

Card Expenditure Statistics [CES] – December 2011

Seasonally-adjusted

At a glance key figures for December

	Total spending £ billions		Annual growth rates for spending		Number of purchases millions	
	2011	2010	2011	2010	2011	2010
All plastic cards	37.9	35.3	8.7%	7.1%	804	719
Debit cards	27.2	24.8	12.0%	9.4%	630	556
Credit cards	10.7	10.5	1.3%	2.2%	174	163

Spending on plastic cards in December amounted to £37.9 billion, £0.2 billion above the monthly average of the previous 12 months. The **number of purchases**, however, at 804 million was 34 million or 4.8% higher than the average of the previous 12 months.

The key figures above show the stronger annual growth in plastic card spending compared to December 2010, with weaker credit card spending more than offset by greater debit card spending. Measured by the number of purchases, the increase over the year is more marked with the December 2011 total of 804 million almost 100 million more than the previous December, an annual growth rate of 9.8%, and reflecting the continued penetration of plastic cards into the lower value end of the payment markets and the increased use of online channels. This stronger growth in the number of purchases compared with their total value has exerted downward pressure on the all cards **average transaction value** (see Chart 3) that fell in December 2011 to its lowest level since mid-2004.

With the **plastic card share of total retail sales** (including automotive fuels)¹ at 68.5% in December (see Chart 2), the mixed Christmas results reported by some of the major retailers are too disparate to have influenced the aggregated data. Although total plastic card retail sales were greater in May, August, September and October, December 2011 was £1.2 billion higher than December 2010.

In **food & drink** plastic cards accounted for 63.0% of all spending, and for **automotive fuel** the share was 61.7%. Both of these sectors continued to show strong growth in plastic card usage with the total number of plastic card food & drink purchases up by 10.8% and those for automotive fuel up by 8.7% during the course of 2011.

¹CES 3-month moving average spending for December of £19.9 billion expressed as a percentage of a similar 3-month moving average for National Statistics 'All retailing including automotive fuel' (J5BU) that gives a figure of £29.0 billion.

Chart 1

Spending on plastic cards
Annual growth rates

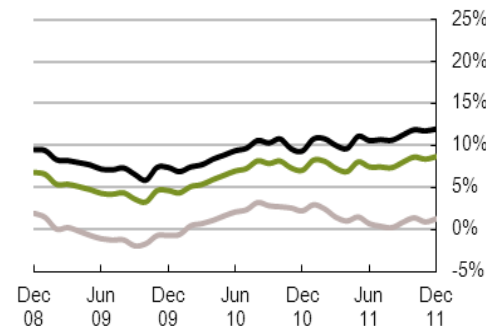


Chart 2

Percent of retail sales made on plastic cards
(including automotive fuel)
Three-month moving average

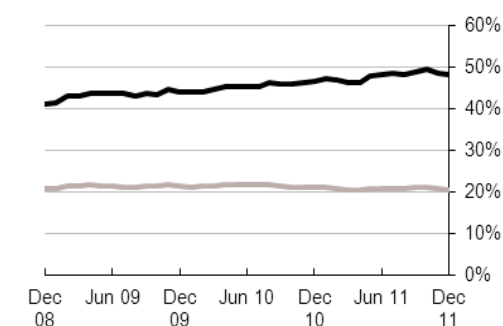


Chart 3

Average transaction values
Three-month moving average

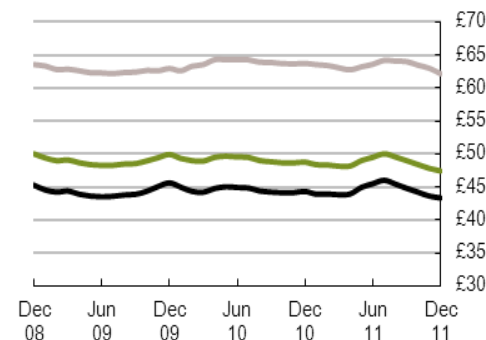
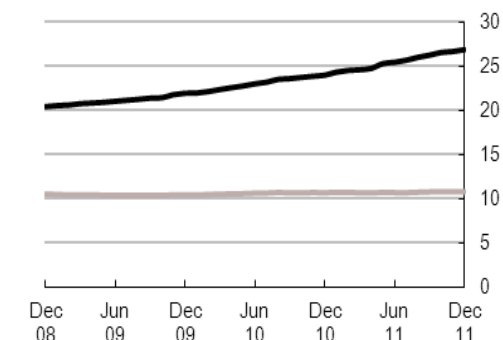


Chart 4

Average monthly expenditure
£ billions



— Debit cards
— Credit cards
— All plastic cards

Table 1 Card expenditure statistics (seasonally adjusted)

Summary

		Number of purchase transactions (millions)									Value of purchase transactions (£ millions)								
		All sectors			Retail sales			Services			All sectors			Retail sales			Services		
		Credit	Debit	Total	Credit	Debit	Total	Credit	Debit	Total	Credit	Debit	Total	Credit	Debit	Total	Credit	Debit	Total
Annual																			
2006		1,948	4,493	6,441	1,215	3,017	4,232	733	1,476	2,209	119,944	195,405	315,349	59,882	97,961	157,843	60,062	97,444	157,507
2007		1,958	4,969	6,927	1,197	3,304	4,501	761	1,665	2,426	123,788	223,879	347,667	61,063	108,657	169,720	62,725	115,223	177,948
2008		1,972	5,466	7,438	1,186	3,581	4,767	786	1,885	2,671	126,194	245,190	371,384	60,686	116,058	176,744	65,508	129,133	194,641
2009		2,002	5,938	7,940	1,224	3,892	5,116	778	2,046	2,824	125,330	263,344	388,674	61,818	125,364	187,182	63,512	137,980	201,493
2010		2,007	6,484	8,490	1,381	4,712	6,093	626	1,772	2,398	128,131	287,994	416,125	69,628	148,491	218,119	58,503	139,503	198,006
Monthly																			
2010	Dec	163	556	719	112	402	514	51	154	205	10,470	24,806	35,276	5,712	12,768	18,479	4,758	12,038	16,796
2011	Jan	169	586	756	116	422	538	53	164	217	10,684	25,227	35,911	5,786	13,248	19,035	4,897	11,979	16,876
	Feb	169	579	748	116	415	531	53	164	218	10,648	25,543	36,191	5,757	13,045	18,802	4,891	12,499	17,389
	Mar	167	573	740	114	409	523	53	165	218	10,532	25,409	35,941	5,704	12,727	18,431	4,828	12,682	17,509
	Apr	169	591	760	117	425	542	52	166	218	10,542	25,627	36,169	5,840	13,395	19,235	4,702	12,232	16,934
	May	177	638	815	122	458	579	56	181	236	11,401	30,086	41,487	6,087	14,425	20,512	5,314	15,661	20,975
	Jun	167	577	744	114	412	526	53	166	219	10,691	26,500	37,191	5,779	13,002	18,781	4,912	13,498	18,410
	Jul	167	595	762	114	427	541	52	168	221	10,691	26,764	37,454	5,823	13,610	19,433	4,868	13,153	18,021
	Aug	178	630	808	122	454	576	56	176	232	11,383	28,608	39,992	6,129	14,292	20,421	5,254	14,316	19,570
	Sep	171	618	789	117	441	558	54	177	231	10,922	27,185	38,107	5,955	13,949	19,905	4,967	13,236	18,203
	Oct	175	638	813	120	457	576	55	182	237	10,902	27,607	38,509	6,017	14,397	20,415	4,884	13,210	18,094
	Nov	171	614	786	116	435	552	55	179	234	10,731	26,793	37,525	5,842	13,648	19,490	4,889	13,145	18,035
	Dec	174	630	804	118	446	564	56	184	240	10,692	27,187	37,879	5,803	13,886	19,689	4,889	13,301	18,190
12 month growth rates (percentages)																			
Annual																			
2006		-2.7	9.8	5.7	-2.9	9.3	5.5	-2.4	10.9	6.1	-1.4	15.3	8.3	-0.5	10.3	5.9	-2.2	20.8	10.9
2007		0.5	10.6	7.6	-1.4	9.5	6.4	3.8	12.8	9.8	3.2	14.6	10.2	2.0	10.9	7.5	4.4	18.2	13.0
2008		0.7	10.0	7.4	-0.9	8.4	5.9	3.2	13.2	10.1	1.9	9.5	6.8	-0.6	6.8	4.1	4.4	12.1	9.4
2009		1.5	8.6	6.8	3.2	8.7	7.3	-1.0	8.5	5.7	-0.7	7.4	4.7	1.9	8.0	5.9	-3.0	6.9	3.5
2010		0.3	9.2	6.9	12.8	21.1	19.1	-19.5	-13.4	-15.1	2.2	9.4	7.1	12.6	18.4	16.5	-7.9	1.1	-1.7
Monthly																			
2010	Dec	0.3	9.2	6.9	12.8	21.1	19.1	-19.5	-13.4	-15.1	2.2	9.4	7.1	12.6	18.4	16.5	-7.9	1.1	-1.7
2011	Jan	0.7	10.3	7.9	11.9	21.1	18.9	-17.5	-10.8	-12.6	3.0	10.8	8.3	12.6	18.7	16.7	-6.6	3.5	0.3
	Feb	0.6	10.4	8.0	10.7	20.0	17.8	-16.2	-8.8	-10.8	2.5	10.8	8.1	11.3	17.8	15.7	-6.4	4.2	0.9
	Mar	0.0	10.1	7.5	8.8	18.2	16.0	-15.1	-6.8	-9.1	1.5	10.0	7.3	9.2	16.3	14.0	-6.5	4.1	0.8
	Apr	0.1	10.3	7.7	7.9	17.3	15.1	-13.8	-4.7	-7.1	1.0	9.7	6.9	8.2	15.6	13.1	-6.4	4.0	0.8
	May	0.9	11.6	8.9	7.7	17.5	15.2	-11.5	-1.3	-4.0	1.5	11.1	8.1	7.5	15.9	13.2	-4.8	6.5	3.0
	Jun	0.3	11.0	8.4	5.9	15.6	13.4	-10.2	0.7	-2.2	0.7	10.6	7.5	5.5	14.4	11.5	-4.5	6.9	3.4
	Jul	0.3	11.2	8.6	4.9	14.7	12.4	-8.6	3.2	0.0	0.4	10.7	7.5	4.5	13.9	10.8	-4.0	7.5	4.0
	Aug	0.1	10.8	8.2	3.7	13.2	11.0	-6.8	5.1	1.9	0.2	10.6	7.4	3.3	12.6	9.6	-3.2	8.7	5.1
	Sep	1.0	11.6	9.0	3.5	12.9	10.7	-4.1	8.3	5.0	0.9	11.3	8.0	3.3	12.6	9.6	-1.8	9.9	6.4
	Oct	1.8	12.2	9.7	3.3	12.6	10.5	-1.3	11.3	8.0	1.4	11.9	8.6	3.1	12.5	9.5	-0.6	11.3	7.8
	Nov	1.5	11.7	9.3	2.0	11.0	8.9	0.5	13.6	10.2	0.9	11.7	8.4	1.8	11.0	8.0	-0.1	12.5	8.8
	Dec	2.4	12.1	9.8	1.7	10.3	8.4	3.7	16.9	13.5	1.3	12.0	8.7	1.3	10.2	7.3	1.4	13.9	10.2

Table 2A Card expenditure statistics (seasonally adjusted)

Retail sales

Number of purchase transactions (millions)

Total retail sales

		Number of purchase transactions (millions)																		Total retail sales		
		Food & drink			Mixed business			Clothing			Household			Other retailers			Automotive Fuels *			Number of purchases		
		Credit	Debit	Total	Credit	Debit	Total	Credit	Debit	Total	Credit	Debit	Total	Credit	Debit	Total	Credit	Debit	Total	Credit	Debit	Total
Annual																						
2006		394	1,454	1,848	215	415	630	126	317	444	145	263	408	334	567	901	0	0	0	1,215	3,017	4,232
2007		426	1,639	2,066	203	436	640	124	350	474	147	282	429	297	596	893	165	419	584	1,197	3,304	4,501
2008		500	1,874	2,373	134	408	542	121	371	492	143	292	436	288	636	924	168	459	627	1,186	3,581	4,767
2009		512	2,086	2,597	131	401	532	125	404	529	146	321	467	310	681	991	158	475	633	1,224	3,892	5,116
2010		534	2,283	2,817	138	403	541	128	424	552	147	349	495	273	733	1,006	161	520	681	1,381	4,712	6,093
Monthly																						
2010	Dec	44	198	243	12	34	45	10	35	45	12	29	41	21	62	84	13	44	56	112	402	514
2011	Jan	46	205	251	13	36	48	11	36	47	12	32	44	21	66	88	13	47	60	116	422	538
	Feb	45	201	246	12	35	47	11	36	46	12	32	44	22	65	87	13	47	60	116	415	531
	Mar	44	199	243	11	33	45	11	35	45	12	31	44	22	64	86	13	46	60	114	409	523
	Apr	47	206	253	11	36	48	12	39	50	12	32	44	22	65	87	13	46	60	117	425	542
	May	47	224	271	12	40	52	12	39	51	12	32	45	24	72	96	14	51	65	122	458	579
	Jun	44	202	246	11	35	46	11	35	46	11	31	42	22	63	85	14	46	60	114	412	526
	Jul	46	211	257	11	36	47	11	37	48	12	32	44	20	62	83	14	48	62	114	427	541
	Aug	50	227	277	11	37	49	11	39	51	13	33	46	22	67	90	14	50	64	122	454	576
	Sep	47	222	269	11	36	48	11	39	50	12	32	45	21	64	85	14	48	61	117	441	558
	Oct	49	227	276	12	39	51	12	40	51	12	34	46	21	67	88	14	50	63	120	457	576
	Nov	47	216	263	12	37	49	11	37	49	12	33	45	20	64	84	13	48	61	116	435	552
	Dec	48	222	270	12	38	51	12	39	50	12	33	46	21	64	84	13	49	63	118	446	564
12 month growth rates (percentages)																						
Annual																						
2006		-0.2	11.5	8.8	-0.8	8.6	5.2	-4.6	9.5	5.1	-4.7	5.7	1.8	-5.9	6.3	1.4	-	-	-	-2.9	9.3	5.5
2007		8.2	12.7	11.8	-5.6	5.1	1.5	-1.8	10.3	6.9	1.1	7.3	5.1	-11.1	5.0	-0.9	-	-	-	-1.4	9.5	6.4
2008		17.3	14.3	14.9	-34.0	-6.5	-15.2	-2.3	6.0	3.8	-2.6	3.6	1.5	-3.0	6.8	3.5	1.4	9.6	7.3	-0.9	8.4	5.9
2009		2.4	11.3	9.4	-2.2	-1.7	-1.8	3.2	9.0	7.6	1.9	9.7	7.1	7.8	7.0	7.2	-5.7	3.5	1.0	3.2	8.7	7.3
2010		4.3	9.5	8.4	5.1	0.6	1.7	2.5	5.0	4.4	0.5	8.7	6.1	-11.9	7.6	1.5	2.0	9.5	7.6	12.8	21.1	19.1
Monthly																						
2010	Dec	4.3	9.5	8.4	5.1	0.6	1.7	2.5	5.0	4.4	0.5	8.7	6.1	-11.9	7.6	1.5	2.0	9.5	7.6	12.8	21.1	19.1
2011	Jan	5.0	10.4	9.3	6.6	1.7	2.9	3.3	5.7	5.1	1.7	10.2	7.6	-14.0	9.3	2.0	3.1	10.8	8.9	11.9	21.1	18.9
	Feb	4.9	10.6	9.5	6.6	1.7	2.9	2.7	5.0	4.4	1.3	10.6	7.7	-13.3	9.5	2.4	2.2	10.5	8.4	10.7	20.0	17.8
	Mar	4.1	10.2	9.0	5.4	1.2	2.2	1.7	4.0	3.5	0.8	11.0	7.8	-13.2	9.0	2.1	1.1	9.9	7.7	8.8	18.2	16.0
	Apr	4.2	10.3	9.1	5.2	1.8	2.6	2.4	4.4	3.9	0.6	11.4	8.0	-12.4	9.3	2.7	0.1	9.3	7.0	7.9	17.3	15.1
	May	4.8	11.6	10.3	5.9	3.5	4.1	3.7	5.7	5.2	0.5	11.8	8.3	-10.8	10.6	4.1	0.2	10.1	7.7	7.7	17.5	15.2
	Jun	3.7	10.9	9.5	4.6	3.6	3.8	3.1	4.7	4.3	-1.1	11.1	7.4	-10.2	9.7	3.8	0.1	9.7	7.4	5.9	15.6	13.4
	Jul	3.6	11.1	9.6	3.9	4.4	4.3	3.2	4.8	4.5	-1.9	11.1	7.2	-9.5	9.5	3.9	0.5	10.0	7.7	4.9	14.7	12.4
	Aug	3.3	10.8	9.3	2.4	4.3	3.8	2.7	4.2	3.9	-1.8	10.5	6.8	-9.2	8.3	3.2	0.5	9.9	7.7	3.7	13.2	11.0
	Sep	4.1	11.7	10.3	2.1	5.4	4.6	3.5	5.0	4.7	-1.0	10.8	7.3	-7.7	8.5	3.9	1.2	10.5	8.3	3.5	12.9	10.7
	Oct	4.7	12.6	11.1	2.5	7.0	5.8	4.3	6.0	5.6	-0.6	11.1	7.6	-6.4	8.7	4.4	1.3	10.7	8.4	3.3	12.6	10.5
	Nov	4.3	12.0	10.6	1.8	7.5	6.1	3.9	5.5	5.1	-0.8	10.6	7.2	-6.2	7.2	3.5	0.9	10.1	7.9	2.0	11.0	8.9
	Dec	4.8	12.3	10.8	2.4	8.8	7.2	4.9	6.4	6.1	0.0	11.2	7.9	-5.0	6.7	3.5	1.7	10.8	8.7	1.7	10.3	8.4

* The category of Automotive Fuels is effective from January 2010. Data shown for 2009 are for growth trend purposes only; these data are excluded from totals for 2009 as these are already included in their former Services sector of Motoring (now known as Vehicle Sales & Service)

Table 2B Card expenditure statistics (seasonally adjusted)

Retail sales

Value of purchase transactions (£ millions)

Total retail sales

	Value of purchase transactions (£ millions)																		Total retail sales		
	Food & drink			Mixed business			Clothing			Household			Other retailers			Automotive Fuels *			Value of purchases		
	Credit	Debit	Total	Credit	Debit	Total	Credit	Debit	Total	Credit	Debit	Total	Credit	Debit	Total	Credit	Debit	Total	Credit	Debit	Total
Annual																					
2006	14,002	43,462	57,463	8,903	13,103	22,005	5,783	9,379	15,162	14,020	13,722	27,741	17,175	18,296	35,470	0	0	0	59,882	97,961	157,843
2007	15,308	48,573	63,882	8,840	14,054	22,894	5,861	10,454	16,315	14,700	15,346	30,046	16,354	20,229	36,582	5,868	10,961	16,829	61,063	108,657	169,720
2008	17,564	54,549	72,112	7,054	13,457	20,511	5,954	11,213	17,167	14,382	15,575	29,956	15,733	21,265	36,998	6,676	12,967	19,644	60,686	116,058	176,744
2009	18,097	60,228	78,324	7,092	13,863	20,954	6,376	12,643	19,019	14,494	16,603	31,096	15,760	22,027	37,787	5,860	12,668	18,528	61,818	125,364	187,182
2010	18,831	63,841	82,672	7,157	13,925	21,083	6,782	13,640	20,422	14,638	18,753	33,391	15,607	23,540	39,147	6,613	14,792	21,405	69,628	148,491	218,119
Monthly																					
2010 Dec	1,563	5,500	7,063	587	1,156	1,742	564	1,145	1,708	1,203	1,654	2,857	1,249	2,023	3,272	547	1,290	1,837	5,712	12,768	18,479
2011 Jan	1,581	5,627	7,208	600	1,221	1,821	581	1,198	1,778	1,166	1,696	2,862	1,255	2,063	3,318	605	1,443	2,048	5,786	13,248	19,035
Feb	1,551	5,480	7,032	586	1,183	1,769	578	1,173	1,751	1,173	1,721	2,894	1,265	2,054	3,319	604	1,434	2,037	5,757	13,045	18,802
Mar	1,519	5,302	6,821	567	1,095	1,662	575	1,145	1,720	1,180	1,716	2,896	1,258	2,052	3,310	605	1,417	2,022	5,704	12,727	18,431
Apr	1,633	5,669	7,302	596	1,252	1,848	600	1,257	1,857	1,189	1,761	2,950	1,226	2,034	3,260	596	1,421	2,017	5,840	13,395	19,235
May	1,607	6,153	7,760	658	1,376	2,033	616	1,299	1,915	1,215	1,805	3,020	1,359	2,223	3,582	633	1,569	2,202	6,087	14,425	20,512
Jun	1,536	5,406	6,942	593	1,225	1,818	610	1,200	1,810	1,140	1,725	2,865	1,282	2,012	3,294	618	1,434	2,052	5,779	13,002	18,781
Jul	1,608	5,809	7,417	603	1,271	1,874	602	1,256	1,858	1,161	1,768	2,929	1,228	2,030	3,258	621	1,477	2,098	5,823	13,610	19,433
Aug	1,718	6,142	7,861	616	1,316	1,932	617	1,307	1,924	1,259	1,837	3,096	1,299	2,135	3,434	619	1,556	2,175	6,129	14,292	20,421
Sep	1,658	6,041	7,698	610	1,279	1,888	607	1,268	1,875	1,215	1,819	3,034	1,241	2,060	3,301	625	1,483	2,108	5,955	13,949	19,905
Oct	1,681	6,165	7,845	634	1,347	1,981	622	1,330	1,952	1,209	1,871	3,080	1,248	2,138	3,386	625	1,545	2,171	6,017	14,397	20,415
Nov	1,596	5,730	7,325	610	1,283	1,893	612	1,263	1,875	1,193	1,837	3,030	1,212	2,040	3,252	620	1,496	2,115	5,842	13,648	19,490
Dec	1,606	5,891	7,497	625	1,319	1,945	620	1,306	1,926	1,131	1,805	2,935	1,192	2,030	3,223	628	1,535	2,164	5,803	13,886	19,689

12 month growth rates (percentages)

	12 month growth rates (percentages)																				
	Credit	Debit	Total	Credit	Debit	Total	Credit	Debit	Total	Credit	Debit	Total	Credit	Debit	Total	Credit	Debit	Total	Credit	Debit	Total
Annual																					
2006	-0.1	10.3	7.5	2.1	10.1	6.7	-1.5	8.6	4.5	0.9	13.5	6.8	-2.9	8.9	2.8	-	-	-	-0.5	10.3	5.9
2007	9.3	11.8	11.2	-0.7	7.3	4.0	1.3	11.5	7.6	4.9	11.8	8.3	-4.8	10.6	3.1	-	-	-	2.0	10.9	7.5
2008	14.7	12.3	12.9	-20.2	-4.2	-10.4	1.6	7.3	5.2	-2.2	1.5	-0.3	-3.8	5.1	1.1	13.8	18.3	16.7	-0.6	6.8	4.1
2009	3.0	10.4	8.6	0.5	3.0	2.2	7.1	12.8	10.8	0.8	6.6	3.8	0.2	3.6	2.1	-12.2	-2.3	-5.7	1.9	8.0	5.9
2010	4.1	6.0	5.6	0.9	0.5	0.6	6.4	7.9	7.4	1.0	13.0	7.4	-1.0	6.9	3.6	12.9	16.8	15.5	12.6	18.4	16.5
Monthly																					
2010 Dec	4.1	6.0	5.6	0.9	0.5	0.6	6.4	7.9	7.4	1.0	13.0	7.4	-1.0	6.9	3.6	12.9	16.8	15.5	12.6	18.4	16.5
2011 Jan	4.3	6.7	6.1	1.6	1.4	1.5	7.0	8.5	8.0	2.4	14.9	9.1	-0.3	8.5	4.8	14.1	18.6	17.2	12.6	18.7	16.7
Feb	4.0	6.9	6.2	0.7	1.2	1.0	6.3	7.9	7.4	1.8	15.1	9.0	-0.6	8.6	4.8	13.2	18.6	16.9	11.3	17.8	15.7
Mar	3.1	6.4	5.6	-0.7	0.5	0.1	5.3	6.9	6.4	0.7	15.0	8.4	-1.4	8.1	4.2	11.9	18.1	16.1	9.2	16.3	14.0
Apr	3.3	6.6	5.9	-0.3	1.3	0.8	5.5	7.3	6.7	0.1	15.2	8.3	-2.0	8.1	3.9	10.5	17.4	15.2	8.2	15.6	13.1
May	3.6	8.0	7.0	0.7	3.1	2.3	6.3	8.6	7.8	-0.4	15.8	8.4	-1.9	9.0	4.5	10.2	18.3	15.7	7.5	15.9	13.2
Jun	2.3	7.4	6.2	-0.2	3.2	2.1	6.0	8.0	7.3	-2.2	15.1	7.2	-3.0	8.1	3.5	9.7	18.1	15.4	5.5	14.4	11.5
Jul	2.1	7.8	6.5	0.0	4.3	2.8	6.1	8.5	7.7	-2.9	15.2	7.0	-3.5	8.0	3.3	9.6	18.6	15.8	4.5	13.9	10.8
Aug	1.8	7.5	6.2	-0.5	4.4	2.7	5.6	7.8	7.1	-3.3	14.1	6.3	-4.0	6.9	2.5	9.5	18.9	16.0	3.3	12.6	9.6
Sep	2.6	8.7	7.3	0.3	5.7	3.9	6.1	8.7	7.8	-2.5	14.5	6.9	-3.5	7.1	2.8	10.5	19.8	16.9	3.3	12.6	9.6
Oct	3.2	9.5	8.1	1.3	7.3	5.3	6.7	9.7	8.7	-2.1	14.6	7.2	-3.0	7.4	3.2	11.0	20.2	17.3	3.1	12.5	9.5
Nov	2.5	8.9	7.4	1.1	7.7	5.5	6.1	9.2	8.2	-2.6	14.1	6.7	-3.7	6.2	2.3	10.8	19.7	17.0	1.8	11.0	8.0
Dec	2.5	8.7	7.3	1.9	8.9	6.5	6.8	10.0	8.9	-2.8	13.9	6.6	-3.5	5.7	2.0	11.9	20.4	17.8	1.3	10.2	7.3

* The category of Automotive Fuels is effective from January 2010. Data shown for 2009 are for growth trend purposes only; these data are excluded from totals for 2009 as these are already included in their former Services sector of Motoring (now known as Vehicle Sales & Service)

Table 2C Card expenditure statistics (seasonally adjusted)

Services

Number of purchase transactions (millions)

Total services

		Number of purchase transactions (millions)																		Total services		
		Vehicle Sales & Services			Entertainment			Hotels			Travel			Financial			Other services			Number of purchases		
		Credit	Debit	Total	Credit	Debit	Total	Credit	Debit	Total	Credit	Debit	Total	Credit	Debit	Total	Credit	Debit	Total	Credit	Debit	Total
Annual																						
2006		242	529	771	176	349	525	36	24	61	96	127	224	28	91	119	155	356	510	733	1,476	2,209
2007		245	573	818	190	411	600	38	26	64	101	148	249	28	106	134	160	401	561	761	1,665	2,426
2008		249	628	876	198	500	698	36	28	64	103	168	271	32	111	143	167	451	618	786	1,885	2,671
2009		235	656	891	206	593	799	37	31	68	100	183	284	32	112	144	167	470	637	778	2,046	2,824
2010		76	203	279	220	720	940	37	34	71	97	202	299	32	129	161	163	483	646	626	1,772	2,398
Monthly																						
2010	Dec	6	18	24	18	63	82	3	3	6	8	18	26	3	11	14	13	41	54	51	154	205
2011	Jan	7	22	29	19	68	87	3	3	6	8	18	25	3	11	14	13	42	55	53	164	217
	Feb	7	23	31	19	67	86	3	3	6	8	18	25	3	11	14	13	42	55	53	164	218
	Mar	8	24	32	19	66	84	3	3	5	8	18	26	3	12	14	13	43	56	53	165	218
	Apr	7	24	31	19	67	86	3	3	6	7	18	26	3	12	14	13	42	55	52	166	218
	May	8	24	32	20	75	95	3	3	7	8	19	27	3	12	15	14	46	61	56	181	236
	Jun	7	18	25	19	69	88	3	3	7	7	19	26	3	12	15	14	44	58	53	166	219
	Jul	6	19	25	20	72	92	3	3	7	7	19	26	3	12	15	13	43	56	52	168	221
	Aug	6	20	26	21	76	97	3	3	7	8	20	28	3	13	16	14	45	59	56	176	232
	Sep	7	21	27	21	77	98	3	3	7	8	19	27	3	12	15	13	44	57	54	177	231
	Oct	7	22	28	21	79	101	3	4	7	8	20	27	3	13	16	13	45	58	55	182	237
	Nov	7	22	29	21	75	96	3	3	7	8	20	28	3	13	16	14	45	59	55	179	234
	Dec	7	24	31	22	79	100	3	3	7	8	20	28	3	13	16	13	45	58	56	184	240

12 month growth rates (percentages)

Annual																						
2006		-10.3	1.2	-2.7	5.3	15.2	11.7	-1.3	9.2	2.6	1.4	15.1	8.7	-9.0	13.6	7.4	1.7	21.7	14.9	-2.4	10.9	6.1
2007		1.3	8.3	6.1	8.1	17.6	14.4	3.2	6.5	4.5	4.2	16.7	11.3	0.8	16.2	12.6	3.4	12.9	10.0	3.8	12.8	9.8
2008		1.4	9.6	7.1	4.3	21.7	16.2	-2.8	5.9	0.8	2.5	13.4	9.0	15.7	4.8	7.1	4.6	12.3	10.1	3.2	13.2	10.1
2009		-5.4	4.5	1.7	4.3	18.7	14.6	0.5	14.0	6.3	-2.5	8.9	4.6	-1.9	1.1	0.4	-0.1	4.4	3.2	-1.0	8.5	5.7
2010		-67.7	-69.0	-68.6	6.7	21.4	17.6	1.6	9.2	5.1	-3.1	10.3	5.5	1.0	15.0	11.9	-2.4	2.7	1.4	-19.5	-13.4	-15.1
Monthly																						
2010	Dec	-67.7	-69.0	-68.6	6.7	21.4	17.6	1.6	9.2	5.1	-3.1	10.3	5.5	1.0	15.0	11.9	-2.4	2.7	1.4	-19.5	-13.4	-15.1
2011	Jan	-65.3	-66.0	-65.8	8.1	22.6	18.9	2.3	10.3	6.0	-2.8	11.2	6.3	0.8	15.3	12.1	-2.3	3.2	1.8	-17.5	-10.8	-12.6
	Feb	-62.8	-62.8	-62.8	8.1	22.2	18.6	1.9	10.0	5.6	-3.7	11.4	6.1	0.1	14.7	11.5	-2.6	3.1	1.6	-16.2	-8.8	-10.8
	Mar	-59.9	-59.1	-59.3	7.4	21.2	17.7	0.4	8.7	4.3	-4.4	11.7	6.1	-1.0	13.9	10.7	-3.2	3.0	1.4	-15.1	-6.8	-9.1
	Apr	-56.5	-54.8	-55.2	6.8	20.3	16.9	0.1	9.3	4.4	-5.4	12.4	6.2	-1.4	13.4	10.3	-3.6	3.2	1.4	-13.8	-4.7	-7.1
	May	-52.2	-49.4	-50.2	7.5	21.5	18.1	0.7	10.8	5.4	-5.5	14.4	7.5	-0.7	13.5	10.5	-2.7	4.7	2.8	-11.5	-1.3	-4.0
	Jun	-47.8	-44.6	-45.4	6.3	20.7	17.1	0.6	11.2	5.5	-6.9	13.9	6.8	-1.0	12.7	9.8	-2.7	5.3	3.2	-10.2	0.7	-2.2
	Jul	-43.1	-38.8	-39.9	6.0	20.7	17.1	0.7	12.5	6.2	-7.1	14.3	7.0	-0.9	12.2	9.4	-2.6	5.9	3.7	-8.6	3.2	0.0
	Aug	-37.4	-32.2	-33.6	5.7	19.8	16.4	1.2	12.1	6.3	-7.1	13.9	6.8	0.1	12.0	9.6	-2.5	6.2	3.9	-6.8	5.1	1.9
	Sep	-29.2	-22.2	-24.0	6.9	20.8	17.5	2.4	13.1	7.4	-6.8	13.6	6.7	1.0	12.1	9.8	-1.8	6.9	4.6	-4.1	8.3	5.0
	Oct	-19.5	-10.1	-12.6	8.0	21.3	18.1	3.6	13.9	8.5	-6.3	13.9	7.2	1.6	12.6	10.4	-1.2	7.8	5.5	-1.3	11.3	8.0
	Nov	-7.2	6.3	2.6	7.6	20.3	17.3	4.2	14.0	8.8	-6.8	12.7	6.3	1.4	12.6	10.4	-1.3	8.0	5.6	0.5	13.6	10.2
	Dec	10.8	29.3	24.2	8.8	20.9	18.1	5.5	14.5	9.8	-6.2	12.6	6.5	1.7	13.0	10.7	-0.5	8.9	6.5	3.7	16.9	13.5

Table 2D Card expenditure statistics (seasonally adjusted)

Services

Value of purchase transactions (£ millions)

Total services

		Vehicle Sales & Services			Entertainment			Hotels			Travel			Financial			Other services			Value of purchases		
		Credit	Debit	Total	Credit	Debit	Total	Credit	Debit	Total	Credit	Debit	Total	Credit	Debit	Total	Credit	Debit	Total	Credit	Debit	Total
Annual																						
2006		13,793	27,055	40,848	8,873	9,675	18,547	5,207	2,041	7,248	13,217	11,025	24,242	5,586	20,922	26,508	13,387	26,727	40,114	60,062	97,444	157,507
2007		14,684	30,696	45,381	9,297	11,230	20,527	5,483	2,263	7,746	13,436	12,603	26,039	5,699	26,121	31,820	14,126	32,308	46,434	62,725	115,223	177,948
2008		15,524	32,972	48,496	9,656	13,060	22,715	5,507	2,446	7,953	14,009	13,728	27,736	5,924	29,919	35,843	14,888	37,009	51,897	65,508	129,133	194,641
2009		14,629	35,429	50,057	9,648	14,597	24,245	5,290	2,723	8,014	13,059	14,079	27,138	5,724	32,985	38,710	15,161	38,168	53,329	63,512	137,980	201,493
2010		8,751	24,678	33,429	9,839	16,937	26,776	5,533	3,041	8,574	12,812	15,770	28,582	5,885	38,433	44,317	15,682	40,645	56,327	58,503	139,503	198,006
Monthly																						
2010	Dec	702	2,083	2,786	789	1,456	2,245	460	264	724	1,031	1,381	2,412	504	3,528	4,032	1,272	3,325	4,598	4,758	12,038	16,796
2011	Jan	762	2,196	2,958	833	1,572	2,405	474	281	755	1,041	1,364	2,405	500	3,162	3,663	1,287	3,403	4,690	4,897	11,979	16,876
	Feb	777	2,230	3,007	836	1,558	2,393	468	277	744	1,007	1,340	2,347	510	3,570	4,080	1,293	3,524	4,817	4,891	12,499	17,389
	Mar	794	2,302	3,096	784	1,498	2,283	422	239	661	1,005	1,357	2,362	518	3,702	4,220	1,305	3,583	4,888	4,828	12,682	17,509
	Apr	747	2,233	2,980	802	1,585	2,387	472	286	757	944	1,362	2,306	534	3,668	4,202	1,203	3,099	4,302	4,702	12,232	16,934
	May	789	2,486	3,275	952	1,849	2,801	515	295	811	1,018	1,422	2,440	642	3,717	4,359	1,398	5,892	7,290	5,314	15,661	20,975
	Jun	732	2,165	2,897	804	1,620	2,424	506	296	802	980	1,398	2,377	562	3,688	4,250	1,328	4,332	5,660	4,912	13,498	18,410
	Jul	682	2,151	2,833	868	1,721	2,589	515	305	820	982	1,393	2,375	557	3,721	4,278	1,263	3,863	5,126	4,868	13,153	18,021
	Aug	729	2,225	2,953	883	1,769	2,652	526	307	833	1,071	1,437	2,508	643	4,473	5,116	1,403	4,106	5,508	5,254	14,316	19,570
	Sep	716	2,184	2,900	837	1,729	2,567	524	298	822	989	1,419	2,408	563	3,882	4,445	1,338	3,724	5,062	4,967	13,236	18,203
	Oct	715	2,222	2,937	862	1,791	2,653	528	312	840	960	1,442	2,402	532	3,804	4,336	1,287	3,639	4,927	4,884	13,210	18,094
	Nov	723	2,194	2,917	838	1,695	2,533	524	302	826	966	1,448	2,414	517	3,917	4,434	1,321	3,590	4,910	4,889	13,145	18,035
	Dec	739	2,194	2,933	855	1,773	2,628	527	305	833	976	1,460	2,437	504	3,839	4,343	1,287	3,729	5,016	4,889	13,301	18,190

12 month growth rates (percentages)

Annual																						
2006		-1.7	11.9	6.9	6.7	18.3	12.4	3.8	17.4	7.3	1.1	13.7	6.5	-32.8	21.1	3.6	5.6	36.4	24.3	-2.2	20.8	10.9
2007		6.5	13.5	11.1	4.8	16.1	10.7	5.3	10.9	6.9	1.7	14.3	7.4	2.0	24.9	20.0	5.5	20.9	15.8	4.4	18.2	13.0
2008		5.7	7.4	6.9	3.9	16.3	10.7	0.5	8.1	2.7	4.3	8.9	6.5	4.0	14.5	12.6	5.4	14.6	11.8	4.4	12.1	9.4
2009		-5.8	7.4	3.2	-0.1	11.8	6.7	-3.9	11.3	0.8	-6.8	2.6	-2.2	-3.4	10.2	8.0	1.8	3.1	2.8	-3.0	6.9	3.5
2010		-40.2	-30.3	-33.2	2.0	16.0	10.4	4.6	11.7	7.0	-1.9	12.0	5.3	2.8	16.5	14.5	3.4	6.5	5.6	-7.9	1.1	-1.7
Monthly																						
2010	Dec	-40.2	-30.3	-33.2	2.0	16.0	10.4	4.6	11.7	7.0	-1.9	12.0	5.3	2.8	16.5	14.5	3.4	6.5	5.6	-7.9	1.1	-1.7
2011	Jan	-37.6	-27.1	-30.2	3.3	17.2	11.7	5.4	12.9	8.0	-1.4	11.9	5.6	3.7	18.7	16.5	3.6	8.9	7.4	-6.6	3.5	0.3
	Feb	-35.7	-25.0	-28.1	3.4	17.2	11.8	5.1	12.8	7.7	-2.6	10.5	4.3	3.8	19.3	17.0	2.8	8.9	7.1	-6.4	4.2	0.9
	Mar	-34.1	-23.8	-26.8	2.9	16.7	11.3	3.4	11.4	6.2	-3.4	9.1	3.2	3.6	18.8	16.6	1.9	8.0	6.3	-6.5	4.1	0.8
	Apr	-32.0	-22.0	-24.8	2.6	16.5	11.1	3.1	11.5	6.0	-4.5	8.9	2.6	4.1	18.4	16.3	0.7	5.8	4.3	-6.4	4.0	0.8
	May	-29.0	-18.6	-21.5	4.3	18.2	12.9	3.7	13.1	7.0	-3.7	9.7	3.5	6.6	18.2	16.6	0.6	10.0	7.3	-4.8	6.5	3.0
	Jun	-26.3	-15.9	-18.8	3.2	17.4	12.0	3.9	13.5	7.2	-4.3	9.5	3.1	7.1	17.2	15.7	0.0	9.7	7.0	-4.5	6.9	3.4
	Jul	-23.6	-12.8	-15.8	3.0	18.1	12.4	4.1	14.6	7.7	-5.1	9.0	2.5	8.2	16.6	15.4	-0.7	9.3	6.5	-4.0	7.5	4.0
	Aug	-20.1	-9.9	-12.7	2.4	17.5	11.8	4.6	14.2	7.9	-5.5	8.4	2.0	10.2	17.9	16.9	-0.6	9.8	6.9	-3.2	8.7	5.1
	Sep	-15.4	-5.9	-8.5	2.8	18.6	12.7	6.0	14.8	9.1	-5.8	7.9	1.6	11.9	18.6	17.7	-0.4	9.8	7.0	-1.8	9.9	6.4
	Oct	-10.3	-1.6	-4.0	3.4	19.2	13.3	7.1	15.3	10.0	-6.0	7.8	1.6	12.9	19.2	18.4	-0.1	10.4	7.5	-0.6	11.3	7.8
	Nov	-5.2	2.6	0.5	2.3	18.3	12.4	7.4	15.0	10.1	-6.8	7.2	0.9	12.1	17.8	17.0	-0.3	13.5	9.6	-0.1	12.5	8.8
	Dec	1.7	8.5	6.8	3.2	19.0	13.2	8.4	15.2	10.8	-6.8	6.8	0.7	11.9	17.5	16.7	0.2	14.4	10.4	1.4	13.9	10.2

Table 3A Card expenditure statistics (not seasonally adjusted)

Number of credit card transactions

Detailed sector breakdown - retail sectors

	December 2010	January 2011	February 2011	March 2011	April 2011	May 2011	June 2011	July 2011	August 2011	September 2011	October 2011	November 2011	December 2011	Total (latest 12 months)
Supermarkets	48,942,099	38,855,018	36,777,424	42,023,720	42,272,726	42,976,297	42,807,308	43,342,100	45,602,512	42,810,848	45,550,297	47,112,441	52,503,341	522,634,032
Bakers & dairies	83,094	62,802	66,484	75,779	80,239	91,578	101,640	110,858	112,796	113,666	123,589	126,027	138,199	1,203,657
Sweet stores	457,308	96,750	124,541	166,165	216,227	173,983	158,390	152,247	162,671	157,620	172,638	259,479	498,252	2,338,963
Miscellaneous foodstores	2,292,898	1,745,699	1,788,163	2,034,325	2,203,845	2,314,030	2,358,015	2,312,729	2,497,142	2,286,838	2,391,541	2,426,339	2,698,908	27,057,574
Off-licences	694,690	414,689	425,084	475,263	493,212	507,233	491,326	512,591	505,625	479,014	500,732	511,152	693,691	6,009,612
Food & drink	52,470,089	41,174,958	39,181,696	44,775,252	45,266,249	46,063,121	45,916,679	46,430,525	48,880,746	45,847,986	48,738,797	50,435,438	56,532,391	559,243,838
Department stores	10,850,795	5,864,433	4,589,998	5,368,637	5,382,143	6,169,300	6,084,883	6,184,177	5,915,425	5,461,136	6,122,623	7,941,789	11,492,762	76,577,306
Discount stores	2,672,843	1,390,630	1,258,151	1,328,788	1,461,861	1,521,968	1,354,410	1,467,080	1,508,082	1,464,624	1,608,251	1,971,262	2,620,098	18,955,205
Catalogues	2,076,253	1,289,875	1,078,444	1,132,308	1,009,011	1,047,619	1,014,945	987,168	556,552	1,151,671	1,900,688	2,552,663	2,574,654	16,295,598
Miscellaneous mixed	3,279,520	2,550,660	2,379,664	2,278,857	2,027,759	2,344,961	2,213,742	2,241,121	2,416,923	2,290,948	2,483,597	2,855,885	3,363,692	29,447,809
Mixed business	18,879,411	11,095,598	9,306,257	10,108,590	9,880,774	11,083,848	10,667,980	10,879,546	10,396,982	10,368,379	12,115,159	15,321,599	20,051,206	141,275,918
Men's clothing	671,966	439,246	343,074	356,056	369,445	413,568	424,717	454,778	433,702	382,263	388,365	443,942	639,924	5,089,080
Women's clothing	2,558,986	1,569,404	1,355,827	1,635,120	1,950,487	2,117,099	2,140,498	2,237,039	2,023,878	1,884,976	2,012,709	2,234,603	2,977,336	24,138,976
Family clothing	9,759,355	5,503,258	4,725,783	5,685,349	6,400,347	6,794,947	6,563,312	7,471,011	6,820,965	6,277,540	7,591,759	6,888,177	7,591,759	81,278,531
Miscellaneous clothing	776,249	383,843	394,038	468,782	642,563	737,873	737,873	652,612	647,519	647,519	721,965	744,915	955,980	8,078,717
Shoe shops	1,566,273	1,227,063	887,328	983,679	1,137,486	1,355,358	1,426,535	1,587,333	1,603,134	1,298,626	1,311,988	1,329,718	1,728,915	16,057,163
Clothing	15,332,829	9,122,814	7,706,050	9,128,986	10,680,328	11,418,845	11,610,365	12,402,773	11,554,998	10,490,929	11,323,204	12,344,937	16,858,238	134,642,467
Furniture stores	1,572,453	1,450,133	1,143,232	1,224,009	1,104,175	1,235,219	1,186,734	1,226,871	1,316,310	1,242,513	1,356,849	1,511,371	1,669,100	15,666,516
Household appliance stores	1,676,355	1,279,333	1,175,264	1,339,673	1,271,378	1,329,351	1,192,101	1,261,678	1,284,005	1,299,794	1,309,396	1,436,361	1,662,960	15,841,294
Electronic stores	2,207,312	1,500,989	1,137,444	1,185,215	1,071,527	1,129,875	1,138,707	1,176,393	1,307,785	1,288,419	1,315,484	1,532,779	2,080,445	15,955,062
DIY stores	5,572,667	5,211,926	5,221,339	6,442,357	7,403,538	7,068,495	5,809,971	6,032,960	6,361,301	5,898,813	6,135,940	6,186,843	5,927,375	73,700,858
Floor covering stores	142,969	160,903	153,072	167,999	144,145	164,073	147,861	152,807	172,067	161,294	171,348	192,490	138,450	1,926,509
Garden centres	1,477,218	822,154	969,381	1,724,055	2,478,501	2,477,578	1,737,250	1,432,323	1,362,180	1,228,793	1,352,414	1,340,235	1,734,297	18,659,161
Miscellaneous household	350,144	336,353	304,310	335,048	333,901	365,459	360,235	406,283	497,365	463,364	471,088	492,703	449,841	4,815,950
Household	12,999,118	10,761,791	10,104,042	12,418,356	13,807,165	13,860,050	11,572,859	11,689,315	12,301,013	11,582,990	12,163,422	12,641,879	13,662,468	146,565,350
Books, newspapers & magazines	3,216,479	1,614,899	1,511,488	1,626,459	1,603,650	1,797,859	1,786,916	1,748,461	1,835,314	1,813,143	1,957,656	2,303,275	3,153,312	22,752,432
Record shops	1,911,377	609,165	538,279	604,130	514,642	535,550	576,011	445,221	459,346	435,543	495,900	758,457	1,418,705	7,390,949
Music shops	1,806,861	1,861,944	1,530,632	1,656,231	1,527,422	1,902,334	1,659,359	1,575,406	1,714,212	1,629,741	1,745,463	1,729,473	1,960,378	20,492,595
Hobbies, toys & games	1,926,809	603,310	506,922	572,825	514,762	488,207	459,262	469,197	506,613	495,089	616,172	956,663	1,451,512	7,640,534
Photographic	381,508	216,652	181,665	210,565	198,193	230,202	248,611	242,373	263,388	248,872	232,830	298,872	378,829	2,951,052
Handicraft	75,449	74,761	72,202	78,408	64,544	73,384	90,609	68,351	78,319	78,651	84,678	95,063	77,986	936,956
Sports shops	3,674,001	2,377,061	2,067,231	2,376,120	2,656,943	2,861,639	2,744,513	2,988,068	3,178,784	2,590,488	2,476,010	2,618,752	3,524,804	32,460,413
Jewellers	1,307,376	517,308	523,066	552,158	521,629	567,332	585,183	606,902	604,305	554,090	564,438	769,583	1,345,193	7,711,187
Computer software	764,550	615,847	530,883	580,259	525,633	604,234	568,806	539,329	585,213	577,335	613,442	692,115	783,168	7,216,264
Medical goods	17,660	17,652	18,676	20,888	17,813	19,395	20,578	19,640	19,746	19,833	19,344	21,438	18,942	233,945
Chemists	5,438,607	3,283,913	3,063,585	3,634,312	3,127,580	3,613,626	3,982,352	3,350,787	3,671,672	3,425,708	3,425,708	3,565,918	3,901,599	5,296,284
Optical goods	324,384	414,210	422,484	470,952	430,882	475,475	458,035	452,913	480,561	443,216	434,974	437,683	360,559	5,281,944
Cosmetic stores	868,481	335,823	307,999	336,805	297,443	339,450	346,389	350,011	372,486	336,541	366,141	526,135	883,834	4,799,057
Tobacconists	11,903	7,253	8,181	10,664	11,306	18,363	14,638	14,638	16,673	14,213	13,947	16,558	18,477	162,808
Florists	534,462	299,798	412,176	465,537	450,511	351,209	342,785	318,313	310,203	324,293	303,591	317,053	531,758	4,427,227
Artists' supplies	301,863	212,147	217,291	254,349	213,443	246,621	576,841	237,940	269,722	247,867	270,380	349,431	338,757	3,434,789
Antiques, art & stamps/coins	166,502	122,147	111,404	130,265	127,083	145,851	155,409	156,615	170,694	143,053	169,179	159,532	184,053	1,766,532
Pawn shops	4,148	2,533	2,393	2,619	2,403	2,500	5,022	2,632	2,533	2,477	2,492	2,949	4,630	35,183
Gift shops	2,503,042	1,030,542	1,115,928	1,169,021	1,155,341	1,217,314	1,307,917	1,320,862	1,467,366	1,255,062	1,349,152	1,805,128	2,622,074	16,815,707
Secondhand shops	6,794	4,989	5,318	6,085	5,837	7,073	7,314	6,864	7,240	6,864	6,984	7,454	9,071	96,211
Luggage & leather goods	164,512	109,171	81,723	93,475	97,786	106,063	117,507	126,680	117,508	99,055	98,685	119,816	160,726	1,328,195
Pet shops	694,365	574,348	542,259	611,187	593,167	652,567	637,705	638,652	657,359	609,963	645,469	645,675	733,576	7,541,927
Religious goods	744	685	735	785	581	659	735	775	775	691	860	747	747	9,728
Direct sales	3,859,387	3,760,460	3,532,859	4,141,697	3,486,880	3,810,217	3,522,478	3,199,396	3,290,423	3,348,054	3,459,085	3,658,592	3,617,978	42,828,119
Miscellaneous & speciality shops	1,881,238	1,353,741	1,259,005	1,410,614	1,137,971	1,284,451	1,479,359	1,225,492	1,828,102	1,258,936	1,262,277	1,466,389	1,573,326	16,519,663
Other retail	31,842,502	20,020,359	18,564,319	21,016,410	19,283,445	21,368,111	21,672,266	20,105,894	21,909,119	19,958,778	20,737,792	23,665,581	30,448,679	258,750,753
Automotive Fuels	12,341,225	12,296,597	11,970,484	13,798,071	13,287,427	14,308,236	13,103,732	13,909,766	14,231,671	13,817,901	13,825,922	13,487,048	12,980,570	161,017,425
Total retail sales	143,865,174	104,472,117	96,832,848	111,245,665	112,205,388	118,102,211	114,543,881	115,417,819	119,274,529	112,066,963	118,904,296	127,896,482	150,533,552	1,401,495,751

Table 3A Card expenditure statistics (not seasonally adjusted)

Number of credit card transactions

Detailed sector breakdown - services sectors

	December 2010	January 2011	February 2011	March 2011	April 2011	May 2011	June 2011	July 2011	August 2011	September 2011	October 2011	November 2011	December 2011	Total (latest 12 months)
Auto rental	314,066	330,052	326,771	384,768	382,425	415,769	494,774	440,044	424,168	403,835	367,981	347,080	341,059	4,658,726
Auto parts & accessories	795,453	803,703	785,025	936,688	813,074	867,323	818,021	812,356	830,818	810,110	801,412	805,151	768,488	9,852,169
Auto services	1,417,947	1,503,073	1,505,271	1,712,330	1,504,947	1,743,270	1,664,751	1,686,855	1,608,097	1,782,213	1,741,305	1,779,072	1,651,376	19,882,560
Auto repair shops	844,878	926,916	903,484	1,082,917	914,882	968,572	900,164	893,572	905,141	963,712	922,239	908,109	845,618	11,135,326
Service stations	2,277,138	2,523,735	2,366,964	2,686,727	2,609,065	2,777,054	1,896,503	1,930,015	2,000,663	2,575,607	2,702,744	2,822,297	3,214,254	30,105,628
Vehicle sales	505,319	577,054	583,073	730,317	693,916	637,916	1,356,445	641,512	657,853	658,637	599,019	575,119	513,888	8,224,247
Vehicle Sales & Services	6,154,801	6,664,533	6,470,588	7,533,747	6,862,309	7,465,402	7,130,658	6,404,354	6,426,740	7,194,114	7,134,700	7,236,828	7,334,683	83,858,656
Restaurants	8,693,286	8,547,186	8,831,664	9,700,737	9,699,353	10,484,849	9,789,427	10,852,563	11,237,516	10,313,515	10,865,074	10,226,602	10,384,316	120,932,802
Public houses	1,412,531	1,345,030	1,401,729	1,573,369	1,689,478	1,869,639	1,770,217	1,827,418	2,079,585	1,777,943	1,850,851	1,651,107	1,714,839	20,551,205
Catering services	173,572	167,907	169,594	211,459	170,517	205,829	205,721	204,043	191,059	226,029	217,790	240,953	206,697	2,417,598
Video stores	87,319	80,373	74,887	73,434	82,326	73,434	72,665	70,574	73,320	71,373	73,136	74,328	83,331	907,895
Cinema, theatre & dance	1,610,593	1,748,099	1,694,328	1,514,258	1,224,841	1,774,890	1,511,897	1,862,575	1,858,224	1,586,386	1,797,510	1,913,729	1,821,420	20,308,157
Concerts & entertainers	20,662	17,521	17,984	21,548	21,916	24,636	26,131	27,646	31,981	23,922	28,866	33,330	35,268	310,749
Tourist attractions	158,408	133,679	190,791	222,614	426,802	434,149	433,107	525,809	736,164	409,756	415,614	224,159	207,422	4,360,066
Amusement parks	11,832	11,165	17,075	14,969	36,184	23,525	26,593	32,866	60,032	24,490	30,964	15,434	15,929	309,226
Aquariums	6,545	8,428	9,941	9,926	13,869	13,210	11,523	12,561	16,100	10,140	10,361	7,869	7,755	131,683
Sports & games establishments	2,431,709	2,146,741	1,955,658	2,527,086	1,821,852	1,369,466	2,125,337	2,096,552	2,416,497	2,099,829	2,240,577	2,052,113	2,320,366	25,172,074
Professional sports clubs	110,266	94,655	100,383	102,751	99,284	91,478	108,567	112,304	118,246	98,368	103,377	115,073	135,613	1,280,099
Gambling	2,946,663	2,967,046	2,735,671	2,999,026	2,733,603	3,031,716	2,608,272	2,789,306	3,490,623	3,471,936	3,737,047	3,645,347	3,637,421	37,847,014
Personal services	110,054	98,770	112,088	98,727	99,363	167,918	156,517	176,002	212,974	193,840	193,696	212,218	237,356	1,959,469
Miscellaneous entertainment	175,997	177,852	196,641	228,073	310,481	292,930	295,768	338,575	441,892	283,972	295,466	208,453	200,080	3,270,183
Entertainment	17,949,437	17,544,452	17,495,073	19,316,052	18,420,977	19,866,561	19,141,742	20,928,794	22,964,213	20,591,499	21,860,329	20,620,715	21,007,813	239,758,220
Hotels	2,560,111	2,650,909	2,743,560	2,863,493	3,029,677	3,512,605	3,612,850	3,779,089	3,744,513	3,625,489	3,516,157	3,317,319	2,905,774	39,301,435
Airlines	594,877	980,205	696,387	702,424	535,494	633,500	661,860	590,996	628,784	625,558	548,555	566,848	412,803	7,583,414
Airport terminals	14,679	17,018	17,274	23,476	25,051	28,145	32,058	33,491	36,510	30,828	24,177	23,092	18,655	309,775
Railways	3,933,440	4,039,323	4,041,671	4,772,440	4,064,089	4,222,439	4,653,258	4,709,814	4,529,433	4,862,762	4,892,874	4,989,603	4,232,647	54,010,353
Buses	305,116	304,289	307,338	367,240	353,870	425,800	423,948	436,217	449,333	470,892	461,579	419,119	377,256	4,796,881
Sea travel	61,794	64,319	65,468	78,872	87,359	96,194	97,696	111,970	125,602	94,283	80,258	60,027	51,729	1,013,777
Travel agents	824,064	1,397,513	1,236,316	1,407,574	1,123,739	1,285,188	945,324	1,264,225	1,225,235	1,201,764	1,066,019	962,170	720,715	13,835,782
Timeshares	158	248	292	636	210	157	194	140	115	138	116	183	94	2,523
Camping grounds	52,751	139,436	139,126	167,310	240,509	262,561	256,828	296,763	323,681	176,355	132,299	60,758	45,209	2,240,835
Miscellaneous travel	689,044	597,971	589,127	687,718	592,862	737,100	559,914	700,499	666,136	643,078	606,159	587,548	492,011	7,460,123
Travel	6,475,923	7,540,322	7,092,999	8,207,690	7,023,183	7,691,084	7,631,080	8,144,115	7,984,829	8,105,658	7,812,036	7,669,348	6,351,119	91,253,463
Telegraph services / Wire transfer money order	4,532	3,578	3,110	3,806	3,472	11,343	4,561	3,578	4,140	3,628	3,606	3,627	4,139	52,588
Insurance services	1,464,082	1,589,802	1,585,228	1,908,435	1,657,852	1,808,564	1,980,046	1,959,768	2,059,526	1,957,808	1,765,772	1,700,541	1,443,739	21,417,081
Fis - cash disbursements (auto & manual)	23,452	23,419	23,625	25,912	176,758	274,617	230,598	250,132	251,798	203,499	87,374	21,457	17,720	1,586,909
Fis - merchandise & services	511,091	524,329	486,621	583,924	508,045	518,920	482,350	495,635	529,590	536,826	523,344	492,785	480,302	6,162,671
Non-Fis - foreign currency, travellers' cheques	12,749	11,355	13,832	17,464	16,155	21,773	23,766	28,904	30,449	23,766	17,131	12,183	12,981	229,381
Security brokers and dealers	14,617	17,131	17,013	23,041	16,525	20,766	25,899	21,932	38,620	34,051	28,082	31,257	26,942	301,259
Tax preparation services	82	161	334	412	251	804	375	339	192	202	172	170	165	3,577
Tax payments	3,807	3,724	3,257	4,346	4,265	4,650	5,256	5,258	5,798	4,796	4,420	4,532	3,700	54,002
Fines, bail and bond payments	57,369	61,562	61,702	70,543	60,988	67,614	53,490	72,808	70,479	72,799	70,654	72,367	62,955	797,961
Miscellaneous financial	135,689	148,496	147,721	177,862	174,904	178,772	152,303	150,458	154,065	169,627	168,814	171,151	163,586	1,957,759
Financial	2,227,470	2,383,557	2,342,443	2,814,436	2,620,524	2,907,823	2,958,644	2,988,812	3,144,657	3,006,624	2,669,369	2,510,070	2,216,229	32,563,188

Table 3A Card expenditure statistics (not seasonally adjusted)

Number of credit card transactions

Detailed sector breakdown - services sectors (continued)

	December 2010	January 2011	February 2011	March 2011	April 2011	May 2011	June 2011	July 2011	August 2011	September 2011	October 2011	November 2011	December 2011	Total (latest 12 months)
Telecoms	2,067,412	1,762,498	1,646,198	1,866,413	1,849,021	2,022,780	1,850,386	1,879,207	1,959,468	1,885,486	1,930,901	1,860,084	1,986,619	22,499,061
Utilities	285,689	320,411	305,278	379,761	333,865	352,103	365,705	338,770	339,759	316,904	312,647	307,600	274,260	3,947,063
Contractors (residential & commercial)	275,484	295,522	290,778	326,715	256,070	284,107	394,736	270,050	285,383	287,545	290,450	305,932	248,974	3,536,262
Gardening services	54,025	30,454	33,600	52,967	70,892	76,880	57,461	47,947	48,236	42,881	45,074	44,514	54,917	605,823
Veterinary services	515,550	526,084	464,314	528,817	482,194	535,845	500,938	510,564	532,214	514,966	506,898	503,743	485,883	6,092,460
Photocopying & printing	364,107	324,692	296,966	344,940	274,744	323,447	323,375	308,420	318,190	336,730	342,788	435,773	403,693	4,033,758
Photographic studios	128,221	83,543	82,650	378,582	342,509	384,901	110,581	137,507	98,600	101,363	128,354	144,049	118,256	2,110,895
Beauty & barber shops	1,655,581	1,163,597	1,136,144	1,044,541	1,003,714	1,072,823	1,396,731	1,378,616	1,367,387	1,352,299	1,316,162	1,365,974	1,756,139	15,354,127
Employment agencies	15,788	20,316	19,752	20,612	12,162	11,481	14,195	14,958	14,166	15,674	15,327	14,049	13,390	186,082
Counselling services	3,775	4,194	3,991	4,342	4,473	5,462	4,909	4,599	5,141	4,936	4,900	4,762	3,647	55,356
Legal services	23,526	30,045	29,822	35,527	30,647	34,375	34,256	31,854	32,884	32,926	32,082	34,381	27,828	386,627
Laundry & cleaning	135,019	150,303	140,724	161,656	153,629	186,555	179,725	175,020	164,432	173,584	173,316	169,171	153,669	1,981,784
Funeral services	10,151	11,105	10,394	11,023	8,953	9,153	10,365	9,864	9,907	10,308	10,210	11,050	10,534	122,866
Medical services	891,789	1,028,739	1,021,477	1,182,622	950,276	1,107,385	1,122,419	1,045,092	1,064,312	1,128,025	1,072,132	1,173,003	977,179	12,872,661
Moving & courier services	173,650	166,269	164,111	197,160	167,708	198,091	194,357	196,184	191,772	196,047	193,466	214,021	206,381	2,285,567
Repair shops (not auto)	55,861	51,951	48,516	55,841	49,153	56,965	56,984	53,910	59,327	57,370	57,039	62,998	60,876	670,930
Accounting services	32,035	35,853	29,277	31,595	22,587	27,187	37,433	25,063	29,723	33,810	32,346	33,835	30,480	369,189
Advertising, consultancy & PR	85,940	110,528	108,550	163,820	143,882	168,112	157,794	148,388	157,560	151,829	147,565	150,624	130,380	1,739,032
Computer programming	461,088	476,240	452,999	505,303	433,550	449,259	431,180	415,415	412,274	437,297	496,335	481,989	455,695	5,447,536
Farming services	64,562	57,309	54,823	64,202	64,330	68,384	62,052	58,823	61,941	59,825	59,227	58,207	60,034	729,157
Miscellaneous professional services	1,070,666	1,067,404	1,319,915	1,229,117	986,350	1,122,614	1,096,869	1,069,229	1,041,214	1,090,245	995,964	1,057,296	974,900	13,051,117
Engineering services	46,301	53,832	58,014	69,443	56,717	64,242	57,147	60,491	62,098	60,931	58,130	62,177	48,346	711,568
Marina services	34,996	32,660	31,455	46,622	66,508	70,128	72,791	77,189	88,783	54,121	42,933	33,597	31,642	648,429
Wrecking & salvage yards	2,953	3,781	3,748	4,352	4,009	4,224	4,364	4,243	4,377	4,449	4,245	4,166	3,373	49,331
Pest control	1,707	2,103	1,941	2,522	2,350	2,906	3,337	4,277	4,351	4,101	3,596	3,126	2,263	36,873
Educational establishments	364,255	502,685	409,651	503,839	372,398	458,749	410,283	420,508	420,465	629,741	547,936	539,577	424,912	5,640,744
Child care services	14,442	18,027	17,928	16,327	12,139	14,626	14,009	14,868	16,564	14,947	15,706	14,530	14,486	184,157
Social, political & religious organisations	1,073,604	895,294	887,115	1,419,875	1,196,161	1,270,500	1,219,836	1,231,568	1,209,865	1,105,983	928,514	1,026,831	1,013,000	13,404,542
Government services	1,333,184	1,448,125	1,484,559	1,701,460	1,471,372	1,673,000	1,549,906	1,604,640	1,662,660	1,662,763	1,565,757	1,597,473	1,396,877	18,818,592
Miscellaneous services	1,400,257	916,687	928,804	1,185,259	1,019,474	1,071,879	1,133,268	1,094,085	1,103,153	1,146,316	1,193,536	1,376,038	1,630,297	13,798,796
Commercial equipment	865,123	921,091	838,058	934,116	754,634	864,947	1,177,517	824,826	847,317	962,685	903,953	983,599	875,917	10,888,660
Other services	13,506,721	12,511,342	12,321,552	14,469,371	12,596,471	13,993,110	14,044,909	13,456,175	13,613,523	13,876,087	13,427,489	14,074,169	13,874,847	162,259,045
Total services	48,874,463	49,295,115	48,466,215	55,204,789	50,553,141	55,436,585	54,519,883	55,701,339	57,878,475	56,399,471	56,420,080	55,428,449	53,690,465	648,994,007
TOTAL	192,739,637	153,767,232	145,299,063	166,450,454	162,758,529	173,538,796	169,063,764	171,119,158	177,153,004	168,466,434	175,324,376	183,324,931	204,224,017	2,050,489,758

Table 3B Card expenditure statistics (not seasonally adjusted)

Value of credit card transactions

Detailed sector breakdown - retail sectors

£	December 2010	January 2011	February 2011	March 2011	April 2011	May 2011	June 2011	July 2011	August 2011	September 2011	October 2011	November 2011	December 2011	Total (latest 12 months)
Supermarkets	2,027,283,255	1,303,106,322	1,238,128,879	1,404,814,230	1,484,814,718	1,453,979,690	1,460,567,077	1,472,954,316	1,542,522,458	1,452,392,350	1,548,648,472	1,640,614,223	2,069,974,601	18,072,517,336
Bakers & dairies	2,513,456	1,635,316	1,687,961	1,990,455	1,974,535	2,139,379	2,771,001	2,363,431	2,257,343	2,252,133	2,480,447	2,631,158	3,126,848	27,310,007
Sweet stores	12,212,198	2,180,874	2,713,295	3,888,111	5,110,576	3,696,618	6,637,511	3,842,148	3,845,461	3,827,310	4,192,134	7,053,258	13,160,893	57,148,189
Miscellaneous foodstores	82,492,747	51,018,233	50,863,380	58,116,853	61,270,296	64,297,985	67,119,982	66,057,923	67,331,667	62,427,041	64,720,568	70,325,202	90,668,831	774,217,961
Off-licences	53,997,654	22,181,740	21,864,971	25,815,088	26,430,345	28,811,316	30,374,361	33,238,367	28,016,983	26,142,439	26,489,992	34,378,575	54,223,753	357,967,930
Food & drink	2,178,499,310	1,380,122,485	1,315,258,486	1,494,624,737	1,579,600,470	1,552,924,988	1,564,469,932	1,578,456,185	1,643,973,912	1,547,041,273	1,646,531,613	1,755,002,416	2,231,154,926	19,289,161,423
Department stores	621,054,555	325,533,907	270,777,136	317,217,807	313,401,425	358,292,780	364,414,018	372,520,261	338,363,556	347,664,777	379,569,468	478,178,754	653,078,990	4,519,012,879
Discount stores	147,017,049	74,162,042	65,218,665	70,577,772	81,526,201	86,284,479	72,490,145	77,641,240	81,139,599	77,088,596	88,287,937	108,207,765	137,502,949	1,020,127,390
Catalogues	61,221,374	41,992,738	38,330,530	41,257,965	38,445,235	40,124,832	36,864,449	37,301,023	32,604,629	42,254,123	58,815,556	73,419,813	68,265,452	549,676,345
Miscellaneous mixed	112,074,741	74,124,619	70,682,269	81,022,237	83,955,428	102,185,796	100,746,229	103,444,853	107,946,720	106,978,454	115,119,160	133,132,380	147,219,948	1,226,558,093
Mixed business	941,367,719	515,813,306	445,008,600	510,075,791	517,328,289	586,887,887	574,514,841	590,907,377	560,054,504	573,985,950	641,792,121	792,938,712	1,006,067,339	7,315,374,707
Men's clothing	57,340,756	40,402,189	32,215,232	36,155,205	36,045,238	41,415,191	42,404,945	42,970,804	38,752,253	38,295,838	39,966,315	44,250,758	56,856,285	489,730,253
Women's clothing	149,366,446	104,097,623	97,946,690	121,193,057	125,081,056	132,923,383	136,667,689	132,722,857	121,704,651	133,845,737	140,294,824	147,010,454	170,549,391	1,564,037,412
Family clothing	458,002,433	243,815,217	232,465,930	282,506,357	302,300,198	315,485,445	344,386,946	323,818,077	329,002,274	329,002,274	351,527,604	383,898,653	499,428,188	3,924,988,574
Miscellaneous clothing	34,353,289	20,993,947	21,394,425	25,560,431	27,486,306	30,725,935	60,232,009	29,900,410	30,964,916	32,445,159	34,846,293	36,601,199	40,411,447	391,562,377
Shoe shops	90,832,708	62,040,915	49,422,372	57,866,796	70,589,733	72,849,429	74,882,801	75,590,640	80,086,320	77,850,458	84,385,313	85,373,295	95,953,986	890,532,158
Clothing	789,895,632	471,349,891	433,444,651	523,281,846	561,502,531	593,399,383	630,541,127	625,571,657	595,326,217	611,439,466	651,020,349	697,134,359	866,839,297	7,260,850,774
Furniture stores	267,859,665	286,287,108	231,247,211	254,130,984	221,447,478	248,873,458	225,090,002	236,780,103	253,094,184	244,724,489	273,632,871	277,579,730	240,583,129	2,993,470,747
Household appliance stores	144,299,215	118,080,790	106,874,722	122,699,318	105,971,977	111,050,445	105,450,724	109,751,490	112,738,002	116,909,890	123,244,877	134,841,502	131,038,368	1,398,652,105
Electronic stores	390,987,704	238,215,234	172,440,956	188,592,881	173,347,884	196,296,558	180,482,840	190,656,812	219,710,208	211,929,869	217,224,146	256,585,982	340,525,776	2,586,009,146
DIY stores	350,208,308	386,225,014	360,994,689	440,459,492	485,978,559	471,778,695	411,766,373	428,499,963	448,137,258	426,118,965	435,124,182	435,462,940	357,292,157	5,087,838,287
Floor covering stores	51,969,178	53,565,441	49,103,740	56,829,891	49,527,827	55,570,479	51,086,071	52,877,100	58,451,262	56,525,245	59,803,780	66,589,133	47,023,221	656,953,190
Garden centres	64,081,963	36,700,611	45,397,706	87,593,476	130,547,158	123,190,834	85,728,649	72,868,074	58,731,442	58,673,442	60,439,114	60,064,974	71,472,190	900,402,257
Miscellaneous household	44,608,327	43,223,368	39,612,574	44,954,868	41,473,642	45,503,813	46,517,003	51,725,643	62,300,582	58,673,570	60,058,170	61,609,719	50,076,257	605,729,209
Household	1,314,014,360	1,162,297,566	1,005,671,598	1,195,260,910	1,208,294,525	1,252,264,282	1,106,121,662	1,143,159,185	1,222,099,525	1,173,613,470	1,229,527,140	1,292,733,980	1,238,011,098	14,229,054,941
Books, newspapers & magazines	86,894,070	48,881,753	47,954,299	53,050,928	47,406,085	52,524,678	53,857,953	52,173,669	52,652,444	58,467,046	58,152,930	67,068,490	84,899,625	677,089,900
Record shops	55,774,068	13,152,843	13,152,843	15,132,234	13,187,736	13,405,951	14,440,121	13,405,951	12,195,085	11,675,079	13,808,455	20,539,796	40,529,061	194,681,097
Music shops	33,577,705	26,633,570	22,734,082	24,723,786	21,585,595	24,583,966	23,391,022	24,763,313	25,783,367	25,959,001	26,533,971	28,362,168	34,612,962	309,666,803
Hobbies, toys & games	101,769,223	31,710,715	26,870,464	33,332,602	28,769,035	28,523,195	27,021,297	26,181,794	26,842,595	28,256,767	33,331,705	52,664,655	71,369,169	414,873,993
Photographic	44,273,397	24,873,257	22,518,900	28,447,103	26,242,504	28,168,678	31,522,128	31,038,888	30,769,034	27,865,093	26,325,388	29,731,483	38,820,869	346,323,325
Handicraft	7,003,082	7,229,388	6,682,678	7,545,187	6,207,014	7,044,946	9,770,808	6,936,816	7,547,775	7,437,531	8,151,747	8,827,316	7,081,597	90,462,803
Sports shops	218,626,385	146,096,182	132,329,772	160,484,738	172,017,941	188,722,874	180,369,952	193,395,264	203,068,686	165,560,009	160,486,990	171,484,800	211,645,580	2,085,662,788
Jewellers	208,488,753	81,813,617	85,011,880	91,915,377	86,249,236	97,079,828	103,533,302	108,252,153	101,522,252	96,429,496	96,142,023	116,404,137	207,660,419	1,272,013,720
Computer software	156,919,185	105,008,889	89,796,984	107,141,291	100,462,546	118,113,319	107,741,135	105,652,703	112,677,222	112,546,450	130,160,743	153,235,144	166,868,865	1,409,405,291
Medical goods	4,369,764	4,133,128	5,019,541	5,581,507	4,709,159	4,843,178	5,641,752	5,325,355	5,291,818	5,485,951	5,222,227	5,690,414	5,033,937	61,977,967
Chemists	145,094,331	67,903,568	65,099,741	76,855,045	67,287,734	77,680,178	96,545,578	73,621,131	77,418,142	70,555,604	82,172,135	99,422,684	147,037,584	1,001,599,124
Optical goods	43,589,045	60,131,710	62,690,543	69,578,471	61,705,454	68,401,177	65,915,109	65,493,796	69,432,300	63,370,912	62,581,299	63,498,073	48,993,506	761,792,350
Cosmetic stores	38,214,165	16,000,481	14,851,956	17,231,545	20,286,333	23,678,200	17,410,713	17,571,268	18,195,225	17,361,072	18,909,426	26,416,006	39,486,308	247,398,533
Tobacconists	804,003	536,457	541,744	693,727	899,106	859,106	1,917,311	1,034,549	928,230	975,598	899,516	921,390	1,186,370	11,220,891
Florists	23,753,576	14,177,273	18,745,702	21,277,405	20,594,544	18,007,482	19,185,528	15,957,636	15,668,959	16,510,539	14,996,298	15,950,744	24,132,092	215,204,202
Artists' supplies	14,102,960	10,598,264	10,733,038	13,021,481	10,520,113	12,616,720	49,054,725	12,115,555	13,038,294	13,191,808	13,360,464	16,193,971	14,823,839	189,268,272
Antiques, art & stamps/coins	28,518,180	22,116,906	20,886,622	26,287,870	20,360,256	25,027,446	28,669,844	24,682,158	23,406,731	24,483,601	27,262,648	28,316,845	26,758,525	298,249,452
Pawn shops	611,247	520,069	393,845	426,220	447,492	545,453	952,218	537,461	565,130	569,559	575,149	616,450	868,007	7,017,053
Gift shops	78,062,850	35,077,111	35,960,038	40,773,473	39,642,493	43,606,848	43,731,682	46,942,942	50,306,355	45,716,844	49,476,895	64,493,356	79,999,055	575,727,092
Secondhand shops	775,759	584,656	743,429	853,456	673,819	626,916	894,120	894,120	603,810	777,098	823,528	848,576	897,609	14,960,238
Luggage & leather goods	15,820,158	9,072,040	7,973,552	9,215,631	9,375,339	10,197,732	12,967,087	13,589,437	10,340,199	10,507,214	10,512,196	11,837,972	17,608,252	133,196,651
Pet shops	27,878,360	24,352,379	23,028,908	26,605,758	25,728,582	28,031,921	28,149,128	27,675,313	29,347,500	27,610,044	28,326,481	28,499,025	30,711,919	328,066,958
Religious goods	50,835	57,121	52,928	66,666	50,469	36,666	57,453	57,453	58,912	50,803	51,224	50,803	657,775	
Direct sales	225,913,238	229,669,964	229,173,319	269,912,762	214,446,246	238,949,610	212,079,747	203,054,614	2					

Table 3B Card expenditure statistics (not seasonally adjusted)

Value of credit card transactions

Detailed sector breakdown - services sectors

£	December 2010	January 2011	February 2011	March 2011	April 2011	May 2011	June 2011	July 2011	August 2011	September 2011	October 2011	November 2011	December 2011	Total (latest 12 months)
Auto rental	35,619,777	36,638,354	36,186,615	44,107,511	44,970,609	50,581,824	67,103,645	60,030,425	53,254,986	47,544,201	41,575,931	38,958,885	40,910,390	561,863,376
Auto parts & accessories	119,103,225	122,362,147	121,069,375	147,082,109	123,208,919	134,237,449	127,914,280	125,587,846	126,101,975	128,644,968	125,783,524	127,704,798	117,613,887	1,527,311,277
Auto services	35,525,464	41,256,078	40,633,702	47,153,042	41,081,444	48,321,613	46,296,586	45,793,067	45,660,953	47,631,132	44,327,342	43,875,326	38,607,726	530,628,011
Auto repair shops	204,780,916	232,058,330	227,978,483	276,311,111	228,474,828	242,557,927	222,840,284	226,595,902	223,949,025	245,210,643	232,965,884	229,025,608	206,875,265	2,794,843,290
Service stations	65,208,500	79,359,752	73,319,249	84,639,329	80,025,431	87,139,514	58,438,008	58,597,931	59,318,946	81,245,828	81,110,213	83,727,239	90,581,395	917,502,835
Vehicle sales	168,970,454	198,707,916	201,311,949	250,462,611	206,715,740	225,723,257	255,393,741	212,327,393	214,234,048	226,754,113	210,255,684	195,170,883	167,531,299	2,564,588,634
Vehicle Sales & Services	629,206,336	710,382,577	700,499,373	849,755,713	724,476,971	788,561,584	777,986,544	728,922,564	722,519,933	777,030,885	736,018,578	718,462,739	662,119,962	8,896,737,423
Restaurants	397,390,558	327,515,487	334,690,904	362,086,510	370,901,306	397,805,711	371,837,799	414,889,542	417,707,339	384,788,022	404,877,447	379,809,467	457,675,125	4,624,584,659
Public houses	75,710,648	58,025,548	59,439,831	65,770,392	70,591,802	79,460,370	77,115,074	78,694,556	86,955,235	75,578,048	77,845,382	71,575,911	88,338,071	889,390,220
Catering services	13,554,913	12,702,894	12,545,155	16,090,081	12,403,068	15,665,971	15,057,771	14,551,936	12,347,413	15,978,505	14,883,046	17,773,498	15,054,007	175,053,345
Video stores	1,822,926	1,333,804	1,181,392	1,334,404	1,155,942	1,341,745	1,300,108	1,278,898	1,157,277	1,371,360	1,908,856	1,500,318	1,521,989	16,386,093
Cinema, theatre & dance	123,224,266	107,650,470	108,675,108	128,239,685	90,581,428	192,516,646	114,305,044	132,820,518	102,601,967	109,523,762	134,770,007	145,111,520	132,014,945	1,498,811,100
Concerts & entertainers	1,156,711	1,135,578	1,022,985	1,265,259	1,141,879	1,796,095	1,405,083	1,491,289	1,735,975	1,447,535	1,764,992	2,666,687	1,848,761	18,722,118
Tourist attractions	8,509,228	7,191,475	9,576,991	12,428,781	21,242,843	22,188,558	26,219,763	26,219,763	33,081,518	18,960,468	19,834,671	11,467,269	10,816,110	214,867,210
Amusement parks	753,437	690,050	886,866	938,320	1,695,910	1,252,757	1,384,544	1,712,580	2,492,151	1,153,367	1,417,396	951,835	890,944	15,466,720
Aquariums	396,876	471,130	549,004	680,631	830,468	824,740	734,856	759,082	839,420	597,894	574,694	481,410	515,593	7,858,922
Sports & games establishments	81,917,888	75,600,729	73,165,381	98,080,258	85,430,072	127,056,944	112,773,829	84,590,836	77,518,756	72,323,401	72,941,315	72,344,856	78,004,803	1,029,831,180
Professional sports clubs	7,943,421	6,928,705	7,973,548	8,198,845	8,791,993	9,373,134	21,021,092	13,499,139	8,811,454	7,964,246	7,869,477	10,286,663	8,622,081	119,340,377
Gambling	107,955,929	112,120,673	106,604,244	114,310,608	104,464,307	111,855,022	97,005,180	97,732,231	113,357,281	101,470,015	105,298,280	93,520,654	88,376,811	1,246,115,306
Personal services	7,768,069	7,646,275	7,404,504	8,459,895	7,218,042	9,823,502	9,589,794	9,729,051	10,474,225	10,236,987	10,127,586	10,272,500	10,854,289	111,836,650
Miscellaneous entertainment	10,575,518	9,631,532	10,566,147	14,079,338	17,840,858	17,925,643	17,508,353	19,947,572	22,349,045	15,928,598	16,941,816	15,236,806	11,866,218	189,821,926
Entertainment	838,680,368	728,644,350	734,282,060	831,963,007	794,289,918	988,555,043	863,227,085	897,916,993	891,429,056	817,322,208	871,054,965	832,999,394	906,401,747	10,158,085,828
Hotels	363,046,928	385,702,368	391,787,051	412,144,380	447,256,133	536,882,764	576,151,749	618,029,684	575,913,744	575,632,392	552,657,132	507,958,062	438,546,187	6,018,661,646
Airlines	170,426,718	342,410,369	260,773,461	273,581,351	210,239,241	249,735,961	240,055,281	239,798,972	250,677,944	258,692,472	226,657,228	229,767,980	163,532,584	2,945,922,844
Airport terminals	2,568,245	2,399,167	2,081,027	2,995,783	3,083,074	3,775,463	3,664,840	4,147,029	3,964,418	3,714,817	3,294,957	2,884,451	2,591,079	38,596,105
Railways	186,767,034	175,500,555	170,822,137	196,987,005	162,867,898	184,081,039	209,043,957	197,436,747	188,709,043	216,720,602	212,797,174	219,639,245	204,490,831	2,339,096,233
Buses	15,728,540	15,289,271	15,606,810	18,950,092	18,935,616	22,140,149	22,041,795	23,803,286	23,335,709	24,492,227	21,926,110	19,976,360	18,408,237	244,905,662
Sea travel	10,479,139	13,343,787	11,969,239	14,400,257	14,020,508	15,634,826	15,582,736	17,614,669	16,697,676	14,873,775	12,226,993	10,190,347	8,114,879	164,669,692
Travel agents	300,361,524	562,555,511	468,015,967	540,261,846	462,516,237	554,775,815	524,217,922	560,831,261	506,331,524	425,196,837	361,174,619	312,915,813	257,892,883	5,536,686,235
Timeshares	19,509	46,303	49,888	49,353	26,511	22,590	27,998	22,339	16,884	17,678	19,394	24,924	13,165	337,027
Camping grounds	18,264,037	29,276,933	26,765,605	32,566,265	36,319,867	41,537,141	41,923,905	44,567,039	37,158,291	17,634,530	16,243,808	17,651,726	14,742,817	356,387,927
Miscellaneous travel	18,723,143	21,995,116	23,076,566	30,066,006	28,799,040	35,532,147	39,203,048	34,401,791	31,356,745	24,665,238	22,281,936	20,568,148	17,096,047	329,041,828
Travel	723,337,889	1,162,817,012	979,160,700	1,109,857,958	936,807,992	1,107,235,131	1,095,761,482	1,122,623,133	1,058,248,234	986,008,176	876,622,219	833,618,994	686,882,522	11,955,643,553
Telegraph services / Wire transfer money order	1,125,080	901,161	774,172	1,419,467	851,711	22,104,065	1,137,858	858,272	894,229	847,713	833,531	814,432	915,598	32,352,209
Insurance services	284,263,949	323,256,033	317,655,792	401,328,164	333,493,285	364,140,673	385,581,982	377,816,652	395,002,800	397,976,257	360,350,948	334,866,275	279,683,700	4,271,152,561
Fis - cash disbursements (auto & manual)	18,231,684	17,908,016	16,633,928	17,813,618	67,900,310	120,314,463	89,725,443	106,409,073	110,991,594	81,050,151	37,681,205	14,006,037	13,419,500	693,853,338
Fis - merchandise & services	62,179,703	68,383,204	69,249,628	85,522,442	75,251,226	77,566,033	79,000,644	78,407,191	85,791,587	83,540,179	73,472,793	68,701,864	61,471,591	906,358,382
Non-Fis - foreign currency, travellers' cheques	4,779,551	4,655,275	5,728,945	6,783,984	7,851,237	9,988,269	11,038,150	16,105,809	16,046,736	10,678,397	7,607,389	5,388,193	5,080,941	107,253,311
Security brokers and dealers	3,716,474	5,044,981	4,786,023	6,455,961	5,428,252	5,953,338	6,625,185	5,992,434	13,390,993	10,357,278	7,731,455	8,901,457	7,096,992	87,764,349
Tax preparation services	33,408	51,741	83,944	102,163	60,009	253,263	67,896	115,179	67,372	72,526	77,536	81,529	64,116	1,097,274
Tax payments	369,070	319,879	223,864	384,004	363,262	444,724	458,775	360,358	376,403	351,259	344,501	361,759	304,335	4,293,123
Fines, bail and bond payments	6,888,809	7,758,222	7,753,809	8,867,438	7,302,963	8,821,653	5,833,305	8,780,315	8,289,878	9,065,774	8,573,819	8,837,187	7,387,720	97,272,083
Miscellaneous financial	28,152,603	34,743,309	32,063,739	37,529,207	34,627,558	37,039,561	29,770,410	29,713,145	29,256,747	35,245,470	34,810,336	35,609,492	34,192,700	404,601,674
Financial	409,740,331	463,021,821	454,953,844	566,206,448	533,129,799	646,626,042	609,239,648	624,558,428	660,108,339	629,185,004	531,483,513	477,568,225	409,917,193	6,605,998,304

Table 3B Card expenditure statistics (not seasonally adjusted)

Value of credit card transactions

Detailed sector breakdown - services sectors (continued)

£	December 2010	January 2011	February 2011	March 2011	April 2011	May 2011	June 2011	July 2011	August 2011	September 2011	October 2011	November 2011	December 2011	Total (latest 12 months)
Telecoms	83,966,619	64,753,687	59,738,794	66,917,058	62,109,042	69,732,737	62,784,899	64,290,471	67,408,442	65,178,486	76,643,835	71,042,852	79,518,596	810,118,899
Utilities	37,436,396	43,178,668	44,442,927	60,933,589	51,845,816	52,334,187	56,598,558	46,971,388	45,956,214	46,184,227	44,991,859	45,744,067	40,414,791	579,596,291
Contractors (residential & commercial)	71,898,368	74,160,221	74,304,067	84,970,689	66,097,497	75,112,996	99,065,026	74,046,599	76,334,684	77,272,620	77,412,095	85,771,144	62,990,471	927,538,109
Gardening services	3,158,436	2,111,848	2,616,828	4,473,820	6,015,211	6,186,011	5,119,650	4,086,387	3,996,137	3,659,520	3,638,569	3,462,559	3,244,249	48,610,789
Veterinary services	42,838,691	46,324,151	39,943,324	46,093,472	41,357,629	46,013,125	43,414,683	43,415,910	44,849,010	43,809,777	42,692,772	42,777,448	39,924,092	520,615,393
Photocopying & printing	29,162,406	30,153,071	30,174,085	35,225,467	26,867,931	31,185,585	31,937,109	30,363,445	31,041,082	35,784,544	34,128,786	38,505,380	32,815,191	388,181,676
Photographic studios	9,282,050	6,765,023	6,850,365	23,291,215	20,806,738	22,906,258	8,421,225	10,222,369	8,394,181	8,151,055	8,870,159	10,926,899	8,654,049	144,259,536
Beauty & barber shops	86,491,484	61,001,438	60,874,129	55,793,765	52,145,574	56,785,502	72,920,180	72,926,575	71,492,482	72,800,293	69,962,272	73,772,420	90,373,108	810,847,738
Employment agencies	4,618,865	4,837,609	4,793,680	5,373,615	4,377,025	3,928,324	4,728,179	5,585,921	5,389,665	6,857,031	6,099,241	5,926,637	5,963,110	63,860,037
Counselling services	493,621	496,014	439,646	543,796	709,650	934,240	613,175	616,898	641,096	643,364	714,168	602,424	487,902	7,442,373
Legal services	13,710,921	16,738,097	17,104,602	20,512,425	17,057,702	18,330,454	19,177,273	16,877,565	17,511,669	17,555,050	17,346,517	18,620,048	15,797,369	212,628,771
Laundry & cleaning	4,494,073	4,867,140	4,566,232	5,522,789	5,270,399	6,493,703	5,755,363	5,715,275	5,434,476	5,901,860	5,698,413	5,559,567	5,028,097	65,813,314
Funeral services	10,221,192	11,397,973	11,312,784	11,940,040	9,222,750	11,132,326	10,424,246	10,226,268	10,059,350	10,791,435	10,525,185	11,686,798	10,339,937	127,040,092
Medical services	116,981,073	130,439,664	135,991,219	159,994,934	127,053,702	143,876,408	151,022,172	142,817,807	139,541,172	148,461,620	143,391,272	157,065,223	126,432,703	1,706,087,896
Moving & courier services	17,689,027	18,570,233	18,591,607	21,324,502	18,185,788	20,996,818	20,139,691	22,365,217	22,624,257	22,197,619	21,228,158	21,842,831	19,906,943	247,973,664
Repair shops (not auto)	9,713,984	8,273,342	8,111,608	9,349,694	8,352,828	9,457,707	10,598,308	9,859,158	9,530,028	9,786,828	10,375,477	10,176,802	9,839,889	113,711,669
Accounting services	5,936,577	6,857,019	6,191,039	6,748,076	4,743,388	5,193,894	8,604,280	4,865,129	5,437,720	6,083,789	5,677,780	6,302,296	6,145,067	72,849,477
Advertising, consultancy & PR	9,957,572	12,233,072	11,567,057	16,116,569	13,568,629	16,150,699	15,401,852	14,006,458	14,331,464	14,719,479	14,214,245	14,266,693	12,220,486	168,796,703
Computer programming	35,330,678	33,997,966	31,578,864	38,012,013	29,002,362	30,862,088	33,740,483	28,841,520	29,177,687	33,091,574	32,911,839	34,005,196	30,751,954	385,973,556
Farming services	7,576,633	7,249,553	7,029,548	8,134,226	7,556,368	8,121,665	8,577,355	7,787,663	8,501,526	7,813,932	7,740,042	7,469,670	6,952,501	92,934,049
Miscellaneous professional services	122,832,253	142,761,253	140,607,564	160,191,057	132,332,980	148,615,136	149,777,914	146,993,896	149,546,131	181,339,836	145,001,657	144,084,708	122,523,028	1,763,775,160
Engineering services	14,531,789	15,886,061	17,359,280	20,987,137	16,884,615	19,393,943	17,645,086	18,566,802	18,317,621	19,129,718	17,490,461	18,273,365	14,106,914	214,041,003
Marina services	7,984,222	6,841,732	6,406,538	10,765,763	10,577,973	11,306,894	11,572,699	11,541,025	11,007,165	8,086,144	6,976,475	5,755,924	5,944,111	106,782,443
Wrecking & salvage yards	584,322	731,481	751,259	865,860	781,828	795,382	875,871	809,722	802,334	914,449	829,606	810,423	630,450	9,598,665
Pest control	552,659	562,245	527,733	691,136	584,989	1,230,387	729,001	787,698	885,542	927,307	821,498	785,910	625,729	9,159,175
Educational establishments	81,234,642	152,190,033	97,639,559	97,284,187	87,195,825	107,717,387	85,664,303	91,512,279	130,981,104	272,974,131	162,593,566	94,147,958	82,800,314	1,462,700,646
Child care services	2,003,565	2,320,623	2,188,090	2,352,158	1,455,043	1,704,728	1,661,264	1,817,952	1,709,453	1,781,374	1,692,865	1,716,779	1,565,852	21,966,181
Social, political & religious organisations	66,459,585	66,057,594	58,607,416	89,490,074	68,202,325	61,703,647	82,622,160	66,775,013	63,422,116	67,375,918	61,883,420	61,944,921	72,992,918	821,077,522
Government services	135,726,783	147,063,736	152,776,759	177,681,629	156,485,540	187,632,847	146,826,755	160,250,318	171,639,525	169,106,591	154,815,769	152,955,902	134,214,853	1,911,450,224
Miscellaneous services	53,824,385	46,064,543	45,072,132	60,230,172	51,391,057	53,288,717	56,886,400	53,400,222	51,731,898	54,116,188	52,551,361	57,969,385	59,545,018	642,247,093
Commercial equipment	90,374,581	100,059,526	98,399,407	115,776,599	92,641,856	104,339,670	115,017,277	102,312,986	103,099,814	112,630,656	105,400,486	112,579,174	90,317,356	1,252,574,807
Other services	1,177,067,452	1,264,944,616	1,196,558,142	1,417,587,526	1,190,880,060	1,331,444,465	1,338,322,437	1,270,655,936	1,320,795,045	1,525,126,425	1,344,319,848	1,316,551,403	1,193,067,048	15,710,252,951
Total services	4,161,081,324	4,715,512,744	4,457,241,170	5,187,515,032	4,626,840,873	5,399,305,029	5,260,688,945	5,262,706,738	5,229,014,351	5,310,305,090	4,912,156,255	4,687,158,817	4,296,934,659	59,345,379,703
TOTAL	11,642,884,074	9,919,028,672	9,272,815,469	10,793,735,064	10,218,142,387	11,287,308,560	11,011,497,460	11,037,042,195	11,147,575,190	11,037,394,230	10,933,596,797	11,232,853,005	11,893,845,316	129,784,834,345

Table 3C Card expenditure statistics (not seasonally adjusted)

Number of debit card transactions

Detailed sector breakdown - retail sectors

	December 2010	January 2011	February 2011	March 2011	April 2011	May 2011	June 2011	July 2011	August 2011	September 2011	October 2011	November 2011	December 2011	Total (latest 12 months)
Supermarkets	196,519,459	179,518,942	174,785,146	197,490,439	189,924,812	208,915,244	195,678,183	195,013,759	205,073,639	197,557,302	212,741,290	209,719,223	219,365,136	2,385,783,115
Bakers & dairies	351,374	307,536	320,676	371,284	414,642	486,135	1,031,418	1,052,472	1,143,708	1,186,055	1,054,000	1,077,027	1,172,181	9,617,134
Sweet stores	1,428,796	379,365	531,046	649,335	837,234	736,853	632,145	563,545	615,019	580,410	667,546	821,191	1,606,335	8,620,024
Miscellaneous foodstores	9,705,176	8,203,828	8,350,310	9,460,268	9,977,792	10,762,886	10,678,703	10,251,649	11,596,545	10,540,433	11,306,626	10,832,409	11,078,867	123,040,316
Off-licences	3,031,441	2,623,463	2,672,134	2,938,287	3,066,155	3,118,072	2,948,707	3,067,080	3,054,204	2,920,155	3,246,025	2,969,998	3,205,995	35,830,275
Food & drink	211,036,246	191,033,134	186,659,312	210,909,613	204,220,635	224,019,190	210,969,156	209,948,505	221,483,115	212,784,355	229,015,487	225,410,848	236,428,514	2,562,890,864
Department stores	25,046,026	13,647,685	11,361,548	13,173,900	13,136,006	14,492,468	14,048,848	14,428,443	14,161,947	12,927,688	14,378,738	16,648,101	26,158,014	178,563,386
Discount stores	11,092,634	6,449,408	6,097,105	6,466,208	6,974,085	7,120,532	6,936,148	7,288,436	7,542,776	7,371,763	8,278,247	9,234,529	12,578,699	92,337,936
Catalogues	4,602,513	3,279,617	2,798,560	2,968,996	2,598,680	2,962,420	2,716,330	2,646,240	2,004,490	2,932,595	4,175,528	5,257,827	5,565,191	39,906,474
Miscellaneous mixed	11,216,051	8,021,129	8,040,952	9,272,692	9,797,292	11,520,838	10,665,346	10,738,527	11,729,390	10,663,172	11,869,883	12,402,405	15,045,901	129,767,527
Mixed business	51,957,224	31,397,839	28,298,165	31,681,796	32,506,063	36,096,258	34,366,672	35,101,646	35,438,603	33,895,218	38,702,396	43,542,862	59,347,805	440,575,323
Men's clothing	1,688,880	979,541	822,032	859,128	901,815	958,829	963,837	1,036,155	1,066,395	917,063	975,634	1,002,359	1,633,479	12,116,267
Women's clothing	8,625,449	5,252,541	4,676,578	5,452,504	6,494,933	6,800,005	6,940,035	7,363,730	6,890,182	6,309,105	7,041,467	6,889,305	10,099,995	80,210,380
Family clothing	33,475,898	20,085,726	17,948,465	21,253,675	22,871,648	24,522,807	22,845,339	25,223,298	24,091,547	22,288,783	25,299,565	24,947,409	36,829,126	282,207,388
Miscellaneous clothing	3,079,507	1,637,305	1,671,489	2,017,085	2,791,527	3,147,737	2,975,708	2,653,528	2,739,302	2,399,302	3,228,720	2,839,656	3,810,713	32,334,628
Shoe shops	3,919,042	2,259,461	2,513,265	2,328,020	3,443,596	3,775,652	3,443,596	3,775,652	4,012,672	3,577,806	3,291,120	3,124,890	4,390,336	39,707,581
Clothing	50,788,776	30,910,071	27,378,025	32,095,657	36,357,943	38,725,183	37,168,515	40,052,363	38,883,294	35,612,059	39,836,506	38,803,619	56,753,009	452,576,244
Furniture stores	3,659,043	3,179,633	2,677,009	2,915,127	2,694,961	2,970,010	2,836,497	2,947,793	3,175,991	3,015,840	3,337,186	3,503,960	4,260,533	37,514,540
Household appliance stores	6,243,407	4,768,154	4,587,726	5,247,272	5,038,053	5,270,555	4,990,382	5,309,722	5,254,290	5,329,154	5,665,252	5,685,513	6,862,313	64,008,386
Electronic stores	4,021,995	2,732,696	2,137,160	2,218,158	1,992,362	2,287,359	2,100,124	2,141,587	2,388,862	2,379,542	2,511,005	2,742,118	4,047,199	29,677,972
DIY stores	14,867,860	13,384,389	13,699,610	16,840,352	19,065,125	18,530,504	16,419,265	16,251,689	17,117,828	15,976,500	17,313,020	16,781,398	17,120,414	198,500,094
Floor covering stores	241,750	277,491	272,813	301,394	258,813	298,283	270,309	275,311	314,024	294,433	319,573	343,558	262,922	3,488,924
Garden centres	3,331,851	1,824,890	2,086,148	3,559,025	5,214,801	5,074,393	3,692,075	3,138,847	3,008,553	2,616,132	3,017,282	3,006,344	4,028,479	40,266,969
Miscellaneous household	1,051,423	1,069,217	980,201	1,083,485	1,006,571	1,085,961	1,087,800	1,244,606	1,461,947	1,338,570	1,398,782	1,329,024	1,259,742	14,345,906
Household	33,417,329	27,236,470	26,440,667	32,164,813	35,270,686	35,517,065	31,396,452	31,309,555	32,721,495	30,949,971	33,562,100	33,391,915	37,841,602	387,802,791
Books, newspapers & magazines	9,979,856	5,804,158	5,650,172	6,038,992	5,741,010	6,382,207	6,108,885	5,894,637	6,518,661	6,543,473	6,997,069	7,177,007	10,085,598	78,941,869
Record shops	6,181,407	2,075,108	1,808,015	1,889,186	1,610,861	1,786,647	1,684,234	1,456,457	1,905,688	1,905,688	2,567,650	5,240,873	25,230,133	
Music shops	6,393,616	6,643,606	5,695,748	6,330,953	5,883,209	7,432,427	6,302,036	5,854,541	6,535,880	6,331,501	6,910,653	6,816,230	7,580,031	78,316,815
Hobbies, toys & games	5,675,818	2,039,255	1,754,269	1,928,410	1,640,481	1,648,346	1,478,085	1,421,390	1,615,072	1,666,713	2,178,664	2,774,821	4,581,296	24,726,802
Photographic	683,360	409,287	358,168	412,878	396,096	487,074	464,530	487,074	512,457	508,360	469,537	547,947	728,769	5,753,374
Handicraft	174,459	168,965	166,747	182,046	154,942	170,163	161,164	158,169	179,760	185,458	203,641	215,264	189,721	2,136,040
Sports shops	9,595,935	6,537,425	5,775,703	6,720,490	7,447,461	7,749,499	7,559,126	8,133,198	8,711,978	7,496,991	7,457,696	7,081,670	9,934,014	90,605,251
Jewellers	2,978,501	1,178,754	1,324,680	1,383,683	1,330,279	1,411,675	1,320,416	1,324,510	1,224,554	1,287,870	1,613,913	1,791,620	3,169,507	17,938,125
Computer software	964,117	749,181	617,438	664,382	597,666	700,388	625,224	587,049	641,552	642,373	728,337	763,903	961,914	8,279,407
Medical goods	24,311	25,372	27,095	30,965	27,071	29,742	31,437	30,600	30,671	30,987	30,549	32,424	28,704	355,617
Chemists	23,687,797	15,880,389	15,405,979	18,060,785	15,496,921	18,061,045	17,149,269	16,073,575	17,792,103	16,666,764	17,615,018	17,916,204	23,570,831	209,688,883
Optical goods	651,892	855,493	879,009	986,290	876,396	966,822	926,102	906,439	968,993	917,352	933,794	902,722	747,336	10,866,748
Cosmetic stores	2,757,516	1,046,787	1,053,501	1,166,712	1,162,838	1,187,671	1,203,560	1,154,897	1,298,628	1,163,804	1,312,623	1,584,514	3,010,626	16,346,161
Tobacconists	32,739	20,982	23,918	30,722	30,740	38,386	36,181	36,181	38,677	36,331	41,626	40,925	55,048	427,584
Florists	1,000,292	635,732	971,716	1,023,142	1,112,273	751,219	739,497	723,763	702,383	715,105	701,014	701,727	1,078,341	9,855,912
Artists' supplies	747,036	541,778	567,419	653,721	561,992	643,063	591,480	577,906	660,013	604,712	706,481	842,265	885,232	7,836,062
Antiques, art & stamps/coins	290,316	210,195	209,449	231,765	218,095	234,120	248,095	248,095	244,092	249,022	269,704	288,977	345,616	3,028,510
Pawn shops	23,617	15,834	16,017	17,257	16,233	16,737	17,881	18,879	18,794	19,386	20,599	22,003	32,149	231,769
Gift shops	8,976,024	3,752,117	4,446,882	4,398,744	4,230,985	4,055,510	4,642,064	4,108,983	4,590,585	4,128,593	4,711,014	5,580,422	9,800,423	58,446,322
Secondhand shops	45,530	35,680	37,317	42,797	40,766	48,779	48,779	49,991	54,067	52,834	57,355	56,617	69,049	596,167
Luggage & leather goods	292,383	195,866	154,842	173,558	176,124	185,729	193,808	208,571	213,546	172,206	165,461	184,731	280,966	2,305,408
Pet shops	2,416,364	2,163,647	2,070,472	2,288,328	2,193,600	2,408,297	2,259,957	2,400,254	2,471,433	2,311,088	2,521,056	2,366,634	2,706,547	28,161,313
Religious goods	1,670	1,493	1,551	1,734	1,560	1,554	1,560	1,905	1,905	1,946	1,946	1,946	1,860	22,889
Direct sales	5,283,437	5,297,948	4,945,568	5,859,763	5,284,452	5,593,962	5,304,603	5,044,732	4,710,162	4,954,827	5,250,808	5,464,585	5,547,660	63,259,070
Miscellaneous & speciality shops	3,925,770	2,717,733	2,567,371	2,840,312	2,673,320	2,909,013	2,853,625	2,803,984	4,069,669	2,938,427	3,156,165	3,582,994	3,931,499	37,044,112
Other retail	92,783,763	59,002,785	56,529,046	63,357,615	58,905,371	64,881,086	62,006,097	59,679,142	65,550,813	61,162,857	65,633,088	69,128,833	94,563,610	780,400,343
Automotive Fuels	42,064,866	43,597,332	42,566,687	49,032,871	46,159,881	51,150,399	48,018,477	48,364,276	50,340,013	48,360,724	50,548,133	48,813,591	47,455,922	574,408,306
Total retail sales	482,048,204	383,177,631	367,871,902	419,442,365	413,420,579	450,389,181	423,925,369	424,455,487	444,417,33					

Table 3C Card expenditure statistics (not seasonally adjusted)

Number of debit card transactions

Detailed sector breakdown - services sectors

	December 2010	January 2011	February 2011	March 2011	April 2011	May 2011	June 2011	July 2011	August 2011	September 2011	October 2011	November 2011	December 2011	Total (latest 12 months)
Auto rental	429,751	441,378	442,088	522,267	520,508	543,761	551,735	572,310	569,771	544,457	518,789	491,974	488,184	6,207,222
Auto parts & accessories	1,617,155	1,714,527	1,683,096	1,994,149	1,771,869	1,861,814	1,709,263	1,709,158	1,772,286	1,767,025	1,835,043	1,768,115	1,730,090	21,316,435
Auto services	2,891,715	2,666,719	2,655,532	2,997,851	2,779,412	3,152,951	3,110,282	3,163,006	3,187,696	3,216,433	3,327,435	3,315,594	3,502,218	37,075,129
Auto repair shops	1,457,690	1,666,132	1,646,147	1,987,604	1,704,365	1,800,697	1,685,376	1,660,789	1,675,521	1,802,392	1,795,972	1,724,345	1,603,686	20,753,026
Service stations	11,418,407	13,183,611	12,743,294	14,431,363	13,924,696	15,014,963	10,392,966	10,451,087	10,971,965	14,065,661	15,163,866	15,023,337	16,842,759	162,209,568
Vehicle sales	919,220	1,093,360	1,111,545	1,389,509	1,259,097	1,337,928	1,499,527	1,232,996	1,271,134	1,227,790	1,225,057	1,135,159	1,025,252	14,858,354
Vehicle Sales & Services	18,733,578	20,765,727	20,281,702	23,322,743	21,959,947	23,712,114	18,949,149	18,789,346	19,448,373	22,673,758	23,866,162	23,458,524	25,192,189	262,419,734
Restaurants	34,348,613	33,969,770	34,889,801	38,578,583	38,137,850	41,637,372	38,498,144	39,741,250	42,170,675	39,590,376	44,887,897	42,300,144	44,010,868	478,412,730
Public houses	5,734,686	5,622,815	5,736,442	6,431,097	7,001,140	7,638,442	6,566,619	6,724,566	7,788,813	6,715,395	7,701,603	6,674,949	7,092,742	81,694,623
Catering services	508,086	497,531	523,075	614,255	510,273	579,154	575,979	564,117	568,764	605,460	631,202	683,575	593,803	6,947,188
Video stores	215,269	206,375	282,074	282,583	364,105	394,611	359,070	163,523	112,197	123,326	131,864	138,452	158,060	2,622,240
Cinema, theatre & dance	3,511,779	4,184,730	4,413,738	3,507,785	3,165,554	4,700,499	4,093,547	5,046,283	5,693,270	3,928,284	4,441,250	4,529,991	4,224,440	51,929,371
Concerts & entertainers	54,506	46,388	52,914	55,088	57,837	60,367	63,218	64,714	82,316	60,397	74,081	72,931	90,598	780,849
Tourist attractions	358,235	338,700	459,898	488,431	858,155	776,745	717,246	831,001	1,323,376	686,120	777,653	396,118	368,027	8,021,470
Amusement parks	40,012	44,481	67,292	61,353	123,250	88,370	90,922	106,839	197,491	87,106	108,231	56,778	58,410	1,090,523
Aquariums	19,626	27,872	32,703	31,126	39,067	39,825	33,203	36,257	48,923	31,595	33,741	25,155	23,864	403,331
Sports & games establishments	2,219,113	2,526,007	2,473,824	2,771,289	2,392,550	2,300,162	2,613,896	2,618,994	2,954,425	2,506,606	2,772,222	2,393,530	2,450,707	30,774,212
Professional sports clubs	178,989	149,757	158,323	163,333	169,403	164,466	158,531	173,313	207,077	169,659	174,930	180,077	241,610	2,110,479
Gambling	13,923,967	14,609,428	13,881,509	16,836,188	14,865,497	17,316,440	15,548,391	16,245,313	16,771,743	16,519,997	17,284,142	16,360,818	16,452,253	192,691,719
Personal services	257,925	249,483	252,873	286,257	265,672	465,789	423,840	433,378	452,748	419,268	424,715	398,395	423,207	4,495,625
Miscellaneous entertainment	356,223	435,959	496,038	549,506	773,265	708,847	759,336	829,351	1,108,902	730,430	817,809	551,718	508,700	8,269,861
Entertainment	61,727,029	62,909,296	63,626,504	70,656,874	68,723,618	76,871,089	70,501,942	73,578,899	79,480,720	72,174,019	80,261,340	74,762,631	76,697,289	870,244,221
Hotels	2,575,767	2,607,666	2,720,543	2,709,675	3,307,862	3,471,234	3,479,953	3,781,579	3,984,551	3,460,144	3,614,289	3,133,972	3,001,728	39,273,196
Airlines	454,976	693,246	404,758	391,322	314,675	372,865	437,102	381,795	397,162	403,715	388,468	357,261	285,739	4,828,108
Airport terminals	19,643	23,030	23,129	32,302	36,744	39,708	44,029	45,451	53,785	42,099	33,452	28,701	26,453	428,883
Railways	12,974,496	12,519,936	12,598,320	14,933,660	13,259,309	15,087,274	14,957,338	14,590,972	14,793,857	15,023,376	16,628,814	16,284,151	14,944,331	175,621,338
Buses	797,034	853,166	819,420	931,102	871,775	958,945	939,908	952,979	990,433	1,027,646	1,114,769	1,021,927	961,441	11,443,511
Sea travel	93,926	97,263	100,752	114,272	132,643	133,174	142,966	161,716	188,561	134,716	122,976	105,483	97,835	1,532,357
Travel agents	947,862	1,817,106	1,548,463	1,793,432	1,585,962	1,724,047	1,664,913	1,724,370	1,611,261	1,443,001	1,330,739	1,082,432	880,676	18,206,402
Timeshares	216	339	284	1,205	194	120	135	113	75	78	84	100	54	2,781
Camping grounds	103,806	245,536	299,629	407,174	633,122	627,834	613,951	727,480	890,135	471,156	390,267	150,230	106,353	5,562,867
Miscellaneous travel	925,830	714,658	713,182	827,005	795,522	979,233	900,224	931,856	957,784	851,474	843,253	782,010	746,968	10,043,169
Travel	16,317,789	16,964,280	16,507,937	19,431,474	17,629,946	19,923,200	19,700,566	19,516,732	19,883,053	19,397,261	20,852,822	19,812,295	18,049,850	227,669,416
Telegraph services / Wire transfer money order	42,636	34,339	33,636	38,861	38,030	37,949	40,985	41,665	46,375	46,859	49,651	50,756	54,783	513,889
Insurance services	2,344,442	2,686,712	2,673,674	3,284,119	2,922,307	3,256,472	3,461,874	3,474,007	3,606,094	3,532,745	3,297,574	2,832,945	2,417,178	37,445,701
Fis - cash disbursements (auto & manual)	111,801	90,152	103,958	122,110	4,791	5,915	2,417	2,650	2,474	2,206	67,256	95,976	102,426	602,331
Fis - merchandise & services	7,151,825	7,208,799	6,507,913	7,808,351	6,949,703	7,404,481	7,249,456	7,525,464	7,896,973	7,634,998	8,021,177	8,135,925	8,265,218	90,608,458
Non-Fis - foreign currency, travellers' cheques	150,843	131,213	156,313	180,433	198,398	231,389	259,484	304,490	334,738	280,986	221,064	175,359	195,420	2,669,287
Security brokers and dealers	60,033	77,672	78,575	114,149	106,757	70,445	69,356	65,917	146,928	79,169	63,751	83,735	48,311	1,004,765
Tax preparation services	126	331	309	371	524	443	631	645	635	580	469	524	453	5,915
Tax payments	118,024	157,279	128,903	148,746	140,641	153,941	113,049	112,529	118,083	142,554	152,017	150,801	163,432	1,681,975
Fines, bail and bond payments	253,590	262,877	265,407	314,935	363,159	436,691	446,382	468,060	445,215	441,580	466,346	456,950	438,165	4,805,767
Miscellaneous financial	431,027	488,675	482,171	565,875	561,341	593,163	460,098	460,087	479,586	563,802	592,753	583,303	608,325	6,439,179
Financial	10,664,347	11,138,049	10,430,859	12,577,950	11,285,651	12,190,889	12,103,732	12,455,514	13,077,101	12,725,479	12,932,058	12,566,274	12,293,711	145,777,267

Table 3C Card expenditure statistics (not seasonally adjusted)

Number of debit card transactions

Detailed sector breakdown - services sectors (continued)

	December 2010	January 2011	February 2011	March 2011	April 2011	May 2011	June 2011	July 2011	August 2011	September 2011	October 2011	November 2011	December 2011	Total (latest 12 months)
Telecoms	10,868,232	9,560,726	8,927,584	9,939,854	10,678,214	11,429,589	11,143,781	11,230,739	11,765,512	11,257,037	11,659,157	11,342,748	12,096,077	131,031,018
Utilities	1,602,139	1,689,565	1,583,060	1,978,020	1,752,460	1,889,688	1,944,022	1,879,512	1,965,177	1,857,047	1,906,166	1,887,608	1,739,743	22,072,068
Contractors (residential & commercial)	509,564	529,985	534,719	593,362	439,777	481,076	498,138	463,519	491,991	505,141	526,557	540,993	456,156	6,061,414
Gardening services	117,156	67,219	72,614	106,122	138,937	146,944	112,993	97,264	99,782	86,003	94,079	92,968	119,071	1,233,996
Veterinary services	1,328,402	1,406,772	1,282,093	1,465,148	1,322,600	1,460,309	1,354,625	1,398,444	1,459,729	1,412,188	1,435,019	1,389,029	1,333,768	16,719,724
Photocopying & printing	425,235	385,347	362,725	433,705	350,424	426,550	412,437	376,722	405,180	427,069	439,858	568,938	530,630	5,119,585
Photographic studios	357,594	246,494	256,787	1,206,026	1,139,734	1,290,945	320,984	361,919	305,452	306,296	360,191	381,710	353,936	6,530,474
Beauty & barber shops	5,017,617	3,764,081	3,753,940	3,392,034	3,290,463	3,460,146	4,498,533	4,423,499	4,425,610	4,334,708	4,352,525	4,245,831	5,490,655	49,432,025
Employment agencies	15,426	24,391	22,853	22,569	9,091	10,062	10,826	10,382	10,532	9,837	9,771	9,023	7,690	157,027
Counselling services	50,264	49,901	46,173	49,075	62,644	76,224	72,621	70,909	81,434	74,834	75,674	74,821	67,832	802,142
Legal services	90,438	110,134	109,676	135,192	109,173	123,443	129,849	126,123	133,524	133,598	129,524	135,303	110,601	1,486,140
Laundry & cleaning	373,818	402,558	386,201	449,285	408,488	481,317	472,214	450,727	439,333	465,327	474,077	460,965	427,268	5,317,760
Funeral services	16,497	18,342	18,586	19,396	16,361	16,916	19,225	18,367	18,644	19,018	19,592	20,894	19,783	225,124
Medical services	1,902,832	2,272,760	2,326,310	2,686,774	2,155,261	2,467,858	2,497,141	2,323,325	2,420,941	2,575,276	2,476,951	2,655,252	2,194,629	29,052,478
Moving & courier services	229,555	223,013	217,485	253,182	227,048	263,541	273,206	262,589	267,562	275,067	270,466	305,360	301,728	3,140,247
Repair shops (not auto)	115,919	109,697	99,316	112,421	84,045	96,457	96,782	90,916	101,276	100,091	101,906	105,905	110,340	1,209,152
Accounting services	206,426	221,318	196,520	228,307	198,361	242,652	239,938	229,031	254,643	251,241	249,011	255,875	228,447	2,795,344
Advertising, consultancy & PR	187,745	237,843	228,987	260,126	221,467	262,848	247,211	235,851	246,730	242,169	241,199	246,418	191,216	2,862,065
Computer programming	862,652	1,059,506	1,031,464	1,206,402	873,294	950,986	868,144	851,094	892,376	971,393	1,085,546	1,087,710	1,048,560	11,926,475
Farming services	143,531	132,383	126,807	145,645	145,577	160,959	143,771	138,801	145,284	141,690	144,979	139,247	143,052	1,708,195
Miscellaneous professional services	3,024,640	2,749,320	2,599,486	2,962,900	2,540,385	2,917,827	2,879,266	2,813,406	2,886,223	2,942,428	3,035,682	3,132,708	3,050,300	34,509,931
Engineering services	42,857	49,189	55,312	68,565	60,231	63,268	65,814	63,881	64,455	64,100	62,986	64,193	52,662	734,656
Marina services	49,022	43,714	44,480	63,412	93,341	92,265	92,002	97,835	118,027	73,564	64,443	50,007	51,715	884,805
Wrecking & salvage yards	6,031	7,191	7,309	8,538	8,206	8,767	8,749	8,600	8,864	8,837	8,808	8,808	6,924	99,669
Pest control	1,951	2,352	2,229	2,769	2,824	4,008	4,124	5,088	5,167	4,961	4,261	3,979	2,834	44,596
Educational establishments	948,787	1,375,923	1,239,689	1,506,342	966,237	1,470,506	1,109,014	887,489	819,226	1,581,419	1,890,388	1,799,713	1,221,435	15,867,381
Child care services	77,621	101,652	104,691	97,599	76,983	97,102	92,259	92,632	108,998	95,550	107,648	98,024	92,007	1,165,145
Social, political & religious organisations	1,681,622	1,468,612	1,573,617	2,757,117	2,074,022	2,274,308	2,127,233	2,167,169	2,220,719	2,165,180	2,083,817	2,131,052	1,846,028	24,888,874
Government services	4,207,330	4,847,329	4,802,984	5,442,790	5,082,368	5,900,379	5,652,209	5,554,785	5,854,297	5,719,520	5,613,720	5,525,830	4,908,004	64,904,215
Miscellaneous services	6,420,097	4,615,979	4,646,680	5,718,296	5,023,401	5,615,860	5,529,977	5,166,130	5,538,769	5,546,082	5,734,200	6,209,304	7,250,583	66,595,261
Commercial equipment	1,459,787	1,484,217	1,357,574	1,491,209	1,223,532	1,451,075	1,862,564	1,289,236	1,364,856	1,650,619	1,580,615	1,593,043	1,548,752	17,897,292
Other services	42,340,787	39,257,513	38,017,951	44,802,182	40,774,949	45,633,875	44,779,652	43,185,984	44,920,313	45,297,329	46,238,845	46,563,259	47,002,426	526,474,278
Total services	152,359,297	153,642,531	151,585,496	173,500,898	163,681,973	181,802,401	169,514,994	171,308,054	180,794,111	175,727,990	187,765,516	180,296,955	182,237,193	2,071,858,112
TOTAL	634,407,501	536,820,162	519,457,398	592,943,263	577,102,552	632,191,582	593,440,363	595,763,541	625,211,444	598,493,174	645,063,226	639,397,623	714,627,655	7,270,511,983

Table 3D Card expenditure statistics (not seasonally adjusted)

Value of debit card transactions

Detailed sector breakdown - retail sectors

£	December 2010	January 2011	February 2011	March 2011	April 2011	May 2011	June 2011	July 2011	August 2011	September 2011	October 2011	November 2011	December 2011	Total (latest 12 months)
Supermarkets	6,379,061,638	4,979,913,209	4,743,040,655	5,271,645,702	5,291,473,518	5,752,808,679	5,321,480,393	5,365,699,856	5,620,169,822	5,336,379,832	5,783,167,464	5,713,035,001	6,795,818,629	65,974,632,760
Bakers & dairies	5,746,339	4,465,006	4,582,734	5,424,516	5,799,108	6,174,111	19,864,654	18,396,445	20,127,072	20,031,476	12,908,330	13,974,701	16,109,378	147,857,531
Sweet stores	23,828,246	5,578,067	7,210,415	9,277,413	12,663,126	9,903,597	9,968,048	9,180,646	9,881,362	9,485,111	10,912,385	14,178,885	27,502,332	135,741,387
Miscellaneous foodstores	211,014,800	151,185,707	150,614,177	170,530,162	182,674,770	193,043,314	200,963,233	193,036,963	221,053,679	200,672,701	210,805,457	206,814,592	242,658,652	2,324,414,407
Off-licences	85,385,754	55,508,979	56,130,426	63,100,975	67,115,235	68,317,315	69,195,487	72,085,817	69,900,855	65,558,200	70,260,918	68,299,187	92,173,300	817,646,694
Food & drink	6,705,036,777	5,196,650,968	4,961,578,407	5,519,978,768	5,559,725,757	6,030,608,016	5,621,471,815	5,658,389,727	5,941,132,790	5,632,127,320	6,088,054,654	6,016,302,366	7,174,262,291	69,400,292,779
Department stores	915,099,312	450,125,948	379,452,233	450,186,140	452,070,001	503,889,153	495,233,685	491,431,287	477,358,871	460,266,098	520,047,930	602,403,477	975,949,855	6,258,414,678
Discount stores	473,932,531	246,958,345	229,809,597	235,313,879	284,787,058	293,878,191	282,379,583	288,647,947	308,880,351	297,492,523	341,697,126	384,496,369	508,481,677	3,702,822,646
Catalogues	150,659,189	127,151,392	114,988,869	122,599,525	107,981,128	126,758,517	113,683,391	110,860,114	112,739,600	121,022,335	151,536,471	171,186,343	168,683,215	1,549,190,900
Miscellaneous mixed	327,067,549	209,495,819	212,722,017	246,280,400	270,042,596	321,102,617	300,199,182	304,214,940	333,245,714	311,405,974	348,891,888	379,624,445	473,955,382	3,711,180,974
Mixed business	1,866,758,581	1,033,731,504	936,972,716	1,054,379,944	1,114,860,783	1,245,628,478	1,191,495,841	1,195,154,288	1,232,224,536	1,190,186,930	1,362,173,415	1,537,710,634	2,127,070,129	15,221,609,198
Men's clothing	91,791,171	52,806,360	44,109,240	49,227,469	51,080,028	57,064,341	56,965,660	58,432,057	58,206,030	53,027,859	57,705,252	60,092,780	93,069,999	691,787,075
Women's clothing	286,642,305	174,303,349	162,653,898	193,553,282	216,142,459	233,109,785	237,874,834	234,803,755	227,905,226	227,959,077	252,538,712	248,999,342	337,168,911	2,747,012,630
Family clothing	1,106,940,069	585,371,683	555,423,572	669,715,370	726,702,752	779,323,358	726,307,219	761,145,005	763,760,157	717,342,946	856,544,413	1,245,150,282	9,265,119,157	9,265,119,157
Miscellaneous clothing	78,455,230	43,230,604	44,374,777	55,039,618	55,039,618	75,342,754	78,928,996	67,688,236	75,708,620	77,974,618	89,185,674	81,855,559	100,311,970	856,338,034
Shoe shops	157,328,730	104,476,581	82,828,257	95,796,483	119,219,049	120,884,773	120,405,385	124,514,538	145,107,628	132,284,170	140,953,140	135,114,266	182,709,353	1,504,293,870
Clothing	1,721,157,505	960,188,577	889,389,744	1,063,332,222	1,179,840,896	1,265,725,011	1,214,482,094	1,246,583,591	1,270,687,661	1,242,588,917	1,390,715,178	1,382,606,360	1,958,410,515	15,064,550,766
Furniture stores	307,688,255	312,380,900	264,896,713	295,786,204	266,794,269	300,640,391	276,361,764	286,361,849	306,737,519	304,264,544	339,188,151	342,983,890	323,048,296	3,619,444,490
Household appliance stores	234,476,503	189,213,713	178,276,396	206,397,135	188,113,434	195,044,054	184,430,335	191,465,360	193,039,217	197,716,227	213,178,229	225,575,065	251,301,369	2,413,750,534
Electronic stores	474,732,589	288,753,290	213,077,760	230,903,089	212,971,077	249,694,906	224,154,822	232,229,787	269,849,576	265,653,997	280,744,532	318,234,405	457,418,339	3,243,685,580
DIY stores	604,538,946	613,437,162	597,231,718	741,967,828	836,063,679	825,144,998	754,873,067	756,245,612	787,861,213	759,131,958	804,465,373	803,165,369	717,776,867	8,997,364,844
Floor covering stores	57,444,151	60,493,820	57,722,880	67,462,685	59,991,613	68,361,976	63,961,361	64,488,152	72,749,018	70,516,138	76,540,264	83,304,613	62,391,126	807,983,646
Garden centres	108,039,557	54,897,175	64,977,653	120,818,392	186,611,070	176,919,176	125,786,911	105,919,597	99,366,528	86,735,614	95,059,588	95,683,217	128,114,957	1,340,889,878
Miscellaneous household	69,591,782	67,390,277	61,524,131	69,835,342	65,960,341	72,268,635	74,420,912	82,045,807	98,763,326	92,878,837	98,581,588	94,310,392	82,220,809	960,200,397
Household	1,856,511,783	1,586,566,337	1,437,707,251	1,733,170,675	1,816,505,483	1,888,074,136	1,703,989,172	1,718,756,164	1,828,366,397	1,776,897,315	1,907,757,725	1,963,256,951	2,022,271,763	21,383,319,369
Books, newspapers & magazines	187,935,107	101,169,554	94,908,629	102,068,195	96,888,496	107,305,157	101,944,747	100,251,317	110,783,371	130,891,709	129,929,235	126,267,578	184,186,126	1,386,594,114
Record shops	153,557,904	41,205,914	37,995,456	32,904,660	37,995,456	37,995,456	32,715,874	37,995,456	33,278,570	33,278,570	41,303,232	28,311,784	125,237,063	534,752,702
Music shops	56,033,381	50,937,222	43,672,219	47,269,555	42,604,264	50,785,544	47,150,368	47,759,410	52,456,244	51,354,654	56,594,476	57,208,796	68,321,798	616,114,550
Hobbies, toys & games	237,287,805	71,548,623	58,788,773	71,648,493	60,767,574	60,114,947	54,090,202	48,743,106	53,951,491	60,605,374	80,531,801	111,206,487	171,997,723	903,994,594
Photographic	44,464,362	24,379,885	21,628,979	26,759,154	27,783,745	30,884,118	30,884,118	30,828,790	31,170,134	28,534,570	28,077,445	30,591,648	43,087,251	350,844,507
Handicraft	8,780,429	8,849,574	8,470,977	9,589,539	8,574,859	9,634,757	9,162,740	9,148,470	9,784,141	10,241,661	11,109,371	11,699,567	9,868,564	116,134,220
Sports shops	389,236,472	246,523,487	224,830,353	269,342,644	301,572,332	319,872,581	310,188,755	330,986,524	355,672,842	303,503,592	306,946,495	304,783,639	420,416,136	3,694,639,380
Jewellers	268,175,526	112,233,519	118,897,712	116,797,022	116,797,022	128,960,289	127,192,905	127,192,905	127,192,905	127,192,905	143,445,592	129,430,849	1,633,469,081	1,633,469,081
Computer software	165,476,664	118,406,786	96,432,137	108,905,792	93,767,053	113,779,067	97,542,426	91,888,826	100,783,204	105,319,716	131,469,923	153,789,888	173,458,461	1,385,543,279
Medical goods	4,291,898	4,491,441	5,451,128	6,320,556	5,249,880	5,877,879	6,456,868	6,046,845	6,443,420	6,298,916	6,361,184	6,837,485	5,817,259	71,652,861
Chemists	464,926,668	231,863,064	229,756,491	268,264,778	237,630,143	278,168,443	259,284,725	246,259,385	268,904,701	245,931,955	275,824,496	304,252,234	475,505,448	3,321,645,863
Optical goods	56,672,407	81,783,980	85,834,306	96,300,709	84,390,474	93,470,539	88,574,018	87,152,471	92,452,364	87,132,919	88,537,467	86,355,285	67,683,773	1,039,668,305
Cosmetic stores	105,682,785	37,304,823	37,871,511	44,611,127	43,704,001	40,447,589	37,408,835	36,154,531	44,764,002	36,733,166	41,656,689	53,684,214	107,098,385	561,038,873
Tobacconists	1,112,592	683,265	732,060	888,811	1,179,620	1,185,030	979,197	1,185,030	1,335,207	1,219,704	1,248,110	1,340,796	1,899,644	13,834,732
Florists	36,772,773	24,327,705	36,935,689	38,444,246	41,192,856	31,416,750	30,631,201	29,852,736	29,190,123	29,635,853	27,881,810	28,383,438	40,874,703	388,767,110
Artists' supplies	22,567,748	16,424,866	16,853,584	19,971,955	16,779,218	19,390,935	24,395,629	18,118,808	20,372,588	19,164,006	21,534,043	25,532,114	25,720,021	244,257,407
Antiques, art & stamps/coins	32,003,787	23,724,874	24,001,094	28,721,477	22,095,200	25,704,849	26,904,949	26,279,849	26,850,929	28,013,582	30,003,378	30,979,578	33,011,418	326,291,022
Pawn shops	2,405,203	1,940,679	1,711,088	1,938,581	2,127,234	2,050,442	2,072,237	2,542,732	2,390,699	2,329,220	2,885,151	2,607,174	3,550,159	28,145,396
Gift shops	171,282,567	73,236,174	77,463,948	83,777,999	83,062,614	83,271,439	89,372,601	87,214,424	95,330,228	87,673,422	101,340,521	120,443,699	182,467,084	1,164,654,153
Secondhand shops	3,049,110	2,129,502	2,995,694	2,688,372	2,659,543	3,588,481	3,741,345	3,588,481	3,614,808	3,934,526	3,414,388	4,430,350	39,497,033	39,497,033
Luggage & leather goods	17,156,440	9,601,153	7,937,335	9,419,334	9,648,114	10,006,582	11,463,822	11,766,423	10,758,243	10,148,242	10,529,553	11,679,821	19,464,722	132,423,344
Pet shops	66,070,340	58,817,528	56,198,678	63,081,826	61,367,136	67,529,752	63,989,107	66,991,165	70,631,727	65,543,944	70,411,650	65,945,368	75,336,951	785,844,832
Religious goods	49,570	73,977	47,612	51,381	51,092	51,092								

Table 3D Card expenditure statistics (not seasonally adjusted)

Value of debit card transactions

Detailed sector breakdown - services sectors

£	December 2010	January 2011	February 2011	March 2011	April 2011	May 2011	June 2011	July 2011	August 2011	September 2011	October 2011	November 2011	December 2011	Total (latest 12 months)
Auto rental	36,886,576	38,217,671	38,470,053	47,176,556	47,354,256	50,662,699	57,275,085	57,198,338	55,313,145	50,091,369	48,403,126	44,469,423	44,104,598	578,736,319
Auto parts & accessories	168,956,540	180,290,468	178,590,410	233,276,144	194,570,174	209,460,405	197,405,353	193,640,313	195,598,305	211,509,048	203,638,290	193,514,427	177,220,235	2,368,713,572
Auto services	53,615,174	57,534,295	56,639,427	68,094,070	61,501,345	71,157,737	70,452,393	70,566,796	73,252,598	71,182,023	67,564,961	66,845,432	61,535,185	796,326,262
Auto repair shops	516,064,787	569,534,703	551,956,994	787,922,670	625,596,026	657,582,397	614,844,367	606,947,786	563,416,854	713,691,187	636,740,133	592,484,832	528,388,637	7,449,106,586
Service stations	145,285,607	177,591,930	167,157,293	195,387,525	188,147,867	229,380,085	140,417,384	138,329,031	144,560,012	194,286,551	200,802,327	196,900,054	218,345,984	2,191,306,043
Vehicle sales	869,103,767	972,248,406	970,156,769	1,384,487,423	1,123,782,603	1,225,309,510	1,167,670,243	1,121,664,479	1,100,921,284	1,287,819,445	1,159,813,123	1,044,258,689	852,066,851	13,410,198,825
Vehicle Sales & Services	1,789,912,451	1,995,417,473	1,962,970,946	2,716,344,388	2,240,952,271	2,443,562,833	2,248,064,825	2,188,346,743	2,133,062,198	2,528,579,623	2,316,961,960	2,136,472,857	1,881,661,490	26,794,387,607
Restaurants	693,066,419	668,621,484	679,654,361	728,063,582	763,103,885	806,839,800	742,666,603	781,797,513	841,130,780	747,166,727	847,166,097	771,734,352	869,148,434	9,247,093,618
Public houses	152,605,939	140,693,546	141,398,857	157,776,179	172,844,086	188,795,368	165,166,877	167,541,315	198,255,655	165,010,293	184,393,330	162,509,644	183,995,158	2,028,380,308
Catering services	12,215,986	11,153,092	11,391,769	13,872,051	12,543,857	14,427,681	14,940,091	14,491,471	14,839,124	14,555,695	14,404,516	15,430,173	14,279,978	166,329,498
Video stores	2,908,472	2,514,509	2,320,170	3,248,521	3,878,538	4,290,924	3,831,084	2,220,375	1,668,909	1,958,406	2,333,330	2,221,511	2,391,990	32,878,267
Cinema, theatre & dance	130,336,360	118,430,424	125,117,756	134,440,452	120,534,514	243,382,797	135,846,707	172,074,345	142,718,019	119,727,348	153,811,363	157,424,265	151,435,080	1,774,943,070
Concerts & entertainers	1,531,555	1,431,757	1,565,407	1,810,172	1,787,039	2,160,028	2,080,279	2,015,319	2,478,642	1,919,787	2,337,613	2,443,502	2,574,168	24,603,353
Tourist attractions	12,253,384	11,811,999	14,784,828	17,240,422	30,349,599	26,022,490	25,485,442	29,826,069	43,907,607	23,713,544	27,451,545	14,604,711	12,830,380	278,028,636
Amusement parks	1,384,338	1,427,743	1,991,271	1,992,572	4,054,384	3,005,606	3,020,362	3,625,738	6,060,218	2,746,733	3,368,398	2,001,572	1,877,516	35,172,113
Aquariums	761,996	965,920	1,073,138	1,174,733	1,433,598	1,496,836	1,210,855	1,302,785	1,583,142	1,111,253	1,144,827	922,790	886,976	14,306,853
Sports & games establishments	80,311,534	90,601,795	85,158,845	108,100,279	98,429,947	114,789,947	104,323,785	100,162,341	96,405,414	89,624,460	91,498,188	83,350,279	87,824,025	1,150,268,651
Professional sports clubs	8,659,101	7,397,346	8,104,074	8,769,572	10,552,545	9,486,510	15,434,772	11,312,059	10,200,776	9,141,002	8,535,598	9,756,104	10,608,198	119,298,556
Gambling	325,235,410	332,738,932	342,506,042	411,773,615	350,151,654	398,300,450	388,249,150	395,801,267	481,584,933	432,391,096	431,587,320	405,724,814	380,520,961	4,751,330,234
Personal services	11,463,127	11,183,606	11,217,623	12,864,674	11,704,296	17,949,288	16,324,840	16,626,172	17,287,084	16,636,570	16,707,685	15,943,829	16,754,070	181,199,737
Miscellaneous entertainment	15,999,208	16,720,674	18,846,736	24,582,235	34,690,184	33,205,577	33,489,238	37,600,011	44,758,945	31,667,596	35,870,520	27,702,305	21,469,009	360,603,030
Entertainment	1,448,732,829	1,415,692,827	1,445,130,517	1,625,709,059	1,616,057,472	1,864,153,302	1,652,070,085	1,736,396,780	1,902,879,248	1,657,370,510	1,820,610,330	1,671,769,851	1,756,595,943	20,164,435,924
Hotels	209,470,309	231,767,307	233,667,589	235,828,274	285,158,420	315,107,014	333,920,339	359,173,455	375,431,505	317,919,196	317,648,120	263,592,462	241,353,843	3,510,567,524
Airlines	76,890,702	142,128,378	88,298,105	92,453,251	73,784,582	89,885,132	91,901,290	96,665,029	93,878,141	98,818,271	96,040,265	87,807,302	67,461,354	1,119,121,100
Airport terminals	2,132,039	2,253,721	1,945,968	2,863,023	3,382,838	3,460,094	3,831,024	4,134,943	4,393,632	3,440,931	2,943,807	2,391,528	2,449,476	37,490,985
Railways	290,388,279	294,975,057	296,143,400	351,162,017	300,401,721	355,260,637	362,049,327	348,503,787	357,081,557	362,348,211	396,679,966	391,060,573	347,874,923	4,163,541,176
Buses	20,568,981	24,197,554	22,542,556	26,323,934	26,419,242	28,501,441	29,075,014	29,725,758	31,814,738	34,956,802	31,743,284	27,181,933	25,350,658	337,832,914
Sea travel	6,190,097	8,022,991	7,985,924	9,244,752	9,780,939	10,163,526	10,699,281	11,798,860	9,155,540	12,110,703	9,155,540	6,807,310	6,075,325	109,938,139
Travel agents	497,444,636	877,492,672	774,517,061	945,832,790	891,744,645	1,067,450,019	1,041,921,530	1,022,367,717	850,010,433	717,934,784	674,341,714	593,622,398	501,990,884	9,959,226,647
Timeshares	24,119	69,621	33,831	55,184	22,244	14,250	23,262	15,584	9,868	9,523	10,992	12,276	6,406	283,041
Camping grounds	27,952,542	42,215,202	47,324,209	63,099,798	74,405,304	79,840,324	78,422,322	84,699,997	81,131,302	49,009,688	48,712,077	36,267,838	27,335,944	712,464,005
Miscellaneous travel	21,943,329	22,976,247	23,950,000	31,316,405	32,142,825	37,716,404	42,849,098	38,648,604	36,383,478	28,458,048	26,709,420	25,006,595	21,597,968	367,755,092
Travel	943,534,724	1,414,331,443	1,262,741,054	1,522,351,154	1,412,084,340	1,672,291,827	1,660,772,148	1,636,560,279	1,466,813,852	1,304,131,798	1,285,274,513	1,170,157,753	1,000,142,938	16,807,653,099
Telegraph services / Wire transfer money order	12,542,555	11,898,913	11,602,102	12,206,278	11,813,587	10,723,677	11,531,394	12,584,654	15,634,085	18,246,571	16,642,995	18,187,697	17,130,953	168,202,906
Insurance services	544,721,727	608,078,108	589,855,896	740,805,961	660,951,111	729,302,797	763,553,699	779,948,066	785,344,969	788,047,082	775,272,749	508,320,655	415,823,015	8,145,304,108
Fis - cash disbursements (auto & manual)	35,453,434	29,282,753	33,461,728	34,527,598	1,986,838	2,186,980	1,155,446	1,401,419	1,297,021	1,069,578	23,239,222	31,205,368	34,733,415	195,547,366
Fis - merchandise & services	2,189,189,792	2,205,878,449	2,054,485,927	2,507,630,924	2,397,764,097	2,379,677,236	2,362,363,559	2,449,514,619	2,734,680,801	2,431,325,356	2,468,306,673	2,647,529,565	2,591,419,842	29,230,577,048
Non-Fis - foreign currency, travellers' cheques	51,002,569	46,657,418	53,885,767	61,761,641	72,514,008	87,789,323	99,239,091	129,975,366	138,793,109	103,635,173	76,555,351	58,636,237	62,698,927	992,141,411
Security brokers and dealers	206,543,276	283,484,820	275,180,880	469,074,514	517,089,523	246,070,738	223,527,190	204,628,858	520,199,109	240,995,733	170,610,245	235,400,165	132,750,601	3,519,012,376
Tax preparation services	37,624	83,445	82,231	81,705	87,904	70,492	107,560	116,505	131,689	139,302	96,468	93,464	120,311	1,211,076
Tax payments	106,227,994	154,551,705	121,533,541	142,181,231	136,644,362	166,604,126	102,905,285	101,155,183	105,607,637	140,788,286	145,434,185	142,745,913	157,758,438	1,617,909,892
Fines, bail and bond payments	21,115,970	22,388,314	22,473,405	27,233,205	25,806,737	29,759,671	30,598,953	31,191,837	29,031,633	30,951,980	30,980,950	30,679,924	26,873,801	337,970,410
Miscellaneous financial	56,542,263	67,833,515	64,432,619	76,564,380	74,354,888	88,765,997	61,519,700	60,924,285	62,995,227	78,390,902	79,660,150	79,211,411	81,472,100	876,125,174
Financial	3,223,377,204	3,430,137,440	3,226,994,096	4,072,067,437	3,899,013,055	3,740,951,037	3,656,501,877	3,771,440,792	4,393,715,280	3,833,589,963	3,786,798,988	3,752,010,399	3,520,781,403	45,084,001,767

Table 3D Card expenditure statistics (not seasonally adjusted)

Value of debit card transactions

Detailed sector breakdown - services sectors (continued)

£	December 2010	January 2011	February 2011	March 2011	April 2011	May 2011	June 2011	July 2011	August 2011	September 2011	October 2011	November 2011	December 2011	Total (latest 12 months)
Telecoms	292,076,196	247,686,977	226,580,081	253,126,273	248,605,518	272,687,964	262,660,143	265,811,870	276,662,538	268,642,702	295,627,635	282,495,070	312,853,076	3,213,439,847
Utilities	142,612,310	161,729,034	164,670,083	227,531,432	193,989,352	198,850,532	195,525,269	177,756,053	179,915,970	177,548,394	181,135,127	181,841,278	172,502,456	2,212,994,980
Contractors (residential & commercial)	93,115,098	93,949,559	98,802,213	113,513,736	84,779,244	98,603,238	110,478,364	97,935,891	102,978,392	107,182,395	110,539,042	128,667,594	102,329,005	1,249,758,673
Gardening services	4,772,851	3,011,968	3,487,736	5,532,520	7,326,024	7,908,576	6,131,343	5,409,024	5,356,136	4,822,721	4,908,075	4,841,020	5,089,946	63,825,089
Veterinary services	68,412,273	75,884,769	67,824,359	78,403,266	70,108,783	78,005,827	73,491,551	74,806,623	77,572,438	74,986,758	75,364,404	73,278,969	68,001,478	887,729,225
Photocopying & printing	21,013,160	20,847,959	20,442,796	24,570,868	19,845,789	23,459,985	24,301,248	22,348,460	23,559,456	25,849,354	25,097,830	29,363,043	25,187,720	284,874,508
Photographic studios	13,846,647	9,637,772	9,940,042	45,895,001	45,060,877	49,506,668	12,576,406	14,907,535	12,330,517	11,687,134	13,303,325	15,203,344	13,193,558	253,242,179
Beauty & barber shops	195,158,531	141,029,890	144,519,931	130,709,399	125,179,388	133,388,158	172,024,947	171,454,255	170,020,860	169,204,805	167,731,872	166,917,484	211,014,842	1,903,195,831
Employment agencies	864,600	969,412	929,036	1,051,749	754,954	895,859	875,492	966,341	913,613	1,022,143	943,803	983,920	812,820	11,119,142
Counselling services	4,039,259	3,847,825	3,609,851	3,780,689	5,809,386	6,877,531	5,789,337	5,462,980	6,089,885	5,577,236	5,849,852	5,767,913	5,197,954	63,660,439
Legal services	47,691,862	53,616,724	53,379,889	67,884,077	57,114,419	60,634,005	71,374,719	65,296,005	73,245,069	73,694,472	72,813,515	76,447,621	65,946,690	791,447,205
Laundry & cleaning	8,615,675	9,374,763	8,789,454	10,737,187	10,003,292	11,825,694	11,348,065	11,005,339	10,835,446	11,462,952	11,439,049	10,989,898	10,000,851	127,811,990
Funeral services	16,026,966	18,408,727	19,373,156	20,742,773	16,717,226	16,843,076	19,690,023	18,860,156	18,968,344	19,370,012	19,986,163	22,033,252	19,511,447	230,504,355
Medical services	147,360,218	170,365,259	180,479,429	212,963,944	171,287,900	195,527,716	201,588,544	189,992,831	190,373,231	202,871,307	196,721,212	211,000,729	169,295,211	2,292,467,313
Moving & courier services	21,009,437	20,813,579	19,377,170	22,877,600	21,148,910	24,343,704	26,362,009	27,381,629	28,682,894	28,433,457	27,116,107	28,075,291	25,769,818	300,382,168
Repair shops (not auto)	10,648,851	9,246,354	8,498,141	9,848,127	8,003,809	9,026,497	9,733,633	9,997,249	9,724,554	9,750,037	9,762,490	10,646,873	10,518,811	113,756,575
Accounting services	10,786,357	12,530,839	11,337,668	13,600,492	13,208,003	15,769,841	15,531,588	15,052,832	18,350,854	18,564,207	17,422,242	18,425,844	16,903,908	186,698,318
Advertising, consultancy & PR	12,094,726	14,596,689	14,006,716	15,779,695	13,735,590	16,122,133	15,657,790	14,786,599	14,873,020	14,948,760	14,027,550	14,354,054	11,075,118	173,963,714
Computer programming	106,899,797	105,469,356	92,769,545	110,775,508	31,209,543	32,720,119	33,619,571	31,724,708	32,800,285	36,842,215	38,336,781	37,845,931	34,314,241	618,427,803
Farming services	12,508,488	11,814,563	11,308,870	13,271,543	12,661,581	14,202,725	13,585,431	13,752,913	14,553,963	13,919,852	13,762,196	13,302,522	12,821,722	158,957,881
Miscellaneous professional services	374,063,358	446,872,788	390,619,729	466,878,560	435,871,344	460,497,078	462,133,043	468,350,735	478,250,317	549,518,272	494,075,616	499,250,537	438,511,951	5,590,829,970
Engineering services	11,265,255	12,834,794	14,447,040	18,078,621	15,689,443	16,881,946	17,494,122	17,010,527	16,930,790	17,521,737	17,020,880	17,334,399	13,951,098	195,195,397
Marina services	7,260,654	6,259,303	6,606,736	10,485,285	11,826,462	12,887,402	12,297,220	11,804,239	12,762,428	8,828,384	8,226,868	6,768,506	6,445,853	115,198,686
Wrecking & salvage yards	710,524	940,738	973,201	1,097,627	1,116,239	1,237,494	1,245,859	1,128,167	1,211,692	1,199,764	1,220,037	1,178,353	895,516	13,444,687
Pest control	454,675	446,626	451,957	545,918	500,002	811,494	682,028	765,410	756,542	829,478	789,316	756,328	582,169	7,917,268
Educational establishments	117,140,544	315,679,475	172,782,114	139,510,483	139,114,279	201,673,611	114,005,921	107,398,953	170,473,355	555,812,268	444,417,483	187,707,208	129,074,157	2,677,649,307
Child care services	8,258,480	10,027,710	9,212,115	10,655,406	8,187,303	10,144,551	9,788,177	9,590,898	9,834,889	10,079,717	10,260,073	10,338,291	8,958,627	117,077,757
Social, political & religious organisations	64,098,060	61,075,733	59,141,117	105,628,582	77,450,214	75,577,800	73,509,901	85,715,301	93,465,429	82,461,032	88,909,623	77,668,015	72,183,904	952,786,651
Government services	739,082,721	959,317,444	868,601,812	964,892,402	881,459,861	3,190,945,379	1,912,638,940	1,393,313,587	1,341,536,499	1,039,367,359	994,606,878	965,075,264	882,291,319	15,394,046,744
Miscellaneous services	359,776,315	420,015,993	356,615,348	435,326,334	381,391,464	435,502,988	409,672,119	419,500,038	448,432,081	431,603,425	443,403,405	432,444,904	422,281,569	5,036,189,668
Commercial equipment	79,236,313	86,593,133	83,743,799	99,875,154	83,844,684	95,215,482	113,701,996	95,712,103	99,615,132	110,199,515	104,893,346	109,999,972	90,640,082	1,174,034,398
Other services	2,990,900,201	3,504,895,755	3,123,321,134	3,635,570,251	3,193,000,883	5,768,575,073	4,409,514,799	3,843,999,251	3,941,076,619	4,083,801,864	3,909,711,795	3,641,003,427	3,358,156,917	46,412,627,768
Total services	10,605,927,718	11,992,242,245	11,254,825,336	13,807,870,563	12,646,266,441	15,804,631,086	13,960,844,073	13,535,917,300	14,212,978,702	13,725,392,954	13,437,005,706	12,637,006,749	11,758,692,534	158,773,673,689
TOTAL	27,055,152,552	23,928,258,837	22,535,721,255	26,724,040,652	25,611,816,797	29,862,940,502	27,120,371,649	26,776,301,386	28,082,962,726	27,018,781,836	27,837,047,272	27,304,038,292	29,577,513,981	322,379,795,185