

## Card Expenditure Statistics [CES] – November 2011

Seasonally-adjusted

### At a glance key figures for November

	Total spending £ billions		Annual growth rates for spending		Number of purchases millions	
	2011	2010	2011	2010	2011	2010
<b>All plastic cards</b>	<b>37.6</b>	36.4	<b>8.4%</b>	7.4%	<b>787</b>	751
<b>Debit cards</b>	<b>26.8</b>	25.5	<b>11.7%</b>	9.6%	<b>615</b>	579
<b>Credit cards</b>	<b>10.7</b>	10.9	<b>0.9%</b>	2.6%	<b>172</b>	172

**Spending on plastic cards** in November amounted to £37.6 billion, a figure very close to the monthly average of the previous 12 months. The **number of purchases**, however, at 787 million was more than 2% above the average of the previous 12 months.

These November data for plastic card spending do not reflect the bleak retail sales picture painted by the BRC-KPMG Monitor of a 1.6% fall compared with November 2010, but are more in line with National Statistics that showed an increase in the value of sales of 4.6% compared with November 2010. With an annual growth rate of 9.3% in the number of plastic card purchases it is clear that changes in consumers' spending habits, such as increasingly using plastic cards for lower value transactions and for internet purchases, are boosting growth in card use at a faster rate than the underlying growth in retail sales. Coupled with price cutting within the retail sector, notably by supermarkets, this is having a downward effect on the **average value of a plastic card transaction** which fell to £35.34, 34 pence below the figure for November 2010 but £2.37 below the level seen in 2007.

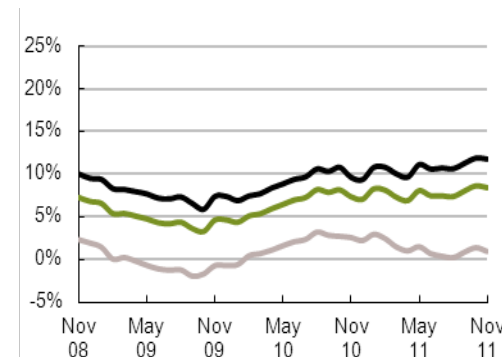
There were 264 million plastic card purchases in the **food & drink sector** in November – 2.7% higher than the average of the previous 12 months, although the spending figure of £7.35 billion was the same as the average. The average purchase price of £27.85 was £1.38 lower than the monthly figure for November 2010, for the same reasons indicated above. Debit card purchases of food and drink were growing at an annual rate of 12% in November and accounted for 82% of all card purchases in this sector

The **plastic card share of total retail sales** (including automotive fuels)<sup>1</sup> was 69.2% in November (see Chart 2). In food & drink plastic cards accounted for 63.8% of all spending, and for automotive fuels the share was 64.7%.

<sup>1</sup>CES 3-month moving average spending for November of £20.0 billion expressed as a percentage of a similar 3-month moving average for National Statistics 'All retailing including automotive fuel' (AGG 21) based on the value of Retail Sales at current prices (SA) that gives a figure of £28.9 billion.

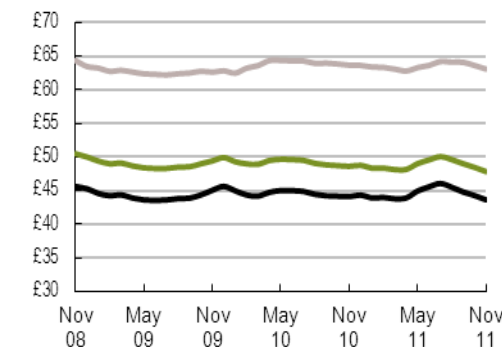
### Chart 1

Spending on plastic cards  
Annual growth rates



### Chart 3

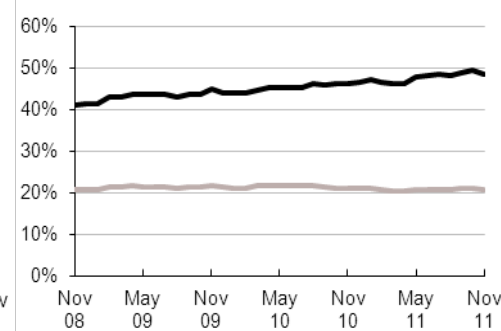
Average transaction values  
Three-month moving average



— Debit cards  
— Credit cards  
— All plastic cards

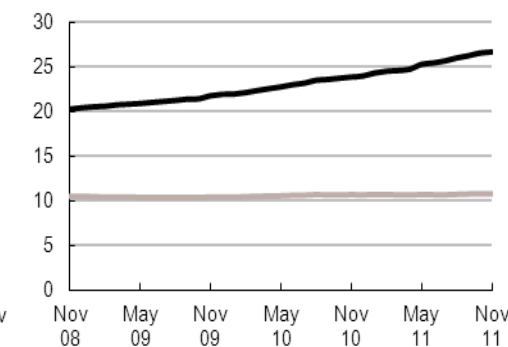
### Chart 2

Percent of retail sales made on plastic cards  
(including automotive fuel)  
Three-month moving average



### Chart 4

Average monthly expenditure  
£ billions



# Table 1 Card expenditure statistics (seasonally adjusted)

## Summary

		Number of purchase transactions (millions)									Value of purchase transactions (£ millions)									
		All sectors			Retail sales			Services			All sectors			Retail sales			Services			
		Credit	Debit	Total	Credit	Debit	Total	Credit	Debit	Total	Credit	Debit	Total	Credit	Debit	Total	Credit	Debit	Total	
<b>Annual</b>																				
	2006	1,948	4,493	6,441	1,215	3,017	4,232	733	1,476	2,209	119,944	195,408	315,352	59,883	97,961	157,844	60,061	97,447	157,508	
	2007	1,958	4,969	6,927	1,197	3,304	4,501	761	1,665	2,426	123,787	223,887	347,675	61,065	108,656	169,721	62,723	115,231	177,954	
	2008	1,972	5,466	7,438	1,186	3,581	4,767	786	1,885	2,671	126,192	245,188	371,381	60,686	116,055	176,742	65,506	129,133	194,639	
	2009	2,002	5,939	7,940	1,224	3,893	5,117	778	2,046	2,824	125,335	263,345	388,680	61,820	125,365	187,186	63,514	137,979	201,494	
	2010	2,006	6,484	8,491	1,381	4,712	6,093	626	1,772	2,398	128,136	288,025	416,162	69,632	148,492	218,124	58,504	139,534	198,038	
<b>Monthly</b>																				
	2010	Nov	172	579	751	119	419	538	54	159	213	10,918	25,471	36,390	5,976	13,220	19,196	4,943	12,251	17,194
		Dec	163	555	718	112	400	512	51	154	206	10,444	24,798	35,242	5,693	12,714	18,407	4,751	12,084	16,835
	2011	Jan	169	586	755	116	422	538	53	164	217	10,680	25,213	35,893	5,782	13,251	19,034	4,898	11,962	16,860
		Feb	169	579	748	116	415	531	54	164	218	10,647	25,535	36,182	5,757	13,059	18,816	4,889	12,477	17,366
		Mar	167	574	741	114	409	524	53	165	218	10,564	25,410	35,974	5,706	12,753	18,459	4,858	12,658	17,515
		Apr	169	590	760	117	424	541	52	166	218	10,536	25,623	36,159	5,839	13,388	19,227	4,697	12,234	16,931
		May	177	638	815	121	458	579	56	181	236	11,392	30,119	41,510	6,084	14,411	20,495	5,308	15,707	21,015
		Jun	167	577	744	114	411	525	53	166	219	10,694	26,588	37,282	5,787	13,005	18,792	4,907	13,583	18,489
		Jul	167	595	761	115	426	541	52	168	221	10,677	26,701	37,379	5,819	13,596	19,415	4,858	13,106	17,963
		Aug	178	630	807	121	453	575	56	176	232	11,389	28,642	40,031	6,125	14,289	20,414	5,264	14,353	19,617
		Sep	171	620	791	116	443	559	54	177	231	10,931	27,192	38,123	5,961	13,956	19,917	4,969	13,236	18,206
		Oct	175	639	813	120	457	576	55	182	237	10,904	27,583	38,487	6,023	14,410	20,433	4,881	13,172	18,053
		Nov	172	615	787	117	437	553	55	179	234	10,750	26,817	37,567	5,862	13,694	19,556	4,888	13,123	18,011
<b>12 month growth rates (percentages)</b>																				
<b>Annual</b>																				
	2006	-2.7	9.9	5.7	-2.9	9.3	5.5	-2.4	10.9	6.1	-1.4	15.3	8.3	-0.5	10.3	5.9	-2.2	20.8	10.9	
	2007	0.5	10.6	7.6	-1.4	9.5	6.4	3.8	12.8	9.8	3.2	14.6	10.2	2.0	10.9	7.5	4.4	18.2	13.0	
	2008	0.7	10.0	7.4	-0.9	8.4	5.9	3.3	13.2	10.1	1.9	9.5	6.8	-0.6	6.8	4.1	4.4	12.1	9.4	
	2009	1.5	8.6	6.8	3.2	8.7	7.3	-1.0	8.5	5.7	-0.7	7.4	4.7	1.9	8.0	5.9	-3.0	6.9	3.5	
	2010	0.2	9.2	6.9	12.8	21.1	19.1	-19.5	-13.4	-15.1	2.2	9.4	7.1	12.6	18.4	16.5	-7.9	1.1	-1.7	
<b>Monthly</b>																				
	2010	Nov	0.6	8.9	6.8	12.0	19.5	17.7	-17.5	-11.5	-13.1	2.6	9.6	7.4	12.1	17.1	15.4	-6.6	2.8	-0.2
		Dec	0.2	9.2	6.9	12.8	21.1	19.1	-19.5	-13.4	-15.1	2.2	9.4	7.1	12.6	18.4	16.5	-7.9	1.1	-1.7
	2011	Jan	0.7	10.3	7.9	11.9	21.1	18.9	-17.5	-10.8	-12.6	3.0	10.8	8.3	12.6	18.7	16.7	-6.6	3.5	0.3
		Feb	0.6	10.4	8.0	10.7	20.0	17.8	-16.2	-8.8	-10.8	2.5	10.8	8.1	11.3	17.8	15.7	-6.4	4.2	0.9
		Mar	0.0	10.0	7.5	8.8	18.2	16.0	-15.1	-6.8	-9.1	1.5	10.0	7.3	9.3	16.3	14.0	-6.5	4.1	0.8
		Apr	0.1	10.3	7.7	7.9	17.3	15.1	-13.8	-4.7	-7.2	1.0	9.7	6.9	8.2	15.6	13.1	-6.4	4.0	0.8
		May	0.9	11.6	8.9	7.7	17.5	15.2	-11.5	-1.3	-4.0	1.5	11.1	8.1	7.5	15.9	13.2	-4.8	6.5	3.0
		Jun	0.3	11.1	8.4	5.9	15.6	13.4	-10.2	0.7	-2.2	0.7	10.6	7.5	5.5	14.4	11.5	-4.5	6.9	3.4
		Jul	0.3	11.2	8.6	4.9	14.7	12.4	-8.6	3.2	0.0	0.4	10.7	7.5	4.5	13.9	10.9	-4.0	7.6	4.1
		Aug	0.1	10.8	8.2	3.7	13.2	11.0	-6.8	5.1	1.9	0.2	10.6	7.4	3.3	12.6	9.6	-3.2	8.7	5.1
		Sep	1.0	11.6	9.0	3.5	12.9	10.7	-4.1	8.3	5.0	0.9	11.3	8.0	3.3	12.6	9.6	-1.8	9.9	6.4
		Oct	1.8	12.2	9.7	3.3	12.6	10.5	-1.4	11.3	8.0	1.4	11.9	8.6	3.1	12.5	9.5	-0.6	11.3	7.8
		Nov	1.5	11.7	9.3	2.0	11.0	8.9	0.5	13.5	10.1	0.9	11.7	8.4	1.8	11.0	8.0	-0.1	12.5	8.8

# Table 2A Card expenditure statistics (seasonally adjusted)

## Retail sales

Number of purchase transactions (millions)

Total retail sales

		Food & drink			Mixed business			Clothing			Household			Other retailers			Automotive Fuels *			Number of purchases		
		Credit	Debit	Total	Credit	Debit	Total	Credit	Debit	Total	Credit	Debit	Total	Credit	Debit	Total	Credit	Debit	Total	Credit	Debit	Total
<b>Annual</b>																						
2006		394	1,454	1,848	215	415	630	126	317	444	145	263	408	334	567	901	0	0	0	1,215	3,017	4,232
2007		426	1,639	2,066	203	436	639	124	350	474	147	282	429	297	596	893	165	419	584	1,197	3,304	4,501
2008		500	1,873	2,373	134	408	542	121	371	492	143	292	436	288	637	925	168	459	626	1,186	3,581	4,767
2009		512	2,086	2,597	131	401	532	125	404	529	146	321	466	311	681	991	158	475	633	1,224	3,893	5,117
2010		533	2,283	2,816	138	403	541	128	424	552	147	349	495	273	733	1,006	161	520	681	1,381	4,712	6,093
<b>Monthly</b>																						
2010	Nov	47	203	250	12	35	46	11	37	48	13	32	44	23	66	89	14	47	61	119	419	538
	Dec	44	198	242	12	34	45	10	35	45	12	29	41	21	62	83	13	43	56	112	400	512
2011	Jan	46	205	251	13	36	49	11	36	47	12	32	44	21	66	87	14	47	60	116	422	538
	Feb	45	201	246	12	35	47	11	36	46	12	32	44	22	65	87	13	47	60	116	415	531
	Mar	44	199	243	11	33	45	11	35	45	12	31	44	22	64	86	14	47	60	114	409	524
	Apr	47	207	253	11	36	48	12	39	50	12	32	44	22	65	87	13	46	59	117	424	541
	May	47	225	272	12	40	52	12	39	51	12	32	45	24	71	95	14	50	65	121	458	579
	Jun	44	201	245	11	35	46	11	35	46	11	31	42	22	62	85	14	47	61	114	411	525
	Jul	46	211	257	11	36	47	11	37	48	12	32	44	20	62	83	14	47	62	115	426	541
	Aug	50	226	276	11	37	49	11	39	51	13	33	46	22	67	90	14	51	65	121	453	575
	Sep	47	222	269	11	36	47	11	39	50	12	32	45	21	65	86	14	48	61	116	443	559
	Oct	49	227	276	12	39	51	12	40	51	12	34	47	21	68	89	14	49	63	120	457	576
	Nov	47	217	264	12	37	49	11	37	49	12	33	45	20	64	84	14	48	62	117	437	553

12 month growth rates (percentages)

		Credit	Debit	Total	Credit	Debit	Total	Credit	Debit	Total	Credit	Debit	Total	Credit	Debit	Total	Credit	Debit	Total	Credit	Debit	Total
<b>Annual</b>																						
2006		-0.3	11.5	8.8	-0.8	8.6	5.2	-4.6	9.5	5.1	-4.7	5.7	1.8	-5.9	6.3	1.4	-	-	-	-2.9	9.3	5.5
2007		8.2	12.8	11.8	-5.6	5.1	1.5	-1.8	10.3	6.9	1.1	7.3	5.1	-11.1	5.0	-0.9	-	-	-	-1.4	9.5	6.4
2008		17.3	14.3	14.9	-34.0	-6.5	-15.2	-2.3	6.0	3.8	-2.6	3.6	1.5	-3.0	6.8	3.5	1.4	9.6	7.3	-0.9	8.4	5.9
2009		2.4	11.3	9.4	-2.2	-1.7	-1.9	3.2	9.0	7.6	1.9	9.7	7.1	7.8	7.0	7.2	-5.7	3.5	1.1	3.2	8.7	7.3
2010		4.3	9.5	8.4	5.1	0.6	1.7	2.5	5.0	4.4	0.5	8.7	6.1	-11.9	7.6	1.5	2.0	9.5	7.6	12.8	21.1	19.1
<b>Monthly</b>																						
2010	Nov	4.0	9.0	8.0	4.4	-0.3	0.9	2.7	5.2	4.6	1.1	8.9	6.4	-10.3	7.0	1.6	2.4	9.7	7.9	12.0	19.5	17.7
	Dec	4.3	9.5	8.4	5.1	0.6	1.7	2.5	5.0	4.4	0.5	8.7	6.1	-11.9	7.6	1.5	2.0	9.5	7.6	12.8	21.1	19.1
2011	Jan	5.0	10.4	9.3	6.6	1.7	2.9	3.3	5.7	5.1	1.7	10.2	7.6	-14.0	9.3	2.0	3.1	10.8	8.9	11.9	21.1	18.9
	Feb	4.9	10.6	9.5	6.6	1.7	2.9	2.7	5.0	4.4	1.3	10.6	7.7	-13.3	9.5	2.4	2.2	10.5	8.4	10.7	20.0	17.8
	Mar	4.1	10.2	9.0	5.4	1.2	2.2	1.7	4.0	3.5	0.8	11.0	7.8	-13.2	9.0	2.1	1.1	9.9	7.7	8.8	18.2	16.0
	Apr	4.2	10.3	9.1	5.2	1.8	2.6	2.4	4.4	3.9	0.6	11.4	8.0	-12.4	9.3	2.7	0.1	9.3	7.0	7.9	17.3	15.1
	May	4.8	11.6	10.3	5.9	3.5	4.1	3.7	5.7	5.2	0.5	11.8	8.3	-10.8	10.6	4.2	0.2	10.2	7.7	7.7	17.5	15.2
	Jun	3.7	10.9	9.5	4.6	3.6	3.8	3.1	4.7	4.3	-1.1	11.1	7.4	-10.2	9.7	3.8	0.1	9.7	7.4	5.9	15.6	13.4
	Jul	3.6	11.1	9.6	3.8	4.4	4.3	3.2	4.8	4.5	-1.9	11.2	7.2	-9.5	9.5	3.9	0.5	10.0	7.7	4.9	14.7	12.4
	Aug	3.3	10.8	9.3	2.4	4.3	3.8	2.7	4.2	3.9	-1.8	10.5	6.8	-9.2	8.3	3.2	0.5	10.0	7.7	3.7	13.2	11.0
	Sep	4.1	11.8	10.3	2.1	5.4	4.6	3.5	5.0	4.7	-1.0	10.8	7.3	-7.7	8.5	3.9	1.2	10.5	8.3	3.5	12.9	10.7
	Oct	4.7	12.6	11.1	2.4	7.0	5.8	4.3	6.0	5.6	-0.6	11.1	7.6	-6.4	8.6	4.4	1.4	10.7	8.5	3.3	12.6	10.5
	Nov	4.3	12.0	10.6	1.8	7.5	6.1	3.9	5.5	5.1	-0.8	10.5	7.2	-6.2	7.2	3.5	0.9	10.1	7.9	2.0	11.0	8.9

\* The category of Automotive Fuels is effective from January 2010. Data shown for 2009 are for growth trend purposes only; these data are excluded from totals for 2009 as these are already included in their former Services sector of Motoring (now known as Vehicle Sales & Service)

# Table 2B Card expenditure statistics (seasonally adjusted)

## Retail sales

Value of purchase transactions (£ millions)

																			Total retail sales			
																			Value of purchases			
Food & drink			Mixed business			Clothing			Household			Other retailers			Automotive Fuels *							
	Credit	Debit	Total	Credit	Debit	Total	Credit	Debit	Total	Credit	Debit	Total	Credit	Debit	Total	Credit	Debit	Total	Credit	Debit	Total	
<b>Annual</b>																						
2006	14,002	43,461	57,463	8,903	13,103	22,006	5,783	9,379	15,162	14,020	13,722	27,741	17,175	18,296	35,471	0	0	0	59,883	97,961	157,844	
2007	15,309	48,573	63,882	8,840	14,054	22,894	5,861	10,455	16,315	14,700	15,346	30,047	16,354	20,229	36,583	5,868	10,958	16,827	61,065	108,656	169,721	
2008	17,563	54,547	72,110	7,054	13,457	20,511	5,954	11,212	17,167	14,382	15,574	29,956	15,733	21,265	36,998	6,676	12,964	19,640	60,686	116,055	176,742	
2009	18,097	60,228	78,326	7,092	13,863	20,955	6,376	12,643	19,019	14,494	16,602	31,097	15,761	22,029	37,790	5,860	12,668	18,528	61,820	125,365	187,186	
2010	18,833	63,840	82,673	7,157	13,925	21,082	6,782	13,639	20,421	14,638	18,752	33,390	15,609	23,543	39,152	6,613	14,792	21,405	69,632	148,492	218,124	
<b>Monthly</b>																						
2010	Nov	1,643	5,654	7,297	610	1,208	1,818	594	1,208	1,802	1,243	1,695	2,938	1,309	2,092	3,402	577	1,362	1,939	5,976	13,220	19,196
	Dec	1,550	5,482	7,032	589	1,153	1,742	561	1,142	1,703	1,203	1,639	2,842	1,241	2,009	3,250	549	1,288	1,837	5,693	12,714	18,407
2011	Jan	1,583	5,632	7,215	599	1,222	1,821	581	1,199	1,780	1,166	1,698	2,864	1,251	2,063	3,314	603	1,437	2,040	5,782	13,251	19,034
	Feb	1,553	5,486	7,039	586	1,183	1,769	578	1,174	1,752	1,172	1,724	2,896	1,264	2,055	3,319	603	1,437	2,040	5,757	13,059	18,816
	Mar	1,519	5,302	6,822	566	1,095	1,662	575	1,146	1,721	1,181	1,718	2,899	1,258	2,054	3,312	606	1,437	2,044	5,706	12,753	18,459
	Apr	1,632	5,675	7,307	596	1,252	1,848	600	1,257	1,857	1,188	1,761	2,949	1,228	2,034	3,262	596	1,408	2,004	5,839	13,388	19,227
	May	1,605	6,160	7,765	657	1,376	2,033	617	1,302	1,919	1,212	1,804	3,017	1,360	2,224	3,584	632	1,546	2,178	6,084	14,411	20,495
	Jun	1,536	5,399	6,935	595	1,224	1,819	611	1,199	1,809	1,141	1,724	2,865	1,286	2,012	3,298	617	1,449	2,065	5,787	13,005	18,792
	Jul	1,605	5,811	7,416	602	1,270	1,873	603	1,255	1,857	1,158	1,766	2,924	1,231	2,030	3,261	621	1,463	2,084	5,819	13,596	19,415
	Aug	1,717	6,119	7,835	615	1,315	1,930	618	1,307	1,925	1,257	1,837	3,094	1,301	2,135	3,436	618	1,577	2,195	6,125	14,289	20,414
	Sep	1,659	6,044	7,703	609	1,280	1,889	607	1,269	1,877	1,215	1,821	3,036	1,243	2,063	3,306	627	1,479	2,106	5,961	13,956	19,917
	Oct	1,685	6,176	7,861	633	1,348	1,981	622	1,331	1,953	1,209	1,876	3,085	1,249	2,144	3,394	625	1,535	2,160	6,023	14,410	20,433
	Nov	1,611	5,743	7,354	609	1,284	1,892	612	1,263	1,876	1,197	1,845	3,042	1,214	2,049	3,263	619	1,510	2,129	5,862	13,694	19,556
<b>12 month growth rates (percentages)</b>																						
<b>Annual</b>																						
2006	-0.1	10.3	7.5	2.1	10.1	6.7	-1.5	8.6	4.5	0.9	13.5	6.8	-2.9	8.9	2.8	-	-	-	-0.5	10.3	5.9	
2007	9.3	11.8	11.2	-0.7	7.3	4.0	1.3	11.5	7.6	4.9	11.8	8.3	-4.8	10.6	3.1	-	-	-	2.0	10.9	7.5	
2008	14.7	12.3	12.9	-20.2	-4.2	-10.4	1.6	7.2	5.2	-2.2	1.5	-0.3	-3.8	5.1	1.1	13.8	18.3	16.7	-0.6	6.8	4.1	
2009	3.0	10.4	8.6	0.5	3.0	2.2	7.1	12.8	10.8	0.8	6.6	3.8	0.2	3.6	2.1	-12.2	-2.3	-5.7	1.9	8.0	5.9	
2010	4.1	6.0	5.6	0.9	0.4	0.6	6.4	7.9	7.4	1.0	12.9	7.4	-1.0	6.9	3.6	12.9	16.8	15.5	12.6	18.4	16.5	
<b>Monthly</b>																						
2010	Nov	3.9	5.5	5.1	1.2	0.1	0.5	6.7	8.1	7.7	1.6	13.1	7.7	-0.4	6.4	3.6	13.6	17.1	16.0	12.1	17.1	15.4
	Dec	4.1	6.0	5.6	0.9	0.4	0.6	6.4	7.9	7.4	1.0	12.9	7.4	-1.0	6.9	3.6	12.9	16.8	15.5	12.6	18.4	16.5
2011	Jan	4.3	6.7	6.1	1.6	1.4	1.5	7.0	8.5	8.0	2.4	14.9	9.1	-0.3	8.5	4.8	14.1	18.6	17.2	12.6	18.7	16.7
	Feb	4.1	6.9	6.2	0.7	1.2	1.0	6.3	7.9	7.4	1.8	15.1	9.0	-0.6	8.6	4.8	13.2	18.5	16.9	11.3	17.8	15.7
	Mar	3.1	6.4	5.6	-0.7	0.5	0.1	5.3	7.0	6.4	0.7	15.0	8.4	-1.4	8.1	4.2	11.9	18.0	16.1	9.3	16.3	14.0
	Apr	3.3	6.6	5.9	-0.3	1.3	0.8	5.5	7.3	6.7	0.1	15.2	8.3	-2.0	8.1	3.9	10.5	17.3	15.2	8.2	15.6	13.1
	May	3.6	8.0	7.0	0.7	3.1	2.3	6.3	8.6	7.8	-0.4	15.8	8.4	-1.9	9.1	4.5	10.3	18.4	15.8	7.5	15.9	13.2
	Jun	2.3	7.4	6.2	-0.2	3.2	2.1	6.1	8.0	7.3	-2.2	15.1	7.2	-3.0	8.2	3.5	9.8	18.1	15.5	5.5	14.4	11.5
	Jul	2.1	7.8	6.5	-0.1	4.3	2.8	6.1	8.5	7.7	-2.9	15.2	7.0	-3.5	8.0	3.3	9.7	18.7	15.8	4.5	13.9	10.9
	Aug	1.8	7.5	6.2	-0.5	4.4	2.7	5.6	7.9	7.1	-3.3	14.1	6.3	-4.0	7.0	2.5	9.6	18.9	16.0	3.3	12.6	9.6
	Sep	2.7	8.7	7.3	0.2	5.7	3.8	6.1	8.7	7.8	-2.5	14.5	6.9	-3.5	7.1	2.8	10.6	19.8	16.9	3.3	12.6	9.6
	Oct	3.2	9.5	8.1	1.3	7.3	5.3	6.7	9.7	8.7	-2.1	14.6	7.2	-3.0	7.4	3.2	11.0	20.2	17.3	3.1	12.5	9.5
	Nov	2.5	8.9	7.4	1.1	7.7	5.5	6.1	9.2	8.2	-2.6	14.0	6.7	-3.7	6.2	2.3	10.8	19.7	16.9	1.8	11.0	8.0

\* The category of Automotive Fuels is effective from January 2010. Data shown for 2009 are for growth trend purposes only; these data are excluded from totals for 2009 as these are already included in their former Services sector of Motoring (now known as Vehicle Sales & Service)

# Table 2C Card expenditure statistics (seasonally adjusted)

## Services

Number of purchase transactions (millions)

Total services

		Number of purchase transactions (millions)																		Total services		
		Vehicle Sales & Services			Entertainment			Hotels			Travel			Financial			Other services			Number of purchases		
		Credit	Debit	Total	Credit	Debit	Total	Credit	Debit	Total	Credit	Debit	Total	Credit	Debit	Total	Credit	Debit	Total	Credit	Debit	Total
<b>Annual</b>																						
2006		242	529	771	176	349	525	36	24	61	96	127	224	28	91	119	155	356	510	733	1,476	2,209
2007		245	573	818	190	411	600	38	26	64	101	148	249	28	106	134	160	401	561	761	1,665	2,426
2008		249	628	877	198	500	698	36	28	64	103	168	271	32	111	143	167	451	618	786	1,885	2,671
2009		235	656	891	206	593	800	37	31	68	101	183	284	32	112	144	167	470	637	778	2,046	2,824
2010		76	203	279	220	720	940	37	34	71	97	202	299	32	129	161	163	483	646	626	1,772	2,398
<b>Monthly</b>																						
2010	Nov	6	18	24	20	67	86	3	3	6	8	19	27	3	11	14	14	42	56	54	159	213
	Dec	6	18	25	18	63	82	3	3	6	8	18	26	3	11	14	13	40	54	51	154	206
2011	Jan	7	22	29	19	68	87	3	3	6	8	18	25	3	11	14	13	42	55	53	164	217
	Feb	7	23	31	19	67	86	3	3	6	8	18	25	3	11	14	13	42	55	54	164	218
	Mar	8	24	32	19	66	84	3	3	5	8	18	26	3	12	14	13	43	56	53	165	218
	Apr	8	24	31	19	67	86	3	3	6	7	18	26	3	12	14	13	42	55	52	166	218
	May	8	24	32	20	75	95	3	3	7	8	19	27	3	12	15	14	46	61	56	181	236
	Jun	7	18	25	19	69	88	3	3	7	7	19	26	3	12	15	14	44	58	53	166	219
	Jul	6	18	24	20	72	92	3	3	7	7	19	26	3	12	15	13	43	56	52	168	221
	Aug	6	20	26	21	76	97	3	3	7	8	20	28	3	13	16	14	45	59	56	176	232
	Sep	7	21	27	21	77	98	3	3	7	8	19	27	3	12	15	13	44	57	54	177	231
	Oct	7	21	28	21	79	101	3	4	7	8	20	27	3	13	16	13	45	58	55	182	237
	Nov	7	22	29	21	75	96	3	3	7	8	20	28	3	13	16	14	45	59	55	179	234
<b>12 month growth rates (percentages)</b>																						
<b>Annual</b>																						
2006		-10.3	1.2	-2.7	5.3	15.2	11.7	-1.3	9.2	2.6	1.4	15.1	8.7	-9.0	13.6	7.4	1.7	21.7	14.9	-2.4	10.9	6.1
2007		1.3	8.3	6.1	8.1	17.6	14.4	3.2	6.5	4.5	4.2	16.7	11.3	0.8	16.2	12.6	3.4	12.9	10.0	3.8	12.8	9.8
2008		1.4	9.6	7.1	4.3	21.7	16.2	-2.8	5.9	0.8	2.5	13.4	9.0	15.7	4.8	7.1	4.6	12.3	10.1	3.3	13.2	10.1
2009		-5.4	4.5	1.7	4.3	18.7	14.6	0.5	14.0	6.3	-2.5	8.9	4.6	-1.9	1.1	0.4	-0.1	4.4	3.2	-1.0	8.5	5.7
2010		-67.7	-69.0	-68.6	6.7	21.4	17.6	1.6	9.2	5.1	-3.1	10.3	5.5	1.0	15.0	11.9	-2.4	2.7	1.4	-19.5	-13.4	-15.1
<b>Monthly</b>																						
2010	Nov	-62.0	-62.9	-62.6	6.8	21.3	17.5	2.0	8.8	5.1	-2.2	10.4	5.9	1.5	15.4	12.3	-1.9	2.9	1.6	-17.5	-11.5	-13.1
	Dec	-67.7	-69.0	-68.6	6.7	21.4	17.6	1.6	9.2	5.1	-3.1	10.3	5.5	1.0	15.0	11.9	-2.4	2.7	1.4	-19.5	-13.4	-15.1
2011	Jan	-65.3	-66.0	-65.8	8.1	22.6	18.9	2.3	10.2	6.0	-2.8	11.2	6.3	0.8	15.3	12.1	-2.3	3.2	1.8	-17.5	-10.8	-12.6
	Feb	-62.8	-62.8	-62.8	8.1	22.2	18.6	1.8	10.0	5.6	-3.7	11.4	6.1	0.1	14.7	11.5	-2.6	3.1	1.6	-16.2	-8.8	-10.8
	Mar	-59.9	-59.1	-59.3	7.3	21.2	17.7	0.4	8.7	4.3	-4.4	11.7	6.1	-1.0	13.9	10.7	-3.2	3.0	1.4	-15.1	-6.8	-9.1
	Apr	-56.5	-54.8	-55.2	6.8	20.3	16.9	0.1	9.3	4.4	-5.4	12.4	6.2	-1.4	13.4	10.3	-3.6	3.2	1.4	-13.8	-4.7	-7.2
	May	-52.2	-49.5	-50.2	7.5	21.5	18.0	0.7	10.8	5.4	-5.5	14.3	7.5	-0.7	13.5	10.5	-2.7	4.7	2.8	-11.5	-1.3	-4.0
	Jun	-47.8	-44.6	-45.4	6.3	20.7	17.1	0.6	11.2	5.5	-6.9	13.9	6.8	-1.0	12.7	9.8	-2.7	5.3	3.2	-10.2	0.7	-2.2
	Jul	-43.2	-38.8	-40.0	6.0	20.7	17.1	0.7	12.5	6.2	-7.1	14.3	7.0	-0.9	12.2	9.4	-2.6	5.9	3.7	-8.6	3.2	0.0
	Aug	-37.4	-32.2	-33.6	5.7	19.8	16.4	1.2	12.1	6.3	-7.1	13.9	6.8	0.1	12.0	9.6	-2.6	6.2	3.9	-6.8	5.1	1.9
	Sep	-29.3	-22.2	-24.1	6.9	20.8	17.5	2.4	13.0	7.4	-6.8	13.6	6.7	1.0	12.1	9.8	-1.9	6.9	4.6	-4.1	8.3	5.0
	Oct	-19.7	-10.1	-12.7	8.0	21.3	18.1	3.6	13.9	8.5	-6.3	13.9	7.2	1.6	12.6	10.4	-1.2	7.8	5.5	-1.4	11.3	8.0
	Nov	-7.5	6.0	2.3	7.6	20.3	17.3	4.2	13.9	8.8	-6.8	12.7	6.3	1.4	12.6	10.4	-1.3	8.0	5.6	0.5	13.5	10.1

## Table 2D Card expenditure statistics (seasonally adjusted)

### Services

Value of purchase transactions (£ millions)

		Value of purchase transactions (£ millions)																		Total services		
		Vehicle Sales & Services			Entertainment			Hotels			Travel			Financial			Other services			Value of purchases		
		Credit	Debit	Total	Credit	Debit	Total	Credit	Debit	Total	Credit	Debit	Total	Credit	Debit	Total	Credit	Debit	Total	Credit	Debit	Total
<b>Annual</b>																						
2006		13,793	27,055	40,848	8,871	9,675	18,546	5,207	2,041	7,248	13,217	11,025	24,242	5,586	20,925	26,510	13,387	26,727	40,113	60,061	97,447	157,508
2007		14,685	30,696	45,381	9,294	11,230	20,524	5,483	2,263	7,746	13,436	12,604	26,040	5,699	26,128	31,827	14,126	32,309	46,436	62,723	115,231	177,954
2008		15,524	32,972	48,496	9,652	13,060	22,713	5,507	2,446	7,953	14,010	13,729	27,738	5,924	29,926	35,850	14,888	37,001	51,888	65,506	129,133	194,639
2009		14,631	35,429	50,060	9,647	14,597	24,244	5,290	2,723	8,013	13,061	14,081	27,142	5,725	32,999	38,724	15,161	38,150	53,311	63,514	137,979	201,494
2010		8,752	24,676	33,429	9,839	16,936	26,774	5,532	3,040	8,572	12,814	15,772	28,586	5,885	38,450	44,335	15,682	40,660	56,342	58,504	139,534	198,038
<b>Monthly</b>																						
2010	Nov	707	2,135	2,843	883	1,544	2,427	472	272	744	1,054	1,386	2,440	523	3,672	4,195	1,302	3,243	4,546	4,943	12,251	17,194
	Dec	707	2,083	2,790	780	1,451	2,230	458	262	721	1,037	1,387	2,424	500	3,543	4,043	1,269	3,359	4,627	4,751	12,084	16,835
2011	Jan	763	2,199	2,962	833	1,570	2,403	473	281	754	1,042	1,366	2,408	499	3,154	3,653	1,288	3,392	4,680	4,898	11,962	16,860
	Feb	779	2,232	3,011	835	1,558	2,393	467	277	744	1,007	1,340	2,347	510	3,564	4,073	1,292	3,506	4,798	4,889	12,477	17,366
	Mar	795	2,304	3,098	813	1,496	2,309	421	239	660	1,005	1,354	2,359	517	3,697	4,214	1,306	3,569	4,874	4,858	12,658	17,515
	Apr	747	2,232	2,979	801	1,584	2,385	471	286	757	941	1,362	2,303	534	3,663	4,197	1,202	3,108	4,310	4,697	12,234	16,931
	May	790	2,489	3,279	949	1,847	2,797	515	295	810	1,018	1,422	2,440	642	3,712	4,353	1,394	5,942	7,336	5,308	15,707	21,015
	Jun	733	2,162	2,895	799	1,619	2,418	506	296	802	979	1,397	2,376	562	3,680	4,241	1,328	4,429	5,757	4,907	13,583	18,489
	Jul	675	2,148	2,823	867	1,720	2,587	515	305	820	981	1,392	2,374	558	3,712	4,270	1,261	3,828	5,090	4,858	13,106	17,963
	Aug	730	2,217	2,947	880	1,778	2,658	526	307	833	1,070	1,437	2,507	643	4,464	5,107	1,415	4,151	5,566	5,264	14,353	19,617
	Sep	716	2,184	2,900	837	1,739	2,575	529	298	827	988	1,419	2,407	563	3,875	4,438	1,336	3,721	5,057	4,969	13,236	18,206
	Oct	713	2,224	2,937	861	1,791	2,652	528	313	840	960	1,440	2,400	533	3,801	4,334	1,286	3,603	4,889	4,881	13,172	18,053
	Nov	720	2,197	2,917	836	1,692	2,528	524	302	826	966	1,446	2,412	521	3,973	4,495	1,321	3,513	4,834	4,888	13,123	18,011
<b>12 month growth rates (percentages)</b>																						
<b>Annual</b>																						
2006		-1.7	11.9	6.9	6.7	18.3	12.4	3.8	17.4	7.3	1.1	13.7	6.5	-32.8	21.1	3.6	5.6	36.4	24.3	-2.2	20.8	10.9
2007		6.5	13.5	11.1	4.8	16.1	10.7	5.3	10.9	6.9	1.7	14.3	7.4	2.0	24.9	20.1	5.5	20.9	15.8	4.4	18.2	13.0
2008		5.7	7.4	6.9	3.9	16.3	10.7	0.4	8.1	2.7	4.3	8.9	6.5	4.0	14.5	12.6	5.4	14.5	11.7	4.4	12.1	9.4
2009		-5.8	7.5	3.2	-0.1	11.8	6.7	-3.9	11.3	0.8	-6.8	2.6	-2.2	-3.4	10.3	8.0	1.8	3.1	2.7	-3.0	6.9	3.5
2010		-40.2	-30.3	-33.2	2.0	16.0	10.4	4.6	11.6	7.0	-1.9	12.0	5.3	2.8	16.5	14.5	3.4	6.6	5.7	-7.9	1.1	-1.7
<b>Monthly</b>																						
2010	Nov	-35.7	-25.2	-28.3	2.2	15.7	10.3	4.6	11.3	6.8	-1.9	12.2	5.3	2.6	17.2	15.0	4.2	7.1	6.3	-6.6	2.8	-0.2
	Dec	-40.2	-30.3	-33.2	2.0	16.0	10.4	4.6	11.6	7.0	-1.9	12.0	5.3	2.8	16.5	14.5	3.4	6.6	5.7	-7.9	1.1	-1.7
2011	Jan	-37.6	-27.1	-30.2	3.3	17.2	11.7	5.4	12.9	8.0	-1.4	12.0	5.6	3.7	18.7	16.5	3.6	9.0	7.4	-6.6	3.5	0.3
	Feb	-35.7	-25.0	-28.1	3.4	17.2	11.8	5.0	12.8	7.7	-2.6	10.5	4.3	3.8	19.3	17.0	2.8	9.0	7.2	-6.4	4.2	0.9
	Mar	-34.1	-23.8	-26.8	2.8	16.7	11.3	3.4	11.4	6.2	-3.4	9.1	3.2	3.6	18.8	16.6	1.9	8.1	6.3	-6.5	4.1	0.8
	Apr	-32.0	-22.0	-24.8	2.6	16.5	11.1	3.1	11.5	6.0	-4.4	8.9	2.6	4.1	18.4	16.3	0.7	5.9	4.4	-6.4	4.0	0.8
	May	-29.0	-18.6	-21.5	4.2	18.2	12.8	3.7	13.1	7.0	-3.7	9.7	3.5	6.6	18.3	16.6	0.7	10.1	7.4	-4.8	6.5	3.0
	Jun	-26.3	-15.9	-18.8	3.2	17.4	12.0	3.9	13.5	7.2	-4.3	9.5	3.1	7.1	17.2	15.7	0.0	9.8	7.1	-4.5	6.9	3.4
	Jul	-23.6	-12.8	-15.8	3.0	18.1	12.4	4.1	14.6	7.7	-5.1	9.0	2.5	8.2	16.6	15.4	-0.7	9.4	6.6	-4.0	7.6	4.1
	Aug	-20.1	-9.9	-12.7	2.3	17.5	11.8	4.6	14.2	7.9	-5.5	8.4	2.0	10.3	17.9	16.9	-0.6	9.9	7.0	-3.2	8.7	5.1
	Sep	-15.4	-6.0	-8.5	2.8	18.6	12.6	6.0	14.8	9.1	-5.8	7.9	1.7	11.9	18.6	17.7	-0.4	9.9	7.1	-1.8	9.9	6.4
	Oct	-10.4	-1.6	-4.0	3.3	19.1	13.3	7.1	15.3	10.0	-6.0	7.8	1.6	12.9	19.2	18.3	-0.1	10.5	7.6	-0.6	11.3	7.8
	Nov	-5.3	2.5	0.5	2.3	18.3	12.4	7.4	14.9	10.1	-6.8	7.2	0.9	12.1	17.8	17.0	-0.3	13.6	9.7	-0.1	12.5	8.8



Table 3A Card expenditure statistics (not seasonally adjusted)

Number of credit card transactions

Detailed sector breakdown - services sectors

	November 2010	December 2010	January 2011	February 2011	March 2011	April 2011	May 2011	June 2011	July 2011	August 2011	September 2011	October 2011	November 2011	Total (latest 12 months)
Auto rental	340,619	314,066	330,052	326,771	384,768	382,425	415,769	494,774	440,044	424,168	403,835	367,981	347,080	4,631,733
Auto parts & accessories	863,024	795,453	803,703	785,025	936,688	813,074	867,323	818,021	812,356	830,818	810,110	801,412	805,151	9,879,134
Auto services	1,659,978	1,417,947	1,503,073	1,505,271	1,712,330	1,504,947	1,743,270	1,664,751	1,686,855	1,608,097	1,782,213	1,741,305	1,779,072	19,649,131
Auto repair shops	933,561	844,878	926,916	903,484	903,484	914,882	968,572	900,164	893,572	905,141	963,712	922,239	908,109	11,134,586
Service stations	2,129,020	2,277,138	2,523,735	2,366,964	2,686,727	2,609,065	2,777,054	1,896,503	1,930,015	2,000,663	2,575,607	2,702,744	2,822,297	29,168,512
Vehicle sales	594,673	505,319	577,054	583,073	730,317	637,916	693,414	1,356,445	641,512	657,853	658,637	599,019	575,119	8,215,678
<b>Vehicle Sales &amp; Services</b>	<b>6,520,875</b>	<b>6,154,801</b>	<b>6,664,533</b>	<b>6,470,588</b>	<b>7,533,747</b>	<b>6,862,309</b>	<b>7,465,402</b>	<b>7,130,658</b>	<b>6,404,354</b>	<b>6,426,740</b>	<b>7,194,114</b>	<b>7,134,700</b>	<b>7,236,828</b>	<b>82,678,774</b>
Restaurants	9,547,760	8,693,286	8,547,186	8,831,664	9,700,737	9,699,353	10,484,849	9,789,427	10,852,563	11,237,516	10,313,515	10,865,074	10,226,602	119,241,772
Public houses	1,575,120	1,412,531	1,345,030	1,401,729	1,573,369	1,689,478	1,869,639	1,770,217	1,827,418	2,079,585	1,777,943	1,850,851	1,651,107	20,248,897
Catering services	208,720	173,572	167,907	169,594	211,459	170,517	205,829	205,721	204,043	191,059	226,029	217,790	240,953	2,384,473
Video stores	81,675	87,319	80,373	74,887	78,148	73,434	82,326	72,665	70,574	73,320	71,373	73,136	74,328	911,883
Cinema, theatre & dance	2,033,623	1,610,593	1,748,099	1,694,328	1,514,258	1,224,841	1,774,890	1,511,897	1,862,575	1,858,224	1,586,386	1,797,510	1,913,729	20,097,330
Concerts & entertainers	18,169	20,662	17,521	17,984	21,548	21,916	24,636	26,131	27,646	31,981	23,922	28,866	33,330	296,143
Tourist attractions	226,264	158,408	133,679	190,791	222,614	426,802	434,149	433,107	525,809	736,164	409,756	415,614	224,159	4,311,052
Amusement parks	16,683	11,832	11,165	17,075	14,969	36,184	23,525	26,593	32,866	60,032	24,490	30,964	15,434	305,129
Aquariums	8,572	6,545	8,428	9,941	9,926	13,869	13,210	11,523	12,561	16,100	10,140	10,361	7,869	130,473
Sports & games establishments	2,072,792	2,431,709	2,146,741	1,955,658	2,527,086	1,821,852	1,369,466	2,125,337	2,096,552	2,416,497	2,099,829	2,240,577	2,052,113	25,283,417
Professional sports clubs	120,550	110,266	94,655	100,383	102,751	99,284	91,478	108,567	112,304	118,246	98,368	103,377	115,073	1,254,752
Gambling	3,212,420	2,946,663	2,967,046	2,735,671	2,999,026	2,733,603	3,031,716	2,608,272	2,789,306	3,490,623	3,471,936	3,737,047	3,645,347	37,156,256
Personal services	104,460	110,054	98,770	98,727	98,727	99,363	167,918	156,517	176,002	212,974	193,840	193,696	212,218	1,832,167
Miscellaneous entertainment	215,210	175,997	177,852	196,641	228,073	310,481	292,930	295,768	338,575	441,892	283,972	295,466	208,453	3,246,100
<b>Entertainment</b>	<b>19,442,018</b>	<b>17,949,437</b>	<b>17,544,452</b>	<b>17,495,073</b>	<b>19,316,052</b>	<b>18,420,977</b>	<b>19,866,561</b>	<b>19,141,742</b>	<b>20,928,794</b>	<b>22,964,213</b>	<b>20,591,499</b>	<b>21,860,329</b>	<b>20,620,715</b>	<b>236,699,844</b>
<b>Hotels</b>	<b>3,028,301</b>	<b>2,560,111</b>	<b>2,650,909</b>	<b>2,743,560</b>	<b>2,863,493</b>	<b>3,029,677</b>	<b>3,512,605</b>	<b>3,612,850</b>	<b>3,779,089</b>	<b>3,744,513</b>	<b>3,625,489</b>	<b>3,516,157</b>	<b>3,317,319</b>	<b>38,955,772</b>
Airlines	782,393	594,877	980,205	696,387	702,424	535,494	633,500	661,860	590,996	628,784	625,558	548,555	566,848	7,765,488
Airport terminals	18,653	14,679	17,018	17,274	23,476	25,051	28,145	32,058	33,491	36,510	30,828	24,177	23,092	305,799
Railways	4,900,013	3,933,440	4,039,323	4,041,671	4,772,440	4,064,089	4,222,439	4,653,258	4,709,814	4,529,433	4,862,762	4,892,874	4,989,603	53,711,146
Buses	362,050	305,116	304,289	307,338	367,240	353,870	425,800	423,948	436,217	449,333	470,892	461,579	419,119	4,724,741
Sea travel	66,277	61,794	64,319	65,468	78,872	87,359	96,194	97,696	111,970	125,602	94,283	80,258	60,027	1,023,842
Travel agents	1,070,729	824,064	1,397,513	1,236,316	1,407,574	1,123,739	1,285,188	945,324	1,264,225	1,225,235	1,201,764	1,066,019	962,170	13,939,131
Timeshares	302	158	248	292	636	210	157	194	140	115	138	116	183	2,587
Camping grounds	81,194	52,751	139,436	139,126	167,310	240,509	262,561	256,828	296,763	323,681	176,355	132,299	60,758	2,248,377
Miscellaneous travel	843,231	689,044	597,971	589,127	687,718	592,862	737,100	559,914	700,499	666,136	643,078	606,159	587,548	7,657,156
<b>Travel</b>	<b>8,124,842</b>	<b>6,475,923</b>	<b>7,540,322</b>	<b>7,092,999</b>	<b>8,207,690</b>	<b>7,023,183</b>	<b>7,691,084</b>	<b>7,631,080</b>	<b>8,144,115</b>	<b>7,984,829</b>	<b>8,105,658</b>	<b>7,812,036</b>	<b>7,669,348</b>	<b>91,378,267</b>
Telegraph services / Wire transfer money order	4,108	4,532	3,578	3,110	3,806	3,472	11,343	4,561	3,578	4,140	3,628	3,606	3,627	52,981
Insurance services	1,687,249	1,464,082	1,589,802	1,585,228	1,908,435	1,657,852	1,808,564	1,980,046	1,959,768	2,059,526	1,957,808	1,765,772	1,700,541	21,437,424
FIs - cash disbursements (auto & manual)	28,545	23,452	23,419	23,625	25,912	176,758	274,617	230,598	250,132	251,798	203,499	87,374	21,457	1,592,641
FIs - merchandise & services	518,338	511,091	524,329	486,621	583,924	508,045	518,920	482,350	495,635	529,590	536,826	523,344	492,785	6,193,460
Non-FIs - foreign currency, travellers' cheques	16,657	12,749	11,355	13,832	16,155	17,464	21,773	23,766	28,904	30,449	23,388	17,131	12,183	229,149
Security brokers and dealers	17,793	14,617	17,131	17,013	23,041	16,525	20,766	25,899	21,932	38,620	34,051	28,082	31,257	288,934
Tax preparation services	101	82	161	334	412	251	804	375	339	192	202	172	170	3,494
Tax payments	4,727	3,807	3,724	3,257	4,346	4,265	4,650	5,256	5,258	5,798	4,796	4,420	4,532	54,109
Fines, bail and bond payments	68,642	57,369	61,562	61,702	70,543	60,988	67,614	53,490	72,808	70,479	72,799	70,654	72,367	792,375
Miscellaneous financial	145,892	135,689	148,496	147,721	177,862	174,904	178,772	152,303	150,458	154,065	169,627	168,814	171,151	1,929,862
<b>Financial</b>	<b>2,492,052</b>	<b>2,227,470</b>	<b>2,383,557</b>	<b>2,342,443</b>	<b>2,814,436</b>	<b>2,620,524</b>	<b>2,907,823</b>	<b>2,958,644</b>	<b>2,988,812</b>	<b>3,144,657</b>	<b>3,006,624</b>	<b>2,669,369</b>	<b>2,510,070</b>	<b>32,574,429</b>



Table 3A Card expenditure statistics (not seasonally adjusted)

Number of credit card transactions

## Detailed sector breakdown - services sectors (continued)

	November 2010	December 2010	January 2011	February 2011	March 2011	April 2011	May 2011	June 2011	July 2011	August 2011	September 2011	October 2011	November 2011	Total (latest 12 months)
Telecoms	1,873,436	2,067,412	1,762,498	1,646,198	1,866,413	1,849,021	2,022,780	1,850,386	1,879,207	1,959,468	1,885,486	1,930,901	1,860,084	22,579,854
Utilities	321,958	285,689	320,411	305,278	379,761	333,865	352,103	365,705	338,770	339,759	316,904	312,647	307,600	3,958,492
Contractors (residential & commercial)	344,903	275,484	295,522	290,778	326,715	256,070	284,107	394,736	270,050	285,383	287,545	290,450	305,932	3,562,772
Gardening services	49,505	54,025	30,454	33,600	52,967	70,892	76,880	57,461	47,947	48,236	42,881	45,074	44,514	604,931
Veterinary services	580,463	515,550	526,084	464,314	528,817	482,194	535,845	500,938	510,564	532,214	514,966	506,898	503,743	6,122,127
Photocopying & printing	398,100	364,107	324,692	296,966	344,940	274,744	323,447	323,375	308,420	318,190	336,730	342,788	435,773	3,994,172
Photographic studios	173,072	128,221	83,543	82,650	378,582	342,509	384,901	110,581	137,507	98,600	101,363	128,354	144,049	2,120,860
Beauty & barber shops	1,353,528	1,655,581	1,163,597	1,136,144	1,044,541	1,003,714	1,072,823	1,396,731	1,378,616	1,367,387	1,352,299	1,316,162	1,365,974	15,253,569
Employment agencies	19,678	15,768	20,316	19,752	20,612	12,162	11,481	14,195	14,958	14,166	15,674	15,327	14,049	188,460
Counselling services	3,899	3,775	4,194	3,991	4,342	4,473	5,462	4,909	4,599	5,141	4,936	4,900	4,762	55,484
Legal services	30,495	23,526	30,045	29,822	35,527	30,647	34,375	34,256	31,854	32,884	32,926	32,082	34,381	382,325
Laundry & cleaning	180,324	135,019	150,303	140,724	161,656	153,629	186,555	179,725	175,020	164,432	173,584	173,316	169,171	1,963,134
Funeral services	11,091	10,151	11,105	10,394	11,023	8,953	9,153	10,365	9,864	9,907	10,308	10,210	11,050	122,483
Medical services	1,135,765	891,789	1,028,739	1,021,477	1,182,622	950,276	1,107,385	1,122,419	1,045,092	1,064,312	1,128,025	1,072,132	1,173,003	12,787,271
Moving & courier services	186,690	173,650	166,269	164,111	197,160	167,708	198,091	194,357	191,772	196,184	196,047	193,466	214,021	2,252,836
Repair shops (not auto)	61,272	55,861	51,951	48,516	55,841	49,153	56,965	56,984	53,910	59,327	57,370	57,039	62,998	665,915
Accounting services	34,143	32,035	35,853	29,277	31,595	22,587	27,187	37,433	25,063	29,723	33,810	32,346	33,835	370,744
Advertising, consultancy & PR	122,583	85,940	110,528	108,550	163,820	143,882	168,112	157,794	148,388	157,560	151,829	147,565	150,624	1,694,592
Computer programming	491,416	461,088	476,240	452,999	505,303	433,550	449,259	431,180	415,415	412,274	437,297	496,335	481,989	5,452,929
Farming services	65,886	64,562	57,309	54,823	64,202	64,330	68,384	62,052	58,823	61,941	59,825	59,227	58,207	733,685
Miscellaneous professional services	1,231,047	1,070,666	1,067,404	1,319,915	1,229,117	986,350	1,122,614	1,096,869	1,069,229	1,041,214	1,090,245	995,964	1,057,296	13,146,883
Engineering services	58,786	46,301	53,832	58,014	69,443	56,717	64,242	57,147	60,491	62,098	60,931	58,130	62,177	709,523
Marina services	39,711	34,996	32,660	31,455	46,622	66,508	70,128	72,791	77,189	88,783	54,121	42,933	33,597	651,783
Wrecking & salvage yards	4,107	2,953	3,781	3,748	4,352	4,009	4,224	4,364	4,377	4,449	4,245	4,166	4,166	48,911
Pest control	2,570	1,707	2,103	1,941	2,522	2,350	2,906	3,337	4,277	4,351	4,101	3,596	3,126	36,317
Educational establishments	457,594	364,255	502,685	409,651	503,839	372,398	458,749	410,283	420,508	420,465	629,741	547,936	539,577	5,580,087
Child care services	17,045	14,442	18,027	17,928	16,327	12,139	14,626	14,009	14,868	16,564	14,947	15,706	14,530	184,113
Social, political & religious organisations	1,250,386	1,073,604	895,294	887,115	1,419,875	1,196,161	1,270,500	1,219,836	1,231,568	1,209,865	1,105,983	928,514	1,026,831	13,465,146
Government services	1,544,500	1,333,184	1,448,125	1,484,559	1,701,460	1,471,372	1,673,000	1,549,906	1,604,640	1,662,660	1,662,763	1,565,757	1,597,473	18,754,899
Miscellaneous services	1,170,788	1,400,257	916,687	928,804	1,185,259	1,019,474	1,071,879	1,133,268	1,094,085	1,103,153	1,146,316	1,193,536	1,376,038	13,568,756
Commercial equipment	991,737	865,123	921,091	838,058	934,116	754,634	864,947	1,177,517	824,826	847,317	962,685	903,953	983,599	10,877,866
Other services	14,206,478	13,506,721	12,511,342	12,321,552	14,469,371	12,596,471	13,993,110	14,044,909	13,456,175	13,613,523	13,876,087	13,427,489	14,074,169	161,890,919
<b>Total services</b>	<b>53,814,566</b>	<b>48,874,463</b>	<b>49,295,115</b>	<b>48,466,215</b>	<b>55,204,789</b>	<b>50,553,141</b>	<b>55,436,585</b>	<b>54,519,883</b>	<b>55,701,339</b>	<b>57,878,475</b>	<b>56,399,471</b>	<b>56,420,080</b>	<b>55,428,449</b>	<b>644,178,005</b>
<b>TOTAL</b>	<b>183,903,764</b>	<b>192,739,637</b>	<b>153,767,232</b>	<b>145,299,063</b>	<b>166,450,454</b>	<b>162,758,529</b>	<b>173,538,796</b>	<b>169,063,764</b>	<b>171,119,158</b>	<b>177,153,004</b>	<b>168,466,434</b>	<b>175,324,376</b>	<b>183,324,931</b>	<b>2,039,005,378</b>



Table 3B Card expenditure statistics (not seasonally adjusted)

Value of credit card transactions

## Detailed sector breakdown - services sectors

£	November 2010	December 2010	January 2011	February 2011	March 2011	April 2011	May 2011	June 2011	July 2011	August 2011	September 2011	October 2011	November 2011	Total (latest 12 months)
Auto rental	35,414,343	35,619,777	36,638,354	36,186,615	44,107,511	44,970,609	50,581,824	67,103,645	60,030,425	53,254,986	47,544,201	41,575,931	38,958,885	556,572,763
Auto parts & accessories	130,885,044	119,103,225	122,362,147	121,069,375	147,082,109	123,208,919	134,237,449	127,914,280	125,587,846	126,101,975	128,644,968	125,783,524	127,704,798	1,528,800,615
Auto services	42,454,880	35,525,464	41,256,078	40,633,702	47,153,042	41,081,444	48,321,613	46,296,586	45,783,067	45,660,953	47,631,132	44,327,342	43,875,326	527,545,749
Auto repair shops	229,616,427	204,780,916	232,058,330	227,978,483	276,311,111	228,474,828	242,557,927	222,840,284	226,595,902	223,949,025	245,210,643	232,965,884	229,025,608	2,792,748,941
Service stations	62,799,781	65,208,500	79,359,752	73,319,249	84,639,329	80,025,431	87,139,514	58,438,008	58,597,931	59,318,946	81,245,828	81,110,213	83,727,239	892,129,940
Vehicle sales	202,818,091	168,970,454	198,707,916	201,311,949	250,462,611	206,715,740	225,723,257	255,393,741	212,327,393	214,234,048	226,754,113	210,255,684	195,170,883	2,566,027,789
<b>Vehicle Sales &amp; Services</b>	<b>703,988,566</b>	<b>629,208,336</b>	<b>710,382,577</b>	<b>700,499,373</b>	<b>849,755,713</b>	<b>724,476,971</b>	<b>788,561,584</b>	<b>777,986,544</b>	<b>728,922,564</b>	<b>722,519,933</b>	<b>777,030,885</b>	<b>736,018,578</b>	<b>718,462,739</b>	<b>8,863,825,797</b>
Restaurants	374,152,084	397,390,558	327,515,487	334,690,904	362,086,510	370,901,306	397,805,711	371,837,799	414,889,542	417,707,339	384,788,022	404,877,447	379,809,467	4,564,300,092
Public houses	70,487,712	75,710,648	58,025,548	59,439,831	65,770,392	70,591,802	79,460,370	77,115,074	78,694,556	86,955,235	75,578,048	77,845,382	71,575,911	876,762,797
Catering services	15,999,475	13,554,913	12,702,894	12,545,155	16,090,081	12,403,068	15,665,971	15,057,771	14,551,936	12,347,413	15,978,505	14,883,046	17,773,498	173,554,251
Video stores	1,892,807	1,822,926	1,333,804	1,181,392	1,334,404	1,155,942	1,341,745	1,300,108	1,278,898	1,157,277	1,371,360	1,908,856	1,500,318	16,687,030
Cinema, theatre & dance	172,408,893	123,224,266	107,650,470	108,675,108	128,239,685	90,581,428	192,516,646	114,305,044	132,820,518	102,601,967	109,523,762	134,770,007	145,111,520	1,490,020,421
Concerts & entertainers	1,385,613	1,156,711	1,135,578	1,022,985	1,265,259	1,141,879	1,796,095	1,405,083	1,491,289	1,735,975	1,447,535	1,764,992	2,666,687	18,030,068
Tourist attractions	10,948,423	8,509,228	9,576,991	7,191,475	12,428,781	21,242,843	21,856,763	22,188,558	26,219,763	33,081,518	18,960,468	19,834,671	11,467,269	212,558,328
Amusement parks	1,055,836	753,437	690,500	886,866	938,320	1,695,910	1,252,757	1,384,544	1,712,580	2,492,151	1,153,367	1,417,396	951,835	15,329,213
Aquariums	522,390	396,876	471,130	549,004	680,631	830,468	824,740	734,856	759,082	839,420	597,894	574,694	481,410	7,740,205
Sports & games establishments	77,814,469	81,917,888	75,600,729	73,165,381	98,080,258	85,430,072	127,056,944	112,773,829	84,590,836	77,518,756	72,323,401	72,941,315	72,344,856	1,033,744,265
Professional sports clubs	8,953,944	7,943,421	6,928,705	7,973,548	8,196,845	8,791,993	9,373,134	21,021,092	13,499,139	8,811,454	7,964,246	7,869,477	10,286,663	118,661,717
Gambling	120,108,281	107,955,929	112,120,673	106,604,244	114,310,608	104,464,307	111,855,022	97,005,180	97,732,231	113,357,281	101,470,015	105,298,280	93,520,654	1,265,694,424
Personal services	7,614,426	7,768,069	7,646,275	7,404,504	8,459,895	7,218,042	9,823,502	9,589,794	9,729,051	10,474,225	10,236,987	10,127,586	10,272,500	108,750,430
Miscellaneous entertainment	15,237,084	10,575,518	9,631,532	10,566,147	14,079,338	17,840,858	17,925,643	17,508,353	19,947,572	22,349,045	15,928,598	16,941,816	15,236,806	188,531,226
<b>Entertainment</b>	<b>878,581,437</b>	<b>838,680,388</b>	<b>728,644,350</b>	<b>734,282,060</b>	<b>831,963,007</b>	<b>794,289,918</b>	<b>988,555,043</b>	<b>863,227,085</b>	<b>897,916,993</b>	<b>891,429,056</b>	<b>817,322,208</b>	<b>871,054,965</b>	<b>832,999,394</b>	<b>10,090,364,467</b>
<b>Hotels</b>	<b>457,644,024</b>	<b>383,046,928</b>	<b>385,702,368</b>	<b>391,787,051</b>	<b>412,144,380</b>	<b>447,256,133</b>	<b>536,882,764</b>	<b>576,151,749</b>	<b>618,029,684</b>	<b>575,913,744</b>	<b>575,632,392</b>	<b>552,657,132</b>	<b>507,958,062</b>	<b>5,963,162,387</b>
Airlines	259,872,794	170,426,718	342,410,369	260,773,461	273,581,351	210,239,241	249,735,961	240,055,281	239,798,972	250,677,944	258,692,472	226,657,228	229,767,980	2,952,816,978
Airport terminals	3,021,839	2,568,245	2,399,167	2,081,027	2,995,783	3,083,074	3,775,463	3,664,840	4,147,029	3,964,418	3,714,817	3,294,957	2,884,451	38,573,271
Railways	204,798,980	186,767,034	175,500,555	170,822,137	196,987,005	162,867,898	184,081,039	209,043,957	197,436,747	188,709,043	216,720,602	212,797,174	219,639,245	2,321,372,436
Buses	17,419,512	15,728,540	15,289,271	15,606,810	18,950,092	18,935,616	22,140,149	22,041,795	23,803,286	23,335,709	24,492,227	21,926,110	19,976,360	242,225,965
Sea travel	10,925,868	10,479,139	13,343,787	11,969,239	14,020,257	14,020,508	15,634,826	15,582,736	17,614,669	16,697,676	14,873,775	12,226,993	10,190,347	167,033,952
Travel agents	368,033,669	300,361,524	562,555,511	468,015,967	540,261,846	462,516,237	554,775,815	524,217,922	560,831,261	506,331,524	425,196,837	361,174,619	312,915,813	5,579,154,876
Timeshares	34,994	19,509	46,303	49,888	49,353	26,511	22,590	27,998	22,339	16,884	17,678	19,394	24,924	343,371
Camping grounds	24,039,939	18,264,037	29,276,933	26,765,605	32,566,265	36,319,867	41,537,141	41,923,905	44,567,039	37,158,291	17,634,530	16,243,808	17,651,726	359,909,147
Miscellaneous travel	23,891,739	18,723,143	21,995,116	23,076,566	30,066,006	28,799,040	35,532,147	39,203,048	34,401,791	31,356,745	24,665,238	22,281,936	20,568,148	330,668,924
<b>Travel</b>	<b>912,039,334</b>	<b>723,337,889</b>	<b>1,162,817,012</b>	<b>979,160,700</b>	<b>1,109,857,958</b>	<b>936,807,992</b>	<b>1,107,235,131</b>	<b>1,095,761,482</b>	<b>1,122,623,133</b>	<b>1,058,248,234</b>	<b>966,008,176</b>	<b>876,622,219</b>	<b>833,618,994</b>	<b>11,992,098,920</b>
Telegraph services / Wire transfer money order	1,123,571	1,125,080	901,161	774,172	1,419,467	851,711	22,104,065	1,137,858	858,272	894,229	847,713	833,531	814,432	32,561,691
Insurance services	341,266,845	284,263,949	323,256,033	317,655,792	401,328,164	333,493,285	364,140,673	385,581,982	377,816,652	395,002,800	397,976,257	360,350,948	334,866,275	4,275,732,810
Fis - cash disbursements (auto & manual)	19,885,902	18,231,684	17,908,016	16,633,928	17,813,618	67,900,310	120,314,463	89,725,443	106,409,073	110,991,594	81,050,151	37,681,205	14,006,037	698,665,522
Fis - merchandise & services	67,884,186	62,179,703	68,383,204	69,249,628	85,522,442	75,251,226	77,566,033	79,000,644	78,407,191	85,791,587	83,540,179	73,472,793	68,701,864	907,066,494
Non-Fis - foreign currency, travellers' cheques	6,090,372	4,779,551	4,655,275	6,783,984	7,851,223	9,988,269	11,038,150	16,105,809	16,046,736	10,678,397	7,607,389	5,388,193	106,651,921	
Security brokers and dealers	4,829,937	3,716,474	5,044,981	4,786,023	6,455,961	5,428,252	5,953,338	6,625,185	5,992,434	13,390,993	10,357,278	7,731,455	8,901,457	84,383,831
Tax preparation services	55,775	33,408	51,741	83,944	102,163	60,009	253,263	67,896	115,179	67,372	72,526	77,536	81,529	1,066,566
Tax payments	432,227	369,070	319,879	223,864	384,004	363,262	444,724	458,775	376,403	360,358	351,259	344,501	361,759	4,357,858
Fines, bail and bond payments	8,629,610	6,888,809	7,758,222	7,753,809	8,867,438	7,302,963	8,821,653	5,833,305	8,780,315	8,289,878	9,065,774	8,573,819	8,837,187	96,773,172
Miscellaneous financial	29,691,000	28,152,603	34,743,309	32,063,739	37,529,207	34,627,558	37,039,561	29,770,410	29,713,145	29,256,747	35,245,470	34,810,336	35,609,492	398,561,577
<b>Financial</b>	<b>479,689,425</b>	<b>409,740,331</b>	<b>463,021,821</b>	<b>454,953,844</b>	<b>566,206,448</b>	<b>533,129,799</b>	<b>646,626,042</b>	<b>609,239,648</b>	<b>624,558,428</b>	<b>660,108,339</b>	<b>629,185,004</b>	<b>531,483,513</b>	<b>477,568,225</b>	<b>6,605,821,442</b>

Table 3B Card expenditure statistics (not seasonally adjusted)

Value of credit card transactions

## Detailed sector breakdown - services sectors (continued)

£	November 2010	December 2010	January 2011	February 2011	March 2011	April 2011	May 2011	June 2011	July 2011	August 2011	September 2011	October 2011	November 2011	Total (latest 12 months)
Telecoms	71,967,310	83,966,619	64,753,687	59,738,794	66,917,058	62,109,042	69,732,737	62,784,899	64,290,471	67,408,442	65,178,486	76,643,835	71,042,852	814,566,922
Utilities	42,295,739	37,436,396	43,178,668	44,442,927	60,933,589	51,845,816	52,334,187	56,598,558	46,971,388	45,956,214	46,184,227	44,991,859	45,744,067	576,617,896
Contractors (residential & commercial)	87,743,748	71,898,368	74,160,221	74,304,067	84,970,689	66,097,497	75,112,996	99,065,026	74,046,599	76,334,684	77,272,620	77,412,095	85,771,144	936,446,006
Gardening services	3,334,953	3,158,436	2,111,848	2,616,828	4,473,820	6,015,211	6,186,011	5,119,650	4,086,387	3,996,137	3,659,520	3,638,569	3,462,559	48,524,976
Veterinary services	48,784,297	42,838,691	46,324,151	39,943,324	46,093,472	41,357,629	46,013,125	43,414,683	43,415,910	44,849,010	43,809,777	42,692,772	42,777,448	523,529,992
Photocopying & printing	34,385,452	29,162,406	30,153,071	30,174,085	35,225,467	26,867,931	31,185,585	31,937,109	30,363,445	31,041,082	35,784,544	34,128,786	38,505,380	384,528,891
Photographic studios	11,570,766	9,282,050	6,765,023	6,850,365	23,291,215	20,806,738	22,906,258	8,421,225	10,222,369	8,394,181	8,151,055	8,870,159	10,926,899	144,887,537
Beauty & barber shops	73,497,743	86,491,484	61,001,438	60,874,129	55,793,765	52,145,574	56,785,502	72,920,180	72,926,575	71,492,482	72,800,293	69,962,272	73,772,420	806,966,114
Employment agencies	4,900,539	4,618,865	4,837,609	4,793,680	5,373,615	4,377,025	3,928,324	4,728,179	5,585,921	5,389,665	6,857,031	6,099,241	5,926,637	62,515,792
Counselling services	592,541	493,621	496,014	439,646	543,796	709,650	934,240	613,175	616,898	641,096	643,364	714,168	602,424	7,448,092
Legal services	16,204,544	13,710,921	16,738,097	17,104,602	20,512,425	17,057,702	18,330,454	19,177,273	16,877,565	17,511,669	17,555,050	17,346,517	18,620,048	210,542,323
Laundry & cleaning	5,751,935	4,494,073	4,867,140	4,566,232	5,522,789	5,270,399	6,493,703	5,755,363	5,715,275	5,434,476	5,901,860	5,698,413	5,559,567	65,279,290
Funeral services	9,801,055	10,221,192	11,397,973	11,312,784	11,940,040	9,222,750	9,113,326	10,424,246	10,226,268	10,059,350	10,791,435	10,525,185	11,686,798	126,921,347
Medical services	150,415,590	116,981,073	130,439,664	135,991,219	159,994,934	127,053,702	143,876,408	151,022,172	142,817,807	139,541,172	148,461,620	143,391,272	157,065,223	1,696,636,266
Moving & courier services	19,711,689	17,689,027	18,570,233	18,591,607	21,324,502	18,185,788	20,996,818	20,139,691	22,365,217	22,624,257	22,197,619	21,228,158	21,842,831	245,755,748
Repair shops (not auto)	10,942,727	9,713,984	8,273,342	8,111,608	9,349,694	8,352,828	9,457,707	10,598,308	9,859,158	9,530,028	9,786,828	10,375,477	10,176,802	113,585,764
Accounting services	6,134,488	5,936,577	6,857,019	6,191,039	6,748,076	4,743,388	5,193,894	8,604,280	4,865,129	5,437,720	6,083,789	5,677,780	6,302,296	72,640,987
Advertising, consultancy & PR	12,963,498	9,957,572	12,233,072	11,567,057	16,116,569	13,568,629	16,150,699	15,401,852	14,006,458	14,331,464	14,719,479	14,214,245	14,266,693	166,533,789
Computer programming	39,032,204	35,330,678	33,997,966	31,578,864	38,012,013	29,002,362	30,862,088	33,740,483	28,841,520	29,177,687	33,091,584	32,911,839	34,005,196	390,552,280
Farming services	8,106,451	7,576,633	7,249,553	7,029,548	8,134,226	7,556,368	8,121,665	8,577,355	7,787,663	8,501,526	7,813,932	7,740,042	7,469,670	93,558,181
Miscellaneous professional services	147,527,051	122,832,253	142,761,253	140,607,564	160,191,057	132,332,980	148,615,136	149,777,914	146,993,896	149,546,131	181,339,836	145,001,657	144,084,708	1,764,084,385
Engineering services	17,448,053	14,531,789	15,886,061	17,359,280	20,987,137	16,884,615	19,393,943	17,645,086	18,566,802	18,317,621	19,129,718	17,490,461	18,273,365	214,465,878
Marina services	6,637,367	7,984,222	6,841,732	6,406,538	10,765,763	10,577,973	11,306,894	11,572,699	11,541,025	11,007,165	8,086,144	6,976,475	5,755,924	108,822,554
Wrecking & salvage yards	845,954	584,322	731,481	751,259	865,860	781,828	795,382	875,871	809,722	802,334	914,449	829,606	810,423	9,552,537
Pest control	732,674	552,659	562,245	527,733	691,136	584,989	1,230,387	729,001	787,698	885,542	927,307	821,498	785,910	9,086,105
Educational establishments	92,122,670	81,234,642	152,190,033	97,639,559	97,284,187	87,195,825	107,717,387	85,664,303	91,512,279	130,981,104	272,974,131	162,593,566	94,147,958	1,461,134,974
Child care services	2,267,144	2,003,565	2,320,623	2,188,090	2,352,158	1,455,043	1,704,728	1,661,264	1,817,952	1,709,453	1,781,374	1,692,865	1,716,779	22,403,894
Social, political & religious organisations	66,132,145	66,459,585	66,057,594	58,607,416	89,490,074	68,202,325	61,703,647	82,622,160	66,775,013	63,422,116	67,375,918	61,883,420	61,944,921	814,544,189
Government services	146,262,968	135,726,783	147,063,736	152,776,759	177,681,629	156,485,540	187,632,847	146,826,755	160,250,318	171,639,525	169,106,591	154,815,769	152,955,902	1,912,962,154
Miscellaneous services	53,765,453	53,824,385	46,064,543	45,072,132	60,230,172	51,391,057	53,288,717	56,886,400	53,400,222	51,731,898	54,116,188	52,551,361	57,969,385	636,526,460
Commercial equipment	108,105,797	90,374,581	100,059,526	98,399,407	115,776,599	92,641,856	104,339,670	115,017,277	102,312,986	103,099,814	112,630,656	105,400,486	112,579,174	1,252,632,032
Other services	1,299,984,545	1,177,067,452	1,264,944,616	1,196,558,142	1,417,587,526	1,190,880,060	1,331,444,465	1,338,322,437	1,270,655,936	1,320,795,045	1,525,126,425	1,344,319,848	1,316,551,403	15,694,253,355
<b>Total services</b>	<b>4,731,927,331</b>	<b>4,161,081,324</b>	<b>4,715,512,744</b>	<b>4,457,241,170</b>	<b>5,187,515,032</b>	<b>4,626,840,873</b>	<b>5,399,305,029</b>	<b>5,260,688,945</b>	<b>5,262,706,738</b>	<b>5,229,014,351</b>	<b>5,310,305,090</b>	<b>4,912,156,255</b>	<b>4,687,158,817</b>	<b>59,209,526,368</b>
<b>TOTAL</b>	<b>11,404,381,876</b>	<b>11,642,884,074</b>	<b>9,919,028,672</b>	<b>9,272,815,469</b>	<b>10,793,735,064</b>	<b>10,218,142,387</b>	<b>11,287,308,560</b>	<b>11,011,497,460</b>	<b>11,037,042,195</b>	<b>11,147,575,190</b>	<b>11,037,394,230</b>	<b>10,933,596,797</b>	<b>11,232,853,005</b>	<b>129,533,873,103</b>



Table 3C Card expenditure statistics (not seasonally adjusted)

Number of debit card transactions

## Detailed sector breakdown - services sectors

	November 2010	December 2010	January 2011	February 2011	March 2011	April 2011	May 2011	June 2011	July 2011	August 2011	September 2011	October 2011	November 2011	Total (latest 12 months)
Auto rental	459,017	429,751	441,378	442,088	522,267	520,508	543,761	551,735	572,310	569,771	544,457	518,789	491,974	6,148,789
Auto parts & accessories	1,752,246	1,617,155	1,714,527	1,683,096	1,994,149	1,771,869	1,861,814	1,709,263	1,709,158	1,772,286	1,767,025	1,835,043	1,768,115	21,203,500
Auto services	2,917,879	2,891,715	2,666,719	2,655,532	2,997,851	2,779,412	3,152,951	3,110,282	3,163,006	3,187,696	3,216,433	3,327,435	3,315,594	36,464,626
Auto repair shops	1,617,603	1,457,690	1,666,132	1,646,147	1,987,604	1,704,365	1,800,697	1,685,376	1,660,789	1,675,521	1,802,392	1,795,972	1,724,345	20,607,030
Service stations	10,756,888	11,418,047	13,183,611	12,743,294	14,431,363	13,924,696	15,014,963	10,392,966	10,451,087	10,971,965	14,065,661	15,163,866	15,023,337	156,784,856
Vehicle sales	1,087,487	919,220	1,093,360	1,111,545	1,389,509	1,259,097	1,337,928	1,499,527	1,232,996	1,271,134	1,227,790	1,225,057	1,135,159	14,752,322
<b>Vehicle Sales &amp; Services</b>	<b>18,591,120</b>	<b>18,733,578</b>	<b>20,765,727</b>	<b>20,281,702</b>	<b>23,322,743</b>	<b>21,959,947</b>	<b>23,712,114</b>	<b>18,949,149</b>	<b>18,789,346</b>	<b>19,448,373</b>	<b>22,673,758</b>	<b>23,866,162</b>	<b>23,458,524</b>	<b>255,961,123</b>
Restaurants	35,960,594	34,348,613	33,969,770	34,889,801	38,578,583	38,137,850	41,637,372	38,498,144	39,741,250	42,170,675	39,590,376	44,887,897	42,300,144	468,750,475
Public houses	6,078,969	5,734,686	5,622,815	5,736,442	6,431,097	7,001,140	7,638,442	6,566,619	6,724,566	7,788,813	6,715,395	7,701,603	6,674,949	80,336,567
Catering services	587,654	508,086	497,531	523,075	614,255	510,273	579,154	575,979	564,117	568,764	605,460	631,202	683,575	6,861,471
Video stores	196,187	215,269	206,375	188,074	282,583	364,105	394,611	359,070	363,523	359,070	412,197	413,864	338,452	2,679,449
Cinema, theatre & dance	4,685,570	3,511,779	4,184,730	4,413,738	3,507,785	3,165,554	4,700,499	4,093,547	5,046,283	5,693,270	3,928,284	4,441,250	4,529,991	51,216,710
Concerts & entertainers	46,254	54,506	46,388	52,914	55,088	57,837	60,367	63,218	64,714	82,316	60,397	74,081	72,931	744,757
Tourist attractions	606,625	358,235	338,700	459,898	488,431	858,155	776,745	717,246	831,001	1,323,376	686,120	777,653	396,118	8,011,678
Amusement parks	54,705	40,012	44,481	67,292	61,353	123,250	88,370	90,922	106,839	197,491	87,106	108,231	56,778	1,072,125
Aquariums	26,519	19,626	27,872	32,703	31,126	39,067	39,825	33,203	36,257	48,923	31,595	33,741	25,155	399,093
Sports & games establishments	2,280,519	2,219,113	2,526,007	2,473,824	2,771,289	2,392,550	2,300,162	2,613,896	2,618,994	2,954,425	2,506,606	2,772,222	2,393,530	30,542,618
Professional sports clubs	177,890	178,989	149,757	158,323	163,333	169,403	164,466	158,531	173,313	207,077	169,659	174,930	180,077	2,047,858
Gambling	14,829,646	13,923,967	14,609,428	13,881,509	16,836,188	14,865,497	17,316,440	15,548,391	16,245,313	16,771,743	16,519,997	17,284,142	16,360,818	190,163,433
Personal services	255,609	257,925	249,483	252,873	286,257	265,672	465,789	423,840	433,378	452,748	419,268	424,715	398,395	4,330,343
Miscellaneous entertainment	478,289	356,223	435,959	496,038	549,506	773,265	708,847	759,336	829,351	1,108,902	730,430	817,809	551,718	8,117,384
<b>Entertainment</b>	<b>66,265,030</b>	<b>61,727,029</b>	<b>62,909,296</b>	<b>63,626,504</b>	<b>70,656,874</b>	<b>68,723,618</b>	<b>76,871,089</b>	<b>70,501,942</b>	<b>73,578,899</b>	<b>79,480,720</b>	<b>72,174,019</b>	<b>80,261,340</b>	<b>74,762,631</b>	<b>855,273,961</b>
<b>Hotels</b>	<b>2,796,212</b>	<b>2,575,767</b>	<b>2,607,666</b>	<b>2,720,543</b>	<b>2,709,675</b>	<b>3,307,862</b>	<b>3,471,234</b>	<b>3,479,953</b>	<b>3,781,579</b>	<b>3,984,551</b>	<b>3,460,144</b>	<b>3,614,289</b>	<b>3,133,972</b>	<b>38,847,235</b>
Airlines	583,350	454,976	693,246	404,758	391,322	314,675	372,865	437,102	381,795	397,162	403,715	388,468	357,261	4,997,345
Airport terminals	22,650	19,643	23,030	23,129	32,302	36,744	39,708	44,029	45,451	53,785	42,099	33,452	28,701	422,073
Railways	14,750,047	12,974,496	12,519,936	12,598,320	14,933,660	13,259,309	15,087,274	14,957,338	14,590,972	14,793,857	15,023,376	16,628,814	16,284,151	173,651,503
Buses	949,896	797,034	853,166	819,420	931,102	871,775	958,945	939,908	952,979	990,433	1,027,646	1,114,769	1,021,927	11,279,104
Sea travel	93,673	93,926	97,263	114,272	132,643	133,174	142,966	161,716	188,561	134,716	122,976	134,716	105,483	1,528,448
Travel agents	1,118,282	947,862	1,817,106	1,548,463	1,793,432	1,585,962	1,724,047	1,664,913	1,724,370	1,611,261	1,443,001	1,330,739	1,082,432	18,273,588
Timeshares	284	216	339	284	1,205	194	120	135	113	75	78	84	100	2,943
Camping grounds	164,677	103,806	245,536	299,629	407,174	633,122	627,834	613,951	727,480	890,135	471,156	390,267	150,230	5,560,320
Miscellaneous travel	1,029,859	925,830	714,658	713,182	827,005	795,522	979,233	900,224	931,856	957,784	851,474	843,253	782,010	10,222,031
<b>Travel</b>	<b>18,712,718</b>	<b>16,317,789</b>	<b>16,964,280</b>	<b>16,507,937</b>	<b>19,431,474</b>	<b>17,629,946</b>	<b>19,923,200</b>	<b>19,700,566</b>	<b>19,516,732</b>	<b>19,883,053</b>	<b>19,397,261</b>	<b>20,852,822</b>	<b>19,812,295</b>	<b>225,937,355</b>
Telegraph services / Wire transfer money order	40,116	42,636	34,339	33,636	38,861	38,030	37,949	40,985	41,665	46,375	46,859	49,651	50,756	501,742
Insurance services	2,689,674	2,344,442	2,686,712	2,673,674	3,284,119	2,922,307	3,256,472	3,461,874	3,474,007	3,606,094	3,532,745	3,297,574	2,832,945	37,372,965
Fis - cash disbursements (auto & manual)	104,628	111,801	90,152	103,958	122,110	4,791	5,915	2,417	2,650	2,474	2,206	67,256	95,976	611,706
Fis - merchandise & services	6,968,354	7,151,825	7,208,799	6,507,913	7,808,351	6,949,703	7,404,481	7,249,456	7,525,464	7,896,973	7,634,998	8,021,177	8,135,925	89,495,065
Non-Fis - foreign currency, travellers' cheques	141,618	150,843	131,213	156,313	180,433	198,398	231,389	259,484	304,490	334,738	221,064	221,064	175,359	2,624,710
Security brokers and dealers	78,144	60,033	77,672	78,575	114,149	106,757	70,445	69,356	65,917	146,928	79,169	63,751	83,735	1,016,487
Tax preparation services	154	126	331	309	371	524	443	631	645	635	580	469	524	5,588
Tax payments	116,346	118,024	157,279	128,903	148,746	140,641	153,941	113,049	112,529	118,083	142,554	152,017	150,801	1,636,567
Fines, bail and bond payments	287,441	253,590	262,877	265,407	314,935	363,159	436,691	446,382	468,060	445,215	441,580	466,346	456,950	4,621,192
Miscellaneous financial	440,520	431,027	488,675	482,171	565,875	561,341	593,163	460,098	460,087	479,586	563,802	592,753	583,303	6,261,881
<b>Financial</b>	<b>10,866,995</b>	<b>10,664,347</b>	<b>11,138,049</b>	<b>10,430,859</b>	<b>12,577,950</b>	<b>11,285,651</b>	<b>12,190,889</b>	<b>12,103,732</b>	<b>12,455,514</b>	<b>13,077,101</b>	<b>12,725,479</b>	<b>12,932,058</b>	<b>12,566,274</b>	<b>144,147,903</b>

Table 3C Card expenditure statistics (not seasonally adjusted)

Number of debit card transactions

## Detailed sector breakdown - services sectors (continued)

	November 2010	December 2010	January 2011	February 2011	March 2011	April 2011	May 2011	June 2011	July 2011	August 2011	September 2011	October 2011	November 2011	Total (latest 12 months)
Telecoms	9,776,545	10,868,232	9,560,726	8,927,584	9,939,854	10,678,214	11,429,589	11,143,781	11,230,739	11,765,512	11,257,037	11,659,157	11,342,748	129,803,173
Utilities	1,748,683	1,602,139	1,689,565	1,583,060	1,978,020	1,752,460	1,889,688	1,944,022	1,879,512	1,965,177	1,857,047	1,906,166	1,887,608	21,934,464
Contractors (residential & commercial)	608,029	509,564	529,985	534,719	593,362	439,777	481,076	498,138	463,519	491,991	505,141	526,557	540,993	6,114,822
Gardening services	101,713	117,156	67,219	72,614	106,122	138,937	146,944	112,993	97,264	99,782	86,003	94,079	92,968	1,232,081
Veterinary services	1,507,384	1,328,402	1,406,772	1,282,093	1,465,148	1,322,600	1,460,309	1,354,625	1,398,444	1,459,729	1,412,188	1,435,019	1,389,029	16,714,358
Photocopying & printing	469,276	425,235	385,347	362,725	433,705	350,424	426,550	412,437	376,722	405,180	427,069	439,858	568,938	5,014,190
Photographic studios	424,654	357,594	246,494	256,787	1,206,026	1,139,734	1,290,945	320,984	361,919	305,452	306,296	360,191	381,710	6,534,132
Beauty & barber shops	4,164,566	5,017,617	3,764,081	3,753,940	3,392,034	3,290,463	3,460,146	4,498,533	4,423,499	4,425,610	4,334,708	4,352,525	4,245,831	48,958,987
Employment agencies	21,761	15,426	24,391	22,853	22,569	9,091	10,062	10,826	10,382	10,532	9,837	9,023	9,023	164,763
Counselling services	50,063	50,264	49,901	46,173	49,075	62,644	76,224	72,621	70,909	81,434	74,834	75,674	74,821	784,574
Legal services	113,297	90,438	110,134	109,676	135,192	109,173	123,443	129,849	126,123	133,524	133,598	129,524	135,303	1,465,977
Laundry & cleaning	486,368	373,818	402,558	386,201	449,285	408,488	481,317	472,214	450,727	439,333	465,327	474,077	460,965	5,264,310
Funeral services	17,682	16,497	18,342	18,586	19,396	16,361	16,916	19,225	18,367	18,644	19,018	19,592	20,894	221,838
Medical services	2,452,101	1,902,832	2,272,760	2,326,310	2,686,774	2,155,261	2,467,858	2,497,141	2,323,325	2,420,941	2,575,276	2,476,951	2,655,252	28,760,681
Moving & courier services	240,692	229,555	223,013	217,485	253,182	227,048	263,541	273,206	262,589	267,562	275,067	270,466	305,360	3,068,074
Repair shops (not auto)	135,505	115,919	109,697	99,316	112,421	84,045	96,457	96,782	90,916	101,276	100,091	101,906	105,905	1,214,731
Accounting services	224,563	206,426	221,318	196,520	228,307	198,361	242,652	239,938	229,031	254,643	251,241	249,011	255,875	2,773,323
Advertising, consultancy & PR	260,621	187,745	237,843	228,987	260,126	221,467	262,848	247,211	235,851	246,730	242,169	241,199	246,418	2,858,594
Computer programming	921,370	862,652	1,059,506	1,031,464	1,206,402	873,294	950,986	868,144	851,094	892,376	971,393	1,085,546	1,087,710	11,740,567
Farming services	149,533	143,531	132,383	126,807	145,645	145,577	160,959	143,771	138,801	145,284	141,690	144,979	139,247	1,708,674
Miscellaneous professional services	3,373,283	3,024,640	2,749,320	2,599,486	2,962,900	2,540,385	2,917,827	2,879,266	2,813,406	2,886,223	2,942,428	3,035,682	3,132,708	34,484,271
Engineering services	53,511	42,857	49,189	55,312	68,565	60,231	63,268	65,814	63,881	64,455	64,100	62,986	64,193	724,851
Marina services	52,251	49,022	43,714	44,480	63,412	93,341	92,265	92,002	97,835	118,027	73,564	64,443	50,007	882,112
Wrecking & salvage yards	8,130	6,031	7,191	7,309	8,538	8,206	8,767	8,749	8,600	8,864	8,876	8,837	8,808	98,776
Pest control	2,798	1,951	2,352	2,769	2,824	4,008	4,124	5,088	5,167	4,961	4,261	3,979	43,713	
Educational establishments	1,400,713	948,787	1,375,923	1,239,689	1,506,342	966,237	1,470,506	1,109,014	887,489	819,226	1,581,419	1,890,388	1,799,713	15,594,733
Child care services	91,344	77,621	101,652	104,691	97,599	76,983	97,102	92,259	92,632	108,998	95,550	107,648	98,024	1,150,759
Social, political & religious organisations	2,192,574	1,681,622	1,468,612	1,573,617	2,757,117	2,074,022	2,274,308	2,127,233	2,167,169	2,220,719	2,165,180	2,083,817	2,131,052	24,724,468
Government services	4,873,540	4,207,330	4,847,329	4,802,984	5,442,790	5,082,368	5,900,379	5,652,209	5,554,785	5,854,297	5,719,520	5,613,720	5,525,830	64,203,541
Miscellaneous services	5,586,335	6,420,097	4,615,979	4,646,680	5,718,296	5,023,401	5,615,860	5,529,977	5,166,130	5,538,769	5,546,082	5,734,200	6,209,304	65,764,775
Commercial equipment	1,542,240	1,459,787	1,484,217	1,357,574	1,491,209	1,223,532	1,451,075	1,862,564	1,289,236	1,364,856	1,650,619	1,580,615	1,593,043	17,808,327
Other services	43,051,125	42,340,787	39,257,513	38,017,951	44,802,182	40,774,949	45,633,875	44,779,652	43,185,984	44,920,313	45,297,329	46,238,845	46,563,259	521,812,639
<b>Total services</b>	<b>160,283,200</b>	<b>152,359,297</b>	<b>153,642,531</b>	<b>151,585,496</b>	<b>173,500,898</b>	<b>163,681,973</b>	<b>181,802,401</b>	<b>169,514,994</b>	<b>171,308,054</b>	<b>180,794,111</b>	<b>175,727,990</b>	<b>187,765,516</b>	<b>180,296,955</b>	<b>2,041,980,216</b>
<b>TOTAL</b>	<b>600,246,495</b>	<b>634,407,501</b>	<b>536,820,162</b>	<b>519,457,398</b>	<b>592,943,263</b>	<b>577,102,552</b>	<b>632,191,582</b>	<b>593,440,363</b>	<b>595,763,541</b>	<b>625,211,444</b>	<b>598,493,174</b>	<b>645,063,226</b>	<b>639,397,623</b>	<b>7,190,291,829</b>





Table 3D Card expenditure statistics (not seasonally adjusted)

Value of debit card transactions

Detailed sector breakdown - services sectors

£	November 2010	December 2010	January 2011	February 2011	March 2011	April 2011	May 2011	June 2011	July 2011	August 2011	September 2011	October 2011	November 2011	Total (latest 12 months)
Auto rental	40,022,807	36,886,576	38,217,671	38,470,053	47,176,556	47,354,256	50,662,699	57,275,085	57,198,338	55,313,145	50,091,369	48,403,126	44,469,423	571,518,297
Auto parts & accessories	192,999,373	168,956,540	180,290,468	178,590,410	233,276,144	194,570,174	209,460,405	197,405,353	193,640,313	195,598,305	211,509,048	203,638,290	193,514,427	2,360,449,877
Auto services	60,097,395	53,615,174	57,534,295	56,639,427	68,094,070	61,501,345	71,157,737	70,452,393	70,566,796	73,252,598	71,182,023	67,564,961	66,845,432	788,406,251
Auto repair shops	577,299,931	516,064,787	569,534,703	551,956,994	787,922,670	625,596,026	657,582,397	614,844,367	606,947,786	653,416,854	713,691,187	636,740,133	592,484,832	7,436,782,736
Service stations	136,793,714	145,285,607	177,591,930	167,157,293	195,387,525	188,147,867	229,380,085	140,417,384	138,329,031	144,560,012	194,286,551	200,802,327	196,900,054	2,118,245,666
Vehicle sales	1,062,863,143	869,103,767	972,248,406	970,156,769	1,384,487,423	1,123,782,603	1,225,309,510	1,167,670,243	1,121,664,479	1,100,921,284	1,287,819,445	1,159,813,123	1,044,258,689	13,427,235,741
<b>Vehicle Sales &amp; Services</b>	<b>2,070,076,363</b>	<b>1,789,912,451</b>	<b>1,995,417,473</b>	<b>1,962,970,946</b>	<b>2,716,344,388</b>	<b>2,240,952,271</b>	<b>2,443,552,833</b>	<b>2,248,064,825</b>	<b>2,188,346,743</b>	<b>2,133,062,198</b>	<b>2,528,579,623</b>	<b>2,316,961,960</b>	<b>2,138,472,857</b>	<b>26,702,638,568</b>
Restaurants	686,356,700	693,066,419	668,621,484	679,654,361	728,063,582	763,103,885	806,839,800	742,666,603	781,797,513	841,130,780	747,166,727	847,166,097	771,734,352	9,071,011,603
Public houses	152,239,470	152,605,939	140,693,546	141,398,857	157,776,179	172,844,086	188,795,368	165,166,877	167,541,315	198,255,655	165,010,293	184,393,330	162,509,644	1,996,991,089
Catering services	13,195,666	12,215,986	11,153,092	11,391,769	13,872,051	12,543,857	14,427,681	14,940,091	14,491,471	14,839,124	14,555,695	14,404,516	15,430,173	164,265,506
Video stores	2,738,661	2,908,472	2,514,509	2,320,170	3,248,521	3,878,538	4,290,924	3,831,084	2,220,375	1,668,909	1,958,406	2,333,330	2,221,511	33,394,749
Cinema, theatre & dance	167,044,039	130,336,360	118,430,424	125,117,756	134,440,452	120,534,514	243,382,797	135,846,707	172,074,345	142,718,019	119,727,348	153,811,363	157,424,265	1,753,844,350
Concerts & entertainers	1,569,614	1,531,555	1,431,757	1,565,047	1,810,172	1,787,039	2,160,028	2,080,279	2,015,319	2,478,642	1,919,787	2,337,613	2,443,502	23,560,740
Tourist attractions	18,683,868	12,253,384	11,811,999	14,784,828	17,240,422	30,349,599	26,022,490	25,485,442	29,826,069	43,907,607	23,713,544	27,451,545	14,604,711	277,451,640
Amusement parks	1,809,428	1,384,338	1,427,743	1,991,271	1,992,572	4,054,384	3,005,606	3,020,362	3,625,738	6,060,218	2,746,733	3,368,398	2,001,572	34,678,935
Aquariums	968,475	761,996	965,920	1,073,138	1,174,733	1,433,598	1,496,836	1,210,855	1,302,785	1,583,142	1,111,253	1,144,827	922,790	14,181,873
Sports & games establishments	81,347,263	80,311,534	90,601,795	85,158,845	108,100,279	98,429,293	114,789,947	104,323,785	100,162,341	96,405,414	89,624,460	91,498,188	83,350,279	1,142,756,160
Professional sports clubs	8,667,040	8,659,101	7,397,346	8,104,074	8,769,572	10,552,545	9,486,510	15,434,772	11,312,059	10,200,776	9,141,002	8,535,598	9,756,104	117,349,459
Gambling	347,931,620	325,235,410	332,738,932	342,506,042	411,773,615	350,151,654	398,300,450	388,249,150	395,801,267	481,584,933	432,391,096	431,587,320	405,724,814	4,696,044,683
Personal services	11,219,399	11,463,127	11,822,623	12,864,674	11,704,296	12,864,674	11,704,296	17,949,288	16,324,840	17,287,084	16,636,570	17,707,685	15,943,829	175,908,794
Miscellaneous entertainment	24,858,348	15,999,208	16,720,674	18,846,736	24,582,235	34,690,184	33,205,577	33,489,238	37,600,011	44,758,945	31,667,596	35,870,520	27,702,305	355,133,229
<b>Entertainment</b>	<b>1,518,629,591</b>	<b>1,448,732,829</b>	<b>1,415,692,827</b>	<b>1,445,130,517</b>	<b>1,625,709,059</b>	<b>1,616,057,472</b>	<b>1,864,153,302</b>	<b>1,652,070,085</b>	<b>1,736,396,780</b>	<b>1,902,879,248</b>	<b>1,657,370,510</b>	<b>1,820,610,330</b>	<b>1,671,769,851</b>	<b>19,856,572,810</b>
<b>Hotels</b>	<b>236,788,937</b>	<b>209,470,309</b>	<b>231,767,307</b>	<b>233,667,589</b>	<b>235,828,274</b>	<b>285,158,420</b>	<b>315,107,014</b>	<b>333,920,339</b>	<b>359,173,455</b>	<b>375,431,505</b>	<b>317,919,196</b>	<b>317,648,120</b>	<b>263,592,462</b>	<b>3,478,683,990</b>
Airlines	115,267,796	76,890,702	142,128,378	88,298,105	92,453,251	73,784,582	89,885,132	91,901,290	96,665,029	93,878,141	98,818,271	96,040,265	87,807,302	1,128,550,448
Airport terminals	2,340,720	2,132,039	2,253,721	1,945,968	2,863,023	3,382,838	3,460,094	3,831,024	4,134,943	4,393,632	3,440,931	2,943,807	2,391,528	37,173,548
Railways	336,300,589	290,388,279	294,975,057	296,143,400	351,162,017	300,401,721	355,260,637	362,049,327	348,503,787	357,081,557	362,348,211	396,679,966	391,060,573	4,106,054,532
Buses	23,968,475	20,568,981	24,197,554	22,542,556	26,323,934	26,419,242	28,501,441	29,075,014	29,725,758	31,814,738	34,956,802	31,743,284	27,181,933	333,051,237
Sea travel	6,643,674	6,190,097	8,022,991	7,985,924	9,244,752	9,780,939	10,163,526	10,699,281	11,798,860	12,110,703	9,155,540	8,092,988	6,807,310	110,052,911
Travel agents	568,963,056	497,444,636	877,492,672	774,517,061	945,832,790	891,744,645	1,067,450,019	1,041,921,530	1,022,367,717	850,010,433	717,934,784	674,341,714	593,622,398	9,954,680,399
Timeshares	21,296	24,119	69,621	33,831	55,184	22,244	14,250	23,262	15,584	9,868	9,523	10,992	12,276	300,754
Camping grounds	39,137,927	27,952,542	42,215,202	47,324,209	63,099,798	74,405,304	79,840,324	78,422,322	84,699,997	81,131,302	49,009,688	48,712,077	36,267,838	713,080,603
Miscellaneous travel	26,148,213	21,943,329	22,976,247	23,950,000	31,316,405	32,142,825	37,716,404	42,849,098	38,648,604	36,383,478	28,458,048	26,709,420	25,006,595	368,100,453
<b>Travel</b>	<b>1,118,791,746</b>	<b>943,534,724</b>	<b>1,414,331,443</b>	<b>1,262,741,054</b>	<b>1,522,351,154</b>	<b>1,412,084,340</b>	<b>1,672,291,827</b>	<b>1,660,772,148</b>	<b>1,636,560,279</b>	<b>1,466,813,852</b>	<b>1,304,131,798</b>	<b>1,285,274,513</b>	<b>1,170,157,753</b>	<b>16,751,044,885</b>
Telegraph services / Wire transfer money order	14,312,847	12,542,555	11,898,913	11,602,102	12,206,278	11,813,587	10,723,677	11,531,394	12,584,654	15,634,085	18,246,571	16,642,995	18,187,697	163,614,508
Insurance services	577,290,843	544,721,727	608,078,108	589,855,896	740,805,961	660,951,111	729,302,797	763,553,699	779,948,066	785,344,969	788,047,082	775,272,749	508,320,655	8,274,202,820
Fis - cash disbursements (auto & manual)	32,079,593	35,453,434	29,282,753	33,461,728	34,527,598	1,986,838	2,186,980	1,155,446	1,401,419	1,297,021	1,069,578	23,239,222	31,205,368	196,267,385
Fis - merchandise & services	2,331,333,127	2,189,189,792	2,205,878,449	2,054,485,927	2,507,630,924	2,397,764,097	2,379,677,236	2,362,363,559	2,449,514,619	2,734,680,801	2,431,325,356	2,468,306,673	2,647,529,565	28,828,346,998
Non-Fis - foreign currency, travellers' cheques	49,799,078	51,002,569	46,657,418	53,885,767	61,761,641	72,514,008	87,789,323	99,239,091	129,975,366	138,793,109	103,635,173	76,555,351	58,636,237	980,445,053
Security brokers and dealers	267,660,636	206,543,276	283,484,820	275,180,880	469,074,514	517,089,523	246,070,738	223,527,190	204,628,858	520,199,109	240,995,733	170,610,245	235,400,165	3,592,805,051
Tax preparation services	51,888	37,624	83,445	82,231	81,705	87,904	70,492	107,560	116,505	131,689	139,302	96,468	93,464	1,128,389
Tax payments	100,775,955	106,227,994	154,551,705	121,533,541	142,181,231	136,644,362	166,604,126	102,905,285	101,155,183	105,607,637	140,788,286	145,434,185	142,745,913	1,566,379,448
Fines, bail and bond payments	24,223,803	21,115,970	22,388,314	22,473,405	27,233,205	25,806,737	29,759,671	30,598,953	31,191,837	29,031,633	30,951,980	30,980,950	30,679,924	332,212,579
Miscellaneous financial	57,345,883	56,542,263	67,833,515	64,432,619	76,564,380	74,354,888	88,765,997	61,519,700	60,924,285	62,995,227	78,390,902	79,660,150	79,211,411	851,195,337
<b>Financial</b>	<b>3,454,873,653</b>	<b>3,223,377,204</b>	<b>3,430,137,440</b>	<b>3,226,994,096</b>	<b>4,072,067,437</b>	<b>3,899,013,055</b>	<b>3,740,951,037</b>	<b>3,656,501,877</b>	<b>3,771,440,792</b>	<b>4,393,715,280</b>	<b>3,833,589,963</b>	<b>3,786,798,988</b>	<b>3,752,010,399</b>	<b>44,786,597,568</b>

Table 3D Card expenditure statistics (not seasonally adjusted)

Value of debit card transactions

## Detailed sector breakdown - services sectors (continued)

£	November 2010	December 2010	January 2011	February 2011	March 2011	April 2011	May 2011	June 2011	July 2011	August 2011	September 2011	October 2011	November 2011	Total (latest 12 months)
Telecoms	253,376,557	292,076,196	247,686,977	226,580,081	253,126,273	248,605,518	272,687,964	262,660,143	265,811,870	276,662,538	268,642,702	295,627,635	282,495,070	3,192,662,967
Utilities	152,251,015	142,612,310	161,729,034	164,670,083	227,531,432	193,989,352	198,850,532	195,525,269	177,756,053	179,915,970	177,548,394	181,135,127	181,841,278	2,183,104,834
Contractors (residential & commercial)	107,534,056	93,115,098	93,949,559	98,802,213	113,513,736	84,779,244	98,603,238	110,478,364	97,935,891	102,978,392	107,182,395	110,539,042	128,667,594	1,240,544,766
Gardening services	4,449,934	4,772,851	3,011,968	3,487,736	5,532,520	7,326,024	7,908,576	6,131,343	5,409,024	5,356,136	4,822,721	4,908,075	4,841,020	63,507,994
Veterinary services	79,182,468	68,412,273	75,884,769	67,824,359	78,403,266	70,108,783	78,005,827	73,491,551	74,806,623	77,572,438	74,986,758	75,364,404	73,278,969	888,140,020
Photocopying & printing	24,910,763	21,013,160	20,847,959	20,442,796	24,570,868	19,845,789	23,459,985	24,301,248	22,348,460	23,559,456	25,849,354	25,097,830	29,363,043	280,699,948
Photographic studios	16,548,650	13,846,647	9,637,772	9,940,042	45,895,001	45,060,877	49,506,668	12,576,406	14,907,535	12,330,517	11,687,134	13,303,325	15,203,344	253,895,268
Beauty & barber shops	163,130,931	195,158,531	141,029,890	144,519,931	130,709,399	125,179,388	133,388,158	172,024,947	171,454,255	170,020,860	169,204,805	167,731,872	166,917,484	1,887,339,520
Employment agencies	910,475	864,600	969,412	929,036	1,051,749	754,954	895,859	875,492	966,341	913,613	1,022,143	943,803	983,920	11,170,922
Counselling services	4,746,562	4,039,259	3,847,825	3,609,851	3,780,689	5,809,386	6,877,531	5,789,337	5,462,980	6,089,885	5,577,236	5,849,852	5,767,913	62,501,744
Legal services	58,169,221	47,691,862	53,616,724	53,379,889	67,884,077	57,114,419	60,634,005	71,374,719	65,296,005	73,245,069	73,694,472	72,813,515	76,447,621	773,192,377
Laundry & cleaning	11,138,839	8,615,675	9,374,763	8,789,454	10,737,187	10,003,292	11,825,694	11,348,065	11,005,339	10,835,466	11,462,952	11,439,049	10,989,898	126,426,814
Funeral services	15,857,206	16,026,966	18,408,727	19,373,156	20,742,773	16,717,226	16,843,076	19,690,023	18,860,156	18,968,344	19,370,012	19,986,163	22,033,252	227,019,874
Medical services	191,373,367	147,360,218	170,365,259	180,479,429	212,963,944	171,287,900	195,527,716	201,588,544	189,992,831	190,373,231	202,871,307	196,721,212	211,000,729	2,270,532,320
Moving & courier services	23,149,592	21,009,437	20,813,579	19,377,170	22,877,600	21,148,910	24,343,704	26,362,009	27,381,629	28,682,894	28,433,457	27,116,107	28,075,291	295,621,787
Repair shops (not auto)	11,991,276	10,648,851	9,246,354	8,498,141	9,848,127	8,003,809	9,026,497	9,733,633	8,997,249	9,724,554	9,750,037	9,762,490	10,646,873	113,886,615
Accounting services	12,362,276	10,786,357	12,530,839	11,337,668	13,600,492	13,208,003	15,769,841	15,531,588	15,052,832	18,350,854	18,564,207	17,422,242	18,425,844	180,580,767
Advertising, consultancy & PR	16,232,292	12,094,726	14,596,689	14,006,716	15,779,695	13,735,590	16,122,133	15,657,790	14,786,599	14,873,020	14,948,760	14,027,550	14,354,054	174,983,322
Computer programming	120,799,693	106,899,797	105,469,356	92,769,545	110,775,508	31,209,543	32,720,119	33,619,571	31,724,708	32,800,285	36,842,215	38,336,781	37,845,931	691,013,359
Farming services	13,155,989	12,508,488	11,814,563	11,308,870	13,271,543	12,661,581	14,202,725	13,585,431	13,752,913	14,553,963	13,919,852	13,762,196	13,302,522	158,644,647
Miscellaneous professional services	420,748,622	374,063,358	446,872,788	390,619,729	466,878,560	435,871,344	460,497,078	462,133,043	468,350,735	478,250,317	549,518,272	494,075,616	499,250,537	5,526,381,377
Engineering services	14,068,013	11,265,255	12,834,794	14,447,040	18,078,621	15,689,443	16,881,946	17,494,122	17,010,527	16,930,790	17,521,737	17,020,880	17,334,399	192,509,554
Marina services	6,645,463	7,260,654	6,259,303	6,606,736	10,485,285	11,826,462	12,887,402	12,297,220	11,804,239	12,762,428	8,828,384	8,226,868	6,768,506	116,013,487
Wrecking & salvage yards	1,036,052	710,524	940,738	973,201	1,097,627	1,116,239	1,237,494	1,245,859	1,128,167	1,211,692	1,199,764	1,220,037	1,178,353	13,259,695
Pest control	524,146	454,675	446,626	451,957	545,918	500,002	811,494	682,028	765,410	756,542	829,478	789,316	756,328	7,789,774
Educational establishments	168,554,028	117,140,544	315,679,475	172,782,114	139,510,483	139,114,279	201,673,611	114,005,921	107,398,953	170,473,355	555,812,268	444,417,483	187,707,208	2,665,715,694
Child care services	9,297,230	8,258,480	10,027,710	9,212,115	10,655,406	8,187,303	10,144,551	9,788,177	9,590,898	9,834,889	10,079,717	10,260,073	10,338,291	116,377,610
Social, political & religious organisations	76,526,760	64,098,060	61,075,733	59,141,117	105,628,582	77,450,214	75,577,800	73,509,901	85,715,301	93,465,429	82,461,032	88,909,623	77,668,015	944,700,807
Government services	900,777,790	739,082,721	959,317,444	868,601,812	964,892,402	881,459,861	3,190,945,379	1,912,638,940	1,393,313,587	1,341,536,499	1,039,367,359	994,606,878	965,075,264	15,250,838,146
Miscellaneous services	382,430,314	359,776,315	420,015,993	356,615,348	435,326,334	381,391,464	435,502,988	409,672,119	419,500,038	448,432,081	431,603,425	443,403,405	432,444,904	4,973,684,414
Commercial equipment	94,609,920	79,236,313	86,593,133	83,743,799	99,875,154	83,844,684	95,215,482	113,701,996	95,712,103	99,615,132	110,199,515	104,893,346	109,999,972	1,162,630,629
Other services	3,356,489,500	2,990,900,201	3,504,895,755	3,123,321,134	3,635,570,251	3,193,000,883	5,768,575,073	4,409,514,799	3,843,999,251	3,941,076,619	4,083,801,864	3,909,711,795	3,641,003,427	46,045,371,052
<b>Total services</b>	<b>11,755,649,790</b>	<b>10,605,927,718</b>	<b>11,992,242,245</b>	<b>11,254,825,336</b>	<b>13,807,870,563</b>	<b>12,646,266,441</b>	<b>15,804,631,086</b>	<b>13,960,844,073</b>	<b>13,535,917,300</b>	<b>14,212,978,702</b>	<b>13,725,392,954</b>	<b>13,437,005,706</b>	<b>12,637,006,749</b>	<b>157,620,908,873</b>
<b>TOTAL</b>	<b>25,887,753,186</b>	<b>27,055,152,552</b>	<b>23,928,258,837</b>	<b>22,535,721,255</b>	<b>26,724,040,652</b>	<b>25,611,816,797</b>	<b>29,862,940,502</b>	<b>27,120,371,649</b>	<b>26,776,301,386</b>	<b>28,082,962,726</b>	<b>27,018,781,836</b>	<b>27,837,047,272</b>	<b>27,304,038,292</b>	<b>319,857,433,756</b>