

# Card Expenditure Statistics

October 2014

## Card Expenditure Statistics (Seasonally Adjusted) – October 2014

	Total Spending <i>£ billions</i>		Annual growth rates for spending		Number of purchases <i>Millions</i>	
	Oct 2014	Oct 2013	Oct 2014	Oct 2013	Oct 2014	Oct 2013
<b>All payment cards</b>	<b>47.8</b>	45.2	<b>6.5%</b>	6.2%	<b>1,025</b>	934
<b>Debit cards</b>	<b>33.9</b>	31.8	<b>7.5%</b>	7.4%	<b>788</b>	717
<b>Credit cards</b>	<b>13.9</b>	13.5	<b>3.9%</b>	3.7%	<b>237</b>	217

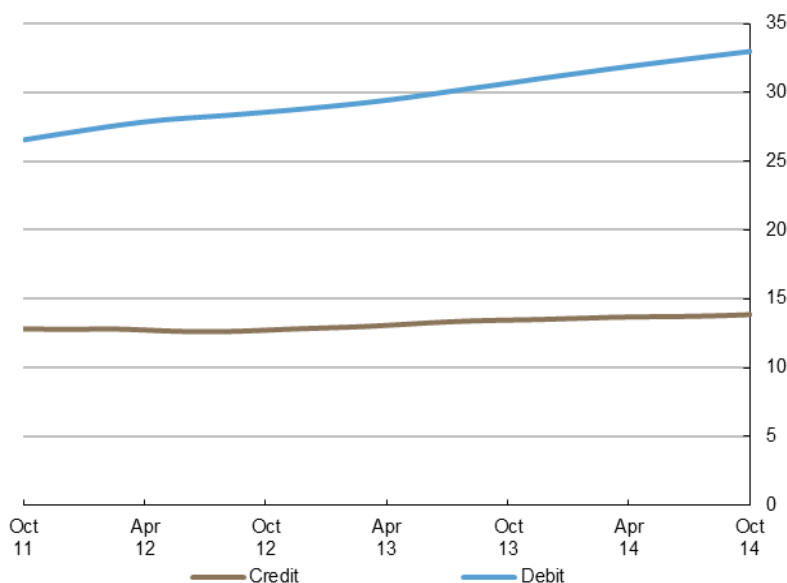
With effect of January 2014 the methodology used for seasonal adjustment - using X12 ARIMA - was changed. Trading days and leap years have been incorporated into the monthly seasonal adjustment process. Unless otherwise stated all data referred to are seasonally adjusted. Unadjusted data are located in tables 3A to 3D. There is a step change in the data between 2010 and 2011 following a change in the reporting population. Average transaction values are based on three-month rolling averages, while growth rates are based on twelve-month rolling periods.

### Introduction

**Plastic card spending** continues to support the economy, rising by 0.6% in October to reach £47.8 billion, with corresponding purchases increasing by 0.8% to 1.0 billion purchases. Spending and purchases have risen continuously since July 2012 and August 2012 respectively despite varying levels of economic performance during this period.

### Chart 1

Average monthly expenditure  
Three-month moving average (£ billions)



### Annual growth rates

The **annual growth rate in card expenditure** fell to 6.5% in October. It has declined continuously since peaking at 7.4% in May and compares to a figure of 6.2% a year ago. This could be linked to the low rate of annual inflation<sup>1</sup>, which amounted to 1.3% in October and has undershot the Bank of England's target of 2% for every month of 2014 so far. The low rate of annual earnings growth could also account for the decline in the annual growth rate of card expenditure. The latest data reported by the Office for National Statistics shows that annual earnings<sup>2</sup> grew at a rate of 1.4% in September which is low by historical standards. However it is interesting to note the October annual growth rate for debit cards at 7.5% was nearly twice that of credit cards at 3.9%. Annual

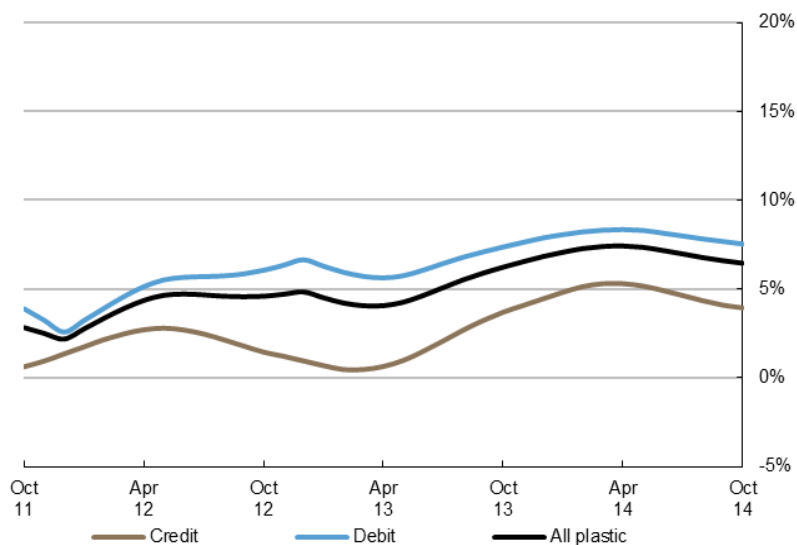
<sup>1</sup> <http://www.ons.gov.uk/ons/rel/cpi/consumer-price-indices/october-2014/index.html>

<sup>2</sup> <http://www.ons.gov.uk/ons/rel/lms/labour-market-statistics/november-2014/dataset--earnings.html>

growth in the **service** sector continued to exceed that in **retail sales**. Spending within the service sector expanded by 8.7%, more than double the growth of spending within retail, which increased by 4.2%.

Meanwhile, the **annual growth rate of the number of purchases** continued to outstrip that of the **value of purchases**, highlighting a growing consumer preference to use cards more often for lower value payments. This measure grew more quickly for the first half of the year, growing from 7.6% in January to 9.3% in October.

**Chart 2**  
Spending on payment cards  
Year-on-year growth rates



### Average transaction values

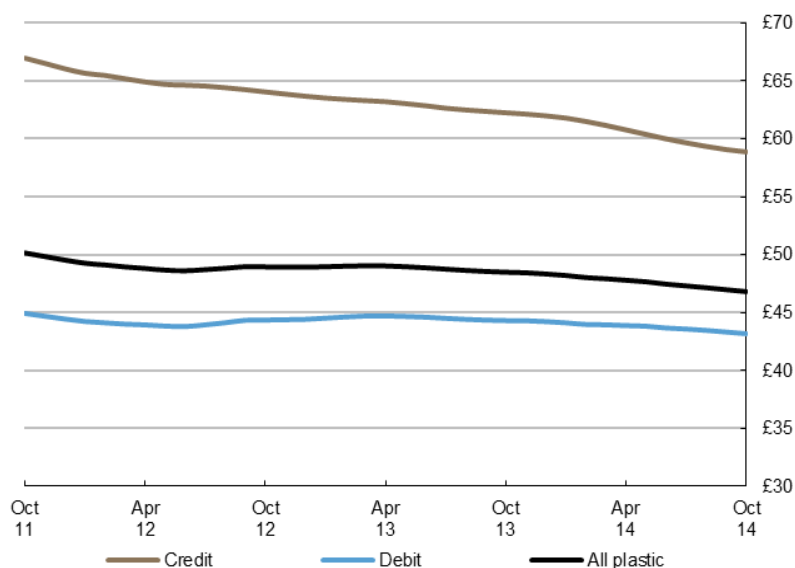
The **average transaction value** (ATV) on all payment cards continued to decline, it fell by 9p in October to £46.68 and compares to a figure of £48.42 in October 2013. The **ATV for debit cards** also decreased by 9p, and fell to £43.05 in October. Debit card ATVs have declined continuously since April 2013. Meanwhile **credit card ATVs** dropped 8p to £58.74, continuing a trend that began in March 2010.

Declining ATVs were also evident within the sectors. The ATV for **retail sales** fell by 8p to £33.30, a record low. The ATV for **services** decreased by 22p to £76.24, the lowest it's been since December 2009.

The persistent decline in ATVs for plastic cards over time is a reflection of the continuing migration of low value cash payments to cards alongside the increasing use of **contactless cards**. The recent initiative by Transport for London to accept contactless card payments across its network is expected to continue driving this trend.

Changing consumer habits have also been contributing to the decline in ATVs. This includes a preference to pursue better value deals as well as to shop at budget retailers and discount service providers. So-called 'price wars' amongst the major British supermarkets is another factor applying downward pressure on purchase values.

**Chart 3**  
Average transaction values  
Three-month moving average



### Spending by sector – retail sales and services

Despite a decrease in the value of national retail sales in October, the number of plastic card transactions within the **retail sector** increased by 5 million to 705 million, with the corresponding value rising by £104 million to £23.5 billion. This increase continues to be heavily weighted in the **food & drink** and **household** sub sectors. Food and drink expenditure increased by £50 million to reach £9.1 billion while household spending reached £3.7 billion after increasing by £40 million. The only fall came for **automotive fuels** which decreased by £4 million, the fourteenth consecutive month of decline.

It is possible that the recent patterns of expenditure for these sub sectors are interrelated, linked by the ongoing price wars between the major supermarkets and a fall in commodity prices. Also people may be travelling less than they were during the summer months and starting to stock up on Christmas food and drink. Price competition<sup>3</sup> between the supermarkets and discounters such as Aldi's and Lidl's is another likely driver. It is also possible that a substitution effect was responsible for the increase in the household sub sector with the fall in automotive fuels improving the purchasing power of consumers.

Meanwhile, the number of purchases in the **services sector** grew by 3.3 million to 319 million, corresponding to growth in spending of £184 million to £24.4 billion. **Entertainment** and **other services** continued to be the main contributors of growth. Expenditure in entertainment reached £4.0 billion following growth of £60 million during the month. Other services expenditure increased by 49 million to stand at £7.3 billion in October.

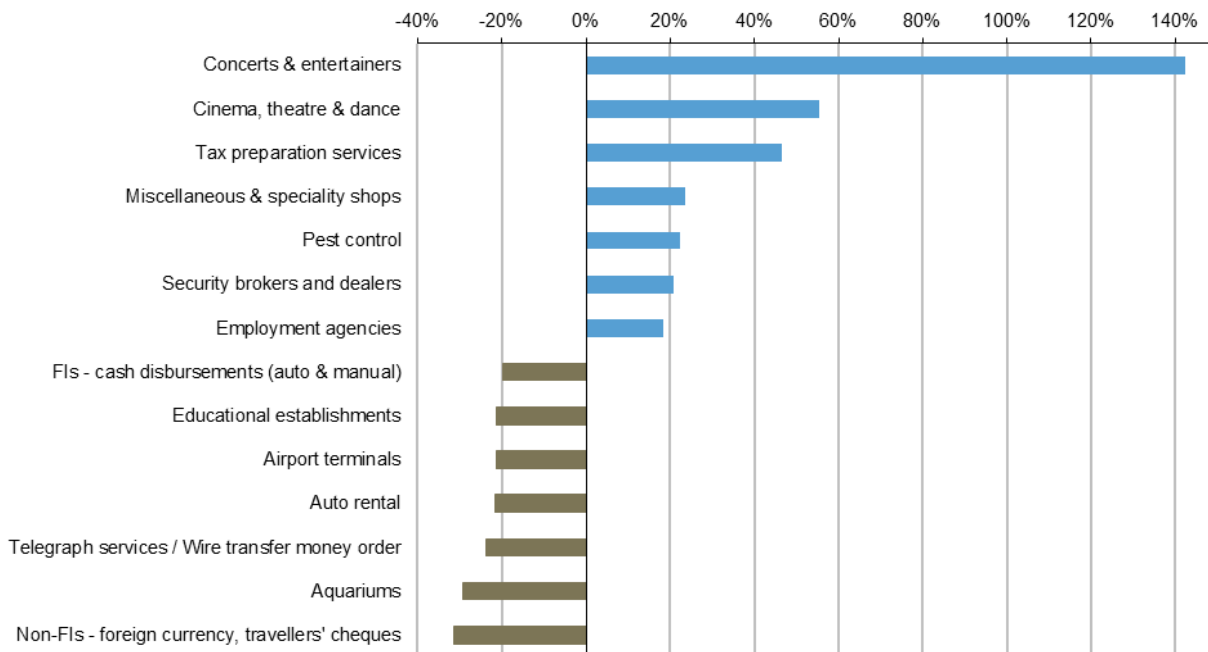
### Spending by merchant categories – retail sales and services (not seasonally adjusted)

The largest increases in expenditure came from merchants in the entertainment sub sector such as concerts & entertainers, cinema, theatre and dance. It is likely that this owed much to the October half term. The next highest increase in expenditure came from tax preparation services, with the deadline for paper tax returns on the 31<sup>st</sup> October. The largest decreases in spending were recorded at non-FIs that provide foreign currency and traveller's cheques and at aquariums.

<sup>3</sup> <http://www.theguardian.com/business/2014/nov/18/uk-grocery-sales-decline-price-war-asda-sainsburys-morrisons-tesco>.

Chart 4<sup>4</sup>

Biggest change in total card spending between September and October



### Payment card spending within national retail sales

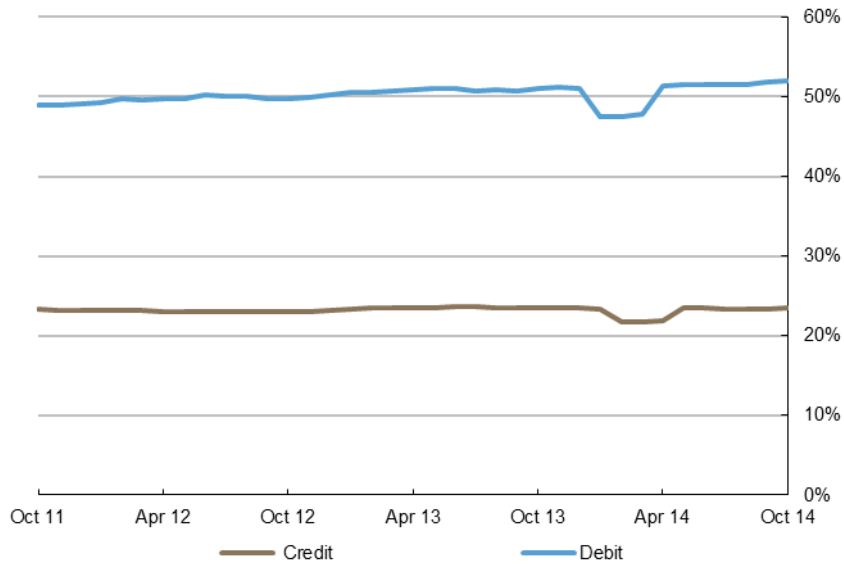
There was a slight uptick in the percentage share of retail sales accounted for by payment cards<sup>5</sup>. This figure increased to 75.7%, up 0.3 percentage points from September, with debit and credit card expenditure split, 52.1% and 23.6% respectively. This could owe to factors such as the improving economy and the wider acceptance of contactless cards amongst merchants. This trend was reflected in other sub sectors such as **food & drink** and **automotive fuels**. The share of spending in the food & drink sub sector accounted for by payment cards rose from 71.3% in September to 71.6% in October and compares to a figure of 67.9% a year ago. In comparison to food & drink, nearly all expenditure on automotive fuels is accounted for by payment cards at 92.5%, a figure that compares with 92.0% in September and 89.0% a year ago.

<sup>4</sup> Chart 4 shows relative growth rates. Some listed merchant categories are too small in size to make a material impact on the overall total.

<sup>5</sup> CES 3-month moving average spend of £23.5 billion expressed as a percentage of a similar 3-month moving average for ONS Retail Sales – All Retailing Including Automotive Fuel (J5A3) that amounted to £28.6 billion.

### Chart 5<sup>6</sup>

Proportion of retail sales made on payment cards (including automotive fuel)  
Three-month moving average



Contact: Nigel Burt; [nigel.burt@ukpayments.org.uk](mailto:nigel.burt@ukpayments.org.uk) | [camis@ukpayments.org.uk](mailto:camis@ukpayments.org.uk) | 020 3217 8244 or 020 3217 8720

<sup>6</sup> The step change in between January and March 2014 stems from calendar day effects in total retail sales published by the ONS.

# Table 1 Card expenditure statistics (seasonally adjusted)

Summary<sup>1 and 2</sup>

Number of purchase transactions (millions)

Value of purchase transactions (£ millions)

	Number of purchase transactions (millions)									Value of purchase transactions (£ millions)									
	All sectors			Retail sales			Services			All sectors			Retail sales			Services			
	Credit	Debit	Total	Credit	Debit	Total	Credit	Debit	Total	Credit	Debit	Total	Credit	Debit	Total	Credit	Debit	Total	
<b>Annual</b>																			
2009	2,003	5,943	7,947	1,226	3,896	5,122	777	2,047	2,825	125,144	262,164	387,308	61,604	125,390	186,994	63,540	136,774	200,314	
2010	2,010	6,505	8,514	1,382	4,722	6,104	628	1,782	2,410	128,149	289,725	417,874	69,564	148,600	218,164	58,585	141,125	199,710	
2011	2,258	7,227	9,485	1,554	5,299	6,853	704	1,928	2,632	151,398	324,287	475,684	78,944	165,560	244,504	72,454	158,727	231,180	
2012	2,372	7,835	10,207	1,621	5,642	7,263	751	2,193	2,944	152,839	345,851	498,690	81,084	175,430	256,514	71,755	170,421	242,176	
2013	2,549	8,391	10,940	1,735	5,963	7,698	814	2,428	3,242	159,630	373,097	532,727	84,601	183,510	268,111	75,029	189,587	264,616	
<b>Monthly</b>																			
2013	Oct	217	717	934	147	507	654	70	210	280	13,476	31,752	45,228	7,109	15,540	22,649	6,367	16,212	22,579
	Nov	218	722	940	147	510	657	71	213	283	13,523	31,971	45,495	7,119	15,590	22,709	6,404	16,381	22,786
	Dec	219	730	949	148	513	661	72	217	288	13,564	32,208	45,772	7,123	15,630	22,753	6,441	16,578	23,019
2014	Jan	221	737	958	149	518	666	72	219	292	13,612	32,410	46,022	7,144	15,670	22,814	6,468	16,740	23,208
	Feb	223	744	967	150	522	672	73	222	295	13,658	32,621	46,279	7,176	15,740	22,916	6,482	16,881	23,363
	Mar	225	745	970	152	520	672	74	225	298	13,693	32,777	46,470	7,206	15,810	23,016	6,487	16,967	23,454
	Apr	227	753	980	153	525	678	74	227	301	13,704	32,946	46,650	7,220	15,870	23,090	6,484	17,076	23,560
	May	229	758	987	154	529	683	74	229	303	13,708	33,104	46,812	7,227	15,940	23,167	6,481	17,164	23,645
	Jun	230	763	993	155	532	688	75	230	305	13,725	33,227	46,952	7,244	15,970	23,214	6,481	17,257	23,738
	Jul	232	767	999	157	535	692	75	232	307	13,761	33,376	47,137	7,259	16,010	23,269	6,502	17,366	23,868
	Aug	234	774	1,007	158	538	696	76	236	312	13,798	33,528	47,327	7,277	16,050	23,327	6,521	17,478	24,000
	Sep	235	781	1,017	159	541	701	76	240	316	13,848	33,706	47,554	7,286	16,100	23,386	6,562	17,606	24,168
	Oct	237	788	1,025	160	545	705	77	243	319	13,930	33,913	47,842	7,320	16,170	23,490	6,610	17,743	24,352

Year-on-year growth rates (percentages)

<b>Annual</b>																			
2009	1.8	8.9	7.0	3.4	8.9	7.6	-0.7	8.7	5.9	-0.4	7.3	4.6	1.4	7.9	5.7	-2.2	6.6	3.7	
2010	0.3	9.4	7.1	12.7	21.2	19.2	-19.2	-12.9	-14.7	2.4	10.5	7.9	12.9	18.5	16.7	-7.8	3.2	-0.3	
2011	12.4	11.1	11.4	12.5	12.2	12.3	12.1	8.2	9.2	18.1	11.9	13.8	13.5	11.4	12.1	23.7	12.5	15.8	
2012	5.1	8.4	7.6	4.3	6.5	6.0	6.7	13.7	11.9	1.0	6.6	4.8	2.7	6.0	4.9	-1.0	7.4	4.8	
2013	7.5	7.1	7.2	7.1	5.7	6.0	8.4	10.7	10.1	4.4	7.9	6.8	4.3	4.6	4.5	4.6	11.2	9.3	
<b>Monthly</b>																			
2013	Oct	6.8	6.4	6.5	6.5	4.9	5.3	7.5	10.4	9.6	3.7	7.4	6.2	4.0	4.2	4.1	3.3	10.7	8.5
	Nov	7.1	6.7	6.8	6.8	5.3	5.6	7.9	10.5	9.8	4.1	7.6	6.5	4.2	4.4	4.3	3.9	11.0	8.9
	Dec	7.5	7.1	7.2	7.1	5.7	6.0	8.4	10.7	10.1	4.4	7.9	6.8	4.3	4.6	4.5	4.6	11.2	9.3
2014	Jan	7.8	7.6	7.6	7.3	6.1	6.4	8.9	11.2	10.6	4.8	8.1	7.1	4.5	4.8	4.7	5.2	11.4	9.6
	Feb	8.2	8.0	8.1	7.6	6.6	6.8	9.4	11.7	11.1	5.1	8.2	7.3	4.5	5.0	4.8	5.8	11.5	9.9
	Mar	8.5	8.4	8.4	7.8	6.9	7.1	10.0	12.3	11.7	5.3	8.3	7.4	4.6	5.1	4.9	6.1	11.6	10.0
	Apr	8.7	8.8	8.8	7.9	7.2	7.4	10.4	12.8	12.2	5.3	8.3	7.4	4.5	5.2	5.0	6.2	11.5	10.0
	May	8.7	9.1	9.0	7.8	7.5	7.6	10.7	13.2	12.6	5.2	8.3	7.4	4.3	5.3	5.0	6.2	11.3	9.8
	Jun	8.6	9.3	9.2	7.6	7.6	7.6	10.8	13.6	12.9	4.9	8.2	7.2	4.0	5.2	4.8	6.0	11.0	9.6
	Jul	8.5	9.4	9.2	7.4	7.6	7.5	10.9	13.9	13.1	4.6	8.0	7.0	3.7	5.2	4.7	5.8	10.8	9.3
	Aug	8.4	9.4	9.2	7.3	7.5	7.4	10.9	14.2	13.4	4.3	7.8	6.8	3.3	5.1	4.5	5.5	10.6	9.1
	Sep	8.4	9.5	9.2	7.3	7.4	7.4	10.9	14.6	13.7	4.1	7.7	6.6	3.1	4.9	4.4	5.2	10.4	8.9
	Oct	8.5	9.6	9.3	7.4	7.4	7.4	10.9	14.9	13.9	3.9	7.5	6.5	3.0	4.8	4.2	5.0	10.2	8.7

<sup>1</sup> There was a step change in 2011 due to a change in reporting population

<sup>2</sup> With effect of January 2014 the seasonal adjustment methodology using X12 ARIMA was reviewed and changed. Trading days and leap years have been incorporated into the monthly seasonal adjustment process.

# Table 2A Card expenditure statistics (seasonally adjusted)

Retail sales<sup>1 and 2</sup>

Number of purchase transactions (millions)

Total retail sales

	Number of purchase transactions (millions)																		Total retail sales			
	Food & drink			Mixed business			Clothing			Household			Other retailers			Automotive Fuels <sup>3</sup>			Number of purchases			
	Credit	Debit	Total	Credit	Debit	Total	Credit	Debit	Total	Credit	Debit	Total	Credit	Debit	Total	Credit	Debit	Total	Credit	Debit	Total	
Annual																						
2009	514	2,087	2,601	131	404	535	125	405	530	146	319	465	310	682	992	158	475	633	1,226	3,896	5,122	
2010	532	2,285	2,817	138	406	545	129	424	553	148	350	498	273	733	1,006	161	524	686	1,382	4,722	6,104	
2011	602	2,563	3,165	136	425	561	139	427	566	157	370	526	297	781	1,078	223	733	957	1,554	5,299	6,853	
2012	663	2,824	3,487	148	479	627	145	453	598	157	375	532	281	757	1,039	227	754	981	1,621	5,642	7,263	
2013	722	3,061	3,783	183	523	706	152	461	613	165	403	568	277	722	998	236	793	1,029	1,735	5,963	7,698	
Monthly																						
2013	Oct	61	261	322	16	46	62	13	39	52	14	34	48	23	61	84	20	67	87	147	507	654
	Nov	61	263	324	17	46	62	13	39	52	14	35	49	23	61	83	20	67	86	147	510	657
	Dec	62	266	328	17	46	63	13	39	52	14	35	49	22	61	83	20	67	87	148	513	661
2014	Jan	62	269	331	17	46	64	13	39	52	14	35	49	22	61	84	20	67	87	149	518	666
	Feb	63	272	335	18	46	64	13	39	52	14	35	49	22	62	84	20	67	87	150	522	672
	Mar	63	276	339	19	39	58	13	40	53	14	35	50	22	62	85	20	68	87	152	520	672
	Apr	63	280	343	19	39	58	14	40	54	14	35	50	23	63	86	20	68	88	153	525	678
	May	64	283	347	20	38	59	14	40	54	14	36	50	23	64	87	20	68	88	154	529	683
	Jun	64	285	349	21	38	59	14	40	54	14	36	50	23	65	88	20	68	88	155	532	688
	Jul	64	287	351	22	38	60	14	40	54	14	36	50	23	65	88	20	68	88	157	535	692
	Aug	64	289	353	22	38	61	14	40	54	14	37	51	24	65	89	20	68	88	158	538	696
	Sep	65	292	357	23	38	62	13	40	54	14	37	51	24	65	89	20	68	88	159	541	701
	Oct	65	295	360	24	39	62	13	40	54	14	37	52	24	66	89	20	68	88	160	545	705

Year-on-year growth rates (percentages)

Annual																						
2009	2.8	11.4	9.6	-2.1	-1.0	-1.2	3.2	9.5	7.9	2.0	9.3	6.9	8.0	7.5	7.6	-5.4	3.8	1.3	3.4	8.9	7.6	
2010	3.5	9.5	8.3	5.7	0.7	1.9	2.7	4.8	4.3	1.7	9.6	7.1	-12.0	7.5	1.4	2.0	10.4	8.3	12.7	21.2	19.2	
2011	13.2	12.2	12.4	-1.4	4.6	3.1	8.1	0.6	2.4	5.7	5.7	5.7	8.7	6.6	7.2	38.4	39.9	39.5	12.5	12.2	12.3	
2012	10.0	10.2	10.1	8.5	12.7	11.7	4.7	6.0	5.7	0.1	1.5	1.1	-5.2	-3.0	-3.6	1.8	2.8	2.6	4.3	6.5	6.0	
2013	9.1	8.4	8.5	23.5	9.2	12.6	4.9	1.8	2.5	5.3	7.5	6.8	-1.6	-4.7	-3.9	3.9	5.2	4.9	7.1	5.7	6.0	
Monthly																						
2013	Oct	9.4	8.1	8.3	19.4	8.1	10.7	4.8	1.8	2.6	4.0	5.4	5.0	-2.3	-6.8	-5.6	3.5	4.8	4.5	6.5	4.9	5.3
	Nov	9.2	8.2	8.4	21.4	8.6	11.6	4.8	1.8	2.5	4.6	6.4	5.9	-1.8	-5.8	-4.7	3.7	5.0	4.7	6.8	5.3	5.6
	Dec	9.1	8.4	8.5	23.5	9.2	12.6	4.9	1.8	2.5	5.3	7.5	6.8	-1.6	-4.7	-3.9	3.9	5.2	4.9	7.1	5.7	6.0
2014	Jan	8.9	8.6	8.7	25.6	9.9	13.7	5.1	2.0	2.7	5.9	8.5	7.7	-1.4	-3.6	-3.0	4.0	5.3	5.0	7.3	6.1	6.4
	Feb	8.7	8.8	8.8	27.8	10.7	14.7	5.4	2.3	3.0	6.5	9.3	8.5	-1.3	-2.3	-2.0	4.1	5.5	5.2	7.6	6.6	6.8
	Mar	8.4	9.1	9.0	29.9	9.8	14.6	5.9	2.6	3.4	6.7	9.8	8.9	-1.2	-0.9	-1.0	4.1	5.5	5.2	7.8	6.9	7.1
	Apr	8.1	9.5	9.2	31.6	8.7	14.2	6.2	2.9	3.7	6.6	9.9	8.9	-1.1	0.6	0.2	3.9	5.5	5.1	7.9	7.2	7.4
	May	7.7	9.8	9.4	32.8	7.2	13.4	6.4	3.2	4.0	6.2	9.7	8.6	-1.1	2.2	1.3	3.5	5.2	4.8	7.8	7.5	7.6
	Jun	7.3	10.1	9.6	33.6	5.4	12.3	6.4	3.4	4.1	5.6	9.3	8.2	-1.1	3.9	2.5	2.9	4.8	4.3	7.6	7.6	7.6
	Jul	7.0	10.4	9.7	34.2	3.3	10.9	6.3	3.5	4.2	5.1	8.9	7.8	-1.2	4.4	2.8	2.3	4.3	3.8	7.4	7.6	7.5
	Aug	6.7	10.6	9.9	34.9	1.0	9.5	6.1	3.6	4.2	4.7	8.7	7.5	-1.3	4.9	3.1	1.8	3.8	3.4	7.3	7.5	7.4
	Sep	6.6	11.0	10.1	35.8	-1.4	8.0	6.0	3.7	4.2	4.4	8.5	7.3	-1.2	5.3	3.5	1.4	3.4	3.0	7.3	7.4	7.4
	Oct	6.5	11.3	10.4	36.9	-3.8	6.6	5.9	3.8	4.3	4.3	8.3	7.1	-0.9	5.8	3.9	1.1	3.2	2.7	7.4	7.4	7.4

<sup>1</sup> There was a step change in 2011 due to a change in reporting population

<sup>2</sup> With effect of January 2014 the seasonal adjustment methodology using X12 ARIMA was reviewed and changed. Trading days and leap years have been incorporated into the monthly seasonal adjustment process.

<sup>3</sup> Automotive Fuels data is effective from January 2010. Data shown pre 2010 are for growth trend purposes only; these data are excluded from totals as these are already included in their former Services sector of Motoring (now known as Vehicle Sales & Service)



## Table 2B Card expenditure statistics (seasonally adjusted)

Retail sales<sup>1 and 2</sup>

Value of purchase transactions (£ millions)

Total retail sales

	Value of purchase transactions (£ millions)																		Total retail sales			
	Food & drink			Mixed business			Clothing			Household			Other retailers			Automotive Fuels <sup>3</sup>			Value of purchases			
	Credit	Debit	Total	Credit	Debit	Total	Credit	Debit	Total	Credit	Debit	Total	Credit	Debit	Total	Credit	Debit	Total	Credit	Debit	Total	
Annual																						
2009	18,110	60,240	78,350	7,064	13,910	20,974	6,360	12,650	19,010	14,410	16,570	30,980	15,660	22,020	37,680	5,860	12,668	18,528	61,604	125,390	186,994	
2010	18,770	63,710	82,480	7,167	13,970	21,137	6,809	13,650	20,459	14,680	18,860	33,540	15,520	23,560	39,080	6,618	14,850	21,468	69,564	148,600	218,164	
2011	21,060	69,460	90,520	7,088	14,770	21,858	7,841	14,480	22,321	15,210	20,530	35,740	17,520	24,350	41,870	10,225	21,970	32,195	78,944	165,560	244,504	
2012	22,590	74,170	96,760	7,729	16,410	24,139	8,211	15,650	23,861	15,370	21,650	37,020	16,750	24,460	41,210	10,434	23,090	33,524	81,084	175,430	256,514	
2013	24,090	77,860	101,950	8,735	17,960	26,695	8,661	16,090	24,751	15,940	23,270	39,210	16,500	24,400	40,900	10,675	23,930	34,605	84,601	183,510	268,111	
Monthly																						
2013	Oct	2,030	6,550	8,580	753	1,550	2,303	738	1,370	2,108	1,350	2,010	3,360	1,350	2,060	3,410	888	2,000	2,888	7,109	15,540	22,649
	Nov	2,030	6,580	8,610	759	1,550	2,309	737	1,370	2,107	1,360	2,030	3,390	1,350	2,060	3,410	883	2,000	2,883	7,119	15,590	22,709
	Dec	2,030	6,600	8,630	767	1,540	2,307	738	1,380	2,118	1,360	2,060	3,420	1,350	2,060	3,410	878	1,990	2,868	7,123	15,630	22,753
2014	Jan	2,030	6,630	8,660	777	1,520	2,297	742	1,380	2,122	1,370	2,090	3,460	1,350	2,060	3,410	875	1,990	2,865	7,144	15,670	22,814
	Feb	2,030	6,680	8,710	786	1,490	2,276	747	1,400	2,147	1,380	2,110	3,490	1,360	2,070	3,430	873	1,990	2,863	7,176	15,740	22,916
	Mar	2,040	6,750	8,790	792	1,450	2,242	753	1,410	2,163	1,390	2,130	3,520	1,360	2,080	3,440	871	1,990	2,861	7,206	15,810	23,016
	Apr	2,040	6,820	8,860	793	1,410	2,203	758	1,420	2,178	1,390	2,140	3,530	1,370	2,090	3,460	869	1,990	2,859	7,220	15,870	23,090
	May	2,040	6,870	8,910	792	1,380	2,172	759	1,430	2,189	1,390	2,150	3,540	1,380	2,120	3,500	866	1,990	2,856	7,227	15,940	23,167
	Jun	2,040	6,900	8,940	793	1,360	2,153	758	1,430	2,188	1,400	2,160	3,560	1,390	2,130	3,520	863	1,990	2,853	7,244	15,970	23,214
	Jul	2,040	6,920	8,960	797	1,350	2,147	753	1,430	2,183	1,400	2,180	3,580	1,410	2,140	3,550	859	1,990	2,849	7,259	16,010	23,269
	Aug	2,040	6,950	8,990	803	1,350	2,153	749	1,420	2,169	1,410	2,200	3,610	1,420	2,140	3,560	855	1,990	2,845	7,277	16,050	23,327
	Sep	2,040	6,990	9,030	811	1,350	2,161	746	1,410	2,156	1,410	2,220	3,630	1,430	2,140	3,570	849	1,990	2,839	7,286	16,100	23,386
	Oct	2,050	7,030	9,080	819	1,350	2,169	746	1,410	2,156	1,420	2,250	3,670	1,440	2,140	3,580	845	1,990	2,835	7,320	16,170	23,490

Year-on-year growth rates (percentages)

Annual																						
2009	2.8	10.1	8.4	0.3	2.7	1.9	7.9	12.8	11.1	-0.1	6.4	3.3	-0.6	4.0	2.1	-12.2	-2.0	-5.5	1.4	7.9	5.7	
2010	3.6	5.8	5.3	1.5	0.4	0.8	7.1	7.9	7.6	1.9	13.8	8.3	-0.9	7.0	3.7	12.9	17.2	15.9	12.9	18.5	16.7	
2011	12.2	9.0	9.7	-1.1	5.7	3.4	15.2	6.1	9.1	3.6	8.9	6.6	12.9	3.4	7.1	54.5	47.9	50.0	13.5	11.4	12.1	
2012	7.3	6.8	6.9	9.0	11.1	10.4	4.7	8.1	6.9	1.1	5.5	3.6	-4.4	0.5	-1.6	2.0	5.1	4.1	2.7	6.0	4.9	
2013	6.6	5.0	5.4	13.0	9.4	10.6	5.5	2.8	3.7	3.7	7.5	5.9	-1.5	-0.2	-0.8	2.3	3.6	3.2	4.3	4.6	4.5	
Monthly																						
2013	Oct	7.3	4.9	5.5	12.1	8.9	9.9	5.0	2.6	3.5	2.4	5.4	4.1	-2.0	-1.1	-1.5	2.5	4.1	3.6	4.0	4.2	4.1
	Nov	7.0	5.0	5.4	12.6	9.3	10.3	5.2	2.6	3.5	3.1	6.3	5.0	-1.7	-0.7	-1.1	2.4	3.9	3.4	4.2	4.4	4.3
	Dec	6.6	5.0	5.4	13.0	9.4	10.6	5.5	2.8	3.7	3.7	7.5	5.9	-1.5	-0.2	-0.8	2.3	3.6	3.2	4.3	4.6	4.5
2014	Jan	6.2	4.9	5.2	13.4	9.4	10.7	5.9	3.2	4.1	4.4	8.7	6.9	-1.4	0.2	-0.4	2.2	3.4	3.0	4.5	4.8	4.7
	Feb	5.9	4.7	5.0	13.9	9.3	10.8	6.3	3.8	4.7	5.0	10.0	7.9	-1.4	0.7	-0.1	2.1	3.2	2.8	4.5	5.0	4.8
	Mar	5.5	4.6	4.8	14.1	8.8	10.5	6.8	4.3	5.2	5.5	11.1	8.8	-1.4	1.2	0.2	1.8	3.0	2.6	4.6	5.1	4.9
	Apr	5.0	4.7	4.7	14.1	7.9	9.9	7.0	5.0	5.7	5.8	11.9	9.4	-1.4	1.7	0.4	1.3	2.7	2.2	4.5	5.2	5.0
	May	4.5	4.8	4.7	13.9	6.7	9.0	7.0	5.5	6.0	6.0	12.4	9.8	-1.4	2.3	0.8	0.7	2.3	1.8	4.3	5.3	5.0
	Jun	4.0	4.9	4.7	13.3	5.1	7.8	6.6	5.7	6.0	6.1	12.6	9.9	-1.3	2.8	1.1	-0.1	1.8	1.2	4.0	5.2	4.8
	Jul	3.4	5.1	4.7	12.7	3.3	6.3	6.1	5.8	5.9	6.0	12.6	9.9	-1.1	3.2	1.5	-0.9	1.3	0.6	3.7	5.2	4.7
	Aug	2.9	5.3	4.8	12.0	1.2	4.7	5.5	5.8	5.7	5.8	12.7	9.9	-0.7	3.6	1.8	-1.6	0.8	0.1	3.3	5.1	4.5
	Sep	2.5	5.6	4.8	11.5	-1.0	3.0	5.0	5.8	5.5	5.7	12.8	9.9	-0.2	3.8	2.2	-2.2	0.4	-0.4	3.1	4.9	4.4
	Oct	2.1	5.8	4.9	11.0	-3.1	1.5	4.6	5.7	5.3	5.7	12.9	10.0	0.4	3.9	2.5	-2.8	0.1	-0.8	3.0	4.8	4.2

<sup>1</sup> There was a step change in 2011 due to a change in reporting population

<sup>2</sup> With effect of January 2014 the seasonal adjustment methodology using X12 ARIMA was reviewed and changed. Trading days and leap years have been incorporated into the monthly seasonal adjustment process.

<sup>3</sup> Automotive Fuels data is effective from January 2010. Data shown pre 2010 are for growth trend purposes only; these data are excluded from totals as these are already included in their former Services sector of Motoring (now known as Vehicle Sales & Service)

# Table 2C Card expenditure statistics (seasonally adjusted)

## Services<sup>1 and 2</sup>

### Number of purchase transactions (millions)

	Number of purchase transactions (millions)																		Total services			
	Vehicle Sales & Services <sup>3</sup>			Entertainment			Hotels			Travel			Financial			Other services			Number of purchases			
	Credit	Debit	Total	Credit	Debit	Total	Credit	Debit	Total	Credit	Debit	Total	Credit	Debit	Total	Credit	Debit	Total	Credit	Debit	Total	
<b>Annual</b>																						
2009	236	658	894	206	593	798	37	31	68	101	183	284	32	112	144	167	470	637	777	2,047	2,825	
2010	76	204	280	222	726	948	37	35	72	97	202	300	32	129	161	164	487	650	628	1,782	2,410	
2011	51	89	139	268	881	1,148	51	43	94	116	236	352	33	145	178	186	535	720	704	1,928	2,632	
2012	50	93	144	309	1,062	1,371	53	48	100	124	265	389	30	160	190	186	564	750	751	2,193	2,944	
2013	53	104	157	352	1,221	1,574	54	53	108	129	284	413	29	173	202	196	593	789	814	2,428	3,242	
<b>Monthly</b>																						
2013	Oct	5	9	14	31	107	138	5	5	9	11	24	35	2	15	17	17	50	67	70	210	280
	Nov	5	9	14	31	109	140	5	5	9	11	24	36	2	15	17	17	51	67	71	213	283
	Dec	5	9	14	32	112	144	5	5	9	11	25	36	2	15	17	17	51	68	72	217	288
2014	Jan	5	10	14	32	114	146	5	5	9	11	25	36	2	15	17	17	51	68	72	219	292
	Feb	5	10	14	33	116	149	5	5	10	11	25	37	2	15	17	17	51	68	73	222	295
	Mar	5	10	14	34	118	152	5	5	10	11	26	37	2	15	17	17	51	68	74	225	298
	Apr	5	10	14	34	120	154	5	5	10	11	26	37	2	15	17	17	52	68	74	227	301
	May	5	10	14	34	121	155	5	5	10	11	26	38	2	15	17	17	52	69	74	229	303
	Jun	5	10	14	35	122	157	5	5	10	11	26	38	2	15	17	17	52	69	75	230	305
	Jul	5	10	15	35	123	158	5	5	10	11	27	38	2	15	17	17	53	70	75	232	307
	Aug	5	10	15	35	126	161	5	5	10	11	27	38	2	15	17	17	53	71	76	236	312
	Sep	5	10	15	36	129	165	5	5	10	11	27	39	2	14	17	17	54	71	76	240	316
	Oct	5	10	15	36	131	167	5	5	10	12	28	39	2	14	16	17	54	72	77	243	319

### Year-on-year growth rates (percentages)

<b>Annual</b>																						
2009	-4.7	4.9	2.2	4.3	18.7	14.6	1.0	13.7	6.5	-2.2	8.5	4.5	-0.5	1.3	0.9	0.0	4.4	3.2	-0.7	8.7	5.9	
2010	-67.8	-69.0	-68.7	7.8	22.5	18.7	1.7	10.2	5.6	-3.1	10.5	5.6	0.7	15.3	12.1	-1.9	3.5	2.1	-19.2	-12.9	-14.7	
2011	-33.4	-56.5	-50.2	20.8	21.3	21.1	36.5	24.3	30.7	19.2	16.8	17.6	3.0	11.9	10.1	13.4	9.9	10.8	12.1	8.2	9.2	
2012	-0.4	5.4	3.3	15.3	20.6	19.4	3.3	11.3	7.0	6.4	12.5	10.5	-10.0	10.8	7.0	0.4	5.4	4.1	6.7	13.7	11.9	
2013	5.1	11.5	9.3	14.2	15.0	14.8	3.6	11.6	7.4	4.8	6.8	6.2	-3.6	8.1	6.2	5.2	5.1	5.1	8.4	10.7	10.1	
<b>Monthly</b>																						
2013	Oct	3.4	9.4	7.3	14.3	15.2	15.0	1.2	10.5	5.6	4.0	6.8	5.9	-4.8	8.3	6.2	3.8	4.0	3.9	7.5	10.4	9.6
	Nov	4.2	10.4	8.2	14.2	15.0	14.8	2.3	11.0	6.5	4.4	6.6	5.9	-4.1	8.2	6.3	4.5	4.5	4.5	7.9	10.5	9.8
	Dec	5.1	11.5	9.3	14.2	15.0	14.8	3.6	11.6	7.4	4.8	6.8	6.2	-3.6	8.1	6.2	5.2	5.1	5.1	8.4	10.7	10.1
2014	Jan	6.0	12.7	10.4	14.4	15.3	15.1	4.8	12.4	8.4	5.3	7.2	6.6	-3.2	7.9	6.1	5.8	5.7	5.7	8.9	11.2	10.6
	Feb	6.9	13.9	11.4	14.8	15.9	15.6	5.9	13.2	9.4	5.9	7.7	7.1	-3.0	7.7	6.1	6.3	6.2	6.2	9.4	11.7	11.1
	Mar	7.6	14.8	12.3	15.3	16.6	16.3	6.8	13.9	10.2	6.4	8.3	7.7	-2.8	7.7	6.1	6.7	6.4	6.5	10.0	12.3	11.7
	Apr	8.1	15.3	12.8	15.9	17.5	17.1	7.3	14.5	10.8	6.8	8.8	8.1	-2.6	7.6	6.1	6.8	6.5	6.6	10.4	12.8	12.2
	May	8.4	15.6	13.2	16.3	18.2	17.8	7.6	14.8	11.1	6.9	9.2	8.5	-2.5	7.3	5.9	6.8	6.5	6.5	10.7	13.2	12.6
	Jun	8.6	15.7	13.3	16.7	19.0	18.4	7.5	14.9	11.1	6.9	9.6	8.7	-2.6	6.8	5.5	6.7	6.4	6.5	10.8	13.6	12.9
	Jul	8.6	15.7	13.3	17.0	19.5	18.9	7.3	14.9	11.0	6.8	10.0	9.0	-2.7	6.2	4.9	6.4	6.4	6.4	10.9	13.9	13.1
	Aug	8.5	15.7	13.2	17.4	20.0	19.4	7.1	14.8	10.9	6.7	10.6	9.4	-3.1	5.4	4.2	6.1	6.5	6.4	10.9	14.2	13.4
	Sep	8.3	15.6	13.1	17.8	20.7	20.0	6.8	14.9	10.8	6.5	11.2	9.7	-3.7	4.5	3.3	5.8	6.7	6.4	10.9	14.6	13.7
	Oct	7.8	15.4	12.8	18.1	21.2	20.5	6.5	15.0	10.7	6.3	11.8	10.1	-4.5	3.4	2.3	5.5	6.8	6.5	10.9	14.9	13.9

<sup>1</sup> There was a step change in 2011 due to a change in reporting population

<sup>2</sup> With effect of January 2014 the seasonal adjustment methodology using X12 ARIMA was reviewed and changed. Trading days and leap years have been incorporated into the monthly seasonal adjustment process.

<sup>3</sup> With effect of January 2010 Automotive Fuels was published as a separate sub-sector in retail sales. See tables 2A and 2B

# Table 2D Card expenditure statistics (seasonally adjusted)

## Services<sup>1 and 2</sup>

### Value of purchase transactions (£ millions)

		Value of purchase transactions (£ millions)																		Total services		
		Vehicle Sales & Services <sup>3</sup>			Entertainment			Hotels			Travel			Financial			Other services			Value of purchases		
		Credit	Debit	Total	Credit	Debit	Total	Credit	Debit	Total	Credit	Debit	Total	Credit	Debit	Total	Credit	Debit	Total	Credit	Debit	Total
<b>Annual</b>																						
2009		14,660	35,510	50,170	9,618	14,610	24,228	5,302	2,723	8,025	13,077	14,100	27,177	5,720	32,810	38,530	15,162	37,021	52,183	63,540	136,774	200,314
2010		8,769	24,850	33,619	9,959	17,030	26,989	5,501	3,082	8,583	12,770	15,840	28,610	5,910	39,420	45,330	15,677	40,903	56,579	58,585	141,125	199,710
2011		7,778	22,460	30,238	14,070	20,700	34,770	8,643	3,845	12,488	16,314	18,480	34,794	7,149	46,470	53,619	18,500	46,772	65,271	72,454	158,727	231,180
2012		7,549	23,580	31,129	14,680	22,760	37,440	8,876	4,314	13,190	16,532	20,670	37,202	5,470	50,080	55,550	18,648	49,017	67,665	71,755	170,421	242,176
2013		7,667	25,710	33,377	15,650	24,620	40,270	9,242	4,781	14,023	17,432	22,140	39,572	5,113	55,090	60,203	19,924	57,246	77,171	75,029	189,587	264,616
<b>Monthly</b>																						
2013	Oct	644	2,220	2,864	1,330	2,110	3,440	791	410	1,201	1,480	1,860	3,340	418	4,700	5,118	1,704	4,912	6,616	6,367	16,212	22,579
	Nov	648	2,260	2,908	1,340	2,120	3,460	796	415	1,211	1,488	1,900	3,388	416	4,710	5,126	1,716	4,976	6,692	6,404	16,381	22,786
	Dec	652	2,300	2,952	1,350	2,160	3,510	800	422	1,222	1,497	1,930	3,427	414	4,700	5,114	1,728	5,066	6,794	6,441	16,578	23,019
2014	Jan	656	2,340	2,996	1,360	2,200	3,560	803	428	1,231	1,502	1,950	3,452	412	4,690	5,102	1,735	5,132	6,867	6,468	16,740	23,208
	Feb	657	2,360	3,017	1,370	2,240	3,610	804	435	1,239	1,501	1,970	3,471	411	4,710	5,121	1,739	5,166	6,905	6,482	16,881	23,363
	Mar	656	2,370	3,026	1,380	2,270	3,650	807	440	1,247	1,493	1,970	3,463	410	4,730	5,140	1,741	5,187	6,928	6,487	16,967	23,454
	Apr	655	2,370	3,025	1,390	2,290	3,680	811	444	1,255	1,478	1,970	3,448	410	4,770	5,180	1,740	5,232	6,972	6,484	17,076	23,560
	May	653	2,370	3,023	1,400	2,300	3,700	819	448	1,267	1,460	1,960	3,420	409	4,790	5,199	1,739	5,296	7,035	6,481	17,164	23,645
	Jun	651	2,370	3,021	1,410	2,300	3,710	828	452	1,280	1,444	1,960	3,404	408	4,810	5,218	1,740	5,365	7,105	6,481	17,257	23,738
	Jul	650	2,390	3,040	1,430	2,340	3,770	838	456	1,294	1,431	1,960	3,391	408	4,810	5,218	1,744	5,410	7,154	6,502	17,366	23,868
	Aug	650	2,410	3,060	1,440	2,390	3,830	846	463	1,309	1,426	1,980	3,406	409	4,800	5,209	1,750	5,435	7,185	6,521	17,478	24,000
	Sep	650	2,430	3,080	1,460	2,450	3,910	854	471	1,325	1,428	2,000	3,428	411	4,800	5,211	1,759	5,455	7,214	6,562	17,606	24,168
	Oct	651	2,460	3,111	1,480	2,490	3,970	860	479	1,339	1,435	2,020	3,455	414	4,800	5,214	1,769	5,494	7,263	6,610	17,743	24,352

### Year-on-year growth rates (percentages)

<b>Annual</b>																						
2009		-5.1	7.6	3.6	-0.2	12.8	7.3	-3.3	11.9	1.4	-5.3	2.8	-1.3	-2.9	11.1	8.8	3.1	1.1	1.6	-2.2	6.6	3.7
2010		-40.2	-30.0	-33.0	3.5	16.6	11.4	3.8	13.2	7.0	-2.4	12.3	5.3	3.3	20.1	17.6	3.4	10.5	8.4	-7.8	3.2	-0.3
2011		-11.3	-9.6	-10.1	41.3	21.6	28.8	57.1	24.8	45.5	27.8	16.7	21.6	21.0	17.9	18.3	18.0	14.3	15.4	23.7	12.5	15.8
2012		-2.9	5.0	2.9	4.3	10.0	7.7	2.7	12.2	5.6	1.3	11.9	6.9	-23.5	7.8	3.6	0.8	4.8	3.7	-1.0	7.4	4.8
2013		1.6	9.0	7.2	6.6	8.2	7.6	4.1	10.8	6.3	5.4	7.1	6.4	-6.5	10.0	8.4	6.8	16.8	14.0	4.6	11.2	9.3
<b>Monthly</b>																						
2013	Oct	0.3	7.3	5.6	6.4	8.4	7.6	1.1	10.5	4.1	5.1	7.6	6.5	-8.3	10.0	8.2	5.2	15.3	12.5	3.3	10.7	8.5
	Nov	0.9	8.0	6.3	6.5	8.3	7.6	2.5	10.7	5.2	5.2	7.2	6.3	-7.4	10.2	8.4	6.1	16.1	13.3	3.9	11.0	8.9
	Dec	1.6	9.0	7.2	6.6	8.2	7.6	4.1	10.8	6.3	5.4	7.1	6.4	-6.5	10.0	8.4	6.8	16.8	14.0	4.6	11.2	9.3
2014	Jan	2.2	10.1	8.2	6.9	8.2	7.7	5.7	11.0	7.5	5.8	7.1	6.5	-5.6	9.6	8.1	7.5	17.3	14.6	5.2	11.4	9.6
	Feb	2.8	11.2	9.2	7.1	8.6	8.0	7.1	11.3	8.5	6.0	7.3	6.8	-4.4	9.0	7.7	8.0	17.4	14.8	5.8	11.5	9.9
	Mar	3.1	12.1	10.0	7.4	9.2	8.5	8.2	11.6	9.4	6.2	7.4	6.9	-5.1	8.4	7.2	8.4	17.3	14.9	6.1	11.6	10.0
	Apr	3.3	12.6	10.4	7.6	9.8	9.0	8.9	12.0	10.0	6.0	7.3	6.7	-5.4	8.0	6.7	8.5	17.0	14.7	6.2	11.5	10.0
	May	3.4	12.9	10.6	7.8	10.4	9.4	9.2	12.3	10.3	5.5	7.0	6.3	-5.6	7.7	6.4	8.5	16.4	14.3	6.2	11.3	9.8
	Jun	3.3	12.9	10.6	7.9	10.9	9.7	9.3	12.6	10.4	4.8	6.7	5.9	-5.6	7.4	6.2	8.3	15.6	13.6	6.0	11.0	9.6
	Jul	3.3	13.0	10.7	8.0	11.3	10.0	9.2	12.8	10.4	4.1	6.6	5.5	-5.5	7.0	5.9	7.9	14.8	13.0	5.8	10.8	9.3
	Aug	3.2	13.1	10.8	8.1	11.8	10.4	9.0	13.1	10.4	3.3	6.9	5.3	-5.3	6.4	5.4	7.5	14.1	12.4	5.5	10.6	9.1
	Sep	3.1	13.2	10.9	8.3	12.6	10.9	8.9	13.5	10.5	2.6	7.3	5.2	-5.0	5.7	4.8	7.0	13.6	11.9	5.2	10.4	8.9
	Oct	2.9	13.2	10.8	8.7	13.4	11.5	8.7	14.0	10.5	1.9	7.7	5.1	-4.6	5.0	4.2	6.5	13.2	11.5	5.0	10.2	8.7

<sup>1</sup> There was a step change in 2011 due to a change in reporting population

<sup>2</sup> With effect of January 2014 the seasonal adjustment methodology using X12 ARIMA was reviewed and changed. Trading days and leap years have been incorporated into the monthly seasonal adjustment process.

<sup>3</sup> With effect of January 2010 Automotive Fuels was published as a separate sub-sector in retail sales. See tables 2A and 2B

Table 3A Card expenditure statistics (not seasonally adjusted)

Number of credit card transactions

Detailed sector breakdown - retail sectors (not seasonally adjusted)

Historical data located in hidden columns

	October 2013	November 2013	December 2013	January 2014	February 2014	March 2014	April 2014	May 2014	June 2014	July 2014	August 2014	September 2014	October 2014	Total (latest 12 months)
Supermarkets	57,093,638	58,248,997	66,668,040	54,229,964	50,643,647	58,491,519	56,997,774	58,697,290	60,631,120	61,088,401	57,114,815	60,586,648	61,830,330	705,228,545
Bakers & dairies	262,881	259,950	254,447	218,873	248,836	291,266	271,991	298,346	307,318	325,896	331,703	346,522	381,124	3,533,272
Sweet stores	255,747	341,719	569,862	190,697	243,029	284,882	354,176	247,356	307,081	259,510	263,440	255,652	301,988	3,571,392
Miscellaneous foodstores	3,435,306	3,296,909	3,663,040	3,131,473	3,003,164	3,378,151	3,266,143	3,340,250	3,427,085	3,528,170	3,291,489	3,445,030	3,495,159	40,266,063
Off-licences	552,474	597,368	718,191	455,948	480,686	562,790	562,636	595,579	620,745	633,155	603,337	576,881	582,608	6,989,924
<b>Food &amp; drink</b>	<b>61,600,046</b>	<b>62,744,943</b>	<b>71,873,580</b>	<b>58,226,955</b>	<b>54,616,362</b>	<b>63,008,608</b>	<b>61,452,720</b>	<b>63,178,621</b>	<b>65,245,349</b>	<b>65,835,132</b>	<b>61,604,784</b>	<b>65,210,733</b>	<b>66,591,209</b>	<b>759,589,196</b>
Department stores	5,506,018	7,434,515	9,383,748	5,070,519	4,332,925	5,484,238	5,122,655	5,852,710	6,210,656	5,485,616	5,178,290	5,708,960	5,708,960	71,103,216
Discount stores	2,053,785	2,489,901	2,589,176	1,843,846	1,676,917	1,857,092	1,973,143	2,050,328	2,047,900	2,107,162	2,187,082	2,082,320	2,295,867	25,200,734
Catalogues	6,090,055	6,184,750	6,341,471	6,429,400	6,089,072	8,310,092	8,329,589	8,314,021	8,514,461	9,196,113	10,461,308	12,018,963	13,094,788	103,284,028
Miscellaneous mixed	2,848,730	3,211,356	4,042,340	2,448,209	2,273,260	2,596,669	2,576,093	2,619,148	2,745,509	2,708,225	2,552,241	2,730,444	2,919,227	33,422,721
<b>Mixed business</b>	<b>16,498,588</b>	<b>19,320,522</b>	<b>22,356,735</b>	<b>16,559,839</b>	<b>14,372,174</b>	<b>17,834,372</b>	<b>18,001,480</b>	<b>18,467,735</b>	<b>19,160,580</b>	<b>20,222,156</b>	<b>20,686,247</b>	<b>22,010,017</b>	<b>24,018,842</b>	<b>233,010,699</b>
Men's clothing	361,515	395,231	561,219	393,264	272,197	296,584	314,562	333,951	395,921	430,718	362,514	320,944	341,354	4,418,459
Women's clothing	1,952,574	2,138,557	2,983,625	1,809,206	1,480,272	1,863,469	1,970,071	2,148,099	2,401,795	2,563,418	2,019,646	1,961,691	1,983,874	25,323,723
Family clothing	8,404,963	9,649,272	12,976,417	7,756,496	6,421,098	8,007,527	8,641,770	9,094,887	9,591,497	10,400,921	8,778,183	8,595,298	9,245,001	109,158,367
Miscellaneous clothing	691,247	558,629	636,271	386,599	330,020	425,946	400,059	463,400	502,370	533,256	472,742	463,839	494,536	5,697,307
Shoe shops	1,318,286	1,287,345	1,694,672	1,322,524	887,049	1,051,584	1,270,984	1,332,562	1,352,208	1,620,651	1,520,254	1,294,389	1,315,745	16,129,967
<b>Clothing</b>	<b>12,728,585</b>	<b>14,029,034</b>	<b>18,852,204</b>	<b>11,668,089</b>	<b>9,390,636</b>	<b>11,645,110</b>	<b>12,627,446</b>	<b>13,372,539</b>	<b>14,423,791</b>	<b>15,548,964</b>	<b>13,153,339</b>	<b>12,636,161</b>	<b>13,380,510</b>	<b>160,727,823</b>
Furniture stores	1,659,829	1,826,980	2,008,621	1,624,038	1,269,105	1,369,819	1,335,464	1,369,006	1,370,657	1,397,622	1,443,318	1,457,353	1,609,362	18,081,345
Household appliance stores	1,403,675	1,492,623	1,551,652	1,386,927	1,222,785	1,368,061	1,329,475	1,356,395	1,345,912	1,375,392	1,369,529	1,376,429	1,452,866	16,628,046
Electronic stores	1,304,342	1,426,280	1,966,365	1,458,398	1,127,094	1,191,491	1,180,405	1,158,602	1,141,839	1,199,477	1,177,056	1,302,988	1,343,139	15,673,134
DIY stores	6,359,875	6,131,107	6,075,875	5,620,367	5,511,291	6,585,443	7,099,501	7,183,497	6,711,164	6,796,877	6,765,785	6,484,108	6,633,117	77,598,132
Floor covering stores	195,295	198,849	151,754	168,811	163,264	178,306	169,464	163,006	161,908	170,112	174,404	180,492	204,360	2,084,730
Garden centres	1,371,300	1,405,701	1,730,963	939,795	993,315	1,975,139	2,357,676	2,535,755	2,077,289	1,631,458	1,414,282	1,505,140	1,523,223	20,089,736
Miscellaneous household	1,639,866	1,759,966	2,295,699	1,665,995	1,373,807	1,564,948	1,508,556	1,557,983	1,626,757	1,728,844	1,659,340	1,706,823	1,753,166	20,201,884
<b>Household</b>	<b>13,934,182</b>	<b>14,241,506</b>	<b>15,780,929</b>	<b>12,864,331</b>	<b>11,660,661</b>	<b>14,233,207</b>	<b>14,980,541</b>	<b>15,324,244</b>	<b>14,435,526</b>	<b>14,299,782</b>	<b>14,003,714</b>	<b>14,013,333</b>	<b>14,519,233</b>	<b>170,357,007</b>
Books, newspapers & magazines	2,105,693	2,287,550	3,381,975	1,774,536	1,631,312	1,842,103	1,740,862	1,794,583	1,876,943	1,999,350	1,887,174	2,101,605	2,174,572	24,492,565
Record shops	230,882	310,799	777,146	230,976	192,665	205,829	205,237	189,599	185,953	193,635	188,335	193,635	205,056	3,083,870
Music shops	148,635	153,219	185,763	140,271	122,280	127,443	115,845	118,073	110,608	119,722	110,101	140,080	137,059	1,580,464
Hobbies, toys & games	531,793	778,529	1,126,941	424,272	388,424	455,912	458,604	461,034	454,415	501,143	503,616	572,433	644,276	6,769,599
Photographic	180,046	201,763	241,250	168,609	147,739	137,864	137,864	152,271	176,979	170,988	174,549	168,879	2,029,571	
Handicraft	106,029	111,351	95,931	94,511	82,514	92,067	84,386	84,182	80,735	85,151	88,873	91,075	96,991	1,087,767
Sports shops	2,584,620	2,673,835	3,146,963	2,587,737	2,200,325	2,554,403	2,763,182	2,965,478	3,101,497	3,424,220	3,374,877	2,990,170	2,705,499	34,488,186
Jewellers	669,855	864,653	1,296,970	695,688	627,438	625,622	660,408	660,408	699,387	708,113	647,605	628,272	621,962	8,766,250
Computer software	585,902	602,017	692,255	520,918	318,027	334,344	299,238	267,725	256,033	263,969	229,223	275,226	272,589	4,331,564
Medical goods	442,660	446,351	541,936	417,495	393,413	454,292	443,964	477,152	493,652	535,977	495,574	491,190	527,041	5,718,037
Chemists	3,916,413	4,132,957	5,942,895	3,669,833	3,305,234	3,842,147	3,688,638	3,919,350	4,175,160	4,298,637	3,789,871	4,046,025	4,182,467	48,993,214
Optical goods	486,509	459,998	411,756	494,672	466,591	528,826	491,505	518,335	544,419	567,507	516,462	513,748	505,269	6,019,088
Cosmetic stores	465,673	613,751	1,018,541	385,108	359,696	431,911	402,278	433,087	481,406	484,158	458,036	489,088	538,804	6,095,864
Tobacconists	24,583	24,178	30,484	26,664	24,703	28,516	28,870	31,518	34,030	36,250	37,014	35,497	37,156	373,156
Florists	325,744	325,642	542,226	288,616	402,286	546,908	340,827	356,423	345,465	337,394	293,419	333,418	312,535	4,425,159
Artists' supplies	324,776	365,568	387,731	266,583	265,919	290,558	266,722	271,365	265,387	283,193	283,229	288,984	320,939	3,556,178
Antiques, art & stamps/coins	165,003	166,203	182,711	127,321	124,347	139,340	148,991	163,259	174,291	160,042	174,436	182,888	169,574	1,913,403
Pawn shops	3,685	3,879	5,910	3,544	3,387	3,596	3,274	3,262	3,280	4,180	4,145	4,089	4,108	46,654
Gift shops	1,474,940	1,910,235	2,849,485	1,147,851	1,178,081	1,395,036	1,278,338	1,349,995	1,530,219	1,601,594	1,647,539	1,597,827	1,680,567	19,166,767
Secondhand shops	21,387	21,694	18,739	21,837	16,936	21,533	23,674	21,181	22,674	21,289	21,289	23,336	259,068	
Luggage & leather goods	116,818	131,736	173,770	104,039	81,104	98,470	95,737	103,023	117,169	122,440	120,209	104,581	113,337	1,365,615
Pet shops	812,871	795,270	870,582	776,910	709,721	798,306	800,551	820,125	809,028	835,900	816,913	820,832	858,310	9,712,448
Religious goods	10,384	7,778	6,935	7,537	6,935	8,342	10,274	12,461	12,968	15,533	13,755	11,616	11,016	124,222
Direct sales	4,044,664	3,584,185	3,793,509	3,547,575	3,289,938	3,536,885	3,521,918	3,455,927	3,349,481	3,415,209	3,006,517	3,390,743	3,610,443	41,502,330
Miscellaneous & speciality shops	2,888,099	3,306,818	3,660,350	2,933,532	2,653,425	3,054,845	3,007,121	3,297,886	3,321,443	3,528,257	3,426,476	3,527,240	4,896,143	40,613,538
<b>Other retail</b>	<b>22,667,664</b>	<b>24,279,959</b>	<b>31,388,143</b>	<b>20,851,108</b>	<b>18,972,368</b>	<b>21,629,483</b>	<b>20,981,685</b>	<b>21,927,693</b>	<b>22,603,479</b>	<b>23,737,144</b>	<b>22,313,052</b>	<b>23,014,987</b>	<b>24,815,474</b>	<b>276,514,575</b>
<b>Automotive Fuels</b>	<b>20,068,968</b>	<b>19,453,192</b>	<b>19,700,953</b>	<b>18,578,717</b>	<b>17,647,840</b>	<b>20,285,710</b>	<b>19,541,927</b>	<b>20,201,721</b>	<b>20,524,988</b>	<b>21,011,476</b>	<b>19,883,640</b>	<b>20,538,893</b>	<b>20,241,508</b>	<b>237,610,565</b>
<b>Total retail sales</b>	<b>147,498,033</b>	<b>154,069,156</b>	<b>179,952,544</b>	<b>138,749,039</b>	<b>126,660,041</b>	<b>148,636,490</b>	<b>147,585,799</b>	<b>152,472,753</b>	<b>156,393,713</b>	<b>160,654,654</b>	<b>151,644,776</b>	<b>157,424,124</b>	<b>163,566,776</b>	<b>1,837,809,865</b>

Table 3A Card expenditure statistics (not seasonally adjusted)

Number of credit card transactions

## Detailed sector breakdown - services sectors (not seasonally adjusted)

	October 2013	November 2013	December 2013	January 2014	February 2014	March 2014	April 2014	May 2014	June 2014	July 2014	August 2014	September 2014	October 2014	Total (latest 12 months)
Auto rental	473,719	405,564	378,236	396,858	383,576	444,885	461,221	484,255	487,455	555,151	500,462	511,270	413,138	5,422,071
Auto parts & accessories	749,248	737,727	675,823	731,647	702,179	813,522	785,705	784,299	775,934	811,061	739,860	754,556	747,991	9,060,304
Auto services	2,037,002	1,966,855	1,848,561	1,878,503	1,826,107	2,018,861	1,904,900	2,055,171	2,069,744	2,159,670	1,894,723	2,159,220	2,298,670	24,080,785
Auto repair shops	897,179	858,596	773,682	873,209	836,421	988,773	879,423	896,408	894,770	929,910	847,137	904,716	892,621	10,575,666
Service stations	0	0	0	0	0	0	0	0	0	0	0	0	0	0
Vehicle sales	552,130	503,874	447,933	526,409	519,371	650,525	591,055	607,552	611,729	623,550	570,041	611,948	559,613	6,823,600
<b>Vehicle Sales &amp; Services</b>	<b>4,709,278</b>	<b>4,472,616</b>	<b>4,124,235</b>	<b>4,406,626</b>	<b>4,267,654</b>	<b>4,916,366</b>	<b>4,622,304</b>	<b>4,827,685</b>	<b>4,839,632</b>	<b>5,079,342</b>	<b>4,552,223</b>	<b>4,941,710</b>	<b>4,912,033</b>	<b>55,962,426</b>
Restaurants	16,388,914	15,858,167	15,937,174	14,497,422	15,000,918	17,383,616	17,078,399	18,428,523	18,681,211	19,675,271	19,650,962	19,474,411	20,357,450	212,023,524
Public houses	2,684,763	2,631,824	2,993,454	2,507,341	2,682,597	3,178,876	2,905,567	2,867,335	2,966,619	3,105,470	3,097,818	3,095,522	2,917,776	34,950,199
Catering services	550,595	551,530	522,021	502,140	509,397	577,975	546,378	592,204	611,256	637,607	548,786	662,534	700,168	6,961,996
Video stores	253,977	259,755	257,361	291,986	236,679	193,799	183,136	198,539	187,600	179,737	187,600	200,162	194,812	2,600,041
Cinema, theatre & dance	2,093,374	2,277,896	2,317,580	2,081,910	1,865,420	1,758,778	1,720,158	1,734,904	1,625,643	1,799,514	1,885,243	1,688,733	2,103,104	22,858,883
Concerts & entertainers	70,775	69,054	65,612	53,303	56,341	56,671	58,889	60,358	53,412	57,313	72,183	56,304	155,989	815,429
Tourist attractions	510,639	319,256	315,830	259,559	313,539	394,829	680,919	640,833	679,940	869,862	1,035,607	688,056	617,247	6,815,477
Amusement parks	67,845	35,059	25,533	20,430	33,766	38,110	97,405	75,533	78,563	105,874	153,147	81,893	84,808	830,121
Aquariums	21,257	14,471	13,400	14,041	20,535	23,566	41,437	31,713	29,453	53,005	77,289	50,730	39,582	409,222
Sports & games establishments	2,452,705	2,402,197	3,601,297	3,409,375	2,996,871	3,516,752	3,238,542	3,526,019	3,163,540	3,152,681	3,153,968	3,752,906	3,831,557	39,745,705
Professional sports clubs	119,270	123,279	150,241	118,217	102,277	129,269	140,729	156,949	111,385	144,396	133,455	156,788	122,882	1,589,867
Gambling	5,108,341	4,956,463	5,810,300	5,726,962	5,358,815	6,132,327	5,812,518	5,390,776	5,710,887	5,298,448	4,962,234	5,871,800	5,867,624	66,899,154
Personal services	288,351	265,324	303,603	241,369	220,650	244,799	239,993	255,865	254,380	259,245	285,033	285,851	285,548	3,141,660
Miscellaneous entertainment	651,210	555,754	458,249	588,093	572,751	644,883	680,714	704,453	654,885	717,810	931,134	783,590	918,186	8,210,502
<b>Entertainment</b>	<b>31,262,016</b>	<b>30,320,029</b>	<b>32,771,655</b>	<b>30,312,148</b>	<b>29,970,556</b>	<b>34,296,926</b>	<b>33,435,447</b>	<b>34,648,601</b>	<b>34,819,713</b>	<b>36,064,096</b>	<b>36,166,596</b>	<b>36,849,280</b>	<b>38,196,733</b>	<b>407,851,780</b>
<b>Hotels</b>	<b>4,840,124</b>	<b>4,467,429</b>	<b>4,088,300</b>	<b>4,083,032</b>	<b>4,145,655</b>	<b>4,779,228</b>	<b>4,621,856</b>	<b>5,088,404</b>	<b>5,144,954</b>	<b>5,392,087</b>	<b>5,008,619</b>	<b>5,364,820</b>	<b>5,260,401</b>	<b>57,444,785</b>
Airlines	1,593,212	1,338,321	1,076,908	1,793,149	1,472,817	1,632,121	1,577,849	1,696,763	1,466,966	1,439,314	826,932	1,486,949	1,494,116	17,301,735
Airport terminals	37,187	28,978	26,467	30,805	30,311	37,202	39,803	43,787	45,051	47,702	41,776	45,075	38,580	455,537
Railways	6,167,437	5,935,621	5,470,311	5,395,775	5,136,056	6,016,771	5,637,972	6,055,935	6,308,006	6,493,007	5,606,498	6,422,484	6,582,038	71,060,474
Buses	780,117	747,833	641,808	699,472	705,467	797,647	785,207	851,027	796,410	834,718	553,618	632,530	632,194	8,677,931
Sea travel	139,008	117,598	108,514	129,609	141,283	180,642	195,449	231,008	226,843	251,004	236,412	227,742	203,222	2,249,326
Travel agents	1,858,481	1,624,009	1,493,578	2,139,052	1,838,082	1,962,089	1,789,813	1,890,807	1,855,617	1,836,259	1,704,006	1,906,279	1,855,618	21,895,209
Timeshares	19,255	17,274	17,424	27,484	20,608	18,897	18,170	17,870	15,935	17,550	741	17,736	18,488	208,177
Camping grounds	138,217	74,780	65,531	108,435	113,108	160,290	243,032	272,975	271,336	338,850	349,572	216,451	148,694	2,363,054
Miscellaneous travel	918,403	852,825	814,053	794,911	793,733	902,792	873,155	947,789	948,123	1,008,342	1,221,358	1,381,001	1,474,862	12,012,944
<b>Travel</b>	<b>11,651,317</b>	<b>10,737,239</b>	<b>9,714,594</b>	<b>11,118,692</b>	<b>10,251,465</b>	<b>11,708,451</b>	<b>11,160,450</b>	<b>12,007,961</b>	<b>11,933,817</b>	<b>12,266,746</b>	<b>10,540,913</b>	<b>12,336,247</b>	<b>12,447,812</b>	<b>136,224,367</b>
Telegraph services / Wire transfer money order	14,162	12,789	14,129	15,188	15,915	16,698	15,785	18,603	17,196	17,288	3,830	16,334	19,855	183,610
Insurance services	1,777,630	1,495,708	1,433,304	1,629,910	1,526,165	1,760,216	1,664,767	1,655,283	1,667,084	1,839,112	1,663,217	1,728,944	1,558,553	19,622,263
Fis - cash disbursements (auto & manual)	20,716	17,252	13,429	15,639	16,258	17,396	14,963	16,682	17,106	16,167	13,324	18,063	18,007	194,286
Fis - merchandise & services	382,694	367,261	367,935	390,220	353,889	417,721	377,995	375,943	367,773	374,318	352,262	355,847	132,658	4,233,822
Non-Fis - foreign currency, travellers' cheques	73,686	53,056	53,897	56,886	63,712	74,872	96,032	126,063	134,594	133,160	121,116	131,418	98,922	1,143,728
Security brokers and dealers	10,294	10,311	9,894	10,758	8,450	8,458	7,825	7,620	6,234	6,704	5,497	7,105	9,757	98,613
Tax preparation services	153	150	121	203	201	216	171	160	168	131	208	158	158	2,053
Tax payments	4,248	3,859	3,900	3,494	3,719	3,648	4,484	4,192	4,497	5,484	5,021	14,484	13,454	70,236
Fines, bail and bond payments	75,357	71,201	69,803	71,855	68,784	74,170	69,133	70,008	70,385	75,076	69,242	69,978	74,058	853,693
Miscellaneous financial	84,951	77,303	66,068	71,097	69,499	86,999	93,520	91,650	94,717	100,733	89,335	92,888	97,775	1,031,584
<b>Financial</b>	<b>2,443,891</b>	<b>2,108,890</b>	<b>2,032,480</b>	<b>2,265,250</b>	<b>2,126,592</b>	<b>2,460,394</b>	<b>2,344,675</b>	<b>2,366,204</b>	<b>2,379,754</b>	<b>2,568,208</b>	<b>2,322,975</b>	<b>2,435,269</b>	<b>2,023,197</b>	<b>27,433,888</b>

Table 3A Card expenditure statistics (not seasonally adjusted)

Number of credit card transactions

Detailed sector breakdown - services sectors (continued, not seasonally adjusted)

	October 2013	November 2013	December 2013	January 2014	February 2014	March 2014	April 2014	May 2014	June 2014	July 2014	August 2014	September 2014	October 2014	Total (latest 12 months)
Telecoms	2,037,282	1,932,087	1,992,186	1,957,337	1,737,496	1,922,201	1,845,789	1,873,705	1,820,424	1,940,226	1,832,428	2,094,885	2,026,129	22,974,893
Utilities	404,266	361,679	358,992	395,102	375,005	423,441	360,426	394,018	361,589	386,438	344,724	400,384	414,699	4,576,497
Contractors (residential & commercial)	301,694	287,437	238,202	264,917	254,564	279,307	259,777	264,691	264,216	283,335	255,129	285,156	309,577	3,246,308
Gardening services	47,954	47,483	61,863	34,612	37,552	66,987	77,143	79,009	70,139	58,339	48,078	49,984	49,984	681,173
Veterinary services	654,717	605,735	590,999	618,075	561,027	612,151	614,798	635,408	642,890	708,302	673,568	672,697	697,860	7,633,510
Photocopying & printing	310,710	320,936	344,367	298,378	237,636	267,338	238,934	253,817	244,676	250,786	218,538	258,906	270,138	3,204,450
Photographic studios	145,031	150,555	137,012	88,093	86,768	102,648	101,318	122,873	136,376	155,656	118,162	126,215	158,239	1,483,915
Beauty & barber shops	1,573,468	1,609,096	2,041,008	1,458,788	1,389,438	1,577,388	1,543,901	1,644,624	1,655,854	1,723,337	1,595,475	1,637,457	1,655,549	19,531,915
Employment agencies	29,037	26,698	23,239	22,428	21,330	22,317	22,626	22,134	24,877	25,676	22,743	23,563	26,347	283,978
Counselling services	6,576	5,798	4,636	5,896	5,458	6,201	6,229	6,016	5,893	6,146	5,390	5,839	6,683	70,185
Legal services	60,488	41,321	66,712	58,778	39,898	78,454	56,243	56,778	55,962	57,733	53,120	56,910	59,291	681,200
Laundry & cleaning	206,888	193,682	181,537	183,012	163,424	190,058	187,756	203,512	219,132	220,051	191,885	213,948	219,973	2,367,970
Funeral services	12,250	11,806	11,689	12,826	11,994	13,069	12,330	12,390	12,379	12,818	11,217	12,466	12,361	147,345
Medical services	1,328,013	1,263,840	1,127,482	1,309,962	1,191,535	1,279,940	1,224,028	1,258,384	1,276,436	1,333,469	1,157,149	1,325,534	1,380,751	15,128,510
Moving & courier services	448,352	435,760	418,601	386,531	384,439	418,748	406,900	437,923	421,904	444,248	367,785	436,497	474,088	5,033,424
Repair shops (not auto)	66,033	65,551	63,803	66,667	58,736	60,509	57,755	59,730	60,119	64,539	60,539	63,872	66,613	748,433
Accounting services	38,928	37,146	36,013	45,387	35,026	36,575	28,873	27,888	28,911	30,566	30,888	37,028	38,089	412,390
Advertising, consultancy & PR	82,082	83,131	61,132	70,899	64,049	73,146	69,793	70,583	69,569	71,795	67,745	71,402	68,930	842,174
Computer programming	1,504,643	1,590,037	2,009,671	1,362,008	1,174,166	1,356,973	1,287,080	1,310,328	1,358,164	1,416,607	1,363,147	1,510,704	1,588,711	17,327,596
Farming services	102,921	105,644	120,129	103,931	97,123	111,280	112,038	113,761	110,134	107,943	103,520	107,139	107,860	1,300,502
Miscellaneous professional services	967,131	926,776	875,755	935,356	880,584	958,144	907,397	885,235	884,102	922,738	828,243	941,942	1,155,517	11,101,789
Engineering services	55,696	50,653	44,337	50,440	48,815	54,097	52,167	52,282	53,549	56,524	48,699	51,978	55,759	619,300
Marina services	46,742	36,912	36,047	34,776	31,179	50,505	69,437	74,883	84,199	100,634	92,290	74,317	49,863	735,042
Wrecking & salvage yards	3,894	3,365	2,530	3,544	3,178	3,606	3,710	3,579	3,572	3,914	3,467	4,003	3,889	42,357
Pest control	3,426	2,786	2,363	2,526	2,287	2,657	2,811	3,431	3,888	3,888	3,124	3,416	4,020	36,701
Educational establishments	752,379	704,570	571,025	776,327	629,403	757,142	596,396	670,953	668,813	606,935	474,171	927,772	854,026	8,237,533
Child care services	21,442	18,613	18,333	23,664	22,588	19,639	20,424	21,473	18,318	18,682	22,642	19,920	22,513	246,809
Social, political & religious organisations	1,347,088	1,526,509	1,327,738	1,183,485	1,101,393	1,497,052	1,374,001	1,447,647	1,438,502	1,422,725	1,396,777	1,553,201	1,458,810	16,727,840
Government services	2,412,727	2,221,893	2,103,513	2,408,356	2,342,378	2,567,896	2,526,309	2,661,148	2,659,224	2,703,299	2,433,934	2,589,424	2,609,465	29,826,839
Miscellaneous services	1,416,482	1,425,366	1,968,180	1,412,100	1,343,621	1,507,244	1,208,529	1,427,557	1,457,208	1,513,345	1,258,622	1,398,469	1,411,557	17,331,798
Commercial equipment	1,015,092	995,875	948,365	987,945	868,457	927,720	860,208	887,130	869,808	910,146	840,748	988,416	985,467	11,070,285
Other services	17,403,432	17,088,740	17,787,459	16,562,146	15,200,547	17,244,433	16,135,126	16,982,890	16,980,331	17,560,840	15,923,947	17,943,444	18,242,758	203,652,661
<b>Total services</b>	<b>72,310,058</b>	<b>69,194,943</b>	<b>70,518,723</b>	<b>68,747,894</b>	<b>65,962,469</b>	<b>75,405,798</b>	<b>72,319,858</b>	<b>75,921,745</b>	<b>76,098,201</b>	<b>78,931,319</b>	<b>74,515,273</b>	<b>79,870,770</b>	<b>81,082,934</b>	<b>888,569,927</b>
<b>TOTAL</b>	<b>219,808,091</b>	<b>223,264,099</b>	<b>250,471,267</b>	<b>207,496,933</b>	<b>192,622,510</b>	<b>224,042,288</b>	<b>219,905,657</b>	<b>228,394,498</b>	<b>232,491,914</b>	<b>239,585,973</b>	<b>226,160,049</b>	<b>237,294,894</b>	<b>244,649,710</b>	<b>2,726,379,792</b>

Table 3B Card expenditure statistics (not seasonally adjusted)

Value of credit card transactions

## Detailed sector breakdown - retail sectors (not seasonally adjusted)

Historical data located in hidden columns

£	October 2013	November 2013	December 2013	January 2014	February 2014	March 2014	April 2014	May 2014	June 2014	July 2014	August 2014	September 2014	October 2014	Total (latest 12 months)
Supermarkets	1,826,140,750	1,976,965,597	2,452,034,549	1,669,391,820	1,580,303,446	1,829,134,864	1,825,485,104	1,854,539,445	1,892,842,169	1,866,286,352	1,768,193,043	1,851,927,919	1,891,157,052	22,458,261,360
Bakers & dairies	4,080,205	4,137,032	4,655,329	3,436,605	3,565,614	4,296,637	4,054,742	4,328,168	4,501,039	4,555,222	4,447,042	4,821,709	5,019,309	51,818,448
Sweet stores	6,948,075	9,982,186	18,355,834	4,840,433	5,655,323	6,960,349	9,036,579	5,996,778	6,311,136	6,559,513	5,728,239	6,124,994	6,864,072	92,415,436
Miscellaneous foodstores	101,797,668	103,777,264	129,511,241	95,640,387	91,045,937	102,527,425	99,619,064	101,957,003	105,099,451	105,072,662	95,260,717	101,868,863	105,551,300	1,236,931,314
Off-licences	40,227,043	49,800,057	62,836,919	31,686,134	33,031,374	40,934,432	41,646,140	42,286,286	42,379,035	42,768,741	39,502,550	37,486,285	39,110,321	503,468,274
<b>Food &amp; drink</b>	<b>1,979,193,741</b>	<b>2,144,662,136</b>	<b>2,667,393,872</b>	<b>1,804,995,379</b>	<b>1,713,601,694</b>	<b>1,983,853,707</b>	<b>1,979,841,629</b>	<b>2,009,107,680</b>	<b>2,051,132,830</b>	<b>2,025,242,490</b>	<b>1,913,131,591</b>	<b>2,002,229,770</b>	<b>2,047,702,054</b>	<b>24,342,894,832</b>
Department stores	403,925,107	513,436,969	617,716,671	381,422,432	297,273,185	359,113,742	364,618,673	375,961,071	402,239,253	385,177,909	384,744,014	416,549,663	468,540,962	4,885,450,962
Discount stores	98,496,565	119,700,804	126,666,687	86,406,756	75,022,870	82,260,449	85,742,661	88,518,943	84,709,584	85,398,098	96,015,907	91,614,033	101,469,831	1,123,526,623
Catalogues	144,816,925	160,948,175	155,551,854	145,585,238	134,492,478	174,871,612	161,180,149	156,496,282	153,413,628	159,650,484	179,656,076	202,221,488	209,405,782	1,993,473,246
Miscellaneous mixed	120,250,942	135,799,913	163,599,865	93,489,643	88,631,515	103,015,297	104,163,540	108,262,040	112,268,566	110,696,544	106,724,253	117,090,258	125,590,490	1,369,331,924
<b>Mixed business</b>	<b>767,489,539</b>	<b>929,885,661</b>	<b>1,063,535,077</b>	<b>706,904,069</b>	<b>595,420,046</b>	<b>719,261,100</b>	<b>715,705,023</b>	<b>729,238,336</b>	<b>752,631,031</b>	<b>740,923,035</b>	<b>769,593,616</b>	<b>795,669,793</b>	<b>853,015,766</b>	<b>9,371,782,755</b>
Men's clothing	43,264,473	43,781,987	55,969,042	42,801,660	31,221,703	37,604,140	37,862,141	40,833,767	47,265,584	44,249,516	38,431,504	38,690,483	43,078,069	501,789,596
Women's clothing	150,301,633	155,636,178	182,627,083	120,564,248	110,629,220	143,226,453	141,500,930	147,472,156	162,901,994	150,980,955	127,844,880	143,884,654	150,155,720	1,737,424,471
Family clothing	454,897,046	494,323,460	615,513,650	354,648,170	323,538,576	404,817,325	428,739,176	439,909,785	455,110,063	459,841,982	420,793,689	439,389,484	477,989,731	5,314,615,091
Miscellaneous clothing	41,299,095	37,343,227	38,634,749	25,915,940	23,892,197	28,968,068	28,595,033	30,340,943	33,313,161	32,369,999	29,502,619	30,658,631	33,734,224	373,276,791
Shoe shops	96,315,477	94,647,789	113,054,991	77,521,018	56,136,705	70,404,425	81,009,536	83,013,735	90,473,966	84,763,032	89,036,397	85,479,476	95,268,150	1,020,814,300
<b>Clothing</b>	<b>786,077,724</b>	<b>825,732,641</b>	<b>1,005,799,515</b>	<b>621,451,036</b>	<b>545,418,401</b>	<b>685,028,411</b>	<b>717,706,876</b>	<b>741,575,386</b>	<b>789,064,788</b>	<b>772,205,484</b>	<b>705,609,089</b>	<b>736,102,728</b>	<b>800,225,894</b>	<b>8,947,920,249</b>
Furniture stores	312,230,161	308,011,466	281,842,932	324,562,565	261,067,025	283,713,093	273,140,364	276,059,234	265,054,435	278,401,267	280,580,626	292,396,833	332,030,291	3,456,860,131
Household appliance stores	131,710,682	136,155,284	139,037,551	134,974,982	119,163,085	130,783,703	117,745,999	119,516,899	115,836,939	118,784,658	112,757,997	118,141,024	133,024,976	1,495,923,097
Electronic stores	208,180,828	235,837,084	335,296,699	229,354,346	170,169,436	188,670,816	188,977,958	184,768,039	184,522,600	188,522,451	196,715,221	220,993,382	230,933,203	2,554,761,235
DIY stores	493,006,720	458,296,139	410,702,299	444,770,223	413,028,861	488,139,916	516,438,874	523,716,054	494,949,484	514,348,453	488,927,896	485,452,404	512,706,460	5,751,477,063
Floor covering stores	69,905,671	72,060,246	54,884,112	59,281,547	57,287,828	64,511,768	61,013,601	60,456,355	60,438,872	63,284,479	62,640,509	66,701,185	76,600,227	759,160,729
Garden centres	59,522,023	60,229,499	71,294,487	40,489,849	44,527,247	96,666,417	120,238,928	128,077,572	105,225,127	82,910,636	66,132,586	68,744,940	64,887,979	949,425,272
Miscellaneous household	147,735,226	149,629,080	183,530,479	138,559,364	117,691,211	134,494,274	131,284,386	133,244,986	141,994,881	144,176,712	135,668,012	147,735,362	157,996,429	1,716,005,176
<b>Household</b>	<b>1,422,291,311</b>	<b>1,420,218,798</b>	<b>1,476,588,559</b>	<b>1,371,992,876</b>	<b>1,182,934,693</b>	<b>1,386,979,987</b>	<b>1,408,840,110</b>	<b>1,425,839,144</b>	<b>1,368,022,338</b>	<b>1,390,428,656</b>	<b>1,343,422,847</b>	<b>1,400,165,130</b>	<b>1,508,179,565</b>	<b>16,683,612,703</b>
Books, newspapers & magazines	64,013,718	68,678,141	92,171,182	57,581,933	50,665,254	55,102,495	50,105,306	51,359,442	50,670,938	54,830,018	52,373,268	58,397,262	64,449,237	706,384,476
Record shops	6,685,616	9,233,499	6,126,779	5,312,455	5,433,029	5,258,248	5,433,009	5,768,927	5,450,654	5,402,404	5,522,980	5,402,404	5,817,050	88,644,317
Music shops	18,033,453	19,640,832	23,997,885	18,292,708	16,077,068	17,031,916	15,775,764	16,056,721	15,243,809	15,982,661	15,737,298	18,054,586	18,457,834	210,349,082
Hobbies, toys & games	30,568,731	53,673,579	81,186,804	28,048,564	23,631,729	28,403,432	27,427,899	27,991,967	27,470,974	28,385,539	27,912,215	38,200,066	39,081,120	431,413,888
Photographic	22,854,492	23,800,804	25,419,069	22,078,820	17,547,030	22,392,004	19,330,242	21,559,821	19,330,242	22,559,916	21,346,549	20,717,791	20,690,855	259,602,318
Handicraft	9,348,560	9,546,814	8,294,002	8,652,078	7,803,137	8,610,197	8,026,860	8,073,347	7,606,702	8,108,550	8,236,065	8,458,447	9,056,284	100,472,483
Sports shops	172,655,595	176,539,010	204,501,874	165,856,660	145,227,003	172,931,296	187,331,391	196,732,628	197,770,571	216,427,460	211,728,607	190,101,758	176,628,767	2,241,777,025
Jewellers	115,855,519	136,862,635	219,342,983	105,429,256	104,996,613	118,654,168	109,714,230	116,513,786	125,509,058	123,628,458	119,809,043	117,842,818	116,551,038	1,514,854,086
Computer software	57,519,585	59,220,658	65,590,821	55,800,572	44,207,262	48,942,304	46,225,642	42,814,275	40,185,299	42,046,752	36,569,916	44,864,892	44,458,422	570,926,815
Medical goods	16,668,446	17,341,823	19,924,668	14,780,274	14,798,471	17,078,589	15,905,036	16,717,649	17,225,875	18,554,286	17,362,519	17,827,145	19,727,301	207,243,636
Chemists	90,980,415	109,358,015	165,396,321	76,191,697	69,474,503	82,365,805	77,636,300	83,961,044	89,485,420	90,747,893	81,107,847	85,447,452	99,568,525	1,110,740,822
Optical goods	73,236,058	68,280,778	57,426,905	74,029,362	71,457,677	81,586,207	75,068,723	78,840,333	81,911,736	85,003,266	77,846,573	78,013,249	77,169,467	906,634,276
Cosmetic stores	28,474,809	35,632,076	53,178,212	22,491,160	21,294,332	26,471,740	24,040,377	26,465,213	29,060,603	28,273,976	26,432,353	30,654,481	32,566,473	356,500,996
Tobacconists	1,472,360	1,562,859	2,015,210	1,615,835	1,384,420	1,658,055	1,665,145	1,722,864	1,930,437	1,979,877	1,755,366	1,854,227	1,786,251	20,930,546
Florists	16,878,470	16,635,720	25,286,535	14,545,071	19,596,272	25,477,138	18,088,247	19,461,686	18,594,458	18,228,273	15,746,797	17,919,976	16,751,659	226,331,832
Artists' supplies	15,901,712	16,831,499	16,784,332	12,558,292	12,474,343	14,083,169	12,942,109	13,695,229	14,109,242	13,448,808	14,280,512	15,893,708	17,025,227	170,325,227
Antiques, art & stamps/coins	30,028,725	29,159,910	29,020,834	21,275,050	20,536,334	25,456,759	24,277,058	26,554,813	26,648,055	25,865,475	23,990,863	27,654,397	28,995,363	309,433,911
Pawn shops	904,955	903,890	1,269,842	934,616	840,595	820,997	837,141	796,151	823,737	1,049,566	1,055,288	1,140,540	1,111,964	11,584,327
Gift shops	56,473,607	72,433,071	87,265,726	40,217,169	39,671,984	47,511,796	45,483,773	49,306,719	51,574,391	56,205,586	57,944,067	58,398,593	62,830,792	668,843,667
Secondhand shops	2,525,613	2,283,768	2,415,751	2,147,096	2,086,532	2,657,533	2,550,881	2,491,816	2,580,587	2,648,352	2,248,847	2,745,719	2,924,560	29,024,560
Luggage & leather goods	16,767,854	17,588,930	24,122,778	13,972,162	11,775,032	14,703,807	13,950,157	14,583,384	17,214,664	16,097,223	15,804,654	15,407,444	16,221,758	191,441,993
Pet shops	35,129,121	33,672,127	35,672,579	33,596,240	30,302,499	34,684,329	34,657,384	34,804,145	34,431,787	35,951,236	34,873,742	35,600,038	36,761,385	415,007,491
Religious goods	336,771	251,365	238,034	227,417	199,224	363,713	363,713	437,295	443,189	512,863	455,642	415,744	418,669	

Table 3B Card expenditure statistics (not seasonally adjusted)

Value of credit card transactions

## Detailed sector breakdown - services sectors (not seasonally adjusted)

£	October 2013	November 2013	December 2013	January 2014	February 2014	March 2014	April 2014	May 2014	June 2014	July 2014	August 2014	September 2014	October 2014	Total (latest 12 months)
Auto rental	51,466,513	42,836,496	42,360,189	43,363,738	41,273,457	50,249,830	55,307,250	61,536,441	67,177,503	78,700,091	66,323,928	63,228,475	45,921,366	658,278,764
Auto parts & accessories	121,861,877	118,758,944	106,251,114	117,824,449	112,364,912	129,183,514	122,384,269	123,464,389	121,229,564	126,167,405	113,402,486	119,291,797	119,304,433	1,429,627,276
Auto services	48,414,282	45,534,194	41,257,536	45,457,360	43,850,954	51,367,255	48,174,695	51,241,599	52,434,304	54,456,871	48,337,365	54,265,366	52,153,347	588,530,842
Auto repair shops	224,924,662	215,001,488	194,655,696	219,584,718	212,833,093	250,090,553	217,477,138	223,417,327	221,937,032	229,193,952	209,228,564	225,963,019	223,913,779	2,643,296,353
Service stations	0	0	0	0	0	0	0	0	0	0	0	0	0	0
Vehicle sales	204,435,326	185,397,370	162,997,349	201,904,064	202,279,699	254,718,984	214,314,520	219,990,002	219,209,537	219,384,211	202,643,411	232,092,762	212,432,032	2,527,363,941
<b>Vehicle Sales &amp; Services</b>	<b>651,102,660</b>	<b>607,528,488</b>	<b>547,521,878</b>	<b>628,134,329</b>	<b>612,602,115</b>	<b>735,610,136</b>	<b>657,657,872</b>	<b>679,649,758</b>	<b>681,987,940</b>	<b>707,902,530</b>	<b>639,935,754</b>	<b>694,841,419</b>	<b>653,724,957</b>	<b>7,847,097,176</b>
Restaurants	576,639,385	566,035,108	636,264,292	491,736,841	509,840,528	599,438,672	578,649,229	617,957,219	628,047,969	652,420,330	659,954,017	646,346,808	663,022,323	7,249,713,336
Public houses	104,953,621	103,179,808	136,068,050	92,669,162	97,540,023	117,892,908	114,690,587	116,865,527	121,581,345	125,999,103	128,046,551	127,690,027	120,025,343	1,402,248,434
Catering services	56,972,593	57,894,643	60,128,107	51,331,696	49,232,929	57,704,523	54,533,947	60,575,182	60,633,178	63,644,095	52,293,560	62,677,523	63,267,630	693,917,013
Video stores	2,849,915	3,273,662	2,903,900	3,171,342	2,781,590	2,510,898	2,261,708	2,348,816	2,894,079	2,903,193	2,653,922	2,896,174	2,771,620	33,370,904
Cinema, theatre & dance	158,858,206	157,457,515	159,509,598	123,753,894	112,248,163	133,080,541	112,511,840	132,556,146	118,787,241	118,793,447	100,174,444	112,098,334	196,116,543	1,577,087,706
Concerts & entertainers	8,039,076	7,310,991	5,719,691	4,538,866	4,603,358	5,012,692	4,451,237	5,562,265	5,563,662	5,096,303	5,658,510	5,208,407	11,022,207	69,747,829
Tourist attractions	27,178,224	17,829,140	18,349,724	19,084,206	19,878,168	25,413,220	39,200,023	37,428,976	39,980,749	48,415,700	49,784,625	34,526,986	33,174,431	383,065,948
Amusement parks	3,501,600	1,835,396	1,319,257	1,290,503	1,670,967	2,154,417	4,955,502	4,080,440	4,927,013	6,345,674	7,562,475	4,006,288	4,399,506	44,547,438
Aquariums	985,945	760,769	783,618	780,599	965,153	1,164,787	1,994,814	1,573,214	1,478,468	2,820,832	3,780,031	2,418,435	1,915,408	20,436,128
Sports & games establishments	86,976,404	88,013,877	109,082,265	101,364,918	92,717,104	121,647,798	124,402,585	167,238,503	114,288,214	104,338,210	95,933,765	117,518,755	106,946,256	1,343,492,250
Professional sports clubs	10,436,277	11,740,404	13,971,290	13,533,792	8,525,872	11,824,269	15,158,980	26,698,175	16,594,602	15,295,616	10,520,859	11,476,557	10,988,901	166,329,317
Gambling	95,324,837	103,894,222	111,809,174	112,549,339	113,525,945	125,263,175	114,000,045	111,231,696	120,251,570	100,055,242	109,732,884	128,186,302	116,110,692	1,366,610,286
Personal services	18,993,291	19,475,913	22,303,456	16,543,014	18,271,902	19,442,303	17,376,767	18,505,115	18,183,881	18,516,776	18,555,765	19,309,792	20,890,103	227,374,787
Miscellaneous entertainment	208,234,101	187,891,875	129,982,776	205,500,931	187,382,401	206,281,327	187,462,983	208,679,940	178,598,619	183,429,236	182,779,473	209,980,602	225,293,443	2,293,263,606
<b>Entertainment</b>	<b>1,359,943,475</b>	<b>1,326,593,323</b>	<b>1,408,195,198</b>	<b>1,239,577,991</b>	<b>1,217,455,215</b>	<b>1,428,831,530</b>	<b>1,371,650,247</b>	<b>1,511,301,214</b>	<b>1,431,810,590</b>	<b>1,448,073,757</b>	<b>1,427,430,881</b>	<b>1,464,340,630</b>	<b>1,575,944,406</b>	<b>16,871,204,982</b>
<b>Hotels</b>	<b>850,506,929</b>	<b>760,157,105</b>	<b>680,489,125</b>	<b>658,835,614</b>	<b>666,381,244</b>	<b>790,791,493</b>	<b>775,878,894</b>	<b>882,628,282</b>	<b>947,235,714</b>	<b>965,874,687</b>	<b>881,649,192</b>	<b>956,787,879</b>	<b>928,249,515</b>	<b>9,894,958,744</b>
Airlines	517,635,831	435,384,094	341,819,234	638,933,165	496,784,172	549,346,769	512,663,805	550,450,429	449,852,789	431,493,373	294,930,195	446,930,054	446,668,588	5,595,256,667
Airport terminals	3,496,326	3,020,289	2,822,851	2,663,397	2,709,929	3,314,277	3,404,936	3,792,644	4,503,785	4,416,526	3,781,705	4,233,840	3,269,729	41,933,908
Railways	259,009,420	244,761,368	255,455,673	266,222,709	213,302,647	244,364,696	233,311,955	242,585,018	252,964,857	255,535,137	217,598,775	276,166,636	272,759,541	2,975,029,012
Buses	30,032,612	27,294,113	23,790,684	25,639,862	25,569,359	29,412,695	30,356,804	32,560,449	31,797,331	33,113,221	29,054,248	33,109,128	30,140,638	351,838,532
Sea travel	40,675,774	36,473,261	31,097,343	44,534,300	48,819,292	59,572,808	59,194,249	68,129,309	63,343,575	69,540,876	74,770,856	65,365,478	690,413,032	6,889,297,698
Travel agents	502,624,688	410,113,864	384,013,997	665,320,401	562,415,526	601,826,936	580,071,541	645,559,045	625,674,246	630,878,748	542,984,853	538,561,524	501,877,017	6,689,297,698
Timeshares	3,405,543	3,087,805	3,002,997	4,431,798	3,373,127	3,195,640	3,111,884	3,101,851	2,710,929	3,042,657	380,726	2,830,522	3,032,210	35,302,146
Camping grounds	17,349,577	22,134,385	21,403,697	21,239,565	21,100,708	29,578,558	30,173,441	36,001,202	38,590,103	43,018,919	34,891,594	21,593,914	18,491,411	338,217,497
Miscellaneous travel	56,297,640	51,708,150	46,676,600	57,605,079	54,308,605	61,472,638	61,125,731	67,262,739	71,890,405	70,917,006	64,013,157	67,200,917	66,074,024	740,255,051
<b>Travel</b>	<b>1,430,527,411</b>	<b>1,233,977,329</b>	<b>1,110,083,076</b>	<b>1,726,590,276</b>	<b>1,428,383,365</b>	<b>1,582,085,017</b>	<b>1,513,414,346</b>	<b>1,649,442,686</b>	<b>1,541,328,020</b>	<b>1,541,987,272</b>	<b>1,257,176,129</b>	<b>1,465,397,391</b>	<b>1,407,678,636</b>	<b>17,457,543,543</b>
Telegraph services / Wire transfer money order	1,841,109	1,657,611	1,720,898	1,864,964	1,866,032	1,931,301	1,755,582	2,793,668	2,400,530	2,732,171	1,153,248	2,569,862	2,837,875	25,283,742
Insurance services	309,066,350	264,979,364	248,459,725	280,792,392	264,617,677	311,505,647	290,771,640	283,038,027	292,151,793	312,218,061	286,579,320	310,818,706	286,523,898	3,432,456,250
Fis - cash disbursements (auto & manual)	9,832,705	8,224,051	7,414,987	9,424,196	8,338,386	9,360,562	7,730,038	8,601,183	8,358,129	8,518,831	8,046,633	9,091,408	8,330,810	101,439,214
Fis - merchandise & services	45,099,596	40,535,849	38,877,817	44,820,062	41,904,664	47,008,446	44,656,040	43,957,464	42,816,470	42,932,378	36,915,806	38,972,541	36,652,660	500,050,197
Non-Fis - foreign currency, travellers' cheques	29,724,529	19,485,368	19,706,962	22,070,067	24,147,781	28,652,998	39,378,477	51,679,310	57,555,679	61,416,056	58,744,704	55,391,192	38,093,704	476,322,298
Security brokers and dealers	4,935,248	4,471,505	4,256,617	4,992,289	3,488,446	4,008,244	3,465,683	3,452,771	2,303,997	2,461,471	2,071,822	2,650,887	3,779,278	41,403,010
Tax preparation services	73,053	88,168	72,637	115,217	85,720	88,676	106,691	121,457	131,353	148,679	148,949	130,259	207,030	1,444,836
Tax payments	252,734	213,504	216,430	186,354	167,214	196,536	251,282	218,342	245,097	245,097	218,545	14,931,014	11,874,212	28,935,862
Fines, bail and bond payments	11,558,014	11,144,477	10,735,192	11,898,936	10,906,951	11,529,756	10,518,114	11,877,754	11,910,920	12,529,538	11,198,866	11,062,925	11,634,649	136,948,078
Miscellaneous financial	14,872,093	13,939,517	11,567,958	14,658,959	13,292,122	15,790,165	15,810,230	16,091,732	16,854,352	17,377,539	15,506,912	16,428,170	18,213,530	185,531,188
<b>Financial</b>	<b>427,255,431</b>	<b>364,739,414</b>	<b>343,029,223</b>	<b>390,823,436</b>	<b>368,814,993</b>	<b>430,072,331</b>	<b>414,443,777</b>	<b>421,831,708</b>	<b>434,700,555</b>	<b>460,579,821</b>	<b>420,584,805</b>	<b>462,046,964</b>	<b>418,147,646</b>	<b>4,929,814,673</b>



Table 3B Card expenditure statistics (not seasonally adjusted)

Value of credit card transactions

## Detailed sector breakdown - services sectors (continued, not seasonally adjusted)

£	October 2013	November 2013	December 2013	January 2014	February 2014	March 2014	April 2014	May 2014	June 2014	July 2014	August 2014	September 2014	October 2014	Total (latest 12 months)
Telecoms	97,593,362	91,605,961	92,488,707	92,435,243	79,909,314	85,249,144	80,159,521	81,675,336	77,845,629	82,689,087	74,994,671	96,640,015	94,694,720	1,030,387,348
Utilities	65,327,296	55,082,315	55,124,731	66,422,427	64,564,568	79,561,318	68,691,001	69,473,457	61,847,292	62,153,745	52,920,648	61,961,954	63,879,210	761,682,666
Contractors (residential & commercial)	91,393,171	89,360,957	75,210,216	81,295,735	78,149,649	89,489,336	82,341,488	86,302,519	85,946,850	91,749,412	81,374,952	94,851,740	98,277,277	1,034,350,131
Gardening services	4,306,455	5,950,008	4,230,527	3,610,208	5,122,954	6,467,052	7,461,580	9,592,559	6,928,509	6,221,464	5,016,501	6,573,922	4,722,071	71,897,355
Veterinary services	59,711,544	55,512,605	53,316,744	58,508,144	53,099,520	57,447,118	57,584,682	59,774,210	60,647,263	66,244,865	61,754,639	63,412,394	64,712,346	712,014,530
Photocopying & printing	41,641,113	39,811,281	36,458,049	37,280,743	33,206,000	35,940,524	32,217,794	34,363,127	33,337,441	34,146,077	32,176,204	35,452,933	38,915,279	423,305,452
Photographic studios	8,593,401	9,629,806	9,095,336	6,261,586	6,047,939	7,372,729	6,808,082	7,419,065	7,714,278	8,992,910	7,128,995	7,698,229	8,535,676	92,704,631
Beauty & barber shops	86,391,523	88,685,911	106,567,431	77,742,629	76,367,195	86,986,574	83,918,490	89,690,669	88,569,515	92,706,884	86,799,539	89,650,244	91,444,010	1,059,129,091
Employment agencies	29,767,087	27,872,176	24,922,636	19,759,846	22,453,643	23,432,930	24,231,968	22,928,748	30,440,195	28,667,999	24,588,434	24,896,795	29,755,762	303,951,132
Counselling services	1,072,618	1,145,066	1,038,653	1,335,256	1,290,479	1,800,816	1,159,756	1,609,265	1,284,517	1,269,641	1,243,223	1,348,889	1,638,567	16,164,128
Legal services	23,331,020	21,678,304	19,518,690	22,115,102	21,932,750	24,970,941	21,842,243	22,330,345	22,509,288	23,681,733	20,980,184	23,057,359	25,737,607	270,354,465
Laundry & cleaning	7,183,044	6,903,605	6,310,790	6,292,255	5,542,432	6,605,755	6,457,960	6,883,228	7,429,596	7,473,733	6,704,345	7,471,607	7,491,143	81,566,109
Funeral services	13,872,840	14,149,015	14,102,176	15,159,458	14,280,785	15,323,363	13,900,753	13,285,077	12,906,279	14,298,273	12,252,622	13,984,825	14,944,016	168,586,642
Medical services	184,229,180	175,464,791	153,067,271	174,090,678	164,585,099	178,647,227	166,042,844	173,184,717	176,430,746	182,096,979	157,968,047	177,131,808	190,404,378	2,069,114,585
Moving & courier services	45,875,203	42,301,459	40,823,203	41,338,663	38,423,107	42,110,663	40,937,778	44,701,138	43,324,975	47,391,562	42,588,269	44,166,658	45,959,770	514,067,245
Repair shops (not auto)	10,096,639	10,157,391	10,240,642	10,244,301	9,057,588	10,000,809	9,288,119	9,745,863	10,231,242	10,682,283	9,864,598	10,388,477	11,530,483	121,431,796
Accounting services	7,781,778	7,721,110	7,597,801	9,721,220	8,038,148	8,397,078	6,781,894	6,426,770	6,473,904	7,035,924	6,488,641	7,565,840	7,706,393	89,954,723
Advertising, consultancy & PR	8,593,682	8,028,212	6,512,091	8,178,067	7,155,563	7,838,293	7,385,859	7,675,258	7,184,307	7,898,813	6,913,128	7,659,767	8,173,417	90,602,775
Computer programming	96,470,856	98,253,750	117,895,489	89,030,660	77,173,474	86,643,863	83,227,411	83,312,851	86,059,234	87,831,769	80,598,665	90,742,890	106,785,066	1,087,555,122
Farming services	11,106,085	10,791,595	11,078,418	10,557,430	9,819,920	10,819,749	10,738,971	11,249,147	11,274,029	11,868,368	10,849,893	11,318,017	11,730,879	132,096,416
Miscellaneous professional services	163,073,409	145,174,348	135,820,634	167,379,520	145,534,552	164,188,054	160,366,719	156,090,032	158,640,726	162,161,215	152,757,433	183,888,167	174,550,907	1,906,552,307
Engineering services	16,285,307	14,613,272	13,625,452	14,707,616	14,345,073	16,048,906	15,031,718	15,487,982	16,134,542	17,091,781	14,523,724	15,311,257	17,247,482	184,168,805
Marina services	7,186,073	5,496,553	5,427,560	6,990,813	5,927,051	10,518,488	11,279,346	10,984,377	11,579,277	12,222,098	10,513,381	8,808,529	6,975,571	106,723,044
Wrecking & salvage yards	885,622	718,845	540,929	794,461	696,363	791,639	778,303	735,794	788,548	860,241	715,157	863,294	852,495	9,136,069
Pest control	593,733	505,576	460,647	524,890	544,576	544,726	517,166	596,106	607,555	740,819	577,849	691,170	768,456	7,079,536
Educational establishments	194,172,993	108,210,062	99,757,683	199,416,619	113,421,873	108,233,207	120,772,514	124,524,036	110,065,475	119,191,324	134,769,003	306,083,886	191,162,573	1,735,608,255
Child care services	2,472,815	2,241,838	2,138,260	2,651,321	2,329,576	2,464,740	2,410,790	2,553,112	2,639,706	2,810,358	2,432,574	2,705,481	2,716,864	30,094,620
Social, political & religious organisations	87,278,895	94,417,871	84,785,581	99,606,978	78,921,455	102,189,551	81,220,082	79,702,562	78,147,058	84,037,234	76,279,579	90,847,656	92,894,720	1,043,050,327
Government services	230,522,757	212,256,280	218,974,189	336,231,048	293,173,193	279,973,801	272,784,341	280,383,401	271,139,732	296,742,331	231,143,233	276,416,205	256,510,445	3,225,728,199
Miscellaneous services	87,308,740	85,045,871	98,638,690	84,484,050	77,638,485	96,269,451	85,474,804	87,691,329	98,238,156	94,141,002	75,669,365	92,219,290	94,011,580	1,069,522,073
Commercial equipment	139,801,934	132,417,825	117,595,887	130,031,013	120,854,976	136,328,017	132,624,956	131,587,188	127,178,174	137,349,665	121,249,969	134,686,498	141,335,442	1,563,239,610
Other services	1,823,920,175	1,661,203,659	1,623,365,032	1,874,197,980	1,629,607,300	1,782,655,862	1,694,438,933	1,731,959,268	1,713,544,038	1,802,449,249	1,603,837,465	1,988,495,796	1,906,064,605	21,011,819,187
<b>Total services</b>	<b>6,543,256,081</b>	<b>5,954,199,318</b>	<b>5,712,683,532</b>	<b>6,518,159,626</b>	<b>5,923,244,232</b>	<b>6,750,046,369</b>	<b>6,427,484,069</b>	<b>6,876,812,916</b>	<b>6,750,606,857</b>	<b>6,926,867,316</b>	<b>6,230,614,226</b>	<b>7,051,910,079</b>	<b>6,889,809,765</b>	<b>78,012,438,305</b>
<b>TOTAL</b>	<b>13,788,957,915</b>	<b>13,620,574,454</b>	<b>14,577,110,119</b>	<b>13,129,139,250</b>	<b>11,900,920,532</b>	<b>13,749,151,958</b>	<b>13,387,174,435</b>	<b>14,000,109,944</b>	<b>13,954,065,534</b>	<b>14,179,660,641</b>	<b>13,150,516,984</b>	<b>14,269,762,556</b>	<b>14,489,848,646</b>	<b>164,408,035,053</b>

Table 3C Card expenditure statistics (not seasonally adjusted)

Number of debit card transactions

## Detailed sector breakdown - retail sectors (not seasonally adjusted)

Historical data located in hidden columns

	October 2013	November 2013	December 2013	January 2014	February 2014	March 2014	April 2014	May 2014	June 2014	July 2014	August 2014	September 2014	October 2014	Total (latest 12 months)
Supermarkets	242,375,793	238,149,141	257,995,740	232,173,554	226,427,702	267,596,709	255,056,536	264,505,104	268,383,233	268,962,347	250,310,359	267,318,164	274,107,311	3,070,985,900
Bakers & dairies	2,055,274	2,055,028	1,951,478	1,696,876	1,944,370	2,352,591	2,134,485	2,422,783	2,398,777	2,592,844	2,691,821	2,802,212	3,246,684	28,289,949
Sweet stores	877,587	1,033,928	1,480,131	746,350	1,004,656	1,140,131	1,216,860	971,133	1,001,919	949,519	1,001,872	1,006,232	1,141,251	12,693,982
Miscellaneous foodstores	15,746,805	15,128,721	16,127,154	14,891,786	14,612,264	16,629,598	15,729,454	16,186,409	16,414,959	16,569,188	15,648,424	16,522,668	16,791,159	191,251,784
Off-licences	3,304,845	3,269,060	3,409,605	2,954,738	3,014,742	3,492,097	3,323,404	3,562,900	3,601,223	3,630,341	3,480,537	3,442,499	3,501,732	40,682,878
<b>Food &amp; drink</b>	<b>264,360,304</b>	<b>259,635,878</b>	<b>280,964,108</b>	<b>252,463,304</b>	<b>247,003,734</b>	<b>291,211,126</b>	<b>277,460,739</b>	<b>287,648,329</b>	<b>291,800,111</b>	<b>292,704,239</b>	<b>273,133,013</b>	<b>291,091,775</b>	<b>298,788,137</b>	<b>3,343,904,493</b>
Department stores	12,378,435	15,083,611	21,423,392	12,572,844	10,499,748	12,472,854	11,835,769	12,533,856	13,244,693	14,048,914	12,674,983	12,474,076	13,209,227	162,073,967
Discount stores	11,627,714	13,058,481	13,780,714	10,264,114	9,970,728	11,240,994	11,444,597	11,882,106	11,956,718	12,187,117	12,463,238	12,279,990	13,747,422	144,276,219
Catalogues	3,979,275	4,460,939	4,827,027	3,977,000	3,440,230	3,756,058	3,570,335	2,922,894	2,528,940	2,579,065	2,484,659	2,711,606	2,810,782	40,069,535
Miscellaneous mixed	16,824,100	17,197,199	21,429,168	15,486,079	13,607,197	9,463,815	7,940,077	8,177,616	8,724,602	8,586,258	7,937,515	8,541,263	9,004,972	136,095,761
<b>Mixed business</b>	<b>44,809,524</b>	<b>49,800,230</b>	<b>61,460,301</b>	<b>42,300,037</b>	<b>37,517,903</b>	<b>36,933,721</b>	<b>34,790,778</b>	<b>35,516,472</b>	<b>36,454,953</b>	<b>37,401,354</b>	<b>35,560,395</b>	<b>36,006,935</b>	<b>38,772,403</b>	<b>482,515,482</b>
Men's clothing	706,141	751,769	1,128,891	685,648	555,503	593,476	627,990	659,203	750,344	832,687	777,012	651,552	664,323	8,678,398
Women's clothing	6,221,277	5,992,710	9,355,166	5,418,761	4,778,859	5,976,859	5,881,308	6,636,145	7,007,705	7,533,384	6,244,261	6,350,394	6,062,497	77,238,049
Family clothing	26,553,090	28,346,754	40,664,398	23,993,183	21,105,731	26,473,105	26,800,581	28,639,412	30,662,494	32,032,606	27,879,626	28,107,723	29,526,944	344,232,557
Miscellaneous clothing	2,035,469	1,179,336	1,179,336	640,721	598,478	743,825	687,001	784,341	879,906	888,962	814,514	795,389	917,407	10,102,955
Shoe shops	2,805,290	2,670,244	3,703,686	2,808,534	2,057,640	2,464,467	2,784,572	2,938,203	3,387,880	3,533,795	3,486,905	3,126,394	3,829,073	35,791,193
<b>Clothing</b>	<b>38,321,267</b>	<b>38,934,552</b>	<b>56,031,477</b>	<b>33,546,847</b>	<b>29,096,211</b>	<b>36,251,732</b>	<b>36,781,452</b>	<b>39,657,304</b>	<b>42,688,129</b>	<b>44,821,434</b>	<b>39,202,318</b>	<b>39,031,452</b>	<b>40,000,244</b>	<b>476,043,152</b>
Furniture stores	4,324,980	4,636,353	5,464,895	3,706,439	3,190,557	3,590,650	3,414,324	3,507,350	3,493,461	3,497,584	3,609,143	3,652,185	3,988,631	45,751,572
Household appliance stores	5,980,844	6,145,496	6,304,872	5,658,796	5,309,158	6,107,020	5,686,452	5,922,952	5,801,717	5,938,664	6,089,576	6,081,291	6,446,569	71,492,563
Electronic stores	2,245,645	2,389,025	3,557,748	2,499,101	2,013,223	2,165,295	2,118,689	2,117,416	2,078,621	2,157,982	2,182,453	2,407,155	2,469,676	28,156,384
DIY stores	16,889,277	16,382,210	16,699,045	14,713,069	14,956,710	18,205,780	19,031,904	19,368,761	18,741,360	18,833,632	18,511,793	18,473,299	18,895,116	212,812,679
Floor covering stores	354,170	352,408	279,184	294,224	292,819	328,827	311,146	303,823	302,829	317,254	332,409	350,285	386,206	3,851,414
Garden centres	2,993,294	3,232,834	4,008,415	2,108,368	2,268,022	4,321,382	4,915,393	5,339,620	4,533,624	3,634,204	3,177,317	3,288,687	3,378,412	44,206,278
Miscellaneous household	1,761,308	1,639,453	1,854,850	1,759,102	1,559,038	1,653,290	1,646,190	1,553,868	1,548,305	1,679,934	1,882,326	2,024,136	2,013,878	20,814,370
<b>Household</b>	<b>34,549,518</b>	<b>34,777,779</b>	<b>38,169,009</b>	<b>30,739,099</b>	<b>29,589,527</b>	<b>36,372,244</b>	<b>37,124,098</b>	<b>38,113,790</b>	<b>36,499,917</b>	<b>36,059,254</b>	<b>35,785,017</b>	<b>36,277,038</b>	<b>37,578,488</b>	<b>427,085,260</b>
Books, newspapers & magazines	7,042,233	7,030,022	10,476,422	6,152,039	5,990,598	6,778,545	6,234,641	6,524,531	6,828,627	6,940,649	6,674,419	7,546,169	7,559,422	84,736,084
Record shops	862,048	1,087,866	2,979,586	858,752	759,919	756,043	765,926	719,919	774,698	769,068	756,494	805,483	11,750,344	
Music shops	277,304	279,195	354,230	270,378	239,952	255,925	232,607	236,784	221,112	230,696	215,498	268,399	271,107	3,075,883
Hobbies, toys & games	1,650,255	2,139,710	3,357,141	1,369,891	1,337,525	1,670,996	1,569,490	1,659,894	1,629,917	1,676,085	1,755,161	2,102,835	2,274,197	22,542,842
Photographic	360,202	371,279	488,097	321,548	279,020	325,318	297,832	317,480	338,694	357,298	345,216	366,210	333,185	4,141,177
Handicraft	244,218	252,091	224,086	209,506	199,853	224,861	200,872	198,715	191,229	199,111	206,998	218,382	239,988	2,565,692
Sports shops	7,329,930	7,251,070	8,261,623	7,114,816	6,342,602	7,676,488	7,895,370	8,595,209	9,178,965	9,729,339	9,632,417	8,882,866	8,037,975	98,598,740
Jewellers	1,432,126	1,774,717	1,467,860	1,447,817	1,440,918	1,661,754	1,376,139	1,458,805	1,534,444	1,565,765	1,473,187	1,457,936	1,447,085	19,538,635
Computer software	450,448	470,750	558,112	502,643	417,296	431,661	399,736	355,063	342,303	354,800	318,072	391,023	388,335	4,929,794
Medical goods	43,138	41,592	36,028	40,246	38,022	42,338	41,461	43,080	43,628	48,510	44,449	46,926	48,506	514,786
Chemists	18,402,084	18,120,938	25,957,871	17,191,636	16,358,746	19,078,818	17,882,721	18,778,024	19,922,836	20,055,492	17,789,551	19,770,849	19,897,983	230,805,465
Optical goods	973,457	903,498	801,472	964,899	944,686	1,080,946	980,351	1,010,262	1,040,900	1,064,202	962,322	1,039,267	1,014,340	11,807,145
Cosmetic stores	1,488,271	1,758,752	3,132,550	1,207,907	1,243,284	1,513,570	1,347,168	1,441,423	1,607,398	1,555,384	1,501,089	1,648,173	1,766,409	19,723,107
Tobacconists	115,669	114,264	138,999	144,189	138,411	165,878	161,069	176,653	190,073	200,541	198,153	214,980	225,451	2,068,661
Florists	761,705	733,179	1,143,379	662,934	1,051,111	1,427,517	804,169	832,886	837,509	837,673	738,344	816,331	781,518	10,666,550
Artists' supplies	868,965	919,947	1,048,825	711,771	747,060	832,644	749,249	746,441	725,322	743,586	762,713	805,253	921,707	9,714,518
Antiques, art & stamps/coins	297,873	305,900	359,761	244,836	259,537	286,506	292,681	299,984	299,984	343,042	331,330	343,042	323,719	3,640,328
Pawn shops	26,448	27,608	35,678	25,104	23,763	25,920	24,300	25,711	24,410	28,201	27,816	28,038	28,150	324,699
Gift shops	4,963,961	6,039,987	10,827,303	4,303,272	5,117,175	6,024,862	4,585,734	4,795,623	5,838,364	5,411,544	5,450,837	5,676,690	6,050,654	70,122,045
Secondhand shops	80,893	79,575	69,698	66,420	69,698	73,082	69,976	73,287	71,653	72,247	78,727	77,247	81,081	914,000
Luggage & leather goods	158,858	179,578	261,256	146,580	122,395	152,099	137,296	145,537	159,663	170,228	179,133	154,268	158,011	1,966,044
Pet shops	3,083,803	2,959,663	3,273,090	2,952,137	2,791,901	3,161,873	3,064,097	3,187,987	3,137,741	3,237,703	3,322,678	3,259,855	3,387,734	37,736,459
Religious goods	7,672	7,350	7,886	6,081	6,243	6,243	7,129	6,987	6,436	7,608	8,654	6,864	8,677	85,629
Direct sales	5,941,739	5,446,309	5,678,851	5,449,043	5,005,157	5,514,064	5,318,394	5,223,862	5,110,493	5,060,292	4,089,091	4,570,132	5,797,399	62,263,087
Miscellaneous & speciality shops	3,141,458	3,535,437	4,259,155	3,026,587	2,894,414	3,409,500	3,489,018	3,917,904	3,916,663	4,114,304	4,083,100	4,099,901	4,373,584	45,119,564
<b>Other retail</b>	<b>60,004,758</b>	<b>61,830,277</b>	<b>86,638,649</b>	<b>55,413,986</b>	<b>53,811,970</b>	<b>62,666,728</b>	<b>57,921,251</b>	<b>60,772,051</b>	<b>63,962,362</b>	<b>64,667,371</b>	<b>60,907,035</b>	<b>64,537,898</b>	<b>66,221,700</b>	<b>759,351,278</b>
<b>Automotive Fuels</b>	<b>67,466,576</b>	<b>66,452,283</b>	<b>67,146,198</b>	<b>63,636,252</b>	<b>61,465,615</b>	<b>71,045,516</b>	<b>66,688,555</b>	<b>69,365,348</b>	<b>69,118,768</b>	<b>70,788,586</b>	<b>67,291,593</b>	<b>69,757,975</b>	<b>70,027,881</b>	<b>812,764,570</b>
<b>Total retail sales</b>	<b>509,511,947</b>	<b>511,430,999</b>	<b>590,409,742</b>	<b>478,099,525</b>	<b>458,484,960</b>	<b>534,481,067</b>	<b>510,766,873</b>							

Table 3C Card expenditure statistics (not seasonally adjusted)

Number of debit card transactions

## Detailed sector breakdown - services sectors (not seasonally adjusted)

	October 2013	November 2013	December 2013	January 2014	February 2014	March 2014	April 2014	May 2014	June 2014	July 2014	August 2014	September 2014	October 2014	Total (latest 12 months)
Auto rental	517,988	471,383	461,894	454,600	451,410	514,159	524,895	499,222	454,641	514,625	489,096	486,063	429,346	5,751,334
Auto parts & accessories	1,540,011	1,513,042	1,371,648	1,499,221	1,490,642	1,771,765	1,661,179	1,656,262	1,642,401	1,715,202	1,594,973	1,660,197	1,655,845	19,232,377
Auto services	4,421,938	4,325,723	4,586,904	4,193,395	4,138,412	4,633,178	4,478,062	4,768,630	4,768,582	5,008,165	4,771,088	5,118,545	5,568,417	56,359,101
Auto repair shops	1,761,197	1,655,639	1,466,924	1,704,640	1,670,663	2,009,072	1,791,806	1,817,611	1,799,499	1,885,760	1,725,679	1,854,519	1,860,289	21,241,469
Service stations	0	0	0	0	0	0	0	0	0	0	0	0	0	0
Vehicle sales	1,086,278	983,254	872,981	1,042,666	1,040,754	1,351,666	1,235,178	1,274,094	1,278,265	1,321,833	1,226,520	1,318,713	1,210,437	14,156,361
<b>Vehicle Sales &amp; Services</b>	<b>9,327,412</b>	<b>8,949,041</b>	<b>8,759,719</b>	<b>8,894,522</b>	<b>8,791,881</b>	<b>10,279,840</b>	<b>9,691,120</b>	<b>10,015,819</b>	<b>9,943,388</b>	<b>10,445,585</b>	<b>9,807,356</b>	<b>10,438,037</b>	<b>10,724,334</b>	<b>116,740,642</b>
Restaurants	63,760,719	63,027,311	65,601,268	59,350,203	62,087,330	72,931,097	69,485,689	75,446,688	74,179,709	74,687,576	76,405,672	77,926,655	83,301,351	854,430,549
Public houses	10,794,019	10,667,601	12,689,124	10,751,670	11,791,199	14,081,221	11,820,064	11,558,612	11,608,195	11,528,950	11,628,761	12,111,534	11,632,640	141,869,571
Catering services	1,863,468	1,895,032	1,728,899	1,734,223	1,829,422	2,093,311	1,886,252	2,080,951	2,035,276	2,117,541	1,902,407	2,316,171	2,686,144	24,305,629
Video stores	380,396	447,308	311,703	198,588	182,634	188,577	155,203	122,925	74,080	47,236	47,485	47,484	47,657	1,870,880
Cinema, theatre & dance	4,768,837	5,606,455	6,022,338	5,558,432	5,114,323	4,635,390	4,740,692	5,186,848	4,587,293	4,896,059	6,147,872	4,329,666	5,578,023	62,403,391
Concerts & entertainers	177,775	170,571	169,888	159,777	180,527	174,707	173,989	180,817	138,392	154,280	216,288	160,019	402,543	2,281,798
Tourist attractions	870,049	584,727	557,832	459,281	557,262	636,561	1,304,257	1,096,840	1,070,595	1,309,431	1,140,449	1,887,806	1,128,104	11,941,145
Amusement parks	252,891	140,141	88,580	81,873	130,790	158,919	349,531	300,311	327,866	379,480	543,764	343,593	328,118	3,172,966
Aquariums	74,916	52,130	44,242	54,512	81,936	105,289	162,267	130,012	117,842	169,193	258,187	188,789	131,565	1,495,964
Sports & games establishments	3,094,336	2,778,843	3,241,403	3,646,461	3,435,505	3,858,399	3,797,167	3,875,815	3,449,247	3,678,730	3,801,194	3,933,758	4,175,513	43,672,035
Professional sports clubs	218,100	217,694	269,481	219,775	202,934	251,178	259,698	268,524	213,423	256,362	266,816	277,902	249,617	2,953,404
Gambling	21,335,951	19,766,970	22,660,450	23,133,686	21,534,909	26,200,510	25,935,106	22,076,829	25,276,498	21,466,970	20,774,412	23,843,099	24,930,854	277,600,302
Personal services	445,625	368,826	399,121	394,394	389,121	461,679	446,634	489,218	463,596	451,427	436,422	443,228	416,964	5,156,197
Miscellaneous entertainment	802,071	643,017	598,712	766,700	840,306	852,830	999,646	961,727	858,690	997,577	1,482,936	1,045,083	1,108,100	11,155,324
<b>Entertainment</b>	<b>108,839,253</b>	<b>106,366,635</b>	<b>114,373,041</b>	<b>106,509,575</b>	<b>108,443,064</b>	<b>126,758,369</b>	<b>121,516,195</b>	<b>123,776,117</b>	<b>124,400,702</b>	<b>122,140,812</b>	<b>125,800,022</b>	<b>128,107,430</b>	<b>136,117,193</b>	<b>1,444,309,155</b>
<b>Hotels</b>	<b>4,579,835</b>	<b>4,242,980</b>	<b>4,322,729</b>	<b>4,291,520</b>	<b>4,396,419</b>	<b>5,149,527</b>	<b>5,132,395</b>	<b>5,309,532</b>	<b>5,243,412</b>	<b>5,553,549</b>	<b>5,787,830</b>	<b>5,611,828</b>	<b>5,334,300</b>	<b>60,376,021</b>
Airlines	1,560,545	1,217,459	1,121,761	1,825,452	1,494,520	1,737,978	1,747,465	1,923,147	1,854,264	1,852,519	524,605	1,791,735	1,710,717	18,801,622
Airport terminals	46,307	34,352	34,982	36,677	38,279	50,907	55,035	60,095	62,651	67,922	62,081	61,853	49,515	614,349
Railways	18,348,074	17,454,317	17,466,653	16,284,432	15,749,958	18,117,208	16,706,701	17,649,946	18,154,242	18,624,822	16,895,736	19,071,308	19,683,245	211,858,568
Buses	2,388,162	2,473,044	2,256,666	2,607,204	2,606,014	2,983,242	2,843,411	3,133,213	2,842,563	3,028,462	1,558,865	1,575,647	1,633,650	29,541,981
Sea travel	151,048	129,792	126,243	126,938	126,142	154,512	188,549	200,178	210,870	244,335	256,672	200,079	176,881	2,141,191
Travel agents	1,424,372	1,144,591	1,107,435	2,168,672	1,820,965	2,051,308	1,896,700	2,024,641	1,914,543	1,993,828	1,776,812	1,715,066	1,486,172	21,100,733
Timeshares	4,809	3,962	3,917	6,867	5,024	4,701	4,639	4,590	4,135	4,761	51	4,618	4,815	52,080
Camping grounds	453,379	234,727	209,861	292,283	345,266	529,631	821,325	873,246	835,971	1,063,914	1,238,243	716,232	550,869	7,711,568
Miscellaneous travel	1,131,610	1,050,654	1,044,351	972,890	1,005,696	1,160,982	1,156,331	1,216,732	1,218,363	1,325,132	2,612,582	3,135,937	4,203,279	20,102,929
<b>Travel</b>	<b>25,506,306</b>	<b>23,742,898</b>	<b>23,371,869</b>	<b>24,321,415</b>	<b>23,191,864</b>	<b>26,790,469</b>	<b>25,420,156</b>	<b>27,085,788</b>	<b>27,097,602</b>	<b>28,205,695</b>	<b>24,925,647</b>	<b>28,272,475</b>	<b>29,499,143</b>	<b>311,925,021</b>
Telegraph services / Wire transfer money order	95,600	102,388	114,567	110,422	112,626	131,687	131,853	148,109	159,532	165,076	134,451	138,632	111,608	1,560,951
Insurance services	3,559,212	3,016,007	2,804,116	3,253,960	3,104,990	3,611,175	3,426,395	3,510,235	3,493,132	3,840,574	3,539,042	3,721,176	3,446,320	40,767,122
FIs - cash disbursements (auto & manual)	7,563	6,299	9,471	9,731	12,512	10,850	11,492	15,064	16,704	17,619	16,757	15,732	9,845	152,076
FIs - merchandise & services	9,823,300	9,330,101	9,915,332	9,775,939	8,819,893	10,460,191	9,754,814	9,471,879	9,042,513	9,431,778	8,906,787	9,206,976	8,414,652	112,530,855
Non-FIs - foreign currency, travellers' cheques	671,022	550,810	563,103	608,549	657,622	754,526	810,532	978,173	1,048,101	1,132,050	1,046,359	1,049,505	802,651	10,001,981
Security brokers and dealers	904,873	147,183	115,370	154,917	128,688	196,132	210,088	179,058	176,764	153,100	129,594	186,996	234,982	2,012,872
Tax preparation services	781	679	482	803	728	768	691	540	554	573	447	464	502	7,231
Tax payments	26,061	23,254	22,664	24,170	20,813	23,359	27,397	24,889	24,658	26,504	23,614	119,133	119,956	480,411
Fines, bail and bond payments	589,209	572,121	556,486	579,224	554,418	642,922	591,095	621,010	569,820	626,926	607,243	588,526	642,782	7,152,573
Miscellaneous financial	165,878	153,488	133,058	133,508	138,989	174,936	188,916	190,261	200,712	212,245	187,354	192,306	182,882	2,088,655
<b>Financial</b>	<b>15,843,499</b>	<b>13,902,330</b>	<b>14,234,649</b>	<b>14,651,223</b>	<b>13,551,279</b>	<b>16,006,546</b>	<b>15,153,273</b>	<b>15,139,218</b>	<b>14,732,490</b>	<b>15,606,445</b>	<b>14,591,648</b>	<b>15,219,446</b>	<b>13,966,180</b>	<b>176,754,727</b>

Table 3C Card expenditure statistics (not seasonally adjusted)

Number of debit card transactions

## Detailed sector breakdown - services sectors (continued, not seasonally adjusted)

	October 2013	November 2013	December 2013	January 2014	February 2014	March 2014	April 2014	May 2014	June 2014	July 2014	August 2014	September 2014	October 2014	Total (latest 12 months)
Telecoms	10,762,997	10,361,858	10,823,183	10,796,273	9,640,691	10,831,117	10,284,070	10,573,527	10,238,423	10,957,136	10,886,754	11,684,194	11,776,295	128,853,521
Utilities	2,231,554	2,046,557	2,026,921	2,160,247	2,008,142	2,277,975	2,183,429	2,258,731	2,109,226	2,232,094	1,869,813	2,290,362	2,430,405	25,893,902
Contractors (residential & commercial)	595,381	571,622	487,652	518,702	515,099	587,744	548,864	555,804	561,355	600,512	540,978	616,955	672,884	6,778,171
Gardening services	103,135	106,558	140,139	80,481	84,601	140,779	156,489	162,706	146,901	124,095	101,734	107,037	108,602	1,460,122
Veterinary services	1,804,102	1,642,146	1,573,620	1,667,526	1,555,093	1,732,102	1,707,565	1,770,281	1,785,181	1,976,485	1,903,366	1,897,670	1,983,848	21,194,883
Photocopying & printing	422,663	450,675	490,695	379,017	344,683	393,923	373,540	417,405	391,462	383,927	353,634	424,824	439,246	4,843,031
Photographic studios	416,809	434,175	425,439	290,150	298,775	352,493	332,652	410,686	456,169	485,678	417,613	432,520	497,875	4,834,225
Beauty & barber shops	4,938,620	4,883,155	6,264,809	4,577,956	4,584,394	5,322,042	5,051,488	5,439,531	5,398,071	5,523,221	5,214,381	5,385,135	5,367,998	63,012,181
Employment agencies	8,758	7,706	6,087	8,175	7,729	8,634	7,976	8,363	7,909	8,659	8,064	9,344	9,871	98,517
Counselling services	110,290	101,630	102,363	104,200	97,969	115,716	116,826	117,128	116,592	120,599	112,915	120,415	119,060	1,345,413
Legal services	173,706	159,215	138,924	166,110	162,750	182,830	169,932	172,156	165,995	177,410	155,283	170,753	181,017	2,002,375
Laundry & cleaning	505,303	476,758	450,422	445,445	411,576	482,745	460,733	497,600	525,117	522,121	471,979	534,984	551,529	5,831,009
Funeral services	28,878	27,402	27,063	30,559	29,043	32,655	30,312	30,516	30,292	31,269	28,694	31,662	33,291	362,758
Medical services	3,075,228	2,905,292	2,577,547	3,043,019	2,858,295	3,089,795	2,927,777	2,999,071	3,001,833	3,161,363	2,796,872	3,220,607	3,366,450	35,947,921
Moving & courier services	419,385	403,254	431,961	400,897	355,119	400,601	397,950	424,460	433,085	464,673	409,623	466,203	488,631	5,076,457
Repair shops (not auto)	119,242	116,177	123,568	115,713	109,494	116,263	110,428	112,468	114,791	121,597	117,893	124,572	128,552	1,411,516
Accounting services	330,579	297,327	286,223	352,835	302,307	337,500	272,158	230,951	238,859	251,234	231,817	252,075	268,990	3,322,276
Advertising, consultancy & PR	168,777	166,130	142,846	140,294	134,155	150,673	143,909	145,651	145,272	147,442	136,947	147,128	139,272	1,719,719
Computer programming	1,174,600	810,749	722,924	693,977	619,188	671,769	651,765	647,397	646,980	659,471	644,421	712,191	667,027	8,147,859
Farming services	277,436	283,639	322,474	286,159	274,343	310,399	304,856	308,917	308,539	298,953	290,284	304,834	308,337	3,601,734
Miscellaneous professional services	3,737,546	3,649,785	3,660,044	3,715,496	3,420,188	3,822,010	3,639,055	3,583,534	3,538,200	3,620,482	3,328,265	3,641,231	3,869,060	43,487,350
Engineering services	92,637	84,276	72,750	78,665	79,793	91,699	89,674	89,697	90,729	95,610	82,530	90,028	95,748	1,041,199
Marina services	75,527	62,697	64,701	57,173	57,058	89,092	117,010	121,693	133,951	153,484	151,521	121,930	89,346	1,219,656
Wrecking & salvage yards	10,503	9,930	7,728	9,686	11,157	11,157	11,206	11,206	11,480	11,480	10,480	11,523	11,634	127,189
Pest control	4,771	3,878	3,414	3,508	3,199	3,636	3,961	4,755	5,033	5,509	4,729	5,117	6,196	52,935
Educational establishments	3,085,454	2,915,945	2,183,997	2,853,111	2,632,963	3,123,187	2,154,803	2,844,576	2,334,561	1,706,803	1,183,053	3,044,649	3,800,242	30,777,890
Child care services	159,702	138,143	126,814	178,070	177,852	159,288	156,309	162,786	136,151	139,144	176,977	153,606	181,245	1,886,385
Social, political & religious organisations	2,842,365	2,920,141	2,504,065	2,245,172	2,239,170	3,310,531	2,980,588	3,210,581	3,117,622	3,164,185	2,971,538	3,383,676	3,323,175	35,370,444
Government services	7,460,728	6,662,824	6,573,169	7,664,360	6,993,114	7,538,347	7,785,089	8,141,244	8,008,216	7,725,147	8,156,807	8,519,646	8,519,646	92,108,406
Miscellaneous services	5,854,799	5,632,726	7,667,269	5,621,450	5,298,194	6,199,073	6,009,490	6,330,485	6,413,374	6,610,441	5,785,416	6,432,882	6,250,880	74,251,680
Commercial equipment	1,794,048	1,694,069	1,782,522	1,713,344	1,550,429	1,704,777	1,559,175	1,628,524	1,549,788	1,564,392	1,516,202	1,877,097	1,797,924	19,938,243
Other services	52,785,523	50,026,439	52,191,333	50,397,770	46,855,369	53,590,552	50,739,012	53,412,430	52,160,939	53,659,912	49,628,923	55,652,011	57,484,276	625,998,966
<b>Total services</b>	<b>216,883,828</b>	<b>207,230,323</b>	<b>217,253,340</b>	<b>209,066,025</b>	<b>205,229,876</b>	<b>238,575,303</b>	<b>227,652,151</b>	<b>234,738,904</b>	<b>233,578,533</b>	<b>235,611,998</b>	<b>230,541,426</b>	<b>243,501,227</b>	<b>253,125,426</b>	<b>2,736,104,532</b>
<b>TOTAL</b>	<b>726,395,775</b>	<b>718,661,322</b>	<b>807,663,082</b>	<b>687,165,550</b>	<b>663,714,836</b>	<b>773,056,370</b>	<b>738,419,024</b>	<b>765,812,198</b>	<b>774,102,773</b>	<b>782,034,236</b>	<b>742,420,797</b>	<b>780,204,300</b>	<b>804,514,279</b>	<b>9,037,768,767</b>

Table 3D Card expenditure statistics (not seasonally adjusted)

Value of debit card transactions

## Detailed sector breakdown - retail sectors (not seasonally adjusted)

Historical data located in hidden columns

£	October 2013	November 2013	December 2013	January 2014	February 2014	March 2014	April 2014	May 2014	June 2014	July 2014	August 2014	September 2014	October 2014	Total (latest 12 months)
Supermarkets	6,027,317,297	6,125,921,193	7,170,740,212	5,716,994,880	5,552,504,549	6,601,404,946	6,346,041,895	6,468,730,922	6,563,070,305	6,442,532,570	6,120,436,539	6,431,451,478	6,499,970,832	76,039,800,321
Bakers & dairies	16,678,825	16,674,490	16,332,307	13,284,360	14,615,963	17,330,572	16,520,864	17,987,147	17,854,783	19,336,100	19,898,434	20,139,064	22,107,926	212,082,010
Sweet stores	13,431,329	17,235,543	28,163,453	10,468,419	13,406,756	15,837,220	18,673,712	13,145,938	13,993,000	13,772,372	13,586,743	14,250,714	15,746,179	188,280,049
Miscellaneous foodstores	291,336,200	286,676,095	342,533,638	283,130,937	273,209,081	310,075,213	297,811,515	302,513,368	304,751,897	306,472,645	291,907,726	306,464,838	309,106,365	3,614,653,318
Off-licences	77,639,112	80,115,901	95,446,992	66,839,994	68,235,475	80,184,301	80,658,237	83,736,448	84,611,146	86,861,323	83,374,584	81,002,969	82,558,497	973,624,967
<b>Food &amp; drink</b>	<b>6,426,402,763</b>	<b>6,526,623,222</b>	<b>7,653,216,602</b>	<b>6,090,717,690</b>	<b>5,921,971,824</b>	<b>7,024,832,252</b>	<b>6,759,706,223</b>	<b>6,886,113,623</b>	<b>6,984,281,131</b>	<b>6,868,975,010</b>	<b>6,529,204,026</b>	<b>6,853,309,063</b>	<b>6,929,489,799</b>	<b>81,028,440,665</b>
Department stores	483,967,139	606,731,816	842,736,395	462,656,299	384,067,020	472,361,280	451,183,401	479,841,080	510,676,183	510,426,570	472,016,310	483,485,209	516,471,109	6,191,652,672
Discount stores	403,278,104	465,149,954	513,171,427	337,426,484	320,077,938	363,998,603	362,361,731	376,242,829	375,075,861	371,069,227	393,867,302	401,585,114	443,279,128	4,723,305,598
Catalogues	160,590,049	172,670,470	183,558,502	165,442,784	145,556,649	164,999,044	155,059,569	137,750,638	129,625,780	130,959,415	126,246,038	140,976,147	142,080,161	1,794,925,197
Miscellaneous mixed	503,237,563	535,625,566	696,060,594	438,431,170	390,645,902	273,864,151	233,751,055	244,440,742	257,993,328	251,967,611	238,859,362	264,774,728	284,555,521	4,110,969,730
<b>Mixed business</b>	<b>1,551,072,855</b>	<b>1,780,177,806</b>	<b>2,235,526,918</b>	<b>1,403,956,737</b>	<b>1,240,347,509</b>	<b>1,275,223,078</b>	<b>1,202,355,756</b>	<b>1,238,275,289</b>	<b>1,273,371,152</b>	<b>1,264,422,823</b>	<b>1,230,989,012</b>	<b>1,290,821,198</b>	<b>1,385,385,919</b>	<b>16,820,853,197</b>
Men's clothing	46,642,376	47,148,284	67,967,904	41,675,765	34,448,267	40,800,731	41,298,567	43,797,736	48,761,353	49,050,070	46,060,198	42,604,463	44,913,043	548,526,381
Women's clothing	242,217,820	242,124,308	337,924,015	194,779,311	180,892,085	228,056,473	226,869,530	250,462,504	268,364,452	267,302,992	223,779,025	243,056,795	247,325,196	2,910,936,686
Family clothing	929,070,646	990,655,762	1,369,721,891	731,275,974	683,133,444	1,369,721,891	875,110,624	943,690,253	979,549,641	977,532,565	895,147,981	941,883,776	1,009,709,204	11,292,455,262
Miscellaneous clothing	64,774,807	43,241,766	41,617,135	26,178,299	24,083,595	29,801,751	32,234,960	28,687,686	37,167,951	35,542,904	33,108,538	31,990,946	35,663,034	399,318,985
Shoe shops	139,295,693	136,117,680	183,904,155	118,763,063	89,738,748	110,588,333	123,050,426	126,567,020	137,101,597	132,676,278	150,587,060	140,709,119	141,884,905	1,591,688,384
<b>Clothing</b>	<b>1,422,001,342</b>	<b>1,459,287,800</b>	<b>2,001,135,700</b>	<b>1,112,672,412</b>	<b>1,012,296,139</b>	<b>1,284,357,912</b>	<b>1,314,950,356</b>	<b>1,396,752,473</b>	<b>1,470,944,994</b>	<b>1,462,104,809</b>	<b>1,348,682,622</b>	<b>1,400,245,099</b>	<b>1,479,495,382</b>	<b>16,742,925,698</b>
Furniture stores	407,611,546	405,875,696	388,560,446	383,924,196	329,227,423	365,701,399	354,157,965	360,675,094	352,769,133	369,935,359	371,862,572	397,221,974	442,672,990	4,522,584,247
Household appliance stores	229,976,516	240,375,807	248,190,208	248,189,862	228,939,141	263,036,380	230,801,046	231,516,669	222,573,675	225,212,666	220,568,024	225,855,578	246,122,686	2,831,381,682
Electronic stores	243,263,858	265,470,909	407,042,526	265,305,279	204,080,891	226,652,824	226,644,946	221,096,741	222,765,428	227,061,022	237,061,022	271,445,535	270,794,472	3,044,750,622
DIY stores	929,937,183	877,440,249	813,848,012	793,138,430	771,452,444	933,104,960	986,098,540	1,013,975,865	982,893,409	1,033,579,712	983,092,794	1,001,138,380	1,070,426,220	11,260,189,015
Floor covering stores	94,286,988	96,751,959	75,881,876	76,463,748	75,659,828	87,985,051	84,484,037	85,204,972	86,085,474	91,582,527	91,414,075	98,441,851	110,038,032	1,059,993,430
Garden centres	92,252,516	99,022,394	124,188,782	62,180,234	68,329,985	144,480,806	174,378,642	189,385,252	159,815,693	126,709,448	102,833,209	107,179,245	110,936,623	1,463,440,313
Miscellaneous household	126,685,781	116,009,594	118,131,459	118,467,919	104,120,124	114,898,727	115,993,696	109,980,263	110,792,649	120,007,768	127,367,828	142,050,903	144,074,117	1,441,895,047
<b>Household</b>	<b>2,124,014,388</b>	<b>2,100,946,608</b>	<b>2,175,843,309</b>	<b>1,947,669,668</b>	<b>1,781,809,836</b>	<b>2,135,860,147</b>	<b>2,172,558,872</b>	<b>2,211,834,856</b>	<b>2,137,695,461</b>	<b>2,193,417,489</b>	<b>2,134,199,504</b>	<b>2,243,333,466</b>	<b>2,389,065,140</b>	<b>25,624,234,356</b>
Books, newspapers & magazines	125,137,909	118,316,488	185,816,360	101,347,702	93,119,471	102,354,936	96,281,704	99,828,590	99,747,797	104,955,236	113,656,002	117,264,779	119,873,629	1,352,562,694
Record shops	18,170,602	24,298,360	72,637,129	17,136,554	14,972,431	16,502,748	15,607,722	16,528,066	15,828,263	13,973,380	14,230,141	15,707,874	16,713,228	252,175,896
Music shops	20,551,196	21,406,127	27,122,904	21,309,507	18,579,194	19,831,546	18,855,149	18,049,898	17,244,262	18,279,718	18,250,289	21,187,359	21,482,406	241,598,359
Hobbies, toys & games	61,609,469	107,195,411	171,613,785	58,678,052	48,228,312	63,119,370	57,478,143	60,361,558	59,350,282	59,077,433	60,227,967	93,844,478	95,457,465	934,631,756
Photographic	20,911,285	21,452,397	22,908,962	18,910,779	16,036,012	20,385,930	18,380,523	19,832,480	20,173,177	22,545,513	19,951,151	20,269,509	19,536,760	240,383,201
Handicraft	12,852,618	13,097,651	11,517,138	11,325,297	10,741,403	12,203,853	11,095,410	11,364,211	10,903,488	11,710,166	11,398,946	12,045,453	13,082,492	140,485,508
Sports shops	308,127,721	309,843,495	362,086,995	286,583,484	258,046,200	317,424,687	337,231,553	362,191,865	372,063,720	395,279,952	398,095,446	362,075,283	337,037,392	4,097,959,982
Jewellers	134,639,093	163,706,402	268,433,050	127,770,962	132,261,288	149,530,537	133,605,415	143,834,336	150,452,473	154,242,992	148,277,162	146,561,517	142,392,606	1,861,068,740
Computer software	54,822,454	56,491,399	68,239,580	56,896,098	47,704,565	52,463,903	50,637,927	47,906,383	44,870,731	47,907,170	42,961,671	53,862,275	53,417,412	623,359,114
Medical goods	9,812,929	9,191,790	8,208,907	8,882,626	9,285,870	10,316,499	10,129,922	10,063,359	10,388,966	11,308,998	10,574,104	10,903,523	11,789,962	121,044,526
Chemists	283,047,961	307,586,308	521,866,026	245,470,635	238,142,447	284,482,105	263,181,059	281,072,196	298,233,583	297,537,838	264,273,877	291,403,745	308,936,222	3,602,186,041
Optical goods	95,330,123	88,193,374	73,841,318	95,413,130	94,095,463	109,762,019	99,102,727	102,792,885	105,972,389	108,724,008	98,687,538	104,419,610	102,506,241	1,183,510,702
Cosmetic stores	49,415,717	61,040,229	113,504,253	37,700,243	38,347,393	47,215,637	42,462,508	45,817,975	50,960,110	49,446,087	47,571,256	53,382,733	56,479,969	643,928,393
Tobacconists	3,821,800	3,659,560	4,540,493	4,525,228	4,149,070	4,859,313	4,762,419	5,191,067	5,654,555	5,691,932	6,115,430	6,115,430	6,106,980	61,127,778
Florists	31,544,272	30,039,797	43,608,044	27,759,896	42,370,340	54,401,268	35,192,074	36,353,686	35,732,290	36,235,578	32,357,271	35,640,233	33,742,701	443,433,178
Artists' supplies	24,724,164	25,978,799	28,871,512	19,889,017	20,323,358	22,728,464	20,829,700	21,419,660	20,686,832	21,539,109	21,527,516	23,207,387	25,966,322	272,967,676
Antiques, art & stamps/coins	32,085,800	33,676,816	35,853,790	26,279,173	26,505,158	32,818,744	29,588,264	32,513,649	31,018,733	29,988,157	36,398,143	35,737,458	382,171,941	3,821,719,941
Pawn shops	4,413,392	4,355,559	5,114,283	4,208,354	3,917,163	4,282,933	4,546,896	4,923,412	4,855,410	5,691,680	5,318,738	5,430,726	5,367,803	58,012,957
Gift shops	110,631,169	138,317,971	208,704,745	88,506,192	93,086,345	110,972,332	93,855,847	97,023,573	106,640,195	108,482,294	110,496,111	114,712,235	128,221,369	1,399,019,209
Secondhand shops	5,219,834	4,604,689	5,892,263	3,906,144	4,703,558	4,984,276	4,484,941	4,699,633	5,343,940	5,660,029	4,818,755	5,976,273	5,791,233	61,029,734
Luggage & leather goods	13,121,566	14,449,929	21,854,517	11,922,650	9,954,957	12,424,151	11,527,244	12,030,211	13,759,562	13,050,707	13,084,893	12,277,887	12,939,502	159,276,210
Pet shops	88,868,914	84,843,237	93,506,876	84,835,679	79,579,659	90,767,861	88,989,532	91,667,507	90,034,391	93,245,317	95,903,585	95,167,919	98,	

Table 3D Card expenditure statistics (not seasonally adjusted)

Value of debit card transactions

## Detailed sector breakdown - services sectors (not seasonally adjusted)

£	October 2013	November 2013	December 2013	January 2014	February 2014	March 2014	April 2014	May 2014	June 2014	July 2014	August 2014	September 2014	October 2014	Total (latest 12 months)
Auto rental	50,927,372	46,776,776	45,334,381	44,977,954	45,767,540	58,357,050	57,072,493	59,290,556	58,367,813	65,054,854	60,058,563	61,742,489	52,166,626	654,967,095
Auto parts & accessories	204,962,147	195,617,070	172,790,118	197,983,221	190,605,308	252,119,739	220,060,852	219,854,441	217,791,363	225,794,164	205,511,772	234,624,495	220,453,815	2,553,206,358
Auto services	60,977,642	55,514,366	55,800,315	56,050,489	54,702,736	61,737,298	62,370,096	65,190,117	66,163,377	71,066,717	65,421,413	69,759,659	66,221,975	749,998,558
Auto repair shops	600,655,864	558,701,406	513,303,736	581,089,787	558,437,791	799,200,552	633,544,197	632,515,937	616,903,555	633,264,901	579,516,821	704,970,742	619,962,392	7,431,411,817
Service stations	0	0	0	0	0	0	0	0	0	0	0	0	0	0
Vehicle sales	1,299,643,852	1,159,577,091	1,006,019,804	1,262,095,718	1,230,550,537	1,832,708,587	1,504,945,624	1,497,994,113	1,503,703,022	1,499,737,700	1,359,556,652	1,743,722,077	1,487,924,446	17,088,535,371
<b>Vehicle Sales &amp; Services</b>	<b>2,217,166,877</b>	<b>2,016,186,709</b>	<b>1,793,248,354</b>	<b>2,142,197,169</b>	<b>2,080,063,912</b>	<b>3,004,123,226</b>	<b>2,477,993,262</b>	<b>2,474,845,164</b>	<b>2,462,929,130</b>	<b>2,494,918,336</b>	<b>2,270,065,221</b>	<b>2,814,819,462</b>	<b>2,446,729,254</b>	<b>28,478,119,199</b>
Restaurants	1,066,658,132	1,044,510,516	1,139,822,112	989,675,401	1,043,916,678	1,229,331,658	1,173,705,811	1,244,835,509	1,222,943,152	1,235,673,689	1,332,762,747	1,275,150,906	1,315,427,478	14,247,755,657
Public houses	242,816,983	237,800,652	299,341,233	235,655,054	254,105,813	308,003,220	281,569,552	277,535,679	277,935,480	279,633,321	290,643,196	294,036,798	276,576,481	3,312,836,479
Catering services	71,214,354	71,119,326	76,062,076	61,663,361	62,509,913	73,016,828	74,002,327	82,084,846	80,808,178	89,321,883	74,623,412	87,782,491	85,298,103	918,292,744
Video stores	4,513,187	5,553,105	2,787,193	1,437,884	1,349,628	1,461,754	1,258,528	1,232,957	1,075,868	1,000,074	918,326	971,250	995,116	20,041,683
Cinema, theatre & dance	174,030,777	191,113,333	202,631,506	158,362,250	153,863,369	168,644,524	171,363,778	177,211,674	153,424,223	157,801,606	157,710,964	138,103,646	192,643,363	2,022,874,236
Concerts & entertainers	6,587,167	5,964,652	5,776,273	4,777,083	5,101,575	5,551,998	5,330,792	5,805,467	4,418,768	5,093,092	6,608,562	4,935,659	13,549,931	72,913,852
Tourist attractions	31,508,311	21,197,806	21,223,197	18,885,959	22,791,352	27,571,661	46,271,282	39,756,640	39,036,561	47,999,528	63,959,872	38,664,063	41,390,977	428,748,898
Amusement parks	7,453,318	4,041,344	2,602,058	2,456,316	3,619,000	4,750,367	11,668,397	9,521,723	10,278,133	12,633,423	18,116,307	10,451,088	9,671,262	99,809,148
Aquariums	2,245,062	1,685,428	1,553,870	1,783,939	2,487,908	3,287,210	5,355,585	4,183,443	3,684,926	5,845,454	8,877,218	6,367,706	4,305,414	49,418,101
Sports & games establishments	101,442,039	93,859,332	103,488,258	114,759,731	104,476,133	138,912,634	107,930,700	147,852,692	119,353,804	123,002,664	118,999,408	126,637,026	121,470,145	1,450,742,527
Professional sports clubs	12,376,769	12,023,388	13,873,945	13,881,335	10,405,911	15,833,168	18,183,081	24,619,757	16,393,885	16,524,984	13,014,050	13,570,718	14,267,281	182,591,503
Gambling	319,053,514	309,202,146	345,604,273	304,161,958	373,944,446	358,560,480	317,724,367	320,743,244	362,983,830	284,782,282	379,599,690	370,590,292	399,565,752	4,127,462,760
Personal services	18,740,914	16,443,730	17,633,618	18,321,064	17,577,294	20,337,770	18,478,943	19,534,069	18,808,808	19,000,675	17,969,851	19,106,378	18,685,043	221,897,243
Miscellaneous entertainment	32,788,894	31,688,548	31,883,658	25,674,096	27,628,254	33,826,544	38,359,955	37,176,865	34,196,086	39,466,520	53,123,257	40,319,723	42,516,096	435,859,602
<b>Entertainment</b>	<b>2,091,429,421</b>	<b>2,046,203,306</b>	<b>2,264,283,270</b>	<b>1,951,495,431</b>	<b>2,083,777,274</b>	<b>2,389,089,816</b>	<b>2,301,203,098</b>	<b>2,392,094,565</b>	<b>2,345,341,702</b>	<b>2,317,779,195</b>	<b>2,536,926,590</b>	<b>2,426,687,744</b>	<b>2,536,362,442</b>	<b>27,591,244,433</b>
<b>Hotels</b>	<b>417,818,542</b>	<b>349,475,160</b>	<b>342,724,112</b>	<b>403,326,712</b>	<b>365,361,464</b>	<b>429,793,519</b>	<b>459,977,062</b>	<b>476,680,001</b>	<b>482,628,021</b>	<b>514,000,872</b>	<b>534,586,321</b>	<b>543,055,543</b>	<b>477,335,602</b>	<b>5,378,944,369</b>
Airlines	305,065,163	237,337,868	209,820,131	427,114,311	335,636,160	389,034,435	367,551,172	410,177,865	384,694,945	385,295,451	140,765,967	353,563,123	336,771,312	3,977,762,740
Airport terminals	3,427,379	2,861,466	2,840,459	2,705,739	2,643,013	3,729,765	3,762,500	4,066,517	4,562,024	4,817,052	4,485,975	4,625,927	3,697,695	44,798,132
Railways	424,349,662	392,545,486	393,937,057	402,071,599	360,800,630	413,760,414	386,785,453	395,472,087	405,314,021	424,256,257	375,282,523	446,270,247	452,306,183	4,848,801,957
Buses	45,001,861	40,189,011	35,044,807	44,967,181	40,978,139	46,494,748	46,333,496	45,757,143	40,619,275	42,797,322	40,476,664	49,523,742	41,165,493	514,347,021
Sea travel	39,665,230	32,679,432	26,972,561	34,996,152	37,854,352	44,511,218	47,613,955	51,382,590	50,423,299	49,621,149	44,549,938	42,222,439	49,521,402	512,348,487
Travel agents	764,343,723	652,810,683	629,728,104	1,113,960,407	1,000,158,414	1,182,951,416	1,169,356,354	1,319,241,982	1,207,147,883	1,180,286,777	961,322,226	876,502,030	791,474,159	12,084,941,435
Timeshares	675,519	553,604	541,541	954,218	718,365	665,084	653,169	635,740	559,459	659,263	27,922	613,935	646,660	7,228,960
Camping grounds	60,758,825	55,552,933	49,174,318	53,107,459	61,020,349	88,697,244	91,964,404	104,051,885	103,459,640	112,744,653	101,102,395	76,322,952	72,353,813	969,552,045
Miscellaneous travel	31,864,928	29,279,785	27,382,070	28,489,285	29,019,418	36,700,293	39,618,179	40,564,671	49,862,014	49,067,347	47,435,641	47,680,035	45,789,514	470,888,252
<b>Travel</b>	<b>1,675,152,290</b>	<b>1,443,810,268</b>	<b>1,375,441,048</b>	<b>2,108,366,351</b>	<b>1,868,829,840</b>	<b>2,206,544,617</b>	<b>2,153,638,682</b>	<b>2,371,350,480</b>	<b>2,246,642,560</b>	<b>2,249,545,271</b>	<b>1,715,449,251</b>	<b>1,897,324,430</b>	<b>1,793,726,231</b>	<b>23,430,669,029</b>
Telegraph services / Wire transfer money order	31,238,405	36,005,546	38,091,769	37,670,345	36,654,173	39,636,033	42,051,631	73,201,751	77,211,551	79,932,893	67,893,193	70,595,002	52,934,113	651,878,000
Insurance services	572,476,403	486,542,106	447,341,771	523,628,742	501,929,012	612,843,160	582,610,854	559,351,692	556,696,592	603,328,051	556,024,083	609,665,092	581,097,912	6,621,059,067
Fis - cash disbursements (auto & manual)	3,358,426	2,795,288	4,133,362	4,209,586	6,607,069	3,746,684	4,195,455	5,706,335	6,277,915	7,151,494	6,757,393	5,790,265	3,616,945	60,987,791
Fis - merchandise & services	3,282,384,479	3,002,032,530	3,273,512,985	3,251,790,773	2,894,779,027	3,414,978,629	3,438,506,077	3,004,409,197	2,919,300,151	3,143,246,873	2,870,727,520	3,050,844,299	3,131,058,583	37,395,186,644
Non-Fis - foreign currency, travellers' cheques	223,696,701	167,583,628	179,226,960	211,863,560	224,605,877	256,167,706	374,973,019	425,809,168	507,001,131	426,004,137	413,208,309	282,655,364	3,774,092,198	
Security brokers and dealers	1,340,898,871	445,854,878	362,166,225	562,070,435	443,281,791	750,114,102	933,658,702	433,281,602	597,874,392	525,170,884	412,057,912	486,798,615	587,399,321	6,539,728,859
Tax preparation services	278,994	279,241	179,134	276,956	202,229	172,095	228,341	175,998	147,784	228,705	140,313	169,417	232,286	2,432,499
Tax payments	2,228,698	1,998,555	1,954,451	1,888,414	1,397,133	2,094,581	2,344,775	1,902,278	1,780,705	1,702,681	1,461,966	120,084,188	111,322,686	249,932,413
Fines, bail and bond payments	40,729,494	38,884,290	35,596,821	39,034,465	38,664,949	44,415,562	39,712,282	41,486,943	38,557,969	42,522,317	40,454,993	39,311,252	42,323,653	480,965,496
Miscellaneous financial	21,314,503	19,477,304	16,267,067	18,101,736	17,361,289	22,068,014	22,808,958	23,916,091	25,423,676	27,633,273	24,682,459	25,963,644	25,790,553	269,494,064
<b>Financial</b>	<b>5,518,604,974</b>	<b>4,201,453,366</b>	<b>4,358,470,545</b>	<b>4,650,535,012</b>	<b>4,165,482,549</b>	<b>5,146,236,566</b>	<b>5,371,110,414</b>	<b>4,518,404,906</b>	<b>4,649,079,903</b>	<b>4,937,918,302</b>	<b>4,406,203,969</b>	<b>4,822,430,083</b>	<b>4,818,431,416</b>	<b>56,045,757,031</b>

Table 3D Card expenditure statistics (not seasonally adjusted)

Value of debit card transactions

## Detailed sector breakdown - services sectors (continued, not seasonally adjusted)

£	October 2013	November 2013	December 2013	January 2014	February 2014	March 2014	April 2014	May 2014	June 2014	July 2014	August 2014	September 2014	October 2014	Total (latest 12 months)
Telecoms	344,349,276	324,610,484	335,300,244	345,726,054	297,315,259	339,678,620	316,438,873	325,512,230	312,964,866	336,018,002	325,398,903	373,938,923	374,958,493	4,007,860,951
Utilities	238,970,304	211,318,563	208,503,419	240,602,317	240,985,029	300,350,547	282,949,215	267,263,009	236,566,129	236,405,813	194,060,920	228,640,198	240,369,447	2,888,014,606
Contractors (residential & commercial)	162,074,000	157,437,074	136,046,509	136,888,779	138,204,139	159,616,860	153,717,380	158,782,081	161,505,134	173,443,220	160,577,402	184,637,283	197,911,851	1,918,767,712
Gardening services	6,708,629	6,511,654	7,023,438	5,310,085	5,547,964	9,184,405	10,621,455	10,576,390	9,841,969	9,086,154	7,278,585	7,797,974	7,516,624	96,296,697
Veterinary services	106,376,752	96,671,387	91,432,644	101,290,708	94,039,813	105,062,027	104,146,945	108,292,544	109,234,996	120,576,286	113,893,091	115,697,769	120,403,565	1,280,741,775
Photocopying & printing	27,650,675	27,052,511	24,772,707	24,303,411	22,483,252	25,367,769	23,977,407	26,205,895	25,189,165	25,660,506	23,027,078	27,539,148	27,978,133	303,556,982
Photographic studios	13,685,262	14,902,237	14,639,440	9,639,804	10,078,351	11,857,625	11,180,434	12,531,914	13,268,085	15,324,341	12,561,872	13,143,498	15,102,367	154,229,968
Beauty & barber shops	197,448,331	196,898,423	243,837,821	177,500,706	183,206,172	212,570,868	200,758,000	215,869,530	210,980,999	218,968,540	205,671,521	215,292,950	215,960,368	2,497,515,898
Employment agencies	1,389,773	1,343,704	1,123,738	1,465,954	1,343,084	1,594,566	1,458,139	1,557,600	1,496,861	1,688,849	1,420,604	1,649,301	1,688,723	17,831,123
Counselling services	7,139,987	6,291,357	6,133,762	6,343,743	6,233,781	7,221,051	6,936,088	6,671,191	6,750,088	6,935,400	6,191,021	7,216,297	6,589,327	79,513,106
Legal services	94,087,433	86,455,698	74,329,018	82,465,721	77,494,849	88,345,777	83,104,494	85,746,342	85,861,238	90,883,792	79,567,774	85,714,608	92,058,832	1,012,028,143
Laundry & cleaning	13,628,609	12,850,200	12,026,171	11,792,698	10,587,970	12,545,235	12,192,957	13,210,315	13,910,467	13,986,693	12,812,504	14,479,604	14,652,278	155,047,092
Funeral services	35,345,234	34,682,847	34,291,569	39,094,876	37,326,159	41,891,295	38,061,072	37,362,229	37,355,990	39,513,696	36,476,388	40,267,697	44,952,644	461,276,462
Medical services	257,935,546	242,398,551	212,364,223	246,380,254	237,644,367	261,025,331	244,811,033	253,551,504	256,071,284	270,847,472	234,115,074	268,110,762	286,520,060	3,013,839,915
Moving & courier services	37,040,464	35,347,485	33,806,947	32,657,886	29,392,206	33,662,685	34,012,298	35,743,244	37,314,083	41,657,454	37,857,640	40,641,264	40,711,894	432,805,086
Repair shops (not auto)	12,040,582	12,009,753	12,000,711	11,444,106	10,884,160	12,107,879	11,853,934	12,348,788	12,957,367	13,527,442	12,440,790	13,359,775	13,798,148	148,732,853
Accounting services	19,368,576	18,272,354	17,459,720	23,145,515	19,071,677	20,135,680	17,323,671	16,949,187	15,391,604	16,243,996	14,738,729	16,814,590	17,734,997	213,281,720
Advertising, consultancy & PR	12,185,100	11,459,702	9,052,505	11,295,508	10,668,870	11,593,422	11,621,279	11,716,235	11,190,740	11,968,211	10,429,373	11,595,265	11,476,301	134,067,411
Computer programming	40,518,505	36,092,311	36,781,620	38,812,837	32,175,902	35,131,064	34,696,518	34,082,872	32,992,312	34,379,299	32,261,969	35,711,886	34,945,975	418,064,565
Farming services	22,126,143	21,766,748	22,736,921	21,308,918	19,795,505	22,246,110	22,951,068	23,380,149	24,012,069	24,539,130	22,931,223	23,904,650	27,940,896	277,513,387
Miscellaneous professional services	670,730,387	531,148,791	501,558,663	634,220,895	540,259,786	650,602,417	687,443,199	584,170,481	579,227,743	627,289,774	599,474,909	690,893,213	659,541,526	7,285,831,397
Engineering services	21,021,165	18,703,132	16,522,590	17,774,706	18,084,923	20,957,790	20,866,394	21,388,100	21,018,412	22,213,310	19,215,744	21,720,793	22,103,654	240,569,548
Marina services	9,358,571	7,370,882	7,136,961	8,424,326	8,111,521	14,324,542	15,168,212	14,900,508	15,882,004	16,747,256	14,930,200	12,431,521	10,590,166	146,018,099
Wrecking & salvage yards	1,629,771	1,433,209	1,105,356	1,373,989	1,414,370	1,624,409	1,607,849	1,630,704	1,739,523	1,796,037	1,498,483	1,731,464	1,785,406	18,740,799
Pest control	634,499	565,813	474,442	554,710	527,708	579,819	604,346	699,750	792,785	865,292	736,680	795,665	1,050,396	8,247,406
Educational establishments	600,546,301	241,667,125	199,280,773	466,713,026	222,855,448	178,157,464	236,958,177	227,701,886	152,518,017	157,396,828	204,726,960	722,901,486	618,243,115	3,629,120,305
Child care services	14,034,151	12,619,068	11,412,467	15,221,560	13,520,657	14,562,967	14,367,733	14,429,586	14,171,071	14,911,810	15,028,512	13,371,698	16,011,297	169,628,426
Social, political & religious organisations	116,991,908	109,678,977	89,416,198	93,820,152	83,003,182	118,781,593	103,726,573	103,089,936	100,341,945	129,745,897	102,121,263	120,578,731	130,716,686	1,285,021,133
Government services	1,601,572,163	1,449,613,799	1,576,988,115	3,048,834,528	1,949,079,267	1,698,889,857	1,754,928,022	2,086,318,982	2,031,109,989	2,553,406,214	1,625,128,766	1,911,495,207	1,897,331,746	23,583,124,492
Miscellaneous services	502,165,055	449,210,548	490,746,027	586,085,339	447,877,498	514,148,450	526,986,640	526,741,780	637,568,640	672,048,131	534,304,144	603,223,593	584,038,962	6,572,979,752
Commercial equipment	150,083,450	141,846,360	124,646,009	134,341,182	125,835,517	154,120,909	143,689,876	148,032,770	146,077,552	157,923,405	145,024,161	166,737,100	163,643,632	1,751,918,473
Other services	5,338,836,602	4,518,230,747	4,552,950,728	6,574,834,293	4,895,048,386	5,077,939,033	5,129,159,281	5,386,457,732	5,315,303,127	6,055,998,250	4,804,245,469	5,993,690,727	5,898,327,509	64,202,185,282
<b>Total services</b>	<b>17,259,008,706</b>	<b>14,575,359,556</b>	<b>14,687,118,057</b>	<b>17,830,754,968</b>	<b>15,458,563,425</b>	<b>18,253,726,777</b>	<b>17,893,081,799</b>	<b>17,619,832,848</b>	<b>17,501,924,443</b>	<b>18,570,160,226</b>	<b>16,267,476,821</b>	<b>18,498,007,989</b>	<b>17,970,912,454</b>	<b>205,126,919,363</b>
<b>TOTAL</b>	<b>32,887,317,597</b>	<b>30,579,428,978</b>	<b>33,646,705,216</b>	<b>32,129,606,700</b>	<b>28,981,013,865</b>	<b>34,129,492,761</b>	<b>33,254,517,959</b>	<b>33,399,014,422</b>	<b>33,423,356,636</b>	<b>34,527,304,793</b>	<b>31,495,400,010</b>	<b>34,443,685,230</b>	<b>34,356,633,123</b>	<b>394,366,159,693</b>