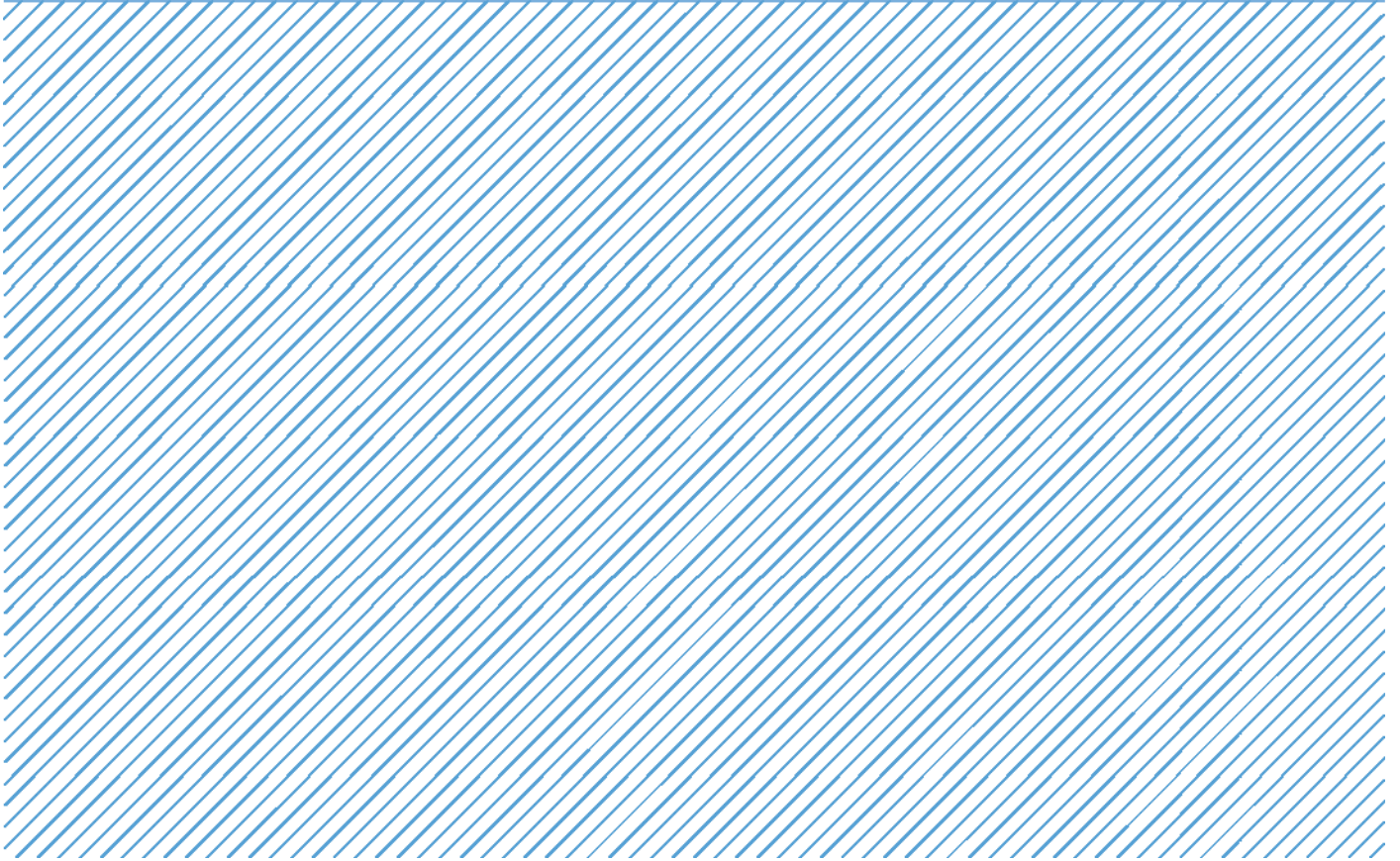


Card Expenditure Statistics

November 2015



Card Expenditure Statistics – November 2015

	Total Spending £ billions		Annual growth rates for spending		Number of purchases Millions	
	Nov 2015	Nov 2014	Nov 2015	Nov 2014	Nov 2015	Nov 2014
All payment cards	53.2	49.3	8.3%	7.7%	1,174	1,037
<i>Of which online *</i>	11.8	10.4	14.0%	–	142	115
Debit cards	37.7	34.8	8.8%	8.4%	901	795
Credit cards	15.5	14.5	7.1%	6.2%	273	243

Unless otherwise stated all data referred to are seasonally adjusted and depict the underlying trend. The X12 ARIMA monthly seasonal adjustments include trading days and leap years. Unadjusted data are located in tables 3A to 3D. There is a step change in the data between 2010 and 2011 following a change in the reporting population. Average transaction values are based on three-month rolling averages, while growth rates are based on twelve-month rolling periods.

* As there are insufficient online data series collected to apply X12 ARIMA seasonal adjustment, the underlying trend is determined using linear regression. This allows an estimation of the likely scale of seasonal impacts to be made until there are sufficient data (3 years) to use a recognised method of seasonal adjustment.

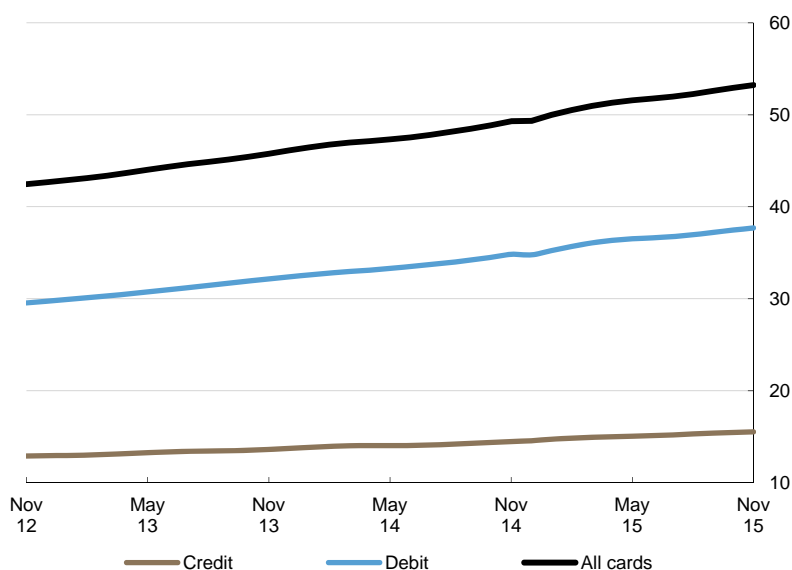
Introduction

Payment card spending amounted to £53.2 billion in November, up by 0.6% on October. The **number of purchases** also increased and reached a monthly record of 1.2 billion, up by 0.9% during the month. This rise, in part was a reflection of consumers taking advantage of promotions on offer most notably on **Black Friday** and **Cyber Monday**¹.

Online spending grew by 1.0% to £11.8 billion; representing 22.2% of total card spending, while the number of online purchases rose by 1.6% to reach 142 million, accounting for 12.1% of the total number of card purchases. Meanwhile, spending on **contactless** cards reached a **milestone of £1.0 billion** spent within a single month, up by 10% on October, and compares to £0.3 billion spent a year ago. The number of contactless purchases amounted to 128 million, up by 6% on October.

Chart 1

Monthly expenditure
(£ billions)



¹ Sky News, Shoppers Splash Record £3.3bn Over Four Days: <http://news.sky.com/story/1597843/shoppers-splash-record-3-3bn-over-four-days>

Annual growth rates

Payment card spending grew at an **annual rate** of 8.3%, unchanged on October, but up from 7.7% a year ago. This robust growth could, in part stem from increasing levels of household disposable income², rising employment and wages³, as well as ongoing migration from cash payments.

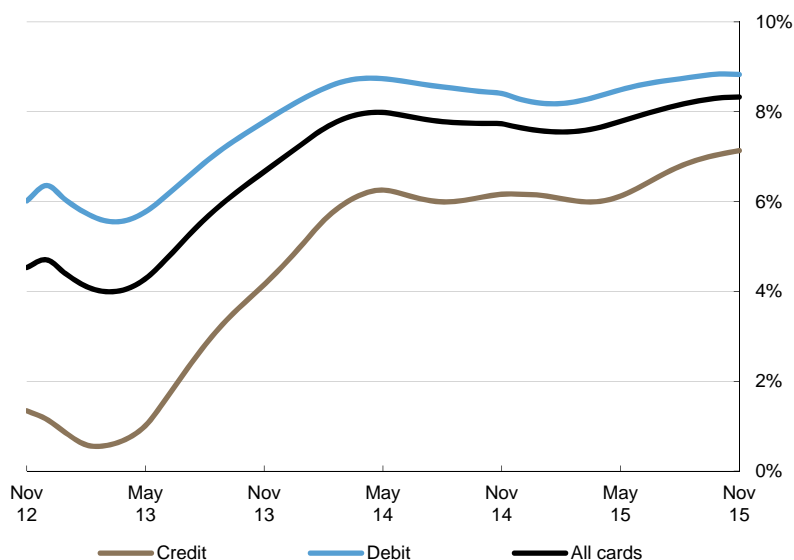
Within the sectors, the **financial** sub-sector rose by a record 16.6%, driven by an increasing proportion of **tax payments** being made using cards. In contrast, spending on **automotive fuels** has been in decline for over a year, decreasing by 8.5% in November – a reflection of falling oil prices⁴.

Meanwhile, the highest annual growth rate (11.5%) in the **number of purchases**, since 2004, continued to outstrip that of spending, continuing a trend evident since 2011. This trend was also evident in **e-commerce** where the number of online purchases grew by 23% compared to a year ago, with the corresponding spending up by 14%. In contrast, **contactless** spending at an annual growth rate of 241% exceeded that on contactless purchases (233%).

Chart 2

Spending on payment cards

Year-on-year growth rates



Sub-sector	Annual growth (%)
Other retail	10.0
Mixed business	8.1
Household	7.9
Clothing	7.3
Food & drink	0.7
Automotive Fuels	-8.5
Retail sales	3.4
Financial	16.6
Hotels	14.3
Entertainment	14.2
Other services	13.1
Vehicle Sales & Services	10.4
Travel	8.6
Services	13.1

² ONS, Quarterly National Accounts, Q3: <http://www.ons.gov.uk/ons/rel/naa2/quarterly-national-accounts/q3-2015/index.html>

³ ONS, UK Labour Market: <http://www.ons.gov.uk/ons/taxonomy/index.html?nscl=Labour+Market>

⁴ Reuters, Wall St. slides as oil prices tumble to near seven-year low: <http://reut.rs/1IPgFuj>

Average transaction values

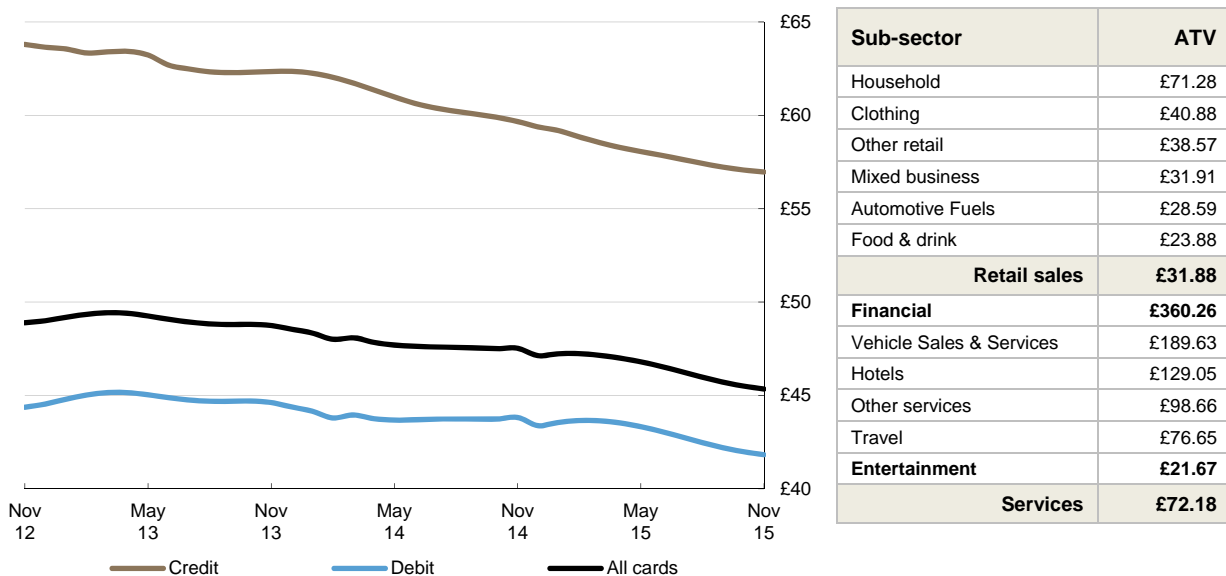
There has been a consistent trend of continuously declining ATVs since 2011, likely reflecting falling commodity prices, record low inflation and changing consumer spending habits coupled with supermarket price wars⁵. This has been accelerated by the increasing usage of **contactless** cards, with the number of contactless payments accounting for a record 10.9% of total card purchases – up from 3.8% a year ago.

There was a slight decrease in the **average transaction value (ATV)** on all payment cards, which fell by 16p to £45.34 and compares to £47.53 a year ago. The **retail sales** ATV declined by 12p to £31.88, while the ATV for **services** fell by 31p to £72.18. Within the merchant sectors, the largest decrease came from the **vehicle sales & services** sub-sector, which recorded an ATV fall of £1.18, while **financial services** registered the largest increase of £2.85 during the month.

The ATV for **online spending** on all payment cards stood at a record low of £74.69, down from £79.97 in October. In contrast, the ATV on **contactless** cards reached £8.03, up from £7.72 in October, likely driven by the maximum limit increase from £20 to £30 from September.

Chart 3

Average transaction values



⁵ The Guardian, Who will be the winners in the Christmas supermarket sweep? <http://gu.com/p/4f8ky/stw>

Spending by sector – retail sales and services

The number of transactions within the **retail sector** increased by 6.3 million to 782 million, with the corresponding spend rising by £108 million to £24.9 billion. Meanwhile, the number of transactions in the **services sector** grew by 4.3 million to 392 million, corresponding to a rise in spending of £188 million to £28.3 billion. The highest increases in **retail** spending came from the **food & drink** and **other retail** sub-sectors, where spending amounted to £9.4 billion and £4.1 billion respectively. Despite the decline in overall food sales by 0.6% on October⁶, card spending on groceries recorded a rise of £41 million with particularly strong performance at **sweet stores** and **off-licences**.

The largest growth within the **services** sector was registered at **financial services** after increasing by £99 million to £6.6 billion. This growth was boosted by a notable rise in **tax payments**. **Entertainment** was also a strong contributor to growth after increasing by £32 million to £4.5 billion, with particularly robust spending at **concerts, cinema, theatre & dance**.

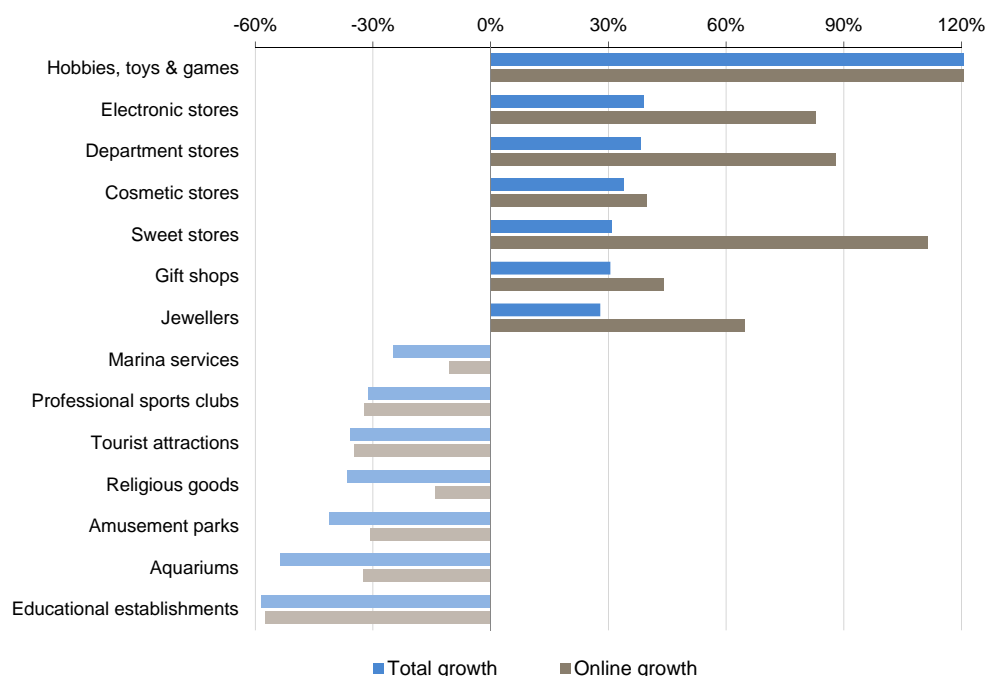
Spending by merchant categories (not seasonally adjusted)

Along with growth in spending at supermarkets, sweet stores and concert establishments there was increased consumer traffic at a number of other merchants during the month. The largest increases were evident at **hobbies, toys & games** stores and other gift shops such as **jewellers** and **cosmetic stores** – a reflection of the Christmas shopping season, with particular strong **online spending**⁷ during **Black Friday**.

Meanwhile, spending at **educational establishments**, aquariums and amusement parks registered the largest decreases on October.

Chart 4

Largest changes in total card spending between October and November⁸



⁶ ONS, Retail Sales, November 2015: <http://www.ons.gov.uk/ons/rel/rsi/retail-sales/november-2015/stb-rsi-nov-15.html#tab-Sector-summary>

⁷ BBC, Black Friday: online spending surge in UK and US: <http://www.bbc.co.uk/news/business-34931837>

⁸ Actual monthly total and online growth rates for spending on hobbies, toys and games (158% and 156% respectively) are not fully covered in chart in order to illustrate the majority of changes within the given scale

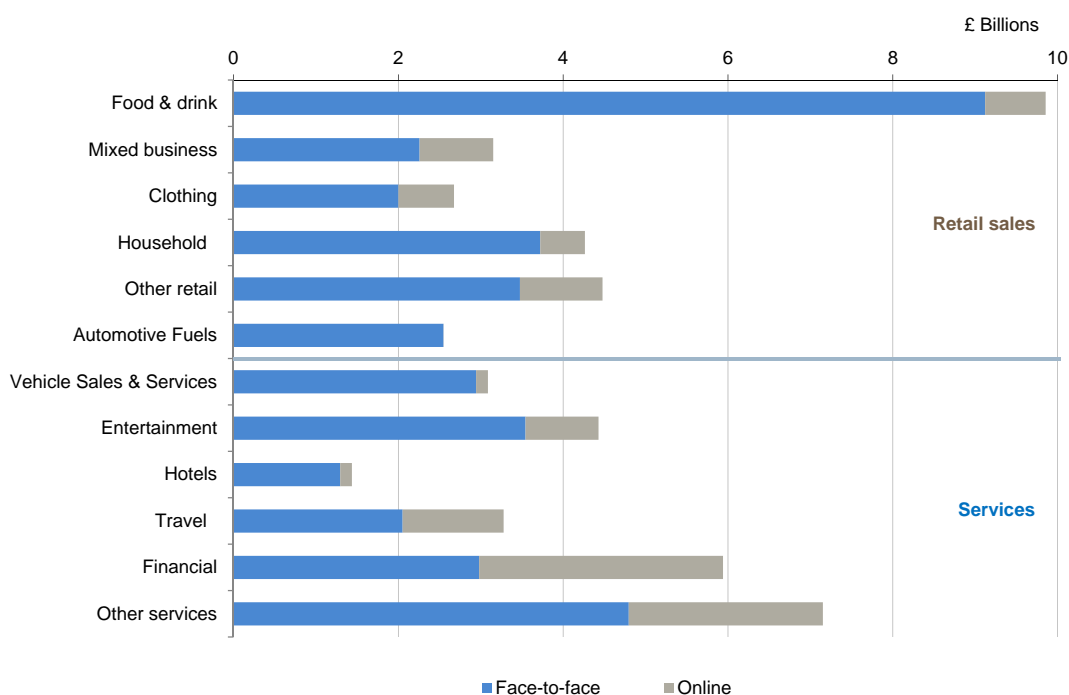
Spending online (not seasonally adjusted)

Online shopping continued to be prevalent within the **services** sector where 30% of total card spend was made via the internet, while just 14% of retail spending was online. The highest e-commerce traffic remained within **financial** services, where half of spending was completed via the internet, followed by **travel** with 37%. Within the merchant categories, **catalogues** registered the highest share of online spending (82%), followed by timeshares (82%), tax payments (80%) and concerts & entertainers (72%).

The lowest share was recorded in the **vehicle sales & services** sub-sector, where just 4.7% of spending was made online, while virtually all spending on **automotive fuels** occurred in the face-to-face environment, which was also the case at **employment agencies**, laundries and pubs.

Chart 5

Face-to-face and online spending by merchant sectors, November



Payment card spending within national retail sales

Retail sales form a significant part of household spending in the UK and data from merchants show increasing use of payment cards over many years. There was an increase in the percentage **share of retail sales** (including automotive fuels)⁹ accounted for by payment cards in November. This figure increased to a record 78.6%, with debit and credit card splits of 53.9% and 24.5% respectively.

This trend was also reflected in other sub-sectors such as **food & drink** and **automotive fuels**. The share of spending within food & drink accounted for by cards rose to 74.0%, while the majority of expenditure on automotive fuels was accounted for by payment cards at 85.2%.

Contact: Silvija Krupena; silvija.krupena@ukpayments.org.uk | camis@ukpayments.org.uk | 020 3217 8460 or 020 3217 8720

⁹ CES 3-month moving average spend of £24.9 billion expressed as a percentage of a similar 3-month moving average for ONS Retail Sales – All Retailing Including Automotive Fuel (J5A3) that amounted to £31.6 billion.

Table 1 Card expenditure statistics (seasonally adjusted)

Summary^{1 and 2}

		Number of purchase transactions (millions)									Value of purchase transactions (£ millions)								
		All sectors			Retail sales			Services			All sectors			Retail sales			Services		
		Credit	Debit	Total	Credit	Debit	Total	Credit	Debit	Total	Credit	Debit	Total	Credit	Debit	Total	Credit	Debit	Total
Annual																			
	2010	2,013	6,511	8,524	1,385	4,727	6,112	628	1,784	2,412	128,408	289,696	418,104	69,564	148,600	218,165	58,843	141,096	199,939
	2011	2,254	7,231	9,484	1,550	5,301	6,851	703	1,930	2,633	151,253	324,903	476,156	78,859	165,577	244,436	72,394	159,327	231,720
	2012	2,373	7,862	10,235	1,621	5,665	7,286	752	2,197	2,949	153,002	345,559	498,561	81,067	175,372	256,438	71,936	170,187	242,123
	2013	2,550	8,331	10,881	1,734	5,904	7,637	816	2,427	3,243	160,032	373,365	533,398	84,601	183,489	268,089	75,432	189,877	265,309
	2014	2,799	9,237	12,036	1,876	6,434	8,310	923	2,803	3,726	169,894	404,232	574,126	87,442	193,605	281,048	82,451	210,627	293,078
Monthly																			
	2014																		
	Nov	243	795	1,037	162	546	709	80	248	329	14,473	34,829	49,302	7,390	16,411	23,801	7,082	18,418	25,501
	Dec	245	801	1,047	164	549	713	81	253	334	14,565	34,767	49,332	7,423	16,004	23,427	7,142	18,763	25,905
	2015																		
	Jan	249	809	1,058	166	552	718	83	257	340	14,749	35,234	49,984	7,456	16,086	23,542	7,293	19,148	26,441
	Feb	252	817	1,069	168	556	724	84	262	346	14,828	35,684	50,513	7,493	16,167	23,660	7,335	19,518	26,853
	Mar	255	826	1,081	170	560	730	85	267	351	14,905	36,069	50,974	7,532	16,258	23,790	7,372	19,811	27,184
	Apr	257	835	1,092	172	564	736	85	271	356	14,976	36,344	51,320	7,569	16,366	23,935	7,406	19,978	27,385
	May	259	843	1,102	173	568	742	86	274	360	15,056	36,514	51,569	7,605	16,491	24,096	7,451	20,023	27,474
	Jun	262	850	1,112	175	573	748	87	278	364	15,138	36,627	51,765	7,635	16,618	24,254	7,503	20,009	27,512
	Jul	264	859	1,123	176	578	754	88	282	369	15,219	36,761	51,980	7,662	16,738	24,400	7,557	20,023	27,580
	Aug	266	870	1,137	178	583	761	88	287	376	15,302	36,957	52,260	7,690	16,854	24,544	7,612	20,104	27,716
	Sep	269	882	1,151	179	589	768	89	293	382	15,384	37,211	52,595	7,721	16,962	24,683	7,663	20,249	27,912
	Oct	271	892	1,163	181	594	775	90	298	388	15,462	37,468	52,930	7,755	17,056	24,810	7,708	20,412	28,120
	Nov	273	901	1,174	182	600	782	91	302	392	15,532	37,694	53,226	7,788	17,130	24,918	7,744	20,564	28,308
Year-on-year growth rates (percentages)																			
Annual																			
	2010	0.5	9.6	7.3	13.0	21.6	19.5	-19.2	-12.9	-14.7	2.5	10.4	7.8	12.9	18.5	16.6	-7.5	3.0	-0.3
	2011	12.0	11.1	11.3	12.0	12.1	12.1	11.9	8.2	9.2	17.8	12.2	13.9	13.4	11.4	12.0	23.0	12.9	15.9
	2012	5.3	8.7	7.9	4.6	6.9	6.4	6.8	13.9	12.0	1.2	6.4	4.7	2.8	5.9	4.9	-0.6	6.8	4.5
	2013	7.5	6.0	6.3	7.0	4.2	4.8	8.6	10.5	10.0	4.6	8.0	7.0	4.4	4.6	4.5	4.9	11.6	9.6
	2014	9.8	10.9	10.6	8.2	9.0	8.8	13.2	15.5	14.9	6.2	8.3	7.6	3.4	5.5	4.8	9.3	10.9	10.5
Monthly																			
	2014																		
	Nov	9.5	10.8	10.5	7.8	9.0	8.8	13.1	15.3	14.8	6.2	8.4	7.7	3.3	5.9	5.1	9.4	10.8	10.4
	Dec	9.8	10.9	10.6	8.2	9.0	8.8	13.2	15.5	14.9	6.2	8.3	7.6	3.4	5.5	4.8	9.3	10.9	10.5
	2015																		
	Jan	10.0	10.8	10.6	8.5	8.8	8.7	13.2	15.6	15.0	6.1	8.2	7.6	3.4	5.1	4.6	9.2	11.2	10.6
	Feb	10.2	10.5	10.5	8.9	8.4	8.5	13.1	15.8	15.1	6.1	8.2	7.5	3.4	4.7	4.3	9.1	11.6	10.8
	Mar	10.4	10.4	10.4	9.2	8.1	8.3	13.0	16.0	15.2	6.0	8.2	7.6	3.4	4.2	4.0	8.9	12.1	11.2
	Apr	10.6	10.3	10.4	9.5	7.8	8.2	12.9	16.3	15.5	6.0	8.4	7.7	3.4	3.8	3.7	8.8	12.7	11.6
	May	10.9	10.2	10.4	9.9	7.4	8.0	13.0	16.8	15.9	6.1	8.5	7.8	3.6	3.5	3.5	8.9	13.3	12.0
	Jun	11.3	10.2	10.5	10.4	7.2	7.9	13.0	17.4	16.3	6.3	8.6	7.9	3.8	3.2	3.4	9.1	13.7	12.4
	Jul	11.6	10.3	10.6	10.9	7.0	7.9	13.2	18.0	16.8	6.6	8.7	8.0	4.0	3.1	3.4	9.3	14.0	12.6
	Aug	12.0	10.4	10.8	11.3	7.0	8.0	13.3	18.6	17.3	6.8	8.7	8.2	4.3	3.0	3.4	9.5	14.2	12.8
	Sep	12.2	10.6	11.0	11.7	7.0	8.1	13.4	19.1	17.7	6.9	8.8	8.2	4.5	2.9	3.4	9.6	14.3	13.0
	Oct	12.4	10.9	11.2	11.9	7.1	8.2	13.4	19.6	18.1	7.1	8.8	8.3	4.6	2.8	3.4	9.6	14.4	13.1
	Nov	12.5	11.1	11.5	12.1	7.3	8.4	13.4	20.0	18.4	7.1	8.8	8.3	4.8	2.8	3.4	9.6	14.4	13.1

¹ There was a step change in 2011 due to a change in reporting population

² Data are seasonally adjusted and depict the underlying trend. The X12 ARIMA monthly seasonal adjustments include trading days and leap years.

Table 2A Card expenditure statistics (seasonally adjusted)

Retail sales^{1 and 2}

Number of purchase transactions (millions)

Total retail sales

	Number of purchase transactions (millions)																		Total retail sales			
	Food & drink			Mixed business			Clothing			Household			Other retailers			Automotive Fuels ³			Number of purchases			
	Credit	Debit	Total	Credit	Debit	Total	Credit	Debit	Total	Credit	Debit	Total	Credit	Debit	Total	Credit	Debit	Total	Credit	Debit	Total	
Annual																						
2010	533	2,289	2,821	139	406	545	129	424	553	148	350	498	275	733	1,008	162	525	687	1,385	4,727	6,112	
2011	600	2,565	3,165	136	425	562	139	428	567	157	370	526	295	781	1,076	223	732	956	1,550	5,301	6,851	
2012	663	2,848	3,511	148	478	626	145	453	598	157	375	532	281	757	1,038	227	754	982	1,621	5,665	7,286	
2013	722	3,009	3,730	182	523	705	152	459	612	165	401	566	276	720	997	236	792	1,028	1,734	5,904	7,637	
2014	769	3,454	4,222	251	476	727	163	478	641	172	433	605	285	783	1,067	237	810	1,047	1,876	6,434	8,310	
Monthly																						
2014	Nov	66	295	361	24	39	63	14	40	54	15	37	52	25	67	92	19	67	87	162	546	709
	Dec	67	296	363	24	40	64	14	41	55	15	37	52	25	68	93	19	67	87	164	549	713
2015	Jan	67	297	364	25	40	65	14	41	56	15	38	52	25	68	94	19	67	86	166	552	718
	Feb	68	299	367	26	41	67	14	42	56	15	38	53	26	69	95	19	67	87	168	556	724
	Mar	68	301	369	27	41	69	15	42	57	15	38	53	26	70	95	19	68	87	170	560	730
	Apr	69	304	372	28	42	70	15	42	57	15	38	53	26	70	96	19	68	87	172	564	736
	May	69	306	375	29	43	72	15	42	57	15	39	53	27	71	97	19	68	88	173	568	742
	Jun	70	308	377	29	44	73	15	42	57	15	39	54	27	72	99	19	68	88	175	573	748
	Jul	70	310	380	30	44	74	15	43	57	15	39	54	28	73	101	19	68	88	176	578	754
	Aug	70	312	383	30	45	76	15	43	58	15	40	55	28	74	102	19	69	88	178	583	761
	Sep	71	316	386	31	46	77	15	43	58	15	40	55	29	75	104	19	69	88	179	589	768
	Oct	71	319	390	31	47	78	15	44	59	15	40	56	29	76	105	19	69	88	181	594	775
	Nov	72	322	394	31	47	79	15	44	59	15	41	56	30	76	106	19	69	88	182	600	782
Year-on-year growth rates (percentages)																						
Annual																						
2010	3.9	10.1	8.8	5.8	0.7	1.9	2.9	4.7	4.3	1.7	9.6	7.1	-11.6	7.5	1.5	2.2	10.7	8.5	13.0	21.6	19.5	
2011	12.5	12.1	12.2	-1.5	4.6	3.1	8.0	0.8	2.5	5.8	5.7	5.7	7.4	6.6	6.8	38.1	39.4	39.1	12.0	12.1	12.1	
2012	10.5	11.0	10.9	8.4	12.5	11.5	4.6	5.8	5.5	0.1	1.4	1.0	-4.8	-3.1	-3.6	1.8	3.0	2.7	4.6	6.9	6.4	
2013	8.9	5.6	6.3	23.1	9.2	12.5	4.8	1.5	2.3	5.4	6.9	6.4	-1.5	-4.9	-4.0	3.8	5.0	4.7	7.0	4.2	4.8	
2014	6.5	14.8	13.2	37.6	-8.9	3.2	6.9	4.1	4.8	4.0	8.0	6.8	2.9	8.7	7.1	0.5	2.3	1.9	8.2	9.0	8.8	
Monthly																						
2014	Nov	6.4	14.6	13.0	36.6	-6.8	4.4	6.6	3.6	4.4	4.2	8.2	7.0	1.8	8.0	6.3	0.9	2.7	2.3	7.8	9.0	8.8
	Dec	6.5	14.8	13.2	37.6	-8.9	3.2	6.9	4.1	4.8	4.0	8.0	6.8	2.9	8.7	7.1	0.5	2.3	1.9	8.2	9.0	8.8
2015	Jan	6.7	14.6	13.1	38.4	-10.8	2.0	7.1	4.6	5.3	3.8	7.8	6.6	4.2	9.2	7.8	0.0	1.9	1.4	8.5	8.8	8.7
	Feb	6.8	14.2	12.8	39.0	-12.7	1.0	7.3	5.1	5.6	3.6	7.6	6.5	5.4	9.5	8.4	-0.4	1.4	1.0	8.9	8.4	8.5
	Mar	7.0	13.4	12.2	39.6	-11.6	2.2	7.3	5.3	5.8	3.5	7.5	6.3	6.6	9.7	8.9	-0.9	1.0	0.6	9.2	8.1	8.3
	Apr	7.1	12.5	11.5	40.3	-10.3	3.7	7.2	5.4	5.9	3.5	7.6	6.4	7.8	9.7	9.2	-1.2	0.7	0.3	9.5	7.8	8.2
	May	7.3	11.5	10.7	41.2	-8.6	5.6	7.1	5.5	5.9	3.6	7.7	6.5	9.0	9.7	9.5	-1.5	0.5	0.1	9.9	7.4	8.0
	Jun	7.6	10.6	10.1	42.0	-6.5	7.7	7.0	5.5	5.9	3.7	8.0	6.8	10.2	9.7	9.8	-1.8	0.5	-0.1	10.4	7.2	7.9
	Jul	8.0	9.8	9.4	42.5	-4.0	10.0	7.2	5.7	6.1	3.9	8.3	7.0	11.4	9.8	10.3	-2.0	0.4	-0.1	10.9	7.0	7.9
	Aug	8.3	9.1	8.9	42.6	-1.1	12.3	7.4	6.0	6.4	3.9	8.5	7.2	12.7	10.1	10.8	-2.2	0.5	-0.1	11.3	7.0	8.0
	Sep	8.6	8.5	8.5	42.2	1.9	14.7	7.8	6.4	6.7	3.9	8.6	7.3	13.8	10.3	11.3	-2.4	0.6	-0.1	11.7	7.0	8.1
	Oct	8.8	8.0	8.2	41.4	5.0	16.9	8.2	6.7	7.1	3.9	8.7	7.3	14.8	10.6	11.7	-2.5	0.7	0.0	11.9	7.1	8.2
	Nov	8.9	7.8	8.0	40.3	8.1	18.9	8.4	7.0	7.4	3.9	8.8	7.4	15.7	10.9	12.1	-2.5	0.9	0.1	12.1	7.3	8.4

¹ There was a step change in 2011 due to a change in reporting population

² Data are seasonally adjusted and depict the underlying trend. The X12 ARIMA monthly seasonal adjustments include trading days and leap years.

³ Automotive Fuels data is effective from January 2010. Data shown pre 2010 are for growth trend purposes only; these data are excluded from totals as these are already included in their former Services sector of Motoring (now known as Vehicle Sales & Service)

Table 2B Card expenditure statistics (seasonally adjusted)

Retail sales^{1 and 2}

Value of purchase transactions (£ millions)

Total retail sales

	Food & drink			Mixed business			Clothing			Household			Other retailers			Automotive Fuels ³			Value of purchases			
	Credit	Debit	Total	Credit	Debit	Total	Credit	Debit	Total	Credit	Debit	Total	Credit	Debit	Total	Credit	Debit	Total	Credit	Debit	Total	
Annual																						
2010	18,758	63,685	82,444	7,168	13,958	21,126	6,790	13,656	20,446	14,695	18,871	33,566	15,525	23,590	39,114	6,628	14,841	21,469	69,564	148,600	218,165	
2011	21,063	69,473	90,537	7,092	14,762	21,854	7,840	14,475	22,315	15,174	20,513	35,687	17,511	24,374	41,885	10,179	21,979	32,158	78,859	165,577	244,436	
2012	22,571	74,202	96,773	7,732	16,413	24,145	8,220	15,631	23,852	15,379	21,621	37,000	16,765	24,452	41,217	10,398	23,053	33,451	81,067	175,372	256,438	
2013	24,091	77,897	101,988	8,723	17,935	26,658	8,664	16,060	24,723	15,914	23,268	39,182	16,527	24,431	40,958	10,682	23,898	34,580	84,601	183,489	268,089	
2014	24,495	84,550	109,046	9,609	16,676	26,285	9,107	17,032	26,139	16,867	26,015	42,882	17,129	25,740	42,869	10,235	23,592	33,828	87,442	193,605	281,048	
Monthly																						
2014																						
Nov	2,052	7,289	9,340	829	1,366	2,195	771	1,431	2,201	1,422	2,230	3,651	1,506	2,185	3,691	811	1,911	2,722	7,390	16,411	23,801	
Dec	2,060	6,844	8,903	839	1,383	2,222	780	1,443	2,223	1,427	2,245	3,673	1,523	2,207	3,730	793	1,883	2,675	7,423	16,004	23,427	
2015																						
Jan	2,067	6,880	8,947	848	1,402	2,249	792	1,458	2,250	1,434	2,264	3,698	1,537	2,223	3,761	777	1,859	2,637	7,456	16,086	23,542	
Feb	2,074	6,902	8,976	856	1,422	2,278	804	1,474	2,278	1,442	2,286	3,728	1,549	2,236	3,785	767	1,847	2,615	7,493	16,167	23,660	
Mar	2,081	6,921	9,002	864	1,442	2,306	816	1,488	2,304	1,449	2,310	3,759	1,559	2,250	3,810	763	1,846	2,609	7,532	16,258	23,790	
Apr	2,088	6,948	9,036	872	1,462	2,334	824	1,499	2,322	1,455	2,335	3,791	1,569	2,271	3,840	761	1,852	2,613	7,569	16,366	23,935	
May	2,097	6,986	9,083	880	1,483	2,363	828	1,507	2,335	1,461	2,362	3,823	1,580	2,294	3,874	760	1,857	2,617	7,605	16,491	24,096	
Jun	2,106	7,033	9,139	887	1,505	2,393	829	1,516	2,344	1,466	2,389	3,855	1,591	2,319	3,910	756	1,857	2,612	7,635	16,618	24,254	
Jul	2,116	7,080	9,196	895	1,527	2,422	828	1,524	2,352	1,471	2,415	3,886	1,604	2,344	3,948	748	1,848	2,596	7,662	16,738	24,400	
Aug	2,127	7,127	9,254	902	1,548	2,450	829	1,532	2,361	1,477	2,439	3,916	1,619	2,371	3,990	737	1,836	2,573	7,690	16,854	24,544	
Sep	2,137	7,177	9,314	908	1,565	2,473	832	1,541	2,373	1,483	2,459	3,942	1,634	2,397	4,031	726	1,824	2,550	7,721	16,962	24,683	
Oct	2,147	7,219	9,366	913	1,579	2,493	839	1,550	2,389	1,488	2,476	3,964	1,649	2,415	4,064	718	1,817	2,535	7,755	17,056	24,810	
Nov	2,157	7,250	9,407	918	1,589	2,507	847	1,559	2,406	1,492	2,491	3,983	1,661	2,425	4,086	712	1,816	2,528	7,788	17,130	24,918	
Year-on-year growth rates (percentages)																						
Annual																						
2010	3.6	5.7	5.2	1.5	0.3	0.7	6.9	7.6	7.4	1.8	13.8	8.2	-0.8	7.0	3.8	13.1	17.2	15.9	12.9	18.5	16.6	
2011	12.3	9.1	9.8	-1.1	5.8	3.4	15.5	6.0	9.1	3.3	8.7	6.3	12.8	3.3	7.1	53.6	48.1	49.8	13.4	11.4	12.0	
2012	7.2	6.8	6.9	9.0	11.2	10.5	4.8	8.0	6.9	1.4	5.4	3.7	-4.3	0.3	-1.6	2.2	4.9	4.0	2.8	5.9	4.9	
2013	6.7	5.0	5.4	12.8	9.3	10.4	5.4	2.7	3.7	3.5	7.6	5.9	-1.4	-0.1	-0.6	2.7	3.7	3.4	4.4	4.6	4.5	
2014	1.7	8.5	6.9	10.1	-7.0	-1.4	5.1	6.1	5.7	6.0	11.8	9.4	3.6	5.4	4.7	-4.2	-1.3	-2.2	3.4	5.5	4.8	
Monthly																						
2014																						
Nov	1.8	8.9	7.2	10.4	-5.6	-0.3	5.0	6.0	5.7	6.2	12.2	9.8	2.5	5.1	4.0	-3.3	-0.7	-1.5	3.3	5.9	5.1	
Dec	1.7	8.5	6.9	10.1	-7.0	-1.4	5.1	6.1	5.7	6.0	11.8	9.4	3.6	5.4	4.7	-4.2	-1.3	-2.2	3.4	5.5	4.8	
2015																						
Jan	1.6	8.1	6.6	9.9	-8.0	-2.2	5.2	6.1	5.8	5.7	11.2	9.0	4.8	5.6	5.3	-5.2	-2.0	-3.0	3.4	5.1	4.6	
Feb	1.5	7.6	6.1	9.5	-8.6	-2.6	5.3	6.0	5.7	5.4	10.6	8.5	6.0	5.7	5.8	-6.2	-2.7	-3.8	3.4	4.7	4.3	
Mar	1.5	6.8	5.6	9.2	-8.5	-2.6	5.3	5.8	5.6	5.0	10.1	8.0	7.2	5.8	6.3	-7.3	-3.4	-4.6	3.4	4.2	4.0	
Apr	1.4	6.0	4.9	9.1	-7.9	-2.2	5.4	5.6	5.5	4.7	9.8	7.7	8.4	5.8	6.8	-8.2	-4.0	-5.3	3.4	3.8	3.7	
May	1.5	5.1	4.3	9.2	-6.8	-1.4	5.6	5.4	5.5	4.6	9.7	7.6	9.6	5.9	7.3	-8.9	-4.5	-5.9	3.6	3.5	3.5	
Jun	1.6	4.2	3.6	9.5	-5.2	-0.2	6.0	5.3	5.6	4.5	9.7	7.6	10.6	6.0	7.9	-9.7	-4.9	-6.4	3.8	3.2	3.4	
Jul	1.9	3.3	3.0	10.0	-3.2	1.3	6.5	5.4	5.8	4.4	9.8	7.7	11.5	6.4	8.4	-10.4	-5.4	-6.9	4.0	3.1	3.4	
Aug	2.2	2.5	2.4	10.4	-0.9	3.0	7.0	5.6	6.1	4.4	9.9	7.7	12.1	6.8	8.9	-11.2	-5.8	-7.5	4.3	3.0	3.4	
Sep	2.6	1.6	1.8	10.8	1.6	4.8	7.6	5.9	6.5	4.3	10.0	7.8	12.5	7.4	9.4	-11.8	-6.3	-8.0	4.5	2.9	3.4	
Oct	2.9	0.8	1.3	10.9	4.1	6.5	8.2	6.3	6.9	4.3	10.1	7.8	12.6	8.0	9.8	-12.4	-6.5	-8.3	4.6	2.8	3.4	
Nov	3.3	0.0	0.7	11.0	6.5	8.1	8.6	6.6	7.3	4.4	10.2	7.9	12.5	8.4	10.0	-12.7	-6.6	-8.5	4.8	2.8	3.4	

¹ There was a step change in 2011 due to a change in reporting population

² Data are seasonally adjusted and depict the underlying trend. The X12 ARIMA monthly seasonal adjustments include trading days and leap years.

³ Automotive Fuels data is effective from January 2010. Data shown pre 2010 are for growth trend purposes only; these data are excluded from totals as these are already included in their former Services sector of Motoring (now known as Vehicle Sales & Service)

Table 2C Card expenditure statistics (seasonally adjusted)

Services^{1 and 2}

		Number of purchase transactions (millions)																		Total services		
		Vehicle Sales & Services ³			Entertainment			Hotels			Travel			Financial			Other services			Number of purchases		
		Credit	Debit	Total	Credit	Debit	Total	Credit	Debit	Total	Credit	Debit	Total	Credit	Debit	Total	Credit	Debit	Total	Credit	Debit	Total
Annual																						
	2010	76	204	280	222	726	949	37	35	72	98	203	300	32	130	161	164	487	650	628	1,784	2,412
	2011	51	89	139	268	882	1,150	51	43	94	116	237	353	33	145	178	186	534	719	703	1,930	2,633
	2012	50	94	144	309	1,062	1,371	52	48	100	123	266	389	30	161	190	187	567	754	752	2,197	2,949
	2013	53	104	157	354	1,222	1,577	54	53	108	130	285	416	28	173	202	196	589	785	816	2,427	3,243
	2014	58	120	179	423	1,499	1,921	60	63	122	151	327	478	25	165	190	207	629	836	923	2,803	3,726
Monthly																						
	2014																					
	Nov	5	11	15	37	134	172	5	6	11	13	30	43	2	14	16	18	54	72	80	248	329
	Dec	5	11	16	38	137	174	5	6	11	13	31	44	2	14	16	18	55	73	81	253	334
	2015																					
	Jan	6	11	17	38	139	177	5	6	11	14	32	45	2	14	17	18	56	74	83	257	340
	Feb	6	11	17	38	142	180	5	6	11	14	32	46	2	15	17	18	56	75	84	262	346
	Mar	6	11	17	39	145	183	5	6	11	14	33	47	2	15	17	18	57	75	85	267	351
	Apr	6	11	17	39	147	186	5	6	11	14	34	48	2	15	17	19	57	76	85	271	356
	May	6	12	17	39	150	189	5	6	12	15	34	49	2	15	17	19	58	77	86	274	360
	Jun	6	12	17	39	151	191	5	6	12	15	35	50	2	15	18	19	58	77	87	278	364
	Jul	6	12	18	40	154	193	6	6	12	15	36	51	2	15	18	19	59	78	88	282	369
	Aug	6	12	18	40	157	197	6	6	12	15	37	52	2	16	18	19	59	79	88	287	376
	Sep	6	12	18	40	161	201	6	7	12	16	38	54	2	16	18	20	60	79	89	293	382
	Oct	6	12	18	41	164	205	6	7	12	16	39	55	2	16	18	20	60	80	90	298	388
	Nov	6	13	18	41	167	208	6	7	12	16	39	55	2	16	18	20	60	80	91	302	392
Year-on-year growth rates (percentages)																						
Annual																						
	2010	-67.8	-69.0	-68.7	8.0	22.5	18.8	1.6	10.5	5.7	-2.8	10.7	5.9	0.2	15.3	12.0	-2.0	3.2	1.9	-19.2	-12.9	-14.7
	2011	-33.3	-56.6	-50.3	20.5	21.4	21.2	36.2	24.3	30.5	18.7	17.0	17.5	2.9	12.3	10.4	13.6	9.7	10.6	11.9	8.2	9.2
	2012	-0.5	5.6	3.4	15.3	20.4	19.2	3.3	11.1	6.9	6.5	12.2	10.3	-9.5	10.5	6.8	0.6	6.2	4.8	6.8	13.9	12.0
	2013	4.8	10.9	8.8	14.8	15.1	15.0	3.5	11.6	7.4	5.6	7.3	6.8	-3.7	7.9	6.1	4.7	3.9	4.1	8.6	10.5	10.0
	2014	10.2	15.9	14.0	19.2	22.6	21.8	9.8	17.6	13.7	15.5	14.7	15.0	-11.4	-4.8	-5.7	5.9	6.7	6.5	13.2	15.5	14.9
Monthly																						
	2014																					
	Nov	11.1	16.3	14.5	19.1	22.3	21.6	9.7	17.5	13.6	15.2	13.7	14.2	-10.9	-3.5	-4.5	6.1	6.7	6.6	13.1	15.3	14.8
	Dec	10.2	15.9	14.0	19.2	22.6	21.8	9.8	17.6	13.7	15.5	14.7	15.0	-11.4	-4.8	-5.7	5.9	6.7	6.5	13.2	15.5	14.9
	2015																					
	Jan	10.7	15.5	13.9	19.1	22.5	21.7	9.8	17.7	13.7	15.7	15.8	15.8	-10.3	-3.9	-4.8	5.8	6.7	6.5	13.2	15.6	15.0
	Feb	11.0	15.0	13.7	18.7	22.2	21.4	9.9	17.6	13.7	15.8	17.1	16.7	-8.9	-3.1	-3.9	5.8	6.9	6.6	13.1	15.8	15.1
	Mar	11.3	14.7	13.5	18.1	21.9	21.1	10.0	17.6	13.8	15.7	18.5	17.6	-7.3	-2.3	-3.0	5.9	7.3	6.9	13.0	16.0	15.2
	Apr	11.6	14.5	13.6	17.5	21.9	20.9	10.1	17.7	13.9	15.6	20.0	18.6	-5.5	-1.5	-2.0	6.2	7.8	7.4	12.9	16.3	15.5
	May	12.1	14.6	13.8	17.0	22.0	20.9	10.4	17.9	14.2	15.7	21.4	19.6	-3.5	-0.5	-0.9	6.6	8.5	8.0	13.0	16.8	15.9
	Jun	12.6	15.0	14.2	16.4	22.2	20.9	10.8	18.2	14.5	16.0	22.9	20.7	-1.6	0.6	0.3	7.2	9.1	8.6	13.0	17.4	16.3
	Jul	13.2	15.5	14.7	15.9	22.4	21.0	11.1	18.6	14.9	16.4	24.5	21.9	0.5	2.0	1.8	7.9	9.7	9.2	13.2	18.0	16.8
	Aug	13.9	16.0	15.3	15.3	22.6	21.0	11.5	19.1	15.3	17.0	26.2	23.3	2.5	3.5	3.4	8.5	10.2	9.7	13.3	18.6	17.3
	Sep	14.7	16.4	15.9	14.6	22.8	21.0	11.7	19.5	15.7	17.7	27.9	24.7	4.7	5.3	5.2	9.1	10.6	10.2	13.4	19.1	17.7
	Oct	15.7	16.9	16.5	13.9	22.9	20.9	11.7	19.9	15.9	18.4	29.3	25.8	7.0	7.2	7.2	9.6	10.9	10.6	13.4	19.6	18.1
	Nov	16.8	17.2	17.1	13.2	23.0	20.8	11.7	20.2	16.0	18.9	30.3	26.7	9.4	9.3	9.3	10.0	11.2	10.9	13.4	20.0	18.4

¹ There was a step change in 2011 due to a change in reporting population

² Data are seasonally adjusted and depict the underlying trend. The X12 ARIMA monthly seasonal adjustments include trading days and leap years.

³ With effect of January 2010 Automotive Fuels was published as a separate sub-sector in retail sales. See tables 2A and 2B

Table 2D Card expenditure statistics (seasonally adjusted)

Services^{1 and 2}

Value of purchase transactions (£ millions)

Value of purchase transactions (£ millions)																			Total services			
Vehicle Sales & Services ³			Entertainment			Hotels			Travel			Financial			Other services			Value of purchases				
	Credit	Debit	Total	Credit	Debit	Total	Credit	Debit	Total	Credit	Debit	Total	Credit	Debit	Total	Credit	Debit	Total	Credit	Debit	Total	
Annual																						
2010	8,756	24,835	33,591	9,957	17,047	27,004	5,510	3,087	8,597	12,880	15,931	28,811	5,970	39,117	45,087	15,771	41,077	56,848	58,843	141,096	199,939	
2011	7,774	22,465	30,239	14,092	20,688	34,780	8,639	3,851	12,491	16,297	18,480	34,777	7,133	46,880	54,014	18,458	46,963	65,421	72,394	159,327	231,720	
2012	7,563	23,555	31,119	14,686	22,800	37,486	8,903	4,312	13,214	16,606	20,578	37,184	5,501	49,879	55,381	18,676	49,063	67,739	71,936	170,187	242,123	
2013	7,698	25,707	33,406	15,664	24,546	40,210	9,300	4,774	14,074	17,525	22,034	39,559	5,139	55,619	60,758	20,105	57,197	77,302	75,432	189,877	265,309	
2014	8,102	28,943	37,046	17,418	28,512	45,930	10,374	5,571	15,945	20,073	25,154	45,227	5,142	58,109	63,252	21,341	64,338	85,679	82,451	210,627	293,078	
Monthly																						
2014																						
Nov	667	2,494	3,160	1,527	2,552	4,079	902	492	1,393	1,709	2,180	3,889	447	4,946	5,393	1,832	5,754	7,586	7,082	18,418	25,501	
Dec	664	2,525	3,190	1,532	2,587	4,119	913	497	1,410	1,719	2,208	3,927	461	5,048	5,509	1,852	5,898	7,750	7,142	18,763	25,905	
2015																						
Jan	766	2,551	3,317	1,533	2,621	4,153	924	502	1,426	1,722	2,231	3,953	476	5,174	5,650	1,872	6,069	7,941	7,293	19,148	26,441	
Feb	764	2,570	3,335	1,533	2,657	4,190	935	507	1,442	1,723	2,247	3,971	490	5,308	5,798	1,889	6,228	8,117	7,335	19,518	26,853	
Mar	764	2,589	3,354	1,535	2,700	4,235	944	512	1,457	1,725	2,257	3,981	502	5,439	5,941	1,903	6,314	8,216	7,372	19,811	27,184	
Apr	764	2,614	3,378	1,539	2,737	4,276	952	519	1,471	1,728	2,262	3,990	510	5,547	6,057	1,913	6,300	8,213	7,406	19,978	27,385	
May	764	2,634	3,399	1,548	2,756	4,304	961	526	1,487	1,740	2,270	4,010	515	5,622	6,137	1,922	6,214	8,136	7,451	20,023	27,474	
Jun	764	2,649	3,413	1,557	2,765	4,322	972	534	1,506	1,759	2,286	4,045	520	5,673	6,193	1,931	6,101	8,032	7,503	20,009	27,512	
Jul	762	2,665	3,426	1,564	2,783	4,347	984	541	1,525	1,782	2,308	4,090	526	5,725	6,251	1,938	6,001	7,939	7,557	20,023	27,580	
Aug	759	2,685	3,444	1,570	2,817	4,387	998	548	1,546	1,805	2,332	4,137	537	5,786	6,323	1,944	5,935	7,879	7,612	20,104	27,716	
Sep	754	2,707	3,462	1,573	2,860	4,434	1,011	556	1,567	1,826	2,353	4,179	550	5,861	6,411	1,948	5,911	7,859	7,663	20,249	27,912	
Oct	749	2,721	3,471	1,576	2,899	4,475	1,023	564	1,587	1,843	2,368	4,211	566	5,942	6,508	1,950	5,918	7,868	7,708	20,412	28,120	
Nov	745	2,728	3,473	1,580	2,927	4,507	1,032	573	1,606	1,855	2,373	4,228	581	6,026	6,607	1,952	5,936	7,888	7,744	20,564	28,308	
Year-on-year growth rates (percentages) ²																						
Annual																						
2010	-40.3	-30.1	-33.1	3.5	16.7	11.4	3.9	13.3	7.1	-1.9	12.8	5.7	3.3	18.6	16.3	4.0	11.1	9.0	-7.5	3.0	-0.3	
2011	-11.2	-9.5	-10.0	41.5	21.4	28.8	56.8	24.8	45.3	26.5	16.0	20.7	19.5	19.8	19.8	17.0	14.3	15.1	23.0	12.9	15.9	
2012	-2.7	4.9	2.9	4.2	10.2	7.8	3.1	12.0	5.8	1.9	11.4	6.9	-22.9	6.4	2.5	1.2	4.5	3.5	-0.6	6.8	4.5	
2013	1.8	9.1	7.3	6.7	7.7	7.3	4.5	10.7	6.5	5.5	7.1	6.4	-6.6	11.5	9.7	7.7	16.6	14.1	4.9	11.6	9.6	
2014	5.2	12.6	10.9	11.2	16.2	14.2	11.5	16.7	13.3	14.5	14.2	14.3	0.1	4.5	4.1	6.1	12.5	10.8	9.3	10.9	10.5	
Monthly																						
2014																						
Nov	5.9	13.2	11.5	10.8	15.2	13.5	11.5	16.2	13.1	14.8	14.3	14.5	-1.1	4.6	4.1	6.5	12.2	10.7	9.4	10.8	10.4	
Dec	5.2	12.6	10.9	11.2	16.2	14.2	11.5	16.7	13.3	14.5	14.2	14.3	0.1	4.5	4.1	6.1	12.5	10.8	9.3	10.9	10.5	
2015																						
Jan	5.7	11.8	10.4	11.4	16.9	14.7	11.7	17.0	13.5	13.7	13.7	13.7	1.5	4.8	4.5	5.8	13.1	11.2	9.2	11.2	10.6	
Feb	6.0	11.1	9.9	11.4	17.3	15.0	11.8	17.2	13.6	12.4	13.0	12.8	3.2	5.4	5.2	5.7	14.2	12.0	9.1	11.6	10.8	
Mar	6.3	10.6	9.6	11.2	17.6	15.2	12.1	17.2	13.8	11.0	12.4	11.8	5.0	6.2	6.1	5.7	15.5	13.0	8.9	12.1	11.2	
Apr	6.7	10.3	9.5	11.1	18.0	15.3	12.3	17.1	13.9	9.7	12.0	11.0	6.9	7.1	7.0	5.9	16.8	14.0	8.8	12.7	11.6	
May	7.2	10.3	9.6	11.0	18.4	15.5	12.5	17.0	14.1	8.7	11.7	10.4	8.9	8.0	8.0	6.3	17.7	14.8	8.9	13.3	12.0	
Jun	7.8	10.3	9.7	11.0	18.7	15.7	12.7	16.9	14.1	8.1	11.6	10.0	10.9	8.9	9.1	6.8	18.1	15.2	9.1	13.7	12.4	
Jul	8.4	10.3	9.9	10.8	19.0	15.8	12.9	16.7	14.2	7.7	11.5	9.8	13.1	10.0	10.3	7.3	17.9	15.2	9.3	14.0	12.6	
Aug	9.1	10.3	10.0	10.4	18.9	15.7	13.0	16.6	14.2	7.4	11.3	9.6	15.3	11.4	11.7	7.8	17.4	14.9	9.5	14.2	12.8	
Sep	9.7	10.2	10.1	9.8	18.7	15.3	13.1	16.4	14.3	7.1	11.0	9.3	17.7	12.9	13.3	8.1	16.6	14.5	9.6	14.3	13.0	
Oct	10.4	10.2	10.3	9.0	18.4	14.8	13.3	16.2	14.3	6.8	10.7	8.9	20.0	14.6	15.0	8.3	15.8	13.9	9.6	14.4	13.1	
Nov	11.3	10.1	10.4	8.1	17.9	14.2	13.4	16.1	14.3	6.5	10.3	8.6	22.1	16.1	16.6	8.4	14.7	13.1	9.6	14.4	13.1	

¹ There was a step change in 2011 due to a change in reporting population

² Data are seasonally adjusted and depict the underlying trend. The X12 ARIMA monthly seasonal adjustments include trading days and leap years.

³ With effect of January 2010 Automotive Fuels was published as a separate sub-sector in retail sales. See tables 2A and 2B

Table 3A Card expenditure statistics (not seasonally adjusted)

Number of credit card transactions

Detailed sector breakdown - retail sectors (not seasonally adjusted)

Historical data located in hidden columns

	November 2014	December 2014	January 2015	February 2015	March 2015	April 2015	May 2015	June 2015	July 2015	August 2015	September 2015	October 2015	November 2015	Total (latest 12 months)
Supermarkets	60,586,531	73,763,834	57,588,888	55,586,648	65,052,107	61,399,330	62,498,646	67,250,065	66,514,921	60,652,888	66,890,671	64,852,573	68,207,288	770,257,859
Bakers & dairies	372,500	392,198	332,212	348,942	441,972	395,763	432,237	449,436	473,131	463,095	490,717	529,408	517,208	5,266,319
Sweet stores	358,532	675,080	193,040	257,673	354,246	254,081	255,853	283,719	292,114	271,194	291,130	334,772	424,677	3,927,579
Miscellaneous foodstores	3,296,311	3,881,861	3,064,243	3,126,141	3,622,369	3,487,764	3,575,917	3,948,514	4,013,042	3,661,968	3,992,586	3,953,541	3,962,509	44,290,455
Off-licences	607,160	906,763	477,140	508,981	591,989	585,129	695,749	839,878	881,044	828,050	791,196	853,621	930,348	8,889,888
Food & drink	65,221,034	79,619,736	61,655,523	59,828,385	70,062,683	66,162,067	67,468,402	72,771,612	72,174,262	65,877,195	72,456,300	70,523,915	74,042,030	832,632,100
Department stores	7,419,741	11,204,390	5,879,120	4,534,345	5,213,990	5,372,906	5,503,285	6,318,905	6,786,917	5,639,397	5,793,213	6,075,856	8,503,642	76,805,966
Discount stores	2,733,114	3,718,388	1,986,850	1,846,955	2,162,942	2,109,940	2,230,282	2,330,834	2,536,318	2,490,904	2,466,413	2,724,547	3,411,788	30,016,161
Catalogues	14,761,571	13,355,044	13,038,976	11,460,890	14,547,500	15,935,516	15,912,801	16,576,907	16,934,356	16,806,372	20,438,174	19,206,273	22,764,905	196,977,714
Miscellaneous mixed	3,240,114	4,443,373	2,347,602	2,276,975	2,775,193	2,727,693	2,761,991	3,024,082	2,824,720	2,373,176	2,798,535	2,751,909	3,140,599	34,245,848
Mixed business	28,154,540	32,721,195	23,252,548	20,119,165	24,699,625	26,146,055	26,408,359	28,250,728	29,062,311	27,309,849	31,496,335	30,758,585	37,820,934	338,045,689
Men's clothing	379,483	614,427	398,330	282,390	301,997	329,312	357,823	442,695	507,773	495,613	444,048	487,371	543,477	5,205,256
Women's clothing	2,167,033	3,240,215	2,024,403	1,708,509	2,116,948	2,266,521	2,362,556	2,780,291	2,856,443	2,220,781	2,373,317	2,415,483	2,711,776	29,077,243
Family clothing	9,923,716	14,569,731	8,555,367	7,182,435	8,989,589	9,453,294	9,431,494	10,374,586	11,286,639	8,888,164	9,436,333	9,583,778	11,083,759	118,835,169
Miscellaneous clothing	526,195	653,844	390,502	419,333	418,112	438,040	521,359	593,797	460,159	480,471	492,953	534,912	534,912	5,687,509
Shoe shops	1,203,087	1,752,546	1,272,095	905,035	1,054,427	1,352,048	1,295,124	1,603,718	1,656,457	1,473,879	1,364,843	1,329,548	1,355,895	16,415,611
Clothing	14,199,514	20,830,763	12,640,697	10,416,396	12,882,294	13,819,287	13,885,037	15,722,649	16,847,105	13,538,596	14,099,012	14,309,133	16,229,819	175,220,788
Furniture stores	1,711,801	1,990,907	1,700,090	1,366,865	1,550,345	1,427,301	1,465,811	1,515,095	1,500,292	1,449,154	1,590,406	1,639,405	1,857,878	19,053,549
Household appliance stores	1,514,083	1,818,084	1,411,288	1,273,110	1,456,580	1,393,101	1,417,150	1,384,226	1,449,052	1,406,249	1,477,863	1,517,890	1,652,915	17,657,508
Electronic stores	1,407,022	2,095,151	1,442,582	1,167,846	1,265,852	1,149,132	1,106,038	1,145,498	1,214,868	1,128,824	1,299,213	1,267,557	1,637,960	15,920,521
DIY stores	6,436,397	6,202,095	5,636,883	5,569,233	6,929,812	7,485,530	7,352,175	6,938,820	6,953,865	6,808,829	6,629,518	6,754,202	6,644,878	79,905,840
Floor covering stores	203,676	155,818	169,035	165,102	192,750	170,271	173,663	214,408	222,217	219,805	232,107	248,326	265,780	2,428,922
Garden centres	1,515,932	2,043,295	976,535	1,095,016	1,956,339	2,564,636	2,702,405	2,265,116	1,712,663	1,538,728	1,524,410	1,577,938	1,608,351	21,565,432
Miscellaneous household	1,870,521	2,374,306	1,707,694	1,497,446	1,688,439	1,587,504	1,678,135	1,781,920	1,848,132	1,723,087	1,835,722	1,949,386	2,112,042	21,783,813
Household	14,659,432	16,679,656	13,044,107	12,134,618	15,040,117	15,777,475	15,895,377	15,244,723	14,901,089	14,274,676	14,589,239	14,954,704	15,779,804	178,315,585
Books, newspapers & magazines	2,248,541	3,525,931	1,770,179	1,714,598	2,009,524	1,787,245	1,841,686	2,063,275	2,149,740	1,951,842	2,268,220	2,199,514	2,445,267	25,727,021
Record shops	269,828	680,466	191,176	178,039	202,886	165,727	175,338	165,727	1,147,443	2,279,213	3,220,098	4,091,769	304,208	15,100,848
Music shops	153,204	208,077	134,096	124,995	131,316	116,311	113,214	116,105	112,789	101,751	134,780	133,644	147,972	1,575,050
Hobbies, toys & games	941,253	1,434,517	447,838	433,046	468,276	452,918	454,795	482,511	522,151	477,657	621,870	629,876	4,897,324	11,322,779
Photographic	193,998	173,055	151,413	142,343	163,296	132,042	139,647	153,670	145,141	132,042	133,096	132,483	141,667	1,770,116
Handicraft	99,792	89,102	81,725	84,284	95,204	79,365	79,500	80,814	83,386	83,094	90,342	93,388	98,086	1,038,290
Sports shops	2,709,525	3,945,583	2,946,979	2,518,691	2,911,494	3,158,651	3,207,498	3,336,902	3,647,036	3,567,177	3,380,537	3,071,289	3,270,741	38,962,578
Jewellers	820,947	1,580,354	622,807	585,679	644,629	559,985	580,082	635,982	678,651	593,540	577,488	573,804	801,312	8,434,313
Computer software	264,712	322,798	269,597	237,907	257,936	225,734	213,552	223,019	223,827	203,029	232,372	222,843	237,207	2,869,821
Medical goods	515,664	650,218	505,645	471,859	551,007	523,135	564,904	607,767	607,966	576,325	613,250	610,655	6,853,222	6,853,222
Chemists	4,044,462	6,360,944	3,697,467	3,439,281	4,140,786	3,858,870	3,868,906	4,565,762	4,460,212	3,877,114	4,333,889	4,201,159	4,593,938	51,398,328
Optical goods	463,472	432,049	478,286	480,324	554,467	517,379	501,234	560,728	559,741	500,461	527,328	503,085	497,851	6,112,933
Cosmetic stores	686,290	1,249,664	504,958	492,957	573,534	521,101	555,905	602,023	601,800	589,594	625,183	653,357	927,841	7,897,917
Tobaccoconists	38,026	49,458	39,490	46,911	46,911	47,524	53,444	55,445	57,011	65,316	65,797	65,797	64,081	630,333
Florists	303,973	546,632	275,768	403,450	557,481	334,084	352,040	360,075	337,926	286,718	335,789	317,172	316,173	4,423,308
Artists' supplies	357,654	399,107	246,760	262,719	307,662	252,362	260,184	268,839	285,376	274,465	303,932	311,390	386,163	3,558,959
Antiques, art & stamps/coins	165,337	196,396	137,743	128,243	145,810	139,196	144,011	153,508	172,236	164,080	177,698	175,902	174,470	1,909,293
Pawn shops	4,372	6,756	3,825	3,602	3,992	3,709	3,888	4,068	4,440	4,197	4,167	4,159	4,530	51,333
Gift shops	2,136,792	3,396,948	1,272,648	1,352,862	1,617,349	1,390,319	1,499,314	1,769,461	1,800,291	1,717,702	1,747,772	1,784,942	2,345,813	21,695,421
Secondhand shops	21,605	25,100	20,969	18,630	32,885	25,388	29,438	29,116	31,634	28,805	27,770	29,031	327,132	327,132
Luggage & leather goods	130,256	178,310	96,678	76,691	93,516	91,841	99,331	114,725	120,496	109,378	107,929	111,783	133,454	1,334,132
Pet shops	844,893	978,092	818,028	769,445	896,022	855,964	877,691	897,488	903,880	863,936	867,405	885,334	888,157	10,501,442
Religious goods	8,010	6,959	9,063	9,063	9,063	9,063	9,063	12,894	12,894	12,894	12,894	12,894	12,894	7,492
Direct sales	3,315,143	3,704,124	3,613,018	3,425,509	3,948,444	3,539,776	3,470,343	3,269,428	3,202,411	2,875,553	3,368,781	3,393,640	3,434,835	41,245,862
Miscellaneous & speciality shops	5,303,865	5,885,087	4,866,830	4,483,710	5,136,436	4,785,348	5,095,330	5,178,580	5,193,577	4,930,769	5,236,937	5,474,544	5,981,002	62,248,150
Other retail	26,041,614	36,026,846	23,201,332	21,874,817	25,499,926	23,581,558	24,177,779	26,687,627	28,406,554	26,255,919	28,975,700	29,686,239	32,738,605	327,112,898
Automotive Fuels	18,691,214	19,471,196	17,680,607	17,067,636	19,864,018	19,250,747	19,720,570	20,573,323	20,663,627	19,132,569	20,069,378	19,498,020	19,056,115	232,047,806
Total retail sales	166,967,348	205,349,392	151,474,814	141,441,017	168,048,663	164,737,189	167,545,524	179,250,662	182,054,938	166,388,800	181,685,964	179,730,596	195,667,307	2,083,374,866

Table 3A Card expenditure statistics (not seasonally adjusted)

Number of credit card transactions

Detailed sector breakdown - services sectors (not seasonally adjusted)

	November 2014	December 2014	January 2015	February 2015	March 2015	April 2015	May 2015	June 2015	July 2015	August 2015	September 2015	October 2015	November 2015	Total (latest 12 months)
Auto rental	457,587	449,455	993,632	976,166	1,193,921	1,196,151	1,275,474	1,359,244	1,434,851	1,326,238	1,303,950	1,151,878	998,297	13,659,257
Auto parts & accessories	696,196	719,396	726,957	707,777	840,390	779,734	751,096	792,874	804,641	719,173	756,119	739,903	708,859	9,046,919
Auto services	2,168,635	2,142,038	2,073,872	2,111,488	2,441,298	2,218,221	2,273,165	2,453,147	2,493,185	2,127,417	2,528,299	2,508,449	2,532,991	27,903,570
Auto repair shops	806,242	769,757	834,511	825,693	1,006,990	881,945	847,160	908,613	935,150	824,235	916,808	877,852	817,546	10,446,260
Service stations	0	0	0	0	0	0	0	0	0	0	0	0	0	0
Vehicle sales	489,946	459,214	509,783	530,674	681,826	597,120	575,966	628,582	620,056	553,103	614,166	554,988	502,592	6,828,070
Vehicle Sales & Services	4,618,606	4,539,860	5,138,755	5,151,798	6,164,425	5,673,171	5,722,861	6,142,460	6,287,883	5,550,166	6,119,342	5,833,070	5,560,285	67,884,076
Restaurants	19,149,963	19,702,360	17,468,629	18,323,415	21,372,709	20,686,303	22,119,658	22,463,756	23,919,749	22,933,932	23,413,962	24,740,067	23,582,115	260,726,655
Public houses	2,669,772	2,989,403	2,359,976	2,581,141	3,198,159	3,215,619	3,369,184	3,533,498	3,720,743	3,557,930	3,682,197	3,629,802	3,430,734	39,268,386
Catering services	662,202	630,702	618,970	652,581	754,868	684,934	713,181	787,325	804,892	696,597	839,762	870,742	863,665	8,918,219
Video stores	175,577	222,622	248,637	396,261	275,979	200,510	35,927	200,510	34,860	29,729	30,210	31,055	34,371	1,810,496
Cinema, theatre & dance	2,408,504	2,556,896	2,062,579	2,062,271	2,041,377	1,938,168	1,925,388	2,085,082	2,051,696	1,982,932	1,917,111	2,629,822	2,879,261	26,132,583
Concerts & entertainers	186,409	204,442	155,894	142,819	152,074	149,345	166,935	156,513	163,827	157,728	157,250	185,450	237,828	2,030,105
Tourist attractions	371,649	383,982	279,687	364,966	459,616	708,431	726,952	776,021	996,011	1,104,976	825,239	723,794	427,404	7,777,079
Amusement parks	41,437	34,322	26,664	43,899	50,917	102,760	96,299	82,396	112,107	154,933	81,849	83,729	46,958	916,833
Aquariums	21,923	21,027	16,900	28,634	32,243	57,254	48,833	45,299	63,489	91,367	53,524	52,560	23,180	534,310
Sports & games establishments	3,395,489	4,367,895	4,437,815	3,403,643	3,952,897	3,460,588	3,737,930	2,731,521	1,275,631	1,162,531	1,162,078	1,161,583	1,026,097	31,930,209
Professional sports clubs	125,941	121,235	94,640	87,997	114,926	100,813	94,128	73,111	92,563	95,775	116,527	138,959	91,141	1,221,815
Gambling	5,739,677	6,803,324	6,217,794	6,029,887	6,897,959	6,432,579	6,069,026	6,069,113	5,686,552	5,634,252	6,975,395	6,650,206	7,370,812	76,836,899
Personal services	301,534	382,897	273,070	314,164	301,029	314,164	319,298	331,951	354,987	303,313	324,285	310,550	328,756	3,835,107
Miscellaneous entertainment	683,184	583,282	738,153	732,128	812,753	841,015	875,849	860,432	922,486	957,592	911,170	897,296	776,322	9,908,478
Entertainment	35,933,261	39,004,389	35,017,208	35,122,649	40,430,641	38,949,173	40,463,171	40,031,945	40,199,593	38,913,587	40,490,559	42,105,615	41,118,644	471,847,174
Hotels	4,841,041	4,424,903	4,632,595	4,799,973	5,565,834	5,269,172	5,733,646	6,004,296	6,248,486	5,741,106	6,140,996	6,095,088	5,447,219	66,103,314
Airlines	2,159,641	1,888,402	2,894,299	2,588,581	2,916,620	2,790,617	2,744,863	2,743,875	2,635,743	2,539,206	2,878,630	2,662,795	2,268,844	31,552,475
Airport terminals	28,808	27,230	31,176	31,655	40,221	42,867	39,309	40,221	69,473	69,473	77,169	64,862	51,851	616,504
Railways	6,104,469	5,771,604	5,368,574	5,448,994	6,243,563	5,716,846	5,907,351	6,470,149	6,335,560	5,327,447	6,625,896	6,689,202	6,178,623	72,083,809
Buses	588,222	568,612	766,613	770,893	897,373	877,078	942,005	1,039,151	1,072,411	921,100	1,054,895	1,060,034	922,247	10,892,412
Sea travel	159,628	150,167	204,276	196,904	244,440	245,222	284,646	313,454	342,783	336,070	280,470	249,453	204,666	3,052,551
Travel agents	1,633,859	1,555,971	2,263,803	2,080,753	2,325,325	2,148,541	2,158,345	2,300,118	2,493,286	2,466,853	2,872,155	2,683,957	2,456,001	27,805,108
Timeshares	16,426	16,631	26,135	19,605	18,926	16,463	15,428	15,078	15,406	15,226	15,495	16,149	12,865	203,407
Camping grounds	75,561	57,142	113,329	127,401	179,593	256,111	283,155	290,446	355,853	364,500	224,430	175,281	81,427	2,508,668
Miscellaneous travel	1,531,166	1,511,118	1,795,746	1,845,973	2,185,122	2,145,222	2,364,363	2,555,817	2,753,382	2,603,191	2,791,112	2,993,837	2,765,484	28,310,367
Travel	12,297,780	11,546,877	13,463,951	13,110,759	15,050,271	14,236,321	14,743,023	15,789,055	16,084,148	14,643,066	16,820,252	16,595,570	14,942,008	177,025,301
Telegraph services / Wire transfer money order	21,841	23,011	27,018	34,169	39,309	39,193	39,782	39,286	41,360	35,415	37,701	42,700	45,072	444,016
Insurance services	1,373,640	1,352,680	1,584,886	1,547,949	1,891,021	1,698,351	1,699,776	1,801,937	1,907,016	1,746,104	1,889,383	1,711,041	1,483,784	20,313,928
Fis - cash disbursements (auto & manual)	17,237	14,055	29,948	30,495	34,869	31,832	35,416	33,680	33,073	30,799	32,415	31,864	24,816	363,262
Fis - merchandise & services	113,345	118,764	196,393	196,932	226,114	204,758	206,765	216,127	205,252	206,980	230,273	229,139	230,890	2,468,387
Non-Fis - foreign currency, travellers' cheques	72,863	76,097	87,458	114,924	142,908	124,938	146,570	164,073	186,364	149,241	154,275	149,392	100,542	1,596,782
Security brokers and dealers	18,704	20,789	112,045	75,468	86,030	73,594	58,176	51,482	54,753	58,258	50,817	48,012	46,840	736,264
Tax preparation services	160	111	211	179	222	171	164	180	165	130	167	171	149	2,020
Tax payments	11,738	11,790	17,552	19,339	31,554	25,386	22,745	22,671	27,230	24,222	27,025	29,166	28,584	287,264
Fines, bail and bond payments	67,861	56,080	57,229	54,596	61,440	57,529	59,061	57,592	55,921	51,939	52,964	54,322	50,427	669,100
Miscellaneous financial	85,404	79,308	80,090	80,970	109,690	101,552	93,819	77,950	77,969	94,571	98,596	94,734	88,180	1,077,429
Financial	1,782,793	1,752,685	2,192,830	2,155,021	2,623,157	2,357,304	2,362,274	2,464,978	2,589,103	2,397,659	2,573,616	2,390,541	2,099,284	27,958,452

Table 3A Card expenditure statistics (not seasonally adjusted)

Number of credit card transactions

Detailed sector breakdown - services sectors (continued, not seasonally adjusted)

	November 2014	December 2014	January 2015	February 2015	March 2015	April 2015	May 2015	June 2015	July 2015	August 2015	September 2015	October 2015	November 2015	Total (latest 12 months)
Telecoms	1,909,784	2,072,859	1,974,035	1,759,888	2,011,489	1,880,500	1,922,334	1,928,822	1,973,383	1,924,936	2,092,987	2,080,681	1,940,834	23,562,748
Utilities	372,316	387,786	414,914	397,637	487,402	436,326	427,733	440,457	448,707	403,466	458,576	458,628	417,519	5,179,151
Contractors (residential & commercial)	280,539	252,097	261,417	263,301	305,029	269,581	256,792	282,117	287,241	252,139	298,479	300,990	289,692	3,318,875
Gardening services	45,904	60,258	32,281	36,526	49,745	61,814	61,712	57,097	44,371	38,766	37,797	35,660	31,270	547,297
Veterinary services	630,390	647,111	614,431	567,580	646,035	622,905	618,115	663,167	709,127	658,795	686,634	685,496	648,744	7,768,140
Photocopying & printing	313,482	364,848	358,977	318,632	356,810	306,707	313,631	329,218	324,485	300,813	347,779	366,925	443,125	4,131,950
Photographic studios	171,301	267,854	119,347	109,704	144,869	145,090	174,713	212,094	227,091	158,889	177,443	247,861	257,802	2,242,757
Beauty & barber shops	1,605,024	2,191,032	1,443,711	1,438,098	1,666,855	1,606,010	1,655,159	1,747,446	1,843,388	1,596,885	1,699,440	1,702,637	1,734,313	20,324,974
Employment agencies	23,779	20,711	23,717	23,327	30,983	23,911	25,445	24,751	29,264	24,469	24,417	27,041	22,876	300,912
Counselling services	6,314	5,780	6,461	6,082	6,617	6,086	6,166	6,396	6,401	6,112	6,568	6,421	6,199	75,289
Legal services	53,116	48,675	53,322	55,469	49,043	55,916	54,384	58,462	58,658	52,843	57,570	57,545	54,968	656,855
Laundry & cleaning	201,731	193,987	186,139	174,962	201,096	196,740	205,190	231,906	231,540	194,883	223,378	225,063	210,466	2,475,350
Funeral services	11,691	12,157	13,705	12,929	14,892	13,428	12,481	13,209	13,013	11,509	12,676	12,533	12,353	154,885
Medical services	1,277,573	1,197,862	1,301,976	1,256,337	1,427,029	1,315,926	1,273,377	1,423,803	1,424,064	1,227,114	1,429,760	1,419,589	1,399,205	16,096,042
Moving & courier services	452,289	447,052	425,125	424,700	472,955	438,750	446,512	489,862	481,773	401,022	493,607	515,683	503,551	5,540,592
Repair shops (not auto)	71,419	81,348	245,823	217,026	248,012	230,754	233,869	227,133	251,891	256,669	251,599	255,334	246,572	2,746,030
Accounting services	36,612	36,556	39,336	32,285	33,980	26,293	25,139	27,343	28,710	30,067	36,118	33,872	33,466	383,165
Advertising, consultancy & PR	62,688	56,340	63,786	66,416	63,786	67,593	67,593	213,928	213,188	194,280	238,152	229,117	232,565	1,722,204
Computer programming	1,971,380	2,396,813	1,844,605	1,627,875	1,770,182	1,522,341	1,683,941	1,767,243	1,796,768	1,679,534	1,826,515	1,984,028	2,476,731	22,376,576
Farming services	105,173	125,069	103,315	96,146	120,886	112,230	111,653	113,763	110,614	103,310	112,362	110,239	112,342	1,331,929
Miscellaneous professional services	1,117,761	1,128,921	1,126,257	1,121,432	1,256,221	1,145,396	1,172,760	1,222,125	1,223,140	1,132,654	1,229,566	1,249,715	1,269,091	14,277,278
Engineering services	48,022	44,733	47,774	49,064	55,916	51,747	49,923	55,074	55,177	47,347	51,070	52,002	49,528	609,355
Marina services	38,140	34,678	34,278	34,104	52,246	72,247	76,153	87,219	99,722	96,960	72,889	54,329	36,986	751,811
Wrecking & salvage yards	3,423	2,955	3,533	3,778	4,567	4,397	4,073	4,333	4,265	3,576	3,878	3,924	3,586	46,865
Pest control	3,120	2,843	2,969	2,752	3,196	3,238	3,210	4,040	4,354	3,285	3,137	3,166	2,941	39,131
Educational establishments	814,901	671,390	939,826	776,408	942,386	772,482	788,699	850,900	724,232	564,038	1,127,616	1,027,536	1,024,979	10,210,492
Child care services	19,371	19,787	22,647	24,072	24,365	21,413	23,088	22,023	24,734	23,962	23,504	25,052	24,368	279,015
Social, political & religious organisations	1,380,576	1,387,283	1,172,813	1,141,191	1,532,543	1,572,461	1,596,456	1,535,985	1,489,763	1,390,248	1,595,973	1,448,509	1,429,775	17,293,000
Government services	2,317,183	2,216,602	2,636,231	2,626,626	2,965,516	2,804,226	2,812,774	2,999,614	3,000,265	2,717,590	2,985,182	2,914,716	2,676,440	33,355,782
Miscellaneous services	1,386,545	2,097,444	1,328,314	1,282,991	1,577,042	1,461,026	1,404,915	1,597,799	1,524,738	1,343,005	1,580,527	1,542,490	1,633,858	18,374,149
Commercial equipment	943,241	931,419	945,828	865,328	988,720	875,358	854,010	883,758	880,569	782,068	951,208	910,033	922,433	10,790,732
Other services	17,674,788	19,404,250	17,786,893	16,812,666	19,523,498	18,125,267	18,362,000	19,521,087	19,534,636	17,621,234	20,136,407	19,986,815	20,148,578	226,963,331
Total services	77,148,269	80,672,964	78,232,232	77,152,866	89,357,826	84,610,408	87,386,975	89,953,821	90,943,849	84,866,818	92,281,172	93,006,699	89,316,018	1,037,781,648
TOTAL	244,115,617	286,022,356	229,707,046	218,593,883	257,406,489	249,347,597	254,932,499	269,204,483	272,998,787	251,255,618	273,967,136	272,737,295	284,983,325	3,121,156,514

Table 3B Card expenditure statistics (not seasonally adjusted)

Value of credit card transactions

Detailed sector breakdown - retail sectors (not seasonally adjusted)

Historical data located in hidden columns

£	November 2014	December 2014	January 2015	February 2015	March 2015	April 2015	May 2015	June 2015	July 2015	August 2015	September 2015	October 2015	November 2015	Total (latest 12 months)
Supermarkets	1,928,770,781	2,630,480,321	1,678,635,431	1,617,530,589	1,914,841,992	1,828,093,490	1,867,223,577	1,965,603,126	1,921,743,384	1,767,494,739	1,943,800,838	1,882,570,671	2,110,194,268	23,128,212,426
Bakers & dairies	5,067,001	6,036,341	4,241,317	4,464,634	5,543,623	4,958,324	5,442,804	5,770,694	5,888,546	5,578,068	6,146,245	6,205,640	6,333,732	66,609,968
Sweet stores	9,216,196	17,550,217	3,960,032	5,242,765	8,163,892	6,349,334	5,139,348	5,828,792	6,097,429	5,638,129	6,134,328	7,203,612	10,862,873	88,170,751
Miscellaneous foodstores	104,665,839	141,788,125	94,485,621	94,027,858	109,163,896	103,200,967	106,567,859	116,544,416	114,661,144	102,848,932	114,573,363	112,843,877	118,751,739	1,329,457,797
Off-licences	49,018,615	81,006,626	34,576,570	35,937,378	42,399,466	42,400,671	53,969,447	67,621,886	65,625,000	58,936,710	56,699,684	62,969,973	79,915,033	681,698,444
Food & drink	2,096,736,432	2,876,861,630	1,815,898,971	1,757,203,224	2,080,112,869	1,984,642,786	2,038,343,035	2,161,368,914	2,114,015,503	1,940,496,578	2,127,354,458	2,071,793,773	2,326,057,645	25,294,149,386
Department stores	526,629,699	716,907,891	374,138,319	307,909,254	366,716,989	380,429,276	375,433,338	413,590,003	418,703,133	386,820,363	418,224,311	423,771,395	589,469,204	5,172,113,476
Discount stores	130,944,852	172,897,218	88,644,352	79,189,604	103,962,527	87,496,492	90,229,458	98,232,488	108,765,185	107,630,372	107,769,286	118,370,610	160,991,941	1,324,179,533
Catalogues	221,486,449	186,417,062	195,433,119	175,569,054	221,852,433	222,300,625	213,974,651	221,922,475	213,215,802	206,374,907	239,081,288	233,919,418	306,305,285	2,636,366,119
Miscellaneous mixed	139,026,768	177,570,623	92,313,680	91,904,018	112,340,363	110,602,659	114,198,575	123,446,808	126,396,235	100,690,624	122,636,166	120,048,330	138,887,847	1,421,035,928
Mixed business	1,018,087,768	1,263,792,794	750,529,470	654,571,930	804,872,312	800,829,052	793,836,022	857,191,774	857,080,355	801,516,266	887,711,051	896,109,753	1,195,654,277	10,553,695,056
Men's clothing	45,857,878	64,127,147	44,201,826	32,698,215	39,593,483	40,478,255	45,229,163	54,130,105	51,576,315	46,220,591	48,103,871	51,360,681	57,243,161	574,962,813
Women's clothing	154,529,024	196,326,643	159,149,398	135,245,746	176,902,497	174,289,550	177,937,755	205,366,292	187,413,849	148,950,856	182,461,893	183,473,541	198,888,700	2,126,406,720
Family clothing	505,514,152	686,161,667	385,662,570	353,015,231	452,992,499	460,437,033	457,014,877	497,500,839	494,981,784	425,252,715	495,765,087	485,252,715	579,022,029	5,759,022,029
Miscellaneous clothing	34,474,229	40,912,132	25,899,316	24,143,103	31,580,667	30,489,724	34,633,992	30,489,724	35,654,918	31,053,244	34,628,023	36,586,036	37,654,942	397,684,432
Shoe shops	89,601,502	118,920,934	77,099,586	58,080,942	72,656,788	86,990,840	83,548,814	95,801,562	83,677,995	86,784,334	92,116,185	92,480,701	98,916,369	1,053,074,788
Clothing	829,976,785	1,106,448,523	692,012,696	603,183,149	773,725,934	792,685,402	796,174,406	889,437,804	859,304,661	737,228,524	842,562,687	859,666,046	958,720,950	9,911,150,782
Furniture stores	314,306,428	290,208,827	341,850,181	281,060,707	318,659,107	286,871,454	298,481,918	291,086,021	300,302,324	281,775,269	315,883,991	336,963,662	339,289,928	3,682,433,389
Household appliance stores	137,719,661	143,838,310	129,957,651	118,658,580	132,936,169	117,426,919	119,763,127	119,900,856	125,419,946	116,088,418	127,997,106	135,000,404	151,539,685	1,538,527,171
Electronic stores	241,624,213	362,461,743	232,674,945	180,777,274	201,318,756	189,025,568	178,518,547	184,156,277	195,082,331	183,303,425	224,520,351	213,013,605	296,801,893	2,641,654,715
DIY stores	478,249,120	410,724,234	437,047,787	428,465,628	544,031,244	539,137,873	517,555,770	517,555,770	523,273,141	488,657,140	495,076,527	523,909,367	489,323,467	5,929,340,660
Floor covering stores	76,156,871	56,573,443	60,832,761	58,591,643	68,991,331	61,781,920	62,821,999	69,065,624	71,166,773	67,803,424	73,883,997	78,860,739	85,776,894	816,149,668
Garden centres	64,345,061	82,278,410	40,414,406	48,666,998	96,935,523	134,726,750	135,474,086	113,937,877	127,020,219	67,982,502	67,334,525	67,334,525	67,880,464	1,013,440,277
Miscellaneous household	162,324,551	192,671,516	145,579,611	125,872,725	147,574,305	138,633,478	144,749,617	154,536,471	161,905,810	146,441,472	163,340,159	172,685,282	178,563,003	1,872,553,449
Household	1,474,725,905	1,538,756,483	1,388,357,362	1,242,093,555	1,510,446,435	1,467,603,962	1,471,947,776	1,450,238,896	1,462,938,842	1,356,089,367	1,468,683,733	1,527,767,584	1,609,175,334	17,494,099,329
Books, newspapers & magazines	68,516,658	98,999,105	61,161,716	56,081,927	63,632,164	55,607,417	54,310,127	59,970,917	61,941,189	55,934,016	64,168,211	64,235,263	71,960,803	768,002,845
Record shops	8,026,361	18,884,654	4,952,361	4,786,344	5,563,085	5,214,834	4,634,190	19,203,564	34,572,105	29,900,860	58,038,048	60,611,025	8,715,746	25,900,676,816
Music shops	20,573,225	26,902,668	18,745,044	16,833,535	18,473,064	16,903,172	16,562,287	16,769,465	16,819,736	15,612,486	18,793,117	18,935,548	21,895,379	223,245,501
Hobbies, toys & games	60,391,283	88,255,251	25,615,586	24,539,527	27,673,461	26,035,054	26,283,465	28,723,831	29,023,831	26,113,405	37,492,936	37,207,099	137,780,308	514,743,754
Photographic	22,251,553	26,461,004	22,497,534	21,240,772	22,251,553	22,497,534	21,240,772	24,273,966	24,273,966	22,478,185	22,315,831	24,464,995	22,983,173	22,983,173
Handicraft	9,158,318	8,030,223	8,058,732	8,041,776	9,032,076	7,773,045	7,592,969	8,251,524	7,960,809	7,959,694	8,418,878	8,657,945	9,160,179	98,937,850
Sports shops	179,795,808	242,218,238	182,560,454	162,079,912	199,115,781	211,210,017	214,669,929	219,844,787	236,237,388	230,127,183	219,104,853	204,087,361	219,403,966	2,540,659,869
Jewellers	141,608,949	275,864,145	106,095,764	111,434,248	122,399,900	111,921,714	118,746,433	127,102,247	131,887,134	121,511,396	122,900,153	122,040,275	152,231,618	1,624,135,027
Computer software	44,448,481	53,597,714	42,424,866	38,717,525	43,805,526	38,982,828	36,436,023	37,929,927	38,825,447	36,017,944	40,891,478	39,730,474	44,446,087	491,805,839
Medical goods	19,480,880	23,330,326	16,320,375	16,242,527	19,667,411	17,892,251	18,444,051	20,176,924	20,152,580	18,224,910	18,493,235	20,257,633	21,945,292	231,147,515
Chemists	102,943,425	173,459,325	76,449,544	71,533,680	88,859,475	80,078,806	83,763,293	98,169,021	94,292,092	82,001,173	95,185,394	95,056,084	113,982,272	82,001,173
Optical goods	70,543,943	61,760,769	73,532,422	74,978,311	87,530,604	80,828,240	79,428,560	87,472,590	87,406,547	78,304,674	81,039,799	78,651,453	77,031,567	947,965,536
Cosmetic stores	40,263,850	64,081,371	27,609,474	26,944,655	33,188,890	30,015,856	31,882,534	34,609,744	34,099,256	32,619,723	36,467,331	37,555,476	52,411,540	441,782,850
Tobaccoists	1,831,310	2,486,189	1,876,991	1,867,348	2,319,234	2,228,572	2,216,407	2,542,800	2,629,613	2,629,346	3,119,073	2,961,442	29,921,955	29,921,955
Florists	16,179,196	26,046,914	14,551,445	19,972,097	27,366,166	18,437,840	18,967,116	19,472,890	18,258,029	15,145,775	17,906,683	16,613,410	16,866,564	229,604,929
Artists' supplies	16,988,148	17,303,989	12,369,931	12,664,697	14,689,170	12,482,623	13,073,622	14,111,554	13,816,861	12,873,613	14,972,321	15,165,278	17,588,829	171,112,488
Antiques, art & stamps/coins	28,347,263	29,960,767	22,216,469	21,217,466	28,591,912	25,191,054	25,949,687	28,648,083	22,809,114	28,779,393	28,621,755	28,621,755	316,844,503	316,844,503
Pawn shops	1,066,209	1,396,827	1,009,655	902,834	1,028,383	976,574	1,014,967	1,057,546	1,168,327	1,036,608	1,034,947	1,106,042	1,089,565	12,822,275
Gift shops	80,772,225	108,816,624	45,023,610	45,078,528	53,543,914	49,263,101	52,920,502	58,132,472	61,466,015	59,068,169	61,158,474	63,036,462	82,074,019	739,581,890
Secondhand shops	2,539,073	2,730,704	2,212,641	2,585,549	2,828,943	2,547,624	3,200,489	2,973,528	3,094,837	2,273,528	2,891,550	3,234,225	3,482,759	34,282,759
Luggage & leather goods	17,564,159	26,091,493	14,186,627	12,264,056	15,249,097	15,259,219	16,201,149	18,611,914	18,176,857	17,444,107	17,498,010	17,723,271	19,502,153	208,207,953
Pet shops	36,027,100	40,106,068	34,669,995	32,729,264	38,486,145	36,942,107	37,060,270	38,629,571	38,638,470	36,798,818	37,469,999	37,748,009	37,624,537	446,903,253
Religious goods	264,805	284,263	238,908	211,921	319,640	429,842	450,689	447,117						

Table 3B Card expenditure statistics (not seasonally adjusted)

Value of credit card transactions

Detailed sector breakdown - services sectors (not seasonally adjusted)

£	November 2014	December 2014	January 2015	February 2015	March 2015	April 2015	May 2015	June 2015	July 2015	August 2015	September 2015	October 2015	November 2015	Total (latest 12 months)
Auto rental	48,692,508	54,932,445	122,437,662	116,032,788	148,511,563	145,743,577	169,204,770	201,946,636	221,376,504	170,823,458	146,658,827	126,226,020	112,771,021	1,736,665,271
Auto parts & accessories	109,726,143	111,025,849	114,799,301	111,670,937	136,953,966	122,643,324	118,718,992	124,189,942	125,257,720	110,952,722	119,908,876	117,510,509	111,999,228	1,425,631,366
Auto services	48,147,706	45,894,314	50,058,348	50,473,876	60,331,663	53,723,262	55,702,996	60,187,464	59,383,755	51,011,590	59,999,907	55,891,964	52,833,851	655,492,990
Auto repair shops	201,589,254	188,385,314	208,049,743	208,586,297	258,176,350	217,569,585	211,092,719	224,862,211	232,156,747	203,100,885	226,873,364	219,961,121	203,281,305	2,602,095,641
Service stations	0	0	0	0	0	0	0	0	0	0	0	0	0	0
Vehicle sales	184,412,977	171,391,186	199,180,498	210,718,355	292,612,770	222,903,256	216,508,690	233,464,662	227,277,465	202,387,353	238,069,624	215,752,162	194,751,912	2,625,017,933
Vehicle Sales & Services	592,568,588	571,629,108	694,525,552	697,482,253	896,586,312	762,583,004	771,228,167	844,650,915	865,452,191	738,276,008	791,510,598	735,341,776	675,637,317	9,044,903,201
Restaurants	637,331,308	759,799,380	545,961,094	570,926,077	669,678,017	645,068,495	694,545,735	702,783,340	740,960,377	702,496,286	705,632,441	740,633,963	707,102,971	8,185,588,176
Public houses	112,072,072	146,534,509	94,077,176	101,058,649	125,477,614	123,782,213	130,939,891	136,806,327	143,743,255	137,071,403	140,868,749	137,872,218	132,789,613	1,551,021,617
Catering services	61,459,408	66,497,467	54,178,352	54,676,558	63,996,710	59,994,850	63,719,219	67,340,385	65,966,773	57,399,412	61,883,448	63,975,928	61,901,913	741,531,015
Video stores	2,523,620	2,999,706	2,832,269	3,885,491	3,351,434	3,599,002	3,167,940	2,743,166	2,718,943	562,149	860,835	769,176	766,243	23,961,084
Cinema, theatre & dance	197,634,394	171,926,046	120,395,717	122,720,223	149,836,491	123,946,012	133,045,654	136,751,241	139,973,137	113,210,194	138,671,085	164,297,410	181,609,150	1,696,382,360
Concerts & entertainers	12,892,572	12,477,003	9,488,618	9,029,839	10,807,981	9,500,877	10,935,525	10,021,260	10,133,023	9,193,579	10,469,928	13,934,067	15,265,783	131,257,483
Tourist attractions	21,732,058	23,256,908	21,074,548	24,772,851	31,671,940	41,658,753	42,816,707	46,532,568	55,904,211	55,885,322	43,803,704	39,056,236	25,226,975	451,660,723
Amusement parks	2,230,457	1,857,239	1,676,325	2,255,784	3,030,587	5,250,113	4,972,863	5,030,614	6,211,527	7,165,418	3,787,649	4,000,736	2,434,703	47,673,558
Aquariums	1,179,459	1,250,382	925,954	1,433,372	1,674,159	2,887,754	2,554,822	2,391,541	3,384,423	4,598,116	2,588,087	2,521,135	1,242,527	27,452,272
Sports & games establishments	109,091,983	121,668,881	122,297,483	104,489,760	138,508,223	136,368,112	194,885,842	116,716,395	90,592,545	74,132,073	77,170,877	75,539,798	73,865,851	1,326,235,840
Professional sports clubs	11,103,361	8,579,596	8,582,022	8,135,903	10,656,449	11,487,953	12,896,246	9,164,171	8,473,331	6,802,013	8,818,704	9,665,428	6,425,054	109,686,870
Gambling	119,267,515	135,445,847	132,905,458	126,834,122	143,440,446	134,356,659	126,943,139	124,621,145	122,547,822	127,142,100	154,276,526	140,204,755	145,047,120	1,613,765,139
Personal services	22,294,337	25,917,447	19,927,724	25,917,447	18,237,996	19,927,724	21,130,957	20,444,008	21,635,816	19,132,888	20,679,005	21,795,991	23,731,989	253,732,078
Miscellaneous entertainment	191,940,755	141,733,847	223,545,357	198,833,405	218,182,345	209,875,415	210,530,581	205,939,584	195,509,752	183,089,729	221,708,848	217,988,952	185,934,282	2,412,872,097
Entertainment	1,502,753,299	1,619,944,258	1,357,868,097	1,347,290,030	1,591,443,353	1,527,692,599	1,651,973,398	1,586,153,107	1,605,754,935	1,497,880,682	1,591,219,886	1,632,255,793	1,563,344,174	18,572,820,312
Hotels	846,621,742	756,807,809	788,639,299	797,812,610	942,484,709	907,599,176	1,019,654,449	1,115,988,854	1,153,851,692	1,019,172,305	1,138,449,463	1,131,102,394	952,168,622	11,723,731,382
Airlines	543,328,546	474,680,419	779,674,591	674,126,258	766,151,551	702,053,181	701,660,254	696,341,750	676,219,611	613,493,514	699,526,964	658,246,861	527,038,179	7,969,213,133
Airport terminals	2,719,452	2,852,456	2,920,112	2,860,571	3,568,962	3,557,448	3,949,288	4,674,046	4,856,163	4,124,175	4,854,186	4,113,221	3,299,053	45,629,681
Railways	254,399,706	278,925,739	263,317,268	230,221,656	257,917,388	242,807,779	241,626,010	270,415,271	256,489,790	213,494,979	292,545,465	288,942,717	262,654,076	3,099,358,138
Buses	27,203,037	25,540,035	31,295,941	30,431,741	36,631,711	36,669,273	38,810,768	42,336,848	45,038,412	39,522,335	44,445,654	40,952,291	33,796,186	445,471,195
Sea travel	50,651,581	49,128,488	70,596,761	61,889,380	74,094,419	70,345,119	75,258,094	82,905,152	89,287,165	89,489,850	78,322,021	70,622,349	58,540,056	870,478,854
Travel agents	412,919,856	398,378,747	667,166,873	593,739,633	677,213,914	636,429,875	694,109,931	715,309,531	718,164,106	625,920,300	651,971,105	596,020,752	494,286,537	7,468,711,304
Timeshares	2,713,733	2,718,706	3,523,185	2,584,235	2,500,377	2,294,401	2,155,021	2,188,135	2,154,152	2,115,184	2,171,178	2,211,899	1,813,768	28,430,241
Camping grounds	21,811,340	16,341,278	22,533,414	23,323,215	31,773,059	31,585,217	38,296,710	41,626,530	44,997,143	36,415,545	23,509,369	21,137,768	26,116,656	357,655,904
Miscellaneous travel	58,878,017	54,600,581	66,337,275	65,007,028	78,078,847	73,365,774	80,393,163	92,406,988	90,993,307	76,199,521	78,015,752	77,668,623	69,582,244	902,649,103
Travel	1,374,625,268	1,303,166,449	1,907,365,420	1,684,183,717	1,927,930,228	1,799,108,067	1,876,259,239	1,948,204,251	1,928,199,849	1,700,775,403	1,875,361,694	1,759,916,481	1,477,126,755	21,187,597,553
Telegraph services / Wire transfer money order	2,978,561	3,287,459	4,011,632	5,142,689	5,992,464	5,923,618	6,114,317	6,536,577	6,471,447	5,943,600	6,487,084	6,904,014	7,026,277	69,841,178
Insurance services	252,460,942	240,949,757	301,947,224	289,287,764	361,798,426	323,000,940	316,226,441	334,766,895	347,819,888	320,817,052	356,103,142	331,064,319	295,117,545	3,818,899,393
Fis - cash disbursements (auto & manual)	7,367,465	7,224,181	9,080,242	8,528,236	10,577,847	9,429,638	9,631,741	9,367,783	10,354,358	9,506,666	9,502,947	9,129,878	6,967,781	109,301,298
Fis - merchandise & services	29,242,791	29,281,741	35,931,422	39,582,257	58,152,978	41,279,960	42,579,342	43,929,202	43,023,976	40,296,918	43,985,298	45,491,460	41,460,944	504,995,498
Non-Fis - foreign currency, travellers' cheques	27,874,108	29,001,107	37,860,899	48,798,932	63,620,229	67,222,706	73,535,011	67,222,706	73,535,011	75,258,385	68,451,584	66,056,132	92,616,426	721,977,039
Security brokers and dealers	6,250,957	7,114,040	31,322,976	18,056,998	27,870,296	20,381,525	15,110,591	13,740,275	15,752,848	18,165,611	14,471,679	13,789,971	13,416,254	209,193,064
Tax preparation services	161,889	64,178	157,630	394,432	292,548	220,373	409,535	223,333	264,545	111,817	334,984	163,865	161,794	2,799,034
Tax payments	12,248,303	10,969,102	20,861,959	24,853,350	35,885,269	29,681,688	28,870,892	29,080,962	40,077,012	41,669,142	46,412,507	61,777,586	61,806,574	431,946,043
Fines, bail and bond payments	10,607,681	8,613,982	9,575,720	9,036,614	10,075,503	8,758,899	9,696,864	10,079,148	9,534,468	8,645,049	9,034,960	9,289,458	8,264,594	110,605,259
Miscellaneous financial	16,850,481	15,170,926	16,103,984	15,999,522	19,832,261	18,249,952	17,710,342	16,383,592	16,514,716	17,043,493	19,054,021	18,315,461	18,009,436	208,387,706
Financial	366,043,178	351,676,473	466,853,688	459,680,794	594,097,821	513,554,820	513,572,771	537,642,778	582,740,659	537,457,733	573,838,206	561,982,144	494,847,625	6,187,945,512

Table 3B Card expenditure statistics (not seasonally adjusted)

Value of credit card transactions

Detailed sector breakdown - services sectors (continued, not seasonally adjusted)

£	November 2014	December 2014	January 2015	February 2015	March 2015	April 2015	May 2015	June 2015	July 2015	August 2015	September 2015	October 2015	November 2015	Total (latest 12 months)
Telecoms	93,006,909	98,948,665	93,190,182	79,443,654	87,840,085	80,615,666	82,088,386	80,972,314	85,012,575	82,703,450	92,947,387	95,617,975	91,103,509	1,050,483,848
Utilities	56,856,139	55,353,768	67,503,406	66,619,309	85,907,565	75,339,731	70,392,244	70,069,707	67,902,548	58,719,985	67,445,974	67,653,200	60,890,739	813,798,176
Contractors (residential & commercial)	92,082,103	80,121,717	84,556,259	86,325,875	102,112,164	88,432,338	89,063,293	97,327,231	94,783,903	82,603,621	101,407,698	98,532,783	96,462,412	1,101,729,294
Gardening services	4,437,731	5,846,686	3,014,602	3,767,431	7,346,597	7,288,044	6,572,988	8,048,588	5,771,320	4,558,448	5,803,969	4,269,502	3,579,431	65,867,606
Veterinary services	58,803,201	59,680,217	59,970,251	55,395,185	63,640,842	61,323,389	60,628,149	65,289,881	68,961,663	63,601,203	66,725,128	66,835,368	63,344,716	755,395,992
Photocopying & printing	40,425,799	37,982,605	49,550,846	46,878,895	49,794,168	44,074,718	42,185,198	44,933,136	42,244,687	39,539,847	48,566,660	49,173,439	52,399,545	547,323,744
Photographic studios	9,798,565	10,636,572	6,184,194	6,365,785	7,754,624	7,503,910	8,367,461	9,380,420	10,948,180	7,967,319	8,793,083	10,688,905	11,450,162	106,040,615
Beauty & barber shops	90,824,734	116,659,521	80,127,235	79,895,265	93,279,346	89,872,540	92,493,995	96,310,049	100,737,543	88,405,995	95,226,709	97,009,055	99,504,663	1,129,521,916
Employment agencies	27,415,997	26,708,354	23,140,031	26,565,378	33,059,121	24,078,232	27,482,769	29,995,881	33,913,788	29,593,814	29,907,174	33,347,226	29,216,472	347,008,240
Counselling services	1,147,901	1,804,258	1,573,832	1,551,677	1,602,832	1,636,561	1,483,461	1,533,704	1,569,197	1,635,442	1,550,569	1,589,397	1,589,397	19,034,686
Legal services	21,556,756	20,352,654	21,631,662	22,613,879	26,143,020	22,567,722	22,217,555	24,811,064	24,533,203	21,224,778	23,710,453	24,050,736	23,469,552	277,326,278
Laundry & cleaning	6,999,898	6,589,508	6,418,196	5,905,279	6,828,995	6,740,501	6,895,807	7,817,655	7,940,675	6,785,612	7,698,303	7,715,978	7,284,862	84,621,371
Funeral services	14,620,960	14,741,102	16,939,080	16,287,416	18,775,262	15,805,909	14,081,297	14,640,338	14,072,307	12,856,110	14,218,937	15,188,382	14,924,560	182,530,700
Medical services	176,710,591	160,247,893	173,984,776	174,931,122	197,252,618	178,832,074	176,910,998	195,038,959	195,676,704	166,156,954	192,129,662	195,210,910	193,102,516	2,199,475,186
Moving & courier services	43,645,087	42,254,825	42,040,591	41,839,434	46,957,486	43,290,103	43,355,686	48,681,948	52,140,616	39,985,486	47,012,957	47,833,270	44,801,500	540,193,902
Repair shops (not auto)	11,388,780	12,435,217	19,592,756	17,644,193	21,895,955	17,692,017	19,096,738	18,577,784	22,696,987	20,597,007	20,255,260	20,708,574	20,805,642	231,998,130
Accounting services	7,523,946	8,599,594	10,096,831	8,945,675	9,487,893	7,184,082	6,521,564	6,886,821	7,442,988	7,095,400	7,892,602	7,775,594	8,062,228	95,991,272
Advertising, consultancy & PR	7,092,562	6,795,343	8,153,575	7,980,934	9,428,613	8,283,046	7,771,648	19,682,774	19,611,818	17,539,859	21,650,491	21,515,796	21,020,247	169,834,144
Computer programming	128,369,053	146,022,163	119,170,383	104,019,859	118,672,351	108,221,422	114,481,556	122,083,687	118,411,210	110,315,539	117,111,871	128,945,691	156,145,618	1,463,601,350
Farming services	10,457,731	11,254,931	10,501,259	9,755,574	12,275,257	11,005,129	10,846,069	12,064,602	12,080,762	10,948,496	11,989,201	11,853,475	11,190,085	135,764,840
Miscellaneous professional services	160,748,512	154,357,611	178,978,981	169,634,098	203,128,533	179,563,189	174,233,195	188,019,778	180,749,574	174,674,194	206,893,863	183,398,931	171,074,659	2,164,706,606
Engineering services	14,214,895	13,242,871	14,950,577	15,230,850	17,339,285	15,424,298	14,558,375	16,964,189	16,927,353	14,247,722	15,368,369	15,366,499	14,611,424	184,231,812
Marina services	5,458,747	5,636,031	6,703,353	6,213,521	11,186,321	10,805,830	10,406,418	11,776,069	11,782,882	10,066,496	8,538,055	6,791,605	5,279,694	105,186,275
Wrecking & salvage yards	760,361	659,424	733,703	815,137	1,005,827	890,164	806,687	905,261	931,617	729,360	830,684	865,837	788,798	9,962,499
Pest control	641,360	668,535	650,935	624,527	668,748	641,273	660,846	781,028	825,106	698,923	698,514	694,076	572,861	8,185,372
Educational establishments	111,474,301	109,713,169	251,317,005	140,884,476	147,228,439	178,384,234	143,923,642	145,560,177	148,633,293	185,549,246	412,611,719	248,488,439	134,065,727	2,246,359,566
Child care services	2,434,069	2,386,321	2,695,517	2,598,952	2,629,973	3,018,286	2,652,615	3,086,942	3,121,760	2,544,788	3,067,731	2,945,985	2,818,486	33,567,356
Social, political & religious organisations	81,573,597	94,118,627	97,315,050	84,249,472	107,773,218	93,746,360	90,785,591	91,642,357	94,457,506	81,110,835	98,171,005	99,937,531	91,576,239	1,124,883,791
Government services	227,249,618	244,263,188	353,415,054	295,008,807	291,162,522	282,484,904	261,961,093	276,131,076	296,889,828	272,117,869	271,887,691	229,862,472	204,808,585	3,279,993,089
Miscellaneous services	82,274,910	101,961,666	81,404,193	77,281,547	100,539,107	86,575,646	88,749,771	92,845,523	88,921,924	84,652,201	94,182,215	91,685,826	89,437,685	1,078,237,304
Commercial equipment	130,932,437	115,811,389	126,162,123	123,821,690	150,582,767	128,331,261	127,580,216	135,192,369	137,543,065	120,815,761	139,209,325	137,941,430	131,511,755	1,574,503,151
Other services	1,720,927,250	1,765,854,425	2,011,666,438	1,779,094,896	2,033,687,847	1,879,264,266	1,819,255,311	1,937,051,312	1,967,236,582	1,819,910,074	2,233,588,132	2,023,455,059	1,857,293,769	23,127,358,111
Total services	6,403,539,325	6,369,078,522	7,226,918,494	6,765,544,300	7,986,230,270	7,389,801,932	7,651,943,335	7,969,691,217	8,103,235,908	7,313,472,205	8,203,967,979	7,844,053,647	7,020,418,262	89,844,356,071
TOTAL	14,210,825,654	16,006,358,421	13,984,237,134	13,023,748,592	15,515,429,703	14,650,360,686	15,018,977,361	15,717,281,585	15,818,165,377	14,364,831,113	15,912,435,561	15,571,898,738	15,673,369,483	181,257,093,754

Table 3C Card expenditure statistics (not seasonally adjusted)

Number of debit card transactions

Detailed sector breakdown - retail sectors (not seasonally adjusted)

Historical data located in hidden columns

	November 2014	December 2014	January 2015	February 2015	March 2015	April 2015	May 2015	June 2015	July 2015	August 2015	September 2015	October 2015	November 2015	Total (latest 12 months)
Supermarkets	267,523,289	292,824,915	254,199,853	250,604,486	292,633,205	273,955,712	279,345,111	292,358,306	290,790,164	266,080,985	293,605,090	292,576,017	299,994,829	3,378,968,673
Bakers & dairies	3,322,286	3,368,221	2,941,667	3,013,084	3,617,222	3,418,100	3,771,372	3,686,133	3,932,783	3,965,664	4,145,443	4,787,536	4,700,703	45,347,928
Sweet stores	1,260,132	2,164,422	859,699	1,148,723	1,421,883	1,274,670	1,144,361	1,201,875	1,160,069	1,170,298	1,226,087	1,401,304	1,554,595	15,727,986
Miscellaneous foodstores	15,662,884	17,357,667	14,925,248	15,369,279	17,840,496	17,201,227	17,200,150	18,671,094	18,413,554	17,144,162	18,928,564	18,610,780	18,762,526	210,514,747
Off-licences	3,441,042	3,871,355	3,065,297	3,109,951	3,554,995	3,497,229	3,751,468	3,813,894	3,898,767	3,819,889	3,697,879	3,889,945	3,941,072	43,911,741
Food & drink	291,209,633	319,586,580	275,991,764	273,245,623	319,067,601	299,346,938	305,302,462	319,731,302	318,195,337	292,180,998	321,603,063	321,266,582	328,953,725	3,694,471,075
Department stores	15,631,934	25,893,752	13,104,640	11,251,179	12,877,724	13,256,491	14,973,014	16,397,601	14,879,562	15,578,492	16,168,607	16,168,607	16,397,601	188,450,631
Discount stores	15,301,524	20,157,519	11,876,047	11,623,204	13,510,310	12,995,083	13,910,470	14,039,730	14,994,113	14,979,539	15,123,218	17,056,854	19,197,941	179,464,028
Catalogues	2,809,874	3,319,722	4,044,152	3,570,007	4,041,891	3,824,616	3,824,983	3,912,030	4,045,369	3,858,469	4,436,596	4,934,383	5,644,828	49,457,046
Miscellaneous mixed	9,448,904	14,256,485	7,071,956	7,196,824	8,952,107	8,569,395	8,410,898	9,283,150	8,412,121	8,858,323	8,120,270	7,896,914	9,041,743	104,070,186
Mixed business	43,192,236	63,627,478	36,096,795	33,641,214	39,746,039	38,266,818	39,402,842	42,207,924	43,849,204	40,575,893	43,258,576	46,056,758	54,712,350	521,441,891
Men's clothing	716,662	1,332,242	698,061	578,946	592,088	670,469	736,102	829,847	951,527	1,056,908	884,382	972,870	1,059,733	10,363,175
Women's clothing	5,991,468	10,097,167	5,547,677	5,111,566	6,309,537	6,497,301	6,707,022	7,590,771	7,802,986	6,449,484	6,996,352	7,054,441	7,015,832	83,180,136
Family clothing	29,481,022	46,284,077	25,273,855	22,650,603	28,152,668	29,071,579	29,321,907	31,689,578	34,051,631	28,407,911	30,178,189	30,457,796	33,027,971	368,567,765
Miscellaneous clothing	803,420	1,175,558	603,760	595,957	761,371	693,283	780,927	937,809	843,233	862,367	961,750	961,750	939,431	10,076,743
Shoe shops	2,542,785	3,878,014	2,649,300	2,054,067	2,417,462	3,043,858	2,844,003	3,560,814	3,642,008	3,437,780	3,345,812	3,080,662	2,966,887	36,920,467
Clothing	39,535,337	62,767,058	34,772,653	30,991,139	38,252,657	39,976,290	40,370,405	44,608,819	47,369,474	40,195,316	42,267,102	42,527,519	45,009,854	509,108,286
Furniture stores	4,107,155	5,048,472	3,904,577	3,397,518	3,868,353	3,568,141	3,714,953	3,786,780	3,732,648	3,710,034	4,034,792	4,144,601	4,554,831	47,465,700
Household appliance stores	6,660,096	7,770,250	6,031,614	5,699,660	6,509,032	6,165,365	6,432,100	6,149,769	6,376,988	6,443,203	6,703,404	7,066,362	7,282,737	78,630,484
Electronic stores	2,504,838	4,015,631	2,635,438	2,185,338	2,327,669	2,213,389	2,173,444	2,215,162	2,335,689	2,235,499	2,562,403	2,490,092	3,090,689	30,480,443
DIY stores	18,256,075	18,343,457	16,012,128	16,165,504	19,388,390	21,060,634	20,981,000	20,234,540	20,395,665	19,831,154	19,963,124	20,260,071	20,397,361	233,033,028
Floor covering stores	375,980	301,685	306,884	314,111	361,385	330,897	345,433	437,967	456,995	455,433	491,544	523,944	551,578	4,877,856
Garden centres	3,583,759	4,906,361	2,262,952	2,539,208	4,339,331	5,474,453	5,839,585	5,062,760	3,951,660	3,611,630	3,507,236	3,716,810	4,073,764	49,285,556
Miscellaneous household	1,876,129	2,215,466	1,880,525	1,780,034	1,941,785	1,771,257	1,736,572	1,805,359	1,908,609	1,948,273	2,289,456	2,349,288	2,192,542	23,799,166
Household	37,364,032	42,601,322	33,034,118	32,061,373	38,735,945	40,584,136	41,223,087	39,692,337	39,158,060	38,235,226	39,551,959	40,551,168	42,143,502	467,572,233
Books, newspapers & magazines	7,280,113	11,280,612	6,362,507	6,518,184	7,614,887	6,770,850	7,033,192	7,751,328	7,798,984	7,347,096	8,530,422	8,212,666	8,321,988	93,542,716
Record shops	966,162	2,687,290	720,345	697,084	833,887	688,712	658,162	823,394	1,602,453	1,462,942	2,010,286	2,505,475	1,149,973	15,840,003
Music shops	283,881	417,475	263,054	243,689	252,763	226,159	222,296	224,010	223,694	203,335	262,225	260,639	271,179	3,070,518
Hobbies, toys & games	3,049,742	4,933,306	1,632,229	1,633,659	1,835,585	1,703,577	1,746,758	1,814,287	1,846,134	1,773,730	2,286,091	2,344,439	5,144,899	28,694,694
Photographic	376,667	367,601	302,048	299,918	302,048	266,357	266,357	295,092	295,127	257,794	259,127	257,794	263,214	3,508,924
Handicraft	238,265	216,077	196,978	211,295	235,054	198,818	197,363	198,729	203,725	203,262	226,420	239,324	240,669	2,567,714
Sports shops	7,735,756	11,281,857	8,113,325	7,420,496	8,639,888	9,349,477	9,507,282	9,757,572	10,339,535	10,572,916	9,947,768	9,116,029	9,371,966	113,418,111
Jewellers	1,813,149	3,842,573	1,395,384	1,437,268	1,638,570	1,315,944	1,373,401	1,467,243	1,394,524	1,386,033	1,378,705	1,386,033	1,858,013	20,055,825
Computer software	376,240	477,794	388,197	336,754	356,407	330,127	317,401	330,516	331,824	315,152	372,111	356,980	377,759	4,291,022
Medical goods	45,016	41,959	42,223	42,185	47,553	45,277	44,319	48,162	48,018	43,981	45,982	47,209	47,535	544,403
Chemists	18,371,253	28,461,493	17,712,285	17,505,452	21,058,716	19,332,340	19,248,466	22,456,837	21,617,459	19,023,965	22,041,223	21,310,143	22,486,763	252,255,142
Optical goods	913,091	860,063	952,802	986,218	1,152,324	1,054,616	1,016,071	1,131,527	1,114,619	1,001,525	1,107,636	1,062,317	1,042,924	12,482,642
Cosmetic stores	2,001,459	4,045,071	1,663,971	1,738,595	2,074,617	1,852,181	1,962,929	2,094,905	2,040,486	1,977,153	2,166,567	2,303,232	2,818,364	26,738,075
Tobaccoconists	236,185	288,166	280,813	277,465	335,052	319,015	335,052	355,330	368,927	365,132	494,628	464,471	485,303	4,382,455
Florists	729,732	1,218,653	665,905	1,082,264	1,452,345	825,145	864,456	915,417	882,662	766,732	860,700	838,441	808,265	11,180,985
Artists' supplies	962,713	1,154,945	706,234	785,171	940,542	743,797	751,011	769,573	797,853	778,375	901,713	940,202	1,118,049	10,387,465
Antiques, art & stamps/coins	327,041	415,939	273,110	283,788	312,862	299,811	300,550	300,550	300,550	300,550	300,550	300,550	300,550	3,930,229
Pawn shops	28,100	40,701	27,881	27,156	29,013	28,177	30,364	32,103	35,643	32,245	31,817	30,990	31,682	377,772
Gift shops	7,042,007	13,299,628	4,977,677	6,143,151	7,287,943	5,347,723	5,660,446	7,128,366	6,407,495	6,131,448	6,634,057	6,874,652	8,548,788	84,441,374
Secondhand shops	75,281	95,126	70,066	80,378	79,192	70,666	79,192	81,855	88,637	93,827	93,827	93,827	1,009,187	90,924
Luggage & leather goods	183,014	276,494	134,426	114,205	137,740	126,886	137,791	154,675	163,772	158,778	155,512	155,892	180,000	1,895,971
Pet shops	3,275,100	3,698,419	3,229,337	3,064,347	3,460,071	3,332,713	3,449,220	3,471,107	3,532,518	3,557,951	3,537,691	3,650,394	3,607,297	41,591,065
Religious goods	7,960	6,872	6,049	7,614	7,310	7,614	7,657	8,669	8,274	8,645	9,252	9,252	7,624	92,754
Direct sales	5,421,863	5,964,422	5,774,985	5,503,260	6,356,257	5,805,456	5,809,497	5,685,748	5,649,805	5,301,642	5,823,009	5,832,648	6,047,103	69,553,832
Miscellaneous & speciality shops	4,542,648	5,437,776	4,253,581	4,079,870	4,535,651	4,304,233	4,499,096	4,501,400	4,528,778	4,387,730	4,705,582	4,871,655	4,717,417	54,822,769
Other retail	66,281,838	100,811,679	60,142,477	60,510,542	71,007,281	64,345,616	65,517,590	71,796,595	71,839,483	67,540,781	74,218,566	73,555,088	79,389,949	860,675,647
Automotive Fuels	66,052,325	67,044,683	61,585,708	60,019,339	70,293,603	67,611,684	69,862,480	71,056,102	71,846,834	67,573,143	69,844,813	70,161,635	70,056,719	816,956,743
Total retail sales	543,635,401	656,438,800	501,623,515	490,469,13										

Table 3C Card expenditure statistics (not seasonally adjusted)

Number of debit card transactions

Detailed sector breakdown - services sectors (not seasonally adjusted)

	November 2014	December 2014	January 2015	February 2015	March 2015	April 2015	May 2015	June 2015	July 2015	August 2015	September 2015	October 2015	November 2015	Total (latest 12 months)
Auto rental	417,682	419,694	597,108	607,222	723,739	733,045	766,330	809,028	861,277	814,403	782,453	726,539	635,714	8,476,552
Auto parts & accessories	1,514,437	1,531,135	1,587,043	1,594,313	1,807,082	1,733,359	1,677,413	1,757,107	1,794,227	1,622,556	1,729,711	1,723,516	1,615,989	20,173,451
Auto services	5,320,118	5,964,368	5,150,612	5,276,268	6,079,092	5,786,788	5,960,997	6,243,592	6,461,731	5,926,722	6,666,646	6,713,529	6,984,468	73,214,813
Auto repair shops	1,663,458	1,542,237	1,746,188	1,754,066	2,091,334	1,906,380	1,845,954	1,957,282	2,021,309	1,792,264	2,002,377	1,959,904	1,809,370	22,428,665
Service stations	0	0	0	0	0	0	0	0	0	0	0	0	0	0
Vehicle sales	1,049,459	962,902	1,105,860	1,155,992	1,465,178	1,341,974	1,304,324	1,393,684	1,395,448	1,273,628	1,403,841	1,287,479	1,144,930	15,235,240
Vehicle Sales & Services	9,965,154	10,420,336	10,186,811	10,387,861	12,166,425	11,501,546	11,555,018	12,160,693	12,533,992	11,429,573	12,585,028	12,410,967	12,190,471	139,528,721
Restaurants	80,466,764	85,666,613	75,682,739	79,833,795	93,500,204	89,307,716	96,536,129	92,098,252	95,443,427	96,356,379	97,407,724	106,813,856	105,897,101	1,114,543,935
Public houses	11,036,808	12,468,354	10,212,995	11,320,877	14,036,214	14,008,762	14,443,267	14,539,151	14,494,903	14,605,330	15,385,374	15,398,155	15,440,257	166,353,639
Catering services	2,604,738	2,410,320	2,503,120	2,721,843	3,166,277	2,785,753	2,941,984	3,084,055	3,198,407	2,825,539	3,464,917	3,777,595	4,124,198	37,004,008
Video stores	47,156	54,618	51,411	66,562	59,131	56,947	50,290	37,103	32,324	27,893	28,485	30,817	33,263	528,844
Cinema, theatre & dance	5,717,666	6,642,095	5,853,072	6,111,216	5,222,015	6,282,496	5,573,609	6,329,700	6,022,647	5,732,984	5,358,151	7,223,830	7,563,831	73,915,646
Concerts & entertainers	426,241	449,456	433,359	417,193	420,837	411,175	469,710	406,311	444,536	471,229	433,830	496,054	594,801	5,448,491
Tourist attractions	709,782	722,334	529,517	793,134	911,748	1,470,138	1,246,987	1,246,987	1,586,400	1,246,335	1,413,199	1,475,346	861,960	14,499,332
Amusement parks	168,492	111,778	96,927	169,731	194,669	404,226	389,695	335,347	402,204	585,657	348,473	344,076	201,962	3,584,745
Aquariums	77,930	66,836	67,071	119,314	135,747	225,420	188,315	172,673	219,189	333,136	210,462	202,754	90,760	2,031,677
Sports & games establishments	3,636,597	3,967,071	4,664,389	4,078,557	4,567,241	4,398,042	4,923,177	4,369,973	3,820,778	3,916,486	3,606,927	3,669,012	3,300,383	49,282,036
Professional sports clubs	249,731	257,602	220,085	209,543	253,113	244,215	260,980	201,352	253,114	272,854	292,663	323,305	251,470	3,040,296
Gambling	22,386,666	26,904,005	25,389,507	26,040,163	33,237,256	31,280,685	26,972,947	24,717,510	21,087,634	23,371,720	26,652,891	26,102,952	29,438,725	321,195,995
Personal services	387,487	443,673	428,216	444,222	538,480	515,890	531,825	586,675	578,354	470,185	507,286	438,612	440,431	5,923,848
Miscellaneous entertainment	804,167	736,564	896,675	1,035,854	1,057,060	1,182,248	1,181,586	1,067,274	1,303,472	1,648,416	1,208,396	1,268,462	1,060,780	13,646,787
Entertainment	128,720,225	140,901,319	127,029,083	133,362,004	157,299,992	152,573,713	155,787,748	149,192,363	148,887,388	152,782,143	156,380,925	167,502,679	169,299,922	1,810,999,279
Hotels	5,003,321	5,100,211	5,101,547	5,404,788	6,179,040	6,153,720	6,510,714	6,407,385	6,830,350	7,215,413	6,680,119	6,730,681	6,247,947	74,561,915
Airlines	1,808,807	1,733,290	2,620,080	2,249,620	2,597,389	2,735,689	2,539,694	2,576,766	2,617,254	2,527,732	2,627,469	2,418,202	2,087,670	29,330,855
Airport terminals	34,089	36,909	37,705	40,613	53,131	57,303	61,166	95,774	143,419	136,221	145,613	108,922	85,081	1,001,857
Railways	18,030,141	18,720,621	16,159,293	16,427,164	18,726,186	16,821,310	16,978,171	18,284,136	17,814,699	15,721,937	19,018,031	19,328,179	18,496,741	212,496,468
Buses	1,597,815	1,620,129	2,338,506	2,290,094	2,616,455	2,476,466	2,601,165	2,634,657	2,623,817	2,517,134	2,760,560	2,984,519	2,737,187	30,200,689
Sea travel	138,973	137,089	172,181	173,939	215,397	251,162	262,288	289,016	334,092	371,819	273,980	237,962	191,233	2,910,158
Travel agents	1,256,721	1,166,905	2,278,583	2,058,904	2,403,521	2,162,095	2,220,577	2,239,108	2,246,077	2,020,766	1,956,929	1,760,123	1,410,182	23,923,770
Timeshares	4,101	4,173	6,764	5,160	5,164	4,479	4,420	4,132	4,333	4,124	4,041	4,770	3,929	55,489
Camping grounds	276,998	184,658	339,600	406,150	626,283	940,746	997,412	946,989	1,200,855	1,439,346	796,241	693,983	319,126	8,891,389
Miscellaneous travel	4,819,112	5,378,322	6,285,288	6,593,926	7,932,037	8,062,357	9,208,544	9,762,490	10,742,465	10,669,782	11,456,326	12,932,262	12,547,484	111,571,283
Travel	27,966,757	28,982,096	30,238,000	30,245,570	35,175,563	33,511,607	34,873,437	36,833,068	37,727,011	35,408,861	39,039,190	40,468,922	37,878,633	420,381,958
Telegraph services / Wire transfer money order	115,836	137,847	140,830	238,884	288,381	277,848	297,114	306,139	314,377	307,340	318,340	327,696	333,292	3,288,088
Insurance services	3,014,661	2,791,703	3,427,398	3,396,614	4,117,322	3,825,147	4,117,322	3,820,985	4,034,057	3,916,536	4,224,869	3,967,139	3,474,709	45,234,458
Fis - cash disbursements (auto & manual)	6,691	10,653	45,863	47,106	59,815	62,053	74,868	80,326	93,774	82,414	71,309	66,070	51,707	745,958
Fis - merchandise & services	7,900,393	8,534,787	8,416,699	7,722,528	9,170,794	8,250,848	8,559,706	8,619,092	8,913,967	8,670,555	9,988,249	9,300,289	8,896,575	104,044,089
Non-Fis - foreign currency, travellers' cheques	648,508	711,740	838,326	722,917	1,004,685	925,719	1,082,533	1,252,894	1,114,077	1,279,891	1,114,077	1,020,188	730,992	12,136,545
Security brokers and dealers	212,362	215,529	293,050	259,586	340,988	343,533	299,020	262,572	268,671	273,171	248,724	246,373	256,397	3,307,614
Tax preparation services	429	428	686	496	596	517	514	541	570	482	524	550	533	6,437
Tax payments	106,133	106,197	531,551	428,290	256,706	207,366	187,960	205,893	283,915	205,615	253,951	302,011	301,720	3,271,175
Fines, bail and bond payments	612,274	566,958	594,854	553,770	625,302	596,625	636,182	597,015	633,600	614,343	603,518	662,041	597,398	7,281,606
Miscellaneous financial	157,462	144,289	135,169	143,383	178,217	195,197	189,394	154,367	156,218	192,936	200,274	194,475	175,173	2,059,092
Financial	12,774,749	13,220,131	14,309,017	13,628,983	16,042,806	14,684,853	15,148,276	15,512,896	16,355,654	15,543,283	16,023,835	16,086,832	14,818,496	181,375,062

Table 3C Card expenditure statistics (not seasonally adjusted)

Number of debit card transactions

Detailed sector breakdown - services sectors (continued, not seasonally adjusted)

	November 2014	December 2014	January 2015	February 2015	March 2015	April 2015	May 2015	June 2015	July 2015	August 2015	September 2015	October 2015	November 2015	Total (latest 12 months)
Telecoms	11,357,039	12,148,809	11,668,588	10,556,637	12,102,464	11,385,024	11,830,487	11,459,811	11,812,331	11,750,977	12,137,640	12,483,808	11,665,232	141,001,808
Utilities	2,256,634	2,480,211	2,771,054	2,587,807	3,012,092	2,762,973	2,745,037	2,760,743	2,830,632	2,497,955	2,682,454	2,742,397	2,567,806	32,441,161
Contractors (residential & commercial)	607,875	562,070	547,458	563,119	625,346	601,936	572,201	638,709	651,765	580,639	692,068	701,458	682,778	7,419,547
Gardening services	103,975	140,570	73,969	82,354	101,250	127,534	130,078	121,480	96,257	83,590	84,254	79,834	75,855	1,197,025
Veterinary services	1,772,689	1,770,760	1,728,216	1,630,090	1,838,669	1,785,870	1,789,097	1,891,374	2,030,535	1,927,330	2,008,607	2,021,930	1,897,331	22,319,809
Photocopying & printing	535,658	604,398	524,620	508,833	566,022	524,733	543,503	565,908	561,525	547,385	629,685	638,512	687,482	6,902,606
Photographic studios	525,261	802,062	407,401	409,383	526,284	517,470	608,533	704,388	729,417	557,532	599,326	825,535	858,862	7,546,193
Beauty & barber shops	5,043,651	6,888,108	4,682,127	4,887,363	5,720,662	5,477,128	5,731,831	5,908,854	6,175,325	5,488,314	5,794,306	5,866,583	5,706,301	68,326,902
Employment agencies	8,722	7,576	9,349	9,603	10,559	10,285	11,060	10,478	10,410	8,466	10,301	10,223	9,237	117,547
Counselling services	112,483	116,972	115,541	109,507	121,883	108,707	111,090	113,980	114,890	109,103	120,690	125,240	110,652	1,378,255
Legal services	157,112	140,671	159,771	166,981	199,467	178,332	175,970	196,185	200,270	176,219	198,165	198,869	188,726	2,179,626
Laundry & cleaning	509,558	490,742	462,576	447,616	508,569	490,085	517,900	567,827	559,914	493,511	572,053	593,123	560,066	6,263,982
Funeral services	31,118	30,841	36,036	36,693	41,198	36,311	34,372	36,575	36,574	32,411	35,882	37,279	36,178	430,350
Medical services	3,064,660	2,843,216	3,146,897	3,129,779	3,546,287	3,250,999	3,150,261	3,497,928	3,520,755	3,111,044	3,632,736	3,651,809	3,558,840	40,040,551
Moving & courier services	471,148	526,211	460,126	436,089	493,954	472,805	471,383	513,768	508,370	464,167	526,061	531,583	527,359	5,931,876
Repair shops (not auto)	137,812	174,218	381,400	351,616	400,119	373,632	381,535	365,218	403,356	403,826	413,797	427,274	414,592	4,490,583
Accounting services	231,651	148,594	85,389	70,902	77,791	66,970	67,570	76,373	75,899	74,127	87,618	85,439	85,132	1,001,804
Advertising, consultancy & PR	121,593	110,063	119,461	127,570	147,453	136,798	133,607	162,602	159,770	158,226	186,350	171,555	166,942	1,780,397
Computer programming	617,304	647,842	757,543	731,057	802,402	665,562	728,848	750,652	744,066	702,333	797,751	824,275	765,874	8,918,205
Farming services	299,254	353,148	298,545	284,947	327,633	320,209	321,352	329,406	322,761	309,926	334,580	333,793	337,124	3,873,424
Miscellaneous professional services	3,116,047	3,116,230	3,225,074	3,178,641	3,617,406	3,358,730	3,446,844	3,240,741	3,239,258	2,914,833	3,385,188	3,430,054	3,561,596	39,714,595
Engineering services	84,044	73,788	76,067	80,353	93,741	89,418	85,467	94,517	95,676	82,002	90,288	94,864	88,242	1,044,403
Marina services	70,120	67,115	62,706	67,371	94,637	130,593	132,814	146,567	164,857	174,933	130,630	105,508	75,621	1,353,352
Wrecking & salvage yards	8,336	7,434	8,971	9,545	11,473	11,160	10,626	11,293	11,228	9,984	10,956	10,935	9,797	123,402
Pest control	5,122	4,473	4,678	4,335	5,011	5,182	5,101	6,318	6,967	5,636	5,681	5,521	5,071	63,904
Educational establishments	3,621,829	2,609,438	3,693,130	3,472,268	4,125,101	3,062,343	3,599,887	3,127,839	2,128,231	1,449,257	4,058,381	4,683,074	5,037,677	41,046,626
Child care services	152,913	147,403	182,927	199,403	197,995	168,684	187,270	170,362	190,949	188,971	183,236	200,582	194,067	2,211,849
Social, political & religious organisations	2,942,952	2,857,263	2,487,774	2,651,009	3,563,849	3,610,835	3,770,425	4,022,097	3,995,489	3,621,123	4,343,290	4,126,296	3,803,978	42,853,428
Government services	7,343,485	7,193,867	8,512,075	8,002,835	9,031,161	8,978,517	8,825,996	9,017,502	8,991,685	8,451,636	9,374,322	9,185,071	8,483,710	104,048,377
Miscellaneous services	5,851,109	8,560,998	5,744,176	5,565,215	6,708,920	6,304,329	5,876,409	6,778,818	6,392,223	5,577,202	6,489,571	6,430,143	6,337,802	76,765,806
Commercial equipment	1,642,893	1,776,722	1,650,184	1,527,155	1,689,205	1,570,601	1,591,286	1,580,552	1,545,944	1,455,793	1,892,986	1,765,412	1,727,773	19,773,613
Other services	52,804,047	57,401,813	54,083,829	51,886,076	60,308,603	56,583,755	57,587,840	58,868,865	58,307,329	53,408,451	61,508,763	62,387,979	60,227,703	692,561,006
Total services	237,234,253	256,025,906	240,948,287	244,915,282	287,172,429	275,009,194	281,463,033	278,975,270	280,641,724	275,787,724	292,217,860	305,588,060	300,663,172	3,319,407,941
TOTAL	780,869,654	912,464,706	742,571,802	735,384,412	864,275,755	825,140,676	843,141,899	868,068,349	872,900,116	822,089,081	882,961,939	899,705,810	920,929,271	10,189,633,816

Table 3D Card expenditure statistics (not seasonally adjusted)

Value of debit card transactions

Detailed sector breakdown - retail sectors (not seasonally adjusted)

Historical data located in hidden columns

£	November 2014	December 2014	January 2015	February 2015	March 2015	April 2015	May 2015	June 2015	July 2015	August 2015	September 2015	October 2015	November 2015	Total (latest 12 months)
Supermarkets	6,580,476,684	8,039,775,018	5,990,101,944	5,814,725,528	6,839,228,579	6,391,188,446	6,504,106,701	6,739,443,679	6,580,572,440	6,138,683,954	6,696,967,883	6,547,424,344	7,027,168,271	79,309,386,787
Bakers & dairies	22,135,962	24,360,695	19,459,633	20,037,553	23,996,915	23,085,621	25,136,291	24,910,271	26,624,649	26,742,726	27,155,461	29,843,628	29,368,819	300,722,262
Sweet stores	19,038,530	35,662,834	11,301,323	14,774,015	20,038,115	17,721,712	14,591,525	15,866,269	15,591,293	15,393,007	16,365,499	18,593,843	22,874,000	218,773,435
Miscellaneous foodstores	295,039,398	374,946,070	283,058,027	284,887,874	327,373,914	317,415,470	319,407,115	340,505,187	334,789,157	313,320,892	341,409,577	332,597,790	339,937,228	3,909,648,301
Off-licences	84,936,269	122,179,270	73,630,383	75,256,293	86,362,213	87,459,635	95,447,960	102,519,175	105,615,570	100,810,262	97,515,905	103,008,040	108,857,397	1,158,662,103
Food & drink	7,001,626,843	8,596,923,887	6,377,551,310	6,209,681,263	7,296,999,736	6,836,870,884	6,958,689,592	7,223,244,581	7,063,193,109	6,594,950,841	7,179,414,325	7,031,467,645	7,528,205,715	84,897,192,888
Department stores	643,377,504	1,060,237,689	478,249,207	412,891,096	485,798,343	504,533,113	562,575,944	574,544,294	517,473,521	567,169,820	590,801,375	583,602,736	7,067,492,235	
Discount stores	541,363,563	709,579,959	375,188,355	360,762,174	412,165,979	398,578,234	418,730,099	440,653,971	459,286,909	450,905,970	471,941,061	514,512,381	638,964,213	5,651,269,305
Catalogues	134,517,646	153,010,234	167,387,974	149,436,121	173,413,447	159,645,108	155,556,445	163,608,420	164,171,565	153,528,585	174,152,976	176,906,186	198,577,549	1,989,394,610
Miscellaneous mixed	308,195,612	454,734,523	201,146,555	208,643,430	262,653,040	255,809,004	255,675,408	279,325,882	253,081,154	212,342,360	263,164,051	257,201,471	305,636,480	3,209,413,358
Mixed business	1,627,454,325	2,377,562,405	1,221,972,091	1,131,732,821	1,347,847,563	1,299,830,689	1,334,495,065	1,446,164,217	1,451,083,922	1,334,250,436	1,476,427,908	1,539,421,413	1,956,780,978	17,917,569,508
Men's clothing	47,526,211	79,747,548	41,519,098	35,171,923	41,227,128	43,999,652	48,769,103	54,551,290	56,312,651	58,902,612	54,448,485	58,591,027	64,263,218	637,503,735
Women's clothing	245,230,260	373,295,049	211,366,187	200,300,272	249,359,066	256,151,821	259,551,119	293,184,873	283,956,745	232,496,820	275,091,080	278,002,254	286,845,576	3,199,600,862
Family clothing	1,033,400,170	1,568,372,019	767,916,790	735,607,496	931,026,274	957,135,855	964,724,622	1,027,795,822	1,047,693,697	919,042,029	1,035,368,273	1,058,464,838	1,175,015,235	12,188,162,950
Miscellaneous clothing	33,913,508	43,693,859	25,396,497	24,094,318	30,995,563	30,688,188	33,640,502	40,522,915	33,465,078	35,245,366	35,658,449	38,424,323	38,714,432	415,939,040
Shoe shops	132,089,508	196,767,051	115,091,537	92,046,793	111,959,541	136,010,437	127,467,677	147,123,977	141,226,654	150,835,887	154,233,586	145,277,320	182,876,450	1,670,916,910
Clothing	1,492,159,207	2,261,875,526	1,161,290,109	1,087,220,802	1,364,567,572	1,423,985,953	1,434,152,573	1,563,178,877	1,567,654,825	1,396,522,714	1,554,799,873	1,579,159,762	1,717,714,911	18,112,123,497
Furniture stores	417,952,825	397,566,575	413,150,889	364,185,937	412,809,482	385,490,558	397,094,806	401,901,920	409,823,001	397,371,202	451,632,302	471,252,734	473,451,797	4,975,731,203
Household appliance stores	255,440,198	284,497,125	243,448,109	231,702,919	262,106,546	240,605,916	242,882,180	237,403,291	241,913,650	231,947,937	250,607,756	261,150,486	282,174,972	3,010,440,887
Electronic stores	278,625,353	464,014,124	278,325,014	222,017,407	244,982,721	236,516,752	225,800,149	233,761,172	244,163,426	232,855,411	290,568,596	270,157,259	375,578,515	3,318,740,546
DIY stores	994,261,864	899,268,819	861,300,753	861,758,150	1,006,679,869	1,114,856,659	1,118,456,659	1,102,674,545	1,128,071,443	1,068,452,108	1,098,947,570	1,174,507,243	1,108,599,305	12,543,518,726
Floor covering stores	109,374,675	85,502,856	84,047,108	83,867,691	98,017,667	93,686,909	95,430,346	107,718,380	111,082,666	108,081,100	119,306,584	126,666,359	135,134,653	1,248,542,519
Garden centres	110,782,721	153,861,416	65,897,195	143,759,782	197,220,805	206,997,772	179,164,707	136,212,572	116,911,170	112,532,572	114,981,572	124,452,230	1,628,984,319	
Miscellaneous household	130,404,872	136,651,236	126,813,118	118,305,976	135,715,920	126,781,612	123,878,202	131,101,518	138,499,620	137,649,607	164,880,088	169,896,122	156,051,991	1,666,225,010
Household	2,296,842,508	2,421,362,153	2,072,982,186	1,958,831,398	2,304,071,987	2,395,104,814	2,410,540,114	2,393,725,533	2,409,765,863	2,293,268,535	2,488,475,468	2,588,611,775	2,655,443,463	28,392,183,289
Books, newspapers & magazines	115,711,992	192,971,153	97,637,019	93,821,722	109,053,792	98,309,746	99,290,042	107,283,900	110,128,301	105,483,016	124,763,064	122,838,453	126,496,573	1,388,075,971
Record shops	21,259,567	13,943,176	13,663,965	16,596,639	14,342,157	13,191,089	16,372,981	14,342,157	24,251,363	34,637,184	34,637,184	25,561,303	29,819,595	
Music shops	21,798,329	30,890,925	21,150,066	19,079,216	20,752,372	19,374,916	18,680,833	18,999,045	19,352,660	18,270,292	21,757,531	21,598,299	23,307,230	253,213,385
Hobbies, toys & games	141,747,871	228,492,325	60,316,773	57,663,393	66,249,020	60,135,728	61,504,928	67,831,384	65,884,790	61,483,790	93,316,761	95,537,829	204,951,031	1,123,367,754
Photographic	21,093,080	24,553,378	18,838,696	19,563,749	23,490,652	20,441,183	20,741,128	22,769,972	20,741,128	21,399,569	21,157,573	21,272,385	22,612,059	260,645,324
Handicraft	12,578,846	11,171,090	10,791,412	11,714,124	13,195,641	11,666,044	11,842,542	12,573,247	12,292,472	11,525,221	12,559,722	13,071,521	13,375,592	145,778,628
Sports shops	335,970,945	487,012,343	323,089,145	302,569,682	366,686,342	399,570,664	411,739,471	419,322,530	443,640,312	456,356,260	427,867,893	405,363,806	429,195,401	4,872,413,849
Jewellers	177,130,493	377,219,925	143,249,819	158,253,319	158,253,319	147,161,551	159,338,697	171,000,784	157,752,811	153,155,300	199,844,943	199,844,943	2,021,080,107	
Computer software	51,950,877	66,548,726	50,004,414	42,557,173	46,121,630	42,464,994	39,724,120	41,841,083	44,320,442	41,142,166	49,839,459	48,062,260	52,383,089	565,009,556
Medical goods	11,050,583	9,858,886	8,986,372	10,329,584	12,264,925	11,446,994	11,011,744	12,326,079	12,788,388	11,337,884	12,002,337	12,582,105	12,848,465	137,783,763
Chemists	303,998,413	560,830,040	252,914,419	252,802,735	314,248,350	281,614,264	289,415,056	337,911,318	320,994,387	280,195,451	322,791,333	321,123,697	372,423,548	3,907,264,508
Optical goods	92,298,670	81,131,619	96,043,749	100,665,272	119,047,054	108,764,578	105,566,791	117,738,776	116,143,502	104,145,225	112,923,864	109,341,835	106,599,158	1,278,111,423
Cosmetic stores	67,716,728	139,510,694	57,448,290	59,610,444	72,314,159	65,938,076	70,574,327	75,264,368	73,197,537	69,369,013	76,909,619	82,438,090	108,136,809	950,711,426
Tobacco/nicotine	6,506,859	8,531,233	7,822,917	7,669,417	8,855,909	8,741,401	9,119,205	9,828,249	10,361,621	10,127,697	13,503,280	14,127,697	13,750,998	123,284,495
Florists	31,327,717	48,310,633	29,229,125	45,548,967	57,749,797	36,709,069	38,014,207	39,972,955	38,743,584	33,452,142	37,780,494	35,763,881	35,062,163	476,337,017
Artists' supplies	27,284,523	31,755,707	20,158,443	21,393,313	25,258,765	21,049,544	21,367,784	21,974,575	22,979,068	21,853,998	25,169,812	26,091,604	30,232,878	289,285,491
Antiques, art & stamps/coins	35,480,923	40,886,051	27,660,468	28,590,950	34,180,476	32,671,580	35,710,359	34,265,496	30,316,958	38,181,257	37,571,059	38,150,783	410,434,728	
Pawn shops	4,724,551	6,129,393	5,707,459	5,268,272	5,584,353	6,102,743	6,819,932	7,355,587	8,831,221	7,354,996	7,077,765	6,652,082	6,351,682	79,235,485
Gift shops	157,641,501	257,138,344	98,215,840	106,550,361	126,507,157	103,693,801	107,555,865	122,522,686	120,974,753	118,312,835	126,662,754	135,318,962	176,814,696	1,600,268,054
Secondhand shops	4,980,532	6,206,701	4,330,167	5,237,356	5,099,767	5,157,941	6,034,406	5,631,958	6,313,958	6,643,221	6,375,992	5,562,378	6,731,497	
Luggage & leather goods	14,300,238	24,556,527	11,354,129	9,765,594	12,425,182	11,563,388	12,591,933	14,367,048	13,703,278	13,487,141	13,947,254	14,099,490	16,322,241	168,183,205
Pet shops	94,488,368	107,345,496	92,554,728	87,907,450	99,477,534	97,196,986	99,719,182	100,713,554	102,506,885	102,663,675	103,001,169	105,095,536	103,424,771	1,201,606,966

Table 3D Card expenditure statistics (not seasonally adjusted)

Value of debit card transactions

Detailed sector breakdown - services sectors (not seasonally adjusted)

£	November 2014	December 2014	January 2015	February 2015	March 2015	April 2015	May 2015	June 2015	July 2015	August 2015	September 2015	October 2015	November 2015	Total (latest 12 months)
Auto rental	48,661,204	49,699,485	67,486,127	69,146,678	87,233,433	86,086,834	95,939,187	106,442,875	117,900,351	97,756,282	89,663,382	83,169,501	72,392,408	1,022,916,543
Auto parts & accessories	196,004,291	187,060,828	204,418,972	206,282,457	257,547,621	234,010,091	227,936,418	237,026,998	239,188,299	211,749,563	247,780,723	230,439,677	212,146,107	2,695,587,754
Auto services	61,948,712	66,873,961	61,833,325	62,718,217	73,893,083	70,535,944	72,261,703	76,664,423	79,262,425	72,394,900	78,077,606	74,987,146	72,660,018	862,162,841
Auto repair shops	558,461,002	490,882,922	586,095,288	581,762,863	803,736,716	666,374,257	655,841,924	660,448,930	672,649,182	602,343,168	731,300,600	666,546,460	588,473,084	7,696,455,394
Service stations	0	0	0	0	0	0	0	0	0	0	0	0	0	0
Vehicle sales	1,287,284,185	1,146,720,831	1,366,201,618	1,415,058,573	2,022,635,836	1,720,412,096	1,650,499,117	1,758,132,811	1,700,066,315	1,510,697,172	1,936,402,616	1,658,214,751	1,465,895,675	19,350,927,411
Vehicle Sales & Services	2,152,359,394	1,941,238,027	2,286,035,330	2,334,968,788	3,245,046,689	2,777,419,222	2,702,478,349	2,838,716,037	2,809,066,572	2,494,941,175	3,063,224,927	2,703,357,535	2,411,557,292	31,628,049,943
Restaurants	1,278,909,658	1,455,887,749	1,199,071,466	1,268,259,712	1,482,874,372	1,426,487,259	1,534,239,265	1,450,766,307	1,503,982,500	1,568,603,403	1,497,852,694	1,597,884,000	1,584,157,683	17,570,066,410
Public houses	262,425,896	319,016,226	241,513,447	261,342,951	324,495,542	321,172,997	330,034,807	332,559,046	332,984,042	339,301,080	345,483,345	335,799,325	336,312,718	3,820,015,526
Catering services	81,757,322	88,912,799	70,160,395	74,186,653	84,829,305	85,676,156	90,531,410	93,742,832	101,420,083	94,695,327	91,972,162	95,609,938	90,620,130	1,062,357,190
Video stores	1,010,395	1,076,663	861,102	962,491	988,143	1,010,312	971,411	917,156	843,535	703,465	808,668	801,161	932,169	10,876,276
Cinema, theatre & dance	215,379,025	222,698,361	161,470,582	175,094,116	187,445,340	204,763,625	176,454,114	189,414,285	187,275,011	165,089,035	172,731,658	225,115,851	240,406,647	2,307,958,625
Concerts & entertainers	15,108,897	14,529,879	13,369,504	12,891,839	13,785,199	13,133,480	15,155,192	13,179,780	14,392,800	14,119,814	13,797,791	16,419,467	19,740,069	174,514,814
Tourist attractions	26,200,395	28,140,293	21,571,758	28,781,741	34,462,801	28,781,741	46,914,707	44,346,327	44,346,701	71,905,962	49,133,210	48,577,716	30,968,763	512,196,722
Amusement parks	4,806,216	3,174,442	2,906,274	4,626,200	5,715,839	12,551,440	11,810,551	9,699,541	11,965,117	17,819,058	9,339,565	9,363,866	5,443,457	104,415,350
Aquariums	2,677,069	2,442,354	2,201,013	3,785,262	4,468,267	7,898,043	6,547,231	5,813,445	7,627,372	11,846,686	6,905,013	6,659,759	3,011,981	69,206,426
Sports & games establishments	113,803,071	124,378,192	136,867,555	126,383,821	165,273,990	159,894,818	201,246,821	146,318,520	141,717,746	130,763,329	130,075,248	129,267,001	116,800,546	1,708,987,587
Professional sports clubs	13,095,286	11,809,711	12,644,536	12,011,429	14,157,280	15,881,779	17,897,121	12,696,261	13,886,308	12,137,782	14,673,372	15,097,079	10,596,463	163,489,121
Gambling	323,495,037	410,154,188	408,658,643	441,541,326	531,812,177	484,973,822	399,119,432	339,115,182	292,779,342	437,842,974	394,551,868	383,688,437	378,079,416	4,902,316,807
Personal services	17,181,752	19,956,277	18,415,247	18,467,595	22,115,860	20,197,872	20,366,499	21,428,268	21,528,264	18,660,303	20,271,468	19,486,800	19,600,567	240,495,020
Miscellaneous entertainment	36,839,678	26,407,911	27,680,604	32,180,332	39,280,858	43,518,759	41,957,775	33,162,918	39,768,427	45,710,795	35,825,249	36,234,085	29,131,923	430,859,636
Entertainment	2,392,689,697	2,728,585,045	2,317,392,126	2,460,515,468	2,911,704,973	2,848,607,105	2,893,246,336	2,693,159,868	2,726,117,248	2,929,199,013	2,783,421,311	2,920,004,485	2,865,802,532	33,077,755,510
Hotels	413,724,093	405,241,691	468,393,502	442,708,882	506,362,559	530,750,180	558,349,879	575,897,185	612,050,018	621,771,916	621,128,527	597,645,181	485,398,438	6,425,697,958
Airlines	343,106,746	312,112,640	564,976,244	462,564,085	541,135,869	510,143,908	522,686,373	531,715,854	537,064,654	473,874,703	492,336,011	450,053,667	360,906,111	5,759,570,119
Airport terminals	2,683,374	2,993,304	2,960,642	2,704,203	3,618,362	3,979,027	4,147,853	5,083,269	5,553,924	5,012,857	5,404,290	4,348,762	3,125,687	48,932,180
Railways	412,254,798	424,300,254	407,107,875	386,386,851	438,665,715	396,947,897	391,220,189	426,147,598	414,545,540	359,067,311	458,173,449	463,875,990	430,109,985	4,996,548,654
Buses	36,152,132	35,409,072	56,766,725	53,286,614	62,484,009	62,471,958	62,651,770	65,048,114	69,124,924	67,447,258	76,173,081	69,750,872	57,855,551	738,469,948
Sea travel	34,792,493	34,110,530	44,977,559	49,183,904	57,487,225	59,611,726	59,790,435	62,306,612	58,391,065	59,148,370	57,032,057	43,452,436	645,290,958	
Travel agents	699,337,829	654,087,795	1,158,853,750	1,098,736,149	1,340,546,321	1,285,291,863	1,437,602,683	1,337,348,558	1,246,592,721	1,037,596,059	954,499,311	905,377,013	729,153,524	13,185,685,747
Timeshares	559,757	551,643	851,515	661,010	650,897	597,828	573,060	563,181	556,803	530,570	596,746	588,338	566,287	7,287,878
Camping grounds	63,337,640	43,934,115	62,565,070	71,460,829	104,151,753	103,073,672	116,519,186	124,211,020	133,103,349	123,508,319	98,059,091	95,482,818	86,884,053	1,162,953,275
Miscellaneous travel	46,191,582	47,123,298	54,421,077	58,191,950	72,453,366	74,135,727	81,065,900	96,765,824	99,903,206	88,116,982	90,680,366	94,819,717	89,618,922	947,296,335
Travel	1,638,416,351	1,554,622,651	2,353,480,457	2,183,175,595	2,621,193,517	2,496,253,806	2,676,257,449	2,649,190,030	2,564,836,186	2,214,302,429	2,235,721,384	2,141,329,234	1,801,672,556	27,492,035,094
Telegraph services / Wire transfer money order	51,214,066	56,956,256	69,655,661	87,401,366	98,656,348	97,648,540	107,696,201	107,815,304	110,392,543	110,023,985	99,594,634	106,776,100	115,137,886	1,167,754,824
Insurance services	506,688,463	462,438,680	599,113,232	586,588,341	759,662,939	686,051,094	654,881,529	684,860,933	716,678,643	658,038,490	732,162,840	699,802,824	627,728,542	7,868,008,087
Fis - cash disbursements (auto & manual)	2,165,476	3,620,256	7,807,402	8,693,333	11,832,346	12,045,179	15,260,933	17,685,126	22,989,258	19,305,087	15,775,030	12,189,468	9,017,948	156,221,366
Fis - merchandise & services	2,884,267,085	3,122,861,873	3,074,788,592	2,839,218,712	3,510,917,823	3,388,463,046	3,203,273,478	3,201,483,181	3,306,570,602	3,162,958,040	3,381,521,026	3,464,467,223	3,359,384,619	39,015,908,215
Non-Fis - foreign currency, travellers' cheques	209,408,494	251,074,653	273,705,798	307,546,478	403,276,194	356,236,256	427,472,174	512,677,087	676,327,376	520,762,748	433,514,766	393,072,549	278,952,460	4,834,618,539
Security brokers and dealers	430,175,139	468,760,161	571,545,307	519,933,015	1,056,984,874	1,289,453,033	611,988,254	596,430,322	632,458,783	670,705,068	520,637,410	457,001,248	476,949,945	7,872,847,420
Tax preparation services	124,203	127,347	259,361	207,896	246,991	180,222	222,761	178,480	194,720	133,437	190,233	204,681	163,084	2,309,213
Tax payments	103,361,163	109,300,215	1,046,464,817	839,435,134	309,443,927	260,635,782	253,302,688	267,403,716	513,182,417	374,417,590	402,270,367	487,365,495	514,723,778	5,377,945,926
Fines, bail and bond payments	39,174,780	33,993,370	38,245,796	37,102,140	40,415,407	38,084,814	39,755,391	37,926,934	40,403,653	37,629,054	38,233,247	40,780,453	37,088,186	459,658,445
Miscellaneous financial	22,687,580	19,603,229	20,150,927	20,676,743	25,174,558	25,841,940	26,009,268	24,382,635	25,104,106	25,752,296	28,477,640	27,455,922	25,333,006	293,962,270
Financial	4,249,266,449	4,528,736,040	5,701,736,893	5,246,803,158	6,216,611,407	6,154,639,906	5,339,862,677	5,450,843,718	6,044,302,101	5,579,725,795	5,652,377,193	5,689,115,963	5,444,479,454	67,049,234,305

Table 3D Card expenditure statistics (not seasonally adjusted)

Value of debit card transactions

Detailed sector breakdown - services sectors (continued, not seasonally adjusted)

£	November 2014	December 2014	January 2015	February 2015	March 2015	April 2015	May 2015	June 2015	July 2015	August 2015	September 2015	October 2015	November 2015	Total (latest 12 months)
Telecoms	360,082,214	375,493,377	371,069,101	322,437,897	369,775,651	339,079,060	355,579,852	337,849,422	352,968,220	352,076,795	366,712,073	388,714,105	361,238,519	4,292,994,072
Utilities	212,369,276	216,974,563	258,762,012	260,189,232	329,044,668	293,119,381	272,993,260	264,789,042	256,132,632	222,325,292	248,850,628	251,005,608	227,891,741	3,102,078,059
Contractors (residential & commercial)	180,614,814	162,293,188	156,827,656	162,504,839	186,259,010	177,617,982	173,690,832	193,759,445	196,562,448	177,253,122	216,455,656	217,999,627	211,685,736	2,232,909,541
Gardening services	6,312,204	7,381,002	4,936,708	5,818,499	8,533,939	10,350,714	10,139,673	10,106,773	8,441,852	6,954,786	7,201,912	6,652,579	5,932,047	92,450,484
Veterinary services	107,305,108	106,313,469	107,528,673	101,452,828	115,255,844	112,789,765	112,619,178	120,286,310	128,829,815	120,285,954	126,751,192	127,417,778	119,442,841	1,398,973,647
Photocopying & printing	29,016,914	27,521,464	29,664,582	28,923,171	32,187,940	30,344,140	29,927,845	31,748,306	30,731,267	27,582,593	33,444,172	33,488,824	35,054,501	370,618,805
Photographic studios	16,520,271	19,434,252	11,115,400	12,018,609	14,511,667	13,822,284	15,699,462	17,626,121	14,509,929	14,509,929	16,216,480	21,958,706	23,620,167	200,329,673
Beauty & barber shops	206,531,968	272,839,930	185,617,761	196,546,085	229,581,715	219,892,169	229,859,569	234,244,210	245,102,859	218,999,175	233,985,573	238,700,701	235,641,406	2,741,011,153
Employment agencies	1,529,737	1,279,288	1,683,469	1,544,912	1,754,491	1,644,607	1,571,930	1,671,680	1,699,110	1,418,238	1,463,026	1,428,999	1,356,740	18,516,490
Counselling services	6,427,843	6,555,645	6,858,643	6,181,017	6,699,237	6,143,816	6,450,585	6,800,723	6,881,874	6,319,740	6,696,256	6,701,778	6,707,285	78,996,599
Legal services	82,276,630	73,697,655	76,116,977	76,973,651	93,482,241	82,693,466	82,074,390	95,341,993	95,010,888	85,309,945	93,382,860	95,514,417	90,133,685	1,039,732,168
Laundry & cleaning	13,611,668	12,945,313	12,360,399	11,624,806	13,265,791	13,212,138	13,700,883	15,166,822	15,241,061	13,532,938	15,477,467	15,691,321	14,865,961	167,084,900
Funeral services	42,755,693	40,518,419	50,568,037	51,436,670	58,261,530	49,427,209	45,447,373	48,679,676	48,449,736	43,471,055	48,210,447	52,822,267	51,201,449	588,493,868
Medical services	262,914,250	235,651,682	262,409,139	266,104,767	305,622,470	279,710,453	275,029,602	303,244,936	305,972,885	263,776,969	309,248,578	314,211,978	304,972,250	3,425,955,709
Moving & courier services	37,315,479	37,181,930	34,488,340	33,232,750	37,941,458	36,560,835	37,287,565	42,713,374	45,119,382	40,495,030	43,875,786	42,511,237	41,233,869	472,641,556
Repair shops (not auto)	14,003,752	16,438,515	23,338,756	22,370,483	27,580,853	24,429,983	25,070,328	24,274,445	27,732,809	25,985,955	27,748,253	27,848,424	27,523,622	300,342,426
Accounting services	16,564,730	15,129,283	18,179,082	15,197,504	16,276,184	13,844,431	13,551,148	15,229,121	15,363,240	14,094,359	16,102,772	15,700,231	15,396,706	184,064,061
Advertising, consultancy & PR	10,144,793	9,206,509	10,512,238	12,014,949	11,459,352	10,159,921	11,559,921	12,557,125	12,351,328	11,288,011	13,327,752	12,724,086	11,807,665	138,785,898
Computer programming	33,476,652	32,950,400	37,284,610	34,688,696	38,674,661	35,029,030	35,732,501	37,107,796	36,706,691	34,445,173	39,129,832	40,065,589	37,739,394	439,554,373
Farming services	22,981,478	25,228,523	22,869,432	21,472,663	24,153,642	25,031,472	24,540,976	26,814,445	26,881,019	25,746,365	27,417,211	29,391,127	26,694,249	306,241,124
Miscellaneous professional services	560,057,349	540,308,189	679,347,601	621,467,100	742,282,335	763,311,767	641,229,567	615,227,139	624,812,045	587,506,676	680,752,785	607,740,148	558,779,944	7,662,765,296
Engineering services	19,564,696	16,454,443	17,216,126	18,318,895	21,312,670	20,037,824	19,457,001	22,493,945	22,105,425	19,163,854	20,848,007	21,242,131	19,841,584	238,491,905
Marina services	7,745,180	8,062,195	8,863,504	9,162,519	15,384,776	16,106,954	15,370,403	16,948,324	16,583,052	14,821,153	13,263,533	11,193,479	8,232,568	153,992,460
Wrecking & salvage yards	1,447,320	1,209,782	1,493,479	1,493,117	1,882,800	1,918,903	1,841,473	1,994,864	2,069,273	1,715,937	1,857,689	1,976,810	1,800,915	21,245,042
Pest control	922,689	819,255	798,099	751,949	894,304	892,994	853,531	1,032,640	1,120,113	949,954	1,023,504	1,043,060	902,037	11,081,440
Educational establishments	240,017,096	186,674,300	600,615,992	270,258,209	229,102,894	356,643,370	237,364,841	189,927,450	186,089,149	277,438,371	1,071,243,062	808,239,824	305,453,165	4,719,050,627
Child care services	13,713,178	13,460,189	15,672,777	14,618,602	16,681,569	15,486,670	14,905,148	16,228,450	16,438,477	13,922,617	16,656,220	16,453,305	15,574,682	186,098,706
Social, political & religious organisations	101,182,423	100,165,842	100,789,272	94,401,993	129,581,044	124,717,180	124,427,810	194,091,213	215,389,002	186,064,952	216,275,035	229,073,141	188,239,375	1,903,215,859
Government services	1,676,017,231	1,734,264,844	6,693,516,793	3,168,497,748	2,817,964,701	2,791,280,069	2,783,085,667	2,306,854,028	2,364,077,268	2,042,367,066	2,011,331,661	2,002,403,353	1,776,733,120	32,492,376,318
Miscellaneous services	509,646,504	571,832,069	587,707,183	506,926,582	626,128,994	575,728,396	505,786,917	649,573,793	640,653,103	396,834,909	445,001,049	443,808,591	405,591,289	6,355,572,875
Commercial equipment	151,173,250	133,798,934	141,219,411	139,039,443	162,316,243	158,040,914	158,787,884	168,921,352	169,190,677	153,329,942	180,866,106	176,104,870	163,481,277	1,905,097,053
Other services	4,944,242,390	5,002,084,449	10,529,299,976	6,486,167,474	6,684,410,271	6,600,367,328	6,275,233,115	6,023,294,963	6,134,503,296	5,399,986,855	6,550,816,577	6,259,828,094	5,294,769,789	77,240,762,187
Total services	15,790,698,374	16,160,507,903	23,656,338,284	19,154,339,365	22,185,329,416	21,408,037,347	20,445,427,805	20,231,101,801	20,890,875,421	19,239,927,183	20,926,689,919	20,311,280,492	18,303,680,061	242,913,534,997
TOTAL	32,323,363,756	37,072,881,595	38,112,235,705	33,081,623,487	38,667,556,956	37,306,861,635	36,627,048,779	37,059,068,884	37,630,213,569	34,846,817,747	37,846,851,451	37,248,294,714	36,625,356,517	442,124,811,039