

Card Expenditure Statistics

May 2015

Card Expenditure Statistics – May 2015

	Total Spending £ billions		Annual growth rates for spending		Number of purchases Millions	
	May 2015	May 2014	May 2015	May 2014	May 2015	May 2014
All payment cards	51.1	47.4	7.0%	8.1%	1,093	991
<i>Of which online *</i>	11.2	9.9	-	-	124	103
Debit cards	36.5	33.3	7.9%	8.8%	838	761
Credit cards	14.6	14.1	4.8%	6.4%	255	230

Unless otherwise stated all data referred to are seasonally adjusted and depict the underlying trend. The X12 ARIMA monthly seasonal adjustments include trading days and leap years. Unadjusted data are located in tables 3A to 3D. There is a step change in the data between 2010 and 2011 following a change in the reporting population. Average transaction values are based on three-month rolling averages, while growth rates are based on twelve-month rolling periods.

* As there are insufficient online data series collected to apply X12 ARIMA seasonal adjustment, the underlying trend is determined using linear regression. This allows an estimation of the likely scale of seasonal impacts to be made until there are sufficient data (3 years) to use a recognised method of seasonal adjustment.

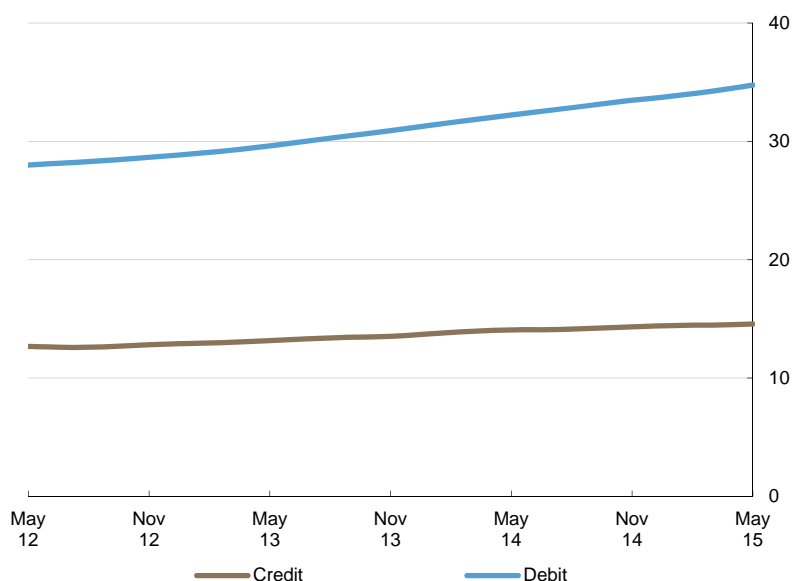
Introduction

The **number of purchases** increased by 1.1% to 1.09 billion in May, which was 12 million above the level recorded in April. The main contributors to this growth have been the migration of cash payments to cards, enhanced by growing **online** and **contactless** spending, in particular, across the TfL network¹. The number of online purchases grew by 1.5% on April to reach 124 million, accounting for 11.4% of total purchases, up from 10.4% a year ago.

Payment card spending also grew, increasing by 0.8% on April and reaching a record monthly total of £51.1 billion. Factors driving this growth include changes in seasonal shopping habits in sectors such as household and entertainment, as well as stronger wage growth and a high employment rate². Spending via the internet rose by £105 million in May to £11.2 billion, representing 21.8% of total card spending, up from 20.9% in May 2014.

Chart 1

Average monthly expenditure
Three-month moving average (£ billions)



¹ 1.2 million contactless payments across TfL every day: <https://www.talkingpayments.com/news/888/1-2-million-contactless-payments-across-tf-l-every-day>

² ONS, UK Labour Market: <http://www.ons.gov.uk/ons/rel/lms/labour-market-statistics/june-2015/statistical-bulletin.html#tab-1--Employment>

Annual growth rates

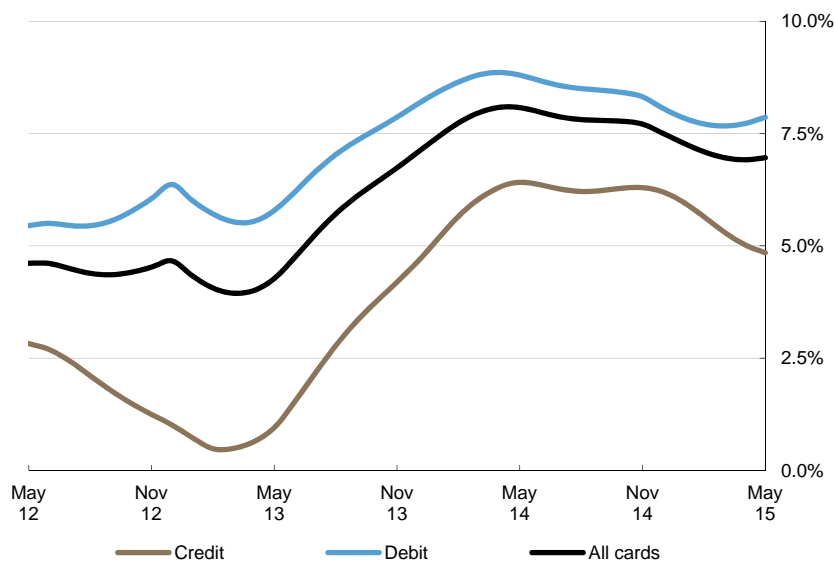
Card spending grew at an **annual rate** of 7.0%, slightly up on April. The annual growth rate picked up for the first time in fourteen months. This growth was mainly driven by increased spending in the services sector using debit cards, where the annual growth rate reached 12.4%; the highest level for over six years.

The pick-up in the growth in card spending coincides with the slight increase in the rate of annual inflation. The latest figures showed an increase in the annual UK **consumer price index** for the first time since October 2014 after growing by 0.1% in the year to May 2015³ and compares to a 0.1% deflation in the year to April. The largest upward contribution came from transport prices which rose 0.6 percent, mainly driven by air transport⁴.

Debit card spending grew by 7.9% while that on **credit cards** increased by 4.8%. This difference in part reflects the near universality in the holding of debit cards with high propensity of use. Furthermore, the annual growth in the **service** sector continued to exceed that in **retail** sales with registered growth of 10.8% and 3.1% respectively.

Meanwhile, the **growth rate of the number of purchases** continued to exceed that of the value of purchases, after increasing by 9.6% in the year to May and compares to 9.3% a year ago.

Chart 2
Spending on payment cards
Year-on-year growth rates



³ ONS, Consumer Price Inflation, May 2015: <http://www.ons.gov.uk/ons/rel/cpi/consumer-price-indices/may-2015/index.html>

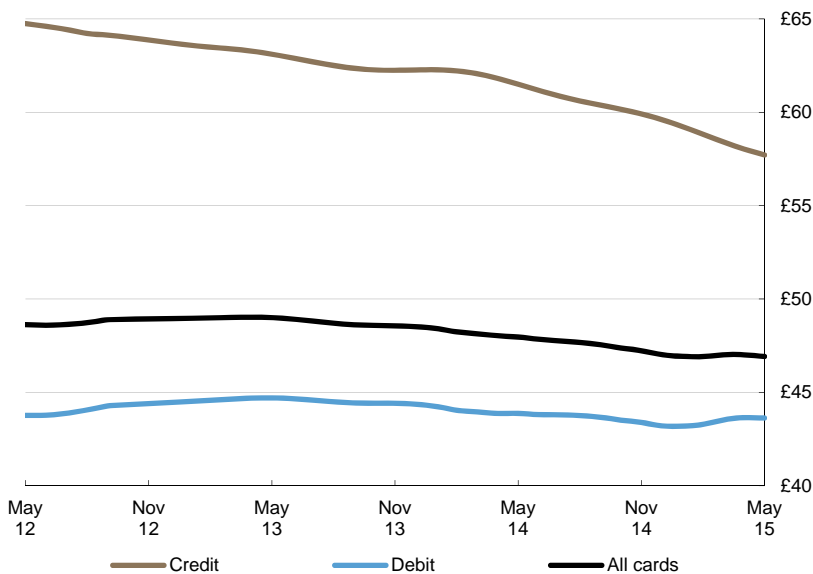
⁴ Morningstar, UK Exits Deflation In May: http://www.morningstar.co.uk/uk/news/AN_1434452131443863300/update-uk-exits-deflation-in-may%3B-factory-gate-prices-fall.aspx

Average transaction values

The **average transaction value** (ATV) on all payment cards decreased between April and May from £47.01 to £46.92, and compares to £47.97 a year ago. The major contributor to this decrease was a notable fall in spending at security brokers and dealers where the average payment value fell by £1,808.05. The ATV for debit cards declined slightly, by 1p to £43.63, while the ATV for credit cards decreased by 32p to £57.71. The ATV of **online** card payments decreased by 46p and amounted to £90.15 in May, which compares to £96.87 a year ago.

Within the sectors, the ATV in **services** dropped by 42p to £76.88, while the ATV for **retail sales** declined by 5p to £32.54. The consistent decline in the ATVs since 2011 is likely a reflection of increased spending using **contactless** cards alongside the ongoing migration from low value cash payments towards cards. Low inflation and intense price competition in the retail market are other factors putting downward pressure on the ATV.

Chart 3
Average transaction values
Three-month moving average



Spending by sector – retail sales and services

The number of transactions within the **retail sector** increased by 6.5 million to 737 million, with the corresponding spend rising by £191 million to £24.0 billion. The majority of the increase in spending was in the **food & drink** and **clothing** sub-sectors, where spending amounted to £9.2 billion and £2.3 billion respectively. Warmer weather and two bank holiday weekends were likely the main drivers of a recent uptick in the clothing sub-sector, prompting consumers to change wardrobes and take advantage of summer sales. The spending in the **household** sub-sector continued to grow strongly reaching £3.8 billion, mainly driven by large increases in expenditure at furniture stores and garden centres, in part stemming from the strengthening housing market.

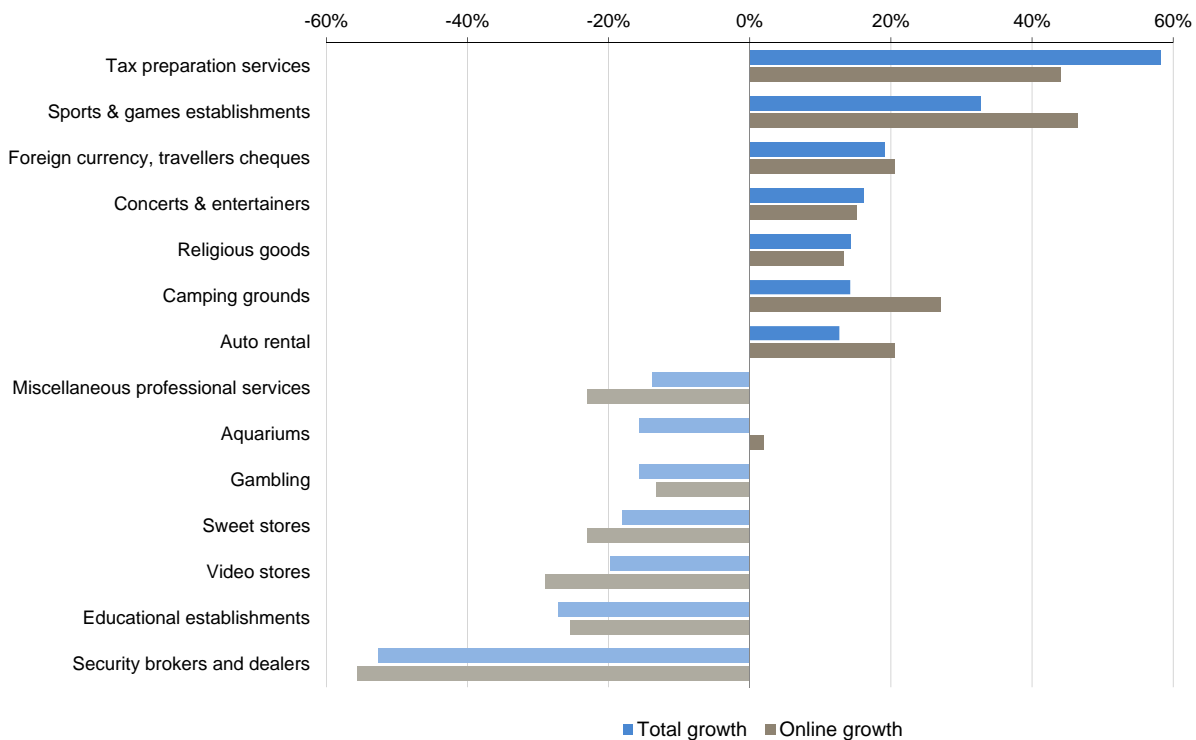
Meanwhile, the number of transactions in the **services sector** grew by 5.6 million to 356 million, corresponding to a rise in spending of £224 million to £27.2 billion. A major contributor of growth was the **entertainment** sub-sector, which recorded an increase of £61 million to £4.3 billion, boosted by a notable rise at restaurants. The **travel** category was also a strong contributor to growth after increasing by £24 million to £3.9 billion.

Spending by merchant categories (not seasonally adjusted)

Along with growth in spending at supermarkets, household stores and restaurants there were significant increases in card spending at a number of other merchants during May. The largest increase in spending was evident at merchants offering leisure activities, such as sports & games establishments, concerts & entertainers and camping grounds. Travel related services like foreign currency, travellers cheques and auto rental also registered a substantial rise in spending. Growth in spending on leisure and travel coincided with the bank holidays. Meanwhile, spending at video stores, educational establishments and security broker and dealers recorded the largest decreases between April and May.

Chart 4⁵

Largest changes in total card spending between April and May



⁵ Chart 4 shows relative growth rates. Some listed merchant categories are too small in size to make a material impact on the overall total

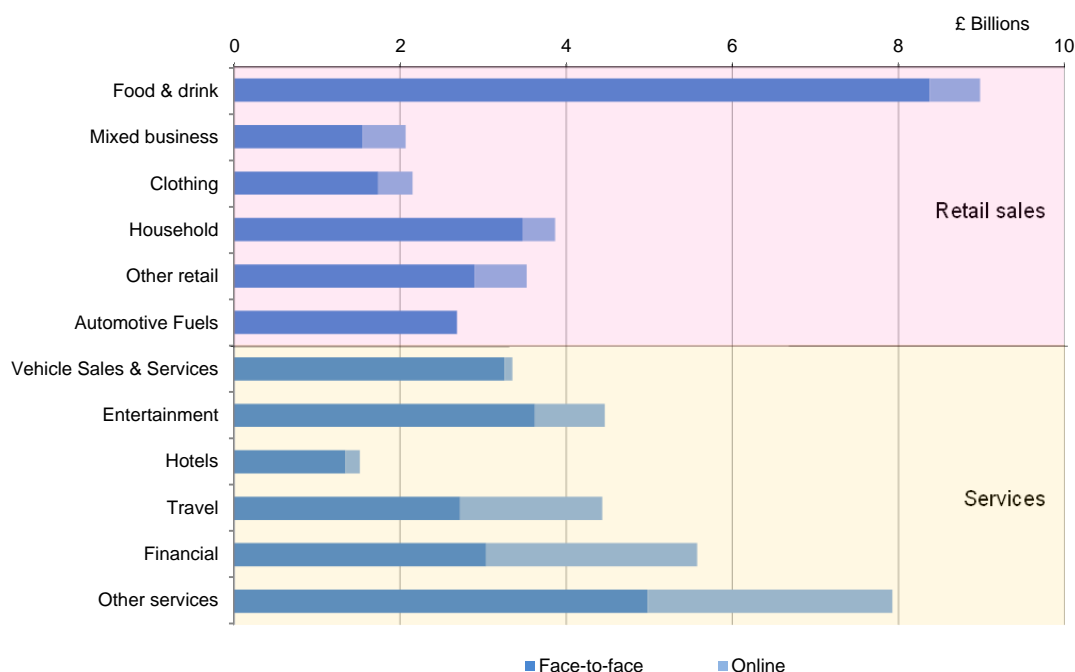
Payment card spending online (not seasonally adjusted)

Consumer behaviour differs noticeably when spending via the online channel or in the face-to-face environment. E-commerce continued to dominate within the services sector where 30% of card spending was made via the internet, while just 11% of retail spending was online. Comparing online to the face-to-face channel reveals a similar pattern, with higher e-commerce proportions within services compared to retail sales. 76% of total internet spending occurred in the services sector compared to 48% in the face-to-face environment.

In volume terms, entertainment accounted for 28% of the total number of online transactions, with other services accounting for 16%, both unchanged on March and April. In value terms, the share of other services and financial services both decreased to 27% and 23% respectively, while travel increased to 16%. The highest online prevalence within the sectors was evident in financial services, with 39% of payments and 46% of spending in this sub-sector completed via the internet. The lowest share was recorded in food & drink, where just 2.3% of purchases and 6.7% of spending were made online, while virtually all spending on automotive fuels and vehicle sales & services occurred in the face-to-face environment.

Chart 5

Face-to-face and online spending by merchant sectors, May



Payment card spending within national retail sales

There was an increase in the percentage share of retail sales accounted for by payment cards⁶ in May. This measure increased to 75.8%, up 0.3 percentage points on April, with debit and credit card splits of 52.0% and 23.8% respectively. This trend was reflected in other sub-sectors such as **food & drink** and **automotive fuels**. The proportion of spending in the food & drink sector accounted for by payment cards rose slightly to 71.4% when compared to 71.3% in May 2014. Meanwhile, nearly all expenditure on automotive fuels was accounted for by payment cards at 91.1%, up from 90.4% a year ago.

Contact: Silvija Krupena; silvija.krupena@ukpayments.org.uk | camis@ukpayments.org.uk | 020 3217 8460 or 020 3217 8720

⁶ CES 3-month moving average spend of £23.8 billion expressed as a percentage of a similar 3-month moving average for ONS Retail Sales – All Retailing Including Automotive Fuel (J5A3) that amounted to £31.3 billion.

Table 1 Card expenditure statistics (seasonally adjusted)

Summary^{1 and 2}

		Number of purchase transactions (millions)									Value of purchase transactions (£ millions)									
		All sectors			Retail sales			Services			All sectors			Retail sales			Services			
		Credit	Debit	Total	Credit	Debit	Total	Credit	Debit	Total	Credit	Debit	Total	Credit	Debit	Total	Credit	Debit	Total	
Annual																				
	2010	2,010	6,507	8,517	1,383	4,724	6,106	628	1,783	2,411	128,227	289,880	418,107	69,587	148,572	218,159	58,640	141,308	199,948	
	2011	2,259	7,230	9,488	1,555	5,300	6,855	704	1,930	2,633	151,306	324,740	476,047	78,885	165,570	244,455	72,421	159,171	231,592	
	2012	2,373	7,836	10,209	1,622	5,642	7,264	751	2,194	2,945	152,846	345,420	498,266	81,035	175,345	256,380	71,811	170,075	241,886	
	2013	2,550	8,391	10,941	1,735	5,961	7,696	815	2,430	3,245	159,955	373,592	533,547	84,635	183,714	268,349	75,320	189,878	265,198	
	2014	2,795	9,249	12,043	1,873	6,446	8,319	922	2,802	3,725	169,874	403,712	573,587	87,468	193,583	281,051	82,406	210,130	292,536	
Monthly																				
	2014																			
	May	230	761	991	154	533	687	76	227	303	14,071	33,306	47,377	7,262	16,126	23,388	6,809	17,180	23,989	
	Jun	231	765	996	155	536	691	76	229	305	14,079	33,496	47,575	7,269	16,145	23,414	6,810	17,351	24,161	
	Jul	233	770	1,003	156	538	695	77	232	308	14,115	33,723	47,838	7,283	16,178	23,462	6,832	17,545	24,377	
	Aug	235	777	1,012	158	542	699	77	236	313	14,188	33,952	48,140	7,307	16,230	23,537	6,881	17,723	24,603	
	Sep	237	785	1,022	159	545	704	78	240	318	14,275	34,144	48,419	7,333	16,278	23,610	6,942	17,866	24,809	
	Oct	239	792	1,032	160	548	708	79	244	324	14,352	34,334	48,687	7,354	16,323	23,676	6,999	18,012	25,010	
	Nov	242	798	1,039	161	550	711	80	248	328	14,406	34,564	48,969	7,366	16,376	23,742	7,039	18,188	25,227	
	Dec	244	801	1,045	163	551	713	81	251	332	14,436	34,407	48,843	7,374	15,939	23,314	7,062	18,468	25,530	
	2015																			
	Jan	246	805	1,050	164	551	715	81	253	335	14,452	34,847	49,299	7,382	16,002	23,384	7,070	18,845	25,915	
	Feb	248	810	1,058	166	553	719	82	257	339	14,473	35,306	49,780	7,399	16,067	23,466	7,074	19,239	26,314	
	Mar	250	818	1,068	168	556	724	83	262	345	14,513	35,751	50,264	7,429	16,163	23,592	7,084	19,588	26,672	
	Apr	253	828	1,081	169	561	730	83	267	351	14,569	36,147	50,716	7,465	16,295	23,760	7,104	19,852	26,956	
	May	255	838	1,093	170	566	737	84	272	356	14,639	36,492	51,131	7,503	16,448	23,951	7,136	20,044	27,180	
Year-on-year growth rates (percentages)																				
Annual																				
	2010	0.3	9.5	7.2	12.8	21.2	19.2	-19.3	-13.0	-14.7	2.4	10.5	7.9	13.0	18.5	16.7	-7.8	3.2	-0.3	
	2011	12.3	11.1	11.4	12.5	12.2	12.3	12.0	8.2	9.2	18.0	12.0	13.9	13.4	11.4	12.1	23.5	12.6	15.8	
	2012	5.1	8.4	7.6	4.3	6.5	6.0	6.8	13.7	11.9	1.0	6.4	4.7	2.7	5.9	4.9	-0.8	6.9	4.4	
	2013	7.5	7.1	7.2	7.0	5.7	6.0	8.5	10.8	10.2	4.7	8.2	7.1	4.4	4.8	4.7	4.9	11.6	9.6	
	2014	9.6	10.2	10.1	7.9	8.1	8.1	13.1	15.3	14.8	6.2	8.1	7.5	3.3	5.4	4.7	9.4	10.7	10.3	
Monthly																				
	2014																			
	May	9.1	9.4	9.3	7.9	7.8	7.8	11.7	13.3	12.9	6.4	8.8	8.1	4.5	5.9	5.5	8.6	11.7	10.8	
	Jun	9.1	9.6	9.5	7.7	8.0	7.9	12.1	13.6	13.2	6.4	8.7	8.0	4.3	5.9	5.4	8.8	11.4	10.7	
	Jul	9.0	9.7	9.5	7.5	8.0	7.9	12.3	13.9	13.5	6.3	8.6	7.9	4.0	5.9	5.3	8.9	11.2	10.5	
	Aug	9.0	9.8	9.6	7.3	8.0	7.9	12.6	14.2	13.8	6.2	8.5	7.8	3.7	5.9	5.2	9.0	11.0	10.5	
	Sep	9.1	10.0	9.8	7.3	8.1	7.9	12.8	14.5	14.1	6.2	8.5	7.8	3.5	5.9	5.2	9.3	11.0	10.5	
	Oct	9.2	10.1	9.9	7.4	8.2	8.0	13.0	14.9	14.4	6.3	8.4	7.8	3.5	5.9	5.1	9.5	10.9	10.5	
	Nov	9.4	10.3	10.1	7.7	8.2	8.1	13.2	15.2	14.7	6.3	8.3	7.7	3.4	5.8	5.0	9.6	10.8	10.4	
	Dec	9.6	10.2	10.1	7.9	8.1	8.1	13.1	15.3	14.8	6.2	8.1	7.5	3.3	5.4	4.7	9.4	10.7	10.3	
	2015																			
	Jan	9.7	10.1	10.0	8.2	7.9	8.0	12.9	15.4	14.8	6.0	7.8	7.3	3.2	4.9	4.4	9.0	10.7	10.2	
	Feb	9.7	9.8	9.8	8.4	7.5	7.7	12.6	15.3	14.6	5.7	7.7	7.1	3.1	4.4	4.0	8.5	10.9	10.2	
	Mar	9.8	9.6	9.7	8.6	7.3	7.6	12.3	15.3	14.5	5.3	7.7	7.0	3.0	3.9	3.6	7.9	11.3	10.3	
	Apr	9.8	9.6	9.6	8.8	7.1	7.5	12.0	15.5	14.6	5.0	7.7	6.9	2.9	3.5	3.3	7.4	11.8	10.5	
	May	9.9	9.6	9.6	9.1	6.9	7.4	11.8	15.9	14.9	4.8	7.9	7.0	2.9	3.1	3.1	7.0	12.4	10.8	

¹ There was a step change in 2011 due to a change in reporting population

² Data are seasonally adjusted and depict the underlying trend. The X12 ARIMA monthly seasonal adjustments include trading days and leap years.

Table 2A Card expenditure statistics (seasonally adjusted)

Retail sales^{1 and 2}

Number of purchase transactions (millions)

Total retail sales

	Number of purchase transactions (millions)																		Total retail sales			
	Food & drink			Mixed business			Clothing			Household			Other retailers			Automotive Fuels ³			Number of purchases			
	Credit	Debit	Total	Credit	Debit	Total	Credit	Debit	Total	Credit	Debit	Total	Credit	Debit	Total	Credit	Debit	Total	Credit	Debit	Total	
Annual																						
2010	533	2,285	2,818	139	406	545	129	424	553	148	350	498	273	733	1,006	162	525	687	1,383	4,724	6,106	
2011	602	2,564	3,166	136	425	561	139	428	567	157	370	527	297	782	1,078	224	733	956	1,555	5,300	6,855	
2012	662	2,824	3,487	148	479	627	145	453	598	157	375	532	281	757	1,038	228	754	982	1,622	5,642	7,264	
2013	722	3,061	3,782	182	523	705	153	461	613	165	402	567	277	723	1,000	236	793	1,029	1,735	5,961	7,696	
2014	769	3,467	4,236	248	477	726	162	479	641	172	433	605	284	780	1,064	237	810	1,047	1,873	6,446	8,319	
Monthly																						
2014	May	63	287	351	20	38	58	14	40	54	14	35	50	23	65	88	20	68	87	154	533	687
	Jun	64	289	353	20	38	58	14	40	54	14	36	50	23	65	89	20	68	87	155	536	691
	Jul	64	291	355	21	38	59	14	40	54	14	36	50	24	66	89	20	68	87	156	538	695
	Aug	64	293	358	22	38	60	14	40	54	14	36	51	24	66	90	20	68	87	158	542	699
	Sep	65	296	361	22	39	61	14	40	54	14	37	51	24	66	90	20	67	87	159	545	704
	Oct	65	298	363	23	39	61	14	40	54	15	37	52	25	66	91	20	67	87	160	548	708
	Nov	66	299	365	23	39	62	14	40	54	15	37	52	25	67	92	19	67	87	161	550	711
	Dec	67	299	365	24	39	63	14	41	54	15	37	52	25	67	92	19	67	86	163	551	713
2015	Jan	67	298	365	24	40	64	14	41	55	15	38	52	25	68	93	19	67	86	164	551	715
	Feb	68	298	366	25	40	65	14	41	55	15	38	52	25	68	93	19	67	87	166	553	719
	Mar	68	300	368	26	40	66	14	42	56	15	38	53	25	69	94	19	68	87	168	556	724
	Apr	69	303	372	27	41	67	14	42	56	15	38	53	25	69	94	19	68	88	169	561	730
	May	69	306	376	27	41	68	14	42	56	15	39	53	25	70	95	19	69	88	170	566	737
Year-on-year growth rates (percentages)																						
Annual																						
2010	3.6	9.5	8.3	5.8	0.7	1.9	2.7	4.8	4.3	1.6	9.7	7.1	-11.9	7.5	1.5	2.3	10.6	8.5	12.8	21.2	19.2	
2011	13.1	12.2	12.4	-1.5	4.6	3.0	8.1	0.8	2.5	5.9	5.7	5.8	8.7	6.6	7.2	38.3	39.5	39.2	12.5	12.2	12.3	
2012	10.0	10.2	10.1	8.5	12.7	11.6	4.6	5.9	5.6	0.2	1.4	1.1	-5.3	-3.1	-3.7	1.8	2.9	2.7	4.3	6.5	6.0	
2013	9.0	8.4	8.5	23.2	9.2	12.5	5.0	1.7	2.5	5.1	7.1	6.5	-1.5	-4.6	-3.7	3.6	5.1	4.8	7.0	5.7	6.0	
2014	6.5	13.3	12.0	36.2	-8.8	2.9	6.3	3.9	4.5	4.0	7.8	6.7	2.7	8.0	6.5	0.5	2.2	1.8	7.9	8.1	8.1	
Monthly																						
2014	May	7.6	10.4	9.8	33.0	6.8	13.2	6.5	2.9	3.7	6.0	9.6	8.6	-0.3	3.0	2.1	3.4	5.4	4.9	7.9	7.8	7.8
	Jun	7.2	10.8	10.1	33.6	4.9	11.9	6.5	3.0	3.8	5.5	9.2	8.1	-0.3	4.8	3.4	3.0	4.8	4.4	7.7	8.0	7.9
	Jul	6.8	11.2	10.4	33.8	2.8	10.5	6.4	3.0	3.9	5.0	8.8	7.7	-0.3	5.3	3.7	2.5	4.3	3.9	7.5	8.0	7.9
	Aug	6.6	11.7	10.7	34.0	0.5	8.8	6.2	3.1	3.9	4.6	8.5	7.4	-0.2	5.8	4.1	2.1	3.8	3.4	7.3	8.0	7.9
	Sep	6.4	12.2	11.1	34.3	-1.9	7.2	6.1	3.2	3.9	4.4	8.3	7.2	0.1	6.4	4.6	1.6	3.3	2.9	7.3	8.1	7.9
	Oct	6.3	12.8	11.5	34.9	-4.2	5.7	6.1	3.4	4.0	4.4	8.2	7.1	0.7	6.9	5.2	1.3	3.0	2.6	7.4	8.2	8.0
	Nov	6.4	13.1	11.8	35.6	-6.5	4.3	6.2	3.6	4.3	4.2	8.1	6.9	1.6	7.5	5.8	0.9	2.6	2.2	7.7	8.2	8.1
	Dec	6.5	13.3	12.0	36.2	-8.8	2.9	6.3	3.9	4.5	4.0	7.8	6.7	2.7	8.0	6.5	0.5	2.2	1.8	7.9	8.1	8.1
2015	Jan	6.6	13.2	11.9	36.6	-10.9	1.5	6.3	4.3	4.8	3.8	7.5	6.4	3.8	8.4	7.1	0.0	1.8	1.4	8.2	7.9	8.0
	Feb	6.8	12.8	11.7	36.7	-12.9	0.2	6.1	4.5	4.9	3.5	7.3	6.2	4.8	8.6	7.6	-0.4	1.3	0.9	8.4	7.5	7.7
	Mar	6.9	12.3	11.3	36.7	-12.1	1.1	5.8	4.7	5.0	3.3	7.1	6.0	5.8	8.7	7.9	-0.9	1.0	0.6	8.6	7.3	7.6
	Apr	7.1	11.6	10.8	36.7	-11.0	2.3	5.3	4.8	4.9	3.3	7.2	6.1	6.7	8.7	8.2	-1.2	0.8	0.3	8.8	7.1	7.5
	May	7.4	11.0	10.3	36.9	-9.6	3.6	4.9	4.8	4.8	3.4	7.4	6.3	7.5	8.6	8.3	-1.5	0.7	0.2	9.1	6.9	7.4

¹ There was a step change in 2011 due to a change in reporting population

² Data are seasonally adjusted and depict the underlying trend. The X12 ARIMA monthly seasonal adjustments include trading days and leap years.

³ Automotive Fuels data is effective from January 2010. Data shown pre 2010 are for growth trend purposes only; these data are excluded from totals as these are already included in their former Services sector of Motoring (now known as Vehicle Sales & Service)

Table 2B Card expenditure statistics (seasonally adjusted)

Retail sales^{1 and 2}

Value of purchase transactions (£ millions)

Total retail sales

	Food & drink									Mixed business			Clothing			Household			Other retailers			Automotive Fuels ³			Value of purchases		
	Credit	Debit	Total	Credit	Debit	Total	Credit	Debit	Total	Credit	Debit	Total	Credit	Debit	Total	Credit	Debit	Total	Credit	Debit	Total	Credit	Debit	Total			
Annual																											
2010	18,767	63,686	82,453	7,169	13,945	21,114	6,808	13,649	20,457	14,683	18,866	33,549	15,522	23,580	39,102	6,638	14,846	21,485	69,587	148,572	218,159						
2011	21,064	69,435	90,499	7,089	14,762	21,852	7,851	14,480	22,331	15,184	20,540	35,724	17,512	24,375	41,888	10,185	21,977	32,162	78,885	165,570	244,455						
2012	22,571	74,148	96,719	7,731	16,412	24,143	8,209	15,632	23,841	15,378	21,647	37,024	16,743	24,452	41,195	10,404	23,055	33,458	81,035	175,345	256,380						
2013	24,095	78,054	102,149	8,722	17,928	26,650	8,672	16,083	24,755	15,940	23,286	39,226	16,534	24,447	40,980	10,673	23,916	34,589	84,635	183,714	268,349						
2014	24,496	84,551	109,047	9,582	16,694	26,276	9,135	17,026	26,161	16,864	26,023	42,886	17,159	25,700	42,859	10,232	23,589	33,822	87,468	193,583	281,051						
Monthly																											
2014																											
May	2,041	7,049	9,090	792	1,378	2,170	766	1,427	2,193	1,399	2,142	3,541	1,394	2,141	3,535	871	1,988	2,859	7,262	16,126	23,388						
Jun	2,040	7,079	9,118	792	1,360	2,152	764	1,430	2,194	1,401	2,152	3,553	1,407	2,142	3,549	865	1,982	2,848	7,269	16,145	23,414						
Jul	2,038	7,112	9,150	795	1,351	2,145	762	1,429	2,190	1,405	2,168	3,573	1,425	2,142	3,567	859	1,977	2,836	7,283	16,178	23,462						
Aug	2,037	7,157	9,194	800	1,348	2,148	760	1,426	2,186	1,411	2,187	3,598	1,448	2,142	3,590	851	1,969	2,820	7,307	16,230	23,537						
Sep	2,040	7,196	9,236	807	1,350	2,157	759	1,423	2,182	1,416	2,206	3,622	1,471	2,147	3,619	839	1,956	2,794	7,333	16,278	23,610						
Oct	2,046	7,232	9,277	813	1,355	2,168	760	1,422	2,182	1,420	2,220	3,639	1,492	2,161	3,654	823	1,934	2,757	7,354	16,323	23,676						
Nov	2,053	7,279	9,331	817	1,362	2,180	761	1,423	2,185	1,422	2,230	3,652	1,507	2,178	3,685	805	1,905	2,710	7,366	16,376	23,742						
Dec	2,059	6,832	8,891	821	1,372	2,193	764	1,430	2,194	1,425	2,241	3,666	1,517	2,189	3,707	788	1,875	2,664	7,374	15,939	23,314						
2015																											
Jan	2,065	6,875	8,940	824	1,384	2,209	767	1,440	2,207	1,429	2,256	3,685	1,522	2,193	3,715	774	1,853	2,627	7,382	16,002	23,384						
Feb	2,072	6,900	8,972	830	1,399	2,229	771	1,453	2,224	1,436	2,278	3,714	1,525	2,194	3,718	766	1,843	2,609	7,399	16,067	23,466						
Mar	2,080	6,930	9,010	838	1,414	2,252	776	1,467	2,243	1,445	2,303	3,748	1,527	2,201	3,728	763	1,847	2,611	7,429	16,163	23,592						
Apr	2,090	6,979	9,070	848	1,428	2,276	780	1,479	2,258	1,454	2,330	3,784	1,529	2,218	3,746	765	1,861	2,626	7,465	16,295	23,760						
May	2,102	7,051	9,152	858	1,440	2,299	783	1,487	2,270	1,462	2,354	3,816	1,530	2,237	3,767	767	1,879	2,646	7,503	16,448	23,951						
Year-on-year growth rates (percentages)																											
Annual																											
2010	3.7	5.7	5.3	1.5	0.3	0.7	7.1	7.7	7.5	1.9	13.8	8.2	-0.8	7.1	3.8	13.3	17.2	16.0	13.0	18.5	16.7						
2011	12.2	9.0	9.8	-1.1	5.9	3.5	15.3	6.1	9.2	3.4	8.9	6.5	12.8	3.4	7.1	53.4	48.0	49.7	13.4	11.4	12.1						
2012	7.2	6.8	6.9	9.1	11.2	10.5	4.6	8.0	6.8	1.3	5.4	3.6	-4.4	0.3	-1.7	2.1	4.9	4.0	2.7	5.9	4.9						
2013	6.8	5.3	5.6	12.8	9.2	10.4	5.6	2.9	3.8	3.7	7.6	5.9	-1.3	0.0	-0.5	2.6	3.7	3.4	4.4	4.8	4.7						
2014	1.7	8.3	6.8	9.9	-6.9	-1.4	5.3	5.9	5.7	5.8	11.8	9.3	3.8	5.1	4.6	-4.1	-1.4	-2.2	3.3	5.4	4.7						
Monthly																											
2014																											
May	4.6	6.2	5.8	13.5	6.3	8.6	7.7	5.3	6.1	6.2	12.0	9.6	-0.9	3.3	1.6	1.1	2.2	1.8	4.5	5.9	5.5						
Jun	4.0	6.5	5.9	13.0	4.7	7.4	7.5	5.5	6.2	6.3	12.2	9.8	-0.7	3.8	1.9	0.3	1.6	1.2	4.3	5.9	5.4						
Jul	3.4	6.8	6.0	12.4	2.8	5.9	7.1	5.7	6.2	6.3	12.3	9.8	-0.5	4.2	2.3	-0.4	1.1	0.7	4.0	5.9	5.3						
Aug	2.9	7.3	6.3	11.7	0.8	4.4	6.6	5.7	6.1	6.2	12.4	9.8	0.0	4.4	2.6	-1.1	0.6	0.1	3.7	5.9	5.2						
Sep	2.4	7.9	6.6	11.2	-1.4	2.7	6.2	5.8	6.0	6.2	12.4	9.9	0.8	4.6	3.0	-1.8	0.2	-0.4	3.5	5.9	5.2						
Oct	2.1	8.3	6.9	10.7	-3.4	1.2	5.9	5.9	5.9	6.2	12.4	9.9	1.7	4.8	3.5	-2.5	-0.3	-1.0	3.5	5.9	5.1						
Nov	1.8	8.7	7.1	10.3	-5.3	-0.2	5.7	5.9	5.8	6.0	12.2	9.7	2.7	5.0	4.0	-3.2	-0.8	-1.5	3.4	5.8	5.0						
Dec	1.7	8.3	6.8	9.9	-6.9	-1.4	5.3	5.9	5.7	5.8	11.8	9.3	3.8	5.1	4.6	-4.1	-1.4	-2.2	3.3	5.4	4.7						
2015																											
Jan	1.6	7.9	6.4	9.3	-8.0	-2.4	4.9	5.7	5.4	5.5	11.1	8.8	4.8	5.2	5.1	-5.1	-2.0	-3.0	3.2	4.9	4.4						
Feb	1.5	7.3	5.9	8.6	-8.7	-3.0	4.3	5.5	5.1	5.1	10.5	8.3	5.9	5.1	5.4	-6.2	-2.8	-3.8	3.1	4.4	4.0						
Mar	1.4	6.6	5.3	8.0	-8.8	-3.2	3.7	5.2	4.7	4.8	10.0	7.9	6.9	5.0	5.7	-7.2	-3.4	-4.6	3.0	3.9	3.6						
Apr	1.4	5.8	4.8	7.6	-8.4	-3.1	3.1	4.9	4.3	4.5	9.6	7.6	7.8	4.8	6.0	-8.2	-4.0	-5.3	2.9	3.5	3.3						
May	1.5	5.0	4.2	7.4	-7.6	-2.5	2.7	4.6	3.9	4.4	9.5	7.5	8.7	4.7	6.3	-8.9	-4.4	-5.8	2.9	3.1	3.1						

¹ There was a step change in 2011 due to a change in reporting population

² Data are seasonally adjusted and depict the underlying trend. The X12 ARIMA monthly seasonal adjustments include trading days and leap years.

³ Automotive Fuels data is effective from January 2010. Data shown pre 2010 are for growth trend purposes only; these data are excluded from totals as these are already included in their former Services sector of Motoring (now known as Vehicle Sales & Service)

Table 2C Card expenditure statistics (seasonally adjusted)

Services^{1 and 2}

		Number of purchase transactions (millions)																		Total services		
		Vehicle Sales & Services ³			Entertainment			Hotels			Travel			Financial			Other services			Number of purchases		
		Credit	Debit	Total	Credit	Debit	Total	Credit	Debit	Total	Credit	Debit	Total	Credit	Debit	Total	Credit	Debit	Total	Credit	Debit	Total
Annual																						
	2010	76	204	280	222	726	948	37	35	72	98	202	300	32	130	161	164	487	650	628	1,783	2,411
	2011	51	89	139	267	881	1,149	51	43	94	116	237	353	33	146	178	185	534	720	704	1,930	2,633
	2012	50	94	144	309	1,062	1,371	53	48	100	124	266	389	30	161	190	186	564	750	751	2,194	2,945
	2013	53	104	157	353	1,220	1,573	55	53	108	130	285	415	29	173	202	196	593	789	815	2,430	3,245
	2014	59	121	179	422	1,498	1,920	59	63	122	150	327	477	25	165	190	207	630	837	922	2,802	3,725
Monthly																						
	2014																					
	May	5	10	15	35	121	155	5	5	10	12	27	39	2	14	16	17	51	68	76	227	303
	Jun	5	10	15	35	122	156	5	5	10	12	27	39	2	14	16	17	52	69	76	229	305
	Jul	5	10	15	35	124	159	5	5	10	12	27	40	2	14	16	17	52	69	77	232	308
	Aug	5	10	15	36	126	162	5	5	10	13	27	40	2	14	16	17	53	70	77	236	313
	Sep	5	10	15	36	129	165	5	5	10	13	28	41	2	14	16	17	53	71	78	240	318
	Oct	5	10	15	37	132	169	5	5	11	13	28	41	2	14	16	18	54	72	79	244	324
	Nov	5	11	15	37	135	172	5	6	11	13	29	42	2	14	16	18	54	72	80	248	328
	Dec	5	11	16	38	136	174	5	6	11	13	30	43	2	14	16	18	55	72	81	251	332
	2015																					
	Jan	5	11	16	38	138	176	5	6	11	13	30	44	2	14	16	18	55	73	81	253	335
	Feb	5	11	16	38	140	179	5	6	11	13	31	44	2	14	16	18	55	73	82	257	339
	Mar	5	11	16	39	144	183	5	6	11	13	32	45	2	14	16	18	55	73	83	262	345
	Apr	5	11	16	40	148	187	5	6	11	14	32	46	2	14	16	18	56	74	83	267	351
	May	5	11	16	40	151	192	5	6	11	14	32	46	2	14	16	18	56	74	84	272	356
Year-on-year growth rates (percentages)																						
Annual																						
	2010	-67.8	-69.0	-68.7	7.5	22.5	18.6	1.7	10.5	5.7	-3.0	10.5	5.7	0.5	15.3	12.0	-1.9	3.4	2.0	-19.3	-13.0	-14.7
	2011	-33.5	-56.5	-50.3	20.7	21.3	21.2	36.4	24.2	30.5	19.2	17.1	17.8	2.9	12.4	10.5	13.3	9.8	10.7	12.0	8.2	9.2
	2012	-0.3	5.6	3.5	15.4	20.5	19.3	3.4	11.1	6.9	6.4	12.2	10.3	-9.8	10.3	6.6	0.5	5.5	4.2	6.8	13.7	11.9
	2013	5.2	11.4	9.2	14.4	14.9	14.8	4.0	11.8	7.7	5.1	7.5	6.7	-3.3	7.8	6.1	5.1	5.1	5.1	8.5	10.8	10.2
	2014	10.4	15.6	13.8	19.6	22.8	22.1	8.5	17.5	12.9	15.1	14.6	14.7	-12.2	-5.0	-6.0	5.8	6.2	6.1	13.1	15.3	14.8
Monthly																						
	2014																					
	May	10.2	16.1	14.1	17.2	18.9	18.5	8.3	16.1	12.1	10.3	9.6	9.9	-5.9	3.6	2.2	7.2	6.3	6.5	11.7	13.3	12.9
	Jun	10.8	16.3	14.4	17.6	19.6	19.1	8.5	16.3	12.3	11.2	10.0	10.4	-6.7	2.5	1.2	7.1	6.1	6.3	12.1	13.6	13.2
	Jul	11.2	16.3	14.6	18.0	20.2	19.7	8.5	16.5	12.4	12.0	10.6	11.0	-7.5	1.4	0.1	6.9	5.9	6.2	12.3	13.9	13.5
	Aug	11.4	16.4	14.7	18.4	20.7	20.2	8.5	16.6	12.5	12.8	11.3	11.8	-8.4	0.2	-1.1	6.7	5.9	6.1	12.6	14.2	13.8
	Sep	11.5	16.4	14.7	18.9	21.4	20.8	8.6	16.9	12.6	13.5	12.2	12.6	-9.3	-1.1	-2.3	6.5	6.0	6.1	12.8	14.5	14.1
	Oct	11.4	16.3	14.6	19.3	22.0	21.4	8.6	17.1	12.8	14.2	13.0	13.4	-10.2	-2.4	-3.5	6.3	6.1	6.1	13.0	14.9	14.4
	Nov	11.0	16.1	14.3	19.6	22.5	21.9	8.5	17.4	12.9	14.8	13.8	14.1	-11.1	-3.6	-4.7	6.0	6.2	6.1	13.2	15.2	14.7
	Dec	10.4	15.6	13.8	19.6	22.8	22.1	8.5	17.5	12.9	15.1	14.6	14.7	-12.2	-5.0	-6.0	5.8	6.2	6.1	13.1	15.3	14.8
	2015																					
	Jan	9.7	15.0	13.2	19.3	22.6	21.8	8.4	17.4	12.9	15.2	15.3	15.2	-11.6	-4.4	-5.4	5.6	6.1	6.0	12.9	15.4	14.8
	Feb	8.9	14.3	12.5	18.8	22.1	21.4	8.3	17.3	12.8	15.0	15.9	15.6	-11.0	-4.0	-5.0	5.3	6.1	5.9	12.6	15.3	14.6
	Mar	8.1	13.8	11.9	18.1	21.7	20.9	8.3	17.2	12.8	14.6	16.6	16.0	-10.3	-3.5	-4.5	5.1	6.3	6.0	12.3	15.3	14.5
	Apr	7.5	13.6	11.6	17.6	21.6	20.7	8.4	17.3	12.9	14.1	17.4	16.4	-9.5	-3.1	-3.9	5.0	6.6	6.2	12.0	15.5	14.6
	May	7.0	13.6	11.4	17.3	21.8	20.8	8.5	17.7	13.1	13.7	18.1	16.7	-8.7	-2.5	-3.3	5.0	7.1	6.6	11.8	15.9	14.9

¹ There was a step change in 2011 due to a change in reporting population

² Data are seasonally adjusted and depict the underlying trend. The X12 ARIMA monthly seasonal adjustments include trading days and leap years.

³ Automotive Fuels data is effective from January 2010. Data shown pre 2010 are for growth trend purposes only; these data are excluded from totals as these are already included in their former Services sector of Motoring (now known as Vehicle Sales & Service)

Table 2D Card expenditure statistics (seasonally adjusted)

Services^{1 and 2}

Value of purchase transactions (£ millions)

Total services

	Vehicle Sales & Services ³			Entertainment			Hotels			Travel			Financial			Other services			Value of purchases			
	Credit	Debit	Total	Credit	Debit	Total	Credit	Debit	Total	Credit	Debit	Total	Credit	Debit	Total	Credit	Debit	Total	Credit	Debit	Total	
Annual																						
2010	8,762	24,843	33,606	9,954	17,043	26,997	5,508	3,091	8,599	12,782	15,901	28,683	5,962	39,566	45,528	15,671	40,864	56,534	58,640	141,308	199,948	
2011	7,773	22,464	30,238	14,074	20,684	34,758	8,641	3,854	12,496	16,331	18,475	34,806	7,115	46,925	54,039	18,486	46,769	65,255	72,421	159,171	231,592	
2012	7,565	23,545	31,110	14,686	22,797	37,484	8,890	4,316	13,206	16,553	20,534	37,087	5,462	49,885	55,347	18,654	48,997	67,651	71,811	170,075	241,886	
2013	7,699	25,722	33,421	15,664	24,555	40,220	9,263	4,785	14,048	17,463	22,065	39,528	5,139	55,551	60,690	20,092	57,200	77,291	75,320	189,878	265,198	
2014	8,111	28,860	36,971	17,368	28,485	45,853	10,365	5,587	15,952	20,126	25,193	45,319	5,093	57,937	63,030	21,344	64,067	85,411	82,406	210,130	292,536	
Monthly																						
2014																						
May	680	2,369	3,050	1,418	2,303	3,722	852	456	1,309	1,684	2,055	3,740	420	4,827	5,248	1,753	5,168	6,921	6,809	17,180	23,989	
Jun	678	2,377	3,055	1,427	2,316	3,743	858	462	1,320	1,671	2,055	3,726	419	4,853	5,272	1,756	5,289	7,045	6,810	17,351	24,161	
Jul	676	2,394	3,070	1,442	2,349	3,791	866	467	1,333	1,664	2,067	3,732	419	4,859	5,279	1,765	5,408	7,173	6,832	17,545	24,377	
Aug	674	2,417	3,091	1,463	2,402	3,866	874	473	1,347	1,669	2,093	3,761	421	4,850	5,271	1,780	5,488	7,267	6,881	17,723	24,603	
Sep	672	2,435	3,107	1,486	2,461	3,948	883	481	1,364	1,681	2,127	3,808	424	4,841	5,265	1,796	5,521	7,317	6,942	17,866	24,809	
Oct	671	2,450	3,120	1,505	2,514	4,019	891	488	1,380	1,694	2,161	3,855	427	4,852	5,279	1,810	5,547	7,357	6,999	18,012	25,010	
Nov	670	2,468	3,138	1,517	2,546	4,063	897	494	1,392	1,702	2,182	3,884	431	4,892	5,323	1,823	5,605	7,427	7,039	18,188	25,227	
Dec	670	2,491	3,161	1,520	2,565	4,085	901	499	1,400	1,703	2,188	3,890	435	4,967	5,402	1,833	5,759	7,592	7,062	18,468	25,530	
2015																						
Jan	672	2,517	3,189	1,519	2,588	4,107	903	501	1,404	1,698	2,189	3,887	438	5,069	5,507	1,841	5,980	7,821	7,070	18,845	25,915	
Feb	674	2,544	3,218	1,519	2,626	4,145	904	505	1,409	1,691	2,195	3,886	441	5,177	5,618	1,845	6,193	8,039	7,074	19,239	26,314	
Mar	676	2,571	3,247	1,524	2,677	4,201	907	509	1,416	1,685	2,207	3,892	444	5,280	5,724	1,848	6,345	8,193	7,084	19,588	26,672	
Apr	677	2,593	3,270	1,534	2,730	4,264	912	514	1,426	1,684	2,226	3,910	447	5,361	5,808	1,851	6,427	8,278	7,104	19,852	26,956	
May	678	2,611	3,290	1,548	2,777	4,325	918	521	1,439	1,688	2,246	3,934	449	5,420	5,869	1,855	6,469	8,324	7,136	20,044	27,180	

Year-on-year growth rates (percentages)²

	Vehicle Sales & Services ³			Entertainment			Hotels			Travel			Financial			Other services			Value of purchases			
	Credit	Debit	Total	Credit	Debit	Total	Credit	Debit	Total	Credit	Debit	Total	Credit	Debit	Total	Credit	Debit	Total	Credit	Debit	Total	
Annual																						
2010	-40.2	-30.1	-33.1	3.5	16.7	11.4	3.9	13.4	7.1	-2.3	12.7	5.5	3.4	20.0	17.5	3.4	10.4	8.4	-7.8	3.2	-0.3	
2011	-11.3	-9.6	-10.0	41.4	21.4	28.7	56.9	24.7	45.3	27.8	16.2	21.3	19.3	18.6	18.7	18.0	14.5	15.4	23.5	12.6	15.8	
2012	-2.7	4.8	2.9	4.4	10.2	7.8	2.9	12.0	5.7	1.4	11.1	6.6	-23.2	6.3	2.4	0.9	4.8	3.7	-0.8	6.9	4.4	
2013	1.8	9.2	7.4	6.7	7.7	7.3	4.2	10.9	6.4	5.5	7.5	6.6	-5.9	11.4	9.7	7.7	16.7	14.2	4.9	11.6	9.6	
2014	5.4	12.2	10.6	10.9	16.0	14.0	11.9	16.8	13.6	15.2	14.2	14.7	-0.9	4.3	3.9	6.2	12.0	10.5	9.4	10.7	10.3	
Monthly																						
2014																						
May	5.4	12.9	11.1	8.6	10.2	9.6	11.2	12.8	11.7	11.9	10.7	11.2	-3.9	8.7	7.6	9.1	15.2	13.6	8.6	11.7	10.8	
Jun	5.7	13.0	11.3	8.8	10.8	10.0	11.1	13.4	11.9	12.7	10.8	11.6	-3.6	8.2	7.1	8.8	14.3	12.8	8.8	11.4	10.7	
Jul	6.0	13.1	11.4	8.9	11.4	10.4	11.2	13.9	12.1	13.3	11.2	12.2	-3.2	7.6	6.6	8.3	13.6	12.2	8.9	11.2	10.5	
Aug	6.2	13.3	11.6	9.2	12.2	11.0	11.4	14.4	12.4	14.0	12.1	12.9	-2.8	6.8	5.9	7.8	13.1	11.7	9.0	11.0	10.5	
Sep	6.3	13.4	11.7	9.6	13.1	11.7	11.7	15.0	12.8	14.7	13.2	13.9	-2.4	5.8	5.1	7.4	12.8	11.4	9.3	11.0	10.5	
Oct	6.2	13.3	11.7	10.1	14.1	12.5	11.9	15.6	13.2	15.3	14.2	14.7	-1.9	5.0	4.4	7.0	12.5	11.1	9.5	10.9	10.5	
Nov	5.9	12.9	11.3	10.6	15.1	13.4	12.0	16.3	13.4	15.6	14.5	15.0	-1.4	4.5	4.0	6.6	12.2	10.7	9.6	10.8	10.4	
Dec	5.4	12.2	10.6	10.9	16.0	14.0	11.9	16.8	13.6	15.2	14.2	14.7	-0.9	4.3	3.9	6.2	12.0	10.5	9.4	10.7	10.3	
2015																						
Jan	4.6	11.3	9.8	10.9	16.6	14.4	11.7	17.1	13.5	14.2	13.3	13.7	-0.3	4.5	4.1	5.8	12.3	10.7	9.0	10.7	10.2	
Feb	3.8	10.5	9.0	10.8	16.9	14.5	11.4	17.2	13.3	12.7	12.2	12.4	0.4	4.9	4.5	5.5	13.3	11.2	8.5	10.9	10.2	
Mar	3.0	9.9	8.4	10.7	17.0	14.6	11.0	17.1	13.1	10.9	11.4	11.2	1.1	5.4	5.0	5.2	14.5	12.1	7.9	11.3	10.3	
Apr	2.4	9.6	8.0	10.5	17.3	14.7	10.8	16.9	12.9	9.2	10.9	10.1	1.7	5.9	5.6	5.1	15.9	13.1	7.4	11.8	10.5	
May	1.8	9.5	7.8	10.4	17.8	15.0	10.5	16.6	12.6	7.7	10.7	9.4	2.4	6.4	6.1	5.1	17.3	14.1	7.0	12.4	10.8	

¹ There was a step change in 2011 due to a change in reporting population

² Data are seasonally adjusted and depict the underlying trend. The X12 ARIMA monthly seasonal adjustments include trading days and leap years.

³ Automotive Fuels data is effective from January 2010. Data shown pre 2010 are for growth trend purposes only; these data are excluded from totals as these are already included in their former Services sector of Motoring (now known as Vehicle Sales & Service)

Table 3A Card expenditure statistics (not seasonally adjusted)

Number of credit card transactions

Detailed sector breakdown - retail sectors (not seasonally adjusted)

Historical data located in hidden columns

	May 2014	June 2014	July 2014	August 2014	September 2014	October 2014	November 2014	December 2014	January 2015	February 2015	March 2015	April 2015	May 2015	Total (latest 12 months)
Supermarkets	58,629,190	60,525,536	60,952,700	57,026,642	60,556,456	61,788,278	60,586,531	73,763,834	57,588,817	55,586,545	65,051,989	61,399,227	62,498,538	737,325,093
Bakers & dairies	299,385	308,612	327,757	331,909	346,295	382,365	372,500	392,198	332,212	348,942	441,972	395,763	432,237	4,412,762
Sweet stores	244,749	257,164	257,183	270,057	253,397	298,880	358,532	675,080	193,040	257,673	354,246	294,081	255,853	3,725,186
Miscellaneous foodstores	3,344,117	3,434,749	3,536,443	3,288,342	3,434,341	3,490,576	3,296,311	3,881,861	3,056,627	3,119,217	3,614,809	3,481,816	3,569,301	41,204,393
Off-licences	594,609	621,669	634,413	603,366	575,932	583,432	607,160	906,763	461,250	490,639	571,339	568,017	619,367	7,243,347
Food & drink	63,112,050	65,147,730	65,708,496	61,520,316	65,166,421	66,543,531	65,221,034	79,619,736	61,631,946	59,803,016	70,034,355	66,138,904	67,375,296	793,910,781
Department stores	5,505,234	5,865,845	6,197,849	5,464,470	5,163,445	5,690,941	7,419,741	11,204,390	5,868,824	4,524,247	5,201,786	5,361,104	5,488,735	73,451,377
Discount stores	2,089,652	2,088,096	2,183,190	2,187,503	2,082,198	2,296,179	2,733,114	3,718,388	1,986,574	1,846,732	2,162,690	2,109,659	2,229,891	27,624,214
Catalogues	8,029,188	8,187,987	8,823,587	9,987,830	11,496,859	12,489,582	14,761,571	13,355,044	12,286,284	10,784,822	13,824,185	15,223,597	15,173,564	146,394,912
Miscellaneous mixed	2,616,868	2,743,461	2,706,176	2,549,000	2,726,897	2,917,515	3,240,114	4,443,373	2,213,584	2,626,629	2,154,815	2,579,001	2,583,467	33,484,032
Mixed business	18,240,942	18,885,389	19,910,802	20,188,803	21,469,399	23,394,217	28,154,540	32,721,195	22,355,266	19,310,616	23,815,290	25,273,361	25,475,657	280,954,535
Men's clothing	334,842	396,886	431,817	365,831	321,661	343,018	379,483	614,427	394,496	278,936	298,301	324,654	352,821	4,502,331
Women's clothing	2,165,331	2,416,563	2,578,885	2,047,982	1,972,816	2,002,248	2,167,033	3,240,215	1,872,157	1,616,549	2,018,980	2,181,417	2,273,036	26,387,881
Family clothing	9,097,595	9,597,338	10,402,319	8,813,515	8,589,400	9,264,896	9,923,716	14,569,731	7,954,815	6,703,790	8,500,384	8,932,820	8,957,630	112,210,354
Miscellaneous clothing	455,958	504,536	535,580	476,286	463,924	496,275	526,195	653,844	389,356	337,077	417,921	416,798	436,526	5,654,318
Shoe shops	1,334,953	1,534,586	1,623,840	1,529,344	1,294,980	1,317,140	1,203,087	1,752,546	1,246,909	889,887	1,046,121	1,344,807	1,287,443	16,070,696
Clothing	13,388,679	14,449,909	15,572,441	13,232,958	12,642,781	13,423,577	14,199,514	20,830,763	11,857,733	9,826,239	12,281,707	13,200,496	13,307,462	164,825,580
Furniture stores	1,370,226	1,371,949	1,399,189	1,447,073	1,456,891	1,616,661	1,711,801	1,990,907	1,696,414	1,363,933	1,425,896	1,464,307	1,464,307	18,491,609
Household appliance stores	1,352,971	1,342,328	1,371,996	1,367,229	1,372,891	1,450,153	1,514,083	1,818,084	1,359,174	1,224,773	1,402,606	1,349,032	1,365,104	16,937,453
Electronic stores	1,160,791	1,144,057	1,202,022	1,214,858	1,301,009	1,346,030	1,407,022	2,095,151	1,440,932	1,166,456	1,264,406	1,147,704	1,103,532	15,833,179
DIY stores	7,189,074	6,717,473	6,804,578	6,781,796	6,483,709	6,641,160	6,436,397	6,202,095	5,615,055	5,547,177	6,903,753	7,453,839	7,322,392	78,909,424
Floor covering stores	164,187	163,064	171,459	174,930	180,484	204,653	203,676	155,818	169,035	165,102	192,748	170,271	173,663	2,124,903
Garden centres	2,545,759	2,086,843	1,639,181	1,420,237	1,507,278	1,528,964	1,515,932	2,043,295	976,477	1,094,990	1,956,307	1,497,500	2,702,329	21,036,379
Miscellaneous household	1,561,352	1,630,865	1,733,650	1,672,760	1,706,721	1,754,504	1,870,521	2,374,306	1,707,694	1,497,446	1,688,437	1,587,506	1,678,131	20,902,535
Household	15,344,360	14,456,579	14,322,075	14,078,883	14,008,983	14,542,125	14,659,432	16,679,656	12,964,781	12,059,877	14,954,845	15,698,788	15,809,458	174,235,482
Books, newspapers & magazines	1,776,164	1,857,098	1,975,240	1,865,154	2,079,663	2,151,685	2,248,541	3,525,931	1,756,639	1,702,008	1,997,026	1,777,709	1,831,648	24,768,342
Record shops	187,943	193,521	191,236	186,064	187,725	203,134	269,828	680,466	189,394	176,347	200,922	173,710	163,767	2,816,114
Music shops	118,628	111,317	120,279	113,421	139,945	143,202	153,204	208,077	130,464	121,895	127,988	113,505	110,150	1,593,447
Hobbies, toys & games	460,088	454,747	501,496	504,352	573,714	646,466	941,253	1,434,517	446,226	431,452	466,722	451,614	453,089	7,305,648
Photographic	152,423	163,319	177,143	171,789	175,059	171,805	193,998	173,055	139,977	132,129	151,564	121,432	128,079	1,899,349
Handicraft	84,465	81,131	89,960	89,960	90,994	98,208	99,792	89,102	81,181	94,990	83,916	79,031	79,156	1,053,180
Sports shops	2,967,242	3,104,119	3,426,833	3,423,746	2,987,628	2,715,180	2,709,525	3,945,583	2,624,270	2,309,683	2,660,105	2,903,061	2,952,413	35,762,146
Jewellers	663,349	702,784	712,102	650,185	629,826	625,307	820,947	1,580,354	618,367	582,567	642,113	557,666	577,339	6,899,557
Computer software	268,155	256,616	264,648	253,899	275,559	279,292	264,712	322,798	267,470	235,478	256,630	223,761	211,488	3,111,351
Medical goods	477,924	494,449	536,283	495,905	491,225	527,091	515,664	650,218	505,645	471,859	551,007	523,135	564,904	6,327,385
Chemists	3,889,743	4,145,656	4,263,906	3,753,739	4,006,899	4,139,070	4,044,462	6,360,944	3,696,771	3,438,703	4,140,068	3,858,174	3,868,284	49,816,676
Optical goods	519,089	545,320	568,719	517,516	515,272	508,838	463,472	432,049	477,710	499,814	553,869	516,646	500,423	6,079,648
Cosmetic stores	443,499	481,786	484,636	460,983	488,932	542,335	686,290	1,249,664	420,899	425,287	495,578	451,684	486,716	6,674,790
Tobacconists	35,369	38,093	40,308	38,874	40,498	40,795	38,026	49,458	39,940	39,940	46,911	45,916	47,524	505,833
Florists	357,576	346,967	339,476	294,073	333,315	320,220	303,973	546,632	269,430	393,760	542,015	328,944	346,278	4,365,088
Artists' supplies	271,201	265,297	282,990	284,359	288,525	323,103	357,654	399,107	244,892	260,771	305,702	250,606	258,432	3,521,438
Antiques, art & stamps/coins	162,329	158,984	173,106	180,355	172,662	168,381	165,337	196,396	127,553	120,961	138,986	133,202	138,439	1,874,362
Pawn shops	3,262	3,278	4,180	4,144	4,088	4,108	4,372	6,756	3,825	3,602	3,992	3,709	3,888	49,942
Gift shops	1,367,640	1,544,126	1,618,945	1,676,126	1,592,265	1,684,657	2,136,792	3,396,948	1,256,452	1,597,661	1,372,145	1,482,127	1,482,127	20,693,679
Secondhand shops	21,197	22,667	24,347	21,879	21,231	23,222	21,605	25,100	20,969	18,630	32,885	25,388	29,438	287,361
Luggage & leather goods	103,054	117,371	122,547	120,379	104,480	113,708	130,256	178,310	95,226	75,503	92,310	90,375	97,457	1,337,922
Pet shops	831,670	821,580	848,467	855,815	821,432	867,512	844,893	978,092	816,191	767,676	894,590	854,306	875,694	10,246,248
Religious goods	12,493	13,019	15,580	13,783	11,652	11,041	8,078	8,078	6,959	6,463	9,063	9,581	12,035	125,264
Direct sales	3,628,044	3,521,590	3,589,174	3,315,087	3,390,131	3,615,554	3,315,143	3,704,124	3,395,772	3,242,718	3,727,137	3,326,615	3,245,987	41,389,032
Miscellaneous & speciality shops	3,273,598	3,304,429	3,511,728	3,410,197	3,526,461	4,915,523	5,303,865	5,885,087	4,856,783	4,474,328	5,127,122	4,777,093	5,086,824	54,179,440
Other retail	22,076,145	22,749,264	23,879,088	22,701,784	22,949,181	24,839,437	26,041,614	36,026,846	22,489,005	21,330,478	24,855,956	22,969,008	23,551,579	294,383,240
Automotive Fuels	20,303,884	20,632,879	21,138,126	19,883,979	20,535,495	20,240,182	18,691,214	19,471,196	17,675,368	17,062,678	19,861,788	19,249,331	19,720,516	234,162,752
Total retail sales	152,466,060	156,321,750	160,531,028	151,606,723	156,772,260	162,983,069	166,967,348	205,349,392	148,974,099	139,392,904	165,803,941	162,529,888	165,239,968	1,942,472,370

Table 3A Card expenditure statistics (not seasonally adjusted)

Number of credit card transactions

Detailed sector breakdown - services sectors (not seasonally adjusted)

	May 2014	June 2014	July 2014	August 2014	September 2014	October 2014	November 2014	December 2014	January 2015	February 2015	March 2015	April 2015	May 2015	Total (latest 12 months)
Auto rental	650,680	667,464	740,074	681,619	657,457	543,475	457,587	449,455	495,316	512,332	627,398	621,915	665,362	7,119,454
Auto parts & accessories	799,716	790,371	827,270	744,173	754,786	751,478	696,196	719,396	719,555	701,469	833,639	773,763	744,952	9,057,048
Auto services	2,068,569	2,081,660	2,171,202	1,912,440	2,168,016	2,325,359	2,168,635	2,142,038	2,073,058	2,110,666	2,440,360	2,217,293	2,272,123	26,082,850
Auto repair shops	903,749	904,199	941,391	848,138	904,641	893,101	806,242	769,757	833,959	825,219	1,006,526	881,441	846,698	10,461,312
Service stations	0	0	0	0	0	0	0	0	0	0	0	0	0	0
Vehicle sales	610,525	614,799	627,747	570,329	611,847	560,000	489,946	459,214	509,139	529,976	681,144	596,412	575,230	6,825,783
Vehicle Sales & Services	5,033,239	5,058,493	5,307,684	4,756,699	5,096,747	5,073,413	4,618,606	4,539,860	4,631,027	4,679,662	5,589,067	5,090,824	5,104,365	59,546,447
Restaurants	18,472,146	18,753,520	19,775,009	19,600,318	19,438,995	20,318,156	19,149,963	19,702,360	17,443,915	18,297,687	21,341,536	20,659,370	22,089,479	236,570,308
Public houses	2,887,419	2,991,777	3,138,804	3,084,888	3,084,180	2,906,707	2,669,772	2,989,403	2,359,976	2,581,141	3,198,159	3,215,619	3,369,184	35,589,610
Catering services	591,645	611,391	637,298	555,148	661,358	699,112	662,202	630,702	613,116	646,425	748,014	679,220	706,167	7,850,533
Video stores	183,092	198,503	180,019	187,561	180,019	200,110	194,779	222,622	248,533	396,185	275,895	270,289	200,460	2,750,533
Cinema, theatre & dance	1,734,077	1,625,616	1,800,033	1,923,221	1,690,062	2,193,403	2,408,504	2,556,896	2,001,813	2,014,385	1,984,029	1,882,207	1,866,799	23,946,968
Concerts & entertainers	135,874	124,909	131,869	151,746	56,295	156,016	186,409	204,442	138,654	128,301	136,188	136,039	152,321	1,703,189
Tourist attractions	640,000	678,591	866,322	1,039,696	685,602	621,739	371,649	383,982	364,996	364,396	458,960	702,828	716,101	7,168,524
Amusement parks	75,670	78,647	106,039	155,126	81,861	84,816	41,437	34,322	26,664	43,899	50,917	102,760	96,299	902,787
Aquariums	31,907	29,617	52,920	79,248	50,536	39,548	21,923	21,027	16,900	28,634	32,243	57,254	48,833	478,683
Sports & games establishments	3,528,874	3,167,194	3,156,670	3,185,707	3,752,885	3,851,656	3,395,489	4,367,895	4,268,156	3,376,739	3,926,780	3,439,610	3,658,846	43,547,627
Professional sports clubs	156,524	111,253	144,277	136,338	156,345	124,435	125,941	121,235	94,640	87,997	114,926	100,813	94,128	1,412,328
Gambling	5,420,051	5,747,752	5,333,736	5,019,556	5,916,812	6,060,666	5,739,677	6,803,324	6,144,983	5,960,250	6,789,023	6,336,623	5,992,962	71,845,266
Personal services	286,593	284,982	292,758	278,971	278,822	281,498	301,534	382,897	270,324	255,579	285,409	285,409	303,304	3,511,936
Miscellaneous entertainment	705,075	655,892	720,108	933,393	783,092	923,012	683,184	583,282	738,153	732,128	812,753	841,015	875,849	9,281,861
Entertainment	34,848,947	35,059,644	36,343,404	36,323,375	36,836,955	38,455,543	35,933,261	39,004,389	34,644,533	34,913,746	40,165,233	38,709,056	40,170,634	446,559,773
Hotels	5,205,389	5,281,499	5,537,804	5,212,363	5,445,681	5,360,924	4,841,041	4,424,903	4,411,057	4,625,058	5,371,107	5,122,317	5,571,434	61,205,188
Airlines	2,799,134	2,553,575	2,478,111	2,364,403	2,638,124	2,570,159	2,159,641	1,888,402	2,865,096	2,561,380	2,888,021	2,763,663	2,714,217	30,444,792
Airport terminals	43,781	45,033	47,719	41,728	45,058	38,562	28,808	27,230	31,088	31,580	39,256	40,161	42,789	459,012
Railways	6,055,544	6,307,600	6,492,461	5,606,392	6,422,013	6,582,071	6,104,469	5,771,604	5,365,874	5,446,324	6,240,141	5,713,354	5,903,453	71,955,756
Buses	655,151	610,088	615,265	545,699	633,416	640,292	588,222	568,612	526,983	543,959	630,301	616,446	659,165	7,178,448
Sea travel	234,012	230,063	253,141	259,551	230,982	205,729	159,628	150,167	176,592	167,537	209,514	206,166	243,176	2,492,246
Travel agents	1,891,578	1,857,014	1,836,892	1,723,866	1,907,065	1,872,174	1,633,859	1,555,971	2,117,373	1,935,959	2,140,222	1,961,575	1,968,287	22,510,257
Timeshares	17,823	15,901	17,534	17,738	17,736	18,488	16,426	16,631	26,135	19,605	18,926	16,463	15,428	217,011
Camping grounds	272,077	269,573	335,414	346,267	215,594	148,977	75,561	57,142	111,929	126,155	177,569	253,605	279,619	2,397,405
Miscellaneous travel	1,146,744	1,153,983	1,246,342	1,081,697	1,198,276	1,475,084	1,531,166	1,511,118	1,616,711	1,674,930	1,948,468	1,943,613	2,126,902	18,508,290
Travel	13,115,844	13,042,830	13,322,879	11,987,341	13,308,264	13,551,536	12,297,780	11,546,877	12,837,781	12,507,429	14,292,418	13,515,046	13,953,036	156,163,217
Telegraph services / Wire transfer money order	18,617	17,212	17,323	16,028	16,333	19,921	21,841	23,011	24,858	26,993	30,691	30,947	30,378	275,536
Insurance services	1,655,568	1,667,417	1,839,432	1,672,600	1,729,359	1,586,678	1,373,640	1,352,680	1,466,740	1,432,192	1,744,215	1,563,292	1,565,265	18,993,510
Fls - cash disbursements (auto & manual)	16,682	17,106	16,167	13,325	18,063	18,010	17,237	14,055	15,312	15,607	18,167	15,980	17,056	196,085
Fls - merchandise & services	143,156	140,114	143,434	126,415	355,759	132,630	113,345	118,764	123,995	123,511	152,278	138,545	135,612	1,804,402
Non-Fls - foreign currency, travellers' cheques	128,580	137,240	135,592	123,556	132,594	100,055	72,863	76,097	82,272	108,817	135,733	118,753	140,160	1,363,732
Security brokers and dealers	15,263	12,653	15,409	15,433	16,988	23,977	18,704	20,789	25,221	18,972	25,760	24,596	21,811	240,313
Tax preparation services	160	168	166	132	208	158	160	111	211	179	222	171	164	2,050
Tax payments	13,600	12,583	14,853	13,002	14,481	13,453	11,738	11,790	17,552	19,339	31,554	25,386	22,745	208,476
Fines, bail and bond payments	69,821	70,248	74,900	69,187	69,153	74,059	67,861	56,080	57,229	54,596	61,440	57,529	59,061	771,743
Miscellaneous financial	92,056	95,168	101,285	89,446	92,937	97,860	85,404	79,308	80,085	80,963	109,684	101,552	93,815	1,107,507
Financial	2,153,503	2,169,909	2,358,561	2,139,124	2,445,875	2,066,801	1,782,793	1,752,685	1,893,475	1,881,169	2,309,744	2,076,751	2,086,067	24,962,954

Table 3A Card expenditure statistics (not seasonally adjusted)

Number of credit card transactions

Detailed sector breakdown - services sectors (continued, not seasonally adjusted)

	May 2014	June 2014	July 2014	August 2014	September 2014	October 2014	November 2014	December 2014	January 2015	February 2015	March 2015	April 2015	May 2015	Total (latest 12 months)
Telecoms	1,872,218	1,819,447	1,940,118	1,907,603	2,094,657	2,027,933	1,909,784	2,072,859	1,929,964	1,723,570	1,970,636	1,842,460	1,883,249	23,122,280
Utilities	394,325	362,001	387,091	357,415	400,371	415,656	372,316	387,786	397,889	382,735	470,622	421,238	413,368	4,768,488
Contractors (residential & commercial)	265,479	264,791	284,268	255,928	285,174	312,244	280,539	252,097	261,223	263,097	304,845	269,369	256,562	3,290,137
Gardening services	80,070	70,821	58,815	48,073	49,976	50,137	45,904	60,258	32,281	36,526	49,745	61,814	61,712	626,062
Veterinary services	636,894	644,356	709,910	673,642	672,737	697,845	630,390	647,111	614,179	567,382	645,731	622,621	617,885	7,743,789
Photocopying & printing	256,744	247,643	253,431	222,763	261,490	282,420	313,482	364,848	268,770	239,779	282,306	240,832	243,069	3,220,833
Photographic studios	123,180	136,757	156,025	118,408	126,124	159,776	171,301	267,854	112,371	100,886	127,897	132,342	152,353	1,762,094
Beauty & barber shops	1,656,204	1,668,774	1,739,716	1,595,221	1,635,737	1,656,708	1,605,024	2,191,032	1,435,747	1,431,072	1,660,936	1,601,539	1,650,605	19,872,111
Employment agencies	22,156	24,919	25,673	22,778	23,563	26,367	23,779	20,711	23,713	23,323	30,977	23,905	25,441	295,149
Counselling services	5,963	5,848	6,149	5,389	5,837	6,314	5,780	6,440	6,052	6,589	6,063	6,152	6,152	73,298
Legal services	56,505	56,074	57,933	53,181	56,907	59,607	53,116	48,675	53,308	55,457	49,035	55,902	54,362	653,557
Laundry & cleaning	204,625	220,424	221,857	191,858	213,786	220,407	201,731	193,987	186,139	174,962	201,096	196,740	205,190	2,428,177
Funeral services	12,407	12,401	12,847	11,227	12,466	12,361	11,691	12,157	13,661	12,859	14,818	13,366	12,397	152,251
Medical services	1,264,968	1,284,136	1,343,498	1,159,639	1,325,044	1,382,020	1,277,573	1,197,862	1,297,095	1,252,320	1,421,862	1,309,918	1,267,790	15,518,757
Moving & courier services	438,164	422,331	444,893	370,590	436,418	475,027	452,289	447,052	420,698	420,810	468,784	434,203	441,344	5,234,439
Repair shops (not auto)	59,945	60,366	64,894	60,584	63,855	67,310	71,419	81,348	67,177	65,872	77,460	68,940	66,215	815,440
Accounting services	27,971	28,943	30,600	30,899	37,019	38,225	36,612	36,556	39,334	32,285	33,978	26,291	25,137	395,879
Advertising, consultancy & PR	72,501	71,871	74,295	69,192	71,614	70,554	62,688	56,340	59,858	62,516	72,021	65,394	62,895	799,239
Computer programming	1,310,973	1,358,800	1,417,439	1,376,648	1,511,223	1,610,805	1,971,380	2,396,813	1,656,225	1,460,850	1,598,304	1,459,369	1,537,451	19,355,307
Farming services	113,871	110,248	108,086	103,884	107,100	108,025	105,173	125,069	102,807	95,677	120,370	111,780	111,123	1,309,342
Miscellaneous professional services	893,472	890,855	932,001	867,660	946,236	1,183,746	1,117,761	1,128,921	1,091,932	1,088,549	1,221,690	1,108,803	1,138,602	12,716,756
Engineering services	52,286	53,547	56,521	48,707	51,981	55,842	48,022	44,733	47,211	48,450	55,248	51,073	49,305	610,640
Marina services	75,000	83,757	99,232	91,231	73,938	49,673	38,140	34,678	33,376	33,326	50,888	70,547	73,993	732,779
Wrecking & salvage yards	3,594	3,588	3,926	3,490	4,003	3,899	3,423	2,955	3,533	3,778	4,567	4,397	4,073	45,632
Pest control	3,447	3,414	3,924	3,124	3,416	4,019	3,120	2,843	2,752	2,752	3,196	3,238	3,210	39,225
Educational establishments	675,737	673,242	612,153	486,772	931,449	861,563	814,901	671,390	871,750	721,802	879,052	711,260	726,693	8,962,027
Child care services	21,517	18,401	18,800	22,690	19,937	22,777	19,371	19,787	22,647	24,072	24,365	21,413	23,088	257,348
Social, political & religious organisations	1,448,309	1,437,801	1,421,342	1,394,944	1,551,815	1,467,619	1,380,576	1,387,283	1,130,492	1,100,380	1,490,503	1,523,667	1,531,191	16,817,613
Government services	2,651,192	2,650,075	2,692,184	2,448,026	2,588,667	2,609,311	2,317,183	2,216,602	2,443,716	2,445,460	2,756,334	2,609,504	2,621,861	30,398,923
Miscellaneous services	1,398,673	1,428,403	1,483,329	1,281,106	1,399,771	1,415,175	1,386,545	2,097,444	1,326,549	1,281,298	1,574,626	1,459,132	1,402,806	17,536,184
Commercial equipment	889,160	872,073	912,209	845,705	987,710	993,836	943,241	931,419	912,747	839,158	959,222	839,933	824,318	10,861,571
Other services	16,987,550	16,986,107	17,573,159	16,128,377	17,950,021	18,347,572	17,674,788	19,404,250	16,865,801	15,997,055	18,627,703	17,367,053	17,493,440	210,415,326
Total services	77,344,472	77,598,482	80,443,491	76,547,279	81,083,543	82,855,789	77,148,269	80,672,964	75,283,674	74,604,119	86,355,272	81,881,047	84,378,976	958,852,905
TOTAL	229,810,532	233,920,232	240,974,519	228,154,002	237,855,803	245,838,858	244,115,617	286,022,356	224,257,773	213,997,023	252,159,213	244,410,935	249,618,944	2,901,325,275

Table 3B Card expenditure statistics (not seasonally adjusted)

Value of credit card transactions

Detailed sector breakdown - retail sectors (not seasonally adjusted)

Historical data located in hidden columns

£	May 2014	June 2014	July 2014	August 2014	September 2014	October 2014	November 2014	December 2014	January 2015	February 2015	March 2015	April 2015	May 2015	Total (latest 12 months)
Supermarkets	1,852,979,563	1,890,622,873	1,863,140,099	1,766,729,549	1,852,507,855	1,891,740,567	1,928,770,781	2,630,480,321	1,678,634,665	1,617,529,529	1,914,840,781	1,828,092,396	1,867,222,469	22,730,311,885
Bakers & dairies	4,370,575	4,562,654	4,617,597	4,468,611	4,817,872	5,082,480	5,067,001	6,036,341	4,241,317	4,464,634	5,543,623	4,958,324	5,442,804	59,303,258
Sweet stores	5,944,123	6,266,297	6,510,251	6,420,174	6,075,636	6,806,456	9,216,196	17,550,217	3,960,032	5,242,765	8,163,892	6,349,334	5,139,348	87,700,598
Miscellaneous foodstores	102,162,206	105,436,814	105,424,686	96,379,519	101,801,931	105,841,721	104,665,839	141,788,125	94,022,833	93,614,453	108,681,740	102,791,450	106,098,898	1,266,548,009
Off-licences	42,244,580	42,421,883	42,838,798	39,577,615	37,486,314	39,406,906	49,018,615	81,006,626	32,148,188	33,309,309	39,441,699	38,509,637	45,632,215	521,797,805
Food & drink	2,007,701,047	2,049,310,521	2,022,531,431	1,913,575,468	2,002,689,608	2,046,878,190	2,096,738,432	2,876,861,630	1,813,007,035	1,754,160,690	2,076,671,735	1,981,701,141	2,029,535,734	24,665,661,555
Department stores	376,528,661	401,925,110	384,053,341	384,446,547	383,199,699	414,732,897	526,629,699	716,907,891	373,113,287	306,997,415	365,551,689	379,259,192	374,080,592	5,010,897,359
Discount stores	94,272,437	90,600,286	93,498,253	96,166,295	91,598,413	101,495,806	130,944,852	172,897,218	88,637,387	79,184,088	103,957,704	87,485,376	90,215,873	1,226,681,551
Catalogues	153,494,683	150,087,029	155,873,321	173,932,899	197,698,269	204,584,481	221,486,449	186,417,062	178,179,123	159,005,963	203,742,290	204,726,444	195,638,497	2,231,371,827
Miscellaneous mixed	108,217,540	112,230,410	110,677,935	106,659,671	116,999,333	125,589,762	139,028,768	85,465,419	177,570,623	85,617,544	104,783,109	103,007,994	105,008,145	1,372,636,713
Mixed business	732,513,321	754,842,835	744,102,850	761,205,412	789,495,714	846,402,946	1,018,087,768	1,253,792,794	725,395,216	630,805,010	778,034,792	774,479,006	764,943,107	9,841,587,450
Men's clothing	40,995,605	47,429,144	44,418,380	38,717,958	38,849,527	43,312,436	45,857,878	64,127,147	43,511,193	32,016,148	38,758,325	39,630,788	44,213,660	520,842,584
Women's clothing	149,867,751	165,018,242	152,918,579	130,438,322	145,825,606	152,552,364	154,529,024	196,326,643	126,401,712	117,254,936	152,098,245	153,506,762	154,734,769	1,801,605,204
Family clothing	441,898,483	457,641,201	461,676,656	423,016,503	441,959,987	481,959,367	505,514,152	505,514,152	356,245,977	330,145,504	425,026,364	400,028,175	429,556,545	5,427,481,193
Miscellaneous clothing	30,091,853	33,479,422	32,557,826	29,642,910	30,680,747	33,893,128	34,474,229	40,912,132	25,411,107	23,552,950	30,557,497	29,498,368	31,497,415	376,157,731
Shoe shops	83,673,040	91,226,181	85,475,811	89,916,631	86,025,128	96,001,094	89,601,502	118,920,934	74,497,003	56,670,946	71,140,130	85,549,046	81,816,766	1,026,841,172
Clothing	746,526,732	794,794,190	777,047,252	711,732,324	741,889,470	807,719,090	829,976,785	1,106,448,523	626,066,992	559,640,484	717,580,561	738,213,139	741,819,155	9,152,927,884
Furniture stores	276,732,875	265,789,007	281,776,424	279,209,784	292,548,037	333,573,154	314,906,428	290,208,827	341,015,635	280,372,386	317,809,325	298,125,242	298,125,242	3,581,236,886
Household appliance stores	119,433,088	115,732,161	118,726,715	112,781,214	117,975,198	133,045,193	137,719,661	143,838,310	126,206,518	114,929,849	128,412,379	113,757,361	115,295,861	1,478,420,420
Electronic stores	185,266,272	185,008,552	189,141,349	198,186,908	220,920,108	231,647,999	241,624,213	362,461,743	232,351,109	180,611,098	201,161,939	188,844,468	178,343,361	2,610,302,847
DIY stores	524,464,300	495,806,769	515,469,469	490,378,817	485,507,439	513,938,965	478,249,120	410,724,234	435,099,627	426,427,027	541,793,901	529,728,857	589,804,055	5,859,804,055
Floor covering stores	60,897,913	60,876,671	63,828,489	62,847,588	66,700,835	76,648,575	76,156,871	56,573,443	60,832,781	58,591,643	68,990,265	61,781,920	62,821,999	776,651,080
Garden centres	128,902,619	106,075,067	83,624,146	66,905,584	68,998,218	65,482,114	64,345,061	82,278,410	40,394,861	48,660,622	134,641,403	96,923,628	135,374,741	993,703,895
Miscellaneous household	133,520,372	142,340,623	144,590,634	137,985,253	147,730,703	158,297,632	162,324,551	192,671,516	145,579,611	125,872,725	147,573,899	138,632,946	144,748,939	1,788,349,032
Household	1,429,217,439	1,371,628,850	1,394,590,586	1,350,861,788	1,400,380,538	1,512,633,632	1,474,725,905	1,538,756,483	1,381,480,142	1,235,465,390	1,502,665,336	1,460,840,565	1,464,439,000	17,088,468,215
Books, newspapers & magazines	51,728,440	50,937,284	54,966,537	51,980,299	58,998,772	65,424,504	68,516,658	98,999,105	59,462,857	54,657,565	61,798,632	54,317,544	53,051,438	733,111,195
Record shops	5,385,350	5,719,169	5,385,684	5,164,918	5,352,028	5,760,207	8,026,361	18,884,654	4,921,162	4,754,837	5,534,437	5,184,650	4,596,071	79,284,177
Music shops	16,094,735	15,293,181	16,029,740	15,902,468	18,074,695	18,711,772	20,573,225	26,902,668	17,983,276	16,404,936	18,015,527	16,377,048	15,961,694	216,230,289
Hobbies, toys & games	28,018,936	27,563,708	28,492,747	28,139,279	38,409,631	39,391,413	60,391,283	88,255,251	25,512,438	24,436,073	27,538,232	25,895,288	26,151,984	440,177,327
Photographic	21,629,908	21,351,888	22,685,960	21,463,647	20,785,250	21,140,487	22,251,553	26,401,004	19,052,646	18,125,249	24,088,980	19,385,452	20,114,172	256,906,288
Handicraft	8,099,280	7,638,108	8,280,537	8,453,927	9,106,617	9,158,318	8,030,223	7,964,335	7,964,335	7,964,335	7,964,335	7,964,335	7,964,335	98,933,313
Sports shops	197,142,199	198,208,869	216,921,703	216,041,028	190,017,862	177,774,087	179,795,808	242,218,238	163,000,095	148,124,270	179,873,856	192,568,885	196,417,245	2,300,961,946
Jewellers	117,230,455	126,235,522	124,532,078	120,510,008	118,442,829	118,363,801	141,608,949	275,864,145	105,039,386	110,385,149	121,672,513	111,181,132	117,777,170	1,591,612,682
Computer software	42,915,502	40,322,541	42,207,464	40,120,655	45,001,326	45,541,677	44,448,481	53,597,714	42,001,331	38,261,060	43,383,602	38,671,408	36,064,933	509,622,192
Medical goods	16,811,579	17,311,453	18,597,011	17,365,146	17,830,279	19,734,790	19,480,880	23,330,326	16,320,375	16,242,527	19,667,411	17,892,251	18,444,051	222,216,500
Chemists	83,567,360	89,060,997	90,256,038	80,746,213	84,834,270	88,930,462	102,943,425	173,459,325	76,289,660	71,371,228	88,696,710	79,955,744	83,637,938	1,120,182,010
Optical goods	78,969,154	82,066,488	85,223,777	77,912,830	78,079,837	77,393,158	70,543,943	61,760,769	74,939,809	87,488,511	80,782,735	79,380,099	79,380,099	929,063,334
Cosmetic stores	27,021,762	29,097,199	28,324,760	26,655,697	30,649,059	33,040,304	40,263,850	64,081,371	24,215,191	24,258,644	29,848,759	27,075,426	28,796,291	386,306,551
Tobaccoists	1,908,622	2,132,715	2,152,443	1,917,707	2,010,361	2,001,500	1,831,310	2,486,189	1,876,991	1,867,348	2,319,234	2,228,752	2,216,407	25,040,957
Florists	19,518,504	18,663,948	18,327,133	15,783,662	17,916,325	16,948,017	16,179,196	26,046,914	14,331,289	19,609,033	26,823,219	18,257,575	18,756,672	227,642,983
Artists' supplies	13,705,505	13,230,172	14,115,643	13,549,703	14,277,680	16,014,751	16,988,148	17,303,989	11,958,283	12,413,679	14,438,223	12,230,973	12,886,172	169,407,416
Antiques, art & stamps/coins	26,731,393	26,720,165	26,003,900	23,987,688	27,649,734	29,208,918	28,347,263	29,960,767	21,827,685	20,693,463	27,511,844	24,504,978	25,667,550	312,083,955
Pawn shops	796,151	823,506	1,049,566	1,055,259	1,140,407	1,111,964	1,066,209	1,396,827	1,009,655	902,834	1,028,383	976,574	1,014,967	12,576,151
Gift shops	50,302,524	52,447,629	57,336,769	59,719,274	58,345,837	63,837,591	68,772,225	108,816,624	44,155,592	44,238,093	52,495,682	48,302,504	52,008,865	722,476,685
Secondhand shops	2,493,747	2,817,861	2,652,510	1,926,742	2,244,984	2,736,159	2,539,073	2,730,704	2,585,549	2,212,641	3,828,943	2,547,624	2,784,926	31,607,716
Luggage & leather goods	14,606,276	17,238,794	16,111,921	15,815,248	15,407,907	16,256,329	17,564,159	26,091,493	13,513,328	11,702,344	14,623,772	16,627,511	15,369,008	194,321,814
Pet shops	35,640,415	35,316,401	36,847,341	36,926,148	35,805,167	37,530,329	36,027,100	40,106,068	36,027,100	36,027,100	36,862,122	38,403,066	36,942,926	437,950,914
Religious goods	438,803	446,658	517,438	457,440	417,249	420,257	264,805	284,263	238,908	211,921	319,640	350,689	429,842	4,359,110
Direct sales	213,784,434	207,868,051	215,134,572	197,751,294	222,105,044	220,662,450	195,910,025	207,548,153	204,324,758	191,639,536</				

Table 3B Card expenditure statistics (not seasonally adjusted)

Value of credit card transactions

Detailed sector breakdown - services sectors (not seasonally adjusted)

£	May 2014	June 2014	July 2014	August 2014	September 2014	October 2014	November 2014	December 2014	January 2015	February 2015	March 2015	April 2015	May 2015	Total (latest 12 months)
Auto rental	82,369,463	94,113,999	111,012,128	90,745,396	78,363,853	58,552,412	48,692,508	54,932,445	53,938,226	54,282,017	69,628,596	68,194,804	80,205,017	862,661,401
Auto parts & accessories	126,416,416	124,017,222	129,194,006	113,897,510	119,363,198	120,022,023	109,726,143	111,025,849	113,207,752	110,531,460	135,598,016	121,414,575	117,554,550	1,425,552,304
Auto services	51,353,681	52,564,626	54,579,279	48,809,353	54,337,861	53,613,594	48,147,706	45,894,314	49,869,612	50,257,566	60,077,183	53,474,490	55,419,156	627,044,740
Auto repair shops	225,011,258	223,964,595	231,713,269	209,389,099	225,962,531	224,056,040	201,589,254	188,385,314	207,919,317	208,482,759	258,072,628	217,481,848	210,983,671	2,608,000,325
Service stations	0	0	0	0	0	0	0	0	0	0	0	0	0	0
Vehicle sales	220,996,349	220,283,134	220,760,758	202,783,521	232,060,652	212,516,300	184,412,977	171,391,166	199,049,409	210,546,259	292,480,814	222,772,331	216,380,527	2,585,437,868
Vehicle Sales & Services	706,147,167	714,943,576	747,259,440	665,624,879	710,088,095	668,760,369	592,568,588	571,629,108	623,984,316	634,100,061	815,857,237	683,338,048	680,542,921	8,108,696,638
Restaurants	621,777,239	633,174,889	659,210,292	659,684,635	646,844,400	663,818,230	637,331,308	759,799,380	545,233,839	570,225,917	668,736,730	644,233,879	693,178,547	7,781,472,046
Public houses	117,879,724	122,798,677	127,537,625	127,704,874	127,479,808	119,903,789	112,072,072	146,534,509	94,077,176	101,058,649	125,477,614	123,782,213	130,939,891	1,459,366,897
Catering services	60,598,473	60,675,748	63,684,776	55,635,879	62,663,706	63,281,037	61,459,408	66,497,467	54,074,715	54,569,706	63,873,016	59,888,282	63,586,868	729,890,609
Video stores	2,348,500	2,893,659	2,901,796	2,663,357	2,891,445	2,768,157	2,523,620	2,999,706	2,819,920	3,879,544	3,343,255	3,593,039	2,734,666	36,012,164
Cinema, theatre & dance	132,665,675	119,131,514	119,388,936	102,579,651	113,181,974	205,931,162	197,634,394	171,926,046	111,408,926	113,987,005	139,329,568	114,577,998	121,691,531	1,630,768,705
Concerts & entertainers	8,829,733	8,641,609	8,370,622	9,043,936	5,207,668	11,023,193	12,892,572	12,477,003	8,935,985	8,567,270	10,307,836	9,063,746	10,478,431	115,009,871
Tourist attractions	38,007,078	40,631,517	48,980,035	51,252,205	35,106,643	34,045,806	21,732,058	23,256,908	20,410,540	24,245,439	31,103,106	40,376,927	40,238,020	411,379,204
Amusement parks	4,084,082	4,930,070	6,349,972	7,703,384	4,005,529	4,399,807	2,230,457	1,857,239	1,676,325	2,255,784	3,030,587	5,250,113	4,972,863	48,662,130
Aquariums	1,581,409	1,485,135	2,814,502	3,943,144	2,409,727	1,919,755	1,179,459	1,250,382	925,954	1,433,372	1,674,159	2,887,754	2,554,822	24,478,165
Sports & games establishments	167,602,097	114,849,075	104,744,007	96,960,646	117,658,987	109,176,954	109,091,983	121,668,881	118,490,535	102,072,698	136,642,411	135,099,655	191,918,677	1,458,374,509
Professional sports clubs	26,683,825	16,607,340	15,291,950	10,691,386	11,450,186	11,124,829	11,103,361	8,579,596	8,582,022	8,135,903	10,656,449	11,487,953	12,896,246	136,607,221
Gambling	115,106,721	124,598,989	103,941,677	113,338,909	132,004,079	124,596,142	119,267,515	135,445,847	127,598,773	122,062,234	137,063,112	128,713,288	121,847,582	1,490,468,147
Personal services	19,327,548	19,008,889	19,446,422	18,363,654	19,064,605	20,914,954	25,917,447	19,558,370	17,910,331	22,294,337	20,768,373	19,615,505	20,155,476	243,018,156
Miscellaneous entertainment	208,694,754	178,643,414	183,553,044	182,933,722	209,962,865	225,567,033	191,940,755	141,733,847	223,545,357	198,833,405	218,182,345	209,875,415	210,530,581	2,375,301,783
Entertainment	1,525,186,858	1,448,070,318	1,466,215,656	1,442,499,382	1,489,931,622	1,598,470,848	1,502,753,299	1,619,944,258	1,337,338,437	1,329,227,257	1,570,188,561	1,508,445,767	1,627,724,201	17,940,809,606
Hotels	914,465,945	986,043,516	1,003,226,810	916,445,630	986,513,547	963,222,549	846,621,742	756,807,809	737,230,794	752,782,342	889,122,782	861,624,492	968,006,931	10,667,648,944
Airlines	778,726,857	671,540,382	651,187,587	597,040,030	665,502,522	649,880,195	543,328,546	474,680,419	773,422,497	668,117,366	759,758,337	696,684,510	695,477,128	7,846,619,519
Airport terminals	3,804,065	4,508,972	4,431,939	3,788,854	4,240,768	3,294,833	2,719,452	2,852,456	2,746,387	2,640,467	3,521,125	3,481,483	3,804,741	42,031,477
Railways	242,531,016	252,912,204	255,468,602	217,549,378	276,100,090	272,763,727	254,399,706	278,925,739	263,179,567	230,053,022	257,726,214	242,615,341	241,389,713	3,043,083,303
Buses	32,472,211	31,713,585	33,019,772	30,199,212	33,171,314	30,389,255	27,203,037	25,540,035	24,451,133	23,911,767	28,988,238	29,215,197	30,630,877	348,433,422
Sea travel	69,077,971	64,442,498	70,374,017	76,742,237	75,808,020	66,165,641	50,651,581	49,128,488	67,095,708	58,189,740	70,148,351	66,313,414	71,077,793	786,137,488
Travel agents	647,465,196	627,677,776	631,748,563	550,052,306	539,173,392	510,317,523	412,919,856	398,378,747	639,088,554	566,364,287	642,166,274	604,399,199	661,711,434	6,783,997,911
Timeshares	2,943,246	2,592,768	2,885,021	2,831,060	2,830,522	3,032,210	2,713,733	2,718,706	3,523,185	2,584,235	2,500,377	2,294,401	2,155,021	32,661,239
Camping grounds	35,962,649	38,520,283	42,821,832	34,682,590	21,546,869	18,718,294	21,811,340	16,341,278	22,222,828	23,055,748	31,371,898	30,947,706	36,883,006	338,923,672
Miscellaneous travel	67,589,497	72,506,909	71,499,540	60,566,622	62,530,702	66,106,587	58,878,017	54,600,581	63,898,347	62,805,893	74,499,409	70,642,886	77,105,591	795,641,084
Travel	1,880,572,708	1,766,415,377	1,763,436,873	1,573,452,289	1,680,904,199	1,620,668,265	1,374,625,268	1,303,166,449	1,859,628,206	1,637,722,525	1,870,680,223	1,746,594,137	1,820,235,304	20,017,529,115
Telegraph services / Wire transfer money order	2,795,530	2,405,476	2,741,470	2,532,889	2,569,807	2,842,173	2,978,561	3,287,459	3,365,047	3,496,754	3,982,978	3,872,588	3,895,159	37,970,361
Insurance services	282,987,075	292,115,474	312,260,894	287,833,938	310,804,423	290,551,150	252,460,942	240,949,757	272,825,674	259,675,170	324,846,464	287,961,275	281,840,900	3,414,126,061
FIs - cash disbursements (auto & manual)	8,601,183	8,358,129	8,518,831	8,047,738	9,091,408	8,330,810	7,367,465	7,224,181	7,247,564	6,773,306	8,608,247	7,495,234	7,343,029	94,405,942
FIs - merchandise & services	40,263,145	40,336,412	40,745,012	35,943,068	38,961,472	36,652,587	29,242,791	29,281,741	31,284,029	32,605,460	50,628,050	34,293,254	35,038,389	435,012,265
Non-FIs - foreign currency, travellers' cheques	52,449,305	58,449,237	62,213,572	59,635,435	55,732,886	38,432,915	27,874,108	29,001,107	35,203,834	43,626,991	58,810,708	50,041,407	59,484,377	578,506,577
Security brokers and dealers	6,395,005	4,658,761	5,509,875	5,241,842	5,737,474	8,192,798	6,250,957	7,114,040	8,519,552	5,868,259	14,493,425	8,882,213	6,653,749	87,122,945
Tax preparation services	121,457	131,353	148,679	149,129	130,259	207,030	161,889	64,178	157,630	394,432	292,548	220,373	409,535	2,467,035
Tax payments	14,410,202	11,955,451	13,806,551	13,506,635	14,929,731	11,874,173	12,248,303	10,969,102	20,861,959	24,853,350	35,885,269	29,681,688	28,870,892	229,443,104
Fines, bail and bond payments	11,901,981	11,928,767	12,555,496	11,235,928	11,036,945	11,636,926	10,607,681	8,613,982	9,575,720	9,036,614	10,075,503	8,758,899	9,696,864	124,759,328
Miscellaneous financial	16,168,725	16,914,821	17,449,825	15,528,954	16,433,695	18,229,330	16,850,481	15,170,926	16,102,549	15,997,984	19,831,993	18,249,952	17,709,818	204,470,425
Financial	436,093,608	447,253,981	475,950,205	439,655,556	465,428,100	426,949,892	366,043,178	351,676,473	405,143,558	402,328,320	527,455,185	449,456,883	450,942,712	5,208,284,043

Table 3B Card expenditure statistics (not seasonally adjusted)

Value of credit card transactions

Detailed sector breakdown - services sectors (continued, not seasonally adjusted)

£	May 2014	June 2014	July 2014	August 2014	September 2014	October 2014	November 2014	December 2014	January 2015	February 2015	March 2015	April 2015	May 2015	Total (latest 12 months)
Telecoms	81,403,348	77,569,528	82,448,037	83,422,828	96,641,240	94,772,998	93,006,909	98,948,665	91,611,814	78,255,896	86,429,069	79,347,631	80,731,531	1,043,186,146
Utilities	69,523,674	61,936,138	62,289,768	54,211,364	61,963,440	64,056,758	56,856,139	55,353,768	65,155,904	65,017,366	83,987,124	73,493,356	68,533,986	772,855,111
Contractors (residential & commercial)	86,487,430	86,117,366	92,147,402	81,528,719	94,883,075	98,694,498	92,082,103	80,121,717	84,509,420	86,282,461	102,083,505	88,392,236	89,031,693	1,075,874,195
Gardening services	9,664,030	6,982,163	6,275,897	5,017,001	6,573,559	4,728,733	4,437,731	5,846,686	3,014,602	3,767,431	7,346,597	7,288,044	6,572,988	67,851,432
Veterinary services	59,900,503	60,771,206	66,375,910	61,770,331	63,422,557	64,732,297	58,803,201	59,680,217	59,911,478	55,346,567	63,561,259	61,269,392	60,586,621	736,231,036
Photocopying & printing	36,078,172	35,136,309	35,654,143	33,813,133	37,791,849	41,280,237	40,425,799	37,982,605	38,140,886	36,234,842	38,633,424	33,723,427	32,800,920	441,617,574
Photographic studios	7,491,782	7,800,370	9,067,167	7,139,242	7,691,483	8,628,097	9,798,565	10,636,572	7,239,215	5,827,775	5,979,146	7,128,343	7,726,344	94,662,319
Beauty & barber shops	90,206,210	89,203,223	93,485,479	86,817,366	89,593,455	91,488,717	90,824,734	116,659,521	79,056,700	78,904,295	92,499,233	89,240,431	91,841,040	1,089,614,194
Employment agencies	22,938,905	30,456,453	28,668,084	24,595,673	24,896,795	29,760,796	27,415,997	26,708,354	23,137,091	26,565,118	33,057,723	24,072,192	27,481,855	326,816,131
Counselling services	1,582,077	1,263,472	1,270,125	1,243,211	1,348,774	1,638,767	1,147,901	1,804,258	1,544,962	1,599,598	1,631,747	1,481,068	1,574,409	17,542,408
Legal services	22,201,956	22,570,059	23,783,781	20,993,270	23,055,090	25,849,305	21,556,756	20,352,654	21,621,482	22,605,803	26,135,867	22,550,631	22,184,734	273,259,432
Laundry & cleaning	6,915,449	7,469,799	7,525,373	6,707,533	7,466,319	7,503,475	6,999,898	6,589,508	6,418,196	5,905,279	6,828,995	6,740,501	6,895,807	83,050,683
Funeral services	13,309,894	12,932,821	14,325,266	12,264,028	13,984,825	14,944,016	14,620,960	14,741,102	16,905,013	16,188,497	18,694,124	15,762,885	13,997,843	179,361,380
Medical services	173,828,222	177,204,678	183,148,976	158,135,538	177,104,795	190,514,834	176,710,591	160,247,893	172,838,768	173,843,078	196,157,544	177,588,822	175,825,797	2,119,321,314
Moving & courier services	44,753,025	43,390,225	47,495,182	42,711,314	44,162,345	46,051,396	43,645,087	42,254,825	41,187,269	41,122,236	46,193,815	42,461,062	42,332,958	523,007,714
Repair shops (not auto)	9,790,225	10,282,763	10,737,323	9,889,358	10,388,034	11,643,854	11,388,780	12,435,217	10,093,607	10,245,809	12,106,121	10,439,541	10,296,211	129,946,618
Accounting services	6,474,576	6,479,405	7,049,208	6,494,220	7,565,507	7,724,817	7,523,946	8,599,594	10,096,395	8,945,675	9,487,691	7,183,947	6,521,235	93,671,640
Advertising, consultancy & PR	8,111,265	7,707,853	8,286,333	7,186,784	7,816,479	8,367,861	7,092,562	6,795,343	7,730,480	7,573,611	8,906,992	7,780,238	7,267,345	92,511,831
Computer programming	83,679,438	86,506,565	88,195,049	81,470,301	91,193,639	108,359,998	128,369,053	146,022,163	111,229,634	97,338,559	112,082,133	104,901,089	108,379,674	1,264,047,857
Farming services	11,263,990	11,288,639	11,890,564	10,873,732	11,315,288	11,782,430	10,457,731	11,254,931	10,432,069	9,699,281	12,205,228	10,960,132	10,773,070	132,933,095
Miscellaneous professional services	157,574,269	159,293,403	163,657,160	156,012,835	184,092,288	177,132,251	160,748,512	154,357,611	173,046,539	162,447,485	194,587,909	167,738,108	165,619,461	2,018,733,562
Engineering services	15,492,457	16,135,800	17,093,798	14,528,338	15,311,967	17,273,640	14,214,895	13,242,871	14,814,207	16,861,550	14,959,434	14,162,044	183,121,219	183,121,219
Marina services	11,021,165	11,574,879	12,227,972	10,556,994	8,821,591	7,002,059	5,458,747	5,636,031	6,664,806	6,175,257	11,133,626	10,749,094	10,323,551	106,324,607
Wrecking & salvage yards	743,745	795,734	865,882	721,356	863,294	849,871	760,361	659,424	733,703	815,137	1,005,827	890,164	806,687	9,767,440
Pest control	598,064	609,471	743,813	577,849	691,170	768,440	641,360	668,535	650,935	624,527	668,748	641,273	660,846	7,946,967
Educational establishments	127,630,893	114,977,779	123,739,956	144,881,445	315,278,800	196,945,112	111,474,301	109,713,169	211,296,796	123,127,607	124,977,535	149,783,534	121,760,290	1,847,956,324
Child care services	2,564,515	2,657,791	2,835,945	2,439,354	2,711,790	2,737,050	2,434,069	2,386,321	2,695,517	2,598,952	3,018,286	2,629,973	2,652,615	31,797,663
Social, political & religious organisations	79,951,690	78,115,825	84,129,399	76,303,662	90,849,072	93,731,593	81,573,597	94,118,627	92,682,804	80,679,891	103,708,378	89,371,245	84,957,320	1,050,221,413
Government services	266,172,757	259,322,352	283,092,549	269,894,839	276,352,498	256,544,338	227,249,618	244,263,188	350,285,408	292,006,631	287,549,251	279,103,062	258,684,708	3,284,348,442
Miscellaneous services	87,268,932	97,670,345	93,625,945	80,170,283	92,228,377	94,346,652	82,274,910	101,961,666	80,743,357	76,663,930	99,733,735	85,854,180	87,961,704	1,073,235,084
Commercial equipment	131,964,752	127,572,885	137,804,305	121,963,187	134,744,019	141,904,325	130,932,437	115,811,389	123,967,902	122,044,476	148,559,408	125,864,205	125,595,220	1,556,763,758
Other services	1,726,587,410	1,711,795,299	1,799,935,791	1,674,335,088	2,000,803,414	1,921,759,215	1,720,927,250	1,765,854,425	1,917,777,550	1,713,364,012	1,957,039,510	1,799,539,919	1,744,447,166	21,727,578,639
Total services	7,189,053,696	7,074,522,067	7,256,024,775	6,712,012,824	7,333,668,977	7,199,831,138	6,403,539,325	6,369,078,522	6,881,102,861	6,469,524,517	7,630,343,498	7,048,999,246	7,291,899,235	83,670,546,985
TOTAL	14,332,213,536	14,297,939,581	14,530,418,455	13,854,417,626	14,554,291,600	14,820,506,046	14,210,825,654	16,006,358,421	13,491,803,442	12,614,090,483	15,018,935,892	14,175,593,794	14,515,435,905	171,890,616,899

Table 3C Card expenditure statistics (not seasonally adjusted)

Number of debit card transactions

Detailed sector breakdown - retail sectors (not seasonally adjusted)

Historical data located in hidden columns

	May 2014	June 2014	July 2014	August 2014	September 2014	October 2014	November 2014	December 2014	January 2015	February 2015	March 2015	April 2015	May 2015	Total (latest 12 months)
Supermarkets	269,161,332	273,496,936	273,796,584	255,394,111	272,893,545	279,762,517	267,523,289	292,824,915	254,198,514	250,603,025	292,631,442	273,954,061	279,343,353	3,266,422,292
Bakers & dairies	2,426,053	2,403,279	2,600,648	2,690,670	2,800,044	3,247,832	3,322,286	3,368,221	2,941,667	3,013,084	3,617,222	3,418,100	3,771,372	37,194,425
Sweet stores	970,669	1,001,563	950,059	1,011,398	1,003,917	1,143,518	1,260,132	2,164,422	859,699	1,148,723	1,421,883	1,274,670	1,144,361	14,384,345
Miscellaneous foodstores	16,128,968	16,387,687	16,591,936	15,550,854	16,398,981	16,684,431	15,662,884	17,357,667	14,915,784	15,358,991	17,829,802	17,196,385	17,285,508	197,220,910
Off-licences	3,530,437	3,579,031	3,618,981	3,460,419	3,420,106	3,484,176	3,441,042	3,871,355	3,051,911	3,094,775	3,538,729	3,482,825	3,702,944	41,746,294
Food & drink	292,217,459	296,868,496	297,558,208	278,107,452	296,516,593	304,322,474	291,209,633	319,586,580	275,967,575	273,218,598	319,039,078	299,326,041	305,247,538	3,556,968,266
Department stores	12,528,112	13,231,106	13,963,452	12,594,426	12,399,135	13,138,406	15,631,934	25,893,752	13,101,192	11,248,213	13,237,827	12,873,556	13,251,429	170,564,428
Discount stores	11,987,176	12,058,499	12,390,457	12,460,128	12,274,310	13,741,707	15,301,524	20,157,519	11,872,444	11,619,472	13,506,001	12,991,185	13,904,540	162,277,786
Catalogues	2,853,696	2,464,569	2,515,604	2,401,435	2,665,625	2,767,181	2,809,874	3,319,722	2,851,786	2,506,862	2,896,947	2,710,404	2,672,365	32,582,374
Miscellaneous mixed	8,089,967	8,636,963	8,514,428	7,872,264	8,469,331	8,939,562	9,448,904	14,256,485	7,115,022	6,970,505	8,850,959	8,469,223	8,301,326	105,853,517
Mixed business	35,458,951	36,391,137	37,383,941	35,328,253	35,808,401	38,586,856	43,192,236	63,627,478	34,804,472	32,489,569	38,491,734	37,044,368	38,129,660	471,278,105
Men's clothing	652,354	742,556	827,327	777,455	647,310	662,187	716,662	1,332,242	696,913	577,998	591,086	669,243	734,810	8,975,789
Women's clothing	6,617,555	6,993,234	7,526,514	6,278,953	6,333,969	6,053,736	5,991,468	10,097,167	5,506,091	5,087,194	6,284,045	6,472,963	6,682,074	79,307,408
Family clothing	28,434,307	30,464,565	31,849,288	27,783,290	27,940,984	29,409,993	29,489,667	46,284,077	24,797,559	22,268,667	27,742,670	28,605,405	28,890,687	355,518,207
Miscellaneous clothing	752,922	883,615	893,750	819,822	794,591	918,932	803,420	1,175,558	603,296	595,437	780,258	692,631	760,681	9,721,991
Shoe shops	2,922,538	3,369,393	3,519,976	3,478,018	3,111,301	2,819,006	2,542,765	3,878,014	2,640,648	2,047,864	2,412,242	3,038,555	2,837,975	35,695,257
Clothing	39,379,676	42,453,363	44,616,855	39,137,538	38,826,155	39,863,854	39,535,337	62,767,058	34,244,507	30,577,160	37,810,301	39,478,297	39,906,227	489,218,652
Furniture stores	3,472,270	3,459,739	3,471,440	3,583,506	3,621,676	3,967,890	4,107,155	5,048,472	3,393,783	3,396,810	3,867,413	3,567,606	3,714,347	45,709,837
Household appliance stores	5,903,094	5,781,493	5,919,937	6,073,481	6,062,765	6,428,661	6,660,096	7,770,250	5,979,010	5,654,004	6,456,996	6,122,009	6,373,657	75,282,359
Electronic stores	2,102,715	2,066,546	2,151,381	2,221,485	2,385,798	2,455,702	2,504,838	4,015,631	2,633,044	2,183,398	2,325,617	2,211,293	2,171,030	29,325,763
DIY stores	19,256,745	18,628,043	18,736,289	18,415,445	18,355,694	18,791,364	18,256,075	18,343,457	15,948,845	16,100,856	19,309,364	20,963,207	20,889,806	222,738,445
Floor covering stores	302,216	301,300	316,367	329,233	346,583	383,008	375,980	301,685	306,884	314,111	361,385	330,897	345,433	4,012,866
Garden centres	5,333,356	4,529,984	3,635,157	3,173,766	3,281,962	3,377,521	3,583,759	4,906,361	2,539,178	2,262,888	5,474,395	5,839,541	5,839,541	46,943,531
Miscellaneous household	1,558,090	1,554,953	1,689,164	1,895,981	2,022,218	2,013,869	1,876,129	2,215,466	1,880,523	1,760,032	1,941,783	1,771,255	1,736,564	22,357,937
Household	37,928,486	36,322,058	35,919,735	35,692,897	36,076,426	37,418,015	37,364,032	42,601,322	32,914,977	31,948,389	38,601,847	40,440,662	41,070,378	446,370,738
Books, newspapers & magazines	6,497,341	6,798,841	6,916,640	6,641,671	7,508,688	7,528,489	7,280,113	11,280,612	6,356,715	6,513,488	7,604,793	6,765,944	7,027,990	88,223,984
Record shops	711,530	765,673	689,414	701,366	747,844	796,417	966,162	2,687,290	718,729	695,442	831,979	687,078	656,352	10,943,746
Music shops	236,612	221,311	230,937	218,160	267,287	274,737	283,881	417,475	267,267	249,951	241,001	219,168	219,168	3,107,755
Hobbies, toys & games	1,646,338	1,618,423	1,668,506	1,745,255	2,086,151	2,260,925	3,049,742	4,933,306	1,631,007	1,632,307	1,834,549	1,702,651	1,745,604	25,908,426
Photographic	316,941	338,433	356,822	345,673	366,087	339,112	376,067	367,601	291,614	294,478	329,913	256,797	257,647	3,920,244
Handicraft	198,717	191,705	200,235	207,796	217,528	241,074	238,265	216,077	196,620	234,898	198,626	211,107	197,149	2,551,080
Sports shops	8,562,399	9,148,920	9,707,109	9,649,494	8,849,942	8,027,783	7,735,756	11,281,857	7,619,018	7,095,665	8,241,644	8,927,291	9,071,464	105,355,943
Jewellers	1,451,928	1,527,590	1,562,405	1,467,472	1,450,252	1,443,249	1,813,149	3,842,573	1,393,571	1,435,147	1,637,212	1,314,682	1,372,040	20,259,342
Computer software	353,082	340,796	353,743	348,707	389,464	393,311	376,240	477,794	385,806	334,747	354,355	328,183	315,382	4,398,528
Medical goods	44,335	44,907	48,725	44,507	46,749	48,375	45,016	41,959	42,223	42,185	47,553	45,277	44,319	541,795
Chemists	18,437,845	19,587,787	19,758,581	17,488,552	19,450,830	19,578,135	18,371,253	28,461,493	17,712,011	17,505,228	21,058,420	19,332,102	19,248,248	237,552,640
Optical goods	998,136	1,029,925	1,055,734	953,822	1,033,616	1,014,705	913,091	860,063	952,197	1,151,739	1,053,896	1,063,888	1,015,388	12,019,864
Cosmetic stores	1,472,862	1,599,918	1,550,576	1,501,452	1,640,674	1,767,641	2,001,459	4,045,071	1,401,760	1,527,031	1,833,026	1,627,151	1,735,080	22,230,839
Tobacconists	192,565	206,462	215,994	212,046	228,817	246,385	236,185	288,166	280,813	277,465	328,157	319,011	335,052	3,174,553
Florists	830,777	836,238	839,158	735,210	811,672	786,866	729,732	1,218,653	655,313	1,061,424	1,420,962	817,257	856,196	10,768,681
Artists' supplies	745,150	724,536	743,185	763,969	803,391	922,982	962,713	1,154,945	703,946	782,947	938,238	741,849	748,955	9,991,656
Antiques, art & stamps/coins	300,027	289,398	304,928	341,750	330,178	323,892	327,041	415,939	260,380	273,826	304,210	286,676	291,873	3,750,091
Pawn shops	25,649	28,138	28,138	27,751	27,988	28,111	28,100	40,701	27,881	27,156	29,013	28,177	30,364	347,727
Gift shops	4,788,006	5,819,554	5,417,698	5,460,893	5,640,771	6,026,975	7,042,007	13,299,628	4,938,619	6,099,934	7,237,180	5,301,180	5,624,042	67,908,481
Secondhand shops	73,558	71,929	77,639	76,229	78,822	80,614	75,281	95,126	69,261	70,066	80,378	77,456	79,192	931,993
Luggage & leather goods	145,617	159,918	170,609	179,732	154,063	158,218	183,014	276,494	134,082	114,031	137,410	126,280	137,387	1,931,238
Pet shops	3,197,372	3,149,616	3,253,128	3,358,495	3,253,931	3,391,871	3,275,100	3,698,419	3,228,703	3,063,687	3,326,264	3,448,716	3,363,687	39,913,454
Religious goods	6,943	6,419	7,656	8,624	6,836	8,651	7,960	8,239	6,049	6,872	7,614	7,310	7,657	89,887
Direct sales	6,243,881	6,102,503	6,077,428	5,317,033	4,553,118	5,785,541	5,421,863	5,964,422	5,647,008	5,392,182	6,224,567	5,664,938	5,657,555	67,808,158
Miscellaneous & speciality shops	3,796,870	3,810,493	4,011,948	3,974,965	4,066,803	4,363,372	4,542,648	5,437,776	4,241,242	4,067,173	4,523,655	4,293,472	4,488,558	51,822,103
Other retail	61,274,481	64,415,642	65,246,934	61,770,624	64,011,502	65,837,431	66,281,838	100,811,679	59,154,944	59,750,347	70,100,940	63,458,949	64,611,378	805,452,208
Automotive Fuels	69,312,087	68,898,586	70,761,627	66,861,871	69,266,911	69,582,977	66,052,325	67,044,683	61,562,523	59,997,064	70,278,065	67,601,472	69,862,478	807,770,582
Total retail sales	535,571,140	545,349,282	551,487,300	516,898,635	540,507,988	555,611,607	543,635,401	656,438,800						

Table 3C Card expenditure statistics (not seasonally adjusted)

Number of debit card transactions

Detailed sector breakdown - services sectors (not seasonally adjusted)

	May 2014	June 2014	July 2014	August 2014	September 2014	October 2014	November 2014	December 2014	January 2015	February 2015	March 2015	April 2015	May 2015	Total (latest 12 months)
Auto rental	549,962	511,189	574,744	550,032	527,332	465,783	417,682	419,694	415,138	435,517	508,375	504,159	520,305	5,849,950
Auto parts & accessories	1,664,747	1,651,354	1,730,875	1,588,748	1,648,160	1,647,237	1,514,437	1,531,135	1,579,170	1,587,489	1,799,368	1,726,608	1,670,335	19,674,916
Auto services	4,782,190	4,782,825	5,024,773	4,789,594	5,128,547	5,616,648	5,320,118	5,964,368	5,149,588	5,275,222	6,077,942	5,785,540	5,959,723	64,874,888
Auto repair shops	1,826,776	1,812,948	1,905,695	1,720,330	1,848,396	1,856,634	1,663,458	1,542,237	1,746,028	1,753,918	2,091,164	1,906,238	1,845,764	21,692,810
Service stations	0	0	0	0	0	0	0	0	0	0	0	0	0	0
Vehicle sales	1,273,343	1,278,210	1,324,569	1,219,825	1,311,194	1,205,260	1,049,459	962,902	1,105,714	1,155,848	1,465,026	1,341,802	1,304,184	14,723,993
<i>Vehicle Sales & Services</i>	<i>10,097,018</i>	<i>10,036,526</i>	<i>10,560,656</i>	<i>9,868,529</i>	<i>10,463,629</i>	<i>10,791,562</i>	<i>9,965,154</i>	<i>10,420,336</i>	<i>9,995,638</i>	<i>10,207,994</i>	<i>11,941,875</i>	<i>11,264,347</i>	<i>11,300,311</i>	<i>126,816,557</i>
Restaurants	75,353,755	74,151,715	74,812,624	76,083,571	77,606,102	83,012,359	80,466,764	85,666,613	75,513,198	79,664,306	93,301,821	89,126,203	96,326,473	985,731,749
Public houses	11,638,217	11,714,961	11,670,551	11,574,428	12,055,485	11,585,025	11,036,808	12,468,354	10,212,995	11,320,877	14,036,214	14,008,762	14,443,267	146,127,727
Catering services	2,082,031	2,037,476	2,120,335	1,926,216	2,314,161	2,685,659	2,604,738	2,410,320	2,482,732	2,700,295	3,140,375	2,765,605	2,917,602	30,105,514
Video stores	122,626	73,760	46,928	47,199	47,551	47,409	47,156	54,618	47,551	66,512	59,067	56,885	50,226	648,662
Cinema, theatre & dance	5,160,770	4,562,126	4,873,241	6,209,387	4,311,896	5,733,618	5,717,666	6,642,095	5,765,654	6,036,490	5,141,929	6,197,420	5,484,048	66,675,570
Concerts & entertainers	350,049	289,210	310,695	386,039	159,919	402,515	426,241	449,456	401,611	386,719	390,877	383,943	440,598	4,427,823
Tourist attractions	1,095,886	1,070,116	1,310,357	1,898,813	1,140,476	1,143,805	709,782	722,334	529,358	793,013	1,469,334	1,322,352	1,322,352	13,021,298
Amusement parks	300,739	328,108	380,112	549,455	343,091	327,845	168,492	111,778	96,927	169,731	194,669	404,226	389,695	3,464,129
Aquariums & games establishments	130,993	117,848	169,069	263,153	188,208	131,313	77,930	66,836	67,071	119,314	135,747	225,420	188,315	1,750,224
Professional sports clubs	267,310	212,593	255,782	272,466	276,756	252,951	249,731	257,602	220,085	209,543	253,113	244,215	260,980	2,965,817
Gambling	21,977,161	25,177,786	21,403,614	20,966,584	23,757,889	25,015,915	22,386,666	26,904,005	24,367,306	24,986,052	31,782,416	30,031,781	25,919,090	302,699,104
Personal services	493,431	467,809	434,254	440,977	419,980	419,980	387,487	443,673	407,952	426,432	498,436	498,436	513,571	5,435,660
Miscellaneous entertainment	964,995	863,771	1,008,098	1,487,587	1,042,320	1,109,222	804,167	736,564	896,675	1,035,854	1,057,060	1,182,248	1,181,586	12,405,152
<i>Entertainment</i>	<i>123,798,082</i>	<i>124,515,377</i>	<i>122,504,560</i>	<i>125,969,929</i>	<i>127,598,796</i>	<i>136,054,818</i>	<i>128,720,225</i>	<i>140,901,319</i>	<i>125,402,564</i>	<i>131,935,001</i>	<i>155,436,068</i>	<i>150,947,185</i>	<i>154,241,041</i>	<i>1,624,226,883</i>
<i>Hotels</i>	<i>5,370,721</i>	<i>5,323,968</i>	<i>5,656,517</i>	<i>5,918,404</i>	<i>5,636,711</i>	<i>5,372,816</i>	<i>5,003,321</i>	<i>5,100,211</i>	<i>4,996,340</i>	<i>5,334,147</i>	<i>6,102,734</i>	<i>6,109,018</i>	<i>6,465,881</i>	<i>67,020,068</i>
Airlines	2,413,628	2,359,612	2,338,339	2,212,456	2,300,499	2,191,324	1,808,807	1,733,290	2,597,137	2,229,139	2,575,035	2,714,159	2,513,816	27,573,613
Airport terminals	59,982	62,610	67,866	62,026	61,780	49,536	34,089	36,909	37,697	40,595	53,123	57,287	61,154	624,672
Railways	17,649,599	18,153,909	18,624,503	16,897,538	19,071,062	19,683,575	18,030,141	18,720,621	16,158,919	16,426,762	18,725,686	16,820,810	16,977,623	214,291,149
Buses	1,690,265	1,445,150	1,409,130	1,420,738	1,575,275	1,652,047	1,597,815	1,620,129	1,550,812	1,544,190	1,762,211	1,663,914	1,742,101	18,983,512
Sea travel	202,021	212,603	245,475	265,161	202,165	178,354	138,973	137,089	135,741	140,035	170,824	193,194	205,042	2,224,656
Travel agents	2,022,688	1,913,555	1,991,170	1,823,068	1,712,893	1,523,683	1,256,721	1,166,905	2,207,727	1,981,591	2,293,524	2,032,676	2,076,818	21,980,331
Timeshares	4,568	4,116	4,727	4,618	4,618	4,815	4,101	4,173	6,764	5,160	5,164	4,479	4,420	57,155
Camping grounds	869,732	832,691	1,060,812	1,234,581	713,371	549,421	276,998	184,658	338,870	405,562	625,477	939,408	995,372	8,157,221
Miscellaneous travel	2,659,811	2,653,896	2,977,895	2,452,435	2,778,684	4,202,302	4,819,112	5,378,322	5,847,702	6,151,282	7,381,431	7,543,370	8,586,119	60,772,550
<i>Travel</i>	<i>27,572,294</i>	<i>27,638,142</i>	<i>28,719,917</i>	<i>26,372,621</i>	<i>28,420,347</i>	<i>30,035,057</i>	<i>27,966,757</i>	<i>28,982,096</i>	<i>28,881,369</i>	<i>28,924,316</i>	<i>33,592,475</i>	<i>31,969,297</i>	<i>33,162,465</i>	<i>354,664,859</i>
Telegraph services / Wire transfer money order	149,461	161,069	166,937	150,752	138,538	117,353	115,836	137,847	123,634	137,039	170,178	165,131	168,223	1,752,537
Insurance services	3,489,126	3,472,583	3,819,792	3,555,294	3,702,712	3,498,704	3,014,661	2,791,703	3,151,406	3,125,203	3,792,354	3,505,864	3,501,537	40,931,813
FIs - cash disbursements (auto & manual)	15,064	16,704	17,619	16,757	15,732	9,845	6,691	10,653	9,317	14,122	20,489	19,431	24,812	182,172
FIs - merchandise & services	8,298,816	7,920,829	8,372,814	7,928,399	9,157,384	8,393,281	7,900,393	8,534,787	8,283,497	7,596,859	9,027,795	8,112,134	8,420,164	99,648,336
Non-FIs - foreign currency, travellers' cheques	979,657	1,069,739	1,159,503	1,099,653	1,062,344	820,268	648,508	711,740	700,129	813,266	973,361	892,426	1,047,459	10,998,396
Security brokers and dealers	190,061	189,563	166,978	132,593	189,286	246,706	212,362	215,529	235,318	218,662	299,692	307,203	272,720	2,686,612
Tax preparation services	535	547	572	444	461	499	429	428	686	496	596	517	514	6,189
Tax payments	103,547	100,755	118,401	93,669	116,092	116,892	106,133	106,197	531,551	428,990	256,706	207,366	187,960	2,370,012
Fines, bail and bond payments	620,225	568,918	625,940	607,070	584,590	641,353	612,274	566,958	594,854	553,770	625,302	596,625	636,182	7,213,936
Miscellaneous financial	190,284	201,342	213,408	186,729	191,331	182,181	157,462	144,289	135,140	143,363	178,191	195,166	189,371	2,117,973
<i>Financial</i>	<i>14,036,776</i>	<i>13,702,049</i>	<i>14,661,964</i>	<i>13,771,360</i>	<i>15,158,470</i>	<i>14,027,082</i>	<i>12,774,749</i>	<i>13,220,131</i>	<i>13,765,532</i>	<i>13,031,070</i>	<i>15,344,664</i>	<i>14,001,863</i>	<i>14,448,942</i>	<i>167,907,876</i>

Table 3C Card expenditure statistics (not seasonally adjusted)

Number of debit card transactions

Detailed sector breakdown - services sectors (continued, not seasonally adjusted)

	May 2014	June 2014	July 2014	August 2014	September 2014	October 2014	November 2014	December 2014	January 2015	February 2015	March 2015	April 2015	May 2015	Total (latest 12 months)
Telecoms	10,568,277	10,234,126	10,954,341	11,160,569	11,681,094	11,780,321	11,357,039	12,148,809	11,629,789	10,521,102	12,061,068	11,344,105	11,787,477	136,659,840
Utilities	2,242,881	2,094,752	2,218,965	2,083,432	2,276,869	2,418,817	2,256,634	2,480,211	2,678,632	2,503,474	2,929,327	2,683,438	2,661,963	29,286,514
Contractors (residential & commercial)	552,315	557,606	597,324	537,421	612,459	670,798	607,875	562,070	547,242	562,943	625,142	601,716	571,993	7,054,589
Gardening services	164,171	147,617	124,445	101,252	106,560	108,344	103,975	140,570	73,969	82,354	101,250	130,078	101,250	1,347,948
Veterinary services	1,765,182	1,780,466	1,972,413	1,895,053	1,889,163	1,976,059	1,772,689	1,770,760	1,728,084	1,629,990	1,838,503	1,785,682	1,788,915	21,827,777
Photocopying & printing	416,979	391,360	384,199	356,661	423,670	460,159	535,658	604,398	382,083	378,879	431,481	393,955	406,379	5,148,882
Photographic studios	410,768	456,473	486,044	417,460	431,366	499,858	525,261	802,062	391,799	382,983	474,816	382,983	532,067	5,874,013
Beauty & barber shops	5,453,333	5,415,809	5,558,664	5,192,212	5,359,335	5,350,502	5,043,651	6,888,108	4,676,643	4,882,139	5,715,413	5,472,792	5,727,157	65,282,425
Employment agencies	8,272	7,839	8,624	8,167	9,309	9,837	8,722	7,576	9,349	9,603	10,559	10,285	11,060	110,930
Counselling services	117,156	116,602	120,620	112,894	120,382	119,031	112,483	116,972	115,529	109,490	121,866	108,699	111,077	1,385,645
Legal services	163,938	165,113	176,757	154,063	169,200	179,930	157,112	140,671	159,771	166,971	199,461	178,324	175,966	2,023,339
Laundry & cleaning	499,157	527,325	525,677	470,625	533,467	551,180	509,558	490,742	462,576	447,616	508,569	490,085	517,900	6,035,320
Funeral services	30,400	30,181	31,247	28,577	31,534	33,124	31,118	30,841	35,972	36,609	41,096	36,211	34,246	400,756
Medical services	2,991,261	2,998,904	3,168,462	2,782,265	3,201,493	3,350,986	3,064,660	2,843,216	3,142,691	3,126,229	3,541,876	3,245,954	3,145,439	37,612,175
Moving & courier services	423,765	432,456	464,321	419,260	464,824	489,882	471,148	526,211	456,300	432,367	490,131	468,877	467,002	5,582,779
Repair shops (not auto)	112,291	114,738	121,850	117,390	123,952	129,025	137,812	174,218	130,904	133,830	157,423	143,302	143,073	1,627,517
Accounting services	230,544	238,453	251,010	231,333	251,492	268,775	231,651	148,594	85,389	70,902	77,791	66,970	67,570	1,989,930
Advertising, consultancy & PR	144,042	144,159	146,581	135,994	145,241	139,561	121,593	110,063	118,681	126,766	146,433	135,850	132,567	1,603,489
Computer programming	646,474	646,270	659,134	648,013	710,741	704,088	617,304	647,842	581,606	577,952	650,516	611,957	594,342	7,649,765
Farming services	308,659	308,219	298,794	291,132	304,078	307,918	299,254	353,148	298,450	284,838	327,520	320,119	321,262	3,714,732
Miscellaneous professional services	2,974,072	2,886,103	3,022,385	2,820,286	3,024,682	3,302,529	3,116,047	3,116,230	3,072,918	3,029,574	3,449,516	3,195,333	3,274,461	37,310,064
Engineering services	85,827	87,726	91,992	78,890	89,283	95,013	84,044	73,788	75,792	80,033	93,421	89,097	85,190	1,024,269
Marina services	121,866	134,123	153,718	151,192	121,387	88,976	70,120	67,115	61,850	66,513	93,265	129,079	130,914	1,268,252
Wrecking & salvage yards	8,714	8,969	9,492	8,602	9,589	9,785	8,336	7,434	8,971	9,545	11,473	11,160	10,626	113,982
Pest control	4,785	5,062	5,572	4,721	5,099	6,177	5,122	4,473	5,011	4,335	5,182	5,182	5,101	60,533
Educational establishments	2,856,070	2,340,428	1,715,559	1,208,582	3,049,501	3,816,832	3,621,829	2,609,438	3,498,325	3,310,473	3,922,400	2,874,351	3,391,465	35,359,183
Child care services	161,807	135,841	139,486	175,820	152,359	181,283	152,913	147,403	182,927	199,403	197,995	168,684	187,270	2,021,384
Social, political & religious organisations	3,186,590	3,095,769	3,145,597	2,955,636	3,363,071	3,328,228	2,942,952	2,857,263	2,450,511	2,612,807	3,517,201	3,549,280	3,682,958	37,501,273
Government services	7,983,161	7,860,442	8,181,059	7,779,389	8,095,263	8,462,613	7,343,485	7,193,867	8,325,906	7,818,717	8,815,378	8,775,760	8,625,085	97,276,964
Miscellaneous services	6,321,630	6,407,045	6,607,017	5,816,837	6,422,663	6,240,787	5,851,109	8,560,998	5,740,889	5,561,665	6,704,839	6,300,525	5,872,798	76,087,172
Commercial equipment	1,624,712	1,546,616	1,562,688	1,516,204	1,869,529	1,799,133	1,642,893	1,776,722	1,622,563	1,505,282	1,664,690	1,538,269	1,560,960	19,605,549
Other services	52,579,099	51,316,592	52,904,037	49,659,932	55,048,655	56,879,551	52,804,047	57,401,813	52,750,789	50,665,384	58,925,430	55,336,399	56,154,361	649,846,990
Total services	233,453,990	232,532,654	235,007,651	231,560,775	242,326,608	253,160,886	237,234,253	256,025,906	235,792,232	240,097,912	281,343,246	269,628,109	275,773,001	2,990,483,233
TOTAL	769,025,130	777,881,936	786,494,951	748,459,410	782,834,596	808,772,493	780,869,654	912,464,706	734,441,230	728,079,039	855,665,211	816,977,898	834,600,660	9,567,541,784

Table 3D Card expenditure statistics (not seasonally adjusted)

Value of debit card transactions

Detailed sector breakdown - retail sectors (not seasonally adjusted)

Historical data located in hidden columns

£	May 2014	June 2014	July 2014	August 2014	September 2014	October 2014	November 2014	December 2014	January 2015	February 2015	March 2015	April 2015	May 2015	Total (latest 12 months)
Supermarkets	6,652,810,297	6,748,597,784	6,616,484,371	6,304,309,023	6,630,783,495	6,692,161,190	6,580,476,684	8,039,775,018	5,990,089,745	5,814,712,649	6,839,213,902	6,391,174,148	6,504,091,575	79,151,869,584
Bakers & dairies	18,069,213	17,947,250	19,473,384	19,893,601	20,096,804	22,196,770	22,135,962	24,360,695	19,459,633	20,037,553	23,996,915	23,085,621	25,136,291	257,820,479
Sweet stores	13,133,239	13,980,446	13,769,757	14,194,693	14,208,186	15,889,329	19,038,530	35,662,834	11,301,323	14,774,015	20,038,115	17,721,712	14,591,525	205,170,465
Miscellaneous foodstores	301,074,468	303,879,690	306,501,427	291,734,971	304,222,495	307,472,191	295,039,398	374,946,070	282,673,215	284,513,667	326,940,090	317,175,118	319,158,341	3,714,256,673
Off-licences	83,060,746	84,188,869	86,659,170	83,061,343	80,600,097	82,382,139	84,936,269	122,179,270	70,538,706	72,358,454	83,007,928	84,069,874	89,031,304	1,023,013,423
Food & drink	7,068,147,963	7,168,594,038	7,042,888,109	6,713,193,631	7,049,911,077	7,120,101,619	7,001,626,843	8,596,923,887	6,374,062,622	6,206,396,338	7,293,196,590	6,833,226,473	6,952,009,036	84,352,130,624
Department stores	480,297,475	510,910,010	507,627,697	469,331,801	480,721,355	513,042,310	643,377,504	1,060,237,689	477,980,154	412,641,930	499,298,009	485,490,447	504,142,591	6,564,801,497
Discount stores	387,677,059	386,283,193	387,274,661	394,399,831	401,300,564	443,055,148	541,363,563	709,579,959	375,150,216	360,722,893	412,120,960	398,538,877	418,664,167	5,228,454,032
Catalogues	133,970,324	126,033,518	127,431,829	121,752,832	138,291,950	139,486,035	134,517,646	153,010,234	142,003,227	125,344,338	146,829,077	134,245,427	129,039,221	1,617,985,334
Miscellaneous mixed	242,037,789	255,600,185	250,113,715	237,247,756	262,798,747	282,677,924	308,195,612	454,734,523	197,323,326	205,296,026	258,621,848	251,688,129	251,063,699	3,215,361,490
Mixed business	1,243,982,647	1,278,826,906	1,272,447,902	1,222,732,220	1,283,112,616	1,378,261,417	1,627,454,325	2,377,562,405	1,192,456,923	1,104,005,187	1,316,869,894	1,269,962,880	1,302,909,678	16,626,602,353
Men's clothing	43,541,157	48,523,430	48,915,921	46,146,864	42,473,258	44,918,112	47,526,211	79,747,548	41,370,051	35,036,085	41,071,944	43,799,938	48,574,844	568,104,206
Women's clothing	250,576,095	269,021,588	268,099,398	225,613,476	243,336,002	247,990,473	245,230,260	373,295,049	204,462,181	196,538,907	244,619,953	251,670,358	254,834,419	3,024,712,064
Family clothing	937,902,853	974,784,978	973,117,127	892,706,958	937,042,842	1,007,830,372	1,033,400,170	1,568,372,019	1,033,400,170	1,568,372,019	749,464,232	935,328,338	945,830,565	11,650,342,885
Miscellaneous clothing	31,237,327	37,352,187	35,811,964	33,257,447	31,969,488	35,797,383	33,913,508	43,693,859	25,345,273	24,034,891	30,883,448	30,552,534	33,529,739	396,141,721
Shoe shops	126,349,831	136,896,197	132,702,001	150,545,117	140,535,067	141,945,771	132,089,058	196,767,051	114,349,674	91,594,480	111,479,643	136,474,347	126,940,253	1,611,318,659
Clothing	1,389,607,263	1,466,578,380	1,458,646,411	1,348,269,862	1,395,356,657	1,478,482,111	1,492,159,207	2,261,875,526	1,134,991,411	1,067,785,564	1,340,379,071	1,396,835,515	1,409,259,820	17,250,919,535
Furniture stores	357,323,975	349,569,585	367,500,727	369,486,498	393,652,362	440,568,399	417,952,825	397,566,575	412,947,887	363,970,696	412,549,965	385,323,560	396,876,948	4,707,966,027
Household appliance stores	230,386,586	221,407,689	224,364,036	219,771,247	224,840,589	245,607,089	255,440,198	284,497,125	240,578,161	229,105,704	258,931,450	238,154,310	239,927,173	2,882,624,771
Electronic stores	218,768,428	220,602,993	224,836,749	236,421,237	268,255,114	268,689,725	278,625,353	464,014,124	278,258,074	221,975,970	244,917,576	236,447,861	225,717,253	3,168,762,029
DIY stores	1,010,656,618	979,528,752	1,031,544,947	980,140,455	996,702,073	1,067,359,815	994,261,864	899,268,819	978,787,651	858,155,388	1,002,487,032	1,109,727,912	1,113,531,785	11,890,496,493
Floor covering stores	84,849,034	85,738,505	91,482,088	90,726,180	97,593,433	109,257,685	109,374,675	85,502,856	84,047,108	83,867,691	98,017,667	93,686,909	95,430,346	1,124,725,143
Garden centres	189,205,663	159,716,545	126,777,265	102,889,415	106,940,105	105,087,722	110,782,721	153,861,418	65,835,806	76,989,886	143,753,493	197,168,350	126,947,716	1,556,770,442
Miscellaneous household	110,085,573	111,069,960	120,396,502	129,260,931	141,892,080	144,206,545	130,404,872	136,651,236	126,811,804	118,304,805	135,714,103	126,781,340	123,872,645	1,545,366,803
Household	2,201,276,177	2,127,634,029	2,186,902,314	2,128,695,963	2,229,875,736	2,380,776,980	2,296,842,508	2,421,362,153	2,066,266,491	1,952,370,140	2,296,371,286	2,387,310,242	2,402,303,866	26,876,711,708
Books, newspapers & magazines	98,733,512	98,712,930	102,893,738	102,255,614	116,749,348	119,489,891	115,711,992	192,971,153	97,413,348	93,639,063	107,688,857	98,021,844	98,975,711	1,344,523,489
Record shops	14,395,033	15,634,678	13,806,146	14,071,558	15,520,758	16,513,839	21,259,567	61,784,896	13,924,111	13,643,764	16,576,087	14,322,811	13,168,954	230,227,168
Music shops	17,976,622	17,203,986	18,260,047	18,301,927	21,098,741	21,590,349	21,798,329	30,890,925	20,876,720	18,834,109	20,508,564	19,119,575	18,409,500	246,892,767
Hobbies, toys & games	59,841,716	58,932,787	58,776,791	59,917,442	92,986,146	94,927,307	141,747,871	228,492,325	60,280,109	57,614,373	66,206,892	60,095,576	61,467,342	1,041,444,961
Photographic	19,849,823	20,162,768	22,528,377	19,986,682	20,251,667	19,922,366	21,093,080	24,553,378	17,474,622	17,032,322	20,968,185	17,760,515	18,466,013	240,199,975
Handicraft	11,343,400	10,923,684	11,746,712	11,388,770	11,994,617	13,092,120	12,578,846	11,171,090	10,700,228	11,613,745	11,679,749	11,613,745	11,798,463	141,848,604
Sports shops	361,068,793	371,087,151	394,543,189	400,133,320	360,717,898	337,327,538	335,970,945	487,012,343	301,275,912	285,376,313	342,772,910	374,990,002	386,848,314	4,378,055,835
Jewellers	143,482,480	150,212,803	154,319,981	148,093,227	146,327,346	143,807,164	177,130,493	377,219,925	129,694,868	142,961,126	158,065,781	137,884,967	146,908,397	2,012,626,078
Computer software	47,739,930	44,752,573	47,802,978	46,151,699	53,669,724	53,987,138	51,950,877	66,548,726	49,895,212	42,446,028	46,034,682	42,370,952	39,648,628	585,259,217
Medical goods	10,135,740	10,452,386	11,294,904	10,528,439	10,847,140	11,733,798	11,050,583	9,858,886	8,986,372	10,329,584	12,264,925	11,446,994	11,011,744	129,805,759
Chemists	275,957,374	293,135,480	293,274,059	260,341,897	286,903,593	304,205,465	303,998,413	560,830,040	252,878,013	252,774,754	314,208,755	281,598,388	289,388,305	3,693,537,162
Optical goods	101,668,505	104,968,696	107,993,565	97,809,054	103,600,803	102,043,233	92,298,670	81,131,619	110,635,599	119,016,097	108,733,185	105,531,585	105,531,585	1,219,772,589
Cosmetic stores	47,054,419	50,664,452	49,261,372	47,669,769	53,055,632	56,998,070	56,998,070	139,510,694	42,269,697	46,438,479	55,905,179	49,789,784	53,294,452	712,574,308
Tobacconists	5,797,374	6,338,126	6,369,095	6,126,875	6,556,525	6,836,343	6,506,859	8,531,233	7,822,917	7,669,417	8,855,909	8,741,407	9,119,205	89,473,911
Florists	36,254,304	35,628,665	36,268,562	32,239,486	35,433,986	33,810,136	31,327,717	48,310,633	28,891,308	44,822,824	56,712,916	36,455,668	37,740,382	457,642,283
Artists' supplies	21,352,395	20,642,620	21,499,559	21,602,349	23,118,488	26,014,326	27,284,523	31,755,707	20,008,421	21,247,200	25,105,181	20,916,679	21,220,530	280,415,583
Antiques, art & stamps/coins	32,883,211	32,963,957	31,373,676	28,906,533	36,527,801	36,192,119	35,480,923	40,886,051	27,232,685	28,246,433	33,870,836	31,942,380	32,375,951	395,999,345
Pawn shops	4,914,570	4,842,238	5,678,865	5,303,250	5,419,437	5,363,839	4,724,551	6,129,393	5,707,459	5,268,272	5,584,353	6,102,743	6,819,932	66,944,332
Gift shops	97,553,888	106,983,957	109,294,736	112,105,841	114,158,010	128,540,591	157,641,501	257,138,344	96,593,517	104,890,959	124,512,349	101,709,204	106,160,713	1,519,729,722
Secondhand shops	4,692,695	5,332,302	5,552,938	4,820,151	5,969,098	5,678,765	4,980,532	6,206,701	4,330,167	5,237,356	5,099,767	5,406,529	5,157,941	63,772,247
Luggage & leather goods	12,038,584	13,787,530	13,072,160	13,121,861	12,265,334	12,950,299	14,300,238	24,556,527	11,223,453	9,700,992	12,280,267	11,409,740	12,446,073	161,113,574
Pet shops	92,317,782	90,775,804	94,116,162	97,315,866	94,955,471	98,577,323	98,488,368	107,345,496	94,488,098	97,171,543	92,506,908	97,171,543	99,692,437	1,154,255,424
Religious goods	214,988	184,693	212,533	239,464	216,161	303,125	212,904	226,295	166,995	201,946	211,479			

Table 3D Card expenditure statistics (not seasonally adjusted)

Value of debit card transactions

Detailed sector breakdown - services sectors (not seasonally adjusted)

£	May 2014	June 2014	July 2014	August 2014	September 2014	October 2014	November 2014	December 2014	January 2015	February 2015	March 2015	April 2015	May 2015	Total (latest 12 months)
Auto rental	64,821,596	66,288,166	74,971,849	67,081,827	65,532,164	55,395,168	48,661,204	49,699,485	47,539,657	50,489,134	62,745,751	60,698,898	65,977,704	715,081,007
Auto parts & accessories	220,707,704	218,893,612	227,663,319	204,229,304	232,766,900	219,335,005	196,004,291	187,060,828	203,322,630	205,360,514	256,466,585	233,066,161	227,027,020	2,611,196,169
Auto services	64,890,099	66,196,741	71,115,114	65,569,794	69,737,493	69,101,977	61,948,712	66,873,961	61,617,208	62,485,603	73,587,903	70,238,155	71,908,885	810,381,546
Auto repair shops	633,467,904	618,728,806	636,566,658	578,144,895	703,472,885	619,233,246	558,461,002	490,882,922	586,011,588	681,766,599	803,659,828	666,348,634	655,752,602	7,498,969,665
Service stations	0	0	0	0	0	0	0	0	0	0	0	0	0	0
Vehicle sales	1,493,609,596	1,499,441,292	1,498,172,686	1,353,316,581	1,735,273,345	1,481,706,420	1,287,284,185	1,146,720,831	1,366,172,541	1,415,029,550	2,022,594,837	1,720,373,636	1,650,470,146	18,176,556,050
Vehicle Sales & Services	2,477,496,899	2,469,548,617	2,508,489,626	2,268,342,401	2,806,782,787	2,444,771,816	2,152,359,394	1,941,238,027	2,264,663,624	2,315,071,450	3,219,054,904	2,750,725,484	2,671,136,357	29,812,184,437
Restaurants	1,246,947,563	1,226,899,881	1,243,231,661	1,328,162,128	1,271,326,590	1,312,684,984	1,278,909,658	1,455,887,749	1,192,365,978	1,261,791,326	1,475,490,653	1,418,626,703	1,526,145,065	15,991,522,376
Public houses	279,112,862	280,170,331	282,650,615	289,021,678	292,426,611	275,200,958	262,425,896	319,016,226	241,513,447	261,342,951	324,495,542	321,172,997	330,034,807	3,479,472,059
Catering services	82,066,700	80,809,742	89,314,170	84,296,931	87,706,236	85,281,220	81,757,322	88,912,799	69,913,404	73,922,241	84,508,934	85,425,900	90,225,329	1,002,074,228
Video stores	1,224,019	1,063,510	917,855	986,706	917,855	986,737	1,010,395	1,076,663	860,416	960,877	986,761	1,007,709	958,070	11,771,541
Cinema, theatre & dance	176,395,866	152,686,128	157,174,625	159,720,024	137,511,059	208,138,857	215,379,025	222,698,361	155,736,770	169,598,856	180,383,316	198,027,065	168,006,632	2,125,060,718
Concerts & entertainers	12,260,026	10,011,317	10,949,394	12,885,230	4,925,100	13,545,647	15,108,897	14,529,879	12,450,448	11,978,408	12,922,553	12,325,584	14,362,540	145,994,997
Tourist attractions	39,729,123	39,076,168	48,081,461	65,029,507	38,753,336	42,316,752	26,200,395	21,482,753	28,708,368	34,323,855	51,215,656	46,375,987	46,970,531	469,704,531
Amusement parks	9,523,261	10,274,678	12,641,134	18,545,932	10,433,685	9,660,972	4,806,216	3,174,442	2,906,274	4,626,200	5,715,839	12,551,440	11,810,551	107,147,363
Aquariums	4,183,897	3,682,861	5,841,407	9,277,737	6,349,185	4,315,696	2,677,069	2,442,354	2,201,013	3,785,262	4,468,267	7,898,043	6,547,231	59,486,125
Sports & games establishments	147,793,822	119,435,454	123,173,506	119,981,405	126,144,803	123,576,992	113,803,071	124,378,192	132,508,537	123,517,325	162,304,680	157,453,608	196,447,181	1,622,724,754
Professional sports clubs	24,545,785	16,335,099	16,491,496	13,329,765	13,518,411	14,439,405	13,095,286	11,809,711	12,644,536	12,011,429	14,157,280	15,881,779	17,897,121	171,611,318
Gambling	328,060,891	372,383,624	292,376,392	349,767,329	377,455,605	410,046,397	323,495,037	410,154,188	375,986,466	399,963,617	492,599,747	450,694,935	366,875,338	4,621,798,675
Personal services	19,627,318	19,016,346	19,365,162	17,885,782	19,000,638	18,903,100	17,181,752	19,956,277	18,155,145	21,777,918	18,891,031	20,049,648	229,244,270	229,244,270
Miscellaneous entertainment	37,211,029	34,284,335	39,748,160	53,371,695	40,234,595	42,776,080	36,839,678	26,407,911	27,680,604	32,180,332	39,260,858	43,518,759	41,957,775	458,280,782
Entertainment	2,408,682,162	2,366,129,474	2,342,025,889	2,522,192,998	2,426,741,696	2,561,873,797	2,392,689,697	2,728,585,045	2,266,312,117	2,402,542,337	2,853,416,203	2,795,691,209	2,837,693,275	30,495,893,737
Hotels	485,964,788	493,959,484	527,720,910	547,835,404	550,592,362	487,170,287	413,724,093	405,241,691	453,892,961	433,372,171	496,297,673	521,886,257	548,562,044	5,880,255,337
Airlines	509,960,880	485,813,004	484,266,636	425,852,626	446,400,416	423,189,577	343,106,746	312,112,640	560,959,507	459,050,438	537,076,995	506,606,502	518,300,540	5,502,735,627
Airport terminals	4,049,415	4,566,287	4,820,462	4,484,532	4,606,026	3,748,527	2,683,374	2,993,304	2,959,017	2,699,505	3,612,128	3,940,177	4,108,338	45,221,677
Railways	395,421,610	405,266,735	424,212,199	375,317,886	446,237,071	452,328,670	412,254,798	424,300,254	407,095,265	386,371,480	438,646,449	396,930,365	391,196,240	4,960,157,412
Buses	43,739,831	38,699,098	40,579,431	40,829,728	49,488,023	41,533,820	36,152,132	35,409,072	38,513,745	35,241,339	41,426,415	42,031,588	41,037,483	480,941,874
Sea travel	51,932,331	50,980,437	50,032,733	46,097,708	42,841,620	49,932,763	34,792,493	34,110,630	43,015,318	47,176,427	54,996,977	56,895,132	57,067,406	567,939,544
Travel agents	1,320,485,662	1,208,442,587	1,179,844,894	972,418,756	876,473,485	808,061,135	699,337,829	654,087,795	1,139,354,145	1,080,501,804	1,312,584,469	1,258,915,334	1,411,560,701	12,601,582,934
Timeshares	627,710	555,153	652,731	613,935	613,935	646,660	559,757	551,643	851,515	661,010	650,897	597,828	573,069	7,528,124
Camping grounds	103,501,848	102,810,190	112,361,605	100,630,639	75,773,969	72,023,310	63,337,640	43,934,115	62,395,820	71,321,872	103,967,811	102,665,143	115,756,169	1,026,978,283
Miscellaneous travel	42,474,136	51,952,383	51,547,899	43,482,710	41,895,407	45,740,284	46,191,582	47,123,298	50,832,496	54,693,237	67,374,882	69,898,178	75,815,265	646,547,621
Travel	2,472,193,423	2,349,085,874	2,348,318,590	2,009,728,520	1,984,329,952	1,897,204,746	1,638,416,351	1,554,622,651	2,305,976,828	2,137,717,112	2,560,337,023	2,438,480,247	2,615,415,202	25,839,633,096
Telegraph services / Wire transfer money order	73,553,216	77,684,375	80,526,113	69,922,113	70,560,044	53,467,673	51,214,066	56,956,256	59,819,955	59,082,888	66,431,796	66,411,805	72,212,905	784,289,989
Insurance services	556,036,083	553,501,085	600,298,680	557,075,817	606,859,314	586,156,060	506,688,463	462,438,680	536,840,808	522,816,916	681,442,564	608,084,938	577,097,469	6,799,300,794
FIs - cash disbursements (auto & manual)	5,706,335	6,277,914	7,151,494	6,757,393	5,790,265	3,616,945	2,165,476	3,620,256	3,327,973	4,838,373	7,310,723	6,856,902	9,101,241	66,814,955
FIs - merchandise & services	2,934,651,837	2,871,828,202	3,125,803,796	2,891,164,681	3,036,697,549	3,122,859,054	2,884,267,085	3,122,861,873	3,002,801,577	2,777,750,274	3,414,682,590	3,296,485,878	3,129,504,912	36,676,707,471
Non-FIs - foreign currency, travellers' cheques	380,787,979	434,646,978	518,471,519	459,319,256	416,723,277	288,294,755	209,408,494	251,074,653	267,363,714	301,359,193	395,054,101	347,869,553	414,621,030	4,304,206,523
Security brokers and dealers	466,282,393	633,397,530	570,309,229	412,570,218	487,160,597	605,374,227	430,175,139	468,760,161	553,342,674	508,253,053	1,044,751,548	1,278,855,967	603,918,408	7,596,868,751
Tax preparation services	173,487	147,262	228,695	138,128	168,987	231,912	124,203	127,347	259,361	207,896	180,222	222,761	2,283,765	2,283,765
Tax payments	110,074,519	97,506,474	154,007,816	121,810,910	118,060,386	109,516,972	103,361,163	109,300,215	1,046,464,817	839,435,134	309,443,927	260,635,872	253,302,688	3,522,846,284
Fines, bail and bond payments	41,603,421	38,710,888	42,651,152	40,640,355	39,151,354	42,238,383	39,174,780	33,993,370	38,245,796	37,102,140	40,415,407	38,084,814	39,755,391	470,163,830
Miscellaneous financial	23,883,341	25,402,971	27,653,531	24,575,730	25,820,703	25,674,879	22,687,580	19,603,229	20,148,334	20,673,459	25,170,004	25,835,798	25,996,150	289,242,368
Financial	4,592,752,611	4,739,103,679	5,127,102,025	4,583,974,601	4,806,992,476	4,837,430,860	4,249,266,449	4,528,736,040	5,528,615,009	5,071,519,326	5,984,949,651	5,929,301,659	5,125,732,955	60,512,724,730

Table 3D Card expenditure statistics (not seasonally adjusted)

Value of debit card transactions

Detailed sector breakdown - services sectors (continued, not seasonally adjusted)

£	May 2014	June 2014	July 2014	August 2014	September 2014	October 2014	November 2014	December 2014	January 2015	February 2015	March 2015	April 2015	May 2015	Total (latest 12 months)
Telecoms	324,927,386	312,423,457	335,582,739	345,064,573	373,816,958	375,046,891	360,082,214	375,493,377	369,835,016	321,330,526	368,502,147	337,905,570	354,385,092	4,229,468,560
Utilities	265,713,318	235,149,021	235,299,285	207,690,828	227,626,940	239,551,873	212,369,276	216,974,563	252,092,768	253,924,700	322,446,019	286,792,309	266,399,257	2,956,316,839
Contractors (residential & commercial)	157,782,176	160,566,710	172,730,229	159,564,891	183,450,785	196,972,622	180,614,814	162,293,188	156,807,460	162,488,240	186,236,607	177,589,447	173,670,266	2,072,985,259
Gardening services	10,584,035	9,855,931	9,100,089	7,244,133	7,759,871	7,483,651	6,312,204	7,381,002	4,936,708	5,818,499	8,533,939	10,350,714	10,139,673	94,916,414
Veterinary services	108,002,537	108,964,596	120,363,732	113,389,470	115,188,613	119,919,434	107,305,108	106,313,469	107,500,912	101,437,825	115,221,907	112,759,200	112,588,070	1,340,952,336
Photocopying & printing	26,170,064	25,190,275	25,717,204	23,164,519	27,478,515	28,460,589	29,016,914	27,521,464	24,389,908	24,006,267	26,953,310	25,288,578	25,062,570	312,250,293
Photographic studios	12,511,334	13,277,635	15,326,826	12,512,733	13,080,529	15,121,850	16,520,271	19,434,252	10,490,226	12,682,986	13,162,216	16,682,986	13,840,591	166,586,595
Beauty & barber shops	216,134,523	211,665,525	220,290,633	204,898,796	214,395,064	215,319,107	206,531,968	272,839,930	184,987,705	195,934,285	228,972,420	219,379,258	229,307,639	2,604,522,330
Employment agencies	1,555,075	1,496,319	1,685,922	1,426,460	1,647,459	1,685,814	1,529,737	1,279,288	1,683,469	1,544,912	1,754,491	1,644,607	1,571,930	18,950,408
Counselling services	6,675,646	6,743,800	6,942,532	6,188,630	6,942,532	7,213,122	6,587,466	6,427,843	6,555,645	6,179,615	6,698,259	6,143,639	6,449,593	78,987,644
Legal services	83,357,438	85,245,602	90,785,309	78,826,069	84,783,030	91,531,378	82,276,630	73,697,655	76,116,977	76,969,273	93,480,024	82,690,279	82,072,821	998,475,047
Laundry & cleaning	13,241,650	13,960,391	14,074,127	12,775,536	14,430,678	14,634,388	13,611,668	12,945,313	12,360,399	11,624,806	13,265,791	13,212,138	13,700,883	160,596,118
Funeral services	37,247,857	37,213,116	39,507,734	36,306,876	40,112,133	44,740,704	42,755,693	40,518,419	50,503,373	51,271,254	58,112,956	49,324,062	45,270,710	535,637,030
Medical services	253,011,239	255,886,686	271,444,138	233,124,916	266,779,969	285,383,184	262,914,250	235,651,682	261,986,746	265,701,712	305,022,227	279,133,804	274,492,077	3,197,521,391
Moving & courier services	35,775,271	37,353,219	41,775,039	37,918,551	40,528,812	40,843,689	37,315,479	37,181,930	33,949,823	32,695,007	37,434,215	36,016,361	36,638,445	449,650,570
Repair shops (not auto)	12,335,673	12,951,467	13,563,637	12,379,503	13,295,981	13,857,900	14,003,752	16,438,515	12,282,343	12,882,393	15,714,800	14,489,090	14,099,838	165,959,219
Accounting services	16,839,756	15,258,865	16,158,579	14,594,121	16,666,250	17,652,067	16,564,730	15,129,283	18,179,082	15,197,504	16,276,184	13,844,431	13,551,148	189,072,244
Advertising, consultancy & PR	11,644,050	11,170,770	11,950,925	10,419,933	11,491,712	11,447,384	10,144,793	9,206,509	10,330,770	10,458,447	11,932,594	11,399,887	11,079,921	131,033,645
Computer programming	34,098,285	33,028,698	34,428,695	32,505,447	35,699,007	36,234,290	33,476,652	32,950,400	32,580,949	30,731,074	34,800,556	33,626,990	32,210,670	402,273,429
Farming services	23,328,942	23,980,569	24,516,812	22,900,501	23,823,928	27,960,379	22,981,478	25,228,523	22,848,846	21,445,357	24,112,807	25,004,522	24,509,087	289,312,809
Miscellaneous professional services	578,096,772	564,713,662	616,267,691	593,164,509	678,230,705	652,090,767	560,057,349	540,308,189	655,020,085	598,321,263	715,700,369	737,066,394	613,622,641	7,524,563,624
Engineering services	19,880,740	19,814,991	20,837,826	17,735,302	21,549,773	21,945,529	19,564,696	16,454,443	17,017,697	18,161,916	21,144,281	19,867,960	19,250,316	233,344,730
Marina services	14,826,188	15,817,872	16,701,794	14,875,025	12,342,579	10,526,136	7,745,180	8,062,195	8,837,949	9,140,116	15,345,747	16,060,841	15,307,890	150,763,324
Wrecking & salvage yards	1,548,401	1,648,932	1,709,767	1,423,477	1,638,009	1,703,623	1,447,320	1,209,782	1,493,479	1,493,117	1,882,800	1,918,903	1,841,473	19,410,682
Pest control	699,392	791,200	861,200	733,996	790,902	1,047,651	922,689	819,255	798,099	751,949	894,304	892,994	853,531	10,157,770
Educational establishments	231,062,807	154,889,110	161,912,462	227,552,457	754,410,684	634,640,046	240,017,096	186,674,300	514,792,793	246,446,504	202,501,563	310,559,917	213,906,446	3,848,303,378
Child care services	14,423,958	14,216,210	15,029,118	13,313,056	14,908,003	15,938,033	13,713,178	13,460,189	15,672,777	14,618,602	16,681,569	15,486,670	14,905,148	177,942,553
Social, political & religious organisations	102,996,926	99,811,089	129,164,122	101,636,396	119,971,684	131,629,901	101,182,423	100,165,842	98,517,887	92,412,022	127,118,375	121,576,553	119,842,123	1,343,028,417
Government services	1,965,921,155	1,929,446,836	2,392,161,584	1,926,816,242	1,905,509,711	1,891,940,201	1,676,017,231	1,734,264,844	6,690,488,709	3,165,510,621	2,814,530,356	2,787,955,705	2,779,768,467	31,694,410,507
Miscellaneous services	526,731,275	636,638,329	671,422,442	536,498,306	602,017,728	582,953,341	509,646,504	571,832,069	586,335,430	505,382,572	624,326,391	574,182,935	504,054,739	6,905,290,786
Commercial equipment	147,474,081	145,510,845	157,655,704	144,923,812	165,907,052	163,343,631	151,173,250	133,798,934	139,802,956	137,893,398	160,962,488	156,434,604	157,275,299	1,814,681,973
Other services	5,254,597,950	5,194,681,728	5,884,967,896	5,151,569,064	5,996,546,186	5,896,193,519	4,944,242,390	5,002,084,449	10,379,498,841	6,402,910,256	6,589,721,712	6,491,281,348	6,181,668,534	74,117,365,923
Total services	17,691,687,833	17,612,508,856	18,738,624,936	17,083,642,988	18,571,985,459	18,126,645,025	15,790,698,374	16,160,507,903	23,198,959,380	18,763,132,602	21,703,777,166	20,927,366,204	19,980,208,367	226,658,057,260
TOTAL	33,635,546,182	33,699,010,209	34,866,219,584	32,468,908,265	34,661,365,548	34,672,191,066	32,323,363,756	37,072,881,595	37,539,493,745	32,591,651,890	38,064,402,190	36,704,329,390	36,035,826,404	420,699,643,642