

Card Expenditure Statistics

March 2015

Card Expenditure Statistics (Seasonally Adjusted) – March 2015

	Total Spending <i>£ billions</i>		Annual growth rates for spending		Number of purchases <i>Millions</i>	
	Mar 2015	Mar 2014	Mar 2015	Mar 2014	Mar 2015	Mar 2014
All payment cards	50.0	47.1	6.9%	8.0%	1,060	979
Debit cards	35.6	33.1	7.6%	8.8%	811	751
Credit cards	14.5	14.0	5.3%	6.0%	249	227

With effect of January 2014 the methodology used for seasonal adjustment - using X12 ARIMA - was changed. Trading days and leap years have been incorporated into the monthly seasonal adjustment process. Unless otherwise stated all data referred to are seasonally adjusted. Unadjusted data are located in tables 3A to 3D. There is a step change in the data between 2010 and 2011 following a change in the reporting population. Average transaction values are based on three-month rolling averages, while growth rates are based on twelve-month rolling periods.

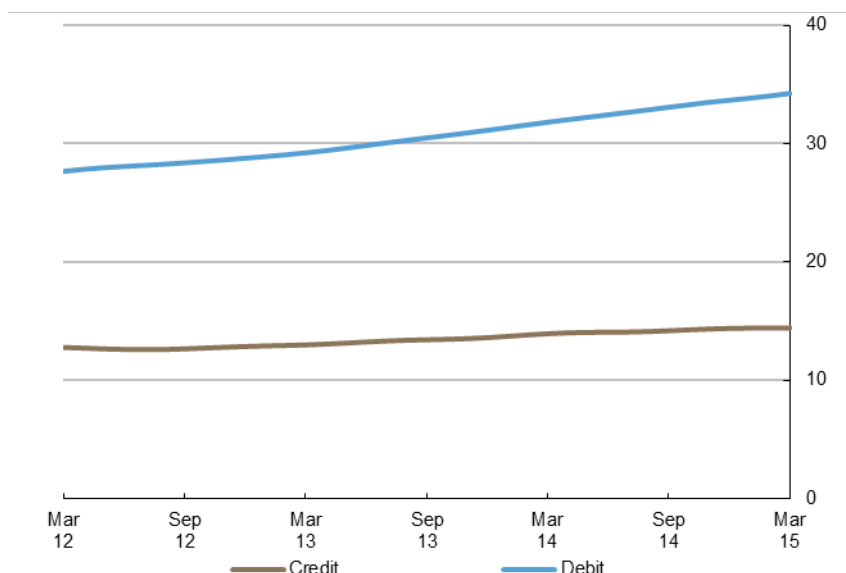
Introduction

The **number of purchases** rose by 6.9 million in March to reach a record monthly total of 1.06 billion. The major contributors to this growth were the ongoing migration of cash payments to cards alongside the expansion in **contactless** and **online** payments. The number of contactless purchases accounted for 4.4% of total card payments and the corresponding proportion for online payments was 11.5%.

Payment card spending also increased in March, up by £406 million on February, reaching a milestone of **£50 billion** value spent within a single month. During the first quarter of the year cardholders made 46 million more purchases and spent £2.4 billion above the level recorded in the last quarter of 2014. The continuous increase in payment card spending has mainly been driven by the improving economy coupled with strong growth in consumer confidence¹, which reached the highest level in 12 years.

Chart 1

Average monthly expenditure
Three-month moving average (£ billions)



¹ Source: GfK's UK Consumer Confidence Index

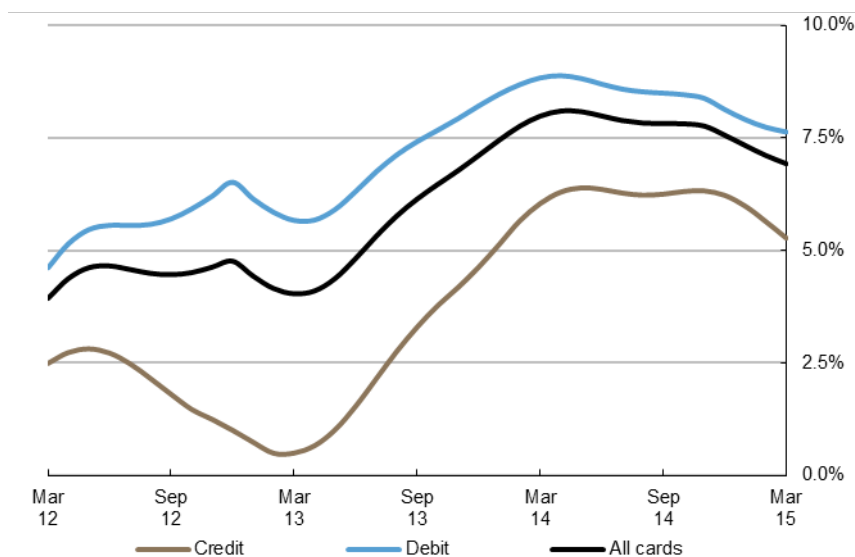
Annual growth rates

Card spending grew at an **annual rate** of 6.9%, down from 7.1% in February. The annual growth rate has declined continuously since peaking at 8.1% in May 2014. This could be linked to the decelerating rate of annual inflation. The Office for National Statistics recently released figures that showed annual **consumer price inflation** stayed unchanged at 0% in the year to March for the second consecutive month², down from 1.6% in the year to March 2014. Inflation remained flat with a fall in clothing and gas prices³ offset by higher motor fuel costs.

The annual growth in the **service** sector continued to exceed that in **retail** sales. Spending within the service sector expanded by 10.3%, almost three times the growth of spending within retail, which increased by 3.6%. Annual growth within the service sector has been particularly strong in entertainment and other services, while in retail sales, mixed business and automotive fuels categories registered negative growth.

Meanwhile, the **growth rate of the number of purchases** continued to outstrip that of amount spent, highlighting a growing consumer preference to use cards more often for lower value payments. This measure grew to 9.6% in March and compares to 8.6% a year ago.

Chart 2
Spending on payment cards
Year-on-year growth rates



² ONS, Consumer Price Inflation, March 2015: <http://www.ons.gov.uk/ons/rel/cpi/consumer-price-indices/march-2015/index.html>

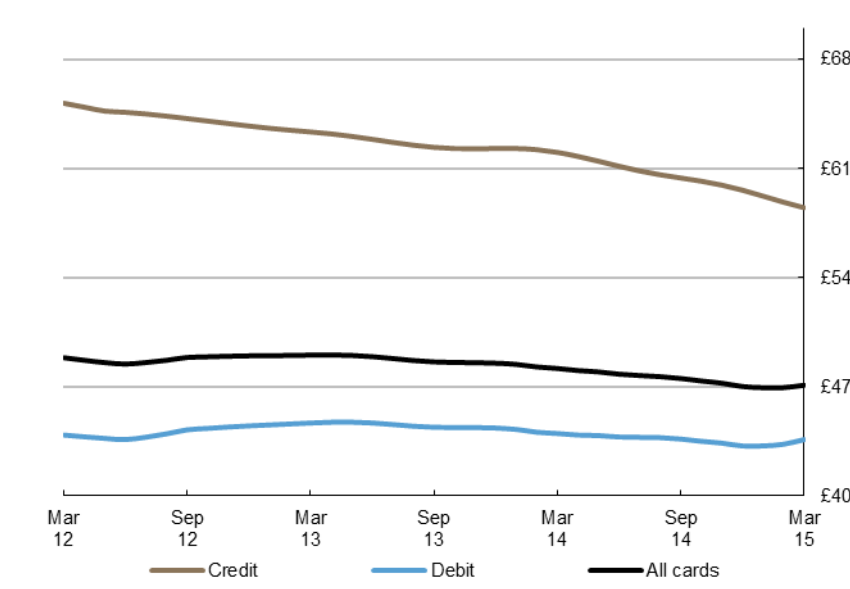
³ 16% Drop In UK Wholesale Gas Prices: <http://www.realwire.com/releases/16-Drop-In-UK-Wholesale-Gas-Prices-In-March-Compared-With-Last-Year>

Average transaction values

The **average transaction value** (ATV) on all payment cards increased for the first time since 2013 and reached £47.10 after growing by 15p. Within the sectors, the ATV in **retail sales** declined slightly by 2p to £32.65, while the ATV for **services** rose by 27p to £77.69. The main contributor to the increase in the average payment value for all cards were security brokers and dealers, which recorded an ATV rise of £1,091.19 during the month offset by a £732.84 decrease in average value spent on tax payments. Meanwhile, the ATV on all payment cards via the **online** channel amounted to £108.75 in March, up from £103.62 in February – more than double the ATV via all channels.

Despite this uptick in March, there has been a consistent trend over the last three years of continuously declining ATVs, mainly driven by the ongoing migration of low value cash payments towards cards alongside the increasing number of **contactless** payments, and a decline in general price inflation.

Chart 3
Average transaction values
Three-month moving average



Spending by sector – retail sales and services

The number of transactions within the **retail sector** increased by 2.9 million to 718 million, with the corresponding spend rising by £57 million to £23.4 billion. The majority of the increase in spending was in the **food & drink** and **household** sub-sectors, reaching £9.0 billion and £3.7 billion respectively, mainly driven by large increases in spending at supermarkets and DIY stores. Spending in the **automotive fuels** category continued to decline after falling by £21 million to £2.5 billion, down from £2.9 billion in March 2014.

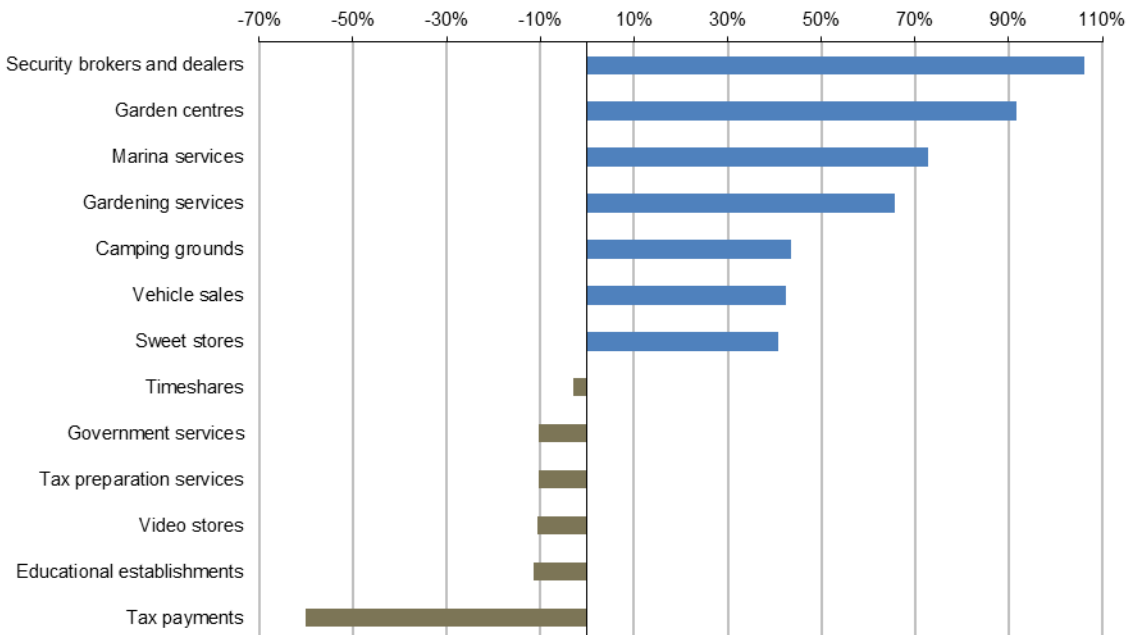
Meanwhile, the number of transactions in the **services sector** grew by 4.0 million to 342 million, corresponding to a rise in spending of £348 million to £26.6 billion. A major contributor of growth was the **other services** sub-sector, which recorded an increase of £189 million to £8.3 billion. The **financial services** category was also a strong contributor to growth after increasing by £104 million to £5.7 billion.

Spending by merchant categories – retail sales and services (not seasonally adjusted)

The largest increase in spending was evident at security brokers and dealers which could be linked to ISA purchases for the financial year 2015/16. The arrival of spring led to considerable growth in spending at garden centres and on gardening services. Merchants offering recreational services such as marina services and camping grounds also recorded strong growth. There was also a notable increase in spending at sweet stores most likely linked to people stocking up for Easter. Meanwhile, only 6 merchant categories registered lower spending in March compared to February with tax payments accounting for the largest fall of 60%. Interestingly, merchants within the financial services sub-sector recorded both the highest increase and decrease between February and March.

Chart 4⁴

Largest changes in total card spending between February and March



⁴ Chart 4 shows relative growth rates. Some listed merchant categories are too small in size to make a material impact on the overall total

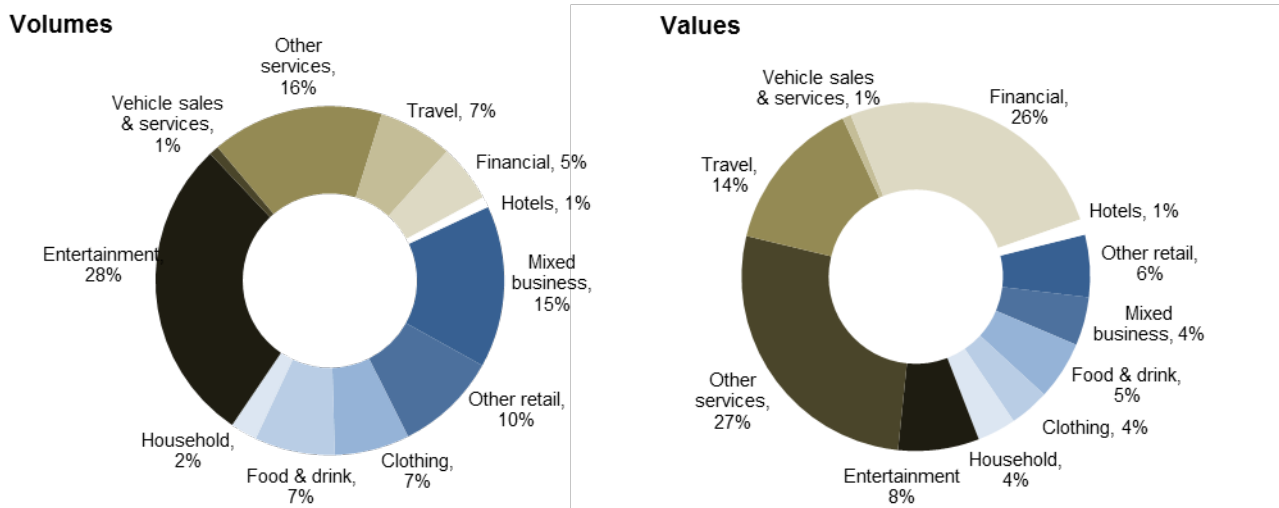
Payment card spending online (not seasonally adjusted)

The number of online card payments increased by 21 million in March to 128 million, while online spending rose by £0.9 billion to reach £11.9 billion, with half of this increase coming from travel and entertainment sectors. The proportion of online purchases increased slightly from 11.3% in February to 11.5% in March with corresponding online spending accounting for 22.4% of total card expenditure, down from 24.4% a month ago.

E-commerce was most prevalent within the services sector. In volume terms entertainment accounted for 28% of the total number of online transactions, up one percentage point on February, with other services accounting for 16%, which was unchanged. In value terms the proportions for other services decreased by four percentage points to 27%, while the shares for travel and financial services were relatively unchanged. In contrast, the online market for buying groceries and other consumable products was comparatively smaller.

Comparing online and face-to-face channel reveals a similar pattern, with higher proportions for e-commerce within services compared to retail sales. The largest share was evident in financial services, with almost half (47%) of total spending in this sub-sector completed via the internet. The lowest share was recorded in food & drink, where online accounted for just 6.9% of total spending. It is also worth noting virtually all spending on automotive fuels and vehicle sales & services occurs in the face-to-face environment.

Chart 5
Online purchases and spending by sub-sectors



Payment card spending within national retail sales

There was a slight uptick in the percentage share of retail sales accounted for by payment cards⁵. This figure increased to 75.1%, up 0.4 percentage points, with debit and credit card splits of 51.3% and 23.7% respectively. This trend was reflected in other sub-sectors such as **food & drink** and **automotive fuels**. The share of spending in the food & drink sector accounted for by payment cards rose from 70.4% in February to 70.8% in March and compares to a figure of 65.4% a year ago. In comparison to food & drink, nearly all expenditure on automotive fuels was accounted for by payment cards at 88.8%, up from 87.1% in February and 84.4% a year ago.

Contact: Silviya Krupena; silviya.krupena@ukpayments.org.uk | camis@ukpayments.org.uk | 020 3217 8460 or 020 3217 8720

⁵ CES 3-month moving average spend of £23.4 billion expressed as a percentage of a similar 3-month moving average for ONS Retail Sales – All Retailing Including Automotive Fuel (J5A3) that amounted to £35.9 billion.

Table 1 Card expenditure statistics (seasonally adjusted)

Summary¹ and ²

		Number of purchase transactions (millions)									Value of purchase transactions (£ millions)									
		All sectors			Retail sales			Services			All sectors			Retail sales			Services			
		Credit	Debit	Total	Credit	Debit	Total	Credit	Debit	Total	Credit	Debit	Total	Credit	Debit	Total	Credit	Debit	Total	
Annual																				
	2010	2,010	6,502	8,512	1,382	4,719	6,102	628	1,782	2,410	128,177	289,780	417,957	69,580	148,574	218,154	58,597	141,205	199,803	
	2011	2,258	7,231	9,489	1,555	5,302	6,856	704	1,929	2,633	151,346	324,167	475,512	78,880	165,579	244,459	72,466	158,587	231,053	
	2012	2,373	7,835	10,208	1,622	5,642	7,264	751	2,193	2,945	152,865	345,283	498,148	81,038	175,179	256,217	71,827	170,104	241,931	
	2013	2,551	8,391	10,942	1,736	5,963	7,699	815	2,428	3,244	159,937	373,629	533,565	84,641	183,682	268,323	75,296	189,947	265,242	
	2014	2,796	9,255	12,050	1,873	6,452	8,325	923	2,802	3,725	169,889	404,006	573,895	87,480	193,644	281,124	82,410	210,361	292,771	
Monthly																				
	2014	Mar	227	751	979	152	526	678	75	225	300	14,040	33,085	47,125	7,250	16,055	23,305	6,791	17,030	23,820
		Apr	229	758	987	153	531	684	76	227	302	14,071	33,217	47,287	7,262	16,119	23,381	6,808	17,098	23,907
		May	230	762	993	154	534	689	76	228	304	14,073	33,352	47,425	7,265	16,152	23,416	6,809	17,201	24,009
		Jun	232	766	998	155	537	692	76	229	306	14,084	33,534	47,618	7,271	16,174	23,446	6,813	17,360	24,173
		Jul	233	771	1,004	156	539	696	77	232	309	14,124	33,752	47,876	7,286	16,201	23,487	6,838	17,551	24,389
		Aug	235	778	1,013	158	542	700	77	236	313	14,198	33,975	48,173	7,310	16,244	23,554	6,888	17,731	24,619
		Sep	237	785	1,023	159	545	704	78	240	318	14,285	34,161	48,447	7,336	16,285	23,620	6,950	17,877	24,826
		Oct	240	793	1,032	160	548	709	79	244	324	14,360	34,354	48,714	7,356	16,329	23,685	7,004	18,025	25,029
		Nov	242	798	1,039	161	550	712	80	248	328	14,407	34,580	48,987	7,367	16,380	23,746	7,040	18,200	25,241
		Dec	244	801	1,045	163	550	713	81	251	331	14,427	34,402	48,829	7,371	15,929	23,299	7,056	18,473	25,529
	2015	Jan	245	803	1,048	164	550	714	81	253	334	14,430	34,802	49,232	7,373	15,965	23,338	7,057	18,837	25,894
		Feb	247	806	1,053	165	550	715	82	256	338	14,439	35,203	49,642	7,383	15,985	23,368	7,056	19,218	26,274
		Mar	249	811	1,060	167	552	718	82	260	342	14,469	35,579	50,048	7,406	16,019	23,425	7,063	19,560	26,623
Year-on-year growth rates (percentages)																				
Annual																				
	2010	0.3	9.4	7.1	12.8	21.1	19.1	-19.3	-12.9	-14.7	2.4	10.4	7.8	13.0	18.5	16.6	-7.8	3.1	-0.4	
	2011	12.4	11.2	11.5	12.5	12.3	12.4	12.1	8.2	9.2	18.1	11.9	13.8	13.4	11.4	12.1	23.7	12.3	15.6	
	2012	5.1	8.4	7.6	4.3	6.4	5.9	6.8	13.7	11.8	1.0	6.5	4.8	2.7	5.8	4.8	-0.9	7.3	4.7	
	2013	7.5	7.1	7.2	7.0	5.7	6.0	8.5	10.7	10.2	4.6	8.2	7.1	4.4	4.9	4.7	4.8	11.7	9.6	
	2014	9.6	10.3	10.1	7.9	8.2	8.1	13.2	15.4	14.8	6.2	8.1	7.6	3.4	5.4	4.8	9.4	10.7	10.4	
Monthly																				
	2014	Mar	8.7	8.6	8.6	7.8	7.1	7.3	10.6	12.3	11.9	6.0	8.8	8.0	4.8	5.6	5.3	7.5	12.1	10.8
		Apr	9.0	9.1	9.0	7.9	7.5	7.6	11.3	12.9	12.5	6.3	8.9	8.1	4.7	5.8	5.4	8.1	12.0	10.9
		May	9.1	9.4	9.3	7.9	7.9	7.9	11.7	13.3	12.9	6.4	8.8	8.1	4.5	5.9	5.4	8.5	11.8	10.8
		Jun	9.1	9.7	9.5	7.7	8.1	8.0	12.1	13.6	13.2	6.4	8.7	8.0	4.3	5.9	5.4	8.7	11.5	10.7
		Jul	9.0	9.8	9.6	7.5	8.1	8.0	12.3	13.9	13.5	6.3	8.6	7.9	4.0	5.9	5.3	8.9	11.3	10.6
		Aug	9.0	9.9	9.7	7.3	8.1	7.9	12.6	14.2	13.8	6.2	8.5	7.8	3.7	5.9	5.2	9.1	11.1	10.5
		Sep	9.0	10.0	9.8	7.3	8.2	8.0	12.8	14.6	14.1	6.2	8.5	7.8	3.6	5.9	5.2	9.3	11.0	10.5
		Oct	9.2	10.2	10.0	7.4	8.3	8.1	13.1	15.0	14.5	6.3	8.5	7.8	3.5	5.9	5.1	9.5	11.0	10.6
		Nov	9.4	10.3	10.1	7.6	8.3	8.2	13.2	15.3	14.8	6.3	8.4	7.8	3.4	5.8	5.1	9.6	10.9	10.5
		Dec	9.6	10.3	10.1	7.9	8.2	8.1	13.2	15.4	14.8	6.2	8.1	7.6	3.4	5.4	4.8	9.4	10.7	10.4
	2015	Jan	9.7	10.1	10.0	8.1	8.0	8.0	13.0	15.4	14.8	6.0	7.9	7.3	3.2	5.0	4.4	9.1	10.7	10.3
		Feb	9.7	9.8	9.8	8.3	7.5	7.7	12.6	15.3	14.7	5.6	7.7	7.1	3.1	4.4	4.0	8.5	10.9	10.2
		Mar	9.7	9.6	9.6	8.5	7.2	7.5	12.2	15.3	14.5	5.3	7.6	6.9	2.9	3.9	3.6	7.9	11.2	10.3

¹ There was a step change in 2011 due to a change in reporting population

² With effect of January 2014 the seasonal adjustment methodology using X12 ARIMA was reviewed and changed. Trading days and leap years have been incorporated into the monthly seasonal adjustment process.

Table 2A Card expenditure statistics (seasonally adjusted)

Retail sales^{1 and 2}

		Number of purchase transactions (millions)																		Total retail sales			
		Food & drink			Mixed business			Clothing			Household			Other retailers			Automotive Fuels ³			Number of purchases			
		Credit	Debit	Total	Credit	Debit	Total	Credit	Debit	Total	Credit	Debit	Total	Credit	Debit	Total	Credit	Debit	Total	Credit	Debit	Total	
Annual																							
	2010	533	2,282	2,815	139	406	545	129	424	553	148	350	498	273	733	1,006	161	524	685	1,382	4,719	6,102	
	2011	602	2,564	3,166	136	425	561	139	427	566	157	370	526	297	782	1,079	223	733	957	1,555	5,302	6,856	
	2012	662	2,824	3,487	148	479	627	145	453	598	157	375	532	281	757	1,039	227	754	981	1,622	5,642	7,264	
	2013	722	3,061	3,783	182	523	705	153	462	614	165	402	567	277	723	1,001	236	793	1,029	1,736	5,963	7,699	
	2014	769	3,469	4,237	249	479	727	163	480	642	172	433	605	284	782	1,066	237	810	1,047	1,873	6,452	8,325	
Monthly																							
	2014																						
	Mar	63	281	344	19	39	58	14	40	53	14	35	50	23	64	87	20	68	88	152	526	678	
	Apr	63	284	348	20	39	58	14	40	54	14	35	50	23	65	87	20	68	88	153	531	684	
	May	63	287	351	20	38	58	14	40	54	14	36	50	23	65	88	20	68	88	154	534	689	
	Jun	64	289	353	20	38	59	14	40	54	14	36	50	23	65	89	20	68	88	155	537	692	
	Jul	64	291	355	21	38	59	14	40	54	14	36	50	24	66	89	20	68	88	156	539	696	
	Aug	64	294	358	21	38	60	14	40	54	14	36	51	24	66	90	20	68	88	158	542	700	
	Sep	65	296	361	22	39	61	14	40	54	14	37	51	24	66	91	20	68	87	159	545	704	
	Oct	65	299	364	23	39	61	14	40	54	15	37	52	25	66	91	20	67	87	160	548	709	
	Nov	66	299	365	23	39	62	14	40	54	15	37	52	25	67	92	19	67	87	161	550	712	
	Dec	67	299	366	24	39	63	14	41	54	15	37	52	25	67	92	19	67	86	163	550	713	
	2015																						
	Jan	67	298	366	24	40	64	14	41	55	15	38	52	25	68	93	19	66	86	164	550	714	
	Feb	68	298	366	25	40	64	14	41	55	15	38	52	25	68	93	19	66	85	165	550	715	
	Mar	68	299	367	25	40	65	14	41	55	15	38	52	25	68	94	19	66	85	167	552	718	
Year-on-year growth rates (percentages)																							
Annual																							
	2010	3.6	9.4	8.2	5.8	0.7	1.9	2.7	4.8	4.3	1.6	9.7	7.2	-11.9	7.5	1.5	2.1	10.3	8.3	12.8	21.1	19.1	
	2011	13.1	12.4	12.5	-1.5	4.6	3.0	8.1	0.7	2.4	5.9	5.6	5.7	8.7	6.7	7.3	38.3	40.0	39.6	12.5	12.3	12.4	
	2012	10.0	10.1	10.1	8.5	12.7	11.7	4.6	6.0	5.6	0.2	1.4	1.1	-5.3	-3.2	-3.7	1.8	2.8	2.6	4.3	6.4	5.9	
	2013	9.0	8.4	8.5	23.1	9.2	12.5	5.0	2.0	2.7	5.2	7.2	6.6	-1.4	-4.5	-3.7	3.8	5.1	4.8	7.0	5.7	6.0	
	2014	6.4	13.3	12.0	36.4	-8.4	3.2	6.5	3.9	4.5	4.0	7.8	6.7	2.4	8.1	6.5	0.5	2.2	1.8	7.9	8.2	8.1	
Monthly																							
	2014																						
	Mar	8.4	9.4	9.2	30.0	9.7	14.5	6.1	2.5	3.3	6.5	9.6	8.7	-0.6	-0.3	-0.4	4.1	5.6	5.3	7.8	7.1	7.3	
	Apr	8.0	9.9	9.6	31.9	8.6	14.2	6.5	2.7	3.6	6.4	9.7	8.7	-0.5	1.4	0.9	3.9	5.5	5.2	7.9	7.5	7.6	
	May	7.6	10.4	9.9	33.1	7.1	13.4	6.7	2.9	3.8	6.0	9.5	8.5	-0.5	3.1	2.1	3.5	5.3	4.9	7.9	7.9	7.9	
	Jun	7.2	10.9	10.2	33.8	5.3	12.2	6.8	3.0	3.9	5.5	9.1	8.0	-0.5	4.9	3.4	3.1	4.8	4.4	7.7	8.1	8.0	
	Jul	6.9	11.3	10.4	34.0	3.1	10.7	6.6	3.0	3.9	4.9	8.7	7.6	-0.6	5.5	3.8	2.5	4.3	3.9	7.5	8.1	8.0	
	Aug	6.6	11.7	10.8	34.1	0.8	9.1	6.5	3.1	3.9	4.6	8.4	7.3	-0.5	6.0	4.2	2.1	3.8	3.4	7.3	8.1	7.9	
	Sep	6.4	12.3	11.2	34.4	-1.6	7.5	6.4	3.2	4.0	4.4	8.2	7.1	-0.1	6.5	4.7	1.6	3.3	2.9	7.3	8.2	8.0	
	Oct	6.3	12.8	11.6	35.0	-3.9	6.0	6.4	3.4	4.1	4.3	8.1	7.0	0.5	7.1	5.2	1.3	2.9	2.6	7.4	8.3	8.1	
	Nov	6.4	13.2	11.9	35.8	-6.2	4.6	6.5	3.6	4.3	4.2	8.0	6.9	1.4	7.6	5.9	0.9	2.6	2.2	7.6	8.3	8.2	
	Dec	6.4	13.3	12.0	36.4	-8.4	3.2	6.5	3.9	4.5	4.0	7.8	6.7	2.4	8.1	6.5	0.5	2.2	1.8	7.9	8.2	8.1	
	2015																						
	Jan	6.6	13.2	12.0	36.7	-10.6	1.7	6.4	4.2	4.7	3.7	7.5	6.4	3.5	8.5	7.1	0.0	1.8	1.4	8.1	8.0	8.0	
	Feb	6.7	12.9	11.7	36.6	-12.8	0.3	6.1	4.3	4.8	3.5	7.2	6.1	4.6	8.7	7.6	-0.5	1.2	0.9	8.3	7.5	7.7	
	Mar	6.9	12.3	11.3	36.2	-12.2	0.9	5.6	4.3	4.7	3.3	7.0	6.0	5.7	8.7	7.9	-1.0	0.7	0.3	8.5	7.2	7.5	

1 There was a step change in 2011 due to a change in reporting population

2 With effect of January 2014 the seasonal adjustment methodology using X12 ARIMA was reviewed and changed. Trading days and leap years have been incorporated into the monthly seasonal adjustment process.

3 Automotive Fuels data is effective from January 2010. Data shown pre 2010 are for growth trend purposes only; these data are excluded from totals as these are already included in their former Services sector of Motoring (now known as Vehicle Sales & Service)

Table 2B Card expenditure statistics (seasonally adjusted)

Retail sales^{1 and 2}

Value of purchase transactions (£ millions)

Total retail sales

	Value of purchase transactions (£ millions)																		Total retail sales			
	Food & drink			Mixed business			Clothing			Household			Other retailers			Automotive Fuels ³			Value of purchases			
	Credit	Debit	Total	Credit	Debit	Total	Credit	Debit	Total	Credit	Debit	Total	Credit	Debit	Total	Credit	Debit	Total	Credit	Debit	Total	
Annual																						
2010	18,768	63,684	82,451	7,165	13,950	21,115	6,808	13,649	20,456	14,684	18,863	33,547	15,522	23,577	39,099	6,634	14,852	21,486	69,580	148,574	218,154	
2011	21,069	69,451	90,520	7,088	14,754	21,842	7,843	14,480	22,323	15,177	20,525	35,701	17,514	24,380	41,894	10,189	21,989	32,178	78,880	165,579	244,459	
2012	22,570	74,172	96,742	7,729	16,413	24,143	8,209	15,633	23,842	15,378	21,620	36,998	16,741	24,456	41,196	10,411	22,886	33,297	81,038	175,179	256,217	
2013	24,103	78,006	102,109	8,719	17,933	26,652	8,673	16,112	24,785	15,945	23,239	39,184	16,535	24,452	40,988	10,665	23,940	34,605	84,641	183,682	268,323	
2014	24,495	84,563	109,059	9,589	16,713	26,302	9,140	17,032	26,172	16,864	26,026	42,890	17,159	25,712	42,871	10,233	23,597	33,830	87,480	193,644	281,124	
Monthly																						
2014	Mar	2,037	6,948	8,985	792	1,439	2,231	764	1,410	2,174	1,396	2,131	3,528	1,377	2,126	3,503	883	2,001	2,883	7,250	16,055	23,305
	Apr	2,040	7,010	9,050	794	1,407	2,201	767	1,422	2,189	1,399	2,141	3,540	1,384	2,139	3,523	878	1,999	2,877	7,262	16,119	23,381
	May	2,040	7,053	9,094	793	1,381	2,174	767	1,429	2,197	1,399	2,148	3,547	1,392	2,146	3,538	873	1,995	2,867	7,265	16,152	23,416
	Jun	2,039	7,085	9,124	793	1,363	2,156	766	1,433	2,198	1,401	2,157	3,558	1,406	2,146	3,552	867	1,990	2,857	7,271	16,174	23,446
	Jul	2,038	7,117	9,155	795	1,354	2,149	763	1,431	2,194	1,405	2,171	3,575	1,424	2,144	3,569	861	1,984	2,845	7,286	16,201	23,487
	Aug	2,038	7,160	9,198	801	1,350	2,151	761	1,428	2,188	1,410	2,187	3,598	1,448	2,144	3,592	852	1,975	2,827	7,310	16,244	23,554
	Sep	2,041	7,198	9,239	808	1,352	2,159	760	1,424	2,184	1,416	2,204	3,620	1,472	2,149	3,621	839	1,959	2,798	7,336	16,285	23,620
	Oct	2,046	7,235	9,281	814	1,356	2,171	760	1,422	2,182	1,420	2,219	3,638	1,493	2,163	3,656	823	1,934	2,757	7,356	16,329	23,685
	Nov	2,053	7,285	9,337	818	1,363	2,182	761	1,424	2,184	1,422	2,229	3,651	1,509	2,177	3,686	804	1,901	2,705	7,367	16,380	23,746
	Dec	2,060	6,838	8,898	821	1,371	2,192	762	1,428	2,191	1,425	2,238	3,663	1,518	2,188	3,706	785	1,866	2,650	7,371	15,929	23,299
2015	Jan	2,067	6,883	8,951	822	1,378	2,200	765	1,435	2,199	1,428	2,247	3,675	1,523	2,189	3,712	767	1,834	2,600	7,373	15,965	23,338
	Feb	2,075	6,906	8,981	825	1,384	2,209	767	1,443	2,211	1,435	2,259	3,693	1,527	2,183	3,710	753	1,810	2,563	7,383	15,985	23,368
	Mar	2,085	6,925	9,011	831	1,390	2,220	771	1,453	2,224	1,444	2,273	3,717	1,531	2,180	3,712	744	1,798	2,542	7,406	16,019	23,425

Year-on-year growth rates (percentages)

Annual																						
2010	3.7	5.7	5.3	1.4	0.3	0.7	7.1	7.6	7.4	1.9	13.8	8.2	-0.9	7.0	3.8	13.2	17.2	16.0	13.0	18.5	16.6	
2011	12.3	9.1	9.8	-1.1	5.8	3.4	15.2	6.1	9.1	3.4	8.8	6.4	12.8	3.4	7.1	53.6	48.1	49.8	13.4	11.4	12.1	
2012	7.1	6.8	6.9	9.0	11.2	10.5	4.7	8.0	6.8	1.3	5.3	3.6	-4.4	0.3	-1.7	2.2	4.1	3.5	2.7	5.8	4.8	
2013	6.8	5.2	5.5	12.8	9.3	10.4	5.7	3.1	4.0	3.7	7.5	5.9	-1.2	0.0	-0.5	2.4	4.6	3.9	4.4	4.9	4.7	
2014	1.6	8.4	6.8	10.0	-6.8	-1.3	5.4	5.7	5.6	5.8	12.0	9.5	3.8	5.2	4.6	-4.1	-1.4	-2.2	3.4	5.4	4.8	
Monthly																						
2014	Mar	5.6	5.6	5.6	13.8	8.5	10.2	7.4	4.3	5.3	5.6	10.9	8.7	-0.9	1.9	0.8	2.1	3.1	2.8	4.8	5.6	5.3
	Apr	5.1	5.9	5.7	13.9	7.6	9.6	7.7	4.7	5.7	6.0	11.6	9.3	-0.9	2.6	1.2	1.7	2.5	2.3	4.7	5.8	5.4
	May	4.5	6.2	5.8	13.6	6.4	8.7	7.8	5.0	6.0	6.2	12.1	9.7	-0.9	3.3	1.6	1.1	1.8	1.6	4.5	5.9	5.4
	Jun	4.0	6.5	5.9	13.1	4.8	7.5	7.5	5.3	6.1	6.3	12.3	9.8	-0.7	3.8	2.0	0.4	1.2	0.9	4.3	5.9	5.4
	Jul	3.4	6.9	6.1	12.5	2.9	6.0	7.1	5.4	6.0	6.2	12.4	9.9	-0.5	4.2	2.3	-0.3	0.6	0.3	4.0	5.9	5.3
	Aug	2.9	7.4	6.3	11.9	0.9	4.4	6.7	5.5	5.9	6.2	12.5	9.9	0.0	4.5	2.7	-1.0	0.2	-0.2	3.7	5.9	5.2
	Sep	2.4	7.9	6.6	11.3	-1.3	2.8	6.3	5.6	5.8	6.2	12.6	10.0	0.8	4.6	3.0	-1.7	-0.2	-0.7	3.6	5.9	5.2
	Oct	2.0	8.4	6.9	10.9	-3.4	1.3	6.0	5.7	5.8	6.1	12.6	9.9	1.7	4.8	3.5	-2.4	-0.5	-1.1	3.5	5.9	5.1
	Nov	1.8	8.8	7.1	10.5	-5.2	-0.1	5.7	5.7	5.7	6.0	12.4	9.8	2.7	5.0	4.1	-3.2	-0.9	-1.6	3.4	5.8	5.1
	Dec	1.6	8.4	6.8	10.0	-6.8	-1.3	5.4	5.7	5.6	5.8	12.0	9.5	3.8	5.2	4.6	-4.1	-1.4	-2.2	3.4	5.4	4.8
2015	Jan	1.5	8.0	6.5	9.4	-8.0	-2.3	4.9	5.6	5.4	5.4	11.4	9.0	4.8	5.2	5.1	-5.1	-2.1	-3.0	3.2	5.0	4.4
	Feb	1.5	7.4	6.0	8.6	-8.8	-3.0	4.3	5.4	5.0	5.1	10.7	8.4	5.9	5.1	5.4	-6.3	-2.9	-3.9	3.1	4.4	4.0
	Mar	1.4	6.7	5.5	7.9	-9.0	-3.4	3.6	5.0	4.5	4.7	10.0	7.8	6.9	4.9	5.7	-7.5	-3.7	-4.9	2.9	3.9	3.6

1 There was a step change in 2011 due to a change in reporting population

2 With effect of January 2014 the seasonal adjustment methodology using X12 ARIMA was reviewed and changed. Trading days and leap years have been incorporated into the monthly seasonal adjustment process.

3 Automotive Fuels data is effective from January 2010. Data shown pre 2010 are for growth trend purposes only; these data are excluded from totals as these are already included in their former Services sector of Motoring (now known as Vehicle Sales & Service)

Table 2C Card expenditure statistics (seasonally adjusted)

Services^{1 and 2}

		Number of purchase transactions (millions)																		Total services			
		Vehicle Sales & Services ³			Entertainment			Hotels			Travel			Financial			Other services			Number of purchases			
		Credit	Debit	Total	Credit	Debit	Total	Credit	Debit	Total	Credit	Debit	Total	Credit	Debit	Total	Credit	Debit	Total	Credit	Debit	Total	
Annual																							
	2010	76	204	280	221	726	947	37	35	72	98	202	300	32	129	161	164	487	650	628	1,782	2,410	
	2011	51	89	139	267	881	1,149	51	43	94	116	237	353	33	145	178	185	535	720	704	1,929	2,633	
	2012	50	94	144	309	1,062	1,371	53	48	100	124	266	389	30	160	190	186	564	750	751	2,193	2,945	
	2013	53	104	157	353	1,220	1,572	55	53	108	130	285	415	28	174	202	196	593	789	815	2,428	3,244	
	2014	59	121	179	422	1,498	1,920	59	63	122	150	326	476	25	165	190	207	630	837	923	2,802	3,725	
Monthly																							
	2014																						
	Mar	5	10	15	34	120	153	5	5	10	12	26	38	2	14	16	17	51	68	75	225	300	
	Apr	5	10	15	34	121	155	5	5	10	12	26	39	2	14	16	17	51	68	76	227	302	
	May	5	10	15	35	121	156	5	5	10	12	27	39	2	14	16	17	51	68	76	228	304	
	Jun	5	10	15	35	122	157	5	5	10	12	27	39	2	14	16	17	52	69	76	229	306	
	Jul	5	10	15	35	124	159	5	5	10	13	27	40	2	14	16	17	52	69	77	232	309	
	Aug	5	10	15	36	126	162	5	5	10	13	27	40	2	14	16	17	53	70	77	236	313	
	Sep	5	10	15	36	129	165	5	5	10	13	28	41	2	14	16	17	53	71	78	240	318	
	Oct	5	10	15	37	132	169	5	5	11	13	28	41	2	14	16	18	54	72	79	244	324	
	Nov	5	11	16	37	134	172	5	6	11	13	29	42	2	14	16	18	54	72	80	248	328	
	Dec	5	11	16	38	136	174	5	6	11	13	30	43	2	14	16	18	55	72	81	251	331	
	2015																						
	Jan	5	11	16	38	138	175	5	6	11	13	30	44	2	14	16	18	55	73	81	253	334	
	Feb	5	11	16	38	140	178	5	6	11	13	31	44	2	14	16	18	55	73	82	256	338	
	Mar	5	11	16	39	142	180	5	6	11	13	32	45	2	14	16	18	55	73	82	260	342	
Year-on-year growth rates (percentages)																							
Annual																							
	2010	-67.9	-69.0	-68.7	7.5	22.5	18.6	1.7	10.5	5.8	-3.0	10.6	5.8	0.7	15.3	12.1	-1.9	3.5	2.1	-19.3	-12.9	-14.7	
	2011	-33.3	-56.5	-50.2	20.9	21.4	21.3	36.4	24.4	30.6	19.2	17.0	17.7	3.0	11.9	10.1	13.4	9.9	10.8	12.1	8.2	9.2	
	2012	-0.5	5.5	3.3	15.4	20.5	19.3	3.4	11.0	6.9	6.4	12.3	10.3	-10.0	10.8	7.0	0.5	5.4	4.1	6.8	13.7	11.8	
	2013	5.3	11.4	9.2	14.3	14.8	14.7	4.1	11.7	7.7	5.1	7.3	6.6	-4.0	8.2	6.3	5.2	5.2	5.2	8.5	10.7	10.2	
	2014	10.5	15.7	14.0	19.7	22.8	22.1	8.5	17.5	12.9	15.3	14.5	14.8	-11.4	-4.8	-5.7	5.8	6.2	6.1	13.2	15.4	14.8	
Monthly																							
	2014																						
	Mar	8.7	15.0	12.8	16.0	17.0	16.8	7.2	14.8	10.9	8.3	8.9	8.7	-4.8	5.3	3.8	6.9	6.3	6.5	10.6	12.3	11.9	
	Apr	9.6	15.7	13.6	16.7	18.0	17.7	7.8	15.6	11.6	9.4	9.4	9.4	-5.4	4.5	3.0	7.2	6.3	6.6	11.3	12.9	12.5	
	May	10.4	16.2	14.2	17.2	18.9	18.5	8.2	16.1	12.0	10.5	9.8	10.0	-6.1	3.5	2.1	7.2	6.2	6.5	11.7	13.3	12.9	
	Jun	10.9	16.3	14.5	17.6	19.6	19.2	8.4	16.3	12.2	11.4	10.2	10.5	-6.9	2.5	1.1	7.1	6.1	6.3	12.1	13.6	13.2	
	Jul	11.3	16.4	14.7	18.0	20.2	19.7	8.5	16.4	12.4	12.2	10.7	11.1	-7.7	1.4	0.1	6.9	6.0	6.2	12.3	13.9	13.5	
	Aug	11.6	16.4	14.8	18.4	20.8	20.3	8.5	16.6	12.5	13.0	11.3	11.9	-8.6	0.2	-1.1	6.6	6.0	6.2	12.6	14.2	13.8	
	Sep	11.7	16.4	14.8	18.9	21.4	20.8	8.5	16.9	12.6	13.7	12.1	12.6	-9.5	-1.0	-2.2	6.4	6.1	6.2	12.8	14.6	14.1	
	Oct	11.5	16.3	14.7	19.3	22.0	21.4	8.5	17.2	12.8	14.5	13.0	13.4	-10.3	-2.3	-3.4	6.2	6.2	6.2	13.1	15.0	14.5	
	Nov	11.1	16.1	14.4	19.6	22.6	21.9	8.5	17.4	12.9	15.0	13.8	14.2	-11.0	-3.5	-4.6	6.0	6.2	6.2	13.2	15.3	14.8	
	Dec	10.5	15.7	14.0	19.7	22.8	22.1	8.5	17.5	12.9	15.3	14.5	14.8	-11.4	-4.8	-5.7	5.8	6.2	6.1	13.2	15.4	14.8	
	2015																						
	Jan	9.7	15.1	13.3	19.4	22.6	21.9	8.4	17.4	12.9	15.3	15.2	15.2	-11.5	-4.2	-5.2	5.5	6.2	6.0	13.0	15.4	14.8	
	Feb	8.9	14.5	12.6	18.8	22.2	21.4	8.3	17.2	12.7	15.1	15.8	15.6	-11.2	-3.6	-4.7	5.2	6.2	6.0	12.6	15.3	14.7	
	Mar	8.1	14.0	12.0	18.1	21.6	20.8	8.3	17.0	12.6	14.6	16.5	15.9	-10.6	-3.2	-4.2	5.0	6.4	6.0	12.2	15.3	14.5	

1 There was a step change in 2011 due to a change in reporting population

2 With effect of January 2014 the seasonal adjustment methodology using X12 ARIMA was reviewed and changed. Trading days and leap years have been incorporated into the monthly seasonal adjustment process.

3 With effect of January 2010 Automotive Fuels was published as a separate sub-sector in retail sales. See tables 2A and 2B

Table 2D Card expenditure statistics (seasonally adjusted)

Services^{1 and 2}

Value of purchase transactions (£ millions)

Total services

	Vehicle Sales & Services ³									Entertainment			Hotels			Travel			Financial			Other services			Value of purchases		
	Credit	Debit	Total	Credit	Debit	Total	Credit	Debit	Total	Credit	Debit	Total	Credit	Debit	Total	Credit	Debit	Total	Credit	Debit	Total	Credit	Debit	Total			
Annual																											
2010	8,762	24,834	33,596	9,953	17,041	26,995	5,503	3,091	8,594	12,781	15,900	28,681	5,927	39,472	45,399	15,671	40,866	56,537	58,597	141,205	199,803						
2011	7,773	22,466	30,239	14,072	20,687	34,760	8,639	3,854	12,493	16,331	18,474	34,806	7,161	46,332	53,493	18,488	46,774	65,262	72,466	158,587	231,053						
2012	7,565	23,553	31,118	14,683	22,790	37,473	8,877	4,316	13,193	16,552	20,545	37,097	5,492	49,900	55,392	18,657	49,000	67,656	71,827	170,104	241,931						
2013	7,693	25,736	33,430	15,664	24,553	40,217	9,255	4,785	14,040	17,474	22,089	39,564	5,132	55,561	60,693	20,077	57,222	77,299	75,296	189,947	265,242						
2014	8,110	28,905	37,015	17,371	28,488	45,859	10,362	5,587	15,949	20,137	25,192	45,329	5,084	58,102	63,186	21,345	64,088	85,433	82,410	210,361	292,771						
Monthly																											
2014	Mar	683	2,383	3,066	1,406	2,279	3,685	834	446	1,280	1,687	2,079	3,766	422	4,785	5,207	1,759	5,058	6,817	6,791	17,030	23,820					
	Apr	682	2,382	3,064	1,414	2,301	3,714	842	451	1,294	1,694	2,064	3,758	422	4,819	5,241	1,755	5,081	6,835	6,808	17,098	23,907					
	May	680	2,379	3,059	1,420	2,309	3,729	851	457	1,307	1,686	2,050	3,736	421	4,849	5,270	1,751	5,157	6,908	6,809	17,201	24,009					
	Jun	677	2,382	3,060	1,429	2,321	3,750	860	462	1,322	1,671	2,048	3,720	421	4,866	5,287	1,754	5,279	7,033	6,813	17,360	24,173					
	Jul	675	2,396	3,071	1,444	2,353	3,796	870	467	1,337	1,664	2,062	3,726	422	4,870	5,292	1,764	5,403	7,167	6,838	17,551	24,389					
	Aug	673	2,418	3,092	1,465	2,403	3,868	880	474	1,353	1,668	2,091	3,759	422	4,859	5,281	1,780	5,486	7,265	6,888	17,731	24,619					
	Sep	672	2,437	3,109	1,487	2,462	3,949	888	481	1,369	1,681	2,129	3,810	423	4,848	5,272	1,797	5,520	7,318	6,950	17,877	24,826					
	Oct	671	2,452	3,122	1,506	2,513	4,018	895	488	1,383	1,696	2,165	3,861	425	4,857	5,282	1,812	5,550	7,362	7,004	18,025	25,029					
	Nov	670	2,469	3,139	1,515	2,544	4,059	898	494	1,393	1,704	2,186	3,890	428	4,890	5,318	1,824	5,617	7,441	7,040	18,200	25,241					
	Dec	671	2,491	3,162	1,516	2,562	4,078	900	498	1,398	1,703	2,191	3,895	432	4,952	5,384	1,834	5,778	7,612	7,056	18,473	25,529					
2015	Jan	674	2,511	3,185	1,511	2,583	4,094	899	501	1,400	1,696	2,191	3,887	436	5,043	5,479	1,841	6,008	7,849	7,057	18,837	25,894					
	Feb	678	2,526	3,204	1,507	2,609	4,115	897	503	1,401	1,687	2,196	3,883	441	5,144	5,586	1,846	6,240	8,086	7,056	19,218	26,274					
	Mar	683	2,535	3,218	1,507	2,639	4,145	897	507	1,404	1,680	2,212	3,891	446	5,244	5,690	1,851	6,424	8,275	7,063	19,560	26,623					

Year-on-year growth rates (percentages)²

	Year-on-year growth rates (percentages) ²																								
	Credit	Debit	Total	Credit	Debit	Total	Credit	Debit	Total	Credit	Debit	Total	Credit	Debit	Total	Credit	Debit	Total	Credit	Debit	Total	Credit	Debit	Total	
Annual																									
2010	-40.2	-30.1	-33.1	3.5	16.6	11.4	3.8	13.4	7.1	-2.3	12.7	5.5	3.5	19.6	17.2	3.4	10.4	8.4	-7.8	3.1	-0.4				
2011	-11.3	-9.5	-10.0	41.4	21.4	28.8	57.0	24.7	45.4	27.8	16.2	21.4	20.8	17.4	17.8	18.0	14.5	15.4	23.7	12.3	15.6				
2012	-2.7	4.8	2.9	4.3	10.2	7.8	2.8	12.0	5.6	1.4	11.2	6.6	-23.3	7.7	3.6	0.9	4.8	3.7	-0.9	7.3	4.7				
2013	1.7	9.3	7.4	6.7	7.7	7.3	4.3	10.9	6.4	5.6	7.5	6.6	-6.6	11.3	9.6	7.6	16.8	14.3	4.8	11.7	9.6				
2014	5.4	12.3	10.7	10.9	16.0	14.0	12.0	16.8	13.6	15.2	14.0	14.6	-0.9	4.6	4.1	6.3	12.0	10.5	9.4	10.7	10.4				
Monthly																									
2014	Mar	4.3	12.3	10.4	7.9	8.9	8.5	8.9	11.8	9.9	9.6	10.4	10.0	-4.1	9.7	8.4	9.1	16.7	14.7	7.5	12.1	10.8			
	Apr	4.9	12.9	11.0	8.3	9.6	9.1	9.9	12.3	10.7	10.9	10.6	10.8	-4.2	9.3	8.0	9.2	16.1	14.3	8.1	12.0	10.9			
	May	5.3	13.1	11.2	8.6	10.2	9.6	10.6	12.8	11.4	11.9	10.6	11.2	-4.0	8.8	7.7	9.1	15.3	13.6	8.5	11.8	10.8			
	Jun	5.7	13.1	11.4	8.8	10.8	10.0	11.1	13.3	11.8	12.7	10.7	11.6	-3.7	8.4	7.3	8.7	14.3	12.9	8.7	11.5	10.7			
	Jul	6.0	13.2	11.5	8.9	11.5	10.5	11.3	13.9	12.2	13.3	11.1	12.1	-3.3	7.7	6.8	8.3	13.6	12.2	8.9	11.3	10.6			
	Aug	6.2	13.3	11.7	9.2	12.2	11.0	11.6	14.4	12.5	14.0	12.0	12.8	-2.9	7.0	6.1	7.9	13.1	11.7	9.1	11.1	10.5			
	Sep	6.4	13.5	11.8	9.6	13.1	11.8	11.8	15.0	12.9	14.7	13.1	13.8	-2.5	6.1	5.3	7.5	12.8	11.4	9.3	11.0	10.5			
	Oct	6.3	13.4	11.8	10.1	14.1	12.6	12.0	15.6	13.2	15.3	14.0	14.6	-2.0	5.3	4.7	7.1	12.5	11.1	9.5	11.0	10.6			
	Nov	6.0	13.0	11.4	10.6	15.2	13.4	12.1	16.2	13.5	15.6	14.4	14.9	-1.5	4.8	4.3	6.7	12.1	10.7	9.6	10.9	10.5			
	Dec	5.4	12.3	10.7	10.9	16.0	14.0	12.0	16.8	13.6	15.2	14.0	14.6	-0.9	4.6	4.1	6.3	12.0	10.5	9.4	10.7	10.4			
2015	Jan	4.7	11.4	9.9	10.9	16.6	14.4	11.7	17.1	13.5	14.2	13.1	13.6	-0.2	4.6	4.2	5.9	12.4	10.7	9.1	10.7	10.3			
	Feb	3.9	10.5	9.0	10.8	16.8	14.5	11.4	17.1	13.4	12.6	12.1	12.3	0.5	4.9	4.5	5.5	13.3	11.3	8.5	10.9	10.2			
	Mar	3.2	9.7	8.2	10.5	16.8	14.4	11.0	17.0	13.1	10.8	11.2	11.1	1.2	5.2	4.9	5.3	14.7	12.3	7.9	11.2	10.3			

1 There was a step change in 2011 due to a change in reporting population

2 With effect of January 2014 the seasonal adjustment methodology using X12 ARIMA was reviewed and changed. Trading days and leap years have been incorporated into the monthly seasonal adjustment process.

3 With effect of January 2010 Automotive Fuels was published as a separate sub-sector in retail sales. See tables 2A and 2B

Table 3A Card expenditure statistics (not seasonally adjusted)

Number of credit card transactions

Detailed sector breakdown - retail sectors (not seasonally adjusted)

Historical data located in hidden columns

	March 2014	April 2014	May 2014	June 2014	July 2014	August 2014	September 2014	October 2014	November 2014	December 2014	January 2015	February 2015	March 2015	Total (latest 12 months)
Supermarkets	58,425,501	56,930,462	58,629,190	60,525,536	60,952,700	57,026,642	60,556,456	61,788,278	60,586,531	73,763,834	57,588,817	55,586,545	65,051,989	728,986,980
Bakers & dairies	291,629	272,727	299,385	308,612	327,757	331,909	346,295	382,365	372,500	392,198	332,212	348,942	441,972	4,156,874
Sweet stores	282,632	351,406	244,749	257,164	257,183	270,507	253,397	298,880	358,532	675,080	193,040	257,673	354,246	3,771,407
Miscellaneous foodstores	3,368,921	3,264,642	3,344,117	3,434,749	3,536,443	3,288,342	3,434,341	3,490,576	3,296,311	3,881,861	3,056,627	3,119,217	3,614,809	40,762,035
Off-licences	561,599	561,770	594,609	621,669	634,413	603,366	575,932	583,432	607,160	906,763	461,250	490,639	571,339	7,212,342
Food & drink	62,930,282	61,381,007	63,112,050	65,147,730	65,708,496	61,520,316	65,166,421	66,543,531	65,221,034	79,619,736	61,631,946	59,803,016	70,034,355	784,889,638
Department stores	5,085,142	5,139,404	5,505,234	5,865,845	6,197,849	5,464,470	5,163,445	5,690,941	7,419,741	11,204,390	5,868,824	4,524,247	5,201,786	73,246,176
Discount stores	1,872,304	2,010,222	2,089,652	2,088,096	2,183,190	2,187,503	2,082,198	2,296,179	2,733,114	3,718,388	1,986,574	1,846,732	2,162,690	27,384,538
Catalogues	8,109,442	8,072,540	8,029,188	8,187,987	8,823,587	9,987,830	11,496,859	12,489,582	14,761,571	13,355,044	12,286,284	10,784,822	13,824,185	132,099,479
Miscellaneous mixed	2,593,996	2,573,138	2,616,868	2,743,461	2,706,176	2,549,000	2,726,897	2,917,515	3,240,114	4,443,373	2,213,584	2,154,815	2,626,629	33,511,570
Mixed business	17,660,884	17,795,304	18,240,942	18,885,389	19,910,802	20,188,803	21,469,399	23,394,217	28,154,540	32,721,195	22,355,266	19,310,616	23,815,290	266,241,763
Men's clothing	297,447	315,488	334,842	396,886	431,817	365,831	321,661	343,018	379,483	614,427	394,496	278,936	298,301	4,475,186
Women's clothing	1,876,045	1,987,751	2,165,331	2,416,563	2,578,885	2,047,982	1,972,816	2,002,248	2,167,033	3,240,215	1,872,157	1,616,549	2,018,980	26,086,510
Family clothing	8,006,705	8,637,891	9,097,595	9,597,338	10,402,319	8,813,515	8,589,400	9,264,896	9,923,716	14,569,731	7,954,815	6,703,790	8,500,384	112,055,390
Miscellaneous clothing	414,109	421,383	455,958	504,536	535,580	476,286	463,924	496,275	526,195	653,844	389,356	337,077	417,921	5,678,335
Shoe shops	1,052,866	1,271,606	1,334,953	1,534,586	1,623,840	1,529,344	1,294,980	1,317,140	1,203,087	1,752,546	1,246,909	889,887	1,046,121	16,044,999
Clothing	11,647,172	12,634,119	13,388,679	14,449,909	15,572,441	13,232,968	12,642,781	13,423,577	14,199,514	20,830,763	11,857,733	9,826,239	12,281,707	164,340,420
Furniture stores	1,370,238	1,335,835	1,370,226	1,371,949	1,399,189	1,447,073	1,456,891	1,616,661	1,711,801	1,696,414	1,990,907	1,363,933	1,546,588	18,307,467
Household appliance stores	1,364,413	1,326,020	1,352,971	1,342,328	1,371,996	1,367,229	1,372,891	1,450,153	1,514,083	1,818,084	1,359,174	1,224,773	1,402,606	16,902,308
Electronic stores	1,192,117	1,182,292	1,160,791	1,144,057	1,202,022	1,214,858	1,301,009	1,346,030	1,407,022	2,095,151	1,440,932	1,166,456	1,264,406	15,925,026
DIY stores	6,586,286	7,102,919	7,189,074	6,717,473	6,804,578	6,781,796	6,483,709	6,641,160	6,436,397	6,202,095	5,615,055	5,547,177	6,903,753	78,425,186
Floor covering stores	178,930	170,541	164,187	163,064	171,459	174,930	180,484	204,653	203,676	155,818	169,035	165,102	192,748	2,115,697
Garden centres	1,980,009	2,365,525	2,545,759	2,086,843	1,639,181	1,420,237	1,507,278	1,528,964	1,515,932	2,043,295	976,477	1,094,990	1,956,307	20,680,788
Miscellaneous household	1,565,967	1,510,614	1,561,352	1,630,865	1,733,650	1,672,760	1,706,721	1,754,504	1,870,521	2,374,206	1,497,694	1,497,446	1,688,437	20,708,870
Household	14,237,960	14,993,746	15,344,360	14,456,579	14,322,075	14,078,883	14,008,983	14,542,125	14,659,432	16,679,656	12,964,781	12,059,877	14,954,845	173,065,342
Books, newspapers & magazines	1,824,770	1,722,216	1,776,164	1,857,098	1,975,240	1,865,154	2,079,663	2,151,685	2,248,541	3,525,931	1,756,639	1,702,008	1,997,026	24,657,365
Record shops	204,181	203,415	187,943	193,521	191,236	186,064	187,725	203,134	269,828	680,466	189,394	176,347	200,922	2,869,995
Music shops	127,794	116,202	111,317	120,279	113,421	139,945	143,202	130,464	143,202	127,988	121,895	127,988	104,622	1,604,622
Hobbies, toys & games	455,356	457,412	460,088	454,747	501,496	504,352	573,714	646,466	941,253	1,434,517	446,226	431,452	466,722	7,318,445
Photographic	148,166	137,962	152,423	163,319	177,143	171,789	175,059	171,805	193,998	173,055	139,977	132,129	151,564	1,940,223
Handicraft	92,206	84,665	85,719	81,131	89,960	89,960	90,994	98,208	99,792	81,181	89,102	83,916	94,990	1,064,074
Sports shops	2,553,051	2,762,196	2,967,242	3,104,119	3,426,833	3,423,746	2,987,628	2,715,180	2,709,525	3,945,583	2,624,270	2,309,683	2,660,105	35,636,110
Jewellers	692,173	628,163	663,349	702,784	712,102	650,185	629,826	625,307	820,947	1,580,354	618,367	582,567	642,113	8,856,064
Computer software	290,421	274,480	268,155	256,616	264,648	253,899	275,559	279,292	264,712	322,798	267,470	235,478	255,630	3,218,737
Medical goods	454,970	444,657	477,924	494,449	536,283	495,905	491,225	527,091	515,664	650,218	505,645	471,859	551,007	6,161,927
Chemists	3,809,456	3,658,686	3,889,743	4,145,656	4,263,906	3,753,739	4,006,899	4,139,070	4,044,462	6,360,944	3,696,771	3,438,703	4,140,068	49,538,647
Optical goods	528,955	491,808	519,089	545,320	568,719	517,516	515,272	508,838	463,472	477,710	477,710	479,814	553,869	6,073,478
Cosmetic stores	445,889	413,529	443,499	481,786	484,636	460,983	488,932	542,335	686,290	1,249,664	420,899	425,287	495,578	6,593,418
Tobacconists	32,457	32,613	35,369	38,093	40,308	38,874	40,498	40,795	38,026	49,458	39,940	39,940	46,911	480,375
Florists	548,022	341,769	357,576	346,967	339,476	294,073	333,315	320,220	303,973	546,632	269,430	393,763	542,015	4,389,209
Artists' supplies	290,507	266,504	271,201	265,297	282,990	284,359	288,525	323,103	357,654	399,107	244,892	260,771	305,702	3,550,105
Antiques, art & stamps/coins	138,430	147,898	162,329	158,984	173,106	180,355	172,662	168,381	165,337	196,396	127,553	120,961	138,986	1,912,948
Pawn shops	3,606	3,278	3,262	3,278	4,180	4,144	4,088	4,108	4,372	6,756	3,602	3,602	3,992	48,885
Gift shops	1,404,528	1,295,948	1,367,640	1,544,126	1,618,945	1,676,126	1,592,265	1,684,657	2,136,792	3,396,948	1,256,452	1,335,435	1,597,661	20,502,995
Secondhand shops	21,546	21,857	21,197	22,667	24,347	21,879	21,231	23,222	21,605	25,100	20,969	18,630	32,885	275,589
Luggage & leather goods	98,814	95,751	103,054	117,371	122,547	120,379	104,480	113,708	130,256	178,310	95,226	75,503	92,310	1,348,895
Pet shops	800,145	803,288	831,670	821,580	848,467	855,815	821,432	867,512	844,893	978,092	816,191	767,676	894,590	10,151,206
Religious goods	8,376	10,309	12,493	13,019	15,580	13,783	11,652	11,041	8,010	8,078	6,959	6,463	9,063	126,450
Direct sales	3,718,383	3,689,464	3,628,044	3,521,590	3,589,174	3,315,087	3,390,131	3,615,554	3,315,143	3,704,124	3,395,772	3,242,718	3,727,137	42,133,938
Miscellaneous & speciality shops	3,021,046	2,983,948	3,273,598	3,304,429	3,511,728	3,410,197	3,526,461	4,915,523	5,303,865	5,885,087	4,474,328	4,474,328	5,127,122	50,573,069
Other retail	21,713,248	21,087,969	22,076,145	22,749,264	23,879,088	22,701,784	22,949,181	24,839,437	26,041,614	36,026,846	22,489,005	21,330,478	24,855,956	291,026,767
Automotive Fuels	20,347,577	19,623,179	20,303,884	20,632,879	21,138,126	19,883,979	20,535,495	20,240,182	18,691,214	19,471,196	17,675,368	17,062,678	19,861,788	235,119,968
Total retail sales	148,537,123	147,515,324	152,466,060	156,321,750	160,531,028	151,606,723	156,772,260	162,983,069	166,967,348	205,349,392	148,974,099	139,392,904	165,803,941	1,914,683,898

Table 3A Card expenditure statistics (not seasonally adjusted)

Number of credit card transactions

Detailed sector breakdown - services sectors (not seasonally adjusted)

	March 2014	April 2014	May 2014	June 2014	July 2014	August 2014	September 2014	October 2014	November 2014	December 2014	January 2015	February 2015	March 2015	Total (latest 12 months)
Auto rental	568,528	615,311	650,680	667,464	740,074	681,619	657,457	543,475	457,587	449,455	495,316	512,332	627,398	7,098,168
Auto parts & accessories	827,824	800,394	799,716	790,371	827,270	744,173	754,786	751,478	696,196	719,396	719,555	701,469	833,639	9,138,443
Auto services	2,027,837	1,915,563	2,068,569	2,081,660	2,171,202	1,912,440	2,168,016	2,325,359	2,168,635	2,142,038	2,073,058	2,110,666	2,440,360	25,577,566
Auto repair shops	992,979	885,258	903,749	904,199	941,391	848,138	904,641	893,101	806,242	769,757	833,959	825,219	1,006,526	10,522,180
Service stations	0	0	0	0	0	0	0	0	0	0	0	0	0	0
Vehicle sales	653,897	594,366	610,525	614,799	627,747	570,329	611,847	560,000	489,946	459,214	509,139	529,976	681,144	6,859,032
Vehicle Sales & Services	5,071,065	4,810,892	5,033,239	5,058,493	5,307,684	4,756,699	5,096,747	5,073,413	4,618,606	4,539,860	4,631,027	4,679,662	5,589,067	59,195,389
Restaurants	17,375,229	17,088,152	18,472,146	18,753,520	19,775,009	19,600,318	19,438,995	20,318,156	19,149,963	19,702,360	17,443,915	18,297,687	21,341,536	229,381,757
Public houses	3,183,652	2,917,200	2,887,419	2,991,777	3,138,804	3,084,888	3,084,180	2,906,707	2,669,772	2,989,403	2,359,976	2,581,141	3,198,159	34,809,426
Catering services	577,567	545,646	591,645	611,391	637,298	555,148	661,358	699,112	662,202	630,702	613,116	646,425	748,014	7,602,057
Video stores	216,422	193,754	183,092	198,503	187,561	180,019	180,019	194,779	175,577	222,622	248,533	396,185	275,895	2,656,630
Cinema, theatre & dance	1,757,955	1,719,511	1,734,077	1,625,616	1,800,033	1,923,221	1,690,062	2,193,403	2,408,504	2,556,896	2,001,813	2,014,385	1,984,029	23,651,550
Concerts & entertainers	138,866	133,890	135,874	124,909	131,869	151,746	56,295	156,016	186,409	204,442	138,654	128,301	136,188	1,684,593
Tourist attractions	401,783	684,396	640,000	678,591	866,322	1,039,696	685,602	621,739	371,649	383,982	278,658	364,396	458,960	7,073,991
Amusement parks	38,124	97,591	75,670	78,647	106,039	155,126	81,861	84,816	41,437	34,322	26,664	43,899	50,917	876,989
Aquariums	23,564	41,589	31,907	29,617	52,920	79,248	50,536	39,548	21,923	21,027	16,900	28,634	32,243	446,092
Sports & games establishments	3,562,420	3,265,765	3,528,874	3,167,194	3,156,670	3,185,707	3,752,885	3,851,656	3,395,489	4,367,895	4,268,156	3,376,739	3,926,780	43,243,810
Professional sports clubs	128,878	140,200	156,524	111,253	144,277	136,338	156,345	124,435	125,941	121,235	94,640	87,997	114,926	1,514,111
Gambling	6,175,058	5,849,636	5,420,051	5,747,752	5,333,736	5,019,556	5,916,812	6,060,666	5,739,677	6,803,324	6,144,983	5,960,250	6,789,023	70,785,466
Personal services	274,700	286,593	284,982	292,758	278,971	278,971	278,971	281,498	301,534	382,897	270,372	255,579	295,810	3,484,565
Miscellaneous entertainment	645,362	681,106	705,075	655,892	720,108	933,393	783,092	923,012	683,184	583,282	738,153	732,128	812,753	8,951,178
Entertainment	34,499,580	33,633,185	34,848,947	35,059,644	36,343,404	36,323,375	36,836,955	38,455,543	35,933,261	39,004,389	34,644,533	34,913,746	40,165,233	436,162,215
Hotels	4,882,977	4,721,602	5,205,389	5,281,499	5,537,804	5,212,363	5,445,681	5,360,924	4,841,041	4,424,903	4,411,057	4,625,058	5,371,107	60,438,428
Airlines	2,744,532	2,643,890	2,799,134	2,553,575	2,478,111	2,364,403	2,638,124	2,570,159	2,159,641	1,888,402	2,865,096	2,561,380	2,888,021	30,409,936
Airport terminals	37,224	39,805	43,781	45,033	47,719	41,728	45,058	38,562	28,808	27,230	31,088	31,580	39,256	459,648
Railways	6,016,419	5,637,691	6,055,544	6,307,600	6,492,461	5,606,392	6,422,013	6,582,071	6,104,469	5,771,604	5,365,874	5,446,324	6,240,141	72,032,184
Buses	638,781	616,799	655,151	610,088	615,265	545,699	633,416	640,292	588,222	568,612	526,983	543,959	630,301	7,174,787
Sea travel	182,450	198,509	234,012	230,063	253,141	259,551	230,982	205,729	159,628	150,167	176,592	167,537	209,514	2,475,425
Travel agents	1,963,002	1,790,377	1,891,578	1,857,014	1,836,892	1,723,866	1,907,065	1,872,174	1,633,859	1,555,971	2,117,373	1,935,959	2,140,222	22,262,350
Timeshares	18,877	18,146	17,823	15,901	17,534	17,738	17,736	18,488	16,426	16,631	26,135	19,605	18,926	221,089
Camping grounds	160,116	242,435	272,077	269,573	335,414	346,267	215,594	148,977	75,561	57,142	111,929	126,155	177,569	2,378,693
Miscellaneous travel	1,068,928	1,044,271	1,146,744	1,153,983	1,246,342	1,081,697	1,198,276	1,475,084	1,531,166	1,511,118	1,616,711	1,674,930	1,948,468	16,628,790
Travel	12,830,329	12,231,923	13,115,844	13,042,830	13,322,879	11,987,341	13,308,264	13,551,536	12,297,780	11,546,877	12,837,781	12,507,429	14,292,418	154,042,902
Telegraph services / Wire transfer money order	17,561	16,614	18,617	17,212	17,323	16,028	16,333	19,921	21,841	23,011	24,858	26,993	30,691	249,442
Insurance services	1,761,585	1,665,616	1,655,568	1,667,417	1,839,432	1,672,600	1,729,359	1,586,678	1,373,640	1,352,680	1,466,740	1,432,192	1,744,215	19,186,137
Fls - cash disbursements (auto & manual)	17,270	14,963	16,682	17,106	16,167	13,325	18,063	18,010	17,237	14,055	15,312	15,607	18,167	194,694
Fls - merchandise & services	147,161	135,118	143,156	140,114	143,434	126,415	355,759	132,630	113,345	118,764	123,995	123,511	152,278	1,808,519
Non-Fls - foreign currency, travellers' cheques	75,695	97,123	128,580	137,240	135,592	123,556	132,594	100,055	72,863	76,097	82,272	108,817	135,733	1,330,522
Security brokers and dealers	18,390	16,674	15,263	12,653	15,409	15,433	16,988	23,977	18,704	20,789	25,221	18,972	25,760	225,843
Tax preparation services	219	175	160	168	166	132	208	158	160	111	111	179	222	2,050
Tax payments	18,711	15,753	13,600	12,583	14,853	13,002	14,481	13,453	11,738	11,790	17,552	19,339	31,554	189,698
Fines, bail and bond payments	74,033	68,947	69,821	70,248	74,900	69,187	69,153	74,059	67,861	57,229	54,596	61,440	79,521	793,521
Miscellaneous financial	87,221	93,917	92,056	95,168	101,285	89,446	92,937	97,860	85,404	79,308	80,085	80,963	109,684	1,098,113
Financial	2,217,846	2,124,900	2,153,503	2,169,909	2,358,561	2,139,124	2,445,875	2,066,801	1,782,793	1,752,685	1,893,475	1,881,169	2,309,744	25,078,539

Table 3A Card expenditure statistics (not seasonally adjusted)

Number of credit card transactions

Detailed sector breakdown - services sectors (continued, not seasonally adjusted)

	March 2014	April 2014	May 2014	June 2014	July 2014	August 2014	September 2014	October 2014	November 2014	December 2014	January 2015	February 2015	March 2015	Total (latest 12 months)
Telecoms	1,920,502	1,844,217	1,872,218	1,819,447	1,940,118	1,907,603	2,094,657	2,027,933	1,909,784	2,072,859	1,929,964	1,723,570	1,970,636	23,113,006
Utilities	423,439	360,360	394,325	362,001	387,091	357,415	400,371	415,656	372,316	387,786	397,889	382,735	470,622	4,688,567
Contractors (residential & commercial)	280,681	260,230	265,479	264,791	284,268	255,928	285,174	312,244	280,539	252,097	261,223	263,097	304,845	3,289,915
Gardening services	67,180	77,954	80,070	70,821	58,815	48,073	49,976	50,137	45,904	60,258	32,281	36,526	49,745	660,560
Veterinary services	612,622	615,866	636,894	644,356	709,910	673,642	672,737	697,845	630,390	647,111	614,179	567,382	645,731	7,756,043
Photocopying & printing	272,721	241,918	256,744	247,643	253,431	222,763	261,490	282,420	313,482	364,848	268,770	239,779	282,306	3,235,594
Photographic studios	103,021	101,770	123,180	136,757	156,025	118,408	126,124	159,776	171,301	267,854	112,371	100,886	127,897	1,702,349
Beauty & barber shops	1,581,961	1,552,150	1,656,204	1,668,774	1,739,716	1,595,221	1,635,737	1,656,708	1,605,024	2,191,032	1,435,747	1,431,072	1,660,936	19,828,321
Employment agencies	22,353	22,654	22,156	24,919	25,673	22,778	23,563	26,367	23,779	20,711	23,713	23,323	30,977	290,613
Counselling services	6,158	6,200	5,963	6,149	5,848	5,389	5,837	6,685	6,314	5,780	6,052	6,440	6,589	73,246
Legal services	78,302	56,038	56,505	56,074	57,933	53,181	56,907	59,607	53,116	48,675	53,308	55,457	49,035	655,836
Laundry & cleaning	190,490	188,431	204,625	220,424	221,857	191,858	213,786	220,407	201,731	193,987	186,139	174,962	201,096	2,419,303
Funeral services	13,094	12,342	12,407	12,401	12,847	11,227	12,466	12,361	11,691	12,157	13,661	12,859	14,818	151,237
Medical services	1,281,759	1,228,050	1,264,968	1,284,136	1,343,498	1,159,639	1,325,044	1,382,020	1,277,573	1,197,862	1,297,095	1,252,320	1,421,862	15,434,067
Moving & courier services	418,803	407,060	438,164	422,331	444,893	370,590	436,418	475,027	452,289	447,052	420,698	420,810	468,784	5,204,116
Repair shops (not auto)	60,594	57,875	59,945	60,366	64,894	60,584	63,855	67,310	71,419	81,348	65,872	67,177	77,460	798,105
Accounting services	36,625	28,922	27,971	28,943	30,600	30,899	37,019	38,225	36,612	36,556	39,334	32,285	33,978	401,344
Advertising, consultancy & PR	73,424	71,265	72,501	71,871	74,295	69,192	71,614	70,554	62,688	56,340	59,858	62,516	72,021	814,715
Computer programming	1,357,517	1,287,682	1,310,973	1,358,800	1,417,439	1,376,648	1,511,223	1,610,805	1,971,380	2,396,813	1,656,225	1,460,850	1,598,304	18,957,142
Farming services	111,383	112,133	113,871	110,248	108,086	103,884	107,100	108,025	105,173	125,069	102,807	95,677	120,370	1,312,443
Miscellaneous professional services	921,302	879,791	893,472	890,855	932,001	867,660	946,236	1,183,746	1,117,761	1,128,921	1,091,932	1,088,549	1,221,690	12,242,614
Engineering services	54,099	52,173	52,286	53,547	56,521	48,707	51,981	55,842	48,022	44,733	47,211	48,450	55,248	614,721
Marina services	50,713	69,594	75,000	83,757	99,232	91,231	73,938	49,673	38,140	34,678	33,376	33,326	50,888	732,833
Wrecking & salvage yards	3,626	3,730	3,594	3,588	3,926	3,490	4,003	3,899	3,423	2,955	3,533	3,778	4,567	44,486
Pest control	2,660	2,818	3,447	3,414	3,924	3,124	3,416	4,019	2,843	2,969	2,752	2,969	3,196	39,042
Educational establishments	760,752	600,652	675,737	673,242	612,153	486,772	931,449	861,563	814,901	671,390	871,750	721,802	879,052	8,800,463
Child care services	19,686	20,471	21,517	18,401	18,800	22,690	19,937	22,777	19,371	19,787	22,647	24,072	24,365	254,835
Social, political & religious organisations	1,492,888	1,367,471	1,448,309	1,437,801	1,421,342	1,394,944	1,551,815	1,467,619	1,380,576	1,387,283	1,130,492	1,100,380	1,490,503	16,578,535
Government services	2,601,633	2,557,237	2,651,192	2,650,075	2,692,184	2,448,026	2,588,667	2,609,311	2,317,183	2,216,602	2,443,716	2,445,460	2,756,334	30,375,987
Miscellaneous services	1,487,753	1,181,411	1,398,673	1,428,403	1,483,329	1,281,106	1,399,771	1,415,175	1,386,545	2,097,444	1,326,549	1,281,298	1,574,626	17,254,330
Commercial equipment	929,620	862,234	889,160	872,073	912,209	845,705	987,710	993,836	943,241	931,419	912,747	839,158	959,222	10,948,714
Other services	17,237,361	16,130,699	16,987,550	16,986,107	17,573,159	16,128,377	17,950,021	18,347,572	17,674,788	19,404,250	16,865,801	15,997,055	18,627,703	208,673,082
Total services	76,739,158	73,653,201	77,344,472	77,598,482	80,443,491	76,547,279	81,083,543	82,855,789	77,148,269	80,672,964	75,283,674	74,604,119	86,355,272	943,590,555
TOTAL	225,276,281	221,168,525	229,810,532	233,920,232	240,974,519	228,154,002	237,855,803	245,838,858	244,115,617	286,022,356	224,257,773	213,997,023	252,159,213	2,858,274,453

Table 3B Card expenditure statistics (not seasonally adjusted)

Value of credit card transactions

Detailed sector breakdown - retail sectors (not seasonally adjusted)

Historical data located in hidden columns

£	March 2014	April 2014	May 2014	June 2014	July 2014	August 2014	September 2014	October 2014	November 2014	December 2014	January 2015	February 2015	March 2015	Total (latest 12 months)
Supermarkets	1,827,701,780	1,823,830,120	1,852,979,563	1,890,622,873	1,863,140,099	1,766,729,549	1,852,507,855	1,891,740,567	1,928,770,781	2,630,480,321	1,678,634,665	1,617,529,529	1,914,840,781	22,711,806,703
Bakers & dairies	4,317,689	4,088,753	4,370,575	4,562,654	4,617,597	4,468,611	4,817,872	5,082,480	5,067,001	6,036,341	4,241,317	4,464,634	5,543,623	57,361,458
Sweet stores	6,910,633	8,973,193	5,944,123	6,266,297	6,510,251	6,420,174	6,075,636	6,806,456	9,216,196	17,550,217	3,960,032	5,242,765	8,163,892	91,129,232
Miscellaneous foodstores	102,379,214	99,670,775	102,162,206	105,436,814	105,424,686	96,379,519	101,801,931	105,841,721	104,665,839	141,788,125	94,022,833	93,614,453	108,681,740	1,259,490,642
Off-licences	40,898,662	41,629,932	42,244,580	42,421,883	42,838,798	39,577,615	37,486,314	39,406,906	49,018,615	81,006,626	32,148,188	33,309,309	39,441,699	520,530,465
Food & drink	1,982,207,978	1,978,192,773	2,007,701,047	2,049,310,521	2,022,531,431	1,913,575,468	2,002,689,608	2,048,878,130	2,096,738,432	2,876,861,630	1,813,007,035	1,754,160,690	2,076,671,735	24,640,318,500
Department stores	359,206,273	365,046,580	376,528,661	401,925,110	384,053,341	384,446,547	383,199,699	414,732,897	526,629,699	373,113,287	306,997,415	306,997,415	365,551,689	4,999,132,816
Discount stores	85,280,160	91,216,281	94,272,437	90,600,286	93,498,253	96,166,295	91,598,413	101,495,806	130,944,852	172,897,218	88,637,387	79,184,088	103,957,704	1,234,469,020
Catalogues	172,756,007	158,120,141	153,494,683	150,087,029	155,873,321	173,932,899	197,698,269	204,584,481	221,486,449	186,417,062	178,179,123	159,005,963	203,742,290	2,142,621,710
Miscellaneous mixed	102,863,364	103,961,277	112,230,410	110,677,935	110,677,935	106,659,671	116,999,333	125,589,762	139,026,768	177,570,623	85,465,419	85,617,544	104,783,109	1,376,799,391
Mixed business	720,105,804	718,344,279	732,513,321	754,842,835	744,102,850	761,205,412	789,495,714	846,402,946	1,018,087,768	1,253,792,794	725,395,216	630,805,010	778,034,792	9,753,022,937
Men's clothing	37,764,973	38,019,850	40,995,605	47,429,144	44,418,380	38,717,958	38,849,527	43,312,436	45,857,878	64,127,147	43,511,193	32,016,148	38,758,325	516,013,391
Women's clothing	145,108,415	143,846,026	149,867,751	165,018,242	152,918,579	130,438,322	145,825,606	152,552,364	154,529,024	196,326,643	126,401,712	117,254,936	152,098,245	1,787,077,450
Family clothing	406,362,973	430,084,708	441,898,462	457,641,201	461,676,656	423,016,503	440,508,462	481,959,987	505,514,152	356,245,667	330,145,504	325,026,364	4,539,879,664	
Miscellaneous clothing	28,436,123	28,263,095	30,091,853	33,479,422	32,557,826	29,642,910	30,680,747	33,893,128	34,474,229	40,912,132	25,411,107	23,552,950	30,557,497	373,516,896
Shoe shops	70,991,124	81,539,472	83,673,040	91,226,181	85,475,811	89,916,631	86,025,128	96,001,094	89,601,502	118,920,934	74,497,003	56,670,946	71,140,130	1,024,687,872
Clothing	688,663,608	721,752,951	746,526,732	794,794,190	777,047,252	711,732,324	741,889,470	807,719,009	829,976,785	1,106,448,523	626,066,992	559,640,484	717,580,561	9,141,175,273
Furniture stores	284,281,171	273,686,156	276,732,875	265,789,007	279,209,784	281,776,424	292,548,037	333,573,154	314,306,428	290,208,827	341,015,635	280,372,386	317,809,325	3,547,028,039
Household appliance stores	130,716,135	117,640,150	119,433,088	115,732,161	118,726,715	112,781,214	117,975,198	133,045,193	137,719,661	143,838,310	126,206,518	114,929,849	128,412,379	1,486,440,436
Electronic stores	188,993,357	189,474,530	185,266,272	185,008,552	189,141,349	198,186,908	220,920,108	231,647,999	241,624,213	362,461,743	232,351,109	180,611,098	201,161,939	2,617,855,820
DIY stores	488,326,163	516,911,927	524,464,300	495,806,769	515,469,469	490,378,817	485,507,439	513,938,965	478,249,120	410,724,234	435,099,627	426,427,027	544,793,901	5,834,771,595
Floor covering stores	64,744,402	61,415,389	60,897,913	60,876,671	63,828,489	62,847,588	66,700,835	76,648,575	76,156,871	56,573,443	60,832,781	58,591,643	68,990,265	774,360,463
Garden centres	97,204,351	120,958,611	128,902,619	106,075,067	83,624,146	66,905,584	68,998,218	65,482,114	64,345,061	82,278,410	40,594,861	48,660,662	96,923,628	932,548,981
Miscellaneous household	134,591,704	131,445,633	133,520,372	142,340,623	144,590,634	137,985,253	147,730,703	158,297,632	162,324,551	192,671,516	145,579,611	125,872,725	147,573,899	1,769,933,152
Household	1,388,857,283	1,411,532,396	1,429,217,439	1,371,628,850	1,394,590,586	1,350,861,788	1,400,380,538	1,512,633,632	1,474,725,905	1,538,756,483	1,381,480,142	1,235,465,390	1,502,665,336	17,003,938,485
Books, newspapers & magazines	55,451,252	50,267,408	51,728,440	50,937,284	54,966,537	51,980,299	58,998,772	65,424,504	68,516,658	98,999,105	59,462,857	54,657,565	61,798,632	727,738,061
Record shops	5,504,001	5,800,659	5,385,350	5,719,169	5,386,684	5,164,918	5,352,028	5,760,207	8,026,361	18,884,654	4,921,162	4,754,836	5,534,437	80,689,465
Music shops	17,058,243	15,834,168	16,094,735	15,293,181	16,029,740	15,902,468	18,074,695	18,711,772	20,573,225	17,983,276	16,404,995	18,015,527	18,015,527	215,820,450
Hobbies, toys & games	28,431,103	27,442,025	28,018,936	27,563,708	28,492,747	28,139,279	38,409,631	39,391,413	60,391,283	88,255,251	25,512,438	24,436,073	27,538,232	443,591,016
Photographic	23,520,637	19,386,463	21,629,900	21,351,888	22,685,960	21,463,647	20,785,250	21,140,487	22,251,553	26,461,004	19,052,646	18,125,249	24,088,980	258,423,035
Handicraft	8,616,677	8,034,821	8,099,280	7,638,108	8,154,035	8,280,537	8,453,927	9,106,617	9,158,318	7,906,345	7,964,332	8,982,355	99,808,899	
Sports shops	172,972,873	187,450,432	197,142,199	198,208,869	216,921,703	216,041,028	190,017,862	177,774,087	179,795,808	242,218,238	163,000,095	148,124,270	179,873,856	2,296,568,447
Jewellers	119,147,110	110,324,441	117,230,455	126,235,522	124,532,078	120,510,008	118,442,829	118,363,801	141,608,949	275,864,145	105,039,386	110,385,149	121,672,513	1,590,209,276
Computer software	48,355,704	45,977,761	42,915,502	40,322,541	42,207,464	40,120,655	45,541,677	44,448,481	45,597,714	53,597,714	42,001,331	38,261,060	43,383,602	523,779,114
Medical goods	17,159,353	15,979,452	16,811,579	17,311,453	18,597,011	17,365,146	17,830,279	19,734,790	19,480,880	23,330,326	16,320,375	16,242,527	19,667,411	218,671,229
Chemists	81,907,727	77,218,556	83,567,360	89,060,997	90,256,038	80,746,213	84,834,270	98,930,462	102,943,425	173,459,325	76,289,660	71,371,228	88,696,710	1,117,374,244
Optical goods	81,617,428	75,128,155	78,969,154	82,066,488	85,223,777	77,912,830	78,079,837	77,393,158	70,543,943	61,760,769	73,491,378	74,939,809	87,488,511	922,997,800
Cosmetic stores	27,210,124	24,662,894	27,021,762	29,097,199	28,324,760	26,655,697	30,649,059	33,040,304	40,263,850	64,081,371	24,215,191	24,258,644	29,848,759	382,119,490
Tobaccoists	1,838,016	1,850,376	1,908,622	2,132,715	2,152,443	1,917,707	2,010,361	2,001,500	1,831,310	2,486,189	1,876,991	1,867,348	2,319,234	24,354,796
Artists	25,516,782	18,127,137	19,518,504	18,663,948	18,327,133	15,783,662	17,916,325	16,948,017	16,179,196	26,046,914	16,331,289	19,609,033	26,823,219	228,274,377
Artists' supplies	14,092,727	12,950,002	13,705,505	13,290,172	14,115,643	13,549,703	14,277,680	16,014,751	16,988,148	17,303,989	11,958,283	12,413,679	14,438,223	170,945,778
Antiques, art & stamps/coins	25,482,909	24,362,276	26,731,393	26,720,165	26,003,900	23,987,688	27,649,734	29,208,918	28,347,263	29,960,767	21,827,685	20,693,463	27,511,844	313,005,096
Pawn shops	821,488	837,274	796,151	823,506	1,049,566	1,055,259	1,140,407	1,111,964	1,066,209	1,396,827	1,009,655	902,834	1,028,383	12,218,035
Gift shops	48,115,249	46,596,398	50,302,524	52,447,629	57,336,769	57,336,769	58,345,837	63,837,591	80,772,225	108,816,624	44,155,592	44,238,093	52,495,682	719,064,238
Secondhand shops	2,656,883	2,550,981	2,493,747	2,817,861	2,652,510	1,926,742	2,244,984	2,736,159	2,539,073	2,730,704	2,585,549	2,212,641	3,828,943	31,319,894
Luggage & leather goods	14,747,408	13,956,290	14,606,276	17,238,794	16,111,921	15,815,248	15,407,907	16,256,329	17,564,159	26,091,493	13,513,328	11,702,344	14,623,772	192,887,861
Pet shops	34,958,050	35,020,504	35,840,415	35,316,401	36,847,341	36,926,148	35,805,167	37,530,232	36,027,100	40,106,068	34,568,137	32,616,206	38,403,066	434,806,785
Religious goods	285,525	365,039	438,803	446,658	517,438	457,440	417,249	420,257	264,805	284,263	238,908	211,921	319,640	4,382,421
Direct sales	215,052,775	219,121,500	213,784,434	207,868,051	215,134,572	197,751,294	222,105,044	220,662,450	195,910,025	207,548,153	204,324,758	191,639,536	220,662,990	2,516,512,81

Table 3B Card expenditure statistics (not seasonally adjusted)

Value of credit card transactions

Detailed sector breakdown - services sectors (not seasonally adjusted)

£	March 2014	April 2014	May 2014	June 2014	July 2014	August 2014	September 2014	October 2014	November 2014	December 2014	January 2015	February 2015	March 2015	Total (latest 12 months)
Auto rental	64,738,074	73,548,112	82,369,463	94,113,999	111,012,128	90,745,396	78,363,853	58,552,412	48,692,508	54,932,445	53,938,226	54,282,017	69,628,596	870,179,155
Auto parts & accessories	132,047,280	125,120,967	126,416,416	124,017,222	129,194,006	113,897,510	119,363,198	120,022,023	109,726,143	111,025,849	113,207,752	110,531,460	135,598,016	1,438,120,562
Auto services	51,300,922	48,228,522	51,353,681	52,564,626	54,579,279	48,809,353	54,337,861	53,613,594	48,147,706	45,894,314	49,869,612	50,257,566	60,077,183	617,733,297
Auto repair shops	251,002,418	218,814,050	225,011,258	223,964,595	231,713,269	209,389,099	225,962,531	224,056,040	201,589,254	188,385,314	207,919,317	208,482,759	258,072,628	2,623,360,114
Service stations	0	0	0	0	0	0	0	0	0	0	0	0	0	0
Vehicle sales	255,657,880	215,349,198	220,996,349	220,283,134	220,760,758	202,783,521	232,060,652	212,516,300	184,412,977	171,391,186	199,049,409	210,546,259	292,480,814	2,582,630,557
Vehicle Sales & Services	754,746,574	681,060,849	706,147,167	714,943,576	747,259,440	665,624,879	710,088,095	668,760,369	592,568,588	571,629,108	623,984,316	634,100,061	815,857,237	8,132,023,685
Restaurants	600,852,984	580,917,429	621,777,239	633,174,889	659,210,292	659,684,635	646,844,400	663,818,230	637,331,308	759,799,380	545,233,839	570,225,917	668,736,730	7,646,754,288
Public houses	118,400,017	115,411,227	117,879,724	122,798,677	127,537,625	127,704,874	127,479,808	119,903,789	112,072,072	146,534,509	94,077,176	101,058,649	125,477,614	1,437,935,744
Catering services	57,715,500	54,533,751	60,598,473	60,675,748	63,684,776	55,635,879	62,663,706	63,281,037	61,459,408	66,497,467	54,074,715	54,569,706	63,873,016	721,547,682
Video stores	2,509,472	2,261,150	2,348,500	2,893,659	2,901,796	2,663,357	2,891,445	2,768,157	2,523,620	2,999,706	2,819,920	3,879,544	3,343,255	34,294,109
Cinema, theatre & dance	133,184,925	112,657,783	132,665,675	119,131,514	119,388,936	102,579,651	113,181,974	205,931,162	197,634,394	171,926,046	111,408,926	113,987,005	139,329,568	1,639,822,634
Concerts & entertainers	8,515,892	7,763,325	8,829,733	8,641,609	8,370,622	9,043,936	5,207,668	11,023,193	12,892,572	12,477,003	8,935,985	8,567,270	10,307,836	112,060,752
Tourist attractions	26,765,101	40,082,771	38,007,078	40,631,517	48,980,035	51,252,205	35,106,643	34,045,806	21,732,058	23,256,908	20,410,540	23,245,439	31,103,106	408,854,106
Amusement parks	2,154,696	4,961,353	4,084,082	4,930,070	6,349,972	7,703,384	4,005,529	4,399,807	2,230,457	1,857,239	1,676,325	2,255,784	3,030,587	47,484,589
Aquariums	1,164,805	2,002,690	1,581,409	1,485,135	2,814,502	3,943,144	2,409,727	1,919,755	1,179,459	1,250,382	925,954	1,433,372	1,674,159	22,619,688
Sports & games establishments	122,490,989	125,035,573	167,602,097	114,849,075	104,744,007	96,960,646	117,658,987	109,176,954	109,091,983	121,668,881	118,490,535	102,072,698	136,642,411	1,423,993,847
Professional sports clubs	11,804,911	15,130,702	26,683,825	16,607,340	15,291,950	10,691,386	11,450,186	11,124,829	11,103,361	8,579,596	8,582,022	8,135,903	10,656,449	154,037,549
Gambling	129,285,201	117,565,543	115,106,721	124,598,989	103,941,677	113,338,909	132,004,079	124,596,142	119,267,515	135,445,847	127,598,773	122,052,234	137,063,112	1,472,579,541
Personal services	20,177,974	18,296,684	19,327,548	19,008,682	19,446,422	18,363,954	16,624,605	20,914,954	22,294,337	25,917,447	19,558,370	17,910,331	20,768,373	207,871,407
Miscellaneous entertainment	206,318,646	187,482,954	208,694,754	178,643,414	183,553,044	182,933,722	209,962,865	225,567,033	191,940,755	141,733,847	223,545,357	198,833,405	218,182,345	2,351,073,495
Entertainment	1,441,341,113	1,384,102,935	1,525,186,858	1,448,070,318	1,466,215,656	1,442,499,382	1,489,931,622	1,598,470,848	1,502,753,299	1,619,944,258	1,337,338,437	1,329,227,257	1,570,188,561	17,713,929,431
Hotels	818,300,312	803,486,127	914,465,945	986,043,516	1,003,226,810	916,445,630	986,513,547	963,222,549	846,621,742	756,807,809	737,230,794	752,782,342	889,122,782	10,555,969,593
Airlines	788,449,977	742,919,231	778,726,857	671,540,382	651,187,587	597,040,030	665,502,522	649,880,195	543,328,546	474,680,419	773,422,497	668,117,366	759,758,337	7,976,103,969
Airport terminals	3,328,301	3,416,536	3,804,065	4,508,972	4,431,939	3,788,854	4,240,768	3,294,833	2,719,452	2,852,456	2,746,387	2,640,467	3,521,125	41,965,854
Railways	244,309,560	233,271,637	242,531,016	252,912,204	255,468,602	217,549,378	276,100,090	272,763,727	254,399,706	278,925,739	263,179,567	230,053,022	257,726,214	3,034,880,902
Buses	29,515,726	30,271,761	32,472,211	31,713,585	33,019,772	30,199,212	33,171,314	30,389,255	27,203,037	25,540,035	24,451,133	23,911,767	28,988,238	351,331,320
Sea travel	60,837,512	59,878,362	69,077,971	64,442,498	70,374,017	76,742,237	75,808,020	66,165,641	50,651,581	49,128,488	67,095,708	58,189,740	70,148,351	777,702,614
Travel agents	603,661,819	581,711,202	647,465,196	627,677,776	631,748,563	550,052,306	539,173,392	510,317,523	412,919,856	398,378,747	639,088,554	566,364,287	642,166,274	6,747,063,676
Timeshares	3,107,615	2,958,426	2,943,246	2,592,768	2,885,021	2,831,060	2,830,522	3,032,210	2,713,733	2,718,706	3,523,185	2,584,235	2,500,377	34,113,489
Camping grounds	29,567,020	30,148,707	35,962,649	38,520,283	42,821,832	34,682,590	21,546,869	18,718,294	21,811,340	16,341,278	22,222,828	23,055,748	31,371,898	337,204,316
Miscellaneous travel	61,248,102	61,425,838	67,589,497	72,506,909	71,499,540	60,566,622	62,530,702	66,106,587	58,878,017	54,600,581	63,898,347	62,805,893	74,499,409	776,907,942
Travel	1,824,025,632	1,746,001,700	1,880,572,708	1,766,415,377	1,763,436,873	1,573,452,289	1,680,904,199	1,620,668,265	1,374,625,268	1,303,166,449	1,659,628,206	1,637,722,525	1,870,680,223	20,077,274,082
Telegraph services / Wire transfer money order	2,806,086	2,759,232	2,795,530	2,405,476	2,741,470	2,532,889	2,569,807	2,842,173	2,978,561	3,287,459	3,365,047	3,496,754	3,982,978	35,757,376
Insurance services	311,758,820	290,878,137	282,987,075	292,115,474	312,260,894	287,833,938	310,804,423	290,551,150	252,460,942	240,949,757	272,825,674	259,675,170	324,846,464	3,418,189,099
FIs - cash disbursements (auto & manual)	9,329,764	7,730,038	8,601,183	8,358,129	8,518,831	8,047,738	9,091,408	8,330,810	7,367,465	7,224,181	7,247,564	6,773,306	8,608,247	95,898,900
FIs - merchandise & services	39,396,664	37,629,065	40,263,145	40,336,412	40,745,012	35,943,068	38,961,472	36,652,587	29,242,791	29,281,741	31,284,029	32,605,460	50,628,050	443,572,832
Non-FIs - foreign currency, travellers' cheques	28,773,852	39,617,132	52,449,305	58,449,237	62,213,572	59,635,435	55,732,886	38,432,915	27,874,108	29,001,107	35,203,834	43,626,991	58,810,708	561,047,230
Security brokers and dealers	7,270,746	6,336,903	6,395,005	4,658,761	5,509,875	5,241,842	5,737,474	8,192,798	6,250,957	7,114,040	8,519,552	5,868,259	14,493,425	84,318,891
Tax preparation services	91,401	111,941	121,457	131,353	148,679	149,129	130,259	207,030	161,889	64,178	157,630	394,432	292,548	2,070,525
Tax payments	21,852,953	15,278,119	14,410,202	11,955,451	13,806,551	13,506,635	14,929,731	11,874,173	12,248,303	10,969,102	20,861,959	24,853,350	35,885,269	200,578,845
Fines, bail and bond payments	11,571,356	10,555,086	11,901,981	11,928,767	12,555,496	11,235,928	11,036,945	11,636,926	10,607,681	8,613,982	9,575,720	9,036,614	10,075,503	128,760,629
Miscellaneous financial	15,838,519	15,885,595	16,168,725	16,914,921	17,449,825	15,528,954	16,433,695	18,229,330	16,850,481	15,170,926	16,102,549	15,997,984	19,831,993	200,564,978
Financial	448,690,161	426,781,248	436,093,608	447,253,981	475,950,205	439,655,556	465,428,100	426,949,892	366,043,178	351,676,473	405,143,558	402,328,320	527,455,185	5,170,759,304

Table 3B Card expenditure statistics (not seasonally adjusted)

Value of credit card transactions

Detailed sector breakdown - services sectors (continued, not seasonally adjusted)

£	March 2014	April 2014	May 2014	June 2014	July 2014	August 2014	September 2014	October 2014	November 2014	December 2014	January 2015	February 2015	March 2015	Total (latest 12 months)
Telecoms	84,947,412	79,865,009	81,403,348	77,569,528	82,448,037	83,422,828	96,641,240	94,772,998	93,006,909	98,948,665	91,611,814	78,255,896	86,429,069	1,044,375,341
Utilities	79,594,940	68,629,657	69,523,674	61,936,138	62,289,768	54,211,364	61,963,440	64,056,758	56,856,139	55,353,768	65,155,904	65,017,366	83,987,124	768,981,100
Contractors (residential & commercial)	89,802,259	82,573,296	86,487,430	86,117,366	92,147,402	81,528,719	94,883,075	98,694,498	92,082,103	80,121,717	84,509,420	86,282,461	102,083,505	1,067,510,992
Gardening services	6,486,727	7,517,285	9,664,030	6,982,163	6,275,897	5,017,001	6,573,559	4,728,733	5,846,686	3,014,602	3,767,431	7,346,597	71,171,715	
Veterinary services	57,483,233	57,673,503	59,900,503	60,771,206	66,375,910	61,770,331	63,422,557	64,732,297	58,803,201	59,680,217	59,911,478	55,346,567	63,561,259	731,949,029
Photocopying & printing	37,996,150	34,050,175	36,078,172	35,136,309	35,654,143	33,813,133	37,791,849	41,280,237	40,425,799	37,982,605	38,140,886	36,234,842	38,633,424	445,221,574
Photographic studios	7,426,754	6,866,016	7,491,782	7,800,370	9,067,167	7,139,242	7,691,483	8,628,097	9,798,565	10,636,572	5,827,775	5,979,146	7,239,215	94,165,430
Beauty & barber shops	87,159,902	84,244,621	90,206,210	89,203,223	93,485,479	86,817,366	89,593,455	91,488,717	90,824,734	116,659,521	79,056,700	78,904,295	92,499,233	1,082,983,554
Employment agencies	23,450,177	24,241,512	22,938,905	30,456,453	28,668,084	24,595,673	24,896,795	29,760,796	27,415,997	26,708,354	23,137,091	26,565,118	33,057,723	322,442,501
Counselling services	1,783,445	1,142,244	1,582,077	1,263,472	1,270,125	1,243,211	1,348,774	1,638,767	1,568,525	1,544,962	1,599,598	1,599,598	17,153,914	
Legal services	24,872,763	21,696,628	22,201,956	22,570,059	23,783,781	20,993,270	23,055,090	25,849,305	21,556,756	20,352,654	21,621,482	22,605,803	26,135,867	272,422,651
Laundry & cleaning	6,620,340	6,479,024	6,915,449	7,469,799	7,525,373	6,707,533	7,466,319	7,503,475	6,999,898	6,589,508	6,418,196	5,905,279	6,828,995	82,808,848
Funeral services	15,351,639	13,912,422	13,309,894	12,932,821	14,325,266	12,264,028	13,984,825	14,944,016	14,620,960	14,741,102	16,905,013	16,188,497	18,694,124	176,822,968
Medical services	178,842,118	166,448,179	173,828,222	177,204,678	183,148,976	158,135,538	177,104,795	190,514,834	176,710,591	160,247,893	172,838,768	173,843,078	196,157,544	2,106,183,098
Moving & courier services	42,133,644	40,995,667	44,753,025	43,390,225	47,495,182	42,711,314	44,162,345	46,051,396	43,645,087	42,254,825	41,187,269	41,122,236	46,193,815	523,962,386
Repair shops (not auto)	10,016,258	9,336,817	9,790,225	10,282,763	10,737,323	9,889,358	10,388,034	11,643,854	11,388,780	12,435,217	10,245,809	10,093,607	12,106,121	128,337,908
Accounting services	8,432,728	6,799,732	6,474,576	6,479,405	7,049,208	6,494,220	7,565,507	7,724,817	7,523,946	8,599,594	10,096,395	8,945,675	9,487,691	93,240,766
Advertising, consultancy & PR	8,016,266	7,798,574	8,111,265	7,707,853	8,286,333	7,186,784	7,816,479	8,367,861	7,092,562	6,795,343	7,730,480	7,573,611	8,906,992	93,374,137
Computer programming	87,130,609	83,577,570	83,679,438	86,506,565	88,195,049	81,470,301	91,193,639	108,359,998	128,369,053	146,022,163	111,229,634	97,338,559	112,082,133	1,218,024,102
Farming services	10,834,389	10,750,685	11,263,990	11,288,639	11,890,564	10,873,732	11,315,288	11,782,430	10,457,731	11,254,931	10,432,069	9,699,281	12,205,228	133,214,568
Miscellaneous professional services	161,243,109	156,645,040	157,574,269	159,293,403	163,657,160	156,012,835	184,092,288	177,132,251	160,748,512	154,357,611	173,046,539	162,447,485	194,587,909	1,999,595,302
Engineering services	16,050,278	15,035,320	15,492,457	16,135,800	17,093,798	14,528,338	15,311,967	17,273,640	14,214,895	13,242,871	14,814,207	14,522,675	16,861,550	184,527,518
Marina services	10,604,828	11,363,904	11,021,165	11,574,879	12,227,972	10,556,994	8,821,591	7,002,059	5,458,747	5,636,031	6,664,806	6,175,257	11,133,626	107,637,031
Wrecking & salvage yards	794,929	781,021	743,745	795,734	865,882	721,356	863,294	849,871	760,361	659,424	733,703	815,137	1,005,827	9,595,355
Pest control	545,278	518,014	598,064	609,471	743,813	577,849	691,170	768,440	641,360	668,535	650,935	624,527	668,748	7,760,926
Educational establishments	111,041,042	124,398,717	127,630,893	114,977,779	123,739,956	144,881,445	315,278,800	196,945,112	111,474,301	109,713,169	211,296,796	123,127,607	124,977,535	1,828,442,110
Child care services	2,472,449	2,422,096	2,564,515	2,657,791	2,835,945	2,439,354	2,711,790	2,737,050	2,434,069	2,386,321	2,695,517	2,598,952	3,018,286	31,501,686
Social, political & religious organisations	100,680,795	80,889,229	79,951,690	78,115,825	84,129,399	76,303,662	90,849,072	93,731,593	81,573,597	94,118,627	92,682,804	80,679,891	103,708,378	1,036,733,767
Government services	264,907,312	263,354,208	266,172,757	259,322,352	283,092,549	269,894,839	276,352,498	256,544,338	227,249,618	244,263,188	350,285,408	292,006,631	287,549,251	3,276,087,637
Miscellaneous services	97,546,047	86,535,492	87,268,932	97,670,345	93,625,945	80,170,283	92,228,377	94,346,652	82,274,910	101,961,666	80,743,357	76,663,930	99,733,735	1,073,223,624
Commercial equipment	136,612,345	132,936,953	131,964,752	127,572,885	137,804,305	121,963,187	134,744,019	141,904,325	130,932,437	115,811,389	123,967,902	122,044,476	148,559,408	1,570,206,038
Other services	1,770,880,165	1,689,478,610	1,726,587,410	1,711,795,299	1,799,935,791	1,674,335,088	2,000,803,414	1,921,759,215	1,720,927,250	1,765,854,425	1,917,777,550	1,713,364,012	1,957,039,510	21,599,657,574
Total services	7,057,983,957	6,730,911,469	7,189,053,696	7,074,522,067	7,256,024,775	6,712,012,824	7,333,668,977	7,199,831,138	6,403,539,325	6,369,078,522	6,881,102,861	6,469,524,517	7,630,343,498	83,249,613,669
TOTAL	14,066,449,322	13,704,970,529	14,332,213,536	14,297,939,581	14,530,418,455	13,654,417,626	14,554,291,600	14,820,506,046	14,210,825,654	16,006,358,421	13,491,803,442	12,614,090,483	15,018,935,892	171,236,771,265

Table 3C Card expenditure statistics (not seasonally adjusted)

Number of debit card transactions

Detailed sector breakdown - retail sectors (not seasonally adjusted)

Historical data located in hidden columns

	March 2014	April 2014	May 2014	June 2014	July 2014	August 2014	September 2014	October 2014	November 2014	December 2014	January 2015	February 2015	March 2015	Total (latest 12 months)
Supermarkets	272,267,868	259,596,708	269,161,332	273,496,936	273,796,584	255,394,111	272,893,545	279,762,517	267,523,289	292,824,915	254,198,514	250,603,025	292,631,442	3,241,882,918
Bakers & dairies	2,352,948	2,136,296	2,426,053	2,403,279	2,600,648	2,690,670	2,800,044	3,247,832	3,322,286	3,368,221	2,941,667	3,013,084	3,617,222	34,567,302
Sweet stores	1,137,676	1,214,703	970,669	1,001,563	950,059	1,011,398	1,003,917	1,143,518	1,260,132	2,164,422	859,699	1,148,723	1,421,883	14,150,686
Miscellaneous foodstores	16,468,884	15,633,260	16,128,968	16,387,687	16,591,936	15,550,854	16,398,981	16,684,431	15,662,884	17,357,667	14,915,784	15,358,991	17,829,802	194,501,245
Off-licences	3,455,446	3,290,259	3,530,437	3,579,031	3,618,981	3,460,419	3,420,106	3,484,176	3,441,042	3,871,355	3,051,911	3,094,775	3,538,729	41,381,221
Food & drink	295,682,822	281,871,226	292,217,459	296,868,496	297,558,208	278,107,452	296,516,593	304,322,474	291,209,633	319,586,560	275,967,575	273,218,598	319,039,078	3,526,483,372
Department stores	12,444,317	11,828,910	12,528,112	13,231,106	13,963,452	12,594,426	12,399,135	13,138,406	15,631,934	25,893,752	13,101,192	11,248,213	13,237,827	168,796,465
Discount stores	11,278,320	11,545,306	11,987,176	12,058,499	12,390,457	12,460,128	12,774,310	13,741,707	15,301,524	20,157,519	11,872,444	11,619,472	13,506,001	158,914,543
Catalogues	3,689,572	3,497,790	2,853,696	2,464,569	2,515,604	2,401,435	2,665,625	2,767,181	2,809,874	3,319,722	2,851,786	2,506,862	2,896,947	33,551,091
Miscellaneous mixed	9,324,886	7,854,741	8,089,967	8,636,963	8,514,428	7,872,264	8,469,331	8,939,562	9,448,904	14,256,485	6,979,050	7,115,022	8,850,959	105,027,676
Mixed business	36,737,095	34,726,747	35,458,951	36,391,137	37,383,941	35,328,253	35,808,401	38,586,856	43,192,236	63,627,478	34,804,472	32,489,569	38,491,734	466,289,775
Men's clothing	586,810	621,229	652,354	742,556	827,327	777,455	647,310	662,187	716,662	1,332,242	696,913	577,998	591,086	8,845,319
Women's clothing	5,953,121	5,860,403	6,617,555	6,993,234	7,526,514	6,278,953	6,333,969	6,053,736	5,991,468	10,097,167	5,506,091	5,087,194	6,284,045	78,630,329
Family clothing	26,264,563	26,592,507	28,434,307	30,464,565	31,849,288	27,783,290	27,940,984	29,409,993	29,481,022	46,284,077	24,797,559	46,284,077	27,742,670	353,048,929
Miscellaneous clothing	700,510	652,579	752,922	883,615	893,750	819,822	794,591	918,932	803,420	1,175,558	603,296	595,437	780,258	9,674,180
Shoe shops	2,447,950	2,765,338	2,922,538	3,369,393	3,519,976	3,478,018	3,111,301	2,819,006	2,542,765	3,878,014	2,640,648	2,047,864	2,412,242	35,507,103
Clothing	35,952,954	36,492,056	39,379,676	42,453,363	44,616,855	39,137,538	38,828,155	39,863,854	39,535,337	62,767,058	34,244,507	30,577,160	37,810,301	485,705,860
Furniture stores	3,551,021	3,378,686	3,472,270	3,459,739	3,471,440	3,583,506	3,621,676	3,967,890	5,048,472	5,048,472	3,903,783	3,396,810	3,867,413	45,278,840
Household appliance stores	6,085,623	5,666,845	5,903,094	5,781,493	5,919,937	6,073,481	6,062,765	6,428,661	6,660,096	7,770,250	5,979,010	5,654,004	6,456,996	74,356,632
Electronic stores	2,147,489	2,101,982	2,102,715	2,066,546	2,151,381	2,221,485	2,385,798	2,455,702	2,504,838	4,015,631	2,633,044	2,183,398	2,325,617	29,148,137
DIY stores	18,077,216	18,911,642	19,256,745	18,628,043	18,736,289	18,415,445	18,355,694	18,791,364	18,256,075	18,343,437	15,948,845	16,100,856	19,309,364	219,053,819
Floor covering stores	325,755	308,981	302,216	301,300	316,367	329,233	346,583	383,008	375,980	301,685	306,884	314,111	361,385	3,947,733
Garden centres	4,310,220	4,906,206	5,333,356	4,529,984	3,635,157	3,173,766	3,377,521	3,281,992	3,583,759	4,906,361	2,539,178	4,339,289	4,339,289	45,869,157
Miscellaneous household	1,651,810	1,647,611	1,558,090	1,554,953	1,689,164	1,895,981	2,022,218	2,013,869	1,876,129	2,215,466	1,880,523	1,760,032	1,941,783	22,055,819
Household	36,149,134	36,921,953	37,928,486	36,322,058	35,919,735	35,692,897	36,076,426	37,418,015	37,364,032	42,601,322	32,914,977	31,948,389	38,601,847	439,710,137
Books, newspapers & magazines	6,743,816	6,204,725	6,497,341	6,798,841	6,916,640	6,641,671	7,508,688	7,528,489	7,280,113	11,280,612	6,356,715	6,513,488	7,604,793	87,132,116
Record shops	828,547	756,910	711,530	765,673	689,414	701,366	747,844	796,417	966,162	2,687,290	718,729	695,442	831,979	11,068,756
Music shops	254,974	231,919	236,612	221,311	230,937	218,160	267,287	274,737	260,376	417,475	241,071	249,951	249,951	3,133,717
Hobbies, toys & games	1,654,078	1,554,135	1,646,338	1,618,423	1,668,506	1,745,255	2,086,151	2,260,925	3,049,742	4,933,306	1,631,007	1,632,307	1,834,549	25,660,644
Photographic	324,904	297,179	316,941	338,433	356,822	345,673	366,087	339,112	376,067	367,601	291,614	294,478	329,913	4,019,920
Handicraft	223,958	200,598	198,717	200,235	207,796	207,796	217,528	241,074	238,265	216,077	196,620	211,107	234,898	2,554,620
Sports shops	7,639,634	7,859,893	8,562,399	9,148,920	9,707,109	9,649,494	8,849,942	8,027,783	7,735,756	11,281,857	7,619,018	7,095,665	8,241,644	103,779,480
Jewellers	1,649,911	1,368,679	1,451,928	1,527,590	1,562,405	1,467,472	1,450,252	1,443,249	1,813,149	3,842,573	1,393,571	1,435,147	1,637,212	20,393,227
Computer software	371,868	362,957	353,082	340,796	353,743	348,707	389,464	393,311	376,240	477,794	385,806	334,747	354,355	4,471,002
Medical goods	43,470	42,584	44,335	44,907	48,725	44,507	46,749	48,375	45,016	41,959	42,223	42,185	47,553	539,118
Chemists	18,703,436	17,559,579	18,437,845	19,587,787	19,758,581	17,488,552	19,450,830	19,578,135	18,371,253	28,461,493	17,172,011	17,505,228	21,058,420	234,969,714
Optical goods	1,066,926	968,040	998,136	1,029,925	1,055,734	953,822	1,033,616	1,014,705	913,091	860,063	952,197	985,688	1,151,739	11,916,756
Cosmetic stores	1,552,635	1,380,248	1,472,862	1,599,918	1,550,576	1,501,452	1,640,674	1,767,641	2,001,459	4,045,071	1,401,760	1,527,031	1,833,026	21,721,718
Tobacconists	182,144	176,345	192,565	206,462	215,994	212,046	228,817	246,385	236,185	288,166	280,813	277,465	328,157	2,889,400
Florists	1,421,108	801,305	830,777	836,238	839,158	735,210	811,672	786,866	729,732	1,218,653	655,313	1,061,424	1,420,962	10,727,310
Artists' supplies	830,631	747,768	745,150	724,536	743,185	763,969	803,391	922,982	962,713	1,154,945	782,947	703,946	938,238	9,939,770
Antiques, art & stamps/coins	291,992	286,228	300,027	289,398	304,928	341,750	330,178	323,892	327,041	415,939	260,380	273,826	304,210	3,757,797
Pawn shops	26,145	24,445	25,649	24,347	28,138	27,751	27,988	28,111	28,100	40,701	27,881	27,156	29,013	339,280
Gift shops	5,987,534	4,579,175	4,788,006	5,819,554	5,417,698	5,460,893	5,640,771	6,026,975	7,042,007	13,299,628	4,938,619	6,099,934	7,237,180	76,350,440
Secondhand shops	73,193	70,218	73,558	71,929	77,639	76,229	78,822	80,614	75,281	95,126	69,261	70,066	80,378	919,121
Luggage & leather goods	152,239	137,362	145,617	159,918	170,609	179,732	154,063	158,218	183,014	276,494	134,082	114,031	137,410	1,950,550
Pet shops	3,159,506	3,065,207	3,149,616	3,197,372	3,253,128	3,358,495	3,253,931	3,391,871	3,275,100	3,698,419	3,228,703	3,063,687	3,459,524	39,395,053
Religious goods	6,203	7,089	6,943	6,419	7,656	8,624	8,651	8,651	7,960	8,239	6,049	6,872	7,614	88,952
Direct sales	6,596,840	6,291,592	6,243,881	6,102,503	6,077,428	5,317,033	4,553,118	5,785,541	5,421,863	5,964,422	5,647,008	5,392,182	6,224,567	69,021,138
Miscellaneous & speciality shops	3,287,928	3,371,261	3,796,870	3,810,493	4,011,946	3,974,965	4,066,803	4,363,372	4,542,648	5,437,776	4,241,242	4,067,173	4,523,655	50,208,204
Other retail	63,073,620	58,345,441	61,274,481	64,415,642	65,246,934	61,770,624	64,011,502	65,837,431	66,281,838	100,811,679	59,154,944	59,750,347	70,100,940	797,001,803
Automotive Fuels	70,844,712	66,577,221	69,312,087	68,898,586	70,761,627	66,861,871	69,266,911	69,582,977	66,052,325	67,044,683	61,562,523	59,997,064	70,278,065	806,195,940
Total retail sales	538,440,337	514,934,644	535,571,140	545,349,282	551,487,300	516,898,635	540,507,988	555,611,607	543,635,401	656,438,800	498,648,998	487,981,127	574,321,965	6,521,386,887

Table 3C Card expenditure statistics (not seasonally adjusted)

Number of debit card transactions

Detailed sector breakdown - services sectors (not seasonally adjusted)

	March 2014	April 2014	May 2014	June 2014	July 2014	August 2014	September 2014	October 2014	November 2014	December 2014	January 2015	February 2015	March 2015	Total (latest 12 months)
Auto rental	545,107	571,075	549,962	511,189	574,744	550,032	527,332	465,783	417,682	419,694	415,138	435,517	508,375	5,946,529
Auto parts & accessories	1,776,462	1,667,056	1,664,747	1,651,354	1,730,875	1,588,748	1,648,160	1,647,237	1,514,437	1,531,135	1,579,170	1,587,489	1,799,368	19,609,776
Auto services	4,636,331	4,487,784	4,782,190	4,782,825	5,024,773	4,789,594	5,128,547	5,616,648	5,320,118	5,964,368	5,149,588	5,275,222	6,077,942	62,399,599
Auto repair shops	2,010,581	1,797,303	1,826,776	1,812,948	1,905,695	1,720,330	1,848,396	1,856,634	1,663,458	1,542,237	1,746,028	1,753,918	2,091,164	21,564,887
Service stations	0	0	0	0	0	0	0	0	0	0	0	0	0	0
Vehicle sales	1,371,450	1,255,002	1,273,343	1,278,210	1,324,569	1,219,825	1,311,194	1,205,260	1,049,459	962,902	1,105,714	1,155,848	1,465,026	14,606,352
Vehicle Sales & Services	10,339,931	9,778,220	10,097,018	10,036,526	10,560,656	9,868,529	10,463,629	10,791,562	9,965,154	10,420,336	9,995,638	10,207,994	11,941,875	124,127,137
Restaurants	72,671,446	69,295,822	75,353,755	74,151,715	74,812,624	76,083,571	77,606,102	83,012,359	80,466,764	85,666,613	75,513,198	79,664,306	93,301,821	944,928,650
Public houses	14,071,847	11,856,817	11,638,217	11,714,961	11,670,551	11,574,428	12,055,485	11,585,025	11,036,808	12,468,354	10,212,995	11,320,877	14,036,214	141,170,732
Catering services	2,094,246	1,886,666	2,082,031	2,037,476	2,120,335	1,926,216	2,314,161	2,685,659	2,604,738	2,410,320	2,482,732	2,700,295	3,140,375	28,391,004
Video stores	188,264	154,908	122,626	73,760	46,928	47,551	47,199	47,409	47,156	43,568	51,351	66,512	59,067	819,085
Cinema, theatre & dance	4,609,400	4,716,537	5,160,770	4,562,126	4,873,241	6,209,387	4,311,896	5,733,618	5,717,666	6,642,095	5,765,654	6,036,490	5,141,929	64,871,409
Concerts & entertainers	347,458	335,333	350,049	289,210	310,695	386,039	159,919	402,515	426,241	449,456	401,611	386,719	390,877	4,288,664
Tourist attractions	771,948	1,306,169	1,095,886	1,070,116	1,310,357	1,898,813	1,140,476	1,143,805	709,782	722,334	529,358	793,013	911,558	12,631,667
Amusement parks	158,733	350,416	300,739	328,108	380,112	549,455	343,091	327,845	168,492	111,778	96,927	169,731	194,669	3,321,363
Aquariums	104,800	161,927	130,093	117,848	169,069	263,153	188,208	131,313	77,930	66,836	67,071	119,314	135,747	1,628,509
Sports & games establishments	3,894,322	3,815,721	3,861,019	3,440,500	3,675,345	3,870,425	3,914,317	4,187,202	3,636,597	3,967,071	4,389,649	4,019,863	4,511,540	47,289,299
Professional sports clubs	250,004	258,538	267,310	212,593	255,782	272,466	276,756	252,951	249,731	257,602	220,085	209,543	253,113	2,986,470
Gambling	26,039,326	25,766,034	21,977,161	25,177,786	21,403,614	20,966,584	23,757,889	25,015,915	22,386,666	26,904,005	24,367,306	24,986,052	31,782,416	294,491,428
Personal services	475,224	456,477	493,431	475,407	467,809	440,977	419,980	440,977	387,487	434,673	407,952	426,432	519,682	5,373,561
Miscellaneous entertainment	852,462	999,790	964,985	863,771	1,008,098	1,487,587	1,042,320	1,109,222	804,167	736,564	896,675	1,035,854	1,057,060	12,006,103
Entertainment	126,529,480	121,361,205	123,798,082	124,515,377	122,504,560	125,969,929	127,598,796	136,054,818	128,720,225	140,901,319	125,402,564	131,935,001	155,436,068	1,564,197,944
Hotels	5,197,892	5,181,268	5,370,721	5,323,968	5,656,517	5,918,404	5,636,711	5,372,816	5,003,321	5,100,211	4,996,340	5,334,147	6,102,734	64,997,158
Airlines	2,245,693	2,213,928	2,413,628	2,359,612	2,338,339	2,212,456	2,300,499	2,191,324	1,808,807	1,733,290	2,597,137	2,229,139	2,575,035	26,973,194
Airport terminals	50,838	54,912	59,982	62,610	67,866	62,026	61,780	49,536	34,089	36,909	37,697	40,595	53,123	621,125
Railways	18,116,948	16,706,410	17,649,599	18,153,909	18,624,503	16,897,538	19,071,062	19,683,575	18,030,141	18,720,621	16,158,919	16,426,762	18,725,686	214,848,725
Buses	1,804,212	1,645,153	1,690,265	1,445,150	1,409,130	1,420,738	1,575,275	1,652,047	1,597,815	1,620,129	1,550,812	1,544,190	1,762,211	18,912,915
Sea travel	155,382	190,258	202,021	212,603	245,475	265,161	202,165	178,354	138,973	137,089	135,741	140,035	170,824	2,218,699
Travel agents	2,049,932	1,894,712	2,022,688	1,913,555	1,991,170	1,823,068	1,712,893	1,523,683	1,256,721	1,166,905	2,207,727	1,981,591	2,293,524	21,788,237
Timeshares	4,680	4,608	4,568	4,116	4,727	4,618	4,618	4,815	4,101	4,173	6,764	5,160	5,164	57,432
Camping grounds	526,777	817,190	869,732	832,691	1,060,812	1,234,581	713,371	549,421	276,998	184,658	338,870	405,562	625,477	7,909,363
Miscellaneous travel	2,342,851	2,353,924	2,659,811	2,653,896	2,977,895	2,452,435	2,778,684	4,202,302	4,819,112	5,378,322	5,847,702	6,151,282	7,381,431	49,656,796
Travel	27,297,313	25,881,095	27,572,294	27,638,142	28,719,917	26,372,621	28,420,347	30,035,057	27,966,757	28,982,096	28,881,369	28,924,316	33,592,475	342,986,486
Telegraph services / Wire transfer money order	145,389	146,471	149,461	161,069	166,937	150,752	138,538	117,353	115,836	137,847	123,634	137,039	170,178	1,715,115
Insurance services	3,598,054	3,412,124	3,489,126	3,472,583	3,819,792	3,555,294	3,702,712	3,498,704	3,014,661	2,791,703	3,151,406	3,125,203	3,792,354	40,825,662
FiIs - cash disbursements (auto & manual)	9,452	11,492	15,064	16,704	17,619	16,757	15,732	9,845	6,691	10,653	9,317	14,122	20,489	164,485
FiIs - merchandise & services	8,780,226	8,248,421	8,298,816	7,920,829	8,372,814	7,928,399	9,157,384	8,393,281	7,900,393	8,534,787	8,283,497	7,596,859	9,027,795	99,663,275
Non-FiIs - foreign currency, travellers' cheques	743,998	813,949	979,657	1,069,739	1,159,503	1,099,653	1,062,344	820,268	648,508	711,740	700,129	813,266	973,361	10,852,117
Security brokers and dealers	236,584	246,254	190,061	189,563	166,978	132,593	189,286	246,706	212,362	215,529	235,318	218,662	299,692	2,543,004
Tax preparation services	760	686	535	547	572	444	461	499	429	428	686	496	596	6,379
Tax payments	140,896	117,253	103,547	100,755	118,401	93,669	116,092	116,892	106,133	106,197	531,551	428,290	256,706	2,195,486
Fines, bail and bond payments	642,602	590,644	620,225	568,918	625,940	607,070	584,590	641,353	612,274	566,958	594,854	553,770	625,702	7,191,898
Miscellaneous financial	174,321	188,844	190,284	201,342	213,408	186,729	191,331	182,181	157,462	144,289	135,140	143,363	178,191	2,112,564
Financial	14,472,282	13,776,138	14,036,776	13,702,049	14,661,964	13,771,360	15,158,470	14,027,082	12,774,749	13,220,131	13,765,532	13,031,070	15,344,664	167,269,985

Table 3C Card expenditure statistics (not seasonally adjusted)

Number of debit card transactions

Detailed sector breakdown - services sectors (continued, not seasonally adjusted)

	March 2014	April 2014	May 2014	June 2014	July 2014	August 2014	September 2014	October 2014	November 2014	December 2014	January 2015	February 2015	March 2015	Total (latest 12 months)
Telecoms	10,825,006	10,278,590	10,568,277	10,234,126	10,954,341	11,160,569	11,681,094	11,780,321	11,357,039	12,148,809	11,629,789	10,521,102	12,061,068	134,375,125
Utilities	2,261,090	2,158,437	2,242,881	2,094,752	2,218,965	2,083,432	2,276,869	2,418,817	2,256,634	2,480,211	2,678,632	2,503,474	2,929,327	28,342,431
Contractors (residential & commercial)	584,789	545,106	552,315	557,606	597,324	537,421	612,459	670,798	607,875	562,070	547,242	562,943	625,142	6,978,301
Gardening services	140,361	157,347	164,171	147,617	124,445	101,252	106,560	108,344	103,975	140,570	73,969	82,354	101,250	1,411,854
Veterinary services	1,724,134	1,701,750	1,765,182	1,780,466	1,972,413	1,895,053	1,889,163	1,976,059	1,772,689	1,770,760	1,728,084	1,629,990	1,838,503	21,720,112
Photocopying & printing	396,304	373,089	416,979	391,360	384,199	356,661	423,670	460,159	535,658	604,398	382,083	378,879	431,481	5,138,616
Photographic studios	351,834	332,374	410,768	456,473	486,044	417,460	431,366	499,858	525,261	802,062	391,799	382,983	474,816	5,611,264
Beauty & barber shops	5,308,954	5,054,308	5,453,333	5,415,809	5,558,664	5,192,212	5,359,335	5,350,502	5,043,651	6,888,108	4,676,643	4,882,139	5,715,413	64,590,117
Employment agencies	8,570	7,917	8,272	7,839	8,624	8,167	9,309	9,837	8,722	7,576	9,349	9,603	10,559	105,774
Counselling services	115,588	116,868	117,156	116,602	120,620	112,894	120,382	119,031	115,529	116,972	115,529	109,490	121,866	1,399,893
Legal services	175,025	162,324	163,938	165,113	176,757	154,063	169,200	179,930	157,112	140,671	159,771	166,971	199,461	1,995,311
Laundry & cleaning	482,113	460,837	499,157	527,325	525,677	470,625	533,467	551,180	509,558	490,742	462,576	447,616	508,569	5,987,329
Funeral services	32,534	30,223	30,400	30,181	31,247	28,577	31,534	33,124	30,841	35,972	36,609	36,609	41,096	390,922
Medical services	3,070,357	2,914,798	2,991,261	2,998,904	3,168,462	2,782,265	3,201,493	3,350,986	3,064,660	2,843,216	3,142,691	3,126,229	3,541,876	37,126,841
Moving & courier services	399,308	396,973	423,765	432,456	464,321	419,260	464,824	489,882	471,148	526,211	456,300	432,367	490,131	5,467,638
Repair shops (not auto)	115,752	110,059	112,291	114,738	121,850	117,390	123,952	129,025	137,812	174,218	130,904	133,830	157,423	1,563,492
Accounting services	336,903	271,875	230,544	238,453	251,010	231,333	251,492	268,775	231,651	148,594	85,389	70,902	77,791	2,357,809
Advertising, consultancy & PR	148,452	142,178	144,042	144,159	146,581	135,994	145,241	139,561	121,593	110,063	118,681	126,766	146,433	1,621,292
Computer programming	673,931	654,005	646,474	646,270	659,134	648,013	710,741	704,088	617,304	647,842	581,606	577,952	650,516	7,743,945
Farming services	309,993	304,440	308,659	308,219	298,794	291,132	304,078	307,918	299,254	353,148	298,450	284,838	327,520	3,686,450
Miscellaneous professional services	3,024,201	2,860,800	2,974,072	2,886,103	3,022,385	2,820,286	3,024,682	3,302,529	3,116,047	3,116,230	3,072,918	3,029,574	3,449,516	36,675,142
Engineering services	88,036	85,859	85,827	87,726	91,992	78,890	89,283	95,013	84,044	73,788	75,792	80,033	93,421	1,021,668
Marina services	89,183	117,031	121,866	134,123	153,718	151,192	121,387	88,976	70,120	67,115	61,850	66,513	93,265	1,247,156
Wrecking & salvage yards	8,947	9,004	8,714	8,969	9,492	8,602	9,589	9,785	8,336	7,434	8,971	9,545	11,473	109,914
Pest control	3,628	3,967	4,785	5,062	5,572	4,721	5,099	6,177	5,122	4,473	4,678	4,335	5,011	59,002
Educational establishments	3,130,357	2,164,707	2,856,070	2,340,428	1,715,559	1,208,582	3,049,501	3,816,832	3,621,829	2,609,438	3,498,325	3,310,473	3,922,400	34,114,144
Child care services	157,920	155,196	161,807	135,841	139,486	175,820	152,359	181,283	152,913	147,403	182,927	199,403	197,995	1,982,433
Social, political & religious organisations	3,304,030	2,941,328	3,186,590	3,095,769	3,145,597	2,955,636	3,363,071	3,328,228	2,942,952	2,857,263	2,450,511	2,612,807	3,517,201	36,396,953
Government services	7,519,115	7,838,609	7,983,161	7,860,442	8,181,059	7,779,389	8,095,263	8,462,613	7,343,485	7,193,867	8,325,906	7,818,717	8,815,378	95,697,889
Miscellaneous services	6,500,968	6,287,381	6,321,630	6,407,045	6,607,017	5,816,837	6,422,663	6,240,787	5,851,109	8,560,998	5,740,889	5,561,665	6,704,839	76,522,860
Commercial equipment	1,699,987	1,554,977	1,624,712	1,546,616	1,562,688	1,516,204	1,869,529	1,799,133	1,642,893	1,776,722	1,622,563	1,505,282	1,664,690	19,686,009
Other services	52,987,370	50,192,357	52,579,099	51,316,592	52,904,037	49,659,932	55,048,655	56,879,551	52,804,047	57,401,813	52,750,789	50,665,384	58,925,430	641,127,686
Total services	236,824,268	226,170,283	233,453,990	232,532,654	235,007,651	231,560,775	242,326,608	253,160,886	237,234,253	256,025,906	235,792,232	240,097,912	281,343,246	2,904,706,396
TOTAL	775,264,605	741,104,927	769,025,130	777,881,936	786,494,951	748,459,410	782,834,596	808,772,493	780,869,654	912,464,706	734,441,230	728,079,039	855,665,211	9,426,093,283

Table 3D Card expenditure statistics (not seasonally adjusted)

Value of debit card transactions

Detailed sector breakdown - retail sectors (not seasonally adjusted)

Historical data located in hidden columns

£	March 2014	April 2014	May 2014	June 2014	July 2014	August 2014	September 2014	October 2014	November 2014	December 2014	January 2015	February 2015	March 2015	Total (latest 12 months)
Supermarkets	6,788,098,765	6,527,340,437	6,652,810,297	6,748,597,784	6,616,484,371	6,304,309,023	6,630,783,495	6,692,161,190	6,580,476,684	8,039,775,018	5,990,089,745	5,814,712,649	6,839,213,902	79,436,754,595
Bakers & dairies	17,350,851	16,569,483	18,069,213	17,947,250	19,473,384	19,893,601	20,096,804	22,196,770	22,135,962	24,360,695	19,459,633	20,037,553	23,996,915	244,237,263
Sweet stores	15,784,029	18,624,344	13,133,239	13,980,446	13,769,577	14,194,693	14,208,186	15,889,329	19,038,530	35,662,834	11,301,323	14,774,015	20,038,115	204,614,811
Miscellaneous foodstores	306,776,830	295,740,516	301,074,468	303,879,690	306,501,427	291,734,971	304,222,495	307,472,191	295,039,398	374,946,070	282,673,215	284,513,667	326,940,090	3,674,738,198
Off-licences	79,449,041	79,968,648	83,060,746	84,188,869	86,659,170	83,061,343	80,600,097	82,382,139	84,936,269	122,179,270	70,538,706	72,358,454	83,007,928	1,012,941,639
Food & drink	7,207,459,516	6,938,243,428	7,068,147,963	7,168,594,039	7,042,886,109	6,713,193,631	7,049,911,077	7,120,101,619	7,001,626,843	8,596,923,887	6,374,062,622	6,206,396,338	7,293,196,950	84,573,286,500
Department stores	472,182,216	451,626,372	480,297,475	510,910,010	507,627,697	469,331,801	480,721,355	513,042,310	1,060,237,689	643,377,504	412,641,930	412,641,930	499,298,009	6,507,092,306
Discount stores	369,872,085	373,211,086	387,677,059	386,283,193	387,274,661	394,399,831	401,300,564	443,055,148	541,363,563	709,579,959	375,150,216	360,722,893	412,120,960	5,172,139,133
Catalogues	161,180,445	150,961,809	133,970,324	126,033,518	127,431,829	121,752,832	138,291,950	139,486,035	134,517,646	153,010,234	142,003,227	125,344,338	146,829,077	1,639,632,819
Miscellaneous mixed	269,898,020	231,306,125	242,037,789	255,600,185	250,113,715	237,247,756	262,798,747	282,677,924	308,195,612	454,734,523	197,323,326	205,296,026	258,621,848	3,185,953,576
Mixed business	1,273,132,766	1,207,105,392	1,243,982,647	1,278,826,906	1,272,447,902	1,222,732,220	1,283,112,616	1,378,261,417	1,627,454,325	2,377,562,405	1,192,456,923	1,104,005,187	1,316,869,894	16,504,817,834
Men's clothing	40,578,845	41,058,431	43,541,157	48,523,430	48,915,921	46,146,864	42,473,258	44,918,112	47,526,211	79,747,548	41,370,051	35,036,085	41,071,944	560,329,012
Women's clothing	227,673,119	226,753,720	250,576,095	269,021,588	268,099,398	225,613,476	243,336,002	247,990,473	245,230,260	373,295,049	204,462,181	196,538,907	244,619,953	2,995,537,102
Family clothing	868,720,112	888,884,663	937,902,853	974,784,978	973,117,127	892,706,958	937,042,842	1,007,830,372	1,033,400,170	1,568,372,019	749,464,232	720,581,201	912,324,083	11,596,411,498
Miscellaneous clothing	28,335,865	27,591,089	31,237,327	37,352,187	35,811,964	33,257,447	31,969,488	35,797,383	33,913,508	43,693,859	25,345,273	24,034,891	30,883,448	390,887,864
Shoe shops	110,346,214	122,632,843	126,349,831	136,896,197	132,702,001	150,545,117	140,535,067	141,945,771	132,089,058	196,767,051	114,349,674	91,594,480	111,479,643	1,597,886,733
Clothing	1,275,654,155	1,306,920,746	1,389,607,263	1,466,578,380	1,458,646,411	1,348,269,862	1,395,356,657	1,478,482,111	1,492,159,207	2,261,875,526	1,134,991,411	1,067,785,564	1,340,379,071	17,141,052,209
Furniture stores	362,071,346	350,578,563	357,323,975	349,569,585	367,500,727	369,486,498	393,652,362	440,568,999	417,952,825	397,566,575	412,947,887	363,970,696	412,549,965	4,633,668,057
Household appliance stores	261,909,057	229,719,733	230,386,586	221,407,689	224,364,036	219,771,247	224,840,589	245,607,089	255,440,198	284,497,125	240,578,161	229,105,704	258,931,450	2,864,649,607
Electronic stores	224,172,411	224,140,656	218,768,428	220,602,993	224,836,749	236,421,237	268,255,114	268,689,275	278,625,353	464,014,124	278,258,074	221,975,970	244,917,576	3,149,505,999
DIY stores	928,569,130	982,252,635	1,010,656,618	979,528,752	1,031,544,947	980,140,255	996,702,073	1,067,359,815	994,261,864	899,268,819	857,787,651	858,155,388	1,002,487,032	11,660,146,049
Floor covering stores	87,258,899	84,031,597	84,849,034	85,738,505	91,482,088	90,726,180	97,593,433	109,257,685	109,374,675	85,502,856	84,047,108	83,867,691	98,017,667	1,104,488,519
Garden centres	144,102,255	174,054,626	189,205,963	159,716,545	126,777,265	102,889,415	106,940,105	105,087,722	110,782,721	153,861,418	76,989,886	76,989,886	135,753,493	1,515,895,165
Miscellaneous household	114,746,452	115,956,814	110,085,573	111,069,960	120,396,502	129,260,931	141,892,060	144,206,545	130,404,872	136,651,236	126,811,804	118,304,805	143,714,103	1,520,755,205
Household	2,122,829,550	2,160,734,824	2,201,276,177	2,127,634,029	2,186,902,314	2,128,695,963	2,229,875,736	2,380,776,980	2,296,842,508	2,421,362,153	2,066,266,491	1,952,370,140	2,296,371,286	26,449,108,601
Books, newspapers & magazines	101,123,416	93,985,230	98,733,512	98,712,930	102,893,738	102,255,614	116,749,348	119,489,891	115,711,992	192,971,153	97,413,348	93,639,063	107,688,857	1,340,244,676
Record shops	16,289,821	15,418,423	14,395,033	15,634,678	13,806,146	14,071,558	15,520,758	16,513,839	21,259,567	61,784,896	13,924,110	13,643,764	16,576,087	232,548,589
Music shops	19,730,825	18,774,487	17,203,986	18,260,047	17,203,986	18,301,927	21,098,741	21,590,343	21,798,329	20,876,721	20,508,564	26,114,801	26,114,801	246,114,801
Hobbies, toys & games	62,467,795	56,941,160	59,841,716	58,932,787	58,776,791	59,917,442	92,986,146	94,927,307	141,747,871	228,492,325	60,280,109	57,614,373	66,206,892	1,036,664,919
Photographic	20,376,002	18,352,949	19,849,823	20,162,768	22,528,377	19,986,682	20,251,667	19,922,366	21,093,080	24,553,378	17,474,622	17,032,322	20,968,185	242,176,219
Handicraft	12,139,862	11,343,400	11,069,995	10,923,684	11,746,712	11,388,770	11,994,617	13,092,120	12,578,846	11,171,970	11,070,228	11,679,580	13,160,749	140,849,191
Sports shops	316,011,614	335,918,066	361,068,793	371,087,151	394,543,189	400,133,320	360,717,898	337,327,538	335,970,945	487,012,343	301,275,912	285,376,313	342,772,910	4,313,204,378
Jewellers	148,843,290	133,123,229	143,482,480	150,212,803	154,319,981	148,093,227	146,327,346	143,807,164	177,130,493	377,219,925	129,694,868	142,961,126	158,065,781	2,004,438,423
Computer software	51,515,129	49,999,009	47,739,930	44,752,573	47,802,978	46,151,699	53,669,724	53,987,138	51,950,877	66,548,726	49,895,212	42,446,028	46,034,682	600,978,573
Medical goods	10,358,233	10,190,213	10,135,740	10,452,386	11,294,904	10,528,439	10,847,140	11,733,798	11,050,583	9,858,886	8,986,372	10,329,584	12,264,925	127,672,970
Chemists	278,946,739	258,426,906	275,957,374	293,135,480	293,274,059	260,341,897	286,903,593	304,205,465	303,998,413	560,830,040	252,878,013	252,774,754	314,208,755	3,656,934,749
Optical goods	108,404,656	97,959,200	101,668,505	104,968,696	107,993,565	97,809,054	103,600,803	102,043,233	92,298,670	106,610,483	96,010,483	100,635,599	119,210,097	1,205,135,524
Cosmetic stores	48,737,434	43,713,584	47,054,419	50,664,452	49,261,372	47,669,769	53,055,632	56,998,070	67,716,728	139,510,694	42,269,697	46,438,479	55,905,179	700,258,075
Tobacconists	5,438,197	5,303,406	5,797,374	6,338,126	6,369,095	6,126,875	6,556,525	6,836,343	6,506,859	8,531,233	7,822,917	7,669,417	8,855,909	82,714,079
Florists	54,141,889	35,057,516	36,254,304	35,628,665	36,268,562	32,339,486	35,433,986	33,810,136	31,327,717	48,310,633	28,891,308	44,822,824	56,712,916	454,758,053
Artists' supplies	22,657,695	20,761,820	21,352,395	20,642,620	21,499,559	21,602,349	22,602,349	22,118,488	26,014,326	27,284,523	21,247,200	20,008,421	25,105,181	280,392,589
Antiques, art & stamps/coins	32,935,776	29,703,177	32,883,211	32,963,957	31,373,675	28,906,533	36,527,801	36,192,119	35,480,923	40,886,051	27,232,685	28,246,433	33,870,836	394,267,402
Pawn shops	4,290,421	4,546,185	4,914,570	4,842,238	5,678,865	5,303,250	5,419,437	5,363,839	4,724,551	6,129,393	5,707,459	5,268,272	5,584,353	63,482,412
Gift shops	110,855,269	94,550,846	97,553,888	106,983,957	109,294,736	112,105,841	114,158,010	128,540,591	157,641,501	257,138,344	96,593,517	104,890,959	124,512,349	1,503,964,539
Secondhand shops	4,696,975	4,984,155	4,692,695	5,332,302	5,552,938	4,820,151	5,969,098	5,678,765	4,980,532	6,206,701	4,330,167	5,237,356	5,099,767	62,884,627
Luggage & leather goods	12,442,193	11,536,563	12,038,584	13,787,530	13,072,160	13,121,861	12,265,334	12,950,299	14,300,238	24,556,527	11,223,453	9,700,092	12,280,267	160,832,908
Pet shops	90,702,118	89,220,987	90,775,804	90,775,804	94,116,162	97,315,866	94,955,471	98,577,323	94,488,368	107,345,496	97,506,908	87,865,988	99,444,058	1,138,930,213
Religious goods	170,736	209,843	214,988	184,693	212,533	239,464	216,161	303,125	212,904	226,295	166,995	201,946	211,479	2,600,426

Table 3D Card expenditure statistics (not seasonally adjusted)

Value of debit card transactions

Detailed sector breakdown - services sectors (not seasonally adjusted)

£	March 2014	April 2014	May 2014	June 2014	July 2014	August 2014	September 2014	October 2014	November 2014	December 2014	January 2015	February 2015	March 2015	Total (latest 12 months)
Auto rental	61,831,074	61,817,906	64,821,596	66,288,166	74,971,849	67,081,827	65,532,164	55,395,168	48,661,204	49,699,485	47,539,657	50,489,134	62,745,751	715,043,907
Auto parts & accessories	252,416,038	220,573,562	220,707,704	218,893,612	227,663,319	204,229,304	232,766,900	219,335,005	196,004,291	187,060,828	203,322,630	205,360,514	256,466,585	2,592,384,254
Auto services	61,038,514	61,996,128	64,890,099	66,196,741	71,115,114	65,569,794	69,737,493	69,101,977	61,948,712	66,873,961	61,617,208	62,485,603	73,587,903	795,120,733
Auto repair shops	798,969,245	634,820,644	633,467,904	618,728,806	636,566,658	578,144,895	703,472,885	619,233,246	558,461,002	490,882,922	586,011,588	581,706,599	803,659,828	7,445,156,977
Service stations	0	0	0	0	0	0	0	0	0	0	0	0	0	0
Vehicle sales	1,831,673,619	1,505,403,401	1,493,609,596	1,499,441,292	1,498,172,686	1,353,316,551	1,735,273,345	1,481,706,420	1,287,284,185	1,146,720,831	1,366,172,541	1,415,029,550	2,022,594,837	17,804,725,265
Vehicle Sales & Services	3,005,928,490	2,484,611,641	2,477,496,899	2,469,548,617	2,508,489,626	2,268,342,401	2,806,782,787	2,444,771,816	2,152,359,394	1,941,238,027	2,264,663,624	2,319,071,400	3,219,054,904	29,352,431,136
Restaurants	1,226,858,079	1,173,134,312	1,246,947,563	1,226,899,881	1,243,231,661	1,328,162,128	1,271,326,590	1,312,684,984	1,278,909,658	1,455,887,749	1,192,365,978	1,261,791,326	1,475,490,653	15,466,832,483
Public houses	307,847,452	282,162,591	279,112,862	280,170,331	282,650,615	289,021,678	292,426,611	275,200,958	262,425,896	319,016,226	241,513,447	261,342,951	324,495,542	3,389,539,708
Catering services	72,987,553	73,967,939	82,066,700	80,809,742	89,314,170	84,296,931	87,706,236	85,281,220	81,757,322	88,912,799	69,913,404	73,922,241	84,508,934	982,457,639
Video stores	1,452,213	1,224,019	1,063,510	986,706	917,855	955,842	986,737	1,010,395	1,076,663	860,416	960,877	986,761	1,283,276	12,283,276
Cinema, theatre & dance	167,793,645	170,417,853	176,395,866	152,686,128	157,174,625	159,720,024	137,511,059	208,138,857	215,379,025	222,698,361	155,736,770	169,598,856	180,383,316	2,105,840,740
Concerts & entertainers	12,153,997	11,497,794	12,260,026	10,011,317	10,949,394	12,885,230	4,925,100	13,545,647	15,108,897	14,529,879	12,450,448	11,978,408	12,922,553	143,064,693
Tourist attractions	28,155,045	46,415,747	39,729,123	39,076,168	48,081,461	65,029,507	38,753,336	42,316,752	26,200,395	21,482,753	28,140,293	28,140,368	34,323,855	458,257,758
Amusement parks	4,743,457	11,683,571	9,523,261	10,274,678	12,641,134	18,545,932	10,433,685	9,660,972	4,806,216	3,174,442	2,906,274	4,626,200	5,715,839	103,992,204
Aquariums	3,273,262	5,347,958	4,183,897	3,682,861	5,841,407	9,277,737	6,349,185	4,315,696	2,677,609	2,442,354	2,201,013	3,785,262	4,468,267	54,572,706
Sports & games establishments	139,326,686	138,271,825	147,793,822	119,435,454	123,173,506	119,981,405	126,144,803	123,576,992	113,803,071	124,378,192	132,508,537	123,517,325	162,304,680	1,554,889,612
Professional sports clubs	15,770,617	18,129,625	24,545,785	16,335,099	16,491,496	13,329,765	13,518,411	14,439,405	13,095,286	11,809,711	12,644,536	12,011,429	14,157,280	180,507,828
Gambling	366,364,235	325,233,139	328,060,891	372,383,624	292,376,392	349,767,329	377,455,605	410,046,397	323,495,037	410,154,188	375,986,466	399,963,617	492,599,747	4,457,522,432
Personal services	20,542,339	18,628,564	19,627,318	19,016,346	17,885,162	19,365,162	17,885,329	19,000,638	18,903,100	17,181,752	19,956,277	18,155,145	21,777,918	227,559,473
Miscellaneous entertainment	33,824,091	38,340,237	37,211,029	34,284,335	39,748,160	53,371,695	40,234,595	42,776,080	36,839,678	26,407,911	27,680,604	32,180,332	39,280,858	448,355,514
Entertainment	2,401,092,671	2,314,484,650	2,408,682,162	2,366,129,474	2,342,025,889	2,522,192,998	2,426,741,696	2,561,873,797	2,392,689,697	2,728,585,045	2,266,312,117	2,402,542,337	2,853,416,203	29,585,676,065
Hotels	437,161,708	468,262,723	485,964,788	493,959,484	527,720,910	547,835,404	550,592,362	487,170,287	413,724,093	405,241,691	453,892,961	433,372,171	496,297,673	5,764,034,547
Airlines	493,801,447	467,482,316	509,960,880	485,813,004	484,266,636	425,852,626	446,400,416	423,189,577	343,106,746	312,112,640	560,959,507	459,050,438	537,076,995	5,455,271,781
Airport terminals	3,727,194	3,756,968	4,049,415	4,566,287	4,820,462	4,484,532	4,606,026	3,748,527	2,683,374	2,993,204	2,959,017	2,699,505	3,612,128	44,979,545
Railways	413,717,509	386,740,471	395,421,610	405,266,735	424,212,199	375,317,886	446,237,071	452,328,670	412,254,798	424,300,254	407,095,265	386,371,480	438,646,449	4,954,192,888
Buses	44,875,938	44,641,068	43,739,831	38,699,098	40,579,431	40,829,728	49,488,023	41,533,820	36,152,132	35,409,072	38,513,745	35,241,339	41,426,415	486,253,702
Sea travel	45,108,287	48,030,158	51,932,331	50,980,437	50,032,733	46,097,708	42,841,620	49,932,763	34,792,493	34,110,530	43,015,318	47,176,427	54,996,977	553,939,495
Travel agents	1,184,517,841	1,170,340,646	1,320,485,662	1,208,442,587	1,179,844,894	972,418,756	876,473,485	808,061,135	699,337,829	654,087,795	1,139,354,145	1,080,501,804	1,312,584,469	12,421,933,207
Timeshares	658,261	629,232	627,710	555,153	652,731	613,935	613,935	646,660	559,757	551,643	851,515	661,010	650,897	7,614,178
Camping grounds	87,963,603	91,291,944	103,501,848	102,810,190	112,361,605	100,630,639	75,773,969	72,023,310	63,337,640	43,934,115	62,395,820	71,321,872	103,967,811	1,003,350,763
Miscellaneous travel	38,068,596	41,164,354	42,474,136	51,952,383	51,547,899	43,482,710	41,895,407	45,740,284	46,191,582	47,123,298	50,832,496	54,693,237	67,374,882	584,472,668
Travel	2,312,438,676	2,254,077,157	2,472,193,423	2,349,085,874	2,348,318,590	2,009,728,520	1,984,329,952	1,897,204,746	1,638,416,351	1,554,622,651	2,305,976,828	2,137,717,112	2,560,337,023	25,512,008,227
Telegraph services / Wire transfer money order	69,302,108	75,811,649	73,553,216	77,684,375	80,526,113	69,922,113	70,560,044	53,467,673	51,214,066	56,956,256	59,819,955	59,082,888	66,431,796	795,030,144
Insurance services	609,994,302	579,820,071	556,036,083	553,501,085	600,298,680	557,075,817	606,859,314	586,156,060	506,688,463	462,438,680	536,840,808	522,816,916	681,442,564	6,749,974,541
Fis - cash disbursements (auto & manual)	3,563,618	4,195,455	5,706,335	6,277,914	7,151,494	6,757,393	5,790,265	3,616,945	2,165,476	3,620,256	3,327,973	4,838,373	7,310,723	60,758,602
Fis - merchandise & services	3,147,174,180	3,150,051,102	2,934,651,837	2,871,828,202	3,125,803,796	2,891,164,681	3,036,697,549	3,122,859,054	2,884,267,085	3,122,861,873	3,002,801,577	2,777,750,274	3,414,682,990	36,335,419,620
Non-Fis - foreign currency, travellers' cheques	255,331,637	307,372,976	380,787,979	434,646,978	518,471,519	459,319,256	416,723,277	288,294,755	209,408,494	251,074,653	267,363,714	301,359,193	395,054,101	4,229,876,895
Security brokers and dealers	903,525,029	1,109,022,736	466,282,393	633,397,530	570,309,229	412,570,218	487,160,597	605,374,227	430,175,139	468,760,161	553,342,674	508,253,053	1,044,751,548	7,289,399,505
Tax preparation services	171,935	226,170	173,487	147,262	228,695	168,987	231,912	124,203	127,341	259,361	207,896	267,991	2,280,439	
Tax payments	158,003,406	121,767,876	110,074,519	97,506,474	154,007,816	121,810,910	118,060,386	109,516,972	103,361,163	109,300,215	1,046,464,817	838,435,134	309,443,927	3,240,750,209
Fines, bail and bond payments	44,641,275	39,863,935	41,603,421	38,710,888	42,651,152	40,640,355	39,151,354	42,238,383	39,174,780	33,993,370	38,245,796	37,102,140	40,415,407	473,790,981
Miscellaneous financial	21,993,449	22,784,364	23,883,341	25,402,971	27,653,531	24,575,730	25,820,703	25,674,879	22,687,580	19,603,229	20,148,334	20,673,459	25,170,004	284,078,125
Financial	5,213,700,939	5,410,916,334	4,592,752,611	4,739,103,679	5,127,102,025	4,583,974,601	4,806,992,476	4,837,430,860	4,249,266,449	4,528,736,040	5,528,615,009	5,071,519,326	5,984,949,651	59,461,359,061

Table 3D Card expenditure statistics (not seasonally adjusted)

Value of debit card transactions

Detailed sector breakdown - services sectors (continued, not seasonally adjusted)

£	March 2014	April 2014	May 2014	June 2014	July 2014	August 2014	September 2014	October 2014	November 2014	December 2014	January 2015	February 2015	March 2015	Total (latest 12 months)
Telecoms	339,090,687	315,846,256	324,927,386	312,423,457	335,582,739	345,064,573	373,816,958	375,046,891	360,082,214	375,493,377	369,835,016	321,330,526	368,502,147	4,177,951,540
Utilities	298,470,493	280,043,003	265,713,318	235,149,021	235,299,285	207,690,828	227,626,940	239,551,873	212,369,276	216,974,563	252,092,768	253,924,700	322,446,019	2,948,881,594
Contractors (residential & commercial)	158,651,873	152,697,053	157,782,176	160,566,710	172,730,229	159,564,891	183,450,785	196,972,622	180,614,814	162,293,188	156,807,460	162,488,240	186,236,607	2,032,204,775
Gardening services	9,149,365	10,618,072	10,584,035	9,855,931	9,100,089	7,244,133	7,759,871	7,483,651	6,312,204	7,381,002	4,936,708	5,818,499	8,533,939	95,628,134
Veterinary services	104,564,127	103,780,332	108,002,537	108,964,596	120,363,732	113,389,470	115,188,613	119,919,434	107,305,108	106,313,469	107,500,912	101,437,825	115,221,907	1,327,387,935
Photocopying & printing	25,420,876	23,958,142	26,170,064	25,190,275	25,717,204	23,164,519	27,478,515	28,460,589	29,016,914	27,521,464	24,389,908	24,006,267	26,953,310	312,027,171
Photographic studios	11,838,965	11,174,005	12,511,334	13,277,635	12,511,334	15,326,826	12,512,733	13,080,529	15,121,850	19,434,252	10,490,226	11,136,480	13,162,216	163,748,357
Beauty & barber shops	211,894,174	200,734,986	216,134,523	211,665,525	220,290,633	204,898,796	214,395,064	215,319,107	206,531,968	272,839,930	184,987,705	195,934,285	228,972,420	2,572,704,942
Employment agencies	1,590,633	1,454,675	1,555,075	1,496,319	1,685,922	1,426,460	1,647,459	1,685,814	1,529,737	1,279,288	1,683,469	1,544,912	1,754,491	18,743,621
Counselling services	7,121,981	6,907,845	6,675,646	6,743,800	6,942,532	6,188,630	6,942,532	6,587,466	6,427,843	6,555,645	6,857,500	6,179,615	6,698,259	79,977,903
Legal services	86,590,095	81,167,031	83,357,438	85,245,602	90,785,309	78,826,069	84,783,030	91,531,378	82,276,630	73,697,655	76,116,977	76,969,273	93,480,024	998,236,416
Laundry & cleaning	12,518,969	12,189,945	13,241,650	13,960,391	14,074,127	12,775,536	14,430,678	14,634,388	13,611,668	12,945,313	12,360,399	11,624,806	13,265,791	159,114,692
Funeral services	41,785,737	37,964,826	37,247,857	37,213,116	39,507,734	36,306,876	40,112,133	44,740,704	42,755,693	40,518,419	50,503,373	51,271,254	58,112,956	516,254,941
Medical services	259,773,158	243,948,568	253,011,239	255,886,686	271,444,138	233,124,916	266,779,969	285,383,184	262,914,250	235,651,682	261,986,746	265,701,712	305,022,227	3,140,855,317
Moving & courier services	33,598,220	33,998,140	35,775,271	37,353,219	41,775,039	37,918,551	40,528,812	40,843,689	37,315,479	37,181,930	33,949,823	32,695,007	37,434,215	446,769,175
Repair shops (not auto)	12,056,221	11,832,287	12,335,673	12,951,467	13,563,637	12,379,503	13,295,981	13,857,900	14,003,752	16,438,515	12,282,343	12,882,393	15,714,800	161,538,251
Accounting services	20,000,521	17,242,124	16,839,756	15,258,865	16,158,579	14,594,121	16,666,250	17,652,067	16,564,730	15,129,283	18,179,082	15,197,504	16,276,184	195,758,545
Advertising, consultancy & PR	11,494,690	11,586,359	11,644,050	11,170,770	11,950,925	10,419,933	11,491,712	11,447,384	10,144,793	9,206,509	10,330,770	10,458,447	11,932,594	131,784,246
Computer programming	35,623,249	35,176,772	34,098,285	33,028,698	34,428,695	32,505,447	35,699,007	36,234,290	33,476,652	32,950,400	32,580,949	30,731,074	34,800,556	405,710,825
Farming services	22,202,228	22,892,214	23,328,942	23,980,569	24,516,812	22,900,501	23,823,928	27,960,379	22,981,478	25,228,523	22,848,846	21,445,357	24,112,807	286,020,356
Miscellaneous professional services	624,493,341	655,002,762	578,096,772	564,713,662	616,267,691	593,164,509	678,230,705	652,090,767	560,057,349	540,308,189	655,020,085	598,321,263	715,700,369	7,406,974,123
Engineering services	19,549,316	19,254,806	19,880,740	19,814,991	20,837,826	17,735,302	21,549,773	21,945,529	19,564,696	16,454,443	17,017,697	18,161,916	21,144,281	233,362,000
Marina services	14,266,986	15,101,423	14,826,188	15,817,872	16,701,794	14,875,025	12,342,579	10,526,136	7,745,180	8,062,195	8,837,949	9,140,116	15,345,747	149,322,204
Wrecking & salvage yards	1,531,482	1,528,480	1,548,401	1,648,932	1,709,767	1,423,477	1,638,009	1,703,623	1,447,320	1,209,782	1,493,479	1,493,117	1,882,800	18,727,187
Pest control	579,395	604,200	699,392	791,200	861,200	733,996	790,902	1,047,651	819,255	798,099	751,949	922,689	894,304	9,714,837
Educational establishments	180,461,705	242,949,586	231,062,807	154,889,110	161,912,462	227,552,457	754,410,684	634,640,046	240,017,096	186,674,300	514,792,793	246,446,504	202,501,563	3,797,849,408
Child care services	14,506,050	14,352,047	14,423,958	14,216,210	15,029,118	13,313,056	14,908,003	15,938,033	13,713,178	13,460,189	15,672,777	14,618,602	16,681,569	176,326,740
Social, political & religious organisations	116,291,760	102,208,870	102,996,926	99,811,089	129,164,122	101,636,396	119,971,684	131,629,901	101,182,423	100,165,842	98,517,887	92,412,022	127,118,375	1,306,815,537
Government services	1,554,841,412	1,653,868,036	1,965,921,155	1,929,446,836	2,392,161,584	1,926,816,242	1,905,509,711	1,891,940,201	1,676,017,231	1,734,264,844	6,690,488,709	3,165,510,621	2,814,530,356	29,746,475,526
Miscellaneous services	550,986,087	561,262,303	526,731,275	636,638,329	671,422,442	536,498,306	602,017,728	582,953,341	509,646,504	571,832,069	586,335,430	505,382,572	624,326,391	6,915,046,690
Commercial equipment	153,474,048	143,074,289	147,474,081	145,510,845	157,655,704	144,923,812	165,907,052	163,343,631	151,173,250	133,798,934	139,802,956	137,893,398	160,962,488	1,791,520,440
Other services	4,934,417,844	5,024,419,437	5,254,597,950	5,194,681,728	5,884,967,896	5,151,569,064	5,996,546,186	5,898,193,519	4,944,242,390	5,002,084,449	10,379,498,841	6,402,910,256	6,589,721,712	71,723,433,428
Total services	18,304,740,328	17,956,771,942	17,691,687,833	17,612,508,856	18,738,624,936	17,083,642,988	18,571,985,459	18,126,645,025	15,790,698,374	16,160,507,903	23,198,959,380	18,763,132,602	21,703,777,166	221,398,942,464
TOTAL	34,324,141,237	33,469,749,301	33,635,546,182	33,699,010,209	34,866,219,584	32,468,908,265	34,661,365,548	34,672,191,066	32,323,363,756	37,072,881,595	37,539,493,745	32,591,651,890	38,064,402,190	415,064,783,331