

# Card Expenditure Statistics

March 2014

## Card Expenditure Statistics – March 2014

	Total spending <i>£ billions</i>		Annual growth rates for spending		Number of purchases <i>Millions</i>	
	Mar 2014	Mar 2013	Mar 2014	Mar 2013	Mar 2014	Mar 2013
<b>All plastic cards</b>	<b>46.4</b>	43.4	<b>7.4%</b>	3.9%	<b>977</b>	887
<b>Debit cards</b>	<b>32.6</b>	30.4	<b>8.3%</b>	5.5%	<b>751</b>	680
<b>Credit cards</b>	<b>13.8</b>	13.1	<b>5.4%</b>	0.4%	<b>226</b>	207

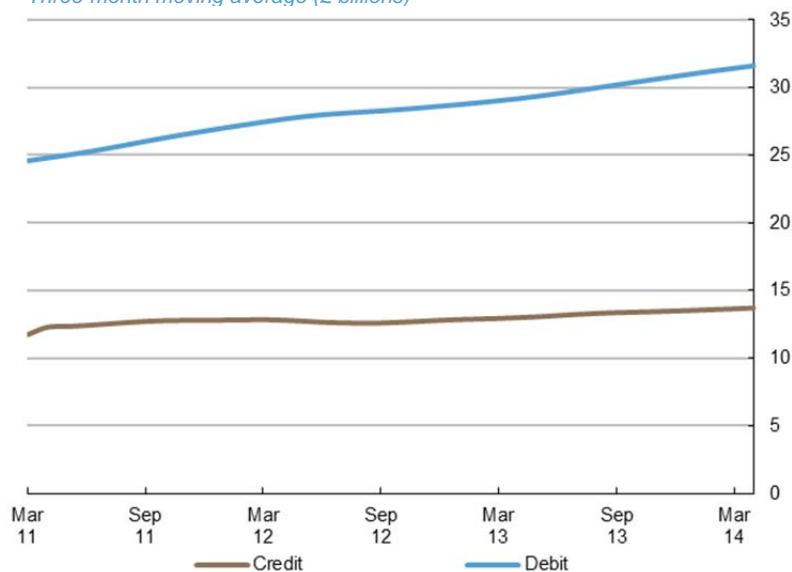
With effect of January 2014 the methodology used for seasonal adjustment - using X12 ARIMA - has been reviewed and changed. Trading days and leap years have been incorporated into the monthly seasonal adjustment process. Unless otherwise stated all data referred to are seasonally adjusted. Unadjusted data are located in tables 3A to 3D. There is a step change in the data between 2010 and 2011 following a change in the reporting population. Average transaction values are based on three-month rolling averages, while growth rates are based on twelve-month rolling periods.

### Introduction

**Plastic card spending** continued to grow strongly in March, after increasing by £0.2 billion to £46.4 billion during the month. The number of purchases reached a record 977 million, up 10 million on February. Factors driving growth included seasonal shopping habits in sectors such as clothing and household goods as well as the continuing rise in **consumer confidence**.

Chart 1

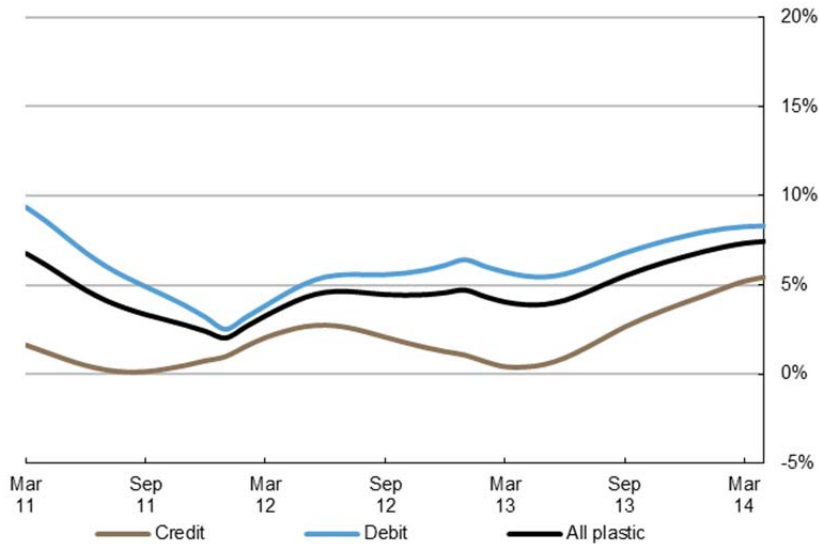
Average monthly expenditure  
Three-month moving average (£ billions)



### Annual growth rates

Growth in plastic card spending continued to accelerate, growing at an annual rate of 7.4% in March, which is the **strongest rate of growth** since the beginning of 2011. Debit card spending grew by 8.3% while that on credit cards increased by 5.4%. Growth in the **service** sector continued to exceed that in **retail sales**. The service sector grew by 9.9% during the month nearly double the growth of spending within retail, which increased by 5.1%.

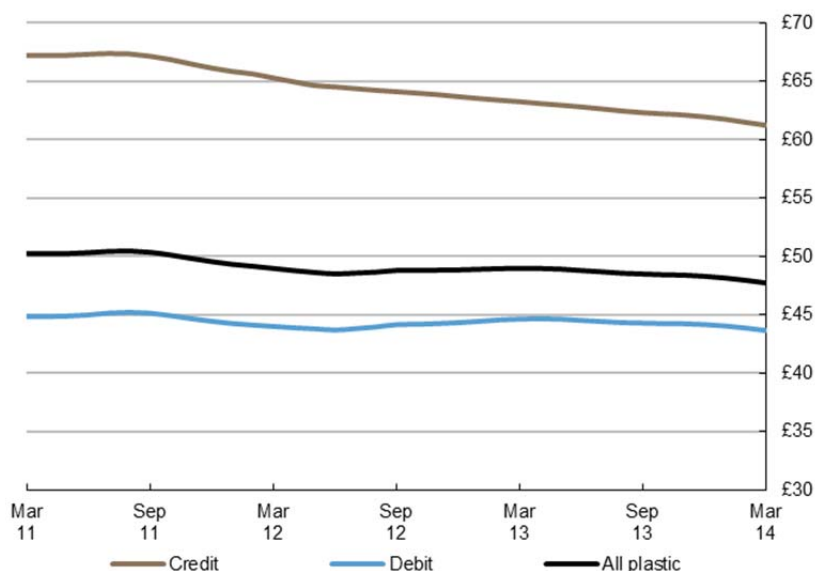
Chart 2  
 Spending on plastic cards  
 Year-on-year growth rates



### Average transaction values

The **average transaction value** (ATV) on all plastic cards decreased between February and March, falling by 23p to £47.74. The ATV for debit cards decreased by 21p to £43.67 while the ATV for credit cards decreased by 25p to £61.24. ATVs for plastic cards have been on a sustained decline since peaking in the middle of 2011. It is likely this has been driven by increased **online spending** coupled with more frequent use of plastic cards for lower value payments. Within the sectors, the ATV in **retail sales** fell slightly to £34.25, while the ATV in **services** decreased more significantly by 77p to £78.24.

**Chart 3**  
Average transaction values  
Three-month moving average



### Spending by sector - retail sales and services

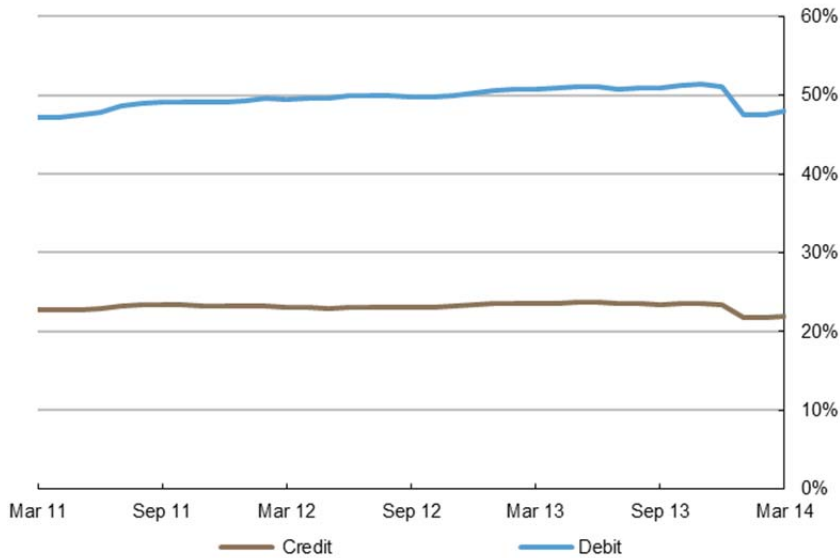
The number of transactions within the **retail sector** increased by 6.2 million to 676 million, with the corresponding spend rising by £0.1 billion to £23.1 billion. A majority of this increase was in the **food & drink** and **household goods** sub-sectors, where spending amounted to £8.8 billion and £3.5 billion respectively. There was however, a slight decrease in spending in **mixed business**.

Meanwhile the number of transactions in the **services sector** increased by 3.7 million to 301 million, but spending was virtually unchanged and stood at £23.3 billion. Some sub-sectors within services however recorded contrasting pictures during the month. There were notable increases in spending within **vehicle sales**, **entertainment** and **other services**, which were offset by a sizable decrease in **financial services**.

It is also worth noting the more pronounced increase in the overall number of transactions relative to spending. This was perhaps driven by a preference by consumers to buy less but more often, as well as a likely reflection of the increasing prevalence of **online spending**.

Chart 4

Proportion of retail sales made on plastic cards (including automotive fuel)  
Three-month moving average



#### Plastic card spending within national retail sales

The **plastic card share of total retail sales** (including automotive fuels)<sup>1</sup> amounted to 69.8% during the month with a split of 47.9% by debit and 21.9% by credit. Within the **food & drink** and **automotive fuels** sub-sectors, plastic card spending in February accounted for 64.4% and 84.5% of all spending respectively.

Contact: David Obuwa; [david.obuwa@ukpayments.org.uk](mailto:david.obuwa@ukpayments.org.uk) | [camis@ukpayments.org.uk](mailto:camis@ukpayments.org.uk) | 020 3217 8421 or 020 3217 8720

<sup>1</sup> CES 3-month moving average spend of £23.0 billion expressed as a percentage of a similar 3-month moving average for ONS Retail Sales - All retailing including automotive fuel (J5A3) which amounted to £32.9 billion.

# Table 1 Card expenditure statistics (seasonally adjusted)

## Summary<sup>1 and 2</sup>

			Number of purchase transactions (millions)									Value of purchase transactions (£ millions)								
			All sectors			Retail sales			Services			All sectors			Retail sales			Services		
			Credit	Debit	Total	Credit	Debit	Total	Credit	Debit	Total	Credit	Debit	Total	Credit	Debit	Total	Credit	Debit	Total
<b>Annual</b>																				
	2009		2,004	5,945	7,949	1,227	3,896	5,123	777	2,048	2,826	125,184	262,231	387,415	61,621	125,440	187,061	63,563	136,791	200,354
	2010		2,010	6,500	8,510	1,382	4,718	6,100	628	1,782	2,410	128,320	289,841	418,161	69,519	148,650	218,169	58,801	141,191	199,992
	2011		2,259	7,227	9,487	1,555	5,298	6,853	704	1,929	2,633	151,222	324,224	475,446	78,869	165,510	244,379	72,353	158,714	231,067
	2012		2,373	7,831	10,204	1,622	5,638	7,260	751	2,193	2,944	152,822	345,007	497,829	81,027	174,910	255,937	71,795	170,097	241,892
	2013		2,550	8,389	10,940	1,736	5,965	7,702	814	2,424	3,238	159,556	372,541	532,097	84,507	183,330	267,837	75,049	189,211	264,260
<b>Monthly</b>																				
	2013	Mar	207	680	887	141	486	627	66	194	260	13,062	30,387	43,449	6,947	15,050	21,997	6,115	15,337	21,452
		Apr	209	685	894	143	489	632	66	196	262	13,147	30,569	43,716	6,985	15,100	22,085	6,162	15,469	21,631
		May	211	691	902	144	493	637	67	198	265	13,251	30,780	44,031	7,036	15,180	22,216	6,215	15,600	21,815
		Jun	213	698	911	145	498	643	67	200	267	13,327	30,972	44,299	7,077	15,270	22,347	6,250	15,702	21,952
		Jul	214	702	916	146	500	647	68	202	270	13,365	31,146	44,511	7,091	15,340	22,431	6,274	15,806	22,080
		Aug	215	708	923	147	503	650	68	204	273	13,407	31,331	44,738	7,099	15,410	22,509	6,308	15,921	22,229
		Sep	216	712	928	147	505	652	69	207	276	13,447	31,506	44,953	7,110	15,460	22,570	6,337	16,046	22,383
		Oct	217	717	934	147	507	654	70	210	280	13,481	31,701	45,182	7,101	15,500	22,601	6,380	16,201	22,581
		Nov	218	722	940	148	509	657	71	213	283	13,548	31,927	45,475	7,122	15,550	22,672	6,426	16,377	22,803
		Dec	220	729	949	148	513	661	72	217	288	13,588	32,123	45,711	7,128	15,610	22,738	6,460	16,513	22,973
	2014	Jan	222	736	958	150	516	666	73	220	292	13,657	32,298	45,955	7,158	15,670	22,828	6,499	16,628	23,127
		Feb	224	743	967	151	519	670	73	224	297	13,721	32,474	46,195	7,200	15,770	22,970	6,521	16,704	23,225
		Mar	226	751	977	152	524	676	74	227	301	13,785	32,600	46,385	7,244	15,870	23,114	6,541	16,730	23,271
<b>Year-on-year growth rates (percentages)</b>																				
<b>Annual</b>																				
	2009		1.8	8.9	7.0	3.5	9.0	7.6	-0.7	8.8	6.0	-0.3	7.3	4.7	1.6	8.0	5.8	-2.2	6.6	3.7
	2010		0.3	9.3	7.1	12.7	21.1	19.1	-19.3	-13.0	-14.7	2.5	10.5	7.9	12.8	18.5	16.6	-7.5	3.2	-0.2
	2011		12.4	11.2	11.5	12.5	12.3	12.3	12.2	8.2	9.3	17.8	11.9	13.7	13.4	11.3	12.0	23.0	12.4	15.5
	2012		5.1	8.4	7.6	4.3	6.4	5.9	6.6	13.7	11.8	1.1	6.4	4.7	2.7	5.7	4.7	-0.8	7.2	4.7
	2013		7.4	7.1	7.2	7.0	5.8	6.1	8.4	10.5	10.0	4.4	8.0	6.9	4.3	4.8	4.6	4.5	11.2	9.2
<b>Monthly</b>																				
	2013	Mar	4.4	6.5	6.0	3.7	4.6	4.4	5.9	11.7	10.2	0.4	5.5	3.9	2.0	4.3	3.6	-1.4	6.7	4.2
		Apr	4.5	6.1	5.7	3.9	4.2	4.1	5.8	11.2	9.7	0.5	5.4	3.9	2.0	4.0	3.4	-1.1	6.9	4.5
		May	4.7	5.8	5.6	4.2	4.0	4.0	5.8	10.7	9.5	0.9	5.6	4.1	2.2	3.9	3.3	-0.6	7.4	5.0
		Jun	5.1	5.7	5.6	4.7	3.9	4.1	6.0	10.5	9.4	1.4	6.0	4.5	2.6	3.9	3.5	0.1	8.1	5.7
		Jul	5.6	5.9	5.8	5.2	4.2	4.4	6.4	10.4	9.3	2.0	6.4	5.0	3.0	4.0	3.7	0.9	8.9	6.5
		Aug	6.0	6.1	6.0	5.7	4.4	4.7	6.8	10.3	9.4	2.6	6.8	5.5	3.5	4.1	3.9	1.7	9.6	7.2
		Sep	6.4	6.3	6.3	6.1	4.7	5.0	7.2	10.2	9.4	3.1	7.1	5.9	3.8	4.2	4.1	2.5	10.1	7.8
		Oct	6.8	6.5	6.5	6.4	5.0	5.4	7.5	10.2	9.5	3.6	7.5	6.3	4.0	4.4	4.3	3.2	10.6	8.4
		Nov	7.1	6.8	6.8	6.7	5.4	5.7	7.9	10.3	9.7	4.0	7.7	6.6	4.1	4.6	4.5	3.8	11.0	8.8
		Dec	7.4	7.1	7.2	7.0	5.8	6.1	8.4	10.5	10.0	4.4	8.0	6.9	4.3	4.8	4.6	4.5	11.2	9.2
	2014	Jan	7.8	7.5	7.6	7.3	6.2	6.5	8.9	10.9	10.4	4.8	8.2	7.1	4.4	5.0	4.8	5.3	11.4	9.6
		Feb	8.2	8.0	8.0	7.6	6.6	6.8	9.5	11.5	11.0	5.2	8.3	7.3	4.6	5.2	5.0	5.9	11.4	9.8
		Mar	8.5	8.5	8.5	7.8	7.0	7.2	10.0	12.2	11.7	5.4	8.3	7.4	4.7	5.3	5.1	6.3	11.4	9.9

<sup>1</sup> There was a step change in 2011 due to a change in reporting population

<sup>2</sup> With effect of January 2014 the seasonal adjustment methodology using X12 ARIMA was reviewed and changed. Trading days and leap years have been incorporated into the monthly seasonal adjustment process.

# Table 2A Card expenditure statistics (seasonally adjusted)

Retail sales<sup>1 and 2</sup>

Number of purchase transactions (millions)

Total retail sales

	Number of purchase transactions (millions)																		Total retail sales			
	Food & drink			Mixed business			Clothing			Household			Other retailers			Automotive Fuels <sup>3</sup>			Number of purchases			
	Credit	Debit	Total	Credit	Debit	Total	Credit	Debit	Total	Credit	Debit	Total	Credit	Debit	Total	Credit	Debit	Total	Credit	Debit	Total	
Annual																						
2009	514	2,087	2,601	132	404	535	125	405	530	146	319	465	310	682	992	158	475	633	1,227	3,896	5,123	
2010	533	2,281	2,814	139	406	545	128	424	553	148	350	498	273	733	1,006	161	524	685	1,382	4,718	6,100	
2011	602	2,561	3,163	137	424	561	139	428	566	157	370	527	296	783	1,079	223	733	956	1,555	5,298	6,853	
2012	663	2,819	3,482	149	479	628	145	453	598	157	375	532	281	757	1,038	227	754	982	1,622	5,638	7,260	
2013	722	3,061	3,783	184	524	708	152	460	612	165	403	568	277	724	1,001	236	793	1,029	1,736	5,965	7,702	
Monthly																						
2013	Mar	59	249	308	14	42	56	12	38	50	13	32	46	23	60	83	19	65	85	141	486	627
	Apr	60	250	310	14	42	57	12	38	51	13	33	46	23	60	83	20	66	85	143	489	632
	May	60	252	312	15	43	58	13	38	51	14	33	47	23	60	83	20	66	86	144	493	637
	Jun	60	255	315	15	44	59	13	39	51	14	34	48	23	60	84	20	66	86	145	498	643
	Jul	61	256	317	16	44	60	13	39	51	14	34	48	23	61	84	20	67	87	146	500	647
	Aug	61	258	319	16	45	61	13	39	52	14	34	48	23	61	84	20	67	87	147	503	650
	Sep	61	259	320	16	45	62	13	39	51	14	34	48	23	61	84	20	67	87	147	505	652
	Oct	61	261	322	17	45	62	13	38	51	14	34	48	23	61	84	20	67	86	147	507	654
	Nov	61	263	324	17	45	63	13	38	51	14	35	49	23	61	84	20	67	86	148	509	657
	Dec	62	266	328	18	45	63	13	38	51	14	35	49	23	61	84	20	67	86	148	513	661
2014	Jan	62	269	331	18	45	63	13	39	52	14	35	49	22	62	84	20	67	87	150	516	666
	Feb	63	271	334	18	44	63	13	39	52	14	35	50	23	62	85	20	67	87	151	519	670
	Mar	63	275	338	19	44	63	13	39	53	14	35	50	23	63	85	20	68	88	152	524	676

Year-on-year growth rates (percentages)

	Year-on-year growth rates (percentages)																					
	Credit	Debit	Total	Credit	Debit	Total	Credit	Debit	Total	Credit	Debit	Total	Credit	Debit	Total	Credit	Debit	Total	Credit	Debit	Total	
Annual																						
2009	2.8	11.5	9.7	-1.8	-1.0	-1.2	3.2	9.4	7.9	1.9	9.2	6.8	8.0	7.5	7.7	-5.4	3.8	1.3	3.5	9.0	7.6	
2010	3.6	9.3	8.2	5.5	0.7	1.8	2.7	4.8	4.3	1.6	9.7	7.2	-12.0	7.5	1.4	2.0	10.3	8.3	12.7	21.1	19.1	
2011	13.1	12.3	12.4	-1.1	4.5	3.0	8.2	0.8	2.5	6.1	5.7	5.8	8.5	6.8	7.3	38.4	39.9	39.5	12.5	12.3	12.3	
2012	10.1	10.1	10.1	8.6	12.9	11.8	4.6	5.9	5.6	0.0	1.5	1.0	-5.1	-3.3	-3.8	1.7	2.9	2.7	4.3	6.4	5.9	
2013	9.0	8.6	8.7	23.8	9.4	12.8	4.7	1.6	2.4	4.8	7.4	6.6	-1.6	-4.4	-3.6	3.9	5.1	4.8	7.0	5.8	6.1	
Monthly																						
2013	Mar	9.4	8.6	8.7	9.9	10.2	10.1	2.6	3.0	2.9	-1.0	0.2	-0.1	-5.8	-6.8	-6.5	1.0	2.2	1.9	3.7	4.6	4.4
	Apr	9.4	8.2	8.5	10.6	9.3	9.6	2.6	2.5	2.5	-0.6	0.4	0.1	-5.8	-7.9	-7.3	1.1	2.3	2.0	3.9	4.2	4.1
	May	9.5	8.1	8.4	11.5	8.6	9.3	2.9	2.2	2.4	0.0	1.0	0.7	-5.6	-9.0	-8.1	1.4	2.5	2.3	4.2	4.0	4.0
	Jun	9.7	8.1	8.4	12.6	8.1	9.2	3.5	2.1	2.5	0.8	1.8	1.5	-5.1	-10.0	-8.7	2.0	3.0	2.8	4.7	3.9	4.1
	Jul	9.8	8.1	8.4	13.8	7.9	9.3	4.1	2.1	2.6	1.5	2.6	2.3	-4.4	-9.2	-7.9	2.5	3.5	3.3	5.2	4.2	4.4
	Aug	9.7	8.1	8.4	15.2	7.9	9.7	4.5	2.1	2.7	2.2	3.5	3.1	-3.6	-8.3	-7.1	3.0	4.0	3.8	5.7	4.4	4.7
	Sep	9.6	8.2	8.4	17.0	8.2	10.3	4.7	2.0	2.6	2.8	4.4	3.9	-2.8	-7.4	-6.2	3.3	4.5	4.2	6.1	4.7	5.0
	Oct	9.4	8.2	8.4	19.1	8.5	11.1	4.8	1.8	2.5	3.4	5.3	4.7	-2.3	-6.5	-5.4	3.6	4.7	4.5	6.4	5.0	5.4
	Nov	9.2	8.3	8.5	21.5	9.0	11.9	4.7	1.7	2.4	4.0	6.3	5.6	-1.9	-5.5	-4.5	3.7	4.9	4.7	6.7	5.4	5.7
	Dec	9.0	8.6	8.7	23.8	9.4	12.8	4.7	1.6	2.4	4.8	7.4	6.6	-1.6	-4.4	-3.6	3.9	5.1	4.8	7.0	5.8	6.1
2014	Jan	8.8	8.8	8.8	26.1	9.7	13.6	4.9	1.8	2.5	5.6	8.4	7.6	-1.4	-3.2	-2.7	4.1	5.2	5.0	7.3	6.2	6.5
	Feb	8.6	9.0	8.9	28.1	9.8	14.2	5.1	2.1	2.8	6.4	9.3	8.4	-1.1	-1.9	-1.7	4.2	5.4	5.1	7.6	6.6	6.8
	Mar	8.4	9.2	9.0	29.8	9.8	14.6	5.4	2.3	3.1	6.9	9.9	9.0	-0.9	-0.6	-0.7	4.2	5.4	5.1	7.8	7.0	7.2

<sup>1</sup> There was a step change in 2011 due to a change in reporting population

<sup>2</sup> With effect of January 2014 the seasonal adjustment methodology using X12 ARIMA was reviewed and changed. Trading days and leap years have been incorporated into the monthly seasonal adjustment process.

<sup>3</sup> Automotive Fuels data is effective from January 2010. Data shown pre 2010 are for growth trend purposes only; these data are excluded from totals as these are already included in their former Services sector of Motoring (now known as Vehicle Sales & Service)

## Table 2B Card expenditure statistics (seasonally adjusted)

Retail sales<sup>1 and 2</sup>

Value of purchase transactions (£ millions)

Total retail sales

	Value of purchase transactions (£ millions)																		Total retail sales			
	Food & drink			Mixed business			Clothing			Household			Other retailers			Automotive Fuels <sup>3</sup>			Value of purchases			
	Credit	Debit	Total	Credit	Debit	Total	Credit	Debit	Total	Credit	Debit	Total	Credit	Debit	Total	Credit	Debit	Total	Credit	Debit	Total	
Annual																						
2009	18,120	60,230	78,350	7,063	13,920	20,983	6,358	12,690	19,048	14,420	16,560	30,980	15,660	22,040	37,700	5,860	12,668	18,528	61,621	125,440	187,061	
2010	18,700	63,730	82,430	7,157	13,960	21,117	6,806	13,650	20,456	14,680	18,890	33,570	15,540	23,570	39,110	6,636	14,850	21,486	69,519	148,650	218,169	
2011	20,990	69,420	90,410	7,124	14,760	21,884	7,839	14,500	22,339	15,190	20,480	35,670	17,520	24,370	41,890	10,206	21,980	32,186	78,869	165,510	244,379	
2012	22,570	73,950	96,520	7,704	16,390	24,094	8,212	15,620	23,832	15,380	21,590	36,970	16,740	24,460	41,200	10,421	22,900	33,321	81,027	174,910	255,937	
2013	24,140	77,850	101,990	8,686	17,920	26,606	8,661	16,080	24,741	15,900	23,200	39,100	16,440	24,430	40,870	10,680	23,850	34,530	84,507	183,330	267,837	
Monthly																						
2013	Mar	1,990	6,450	8,440	695	1,440	2,135	704	1,310	2,014	1,290	1,840	3,130	1,380	2,020	3,400	888	1,990	2,878	6,947	15,050	21,997
	Apr	2,000	6,450	8,450	704	1,450	2,154	710	1,320	2,030	1,300	1,870	3,170	1,380	2,020	3,400	891	1,990	2,881	6,985	15,100	22,085
	May	2,010	6,460	8,470	713	1,470	2,183	718	1,330	2,048	1,320	1,910	3,230	1,380	2,020	3,400	895	1,990	2,885	7,036	15,180	22,216
	Jun	2,020	6,480	8,500	723	1,490	2,213	726	1,340	2,066	1,330	1,940	3,270	1,380	2,030	3,410	898	1,990	2,888	7,077	15,270	22,347
	Jul	2,020	6,490	8,510	731	1,510	2,241	732	1,350	2,082	1,340	1,960	3,300	1,370	2,040	3,410	898	1,990	2,888	7,091	15,340	22,431
	Aug	2,030	6,510	8,540	738	1,530	2,268	735	1,360	2,095	1,340	1,970	3,310	1,360	2,050	3,410	896	1,990	2,886	7,099	15,410	22,509
	Sep	2,030	6,520	8,550	743	1,540	2,283	735	1,360	2,095	1,350	1,990	3,340	1,360	2,060	3,420	892	1,990	2,882	7,110	15,460	22,570
	Oct	2,030	6,540	8,570	749	1,550	2,299	734	1,360	2,094	1,350	2,010	3,360	1,350	2,060	3,410	888	1,980	2,868	7,101	15,500	22,601
	Nov	2,030	6,570	8,600	757	1,550	2,307	732	1,360	2,092	1,360	2,030	3,390	1,360	2,060	3,420	883	1,980	2,863	7,122	15,550	22,672
	Dec	2,030	6,590	8,620	766	1,550	2,316	733	1,370	2,103	1,360	2,060	3,420	1,360	2,060	3,420	879	1,980	2,859	7,128	15,610	22,738
2014	Jan	2,030	6,610	8,640	776	1,540	2,316	736	1,380	2,116	1,370	2,090	3,460	1,370	2,060	3,430	876	1,990	2,866	7,158	15,670	22,828
	Feb	2,040	6,650	8,690	785	1,530	2,315	741	1,400	2,141	1,390	2,120	3,510	1,370	2,060	3,430	874	2,010	2,884	7,200	15,770	22,970
	Mar	2,050	6,710	8,760	793	1,510	2,303	747	1,410	2,157	1,400	2,140	3,540	1,380	2,070	3,450	874	2,030	2,904	7,244	15,870	23,114

Year-on-year growth rates (percentages)

	Year-on-year growth rates (percentages)																					
Annual																						
2009	3.2	10.1	8.5	0.3	2.7	1.9	7.9	13.1	11.3	0.1	6.5	3.4	-0.4	4.2	2.2	-12.1	-2.2	-5.5	1.6	8.0	5.8	
2010	3.2	5.8	5.2	1.3	0.3	0.6	7.0	7.6	7.4	1.8	14.1	8.4	-0.8	6.9	3.7	13.2	17.2	16.0	12.8	18.5	16.6	
2011	12.2	8.9	9.7	-0.5	5.7	3.6	15.2	6.2	9.2	3.5	8.4	6.3	12.7	3.4	7.1	53.8	48.0	49.8	13.4	11.3	12.0	
2012	7.5	6.5	6.8	8.1	11.0	10.1	4.8	7.7	6.7	1.3	5.4	3.6	-4.5	0.4	-1.6	2.1	4.2	3.5	2.7	5.7	4.7	
2013	7.0	5.3	5.7	12.7	9.3	10.4	5.5	2.9	3.8	3.4	7.5	5.8	-1.8	-0.1	-0.8	2.5	4.1	3.6	4.3	4.8	4.6	
Monthly																						
2013	Mar	7.1	5.5	5.9	8.5	9.2	8.9	2.1	4.3	3.6	-0.4	3.2	1.7	-4.4	-1.0	-2.4	1.0	4.0	3.1	2.0	4.3	3.6
	Apr	7.1	5.3	5.7	8.8	8.6	8.7	2.1	3.5	3.0	-0.5	2.9	1.5	-4.3	-1.5	-2.6	1.0	4.1	3.1	2.0	4.0	3.4
	May	7.2	5.1	5.6	9.3	8.2	8.6	2.4	3.1	2.9	-0.5	2.9	1.5	-4.1	-1.8	-2.7	1.2	4.4	3.4	2.2	3.9	3.3
	Jun	7.4	5.1	5.6	9.8	8.0	8.6	3.1	2.9	2.9	-0.1	3.2	1.8	-3.7	-1.9	-2.6	1.7	4.7	3.8	2.6	3.9	3.5
	Jul	7.5	5.1	5.6	10.4	8.0	8.8	3.8	2.9	3.2	0.4	3.6	2.3	-3.3	-1.8	-2.4	2.1	5.0	4.1	3.0	4.0	3.7
	Aug	7.7	5.1	5.7	11.0	8.2	9.1	4.4	2.8	3.4	1.0	4.1	2.8	-2.9	-1.6	-2.1	2.5	5.1	4.3	3.5	4.1	3.9
	Sep	7.7	5.1	5.7	11.5	8.5	9.5	4.9	2.8	3.5	1.5	4.7	3.4	-2.5	-1.3	-1.8	2.6	5.1	4.3	3.8	4.2	4.1
	Oct	7.5	5.2	5.7	11.9	8.8	9.8	5.1	2.8	3.6	2.1	5.4	4.0	-2.3	-1.0	-1.5	2.6	4.9	4.2	4.0	4.4	4.3
	Nov	7.3	5.3	5.7	12.3	9.1	10.1	5.3	2.7	3.6	2.7	6.3	4.8	-2.1	-0.6	-1.2	2.6	4.6	3.9	4.1	4.6	4.5
	Dec	7.0	5.3	5.7	12.7	9.3	10.4	5.5	2.9	3.8	3.4	7.5	5.8	-1.8	-0.1	-0.8	2.5	4.1	3.6	4.3	4.8	4.6
2014	Jan	6.6	5.1	5.5	13.2	9.5	10.7	5.8	3.3	4.2	4.1	8.8	6.8	-1.6	0.4	-0.4	2.4	3.7	3.3	4.4	5.0	4.8
	Feb	6.1	5.0	5.2	13.5	9.5	10.8	6.1	3.8	4.6	5.0	10.1	8.0	-1.4	0.8	-0.1	2.2	3.4	3.1	4.6	5.2	5.0
	Mar	5.7	4.8	5.0	13.8	9.4	10.8	6.4	4.4	5.1	5.7	11.3	9.0	-1.1	1.3	0.3	2.0	3.1	2.8	4.7	5.3	5.1

<sup>1</sup> There was a step change in 2011 due to a change in reporting population

<sup>2</sup> With effect of January 2014 the seasonal adjustment methodology using X12 ARIMA was reviewed and changed. Trading days and leap years have been incorporated into the monthly seasonal adjustment process.

<sup>3</sup> Automotive Fuels data is effective from January 2010. Data shown pre 2010 are for growth trend purposes only; these data are excluded from totals as these are already included in their former Services sector of Motoring (now known as Vehicle Sales & Service)



# Table 2C Card expenditure statistics (seasonally adjusted)

Services<sup>1 and 2</sup>

Number of purchase transactions (millions)																			Total services			
Vehicle Sales & Services <sup>3</sup>			Entertainment			Hotels			Travel			Financial			Other services			Number of purchases				
	Credit	Debit	Total	Credit	Debit	Total	Credit	Debit	Total	Credit	Debit	Total	Credit	Debit	Total	Credit	Debit	Total	Credit	Debit	Total	
<b>Annual</b>																						
2009	236	658	894	206	593	798	37	31	68	101	183	283	32	112	144	167	471	638	777	2,048	2,826	
2010	76	204	280	222	726	947	37	35	72	97	202	299	32	129	161	164	487	650	628	1,782	2,410	
2011	51	89	139	268	882	1,150	51	43	94	116	236	352	33	145	178	186	535	721	704	1,929	2,633	
2012	50	93	144	309	1,062	1,371	53	48	100	123	265	389	30	160	190	187	564	751	751	2,193	2,944	
2013	53	104	157	352	1,218	1,570	54	53	108	130	284	413	29	173	202	196	592	788	814	2,424	3,238	
<b>Monthly</b>																						
2013	Mar	4	8	12	28	96	124	4	4	9	11	23	33	2	14	17	16	48	64	66	194	260
	Apr	4	8	13	28	97	125	4	4	9	11	23	34	2	14	17	16	49	65	66	196	262
	May	4	9	13	29	98	127	5	4	9	11	23	34	2	14	17	16	49	65	67	198	265
	Jun	4	9	13	29	100	129	5	4	9	11	24	34	2	14	17	16	49	65	67	200	267
	Jul	4	9	13	29	101	130	5	4	9	11	24	35	2	15	17	16	49	66	68	202	270
	Aug	4	9	13	30	103	133	5	5	9	11	24	35	2	15	17	16	50	66	68	204	273
	Sep	5	9	13	30	105	135	5	5	9	11	24	35	2	15	17	17	50	67	69	207	276
	Oct	5	9	14	31	107	138	5	5	9	11	24	35	2	15	17	17	50	67	70	210	280
	Nov	5	9	14	31	109	140	5	5	9	11	25	36	2	15	17	17	51	67	71	213	283
	Dec	5	9	14	32	112	144	5	5	9	11	25	36	2	15	17	17	51	68	72	217	288
2014	Jan	5	10	14	32	114	146	5	5	10	11	25	37	2	15	17	17	51	68	73	220	292
	Feb	5	10	14	33	117	150	5	5	10	11	26	37	2	15	17	17	52	69	73	224	297
	Mar	5	10	15	34	119	153	5	5	10	11	26	37	2	15	17	17	52	69	74	227	301
<b>Year-on-year growth rates (percentages)</b>																						
<b>Annual</b>																						
2009	-4.7	5.0	2.2	4.3	18.7	14.6	1.0	13.7	6.5	-2.3	8.6	4.5	-0.6	1.1	0.8	0.1	4.8	3.6	-0.7	8.8	6.0	
2010	-67.8	-69.0	-68.7	7.8	22.4	18.7	1.7	10.1	5.6	-3.2	10.3	5.5	0.6	15.3	12.1	-1.9	3.3	2.0	-19.3	-13.0	-14.7	
2011	-33.2	-56.6	-50.3	20.8	21.5	21.4	36.5	24.4	30.7	19.3	16.9	17.7	3.0	11.8	10.0	13.7	9.9	10.9	12.2	8.2	9.3	
2012	-0.9	5.5	3.2	15.3	20.4	19.2	3.4	11.3	7.0	6.1	12.5	10.4	-9.8	11.0	7.1	0.3	5.5	4.1	6.6	13.7	11.8	
2013	5.4	11.3	9.2	14.0	14.7	14.6	3.5	11.5	7.3	5.3	6.9	6.3	-3.8	8.0	6.1	5.2	4.9	5.0	8.4	10.5	10.0	
<b>Monthly</b>																						
2013	Mar	0.1	5.5	3.6	14.9	18.7	17.8	-1.2	8.0	3.0	4.7	9.5	8.0	-10.8	8.9	5.4	-0.1	3.0	2.2	5.9	11.7	10.2
	Apr	0.5	5.7	3.9	14.6	17.9	17.1	-2.1	7.7	2.4	4.2	8.9	7.3	-10.5	8.4	5.1	0.1	2.6	2.0	5.8	11.2	9.7
	May	0.9	6.1	4.3	14.3	17.1	16.5	-2.5	7.9	2.3	3.9	8.4	6.9	-9.9	8.2	5.0	0.5	2.5	2.0	5.8	10.7	9.5
	Jun	1.4	6.6	4.7	14.2	16.5	16.0	-2.3	8.3	2.6	3.8	8.1	6.7	-8.9	8.1	5.2	1.1	2.7	2.3	6.0	10.5	9.4
	Jul	1.9	7.1	5.3	14.2	16.0	15.6	-1.8	8.9	3.2	3.9	7.9	6.6	-7.8	8.2	5.5	1.8	2.9	2.6	6.4	10.4	9.3
	Aug	2.4	7.7	5.8	14.2	15.6	15.3	-1.0	9.5	3.9	4.1	7.5	6.4	-6.7	8.2	5.7	2.5	3.2	3.0	6.8	10.3	9.4
	Sep	3.0	8.4	6.5	14.2	15.2	15.0	0.0	10.0	4.7	4.3	7.1	6.2	-5.7	8.2	5.9	3.2	3.5	3.4	7.2	10.2	9.4
	Oct	3.7	9.2	7.3	14.0	14.9	14.7	1.1	10.4	5.5	4.5	6.8	6.1	-4.8	8.2	6.1	3.9	3.9	3.9	7.5	10.2	9.5
	Nov	4.5	10.2	8.2	13.9	14.7	14.5	2.3	10.9	6.3	4.8	6.7	6.1	-4.2	8.1	6.2	4.5	4.3	4.4	7.9	10.3	9.7
	Dec	5.4	11.3	9.2	14.0	14.7	14.6	3.5	11.5	7.3	5.3	6.9	6.3	-3.8	8.0	6.1	5.2	4.9	5.0	8.4	10.5	10.0
2014	Jan	6.4	12.5	10.4	14.3	15.0	14.8	4.8	12.2	8.4	5.8	7.3	6.8	-3.5	7.8	6.0	5.7	5.4	5.5	8.9	10.9	10.4
	Feb	7.3	13.7	11.4	14.7	15.6	15.4	6.1	13.1	9.4	6.3	7.9	7.4	-3.2	7.6	5.9	6.2	5.9	6.0	9.5	11.5	11.0
	Mar	8.0	14.6	12.3	15.4	16.5	16.3	7.1	13.9	10.4	6.8	8.5	8.0	-2.9	7.5	5.9	6.6	6.4	6.4	10.0	12.2	11.7

1 There was a step change in 2011 due to a change in reporting population

2 With effect of January 2014 the seasonal adjustment methodology using X12 ARIMA was reviewed and changed. Trading days and leap years have been incorporated into the monthly seasonal adjustment process.

3 With effect of January 2010 Automotive Fuels was published as a separate sub-sector in retail sales. See tables 2A and 2B

# Table 2D Card expenditure statistics (seasonally adjusted)

## Services<sup>1 and 2</sup>

Value of purchase transactions (£ millions)

	Value of purchase transactions (£ millions)																		Total services			
	Vehicle Sales & Services <sup>3</sup>			Entertainment			Hotels			Travel			Financial			Other services			Value of purchases			
	Credit	Debit	Total	Credit	Debit	Total	Credit	Debit	Total	Credit	Debit	Total	Credit	Debit	Total	Credit	Debit	Total	Credit	Debit	Total	
<b>Annual</b>																						
2009	14,660	35,510	50,170	9,614	14,610	24,224	5,302	2,721	8,023	13,090	14,100	27,190	5,740	32,820	38,560	15,157	37,030	52,187	63,563	136,791	200,354	
2010	8,753	24,840	33,593	9,956	17,050	27,006	5,502	3,081	8,583	12,810	15,860	28,670	5,919	39,430	45,349	15,861	40,930	56,791	58,801	141,191	199,992	
2011	7,780	22,460	30,240	14,070	20,680	34,750	8,637	3,844	12,481	16,290	18,480	34,770	7,187	46,460	53,647	18,389	46,790	65,179	72,353	158,714	231,067	
2012	7,545	23,560	31,105	14,690	22,760	37,450	8,870	4,317	13,187	16,550	20,600	37,150	5,480	49,980	55,460	18,660	48,880	67,540	71,795	170,097	241,892	
2013	7,654	25,630	33,284	15,680	24,540	40,220	9,249	4,781	14,030	17,440	22,000	39,440	5,122	55,120	60,242	19,904	57,140	77,044	75,049	189,211	264,260	
<b>Monthly</b>																						
2013	Mar	633	2,050	2,683	1,270	1,980	3,250	745	387	1,132	1,420	1,800	3,220	440	4,550	4,990	1,607	4,570	6,177	6,115	15,337	21,452
	Apr	637	2,090	2,727	1,280	1,990	3,270	758	389	1,147	1,430	1,830	3,260	434	4,550	4,984	1,623	4,620	6,243	6,162	15,469	21,631
	May	639	2,120	2,759	1,290	2,010	3,300	769	390	1,159	1,450	1,840	3,290	427	4,540	4,967	1,640	4,700	6,340	6,215	15,600	21,815
	Jun	638	2,130	2,768	1,300	2,020	3,320	776	392	1,168	1,460	1,840	3,300	421	4,540	4,961	1,655	4,780	6,435	6,250	15,702	21,952
	Jul	637	2,140	2,777	1,310	2,040	3,350	781	396	1,177	1,460	1,830	3,290	418	4,570	4,988	1,668	4,830	6,498	6,274	15,806	22,080
	Aug	637	2,150	2,787	1,320	2,060	3,380	784	401	1,185	1,470	1,820	3,290	417	4,630	5,047	1,680	4,860	6,540	6,308	15,921	22,229
	Sep	638	2,170	2,808	1,330	2,080	3,410	788	406	1,194	1,470	1,820	3,290	418	4,690	5,108	1,693	4,880	6,573	6,337	16,046	22,383
	Oct	642	2,210	2,852	1,340	2,100	3,440	793	411	1,204	1,480	1,850	3,330	419	4,730	5,149	1,706	4,900	6,606	6,380	16,201	22,581
	Nov	648	2,260	2,908	1,350	2,130	3,480	798	417	1,215	1,490	1,890	3,380	420	4,710	5,130	1,720	4,970	6,690	6,426	16,377	22,803
	Dec	654	2,300	2,954	1,350	2,160	3,510	802	423	1,225	1,500	1,930	3,430	419	4,640	5,059	1,735	5,060	6,795	6,460	16,513	22,973
2014	Jan	660	2,350	3,010	1,360	2,200	3,560	804	428	1,232	1,510	1,960	3,470	418	4,550	4,968	1,747	5,140	6,887	6,499	16,628	23,127
	Feb	664	2,380	3,044	1,370	2,250	3,620	804	434	1,238	1,510	1,990	3,500	417	4,460	4,877	1,756	5,190	6,946	6,521	16,704	23,225
	Mar	667	2,400	3,067	1,380	2,290	3,670	805	440	1,245	1,510	2,000	3,510	415	4,360	4,775	1,764	5,240	7,004	6,541	16,730	23,271

## Year-on-year growth rates (percentages)<sup>2</sup>

<b>Annual</b>																						
2009	-5.1	7.7	3.6	-0.2	12.8	7.2	-3.3	11.8	1.3	-5.1	2.8	-1.2	-2.3	11.2	9.0	3.0	0.9	1.5	-2.2	6.6	3.7	
2010	-40.3	-30.0	-33.0	3.6	16.7	11.5	3.8	13.2	7.0	-2.1	12.5	5.4	3.1	20.1	17.6	4.6	10.5	8.8	-7.5	3.2	-0.2	
2011	-11.1	-9.6	-10.0	41.3	21.3	28.7	57.0	24.8	45.4	27.2	16.5	21.3	21.4	17.8	18.3	15.9	14.3	14.8	23.0	12.4	15.5	
2012	-3.0	4.9	2.9	4.4	10.1	7.8	2.7	12.3	5.7	1.6	11.5	6.8	-23.8	7.6	3.4	1.5	4.5	3.6	-0.8	7.2	4.7	
2013	1.4	8.8	7.0	6.7	7.8	7.4	4.3	10.7	6.4	5.4	6.8	6.2	-6.5	10.3	8.6	6.7	16.9	14.1	4.5	11.2	9.2	
<b>Monthly</b>																						
2013	Mar	-2.5	4.7	2.8	4.7	8.9	7.2	-2.5	9.7	1.3	2.1	9.0	5.8	-23.9	8.0	3.9	0.4	4.4	3.3	-1.4	6.7	4.2
	Apr	-2.4	4.8	3.0	4.8	8.5	7.1	-3.4	9.4	0.6	2.3	8.7	5.8	-21.9	8.0	4.3	0.6	5.3	4.0	-1.1	6.9	4.5
	May	-2.2	5.1	3.3	5.1	8.4	7.1	-3.6	9.3	0.4	2.8	8.6	6.0	-20.0	8.2	4.8	1.1	6.7	5.2	-0.6	7.4	5.0
	Jun	-1.8	5.5	3.6	5.4	8.3	7.2	-3.3	9.4	0.7	3.4	8.6	6.3	-17.9	8.4	5.3	1.8	8.8	6.8	0.1	8.1	5.7
	Jul	-1.4	5.9	4.1	5.9	8.2	7.3	-2.5	9.7	1.4	4.0	8.4	6.4	-15.9	8.8	6.0	2.6	10.9	8.6	0.9	8.9	6.5
	Aug	-0.9	6.2	4.4	6.3	8.2	7.4	-1.4	10.0	2.2	4.5	8.0	6.4	-13.8	9.3	6.8	3.4	12.8	10.2	1.7	9.6	7.2
	Sep	-0.4	6.4	4.7	6.5	8.2	7.5	-0.2	10.3	3.2	4.8	7.3	6.2	-11.8	9.9	7.6	4.2	14.3	11.5	2.5	10.1	7.8
	Oct	0.1	7.0	5.3	6.6	8.1	7.5	1.2	10.5	4.2	5.0	6.8	6.0	-9.8	10.4	8.3	5.1	15.4	12.5	3.2	10.6	8.4
	Nov	0.8	7.8	6.1	6.6	7.9	7.4	2.7	10.6	5.3	5.2	6.6	6.0	-8.1	10.5	8.6	5.9	16.2	13.3	3.8	11.0	8.8
	Dec	1.4	8.8	7.0	6.7	7.8	7.4	4.3	10.7	6.4	5.4	6.8	6.2	-6.5	10.3	8.6	6.7	16.9	14.1	4.5	11.2	9.2
2014	Jan	2.1	9.9	8.1	6.8	7.9	7.5	5.9	10.9	7.6	5.9	7.2	6.6	-5.1	9.6	8.2	7.4	17.4	14.6	5.3	11.4	9.6
	Feb	2.8	11.0	9.0	7.1	8.3	7.8	7.3	11.2	8.6	6.2	7.7	7.1	-3.7	8.5	7.4	8.1	17.6	15.0	5.9	11.4	9.8
	Mar	3.2	12.0	9.9	7.4	9.0	8.4	8.4	11.5	9.4	6.4	8.1	7.4	-4.4	7.2	6.1	8.6	17.7	15.2	6.3	11.4	9.9

<sup>1</sup> There was a step change in 2011 due to a change in reporting population

<sup>2</sup> With effect of January 2014 the seasonal adjustment methodology using X12 ARIMA was reviewed and changed. Trading days and leap years have been incorporated into the monthly seasonal adjustment process.

<sup>3</sup> With effect of January 2010 Automotive Fuels was published as a separate sub-sector in retail sales. See tables 2A and 2B

Table 3A Card expenditure statistics (not seasonally adjusted)

Number of credit card transactions

## Detailed sector breakdown - retail sectors (not seasonally adjusted)

	March 2013	April 2013	May 2013	June 2013	July 2013	August 2013	September 2013	October 2013	November 2013	December 2013	January 2014	February 2014	March 2014	Total (latest 12 months)
Supermarkets	51,880,030	46,196,999	55,717,638	53,425,041	61,193,349	54,952,089	56,015,029	57,093,638	58,248,997	66,668,040	54,229,964	50,643,647	58,491,519	672,875,950
Bakers & dairies	213,989	207,748	233,930	231,392	246,973	249,517	247,899	262,881	259,950	254,447	218,873	245,836	291,266	2,950,712
Sweet stores	326,875	216,699	238,093	225,219	220,508	236,517	225,801	255,747	341,719	569,862	190,697	243,029	284,882	3,248,574
Miscellaneous foodstores	3,080,854	3,161,225	3,484,093	3,279,754	3,747,064	3,450,327	3,315,990	3,435,306	3,296,909	3,663,040	3,131,473	3,003,164	3,378,151	40,346,496
Off-licences	516,844	530,895	573,053	569,037	616,461	575,117	535,325	552,474	597,368	718,191	455,948	480,686	562,790	6,767,345
<i>Food &amp; drink</i>	<b>56,018,592</b>	<b>50,334,960</b>	<b>60,225,413</b>	<b>57,730,443</b>	<b>66,024,355</b>	<b>59,463,368</b>	<b>60,340,044</b>	<b>61,600,046</b>	<b>62,744,943</b>	<b>71,873,580</b>	<b>58,226,955</b>	<b>54,616,362</b>	<b>63,008,608</b>	<b>726,189,077</b>
Department stores	4,739,808	5,186,999	5,429,410	5,717,876	6,114,210	5,200,024	5,212,417	7,434,515	5,838,748	5,838,384	4,332,925	5,070,519	70,427,045	
Discount stores	1,613,231	1,691,713	1,825,151	1,817,397	2,036,416	1,973,546	1,930,113	2,053,785	2,489,901	2,589,176	1,843,846	1,676,917	1,857,092	23,785,053
Catalogues	3,389,292	1,638,275	4,074,732	4,052,141	4,722,524	5,288,562	5,146,665	6,090,055	6,184,750	6,341,471	6,429,400	6,089,072	8,310,092	64,367,739
Miscellaneous mixed	2,215,446	2,423,358	2,499,049	2,367,186	2,421,222	2,481,275	2,677,894	2,848,730	2,421,356	4,042,340	2,448,209	2,273,260	2,596,669	32,591,548
<i>Mixed business</i>	<b>11,957,777</b>	<b>10,940,345</b>	<b>13,828,342</b>	<b>13,954,600</b>	<b>15,595,372</b>	<b>14,943,407</b>	<b>14,967,069</b>	<b>16,496,588</b>	<b>19,320,522</b>	<b>22,356,735</b>	<b>16,559,639</b>	<b>14,372,174</b>	<b>17,834,372</b>	<b>191,171,385</b>
Men's clothing	313,488	365,090	394,579	435,308	504,500	416,701	365,988	361,515	395,231	561,219	393,264	272,197	296,584	4,762,176
Women's clothing	1,575,489	1,923,339	2,027,657	2,079,578	2,624,964	1,981,627	1,866,138	1,952,574	2,138,557	2,983,625	1,809,206	1,480,272	1,863,469	24,731,006
Family clothing	6,402,801	7,289,974	7,904,208	7,603,340	9,876,852	7,674,283	8,404,963	9,649,272	12,976,417	7,756,496	6,421,098	6,421,098	8,007,527	101,316,916
Miscellaneous clothing	694,425	845,455	875,406	879,865	1,024,971	830,561	844,144	691,247	558,629	636,271	386,599	330,020	425,984	8,333,114
Shoe shops	880,980	1,255,001	1,309,702	1,417,257	1,728,270	1,559,747	1,339,372	1,318,286	1,287,345	1,694,672	1,322,524	887,049	1,051,586	16,170,809
<i>Clothing</i>	<b>9,867,183</b>	<b>11,682,859</b>	<b>12,511,552</b>	<b>12,415,348</b>	<b>15,759,557</b>	<b>12,462,919</b>	<b>12,168,128</b>	<b>12,728,585</b>	<b>14,029,034</b>	<b>18,852,204</b>	<b>11,668,089</b>	<b>9,390,636</b>	<b>11,645,110</b>	<b>155,314,021</b>
Furniture stores	1,403,130	1,456,056	1,462,612	1,351,688	1,473,923	1,483,518	1,513,224	1,659,829	1,826,980	2,008,621	1,624,038	1,269,105	1,369,819	18,499,413
Household appliance stores	1,279,815	1,298,907	1,343,724	1,296,256	1,345,303	1,337,825	1,357,924	1,403,675	1,492,623	1,551,652	1,386,927	1,222,785	1,368,061	16,405,662
Electronic stores	1,103,205	1,081,431	1,161,035	1,061,349	1,216,281	1,197,101	1,241,455	1,304,342	1,426,280	1,966,365	1,458,398	1,127,094	1,191,491	15,432,622
DIY stores	5,591,634	6,329,404	7,211,201	6,436,739	6,651,822	6,508,436	6,071,612	6,359,875	6,131,107	6,075,875	5,511,291	5,620,367	6,585,443	75,493,172
Floor covering stores	163,886	166,133	167,407	148,672	162,384	171,438	164,537	195,295	198,849	151,754	168,811	163,264	178,306	2,036,850
Garden centres	1,349,911	2,110,753	2,680,631	2,162,963	1,734,463	1,450,187	1,352,842	1,371,300	1,405,701	1,730,963	939,795	993,315	1,975,139	19,908,052
Miscellaneous household	1,373,508	1,414,575	1,511,468	1,521,360	1,623,937	1,535,091	1,502,730	1,639,866	1,759,966	2,295,699	1,665,995	1,373,807	1,564,948	19,409,502
<i>Household</i>	<b>12,265,089</b>	<b>13,857,259</b>	<b>15,538,078</b>	<b>13,979,027</b>	<b>14,208,173</b>	<b>13,683,596</b>	<b>13,204,324</b>	<b>13,934,182</b>	<b>14,241,506</b>	<b>15,780,929</b>	<b>12,864,331</b>	<b>11,660,661</b>	<b>14,233,207</b>	<b>167,185,273</b>
Books, newspapers & magazines	1,671,439	1,787,414	1,791,687	1,672,155	1,975,988	1,878,601	2,034,974	2,105,693	2,287,550	3,381,975	1,774,536	1,631,312	1,842,103	24,163,988
Record shops	266,986	354,443	210,232	196,487	217,779	213,511	210,799	777,146	230,882	310,799	218,146	192,665	205,829	3,355,010
Music shops	132,215	1,993,999	129,737	118,653	121,554	115,752	140,261	148,635	153,219	185,763	140,271	122,280	127,443	3,497,567
Hobbies, toys & games	394,068	391,780	397,357	376,863	441,578	440,080	483,956	531,793	778,529	1,126,941	424,272	388,424	455,912	6,237,485
Photographic	182,075	178,754	200,241	200,774	216,323	210,781	221,441	180,046	201,763	241,251	166,782	128,609	147,939	2,294,503
Handicraft	89,441	94,663	91,822	81,878	88,599	94,555	93,634	106,029	111,351	95,931	94,511	82,514	92,067	1,127,554
Sports shops	2,272,875	2,563,607	2,884,322	2,770,746	3,457,349	3,297,542	2,912,804	2,584,620	2,673,835	3,146,963	2,587,737	2,200,325	2,554,403	33,634,253
Jewellers	599,596	590,093	620,825	644,140	741,868	641,971	714,998	669,855	664,653	1,296,970	695,688	627,438	609,132	8,798,631
Computer software	644,621	645,400	657,918	631,317	730,559	579,251	606,833	585,902	602,017	692,255	520,918	318,027	334,344	6,904,741
Medical goods	419,574	394,403	435,917	435,993	477,475	424,215	408,074	442,660	446,351	541,936	417,495	393,413	454,292	5,272,224
Chemists	3,247,897	3,307,584	3,851,489	3,629,995	4,475,477	3,729,073	3,718,257	3,916,413	4,132,957	5,942,895	3,669,833	3,305,234	3,842,147	47,521,354
Optical goods	463,965	486,695	512,841	475,910	553,489	506,414	487,323	486,509	459,998	411,756	494,672	466,591	528,826	5,871,024
Cosmetic stores	369,194	416,846	469,810	411,218	457,447	440,671	421,654	465,673	613,751	1,018,541	385,108	359,696	431,911	5,892,326
Tobaccoists	16,239	16,754	20,595	20,367	24,905	24,905	24,583	24,178	30,484	26,664	24,703	26,664	28,912	289,414
Florists	552,845	332,278	369,997	346,093	352,609	311,652	323,963	325,744	325,642	542,226	288,616	402,286	546,908	4,468,014
Artists' supplies	263,638	285,767	269,119	240,588	275,071	284,751	282,108	324,776	365,568	387,731	266,583	265,919	290,558	3,538,539
Antiques, art & stamps/coins	149,622	173,175	165,536	144,992	168,613	168,613	153,528	166,203	168,613	127,321	127,321	124,347	187,947	1,879,467
Pawn shops	2,951	3,101	3,209	3,073	3,229	3,447	3,370	3,685	3,879	5,910	3,544	3,387	3,596	43,430
Gift shops	1,233,526	1,195,123	1,293,981	1,357,809	1,514,973	1,553,700	1,379,816	1,474,940	1,910,235	2,849,485	1,147,851	1,178,081	1,395,036	18,251,030
Secondhand shops	27,195	17,888	20,439	20,209	21,574	20,800	21,574	20,800	21,574	21,694	18,739	16,936	21,533	244,931
Luggage & leather goods	99,258	101,854	115,027	124,438	136,306	119,727	108,579	116,818	131,736	173,770	104,039	81,104	98,470	1,411,868
Pet shops	740,374	728,630	808,862	750,655	818,766	807,213	770,475	812,871	795,270	870,582	776,910	709,721	798,306	9,448,261
Religious goods	7,582	9,786	12,294	12,503	13,716	13,593	12,011	10,384	7,778	6,935	5,993	7,537	8,342	120,872
Direct sales	3,749,016	3,573,569	3,828,368	3,452,683	3,799,478	3,500,674	3,648,637	4,044,664	3,584,185	3,793,509	3,547,575	3,289,938	3,536,885	43,800,165
Miscellaneous & speciality shops	2,951,069	2,941,379	3,980,922	2,960,859	3,339,289	4,006,902	3,291,326	2,888,099	3,306,818	3,660,350	2,933,532	2,653,425	3,054,843	39,017,746
<i>Other retail</i>	<b>20,547,261</b>	<b>22,584,985</b>	<b>23,142,547</b>	<b>21,080,398</b>	<b>24,424,014</b>	<b>23,472,411</b>	<b>22,391,315</b>	<b>22,667,664</b>	<b>24,279,959</b>	<b>31,388,143</b>	<b>20,851,108</b>	<b>18,972,368</b>	<b>21,629,483</b>	<b>276,884,395</b>
<i>Automotive Fuels</i>	<b>19,560,945</b>	<b>18,362,097</b>	<b>20,379,628</b>	<b>19,765,733</b>	<b>21,882,964</b>	<b>20,432,217</b>	<b>19,977,476</b>	<b>20,068,968</b>	<b>19,453,192</b>	<b>19,700,953</b>	<b>18,578,717</b>	<b>17,647,840</b>	<b>20,285,710</b>	<b>236,335,495</b>
<b>Total retail sales</b>	<b>130,216,847</b>	<b>127,762,505</b>	<b>145,625,560</b>	<b>138,925,549</b>	<b>157,694,435</b>	<b>144,457,918</b>	<b>143,048,376</b>	<b>147,498,033</b>	<b>154,069,156</b>	<b>179,952,544</b>	<b>138,749,039</b>	<b>126,660,041</b>	<b>148,636,490</b>	<b>1,753,079,646</b>

Table 3A Card expenditure statistics (not seasonally adjusted)

Number of credit card transactions

## Detailed sector breakdown - services sectors (not seasonally adjusted)

	March 2013	April 2013	May 2013	June 2013	July 2013	August 2013	September 2013	October 2013	November 2013	December 2013	January 2014	February 2014	March 2014	Total (latest 12 months)
Auto rental	444,025	458,184	522,338	489,944	568,433	543,062	485,611	473,719	405,564	378,236	396,858	383,576	444,885	5,550,410
Auto parts & accessories	779,557	808,033	818,781	757,895	840,498	769,158	727,202	749,248	737,727	675,823	731,647	702,179	813,522	9,131,713
Auto services	1,591,231	1,588,090	1,840,875	1,805,694	1,940,151	1,744,976	1,873,939	2,037,002	1,966,855	1,848,561	1,878,503	1,826,107	2,018,661	22,369,414
Auto repair shops	923,453	856,560	916,930	869,571	964,830	887,079	872,674	897,179	858,596	773,682	873,209	836,421	988,773	10,595,504
Service stations	0	0	0	0	0	0	0	0	0	0	0	0	0	0
Vehicle sales	589,945	600,366	623,701	582,632	642,726	594,801	582,371	552,130	503,874	447,933	526,409	519,371	650,525	6,826,839
<b>Vehicle Sales &amp; Services</b>	<b>4,328,211</b>	<b>4,311,233</b>	<b>4,722,625</b>	<b>4,505,736</b>	<b>4,956,638</b>	<b>4,539,076</b>	<b>4,541,797</b>	<b>4,709,278</b>	<b>4,472,616</b>	<b>4,124,235</b>	<b>4,406,626</b>	<b>4,267,654</b>	<b>4,916,366</b>	<b>54,473,880</b>
Restaurants	13,789,048	14,268,412	15,755,368	15,229,409	16,863,448	16,623,470	15,801,604	16,388,914	15,858,167	15,937,174	14,497,422	15,000,918	17,383,616	189,607,922
Public houses	2,257,454	2,449,348	2,822,324	2,647,743	3,110,038	2,979,687	2,745,144	2,684,763	2,631,824	2,993,454	2,507,341	2,682,597	3,178,876	33,433,139
Catering services	435,817	418,851	490,990	476,850	520,905	471,538	504,396	550,595	551,530	522,021	502,140	509,397	577,975	6,097,188
Video stores	223,571	177,795	211,623	207,425	236,033	238,633	260,410	253,977	259,755	257,361	291,986	236,679	216,475	2,848,152
Cinema, theatre & dance	1,615,358	1,797,455	1,962,841	1,643,893	1,749,483	1,906,702	1,647,853	2,093,374	2,277,896	2,317,580	2,081,910	1,865,420	1,758,778	23,103,185
Concerts & entertainers	53,441	54,841	55,232	52,200	50,850	60,150	55,633	70,775	69,054	65,612	53,303	56,341	56,671	700,662
Tourist attractions	319,761	552,456	619,599	564,750	829,470	1,016,178	587,624	1,016,739	319,256	510,630	259,559	313,539	394,829	6,283,729
Amusement parks	31,082	77,591	75,869	67,812	101,739	159,874	69,718	67,845	35,059	25,533	20,430	33,766	38,110	773,346
Aquariums	14,228	28,967	26,124	24,764	34,775	46,964	24,187	21,257	14,471	13,400	14,041	20,535	23,566	293,051
Sports & games establishments	2,669,667	2,656,062	2,470,431	2,109,328	2,409,896	2,358,234	2,417,377	2,452,705	2,402,197	3,601,297	3,409,375	2,996,871	3,516,752	32,800,525
Professional sports clubs	96,796	125,093	159,320	101,822	144,167	143,750	121,256	119,270	123,279	150,241	118,217	102,277	129,269	1,537,961
Gambling	4,673,074	4,035,780	4,714,783	4,062,450	4,452,755	4,406,338	4,934,217	5,108,341	4,956,463	5,810,300	5,726,962	5,358,815	6,132,327	59,699,531
Personal services	399,566	239,267	290,843	230,843	325,713	301,968	284,495	288,351	265,324	303,603	241,369	220,650	244,799	3,329,352
Miscellaneous entertainment	583,266	640,859	660,254	604,977	728,678	729,031	639,812	651,210	555,754	458,249	588,093	572,751	644,883	7,474,551
<b>Entertainment</b>	<b>27,162,129</b>	<b>27,522,777</b>	<b>30,347,728</b>	<b>28,084,266</b>	<b>31,557,950</b>	<b>31,442,517</b>	<b>30,093,726</b>	<b>31,262,016</b>	<b>30,320,029</b>	<b>32,771,655</b>	<b>30,312,148</b>	<b>29,970,556</b>	<b>34,296,926</b>	<b>367,982,294</b>
<b>Hotels</b>	<b>4,194,928</b>	<b>4,629,392</b>	<b>4,900,990</b>	<b>4,768,431</b>	<b>5,218,476</b>	<b>4,863,882</b>	<b>4,682,612</b>	<b>4,840,124</b>	<b>4,467,429</b>	<b>4,088,300</b>	<b>4,083,032</b>	<b>4,145,655</b>	<b>4,779,228</b>	<b>55,467,551</b>
Airlines	1,617,420	1,604,131	1,649,270	1,513,849	1,547,170	1,494,484	1,723,032	1,593,212	1,338,321	1,076,908	1,793,149	1,472,817	1,632,121	18,438,464
Airport terminals	21,918	27,018	31,822	36,935	49,342	42,104	39,687	37,187	28,978	26,467	30,805	30,311	37,202	417,858
Railways	5,300,173	5,540,668	5,851,360	5,594,415	6,086,672	5,318,403	5,860,525	6,167,437	5,935,621	5,470,311	5,395,775	5,136,056	6,016,771	68,374,014
Buses	612,654	618,037	705,755	704,617	772,351	687,817	779,826	780,117	747,833	641,808	699,472	705,467	797,647	8,640,747
Sea travel	123,407	129,327	179,664	170,911	198,375	205,810	152,438	139,008	117,598	108,514	129,609	141,283	180,642	1,853,179
Travel agents	1,816,261	1,611,842	1,954,532	1,825,848	1,913,479	1,677,311	1,714,068	1,858,481	1,624,009	1,493,578	2,139,052	1,838,082	1,962,089	21,612,371
Timeshares	34,470	27,273	17,792	16,645	18,896	20,169	15,865	19,255	17,274	17,424	27,484	20,608	18,897	237,582
Camping grounds	137,458	207,035	256,300	248,568	336,029	351,884	192,332	138,217	74,780	65,531	108,435	113,108	160,290	2,252,509
Miscellaneous travel	819,241	847,934	918,469	886,770	955,758	895,220	866,976	918,403	852,825	814,053	794,911	793,733	902,792	10,447,844
<b>Travel</b>	<b>10,483,002</b>	<b>10,613,265</b>	<b>11,564,964</b>	<b>10,998,558</b>	<b>11,878,072</b>	<b>10,693,202</b>	<b>11,344,749</b>	<b>11,651,317</b>	<b>10,737,239</b>	<b>9,714,594</b>	<b>11,118,692</b>	<b>10,251,465</b>	<b>11,708,451</b>	<b>132,274,568</b>
Telegraph services / Wire transfer money order	3,538	3,329	9,627	12,125	8,853	10,710	3,562	14,162	12,789	14,129	15,188	15,915	16,698	137,087
Insurance services	1,738,545	1,647,218	1,736,851	1,623,387	1,990,189	1,825,786	1,817,639	1,777,630	1,495,708	1,433,304	1,629,910	1,526,165	1,760,216	20,264,003
FIs - cash disbursements (auto & manual)	21,269	21,240	22,838	20,811	21,056	17,902	19,838	20,716	17,252	13,429	15,639	16,258	17,396	224,375
FIs - merchandise & services	482,500	422,686	458,502	448,319	383,972	367,453	370,040	382,694	367,261	367,935	390,220	353,889	417,721	4,730,692
Non-FIs - foreign currency, travellers' cheques	69,922	84,043	95,817	94,819	117,080	110,369	109,358	73,686	53,056	53,897	56,886	63,712	74,872	987,595
Security brokers and dealers	13,755	31,121	13,042	12,388	10,116	9,218	9,663	10,294	10,311	9,894	10,758	8,450	8,458	143,713
Tax preparation services	257	236	208	174	165	158	160	153	150	121	203	201	216	2,145
Tax payments	21,261	18,384	4,768	4,102	5,687	5,410	15,128	4,248	3,859	3,900	3,494	3,719	3,648	76,347
Fines, bail and bond payments	62,787	60,268	70,418	63,179	71,377	68,253	66,050	75,357	71,201	69,803	71,855	68,784	74,170	830,715
Miscellaneous financial	72,632	87,636	107,240	87,148	97,891	97,862	83,017	84,951	77,303	66,068	71,097	69,499	86,999	1,016,711
<b>Financial</b>	<b>2,486,466</b>	<b>2,376,161</b>	<b>2,519,311</b>	<b>2,366,452</b>	<b>2,706,386</b>	<b>2,513,121</b>	<b>2,494,455</b>	<b>2,443,891</b>	<b>2,108,890</b>	<b>2,032,480</b>	<b>2,265,250</b>	<b>2,126,592</b>	<b>2,460,394</b>	<b>28,413,383</b>

Table 3A Card expenditure statistics (not seasonally adjusted)

Number of credit card transactions

## Detailed sector breakdown - services sectors (continued, not seasonally adjusted)

	March 2013	April 2013	May 2013	June 2013	July 2013	August 2013	September 2013	October 2013	November 2013	December 2013	January 2014	February 2014	March 2014	Total (latest 12 months)
Telecoms	1,926,370	2,008,061	1,952,321	1,863,297	2,030,451	1,957,400	1,991,756	2,037,282	1,932,087	1,992,186	1,957,337	1,737,496	1,922,201	23,381,875
Utilities	449,284	384,438	397,801	355,259	385,297	355,440	372,424	404,266	361,679	358,992	395,102	375,005	423,441	4,569,144
Contractors (residential & commercial)	257,518	267,615	272,941	249,244	280,760	263,823	272,471	301,694	287,437	238,202	264,917	254,564	279,307	3,232,975
Gardening services	49,193	68,914	82,824	67,952	61,476	51,862	46,834	47,954	47,483	61,863	34,612	37,552	66,987	676,313
Veterinary services	553,594	584,575	607,799	579,700	662,903	663,843	617,063	654,717	605,735	590,999	618,075	561,027	612,151	7,358,587
Photocopying & printing	265,328	286,438	261,551	241,239	253,464	249,200	273,726	310,710	320,936	344,367	298,378	237,636	267,338	3,344,983
Photographic studios	99,736	104,091	116,518	122,589	144,646	109,804	108,821	145,031	150,555	137,012	88,093	86,768	102,648	1,416,576
Beauty & barber shops	1,454,447	1,503,101	1,615,705	1,556,995	1,716,842	1,607,502	1,523,249	1,573,468	1,609,096	2,041,008	1,458,788	1,389,438	1,577,388	19,172,580
Employment agencies	31,346	30,436	27,665	25,191	29,770	28,316	26,477	29,037	26,698	23,239	22,428	21,330	22,317	312,904
Counselling services	6,922	6,498	6,157	6,078	6,617	6,270	6,485	6,576	5,798	4,636	5,896	5,458	6,201	72,670
Legal services	59,789	57,342	76,349	37,594	78,636	40,894	73,516	60,488	41,321	66,712	58,778	39,898	78,454	709,982
Laundry & cleaning	164,799	183,297	201,407	200,717	222,004	188,185	196,271	206,888	193,682	181,537	183,012	163,424	190,058	2,310,482
Funeral services	12,915	12,921	12,957	11,543	12,360	11,059	10,783	12,250	11,806	11,689	12,826	11,994	13,069	145,257
Medical services	1,159,297	1,141,235	1,249,898	1,172,932	1,274,330	1,154,617	1,194,498	1,328,013	1,263,840	1,127,482	1,309,962	1,191,535	1,279,940	14,688,282
Moving & courier services	372,815	386,953	431,937	418,551	435,212	381,354	391,457	448,352	435,760	418,601	386,531	384,439	418,748	4,937,895
Repair shops (not auto)	63,821	58,123	63,663	57,418	66,113	61,440	60,133	66,033	65,551	63,803	66,667	58,736	60,509	748,189
Accounting services	31,420	28,230	28,707	26,774	29,496	32,711	35,968	38,928	37,146	36,013	45,387	35,026	36,575	410,961
Advertising, consultancy & PR	78,709	98,742	90,001	79,670	86,779	82,752	79,424	82,082	83,131	61,132	70,899	64,049	73,146	951,807
Computer programming	1,306,286	1,260,313	1,350,347	1,257,317	1,352,741	1,249,594	1,397,593	1,504,643	1,590,037	2,009,671	1,362,008	1,174,166	1,356,973	16,865,403
Farming services	96,751	105,026	108,725	100,834	107,924	99,169	98,637	102,921	105,644	120,129	103,931	97,123	111,280	1,261,343
Miscellaneous professional services	875,676	949,812	945,189	865,059	930,223	900,722	946,325	967,131	926,776	875,755	935,356	880,584	958,144	11,081,076
Engineering services	48,141	56,881	52,044	51,699	58,159	51,674	50,428	55,696	50,653	44,337	50,440	48,815	54,097	624,923
Marina services	40,659	65,685	76,424	74,297	107,982	101,596	62,551	46,742	36,912	36,047	34,776	31,179	50,505	724,696
Wrecking & salvage yards	3,670	3,886	4,284	4,059	4,443	3,982	3,633	3,894	3,365	2,530	3,544	3,178	3,606	44,404
Pest control	2,833	2,857	3,168	2,899	3,939	3,599	2,996	3,426	2,786	2,363	2,526	2,287	2,657	35,503
Educational establishments	597,361	517,258	567,916	537,608	542,482	455,560	785,644	752,379	704,570	571,025	776,327	629,403	757,142	7,597,314
Child care services	18,347	19,930	18,394	15,590	17,279	18,590	17,732	21,442	18,613	18,333	23,664	22,588	19,639	231,794
Social, political & religious organisations	1,228,690	1,025,691	1,356,107	1,234,677	1,345,963	1,277,436	1,363,567	1,347,088	1,526,509	1,327,738	1,183,485	1,101,393	1,497,052	15,586,706
Government services	2,130,631	2,186,840	2,362,713	2,258,583	2,449,924	2,244,558	2,298,025	2,412,727	2,221,893	2,103,513	2,408,356	2,342,378	2,567,896	27,857,406
Miscellaneous services	1,368,082	2,240,045	1,379,833	1,299,076	1,467,129	1,327,713	1,337,170	1,416,482	1,425,366	1,968,180	1,412,100	1,343,621	1,507,244	18,123,959
Commercial equipment	902,142	878,844	926,106	854,846	910,074	892,327	979,572	1,015,092	995,875	948,365	987,945	868,457	927,720	11,185,223
Other services	15,656,572	16,524,078	16,647,451	15,629,287	17,075,418	15,872,992	16,625,229	17,403,432	17,088,740	17,787,459	16,562,146	15,200,547	17,244,433	199,661,212
<b>Total services</b>	<b>64,311,308</b>	<b>65,976,906</b>	<b>70,703,069</b>	<b>66,352,730</b>	<b>73,392,940</b>	<b>69,924,790</b>	<b>69,782,568</b>	<b>72,310,058</b>	<b>69,194,943</b>	<b>70,518,723</b>	<b>68,747,894</b>	<b>65,962,469</b>	<b>75,405,798</b>	<b>838,272,888</b>
<b>TOTAL</b>	<b>194,528,155</b>	<b>193,739,411</b>	<b>216,328,629</b>	<b>205,278,279</b>	<b>231,087,375</b>	<b>214,382,708</b>	<b>212,830,944</b>	<b>219,808,091</b>	<b>223,264,099</b>	<b>250,471,267</b>	<b>207,496,933</b>	<b>192,622,510</b>	<b>224,042,288</b>	<b>2,591,352,534</b>

Table 3B Card expenditure statistics (not seasonally adjusted)

Value of credit card transactions

Detailed sector breakdown - retail sectors (not seasonally adjusted)

£	March 2013	April 2013	May 2013	June 2013	July 2013	August 2013	September 2013	October 2013	November 2013	December 2013	January 2014	February 2014	March 2014	Total (latest 12 months)
Supermarkets	1,722,257,822	1,521,647,858	1,828,454,442	1,738,759,991	1,975,026,227	1,780,535,367	1,835,642,675	1,826,140,750	1,976,965,597	2,452,034,549	1,669,391,820	1,580,303,446	1,829,134,864	22,014,037,586
Bakers & dairies	3,527,071	3,500,534	3,830,121	3,687,989	3,936,029	3,756,017	3,844,846	4,080,205	4,137,032	4,655,329	3,436,605	3,565,614	4,296,637	46,726,958
Sweet stores	8,496,113	6,138,800	5,533,411	5,645,055	5,933,110	6,057,438	5,752,280	6,948,075	9,982,186	18,355,834	4,840,433	5,655,323	6,960,349	87,802,294
Miscellaneous foodstores	92,452,646	92,968,404	102,574,296	97,502,263	106,766,414	96,957,522	96,137,345	101,797,668	103,777,264	129,511,241	95,640,387	91,045,937	102,527,425	1,217,206,166
Off-licences	39,053,628	37,803,793	44,608,902	43,211,861	42,126,992	39,418,830	35,823,568	40,227,043	49,800,057	62,836,919	31,686,134	33,031,374	40,934,432	501,509,905
Food & drink	1,865,787,280	1,662,059,389	1,985,001,172	1,888,807,159	2,133,788,772	1,926,725,174	1,977,200,714	1,979,183,741	2,144,662,136	2,667,393,872	1,804,995,379	1,713,601,694	1,983,853,707	23,867,282,900
Department stores	334,410,851	363,107,039	368,555,169	396,573,403	385,713,017	362,795,403	385,313,303	403,925,107	513,436,969	617,716,671	381,422,432	297,273,185	359,113,742	4,834,945,085
Discount stores	78,256,991	81,807,001	87,761,247	83,185,041	93,143,354	90,717,837	89,962,301	98,496,565	119,700,804	126,666,687	86,406,756	75,022,870	82,260,449	1,115,130,912
Catalogues	92,024,567	51,960,204	114,659,084	109,051,137	122,983,156	129,933,825	123,648,231	144,816,925	160,948,175	155,551,854	145,585,238	134,492,478	174,871,612	1,568,501,919
Miscellaneous mixed	93,488,912	101,408,357	101,466,001	96,375,468	107,701,418	107,711,076	112,516,978	120,250,942	135,799,913	163,599,865	93,489,643	88,631,515	103,015,297	1,324,966,473
Mixed business	598,181,321	598,282,601	672,441,501	685,184,694	709,540,945	684,158,141	711,440,813	767,489,539	929,885,861	1,063,535,077	706,904,069	595,420,048	719,261,100	8,843,544,389
Men's clothing	37,182,866	40,893,213	46,327,588	49,982,626	48,919,483	42,206,821	42,618,206	43,264,473	43,781,987	55,969,042	42,801,660	31,221,703	37,604,140	525,590,942
Women's clothing	122,573,368	140,332,664	143,483,780	145,849,930	157,084,027	126,516,213	145,125,199	150,301,633	155,636,178	182,627,083	120,564,248	110,629,220	143,226,453	1,721,376,628
Family clothing	334,971,717	370,794,182	405,248,830	387,382,054	453,853,771	370,794,182	453,853,771	454,897,046	494,323,460	454,897,046	354,648,170	323,538,576	404,817,325	5,067,207,055
Miscellaneous clothing	36,573,064	43,081,260	45,022,939	44,343,510	46,448,488	41,333,717	44,669,715	41,299,095	37,343,227	38,634,749	25,915,940	23,892,197	28,976,068	460,957,905
Shoe shops	58,994,947	78,019,389	81,357,951	82,692,282	88,211,355	88,292,622	90,404,191	96,315,477	94,647,789	113,054,991	77,521,018	56,138,705	70,404,425	1,017,058,195
Clothing	590,295,962	673,120,708	721,441,088	710,250,402	794,514,124	682,827,398	740,529,277	786,077,724	825,732,641	1,005,799,515	621,451,036	545,418,401	685,028,411	8,792,190,725
Furniture stores	269,115,626	272,881,092	272,648,405	243,750,116	267,215,329	265,899,809	282,815,434	312,230,161	308,011,466	281,842,932	324,562,565	261,067,025	283,713,093	3,376,637,427
Household appliance stores	120,072,876	120,993,389	121,958,498	114,823,418	121,898,926	116,698,471	118,613,404	131,710,682	136,155,284	139,037,551	134,974,982	119,163,085	130,783,703	1,506,811,393
Electronic stores	176,413,858	174,158,957	179,123,727	164,272,340	189,834,878	192,328,858	205,051,339	208,180,828	235,837,084	335,296,699	229,354,346	170,169,436	188,670,816	2,472,279,287
DIY stores	407,019,555	457,392,913	420,485,014	464,217,447	491,506,978	472,067,010	452,575,335	493,006,720	458,296,139	410,702,299	444,770,223	413,028,861	488,139,916	5,566,188,855
Floor covering stores	55,960,810	56,190,006	59,401,802	54,831,706	60,126,693	60,685,210	58,218,205	69,905,671	72,060,246	54,884,112	59,281,547	57,287,828	64,511,768	727,384,794
Garden centres	62,691,140	103,790,061	133,927,496	104,248,864	98,961,303	67,983,243	61,024,743	59,522,023	60,229,490	71,294,487	40,489,849	44,527,247	96,666,417	932,665,232
Miscellaneous household	113,864,935	126,108,539	127,546,772	129,799,629	140,593,528	127,211,697	137,389,669	147,735,226	149,629,080	183,530,479	138,559,364	117,691,211	134,494,274	1,660,289,468
Household	1,205,138,800	1,311,514,957	1,415,091,714	1,275,943,520	1,360,137,614	1,302,874,298	1,315,688,129	1,422,291,311	1,420,218,798	1,476,588,559	1,371,992,876	1,182,934,693	1,386,979,987	16,242,256,456
Books, newspapers & magazines	51,496,650	52,744,737	62,330,988	49,716,410	56,324,071	63,505,033	59,810,394	64,013,718	68,678,141	92,171,182	57,581,933	50,665,254	55,102,495	732,644,356
Record shops	7,050,689	10,097,282	5,795,887	5,367,075	6,117,753	5,957,592	5,984,066	6,685,616	9,233,499	5,312,455	5,312,455	5,551,324	9,701,316	95,701,316
Music shops	16,802,149	28,070,051	15,795,668	14,524,896	16,314,444	16,261,607	17,092,818	18,033,453	19,640,832	23,997,885	18,292,708	16,077,068	17,031,916	221,133,346
Hobbies, toys & games	23,146,518	22,741,770	23,421,616	22,541,406	25,658,041	23,943,411	28,039,590	30,568,731	53,673,579	81,186,804	28,048,564	23,631,729	28,403,432	391,858,673
Photographic	26,451,457	22,686,051	25,766,294	23,137,803	25,796,688	24,584,696	23,128,342	22,854,492	23,800,804	25,419,069	22,078,820	22,547,030	23,392,004	280,192,093
Handicraft	8,112,011	8,014,569	9,145,184	7,507,726	8,083,973	9,132,804	8,423,992	9,348,560	9,546,814	8,294,002	8,652,078	7,803,137	8,610,197	102,563,036
Sports shops	157,957,997	177,294,028	195,477,579	183,351,381	219,500,061	211,983,799	188,071,001	172,655,595	176,539,010	204,501,874	165,856,660	145,227,003	172,931,296	2,213,389,287
Jewellers	107,462,201	109,265,148	113,534,613	118,113,120	129,609,708	117,248,386	115,855,519	116,862,635	129,342,983	105,429,256	104,996,613	118,654,168	1,512,251,985	
Computer software	64,505,189	113,362,411	57,984,021	54,634,496	59,495,506	55,450,356	57,180,822	57,519,585	59,220,658	65,590,821	55,800,572	44,207,262	48,942,304	729,388,814
Medical goods	15,545,803	13,501,955	15,954,507	15,374,004	16,873,314	14,962,582	14,294,402	16,668,446	17,341,823	19,924,668	14,780,274	14,798,471	17,078,589	191,553,035
Chemists	69,944,968	70,781,139	83,136,887	78,199,091	96,280,059	80,842,060	78,376,484	90,980,415	109,358,015	165,396,321	76,191,697	69,474,503	82,365,805	1,081,382,476
Optical goods	70,031,534	73,785,320	76,696,549	70,524,385	80,809,046	75,288,827	72,094,264	73,236,058	68,280,778	57,426,905	74,029,362	71,457,677	81,586,207	875,215,378
Cosmetic stores	22,327,423	23,309,165	36,892,642	25,407,223	27,054,569	25,063,710	25,150,733	28,474,809	35,632,076	22,491,160	21,294,332	26,471,740	350,420,511	
Tobaccoists	1,116,639	1,185,223	1,444,374	1,332,919	1,674,915	1,535,684	1,428,698	1,472,360	2,015,210	1,615,835	1,384,420	1,658,055	1,810,552	
Florists	24,330,955	17,257,453	19,716,432	17,717,734	18,125,275	16,022,331	16,688,068	16,878,470	16,635,720	25,286,535	14,545,071	19,596,272	25,477,138	223,946,499
Artists' supplies	12,873,320	13,495,588	13,699,275	12,570,799	13,776,852	13,538,409	14,173,078	15,901,712	16,831,499	16,784,332	12,558,292	12,474,343	14,083,169	169,887,348
Antiques, art & stamps/coins	26,233,826	26,132,504	26,493,631	26,996,000	26,493,631	25,854,937	23,782,941	30,028,725	29,159,910	29,020,834	21,275,050	20,535,334	25,456,759	311,977,988
Pawn shops	676,576	700,402	763,529	698,606	794,358	986,309	962,519	904,955	903,890	1,269,842	934,616	840,595	820,997	10,580,618
Gift shops	43,375,252	43,303,542	47,922,775	47,848,456	54,411,222	55,698,070	50,711,474	56,473,607	72,433,071	87,265,726	40,217,169	39,671,984	47,511,796	643,468,892
Secondhand shops	3,268,875	2,168,434	2,433,203	2,439,989	2,045,305	2,205,427	2,525,613	2,283,768	2,415,751	2,086,532	2,147,096	2,657,533	28,012,521	
Luggage & leather goods	14,228,644	15,164,488	16,650,938	20,137,383	19,574,066	15,563,992	15,763,536	16,767,854	17,588,930	24,122,778	13,972,162	11,775,032	14,703,807	201,784,966
Pet shops	32,046,638	32,273,147	35,667,323	32,949,336	36,130,464	35,596,483	33,552,269	35,129,121	33,672,127	35,672,579	33,596,240	30,302,499	34,684,329	409,225,917
Religious goods	254,387	330,791	406,285	410,814	446,525	451,459	451,459	336,771	251,365	238,034	199,224	227,417	282,970	4,024,385
Direct sales	233,391,766	231,366,651	238,054,206	214,441,718	236,172,313	217,415,005	221,727,704	240,998,597	213,557,565	219,630,707	219,797,195	195,166,140	214,969,717	2,663,297,518
Miscellaneous & speciality shops	252,035,223	245,078,445	373,803,0											

Table 3B Card expenditure statistics (not seasonally adjusted)

Value of credit card transactions

## Detailed sector breakdown - services sectors (not seasonally adjusted)

£	March 2013	April 2013	May 2013	June 2013	July 2013	August 2013	September 2013	October 2013	November 2013	December 2013	January 2014	February 2014	March 2014	Total (latest 12 months)
Auto rental	51,309,951	54,817,631	71,995,250	64,712,818	79,279,170	76,778,639	55,448,702	51,466,513	42,836,496	42,360,189	43,363,738	41,273,457	50,249,830	674,582,433
Auto parts & accessories	124,309,797	125,609,513	129,573,692	120,393,503	131,308,164	119,171,133	116,788,003	121,861,877	118,758,944	106,251,114	117,824,449	112,364,912	129,183,514	1,449,088,818
Auto services	44,655,107	43,583,607	48,991,651	47,174,244	50,012,157	44,662,447	47,199,044	48,414,282	45,534,190	41,257,536	45,457,360	43,850,954	51,367,255	557,504,727
Auto repair shops	232,350,133	211,574,829	227,548,216	216,638,656	233,720,829	218,189,327	219,233,646	224,924,662	215,001,488	194,655,690	219,584,718	212,833,093	250,090,553	2,643,995,707
Service stations	0	0	0	0	0	0	0	0	0	0	0	0	0	0
Vehicle sales	219,371,727	212,880,390	215,925,551	203,181,603	220,123,258	206,410,088	217,688,216	204,435,326	185,397,370	162,997,349	201,904,064	202,279,699	254,718,984	2,487,941,898
<b>Vehicle Sales &amp; Services</b>	<b>671,996,715</b>	<b>648,465,970</b>	<b>694,034,360</b>	<b>652,100,824</b>	<b>714,443,578</b>	<b>665,211,634</b>	<b>656,357,611</b>	<b>651,102,660</b>	<b>607,528,488</b>	<b>547,521,878</b>	<b>628,134,329</b>	<b>612,602,115</b>	<b>735,610,136</b>	<b>7,813,113,583</b>
Restaurants	507,262,724	530,040,458	568,947,092	559,448,303	599,240,747	588,760,785	563,149,577	576,639,385	566,035,108	636,264,292	491,736,841	509,840,528	599,438,672	6,789,541,788
Public houses	89,963,282	102,217,292	110,886,994	104,979,349	120,161,745	116,324,326	108,084,387	104,953,621	103,179,808	136,068,050	92,669,162	97,540,023	117,892,908	1,314,957,665
Catering services	51,509,759	43,778,484	56,277,811	54,042,683	57,395,198	51,822,679	51,080,624	56,972,593	57,894,643	60,128,107	51,331,696	49,232,929	57,704,523	647,661,970
Video stores	2,673,429	2,520,170	2,534,087	2,423,323	2,688,000	2,610,903	3,022,377	2,849,915	3,273,662	2,903,900	3,171,342	2,781,590	2,510,898	33,290,167
Cinema, theatre & dance	136,891,439	129,989,934	135,625,522	114,821,169	114,542,932	108,460,203	116,076,033	158,858,206	157,457,515	159,509,598	123,753,894	112,248,163	133,080,541	1,564,423,710
Concerts & entertainers	4,399,991	3,929,688	8,406,313	4,439,020	4,245,081	6,336,792	6,145,253	8,039,076	7,310,991	5,719,691	4,538,866	4,603,358	5,012,692	68,726,821
Tourist attractions	21,690,708	29,442,205	36,179,014	33,185,504	46,303,056	49,674,696	29,390,746	27,178,224	17,829,140	18,349,724	19,084,206	19,878,168	25,413,220	351,907,903
Amusement parks	1,828,390	3,776,729	4,376,044	4,096,921	5,852,279	8,228,465	3,537,175	3,501,600	1,835,396	1,319,257	1,290,503	1,670,967	2,154,417	41,639,753
Aquariums	792,107	1,394,861	1,329,719	1,256,684	1,725,128	2,054,232	1,123,131	985,945	760,769	783,618	780,599	965,153	1,164,877	14,324,626
Sports & games establishments	101,700,956	106,512,798	134,895,861	121,081,156	95,593,125	84,665,760	91,806,370	86,976,404	88,013,877	109,082,265	101,364,918	92,717,104	121,647,798	1,234,357,436
Professional sports clubs	9,013,658	12,767,584	27,585,715	13,433,154	14,597,146	10,680,687	10,503,648	10,436,277	11,740,404	13,971,290	13,533,792	8,525,872	11,824,269	159,599,838
Gambling	113,804,857	103,343,295	105,105,025	90,142,811	98,281,746	98,570,796	107,840,099	95,324,837	103,894,222	111,809,174	112,549,339	113,525,945	125,263,175	1,265,650,464
Personal services	19,956,083	15,467,515	18,623,068	17,245,146	18,735,207	17,433,468	18,102,236	18,993,291	19,475,913	22,303,456	16,543,014	19,471,902	19,442,303	220,636,519
Miscellaneous entertainment	194,758,963	191,014,766	207,348,188	187,776,973	177,522,852	179,375,410	200,259,833	208,234,101	187,891,875	129,982,776	205,500,931	187,382,401	206,281,327	2,268,571,433
<b>Entertainment</b>	<b>1,256,246,346</b>	<b>1,276,195,779</b>	<b>1,418,120,453</b>	<b>1,308,372,196</b>	<b>1,356,984,242</b>	<b>1,324,999,202</b>	<b>1,310,121,489</b>	<b>1,359,943,475</b>	<b>1,326,593,323</b>	<b>1,408,195,198</b>	<b>1,239,577,991</b>	<b>1,217,455,215</b>	<b>1,428,831,530</b>	<b>15,975,290,093</b>
<b>Hotels</b>	<b>699,880,785</b>	<b>781,960,016</b>	<b>838,481,527</b>	<b>859,310,067</b>	<b>923,458,740</b>	<b>818,860,792</b>	<b>849,137,388</b>	<b>850,506,929</b>	<b>760,157,105</b>	<b>680,489,125</b>	<b>658,835,614</b>	<b>666,381,244</b>	<b>790,791,493</b>	<b>9,478,370,040</b>
Airlines	521,324,327	483,865,303	567,723,576	507,633,027	528,989,161	477,303,213	530,037,680	517,635,831	435,384,094	341,819,234	638,933,165	496,784,172	549,346,769	6,075,455,225
Airport terminals	2,958,637	3,314,426	3,724,832	3,964,086	4,952,878	3,817,449	3,806,174	3,496,326	3,020,289	2,822,851	2,663,397	2,709,929	3,314,277	41,606,914
Railways	216,427,449	233,506,306	240,220,127	230,413,938	245,229,841	210,931,344	250,727,312	259,009,420	244,761,368	255,455,673	266,222,709	213,302,647	244,364,696	2,894,145,381
Buses	26,699,013	26,605,579	30,726,803	31,086,944	34,442,519	30,736,039	32,574,954	30,032,612	27,294,113	23,790,684	25,639,862	25,569,359	29,412,695	347,912,163
Sea travel	38,598,653	38,018,115	56,672,734	47,053,531	51,169,625	56,522,918	40,110,216	40,675,774	36,473,261	44,534,300	48,819,292	59,572,808	59,572,808	550,719,917
Travel agents	572,506,329	567,097,490	691,699,748	634,992,600	653,050,917	559,443,151	493,044,290	502,624,688	410,113,864	384,013,997	665,320,401	562,415,526	601,826,936	6,725,643,608
Timeshares	7,282,867	5,868,907	3,449,554	3,114,270	3,420,579	3,470,401	2,091,593	3,405,543	3,087,805	3,002,997	4,431,798	3,373,127	3,195,640	41,912,214
Camping grounds	24,723,496	26,958,090	34,578,873	36,616,205	42,129,566	35,831,057	19,993,046	17,349,577	22,134,385	21,403,697	21,239,565	21,100,708	29,578,558	328,913,327
Miscellaneous travel	54,969,544	60,068,339	69,721,696	67,656,590	68,413,559	60,447,230	54,679,127	56,297,640	51,708,150	46,676,600	57,605,079	54,308,605	61,472,638	709,055,253
<b>Travel</b>	<b>1,465,490,315</b>	<b>1,445,302,555</b>	<b>1,698,517,943</b>	<b>1,562,531,191</b>	<b>1,631,798,645</b>	<b>1,438,502,802</b>	<b>1,427,064,392</b>	<b>1,430,527,411</b>	<b>1,233,977,329</b>	<b>1,110,083,076</b>	<b>1,726,590,276</b>	<b>1,428,383,365</b>	<b>1,582,085,017</b>	<b>17,715,364,002</b>
Telegraph services / Wire transfer money order	834,253	845,626	1,594,962	1,610,543	1,332,401	1,590,361	782,516	1,841,109	1,657,611	1,720,898	1,864,964	1,866,032	1,931,301	18,638,324
Insurance services	311,361,097	297,003,444	298,516,370	279,304,271	337,540,202	311,283,349	314,343,426	309,066,350	264,979,364	248,459,725	280,792,392	264,617,677	311,505,647	3,517,412,217
Fis - cash disbursements (auto & manual)	10,829,256	11,718,325	13,820,450	10,402,370	11,138,855	11,535,460	9,609,002	9,832,705	8,224,051	7,414,987	9,424,196	8,338,386	9,360,562	120,819,349
Fis - merchandise & services	61,844,678	58,006,854	61,344,889	59,602,531	45,460,371	41,488,112	42,931,713	45,099,596	40,535,849	38,877,817	44,820,062	41,904,664	47,008,446	567,080,904
Non-Fis - foreign currency, travellers' cheques	25,159,725	31,796,267	38,880,346	40,290,238	54,524,275	51,818,987	46,189,664	29,724,529	19,485,368	19,706,962	22,070,067	24,147,781	28,652,998	407,287,482
Security brokers and dealers	5,336,155	9,390,349	5,267,318	4,875,531	4,189,448	3,713,863	4,168,141	4,935,248	4,471,505	4,256,617	4,992,289	3,488,446	4,008,244	57,756,999
Tax preparation services	88,735	83,771	87,646	78,684	109,340	65,658	81,151	73,053	88,168	72,637	115,217	85,720	88,676	1,029,721
Tax payments	20,627,230	14,221,983	254,680	226,232	289,170	248,285	14,197,319	252,734	213,504	216,430	167,214	186,354	30,670,441	196,536
Fines, bail and bond payments	9,409,790	8,923,348	10,607,750	9,643,313	10,467,846	10,349,969	10,045,380	11,558,014	11,144,477	10,735,192	11,898,936	10,906,951	11,529,756	127,810,932
Miscellaneous financial	12,662,633	13,635,886	19,143,786	14,540,724	15,843,273	16,721,850	14,234,841	14,872,093	13,939,517	11,567,958	14,658,959	13,292,122	15,790,165	178,241,174
<b>Financial</b>	<b>458,153,552</b>	<b>445,625,853</b>	<b>449,518,197</b>	<b>420,574,437</b>	<b>480,895,181</b>	<b>448,815,894</b>	<b>456,583,153</b>	<b>427,255,431</b>	<b>364,739,414</b>	<b>343,029,223</b>	<b>390,823,436</b>	<b>368,814,993</b>	<b>430,072,331</b>	<b>5,026,747,543</b>

Table 3B Card expenditure statistics (not seasonally adjusted)

Value of credit card transactions

## Detailed sector breakdown - services sectors (continued, not seasonally adjusted)

£	March 2013	April 2013	May 2013	June 2013	July 2013	August 2013	September 2013	October 2013	November 2013	December 2013	January 2014	February 2014	March 2014	Total (latest 12 months)
Telecoms	81,006,548	81,752,897	86,217,569	80,832,382	88,500,373	86,233,671	89,871,129	97,593,362	91,605,961	92,488,707	92,435,243	79,909,314	85,249,144	1,052,689,752
Utilities	90,243,556	80,469,639	70,766,653	61,756,902	64,187,210	56,392,681	71,185,095	65,327,296	55,082,315	55,124,731	66,422,427	64,564,568	79,561,318	790,840,835
Contractors (residential & commercial)	75,618,960	73,969,739	82,275,212	75,711,516	83,751,304	79,291,180	84,729,261	91,393,171	89,360,957	75,210,216	81,295,735	78,149,649	89,489,336	984,627,276
Gardening services	5,488,265	6,416,217	8,959,384	6,671,929	6,123,235	5,262,106	5,904,809	4,306,455	5,950,008	4,230,527	3,610,208	5,122,954	6,467,052	69,024,884
Veterinary services	50,348,574	53,576,703	55,899,068	53,732,816	60,290,487	59,554,710	56,402,410	59,711,544	55,512,605	53,316,744	58,508,144	53,099,520	57,447,118	677,051,869
Photocopying & printing	36,791,687	34,509,303	36,185,090	34,053,063	34,713,686	35,640,936	36,851,687	41,641,113	39,811,281	36,458,049	37,280,743	33,206,000	35,940,524	436,291,475
Photographic studios	7,111,787	7,513,826	7,686,858	7,677,701	9,185,796	7,474,123	7,603,455	8,593,401	9,629,806	9,095,336	6,261,586	6,047,939	7,372,729	94,142,556
Beauty & barber shops	80,003,887	81,403,647	87,311,193	83,834,623	90,568,016	85,292,648	83,242,597	86,391,523	88,685,911	106,567,431	77,742,629	76,367,195	86,986,574	1,034,393,987
Employment agencies	28,516,933	24,565,085	24,782,463	24,631,882	28,902,730	26,933,153	25,761,253	29,767,087	27,872,176	24,922,636	19,759,846	22,453,643	23,432,930	303,784,884
Counselling services	1,169,968	1,142,244	1,154,998	864,173	950,697	1,236,494	1,044,845	1,072,618	1,145,066	1,038,653	1,335,256	1,290,479	1,800,816	14,076,339
Legal services	21,874,630	19,742,046	22,402,051	20,143,558	22,855,586	21,470,962	21,773,263	23,331,020	21,678,304	19,518,609	22,115,102	21,932,750	24,970,941	261,934,192
Laundry & cleaning	5,653,781	6,254,639	6,965,989	6,850,546	7,636,844	6,669,304	6,846,083	7,183,044	6,903,605	6,310,790	6,292,255	5,542,432	6,605,755	80,061,286
Funeral services	14,989,400	14,250,819	13,872,223	12,089,510	13,133,184	11,812,162	11,736,961	13,872,840	14,149,015	14,102,176	15,159,458	14,280,785	15,323,363	163,782,496
Medical services	162,507,666	156,414,951	173,254,864	162,313,183	175,069,265	156,517,872	161,718,614	184,229,180	175,464,791	153,067,271	174,090,678	164,585,099	178,647,227	2,015,372,995
Moving & courier services	39,054,373	38,605,999	41,158,875	40,876,389	45,508,150	39,098,386	39,844,087	45,875,203	42,301,459	40,823,203	41,338,663	38,423,107	42,110,663	495,964,184
Repair shops (not auto)	9,505,263	9,473,821	10,330,371	9,667,660	11,203,334	9,844,847	10,145,250	10,096,639	10,157,391	10,240,642	10,244,301	9,057,588	10,000,809	120,462,653
Accounting services	7,729,907	6,404,776	6,419,240	6,132,826	6,478,360	6,550,649	6,773,782	7,781,778	7,721,110	7,597,801	9,721,220	8,038,148	8,397,078	88,016,768
Advertising, consultancy & PR	9,009,806	9,908,015	9,951,409	8,327,609	7,834,617	8,203,546	8,203,546	8,593,682	8,028,212	6,512,091	8,178,067	7,155,563	7,838,293	99,677,776
Computer programming	85,189,202	80,399,058	120,760,312	84,867,513	87,158,397	100,476,099	89,075,528	96,470,856	98,253,750	117,895,489	89,030,660	77,173,474	86,643,863	1,128,204,999
Farming services	9,689,575	9,921,924	10,616,737	10,039,638	11,388,989	10,613,297	10,467,614	11,106,085	10,791,595	11,078,418	10,557,430	9,819,920	10,819,749	127,221,396
Miscellaneous professional services	150,334,786	154,716,945	166,440,535	153,800,917	163,085,183	163,781,037	175,021,105	163,073,409	145,174,348	135,820,634	167,379,520	145,534,552	164,188,054	1,898,016,239
Engineering services	15,669,638	17,678,626	16,335,663	15,264,447	16,556,080	15,188,188	14,812,211	16,285,307	14,613,272	13,625,452	14,707,616	14,345,073	16,048,906	185,460,841
Marina services	9,850,282	11,010,430	11,246,087	10,564,036	13,326,157	11,311,648	8,222,346	7,186,073	5,496,553	5,427,560	6,990,813	5,927,051	10,518,488	107,227,242
Wrecking & salvage yards	734,309	748,555	869,044	837,178	903,496	855,994	872,093	718,845	885,622	540,929	794,461	696,363	791,639	9,514,219
Pest control	641,358	572,521	619,393	472,808	596,394	544,015	619,276	593,733	505,576	460,647	524,890	544,576	544,726	6,598,555
Educational establishments	99,223,868	122,122,117	111,980,902	99,606,861	113,419,428	148,496,229	312,295,739	194,172,993	108,210,062	99,757,683	199,416,619	113,421,873	108,233,207	1,731,133,713
Child care services	2,017,328	2,106,675	2,262,509	2,188,780	2,490,953	2,178,294	2,265,255	2,472,815	2,241,838	2,138,260	2,651,321	2,329,576	2,464,740	27,791,016
Social, political & religious organisations	95,957,075	68,569,821	75,303,699	69,015,732	78,655,030	73,051,946	83,680,820	87,278,895	94,417,871	84,785,581	99,606,978	78,921,455	102,189,551	995,477,379
Government services	193,605,613	197,610,364	242,222,499	225,479,917	263,214,014	252,260,711	207,743,546	230,522,757	212,256,280	218,974,189	336,231,048	293,173,193	279,973,801	2,959,662,319
Miscellaneous services	81,286,634	121,437,741	83,678,601	77,539,522	88,144,010	81,376,749	87,775,118	87,308,740	85,045,871	98,638,690	84,484,050	77,638,485	96,269,451	1,069,337,028
Commercial equipment	124,472,578	119,548,348	130,456,044	124,084,698	132,251,768	125,950,579	128,015,165	139,801,934	132,417,825	117,595,887	130,031,013	120,854,976	136,328,017	1,537,336,254
Other services	1,595,297,237	1,612,817,491	1,718,385,535	1,569,930,315	1,729,394,828	1,689,195,287	1,850,503,943	1,823,920,175	1,661,203,659	1,623,365,032	1,874,197,980	1,629,607,300	1,782,655,862	20,565,177,407
<b>Total services</b>	<b>6,147,064,950</b>	<b>6,210,367,664</b>	<b>6,817,058,015</b>	<b>6,372,819,030</b>	<b>6,836,875,214</b>	<b>6,385,585,611</b>	<b>6,549,767,976</b>	<b>6,543,256,081</b>	<b>5,954,199,318</b>	<b>5,712,683,532</b>	<b>6,518,159,626</b>	<b>5,923,244,232</b>	<b>6,750,046,369</b>	<b>76,574,062,668</b>
<b>TOTAL</b>	<b>12,604,416,430</b>	<b>12,645,224,259</b>	<b>14,023,560,945</b>	<b>13,096,352,462</b>	<b>14,240,977,070</b>	<b>13,390,014,496</b>	<b>13,541,544,948</b>	<b>13,788,057,915</b>	<b>13,620,574,454</b>	<b>14,577,110,119</b>	<b>13,129,139,250</b>	<b>11,900,920,532</b>	<b>13,749,151,958</b>	<b>161,702,628,408</b>



Table 3C Card expenditure statistics (not seasonally adjusted)

Number of debit card transactions

## Detailed sector breakdown - retail sectors (not seasonally adjusted)

	March 2013	April 2013	May 2013	June 2013	July 2013	August 2013	September 2013	October 2013	November 2013	December 2013	January 2014	February 2014	March 2014	Total (latest 12 months)
Supermarkets	226,385,912	215,291,191	235,208,507	226,163,674	253,022,073	226,677,454	233,698,392	242,375,793	238,149,141	257,995,740	232,173,554	226,427,702	267,596,709	2,854,779,930
Bakers & dairies	1,651,307	1,503,547	1,718,276	1,715,708	1,769,702	1,835,861	1,845,455	2,055,274	2,055,028	1,951,478	1,696,876	1,944,370	2,352,591	22,444,166
Sweet stores	1,117,545	856,044	782,664	809,898	754,505	797,639	780,757	877,587	1,033,928	1,480,131	746,350	1,004,656	1,140,131	11,064,290
Miscellaneous foodstores	13,978,934	14,066,024	15,771,160	14,726,720	16,814,342	15,409,185	14,677,461	15,746,805	15,128,721	16,127,154	14,891,786	14,612,264	16,629,598	184,601,230
Off-licences	3,104,449	3,197,886	3,367,148	3,299,456	3,572,997	3,319,416	3,175,673	3,304,845	3,269,060	3,409,605	2,954,738	3,014,742	3,492,097	39,377,663
<i>Food &amp; drink</i>	<i>246,238,147</i>	<i>234,914,692</i>	<i>256,847,765</i>	<i>246,715,456</i>	<i>275,933,619</i>	<i>248,039,555</i>	<i>254,177,738</i>	<i>264,360,304</i>	<i>259,635,878</i>	<i>280,964,108</i>	<i>252,463,304</i>	<i>247,003,734</i>	<i>291,211,126</i>	<i>3,112,267,279</i>
Department stores	11,356,686	11,712,339	12,201,073	12,541,581	13,977,419	11,912,684	12,071,197	12,378,435	15,083,611	21,423,392	12,572,844	10,499,748	12,472,854	158,847,177
Discount stores	9,202,025	9,530,289	9,909,664	10,021,388	11,048,135	10,734,123	10,776,313	11,627,714	13,058,481	13,780,714	10,264,114	9,970,728	11,240,994	131,962,657
Catalogues	3,737,037	4,041,500	3,849,207	3,423,892	3,920,659	3,640,115	3,573,380	3,979,275	4,460,939	4,827,027	3,977,000	3,440,230	3,756,058	46,889,282
Miscellaneous mixed	12,976,229	12,694,116	14,828,505	13,926,583	17,158,671	14,952,186	16,257,538	16,824,100	17,197,199	21,429,168	15,486,079	13,607,197	9,463,815	183,825,157
<i>Mixed business</i>	<i>37,271,977</i>	<i>37,978,244</i>	<i>40,788,449</i>	<i>39,913,444</i>	<i>46,104,684</i>	<i>41,239,108</i>	<i>42,678,426</i>	<i>44,809,524</i>	<i>49,800,230</i>	<i>61,460,301</i>	<i>42,300,037</i>	<i>37,517,903</i>	<i>36,933,721</i>	<i>521,524,273</i>
Men's clothing	619,138	719,655	740,123	816,599	979,972	862,360	712,572	706,141	751,769	1,128,891	685,648	555,503	593,476	9,252,709
Women's clothing	5,038,157	6,094,677	6,248,959	6,126,007	8,061,187	6,196,826	5,949,734	6,221,277	5,992,710	9,355,166	5,418,761	4,778,859	5,976,859	76,421,022
Family clothing	20,924,418	24,264,158	24,529,466	24,116,010	30,438,157	24,030,810	24,962,411	26,553,090	28,346,754	40,664,398	23,993,183	21,105,731	26,473,105	319,477,273
Miscellaneous clothing	2,302,885	2,938,621	2,934,582	2,925,034	3,328,477	2,621,630	2,831,226	2,035,469	1,173,075	1,179,336	2,608,721	598,478	743,825	23,950,474
Shoe shops	2,045,942	2,898,909	2,866,176	3,132,600	3,863,672	3,552,044	3,139,476	2,805,290	2,670,244	3,703,686	2,807,534	2,057,640	2,464,467	35,962,738
<i>Clothing</i>	<i>30,930,540</i>	<i>36,916,020</i>	<i>37,319,306</i>	<i>37,116,250</i>	<i>46,671,465</i>	<i>37,263,670</i>	<i>37,595,419</i>	<i>38,321,267</i>	<i>38,934,552</i>	<i>56,031,477</i>	<i>33,546,847</i>	<i>29,096,211</i>	<i>36,251,732</i>	<i>465,064,216</i>
Furniture stores	3,738,977	3,853,103	3,833,031	3,620,875	3,891,664	3,914,362	4,035,823	4,324,980	4,636,353	5,464,895	3,706,439	3,190,557	3,590,650	48,062,732
Household appliance stores	5,595,199	5,298,990	5,552,585	5,546,648	5,560,478	5,668,515	5,749,166	5,980,844	6,145,496	6,304,872	5,658,796	5,309,158	6,107,020	68,882,568
Electronic stores	1,885,813	1,864,281	1,963,283	1,817,643	2,073,992	2,063,372	2,162,076	2,245,645	2,389,025	3,557,748	2,499,101	2,013,223	2,165,295	26,814,684
DIY stores	14,734,597	16,363,989	18,258,427	16,728,229	17,547,903	16,739,830	16,238,564	16,889,277	16,382,210	16,699,045	14,713,069	14,956,710	18,205,780	199,723,033
Floor covering stores	283,160	297,167	295,693	264,040	291,667	310,665	302,353	354,170	352,408	279,184	294,224	292,819	328,827	3,663,217
Garden centres	3,010,512	4,430,916	5,459,622	4,559,622	3,745,258	3,171,113	2,905,336	2,993,294	3,232,834	4,008,415	2,108,368	2,268,022	4,321,382	43,202,514
Miscellaneous household	1,173,458	1,472,704	1,395,319	1,274,395	1,487,715	1,645,264	1,618,127	1,761,308	1,639,453	1,854,850	1,759,102	1,559,038	1,653,290	19,120,565
<i>Household</i>	<i>30,421,716</i>	<i>33,581,150</i>	<i>36,756,292</i>	<i>33,811,452</i>	<i>34,598,677</i>	<i>33,513,121</i>	<i>33,011,445</i>	<i>34,549,518</i>	<i>34,777,779</i>	<i>38,169,009</i>	<i>30,739,099</i>	<i>29,589,527</i>	<i>36,372,244</i>	<i>409,469,313</i>
Books, newspapers & magazines	6,038,163	6,092,596	6,166,316	5,955,969	6,674,626	6,358,540	7,003,345	7,042,233	7,030,022	10,476,422	6,152,039	5,990,598	6,778,545	81,721,251
Record shops	1,029,421	1,322,848	768,337	758,955	757,442	747,971	1,087,866	866,048	856,752	9,279,586	756,043	1,299,586	839,141	12,574,995
Music shops	254,808	8,289,617	247,259	231,138	232,237	220,375	260,926	277,304	279,195	354,230	270,378	239,952	255,925	11,158,536
Hobbies, toys & games	1,288,197	1,229,170	1,329,416	1,250,229	1,323,812	1,369,533	1,765,100	1,650,255	2,139,710	3,357,141	1,369,891	1,337,525	1,670,996	19,792,778
Photographic	344,770	352,697	389,289	418,203	431,176	438,252	438,166	360,202	371,279	488,097	321,548	279,020	325,318	4,613,247
Handicraft	197,960	205,038	202,407	182,675	196,629	211,988	209,729	244,218	252,091	224,086	209,506	199,853	224,861	2,563,081
Sports shops	6,453,416	7,122,926	7,808,165	7,838,031	9,503,744	8,978,329	8,288,725	7,329,930	7,251,070	8,261,623	7,114,816	6,342,602	7,676,488	93,516,449
Jewellers	1,351,459	1,270,074	1,294,478	1,336,254	1,534,278	1,498,893	1,367,194	1,432,126	1,774,717	2,880,025	1,440,918	1,467,860	1,661,754	18,958,571
Computer software	535,793	724,782	503,946	471,818	515,029	475,753	512,576	450,448	470,750	558,112	502,643	417,296	431,661	6,034,814
Medical goods	37,208	34,959	40,201	38,027	42,876	41,190	38,889	43,138	41,592	36,028	40,246	38,022	42,338	477,506
Chemists	15,890,932	16,122,290	18,078,387	17,030,152	20,540,880	17,264,860	17,691,062	18,402,084	18,120,938	25,957,871	17,191,636	16,358,746	19,078,818	221,837,724
Optical goods	921,269	955,041	996,431	921,990	1,071,517	966,622	967,614	973,457	903,498	801,472	964,899	944,686	1,080,946	11,548,173
Cosmetic stores	1,245,339	1,490,391	1,352,569	1,321,705	1,450,807	1,395,333	1,399,259	1,488,271	1,758,752	3,132,550	1,207,907	1,243,284	1,513,570	18,754,398
Tobacconists	60,660	59,536	81,997	96,189	97,387	96,189	99,623	115,669	114,264	138,999	144,189	138,411	165,878	1,329,298
Florists	1,370,785	756,293	826,573	804,751	840,520	747,618	746,494	761,705	733,179	1,143,379	662,934	1,051,111	1,427,517	10,502,074
Artists' supplies	732,458	766,803	709,317	616,748	687,337	727,587	742,253	868,965	919,947	1,048,825	711,771	747,060	832,644	9,379,257
Antiques, art & stamps/coins	268,302	301,701	249,133	280,475	277,557	274,495	277,557	297,873	309,900	244,836	259,537	292,681	3,451,585	3,451,585
Pawn shops	25,533	24,007	25,425	24,627	24,739	25,742	24,450	26,448	27,608	35,678	25,104	23,763	25,920	313,511
Gift shops	5,024,403	4,248,138	4,276,667	4,811,931	4,728,241	4,742,491	4,606,286	4,963,961	6,039,987	10,827,303	4,303,272	5,117,175	6,024,862	64,690,314
Secondhand shops	63,782	65,125	66,928	65,925	76,386	75,823	77,585	80,893	79,575	97,223	69,698	66,420	73,086	894,667
Luggage & leather goods	149,378	146,555	161,875	164,849	184,463	182,396	160,032	158,858	179,578	261,256	146,580	122,395	152,099	2,020,936
Pet shops	2,828,510	2,745,039	2,943,788	2,743,439	3,026,668	3,033,245	2,926,068	3,083,803	2,959,663	3,273,090	2,952,137	2,791,901	3,161,873	35,640,714
Religious goods	5,330	6,708	6,561	6,232	6,785	8,175	7,039	7,672	7,886	7,350	6,081	6,081	6,243	82,446
Direct sales	5,805,607	5,446,580	5,670,051	5,105,268	5,530,165	5,204,130	5,440,687	5,941,739	5,446,309	5,678,851	5,449,043	5,005,157	5,514,064	65,432,044
Miscellaneous & speciality shops	2,449,992	2,510,455	2,619,425	2,493,992	2,826,632	2,746,747	2,836,517	3,141,458	3,535,437	4,259,155	3,026,587	2,894,414	3,409,500	36,300,319
<i>Other retail</i>	<i>54,373,475</i>	<i>62,289,369</i>	<i>56,841,625</i>	<i>54,924,038</i>	<i>62,577,673</i>	<i>57,866,385</i>	<i>58,723,182</i>	<i>60,004,758</i>	<i>61,830,277</i>	<i>86,638,649</i>	<i>55,413,986</i>	<i>53,811,970</i>	<i>62,666,728</i>	<i>733,588,688</i>
<i>Automotive Fuels</i>	<i>66,870,760</i>	<i>64,666,665</i>	<i>67,595,606</i>	<i>65,645,622</i>	<i>71,475,396</i>	<i>67,323,963</i>	<i>66,635,244</i>	<i>67,466,576</i>	<i>66,452,283</i>	<i>67,146,198</i>	<i>63,636,252</i>	<i>61,465,615</i>	<i>71,045,516</i>	<i>800,554,936</i>
<b>Total retail sales</b>	<b>466,106,615</b>	<b>470,346,140</b>	<b>496,149,091</b>	<b>478,126,262</b>	<b>537,361,714</b>	<b>485,245,802</b>	<b>492,821,456</b>	<b>509,511,947</b>	<b>511,430,999</b>	<b>590,409,742</b>	<b>478,099,525</b>	<b>458,484,960</b>	<b>534,481,067</b>	<b>6,042,468,705</b>

Table 3C Card expenditure statistics (not seasonally adjusted)

Number of debit card transactions

Detailed sector breakdown - services sectors (not seasonally adjusted)

	March 2013	April 2013	May 2013	June 2013	July 2013	August 2013	September 2013	October 2013	November 2013	December 2013	January 2014	February 2014	March 2014	Total (latest 12 months)
Auto rental	482,036	483,514	523,682	501,996	577,243	557,777	498,134	517,988	471,383	461,894	454,600	451,410	514,159	6,013,780
Auto parts & accessories	1,563,576	1,584,907	1,617,193	1,517,743	1,690,518	1,549,472	1,482,669	1,540,011	1,513,042	1,371,648	1,499,221	1,490,642	1,771,765	18,628,831
Auto services	3,352,765	3,332,098	3,921,113	3,840,284	4,213,611	3,961,649	4,063,540	4,421,938	4,325,723	4,586,904	4,193,395	4,138,412	4,633,178	49,631,845
Auto repair shops	1,780,174	1,634,699	1,750,471	1,665,669	1,849,378	1,692,522	1,672,303	1,761,197	1,655,639	1,466,292	1,704,640	1,670,663	2,009,072	20,532,545
Service stations	0	0	0	0	0	0	0	0	0	0	0	0	0	0
Vehicle sales	1,139,653	1,168,966	1,210,826	1,136,144	1,268,469	1,175,654	1,143,899	1,086,278	983,254	872,981	1,042,666	1,040,754	1,351,666	13,481,557
<b>Vehicle Sales &amp; Services</b>	<b>8,318,204</b>	<b>8,204,184</b>	<b>9,023,285</b>	<b>8,661,836</b>	<b>9,599,219</b>	<b>8,937,074</b>	<b>8,860,545</b>	<b>9,327,412</b>	<b>8,949,041</b>	<b>8,759,719</b>	<b>8,894,522</b>	<b>8,791,881</b>	<b>10,279,840</b>	<b>108,288,558</b>
Restaurants	54,588,222	54,463,103	60,204,782	56,312,683	61,305,013	60,575,958	59,708,345	63,760,719	63,027,311	65,601,268	59,350,203	62,087,330	72,931,097	739,327,812
Public houses	9,306,444	9,628,657	11,216,689	10,201,227	11,886,431	11,093,333	10,695,756	10,794,019	10,667,601	12,689,124	10,751,670	11,791,199	14,081,221	135,496,927
Catering services	1,394,434	1,335,013	1,530,115	1,433,908	1,548,396	1,478,991	1,561,808	1,863,468	1,895,032	1,728,899	1,734,223	1,829,422	2,093,311	20,032,586
Video stores	593,990	616,404	344,650	334,896	318,552	390,601	624,193	380,396	447,308	311,703	198,588	182,634	188,577	4,338,502
Cinema, theatre & dance	3,729,965	4,782,763	5,567,210	4,541,112	5,027,141	5,637,914	4,135,979	4,768,837	5,606,455	6,022,338	5,558,432	5,114,323	4,635,390	61,397,894
Concerts & entertainers	154,879	162,550	151,462	131,447	119,481	163,355	141,321	177,875	170,571	169,888	159,777	180,527	174,707	1,902,961
Tourist attractions	540,408	1,088,922	1,004,205	865,106	1,004,206	1,802,302	945,489	870,049	584,727	557,832	459,281	636,561	765,262	10,811,942
Amusement parks	111,122	281,204	267,531	271,707	352,172	507,622	269,535	252,891	140,141	88,580	81,873	130,790	158,919	2,802,965
Aquariums	53,221	99,901	92,469	94,178	126,161	168,193	92,852	74,916	52,130	44,242	54,512	81,936	105,289	1,086,779
Sports & games establishments	2,932,208	3,137,079	3,106,897	2,796,145	2,754,774	3,268,650	2,969,255	3,094,336	2,778,843	3,241,403	3,646,461	3,435,505	3,858,399	38,087,747
Professional sports clubs	178,716	234,360	257,523	185,094	258,392	278,035	223,763	218,100	217,694	269,481	219,775	202,934	251,178	2,816,329
Gambling	20,744,897	22,628,628	19,627,778	18,369,678	18,086,390	19,057,100	20,068,703	21,335,951	19,766,979	22,660,450	23,133,686	21,534,909	26,200,510	252,470,762
Personal services	440,072	307,456	460,738	460,738	497,745	461,906	436,599	445,625	368,826	389,121	394,394	394,688	461,679	5,121,179
Miscellaneous entertainment	670,136	880,587	816,475	702,707	1,286,023	1,112,756	743,412	802,071	643,017	598,712	766,700	840,306	852,830	10,045,596
<b>Entertainment</b>	<b>95,438,714</b>	<b>99,646,627</b>	<b>104,690,188</b>	<b>96,700,626</b>	<b>104,798,877</b>	<b>105,996,716</b>	<b>102,617,010</b>	<b>108,839,253</b>	<b>106,366,635</b>	<b>114,373,041</b>	<b>106,509,575</b>	<b>108,443,064</b>	<b>126,758,369</b>	<b>1,285,739,961</b>
<b>Hotels</b>	<b>4,034,039</b>	<b>4,329,132</b>	<b>4,616,808</b>	<b>4,439,723</b>	<b>5,091,596</b>	<b>5,128,864</b>	<b>4,465,880</b>	<b>4,579,835</b>	<b>4,242,980</b>	<b>4,322,729</b>	<b>4,291,520</b>	<b>4,396,419</b>	<b>5,149,527</b>	<b>55,055,013</b>
Airlines	1,358,240	1,398,459	1,659,233	1,556,133	1,665,068	1,611,641	1,390,724	1,560,545	1,217,459	1,121,761	1,825,452	1,494,520	1,737,978	18,238,973
Airport terminals	31,868	41,098	43,217	47,363	66,721	60,254	58,234	46,307	34,352	34,982	36,677	38,279	50,907	558,391
Railways	16,143,037	17,230,363	17,345,000	16,263,274	17,974,745	15,766,535	17,001,197	18,348,074	17,454,317	17,466,653	16,284,432	15,749,958	18,117,208	205,001,756
Buses	1,677,549	1,708,868	1,912,331	1,896,390	2,079,562	1,985,312	2,229,313	2,388,162	2,473,044	2,256,666	2,607,204	2,606,014	2,983,242	27,126,108
Sea travel	134,277	145,364	172,534	179,982	225,367	243,457	167,130	151,048	129,792	126,243	126,938	126,142	154,512	1,948,509
Travel agents	1,811,321	1,822,196	1,874,227	1,758,247	1,837,386	1,658,703	1,509,253	1,424,372	1,144,591	1,107,435	2,168,672	1,820,965	2,051,308	20,177,355
Timeshares	35,950	28,111	4,542	4,098	4,801	5,205	5,077	4,809	3,962	3,917	6,867	5,024	4,701	81,114
Camping grounds	439,623	634,257	754,953	709,802	990,839	1,120,503	584,973	453,379	234,727	209,861	292,283	345,266	529,631	6,860,474
Miscellaneous travel	934,646	1,001,646	1,043,066	1,025,094	1,145,793	1,193,771	1,062,374	1,131,610	1,050,654	1,044,351	972,890	1,005,696	1,160,982	12,837,927
<b>Travel</b>	<b>22,566,511</b>	<b>24,010,362</b>	<b>24,809,103</b>	<b>23,440,383</b>	<b>25,990,282</b>	<b>23,645,381</b>	<b>24,008,275</b>	<b>25,508,306</b>	<b>23,742,898</b>	<b>23,371,869</b>	<b>24,321,415</b>	<b>23,191,864</b>	<b>26,790,469</b>	<b>292,830,607</b>
Telegraph services / Wire transfer money order	64,859	69,256	77,413	80,830	85,891	88,110	75,991	95,600	102,388	114,567	110,422	112,626	131,687	1,144,781
Insurance services	3,175,540	3,077,061	3,246,698	3,170,640	3,770,244	3,565,295	3,534,555	3,559,212	3,016,007	2,804,116	3,253,960	3,104,990	3,611,175	39,713,953
Fis - cash disbursements (auto & manual)	3,454	3,341	5,774	6,601	7,589	7,526	7,346	7,563	6,299	9,471	9,731	12,512	10,850	94,603
Fis - merchandise & services	9,728,708	8,859,562	9,569,979	9,289,472	9,799,356	9,360,638	8,988,025	9,823,300	9,330,101	9,915,332	9,775,939	8,819,893	10,460,191	113,991,781
Non-Fis - foreign currency, travellers' cheques	741,842	791,771	860,909	892,020	957,718	951,998	929,240	671,022	550,810	563,103	608,549	657,622	754,526	9,189,288
Security brokers and dealers	161,334	173,001	139,250	115,877	100,387	117,018	162,477	904,873	147,183	115,370	154,917	128,688	196,132	2,455,173
Tax preparation services	1,189	1,021	1,089	912	1,055	842	766	781	679	482	803	728	768	9,926
Tax payments	130,401	126,514	26,780	23,796	29,619	26,172	104,077	26,061	23,254	22,664	24,170	20,813	23,359	477,279
Fines, bail and bond payments	507,093	460,759	510,023	483,068	527,452	548,572	502,140	589,209	572,121	556,486	579,224	554,418	642,922	6,526,394
Miscellaneous financial	136,822	162,271	181,617	169,263	192,271	175,469	160,869	165,878	153,488	133,058	133,508	138,989	174,936	1,941,617
<b>Financial</b>	<b>14,651,242</b>	<b>13,724,557</b>	<b>14,619,525</b>	<b>14,232,479</b>	<b>15,471,582</b>	<b>14,841,640</b>	<b>14,465,486</b>	<b>15,843,499</b>	<b>13,902,330</b>	<b>14,234,649</b>	<b>14,651,223</b>	<b>13,551,279</b>	<b>16,006,546</b>	<b>175,544,795</b>

Table 3C Card expenditure statistics (not seasonally adjusted)

Number of debit card transactions

## Detailed sector breakdown - services sectors (continued, not seasonally adjusted)

	March 2013	April 2013	May 2013	June 2013	July 2013	August 2013	September 2013	October 2013	November 2013	December 2013	January 2014	February 2014	March 2014	Total (latest 12 months)
Telecoms	10,318,453	10,948,098	10,616,347	10,247,508	10,834,969	10,635,775	10,707,474	10,762,997	10,361,858	10,823,183	10,796,273	9,640,691	10,831,117	127,206,290
Utilities	2,637,881	1,979,506	2,118,022	1,920,198	2,123,788	1,975,231	2,087,333	2,231,554	2,046,557	2,026,921	2,160,247	2,008,142	2,277,975	24,955,474
Contractors (residential & commercial)	486,656	509,182	513,382	477,439	543,130	514,989	535,368	595,381	571,622	487,652	518,702	515,099	587,744	6,369,690
Gardening services	102,363	137,341	161,868	136,684	127,034	110,064	101,134	103,135	106,558	140,139	80,481	84,601	140,779	1,429,818
Veterinary services	1,530,916	1,583,014	1,638,905	1,563,070	1,807,626	1,807,849	1,678,998	1,804,102	1,642,146	1,573,620	1,667,526	1,555,093	1,732,102	20,054,051
Photocopying & printing	339,695	408,305	360,755	311,351	320,244	323,597	360,843	422,663	450,675	490,695	379,017	344,683	393,923	4,566,751
Photographic studios	314,166	318,825	355,410	369,459	406,925	345,757	332,692	416,809	434,175	425,439	290,150	298,775	352,493	4,346,909
Beauty & barber shops	4,749,183	4,878,805	5,177,444	4,941,979	5,354,871	5,070,196	4,803,960	4,938,620	4,883,155	6,264,809	4,577,956	4,584,394	5,322,042	60,798,231
Employment agencies	10,849	9,637	10,684	9,922	10,957	10,127	10,220	8,758	6,087	6,087	8,175	7,729	8,634	108,636
Counselling services	104,475	111,469	105,799	95,594	115,610	102,628	104,234	110,290	101,630	102,363	104,200	97,969	115,716	1,267,502
Legal services	158,718	146,430	164,711	153,657	173,971	157,791	161,550	173,706	159,215	138,924	166,110	162,750	182,830	1,941,645
Laundry & cleaning	406,917	447,108	477,896	472,117	513,810	447,929	477,514	505,303	476,758	450,422	445,445	411,576	482,745	5,608,623
Funeral services	28,132	27,015	28,833	26,315	28,361	25,741	25,656	28,878	27,402	27,063	30,559	29,043	32,655	337,521
Medical services	2,694,586	2,612,643	2,852,077	2,642,520	2,892,370	2,659,137	2,754,685	3,075,228	2,905,292	2,577,547	3,043,019	2,858,295	3,089,795	33,962,608
Moving & courier services	299,371	342,126	397,752	376,203	412,113	379,257	370,968	419,385	403,254	431,961	400,897	355,119	400,601	4,689,636
Repair shops (not auto)	113,452	104,904	111,864	102,602	116,578	112,966	109,336	119,242	116,177	123,568	115,713	109,494	116,263	1,358,707
Accounting services	265,959	290,561	293,544	269,612	307,007	289,958	302,302	330,579	297,327	286,223	352,835	302,307	337,500	3,659,755
Advertising, consultancy & PR	170,137	224,454	187,949	159,632	174,723	165,544	160,914	168,777	166,130	122,846	140,294	134,155	150,673	1,956,091
Computer programming	1,585,625	1,464,715	1,598,498	1,426,252	1,609,444	1,465,275	1,555,013	1,174,600	810,749	722,924	693,977	619,188	671,769	13,812,404
Farming services	257,788	272,359	278,923	264,218	283,831	265,824	267,204	277,436	283,639	322,474	286,159	274,343	310,399	3,386,809
Miscellaneous professional services	2,986,973	2,959,849	3,283,496	3,071,834	3,400,394	3,224,516	3,385,626	3,737,546	3,649,785	3,660,044	3,715,496	3,420,188	3,822,010	41,330,784
Engineering services	71,848	72,293	80,876	82,541	91,761	83,614	81,628	92,637	84,276	72,750	78,665	79,793	91,699	992,533
Marina services	64,452	97,537	112,610	108,090	155,282	150,618	96,065	75,527	62,697	64,701	57,173	57,058	89,092	1,126,450
Wrecking & salvage yards	9,642	8,996	11,078	10,770	11,792	10,969	10,079	10,503	9,930	7,728	9,686	9,963	11,157	122,651
Pest control	3,706	3,682	4,188	4,055	5,398	5,291	4,149	4,771	3,878	3,414	3,508	3,199	3,636	49,169
Educational establishments	2,148,566	1,711,095	2,247,889	1,671,538	1,380,528	1,011,992	2,373,647	3,085,454	2,915,945	2,183,997	2,853,111	2,632,963	3,123,187	27,191,346
Child care services	136,299	143,232	138,631	110,795	121,451	135,325	126,619	159,702	138,143	126,814	178,070	177,852	159,288	1,715,922
Social, political & religious organisations	2,654,740	2,101,181	2,772,085	2,495,102	2,696,220	2,540,438	2,775,127	2,842,365	2,920,141	2,504,065	2,245,172	2,239,170	3,310,531	31,441,597
Government services	6,132,219	6,465,951	7,171,745	6,734,617	7,459,792	7,088,713	6,901,496	7,460,728	6,662,824	6,573,169	7,864,360	6,993,114	7,538,347	84,714,856
Miscellaneous services	5,757,003	10,989,124	6,154,889	5,626,443	6,172,859	5,420,983	5,576,645	5,854,799	5,632,726	7,667,269	5,621,450	5,298,194	6,199,073	76,214,454
Commercial equipment	1,560,211	1,517,941	1,608,347	1,445,169	1,508,863	1,516,759	1,788,740	1,794,048	1,694,069	1,782,522	1,713,344	1,550,429	1,704,777	19,625,008
Other services	48,100,981	52,887,378	51,036,497	47,327,286	51,161,702	48,054,853	50,027,219	52,785,523	50,026,439	52,191,333	50,397,770	46,855,369	53,590,552	606,341,921
<b>Total services</b>	<b>193,109,691</b>	<b>202,802,240</b>	<b>208,795,406</b>	<b>194,802,333</b>	<b>212,113,258</b>	<b>206,604,528</b>	<b>204,444,415</b>	<b>216,883,828</b>	<b>207,230,323</b>	<b>217,253,340</b>	<b>209,066,025</b>	<b>205,229,876</b>	<b>238,575,303</b>	<b>2,523,800,875</b>
<b>TOTAL</b>	<b>659,216,306</b>	<b>673,148,380</b>	<b>704,944,497</b>	<b>672,928,595</b>	<b>749,474,972</b>	<b>691,850,330</b>	<b>697,265,871</b>	<b>726,395,775</b>	<b>718,661,322</b>	<b>807,663,082</b>	<b>687,165,550</b>	<b>663,714,836</b>	<b>773,056,370</b>	<b>8,566,269,580</b>

Table 3D Card expenditure statistics (not seasonally adjusted)

Value of debit card transactions

## Detailed sector breakdown - retail sectors (not seasonally adjusted)

£	March 2013	April 2013	May 2013	June 2013	July 2013	August 2013	September 2013	October 2013	November 2013	December 2013	January 2014	February 2014	March 2014	Total (latest 12 months)
Supermarkets	5,949,152,252	5,760,900,253	6,019,681,627	5,778,078,903	6,438,913,903	5,765,036,669	5,991,941,701	6,027,317,297	6,125,921,193	7,170,740,212	5,716,994,880	5,552,504,549	6,601,404,946	72,949,436,133
Bakers & dairies	14,054,776	13,358,580	14,849,453	14,494,534	15,483,265	15,866,427	15,397,357	16,678,825	16,674,490	16,332,307	13,284,360	14,615,963	17,330,572	184,366,133
Sweet stores	17,204,687	13,184,131	11,688,422	11,688,422	11,382,404	11,871,845	13,431,327	13,431,327	17,235,543	28,163,453	10,468,419	13,406,756	15,837,220	169,729,647
Miscellaneous foodstores	267,324,428	270,900,450	296,501,362	276,506,809	309,793,975	287,074,791	275,097,906	291,336,200	286,676,095	342,533,638	283,130,937	273,209,081	310,075,213	3,502,836,457
Off-licences	73,446,850	74,784,010	80,598,477	78,293,764	83,896,565	79,956,871	73,901,099	77,639,112	80,115,901	95,446,992	66,839,094	68,235,475	80,184,301	939,891,661
Food & drink	6,321,182,993	6,133,127,424	6,422,949,301	6,159,062,432	6,859,470,112	6,159,806,603	6,368,079,806	6,426,402,763	6,526,623,222	7,653,216,602	6,090,717,690	5,921,971,824	7,024,832,252	77,746,260,031
Department stores	426,312,974	442,164,754	458,069,424	481,347,059	496,472,101	433,673,553	467,967,888	483,967,139	606,731,816	842,736,395	462,656,299	384,067,020	472,361,280	6,032,214,728
Discount stores	318,475,571	336,644,271	344,605,557	335,692,441	376,596,012	357,736,112	373,674,866	403,278,104	465,149,954	513,171,427	337,426,484	320,077,938	363,998,603	4,528,051,769
Catalogues	146,816,444	152,639,759	150,117,653	134,997,002	157,261,928	145,884,602	150,393,656	160,590,049	172,670,470	183,558,502	165,442,784	145,556,649	164,999,044	1,884,112,098
Miscellaneous mixed	364,123,297	353,420,266	421,888,457	488,761,770	430,339,362	485,793,523	503,237,563	503,237,563	535,625,566	696,060,594	390,645,902	390,645,902	273,864,151	5,417,420,158
Mixed business	1,255,726,286	1,284,669,050	1,374,681,091	1,351,388,336	1,519,091,811	1,367,633,629	1,477,829,933	1,551,072,655	1,780,177,806	2,235,526,918	1,403,956,737	1,240,347,509	1,275,223,078	17,861,798,753
Men's clothing	40,665,108	46,537,415	48,972,338	52,325,001	55,930,695	50,883,344	46,674,617	46,642,376	47,148,284	67,967,904	41,675,765	34,448,267	40,800,731	580,006,737
Women's clothing	186,937,581	225,922,476	228,470,259	225,699,089	272,535,171	215,394,178	232,823,318	242,217,820	242,124,308	337,924,015	194,779,311	180,892,085	228,056,473	2,826,838,503
Family clothing	696,892,376	798,170,847	789,601,253	813,541,972	914,666,202	777,849,042	863,036,320	929,070,646	990,655,762	1,369,721,891	731,275,974	683,133,444	875,110,624	10,557,552,295
Miscellaneous clothing	64,990,915	82,498,593	82,761,951	81,121,733	87,240,527	74,427,181	84,643,658	64,774,807	43,211,766	64,178,299	26,178,299	43,211,766	29,801,751	722,391,596
Shoe shops	88,772,565	121,008,830	119,270,981	122,995,548	137,514,918	146,499,606	141,359,215	139,295,693	136,117,880	183,904,155	118,763,063	89,738,748	110,598,333	1,567,056,670
Clothing	1,078,258,545	1,274,138,161	1,293,017,401	1,271,742,624	1,489,605,831	1,265,053,351	1,368,537,128	1,422,001,342	1,459,287,800	2,001,135,700	1,112,672,412	1,012,296,139	1,284,357,912	16,253,845,801
Furniture stores	340,083,180	345,959,640	344,139,010	313,670,891	347,449,632	345,903,748	380,675,108	407,611,546	405,875,696	388,560,446	383,924,196	329,227,423	365,701,399	4,358,698,735
Household appliance stores	225,862,969	219,367,193	223,793,877	215,778,138	218,471,041	211,423,240	213,551,862	229,976,516	240,375,807	248,190,208	248,189,862	228,939,141	263,036,380	2,761,093,265
Electronic stores	192,282,031	195,027,218	201,809,910	186,311,250	220,371,342	219,460,331	239,747,112	243,263,858	265,470,909	407,042,526	265,305,279	204,080,891	226,652,824	2,874,543,450
DIY stores	715,852,907	805,094,921	919,523,853	849,334,852	914,666,202	871,371,375	851,894,400	929,937,183	877,440,249	813,848,012	793,138,430	771,452,444	933,104,960	10,330,806,522
Floor covering stores	69,454,233	71,825,003	76,731,934	71,285,960	80,054,270	82,030,371	79,677,696	94,286,988	96,751,959	75,881,876	76,463,748	75,659,828	87,985,051	968,634,684
Garden centres	93,345,055	150,181,694	191,738,171	155,954,272	129,425,598	101,941,827	91,439,223	92,252,516	124,188,782	62,180,234	68,329,985	144,480,806	1,411,135,502	
Miscellaneous household	85,579,039	106,016,112	99,045,093	90,038,467	108,233,135	114,701,144	117,743,375	126,685,781	116,009,594	118,131,459	118,467,919	104,120,124	114,898,727	1,334,990,930
Household	1,722,459,414	1,893,471,781	2,056,781,848	1,882,373,830	2,018,671,221	1,946,832,036	1,974,728,416	2,124,014,388	2,100,946,608	2,175,843,909	1,947,669,668	1,781,809,836	2,135,860,147	24,039,003,088
Books, newspapers & magazines	95,511,769	99,307,237	96,706,672	92,720,992	104,028,973	110,837,408	125,668,388	125,137,909	118,316,488	185,816,360	101,347,702	93,119,471	102,354,936	1,355,362,536
Record shops	19,216,937	27,552,500	14,751,344	14,653,404	15,081,174	14,930,869	17,315,399	18,170,602	17,136,554	27,637,129	17,136,554	18,972,431	16,502,748	268,002,514
Music shops	18,660,901	62,466,012	18,301,814	16,806,007	18,263,397	17,639,023	19,131,403	20,551,196	21,406,127	27,122,904	21,309,507	18,579,194	19,831,546	281,408,130
Hobbies, toys & games	43,351,977	38,959,350	41,145,929	40,505,862	43,796,908	44,264,327	65,614,546	61,609,469	107,195,411	171,613,785	58,678,052	48,228,312	63,119,370	784,731,321
Photographic	21,229,597	19,634,194	20,948,073	20,948,073	21,634,194	21,307,599	22,021,110	21,452,397	20,911,285	21,907,779	16,036,012	22,490,560	22,385,938	229,408,560
Handicraft	10,239,944	10,620,598	10,729,425	9,910,162	10,600,789	11,133,235	11,179,075	12,852,618	13,097,651	11,517,138	11,325,297	10,741,403	12,203,853	135,911,244
Sports shops	269,570,959	303,486,059	329,531,447	322,364,849	381,667,606	369,418,053	337,619,963	308,127,721	309,843,495	362,086,905	286,583,484	258,046,200	317,424,687	3,886,200,469
Jewellers	124,340,661	128,645,806	129,992,010	133,763,113	147,196,949	133,315,335	143,928,981	134,639,093	163,706,402	127,770,962	132,261,288	149,530,537	179,183,526	1,793,183,526
Computer software	56,511,143	105,979,775	49,566,690	45,365,597	50,745,241	50,984,680	55,670,600	54,822,454	56,491,399	68,239,580	56,896,098	47,704,565	52,463,903	694,930,582
Medical goods	8,565,125	6,978,046	9,237,338	8,694,115	9,726,757	8,687,930	8,528,980	9,812,929	9,191,790	8,208,907	8,882,626	9,285,870	10,316,499	107,551,787
Chemists	236,641,404	242,104,675	269,291,813	253,995,375	307,288,061	258,278,168	258,984,808	283,047,961	307,586,308	521,866,026	245,470,635	238,142,447	284,482,105	3,470,538,382
Optical goods	90,869,751	95,429,962	98,149,926	89,825,893	104,170,748	95,065,213	93,894,851	95,330,123	88,193,374	73,841,318	95,413,130	94,095,463	109,762,019	1,133,172,020
Cosmetic stores	39,309,621	45,017,569	44,351,635	43,150,073	46,808,248	45,136,391	45,402,790	49,415,751	61,040,229	113,504,253	37,700,243	38,347,393	47,215,637	617,090,212
Tobaccoconists	2,269,823	2,279,759	2,861,382	3,460,836	3,460,836	3,302,511	3,821,800	3,659,560	4,525,228	4,540,493	4,525,228	4,149,070	4,859,313	4,354,851
Florists	50,911,085	31,721,476	35,026,903	32,955,293	34,656,319	30,991,981	31,109,757	31,544,272	30,039,797	43,608,044	27,759,896	42,370,340	54,401,268	426,185,346
Artists' supplies	20,197,630	21,714,764	20,627,429	18,229,249	20,389,182	20,927,670	21,343,018	24,724,164	25,978,799	28,871,512	19,889,017	20,323,358	22,728,464	265,746,626
Antiques, art & stamps/coins	28,375,689	29,568,565	29,151,732	28,395,657	28,360,848	27,062,679	30,502,022	32,085,800	33,676,819	36,853,790	26,279,173	26,505,158	32,818,744	360,263,264
Pawn shops	3,677,752	3,803,829	4,147,052	3,942,237	4,319,282	4,308,929	4,131,469	4,413,392	4,355,559	5,114,283	4,208,354	3,917,163	4,282,933	50,944,482
Gift shops	92,070,854	86,891,810	87,417,655	90,984,350	98,709,290	101,030,978	97,807,746	110,631,169	138,317,971	208,704,745	88,506,192	93,086,345	110,972,332	1,313,060,583
Secondhand shops	4,252,425	4,321,821	4,432,904	4,383,774	4,742,652	4,383,774	4,604,689	5,219,834	4,604,689	5,892,263	3,906,144	4,703,558	5,134,393	56,134,393
Luggage & leather goods	11,856,529	11,844,118	12,906,550	14,929,526	14,699,091	13,140,696	12,637,394	13,121,566	14,449,929	21,854,517	11,922,650	9,954,957	12,424,151	163,885,145
Pet shops	80,454,592	79,257,501	85,734,461	80,002,896	88,043,889	88,375,091	84,729,837	88,868,914	84,843,237	93,506,472	84,835,679	79,579,659	90,767,861	1,028,545,901
Religious goods	144,973	206,178	175,145	168,168	181,819	168,168	233,104	217,079	189,268	200,822	168,635	168,635	170,889	2,292,537
Direct sales	299,239,830	306,771,158	295,634,774	266,616,407	281,590,360	2								

Table 3D Card expenditure statistics (not seasonally adjusted)

Value of debit card transactions

Detailed sector breakdown - services sectors (not seasonally adjusted)

£	March 2013	April 2013	May 2013	June 2013	July 2013	August 2013	September 2013	October 2013	November 2013	December 2013	January 2014	February 2014	March 2014	Total (latest 12 months)
Auto rental	51,957,763	50,640,720	55,588,684	53,127,400	62,888,101	58,732,778	52,662,922	50,927,372	46,776,776	45,334,381	44,977,954	45,767,540	58,357,050	625,781,678
Auto parts & accessories	217,240,916	206,535,650	212,599,766	198,479,355	214,408,015	197,923,524	209,836,834	204,962,147	195,617,070	172,790,118	197,983,221	190,605,308	252,119,739	2,453,860,747
Auto services	49,399,118	51,266,014	58,114,988	55,063,295	64,375,910	58,211,105	56,586,045	60,977,642	55,514,366	55,800,315	56,050,489	54,702,736	61,737,298	688,400,203
Auto repair shops	702,683,735	583,896,646	602,793,307	579,512,205	593,441,495	566,852,150	662,519,543	600,655,864	558,701,406	513,303,736	581,089,787	558,437,791	799,200,552	7,200,404,482
Service stations	0	0	0	0	0	0	0	0	0	0	0	0	0	0
Vehicle sales	1,442,371,564	1,349,854,405	1,358,118,015	1,259,494,989	1,350,072,610	1,250,521,319	1,483,832,521	1,299,643,852	1,159,577,091	1,006,019,804	1,262,095,718	1,230,550,537	1,832,708,587	15,842,489,448
<b>Vehicle Sales &amp; Services</b>	<b>2,463,653,096</b>	<b>2,242,193,435</b>	<b>2,287,214,760</b>	<b>2,145,677,244</b>	<b>2,285,186,131</b>	<b>2,132,240,876</b>	<b>2,465,437,865</b>	<b>2,217,166,877</b>	<b>2,016,186,709</b>	<b>1,793,248,354</b>	<b>2,142,197,169</b>	<b>2,080,063,912</b>	<b>3,004,123,226</b>	<b>26,810,936,558</b>
Restaurants	965,391,187	997,798,891	1,050,350,172	995,324,824	1,074,742,868	1,103,525,911	1,029,332,043	1,066,658,132	1,044,510,516	1,139,822,112	989,675,401	1,043,916,678	1,229,331,658	12,764,989,206
Public houses	212,260,844	231,501,448	254,072,227	232,242,230	270,472,783	263,557,281	244,021,220	242,816,983	237,800,652	299,341,233	235,655,054	254,105,813	308,003,220	3,073,590,144
Catering services	59,030,735	55,777,179	70,489,358	68,592,731	76,967,424	75,771,651	63,326,867	71,214,354	71,119,326	76,062,076	61,663,361	62,509,913	73,016,828	826,511,068
Video stores	7,035,388	7,477,442	3,862,037	3,750,291	3,481,822	4,266,662	7,876,584	4,513,187	5,553,105	2,787,193	1,437,884	1,349,628	1,461,754	47,817,589
Cinema, theatre & dance	154,674,088	156,984,323	169,612,578	141,546,290	154,272,636	150,546,344	133,598,436	174,030,777	191,113,333	202,631,506	158,362,250	153,863,369	168,644,524	1,955,206,366
Concerts & entertainers	4,905,670	4,721,325	4,764,051	4,209,974	4,295,575	4,957,150	4,888,593	6,587,167	5,964,652	5,776,273	4,777,083	5,101,575	5,551,998	61,595,416
Tourist attractions	20,958,969	38,304,751	36,302,458	31,480,670	44,444,605	62,197,013	31,585,911	31,508,311	21,197,806	21,223,197	18,885,959	22,791,352	27,571,661	387,493,694
Amusement parks	3,538,983	8,845,138	8,746,138	8,733,549	11,768,481	17,387,076	8,155,020	7,453,318	4,041,344	2,602,058	2,456,316	3,619,000	4,750,367	88,557,805
Aquariums	1,709,546	3,166,053	2,919,669	2,925,428	3,852,627	5,175,397	2,772,655	2,245,062	1,685,428	1,553,870	1,783,939	2,487,908	3,287,210	33,855,246
Sports & games establishments	110,187,938	116,401,364	121,821,897	116,233,325	108,881,101	107,411,219	103,361,830	101,442,039	93,859,332	103,488,258	114,759,731	104,476,133	138,912,634	1,331,048,863
Professional sports clubs	10,780,338	15,368,349	25,330,895	13,384,502	15,866,772	13,235,770	12,065,754	12,376,769	12,023,388	13,873,945	13,881,335	10,405,911	15,833,168	173,646,558
Gambling	380,943,851	402,187,241	330,295,337	319,436,832	308,445,475	377,906,731	355,840,011	319,053,514	309,202,146	345,604,273	304,161,958	373,944,446	358,560,480	4,104,638,444
Personal services	18,402,481	14,142,168	19,454,109	17,936,440	19,908,438	18,057,681	18,314,989	18,740,914	16,443,730	17,633,618	18,321,064	17,577,294	20,337,770	216,868,215
Miscellaneous entertainment	27,356,195	33,379,579	32,273,576	30,990,326	40,279,948	41,642,426	31,282,564	32,788,894	31,688,548	31,883,658	25,674,096	27,628,254	33,826,544	393,338,413
<b>Entertainment</b>	<b>1,977,176,213</b>	<b>2,086,055,251</b>	<b>2,130,294,502</b>	<b>1,986,787,412</b>	<b>2,137,680,555</b>	<b>2,245,638,312</b>	<b>2,046,422,477</b>	<b>2,091,429,421</b>	<b>2,046,203,306</b>	<b>2,264,283,270</b>	<b>1,951,495,431</b>	<b>2,083,777,274</b>	<b>2,389,089,816</b>	<b>25,459,157,027</b>
Hotels	355,601,604	406,840,702	422,233,918	415,877,501	470,555,672	471,397,528	442,888,896	417,818,542	349,475,160	342,724,112	403,326,712	365,361,464	429,793,519	4,938,293,726
Airlines	293,975,207	278,051,473	369,980,928	346,761,536	373,684,810	316,313,679	278,197,083	305,065,163	237,337,868	209,820,131	427,114,311	335,636,160	389,034,435	3,866,997,577
Airport terminals	2,872,980	3,612,178	3,612,178	3,990,231	5,090,755	4,931,579	4,145,766	3,427,379	2,861,466	2,840,459	2,705,739	2,643,013	3,729,765	43,400,246
Railways	385,016,627	418,714,869	413,229,949	386,654,638	421,207,822	354,257,589	392,373,852	424,349,662	392,545,486	393,937,057	402,071,599	360,800,630	413,760,414	4,773,903,567
Buses	36,441,856	38,832,633	40,797,871	39,935,632	45,897,925	44,440,303	49,763,501	45,001,861	40,189,011	35,044,807	44,967,181	40,978,139	46,494,748	512,343,612
Sea travel	26,936,612	27,573,256	41,109,774	40,999,075	40,678,970	28,859,676	39,665,230	26,972,561	34,996,152	37,854,352	34,996,152	37,854,352	44,511,218	435,073,600
Travel agents	1,079,707,156	1,139,044,938	1,272,436,493	1,148,500,449	1,107,668,558	899,883,083	783,274,613	764,343,723	652,810,683	629,728,104	1,113,960,407	1,000,159,414	1,182,951,416	11,694,761,881
Timeshares	9,188,165	7,764,118	693,070	584,611	668,016	716,726	600,394	675,519	553,604	541,541	954,218	718,365	665,084	15,135,286
Camping grounds	70,402,702	73,673,291	87,672,545	86,716,590	101,650,522	94,001,431	64,171,662	60,758,825	55,552,933	49,174,318	53,107,459	61,020,349	88,697,244	876,197,169
Miscellaneous travel	30,222,815	36,927,992	39,718,082	43,947,730	46,577,573	38,249,772	32,032,367	31,864,928	29,279,785	27,382,070	28,489,285	29,019,418	36,700,293	420,189,295
<b>Travel</b>	<b>1,934,764,120</b>	<b>2,024,004,486</b>	<b>2,269,250,890</b>	<b>2,096,265,321</b>	<b>2,143,445,056</b>	<b>1,793,473,132</b>	<b>1,633,418,914</b>	<b>1,675,152,290</b>	<b>1,443,810,268</b>	<b>1,375,441,048</b>	<b>2,108,366,351</b>	<b>1,868,829,840</b>	<b>2,206,544,617</b>	<b>22,638,002,213</b>
Telegraph services / Wire transfer money order	26,413,308	29,493,257	30,028,342	43,742,674	31,747,274	37,936,615	33,259,391	31,238,405	36,005,546	38,091,769	37,670,345	36,654,173	39,636,033	425,503,824
Insurance services	546,730,231	536,821,854	532,886,806	507,098,549	595,309,345	552,290,926	564,695,768	572,476,403	486,542,106	447,341,771	523,628,742	501,929,012	612,843,160	6,433,864,442
Fis - cash disbursements (auto & manual)	1,109,902	1,085,297	1,971,967	2,334,180	2,810,343	2,840,322	2,676,623	3,358,426	2,795,288	4,133,362	4,209,586	6,607,069	3,746,684	38,569,147
Fis - merchandise & services	3,086,113,347	3,143,989,398	3,079,517,850	2,949,512,017	3,164,951,906	2,965,904,082	2,945,859,953	3,282,384,479	3,002,032,530	3,273,512,985	3,251,790,773	2,894,779,027	3,414,978,629	37,369,213,629
Non-Fis - foreign currency, travellers' cheques	236,125,802	256,821,401	286,674,302	320,472,689	396,018,343	380,969,739	329,079,241	223,696,701	167,583,628	179,226,960	211,863,560	224,605,877	256,167,706	3,233,180,147
Security brokers and dealers	670,528,289	775,790,424	430,976,455	405,281,925	335,293,676	422,056,225	515,583,849	1,340,898,871	445,854,878	362,166,225	562,070,435	443,281,791	750,114,102	6,789,368,856
Tax preparation services	403,081	366,540	363,759	344,171	475,048	326,859	283,173	278,994	279,241	179,134	276,956	202,229	172,095	3,548,199
Tax payments	137,115,804	126,209,240	2,208,347	1,927,549	2,265,651	1,847,954	108,565,021	2,228,698	1,998,555	1,954,451	1,888,414	1,397,133	2,094,581	254,585,594
Fines, bail and bond payments	34,457,328	32,629,040	34,449,795	32,546,942	35,092,282	36,134,691	35,081,057	40,729,494	38,884,290	35,596,821	39,034,465	38,664,949	44,415,562	443,259,388
Miscellaneous financial	19,080,525	21,207,211	24,631,751	22,529,772	24,432,655	20,864,430	22,939,807	21,314,503	19,477,304	16,267,067	18,101,736	17,361,289	22,068,014	251,195,539
<b>Financial</b>	<b>4,758,077,617</b>	<b>4,924,413,662</b>	<b>4,423,709,374</b>	<b>4,285,790,468</b>	<b>4,588,396,523</b>	<b>4,421,171,843</b>	<b>4,558,023,883</b>	<b>5,518,604,974</b>	<b>4,201,453,366</b>	<b>4,358,470,545</b>	<b>4,650,535,012</b>	<b>4,165,482,549</b>	<b>5,146,236,566</b>	<b>55,242,288,765</b>

Table 3D Card expenditure statistics (not seasonally adjusted)

Value of debit card transactions

## Detailed sector breakdown - services sectors (continued, not seasonally adjusted)

£	March 2013	April 2013	May 2013	June 2013	July 2013	August 2013	September 2013	October 2013	November 2013	December 2013	January 2014	February 2014	March 2014	Total (latest 12 months)
Telecoms	295,194,074	326,217,706	318,327,073	308,159,640	325,953,973	318,863,552	331,500,689	344,349,276	324,610,484	335,300,244	345,726,054	297,315,259	339,678,620	3,916,002,570
Utilities	443,057,826	370,977,264	274,720,536	236,208,371	243,340,943	211,864,154	361,247,555	238,970,304	211,318,563	208,503,419	240,602,317	240,985,029	300,350,547	3,139,089,002
Contractors (residential & commercial)	118,915,368	118,761,096	132,099,818	125,669,967	142,186,767	132,616,117	142,786,128	162,074,000	157,437,074	136,046,509	136,888,779	138,204,139	159,616,860	1,684,387,254
Gardening services	5,884,668	7,590,751	9,728,334	8,328,160	8,658,660	6,983,347	6,629,684	6,708,629	6,511,654	7,023,438	5,310,085	5,547,964	9,184,405	88,205,111
Veterinary services	88,992,952	93,006,230	97,030,301	92,813,100	106,770,141	105,868,551	98,863,501	106,376,752	96,671,387	91,432,644	101,290,708	94,039,813	105,062,027	1,189,225,155
Photocopying & printing	22,785,865	23,350,249	23,914,344	22,109,689	23,027,173	22,198,131	24,510,016	27,650,675	27,052,511	24,772,707	24,303,411	22,483,252	25,367,769	290,739,927
Photographic studios	10,776,401	11,574,301	12,068,635	11,836,607	14,208,429	11,473,080	11,919,235	13,685,262	14,902,237	14,639,440	9,639,804	10,078,351	11,857,625	147,883,006
Beauty & barber shops	188,608,065	192,553,773	203,899,445	193,193,265	208,892,500	199,288,960	191,830,130	197,448,331	196,898,423	243,837,821	177,500,706	183,206,172	212,570,868	2,401,120,394
Employment agencies	1,376,603	1,103,445	1,271,095	1,228,667	1,327,751	1,341,191	1,373,090	1,389,773	1,343,704	1,123,738	1,465,954	1,343,084	1,594,566	15,906,058
Counselling services	6,715,671	7,221,886	7,192,962	6,215,863	7,163,843	6,367,391	6,591,045	7,139,987	6,291,357	6,133,762	6,343,743	6,233,781	7,221,051	80,116,671
Legal services	81,265,612	75,795,588	85,226,270	82,589,028	95,350,242	85,623,673	86,933,676	94,087,433	86,455,698	74,329,018	82,465,721	77,494,849	88,345,777	1,014,696,973
Laundry & cleaning	10,361,619	11,521,309	12,463,251	12,425,070	13,790,216	12,129,176	12,884,521	13,628,609	12,850,200	12,026,171	11,792,698	10,587,970	12,545,235	148,644,426
Funeral services	33,392,078	31,111,487	33,834,667	30,212,241	32,347,227	29,821,711	30,091,089	35,345,234	34,682,847	34,291,569	39,094,876	37,326,159	41,891,295	410,050,402
Medical services	223,571,560	214,041,595	239,995,279	225,244,076	246,993,334	229,917,003	229,917,003	257,935,546	242,398,551	212,364,223	246,380,254	237,644,367	261,025,331	2,834,748,741
Moving & courier services	27,341,144	27,835,728	32,264,064	32,569,035	37,512,495	35,344,432	33,891,130	37,040,464	35,347,485	33,806,947	32,657,886	29,392,206	33,662,685	401,324,557
Repair shops (not auto)	10,591,058	10,419,441	11,278,260	10,622,080	12,454,485	11,830,641	11,362,507	12,040,582	12,009,753	12,000,711	11,444,106	10,884,160	12,107,879	138,454,605
Accounting services	16,078,586	15,754,078	16,762,569	17,487,635	17,969,120	17,891,311	17,509,135	19,368,576	18,272,354	17,459,720	23,145,515	19,071,677	20,135,680	220,827,370
Advertising, consultancy & PR	11,746,699	13,668,885	13,396,969	11,774,919	12,854,579	11,278,364	11,493,302	12,185,100	11,459,702	9,052,505	11,295,508	10,668,870	11,593,422	140,722,125
Computer programming	35,549,055	36,342,817	37,825,560	35,392,700	38,861,514	36,347,816	39,734,614	40,518,505	36,092,311	36,781,620	38,812,837	32,175,902	35,131,064	444,017,260
Farming services	18,149,540	18,747,706	20,414,332	20,106,071	22,414,252	20,994,968	20,848,856	22,126,143	21,766,748	22,736,921	21,308,918	19,795,505	22,246,110	253,506,530
Miscellaneous professional services	558,309,154	566,805,614	552,538,001	519,747,318	576,787,453	558,320,804	627,648,940	670,730,387	531,148,791	501,558,663	634,220,895	540,259,786	650,602,417	6,930,369,069
Engineering services	18,222,491	17,857,498	19,730,418	19,166,471	20,963,280	19,047,591	19,458,273	21,021,165	18,703,132	16,522,590	17,774,706	18,084,923	20,957,790	229,287,837
Marina services	11,180,611	13,447,090	14,023,914	12,886,792	16,509,592	14,578,480	10,649,987	9,358,571	7,370,882	7,136,961	8,424,326	8,111,521	14,324,542	136,822,658
Wrecking & salvage yards	1,314,443	1,291,235	1,511,162	1,329,797	1,691,550	1,527,891	1,433,529	1,629,771	1,433,209	1,105,356	1,373,989	1,414,370	1,624,409	17,366,268
Pest control	606,247	545,155	617,462	523,680	657,043	636,976	532,018	634,499	565,813	474,442	554,710	527,708	579,819	6,849,325
Educational establishments	150,714,686	244,399,893	187,222,346	130,102,526	147,008,113	218,043,731	715,591,666	600,546,301	241,667,125	199,280,773	466,713,026	222,855,448	178,157,464	3,551,588,412
Child care services	11,579,061	12,477,961	12,762,230	11,674,096	13,682,777	11,679,262	12,190,215	14,034,151	12,619,068	11,412,467	15,221,560	13,520,657	14,562,967	155,837,411
Social, political & religious organisations	106,754,230	81,812,814	92,169,633	84,382,216	102,342,257	97,347,731	102,718,018	116,991,908	109,678,977	89,416,198	93,820,152	83,003,182	118,781,593	1,172,464,679
Government services	1,196,644,377	1,320,191,328	1,642,522,130	1,667,537,359	2,093,620,979	1,666,958,146	1,211,617,829	1,601,572,163	1,449,613,799	1,576,988,115	3,048,834,528	1,949,079,267	1,698,889,857	20,927,425,500
Miscellaneous services	454,926,414	911,467,416	518,245,412	471,812,249	579,615,993	461,144,432	481,712,384	502,165,055	449,210,548	490,746,027	586,085,339	447,877,498	514,148,450	6,414,230,803
Commercial equipment	130,157,337	125,065,424	134,817,184	129,245,014	138,653,857	135,500,822	145,752,014	150,083,450	141,846,360	124,646,009	134,341,182	125,835,517	154,120,909	1,639,907,742
Other services	4,290,763,495	4,902,956,763	4,759,873,656	4,532,593,702	5,303,610,538	4,683,721,614	5,001,221,779	5,338,836,602	4,518,230,747	4,552,950,728	6,574,834,293	4,895,048,386	5,077,939,033	60,141,817,841
<b>Total services</b>	<b>15,780,036,145</b>	<b>16,586,464,299</b>	<b>16,292,577,100</b>	<b>15,462,991,648</b>	<b>16,928,874,475</b>	<b>15,747,643,305</b>	<b>16,147,413,814</b>	<b>17,259,008,706</b>	<b>14,575,359,556</b>	<b>14,687,118,057</b>	<b>17,830,754,968</b>	<b>15,458,563,425</b>	<b>18,253,726,777</b>	<b>195,230,496,130</b>
<b>TOTAL</b>	<b>30,088,594,632</b>	<b>31,150,800,840</b>	<b>31,387,607,141</b>	<b>29,908,493,565</b>	<b>32,999,619,864</b>	<b>30,484,191,796</b>	<b>31,355,481,730</b>	<b>32,887,317,597</b>	<b>30,579,428,978</b>	<b>33,646,705,216</b>	<b>32,129,606,700</b>	<b>28,981,013,865</b>	<b>34,129,492,761</b>	<b>379,639,760,053</b>