

Card Expenditure Statistics [CES] – March 2012

Seasonally-adjusted

At a glance key figures for March 2012

	Total spending £ billions		Growth rates annualised See note below		Number of purchases millions	
	2012	2011	6 month	12 month	2012	2011
All plastic cards	41.1	37.6	4.7	9.3	833	746
Debit cards	28.4	25.5	8.6	11.4	638	567
Credit cards	12.6	12.0	-3.2	4.9	195	180

Note. As a result of a change in the composition of the members of The UK Cards Association that report Card Expenditure Statistics there is a break in series from January 2011. The breaks in series have the effect of distorting the year-on-year spending growth rates that are used in the CES; these distortions will disappear after 12 months, but in the meantime the 'At a glance key figures' above show six and 12 months annualised growth rates as these are based on post-break data.

March 2012's plastic card spend totalled £41.1 billion, £3.5 billion more than in March 2011. While this is lower than in both January and February of this year, it matches the monthly average spend totals over the last six months. The **number of purchase transactions** decreased. At 833 million, they were 4 million lower than the monthly average over the past six months.

Despite the economy falling back into technical recession during Q1 with a 0.2% contraction, the retail sector was resilient; **March 2012's Retail Sales values¹** increased by 5.7% compared with March 2011, improving on February 2012's gain of 3.2% from a year before.

During March 2012 the plastic card share of all retail sales was 73.6%. Debit card usage continued to dominate plastic card transactions, falling slightly from February 2012's 10-year high of 50.3% to 50.2% in March. Credit cards accounted for 23.4%. Average monthly debit card retail spending was £14 billion with credit cards at £6.7 billion since March 2011.

An anomaly occurred in the **volume of fuel sales** in March due to an unexpected surge in demand at the end of the month. **Retail Sales figures¹** show that sales volumes of predominantly automotive fuels increased by 7.1% from March 2011 to March 2012, and sales values increased by 12.0% over the same time frame. The **plastic card share** of spending on automotive fuels stood at a three month average of 81.1%.

Chart 1

Spending on plastic cards
Year-on-year growth rates⁴

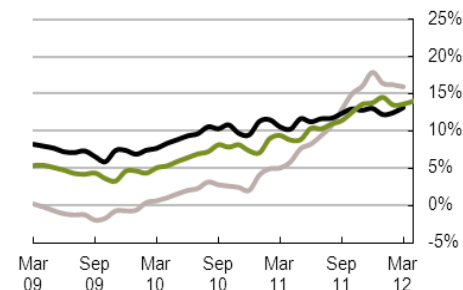


Chart 2

Percent of retail sales made on plastic cards
(including automotive fuel)
Three-month moving average

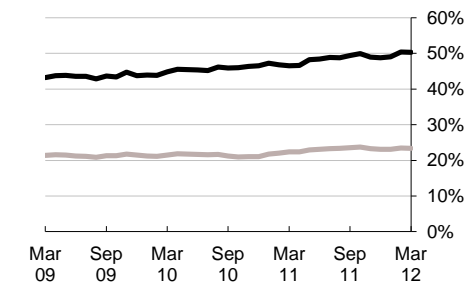


Chart 3

Average transaction values
Three-month moving average

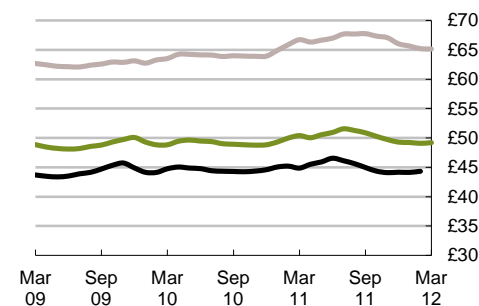
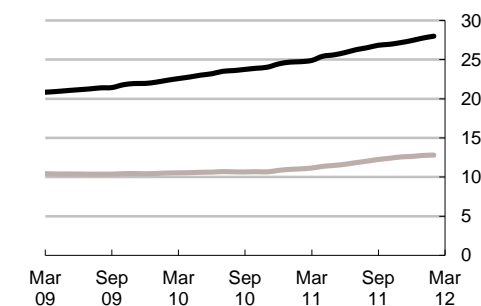


Chart 4

Average monthly expenditure
12 month moving average
£ billions



— Debit cards
— Credit cards
— All plastic cards

⁴ Year-on-year growth rates are rates of change that express the most recent 12 month period over the corresponding period of the preceding 12 months.

¹ Source: Retail Sales – March 2012, Office for National Statistics Statistical Bulletin

Table 1 Card expenditure statistics (seasonally adjusted)

Summary

		Number of purchase transactions (millions)									Value of purchase transactions (£ millions)								
		All sectors			Retail sales			Services			All sectors			Retail sales			Services		
		Credit	Debit	Total	Credit	Debit	Total	Credit	Debit	Total	Credit	Debit	Total	Credit	Debit	Total	Credit	Debit	Total
Annual																			
	2007	1,958	4,967	6,925	1,197	3,304	4,501	761	1,664	2,424	123,823	223,871	347,694	61,079	108,636	169,715	62,744	115,235	177,979
	2008	1,972	5,466	7,438	1,186	3,581	4,767	786	1,885	2,670	126,239	245,227	371,465	60,698	116,048	176,745	65,541	129,179	194,720
	2009	2,002	5,939	7,941	1,224	3,892	5,116	778	2,047	2,825	125,375	263,400	388,775	61,826	125,352	187,178	63,550	138,048	201,597
	2010	2,002	6,492	8,494	1,377	4,717	6,094	625	1,775	2,400	127,959	288,419	416,378	69,504	148,649	218,153	58,455	139,770	198,225
	2011	2,255	7,213	9,468	1,552	5,288	6,840	704	1,924	2,628	150,835	326,053	476,889	78,727	165,051	243,777	72,109	161,003	233,112
Monthly																			
	2011																		
	Mar	180	567	746	124	416	540	56	150	207	12,028	25,534	37,562	6,242	12,907	19,149	5,786	12,627	18,413
	Apr	184	585	768	128	432	560	55	153	208	12,065	25,775	37,840	6,451	13,495	19,946	5,614	12,280	17,894
	May	192	632	825	133	465	598	60	167	227	12,979	29,959	42,938	6,702	14,404	21,106	6,278	15,555	21,833
	Jun	184	579	763	126	421	547	58	158	216	12,466	26,805	39,271	6,452	13,178	19,629	6,014	13,627	19,642
	Jul	185	596	781	127	436	563	58	160	218	12,524	27,412	39,936	6,534	13,777	20,311	5,990	13,635	19,625
	Aug	198	629	827	136	463	599	61	166	228	13,328	29,038	42,365	6,909	14,474	21,383	6,418	14,564	20,982
	Sep	188	610	798	129	445	574	59	164	224	12,823	27,297	40,120	6,675	13,995	20,670	6,148	13,302	19,450
	Oct	195	632	827	134	464	598	60	168	229	12,954	27,812	40,765	6,836	14,532	21,368	6,118	13,279	19,397
	Nov	192	611	803	131	445	576	61	166	227	12,797	27,057	39,853	6,656	13,829	20,485	6,141	13,228	19,368
	Dec	193	626	819	133	456	589	60	171	231	12,543	27,549	40,093	6,633	14,083	20,716	5,911	13,466	19,377
	2012																		
	Jan	199	659	859	136	482	619	63	177	240	13,036	29,153	42,189	6,826	14,882	21,708	6,210	14,272	20,481
	Feb	208	671	880	141	487	629	67	184	251	13,596	29,674	43,269	7,054	15,020	22,074	6,542	14,653	21,195
	Mar	195	638	833	132	460	592	63	179	241	12,617	28,445	41,062	6,676	14,329	21,005	5,941	14,117	20,057
Year-on-year growth rates (percentages)																			
Annual																			
	2007	0.5	10.6	7.5	-1.4	9.5	6.4	3.8	12.8	9.8	3.2	14.6	10.3	2.0	10.9	7.5	4.5	18.2	13.0
	2008	0.7	10.0	7.4	-0.9	8.4	5.9	3.3	13.3	10.1	2.0	9.5	6.8	-0.6	6.8	4.1	4.5	12.1	9.4
	2009	1.5	8.7	6.8	3.2	8.7	7.3	-1.0	8.6	5.8	-0.7	7.4	4.7	1.9	8.0	5.9	-3.0	6.9	3.5
	2010	0.0	9.3	7.0	12.5	21.2	19.1	-19.6	-13.3	-15.0	2.1	9.5	7.1	12.4	18.6	16.5	-8.0	1.2	-1.7
	2011	12.6	11.1	11.5	12.7	12.1	12.2	12.5	8.4	9.5	17.9	13.0	14.5	13.3	11.0	11.7	23.4	15.2	17.6
Monthly																			
	2011																		
	Mar	2.0	9.8	7.8	11.1	18.8	16.9	-13.6	-8.8	-10.1	5.1	10.6	8.8	11.8	16.5	14.9	-1.8	5.0	2.9
	Apr	2.8	9.9	8.1	11.1	18.0	16.4	-11.7	-7.4	-8.5	5.9	10.3	8.9	11.6	15.9	14.5	-0.1	4.9	3.3
	May	4.4	11.1	9.5	11.7	18.3	16.8	-8.8	-4.7	-5.8	7.6	11.7	10.4	12.0	16.2	14.8	3.1	7.3	6.0
	Jun	4.7	10.6	9.2	10.9	16.7	15.3	-6.7	-3.1	-4.1	8.3	11.2	10.3	11.0	14.8	13.6	5.3	7.8	7.0
	Jul	5.6	10.9	9.6	10.7	16.0	14.8	-4.2	-1.1	-1.9	9.4	11.7	10.9	11.0	14.5	13.4	7.6	8.9	8.5
	Aug	6.4	10.4	9.5	10.5	14.7	13.7	-1.6	0.3	-0.2	10.7	11.7	11.4	10.9	13.3	12.5	10.4	10.2	10.2
	Sep	8.2	11.0	10.4	11.3	14.5	13.8	2.0	2.6	2.4	12.9	12.4	12.5	12.0	13.3	12.9	13.8	11.4	12.1
	Oct	10.1	11.5	11.2	12.2	14.3	13.8	5.6	4.7	5.0	15.0	13.0	13.6	13.0	13.2	13.1	17.3	12.7	14.1
	Nov	10.8	10.8	10.8	11.8	12.6	12.5	8.5	6.0	6.7	16.0	12.8	13.8	12.7	11.7	12.1	19.9	13.9	15.7
	Dec	12.6	11.1	11.5	12.7	12.1	12.2	12.5	8.4	9.5	17.9	13.0	14.5	13.3	11.0	11.7	23.4	15.2	17.6
	2012																		
	Jan	12.2	10.9	11.2	12.3	11.7	11.8	12.0	8.9	9.7	16.4	12.2	13.5	12.3	10.6	11.2	21.2	13.9	16.1
	Feb	12.5	11.6	11.8	12.4	12.1	12.2	12.8	10.3	11.0	16.2	12.5	13.6	12.5	11.0	11.5	20.6	14.0	15.9
	Mar	12.9	12.4	12.6	12.7	12.6	12.7	13.5	11.9	12.3	15.9	13.2	14.0	12.9	11.8	12.1	19.5	14.6	16.1

Table 2A Card expenditure statistics (seasonally adjusted)

Retail sales

Number of purchase transactions (millions)

		Number of purchase transactions (millions)																		Total retail sales		
		Food & drink			Mixed business			Clothing			Household			Other retailers			Automotive Fuels *			Number of purchases		
		Credit	Debit	Total	Credit	Debit	Total	Credit	Debit	Total	Credit	Debit	Total	Credit	Debit	Total	Credit	Debit	Total	Credit	Debit	Total
Annual																						
2007		426	1,639	2,066	203	436	639	124	350	474	147	282	429	297	596	893	165	419	584	1,197	3,304	4,501
2008		500	1,873	2,373	134	408	542	121	371	492	143	292	436	288	636	924	168	459	627	1,186	3,581	4,767
2009		512	2,086	2,597	131	401	532	125	404	529	146	321	466	310	681	991	158	475	633	1,224	3,892	5,116
2010		532	2,285	2,817	137	404	541	128	425	553	146	349	495	273	733	1,006	161	521	682	1,377	4,717	6,094
2011		600	2,559	3,159	137	422	558	139	427	566	158	371	528	297	779	1,076	222	730	952	1,552	5,288	6,840
Monthly																						
2011	Mar	47	200	247	11	32	43	11	32	43	13	30	42	25	64	89	18	58	76	124	416	540
	Apr	50	206	256	11	35	46	12	36	48	13	31	44	25	65	90	18	59	76	128	432	560
	May	50	225	276	12	38	50	12	37	49	13	31	44	27	71	98	19	63	82	133	465	598
	Jun	48	203	251	11	34	45	11	34	46	12	30	42	26	63	89	17	58	75	126	421	547
	Jul	50	211	261	11	35	46	12	36	48	13	31	44	24	63	87	18	60	79	127	436	563
	Aug	54	227	280	11	36	47	12	38	50	14	32	45	26	68	94	20	63	83	136	463	599
	Sep	50	219	270	11	35	46	12	36	48	13	31	44	24	64	88	19	61	79	129	445	574
	Oct	53	226	279	12	37	49	12	37	49	14	32	46	24	66	91	19	64	84	134	464	598
	Nov	51	216	268	12	36	48	12	36	47	14	31	45	24	63	87	19	63	82	131	445	576
	Dec	53	223	275	12	37	49	12	37	50	14	32	45	23	64	87	19	63	82	133	456	589
2012	Jan	54	235	289	13	41	53	13	40	53	14	33	47	23	68	92	20	65	85	136	482	619
	Feb	55	238	293	13	40	53	14	41	54	14	33	47	25	70	95	20	65	86	141	487	629
	Mar	52	224	276	12	38	50	12	35	47	13	33	47	24	66	89	19	64	83	132	460	592

Year-on-year growth rates (percentages)

Annual																						
2007		8.2	12.7	11.8	-5.6	5.1	1.4	-1.8	10.3	6.8	1.1	7.3	5.1	-11.1	5.0	-0.9	-	-	-	-1.4	9.5	6.4
2008		17.3	14.3	14.9	-34.0	-6.5	-15.2	-2.3	6.0	3.8	-2.6	3.6	1.5	-3.0	6.8	3.5	1.4	9.6	7.3	-0.9	8.4	5.9
2009		2.4	11.3	9.4	-2.2	-1.7	-1.8	3.2	9.0	7.6	1.9	9.7	7.1	7.8	7.0	7.2	-5.7	3.5	1.0	3.2	8.7	7.3
2010		4.0	9.5	8.5	4.9	0.7	1.8	2.3	5.1	4.4	0.2	8.9	6.2	-12.1	7.7	1.5	1.6	9.7	7.7	12.5	21.2	19.1
2011		12.8	12.0	12.2	-0.7	4.4	3.1	8.7	0.5	2.4	7.9	6.2	6.7	8.8	6.3	7.0	37.9	40.2	39.6	12.7	12.1	12.2
Monthly																						
2011	Mar	5.3	10.1	9.2	4.0	-0.1	0.9	1.7	1.8	1.8	1.7	9.6	7.2	-10.4	8.9	2.9	10.0	18.3	16.3	11.1	18.8	16.9
	Apr	6.0	10.3	9.5	3.4	0.2	0.9	2.6	1.7	1.9	2.0	9.7	7.3	-8.6	9.1	3.7	12.1	20.4	18.3	11.1	18.0	16.4
	May	7.2	11.5	10.7	3.7	1.4	2.0	4.1	2.4	2.8	2.4	9.8	7.5	-5.8	10.3	5.4	15.3	23.9	21.8	11.7	18.3	16.8
	Jun	6.9	10.9	10.1	2.3	1.3	1.5	4.0	1.2	1.8	1.5	8.8	6.6	-4.0	9.5	5.5	17.0	25.8	23.6	10.9	16.7	15.3
	Jul	7.5	11.1	10.4	1.4	1.8	1.7	4.6	1.1	1.9	1.5	8.5	6.4	-2.0	9.4	6.1	19.5	28.4	26.2	10.7	16.0	14.8
	Aug	8.0	10.8	10.3	-0.2	1.5	1.0	4.6	0.2	1.2	2.3	7.6	6.0	-0.4	8.3	5.8	23.1	30.6	28.8	10.5	14.7	13.7
	Sep	9.5	11.7	11.3	-0.8	2.1	1.4	5.6	0.4	1.6	3.7	7.4	6.3	2.4	8.5	6.7	27.1	33.4	31.9	11.3	14.5	13.8
	Oct	11.1	12.5	12.2	-0.5	3.2	2.3	7.0	1.0	2.4	5.1	7.2	6.6	5.1	8.4	7.5	30.7	35.7	34.5	12.2	14.3	13.8
	Nov	11.4	11.9	11.8	-1.2	3.4	2.2	7.0	-0.1	1.5	5.8	6.1	6.0	6.5	6.8	6.7	33.4	37.0	36.2	11.8	12.6	12.5
	Dec	12.8	12.0	12.2	-0.7	4.4	3.1	8.7	0.5	2.4	7.9	6.2	6.7	8.8	6.3	7.0	37.9	40.2	39.6	12.7	12.1	12.2
2012	Jan	12.6	11.9	12.1	-0.9	5.7	4.0	9.4	1.7	3.5	7.1	5.7	6.1	9.3	5.1	6.3	33.5	35.6	35.1	12.3	11.7	11.8
	Feb	13.2	12.6	12.7	-0.4	7.7	5.6	11.7	4.1	5.9	7.1	5.8	6.2	8.5	5.2	6.0	31.6	32.6	32.4	12.4	12.1	12.2
	Mar	14.1	13.2	13.4	1.1	10.1	7.8	13.0	6.1	7.7	7.5	6.5	6.8	7.6	5.3	5.9	29.9	30.3	30.2	12.7	12.6	12.7

* The category of Automotive Fuels is effective from January 2010. Data shown for 2009 are for growth trend purposes only; these data are excluded from totals for 2009 as these are already included in their former Services sector of Motoring (now known as Vehicle Sales & Service)

Table 2B Card expenditure statistics (seasonally adjusted)

Retail sales

Value of purchase transactions (£ millions)

		Value of purchase transactions (£ millions)																		Total retail sales			
		Food & drink			Mixed business			Clothing			Household			Other retailers			Automotive Fuels *			Value of purchases			
		Credit	Debit	Total	Credit	Debit	Total	Credit	Debit	Total	Credit	Debit	Total	Credit	Debit	Total	Credit	Debit	Total	Credit	Debit	Total	
Annual																							
	2007	15,313	48,568	63,881	8,842	14,051	22,893	5,862	10,451	16,313	14,701	15,341	30,043	16,361	20,225	36,586	5,873	10,965	16,838	61,079	108,636	169,715	
	2008	17,567	54,545	72,112	7,056	13,456	20,513	5,955	11,211	17,166	14,383	15,572	29,955	15,736	21,264	37,000	6,676	12,967	19,644	60,698	116,048	176,745	
	2009	18,098	60,221	78,319	7,095	13,864	20,959	6,376	12,643	19,020	14,496	16,596	31,092	15,761	22,027	37,788	5,860	12,668	18,528	61,826	125,352	187,178	
	2010	18,784	63,894	82,677	7,151	13,944	21,095	6,774	13,654	20,428	14,617	18,773	33,390	15,582	23,560	39,142	6,596	14,824	21,420	69,504	148,649	218,153	
	2011	20,975	69,232	90,207	7,076	14,642	21,717	7,815	14,436	22,251	15,202	20,488	35,689	17,550	24,346	41,896	10,110	21,907	32,017	78,727	165,051	243,777	
Monthly																							
	2011	Mar	1,609	5,363	6,972	560	1,094	1,654	607	1,084	1,691	1,236	1,624	2,861	1,431	2,025	3,457	799	1,715	2,515	6,242	12,907	19,149
		Apr	1,761	5,671	7,431	574	1,205	1,779	640	1,205	1,846	1,250	1,696	2,946	1,421	1,972	3,393	805	1,746	2,551	6,451	13,495	19,946
		May	1,736	6,114	7,849	629	1,318	1,947	657	1,239	1,897	1,280	1,721	3,001	1,541	2,094	3,636	858	1,918	2,776	6,702	14,404	21,106
		Jun	1,688	5,421	7,109	579	1,187	1,766	665	1,167	1,832	1,235	1,674	2,909	1,512	1,999	3,512	772	1,730	2,502	6,452	13,178	19,629
		Jul	1,760	5,794	7,554	588	1,231	1,819	658	1,226	1,883	1,251	1,716	2,967	1,460	2,018	3,478	817	1,792	2,609	6,534	13,777	20,311
		Aug	1,876	6,145	8,021	599	1,273	1,873	669	1,269	1,938	1,340	1,780	3,120	1,534	2,120	3,654	891	1,887	2,778	6,909	14,474	21,383
		Sep	1,806	5,977	7,782	589	1,223	1,812	662	1,210	1,872	1,303	1,745	3,048	1,460	2,015	3,475	855	1,826	2,681	6,675	13,995	20,670
		Oct	1,849	6,128	7,978	615	1,296	1,911	683	1,285	1,968	1,308	1,800	3,109	1,486	2,084	3,570	894	1,939	2,833	6,836	14,532	21,368
		Nov	1,762	5,713	7,475	596	1,240	1,837	674	1,229	1,903	1,289	1,763	3,052	1,452	1,996	3,448	881	1,888	2,769	6,656	13,829	20,485
		Dec	1,788	5,899	7,687	613	1,284	1,896	690	1,286	1,976	1,270	1,703	2,973	1,381	2,001	3,382	891	1,911	2,802	6,633	14,083	20,716
	2012	Jan	1,868	6,222	8,089	650	1,375	2,024	708	1,366	2,074	1,297	1,843	3,140	1,382	2,086	3,468	921	1,990	2,912	6,826	14,882	21,708
		Feb	1,871	6,234	8,105	643	1,367	2,010	768	1,382	2,150	1,346	1,904	3,249	1,467	2,142	3,609	958	1,992	2,950	7,054	15,020	22,074
		Mar	1,811	5,930	7,742	625	1,294	1,920	671	1,231	1,902	1,299	1,838	3,137	1,366	2,026	3,392	904	2,009	2,913	6,676	14,329	21,005

Year-on-year growth rates (percentages)

Annual																							
	2007	9.4	11.8	11.2	-0.7	7.3	4.0	1.4	11.4	7.6	4.9	11.8	8.3	-4.7	10.5	3.1	-	-	-	2.0	10.9	7.5	
	2008	14.7	12.3	12.9	-20.2	-4.2	-10.4	1.6	7.3	5.2	-2.2	1.5	-0.3	-3.8	5.1	1.1	13.7	18.3	16.7	-0.6	6.8	4.1	
	2009	3.0	10.4	8.6	0.5	3.0	2.2	7.1	12.8	10.8	0.8	6.6	3.8	0.2	3.6	2.1	-12.2	-2.3	-5.7	1.9	8.0	5.9	
	2010	3.8	6.1	5.6	0.8	0.6	0.7	6.2	8.0	7.4	0.8	13.1	7.4	-1.1	7.0	3.6	12.6	17.0	15.6	12.4	18.6	16.5	
	2011	11.7	8.4	9.1	-1.1	5.0	2.9	15.4	5.7	8.9	4.0	9.1	6.9	12.6	3.3	7.0	53.3	47.8	49.5	13.3	11.0	11.7	
Monthly																							
	2011	Mar	4.6	6.4	5.9	-1.9	-0.5	-1.0	6.5	5.1	5.6	1.5	13.4	8.0	2.1	7.4	5.3	22.8	26.5	25.3	11.8	16.5	14.9
		Apr	5.5	6.6	6.4	-1.9	0.0	-0.7	7.4	5.0	5.8	1.4	13.2	7.8	2.8	7.1	5.3	24.9	28.3	27.2	11.6	15.9	14.5
		May	6.5	7.9	7.6	-1.2	1.3	0.5	8.8	5.8	6.8	1.4	13.4	7.9	4.2	7.6	6.2	28.2	31.7	30.6	12.0	16.2	14.8
		Jun	6.1	7.3	7.0	-2.2	1.2	0.1	9.4	5.0	6.5	0.3	12.4	6.9	4.5	6.6	5.8	30.0	33.4	32.4	11.0	14.8	13.6
		Jul	6.8	7.7	7.5	-2.3	2.1	0.6	10.4	5.4	7.1	0.2	12.3	6.8	5.6	6.5	6.1	32.5	36.0	34.9	11.0	14.5	13.4
		Aug	7.4	7.5	7.4	-2.9	1.9	0.3	10.6	4.6	6.6	0.5	11.0	6.3	6.5	5.4	5.9	36.6	38.2	37.7	10.9	13.3	12.5
		Sep	9.0	8.6	8.7	-2.4	2.8	1.0	11.9	5.1	7.3	1.9	10.9	6.9	8.5	5.4	6.7	41.2	41.2	41.2	12.0	13.3	12.9
		Oct	10.6	9.3	9.6	-1.5	4.0	2.1	13.4	5.8	8.3	3.0	10.7	7.3	10.5	5.4	7.5	45.3	43.6	44.1	13.0	13.2	13.1
		Nov	10.7	8.6	9.1	-1.8	4.1	2.1	13.7	5.0	7.9	3.2	9.7	6.9	11.4	4.1	7.0	48.2	44.8	45.9	12.7	11.7	12.1
		Dec	11.7	8.4	9.1	-1.1	5.0	2.9	15.4	5.7	8.9	4.0	9.1	6.9	12.6	3.3	7.0	53.3	47.8	49.5	13.3	11.0	11.7
	2012	Jan	11.5	8.4	9.1	0.1	6.2	4.1	15.5	6.9	9.7	3.4	8.5	6.3	10.7	2.4	5.7	46.9	42.1	43.6	12.3	10.6	11.2
		Feb	11.7	9.0	9.6	2.0	8.3	6.2	17.0	9.1	11.7	4.2	9.0	6.9	9.8	2.5	5.4	43.5	38.5	40.1	12.5	11.0	11.5
		Mar	12.8	9.9	10.5	4.2	10.7	8.5	17.8	11.0	13.3	5.1	9.7	7.7	8.9	2.6	5.2	40.6	36.2	37.6	12.9	11.8	12.1

* The category of Automotive Fuels is effective from January 2010. Data shown for 2009 are for growth trend purposes only; these data are excluded from totals for 2009 as these are already included in their former Services sector of Motoring (now known as Vehicle Sales & Service)

Table 2C Card expenditure statistics (seasonally adjusted)

Services

Number of purchase transactions (millions)

Total services

		Number of purchase transactions (millions)																		Total services		
		Vehicle Sales & Services			Entertainment			Hotels			Travel			Financial			Other services			Number of purchases		
		Credit	Debit	Total	Credit	Debit	Total	Credit	Debit	Total	Credit	Debit	Total	Credit	Debit	Total	Credit	Debit	Total	Credit	Debit	Total
Annual																						
2007		245	571	816	190	411	600	38	26	64	101	148	249	28	106	134	160	401	561	761	1,664	2,424
2008		249	627	876	198	500	698	36	28	64	103	168	271	32	111	143	167	451	618	786	1,885	2,670
2009		235	656	892	206	593	800	37	31	68	101	183	284	32	112	144	167	470	638	778	2,047	2,825
2010		76	205	281	220	721	941	37	34	72	97	202	299	32	129	161	163	484	647	625	1,775	2,400
2011		52	89	141	267	880	1,147	51	43	94	116	235	352	33	144	177	185	534	719	704	1,924	2,628
Monthly																						
2011	Mar	5	9	13	21	67	87	4	3	7	9	18	27	3	11	14	15	43	58	56	150	207
	Apr	5	8	13	21	68	89	4	3	7	9	19	28	3	12	14	14	42	57	55	153	208
	May	5	8	13	22	76	98	4	4	8	10	20	30	3	12	15	16	47	63	60	167	227
	Jun	5	8	12	21	70	91	4	3	8	9	20	29	3	12	14	16	45	61	58	158	216
	Jul	4	7	11	22	74	96	4	4	8	9	20	29	3	12	15	15	44	59	58	160	218
	Aug	4	7	11	23	77	100	4	4	8	10	20	31	3	13	16	16	45	61	61	166	228
	Sep	4	6	10	23	77	100	4	4	8	10	20	30	3	12	15	15	45	60	59	164	224
	Oct	4	6	10	24	80	104	4	4	8	10	20	30	3	13	15	15	46	61	60	168	229
	Nov	4	7	11	23	76	99	5	4	8	10	21	31	3	13	16	16	46	62	61	166	227
	Dec	3	7	11	24	80	104	5	4	8	10	21	31	3	13	15	16	46	61	60	171	231
2012	Jan	5	8	13	25	82	107	5	4	9	10	21	32	3	13	16	16	48	64	63	177	240
	Feb	6	11	17	25	84	110	5	4	9	11	22	33	3	14	16	16	49	65	67	184	251
	Mar	7	14	20	24	80	103	4	4	8	10	21	31	3	13	16	15	47	62	63	179	241
Year-on-year growth rates (percentages)																						
Annual																						
2007		1.1	8.2	6.0	8.1	17.6	14.4	3.2	6.6	4.5	4.2	16.7	11.3	0.8	16.2	12.6	3.4	12.9	10.0	3.8	12.8	9.8
2008		1.5	9.8	7.3	4.3	21.7	16.2	-2.7	5.9	0.8	2.6	13.4	9.0	15.7	4.8	7.1	4.6	12.3	10.1	3.3	13.3	10.1
2009		-5.3	4.7	1.8	4.3	18.7	14.6	0.5	14.0	6.3	-2.5	8.9	4.6	-1.9	1.1	0.4	-0.1	4.4	3.2	-1.0	8.6	5.8
2010		-67.6	-68.8	-68.5	6.5	21.5	17.6	1.4	9.4	5.1	-3.3	10.4	5.5	0.6	15.1	11.9	-2.6	2.8	1.4	-19.6	-13.3	-15.0
2011		-32.1	-56.5	-49.9	21.5	22.0	21.9	36.7	24.6	30.9	19.4	16.4	17.4	2.5	11.4	9.6	13.7	10.3	11.2	12.5	8.4	9.5
Monthly																						
2011	Mar	-64.3	-67.6	-66.7	10.3	21.5	18.7	8.3	12.0	10.0	1.0	12.1	8.2	-1.6	13.5	10.2	-0.4	3.3	2.3	-13.6	-8.8	-10.1
	Apr	-62.9	-67.1	-66.0	10.8	20.7	18.3	10.3	13.5	11.8	2.1	13.2	9.3	-2.0	13.1	9.8	0.1	3.7	2.8	-11.7	-7.4	-8.5
	May	-61.0	-66.3	-64.9	12.5	22.0	19.7	13.4	15.8	14.5	4.1	15.7	11.7	-1.2	13.1	10.1	2.1	5.3	4.5	-8.8	-4.7	-5.8
	Jun	-58.5	-65.5	-63.6	12.4	21.3	19.1	15.7	16.9	16.3	5.0	15.7	12.0	-1.4	12.2	9.4	3.4	6.1	5.4	-6.7	-3.1	-4.1
	Jul	-56.1	-64.5	-62.3	13.3	21.6	19.5	18.2	19.1	18.6	6.7	16.5	13.2	-1.1	11.7	9.0	4.7	6.9	6.3	-4.2	-1.1	-1.9
	Aug	-53.2	-63.7	-60.9	13.9	20.8	19.1	20.9	19.4	20.2	9.0	16.5	14.0	0.1	11.4	9.1	5.9	7.3	7.0	-1.6	0.3	-0.2
	Sep	-49.2	-62.0	-58.6	16.2	21.8	20.5	24.8	21.1	23.1	11.7	16.5	14.9	1.0	11.3	9.2	7.8	8.1	8.1	2.0	2.6	2.4
	Oct	-44.7	-60.4	-56.2	18.5	22.3	21.4	28.9	22.6	25.9	14.5	17.2	16.3	2.0	11.5	9.6	9.9	9.1	9.3	5.6	4.7	5.0
	Nov	-39.4	-58.6	-53.4	19.2	21.3	20.8	32.4	23.4	28.1	16.3	16.3	16.3	2.1	11.3	9.5	11.2	9.4	9.8	8.5	6.0	6.7
	Dec	-32.1	-56.5	-49.9	21.5	22.0	21.9	36.7	24.6	30.9	19.4	16.4	17.4	2.5	11.4	9.6	13.7	10.3	11.2	12.5	8.4	9.5
2012	Jan	-30.2	-54.4	-47.7	20.1	21.3	21.0	34.3	23.7	29.2	17.8	16.2	16.7	2.9	11.5	9.8	13.1	10.8	11.4	12.0	8.9	9.7
	Feb	-25.7	-50.9	-43.9	19.9	21.8	21.4	34.5	24.5	29.7	18.1	16.7	17.1	4.1	12.5	10.9	13.0	11.8	12.1	12.8	10.3	11.0
	Mar	-19.9	-45.0	-37.9	20.1	22.3	21.8	33.2	25.5	29.6	17.6	17.7	17.7	5.0	13.9	12.2	12.4	12.2	12.3	13.5	11.9	12.3

Table 2D Card expenditure statistics (seasonally adjusted)

Services

Value of purchase transactions (£ millions)

		Value of purchase transactions (£ millions)																		Total services			
		Vehicle Sales & Services			Entertainment			Hotels			Travel			Financial			Other services			Value of purchases			
		Credit	Debit	Total	Credit	Debit	Total	Credit	Debit	Total	Credit	Debit	Total	Credit	Debit	Total	Credit	Debit	Total	Credit	Debit	Total	
Annual																							
	2007	14,670	30,663	45,334	9,302	11,231	20,533	5,486	2,264	7,750	13,449	12,611	26,060	5,703	26,144	31,847	14,133	32,322	46,455	62,744	115,235	177,979	
	2008	15,513	32,943	48,456	9,662	13,061	22,723	5,512	2,448	7,960	14,030	13,737	27,767	5,929	29,956	35,884	14,895	37,035	51,930	65,541	129,179	194,720	
	2009	14,616	35,371	49,987	9,659	14,598	24,257	5,296	2,726	8,022	13,079	14,098	27,177	5,731	33,054	38,784	15,168	38,201	53,369	63,550	138,048	201,597	
	2010	8,740	24,684	33,424	9,839	16,953	26,792	5,532	3,051	8,584	12,814	15,814	28,628	5,871	38,572	44,443	15,659	40,695	56,354	58,455	139,770	198,225	
	2011	7,767	22,338	30,105	14,021	20,668	34,689	8,630	3,872	12,502	16,233	18,389	34,622	7,032	46,732	53,764	18,427	49,002	67,429	72,109	161,003	233,112	
Monthly																							
	2011	Mar	675	1,915	2,589	1,108	1,553	2,661	651	278	929	1,323	1,453	2,775	533	3,676	4,208	1,497	3,753	5,250	5,786	12,627	18,413
		Apr	639	1,886	2,524	1,086	1,632	2,718	666	312	978	1,265	1,487	2,751	564	3,693	4,257	1,395	3,270	4,665	5,614	12,280	17,894
		May	685	2,009	2,694	1,237	1,877	3,114	720	325	1,045	1,370	1,553	2,923	683	3,703	4,386	1,583	6,089	7,672	6,278	15,555	21,833
		Jun	683	1,902	2,585	1,135	1,666	2,801	718	321	1,040	1,327	1,524	2,851	592	3,710	4,302	1,558	4,505	6,063	6,014	13,627	19,642
		Jul	640	1,882	2,522	1,187	1,774	2,961	731	334	1,065	1,330	1,529	2,859	607	4,055	4,662	1,495	4,061	5,556	5,990	13,635	19,625
		Aug	674	1,929	2,603	1,212	1,819	3,031	730	334	1,065	1,437	1,584	3,020	697	4,598	5,295	1,669	4,299	5,968	6,418	14,564	20,982
		Sep	626	1,832	2,458	1,193	1,759	2,952	752	329	1,082	1,398	1,567	2,965	598	3,878	4,476	1,580	3,936	5,517	6,148	13,302	19,450
		Oct	613	1,820	2,433	1,233	1,835	3,068	776	350	1,125	1,375	1,587	2,963	574	3,804	4,378	1,547	3,883	5,429	6,118	13,279	19,397
		Nov	608	1,786	2,394	1,197	1,745	2,941	776	335	1,110	1,386	1,603	2,989	559	3,909	4,468	1,616	3,849	5,465	6,141	13,228	19,368
		Dec	579	1,616	2,194	1,143	1,838	2,981	765	344	1,109	1,365	1,617	2,982	503	3,932	4,435	1,556	4,120	5,676	5,911	13,466	19,377
	2012	Jan	663	2,024	2,687	1,222	1,856	3,078	798	377	1,176	1,393	1,679	3,073	564	4,211	4,774	1,569	4,124	5,694	6,210	14,272	20,481
		Feb	779	2,098	2,877	1,236	1,829	3,065	870	377	1,248	1,510	1,743	3,254	545	4,276	4,821	1,601	4,330	5,931	6,542	14,653	21,195
		Mar	750	2,211	2,961	1,207	1,750	2,957	776	427	1,202	1,300	1,698	2,998	413	4,036	4,449	1,494	3,995	5,489	5,941	14,117	20,057

Year-on-year growth rates (percentages)

Annual																							
	2007	6.4	13.4	11.0	4.8	16.1	10.7	5.3	10.9	6.9	1.7	14.4	7.5	2.1	24.9	20.1	5.6	20.9	15.8	4.5	18.2	13.0	
	2008	5.7	7.4	6.9	3.9	16.3	10.7	0.5	8.1	2.7	4.3	8.9	6.6	4.0	14.6	12.7	5.4	14.6	11.8	4.5	12.1	9.4	
	2009	-5.8	7.4	3.2	0.0	11.8	6.8	-3.9	11.4	0.8	-6.8	2.6	-2.1	-3.3	10.3	8.1	1.8	3.1	2.8	-3.0	6.9	3.5	
	2010	-40.2	-30.2	-33.1	1.9	16.1	10.5	4.5	11.9	7.0	-2.0	12.2	5.3	2.5	16.7	14.6	3.2	6.5	5.6	-8.0	1.2	-1.7	
	2011	-11.1	-9.5	-9.9	42.5	21.9	29.5	56.0	26.9	45.6	26.7	16.3	20.9	19.8	21.2	21.0	17.7	20.4	19.7	23.4	15.2	17.6	
Monthly																							
	2011	Mar	-36.7	-27.2	-29.9	12.9	17.4	15.6	15.5	15.2	15.4	4.1	11.3	7.9	5.8	22.3	19.9	5.5	9.4	8.3	-1.8	5.0	2.9
		Apr	-35.6	-26.5	-29.1	15.7	17.5	16.8	18.9	16.3	18.0	5.5	12.0	9.0	6.8	21.9	19.7	5.6	7.6	7.0	-0.1	4.9	3.3
		May	-33.6	-24.7	-27.2	20.5	19.4	19.8	23.6	18.9	21.9	9.0	13.7	11.5	9.9	21.5	19.9	6.9	12.4	10.8	3.1	7.3	6.0
		Jun	-31.5	-23.1	-25.4	22.9	18.9	20.4	27.6	20.1	25.0	11.2	14.3	12.9	11.0	20.3	19.0	7.7	12.6	11.2	5.3	7.8	7.0
		Jul	-29.3	-21.0	-23.3	25.8	20.0	22.2	31.6	22.2	28.3	13.1	14.7	14.0	13.1	20.9	19.9	8.4	12.6	11.4	7.6	8.9	8.5
		Aug	-26.4	-19.3	-21.3	28.1	19.7	22.9	35.4	22.6	31.0	15.5	15.0	15.2	15.9	22.5	21.6	10.1	13.5	12.6	10.4	10.2	10.2
		Sep	-22.9	-17.0	-18.6	32.2	20.9	25.2	41.0	24.1	35.1	18.4	15.3	16.7	18.1	23.0	22.3	11.8	14.0	13.4	13.8	11.4	12.1
		Oct	-19.2	-14.5	-15.8	36.4	21.7	27.2	46.3	25.7	39.0	21.4	16.0	18.4	20.0	23.4	22.9	13.8	15.1	14.8	17.3	12.7	14.1
		Nov	-15.8	-12.5	-13.3	38.6	21.0	27.5	50.7	25.9	42.0	23.6	16.1	19.4	19.9	21.7	21.5	15.4	18.8	17.9	19.9	13.9	15.7
		Dec	-11.1	-9.5	-9.9	42.5	21.9	29.5	56.0	26.9	45.6	26.7	16.3	20.9	19.8	21.2	21.0	17.7	20.4	19.7	23.4	15.2	17.6
	2012	Jan	-10.7	-9.2	-9.6	37.2	21.1	27.1	51.2	25.5	42.2	23.9	15.9	19.5	17.4	17.2	17.2	16.7	20.0	19.1	21.2	13.9	16.1
		Feb	-8.4	-7.7	-7.9	33.7	20.7	25.6	49.4	25.8	41.2	23.5	16.7	19.8	15.3	15.4	15.4	16.2	20.6	19.4	20.6	14.0	15.9
		Mar	-5.8	-5.0	-5.2	31.5	20.8	24.9	46.9	29.3	40.9	21.3	17.5	19.3	13.0	15.1	14.9	15.1	20.7	19.1	19.5	14.6	16.1

Table 3A Card expenditure statistics (not seasonally adjusted)

Number of credit card transactions

Detailed sector breakdown - retail sectors

	March 2011	April 2011	May 2011	June 2011	July 2011	August 2011	September 2011	October 2011	November 2011	December 2011	January 2012	February 2012	March 2012	Total (latest 12 months)
Supermarkets	43,446,345	44,959,229	45,733,354	46,586,050	46,912,319	49,324,554	46,096,859	49,052,064	50,553,261	56,166,436	47,042,759	45,164,000	38,976,266	566,567,151
Bakers & dairies	85,566	92,727	105,836	116,544	122,973	122,919	124,979	135,349	138,661	153,083	123,516	148,510	229,992	1,615,089
Sweet stores	163,859	250,880	199,673	188,803	181,561	191,448	184,725	200,858	299,542	596,773	144,906	193,395	193,958	2,826,522
Miscellaneous foodstores	2,286,446	2,507,113	2,615,774	2,701,520	2,675,882	2,859,966	2,647,186	2,781,257	2,818,508	3,172,359	2,618,032	2,868,379	12,329,517	42,595,493
Off-licences	488,385	515,785	531,837	531,400	553,103	542,488	506,144	530,569	542,852	757,086	424,571	483,011	550,900	6,469,746
Food & drink	46,470,601	48,325,734	49,186,474	50,124,317	50,445,838	53,041,375	49,559,893	52,700,097	54,352,824	60,845,737	50,353,784	48,857,295	52,280,633	620,074,001
Department stores	5,029,939	5,114,790	5,886,128	5,919,175	6,015,940	5,738,836	5,229,315	5,879,460	7,689,502	11,208,608	6,138,637	4,798,266	5,095,272	74,713,929
Discount stores	1,211,686	1,331,900	1,386,909	1,299,737	1,413,899	1,450,781	1,386,141	1,525,840	1,885,075	2,521,906	1,314,815	1,258,643	1,364,505	18,140,151
Catalogues	1,114,701	969,956	1,006,180	989,122	960,888	529,277	1,116,545	1,863,763	2,514,165	2,530,648	1,867,948	1,579,925	1,636,383	17,564,800
Miscellaneous mixed	2,263,332	2,038,615	2,359,504	2,236,439	2,267,223	2,444,591	2,317,654	2,513,025	2,892,126	3,412,718	2,120,031	1,962,276	2,337,411	28,901,613
Mixed business	9,619,659	9,455,261	10,638,721	10,444,473	10,657,950	10,163,465	10,049,655	11,782,088	14,980,868	19,673,880	11,441,431	9,599,110	10,433,871	139,320,493
Men's clothing	337,421	360,364	404,446	447,566	484,156	446,609	375,229	381,503	435,865	660,368	431,294	330,613	273,023	5,031,036
Women's clothing	1,550,897	1,968,148	2,125,589	2,226,494	2,361,193	2,079,417	1,892,977	2,036,040	2,257,974	3,085,591	1,923,674	1,612,577	1,683,036	25,252,710
Family clothing	5,714,151	6,619,462	6,986,916	6,991,347	7,962,411	7,204,050	6,610,946	7,293,611	8,056,772	11,322,643	6,724,348	6,177,303	6,044,774	87,994,583
Miscellaneous clothing	490,190	728,488	814,778	742,893	748,893	748,735	811,158	839,898	1,098,207	1,088,207	362,189	588,019	920,996	9,798,639
Shoe shops	899,529	1,284,980	1,315,954	1,429,162	1,594,519	1,603,468	1,267,560	1,281,159	1,299,786	1,717,295	1,319,978	1,238,107	814,116	16,166,084
Clothing	8,991,188	10,961,442	11,647,683	12,247,865	13,145,172	12,082,279	10,875,694	11,803,471	12,890,295	17,884,104	11,022,483	9,946,619	9,735,945	144,243,052
Furniture stores	1,239,594	1,129,206	1,263,253	1,233,395	1,283,175	1,370,873	1,283,069	1,406,885	1,571,141	1,730,658	1,612,798	1,299,701	1,661,409	16,845,563
Household appliance stores	1,262,941	1,203,545	1,259,579	1,183,791	1,253,461	1,275,672	1,286,453	1,295,714	1,422,669	1,647,726	1,255,974	1,242,734	1,533,681	15,860,999
Electronic stores	1,241,282	1,138,372	1,288,302	1,226,200	1,262,477	1,407,584	1,373,748	1,403,611	1,632,245	2,229,675	1,599,276	1,318,276	1,207,260	17,087,026
DIY stores	6,210,176	7,248,670	6,901,748	5,839,021	6,041,023	6,376,779	5,835,715	6,122,904	6,061,182	5,827,877	5,274,227	5,193,282	6,238,134	72,960,562
Floor covering stores	165,606	142,743	163,409	149,751	155,203	175,325	162,659	173,415	195,714	137,925	162,299	157,591	270,648	2,046,322
Garden centres	1,554,565	2,543,700	2,535,654	1,783,082	1,385,943	1,252,800	1,381,993	1,360,015	1,766,300	913,232	983,273	1,573,176	18,942,416	
Miscellaneous household	1,131,952	1,147,772	1,227,216	1,319,493	1,290,398	1,367,394	1,288,650	1,370,029	1,484,725	1,906,438	1,378,453	1,181,120	960,804	15,922,492
Household	12,806,116	14,554,008	14,638,801	12,734,733	12,748,985	13,359,870	12,483,094	13,154,551	13,727,691	15,246,599	12,196,259	11,375,977	13,445,112	159,665,380
Books, newspapers & magazines	1,695,821	1,668,952	1,864,652	1,902,617	1,860,363	1,963,923	1,920,981	2,062,807	2,418,354	3,287,928	1,741,111	1,708,676	1,714,777	24,115,141
Record shops	606,572	516,072	574,616	549,157	453,912	470,147	440,798	498,912	1,467,350	425,279	373,850	373,850	404,188	6,942,075
Music shops	1,660,681	1,533,219	1,909,914	1,667,744	1,583,283	1,720,841	1,639,479	1,754,320	1,739,438	1,974,681	2,053,428	1,786,180	1,820,857	21,183,384
Hobbies, toys & games	570,207	522,838	497,196	470,208	478,048	514,030	496,837	620,218	969,208	1,473,360	471,985	425,743	445,248	7,384,919
Photographic	212,057	215,553	250,282	272,320	267,628	274,033	289,892	255,946	324,250	416,888	324,399	252,528	194,745	3,238,464
Handicraft	81,835	69,553	79,581	98,789	77,299	87,357	87,217	94,076	105,304	87,902	86,494	90,334	82,282	1,046,188
Sports shops	2,364,946	2,694,972	2,907,052	2,855,271	3,108,953	3,311,044	2,688,728	2,553,310	2,697,690	3,644,136	2,475,767	2,222,196	2,545,258	33,704,377
Jewellers	562,083	540,706	616,079	589,337	640,607	634,650	578,476	589,828	805,455	1,426,541	585,661	595,553	568,180	8,171,073
Computer software	657,141	597,862	673,567	648,881	614,420	674,421	664,631	698,953	770,476	865,205	721,840	672,491	705,319	8,308,066
Medical goods	374,037	357,614	371,480	386,437	381,842	371,212	367,698	377,623	386,216	486,405	356,551	340,148	399,420	4,582,646
Chemists	3,517,748	3,060,171	3,541,980	3,949,678	3,318,585	3,373,430	3,949,678	3,511,564	3,847,336	5,237,134	3,312,602	3,383,560	3,452,598	43,624,853
Optical goods	479,090	448,535	493,228	480,048	476,386	501,625	460,403	451,859	453,180	371,211	451,906	478,902	425,278	5,492,561
Cosmetic stores	348,166	324,325	367,825	387,672	391,644	410,923	375,337	409,055	580,519	985,015	363,280	366,312	295,234	5,257,141
Tobacconists	10,367	11,182	14,346	18,541	14,369	14,831	16,868	14,805	14,108	18,772	14,975	28,148	71,415	252,360
Florists	465,952	474,728	367,977	365,588	339,804	328,455	343,664	320,176	335,139	572,908	299,420	465,759	584,867	4,798,485
Artists' supplies	242,678	217,654	251,586	583,941	246,042	279,124	256,101	278,663	359,690	348,916	246,749	270,528	341,748	3,680,742
Antiques, art & stamps/coins	133,454	133,312	153,281	165,424	167,084	153,281	150,657	159,999	179,286	194,802	134,010	143,665	241,778	2,004,530
Pawn shops	2,440	2,264	2,400	5,009	2,622	2,520	2,460	2,474	2,941	4,626	2,831	2,426	5,878	38,451
Gift shops	1,203,272	1,213,893	1,281,581	1,391,876	1,430,022	1,580,825	1,368,079	1,466,519	1,984,329	2,881,922	1,174,744	1,234,230	1,244,620	18,252,640
Secondhand shops	28,688	14,501	17,699	32,060	15,280	14,586	13,702	15,014	16,257	12,763	12,002	10,032	40,032	220,999
Luggage & leather goods	101,088	109,768	120,247	134,747	142,890	129,913	110,392	110,568	133,287	182,054	110,064	85,499	202,788	1,572,217
Pet shops	634,381	623,988	686,658	677,725	679,717	697,786	646,861	684,485	686,179	779,545	674,187	716,096	657,636	8,210,863
Religious goods	764	625	697	731	811	1,312	731	1,323	899	787	719	786	3,773	13,252
Direct sales	4,852,677	4,121,711	4,451,314	4,383,437	4,035,248	4,124,527	3,955,784	3,531,099	3,728,425	3,673,765	3,621,251	3,645,081	3,659,141	46,930,783
Miscellaneous & speciality shops	2,850,503	2,503,464	2,874,231	3,127,161	2,806,086	3,538,235	2,972,210	3,068,503	3,596,254	3,418,944	2,764,945	2,641,791	2,438,301	35,750,125
Other retail	23,656,648	21,977,462	24,342,655	25,171,199	23,533,407	25,481,735	23,203,058	23,532,099	26,902,042	33,817,900	22,355,090	21,914,355	22,545,361	294,776,335
Automotive Fuels	18,287,051	18,081,609	19,431,064	18,520,477	19,239,331	19,656,469	19,047,690	19,197,479	18,516,214	18,088,807	17,939,583	19,170,580	19,918,554	226,807,885
Total retail sales	119,831,262	123,355,516	129,885,398	129,243,064	129,770,683	133,784,913	125,219,084	132,169,785	141,369,934	165,557,027	125,308,630	120,863,936	128,359,176	1,584,887,146

Table 3A Card expenditure statistics (not seasonally adjusted)

Number of credit card transactions

Detailed sector breakdown - services sectors

	March 2011	April 2011	May 2011	June 2011	July 2011	August 2011	September 2011	October 2011	November 2011	December 2011	January 2012	February 2012	March 2012	Total (latest 12 months)
Auto rental	476,766	459,649	512,076	657,102	607,103	606,607	546,448	465,409	433,127	363,830	403,666	749,820	576,073	6,380,910
Auto parts & accessories	881,943	779,936	828,964	816,834	811,175	830,721	773,305	760,548	757,277	710,825	738,979	784,915	772,574	9,366,053
Auto services	1,553,153	1,356,892	1,585,505	1,566,264	1,586,733	1,501,286	1,641,637	1,593,021	1,624,004	1,475,645	1,481,310	2,200,715	1,648,953	19,261,965
Auto repair shops	976,800	819,461	869,330	861,741	854,547	861,268	892,111	841,971	822,255	731,042	791,582	833,734	1,005,230	10,184,272
Service stations	0	0	0	0	0	0	0	0	0	0	0	0	0	0
Vehicle sales	654,125	578,871	632,619	1,320,964	604,486	618,517	605,170	541,915	515,540	441,377	505,456	554,948	2,508,414	9,428,277
Vehicle Sales & Services	4,542,787	3,994,809	4,428,494	5,222,905	4,464,044	4,418,399	4,458,671	4,202,864	4,152,203	3,722,719	3,920,993	5,124,132	6,511,244	54,621,477
Restaurants	10,643,630	10,778,859	11,695,231	11,246,849	12,354,880	12,654,094	11,685,141	12,320,222	11,602,679	11,706,106	10,799,666	11,832,632	11,485,582	140,161,941
Public houses	1,785,249	1,952,437	2,142,397	2,057,046	2,137,690	2,385,870	2,062,780	2,149,187	1,917,509	2,002,190	1,820,649	1,933,157	3,094,335	25,655,247
Catering services	296,957	265,419	302,674	310,469	311,026	293,825	326,146	313,602	339,813	315,943	295,389	314,261	289,685	3,678,252
Video stores	137,839	132,438	144,404	140,250	142,172	139,650	129,566	137,882	135,731	158,931	142,785	153,210	196,232	1,753,251
Cinema, theatre & dance	1,486,619	1,201,465	1,752,818	1,519,725	1,877,706	1,876,609	1,579,446	1,792,512	1,907,743	1,811,387	1,799,049	1,930,987	1,554,492	20,603,939
Concerts & entertainers	26,775	26,175	29,527	34,066	34,167	36,028	30,322	35,728	39,719	40,172	29,086	32,859	68,227	436,076
Tourist attractions	204,266	436,815	445,360	447,681	545,010	759,269	421,043	426,208	230,546	213,846	194,884	261,630	187,262	4,569,554
Amusement parks	17,434	42,511	27,266	32,152	40,125	69,315	28,286	36,485	18,382	17,027	12,343	22,973	18,065	364,930
Aquariums	9,912	14,659	13,656	12,138	13,283	17,076	10,412	10,648	7,561	7,561	8,957	10,565	52,738	179,458
Sports & games establishments	2,508,709	1,814,031	1,361,994	2,135,962	2,108,111	2,430,995	2,108,050	2,250,839	2,051,519	2,313,614	2,453,000	2,244,321	2,829,416	26,101,852
Professional sports clubs	97,018	100,499	92,673	110,210	115,300	122,539	103,199	107,880	118,453	138,527	114,816	105,877	98,059	1,328,032
Gambling	3,497,314	3,063,485	3,054,153	2,677,473	2,857,736	3,543,463	3,505,273	3,758,197	3,659,066	3,683,365	3,913,474	3,835,152	3,830,281	41,381,118
Personal services	183,638	228,426	251,913	238,862	276,594	296,286	262,282	276,594	313,333	378,348	323,936	312,062	364,606	3,529,931
Miscellaneous entertainment	580,736	615,112	646,139	678,467	661,026	776,196	645,734	649,702	548,319	436,901	551,415	575,218	508,073	7,292,302
Entertainment	21,476,096	20,672,331	21,960,205	21,641,350	23,460,514	25,401,215	22,911,992	24,272,375	22,890,577	23,223,918	22,459,449	23,564,904	24,577,053	277,035,883
Hotels	4,017,617	3,893,811	4,496,472	4,632,789	4,801,120	4,668,870	4,658,653	4,554,203	4,314,770	3,790,154	3,936,864	4,763,581	4,539,422	53,050,709
Airlines	1,747,277	1,376,612	1,563,995	1,557,676	1,451,199	1,515,257	1,546,297	1,350,825	1,316,850	1,010,002	1,695,508	2,069,350	1,619,248	18,072,819
Airport terminals	23,811	26,299	34,931	33,594	34,931	37,676	31,946	25,112	23,823	19,197	31,910	23,724	27,723	345,548
Railways	4,886,197	4,620,641	4,856,713	5,368,603	5,370,510	5,155,763	5,568,722	5,587,775	5,722,118	4,842,517	5,193,128	5,221,997	5,774,046	63,282,533
Buses	375,545	389,968	467,796	445,640	460,334	471,540	492,329	481,594	436,815	393,617	403,987	527,092	488,856	5,459,568
Sea travel	142,853	147,802	163,476	160,413	176,671	190,677	152,534	136,698	107,074	94,314	99,880	158,169	122,430	1,710,138
Travel agents	1,777,634	1,418,588	1,653,150	1,347,816	1,613,800	1,566,133	1,628,489	1,457,483	1,359,478	967,822	1,656,534	1,619,730	1,606,307	17,895,330
Timeshares	323	246	173	908	17,417	17,367	16,716	14,724	17,282	18,856	39,535	34,979	34,614	212,817
Camping grounds	165,480	238,117	260,653	258,683	299,597	327,625	177,854	133,744	61,575	46,020	113,725	117,969	149,571	2,185,133
Miscellaneous travel	829,572	760,438	924,707	747,547	877,329	847,644	841,296	794,192	771,827	659,303	698,229	935,550	821,679	9,679,741
Travel	9,948,692	8,978,711	9,920,276	9,920,880	10,301,788	10,129,682	10,456,183	9,982,147	9,816,842	8,051,648	9,924,250	10,716,746	10,644,474	118,843,627
Telegraph services / Wire transfer money order	3,340	3,475	11,350	4,567	3,584	4,147	3,635	3,610	3,632	4,140	3,772	3,488	4,750	54,150
Insurance services	1,870,227	1,694,065	1,894,660	2,032,051	2,003,670	2,122,930	2,016,003	1,815,717	1,750,852	1,483,321	1,722,221	1,731,333	1,541,762	21,808,585
Fis - cash disbursements (auto & manual)	56,024	205,561	309,510	262,246	280,844	282,869	236,826	120,636	54,750	28,598	32,742	35,777	421,413	2,271,772
Fis - merchandise & services	543,847	489,344	501,438	482,835	496,093	530,083	537,209	523,581	493,515	480,950	503,834	485,941	471,144	5,995,967
Non-Fis - foreign currency, travellers' cheques	25,487	24,608	30,628	36,678	36,678	36,328	32,354	26,534	21,173	18,494	19,576	23,179	65,276	367,852
Security brokers and dealers	23,544	17,072	21,380	26,580	22,601	39,214	34,715	28,897	32,030	27,605	28,142	27,992	30,055	336,283
Tax preparation services	347	251	804	375	339	192	205	175	174	165	256	293	937	4,166
Tax payments	20,849	14,218	12,897	12,361	27,933	18,588	14,434	12,298	12,876	12,876	77,610	147,845	20,787	386,729
Fines, bail and bond payments	68,482	59,584	66,148	53,490	72,808	70,479	72,799	70,654	72,367	62,960	67,403	70,491	71,462	810,645
Miscellaneous financial	100,391	101,488	100,448	102,496	99,027	100,922	97,178	93,267	91,664	61,874	66,644	72,052	73,914	1,060,974
Financial	2,712,538	2,609,666	2,949,263	3,010,025	3,043,577	3,205,746	3,045,812	2,697,505	2,532,455	2,180,983	2,522,200	2,598,391	2,701,500	33,097,123

Table 3A Card expenditure statistics (not seasonally adjusted)

Number of credit card transactions

Detailed sector breakdown - services sectors (continued)

	March 2011	April 2011	May 2011	June 2011	July 2011	August 2011	September 2011	October 2011	November 2011	December 2011	January 2012	February 2012	March 2012	Total (latest 12 months)
Telecoms	2,034,545	2,022,236	2,216,476	2,117,776	2,145,420	2,236,409	2,157,573	2,195,598	2,123,574	2,244,553	2,130,044	2,177,193	2,027,462	25,794,314
Utilities	379,421	352,078	372,045	389,446	361,376	362,499	340,157	338,751	333,110	296,110	341,416	362,517	364,618	4,214,123
Contractors (residential & commercial)	326,259	259,505	288,799	403,228	277,570	292,530	294,910	297,159	312,926	249,917	268,482	284,941	284,814	3,514,781
Gardening services	45,353	73,418	78,452	60,715	49,820	50,018	45,010	47,718	47,926	58,972	35,187	36,669	66,298	650,203
Veterinary services	562,467	521,386	577,927	508,833	519,227	541,821	520,366	511,726	508,007	485,677	486,003	466,859	497,823	6,145,655
Photocopying & printing	351,933	279,354	328,751	332,409	316,663	325,980	345,023	351,289	444,431	407,178	342,316	319,509	333,435	4,126,338
Photographic studios	98,708	343,328	386,247	115,244	141,604	103,122	104,465	130,920	146,980	124,168	79,658	79,640	106,237	1,861,613
Beauty & barber shops	1,373,364	1,123,994	1,199,399	1,546,917	1,536,225	1,514,399	1,498,295	1,456,620	1,509,447	1,945,038	1,327,418	1,389,096	1,235,510	17,282,358
Employment agencies	32,974	22,511	23,534	26,074	26,134	25,985	28,201	28,201	28,888	25,870	26,487	27,756	32,167	321,808
Counselling services	5,158	5,384	6,104	5,575	5,373	5,985	6,105	5,706	5,599	4,294	5,704	6,346	3,630	65,805
Legal services	82,268	52,902	58,514	57,740	32,411	79,186	56,961	55,749	58,170	51,073	41,707	82,236	113,407	740,056
Laundry & cleaning	179,165	174,439	210,565	208,932	203,977	190,101	200,849	199,684	193,202	174,695	173,925	166,123	179,364	2,275,856
Funeral services	11,761	9,084	9,331	10,710	10,181	10,255	10,649	10,502	11,420	10,826	11,808	12,472	293,472	410,710
Medical services	1,239,987	1,012,994	1,175,793	1,203,152	1,092,425	1,099,764	1,163,008	1,104,393	1,210,749	1,002,379	1,131,815	1,163,593	1,310,888	13,670,953
Moving & courier services	298,463	255,980	300,644	314,037	303,519	287,244	314,468	305,447	343,976	316,784	273,106	298,816	325,043	3,639,064
Repair shops (not auto)	55,592	50,079	57,984	58,611	55,781	61,325	59,334	59,222	65,477	62,905	59,842	61,872	61,518	713,950
Accounting services	30,909	23,048	27,511	37,924	25,400	30,084	34,238	32,663	34,168	31,529	37,624	34,823	23,571	372,583
Advertising, consultancy & PR	155,147	136,267	160,730	153,630	143,104	151,653	143,785	138,838	141,796	119,888	141,635	169,753	137,583	1,738,662
Computer programming	1,130,350	986,583	1,070,067	1,086,520	1,034,547	1,061,310	1,091,300	1,191,115	1,466,198	1,654,557	1,200,695	1,189,121	1,092,107	14,124,120
Farming services	65,641	67,616	70,748	64,969	61,994	65,543	62,430	62,209	61,133	63,900	58,164	62,732	63,630	765,068
Miscellaneous professional services	1,243,789	1,030,011	1,178,166	1,160,140	1,134,063	1,110,921	1,171,399	1,065,592	1,127,150	1,020,052	1,043,279	1,100,298	1,030,823	13,171,894
Engineering services	68,017	56,446	64,069	57,441	60,794	62,436	61,019	58,064	61,966	47,660	56,107	64,413	57,932	708,347
Marina services	45,181	67,627	70,869	74,543	79,589	91,481	54,867	43,101	33,136	30,976	32,514	33,109	50,555	662,367
Wrecking & salvage yards	4,295	4,043	4,382	4,551	4,418	4,581	4,642	4,436	4,341	3,495	4,091	4,139	3,589	50,708
Pest control	2,362	2,335	2,890	3,342	4,312	4,358	4,109	3,585	3,137	2,279	2,504	2,577	8,190	43,618
Educational establishments	501,234	372,855	457,871	415,957	425,086	427,669	641,276	553,802	540,871	420,798	594,715	506,694	529,394	5,886,998
Child care services	16,347	12,306	14,873	14,307	15,192	17,064	15,529	16,522	15,378	15,391	18,041	18,412	47,307	220,322
Social, political & religious organisations	1,402,929	1,194,006	1,271,525	1,236,888	1,253,075	1,223,780	1,116,385	938,147	1,060,270	1,022,643	836,690	818,114	1,129,739	13,101,262
Government services	2,017,722	1,755,741	1,994,226	1,916,030	1,957,488	1,988,930	1,995,225	1,901,333	1,939,992	1,703,579	1,910,657	1,988,151	1,873,153	22,924,505
Miscellaneous services	1,321,847	1,145,351	1,212,206	1,286,786	1,238,958	1,237,077	1,294,661	1,336,300	1,519,803	1,757,358	1,314,117	1,440,697	1,808,754	16,592,168
Commercial equipment	966,817	788,263	901,590	1,220,552	867,239	892,405	1,007,928	953,482	1,033,950	917,766	975,434	899,912	975,331	11,433,852
Other services	16,050,005	14,201,170	15,792,388	16,092,979	15,382,965	15,555,915	15,844,167	15,397,874	16,387,171	16,272,310	14,961,185	15,268,583	16,067,344	187,224,051
Total services	58,747,735	54,350,498	59,547,098	60,520,928	61,454,008	63,379,827	61,375,478	61,106,968	60,094,018	57,241,732	57,724,941	62,036,337	65,041,037	723,872,870
TOTAL	178,578,997	177,706,014	189,432,496	189,763,992	191,224,691	197,164,740	186,594,562	193,276,753	201,463,952	222,798,759	183,033,571	182,900,273	193,400,213	2,308,760,016

Table 3B Card expenditure statistics (not seasonally adjusted)

Value of credit card transactions

Detailed sector breakdown - retail sectors

£	March 2011	April 2011	May 2011	June 2011	July 2011	August 2011	September 2011	October 2011	November 2011	December 2011	January 2012	February 2012	March 2012	Total (latest 12 months)
Supermarkets	1,457,325,538	1,595,508,013	1,562,879,239	1,607,798,433	1,610,397,666	1,684,231,694	1,576,782,348	1,683,789,699	1,779,592,722	2,247,500,557	1,556,636,396	1,490,412,787	1,274,466,499	19,669,996,053
Bakers & dairies	2,257,431	2,284,028	2,530,706	3,156,355	2,732,525	2,559,674	2,607,499	2,823,819	3,040,632	3,598,548	2,547,047	2,923,380	4,430,635	35,234,848
Sweet stores	4,275,659	6,298,627	4,681,128	4,770,235	4,998,293	4,899,469	4,835,646	5,292,230	8,955,010	17,779,135	3,929,243	4,796,874	6,079,717	77,315,607
Miscellaneous foodstores	68,021,083	72,919,860	75,869,128	80,851,249	80,130,352	79,241,410	75,317,392	78,302,200	84,429,652	110,253,758	74,123,604	76,271,266	434,062,876	1,321,773,347
Off-licences	29,977,574	30,943,616	33,764,363	37,628,377	41,001,497	33,911,835	30,949,368	31,041,237	40,617,745	65,105,830	26,077,820	28,935,608	36,771,534	436,748,830
Food & drink	1,561,857,285	1,707,954,144	1,679,725,164	1,734,204,649	1,739,260,333	1,804,844,082	1,690,492,253	1,801,249,185	1,916,635,761	2,444,237,828	1,663,317,110	1,603,339,915	1,755,811,261	21,541,068,685
Department stores	300,887,866	301,211,362	345,040,400	357,317,151	364,828,425	330,292,725	336,376,523	368,269,363	466,773,648	640,776,305	352,564,864	289,723,362	315,048,346	4,468,222,474
Discount stores	67,776,866	76,890,867	81,422,331	70,426,122	75,699,981	79,091,230	74,078,745	85,333,449	105,136,512	134,155,197	70,549,350	63,189,078	62,697,853	978,670,715
Catalogues	41,596,806	36,427,981	37,906,023	35,492,910	35,923,864	31,223,651	40,340,835	56,898,295	71,461,881	66,124,791	51,393,515	49,425,304	50,989,624	563,608,674
Miscellaneous mixed	77,856,699	82,152,179	100,308,845	102,844,135	107,996,814	102,844,135	105,593,672	113,775,218	131,896,992	145,930,112	113,775,218	86,024,352	114,277,028	1,278,107,389
Mixed business	488,116,237	496,682,389	564,677,599	563,070,750	579,296,405	547,704,420	556,389,775	624,276,325	775,269,033	986,986,405	562,881,204	488,362,096	543,012,851	7,288,609,252
Men's clothing	38,221,886	39,474,279	45,183,998	48,915,691	49,099,287	42,946,676	41,676,029	44,072,384	48,237,826	63,435,423	45,334,533	35,135,846	33,554,946	537,066,918
Women's clothing	121,483,893	131,887,812	139,506,885	147,773,238	143,794,834	128,699,222	142,008,661	149,162,032	155,695,383	183,149,827	129,692,171	120,969,975	126,103,517	1,698,443,557
Family clothing	293,923,657	326,789,248	326,085,636	350,385,474	379,483,576	379,483,576	363,163,819	390,957,966	426,559,665	566,397,903	313,110,632	325,401,981	312,488,990	4,436,430,154
Miscellaneous clothing	27,953,501	33,168,565	36,306,241	36,891,099	35,857,120	36,312,141	38,946,378	41,178,059	43,355,489	49,302,847	30,676,083	31,045,038	65,104,374	508,143,434
Shoe shops	56,233,652	72,119,086	74,291,185	78,787,183	79,191,591	82,861,344	79,920,331	87,380,633	88,263,408	104,525,959	71,608,077	68,293,423	55,904,790	943,147,009
Clothing	537,816,589	603,438,990	633,373,945	692,752,685	687,426,408	644,424,647	665,715,218	712,751,074	762,111,771	956,811,959	590,421,495	580,846,263	593,156,617	8,123,231,072
Furniture stores	259,839,626	230,359,728	258,478,009	240,537,283	253,517,268	268,178,089	257,930,318	301,598,726	293,612,143	253,230,688	309,949,963	259,942,434	258,642,329	3,185,976,978
Household appliance stores	116,688,605	101,690,148	106,681,351	103,838,466	108,132,969	110,996,648	114,194,794	120,638,942	132,322,125	128,173,191	120,086,744	117,425,797	148,822,939	1,413,004,114
Electronic stores	195,608,253	183,707,423	206,735,124	194,182,191	205,572,030	236,931,396	225,627,456	233,738,478	276,237,698	371,730,801	260,029,462	203,997,283	198,774,271	2,797,264,063
DIY stores	424,625,552	480,536,148	465,001,746	414,966,276	430,963,542	451,355,105	423,699,681	433,530,839	433,901,569	354,321,778	395,821,663	386,146,468	444,950,563	5,115,195,378
Floor covering stores	55,751,301	49,092,595	55,311,063	51,769,583	53,810,052	59,520,339	56,817,205	60,574,883	67,880,077	47,145,447	54,923,904	52,481,454	80,940,873	690,267,475
Garden centres	79,945,056	134,739,356	88,283,618	74,660,656	69,202,838	59,716,910	61,500,602	67,460,670	72,513,121	40,172,507	44,530,864	44,530,864	91,194,283	814,194,283
Miscellaneous household	92,086,502	92,132,894	100,795,019	117,269,161	113,044,255	114,044,853	116,511,250	121,230,116	128,801,169	146,734,086	118,041,742	99,973,338	72,707,394	1,341,285,277
Household	1,224,544,895	1,272,258,291	1,319,491,922	1,210,846,578	1,239,700,772	1,310,229,268	1,254,497,614	1,332,812,586	1,393,501,451	1,373,849,112	1,299,025,985	1,164,497,638	1,286,476,351	15,457,187,568
Books, newspapers & magazines	66,993,530	60,308,015	64,205,265	68,375,169	65,860,771	67,598,587	74,878,639	74,224,537	84,395,134	93,818,331	58,304,275	56,064,153	61,988,392	830,021,268
Record shops	14,936,547	14,122,225	13,687,566	12,172,048	12,172,048	11,668,559	13,780,799	13,780,799	10,657,251	9,700,568	10,657,251	17,266,133	91,503,066	1,471,916,435
Music shops	25,225,153	22,300,207	25,385,741	24,390,534	25,951,437	26,738,436	27,048,267	27,665,101	29,529,042	36,560,422	29,102,091	27,014,240	34,778,170	336,463,688
Hobbies, toys & games	32,636,996	29,078,224	28,740,294	27,493,613	26,460,909	27,058,619	28,134,129	33,314,854	53,098,154	72,027,879	25,268,667	24,679,264	37,764,588	413,119,194
Photographic	27,219,092	27,843,867	33,481,801	33,432,336	33,432,336	33,432,336	33,432,336	29,786,409	28,311,768	32,004,981	28,417,547	27,359,154	26,967,062	372,546,545
Handicraft	8,762,440	7,114,719	7,631,877	11,125,503	8,465,041	8,893,424	8,658,302	9,199,318	10,359,609	7,621,380	8,056,593	7,987,475	7,919,854	103,033,095
Sports shops	159,868,044	176,704,030	194,254,050	189,072,597	203,144,122	214,417,220	172,916,911	167,333,422	178,641,205	221,025,015	157,245,009	147,119,633	163,665,269	2,185,538,487
Jewellers	101,667,327	101,667,327	111,573,595	120,366,725	127,920,550	114,865,175	110,674,995	110,236,772	133,225,294	240,836,277	98,886,969	106,563,978	96,941,404	1,471,916,435
Computer software	109,433,337	102,848,647	120,364,219	111,708,187	109,983,676	116,960,349	116,396,905	133,926,727	157,119,882	171,361,138	119,173,939	106,879,648	131,841,970	1,498,565,287
Medical goods	12,232,765	12,240,950	12,567,765	13,764,507	13,754,782	13,236,058	13,073,376	13,684,560	14,743,411	17,786,106	11,804,012	12,370,192	14,160,314	163,186,033
Chemists	73,862,861	65,528,507	75,774,992	95,733,389	72,842,179	65,609,762	69,043,628	80,717,659	98,123,603	145,665,592	67,045,904	70,349,105	72,511,651	989,945,971
Optical goods	71,537,610	64,964,189	71,650,914	70,295,203	69,807,523	73,242,002	66,574,936	65,604,047	66,489,525	51,116,881	66,169,563	71,992,059	63,110,038	801,016,880
Cosmetic stores	20,634,795	24,212,299	28,137,757	23,241,834	23,039,737	22,662,619	22,368,191	23,930,460	32,598,416	48,013,726	20,166,566	21,175,691	20,169,264	309,678,604
Tobacconists	654,172	713,757	1,919,734	974,797	931,192	1,038,560	974,797	906,976	2,900,199	1,193,341	896,618	2,110,924	2,994,685	15,437,356
Florists	21,452,231	21,685,529	18,872,539	20,350,855	17,048,106	16,673,907	17,518,818	15,835,433	16,860,594	26,030,969	14,571,708	21,489,543	31,222,561	238,160,562
Artists' supplies	13,255,441	11,124,474	13,141,524	49,912,328	13,029,059	13,910,665	14,109,577	14,273,732	17,395,162	15,817,106	12,068,517	13,350,107	16,539,319	204,671,750
Antiques, art & stamps/coins	26,161,969	21,329,797	26,452,409	30,781,657	26,753,710	24,814,961	25,807,152	28,842,877	30,581,976	28,816,802	22,071,422	22,989,050	21,668,411	317,668,411
Pawn shops	412,016	431,559	531,032	956,909	537,007	563,915	567,617	573,182	616,860	869,581	656,316	538,629	1,613,751	8,456,358
Gift shops	41,339,997	41,361,883	45,500,565	46,404,109	50,509,444	53,898,199	48,436,178	52,592,054	69,132,942	86,350,457	39,262,568	43,510,700	50,795,707	627,754,806
Secondhand shops	3,416,066	1,778,328	1,902,548	7,478,655	1,851,467	1,648,962	1,851,467	1,918,471	2,249,679	2,107,033	1,666,838	1,641,572	4,508,832	30,523,847
Luggage & leather goods	11,584,117	11,958,013	13,728,975	16,456,143	17,228,261	13,013,783	13,594,479	13,807,991	15,056,879	22,691,135	13,799,098	11,052,253	15,571,427	177,958,437
Pet shops	27,715,527	27,092,911	29,601,259	30,003,388	29,588,617	31,266,123	29,332,180	30,191,885	30,383,583	32,718,736	29,988,546	32,932,549	29,583,572	362,683,349
Religious goods	49,516	38,142	51,106	58,541	59,352	58,541	52,027	108,177	52,526	108,177	51,462	48,176	306,165	925,174
Direct sales	268,510,407	216,665,915	230,633,669	223,6										

Table 3B Card expenditure statistics (not seasonally adjusted)

Value of credit card transactions

Detailed sector breakdown - services sectors

£	March 2011	April 2011	May 2011	June 2011	July 2011	August 2011	September 2011	October 2011	November 2011	December 2011	January 2012	February 2012	March 2012	Total (latest 12 months)
Auto rental	57,461,989	60,176,207	70,367,807	96,916,013	93,110,411	86,460,480	68,418,640	55,450,945	50,315,059	45,432,744	48,874,859	95,417,035	77,465,993	848,406,193
Auto parts & accessories	137,984,791	118,099,180	128,470,774	127,374,049	125,159,240	125,154,637	123,312,541	120,781,961	122,263,987	111,493,818	115,536,528	123,303,905	126,049,428	1,467,000,048
Auto services	52,506,324	44,501,620	52,138,499	51,949,497	51,426,926	50,430,210	53,418,573	49,452,819	48,489,896	41,493,571	46,848,578	55,917,968	65,236,933	611,305,270
Auto repair shops	246,363,056	203,145,566	215,461,617	212,869,182	216,883,565	213,740,019	226,694,344	214,508,298	209,764,300	183,345,714	201,249,419	210,823,360	228,217,736	2,536,703,120
Service stations	0	0	0	0	0	0	0	0	0	0	0	0	0	0
Vehicle sales	226,381,385	190,005,063	207,569,451	245,288,698	202,321,859	203,845,065	211,706,473	195,010,029	179,251,205	149,329,242	181,442,620	197,850,385	306,805,123	2,470,425,213
Vehicle Sales & Services	720,697,545	615,927,636	674,008,148	734,397,439	688,902,001	679,630,411	683,550,571	635,204,052	610,084,447	531,095,089	593,952,184	683,312,653	803,775,213	7,933,839,844
Restaurants	436,030,617	448,384,329	484,485,531	469,634,308	514,482,555	503,672,415	476,217,090	499,960,563	471,730,633	565,366,802	423,983,049	463,651,311	438,277,160	5,759,845,746
Public houses	76,664,109	84,099,493	93,747,734	93,147,322	95,909,425	104,018,584	91,261,708	94,043,493	86,242,831	106,782,586	77,316,178	79,769,004	138,189,374	1,144,527,732
Catering services	44,098,385	40,892,564	44,436,652	45,051,378	45,178,732	42,314,060	45,238,648	42,468,988	46,442,652	47,671,266	39,795,673	42,989,207	48,435,361	530,915,181
Video stores	2,163,252	1,908,267	2,109,406	2,142,385	2,211,590	1,992,291	2,126,849	2,830,993	2,542,127	2,935,859	2,306,673	2,396,991	3,614,301	29,117,732
Cinema, theatre & dance	127,613,300	90,744,969	192,589,335	116,090,632	134,901,228	104,591,906	110,941,763	136,333,687	146,584,577	132,920,833	113,849,787	136,312,679	134,563,680	1,550,425,076
Concerts & entertainers	3,963,082	3,731,110	5,229,893	5,668,747	5,355,155	4,042,954	5,987,947	6,831,515	6,704,366	3,117,325	2,443,728	3,030,307	5,755,720	57,898,767
Tourist attractions	11,263,632	21,652,323	22,210,762	22,792,766	26,994,222	33,951,994	19,391,487	20,236,772	11,815,643	11,124,202	10,684,689	13,099,749	12,955,053	226,909,663
Amusement parks	1,239,001	2,264,281	1,619,992	1,906,458	2,465,580	3,239,676	1,444,318	1,936,861	1,279,391	950,914	713,898	1,092,977	1,071,676	19,986,022
Aquariums	675,491	861,108	840,452	761,262	788,420	868,011	604,958	578,887	477,216	511,520	515,096	568,875	4,974,388	12,350,193
Sports & games establishments	96,696,014	85,973,628	132,464,518	116,758,442	86,494,940	79,366,618	72,962,979	73,393,858	72,705,544	78,055,985	80,174,465	80,332,275	150,923,377	1,109,606,629
Professional sports clubs	7,930,510	9,191,481	9,930,057	21,341,813	13,876,928	9,328,423	8,435,057	8,451,185	10,890,065	9,159,744	8,714,719	8,235,730	7,974,903	125,530,105
Gambling	132,904,963	116,335,887	111,597,173	99,108,695	100,016,872	114,915,010	101,356,183	105,009,491	92,944,652	89,619,160	102,711,006	96,349,770	95,082,522	1,225,046,421
Personal services	13,710,450	14,507,293	15,815,238	15,492,879	15,710,049	16,126,550	16,030,224	16,542,482	17,564,481	17,436,538	16,840,990	16,862,781	201,087,966	1,225,046,421
Miscellaneous entertainment	195,880,037	170,023,928	201,839,255	219,000,294	180,430,711	186,662,493	208,937,451	209,767,607	189,852,947	126,044,117	200,228,709	198,644,254	195,613,905	2,287,045,671
Entertainment	1,150,832,843	1,090,570,661	1,318,915,998	1,228,897,381	1,224,816,408	1,205,090,985	1,160,936,662	1,218,386,382	1,157,777,125	1,194,618,774	1,080,874,208	1,143,314,119	1,256,094,201	14,280,292,904
Hotels	647,956,449	643,009,902	767,854,483	824,458,651	877,154,953	782,233,789	818,104,495	793,465,134	731,142,115	630,320,291	640,680,262	760,846,553	774,553,286	9,043,823,914
Airlines	504,095,610	396,494,477	463,319,665	453,371,174	453,100,789	456,200,210	462,631,815	402,410,318	390,820,409	288,004,834	552,464,133	621,761,945	493,187,516	5,433,767,285
Airport terminals	3,288,697	3,331,315	4,056,727	3,953,552	4,437,855	4,153,005	3,878,493	3,509,387	3,107,079	2,748,999	3,002,494	3,551,572	3,463,651	43,194,129
Railways	211,819,285	189,982,773	217,092,982	244,224,995	229,273,665	219,274,312	253,020,713	247,976,254	256,909,283	243,726,721	274,179,394	235,317,182	253,869,902	2,864,848,176
Buses	20,068,709	21,632,528	25,002,436	24,397,065	26,351,934	25,618,784	26,400,772	23,799,258	21,602,947	19,863,615	19,172,207	23,485,614	24,824,625	282,691,785
Sea travel	48,701,112	45,822,664	48,911,627	50,862,460	54,854,517	53,323,489	46,600,918	43,873,503	35,212,495	26,983,844	33,366,046	55,986,577	38,123,688	533,921,828
Travel agents	591,695,562	515,446,480	622,718,280	601,896,269	634,368,408	575,711,842	504,161,706	436,823,369	377,817,399	304,991,683	583,090,514	513,732,472	548,151,107	6,218,910,529
Timeshares	76,758	61,425	48,701	146,791	2,281,896	2,399,412	2,419,793	2,082,856	2,465,664	2,956,844	6,817,770	6,269,603	7,323,809	35,274,564
Camping grounds	32,473,343	36,038,464	41,279,968	42,076,231	44,789,397	37,419,192	17,716,702	16,337,411	17,727,297	14,766,224	21,125,524	21,027,763	25,730,655	336,034,828
Miscellaneous travel	71,178,412	54,318,864	66,180,393	70,113,358	63,186,299	59,555,903	63,044,392	51,519,007	48,625,186	40,348,395	51,250,268	58,384,415	67,772,909	694,299,389
Travel	1,483,397,488	1,263,128,990	1,488,610,779	1,491,041,895	1,512,645,760	1,433,656,149	1,379,875,304	1,228,331,363	1,154,287,759	944,391,159	1,545,008,350	1,539,517,143	1,462,447,862	16,442,942,513
Telegraph services / Wire transfer money order	804,098	853,374	22,107,522	1,141,564	860,242	900,187	849,667	836,080	817,459	915,610	872,913	761,151	1,018,255	31,934,024
Insurance services	372,155,856	337,003,421	377,891,135	390,149,046	382,764,167	399,758,168	402,899,802	365,200,900	339,334,878	282,954,874	342,064,653	295,744,423	248,457,345	4,164,222,812
Fis - cash disbursements (auto & manual)	53,329,505	100,861,503	159,547,230	122,356,970	142,082,575	149,137,150	115,833,152	73,612,807	49,199,777	15,345,958	16,092,311	16,515,706	43,103,509	1,003,688,648
Fis - merchandise & services	77,611,762	71,919,730	75,093,457	79,130,113	78,529,540	85,932,901	83,722,782	73,573,406	68,837,218	61,573,143	69,952,827	69,881,129	68,075,894	886,222,140
Non-Fis - foreign currency, travellers' cheques	7,726,728	8,688,071	11,091,261	12,200,484	17,196,006	17,041,874	12,016,307	8,817,247	6,457,909	6,067,521	6,753,928	7,605,524	24,775,365	138,711,497
Security brokers and dealers	6,147,722	4,840,073	5,864,338	6,815,816	6,156,385	13,535,882	10,554,850	7,991,207	9,158,576	7,333,146	7,970,746	8,415,053	9,164,161	97,800,233
Tax preparation services	89,658	60,009	253,263	67,896	115,179	67,372	72,761	77,586	81,814	64,116	112,514	116,101	880,172	1,968,783
Tax payments	19,122,371	11,478,495	9,671,383	9,428,284	33,333,310	19,076,334	12,617,971	12,276,750	9,429,318	9,548,327	90,013,754	75,365,894	20,782,497	313,022,317
Fines, bail and bond payments	8,685,110	7,205,492	8,699,189	5,833,305	8,780,315	8,289,878	9,065,774	8,573,819	8,837,187	7,387,878	8,532,799	8,830,175	9,484,621	99,520,432
Miscellaneous financial	18,347,252	16,787,569	17,191,865	17,860,829	17,789,872	17,281,340	16,845,313	16,642,912	16,594,650	9,863,525	11,171,011	12,242,668	11,450,817	181,722,371
Financial	564,020,062	559,697,737	687,410,643	644,984,307	687,607,591	711,021,086	664,478,379	567,602,714	508,748,786	401,054,098	553,537,456	495,477,824	437,192,636	6,918,813,257

Table 3B Card expenditure statistics (not seasonally adjusted)

Value of credit card transactions

Detailed sector breakdown - services sectors (continued)

£	March 2011	April 2011	May 2011	June 2011	July 2011	August 2011	September 2011	October 2011	November 2011	December 2011	January 2012	February 2012	March 2012	Total (latest 12 months)
Telecoms	84,548,321	78,394,449	87,862,484	82,330,114	84,025,988	93,439,313	86,321,675	92,843,039	92,459,888	100,903,374	89,667,880	86,631,349	83,145,045	1,058,024,598
Utilities	69,002,591	62,424,194	64,767,367	68,385,382	58,874,868	58,930,368	58,801,431	57,708,586	59,157,964	54,556,232	64,019,509	71,332,140	74,907,076	753,865,117
Contractors (residential & commercial)	85,612,575	68,024,622	77,418,373	102,144,358	77,311,765	79,402,604	80,693,067	80,926,275	89,749,331	65,363,266	69,590,357	78,041,595	78,033,380	946,698,993
Gardening services	5,153,669	6,854,844	10,295,976	8,428,090	7,187,035	7,785,590	6,600,281	5,857,717	6,033,137	7,633,867	6,429,037	5,824,167	10,653,543	89,583,284
Veterinary services	50,059,174	45,716,940	50,713,223	44,679,187	44,723,473	46,235,504	44,945,939	43,858,556	43,899,673	40,809,924	42,816,353	41,209,604	43,895,962	533,504,338
Photocopying & printing	44,439,565	34,197,842	37,401,056	40,171,186	38,099,958	40,683,907	43,056,714	41,434,158	49,794,618	39,659,224	40,140,756	38,741,516	41,591,879	484,972,854
Photographic studios	8,380,683	21,109,757	23,268,313	8,918,179	10,744,212	8,969,372	8,619,215	9,379,460	11,494,897	9,317,818	6,597,414	7,002,733	9,635,117	135,056,487
Beauty & barber shops	74,694,118	59,371,023	64,818,893	81,531,649	81,967,609	79,836,205	81,533,855	78,477,166	82,887,030	101,462,194	69,864,519	75,342,345	67,165,753	924,258,241
Employment agencies	21,653,039	16,763,052	18,218,038	19,223,787	19,924,818	20,738,107	22,536,141	22,185,395	24,648,066	21,574,798	19,083,251	22,201,053	24,903,803	252,000,309
Counselling services	997,898	1,411,790	1,377,177	1,074,818	1,203,458	1,179,883	1,334,172	1,456,257	1,405,380	983,102	1,544,180	1,161,880	815,977	14,948,074
Legal services	22,328,902	18,302,955	19,081,581	20,898,189	17,755,267	19,471,935	18,918,826	18,473,257	19,916,819	16,595,609	20,730,212	22,026,997	24,820,385	236,992,032
Laundry & cleaning	5,923,926	5,988,478	7,302,388	6,686,348	6,674,452	6,302,897	6,817,215	6,586,075	6,417,518	5,803,789	5,839,390	5,553,877	6,813,856	76,786,283
Funeral services	12,885,310	9,524,541	9,449,824	10,898,416	10,656,403	10,514,189	11,284,459	11,003,003	12,305,459	10,932,944	12,514,892	13,184,239	29,667,626	151,935,995
Medical services	168,336,950	134,978,431	152,954,574	161,705,651	152,327,251	147,868,819	157,628,487	152,339,010	167,370,218	133,856,040	149,704,442	161,580,961	179,529,081	1,851,842,965
Moving & courier services	38,206,708	34,610,690	40,815,575	34,426,964	40,530,143	38,891,560	38,460,053	38,338,535	39,154,504	33,443,066	40,980,908	36,013,786	38,113,057	453,778,841
Repair shops (not auto)	9,494,118	8,709,147	9,872,045	11,164,731	10,267,956	10,055,641	10,331,527	10,981,502	10,708,765	10,508,235	9,806,080	9,914,277	9,951,125	122,271,031
Accounting services	6,996,948	5,046,267	5,431,112	9,070,920	5,163,966	5,728,682	6,398,240	6,019,502	6,604,747	6,632,792	8,245,746	8,217,106	8,570,681	81,129,761
Advertising, consultancy & PR	15,772,971	13,334,901	15,867,042	15,325,817	13,993,314	14,130,408	14,356,163	13,806,522	13,888,949	11,732,511	14,132,631	15,452,143	12,652,162	168,672,563
Computer programming	99,617,556	85,620,408	91,182,304	96,699,924	88,119,530	96,827,044	93,525,598	100,109,454	112,170,041	99,117,610	79,933,708	71,199,593	74,175,800	1,088,681,014
Farming services	8,024,503	7,615,822	8,184,868	8,673,893	7,899,642	8,637,815	7,902,557	7,831,773	7,577,248	7,091,175	7,297,758	7,141,053	7,541,361	93,394,965
Miscellaneous professional services	169,459,749	146,356,781	162,708,390	164,817,426	161,572,733	164,595,528	198,666,229	160,687,020	160,334,929	134,268,472	164,909,373	162,958,516	151,094,460	1,932,969,857
Engineering services	20,616,055	16,808,205	19,338,231	17,671,661	18,617,092	18,343,825	19,101,390	17,477,716	18,274,344	14,008,959	16,057,258	18,715,041	17,192,520	211,606,242
Marina services	10,348,710	10,821,075	11,458,432	11,871,787	11,904,098	11,413,698	8,246,005	7,131,652	5,834,112	6,013,047	7,471,154	6,828,006	11,178,395	110,171,461
Wrecking & salvage yards	859,479	793,194	824,351	897,732	824,819	828,076	938,709	853,681	841,825	649,177	792,224	777,889	691,314	9,712,991
Pest control	612,450	583,095	1,228,403	728,884	789,122	885,077	926,556	820,454	788,435	628,645	646,548	608,834	1,135,661	9,769,714
Educational establishments	99,509,527	89,376,290	110,057,872	89,628,465	94,706,810	136,334,919	293,059,381	176,057,495	96,995,251	84,018,903	169,844,701	111,405,694	94,143,039	1,545,628,820
Child care services	2,297,889	1,479,948	1,739,059	1,695,367	1,872,434	1,739,651	1,834,905	1,751,890	1,796,380	1,650,271	1,982,172	1,930,527	7,204,869	26,677,473
Social, political & religious organisations	91,286,434	70,419,549	64,130,954	86,280,600	70,233,818	65,769,870	69,838,950	65,026,187	65,722,681	76,186,135	76,393,352	65,432,416	84,353,592	859,788,104
Government services	178,294,944	158,457,464	174,736,625	155,628,441	168,832,814	180,011,038	177,799,508	163,994,232	162,143,661	144,604,367	171,310,986	178,680,093	175,563,853	2,011,763,027
Miscellaneous services	78,028,705	66,697,700	70,621,973	76,882,328	72,035,941	68,657,910	74,202,450	70,475,127	79,821,880	92,834,432	68,531,093	72,805,531	117,084,184	930,650,549
Commercial equipment	130,697,265	107,898,633	120,836,638	132,438,215	121,934,065	125,726,473	136,725,169	126,578,995	132,185,923	107,019,493	122,961,401	121,634,077	127,025,037	1,482,964,119
Other services	1,614,140,732	1,387,692,087	1,533,963,141	1,570,978,509	1,500,774,854	1,569,935,908	1,781,404,867	1,590,469,731	1,582,383,618	1,439,859,471	1,559,839,285	1,519,549,038	1,613,249,593	18,650,100,102
Total services	6,181,045,119	5,560,027,013	6,470,763,192	6,494,758,182	6,491,901,567	6,381,568,328	6,488,350,278	6,033,459,376	5,744,423,850	5,141,338,882	5,973,891,745	6,142,017,330	6,347,312,791	73,269,812,534
TOTAL	12,250,543,940	11,766,063,201	13,004,426,360	13,054,212,648	13,045,594,492	13,059,493,921	12,937,527,227	12,818,908,687	13,075,252,793	13,595,804,217	12,188,296,332	12,157,115,325	12,834,066,453	153,536,761,656

Table 3C Card expenditure statistics (not seasonally adjusted)

Number of debit card transactions

Detailed sector breakdown - retail sectors

	March 2011	April 2011	May 2011	June 2011	July 2011	August 2011	September 2011	October 2011	November 2011	December 2011	January 2012	February 2012	March 2012	Total (latest 12 months)
Supermarkets	194,320,685	187,449,889	206,168,466	193,946,842	193,350,463	203,213,352	194,606,487	209,656,937	206,630,990	215,657,587	203,024,072	203,051,087	213,890,457	2,430,646,629
Bakers & dairies	358,426	429,364	503,136	1,048,045	1,070,737	1,162,627	1,205,904	1,076,770	1,102,215	1,201,993	987,358	1,121,899	1,562,247	12,472,295
Sweet stores	598,404	885,289	778,878	681,695	609,165	660,567	620,623	707,461	870,379	1,720,749	554,855	740,781	588,906	9,419,348
Miscellaneous foodstores	11,394,926	12,208,797	12,979,270	12,895,685	12,659,457	13,886,459	12,829,107	13,810,623	13,284,825	13,716,602	12,817,801	14,103,550	15,109,270	160,301,446
Off-licences	2,984,179	3,155,912	3,227,723	3,057,995	3,197,815	3,171,017	3,011,529	3,352,079	3,065,548	3,319,026	2,846,692	3,063,222	3,330,645	37,799,203
Food & drink	209,656,620	204,129,251	223,657,473	211,630,262	210,887,637	222,094,022	212,273,650	228,603,870	224,953,957	235,615,957	220,230,778	222,080,539	234,481,525	2,650,638,921
Department stores	12,049,999	12,310,307	13,598,527	13,414,198	13,791,949	13,492,732	12,060,330	13,445,385	15,722,665	25,124,521	13,758,614	11,578,425	11,860,978	170,158,631
Discount stores	5,892,328	6,448,517	6,556,818	6,510,081	6,861,193	7,094,140	6,790,246	7,651,320	8,614,397	11,882,417	6,755,111	6,944,007	6,464,050	88,572,297
Catalogues	2,901,411	2,457,453	2,809,928	2,608,431	2,537,738	1,890,580	2,786,566	4,018,098	5,101,856	5,390,331	4,276,461	3,692,274	3,780,501	41,350,217
Miscellaneous mixed	9,207,354	9,855,792	11,600,041	10,769,280	10,866,698	11,873,156	10,778,773	12,028,908	12,581,271	15,337,793	11,190,223	10,658,438	13,588,090	141,128,463
Mixed business	30,051,092	31,072,069	34,565,314	33,301,990	34,057,578	34,350,608	32,415,915	37,143,711	42,020,189	57,735,062	35,980,409	32,873,144	35,693,619	441,209,608
Men's clothing	647,574	709,749	750,078	823,483	897,041	922,918	721,886	760,908	790,813	1,411,209	742,900	626,330	498,129	9,655,444
Women's clothing	4,532,849	5,961,593	6,205,450	6,592,362	7,050,739	6,493,199	5,745,860	6,452,476	6,295,639	9,513,806	5,835,140	5,122,637	5,417,529	76,686,430
Family clothing	19,682,242	21,799,006	23,284,527	22,268,287	24,868,341	23,467,687	21,268,348	24,337,187	23,962,287	36,281,434	21,989,763	20,491,670	21,013,989	285,032,526
Miscellaneous clothing	1,673,066	2,739,131	3,090,225	2,944,155	2,623,486	2,789,274	2,689,812	3,189,875	2,789,959	3,759,807	2,309,212	2,264,240	2,382,924	33,571,900
Shoe shops	2,150,107	3,075,488	3,048,577	3,293,298	3,633,276	3,860,764	3,321,706	3,048,350	2,878,160	4,132,312	3,086,808	2,437,400	1,691,310	37,316,449
Clothing	28,685,838	34,284,967	36,378,657	35,921,585	39,072,883	37,533,842	33,558,612	37,786,796	36,716,858	55,098,568	33,963,823	30,942,277	31,003,881	442,262,749
Furniture stores	2,763,984	2,574,584	2,836,009	2,770,976	2,888,658	3,114,743	2,906,955	3,231,822	3,403,790	4,130,109	3,517,342	3,001,741	5,278,890	39,655,619
Household appliance stores	5,218,124	5,025,854	5,254,370	4,942,473	5,262,033	5,204,685	5,262,025	5,592,201	5,614,051	6,783,122	5,050,822	5,219,997	6,361,679	65,573,312
Electronic stores	2,062,873	1,849,265	2,122,074	1,989,003	2,034,433	2,278,951	2,234,433	2,352,958	2,587,752	3,872,086	2,665,886	2,236,714	2,054,364	28,277,919
DIY stores	15,671,558	18,127,781	17,470,406	15,655,851	15,487,840	14,876,061	14,876,061	16,117,298	15,609,043	15,771,776	13,558,200	13,492,007	15,947,657	188,416,349
Floor covering stores	283,979	243,831	282,333	263,126	269,265	308,711	283,176	308,535	335,309	247,499	276,864	274,472	458,941	3,552,062
Garden centres	3,112,873	5,252,209	5,085,557	3,680,116	3,109,786	2,959,271	2,550,970	2,951,475	2,934,209	3,960,756	1,952,666	2,128,005	3,311,751	39,876,891
Miscellaneous household	1,007,087	1,017,296	1,097,625	1,102,602	1,258,803	1,474,410	1,349,036	1,412,402	1,348,438	1,285,298	1,396,066	1,213,140	211,560	14,166,676
Household	30,120,478	34,090,820	34,148,374	30,404,147	30,310,818	31,643,200	29,462,656	31,966,691	31,832,592	36,050,766	28,417,846	27,566,076	33,624,842	379,518,828
Books, newspapers & magazines	5,812,023	5,543,630	6,168,609	5,998,082	5,785,014	6,396,673	6,336,859	6,765,063	6,952,395	9,848,586	5,937,345	5,978,151	5,845,074	77,555,481
Record shops	1,699,932	1,431,577	1,591,932	1,548,679	1,319,986	1,429,374	1,421,294	1,704,374	2,368,300	1,502,675	1,410,728	1,251,769	1,410,478	22,151,769
Music shops	6,325,120	5,882,505	7,433,839	6,305,824	5,858,116	6,537,170	6,335,276	6,913,184	6,819,872	7,591,180	8,139,152	7,279,913	7,403,659	82,499,690
Hobbies, toys & games	1,791,518	1,523,500	1,519,403	1,396,486	1,342,305	1,531,729	1,549,282	2,055,287	2,660,797	4,068,169	1,530,977	1,328,234	1,366,183	22,272,552
Photographic	424,585	440,325	509,097	552,924	528,135	576,211	518,856	591,812	808,395	494,921	431,417	494,921	391,418	6,415,743
Handicraft	174,166	150,650	165,964	162,737	159,921	181,421	185,070	205,320	218,732	188,255	182,203	192,752	170,870	2,163,895
Sports shops	6,428,285	7,252,073	7,529,344	7,421,987	8,006,178	8,578,644	7,272,226	7,193,583	6,814,693	9,649,384	6,687,185	6,155,782	7,466,368	90,027,447
Jewellers	1,343,650	1,313,225	1,390,343	1,360,778	1,316,437	1,316,858	1,260,602	1,598,285	1,391,334	1,247,007	1,290,050	1,192,999	1,282,999	17,767,856
Computer software	737,914	663,940	766,455	707,884	666,240	737,396	732,640	821,094	840,178	1,041,479	842,410	737,878	760,066	9,317,660
Medical goods	31,538	27,609	30,415	32,322	31,809	32,030	32,105	31,770	33,896	29,945	30,065	29,803	30,840	372,609
Chemists	17,228,444	14,879,466	17,392,182	16,728,077	15,649,130	17,340,758	16,062,737	16,964,777	17,288,361	22,877,898	16,260,374	17,096,720	17,304,273	205,844,746
Optical goods	936,320	846,246	934,380	908,115	888,350	949,495	888,405	901,193	870,557	706,315	889,885	933,552	844,418	10,560,911
Cosmetic stores	1,092,748	1,150,611	1,178,503	1,205,946	1,165,708	1,310,497	1,176,217	1,328,405	1,602,561	3,046,126	1,112,622	1,166,064	836,893	16,280,153
Tobaccoconists	31,735	32,188	39,719	35,666	37,765	37,992	43,237	42,813	46,331	59,520	49,432	64,373	192,390	673,536
Florists	995,280	1,153,601	763,440	768,001	752,525	724,476	731,597	713,555	718,024	1,137,016	651,517	1,093,995	1,442,844	10,650,591
Artists' supplies	597,783	561,552	642,513	596,463	584,693	668,517	609,825	712,914	852,795	895,074	634,302	662,758	1,145,267	8,566,673
Antiques, art & stamps/coins	232,773	248,659	246,092	260,694	247,525	260,994	202,290	277,977	247,525	356,312	231,858	247,385	596,295	3,537,646
Pawn shops	17,164	16,225	17,437	17,850	19,010	18,825	19,664	21,070	22,850	33,120	24,015	24,429	33,637	268,132
Gift shops	4,512,883	4,412,172	4,222,421	4,858,258	4,400,905	4,869,690	4,374,145	5,001,287	6,017,111	10,619,266	4,271,294	4,992,444	4,807,680	62,846,673
Secondhand shops	40,807	39,246	47,727	50,353	51,365	48,928	54,033	58,824	51,365	49,180	51,570	200,921	200,921	769,282
Luggage & leather goods	164,198	171,424	181,489	193,436	208,195	212,628	168,142	159,973	179,792	277,384	150,199	123,182	789,874	2,815,718
Pet shops	2,352,920	2,281,787	2,502,494	2,362,041	2,512,656	2,582,888	2,411,446	2,630,725	2,472,488	2,829,921	2,533,870	2,469,725	2,490,812	30,080,853
Religious goods	1,709	1,703	1,933	1,933	2,065	3,640	1,809	2,052	2,011	1,979	1,552	1,979	3,660	26,694
Direct sales	6,671,536	5,762,461	6,110,226	6,381,371	6,104,469	5,751,403	5,643,218	5,154,548	5,387,244	5,417,050	5,441,736	5,322,679	4,803,055	67,279,460
Miscellaneous & speciality shops	2,647,300	2,656,893	2,894,765	2,860,123	2,810,517	4,078,528	2,925,930	3,144,393	3,572,139	3,924,080	3,028,516	2,985,802	2,288,693	37,170,040
Other retail	62,292,331	58,418,603	64,285,685	62,698,795	60,459,751	66,254,462	60,986,799	64,579,800	68,282,143	94,083,050	61,924,292	62,033,755	63,908,667	787,915,810
Automotive Fuels	62,166,247	59,178,346	64,487,985	60,907,490	61,542,091	63,399,783	61,188,388	64,084,261	61,613,317	60,644,339	60,510,822	61,051,531	68,538,909	747,147,252
Total retail sales	422,972,606	421,174,056	457,523,488	434,864,269	436,330,758	455,275,917	429,886,020	464,165,119						

Table 3C Card expenditure statistics (not seasonally adjusted)

Number of debit card transactions

Detailed sector breakdown - services sectors

	March 2011	April 2011	May 2011	June 2011	July 2011	August 2011	September 2011	October 2011	November 2011	December 2011	January 2012	February 2012	March 2012	Total (latest 12 months)
Auto rental	466,466	456,808	475,670	540,303	563,703	566,479	512,470	466,505	443,821	412,103	409,825	454,355	987,596	6,289,638
Auto parts & accessories	1,605,849	1,429,445	1,484,605	1,472,614	1,470,589	1,515,847	1,414,478	1,454,191	1,389,411	1,293,390	1,399,924	1,537,564	1,512,867	17,374,925
Auto services	2,803,019	2,609,678	2,973,036	2,986,326	3,038,891	3,055,897	3,046,765	3,144,797	3,136,646	3,309,819	2,946,435	3,299,844	3,201,355	36,749,489
Auto repair shops	1,692,024	1,433,413	1,507,297	1,524,592	1,501,916	1,499,867	1,548,572	1,514,925	1,447,503	1,260,649	1,439,564	1,530,684	1,830,880	18,039,862
Service stations	0	0	0	0	0	0	0	0	0	0	0	0	0	0
Vehicle sales	1,134,628	1,048,339	1,109,925	1,345,656	1,078,403	1,108,746	1,064,593	993,010	904,463	761,870	929,286	995,068	4,490,320	15,829,679
Vehicle Sales & Services	7,701,986	6,977,683	7,560,533	7,869,491	7,653,502	7,746,836	7,586,878	7,573,428	7,321,844	7,037,831	7,125,034	7,817,515	12,023,018	94,283,593
Restaurants	37,795,507	37,929,138	41,446,796	38,474,836	39,847,400	42,240,590	39,335,107	44,714,589	42,076,156	43,718,485	41,351,836	43,677,038	44,344,828	499,156,799
Public houses	6,644,785	7,400,762	8,019,104	6,950,060	7,189,210	8,245,765	7,106,612	8,166,655	7,058,999	7,533,326	7,341,022	7,683,360	10,933,579	93,628,454
Catering services	806,293	736,912	804,446	818,886	819,177	818,859	846,867	865,625	915,126	860,929	824,190	906,717	742,755	9,960,489
Video stores	710,254	788,834	893,259	821,294	681,888	602,175	537,864	618,453	582,993	639,033	556,294	555,994	576,784	7,854,865
Cinema, theatre & dance	3,389,312	3,064,996	4,598,484	4,029,977	4,996,093	5,641,718	3,814,774	4,325,228	4,425,463	4,097,266	4,147,427	4,792,067	3,627,727	51,561,220
Concerts & entertainers	52,859	55,807	58,592	61,438	62,933	80,432	57,937	71,459	70,373	87,743	65,899	79,531	144,604	896,748
Tourist attractions	453,531	864,456	780,468	728,562	848,946	1,347,571	692,031	784,826	397,059	371,415	346,005	490,785	371,465	8,023,589
Amusement parks	55,183	121,039	83,774	88,512	106,408	199,200	83,506	106,052	52,162	52,940	47,916	79,467	328,454	1,349,430
Aquariums	30,844	41,118	41,045	35,100	38,537	51,962	32,641	34,921	24,968	23,308	31,382	37,801	138,154	530,937
Sports & games establishments	2,691,086	2,345,946	2,248,918	2,594,527	2,601,934	2,940,777	2,458,583	2,725,455	2,337,966	2,636,829	2,750,773	2,636,829	3,200,639	31,225,928
Professional sports clubs	154,082	169,669	165,122	158,794	175,553	212,103	175,883	180,077	182,815	247,497	197,158	179,112	162,545	2,206,328
Gambling	17,078,764	15,162,805	17,098,856	15,581,754	16,376,701	16,703,096	16,141,662	16,868,670	16,078,861	17,095,147	18,812,761	18,713,360	19,032,084	203,665,757
Personal services	282,139	422,428	471,823	431,122	442,353	460,037	421,549	424,912	399,497	433,025	443,198	540,285	540,285	5,316,666
Miscellaneous entertainment	519,299	774,454	708,526	765,993	842,575	1,130,338	730,395	822,152	547,819	499,504	617,510	681,616	410,750	8,531,632
Entertainment	70,663,938	69,878,364	77,419,213	71,540,855	75,029,708	80,674,623	72,435,411	80,709,074	75,150,257	78,036,611	77,523,198	80,956,875	84,554,653	923,908,842
Hotels	3,186,175	3,594,180	3,760,578	3,759,034	4,095,454	4,295,432	3,743,796	3,924,441	3,405,624	3,278,484	3,390,588	3,807,787	3,978,434	45,033,832
Airlines	1,264,151	1,100,963	1,217,357	1,251,856	1,188,236	1,226,157	1,208,125	1,108,633	1,047,370	858,416	1,445,335	1,457,533	1,366,323	14,476,304
Airport terminals	31,827	37,404	40,401	44,841	46,298	54,570	42,721	33,880	28,968	26,639	30,621	38,965	37,343	462,651
Railways	13,100,430	13,286,155	15,114,676	14,956,740	14,590,660	14,797,481	15,019,323	16,625,228	16,278,805	14,936,089	15,284,845	15,201,818	16,296,878	182,388,698
Buses	934,165	910,298	1,001,295	955,779	970,526	1,007,779	1,044,311	1,133,459	1,039,522	979,344	1,051,267	1,148,258	1,139,509	12,381,347
Sea travel	127,173	147,283	148,320	155,554	148,320	203,772	149,377	138,423	119,185	111,579	114,956	118,345	133,658	1,716,022
Travel agents	1,754,339	1,573,779	1,705,144	1,670,684	1,730,236	1,616,481	1,447,813	1,332,151	1,082,153	879,550	1,854,212	1,639,271	1,788,717	18,320,191
Timeshares	299	194	120	408	5,997	5,290	4,911	4,291	8,167	11,450	35,244	32,057	36,013	144,142
Camping grounds	414,942	644,537	638,846	619,582	736,385	903,009	475,761	393,899	151,915	107,713	247,496	303,869	427,320	5,650,332
Miscellaneous travel	784,028	803,592	988,985	908,805	939,871	968,036	861,534	852,989	790,452	754,056	725,325	1,090,570	859,147	10,543,362
Travel	18,411,354	18,504,205	20,855,144	20,564,249	20,363,779	20,782,575	20,253,876	21,622,953	20,546,537	18,664,836	20,789,301	21,030,686	22,084,908	246,083,049
Telegraph services / Wire transfer money order	36,301	38,663	38,729	41,666	42,366	47,078	47,574	50,409	51,513	55,565	48,385	48,487	60,837	571,272
Insurance services	3,192,471	2,950,093	3,331,224	3,484,033	3,497,069	3,632,975	3,558,960	3,318,625	2,850,431	2,431,796	2,985,528	2,894,379	2,764,776	37,699,889
Fis - cash disbursements (auto & manual)	103,706	4,923	6,098	2,597	2,821	2,599	2,301	67,299	95,986	102,436	91,172	109,371	1,168,096	1,655,699
Fis - merchandise & services	7,527,450	7,276,689	7,725,940	7,259,592	7,546,172	7,912,731	7,659,913	8,053,157	8,152,869	8,311,063	8,453,858	8,074,481	7,173,457	93,599,922
Non-Fis - foreign currency, travellers' cheques	300,509	351,037	337,490	392,151	490,582	463,764	458,032	397,208	351,549	413,470	359,644	394,287	2,251,283	6,660,497
Security brokers and dealers	123,098	114,068	77,635	75,883	71,694	152,568	83,302	70,613	87,167	50,556	73,695	82,451	109,490	1,049,122
Tax preparation services	349	524	443	631	645	635	584	479	531	461	744	965	2,097	8,739
Tax payments	125,023	98,901	92,178	85,327	224,042	116,694	92,778	102,407	92,593	114,806	566,586	381,025	140,785	2,108,122
Fines, bail and bond payments	310,935	364,563	438,168	446,382	468,060	445,215	441,580	466,346	456,950	438,170	434,342	438,275	476,952	5,315,003
Miscellaneous financial	137,446	151,544	151,320	155,980	154,119	158,189	150,180	146,104	141,439	111,212	114,944	124,234	130,409	1,689,674
Financial	11,857,288	11,351,005	12,199,225	11,944,242	12,497,570	12,932,446	12,495,204	12,672,647	12,281,028	12,029,535	13,128,898	12,547,955	14,278,182	150,357,939

Table 3C Card expenditure statistics (not seasonally adjusted)

Number of debit card transactions

Detailed sector breakdown - services sectors (continued)

	March 2011	April 2011	May 2011	June 2011	July 2011	August 2011	September 2011	October 2011	November 2011	December 2011	January 2012	February 2012	March 2012	Total (latest 12 months)
Telecoms	10,102,388	10,873,978	11,671,333	11,421,613	11,509,620	12,033,266	11,469,253	11,848,227	11,544,813	12,255,434	11,449,032	10,929,238	11,277,057	138,282,864
Utilities	2,121,979	2,038,463	2,200,117	2,242,212	2,181,857	2,268,532	2,157,472	2,260,425	2,241,665	2,074,343	2,305,803	2,217,962	2,329,636	26,518,487
Contractors (residential & commercial)	570,337	421,954	461,867	491,159	456,084	485,325	492,438	512,788	529,471	437,308	450,368	487,939	498,769	5,725,470
Gardening services	86,655	138,956	146,490	113,238	97,272	99,541	85,518	96,351	95,566	123,242	74,238	77,243	127,125	1,274,780
Veterinary services	1,504,743	1,378,075	1,517,930	1,340,789	1,386,622	1,448,723	1,381,161	1,399,508	1,352,557	1,281,102	1,307,508	1,290,121	1,377,710	16,461,806
Photocopying & printing	425,226	342,431	421,546	410,386	373,104	400,836	420,861	438,225	564,180	521,649	431,540	408,307	432,633	5,165,698
Photographic studios	281,698	1,117,760	1,267,045	311,782	352,783	294,810	287,241	338,377	362,664	337,148	216,270	222,512	286,417	5,394,809
Beauty & barber shops	4,355,681	3,558,667	3,718,454	4,821,747	4,773,716	4,743,720	4,621,650	4,621,923	4,513,882	5,879,644	4,189,345	4,455,342	3,990,071	53,888,161
Employment agencies	23,068	9,982	11,083	11,585	10,978	11,110	10,209	10,170	9,422	7,920	9,428	9,322	10,418	121,627
Counselling services	47,897	63,115	76,840	73,329	71,543	82,107	75,440	76,258	75,450	68,253	75,535	81,586	11,046	830,502
Legal services	132,509	108,526	122,629	129,584	126,370	134,882	135,097	130,416	137,217	113,243	138,372	144,243	189,538	1,610,117
Laundry & cleaning	441,318	415,525	489,527	496,290	476,019	459,001	482,683	487,427	470,793	430,115	417,499	413,543	439,823	5,478,245
Funeral services	21,085	16,977	17,562	19,885	19,067	19,407	19,648	20,203	21,597	20,405	22,780	24,158	966,851	1,188,540
Medical services	2,635,630	2,125,970	2,444,373	2,502,485	2,325,387	2,424,998	2,563,336	2,455,856	2,645,050	2,154,876	2,511,110	2,659,141	3,062,374	29,874,956
Moving & courier services	241,027	221,648	257,211	272,431	262,084	266,949	273,604	268,579	303,496	299,308	271,807	278,206	280,605	3,255,928
Repair shops (not auto)	106,208	82,563	94,695	97,275	91,862	102,560	101,319	102,694	106,709	111,095	99,068	108,408	107,940	1,206,188
Accounting services	201,483	198,187	242,547	239,905	228,997	254,582	251,134	248,854	255,728	228,210	276,578	260,393	47,218	2,732,333
Advertising, consultancy & PR	238,733	202,589	242,617	234,430	221,383	230,869	220,917	217,652	223,542	164,982	223,903	308,616	215,467	2,706,967
Computer programming	1,109,996	855,572	976,926	893,809	883,545	911,189	978,926	1,093,106	1,100,907	1,057,950	1,148,183	1,219,684	1,212,103	12,331,900
Farming services	151,226	156,566	167,849	152,293	148,459	156,566	148,816	153,379	146,511	151,708	143,906	155,969	154,955	1,836,977
Miscellaneous professional services	2,800,474	2,458,076	2,835,232	2,841,141	2,775,662	2,841,453	2,899,654	2,974,238	3,078,706	2,960,829	3,094,505	3,005,610	2,737,126	34,502,232
Engineering services	68,173	61,308	64,437	68,351	65,988	65,955	66,187	64,582	65,622	52,509	60,288	69,185	65,064	769,476
Marina services	59,928	93,724	91,737	93,040	100,109	120,190	72,931	63,294	48,011	49,303	45,521	50,820	75,700	904,380
Wrecking & salvage yards	8,343	8,350	9,156	9,164	9,103	9,430	9,268	9,256	9,238	7,236	9,104	9,376	8,889	107,570
Pest control	2,557	2,794	3,982	4,130	5,148	5,209	4,972	4,261	4,009	2,852	3,074	3,003	13,839	57,273
Educational establishments	1,533,453	970,164	1,499,522	1,118,026	883,672	816,321	1,612,089	1,947,971	1,826,468	1,217,193	1,819,566	1,712,613	1,792,985	17,216,590
Child care services	98,333	78,201	98,948	94,281	94,703	112,874	99,701	113,311	103,838	97,836	125,068	129,622	178,512	1,326,895
Social, political & religious organisations	2,671,924	2,000,009	2,243,125	2,099,523	2,139,963	2,193,693	2,127,303	2,043,483	2,089,984	1,796,941	1,601,616	1,681,244	2,413,991	24,430,875
Government services	5,386,491	5,102,268	5,920,436	5,670,626	5,576,825	5,859,097	5,687,201	5,577,299	5,495,085	4,874,806	5,701,231	5,711,430	5,078,953	66,255,257
Miscellaneous services	5,652,165	4,984,283	5,568,318	5,525,106	5,164,371	5,529,938	5,516,619	5,700,391	6,176,264	7,201,286	5,559,302	5,701,509	7,144,150	69,771,537
Commercial equipment	1,516,575	1,254,951	1,487,958	1,893,367	1,320,266	1,394,612	1,684,582	1,615,550	1,631,418	1,584,217	1,610,825	1,480,288	1,771,247	18,729,281
Other services	44,597,303	41,341,632	46,371,492	45,692,982	44,132,562	45,777,745	45,957,230	46,894,054	47,229,863	47,562,943	45,392,373	45,306,633	48,298,212	549,957,721
Total services	156,418,044	151,647,069	168,156,185	161,370,853	163,792,575	172,209,659	162,472,395	173,396,597	165,935,153	166,610,240	167,349,392	171,467,451	185,217,407	2,009,624,976
TOTAL	579,390,650	572,821,125	625,679,673	596,235,122	600,123,333	627,485,576	592,358,415	637,561,716	631,354,209	705,837,990	608,377,362	608,014,773	652,468,850	7,458,318,144

Table 3D Card expenditure statistics (not seasonally adjusted)

Value of debit card transactions

Detailed sector breakdown - retail sectors

£	March 2011	April 2011	May 2011	June 2011	July 2011	August 2011	September 2011	October 2011	November 2011	December 2011	January 2012	February 2012	March 2012	Total (latest 12 months)
Supermarkets	5,199,498,403	5,240,648,270	5,680,595,731	5,278,566,880	5,326,180,319	5,577,282,769	5,266,241,839	5,713,582,369	5,644,573,345	6,720,328,438	5,477,862,095	5,318,530,845	5,639,347,501	66,883,740,401
Bakers & dairies	5,414,956	6,138,423	6,545,725	20,254,738	18,833,317	20,577,252	20,479,881	13,379,676	14,487,481	16,710,658	11,905,724	12,822,984	17,482,579	179,618,438
Sweet stores	9,101,658	13,877,323	11,035,894	11,208,759	10,307,206	10,939,053	10,422,524	11,839,730	15,585,135	31,005,109	8,923,219	11,131,816	11,771,573	158,047,341
Miscellaneous foodstores	205,972,837	224,674,974	234,437,101	241,780,882	238,121,528	263,469,361	242,750,265	257,174,735	251,787,133	298,778,334	243,519,637	251,853,106	307,771,009	3,056,118,065
Off-licences	63,359,412	69,552,476	70,994,120	71,681,511	74,951,092	72,519,869	67,831,309	72,859,767	70,838,852	96,180,325	61,216,735	65,304,667	66,809,429	860,840,152
Food & drink	5,483,347,266	5,554,891,466	6,003,608,571	5,623,492,770	5,668,393,462	5,944,788,304	5,607,725,818	6,068,836,277	5,997,271,946	7,163,002,864	5,803,527,410	5,659,643,418	6,043,182,091	71,138,364,397
Department stores	416,263,698	428,006,601	474,293,303	476,559,123	473,086,078	458,178,010	434,257,607	493,212,667	576,072,140	946,815,853	464,451,158	395,695,433	416,242,283	6,036,870,256
Discount stores	232,304,753	273,640,783	279,962,620	273,180,056	279,619,617	299,523,797	284,448,894	328,259,498	371,383,048	493,664,621	265,353,369	261,334,542	189,400,086	3,599,770,931
Catalogues	124,108,606	102,445,361	119,974,651	109,442,889	106,682,679	108,373,994	115,155,024	145,472,388	165,240,106	162,089,327	149,133,204	139,308,617	143,830,314	1,567,148,554
Miscellaneous mixed	239,810,455	268,157,153	299,041,475	318,657,332	299,041,475	303,467,330	332,560,841	309,436,396	347,389,611	378,716,014	474,193,918	297,041,487	288,418,482	4,464,663,453
Mixed business	1,012,487,512	1,072,249,898	1,192,887,906	1,158,223,543	1,162,855,704	1,198,636,642	1,143,297,921	1,314,334,164	1,491,411,308	2,076,783,719	1,175,979,218	1,084,757,074	1,194,136,136	15,265,533,233
Men's clothing	41,024,667	44,537,980	48,822,428	52,297,309	53,846,803	53,519,757	46,008,766	50,410,996	53,047,093	86,210,500	47,371,998	39,503,049	33,956,039	609,532,716
Women's clothing	168,247,536	204,208,835	216,722,332	231,310,172	229,237,530	219,148,453	214,505,978	239,770,516	236,458,677	326,641,723	199,506,511	184,330,184	195,064,065	2,696,904,978
Family clothing	626,989,420	704,270,137	743,641,162	710,765,247	757,690,162	753,970,372	732,614,293	839,906,234	846,366,542	1,253,729,053	669,526,913	664,518,426	685,533,186	9,362,531,727
Miscellaneous clothing	46,326,372	66,081,354	74,105,702	78,803,986	67,503,709	75,532,542	77,340,393	88,856,158	81,417,093	100,085,555	61,152,201	61,763,729	101,038,442	933,680,864
Shoe shops	84,212,831	112,647,411	112,072,888	115,884,290	120,387,410	140,899,276	125,471,768	134,243,970	128,379,218	176,979,183	114,477,451	94,908,133	77,188,341	1,453,539,339
Clothing	966,800,826	1,131,745,717	1,195,364,512	1,189,061,004	1,228,665,614	1,243,070,400	1,195,941,198	1,353,187,874	1,345,668,623	1,943,646,014	1,092,035,074	1,045,023,521	1,092,780,073	15,056,189,624
Furniture stores	285,102,333	260,669,710	289,986,733	278,031,191	290,705,243	309,507,743	302,688,020	355,151,749	343,591,754	319,722,250	346,204,738	300,189,914	348,345,053	3,744,794,098
Household appliance stores	198,482,522	182,058,286	187,370,531	179,024,478	186,240,968	187,581,041	190,070,770	205,308,760	217,939,527	242,774,693	200,999,601	200,406,879	269,152,118	2,448,927,652
Electronic stores	210,185,239	194,602,056	226,859,768	210,198,550	218,555,760	255,730,497	246,584,631	261,192,005	299,595,931	436,312,491	290,433,011	231,583,129	220,858,250	3,092,506,079
DIY stores	683,655,306	796,778,878	773,425,709	726,227,525	728,218,552	758,066,477	714,721,358	758,387,724	760,545,121	649,688,432	645,534,906	664,518,426	756,958,783	8,737,722,246
Floor covering stores	63,476,725	56,963,782	64,347,349	62,506,590	63,420,841	71,637,037	68,028,676	74,483,877	81,856,788	59,647,535	64,775,385	63,135,350	91,702,503	822,505,713
Garden centres	105,159,787	187,101,626	175,332,150	124,725,368	104,404,762	97,137,370	83,487,455	91,726,266	92,230,091	124,792,414	58,569,548	64,891,111	114,052,621	1,318,450,552
Miscellaneous household	65,062,022	67,242,293	73,561,026	76,331,495	84,053,840	100,557,990	94,726,573	100,852,562	96,751,910	84,190,342	96,195,765	82,882,035	20,093,649	977,439,480
Household	1,611,123,934	1,745,417,631	1,790,883,266	1,657,045,197	1,675,599,966	1,780,218,155	1,700,307,483	1,847,102,963	1,892,511,122	1,936,607,256	1,706,866,480	1,588,623,324	1,821,162,977	21,142,345,820
Books, newspapers & magazines	96,340,040	91,773,608	100,615,484	98,760,037	97,278,667	107,545,530	125,433,823	124,288,196	120,873,878	178,673,504	100,949,118	96,993,507	102,293,011	1,345,478,363
Record shops	32,564,906	27,729,912	31,032,945	28,849,308	25,171,649	28,055,602	29,927,173	35,670,294	50,803,871	119,196,839	28,274,635	36,239,426	35,239,285	464,309,939
Music shops	46,609,090	42,343,541	50,326,494	47,177,359	47,899,150	52,409,263	51,256,167	56,545,753	57,248,965	68,935,949	63,139,473	57,485,993	63,793,189	658,561,296
Hobbies, toys & games	66,387,237	56,499,302	54,610,875	51,250,649	45,918,313	51,016,450	56,197,673	76,103,708	107,240,863	168,105,643	51,716,819	46,590,322	55,622,583	820,873,038
Photographic	23,622,108	26,281,282	30,905,133	31,148,706	31,575,170	28,632,981	31,148,706	28,632,981	28,139,775	30,717,066	27,267,695	24,713,045	24,053,158	353,834,659
Handicraft	8,774,301	7,943,068	8,855,057	8,883,855	8,898,138	9,499,117	9,721,805	10,680,474	11,365,496	9,260,549	9,381,861	9,447,417	8,991,874	112,928,711
Sports shops	255,085,341	293,924,483	308,596,381	305,121,032	326,697,619	351,277,643	293,521,048	296,073,876	294,140,769	409,380,785	263,624,845	244,885,067	294,516,382	3,681,759,930
Jewellers	115,322,683	115,289,738	126,795,983	127,404,785	127,513,070	127,978,648	117,474,000	119,916,521	141,953,672	292,261,121	117,522,197	108,524,058	108,524,058	1,633,203,640
Computer software	106,051,341	91,082,257	109,524,617	96,856,823	91,390,619	100,370,381	103,817,982	130,263,926	152,291,282	171,707,139	129,801,233	99,296,496	113,040,370	1,389,443,125
Medical goods	6,414,997	5,305,502	5,986,143	6,590,697	6,310,806	6,765,505	6,561,842	6,609,079	7,166,491	6,049,328	5,817,621	6,500,485	7,008,561	76,672,600
Chemists	252,197,296	224,916,001	262,380,934	250,406,465	237,521,488	259,676,618	233,012,768	262,596,406	291,600,931	461,932,783	231,993,478	247,211,112	253,796,867	3,217,045,851
Optical goods	90,417,872	80,827,824	89,029,348	86,425,116	85,023,865	90,199,057	83,672,393	84,834,893	82,780,837	63,243,549	85,031,699	89,322,879	82,165,032	1,002,556,492
Cosmetic stores	43,161,319	43,504,634	39,925,466	37,678,848	36,830,865	45,488,933	37,422,838	42,464,559	54,620,961	108,634,907	33,525,582	36,812,240	33,980,693	550,890,526
Tobaccoists	883,035	993,976	1,201,992	1,147,611	1,205,661	1,236,723	1,260,438	1,366,889	1,432,416	1,946,378	1,432,416	1,384,334	1,172,915	6,186,621
Florists	37,622,616	42,373,998	31,583,792	31,631,571	30,870,646	30,062,488	30,086,094	28,182,767	28,797,008	42,659,463	26,038,228	42,481,014	66,092,772	430,859,841
Artists' supplies	18,288,088	16,532,839	19,037,235	24,396,194	18,196,651	20,538,764	19,125,372	21,576,421	25,721,643	25,879,108	18,534,984	19,087,055	34,142,038	262,768,304
Antiques, art & stamps/coins	26,924,515	22,038,286	25,407,149	27,188,384	26,653,552	27,267,146	27,879,170	30,010,132	31,149,319	33,263,773	24,039,208	24,039,208	34,402,677	333,223,004
Pawn shops	1,956,789	2,137,840	2,105,132	2,088,941	2,584,998	2,409,442	2,393,393	2,982,385	2,755,659	3,716,181	3,050,313	3,205,179	4,394,383	33,823,846
Gift shops	84,596,044	86,242,189	85,631,936	93,599,131	93,171,720	100,964,539	91,585,317	106,965,893	129,927,920	199,578,326	79,836,013	86,849,038	87,869,836	1,242,221,858
Secondhand shops	2,816,532	2,498,159	3,622,968	2,751,124	3,470,367	3,229,590	3,448,020	3,761,913	3,246,709	4,240,175	2,583,453	3,656,935	12,693,809	49,203,132
Luggage & leather goods	8,914,224	9,547,277	9,900,273	11,520,790	11,833,250	10,755,393	9,983,604	10,338,872	11,381,920	19,435,507	10,706,379	8,487,797	25,328,817	149,219,879
Pet shops	65,045,100	64,028,241	70,263,168	67,207,068	70,514,806	74,334,051	68,842,013	73,878,776	69,303,770	79,231,102	70,700,613	69,247,245	69,237,761	846,788,614
Religious goods	53,345	54,564	100,406	82,083	1									

Table 3D Card expenditure statistics (not seasonally adjusted)

Value of debit card transactions

Detailed sector breakdown - services sectors

£	March 2011	April 2011	May 2011	June 2011	July 2011	August 2011	September 2011	October 2011	November 2011	December 2011	January 2012	February 2012	March 2012	Total (latest 12 months)
Auto rental	44,877,750	46,655,730	48,971,546	60,066,265	61,013,113	59,447,992	50,538,134	47,107,299	43,649,623	41,557,460	40,450,469	46,798,130	136,509,402	682,765,163
Auto parts & accessories	209,585,511	177,037,887	186,173,227	186,182,695	182,990,599	183,210,954	193,461,585	184,697,332	175,193,348	154,973,894	172,666,851	183,183,320	227,983,194	2,207,754,886
Auto services	64,589,333	58,544,514	67,520,745	68,376,060	68,561,049	71,117,938	68,164,705	64,435,592	63,842,981	58,253,804	63,147,800	64,870,641	91,823,690	808,659,419
Auto repair shops	689,036,148	538,309,371	548,584,636	554,516,958	548,539,252	501,120,008	624,369,664	544,442,129	503,233,481	423,958,671	503,773,585	502,430,256	670,805,464	6,464,083,475
Service stations	0	0	0	0	0	0	0	0	0	0	0	0	0	0
Vehicle sales	1,240,692,055	1,046,457,392	1,129,435,688	1,111,617,570	1,066,921,769	1,043,879,912	1,209,427,048	1,076,436,406	962,480,797	756,975,435	989,445,257	989,306,179	1,476,600,738	12,858,984,191
Vehicle Sales & Services	2,248,780,797	1,867,004,894	1,980,685,842	1,980,759,548	1,928,025,782	1,858,776,804	2,145,961,136	1,917,118,758	1,748,400,130	1,435,719,264	1,769,483,962	1,786,588,526	2,603,722,488	23,022,247,134
Restaurants	708,326,535	759,776,697	798,542,648	744,100,985	788,049,631	846,407,123	741,129,054	844,736,889	767,052,507	866,398,782	770,117,932	802,516,599	784,733,988	9,513,562,835
Public houses	162,421,785	182,940,777	197,828,647	175,223,184	179,961,369	211,043,573	175,353,416	196,646,519	172,663,046	196,599,804	177,327,126	182,547,449	269,140,477	2,317,275,387
Catering services	47,163,368	49,600,889	50,531,010	53,761,242	55,116,504	55,473,412	52,679,563	50,800,062	51,534,957	56,751,604	43,922,558	48,273,547	53,924,748	622,370,096
Video stores	8,737,145	9,155,103	10,304,532	9,278,008	8,545,602	7,478,776	7,309,499	9,488,238	9,373,949	10,724,682	7,261,060	6,918,681	7,948,266	103,786,396
Cinema, theatre & dance	131,049,656	117,827,991	239,908,528	133,945,383	170,497,989	140,937,022	116,290,080	150,509,439	154,615,484	148,466,297	125,707,083	148,250,110	142,228,009	1,789,183,415
Concerts & entertainers	1,713,791	1,700,913	2,065,842	2,013,271	1,963,026	2,411,299	1,820,310	2,235,005	2,350,636	2,474,515	1,974,715	2,290,151	5,441,275	28,740,958
Tourist attractions	15,815,060	28,863,440	24,536,288	25,776,255	30,332,876	44,549,665	23,810,123	27,606,095	14,604,799	12,902,012	11,820,611	15,496,705	13,842,937	274,141,806
Amusement parks	1,770,159	4,004,819	2,831,793	2,944,737	3,609,256	6,133,649	2,611,267	3,277,167	1,823,475	1,678,103	1,472,399	2,376,912	21,459,487	54,223,064
Aquariums	1,155,666	1,497,217	1,525,360	1,261,847	1,366,765	1,658,137	1,132,363	1,167,724	922,801	885,447	1,007,131	1,198,472	7,164,927	20,788,191
Sports & games establishments	102,197,568	96,344,569	111,944,960	102,982,328	99,192,413	95,147,385	87,184,546	89,075,320	81,106,214	85,056,694	93,908,441	90,924,668	144,980,611	1,177,848,091
Professional sports clubs	8,139,746	10,564,102	9,544,884	15,493,986	11,434,781	10,546,909	9,433,907	8,811,244	10,012,670	10,986,331	9,983,872	8,973,136	8,593,846	124,379,668
Gambling	422,271,293	353,342,319	391,930,411	386,870,105	395,269,174	478,305,654	424,781,642	423,466,030	398,673,390	381,929,065	420,339,635	352,749,262	349,318,144	4,756,974,831
Personal services	12,912,005	16,087,325	18,261,301	16,773,084	17,164,324	17,756,696	16,888,910	16,956,197	17,212,351	17,424,332	17,788,551	19,853,431	19,853,431	208,459,730
Miscellaneous entertainment	22,472,125	34,835,050	33,052,575	33,599,240	38,027,680	45,264,085	31,619,400	35,928,870	27,554,585	21,277,495	22,836,183	25,962,079	20,771,362	370,728,604
Entertainment	1,646,145,902	1,666,541,211	1,892,808,721	1,704,023,655	1,800,531,390	1,963,113,385	1,692,044,080	1,860,704,799	1,708,581,741	1,813,343,182	1,705,103,078	1,706,266,322	1,849,401,508	21,362,463,072
Hotels	278,310,360	312,292,579	345,959,956	362,027,056	392,695,435	410,598,279	352,100,881	354,487,662	287,957,505	264,860,704	312,215,094	322,828,964	428,748,089	4,146,772,204
Airlines	231,592,267	198,912,075	226,700,354	229,761,039	242,605,016	228,779,349	220,103,643	201,742,381	186,614,811	142,974,762	302,880,189	285,548,016	277,901,856	2,744,523,491
Airport terminals	2,939,168	3,495,997	3,583,197	3,963,043	4,259,276	4,503,146	3,511,772	3,009,820	2,452,527	2,504,813	2,660,015	2,952,576	3,149,061	40,045,243
Railways	308,958,312	300,204,392	354,927,541	361,607,637	348,085,936	356,777,908	361,610,720	395,946,624	390,307,263	346,914,966	398,226,348	373,382,475	395,906,291	4,383,898,101
Buses	26,900,010	28,058,352	30,341,461	30,248,528	31,058,967	33,059,928	35,911,859	32,802,682	28,226,472	26,180,227	31,126,426	31,189,711	32,223,460	370,428,073
Sea travel	15,697,378	16,841,189	17,508,367	18,544,752	21,334,633	22,150,258	19,531,910	22,014,996	16,685,025	14,141,736	19,587,501	26,813,954	26,919,036	242,073,357
Travel agents	914,800,583	896,760,944	1,076,516,253	1,044,599,058	1,025,300,244	852,149,974	719,555,248	673,811,882	592,988,615	500,951,923	953,280,548	872,398,496	1,016,966,454	10,225,279,639
Timeshares	24,752	22,050	14,014	55,024	686,458	637,867	603,633	529,397	1,092,678	1,974,011	6,207,167	5,929,154	9,196,842	26,948,295
Camping grounds	65,114,105	75,284,406	80,785,312	78,697,136	85,231,905	81,723,845	49,187,077	49,103,179	36,463,299	27,495,558	41,285,774	47,817,574	65,703,898	718,778,963
Miscellaneous travel	29,869,232	32,529,501	38,160,079	43,336,638	39,106,276	36,848,044	28,881,982	27,111,809	25,494,710	21,968,327	25,584,068	33,946,472	32,484,047	385,451,953
Travel	1,595,895,807	1,552,108,906	1,828,536,578	1,810,812,855	1,797,668,711	1,616,630,319	1,438,897,844	1,406,072,770	1,280,325,400	1,085,106,323	1,780,836,036	1,679,978,428	1,860,450,945	19,137,427,115
Telegraph services / Wire transfer money order	11,426,504	12,000,689	10,945,848	11,714,893	12,786,881	15,855,604	18,451,921	16,879,763	18,428,873	17,380,684	15,328,713	14,427,381	18,278,128	182,479,378
Insurance services	703,423,259	664,640,137	741,501,157	766,583,472	783,073,537	788,927,651	791,608,367	778,455,458	511,223,723	418,216,746	463,545,621	414,949,919	414,949,919	7,650,902,081
Fis - cash disbursements (auto & manual)	33,381,292	1,993,457	2,194,323	1,195,801	1,433,491	1,317,843	1,086,251	23,264,795	31,206,674	34,733,906	31,422,676	36,228,047	54,275,553	220,352,817
Fis - merchandise & services	2,405,393,999	2,450,985,432	2,431,173,563	2,371,888,056	2,468,954,030	2,756,893,000	2,447,716,203	2,481,391,161	2,661,140,039	2,602,640,595	2,734,977,562	2,605,279,411	2,303,716,685	30,316,755,377
Non-Fis - foreign currency, travellers' cheques	84,304,973	102,119,074	108,460,713	125,377,824	167,758,424	164,968,765	139,793,510	110,895,698	93,894,945	106,308,674	97,467,377	105,862,502	822,759,179	2,145,666,685
Security brokers and dealers	469,237,327	518,344,303	246,907,072	224,046,252	205,121,595	520,647,625	241,471,973	171,218,583	235,961,408	133,210,152	195,086,735	248,436,841	458,489,057	3,398,941,596
Tax preparation services	67,160	87,904	70,492	107,560	116,505	131,689	139,969	98,775	94,548	122,986	240,631	303,383	1,784,020	3,297,972
Tax payments	133,716,365	110,421,873	96,367,966	97,154,404	518,076,108	185,162,983	101,847,053	108,347,605	102,065,347	140,441,421	1,225,994,385	493,855,930	138,730,973	3,318,466,048
Fines, bail and bond payments	26,963,815	25,904,208	29,882,660	30,598,953	31,191,837	29,031,633	30,951,980	30,980,950	30,679,924	26,873,959	28,228,470	30,389,189	33,030,111	357,743,874
Miscellaneous financial	17,532,535	17,670,230	19,911,355	20,583,121	20,332,288	20,642,696	20,529,855	19,531,082	20,336,632	16,301,538	16,809,283	17,647,095	17,988,048	228,283,223
Financial	3,885,447,229	3,904,167,307	3,687,415,149	3,649,250,336	4,208,844,696	4,483,579,489	3,793,597,082	3,741,063,870	3,705,032,113	3,496,230,171	4,873,732,125	4,015,975,400	4,264,001,673	47,822,889,411

Table 3D Card expenditure statistics (not seasonally adjusted)

Value of debit card transactions

Detailed sector breakdown - services sectors (continued)

£	March 2011	April 2011	May 2011	June 2011	July 2011	August 2011	September 2011	October 2011	November 2011	December 2011	January 2012	February 2012	March 2012	Total (latest 12 months)
Telecoms	285,830,319	277,530,718	304,895,121	294,169,731	297,690,640	308,541,476	300,625,986	326,141,791	314,245,034	343,493,713	314,743,570	290,843,931	302,373,469	3,675,295,180
Utilities	331,093,089	330,359,672	340,153,233	331,322,209	324,807,413	306,444,417	310,834,050	329,565,740	331,109,254	374,136,622	378,041,051	367,975,968	398,380,211	4,123,129,840
Contractors (residential & commercial)	112,713,443	85,732,475	99,590,411	112,331,865	99,853,715	105,336,507	109,450,294	113,009,271	132,089,139	104,758,919	95,801,160	109,859,995	113,850,970	1,281,864,721
Gardening services	4,824,893	7,426,481	8,033,160	6,269,486	5,518,286	5,444,821	4,923,658	5,084,975	5,017,376	5,306,245	3,817,858	4,056,943	7,067,405	67,966,694
Veterinary services	84,264,991	76,771,022	84,842,958	74,908,660	76,343,579	79,253,046	76,079,604	76,538,765	74,417,260	68,549,352	72,651,564	71,909,936	77,113,027	909,378,773
Photocopying & printing	24,460,139	19,936,969	23,613,963	24,560,679	22,569,192	26,073,148	25,442,905	29,641,320	25,295,765	24,373,282	24,045,750	26,900,114	296,232,022	
Photographic studios	12,122,857	45,193,023	49,521,169	12,891,574	15,242,489	12,690,209	11,848,314	13,535,192	15,610,165	13,726,047	9,012,000	9,750,957	12,917,980	221,939,119
Beauty & barber shops	171,566,227	138,751,574	146,618,628	186,795,443	187,294,195	184,754,904	183,592,640	181,908,049	181,425,402	231,278,187	159,931,845	175,476,928	156,320,513	2,114,148,308
Employment agencies	1,075,553	787,191	940,452	907,127	989,329	946,897	1,048,850	963,363	1,009,059	817,341	870,055	908,138	1,299,746	11,487,548
Counselling services	3,682,450	5,829,433	6,907,694	5,831,747	5,501,857	6,131,479	5,610,605	5,883,149	5,810,397	5,217,660	5,591,902	6,532,049	1,627,283	66,475,255
Legal services	66,842,684	57,192,828	60,318,432	71,282,726	65,551,727	74,477,165	75,498,575	74,542,199	79,271,037	68,682,555	72,040,305	73,785,394	83,432,040	856,074,983
Laundry & cleaning	10,646,757	10,701,477	12,548,241	12,308,465	12,020,746	11,759,994	12,414,148	12,360,026	11,844,419	10,735,841	10,555,511	10,216,267	13,493,696	140,958,831
Funeral services	22,639,600	17,564,454	17,840,293	20,655,577	19,751,538	20,009,796	20,358,103	21,091,285	23,149,394	20,656,992	25,214,841	25,859,674	66,715,589	298,867,536
Medical services	213,476,902	173,343,846	197,996,232	205,222,594	193,506,591	194,003,619	206,294,749	200,099,628	215,198,089	171,803,950	197,047,697	215,585,298	245,174,592	2,415,276,885
Moving & courier services	22,564,718	20,994,504	24,113,628	26,380,598	27,457,605	28,750,789	28,439,088	27,051,817	28,049,662	25,727,898	23,917,150	23,841,749	25,962,539	310,687,027
Repair shops (not auto)	9,722,943	8,165,613	9,181,127	10,015,405	9,291,177	10,079,585	10,177,948	10,211,711	11,077,014	10,952,216	9,596,101	10,312,604	10,501,614	119,562,115
Accounting services	12,471,643	13,269,219	15,859,815	15,642,772	15,177,363	18,477,246	18,681,323	17,508,037	18,540,355	16,998,369	18,744,530	18,482,335	10,783,131	198,164,495
Advertising, consultancy & PR	15,288,304	13,427,816	15,562,183	14,644,910	15,701,057	14,619,654	14,483,434	13,506,526	13,849,607	10,461,586	13,460,349	15,575,688	12,186,268	167,479,078
Computer programming	95,270,450	29,127,314	31,558,704	33,188,539	31,364,835	32,306,127	36,090,886	37,511,766	37,125,129	33,283,446	35,811,782	33,794,383	33,142,925	404,305,836
Farming services	13,225,678	12,954,348	14,393,629	13,860,358	14,037,118	14,888,887	14,129,701	14,013,428	13,558,627	13,125,728	12,665,049	12,696,815	13,623,743	163,947,431
Miscellaneous professional services	454,033,118	434,104,031	458,429,258	462,242,080	468,900,262	479,092,825	550,646,995	494,359,193	499,355,681	437,160,205	557,689,161	504,971,649	463,983,675	5,810,935,015
Engineering services	17,632,960	15,495,945	16,672,205	17,439,832	16,959,506	16,865,883	17,378,378	16,809,333	17,187,531	13,655,396	14,807,372	16,928,096	17,048,886	197,248,363
Marina services	10,035,927	11,985,554	13,004,329	12,516,928	12,109,468	12,995,362	8,952,464	8,309,253	6,796,466	6,489,028	7,645,869	7,673,097	12,319,989	120,797,807
Wrecking & salvage yards	1,099,645	1,170,210	1,289,916	1,297,514	1,193,735	1,261,738	1,249,502	1,320,917	1,225,130	944,160	1,168,892	1,204,292	1,135,706	14,461,712
Pest control	497,854	498,272	809,619	682,364	768,593	759,687	830,146	790,174	762,152	586,135	567,780	562,941	1,123,857	8,741,720
Educational establishments	145,625,787	142,974,950	206,031,327	115,795,968	109,297,097	175,049,536	598,805,940	491,179,100	196,322,755	131,561,677	390,003,660	204,862,368	145,609,813	2,907,494,191
Child care services	10,567,313	8,364,130	10,351,761	10,004,246	9,814,316	10,085,777	10,399,986	10,593,439	10,761,435	9,296,484	11,906,007	11,424,794	17,241,344	130,243,719
Social, political & religious organisations	101,082,910	76,394,235	75,127,015	73,079,253	85,308,816	93,069,376	81,830,686	88,347,225	77,187,793	71,463,302	72,938,365	66,581,640	97,037,343	958,365,049
Government services	955,167,568	881,282,329	3,205,586,864	1,909,250,480	1,390,041,898	1,337,906,200	1,033,969,149	989,043,047	959,621,581	876,049,249	1,144,869,170	1,026,060,900	932,416,868	15,686,097,735
Miscellaneous services	438,208,106	385,847,397	438,642,842	414,931,989	425,018,388	453,976,542	438,002,071	450,597,132	439,609,685	427,873,702	524,375,773	448,128,668	564,484,237	5,411,488,426
Commercial equipment	100,411,300	85,436,789	97,053,996	115,328,651	97,480,853	101,387,141	112,083,815	106,791,287	112,065,479	92,396,257	102,845,603	103,030,055	120,069,968	1,245,969,894
Other services	3,748,146,128	3,388,613,819	5,987,627,079	4,606,677,043	4,055,507,237	4,135,145,620	4,320,804,236	4,164,109,723	3,862,933,427	3,622,484,027	4,312,705,254	3,892,939,302	3,985,338,541	50,334,885,308
Total services	13,402,726,223	12,690,728,716	15,723,033,325	14,113,550,493	14,183,273,251	14,467,843,896	13,743,405,259	13,443,557,582	12,593,230,316	11,717,743,671	14,754,077,549	13,404,576,942	14,991,663,244	165,826,684,244
TOTAL	26,282,072,026	25,766,995,806	29,796,459,806	27,511,747,860	27,690,583,590	28,584,554,113	27,147,881,109	27,994,518,514	27,381,965,649	29,701,357,775	28,222,359,286	26,478,544,149	29,273,965,859	335,550,933,516