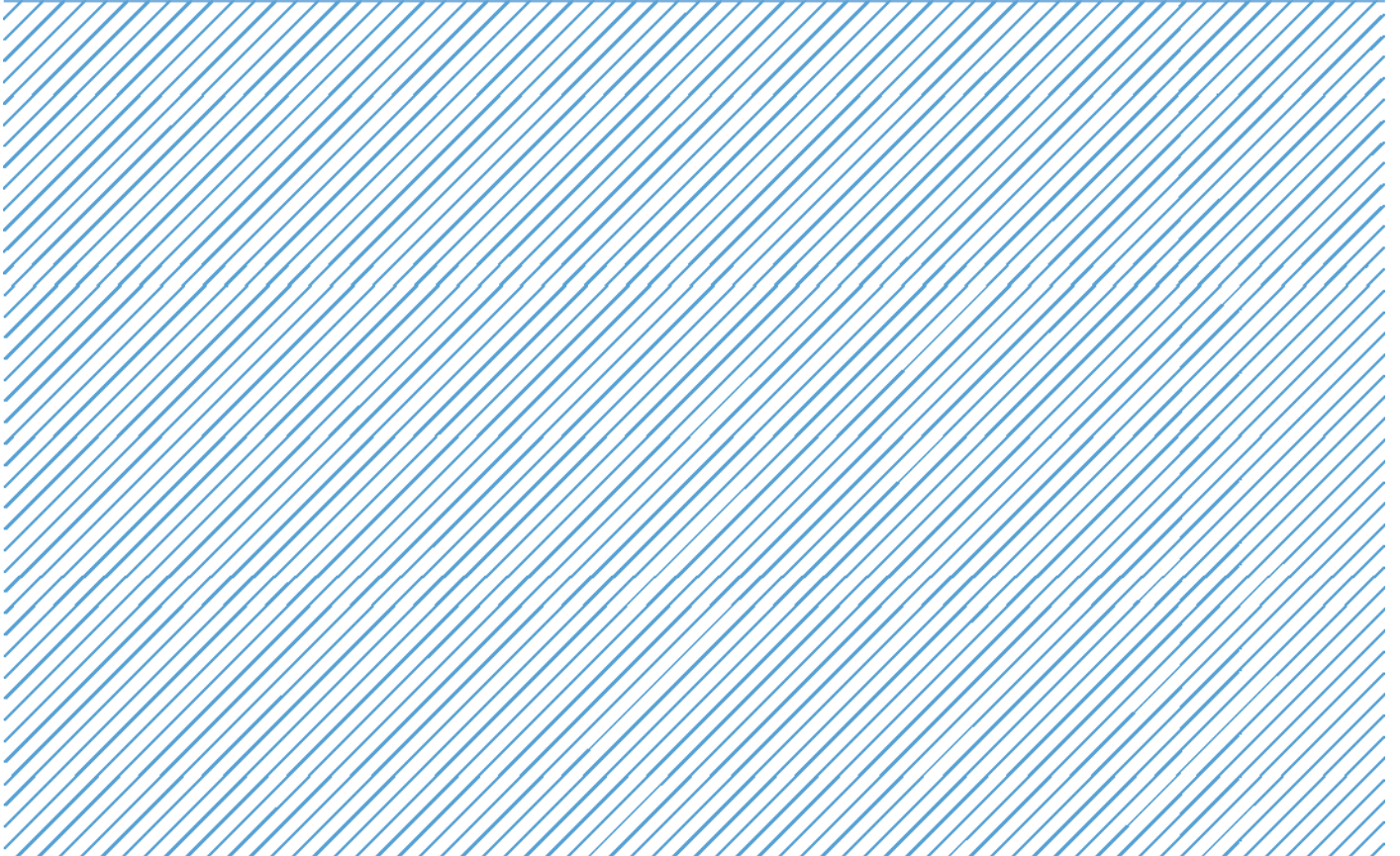


Card Expenditure Statistics

January 2015



Card Expenditure Statistics (Seasonally Adjusted) – January 2015

	Total Spending <i>£ billions</i>		Annual growth rates for spending		Number of purchases <i>Millions</i>	
	Jan 2015	Jan 2014	Jan 2015	Jan 2014	Jan 2015	Jan 2014
All payment cards	48.8	46.5	7.3%	7.3%	1,054	962
Debit cards	34.3	32.7	7.8%	8.3%	809	740
Credit cards	14.5	13.8	6.1%	5.1%	245	222

With effect of January 2014 the methodology used for seasonal adjustment - using X12 ARIMA - was changed. Trading days and leap years have been incorporated into the monthly seasonal adjustment process. Unless otherwise stated all data referred to are seasonally adjusted. Unadjusted data are located in tables 3A to 3D. There is a step change in the data between 2010 and 2011 following a change in the reporting population. Average transaction values are based on three-month rolling averages, while growth rates are based on twelve-month rolling periods.

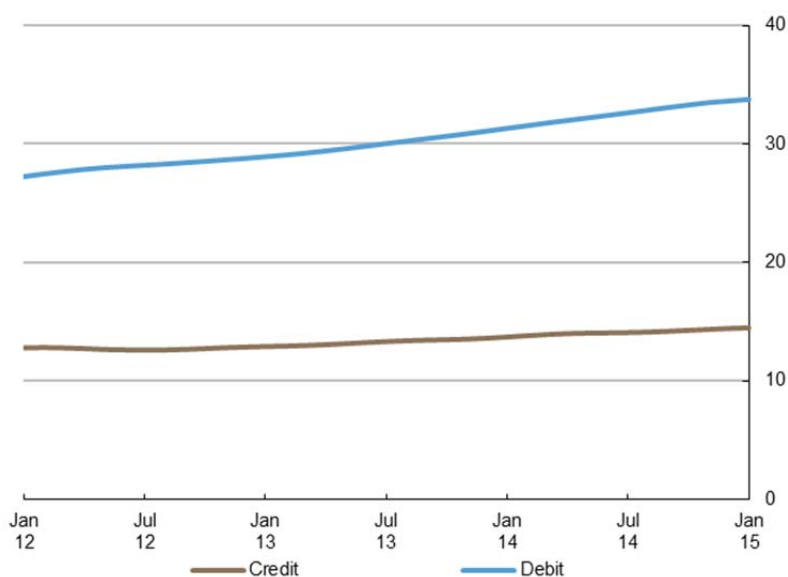
Introduction

Payment card expenditure in January amounted to £48.8 billion, 5% above the level a year ago. The **number of purchases** reached a record monthly total of 1.05 billion, up by 10% on January 2014, highlighting the important role payment cards continue to play for the consumer, providing convenience, safety and familiarity in their payment choices.

The continuous strength in spending has mainly been driven by the maturing economic recovery coupled with a record high employment rate¹ and positive growth in consumer confidence². Other factors driving the growth included **online** and **contactless** spending. The number of purchases made online accounted for 12.3% of total purchases, up from 11.1% a month ago. During January around 4% of total purchases were made using contactless technology, up from 1% a year ago.

Chart 1

Average monthly expenditure
Three-month moving average (£ billions)



¹ ONS, Labour Market Statistics: <http://www.ons.gov.uk/ons/rel/lms/labour-market-statistics/index.html>

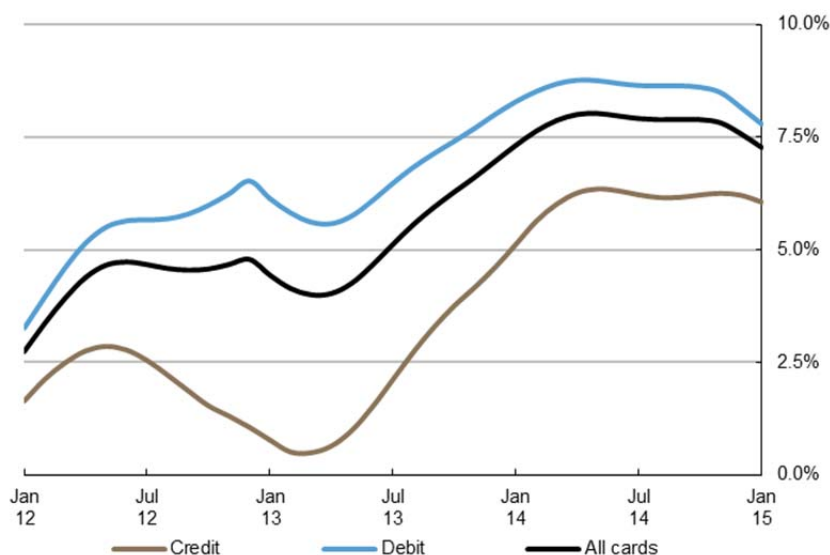
² GfK's UK Consumer Confidence Index: <http://gfk.com/news-and-events/press-room/press-releases/pages/january-sees-a-five-point-increase-in-consumer-confidence-levels.aspx>

Annual growth rates

Growth in payment card spending continued to decelerate slightly, growing at an annual rate of 7.3% in January. Debit card spending grew by 7.8%, while credit card spending increased by 6.1%. The Office for National Statistics recently released figures showed that annual **consumer price inflation** has fallen to its lowest level on record, reaching 0.3% in the year to January 2015³, down from 0.5% in December 2014. The downward effect on the price index was mainly driven by reduced prices on motor fuels and food. Falling prices most likely accounted for the recent slowdown in spending growth.

The robust growth of the number of purchases evident in the last three years continued into 2015. The **annual growth rate of purchases** continued to exceed that of values in January, highlighting a growing consumer preference of more frequent use of cards for lower value payments. During January the annual number of purchases grew by 10.1%. Furthermore, the annual growth in the service sector continued to outstrip that of retail sales. The service sector expanded by 10.1%, more than double the growth of spending within retail, which increased by 4.5%.

Chart 2
Spending on payment cards
Year-on-year growth rates



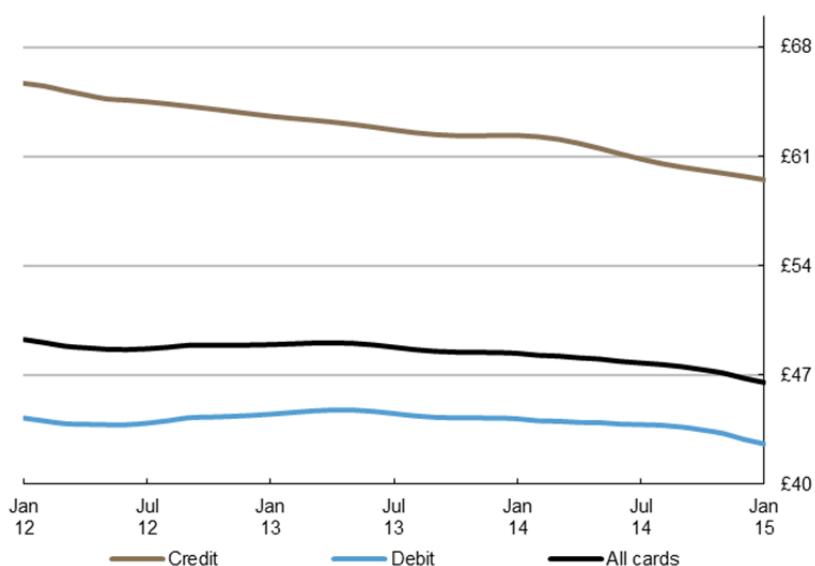
³ ONS, Consumer Price Inflation, January 2015: <http://www.ons.gov.uk/ons/rel/cpi/consumer-price-indices/january-2015/index.html>

Average transaction values

The **average transaction value** (ATV) on all payment cards continued on a downward trajectory, falling by 27p during the month and by £1.87 over the year, to reach £46.53. Within the sectors, the ATV in **retail sales** declined by 24p to £32.91, while the ATV for **services** fell by 56p to £75.94. Within the digital space the average transaction values tend to be higher than in the face-to-face environment; however, the downward trend is also evident. The ATV on all payment cards via the online channel amounted to £96.10 in January – more than double the ATV on all channels.

There has been a consistent pattern over the last three years with higher growth rates in volumes relative to values resulting in declining ATVs. This sustained decline is mainly driven by the ongoing migration of low value cash transactions towards payment cards alongside the increasing acceptance and usage of **contactless cards**, including strong growth on the Transport for London network⁴. The ongoing price war amongst the major British supermarkets⁵, record low petrol prices and inflation have been other major factors applying downward pressure on purchase values.

Chart 3
Average transaction values
Three-month moving average



⁴ TfL named fastest growing contactless merchant in Europe: <http://www.tfl.gov.uk/info-for/media/press-releases/2015/march/tfl-named-fastest-growing-contactless-merchant-in-europe>

⁵ The Telegraph, Food prices fall sharply as supermarkets step up price war: <http://www.telegraph.co.uk/finance/economics/11387343/Food-prices-fall-sharply-as-supermarkets-step-up-price-war.html>

Spending by sector – retail sales and services

The number of transactions within the **retail sector** increased by 2.7 million to 719 million, with the corresponding spend rising by £107 million to £23.5 billion. The majority of the increase in spending was in the **food & drink** and **other retail** sub-sectors, reaching £9.0 billion and £3.8 billion respectively. Spending in the **automotive fuels** category declined for the sixth consecutive month after falling by £26 million to £2.7 billion, driven by falling petrol prices to the lowest level in six years⁶.

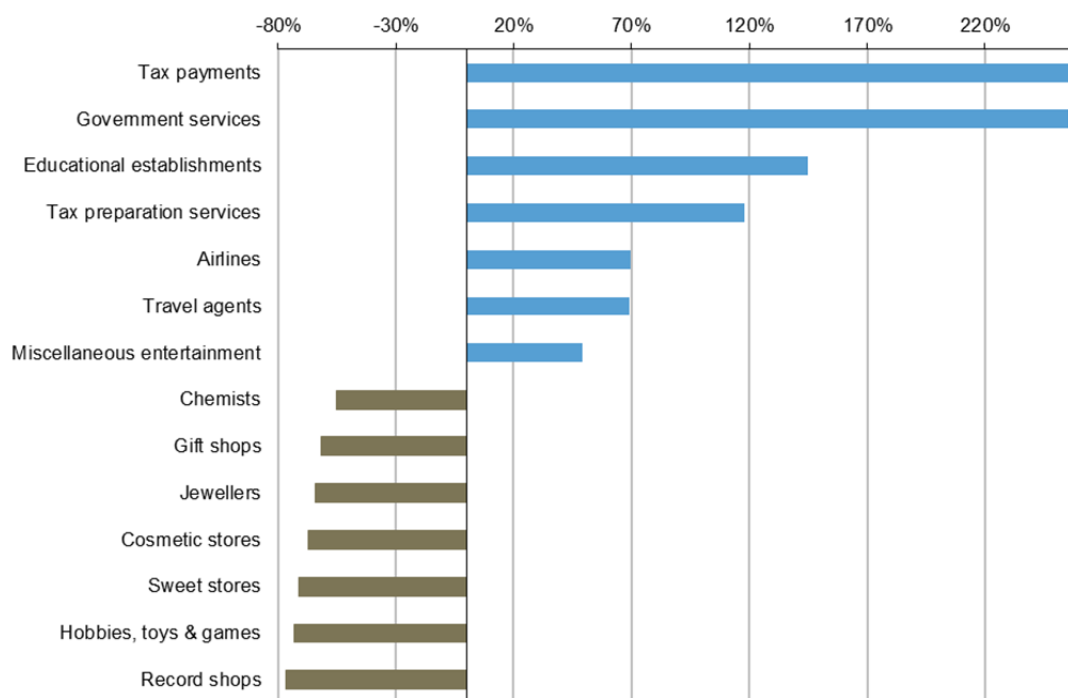
Meanwhile, the number of transactions in the **services sector** grew by 3.4 million to 335 million, corresponding to growth in spending of £127 million to £25.3 billion. A major contributor of growth was the **other services** sub-sector, which recorded an increase of £66 million to £7.4 billion. **Entertainment** also remained a strong contributor to growth after increasing by £30 million to £4.1 billion, mainly driven by strong growth in spending at **sports & games establishments**.

Spending by merchant categories – retail sales and services (not seasonally adjusted)

In January the largest increase in spending is traditionally evident in tax payments boosted by the looming deadline of 31 January for self-assessment tax settlements. Government services also expanded considerably, mainly driven by the strong demand for '65+ Guaranteed Growth Bonds' launched by National Savings and Investments in mid-January⁷. Along with growth in expenditure for tax related services and bonds, there were notable increases in card spending also at educational establishments and travel services. Meanwhile, spending on more festive goods from record shops, jewellers, sweet and cosmetic stores recorded the largest decreases.

Chart 4⁸

Biggest change in total card spending between December and January⁹



⁶ BBC, How low will petrol prices fall? <http://www.bbc.co.uk/news/business-30783378>

⁷ Investors Chronicle: <http://www.investorschronicle.co.uk/2015/01/20/comment/smart-money/don-t-panic-over-ns-i-bonds-0hvc312vSptvPTA4iNIhbK/article.html>

⁸ Chart 4 shows relative growth rates. Some listed merchant categories are too small in size to make a material impact on the overall total

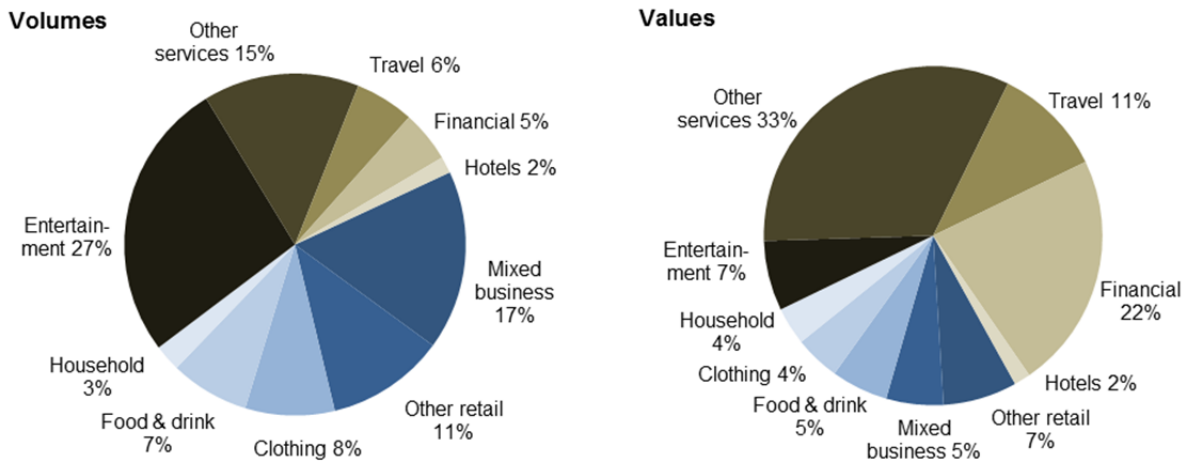
⁹ Actual growth rate for tax payments of 787% is not fully covered in chart in order to illustrate the majority of changes within the given scale

Payment card spending online (not seasonally adjusted)

Ecommerce is constantly evolving with new technology and changes in consumer habits, becoming more prevalent and shopping on the move using mobile devices is increasing and is now common place. The number of card purchases made online amounted to 12.3% of the total card purchases in January, with corresponding online spending accounting for 30% of total card expenditure.

Within the services sector 22% of purchases were made via the internet, while 8% of retail sales were online during the month. The most prominent online shopping category was entertainment, representing 27% of all online purchases in January, while the highest proportion of online spending was registered in other services reaching 33%. Mixed business was also a popular choice accounting for 17% of online volumes and 5% of values.

Chart 3
Online purchases and spending by merchant categories
Three-month moving average



Payment card spending within national retail sales

The **payment card share** of total **retail sales** (including automotive fuels)¹⁰ amounted to 75.1% during January, with a split of 51.5% by debit and 23.5% by credit cards. The share of spending within **food & drink** accounted for by payment cards stood at 71.4% and compares to a figure of 63.8% a year ago. In comparison to food & drink, nearly all expenditure on **automotive fuels** was accounted for by payment cards at 88.6%, a figure that compares with 84.4% a year ago. These trends reflect the increasing use of cards over cash within the retail space, driven by new technology and the continuous change in consumer habits alongside the underlying improvement in the economy.

Contact: Silvija Krupena; silvija.krupena@ukpayments.org.uk | camis@ukpayments.org.uk | 020 3217 8460 or 020 3217 8720

¹⁰ CES 3-month moving average spend of £23.6 billion expressed as a percentage of a similar 3-month moving average for ONS Retail Sales – All Retailing Including Automotive Fuel (J5A3) that amounted to £31.4 billion.

Table 1 Card expenditure statistics (seasonally adjusted)

Summary^{1 and 2}

Number of purchase transactions (millions)										Value of purchase transactions (£ millions)									
All sectors			Retail sales			Services			All sectors			Retail sales			Services				
	Credit	Debit	Total	Credit	Debit	Total	Credit	Debit	Total	Credit	Debit	Total	Credit	Debit	Total	Credit	Debit	Total	
Annual																			
2010	2,010	6,503	8,513	1,382	4,720	6,103	628	1,783	2,411	128,218	289,690	417,908	69,573	148,555	218,128	58,645	141,135	199,779	
2011	2,258	7,229	9,487	1,554	5,300	6,855	704	1,929	2,632	151,309	324,311	475,620	78,871	165,604	244,475	72,438	158,707	231,145	
2012	2,373	7,834	10,207	1,621	5,641	7,262	752	2,193	2,945	152,910	345,472	498,382	81,075	175,214	256,288	71,835	170,258	242,094	
2013	2,550	8,390	10,940	1,735	5,962	7,697	815	2,428	3,244	159,963	373,131	533,094	84,612	183,655	268,267	75,351	189,476	264,827	
2014	2,794	9,255	12,050	1,872	6,453	8,325	922	2,802	3,725	169,894	403,567	573,461	87,450	193,593	281,043	82,444	209,974	292,418	
Monthly																			
2014	Jan	222	740	962	149	521	670	73	219	293	13,837	32,668	46,504	7,173	15,826	22,999	6,664	16,841	23,505
	Feb	224	750	974	150	527	677	74	223	297	13,941	32,905	46,846	7,208	15,924	23,132	6,734	16,981	23,714
	Mar	227	750	977	152	525	676	75	226	300	14,017	33,091	47,108	7,239	16,011	23,250	6,778	17,080	23,858
	Apr	228	757	985	153	530	683	75	227	302	14,053	33,232	47,286	7,256	16,072	23,328	6,797	17,161	23,958
	May	230	761	991	154	534	688	76	228	304	14,064	33,379	47,443	7,263	16,113	23,376	6,801	17,266	24,067
	Jun	232	766	997	155	537	692	76	229	305	14,081	33,563	47,645	7,271	16,148	23,420	6,810	17,415	24,225
	Jul	233	771	1,004	157	539	696	77	232	309	14,123	33,778	47,901	7,284	16,188	23,473	6,838	17,590	24,428
	Aug	235	778	1,013	158	542	700	77	236	313	14,192	33,995	48,187	7,305	16,241	23,546	6,888	17,753	24,641
	Sep	238	786	1,023	159	546	705	78	240	318	14,278	34,172	48,450	7,329	16,294	23,623	6,949	17,878	24,827
	Oct	240	793	1,033	160	549	709	79	244	324	14,366	34,307	48,673	7,354	16,349	23,703	7,012	17,958	24,970
	Nov	242	799	1,041	162	552	713	80	248	328	14,441	34,411	48,853	7,375	16,414	23,790	7,066	17,997	25,063
	Dec	244	804	1,048	163	554	716	81	251	332	14,500	34,066	48,566	7,393	16,011	23,404	7,107	18,055	25,162
2015	Jan	245	809	1,054	164	555	719	82	253	335	14,541	34,259	48,799	7,408	16,102	23,510	7,133	18,156	25,289
Year-on-year growth rates (percentages)																			
Annual																			
2010	0.3	9.4	7.1	12.8	21.2	19.2	-19.3	-12.9	-14.7	2.4	10.5	7.9	12.9	18.5	16.6	-7.7	3.1	-0.3	
2011	12.3	11.2	11.4	12.4	12.3	12.3	12.1	8.2	9.2	18.0	12.0	13.8	13.4	11.5	12.1	23.5	12.5	15.7	
2012	5.1	8.4	7.6	4.3	6.4	5.9	6.8	13.7	11.9	1.1	6.5	4.8	2.8	5.8	4.8	-0.8	7.3	4.7	
2013	7.5	7.1	7.2	7.0	5.7	6.0	8.4	10.7	10.1	4.6	8.0	7.0	4.4	4.8	4.7	4.9	11.3	9.4	
2014	9.6	10.3	10.1	7.9	8.2	8.2	13.1	15.4	14.8	6.2	8.2	7.6	3.4	5.4	4.8	9.4	10.8	10.4	
Monthly																			
2014	Jan	7.8	7.6	7.6	7.3	6.2	6.4	9.1	11.1	10.6	5.1	8.3	7.3	4.5	5.1	4.9	5.8	11.6	9.9
	Feb	8.3	8.2	8.2	7.5	6.8	6.9	9.8	11.7	11.2	5.6	8.5	7.6	4.6	5.3	5.1	6.8	11.8	10.3
	Mar	8.6	8.7	8.7	7.7	7.2	7.3	10.5	12.3	11.9	6.0	8.7	7.9	4.7	5.5	5.3	7.6	11.9	10.6
	Apr	8.9	9.1	9.1	7.8	7.6	7.6	11.2	12.9	12.5	6.3	8.8	8.0	4.6	5.7	5.4	8.1	11.9	10.8
	May	9.0	9.5	9.3	7.7	7.9	7.9	11.7	13.3	12.9	6.3	8.8	8.0	4.4	5.8	5.4	8.5	11.7	10.8
	Jun	8.9	9.7	9.5	7.5	8.1	8.0	12.0	13.7	13.2	6.3	8.7	8.0	4.2	5.9	5.3	8.7	11.5	10.7
	Jul	8.9	9.8	9.6	7.3	8.1	8.0	12.2	13.9	13.5	6.2	8.6	7.9	3.9	5.9	5.2	8.9	11.4	10.7
	Aug	8.9	9.9	9.7	7.2	8.2	7.9	12.5	14.2	13.8	6.2	8.6	7.9	3.6	5.9	5.2	9.0	11.4	10.7
	Sep	9.0	10.0	9.8	7.2	8.2	8.0	12.7	14.6	14.1	6.2	8.6	7.9	3.5	5.9	5.1	9.2	11.4	10.7
	Oct	9.1	10.2	10.0	7.4	8.3	8.1	13.0	15.0	14.5	6.2	8.6	7.9	3.4	5.9	5.1	9.4	11.3	10.8
	Nov	9.4	10.3	10.1	7.6	8.3	8.1	13.1	15.3	14.7	6.3	8.5	7.8	3.4	5.8	5.0	9.5	11.1	10.7
	Dec	9.6	10.3	10.1	7.9	8.2	8.2	13.1	15.4	14.8	6.2	8.2	7.6	3.4	5.4	4.8	9.4	10.8	10.4
2015	Jan	9.7	10.2	10.1	8.2	8.1	8.1	13.0	15.5	14.8	6.1	7.8	7.3	3.3	5.0	4.5	9.1	10.5	10.1

1 There was a step change in 2011 due to a change in reporting population

2 With effect of January 2014 the seasonal adjustment methodology using X12 ARIMA was reviewed and changed. Trading days and leap years have been incorporated into the monthly seasonal adjustment process.

Table 2A Card expenditure statistics (seasonally adjusted)

Retail sales^{1 and 2}

Number of purchase transactions (millions)																				Total retail sales			
																		Number of purchases					
Food & drink						Mixed business			Clothing			Household			Other retailers			Automotive Fuels ³					
Credit		Debit		Total		Credit	Debit	Total	Credit	Debit	Total	Credit	Debit	Total	Credit	Debit	Total	Credit	Debit	Total	Credit	Debit	Total
Annual																							
2010	533	2,283	2,815	139	406	545	129	424	553	148	350	498	273	733	1,006	162	524	686	1,382	4,720	6,103		
2011	602	2,564	3,166	136	425	561	139	428	567	157	370	526	297	782	1,078	223	733	956	1,554	5,300	6,855		
2012	662	2,823	3,485	148	479	627	145	453	598	157	375	532	281	757	1,039	227	754	981	1,621	5,641	7,262		
2013	722	3,060	3,782	182	523	705	152	461	614	165	402	568	277	722	999	236	794	1,030	1,735	5,962	7,697		
2014	769	3,472	4,241	248	479	727	162	479	641	172	433	605	283	779	1,063	237	811	1,048	1,872	6,453	8,325		
Monthly																							
2014	Jan	62	272	334	17	46	63	13	39	52	14	35	49	22	62	84	20	67	87	149	521	670	
	Feb	63	276	339	18	46	64	13	39	52	14	35	49	23	62	85	20	68	88	150	527	677	
	Mar	63	280	343	19	39	57	13	39	53	14	35	49	23	63	86	20	68	88	152	525	676	
	Apr	63	284	347	19	39	58	14	40	53	14	35	50	23	64	87	20	68	88	153	530	683	
	May	64	287	351	20	38	58	14	40	54	14	35	50	23	65	88	20	68	88	154	534	688	
	Jun	64	290	353	20	38	59	14	40	54	14	36	50	23	65	89	20	68	88	155	537	692	
	Jul	64	292	356	21	38	59	14	40	54	14	36	50	24	66	89	20	68	87	157	539	696	
	Aug	64	294	358	22	38	60	14	40	54	14	36	51	24	66	90	20	68	87	158	542	700	
	Sep	65	297	362	22	39	61	14	40	54	14	37	51	24	66	90	20	67	87	159	546	705	
	Oct	65	299	365	23	39	62	14	40	54	15	37	52	25	66	91	20	67	87	160	549	709	
	Nov	66	301	366	23	39	62	14	40	54	15	37	52	25	67	92	20	67	87	162	552	713	
	Dec	66	301	367	23	39	63	14	41	54	15	38	52	25	67	92	19	68	87	163	554	716	
2015	Jan	67	301	368	24	40	63	14	41	55	15	38	53	25	68	93	19	68	87	164	555	719	
Year-on-year growth rates (percentages)																							
Annual																							
2010	3.6	9.4	8.2	5.9	0.7	1.9	2.7	4.8	4.3	1.6	9.6	7.1	-11.9	7.5	1.5	2.1	10.4	8.3	12.8	21.2	19.2		
2011	13.1	12.3	12.4	-1.6	4.6	3.0	8.1	0.8	2.5	5.9	5.7	5.7	8.7	6.6	7.2	38.3	39.8	39.5	12.4	12.3	12.3		
2012	10.0	10.1	10.1	8.4	12.7	11.7	4.6	5.9	5.6	0.1	1.5	1.1	-5.2	-3.1	-3.7	1.8	2.9	2.6	4.3	6.4	5.9		
2013	9.0	8.4	8.5	22.9	9.2	12.4	4.9	1.9	2.6	5.2	7.3	6.7	-1.4	-4.7	-3.8	3.8	5.3	4.9	7.0	5.7	6.0		
2014	6.4	13.5	12.1	36.6	-8.4	3.2	6.4	3.9	4.5	4.1	7.6	6.6	2.3	7.9	6.4	0.5	2.2	1.8	7.9	8.2	8.2		
Monthly																							
2014	Jan	8.8	8.7	8.7	24.9	9.9	13.4	5.1	2.0	2.7	5.8	8.3	7.5	-1.2	-3.4	-2.8	4.0	5.6	5.2	7.3	6.2	6.4	
	Feb	8.6	9.0	8.9	27.0	10.6	14.5	5.5	2.2	3.0	6.3	9.0	8.2	-1.0	-2.0	-1.7	4.1	6.0	5.5	7.5	6.8	6.9	
	Mar	8.4	9.5	9.3	29.1	9.7	14.3	6.0	2.4	3.3	6.5	9.5	8.6	-0.8	-0.5	-0.6	4.1	6.4	5.9	7.7	7.2	7.3	
	Apr	8.0	10.0	9.6	30.8	8.6	13.9	6.3	2.7	3.6	6.4	9.6	8.6	-0.7	1.2	0.7	3.9	6.0	5.5	7.8	7.6	7.6	
	May	7.6	10.5	10.0	31.9	7.1	13.1	6.5	2.8	3.7	6.0	9.3	8.4	-0.7	2.9	1.9	3.6	5.5	5.0	7.7	7.9	7.9	
	Jun	7.2	11.0	10.3	32.6	5.2	11.9	6.6	3.0	3.8	5.5	8.9	7.9	-0.7	4.7	3.2	3.1	4.9	4.5	7.5	8.1	8.0	
	Jul	6.9	11.4	10.6	32.9	3.1	10.5	6.4	3.0	3.9	5.0	8.5	7.5	-0.7	5.2	3.6	2.6	4.3	3.9	7.3	8.1	8.0	
	Aug	6.6	11.9	10.9	33.4	0.8	8.9	6.3	3.1	3.9	4.6	8.2	7.2	-0.7	5.8	4.0	2.1	3.8	3.4	7.2	8.2	7.9	
	Sep	6.4	12.4	11.3	34.0	-1.6	7.3	6.2	3.2	3.9	4.4	8.0	7.0	-0.3	6.3	4.4	1.6	3.3	2.9	7.2	8.2	8.0	
	Oct	6.3	12.9	11.7	34.9	-4.0	5.9	6.2	3.3	4.0	4.3	7.9	6.9	0.3	6.8	5.0	1.2	2.9	2.5	7.4	8.3	8.1	
	Nov	6.4	13.3	12.0	35.8	-6.2	4.5	6.3	3.6	4.3	4.2	7.8	6.8	1.2	7.4	5.7	0.9	2.5	2.1	7.6	8.3	8.1	
	Dec	6.4	13.5	12.1	36.6	-8.4	3.2	6.4	3.9	4.5	4.1	7.6	6.6	2.3	7.9	6.4	0.5	2.2	1.8	7.9	8.2	8.2	
2015	Jan	6.5	13.5	12.1	37.0	-10.6	1.8	6.4	4.3	4.8	3.8	7.5	6.4	3.5	8.4	7.0	0.2	1.8	1.4	8.2	8.1	8.1	

¹ There was a step change in 2011 due to a change in reporting population

² With effect of January 2014 the seasonal adjustment methodology using X12 ARIMA was reviewed and changed. Trading days and leap years have been incorporated into the monthly seasonal adjustment process.

³ Automotive Fuels data is effective from January 2010. Data shown pre 2010 are for growth trend purposes only; these data are excluded from totals as these are already included in their former Services sector of Motoring (now known as Vehicle Sales & Service)

Table 2B Card expenditure statistics (seasonally adjusted)

Retail sales^{1 and 2}

Value of purchase transactions (£ millions)

		Value of purchase transactions (£ millions)																		Total retail sales		
		Food & drink			Mixed business			Clothing			Household			Other retailers			Automotive Fuels ³			Value of purchases		
		Credit	Debit	Total	Credit	Debit	Total	Credit	Debit	Total	Credit	Debit	Total	Credit	Debit	Total	Credit	Debit	Total	Credit	Debit	Total
Annual																						
	2010	18,768	63,670	82,438	7,165	13,950	21,115	6,802	13,649	20,451	14,682	18,863	33,545	15,522	23,577	39,098	6,635	14,847	21,482	69,573	148,555	218,128
	2011	21,067	69,489	90,557	7,089	14,751	21,840	7,832	14,484	22,316	15,177	20,523	35,700	17,515	24,374	41,888	10,191	21,983	32,174	78,871	165,604	244,475
	2012	22,570	74,197	96,766	7,730	16,415	24,145	8,240	15,633	23,874	15,377	21,630	37,007	16,739	24,453	41,192	10,419	22,886	33,305	81,075	175,214	256,288
	2013	24,102	77,987	102,090	8,719	17,931	26,650	8,696	16,123	24,819	15,897	23,231	39,128	16,532	24,471	41,003	10,666	23,912	34,578	84,612	183,655	268,267
	2014	24,496	84,574	109,071	9,593	16,701	26,294	9,110	17,032	26,143	16,867	26,031	42,898	17,162	25,647	42,809	10,221	23,607	33,828	87,450	193,593	281,043
Monthly																						
	2014																					
	Jan	2,029	6,778	8,807	775	1,502	2,277	747	1,382	2,128	1,380	2,088	3,468	1,364	2,082	3,446	879	1,995	2,874	7,173	15,826	22,999
	Feb	2,033	6,855	8,888	785	1,471	2,256	753	1,394	2,147	1,390	2,112	3,502	1,370	2,096	3,466	878	1,996	2,874	7,208	15,924	23,132
	Mar	2,038	6,932	8,970	792	1,437	2,229	759	1,408	2,167	1,397	2,130	3,527	1,377	2,109	3,485	876	1,995	2,871	7,239	16,011	23,250
	Apr	2,041	6,995	9,035	794	1,405	2,199	764	1,421	2,184	1,401	2,139	3,540	1,383	2,120	3,503	873	1,992	2,865	7,256	16,072	23,328
	May	2,041	7,042	9,082	793	1,379	2,172	765	1,429	2,195	1,402	2,146	3,548	1,392	2,129	3,521	870	1,989	2,859	7,263	16,113	23,376
	Jun	2,040	7,076	9,115	793	1,361	2,154	764	1,433	2,197	1,403	2,156	3,559	1,405	2,136	3,541	866	1,987	2,853	7,271	16,148	23,420
	Jul	2,038	7,112	9,150	795	1,352	2,147	761	1,431	2,192	1,406	2,170	3,576	1,424	2,140	3,564	861	1,983	2,844	7,284	16,188	23,473
	Aug	2,038	7,161	9,199	801	1,349	2,149	758	1,427	2,185	1,410	2,187	3,597	1,447	2,143	3,590	851	1,975	2,826	7,305	16,241	23,546
	Sep	2,040	7,210	9,250	808	1,350	2,158	756	1,423	2,179	1,415	2,203	3,618	1,471	2,149	3,620	839	1,959	2,798	7,329	16,294	23,623
	Oct	2,045	7,252	9,298	815	1,356	2,171	758	1,423	2,181	1,419	2,218	3,637	1,494	2,162	3,656	824	1,937	2,761	7,354	16,349	23,703
	Nov	2,053	7,298	9,351	820	1,365	2,185	761	1,427	2,188	1,422	2,233	3,655	1,511	2,180	3,692	809	1,911	2,720	7,375	16,414	23,790
	Dec	2,061	6,865	8,926	823	1,373	2,196	765	1,435	2,201	1,424	2,248	3,672	1,524	2,201	3,725	794	1,889	2,683	7,393	16,011	23,404
	2015																					
	Jan	2,069	6,920	8,989	826	1,379	2,206	771	1,446	2,216	1,427	2,265	3,692	1,533	2,218	3,750	783	1,874	2,657	7,408	16,102	23,510

Year-on-year growth rates (percentages)

Annual																						
	2010	3.7	5.7	5.2	1.4	0.3	0.7	7.0	7.7	7.5	1.9	13.8	8.2	-0.9	7.1	3.8	13.2	17.2	15.9	12.9	18.5	16.6
	2011	12.3	9.1	9.8	-1.1	5.7	3.4	15.1	6.1	9.1	3.4	8.8	6.4	12.8	3.4	7.1	53.6	48.1	49.8	13.4	11.5	12.1
	2012	7.1	6.8	6.9	9.0	11.3	10.6	5.2	7.9	7.0	1.3	5.4	3.7	-4.4	0.3	-1.7	2.2	4.1	3.5	2.8	5.8	4.8
	2013	6.8	5.1	5.5	12.8	9.2	10.4	5.5	3.1	4.0	3.4	7.4	5.7	-1.2	0.1	-0.5	2.4	4.5	3.8	4.4	4.8	4.7
	2014	1.6	8.4	6.8	10.0	-6.9	-1.3	4.8	5.6	5.3	6.1	12.1	9.6	3.8	4.8	4.4	-4.2	-1.3	-2.2	3.4	5.4	4.8
Monthly																						
	2014																					
	Jan	6.4	5.2	5.5	13.2	9.2	10.5	5.9	3.4	4.2	4.1	8.6	6.7	-1.1	0.6	-0.1	2.2	4.1	3.5	4.5	5.1	4.9
	Feb	6.0	5.4	5.5	13.6	9.0	10.4	6.4	3.7	4.6	4.8	9.8	7.7	-1.0	1.2	0.3	2.0	3.7	3.2	4.6	5.3	5.1
	Mar	5.5	5.6	5.6	13.8	8.4	10.2	6.8	4.1	5.1	5.4	10.9	8.6	-0.9	1.8	0.7	1.8	3.2	2.7	4.7	5.5	5.3
	Apr	5.1	5.8	5.7	13.9	7.6	9.6	7.1	4.5	5.4	5.9	11.7	9.3	-0.9	2.4	1.0	1.4	2.6	2.2	4.6	5.7	5.4
	May	4.5	6.2	5.8	13.6	6.3	8.7	7.1	4.9	5.6	6.3	12.1	9.7	-0.9	3.0	1.4	0.8	2.0	1.6	4.4	5.8	5.4
	Jun	4.0	6.5	5.9	13.1	4.7	7.4	6.8	5.1	5.7	6.4	12.4	9.9	-0.7	3.5	1.8	0.1	1.3	0.9	4.2	5.9	5.3
	Jul	3.4	7.0	6.1	12.5	2.8	6.0	6.4	5.3	5.7	6.5	12.5	10.0	-0.4	3.8	2.1	-0.7	0.8	0.3	3.9	5.9	5.2
	Aug	2.9	7.5	6.4	11.8	0.8	4.4	5.9	5.4	5.5	6.5	12.5	10.1	0.0	4.1	2.4	-1.4	0.3	-0.2	3.6	5.9	5.2
	Sep	2.4	8.0	6.7	11.3	-1.4	2.7	5.4	5.4	5.4	6.5	12.6	10.1	0.8	4.2	2.8	-2.1	-0.1	-0.7	3.5	5.9	5.1
	Oct	2.0	8.5	6.9	10.9	-3.5	1.2	5.1	5.5	5.4	6.5	12.6	10.1	1.7	4.4	3.3	-2.8	-0.4	-1.2	3.4	5.9	5.1
	Nov	1.8	8.8	7.1	10.5	-5.3	-0.2	4.9	5.6	5.3	6.3	12.4	9.9	2.7	4.6	3.8	-3.5	-0.8	-1.6	3.4	5.8	5.0
	Dec	1.6	8.4	6.8	10.0	-6.9	-1.3	4.8	5.6	5.3	6.1	12.1	9.6	3.8	4.8	4.4	-4.2	-1.3	-2.2	3.4	5.4	4.8
	2015																					
	Jan	1.5	8.1	6.5	9.4	-8.0	-2.3	4.5	5.7	5.3	5.8	11.5	9.2	4.9	5.0	5.0	-5.0	-1.8	-2.8	3.3	5.0	4.5

¹ There was a step change in 2011 due to a change in reporting population

² With effect of January 2014 the seasonal adjustment methodology using X12 ARIMA was reviewed and changed. Trading days and leap years have been incorporated into the monthly seasonal adjustment process.

³ Automotive Fuels data is effective from January 2010. Data shown pre 2010 are for growth trend purposes only; these data are excluded from totals as these are already included in their former Services sector of Motoring (now known as Vehicle Sales & Service)

Table 2C Card expenditure statistics (seasonally adjusted)

Services^{1 and 2}

Number of purchase transactions (millions)																				Total services		
																		Number of purchases				
Vehicle Sales & Services ³			Entertainment			Hotels			Travel			Financial			Other services							
	Credit	Debit	Total	Credit	Debit	Total	Credit	Debit	Total	Credit	Debit	Total	Credit	Debit	Total	Credit	Debit	Total	Credit	Debit	Total	
Annual																						
2010	76	204	280	221	726	947	37	35	72	98	202	300	32	129	161	164	487	650	628	1,783	2,411	
2011	51	89	139	267	881	1,149	51	43	94	116	236	352	33	145	178	185	535	720	704	1,929	2,632	
2012	51	94	144	309	1,062	1,371	53	48	100	124	266	389	30	160	190	186	564	750	752	2,193	2,945	
2013	53	104	157	353	1,220	1,573	55	53	108	130	284	414	28	174	202	196	593	789	815	2,428	3,244	
2014	58	120	179	422	1,498	1,920	59	63	122	150	326	476	25	165	190	207	630	837	922	2,802	3,725	
Monthly																						
2014	Jan	5	10	14	33	115	148	5	5	10	12	25	37	2	13	16	17	51	68	73	219	293
	Feb	5	10	15	33	118	151	5	5	10	12	26	38	2	14	16	17	51	68	74	223	297
	Mar	5	10	15	34	120	153	5	5	10	12	26	38	2	14	16	17	51	68	75	226	300
	Apr	5	10	15	34	121	155	5	5	10	12	26	39	2	14	16	17	51	68	75	227	302
	May	5	10	15	35	121	156	5	5	10	12	27	39	2	14	16	17	51	68	76	228	304
	Jun	5	10	15	35	122	157	5	5	10	12	27	39	2	14	16	17	52	69	76	229	305
	Jul	5	10	15	35	124	159	5	5	10	12	27	39	2	14	16	17	52	69	77	232	309
	Aug	5	10	15	36	126	162	5	5	10	13	27	40	2	14	16	17	53	70	77	236	313
	Sep	5	10	15	36	129	165	5	5	10	13	28	40	2	14	16	17	54	71	78	240	318
	Oct	5	10	15	37	132	169	5	5	11	13	28	41	2	14	16	18	54	72	79	244	324
	Nov	5	10	15	37	134	172	5	6	11	13	29	42	2	14	16	18	55	72	80	248	328
	Dec	5	11	16	38	136	174	5	6	11	13	29	43	2	14	16	18	55	73	81	251	332
2015	Jan	5	11	16	38	138	176	5	6	11	13	30	43	2	14	16	18	55	73	82	253	335
Year-on-year growth rates (percentages)																						
Annual																						
2010	-67.8	-69.0	-68.7	7.5	22.5	18.6	1.8	10.5	5.8	-3.0	10.5	5.7	0.7	15.3	12.1	-1.9	3.5	2.1	-19.3	-12.9	-14.7	
2011	-33.2	-56.6	-50.3	20.8	21.4	21.3	36.4	24.4	30.6	19.2	16.7	17.6	3.0	11.9	10.1	13.4	9.9	10.8	12.1	8.2	9.2	
2012	-0.1	5.6	3.5	15.4	20.5	19.3	3.4	11.0	6.9	6.5	12.5	10.5	-9.9	10.8	7.0	0.5	5.4	4.2	6.8	13.7	11.9	
2013	4.9	11.4	9.1	14.4	14.8	14.7	3.7	11.7	7.5	5.0	7.1	6.4	-4.0	8.2	6.3	5.1	5.2	5.2	8.4	10.7	10.1	
2014	10.0	15.6	13.7	19.6	22.8	22.1	8.7	17.5	13.0	15.0	14.7	14.8	-11.3	-4.8	-5.7	5.8	6.1	6.1	13.1	15.4	14.8	
Monthly																						
2014	Jan	5.7	12.6	10.2	14.8	15.2	15.1	5.0	12.7	8.7	5.9	7.6	7.0	-4.1	7.1	5.4	5.8	5.7	5.7	9.1	11.1	10.6
	Feb	6.7	13.9	11.4	15.3	16.0	15.9	6.2	13.8	9.9	6.9	8.2	7.8	-4.3	6.2	4.5	6.4	6.1	6.2	9.8	11.7	11.2
	Mar	7.6	15.0	12.4	16.0	17.0	16.8	7.2	14.8	10.9	8.1	8.9	8.7	-4.8	5.3	3.8	6.9	6.2	6.4	10.5	12.3	11.9
	Apr	8.4	15.7	13.2	16.7	18.0	17.7	8.0	15.6	11.7	9.2	9.5	9.4	-5.4	4.5	3.0	7.2	6.2	6.5	11.2	12.9	12.5
	May	9.1	16.1	13.7	17.2	18.9	18.5	8.4	16.1	12.1	10.2	10.0	10.1	-6.1	3.5	2.1	7.2	6.1	6.4	11.7	13.3	12.9
	Jun	9.7	16.3	14.0	17.7	19.6	19.2	8.6	16.3	12.4	11.1	10.5	10.7	-6.8	2.5	1.1	7.1	5.9	6.2	12.0	13.7	13.2
	Jul	10.1	16.4	14.2	18.0	20.2	19.7	8.7	16.4	12.5	11.9	11.0	11.3	-7.7	1.4	0.1	6.9	5.8	6.1	12.2	13.9	13.5
	Aug	10.4	16.5	14.4	18.4	20.8	20.3	8.7	16.6	12.6	12.6	11.7	12.0	-8.6	0.2	-1.1	6.7	5.9	6.1	12.5	14.2	13.8
	Sep	10.5	16.5	14.4	18.8	21.4	20.8	8.7	16.8	12.7	13.4	12.5	12.8	-9.5	-1.0	-2.2	6.5	5.9	6.1	12.7	14.6	14.1
	Oct	10.5	16.4	14.4	19.3	22.0	21.4	8.7	17.1	12.8	14.1	13.3	13.6	-10.3	-2.3	-3.4	6.3	6.0	6.1	13.0	15.0	14.5
	Nov	10.3	16.1	14.2	19.5	22.6	21.9	8.7	17.3	13.0	14.7	14.1	14.3	-10.9	-3.5	-4.6	6.0	6.1	6.1	13.1	15.3	14.7
	Dec	10.0	15.6	13.7	19.6	22.8	22.1	8.7	17.5	13.0	15.0	14.7	14.8	-11.3	-4.8	-5.7	5.8	6.1	6.1	13.1	15.4	14.8
2015	Jan	9.4	14.8	13.0	19.4	22.7	22.0	8.7	17.5	13.1	15.1	15.1	15.1	-11.5	-4.1	-5.2	5.6	6.2	6.1	13.0	15.5	14.8

¹ There was a step change in 2011 due to a change in reporting population

² With effect of January 2014 the seasonal adjustment methodology using X12 ARIMA was reviewed and changed. Trading days and leap years have been incorporated into the monthly seasonal adjustment process.

³ With effect of January 2010 Automotive Fuels was published as a separate sub-sector in retail sales. See tables 2A and 2B

Table 2D Card expenditure statistics (seasonally adjusted)

Services^{1 and 2}

Value of purchase transactions (£ millions)

	Value of purchase transactions (£ millions)																		Total services			
	Vehicle Sales & Services ³			Entertainment			Hotels			Travel			Financial			Other services			Value of purchases			
	Credit	Debit	Total	Credit	Debit	Total	Credit	Debit	Total	Credit	Debit	Total	Credit	Debit	Total	Credit	Debit	Total	Credit	Debit	Total	
Annual																						
2010	8,756	24,842	33,598	9,961	17,041	27,002	5,505	3,090	8,595	12,838	15,889	28,728	5,912	39,426	45,338	15,673	40,846	56,518	58,645	141,135	199,779	
2011	7,774	22,466	30,240	14,074	20,687	34,761	8,640	3,854	12,493	16,323	18,492	34,815	7,137	46,526	53,663	18,491	46,682	65,173	72,438	158,707	231,145	
2012	7,563	23,555	31,117	14,694	22,786	37,480	8,872	4,317	13,189	16,584	20,578	37,162	5,465	50,108	55,573	18,656	48,916	67,572	71,835	170,258	242,094	
2013	7,710	25,743	33,454	15,667	24,550	40,217	9,246	4,789	14,034	17,525	22,132	39,657	5,127	55,081	60,209	20,075	57,181	77,256	75,351	189,476	264,827	
2014	8,109	28,913	37,022	17,366	28,499	45,865	10,370	5,604	15,975	20,152	25,196	45,348	5,082	58,046	63,127	21,365	63,716	85,081	82,444	209,974	292,418	
Monthly																						
2014	Jan	673	2,348	3,022	1,377	2,199	3,576	818	433	1,251	1,617	2,042	3,659	423	4,728	5,151	1,756	5,091	6,846	6,664	16,841	23,505
	Feb	679	2,374	3,053	1,391	2,244	3,635	825	440	1,265	1,657	2,071	3,728	423	4,751	5,175	1,759	5,100	6,859	6,734	16,981	23,714
	Mar	681	2,383	3,064	1,402	2,280	3,682	832	447	1,279	1,682	2,076	3,758	424	4,793	5,217	1,757	5,100	6,858	6,778	17,080	23,858
	Apr	681	2,380	3,061	1,410	2,301	3,711	840	452	1,291	1,690	2,065	3,755	424	4,843	5,267	1,753	5,119	6,872	6,797	17,161	23,958
	May	680	2,376	3,056	1,417	2,309	3,726	848	457	1,305	1,683	2,053	3,736	423	4,887	5,310	1,750	5,184	6,934	6,801	17,266	24,067
	Jun	678	2,380	3,059	1,427	2,321	3,748	859	462	1,321	1,671	2,051	3,722	422	4,909	5,330	1,754	5,292	7,046	6,810	17,415	24,225
	Jul	676	2,395	3,071	1,442	2,352	3,795	870	467	1,337	1,664	2,064	3,728	421	4,910	5,331	1,765	5,401	7,166	6,838	17,590	24,428
	Aug	674	2,418	3,091	1,463	2,404	3,867	880	474	1,354	1,669	2,092	3,762	422	4,891	5,313	1,780	5,474	7,254	6,888	17,753	24,641
	Sep	672	2,437	3,109	1,485	2,463	3,949	888	482	1,370	1,684	2,129	3,813	423	4,870	5,293	1,797	5,496	7,294	6,949	17,878	24,827
	Oct	671	2,454	3,125	1,505	2,514	4,018	896	490	1,386	1,701	2,164	3,865	425	4,848	5,273	1,815	5,488	7,302	7,012	17,958	24,970
	Nov	671	2,472	3,143	1,519	2,545	4,064	904	497	1,401	1,715	2,187	3,902	426	4,822	5,248	1,832	5,474	7,305	7,066	17,997	25,063
	Dec	673	2,494	3,166	1,528	2,567	4,095	911	504	1,415	1,719	2,201	3,920	428	4,792	5,220	1,849	5,497	7,346	7,107	18,055	25,162
2015	Jan	675	2,519	3,194	1,534	2,592	4,125	917	510	1,427	1,716	2,213	3,928	428	4,775	5,203	1,864	5,548	7,412	7,133	18,156	25,289

Year-on-year growth rates (percentages)²

Annual																						
2010	-40.2	-30.1	-33.1	3.6	16.6	11.5	3.9	13.4	7.1	-2.0	12.5	5.5	3.2	20.2	17.6	3.4	10.3	8.3	-7.7	3.1	-0.3	
2011	-11.2	-9.6	-10.0	41.3	21.4	28.7	56.9	24.7	45.3	27.1	16.4	21.2	20.7	18.0	18.4	18.0	14.3	15.3	23.5	12.5	15.7	
2012	-2.7	4.8	2.9	4.4	10.1	7.8	2.7	12.0	5.6	1.6	11.3	6.7	-23.4	7.7	3.6	0.9	4.8	3.7	-0.8	7.3	4.7	
2013	2.0	9.3	7.5	6.6	7.7	7.3	4.2	10.9	6.4	5.7	7.6	6.7	-6.2	9.9	8.3	7.6	16.9	14.3	4.9	11.3	9.4	
2014	5.2	12.3	10.7	10.8	16.1	14.0	12.2	17.0	13.8	15.0	13.8	14.4	-0.9	5.4	4.8	6.4	11.4	10.1	9.4	10.8	10.4	
Monthly																						
2014	Jan	2.8	10.4	8.6	7.0	7.8	7.5	6.0	11.2	7.7	6.9	8.5	7.8	-5.0	9.6	8.2	8.3	17.3	14.8	5.8	11.6	9.9
	Feb	3.7	11.6	9.7	7.4	8.3	7.9	7.7	11.6	9.0	8.3	9.5	9.0	-3.6	9.1	7.9	8.8	17.3	15.0	6.8	11.8	10.3
	Mar	4.4	12.5	10.5	7.9	8.9	8.5	9.1	12.1	10.1	9.8	10.2	10.0	-3.9	8.6	7.4	9.1	17.0	14.8	7.6	11.9	10.6
	Apr	4.9	13.0	11.1	8.3	9.6	9.1	10.2	12.6	11.0	11.0	10.5	10.7	-4.0	8.3	7.2	9.2	16.4	14.4	8.1	11.9	10.8
	May	5.3	13.2	11.3	8.6	10.3	9.6	10.9	13.1	11.7	11.9	10.5	11.1	-3.9	8.2	7.1	9.1	15.5	13.8	8.5	11.7	10.8
	Jun	5.5	13.2	11.4	8.8	10.9	10.1	11.3	13.7	12.1	12.5	10.6	11.4	-3.6	8.2	7.1	8.7	14.6	13.0	8.7	11.5	10.7
	Jul	5.7	13.2	11.5	8.9	11.5	10.5	11.6	14.2	12.5	13.0	10.9	11.9	-3.2	8.0	7.0	8.3	13.8	12.4	8.9	11.4	10.7
	Aug	5.9	13.4	11.6	9.2	12.3	11.1	11.8	14.7	12.8	13.6	11.7	12.6	-2.7	7.7	6.7	7.9	13.3	11.8	9.0	11.4	10.7
	Sep	6.0	13.5	11.7	9.6	13.2	11.8	12.0	15.3	13.1	14.3	12.7	13.4	-2.3	7.1	6.3	7.5	12.8	11.4	9.2	11.4	10.7
	Oct	5.9	13.4	11.7	10.0	14.2	12.6	12.2	15.9	13.4	14.9	13.6	14.2	-1.9	6.5	5.8	7.1	12.5	11.1	9.4	11.3	10.8
	Nov	5.7	13.0	11.3	10.5	15.2	13.4	12.2	16.5	13.7	15.2	14.1	14.6	-1.4	5.9	5.3	6.8	12.0	10.6	9.5	11.1	10.7
	Dec	5.2	12.3	10.7	10.8	16.1	14.0	12.2	17.0	13.8	15.0	13.8	14.4	-0.9	5.4	4.8	6.4	11.4	10.1	9.4	10.8	10.4
2015	Jan	4.5	11.4	9.8	11.0	16.7	14.5	12.1	17.4	13.9	14.1	13.1	13.6	-0.4	5.0	4.5	6.1	11.0	9.7	9.1	10.5	10.1

¹ There was a step change in 2011 due to a change in reporting population

² With effect of January 2014 the seasonal adjustment methodology using X12 ARIMA was reviewed and changed. Trading days and leap years have been incorporated into the monthly seasonal adjustment process.

³ With effect of January 2010 Automotive Fuels was published as a separate sub-sector in retail sales. See tables 2A and 2B

Table 3A Card expenditure statistics (not seasonally adjusted)

Number of credit card transactions

Detailed sector breakdown - retail sectors (not seasonally adjusted)

Historical data located in hidden columns

	January 2014	February 2014	March 2014	April 2014	May 2014	June 2014	July 2014	August 2014	September 2014	October 2014	November 2014	December 2014	January 2015	Total (latest 12 months)
Supermarkets	54,169,922	50,608,344	58,425,501	56,930,462	58,629,190	60,525,536	60,952,700	57,026,642	60,556,456	61,788,278	60,586,531	73,763,834	57,588,817	717,382,291
Bakers & dairies	218,753	321,286	291,629	272,727	299,385	308,612	327,757	331,909	346,295	382,365	372,500	392,198	332,212	3,978,875
Sweet stores	187,700	243,464	282,632	351,406	244,749	257,164	257,183	270,057	253,397	298,880	358,532	675,080	193,040	3,685,584
Miscellaneous foodstores	3,120,106	3,032,621	3,368,921	3,264,642	3,344,117	3,434,749	3,536,443	3,288,342	3,434,341	3,490,576	3,296,311	3,881,861	3,056,627	40,429,551
Off-licences	454,121	479,784	561,599	561,770	594,609	621,669	634,413	603,366	575,932	583,432	607,160	906,763	461,250	7,191,747
Food & drink	58,150,602	54,685,499	62,930,282	61,381,007	63,112,050	65,147,730	65,708,496	61,520,316	65,166,421	66,543,531	65,221,034	79,619,736	61,631,946	772,668,048
Department stores	5,851,704	4,340,179	5,085,142	5,139,404	5,505,234	5,865,845	6,197,849	5,464,470	5,163,445	5,690,941	7,419,741	11,204,390	5,868,824	72,945,464
Discount stores	1,811,103	1,663,519	1,872,304	2,010,222	2,089,652	2,088,096	2,183,190	2,187,503	2,082,198	2,296,179	2,733,114	3,718,388	1,986,574	26,910,939
Catalogues	6,296,304	5,951,672	8,109,442	8,072,540	8,029,188	8,187,987	8,823,587	9,987,830	11,496,859	12,489,582	14,761,571	13,355,044	12,286,284	121,551,586
Miscellaneous mixed	2,443,080	2,386,101	2,593,996	2,573,138	2,616,888	2,743,461	2,706,176	2,549,000	2,726,897	2,917,515	3,240,114	4,443,373	2,213,584	33,710,223
Mixed business	16,402,191	14,341,471	17,660,884	17,795,304	18,240,942	18,885,389	19,910,802	20,188,803	21,469,399	23,394,217	28,154,540	32,721,195	22,355,266	255,118,212
Men's clothing	394,118	291,160	297,447	315,488	334,842	396,886	431,817	365,831	321,661	343,018	379,483	614,427	394,496	4,486,556
Women's clothing	1,816,165	1,489,155	1,876,045	1,987,751	2,165,331	2,416,563	2,578,885	2,047,982	1,972,816	2,002,248	2,167,033	3,240,215	1,872,157	25,816,181
Family clothing	7,765,811	6,448,269	8,006,705	8,637,951	9,097,595	8,813,517	10,402,319	8,813,515	8,589,400	9,264,896	9,923,716	14,569,731	7,954,815	111,306,190
Miscellaneous clothing	373,182	346,033	414,109	421,383	455,958	504,536	535,580	476,286	463,924	496,275	526,195	653,844	389,356	5,683,479
Shoe shops	1,324,863	946,418	1,052,866	1,271,606	1,334,953	1,534,586	1,623,840	1,529,344	1,294,980	1,317,140	1,203,087	1,752,546	1,246,909	16,108,275
Clothing	11,674,139	9,521,035	11,647,172	12,634,119	13,388,679	14,449,909	15,572,441	13,232,958	12,642,781	13,423,577	14,199,514	20,830,763	11,857,733	163,400,681
Furniture stores	1,624,260	1,284,050	1,370,238	1,335,835	1,370,226	1,371,949	1,399,189	1,447,073	1,456,891	1,616,661	1,711,801	1,990,907	1,696,414	18,051,234
Household appliance stores	1,382,474	1,225,682	1,364,413	1,326,020	1,352,971	1,342,328	1,371,996	1,367,229	1,372,891	1,450,153	1,514,083	1,818,084	1,359,174	16,865,024
Electronic stores	1,458,666	1,145,555	1,192,117	1,182,292	1,160,791	1,144,057	1,202,022	1,214,858	1,301,009	1,346,030	1,407,222	2,095,151	1,440,932	15,831,836
DIY stores	5,616,524	5,620,781	6,586,286	7,102,919	7,189,074	6,717,473	6,804,578	6,781,796	6,483,709	6,641,160	6,436,397	6,202,095	5,615,055	78,181,323
Floor covering stores	168,904	168,426	178,930	170,541	164,187	163,064	171,459	174,930	180,484	204,653	203,676	155,818	169,035	2,105,203
Garden centres	947,853	1,005,633	1,980,009	2,365,525	2,545,759	2,086,843	1,639,181	1,420,237	1,507,278	1,528,964	1,515,932	2,043,295	976,477	20,615,133
Miscellaneous household	1,670,285	1,405,828	1,565,967	1,510,614	1,561,352	1,630,865	1,733,650	1,672,760	1,706,721	1,754,504	1,870,521	2,374,306	1,707,694	20,494,782
Household	12,868,966	11,855,955	14,237,960	14,993,746	15,344,360	14,456,579	14,322,075	14,078,883	14,008,983	14,542,125	14,659,432	16,679,656	12,964,781	172,144,535
Books, newspapers & magazines	1,768,096	1,667,305	1,824,770	1,722,216	1,776,164	1,857,098	1,975,240	1,865,154	2,079,663	2,151,685	2,248,541	3,525,931	1,756,639	24,450,406
Record shops	229,305	195,349	204,181	203,415	187,943	193,521	191,236	186,064	187,725	203,134	269,828	680,466	189,394	2,892,256
Music shops	140,204	126,742	127,794	116,202	118,628	111,317	120,279	113,221	139,945	153,204	143,207	153,204	160,927	1,609,275
Hobbies, toys & games	423,673	391,531	455,356	457,412	460,088	454,747	501,496	504,352	573,714	646,466	941,253	1,434,517	446,226	7,267,158
Photographic	166,824	180,758	148,166	137,962	152,423	163,319	177,143	171,789	175,059	171,805	193,998	173,055	139,977	1,985,454
Handicraft	94,524	86,853	92,206	84,616	84,465	81,131	89,960	85,719	90,994	98,208	99,792	89,102	81,181	1,064,227
Sports shops	2,585,581	2,240,595	2,553,051	2,762,196	2,967,242	3,104,119	3,426,833	3,423,746	2,987,628	2,715,180	2,709,525	3,945,583	2,624,270	35,459,968
Jewellers	697,285	641,758	692,173	628,163	663,349	702,784	712,102	650,185	629,826	625,307	820,947	1,580,354	618,367	8,965,315
Computer software	465,270	272,566	290,421	274,480	268,155	256,616	264,648	253,899	275,559	279,292	264,712	322,798	267,470	3,290,616
Medical goods	418,144	401,591	454,970	444,657	477,924	494,449	536,283	495,905	491,225	527,091	515,664	650,218	505,645	5,995,622
Chemists	3,631,504	3,287,740	3,809,456	3,658,686	3,889,743	4,145,656	4,263,906	3,753,739	4,006,899	4,139,070	4,044,462	6,360,944	3,696,771	49,057,072
Optical goods	494,493	469,219	528,955	491,808	519,089	545,320	568,719	517,516	515,272	508,838	463,472	432,049	477,710	6,037,967
Cosmetic stores	400,388	373,666	445,889	413,529	443,499	481,786	484,636	460,983	488,932	542,335	686,290	1,249,664	420,899	6,492,108
Tobacconists	31,066	51,215	32,457	32,613	35,369	38,093	40,308	38,874	40,498	40,795	38,026	49,458	39,940	477,646
Florists	288,585	410,552	548,022	341,769	357,576	346,967	339,476	294,073	333,315	320,220	303,973	546,632	269,430	4,412,005
Artists' supplies	266,264	271,350	290,507	266,504	271,201	265,297	282,990	284,359	288,525	323,103	357,654	399,107	244,892	3,545,489
Antiques, art & stamps/coins	125,928	134,282	138,430	147,898	162,329	158,984	173,106	180,355	172,662	168,381	165,337	196,396	127,553	1,925,713
Pawn shops	3,555	3,600	3,606	3,278	3,262	3,278	4,180	4,144	4,088	4,108	4,372	6,756	3,825	48,497
Gift shops	1,177,787	1,197,827	1,404,528	1,295,948	1,367,640	1,544,126	1,618,945	1,676,126	1,592,265	1,684,657	2,136,792	3,396,948	1,256,452	20,172,254
Secondhand shops	18,721	19,215	21,546	21,857	21,197	22,667	24,347	21,879	21,231	23,222	21,605	25,100	20,969	264,835
Luggage & leather goods	104,236	89,421	98,814	95,751	103,054	117,371	122,547	120,379	104,480	113,700	130,256	178,310	95,226	1,369,317
Pet shops	778,699	711,158	800,145	803,288	831,670	821,580	848,467	855,815	821,432	867,512	844,893	978,092	816,191	10,000,243
Religious goods	6,975	6,159	8,376	10,309	12,493	13,019	15,580	13,783	11,652	11,044	8,010	8,078	6,959	125,459
Direct sales	3,665,668	3,545,095	3,718,383	3,689,464	3,628,044	3,521,590	3,589,174	3,315,087	3,390,131	3,615,554	3,315,143	3,704,124	3,395,772	42,427,561
Miscellaneous & speciality shops	2,896,854	2,735,981	3,021,046	2,983,948	3,273,598	3,304,429	3,511,728	3,410,197	3,526,461	4,915,523	5,303,865	5,885,087	4,856,783	46,728,646
Other retail	20,879,629	19,511,528	21,713,248	21,087,969	22,076,145	22,749,264	23,879,088	22,701,784	22,949,181	24,839,437	26,041,614	36,026,846	22,489,005	286,065,109
Automotive Fuels	18,608,192	17,684,652	20,347,577	19,623,179	20,303,884	20,632,879	21,138,126	19,883,979	20,535,495	20,240,182	18,691,214	19,471,196	17,675,368	236,227,731
Total retail sales	138,583,719	127,800,140	148,537,123	147,515,324	152,466,060	156,321,750	160,531,028	151,606,723	156,772,260	162,983,069	166,967,348	205,349,392	148,974,099	1,885,624,316

Table 3A Card expenditure statistics (not seasonally adjusted)

Number of credit card transactions

Detailed sector breakdown - services sectors (not seasonally adjusted)

	January 2014	February 2014	March 2014	April 2014	May 2014	June 2014	July 2014	August 2014	September 2014	October 2014	November 2014	December 2014	January 2015	Total (latest 12 months)
Auto rental	515,129	550,612	568,528	615,311	650,680	667,464	740,074	681,619	657,457	543,475	457,587	449,455	495,316	7,077,578
Auto parts & accessories	732,630	730,831	827,824	800,394	799,716	790,371	827,270	744,173	754,786	751,478	696,196	719,396	719,555	9,161,990
Auto services	1,886,816	1,849,315	2,027,837	1,915,563	2,068,569	2,081,660	2,171,202	1,912,440	2,168,016	2,325,359	2,168,635	2,142,038	2,073,058	24,903,692
Auto repair shops	873,437	886,747	992,979	885,258	903,749	904,199	941,391	848,138	893,101	806,242	769,757	833,959	10,570,161	
Service stations	0	0	0	0	0	0	0	0	0	0	0	0	0	0
Vehicle sales	528,359	545,527	653,897	594,366	610,525	614,799	627,747	570,329	611,847	560,000	489,946	459,214	509,139	6,847,336
Vehicle Sales & Services	4,536,371	4,563,032	5,071,065	4,810,892	5,033,239	5,058,493	5,307,684	4,756,699	5,096,747	5,073,413	4,618,606	4,539,860	4,631,027	58,560,757
Restaurants	14,465,343	15,085,580	17,375,229	17,088,152	18,472,146	18,753,520	19,775,009	19,600,318	19,438,995	20,318,156	19,149,963	19,702,360	17,443,915	222,203,343
Public houses	2,500,730	2,793,884	3,183,652	2,917,200	2,887,419	2,991,777	3,138,804	3,084,888	3,084,180	2,906,707	2,669,772	2,989,403	2,359,976	35,007,662
Catering services	501,509	1,169,224	577,567	545,646	591,645	611,391	637,298	555,148	661,358	699,112	662,202	630,702	613,116	7,954,409
Video stores	291,725	238,239	216,422	193,754	183,092	198,503	187,561	180,019	200,110	194,779	175,577	222,622	248,533	2,439,211
Cinema, theatre & dance	2,080,518	1,961,068	1,757,955	1,719,511	1,734,077	1,625,616	1,800,033	1,923,221	1,690,062	2,193,403	2,408,504	2,556,896	2,001,813	23,372,159
Concerts & entertainers	134,007	126,873	138,866	133,890	135,874	124,909	131,869	151,746	56,295	156,016	186,409	204,442	138,654	1,685,843
Tourist attractions	263,740	320,504	401,783	684,396	640,000	678,591	866,322	1,039,696	685,602	621,739	371,649	383,982	278,658	6,972,922
Amusement parks	20,420	85,199	38,124	97,591	75,670	78,647	106,039	155,126	81,861	84,816	41,437	34,322	26,664	905,496
Aquariums	14,038	32,532	23,564	41,589	31,907	29,617	52,920	79,248	50,536	39,548	21,923	21,027	16,900	441,311
Sports & games establishments	3,465,738	3,062,899	3,562,420	3,265,765	3,528,874	3,167,194	3,156,670	3,185,707	3,752,885	3,851,656	3,395,489	4,367,895	4,268,156	42,565,610
Professional sports clubs	117,888	114,462	128,878	140,200	156,524	111,253	144,277	136,338	156,345	124,435	125,941	121,235	94,640	1,554,528
Gambling	5,785,423	5,410,422	6,175,058	5,849,636	5,420,051	5,747,752	5,333,736	5,019,556	5,916,812	6,060,666	5,739,677	6,803,324	6,144,983	69,621,673
Personal services	273,457	274,076	274,749	286,593	274,749	286,593	292,758	278,971	278,971	301,534	382,897	270,372	3,481,952	
Miscellaneous entertainment	588,070	576,251	645,362	681,106	705,075	655,892	720,108	933,393	783,092	923,012	683,184	583,282	738,153	8,627,910
Entertainment	30,502,606	31,251,213	34,499,580	33,633,185	34,848,947	35,059,644	36,343,404	36,323,375	36,836,955	38,455,543	35,933,261	39,004,389	34,644,533	426,834,029
Hotels	4,162,505	4,250,507	4,882,977	4,721,602	5,205,389	5,281,499	5,537,804	5,212,363	5,445,681	5,360,924	4,841,041	4,424,903	4,411,057	59,575,747
Airlines	2,933,964	2,428,389	2,744,532	2,643,890	2,799,134	2,553,575	2,478,111	2,364,403	2,638,124	2,570,159	2,159,641	1,888,402	2,865,096	30,133,456
Airport terminals	30,789	86,239	37,224	39,805	43,781	45,033	47,719	41,728	45,058	38,562	28,808	27,230	31,088	512,275
Railways	5,395,471	5,138,529	6,016,419	5,637,691	6,055,544	6,307,600	6,492,461	5,606,392	6,422,013	6,582,071	6,104,469	5,771,604	5,365,874	71,500,667
Buses	562,479	580,303	638,781	616,799	655,151	610,088	615,265	545,699	633,416	640,292	588,222	568,612	526,983	7,219,611
Sea travel	131,714	142,870	182,450	198,509	234,012	230,063	253,141	259,551	230,982	205,729	159,628	150,167	176,592	2,423,694
Travel agents	2,154,117	1,823,497	1,963,002	1,790,377	1,891,578	1,857,014	1,836,892	1,723,866	1,907,065	1,872,174	1,633,859	1,555,971	2,117,373	21,972,668
Timeshares	27,453	20,607	18,877	18,146	17,823	15,901	17,534	17,738	17,736	18,488	16,426	16,631	26,135	222,042
Camping grounds	108,008	117,670	160,116	242,435	272,077	269,573	335,414	346,267	215,594	148,977	75,561	57,142	111,929	2,352,755
Miscellaneous travel	943,614	947,828	1,068,928	1,044,271	1,146,744	1,153,983	1,246,342	1,081,697	1,198,276	1,475,084	1,531,166	1,511,118	1,616,711	15,022,148
Travel	12,287,609	11,285,932	12,830,329	12,231,923	13,115,844	13,042,830	13,322,879	11,987,341	13,308,264	13,551,536	12,297,780	11,546,877	12,837,781	151,359,316
Telegraph services / Wire transfer money order	16,113	16,795	17,561	16,614	18,617	17,212	17,323	16,028	16,333	19,921	21,841	23,011	24,858	226,114
Insurance services	1,631,395	1,530,654	1,761,585	1,665,616	1,655,568	1,667,417	1,839,432	1,672,600	1,729,359	1,586,678	1,373,640	1,352,680	1,466,740	19,301,969
Fls - cash disbursements (auto & manual)	15,614	16,232	17,270	14,963	16,682	17,106	16,167	13,325	18,063	18,010	17,237	14,055	15,312	194,422
Fls - merchandise & services	146,015	133,696	147,161	135,118	143,156	140,114	143,434	126,415	355,759	132,630	113,345	118,764	123,995	1,813,587
Non-Fls - foreign currency, travellers' cheques	57,494	64,357	75,695	97,123	128,580	137,240	135,592	123,556	132,594	100,055	72,863	76,097	82,272	1,226,024
Security brokers and dealers	19,808	92,018	18,390	16,674	15,263	12,653	15,409	15,433	16,988	23,977	18,704	20,789	25,221	291,519
Tax preparation services	210	1,498	219	175	160	168	166	132	208	158	160	111	211	3,366
Tax payments	20,886	19,743	18,711	15,753	13,600	12,583	14,853	13,002	14,481	13,453	11,738	11,970	17,552	177,259
Fines, bail and bond payments	71,838	70,082	74,033	68,947	69,821	70,248	74,900	69,187	69,153	74,059	67,861	56,080	57,229	821,600
Miscellaneous financial	71,185	70,192	87,221	93,917	92,056	95,168	101,285	89,446	92,937	97,860	85,404	79,308	80,085	1,064,879
Financial	2,050,558	2,015,267	2,217,846	2,124,900	2,153,503	2,169,909	2,358,561	2,139,124	2,445,875	2,066,801	1,782,793	1,752,685	1,893,475	25,120,739

Table 3A Card expenditure statistics (not seasonally adjusted)

Number of credit card transactions

Detailed sector breakdown - services sectors (continued, not seasonally adjusted)

	January 2014	February 2014	March 2014	April 2014	May 2014	June 2014	July 2014	August 2014	September 2014	October 2014	November 2014	December 2014	January 2015	Total (latest 12 months)
Telecoms	1,954,921	1,764,738	1,920,502	1,844,217	1,872,218	1,819,447	1,940,118	1,907,603	2,094,657	2,027,933	1,909,784	2,072,859	1,929,964	23,104,040
Utilities	394,816	378,604	423,439	360,360	394,325	362,001	387,091	357,415	400,371	415,656	372,316	387,786	397,889	4,637,253
Contractors (residential & commercial)	265,579	276,965	280,681	260,230	265,479	264,791	284,268	255,928	285,174	312,244	280,539	252,097	261,223	3,279,619
Gardening services	34,614	38,934	67,180	77,954	80,070	70,821	58,815	48,073	49,976	50,137	45,904	60,258	32,281	680,403
Veterinary services	618,048	561,433	612,622	615,866	636,894	644,356	709,910	673,642	672,737	697,845	630,390	647,111	614,179	7,716,985
Photocopying & printing	295,642	242,778	272,721	241,918	256,744	247,643	253,431	222,763	261,490	282,420	313,482	364,848	268,770	3,229,008
Photographic studios	88,066	220,568	103,021	101,770	123,180	136,757	156,025	118,408	126,124	159,776	171,301	267,854	112,371	1,797,155
Beauty & barber shops	1,458,186	1,393,143	1,581,961	1,552,150	1,656,204	1,668,774	1,739,716	1,595,221	1,635,737	1,656,708	1,605,024	2,191,032	1,435,747	19,711,417
Employment agencies	22,466	25,985	22,353	22,654	22,156	24,919	25,673	22,778	23,563	26,367	23,779	20,711	23,713	284,651
Counselling services	5,865	5,480	6,158	6,200	5,963	6,149	5,389	5,837	6,685	6,314	5,780	6,440	72,243	72,243
Legal services	58,616	39,706	78,302	56,038	56,505	56,074	57,933	53,181	56,907	59,607	53,116	48,675	53,308	669,352
Laundry & cleaning	182,919	181,757	190,490	188,431	204,625	220,424	221,857	191,858	213,786	220,407	201,731	193,987	186,139	2,415,492
Funeral services	12,829	12,024	13,094	12,342	12,407	12,401	12,847	11,227	12,466	12,361	11,691	12,157	13,661	148,678
Medical services	1,310,068	1,261,582	1,281,759	1,228,050	1,264,968	1,284,136	1,343,498	1,159,639	1,325,044	1,382,020	1,277,573	1,197,862	1,297,095	15,303,228
Moving & courier services	386,526	388,682	418,803	407,060	438,164	422,331	444,893	370,590	436,418	475,027	452,289	447,052	420,698	5,122,007
Repair shops (not auto)	66,629	64,613	60,594	57,875	59,945	60,366	64,894	60,584	63,855	67,310	71,419	81,348	67,177	779,980
Accounting services	45,429	76,052	36,625	28,922	27,971	28,943	30,600	30,899	37,019	38,225	36,612	36,556	39,334	447,758
Advertising, consultancy & PR	71,073	64,547	73,424	71,265	72,501	71,871	74,295	69,192	71,614	70,554	62,688	56,340	59,858	818,149
Computer programming	1,362,401	1,178,435	1,357,517	1,287,682	1,310,973	1,358,800	1,417,439	1,376,648	1,511,223	1,610,805	1,971,380	2,396,813	1,656,225	18,433,940
Farming services	104,000	98,421	111,383	112,133	113,871	110,248	108,086	103,884	107,100	108,025	105,173	125,069	102,807	1,306,200
Miscellaneous professional services	907,524	1,034,611	921,302	879,791	893,472	890,855	932,001	867,660	946,236	1,183,746	1,117,761	1,128,921	1,091,932	11,888,288
Engineering services	50,430	51,001	54,099	52,173	52,286	53,547	56,521	48,707	51,981	55,842	48,022	44,733	47,211	616,123
Marina services	34,703	33,648	50,713	69,594	75,000	83,757	99,232	91,231	73,938	49,673	38,140	34,678	33,376	732,980
Wrecking & salvage yards	3,544	3,218	3,626	3,730	3,594	3,588	3,926	3,490	4,003	3,899	3,423	2,955	3,533	42,985
Pest control	2,532	5,922	2,660	2,818	3,447	3,414	3,924	3,124	3,416	4,019	3,120	2,843	2,969	41,676
Educational establishments	780,831	648,419	760,752	600,652	675,737	673,242	612,153	486,772	931,449	861,563	814,901	671,390	871,750	8,608,780
Child care services	23,668	32,968	19,686	20,471	21,517	18,401	18,800	22,690	19,937	22,777	19,371	19,787	22,647	259,052
Social, political & religious organisations	1,185,318	1,144,861	1,492,888	1,367,471	1,448,309	1,437,801	1,421,342	1,394,944	1,551,815	1,467,619	1,380,576	1,387,283	1,130,492	16,625,401
Government services	2,428,846	2,364,342	2,601,633	2,557,237	2,651,192	2,650,075	2,692,184	2,448,026	2,588,667	2,609,311	2,317,183	2,216,602	2,443,716	30,140,168
Miscellaneous services	1,385,758	1,341,952	1,487,753	1,181,411	1,398,673	1,428,403	1,483,329	1,281,106	1,399,771	1,415,175	1,386,545	2,097,444	1,326,549	17,228,111
Commercial equipment	988,458	908,886	929,620	862,234	889,160	872,073	912,209	845,705	987,710	993,836	943,241	931,419	912,747	10,988,840
Other services	16,530,305	15,844,275	17,237,361	16,130,699	16,987,550	16,986,107	17,573,159	16,128,377	17,950,021	18,347,572	17,674,788	19,404,250	16,865,801	207,129,960
Total services	70,069,954	69,210,226	76,739,158	73,653,201	77,344,472	77,598,482	80,443,491	76,547,279	81,083,543	82,855,789	77,148,269	80,672,964	75,283,674	928,580,548
TOTAL	208,653,673	196,810,366	225,276,281	221,168,525	229,810,532	233,920,232	240,974,519	228,154,002	237,855,803	245,838,858	244,115,617	286,022,356	224,257,773	2,814,204,864

Table 3B Card expenditure statistics (not seasonally adjusted)

Value of credit card transactions

Detailed sector breakdown - retail sectors (not seasonally adjusted)

Historical data located in hidden columns

£	January 2014	February 2014	March 2014	April 2014	May 2014	June 2014	July 2014	August 2014	September 2014	October 2014	November 2014	December 2014	January 2015	Total (latest 12 months)
Supermarkets	1,667,994,660	1,579,714,015	1,827,701,780	1,823,830,120	1,852,979,563	1,890,622,873	1,863,140,099	1,766,729,549	1,852,507,855	1,891,740,567	1,928,770,781	2,630,480,321	1,678,634,665	22,586,852,188
Bakers & dairies	3,436,203	6,798,661	4,317,689	4,088,753	4,370,575	4,562,654	4,617,597	4,468,611	4,817,872	5,082,480	5,067,001	6,036,341	4,241,317	58,469,551
Sweet stores	4,730,780	5,677,998	6,910,633	8,973,193	5,944,123	6,266,297	6,510,251	6,420,174	6,075,636	6,806,456	9,216,196	17,550,217	3,960,032	90,311,206
Miscellaneous foodstores	95,374,902	98,832,404	102,379,214	99,670,775	102,162,206	105,436,814	105,424,686	96,379,519	101,801,931	105,841,721	104,665,839	141,788,125	94,022,833	1,258,406,067
Off-licences	31,628,827	33,045,895	40,898,662	41,629,932	42,244,580	42,421,883	42,838,798	39,577,615	37,486,314	39,406,906	49,018,615	81,006,626	32,148,188	521,724,014
Food & drink	1,803,165,372	1,724,068,973	1,982,207,978	1,978,192,773	2,007,701,047	2,049,310,521	2,022,531,431	1,913,575,468	2,002,689,068	2,048,878,130	2,096,738,432	2,876,861,630	1,813,007,035	24,515,763,026
Department stores	382,502,468	297,279,905	359,206,273	365,046,580	376,528,661	401,925,110	384,053,341	384,446,547	383,199,699	414,732,897	526,629,699	716,997,891	373,113,287	4,983,069,890
Discount stores	83,813,104	74,543,361	85,280,160	91,216,281	94,272,437	90,600,286	93,498,253	96,166,295	91,598,413	101,495,806	130,944,852	172,897,218	88,637,387	1,211,150,749
Catalogues	143,145,412	132,814,465	172,756,007	158,120,141	153,494,683	150,087,029	155,873,321	173,932,899	197,698,269	204,584,481	221,486,449	186,417,062	178,179,123	2,085,443,929
Miscellaneous mixed	93,200,542	91,504,880	102,863,364	103,961,277	108,217,540	112,230,410	110,677,935	106,659,671	116,999,333	125,589,762	139,026,768	177,570,623	95,465,419	1,380,766,982
Mixed business	702,661,526	596,142,611	720,105,804	718,344,279	732,513,321	754,842,835	744,102,850	761,205,412	789,495,714	846,402,946	1,018,087,768	1,253,792,794	725,395,216	9,660,431,550
Men's clothing	42,954,315	33,453,112	37,764,973	38,019,650	40,995,605	47,429,144	44,418,380	38,717,958	38,849,527	43,312,436	45,857,878	64,127,147	43,511,193	516,457,003
Women's clothing	122,098,515	112,626,685	145,108,415	143,846,026	149,867,751	165,018,242	152,918,579	130,438,322	145,825,606	152,552,364	154,529,024	196,326,643	126,401,712	1,775,459,369
Family clothing	356,685,153	327,048,586	406,362,973	404,084,708	441,898,483	457,641,201	461,676,656	423,016,503	440,508,462	458,959,987	505,514,152	686,161,667	356,245,977	5,418,119,355
Miscellaneous clothing	25,321,502	33,508,692	28,436,123	28,263,095	30,091,853	33,479,422	32,557,826	29,642,910	30,680,747	33,893,128	34,474,229	40,912,132	25,411,107	381,351,264
Shoe shops	78,184,968	62,228,950	70,991,124	81,539,472	83,673,040	91,226,181	85,475,811	89,916,631	86,025,128	96,001,094	89,601,502	118,920,934	74,497,003	1,030,096,870
Clothing	625,244,453	568,866,025	688,663,608	721,752,951	746,526,732	794,794,190	777,047,252	711,732,324	741,889,470	807,719,009	829,976,785	1,106,448,523	626,066,992	9,121,483,861
Furniture stores	324,847,989	267,054,990	284,281,171	273,686,156	276,732,875	265,789,007	279,209,784	281,776,424	292,548,037	333,573,154	314,306,428	290,208,827	341,015,635	3,500,182,489
Household appliance stores	134,773,703	120,734,477	130,716,135	117,640,150	119,433,088	115,732,161	118,726,715	112,781,214	117,975,198	133,045,193	137,719,661	143,838,310	126,206,518	1,494,548,820
Electronic stores	229,721,013	172,484,506	188,993,357	189,474,530	185,266,272	185,008,552	189,141,349	198,186,908	220,920,108	231,647,999	241,624,213	362,461,743	232,351,109	2,597,560,646
DIY stores	444,651,024	429,469,678	488,326,163	516,911,927	524,464,300	495,806,769	515,469,469	490,378,817	485,507,439	513,938,965	478,249,120	410,724,234	435,099,627	5,784,346,508
Floor covering stores	59,281,324	58,163,895	64,744,402	61,415,389	60,897,913	60,876,671	63,828,489	62,847,588	66,700,835	76,648,575	76,156,871	56,573,443	60,832,781	769,686,852
Garden centres	40,948,487	45,300,337	97,204,351	120,958,611	128,902,619	106,075,067	83,624,146	66,905,584	68,998,218	65,482,114	64,345,601	40,394,861	970,469,079	
Miscellaneous household	138,743,048	122,398,616	134,581,704	131,445,633	133,520,372	142,340,623	144,590,634	137,985,253	147,730,703	158,297,632	162,324,551	192,671,516	145,579,611	1,753,476,848
Household	1,372,966,588	1,215,806,199	1,388,857,283	1,411,532,396	1,429,217,439	1,371,628,850	1,394,590,586	1,350,861,788	1,400,380,538	1,512,633,632	1,474,725,905	1,538,756,483	1,381,480,142	16,870,271,241
Books, newspapers & magazines	58,295,383	53,839,212	55,451,252	50,267,408	51,728,440	50,937,284	54,966,537	51,980,299	58,998,772	65,424,504	68,516,658	98,999,105	59,462,857	720,572,328
Record shops	6,076,500	5,605,438	5,504,001	5,800,659	5,385,350	5,719,169	5,385,684	5,164,918	5,352,028	5,760,207	8,026,361	18,884,654	4,921,162	81,509,631
Music shops	18,314,078	16,432,020	17,058,243	15,834,168	16,094,735	15,293,181	16,029,740	15,902,468	18,074,695	18,711,772	20,573,225	26,902,668	17,983,276	214,890,191
Hobbies, toys & games	28,117,370	24,278,589	28,431,103	27,442,025	28,018,936	27,563,708	28,492,747	28,139,279	38,409,631	39,391,413	60,391,283	88,255,251	25,512,438	444,326,403
Photographic	22,113,016	21,321,700	23,520,637	19,386,467	21,629,900	21,351,888	22,685,960	21,463,647	20,785,250	21,140,487	22,251,553	26,461,004	19,052,646	261,051,143
Handicraft	8,659,637	8,207,004	8,616,677	8,034,821	8,099,280	7,383,108	8,154,035	8,453,927	8,200,223	9,100,617	9,158,518	7,906,345	9,985,892	
Sports shops	165,776,849	149,121,352	172,972,873	187,450,432	197,142,199	198,208,869	216,921,703	216,041,028	190,017,862	177,774,087	179,795,808	242,218,238	163,000,095	2,290,664,546
Jewellers	105,842,801	106,570,968	119,147,110	110,324,441	117,230,455	126,235,522	124,532,078	120,510,008	118,442,829	118,363,801	141,608,949	275,864,145	105,039,386	1,583,869,692
Computer software	55,050,793	44,009,468	48,355,704	45,977,761	42,915,502	40,322,541	42,207,464	40,120,655	45,001,326	45,541,677	44,448,481	53,597,714	42,001,331	534,499,624
Medical goods	14,847,543	15,467,820	17,159,353	15,979,452	16,811,579	17,311,453	18,597,011	17,365,146	17,830,279	19,734,790	19,480,880	23,330,326	16,320,375	215,388,464
Chemists	75,410,564	69,992,697	81,907,727	77,218,556	83,567,360	89,060,997	90,256,038	80,746,213	84,834,270	88,930,462	102,943,425	173,459,325	76,289,660	1,109,206,730
Optical goods	74,014,293	71,578,021	81,617,428	75,128,155	78,969,154	82,066,488	77,912,830	77,912,830	78,079,837	77,393,158	70,543,943	61,760,769	73,491,378	913,764,938
Cosmetic stores	23,312,839	22,022,333	27,210,124	24,662,894	27,021,762	29,097,199	28,324,760	26,655,697	30,649,059	33,040,304	40,263,850	64,081,371	24,215,191	377,244,544
Tobaccoists	1,835,891	2,187,295	1,838,016	1,850,376	1,908,622	2,132,715	2,152,443	1,917,707	2,010,361	2,001,500	1,831,310	2,486,189	1,876,991	24,193,525
Florists	14,544,713	20,488,633	25,516,782	18,127,137	19,518,504	18,663,948	18,327,133	15,783,662	17,916,325	16,948,017	16,179,196	26,046,914	14,331,289	227,407,540
Artists' supplies	12,559,867	13,154,938	14,092,727	12,950,002	13,705,505	13,230,172	14,115,643	13,549,703	14,277,680	16,014,751	16,988,148	17,303,989	11,958,283	171,341,541
Antiques, art & stamps/coins	21,241,279	22,335,719	25,482,909	24,362,276	26,731,393	26,720,165	26,003,900	23,987,688	27,649,734	29,208,918	28,347,263	29,960,767	21,827,685	312,618,417
Pawn shops	936,271	881,147	821,488	837,274	796,151	823,506	1,049,566	1,055,259	1,140,407	1,111,964	1,066,209	1,396,827	1,009,655	11,989,453
Gift shops	41,844,630	40,800,944	48,115,249	46,596,398	50,302,524	52,447,629	57,336,769	59,719,274	58,345,837	63,837,591	80,772,225	108,816,624	44,155,592	711,246,656
Secondhand shops	2,146,267	2,806,224	2,656,883	2,550,981	2,493,747	2,817,861	2,652,510	1,926,742	2,244,984	2,736,159	2,539,073	2,730,704	2,585,549	30,541,417
Luggage & leather goods	14,003,652	12,461,848	14,747,408	13,956,290	14,606,276	17,238,794	16,111,921	15,815,248	15,407,907	16,256,329	17,564,159	26,091,493	13,513,328	193,771,001
Pet shops	33,893,671	30,558,371	34,958,050	35,020,504	35,840,415	35,316,401	36,847,341	35,805,167	37,530,232	36,027,100	40,106,068	34,568,137	429,303,934	
Religious goods	229,858	271,017	285,525	365,039	438,803	446,658	517,438	457,440	417,249	420,257	264,805	284,263	238,908	4,407,402
Direct sales	214,037,647	207,937,260	215,052,775	219,121,500	213,784,434	207,868,051	215,134,572	197,751,294	222,105,044	220,662,450	195,910,025	207,548,153	204,324,758	2,527,200,316
Miscellaneous & speciality														

Table 3B Card expenditure statistics (not seasonally adjusted)

Value of credit card transactions

Detailed sector breakdown - services sectors (not seasonally adjusted)

£	January 2014	February 2014	March 2014	April 2014	May 2014	June 2014	July 2014	August 2014	September 2014	October 2014	November 2014	December 2014	January 2015	Total (latest 12 months)
Auto rental	57,929,031	56,554,734	64,738,074	73,548,112	82,369,463	94,113,999	111,012,128	90,745,396	78,363,853	58,552,412	48,692,508	54,932,445	53,938,226	867,561,350
Auto parts & accessories	118,045,526	116,749,098	132,047,280	125,120,967	126,416,416	124,017,222	129,194,006	113,897,510	119,363,198	120,022,023	109,726,143	111,025,849	113,207,752	1,440,787,464
Auto services	45,436,053	46,865,924	51,300,922	48,228,522	51,353,681	52,564,626	54,579,279	48,809,353	54,337,861	53,613,594	48,147,706	45,894,314	49,869,612	605,565,394
Auto repair shops	219,619,016	224,547,977	251,002,418	218,814,050	225,011,258	223,964,595	231,713,269	209,389,099	225,962,531	224,056,040	201,589,254	188,385,314	207,919,317	2,632,355,122
Service stations	0	0	0	0	0	0	0	0	0	0	0	0	0	0
Vehicle sales	202,313,504	208,956,165	255,657,880	215,349,198	220,996,349	220,283,134	220,760,758	202,783,521	232,060,652	212,516,300	184,412,977	171,391,186	199,049,409	2,544,217,525
Vehicle Sales & Services	643,343,130	653,673,898	754,746,574	681,060,849	706,147,167	714,943,576	747,259,440	665,624,879	710,088,095	668,760,369	592,568,588	571,629,108	623,984,316	8,090,486,859
Restaurants	491,944,368	515,000,442	600,852,984	580,917,429	621,777,239	633,174,889	659,210,292	659,684,635	646,844,400	663,818,230	637,331,308	759,799,380	545,233,839	7,523,645,067
Public houses	92,628,590	99,515,802	118,400,017	115,411,227	117,879,724	122,798,677	127,537,625	127,704,874	127,479,808	119,903,789	112,072,072	146,534,509	94,077,176	1,429,315,300
Catering services	51,322,962	75,872,376	57,715,500	54,533,751	60,598,473	60,675,748	63,684,776	55,635,879	62,663,706	63,281,037	61,459,408	66,497,467	54,074,715	736,692,836
Video stores	3,159,700	2,986,423	2,509,472	2,261,150	2,348,500	2,893,659	2,901,796	2,663,357	2,891,445	2,768,157	2,523,620	2,999,706	2,819,920	32,567,205
Cinema, theatre & dance	123,839,413	123,023,988	133,184,925	112,657,783	132,665,675	119,131,514	119,388,936	102,579,651	113,181,974	205,931,162	197,634,394	171,926,046	111,408,926	1,642,714,974
Concerts & entertainers	7,827,096	7,621,430	8,515,892	7,763,325	8,829,733	8,641,609	8,370,622	9,043,936	5,207,668	11,023,193	12,892,572	12,477,003	8,935,985	109,322,968
Tourist attractions	19,684,422	21,086,666	26,765,101	40,082,771	38,007,078	40,631,517	48,980,035	51,252,205	35,106,643	34,045,806	23,256,908	20,410,540	401,357,329	
Amusement parks	1,290,211	6,490,166	2,154,696	4,961,353	4,084,082	4,930,070	6,349,972	7,703,384	4,005,529	4,399,807	2,230,457	1,857,239	1,676,325	50,843,080
Aquariums	780,541	1,601,195	1,164,805	2,002,690	1,581,409	1,485,135	2,814,502	3,943,144	2,409,727	1,919,755	1,179,459	1,250,382	925,954	22,278,157
Sports & games establishments	102,237,280	95,362,606	122,490,989	125,035,573	167,602,097	114,849,075	104,744,007	96,960,646	117,658,987	109,176,954	109,091,983	121,668,881	118,490,535	1,403,132,333
Professional sports clubs	13,514,789	9,227,875	11,804,911	15,130,702	26,683,825	16,607,340	15,291,950	10,691,386	11,450,186	11,124,829	11,103,361	8,579,596	8,582,022	156,277,983
Gambling	116,914,299	117,003,912	129,285,201	117,565,543	115,106,721	124,598,989	103,941,677	113,338,909	132,004,079	124,596,142	119,267,518	135,445,847	127,598,773	1,459,753,308
Personal services	19,056,562	20,700,211	20,177,974	18,296,684	19,327,548	19,008,682	19,446,422	18,363,654	19,064,605	20,914,954	22,294,337	25,917,447	19,558,370	243,070,888
Miscellaneous entertainment	205,495,665	187,618,310	206,318,646	187,482,954	208,694,754	178,643,414	183,553,044	182,933,722	209,962,865	225,567,033	191,940,755	141,733,847	223,545,357	2,327,994,701
Entertainment	1,249,695,898	1,283,111,402	1,441,341,113	1,384,102,935	1,525,186,858	1,448,070,318	1,466,215,656	1,442,499,382	1,489,931,622	1,598,470,848	1,502,753,299	1,619,944,258	1,337,338,437	17,538,966,128
Hotels	679,524,205	690,868,483	818,300,312	803,486,127	914,465,945	986,043,516	1,003,226,810	916,445,630	986,513,547	963,222,549	846,621,742	756,807,809	737,230,794	10,423,233,264
Airlines	882,686,762	706,055,747	788,449,977	742,919,231	778,726,857	671,540,382	651,187,587	597,040,030	665,502,522	649,880,195	543,328,546	474,680,419	773,422,497	8,042,733,990
Airport terminals	2,670,075	39,656,714	3,328,301	3,416,536	3,804,065	4,508,972	4,431,939	3,788,854	4,240,768	3,294,833	2,719,452	2,852,456	2,746,387	78,789,277
Railways	266,181,515	213,483,291	244,309,560	233,271,637	242,531,016	252,912,204	255,468,602	217,549,378	276,100,090	272,763,727	254,399,706	278,925,739	263,179,567	3,004,894,517
Buses	25,750,329	26,863,692	29,515,726	30,271,761	32,472,211	31,713,585	33,019,772	30,199,212	33,171,314	30,389,255	27,203,037	25,540,035	24,451,133	354,810,733
Sea travel	44,948,812	49,409,893	60,837,512	59,878,362	69,077,971	64,442,498	70,374,017	76,742,237	75,808,020	66,165,641	50,651,581	49,128,488	67,095,708	759,611,928
Travel agents	664,919,127	557,696,465	603,661,819	581,711,202	647,465,196	627,677,776	631,748,563	550,052,306	539,173,392	510,317,523	412,919,856	398,378,477	639,088,554	6,699,891,399
Timeshares	4,332,919	3,296,057	3,107,615	2,958,426	2,943,246	2,592,768	2,885,021	2,831,060	2,830,522	3,032,210	2,713,733	2,718,706	3,523,185	35,432,549
Camping grounds	21,209,948	21,213,640	29,567,020	30,148,707	35,962,649	38,520,283	42,821,832	34,682,590	21,546,869	18,718,294	21,811,340	16,341,278	22,222,828	333,557,330
Miscellaneous travel	57,386,136	55,083,795	61,248,102	61,425,838	67,589,497	72,506,909	71,499,540	60,566,622	62,530,702	66,106,587	58,878,017	54,600,581	63,898,347	755,934,537
Travel	1,970,085,623	1,672,759,294	1,824,025,632	1,746,001,700	1,880,572,708	1,766,415,377	1,763,436,873	1,573,452,289	1,680,904,199	1,620,668,265	1,374,625,268	1,303,166,449	1,859,628,206	20,065,656,260
Telegraph services / Wire transfer money order	2,873,265	2,687,028	2,806,086	2,759,232	2,795,530	2,405,476	2,741,470	2,532,889	2,569,807	2,842,173	2,978,561	3,287,459	3,365,047	33,770,758
Insurance services	281,128,921	266,135,834	311,758,820	290,878,137	282,987,075	292,115,474	312,260,894	287,833,938	310,804,423	290,551,150	252,460,942	240,949,757	272,825,674	3,411,562,118
FIs - cash disbursements (auto & manual)	9,419,686	8,326,390	9,329,764	7,730,038	8,601,183	8,358,129	8,518,831	8,047,738	9,091,408	8,330,810	7,367,465	7,224,181	7,247,564	98,173,501
FIs - merchandise & services	37,294,789	35,181,659	39,396,664	37,629,065	40,263,145	40,336,412	40,745,012	35,943,068	38,961,472	36,652,587	29,242,791	29,281,741	31,284,029	434,917,645
Non-FIs - foreign currency, travellers' cheques	22,196,672	24,273,370	28,773,852	39,617,132	52,449,305	58,448,237	62,213,572	59,635,435	55,732,886	38,432,915	27,874,108	29,001,107	35,203,834	511,656,753
Security brokers and dealers	7,906,619	20,824,649	7,270,746	6,336,903	6,395,005	4,658,761	5,509,875	5,241,842	5,737,474	8,192,798	6,250,957	7,114,400	8,519,552	92,052,602
Tax preparation services	123,352	158,526	91,401	111,941	121,457	131,353	148,679	149,129	130,259	207,030	161,889	64,178	157,630	1,633,472
Tax payments	24,550,262	24,844,110	21,852,953	15,278,119	14,410,202	11,955,451	13,806,551	13,506,635	14,929,731	11,874,173	12,248,303	10,969,102	20,861,959	186,537,289
Fines, bail and bond payments	11,936,507	11,084,008	11,571,356	10,555,086	11,901,981	11,928,767	12,555,496	11,235,928	11,036,945	11,636,926	10,607,681	8,613,982	9,575,720	132,303,876
Miscellaneous financial	14,667,751	13,333,073	15,838,519	15,885,595	16,168,725	16,914,921	17,449,825	15,528,954	16,433,695	18,229,330	16,850,481	15,170,926	16,102,549	193,906,593
Financial	412,097,824	406,848,647	448,690,161	426,781,248	436,093,608	447,253,981	475,950,205	439,655,556	465,428,100	426,949,892	366,043,178	351,676,473	405,143,558	5,096,514,607

Table 3B Card expenditure statistics (not seasonally adjusted)

Value of credit card transactions

Detailed sector breakdown - services sectors (continued, not seasonally adjusted)

£	January 2014	February 2014	March 2014	April 2014	May 2014	June 2014	July 2014	August 2014	September 2014	October 2014	November 2014	December 2014	January 2015	Total (latest 12 months)
Telecoms	92,049,569	81,618,903	84,947,412	79,865,009	81,403,348	77,569,528	82,448,037	83,422,828	96,641,240	94,772,998	93,006,909	98,948,665	91,611,814	1,046,256,691
Utilities	66,379,843	65,243,338	79,594,940	68,629,657	69,523,674	61,936,138	62,289,768	54,211,364	61,963,440	64,056,758	56,856,139	55,353,768	65,155,904	764,814,888
Contractors (residential & commercial)	81,489,099	82,905,168	89,802,259	82,573,296	86,487,430	86,117,366	92,147,402	81,528,719	94,883,075	98,694,498	92,082,103	80,121,717	84,509,420	1,051,852,453
Gardening services	3,611,337	5,759,065	6,486,727	7,517,285	9,664,030	6,486,163	6,275,897	5,017,001	6,573,559	4,728,733	4,437,731	5,846,686	3,014,602	72,303,479
Veterinary services	58,506,625	53,143,125	57,483,233	57,673,503	59,900,503	60,771,206	66,375,910	61,770,331	63,422,557	64,732,297	58,803,201	59,680,217	59,911,478	723,667,561
Photocopying & printing	38,849,287	35,239,175	37,996,156	34,050,175	36,078,172	35,136,309	35,654,143	33,813,133	37,791,849	41,280,237	40,425,799	37,982,605	38,140,886	443,588,633
Photographic studios	6,262,611	15,426,536	7,426,754	6,866,016	7,491,782	7,800,370	9,067,167	7,139,242	7,691,483	8,628,097	9,798,565	10,636,572	5,827,775	103,800,359
Beauty & barber shops	77,639,956	76,450,702	87,159,902	84,244,621	90,206,210	89,203,223	93,485,479	86,817,366	89,593,455	91,488,717	90,824,734	116,659,521	79,056,700	1,075,190,630
Employment agencies	19,774,833	22,972,731	23,450,177	24,241,512	22,938,905	30,456,453	28,668,084	24,595,673	24,896,795	29,760,796	27,415,997	26,708,354	23,137,091	309,242,568
Counselling services	1,316,848	1,276,707	1,783,445	1,142,244	1,582,077	1,263,472	1,270,125	1,243,211	1,348,774	1,638,767	1,147,901	1,804,258	1,568,525	17,069,506
Legal services	22,021,339	21,781,216	24,872,763	21,696,628	22,201,956	22,570,059	23,783,781	20,993,270	23,055,090	25,849,305	21,556,756	20,352,654	21,621,482	270,334,960
Laundry & cleaning	6,289,782	6,407,815	6,620,340	6,479,024	6,915,449	7,469,799	7,525,373	6,707,533	7,466,319	7,503,475	6,999,898	6,589,508	6,418,196	83,102,729
Funeral services	15,162,238	14,293,341	15,351,639	13,912,422	13,309,894	12,932,821	14,325,266	12,264,028	13,984,825	14,944,016	14,620,960	14,741,102	16,905,013	171,585,327
Medical services	174,099,547	174,969,817	178,842,118	166,448,179	173,828,222	177,204,678	183,148,976	158,135,538	177,104,795	190,514,834	176,710,591	160,247,893	172,838,768	2,089,994,409
Moving & courier services	41,348,262	38,994,222	42,133,644	40,995,667	44,753,025	43,390,225	47,495,182	42,711,314	44,162,345	46,051,396	43,645,087	42,254,825	41,187,269	517,774,201
Repair shops (not auto)	10,241,740	10,106,759	10,016,258	9,336,817	9,790,225	10,282,763	10,737,323	9,889,358	11,388,034	11,643,854	11,388,780	12,435,217	10,093,607	126,108,995
Accounting services	9,768,508	11,601,569	8,432,728	6,799,732	6,474,576	6,479,405	7,049,208	6,494,220	7,565,507	7,724,817	7,523,946	8,599,594	10,096,395	94,841,697
Advertising, consultancy & PR	8,311,892	7,354,951	8,016,266	7,798,574	8,111,265	7,707,853	8,286,333	7,186,784	7,816,479	8,367,861	7,092,562	6,795,343	7,730,480	92,264,751
Computer programming	89,375,071	78,114,914	87,130,609	83,577,570	83,679,438	86,506,565	88,195,049	81,470,301	91,193,639	108,359,998	128,369,053	146,022,163	111,229,634	1,173,848,933
Farming services	10,565,370	9,937,553	10,834,389	10,750,685	11,263,990	11,288,639	11,890,564	10,873,732	11,315,288	11,782,430	10,457,731	11,254,931	10,432,069	132,082,001
Miscellaneous professional services	165,353,973	173,028,733	161,243,109	156,645,040	157,574,269	159,293,403	163,657,160	156,012,835	184,092,288	177,132,251	160,748,512	154,357,611	173,046,539	1,976,831,750
Engineering services	14,734,557	14,983,352	16,050,278	15,035,320	15,492,457	16,135,800	17,093,798	14,528,338	15,311,967	17,273,640	14,214,895	13,242,871	14,522,675	183,885,391
Marina services	7,018,720	7,054,257	10,604,828	11,363,904	11,021,165	11,574,879	12,227,972	10,556,994	8,821,591	7,002,059	5,458,747	5,636,031	6,664,806	107,987,233
Wrecking & salvage yards	794,461	701,420	794,929	781,021	743,745	795,734	865,882	721,356	863,294	849,871	760,361	659,424	733,703	9,270,740
Pest control	525,844	1,035,579	545,278	518,014	598,064	609,471	743,813	577,849	691,170	768,440	641,360	668,535	650,935	8,048,508
Educational establishments	204,494,612	120,532,535	111,041,042	124,398,717	127,630,893	114,977,779	123,739,956	144,881,445	315,278,800	196,945,112	111,474,301	109,713,169	211,296,796	1,811,910,545
Child care services	2,653,070	3,215,199	2,472,449	2,422,096	2,564,515	2,657,791	2,835,945	2,439,354	2,711,790	2,737,050	2,434,069	2,386,321	2,695,517	31,572,096
Social, political & religious organisations	99,665,987	82,698,504	100,680,795	80,889,229	79,951,690	78,115,825	84,129,399	76,303,662	90,849,072	93,731,593	81,573,597	94,118,627	92,682,804	1,035,724,797
Government services	316,962,145	272,685,316	264,907,312	263,354,208	266,172,757	259,322,352	283,092,549	269,894,839	276,352,498	256,544,338	227,249,618	244,263,188	350,285,408	3,294,124,383
Miscellaneous services	85,627,589	82,705,618	97,546,047	86,535,492	87,268,932	97,670,345	93,625,945	80,170,283	92,228,377	94,346,652	82,274,910	101,961,666	80,743,357	1,077,077,624
Commercial equipment	130,134,580	128,156,260	136,612,345	132,936,953	131,964,752	127,572,885	137,804,305	121,963,187	134,744,019	141,904,325	130,932,437	115,811,389	123,967,902	1,564,370,759
Other services	1,861,029,295	1,700,394,380	1,770,880,165	1,689,478,610	1,726,587,410	1,711,795,299	1,799,935,791	1,674,335,088	2,000,803,414	1,921,759,215	1,720,927,250	1,765,854,425	1,917,777,550	21,400,528,597
Total services	6,815,775,975	6,407,656,104	7,057,983,957	6,730,911,469	7,189,053,696	7,074,522,067	7,256,024,775	6,712,012,824	7,333,668,977	7,199,831,138	6,403,539,325	6,369,078,522	6,881,102,861	82,615,385,715
TOTAL	13,423,055,569	12,500,905,566	14,066,449,322	13,704,970,529	14,332,213,536	14,297,939,581	14,530,418,455	13,654,417,626	14,554,291,600	14,820,506,046	14,210,825,654	16,006,358,421	13,491,803,442	170,171,099,778

Table 3C Card expenditure statistics (not seasonally adjusted)

Number of debit card transactions

Detailed sector breakdown - retail sectors (not seasonally adjusted)

Historical data located in hidden columns

	January 2014	February 2014	March 2014	April 2014	May 2014	June 2014	July 2014	August 2014	September 2014	October 2014	November 2014	December 2014	January 2015	Total (latest 12 months)
Supermarkets	237,033,910	230,560,290	272,267,868	259,596,708	269,161,332	273,496,936	273,796,584	255,394,111	272,893,545	279,762,517	267,523,289	292,824,915	254,198,514	3,201,476,609
Bakers & dairies	1,695,250	2,259,747	2,352,948	2,136,296	2,426,053	2,403,279	2,600,648	2,690,670	2,800,044	3,247,832	3,322,286	3,368,221	2,941,667	32,549,691
Sweet stores	741,905	1,009,337	1,137,676	1,214,703	970,669	1,001,563	950,059	1,011,398	1,003,917	1,143,518	1,260,132	2,164,422	859,699	13,727,093
Miscellaneous foodstores	14,726,109	14,605,615	16,468,884	15,633,260	16,128,968	16,387,687	16,591,936	15,550,854	16,398,981	16,684,431	15,662,884	17,357,667	14,915,784	192,386,951
Off-licences	2,920,957	2,983,684	3,455,446	3,290,259	3,530,437	3,579,031	3,618,981	3,460,419	3,420,106	3,484,176	3,441,042	3,871,355	3,051,911	41,186,847
Food & drink	257,116,131	251,418,673	295,682,822	281,671,226	292,217,459	296,868,496	297,558,208	278,107,452	296,516,593	304,322,474	291,209,633	319,586,580	275,967,575	3,481,327,191
Department stores	12,523,103	10,468,845	12,444,317	11,828,910	12,528,112	13,231,106	13,963,452	12,594,426	12,399,135	13,138,406	15,631,934	25,893,752	13,101,192	167,223,587
Discount stores	10,181,216	9,920,875	11,278,320	11,545,306	11,987,176	12,058,499	12,390,457	12,460,128	12,274,310	13,741,707	15,301,524	20,157,519	11,872,444	154,988,265
Catalogues	3,887,512	3,373,646	3,689,572	3,497,790	2,853,696	2,464,569	2,515,604	2,401,435	2,665,625	2,767,181	2,809,874	3,319,722	2,851,786	35,210,500
Miscellaneous mixed	15,257,213	14,377,306	9,324,886	7,854,741	8,089,967	8,636,963	8,514,428	7,872,264	8,469,331	8,939,562	9,448,904	14,256,485	6,979,050	112,763,887
Mixed business	41,849,044	38,140,672	36,737,095	34,726,747	35,458,951	36,391,137	37,383,941	35,328,253	35,808,401	38,586,856	43,192,236	63,627,478	34,804,472	470,186,239
Men's clothing	677,786	595,793	586,810	621,229	652,354	742,556	827,327	777,455	647,310	662,187	716,662	1,332,242	696,913	8,858,838
Women's clothing	5,385,141	4,773,968	5,953,121	5,860,403	6,617,555	6,993,234	7,526,514	6,278,953	6,333,969	6,053,736	5,991,468	10,097,167	5,506,091	77,986,179
Family clothing	23,810,618	20,997,745	26,264,563	26,592,507	28,434,307	30,464,565	31,849,288	27,783,290	27,940,984	29,409,993	29,481,022	46,284,077	24,797,559	350,299,900
Miscellaneous clothing	590,688	609,890	700,510	652,579	752,922	883,615	893,750	819,822	794,591	918,932	803,420	1,175,558	603,296	9,608,885
Shoe shops	2,787,572	2,128,719	2,447,950	2,765,338	2,922,538	3,369,393	3,519,976	3,478,018	3,111,301	2,819,006	2,542,765	3,878,014	2,640,648	35,623,666
Clothing	33,251,805	29,106,115	35,952,954	36,492,056	39,379,676	42,453,363	44,616,855	39,137,538	38,828,155	39,863,854	39,535,337	62,767,056	34,244,507	482,377,468
Furniture stores	3,660,964	3,181,231	3,551,021	3,378,686	3,472,270	3,459,739	3,471,440	3,583,506	3,621,676	3,967,890	4,107,155	5,048,472	3,903,783	44,746,869
Household appliance stores	5,636,164	5,306,417	6,085,623	5,666,845	5,903,094	5,781,493	5,919,937	6,073,481	6,062,765	6,428,661	6,660,096	7,770,250	5,979,010	73,637,672
Electronic stores	2,472,609	2,043,162	2,147,489	2,101,982	2,102,715	2,066,546	2,151,381	2,221,485	2,385,798	2,455,702	2,504,838	4,015,631	2,633,044	28,829,773
DIY stores	14,599,630	15,118,165	18,077,216	18,911,642	19,256,745	18,628,043	18,736,289	18,415,445	18,355,694	18,791,364	18,256,057	18,343,457	15,948,845	216,838,980
Floor covering stores	290,758	301,914	325,755	308,981	302,216	301,300	316,367	329,233	346,583	383,008	375,980	301,685	306,884	3,899,906
Garden centres	2,108,617	2,272,295	4,310,220	4,906,206	5,333,356	4,529,984	3,635,157	3,173,766	3,281,692	3,377,521	3,583,759	4,206,361	2,262,888	45,573,205
Miscellaneous household	1,764,063	1,613,344	1,651,810	1,647,611	1,558,090	1,554,953	1,689,164	1,895,981	2,022,218	2,013,869	1,876,129	2,915,466	1,880,523	21,619,158
Household	30,532,805	29,836,528	36,149,134	36,921,953	37,928,486	36,322,058	35,919,735	35,692,897	36,076,426	37,418,015	37,364,032	42,601,322	32,914,977	435,145,563
Books, newspapers & magazines	6,113,569	6,123,041	6,743,816	6,204,725	6,497,341	6,798,841	6,916,640	6,641,671	7,508,688	7,528,489	7,280,113	11,280,612	6,356,715	85,880,692
Record shops	846,650	765,607	828,547	756,910	711,530	765,673	689,414	701,366	747,844	796,417	966,162	2,687,290	718,729	11,135,489
Music shops	268,641	243,715	254,974	231,919	236,612	221,311	230,937	218,160	267,287	274,373	417,475	260,376	3,141,384	
Hobbies, toys & games	1,351,822	1,331,078	1,654,078	1,554,135	1,646,338	1,618,423	1,668,506	1,745,255	2,086,151	2,260,925	3,049,742	4,933,306	1,631,007	25,178,944
Photographic	320,775	425,258	324,904	297,179	316,941	338,433	356,822	345,673	366,807	339,112	376,067	367,601	291,614	4,145,691
Handicraft	208,453	207,611	223,958	200,598	198,717	200,235	191,705	200,235	217,528	214,074	238,265	216,077	196,620	2,540,184
Sports shops	7,076,056	6,425,433	7,639,634	7,859,893	8,562,399	9,148,920	9,707,109	9,649,494	8,849,942	8,027,783	7,735,756	11,281,857	7,619,018	102,507,238
Jewellers	1,457,668	1,464,212	1,649,911	1,368,679	1,451,928	1,527,590	1,562,405	1,467,472	1,450,252	1,443,249	1,813,149	3,842,573	1,393,571	20,434,991
Computer software	426,665	357,915	371,868	362,957	353,082	340,796	353,743	348,707	389,464	393,311	376,240	477,794	385,806	4,511,683
Medical goods	41,400	62,138	43,470	42,584	44,335	44,907	48,725	44,507	46,749	48,375	45,016	41,959	42,223	554,988
Chemists	16,835,724	16,121,446	18,703,436	17,559,579	18,437,845	19,587,787	19,758,581	17,488,552	19,450,830	19,578,135	18,371,253	28,461,493	17,712,011	231,230,949
Optical goods	952,174	937,842	1,066,926	968,040	998,136	1,029,925	1,055,734	953,822	1,033,616	1,014,705	913,091	860,063	952,197	11,784,097
Cosmetic stores	1,253,960	1,284,498	1,552,635	1,380,248	1,472,862	1,599,918	1,550,576	1,501,452	1,640,674	1,767,641	2,001,459	4,045,071	1,401,760	21,198,794
Tobacconists	160,718	379,529	182,144	176,345	192,565	206,462	215,994	212,046	228,817	246,385	236,185	288,166	280,813	2,845,451
Florists	658,251	1,086,627	1,421,108	801,305	830,777	836,238	839,158	735,210	811,672	786,866	729,732	1,218,653	655,313	10,752,659
Artists' supplies	709,532	760,460	830,631	747,768	745,150	724,536	743,185	763,969	803,391	922,986	962,713	1,154,945	703,946	9,863,676
Antiques, art & stamps/coins	243,625	294,093	291,992	286,228	300,027	289,398	304,928	341,750	330,178	323,892	327,041	415,939	260,380	3,765,846
Pawn shops	25,363	24,584	26,145	24,445	25,649	24,347	28,138	27,751	27,988	28,111	28,100	40,701	27,881	333,840
Gift shops	4,301,636	5,099,953	5,987,534	4,579,175	4,788,006	5,819,554	5,417,698	5,460,893	5,640,771	6,026,975	7,042,007	13,299,628	4,938,619	74,100,813
Secondhand shops	69,760	76,991	73,193	70,218	73,558	71,929	77,639	76,229	78,822	80,614	75,281	95,126	69,261	918,861
Luggage & leather goods	146,681	144,977	152,239	137,362	145,617	159,918	170,609	179,732	154,063	158,218	183,014	276,494	134,082	1,996,325
Pet shops	2,947,231	2,788,790	3,159,506	3,065,207	3,197,372	3,149,616	3,253,128	3,358,495	3,253,931	3,391,871	3,275,100	3,698,419	3,820,703	38,820,138
Religious goods	5,678	6,256	6,203	7,089	6,943	6,419	7,656	8,624	6,836	8,651	7,960	8,239	6,049	86,925
Direct sales	6,280,581	6,063,755	6,596,840	6,291,592	6,243,881	6,102,503	6,077,428	5,317,033	4,553,118	5,785,541	5,421,863	5,964,422	5,647,008	70,064,984
Miscellaneous & speciality shops	2,896,664	3,257,687	3,287,928	3,371,261	3,796,870	3,810,493	4,011,946	3,974,965	4,066,803	4,363,372	4,542,648	4,241,242	4,816,291	48,162,991
Other retail	55,599,277	55,733,496	63,073,620	58,345,441	61,274,481	64,415,642	65,246,934	61,770,624	64,011,502	65,837,431	66,281,838	100,811,679	59,154,944	785,957,632
Automotive Fuels	63,362,836	61,236,107	70,844,712	66,577,221	69,312,087	68,898,586	70,761,627	66,861,871	69,266,911	69,582,977	66,052,325	67,044,683	61,562,523	808,001,630
Total retail sales	481,713,898	465,471,591	538,440,337	514,934,644	535,571,140	545,349,282	551,487,300	516,898,635	540,507,988	555,611,607	543,635,401	656,438,800	498,648,998	6,462,995,723

Table 3C Card expenditure statistics (not seasonally adjusted)

Number of debit card transactions

Detailed sector breakdown - services sectors (not seasonally adjusted)

	January 2014	February 2014	March 2014	April 2014	May 2014	June 2014	July 2014	August 2014	September 2014	October 2014	November 2014	December 2014	January 2015	Total (latest 12 months)
Auto rental	482,616	606,237	545,107	571,075	549,962	511,189	574,744	550,032	527,332	465,783	417,682	419,694	415,138	6,153,975
Auto parts & accessories	1,486,049	1,559,441	1,776,462	1,667,056	1,664,747	1,651,354	1,730,875	1,588,748	1,648,160	1,647,237	1,514,437	1,531,135	1,579,170	19,558,822
Auto services	4,197,782	4,164,710	4,636,331	4,487,784	4,782,190	4,782,825	5,024,773	4,789,594	5,128,547	5,616,648	5,320,118	5,964,368	5,149,588	59,847,476
Auto repair shops	1,698,052	1,774,292	2,010,581	1,797,303	1,826,776	1,812,948	1,905,695	1,720,330	1,848,396	1,856,634	1,542,237	1,746,028	21,504,678	
Service stations	0	0	0	0	0	0	0	0	0	0	0	0	0	0
Vehicle sales	1,060,926	1,125,989	1,371,450	1,255,002	1,273,343	1,278,210	1,324,569	1,219,825	1,311,194	1,205,260	1,049,459	962,902	1,105,714	14,482,917
Vehicle Sales & Services	8,925,425	9,230,669	10,339,931	9,778,220	10,097,018	10,036,526	10,560,656	9,868,529	10,463,629	10,791,562	9,965,154	10,420,336	11,057,638	121,547,868
Restaurants	59,025,177	62,313,893	72,671,446	69,295,822	75,353,755	74,151,715	74,812,624	76,083,571	77,606,102	83,012,359	80,466,764	85,666,613	75,513,198	906,947,862
Public houses	10,690,060	12,637,258	14,071,847	11,856,817	11,638,217	11,714,961	11,670,551	11,574,428	12,055,485	11,585,025	11,036,808	12,468,354	10,212,995	142,522,746
Catering services	1,733,842	4,832,449	2,094,246	1,886,666	2,082,031	2,037,476	2,120,335	1,926,216	2,314,161	2,685,659	2,604,738	2,410,320	2,482,732	29,477,029
Video stores	198,246	188,512	188,264	154,908	122,626	73,760	46,928	47,551	47,199	47,156	54,618	44,561	51,351	1,070,282
Cinema, theatre & dance	5,526,918	5,253,783	4,609,400	4,716,537	5,160,770	4,562,126	4,873,241	6,209,387	4,311,896	5,733,618	5,717,666	6,642,095	5,765,654	63,556,173
Concerts & entertainers	333,572	334,305	347,458	335,333	350,049	289,210	310,695	386,039	159,919	402,515	426,241	449,456	401,611	4,192,561
Tourist attractions	462,692	647,712	771,948	1,306,169	1,095,886	1,070,116	771,948	1,898,813	1,140,476	1,143,805	709,782	722,334	529,358	12,346,756
Amusement parks	81,612	261,117	158,733	350,416	300,739	328,108	380,112	549,455	343,091	327,845	168,492	111,778	96,927	3,376,813
Aquariums	54,110	131,663	104,800	161,927	130,093	117,848	169,069	263,153	188,208	131,313	77,930	66,836	67,071	1,609,911
Sports & games establishments	3,692,139	3,526,474	3,894,322	3,815,721	3,861,019	3,440,500	3,675,345	3,870,425	3,914,317	4,187,202	3,636,597	3,967,071	4,389,649	46,178,692
Professional sports clubs	218,786	225,175	250,004	258,538	267,310	212,593	255,782	272,466	276,756	252,951	249,731	257,602	220,085	2,998,993
Gambling	23,109,131	21,513,469	26,039,326	25,766,034	21,977,161	25,177,786	21,403,614	20,966,584	23,757,889	25,015,915	22,386,666	26,904,005	24,367,306	285,275,755
Personal services	406,809	489,477	475,224	456,477	493,431	475,407	467,809	434,254	440,977	419,980	387,487	443,673	407,952	5,392,148
Miscellaneous entertainment	764,113	844,526	852,462	999,790	964,995	863,771	1,008,098	1,487,587	1,042,320	1,109,222	804,167	736,564	896,675	11,610,177
Entertainment	106,297,207	113,199,543	126,529,480	121,361,205	123,798,082	124,515,377	122,504,560	125,969,929	127,598,796	136,054,818	128,720,225	140,901,319	125,402,564	1,516,555,898
Hotels	4,327,458	4,468,966	5,197,892	5,181,268	5,370,721	5,323,968	5,656,517	5,918,404	5,636,711	5,372,816	5,003,321	5,100,211	4,996,340	63,227,135
Airlines	2,359,732	1,937,633	2,245,693	2,213,928	2,413,628	2,359,612	2,338,339	2,212,456	2,300,499	2,191,324	1,808,807	1,733,290	2,597,137	26,352,346
Airport terminals	36,566	180,859	50,838	54,912	59,982	62,610	67,866	62,026	61,780	49,536	34,089	36,909	37,697	759,104
Railways	16,284,135	15,767,961	18,116,948	16,706,410	17,649,599	18,153,909	18,624,503	16,897,538	19,071,062	19,683,575	18,030,141	18,720,621	16,158,919	213,581,186
Buses	1,661,995	1,671,679	1,804,212	1,645,153	1,690,265	1,445,150	1,409,130	1,420,738	1,575,275	1,652,047	1,597,815	1,620,129	1,550,812	19,082,405
Sea travel	128,242	127,873	155,382	190,258	202,021	212,603	245,475	265,161	202,165	178,354	138,973	137,089	135,741	2,191,095
Travel agents	2,146,169	1,802,954	2,049,932	1,894,712	2,022,688	1,913,555	1,991,170	1,823,068	1,712,893	1,523,683	1,256,721	1,166,905	2,207,727	21,366,008
Timeshares	6,847	4,997	4,680	4,608	4,568	4,116	4,727	4,618	4,618	4,815	4,101	4,173	6,764	56,785
Camping grounds	289,407	356,015	526,777	817,190	869,732	832,691	1,060,812	1,234,581	713,371	549,421	276,998	184,658	338,870	7,761,116
Miscellaneous travel	1,923,227	2,000,166	2,342,851	2,353,924	2,659,811	2,653,896	2,977,895	2,452,435	2,778,684	4,202,302	4,819,112	5,378,322	5,847,702	40,467,100
Travel	24,836,320	23,850,137	27,297,313	25,881,095	27,572,294	27,638,142	28,719,917	26,372,621	28,420,347	30,035,057	27,966,757	28,982,096	28,881,369	331,617,145
Telegraph services / Wire transfer money order	124,310	124,925	145,389	146,471	149,461	161,069	166,937	150,752	138,538	117,353	115,836	137,847	123,634	1,678,212
Insurance services	3,242,758	3,108,500	3,598,054	3,412,124	3,489,126	3,472,583	3,819,792	3,555,294	3,702,712	3,498,704	3,014,661	2,791,703	3,151,406	40,614,659
FIs - cash disbursements (auto & manual)	7,873	10,459	9,452	11,492	15,064	16,704	17,619	16,757	15,732	9,845	6,691	10,653	9,317	149,785
FIs - merchandise & services	8,384,488	7,483,230	8,780,226	8,248,421	8,298,816	7,920,829	8,372,814	7,928,399	9,157,384	8,393,281	7,900,393	8,534,787	8,283,497	99,302,077
Non-FIs - foreign currency, travellers' cheques	599,732	658,026	743,998	813,949	979,657	1,069,739	1,159,503	1,099,653	1,062,344	820,268	648,508	711,740	700,129	10,467,514
Security brokers and dealers	185,748	352,473	236,584	246,254	190,061	189,563	166,978	132,593	189,286	246,706	212,362	215,529	235,318	2,613,707
Tax preparation services	799	3,932	760	547	535	547	572	444	461	499	429	428	686	9,979
Tax payments	167,235	135,623	140,896	117,253	103,547	100,755	118,401	93,669	116,092	116,892	106,133	106,197	531,551	1,787,009
Fines, bail and bond payments	578,747	564,009	642,602	590,644	620,225	568,918	625,940	607,070	584,590	641,353	612,274	566,958	594,854	7,219,437
Miscellaneous financial	132,766	139,481	174,321	188,844	190,284	201,342	213,408	186,729	191,331	182,181	157,462	144,289	135,140	2,104,812
Financial	13,424,456	12,580,658	14,472,282	13,776,138	14,036,776	13,702,049	14,661,964	13,771,360	15,158,470	14,027,082	12,774,749	13,220,131	13,765,532	165,947,191

Table 3C Card expenditure statistics (not seasonally adjusted)

Number of debit card transactions

Detailed sector breakdown - services sectors (continued, not seasonally adjusted)

	January 2014	February 2014	March 2014	April 2014	May 2014	June 2014	July 2014	August 2014	September 2014	October 2014	November 2014	December 2014	January 2015	Total (latest 12 months)
Telecoms	10,783,066	9,678,419	10,825,006	10,278,590	10,568,277	10,234,126	10,954,341	11,160,569	11,681,094	11,780,321	11,357,039	12,148,809	11,629,789	132,296,380
Utilities	2,142,989	1,998,011	2,261,090	2,158,437	2,242,881	2,094,752	2,218,965	2,083,432	2,276,869	2,418,817	2,256,634	2,480,211	2,678,632	27,168,731
Contractors (residential & commercial)	515,405	552,431	584,789	545,106	552,315	557,606	597,324	537,421	612,459	670,798	607,875	562,070	547,242	6,927,436
Gardening services	79,711	87,186	140,361	157,347	164,171	147,617	124,445	101,252	106,560	108,344	103,975	140,570	73,969	1,455,797
Veterinary services	1,658,010	1,548,018	1,724,134	1,701,750	1,765,182	1,780,466	1,972,413	1,895,053	1,889,163	1,976,059	1,772,689	1,770,760	1,728,084	21,523,771
Photocopying & printing	380,441	347,178	396,304	373,089	416,979	391,360	384,199	356,661	423,670	460,159	535,658	604,398	382,083	5,071,738
Photographic studios	289,030	779,971	351,834	332,374	410,768	456,473	486,044	417,460	499,858	525,261	802,062	391,799	5,885,270	
Beauty & barber shops	4,552,286	4,571,045	5,308,954	5,054,308	5,453,333	5,415,809	5,558,664	5,192,212	5,359,335	5,350,502	5,043,651	6,888,108	4,676,643	63,872,564
Employment agencies	8,139	19,173	8,570	7,917	8,272	7,839	8,624	8,167	9,309	9,837	8,722	7,576	9,349	113,355
Counselling services	104,090	98,518	115,588	116,868	117,156	116,602	120,620	112,894	120,382	119,031	112,483	116,972	115,529	1,382,643
Legal services	158,591	155,397	175,025	162,324	163,938	165,113	176,757	154,063	169,200	179,930	157,112	140,671	159,771	1,959,301
Laundry & cleaning	443,876	457,510	482,113	460,837	499,157	527,325	525,677	470,625	533,467	551,180	509,558	490,742	462,576	5,970,767
Funeral services	30,389	28,979	32,534	30,223	30,400	30,181	31,247	28,577	31,534	33,124	31,118	30,841	35,972	374,730
Medical services	3,019,090	2,997,401	3,070,357	2,914,798	2,991,261	2,998,904	3,168,462	2,782,265	3,201,493	3,350,986	3,064,660	2,843,216	3,142,691	36,526,494
Moving & courier services	399,380	363,571	399,308	396,973	423,765	432,456	464,321	419,260	464,824	489,882	471,148	526,211	456,300	5,308,019
Repair shops (not auto)	114,891	121,177	115,752	110,059	112,291	114,738	121,850	117,390	123,952	129,025	137,812	174,218	130,904	1,509,168
Accounting services	352,269	421,556	336,903	271,875	230,544	238,453	251,010	231,333	251,492	268,775	231,651	148,594	85,389	2,967,575
Advertising, consultancy & PR	138,140	133,090	148,452	142,178	144,042	144,159	146,581	135,994	145,241	139,561	121,593	110,063	118,681	1,629,635
Computer programming	695,626	630,248	673,931	654,005	646,474	646,270	659,134	648,013	710,741	704,088	617,304	647,842	581,606	7,819,656
Farming services	285,707	277,010	309,993	304,440	308,659	308,219	298,794	291,132	304,078	307,918	299,254	353,148	298,450	3,661,095
Miscellaneous professional services	2,917,083	3,204,501	3,024,201	2,860,800	2,974,072	2,886,103	3,022,385	2,820,286	3,024,682	3,302,529	3,116,047	3,116,230	3,072,918	36,424,754
Engineering services	75,480	88,881	88,036	85,859	85,827	87,726	91,992	78,890	89,283	95,013	84,044	73,788	75,792	1,025,131
Marina services	56,808	58,166	89,183	117,031	121,866	134,123	153,718	151,192	121,387	88,976	70,120	67,115	61,850	1,234,727
Wrecking & salvage yards	7,833	8,052	8,947	9,004	8,714	8,969	9,492	8,602	9,589	9,785	8,336	7,434	8,971	105,895
Pest control	3,518	10,397	3,628	3,967	4,785	5,062	5,572	4,721	5,099	6,177	5,122	4,473	4,678	63,681
Educational establishments	2,863,352	2,705,638	3,130,357	2,164,707	2,856,070	2,340,428	1,715,559	1,208,582	3,049,501	3,816,832	3,621,829	2,609,438	3,498,325	32,717,266
Child care services	176,330	203,052	157,920	155,196	161,807	135,841	139,486	175,820	152,359	181,283	152,913	147,403	182,927	1,946,007
Social, political & religious organisations	2,256,775	2,376,993	3,304,030	2,941,328	3,186,590	3,095,769	3,145,597	2,955,636	3,363,071	3,328,228	2,942,952	2,857,263	2,450,511	35,947,968
Government services	7,627,522	6,960,617	7,519,115	7,838,609	7,983,161	7,860,442	8,181,059	7,779,389	8,095,263	8,462,613	7,343,485	7,193,867	8,325,906	93,543,526
Miscellaneous services	5,894,719	5,601,153	6,500,968	6,287,381	6,321,630	6,407,045	6,607,017	5,816,837	6,422,663	6,240,787	5,851,109	8,560,998	5,740,889	76,358,477
Commercial equipment	1,706,364	1,638,521	1,699,987	1,554,977	1,624,712	1,546,616	1,562,888	1,516,204	1,869,529	1,799,133	1,642,893	1,776,722	1,622,563	19,854,545
Other services	49,736,910	48,121,860	52,987,370	50,192,357	52,579,099	51,316,592	52,904,037	49,659,932	55,048,655	56,879,551	52,804,047	57,401,813	52,750,789	632,646,102
Total services	207,547,776	211,451,833	236,824,268	226,170,283	233,453,990	232,532,654	235,007,651	231,560,775	242,326,608	253,160,886	237,234,253	256,025,906	235,792,232	2,831,541,339
TOTAL	689,261,674	676,923,424	775,264,605	741,104,927	769,025,130	777,881,936	786,494,951	748,459,410	782,834,596	808,772,493	780,869,654	912,464,706	734,441,230	9,294,537,062

Table 3D Card expenditure statistics (not seasonally adjusted)

Value of debit card transactions

Detailed sector breakdown - retail sectors (not seasonally adjusted)

Historical data located in hidden columns

£	January 2014	February 2014	March 2014	April 2014	May 2014	June 2014	July 2014	August 2014	September 2014	October 2014	November 2014	December 2014	January 2015	Total (latest 12 months)
Supermarkets	5,909,672,509	5,728,550,085	6,788,098,765	6,527,340,437	6,652,810,297	6,748,597,784	6,616,484,371	6,304,309,023	6,630,783,495	6,692,161,190	6,580,476,684	8,039,775,018	5,990,089,745	79,299,476,894
Bakers & dairies	13,249,190	21,782,240	17,350,851	16,569,483	18,069,213	17,947,250	19,473,384	19,893,601	20,096,804	22,196,770	22,135,962	24,360,695	19,459,633	239,335,886
Sweet stores	10,353,588	15,784,029	13,509,866	18,624,344	13,133,239	18,624,344	13,990,529	13,769,757	14,208,186	15,889,329	19,038,530	35,662,834	11,301,323	199,096,576
Miscellaneous foodstores	279,672,762	310,058,607	306,776,830	295,740,516	301,074,468	303,879,690	306,501,427	291,734,971	304,222,495	307,472,191	295,039,398	374,946,070	282,673,215	3,680,119,878
Off-licences	66,125,134	67,746,038	79,449,041	79,968,648	83,060,746	84,188,869	86,659,170	82,382,139	82,382,139	84,936,289	122,179,270	192,070,336	1,004,770,336	84,936,289
Food & drink	6,279,073,183	6,141,646,836	7,207,459,516	6,938,243,428	7,068,147,963	7,168,594,039	7,042,888,109	6,713,193,631	7,049,911,077	7,120,101,619	7,001,626,843	8,596,923,887	6,374,062,622	84,422,799,570
Department stores	462,730,540	383,616,785	472,182,216	451,626,372	480,297,475	510,910,010	507,627,697	469,331,801	480,721,355	513,042,310	643,377,504	1,060,237,689	477,980,154	6,450,951,368
Discount stores	333,050,041	318,151,687	369,872,085	373,211,086	387,677,059	386,283,193	387,274,661	394,399,831	401,300,564	443,055,148	541,363,563	709,579,959	375,150,216	5,087,319,052
Catalogues	160,550,735	141,909,779	161,180,445	150,961,809	133,970,324	126,033,518	127,431,829	121,752,832	138,291,950	134,517,646	153,010,234	170,510,332	142,003,227	1,670,549,628
Miscellaneous mixed	431,913,781	401,429,898	269,898,020	231,306,125	242,037,789	255,600,185	250,113,715	237,247,756	262,798,747	282,677,924	308,195,612	454,734,523	197,323,326	3,393,363,620
Mixed business	1,388,245,097	1,245,108,149	1,273,132,769	1,207,105,392	1,243,982,647	1,278,826,906	1,272,447,902	1,222,732,220	1,283,112,616	1,378,261,417	1,627,454,325	2,377,562,405	1,192,456,923	16,602,183,668
Men's clothing	41,470,754	40,578,845	41,058,431	43,541,157	48,523,430	48,915,921	46,146,864	42,473,258	44,918,112	47,526,211	79,747,548	41,370,051	562,101,366	41,370,051
Women's clothing	194,266,993	181,674,640	227,673,119	226,753,720	250,576,095	269,021,588	268,099,398	225,613,476	243,336,002	247,990,473	245,230,260	373,295,049	204,462,181	2,963,726,001
Family clothing	726,373,105	681,192,099	868,720,112	888,884,663	937,902,853	974,784,978	973,117,127	892,706,958	937,042,842	1,007,830,372	1,033,400,170	1,568,372,019	749,464,232	11,513,418,425
Miscellaneous clothing	24,423,805	34,931,833	28,335,865	27,591,089	31,237,327	37,352,877	35,811,964	31,969,488	33,913,508	35,797,383	43,693,659	25,345,273	399,237,223	39,237,223
Shoe shops	118,550,368	94,998,545	110,346,214	122,632,843	126,349,831	136,896,197	132,702,001	150,545,117	140,535,067	141,945,771	132,089,058	196,767,051	114,349,674	1,600,157,369
Clothing	1,105,085,025	1,030,098,855	1,275,654,155	1,306,920,746	1,389,607,263	1,466,578,380	1,458,946,411	1,348,269,862	1,395,356,657	1,478,482,111	1,492,159,207	2,261,875,526	1,134,991,411	17,038,640,384
Furniture stores	379,789,319	333,738,409	362,071,346	350,578,563	357,323,975	349,569,585	367,500,727	369,486,498	393,652,362	440,568,399	417,952,825	397,566,575	412,947,887	4,552,957,151
Household appliance stores	246,764,148	229,720,002	261,909,057	229,719,733	230,386,586	221,407,589	224,364,036	224,840,589	219,717,247	224,840,589	255,440,198	284,497,125	240,578,161	2,868,241,512
Electronic stores	261,789,517	204,863,228	224,172,411	224,140,656	218,768,428	220,602,993	224,836,749	236,421,237	268,255,114	268,689,725	278,625,353	464,014,124	278,258,074	3,111,648,092
DIY stores	788,958,275	796,581,573	928,569,130	982,252,635	1,010,656,618	979,528,752	1,031,544,947	996,702,073	1,067,359,815	994,261,864	998,268,819	994,261,864	857,787,651	11,524,654,332
Floor covering stores	75,553,533	76,101,077	87,258,899	84,031,597	84,849,034	85,738,505	91,482,088	90,726,180	97,593,433	109,257,685	109,374,675	85,502,856	84,047,108	1,085,963,137
Garden centres	62,213,227	70,123,110	144,102,255	174,054,826	189,205,963	159,716,545	126,777,265	102,889,415	106,940,105	105,087,722	110,782,721	153,861,418	65,835,806	1,508,377,151
Miscellaneous household	118,426,811	109,599,861	114,746,452	115,956,814	110,085,573	111,069,960	120,396,502	141,892,060	144,200,931	141,892,060	130,404,872	136,651,236	126,811,804	1,491,082,610
Household	1,933,494,630	1,820,727,260	2,122,829,550	2,160,734,624	2,201,276,177	2,127,634,029	2,186,902,314	2,128,695,963	2,229,876,736	2,380,776,980	2,296,842,508	2,421,362,153	2,066,266,491	26,143,923,985
Books, newspapers & magazines	97,964,529	97,194,865	101,123,416	93,985,230	98,733,512	98,712,930	102,893,738	102,255,614	116,749,348	119,489,891	115,711,992	192,971,153	97,413,348	1,337,235,037
Record shops	16,882,698	15,338,208	16,289,821	15,418,423	14,395,033	15,634,678	13,806,146	14,071,558	15,520,758	16,513,899	12,259,567	13,924,110	233,957,037	13,924,110
Music shops	21,185,048	18,773,543	19,730,825	18,774,487	17,976,622	17,203,986	18,260,047	18,301,927	21,098,741	21,590,343	21,798,329	30,890,925	20,876,721	245,276,496
Hobbies, toys & games	57,928,379	48,294,295	62,467,795	56,941,160	59,841,716	58,932,787	58,776,791	59,917,442	92,986,146	94,927,307	141,747,871	228,492,325	60,280,109	1,023,605,744
Photographic	18,864,795	21,181,694	20,376,002	18,352,949	20,162,768	22,528,377	20,251,667	19,986,682	20,251,667	22,528,377	21,093,080	24,553,378	17,474,622	245,733,408
Handicraft	11,272,739	11,138,442	12,139,862	11,069,395	11,343,400	10,923,684	11,746,712	11,388,770	11,994,617	13,092,120	12,578,846	11,171,090	10,700,228	139,287,166
Sports shops	285,099,844	262,519,325	316,011,614	335,918,066	361,068,793	371,087,151	394,543,189	400,133,320	360,717,898	337,327,538	335,970,945	487,012,343	301,275,912	4,263,586,094
Jewellers	127,148,995	133,338,410	148,843,290	133,123,229	143,482,480	150,212,803	154,319,981	148,093,227	146,327,346	147,130,493	177,130,493	377,219,925	129,694,868	1,985,593,216
Computer software	55,709,440	47,391,578	51,515,129	49,999,006	47,739,930	44,752,573	47,802,978	46,151,699	53,669,724	53,987,138	51,950,877	66,548,726	49,895,212	611,404,570
Medical goods	8,944,096	10,497,924	10,358,233	10,190,213	10,135,740	10,452,386	11,294,904	10,528,439	10,847,140	11,733,798	11,050,583	9,858,886	8,986,372	125,934,618
Chemists	240,531,019	235,984,985	278,946,739	258,426,906	275,957,374	293,135,480	293,274,059	260,341,897	286,903,593	304,205,465	303,998,413	560,830,040	252,878,013	3,604,882,964
Optical goods	94,226,817	93,089,990	108,404,656	97,959,200	101,668,505	104,968,696	107,993,565	97,809,054	103,600,803	102,043,233	92,298,670	81,131,619	96,010,483	1,186,978,474
Cosmetic stores	39,560,334	39,987,612	48,737,434	47,054,419	50,664,459	47,669,769	49,261,372	53,055,632	56,998,070	67,716,728	62,998,070	139,510,694	42,269,697	686,639,463
Tobacconists	5,222,309	8,534,211	5,438,197	5,303,406	5,797,374	6,338,126	6,369,095	6,126,875	6,556,525	6,836,343	6,506,859	8,531,233	7,822,917	80,161,161
Florists	27,548,437	43,610,729	54,141,889	35,057,516	36,254,304	35,628,665	36,268,562	32,239,486	35,433,986	33,810,136	31,327,717	48,310,633	28,891,308	450,974,931
Artists' supplies	19,812,551	21,124,149	22,657,695	20,761,820	21,352,395	20,642,620	21,499,559	21,602,349	23,118,488	26,014,326	21,755,707	27,824,523	20,008,421	277,822,052
Antiques, art & stamps/coins	26,447,957	30,789,658	32,935,776	29,703,177	32,883,211	32,963,957	31,373,676	28,906,533	36,527,801	36,192,119	35,480,923	40,886,051	27,232,685	395,875,567
Pawn shops	4,222,545	3,991,923	4,290,421	4,546,185	4,914,570	4,842,238	5,678,865	5,303,250	5,419,437	5,363,839	4,724,551	6,129,393	5,707,459	60,912,131
Gift shops	89,597,608	93,704,308	110,855,269	94,550,846	97,553,888	106,983,957	109,294,736	112,105,841	114,158,010	128,540,591	157,641,501	257,138,344	96,593,517	1,479,120,808
Secondhand shops	3,899,943	6,429,982	4,696,975	4,984,155	4,692,695	5,332,302	5,552,938	4,820,151	5,969,098	5,678,765	4,980,532	6,206,701	4,330,167	63,674,461
Luggage & leather goods	11,936,186	10,884,465	12,442,193	11,536,563	12,038,584	13,787,530	13,072,160	13,121,861	12,265,334	12,950,299	14,300,238	24,556,527	11,223,453	162,179,207
Pet shops	84,686,682	79,469,529	90,702,118	89,220,987	92,317,782	90,775,804	94,116,162	97,315,866	94,955,471	98,577,323	94			

Table 3D Card expenditure statistics (not seasonally adjusted)

Value of debit card transactions

Detailed sector breakdown - services sectors (not seasonally adjusted)

£	January 2014	February 2014	March 2014	April 2014	May 2014	June 2014	July 2014	August 2014	September 2014	October 2014	November 2014	December 2014	January 2015	Total (latest 12 months)
Auto rental	48,331,948	50,957,560	61,831,074	61,817,906	64,821,596	66,288,166	74,971,849	67,081,827	65,532,164	55,395,168	48,661,204	49,699,485	47,539,657	714,597,656
Auto parts & accessories	195,659,890	194,649,733	252,416,038	220,573,562	220,707,704	218,893,612	227,663,319	204,229,304	232,766,900	219,335,005	196,004,291	187,060,828	203,322,630	2,577,622,926
Auto services	55,544,293	57,403,021	61,038,514	61,996,128	64,890,099	66,196,741	71,115,114	65,569,794	69,737,493	69,101,977	61,948,712	66,873,961	61,617,208	777,488,762
Auto repair shops	579,220,374	578,225,240	798,969,245	634,820,644	633,467,904	618,728,806	636,566,658	578,144,895	703,472,885	619,233,246	558,461,002	490,882,922	586,011,588	7,436,985,035
Service stations	0	0	0	0	0	0	0	0	0	0	0	0	0	0
Vehicle sales	1,261,391,170	1,251,586,426	1,831,673,619	1,505,403,401	1,493,609,596	1,499,441,292	1,498,172,686	1,353,316,581	1,735,273,345	1,481,706,420	1,287,284,185	1,146,720,831	1,366,172,541	17,450,360,923
Vehicle Sales & Services	2,140,147,675	2,132,821,980	3,005,928,490	2,484,611,641	2,477,496,899	2,469,548,617	2,508,489,626	2,268,342,401	2,806,782,787	2,444,771,816	2,152,359,394	1,941,238,027	2,264,663,624	28,957,055,302
Restaurants	984,721,155	1,051,480,508	1,226,858,079	1,173,134,312	1,246,947,563	1,226,899,881	1,243,231,661	1,328,162,128	1,271,326,590	1,312,684,994	1,278,909,658	1,455,887,749	1,192,365,978	15,007,889,091
Public houses	234,189,755	263,076,211	307,847,452	282,162,591	279,112,862	280,170,331	282,650,615	289,021,678	292,426,611	275,200,958	262,425,896	319,016,226	241,513,447	3,374,624,878
Catering services	61,625,654	122,870,523	72,987,553	73,967,939	82,066,700	80,809,742	89,314,170	84,296,931	87,706,236	85,281,220	81,757,322	88,912,799	69,913,404	1,019,884,539
Video stores	1,429,723	1,685,198	1,452,213	1,253,495	1,224,019	1,063,510	986,706	917,855	955,842	986,737	1,010,395	1,076,663	860,416	13,473,049
Cinema, theatre & dance	157,474,264	165,952,802	167,793,645	170,417,853	176,395,866	152,686,128	157,174,625	159,720,024	137,511,059	208,138,857	215,379,025	222,698,361	155,736,770	2,089,605,015
Concerts & entertainers	11,319,572	10,852,632	12,153,997	11,497,794	12,260,026	10,011,317	10,949,394	12,885,230	4,925,100	13,545,647	15,108,897	14,529,879	12,450,448	141,170,361
Tourist attractions	19,063,838	23,747,186	28,155,045	46,415,747	39,729,123	39,076,168	48,081,461	65,029,507	38,753,336	42,316,752	26,200,395	28,140,293	21,482,753	447,127,766
Amusement parks	2,446,993	10,182,029	4,743,457	11,683,571	9,523,261	10,274,678	12,641,134	18,545,932	10,433,685	9,660,972	3,174,442	2,906,274	108,575,651	4,284,022,386
Aquariums	1,771,487	3,825,951	3,273,262	5,347,958	4,183,897	3,682,861	5,841,407	9,277,737	6,349,185	4,315,696	2,677,069	2,442,354	2,201,013	53,418,390
Sports & games establishments	114,936,497	108,014,954	139,326,686	138,271,825	147,793,822	119,435,454	123,173,506	119,981,405	126,144,803	123,576,992	113,803,071	124,378,192	132,508,537	1,516,409,247
Professional sports clubs	13,839,474	11,118,716	15,770,617	18,129,625	24,545,785	16,335,099	16,491,496	13,329,765	14,439,405	13,518,411	13,095,286	11,644,536	181,228,452	1,516,409,247
Gambling	315,100,066	352,699,083	366,364,235	325,233,139	328,060,891	372,383,624	292,376,392	349,767,329	377,455,605	410,046,397	323,495,037	410,154,188	375,986,466	4,284,022,386
Personal services	18,489,897	26,257,735	20,542,339	18,628,564	19,627,318	19,016,346	19,365,162	17,885,782	19,000,638	18,903,100	17,181,752	19,956,277	18,061,471	234,426,848
Miscellaneous entertainment	25,588,473	27,978,695	33,824,091	38,340,237	37,211,029	34,284,335	39,748,160	53,371,695	40,234,595	42,776,080	36,839,678	26,407,911	27,680,604	438,697,110
Entertainment	1,961,996,848	2,179,742,223	2,401,092,671	2,314,484,650	2,408,682,162	2,366,129,474	2,342,025,889	2,522,192,998	2,426,741,696	2,561,873,797	2,392,689,697	2,728,585,045	2,266,312,117	28,910,552,419
Hotels	408,644,917	373,442,364	437,161,708	468,262,723	485,964,788	493,959,484	527,720,910	547,835,404	550,592,362	487,170,287	413,724,093	405,241,691	453,892,961	5,644,968,775
Airlines	537,854,569	427,054,287	493,801,447	467,482,316	509,960,880	485,813,004	484,266,636	425,852,626	446,400,416	423,189,577	343,106,746	312,112,640	560,959,507	5,380,000,082
Airport terminals	2,700,244	94,342,688	3,727,194	3,756,968	4,049,415	4,566,287	4,820,462	4,484,532	4,606,026	3,748,527	2,683,374	2,993,304	2,959,017	136,737,794
Railways	402,026,540	361,049,524	413,717,509	396,740,471	395,421,610	405,266,735	424,212,199	375,317,886	446,237,071	452,328,670	412,254,798	424,300,254	407,095,265	4,903,941,992
Buses	43,676,517	42,750,633	44,875,938	44,641,068	43,739,831	38,699,098	40,579,431	40,829,728	49,488,023	41,533,820	36,152,132	35,409,072	38,513,745	497,212,519
Sea travel	35,275,921	38,287,436	45,108,287	48,030,158	51,932,331	50,980,437	50,032,733	46,097,708	42,841,620	49,932,763	34,792,493	34,110,530	43,015,318	535,161,814
Travel agents	1,108,250,534	996,268,724	1,184,517,841	1,170,340,646	1,320,485,662	1,208,442,587	1,179,844,894	972,418,756	876,473,485	808,061,135	699,337,829	654,087,795	1,139,354,145	12,209,633,499
Timeshares	945,679	710,847	658,261	629,232	627,710	555,153	652,731	613,935	613,935	646,660	559,757	551,643	851,515	7,671,379
Camping grounds	52,648,864	60,786,668	87,963,603	91,291,944	103,501,848	102,810,190	112,361,605	100,630,639	75,773,969	72,023,310	63,337,640	43,934,115	62,395,820	976,811,351
Miscellaneous travel	29,631,850	31,113,411	38,068,596	41,164,354	42,474,136	51,952,383	51,547,899	43,482,710	41,895,407	45,740,284	46,191,582	47,123,298	50,832,496	531,586,556
Travel	2,213,010,718	2,052,364,218	2,312,438,676	2,254,077,157	2,472,193,423	2,349,085,874	2,348,318,590	2,009,728,520	1,984,329,952	1,897,204,746	1,638,416,351	1,554,622,651	2,305,978,828	25,178,756,986
Telegraph services / Wire transfer money order	70,574,577	65,336,129	69,302,108	75,811,649	73,553,216	77,684,375	80,526,113	69,922,113	70,560,044	53,467,673	51,214,066	56,956,256	59,819,955	804,153,697
Insurance services	521,278,424	505,474,767	609,994,302	579,820,071	556,036,083	553,501,085	600,298,680	557,075,817	606,859,314	586,156,060	506,688,463	462,438,680	536,840,808	6,661,184,130
FIs - cash disbursements (auto & manual)	3,470,283	5,753,806	3,563,618	4,195,455	5,706,335	6,277,914	7,151,494	6,757,393	5,790,265	3,616,945	2,165,476	3,620,256	3,327,973	57,926,930
FIs - merchandise & services	3,043,772,335	2,707,689,625	3,147,174,180	3,150,051,102	2,934,651,837	2,871,828,202	3,125,803,796	2,891,164,681	3,036,697,549	3,122,859,054	2,884,267,085	3,122,861,873	3,002,801,577	35,997,850,561
Non-FIs - foreign currency, travellers' cheques	211,409,333	246,884,257	255,331,637	307,372,976	380,787,979	434,646,978	518,471,519	459,319,256	416,723,277	288,294,755	209,408,494	251,074,653	267,363,714	4,035,679,495
Security brokers and dealers	660,754,364	560,228,133	903,525,029	1,109,022,736	466,282,393	633,397,530	570,309,229	412,570,218	487,160,597	605,374,227	430,175,139	468,760,161	553,342,674	7,200,148,066
Tax preparation services	281,301	373,137	171,935	173,137	226,170	147,262	168,987	138,128	228,695	231,912	127,347	124,203	259,361	2,370,624
Tax payments	283,869,958	214,040,274	158,003,406	121,767,876	110,074,519	97,506,474	154,007,816	121,810,910	118,060,386	109,516,972	103,361,163	109,300,215	1,046,464,817	2,463,914,828
Fines, bail and bond payments	39,225,662	39,837,586	44,641,275	39,863,935	41,603,421	38,710,888	42,651,152	40,640,355	39,151,354	42,238,363	39,174,780	33,993,370	38,245,796	480,752,295
Miscellaneous financial	18,016,213	17,335,067	21,993,449	22,784,364	23,883,341	25,402,971	27,653,531	24,575,730	25,820,703	25,674,879	22,687,580	19,603,229	20,148,334	277,563,178
Financial	4,852,652,450	4,362,952,781	5,213,700,939	5,410,916,334	4,592,752,611	4,739,103,679	5,127,102,025	4,583,974,601	4,806,992,476	4,837,430,860	4,249,266,449	4,528,736,040	5,528,615,009	57,981,543,804

Table 3D Card expenditure statistics (not seasonally adjusted)

Value of debit card transactions

Detailed sector breakdown - services sectors (continued, not seasonally adjusted)

£	January 2014	February 2014	March 2014	April 2014	May 2014	June 2014	July 2014	August 2014	September 2014	October 2014	November 2014	December 2014	January 2015	Total (latest 12 months)
Telecoms	344,925,406	298,980,253	339,090,687	315,846,256	324,927,386	312,423,457	335,582,739	345,064,573	373,816,958	375,046,891	360,082,214	375,493,377	369,835,016	4,126,189,807
Utilities	239,091,339	240,298,330	298,470,493	280,043,003	265,713,318	235,149,021	235,299,285	207,690,828	227,626,940	239,551,873	212,369,276	216,974,563	252,092,768	2,911,279,698
Contractors (residential & commercial)	136,040,741	143,891,241	158,651,873	152,697,053	157,782,176	160,566,710	172,730,229	159,564,891	183,450,785	196,972,622	180,614,814	162,293,188	156,807,460	1,986,023,042
Gardening services	5,251,912	6,547,263	9,149,365	10,618,072	10,584,035	9,855,931	9,100,089	7,244,133	7,759,871	7,483,651	6,312,204	7,381,002	4,936,708	96,972,324
Veterinary services	100,704,706	93,663,444	104,564,127	103,780,332	108,002,537	108,964,596	120,363,732	113,389,470	115,188,613	119,919,434	107,305,108	106,313,469	107,500,912	1,308,955,774
Photocopying & printing	24,297,382	22,560,598	25,420,876	23,958,142	26,170,064	25,190,275	25,717,204	26,170,519	27,478,515	28,460,589	29,016,914	27,521,464	24,389,908	309,049,068
Photographic studios	9,583,682	34,831,522	11,838,965	11,174,005	12,511,334	13,277,635	15,326,826	12,512,733	13,080,529	15,121,850	16,520,271	19,434,252	10,490,226	186,120,148
Beauty & barber shops	176,361,293	182,448,010	211,894,174	200,734,986	216,134,523	211,665,525	220,290,633	204,898,796	214,395,064	215,319,107	206,531,968	272,839,930	184,987,705	2,542,140,421
Employment agencies	1,462,060	2,235,858	1,590,633	1,454,675	1,555,075	1,496,319	1,685,922	1,426,460	1,647,459	1,685,814	1,529,737	1,279,288	1,683,469	19,270,709
Counselling services	6,238,179	6,251,710	7,121,981	6,907,845	6,675,646	6,743,800	6,942,532	6,188,630	7,213,122	6,587,466	6,427,843	6,555,645	6,857,500	80,473,720
Legal services	80,902,052	75,676,169	86,590,095	81,167,031	83,357,438	85,245,602	90,785,309	78,826,069	84,783,030	91,531,378	82,276,630	73,697,655	76,116,977	990,053,383
Laundry & cleaning	11,747,934	12,131,649	12,518,969	12,189,945	13,241,650	13,960,391	14,074,127	12,775,536	14,430,678	14,634,388	13,611,668	12,945,313	12,360,399	158,874,713
Funeral services	38,892,000	37,195,933	41,785,737	37,964,826	37,247,857	37,213,116	39,507,734	36,306,876	40,112,133	44,740,704	42,755,693	40,518,419	50,503,373	485,852,401
Medical services	244,635,114	253,324,366	259,773,158	243,948,568	253,011,239	255,886,686	271,444,138	233,124,916	266,779,969	285,383,184	262,914,250	235,651,682	261,986,746	3,083,228,902
Moving & courier services	32,563,408	30,315,065	33,598,220	33,998,140	35,775,271	37,353,219	41,775,039	37,918,551	40,528,812	40,843,689	37,315,479	37,181,930	33,949,823	440,553,238
Repair shops (not auto)	11,366,562	12,158,618	12,056,221	11,832,287	12,335,673	12,951,467	13,563,637	12,379,503	13,295,981	13,857,900	14,003,752	16,438,515	12,282,343	157,155,897
Accounting services	22,975,485	30,089,060	20,000,521	17,242,124	16,839,756	15,258,865	16,158,579	14,594,121	16,666,250	17,652,067	16,564,730	15,129,283	18,179,082	214,374,438
Advertising, consultancy & PR	11,211,880	10,640,336	11,494,690	11,586,359	11,644,050	11,170,770	11,950,925	10,419,933	11,491,712	11,447,384	10,144,793	9,206,509	10,330,770	131,528,231
Computer programming	39,258,363	33,787,900	35,623,249	34,098,285	35,176,772	34,098,285	34,428,695	32,505,447	35,699,007	36,234,290	33,476,652	32,950,400	32,580,949	409,590,344
Farming services	21,246,653	20,065,202	22,202,228	22,892,214	23,328,942	23,980,569	24,516,812	22,900,501	23,823,928	27,960,379	22,981,478	25,228,523	22,848,846	282,729,622
Miscellaneous professional services	605,564,200	562,473,957	624,493,341	655,002,762	578,096,772	564,713,662	616,267,691	593,164,509	678,230,705	652,090,767	560,057,349	540,308,189	655,020,085	7,279,919,789
Engineering services	16,637,776	18,409,654	19,549,316	19,254,806	19,880,740	19,814,991	20,837,826	17,735,302	21,549,773	21,945,529	19,564,696	16,454,443	17,017,697	232,014,773
Marina services	8,373,153	8,435,450	14,266,986	15,101,423	14,826,188	15,817,872	16,701,794	14,875,025	12,342,579	10,526,136	7,745,180	8,062,195	8,837,949	147,538,777
Wrecking & salvage yards	1,288,999	1,336,655	1,531,482	1,528,480	1,548,401	1,648,932	1,709,767	1,638,009	1,423,477	1,638,009	1,703,623	1,447,320	1,493,479	18,219,407
Pest control	556,995	1,244,494	579,395	604,200	699,392	791,200	861,200	733,996	790,902	1,047,651	922,689	819,255	798,099	9,892,473
Educational establishments	479,528,696	236,120,090	180,461,705	242,949,586	231,062,807	154,889,110	161,912,462	227,552,457	754,410,684	634,640,046	240,017,096	186,674,300	514,792,793	3,765,483,136
Child care services	15,110,871	14,753,517	14,506,050	14,352,047	14,423,958	14,216,210	15,029,118	13,313,056	14,908,003	15,938,033	13,713,178	13,460,189	15,672,777	174,286,136
Social, political & religious organisations	93,643,420	92,679,770	116,291,760	102,208,870	102,996,926	99,811,089	129,164,122	101,636,396	119,971,684	131,629,901	101,182,423	100,165,842	98,517,887	1,296,256,670
Government services	2,779,790,650	1,742,325,821	1,554,841,412	1,653,868,036	1,965,921,155	1,929,446,836	2,392,161,584	1,926,816,242	1,905,509,711	1,891,940,201	1,676,017,231	1,734,264,844	6,690,488,709	27,063,601,782
Miscellaneous services	617,195,476	485,211,577	550,986,087	561,262,303	526,731,275	636,638,329	671,422,442	536,498,306	602,017,728	582,953,341	509,646,504	571,832,069	586,335,430	6,821,535,391
Commercial equipment	133,627,001	135,640,631	153,474,048	143,074,289	147,474,081	145,510,845	157,655,704	144,923,812	165,907,052	163,343,631	151,173,250	133,798,934	139,802,956	1,781,779,233
Other services	6,310,073,388	4,845,724,143	4,934,417,844	5,024,419,437	5,254,597,950	5,194,681,728	5,884,967,896	5,151,569,064	5,996,546,186	5,898,193,519	4,944,242,390	5,002,084,449	10,379,498,841	68,510,943,447
Total services	17,886,525,996	15,947,047,709	18,304,740,328	17,956,771,942	17,691,687,833	17,612,508,856	18,738,624,936	17,083,642,988	18,571,985,459	18,126,645,025	15,790,698,374	16,160,507,903	23,198,959,380	215,183,820,733
TOTAL	32,314,727,567	29,840,425,623	34,324,141,237	33,469,749,301	33,635,546,182	33,699,010,209	34,866,219,584	32,468,908,265	34,661,365,548	34,672,191,066	32,323,363,756	37,072,881,595	37,539,493,745	408,573,296,111