

Card Expenditure Statistics [CES] – January 2012

Seasonally-adjusted

At a glance key figures for January 2012

	Total spending £ billions		Growth rates annualised See note below		Number of purchases millions	
	2012	2011	6 month	12 month	2012	2011
All plastic cards	42.2	38.2	11.0	10.4	854	756
Debit cards	29.2	26.0	12.9	12.2	656	574
Credit cards	13.0	12.2	7.1	6.4	198	182

Note. As a result of a change in the composition of the members of The UK Cards Association that report Card Expenditure Statistics there is a break in series from January 2011. This month's report is the first to show these changes which are evident mostly in the automotive fuels, hotels, travel and other services sub-sectors. The breaks in series have the effect of distorting the year-on-year growth rates that are used in the CES; these distortions will disappear after 12 months, but in the meantime the 'At a glance key figures' above show six and 12 months annualised growth rates as these are based on post-break data.

Spending on plastic cards in January amounted to £42.2 billion, £1.6 billion above the monthly average of the previous 6 months. The **number of purchases** at 854 million was 44 million higher than the average of the previous 6 months.

These stronger than expected figures for January – all of the sub-sectors showed increased spending – were most evident in **food & drink, vehicle sales & services** and **financial**. The increase in plastic card spending in food & drink contrasts with a fall in the average purchase value in supermarkets to £28.99 – down by 3.0% from January 2011. This bears out recent findings of the BRC-Nielsen shop price index that showed January 2012 as the lowest figure for 19 months. Using plastic cards (principally debit cards) in preference to other forms of spending would explain the increase in total spending; the plastic card share of spending in the food & drink sub-sector has grown by 1.7 percentage points over the past 12 months, reaching 64.7%. The increase in the financial sub-sector was due to January tax payments.

In addition to the increase in card spending on food & drink, there were strong increases over the past 12 months in the other two sectors where there are definitional similarities with National Statistics. For **total retail sales**, the plastic card share of spending in January was 71.9%¹, an increase of three percentage points over the past 12 months. And for **automotive fuels** the share was 79.6%, a rise of over eight percentage points.

¹CES 3-month moving average spending for January of £21.0 billion expressed as a percentage of a similar 3-month moving average for National Statistics 'All retailing including automotive fuel' (J5BU) that gives a figure of £29.1 billion.

Chart 1

Spending on plastic cards
Year-on-year growth rates²

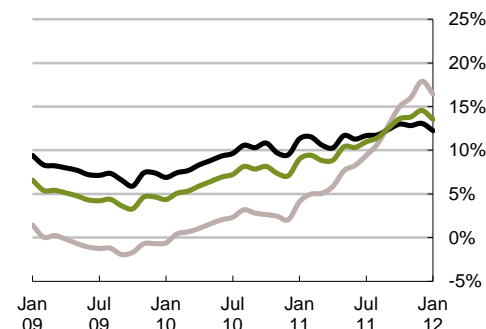


Chart 2

Percent of retail sales made on plastic cards
(including automotive fuel)
Three-month moving average

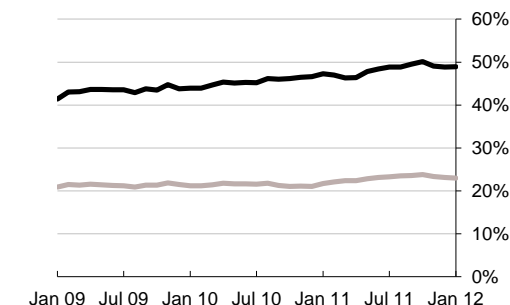


Chart 3

Average transaction values
Three-month moving average

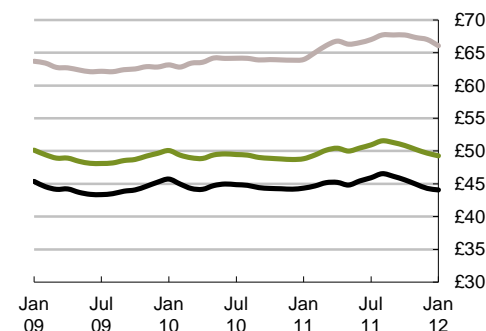
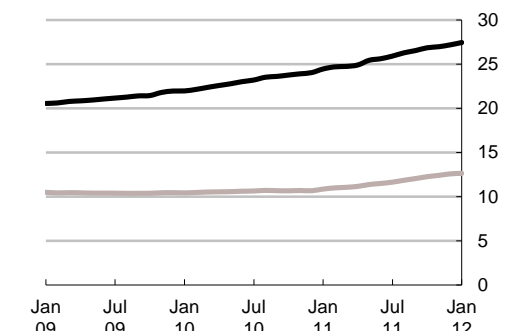


Chart 4

Average monthly expenditure
12 month moving average
£ billions



— Debit cards
— Credit cards
— All plastic cards

² Year-on-year growth rates are rates of change that express the most recent 12 month period over the corresponding period of the preceding 12 months.

Table 1 Card expenditure statistics (seasonally adjusted)

Summary

		Number of purchase transactions (millions)									Value of purchase transactions (£ millions)								
		All sectors			Retail sales			Services			All sectors			Retail sales			Services		
		Credit	Debit	Total	Credit	Debit	Total	Credit	Debit	Total	Credit	Debit	Total	Credit	Debit	Total	Credit	Debit	Total
Annual																			
	2007	1,958	4,968	6,926	1,197	3,304	4,501	761	1,664	2,425	123,826	223,881	347,707	61,080	108,648	169,728	62,746	115,233	177,980
	2008	1,972	5,466	7,439	1,186	3,582	4,768	786	1,885	2,670	126,243	245,232	371,475	60,700	116,068	176,768	65,543	129,164	194,707
	2009	2,002	5,940	7,942	1,224	3,893	5,117	778	2,047	2,825	125,377	263,389	388,766	61,829	125,378	187,208	63,548	138,010	201,558
	2010	2,002	6,492	8,495	1,377	4,717	6,095	625	1,775	2,400	127,959	288,399	416,358	69,505	148,676	218,181	58,454	139,723	198,177
	2011	2,256	7,214	9,470	1,552	5,289	6,841	704	1,925	2,628	150,861	326,111	476,972	78,738	165,095	243,833	72,123	161,016	233,139
Monthly																			
	2011																		
	Jan	182	574	756	125	425	550	57	149	206	12,206	26,031	38,237	6,326	13,274	19,600	5,880	12,757	18,637
	Feb	183	572	755	126	421	547	57	151	208	12,239	26,016	38,255	6,348	13,153	19,501	5,891	12,864	18,754
	Mar	179	559	738	123	410	533	56	149	205	11,869	25,079	36,949	6,166	12,652	18,818	5,703	12,427	18,130
	Apr	183	585	768	128	432	560	55	153	208	12,049	25,802	37,851	6,447	13,505	19,952	5,602	12,297	17,899
	May	193	633	826	133	466	599	60	167	227	12,993	29,980	42,973	6,704	14,400	21,105	6,288	15,579	21,868
	Jun	184	580	764	126	422	548	58	158	216	12,489	26,851	39,340	6,466	13,190	19,656	6,023	13,661	19,684
	Jul	185	598	783	127	438	565	58	160	218	12,551	27,492	40,044	6,551	13,822	20,372	6,001	13,671	19,671
	Aug	198	630	828	136	463	600	61	167	228	13,357	29,092	42,449	6,925	14,503	21,428	6,433	14,588	21,021
	Sep	189	613	803	130	448	578	60	165	224	12,856	27,400	40,256	6,696	14,075	20,771	6,159	13,326	19,485
	Oct	195	633	828	134	464	598	60	169	229	12,955	27,848	40,803	6,843	14,567	21,410	6,112	13,282	19,393
	Nov	192	611	803	131	445	576	61	166	227	12,773	27,019	39,792	6,651	13,847	20,499	6,122	13,172	19,294
	Dec	193	625	818	133	455	588	60	170	230	12,524	27,499	40,023	6,616	14,106	20,722	5,908	13,393	19,301
	2012																		
	Jan	198	656	854	136	480	616	62	176	238	12,987	29,211	42,198	6,794	14,844	21,638	6,192	14,367	20,559
Year-on-year growth rates (percentages)																			
Annual																			
	2007	0.5	10.6	7.5	-1.4	9.5	6.4	3.8	12.8	9.8	3.2	14.6	10.3	2.0	10.9	7.5	4.5	18.2	13.0
	2008	0.7	10.0	7.4	-0.9	8.4	5.9	3.3	13.3	10.1	2.0	9.5	6.8	-0.6	6.8	4.1	4.5	12.1	9.4
	2009	1.5	8.7	6.8	3.2	8.7	7.3	-1.0	8.6	5.8	-0.7	7.4	4.7	1.9	8.0	5.9	-3.0	6.8	3.5
	2010	0.0	9.3	7.0	12.5	21.2	19.1	-19.6	-13.3	-15.0	2.1	9.5	7.1	12.4	18.6	16.5	-8.0	1.2	-1.7
	2011	12.6	11.1	11.5	12.7	12.1	12.3	12.5	8.4	9.5	17.9	13.1	14.6	13.3	11.0	11.8	23.4	15.2	17.6
Monthly																			
	2011																		
	Jan	1.2	10.3	8.0	12.6	21.4	19.3	-17.1	-11.3	-12.9	4.1	11.3	9.0	13.5	18.9	17.1	-5.1	4.3	1.3
	Feb	2.0	10.3	8.3	12.3	20.5	18.5	-15.2	-9.9	-11.4	5.0	11.5	9.4	13.1	18.1	16.5	-3.2	5.4	2.7
	Mar	2.0	9.8	7.8	11.1	18.8	17.0	-13.6	-8.9	-10.2	5.1	10.6	8.8	11.8	16.5	15.0	-1.8	5.0	2.9
	Apr	2.8	9.9	8.1	11.1	18.0	16.4	-11.7	-7.4	-8.6	5.9	10.3	8.9	11.7	15.9	14.5	-0.1	4.9	3.4
	May	4.4	11.1	9.5	11.7	18.3	16.8	-8.8	-4.7	-5.8	7.7	11.7	10.4	12.0	16.2	14.9	3.1	7.3	6.0
	Jun	4.7	10.6	9.2	10.9	16.7	15.4	-6.7	-3.1	-4.1	8.3	11.3	10.3	11.0	14.9	13.6	5.3	7.8	7.0
	Jul	5.6	10.9	9.6	10.7	16.0	14.8	-4.3	-1.1	-2.0	9.4	11.7	11.0	11.0	14.5	13.4	7.7	8.9	8.5
	Aug	6.4	10.4	9.5	10.5	14.7	13.7	-1.6	0.3	-0.3	10.7	11.8	11.4	10.9	13.3	12.6	10.5	10.2	10.3
	Sep	8.2	11.0	10.4	11.3	14.5	13.8	1.9	2.6	2.4	12.9	12.4	12.5	12.0	13.4	12.9	13.9	11.4	12.1
	Oct	10.1	11.6	11.2	12.2	14.3	13.8	5.6	4.7	5.0	15.0	13.0	13.6	13.0	13.2	13.2	17.3	12.8	14.1
	Nov	10.8	10.8	10.8	11.8	12.6	12.5	8.5	6.1	6.7	16.0	12.8	13.8	12.7	11.8	12.1	19.9	13.9	15.7
	Dec	12.6	11.1	11.5	12.7	12.1	12.3	12.5	8.4	9.5	17.9	13.1	14.6	13.3	11.0	11.8	23.4	15.2	17.6
	2012																		
	Jan	12.2	10.9	11.2	12.3	11.7	11.8	12.0	8.9	9.7	16.4	12.2	13.5	12.4	10.6	11.2	21.3	14.0	16.1

Table 2A Card expenditure statistics (seasonally adjusted)

Retail sales

Number of purchase transactions (millions)

Total retail sales

		Food & drink			Mixed business			Clothing			Household			Other retailers			Automotive Fuels *			Number of purchases		
		Credit	Debit	Total	Credit	Debit	Total	Credit	Debit	Total	Credit	Debit	Total	Credit	Debit	Total	Credit	Debit	Total	Credit	Debit	Total
Annual																						
	2007	426	1,639	2,066	203	436	639	124	350	474	147	282	429	297	596	893	165	419	584	1,197	3,304	4,501
	2008	500	1,874	2,374	134	408	542	121	371	492	143	292	436	288	637	925	168	459	626	1,186	3,582	4,768
	2009	512	2,086	2,598	131	401	532	125	404	529	146	321	466	311	681	991	158	475	633	1,224	3,893	5,117
	2010	532	2,285	2,817	137	404	541	128	425	553	146	349	495	273	733	1,006	161	521	682	1,377	4,717	6,095
	2011	600	2,560	3,160	137	422	559	139	427	566	158	371	528	297	779	1,076	222	730	952	1,552	5,289	6,841
Monthly																						
	2011																					
	Jan	47	203	250	12	34	46	11	34	45	13	30	43	24	65	88	18	60	78	125	425	550
	Feb	47	201	248	12	34	45	11	33	44	13	30	43	25	65	89	18	59	77	126	421	547
	Mar	46	197	243	11	31	42	11	31	41	13	30	42	25	63	88	18	58	76	123	410	533
	Apr	50	206	256	11	35	46	12	37	48	13	31	44	25	65	90	18	59	76	128	432	560
	May	50	226	276	12	38	50	12	37	49	13	31	44	27	71	98	19	63	82	133	466	599
	Jun	48	203	251	11	34	45	12	34	46	12	30	42	26	63	89	17	58	75	126	422	548
	Jul	50	212	262	11	35	46	12	36	48	13	31	44	24	63	87	18	60	79	127	438	565
	Aug	54	227	281	11	36	47	12	38	50	14	32	45	26	68	94	20	63	83	136	463	600
	Sep	51	221	272	11	35	46	12	37	48	13	31	44	25	64	89	19	61	80	130	448	578
	Oct	53	227	280	12	37	49	12	38	50	14	32	46	24	67	91	19	64	83	134	464	598
	Nov	51	216	268	12	36	48	12	36	48	13	31	45	24	63	87	19	62	82	131	445	576
	Dec	53	222	275	12	37	49	12	37	50	14	32	45	23	64	87	19	63	82	133	455	588
	2012																					
	Jan	54	234	288	13	41	53	13	40	53	14	33	46	23	68	91	20	65	84	136	480	616
Year-on-year growth rates (percentages)																						
Annual																						
	2007	8.2	12.7	11.8	-5.6	5.1	1.5	-1.8	10.3	6.8	1.1	7.3	5.1	-11.0	5.0	-0.9	-	-	-	-1.4	9.5	6.4
	2008	17.3	14.3	14.9	-34.0	-6.5	-15.2	-2.3	6.0	3.8	-2.6	3.6	1.5	-3.0	6.8	3.6	1.4	9.6	7.3	-0.9	8.4	5.9
	2009	2.4	11.3	9.4	-2.2	-1.7	-1.8	3.2	9.0	7.6	1.9	9.7	7.1	7.8	7.0	7.2	-5.6	3.5	1.0	3.2	8.7	7.3
	2010	4.0	9.5	8.4	4.9	0.7	1.7	2.3	5.1	4.4	0.2	8.9	6.2	-12.1	7.7	1.5	1.6	9.7	7.7	12.5	21.2	19.1
	2011	12.8	12.0	12.2	-0.6	4.4	3.1	8.7	0.6	2.4	7.9	6.2	6.7	8.8	6.3	7.0	38.0	40.2	39.6	12.7	12.1	12.3
Monthly																						
	2011																					
	Jan	5.3	10.4	9.4	6.0	1.3	2.5	3.4	5.1	4.7	1.9	10.0	7.4	-13.2	9.3	2.3	5.9	13.8	11.8	12.6	21.4	19.3
	Feb	5.8	10.7	9.7	5.6	0.9	2.1	2.9	3.7	3.5	2.0	9.9	7.4	-11.5	9.6	3.0	8.3	16.3	14.4	12.3	20.5	18.5
	Mar	5.3	10.1	9.2	4.0	0.0	1.0	1.7	1.9	1.9	1.7	9.6	7.2	-10.4	8.9	2.9	10.0	18.4	16.3	11.1	18.8	17.0
	Apr	6.0	10.3	9.5	3.4	0.2	1.0	2.6	1.8	2.0	2.0	9.7	7.3	-8.6	9.1	3.7	12.1	20.4	18.4	11.1	18.0	16.4
	May	7.2	11.5	10.7	3.7	1.5	2.0	4.1	2.4	2.8	2.4	9.8	7.5	-5.8	10.3	5.4	15.4	24.0	21.9	11.7	18.3	16.8
	Jun	6.9	10.9	10.1	2.3	1.3	1.5	4.0	1.2	1.9	1.5	8.8	6.6	-4.0	9.5	5.5	17.0	25.8	23.6	10.9	16.7	15.4
	Jul	7.5	11.1	10.4	1.4	1.8	1.7	4.6	1.2	2.0	1.5	8.5	6.4	-2.1	9.4	6.0	19.5	28.4	26.2	10.7	16.0	14.8
	Aug	8.0	10.8	10.3	-0.2	1.5	1.1	4.6	0.2	1.3	2.3	7.6	6.0	-0.4	8.3	5.8	23.1	30.6	28.8	10.5	14.7	13.7
	Sep	9.5	11.7	11.3	-0.8	2.2	1.4	5.6	0.5	1.7	3.7	7.4	6.3	2.5	8.5	6.7	27.1	33.4	31.9	11.3	14.5	13.8
	Oct	11.1	12.5	12.2	-0.5	3.3	2.3	6.9	1.0	2.4	5.1	7.2	6.6	5.1	8.4	7.5	30.7	35.7	34.5	12.2	14.3	13.8
	Nov	11.4	11.9	11.8	-1.2	3.4	2.3	7.0	-0.1	1.6	5.8	6.1	6.0	6.5	6.8	6.7	33.4	37.0	36.2	11.8	12.6	12.5
	Dec	12.8	12.0	12.2	-0.6	4.4	3.1	8.7	0.6	2.4	7.9	6.2	6.7	8.8	6.3	7.0	38.0	40.2	39.6	12.7	12.1	12.3
	2012																					
	Jan	12.6	12.0	12.1	-0.9	5.7	4.0	9.4	1.8	3.6	7.1	5.8	6.1	9.4	5.2	6.3	33.5	35.6	35.1	12.3	11.7	11.8

* The category of Automotive Fuels is effective from January 2010. Data shown for 2009 are for growth trend purposes only; these data are excluded from totals for 2009 as these are already included in their former Services sector of Motoring (now known as Vehicle Sales & Service)

Table 2B Card expenditure statistics (seasonally adjusted)

Retail sales

Value of purchase transactions (£ millions)

		Value of purchase transactions (£ millions)																		Total retail sales		
		Food & drink			Mixed business			Clothing			Household			Other retailers			Automotive Fuels *			Value of purchases		
		Credit	Debit	Total	Credit	Debit	Total	Credit	Debit	Total	Credit	Debit	Total	Credit	Debit	Total	Credit	Debit	Total	Credit	Debit	Total
Annual																						
2007		15,314	48,574	63,888	8,839	14,052	22,892	5,862	10,453	16,315	14,702	15,342	30,044	16,362	20,226	36,588	5,872	10,965	16,837	61,080	108,648	169,728
2008		17,570	54,557	72,127	7,055	13,459	20,513	5,955	11,214	17,169	14,384	15,574	29,958	15,736	21,265	37,002	6,675	12,968	19,643	60,700	116,068	176,768
2009		18,101	60,239	78,340	7,093	13,865	20,958	6,376	12,645	19,022	14,498	16,600	31,097	15,761	22,029	37,790	5,860	12,668	18,528	61,829	125,378	187,208
2010		18,786	63,912	82,698	7,148	13,945	21,092	6,773	13,653	20,426	14,620	18,778	33,398	15,584	23,564	39,148	6,595	14,823	21,418	69,505	148,676	218,181
2011		20,980	69,260	90,240	7,075	14,647	21,722	7,815	14,442	22,257	15,205	20,492	35,697	17,556	24,350	41,906	10,108	21,903	32,011	78,738	165,095	243,833
Monthly																						
2011	Jan	1,679	5,559	7,237	572	1,164	1,736	601	1,133	1,734	1,216	1,613	2,828	1,423	2,008	3,431	835	1,797	2,633	6,326	13,274	19,600
	Feb	1,665	5,476	7,141	564	1,140	1,704	610	1,113	1,722	1,221	1,646	2,867	1,458	2,024	3,482	830	1,754	2,585	6,348	13,153	19,501
	Mar	1,580	5,238	6,818	544	1,055	1,599	597	1,027	1,624	1,228	1,612	2,840	1,426	1,999	3,425	791	1,722	2,513	6,166	12,652	18,818
	Apr	1,760	5,671	7,431	575	1,209	1,784	641	1,210	1,852	1,249	1,694	2,943	1,419	1,972	3,391	803	1,748	2,551	6,447	13,505	19,952
	May	1,737	6,124	7,861	631	1,320	1,951	658	1,242	1,900	1,280	1,721	3,001	1,542	2,096	3,638	857	1,897	2,754	6,704	14,400	21,105
	Jun	1,692	5,418	7,110	580	1,191	1,771	666	1,171	1,837	1,237	1,676	2,913	1,515	2,003	3,518	776	1,731	2,507	6,466	13,190	19,656
	Jul	1,766	5,819	7,585	589	1,235	1,824	658	1,230	1,888	1,255	1,720	2,975	1,463	2,023	3,486	819	1,794	2,613	6,551	13,822	20,372
	Aug	1,881	6,148	8,029	600	1,278	1,878	669	1,273	1,942	1,343	1,786	3,129	1,538	2,125	3,663	893	1,893	2,787	6,925	14,503	21,428
	Sep	1,815	6,018	7,833	590	1,228	1,818	663	1,223	1,886	1,309	1,753	3,062	1,466	2,022	3,487	854	1,831	2,685	6,696	14,075	20,771
	Oct	1,854	6,152	8,006	616	1,298	1,915	684	1,289	1,974	1,311	1,801	3,112	1,487	2,087	3,574	890	1,940	2,830	6,843	14,567	21,410
	Nov	1,764	5,722	7,486	598	1,243	1,840	676	1,242	1,918	1,290	1,758	3,048	1,450	1,995	3,444	874	1,887	2,762	6,651	13,847	20,499
	Dec	1,788	5,913	7,701	614	1,287	1,901	692	1,289	1,981	1,267	1,712	2,979	1,370	1,997	3,367	884	1,909	2,792	6,616	14,106	20,722
2012	Jan	1,865	6,217	8,082	650	1,379	2,029	706	1,369	2,075	1,290	1,824	3,113	1,371	2,075	3,445	913	1,981	2,893	6,794	14,844	21,638

Year-on-year growth rates (percentages)

Annual																						
2007		9.4	11.8	11.2	-0.7	7.3	4.0	1.4	11.5	7.6	4.9	11.8	8.3	-4.7	10.6	3.1	-	-	-	2.0	10.9	7.5
2008		14.7	12.3	12.9	-20.2	-4.2	-10.4	1.6	7.3	5.2	-2.2	1.5	-0.3	-3.8	5.1	1.1	13.7	18.3	16.7	-0.6	6.8	4.1
2009		3.0	10.4	8.6	0.5	3.0	2.2	7.1	12.8	10.8	0.8	6.6	3.8	0.2	3.6	2.1	-12.2	-2.3	-5.7	1.9	8.0	5.9
2010		3.8	6.1	5.6	0.8	0.6	0.6	6.2	8.0	7.4	0.8	13.1	7.4	-1.1	7.0	3.6	12.5	17.0	15.6	12.4	18.6	16.5
2011		11.7	8.4	9.1	-1.0	5.0	3.0	15.4	5.8	9.0	4.0	9.1	6.9	12.7	3.3	7.0	53.3	47.8	49.5	13.3	11.0	11.8
Monthly																						
2011	Jan	4.7	6.7	6.3	1.1	1.1	1.1	7.4	8.1	7.9	2.7	14.5	9.0	0.8	8.4	5.2	17.8	21.7	20.4	13.5	18.9	17.1
	Feb	5.2	6.9	6.5	-0.2	0.6	0.3	7.3	6.9	7.0	2.5	14.2	8.8	2.0	8.4	5.7	20.8	24.5	23.3	13.1	18.1	16.5
	Mar	4.6	6.4	6.0	-1.9	-0.4	-0.9	6.5	5.2	5.6	1.5	13.4	8.0	2.2	7.5	5.3	22.8	26.5	25.3	11.8	16.5	15.0
	Apr	5.5	6.6	6.4	-1.9	0.0	-0.6	7.4	5.1	5.9	1.4	13.2	7.8	2.8	7.1	5.3	24.8	28.3	27.2	11.7	15.9	14.5
	May	6.5	7.9	7.6	-1.2	1.4	0.5	8.8	5.9	6.8	1.4	13.4	7.9	4.2	7.6	6.2	28.2	31.8	30.7	12.0	16.2	14.9
	Jun	6.1	7.3	7.0	-2.2	1.3	0.1	9.4	5.1	6.5	0.3	12.4	6.9	4.6	6.6	5.8	30.0	33.5	32.4	11.0	14.9	13.6
	Jul	6.8	7.7	7.5	-2.2	2.1	0.6	10.4	5.5	7.1	0.2	12.3	6.8	5.6	6.5	6.1	32.5	36.0	34.9	11.0	14.5	13.4
	Aug	7.4	7.5	7.5	-2.9	2.0	0.3	10.6	4.7	6.6	0.5	11.0	6.3	6.5	5.4	5.9	36.5	38.2	37.7	10.9	13.3	12.6
	Sep	9.0	8.6	8.7	-2.4	2.9	1.1	11.9	5.1	7.4	1.9	10.9	6.9	8.5	5.4	6.7	41.2	41.2	41.2	12.0	13.4	12.9
	Oct	10.6	9.3	9.6	-1.5	4.1	2.2	13.4	5.8	8.3	3.0	10.6	7.2	10.6	5.4	7.5	45.3	43.6	44.1	13.0	13.2	13.2
	Nov	10.8	8.6	9.1	-1.8	4.1	2.1	13.7	5.1	7.9	3.2	9.7	6.9	11.4	4.1	7.0	48.2	44.8	45.9	12.7	11.8	12.1
	Dec	11.7	8.4	9.1	-1.0	5.0	3.0	15.4	5.8	9.0	4.0	9.1	6.9	12.7	3.3	7.0	53.3	47.8	49.5	13.3	11.0	11.8
2012	Jan	11.5	8.4	9.1	0.1	6.3	4.2	15.5	6.9	9.8	3.4	8.5	6.3	10.8	2.4	5.8	46.9	42.2	43.6	12.4	10.6	11.2

* The category of Automotive Fuels is effective from January 2010. Data shown for 2009 are for growth trend purposes only; these data are excluded from totals for 2009 as these are already included in their former Services sector of Motoring (now known as Vehicle Sales & Service)

Table 2C Card expenditure statistics (seasonally adjusted)

Services

Number of purchase transactions (millions)

Total services

		Number of purchase transactions (millions)																		Total services		
		Vehicle Sales & Services			Entertainment			Hotels			Travel			Financial			Other services			Number of purchases		
		Credit	Debit	Total	Credit	Debit	Total	Credit	Debit	Total	Credit	Debit	Total	Credit	Debit	Total	Credit	Debit	Total	Credit	Debit	Total
Annual																						
2007		245	571	816	190	411	600	38	26	64	101	148	249	28	106	134	160	401	561	761	1,664	2,425
2008		249	627	876	198	500	698	36	28	64	103	168	271	32	111	143	167	451	618	786	1,885	2,670
2009		235	656	892	206	593	800	37	31	68	101	183	284	32	112	144	167	470	638	778	2,047	2,825
2010		76	204	281	220	721	941	37	34	72	97	202	299	32	129	161	163	484	647	625	1,775	2,400
2011		52	89	141	267	880	1,147	51	43	94	116	235	352	33	144	177	185	534	719	704	1,925	2,628
Monthly																						
2011	Jan	4	7	11	21	67	89	4	3	7	9	18	28	3	11	14	15	42	57	57	149	206
	Feb	5	8	13	21	68	89	4	3	7	9	18	28	3	11	14	15	42	58	57	151	208
	Mar	5	9	14	21	66	86	4	3	7	9	17	27	2	11	14	15	43	58	56	149	205
	Apr	4	8	13	21	68	89	4	3	7	9	19	28	3	12	14	14	43	57	55	153	208
	May	5	8	13	22	76	98	4	4	8	10	20	30	3	12	15	16	47	63	60	167	227
	Jun	5	8	13	21	70	91	4	3	8	9	20	29	3	12	14	16	45	61	58	158	216
	Jul	4	7	11	22	74	96	4	4	8	10	20	29	3	12	15	15	44	59	58	160	218
	Aug	4	7	11	23	77	100	4	4	8	10	20	31	3	13	16	16	45	62	61	167	228
	Sep	4	7	11	23	78	101	4	4	8	10	20	30	3	12	15	15	45	60	60	165	224
	Oct	4	6	10	24	80	104	4	4	8	10	20	30	3	13	15	15	46	61	60	169	229
	Nov	4	7	11	23	76	99	5	4	8	10	21	31	3	13	16	16	46	62	61	166	227
	Dec	4	7	10	24	80	104	5	4	8	10	21	31	3	13	15	16	46	61	60	170	230
2012	Jan	4	7	12	25	82	107	5	4	9	10	21	31	3	13	16	16	48	64	62	176	238
Year-on-year growth rates (percentages)																						
Annual																						
2007		1.2	8.2	6.0	8.1	17.6	14.4	3.2	6.6	4.5	4.2	16.7	11.3	0.8	16.2	12.6	3.4	12.9	10.0	3.8	12.8	9.8
2008		1.5	9.8	7.3	4.3	21.7	16.2	-2.8	5.9	0.8	2.5	13.4	9.0	15.7	4.8	7.1	4.6	12.3	10.1	3.3	13.3	10.1
2009		-5.3	4.6	1.8	4.3	18.7	14.6	0.5	14.0	6.3	-2.5	8.9	4.6	-1.9	1.1	0.4	-0.1	4.4	3.2	-1.0	8.6	5.8
2010		-67.6	-68.8	-68.5	6.5	21.5	17.6	1.4	9.4	5.1	-3.3	10.4	5.5	0.6	15.1	11.9	-2.6	2.8	1.4	-19.6	-13.3	-15.0
2011		-32.1	-56.5	-49.9	21.5	22.0	21.9	36.7	24.6	30.9	19.4	16.5	17.4	2.6	11.4	9.6	13.7	10.3	11.2	12.5	8.4	9.5
Monthly																						
2011	Jan	-66.5	-68.3	-67.8	8.9	22.7	19.2	4.6	11.3	7.7	-1.2	11.7	7.2	0.5	15.6	12.3	-1.4	3.4	2.1	-17.1	-11.3	-12.9
	Feb	-65.5	-68.0	-67.3	10.1	22.5	19.3	6.7	11.9	9.1	0.1	12.3	8.0	-0.2	14.8	11.6	-0.7	3.5	2.4	-15.2	-9.9	-11.4
	Mar	-64.4	-67.6	-66.8	10.3	21.5	18.7	8.3	12.0	10.0	1.0	12.1	8.2	-1.5	13.5	10.2	-0.4	3.3	2.3	-13.6	-8.9	-10.2
	Apr	-63.0	-67.2	-66.0	10.8	20.7	18.3	10.4	13.5	11.8	2.1	13.2	9.3	-2.0	13.1	9.8	0.1	3.7	2.8	-11.7	-7.4	-8.6
	May	-61.0	-66.4	-65.0	12.5	22.0	19.7	13.4	15.8	14.5	4.1	15.7	11.7	-1.2	13.1	10.1	2.2	5.3	4.5	-8.8	-4.7	-5.8
	Jun	-58.6	-65.5	-63.7	12.4	21.3	19.1	15.8	16.9	16.3	5.0	15.7	12.0	-1.3	12.2	9.4	3.4	6.1	5.4	-6.7	-3.1	-4.1
	Jul	-56.2	-64.5	-62.3	13.3	21.6	19.5	18.2	19.1	18.6	6.7	16.5	13.2	-1.1	11.7	9.0	4.7	6.9	6.4	-4.3	-1.1	-2.0
	Aug	-53.3	-63.8	-61.0	13.9	20.8	19.1	21.0	19.4	20.2	9.0	16.5	14.0	0.1	11.4	9.1	5.9	7.3	7.0	-1.6	0.3	-0.3
	Sep	-49.2	-62.1	-58.7	16.2	21.8	20.5	24.9	21.1	23.1	11.7	16.5	14.9	1.1	11.3	9.2	7.8	8.1	8.1	1.9	2.6	2.4
	Oct	-44.8	-60.5	-56.3	18.5	22.3	21.4	28.9	22.6	25.9	14.5	17.2	16.3	2.1	11.5	9.6	9.9	9.1	9.3	5.6	4.7	5.0
	Nov	-39.5	-58.7	-53.5	19.2	21.3	20.8	32.4	23.4	28.1	16.4	16.3	16.3	2.1	11.3	9.5	11.3	9.4	9.9	8.5	6.1	6.7
	Dec	-32.1	-56.5	-49.9	21.5	22.0	21.9	36.7	24.6	30.9	19.4	16.5	17.4	2.6	11.4	9.6	13.7	10.3	11.2	12.5	8.4	9.5
2012	Jan	-30.3	-54.5	-47.8	20.1	21.3	21.1	34.3	23.7	29.2	17.9	16.2	16.8	2.9	11.5	9.8	13.2	10.8	11.4	12.0	8.9	9.7

Table 2D Card expenditure statistics (seasonally adjusted)

Services

Value of purchase transactions (£ millions)

		Value of purchase transactions (£ millions)																		Total services		
		Vehicle Sales & Services			Entertainment			Hotels			Travel			Financial			Other services			Value of purchases		
		Credit	Debit	Total	Credit	Debit	Total	Credit	Debit	Total	Credit	Debit	Total	Credit	Debit	Total	Credit	Debit	Total	Credit	Debit	Total
Annual																						
2007		14,669	30,658	45,327	9,303	11,232	20,535	5,486	2,264	7,750	13,450	12,612	26,062	5,704	26,144	31,848	14,134	32,323	46,456	62,746	115,233	177,980
2008		15,511	32,931	48,442	9,663	13,064	22,727	5,511	2,448	7,958	14,032	13,738	27,770	5,931	29,946	35,877	14,895	37,037	51,932	65,543	129,164	194,707
2009		14,614	35,349	49,962	9,657	14,602	24,260	5,295	2,726	8,021	13,080	14,099	27,179	5,734	33,033	38,766	15,169	38,201	53,370	63,548	138,010	201,558
2010		8,740	24,672	33,412	9,838	16,959	26,797	5,532	3,051	8,582	12,813	15,815	28,628	5,873	38,529	44,403	15,658	40,697	56,355	58,454	139,723	198,177
2011		7,768	22,339	30,106	14,028	20,679	34,708	8,628	3,870	12,498	16,232	18,391	34,623	7,037	46,721	53,758	18,429	49,017	67,446	72,123	161,016	233,139
Monthly																						
2011	Jan	662	1,870	2,532	1,153	1,594	2,746	683	302	985	1,359	1,433	2,792	560	3,987	4,548	1,464	3,570	5,034	5,880	12,757	18,637
	Feb	679	1,893	2,571	1,179	1,601	2,780	671	300	972	1,312	1,456	2,768	570	3,899	4,469	1,480	3,714	5,194	5,891	12,864	18,754
	Mar	688	1,939	2,627	1,059	1,507	2,566	652	283	935	1,313	1,439	2,752	510	3,605	4,115	1,481	3,655	5,136	5,703	12,427	18,130
	Apr	632	1,889	2,522	1,086	1,634	2,720	666	312	978	1,261	1,488	2,749	565	3,697	4,261	1,392	3,277	4,669	5,602	12,297	17,899
	May	687	2,013	2,701	1,252	1,878	3,130	720	325	1,045	1,363	1,553	2,916	684	3,707	4,391	1,583	6,102	7,685	6,288	15,579	21,868
	Jun	685	1,906	2,591	1,138	1,670	2,807	718	322	1,039	1,328	1,526	2,853	594	3,715	4,309	1,560	4,524	6,084	6,023	13,661	19,684
	Jul	642	1,886	2,528	1,190	1,780	2,970	730	334	1,065	1,333	1,532	2,864	610	4,063	4,673	1,496	4,076	5,572	6,001	13,671	19,671
	Aug	675	1,933	2,609	1,214	1,823	3,036	731	335	1,066	1,441	1,587	3,029	701	4,600	5,301	1,671	4,310	5,980	6,433	14,588	21,021
	Sep	627	1,837	2,464	1,196	1,767	2,962	750	329	1,079	1,401	1,571	2,971	601	3,884	4,485	1,585	3,939	5,524	6,159	13,326	19,485
	Oct	611	1,818	2,429	1,229	1,838	3,066	771	350	1,122	1,375	1,590	2,965	577	3,799	4,376	1,548	3,887	5,435	6,112	13,282	19,393
	Nov	597	1,753	2,349	1,192	1,747	2,939	772	335	1,106	1,385	1,603	2,987	562	3,883	4,445	1,615	3,852	5,466	6,122	13,172	19,294
	Dec	582	1,602	2,184	1,141	1,843	2,984	763	342	1,105	1,363	1,613	2,976	504	3,881	4,385	1,555	4,112	5,667	5,908	13,393	19,301
2012	Jan	660	2,033	2,693	1,212	1,876	3,088	793	364	1,157	1,391	1,665	3,057	567	4,291	4,858	1,569	4,138	5,707	6,192	14,367	20,559
Year-on-year growth rates (percentages)																						
Annual																						
2007		6.4	13.4	11.0	4.8	16.1	10.7	5.3	10.9	6.9	1.7	14.4	7.5	2.1	24.9	20.1	5.6	20.9	15.8	4.5	18.2	13.0
2008		5.7	7.4	6.9	3.9	16.3	10.7	0.5	8.1	2.7	4.3	8.9	6.6	4.0	14.5	12.6	5.4	14.6	11.8	4.5	12.1	9.4
2009		-5.8	7.3	3.1	-0.1	11.8	6.7	-3.9	11.4	0.8	-6.8	2.6	-2.1	-3.3	10.3	8.1	1.8	3.1	2.8	-3.0	6.8	3.5
2010		-40.2	-30.2	-33.1	1.9	16.1	10.5	4.5	11.9	7.0	-2.0	12.2	5.3	2.4	16.6	14.5	3.2	6.5	5.6	-8.0	1.2	-1.7
2011		-11.1	-9.5	-9.9	42.6	21.9	29.5	56.0	26.8	45.6	26.7	16.3	20.9	19.8	21.3	21.1	17.7	20.4	19.7	23.4	15.2	17.6
Monthly																						
2011	Jan	-38.4	-28.1	-31.1	6.6	17.6	13.2	9.2	14.3	10.9	0.8	12.9	7.1	4.8	21.7	19.2	4.7	9.4	8.1	-5.1	4.3	1.3
	Feb	-37.4	-27.1	-30.1	10.4	17.8	14.9	12.8	15.0	13.6	2.3	12.3	7.6	6.1	23.6	21.0	5.3	10.0	8.7	-3.2	5.4	2.7
	Mar	-36.7	-27.2	-29.9	12.9	17.4	15.7	15.6	15.2	15.4	4.1	11.3	7.9	5.9	22.4	20.0	5.5	9.4	8.3	-1.8	5.0	2.9
	Apr	-35.6	-26.5	-29.1	15.7	17.5	16.8	19.0	16.2	18.0	5.6	12.0	9.0	6.8	22.0	19.8	5.6	7.7	7.1	-0.1	4.9	3.4
	May	-33.6	-24.7	-27.2	20.6	19.4	19.9	23.6	18.8	22.0	9.0	13.7	11.5	10.0	21.6	19.9	6.9	12.4	10.8	3.1	7.3	6.0
	Jun	-31.5	-23.1	-25.4	23.0	19.0	20.5	27.7	20.0	25.0	11.2	14.3	12.9	11.0	20.4	19.1	7.7	12.6	11.2	5.3	7.8	7.0
	Jul	-29.3	-21.0	-23.3	25.9	20.0	22.3	31.6	22.1	28.4	13.1	14.7	14.0	13.1	21.0	19.9	8.4	12.6	11.5	7.7	8.9	8.5
	Aug	-26.4	-19.3	-21.2	28.2	19.7	22.9	35.5	22.5	31.0	15.5	15.0	15.2	16.0	22.5	21.6	10.1	13.6	12.6	10.5	10.2	10.3
	Sep	-22.9	-16.9	-18.5	32.3	20.9	25.2	41.0	24.1	35.1	18.4	15.3	16.7	18.2	23.0	22.4	11.8	14.1	13.4	13.9	11.4	12.1
	Oct	-19.2	-14.5	-15.7	36.5	21.7	27.2	46.3	25.6	39.0	21.4	16.0	18.4	20.1	23.4	23.0	13.8	15.2	14.8	17.3	12.8	14.1
	Nov	-15.7	-12.4	-13.3	38.7	21.0	27.6	50.7	25.9	41.9	23.6	16.1	19.4	20.0	21.8	21.5	15.4	18.9	17.9	19.9	13.9	15.7
	Dec	-11.1	-9.5	-9.9	42.6	21.9	29.5	56.0	26.8	45.6	26.7	16.3	20.9	19.8	21.3	21.1	17.7	20.4	19.7	23.4	15.2	17.6
2012	Jan	-10.7	-9.1	-9.5	37.3	21.1	27.2	51.2	25.5	42.2	23.9	15.9	19.5	17.5	17.2	17.2	16.7	20.0	19.1	21.3	14.0	16.1

Table 3A Card expenditure statistics (not seasonally adjusted)

Number of credit card transactions

Detailed sector breakdown - services sectors (continued)

	January 2011	February 2011	March 2011	April 2011	May 2011	June 2011	July 2011	August 2011	September 2011	October 2011	November 2011	December 2011	January 2012	Total (latest 12 months)
Telecoms	1,957,641	1,841,394	2,034,545	2,022,236	2,216,476	2,117,776	2,145,420	2,236,409	2,157,573	2,195,598	2,123,574	2,244,553	2,130,044	25,465,598
Utilities	338,936	322,740	379,421	352,078	372,045	389,446	361,376	362,499	340,157	338,751	333,110	296,110	341,416	4,189,149
Contractors (residential & commercial)	297,013	293,274	326,259	259,505	288,799	403,228	277,570	292,530	294,910	297,159	312,926	249,917	268,482	3,564,559
Gardening services	35,255	35,390	45,353	73,418	78,452	60,715	49,820	50,018	45,010	47,718	47,926	58,972	35,187	627,979
Veterinary services	525,305	502,549	562,467	521,386	577,927	508,833	519,227	541,821	520,366	511,726	508,007	485,677	486,003	6,245,989
Photocopying & printing	335,519	306,905	351,933	279,354	328,751	332,409	316,663	325,980	345,023	351,289	444,431	407,178	342,316	4,132,232
Photographic studios	86,782	84,417	98,708	343,328	386,247	115,244	141,604	103,122	104,465	130,920	146,980	124,168	79,658	1,858,861
Beauty & barber shops	1,259,015	1,237,449	1,373,364	1,123,994	1,199,399	1,546,917	1,536,225	1,514,399	1,498,295	1,456,620	1,509,447	1,945,038	1,327,418	17,268,565
Employment agencies	28,722	31,184	32,974	22,511	23,534	26,074	26,134	25,985	28,201	28,201	28,888	25,870	26,487	326,043
Counselling services	5,137	4,855	5,158	5,384	6,104	5,575	5,373	5,985	6,105	5,706	5,599	4,294	5,704	65,842
Legal services	53,898	30,087	82,268	52,902	58,514	57,740	32,411	79,186	56,961	55,749	58,170	51,073	41,707	656,768
Laundry & cleaning	170,290	159,208	179,165	174,439	210,565	208,932	203,977	190,101	200,849	199,684	193,202	174,695	173,925	2,268,742
Funeral services	11,214	10,499	11,761	9,084	9,331	10,710	10,181	10,255	10,649	10,502	11,420	10,826	11,808	127,026
Medical services	1,088,768	1,080,171	1,239,987	1,012,994	1,175,793	1,203,152	1,092,425	1,099,764	1,163,008	1,104,393	1,210,749	1,002,379	1,131,815	13,516,630
Moving & courier services	246,263	259,649	298,463	255,980	300,644	314,037	303,519	287,244	314,468	305,447	343,976	316,784	273,106	3,573,317
Repair shops (not auto)	53,056	49,708	55,592	50,079	57,984	58,611	55,781	61,325	59,334	59,222	65,477	62,905	59,842	695,860
Accounting services	36,705	30,015	30,909	23,048	27,511	37,924	25,400	30,084	34,238	32,663	34,168	31,529	37,624	375,113
Advertising, consultancy & PR	103,410	101,906	155,147	136,267	160,730	153,630	143,104	151,653	143,785	138,838	141,796	119,888	141,635	1,688,379
Computer programming	1,110,499	1,063,170	1,130,350	986,583	1,070,067	1,086,520	1,034,547	1,061,310	1,091,300	1,191,115	1,466,198	1,654,557	1,200,695	14,036,412
Farming services	59,492	57,127	65,641	67,616	70,748	64,969	61,994	65,543	62,430	62,209	61,133	63,900	58,164	761,474
Miscellaneous professional services	1,117,827	1,368,447	1,243,789	1,030,011	1,178,166	1,160,140	1,134,063	1,110,921	1,171,399	1,065,592	1,127,150	1,020,052	1,043,279	13,653,009
Engineering services	53,393	57,694	68,017	56,446	64,069	57,441	60,794	62,436	61,019	58,064	61,966	47,660	56,107	711,713
Marina services	32,379	31,138	45,181	67,627	70,869	74,543	79,589	91,481	54,867	43,101	33,136	30,976	32,514	655,022
Wrecking & salvage yards	3,802	3,766	4,295	4,043	4,382	4,551	4,418	4,581	4,642	4,436	4,341	3,495	4,091	51,041
Pest control	2,085	1,929	2,362	2,335	2,890	3,342	4,312	4,358	4,109	3,585	3,137	2,279	2,504	37,142
Educational establishments	502,129	409,683	501,234	372,855	457,871	415,957	425,086	427,669	641,276	553,802	540,871	420,798	594,715	5,761,817
Child care services	18,264	18,213	16,347	12,306	14,873	14,307	15,192	17,064	15,529	16,522	15,378	15,391	18,041	189,163
Social, political & religious organisations	890,271	886,223	1,402,929	1,194,006	1,271,525	1,236,888	1,253,075	1,223,780	1,116,385	938,147	1,060,270	1,022,643	836,690	13,442,561
Government services	1,748,055	1,781,762	2,017,722	1,755,741	1,994,226	1,916,030	1,957,488	1,988,930	1,995,225	1,901,333	1,939,992	1,703,579	1,910,657	22,862,685
Miscellaneous services	1,040,427	1,053,044	1,321,847	1,145,351	1,212,306	1,286,786	1,238,958	1,237,077	1,294,661	1,336,300	1,519,803	1,757,358	1,314,117	15,717,608
Commercial equipment	952,329	874,371	966,817	788,263	901,590	1,220,552	867,239	892,405	1,007,928	953,482	1,033,950	917,766	975,434	11,399,797
Other services	14,163,881	13,987,967	16,050,005	14,201,170	15,792,388	16,092,979	15,382,965	15,555,915	15,844,167	15,397,874	16,387,171	16,272,310	14,961,185	185,926,096
Total services	52,844,744	52,557,992	58,747,735	54,350,498	59,547,098	60,520,928	61,454,008	63,379,827	61,375,478	61,106,968	60,094,018	57,241,732	57,724,941	708,101,223
TOTAL	168,247,048	159,545,680	178,578,997	177,706,014	189,432,496	189,763,992	191,224,691	197,164,740	186,594,562	193,276,753	201,463,952	222,798,759	183,033,571	2,270,584,207

Table 3B Card expenditure statistics (not seasonally adjusted)

Value of credit card transactions

Detailed sector breakdown - services sectors (continued)

£	January 2011	February 2011	March 2011	April 2011	May 2011	June 2011	July 2011	August 2011	September 2011	October 2011	November 2011	December 2011	January 2012	Total (latest 12 months)
Telecoms	82,849,107	77,111,918	84,548,321	78,394,449	87,862,484	82,330,114	84,025,988	93,439,313	86,321,675	92,843,039	92,459,888	100,903,374	89,667,880	1,049,908,443
Utilities	54,307,124	56,767,969	69,002,591	62,424,194	64,767,367	68,385,382	58,874,868	58,930,368	58,801,431	57,708,586	59,157,964	54,556,232	64,019,509	733,396,461
Contractors (residential & commercial)	75,396,283	76,007,195	85,612,575	68,024,622	77,418,373	102,144,358	77,311,765	79,402,604	80,693,067	80,926,275	89,749,331	65,363,266	69,590,357	952,243,788
Gardening services	2,606,508	3,450,119	5,153,669	6,854,844	10,295,976	8,428,090	7,187,035	7,785,590	6,600,281	5,857,717	6,033,137	7,633,867	6,429,037	81,709,362
Veterinary services	46,948,431	44,219,540	50,059,174	45,716,940	50,713,223	44,679,187	44,723,473	46,235,504	44,945,939	43,858,556	43,899,673	40,809,924	42,816,353	542,677,486
Photocopying & printing	37,010,622	37,102,801	44,439,565	34,197,842	37,401,056	40,171,186	38,099,958	40,683,907	43,056,714	41,434,198	49,794,618	39,659,224	40,140,756	486,181,825
Photographic studios	7,049,271	7,230,253	8,380,683	21,109,757	23,268,313	8,918,179	10,744,212	8,969,372	8,619,215	9,379,460	11,494,897	9,317,818	6,597,414	134,029,573
Beauty & barber shops	66,880,415	67,163,401	74,694,118	59,371,023	64,818,893	81,531,649	81,967,609	79,836,205	81,533,855	78,477,166	82,887,030	101,462,194	69,864,519	923,607,662
Employment agencies	15,312,846	19,558,171	21,653,039	16,763,052	18,218,038	19,223,787	19,924,818	20,738,107	22,536,141	22,185,395	24,648,066	21,574,798	19,083,251	246,106,663
Counselling services	1,313,851	902,170	997,898	1,411,790	1,377,177	1,074,818	1,203,458	1,179,883	1,334,172	1,456,257	1,405,380	983,102	1,544,180	14,870,285
Legal services	17,648,887	17,846,435	22,328,902	18,302,955	19,081,581	20,898,189	17,755,267	19,471,935	18,918,826	18,473,257	19,916,819	16,595,609	20,730,212	230,319,987
Laundry & cleaning	5,551,516	5,184,642	5,923,926	5,988,478	7,302,388	6,686,348	6,674,452	6,302,897	6,817,215	6,586,075	6,417,518	5,803,789	5,839,390	75,527,118
Funeral services	11,713,379	11,619,298	12,885,310	9,524,541	9,449,824	10,898,416	10,656,403	10,514,189	11,284,459	11,003,003	12,305,459	10,932,944	12,514,892	133,588,738
Medical services	138,238,216	144,356,181	168,336,950	134,978,431	152,954,574	161,705,651	152,327,251	147,868,819	157,628,487	152,339,010	167,370,218	133,856,040	149,704,442	1,823,426,054
Moving & courier services	33,381,280	33,058,800	38,206,708	34,610,690	40,815,575	34,426,964	40,530,143	38,891,560	38,460,053	38,338,535	39,154,504	33,443,066	40,980,908	450,917,506
Repair shops (not auto)	8,596,210	8,547,372	9,494,118	8,709,147	9,872,045	11,164,731	10,267,956	10,055,641	10,331,527	10,981,502	10,708,765	10,508,235	9,806,080	120,447,119
Accounting services	7,331,714	6,564,760	6,996,948	5,046,267	5,431,112	9,070,920	5,163,966	5,728,682	6,398,240	6,019,502	6,604,747	6,632,792	8,245,746	77,903,682
Advertising, consultancy & PR	12,145,907	11,554,474	15,772,971	13,334,901	15,867,042	15,325,817	13,993,314	14,130,408	14,356,163	13,806,522	13,888,949	11,732,511	14,132,631	167,895,703
Computer programming	91,665,917	85,651,076	99,617,556	85,620,408	91,182,304	96,699,924	88,119,530	96,827,044	93,525,598	100,109,454	112,170,041	99,117,610	79,933,708	1,128,574,253
Farming services	7,314,119	7,085,660	8,024,503	7,615,822	8,184,868	8,673,893	7,899,642	8,637,815	7,902,557	7,831,773	7,577,248	7,091,175	7,297,758	93,822,714
Miscellaneous professional services	155,646,313	153,224,292	169,459,749	146,356,781	162,708,390	164,817,426	161,572,733	164,595,528	198,666,229	160,687,020	160,334,929	134,268,472	164,909,373	1,941,600,922
Engineering services	15,790,602	17,298,267	20,616,055	16,808,205	19,338,231	17,671,661	18,617,092	18,343,825	19,101,390	17,477,716	18,274,344	14,008,959	16,057,258	213,613,003
Marina services	7,000,387	6,440,171	10,348,710	10,821,075	11,458,432	11,871,787	11,904,098	11,413,698	8,246,005	7,131,652	5,834,112	6,013,047	7,471,154	108,953,941
Wrecking & salvage yards	732,686	749,753	859,479	793,194	824,351	897,732	824,819	828,076	938,709	853,681	841,825	649,177	792,224	9,853,020
Pest control	560,005	526,325	612,450	583,095	1,228,403	728,884	789,122	885,077	926,556	820,454	788,435	628,645	646,548	9,163,994
Educational establishments	159,999,214	100,332,304	99,509,527	89,376,290	110,057,872	89,628,465	94,706,810	136,334,919	293,059,381	176,057,495	96,995,251	84,018,903	169,844,701	1,539,921,918
Child care services	2,344,849	2,221,654	2,297,889	1,479,948	1,739,059	1,695,367	1,872,434	1,739,651	1,834,905	1,751,890	1,796,380	1,650,271	1,982,172	22,061,620
Social, political & religious organisations	67,727,197	61,092,788	91,286,434	70,419,549	64,130,954	86,280,600	70,233,818	65,769,870	69,838,950	65,026,187	65,722,681	76,186,135	76,393,352	862,381,318
Government services	151,312,265	155,890,034	178,294,944	158,457,464	174,736,625	155,628,441	168,832,814	180,011,038	177,799,508	163,994,232	162,143,606	144,604,367	171,310,986	1,991,704,059
Miscellaneous services	60,993,814	59,992,244	78,028,705	66,697,700	70,621,973	76,882,328	72,035,941	68,657,910	74,202,450	70,475,127	79,821,880	92,834,432	68,531,093	878,781,783
Commercial equipment	111,935,224	113,082,471	130,697,265	107,898,633	120,836,638	132,438,215	121,934,065	125,726,473	136,725,169	126,578,995	132,185,923	107,019,493	122,961,401	1,478,084,741
Other services	1,457,304,159	1,391,832,538	1,614,140,732	1,387,692,087	1,533,963,141	1,570,978,509	1,500,774,854	1,569,935,908	1,781,404,867	1,590,469,731	1,582,383,618	1,439,659,471	1,559,839,285	18,523,274,741
Total services	5,689,592,624	5,432,950,316	6,181,045,119	5,560,027,013	6,470,763,192	6,494,758,182	6,491,901,567	6,381,568,328	6,488,350,278	6,033,459,376	5,744,423,850	5,141,338,882	5,973,891,745	72,394,477,848
TOTAL	11,481,010,148	10,799,025,033	12,250,543,940	11,766,063,201	13,004,426,360	13,054,212,648	13,045,594,492	13,059,493,921	12,937,527,227	12,818,908,687	13,075,252,793	13,595,804,217	12,188,296,332	151,595,148,851

Table 3C Card expenditure statistics (not seasonally adjusted)

Number of debit card transactions

Detailed sector breakdown - services sectors (continued)

	January 2011	February 2011	March 2011	April 2011	May 2011	June 2011	July 2011	August 2011	September 2011	October 2011	November 2011	December 2011	January 2012	Total (latest 12 months)
Telecoms	9,822,003	9,165,074	10,102,388	10,873,978	11,671,333	11,421,613	11,509,620	12,033,266	11,469,253	11,848,227	11,544,813	12,255,434	11,449,032	135,344,031
Utilities	1,990,327	1,844,932	2,121,979	2,038,463	2,200,117	2,242,212	2,181,857	2,268,532	2,157,472	2,260,425	2,241,665	2,074,343	2,305,803	25,937,800
Contractors (residential & commercial)	515,395	520,752	570,337	421,954	461,867	491,159	456,084	485,325	492,438	512,788	529,471	437,308	450,368	5,829,851
Gardening services	65,518	71,381	86,655	138,956	146,490	113,238	97,272	99,541	85,518	96,351	95,566	123,242	74,238	1,228,448
Veterinary services	1,366,981	1,338,489	1,504,743	1,378,075	1,517,930	1,340,789	1,386,622	1,448,723	1,381,161	1,399,508	1,352,557	1,281,102	1,307,508	16,637,207
Photocopying & printing	386,106	361,610	425,226	342,431	421,546	410,386	373,104	400,836	420,861	438,225	564,180	521,649	431,540	5,111,594
Photographic studios	228,249	238,291	281,698	1,117,760	1,267,045	311,782	352,783	294,810	287,241	338,377	362,664	337,148	216,270	5,405,869
Beauty & barber shops	3,944,859	3,967,588	4,355,681	3,558,667	3,718,454	4,821,747	4,773,716	4,743,720	4,621,650	4,621,923	4,513,882	5,879,644	4,189,345	53,766,017
Employment agencies	25,264	23,969	23,068	9,982	11,083	11,585	10,978	11,110	10,209	10,170	9,422	7,920	9,428	148,924
Counselling services	50,479	46,763	47,897	63,115	76,840	73,329	71,543	82,107	75,440	76,258	75,450	68,253	75,535	832,530
Legal services	109,333	109,376	132,509	108,526	122,629	129,584	126,370	134,882	135,097	130,416	137,217	113,243	138,372	1,518,221
Laundry & cleaning	409,101	392,586	441,318	415,525	489,527	496,290	476,019	459,001	482,683	487,427	470,793	430,115	417,499	5,458,783
Funeral services	18,829	19,123	21,085	16,977	17,562	19,885	19,067	19,407	19,648	20,203	21,597	20,405	22,780	237,739
Medical services	2,244,403	2,303,071	2,635,630	2,125,970	2,444,373	2,502,485	2,325,387	2,424,998	2,563,336	2,455,856	2,645,050	2,154,876	2,511,110	29,092,142
Moving & courier services	221,491	215,905	241,027	221,648	257,211	272,431	262,084	266,949	273,604	268,579	303,496	299,308	271,807	3,154,049
Repair shops (not auto)	109,059	98,227	106,208	82,563	94,695	97,275	91,862	102,560	101,319	102,694	106,709	111,095	99,068	1,194,275
Accounting services	221,438	196,423	201,483	198,187	242,547	239,905	228,997	254,582	251,134	248,854	255,728	228,210	276,578	2,822,628
Advertising, consultancy & PR	220,492	212,192	202,589	238,733	242,617	234,430	221,383	230,869	220,917	217,652	223,542	164,982	223,903	2,633,809
Computer programming	1,095,229	1,064,594	1,109,996	855,572	976,926	893,809	883,545	911,189	978,926	1,093,106	1,100,907	1,057,950	1,148,183	12,074,703
Farming services	138,196	133,564	151,226	156,566	167,849	152,293	148,459	156,566	148,816	153,379	146,511	151,708	143,906	1,810,843
Miscellaneous professional services	2,676,591	2,527,495	2,800,474	2,458,076	2,835,232	2,841,141	2,775,662	2,841,453	2,899,654	2,974,238	3,078,706	2,960,829	3,094,505	34,087,465
Engineering services	49,720	56,954	68,173	61,308	64,437	68,351	65,988	65,955	66,187	64,582	65,622	52,509	60,288	760,354
Marina services	41,687	42,509	59,928	93,724	91,737	93,040	100,109	120,190	72,931	63,294	48,011	49,303	45,521	880,297
Wrecking & salvage yards	7,125	7,258	8,343	8,350	9,156	9,164	9,103	9,430	9,268	9,256	9,238	7,236	9,104	104,906
Pest control	2,319	2,201	2,557	2,794	3,982	4,130	5,148	5,209	4,972	4,261	4,009	2,852	3,074	45,189
Educational establishments	1,410,291	1,274,000	1,533,453	970,164	1,499,522	1,118,026	883,672	816,321	1,612,089	1,947,971	1,826,468	1,217,193	1,819,566	16,518,445
Child care services	103,262	106,644	98,333	78,201	98,948	94,281	94,703	112,874	99,701	113,311	103,838	97,836	125,068	1,223,738
Social, political & religious organisations	1,435,594	1,542,907	2,671,924	2,000,009	2,243,125	2,099,523	2,139,963	2,193,693	2,127,303	2,043,483	2,089,984	1,796,941	1,601,616	24,550,471
Government services	4,865,506	4,832,720	5,386,491	5,102,268	5,920,436	5,670,626	5,576,825	5,859,097	5,687,201	5,577,299	5,495,085	4,874,806	5,701,231	65,684,085
Miscellaneous services	4,575,210	4,606,815	5,652,165	4,984,283	5,568,318	5,525,106	5,164,371	5,529,938	5,516,619	5,700,391	6,176,264	7,201,286	5,559,302	67,184,858
Commercial equipment	1,513,011	1,387,434	1,516,575	1,254,951	1,487,958	1,893,367	1,320,266	1,394,612	1,684,582	1,615,550	1,631,418	1,584,217	1,610,825	18,381,755
Other services	39,863,068	38,710,847	44,597,303	41,341,632	46,371,492	45,692,982	44,132,562	45,777,745	45,957,230	46,894,054	47,229,863	47,562,943	45,392,373	539,661,026
Total services	141,538,265	140,159,714	156,418,044	151,647,069	168,156,185	161,370,853	163,792,575	172,209,659	162,472,395	173,396,597	165,935,153	166,610,240	167,349,392	1,949,517,876
TOTAL	531,735,975	514,947,895	579,390,650	572,821,125	625,679,673	596,235,122	600,123,333	627,485,576	592,358,415	637,561,716	631,354,209	705,837,990	608,377,362	7,292,173,066

Table 3D Card expenditure statistics (not seasonally adjusted)

Value of debit card transactions

Detailed sector breakdown - services sectors

£	January 2011	February 2011	March 2011	April 2011	May 2011	June 2011	July 2011	August 2011	September 2011	October 2011	November 2011	December 2011	January 2012	Total (latest 12 months)
Auto rental	37,070,073	37,185,985	44,877,750	46,655,730	48,971,546	60,066,265	61,013,113	59,447,992	50,538,134	47,107,299	43,649,623	41,557,460	40,450,469	581,521,366
Auto parts & accessories	163,341,111	162,780,720	209,585,511	177,037,887	186,173,227	186,182,695	182,990,599	183,210,954	193,461,585	184,697,332	175,193,348	154,973,894	172,666,851	2,168,954,603
Auto services	54,668,455	53,978,518	64,589,333	58,544,514	67,520,745	68,376,060	68,561,049	71,117,938	68,164,705	64,435,592	63,842,881	58,253,804	63,147,800	770,532,939
Auto repair shops	485,186,272	474,227,963	689,036,148	538,309,371	548,584,636	554,516,958	548,539,252	501,120,008	624,369,664	544,442,129	503,233,481	423,958,671	503,773,585	6,454,111,866
Service stations	0	0	0	0	0	0	0	0	0	0	0	0	0	0
Vehicle sales	896,989,565	900,161,137	1,240,692,055	1,046,457,392	1,129,435,688	1,111,617,570	1,066,921,769	1,043,879,912	1,209,427,048	1,076,436,406	962,480,797	756,975,435	989,445,257	12,533,930,466
Vehicle Sales & Services	1,637,255,476	1,628,334,323	2,248,780,797	1,867,004,894	1,980,685,842	1,980,759,548	1,928,025,782	1,858,776,804	2,145,961,136	1,917,118,758	1,748,400,130	1,435,719,264	1,769,483,962	22,509,051,240
Restaurants	660,219,459	674,187,611	708,326,535	759,776,697	798,542,648	744,100,985	788,049,631	846,407,123	741,129,054	844,736,889	767,052,507	866,398,782	770,117,932	9,308,826,394
Public houses	147,349,122	148,613,512	162,421,785	182,940,777	197,828,647	175,223,184	179,961,369	211,043,573	175,353,416	196,646,519	172,663,046	196,599,804	177,327,126	2,176,622,758
Catering services	37,244,826	39,276,707	47,163,368	49,600,889	50,531,010	53,761,242	55,116,504	55,473,412	52,679,563	50,800,062	51,534,957	56,751,604	43,922,558	606,611,876
Video stores	10,223,165	8,416,951	8,737,145	9,155,103	10,304,532	9,278,008	8,545,602	7,478,776	7,309,499	9,488,238	9,373,949	10,724,682	7,261,060	106,073,545
Cinema, theatre & dance	116,111,437	123,245,587	131,049,656	117,827,991	239,908,528	133,945,383	170,497,989	140,937,022	116,290,080	150,509,439	154,615,484	148,466,297	125,707,083	1,753,000,539
Concerts & entertainers	1,343,892	1,481,470	1,713,791	1,700,913	2,065,842	2,013,271	1,963,026	2,111,299	1,820,310	2,235,005	2,350,636	2,474,515	1,974,715	24,204,793
Tourist attractions	11,712,905	14,726,383	15,815,060	28,863,440	24,536,288	25,776,255	30,332,876	44,549,665	23,810,123	27,606,095	14,604,799	12,902,012	11,820,611	275,343,607
Amusement parks	1,241,434	1,816,881	1,770,159	4,004,819	2,831,793	2,944,737	3,609,256	6,133,649	2,611,267	3,277,167	1,823,475	1,678,103	1,472,399	33,973,705
Aquariums	961,910	1,075,225	1,155,666	1,497,217	1,525,360	1,261,847	1,366,765	1,658,137	1,132,363	1,167,724	922,801	885,447	1,007,131	14,655,683
Sports & games establishments	88,384,821	82,936,495	102,197,568	96,344,569	102,982,328	99,192,413	95,147,385	87,184,546	89,075,320	81,106,214	85,056,694	93,908,441	1,127,076,875	1,127,076,875
Professional sports clubs	7,398,807	8,104,122	8,139,746	10,564,102	9,544,884	15,493,986	11,434,781	10,546,909	9,433,907	8,811,244	10,012,670	10,986,331	9,983,872	123,056,554
Gambling	337,460,649	351,220,701	422,271,293	353,342,319	391,930,411	386,870,105	395,269,174	478,305,654	424,781,642	423,466,030	398,673,390	381,929,065	420,339,635	4,828,399,419
Personal services	11,218,690	11,303,200	12,912,005	16,087,325	18,261,301	12,912,005	17,164,324	17,756,696	16,888,910	16,956,197	16,293,228	17,212,351	17,424,332	195,032,953
Miscellaneous entertainment	16,656,669	18,881,787	22,472,125	34,835,050	33,052,575	33,599,240	38,027,680	45,264,085	31,619,400	35,928,870	27,554,585	21,277,495	22,836,183	365,349,075
Entertainment	1,447,527,786	1,485,286,632	1,646,145,902	1,666,541,211	1,892,908,721	1,704,023,855	1,800,531,390	1,963,113,385	1,692,044,080	1,860,704,799	1,708,581,741	1,813,343,182	1,705,103,078	20,938,227,776
Hotels	258,343,342	255,240,828	278,310,360	312,292,579	345,959,956	362,027,056	392,695,435	410,598,279	352,100,881	354,487,662	287,957,505	264,860,704	312,215,094	3,928,746,339
Airlines	246,973,666	199,674,449	231,592,267	198,912,075	226,700,354	229,761,039	242,605,016	228,779,349	220,103,643	201,742,381	186,614,811	142,974,762	302,880,189	2,612,340,335
Airport terminals	2,387,426	2,058,588	2,939,168	3,495,997	3,583,197	3,963,043	4,259,276	4,503,146	3,511,772	3,009,820	2,452,527	2,504,813	2,660,015	38,941,362
Railways	294,715,519	296,003,321	308,958,312	300,204,392	354,927,541	361,607,637	348,085,936	356,777,908	361,610,720	395,946,624	390,307,263	346,914,966	398,226,348	4,219,570,968
Buses	24,953,323	23,366,080	26,900,010	28,058,352	30,341,461	30,248,528	31,058,967	33,059,928	35,911,859	32,802,682	28,226,472	26,180,227	31,126,426	357,280,992
Sea travel	13,695,711	12,657,109	15,697,378	16,841,189	17,508,367	18,544,752	21,334,633	22,150,258	19,531,910	22,014,996	16,685,025	14,141,736	19,587,501	216,694,854
Travel agents	883,034,082	779,392,504	914,800,583	896,760,944	1,076,516,253	1,044,599,058	1,025,300,244	852,149,974	719,555,248	673,811,882	592,988,615	500,951,923	953,280,548	10,030,107,776
Timeshares	69,438	33,659	24,752	22,050	14,014	55,024	686,458	637,867	603,633	529,397	1,092,678	1,974,011	6,207,167	11,880,710
Camping grounds	42,491,220	47,665,936	65,114,105	75,284,406	80,785,312	78,697,136	85,231,905	81,723,845	49,187,077	49,103,179	36,463,299	27,495,558	41,285,774	718,037,532
Miscellaneous travel	23,361,587	24,330,859	29,869,232	32,529,501	38,160,079	43,336,638	39,106,276	36,848,044	28,881,982	27,111,809	25,494,710	21,968,327	25,584,068	373,221,525
Travel	1,531,681,972	1,385,182,505	1,595,895,807	1,552,108,906	1,828,536,578	1,810,812,855	1,797,668,711	1,616,630,319	1,438,897,844	1,406,072,770	1,280,325,400	1,085,106,323	1,780,838,036	18,578,076,054
Telegraph services / Wire transfer money order	12,117,330	11,813,578	11,426,504	12,000,689	10,945,848	11,714,893	12,786,881	15,855,604	18,451,921	16,879,763	18,428,873	17,380,684	15,328,713	173,013,951
Insurance services	613,081,276	593,302,161	703,423,259	664,640,137	741,501,157	766,583,472	783,073,537	788,927,651	791,608,367	778,455,458	511,223,723	418,216,746	528,176,293	8,069,131,961
Fis - cash disbursements (auto & manual)	29,285,159	33,468,238	33,381,292	1,993,457	2,194,323	1,195,801	1,433,491	1,317,843	1,086,251	23,264,795	31,206,674	34,733,906	31,422,676	196,698,747
Fis - merchandise & services	2,255,632,894	2,094,003,350	2,405,393,999	2,450,985,432	2,431,173,563	2,371,888,056	2,468,954,030	2,756,893,000	2,447,716,203	2,481,391,161	2,661,140,039	2,602,640,595	2,734,977,562	29,907,156,990
Non-Fis - foreign currency, travellers' cheques	63,425,785	72,257,898	84,304,973	102,119,074	108,460,713	125,377,824	167,758,424	164,968,765	139,793,510	110,895,698	93,894,945	106,308,674	97,467,377	1,373,607,875
Security brokers and dealers	284,422,856	276,069,971	469,237,327	518,344,303	246,907,072	224,046,252	205,121,595	520,647,625	241,471,973	171,218,583	235,961,408	133,210,152	195,086,735	3,437,322,996
Tax preparation services	83,445	82,231	67,160	87,904	70,492	107,560	116,505	131,689	139,969	98,775	94,548	122,496	240,631	1,359,960
Tax payments	1,231,201,336	498,833,830	133,716,365	110,421,873	96,367,966	97,154,404	518,076,108	185,162,983	101,847,053	108,347,605	102,065,347	140,441,421	1,225,994,385	3,318,429,340
Fines, bail and bond payments	22,490,306	22,563,200	26,963,815	25,904,208	29,882,660	30,598,953	31,191,837	29,031,633	30,951,980	30,980,950	30,679,924	26,873,959	28,228,470	343,851,589
Miscellaneous financial	14,194,206	14,037,584	17,532,535	17,670,230	19,911,355	20,583,121	20,332,288	20,642,696	20,529,855	19,531,082	20,336,632	16,301,538	16,809,283	224,218,209
Financial	4,525,934,593	3,616,432,051	3,885,447,229	3,904,167,307	3,687,415,149	3,649,250,336	4,208,844,696	4,483,579,489	3,793,597,082	3,741,063,870	3,705,032,113	3,496,230,171	4,873,732,125	47,044,791,618

Table 3D Card expenditure statistics (not seasonally adjusted)

Value of debit card transactions

Detailed sector breakdown - services sectors (continued)

£	January 2011	February 2011	March 2011	April 2011	May 2011	June 2011	July 2011	August 2011	September 2011	October 2011	November 2011	December 2011	January 2012	Total (latest 12 months)
Telecoms	280,677,996	257,899,490	285,830,319	277,530,718	304,895,121	294,169,731	297,690,640	308,541,476	300,625,986	326,141,791	314,245,034	343,493,713	314,743,570	3,625,807,589
Utilities	298,046,342	287,064,640	331,093,089	330,359,672	340,153,233	331,322,209	324,807,413	306,444,417	310,834,050	329,565,740	331,109,254	374,136,622	378,041,051	3,974,931,390
Contractors (residential & commercial)	94,914,527	99,969,277	112,713,443	85,732,475	99,590,411	112,331,865	99,853,715	105,336,507	109,450,294	113,009,271	132,089,139	104,758,919	95,801,160	1,270,636,476
Gardening services	3,002,442	3,501,183	4,824,893	7,426,481	8,033,160	6,269,486	5,518,286	5,444,821	4,923,658	5,084,975	5,017,376	5,306,245	3,817,858	65,168,422
Veterinary services	76,360,351	74,405,572	84,264,991	76,771,022	84,842,958	74,908,660	76,343,579	79,253,046	76,079,604	76,538,765	74,417,260	68,549,352	72,651,564	919,026,373
Photocopying & printing	21,107,290	20,673,132	24,460,139	19,936,969	23,613,963	24,560,679	22,569,192	23,778,935	26,073,148	25,442,905	29,641,320	26,073,148	29,419,429	290,419,429
Photographic studios	9,701,301	10,090,519	12,122,857	45,193,023	49,521,169	12,891,574	15,242,489	12,690,209	11,848,314	13,535,192	15,610,165	13,726,047	9,012,000	221,483,558
Beauty & barber shops	151,054,886	155,957,994	171,566,227	138,751,574	146,618,628	186,795,443	187,294,195	184,754,904	183,592,640	181,908,049	181,425,402	231,278,187	159,931,845	2,109,875,088
Employment agencies	1,007,542	976,490	1,075,553	787,191	940,452	907,127	989,329	946,897	1,048,850	963,363	1,009,059	817,341	870,055	11,331,707
Counselling services	3,874,786	3,644,397	3,682,450	5,829,433	6,907,694	5,831,747	5,501,857	6,131,479	5,610,605	5,883,149	5,810,397	5,217,660	5,591,902	65,642,770
Legal services	53,194,018	53,396,529	66,842,684	57,192,828	60,318,432	71,282,726	65,551,727	74,477,165	75,498,575	74,542,199	79,271,037	68,682,555	72,040,305	819,096,762
Laundry & cleaning	10,009,413	9,395,899	10,646,757	10,701,477	12,548,241	12,308,465	12,020,746	11,759,994	12,414,148	12,360,026	11,844,419	10,735,841	10,555,511	137,291,524
Funeral services	19,358,414	20,257,340	22,639,600	17,564,454	17,840,293	20,655,577	19,751,538	20,009,796	20,358,103	21,091,285	23,149,394	20,656,992	25,214,841	249,189,213
Medical services	172,243,759	182,897,946	213,476,902	173,343,846	197,996,232	205,222,594	193,506,591	194,003,619	206,294,749	200,099,628	215,198,089	171,803,950	197,047,697	2,350,891,843
Moving & courier services	20,750,370	19,300,603	22,564,718	20,994,504	24,113,628	26,380,598	27,457,605	28,750,789	28,439,088	27,051,817	28,049,662	25,727,898	23,917,150	302,748,060
Repair shops (not auto)	9,435,787	8,655,928	9,722,943	8,165,613	9,181,127	10,015,405	9,291,177	10,079,585	10,177,948	10,211,711	11,077,014	10,952,216	9,596,101	117,126,768
Accounting services	12,642,797	11,437,441	12,471,643	13,269,219	15,859,815	15,642,772	15,177,363	18,477,246	18,681,323	17,508,037	18,540,355	16,998,369	18,744,530	192,808,113
Advertising, consultancy & PR	14,483,870	13,939,766	15,288,304	13,427,816	15,701,057	15,562,183	14,644,910	14,619,654	14,483,434	13,506,526	13,849,607	10,461,586	13,460,349	168,945,192
Computer programming	104,699,968	92,046,882	95,270,450	29,127,314	31,558,704	33,188,539	31,364,835	32,306,127	36,090,886	37,511,766	37,125,129	33,283,446	35,811,782	524,685,860
Farming services	11,987,127	11,531,500	13,225,678	12,954,348	14,393,629	13,860,358	14,037,118	14,888,887	14,129,701	14,013,428	13,558,627	13,125,728	12,665,049	162,384,051
Miscellaneous professional services	445,333,435	388,978,157	454,033,118	434,104,031	458,429,258	462,242,080	468,900,262	479,092,825	550,646,995	494,359,193	499,355,681	437,160,205	557,689,161	5,684,990,966
Engineering services	12,628,608	14,277,360	17,632,960	15,495,945	16,672,205	17,439,832	16,959,506	16,865,883	17,378,378	16,809,333	17,187,531	13,655,396	14,807,372	195,181,701
Marina services	6,336,227	6,599,941	10,035,927	11,985,554	13,004,329	12,516,928	12,109,468	12,995,362	8,952,464	8,309,253	6,796,466	6,489,028	7,645,869	117,440,589
Wrecking & salvage yards	958,177	1,008,208	1,099,645	1,170,210	1,289,916	1,297,514	1,193,735	1,261,738	1,249,502	1,320,917	1,225,130	944,160	1,168,892	14,229,567
Pest control	444,451	450,098	497,854	498,272	809,619	682,364	768,593	759,687	830,146	790,174	762,152	586,135	567,780	8,002,874
Educational establishments	339,497,215	179,350,833	145,625,787	142,974,950	206,031,327	115,795,968	109,297,097	175,049,536	598,805,940	491,179,100	196,322,755	131,561,677	390,003,660	2,881,998,630
Child care services	10,212,408	9,373,462	10,567,313	8,364,130	10,351,761	10,004,246	9,814,316	10,085,777	10,399,986	10,593,439	10,761,435	9,296,484	11,906,007	121,518,356
Social, political & religious organisations	60,688,639	58,832,835	101,082,910	76,394,235	75,127,015	73,079,253	85,308,816	93,069,376	81,830,686	88,347,225	77,187,793	71,463,302	72,938,365	954,661,811
Government services	958,753,903	868,336,626	955,167,568	881,282,329	3,205,586,864	1,909,250,480	1,390,041,898	1,337,906,200	1,033,969,149	989,043,047	959,621,581	876,049,249	1,144,869,170	15,551,124,161
Miscellaneous services	423,372,992	359,755,055	438,208,106	385,847,397	438,642,842	414,931,989	425,018,388	453,976,542	438,002,071	450,597,132	439,609,685	427,873,702	524,375,773	5,196,838,682
Commercial equipment	87,888,918	85,187,039	100,411,300	85,436,789	97,053,996	115,328,651	97,480,853	101,387,141	112,083,815	106,791,287	112,065,479	92,396,257	102,845,603	1,208,468,210
Other services	3,714,667,959	3,309,192,142	3,748,146,128	3,388,613,819	5,987,627,079	4,606,677,043	4,055,507,237	4,135,145,620	4,320,804,236	4,164,109,723	3,862,933,427	3,622,484,027	4,312,705,254	49,513,945,735
Total services	13,115,411,128	11,679,668,481	13,402,726,223	12,690,728,716	15,723,033,325	14,113,550,493	14,183,273,251	14,467,843,896	13,743,405,259	13,443,557,582	12,593,230,316	11,717,743,671	14,754,077,549	162,512,838,762
TOTAL	25,162,857,162	23,083,392,856	26,282,072,026	25,766,995,806	29,796,459,806	27,511,747,860	27,690,583,590	28,584,554,113	27,147,881,109	27,994,518,514	27,381,965,649	29,701,357,775	28,222,359,286	329,163,888,390