

Card Expenditure Statistics

February 2015

Card Expenditure Statistics (Seasonally Adjusted) – February 2015

	Total Spending <i>£ billions</i>		Annual growth rates for spending		Number of purchases <i>Millions</i>	
	Feb 2015	Feb 2014	Feb 2015	Feb 2014	Feb 2015	Feb 2014
All payment cards	49.6	46.9	7.1%	7.7%	1,053	975
Debit cards	35.2	32.9	7.7%	8.6%	807	750
Credit cards	14.4	14.0	5.6%	5.7%	246	225

With effect of January 2014 the methodology used for seasonal adjustment - using X12 ARIMA - was changed. Trading days and leap years have been incorporated into the monthly seasonal adjustment process. Unless otherwise stated all data referred to are seasonally adjusted. Unadjusted data are located in tables 3A to 3D. There is a step change in the data between 2010 and 2011 following a change in the reporting population. Average transaction values are based on three-month rolling averages, while growth rates are based on twelve-month rolling periods.

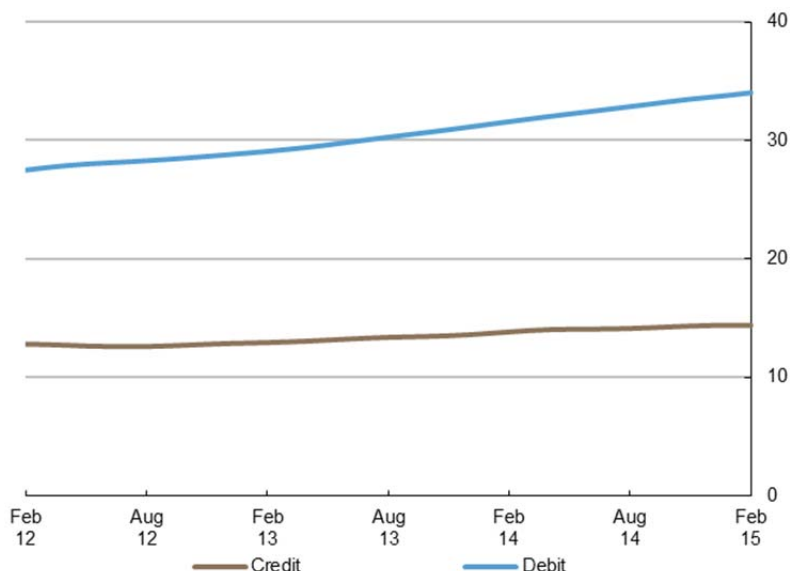
Introduction

Payment card spending increased by 0.8% to £49.6 billion in February, which was £0.4 billion above the level recorded in January. This growth has mainly been driven by the improving economy coupled with higher wage growth¹, increasing the level of household disposable income for consumption spending.

The **number of purchases** rose by 4.4 million to reach a record monthly total of just over 1.05 billion. The main contributors to the growth in the number of transactions have been the ongoing migration of low value cash payments to cards, enhanced by **contactless** and **online** spending. The number of contactless purchases accounted for 4.6% of total purchases, up from 4.0% a month ago. The corresponding proportion for online was 11.3%, down from 12.3% in January.

Chart 1

Average monthly expenditure
Three-month moving average (£ billions)



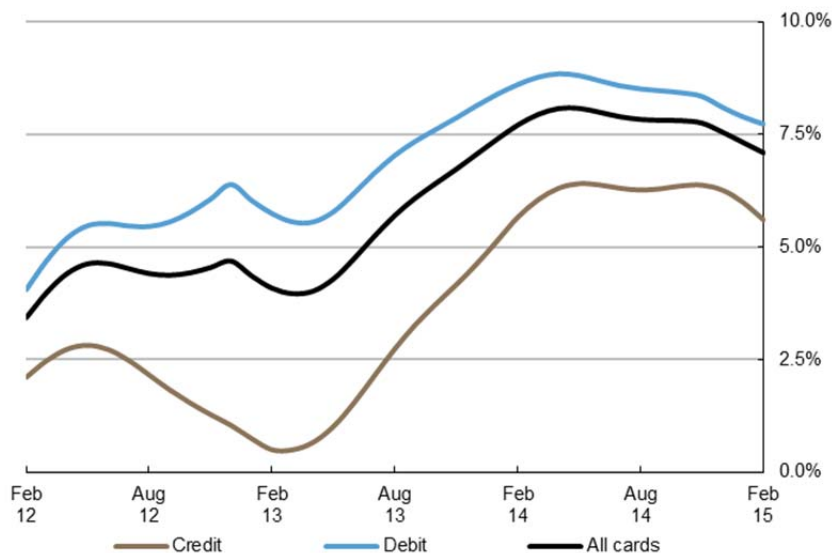
¹ ONS, Labour Market Statistics: <http://www.ons.gov.uk/ons/rel/lms/labour-market-statistics/march-2015/statistical-bulletin.html>

Annual growth rates

Growth in payment card spending continued to slowdown, though debit card spending still grew by 7.7%, while credit card spending increased by 5.6%. This deceleration in growth has been driven by falling general price inflation. The latest figures showed annual **consumer price inflation** at a record low of 0% for the second consecutive month², down from 0.3% in January, and compares to 1.7% in February 2014. The downward effect on the price index was mainly driven by reduced prices on food³.

The robust growth of the number of purchases evident in the last three years continued into 2015. The **annual growth rate of purchases** continued to exceed that of values, highlighting a growing consumer preference of more frequent use of cards for lower value payments. During February, the annual number of purchases grew by 9.8%. Furthermore, the annual growth in the service sector continued to outstrip that of retail sales. The service sector expanded by 10.2%, more than double the growth of spending within retail, which increased by 4.0%. Growth within the service sector has been particularly strong in entertainment, travel and other services.

Chart 2
Spending on payment cards
Year-on-year growth rates



² ONS, Consumer Price Inflation, February 2015: <http://www.ons.gov.uk/ons/rel/cpi/consumer-price-indices/february-2015/index.html>

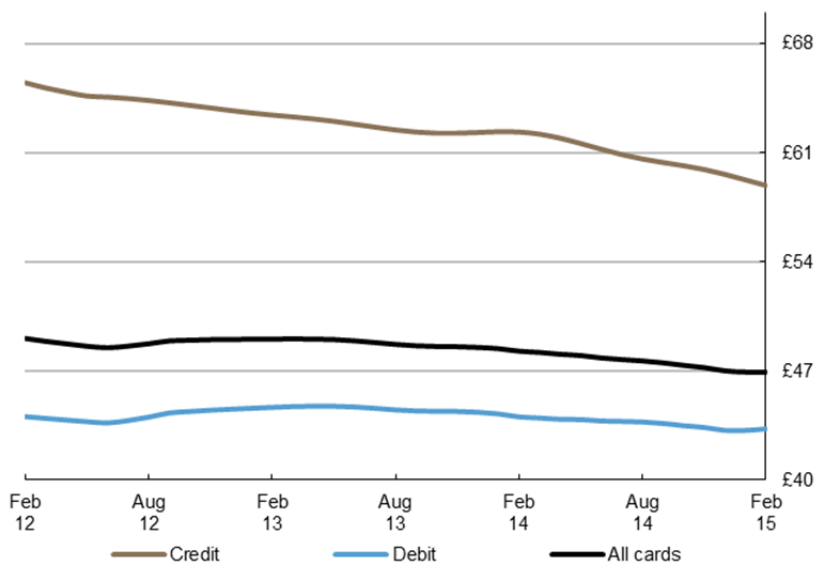
³ The Guardian, UK shop price deflation deepens as food costs fall <http://www.theguardian.com/business/2015/mar/04/uk-shop-price-deflation-deepens-as-food-costs-fall>

Average transaction values

The **average transaction value** (ATV) on all payment cards remained unchanged at £46.92. Within the sectors, the ATV in **retail sales** declined by 24p to £32.64, while the ATV for **services** rose by 31p to £77.54. There has been a consistent trend over the last three years with higher growth rates in volumes relative to values, resulting in declining ATVs. This sustained decline is mainly driven by the ongoing migration of low value cash transactions towards payment cards alongside the increasing acceptance and usage of **contactless cards**, including strong growth on the Transport for London network⁴.

Within the digital space the average transaction values tend to be higher than in the face-to-face environment; however, the downward trend is also evident. The ATV on all payment cards via the online channel amounted to £103.62 in February – more than double the ATV via all channels.

Chart 3
Average transaction values
Three-month moving average



⁴ TfL logs 60 million contactless journeys: <http://business-reporter.co.uk/2015/03/17/transport-for-london-logs-60-million-contactless-journeys/>

Spending by sector – retail sales and services

The number of transactions within the **retail sector** increased by 1.5 million to 716 million, with the corresponding spend rising by £34 million to £23.4 billion. The majority of the increase in spending was in the **food & drink** and **household** sub-sectors, reaching £9.0 billion and £3.7 billion respectively. Spending in the **automotive fuels** category declined for the sixth consecutive month after falling by £34 million to £2.6 billion.

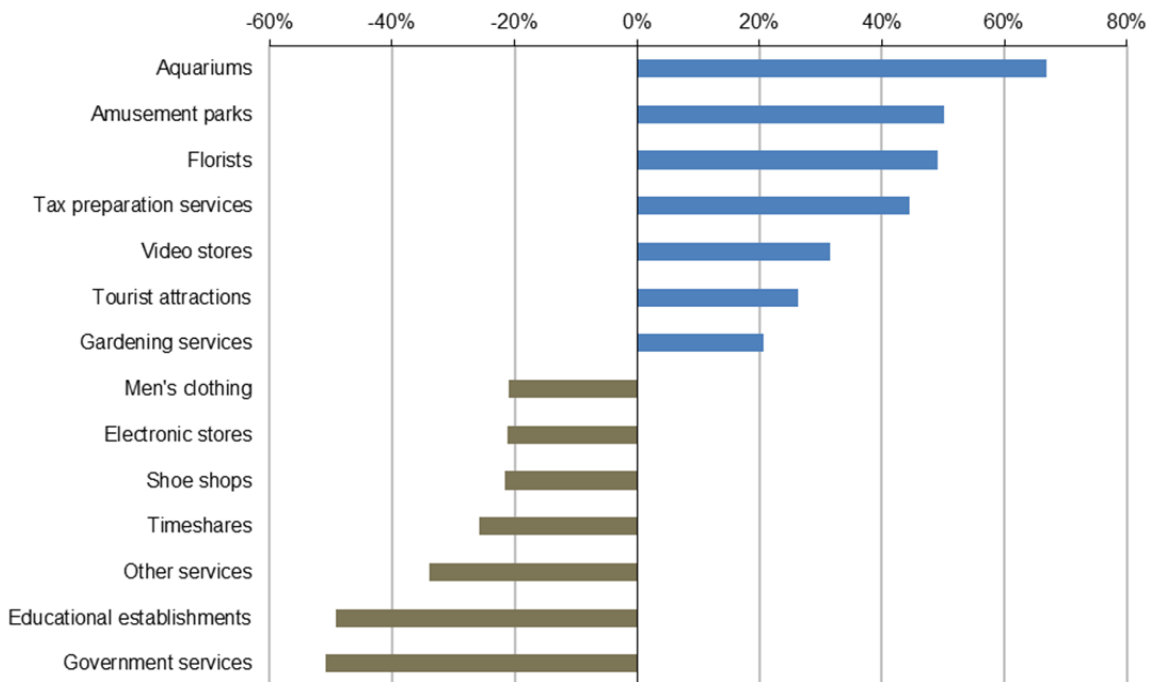
Meanwhile, the number of transactions in the **services sector** grew by 2.9 million to 336 million, corresponding to a rise in spending of £352 million to £26.2 billion. A major contributor of growth was the **other services** sub-sector, which recorded an increase of £215 million to £8.0 billion. **Entertainment** also remained a strong contributor to growth after increasing by £23 million to £4.1 billion, mainly driven by strong growth in spending at **restaurants**.

Spending by merchant categories – retail sales and services (not seasonally adjusted)

In February the largest increase in spending was evident at merchants offering recreational services such as aquariums, amusement parks and tourist attractions. The growth in leisure activities can be attributed to the half term holiday. There was a notable increase in spending at florists most likely linked to Valentine’s Day. Gardening services also expanded considerably, mainly driven by seasonal changes, with households and businesses starting to prepare for spring. Meanwhile, spending on educational establishments and government services recorded the largest decreases in spending.

Chart 4⁵

Largest change in total card spending between January and February



⁵ Chart 4 shows relative growth rates. Some listed merchant categories are too small in size to make a material impact on the overall total

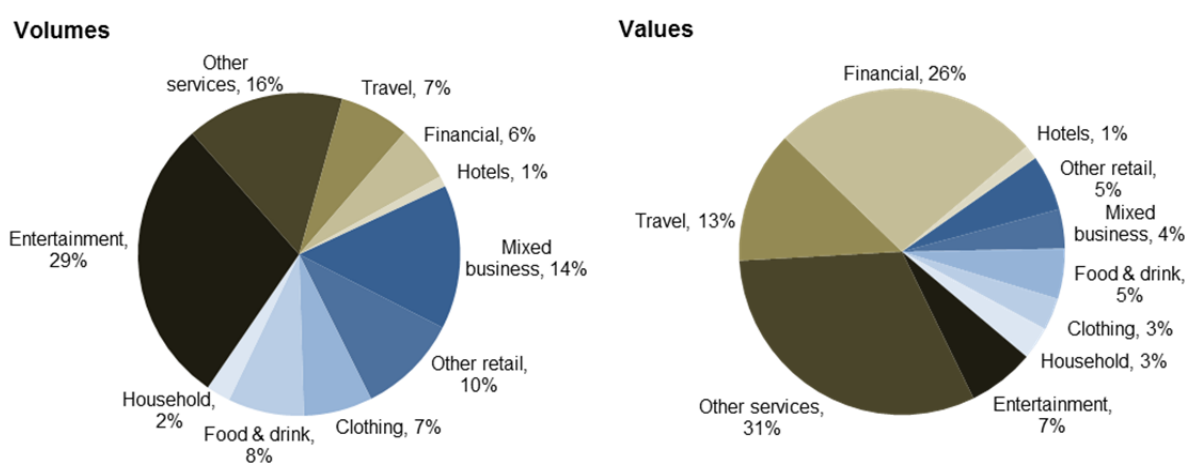
Payment card spending online (not seasonally adjusted)

A growing number of consumers are going online for shopping and entertainment as online services tend to be less time consuming, more convenient and often cheaper. Shopping on the move using mobile devices is becoming increasingly common. The number of card purchases made online amounted to 11.3% of the total card purchases in February, with corresponding online spending accounting for 24.4% of total card expenditure.

Within the services sector 20% of purchases were made via the internet, while 7% of retail sales were online. The most prominent sub-sector for online shopping was entertainment, accounting for 29% of the total number of online purchases in February, up from 27% in January, while the highest proportion of online spending was registered in other services, reaching 31%. Financial services was also a popular choice accounting for 7% of online volumes and 26% of values. In addition, within the sub-sectors, government services, airlines and tax payments accounted for 34% on all online spending during the month.

Chart 5

Online purchases and spending by sub-sectors



Payment card spending within national retail sales

The **payment card share** of total **retail sales** (including automotive fuels)⁶ amounted to 74.5% during February, with a split of 51.0% by debit cards and 23.5% by credit cards. The share of spending within **food & drink** accounted for by payment cards stood at 70.5% up from 64.3% a year ago. In comparison to food & drink, nearly all expenditure on **automotive fuels** was accounted for by payment cards at 87.1%, a figure that compares with 84.7% a year ago. These trends reflect the increasing use of cards over cash within the retail space, driven by new technology and the continuous change in consumer habits alongside the underlying improvement in the economy.

Contact: Silvija Krupena; silvija.krupena@ukpayments.org.uk | camis@ukpayments.org.uk | 020 3217 8460 or 020 3217 8720

⁶ CES 3-month moving average spend of £23.3 billion expressed as a percentage of a similar 3-month moving average for ONS Retail Sales – All Retailing Including Automotive Fuel (J5A3) that amounted to £31.3 billion.

Table 1 Card expenditure statistics (seasonally adjusted)

Summary^{1 and 2}

		Number of purchase transactions (millions)									Value of purchase transactions (£ millions)								
		All sectors			Retail sales			Services			All sectors			Retail sales			Services		
		Credit	Debit	Total	Credit	Debit	Total	Credit	Debit	Total	Credit	Debit	Total	Credit	Debit	Total	Credit	Debit	Total
Annual																			
	2010	2,010	6,504	8,514	1,382	4,721	6,103	628	1,783	2,410	128,215	289,857	418,072	69,581	148,561	218,142	58,634	141,296	199,930
	2011	2,258	7,230	9,488	1,555	5,301	6,855	704	1,930	2,633	151,250	324,743	475,994	78,876	165,587	244,462	72,375	159,156	231,531
	2012	2,373	7,831	10,204	1,621	5,638	7,259	752	2,193	2,945	152,825	345,484	498,309	81,036	175,364	256,400	71,789	170,120	241,909
	2013	2,551	8,388	10,939	1,736	5,961	7,697	816	2,427	3,243	159,895	373,606	533,502	84,605	183,654	268,259	75,290	189,952	265,242
	2014	2,794	9,255	12,048	1,871	6,452	8,323	922	2,802	3,725	169,906	403,870	573,776	87,469	193,669	281,138	82,437	210,200	292,637
Monthly																			
	2014																		
	Feb	225	750	975	150	527	678	74	223	297	13,973	32,883	46,856	7,225	15,952	23,177	6,748	16,931	23,679
	Mar	227	751	978	152	525	677	75	226	301	14,051	33,065	47,117	7,256	16,055	23,310	6,796	17,011	23,806
	Apr	229	757	986	153	530	683	75	227	303	14,082	33,203	47,285	7,269	16,117	23,386	6,813	17,087	23,899
	May	230	762	992	154	534	688	76	228	304	14,083	33,342	47,425	7,271	16,149	23,419	6,813	17,193	24,006
	Jun	232	766	998	155	537	692	76	229	306	14,091	33,526	47,616	7,274	16,172	23,446	6,816	17,353	24,170
	Jul	233	771	1,004	156	539	696	77	232	309	14,126	33,744	47,869	7,284	16,202	23,486	6,841	17,542	24,383
	Aug	235	778	1,013	158	542	700	78	236	313	14,196	33,967	48,163	7,305	16,246	23,551	6,891	17,721	24,612
	Sep	237	786	1,023	159	546	705	78	240	318	14,282	34,155	48,437	7,330	16,288	23,618	6,952	17,867	24,819
	Oct	239	793	1,032	160	549	709	79	244	324	14,356	34,350	48,707	7,351	16,334	23,685	7,005	18,016	25,021
	Nov	241	798	1,040	161	550	712	80	248	328	14,399	34,574	48,973	7,360	16,384	23,744	7,039	18,191	25,229
	Dec	243	801	1,044	163	551	714	81	250	331	14,409	34,398	48,807	7,358	15,940	23,299	7,050	18,458	25,508
	2015																		
	Jan	244	804	1,048	164	551	715	81	252	333	14,394	34,797	49,191	7,351	15,987	23,338	7,044	18,810	25,853
	Feb	246	807	1,053	164	552	716	81	255	336	14,381	35,196	49,577	7,349	16,024	23,372	7,033	19,172	26,205
Year-on-year growth rates (percentages)																			
Annual																			
	2010	0.3	9.4	7.1	12.8	21.2	19.2	-19.3	-12.9	-14.7	2.4	10.5	7.9	13.0	18.5	16.7	-7.8	3.1	-0.3
	2011	12.4	11.2	11.4	12.5	12.3	12.3	12.1	8.2	9.2	18.0	12.0	13.9	13.4	11.5	12.1	23.4	12.6	15.8
	2012	5.1	8.3	7.5	4.3	6.4	5.9	6.8	13.7	11.8	1.0	6.4	4.7	2.7	5.9	4.9	-0.8	6.9	4.5
	2013	7.5	7.1	7.2	7.0	5.7	6.0	8.5	10.7	10.1	4.6	8.1	7.1	4.4	4.7	4.6	4.9	11.7	9.6
	2014	9.5	10.3	10.1	7.8	8.2	8.1	13.1	15.5	14.9	6.3	8.1	7.5	3.4	5.5	4.8	9.5	10.7	10.3
Monthly																			
	2014																		
	Feb	8.3	8.2	8.2	7.6	6.8	7.0	9.8	11.7	11.2	5.7	8.6	7.7	4.7	5.3	5.1	6.8	12.0	10.5
	Mar	8.6	8.7	8.7	7.8	7.2	7.3	10.5	12.4	11.9	6.0	8.8	7.9	4.8	5.5	5.3	7.5	12.1	10.7
	Apr	8.9	9.1	9.1	7.8	7.6	7.7	11.1	12.9	12.5	6.3	8.8	8.1	4.7	5.7	5.4	8.1	12.0	10.8
	May	9.0	9.5	9.4	7.8	8.0	7.9	11.6	13.4	12.9	6.4	8.8	8.1	4.6	5.9	5.5	8.5	11.7	10.8
	Jun	8.9	9.8	9.6	7.6	8.2	8.0	11.9	13.7	13.3	6.4	8.7	8.0	4.3	5.9	5.4	8.7	11.4	10.7
	Jul	8.9	9.9	9.6	7.3	8.2	8.0	12.2	14.0	13.5	6.3	8.6	7.9	4.0	6.0	5.3	8.9	11.2	10.5
	Aug	8.9	10.0	9.7	7.2	8.2	8.0	12.5	14.3	13.8	6.3	8.5	7.8	3.8	6.0	5.3	9.1	11.0	10.5
	Sep	8.9	10.1	9.8	7.2	8.3	8.0	12.7	14.7	14.2	6.3	8.5	7.8	3.6	6.0	5.2	9.4	10.9	10.5
	Oct	9.1	10.3	10.0	7.3	8.3	8.1	13.0	15.0	14.5	6.4	8.4	7.8	3.5	5.9	5.2	9.6	10.9	10.5
	Nov	9.3	10.4	10.1	7.5	8.4	8.2	13.1	15.3	14.8	6.4	8.3	7.8	3.5	5.9	5.1	9.7	10.8	10.4
	Dec	9.5	10.3	10.1	7.8	8.2	8.1	13.1	15.5	14.9	6.3	8.1	7.5	3.4	5.5	4.8	9.5	10.7	10.3
	2015																		
	Jan	9.6	10.2	10.0	8.0	8.0	8.0	12.9	15.5	14.8	6.0	7.9	7.3	3.2	5.0	4.4	9.1	10.7	10.2
	Feb	9.6	9.8	9.8	8.2	7.6	7.7	12.6	15.3	14.6	5.6	7.7	7.1	3.0	4.5	4.0	8.5	10.8	10.2

¹ There was a step change in 2011 due to a change in reporting population

² With effect of January 2014 the seasonal adjustment methodology using X12 ARIMA was reviewed and changed. Trading days and leap years have been incorporated into the monthly seasonal adjustment process.

Table 2A Card expenditure statistics (seasonally adjusted)

Retail sales^{1 and 2}

Number of purchase transactions (millions)

Total retail sales

	Number of purchase transactions (millions)																		Total retail sales			
	Food & drink			Mixed business			Clothing			Household			Other retailers			Automotive Fuels ³			Number of purchases			
	Credit	Debit	Total	Credit	Debit	Total	Credit	Debit	Total	Credit	Debit	Total	Credit	Debit	Total	Credit	Debit	Total	Credit	Debit	Total	
Annual																						
2010	533	2,284	2,816	139	406	545	128	424	553	148	350	498	273	733	1,006	161	524	685	1,382	4,721	6,103	
2011	602	2,564	3,166	136	425	561	139	427	566	157	370	526	297	782	1,078	223	733	957	1,555	5,301	6,855	
2012	662	2,820	3,482	148	479	627	145	453	598	157	375	532	281	757	1,039	227	754	981	1,621	5,638	7,259	
2013	722	3,060	3,782	182	523	705	153	461	614	165	402	568	277	722	999	236	792	1,028	1,736	5,961	7,697	
2014	769	3,472	4,240	248	479	726	162	479	641	172	433	605	283	780	1,063	237	810	1,047	1,871	6,452	8,323	
Monthly																						
2014	Feb	62	277	339	18	46	64	13	39	52	14	35	49	23	63	85	20	67	87	150	527	678
	Mar	63	281	344	19	39	57	13	39	53	14	35	49	23	63	86	20	68	88	152	525	677
	Apr	63	284	348	19	39	58	14	40	53	14	35	50	23	64	87	20	68	88	153	530	683
	May	63	287	351	20	38	58	14	40	54	14	35	50	23	65	88	20	68	88	154	534	688
	Jun	64	290	353	20	38	59	14	40	54	14	36	50	23	65	89	20	68	88	155	537	692
	Jul	64	291	355	21	38	59	14	40	54	14	36	50	24	66	89	20	68	88	156	539	696
	Aug	64	294	358	22	38	60	14	40	54	14	36	51	24	66	90	20	68	88	158	542	700
	Sep	65	297	361	22	39	61	14	40	54	14	37	51	24	66	90	20	68	87	159	546	705
	Oct	65	299	364	23	39	62	14	40	54	15	37	52	25	66	91	20	67	87	160	549	709
	Nov	66	300	366	23	39	62	14	40	54	15	37	52	25	67	92	19	67	87	161	550	712
	Dec	67	300	366	23	39	63	14	40	54	15	38	52	25	67	92	19	67	86	163	551	714
2015	Jan	67	299	366	24	40	63	14	41	54	15	38	52	25	68	93	19	67	86	164	551	715
	Feb	68	299	367	24	40	64	14	41	55	15	38	52	25	68	93	19	67	86	164	552	716

Year-on-year growth rates (percentages)

	Year-on-year growth rates (percentages)																					
	Credit	Debit	Total	Credit	Debit	Total	Credit	Debit	Total	Credit	Debit	Total	Credit	Debit	Total	Credit	Debit	Total	Credit	Debit	Total	
Annual																						
2010	3.6	9.4	8.3	5.8	0.7	1.9	2.6	4.8	4.3	1.6	9.6	7.1	-11.9	7.5	1.5	2.1	10.3	8.3	12.8	21.2	19.2	
2011	13.1	12.2	12.4	-1.6	4.6	3.0	8.1	0.8	2.5	5.9	5.7	5.7	6.6	7.2	38.3	40.0	39.6	12.5	12.3	12.3		
2012	10.0	10.0	10.0	8.5	12.7	11.7	4.7	5.9	5.6	0.1	1.5	1.1	-5.2	-3.1	-3.7	1.8	2.8	2.5	4.3	6.4	5.9	
2013	9.0	8.5	8.6	23.1	9.2	12.5	5.1	1.8	2.6	5.3	7.3	6.7	-1.4	-4.7	-3.8	3.8	5.1	4.8	7.0	5.7	6.0	
2014	6.5	13.5	12.1	36.0	-8.4	3.0	6.2	3.8	4.4	4.0	7.6	6.6	2.2	8.0	6.4	0.5	2.3	1.9	7.8	8.2	8.1	
Monthly																						
2014	Feb	8.6	9.1	9.0	27.4	10.6	14.6	5.6	2.1	3.0	6.3	9.1	8.3	-0.9	-2.0	-1.7	4.1	5.6	5.3	7.6	6.8	7.0
	Mar	8.4	9.6	9.3	29.5	9.7	14.4	6.0	2.4	3.3	6.5	9.5	8.6	-0.8	-0.4	-0.5	4.1	5.7	5.4	7.8	7.2	7.3
	Apr	8.0	10.1	9.7	31.2	8.6	14.0	6.3	2.6	3.5	6.4	9.6	8.7	-0.7	1.2	0.7	3.9	5.7	5.3	7.8	7.6	7.7
	May	7.6	10.6	10.0	32.4	7.1	13.2	6.5	2.8	3.7	6.0	9.4	8.4	-0.7	3.0	2.0	3.6	5.4	5.0	7.8	8.0	7.9
	Jun	7.2	11.1	10.3	33.0	5.3	12.0	6.5	2.9	3.8	5.5	9.0	7.9	-0.7	4.7	3.2	3.1	5.0	4.5	7.6	8.2	8.0
	Jul	6.8	11.5	10.6	33.2	3.1	10.5	6.4	3.0	3.8	5.0	8.6	7.5	-0.8	5.3	3.6	2.6	4.4	4.0	7.3	8.2	8.0
	Aug	6.6	12.0	10.9	33.4	0.8	8.9	6.3	3.0	3.8	4.6	8.3	7.2	-0.7	5.8	4.0	2.1	3.9	3.5	7.2	8.2	8.0
	Sep	6.4	12.5	11.3	33.8	-1.6	7.3	6.2	3.1	3.9	4.4	8.1	7.0	-0.4	6.4	4.5	1.7	3.4	3.0	7.2	8.3	8.0
	Oct	6.3	13.0	11.7	34.5	-3.9	5.8	6.1	3.3	4.0	4.3	8.0	6.9	0.2	6.9	5.0	1.3	3.0	2.6	7.3	8.3	8.1
	Nov	6.4	13.3	12.0	35.3	-6.2	4.4	6.2	3.5	4.2	4.2	7.8	6.8	1.1	7.4	5.7	0.9	2.6	2.2	7.5	8.4	8.2
	Dec	6.5	13.5	12.1	36.0	-8.4	3.0	6.2	3.8	4.4	4.0	7.6	6.6	2.2	8.0	6.4	0.5	2.3	1.9	7.8	8.2	8.1
2015	Jan	6.6	13.3	12.1	36.3	-10.6	1.6	6.1	4.1	4.6	3.7	7.4	6.3	3.4	8.4	7.0	0.1	1.8	1.4	8.0	8.0	8.0
	Feb	6.7	13.0	11.8	36.1	-12.8	0.1	5.8	4.2	4.6	3.5	7.2	6.1	4.5	8.7	7.5	-0.4	1.4	0.9	8.2	7.6	7.7

¹ There was a step change in 2011 due to a change in reporting population

² With effect of January 2014 the seasonal adjustment methodology using X12 ARIMA was reviewed and changed. Trading days and leap years have been incorporated into the monthly seasonal adjustment process.

³ Automotive Fuels data is effective from January 2010. Data shown pre 2010 are for growth trend purposes only; these data are excluded from totals as these are already included in their former Services sector of Motoring (now known as Vehicle Sales & Service)

Table 2B Card expenditure statistics (seasonally adjusted)

Retail sales^{1 and 2}

Value of purchase transactions (£ millions)

Total retail sales

	Food & drink			Mixed business			Clothing			Household			Other retailers			Automotive Fuels ³			Value of purchases			
	Credit	Debit	Total	Credit	Debit	Total	Credit	Debit	Total	Credit	Debit	Total	Credit	Debit	Total	Credit	Debit	Total	Credit	Debit	Total	
Annual																						
2010	18,768	63,675	82,442	7,165	13,946	21,110	6,809	13,649	20,457	14,683	18,863	33,546	15,522	23,577	39,098	6,635	14,852	21,487	69,581	148,561	218,142	
2011	21,067	69,473	90,540	7,088	14,750	21,838	7,845	14,483	22,328	15,176	20,522	35,698	17,511	24,380	41,891	10,188	21,979	32,168	78,876	165,587	244,462	
2012	22,570	74,172	96,741	7,729	16,415	24,144	8,209	15,635	23,844	15,374	21,630	37,005	16,747	24,456	41,202	10,407	23,057	33,464	81,036	175,364	256,400	
2013	24,103	77,977	102,080	8,719	17,938	26,656	8,674	16,127	24,801	15,914	23,235	39,149	16,536	24,453	40,989	10,659	23,924	34,584	84,605	183,654	268,259	
2014	24,496	84,579	109,075	9,588	16,716	26,305	9,129	17,035	26,164	16,865	26,025	42,890	17,157	25,713	42,869	10,234	23,601	33,835	87,469	193,669	281,138	
Monthly																						
2014	Feb	2,033	6,863	8,896	786	1,474	2,260	759	1,397	2,156	1,391	2,113	3,504	1,371	2,106	3,478	884	1,999	2,883	7,225	15,952	23,177
	Mar	2,038	6,946	8,984	793	1,441	2,234	765	1,411	2,176	1,398	2,131	3,529	1,379	2,126	3,505	883	2,000	2,883	7,256	16,055	23,310
	Apr	2,041	7,007	9,048	795	1,409	2,204	768	1,423	2,191	1,401	2,140	3,542	1,386	2,140	3,526	879	1,997	2,875	7,269	16,117	23,386
	May	2,041	7,051	9,092	793	1,383	2,176	768	1,431	2,198	1,402	2,147	3,548	1,394	2,147	3,540	873	1,992	2,865	7,271	16,149	23,419
	Jun	2,040	7,084	9,124	793	1,365	2,158	765	1,434	2,199	1,403	2,156	3,559	1,406	2,146	3,553	868	1,987	2,855	7,274	16,172	23,446
	Jul	2,038	7,119	9,157	795	1,354	2,150	761	1,432	2,193	1,405	2,170	3,576	1,424	2,144	3,568	861	1,981	2,843	7,284	16,202	23,486
	Aug	2,038	7,164	9,202	800	1,351	2,151	758	1,428	2,186	1,410	2,187	3,597	1,447	2,143	3,589	852	1,973	2,825	7,305	16,246	23,551
	Sep	2,041	7,203	9,244	807	1,352	2,159	757	1,424	2,182	1,415	2,204	3,619	1,471	2,147	3,618	839	1,958	2,797	7,330	16,288	23,618
	Oct	2,046	7,240	9,286	814	1,356	2,170	758	1,423	2,181	1,419	2,218	3,637	1,492	2,162	3,654	823	1,935	2,759	7,351	16,334	23,685
	Nov	2,052	7,285	9,337	818	1,362	2,180	758	1,423	2,182	1,420	2,230	3,650	1,507	2,177	3,684	804	1,907	2,711	7,360	16,384	23,744
	Dec	2,059	6,841	8,900	820	1,366	2,186	759	1,426	2,185	1,420	2,241	3,661	1,516	2,189	3,705	784	1,878	2,661	7,358	15,940	23,299
2015	Jan	2,066	6,894	8,960	822	1,368	2,190	760	1,431	2,190	1,420	2,254	3,673	1,519	2,191	3,710	764	1,851	2,616	7,351	15,987	23,338
	Feb	2,073	6,931	9,004	825	1,368	2,193	761	1,436	2,197	1,421	2,269	3,690	1,521	2,186	3,706	748	1,833	2,582	7,349	16,024	23,372

Year-on-year growth rates (percentages)

Annual																						
2010	3.7	5.7	5.2	1.4	0.4	0.7	7.0	7.7	7.5	1.9	13.8	8.2	-0.9	7.0	3.8	13.2	17.2	16.0	13.0	18.5	16.7	
2011	12.3	9.1	9.8	-1.1	5.8	3.4	15.2	6.1	9.1	3.4	8.8	6.4	12.8	3.4	7.1	53.6	48.0	49.7	13.4	11.5	12.1	
2012	7.1	6.8	6.8	9.0	11.3	10.6	4.6	8.0	6.8	1.3	5.4	3.7	-4.4	0.3	-1.6	2.2	4.9	4.0	2.7	5.9	4.9	
2013	6.8	5.1	5.5	12.8	9.3	10.4	5.7	3.1	4.0	3.5	7.4	5.8	-1.3	0.0	-0.5	2.4	3.8	3.3	4.4	4.7	4.6	
2014	1.6	8.5	6.9	10.0	-6.8	-1.3	5.3	5.6	5.5	6.0	12.0	9.6	3.8	5.1	4.6	-4.0	-1.4	-2.2	3.4	5.5	4.8	
Monthly																						
2014	Feb	6.0	5.4	5.5	13.6	9.0	10.5	6.8	3.7	4.8	4.9	9.8	7.8	-1.0	1.2	0.3	2.3	3.2	2.9	4.7	5.3	5.1
	Mar	5.5	5.6	5.6	13.8	8.5	10.2	7.4	4.1	5.3	5.6	10.9	8.7	-1.0	1.9	0.7	2.1	2.9	2.7	4.8	5.5	5.3
	Apr	5.1	5.9	5.7	13.9	7.6	9.7	7.7	4.5	5.6	6.0	11.6	9.3	-1.0	2.6	1.2	1.8	2.6	2.3	4.7	5.7	5.4
	May	4.5	6.2	5.8	13.6	6.4	8.7	7.8	4.9	5.9	6.3	12.1	9.7	-0.9	3.3	1.6	1.2	2.1	1.8	4.6	5.9	5.5
	Jun	4.0	6.5	5.9	13.1	4.8	7.5	7.5	5.1	5.9	6.4	12.3	9.9	-0.8	3.8	1.9	0.5	1.6	1.2	4.3	5.9	5.4
	Jul	3.4	7.0	6.1	12.5	2.9	6.0	7.1	5.3	5.9	6.4	12.5	10.0	-0.5	4.2	2.3	-0.3	1.1	0.6	4.0	6.0	5.3
	Aug	2.9	7.5	6.4	11.9	0.9	4.5	6.6	5.4	5.8	6.4	12.5	10.0	0.0	4.5	2.6	-1.0	0.6	0.1	3.8	6.0	5.3
	Sep	2.4	8.0	6.7	11.3	-1.3	2.8	6.2	5.5	5.7	6.4	12.6	10.1	0.7	4.6	3.0	-1.6	0.1	-0.5	3.6	6.0	5.2
	Oct	2.0	8.5	7.0	10.9	-3.3	1.3	5.9	5.5	5.7	6.3	12.6	10.0	1.7	4.8	3.5	-2.3	-0.4	-1.0	3.5	5.9	5.2
	Nov	1.8	8.8	7.2	10.5	-5.2	-0.1	5.6	5.6	5.6	6.2	12.4	9.9	2.7	5.0	4.0	-3.1	-0.8	-1.5	3.5	5.9	5.1
	Dec	1.6	8.5	6.9	10.0	-6.8	-1.3	5.3	5.6	5.5	6.0	12.0	9.6	3.8	5.1	4.6	-4.0	-1.4	-2.2	3.4	5.5	4.8
2015	Jan	1.5	8.0	6.5	9.3	-8.1	-2.4	4.7	5.5	5.2	5.6	11.4	9.0	4.8	5.2	5.0	-5.1	-2.0	-2.9	3.2	5.0	4.4
	Feb	1.4	7.5	6.1	8.6	-8.9	-3.2	4.0	5.3	4.8	5.1	10.7	8.4	5.8	5.1	5.4	-6.3	-2.7	-3.8	3.0	4.5	4.0

¹ There was a step change in 2011 due to a change in reporting population

² With effect of January 2014 the seasonal adjustment methodology using X12 ARIMA was reviewed and changed. Trading days and leap years have been incorporated into the monthly seasonal adjustment process.

³ Automotive Fuels data is effective from January 2010. Data shown pre 2010 are for growth trend purposes only; these data are excluded from totals as these are already included in their former Services sector of Motoring (now known as Vehicle Sales & Service)

Table 2C Card expenditure statistics (seasonally adjusted)

Services^{1 and 2}

		Number of purchase transactions (millions)																		Total services			
		Vehicle Sales & Services ³			Entertainment			Hotels			Travel			Financial			Other services			Number of purchases			
		Credit	Debit	Total	Credit	Debit	Total	Credit	Debit	Total	Credit	Debit	Total	Credit	Debit	Total	Credit	Debit	Total	Credit	Debit	Total	
Annual																							
	2010	76	204	280	221	726	947	37	35	72	98	202	300	32	130	161	164	487	650	628	1,783	2,410	
	2011	51	89	139	267	881	1,149	51	43	94	116	236	352	33	146	178	185	535	720	704	1,930	2,633	
	2012	51	94	144	309	1,062	1,371	53	48	100	124	266	389	30	161	190	186	564	750	752	2,193	2,945	
	2013	53	104	157	353	1,220	1,572	55	53	108	130	284	414	29	173	202	196	593	789	816	2,427	3,243	
	2014	58	120	179	422	1,498	1,920	59	63	122	150	327	477	25	165	190	207	630	837	922	2,802	3,725	
Monthly																							
	2014																						
	Feb	5	10	14	33	118	151	5	5	10	12	26	38	2	14	16	17	51	68	74	223	297	
	Mar	5	10	15	34	120	154	5	5	10	12	26	38	2	14	16	17	51	68	75	226	301	
	Apr	5	10	15	34	121	155	5	5	10	12	26	39	2	14	16	17	51	68	75	227	303	
	May	5	10	15	35	121	156	5	5	10	12	27	39	2	14	16	17	51	68	76	228	304	
	Jun	5	10	15	35	122	157	5	5	10	12	27	39	2	14	16	17	52	69	76	229	306	
	Jul	5	10	15	35	124	159	5	5	10	13	27	40	2	14	16	17	52	69	77	232	309	
	Aug	5	10	15	36	126	162	5	5	10	13	27	40	2	14	16	17	53	70	78	236	313	
	Sep	5	10	15	36	129	165	5	5	10	13	28	41	2	14	16	17	53	71	78	240	318	
	Oct	5	10	15	37	132	169	5	5	11	13	28	41	2	14	16	18	54	72	79	244	324	
	Nov	5	11	15	37	134	172	5	6	11	13	29	42	2	14	16	18	54	72	80	248	328	
	Dec	5	11	16	38	136	174	5	6	11	13	30	43	2	14	16	18	55	72	81	250	331	
	2015																						
	Jan	5	11	16	38	137	175	5	6	11	13	30	43	2	14	16	18	55	72	81	252	333	
	Feb	5	11	16	38	139	177	5	6	11	13	30	44	2	14	16	18	55	73	81	255	336	
Year-on-year growth rates (percentages)																							
Annual																							
	2010	-67.8	-69.0	-68.7	7.5	22.5	18.6	1.7	10.5	5.8	-3.0	10.5	5.7	0.6	15.3	12.1	-1.9	3.5	2.1	-19.3	-12.9	-14.7	
	2011	-33.2	-56.5	-50.2	20.9	21.4	21.3	36.5	24.4	30.7	19.2	16.7	17.6	2.8	12.4	10.5	13.4	9.9	10.8	12.1	8.2	9.2	
	2012	-0.3	5.5	3.4	15.4	20.5	19.3	3.4	11.0	6.9	6.5	12.5	10.5	-9.8	10.3	6.6	0.5	5.4	4.1	6.8	13.7	11.8	
	2013	5.1	11.3	9.1	14.3	14.8	14.7	3.8	11.7	7.6	5.1	7.0	6.4	-3.3	7.9	6.2	5.2	5.1	5.2	8.5	10.7	10.1	
	2014	9.9	15.8	13.8	19.7	22.8	22.1	8.5	17.5	12.9	15.1	15.0	15.0	-12.1	-5.0	-6.0	5.7	6.2	6.1	13.1	15.5	14.9	
Monthly																							
	2014																						
	Feb	6.8	13.8	11.4	15.3	16.0	15.9	6.2	13.8	9.8	6.9	8.2	7.8	-4.0	6.2	4.6	6.5	6.1	6.2	9.8	11.7	11.2	
	Mar	7.7	14.9	12.4	16.0	17.0	16.8	7.1	14.8	10.8	8.0	8.9	8.6	-4.5	5.4	3.9	6.9	6.4	6.5	10.5	12.4	11.9	
	Apr	8.6	15.7	13.2	16.6	18.0	17.7	7.8	15.6	11.6	9.2	9.5	9.4	-5.1	4.6	3.1	7.1	6.4	6.6	11.1	12.9	12.5	
	May	9.3	16.2	13.8	17.2	18.9	18.5	8.3	16.1	12.0	10.2	10.0	10.1	-5.9	3.7	2.2	7.2	6.3	6.5	11.6	13.4	12.9	
	Jun	9.8	16.4	14.1	17.6	19.6	19.2	8.5	16.3	12.3	11.1	10.5	10.7	-6.7	2.6	1.2	7.0	6.1	6.3	11.9	13.7	13.3	
	Jul	10.2	16.4	14.3	18.0	20.2	19.7	8.5	16.4	12.4	11.9	11.1	11.3	-7.5	1.4	0.1	6.8	6.0	6.2	12.2	14.0	13.5	
	Aug	10.4	16.4	14.4	18.4	20.8	20.3	8.6	16.6	12.5	12.7	11.8	12.1	-8.4	0.2	-1.0	6.6	6.0	6.2	12.5	14.3	13.8	
	Sep	10.5	16.5	14.4	18.9	21.4	20.8	8.6	16.9	12.6	13.5	12.7	12.9	-9.2	-1.1	-2.2	6.4	6.1	6.2	12.7	14.7	14.2	
	Oct	10.5	16.4	14.4	19.3	22.0	21.4	8.6	17.1	12.8	14.2	13.6	13.8	-10.1	-2.4	-3.5	6.2	6.2	6.2	13.0	15.0	14.5	
	Nov	10.3	16.2	14.2	19.6	22.6	21.9	8.6	17.4	12.9	14.8	14.4	14.5	-11.1	-3.7	-4.7	6.0	6.3	6.2	13.1	15.3	14.8	
	Dec	9.9	15.8	13.8	19.7	22.8	22.1	8.5	17.5	12.9	15.1	15.0	15.0	-12.1	-5.0	-6.0	5.7	6.2	6.1	13.1	15.5	14.9	
	2015																						
	Jan	9.3	15.1	13.2	19.4	22.6	21.9	8.4	17.4	12.9	15.2	15.5	15.4	-11.7	-4.5	-5.5	5.5	6.2	6.0	12.9	15.5	14.8	
	Feb	8.5	14.5	12.5	18.8	22.1	21.4	8.3	17.2	12.8	14.9	15.8	15.5	-11.3	-4.0	-5.0	5.2	6.2	5.9	12.6	15.3	14.6	

1 There was a step change in 2011 due to a change in reporting population

2 With effect of January 2014 the seasonal adjustment methodology using X12 ARIMA was reviewed and changed. Trading days and leap years have been incorporated into the monthly seasonal adjustment process.

3 With effect of January 2010 Automotive Fuels was published as a separate sub-sector in retail sales. See tables 2A and 2B

Table 2D Card expenditure statistics (seasonally adjusted)

Services^{1 and 2}

Value of purchase transactions (£ millions)

	Value of purchase transactions (£ millions)																		Total services			
	Vehicle Sales & Services ³			Entertainment			Hotels			Travel			Financial			Other services			Value of purchases			
	Credit	Debit	Total	Credit	Debit	Total	Credit	Debit	Total	Credit	Debit	Total	Credit	Debit	Total	Credit	Debit	Total	Credit	Debit	Total	
Annual																						
2010	8,757	24,841	33,598	9,958	17,042	27,000	5,503	3,090	8,593	12,781	15,889	28,670	5,964	39,569	45,533	15,671	40,865	56,536	58,634	141,296	199,930	
2011	7,773	22,466	30,239	14,072	20,687	34,759	8,640	3,855	12,494	16,331	18,490	34,821	7,070	46,888	53,958	18,490	46,770	65,260	72,375	159,156	231,531	
2012	7,560	23,554	31,114	14,694	22,791	37,485	8,876	4,316	13,192	16,553	20,581	37,134	5,463	49,884	55,347	18,642	48,994	67,636	71,789	170,120	241,909	
2013	7,704	25,739	33,443	15,666	24,553	40,218	9,254	4,782	14,036	17,474	22,126	39,600	5,135	55,533	60,668	20,058	57,219	77,277	75,290	189,952	265,242	
2014	8,103	28,957	37,060	17,371	28,494	45,865	10,362	5,588	15,950	20,141	25,189	45,329	5,100	57,940	63,040	21,361	64,033	85,393	82,437	210,200	292,637	
Monthly																						
2014	Feb	681	2,371	3,052	1,391	2,244	3,635	826	438	1,264	1,663	2,072	3,734	427	4,733	5,161	1,761	5,072	6,833	6,748	16,931	23,679
	Mar	684	2,382	3,066	1,403	2,281	3,684	833	445	1,279	1,689	2,079	3,768	426	4,762	5,189	1,760	5,061	6,821	6,796	17,011	23,806
	Apr	683	2,380	3,064	1,411	2,302	3,713	841	451	1,292	1,696	2,068	3,764	425	4,801	5,225	1,756	5,084	6,841	6,813	17,087	23,899
	May	681	2,377	3,058	1,418	2,310	3,729	850	456	1,306	1,687	2,055	3,742	422	4,836	5,258	1,753	5,160	6,913	6,813	17,193	24,006
	Jun	678	2,382	3,060	1,428	2,322	3,750	860	461	1,321	1,673	2,052	3,725	420	4,856	5,276	1,757	5,280	7,037	6,816	17,353	24,170
	Jul	676	2,396	3,072	1,444	2,353	3,797	870	467	1,337	1,665	2,065	3,730	420	4,857	5,277	1,767	5,403	7,171	6,841	17,542	24,383
	Aug	674	2,417	3,091	1,465	2,404	3,869	880	473	1,353	1,668	2,094	3,762	421	4,844	5,265	1,784	5,488	7,272	6,891	17,721	24,612
	Sep	672	2,439	3,110	1,486	2,462	3,949	889	481	1,370	1,681	2,130	3,811	423	4,835	5,258	1,801	5,520	7,321	6,952	17,867	24,819
	Oct	669	2,462	3,131	1,505	2,513	4,018	895	489	1,384	1,695	2,164	3,859	426	4,848	5,274	1,814	5,540	7,354	7,005	18,016	25,021
	Nov	666	2,488	3,154	1,518	2,544	4,062	899	495	1,394	1,703	2,183	3,886	429	4,887	5,316	1,823	5,594	7,417	7,039	18,191	25,229
	Dec	664	2,516	3,180	1,525	2,561	4,086	901	500	1,401	1,701	2,187	3,888	432	4,955	5,387	1,828	5,738	7,566	7,050	18,458	25,508
2015	Jan	662	2,544	3,206	1,526	2,579	4,105	901	504	1,405	1,691	2,186	3,877	433	5,048	5,481	1,830	5,949	7,780	7,044	18,810	25,853
	Feb	661	2,565	3,227	1,527	2,601	4,128	901	508	1,409	1,678	2,188	3,866	434	5,147	5,581	1,831	6,164	7,995	7,033	19,172	26,205

Year-on-year growth rates (percentages)²

Annual																						
2010	-40.2	-30.1	-33.1	3.5	16.6	11.4	3.8	13.4	7.1	-2.3	12.5	5.4	3.8	19.9	17.5	3.4	10.4	8.4	-7.8	3.1	-0.3	
2011	-11.2	-9.6	-10.0	41.3	21.4	28.7	57.0	24.7	45.4	27.8	16.4	21.5	18.5	18.5	18.5	18.0	14.5	15.4	23.4	12.6	15.8	
2012	-2.7	4.8	2.9	4.4	10.2	7.8	2.7	12.0	5.6	1.4	11.3	6.6	-22.7	6.4	2.6	0.8	4.8	3.6	-0.8	6.9	4.5	
2013	1.9	9.3	7.5	6.6	7.7	7.3	4.3	10.8	6.4	5.6	7.5	6.6	-6.0	11.3	9.6	7.6	16.8	14.3	4.9	11.7	9.6	
2014	5.2	12.5	10.8	10.9	16.1	14.0	12.0	16.8	13.6	15.3	13.8	14.5	-0.7	4.3	3.9	6.5	11.9	10.5	9.5	10.7	10.3	
Monthly																						
2014	Feb	3.7	11.5	9.6	7.4	8.2	7.9	7.6	11.4	8.9	8.1	9.3	8.8	-3.2	10.2	8.9	8.7	17.0	14.8	6.8	12.0	10.5
	Mar	4.4	12.4	10.5	7.9	8.9	8.5	8.9	11.9	9.9	9.6	10.0	9.8	-3.6	9.6	8.4	9.0	16.7	14.6	7.5	12.1	10.7
	Apr	5.0	13.0	11.0	8.3	9.6	9.1	10.0	12.4	10.8	10.9	10.3	10.6	-3.7	9.2	8.0	9.1	16.1	14.2	8.1	12.0	10.8
	May	5.4	13.2	11.3	8.6	10.2	9.6	10.7	12.9	11.4	12.0	10.3	11.0	-3.6	8.7	7.6	9.0	15.2	13.6	8.5	11.7	10.8
	Jun	5.7	13.2	11.4	8.8	10.8	10.0	11.1	13.5	11.9	12.7	10.4	11.4	-3.3	8.2	7.2	8.7	14.3	12.8	8.7	11.4	10.7
	Jul	5.9	13.2	11.5	8.9	11.5	10.5	11.4	14.0	12.3	13.3	10.8	11.9	-2.9	7.6	6.7	8.3	13.6	12.2	8.9	11.2	10.5
	Aug	6.1	13.3	11.6	9.2	12.2	11.0	11.6	14.5	12.6	14.0	11.6	12.7	-2.4	6.8	6.0	7.9	13.1	11.7	9.1	11.0	10.5
	Sep	6.2	13.5	11.8	9.6	13.1	11.7	11.8	15.0	12.9	14.7	12.7	13.6	-2.0	5.9	5.2	7.6	12.8	11.4	9.4	10.9	10.5
	Oct	6.1	13.4	11.7	10.1	14.1	12.6	12.0	15.7	13.3	15.3	13.6	14.4	-1.6	5.1	4.5	7.3	12.5	11.1	9.6	10.9	10.5
	Nov	5.8	13.1	11.4	10.5	15.2	13.4	12.1	16.3	13.5	15.6	14.1	14.8	-1.1	4.5	4.0	6.9	12.1	10.8	9.7	10.8	10.4
	Dec	5.2	12.5	10.8	10.9	16.1	14.0	12.0	16.8	13.6	15.3	13.8	14.5	-0.7	4.3	3.9	6.5	11.9	10.5	9.5	10.7	10.3
2015	Jan	4.3	11.7	10.0	11.0	16.6	14.4	11.8	17.2	13.6	14.2	13.1	13.6	-0.2	4.5	4.1	6.0	12.2	10.6	9.1	10.7	10.2
	Feb	3.4	10.9	9.2	11.0	16.8	14.5	11.5	17.3	13.5	12.6	12.1	12.3	0.2	4.8	4.4	5.6	13.0	11.1	8.5	10.8	10.2

¹ There was a step change in 2011 due to a change in reporting population

² With effect of January 2014 the seasonal adjustment methodology using X12 ARIMA was reviewed and changed. Trading days and leap years have been incorporated into the monthly seasonal adjustment process.

³ With effect of January 2010 Automotive Fuels was published as a separate sub-sector in retail sales. See tables 2A and 2B

Table 3A Card expenditure statistics (not seasonally adjusted)

Number of credit card transactions

Detailed sector breakdown - services sectors (not seasonally adjusted)

	February 2014	March 2014	April 2014	May 2014	June 2014	July 2014	August 2014	September 2014	October 2014	November 2014	December 2014	January 2015	February 2015	Total (latest 12 months)
Auto rental	550,612	568,528	615,311	650,680	667,464	740,074	681,619	657,457	543,475	457,587	449,455	495,316	512,332	7,039,298
Auto parts & accessories	730,831	827,824	800,394	799,716	790,371	827,270	744,173	754,786	751,478	696,196	719,396	719,555	701,469	9,132,628
Auto services	1,849,315	2,027,837	1,915,563	2,068,569	2,081,660	2,171,202	1,912,440	2,168,016	2,325,359	2,168,635	2,142,038	2,073,058	2,110,666	25,165,043
Auto repair shops	886,747	992,979	885,258	903,749	904,199	941,391	848,138	904,641	893,101	806,242	833,959	833,959	825,219	10,508,633
Service stations	0	0	0	0	0	0	0	0	0	0	0	0	0	0
Vehicle sales	545,527	653,897	594,366	610,525	614,799	627,747	570,329	611,847	560,000	489,946	459,214	509,139	529,976	6,831,785
Vehicle Sales & Services	4,563,032	5,071,065	4,810,892	5,033,239	5,058,493	5,307,684	4,756,699	5,096,747	5,073,413	4,618,606	4,539,860	4,631,027	4,679,662	58,677,387
Restaurants	15,085,580	17,375,229	17,088,152	18,472,146	18,753,520	19,775,009	19,600,318	19,438,995	20,318,156	19,149,963	19,702,360	17,443,915	18,297,687	225,415,450
Public houses	2,793,884	3,183,652	2,917,200	2,887,419	2,991,777	3,138,804	3,084,888	3,084,180	2,906,707	2,669,772	2,989,403	2,359,976	2,581,141	34,794,919
Catering services	1,169,224	577,567	545,646	591,645	611,391	637,298	555,148	661,358	699,112	662,202	630,702	613,116	646,425	7,431,610
Video stores	238,239	216,422	193,754	183,092	198,503	187,561	180,019	180,019	222,622	175,577	248,533	396,185	2,597,157	
Cinema, theatre & dance	1,961,068	1,757,955	1,719,511	1,734,077	1,625,616	1,800,033	1,923,221	1,690,062	2,193,403	2,408,504	2,556,896	2,001,813	2,014,385	23,425,476
Concerts & entertainers	126,873	138,866	133,890	135,874	124,909	131,869	151,746	56,295	156,016	186,409	204,442	138,654	128,301	1,687,271
Tourist attractions	320,504	401,783	684,396	640,000	678,591	866,322	1,039,696	685,602	621,739	371,649	278,658	364,396	371,649	7,016,814
Amusement parks	85,199	38,124	97,591	75,670	78,647	106,039	155,126	81,861	84,816	41,437	34,322	26,664	43,899	864,196
Aquariums	32,532	23,564	41,589	31,907	29,617	52,920	79,248	50,536	39,548	21,923	21,027	16,900	28,634	437,413
Sports & games establishments	3,062,899	3,562,420	3,265,765	3,528,874	3,167,194	3,156,670	3,185,707	3,752,885	3,851,656	3,395,489	4,367,895	4,268,156	3,376,739	42,879,450
Professional sports clubs	114,462	128,878	140,200	156,524	111,253	144,277	136,338	156,345	124,435	125,941	121,235	94,640	87,997	1,528,063
Gambling	5,410,422	6,175,058	5,849,636	5,420,051	5,747,752	5,333,736	5,019,556	5,916,812	6,060,666	5,739,677	6,803,324	6,144,983	5,960,250	70,171,501
Personal services	274,076	274,700	274,749	286,593	284,982	292,758	278,971	278,822	301,534	382,897	270,372	270,372	255,579	3,463,455
Miscellaneous entertainment	576,251	645,362	681,106	705,075	655,892	720,108	933,393	783,092	923,012	683,184	583,282	738,153	732,128	8,783,787
Entertainment	31,251,213	34,499,580	33,633,185	34,848,947	35,059,644	36,343,404	36,323,375	36,836,955	38,455,543	35,933,261	39,004,389	34,644,533	34,913,746	430,496,562
Hotels	4,250,507	4,882,977	4,721,602	5,205,389	5,281,499	5,537,804	5,212,363	5,445,681	5,360,924	4,841,041	4,424,903	4,411,057	4,625,058	59,950,298
Airlines	2,428,389	2,744,532	2,643,890	2,799,134	2,553,575	2,478,111	2,364,403	2,638,124	2,570,159	2,159,641	1,888,402	2,865,096	2,561,380	30,266,447
Airport terminals	86,239	37,224	39,805	43,781	45,033	47,719	41,728	45,058	38,562	28,808	27,230	31,088	31,580	457,616
Railways	5,138,529	6,016,419	5,637,691	6,055,544	6,307,600	6,492,461	5,606,392	6,422,013	6,582,071	6,104,469	5,771,604	5,365,874	5,446,324	71,808,462
Buses	580,303	638,781	616,799	655,151	610,088	615,265	545,699	633,416	640,292	588,222	568,612	526,983	543,959	7,183,267
Sea travel	142,870	182,450	198,509	234,012	230,063	253,141	259,551	230,982	205,729	159,628	150,167	176,592	167,537	2,448,361
Travel agents	1,823,497	1,963,002	1,790,377	1,891,578	1,857,014	1,836,892	1,723,866	1,907,065	1,872,174	1,633,859	1,555,971	2,117,373	1,935,959	22,085,130
Timeshares	20,607	18,877	18,146	17,823	15,901	17,534	17,738	17,738	18,488	16,426	16,631	26,135	19,605	221,040
Camping grounds	117,670	160,116	242,435	272,077	269,573	335,414	346,267	215,594	148,977	75,561	57,142	111,929	126,155	2,361,240
Miscellaneous travel	947,828	1,068,928	1,044,271	1,146,744	1,153,983	1,246,342	1,081,697	1,198,276	1,475,084	1,531,166	1,511,118	1,616,711	1,674,930	15,749,250
Travel	11,285,932	12,830,329	12,231,923	13,115,844	13,042,830	13,322,879	11,987,341	13,308,264	13,551,536	12,297,780	11,546,877	12,837,781	12,507,429	152,580,813
Telegraph services / Wire transfer money order	16,795	17,561	16,614	18,617	17,212	17,323	16,028	16,333	19,921	21,841	23,011	24,858	26,993	236,312
Insurance services	1,530,654	1,761,585	1,665,616	1,655,568	1,667,417	1,839,432	1,672,600	1,729,359	1,586,678	1,373,640	1,352,680	1,466,740	1,432,192	19,203,507
Fls - cash disbursements (auto & manual)	16,232	17,270	14,963	16,682	17,106	16,167	13,325	18,063	18,010	17,237	14,055	15,312	15,607	193,797
Fls - merchandise & services	133,696	147,161	135,118	143,156	140,114	143,434	126,415	355,759	132,630	113,345	118,764	123,995	123,511	1,803,402
Non-Fls - foreign currency, travellers' cheques	64,357	75,695	97,123	128,580	137,240	135,592	123,556	132,594	100,055	72,863	76,097	82,272	108,817	1,270,484
Security brokers and dealers	92,018	18,390	16,674	15,263	12,653	15,409	15,433	16,988	23,977	18,704	20,789	25,221	18,972	218,473
Tax preparation services	1,498	219	175	160	168	166	132	208	158	160	111	211	179	2,047
Tax payments	19,743	18,711	15,753	13,600	12,583	14,853	13,002	14,481	13,453	11,738	11,790	17,552	19,339	176,855
Fines, bail and bond payments	70,082	74,033	68,947	69,821	70,248	74,900	69,187	69,153	74,059	67,861	56,080	57,229	54,596	806,114
Miscellaneous financial	70,192	87,221	93,917	92,056	95,168	101,285	89,446	92,937	97,860	85,404	79,308	80,085	80,963	1,075,650
Financial	2,015,267	2,217,846	2,124,900	2,153,503	2,169,909	2,358,561	2,139,124	2,445,875	2,066,801	1,782,793	1,752,685	1,893,475	1,881,169	24,986,641

Table 3A Card expenditure statistics (not seasonally adjusted)

Number of credit card transactions

Detailed sector breakdown - services sectors (continued, not seasonally adjusted)

	February 2014	March 2014	April 2014	May 2014	June 2014	July 2014	August 2014	September 2014	October 2014	November 2014	December 2014	January 2015	February 2015	Total (latest 12 months)
Telecoms	1,764,738	1,920,502	1,844,217	1,872,218	1,819,447	1,940,118	1,907,603	2,094,657	2,027,933	1,909,784	2,072,859	1,929,964	1,723,570	23,062,872
Utilities	378,604	423,439	360,360	394,325	362,001	387,091	357,415	400,371	415,656	372,316	387,786	397,889	382,735	4,641,384
Contractors (residential & commercial)	276,965	280,681	260,230	265,479	264,791	284,268	255,928	285,174	312,244	280,539	252,097	261,223	263,097	3,265,751
Gardening services	38,934	67,180	77,954	80,070	70,821	48,073	49,976	50,137	45,904	60,258	32,281	36,526	677,995	
Veterinary services	561,433	612,622	615,866	636,894	644,356	709,910	673,642	672,737	697,845	630,390	647,111	614,179	567,382	7,722,934
Photocopying & printing	242,778	272,721	241,918	256,744	247,643	253,431	222,763	261,490	282,420	313,482	364,848	268,770	239,779	3,226,009
Photographic studios	220,568	103,021	101,770	123,180	136,757	156,025	118,408	126,124	159,776	171,301	267,854	112,371	100,886	1,677,473
Beauty & barber shops	1,393,143	1,581,961	1,552,150	1,656,204	1,668,774	1,739,716	1,595,221	1,635,737	1,656,708	1,605,024	2,191,032	1,435,747	1,431,072	19,749,346
Employment agencies	25,985	22,353	22,654	22,156	24,919	25,673	22,778	23,563	26,367	23,779	20,711	23,713	23,323	281,989
Counselling services	5,480	6,158	6,200	5,963	5,848	6,149	5,389	5,837	6,685	5,780	6,314	6,440	6,052	72,815
Legal services	39,706	78,302	56,038	56,505	56,074	57,933	53,181	56,907	59,607	53,116	48,675	53,308	55,457	685,103
Laundry & cleaning	181,757	190,490	188,431	204,625	220,424	221,857	191,858	213,786	220,407	201,731	193,987	186,139	174,962	2,408,697
Funeral services	12,024	13,094	12,342	12,407	12,401	12,847	11,227	12,466	11,227	11,691	12,157	13,661	12,859	149,513
Medical services	1,261,582	1,281,759	1,228,050	1,264,968	1,284,136	1,343,498	1,159,639	1,325,044	1,382,020	1,277,573	1,197,862	1,297,095	1,252,320	15,293,964
Moving & courier services	388,682	418,803	407,060	438,164	422,331	444,893	370,590	436,418	475,027	452,289	447,052	420,698	420,810	5,154,135
Repair shops (not auto)	64,613	60,594	57,875	59,945	60,366	64,894	60,584	63,855	67,310	71,419	81,348	67,177	65,872	781,239
Accounting services	76,052	36,625	28,922	27,971	28,943	30,600	30,899	37,019	38,225	36,612	36,556	39,334	32,285	403,991
Advertising, consultancy & PR	64,547	73,424	71,265	72,501	71,871	74,295	69,192	71,614	70,554	62,688	56,340	59,858	62,516	816,118
Computer programming	1,178,435	1,357,517	1,287,682	1,310,973	1,358,800	1,417,439	1,376,648	1,511,223	1,610,805	1,971,380	2,396,813	1,656,225	1,460,850	18,716,355
Farming services	98,421	111,383	112,133	113,871	110,248	108,086	103,884	107,100	108,025	105,173	125,069	102,807	95,677	1,303,456
Miscellaneous professional services	1,034,611	921,302	879,791	893,472	890,855	932,001	867,660	946,236	1,183,746	1,117,761	1,128,921	1,091,932	1,088,549	11,942,226
Engineering services	51,001	54,099	52,173	52,286	53,547	56,521	48,707	51,981	55,842	48,022	44,733	47,211	48,450	613,572
Marina services	33,648	50,713	69,594	75,000	83,757	99,232	91,231	73,938	49,673	38,140	34,678	33,376	33,326	732,658
Wrecking & salvage yards	3,218	3,626	3,730	3,594	3,588	3,926	3,490	4,003	3,899	3,423	2,955	3,533	3,778	43,545
Pest control	5,922	2,660	2,818	3,447	3,414	3,924	3,124	3,416	4,019	3,120	2,843	2,969	2,752	38,506
Educational establishments	648,419	760,752	600,652	675,737	673,242	612,153	486,772	931,449	861,563	814,901	671,390	871,750	721,802	8,682,163
Child care services	32,968	19,686	20,471	21,517	18,401	18,800	22,690	19,937	22,777	19,371	19,787	22,647	24,072	250,156
Social, political & religious organisations	1,144,861	1,492,888	1,367,471	1,448,309	1,437,801	1,421,342	1,394,944	1,551,815	1,467,619	1,380,576	1,387,283	1,130,492	1,100,380	16,580,920
Government services	2,364,342	2,601,633	2,557,237	2,651,192	2,650,075	2,692,184	2,448,026	2,588,667	2,609,311	2,317,183	2,216,602	2,443,716	2,445,460	30,221,286
Miscellaneous services	1,341,952	1,487,753	1,181,411	1,398,673	1,428,403	1,483,329	1,281,106	1,399,771	1,415,175	1,386,545	2,097,444	1,326,549	1,281,298	17,167,457
Commercial equipment	908,886	929,620	862,234	889,160	872,073	912,209	845,705	987,710	993,836	943,241	931,419	912,747	839,158	10,919,112
Other services	15,844,275	17,237,361	16,130,699	16,987,550	16,986,107	17,573,159	16,128,377	17,950,021	18,347,572	17,674,788	19,404,250	16,865,801	15,997,055	207,282,740
Total services	69,210,226	76,739,158	73,653,201	77,344,472	77,598,482	80,443,491	76,547,279	81,083,543	82,855,789	77,148,269	80,672,964	75,283,674	74,604,119	933,974,441
TOTAL	196,810,366	225,276,281	221,168,525	229,810,532	233,920,232	240,974,519	228,154,002	237,855,803	245,838,858	244,115,617	286,022,356	224,257,773	213,997,023	2,831,391,521

Table 3B Card expenditure statistics (not seasonally adjusted)

Value of credit card transactions

Detailed sector breakdown - services sectors (continued, not seasonally adjusted)

£	February 2014	March 2014	April 2014	May 2014	June 2014	July 2014	August 2014	September 2014	October 2014	November 2014	December 2014	January 2015	February 2015	Total (latest 12 months)
Telecoms	81,618,903	84,947,412	79,865,009	81,403,348	77,569,528	82,448,037	83,422,828	96,641,240	94,772,998	93,006,909	98,948,665	91,611,814	78,255,896	1,042,893,684
Utilities	65,243,338	79,594,940	68,629,657	69,523,674	61,936,138	62,289,768	54,211,364	61,963,440	64,056,758	56,856,139	55,353,768	65,155,904	65,017,366	764,588,919
Contractors (residential & commercial)	82,905,168	89,802,259	82,573,296	86,487,430	86,117,366	92,147,402	81,528,719	94,883,075	98,694,498	92,082,103	80,121,717	84,509,420	86,282,461	1,055,229,746
Gardening services	5,759,065	6,486,727	7,517,285	9,664,030	6,982,163	6,275,897	5,017,001	6,573,559	4,728,733	5,846,686	4,437,731	5,846,686	3,014,602	37,671,845
Veterinary services	53,143,125	57,483,233	57,673,503	59,900,503	60,771,206	66,375,910	61,770,331	63,422,557	64,732,297	58,803,201	59,680,217	59,911,478	55,346,567	725,871,003
Photocopying & printing	35,239,175	37,996,150	34,050,175	36,078,172	35,136,309	35,654,143	33,813,133	37,791,849	41,280,237	40,425,799	37,982,605	38,140,886	36,234,842	444,584,300
Photographic studios	15,426,536	7,426,754	6,866,016	7,491,782	7,800,370	9,067,167	7,139,242	7,691,483	8,628,097	9,798,565	10,636,572	5,827,775	5,979,146	94,352,969
Beauty & barber shops	76,450,702	87,159,902	84,244,621	90,206,210	89,203,223	93,485,479	86,817,366	89,593,455	91,488,717	90,824,734	116,659,521	79,056,700	78,904,295	1,077,644,223
Employment agencies	22,972,731	23,450,177	24,241,512	22,938,905	30,456,453	28,668,084	24,595,673	24,896,795	29,760,796	27,415,997	26,708,354	23,137,091	26,565,118	312,834,955
Counselling services	1,276,707	1,783,445	1,142,244	1,582,077	1,263,472	1,270,125	1,243,211	1,348,774	1,638,767	1,147,901	1,804,258	1,568,525	1,544,962	17,337,761
Legal services	21,781,216	24,872,763	21,696,628	22,201,956	22,570,059	23,783,781	20,993,270	23,055,090	25,849,305	21,556,756	20,352,654	21,621,482	22,605,803	271,159,547
Laundry & cleaning	6,407,815	6,620,340	6,479,024	6,915,449	7,469,799	7,525,373	6,707,533	7,466,319	7,503,475	6,999,898	6,589,508	6,418,196	5,905,279	82,600,193
Funeral services	14,293,341	15,351,639	13,912,422	13,309,894	12,932,821	14,325,266	12,264,028	13,984,825	14,944,016	14,620,960	14,741,102	16,905,013	16,188,497	173,480,483
Medical services	174,969,817	178,842,118	166,448,179	173,828,222	177,204,678	183,148,976	158,135,538	177,104,795	190,514,834	176,710,591	160,247,893	172,838,768	173,843,078	2,088,867,670
Moving & courier services	38,994,222	42,133,644	40,995,667	44,753,025	43,390,225	47,495,182	42,711,314	44,162,345	46,051,396	43,645,087	42,254,825	41,187,269	41,122,236	519,902,215
Repair shops (not auto)	10,106,759	10,016,258	9,336,817	9,790,225	10,282,763	10,737,323	10,388,034	10,282,763	11,388,780	12,435,217	10,093,607	11,643,854	10,245,809	126,248,045
Accounting services	11,601,569	8,432,728	6,799,732	6,474,576	6,479,405	7,049,208	6,494,220	7,565,507	7,724,817	7,523,946	8,599,594	10,096,395	8,945,675	92,185,803
Advertising, consultancy & PR	7,354,951	8,016,266	7,798,574	8,111,265	7,707,853	8,286,333	7,186,784	7,816,479	8,367,861	7,092,562	6,795,343	7,730,480	7,573,611	92,483,411
Computer programming	78,114,914	87,130,609	83,577,570	83,679,438	86,506,565	88,195,049	81,470,301	91,193,639	108,359,998	128,369,053	146,022,163	111,229,634	97,338,559	1,193,072,579
Farming services	9,937,553	10,834,389	10,750,685	11,263,990	11,288,639	11,890,564	10,873,732	11,315,288	11,782,430	10,457,731	11,254,931	10,432,069	9,699,281	131,843,729
Miscellaneous professional services	173,028,733	161,243,109	156,645,040	157,574,269	159,293,403	163,657,160	156,012,835	184,092,288	177,132,251	160,748,512	154,357,611	173,046,539	162,447,485	1,966,250,502
Engineering services	14,983,352	16,050,278	15,035,320	15,492,457	16,135,800	17,093,798	14,528,338	15,311,967	17,273,640	14,214,895	13,242,871	14,522,675	14,814,207	183,716,246
Marina services	7,054,257	10,604,828	11,363,904	11,021,165	11,574,879	12,227,972	10,556,994	8,821,591	7,002,059	5,458,747	5,636,031	6,664,806	6,175,257	107,108,233
Wrecking & salvage yards	701,420	794,929	781,021	743,745	795,734	865,882	721,356	863,294	849,871	760,361	659,424	733,703	815,137	9,384,457
Pest control	1,035,579	545,278	518,014	598,064	609,471	743,813	577,849	691,170	768,440	641,360	668,535	650,935	624,527	7,637,456
Educational establishments	120,532,535	111,041,042	124,398,717	127,630,893	114,977,779	123,739,956	144,881,445	315,278,800	196,945,112	111,474,301	109,713,169	211,296,796	123,127,607	1,814,505,617
Child care services	3,215,199	2,472,449	2,422,096	2,564,515	2,657,791	2,835,945	2,439,354	2,711,790	2,737,050	2,434,069	2,386,321	2,695,517	2,598,952	30,955,849
Social, political & religious organisations	82,698,504	100,680,795	80,889,229	79,951,690	84,129,399	84,129,399	76,303,662	90,849,072	93,731,593	81,573,597	94,118,627	92,682,804	80,679,891	1,033,706,184
Government services	272,685,316	264,907,312	263,354,208	266,172,757	259,322,352	283,092,549	269,894,839	276,352,498	256,544,338	227,249,618	244,263,188	350,285,408	292,006,631	3,253,445,698
Miscellaneous services	82,705,618	97,546,047	86,535,492	87,268,932	97,670,345	93,625,945	80,170,283	92,228,377	94,346,652	82,274,910	101,961,666	80,743,357	76,663,930	1,071,035,936
Commercial equipment	128,156,260	136,612,345	132,936,953	131,964,752	127,572,885	137,804,305	121,963,187	134,744,019	141,904,325	130,932,437	115,811,389	123,967,902	122,044,476	1,558,258,975
Other services	1,700,394,380	1,770,880,165	1,689,478,610	1,726,587,410	1,711,795,299	1,799,935,791	1,674,335,088	2,000,803,414	1,921,759,215	1,720,927,250	1,765,854,425	1,917,777,550	1,713,364,012	21,413,498,229
Total services	6,407,656,104	7,057,983,957	6,730,911,469	7,189,053,696	7,074,522,067	7,256,024,775	6,712,012,824	7,333,668,977	7,199,831,138	6,403,539,325	6,369,078,522	6,881,102,861	6,469,524,517	82,677,254,128
TOTAL	12,500,905,566	14,066,449,322	13,704,970,529	14,332,213,536	14,297,939,581	14,530,418,455	13,654,417,626	14,554,291,600	14,820,506,046	14,210,825,654	16,006,358,421	13,491,803,442	12,614,090,483	170,284,284,695

Table 3C Card expenditure statistics (not seasonally adjusted)

Number of debit card transactions

Detailed sector breakdown - services sectors (not seasonally adjusted)

	February 2014	March 2014	April 2014	May 2014	June 2014	July 2014	August 2014	September 2014	October 2014	November 2014	December 2014	January 2015	February 2015	Total (latest 12 months)
Auto rental	606,237	545,107	571,075	549,962	511,189	574,744	550,032	527,332	465,783	417,682	419,694	415,138	435,517	5,983,255
Auto parts & accessories	1,559,441	1,776,462	1,667,056	1,664,747	1,651,354	1,730,875	1,588,748	1,648,160	1,647,237	1,514,437	1,531,135	1,579,170	1,587,489	19,586,870
Auto services	4,164,710	4,636,331	4,487,784	4,782,190	4,782,825	5,024,773	4,789,594	5,128,547	5,616,648	5,320,118	5,964,368	5,149,588	5,275,222	60,957,968
Auto repair shops	1,774,292	2,010,581	1,797,303	1,826,776	1,812,948	1,905,695	1,720,330	1,848,396	1,856,634	1,542,237	1,746,028	1,753,918	1,753,918	21,484,304
Service stations	0	0	0	0	0	0	0	0	0	0	0	0	0	0
Vehicle sales	1,125,989	1,371,450	1,255,002	1,273,343	1,278,210	1,324,569	1,219,825	1,311,194	1,205,260	1,049,459	962,902	1,105,714	1,155,848	14,512,776
Vehicle Sales & Services	9,230,669	10,339,931	9,778,220	10,097,018	10,036,526	10,560,656	9,868,529	10,463,629	10,791,562	9,965,154	10,420,336	9,995,638	10,207,994	122,525,193
Restaurants	62,313,893	72,671,446	69,295,822	75,353,755	74,151,715	74,812,624	76,083,571	77,606,102	83,012,359	80,466,764	85,666,613	75,513,198	79,664,306	924,298,275
Public houses	12,637,258	14,071,847	11,856,817	11,638,217	11,714,961	11,670,551	11,574,428	12,055,485	11,585,025	11,036,808	12,468,354	10,212,995	11,320,877	141,206,365
Catering services	4,832,449	2,094,246	1,886,666	2,082,031	2,037,476	2,120,335	1,926,216	2,314,161	2,685,659	2,604,738	2,410,320	2,482,732	2,700,295	27,344,875
Video stores	188,512	188,264	154,908	122,626	73,760	46,928	47,551	47,199	47,409	47,156	54,618	51,351	66,512	948,282
Cinema, theatre & dance	5,253,783	4,609,400	4,716,537	5,160,770	4,562,126	4,873,241	6,209,387	4,311,896	5,733,618	5,717,666	6,642,095	5,765,654	6,036,490	64,338,880
Concerts & entertainers	334,035	347,458	335,333	350,049	289,210	310,695	386,039	159,919	402,515	426,241	449,456	401,611	386,719	4,245,245
Tourist attractions	647,712	771,948	1,306,169	1,095,886	1,070,116	1,310,357	1,898,813	1,140,476	1,143,805	709,782	722,334	529,358	793,013	12,492,057
Amusement parks	261,117	158,733	350,416	300,739	328,108	380,112	549,455	343,091	327,845	168,492	111,778	96,927	169,731	3,285,427
Aquariums	131,663	104,800	161,927	130,093	117,848	169,069	263,153	188,208	131,313	77,930	66,836	67,071	119,314	1,597,562
Sports & games establishments	3,526,474	3,894,322	3,815,771	3,861,019	3,440,500	3,675,345	3,870,425	3,914,317	4,187,202	3,636,597	3,967,071	4,389,649	4,019,863	46,672,081
Professional sports clubs	225,175	250,004	258,538	267,310	212,593	255,782	272,466	276,756	252,951	249,731	257,602	220,085	209,543	2,983,361
Gambling	21,513,469	26,039,326	25,766,034	21,977,161	25,177,786	21,403,614	20,966,584	23,577,889	25,015,915	22,386,666	26,904,005	24,367,306	24,986,052	288,748,338
Personal services	489,477	456,477	493,431	475,407	467,809	475,407	434,254	440,977	443,673	387,487	443,673	407,952	426,432	5,329,103
Miscellaneous entertainment	844,526	852,462	899,790	964,995	863,771	1,008,098	1,487,587	1,042,320	1,109,222	804,167	736,564	896,675	1,035,854	11,801,505
Entertainment	113,199,543	126,529,480	121,361,205	123,798,082	124,515,377	122,504,560	125,969,929	127,598,796	136,054,818	128,720,225	140,901,319	125,402,564	131,935,001	1,535,291,356
Hotels	4,468,966	5,197,892	5,181,268	5,370,721	5,323,968	5,656,517	5,918,404	5,636,711	5,372,816	5,003,321	5,100,211	4,996,340	5,334,147	64,092,316
Airlines	1,937,633	2,245,693	2,213,928	2,413,628	2,359,612	2,338,339	2,212,456	2,300,499	2,191,324	1,808,807	1,733,290	2,597,137	2,229,139	26,643,852
Airport terminals	180,859	50,838	54,912	59,982	62,610	67,866	62,026	61,780	49,536	34,089	36,909	37,697	40,595	618,840
Railways	15,767,961	18,116,948	16,706,410	17,649,599	18,153,909	18,624,503	16,897,538	19,071,062	19,683,575	18,030,141	18,720,621	16,158,919	16,426,762	214,239,987
Buses	1,671,679	1,804,212	1,645,153	1,690,265	1,445,150	1,409,130	1,420,738	1,575,275	1,652,047	1,597,815	1,620,129	1,550,812	1,544,190	18,954,916
Sea travel	127,873	155,382	190,258	202,021	212,603	245,475	265,161	202,165	178,354	138,973	137,089	135,741	140,035	2,203,257
Travel agents	1,802,954	2,049,932	1,894,712	2,022,688	1,913,555	1,991,170	1,823,068	1,712,893	1,523,683	1,256,721	1,166,905	2,207,727	1,981,591	21,544,645
Timeshares	4,997	4,680	4,608	4,568	4,116	4,727	4,618	4,618	4,815	4,101	4,173	6,764	5,160	56,948
Camping grounds	356,015	526,777	817,190	869,732	832,691	1,060,812	1,234,581	713,371	549,421	276,998	184,658	338,870	405,562	7,810,663
Miscellaneous travel	2,000,166	2,342,851	2,353,924	2,659,811	2,653,896	2,977,895	2,452,435	2,778,684	4,202,302	4,819,112	5,378,322	5,847,702	6,151,282	44,618,216
Travel	23,850,137	27,297,313	25,881,095	27,572,294	27,638,142	28,719,917	26,372,621	28,420,347	30,035,057	27,966,757	28,982,096	28,881,369	28,924,316	336,691,324
Telegraph services / Wire transfer money order	124,925	145,389	146,471	149,461	161,069	166,937	150,752	138,538	117,353	115,836	137,847	123,634	137,039	1,690,326
Insurance services	3,108,500	3,598,054	3,412,124	3,489,126	3,472,583	3,819,792	3,555,294	3,702,712	3,498,704	3,014,661	2,791,703	3,151,406	3,125,203	40,631,362
FiS - cash disbursements (auto & manual)	10,459	9,452	11,492	15,064	16,704	17,619	16,757	15,732	9,845	6,691	10,653	9,317	14,122	153,448
FiS - merchandise & services	7,483,230	8,780,226	8,248,421	8,298,816	7,920,829	8,372,814	7,928,399	9,157,384	8,393,281	7,900,393	8,534,787	8,283,497	7,596,859	99,415,706
Non-FiS - foreign currency, travellers' cheques	658,026	743,998	813,949	979,657	1,069,739	1,159,503	1,099,653	1,062,344	820,268	648,508	711,740	700,129	813,266	10,622,754
Security brokers and dealers	352,473	236,584	246,254	190,061	189,563	166,978	132,593	189,286	246,706	212,362	215,529	235,318	218,662	2,479,896
Tax preparation services	3,932	760	686	536	547	572	444	461	499	429	428	686	496	6,543
Tax payments	135,623	140,896	117,253	103,547	100,755	118,401	93,669	116,092	116,892	106,133	106,197	531,551	428,290	2,079,676
Fines, bail and bond payments	564,009	642,602	590,644	620,225	568,918	625,940	607,070	584,590	641,353	612,274	566,958	594,854	553,770	7,209,198
Miscellaneous financial	139,481	174,321	188,844	190,284	201,342	213,408	186,729	191,331	182,181	157,462	144,289	135,140	143,363	2,108,694
Financial	12,580,658	14,472,282	13,776,138	14,036,776	13,702,049	14,661,964	13,771,360	15,158,470	14,027,082	12,774,749	13,220,131	13,765,532	13,031,070	166,397,603

Table 3C Card expenditure statistics (not seasonally adjusted)

Number of debit card transactions

Detailed sector breakdown - services sectors (continued, not seasonally adjusted)

	February 2014	March 2014	April 2014	May 2014	June 2014	July 2014	August 2014	September 2014	October 2014	November 2014	December 2014	January 2015	February 2015	Total (latest 12 months)
Telecoms	9,678,419	10,825,006	10,278,590	10,568,277	10,234,126	10,954,341	11,160,569	11,681,094	11,780,321	11,357,039	12,148,809	11,629,789	10,521,102	133,139,063
Utilities	1,998,011	2,261,090	2,158,437	2,242,881	2,094,752	2,218,965	2,083,432	2,276,869	2,418,817	2,256,634	2,480,211	2,678,632	2,503,474	27,674,194
Contractors (residential & commercial)	552,431	584,789	545,106	552,315	557,606	597,324	537,421	612,459	670,798	607,875	562,070	547,242	562,943	6,937,948
Gardening services	87,186	140,361	157,347	164,171	147,617	124,445	101,252	106,560	108,344	103,975	140,570	73,969	82,354	1,450,965
Veterinary services	1,548,018	1,724,134	1,701,750	1,765,182	1,780,466	1,972,413	1,895,053	1,889,163	1,976,059	1,772,689	1,770,760	1,728,084	1,629,890	21,605,743
Photocopying & printing	347,178	396,304	373,089	416,979	391,360	384,199	356,661	423,670	460,159	535,658	604,398	382,083	378,879	5,103,439
Photographic studios	779,971	351,834	332,374	410,768	456,473	486,044	417,460	431,366	456,261	525,261	802,062	391,799	382,983	5,488,282
Beauty & barber shops	4,571,045	5,308,954	5,054,308	5,453,333	5,415,809	5,558,664	5,192,212	5,359,335	5,350,502	5,043,651	6,888,108	4,676,643	4,882,139	64,183,658
Employment agencies	19,173	8,570	7,917	8,272	7,839	8,624	8,167	9,309	9,837	8,722	7,576	9,349	9,603	103,785
Counselling services	98,518	115,588	116,868	117,156	116,602	120,620	112,894	120,382	119,031	112,483	116,972	115,529	109,490	1,393,615
Legal services	155,397	175,025	162,324	163,938	165,113	176,757	154,063	169,200	179,930	157,112	140,671	159,771	166,971	1,970,875
Laundry & cleaning	457,510	482,113	460,837	499,157	527,325	525,677	470,625	533,467	551,180	509,558	490,742	462,576	447,616	5,960,873
Funeral services	28,979	32,534	30,223	30,400	30,181	31,247	28,577	31,534	33,124	30,841	35,972	35,972	36,609	382,360
Medical services	2,997,401	3,070,357	2,914,798	2,991,261	2,998,904	3,168,462	2,782,265	3,201,493	3,350,986	3,064,660	2,843,216	3,142,691	3,126,229	36,655,322
Moving & courier services	363,571	399,308	396,973	423,765	432,456	464,321	419,260	464,824	489,882	471,148	526,211	456,300	432,367	5,376,815
Repair shops (not auto)	121,177	115,752	110,059	112,291	114,738	121,850	117,390	123,952	137,812	174,218	174,218	130,904	133,830	1,521,821
Accounting services	421,556	336,903	271,875	230,544	238,453	251,010	231,333	251,492	268,775	231,651	148,594	85,389	70,902	2,616,921
Advertising, consultancy & PR	133,090	148,452	142,178	144,042	144,159	146,581	135,994	145,241	139,561	121,593	110,063	118,681	126,766	1,623,311
Computer programming	630,248	673,931	654,005	646,474	646,270	659,134	648,013	710,741	704,088	647,842	617,304	581,606	577,952	7,767,360
Farming services	277,010	309,993	304,440	308,659	308,219	298,794	291,132	304,078	307,918	299,254	353,148	298,450	284,838	3,668,923
Miscellaneous professional services	3,204,501	3,024,201	2,860,800	2,974,072	2,886,103	3,022,385	2,820,286	3,024,682	3,302,529	3,116,047	3,116,230	3,072,918	3,029,574	36,249,827
Engineering services	88,881	88,036	85,859	85,827	87,726	91,992	78,890	89,283	95,013	84,044	73,788	75,792	80,033	1,016,283
Marina services	58,166	89,183	117,031	121,866	134,123	153,718	151,192	121,387	88,976	70,120	67,115	61,850	66,513	1,243,074
Wrecking & salvage yards	8,052	8,947	9,004	8,714	8,969	9,492	8,602	9,589	9,785	8,336	7,434	8,971	9,545	107,388
Pest control	10,397	3,628	3,967	4,785	5,062	5,572	4,721	5,099	6,177	5,122	4,473	4,678	4,335	57,619
Educational establishments	2,705,638	3,130,357	2,164,707	2,856,070	2,340,428	1,715,559	1,208,582	3,049,501	3,816,832	3,621,829	2,609,438	3,498,325	3,310,473	33,322,101
Child care services	203,052	157,920	155,196	161,807	135,841	139,486	175,820	152,359	181,283	152,913	147,403	182,927	199,403	1,942,358
Social, political & religious organisations	2,376,993	3,304,030	2,941,328	3,186,590	3,095,769	3,145,597	2,955,636	3,363,071	3,328,228	2,942,952	2,857,263	2,450,511	2,612,807	36,183,782
Government services	6,960,617	7,519,115	7,838,609	7,983,161	7,860,442	8,181,059	7,779,389	8,095,263	8,462,613	7,343,485	7,193,867	8,325,906	7,818,717	94,401,626
Miscellaneous services	5,601,153	6,500,968	6,287,381	6,321,630	6,407,045	6,607,017	5,816,837	6,422,663	6,240,787	5,851,109	8,560,998	5,740,889	5,561,665	76,318,989
Commercial equipment	1,638,521	1,699,987	1,554,977	1,624,712	1,546,616	1,562,688	1,516,204	1,869,529	1,799,133	1,642,893	1,776,722	1,622,563	1,505,282	19,721,306
Other services	48,121,860	52,987,370	50,192,357	52,579,099	51,316,592	52,904,037	49,659,932	55,048,655	56,879,551	52,804,047	57,401,813	52,750,789	50,665,384	635,189,626
Total services	211,451,833	236,824,268	226,170,283	233,453,990	232,532,654	235,007,651	231,560,775	242,326,608	253,160,886	237,234,253	256,025,906	235,792,232	240,097,912	2,860,187,418
TOTAL	676,923,424	775,264,605	741,104,927	769,025,130	777,881,936	786,494,951	748,459,410	782,834,596	808,772,493	780,869,654	912,464,706	734,441,230	728,079,039	9,345,692,677

Table 3D Card expenditure statistics (not seasonally adjusted)

Value of debit card transactions

Detailed sector breakdown - services sectors (not seasonally adjusted)

£	February 2014	March 2014	April 2014	May 2014	June 2014	July 2014	August 2014	September 2014	October 2014	November 2014	December 2014	January 2015	February 2015	Total (latest 12 months)
Auto rental	50,957,560	61,831,074	61,817,906	64,821,596	66,288,166	74,971,849	67,081,827	65,532,164	55,395,168	48,661,204	49,699,485	47,539,657	50,489,134	714,129,230
Auto parts & accessories	194,649,733	252,416,038	220,573,562	220,707,704	218,893,612	227,663,319	204,229,304	232,766,900	219,335,005	196,004,291	187,060,828	209,322,630	205,360,514	2,588,333,707
Auto services	57,403,021	61,038,514	61,996,128	64,890,099	66,196,741	71,115,114	65,569,794	69,737,493	69,101,977	61,948,712	66,873,961	61,617,208	62,485,503	782,571,344
Auto repair shops	578,225,240	798,969,245	634,820,644	634,820,644	634,820,644	618,728,806	636,566,658	578,144,895	619,233,246	558,461,002	490,882,922	586,011,588	581,706,599	7,440,466,394
Service stations	0	0	0	0	0	0	0	0	0	0	0	0	0	0
Vehicle sales	1,251,586,426	1,831,673,619	1,505,403,401	1,493,609,596	1,499,441,292	1,498,172,686	1,353,316,581	1,735,273,345	1,481,706,420	1,287,284,185	1,146,720,831	1,366,172,541	1,415,029,550	17,613,804,047
Vehicle Sales & Services	2,132,821,980	3,005,928,490	2,484,611,641	2,477,496,899	2,469,548,617	2,508,489,626	2,268,342,401	2,806,782,787	2,444,771,816	2,152,359,394	1,941,238,027	2,264,663,624	2,315,071,400	29,139,304,722
Restaurants	1,051,480,508	1,226,858,079	1,173,134,312	1,246,947,563	1,226,899,881	1,243,231,661	1,328,162,128	1,271,326,590	1,312,684,984	1,278,909,658	1,455,887,749	1,192,365,978	1,261,791,326	15,218,199,909
Public houses	263,076,211	307,847,452	282,162,591	279,112,862	280,170,331	282,650,615	289,021,678	292,426,611	275,200,958	262,425,896	319,016,226	241,513,447	261,342,951	3,372,891,618
Catering services	122,870,523	72,987,553	73,967,939	82,066,700	80,809,742	89,314,170	84,296,931	87,706,236	85,281,220	81,757,322	88,912,799	69,913,404	73,922,241	970,936,257
Video stores	1,685,198	1,253,495	1,224,019	1,063,510	1,063,510	986,706	917,855	955,842	986,737	1,010,395	1,076,663	860,416	960,877	12,748,728
Cinema, theatre & dance	165,952,802	167,793,645	170,417,853	176,395,866	152,686,128	157,174,625	159,720,024	137,511,059	208,138,857	215,379,025	222,698,361	155,736,770	169,598,856	2,093,251,069
Concerts & entertainers	10,852,632	12,153,997	11,497,794	12,260,026	10,011,317	10,949,394	12,885,230	4,925,100	13,545,647	15,108,897	14,529,879	12,450,448	11,978,408	142,296,137
Tourist attractions	23,747,186	28,155,045	46,415,747	39,729,123	39,076,188	48,081,461	65,029,507	38,753,336	42,316,752	26,200,395	28,140,293	21,482,753	28,708,368	452,088,948
Amusement parks	10,182,029	4,743,457	11,683,571	9,523,261	10,274,678	12,641,134	18,545,932	10,433,685	9,660,972	4,806,216	3,174,442	2,906,274	4,626,200	103,019,822
Aquariums	3,825,951	3,273,262	5,347,958	4,183,897	3,682,861	5,841,407	9,277,737	6,349,185	4,315,696	2,677,069	2,442,354	2,201,013	3,785,262	53,377,701
Sports & games establishments	108,014,954	139,326,686	138,271,825	147,793,822	119,435,454	123,173,506	119,981,405	126,144,803	123,576,992	113,803,071	124,378,192	132,508,537	123,517,325	1,531,911,618
Professional sports clubs	11,118,716	15,770,617	18,129,625	24,545,785	16,335,099	16,491,496	13,329,765	13,518,411	14,439,405	13,095,286	11,809,711	12,644,536	12,011,429	182,121,165
Gambling	352,699,083	366,364,235	325,233,139	328,060,891	372,383,624	292,376,392	349,767,329	377,455,605	410,046,397	323,495,037	410,154,188	375,986,466	399,963,617	4,331,286,927
Personal services	26,257,735	20,542,339	18,628,564	19,627,318	19,016,346	19,365,162	17,885,782	19,000,638	18,903,100	19,956,277	17,181,752	18,061,471	18,155,145	226,323,894
Miscellaneous entertainment	27,978,695	33,824,091	38,340,237	37,211,029	34,284,335	39,748,160	53,371,695	40,234,595	42,776,080	36,839,678	26,407,911	27,680,604	32,180,332	442,898,747
Entertainment	2,179,742,223	2,401,092,671	2,314,484,650	2,408,682,162	2,366,129,474	2,342,025,889	2,522,192,998	2,426,741,696	2,561,873,797	2,392,689,697	2,728,585,045	2,266,312,117	2,402,542,337	29,133,352,533
Hotels	373,442,364	437,161,708	468,262,723	485,964,788	493,959,484	527,720,910	547,835,404	550,592,362	487,170,287	413,724,093	405,241,691	453,892,961	433,372,171	5,704,898,582
Airlines	427,054,287	493,801,447	467,482,316	509,960,880	485,813,004	484,266,636	425,852,626	446,400,416	423,189,577	343,106,746	312,112,640	560,959,507	459,050,438	5,411,996,233
Airport terminals	94,342,688	3,727,194	3,756,968	4,049,415	4,566,287	4,820,462	4,484,532	4,606,026	3,748,527	2,683,374	2,993,304	2,959,017	2,699,505	45,094,611
Railways	361,049,524	413,717,509	386,740,471	395,421,610	405,266,735	424,212,199	375,317,886	446,237,071	452,328,070	412,254,798	424,300,254	407,095,265	386,371,480	4,929,263,948
Buses	42,750,633	44,875,938	44,641,068	43,739,831	38,699,098	40,579,431	40,829,728	49,488,023	41,533,820	36,152,132	35,409,072	38,513,745	35,241,339	489,703,225
Sea travel	38,287,436	45,108,287	48,030,158	51,932,331	50,980,437	50,032,733	46,097,708	42,841,620	49,932,763	34,792,493	34,110,530	43,015,318	47,176,427	544,050,805
Travel agents	996,268,724	1,184,517,841	1,170,340,646	1,320,485,662	1,208,442,587	1,179,844,894	972,418,756	876,473,485	808,061,135	699,337,829	654,087,795	1,139,354,145	1,080,501,804	12,293,866,579
Timeshares	710,847	658,261	629,232	627,710	555,153	652,731	613,935	613,935	646,660	559,757	551,643	851,515	661,010	7,621,542
Camping grounds	60,786,668	87,963,603	91,291,944	103,501,848	102,810,190	112,361,605	100,630,639	75,773,969	72,023,310	63,337,640	43,934,115	62,395,820	71,321,872	987,346,555
Miscellaneous travel	31,113,411	38,068,596	41,164,354	42,474,136	51,952,383	51,547,899	43,482,710	41,895,407	45,740,284	46,191,582	47,123,298	50,832,496	54,693,237	555,166,382
Travel	2,052,364,218	2,312,438,676	2,254,077,157	2,472,193,423	2,349,085,874	2,348,318,590	2,009,728,520	1,984,329,952	1,897,204,746	1,638,416,351	1,554,622,651	2,305,976,828	2,137,717,112	25,264,109,880
Telegraph services / Wire transfer money order	65,336,129	69,302,108	75,811,649	73,553,216	77,684,375	80,526,113	69,922,113	70,560,044	53,467,673	51,214,066	56,956,256	59,819,955	59,082,888	797,900,456
Insurance services	505,474,767	609,994,302	579,820,071	556,036,083	553,501,085	600,298,680	557,075,817	606,859,314	586,156,060	506,688,463	462,438,680	536,840,808	522,816,916	6,678,526,279
Fis - cash disbursements (auto & manual)	5,753,806	3,563,618	4,195,455	5,706,335	6,277,914	7,151,494	6,757,393	5,790,265	3,616,945	2,165,476	3,620,256	3,327,973	4,838,373	57,011,497
Fis - merchandise & services	2,707,689,625	3,147,174,180	3,150,051,102	2,934,651,837	2,871,828,202	3,125,803,796	2,891,164,681	3,036,697,549	3,122,859,054	2,884,267,085	3,122,861,873	3,002,801,577	2,777,750,274	36,067,911,210
Non-Fis - foreign currency, travellers' cheques	246,884,257	255,331,637	307,372,976	380,787,979	434,646,978	518,471,519	459,319,256	416,723,277	288,294,755	209,408,494	251,074,653	267,363,714	301,359,193	4,090,154,431
Security brokers and dealers	560,228,133	903,525,029	1,109,022,736	466,282,393	633,397,530	570,309,229	412,570,218	487,160,597	605,374,227	430,175,139	468,760,161	553,342,674	508,253,053	7,148,172,986
Tax preparation services	373,137	171,935	126,170	173,487	147,262	208,629	138,128	168,987	127,347	124,203	127,347	259,361	207,896	2,205,383
Tax payments	214,040,274	158,003,406	121,767,876	110,074,519	97,506,474	154,007,816	121,810,910	118,060,386	109,516,972	103,361,163	109,300,215	1,046,464,817	839,435,134	3,089,309,688
Fines, bail and bond payments	39,837,586	44,641,275	39,863,935	41,603,421	38,710,888	42,651,152	40,640,355	39,151,354	42,238,383	39,174,780	33,993,370	38,245,796	37,102,140	478,016,849
Miscellaneous financial	17,335,067	21,933,443	22,784,364	23,883,341	25,402,971	27,653,531	24,575,730	25,820,703	25,674,879	22,687,580	19,603,229	20,148,334	20,673,459	280,901,570
Financial	4,362,952,781	5,213,700,939	5,410,916,334	4,592,752,611	4,739,103,679	5,127,102,025	4,583,974,601	4,806,992,476	4,837,430,860	4,249,266,449	4,528,736,040	5,528,615,009	5,071,519,326	58,690,110,349

Table 3D Card expenditure statistics (not seasonally adjusted)

Value of debit card transactions

Detailed sector breakdown - services sectors (continued, not seasonally adjusted)

£	February 2014	March 2014	April 2014	May 2014	June 2014	July 2014	August 2014	September 2014	October 2014	November 2014	December 2014	January 2015	February 2015	Total (latest 12 months)
Telecoms	298,980,253	339,090,687	315,846,256	324,927,386	312,423,457	335,582,739	345,064,573	373,816,958	375,046,891	360,082,214	375,493,377	369,835,016	321,330,526	4,148,540,080
Utilities	240,298,330	298,470,493	280,043,003	265,713,318	235,149,021	235,299,285	207,690,828	227,626,940	239,551,873	212,369,276	216,974,563	252,092,768	253,924,700	2,924,906,069
Contractors (residential & commercial)	143,891,241	158,651,873	152,697,053	157,782,176	160,566,710	172,730,229	159,564,891	183,450,785	196,972,622	180,614,814	162,293,188	156,807,460	162,488,240	2,004,620,041
Gardening services	6,547,263	9,149,365	10,618,072	10,584,035	9,855,931	9,100,089	7,244,133	7,759,871	7,483,651	6,312,204	7,381,002	4,936,708	5,818,499	96,243,560
Veterinary services	93,663,444	104,564,127	103,780,332	108,002,537	108,964,596	120,363,732	113,389,470	115,188,613	119,919,434	107,305,108	106,313,469	107,500,912	101,437,825	1,316,730,155
Photocopying & printing	22,560,598	25,420,876	23,958,142	26,170,064	25,190,275	25,717,204	23,164,519	27,478,515	28,460,589	29,016,914	27,521,464	24,389,908	24,006,267	310,494,737
Photographic studios	34,831,522	11,838,965	11,174,005	11,174,005	13,277,635	12,511,334	13,277,635	13,080,529	15,121,850	16,520,271	19,434,252	10,490,226	11,136,480	162,425,106
Beauty & barber shops	182,448,010	211,894,174	200,734,986	216,134,523	211,665,525	220,290,633	204,898,796	214,395,064	215,319,107	206,531,968	272,839,930	184,987,705	195,934,285	2,555,626,696
Employment agencies	2,235,858	1,590,633	1,454,675	1,555,075	1,496,319	1,685,922	1,426,460	1,647,459	1,685,814	1,529,737	1,279,288	1,683,469	1,544,912	18,579,763
Counselling services	6,251,710	7,121,981	6,907,845	6,675,646	6,743,800	6,942,532	6,188,630	6,587,466	6,188,630	6,555,645	6,857,500	6,179,615	6,179,615	80,401,625
Legal services	75,676,169	86,590,095	81,167,031	83,357,438	85,245,602	90,785,309	78,826,069	84,783,030	91,531,378	82,276,630	73,697,655	76,116,977	76,969,273	991,346,487
Laundry & cleaning	12,131,649	12,518,969	12,189,945	13,241,650	13,960,391	14,074,127	12,775,536	14,430,678	14,634,388	13,611,668	12,945,313	12,360,399	11,624,806	158,367,870
Funeral services	37,195,933	41,785,737	37,964,826	37,247,857	37,213,116	39,507,734	36,306,876	40,112,133	44,740,704	42,755,693	40,518,419	50,503,373	51,271,254	499,927,722
Medical services	253,324,366	259,773,158	243,948,568	253,011,239	255,886,686	271,444,138	233,124,916	266,779,969	285,383,184	262,914,250	235,651,682	261,986,746	265,701,712	3,095,606,248
Moving & courier services	30,315,065	33,598,220	33,998,140	35,775,271	37,353,219	41,775,039	37,918,551	40,528,812	40,843,689	37,315,479	37,181,930	33,949,823	32,695,007	442,933,180
Repair shops (not auto)	12,158,618	12,056,221	11,832,287	12,335,673	12,951,467	13,563,637	12,379,503	13,295,981	13,857,900	14,003,752	16,438,515	12,282,343	12,882,393	157,879,672
Accounting services	30,089,060	20,000,521	17,242,124	16,839,756	15,258,865	16,158,579	14,594,121	16,666,250	17,652,067	16,564,730	15,129,283	18,179,082	15,197,504	199,482,882
Advertising, consultancy & PR	10,640,336	11,494,690	11,586,359	11,644,050	11,170,770	11,950,925	10,419,933	11,491,712	11,447,384	10,144,793	9,206,509	10,330,770	10,458,447	131,346,342
Computer programming	33,787,900	35,623,249	35,176,772	34,098,285	33,028,698	34,428,695	32,505,447	35,699,007	36,234,290	33,476,652	32,950,400	32,580,949	30,731,074	406,533,519
Farming services	20,065,202	22,202,228	22,892,214	23,328,942	23,980,569	24,516,812	22,900,501	23,823,928	27,960,379	22,981,478	25,228,523	22,848,846	21,445,357	284,109,777
Miscellaneous professional services	562,473,957	624,493,341	655,002,762	578,096,772	564,713,662	616,267,691	593,164,509	678,230,705	652,090,767	560,057,349	540,308,189	655,020,085	598,321,263	7,315,767,095
Engineering services	18,409,654	19,549,316	19,254,806	19,880,740	19,814,991	20,837,826	17,735,302	21,549,773	19,564,696	16,454,443	17,017,697	21,945,529	18,161,916	231,767,035
Marina services	8,435,450	14,266,986	15,101,423	14,826,188	15,817,872	16,701,794	14,875,025	12,342,579	10,526,136	7,745,180	8,062,195	8,837,949	9,140,116	148,243,443
Wrecking & salvage yards	1,336,655	1,531,482	1,528,480	1,548,401	1,648,932	1,709,767	1,423,477	1,638,009	1,703,623	1,447,320	1,209,782	1,493,479	1,493,117	18,375,869
Pest control	1,244,494	579,395	604,200	699,392	791,200	861,200	733,996	790,902	1,047,651	922,689	819,255	798,099	751,949	9,399,928
Educational establishments	236,120,090	180,461,705	242,949,586	231,062,807	154,889,110	161,912,462	227,552,457	754,410,684	634,640,046	240,017,096	186,674,300	514,792,793	246,446,504	3,775,809,550
Child care services	14,753,517	14,506,050	14,352,047	14,423,958	14,216,210	15,029,118	13,313,056	14,908,003	15,938,033	13,713,178	13,460,189	15,672,777	14,618,602	174,151,221
Social, political & religious organisations	92,679,770	116,291,760	102,208,870	102,996,926	99,811,089	129,164,122	101,636,396	119,971,684	131,629,901	101,182,423	100,165,842	98,517,887	92,412,022	1,295,988,922
Government services	1,742,325,821	1,554,841,412	1,653,868,036	1,965,921,155	1,929,446,836	2,392,161,584	1,926,816,242	1,905,509,711	1,891,940,201	1,676,017,231	1,734,264,844	6,690,488,709	3,165,510,621	28,486,786,582
Miscellaneous services	485,211,577	550,986,087	561,262,303	526,731,275	636,638,329	671,422,442	536,498,306	602,017,728	582,953,341	509,646,504	571,832,069	586,335,430	505,382,572	6,841,706,386
Commercial equipment	135,640,631	153,474,048	143,074,289	147,474,081	145,510,845	157,655,704	144,923,812	165,907,052	163,343,631	151,173,250	133,798,934	139,802,956	137,893,398	1,784,032,000
Other services	4,845,724,143	4,934,417,844	5,024,419,437	5,254,597,950	5,194,681,728	5,884,967,896	5,151,569,064	5,996,546,186	5,898,193,519	4,944,242,390	5,002,084,449	10,379,498,841	6,402,910,256	70,068,129,560
Total services	15,947,047,709	18,304,740,328	17,956,771,942	17,691,687,833	17,612,508,856	18,738,624,936	17,083,642,988	18,571,985,459	18,126,645,025	15,790,698,374	16,160,507,903	23,198,959,380	18,763,132,602	217,999,905,626
TOTAL	29,840,425,623	34,324,141,237	33,469,749,301	33,635,546,182	33,699,010,209	34,866,219,584	32,468,908,265	34,661,365,548	34,672,191,066	32,323,363,756	37,072,881,595	37,539,493,745	32,591,651,890	411,324,522,378