

Card Expenditure Statistics

February 2014

Card Expenditure Statistics – February 2014

	Total spending <i>£ billions</i>		Annual growth rates for spending		Number of purchases <i>Millions</i>	
	Feb 2014	Feb 2013	Feb 2014	Feb 2013	Feb 2014	Feb 2013
All plastic cards	46.1	43.2	7.3%	4.1%	958	882
Debit cards	32.5	30.2	8.3%	5.8%	737	676
Credit cards	13.6	13.0	5.0%	0.4%	222	206

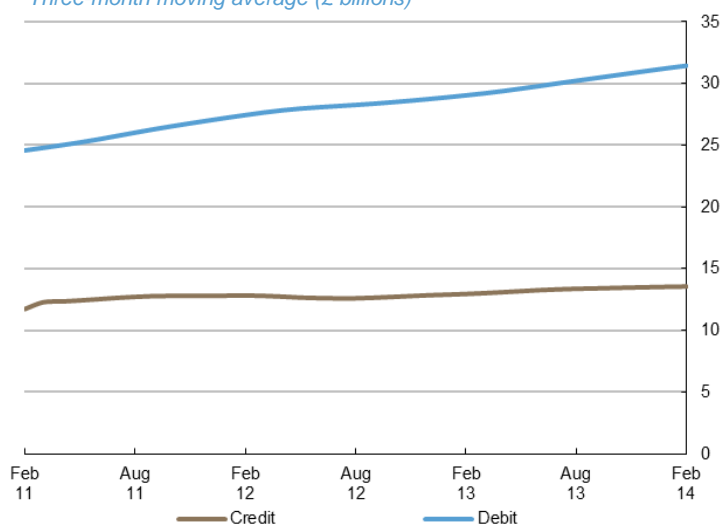
With effect of January 2014 the methodology used for seasonal adjustment - using X12 ARIMA - has been reviewed and changed. Trading days and leap years have been incorporated into the monthly seasonal adjustment process. Unless otherwise stated all data referred to are seasonally adjusted. Unadjusted data are located in tables 3A to 3D. There is a step change in the data between 2010 and 2011 following a change in the reporting population. Average transaction values are based on three-month rolling averages, while growth rates are based on rolling twelve-month periods.

Introduction

The post-Christmas surge in plastic card spending continued into February. **Card spending** increased by £0.2 billion to £46.1 billion between January and February. The number of purchases amounted to 958 million, up 5 million on January. Given February had fewer 'trading days' this growth underlined the continuing strength in consumer spending. Factors driving this growth include increased spending over the **internet** as well as rising **consumer confidence**.

Chart 1

Average monthly expenditure
Three-month moving average (£ billions)



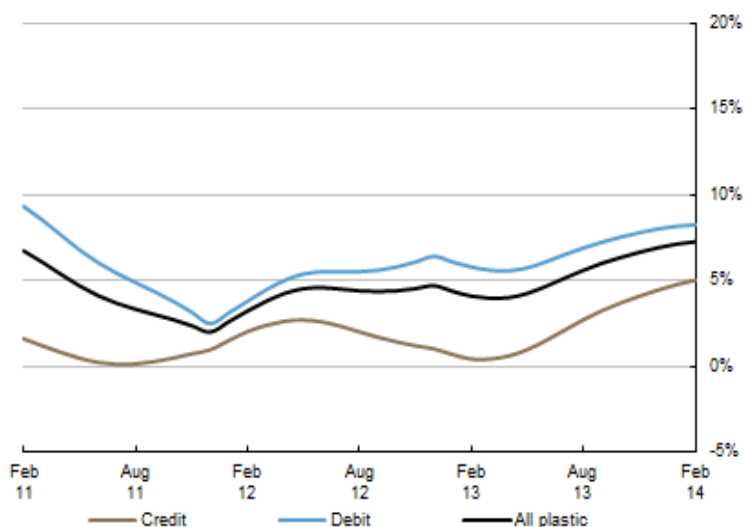
Annual growth rates

Growth in plastic card spending picked up in the second half of 2013, coinciding with the pick-up in the economy. Spending grew at an annual rate of 7.3% in February, which was the strongest rate of growth since January 2011. Debit card spending grew by 8.3% while that on credit cards increased by 5.0%. Over the past few months, growth has been stronger within the **service** sector relative to **retail sales**. The service sector grew by 9.8% during the month while spending within retail increased by 4.9%.

Chart 2

Spending on plastic cards

Year-on-year growth rates



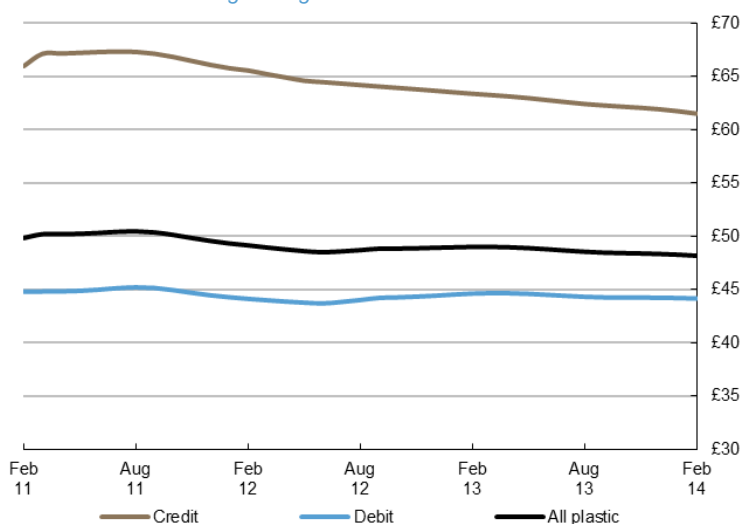
Average transaction values

The **average transaction value** (ATV) on all plastic cards fell slightly to £48.17. The ATV for debit cards was virtually unchanged at £44.16, in contrast to the ATV for credit cards, which continued to decline after decreasing by 22p to £61.51. ATVs for credit cards have been on a sustained decline since peaking at around £67 in middle of 2011. It is likely this has been driven by increased **online spending** coupled with more frequent use of credit cards by consumers looking to benefit from rewards and loyalty points. Within the sectors, the ATV in **retail sales** fell slightly to £34.36, while the ATV for **services** decreased by 35p to £79.66.

Chart 3

Average transaction values

Three-month moving average



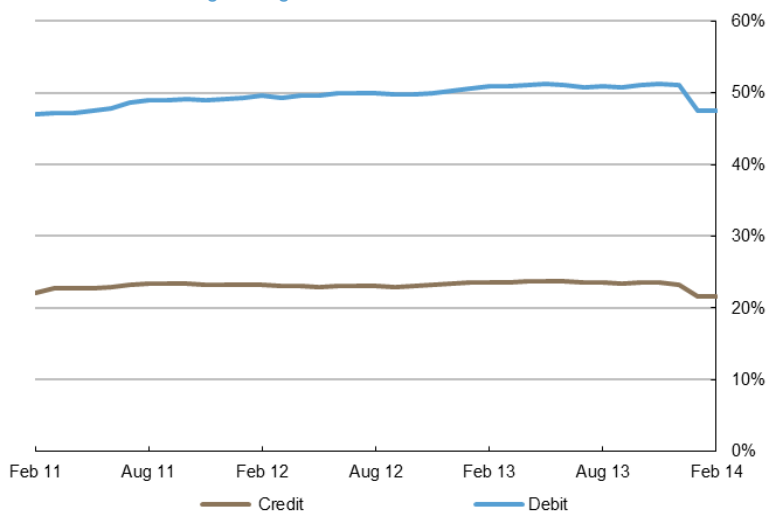
Spending by sector - retail sales and services

The number of transactions within the **retail sector** increased by 3 million to 665 million, with the corresponding spend rising by £0.1 billion to £22.8 billion. A majority of this increase was in the **food & drink** and **household goods** sub-sectors, where spending amounted to £8.6 billion and £3.5 billion respectively. Meanwhile the number of transactions in the **services sector** increased by 2 million to 293 million, which corresponded to an increased spend of £0.1 billion to £23.3 billion. Increased spending was concentrated within the **other services** and **entertainment** sub-sectors.

It is worth noting that spending decreased in the **other retail** and **financial services** sub-sectors. The decrease in other retail in particular continues a trend stretching back to 2012. This trend is a likely reflection of squeezed incomes over this period, as this sector is comprised of merchants more predisposed to discretionary spending such as florists, gift shops and sports shops. However, the rate of decline has slowed down in recent months in line with the improving economic backdrop.

Chart 4

Proportion of retail sales made on plastic cards (including automotive fuel)
Three-month moving average



Plastic card spending within national retail sales

The **plastic card share of total retail sales** (including automotive fuels)¹ amounted to 69.0% during the month with a split of 47.5% by debit and 21.5% by credit. Within the **food & drink** and **automotive fuels** sub-sectors, plastic card spending in February accounted for 63.3% and 84.6% of all spending respectively.

Contact: David Obuwa; david.obuwa@ukpayments.org.uk | camis@ukpayments.org.uk | 020 3217 8421 or 020 3217 8720

¹ CES 3-month moving average spend of £22.8 billion expressed as a percentage of a similar 3-month moving average for ONS Retail Sales - All retailing including automotive fuel (J5A3) which amounted to £33.0 billion.

Table 1 Card expenditure statistics (seasonally adjusted)

Summary^{1 and 2}

		Number of purchase transactions (millions)									Value of purchase transactions (£ millions)									
		All sectors			Retail sales			Services			All sectors			Retail sales			Services			
		Credit	Debit	Total	Credit	Debit	Total	Credit	Debit	Total	Credit	Debit	Total	Credit	Debit	Total	Credit	Debit	Total	
Annual																				
	2009	2,003	5,945	7,949	1,226	3,897	5,123	777	2,048	2,826	125,151	262,219	387,370	61,586	125,403	186,989	63,565	136,816	200,381	
	2010	2,010	6,503	8,513	1,383	4,720	6,103	627	1,783	2,410	128,281	289,769	418,050	69,487	148,617	218,105	58,793	141,152	199,945	
	2011	2,260	7,227	9,487	1,556	5,298	6,854	704	1,929	2,634	151,203	324,130	475,333	78,839	165,403	244,242	72,364	158,727	231,091	
	2012	2,374	7,825	10,199	1,623	5,633	7,256	751	2,192	2,943	152,772	344,981	497,753	81,047	174,769	255,816	71,725	170,212	241,937	
	2013	2,552	8,391	10,942	1,737	5,964	7,701	815	2,426	3,241	159,601	372,691	532,292	84,553	183,424	267,977	75,048	189,267	264,314	
Monthly																				
	2013	Feb	206	676	882	140	483	624	65	193	258	13,015	30,220	43,235	6,937	14,994	21,931	6,078	15,225	21,304
		Mar	207	681	889	142	487	628	66	195	260	13,100	30,426	43,525	6,976	15,080	22,056	6,124	15,345	21,469
		Apr	209	686	896	143	490	633	66	196	263	13,191	30,606	43,797	7,017	15,147	22,164	6,173	15,460	21,633
		May	211	692	903	144	494	638	67	198	265	13,271	30,804	44,075	7,054	15,210	22,264	6,216	15,594	21,810
		Jun	213	698	911	146	498	643	68	200	268	13,334	30,989	44,324	7,084	15,281	22,365	6,250	15,708	21,959
		Jul	214	703	917	146	501	647	68	202	270	13,375	31,146	44,521	7,099	15,341	22,440	6,276	15,805	22,081
		Aug	215	708	923	147	503	650	68	205	273	13,405	31,307	44,712	7,103	15,395	22,498	6,302	15,912	22,214
		Sep	216	712	928	147	504	651	69	207	276	13,439	31,484	44,923	7,102	15,441	22,543	6,337	16,043	22,380
		Oct	217	716	933	147	506	653	70	210	280	13,473	31,691	45,163	7,096	15,491	22,587	6,377	16,199	22,576
		Nov	218	721	940	148	508	656	71	213	284	13,509	31,919	45,428	7,091	15,551	22,642	6,418	16,369	22,786
		Dec	219	727	946	148	511	659	71	216	287	13,540	32,143	45,683	7,090	15,604	22,694	6,450	16,539	22,989
	2014	Jan	220	732	953	149	513	662	72	219	291	13,559	32,345	45,904	7,094	15,654	22,747	6,465	16,691	23,156
		Feb	222	737	958	149	516	665	72	221	293	13,573	32,489	46,062	7,106	15,705	22,811	6,467	16,784	23,251
Year-on-year growth rates (percentages)																				
Annual																				
	2009	1.8	9.0	7.1	3.5	9.1	7.7	-0.7	8.9	6.1	-0.3	7.3	4.7	1.6	8.0	5.8	-2.1	6.6	3.7	
	2010	0.3	9.4	7.1	12.8	21.1	19.1	-19.3	-13.0	-14.7	2.5	10.5	7.9	12.8	18.5	16.6	-7.5	3.2	-0.2	
	2011	12.5	11.1	11.4	12.5	12.2	12.3	12.3	8.2	9.3	17.9	11.9	13.7	13.5	11.3	12.0	23.1	12.5	15.6	
	2012	5.1	8.3	7.5	4.3	6.3	5.9	6.7	13.6	11.7	1.0	6.4	4.7	2.8	5.7	4.7	-0.9	7.2	4.7	
	2013	7.5	7.2	7.3	7.0	5.9	6.1	8.4	10.7	10.1	4.5	8.0	6.9	4.3	5.0	4.8	4.6	11.2	9.2	
Monthly																				
	2013	Feb	4.6	7.1	6.5	3.8	5.1	4.8	6.3	12.5	10.8	0.4	5.8	4.1	2.2	4.8	4.0	-1.5	6.9	4.3
		Mar	4.5	6.5	6.0	3.8	4.6	4.4	6.1	11.8	10.3	0.4	5.6	4.0	2.1	4.4	3.7	-1.3	6.9	4.3
		Apr	4.6	6.1	5.7	3.9	4.2	4.1	5.9	11.3	9.9	0.6	5.6	4.0	2.1	4.2	3.5	-1.0	7.1	4.6
		May	4.8	5.9	5.6	4.3	4.0	4.0	6.0	10.9	9.6	1.0	5.8	4.3	2.4	4.0	3.5	-0.5	7.6	5.1
		Jun	5.2	5.8	5.6	4.7	3.9	4.1	6.2	10.7	9.5	1.5	6.1	4.7	2.7	4.1	3.6	0.2	8.3	5.8
		Jul	5.7	6.0	5.9	5.3	4.2	4.5	6.5	10.5	9.5	2.1	6.5	5.2	3.2	4.2	3.8	1.0	9.0	6.6
		Aug	6.1	6.2	6.1	5.7	4.5	4.8	6.9	10.4	9.5	2.7	6.9	5.6	3.6	4.3	4.1	1.8	9.7	7.3
		Sep	6.5	6.4	6.4	6.1	4.8	5.1	7.3	10.4	9.6	3.3	7.3	6.0	3.9	4.4	4.2	2.6	10.2	7.9
		Oct	6.9	6.6	6.7	6.5	5.1	5.4	7.7	10.4	9.7	3.7	7.6	6.4	4.1	4.6	4.4	3.3	10.6	8.4
		Nov	7.2	6.9	7.0	6.8	5.5	5.8	8.0	10.5	9.9	4.1	7.8	6.7	4.2	4.8	4.6	4.0	11.0	8.9
		Dec	7.5	7.2	7.3	7.0	5.9	6.1	8.4	10.7	10.1	4.5	8.0	6.9	4.3	5.0	4.8	4.6	11.2	9.2
	2014	Jan	7.8	7.6	7.6	7.3	6.2	6.5	8.8	11.1	10.5	4.8	8.2	7.1	4.4	5.1	4.9	5.3	11.3	9.6
		Feb	8.0	7.9	8.0	7.5	6.5	6.7	9.2	11.5	10.9	5.0	8.3	7.3	4.3	5.2	4.9	5.8	11.4	9.8

¹ There was a step change in 2011 due to a change in reporting population

² With effect of January 2014 the seasonal adjustment methodology using X12 ARIMA was reviewed and changed. Trading days and leap years have been incorporated into the monthly seasonal adjustment process.

Table 2A Card expenditure statistics (seasonally adjusted)

Retail sales^{1 and 2}

Number of purchase transactions (millions)

Total retail sales

	Number of purchase transactions (millions)																		Total retail sales			
	Food & drink			Mixed business			Clothing			Household			Other retailers			Automotive Fuels ³			Number of purchases			
	Credit	Debit	Total	Credit	Debit	Total	Credit	Debit	Total	Credit	Debit	Total	Credit	Debit	Total	Credit	Debit	Total	Credit	Debit	Total	
Annual																						
2009	514	2,087	2,601	131	404	535	125	405	530	146	319	465	310	682	992	158	475	633	1,226	3,897	5,123	
2010	533	2,283	2,816	139	406	545	128	424	553	148	350	498	273	733	1,006	162	524	686	1,383	4,720	6,103	
2011	602	2,562	3,164	137	425	562	139	427	566	157	370	527	296	782	1,078	224	732	956	1,556	5,298	6,854	
2012	662	2,816	3,479	149	479	628	146	452	598	157	375	532	281	757	1,038	228	753	981	1,623	5,633	7,256	
2013	722	3,062	3,784	184	523	707	152	460	613	165	402	567	277	724	1,001	236	793	1,030	1,737	5,964	7,701	
Monthly																						
2013	Feb	59	247	306	14	41	55	13	38	51	13	32	45	23	60	83	19	65	84	140	483	624
	Mar	59	249	309	14	41	55	13	38	51	13	32	46	23	60	83	19	65	85	142	487	628
	Apr	60	251	311	14	42	56	13	38	51	14	33	46	23	60	83	20	66	85	143	490	633
	May	60	253	313	15	43	58	13	38	51	14	33	47	23	60	83	20	66	86	144	494	638
	Jun	60	255	315	15	43	59	13	39	51	14	34	48	23	60	84	20	67	86	146	498	643
	Jul	61	257	317	16	44	60	13	39	52	14	34	48	23	61	84	20	67	87	146	501	647
	Aug	61	258	319	16	45	61	13	39	52	14	34	48	23	61	84	20	67	87	147	503	650
	Sep	61	259	320	16	45	62	13	39	51	14	34	48	23	61	84	20	67	87	147	504	651
	Oct	61	260	322	17	46	62	13	38	51	14	34	48	23	61	84	20	67	86	147	506	653
	Nov	61	263	324	17	46	63	13	38	51	14	35	48	23	61	83	20	67	86	148	508	656
	Dec	62	265	326	17	46	63	13	38	51	14	35	49	22	61	83	20	67	87	148	511	659
2014	Jan	62	266	328	18	46	64	13	38	51	14	35	49	22	61	83	20	67	87	149	513	662
	Feb	62	268	330	18	46	64	13	38	51	14	35	49	22	61	83	20	68	87	149	516	665

Year-on-year growth rates (percentages)

	Year-on-year growth rates (percentages)																					
	Credit	Debit	Total	Credit	Debit	Total	Credit	Debit	Total	Credit	Debit	Total	Credit	Debit	Total	Credit	Debit	Total	Credit	Debit	Total	
Annual																						
2009	2.8	11.6	9.7	-2.0	-0.9	-1.2	3.2	9.7	8.1	1.9	9.2	6.8	8.1	7.6	7.7	-5.2	3.9	1.5	3.5	9.1	7.7	
2010	3.6	9.4	8.2	5.6	0.6	1.8	2.8	4.8	4.3	1.6	9.6	7.1	-11.9	7.5	1.4	2.4	10.4	8.4	12.8	21.1	19.1	
2011	13.0	12.2	12.4	-1.1	4.6	3.2	8.0	0.7	2.4	6.2	5.8	5.9	8.6	6.6	7.2	38.4	39.7	39.4	12.5	12.2	12.3	
2012	10.0	9.9	9.9	8.5	12.7	11.7	5.1	5.9	5.7	-0.1	1.4	1.0	-5.2	-3.1	-3.7	1.7	2.9	2.6	4.3	6.3	5.9	
2013	9.1	8.7	8.8	23.8	9.2	12.7	4.6	1.8	2.4	4.9	7.2	6.5	-1.5	-4.4	-3.6	3.7	5.3	5.0	7.0	5.9	6.1	
Monthly																						
2013	Feb	9.4	8.9	9.0	9.3	10.8	10.5	3.3	4.1	3.9	-1.0	0.3	-0.1	-5.6	-5.5	-5.5	1.1	2.6	2.2	3.8	5.1	4.8
	Mar	9.4	8.4	8.6	9.9	9.8	9.8	2.7	3.3	3.2	-0.9	0.2	-0.1	-5.7	-6.7	-6.4	0.9	2.6	2.2	3.8	4.6	4.4
	Apr	9.5	8.1	8.3	10.6	8.9	9.3	2.7	2.7	2.7	-0.5	0.4	0.1	-5.8	-7.8	-7.3	1.0	2.8	2.4	3.9	4.2	4.1
	May	9.6	8.0	8.3	11.5	8.2	9.0	3.0	2.5	2.6	0.1	0.9	0.7	-5.5	-8.9	-8.0	1.3	3.2	2.8	4.3	4.0	4.0
	Jun	9.7	8.0	8.3	12.6	7.8	8.9	3.6	2.4	2.7	0.9	1.7	1.5	-5.0	-10.0	-8.6	1.8	3.7	3.3	4.7	3.9	4.1
	Jul	9.8	8.1	8.4	13.8	7.5	9.0	4.2	2.4	2.9	1.7	2.6	2.3	-4.3	-9.1	-7.8	2.4	4.2	3.8	5.3	4.2	4.5
	Aug	9.8	8.1	8.4	15.3	7.5	9.4	4.6	2.4	2.9	2.4	3.5	3.2	-3.5	-8.3	-7.0	2.8	4.6	4.2	5.7	4.5	4.8
	Sep	9.7	8.2	8.5	17.1	7.7	9.9	4.8	2.3	2.9	3.0	4.4	4.0	-2.7	-7.3	-6.1	3.1	5.0	4.5	6.1	4.8	5.1
	Oct	9.5	8.3	8.5	19.2	8.1	10.7	4.8	2.1	2.7	3.6	5.2	4.7	-2.1	-6.4	-5.3	3.3	5.2	4.7	6.5	5.1	5.4
	Nov	9.3	8.5	8.7	21.5	8.6	11.7	4.7	1.9	2.6	4.2	6.2	5.6	-1.7	-5.4	-4.4	3.5	5.3	4.9	6.8	5.5	5.8
	Dec	9.1	8.7	8.8	23.8	9.2	12.7	4.6	1.8	2.4	4.9	7.2	6.5	-1.5	-4.4	-3.6	3.7	5.3	5.0	7.0	5.9	6.1
2014	Jan	8.8	8.8	8.8	25.9	9.9	13.7	4.6	1.7	2.4	5.7	8.2	7.4	-1.3	-3.4	-2.8	3.8	5.4	5.1	7.3	6.2	6.5
	Feb	8.6	8.9	8.8	27.6	10.6	14.7	4.6	1.8	2.5	6.3	8.9	8.2	-1.2	-2.3	-2.0	4.0	5.5	5.1	7.5	6.5	6.7

¹ There was a step change in 2011 due to a change in reporting population

² With effect of January 2014 the seasonal adjustment methodology using X12 ARIMA was reviewed and changed. Trading days and leap years have been incorporated into the monthly seasonal adjustment process.

³ Automotive Fuels data is effective from January 2010. Data shown pre 2010 are for growth trend purposes only; these data are excluded from totals as these are already included in their former Services sector of Motoring (now known as Vehicle Sales & Service)

Table 2B Card expenditure statistics (seasonally adjusted)

Retail sales^{1 and 2}

Value of purchase transactions (£ millions)

	Value of purchase transactions (£ millions)																		Total retail sales			
	Food & drink			Mixed business			Clothing			Household			Other retailers			Automotive Fuels ³			Value of purchases			
	Credit	Debit	Total	Credit	Debit	Total	Credit	Debit	Total	Credit	Debit	Total	Credit	Debit	Total	Credit	Debit	Total	Credit	Debit	Total	
Annual																						
2009	18,106	60,227	78,333	7,066	13,885	20,951	6,356	12,672	19,028	14,406	16,582	30,988	15,653	22,036	37,689	5,860	12,668	18,528	61,586	125,403	186,989	
2010	18,695	63,736	82,431	7,157	13,947	21,104	6,800	13,651	20,451	14,680	18,872	33,552	15,523	23,567	39,091	6,632	14,844	21,476	69,487	148,617	218,105	
2011	20,994	69,362	90,356	7,097	14,759	21,856	7,833	14,464	22,297	15,191	20,471	35,662	17,519	24,364	41,882	10,205	21,983	32,189	78,839	165,403	244,242	
2012	22,570	73,937	96,507	7,702	16,408	24,110	8,238	15,621	23,859	15,356	21,525	36,881	16,738	24,433	41,171	10,443	22,845	33,289	81,047	174,769	255,816	
2013	24,121	77,855	101,976	8,691	17,913	26,604	8,675	16,065	24,739	15,920	23,279	39,200	16,463	24,444	40,907	10,684	23,868	34,552	84,553	183,424	267,977	
Monthly																						
2013	Feb	1,979	6,425	8,404	690	1,414	2,105	709	1,313	2,021	1,285	1,831	3,116	1,389	2,012	3,401	885	1,999	2,884	6,937	14,994	21,931
	Mar	1,991	6,457	8,448	699	1,425	2,124	711	1,316	2,027	1,295	1,861	3,155	1,392	2,023	3,415	887	1,999	2,886	6,976	15,080	22,056
	Apr	2,002	6,464	8,466	709	1,441	2,149	716	1,323	2,039	1,308	1,894	3,202	1,392	2,028	3,420	891	1,997	2,888	7,017	15,147	22,164
	May	2,010	6,469	8,479	717	1,461	2,179	722	1,333	2,056	1,322	1,924	3,246	1,387	2,030	3,417	896	1,992	2,888	7,054	15,210	22,264
	Jun	2,017	6,482	8,500	725	1,485	2,210	729	1,344	2,073	1,334	1,947	3,282	1,379	2,034	3,413	899	1,989	2,888	7,084	15,281	22,365
	Jul	2,023	6,494	8,516	732	1,507	2,239	733	1,351	2,084	1,342	1,962	3,304	1,370	2,041	3,411	899	1,987	2,886	7,099	15,341	22,440
	Aug	2,026	6,505	8,531	738	1,527	2,264	735	1,354	2,089	1,345	1,973	3,318	1,362	2,050	3,413	896	1,985	2,882	7,103	15,395	22,498
	Sep	2,028	6,515	8,543	743	1,544	2,286	734	1,355	2,089	1,347	1,986	3,333	1,357	2,057	3,414	893	1,983	2,877	7,102	15,441	22,543
	Oct	2,028	6,535	8,563	747	1,558	2,305	730	1,354	2,084	1,349	2,006	3,355	1,353	2,059	3,412	889	1,980	2,868	7,096	15,491	22,587
	Nov	2,026	6,563	8,590	752	1,569	2,321	726	1,354	2,079	1,353	2,030	3,383	1,351	2,057	3,407	884	1,978	2,862	7,091	15,551	22,642
	Dec	2,024	6,583	8,607	757	1,577	2,333	723	1,355	2,078	1,359	2,055	3,414	1,348	2,052	3,400	879	1,982	2,861	7,090	15,604	22,694
2014	Jan	2,024	6,596	8,620	761	1,582	2,343	723	1,358	2,081	1,364	2,077	3,441	1,346	2,046	3,392	876	1,994	2,870	7,094	15,654	22,747
	Feb	2,028	6,615	8,642	765	1,586	2,351	725	1,362	2,087	1,369	2,094	3,463	1,346	2,038	3,383	873	2,012	2,885	7,106	15,705	22,811

Year-on-year growth rates (percentages)

Annual																						
2009	3.1	10.2	8.5	0.4	2.5	1.8	7.8	13.0	11.2	-0.1	6.7	3.4	-0.5	4.2	2.2	-12.0	-2.1	-5.5	1.6	8.0	5.8	
2010	3.3	5.8	5.2	1.3	0.4	0.7	7.0	7.7	7.5	1.9	13.8	8.3	-0.8	7.0	3.7	13.2	17.2	15.9	12.8	18.5	16.6	
2011	12.3	8.8	9.6	-0.8	5.8	3.6	15.2	6.0	9.0	3.5	8.5	6.3	12.9	3.4	7.1	53.9	48.1	49.9	13.5	11.3	12.0	
2012	7.5	6.6	6.8	8.5	11.2	10.3	5.2	8.0	7.0	1.1	5.2	3.4	-4.5	0.3	-1.7	2.3	3.9	3.4	2.8	5.7	4.7	
2013	6.9	5.3	5.7	12.8	9.2	10.3	5.3	2.8	3.7	3.7	8.1	6.3	-1.6	0.0	-0.6	2.3	4.5	3.8	4.3	5.0	4.8	
Monthly																						
2013	Feb	7.1	5.9	6.2	8.7	9.7	9.4	3.0	5.7	4.7	0.0	3.9	2.3	-4.4	-0.4	-2.0	1.3	4.0	3.1	2.2	4.8	4.0
	Mar	7.0	5.6	5.9	8.9	8.9	8.9	2.4	4.6	3.9	-0.3	3.5	1.9	-4.3	-0.8	-2.3	0.9	4.1	3.1	2.1	4.4	3.7
	Apr	7.1	5.3	5.7	9.2	8.2	8.5	2.3	3.9	3.3	-0.3	3.4	1.8	-4.1	-1.3	-2.5	0.8	4.4	3.3	2.1	4.2	3.5
	May	7.2	5.2	5.7	9.6	7.7	8.3	2.6	3.4	3.1	-0.2	3.6	2.0	-3.9	-1.6	-2.5	1.0	4.8	3.6	2.4	4.0	3.5
	Jun	7.3	5.1	5.6	10.2	7.5	8.3	3.3	3.2	3.2	0.2	3.9	2.4	-3.5	-1.7	-2.4	1.5	5.2	4.0	2.7	4.1	3.6
	Jul	7.5	5.1	5.7	10.7	7.5	8.5	4.0	3.1	3.4	0.8	4.4	2.9	-3.1	-1.6	-2.2	2.0	5.5	4.4	3.2	4.2	3.8
	Aug	7.6	5.1	5.7	11.3	7.7	8.8	4.7	3.1	3.6	1.3	4.9	3.4	-2.7	-1.4	-1.9	2.3	5.7	4.6	3.6	4.3	4.1
	Sep	7.6	5.1	5.7	11.8	8.0	9.2	5.1	3.0	3.7	1.9	5.4	4.0	-2.3	-1.2	-1.6	2.4	5.6	4.6	3.9	4.4	4.2
	Oct	7.4	5.2	5.7	12.2	8.3	9.6	5.3	2.9	3.7	2.5	6.1	4.6	-2.0	-0.8	-1.3	2.4	5.4	4.4	4.1	4.6	4.4
	Nov	7.2	5.3	5.7	12.6	8.7	9.9	5.3	2.8	3.7	3.0	7.1	5.4	-1.8	-0.4	-1.0	2.4	5.0	4.1	4.2	4.8	4.6
	Dec	6.9	5.3	5.7	12.8	9.2	10.3	5.3	2.8	3.7	3.7	8.1	6.3	-1.6	0.0	-0.6	2.3	4.5	3.8	4.3	5.0	4.8
2014	Jan	6.5	5.2	5.5	13.0	9.7	10.7	5.3	3.0	3.8	4.3	9.3	7.2	-1.6	0.5	-0.4	2.3	4.0	3.5	4.4	5.1	4.9
	Feb	6.0	4.9	5.2	13.0	10.2	11.1	5.3	3.3	4.0	4.9	10.3	8.1	-1.7	0.8	-0.2	2.2	3.6	3.1	4.3	5.2	4.9

¹ There was a step change in 2011 due to a change in reporting population

² With effect of January 2014 the seasonal adjustment methodology using X12 ARIMA was reviewed and changed. Trading days and leap years have been incorporated into the monthly seasonal adjustment process.

³ Automotive Fuels data is effective from January 2010. Data shown pre 2010 are for growth trend purposes only; these data are excluded from totals as these are already included in their former Services sector of Motoring (now known as Vehicle Sales & Service)

Table 2C Card expenditure statistics (seasonally adjusted)

Services^{1 and 2}

		Number of purchase transactions (millions)																		Total services		
		Vehicle Sales & Services ³			Entertainment			Hotels			Travel			Financial			Other services			Number of purchases		
		Credit	Debit	Total	Credit	Debit	Total	Credit	Debit	Total	Credit	Debit	Total	Credit	Debit	Total	Credit	Debit	Total	Credit	Debit	Total
Annual																						
	2009	236	658	894	205	593	798	37	31	68	101	183	283	32	112	144	167	471	638	777	2,048	2,826
	2010	76	204	280	221	726	947	37	34	72	97	202	299	32	129	161	163	487	651	627	1,783	2,410
	2011	51	89	139	268	882	1,150	51	43	94	116	236	352	33	144	177	186	535	721	704	1,929	2,634
	2012	50	93	144	309	1,061	1,370	53	48	100	123	265	389	30	160	190	187	564	750	751	2,192	2,943
	2013	53	104	157	353	1,220	1,573	54	53	108	130	284	414	29	173	202	196	592	788	815	2,426	3,241
Monthly																						
	2013																					
	Feb	4	8	12	28	96	124	4	4	9	11	23	33	2	14	17	16	48	64	65	193	258
	Mar	4	8	13	28	96	125	4	4	9	11	23	34	2	14	17	16	49	65	66	195	260
	Apr	4	8	13	28	97	126	4	4	9	11	23	34	2	14	17	16	49	65	66	196	263
	May	4	9	13	29	98	127	5	4	9	11	23	34	2	14	17	16	49	65	67	198	265
	Jun	4	9	13	29	100	129	5	4	9	11	24	34	2	14	17	16	49	65	68	200	268
	Jul	4	9	13	29	101	131	5	4	9	11	24	35	2	15	17	16	49	66	68	202	270
	Aug	4	9	13	30	103	133	5	4	9	11	24	35	2	15	17	16	50	66	68	205	273
	Sep	4	9	13	30	105	135	5	5	9	11	24	35	2	15	17	17	50	66	69	207	276
	Oct	5	9	14	31	107	138	5	5	9	11	24	35	2	15	17	17	50	67	70	210	280
	Nov	5	9	14	31	109	140	5	5	9	11	24	36	2	15	17	17	51	67	71	213	284
	Dec	5	9	14	32	112	143	5	5	9	11	25	36	2	15	17	17	51	68	71	216	287
	2014																					
	Jan	5	9	14	32	114	146	5	5	9	11	25	36	2	15	17	17	51	68	72	219	291
	Feb	5	10	14	33	116	148	5	5	9	11	25	36	2	15	17	17	51	68	72	221	293
Year-on-year growth rates (percentages)																						
Annual																						
	2009	-4.8	5.0	2.3	4.2	18.8	14.7	1.1	13.8	6.6	-2.0	8.6	4.6	-0.3	1.0	0.7	0.1	5.0	3.7	-0.7	8.9	6.1
	2010	-67.9	-69.0	-68.7	7.7	22.5	18.7	1.7	10.1	5.6	-3.1	10.3	5.6	0.4	15.3	12.0	-2.0	3.4	2.0	-19.3	-13.0	-14.7
	2011	-33.0	-56.6	-50.2	21.0	21.5	21.4	36.6	23.9	30.5	19.2	16.9	17.6	3.2	11.7	10.0	13.7	9.9	10.8	12.3	8.2	9.3
	2012	-1.0	5.4	3.0	15.2	20.3	19.1	3.4	11.2	6.9	6.4	12.5	10.5	-10.0	11.0	7.1	0.4	5.3	4.1	6.7	13.6	11.7
	2013	5.5	11.3	9.3	14.2	15.0	14.8	3.3	12.2	7.5	5.2	7.0	6.4	-3.7	8.1	6.3	5.1	5.0	5.0	8.4	10.7	10.1
Monthly																						
	2013																					
	Feb	-0.3	5.3	3.3	15.3	19.5	18.5	0.1	9.0	4.2	5.8	10.4	8.9	-10.9	9.7	6.0	0.0	3.8	2.8	6.3	12.5	10.8
	Mar	0.1	5.5	3.5	15.0	18.8	17.9	-1.2	8.4	3.2	5.3	9.5	8.1	-10.9	9.1	5.5	0.0	3.2	2.4	6.1	11.8	10.3
	Apr	0.5	5.8	3.9	14.7	18.0	17.3	-2.1	8.3	2.7	4.7	8.8	7.5	-10.5	8.6	5.2	0.2	2.9	2.2	5.9	11.3	9.9
	May	1.0	6.2	4.3	14.5	17.3	16.6	-2.5	8.5	2.6	4.3	8.4	7.1	-9.8	8.3	5.2	0.5	2.8	2.2	6.0	10.9	9.6
	Jun	1.5	6.6	4.8	14.4	16.6	16.1	-2.4	9.1	2.9	4.2	8.1	6.8	-8.9	8.2	5.3	1.1	2.9	2.4	6.2	10.7	9.5
	Jul	2.0	7.2	5.3	14.4	16.1	15.7	-1.9	9.7	3.5	4.2	7.8	6.7	-7.8	8.2	5.5	1.7	3.1	2.7	6.5	10.5	9.5
	Aug	2.6	7.7	5.9	14.4	15.8	15.5	-1.0	10.2	4.2	4.4	7.5	6.5	-6.6	8.3	5.8	2.4	3.3	3.1	6.9	10.4	9.5
	Sep	3.2	8.4	6.6	14.4	15.4	15.2	-0.1	10.7	5.0	4.7	7.1	6.3	-5.6	8.3	6.0	3.1	3.5	3.4	7.3	10.4	9.6
	Oct	3.9	9.2	7.3	14.3	15.2	15.0	1.0	11.2	5.8	4.8	6.9	6.2	-4.8	8.3	6.2	3.8	3.9	3.9	7.7	10.4	9.7
	Nov	4.7	10.2	8.3	14.2	15.0	14.8	2.1	11.6	6.6	5.0	6.8	6.2	-4.1	8.3	6.3	4.5	4.4	4.4	8.0	10.5	9.9
	Dec	5.5	11.3	9.3	14.2	15.0	14.8	3.3	12.2	7.5	5.2	7.0	6.4	-3.7	8.1	6.3	5.1	5.0	5.0	8.4	10.7	10.1
	2014																					
	Jan	6.4	12.4	10.3	14.3	15.2	15.0	4.5	12.7	8.4	5.4	7.3	6.7	-3.4	7.8	6.1	5.6	5.5	5.5	8.8	11.1	10.5
	Feb	7.2	13.4	11.2	14.5	15.7	15.4	5.6	13.2	9.2	5.6	7.7	7.0	-3.3	7.5	5.8	6.0	5.9	5.9	9.2	11.5	10.9

1 There was a step change in 2011 due to a change in reporting population

2 With effect of January 2014 the seasonal adjustment methodology using X12 ARIMA was reviewed and changed. Trading days and leap years have been incorporated into the monthly seasonal adjustment process.

3 With effect of January 2010 Automotive Fuels was published as a separate sub-sector in retail sales. See tables 2A and 2B

Table 2D Card expenditure statistics (seasonally adjusted)

Services^{1 and 2}

Value of purchase transactions (£ millions)

	Value of purchase transactions (£ millions)																		Total services			
	Vehicle Sales & Services ³			Entertainment			Hotels			Travel			Financial			Other services			Value of purchases			
	Credit	Debit	Total	Credit	Debit	Total	Credit	Debit	Total	Credit	Debit	Total	Credit	Debit	Total	Credit	Debit	Total	Credit	Debit	Total	
Annual																						
2009	14,659	35,502	50,161	9,618	14,610	24,228	5,303	2,723	8,026	13,085	14,122	27,207	5,735	32,825	38,561	15,165	37,034	52,199	63,565	136,816	200,381	
2010	8,749	24,810	33,559	9,957	17,044	27,001	5,502	3,086	8,588	12,803	15,855	28,658	5,911	39,435	45,346	15,872	40,921	56,793	58,793	141,152	199,945	
2011	7,779	22,460	30,239	14,079	20,678	34,757	8,637	3,847	12,484	16,314	18,452	34,766	7,185	46,507	53,691	18,371	46,783	65,153	72,364	158,727	231,091	
2012	7,541	23,552	31,094	14,684	22,774	37,458	8,856	4,310	13,166	16,559	20,668	37,227	5,452	50,013	55,465	18,632	48,895	67,527	71,725	170,212	241,937	
2013	7,660	25,616	33,276	15,658	24,547	40,204	9,254	4,777	14,030	17,444	22,124	39,568	5,118	55,104	60,222	19,914	57,099	77,013	75,048	189,267	264,314	
Monthly																						
2013	Feb	630	2,017	2,647	1,268	1,982	3,250	734	386	1,120	1,409	1,811	3,220	445	4,513	4,958	1,594	4,516	6,109	6,078	15,225	21,304
	Mar	636	2,056	2,692	1,272	1,982	3,254	747	388	1,135	1,420	1,823	3,243	441	4,539	4,980	1,608	4,556	6,164	6,124	15,345	21,469
	Apr	640	2,095	2,735	1,279	1,993	3,272	760	390	1,150	1,436	1,838	3,273	434	4,539	4,973	1,624	4,606	6,230	6,173	15,460	21,633
	May	641	2,120	2,762	1,287	2,009	3,296	771	390	1,161	1,450	1,848	3,298	427	4,534	4,961	1,641	4,692	6,333	6,216	15,594	21,810
	Jun	640	2,132	2,772	1,298	2,026	3,324	777	393	1,170	1,459	1,845	3,304	420	4,539	4,959	1,656	4,774	6,431	6,250	15,708	21,959
	Jul	637	2,137	2,775	1,309	2,041	3,349	781	396	1,177	1,464	1,830	3,293	417	4,572	4,989	1,669	4,829	6,498	6,276	15,805	22,081
	Aug	636	2,145	2,782	1,319	2,058	3,377	784	401	1,184	1,467	1,817	3,284	416	4,636	5,052	1,680	4,855	6,535	6,302	15,912	22,214
	Sep	638	2,166	2,804	1,329	2,079	3,408	788	406	1,193	1,473	1,826	3,298	417	4,696	5,114	1,693	4,870	6,563	6,337	16,043	22,380
	Oct	642	2,205	2,847	1,337	2,103	3,440	793	410	1,203	1,480	1,857	3,337	419	4,724	5,143	1,707	4,899	6,606	6,377	16,199	22,576
	Nov	646	2,252	2,898	1,344	2,127	3,471	797	414	1,212	1,488	1,896	3,384	419	4,707	5,127	1,722	4,972	6,694	6,418	16,369	22,786
	Dec	650	2,299	2,949	1,351	2,157	3,508	800	419	1,218	1,494	1,929	3,423	419	4,654	5,073	1,736	5,082	6,818	6,450	16,539	22,989
2014	Jan	652	2,339	2,990	1,356	2,197	3,553	799	422	1,221	1,495	1,951	3,446	418	4,583	5,001	1,746	5,199	6,945	6,465	16,691	23,156
	Feb	650	2,366	3,016	1,361	2,236	3,597	796	427	1,223	1,491	1,959	3,450	416	4,494	4,910	1,752	5,302	7,054	6,467	16,784	23,251

Year-on-year growth rates (percentages)²

Annual																						
2009	-5.1	7.6	3.5	-0.2	12.7	7.2	-3.2	11.9	1.4	-5.0	3.1	-1.0	-2.4	11.2	8.9	3.2	1.0	1.6	-2.1	6.6	3.7	
2010	-40.3	-30.1	-33.1	3.5	16.7	11.4	3.8	13.3	7.0	-2.2	12.3	5.3	3.1	20.1	17.6	4.7	10.5	8.8	-7.5	3.2	-0.2	
2011	-11.1	-9.5	-9.9	41.4	21.3	28.7	57.0	24.7	45.4	27.4	16.4	21.3	21.5	17.9	18.4	15.7	14.3	14.7	23.1	12.5	15.6	
2012	-3.1	4.9	2.8	4.3	10.1	7.8	2.5	12.0	5.5	1.5	12.0	7.1	-24.1	7.5	3.3	1.4	4.5	3.6	-0.9	7.2	4.7	
2013	1.6	8.8	7.0	6.6	7.8	7.3	4.5	10.8	6.6	5.3	7.0	6.3	-6.1	10.2	8.6	6.9	16.8	14.0	4.6	11.2	9.2	
Monthly																						
2013	Feb	-2.6	4.7	2.8	4.5	9.3	7.4	-1.1	10.3	2.5	1.9	10.8	6.7	-25.8	7.8	3.4	0.5	4.0	3.0	-1.5	6.9	4.3
	Mar	-2.4	4.6	2.8	4.6	8.9	7.1	-2.4	9.8	1.4	2.0	10.2	6.5	-23.7	7.9	3.9	0.5	4.4	3.3	-1.3	6.9	4.3
	Apr	-2.3	4.8	3.0	4.7	8.6	7.0	-3.3	9.5	0.7	2.3	10.0	6.4	-21.6	8.0	4.3	0.8	5.3	4.0	-1.0	7.1	4.6
	May	-2.0	5.1	3.3	4.9	8.4	7.0	-3.5	9.4	0.5	2.8	9.9	6.6	-19.6	8.1	4.8	1.3	6.8	5.2	-0.5	7.6	5.1
	Jun	-1.6	5.5	3.7	5.3	8.2	7.1	-3.1	9.6	0.8	3.3	9.9	6.9	-17.5	8.3	5.3	1.9	8.8	6.9	0.2	8.3	5.8
	Jul	-1.2	5.9	4.1	5.7	8.2	7.2	-2.3	9.9	1.5	3.9	9.6	7.0	-15.4	8.7	6.0	2.7	10.9	8.6	1.0	9.0	6.6
	Aug	-0.8	6.2	4.5	6.1	8.2	7.3	-1.3	10.2	2.4	4.4	9.0	6.9	-13.3	9.2	6.7	3.6	12.8	10.2	1.8	9.7	7.3
	Sep	-0.2	6.5	4.9	6.3	8.1	7.4	0.0	10.5	3.4	4.7	8.3	6.7	-11.2	9.8	7.6	4.4	14.2	11.5	2.6	10.2	7.9
	Oct	0.3	7.0	5.4	6.5	8.1	7.4	1.4	10.7	4.4	4.9	7.7	6.4	-9.2	10.3	8.2	5.3	15.2	12.5	3.3	10.6	8.4
	Nov	0.9	7.8	6.1	6.5	7.9	7.4	2.9	10.8	5.5	5.1	7.3	6.3	-7.6	10.4	8.6	6.1	16.0	13.3	4.0	11.0	8.9
	Dec	1.6	8.8	7.0	6.6	7.8	7.3	4.5	10.8	6.6	5.3	7.0	6.3	-6.1	10.2	8.6	6.9	16.8	14.0	4.6	11.2	9.2
2014	Jan	2.1	9.9	8.0	6.8	7.9	7.4	6.0	10.8	7.6	5.7	7.0	6.4	-4.9	9.6	8.2	7.6	17.4	14.7	5.3	11.3	9.6
	Feb	2.5	10.9	8.9	7.0	8.2	7.7	7.3	10.8	8.5	5.9	7.0	6.5	-3.7	8.6	7.4	8.2	17.9	15.2	5.8	11.4	9.8

¹ There was a step change in 2011 due to a change in reporting population

² With effect of January 2014 the seasonal adjustment methodology using X12 ARIMA was reviewed and changed. Trading days and leap years have been incorporated into the monthly seasonal adjustment process.

³ With effect of January 2010 Automotive Fuels was published as a separate sub-sector in retail sales. See tables 2A and 2B

Table 3A Card expenditure statistics (not seasonally adjusted)

Number of credit card transactions

Detailed sector breakdown - services sectors (continued, not seasonally adjusted)

	February 2013	March 2013	April 2013	May 2013	June 2013	July 2013	August 2013	September 2013	October 2013	November 2013	December 2013	January 2014	February 2014	Total (latest 12 months)
Telecoms	1,788,471	1,926,370	2,008,061	1,952,321	1,863,297	2,030,451	1,957,400	1,991,756	2,037,282	1,932,087	1,992,186	1,957,337	1,737,496	23,386,044
Utilities	248,441	449,284	384,438	397,801	355,259	385,297	355,440	372,424	404,266	361,679	358,992	395,102	375,005	4,594,987
Contractors (residential & commercial)	265,390	257,518	267,615	272,941	249,244	280,760	263,823	272,471	301,694	287,437	238,202	264,917	254,564	3,211,186
Gardening services	36,966	49,193	68,914	82,824	67,952	61,476	51,862	46,834	47,954	47,483	61,863	34,612	37,552	658,519
Veterinary services	643,510	553,594	584,575	607,799	579,700	662,903	663,843	617,063	654,717	605,735	590,999	618,075	561,027	7,300,030
Photocopying & printing	293,311	265,328	286,438	261,551	241,239	253,464	249,200	273,726	310,710	320,936	344,367	298,378	237,636	3,342,973
Photographic studios	99,267	99,736	104,091	116,518	122,589	144,646	109,804	108,821	145,031	150,555	137,012	88,093	86,768	1,413,664
Beauty & barber shops	1,370,428	1,454,447	1,503,101	1,615,705	1,556,995	1,716,842	1,607,502	1,623,249	1,573,468	1,609,096	2,041,008	1,458,788	1,389,438	19,049,639
Employment agencies	26,870	31,346	30,436	27,665	25,191	29,770	28,316	26,477	29,037	26,698	23,239	22,428	21,330	321,933
Counselling services	5,697	6,922	6,498	6,157	6,078	6,617	6,270	6,485	6,576	5,798	4,636	5,896	5,458	73,391
Legal services	38,822	59,789	57,342	76,349	37,594	78,636	40,894	73,516	60,488	41,321	66,712	58,778	39,898	691,317
Laundry & cleaning	156,858	164,799	183,297	201,407	200,717	222,004	188,185	196,271	206,888	193,682	181,537	183,012	163,424	2,285,223
Funeral services	12,138	12,915	12,921	12,957	11,543	12,360	11,059	10,783	12,250	11,806	11,689	12,826	11,994	145,103
Medical services	1,232,490	1,159,297	1,141,235	1,249,898	1,172,932	1,274,330	1,154,617	1,194,498	1,328,013	1,263,840	1,127,482	1,309,962	1,191,535	14,567,639
Moving & courier services	359,231	372,815	386,953	431,937	418,551	435,212	381,354	391,457	448,352	435,760	418,601	386,531	384,439	4,891,962
Repair shops (not auto)	144,362	63,821	58,123	63,663	57,418	66,113	61,440	60,133	66,033	65,551	63,803	66,667	58,736	751,501
Accounting services	33,726	31,420	28,230	28,707	26,774	29,496	32,711	35,968	38,928	37,146	36,013	45,387	35,026	405,806
Advertising, consultancy & PR	82,761	78,709	98,742	86,779	79,670	86,779	82,752	79,424	82,082	83,131	61,132	70,899	64,049	957,370
Computer programming	1,180,949	1,306,286	1,260,313	1,350,347	1,257,317	1,352,741	1,249,594	1,397,593	1,504,643	1,590,037	2,009,671	1,362,008	1,174,166	16,814,716
Farming services	114,280	96,751	105,026	108,725	100,834	107,924	99,169	98,637	102,921	105,644	120,129	103,931	97,123	1,246,814
Miscellaneous professional services	988,087	875,676	949,812	945,189	865,059	930,223	900,722	946,325	967,131	926,776	875,755	935,356	880,584	10,998,608
Engineering services	56,561	48,141	56,881	52,044	51,699	58,159	51,674	50,428	55,696	50,653	44,337	50,440	48,815	618,967
Marina services	33,835	40,659	65,685	76,424	74,297	107,982	101,596	62,551	46,742	36,912	36,047	34,776	31,179	714,850
Wrecking & salvage yards	3,962	3,670	3,886	4,284	4,059	4,443	3,982	3,633	3,894	3,365	2,530	3,544	3,178	44,468
Pest control	2,342	2,833	2,857	3,168	2,899	3,939	3,599	2,996	3,426	2,786	2,363	2,526	2,287	35,679
Educational establishments	642,538	597,361	517,258	567,916	537,608	542,482	455,560	785,644	752,379	704,570	571,025	776,327	629,403	7,437,533
Child care services	21,518	18,347	19,930	18,394	15,590	17,279	18,590	17,732	21,442	18,613	18,333	23,664	22,588	230,502
Social, political & religious organisations	903,243	1,228,690	1,025,691	1,356,107	1,234,677	1,345,963	1,277,436	1,363,567	1,347,088	1,526,509	1,327,738	1,183,485	1,101,393	15,318,344
Government services	2,113,236	2,130,631	2,186,840	2,362,713	2,258,583	2,449,924	2,244,558	2,298,025	2,412,727	2,221,893	2,103,513	2,408,356	2,342,378	27,420,141
Miscellaneous services	1,454,452	1,368,082	2,240,045	1,379,833	1,299,076	1,467,129	1,327,713	1,337,170	1,416,482	1,425,366	1,968,180	1,412,100	1,343,621	17,984,797
Commercial equipment	385,808	902,142	878,844	926,106	854,846	910,074	892,327	979,572	1,015,092	995,875	948,365	987,945	868,457	11,159,645
Other services	14,739,550	15,656,572	16,524,078	16,647,451	15,629,287	17,075,418	15,872,992	16,625,229	17,403,432	17,088,740	17,787,459	16,562,146	15,200,547	198,073,351
Total services	62,338,395	64,311,308	65,976,906	70,703,069	66,352,730	73,392,940	69,924,790	69,782,568	72,310,058	69,194,943	70,518,723	68,747,894	65,962,469	827,178,398
TOTAL	183,838,145	194,528,155	193,739,411	216,328,629	205,278,279	231,087,375	214,382,708	212,830,944	219,808,091	223,264,099	250,471,267	207,496,933	192,622,510	2,561,838,401

Table 3B Card expenditure statistics (not seasonally adjusted)

Value of credit card transactions

Detailed sector breakdown - services sectors (continued, not seasonally adjusted)

£	February 2013	March 2013	April 2013	May 2013	June 2013	July 2013	August 2013	September 2013	October 2013	November 2013	December 2013	January 2014	February 2014	Total (latest 12 months)
Telecoms	80,750,789	81,006,548	81,752,897	86,217,569	80,832,382	88,500,373	86,233,671	89,871,129	97,593,362	91,605,961	92,488,707	92,435,243	79,909,314	1,048,447,156
Utilities	51,052,068	90,243,556	80,469,639	70,766,653	61,756,902	64,187,210	56,392,681	71,185,095	65,327,296	55,082,315	55,124,731	66,422,427	64,564,568	801,523,073
Contractors (residential & commercial)	75,309,056	75,618,960	73,969,739	82,275,212	75,711,516	83,751,304	79,291,180	84,729,261	91,393,171	89,360,957	75,210,216	81,295,735	78,149,649	970,756,900
Gardening services	4,429,002	5,488,265	6,416,217	8,959,384	6,671,929	6,123,235	5,262,106	5,904,809	4,306,455	5,950,008	4,230,527	3,610,208	5,122,954	68,046,097
Veterinary services	56,726,187	50,348,574	53,576,703	55,899,068	53,732,816	60,290,487	59,554,710	56,402,410	59,711,544	55,512,605	53,316,744	58,508,144	53,099,520	669,953,325
Photocopying & printing	41,111,193	36,791,687	34,509,303	36,185,090	34,053,063	34,713,686	35,640,936	36,851,687	41,641,113	39,811,281	36,458,049	37,280,743	33,206,000	437,142,638
Photographic studios	7,552,681	7,111,787	7,513,826	7,686,858	7,677,701	9,185,796	7,474,123	7,603,455	8,593,401	9,629,806	9,095,336	6,261,586	6,047,939	93,881,614
Beauty & barber shops	74,410,432	80,003,887	81,403,647	87,311,193	83,834,623	90,568,016	85,292,648	83,242,597	86,391,523	88,685,911	106,567,431	77,742,629	76,367,195	1,027,411,300
Employment agencies	23,932,455	28,516,933	24,565,085	24,782,463	28,920,730	26,933,153	25,761,253	29,767,087	27,872,176	27,872,176	24,922,636	19,759,846	22,453,643	308,868,887
Counselling services	1,123,208	1,169,968	1,142,244	1,154,998	864,173	950,697	1,236,494	1,044,845	1,072,618	1,145,066	1,038,653	1,335,256	1,290,479	13,445,491
Legal services	20,997,750	21,874,630	19,742,046	22,402,051	20,143,558	22,855,586	21,470,962	21,773,263	23,331,020	21,678,304	19,518,609	22,115,102	21,932,750	258,837,881
Laundry & cleaning	5,430,268	5,653,781	6,254,639	6,965,989	6,850,546	7,636,844	6,669,304	6,846,083	7,183,044	6,903,605	6,310,790	6,292,255	5,542,432	79,109,312
Funeral services	13,267,188	14,989,400	14,250,819	13,872,223	12,089,510	13,133,184	11,812,162	11,736,961	13,872,840	14,149,015	14,102,176	15,159,458	14,280,785	163,448,533
Medical services	166,469,885	162,507,666	156,414,951	173,254,864	162,313,183	175,069,265	156,517,872	161,718,614	184,229,180	175,464,791	153,067,271	174,090,678	164,585,099	1,999,233,434
Moving & courier services	35,248,356	39,054,373	38,605,999	41,158,875	40,876,389	45,508,150	39,098,386	39,844,087	45,875,203	42,301,459	40,823,203	41,338,663	38,423,107	492,907,894
Repair shops (not auto)	11,461,239	9,505,263	9,473,821	10,330,371	9,667,660	11,203,334	9,844,847	10,145,250	10,096,639	10,157,391	10,240,642	10,244,301	9,057,588	119,967,107
Accounting services	8,071,199	7,729,907	6,404,776	6,419,240	6,132,826	6,478,360	6,550,649	6,773,782	7,781,778	7,721,110	7,597,801	9,721,220	8,038,148	87,349,597
Advertising, consultancy & PR	9,191,051	9,009,806	9,908,015	9,951,409	8,327,609	9,146,672	7,834,617	8,203,546	8,593,682	8,028,212	6,512,091	8,178,067	7,155,563	100,849,289
Computer programming	75,082,966	85,189,202	80,399,058	120,760,312	84,867,513	87,158,397	100,476,099	89,075,528	96,470,856	98,253,750	117,895,489	89,030,660	77,173,474	1,126,750,338
Farming services	10,470,099	9,689,575	9,921,924	10,616,737	10,039,638	11,388,989	10,613,297	10,467,614	11,106,085	10,791,595	11,078,418	10,557,430	9,819,920	126,091,222
Miscellaneous professional services	162,398,755	150,334,786	154,716,945	166,440,535	153,800,917	163,085,183	163,781,037	175,021,105	163,073,409	145,174,348	135,820,634	167,379,520	145,534,552	1,884,162,971
Engineering services	17,408,454	15,669,638	17,678,626	16,335,663	15,264,447	16,556,080	15,188,188	14,812,211	16,285,307	14,613,272	13,625,452	14,707,616	14,345,073	185,081,573
Marina services	6,987,340	9,850,282	11,010,430	11,246,087	10,564,036	13,326,157	11,311,648	8,222,346	7,186,073	5,496,553	5,427,560	6,990,813	5,927,051	106,559,036
Wrecking & salvage yards	749,239	734,309	748,555	869,044	837,178	903,496	855,994	872,093	885,622	718,845	540,929	794,461	696,363	9,456,889
Pest control	541,268	641,358	572,521	619,393	472,808	596,394	544,015	619,276	593,733	505,576	460,647	524,890	544,576	6,695,187
Educational establishments	115,265,077	99,223,868	122,122,117	111,980,902	99,606,861	113,419,428	148,496,229	312,295,739	194,172,993	108,210,062	99,757,683	199,416,619	113,421,873	1,722,124,374
Child care services	2,160,174	2,017,328	2,106,675	2,262,509	2,188,780	2,490,953	2,178,294	2,265,255	2,472,815	2,241,838	2,138,260	2,651,321	2,329,576	27,343,604
Social, political & religious organisations	72,393,422	95,957,075	68,569,821	75,303,699	69,015,732	78,655,030	73,051,946	83,680,820	87,278,895	94,417,871	84,785,581	99,606,978	78,921,455	989,244,903
Government services	264,574,998	193,605,613	197,610,364	242,222,499	225,479,917	263,214,014	252,260,711	207,743,546	230,522,757	212,256,280	218,974,189	336,231,048	293,173,193	2,873,294,131
Miscellaneous services	91,160,717	81,286,634	121,437,741	83,678,601	77,539,522	88,144,010	81,376,749	87,775,118	87,308,740	85,045,871	98,638,690	84,484,050	77,638,485	1,054,354,211
Commercial equipment	93,478,987	124,472,578	119,548,348	130,456,044	124,084,698	132,251,768	125,950,579	128,015,165	139,801,934	132,417,825	117,595,887	130,031,013	120,854,976	1,525,480,815
Other services	1,599,205,503	1,595,297,237	1,612,817,491	1,718,385,535	1,569,930,315	1,729,394,828	1,689,195,287	1,850,503,943	1,823,920,175	1,661,203,659	1,623,365,032	1,874,197,980	1,629,607,300	20,377,818,782
Total services	5,863,777,758	6,147,064,950	6,210,367,664	6,817,058,015	6,372,819,030	6,836,875,214	6,385,585,611	6,549,767,976	6,543,256,081	5,954,199,318	5,712,683,532	6,518,159,626	5,923,244,232	75,971,081,249
TOTAL	11,844,900,927	12,604,416,430	12,645,224,259	14,023,560,945	13,096,352,462	14,240,977,070	13,390,014,496	13,541,544,948	13,788,057,915	13,620,574,454	14,577,110,119	13,129,139,250	11,900,920,532	160,557,892,880

Table 3C Card expenditure statistics (not seasonally adjusted)

Number of debit card transactions

Detailed sector breakdown - services sectors (not seasonally adjusted)

	February 2013	March 2013	April 2013	May 2013	June 2013	July 2013	August 2013	September 2013	October 2013	November 2013	December 2013	January 2014	February 2014	Total (latest 12 months)
Auto rental	423,491	482,036	483,514	523,682	501,996	577,243	557,777	498,134	517,988	471,383	461,894	454,600	451,410	5,981,657
Auto parts & accessories	1,585,773	1,563,576	1,584,907	1,617,193	1,517,743	1,690,518	1,549,472	1,482,669	1,540,011	1,513,042	1,371,648	1,499,221	1,490,642	18,420,642
Auto services	3,843,490	3,352,765	3,332,098	3,921,113	3,840,284	4,213,611	3,961,649	4,063,540	4,421,938	4,325,723	4,586,904	4,193,395	4,138,412	48,351,432
Auto repair shops	1,653,135	1,780,174	1,634,699	1,750,471	1,665,669	1,849,378	1,692,522	1,672,303	1,761,197	1,655,639	1,466,292	1,704,640	1,670,663	20,303,647
Service stations	0	0	0	0	0	0	0	0	0	0	0	0	0	0
Vehicle sales	1,132,712	1,139,653	1,168,966	1,210,826	1,136,144	1,268,469	1,175,654	1,143,899	1,086,278	983,254	872,981	1,042,666	1,040,754	13,269,544
Vehicle Sales & Services	8,638,601	8,318,204	8,204,184	9,023,285	8,661,836	9,599,219	8,937,074	8,860,545	9,327,412	8,949,041	8,759,719	8,894,522	8,791,881	106,326,922
Restaurants	51,386,055	54,588,222	54,463,103	60,204,782	56,312,683	61,305,013	60,575,958	59,708,345	63,760,719	63,027,311	65,601,268	59,350,203	62,087,330	720,984,937
Public houses	9,314,256	9,306,444	9,628,657	11,216,689	10,201,227	11,886,431	11,093,333	10,695,756	10,794,019	10,667,601	12,689,124	10,751,670	11,791,199	130,722,150
Catering services	1,342,647	1,394,434	1,335,013	1,530,115	1,433,908	1,548,396	1,478,991	1,561,808	1,863,468	1,895,032	1,728,899	1,734,223	1,829,422	19,333,709
Video stores	556,313	593,990	616,404	344,650	334,896	318,552	390,601	624,193	380,396	447,308	311,703	198,588	182,634	4,743,915
Cinema, theatre & dance	4,633,461	3,729,965	4,782,763	5,567,210	4,541,112	5,027,141	5,637,914	4,135,979	4,768,837	5,606,455	6,022,338	5,558,432	5,114,323	60,492,469
Concerts & entertainers	154,514	154,879	162,550	151,462	131,447	119,481	163,355	141,321	177,875	170,571	169,888	159,777	180,527	1,883,133
Tourist attractions	681,773	540,408	1,088,922	1,004,205	865,106	1,232,206	1,802,302	945,489	870,049	584,727	557,832	459,281	636,561	10,587,088
Amusement parks	164,275	111,122	281,204	267,531	271,707	352,172	507,622	269,535	252,891	140,141	88,580	81,873	130,790	2,755,168
Aquariums	62,580	53,221	99,901	92,469	94,178	126,161	168,193	92,852	74,916	52,130	44,242	54,512	81,936	1,034,711
Sports & games establishments	2,974,039	2,932,208	3,137,079	3,106,897	2,796,145	2,754,774	3,268,650	2,969,255	3,094,336	2,778,843	3,241,403	3,646,461	3,435,505	37,161,556
Professional sports clubs	215,839	178,716	234,360	257,523	185,094	258,392	278,035	223,763	218,100	217,694	269,481	219,775	202,934	2,743,867
Gambling	17,881,311	20,744,897	22,628,628	19,627,778	18,369,678	18,086,390	19,057,100	20,068,703	21,335,951	19,766,979	22,660,450	23,133,686	21,534,909	247,015,149
Personal services	417,562	440,072	502,456	502,402	460,738	497,745	461,906	436,599	445,625	368,826	389,121	394,394	394,688	5,099,572
Miscellaneous entertainment	767,375	670,136	880,587	816,475	702,707	1,286,023	1,112,756	743,412	802,071	643,017	598,712	766,700	840,306	9,862,902
Entertainment	90,552,000	95,438,714	99,646,627	104,690,188	96,700,626	104,798,877	105,996,716	102,817,010	108,839,253	106,366,635	114,373,041	106,509,575	108,443,064	1,254,420,326
Hotels	4,334,744	4,034,039	4,329,132	4,616,808	4,439,723	5,091,596	5,128,864	4,465,880	4,579,835	4,242,980	4,322,729	4,291,520	4,396,419	53,939,525
Airlines	1,378,680	1,358,240	1,398,459	1,659,233	1,556,133	1,665,068	1,611,641	1,390,724	1,560,545	1,217,459	1,121,761	1,825,452	1,494,520	17,859,235
Airport terminals	26,377	31,868	41,098	43,217	47,363	66,721	60,254	58,234	46,307	34,352	34,982	36,677	38,279	539,352
Railways	15,680,302	16,143,037	17,230,363	17,345,000	16,263,274	17,974,745	15,766,535	17,001,197	18,348,074	17,454,317	17,466,653	16,284,432	15,749,958	203,027,585
Buses	1,561,339	1,677,549	1,708,868	1,912,331	1,896,390	2,079,562	1,985,312	2,229,313	2,388,162	2,473,044	2,256,666	2,607,204	2,606,014	25,820,415
Sea travel	130,622	134,277	145,364	172,534	179,982	225,367	243,457	167,130	151,048	129,792	126,243	126,938	126,142	1,928,274
Travel agents	1,664,541	1,811,321	1,822,196	1,874,227	1,758,247	1,837,386	1,658,703	1,509,253	1,424,372	1,144,591	1,107,435	2,168,672	1,820,965	19,937,368
Timeshares	6,101	35,950	28,111	4,542	4,098	4,801	5,205	5,077	4,809	3,962	3,917	6,867	5,024	112,363
Camping grounds	333,713	439,623	634,257	754,953	709,802	990,839	1,120,503	584,973	453,379	234,727	209,861	292,283	345,266	6,770,466
Miscellaneous travel	947,083	934,646	1,001,646	1,043,066	1,025,094	1,145,793	1,193,771	1,062,374	1,131,610	1,050,654	1,044,351	972,890	1,005,696	12,611,591
Travel	21,728,758	22,566,511	24,010,362	24,809,103	23,440,383	25,990,282	23,645,381	24,008,275	25,508,306	23,742,898	23,371,869	24,321,415	23,191,864	288,606,649
Telegraph services / Wire transfer money order	59,782	64,859	69,256	77,413	80,830	85,891	88,110	75,991	95,600	102,388	114,567	110,422	112,626	1,077,953
Insurance services	2,847,012	3,175,540	3,077,061	3,246,698	3,170,640	3,770,244	3,565,295	3,534,555	3,559,212	3,016,007	2,804,116	3,253,960	3,104,990	39,278,318
Fis - cash disbursements (auto & manual)	2,889	3,454	3,341	5,774	6,601	7,589	7,526	7,346	7,563	6,299	9,471	9,731	12,512	87,207
Fis - merchandise & services	9,073,002	9,728,708	8,859,562	9,569,972	9,289,472	9,799,356	9,360,638	8,988,025	9,823,300	9,330,101	9,915,332	9,775,939	8,819,893	113,260,298
Non-Fis - foreign currency, travellers' cheques	601,536	741,842	791,771	860,909	892,020	957,718	951,998	929,240	671,022	550,810	563,103	608,549	657,622	9,176,604
Security brokers and dealers	166,833	161,334	173,001	139,250	115,877	100,387	117,018	162,477	904,873	147,183	115,370	154,917	128,688	2,420,375
Tax preparation services	1,253	1,189	1,021	1,089	912	1,055	842	766	781	679	482	803	728	10,347
Tax payments	18,721	130,401	126,514	26,780	23,796	29,619	26,172	104,077	26,061	23,254	22,664	24,170	20,813	584,321
Fines, bail and bond payments	698,045	507,093	460,759	510,023	483,068	527,452	548,572	502,140	589,209	572,121	556,486	579,224	554,418	6,390,565
Miscellaneous financial	137,419	136,822	162,271	181,617	169,263	192,271	175,469	160,869	165,878	153,488	133,058	133,508	138,989	1,903,503
Financial	13,606,492	14,651,242	13,724,557	14,619,525	14,232,479	15,471,582	14,841,640	14,465,486	15,843,499	13,902,330	14,234,649	14,651,223	13,551,279	174,189,491

Table 3C Card expenditure statistics (not seasonally adjusted)

Number of debit card transactions

Detailed sector breakdown - services sectors (continued, not seasonally adjusted)

	February 2013	March 2013	April 2013	May 2013	June 2013	July 2013	August 2013	September 2013	October 2013	November 2013	December 2013	January 2014	February 2014	Total (latest 12 months)
Telecoms	9,259,541	10,318,453	10,948,098	10,616,347	10,247,508	10,834,969	10,635,775	10,707,474	10,762,997	10,361,858	10,823,183	10,796,273	9,640,691	126,693,626
Utilities	2,110,407	2,637,881	1,979,506	2,118,022	1,920,198	2,123,788	1,975,231	2,087,333	2,231,554	2,046,557	2,026,921	2,160,247	2,008,142	25,315,380
Contractors (residential & commercial)	495,369	486,656	509,182	513,382	477,439	543,130	514,989	535,368	595,381	571,622	487,652	518,702	515,099	6,268,602
Gardening services	80,446	102,363	137,341	161,868	136,684	127,034	110,064	101,134	103,135	106,558	140,139	80,481	84,601	1,391,402
Veterinary services	1,812,484	1,530,916	1,583,014	1,638,905	1,563,070	1,807,626	1,807,849	1,678,998	1,804,102	1,642,146	1,573,620	1,667,526	1,555,093	19,852,865
Photocopying & printing	364,274	339,695	408,305	360,755	311,351	320,244	323,597	360,843	422,663	450,675	490,695	379,017	344,683	4,512,523
Photographic studios	317,321	314,166	318,825	355,410	369,459	406,925	345,757	332,692	416,809	434,175	425,439	290,150	298,775	4,308,582
Beauty & barber shops	4,359,868	4,749,183	4,878,805	5,177,444	4,941,979	5,354,871	5,070,196	4,803,960	4,938,620	4,883,155	6,264,809	4,577,956	4,584,394	60,225,372
Employment agencies	9,345	10,849	9,637	10,684	9,922	10,957	10,127	10,220	8,758	7,706	6,087	8,175	7,729	110,851
Counselling services	103,340	104,475	111,469	105,799	95,594	115,610	102,628	104,234	110,290	101,630	102,363	104,200	97,969	1,256,261
Legal services	155,595	158,718	146,430	164,711	153,657	173,971	157,791	161,550	173,706	159,215	138,924	166,110	162,750	1,917,533
Laundry & cleaning	384,937	406,917	447,108	477,896	472,117	513,810	447,929	477,514	505,303	476,758	450,422	445,445	411,576	5,532,795
Funeral services	27,444	28,132	27,015	28,833	26,315	28,361	25,741	25,656	28,878	27,402	27,063	30,559	29,043	332,998
Medical services	2,879,152	2,694,586	2,612,643	2,852,077	2,642,520	2,892,370	2,659,137	2,754,685	3,075,228	2,905,292	2,577,547	3,043,019	2,858,295	33,567,399
Moving & courier services	309,477	299,371	342,126	397,752	376,203	412,113	379,257	370,988	419,385	403,254	431,961	400,897	355,119	4,588,406
Repair shops (not auto)	382,446	113,452	104,904	111,864	102,602	116,578	112,966	109,336	119,242	116,177	123,568	115,713	109,494	1,355,896
Accounting services	258,154	265,959	290,561	293,544	269,612	307,007	289,958	302,302	330,579	297,327	286,223	352,835	302,307	3,588,214
Advertising, consultancy & PR	177,910	170,137	224,454	187,949	159,632	174,723	165,544	160,914	168,777	166,130	122,846	140,294	134,155	1,975,555
Computer programming	1,412,206	1,585,625	1,464,715	1,598,498	1,426,252	1,609,444	1,465,275	1,555,013	1,174,600	810,749	722,924	693,977	619,188	14,726,260
Farming services	299,945	257,788	272,359	278,923	264,218	283,831	265,824	267,204	277,436	283,639	322,474	286,159	274,343	3,334,198
Miscellaneous professional services	3,459,243	2,986,973	2,959,849	3,283,496	3,071,834	3,400,394	3,224,516	3,385,626	3,737,546	3,649,785	3,660,044	3,715,496	3,420,188	40,495,747
Engineering services	66,989	71,848	72,293	80,876	82,541	91,761	83,614	81,628	92,637	84,276	72,750	78,665	79,793	972,682
Marina services	54,929	64,452	97,537	112,610	108,090	155,282	150,618	96,065	75,527	62,697	64,701	57,173	57,058	1,101,810
Wrecking & salvage yards	9,839	9,642	8,996	11,078	10,770	11,792	10,969	10,079	10,503	9,930	7,728	9,686	9,963	121,136
Pest control	3,348	3,706	3,682	4,188	4,055	5,398	5,291	4,149	4,771	3,878	3,414	3,508	3,199	49,239
Educational establishments	2,490,662	2,148,566	1,711,095	2,247,889	1,671,538	1,380,528	1,011,992	2,373,647	3,085,454	2,915,945	2,183,997	2,853,111	2,632,963	26,216,725
Child care services	162,902	136,299	143,232	138,631	110,795	121,451	135,325	126,619	159,702	138,143	126,814	178,070	177,852	1,692,933
Social, political & religious organisations	1,938,757	2,654,740	2,101,181	2,772,085	2,495,102	2,696,220	2,540,438	2,775,127	2,842,365	2,920,141	2,504,065	2,245,172	2,239,170	30,785,806
Government services	6,220,164	6,132,219	6,465,951	7,171,745	6,734,617	7,459,792	7,088,713	6,901,496	7,460,728	6,662,824	6,573,169	7,664,360	6,993,114	83,308,728
Miscellaneous services	5,879,268	5,757,003	10,989,124	6,154,889	5,626,443	6,172,859	5,420,983	5,576,645	5,854,799	5,632,726	7,667,269	5,621,450	5,298,194	75,772,384
Commercial equipment	496,533	1,560,211	1,517,941	1,608,347	1,445,169	1,508,863	1,516,759	1,788,740	1,794,048	1,694,069	1,782,522	1,713,344	1,550,429	19,480,442
Other services	45,982,295	46,100,981	52,887,378	51,036,497	47,327,286	51,161,702	48,054,853	50,027,219	52,785,523	50,026,439	52,191,333	50,397,770	46,855,369	600,852,350
Total services	184,842,890	193,109,691	202,802,240	208,795,406	194,802,333	212,113,258	206,604,528	204,444,415	216,883,828	207,230,323	217,253,340	209,066,025	205,229,876	2,478,335,263
TOTAL	627,536,886	659,216,306	673,148,380	704,944,497	672,928,595	749,474,972	691,850,330	697,265,871	726,395,775	718,661,322	807,663,082	687,165,550	663,714,836	8,452,429,516

Table 3D Card expenditure statistics (not seasonally adjusted)

Value of debit card transactions

Detailed sector breakdown - services sectors (continued, not seasonally adjusted)

£	February 2013	March 2013	April 2013	May 2013	June 2013	July 2013	August 2013	September 2013	October 2013	November 2013	December 2013	January 2014	February 2014	Total (latest 12 months)
Telecoms	268,327,921	295,194,074	326,217,706	318,327,073	308,159,640	325,953,973	318,863,552	331,500,689	344,349,276	324,610,484	335,300,244	345,726,054	297,315,259	3,871,518,024
Utilities	249,391,603	443,057,826	370,977,264	274,720,536	236,208,371	243,340,943	211,864,154	361,247,555	238,970,304	211,318,563	208,503,419	240,602,317	240,985,029	3,281,796,281
Contractors (residential & commercial)	118,039,270	118,915,368	118,761,096	132,099,818	125,669,967	142,186,767	132,616,117	142,786,128	162,074,000	157,437,074	136,046,509	136,888,779	138,204,139	1,643,685,762
Gardening services	4,774,500	5,884,668	7,590,751	9,728,334	8,328,160	6,983,347	6,629,684	6,708,629	6,511,654	7,023,438	5,310,085	5,547,964	84,905,374	84,905,374
Veterinary services	99,496,837	88,992,952	93,006,230	97,030,301	92,813,100	106,770,141	105,868,551	98,863,501	106,376,752	96,671,387	91,432,644	101,290,708	94,039,813	1,173,156,080
Photocopying & printing	25,861,809	22,785,865	23,350,249	23,914,344	22,109,689	23,027,173	22,198,131	24,510,016	27,650,675	27,052,511	24,772,707	24,303,411	22,483,252	288,158,023
Photographic studios	10,427,291	10,776,401	11,574,301	12,068,635	11,836,607	14,208,429	11,473,080	11,919,235	13,685,262	14,902,237	14,639,440	9,639,804	10,078,351	146,801,782
Beauty & barber shops	173,233,690	188,608,065	192,553,773	203,899,445	193,193,265	208,892,500	199,288,960	191,830,130	197,448,331	196,898,423	243,837,821	177,500,706	183,206,172	2,377,157,591
Employment agencies	840,996	1,376,603	1,103,445	1,271,095	1,228,667	1,327,751	1,341,191	1,373,090	1,389,773	1,343,704	1,123,738	1,465,954	1,343,084	15,688,095
Counselling services	7,466,265	6,715,671	7,221,886	7,192,962	6,215,863	7,163,843	6,367,391	6,591,045	7,139,987	6,291,357	6,133,762	6,343,743	6,233,781	79,611,291
Legal services	76,684,352	81,265,612	75,795,588	85,226,270	82,589,028	95,350,242	85,623,673	86,933,676	94,087,433	86,455,698	74,329,018	82,465,721	77,494,849	1,007,616,808
Laundry & cleaning	9,839,682	10,361,619	11,521,309	12,463,251	12,425,070	13,790,216	12,129,176	12,884,521	13,628,609	12,850,200	12,026,171	11,792,698	10,587,970	146,460,810
Funeral services	31,577,356	33,392,078	31,111,487	33,834,667	30,212,241	32,347,227	29,821,711	30,091,089	35,345,234	34,682,847	34,291,569	39,094,876	37,326,159	401,551,185
Medical services	232,823,823	223,571,560	214,041,595	239,995,279	225,244,076	246,993,334	220,809,182	229,917,003	257,935,546	242,398,551	212,364,223	246,380,254	237,644,367	2,797,294,970
Moving & courier services	26,324,952	27,341,144	27,835,728	32,264,064	32,569,035	37,512,495	35,344,432	33,891,130	37,040,464	35,347,485	33,806,947	32,657,886	29,392,206	395,003,016
Repair shops (not auto)	14,950,001	10,591,058	10,419,441	11,278,260	10,622,080	12,454,485	11,830,641	11,362,507	12,040,582	12,009,753	12,000,711	11,444,106	10,884,160	136,937,784
Accounting services	16,088,832	16,078,586	15,754,078	16,762,569	17,487,635	17,969,120	17,891,311	17,509,135	19,368,576	18,272,354	17,459,720	23,145,515	19,071,677	216,770,276
Advertising, consultancy & PR	12,129,047	11,746,699	13,668,885	13,396,969	11,774,919	12,854,579	11,278,364	11,493,302	12,185,100	11,459,702	9,052,505	11,295,508	10,668,870	140,875,402
Computer programming	33,200,047	35,549,055	36,342,817	37,825,560	35,392,700	38,861,514	36,347,816	39,734,614	40,518,505	36,092,311	36,781,620	38,812,837	32,175,902	444,435,251
Farming services	19,441,352	18,149,540	18,747,706	20,414,332	20,106,071	22,414,252	20,994,968	20,848,856	22,126,143	21,766,748	22,736,921	21,308,918	19,795,505	249,409,960
Miscellaneous professional services	570,845,230	558,309,154	566,805,614	552,538,001	519,747,318	576,787,453	558,320,804	627,648,940	670,730,387	531,148,791	501,558,663	634,220,895	540,259,786	6,838,075,806
Engineering services	16,089,363	18,222,491	17,857,498	19,730,418	19,166,471	20,963,280	19,047,591	19,458,273	21,021,165	18,703,132	16,522,590	17,774,706	18,084,923	226,552,538
Marina services	8,535,758	11,180,611	13,447,090	14,023,914	12,886,792	16,509,592	14,578,480	10,649,987	9,358,571	7,370,882	7,136,961	8,424,326	8,111,521	133,678,727
Wrecking & salvage yards	1,338,136	1,314,443	1,291,235	1,511,162	1,329,797	1,691,550	1,527,891	1,433,529	1,629,771	1,433,209	1,105,356	1,373,989	1,414,370	17,056,302
Pest control	570,497	606,247	545,155	617,462	523,680	657,043	636,976	532,018	634,499	565,813	474,442	554,710	527,708	6,875,753
Educational establishments	222,167,212	150,714,686	244,399,893	187,222,346	130,102,526	147,008,113	218,043,731	715,591,666	600,546,301	241,667,125	199,280,773	466,713,026	222,855,448	3,524,145,634
Child care services	12,766,438	11,579,061	12,477,961	11,674,096	13,682,777	11,679,262	12,190,215	11,412,615	14,034,151	12,619,068	11,412,467	15,221,560	13,520,657	152,853,505
Social, political & religious organisations	74,553,968	106,754,230	81,812,814	92,169,633	84,382,216	102,342,257	97,347,731	102,718,018	116,991,908	109,678,977	89,416,198	93,820,152	83,003,182	1,160,437,316
Government services	1,750,655,245	1,196,644,377	1,320,191,328	1,642,522,130	1,667,537,359	2,093,620,979	1,666,958,146	1,211,617,829	1,601,572,163	1,449,613,799	1,576,988,115	3,048,834,528	1,949,079,267	20,425,180,020
Miscellaneous services	492,243,690	454,926,414	911,467,416	518,245,412	471,812,249	579,615,993	461,144,432	481,712,384	502,165,055	449,210,548	490,746,027	586,085,339	447,877,498	6,355,008,767
Commercial equipment	98,262,710	130,157,337	125,065,424	134,817,184	129,245,014	138,653,857	135,500,822	145,752,014	150,083,450	141,846,360	124,646,009	134,341,182	125,835,517	1,615,944,170
Other services	4,678,947,873	4,290,763,495	4,902,956,763	4,759,873,656	4,532,593,702	5,303,610,538	4,683,721,614	5,001,221,779	5,338,836,602	4,518,230,747	4,552,950,728	6,574,834,293	4,895,048,386	59,354,642,303
Total services	15,179,199,553	15,780,036,145	16,586,464,299	16,292,577,100	15,462,991,648	16,928,874,475	15,747,643,305	16,147,413,814	17,259,008,706	14,575,359,556	14,687,118,057	17,830,754,968	15,458,563,425	192,756,805,498
TOTAL	28,503,340,779	30,088,594,632	31,150,800,840	31,387,607,141	29,908,493,565	32,999,619,864	30,484,191,796	31,355,481,730	32,887,317,597	30,579,428,978	33,646,705,216	32,129,606,700	28,981,013,865	375,598,861,924