

Card Expenditure Statistics [CES] – February 2012

Seasonally-adjusted

At a glance key figures for February 2012

	Total spending £ billions		Growth rates annualised See note below		Number of purchases millions	
	2012	2011	6 month	12 month	2012	2011
All plastic cards	43.5	38.1	8.6	11.1	882	752
Debit cards	29.9	26.0	9.4	13.1	673	570
Credit cards	13.6	12.1	6.1	6.9	209	182

Note. As a result of a change in the composition of the members of The UK Cards Association that report Card Expenditure Statistics there is a break in series from January 2011. The breaks in series have the effect of distorting the year-on-year growth rates that are used in the CES; these distortions will disappear after 12 months, but in the meantime the 'At a glance key figures' above show six and 12 months annualised growth rates as these are based on post-break data.

Spending on plastic cards in February amounted to £43.5 billion, £2.6 billion above the monthly average of the previous 6 months. The **number of purchases** at 882 million was 59 million higher than the average of the previous 6 months.

February 2012's Retail Sales values were 3.2% higher than in February 2011¹; over the same period the growth in the value of retail sales using plastic cards was 14%. The gap between these two indicators indicates the degree to which payments have been migrating to plastic cards. During February 2012 the plastic card share of all retail sales moved up to 74%², with debit cards passing the 50% mark, and credit cards accounting for 23.6%. Average monthly debit card retail spending just exceeded £15 bn with credit cards at £7.1 bn.

With shop price inflation falling to 1.2% in February², the CES confirm that, in spite of the strong increase in the total amount spent on plastic, **average plastic card transaction values [ATV]** have fallen consistently over the past two years for spending in the dominant **food and drink sector**. This ATV has fallen by 3.3% (from an average of £28.56 in 2010 to £27.63 in February 2012). This slightly stronger fall, relative to the fall in shop price inflation, indicates that a good deal of the increased spending on plastic cards (mainly on debit cards) is spending that has migrated from lower value cash purchases.

In addition to the increase in card spending on food & drink, the plastic card share of spending on **automotive fuels** has grown by five percentage points over the past 12 months to reach 81.7%. The increase in petrol and diesel prices shows through in an increase of more than £3.18 in the ATV over the past two years.

¹ Source: Retail Sales – February 2012, Office for National Statistics Statistical Bulletin

² CES 3-month moving average spending for January of £21.6 billion expressed as a percentage of a similar 3-month moving average for National Statistics 'All retailing including automotive fuel' (J5BU) that gives a figure of £29.1 billion.

² Source: BRC-Nielsen Shop Price Index

Chart 1

Spending on plastic cards
Year-on-year growth rates⁴

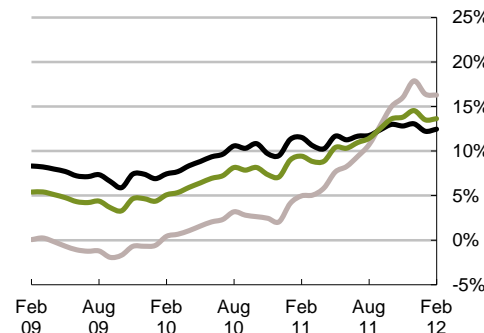


Chart 2

Percent of retail sales made on plastic cards
(including automotive fuel)
Three-month moving average

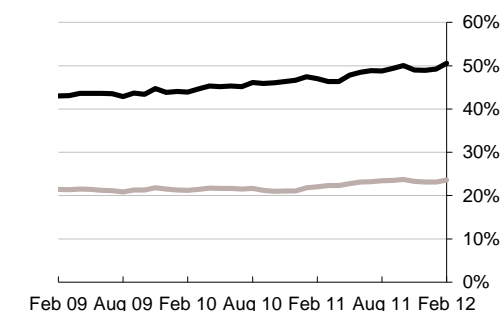


Chart 3

Average transaction values
Three-month moving average

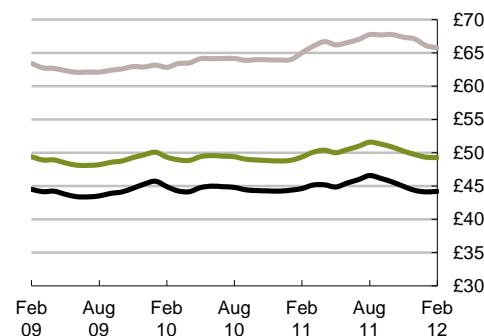
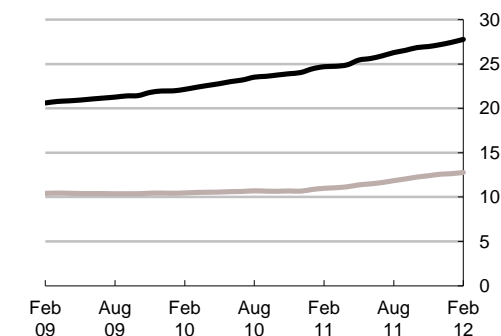


Chart 4

Average monthly expenditure
12 month moving average
£ billions



— Debit cards
— Credit cards
— All plastic cards

⁴ Year-on-year growth rates are rates of change that express the most recent 12 month period over the corresponding period of the preceding 12 months.

Table 1 Card expenditure statistics (seasonally adjusted)

Summary

		Number of purchase transactions (millions)									Value of purchase transactions (£ millions)									
		All sectors			Retail sales			Services			All sectors			Retail sales			Services			
		Credit	Debit	Total	Credit	Debit	Total	Credit	Debit	Total	Credit	Debit	Total	Credit	Debit	Total	Credit	Debit	Total	
Annual																				
	2007	1,958	4,968	6,926	1,197	3,304	4,501	761	1,664	2,425	123,824	223,878	347,701	61,077	108,644	169,721	62,747	115,234	177,981	
	2008	1,972	5,466	7,438	1,186	3,581	4,768	786	1,885	2,671	126,242	245,236	371,478	60,697	116,058	176,754	65,545	129,179	194,724	
	2009	2,002	5,940	7,941	1,224	3,892	5,116	778	2,047	2,825	125,374	263,406	388,780	61,823	125,361	187,184	63,551	138,044	201,595	
	2010	2,002	6,492	8,494	1,377	4,717	6,094	625	1,775	2,400	127,956	288,427	416,384	69,499	148,657	218,156	58,457	139,771	198,228	
	2011	2,255	7,213	9,469	1,552	5,289	6,841	704	1,924	2,628	150,847	326,105	476,952	78,725	165,075	243,800	72,122	161,030	233,152	
Monthly																				
	2011	Feb	182	570	752	125	420	545	57	150	207	12,126	25,986	38,113	6,296	13,126	19,422	5,830	12,860	18,690
		Mar	179	560	738	123	411	533	56	149	205	11,883	25,075	36,958	6,171	12,653	18,824	5,712	12,422	18,135
		Apr	184	585	769	128	432	561	56	153	209	12,063	25,822	37,885	6,454	13,515	19,970	5,609	12,307	17,915
		May	192	633	825	133	466	599	60	167	227	13,001	30,005	43,006	6,705	14,419	21,123	6,297	15,586	21,883
		Jun	184	580	763	126	422	547	58	158	216	12,472	26,854	39,326	6,456	13,203	19,659	6,016	13,651	19,668
		Jul	185	596	781	127	436	563	58	160	218	12,526	27,427	39,953	6,535	13,785	20,320	5,991	13,642	19,633
		Aug	198	630	828	136	464	600	61	167	228	13,341	29,050	42,391	6,915	14,495	21,410	6,427	14,555	20,982
		Sep	188	610	798	129	446	575	59	165	224	12,812	27,288	40,100	6,669	14,000	20,670	6,143	13,287	19,430
		Oct	195	632	827	134	464	598	60	169	229	12,950	27,817	40,767	6,838	14,543	21,381	6,112	13,274	19,386
		Nov	192	611	804	131	445	577	61	166	227	12,801	27,083	39,884	6,662	13,864	20,526	6,139	13,219	19,358
		Dec	193	627	821	133	456	590	60	171	231	12,573	27,617	40,189	6,647	14,123	20,770	5,926	13,493	19,419
	2012	Jan	200	662	861	137	484	621	63	178	241	13,095	29,278	42,372	6,855	14,937	21,792	6,239	14,341	20,580
		Feb	209	673	882	142	490	631	67	183	250	13,645	29,878	43,523	7,067	15,094	22,160	6,578	14,784	21,363
Year-on-year growth rates (percentages)																				
Annual																				
	2007	0.5	10.6	7.5	-1.4	9.5	6.4	3.8	12.8	9.8	3.2	14.6	10.3	2.0	10.9	7.5	4.5	18.2	13.0	
	2008	0.7	10.0	7.4	-0.9	8.4	5.9	3.3	13.3	10.1	2.0	9.5	6.8	-0.6	6.8	4.1	4.5	12.1	9.4	
	2009	1.5	8.7	6.8	3.2	8.7	7.3	-1.0	8.6	5.8	-0.7	7.4	4.7	1.9	8.0	5.9	-3.0	6.9	3.5	
	2010	0.0	9.3	7.0	12.5	21.2	19.1	-19.6	-13.3	-15.0	2.1	9.5	7.1	12.4	18.6	16.5	-8.0	1.3	-1.7	
	2011	12.6	11.1	11.5	12.7	12.1	12.3	12.5	8.4	9.5	17.9	13.1	14.5	13.3	11.0	11.8	23.4	15.2	17.6	
Monthly																				
	2011	Feb	2.0	10.3	8.3	12.3	20.5	18.5	-15.2	-10.0	-11.4	5.0	11.5	9.4	13.1	18.1	16.5	-3.2	5.4	2.7
		Mar	2.0	9.7	7.8	11.1	18.8	16.9	-13.6	-8.9	-10.2	5.1	10.6	8.8	11.8	16.5	15.0	-1.8	5.0	2.9
		Apr	2.8	9.9	8.1	11.1	18.0	16.4	-11.7	-7.4	-8.6	5.9	10.3	8.9	11.7	15.9	14.5	-0.1	4.9	3.4
		May	4.4	11.1	9.5	11.7	18.3	16.8	-8.8	-4.7	-5.8	7.7	11.7	10.4	12.0	16.2	14.9	3.1	7.3	6.0
		Jun	4.7	10.6	9.2	10.9	16.7	15.4	-6.7	-3.1	-4.1	8.3	11.3	10.3	11.0	14.9	13.6	5.3	7.8	7.0
		Jul	5.6	10.9	9.6	10.7	16.1	14.8	-4.2	-1.1	-2.0	9.4	11.7	11.0	11.0	14.5	13.4	7.7	8.9	8.5
		Aug	6.4	10.4	9.5	10.5	14.7	13.7	-1.6	0.2	-0.3	10.7	11.8	11.4	11.0	13.3	12.6	10.5	10.2	10.3
		Sep	8.2	11.0	10.4	11.3	14.5	13.8	2.0	2.6	2.4	12.9	12.4	12.5	12.0	13.4	12.9	13.8	11.4	12.1
		Oct	10.1	11.5	11.2	12.2	14.3	13.8	5.6	4.7	5.0	15.0	13.0	13.6	13.0	13.2	13.2	17.3	12.7	14.1
		Nov	10.8	10.8	10.8	11.8	12.7	12.5	8.5	6.1	6.7	16.0	12.8	13.8	12.7	11.8	12.1	19.9	13.9	15.7
		Dec	12.6	11.1	11.5	12.7	12.1	12.3	12.5	8.4	9.5	17.9	13.1	14.5	13.3	11.0	11.8	23.4	15.2	17.6
	2012	Jan	12.2	10.9	11.2	12.3	11.7	11.8	12.0	8.9	9.7	16.4	12.2	13.5	12.3	10.6	11.2	21.2	13.9	16.1
		Feb	12.5	11.6	11.8	12.4	12.1	12.2	12.8	10.2	10.9	16.2	12.5	13.6	12.5	11.0	11.5	20.6	14.0	15.9

Table 2A Card expenditure statistics (seasonally adjusted)

Retail sales

Number of purchase transactions (millions)

Total retail sales

		Number of purchase transactions (millions)																		Total retail sales		
		Food & drink			Mixed business			Clothing			Household			Other retailers			Automotive Fuels *			Number of purchases		
		Credit	Debit	Total	Credit	Debit	Total	Credit	Debit	Total	Credit	Debit	Total	Credit	Debit	Total	Credit	Debit	Total	Credit	Debit	Total
Annual																						
2007		426	1,639	2,066	203	436	639	124	350	474	147	282	429	297	596	893	165	419	584	1,197	3,304	4,501
2008		500	1,873	2,373	134	408	542	121	371	492	143	292	435	288	636	924	168	459	627	1,186	3,581	4,768
2009		512	2,086	2,597	131	401	532	125	404	529	146	321	466	310	681	991	158	475	633	1,224	3,892	5,116
2010		532	2,285	2,817	137	404	541	128	425	553	146	349	495	273	733	1,006	161	521	682	1,377	4,717	6,094
2011		600	2,560	3,160	137	422	558	139	427	566	158	371	528	297	779	1,076	222	730	952	1,552	5,289	6,841
Monthly																						
2011	Feb	47	200	248	12	33	45	11	33	44	13	30	43	25	64	89	18	59	76	125	420	545
	Mar	46	198	244	11	31	42	11	31	41	13	30	42	25	63	88	18	58	76	123	411	533
	Apr	50	206	256	11	35	46	12	37	48	13	31	44	25	65	90	18	59	77	128	432	561
	May	50	226	276	12	38	50	12	37	49	13	31	44	27	71	98	19	63	82	133	466	599
	Jun	48	203	251	11	34	45	12	34	46	12	30	42	26	63	89	17	58	75	126	422	547
	Jul	50	211	261	11	35	46	12	36	48	13	31	44	24	63	87	18	60	79	127	436	563
	Aug	54	227	281	11	36	47	12	38	50	14	32	45	26	68	94	20	63	82	136	464	600
	Sep	50	220	270	11	35	46	12	36	48	13	31	44	24	64	88	19	61	79	129	446	575
	Oct	53	226	279	12	37	49	12	38	50	14	32	46	24	66	91	19	64	83	134	464	598
	Nov	51	216	268	12	36	48	12	36	48	13	31	45	24	63	87	19	63	82	131	445	577
	Dec	53	223	276	12	37	49	12	38	50	14	32	45	23	64	87	19	63	82	133	456	590
2012	Jan	55	236	290	13	41	54	13	40	53	14	33	47	23	69	92	20	65	85	137	484	621
	Feb	56	239	295	13	41	54	14	41	55	14	33	47	25	70	96	21	65	86	142	490	631
Year-on-year growth rates (percentages)																						
Annual																						
2007		8.2	12.7	11.8	-5.6	5.1	1.4	-1.8	10.3	6.8	1.1	7.3	5.1	-11.1	5.0	-0.9	-	-	-	-1.4	9.5	6.4
2008		17.3	14.3	14.9	-34.0	-6.5	-15.2	-2.3	6.0	3.8	-2.6	3.6	1.5	-3.1	6.8	3.5	1.4	9.6	7.3	-0.9	8.4	5.9
2009		2.3	11.3	9.4	-2.2	-1.7	-1.8	3.2	9.0	7.6	1.9	9.7	7.1	7.8	7.0	7.2	-5.7	3.5	1.0	3.2	8.7	7.3
2010		4.0	9.5	8.5	4.9	0.7	1.7	2.3	5.1	4.4	0.2	8.9	6.2	-12.1	7.7	1.5	1.6	9.7	7.7	12.5	21.2	19.1
2011		12.8	12.0	12.2	-0.7	4.4	3.1	8.6	0.6	2.4	7.9	6.2	6.7	8.8	6.3	7.0	38.0	40.2	39.6	12.7	12.1	12.3
Monthly																						
2011	Feb	5.8	10.7	9.7	5.6	0.9	2.1	2.8	3.7	3.5	2.0	9.9	7.4	-11.5	9.6	3.0	8.4	16.3	14.3	12.3	20.5	18.5
	Mar	5.3	10.1	9.2	4.0	0.0	1.0	1.7	1.9	1.9	1.7	9.6	7.2	-10.4	8.9	2.9	10.0	18.3	16.3	11.1	18.8	16.9
	Apr	6.0	10.3	9.5	3.4	0.2	1.0	2.6	1.8	2.0	2.0	9.7	7.3	-8.6	9.1	3.7	12.1	20.4	18.3	11.1	18.0	16.4
	May	7.2	11.5	10.7	3.7	1.4	2.0	4.1	2.4	2.8	2.4	9.8	7.5	-5.8	10.3	5.5	15.3	23.9	21.8	11.7	18.3	16.8
	Jun	6.9	10.9	10.1	2.3	1.3	1.5	4.0	1.2	1.9	1.5	8.8	6.6	-4.0	9.5	5.5	17.0	25.7	23.6	10.9	16.7	15.4
	Jul	7.6	11.1	10.4	1.4	1.8	1.7	4.6	1.2	2.0	1.5	8.5	6.4	-2.0	9.4	6.1	19.5	28.3	26.2	10.7	16.1	14.8
	Aug	8.0	10.8	10.3	-0.2	1.5	1.1	4.6	0.3	1.3	2.3	7.6	6.0	-0.4	8.3	5.8	23.1	30.6	28.8	10.5	14.7	13.7
	Sep	9.5	11.7	11.3	-0.8	2.2	1.4	5.6	0.5	1.7	3.7	7.4	6.3	2.4	8.5	6.7	27.1	33.4	31.9	11.3	14.5	13.8
	Oct	11.1	12.5	12.2	-0.5	3.3	2.3	6.9	1.0	2.4	5.1	7.2	6.6	5.1	8.5	7.5	30.7	35.7	34.5	12.2	14.3	13.8
	Nov	11.4	11.9	11.8	-1.2	3.4	2.3	7.0	-0.1	1.6	5.8	6.1	6.0	6.5	6.8	6.7	33.4	37.0	36.2	11.8	12.7	12.5
	Dec	12.8	12.0	12.2	-0.7	4.4	3.1	8.6	0.6	2.4	7.9	6.2	6.7	8.8	6.3	7.0	38.0	40.2	39.6	12.7	12.1	12.3
2012	Jan	12.6	11.9	12.1	-0.9	5.7	4.0	9.4	1.8	3.5	7.1	5.7	6.1	9.3	5.1	6.2	33.5	35.5	35.1	12.3	11.7	11.8
	Feb	13.2	12.6	12.7	-0.4	7.7	5.6	11.6	4.2	5.9	7.1	5.8	6.2	8.5	5.2	6.0	31.6	32.6	32.4	12.4	12.1	12.2

* The category of Automotive Fuels is effective from January 2010. Data shown for 2009 are for growth trend purposes only; these data are excluded from totals for 2009 as these are already included in their former Services sector of Motoring (now known as Vehicle Sales & Service)

Table 2B Card expenditure statistics (seasonally adjusted)

Retail sales

Value of purchase transactions (£ millions)

		Value of purchase transactions (£ millions)																		Total retail sales		
		Food & drink			Mixed business			Clothing			Household			Other retailers			Automotive Fuels *			Value of purchases		
		Credit	Debit	Total	Credit	Debit	Total	Credit	Debit	Total	Credit	Debit	Total	Credit	Debit	Total	Credit	Debit	Total	Credit	Debit	Total
Annual																						
2007		15,314	48,573	63,886	8,839	14,052	22,891	5,862	10,453	16,315	14,701	15,341	30,042	16,361	20,225	36,586	5,873	10,964	16,837	61,077	108,644	169,721
2008		17,568	54,552	72,120	7,054	13,457	20,512	5,956	11,213	17,168	14,383	15,571	29,955	15,735	21,264	36,999	6,677	12,967	19,643	60,697	116,058	176,754
2009		18,099	60,231	78,330	7,092	13,864	20,956	6,377	12,644	19,021	14,496	16,596	31,092	15,759	22,027	37,786	5,860	12,668	18,528	61,823	125,361	187,184
2010		18,784	63,906	82,690	7,147	13,943	21,090	6,773	13,652	20,425	14,618	18,773	33,391	15,581	23,559	39,140	6,596	14,824	21,420	69,499	148,657	218,156
2011		20,978	69,252	90,230	7,074	14,645	21,719	7,813	14,440	22,253	15,202	20,488	35,691	17,548	24,345	41,893	10,110	21,904	32,014	78,725	165,075	243,800
Monthly																						
2011	Feb	1,666	5,471	7,137	564	1,141	1,705	601	1,113	1,714	1,217	1,641	2,859	1,442	2,012	3,454	806	1,747	2,553	6,296	13,126	19,422
	Mar	1,580	5,236	6,815	544	1,055	1,599	596	1,028	1,623	1,230	1,615	2,845	1,429	1,998	3,427	792	1,722	2,514	6,171	12,653	18,824
	Apr	1,763	5,674	7,437	575	1,210	1,785	641	1,211	1,852	1,250	1,697	2,948	1,421	1,975	3,396	805	1,747	2,552	6,454	13,515	19,970
	May	1,737	6,120	7,857	631	1,320	1,951	657	1,242	1,899	1,280	1,723	3,003	1,541	2,097	3,638	858	1,917	2,775	6,705	14,419	21,123
	Jun	1,689	5,437	7,126	580	1,190	1,770	665	1,170	1,835	1,235	1,675	2,910	1,512	2,001	3,513	775	1,730	2,505	6,456	13,203	19,659
	Jul	1,761	5,798	7,559	589	1,233	1,822	657	1,227	1,885	1,251	1,717	2,968	1,459	2,019	3,478	817	1,791	2,608	6,535	13,785	20,320
	Aug	1,884	6,168	8,052	599	1,274	1,873	668	1,269	1,937	1,340	1,778	3,119	1,532	2,120	3,652	891	1,887	2,777	6,915	14,495	21,410
	Sep	1,803	5,983	7,786	590	1,224	1,814	663	1,217	1,880	1,304	1,738	3,041	1,456	2,014	3,470	854	1,825	2,678	6,669	14,000	20,670
	Oct	1,851	6,137	7,988	616	1,297	1,913	685	1,287	1,972	1,309	1,801	3,110	1,484	2,083	3,567	893	1,938	2,832	6,838	14,543	21,381
	Nov	1,765	5,728	7,492	598	1,243	1,841	678	1,244	1,922	1,290	1,765	3,055	1,451	1,997	3,448	881	1,888	2,768	6,662	13,864	20,526
	Dec	1,792	5,920	7,713	615	1,289	1,904	694	1,292	1,987	1,271	1,706	2,978	1,382	2,005	3,387	892	1,910	2,802	6,647	14,123	20,770
2012	Jan	1,874	6,246	8,120	652	1,385	2,038	716	1,377	2,092	1,299	1,848	3,147	1,388	2,095	3,483	926	1,987	2,913	6,855	14,937	21,792
	Feb	1,880	6,267	8,147	647	1,382	2,029	758	1,395	2,153	1,348	1,910	3,257	1,472	2,153	3,626	961	1,988	2,949	7,067	15,094	22,160

Year-on-year growth rates (percentages)

Annual																						
2007		9.4	11.8	11.2	-0.7	7.3	4.0	1.4	11.5	7.6	4.9	11.8	8.3	-4.7	10.6	3.1	-	-	-	2.0	10.9	7.5
2008		14.7	12.3	12.9	-20.2	-4.2	-10.4	1.6	7.3	5.2	-2.2	1.5	-0.3	-3.8	5.1	1.1	13.7	18.3	16.7	-0.6	6.8	4.1
2009		3.0	10.4	8.6	0.5	3.0	2.2	7.1	12.8	10.8	0.8	6.6	3.8	0.2	3.6	2.1	-12.2	-2.3	-5.7	1.9	8.0	5.9
2010		3.8	6.1	5.6	0.8	0.6	0.6	6.2	8.0	7.4	0.8	13.1	7.4	-1.1	7.0	3.6	12.6	17.0	15.6	12.4	18.6	16.5
2011		11.7	8.4	9.1	-1.0	5.0	3.0	15.4	5.8	9.0	4.0	9.1	6.9	12.6	3.3	7.0	53.3	47.8	49.5	13.3	11.0	11.8
Monthly																						
2011	Feb	5.2	6.9	6.5	-0.2	0.6	0.3	7.2	6.9	7.0	2.5	14.2	8.8	1.9	8.4	5.7	20.9	24.4	23.3	13.1	18.1	16.5
	Mar	4.6	6.4	6.0	-1.9	-0.4	-0.9	6.5	5.2	5.6	1.5	13.4	8.0	2.2	7.4	5.3	22.8	26.5	25.3	11.8	16.5	15.0
	Apr	5.5	6.6	6.4	-1.9	0.0	-0.6	7.4	5.1	5.9	1.4	13.2	7.8	2.8	7.1	5.3	24.9	28.3	27.2	11.7	15.9	14.5
	May	6.5	7.9	7.6	-1.2	1.4	0.5	8.7	5.9	6.8	1.4	13.4	7.9	4.2	7.6	6.2	28.3	31.7	30.6	12.0	16.2	14.9
	Jun	6.1	7.3	7.0	-2.2	1.3	0.1	9.4	5.1	6.5	0.3	12.4	6.9	4.5	6.6	5.8	30.0	33.4	32.3	11.0	14.9	13.6
	Jul	6.8	7.7	7.5	-2.2	2.1	0.6	10.4	5.5	7.1	0.2	12.3	6.8	5.6	6.5	6.1	32.5	35.9	34.9	11.0	14.5	13.4
	Aug	7.4	7.5	7.5	-2.9	2.0	0.3	10.6	4.7	6.6	0.5	11.0	6.3	6.5	5.4	5.9	36.6	38.2	37.7	11.0	13.3	12.6
	Sep	9.0	8.6	8.7	-2.4	2.9	1.1	11.9	5.1	7.4	1.9	10.9	6.9	8.5	5.4	6.7	41.2	41.2	41.2	12.0	13.4	12.9
	Oct	10.6	9.3	9.6	-1.5	4.1	2.2	13.4	5.8	8.3	3.0	10.7	7.3	10.5	5.4	7.5	45.3	43.6	44.1	13.0	13.2	13.2
	Nov	10.8	8.6	9.1	-1.8	4.1	2.1	13.7	5.1	7.9	3.2	9.7	6.9	11.4	4.1	7.0	48.3	44.8	45.9	12.7	11.8	12.1
	Dec	11.7	8.4	9.1	-1.0	5.0	3.0	15.4	5.8	9.0	4.0	9.1	6.9	12.6	3.3	7.0	53.3	47.8	49.5	13.3	11.0	11.8
2012	Jan	11.5	8.4	9.1	0.1	6.3	4.2	15.5	6.9	9.8	3.4	8.5	6.3	10.7	2.4	5.7	46.8	42.1	43.6	12.3	10.6	11.2
	Feb	11.7	9.0	9.6	2.1	8.3	6.2	17.0	9.1	11.7	4.2	9.0	6.9	9.8	2.5	5.4	43.5	38.5	40.0	12.5	11.0	11.5

* The category of Automotive Fuels is effective from January 2010. Data shown for 2009 are for growth trend purposes only; these data are excluded from totals for 2009 as these are already included in their former Services sector of Motoring (now known as Vehicle Sales & Service)

Table 2C Card expenditure statistics (seasonally adjusted)

Services

Number of purchase transactions (millions)

Total services

	Number of purchase transactions (millions)																		Total services			
	Vehicle Sales & Services			Entertainment			Hotels			Travel			Financial			Other services			Number of purchases			
	Credit	Debit	Total	Credit	Debit	Total	Credit	Debit	Total	Credit	Debit	Total	Credit	Debit	Total	Credit	Debit	Total	Credit	Debit	Total	
Annual																						
2007	245	572	816	190	411	600	38	26	64	101	148	249	28	106	134	160	401	561	761	1,664	2,425	
2008	249	627	876	198	500	698	36	28	64	103	168	271	32	111	143	167	451	618	786	1,885	2,671	
2009	235	656	892	206	593	800	37	31	68	101	183	284	32	112	144	167	470	638	778	2,047	2,825	
2010	76	204	281	220	721	941	37	34	72	97	202	299	32	129	161	163	484	647	625	1,775	2,400	
2011	52	89	141	267	880	1,147	51	43	94	116	235	352	33	144	177	185	534	719	704	1,924	2,628	
Monthly																						
2011	Feb	5	8	12	21	67	89	4	3	7	9	18	28	3	11	14	15	42	57	57	150	207
	Mar	5	9	14	21	66	86	4	3	7	9	17	27	2	11	14	15	43	58	56	149	205
	Apr	5	8	13	21	68	89	4	3	7	9	19	28	3	12	14	14	43	57	56	153	209
	May	5	8	13	22	76	98	4	4	8	10	20	30	3	12	15	16	47	63	60	167	227
	Jun	5	8	13	21	70	91	4	3	8	9	20	29	3	12	14	16	45	61	58	158	216
	Jul	4	7	11	22	74	96	4	4	8	9	20	29	3	12	15	15	44	59	58	160	218
	Aug	4	7	11	23	77	100	4	4	8	10	20	31	3	13	16	16	45	61	61	167	228
	Sep	4	7	10	23	77	100	4	4	8	10	20	30	3	12	15	15	45	60	59	165	224
	Oct	4	6	10	24	80	104	4	4	8	10	20	30	3	13	15	15	46	61	60	169	229
	Nov	4	7	11	23	76	99	5	4	8	10	21	31	3	13	16	16	46	62	61	166	227
	Dec	3	7	10	24	81	104	5	4	8	10	21	31	3	13	15	16	46	62	60	171	231
2012	Jan	4	8	12	25	83	108	5	4	9	10	22	32	3	13	16	16	48	64	63	178	241
	Feb	6	9	15	25	85	110	5	4	9	11	22	33	3	14	16	16	49	66	67	183	250

Year-on-year growth rates (percentages)

	Year-on-year growth rates (percentages)																					
	Credit	Debit	Total	Credit	Debit	Total	Credit	Debit	Total	Credit	Debit	Total	Credit	Debit	Total	Credit	Debit	Total	Credit	Debit	Total	
Annual																						
2007	1.2	8.2	6.0	8.1	17.6	14.4	3.2	6.6	4.5	4.2	16.7	11.3	0.8	16.2	12.6	3.4	12.9	10.0	3.8	12.8	9.8	
2008	1.5	9.8	7.3	4.3	21.7	16.2	-2.7	6.0	0.8	2.6	13.4	9.0	15.7	4.8	7.1	4.6	12.3	10.1	3.3	13.3	10.1	
2009	-5.3	4.6	1.8	4.3	18.7	14.6	0.5	14.0	6.3	-2.5	8.9	4.6	-1.9	1.1	0.4	-0.1	4.4	3.2	-1.0	8.6	5.8	
2010	-67.6	-68.9	-68.5	6.5	21.5	17.6	1.4	9.4	5.1	-3.3	10.4	5.5	0.6	15.1	11.9	-2.6	2.8	1.4	-19.6	-13.3	-15.0	
2011	-32.1	-56.5	-49.9	21.5	22.0	21.9	36.7	24.6	30.9	19.4	16.5	17.4	2.6	11.4	9.6	13.7	10.3	11.2	12.5	8.4	9.5	
Monthly																						
2011	Feb	-65.5	-68.0	-67.3	10.1	22.5	19.3	6.7	11.9	9.1	0.1	12.3	8.0	-0.2	14.8	11.6	-0.7	3.5	2.4	-15.2	-10.0	-11.4
	Mar	-64.3	-67.6	-66.8	10.3	21.5	18.7	8.3	12.1	10.0	1.0	12.1	8.2	-1.5	13.5	10.2	-0.4	3.3	2.3	-13.6	-8.9	-10.2
	Apr	-62.9	-67.2	-66.0	10.9	20.7	18.3	10.3	13.5	11.8	2.1	13.2	9.4	-2.0	13.1	9.8	0.1	3.7	2.8	-11.7	-7.4	-8.6
	May	-61.0	-66.4	-64.9	12.5	22.0	19.7	13.4	15.8	14.5	4.2	15.7	11.7	-1.2	13.1	10.1	2.2	5.3	4.5	-8.8	-4.7	-5.8
	Jun	-58.6	-65.5	-63.7	12.4	21.3	19.1	15.7	17.0	16.3	5.0	15.7	12.0	-1.3	12.2	9.4	3.4	6.1	5.4	-6.7	-3.1	-4.1
	Jul	-56.2	-64.5	-62.3	13.3	21.6	19.5	18.2	19.1	18.6	6.7	16.5	13.2	-1.1	11.7	9.0	4.7	6.9	6.4	-4.2	-1.1	-2.0
	Aug	-53.3	-63.8	-61.0	13.9	20.8	19.1	20.9	19.5	20.2	9.0	16.5	14.0	0.1	11.4	9.1	5.9	7.3	7.0	-1.6	0.2	-0.3
	Sep	-49.2	-62.1	-58.7	16.2	21.8	20.5	24.8	21.1	23.1	11.7	16.5	14.9	1.1	11.3	9.2	7.8	8.1	8.1	2.0	2.6	2.4
	Oct	-44.7	-60.5	-56.3	18.5	22.3	21.4	28.9	22.6	25.9	14.5	17.2	16.3	2.1	11.5	9.6	9.9	9.1	9.3	5.6	4.7	5.0
	Nov	-39.4	-58.7	-53.5	19.2	21.3	20.8	32.4	23.4	28.1	16.3	16.3	16.3	2.1	11.3	9.5	11.2	9.4	9.8	8.5	6.1	6.7
	Dec	-32.1	-56.5	-49.9	21.5	22.0	21.9	36.7	24.6	30.9	19.4	16.5	17.4	2.6	11.4	9.6	13.7	10.3	11.2	12.5	8.4	9.5
2012	Jan	-30.3	-54.4	-47.8	20.1	21.3	21.0	34.3	23.7	29.2	17.8	16.2	16.7	2.9	11.5	9.8	13.1	10.8	11.4	12.0	8.9	9.7
	Feb	-25.8	-51.4	-44.3	19.9	21.8	21.3	34.5	24.4	29.7	18.0	16.7	17.2	4.2	12.5	10.9	13.0	11.7	12.1	12.8	10.2	10.9

Table 2D Card expenditure statistics (seasonally adjusted)

Services

Value of purchase transactions (£ millions)

Total services

	Vehicle Sales & Services			Entertainment			Hotels			Travel			Financial			Other services			Value of purchases			
	Credit	Debit	Total	Credit	Debit	Total	Credit	Debit	Total	Credit	Debit	Total	Credit	Debit	Total	Credit	Debit	Total	Credit	Debit	Total	
Annual																						
2007	14,670	30,660	45,330	9,303	11,231	20,534	5,486	2,264	7,750	13,450	12,611	26,060	5,705	26,145	31,850	14,133	32,323	46,456	62,747	115,234	177,981	
2008	15,513	32,939	48,451	9,664	13,062	22,726	5,512	2,448	7,959	14,031	13,738	27,769	5,932	29,958	35,889	14,895	37,035	51,930	65,545	129,179	194,724	
2009	14,615	35,361	49,976	9,658	14,601	24,259	5,296	2,726	8,022	13,081	14,099	27,179	5,733	33,055	38,789	15,168	38,202	53,371	63,551	138,044	201,595	
2010	8,740	24,681	33,421	9,839	16,958	26,796	5,532	3,051	8,583	12,814	15,816	28,631	5,873	38,572	44,445	15,658	40,693	56,352	58,457	139,771	198,228	
2011	7,766	22,336	30,102	14,027	20,679	34,706	8,629	3,871	12,500	16,233	18,392	34,625	7,038	46,737	53,775	18,428	49,016	67,444	72,122	161,030	233,152	
Monthly																						
2011																						
Feb	678	1,905	2,583	1,157	1,608	2,765	658	298	956	1,288	1,442	2,731	573	3,875	4,447	1,476	3,732	5,208	5,830	12,860	18,690	
Mar	688	1,938	2,626	1,062	1,505	2,566	653	282	935	1,316	1,439	2,756	510	3,617	4,128	1,483	3,641	5,124	5,712	12,422	18,135	
Apr	632	1,889	2,520	1,088	1,637	2,725	666	312	978	1,264	1,488	2,752	565	3,699	4,264	1,394	3,282	4,676	5,609	12,307	17,915	
May	687	2,012	2,698	1,251	1,879	3,130	720	325	1,045	1,373	1,555	2,928	684	3,708	4,392	1,582	6,108	7,690	6,297	15,586	21,883	
Jun	684	1,903	2,586	1,137	1,668	2,805	718	321	1,039	1,327	1,525	2,852	594	3,713	4,307	1,557	4,520	6,078	6,016	13,651	19,668	
Jul	640	1,881	2,521	1,188	1,776	2,964	731	334	1,064	1,330	1,530	2,860	609	4,057	4,666	1,495	4,064	5,559	5,991	13,642	19,633	
Aug	675	1,926	2,601	1,211	1,821	3,032	731	335	1,066	1,438	1,585	3,023	700	4,599	5,299	1,671	4,289	5,961	6,427	14,555	20,982	
Sep	625	1,832	2,457	1,193	1,758	2,951	751	327	1,078	1,394	1,568	2,962	601	3,876	4,477	1,580	3,926	5,506	6,143	13,287	19,430	
Oct	613	1,820	2,433	1,231	1,836	3,067	773	350	1,123	1,373	1,588	2,961	577	3,803	4,379	1,545	3,877	5,422	6,112	13,274	19,386	
Nov	607	1,771	2,379	1,194	1,746	2,941	774	335	1,109	1,386	1,605	2,991	562	3,910	4,472	1,615	3,852	5,467	6,139	13,219	19,358	
Dec	578	1,612	2,190	1,148	1,845	2,993	766	343	1,109	1,372	1,619	2,991	504	3,941	4,445	1,559	4,132	5,691	5,926	13,493	19,419	
2012																						
Jan	656	2,005	2,661	1,231	1,883	3,114	801	372	1,172	1,407	1,683	3,090	566	4,232	4,798	1,578	4,167	5,745	6,239	14,341	20,580	
Feb	778	2,107	2,884	1,269	1,848	3,117	873	376	1,249	1,497	1,747	3,243	552	4,303	4,855	1,610	4,404	6,014	6,578	14,784	21,363	

Year-on-year growth rates (percentages)

	Vehicle Sales & Services			Entertainment			Hotels			Travel			Financial			Other services			Value of purchases			
	Credit	Debit	Total	Credit	Debit	Total	Credit	Debit	Total	Credit	Debit	Total	Credit	Debit	Total	Credit	Debit	Total	Credit	Debit	Total	
Annual																						
2007	6.4	13.4	11.0	4.8	16.1	10.7	5.3	10.9	6.9	1.7	14.4	7.5	2.1	24.9	20.1	5.6	20.9	15.8	4.5	18.2	13.0	
2008	5.7	7.4	6.9	3.9	16.3	10.7	0.5	8.1	2.7	4.3	8.9	6.6	4.0	14.6	12.7	5.4	14.6	11.8	4.5	12.1	9.4	
2009	-5.8	7.4	3.1	-0.1	11.8	6.7	-3.9	11.4	0.8	-6.8	2.6	-2.1	-3.3	10.3	8.1	1.8	3.2	2.8	-3.0	6.9	3.5	
2010	-40.2	-30.2	-33.1	1.9	16.1	10.5	4.5	11.9	7.0	-2.0	12.2	5.3	2.4	16.7	14.6	3.2	6.5	5.6	-8.0	1.3	-1.7	
2011	-11.1	-9.5	-9.9	42.6	21.9	29.5	56.0	26.9	45.6	26.7	16.3	20.9	19.8	21.2	21.0	17.7	20.5	19.7	23.4	15.2	17.6	
Monthly																						
2011																						
Feb	-37.4	-27.1	-30.1	10.3	17.8	14.9	12.8	15.1	13.5	2.3	12.3	7.6	6.1	23.5	21.0	5.3	10.0	8.7	-3.2	5.4	2.7	
Mar	-36.8	-27.2	-29.9	12.9	17.4	15.6	15.6	15.2	15.4	4.1	11.3	7.9	5.9	22.3	20.0	5.5	9.5	8.3	-1.8	5.0	2.9	
Apr	-35.6	-26.5	-29.1	15.7	17.5	16.8	19.0	16.2	18.0	5.5	12.0	9.0	6.8	21.9	19.8	5.6	7.7	7.1	-0.1	4.9	3.4	
May	-33.6	-24.7	-27.2	20.6	19.4	19.9	23.6	18.8	21.9	9.0	13.7	11.5	10.0	21.5	19.9	6.9	12.4	10.8	3.1	7.3	6.0	
Jun	-31.5	-23.1	-25.4	23.0	19.0	20.5	27.6	20.1	25.0	11.2	14.3	12.9	11.0	20.4	19.0	7.7	12.6	11.2	5.3	7.8	7.0	
Jul	-29.3	-21.0	-23.3	25.9	20.0	22.3	31.6	22.1	28.3	13.1	14.7	14.0	13.1	21.0	19.9	8.4	12.6	11.5	7.7	8.9	8.5	
Aug	-26.5	-19.3	-21.3	28.2	19.7	22.9	35.5	22.5	31.0	15.5	15.0	15.2	16.0	22.5	21.6	10.1	13.6	12.6	10.5	10.2	10.3	
Sep	-22.9	-17.0	-18.6	32.3	20.9	25.2	41.0	24.1	35.1	18.4	15.3	16.7	18.2	23.0	22.4	11.8	14.1	13.4	13.8	11.4	12.1	
Oct	-19.2	-14.5	-15.8	36.5	21.7	27.2	46.3	25.6	39.0	21.4	16.0	18.4	20.1	23.4	22.9	13.8	15.2	14.8	17.3	12.7	14.1	
Nov	-15.8	-12.5	-13.3	38.7	21.0	27.5	50.7	25.9	42.0	23.6	16.1	19.4	20.0	21.7	21.5	15.4	18.9	17.9	19.9	13.9	15.7	
Dec	-11.1	-9.5	-9.9	42.6	21.9	29.5	56.0	26.9	45.6	26.7	16.3	20.9	19.8	21.2	21.0	17.7	20.5	19.7	23.4	15.2	17.6	
2012																						
Jan	-10.7	-9.2	-9.6	37.2	21.1	27.1	51.1	25.5	42.1	23.9	15.9	19.5	17.5	17.2	17.2	16.7	20.0	19.1	21.2	13.9	16.1	
Feb	-8.4	-7.7	-7.9	33.6	20.7	25.5	49.4	25.8	41.2	23.5	16.7	19.8	15.3	15.3	15.3	16.2	20.6	19.3	20.6	14.0	15.9	

Table 3A Card expenditure statistics (not seasonally adjusted)

Number of credit card transactions

Detailed sector breakdown - retail sectors

	February 2011	March 2011	April 2011	May 2011	June 2011	July 2011	August 2011	September 2011	October 2011	November 2011	December 2011	January 2012	February 2012	Total (latest 12 months)
Supermarkets	39,145,335	43,446,345	44,959,229	45,733,354	46,586,050	46,912,319	49,324,554	46,096,859	49,052,064	50,553,261	56,166,436	47,042,759	45,164,000	571,037,230
Bakers & dairies	77,684	85,566	92,727	105,836	116,544	122,973	122,919	124,979	135,349	138,661	153,083	123,516	148,510	1,470,663
Sweet stores	148,784	163,859	250,880	199,673	188,803	181,561	191,448	184,725	200,858	299,542	596,773	144,906	193,395	2,796,423
Miscellaneous foodstores	2,039,717	2,286,446	2,507,113	2,615,774	2,701,520	2,675,882	2,859,966	2,647,186	2,781,257	2,818,508	3,172,359	2,618,032	2,868,379	32,552,422
Off-licences	441,464	488,385	515,785	531,837	531,400	553,103	542,488	506,144	530,569	542,852	757,086	424,571	483,011	6,407,231
Food & drink	41,852,984	46,470,601	48,325,734	49,186,474	50,444,838	50,441,375	53,041,375	49,559,893	52,700,097	54,352,824	60,845,737	50,353,784	48,857,295	614,263,969
Department stores	4,346,959	5,029,939	5,114,790	5,886,128	5,919,175	6,015,940	5,738,836	5,229,315	5,879,460	7,689,502	11,208,608	6,138,637	4,798,266	74,648,596
Discount stores	1,140,167	1,211,686	1,331,900	1,386,909	1,299,737	1,413,899	1,450,781	1,386,141	1,525,840	1,885,075	2,521,906	1,314,815	1,258,643	17,987,332
Catalogues	1,042,870	1,114,701	969,956	1,006,180	989,122	960,888	529,277	1,116,545	1,863,763	2,514,165	2,530,648	1,867,948	1,579,925	17,043,118
Miscellaneous mixed	2,381,836	2,263,332	2,038,615	2,359,504	2,236,439	2,267,223	2,444,591	2,513,025	2,317,654	2,892,126	3,412,718	2,120,031	1,962,276	28,827,534
Mixed business	8,911,832	9,619,658	9,455,261	10,638,721	10,444,473	10,657,950	10,163,485	10,049,655	11,782,088	14,980,868	19,673,880	11,441,431	9,599,110	138,506,580
Men's clothing	333,500	337,421	360,364	404,446	447,566	484,156	446,609	375,229	381,503	435,865	660,368	431,294	330,613	5,095,434
Women's clothing	1,342,422	1,550,897	1,968,148	2,125,589	2,226,494	2,361,193	2,079,417	1,892,977	2,036,400	2,257,974	3,085,591	1,923,674	1,612,577	25,120,571
Family clothing	4,823,282	5,714,151	6,619,462	6,986,916	6,991,347	7,962,411	7,204,050	6,610,946	7,293,611	8,056,772	11,322,643	6,724,348	6,177,303	87,663,960
Miscellaneous clothing	447,307	490,190	728,488	814,778	1,153,296	742,893	728,982	811,158	839,898	1,098,207	623,189	588,019	588,019	9,367,833
Shoe shops	841,969	898,529	1,284,980	1,315,954	1,429,162	1,594,519	1,603,468	1,267,560	1,281,159	1,299,786	1,717,295	1,319,978	1,238,107	16,250,497
Clothing	7,788,480	8,991,188	10,961,442	11,647,683	12,247,865	13,145,172	12,082,279	10,875,694	11,803,471	12,890,295	17,884,104	11,022,483	9,946,619	143,498,295
Furniture stores	1,170,276	1,239,594	1,129,206	1,263,253	1,233,395	1,283,175	1,370,873	1,283,069	1,406,885	1,571,141	1,730,658	1,612,798	1,299,701	16,423,748
Household appliance stores	1,117,000	1,262,941	1,203,545	1,259,579	1,183,791	1,253,461	1,275,672	1,286,453	1,295,714	1,422,669	1,647,726	1,255,974	1,242,734	15,590,259
Electronic stores	1,204,010	1,241,282	1,138,372	1,288,302	1,226,200	1,262,477	1,407,584	1,373,748	1,403,611	1,632,245	2,229,675	1,599,276	1,318,276	17,121,048
DIY stores	5,062,882	6,210,176	7,248,670	6,901,748	5,839,021	6,041,023	6,376,779	5,835,715	6,122,904	6,061,182	5,827,877	5,274,227	5,193,282	72,932,604
Floor covering stores	152,750	165,606	142,743	163,049	149,751	155,203	175,325	162,659	173,415	195,714	137,925	162,299	157,591	1,941,280
Garden centres	971,134	1,554,565	2,543,700	2,535,654	1,783,082	1,463,248	1,385,943	1,252,800	1,381,993	1,360,015	1,766,300	1,931,232	983,273	18,923,805
Miscellaneous household	1,004,767	1,131,952	1,147,772	1,227,216	1,319,493	1,290,398	1,367,394	1,288,650	1,370,029	1,484,725	1,906,438	1,378,453	1,181,120	16,093,640
Household	10,682,819	12,806,116	14,554,008	14,638,801	12,734,733	12,748,985	13,359,570	12,483,094	13,154,551	13,727,691	15,246,599	12,196,259	11,375,977	159,026,384
Books, newspapers & magazines	1,618,567	1,695,821	1,668,952	1,864,652	1,902,617	1,860,363	1,963,923	1,920,981	2,062,807	2,418,354	3,287,928	1,741,111	1,708,676	24,096,185
Record shops	543,671	606,572	516,072	574,616	548,157	453,912	470,147	440,798	498,912	767,794	1,467,350	425,279	373,850	7,144,459
Music shops	1,538,390	1,660,681	1,533,219	1,909,914	1,667,744	1,583,283	1,720,841	1,639,479	1,754,320	1,739,438	1,974,681	2,053,428	1,786,180	21,023,208
Hobbies, toys & games	512,108	570,207	522,838	497,196	470,208	478,048	514,030	496,837	620,218	969,208	1,473,360	471,985	425,743	7,509,878
Photographic	197,079	212,057	215,553	250,282	272,320	289,892	274,033	289,892	274,033	324,250	416,888	252,528	224,399	3,255,776
Handicraft	76,970	81,835	69,553	79,581	98,789	77,299	87,357	87,217	94,076	105,304	87,902	86,494	90,334	1,045,741
Sports shops	2,093,064	2,364,946	2,694,972	2,907,052	2,855,271	3,108,953	3,311,044	2,688,728	2,553,310	2,697,690	3,644,136	2,475,767	2,222,196	33,524,065
Jewellers	542,833	562,083	540,706	616,079	640,650	634,650	578,476	589,828	605,455	1,426,541	585,661	595,553	8,164,976	
Computer software	615,579	657,141	597,862	673,567	648,881	614,420	674,421	664,631	698,953	770,476	865,205	721,840	672,491	8,259,888
Medical goods	314,014	374,037	357,614	371,480	386,437	381,842	371,212	367,698	377,623	386,216	486,405	356,551	340,148	4,557,263
Chemists	3,001,466	3,517,748	3,060,171	3,541,908	3,949,678	3,318,585	3,636,287	3,373,430	3,511,564	3,847,336	5,237,134	3,312,602	3,383,560	43,690,003
Optical goods	437,948	479,090	448,535	493,228	480,048	476,386	501,625	460,403	451,859	453,180	371,211	451,906	478,902	5,546,373
Cosmetic stores	331,309	348,166	324,325	367,825	387,672	391,644	410,923	375,337	409,055	580,519	985,015	363,280	366,312	5,310,073
Tobacconists	8,074	10,367	11,182	14,346	18,541	14,831	18,541	16,868	14,369	14,805	14,108	14,975	28,148	191,312
Florists	431,921	465,952	474,728	367,977	365,588	339,804	328,455	343,664	320,176	335,139	572,908	299,420	465,759	4,679,570
Artists' supplies	221,106	242,678	217,654	251,586	583,941	246,042	279,124	256,101	278,663	359,690	348,916	246,749	270,528	3,581,672
Antiques, art & stamps/coins	117,303	133,454	133,312	153,281	165,424	181,232	167,084	150,657	179,286	194,802	134,010	143,665	1,896,206	
Pawn shops	2,280	2,440	2,264	2,400	5,009	2,622	2,520	2,460	2,474	2,941	4,626	2,831	2,426	35,013
Gift shops	1,160,345	1,203,272	1,213,893	1,281,581	1,391,876	1,430,022	1,580,825	1,368,079	1,466,519	1,984,329	2,881,922	1,174,744	1,234,230	18,211,292
Secondhand shops	10,842	28,688	14,501	17,699	32,060	14,586	13,702	15,014	16,257	17,103	12,763	11,002	209,655	
Luggage & leather goods	90,074	101,088	109,768	120,247	134,747	142,890	129,913	110,392	110,568	133,287	182,054	110,064	85,499	1,470,517
Pet shops	567,354	634,381	623,988	686,658	677,725	679,717	697,786	646,861	684,485	686,179	779,545	674,187	716,096	8,187,608
Religious goods	685	764	625	789	811	1,312	731	1,323	731	899	787	719	786	10,243
Direct sales	4,224,908	4,852,677	4,121,711	4,451,314	4,383,437	4,035,248	4,124,527	3,955,784	3,531,099	3,728,425	3,673,765	3,621,251	3,645,081	48,124,319
Miscellaneous & speciality shops	2,623,779	2,850,503	2,503,464	2,874,231	3,127,161	2,806,086	3,538,235	2,972,210	3,068,503	3,596,254	3,418,944	2,764,945	2,641,791	36,162,327
Other retail	21,281,668	23,656,648	21,977,462	24,342,655	25,171,199	23,533,407	25,481,735	23,203,058	23,532,099	26,902,014	33,817,900	22,355,090	21,914,355	295,887,622
Automotive Fuels	16,469,905	18,287,051	18,081,609	19,431,064	18,520,477	19,239,331	19,656,469	19,047,690	19,197,479	18,516,242	18,088,807	17,939,583	19,170,580	225,176,382
Total retail sales	106,987,688	119,831,262	123,355,516	129,885,398	129,243,064	129,770,683	133,784,913	125,219,084	132,169,785	141,369,934	165,557,027	125,308,630	120,863,936	1,576,359,232

Table 3A Card expenditure statistics (not seasonally adjusted)

Number of credit card transactions

Detailed sector breakdown - services sectors

	February 2011	March 2011	April 2011	May 2011	June 2011	July 2011	August 2011	September 2011	October 2011	November 2011	December 2011	January 2012	February 2012	Total (latest 12 months)
Auto rental	395,153	476,766	459,649	512,076	657,102	607,103	606,607	546,448	465,409	433,127	363,830	403,666	749,820	6,281,603
Auto parts & accessories	751,686	881,943	779,936	828,964	816,834	811,175	830,721	773,305	760,548	757,277	710,825	738,979	784,915	9,475,422
Auto services	1,370,964	1,553,153	1,356,892	1,585,505	1,566,264	1,586,733	1,501,286	1,641,637	1,593,021	1,624,004	1,475,645	1,481,310	2,200,715	19,166,165
Auto repair shops	817,405	976,800	819,461	869,330	861,741	854,547	861,268	892,111	841,971	822,255	731,042	791,582	833,734	10,155,842
Service stations	0	0	0	0	0	0	0	0	0	0	0	0	0	0
Vehicle sales	528,700	654,125	578,871	632,619	1,320,964	604,486	618,517	605,170	541,915	515,540	441,377	505,456	554,948	7,573,988
Vehicle Sales & Services	3,863,908	4,542,787	3,994,809	4,428,494	5,222,905	4,464,044	4,418,399	4,458,671	4,202,864	4,152,203	3,722,719	3,920,993	5,124,132	52,653,020
Restaurants	9,819,785	10,643,630	10,778,859	11,695,231	11,246,849	12,354,880	12,654,094	11,685,141	12,320,222	11,602,679	11,706,106	10,799,666	11,832,632	139,319,989
Public houses	1,613,000	1,785,249	1,952,437	2,142,397	2,057,046	2,137,690	2,385,870	2,062,780	2,149,187	1,917,509	2,002,190	1,820,649	1,933,157	24,346,161
Catering services	249,097	296,957	265,419	302,674	310,469	311,026	293,825	326,146	313,602	339,813	315,943	295,389	314,261	3,685,524
Video stores	135,769	137,839	132,438	144,404	140,250	142,172	139,650	129,566	137,882	135,731	158,931	142,785	153,210	1,694,858
Cinema, theatre & dance	1,691,575	1,486,619	1,201,465	1,752,818	1,519,725	1,877,706	1,876,609	1,579,446	1,792,512	1,907,743	1,811,387	1,799,049	1,930,987	20,536,066
Concerts & entertainers	22,341	26,775	26,175	29,527	34,066	34,167	36,028	30,322	35,728	39,719	40,172	29,086	32,859	394,624
Tourist attractions	194,302	204,266	436,815	445,360	447,681	545,010	759,269	421,043	426,208	230,546	213,846	194,884	261,630	4,586,558
Amusement parks	19,115	17,434	42,511	27,266	32,152	40,125	69,315	28,286	36,485	18,382	17,027	12,343	22,973	364,299
Aquariums	9,988	9,912	14,659	13,656	12,138	13,283	17,076	10,412	10,648	7,765	7,561	8,957	10,565	136,632
Sports & games establishments	1,948,262	2,508,709	1,814,031	1,361,994	2,136,962	2,108,111	2,430,995	2,108,050	2,250,839	2,051,519	2,313,614	2,453,000	2,244,321	25,781,145
Professional sports clubs	101,546	97,018	100,499	92,673	110,210	115,300	122,539	103,199	107,880	118,453	138,527	114,816	105,877	1,326,991
Gambling	3,210,569	3,497,314	3,063,485	3,054,153	2,677,473	2,857,736	3,543,463	3,505,273	3,758,197	3,659,066	3,683,365	3,913,474	3,835,152	41,048,151
Personal services	165,570	183,638	228,426	251,913	238,862	238,862	296,286	276,594	283,283	313,333	378,348	323,936	312,062	3,348,963
Miscellaneous entertainment	532,256	580,736	615,112	646,139	678,467	661,026	776,196	645,734	649,702	548,319	436,901	551,415	575,218	7,364,965
Entertainment	19,713,175	21,476,096	20,672,331	21,960,205	21,641,350	23,460,514	25,401,215	22,911,992	24,272,375	22,890,577	23,223,918	22,459,449	23,564,904	273,934,926
Hotels	3,575,881	4,017,617	3,893,811	4,496,472	4,632,789	4,801,120	4,668,870	4,658,653	4,554,203	4,314,770	3,790,154	3,936,864	4,763,581	52,528,904
Airlines	1,538,024	1,747,277	1,376,612	1,563,995	1,557,676	1,451,199	1,515,257	1,546,297	1,350,825	1,316,850	1,010,002	1,695,508	2,069,350	18,200,848
Airport terminals	18,344	23,811	26,299	29,613	33,594	34,931	37,676	31,946	25,112	23,823	19,197	23,724	31,910	341,636
Railways	4,612,100	4,886,197	4,620,641	4,856,713	5,368,603	5,370,510	5,155,763	5,568,722	5,587,775	5,722,118	4,842,517	5,193,128	5,221,997	62,394,684
Buses	318,545	375,545	389,968	467,796	445,640	460,334	471,540	492,329	481,594	436,815	393,617	403,987	527,092	5,346,257
Sea travel	121,030	142,853	147,802	163,476	160,413	176,671	190,677	152,534	136,698	107,074	94,314	99,880	158,169	1,730,561
Travel agents	1,577,407	1,777,634	1,418,588	1,653,150	1,347,816	1,613,800	1,566,133	1,628,489	1,457,483	1,359,478	967,822	1,656,534	1,619,730	18,066,657
Timeshares	345	323	246	173	908	17,417	17,367	16,716	14,724	17,282	18,856	39,535	34,979	178,526
Camping grounds	137,394	165,480	238,117	260,653	258,683	299,597	327,625	177,854	133,744	61,575	46,020	113,725	117,969	2,201,042
Miscellaneous travel	753,395	829,572	760,438	924,707	747,547	877,329	847,644	841,296	794,192	771,827	659,303	698,229	935,550	9,687,634
Travel	9,076,584	9,948,692	8,978,711	9,920,276	9,920,880	10,301,788	10,129,682	10,456,183	9,982,147	9,816,842	8,051,648	9,924,250	10,716,746	118,147,845
Telegraph services / Wire transfer money order	3,111	3,340	3,475	11,350	4,567	3,584	4,147	3,635	3,610	3,632	4,140	3,772	3,488	52,740
Insurance services	1,608,387	1,870,227	1,694,065	1,894,660	2,032,051	2,003,670	2,122,930	2,016,003	1,815,717	1,750,852	1,483,321	1,722,221	1,731,333	22,137,050
FIs - cash disbursements (auto & manual)	52,193	56,024	205,561	309,510	262,246	280,844	282,869	236,826	120,636	54,750	28,598	32,742	35,777	1,906,383
FIs - merchandise & services	459,350	543,847	489,344	501,438	482,835	496,093	530,083	537,209	523,581	493,515	480,950	503,834	485,941	6,068,670
Non-FIs - foreign currency, travellers' cheques	21,748	25,487	24,608	30,628	33,024	36,328	32,354	36,328	26,534	21,173	18,494	19,576	23,179	328,063
Security brokers and dealers	17,441	23,544	17,072	21,380	26,580	22,601	39,214	34,715	28,897	32,030	27,605	28,142	27,992	329,772
Tax preparation services	334	347	251	804	375	339	192	205	175	174	165	256	293	3,576
Tax payments	35,603	20,849	14,218	12,897	12,361	27,933	18,582	14,888	14,434	12,298	12,876	77,610	147,845	386,791
Fines, bail and bond payments	60,347	68,482	59,584	66,148	53,490	72,808	70,479	72,799	70,654	72,367	62,960	67,403	70,491	807,665
Miscellaneous financial	81,963	100,391	101,488	100,448	102,496	99,027	100,922	97,178	93,267	91,664	61,874	66,644	72,052	1,087,451
Financial	2,340,477	2,712,538	2,609,666	2,949,263	3,010,025	3,043,577	3,205,746	3,045,812	2,697,505	2,532,455	2,180,983	2,522,200	2,598,391	33,108,161

Table 3A Card expenditure statistics (not seasonally adjusted)

Number of credit card transactions

Detailed sector breakdown - services sectors (continued)

	February 2011	March 2011	April 2011	May 2011	June 2011	July 2011	August 2011	September 2011	October 2011	November 2011	December 2011	January 2012	February 2012	Total (latest 12 months)
Telecoms	1,841,394	2,034,545	2,022,236	2,216,476	2,117,776	2,145,420	2,236,409	2,157,573	2,195,598	2,123,574	2,244,553	2,130,044	2,177,193	25,801,397
Utilities	322,740	379,421	352,078	372,045	389,446	361,376	362,499	340,157	338,751	333,110	296,110	341,416	362,517	4,228,926
Contractors (residential & commercial)	293,274	326,259	259,505	288,799	403,228	277,570	292,530	294,910	297,159	312,926	249,917	268,482	284,941	3,556,226
Gardening services	35,390	45,353	73,418	78,452	60,715	49,820	50,018	45,010	47,718	47,926	58,972	35,187	36,669	629,258
Veterinary services	502,549	562,467	521,386	577,927	508,833	519,227	541,821	520,366	511,726	508,007	485,677	486,003	466,859	6,210,299
Photocopying & printing	306,905	351,933	279,354	328,751	332,409	316,663	325,980	345,023	351,289	444,431	407,178	342,316	319,509	4,144,836
Photographic studios	84,417	98,708	343,328	386,247	115,244	141,604	103,122	104,465	130,920	146,980	124,168	79,658	79,640	1,854,084
Beauty & barber shops	1,237,449	1,373,364	1,123,994	1,199,399	1,546,917	1,536,225	1,514,399	1,498,295	1,456,620	1,509,447	1,945,038	1,327,418	1,389,096	17,420,212
Employment agencies	31,184	32,974	22,511	23,534	26,074	26,134	25,985	28,201	28,201	28,888	25,870	26,487	27,756	322,615
Counselling services	4,855	5,158	5,384	6,104	5,575	5,373	5,985	6,105	5,706	5,599	4,294	5,704	6,346	67,333
Legal services	30,087	82,268	52,902	58,514	57,740	32,411	79,186	56,961	55,749	58,170	51,073	41,707	82,236	708,917
Laundry & cleaning	159,208	179,165	174,439	210,565	208,932	203,977	190,101	200,849	199,684	193,202	174,695	173,925	166,123	2,275,657
Funeral services	10,499	11,761	9,084	9,331	10,710	10,181	10,255	10,649	10,502	11,420	10,826	11,808	12,472	128,999
Medical services	1,080,171	1,239,987	1,012,994	1,175,793	1,203,152	1,092,425	1,099,764	1,163,008	1,104,393	1,210,749	1,002,379	1,131,815	1,163,593	13,600,052
Moving & courier services	259,649	298,463	255,980	300,644	314,037	303,519	287,244	314,468	305,447	343,976	316,784	273,106	298,816	3,612,484
Repair shops (not auto)	49,708	55,592	50,079	57,984	58,611	55,781	61,325	59,334	59,222	65,477	62,905	59,842	61,872	708,024
Accounting services	30,015	30,909	23,048	27,511	37,924	25,400	30,084	34,238	32,663	34,168	31,529	37,624	34,823	379,921
Advertising, consultancy & PR	101,906	155,147	136,267	160,730	153,630	143,104	151,653	143,785	138,838	141,796	119,888	141,635	169,753	1,756,226
Computer programming	1,063,170	1,130,350	986,583	1,070,067	1,086,520	1,034,547	1,061,310	1,091,300	1,191,115	1,466,198	1,654,557	1,200,695	1,189,121	14,162,363
Farming services	57,127	65,641	67,616	70,748	64,969	61,994	65,543	62,430	62,209	61,133	63,900	58,164	62,732	767,079
Miscellaneous professional services	1,368,447	1,243,789	1,030,011	1,178,166	1,160,140	1,134,063	1,110,921	1,171,399	1,065,592	1,127,150	1,020,052	1,043,279	1,100,298	13,384,860
Engineering services	57,694	68,017	56,446	64,069	57,441	60,794	62,436	61,019	58,064	61,966	47,660	56,107	64,413	718,432
Marina services	31,138	45,181	67,627	70,869	74,543	79,589	91,481	54,867	43,101	33,136	30,976	32,514	33,109	656,993
Wrecking & salvage yards	3,766	4,295	4,043	4,382	4,551	4,418	4,581	4,642	4,341	4,395	4,091	4,139	4,139	51,414
Pest control	1,929	2,362	2,335	2,890	3,342	4,312	4,358	4,109	3,585	3,137	2,279	2,504	2,577	37,790
Educational establishments	409,683	501,234	372,855	457,871	415,957	425,086	427,669	641,276	553,802	540,871	420,798	594,715	506,694	5,858,828
Child care services	18,213	16,347	12,306	14,873	14,307	15,192	17,064	15,529	16,522	15,378	15,391	18,041	18,412	189,362
Social, political & religious organisations	886,223	1,402,929	1,194,006	1,271,525	1,236,888	1,253,075	1,223,780	1,116,385	938,147	1,060,270	1,022,643	836,690	818,114	13,374,452
Government services	1,781,762	2,017,722	1,755,741	1,994,226	1,916,030	1,957,488	1,988,930	1,995,225	1,901,333	1,939,992	1,703,579	1,910,657	1,988,151	23,069,074
Miscellaneous services	1,053,044	1,321,847	1,145,351	1,212,306	1,286,786	1,238,958	1,237,077	1,294,661	1,336,300	1,519,803	1,757,358	1,314,117	1,440,697	16,105,261
Commercial equipment	874,371	966,817	788,263	901,590	1,220,552	867,239	892,405	1,007,928	953,482	1,033,950	917,766	975,434	899,912	11,425,338
Other services	13,987,967	16,050,005	14,201,170	15,792,388	16,092,979	15,382,965	15,555,915	15,844,167	15,397,674	16,387,171	16,272,310	14,961,165	15,268,583	187,206,712
Total services	52,557,992	58,747,735	54,350,498	59,547,098	60,520,928	61,454,008	63,379,827	61,375,478	61,106,968	60,094,018	57,241,732	57,724,941	62,036,337	717,579,568
TOTAL	159,545,680	178,578,997	177,706,014	189,432,496	189,763,992	191,224,691	197,164,740	186,594,562	193,276,753	201,463,952	222,798,759	183,033,571	182,900,273	2,293,938,800

Table 3B Card expenditure statistics (not seasonally adjusted)

Value of credit card transactions

Detailed sector breakdown - retail sectors

£	February 2011	March 2011	April 2011	May 2011	June 2011	July 2011	August 2011	September 2011	October 2011	November 2011	December 2011	January 2012	February 2012	Total (latest 12 months)
Supermarkets	1,329,623,266	1,457,325,538	1,595,508,013	1,562,879,239	1,607,798,433	1,610,397,666	1,684,231,694	1,576,782,348	1,683,789,699	1,779,592,722	2,247,500,557	1,556,636,396	1,490,412,787	19,852,855,092
Bakers & dairies	1,953,135	2,257,431	2,284,028	2,530,706	3,156,355	2,732,525	2,559,674	2,607,499	2,823,819	3,040,632	3,598,548	2,547,047	2,923,380	33,061,644
Sweet stores	3,493,476	4,275,659	6,298,627	4,681,128	4,770,235	4,998,293	4,899,469	4,835,646	5,292,230	8,955,010	17,779,135	3,929,243	4,796,874	75,511,549
Miscellaneous foodstores	60,787,611	68,021,083	72,919,860	75,869,728	80,851,249	80,130,352	79,241,410	75,317,392	78,302,200	84,429,652	110,253,758	74,123,604	76,271,266	955,731,554
Off-licences	26,184,955	29,977,574	30,943,616	33,764,363	37,628,377	41,001,497	33,911,835	30,949,368	31,041,237	40,617,745	65,105,330	26,077,820	28,935,608	429,954,870
Food & drink	1,422,042,443	1,561,857,285	1,707,954,144	1,679,725,164	1,734,204,649	1,739,260,333	1,804,844,082	1,690,482,253	1,801,249,185	1,916,635,761	2,444,237,828	1,663,314,110	1,603,339,915	21,347,114,709
Department stores	259,539,923	300,887,866	301,211,362	345,040,400	357,317,151	364,828,425	330,292,725	336,376,523	368,269,363	466,773,648	640,776,305	352,564,864	289,723,362	4,454,061,994
Discount stores	61,063,923	67,776,866	76,890,867	81,422,331	70,426,122	75,699,981	79,091,230	74,078,745	85,333,449	105,136,512	134,155,197	70,549,350	63,189,078	983,749,728
Catalogues	36,497,564	41,596,806	36,427,981	37,906,023	35,492,910	35,923,864	31,223,651	40,340,835	56,898,295	71,461,881	66,124,791	51,393,515	49,425,304	554,215,856
Miscellaneous mixed	68,841,614	77,856,699	82,152,179	100,308,845	99,834,567	102,844,135	107,096,814	105,593,672	113,775,218	131,896,992	145,930,112	88,373,475	86,024,352	1,241,687,060
Mixed business	425,943,024	486,118,237	496,682,389	564,677,599	563,070,750	579,296,405	547,704,420	556,389,775	624,276,325	775,269,033	966,966,405	562,881,204	488,362,096	7,233,714,638
Men's clothing	34,655,660	38,221,886	39,474,279	45,183,998	48,915,691	49,099,287	42,946,676	41,676,029	44,072,384	48,237,826	63,435,423	45,334,533	35,135,846	541,733,858
Women's clothing	101,811,133	121,483,893	131,887,812	139,506,885	147,773,238	143,794,834	128,699,222	142,008,661	149,162,032	155,695,382	183,149,827	129,692,171	120,969,975	1,693,823,933
Family clothing	248,512,839	293,923,657	326,789,248	338,085,636	350,385,474	379,483,576	353,605,264	363,163,819	390,957,966	466,559,665	556,397,903	313,110,632	325,401,981	4,417,864,821
Miscellaneous clothing	25,395,539	27,953,501	33,168,565	36,306,241	66,891,099	35,857,120	36,312,141	38,946,378	41,178,059	43,355,489	49,302,847	30,678,063	31,045,038	470,992,561
Shoe shops	49,494,315	56,233,652	72,119,086	74,291,185	78,787,183	79,191,591	82,861,344	79,920,331	87,380,633	88,263,408	104,525,959	67,108,076	68,293,423	943,475,871
Clothing	459,869,486	537,816,589	603,438,990	633,373,945	692,762,685	687,426,408	644,424,647	665,715,218	712,751,074	762,111,771	956,811,959	590,421,495	580,846,263	8,067,891,044
Furniture stores	239,291,369	259,839,626	230,359,728	258,478,009	240,537,283	253,517,268	268,178,089	257,930,318	301,598,726	293,612,143	253,230,688	309,949,963	259,942,434	3,187,174,275
Household appliance stores	103,014,697	116,688,605	101,690,148	106,681,351	103,836,466	108,132,969	110,996,648	114,194,794	120,638,942	132,322,125	128,173,191	120,086,744	117,425,797	1,380,869,780
Electronic stores	180,866,758	195,608,253	183,707,423	206,735,124	194,182,191	205,572,030	236,931,396	225,627,456	233,738,478	276,237,698	260,029,462	203,997,283	2,794,097,595	
DIY stores	354,053,093	424,625,552	480,536,148	465,001,746	414,966,276	430,963,542	451,355,105	423,699,681	433,530,839	433,901,669	354,321,778	386,146,468	5,094,870,367	
Floor covering stores	49,018,782	55,751,301	49,092,595	55,311,063	51,769,583	53,810,052	59,520,339	56,817,205	60,574,883	67,880,077	47,145,447	54,923,904	52,448,544	665,077,903
Garden centres	45,329,839	79,945,361	134,739,355	126,489,610	88,283,618	74,660,656	69,202,838	59,716,910	60,746,670	72,513,121	40,172,507	44,530,864	912,501,807	
Miscellaneous household	82,658,605	92,086,502	92,132,894	100,795,019	117,269,161	113,044,255	114,044,853	116,511,250	121,230,116	128,801,169	146,734,086	118,041,742	99,973,338	1,360,664,385
Household	1,054,233,143	1,224,544,895	1,272,258,291	1,319,491,922	1,210,846,578	1,239,700,772	1,310,229,268	1,254,497,614	1,332,812,586	1,393,501,451	1,373,849,112	1,299,025,985	1,164,497,638	15,395,256,112
Books, newspapers & magazines	63,485,680	66,993,530	60,308,015	64,205,265	68,375,169	65,860,771	67,598,587	74,878,639	74,224,537	84,395,134	93,818,331	58,304,275	56,064,153	835,026,406
Record shops	13,062,833	14,936,547	13,038,091	14,122,225	13,687,366	12,172,048	12,492,690	11,668,559	12,780,799	12,433,538	10,657,251	9,700,568	189,173,480	
Music shops	23,487,588	25,225,153	22,300,207	25,385,741	24,390,534	25,951,437	26,738,436	27,048,267	27,665,101	29,529,042	36,560,422	29,102,091	27,014,240	326,910,671
Hobbies, toys & games	26,834,293	32,635,996	29,078,224	28,740,294	27,493,613	26,460,909	27,058,619	28,134,129	33,314,854	53,098,154	72,027,879	25,268,667	24,679,264	407,990,602
Photographic	23,801,371	27,219,092	27,843,867	29,819,941	33,481,801	33,432,336	33,074,698	29,786,409	28,117,768	32,004,981	42,046,981	28,317,547	27,359,154	372,798,575
Handicraft	7,638,257	8,762,440	7,114,719	7,631,877	11,125,503	8,465,041	8,893,424	8,658,302	9,199,318	10,359,609	7,621,380	8,056,593	7,987,475	103,875,681
Sports shops	135,871,703	159,868,044	176,704,030	194,254,050	189,072,597	203,144,122	214,417,220	172,916,911	167,333,422	178,641,205	221,025,015	157,245,009	147,119,637	2,181,741,262
Jewellers	96,465,685	101,667,327	111,573,595	120,366,725	127,920,550	114,865,175	110,674,995	120,836,277	110,236,772	133,225,294	240,836,277	99,886,969	106,563,978	1,476,642,358
Computer software	92,533,092	109,433,337	102,848,647	120,364,219	111,708,187	109,983,676	116,960,349	116,396,905	133,926,727	157,119,882	171,361,138	119,173,939	106,879,648	1,476,156,654
Medical goods	11,405,961	13,232,765	12,240,950	12,567,765	13,764,507	13,754,782	13,236,058	13,073,376	13,684,560	14,743,411	17,786,106	11,804,012	12,370,192	162,258,484
Chemists	63,459,412	73,862,861	65,528,507	75,774,992	75,733,389	72,842,179	76,609,762	69,043,628	80,717,659	98,123,603	145,665,592	67,045,904	70,349,105	991,297,181
Optical goods	65,895,989	71,537,610	64,964,189	71,650,914	70,295,203	69,807,523	73,242,002	66,574,936	65,604,047	66,489,525	51,116,881	66,169,563	71,992,059	809,444,452
Cosmetic stores	17,931,274	20,634,795	24,212,299	28,137,757	23,241,834	23,039,737	22,624,663	22,368,191	23,930,460	32,598,416	48,013,726	20,166,566	21,175,691	310,144,135
Tobacconists	527,658	654,172	713,577	846,573	1,919,734	1,938,560	974,797	1,193,341	1,993,341	920,199	896,618	2,110,924	13,096,843	
Florists	19,685,405	21,452,231	21,685,529	18,872,539	20,350,855	17,048,106	16,673,907	17,518,818	15,835,433	16,860,594	26,030,969	14,571,708	21,489,543	228,390,232
Artists' supplies	11,356,440	13,255,441	11,124,474	13,141,524	49,912,328	13,029,059	13,910,665	14,109,757	14,273,732	17,395,162	15,817,106	12,068,517	13,350,107	201,387,872
Antiques, art & stamps/coins	21,899,837	26,161,969	21,329,797	26,452,400	30,781,657	26,753,710	24,814,961	25,870,152	28,842,877	30,581,976	28,816,802	22,071,422	22,989,050	315,466,782
Pawn shops	383,537	412,016	431,559	531,032	956,909	537,007	563,915	567,617	573,182	616,860	869,581	656,316	538,629	7,254,623
Gift shops	37,113,112	41,339,997	41,361,883	45,500,565	46,404,109	50,509,444	53,898,199	48,436,178	52,592,054	69,132,492	86,350,457	39,262,568	43,510,700	618,299,096
Secondhand shops	1,637,465	3,416,066	1,902,548	1,778,328	1,851,467	1,771,462	1,648,962	1,918,471	2,109,679	2,107,033	1,666,838	1,641,572	2,943,081	
Luggage & leather goods	10,368,833	11,584,117	11,958,013	13,728,975	16,456,143	17,228,261	13,013,783	13,594,479	13,807,991	15,056,879	22,691,135	13,799,098	11,052,253	173,971,127
Pet shops	24,171,708	27,715,527	27,092,911	29,601,259	30,003,388	29,588,617	31,266,123	29,332,180	30,191,885	30,383,583	32,718,736	29,988,546	32,932,549	360,815,304
Religious goods	40,804	49,516	51,106	38,142	59,352	60,565	58,541	52,027	108,177	38,935	51,462	48,176	668,525	
Direct sales	235,416,599	268,510,407	216,665,915	230,633,669	223,602,633	214,022,278	223,230,329	219,480,524	205,824,151	215,376,195	201,221,			

Table 3B Card expenditure statistics (not seasonally adjusted)

Value of credit card transactions

Detailed sector breakdown - services sectors

£	February 2011	March 2011	April 2011	May 2011	June 2011	July 2011	August 2011	September 2011	October 2011	November 2011	December 2011	January 2012	February 2012	Total (latest 12 months)
Auto rental	46,040,048	57,461,989	60,176,207	70,367,807	96,916,013	93,110,411	86,460,480	68,418,640	55,450,945	50,315,059	45,432,744	48,874,859	95,417,035	828,402,189
Auto parts & accessories	116,656,563	137,984,791	118,099,180	128,470,774	127,374,049	125,159,240	125,154,637	123,312,541	120,781,961	122,263,987	111,493,818	115,536,528	123,303,905	1,478,935,411
Auto services	44,119,596	52,506,324	44,501,620	52,138,499	51,949,497	51,426,926	50,430,210	53,418,573	49,452,819	48,489,896	41,493,571	46,848,758	55,917,968	598,574,661
Auto repair shops	205,880,967	246,363,056	203,145,566	215,461,617	212,869,182	216,883,565	213,740,019	226,694,344	214,508,298	209,764,300	183,345,714	201,249,419	210,823,360	2,554,848,440
Service stations	0	0	0	0	0	0	0	0	0	0	0	0	0	0
Vehicle sales	186,070,019	226,381,385	190,005,063	207,569,451	245,288,698	202,321,859	203,845,065	211,706,473	195,010,029	179,251,205	149,329,242	181,442,620	197,850,385	2,390,001,475
Vehicle Sales & Services	598,767,193	720,697,545	615,927,636	674,008,148	734,397,439	688,902,001	679,630,411	683,550,571	635,204,052	610,084,447	531,095,089	593,952,184	683,312,653	7,850,762,176
Restaurants	407,861,110	436,030,617	448,384,329	484,485,531	469,634,308	514,482,555	503,672,415	476,217,090	499,960,563	471,730,633	565,366,802	423,983,049	463,651,311	5,757,599,203
Public houses	70,180,013	76,664,109	84,099,493	93,747,734	93,147,322	95,909,425	104,018,584	91,261,708	94,043,493	86,242,831	106,782,586	77,316,178	79,769,004	1,083,002,467
Catering services	35,856,906	44,098,385	40,892,564	44,436,652	45,051,378	45,178,732	42,314,060	45,238,648	42,468,988	46,442,652	47,671,266	39,795,673	42,989,207	526,578,205
Video stores	2,015,005	2,163,252	1,908,267	2,109,406	2,142,385	2,211,590	1,992,291	2,126,849	2,830,993	2,542,127	2,935,859	2,306,673	2,396,991	27,666,683
Cinema, theatre & dance	109,546,072	127,613,300	90,744,969	192,589,335	116,090,632	134,901,228	104,591,906	110,941,763	136,333,687	146,584,577	132,920,833	113,849,787	136,312,679	1,543,474,696
Concerts & entertainers	2,987,465	3,963,082	3,731,110	5,229,893	5,668,747	5,355,155	4,042,954	5,987,947	6,831,515	6,704,366	3,117,325	2,443,728	3,030,307	56,106,129
Tourist attractions	9,737,640	11,263,632	21,652,323	22,210,762	22,792,766	26,994,223	33,951,994	19,391,487	22,792,766	11,815,643	11,124,202	10,684,689	13,099,749	225,218,242
Amusement parks	1,087,416	1,239,001	2,264,281	1,619,992	1,906,458	2,465,580	3,239,676	1,444,318	1,936,861	1,279,391	950,914	713,898	1,092,977	20,153,347
Aquariums	546,674	675,491	861,108	840,452	761,262	788,420	868,011	604,958	578,887	477,216	511,520	515,096	568,875	8,051,296
Sports & games establishments	72,800,977	96,696,014	85,973,628	132,464,518	116,758,442	86,494,940	79,366,618	72,962,979	73,393,858	72,705,544	78,055,985	80,174,465	80,332,275	1,055,379,266
Professional sports clubs	8,198,032	7,930,510	9,191,481	9,930,057	21,341,813	13,876,928	9,328,423	8,435,057	8,451,185	10,890,065	9,159,744	8,714,719	8,235,730	125,485,712
Gambling	124,127,621	132,904,963	116,335,887	111,597,173	99,108,695	100,016,872	114,915,010	101,356,183	105,009,491	92,944,652	89,619,160	102,711,006	96,349,770	1,262,868,862
Personal services	12,026,332	13,710,450	14,507,293	15,815,238	15,492,879	15,710,049	16,126,550	16,030,224	16,542,482	17,564,481	17,436,538	16,540,990	16,840,990	196,135,635
Miscellaneous entertainment	182,039,964	195,880,037	170,023,928	201,839,255	219,000,294	180,430,711	186,662,493	208,937,451	209,767,607	189,852,947	126,044,117	200,228,709	198,644,254	2,287,311,803
Entertainment	1,039,011,227	1,150,832,843	1,090,570,861	1,318,915,998	1,228,897,381	1,224,816,408	1,205,090,985	1,160,936,662	1,218,386,382	1,157,777,125	1,194,618,774	1,080,874,208	1,143,314,119	14,175,031,546
Hotels	571,839,471	647,956,449	643,009,902	767,854,483	824,458,651	877,154,953	782,233,789	818,104,495	793,465,134	731,142,115	630,320,291	640,680,262	760,846,553	8,917,227,077
Airlines	449,212,210	504,095,610	396,494,477	463,319,665	453,371,174	453,100,789	456,200,210	462,631,815	402,410,318	390,820,409	288,004,834	552,464,133	621,761,945	5,444,675,379
Airport terminals	2,386,467	3,288,697	3,331,315	4,056,727	3,953,552	4,437,855	4,153,005	3,878,493	3,509,387	3,107,079	2,748,999	3,002,494	3,551,572	43,019,175
Railways	199,676,477	211,819,285	189,982,773	217,092,982	244,224,995	229,273,665	219,274,312	253,020,713	247,976,254	256,909,283	243,726,721	274,179,394	235,317,182	2,822,797,559
Buses	16,709,805	20,068,709	21,632,528	25,002,436	24,397,065	26,351,934	25,618,784	26,400,772	23,799,258	21,602,947	19,863,615	19,712,207	23,485,614	277,935,869
Sea travel	41,679,222	48,701,112	45,822,664	48,911,627	50,862,460	54,854,517	53,323,489	46,600,918	43,873,503	35,212,495	26,983,844	33,366,046	55,986,577	544,499,252
Travel agents	526,695,308	591,695,562	515,446,480	622,718,280	601,896,269	634,369,408	575,711,842	504,161,706	436,823,369	377,817,399	304,991,683	583,090,514	513,732,472	6,262,454,984
Timeshares	132,966	76,758	61,425	48,701	146,791	2,281,896	2,399,412	2,419,793	2,082,856	2,465,664	2,956,844	6,817,770	6,269,603	28,027,513
Camping grounds	26,494,729	32,473,343	36,038,464	41,279,968	42,076,231	44,789,397	37,419,192	17,716,702	16,337,411	17,727,297	14,766,224	21,125,524	21,027,763	342,777,516
Miscellaneous travel	53,162,231	71,178,412	54,318,864	66,180,393	70,113,358	63,186,299	59,555,903	63,044,392	51,519,007	48,625,186	40,348,395	51,250,268	58,384,415	697,704,892
Travel	1,316,149,415	1,483,397,488	1,263,128,990	1,488,610,779	1,491,041,895	1,512,645,760	1,433,656,149	1,379,875,304	1,228,331,363	1,154,287,759	944,391,159	1,545,008,350	1,539,517,143	16,463,892,139
Telegraph services / Wire transfer money order	774,171	804,098	853,374	22,107,522	1,141,564	860,242	900,187	849,667	836,080	817,459	915,610	872,913	761,151	31,719,867
Insurance services	320,707,900	372,155,856	337,003,421	377,891,135	390,149,046	382,764,167	399,758,168	402,899,802	365,200,900	339,334,878	282,954,874	342,064,653	295,744,423	4,287,921,323
Fis - cash disbursements (auto & manual)	48,597,876	53,329,505	100,861,503	159,547,230	122,356,970	142,082,575	149,137,150	115,833,152	73,612,807	49,199,777	15,345,958	16,092,311	16,515,706	1,013,914,644
Fis - merchandise & services	64,619,715	77,611,762	71,919,730	75,093,457	79,130,113	78,529,540	85,932,901	83,722,782	73,573,406	68,837,218	61,573,143	69,952,827	69,881,129	895,758,008
Non-Fis - foreign currency, travellers' cheques	6,612,296	7,726,728	8,688,071	11,091,261	12,200,484	17,196,006	17,041,874	12,016,307	8,817,247	6,457,909	6,067,521	6,753,928	7,605,524	121,662,860
Security brokers and dealers	4,409,153	6,147,722	4,840,073	5,864,338	6,815,816	6,156,385	13,535,882	10,554,850	7,991,207	9,158,576	7,333,146	7,970,746	8,415,053	94,783,794
Tax preparation services	83,944	89,658	60,009	253,263	67,896	115,179	67,372	72,761	77,586	81,814	64,116	112,514	116,101	1,178,269
Tax payments	46,173,577	19,122,371	11,478,495	9,671,383	9,428,284	33,333,310	19,076,334	12,617,971	12,276,750	9,429,318	9,548,327	90,013,754	75,365,894	311,362,191
Fines, bail and bond payments	7,664,055	8,685,110	7,205,492	8,699,189	5,833,305	8,780,315	8,289,878	9,065,774	8,573,819	8,837,187	7,387,878	8,532,799	8,830,175	98,720,921
Miscellaneous financial	15,707,785	18,347,252	16,787,569	17,191,865	17,860,829	17,789,872	17,281,340	16,845,313	16,642,912	16,594,650	9,863,525	11,171,011	12,242,668	188,618,805
Financial	515,350,472	564,020,062	559,697,737	687,410,643	644,984,307	687,607,591	711,021,086	664,478,379	567,602,714	508,748,786	401,054,098	553,537,456	495,477,824	7,045,640,683

Table 3B Card expenditure statistics (not seasonally adjusted)

Value of credit card transactions

Detailed sector breakdown - services sectors (continued)

£	February 2011	March 2011	April 2011	May 2011	June 2011	July 2011	August 2011	September 2011	October 2011	November 2011	December 2011	January 2012	February 2012	Total (latest 12 months)
Telecoms	77,111,918	84,548,321	78,394,449	87,862,484	82,330,114	84,025,988	93,439,313	86,321,675	92,843,039	92,459,888	100,903,374	89,667,880	86,631,349	1,059,427,874
Utilities	56,767,969	69,002,591	62,424,194	64,767,367	68,385,382	58,874,868	58,930,368	58,801,431	57,708,586	59,157,964	54,556,232	64,019,509	71,332,140	747,960,632
Contractors (residential & commercial)	76,007,195	85,612,575	68,024,622	77,418,373	102,144,358	77,311,765	79,402,604	80,693,067	80,926,275	89,749,331	65,363,266	69,590,357	78,041,595	954,278,188
Gardening services	3,450,119	5,153,669	6,854,844	10,295,976	8,428,090	7,187,035	7,785,590	6,600,281	5,857,717	6,033,137	7,633,867	6,429,037	5,824,167	84,083,410
Veterinary services	44,219,540	50,059,174	45,716,940	50,713,223	44,679,187	44,723,473	46,235,504	44,945,939	43,858,556	43,899,673	40,809,924	42,816,353	41,209,604	539,667,550
Photocopying & printing	37,102,801	44,439,565	34,197,842	37,401,056	40,171,186	38,099,958	40,683,907	43,056,714	41,434,198	49,794,618	39,659,224	40,140,756	38,741,516	487,820,540
Photographic studios	7,230,253	8,380,683	21,109,757	23,268,313	8,918,179	10,744,212	8,969,372	8,619,215	9,379,460	11,494,897	9,317,818	6,597,414	7,002,733	133,802,053
Beauty & barber shops	67,163,401	74,694,118	59,371,023	64,818,893	81,531,649	81,967,609	79,836,205	81,533,855	78,477,166	82,887,030	101,462,194	69,864,519	75,342,345	931,786,606
Employment agencies	19,558,171	21,653,039	16,763,052	18,218,038	19,223,787	19,924,818	20,738,107	22,536,141	22,185,395	24,648,066	21,574,798	19,083,251	22,201,053	248,749,545
Counselling services	902,170	997,898	1,411,790	1,377,177	1,074,818	1,203,458	1,179,883	1,334,172	1,456,257	1,405,380	983,102	1,544,180	1,161,880	15,129,995
Legal services	17,846,435	22,328,902	18,302,955	19,081,581	20,898,189	17,755,267	19,471,935	18,918,826	18,473,257	19,916,819	16,595,609	20,730,212	22,026,997	234,500,549
Laundry & cleaning	5,184,642	5,923,926	5,988,478	7,302,388	6,686,348	6,674,452	6,302,897	6,817,215	6,586,075	6,417,518	5,803,789	5,839,390	5,553,877	75,896,353
Funeral services	11,619,298	12,885,310	9,449,824	9,449,824	10,898,416	10,656,403	10,514,189	11,284,459	11,003,003	12,305,459	10,932,944	12,514,892	13,184,239	135,153,679
Medical services	144,356,181	168,336,950	134,978,431	152,954,574	161,705,651	152,327,251	147,868,819	157,628,487	152,339,010	167,370,218	133,856,040	149,704,442	161,580,961	1,840,650,834
Moving & courier services	33,058,800	38,206,708	34,610,690	40,815,575	34,426,964	40,530,143	38,891,560	38,460,053	38,338,535	39,154,504	33,443,066	40,980,908	36,013,786	453,872,492
Repair shops (not auto)	8,547,372	9,494,118	8,709,147	9,872,045	11,164,731	10,267,956	10,055,641	10,331,527	10,981,502	10,708,765	10,508,235	9,806,080	9,914,277	121,814,024
Accounting services	6,564,760	6,996,948	5,046,267	5,431,112	9,070,920	5,163,966	5,728,682	6,398,240	6,019,502	6,604,747	6,632,792	8,245,746	8,217,106	79,556,028
Advertising, consultancy & PR	11,554,474	15,772,971	13,334,901	15,867,042	15,325,817	13,993,314	14,130,408	14,356,163	13,806,522	13,888,949	11,732,511	14,132,631	15,452,143	171,793,372
Computer programming	85,651,076	99,617,556	85,620,408	91,182,304	96,699,924	88,119,530	96,827,044	93,525,598	100,109,454	112,170,041	99,117,610	79,933,708	71,199,593	1,114,122,770
Farming services	7,085,660	8,024,503	7,615,822	8,184,868	8,673,893	7,899,642	8,637,815	7,902,557	7,831,773	7,577,248	7,091,175	7,297,758	7,141,053	93,878,107
Miscellaneous professional services	153,224,292	169,459,749	146,356,781	162,708,390	164,817,426	161,572,733	164,595,528	198,666,229	160,687,020	160,334,929	134,268,472	164,909,373	162,958,516	1,951,335,146
Engineering services	17,298,267	20,616,055	16,808,205	19,338,231	17,671,661	18,617,092	18,343,825	19,101,390	17,477,716	18,274,344	14,008,959	16,057,258	18,715,041	215,029,777
Marina services	6,440,171	10,348,710	10,821,075	11,458,432	11,871,787	11,904,098	11,413,698	8,246,005	7,131,652	5,834,112	6,013,047	7,471,154	6,828,006	109,341,776
Wrecking & salvage yards	749,753	859,479	793,194	824,351	897,732	824,819	828,076	938,709	853,681	841,825	649,177	792,224	777,889	9,881,156
Pest control	526,325	612,450	583,095	1,228,403	728,884	789,122	885,077	926,556	820,454	788,435	628,645	646,548	608,834	9,246,503
Educational establishments	100,332,304	99,509,527	89,376,290	110,057,872	89,628,465	94,706,810	136,334,919	293,059,381	176,057,495	96,995,251	84,018,903	169,844,701	111,405,694	1,550,995,308
Child care services	2,221,654	2,297,889	1,479,948	1,739,059	1,695,367	1,872,434	1,739,651	1,834,905	1,751,890	1,796,380	1,650,271	1,982,172	1,930,527	21,770,493
Social, political & religious organisations	61,092,788	91,286,434	70,419,549	64,130,954	86,280,600	70,233,818	65,769,870	69,838,950	65,026,187	65,722,681	76,186,135	76,393,352	65,432,416	866,720,946
Government services	155,890,034	178,294,944	158,457,464	174,736,625	155,628,441	168,832,814	180,011,038	177,799,508	163,994,232	162,143,606	144,604,367	171,310,986	178,680,093	2,014,494,118
Miscellaneous services	59,992,244	78,028,705	66,697,700	70,621,973	76,882,328	72,035,941	68,657,910	74,202,450	70,475,127	79,821,880	92,834,432	68,531,093	72,805,531	891,595,070
Commercial equipment	113,082,471	130,697,265	107,898,633	120,836,638	132,438,215	121,934,065	125,726,473	136,725,169	126,578,995	132,185,923	107,019,493	122,961,401	121,634,077	1,486,636,347
Other services	1,391,832,538	1,614,140,732	1,387,692,087	1,533,963,141	1,570,978,509	1,500,774,854	1,569,935,908	1,781,404,867	1,590,469,731	1,582,383,618	1,439,859,471	1,559,839,285	1,519,549,038	18,650,991,241
Total services	5,432,950,316	6,181,045,119	5,560,027,013	6,470,763,192	6,494,758,182	6,491,901,567	6,381,568,328	6,488,350,278	6,033,459,376	5,744,423,850	5,141,338,882	5,973,891,745	6,142,017,330	73,103,544,862
TOTAL	10,799,025,033	12,250,543,940	11,766,063,201	13,004,426,360	13,054,212,648	13,045,594,492	13,059,493,921	12,937,527,227	12,818,908,687	13,075,252,793	13,595,804,217	12,188,296,332	12,157,115,325	152,953,239,143

Table 3C Card expenditure statistics (not seasonally adjusted)

Number of debit card transactions

Detailed sector breakdown - retail sectors

	February 2011	March 2011	April 2011	May 2011	June 2011	July 2011	August 2011	September 2011	October 2011	November 2011	December 2011	January 2012	February 2012	Total (latest 12 months)
Supermarkets	172,387,130	194,320,685	187,449,889	206,168,466	193,946,842	193,350,463	203,213,352	194,606,487	209,656,937	206,630,990	215,657,587	203,024,072	203,051,087	2,411,076,857
Bakers & dairies	332,742	358,426	429,364	503,136	1,048,045	1,070,737	1,162,627	1,205,904	1,076,770	1,102,215	1,201,993	987,358	1,121,899	11,268,474
Sweet stores	573,886	598,404	885,289	778,878	681,695	609,165	660,567	620,623	707,461	870,379	1,720,749	554,855	740,781	9,428,846
Miscellaneous foodstores	10,217,688	11,394,926	12,208,797	12,979,270	12,895,685	12,659,457	13,886,459	12,829,107	13,810,623	13,284,825	13,716,602	12,817,801	14,103,550	156,587,102
Off-licences	2,731,723	2,984,179	3,155,912	3,227,723	3,057,995	3,197,815	3,171,017	3,011,529	3,352,079	3,065,548	3,319,026	2,846,692	3,063,222	37,452,737
Food & drink	186,243,169	209,656,620	204,129,251	223,657,473	211,630,262	210,887,637	222,094,022	212,273,650	228,603,870	224,953,957	235,615,957	220,230,778	222,080,539	2,625,814,016
Department stores	10,602,264	12,049,999	12,310,307	13,598,527	13,414,198	13,791,949	13,492,732	12,060,330	13,445,385	15,722,665	25,124,521	13,758,614	11,578,425	170,347,652
Discount stores	5,613,214	5,892,328	6,448,517	6,556,818	6,510,081	6,861,193	7,094,140	6,790,246	7,651,320	8,614,397	11,882,417	6,755,111	6,944,007	88,000,575
Catalogues	2,669,693	2,901,411	2,457,453	2,809,928	2,608,431	2,537,738	1,890,580	2,786,566	4,018,098	5,101,856	5,390,331	4,276,461	3,692,274	40,471,127
Miscellaneous mixed	8,042,994	9,207,354	9,855,792	11,600,041	10,769,280	10,866,698	11,873,156	10,778,773	12,028,908	12,581,271	15,337,793	11,190,223	10,658,438	136,747,727
Mixed business	26,928,165	30,057,092	31,072,069	34,565,314	33,301,990	34,057,578	34,350,608	32,415,915	37,143,711	42,020,169	57,735,062	35,980,409	32,873,144	435,567,081
Men's clothing	643,123	647,574	709,749	750,078	823,483	897,041	922,918	721,886	760,908	790,813	1,411,209	742,900	626,330	9,804,889
Women's clothing	4,162,959	4,532,849	5,961,593	6,205,450	6,592,362	7,050,739	6,493,199	5,745,860	6,452,476	6,295,639	9,513,806	5,835,140	5,122,637	75,801,750
Family clothing	16,745,319	19,682,242	21,799,006	23,284,527	22,268,287	24,868,341	23,467,687	21,268,348	24,337,187	23,962,287	36,281,434	21,989,763	20,491,670	283,700,779
Miscellaneous clothing	1,621,115	1,673,066	2,739,131	3,090,025	2,944,155	2,623,486	2,789,274	2,689,812	3,189,875	2,789,959	3,759,807	2,309,212	2,264,240	32,862,042
Shoe shops	2,037,286	2,150,107	3,075,488	3,048,577	3,293,298	3,383,276	3,860,764	3,132,706	3,046,350	2,878,160	4,132,312	3,088,808	2,437,400	37,775,246
Clothing	25,209,802	28,685,838	34,284,967	36,378,657	35,921,585	39,072,883	37,533,842	33,558,612	37,786,796	36,716,858	55,098,568	33,963,823	30,942,277	439,944,706
Furniture stores	2,569,635	2,763,984	2,574,584	2,836,009	2,770,976	2,888,658	3,114,743	2,906,955	3,231,822	3,403,790	4,130,109	3,517,342	3,001,741	37,140,713
Household appliance stores	4,573,902	5,218,124	5,025,854	5,254,370	4,942,473	5,262,033	5,204,685	5,262,025	5,592,201	5,614,051	6,783,122	5,050,822	5,219,997	64,429,575
Electronic stores	2,014,908	2,062,873	1,849,265	2,122,074	1,989,003	2,034,433	2,278,951	2,234,433	2,352,958	2,587,752	3,872,086	2,665,886	2,236,714	28,286,428
DIY stores	12,770,809	15,671,558	18,127,781	17,470,406	15,655,851	15,487,840	16,302,429	14,876,061	16,117,298	15,609,043	15,771,776	13,558,200	13,492,007	188,140,250
Floor covering stores	260,309	283,979	243,831	282,333	263,126	269,265	308,711	283,176	308,535	335,309	247,499	276,864	274,472	3,377,100
Garden centres	2,014,898	3,112,873	5,252,209	5,085,557	3,680,116	3,109,786	2,959,271	2,550,970	2,951,475	2,934,209	3,960,876	1,952,666	2,128,005	39,678,013
Miscellaneous household	899,187	1,007,087	1,017,296	1,097,625	1,102,602	1,258,803	1,474,410	1,349,036	1,412,402	1,348,438	1,285,298	1,396,066	1,213,140	14,962,203
Household	25,193,648	30,120,478	34,090,820	34,148,374	30,404,147	30,310,818	31,643,200	29,462,656	31,966,691	31,832,592	36,050,766	28,417,846	27,566,076	376,014,464
Books, newspapers & magazines	5,562,255	5,812,023	5,543,630	6,168,609	5,998,082	5,785,014	6,396,673	6,336,859	6,765,063	6,952,395	9,848,586	5,937,345	5,978,151	77,522,430
Record shops	1,641,129	1,699,932	1,431,577	1,591,932	1,548,679	1,319,986	1,421,294	1,459,343	1,704,374	1,502,013	1,502,675	1,502,675	1,373,118	22,441,223
Music shops	5,698,130	6,325,120	5,882,505	7,433,839	6,305,824	5,858,116	6,537,170	6,335,276	6,913,184	6,819,872	7,591,180	8,139,152	7,279,913	81,421,151
Hobbies, toys & games	1,643,583	1,791,518	1,523,500	1,519,403	1,396,486	1,342,305	1,531,729	1,549,282	2,055,287	2,660,797	4,468,369	1,530,977	1,328,234	22,697,887
Photographic	396,874	424,585	440,325	509,097	552,924	576,211	572,432	518,856	591,812	608,195	494,921	580,195	431,417	6,448,910
Handicraft	163,637	174,166	150,650	165,964	162,737	159,921	181,421	185,070	205,320	218,732	188,255	182,203	192,752	2,167,191
Sports shops	5,558,121	6,428,285	7,252,073	7,529,344	7,421,987	8,006,178	8,578,644	7,272,226	7,193,583	6,814,693	9,649,384	6,687,185	6,155,782	88,989,364
Jewellers	1,309,988	1,343,650	1,313,223	1,390,343	1,360,778	1,316,437	1,316,858	1,199,938	1,260,602	1,598,285	3,191,334	1,247,007	1,290,050	17,828,507
Computer software	699,072	737,914	663,940	766,455	707,884	666,240	737,396	732,640	821,094	840,178	1,041,479	842,410	737,878	9,295,508
Medical goods	27,634	31,538	27,609	30,415	32,322	31,809	32,300	32,105	31,770	33,896	29,945	30,065	29,803	373,307
Chemists	14,841,073	17,228,444	14,879,466	17,392,182	16,728,070	15,649,130	17,340,758	16,062,737	16,964,777	17,288,361	22,877,898	16,260,374	17,096,720	205,768,917
Optical goods	852,229	936,320	846,246	934,380	908,115	888,350	949,495	888,405	901,193	870,557	706,315	889,885	933,552	10,652,813
Cosmetic stores	1,040,328	1,092,748	1,150,611	1,178,503	1,205,946	1,165,708	1,310,497	1,176,217	1,328,405	1,602,561	3,046,126	1,112,622	1,166,064	16,536,008
Tobacconists	25,094	31,735	32,188	39,719	35,666	37,765	40,411	37,992	43,237	42,813	57,550	49,432	64,373	512,881
Florists	996,403	995,280	1,153,601	763,440	768,001	752,525	724,476	731,597	713,555	718,024	1,137,016	651,517	1,093,995	10,203,027
Artists' supplies	567,273	597,783	561,552	642,513	596,463	584,693	668,517	609,825	712,914	852,795	895,074	634,302	662,758	8,019,189
Antiques, art & stamps/coins	214,570	232,773	223,987	248,659	246,092	260,694	302,290	247,525	298,572	356,312	231,858	302,785	3,174,124	
Pawn shops	15,993	17,164	16,225	17,437	17,850	19,010	18,825	19,684	21,070	22,850	33,120	24,015	24,429	251,659
Gift shops	4,623,335	4,512,883	4,412,172	4,222,421	4,858,258	4,400,905	4,869,690	4,374,145	5,001,287	6,017,111	10,619,266	4,271,294	4,992,444	62,551,876
Secondhand shops	35,940	40,807	50,353	39,246	47,727	48,928	52,940	51,365	54,033	67,195	49,180	51,570	609,168	
Luggage & leather goods	148,718	164,198	171,424	181,489	193,436	208,195	212,628	168,142	159,973	179,792	277,384	150,199	123,182	2,190,042
Pet shops	2,143,389	2,352,920	2,281,787	2,502,494	2,362,041	2,512,656	2,582,888	2,411,446	2,630,725	2,472,488	2,829,921	2,533,870	2,469,725	29,942,961
Religious goods	1,603	1,703	1,933	2,065	1,933	2,065	1,809	2,580	2,052	2,011	1,552	2,011	1,979	24,743
Direct sales	5,793,451	6,671,536	5,762,461	6,110,226	6,381,371	6,104,469	5,751,403	5,643,218	5,154,548	5,387,244	5,417,050	5,441,736	5,322,679	69,147,941
Miscellaneous & speciality shops	2,556,319	2,647,300	2,656,893	2,894,765	2,860,123	2,810,517	4,078,529	2,925,590	3,144,393	3,572,139	3,924,800	3,028,516	2,985,802	37,528,647
Other retail	56,556,141	62,292,331	58,418,603	64,285,685	62,698,795	60,459,751	66,254,462	60,986,799	64,579,800	68,282,143	94,083,058	61,924,292	62,033,755	786,299,474
Automotive Fuels	54,657,256	62,166,247	59,178,346	64,487,985	60,907,490	61,542,091	63,399,783	61,188,388	64,084,251	61,613,317	60,644,339	60,510,822	61,051,531	740,774,590
Total retail sales	374,788,181	422,972,606	421,174,056	457,523,488	434,864,269	436,330,758	455,275,917	429,886,020	464,165,119	46				

Table 3C Card expenditure statistics (not seasonally adjusted)

Number of debit card transactions

Detailed sector breakdown - services sectors

	February 2011	March 2011	April 2011	May 2011	June 2011	July 2011	August 2011	September 2011	October 2011	November 2011	December 2011	January 2012	February 2012	Total (latest 12 months)
Auto rental	393,095	466,466	456,808	475,670	540,303	563,703	566,479	512,470	466,505	443,821	412,103	409,825	454,355	5,768,508
Auto parts & accessories	1,364,473	1,605,849	1,429,445	1,484,605	1,472,614	1,470,589	1,515,847	1,414,478	1,454,191	1,389,411	1,293,390	1,399,924	1,537,564	17,467,907
Auto services	2,498,719	2,803,019	2,609,678	2,973,036	2,986,326	3,038,891	3,055,897	3,046,765	3,144,797	3,136,646	3,309,819	2,946,435	3,299,844	36,351,153
Auto repair shops	1,397,501	1,692,024	1,433,413	1,507,297	1,524,592	1,501,916	1,499,867	1,548,572	1,514,925	1,447,503	1,260,649	1,439,564	1,530,684	17,901,006
Service stations	0	0	0	0	0	0	0	0	0	0	0	0	0	0
Vehicle sales	916,370	1,134,629	1,048,339	1,109,925	1,345,656	1,078,403	1,108,746	1,064,593	993,010	904,463	761,870	929,286	995,068	12,473,987
Vehicle Sales & Services	6,570,158	7,701,986	6,977,683	7,550,533	7,869,491	7,653,502	7,746,836	7,586,878	7,573,428	7,321,844	7,037,831	7,125,034	7,817,515	89,962,561
Restaurants	34,601,777	37,795,507	37,929,138	41,446,796	38,474,836	39,847,400	42,240,590	39,335,107	44,714,589	42,076,156	43,718,485	41,351,836	43,677,038	492,607,478
Public houses	6,025,760	6,644,785	7,400,762	8,019,104	6,950,060	7,189,210	8,245,765	7,106,612	8,166,655	7,058,999	7,533,326	7,341,022	7,683,360	89,339,660
Catering services	706,090	806,293	736,912	804,446	818,886	819,177	818,859	846,867	865,625	915,126	860,929	824,190	906,717	10,024,027
Video stores	642,427	710,254	788,834	893,259	864,456	821,294	681,888	537,864	618,453	582,993	639,033	556,294	555,994	7,988,335
Cinema, theatre & dance	4,342,857	3,389,312	3,064,996	4,598,484	4,029,977	4,996,093	5,641,718	3,814,774	4,325,228	4,425,463	4,097,266	4,147,427	4,792,067	51,322,805
Concerts & entertainers	50,843	52,859	55,807	58,592	61,438	62,933	80,432	57,937	71,459	70,373	87,743	65,899	79,531	805,003
Tourist attractions	459,277	453,531	864,456	780,468	728,562	848,946	1,347,571	692,031	784,826	397,059	371,415	346,005	490,785	8,105,655
Amusement parks	62,094	55,183	121,039	83,774	88,512	106,408	199,200	83,506	106,052	52,162	52,940	47,916	79,467	1,076,159
Aquariums	32,881	30,844	41,118	41,045	35,100	38,537	51,962	32,641	34,921	24,968	23,308	31,382	37,801	423,627
Sports & games establishments	2,426,418	2,691,086	2,345,946	2,248,918	2,594,527	2,601,934	2,940,777	2,458,583	2,725,455	2,337,966	2,383,581	2,750,773	2,636,829	30,716,375
Professional sports clubs	157,321	154,082	169,669	165,122	158,794	175,553	212,103	175,883	180,077	182,815	247,497	197,158	179,112	2,197,865
Gambling	14,074,481	17,078,764	15,162,805	17,098,856	15,581,754	16,376,701	16,703,096	16,141,662	16,868,670	16,078,861	17,095,147	18,812,761	18,713,360	201,712,437
Personal services	249,331	282,139	422,428	471,823	431,122	442,353	460,037	421,549	424,912	399,497	426,437	433,025	443,198	5,058,520
Miscellaneous entertainment	500,541	519,299	774,454	708,526	765,993	842,575	1,130,338	730,395	822,152	547,819	499,504	617,510	681,616	8,640,181
Entertainment	64,332,098	70,663,938	69,878,364	77,419,213	71,540,855	75,029,708	80,674,623	72,435,411	80,709,074	75,150,257	78,036,611	77,523,198	80,956,875	910,018,127
Hotels	2,964,609	3,186,175	3,594,180	3,760,578	3,759,034	4,095,454	4,295,432	3,743,796	3,924,441	3,405,624	3,278,484	3,390,588	3,807,787	44,241,573
Airlines	1,092,703	1,264,151	1,100,963	1,217,357	1,251,856	1,188,236	1,226,157	1,208,125	1,108,633	1,047,370	858,416	1,445,335	1,457,533	14,374,132
Airport terminals	23,576	31,827	37,404	40,401	44,841	46,298	54,570	42,721	33,880	28,968	26,639	30,621	38,965	457,135
Railways	12,622,301	13,100,430	13,286,155	15,114,676	14,956,740	14,590,660	14,797,481	15,019,323	16,625,228	16,278,805	14,936,089	15,284,845	15,201,818	179,192,250
Buses	833,520	934,165	910,298	1,001,295	955,779	970,526	1,007,779	1,044,311	1,133,459	1,039,522	979,344	1,051,267	1,148,258	12,176,003
Sea travel	110,278	127,173	147,283	148,320	155,554	175,570	203,772	149,377	138,423	119,185	111,579	114,956	118,345	1,709,537
Travel agents	1,558,899	1,754,339	1,573,779	1,705,144	1,670,684	1,730,236	1,616,481	1,447,813	1,332,151	1,082,153	879,550	1,854,212	1,639,271	18,285,813
Timeshares	284	299	194	120	408	5,997	5,290	4,911	4,291	8,167	11,450	35,244	32,057	108,428
Camping grounds	302,805	414,942	644,537	638,846	619,582	736,385	903,009	475,761	393,899	151,915	247,496	303,869	5,637,954	
Miscellaneous travel	721,634	784,028	803,592	988,985	908,805	939,871	968,036	861,534	852,989	790,452	754,056	725,325	1,090,570	10,468,243
Travel	17,266,000	18,411,354	18,504,205	20,855,144	20,564,249	20,383,779	20,782,575	20,253,876	21,622,953	20,546,537	18,664,836	20,789,301	21,030,686	242,409,495
Telegraph services / Wire transfer money order	34,302	36,301	38,663	38,729	41,666	42,366	47,078	47,574	50,409	51,513	55,565	48,385	48,487	546,736
Insurance services	2,699,220	3,192,471	2,950,093	3,331,224	3,484,033	3,497,069	3,632,975	3,558,960	3,318,625	2,850,431	2,431,796	2,985,528	2,894,379	38,127,584
Fis - cash disbursements (auto & manual)	103,976	103,706	4,923	6,098	2,597	2,821	2,599	2,301	67,299	95,986	102,436	91,172	109,371	591,309
Fis - merchandise & services	6,551,574	7,527,450	7,276,689	7,725,940	7,259,592	7,546,172	7,912,731	7,659,913	8,053,157	8,152,869	8,311,063	8,453,858	8,074,481	93,953,915
Non-Fis - foreign currency, travellers' cheques	253,435	300,509	351,037	337,490	392,151	490,582	463,764	458,032	397,208	351,549	413,470	359,644	394,287	4,709,723
Security brokers and dealers	85,083	123,098	114,068	77,635	75,883	71,694	152,568	83,302	70,613	87,167	50,556	73,695	82,451	1,062,730
Tax preparation services	309	349	524	443	631	645	635	584	479	531	461	744	965	6,991
Tax payments	214,335	125,023	98,901	92,178	85,327	224,042	116,694	92,778	102,407	92,590	114,806	566,586	381,025	2,092,360
Fines, bail and bond payments	266,763	310,935	364,563	438,168	446,382	468,060	445,215	441,580	466,346	456,950	438,170	434,342	438,275	5,148,986
Miscellaneous financial	107,005	137,446	151,544	151,320	155,980	154,119	158,189	150,180	146,104	141,439	111,212	114,944	124,234	1,696,711
Financial	10,316,002	11,857,288	11,351,005	12,199,225	11,944,242	12,497,570	12,932,448	12,495,204	12,672,647	12,281,028	12,029,535	13,128,898	12,547,955	147,937,045

Table 3C Card expenditure statistics (not seasonally adjusted)

Number of debit card transactions

Detailed sector breakdown - services sectors (continued)

	February 2011	March 2011	April 2011	May 2011	June 2011	July 2011	August 2011	September 2011	October 2011	November 2011	December 2011	January 2012	February 2012	Total (latest 12 months)
Telecoms	9,165,074	10,102,388	10,873,978	11,671,333	11,421,613	11,509,620	12,033,266	11,469,253	11,848,227	11,544,813	12,255,434	11,449,032	10,929,238	137,108,195
Utilities	1,844,932	2,121,979	2,038,463	2,200,117	2,242,212	2,181,857	2,268,532	2,157,472	2,260,425	2,241,665	2,074,343	2,305,803	2,217,962	26,310,830
Contractors (residential & commercial)	520,752	570,337	421,954	461,867	491,159	456,084	485,325	492,438	512,788	529,471	437,308	450,368	487,939	5,797,038
Gardening services	71,381	86,655	138,956	146,490	113,238	97,272	99,541	85,518	96,351	95,566	123,242	74,238	77,243	1,234,310
Veterinary services	1,338,489	1,504,743	1,378,075	1,517,930	1,340,789	1,386,622	1,448,723	1,381,161	1,399,508	1,352,557	1,281,102	1,307,508	1,290,121	16,588,839
Photocopying & printing	361,610	425,226	342,431	421,546	410,386	373,104	400,836	420,861	438,225	564,180	521,649	431,540	408,307	5,158,291
Photographic studios	238,291	281,698	1,117,760	1,267,045	311,782	352,783	294,810	287,241	338,377	362,664	337,148	216,270	222,512	5,390,090
Beauty & barber shops	3,967,588	4,355,681	3,558,667	3,718,454	4,821,747	4,773,716	4,743,720	4,621,650	4,621,923	4,513,882	5,879,644	4,189,345	4,455,342	54,253,771
Employment agencies	23,969	23,068	9,982	11,083	11,585	10,978	11,110	10,209	10,170	9,422	7,920	9,428	9,322	134,277
Counselling services	46,763	47,897	63,115	76,840	73,329	71,543	82,107	75,440	76,258	75,450	68,253	75,535	81,586	867,353
Legal services	109,376	132,509	108,526	122,629	129,584	126,370	134,882	135,097	130,416	137,217	113,243	138,372	144,243	1,553,088
Laundry & cleaning	392,586	441,318	415,525	489,527	496,290	476,019	459,001	482,683	487,427	470,793	430,115	417,499	413,543	5,479,740
Funeral services	19,123	21,085	16,977	17,562	19,885	19,067	19,407	19,648	20,203	21,597	20,405	22,780	24,158	242,774
Medical services	2,303,071	2,635,630	2,125,970	2,444,373	2,502,485	2,325,387	2,424,998	2,563,336	2,455,856	2,645,050	2,154,876	2,511,110	2,659,141	29,448,212
Moving & courier services	215,905	241,027	221,648	257,211	272,431	262,084	266,949	273,604	268,579	303,496	299,308	271,807	278,206	3,216,350
Repair shops (not auto)	98,227	106,208	82,563	94,695	97,275	91,862	102,560	101,319	102,694	106,709	111,095	99,068	108,408	1,204,456
Accounting services	196,423	201,483	198,187	242,547	239,905	228,997	254,582	251,134	248,854	255,728	228,210	276,578	260,393	2,886,598
Advertising, consultancy & PR	212,192	238,733	202,589	242,617	234,430	221,383	230,869	220,917	217,652	223,542	164,982	223,903	308,616	2,730,233
Computer programming	1,064,594	1,109,996	855,572	976,926	893,809	883,545	911,189	978,926	1,093,106	1,100,907	1,057,950	1,148,183	1,219,684	12,229,793
Farming services	133,564	151,226	156,566	167,849	152,293	148,459	156,566	148,816	153,379	146,511	151,708	143,906	155,969	1,833,248
Miscellaneous professional services	2,527,495	2,800,474	2,458,076	2,835,232	2,841,141	2,775,662	2,841,453	2,899,654	2,974,238	3,078,706	2,960,829	3,094,505	3,005,610	34,565,580
Engineering services	56,954	68,173	61,308	64,437	68,351	65,988	65,955	66,187	64,582	65,622	52,509	60,288	69,185	772,585
Marina services	42,509	59,928	93,724	91,737	93,040	100,109	120,190	72,931	63,294	48,011	49,303	45,521	50,820	888,608
Wrecking & salvage yards	7,258	8,343	8,350	9,156	9,164	9,103	9,430	9,268	9,256	9,238	7,236	9,104	9,376	107,024
Pest control	2,201	2,557	2,794	3,982	4,130	5,148	5,209	4,972	4,261	4,009	2,852	3,074	3,003	45,991
Educational establishments	1,274,000	1,533,453	970,164	1,499,522	1,118,026	883,672	816,321	1,612,089	1,947,971	1,826,468	1,217,193	1,819,566	1,712,613	16,957,058
Child care services	106,644	98,333	78,201	98,948	94,281	94,703	112,874	99,701	113,311	103,838	97,836	125,068	129,622	1,246,716
Social, political & religious organisations	1,542,907	2,671,924	2,000,009	2,243,125	2,099,523	2,139,963	2,193,693	2,127,303	2,043,483	2,089,984	1,796,941	1,601,616	1,681,244	24,688,808
Government services	4,832,720	5,386,491	5,102,268	5,920,436	5,670,626	5,576,825	5,859,097	5,687,201	5,577,299	5,495,085	4,874,806	5,701,231	5,711,430	66,562,795
Miscellaneous services	4,606,815	5,652,165	4,984,283	5,568,318	5,525,106	5,164,371	5,529,938	5,516,619	5,700,391	6,176,264	7,201,286	5,559,302	5,701,509	68,279,552
Commercial equipment	1,387,434	1,516,575	1,254,951	1,487,958	1,893,367	1,320,266	1,394,612	1,684,582	1,615,550	1,631,418	1,584,217	1,610,825	1,480,288	18,474,609
Other services	38,710,847	44,597,303	41,341,632	46,371,492	45,692,982	44,132,562	45,777,745	45,957,230	46,894,054	47,229,863	47,562,943	45,392,373	45,306,633	546,256,812
Total services	140,159,714	156,418,044	151,647,069	168,156,185	161,370,853	163,792,575	172,209,659	162,472,395	173,396,597	165,935,153	166,610,240	167,349,392	171,467,451	1,980,825,613
TOTAL	514,947,895	579,390,650	572,821,125	625,679,673	596,235,122	600,123,333	627,485,576	592,358,415	637,561,716	631,354,209	705,837,990	608,377,362	608,014,773	7,385,239,944

Table 3D Card expenditure statistics (not seasonally adjusted)

Value of debit card transactions

Detailed sector breakdown - retail sectors

£	February 2011	March 2011	April 2011	May 2011	June 2011	July 2011	August 2011	September 2011	October 2011	November 2011	December 2011	January 2012	February 2012	Total (latest 12 months)
Supermarkets	4,694,994,490	5,199,498,403	5,240,648,270	5,680,595,731	5,278,566,880	5,326,180,319	5,577,282,769	5,266,241,839	5,713,582,369	5,644,573,345	6,720,328,438	5,477,862,095	5,318,530,845	66,443,891,303
Bakers & dairies	4,846,551	5,414,956	6,138,423	6,545,725	20,254,738	18,833,317	20,577,252	20,479,881	13,379,676	14,487,481	16,710,658	11,905,724	12,822,984	167,550,815
Sweet stores	8,170,952	9,101,658	13,877,323	11,035,894	11,208,759	10,307,206	10,939,053	10,422,524	11,839,730	15,585,135	31,005,109	8,923,219	11,131,816	155,377,426
Miscellaneous foodstores	184,938,191	205,972,837	224,674,974	234,437,101	241,780,882	238,121,528	263,469,361	242,750,265	257,174,735	251,787,133	298,778,334	243,519,637	251,853,106	2,954,319,893
Off-licences	57,978,323	63,359,412	69,552,476	70,994,120	71,681,511	74,951,092	72,519,869	67,831,309	72,859,767	70,838,852	96,180,325	61,316,735	65,304,667	857,390,135
Food & drink	4,950,928,507	5,483,347,266	5,554,891,466	6,003,608,571	5,623,492,770	5,668,393,462	5,944,788,304	5,607,725,818	6,068,836,277	5,997,271,946	7,163,002,864	5,803,527,410	5,659,643,418	70,578,529,572
Department stores	357,978,870	416,263,698	428,006,601	474,293,303	476,559,123	473,086,078	434,257,607	493,212,667	576,072,140	946,815,853	464,451,158	395,695,433	6,036,891,671	
Discount stores	219,831,728	232,304,753	273,640,783	279,962,620	273,180,056	279,619,617	299,523,797	284,448,894	328,259,498	371,383,048	493,664,621	265,353,369	261,334,542	3,642,675,598
Catalogues	110,074,691	124,108,606	102,445,361	119,974,651	109,442,889	106,682,679	108,373,994	115,155,024	145,472,388	165,240,106	162,089,327	149,133,204	139,308,617	1,547,426,846
Miscellaneous mixed	210,112,276	239,810,455	268,157,153	318,657,332	299,041,475	303,467,330	332,560,841	309,436,396	347,389,611	378,716,014	474,193,918	297,041,487	288,418,482	3,856,890,494
Mixed business	897,997,565	1,012,487,512	1,072,249,898	1,192,887,906	1,158,223,543	1,162,855,704	1,198,636,642	1,143,297,921	1,314,334,164	1,491,411,308	2,076,763,719	1,175,979,218	1,084,757,074	15,083,884,609
Men's clothing	38,090,976	41,024,667	44,537,980	48,822,428	52,297,309	53,846,803	53,519,757	46,008,766	50,410,996	53,047,093	86,210,500	47,371,998	39,503,049	616,601,346
Women's clothing	150,806,278	168,247,536	204,208,835	216,722,332	231,310,172	229,237,530	219,148,453	214,505,978	239,770,516	236,458,677	326,641,723	199,506,511	184,330,184	2,670,088,447
Family clothing	527,106,225	626,989,420	704,270,137	743,641,162	710,765,247	757,690,162	732,614,293	758,387,724	760,545,121	846,366,542	669,526,913	664,518,426	9,303,987,961	
Miscellaneous clothing	43,607,750	46,326,372	66,081,354	74,105,702	78,803,986	67,503,709	75,532,542	77,340,393	88,856,158	61,152,201	100,085,555	61,763,729	878,968,794	
Shoe shops	76,347,335	84,212,831	112,647,411	112,072,888	115,884,290	120,387,410	140,899,276	125,471,768	134,243,920	128,379,218	176,979,183	114,477,451	94,908,133	1,460,563,829
Clothing	835,958,564	966,800,826	1,131,745,717	1,195,364,512	1,189,061,004	1,228,665,614	1,243,070,400	1,195,941,198	1,353,187,874	1,345,668,623	1,943,646,014	1,092,035,074	1,045,023,521	14,930,210,377
Furniture stores	259,084,491	285,102,333	260,669,710	289,986,733	278,031,191	290,705,243	309,507,743	302,688,020	355,151,749	343,591,754	319,722,250	346,204,738	300,189,914	3,681,551,378
Household appliance stores	172,870,315	198,482,522	182,058,286	187,370,531	179,024,478	186,240,968	187,581,041	190,070,770	205,308,760	217,939,527	242,774,693	200,999,601	200,406,879	2,378,258,056
Electronic stores	196,953,098	210,185,239	194,602,556	226,859,768	210,198,550	218,555,760	255,730,497	246,584,631	261,192,005	299,595,931	436,312,491	290,433,011	231,583,129	3,081,833,066
DIY stores	559,796,599	683,655,306	796,779,878	726,227,525	728,218,552	758,066,477	714,721,358	758,387,724	760,545,121	669,167,781	649,688,432	645,534,906	8,664,418,769	
Floor covering stores	55,262,662	63,476,725	56,963,782	64,347,349	62,506,590	63,420,841	71,637,037	68,028,676	74,483,877	81,866,788	59,647,535	64,775,385	63,135,350	794,279,935
Garden centres	61,680,558	105,159,787	187,101,626	175,332,150	124,725,368	104,404,762	97,137,370	83,487,455	92,230,091	124,792,164	58,569,548	64,891,111	1,309,557,718	
Miscellaneous household	62,633,454	65,062,022	67,242,293	73,561,026	76,331,495	84,053,840	100,557,990	94,728,573	100,852,562	96,751,910	84,190,342	96,195,765	82,882,035	1,022,407,853
Household	1,368,281,177	1,611,123,934	1,745,417,631	1,790,883,266	1,657,045,197	1,675,999,966	1,780,218,155	1,700,307,483	1,847,102,963	1,892,511,122	1,936,607,256	1,706,866,480	1,588,623,324	20,932,306,777
Books, newspapers & magazines	91,660,073	96,340,040	91,773,608	100,615,484	98,760,037	97,278,667	107,545,530	125,433,823	124,288,196	120,873,878	178,673,504	100,949,118	96,993,507	1,339,525,392
Record shops	30,910,600	32,564,906	27,729,912	31,032,945	25,171,649	27,927,173	28,055,602	27,927,173	28,055,602	25,171,649	119,196,839	28,274,635	26,358,426	461,635,560
Music shops	43,544,101	46,609,090	42,343,541	50,326,494	47,177,359	47,899,150	52,409,263	51,256,167	56,545,753	57,248,965	68,935,949	63,139,473	57,485,993	641,377,197
Hobbies, toys & games	54,801,170	66,387,237	56,499,302	54,610,875	51,250,649	45,918,331	51,016,450	56,197,673	76,103,708	107,240,863	168,105,463	51,716,819	46,590,322	831,637,692
Photographic	21,179,871	23,622,108	26,281,282	27,156,895	30,905,133	31,148,706	31,575,170	28,632,981	31,149,766	43,243,753	27,267,895	24,713,045	30,713,045	303,403,609
Handicraft	7,954,578	8,774,301	7,943,068	8,855,057	8,883,855	8,898,138	9,499,117	9,721,805	10,680,474	11,365,496	9,260,549	9,381,861	9,447,417	112,711,138
Sports shops	215,816,271	255,085,341	293,924,483	308,596,381	305,121,032	326,697,619	351,277,643	293,521,048	296,073,876	294,140,769	409,380,785	263,624,845	244,885,067	3,642,328,889
Jewellers	110,979,566	115,322,683	115,289,738	126,795,983	127,404,785	127,513,070	127,982,610	117,474,000	119,916,521	119,953,672	292,261,121	110,569,847	117,522,197	1,640,002,265
Computer software	94,772,200	106,051,341	91,082,257	109,524,617	96,856,823	91,390,619	100,370,381	103,817,982	130,263,926	152,291,282	171,707,139	129,801,233	99,296,496	1,382,454,096
Medical goods	5,560,679	6,414,997	5,305,502	5,986,143	6,590,697	6,310,806	6,765,505	6,561,842	6,609,079	7,166,491	6,049,328	5,817,621	6,500,485	76,078,496
Chemists	218,465,744	252,197,296	224,916,001	262,380,934	250,406,465	237,521,488	259,676,618	233,012,768	262,596,406	291,600,931	461,932,783	231,993,478	247,211,112	3,215,446,280
Optical goods	82,816,643	90,417,872	80,827,824	89,029,348	86,425,116	85,023,865	90,199,057	83,672,393	84,834,893	82,780,837	63,243,549	85,031,699	89,322,879	1,010,809,332
Cosmetic stores	37,558,066	43,161,319	43,504,634	39,925,466	37,678,848	36,830,865	45,488,933	37,422,838	42,464,559	54,620,961	108,634,907	33,525,582	36,812,240	560,071,152
Tobacconists	743,239	883,035	1,147,617	1,147,617	1,201,992	1,201,992	1,201,992	1,236,723	1,357,870	1,366,889	1,432,416	1,432,416	1,641,329	16,417,329
Florists	37,692,952	37,622,616	42,373,998	31,583,792	31,631,571	30,870,646	30,062,488	30,086,094	28,182,767	28,797,008	42,659,463	26,038,228	42,481,014	402,389,685
Artists' supplies	16,651,376	18,288,088	16,532,839	19,037,235	24,396,194	18,196,651	20,538,764	19,125,372	21,576,421	25,879,108	18,534,984	19,087,055	246,914,365	
Antiques, art & stamps/coins	23,950,943	26,924,515	22,038,286	25,407,149	27,188,384	26,653,552	27,267,146	27,879,170	30,010,132	31,149,319	33,263,773	23,924,208	24,039,208	325,744,842
Pawn shops	1,724,971	1,956,769	2,137,840	2,105,132	2,088,941	2,584,998	2,409,442	2,393,393	2,982,385	2,755,659	3,716,181	3,050,313	3,205,179	31,386,236
Gift shops	80,461,784	84,596,044	86,242,189	85,631,936	93,599,131	93,171,720	100,964,539	91,585,317	106,965,893	129,927,920	199,578,326	79,836,013	86,849,038	1,238,948,066
Secondhand shops	2,544,558	2,498,159	2,498,159	3,622,968	2,751,124	3,422,500	3,448,020	3,761,913	4,240,175	3,266,709	2,583,453	3,656,935	3,932,855	39,325,855
Luggage & leather goods	7,710,549	8,914,224	9,547,277	9,900,273	11,520,790	11,833,250	10,755,393	9,983,604	10,338,872	11,381,920	19,435,507	10,706,379	8,487,797	132,805,286
Pet shops	58,405,230	65,045,100	64,028,241	70,263,168	67,207,068	70,514,806	74,334,051	68,842,013	73,878,776	69,303,770	79,231,102	70,700,613	69,247,245	842,595,953
Religious goods	48,843	53,345	54,846	100,406	82,083	100,406	82,083	58,256	113,563	61,034	51,584	68,663	70,907	869,655

Table 3D Card expenditure statistics (not seasonally adjusted)

Value of debit card transactions

Detailed sector breakdown - services sectors

£	February 2011	March 2011	April 2011	May 2011	June 2011	July 2011	August 2011	September 2011	October 2011	November 2011	December 2011	January 2012	February 2012	Total (latest 12 months)
Auto rental	37,185,985	44,877,750	46,655,730	48,971,546	60,066,265	61,013,113	59,447,992	50,538,134	47,107,299	43,649,623	41,557,460	40,450,469	46,798,130	591,133,511
Auto parts & accessories	162,780,720	209,585,511	177,037,887	186,173,227	186,182,695	182,990,599	183,210,954	193,461,585	184,697,332	175,193,348	154,973,894	172,666,851	183,183,320	2,189,357,203
Auto services	53,978,518	64,589,333	58,544,514	67,520,745	68,376,060	68,561,049	71,117,938	68,164,705	64,435,592	63,842,881	58,253,804	63,147,800	64,870,641	781,425,062
Auto repair shops	474,227,963	689,036,148	538,309,371	548,584,636	554,516,958	548,539,252	501,120,008	624,369,664	544,442,129	503,233,481	423,958,671	503,773,585	502,430,256	6,482,314,159
Service stations	0	0	0	0	0	0	0	0	0	0	0	0	0	0
Vehicle sales	900,161,137	1,240,692,055	1,046,457,392	1,129,435,688	1,111,617,570	1,066,921,769	1,043,879,912	1,209,427,048	1,076,436,406	962,480,797	756,975,435	989,445,257	989,306,179	12,623,075,508
Vehicle Sales & Services	1,628,334,323	2,248,780,797	1,867,004,894	1,980,685,842	1,980,759,548	1,928,025,782	1,858,776,804	2,145,961,136	1,917,118,758	1,748,400,130	1,435,719,264	1,769,483,962	1,786,588,526	22,667,305,443
Restaurants	674,187,611	708,326,535	759,776,697	798,542,648	744,100,985	788,049,631	846,407,123	741,129,054	844,736,889	767,052,507	866,398,782	770,117,932	802,516,599	9,437,155,382
Public houses	148,613,512	162,421,785	182,940,777	197,828,647	175,223,184	179,961,369	211,043,573	175,353,416	196,646,519	172,663,046	196,599,804	177,327,126	182,547,449	2,210,556,695
Catering services	39,276,707	47,163,368	49,600,889	50,531,010	53,761,242	55,116,504	55,473,412	52,679,563	50,800,062	51,534,957	56,751,604	43,922,558	48,273,547	615,608,716
Video stores	8,416,951	8,737,145	9,155,103	10,304,532	9,278,008	8,545,602	7,478,776	7,309,499	9,488,238	9,373,949	10,724,682	7,261,060	6,918,681	104,575,275
Cinema, theatre & dance	123,245,587	131,049,656	117,827,991	239,908,528	133,945,383	170,497,989	140,937,022	116,290,080	150,509,439	154,615,484	148,466,297	125,707,083	148,250,110	1,778,005,062
Concerts & entertainers	1,481,470	1,713,791	1,700,913	2,065,842	2,013,271	1,963,026	2,411,299	1,820,310	2,235,005	2,350,636	2,474,515	1,974,715	2,290,151	25,013,474
Tourist attractions	14,726,383	15,815,060	28,863,440	24,536,288	25,776,255	30,332,876	44,549,665	23,810,123	27,606,095	14,604,799	12,902,012	11,820,611	15,496,705	276,113,929
Amusement parks	1,816,881	1,770,159	4,004,819	2,831,793	2,944,737	3,609,256	6,133,649	2,611,267	3,277,167	1,823,475	1,678,103	1,472,399	2,376,912	34,533,736
Aquariums	1,075,225	1,155,666	1,497,217	1,525,360	1,261,847	1,366,765	1,658,137	1,132,363	1,167,724	922,801	885,447	1,007,131	1,198,472	14,778,930
Sports & games establishments	82,936,495	102,197,568	96,344,569	111,944,902	102,982,328	99,192,413	95,147,385	87,184,546	89,075,320	81,106,214	85,056,694	93,908,441	90,924,668	1,135,065,048
Professional sports clubs	8,104,122	8,139,746	10,564,102	9,544,884	15,493,986	11,434,781	10,546,909	9,433,907	8,811,244	10,012,670	10,986,331	9,983,872	8,973,136	123,925,568
Gambling	351,220,701	422,271,293	353,342,319	391,930,411	386,870,105	395,269,174	478,305,654	424,781,642	423,466,030	398,673,390	381,929,065	420,339,635	352,749,262	4,829,927,900
Personal services	11,303,200	12,912,005	16,087,325	18,261,301	16,773,084	17,164,324	16,888,910	16,888,910	16,888,910	16,888,910	17,212,351	17,212,351	17,888,551	201,518,304
Miscellaneous entertainment	18,881,787	22,472,125	34,835,050	33,052,575	33,599,240	38,027,680	45,264,085	31,619,400	35,928,870	27,554,585	21,277,495	22,836,183	25,962,079	372,429,367
Entertainment	1,485,286,632	1,646,145,902	1,666,541,211	1,892,808,721	1,704,023,655	1,800,531,390	1,963,113,385	1,692,044,080	1,860,704,799	1,708,581,741	1,813,343,182	1,705,103,078	1,706,266,322	21,159,207,466
Hotels	255,240,828	278,310,360	312,292,579	345,959,956	362,027,056	392,695,435	410,598,279	352,100,881	354,487,662	287,957,505	264,860,704	312,215,094	322,828,964	3,996,334,475
Airlines	199,674,449	231,592,267	198,912,075	226,700,354	229,761,039	242,605,016	228,779,349	220,103,643	201,742,381	186,614,811	142,974,762	302,880,189	285,548,016	2,698,213,902
Airport terminals	2,058,588	2,939,168	3,495,997	3,583,197	3,963,043	4,259,276	4,503,146	3,511,772	3,009,820	2,452,527	2,504,813	2,660,015	2,952,576	39,835,350
Railways	296,003,321	308,958,312	300,204,392	354,927,541	361,607,637	348,085,936	356,777,908	361,610,720	395,946,624	390,307,263	346,914,966	398,226,348	373,382,475	4,296,950,122
Buses	23,366,080	26,900,010	28,058,352	30,341,461	30,248,528	31,058,967	33,059,928	35,911,859	32,802,682	28,226,472	26,180,227	31,126,426	31,189,711	365,104,623
Sea travel	12,657,109	15,697,378	16,841,189	17,508,367	18,544,752	21,334,633	22,150,258	19,531,910	22,014,996	16,685,025	14,141,736	19,587,501	26,813,954	230,851,699
Travel agents	779,392,504	914,800,583	896,760,944	1,076,516,253	1,044,599,058	1,025,300,244	852,149,974	719,555,248	673,811,882	592,988,615	500,951,923	953,280,548	872,398,496	10,123,113,768
Timeshares	33,659	24,752	22,050	14,014	55,024	686,458	637,867	603,633	529,397	1,092,678	1,974,011	6,207,167	5,929,154	17,776,205
Camping grounds	47,665,936	65,114,105	75,284,406	80,785,312	78,697,136	85,231,905	81,723,845	49,187,077	49,103,179	36,463,299	27,495,558	41,285,774	47,817,574	718,189,170
Miscellaneous travel	24,330,859	29,869,232	32,529,501	38,160,079	43,336,638	39,106,276	36,848,044	28,881,982	27,111,809	25,494,710	21,968,327	25,584,068	33,946,472	382,837,138
Travel	1,385,182,505	1,595,895,807	1,552,108,906	1,828,536,578	1,810,812,855	1,797,668,711	1,616,630,319	1,438,897,844	1,406,072,770	1,280,325,400	1,085,106,323	1,780,838,036	1,679,978,428	18,872,871,977
Telegraph services / Wire transfer money order	11,813,578	11,426,504	12,000,689	10,945,848	11,714,893	12,786,881	15,855,604	18,451,921	16,879,763	18,428,873	17,380,684	15,328,713	14,427,381	175,627,754
Insurance services	593,302,161	703,423,259	664,640,137	741,501,157	766,583,472	783,073,537	788,927,651	791,608,367	778,455,458	511,223,723	418,216,746	528,176,293	463,545,621	7,939,375,421
Fis - cash disbursements (auto & manual)	33,468,238	33,381,292	1,993,457	2,194,323	1,195,801	1,433,491	1,317,843	1,086,251	23,264,795	31,206,674	34,733,906	31,422,676	36,228,047	199,458,556
Fis - merchandise & services	2,094,003,350	2,405,393,999	2,450,985,432	2,431,173,563	2,371,888,056	2,468,954,030	2,756,893,000	2,447,716,203	2,481,391,161	2,661,140,039	2,602,640,595	2,734,977,562	2,605,279,411	30,418,433,051
Non-Fis - foreign currency, travellers' cheques	72,257,898	84,304,973	102,119,074	108,460,713	125,377,824	167,758,424	164,968,765	139,793,510	110,895,698	93,894,945	106,308,674	97,467,377	105,862,502	1,407,212,479
Security brokers and dealers	276,069,971	469,237,327	518,344,303	246,907,072	224,046,252	205,121,595	520,647,625	241,471,973	171,218,583	235,961,408	133,210,152	195,086,735	248,436,841	3,409,689,866
Tax preparation services	82,231	67,160	87,904	70,492	107,560	116,505	131,689	139,669	98,775	94,548	122,496	240,631	303,383	1,581,112
Tax payments	498,833,830	133,716,365	110,421,873	96,367,966	97,154,404	518,076,108	185,162,983	101,847,053	108,347,605	102,065,347	140,441,421	1,225,994,385	493,855,930	3,313,451,440
Fines, bail and bond payments	22,563,200	26,963,815	25,904,208	29,882,660	30,598,953	31,191,837	29,031,633	30,951,980	30,980,950	30,679,924	26,873,959	28,228,470	30,389,189	351,677,578
Miscellaneous financial	14,037,594	17,532,535	17,670,230	19,911,355	20,583,121	20,332,288	20,642,696	20,529,855	19,531,082	20,336,632	16,301,538	16,809,283	17,647,095	227,827,710
Financial	3,616,432,051	3,885,447,229	3,904,167,307	3,687,415,149	3,649,250,336	4,208,844,696	4,483,579,489	3,793,597,082	3,741,063,870	3,705,032,113	3,496,230,171	4,873,732,125	4,015,975,400	47,444,334,967

Table 3D Card expenditure statistics (not seasonally adjusted)

Value of debit card transactions

Detailed sector breakdown - services sectors (continued)

£	February 2011	March 2011	April 2011	May 2011	June 2011	July 2011	August 2011	September 2011	October 2011	November 2011	December 2011	January 2012	February 2012	Total (latest 12 months)
Telecoms	257,899,490	285,830,319	277,530,718	304,895,121	294,169,731	297,690,640	308,541,476	300,625,986	326,141,791	314,245,034	343,493,713	314,743,570	290,843,931	3,658,752,030
Utilities	287,064,640	331,093,089	330,359,672	340,153,233	331,322,209	324,807,413	306,444,417	310,834,050	329,565,740	331,109,254	374,136,622	378,041,051	367,975,968	4,055,842,718
Contractors (residential & commercial)	99,969,277	112,713,443	85,732,475	99,590,411	112,331,865	99,853,715	105,336,507	109,450,294	113,009,271	132,089,139	104,758,919	95,801,160	109,859,995	1,280,527,194
Gardening services	3,501,183	4,824,893	7,426,481	8,033,160	6,269,486	5,518,286	5,444,821	4,923,658	5,084,975	5,017,376	5,306,245	3,817,858	4,056,943	65,724,182
Veterinary services	74,405,572	84,264,991	76,771,022	84,842,958	74,908,660	76,343,579	79,253,046	76,079,604	76,538,765	74,417,260	68,549,352	72,651,564	71,909,936	916,530,737
Photocopying & printing	20,673,132	24,460,139	19,936,969	23,613,963	24,560,679	22,569,192	23,778,935	26,073,148	25,442,905	29,641,320	25,295,765	24,373,282	24,045,750	293,792,047
Photographic studios	10,090,519	12,122,857	45,193,023	49,521,169	12,891,574	15,242,489	12,690,209	11,848,314	13,535,192	15,610,165	13,726,047	9,012,000	9,750,957	221,143,996
Beauty & barber shops	155,957,994	171,566,227	138,751,574	146,618,628	186,795,443	187,294,195	184,754,904	183,592,640	181,908,049	181,425,402	231,278,187	159,931,845	175,476,928	2,129,394,022
Employment agencies	976,490	1,075,553	787,191	940,452	907,127	989,329	946,897	1,048,850	963,363	1,009,059	817,341	870,055	908,138	11,263,355
Counselling services	3,644,397	3,682,450	5,829,433	6,907,694	5,831,747	5,501,857	6,131,479	5,610,605	5,883,149	5,810,397	5,217,660	5,591,902	6,532,049	68,530,422
Legal services	53,396,529	66,842,684	57,192,828	60,318,432	71,282,726	65,551,727	74,477,165	75,498,575	74,542,199	79,271,037	68,682,555	72,040,305	73,785,394	839,485,627
Laundry & cleaning	9,395,899	10,646,757	10,701,477	12,548,241	12,308,465	12,020,746	11,759,994	12,414,148	12,360,026	11,844,419	10,735,841	10,555,511	10,216,267	138,111,892
Funeral services	20,257,340	22,639,600	17,564,454	17,840,293	20,655,577	19,751,538	20,009,796	20,358,103	21,091,285	23,149,394	20,656,992	25,214,841	25,859,674	254,791,547
Medical services	182,897,946	213,476,902	173,343,846	197,996,232	205,222,594	193,506,591	194,003,619	206,294,749	200,099,628	215,198,089	171,803,950	197,047,697	215,585,298	2,383,579,195
Moving & courier services	19,300,603	22,564,718	20,994,504	24,113,628	26,380,598	27,457,605	28,750,789	28,439,088	27,051,817	28,049,662	25,727,898	23,917,150	23,841,749	307,289,206
Repair shops (not auto)	8,655,928	9,722,943	8,165,613	9,181,127	10,015,405	9,291,177	10,079,585	10,177,948	10,211,711	11,077,014	10,952,216	9,596,101	10,312,604	118,783,444
Accounting services	11,437,441	12,471,643	13,269,219	15,859,815	15,642,772	15,177,363	18,477,246	18,681,323	17,508,037	18,540,355	16,998,369	18,744,530	18,482,335	199,853,007
Advertising, consultancy & PR	13,939,766	15,288,304	13,427,816	15,701,057	15,562,183	14,644,910	14,619,654	14,483,434	13,506,526	13,849,607	10,461,586	13,460,349	15,575,688	170,581,114
Computer programming	92,046,882	95,270,450	29,127,314	31,558,704	33,188,539	31,364,835	32,306,127	36,090,886	37,511,766	37,125,129	33,283,446	35,811,782	33,794,383	466,433,361
Farming services	11,531,500	13,225,678	12,954,348	14,393,629	13,860,358	14,037,118	14,888,887	14,129,701	14,013,428	13,558,627	13,125,728	12,665,049	12,696,815	163,549,366
Miscellaneous professional services	388,978,157	454,033,118	434,104,031	458,429,258	462,242,080	468,900,262	479,092,825	550,646,995	494,359,193	499,355,681	437,160,205	557,689,161	504,971,649	5,800,984,458
Engineering services	14,277,360	17,632,960	15,495,945	16,672,205	17,439,832	16,959,506	16,865,883	17,378,378	16,809,333	17,187,531	13,655,396	14,807,372	16,928,096	197,832,437
Marina services	6,599,941	10,035,927	11,985,554	13,004,329	12,516,928	12,109,468	12,995,362	8,952,464	8,309,253	6,796,466	6,489,028	7,645,869	7,673,097	118,513,745
Wrecking & salvage yards	1,008,208	1,099,645	1,170,210	1,289,916	1,297,514	1,193,735	1,261,738	1,249,502	1,320,917	1,225,130	944,160	1,168,892	1,204,292	14,425,651
Pest control	450,098	497,854	498,272	809,619	682,364	768,593	759,687	830,146	790,174	762,152	586,135	567,780	562,941	8,115,717
Educational establishments	179,350,833	145,625,787	142,974,950	206,031,327	115,795,968	109,297,097	175,049,536	598,805,940	491,179,100	196,322,755	131,561,677	390,003,660	204,862,368	2,907,510,165
Child care services	9,373,462	10,567,313	8,364,130	10,351,761	10,004,246	9,814,316	10,085,777	10,399,986	10,593,439	10,761,435	9,296,484	11,906,007	11,424,794	123,569,688
Social, political & religious organisations	58,832,835	101,082,910	76,394,235	75,127,015	73,079,253	85,308,816	93,069,376	81,830,686	88,347,225	77,187,793	71,463,302	72,938,365	66,581,640	962,410,616
Government services	868,336,626	955,167,568	881,282,329	3,205,586,864	1,909,250,480	1,390,041,898	1,337,906,200	1,033,969,149	989,043,047	959,621,581	876,049,249	1,144,869,170	1,026,060,900	15,708,848,435
Miscellaneous services	359,755,055	438,208,106	385,847,397	438,642,842	414,931,989	425,018,388	453,976,542	438,002,071	450,597,132	439,609,685	427,873,702	524,375,773	448,128,668	5,285,212,295
Commercial equipment	85,187,039	100,411,300	85,436,789	97,053,996	115,328,651	97,480,853	101,387,141	112,083,815	106,791,287	112,065,479	92,396,257	102,845,603	103,030,055	1,226,311,226
Other services	3,309,192,142	3,748,146,128	3,388,613,819	5,987,627,079	4,606,677,043	4,055,507,237	4,135,145,620	4,320,804,236	4,164,109,723	3,862,933,427	3,622,484,027	4,312,705,254	3,892,939,302	50,097,692,895
Total services	11,679,668,481	13,402,726,223	12,690,728,716	15,723,033,325	14,113,550,493	14,183,273,251	14,467,843,896	13,743,405,259	13,443,557,582	12,593,230,316	11,717,743,671	14,754,077,549	13,404,576,942	164,237,747,223
TOTAL	23,083,392,856	26,282,072,026	25,766,995,806	29,796,459,806	27,511,747,860	27,690,583,590	28,584,554,113	27,147,881,109	27,994,518,514	27,381,965,649	29,701,357,775	28,222,359,286	26,478,544,149	332,559,039,683