

Card Expenditure Statistics

December 2013

Card Expenditure Statistics – December 2013

	Total spending £ billions		Annual growth rates for spending		Number of purchases Millions	
	2013	2012	2013	2012	2013	2012
All plastic cards	45.5	42.9	6.1%	5.1%	945	869
Debit cards	31.8	30.0	7.2%	6.6%	726	667
Credit cards	13.7	12.9	3.7%	2.1%	219	202

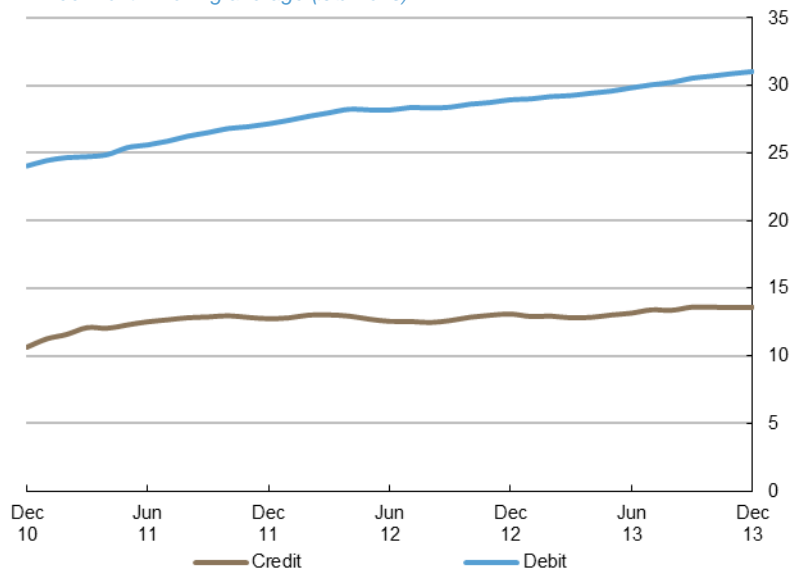
There is a step change in the data between 2010 and 2011 following a change in the reporting population. Average transaction values are based on three-month rolling averages, while growth rates are based on rolling twelve-month periods.

Introduction

Following a dip in November, **plastic card spending** rebounded in December amounting to £45.5 billion, which was still below an average of £45.8 billion recorded in September and October. It is likely aggressive discounting and promotions on the high street in the week before Christmas suppressed the overall spend, though this will have been offset by high levels of **online spending** at some retail outlets pre and post - Christmas. Corresponding **volumes** amounted to 945 million up from 923 million in November. Figures for September and October stood at 948 million and 925 million respectively. For the year as a whole, total plastic card spending amounted to £532 billion from 10.9 billion transactions, up from respective figures of £501 billion and 10.3 billion in 2012.

Chart 1

Average monthly expenditure
Three-month moving average (£ billions)

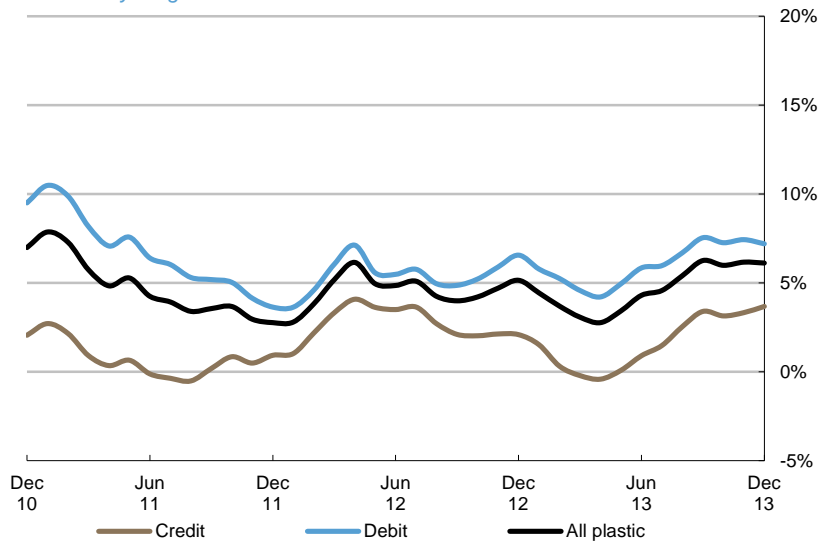


Annual growth rates

Following a dip in early 2013, growth in plastic card spending picked up in the second half of the year, ending the year at 6.1% - with **debit** and **credit** cards both registering relative strong growth rates of 7.2% and 3.7% respectively. A year earlier, plastic card spending was growing by 5.1%, with debit and credit growing by 6.6% and 2.1% respectively. Most of this expansion was concentrated within the **services** sector, which registered average monthly growth of 8.2% in the second half of the year. Over the same period, growth in spending within **retail sales** averaged 3.4% per month. The acceleration in plastic card spending in the second half of the year coincided with the improving economy and rising consumer confidence.

Chart 2

Spending on plastic cards
Year-on-year growth rates

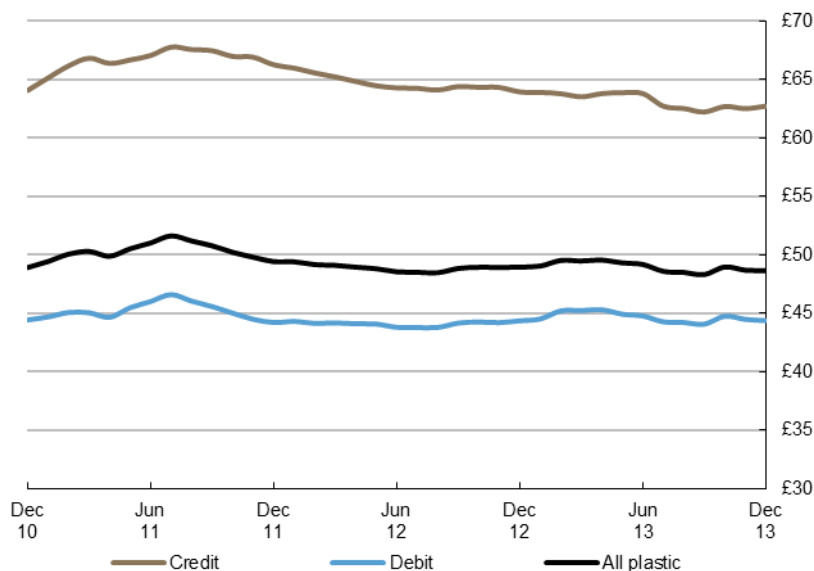


Average transaction values

With the number of plastic card transactions growing slightly more strongly than values the **average transaction, value (ATV)** for all plastic cards fell by 30p during the year to £48.65. This decrease was confined to credit cards, which registered a fall of 122p to £62.73. The ATV for debit cards stood at £48.38 at the end of 2013, unchanged from a year earlier. Within the sectors, the ATV in **retail sales** fell by 107p to £34.35 while the ATV in **services** fell by 46p to £81.12.

Chart 3

Average transaction values
Three-month moving average



Spending by sector - retail sales and services

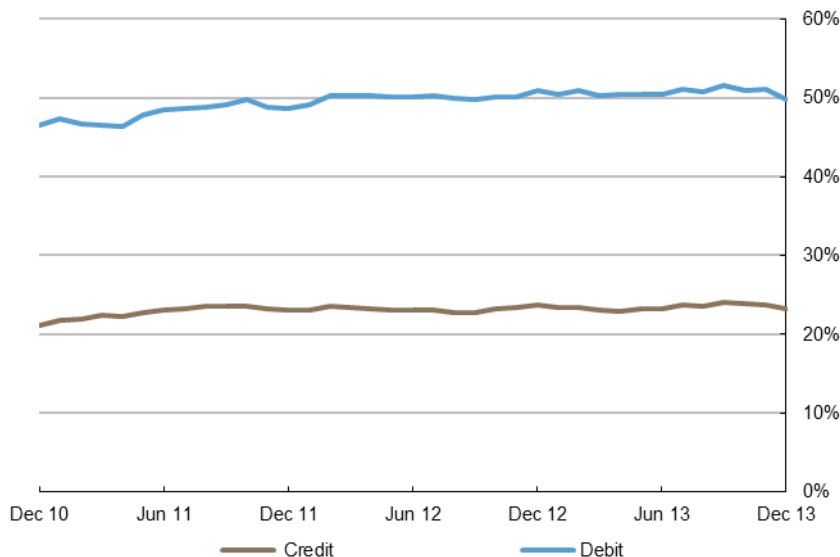
The overall increase in plastic spending between November and December was not reflected in the **retail sales** sector, which decreased slightly by £0.1 billion to £22.1 billion. This was driven by the **food & drink**, mixed business, and stemmed from discounting within these sub-sectors. In contrast spending within **services** increased in December, rising by £1.1 billion to £23.5 billion - driven by increases in **other services, financial services** and **travel**.

For the year 2013, the key highlight within retail sales was the uptick in the **household goods** sub-sector in the second half of the year, most likely reflecting the pickup in the housing market. The service sector recorded very strong growth in debit card spending during the year in particular within **government services** – possibly stemming from the on-going implementation of the *Government Digital Strategy*. Debit card spending in **financial services** also picked up strongly in the second half of the year, driven by increases in payments for financial products and services, including investment products. There were also notable increases in plastic card spending during the year on **educational** and **professional services**.

Chart 4

Proportion of retail sales made on plastic cards (including automotive fuel)

Three-month moving average



Plastic card spending within national retail sales

The **plastic card share of total retail sales** (including automotive fuels)¹ stood at 72.9% in December – a split of 49.7% by debit and 23.2% by credit. For the year as a whole, the proportion of plastic card spending on the high street averaged 74.1%, up from 73.3% in 2012. This increase was a reflection of the on-going migration of low value cash payments to debit cards. Within the **food & drink** and **automotive fuels** sub-sectors, plastic card spending in December accounted for 65.7% and 91.9% of all spending. For the year, these proportions averaged 67.1% and 88.1% respectively.

Contact: David Obuwa; david.obuwa@ukpayments.org.uk | camis@ukpayments.org.uk | 020 3217 8421 or 020 3217 8720

¹ CES 3-month moving average spend of £22.2 billion expressed as a percentage of a similar 3-month moving average for ONS Retail Sales - All retailing including automotive fuel (J5A3) which amounted to £30.4 billion.

Table 1 Card expenditure statistics (seasonally adjusted)

Summary¹

		Number of purchase transactions (millions)									Value of purchase transactions (£ millions)								
		All sectors			Retail sales			Services			All sectors			Retail sales			Services		
		Credit	Debit	Total	Credit	Debit	Total	Credit	Debit	Total	Credit	Debit	Total	Credit	Debit	Total	Credit	Debit	Total
Annual																			
2009		2,002	5,940	7,942	1,224	3,893	5,117	778	2,047	2,825	125,398	263,529	388,927	61,823	125,365	187,188	63,574	138,164	201,739
2010		2,002	6,493	8,495	1,377	4,718	6,096	625	1,775	2,400	127,976	288,569	416,544	69,508	148,680	218,188	58,467	139,889	198,356
2011		2,254	7,211	9,465	1,551	5,287	6,839	703	1,923	2,627	150,810	326,059	476,869	78,706	165,005	243,711	72,104	161,054	233,158
2012		2,388	7,873	10,261	1,628	5,665	7,293	760	2,207	2,968	153,961	347,452	501,412	81,409	176,302	257,711	72,551	171,150	243,701
2013		2,532	8,351	10,883	1,716	5,920	7,637	816	2,431	3,246	159,620	372,464	532,084	84,171	181,765	265,935	75,450	190,699	266,149
Monthly																			
2012	Dec	202	667	869	138	476	614	64	191	255	12,902	30,002	42,904	6,846	14,985	21,831	6,057	15,017	21,073
2013	Jan	201	664	866	136	474	610	65	190	256	12,870	29,655	42,526	6,768	14,639	21,408	6,102	15,016	21,118
	Feb	205	683	888	140	486	626	66	196	262	13,077	31,401	44,478	6,923	15,088	22,011	6,154	16,313	22,467
	Mar	199	657	855	136	467	603	63	190	252	12,521	29,577	42,098	6,717	14,578	21,295	5,803	14,999	20,803
	Apr	201	686	887	133	483	616	67	203	270	12,982	30,774	43,757	6,684	14,964	21,647	6,299	15,811	22,109
	May	213	686	899	144	486	630	68	201	269	13,589	30,786	44,375	7,206	15,146	22,352	6,383	15,640	22,023
	Jun	206	680	886	140	484	625	66	195	261	12,937	30,317	43,254	6,855	14,941	21,797	6,081	15,376	21,457
	Jul	223	735	958	154	530	684	69	205	274	13,707	31,885	45,592	7,344	16,002	23,345	6,363	15,883	22,247
	Aug	213	690	903	146	490	636	67	200	268	13,493	30,846	44,339	7,185	15,034	22,219	6,308	15,812	22,120
	Sep	220	727	948	151	517	668	69	210	280	13,640	32,127	45,767	7,305	15,940	23,246	6,334	16,187	22,521
	Oct	217	708	925	147	499	646	70	209	279	13,681	32,127	45,808	7,140	15,206	22,346	6,541	16,921	23,462
	Nov	214	709	923	144	499	643	70	210	280	13,419	31,127	44,545	7,000	15,207	22,207	6,418	15,920	22,338
	Dec	219	726	945	145	505	650	74	221	295	13,704	31,842	45,546	7,043	15,020	22,063	6,662	16,821	23,483
Year-on-year growth rates (percentages)																			
Annual																			
2009		1.5	8.7	6.8	3.2	8.7	7.3	-1.0	8.6	5.8	-0.7	7.4	4.7	1.9	8.0	5.9	-3.0	6.9	3.6
2010		0.0	9.3	7.0	12.5	21.2	19.1	-19.7	-13.3	-15.1	2.1	9.5	7.1	12.4	18.6	16.6	-8.0	1.2	-1.7
2011		12.6	11.1	11.4	12.6	12.1	12.2	12.5	8.4	9.5	17.8	13.0	14.5	13.2	11.0	11.7	23.3	15.1	17.5
2012		5.9	9.2	8.4	5.0	7.1	6.7	8.1	14.8	13.0	2.1	6.6	5.1	3.4	6.8	5.7	0.6	6.3	4.5
2013		6.0	6.1	6.1	5.4	4.5	4.7	7.3	10.1	9.4	3.7	7.2	6.1	3.4	3.1	3.2	4.0	11.4	9.2
Monthly																			
2012	Dec	5.9	9.2	8.4	5.0	7.1	6.7	8.1	14.8	13.0	2.1	6.6	5.1	3.4	6.8	5.7	0.6	6.3	4.5
2013	Jan	5.4	8.1	7.5	4.3	6.0	5.6	7.8	13.9	12.3	1.5	5.8	4.4	2.8	5.8	4.8	0.1	5.8	4.1
	Feb	4.2	6.9	6.3	3.3	4.8	4.5	6.3	12.7	11.0	0.3	5.2	3.7	1.8	4.7	3.8	-1.3	5.8	3.6
	Mar	3.6	5.9	5.4	2.9	3.9	3.7	5.2	11.4	9.8	-0.2	4.6	3.1	1.2	3.9	3.0	-1.8	5.3	3.1
	Apr	3.2	5.4	4.9	2.4	3.5	3.2	4.8	10.6	9.1	-0.4	4.2	2.8	0.8	3.3	2.5	-1.8	5.2	3.1
	May	3.3	5.2	4.8	2.6	3.2	3.1	4.9	10.6	9.1	0.1	4.9	3.4	1.1	3.2	2.5	-1.1	6.8	4.4
	Jun	3.9	5.4	5.0	3.2	3.4	3.3	5.4	10.5	9.2	0.9	5.8	4.3	1.7	3.3	2.8	0.0	8.5	5.9
	Jul	4.4	5.3	5.1	3.8	3.5	3.6	5.8	10.0	8.9	1.5	6.0	4.6	2.1	3.2	2.8	0.8	8.9	6.4
	Aug	5.2	5.5	5.4	4.7	3.8	4.0	6.4	10.0	9.0	2.5	6.7	5.4	3.1	3.4	3.3	1.9	10.1	7.6
	Sep	6.2	6.3	6.3	5.8	4.7	4.9	7.0	10.6	9.7	3.4	7.5	6.3	4.0	4.2	4.1	2.7	11.0	8.5
	Oct	5.7	5.8	5.8	5.4	4.3	4.5	6.6	9.9	9.1	3.1	7.3	6.0	3.5	3.6	3.5	2.8	11.1	8.6
	Nov	5.7	5.9	5.9	5.3	4.4	4.6	6.6	9.8	9.0	3.3	7.4	6.2	3.4	3.6	3.5	3.3	11.4	9.0
	Dec	6.0	6.1	6.1	5.4	4.5	4.7	7.3	10.1	9.4	3.7	7.2	6.1	3.4	3.1	3.2	4.0	11.4	9.2

¹ There was a step change in 2011 due to a change in reporting population

Table 2A Card expenditure statistics (seasonally adjusted)

Retail sales¹

		Number of purchase transactions (millions)																		Total retail sales		
		Food & drink			Mixed business			Clothing			Household			Other retailers			Automotive Fuels ²			Number of purchases		
		Credit	Debit	Total	Credit	Debit	Total	Credit	Debit	Total	Credit	Debit	Total	Credit	Debit	Total	Credit	Debit	Total	Credit	Debit	Total
Annual																						
	2009	512	2,086	2,597	131	401	532	125	404	529	146	321	466	311	681	992	158	475	633	1,224	3,893	5,117
	2010	532	2,285	2,817	138	404	542	128	425	553	146	349	495	273	734	1,006	161	521	682	1,377	4,718	6,096
	2011	600	2,559	3,159	137	422	558	139	427	566	157	371	528	297	779	1,076	222	730	952	1,551	5,287	6,839
	2012	665	2,835	3,500	148	479	627	147	455	603	158	377	535	280	760	1,041	229	758	987	1,628	5,665	7,293
	2013	710	3,027	3,738	177	514	692	153	463	616	164	400	564	277	723	1,000	235	792	1,027	1,716	5,920	7,637
Monthly																						
	2012 Dec	58	242	300	13	41	53	13	39	51	13	32	45	22	59	81	19	64	84	138	476	614
	2013 Jan	57	243	300	13	41	54	12	38	50	13	31	44	22	58	79	19	63	82	136	474	610
	Feb	58	245	303	14	42	55	13	42	55	14	35	49	22	59	82	19	63	82	140	486	626
	Mar	57	240	298	14	41	55	12	37	49	12	30	42	22	57	79	19	62	81	136	467	603
	Apr	51	240	291	13	41	54	12	38	51	13	31	44	25	67	92	19	65	84	133	483	616
	May	60	248	308	15	43	57	13	38	50	14	34	48	24	59	82	19	65	84	144	486	630
	Jun	58	249	307	15	42	57	12	38	50	14	34	48	21	56	77	20	66	86	140	484	625
	Jul	64	273	337	16	46	63	14	41	55	14	35	49	25	65	89	21	70	90	154	530	684
	Aug	59	249	308	16	44	60	12	37	50	14	34	47	24	59	83	20	67	87	146	490	636
	Sep	63	264	326	17	47	64	13	40	54	14	35	49	24	63	87	20	68	88	151	517	668
	Oct	60	256	317	16	44	60	13	37	50	14	34	48	24	61	84	20	67	87	147	499	646
	Nov	60	256	316	15	44	59	13	39	51	14	34	48	22	59	81	20	67	87	144	499	643
	Dec	62	264	326	14	40	54	13	38	51	14	34	48	23	60	83	20	69	89	145	505	650
Year-on-year growth rates (percentages)																						
Annual																						
	2009	2.4	11.3	9.4	-2.2	-1.7	-1.8	3.2	9.0	7.6	1.8	9.7	7.1	7.8	7.0	7.2	-5.7	3.4	1.0	3.2	8.7	7.3
	2010	4.0	9.6	8.5	4.9	0.7	1.8	2.4	5.1	4.5	0.2	8.9	6.2	-12.1	7.7	1.5	1.6	9.8	7.7	12.5	21.2	19.1
	2011	12.7	12.0	12.1	-0.7	4.3	3.1	8.6	0.5	2.4	7.8	6.2	6.7	8.7	6.2	6.9	37.9	40.1	39.6	12.6	12.1	12.2
	2012	10.8	10.8	10.8	8.5	13.6	12.4	5.9	6.6	6.4	0.4	1.8	1.4	-5.4	-2.4	-3.2	3.5	3.8	3.7	5.0	7.1	6.7
	2013	6.8	6.8	6.8	19.8	7.4	10.3	4.0	1.7	2.3	3.6	6.0	5.3	-1.2	-4.8	-3.9	2.3	4.5	4.0	5.4	4.5	4.7
Monthly																						
	2012 Dec	10.8	10.8	10.8	8.5	13.6	12.4	5.9	6.6	6.4	0.4	1.8	1.4	-5.4	-2.4	-3.2	3.5	3.8	3.7	5.0	7.1	6.7
	2013 Jan	10.2	9.9	9.9	8.4	12.0	11.2	4.3	4.7	4.6	-0.6	0.6	0.3	-5.9	-4.1	-4.6	2.8	3.0	3.0	4.3	6.0	5.6
	Feb	9.2	8.6	8.7	8.9	10.7	10.2	2.2	3.6	3.3	-0.9	0.4	0.0	-6.9	-5.9	-6.2	0.9	2.1	1.8	3.3	4.8	4.5
	Mar	8.8	8.1	8.2	9.4	9.5	9.5	1.7	2.9	2.6	-2.0	-1.3	-1.5	-7.2	-7.4	-7.4	0.1	1.1	0.8	2.9	3.9	3.7
	Apr	7.7	7.1	7.2	7.8	8.0	7.9	2.0	3.0	2.7	-1.2	-0.4	-0.7	-7.3	-7.9	-7.8	0.0	1.9	1.4	2.4	3.5	3.2
	May	7.4	6.9	7.0	8.8	7.5	7.8	2.4	2.7	2.6	-0.4	0.4	0.2	-7.1	-9.0	-8.5	0.3	2.2	1.8	2.6	3.2	3.1
	Jun	7.7	7.1	7.2	9.7	6.9	7.5	3.2	3.0	3.0	0.3	1.4	1.1	-6.6	-9.8	-8.9	1.0	3.1	2.6	3.2	3.4	3.3
	Jul	7.6	6.8	7.0	12.2	7.2	8.4	3.9	2.9	3.1	0.9	2.1	1.8	-5.7	-9.3	-8.4	1.6	3.7	3.2	3.8	3.5	3.6
	Aug	7.7	6.7	6.9	14.4	7.4	9.1	4.3	2.9	3.2	1.7	3.1	2.7	-3.3	-8.5	-7.1	2.3	4.4	3.9	4.7	3.8	4.0
	Sep	8.3	7.4	7.6	17.0	8.6	10.6	5.5	3.6	4.1	2.7	4.2	3.8	-1.7	-6.8	-5.5	2.7	4.8	4.3	5.8	4.7	4.9
	Oct	7.5	6.8	6.9	18.3	8.1	10.5	4.2	2.3	2.8	2.9	4.8	4.3	-1.9	-6.6	-5.3	2.4	4.4	4.0	5.4	4.3	4.5
	Nov	7.1	6.7	6.8	19.4	8.1	10.8	4.2	2.2	2.7	3.2	5.6	4.9	-1.8	-5.8	-4.7	2.1	4.3	3.8	5.3	4.4	4.6
	Dec	6.8	6.8	6.8	19.8	7.4	10.3	4.0	1.7	2.3	3.6	6.0	5.3	-1.2	-4.8	-3.9	2.3	4.5	4.0	5.4	4.5	4.7

¹ There was a step change in 2011 due to a change in reporting population

² Automotive Fuels data is effective from January 2010. Data shown pre 2010 are for growth trend purposes only; these data are excluded from totals as these are already included in their former Services sector of Motoring (now known as Vehicle Sales & Service)

Table 2B Card expenditure statistics (seasonally adjusted)

Retail sales¹

Value of purchase transactions (£ millions)

Total retail sales

	Value of purchase transactions (£ millions)																		Total retail sales		
	Food & drink			Mixed business			Clothing			Household			Other retailers			Automotive Fuels ²			Value of purchases		
	Credit	Debit	Total	Credit	Debit	Total	Credit	Debit	Total	Credit	Debit	Total	Credit	Debit	Total	Credit	Debit	Total	Credit	Debit	Total
Annual																					
2009	18,095	60,221	78,316	7,095	13,868	20,963	6,377	12,649	19,026	14,495	16,598	31,093	15,760	22,030	37,790	5,860	12,668	18,528	61,823	125,365	187,188
2010	18,785	63,898	82,684	7,151	13,950	21,100	6,775	13,662	20,437	14,618	18,774	33,392	15,580	23,561	39,141	6,599	14,835	21,434	69,508	148,680	218,188
2011	20,970	69,202	90,172	7,072	14,636	21,708	7,816	14,438	22,254	15,201	20,484	35,684	17,542	24,331	41,873	10,106	21,913	32,019	78,706	165,005	243,711
2012	22,658	74,482	97,141	7,762	16,468	24,229	8,295	15,729	24,024	15,433	21,758	37,190	16,721	24,515	41,235	10,541	23,351	33,891	81,409	176,302	257,711
2013	23,637	76,674	100,310	8,566	17,587	26,153	8,658	16,075	24,733	15,890	23,207	39,097	16,803	24,346	41,149	10,617	23,876	34,493	84,171	181,765	265,935
Monthly																					
2012 Dec	1,965	6,348	8,312	667	1,425	2,091	714	1,350	2,064	1,261	1,791	3,052	1,353	1,956	3,309	886	2,116	3,002	6,846	14,985	21,831
2013 Jan	1,934	6,266	8,200	676	1,402	2,078	688	1,294	1,982	1,242	1,787	3,029	1,364	1,963	3,327	865	1,928	2,792	6,768	14,639	21,408
Feb	1,945	6,317	8,262	694	1,434	2,129	724	1,401	2,125	1,316	1,969	3,285	1,381	2,037	3,418	863	1,931	2,793	6,923	15,088	22,011
Mar	1,947	6,308	8,254	694	1,417	2,111	684	1,280	1,964	1,223	1,739	2,962	1,324	1,954	3,278	846	1,880	2,726	6,717	14,578	21,295
Apr	1,698	6,219	7,917	688	1,405	2,093	711	1,334	2,044	1,300	1,865	3,166	1,450	2,159	3,609	837	1,982	2,819	6,684	14,964	21,647
May	2,014	6,432	8,446	722	1,473	2,195	733	1,324	2,057	1,348	1,959	3,308	1,531	2,026	3,557	859	1,931	2,790	7,206	15,146	22,352
Jun	1,945	6,325	8,270	712	1,423	2,135	699	1,314	2,013	1,335	1,951	3,287	1,286	1,950	3,236	878	1,978	2,856	6,855	14,941	21,797
Jul	2,124	6,787	8,911	734	1,562	2,296	751	1,428	2,180	1,362	2,024	3,385	1,443	2,109	3,552	930	2,092	3,022	7,344	16,002	23,345
Aug	1,979	6,285	8,264	748	1,471	2,219	717	1,306	2,023	1,319	1,933	3,252	1,508	2,012	3,519	914	2,027	2,942	7,185	15,034	22,219
Sep	2,088	6,709	8,797	761	1,603	2,364	750	1,414	2,164	1,374	2,032	3,406	1,413	2,119	3,532	919	2,063	2,982	7,305	15,940	23,246
Oct	1,989	6,336	8,326	741	1,492	2,233	745	1,324	2,069	1,366	2,000	3,366	1,397	2,055	3,452	900	1,999	2,900	7,140	15,206	22,346
Nov	1,996	6,384	8,381	729	1,499	2,227	730	1,351	2,082	1,321	1,963	3,284	1,332	1,990	3,322	892	2,019	2,911	7,000	15,207	22,207
Dec	1,978	6,305	8,283	668	1,406	2,075	725	1,307	2,032	1,383	1,985	3,367	1,375	1,973	3,348	914	2,044	2,958	7,043	15,020	22,063

Year-on-year growth rates (percentages)

	Value of purchase transactions (£ millions)																		Total retail sales		
	Food & drink			Mixed business			Clothing			Household			Other retailers			Automotive Fuels ²			Value of purchases		
	Credit	Debit	Total	Credit	Debit	Total	Credit	Debit	Total	Credit	Debit	Total	Credit	Debit	Total	Credit	Debit	Total	Credit	Debit	Total
Annual																					
2009	3.0	10.4	8.6	0.6	3.0	2.2	7.1	12.8	10.8	0.8	6.6	3.8	0.2	3.6	2.1	-12.3	-2.4	-5.8	1.9	8.0	5.9
2010	3.8	6.1	5.6	0.8	0.6	0.7	6.2	8.0	7.4	0.8	13.1	7.4	-1.1	7.0	3.6	12.6	17.1	15.7	12.4	18.6	16.6
2011	11.6	8.3	9.1	-1.1	4.9	2.9	15.4	5.7	8.9	4.0	9.1	6.9	12.6	3.3	7.0	53.1	47.7	49.4	13.2	11.0	11.7
2012	8.1	7.6	7.7	9.8	12.5	11.6	6.1	8.9	8.0	1.5	6.2	4.2	-4.7	0.8	-1.5	4.3	6.6	5.8	3.4	6.8	5.7
2013	4.3	2.9	3.3	10.4	6.8	7.9	4.4	2.2	3.0	3.0	6.7	5.1	0.5	-0.7	-0.2	0.7	2.2	1.8	3.4	3.1	3.2
Monthly																					
2012 Dec	8.1	7.6	7.7	9.8	12.5	11.6	6.1	8.9	8.0	1.5	6.2	4.2	-4.7	0.8	-1.5	4.3	6.6	5.8	3.4	6.8	5.7
2013 Jan	7.5	6.8	6.9	9.1	11.2	10.5	4.5	6.8	6.0	0.5	4.8	3.0	-4.6	0.0	-2.0	3.3	5.5	4.8	2.8	5.8	4.8
Feb	6.8	5.7	6.0	8.7	10.1	9.6	2.2	5.4	4.3	-0.3	3.9	2.1	-5.2	-0.8	-2.7	1.0	4.5	3.4	1.8	4.7	3.8
Mar	6.3	5.3	5.5	8.6	9.0	8.9	1.4	4.2	3.2	-1.3	2.4	0.9	-5.3	-1.3	-3.0	-0.2	2.8	1.8	1.2	3.9	3.0
Apr	5.2	4.3	4.5	7.3	7.4	7.4	1.3	3.8	2.9	-1.1	2.6	1.0	-5.3	-1.7	-3.2	-0.2	3.1	2.0	0.8	3.3	2.5
May	4.9	4.2	4.4	8.0	7.2	7.5	1.6	3.3	2.7	-0.7	2.9	1.4	-4.3	-2.1	-3.0	-0.2	3.1	2.0	1.1	3.2	2.5
Jun	5.1	4.2	4.4	8.2	6.6	7.1	2.7	3.5	3.2	-0.3	3.6	2.0	-3.4	-2.0	-2.6	0.4	3.7	2.7	1.7	3.3	2.8
Jul	5.2	3.8	4.1	9.2	6.6	7.5	3.5	3.3	3.3	-0.1	3.7	2.1	-3.2	-2.2	-2.6	1.1	4.1	3.2	2.1	3.2	2.8
Aug	5.5	3.8	4.2	10.2	7.2	8.1	4.1	3.3	3.6	0.6	4.2	2.7	-0.6	-1.9	-1.4	1.8	4.8	3.8	3.1	3.4	3.3
Sep	6.2	4.5	4.9	11.1	8.4	9.3	5.3	4.2	4.6	2.0	5.3	3.9	0.4	-1.0	-0.5	1.9	4.8	3.9	4.0	4.2	4.1
Oct	5.4	3.8	4.2	11.0	7.7	8.8	4.3	2.9	3.4	1.9	5.5	4.0	0.0	-1.4	-0.8	1.2	4.0	3.1	3.5	3.6	3.5
Nov	5.0	3.6	4.0	11.0	7.8	8.8	4.6	3.0	3.5	2.1	6.0	4.4	0.0	-1.1	-0.7	0.6	3.6	2.7	3.4	3.6	3.5
Dec	4.3	2.9	3.3	10.4	6.8	7.9	4.4	2.2	3.0	3.0	6.7	5.1	0.5	-0.7	-0.2	0.7	2.2	1.8	3.4	3.1	3.2

¹ There was a step change in 2011 due to a change in reporting population

² Automotive Fuels data is effective from January 2010. Data shown pre 2010 are for growth trend purposes only; these data are excluded from totals as these are already included in their former Services sector of Motoring (now known as Vehicle Sales & Service)

Table 2C Card expenditure statistics (seasonally adjusted)

Services¹

Number of purchase transactions (millions)

Total services

	Vehicle Sales & Services			Entertainment			Hotels			Travel			Financial			Other services			Number of purchases			
	Credit	Debit	Total	Credit	Debit	Total	Credit	Debit	Total	Credit	Debit	Total	Credit	Debit	Total	Credit	Debit	Total	Credit	Debit	Total	
Annual																						
2009	236	657	893	206	593	799	37	31	68	101	183	284	32	112	144	167	471	638	778	2,047	2,825	
2010	76	204	280	220	720	940	37	34	72	97	202	299	32	129	161	163	484	647	625	1,775	2,400	
2011	52	89	140	267	879	1,146	51	43	94	116	235	351	33	144	177	185	534	719	703	1,923	2,627	
2012	54	99	154	310	1,067	1,377	53	48	101	124	266	391	30	161	190	188	566	755	760	2,207	2,968	
2013	54	105	159	353	1,218	1,570	55	53	108	130	285	415	29	174	203	196	596	792	816	2,431	3,246	
Monthly																						
2012 Dec	4	8	11	27	96	124	4	4	9	11	23	33	2	14	16	16	47	62	64	191	255	
2013 Jan	4	8	13	28	93	121	4	4	8	10	22	33	3	14	17	16	48	64	65	190	256	
Feb	5	11	16	28	95	123	5	5	9	10	23	33	2	14	17	16	49	64	66	196	262	
Mar	4	9	13	27	94	121	4	4	8	10	22	32	2	14	16	15	47	62	63	190	252	
Apr	5	9	14	28	96	124	5	4	9	11	24	35	2	14	17	17	54	71	67	203	270	
May	5	9	14	30	100	130	4	4	9	11	24	35	2	14	17	16	49	65	68	201	269	
Jun	4	8	13	28	98	126	4	4	9	11	23	34	2	14	17	16	47	63	66	195	261	
Jul	5	9	13	30	102	132	5	5	9	11	24	35	2	15	17	17	51	68	69	205	274	
Aug	4	8	13	29	101	130	5	4	9	11	23	34	2	15	17	16	49	65	67	200	268	
Sep	4	8	13	31	109	140	5	4	9	11	24	35	2	15	17	16	50	66	69	210	280	
Oct	4	8	13	30	105	136	5	4	9	11	24	35	2	15	18	17	51	68	70	209	279	
Nov	4	9	13	31	109	139	5	5	9	11	24	35	2	15	17	17	50	66	70	210	280	
Dec	4	9	13	33	115	148	5	5	10	12	26	37	2	15	18	17	51	69	74	221	295	

Year-on-year growth rates (percentages)²

	Vehicle Sales & Services			Entertainment			Hotels			Travel			Financial			Other services			Number of purchases			
	Credit	Debit	Total	Credit	Debit	Total	Credit	Debit	Total	Credit	Debit	Total	Credit	Debit	Total	Credit	Debit	Total	Credit	Debit	Total	
Annual																						
2009	-5.3	4.6	1.8	4.3	18.7	14.6	0.5	13.9	6.3	-2.5	8.9	4.6	-1.9	1.1	0.4	-0.1	4.4	3.2	-1.0	8.6	5.8	
2010	-67.7	-68.9	-68.6	6.5	21.5	17.6	1.4	9.4	5.1	-3.3	10.4	5.5	0.6	15.1	11.9	-2.6	2.8	1.4	-19.7	-13.3	-15.1	
2011	-32.3	-56.6	-50.0	21.5	22.0	21.9	36.7	24.6	30.9	19.4	16.4	17.4	2.4	11.3	9.6	13.7	10.3	11.2	12.5	8.4	9.5	
2012	5.7	12.2	9.8	16.1	21.4	20.2	4.8	12.2	8.2	7.3	13.1	11.2	-8.7	11.6	7.9	1.7	6.1	4.9	8.1	14.8	13.0	
2013	-1.4	5.8	3.3	13.7	14.1	14.0	2.4	10.7	6.3	4.4	6.9	6.1	-3.9	8.6	6.7	4.2	5.2	4.9	7.3	10.1	9.4	
Monthly																						
2012 Dec	5.7	12.2	9.8	16.1	21.4	20.2	4.8	12.2	8.2	7.3	13.1	11.2	-8.7	11.6	7.9	1.7	6.1	4.9	8.1	14.8	13.0	
2013 Jan	5.5	11.7	9.4	16.0	20.6	19.5	2.8	10.9	6.5	7.0	11.9	10.3	-9.5	11.1	7.3	1.3	5.0	4.1	7.8	13.9	12.3	
Feb	1.0	10.8	7.2	15.5	19.4	18.5	-0.6	9.9	4.2	4.8	10.4	8.5	-11.6	10.1	6.1	0.3	3.8	2.9	6.3	12.7	11.0	
Mar	-6.7	1.3	-1.7	15.1	18.8	17.9	-2.2	8.1	2.6	4.1	8.9	7.4	-12.2	8.6	4.9	0.0	3.1	2.3	5.2	11.4	9.8	
Apr	-6.6	1.0	-1.7	13.8	16.9	16.2	-2.8	7.4	1.9	3.8	8.7	7.1	-11.4	8.4	4.9	0.2	3.3	2.5	4.8	10.6	9.1	
May	-6.7	1.1	-1.8	14.3	17.1	16.5	-3.3	8.2	2.0	3.2	8.7	6.9	-10.8	7.9	4.6	0.3	2.9	2.2	4.9	10.6	9.1	
Jun	-4.8	2.2	-0.3	14.0	16.3	15.8	-3.1	8.6	2.3	3.6	9.0	7.2	-9.5	8.1	5.1	1.4	3.4	2.9	5.4	10.5	9.2	
Jul	-4.3	2.6	0.1	14.0	15.3	15.0	-2.3	9.2	3.0	3.5	8.4	6.8	-8.5	7.9	5.2	2.0	3.4	3.0	5.8	10.0	8.9	
Aug	-3.7	3.2	0.7	14.4	15.1	14.9	-1.2	9.8	3.9	3.7	7.7	6.4	-7.3	8.3	5.7	2.8	3.6	3.4	6.4	10.0	9.0	
Sep	-2.7	4.2	1.7	15.1	15.8	15.7	-0.4	9.9	4.4	4.7	7.9	6.9	-5.5	8.3	6.1	2.7	4.3	3.9	7.0	10.6	9.7	
Oct	-2.8	4.2	1.7	14.2	14.9	14.7	0.0	9.8	4.6	4.2	6.8	5.9	-5.3	8.1	6.0	2.5	3.9	3.6	6.6	9.9	9.1	
Nov	-2.4	4.9	2.3	13.4	14.2	14.0	0.9	10.4	5.4	4.2	6.7	5.9	-4.8	8.2	6.1	3.2	4.3	4.0	6.6	9.8	9.0	
Dec	-1.4	5.8	3.3	13.7	14.1	14.0	2.4	10.7	6.3	4.4	6.9	6.1	-3.9	8.6	6.7	4.2	5.2	4.9	7.3	10.1	9.4	

¹ There was a step change in 2011 due to a change in reporting population.

² With effect of January 2010 Automotive Fuels was published as a separate sub-sector in retail sales. See tables 2A and 2B

Table 2D Card expenditure statistics (seasonally adjusted)

Services¹

Value of purchase transactions (£ millions)

	Value of purchase transactions (£ millions)																		Total services			
	Vehicle Sales & Services			Entertainment			Hotels			Travel			Financial			Other services			Value of purchases			
	Credit	Debit	Total	Credit	Debit	Total	Credit	Debit	Total	Credit	Debit	Total	Credit	Debit	Total	Credit	Debit	Total	Credit	Debit	Total	
Annual																						
2009	14,642	35,424	50,066	9,659	14,590	24,248	5,298	2,726	8,023	13,070	14,098	27,169	5,735	33,090	38,826	15,171	38,236	53,407	63,574	138,164	201,739	
2010	8,752	24,713	33,465	9,839	16,943	26,782	5,534	3,050	8,584	12,802	15,814	28,616	5,880	38,653	44,533	15,661	40,715	56,376	58,467	139,889	198,356	
2011	7,774	22,352	30,126	14,022	20,649	34,670	8,634	3,870	12,504	16,212	18,387	34,600	7,033	46,832	53,865	18,429	48,963	67,392	72,104	161,054	233,158	
2012	7,734	23,711	31,444	14,755	22,927	37,682	8,943	4,491	13,434	16,851	20,854	37,706	5,480	49,990	55,470	18,788	49,176	67,964	72,551	171,150	243,701	
2013	7,757	26,013	33,770	15,648	24,612	40,260	9,302	4,802	14,104	17,453	22,048	39,500	5,190	56,048	61,238	20,099	57,176	77,276	75,450	190,699	266,149	
Monthly																						
2012	Dec	590	1,746	2,336	1,268	2,050	3,319	718	432	1,150	1,459	2,002	3,461	430	4,385	4,815	1,591	4,402	5,993	6,057	15,017	21,073
2013	Jan	638	2,050	2,687	1,262	1,953	3,215	713	393	1,106	1,416	1,764	3,180	466	4,505	4,971	1,607	4,351	5,958	6,102	15,016	21,118
	Feb	717	2,443	3,160	1,255	1,974	3,228	730	405	1,135	1,358	1,793	3,150	441	4,589	5,030	1,655	5,109	6,764	6,154	16,313	22,467
	Mar	612	2,029	2,641	1,218	1,947	3,165	701	359	1,060	1,337	1,784	3,121	447	4,511	4,958	1,488	4,370	5,858	5,803	14,999	20,803
	Apr	669	2,205	2,874	1,273	2,017	3,290	806	395	1,201	1,437	1,898	3,335	459	4,622	5,080	1,656	4,673	6,329	6,299	15,811	22,109
	May	663	2,211	2,874	1,297	2,079	3,376	762	397	1,159	1,525	1,888	3,412	434	4,473	4,906	1,703	4,592	6,295	6,383	15,640	22,023
	Jun	618	2,135	2,754	1,258	1,994	3,252	759	384	1,143	1,433	1,797	3,230	407	4,551	4,958	1,605	4,515	6,120	6,081	15,376	21,457
	Jul	655	2,202	2,857	1,311	2,058	3,370	781	400	1,182	1,449	1,832	3,280	422	4,386	4,808	1,745	5,005	6,749	6,363	15,883	22,247
	Aug	641	2,181	2,823	1,319	2,064	3,383	786	394	1,180	1,430	1,765	3,195	409	4,603	5,012	1,723	4,804	6,527	6,308	15,812	22,120
	Sep	631	2,182	2,814	1,362	2,166	3,528	800	416	1,216	1,466	1,805	3,272	422	4,843	5,264	1,653	4,775	6,428	6,334	16,187	22,521
	Oct	639	2,142	2,781	1,351	2,053	3,404	815	408	1,223	1,546	1,861	3,406	425	5,401	5,827	1,765	5,055	6,821	6,541	16,921	23,462
	Nov	629	2,154	2,783	1,361	2,112	3,473	813	420	1,233	1,493	1,853	3,347	409	4,552	4,961	1,713	4,829	6,541	6,418	15,920	22,338
	Dec	645	2,076	2,722	1,382	2,194	3,576	834	431	1,265	1,563	2,008	3,571	450	5,013	5,463	1,787	5,099	6,886	6,662	16,821	23,483

Year-on-year growth rates (percentages)²

Annual																						
2009	-5.7	7.5	3.3	0.0	11.7	6.7	-3.9	11.4	0.8	-6.8	2.6	-2.1	-3.3	10.4	8.2	1.8	3.2	2.8	-3.0	6.9	3.6	
2010	-40.2	-30.2	-33.2	1.9	16.1	10.4	4.5	11.9	7.0	-2.1	12.2	5.3	2.5	16.8	14.7	3.2	6.5	5.6	-8.0	1.2	-1.7	
2011	-11.2	-9.6	-10.0	42.5	21.9	29.5	56.0	26.9	45.7	26.6	16.3	20.9	19.6	21.2	21.0	17.7	20.3	19.5	23.3	15.1	17.5	
2012	-0.5	6.1	4.4	5.2	11.0	8.7	3.6	16.0	7.4	3.9	13.4	9.0	-22.1	6.7	3.0	1.9	0.4	0.8	0.6	6.3	4.5	
2013	0.3	9.7	7.4	6.1	7.3	6.8	4.0	6.9	5.0	3.6	5.7	4.8	-5.3	12.1	10.4	7.0	16.3	13.7	4.0	11.4	9.2	
Monthly																						
2012	Dec	-0.5	6.1	4.4	5.2	11.0	8.7	3.6	16.0	7.4	3.9	13.4	9.0	-22.1	6.7	3.0	1.9	0.4	0.8	0.6	6.3	4.5
2013	Jan	-0.6	5.5	3.9	5.1	10.0	8.0	1.3	14.8	5.5	3.9	12.3	8.4	-23.0	7.1	3.2	1.6	-0.3	0.2	0.1	5.8	4.1
	Feb	-2.3	6.3	4.1	4.6	9.3	7.4	-2.2	13.8	2.8	1.5	10.9	6.5	-24.3	7.2	3.1	1.3	0.1	0.5	-1.3	5.8	3.6
	Mar	-4.7	4.5	2.1	3.8	8.9	6.8	-4.4	7.9	-0.5	1.6	9.8	6.0	-22.7	7.3	3.6	1.2	0.3	0.5	-1.8	5.3	3.1
	Apr	-4.4	4.5	2.2	3.3	7.8	6.0	-4.9	7.0	-1.2	1.4	9.4	5.7	-21.1	7.3	3.8	1.2	0.5	0.7	-1.8	5.2	3.1
	May	-4.4	5.1	2.7	4.4	8.7	7.0	-5.2	7.2	-1.3	2.2	9.8	6.3	-19.1	6.8	3.7	1.6	5.4	4.4	-1.1	6.8	4.4
	Jun	-3.1	6.4	4.0	4.8	8.3	6.9	-4.6	7.6	-0.7	3.1	10.7	7.2	-17.1	8.0	5.1	3.1	9.2	7.5	0.0	8.5	5.9
	Jul	-2.7	6.6	4.2	5.2	7.6	6.7	-3.3	8.0	0.3	3.3	10.3	7.1	-15.3	7.5	4.9	4.0	11.5	9.4	0.8	8.9	6.4
	Aug	-2.1	7.3	4.9	5.8	8.1	7.2	-1.3	8.7	1.9	4.0	9.6	7.0	-12.9	9.6	7.1	5.1	13.3	11.0	1.9	10.1	7.6
	Sep	-1.1	8.4	6.0	6.4	9.1	8.0	0.1	8.9	3.0	4.6	9.1	7.1	-9.9	10.8	8.6	5.0	14.3	11.7	2.7	11.0	8.5
	Oct	-1.2	8.0	5.7	6.4	8.5	7.6	0.8	8.8	3.4	3.8	7.9	6.1	-8.7	11.5	9.4	5.1	14.9	12.2	2.8	11.1	8.6
	Nov	-0.7	8.8	6.4	6.1	8.0	7.3	2.1	9.3	4.5	3.7	7.8	6.0	-7.2	11.8	9.9	6.0	15.6	12.9	3.3	11.4	9.0
	Dec	0.3	9.7	7.4	6.1	7.3	6.8	4.0	6.9	5.0	3.6	5.7	4.8	-5.3	12.1	10.4	7.0	16.3	13.7	4.0	11.4	9.2

¹ There was a step change in 2011 due to a change in reporting population.

² With effect of January 2010 Automotive Fuels was published as a separate sub-sector in retail sales. See tables 2A and 2B

Table 3A Card expenditure statistics (not seasonally adjusted)

Number of credit card transactions

Detailed sector breakdown - retail sectors (not seasonally adjusted)

	December 2012	January 2013	February 2013	March 2013	April 2013	May 2013	June 2013	July 2013	August 2013	September 2013	October 2013	November 2013	December 2013	Total (latest 12 months)
Supermarkets	62,047,806	50,130,902	47,598,002	51,880,030	46,196,999	55,717,638	53,425,041	61,193,349	54,952,089	56,015,029	57,093,638	58,248,997	66,668,040	659,119,754
Bakers & dairies	210,872	173,907	264,882	213,989	207,748	233,930	231,392	246,973	249,517	247,899	262,881	259,950	254,447	2,847,515
Sweet stores	630,636	147,485	200,391	326,875	216,699	225,219	225,219	220,508	236,318	225,801	255,747	341,719	569,862	3,204,717
Miscellaneous foodstores	3,330,864	2,783,493	2,815,202	3,080,854	3,161,223	3,484,093	3,279,754	3,747,064	3,450,327	3,315,990	3,435,306	3,296,909	3,663,040	39,513,257
Off-licences	816,553	427,702	542,791	516,844	530,895	573,053	569,037	616,461	575,117	535,325	552,474	597,368	718,191	6,755,258
Food & drink	67,036,731	53,663,489	51,421,268	56,018,592	50,334,960	60,225,413	57,730,443	66,024,355	59,463,368	60,340,044	61,600,046	62,744,943	71,873,580	711,440,501
Department stores	10,696,124	5,385,487	4,302,281	4,739,808	5,186,999	5,429,410	5,717,876	6,114,210	5,200,024	5,212,417	5,506,018	7,434,515	9,383,748	69,612,793
Discount stores	2,984,625	1,549,447	1,454,187	1,613,231	1,691,713	1,825,151	1,817,397	2,036,416	1,973,546	1,930,113	2,053,785	2,489,901	2,589,176	23,024,063
Catalogues	3,198,114	2,972,994	2,984,372	3,389,292	1,638,275	4,074,732	4,052,141	4,722,524	5,288,562	5,146,665	6,090,055	6,184,750	6,341,471	52,885,833
Miscellaneous mixed	3,597,464	2,132,482	2,113,592	2,215,446	2,499,049	2,423,358	2,367,186	2,722,222	2,481,275	2,677,894	2,848,730	3,211,356	4,042,340	31,734,930
Mixed business	20,476,327	12,040,410	10,854,432	11,957,777	10,940,345	13,828,342	13,954,600	15,595,372	14,943,407	14,967,069	16,496,588	19,320,522	22,356,735	177,257,619
Men's clothing	619,012	389,575	321,745	313,488	365,090	394,579	435,308	504,500	416,701	365,988	361,515	395,231	561,219	4,824,939
Women's clothing	2,865,008	1,684,431	1,501,302	1,575,489	1,923,339	2,027,657	2,079,578	2,624,964	1,981,627	1,866,138	1,952,574	2,138,557	2,983,625	24,339,281
Family clothing	12,183,059	6,803,012	6,478,192	6,402,801	7,289,974	7,904,208	7,603,340	9,876,852	7,674,283	7,752,486	8,404,963	9,649,272	12,976,417	98,815,800
Miscellaneous clothing	1,203,373	698,237	654,505	694,425	845,455	875,406	879,865	1,024,911	830,561	844,144	691,247	558,629	636,271	9,237,716
Shoe shops	1,675,695	1,299,440	951,783	880,980	1,255,001	1,309,702	1,417,257	1,728,270	1,559,747	1,339,372	1,318,286	1,287,345	1,694,672	16,041,855
Clothing	18,546,147	10,874,695	9,907,527	9,867,183	11,682,859	12,511,552	12,415,348	15,759,557	12,462,919	12,168,128	12,728,585	14,029,034	18,852,204	153,259,591
Furniture stores	1,915,580	1,610,252	1,479,411	1,403,130	1,456,056	1,462,612	1,351,688	1,473,923	1,483,518	1,513,224	1,659,829	1,826,980	2,008,621	18,729,244
Household appliance stores	1,672,627	1,267,930	1,200,518	1,279,815	1,298,907	1,343,724	1,296,256	1,345,303	1,337,825	1,357,924	1,403,675	1,492,623	1,551,652	16,176,152
Electronic stores	2,012,779	1,364,065	1,281,121	1,103,205	1,081,431	1,161,035	1,101,349	1,216,281	1,197,101	1,241,455	1,304,342	1,426,280	1,966,365	15,404,030
DIY stores	5,531,688	4,943,109	5,212,297	5,591,634	6,329,404	7,121,201	6,436,739	6,651,822	6,508,436	6,071,612	6,359,875	6,131,107	6,075,875	73,523,111
Floor covering stores	136,990	154,870	170,575	163,886	166,133	167,407	148,672	162,384	171,438	164,537	195,295	198,849	151,754	2,015,800
Garden centres	1,803,682	826,377	941,233	1,349,911	2,110,753	2,680,631	2,162,963	1,734,463	1,450,187	1,352,842	1,371,300	1,405,701	1,730,963	19,117,324
Miscellaneous household	2,017,936	1,384,383	1,330,977	1,373,508	1,414,575	1,511,468	1,521,360	1,623,997	1,535,091	1,502,730	1,639,866	1,759,966	2,295,699	18,893,620
Household	15,091,282	11,550,986	11,616,132	12,265,089	13,857,259	15,538,078	13,979,027	14,208,173	13,683,596	13,204,324	13,934,182	14,241,506	15,780,929	163,859,281
Books, newspapers & magazines	3,325,689	1,689,261	1,636,253	1,671,439	1,787,414	1,791,687	1,672,155	1,975,988	1,878,601	2,034,974	2,105,693	2,287,550	3,381,975	23,912,990
Record shops	1,210,382	383,557	325,090	266,986	354,443	210,232	196,487	217,779	230,882	210,799	230,882	310,799	777,146	3,701,173
Music shops	204,466	141,065	131,583	132,215	1,993,999	129,737	118,653	121,554	115,752	140,261	148,635	153,219	185,763	3,512,436
Hobbies, toys & games	1,102,496	398,010	394,376	394,068	391,780	397,357	376,863	441,578	440,080	483,956	531,793	778,529	1,126,941	6,155,331
Photographic	368,118	205,173	146,786	146,786	200,241	178,754	200,241	216,323	221,441	200,774	210,046	201,763	241,250	2,385,407
Handicraft	89,651	90,134	89,094	89,441	94,663	91,822	81,878	88,599	94,555	93,634	106,029	111,351	95,931	1,127,131
Sports shops	3,576,861	2,545,951	2,125,932	2,272,875	2,563,607	2,884,322	2,770,746	3,457,349	3,297,542	2,912,804	2,584,620	2,673,835	3,146,963	33,236,546
Jewellers	1,423,883	595,475	584,794	599,596	590,093	620,825	644,140	741,868	641,971	641,971	669,855	684,653	1,296,970	8,565,238
Computer software	698,638	654,462	583,677	644,621	645,400	657,918	631,317	730,559	579,251	606,833	585,902	602,017	692,255	7,614,212
Medical goods	505,386	389,962	364,821	419,574	394,403	435,917	435,939	477,475	424,215	408,074	442,660	446,351	541,936	5,181,381
Chemists	5,342,073	3,367,789	3,140,656	3,247,897	3,307,584	3,851,489	3,629,995	4,475,477	3,729,073	3,718,257	3,916,413	4,132,957	5,942,895	46,460,482
Optical goods	369,643	445,432	474,172	463,965	486,695	512,841	475,910	553,489	506,414	487,323	486,509	459,998	411,756	5,764,504
Cosmetic stores	1,010,334	351,455	375,693	369,194	416,846	469,810	411,218	457,447	440,671	421,654	465,673	613,751	1,018,541	5,811,953
Tobacconists	21,746	14,988	12,057	16,239	16,754	20,595	20,367	24,905	24,000	24,600	24,583	24,178	30,484	252,813
Florists	544,164	286,634	455,564	552,845	332,278	369,997	346,093	352,609	311,652	323,963	325,744	325,642	542,226	4,525,247
Artists' supplies	358,268	242,440	257,495	263,638	285,767	269,119	240,588	275,071	284,751	282,108	324,776	365,568	387,731	3,479,052
Antiques, art & stamps/coins	189,939	126,187	138,411	149,622	173,175	144,992	165,536	168,613	165,028	165,028	166,203	165,028	182,711	1,902,679
Pawn shops	4,556	2,901	2,018	2,951	3,101	3,209	3,073	3,229	3,447	3,370	3,685	3,879	5,910	40,773
Gift shops	2,584,075	1,093,027	1,318,299	1,233,526	1,195,123	1,293,981	1,357,809	1,514,973	1,553,700	1,379,816	1,474,940	1,910,235	2,849,485	18,174,914
Secondhand shops	20,061	15,301	16,318	20,209	17,888	20,439	20,209	21,574	20,800	21,387	21,680	21,387	23,526	246,537
Luggage & leather goods	190,969	111,607	113,214	99,258	101,854	115,027	124,438	136,306	119,727	108,579	116,818	131,736	173,770	1,452,334
Pet shops	858,681	748,944	950,309	740,374	728,630	808,862	750,655	818,766	807,213	770,475	812,871	795,270	870,582	9,602,951
Religious goods	7,014	5,650	8,534	7,582	9,786	12,294	13,593	13,716	12,011	12,011	10,384	7,778	7,537	121,368
Direct sales	3,764,194	3,828,813	3,706,671	3,749,016	3,573,569	3,828,368	3,452,683	3,799,478	3,500,674	3,648,637	4,044,664	3,584,185	3,793,509	44,510,267
Miscellaneous & speciality shops	3,554,659	2,764,050	2,622,280	2,951,069	2,941,379	3,980,922	2,960,859	3,339,289	4,006,902	3,291,326	2,888,099	3,306,818	3,660,350	38,713,343
Other retail	31,325,946	20,498,268	19,974,097	20,547,261	22,584,985	23,142,547	21,080,398	24,424,014	23,472,411	22,391,315	22,667,664	24,279,959	31,388,143	276,451,062
Automotive Fuels	18,675,997	17,594,691	17,726,294	19,560,945	18,362,097	20,379,628	19,765,733	21,682,964	20,432,217	19,977,476	20,068,968	19,453,192	19,700,953	234,705,158
Total retail sales	171,152,430	126,222,539	121,499,750	130,216,847	127,762,505	145,625,560	138,925,549	157,694,435	144,457,918	143,048,376	147,498,033	154,069,156	179,952,544	1,716,973,212

Table 3A Card expenditure statistics (not seasonally adjusted)

Number of credit card transactions

Detailed sector breakdown - services sectors (not seasonally adjusted)

	December 2012	January 2013	February 2013	March 2013	April 2013	May 2013	June 2013	July 2013	August 2013	September 2013	October 2013	November 2013	December 2013	Total (latest 12 months)
Auto rental	353,843	397,588	373,185	444,025	458,184	522,338	489,944	568,433	543,062	485,611	473,719	405,564	378,236	5,539,889
Auto parts & accessories	689,246	726,954	773,782	779,557	808,033	818,781	757,895	840,498	769,158	727,202	749,248	737,727	675,823	9,164,658
Auto services	1,487,196	1,446,372	1,794,951	1,591,231	1,588,090	1,840,875	1,805,694	1,940,151	1,744,976	1,873,939	2,037,002	1,966,855	1,848,561	21,478,697
Auto repair shops	704,083	814,578	880,247	923,453	856,560	916,930	869,571	964,830	887,079	872,674	897,179	858,596	773,682	10,515,379
Service stations	0	0	0	0	0	0	0	0	0	0	0	0	0	0
Vehicle sales	428,325	498,907	592,022	589,945	600,366	623,701	582,632	642,726	594,801	582,371	552,130	503,874	447,933	6,811,408
Vehicle Sales & Services	3,662,693	3,884,399	4,414,187	4,328,211	4,311,233	4,722,625	4,505,736	4,956,638	4,539,076	4,541,797	4,709,278	4,472,616	4,124,235	53,510,031
Restaurants	13,430,918	11,828,281	13,440,609	13,789,048	14,268,412	15,755,368	15,229,409	16,863,448	16,623,470	15,801,604	16,388,914	15,858,167	15,937,174	181,783,904
Public houses	2,355,951	1,914,007	2,258,748	2,257,454	2,449,348	2,822,324	2,647,743	3,110,038	2,979,687	2,745,144	2,684,763	2,631,824	2,993,454	31,494,534
Catering services	405,935	381,405	417,790	435,817	418,851	490,990	476,850	520,905	471,538	504,396	550,595	551,530	522,021	5,742,688
Video stores	194,417	208,123	225,096	223,571	177,795	211,623	207,425	236,033	238,633	260,410	253,977	259,755	257,361	2,759,802
Cinema, theatre & dance	2,194,841	2,149,401	1,906,557	1,615,358	1,797,455	1,962,841	1,643,893	1,749,483	1,906,702	1,647,853	2,093,374	2,277,896	2,317,580	23,068,393
Concerts & entertainers	53,817	42,355	54,817	53,441	54,841	55,232	52,200	50,850	60,150	55,633	70,775	69,054	65,612	684,960
Tourist attractions	260,781	222,692	330,841	319,761	319,761	619,599	564,750	829,470	1,016,178	587,624	510,639	319,256	315,830	6,189,096
Amusement parks	23,109	18,817	45,820	31,082	77,591	75,869	67,812	101,739	159,874	69,718	67,845	35,059	25,533	776,759
Aquariums	11,592	12,088	16,817	14,228	28,967	26,124	24,764	34,775	46,964	24,187	21,257	14,471	13,400	278,042
Sports & games establishments	2,847,136	2,769,753	2,585,815	2,669,667	2,656,062	2,470,431	2,109,328	2,409,896	2,358,234	2,417,377	2,452,705	2,402,197	3,601,297	30,902,762
Professional sports clubs	131,987	115,931	103,578	96,796	125,093	159,320	101,822	144,167	143,750	121,256	119,270	123,279	150,241	1,504,503
Gambling	4,437,966	4,817,393	4,403,324	4,673,074	4,035,780	4,714,783	4,062,450	4,452,755	4,406,338	4,934,217	5,108,341	4,956,463	5,810,300	56,375,218
Personal services	474,770	429,948	399,566	379,051	329,267	290,843	322,970	301,968	325,713	301,968	288,351	265,324	303,603	3,831,099
Miscellaneous entertainment	413,231	529,284	550,840	583,266	640,859	660,254	604,977	728,678	729,031	639,812	651,210	555,754	458,249	7,332,214
Entertainment	27,236,451	25,439,478	26,719,703	27,162,129	27,522,777	30,347,728	28,084,266	31,557,950	31,442,517	30,093,726	31,262,016	30,320,029	32,771,655	352,723,974
Hotels	3,612,783	3,591,648	4,298,762	4,194,928	4,629,392	4,900,990	4,768,431	5,218,476	4,863,882	4,682,612	4,840,124	4,467,429	4,088,300	54,544,974
Airlines	1,219,417	1,715,501	1,476,549	1,617,420	1,604,131	1,649,270	1,513,849	1,547,170	1,494,484	1,723,032	1,593,212	1,338,321	1,076,908	18,349,847
Airport terminals	16,610	18,356	20,942	21,918	27,018	31,822	36,935	49,342	42,104	39,687	37,187	28,978	26,467	380,756
Railways	4,842,956	5,002,088	5,027,834	5,300,173	5,540,668	5,851,360	5,594,415	6,086,672	5,318,403	5,860,525	6,167,437	5,935,621	5,470,311	67,155,507
Buses	517,284	516,806	592,210	612,654	618,037	705,755	704,617	772,351	687,817	779,826	780,117	747,833	641,808	8,159,831
Sea travel	107,911	107,549	119,190	123,407	179,664	170,911	129,327	198,375	205,810	152,438	139,008	117,598	108,514	1,751,791
Travel agents	1,312,172	1,976,236	1,774,412	1,816,261	1,611,842	1,954,532	1,825,848	1,913,479	1,677,311	1,714,068	1,858,481	1,624,009	1,493,578	21,240,057
Timeshares	13,499	39,343	20,348	34,470	27,273	17,792	16,645	18,896	20,169	15,865	19,255	17,274	17,424	264,754
Camping grounds	46,686	99,259	129,773	137,458	207,035	256,300	248,568	336,029	351,884	192,332	138,217	74,780	65,531	2,237,166
Miscellaneous travel	673,609	701,819	801,544	819,241	847,934	918,469	886,770	955,758	895,220	866,976	918,403	852,825	814,053	10,279,012
Travel	8,750,144	10,176,957	9,962,802	10,483,002	10,613,265	11,564,964	10,998,558	11,878,072	10,693,202	11,344,749	11,651,317	10,737,239	9,714,594	129,818,721
Telegraph services / Wire transfer money order	4,382	3,338	7,457	3,538	3,329	9,627	12,125	8,853	10,710	3,562	14,162	12,789	14,129	103,619
Insurance services	1,353,102	1,628,442	1,531,841	1,738,545	1,647,218	1,736,851	1,623,387	1,990,189	1,825,786	1,817,639	1,777,630	1,495,708	1,433,304	20,246,540
Fis - cash disbursements (auto & manual)	16,530	19,231	20,521	21,269	21,240	22,838	20,811	21,056	17,902	19,838	20,716	17,252	13,429	236,103
Fis - merchandise & services	431,525	460,652	420,123	482,500	422,686	458,502	448,319	383,972	367,453	370,040	382,694	367,261	367,935	4,932,137
Non-Fis - foreign currency, travellers' cheques	52,319	54,459	69,222	63,414	84,043	95,817	117,080	110,369	109,358	110,369	73,686	53,056	53,897	979,920
Security brokers and dealers	13,629	15,995	13,627	13,755	31,121	13,042	12,388	10,116	9,218	9,663	10,294	10,311	9,894	159,424
Tax preparation services	178	309	242	257	236	208	174	165	158	160	153	150	121	2,333
Tax payments	4,195	77,603	3,688	21,261	18,384	4,768	4,102	5,687	5,410	15,128	4,248	3,859	3,900	168,038
Fines, bail and bond payments	53,394	62,671	68,635	62,787	60,268	70,418	63,179	71,377	68,253	66,050	75,357	71,201	69,803	809,999
Miscellaneous financial	58,177	63,795	73,843	72,632	87,636	107,240	87,148	97,891	97,862	83,017	84,951	77,303	66,068	999,388
Financial	1,987,431	2,386,495	2,203,391	2,486,466	2,376,161	2,519,311	2,366,452	2,706,386	2,513,121	2,494,455	2,443,891	2,108,890	2,032,480	28,637,499

Table 3A Card expenditure statistics (not seasonally adjusted)

Number of credit card transactions

Detailed sector breakdown - services sectors (continued, not seasonally adjusted)

	December 2012	January 2013	February 2013	March 2013	April 2013	May 2013	June 2013	July 2013	August 2013	September 2013	October 2013	November 2013	December 2013	Total (latest 12 months)
Telecoms	2,117,580	2,047,352	1,788,471	1,926,370	2,008,061	1,952,321	1,863,297	2,030,451	1,957,400	1,991,756	2,037,282	1,932,087	1,992,186	23,527,034
Utilities	220,151	255,081	248,441	449,284	384,438	397,801	355,259	385,297	355,440	372,424	404,266	361,679	358,992	4,328,402
Contractors (residential & commercial)	216,213	253,465	265,390	257,518	267,615	272,941	249,244	280,760	263,823	272,471	301,694	287,437	238,202	3,210,560
Gardening services	56,634	31,981	36,966	49,193	68,914	82,824	67,952	61,476	51,862	46,834	47,954	47,483	61,863	655,302
Veterinary services	545,660	573,093	643,510	553,594	584,575	607,799	579,700	662,903	663,843	617,063	654,717	605,735	590,999	7,337,531
Photocopying & printing	347,136	321,237	293,311	265,328	286,438	261,551	241,239	253,464	249,200	273,726	310,710	320,936	344,367	3,421,507
Photographic studios	129,883	91,823	99,267	99,736	104,091	116,518	122,589	144,646	109,804	108,821	145,031	150,555	137,012	1,429,893
Beauty & barber shops	1,950,670	1,315,628	1,370,428	1,454,447	1,503,101	1,615,705	1,556,995	1,716,842	1,607,502	1,523,249	1,573,468	1,609,096	2,041,008	18,887,469
Employment agencies	28,510	27,266	26,870	31,346	30,436	27,665	25,191	29,770	28,316	26,477	29,037	26,698	23,239	332,311
Counselling services	6,639	8,242	5,697	6,922	6,498	6,157	6,078	6,617	6,270	6,485	6,576	5,798	4,636	75,976
Legal services	47,846	73,763	38,822	59,789	57,342	76,349	37,594	78,636	40,894	73,516	60,488	41,321	66,712	705,226
Laundry & cleaning	165,913	160,545	156,858	164,799	183,297	201,407	200,717	222,004	188,155	196,271	206,888	193,682	181,537	2,256,190
Funeral services	10,826	12,637	12,138	12,915	12,921	12,957	11,543	12,360	11,059	10,783	12,250	11,806	11,689	145,058
Medical services	979,002	1,180,284	1,232,490	1,159,297	1,141,235	1,249,898	1,172,932	1,274,330	1,154,617	1,194,498	1,328,013	1,263,840	1,127,482	14,478,916
Moving & courier services	330,200	332,390	359,231	372,815	386,953	431,937	418,551	435,212	381,354	391,457	448,352	435,760	418,601	4,812,613
Repair shops (not auto)	160,865	158,078	144,362	63,821	58,123	63,663	57,418	66,113	61,440	60,133	66,033	65,551	63,803	928,538
Accounting services	32,961	41,368	33,726	31,420	28,230	28,707	26,774	29,496	32,711	35,968	38,928	37,146	36,013	400,487
Advertising, consultancy & PR	118,156	76,357	82,761	78,709	98,742	90,001	79,670	86,779	82,752	79,424	82,082	83,131	61,132	981,540
Computer programming	1,827,647	1,382,778	1,180,949	1,306,286	1,260,313	1,350,347	1,257,317	1,352,741	1,249,594	1,397,593	1,504,643	1,590,037	2,009,671	16,842,269
Farming services	111,633	95,480	114,280	96,751	105,026	108,725	100,834	107,924	99,169	98,637	102,921	105,644	120,129	1,255,520
Miscellaneous professional services	914,747	971,040	988,087	875,676	949,812	945,189	865,059	930,223	900,722	946,325	967,131	926,776	875,755	11,141,795
Engineering services	44,192	59,618	56,561	48,141	56,881	52,044	51,699	58,159	51,674	50,428	55,696	50,653	44,337	635,891
Marina services	31,361	31,065	33,835	40,659	65,685	76,424	74,297	107,982	101,596	62,551	46,742	36,912	36,047	713,795
Wrecking & salvage yards	2,671	3,677	3,962	3,670	3,886	4,284	4,059	4,443	3,982	3,633	3,894	3,365	2,530	45,385
Pest control	2,530	2,518	2,342	2,833	2,857	3,168	2,899	3,939	3,599	2,996	3,426	2,786	2,363	35,726
Educational establishments	473,421	653,923	642,538	597,361	517,258	567,916	537,608	542,482	455,560	785,644	752,379	704,570	571,025	7,328,264
Child care services	15,789	18,793	21,518	18,347	19,930	18,394	15,590	17,279	18,590	17,732	21,442	18,613	18,333	224,561
Social, political & religious organisations	1,083,904	964,535	903,243	1,228,690	1,025,691	1,356,107	1,234,677	1,345,963	1,277,436	1,363,567	1,347,088	1,526,509	1,327,738	14,901,244
Government services	1,853,398	2,102,952	2,113,236	2,130,631	2,186,840	2,362,713	2,258,583	2,449,924	2,244,558	2,298,025	2,412,727	2,221,893	2,103,513	26,885,595
Miscellaneous services	1,841,634	1,485,977	1,454,452	1,368,082	2,240,045	1,379,833	1,299,076	1,467,129	1,327,713	1,337,170	1,416,482	1,425,366	1,968,180	18,169,505
Commercial equipment	346,247	389,315	385,808	902,142	878,844	926,106	854,846	910,074	892,327	979,572	1,015,092	995,875	948,365	10,078,366
Other services	16,014,019	15,122,261	14,739,550	15,656,572	16,524,078	16,647,451	15,629,287	17,075,418	15,872,992	16,625,229	17,403,432	17,088,740	17,787,459	196,172,469
Total services	61,263,521	60,601,238	62,338,395	64,311,308	65,976,906	70,703,069	66,352,730	73,392,940	69,924,790	69,782,568	72,310,058	69,194,943	70,518,723	815,407,668
TOTAL	232,415,951	186,823,777	183,838,145	194,528,155	193,739,411	216,328,629	205,278,279	231,087,375	214,382,708	212,830,944	219,808,091	223,264,099	250,471,267	2,532,380,880

Table 3B Card expenditure statistics (not seasonally adjusted)

Value of credit card transactions

Detailed sector breakdown - retail sectors (not seasonally adjusted)

£	December 2012	January 2013	February 2013	March 2013	April 2013	May 2013	June 2013	July 2013	August 2013	September 2013	October 2013	November 2013	December 2013	Total (latest 12 months)
Supermarkets	2,441,227,487	1,621,446,256	1,545,781,174	1,722,257,822	1,521,647,858	1,828,454,442	1,738,759,991	1,975,026,227	1,780,535,367	1,835,642,675	1,826,140,750	1,976,965,597	2,452,034,549	21,824,692,708
Bakers & dairies	4,197,464	2,987,488	3,557,355	3,527,071	3,500,534	3,830,121	3,687,989	3,936,029	3,756,017	3,844,846	4,080,205	4,137,032	4,655,329	45,500,016
Sweet stores	18,609,960	3,920,053	4,962,538	8,496,113	6,138,800	5,645,055	5,933,110	6,057,438	5,752,280	6,948,075	6,948,075	9,982,186	18,355,834	87,724,893
Miscellaneous foodstores	115,687,169	81,828,310	86,010,958	92,452,646	92,968,404	102,574,296	97,502,263	106,766,414	96,957,522	96,137,345	101,797,668	103,777,264	129,511,241	1,188,284,327
Off-licences	74,144,900	29,847,994	35,011,732	39,053,628	37,803,793	44,608,902	43,211,861	42,126,992	39,418,830	35,823,568	40,227,043	49,800,057	62,836,919	499,771,319
Food & drink	2,653,866,980	1,740,030,101	1,675,323,753	1,865,787,280	1,662,059,389	1,985,001,172	1,888,807,159	2,133,788,772	1,926,725,174	1,977,200,714	1,979,193,741	2,144,662,136	2,667,393,872	23,645,973,263
Department stores	668,774,563	346,409,599	294,176,461	334,410,851	363,107,039	368,555,169	396,573,048	385,713,017	362,795,403	385,313,303	403,925,107	513,436,969	617,716,671	4,772,132,637
Discount stores	149,963,889	74,344,957	69,073,683	78,256,991	81,807,001	87,761,247	83,185,041	93,143,354	90,717,837	89,962,301	98,496,565	119,700,804	126,666,687	1,093,116,468
Catalogues	92,313,587	86,244,894	82,641,133	92,024,567	51,960,204	114,659,084	109,051,137	122,983,156	129,933,825	123,648,231	144,816,925	160,948,175	155,551,854	1,374,463,185
Miscellaneous mixed	151,647,811	87,687,720	89,036,655	93,488,912	101,408,357	93,375,468	107,701,418	100,711,876	112,516,978	135,799,913	120,250,942	135,799,913	163,599,865	1,310,043,305
Mixed business	1,062,699,850	594,687,170	534,927,932	598,181,321	598,282,601	672,441,501	685,184,694	709,540,945	684,158,141	711,440,813	767,489,539	929,886,661	1,063,535,077	8,549,755,595
Men's clothing	60,555,993	41,983,276	35,851,550	37,182,866	40,893,213	46,327,588	49,982,626	48,919,483	42,206,821	42,618,206	43,264,473	43,781,987	55,969,042	528,981,131
Women's clothing	178,682,643	116,096,775	114,443,936	122,573,368	140,332,664	143,483,780	145,849,930	157,084,027	126,516,213	145,125,199	150,301,633	155,636,178	182,627,083	1,700,070,786
Family clothing	586,588,502	314,396,458	319,737,139	334,971,717	370,794,182	405,248,830	387,382,054	453,853,771	384,478,025	417,711,966	454,897,046	494,323,460	615,513,650	4,953,308,298
Miscellaneous clothing	53,727,423	33,187,414	33,993,154	36,573,064	43,081,260	45,022,939	44,343,510	46,445,488	41,333,717	44,299,905	37,343,227	37,343,227	38,634,749	485,927,332
Shoe shops	109,910,405	73,339,458	59,628,655	58,994,947	78,019,389	81,357,951	82,692,282	88,211,355	88,292,622	90,404,191	96,315,477	94,647,789	113,054,991	1,004,959,147
Clothing	989,464,966	579,003,381	563,654,474	590,295,962	673,120,708	721,441,088	710,250,402	794,514,124	682,827,398	740,529,277	786,077,724	825,732,641	1,005,799,515	8,673,246,694
Furniture stores	262,280,436	298,867,483	264,568,189	269,115,626	272,881,092	272,648,405	243,750,116	267,215,329	265,899,809	282,815,434	312,230,161	308,011,466	281,842,932	3,339,846,042
Household appliance stores	135,059,388	128,558,347	115,012,756	120,072,876	120,993,389	121,958,498	114,823,418	121,898,262	116,698,471	118,613,404	131,710,822	136,155,284	139,037,551	1,485,533,602
Electronic stores	328,053,940	216,062,307	179,452,798	176,413,858	174,158,957	179,123,727	164,272,340	189,834,857	192,328,858	205,051,339	208,180,828	235,837,084	335,296,699	2,456,013,647
DIY stores	346,694,220	314,396,458	388,762,456	407,019,555	457,392,913	520,485,014	464,217,447	451,506,978	472,067,010	458,296,335	493,006,720	458,296,139	410,702,299	5,398,785,976
Floor covering stores	46,922,836	53,064,782	57,596,462	55,960,810	56,190,006	59,401,802	54,831,706	60,126,693	60,685,210	58,218,205	69,905,671	72,060,246	54,884,112	712,925,705
Garden centres	72,968,780	34,549,470	44,428,984	62,691,140	103,790,061	133,927,496	104,248,864	88,961,303	67,983,243	61,024,743	59,522,023	60,229,499	71,294,487	892,651,313
Miscellaneous household	159,131,590	116,128,468	109,633,990	113,864,935	126,108,539	127,546,772	129,799,629	140,593,528	127,211,697	137,389,669	147,735,226	149,629,080	183,530,479	1,609,172,012
Household	1,351,111,190	1,229,984,962	1,159,455,635	1,205,138,800	1,311,514,957	1,415,091,714	1,275,943,520	1,360,137,614	1,302,874,298	1,315,688,129	1,422,291,311	1,420,218,798	1,476,588,559	15,894,928,297
Books, newspapers & magazines	93,229,966	56,785,819	52,810,345	51,496,650	52,744,737	62,330,988	49,716,410	56,324,071	63,505,033	59,810,394	64,013,718	68,678,141	92,171,182	730,387,488
Record shops	35,965,523	9,746,411	7,050,689	10,097,282	5,957,582	5,367,075	6,117,753	5,957,592	6,685,616	5,984,066	6,685,616	9,233,499	23,471,988	103,458,428
Music shops	23,611,107	16,701,995	16,398,938	16,802,149	28,070,051	15,795,668	14,524,896	16,314,444	16,261,607	17,092,818	18,033,453	19,640,832	23,997,885	219,634,736
Hobbies, toys & games	54,632,824	22,540,950	23,632,189	23,146,518	22,741,770	23,421,616	22,541,606	25,658,041	23,943,411	28,039,590	30,568,731	53,673,579	81,186,804	381,094,605
Photographic	37,343,224	18,302,050	26,451,457	22,686,051	25,766,294	23,137,803	23,137,803	25,766,294	23,137,803	23,128,342	25,800,804	25,800,804	28,726,125	254,919,069
Handicraft	7,680,107	8,677,344	8,071,851	8,112,011	8,014,569	9,145,184	7,507,726	8,083,973	9,132,804	8,423,992	9,348,560	9,546,814	8,294,002	102,358,830
Sports shops	220,453,800	162,508,285	146,419,225	157,957,997	177,294,028	195,477,579	183,351,381	219,500,061	211,983,799	188,071,001	172,655,595	176,539,010	204,501,874	2,196,259,835
Jewellers	240,159,042	97,111,802	102,288,425	107,462,201	109,265,148	113,534,613	118,113,120	129,609,708	117,248,386	115,855,519	136,862,635	129,342,983	1,490,034,376	1,490,034,376
Computer software	83,872,337	66,604,813	63,575,669	64,505,189	113,362,411	57,984,021	54,634,496	59,495,506	55,450,356	57,180,822	57,519,585	59,220,658	65,590,821	775,124,347
Medical goods	18,205,734	13,583,743	14,385,368	15,545,803	13,501,955	15,954,507	15,374,004	16,873,314	14,962,582	14,294,402	16,668,446	17,341,823	19,924,668	188,410,615
Chemists	145,828,830	69,226,337	66,320,495	69,944,968	70,781,139	83,136,887	78,199,091	96,280,059	80,842,060	78,376,484	90,980,415	109,358,015	165,396,321	1,058,842,271
Optical goods	50,574,272	64,994,242	71,190,623	70,031,534	73,785,320	76,696,549	70,524,385	80,809,046	75,288,827	72,094,264	73,236,058	68,280,778	57,426,905	854,358,531
Cosmetic stores	50,550,184	20,732,439	21,899,854	22,327,423	23,309,165	36,892,642	25,407,223	27,054,569	25,063,710	25,150,873	28,474,809	35,632,076	53,178,212	345,122,995
Tobaccoconists	1,355,358	1,001,682	1,116,639	1,185,223	1,444,374	1,332,919	1,167,915	1,474,684	1,428,698	1,428,698	1,428,698	1,428,698	2,015,210	16,627,585
Florists	24,462,859	14,003,277	21,351,568	24,330,955	17,257,453	19,716,432	17,717,734	18,125,275	16,022,331	16,688,068	16,878,470	16,635,720	25,286,535	224,013,818
Artists' supplies	15,798,366	11,605,141	12,017,844	12,873,320	13,495,588	13,699,275	12,570,799	13,776,852	13,538,409	14,173,078	15,901,712	16,831,499	16,784,332	167,267,849
Antiques, art & stamps/coins	28,870,706	21,446,574	22,328,373	26,233,826	26,132,504	26,986,000	26,493,631	25,854,931	23,782,941	27,251,363	30,028,725	29,159,910	29,020,834	314,719,618
Pawn shops	904,014	734,035	352,576	676,576	700,402	763,529	698,606	794,358	986,309	962,519	904,955	903,890	1,269,842	9,747,597
Gift shops	83,214,047	37,700,009	42,461,994	43,375,252	43,303,542	47,922,775	47,848,456	54,411,222	55,698,070	50,711,474	56,473,607	72,433,071	87,265,726	639,605,198
Secondhand shops	2,199,829	1,879,255	2,098,704	3,268,875	2,168,434	2,603,870	2,433,203	2,439,989	2,045,305	2,205,427	2,525,613	2,283,768	2,415,571	28,368,194
Luggage & leather goods	27,774,054	16,332,542	14,453,971	14,228,644	15,164,488	16,650,938	20,137,383	19,574,066	15,563,992	15,763,536	16,767,854	17,588,930	24,122,778	206,349,127
Pet shops	35,021,858	32,330,513	37,890,287	32,046,638	32,273,147	35,667,323	32,949,336	36,130,464	35,596,483	33,552,269	35,129,121	33,672,127	35,672,579	412,910,287
Religious goods	242,751	200,060	276,044	410,814	440,814	446,525	440,814	446,525	442,730	446,525	442,730	446,525	238,034	4,045,265
Direct sales	215,751,685													

Table 3B Card expenditure statistics (not seasonally adjusted)

Value of credit card transactions

Detailed sector breakdown - services sectors (not seasonally adjusted)

£	December 2012	January 2013	February 2013	March 2013	April 2013	May 2013	June 2013	July 2013	August 2013	September 2013	October 2013	November 2013	December 2013	Total (latest 12 months)
Auto rental	42,499,968	44,476,171	41,403,733	51,309,951	54,817,631	71,995,250	64,712,818	79,279,170	76,778,639	55,448,702	51,466,513	42,836,496	42,360,189	676,885,263
Auto parts & accessories	104,496,237	116,942,785	123,998,136	124,309,797	125,609,513	129,573,692	120,393,503	131,308,164	119,171,133	116,788,003	121,861,877	118,758,944	106,251,114	1,454,966,661
Auto services	36,458,841	39,864,449	39,688,459	44,655,107	43,583,607	48,991,651	47,174,244	50,012,157	44,662,447	47,199,044	48,414,282	45,534,190	41,257,536	541,037,173
Auto repair shops	172,790,485	201,776,265	222,839,946	232,350,133	211,574,829	227,548,216	216,638,656	233,720,829	218,189,327	219,233,646	224,924,662	215,001,488	194,655,690	2,618,453,687
Service stations	0	0	0	0	0	0	0	0	0	0	0	0	0	0
Vehicle sales	148,455,111	180,831,223	221,367,971	219,371,727	212,880,390	215,925,551	203,181,603	220,123,258	206,410,088	217,688,216	204,435,326	185,397,370	162,997,349	2,450,610,072
Vehicle Sales & Services	504,700,642	583,890,893	649,298,245	671,996,715	648,465,970	694,034,360	652,100,824	714,443,578	665,211,634	656,357,611	651,102,660	607,528,488	547,521,878	7,741,952,856
Restaurants	602,239,094	422,143,311	491,742,193	507,262,724	530,040,458	568,947,092	559,448,303	599,240,747	588,760,785	563,149,577	576,639,385	566,035,108	636,264,292	6,609,673,975
Public houses	117,016,941	75,264,349	87,953,693	89,963,282	102,217,292	110,886,994	104,979,349	120,161,745	116,324,326	108,084,387	104,953,621	103,179,808	136,068,050	1,260,036,896
Catering services	53,116,223	41,680,402	46,844,895	51,509,759	43,778,484	56,277,811	54,042,683	57,395,198	51,822,679	51,080,624	56,972,593	57,894,643	60,128,107	629,427,878
Video stores	3,046,783	2,545,719	2,490,567	2,673,429	2,520,170	2,534,087	2,423,323	2,688,000	2,610,903	3,022,377	2,849,915	3,273,662	2,903,900	32,536,052
Cinema, theatre & dance	158,308,628	126,822,636	127,467,427	136,891,439	129,989,934	135,625,522	114,821,169	114,542,932	108,460,203	116,076,033	158,858,206	157,457,515	159,509,598	1,586,522,614
Concerts & entertainers	4,308,565	3,471,472	4,123,508	4,399,991	3,929,688	8,406,313	4,439,020	4,245,081	6,336,792	6,145,253	8,039,076	7,310,991	5,719,691	66,566,876
Tourist attractions	14,668,944	15,003,832	18,753,900	21,690,708	29,442,205	36,179,014	33,185,504	46,303,056	49,674,696	29,390,746	27,178,224	17,829,140	18,349,724	32,980,749
Amusement parks	1,186,189	1,238,092	2,236,664	1,828,390	3,776,729	4,376,044	4,096,921	5,852,279	8,228,465	3,537,175	3,501,600	1,835,396	1,319,257	41,827,012
Aquariums	686,341	706,116	839,833	792,107	1,394,861	1,329,719	1,256,684	1,725,128	2,054,232	1,123,131	985,945	760,769	783,618	13,752,143
Sports & games establishments	90,293,342	90,429,706	84,455,093	101,700,956	106,512,798	134,895,861	121,081,156	95,593,125	84,665,760	91,806,370	86,976,404	88,013,877	109,082,265	1,195,213,371
Professional sports clubs	9,083,470	9,645,812	8,641,805	9,013,658	12,767,584	27,585,715	13,433,154	14,597,146	10,680,687	10,503,648	10,436,277	11,740,404	13,971,290	153,017,180
Gambling	98,338,081	114,348,883	98,053,536	113,804,857	103,343,295	105,105,025	90,142,811	98,281,746	98,570,796	107,840,099	95,324,837	103,894,222	111,809,174	1,240,519,281
Personal services	23,709,229	20,952,524	17,283,036	15,467,515	16,623,068	17,245,146	18,735,207	17,433,468	18,102,236	18,993,291	19,475,913	22,303,456	22,570,943	224,570,943
Miscellaneous entertainment	120,918,431	200,654,575	184,154,793	194,758,963	191,014,766	207,348,188	187,776,973	177,522,852	179,375,410	200,259,833	208,234,101	187,891,875	129,982,776	2,248,975,105
Entertainment	1,296,920,261	1,124,907,429	1,175,040,943	1,256,246,346	1,276,195,779	1,418,120,453	1,308,372,196	1,356,884,242	1,324,999,202	1,310,121,489	1,359,943,475	1,326,593,323	1,408,195,198	15,645,620,075
Hotels	566,683,234	573,907,029	667,821,572	699,880,785	781,960,016	838,481,527	859,310,067	923,458,740	818,860,792	849,137,388	850,506,929	760,157,105	680,489,125	9,303,971,075
Airlines	329,076,244	579,442,375	503,909,236	521,324,327	483,865,303	567,723,576	507,633,027	528,989,161	477,303,213	530,037,680	517,635,831	435,384,094	341,819,234	5,995,067,057
Airport terminals	2,375,684	2,638,248	2,324,977	2,958,637	3,314,426	3,724,832	3,964,086	4,952,878	3,817,449	3,806,174	3,496,326	3,020,289	2,822,851	40,841,173
Railways	246,603,268	247,164,424	212,785,916	216,427,449	233,506,306	240,220,127	230,413,938	245,229,841	210,931,344	250,727,312	259,009,420	244,761,368	255,455,673	2,846,633,118
Buses	22,355,315	22,542,937	24,367,655	26,699,013	26,605,579	30,726,803	31,086,944	34,442,519	30,736,039	32,574,954	30,032,612	27,294,113	23,790,684	340,899,852
Sea travel	29,758,024	35,617,257	36,833,336	38,598,653	38,018,115	56,672,734	47,053,531	51,169,625	56,522,918	40,110,216	40,675,774	36,473,261	31,097,343	508,842,763
Travel agents	347,021,675	614,892,516	516,904,820	572,506,329	567,097,490	691,699,748	634,992,600	653,050,917	559,443,151	493,044,290	502,624,688	410,113,864	384,013,997	6,600,384,410
Timeshares	1,823,279	6,770,571	3,085,286	7,282,867	5,868,907	3,449,554	3,114,270	3,420,579	3,470,401	2,091,593	3,405,543	3,087,805	3,002,997	48,050,373
Camping grounds	14,591,982	19,557,970	23,221,735	24,723,496	26,958,090	34,578,873	36,616,205	42,129,566	35,831,057	19,993,046	17,349,577	22,134,385	21,403,697	324,497,697
Miscellaneous travel	40,919,306	50,823,634	51,676,714	54,969,544	60,068,339	69,721,696	67,656,590	68,413,559	60,447,230	54,679,127	56,297,640	51,708,150	46,676,600	693,138,823
Travel	1,034,524,777	1,579,449,932	1,375,109,675	1,465,490,315	1,445,302,555	1,696,517,943	1,562,531,191	1,631,798,645	1,438,502,802	1,427,064,392	1,430,527,411	1,233,977,329	1,110,083,076	17,398,355,266
Telegraph services / Wire transfer money order	911,767	788,516	1,277,096	834,253	845,626	1,594,962	1,610,543	1,332,401	1,590,361	782,516	1,841,109	1,657,611	1,720,898	15,875,892
Insurance services	227,326,346	280,193,804	272,367,815	311,361,097	297,003,444	298,516,370	279,304,271	337,540,202	311,283,349	314,343,426	309,066,350	264,979,364	248,459,725	3,524,419,217
Fis - cash disbursements (auto & manual)	9,282,050	10,802,834	10,472,233	10,829,256	11,718,325	13,820,450	10,402,370	11,138,855	11,535,460	9,609,002	9,832,705	8,224,051	7,414,987	125,800,528
Fis - merchandise & services	49,606,764	59,870,044	59,130,955	61,844,678	58,006,854	61,344,889	59,602,531	45,460,371	41,488,112	42,931,713	45,099,596	40,535,849	38,877,817	614,193,409
Non-Fis - foreign currency, travellers' cheques	18,725,365	20,362,152	23,495,527	31,796,267	25,159,725	38,880,346	40,290,238	54,524,275	51,818,987	46,189,664	29,724,529	19,485,368	19,706,962	401,434,040
Security brokers and dealers	5,816,125	6,529,714	5,928,161	5,336,155	9,390,349	5,267,318	4,875,531	4,189,448	3,713,863	4,168,141	4,935,248	4,471,505	4,256,617	63,062,050
Tax preparation services	80,893	154,662	55,433	88,735	83,771	87,646	78,684	109,340	65,658	81,151	73,053	88,168	72,637	1,038,938
Tax payments	290,609	90,013,692	199,227	20,627,230	14,221,983	254,680	226,232	289,170	248,285	14,197,319	252,734	213,504	216,430	140,960,486
Fines, bail and bond payments	7,625,149	9,652,173	10,750,219	9,409,790	8,923,348	10,607,750	9,643,313	10,467,846	10,349,969	10,045,380	11,558,014	11,144,477	10,735,192	123,287,471
Miscellaneous financial	9,840,818	11,815,254	13,625,154	12,662,633	13,635,886	19,143,786	14,540,724	15,843,273	16,721,850	14,234,841	14,872,093	13,939,517	11,567,958	172,602,969
Financial	329,505,886	490,182,845	397,301,820	458,153,552	445,625,853	449,518,197	420,574,437	480,895,181	448,815,894	456,583,153	427,255,431	364,739,414	343,029,223	5,182,675,000

Table 3B Card expenditure statistics (not seasonally adjusted)

Value of credit card transactions

Detailed sector breakdown - services sectors (continued, not seasonally adjusted)

£	December 2012	January 2013	February 2013	March 2013	April 2013	May 2013	June 2013	July 2013	August 2013	September 2013	October 2013	November 2013	December 2013	Total (latest 12 months)
Telecoms	97,530,955	87,785,255	80,750,789	81,006,548	81,752,897	86,217,569	80,832,382	88,500,373	86,233,671	89,871,129	97,593,362	91,605,961	92,488,707	1,044,638,643
Utilities	35,570,233	56,513,670	51,052,068	90,243,556	80,469,639	70,766,653	61,756,902	64,187,210	56,392,681	71,185,095	65,327,296	55,082,315	55,124,731	778,101,816
Contractors (residential & commercial)	60,574,286	71,227,830	75,309,056	75,618,960	73,969,739	82,275,212	75,711,516	83,751,304	79,291,180	84,729,261	91,393,171	89,360,957	75,210,216	957,848,402
Gardening services	5,159,360	3,502,267	4,429,002	5,488,265	6,416,217	8,959,384	6,671,929	6,123,235	5,262,106	5,904,809	4,306,455	5,950,008	4,230,527	67,244,204
Veterinary services	47,504,693	53,014,343	56,726,187	50,348,574	53,576,703	55,899,068	53,732,816	60,290,487	59,554,710	56,402,410	59,711,544	55,512,605	53,316,744	668,086,191
Photocopying & printing	39,073,714	42,090,285	41,111,193	36,791,687	34,509,303	36,185,090	34,053,063	34,713,686	35,640,936	36,851,687	41,641,113	39,811,281	36,458,049	449,857,373
Photographic studios	9,044,487	6,456,930	7,552,681	7,111,787	7,513,826	7,686,858	7,677,701	9,185,796	7,474,123	7,603,455	8,593,401	9,629,806	9,095,336	95,581,700
Beauty & barber shops	101,310,425	70,205,779	74,410,432	80,003,887	81,403,647	87,311,193	83,834,623	90,568,016	85,292,648	83,242,597	86,391,523	88,685,911	106,567,431	1,017,917,687
Employment agencies	24,082,616	20,828,985	23,932,455	28,516,933	24,565,085	24,782,463	24,631,882	28,902,730	26,933,153	25,761,253	29,767,087	27,872,176	24,922,636	311,416,838
Counselling services	1,161,786	1,658,444	1,123,208	1,169,968	1,142,244	1,154,998	864,173	950,697	1,236,494	1,044,845	1,072,618	1,145,066	1,038,653	13,601,408
Legal services	16,639,368	20,465,337	20,997,750	21,874,630	19,742,046	22,402,051	20,143,558	22,855,586	21,470,962	21,773,263	23,331,020	21,678,304	19,518,609	256,253,116
Laundry & cleaning	5,606,746	5,633,038	5,430,268	5,653,781	6,254,639	6,965,989	6,850,546	7,636,844	6,669,304	6,846,083	7,183,044	6,903,605	6,310,790	78,337,931
Funeral services	11,446,327	14,339,566	13,267,188	14,989,400	14,250,819	13,872,223	12,089,510	13,133,184	11,812,162	11,736,961	13,872,840	14,149,015	14,102,176	161,615,044
Medical services	130,998,168	157,928,083	166,469,885	162,507,666	156,414,951	173,254,864	162,313,183	175,069,265	156,517,872	161,718,614	184,229,180	175,464,791	153,067,271	1,984,955,625
Moving & courier services	34,799,324	36,372,502	35,248,356	39,054,373	38,605,999	41,158,875	40,876,389	45,508,150	39,098,386	39,844,087	45,875,203	42,301,459	40,823,203	484,766,982
Repair shops (not auto)	13,044,923	11,885,934	11,461,239	9,505,263	9,473,821	10,330,371	9,667,660	11,203,334	9,844,847	10,145,250	10,096,639	10,157,391	10,240,642	124,012,391
Accounting services	6,519,601	9,300,342	8,071,199	7,729,907	6,404,776	6,419,240	6,132,826	6,478,360	6,550,649	6,773,782	7,721,110	7,781,778	7,597,801	86,961,770
Advertising, consultancy & PR	10,970,633	8,820,898	9,191,051	9,009,806	9,908,015	9,951,409	8,327,609	9,146,672	7,834,617	8,203,546	8,593,682	8,028,212	6,512,091	103,527,608
Computer programming	106,796,384	86,551,846	75,082,966	85,189,202	80,399,058	120,760,312	84,867,513	87,158,397	100,476,099	89,075,528	96,470,856	98,253,750	117,895,489	1,122,181,016
Farming services	9,967,176	9,256,996	10,470,099	9,689,575	9,921,924	10,616,737	10,039,638	11,388,989	10,613,297	10,467,614	11,106,085	10,791,595	11,078,418	125,440,967
Miscellaneous professional services	121,279,807	154,928,487	162,398,755	150,334,786	154,716,945	166,440,535	153,800,917	163,085,183	163,781,037	175,021,105	163,073,409	145,174,348	135,820,634	1,888,576,141
Engineering services	14,146,313	16,894,351	17,408,454	15,669,638	17,678,626	16,335,863	15,264,447	16,556,080	15,188,188	14,812,211	16,285,307	14,613,272	13,625,452	190,331,689
Marina services	5,284,476	6,825,277	6,987,340	9,850,282	11,010,430	11,246,087	10,564,036	13,326,157	11,311,648	8,222,346	7,186,073	5,496,553	5,427,560	107,453,789
Wrecking & salvage yards	553,560	778,300	749,239	734,309	748,555	869,044	837,178	903,496	872,093	885,622	718,845	540,929	540,929	9,493,604
Pest control	571,442	567,516	541,268	641,358	572,521	619,393	472,808	596,394	544,015	619,276	593,733	505,576	460,647	6,734,505
Educational establishments	85,569,353	192,717,695	115,265,077	99,223,868	122,122,117	111,980,902	99,606,861	113,419,428	148,496,229	312,295,739	194,172,993	108,210,062	99,757,683	1,717,268,654
Child care services	1,691,186	1,943,982	2,160,174	2,017,328	2,106,675	2,262,509	2,188,780	2,490,953	2,178,294	2,265,255	2,472,815	2,241,838	2,138,260	26,466,863
Social, political & religious organisations	81,997,549	89,018,077	72,393,422	95,957,075	68,569,821	75,303,699	69,015,732	78,655,030	73,051,946	83,680,820	87,278,895	94,417,871	84,785,581	972,127,969
Government services	198,148,148	183,007,710	264,574,998	193,605,613	197,610,364	242,222,499	225,479,917	263,214,014	252,260,711	207,743,546	230,522,757	212,256,280	218,974,189	2,691,472,598
Miscellaneous services	96,623,049	94,825,659	91,160,717	81,286,634	121,437,741	83,678,601	77,539,522	88,144,010	81,376,749	87,775,118	87,308,740	85,045,871	98,638,690	1,078,218,052
Commercial equipment	74,017,583	86,513,548	93,478,987	124,472,578	119,548,348	130,456,044	124,084,698	132,251,768	125,950,579	128,015,165	139,801,934	132,417,825	117,595,887	1,454,587,361
Other services	1,447,683,671	1,601,858,932	1,599,205,503	1,595,297,237	1,612,817,491	1,718,385,535	1,569,930,315	1,729,394,828	1,689,195,287	1,850,503,943	1,823,920,175	1,661,203,659	1,623,365,032	20,075,077,937
Total services	5,200,018,471	5,954,197,060	5,863,777,758	6,147,064,950	6,210,367,664	6,817,058,015	6,372,819,030	6,836,875,214	6,385,585,611	6,549,767,976	6,543,256,081	5,954,199,318	5,712,683,532	75,347,652,209
TOTAL	13,861,779,768	12,136,586,421	11,844,900,927	12,604,416,430	12,645,224,259	14,023,560,945	13,096,352,462	14,240,977,070	13,390,014,496	13,541,544,948	13,788,057,915	13,620,574,454	14,577,110,119	159,509,320,446

Table 3C Card expenditure statistics (not seasonally adjusted)

Number of debit card transactions

Detailed mixed sector breakdown - retail sectors (not seasonally adjusted)

	December 2012	January 2013	February 2013	March 2013	April 2013	May 2013	June 2013	July 2013	August 2013	September 2013	October 2013	November 2013	December 2013	Total (latest 12 months)
Supermarkets	236,177,953	212,826,723	210,028,535	226,385,912	215,291,191	235,208,507	226,163,674	253,022,073	226,677,454	233,698,392	242,375,793	238,149,141	257,571,229	2,777,398,624
Bakers & dairies	1,510,210	1,295,899	2,378,155	1,651,307	1,503,547	1,718,276	1,715,708	1,769,702	1,835,861	1,845,455	2,055,274	2,055,028	1,951,478	21,775,690
Sweet stores	1,791,429	552,818	737,547	1,117,545	856,044	809,898	782,664	754,505	797,639	780,575	1,033,928	1,033,928	1,480,131	10,581,063
Miscellaneous foodstores	14,138,314	12,859,516	13,635,097	13,978,934	14,066,024	15,771,170	14,726,720	16,814,342	15,409,185	14,677,461	15,746,805	15,128,721	16,127,154	178,941,129
Off-licences	3,423,872	2,788,595	3,791,092	3,104,449	3,197,886	3,367,148	3,299,456	3,572,997	3,319,416	3,175,673	3,304,845	3,269,060	3,409,605	39,600,222
Food & drink	257,041,778	230,323,551	230,570,426	246,238,147	234,914,692	256,847,765	246,715,456	275,933,619	248,039,555	254,177,738	264,360,304	259,635,878	280,539,597	3,028,296,728
Department stores	24,144,842	11,880,221	10,373,309	11,356,686	11,712,339	12,201,073	12,541,581	13,977,419	11,912,684	12,071,197	12,378,435	15,083,611	21,423,392	156,911,947
Discount stores	15,011,566	8,506,328	8,378,712	9,202,025	9,530,289	9,909,664	10,021,388	11,048,135	10,734,123	10,776,313	11,627,714	13,058,481	13,780,714	126,573,886
Catalogues	5,268,223	4,011,981	3,654,564	3,737,037	4,041,500	3,849,207	3,423,892	3,920,659	3,640,115	3,573,380	3,979,275	4,460,939	4,827,027	47,119,576
Miscellaneous mixed	17,504,425	12,384,202	12,186,991	12,976,229	12,694,116	14,828,505	13,926,583	17,158,671	14,952,186	16,257,538	16,824,100	17,197,199	21,429,168	182,815,488
Mixed business	61,929,056	36,782,732	34,593,576	37,271,977	37,978,244	40,788,449	39,913,444	46,104,894	41,239,108	42,678,428	44,809,524	49,800,230	61,460,301	513,420,897
Men's clothing	1,371,116	684,994	646,858	619,138	719,655	740,123	816,599	979,972	862,360	712,572	706,141	751,769	1,128,891	9,369,072
Women's clothing	9,233,909	5,177,534	4,885,461	5,038,157	6,094,677	6,248,959	6,126,007	8,061,187	6,196,826	5,949,734	6,221,277	5,992,710	9,355,166	75,347,695
Family clothing	39,058,313	21,497,921	23,349,130	20,924,418	24,264,158	24,529,466	24,116,010	30,438,157	24,030,810	24,962,411	26,553,090	28,346,754	40,664,398	313,676,723
Miscellaneous clothing	3,703,253	2,064,406	2,056,555	2,302,885	2,938,621	2,964,582	2,925,034	3,328,477	2,621,630	2,831,226	2,035,469	1,173,075	1,179,336	28,391,296
Shoe shops	3,826,378	2,915,740	2,273,479	2,045,942	2,898,909	2,866,176	3,132,600	3,863,672	3,552,044	3,139,476	2,805,290	2,670,244	3,703,685	35,867,257
Clothing	57,192,969	32,340,595	33,211,483	30,930,540	36,916,020	37,319,306	37,116,250	46,671,465	37,263,670	37,595,419	38,321,267	36,934,552	56,031,476	462,652,043
Furniture stores	5,128,473	3,892,873	4,274,706	3,738,977	3,853,103	3,833,031	3,620,875	3,891,664	3,914,362	4,035,823	4,324,980	4,636,353	5,464,895	49,481,642
Household appliance stores	6,831,694	4,997,115	5,369,796	5,595,199	5,298,990	5,552,585	5,546,648	5,560,478	5,668,515	5,749,166	5,980,844	6,145,496	6,304,873	67,769,705
Electronic stores	3,588,457	2,294,416	2,314,115	1,885,813	1,864,281	1,963,283	1,817,643	2,073,992	2,063,372	2,162,076	2,245,645	2,389,025	3,557,748	26,631,409
DIY stores	14,826,158	12,562,706	13,543,026	14,734,597	16,363,989	18,258,427	16,728,229	17,547,903	16,739,830	16,238,564	16,889,277	16,382,210	16,699,045	192,687,803
Floor covering stores	248,953	262,331	296,345	283,160	297,167	295,693	264,040	291,667	310,665	302,353	354,170	352,408	279,184	3,589,183
Garden centres	4,192,540	1,859,436	2,063,350	3,010,512	4,430,916	5,457,954	4,559,622	3,745,258	3,171,113	2,905,356	2,993,294	3,232,834	4,008,415	41,438,040
Miscellaneous household	1,389,537	1,297,682	1,436,870	1,173,458	1,472,704	1,395,319	1,274,395	1,487,715	1,645,264	1,618,127	1,761,308	1,639,453	1,854,850	18,057,145
Household	36,205,812	27,166,559	29,298,208	30,421,716	33,581,150	36,756,292	33,811,452	34,598,677	33,513,121	33,011,445	34,549,518	34,777,779	38,169,010	399,654,927
Books, newspapers & magazines	10,148,446	5,803,312	5,692,398	6,038,163	6,092,596	6,166,316	5,955,969	6,674,626	6,358,540	7,003,345	7,042,233	7,030,022	10,476,422	80,333,942
Record shops	4,379,446	1,411,322	1,029,421	1,029,421	1,029,421	1,322,848	768,337	757,442	862,048	836,006	1,087,866	1,087,866	2,979,586	13,626,378
Music shops	402,308	267,860	253,250	254,808	8,289,617	247,259	231,138	232,237	220,375	260,926	277,304	279,195	354,230	11,168,199
Hobbies, toys & games	3,436,767	1,304,682	1,286,097	1,288,197	1,229,170	1,329,416	1,250,229	1,323,812	1,369,533	1,765,100	1,650,255	2,139,710	3,357,141	19,293,342
Photographic	727,417	398,624	296,188	344,770	352,697	389,289	418,203	431,176	438,252	438,166	360,202	371,279	488,097	4,726,943
Handicraft	193,366	188,391	197,398	197,960	205,038	202,407	182,675	196,629	211,988	209,729	244,218	252,091	224,086	2,512,610
Sports shops	9,738,940	6,813,022	5,894,312	6,453,416	7,122,926	7,808,165	7,838,031	9,503,744	8,978,329	8,288,725	7,329,930	7,251,070	8,261,623	91,543,293
Jewellers	3,204,660	1,228,756	1,277,075	1,351,459	1,270,074	1,294,478	1,336,254	1,534,278	1,498,893	1,367,194	1,432,126	1,774,717	2,880,025	18,245,329
Computer software	685,601	598,986	525,136	535,793	724,782	503,946	471,818	515,029	475,753	512,576	450,448	470,750	558,112	6,343,129
Medical goods	33,007	35,502	41,735	37,208	34,959	40,201	38,027	42,876	41,190	38,889	43,138	41,592	36,028	471,345
Chemists	23,577,661	16,130,496	15,639,563	15,890,932	16,122,290	18,078,367	17,030,152	20,540,880	17,264,860	17,691,062	18,402,084	18,120,938	25,957,871	216,869,515
Optical goods	721,836	878,064	941,462	921,269	955,041	996,431	921,990	1,071,517	966,622	967,614	973,457	903,498	801,472	11,298,437
Cosmetic stores	3,211,214	1,107,775	1,203,951	1,245,339	1,490,391	1,352,569	1,321,705	1,450,807	1,395,333	1,399,259	1,488,271	1,758,752	3,132,550	18,346,702
Tobacconists	77,084	54,695	48,935	60,660	59,536	81,997	96,189	97,156	99,623	115,669	114,264	138,999	1,045,110	1,045,110
Florists	1,110,100	627,277	1,156,880	1,370,785	756,293	826,573	804,751	840,520	747,618	746,494	761,705	733,179	1,143,379	10,515,454
Artists' supplies	944,535	627,157	692,741	732,458	766,803	709,317	616,748	687,337	742,253	868,965	919,947	1,048,825	9,140,138	9,140,138
Antiques, art & stamps/coins	357,894	220,544	259,495	268,302	301,701	280,475	249,133	274,495	277,557	297,873	305,900	297,873	3,402,872	3,402,872
Pawn shops	30,194	23,616	14,961	25,533	24,007	25,425	24,627	24,739	25,742	24,450	26,448	27,608	35,672	302,828
Gift shops	9,724,497	3,975,042	5,553,042	5,024,403	4,248,138	4,276,667	4,811,931	4,728,241	4,742,491	4,606,286	4,963,961	6,039,987	10,827,303	63,798,052
Secondhand shops	78,602	57,450	63,782	84,143	65,125	66,928	76,386	75,823	76,386	79,575	79,575	79,575	97,223	890,838
Luggage & leather goods	291,646	147,788	164,551	149,378	146,555	161,875	164,849	184,463	182,396	160,032	158,858	179,578	261,256	2,061,579
Pet shops	3,052,349	2,695,354	3,770,285	2,828,510	2,745,039	2,943,788	2,743,439	3,026,668	3,033,245	2,926,068	3,083,803	2,959,663	3,273,090	36,028,952
Religious goods	6,661	4,432	7,640	6,232	6,708	6,561	6,785	6,785	6,785	7,039	7,350	7,350	7,886	81,810
Direct sales	5,736,870	5,940,223	5,984,462	5,805,607	5,446,580	5,670,051	5,105,268	5,530,165	5,204,130	5,440,687	5,941,739	5,446,309	5,678,851	67,194,072
Miscellaneous & speciality shops	2,742,092	2,050,350	2,040,442	2,449,992	2,510,455	2,619,425	2,493,992	2,826,632	2,746,747	2,836,517	3,141,458	3,535,437	4,259,155	33,510,602
Other retail	84,612,793	52,591,282	54,090,718	54,373,475	62,289,369	56,841,673	54,924,038	62,577,632	57,866,385	58,723,182	60,004,758	61,830,277	86,638,643	722,751,471
Automotive Fuels	63,058,437	59,803,016	60,929,585	66,870,760	64,666,665	67,595,806	65,645,622	71,475,396	67,323,963	66,635,244	67,466,576	66,452,283	67,146,198	792,010,914
Total retail sales	560,040,845	439,007,733	442,693,996	466,106,615	470,346,140	496,149,091	478,126,262 </							

Table 3C Card expenditure statistics (not seasonally adjusted)

Number of debit card transactions

Detailed sector breakdown - services sectors (not seasonally adjusted)

	December 2012	January 2013	February 2013	March 2013	April 2013	May 2013	June 2013	July 2013	August 2013	September 2013	October 2013	November 2013	December 2013	Total (latest 12 months)
Auto rental	417,260	424,894	423,491	482,036	483,514	523,682	501,996	577,243	557,777	498,134	517,988	471,383	461,894	5,924,032
Auto parts & accessories	1,303,700	1,445,932	1,585,773	1,563,576	1,584,907	1,617,193	1,517,743	1,690,518	1,549,472	1,482,669	1,540,011	1,513,042	1,371,648	18,462,484
Auto services	3,640,272	3,030,985	3,843,490	3,352,765	3,332,098	3,921,113	3,840,284	4,213,611	3,961,649	4,063,540	4,421,938	4,325,723	4,586,904	46,894,100
Auto repair shops	1,277,099	1,518,332	1,653,135	1,780,174	1,634,699	1,750,471	1,665,669	1,849,378	1,692,522	1,672,303	1,761,197	1,655,639	1,466,292	20,099,811
Service stations	0	0	0	0	0	0	0	0	0	0	0	0	0	0
Vehicle sales	780,483	932,222	1,132,712	1,139,653	1,168,966	1,210,826	1,136,144	1,268,469	1,175,654	1,143,899	1,086,278	983,254	872,981	13,251,058
Vehicle Sales & Services	7,418,814	7,352,365	8,638,601	8,318,204	8,204,184	9,023,285	8,661,836	9,599,219	8,937,074	8,860,545	9,327,412	8,949,041	8,759,719	104,631,485
Restaurants	53,287,743	47,188,664	51,386,055	54,588,222	54,463,103	60,204,782	56,312,683	61,305,013	60,575,958	59,708,345	63,760,719	63,027,311	65,601,268	698,122,123
Public houses	9,605,727	8,057,707	9,314,256	9,306,444	9,628,657	11,216,689	10,201,227	11,886,431	11,093,333	10,695,756	10,794,019	10,667,601	12,689,124	125,551,244
Catering services	1,217,927	1,189,097	1,342,647	1,394,434	1,335,013	1,530,115	1,433,908	1,548,396	1,478,991	1,561,808	1,863,468	1,895,032	1,728,899	18,301,808
Video stores	598,904	623,303	593,990	616,404	616,404	344,650	334,896	318,552	390,601	624,193	380,396	447,308	311,703	5,542,309
Cinema, theatre & dance	5,100,072	5,324,393	4,633,461	3,729,965	4,782,763	5,567,210	4,541,112	5,027,141	5,637,914	4,135,979	4,768,837	5,606,455	6,022,344	59,777,574
Concerts & entertainers	141,383	124,617	154,514	154,879	162,550	151,462	131,447	119,481	163,355	141,321	177,875	170,571	169,888	1,821,960
Tourist attractions	457,902	374,079	540,408	540,408	1,088,922	1,004,205	865,106	1,232,206	1,802,302	945,489	584,727	584,727	557,832	10,547,098
Amusement parks	75,298	65,386	164,275	111,122	281,204	267,531	271,707	352,172	507,622	269,535	252,891	140,141	88,580	2,772,166
Aquariums	34,965	41,807	62,580	53,221	99,901	92,469	94,178	126,161	168,193	92,855	74,916	52,130	44,242	1,002,650
Sports & games establishments	2,670,637	2,849,155	2,932,039	2,932,208	3,137,079	3,106,897	2,796,145	2,754,774	3,268,650	2,969,255	3,094,336	3,094,336	3,241,403	35,902,784
Professional sports clubs	242,300	206,240	215,839	178,716	234,360	257,523	185,094	258,392	278,035	223,763	218,100	217,694	269,481	2,743,237
Gambling	20,905,422	20,709,708	17,881,311	20,744,897	22,628,628	19,627,778	18,369,678	18,086,390	19,057,100	20,068,703	21,335,951	19,766,979	22,660,450	240,937,573
Personal services	444,800	447,848	417,562	440,072	307,456	502,402	460,738	497,745	461,906	436,599	445,625	368,826	389,121	5,175,900
Miscellaneous entertainment	504,061	599,095	767,375	670,136	880,587	816,475	702,707	1,286,023	1,112,756	743,412	802,071	643,017	598,712	9,622,366
Entertainment	95,286,871	87,801,099	90,552,000	95,438,714	99,646,627	104,690,188	96,700,626	104,798,877	105,996,716	102,617,010	108,839,253	106,366,635	114,373,047	1,217,820,792
Hotels	3,707,148	3,534,644	4,334,744	4,034,039	4,329,132	4,616,808	4,439,723	5,091,596	5,128,864	4,465,880	4,579,835	4,242,980	4,322,729	53,120,974
Airlines	1,041,526	1,429,021	1,378,680	1,358,240	1,398,459	1,659,233	1,556,133	1,665,068	1,611,641	1,390,724	1,560,545	1,217,459	1,121,761	17,346,964
Airport terminals	24,829	24,247	26,377	31,868	41,098	43,217	47,363	66,721	60,254	58,234	46,307	34,352	34,982	515,020
Railways	16,158,140	15,783,635	15,680,302	16,143,037	17,230,363	17,345,000	16,263,274	17,974,745	15,766,535	17,001,197	18,348,074	17,454,317	17,466,653	202,457,132
Buses	1,372,978	1,443,103	1,561,339	1,677,549	1,708,868	1,912,331	1,896,390	2,079,562	1,985,312	2,229,313	2,388,162	2,473,044	2,256,666	23,611,639
Sea travel	111,905	105,453	130,622	134,277	145,364	172,534	179,982	225,367	243,457	167,130	151,048	129,792	126,243	1,911,269
Travel agents	991,873	1,847,917	1,664,541	1,811,321	1,822,196	1,874,227	1,758,247	1,837,386	1,658,703	1,509,253	1,424,372	1,144,591	1,107,435	19,460,189
Timeshares	3,740	35,161	6,101	35,950	28,111	4,542	4,098	4,801	5,205	5,077	4,809	3,962	3,917	141,734
Camping grounds	121,237	242,574	333,713	439,623	634,257	754,953	709,802	990,839	1,120,503	584,973	453,379	234,727	209,861	6,709,204
Miscellaneous travel	824,767	777,559	947,083	934,646	1,001,646	1,043,066	1,025,094	1,145,793	1,193,771	1,062,374	1,131,610	1,050,654	1,044,351	12,357,647
Travel	20,650,995	21,688,670	21,728,758	22,566,511	24,010,362	24,809,103	23,440,383	25,990,282	23,645,381	24,008,275	25,508,306	23,742,898	23,371,869	284,510,798
Telegraph services / Wire transfer money order	64,605	56,905	59,782	64,859	69,256	77,413	80,830	85,891	88,110	75,991	95,600	102,388	114,567	971,592
Insurance services	2,296,047	2,886,690	2,847,012	3,175,540	3,077,061	3,246,698	3,170,640	3,770,244	3,565,295	3,534,555	3,559,212	3,016,007	2,804,116	38,653,070
Fis - cash disbursements (auto & manual)	8,116	2,085	2,889	3,454	3,341	5,774	6,601	7,589	7,526	7,346	7,563	6,299	9,471	69,938
Fis - merchandise & services	9,393,882	9,613,797	9,073,002	9,728,708	8,859,562	9,569,972	9,289,472	9,799,356	9,360,638	8,988,025	9,823,300	9,330,101	10,339,690	113,775,623
Non-Fis - foreign currency, travellers' cheques	536,344	554,801	601,536	741,842	791,771	860,909	892,020	957,718	951,998	929,240	671,022	550,810	563,103	9,066,770
Security brokers and dealers	80,166	116,785	166,833	161,334	173,001	139,250	115,877	100,387	117,018	162,477	904,873	147,183	115,369	2,420,387
Tax preparation services	874	1,359	1,253	1,189	1,021	1,089	912	1,055	842	766	781	679	482	11,428
Tax payments	20,641	568,729	18,721	130,401	126,514	26,780	23,796	29,619	26,172	104,077	26,061	23,254	22,664	1,126,788
Fines, bail and bond payments	447,099	477,954	698,045	507,093	460,759	510,023	483,068	527,452	548,572	502,140	589,209	572,121	556,486	6,432,922
Miscellaneous financial	111,001	116,072	137,419	136,822	162,271	181,617	169,263	192,271	175,469	160,869	165,878	153,488	133,058	1,884,487
Financial	12,958,775	14,395,177	13,606,492	14,651,242	13,724,557	14,619,525	14,232,479	15,471,582	14,841,640	14,465,486	15,843,499	13,902,330	14,659,006	174,413,015

Table 3C Card expenditure statistics (not seasonally adjusted)

Number of debit card transactions

Detailed sector breakdown - services sectors (continued, not seasonally adjusted)

	December 2012	January 2013	February 2013	March 2013	April 2013	May 2013	June 2013	July 2013	August 2013	September 2013	October 2013	November 2013	December 2013	Total (latest 12 months)
Telecoms	10,925,271	10,596,849	9,259,541	10,318,453	10,948,098	10,616,347	10,247,508	10,834,969	10,635,775	10,707,474	10,762,997	10,361,858	10,823,183	126,113,052
Utilities	1,973,199	2,253,288	2,110,407	2,637,881	1,979,506	2,118,022	1,920,198	2,123,788	1,975,231	2,087,333	2,231,554	2,046,557	2,026,921	25,510,686
Contractors (residential & commercial)	410,357	460,651	495,369	486,656	509,182	513,382	477,439	543,130	514,989	535,368	595,381	571,622	487,652	6,190,821
Gardening services	126,620	71,831	80,446	102,363	137,341	161,868	136,684	127,034	110,064	101,134	103,135	106,558	140,139	1,378,597
Veterinary services	1,441,090	1,532,496	1,812,484	1,530,916	1,583,014	1,638,905	1,563,070	1,807,626	1,807,849	1,678,998	1,804,102	1,642,146	1,573,620	19,975,226
Photocopying & printing	425,670	368,721	364,274	339,695	408,305	360,755	311,351	320,244	323,597	360,843	422,663	450,675	490,695	4,521,818
Photographic studios	396,413	273,684	317,321	314,166	318,825	355,410	369,459	406,925	345,757	332,692	416,809	434,175	425,439	4,310,662
Beauty & barber shops	5,958,412	4,083,050	4,359,868	4,749,183	4,878,805	5,177,444	4,941,979	5,354,871	5,070,196	4,803,960	4,938,620	4,883,155	6,264,809	59,505,940
Employment agencies	8,613	10,168	9,345	10,849	9,637	10,684	9,922	10,957	10,127	10,220	8,758	7,706	6,087	114,460
Counselling services	99,672	110,122	103,340	104,475	111,469	105,799	95,594	115,610	102,628	104,234	110,290	101,630	102,363	1,267,554
Legal services	117,519	153,246	155,595	158,718	146,430	164,711	153,657	173,971	157,791	161,550	173,706	159,215	138,924	1,897,514
Laundry & cleaning	408,140	385,077	384,937	406,917	447,108	477,896	472,117	513,810	447,929	477,514	505,303	476,758	450,422	5,445,788
Funeral services	22,348	27,189	27,444	28,132	27,015	28,833	26,315	28,361	25,741	25,656	28,878	27,402	27,063	328,029
Medical services	2,145,013	2,663,835	2,879,152	2,694,586	2,612,643	2,852,077	2,642,520	2,892,370	2,659,137	2,754,685	3,075,228	2,905,292	2,577,547	33,209,072
Moving & courier services	311,490	317,839	309,477	299,371	342,126	397,752	376,203	412,113	379,257	370,968	419,385	403,254	431,961	4,459,706
Repair shops (not auto)	440,841	402,940	382,446	113,452	104,904	111,864	102,602	116,578	112,966	109,336	119,242	116,177	123,568	1,916,075
Accounting services	233,980	295,010	258,154	265,959	290,561	293,544	269,612	307,007	289,958	302,302	330,579	297,327	286,223	3,486,236
Advertising, consultancy & PR	143,579	165,309	177,910	170,137	224,454	187,949	159,632	174,723	165,544	168,777	166,130	166,130	122,846	2,044,325
Computer programming	1,340,903	1,514,706	1,412,206	1,585,625	1,464,715	1,598,498	1,426,252	1,609,444	1,465,275	1,555,013	1,174,600	810,749	722,924	16,340,007
Farming services	285,089	254,473	299,945	257,788	272,359	278,923	264,218	283,831	265,824	267,204	277,436	283,639	322,474	3,328,114
Miscellaneous professional services	2,930,566	2,994,843	3,459,243	2,986,973	2,959,849	3,283,496	3,071,834	3,400,394	3,224,516	3,385,626	3,737,546	3,649,785	3,660,044	39,814,149
Engineering services	50,930	66,142	66,989	71,848	72,293	80,876	82,541	91,761	83,614	81,628	92,637	84,276	72,750	947,355
Marina services	53,411	47,669	54,929	64,452	97,537	112,610	108,090	155,282	150,618	96,065	75,527	62,697	64,701	1,090,177
Wrecking & salvage yards	6,936	9,027	9,839	9,642	8,996	11,078	10,770	11,792	10,969	10,079	10,503	9,930	7,728	120,353
Pest control	3,280	3,505	3,348	3,706	3,682	4,188	4,055	5,398	5,291	4,149	4,771	3,878	3,414	49,385
Educational establishments	1,499,650	2,146,477	2,490,662	2,148,566	1,711,095	2,247,889	1,671,538	1,380,528	1,011,992	2,373,647	3,085,454	2,915,945	2,183,997	25,367,790
Child care services	106,790	137,933	162,902	136,299	143,232	138,631	110,795	121,451	135,325	126,619	159,702	138,143	126,814	1,637,846
Social, political & religious organisations	2,011,397	1,862,393	1,938,757	2,654,740	2,101,181	2,772,085	2,495,102	2,696,220	2,540,438	2,775,127	2,842,365	2,920,141	2,504,065	30,102,614
Government services	5,437,596	6,164,860	6,220,164	6,132,219	6,465,951	7,171,745	6,734,617	7,459,792	7,088,713	6,901,496	7,460,728	6,662,824	6,573,323	81,036,432
Miscellaneous services	7,605,836	6,099,032	5,879,268	5,757,003	10,989,124	6,154,889	5,626,443	6,172,859	5,420,983	5,576,645	5,854,799	5,632,726	7,667,269	76,831,040
Commercial equipment	478,134	452,395	496,533	1,560,211	1,517,941	1,608,347	1,445,169	1,508,863	1,516,759	1,788,740	1,794,048	1,694,069	1,782,522	17,165,597
Other services	47,398,745	45,924,760	45,982,295	48,100,981	52,887,378	51,036,497	47,327,286	51,161,702	48,054,853	50,027,219	52,785,523	50,026,439	52,191,487	595,506,420
Total services	187,421,348	180,696,715	184,842,890	193,109,691	202,802,240	208,795,406	194,802,333	212,113,258	206,604,528	204,444,415	216,883,828	207,230,323	217,677,857	2,430,003,484
TOTAL	747,462,193	619,704,448	627,536,886	659,216,306	673,148,380	704,944,497	672,928,595	749,474,972	691,850,330	697,265,871	726,395,775	718,661,322	807,663,082	8,348,790,464

Table 3D Card expenditure statistics (not seasonally adjusted)

Value of debit card transactions

Detailed sector breakdown - retail sectors (not seasonally adjusted)

£	December 2012	January 2013	February 2013	March 2013	April 2013	May 2013	June 2013	July 2013	August 2013	September 2013	October 2013	November 2013	December 2013	Total (latest 12 months)
Supermarkets	7,213,515,930	5,569,393,490	5,391,326,982	5,949,152,252	5,760,900,253	6,019,681,627	5,778,078,903	6,438,913,903	5,765,036,669	5,991,941,701	6,027,317,297	6,125,921,193	7,143,550,237	71,961,214,507
Bakers & dairies	14,066,501	11,089,299	16,563,453	14,054,776	13,358,580	14,849,453	14,494,534	15,483,265	15,866,427	15,397,357	16,678,825	16,674,490	16,332,307	180,842,766
Sweet stores	35,879,867	8,083,011	10,462,439	17,204,687	13,184,131	11,318,382	11,688,422	11,382,404	11,871,845	11,741,743	13,431,329	17,235,543	28,163,453	165,767,389
Miscellaneous foodstores	317,240,291	243,431,502	256,870,787	267,324,428	270,900,450	296,501,362	276,506,809	309,793,975	287,074,791	275,097,906	291,336,200	286,676,095	342,533,638	3,404,047,943
Off-licences	105,871,640	63,851,451	80,681,357	73,446,850	74,784,010	80,598,477	78,293,764	83,896,655	79,956,871	73,901,099	77,639,112	80,115,901	95,446,992	942,612,449
Food & drink	7,686,574,229	5,895,848,753	5,755,905,018	6,321,182,993	6,133,127,424	6,422,949,301	6,159,062,432	6,859,470,112	6,159,806,603	6,368,079,806	6,426,402,763	6,526,623,222	7,626,026,627	76,654,485,054
Department stores	956,438,125	428,268,774	377,980,479	426,312,974	442,164,754	458,069,424	481,347,059	496,472,101	433,673,553	467,967,888	483,967,139	606,731,816	842,736,995	5,945,692,356
Discount stores	574,423,927	295,046,248	292,658,276	318,475,571	336,644,271	344,605,557	335,692,441	376,596,012	357,736,112	373,674,866	403,278,104	465,149,954	513,171,427	4,412,728,839
Catalogues	174,456,408	153,974,977	141,395,113	146,816,444	152,639,759	150,117,653	134,997,002	157,261,928	145,884,602	150,393,656	160,590,049	172,670,470	183,558,502	1,850,300,155
Miscellaneous mixed	564,829,921	338,015,568	341,483,948	364,123,297	353,420,266	421,888,457	399,351,834	488,761,770	430,339,362	503,237,563	535,625,566	535,625,566	696,060,594	5,358,101,748
Mixed business	2,270,146,391	1,215,305,567	1,153,517,816	1,255,728,286	1,284,869,050	1,374,681,091	1,351,388,336	1,519,091,811	1,367,633,629	1,477,829,933	1,551,072,855	1,780,177,806	2,235,526,918	17,566,823,098
Men's clothing	82,510,683	42,691,303	41,215,292	40,665,108	46,537,415	48,972,338	52,325,001	55,930,695	50,883,344	46,674,617	46,642,376	47,148,284	67,967,904	587,653,677
Women's clothing	331,755,264	181,450,755	179,777,571	186,937,581	225,922,476	228,470,259	225,699,089	272,535,171	215,394,178	232,823,318	242,217,820	242,124,308	337,924,015	2,771,276,541
Family clothing	1,367,867,002	652,983,303	720,490,867	696,892,376	798,170,847	813,541,972	789,601,253	936,384,520	777,849,042	863,036,320	929,070,646	990,655,762	1,369,721,891	10,338,398,799
Miscellaneous clothing	99,821,736	55,375,986	58,004,806	64,990,915	67,240,523	82,761,951	81,121,733	87,240,527	74,427,181	84,643,658	81,774,807	43,241,766	41,617,735	820,759,658
Shoe shops	183,455,103	114,598,542	97,010,101	88,772,565	121,008,830	119,270,881	122,995,548	137,514,918	146,499,806	141,359,215	139,295,693	136,117,680	183,904,212	1,548,347,791
Clothing	2,065,409,788	1,047,099,889	1,096,558,637	1,078,258,545	1,274,138,161	1,293,017,401	1,271,742,624	1,489,605,831	1,265,053,351	1,368,537,128	1,422,001,342	1,459,287,800	2,001,135,757	16,066,436,466
Furniture stores	370,624,966	350,287,610	338,771,923	340,083,180	345,959,640	344,139,010	313,670,891	347,449,632	345,903,748	380,675,108	407,611,546	405,875,696	388,560,446	4,308,988,430
Household appliance stores	255,467,093	217,282,423	219,941,972	225,862,969	219,367,193	223,793,877	215,778,138	218,471,041	211,423,240	215,551,862	229,976,516	240,375,807	248,190,229	2,684,015,267
Electronic stores	394,684,656	241,491,504	206,175,747	192,282,031	195,027,218	201,809,910	186,311,250	220,371,342	219,460,331	239,747,112	243,263,858	265,470,909	407,042,526	2,818,453,738
DIY stores	663,491,299	638,522,138	673,005,520	715,852,907	805,094,921	919,523,853	849,334,852	914,666,203	871,371,375	851,894,040	929,937,183	877,440,249	813,848,012	9,860,491,253
Floor covering stores	63,790,047	63,121,216	68,924,829	69,454,233	71,825,003	76,731,934	71,285,960	80,054,270	82,030,371	79,677,696	94,286,988	96,751,959	75,881,876	930,026,335
Garden centres	132,584,086	53,818,131	65,396,115	93,345,055	150,181,694	191,738,171	155,954,272	129,425,598	101,941,827	91,439,223	92,252,516	99,022,394	124,188,782	1,348,703,778
Miscellaneous household	92,815,198	90,562,770	92,746,466	85,579,039	106,016,112	99,045,093	90,038,467	108,233,135	114,701,144	117,743,375	126,885,781	116,009,594	118,131,459	1,265,492,435
Household	1,973,457,345	1,655,085,792	1,664,962,572	1,722,459,414	1,893,471,781	2,056,781,848	1,882,373,830	2,018,671,221	1,946,832,036	1,974,728,416	2,124,014,388	2,100,946,608	2,175,843,330	23,216,171,236
Books, newspapers & magazines	186,771,727	97,987,982	91,647,943	95,511,769	99,307,237	96,706,672	92,720,992	104,028,973	110,837,408	125,668,388	125,137,909	118,316,488	185,816,360	1,343,688,121
Record shops	107,095,440	19,339,661	19,216,937	19,216,937	27,552,500	14,751,344	14,653,404	15,081,174	17,150,620	17,315,399	17,160,602	24,298,360	284,382,138	284,382,138
Music shops	29,145,190	19,302,734	18,452,519	18,660,901	62,466,012	18,301,814	16,806,007	18,263,397	17,639,023	19,131,403	20,551,196	21,406,127	27,122,904	278,104,037
Hobbies, toys & games	125,817,008	43,066,554	43,097,209	43,351,977	38,959,350	41,145,929	40,505,862	43,796,908	44,264,327	65,614,546	61,609,469	107,195,411	171,613,785	744,221,327
Photographic	38,645,378	20,294,360	15,699,523	21,229,597	16,634,194	21,634,517	20,948,073	23,257,694	22,021,110	21,307,599	20,911,285	21,452,397	22,908,962	251,299,311
Handicraft	10,027,083	10,418,417	10,461,475	10,239,944	10,620,598	10,729,425	9,910,162	10,600,789	11,133,235	11,179,075	12,852,618	13,097,651	11,517,138	132,760,527
Sports shops	418,008,574	268,693,683	240,352,401	269,570,959	303,486,059	329,531,447	322,364,849	381,667,606	369,418,053	337,619,963	308,127,721	309,843,495	362,086,905	3,802,763,141
Jewellers	298,732,291	107,934,077	117,291,729	124,340,661	128,645,806	129,992,010	133,763,113	147,196,949	143,928,981	133,315,335	134,639,093	163,706,402	268,433,050	1,733,187,206
Computer software	88,987,718	62,605,859	57,162,043	56,511,143	105,979,775	49,566,690	45,365,597	50,745,241	50,984,680	55,670,600	54,822,454	56,491,399	68,239,580	714,145,061
Medical goods	6,949,776	7,236,394	9,200,678	8,565,125	6,978,046	9,237,338	8,694,115	9,726,757	8,687,930	8,528,980	9,812,929	9,191,790	8,208,907	104,068,989
Chemists	470,327,921	229,138,349	227,009,768	236,641,404	242,104,675	269,291,813	253,995,375	307,288,061	258,278,168	258,984,808	283,047,961	307,586,308	521,866,026	3,395,232,716
Optical goods	65,542,904	83,306,011	92,699,817	90,869,751	95,429,962	98,149,926	89,825,893	104,170,748	95,065,213	93,894,851	95,330,123	88,193,374	73,841,318	1,100,776,987
Cosmetic stores	110,316,946	34,844,236	38,725,115	39,309,621	45,017,569	44,351,635	43,150,733	46,808,248	45,136,391	45,402,790	49,415,751	61,040,229	113,504,253	606,705,911
Tobaccoists	2,731,043	2,192,533	1,623,332	2,269,823	2,279,759	2,861,382	2,822,446	3,460,836	3,302,435	3,292,511	3,821,800	3,659,560	4,540,493	36,126,928
Florists	43,268,687	25,366,488	45,290,535	50,911,085	31,721,476	35,026,903	32,955,293	34,656,319	30,991,981	31,109,757	31,544,272	30,039,797	43,608,044	423,221,950
Artists' supplies	26,903,770	17,939,266	18,974,473	20,197,630	21,714,764	20,627,429	18,229,249	20,389,182	20,927,670	21,343,018	24,724,164	25,978,799	28,871,512	259,917,156
Antiques, art & stamps/coins	34,265,212	22,382,680	25,046,897	28,375,689	29,265,657	29,151,732	28,395,657	28,360,848	27,064,959	30,502,022	32,085,800	33,676,816	35,853,790	350,465,455
Pawn shops	3,836,156	3,649,446	1,706,478	3,677,752	3,803,829	4,147,052	3,942,237	4,319,282	4,308,929	4,131,469	4,413,392	4,355,559	5,113,902	47,569,627
Gift shops	198,722,285	78,237,819	92,604,234	92,070,854	86,891,810	87,417,655	90,984,350	98,709,290	101,030,978	97,807,746	110,631,169	138,317,971	208,704,745	1,283,408,621
Secondhand shops	4,537,336	3,069,449	6,021,923	4,252,425	4,432,905	3,795,964	4,432,905	4,742,652	4,383,774	5,219,834	4,604,689	5,892,263	56,119,547	56,119,547
Luggage & leather goods	26,138,649	12,866,921	12,148,368	11,856,529	11,844,118	12,906,550	14,929,526	14,699,091	13,140,696	12,637,394	13,121,566	14,449,929	21,854,517	166,455,205
Pet shops	88,593,833	76,479,556	100,031,666	80,454,592	79,257,501	85,734,461	80,002,896	88,043,889	88,375,091	84,729,837	88,868,914	84,843,237	93,506,876	1,030,328,516
Religious goods	178,201	132,438	1											

Table 3D Card expenditure statistics (not seasonally adjusted)

Value of debit card transactions

Detailed sector breakdown - services sectors (not seasonally adjusted)

£	December 2012	January 2013	February 2013	March 2013	April 2013	May 2013	June 2013	July 2013	August 2013	September 2013	October 2013	November 2013	December 2013	Total (latest 12 months)
Auto rental	51,431,622	41,232,774	43,478,944	51,957,763	50,640,720	55,588,684	53,127,400	62,888,101	58,732,778	52,662,922	50,927,372	46,776,776	45,334,381	613,348,615
Auto parts & accessories	157,049,425	179,178,841	205,794,045	217,240,916	206,535,650	212,599,766	198,479,355	214,408,015	197,923,524	209,836,834	204,962,147	195,617,070	172,790,118	2,415,367,281
Auto services	47,913,808	46,259,996	42,037,852	49,399,118	51,266,014	58,114,988	55,063,295	64,375,910	58,211,105	56,586,045	60,977,642	55,514,366	55,800,315	653,606,646
Auto repair shops	421,115,694	491,942,045	564,141,635	702,683,735	583,896,646	602,793,307	579,512,205	593,441,495	566,852,150	662,519,543	600,655,864	558,701,406	513,303,736	7,020,443,767
Service stations	0	0	0	0	0	0	0	0	0	0	0	0	0	0
Vehicle sales	833,429,225	1,037,029,821	1,267,166,166	1,442,371,564	1,349,854,405	1,358,118,015	1,259,494,989	1,350,072,610	1,250,521,319	1,483,832,521	1,299,643,852	1,159,577,091	1,006,019,804	15,263,702,157
Vehicle Sales & Services	1,510,939,774	1,795,644,477	2,122,618,642	2,463,653,096	2,242,193,435	2,287,214,760	2,145,677,244	2,285,186,131	2,132,240,876	2,465,437,865	2,217,166,877	2,016,186,709	1,793,248,354	25,966,468,466
Restaurants	1,030,540,026	820,478,246	922,795,360	965,391,187	997,798,891	1,050,350,172	995,324,824	1,074,742,868	1,103,525,911	1,029,332,043	1,066,658,132	1,044,510,516	1,139,822,112	12,210,730,262
Public houses	243,824,599	185,575,336	210,850,039	212,260,844	231,501,448	254,072,227	232,242,230	270,472,783	263,557,281	244,021,220	242,816,983	237,800,652	299,341,233	2,884,512,276
Catering services	100,879,667	46,120,111	55,743,210	59,030,735	55,777,179	70,489,358	68,592,731	76,967,424	75,771,651	63,326,867	71,214,354	71,119,326	76,062,076	790,215,022
Video stores	10,778,273	7,472,757	6,225,404	7,035,388	7,477,442	3,862,037	3,750,291	3,481,822	4,266,662	7,876,584	4,513,187	5,553,105	2,787,193	64,301,872
Cinema, theatre & dance	186,155,546	151,462,544	143,534,269	154,674,088	156,984,323	169,612,578	141,546,290	154,272,636	150,546,344	133,598,436	174,030,777	191,113,333	202,631,791	1,924,007,409
Concerts & entertainers	4,519,092	3,741,992	4,826,613	4,905,670	4,721,325	4,764,051	4,209,974	4,295,575	4,957,150	4,888,593	6,587,167	5,964,652	5,776,273	59,639,035
Tourist attractions	16,617,799	13,956,176	22,328,475	20,958,969	38,304,751	36,302,458	31,480,670	44,444,605	62,197,013	31,585,911	31,508,311	21,197,806	21,223,197	375,488,342
Amusement parks	2,312,776	2,106,080	4,821,757	3,538,983	8,845,138	8,746,138	8,733,549	11,768,481	17,387,076	8,155,020	7,453,318	4,041,344	2,602,058	88,198,942
Aquariums	1,354,639	1,426,241	1,918,164	1,709,546	3,166,053	2,919,669	2,925,428	3,852,627	5,175,397	2,772,655	2,245,062	1,685,428	1,553,870	31,350,140
Sports & games establishments	92,852,450	95,832,828	93,652,958	110,187,938	116,401,364	121,821,897	116,233,325	108,881,101	107,411,219	103,361,830	101,442,039	93,859,332	103,488,258	1,272,574,089
Professional sports clubs	11,725,850	11,579,910	11,326,122	10,780,338	15,368,349	25,330,895	13,384,502	15,866,772	13,235,770	12,065,754	12,376,769	12,023,388	13,873,945	167,212,514
Gambling	365,929,316	407,725,371	308,562,241	380,943,851	402,187,241	330,295,337	319,436,832	308,445,475	377,906,731	355,840,011	319,053,514	309,202,146	345,604,273	4,165,203,030
Personal services	18,595,703	18,324,265	16,139,699	18,402,481	14,142,168	19,454,109	17,936,440	19,908,438	18,057,681	18,314,989	16,443,918	17,470,914	17,633,618	213,498,532
Miscellaneous entertainment	20,675,603	20,954,740	25,410,904	27,356,195	33,379,579	32,273,576	30,990,326	40,279,948	41,642,426	31,282,564	32,788,894	31,688,548	31,883,658	379,931,358
Entertainment	2,106,761,339	1,786,756,604	1,828,135,215	1,977,176,213	2,086,055,251	2,130,294,502	1,986,787,412	2,137,680,555	2,245,638,312	2,046,422,477	2,091,429,421	2,046,203,306	2,264,283,555	24,626,862,823
Hotels	342,704,796	333,717,136	362,333,475	355,601,604	406,840,702	422,233,918	415,877,501	470,555,672	471,397,528	442,888,896	417,818,542	349,475,160	342,724,112	4,791,464,246
Airlines	302,696,170	319,361,692	306,700,463	293,975,207	278,051,473	369,980,928	346,761,536	373,684,810	316,313,679	278,197,083	305,065,163	237,337,868	209,820,131	3,635,250,033
Airport terminals	2,521,019	2,293,356	2,344,231	2,872,980	3,421,916	3,612,178	3,990,231	5,090,755	4,931,579	4,145,766	2,861,466	2,840,459	41,832,296	41,832,296
Railways	380,901,532	406,130,241	378,204,987	385,016,627	418,714,869	413,229,949	386,654,638	421,207,822	354,257,589	392,373,852	424,349,662	392,545,486	393,937,057	4,766,622,779
Buses	34,150,334	35,884,389	34,945,154	36,441,856	38,832,633	40,797,871	39,935,632	45,897,925	44,440,303	49,763,501	45,001,861	40,189,011	35,044,807	487,174,943
Sea travel	36,753,805	20,775,223	30,694,100	26,936,612	27,573,256	41,109,774	39,173,904	40,999,075	40,678,970	28,859,676	32,679,432	39,665,230	26,972,561	396,117,813
Travel agents	554,843,401	1,000,073,596	903,946,935	1,079,707,156	1,139,044,938	1,272,436,493	1,148,500,449	1,107,668,558	899,883,083	783,274,613	764,343,723	652,810,683	629,728,104	11,381,418,331
Timeshares	2,279,965	6,196,780	838,370	9,188,165	7,764,118	693,070	584,611	668,016	716,726	600,394	675,519	553,604	541,541	29,020,914
Camping grounds	31,573,641	42,616,515	55,908,355	70,402,702	73,673,291	87,672,545	86,716,590	101,650,522	94,001,431	64,171,662	60,758,825	55,552,933	49,174,318	842,299,689
Miscellaneous travel	22,406,093	24,841,613	28,746,432	30,222,815	36,927,992	39,718,082	43,947,730	46,577,573	38,249,772	32,032,367	31,864,928	29,279,785	27,382,070	409,791,159
Travel	1,368,125,960	1,858,173,405	1,742,329,027	1,934,764,120	2,024,004,486	2,269,250,890	2,096,265,321	2,143,445,056	1,793,473,132	1,633,418,914	1,675,152,290	1,443,810,268	1,375,441,048	21,989,527,957
Telegraph services / Wire transfer money order	20,818,855	21,399,217	22,237,823	26,413,308	29,493,257	30,028,342	43,742,674	31,747,274	37,936,615	33,259,391	31,238,405	36,005,546	38,091,769	381,593,621
Insurance services	375,366,086	479,874,560	476,795,144	546,730,231	536,821,854	532,886,806	507,098,549	595,309,345	552,290,926	564,695,768	572,476,403	486,542,106	447,341,771	6,298,863,463
Fis - cash disbursements (auto & manual)	2,103,730	674,695	935,780	1,109,902	1,085,297	1,971,967	2,334,180	2,810,343	2,840,322	2,676,623	3,358,426	2,795,288	4,133,362	26,726,185
Fis - merchandise & services	2,976,936,072	3,115,290,445	3,097,805,248	3,086,113,347	3,143,989,398	3,079,517,850	2,949,512,017	3,164,951,906	2,965,904,082	2,945,859,953	3,282,384,479	3,002,032,530	3,300,633,974	37,133,995,229
Non-Fis - foreign currency, travellers' cheques	163,754,126	167,296,431	181,011,875	236,125,802	256,821,401	286,674,302	320,472,689	396,018,343	380,969,739	329,079,241	223,696,701	167,583,628	179,226,960	3,124,977,112
Security brokers and dealers	252,610,602	393,336,318	598,530,526	670,528,289	775,790,424	430,976,455	405,281,925	335,293,676	422,056,225	515,583,849	1,340,898,871	445,854,878	362,166,143	6,696,297,579
Tax preparation services	335,671	512,418	392,603	403,801	366,540	363,759	344,171	475,048	326,859	283,173	278,994	279,241	179,134	4,205,021
Tax payments	1,710,869	1,226,072,260	1,317,684	137,115,804	126,209,240	2,208,347	1,927,549	2,265,651	1,847,954	108,565,021	2,228,698	1,998,555	1,954,451	1,613,711,214
Fines, bail and bond payments	28,205,352	32,106,266	45,827,807	34,457,328	32,629,040	34,449,795	32,546,942	35,092,282	36,134,691	35,081,057	40,729,494	38,884,290	35,596,821	433,535,813
Miscellaneous financial	16,605,689	16,742,063	19,980,831	19,080,525	21,207,211	24,631,751	22,529,772	24,432,655	20,864,430	22,939,807	21,314,503	19,477,304	16,267,067	249,467,919
Financial	3,838,447,052	5,453,304,673	4,444,835,321	4,758,077,617	4,924,413,662	4,423,709,374	4,285,790,468	4,588,396,523	4,421,171,843	4,558,023,883	5,518,604,974	4,201,453,366	4,385,591,452	55,963,373,156

Table 3D Card expenditure statistics (not seasonally adjusted)

Value of debit card transactions

Detailed sector breakdown - services sectors (continued, not seasonally adjusted)

£	December 2012	January 2013	February 2013	March 2013	April 2013	May 2013	June 2013	July 2013	August 2013	September 2013	October 2013	November 2013	December 2013	Total (latest 12 months)
Telecoms	342,010,999	311,819,707	268,327,921	295,194,074	326,217,706	318,327,073	308,159,640	325,953,973	318,863,552	331,500,689	344,349,276	324,610,484	335,300,244	3,808,624,339
Utilities	191,862,921	381,329,546	249,391,603	443,057,826	370,977,264	274,720,536	236,208,371	243,340,943	211,864,154	361,247,555	238,970,304	211,318,563	208,503,419	3,430,930,084
Contractors (residential & commercial)	100,460,560	107,738,546	118,039,270	118,915,368	118,761,096	132,099,818	125,669,967	142,186,767	132,616,117	142,786,128	162,074,000	157,437,074	136,046,509	1,594,370,660
Gardening services	5,897,853	3,728,350	4,774,500	5,884,668	7,590,751	9,728,334	8,328,160	8,658,660	6,983,347	6,629,684	6,708,629	6,511,654	7,023,438	82,550,175
Veterinary services	81,998,412	89,693,848	99,496,837	88,992,952	93,006,230	97,030,301	92,813,100	106,770,141	105,868,551	98,863,501	106,376,752	96,671,387	91,432,644	1,167,016,244
Photocopying & printing	25,357,051	24,934,403	25,861,809	22,785,865	23,350,249	23,914,344	22,109,689	23,027,173	22,198,131	24,510,016	27,650,675	27,052,511	24,772,707	292,167,572
Photographic studios	14,385,811	9,134,792	10,427,291	10,776,401	11,574,301	12,068,635	11,836,607	14,208,429	11,473,080	11,919,235	13,685,282	14,902,237	14,639,440	146,645,710
Beauty & barber shops	240,276,880	157,608,367	173,233,690	188,608,065	192,553,773	203,899,445	193,193,265	208,892,500	199,288,960	191,830,130	197,448,331	196,898,423	243,837,821	2,347,292,770
Employment agencies	949,821	1,122,577	840,996	1,376,603	1,103,445	1,271,095	1,228,667	1,327,751	1,341,191	1,373,090	1,389,773	1,343,704	1,123,738	14,842,630
Counselling services	7,211,359	7,817,719	7,466,265	6,715,671	7,221,886	7,192,962	6,215,863	7,163,843	6,367,391	6,591,045	7,139,987	6,291,357	6,133,762	82,317,751
Legal services	62,478,469	74,981,788	76,684,352	81,265,612	75,795,588	85,226,270	82,589,028	95,350,242	85,623,673	86,933,676	94,087,433	86,455,698	74,329,018	999,322,378
Laundry & cleaning	10,881,757	10,007,685	9,839,682	10,361,619	11,521,309	12,463,251	12,425,070	13,790,216	12,129,176	12,884,521	13,628,609	12,850,200	12,026,171	143,927,509
Funeral services	24,695,529	32,324,944	31,577,356	33,392,078	31,111,487	33,834,667	30,212,241	32,347,227	29,821,711	30,091,089	35,345,234	34,682,847	34,291,569	389,032,450
Medical services	177,562,433	212,280,582	232,823,823	223,571,560	214,041,595	239,995,279	225,244,076	246,993,334	220,809,182	229,917,003	257,935,546	242,398,551	212,364,223	2,758,374,754
Moving & courier services	26,485,135	28,082,307	26,324,952	27,341,144	27,835,728	32,264,064	32,569,035	37,512,495	35,344,432	33,891,130	37,040,464	35,347,485	33,806,947	387,360,183
Repair shops (not auto)	17,592,918	15,588,855	14,950,001	10,591,058	10,419,441	11,278,260	10,622,080	12,454,485	11,830,641	11,362,507	12,040,582	12,009,753	12,000,711	145,148,374
Accounting services	13,877,890	18,672,904	16,088,832	16,078,586	15,754,078	16,762,569	17,487,635	17,969,120	17,891,311	17,509,135	19,368,576	18,272,354	17,459,720	209,314,820
Advertising, consultancy & PR	9,506,853	11,562,782	12,129,047	11,746,699	13,668,885	13,396,969	11,774,919	12,854,579	11,278,364	11,493,302	12,185,100	11,459,702	9,052,505	142,602,853
Computer programming	38,215,652	37,771,256	33,200,047	35,549,055	36,342,817	37,825,560	35,392,700	38,861,514	36,347,816	39,734,614	40,518,505	36,092,311	36,781,620	444,417,815
Farming services	20,065,187	17,833,724	19,441,352	18,149,540	18,747,706	20,414,332	20,106,071	22,414,252	20,994,968	20,848,856	22,126,143	21,766,748	22,736,921	245,580,613
Miscellaneous professional services	423,595,992	546,758,884	570,845,230	558,309,154	566,805,614	552,538,001	519,747,318	576,787,453	558,320,804	627,648,940	670,730,387	531,148,791	501,558,663	6,781,199,239
Engineering services	13,457,340	16,129,515	16,089,363	18,222,491	17,857,498	19,730,418	19,166,471	20,963,280	19,047,591	19,458,273	21,021,165	18,703,132	16,522,590	222,911,787
Marina services	6,450,633	7,342,668	8,535,758	11,180,611	13,447,090	14,023,914	12,886,792	16,509,592	14,578,480	10,649,987	9,358,571	7,370,882	7,136,961	133,021,306
Wrecking & salvage yards	1,015,134	1,174,874	1,338,136	1,314,443	1,291,235	1,511,162	1,329,797	1,691,550	1,527,891	1,433,529	1,629,771	1,433,209	1,105,356	16,780,953
Pest control	519,434	562,555	570,497	606,247	545,155	617,462	523,680	657,043	636,976	532,018	634,499	565,813	474,442	6,926,387
Educational establishments	147,783,667	447,327,551	222,167,212	150,714,686	244,399,893	187,222,346	130,102,526	147,008,113	218,043,731	715,591,666	600,546,301	241,667,125	199,280,773	3,504,071,923
Child care services	9,592,284	12,309,072	12,766,438	11,579,061	12,477,961	12,762,230	11,674,096	13,682,777	11,679,262	12,190,215	14,034,151	12,619,068	11,412,467	149,186,798
Social, political & religious organisations	79,159,555	83,313,573	74,553,968	106,754,230	81,812,814	92,169,633	84,382,216	102,342,257	97,347,731	102,718,018	116,991,908	109,678,977	89,416,198	1,141,481,523
Government services	1,269,598,552	1,202,519,607	1,750,655,245	1,196,644,377	1,320,191,328	1,642,522,130	1,667,537,359	2,093,620,979	1,666,958,146	1,211,617,829	1,601,572,163	1,449,613,799	1,577,057,201	18,380,510,163
Miscellaneous services	490,547,863	588,544,305	492,243,690	454,926,414	911,467,416	518,245,412	471,812,249	579,615,993	461,144,432	481,712,384	502,165,055	449,210,548	490,746,027	6,401,833,925
Commercial equipment	67,883,090	77,914,623	98,262,710	130,157,337	125,065,424	134,817,184	129,245,014	138,653,857	135,500,822	145,752,014	150,083,450	141,846,360	124,646,009	1,531,944,804
Other services	3,921,377,034	4,537,931,909	4,678,947,873	4,290,763,495	4,902,956,763	4,759,873,656	4,532,593,702	5,303,610,538	4,683,721,614	5,001,221,779	5,338,836,602	4,518,230,747	4,553,019,814	57,101,708,492
Total services	13,088,355,955	15,765,528,204	15,179,199,553	15,780,036,145	16,586,464,299	16,292,577,100	15,462,991,648	16,928,874,475	15,747,643,305	16,147,413,814	17,259,008,706	14,575,359,556	14,714,308,335	190,439,405,140
TOTAL	32,032,607,375	29,126,043,011	28,503,340,779	30,088,594,632	31,150,800,840	31,387,607,141	29,908,493,565	32,999,619,864	30,484,191,796	31,355,481,730	32,887,317,597	30,579,428,978	33,646,705,216	372,117,625,149