

Card Expenditure Statistics

August 2014

Card Expenditure Statistics (Seasonally Adjusted) – August 2014

	Total Spending <i>£ billions</i>		Annual growth rates for spending		Number of purchases <i>Millions</i>	
	August 2014	August 2013	August 2014	August 2013	August 2014	August 2013
All payment cards	47.3	44.8	6.8%	5.5%	1,006	922
Debit cards	33.6	31.4	7.9%	6.8%	774	707
Credit cards	13.7	13.4	4.3%	2.8%	232	215

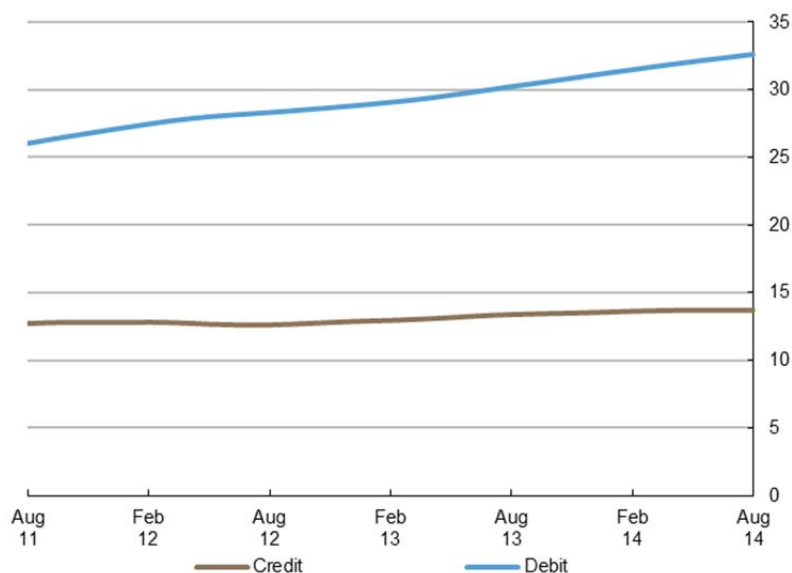
With effect of January 2014 the methodology used for seasonal adjustment - using X12 ARIMA - was changed. Trading days and leap years have been incorporated into the monthly seasonal adjustment process. Unless otherwise stated all data referred to are seasonally adjusted. Unadjusted data are located in tables 3A to 3D. There is a step change in the data between 2010 and 2011 following a change in the reporting population. Average transaction values are based on three-month rolling averages, while growth rates are based on twelve-month rolling periods.

Introduction

Payment card spending increased by 0.4% to £47.3 billion in August, which was £0.2 billion above the level recorded in July. The **number of purchases** also increased and reached a milestone of **1.0 billion** transactions within a single month. This highlights the important role payment cards continue to play for the consumer, providing convenience, safety and familiarity in their payment choices. Factors driving this growth include continuing improvement in the economy¹ as well as positive growth in **consumer confidence**².

Chart 1

Average monthly expenditure
Three-month moving average (£ billions)



¹ ONS Quarterly National Accounts, Q2 2014: <http://www.ons.gov.uk/ons/rel/naa2/quarterly-national-accounts/q2-2014/index.html>

² GfK's UK Consumer Confidence Index: <http://www.gfk.com/uk/news-and-events/press-room/press-releases/pages/august-sees-consumer-confidence-increase-by-three-points.aspx>

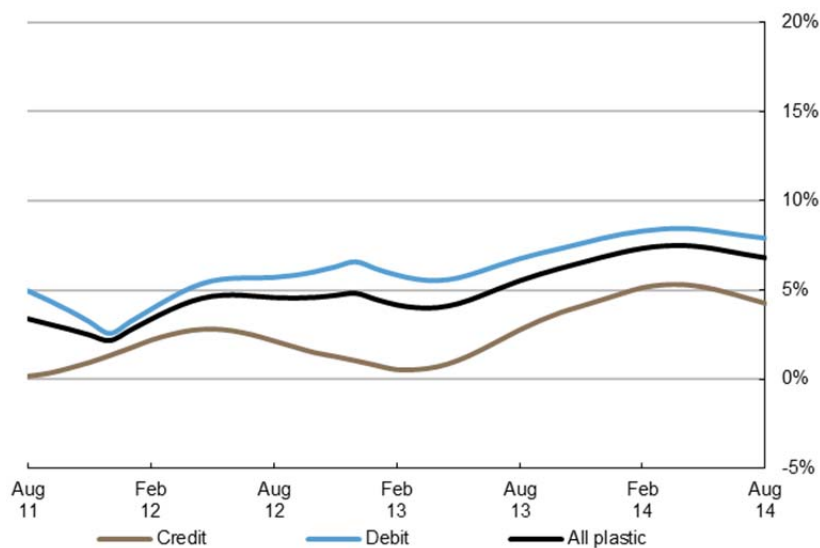
Annual growth rates

However it is worth noting the pace of growth has slowed down in recent months since peaking at 7.5% in April. The **annual growth rate** fell to 6.8% in August, following respective growth rates of 7.2% and 7.0% in June and July. Debit card spending grew by 7.9%, while credit card spending rose more modestly by 4.3% reflecting consumer preference to use their debit cards for daily purchases.

The Office for National Statistics recently released figures showing that annual **consumer price inflation** slowed down to 1.5% in the year to August³, down from 1.6% in July. The downward pressure on the price index was driven by reduced price on motor fuels as well as on food and non-alcoholic drinks. This could in part, account for the recent deceleration in the growth in payment card spending.

Meanwhile, the **annual growth rate of the number of purchases** continued to exceed that of the value of purchases since April 2011, highlighting a growing consumer preference of more frequent use of cards for lower value payments. During August the annual number of purchases grew by 9.2% representing the highest rate of growth in almost a decade. The annual growth in the **service** sector continues to outstrip that of **retail sales**. The service sector expanded by 9.1%, nearly double the growth of spending within retail, which increased by 4.6%.

Chart 2
Spending on payment cards
Year-on-year growth rates



³ ONS, Consumer Price Inflation, August 2014: <http://www.ons.gov.uk/ons/rel/cpi/consumer-price-indices/august-2014/index.html>

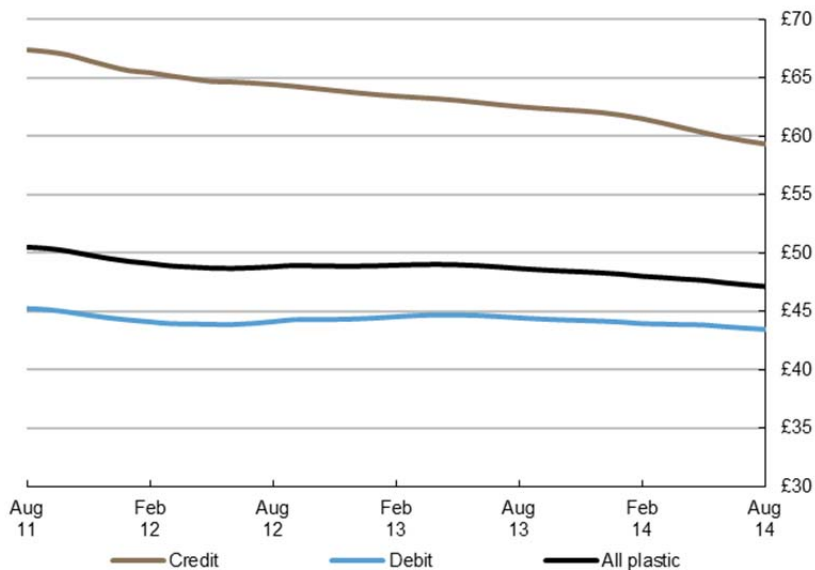
Average transaction values

The **average transaction value** (ATV) on all payment cards decreased between July and August, falling by 15p to £47.14 and compares to an ATV of £48.68 a year ago. The ATV for debit cards decreased by 11p to £43.46, while the ATV for credit cards drop by 26p to £59.34, staying below £60 for the third consecutive month. Within the sectors, the ATV in **retail sales** decreased slightly by 9p to £33.71, while the ATV for **services** fell by 29p to £77.50.

The persistent decline in the ATVs over the last three years is likely a reflection of the continuing migration of low value cash payments to cards alongside the increasing use of **contactless cards**. It is also likely **online spending** is boosting the number of smaller value transactions, particularly via smart phones and tablet devices.

Some consumer preferences have also been driving the decline in ATVs, such as pursuing better value purchases at budget retailers and discount service providers. So-called “price wars” amongst the major British supermarkets is continuously putting downward pressure on purchase values. Recent media coverage⁴ cites competition between the major supermarkets as the main reason behind the drop in fuel prices to their lowest levels since 2010.

Chart 3
Average transaction values
Three-month moving average



⁴ Supermarket price war puts petrol at four-year low: <http://www.theguardian.com/business/2014/sep/30/supermarket-price-war-cuts-petrol-price>

Spending by sector – retail sales and services

The number of transactions within the **retail sector** increased by 4.6 million to 698 million, with the corresponding spend rising by £119 million to £23.5 billion. The majority of the increase in spending was in the **food & drink** and **household** sub-sectors. The summer season, home improvements alongside the strengthening housing market were the main drivers of strong expenditure growth in the household sub-sector, which was evident in the significant growth in spending at **electronic** and **furniture stores**. It is also worth noting that all sub-sectors within **retail** registered increased spending during the month.

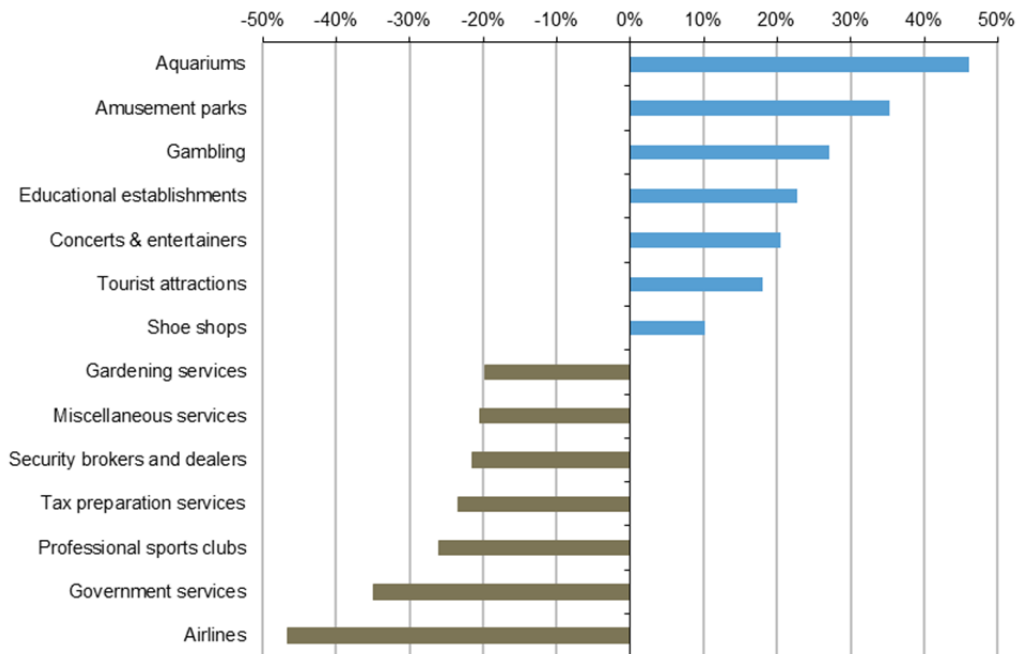
Meanwhile, the number of transactions in the **services sector** grew by 2.0 million to 309 million, corresponding to growth in spending of £79 million to £23.8 billion. A major contributor of growth for the fifth consecutive month was the **other services** sub-sector, which recorded an increase of £50 million to £7.2 billion, driven by strong growth in spending in **educational establishments**. **Entertainment** remained a strong contributor to growth after increasing by £49 million to £3.8 billion, driven by a rise in spending at **restaurants** and **gambling**. There was however, a notable decrease in spending in the **travel** and **financial services** categories, which declined for £35 million and £26 million respectively – most likely driven by seasonal factors.

Spending by merchant categories – retail sales and services (not seasonally adjusted)

Along with growth in spending at groceries, household stores and restaurants, there were notable increases in card spending at a number of other merchants during August. The biggest increase for the second consecutive month was recorded in aquariums, which alongside increased spending at other merchants providing leisure activities such as amusement parks and tourist attractions coincided with the summer holiday season. There was also increased spending in educational establishments and shoe shops, a reflection of the start of the new school year. Meanwhile, the largest decreases in spending were recorded at airlines and in government services.

Chart 4⁵

Biggest change in total card spending between July and August



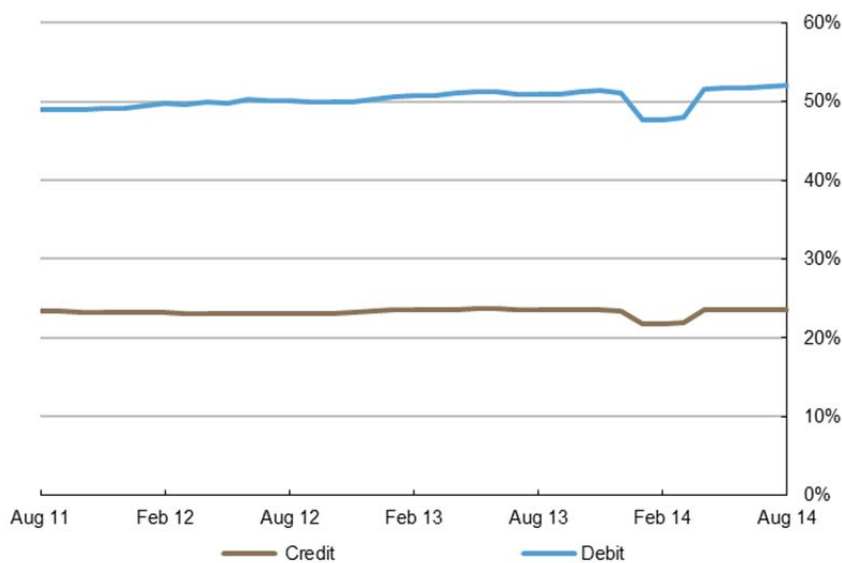
⁵ Chart 4 shows relative growth rates. Some listed merchant categories are too small in size to make a material impact on the overall total.

Payment card spending within national retail sales

Retail sales form a significant part of household spending in the UK and data from merchants show increasing use of payment cards over many years. The **payment card share** of total **retail sales** (including automotive fuels)⁶ amounted to 75.5% during August with a split of 52.0% by debit and 23.5% by credit cards. The share of spending within **food & drink** accounted for by payment cards amounted to 71.3%, with the share of spending within **automotive fuels** amounting to 91.4%. These trends are signalling the increasing use of cards over cash within the retail space, driven by new technology and changing consumer preferences.

Chart 5⁷

Proportion of retail sales made on payment cards (including automotive fuel)
Three-month moving average



Contact: Silvija Krupena; silvija.krupena@ukpayments.org.uk | camis@ukpayments.org.uk | 020 3217 8460 or 020 3217 8720

⁶ CES 3-month moving average spend of £23.4 billion expressed as a percentage of a similar 3-month moving average for ONS Retail Sales – All Retailing Including Automotive Fuel (J5A3) that amounted to £30.9 billion.

⁷ The step change in between January and March 2014 stems from calendar day effects in total retail sales published by the ONS

Table 1 Card expenditure statistics (seasonally adjusted)

Summary^{1 and 2}

		Number of purchase transactions (millions)									Value of purchase transactions (£ millions)								
		All sectors			Retail sales			Services			All sectors			Retail sales			Services		
		Credit	Debit	Total	Credit	Debit	Total	Credit	Debit	Total	Credit	Debit	Total	Credit	Debit	Total	Credit	Debit	Total
Annual																			
	2009	2,003	5,944	7,947	1,226	3,896	5,122	777	2,048	2,825	125,136	262,240	387,376	61,598	125,429	187,027	63,538	136,811	200,349
	2010	2,010	6,502	8,511	1,382	4,719	6,101	628	1,783	2,411	128,099	289,745	417,844	69,523	148,578	218,101	58,576	141,167	199,743
	2011	2,258	7,228	9,486	1,554	5,300	6,854	704	1,928	2,632	151,339	324,267	475,606	78,881	165,527	244,408	72,458	158,740	231,198
	2012	2,372	7,833	10,205	1,621	5,640	7,261	751	2,193	2,944	152,897	345,612	498,509	81,074	175,308	256,382	71,823	170,304	242,127
	2013	2,549	8,388	10,937	1,735	5,961	7,696	814	2,427	3,241	159,687	372,880	532,567	84,586	183,502	268,088	75,102	189,378	264,479
Monthly																			
	2013																		
	Aug	215	707	922	147	502	649	69	205	273	13,433	31,357	44,790	7,115	15,415	22,530	6,318	15,942	22,260
	Sep	216	712	928	147	504	651	69	207	277	13,462	31,512	44,974	7,114	15,459	22,573	6,348	16,053	22,401
	Oct	217	717	934	147	507	654	70	210	280	13,491	31,701	45,192	7,110	15,512	22,622	6,381	16,189	22,570
	Nov	218	723	941	147	510	657	71	213	284	13,530	31,947	45,476	7,113	15,570	22,683	6,417	16,377	22,794
	Dec	220	730	950	148	514	662	72	216	288	13,579	32,213	45,792	7,126	15,622	22,748	6,452	16,592	23,044
	2014																		
	Jan	222	738	959	149	518	667	72	219	292	13,629	32,446	46,075	7,152	15,674	22,826	6,477	16,772	23,249
	Feb	224	746	969	151	523	674	73	222	295	13,671	32,643	46,315	7,182	15,739	22,920	6,490	16,905	23,394
	Mar	226	746	972	152	521	673	74	225	299	13,699	32,824	46,523	7,208	15,817	23,025	6,490	17,007	23,497
	Apr	227	752	980	153	525	679	74	227	301	13,707	32,977	46,684	7,227	15,890	23,117	6,480	17,087	23,568
	May	229	758	986	154	529	684	74	228	303	13,707	33,104	46,812	7,241	15,949	23,190	6,467	17,155	23,621
	Jun	230	763	993	155	533	688	75	230	304	13,709	33,230	46,938	7,257	16,007	23,263	6,452	17,223	23,675
	Jul	231	768	999	156	536	693	75	231	306	13,716	33,372	47,088	7,275	16,077	23,352	6,441	17,296	23,737
	Aug	232	774	1,006	157	540	698	75	234	309	13,735	33,552	47,287	7,298	16,173	23,471	6,437	17,379	23,816
Year-on-year growth rates (percentages)																			
Annual																			
	2009	1.8	8.9	7.0	3.4	8.9	7.6	-0.7	8.7	6.0	-0.4	7.3	4.7	1.5	8.0	5.7	-2.2	6.7	3.7
	2010	0.3	9.4	7.1	12.7	21.1	19.1	-19.2	-12.9	-14.7	2.4	10.5	7.9	12.9	18.5	16.6	-7.8	3.2	-0.3
	2011	12.4	11.2	11.4	12.5	12.3	12.3	12.1	8.2	9.2	18.1	11.9	13.8	13.5	11.4	12.1	23.7	12.4	15.7
	2012	5.1	8.4	7.6	4.3	6.4	5.9	6.8	13.7	11.9	1.0	6.6	4.8	2.8	5.9	4.9	-0.9	7.3	4.7
	2013	7.4	7.1	7.2	7.0	5.7	6.0	8.3	10.7	10.1	4.4	7.9	6.8	4.3	4.7	4.6	4.6	11.2	9.2
Monthly																			
	2013																		
	Aug	6.1	6.0	6.0	5.7	4.4	4.7	6.8	10.4	9.4	2.8	6.8	5.5	3.5	4.0	3.8	1.9	9.6	7.3
	Sep	6.5	6.2	6.3	6.2	4.6	5.0	7.1	10.3	9.5	3.3	7.1	5.9	3.8	4.1	4.0	2.7	10.1	7.9
	Oct	6.8	6.4	6.5	6.5	4.9	5.3	7.5	10.3	9.6	3.7	7.3	6.2	4.0	4.2	4.2	3.4	10.5	8.4
	Nov	7.1	6.7	6.8	6.8	5.3	5.6	7.9	10.4	9.8	4.1	7.6	6.5	4.2	4.4	4.4	4.0	10.9	8.8
	Dec	7.4	7.1	7.2	7.0	5.7	6.0	8.3	10.7	10.1	4.4	7.9	6.8	4.3	4.7	4.6	4.6	11.2	9.2
	2014																		
	Jan	7.8	7.5	7.6	7.3	6.2	6.4	8.8	11.1	10.5	4.8	8.1	7.1	4.5	4.9	4.8	5.2	11.5	9.6
	Feb	8.2	8.1	8.1	7.6	6.6	6.9	9.4	11.7	11.1	5.1	8.3	7.3	4.6	5.1	4.9	5.8	11.6	9.9
	Mar	8.5	8.5	8.5	7.8	7.0	7.2	9.9	12.2	11.7	5.3	8.4	7.5	4.6	5.2	5.0	6.1	11.7	10.0
	Apr	8.7	8.9	8.8	7.9	7.3	7.4	10.4	12.8	12.2	5.3	8.5	7.5	4.5	5.3	5.0	6.2	11.7	10.1
	May	8.7	9.2	9.1	7.8	7.5	7.6	10.7	13.3	12.6	5.2	8.4	7.4	4.3	5.3	5.0	6.1	11.5	9.9
	Jun	8.6	9.4	9.2	7.6	7.7	7.7	10.8	13.6	12.9	4.9	8.2	7.2	4.0	5.2	4.9	5.9	11.2	9.7
	Jul	8.5	9.4	9.2	7.4	7.6	7.6	10.9	13.9	13.1	4.6	8.0	7.0	3.7	5.2	4.7	5.6	10.9	9.4
	Aug	8.4	9.5	9.2	7.3	7.6	7.5	10.9	14.1	13.3	4.3	7.9	6.8	3.4	5.2	4.6	5.2	10.6	9.1

¹ There was a step change in 2011 due to a change in reporting population

² With effect of January 2014 the seasonal adjustment methodology using X12 ARIMA was reviewed and changed. Trading days and leap years have been incorporated into the monthly seasonal adjustment process.

Table 2A Card expenditure statistics (seasonally adjusted)

Retail sales^{1 and 2}

Number of purchase transactions (millions)

Total retail sales

	Number of purchase transactions (millions)																		Total retail sales			
	Food & drink			Mixed business			Clothing			Household			Other retailers			Automotive Fuels ³			Number of purchases			
	Credit	Debit	Total	Credit	Debit	Total	Credit	Debit	Total	Credit	Debit	Total	Credit	Debit	Total	Credit	Debit	Total	Credit	Debit	Total	
Annual																						
2009	514	2,087	2,601	131	404	535	125	405	530	146	319	465	310	682	992	158	475	633	1,226	3,896	5,122	
2010	533	2,281	2,814	138	406	545	128	424	553	148	350	498	273	733	1,006	161	525	686	1,382	4,719	6,101	
2011	602	2,564	3,166	136	425	561	139	428	567	157	370	526	297	781	1,078	223	733	956	1,554	5,300	6,854	
2012	662	2,822	3,484	148	479	627	145	453	598	157	375	532	281	757	1,039	227	754	981	1,621	5,640	7,261	
2013	722	3,060	3,782	183	523	706	152	460	613	165	403	568	277	722	999	236	793	1,029	1,735	5,961	7,696	
Monthly																						
2013	Aug	61	257	318	16	45	61	13	39	52	14	34	48	23	60	84	20	67	87	147	502	649
	Sep	61	259	320	16	45	62	13	39	52	14	34	48	23	61	84	20	67	86	147	504	651
	Oct	61	261	322	16	46	62	13	39	51	14	34	48	23	61	84	20	67	86	147	507	654
	Nov	61	263	325	17	46	62	13	39	51	14	35	49	23	61	83	20	67	86	147	510	657
	Dec	62	266	328	17	46	63	13	39	52	14	35	49	23	61	83	20	67	87	148	514	662
2014	Jan	62	269	331	18	46	64	13	39	52	14	35	49	22	61	84	20	67	87	149	518	667
	Feb	63	273	335	18	46	65	13	40	53	14	35	50	22	62	84	20	68	87	151	523	674
	Mar	63	276	339	19	39	58	13	40	53	14	35	50	22	63	85	20	68	88	152	521	673
	Apr	63	280	343	20	39	58	14	40	54	14	35	50	23	63	86	20	68	88	153	525	679
	May	64	283	346	20	39	59	14	41	54	14	36	50	23	64	87	20	68	88	154	529	684
	Jun	64	285	349	21	39	59	14	41	54	14	36	50	23	65	88	20	68	88	155	533	688
	Jul	64	288	352	21	39	60	14	41	55	14	36	50	23	65	88	20	68	88	156	536	693
	Aug	64	290	355	22	39	61	14	41	55	14	36	51	23	65	88	20	69	89	157	540	698

Year-on-year growth rates (percentages)

Annual																						
2009	2.7	11.4	9.6	-2.1	-1.0	-1.2	3.2	9.5	7.9	2.0	9.3	6.9	8.0	7.5	7.6	-5.4	3.8	1.3	3.4	8.9	7.6	
2010	3.6	9.3	8.2	5.6	0.7	1.9	2.6	4.8	4.3	1.7	9.6	7.1	-12.0	7.5	1.4	2.0	10.5	8.4	12.7	21.1	19.1	
2011	13.1	12.4	12.5	-1.3	4.6	3.1	8.1	0.8	2.5	5.7	5.7	5.7	8.7	6.6	7.1	38.4	39.6	39.3	12.5	12.3	12.3	
2012	10.0	10.1	10.0	8.5	12.7	11.6	4.7	5.8	5.5	0.1	1.5	1.1	-5.2	-3.0	-3.6	1.8	2.9	2.7	4.3	6.4	5.9	
2013	9.0	8.4	8.6	23.4	9.3	12.6	4.8	1.7	2.5	5.2	7.5	6.8	-1.5	-4.7	-3.8	3.9	5.1	4.8	7.0	5.7	6.0	
Monthly																						
2013	Aug	9.7	8.0	8.3	15.3	7.5	9.3	4.5	2.1	2.7	2.7	3.6	3.3	-3.5	-8.6	-7.2	3.0	4.3	4.0	5.7	4.4	4.7
	Sep	9.6	8.0	8.3	17.3	7.7	10.0	4.7	2.0	2.6	3.3	4.5	4.1	-2.7	-7.7	-6.4	3.3	4.7	4.3	6.2	4.6	5.0
	Oct	9.4	8.0	8.3	19.3	8.1	10.7	4.8	1.8	2.5	3.9	5.4	5.0	-2.2	-6.8	-5.5	3.5	4.8	4.5	6.5	4.9	5.3
	Nov	9.2	8.2	8.4	21.3	8.6	11.6	4.8	1.7	2.5	4.5	6.4	5.8	-1.8	-5.8	-4.7	3.7	4.9	4.7	6.8	5.3	5.6
	Dec	9.0	8.4	8.6	23.4	9.3	12.6	4.8	1.7	2.5	5.2	7.5	6.8	-1.5	-4.7	-3.8	3.9	5.1	4.8	7.0	5.7	6.0
2014	Jan	8.8	8.6	8.7	25.7	10.0	13.7	5.0	2.0	2.7	5.9	8.5	7.7	-1.3	-3.5	-2.9	4.0	5.4	5.0	7.3	6.2	6.4
	Feb	8.6	8.8	8.8	28.0	10.7	14.8	5.4	2.3	3.1	6.4	9.3	8.5	-1.2	-2.3	-2.0	4.1	5.7	5.3	7.6	6.6	6.9
	Mar	8.4	9.1	9.0	30.3	9.8	14.7	5.8	2.8	3.5	6.7	9.8	8.9	-1.1	-0.9	-0.9	4.1	6.1	5.6	7.8	7.0	7.2
	Apr	8.0	9.5	9.2	32.3	8.7	14.4	6.1	3.2	3.9	6.6	9.9	8.9	-1.0	0.6	0.2	3.9	5.7	5.3	7.9	7.3	7.4
	May	7.7	9.8	9.4	33.6	7.2	13.6	6.3	3.5	4.2	6.3	9.7	8.7	-1.0	2.2	1.3	3.5	5.2	4.8	7.8	7.5	7.6
	Jun	7.3	10.1	9.6	34.4	5.4	12.5	6.3	3.7	4.3	5.7	9.4	8.3	-1.1	3.9	2.5	2.9	4.7	4.3	7.6	7.7	7.7
	Jul	6.9	10.4	9.8	34.8	3.4	11.1	6.3	3.9	4.5	5.1	9.0	7.9	-1.3	4.4	2.8	2.4	4.2	3.8	7.4	7.6	7.6
	Aug	6.7	10.8	10.0	34.9	1.2	9.6	6.3	4.1	4.6	4.7	8.7	7.5	-1.4	4.9	3.1	1.9	3.8	3.4	7.3	7.6	7.5

¹ There was a step change in 2011 due to a change in reporting population

² With effect of January 2014 the seasonal adjustment methodology using X12 ARIMA was reviewed and changed. Trading days and leap years have been incorporated into the monthly seasonal adjustment process.

³ Automotive Fuels data is effective from January 2010. Data shown pre 2010 are for growth trend purposes only; these data are excluded from totals as these are already included in their former Services sector of Motoring (now known as Vehicle Sales & Service)

Table 2B Card expenditure statistics (seasonally adjusted)

Retail sales^{1 and 2}

Value of purchase transactions (£ millions)

Total retail sales

	Value of purchase transactions (£ millions)																		Total retail sales		
	Food & drink			Mixed business			Clothing			Household			Other retailers			Automotive Fuels ³			Value of purchases		
	Credit	Debit	Total	Credit	Debit	Total	Credit	Debit	Total	Credit	Debit	Total	Credit	Debit	Total	Credit	Debit	Total	Credit	Debit	Total
Annual																					
2009	18,109	60,235	78,344	7,064	13,917	20,981	6,359	12,668	19,027	14,409	16,579	30,988	15,657	22,030	37,687	5,860	12,668	18,528	61,598	125,429	187,027
2010	18,719	63,689	82,408	7,164	13,949	21,113	6,806	13,646	20,452	14,683	18,861	33,544	15,518	23,572	39,090	6,634	14,860	21,494	69,523	148,578	218,101
2011	21,052	69,431	90,483	7,087	14,756	21,843	7,846	14,461	22,307	15,194	20,533	35,727	17,507	24,363	41,870	10,196	21,983	32,179	78,881	165,527	244,408
2012	22,572	74,112	96,684	7,727	16,415	24,142	8,208	15,632	23,840	15,375	21,636	37,012	16,764	24,443	41,207	10,428	23,070	33,498	81,074	175,308	256,382
2013	24,114	77,904	102,017	8,732	17,958	26,690	8,657	16,065	24,721	15,925	23,249	39,174	16,485	24,426	40,910	10,673	23,901	34,575	84,586	183,502	268,088
Monthly																					
2013 Aug	2,029	6,499	8,528	745	1,538	2,283	735	1,353	2,088	1,344	1,976	3,321	1,366	2,044	3,410	896	2,005	2,901	7,115	15,415	22,530
Sep	2,031	6,510	8,541	749	1,548	2,297	735	1,356	2,091	1,347	1,991	3,338	1,359	2,053	3,412	893	2,002	2,895	7,114	15,459	22,573
Oct	2,031	6,539	8,570	752	1,552	2,304	734	1,358	2,092	1,351	2,009	3,360	1,354	2,058	3,412	889	1,996	2,884	7,110	15,512	22,622
Nov	2,029	6,576	8,604	758	1,549	2,306	733	1,363	2,096	1,356	2,034	3,391	1,353	2,060	3,413	884	1,989	2,873	7,113	15,570	22,683
Dec	2,027	6,602	8,629	767	1,537	2,304	736	1,371	2,107	1,364	2,064	3,428	1,353	2,061	3,415	880	1,986	2,866	7,126	15,622	22,748
2014 Jan	2,028	6,630	8,658	777	1,516	2,294	741	1,383	2,125	1,373	2,092	3,466	1,355	2,064	3,420	876	1,987	2,863	7,152	15,674	22,826
Feb	2,032	6,682	8,714	787	1,485	2,272	748	1,398	2,147	1,382	2,115	3,497	1,359	2,069	3,428	874	1,989	2,863	7,182	15,739	22,920
Mar	2,037	6,754	8,791	792	1,447	2,240	755	1,413	2,168	1,388	2,132	3,521	1,364	2,080	3,444	872	1,990	2,862	7,208	15,817	23,025
Apr	2,042	6,822	8,864	794	1,410	2,204	760	1,425	2,185	1,393	2,144	3,536	1,370	2,098	3,469	869	1,990	2,859	7,227	15,890	23,117
May	2,044	6,871	8,915	793	1,382	2,176	762	1,434	2,196	1,396	2,153	3,548	1,378	2,118	3,496	867	1,992	2,858	7,241	15,949	23,190
Jun	2,047	6,904	8,951	795	1,368	2,163	764	1,442	2,205	1,398	2,163	3,561	1,388	2,133	3,521	865	1,996	2,862	7,257	16,007	23,263
Jul	2,049	6,942	8,991	800	1,366	2,166	764	1,447	2,211	1,401	2,176	3,577	1,396	2,143	3,539	864	2,003	2,868	7,275	16,077	23,352
Aug	2,052	6,997	9,049	808	1,373	2,181	766	1,451	2,217	1,405	2,190	3,594	1,404	2,149	3,553	863	2,013	2,876	7,298	16,173	23,471

Year-on-year growth rates (percentages)

Annual																					
2009	2.9	10.2	8.4	0.3	2.8	2.0	7.9	12.9	11.2	-0.1	6.5	3.4	-0.5	4.0	2.1	-12.1	-2.1	-5.5	1.5	8.0	5.7
2010	3.4	5.7	5.2	1.4	0.2	0.6	7.0	7.7	7.5	1.9	13.8	8.2	-0.9	7.0	3.7	13.2	17.3	16.0	12.9	18.5	16.6
2011	12.5	9.0	9.8	-1.1	5.8	3.5	15.3	6.0	9.1	3.5	8.9	6.5	12.8	3.4	7.1	53.7	47.9	49.7	13.5	11.4	12.1
2012	7.2	6.7	6.9	9.0	11.2	10.5	4.6	8.1	6.9	1.2	5.4	3.6	-4.2	0.3	-1.6	2.3	4.9	4.1	2.8	5.9	4.9
2013	6.8	5.1	5.5	13.0	9.4	10.6	5.5	2.8	3.7	3.6	7.5	5.8	-1.7	-0.1	-0.7	2.4	3.6	3.2	4.3	4.7	4.6
Monthly																					
2013 Aug	7.5	5.1	5.7	11.2	8.2	9.1	4.4	2.8	3.3	1.2	4.1	2.9	-2.7	-1.6	-2.0	2.4	4.2	3.6	3.5	4.0	3.8
Sep	7.5	5.0	5.6	11.7	8.5	9.5	4.8	2.7	3.4	1.8	4.7	3.5	-2.3	-1.3	-1.8	2.5	4.2	3.7	3.8	4.1	4.0
Oct	7.4	5.0	5.6	12.1	8.9	9.9	5.0	2.6	3.5	2.3	5.4	4.1	-2.1	-1.0	-1.4	2.5	4.1	3.6	4.0	4.2	4.2
Nov	7.2	5.1	5.6	12.6	9.2	10.3	5.2	2.6	3.5	2.9	6.3	4.9	-1.8	-0.6	-1.1	2.5	3.8	3.4	4.2	4.4	4.4
Dec	6.8	5.1	5.5	13.0	9.4	10.6	5.5	2.8	3.7	3.6	7.5	5.8	-1.7	-0.1	-0.7	2.4	3.6	3.2	4.3	4.7	4.6
2014 Jan	6.4	5.0	5.4	13.5	9.5	10.7	5.9	3.2	4.1	4.3	8.8	6.9	-1.5	0.4	-0.4	2.3	3.4	3.0	4.5	4.9	4.8
Feb	6.0	4.9	5.1	13.9	9.3	10.7	6.3	3.7	4.6	4.9	10.1	7.9	-1.5	0.9	-0.1	2.2	3.2	2.9	4.6	5.1	4.9
Mar	5.6	4.8	5.0	14.1	8.8	10.5	6.7	4.3	5.1	5.5	11.2	8.8	-1.5	1.4	0.2	1.9	3.0	2.7	4.6	5.2	5.0
Apr	5.1	4.8	4.8	14.1	7.9	9.9	6.9	4.9	5.6	5.9	12.0	9.5	-1.5	1.9	0.5	1.5	2.7	2.3	4.5	5.3	5.0
May	4.5	4.8	4.7	13.9	6.7	9.0	6.9	5.3	5.8	6.1	12.5	9.8	-1.4	2.4	0.8	0.9	2.2	1.8	4.3	5.3	5.0
Jun	4.0	4.9	4.7	13.3	5.1	7.8	6.6	5.6	5.9	6.1	12.7	10.0	-1.4	2.9	1.1	0.1	1.8	1.3	4.0	5.2	4.9
Jul	3.5	5.0	4.7	12.7	3.3	6.4	6.2	5.8	6.0	6.0	12.8	10.0	-1.2	3.3	1.5	-0.7	1.3	0.7	3.7	5.2	4.7
Aug	3.0	5.3	4.8	12.2	1.4	4.9	5.8	6.1	6.0	5.9	12.9	10.0	-0.8	3.6	1.8	-1.3	0.9	0.2	3.4	5.2	4.6

¹ There was a step change in 2011 due to a change in reporting population² With effect of January 2014 the seasonal adjustment methodology using X12 ARIMA was reviewed and changed. Trading days and leap years have been incorporated into the monthly seasonal adjustment process.³ Automotive Fuels data is effective from January 2010. Data shown pre 2010 are for growth trend purposes only; these data are excluded from totals as these are already included in their former Services sector of Motoring (now known as Vehicle Sales & Service)

Table 2C Card expenditure statistics (seasonally adjusted)

Services^{1 and 2}

Number of purchase transactions (millions)

	Number of purchase transactions (millions)																		Total services			
	Vehicle Sales & Services ³			Entertainment			Hotels			Travel			Financial			Other services			Number of purchases			
	Credit	Debit	Total	Credit	Debit	Total	Credit	Debit	Total	Credit	Debit	Total	Credit	Debit	Total	Credit	Debit	Total	Credit	Debit	Total	
Annual																						
2009	236	658	894	206	593	798	37	31	68	101	183	284	32	112	144	167	470	637	777	2,048	2,825	
2010	76	204	280	222	726	948	37	35	72	97	202	300	32	129	161	164	487	650	628	1,783	2,411	
2011	51	89	139	268	881	1,149	51	43	94	116	236	352	33	145	178	186	535	721	704	1,928	2,632	
2012	50	93	144	309	1,062	1,371	53	48	100	124	265	389	30	160	190	186	564	750	751	2,193	2,944	
2013	53	104	157	352	1,220	1,572	54	53	108	130	284	413	29	174	202	196	593	789	814	2,427	3,241	
Monthly																						
2013	Aug	4	9	13	30	103	133	5	5	9	11	24	35	2	15	17	16	50	66	69	205	273
	Sep	5	9	13	30	105	135	5	5	9	11	24	35	2	15	17	17	50	66	69	207	277
	Oct	5	9	14	31	107	138	5	5	9	11	24	35	2	15	17	17	50	67	70	210	280
	Nov	5	9	14	31	109	141	5	5	9	11	24	36	2	15	17	17	51	67	71	213	284
	Dec	5	9	14	32	112	144	5	5	9	11	25	36	2	15	17	17	51	68	72	216	288
2014	Jan	5	10	14	33	114	147	5	5	10	11	25	36	2	15	17	17	51	68	72	219	292
	Feb	5	10	14	33	116	149	5	5	10	11	26	37	2	15	17	17	51	68	73	222	295
	Mar	5	10	14	34	118	152	5	5	10	11	26	37	2	15	17	17	51	68	74	225	299
	Apr	5	10	14	34	120	154	5	5	10	11	26	37	2	15	17	17	52	68	74	227	301
	May	5	10	14	34	121	155	5	5	10	11	26	37	2	15	17	17	52	69	74	228	303
	Jun	5	10	14	35	122	156	5	5	10	11	26	37	2	15	17	17	52	69	75	230	304
	Jul	5	10	15	35	123	158	5	5	10	11	26	37	2	15	17	17	53	70	75	231	306
	Aug	5	10	15	35	125	160	5	5	10	11	26	37	2	15	17	17	53	70	75	234	309

Year-on-year growth rates (percentages)

	Year-on-year growth rates (percentages)																					
	Credit	Debit	Total	Credit	Debit	Total	Credit	Debit	Total	Credit	Debit	Total	Credit	Debit	Total	Credit	Debit	Total	Credit	Debit	Total	
Annual																						
2009	-4.7	5.0	2.2	4.3	18.7	14.6	1.0	13.7	6.5	-2.2	8.5	4.5	-0.6	1.2	0.8	0.0	4.4	3.2	-0.7	8.7	6.0	
2010	-67.8	-69.0	-68.7	7.8	22.5	18.7	1.7	10.2	5.6	-3.1	10.5	5.7	0.5	15.3	12.1	-1.9	3.5	2.1	-19.2	-12.9	-14.7	
2011	-33.4	-56.6	-50.3	20.7	21.3	21.2	36.5	24.4	30.7	19.2	16.7	17.5	3.2	11.9	10.2	13.5	9.9	10.8	12.1	8.2	9.2	
2012	-0.4	5.5	3.4	15.4	20.5	19.3	3.4	11.2	7.0	6.4	12.4	10.4	-9.8	10.8	7.0	0.4	5.4	4.1	6.8	13.7	11.9	
2013	5.2	11.5	9.3	14.1	14.9	14.7	3.5	11.4	7.3	4.8	6.9	6.3	-3.8	8.2	6.3	5.2	5.1	5.1	8.3	10.7	10.1	
Monthly																						
2013	Aug	2.3	7.8	5.9	14.5	15.6	15.4	-0.9	9.4	3.9	3.6	7.5	6.2	-6.8	8.3	5.8	2.3	3.3	3.1	6.8	10.4	9.4
	Sep	2.9	8.5	6.5	14.4	15.3	15.1	0.1	9.9	4.7	3.8	7.1	6.1	-5.8	8.4	6.1	3.1	3.6	3.5	7.1	10.3	9.5
	Oct	3.6	9.4	7.3	14.2	15.0	14.9	1.1	10.3	5.5	4.0	6.8	5.9	-4.9	8.4	6.3	3.8	4.0	3.9	7.5	10.3	9.6
	Nov	4.3	10.4	8.3	14.1	14.9	14.7	2.3	10.8	6.3	4.3	6.8	6.0	-4.3	8.4	6.4	4.5	4.5	4.5	7.9	10.4	9.8
	Dec	5.2	11.5	9.3	14.1	14.9	14.7	3.5	11.4	7.3	4.8	6.9	6.3	-3.8	8.2	6.3	5.2	5.1	5.1	8.3	10.7	10.1
2014	Jan	6.1	12.7	10.4	14.3	15.2	15.0	4.8	12.2	8.3	5.3	7.4	6.7	-3.4	8.0	6.3	5.8	5.7	5.7	8.8	11.1	10.5
	Feb	6.9	13.9	11.4	14.8	15.8	15.5	5.9	13.1	9.3	5.8	7.9	7.2	-3.2	7.9	6.2	6.3	6.1	6.2	9.4	11.7	11.1
	Mar	7.6	14.8	12.3	15.3	16.6	16.3	6.8	13.9	10.2	6.4	8.4	7.8	-2.9	7.8	6.2	6.6	6.4	6.4	9.9	12.2	11.7
	Apr	8.1	15.4	12.9	15.9	17.4	17.1	7.4	14.5	10.9	6.7	8.9	8.2	-2.8	7.7	6.1	6.8	6.5	6.5	10.4	12.8	12.2
	May	8.5	15.7	13.2	16.4	18.3	17.9	7.7	14.9	11.2	6.9	9.2	8.5	-2.7	7.3	5.8	6.8	6.4	6.5	10.7	13.3	12.6
	Jun	8.6	15.8	13.3	16.8	19.0	18.5	7.6	15.1	11.3	6.9	9.5	8.7	-2.7	6.7	5.3	6.6	6.4	6.4	10.8	13.6	12.9
	Jul	8.6	15.8	13.3	17.1	19.6	19.0	7.4	15.0	11.1	6.8	9.7	8.8	-2.9	6.0	4.7	6.4	6.4	6.4	10.9	13.9	13.1
	Aug	8.5	15.7	13.2	17.3	20.1	19.5	7.0	14.9	10.9	6.5	9.8	8.8	-3.1	5.3	4.1	6.1	6.5	6.4	10.9	14.1	13.3

¹ There was a step change in 2011 due to a change in reporting population

² With effect of January 2014 the seasonal adjustment methodology using X12 ARIMA was reviewed and changed. Trading days and leap years have been incorporated into the monthly seasonal adjustment process.

³ With effect of January 2010 Automotive Fuels was published as a separate sub-sector in retail sales. See tables 2A and 2B

Table 2D Card expenditure statistics (seasonally adjusted)

Services^{1 and 2}

Value of purchase transactions (£ millions)

	Value of purchase transactions (£ millions)																		Total services			
	Vehicle Sales & Services ³			Entertainment			Hotels			Travel			Financial			Other services			Value of purchases			
	Credit	Debit	Total	Credit	Debit	Total	Credit	Debit	Total	Credit	Debit	Total	Credit	Debit	Total	Credit	Debit	Total	Credit	Debit	Total	
Annual																						
2009	14,659	35,517	50,176	9,619	14,610	24,229	5,301	2,723	8,024	13,078	14,120	27,198	5,721	32,819	38,540	15,160	37,023	52,183	63,538	136,811	200,349	
2010	8,767	24,840	33,607	9,957	17,040	26,997	5,502	3,083	8,584	12,770	15,886	28,656	5,910	39,412	45,321	15,670	40,906	56,577	58,576	141,167	199,743	
2011	7,775	22,465	30,241	14,075	20,698	34,772	8,643	3,843	12,486	16,323	18,473	34,795	7,147	46,492	53,639	18,495	46,769	65,264	72,458	158,740	231,198	
2012	7,548	23,552	31,100	14,704	22,786	37,490	8,880	4,315	13,195	16,545	20,636	37,181	5,469	50,073	55,542	18,677	48,942	67,619	71,823	170,304	242,127	
2013	7,667	25,673	33,340	15,654	24,627	40,281	9,246	4,779	14,026	17,467	22,106	39,574	5,115	55,086	60,200	19,952	57,107	77,059	75,102	189,378	264,479	
Monthly																						
2013	Aug	640	2,164	2,804	1,318	2,080	3,398	782	402	1,184	1,476	1,838	3,314	420	4,616	5,036	1,682	4,842	6,524	6,318	15,942	22,260
	Sep	641	2,180	2,821	1,327	2,096	3,423	786	406	1,193	1,482	1,844	3,326	420	4,667	5,087	1,692	4,859	6,551	6,348	16,053	22,401
	Oct	643	2,212	2,855	1,335	2,111	3,446	792	411	1,203	1,488	1,871	3,360	419	4,695	5,114	1,703	4,888	6,591	6,381	16,189	22,570
	Nov	647	2,253	2,900	1,344	2,129	3,472	797	416	1,214	1,495	1,909	3,404	417	4,708	5,125	1,717	4,962	6,678	6,417	16,377	22,794
2014	Dec	652	2,298	2,950	1,354	2,159	3,513	801	422	1,224	1,502	1,946	3,448	414	4,706	5,120	1,729	5,061	6,790	6,452	16,592	23,044
	Jan	656	2,338	2,994	1,364	2,201	3,565	803	429	1,232	1,506	1,968	3,474	412	4,707	5,119	1,737	5,129	6,866	6,477	16,772	23,249
	Feb	657	2,366	3,023	1,372	2,243	3,616	804	435	1,239	1,504	1,975	3,479	411	4,726	5,136	1,742	5,160	6,901	6,490	16,905	23,394
	Mar	657	2,377	3,033	1,381	2,277	3,658	806	440	1,246	1,494	1,973	3,468	410	4,760	5,170	1,743	5,180	6,923	6,490	17,007	23,497
	Apr	655	2,375	3,030	1,389	2,293	3,681	810	444	1,254	1,475	1,966	3,441	409	4,788	5,197	1,742	5,222	6,964	6,480	17,087	23,568
	May	653	2,371	3,024	1,397	2,294	3,691	818	447	1,265	1,447	1,954	3,402	409	4,797	5,206	1,742	5,292	7,033	6,467	17,155	23,621
	Jun	652	2,377	3,028	1,407	2,302	3,708	827	449	1,276	1,415	1,937	3,352	408	4,790	5,198	1,744	5,368	7,111	6,452	17,223	23,675
	Jul	651	2,396	3,047	1,416	2,329	3,744	836	451	1,288	1,384	1,920	3,303	408	4,773	5,181	1,747	5,427	7,174	6,441	17,296	23,737
Aug	652	2,424	3,076	1,424	2,369	3,794	843	455	1,299	1,357	1,911	3,269	408	4,746	5,155	1,751	5,473	7,224	6,437	17,379	23,816	

Year-on-year growth rates (percentages)²

Annual																						
2009	-5.1	7.7	3.6	-0.2	12.7	7.2	-3.3	11.9	1.3	-5.3	2.9	-1.2	-2.9	11.2	8.8	3.1	1.0	1.6	-2.2	6.7	3.7	
2010	-40.2	-30.1	-33.0	3.5	16.6	11.4	3.8	13.2	7.0	-2.4	12.5	5.4	3.3	20.1	17.6	3.4	10.5	8.4	-7.8	3.2	-0.3	
2011	-11.3	-9.6	-10.0	41.4	21.5	28.8	57.1	24.7	45.5	27.8	16.3	21.4	20.9	18.0	18.4	18.0	14.3	15.4	23.7	12.4	15.7	
2012	-2.9	4.8	2.8	4.5	10.1	7.8	2.7	12.3	5.7	1.4	11.7	6.9	-23.5	7.7	3.5	1.0	4.6	3.6	-0.9	7.3	4.7	
2013	1.6	9.0	7.2	6.5	8.1	7.4	4.1	10.8	6.3	5.6	7.1	6.4	-6.5	10.0	8.4	6.8	16.7	14.0	4.6	11.2	9.2	
Monthly																						
2013	Aug	-0.8	6.4	4.6	5.9	8.3	7.4	-1.5	10.0	2.1	4.8	8.3	6.7	-12.8	9.0	6.7	3.7	12.9	10.3	1.9	9.6	7.3
	Sep	-0.3	6.8	5.0	6.2	8.4	7.5	-0.3	10.3	3.1	5.1	7.6	6.5	-10.6	9.6	7.4	4.6	14.2	11.5	2.7	10.1	7.9
	Oct	0.3	7.3	5.6	6.3	8.4	7.5	1.1	10.4	4.1	5.3	7.0	6.2	-8.3	10.0	8.1	5.4	15.2	12.5	3.4	10.5	8.4
	Nov	0.9	8.0	6.3	6.4	8.2	7.5	2.5	10.6	5.2	5.4	6.9	6.2	-7.4	10.1	8.4	6.1	16.0	13.2	4.0	10.9	8.8
2014	Dec	1.6	9.0	7.2	6.5	8.1	7.4	4.1	10.8	6.3	5.6	7.1	6.4	-6.5	10.0	8.4	6.8	16.7	14.0	4.6	11.2	9.2
	Jan	2.2	10.1	8.2	6.7	8.2	7.6	5.7	11.0	7.4	5.9	7.6	6.8	-5.5	9.6	8.2	7.4	17.2	14.5	5.2	11.5	9.6
	Feb	2.8	11.3	9.2	6.9	8.6	7.9	7.1	11.3	8.5	6.2	8.1	7.2	-4.4	9.1	7.8	7.9	17.3	14.7	5.8	11.6	9.9
	Mar	3.1	12.1	10.0	7.3	9.2	8.4	8.2	11.7	9.4	6.3	8.3	7.4	-5.0	8.6	7.3	8.2	17.2	14.8	6.1	11.7	10.0
	Apr	3.3	12.7	10.4	7.5	9.9	9.0	8.9	12.1	9.9	6.1	8.3	7.3	-5.4	8.2	6.9	8.3	16.9	14.6	6.2	11.7	10.1
	May	3.3	12.9	10.6	7.8	10.5	9.4	9.2	12.4	10.3	5.6	7.9	6.9	-5.5	7.8	6.6	8.2	16.3	14.1	6.1	11.5	9.9
	Jun	3.3	12.9	10.7	7.9	10.9	9.7	9.2	12.7	10.4	4.8	7.5	6.3	-5.5	7.5	6.3	8.0	15.5	13.5	5.9	11.2	9.7
	Jul	3.3	13.1	10.8	7.9	11.3	10.0	9.1	12.8	10.4	3.7	7.2	5.6	-5.4	7.1	6.0	7.7	14.8	12.9	5.6	10.9	9.4
Aug	3.3	13.3	10.9	7.9	11.8	10.3	8.9	13.0	10.3	2.4	7.1	5.0	-5.2	6.4	5.4	7.3	14.3	12.4	5.2	10.6	9.1	

¹ There was a step change in 2011 due to a change in reporting population

² With effect of January 2014 the seasonal adjustment methodology using X12 ARIMA was reviewed and changed. Trading days and leap years have been incorporated into the monthly seasonal adjustment process.

³ With effect of January 2010 Automotive Fuels was published as a separate sub-sector in retail sales. See tables 2A and 2B

Table 3A Card expenditure statistics (not seasonally adjusted)

Number of credit card transactions

Detailed sector breakdown - retail sectors (not seasonally adjusted)

Historical data located in hidden columns

	August 2013	September 2013	October 2013	November 2013	December 2013	January 2014	February 2014	March 2014	April 2014	May 2014	June 2014	July 2014	August 2014	Total (latest 12 months)
Supermarkets	54,952,089	56,015,029	57,093,638	58,248,997	66,668,040	54,229,964	50,643,647	58,491,519	56,997,774	58,697,290	60,631,120	61,088,401	57,114,815	695,920,234
Bakers & dairies	249,517	247,899	262,881	259,950	254,447	218,873	245,836	291,266	271,991	298,346	307,318	325,896	331,703	3,316,406
Sweet stores	236,318	225,801	255,747	341,719	569,862	190,697	243,029	284,882	354,176	247,356	259,081	259,510	263,440	3,495,300
Miscellaneous foodstores	3,450,327	3,315,990	3,435,306	3,296,909	3,663,040	3,131,473	3,003,164	3,378,151	3,266,143	3,340,250	3,427,085	3,528,170	3,291,489	40,077,170
Off-licences	575,117	535,325	552,474	597,368	718,191	455,948	480,686	562,790	562,636	595,579	620,745	633,155	603,337	6,918,234
Food & drink	59,463,368	60,340,044	61,600,046	62,744,943	71,873,580	58,226,955	54,616,362	63,008,608	61,452,720	63,178,821	65,245,349	65,835,132	61,604,784	749,727,344
Department stores	5,200,024	5,212,417	5,506,018	7,434,515	9,383,748	5,838,384	4,332,925	5,070,519	5,122,655	5,484,238	5,852,710	6,210,656	5,485,616	70,934,401
Discount stores	1,973,546	1,930,113	2,053,785	2,489,901	2,589,176	1,843,846	1,676,917	1,857,092	1,973,143	2,050,328	2,047,900	2,107,162	2,187,082	24,806,445
Catalogues	5,288,562	5,146,665	6,090,055	6,184,750	6,341,471	6,429,400	6,089,072	8,310,092	8,329,589	8,314,021	8,514,461	9,196,113	10,461,308	89,406,997
Miscellaneous mixed	2,481,275	2,677,894	2,848,730	3,211,356	4,042,340	2,448,209	2,273,260	2,596,669	2,576,093	2,719,148	2,708,225	2,728,225	2,552,241	33,299,674
Mixed business	14,943,407	14,967,089	16,498,588	19,320,522	22,356,735	16,559,839	14,372,174	17,834,372	18,001,480	18,467,735	19,160,580	20,222,156	20,686,247	218,447,517
Men's clothing	416,701	365,988	361,515	395,231	561,219	393,264	272,197	296,584	314,562	333,951	395,921	430,718	362,514	4,483,664
Women's clothing	1,981,627	1,866,138	1,952,574	2,138,557	2,983,625	1,809,206	1,480,272	1,863,469	1,970,071	2,148,099	2,401,795	2,563,418	2,019,646	25,196,807
Family clothing	7,674,283	7,752,486	8,404,963	9,649,272	12,976,417	7,756,496	6,421,098	8,007,527	8,641,770	9,094,887	10,400,921	9,591,497	8,778,183	107,475,517
Miscellaneous clothing	830,561	844,144	691,247	558,629	636,271	386,599	330,020	425,946	430,059	463,040	502,370	533,256	472,742	6,274,323
Shoe shops	1,559,747	1,339,372	1,318,286	1,287,345	1,694,672	1,322,524	887,049	1,051,584	1,270,984	1,332,562	1,532,208	1,620,651	1,520,254	16,177,491
Clothing	12,462,919	12,168,128	12,728,585	14,029,034	18,852,204	11,668,089	9,390,636	11,645,110	12,627,446	13,372,539	14,423,791	15,548,964	13,153,339	159,607,865
Furniture stores	1,483,518	1,513,224	1,659,829	1,826,980	2,008,621	1,624,038	1,269,105	1,369,819	1,335,464	1,369,006	1,370,657	1,397,622	1,443,318	18,187,683
Household appliance stores	1,337,825	1,357,924	1,403,675	1,492,623	1,551,652	1,386,927	1,222,785	1,368,061	1,329,475	1,356,395	1,345,912	1,375,392	1,369,529	16,560,350
Electronic stores	1,197,101	1,241,455	1,304,342	1,426,280	1,966,365	1,458,398	1,127,094	1,191,491	1,180,405	1,158,602	1,141,839	1,199,477	1,177,056	15,572,804
DIY stores	6,508,436	6,071,612	6,359,875	6,131,107	6,075,875	5,620,367	5,511,291	6,585,443	7,099,501	7,183,497	6,711,164	6,796,877	6,765,785	76,912,394
Floor covering stores	171,438	164,537	195,295	198,849	151,754	168,811	163,264	178,306	169,464	163,006	161,908	170,112	174,404	2,059,710
Garden centres	1,450,187	1,352,842	1,371,300	1,405,701	1,730,963	939,795	993,315	1,975,139	2,357,676	2,535,755	1,631,458	1,414,282	1,414,282	19,785,515
Miscellaneous household	1,535,091	1,502,730	1,639,866	1,759,966	2,295,699	1,665,995	1,373,807	1,564,948	1,508,556	1,628,757	1,728,844	1,557,983	1,659,340	19,884,491
Household	13,683,596	13,204,324	13,934,182	14,241,506	15,780,929	12,864,331	11,660,661	14,233,207	14,980,541	15,324,244	14,435,526	14,299,782	14,003,714	168,962,947
Books, newspapers & magazines	1,878,601	2,034,974	2,105,693	2,287,550	3,381,975	1,774,536	1,631,312	1,842,103	1,740,862	1,794,583	1,876,943	1,999,350	1,887,174	24,357,055
Record shops	214,261	213,511	230,882	310,799	777,146	230,976	192,665	205,829	205,237	189,590	195,159	193,635	188,335	3,133,764
Music shops	115,752	140,261	148,635	153,219	185,763	140,271	115,845	127,443	110,608	118,073	119,722	110,101	1,592,221	11,101,101
Hobbies, toys & games	440,080	483,956	531,793	778,529	1,126,941	424,272	388,424	455,912	458,604	461,034	454,415	501,143	503,616	6,568,639
Photographic	221,441	210,781	180,046	201,763	241,250	166,782	128,609	147,739	137,864	152,271	162,879	176,793	170,988	2,077,765
Handicraft	94,555	93,634	106,029	111,351	95,931	94,511	82,514	92,067	84,386	80,735	84,182	85,151	88,873	1,099,364
Sports shops	3,297,542	2,912,804	2,584,620	2,673,835	3,146,963	2,587,737	2,200,325	2,554,403	2,763,182	2,965,478	3,101,497	3,424,220	3,374,877	34,289,941
Jewellers	714,998	641,971	669,855	864,653	1,296,970	695,688	627,438	690,132	625,622	660,408	699,387	708,113	647,605	8,827,842
Computer software	579,251	606,833	585,902	602,017	692,255	520,918	318,027	334,344	318,027	299,238	267,725	256,033	263,969	4,976,484
Medical goods	424,215	408,074	442,660	446,351	541,936	417,495	393,413	454,292	443,964	477,152	493,652	535,977	495,574	5,550,540
Chemists	3,729,073	3,718,257	3,916,413	4,132,957	5,942,895	3,669,833	3,305,234	3,842,147	3,688,638	3,919,350	4,175,160	4,298,637	3,789,871	48,399,392
Optical goods	506,414	487,323	486,509	459,998	411,756	494,672	466,591	528,826	491,505	518,335	544,419	567,507	516,462	5,973,903
Cosmetic stores	440,671	421,654	465,673	613,751	1,018,541	385,108	359,696	431,911	402,278	433,087	481,406	484,158	458,036	5,955,299
Tobaccoists	24,400	23,263	24,583	24,178	30,484	26,664	24,703	28,516	28,870	31,518	34,030	36,432	35,250	348,491
Florists	311,652	323,963	325,744	325,642	542,226	288,616	402,286	546,908	340,827	356,423	345,465	337,394	293,419	4,428,913
Artists' supplies	284,751	282,108	324,776	365,568	387,731	266,583	265,919	290,558	266,722	271,365	265,387	283,193	283,229	3,553,139
Antiques, art & stamps/coins	168,698	153,528	165,003	166,203	182,711	127,321	124,347	139,340	148,991	163,259	160,042	174,291	182,888	1,887,924
Pawn shops	3,447	3,370	3,685	3,879	5,910	3,544	3,387	3,596	3,274	3,262	3,280	4,180	4,145	45,512
Gift shops	1,553,700	1,379,816	1,474,940	1,910,235	2,849,485	1,147,851	1,178,081	1,395,036	1,278,338	1,349,995	1,530,219	1,601,594	1,647,539	18,743,129
Secondhand shops	20,800	20,206	21,387	21,694	23,526	18,739	16,936	21,533	21,837	21,181	22,674	24,346	21,977	256,036
Luggage & leather goods	119,727	108,579	116,818	131,736	173,770	104,039	81,104	98,470	95,737	103,023	117,169	122,440	120,209	1,373,094
Pet shops	807,213	770,475	812,871	795,270	870,582	776,910	709,721	798,306	800,551	820,125	809,028	835,900	816,913	9,616,652
Religious goods	13,593	12,011	10,384	7,778	7,537	6,935	5,993	8,342	10,274	12,461	12,968	15,533	13,755	123,971
Direct sales	3,500,674	3,648,637	4,044,664	3,584,185	3,793,509	3,547,575	3,289,938	3,536,885	3,521,918	3,455,927	3,349,481	3,415,209	3,006,517	42,194,445
Miscellaneous & speciality shops	4,006,902	3,291,326	2,888,099	3,306,818	3,660,350	2,933,532	2,653,425	3,054,845	3,007,121	3,297,886	3,321,443	3,528,257	3,426,476	38,369,578
Other retail	23,472,411	22,391,315	22,667,664	24,279,959	31,388,143	20,851,108	18,972,368	21,629,483	20,981,685	21,927,693	22,603,479	23,737,144	22,313,052	273,743,093
Automotive Fuels	20,432,217	19,977,476	20,068,968	19,453,192	19,700,953	18,578,717	17,647,840	20,285,710	19,541,927	20,201,721	20,524,988	21,011,476	19,883,640	236,876,608
Total retail sales	144,457,918	143,048,376	147,498,033	154,069,156	179,952,544	138,749,039	126,660,041	148,636,490	147,585,799	152,472,753	156,393,713	160,654,654	151,644,776	1,807,365,374

Table 3A Card expenditure statistics (not seasonally adjusted)

Number of credit card transactions

Detailed sector breakdown - services sectors (not seasonally adjusted)

	August 2013	September 2013	October 2013	November 2013	December 2013	January 2014	February 2014	March 2014	April 2014	May 2014	June 2014	July 2014	August 2014	Total (latest 12 months)
Auto rental	543,062	485,611	473,719	405,564	378,236	396,858	383,576	444,885	461,221	484,255	487,455	555,151	500,462	5,456,993
Auto parts & accessories	769,158	727,202	749,248	737,727	675,823	731,647	702,179	813,522	785,705	784,299	775,934	811,061	739,860	9,034,207
Auto services	1,744,976	1,873,939	2,037,002	1,966,855	1,848,561	1,878,503	1,826,107	2,018,661	1,904,900	2,055,171	2,069,744	2,159,670	1,894,723	23,533,836
Auto repair shops	887,079	872,674	897,179	858,596	773,682	873,209	836,421	988,773	879,423	896,408	894,770	929,910	847,137	10,548,182
Service stations	0	0	0	0	0	0	0	0	0	0	0	0	0	0
Vehicle sales	594,801	582,371	552,130	503,874	447,933	526,409	519,371	650,525	591,055	607,552	611,729	623,550	570,041	6,786,540
Vehicle Sales & Services	4,539,076	4,541,797	4,709,278	4,472,616	4,124,235	4,406,626	4,267,654	4,916,366	4,622,304	4,827,685	4,839,632	5,079,342	4,552,223	55,359,758
Restaurants	16,623,470	15,801,604	16,388,914	15,858,167	15,937,174	14,497,422	15,000,918	17,383,616	17,078,399	18,428,523	18,681,211	19,675,271	19,650,962	204,382,181
Public houses	2,979,687	2,745,144	2,684,763	2,631,824	2,993,454	2,507,341	2,682,597	3,178,876	2,905,567	2,867,335	2,966,619	3,105,470	3,097,818	34,366,808
Catering services	471,538	504,396	550,595	551,530	522,021	502,140	509,397	577,975	546,378	592,204	611,256	637,607	548,786	6,654,285
Video stores	238,633	260,410	253,977	259,755	257,361	291,986	236,679	216,475	183,136	198,539	187,600	179,737	2,719,454	
Cinema, theatre & dance	1,906,702	1,647,853	2,093,374	2,277,896	2,317,580	2,081,910	1,865,420	1,758,778	1,720,158	1,734,904	1,625,643	1,799,514	1,885,243	22,808,273
Concerts & entertainers	60,150	55,633	70,775	69,054	65,612	53,303	56,341	56,671	58,889	60,358	53,412	57,313	72,183	729,544
Tourist attractions	1,016,178	587,624	510,639	319,256	315,830	259,559	313,539	394,829	680,919	640,833	679,940	869,862	1,035,607	6,608,437
Amusement parks	159,874	69,718	67,845	35,059	25,533	20,430	33,766	38,110	97,405	75,533	78,563	105,874	153,147	800,983
Aquariums	46,964	24,187	21,257	14,471	13,400	14,041	20,535	23,566	41,437	31,713	29,453	53,005	77,289	364,354
Sports & games establishments	2,358,234	2,417,377	2,452,705	2,402,197	3,601,297	3,409,375	2,996,871	3,516,752	3,238,542	3,326,019	3,152,681	3,153,968	3,152,681	37,031,324
Professional sports clubs	143,750	121,256	119,270	123,279	150,241	118,217	102,277	129,269	140,729	156,949	111,385	144,396	133,455	1,550,723
Gambling	4,406,338	4,934,217	5,108,341	4,956,463	5,810,300	5,726,962	5,358,815	6,132,327	5,812,518	5,390,776	5,298,448	4,962,234	4,962,234	65,202,288
Personal services	301,968	284,495	288,351	265,324	303,603	241,369	220,650	244,799	255,993	255,865	254,380	259,245	285,033	3,143,107
Miscellaneous entertainment	729,031	639,812	651,210	555,754	458,249	588,093	572,751	644,883	680,714	704,453	654,885	717,810	931,134	7,799,748
Entertainment	31,442,517	30,093,726	31,262,016	30,320,029	32,771,655	30,312,148	29,970,556	34,296,926	33,435,447	34,648,601	34,819,713	36,064,096	36,166,596	394,161,509
Hotels	4,863,882	4,682,612	4,840,124	4,467,429	4,088,300	4,083,032	4,145,655	4,779,228	4,621,856	5,088,404	5,144,954	5,392,087	5,008,619	56,342,300
Airlines	1,494,484	1,723,032	1,593,212	1,338,321	1,076,908	1,793,149	1,472,817	1,632,121	1,577,849	1,696,763	1,466,496	1,439,314	826,932	17,636,914
Airport terminals	42,104	39,687	37,187	28,978	26,467	30,805	30,311	37,202	39,803	43,787	45,051	47,702	41,776	448,756
Railways	5,318,403	5,860,525	6,167,437	5,935,621	5,470,311	5,395,775	5,136,056	6,016,771	5,637,972	6,055,935	6,308,006	6,493,007	5,606,498	70,083,914
Buses	687,817	779,826	780,117	747,833	641,808	699,472	705,467	797,647	785,207	851,027	796,410	834,718	553,618	8,973,150
Sea travel	205,810	152,438	139,008	117,598	108,514	129,609	141,283	180,642	195,449	231,008	226,843	251,004	236,412	2,109,809
Travel agents	1,677,311	1,714,068	1,858,481	1,624,009	1,493,578	2,139,052	1,838,082	1,962,089	1,789,813	1,890,807	1,855,617	1,836,259	1,704,006	21,705,861
Timeshares	20,169	15,865	19,255	17,274	17,424	27,484	20,608	18,897	18,170	17,870	15,935	17,550	741	207,073
Camping grounds	351,884	192,332	138,217	74,780	65,531	108,435	113,108	160,290	243,032	272,975	271,336	338,850	349,572	2,328,458
Miscellaneous travel	895,220	866,976	918,403	852,825	814,053	794,911	793,733	902,792	873,155	947,789	948,123	1,008,342	1,221,358	10,942,460
Travel	10,693,202	11,344,749	11,651,317	10,737,239	9,714,594	11,118,692	10,251,465	11,708,451	11,160,450	12,007,961	11,933,817	12,266,746	10,540,913	134,436,394
Telegraph services / Wire transfer money order	10,710	3,562	14,162	12,789	14,129	15,188	15,915	16,698	15,785	18,603	17,196	17,288	3,830	165,145
Insurance services	1,825,786	1,817,639	1,777,630	1,495,708	1,433,304	1,629,910	1,526,165	1,760,216	1,664,767	1,655,283	1,667,084	1,839,112	1,663,217	19,930,035
FiS - cash disbursements (auto & manual)	17,902	19,838	20,716	17,252	13,429	15,639	16,258	17,396	14,963	16,682	17,106	16,167	13,324	198,770
FiS - merchandise & services	367,453	370,040	382,694	367,261	367,935	390,220	353,889	417,721	377,995	375,943	367,773	374,318	352,262	4,498,051
Non-FiS - foreign currency, travellers' cheques	110,369	109,358	73,686	53,056	53,897	56,886	63,712	74,872	96,032	126,063	134,594	133,160	121,116	1,096,432
Security brokers and dealers	9,218	9,663	10,294	10,311	9,894	10,758	8,450	8,458	7,825	7,620	6,234	6,704	5,497	101,708
Tax preparation services	158	160	153	150	121	203	201	216	171	160	168	166	131	2,000
Tax payments	5,410	15,128	4,248	3,859	3,900	3,494	3,719	3,648	4,484	4,192	4,497	5,484	5,021	61,674
Fines, bail and bond payments	68,253	66,050	75,357	71,201	69,803	71,855	68,784	74,170	69,133	70,008	70,385	75,076	69,242	851,064
Miscellaneous financial	97,862	83,017	84,951	77,303	66,068	71,097	69,499	86,999	93,520	91,650	94,717	100,733	89,335	1,008,889
Financial	2,513,121	2,494,455	2,443,891	2,108,890	2,032,480	2,265,250	2,126,592	2,460,394	2,344,675	2,366,204	2,379,754	2,568,208	2,322,975	27,913,768

Table 3A Card expenditure statistics (not seasonally adjusted)

Number of credit card transactions

Detailed sector breakdown - services sectors (continued, not seasonally adjusted)

	August 2013	September 2013	October 2013	November 2013	December 2013	January 2014	February 2014	March 2014	April 2014	May 2014	June 2014	July 2014	August 2014	Total (latest 12 months)
Telecoms	1,957,400	1,991,756	2,037,282	1,932,087	1,992,186	1,957,337	1,737,496	1,922,201	1,845,789	1,873,705	1,820,424	1,940,226	1,832,428	22,882,917
Utilities	355,440	372,424	404,266	361,679	358,992	395,102	375,005	423,441	360,426	394,018	361,589	386,438	344,724	4,538,104
Contractors (residential & commercial)	263,823	272,471	301,694	287,437	238,202	264,917	254,564	279,307	259,777	264,691	264,216	283,335	255,129	3,225,740
Gardening services	51,862	46,834	47,954	47,483	61,863	34,612	37,552	66,987	77,143	79,009	70,139	58,339	48,078	675,993
Veterinary services	663,843	617,063	654,717	605,735	590,999	618,075	561,027	612,151	614,798	635,408	642,890	708,302	673,568	7,534,733
Photocopying & printing	249,200	273,726	310,710	320,936	344,367	298,378	237,636	267,338	238,934	253,817	244,676	250,786	218,538	3,259,842
Photographic studios	109,804	108,821	145,031	150,555	137,012	88,093	86,768	102,648	101,318	122,873	136,376	155,656	118,162	1,453,313
Beauty & barber shops	1,607,502	1,523,249	1,573,468	1,609,096	2,041,008	1,458,788	1,389,438	1,577,388	1,543,901	1,644,624	1,655,854	1,723,337	1,585,475	19,335,626
Employment agencies	28,316	26,477	29,037	26,698	23,239	22,428	21,330	22,317	22,626	22,134	24,877	25,676	22,743	289,582
Counselling services	6,270	6,485	6,576	5,798	4,636	5,896	6,201	5,893	6,016	6,146	5,893	6,146	5,390	70,724
Legal services	40,894	73,516	60,488	41,321	66,712	58,778	39,898	78,454	56,243	56,778	55,962	57,733	53,120	699,003
Laundry & cleaning	188,185	196,271	206,888	193,682	181,537	183,012	163,424	190,058	187,756	203,512	219,132	220,051	191,885	2,337,208
Funeral services	11,059	10,783	12,250	11,806	11,689	12,826	11,994	13,069	12,330	12,390	12,379	12,818	11,217	145,551
Medical services	1,154,617	1,194,498	1,328,013	1,263,840	1,127,482	1,309,962	1,191,535	1,279,940	1,224,028	1,258,384	1,276,436	1,333,469	1,157,149	14,944,738
Moving & courier services	381,354	391,457	448,352	435,760	418,601	386,531	384,439	418,748	406,900	437,923	421,904	444,248	367,785	4,962,648
Repair shops (not auto)	61,440	60,133	66,033	65,551	63,803	66,667	58,736	60,509	57,755	59,730	60,119	64,539	60,539	744,114
Accounting services	32,711	35,968	38,928	37,146	36,013	45,387	35,026	36,575	28,873	27,888	28,911	30,566	30,888	412,169
Advertising, consultancy & PR	82,752	79,424	82,082	83,131	61,132	70,899	64,049	73,146	69,793	70,583	69,569	71,795	67,745	863,348
Computer programming	1,249,594	1,397,593	1,504,643	1,590,037	2,009,671	1,362,008	1,174,166	1,356,973	1,287,080	1,310,328	1,358,164	1,416,607	1,363,147	17,130,417
Farming services	99,169	98,637	102,921	105,644	120,129	103,931	97,123	111,280	112,038	113,761	110,134	107,943	103,520	1,287,061
Miscellaneous professional services	900,722	946,325	967,131	926,776	875,755	935,356	880,584	958,144	907,397	885,235	884,102	922,738	828,243	10,917,786
Engineering services	51,674	50,428	55,696	50,653	44,337	50,440	48,815	54,097	52,167	53,549	56,524	48,699	617,687	
Marina services	101,596	62,551	46,742	36,912	36,047	34,776	31,179	50,505	69,437	74,883	84,199	100,634	92,290	720,155
Wrecking & salvage yards	3,982	3,633	3,894	3,365	2,530	3,544	3,178	3,606	3,710	3,579	3,572	3,914	3,467	41,992
Pest control	3,599	2,996	3,426	2,786	2,363	2,526	2,287	2,657	2,811	3,431	3,392	3,888	3,124	35,687
Educational establishments	455,560	785,644	752,379	704,570	571,025	776,327	629,403	757,142	596,396	670,953	668,813	606,935	474,171	7,993,758
Child care services	18,590	17,732	21,442	18,613	18,333	23,664	22,588	19,639	20,424	21,473	18,318	18,682	22,642	243,550
Social, political & religious organisations	1,277,436	1,363,567	1,347,088	1,526,509	1,327,738	1,183,485	1,101,393	1,497,052	1,374,001	1,447,647	1,438,502	1,422,725	1,396,777	16,426,484
Government services	2,244,558	2,298,025	2,412,727	2,221,893	2,103,513	2,408,356	2,342,378	2,567,896	2,526,309	2,661,148	2,659,224	2,703,299	2,433,934	29,338,702
Miscellaneous services	1,327,713	1,337,170	1,416,482	1,425,366	1,968,180	1,412,100	1,343,621	1,507,244	1,208,529	1,427,557	1,457,208	1,513,345	1,258,622	17,275,424
Commercial equipment	892,327	979,572	1,015,092	995,875	948,365	987,945	868,457	927,720	860,208	887,130	869,808	910,146	840,748	11,091,066
Other services	15,872,992	16,625,229	17,403,432	17,088,740	17,787,459	16,562,146	15,200,547	17,244,433	16,135,126	16,982,890	16,980,331	17,560,840	15,923,947	201,495,120
Total services	69,924,790	69,782,568	72,310,058	69,194,943	70,518,723	68,747,894	65,962,469	75,405,798	72,319,858	75,921,745	76,098,201	78,931,319	74,515,273	869,708,849
TOTAL	214,382,708	212,830,944	219,808,091	223,264,099	250,471,267	207,496,933	192,622,510	224,042,288	219,905,657	228,394,498	232,491,914	239,585,973	226,160,049	2,677,074,223

Table 3B Card expenditure statistics (not seasonally adjusted)

Value of credit card transactions

Detailed sector breakdown - retail sectors (not seasonally adjusted)

Historical data located in hidden columns

£	August 2013	September 2013	October 2013	November 2013	December 2013	January 2014	February 2014	March 2014	April 2014	May 2014	June 2014	July 2014	August 2014	Total (latest 12 months)
Supermarkets	1,780,535,367	1,835,642,675	1,826,140,750	1,976,965,597	2,452,034,549	1,669,391,820	1,580,303,446	1,829,134,864	1,825,485,104	1,854,539,445	1,892,842,169	1,866,286,352	1,768,193,043	22,376,959,814
Bakers & dairies	3,756,017	3,844,846	4,080,205	4,137,032	4,655,329	3,436,605	3,565,614	4,296,637	4,054,742	4,328,168	4,501,039	4,555,222	4,447,042	49,902,481
Sweet stores	6,057,438	5,752,280	6,948,075	9,982,186	18,355,834	4,840,433	5,655,323	6,960,349	9,036,579	5,996,778	6,311,136	6,559,513	5,728,239	92,126,725
Miscellaneous foodstores	96,957,522	96,137,345	101,797,668	103,777,264	129,511,241	95,640,387	91,045,937	102,527,425	99,619,064	101,957,003	105,099,451	105,072,662	95,260,717	1,227,446,164
Off-licences	39,418,830	35,823,568	40,227,043	49,800,057	62,836,919	31,686,134	33,031,374	40,934,432	41,646,140	42,286,286	42,379,035	42,768,741	39,502,550	502,922,279
Food & drink	1,926,725,174	1,977,200,714	1,979,193,741	2,144,662,136	2,667,393,872	1,804,995,379	1,713,601,694	1,963,853,707	1,979,841,629	2,009,107,680	2,051,132,830	2,025,242,490	1,913,131,591	24,249,357,643
Department stores	362,795,403	385,313,303	403,925,107	513,436,969	617,716,671	381,422,432	297,273,185	359,113,742	364,618,673	375,961,071	402,239,253	385,177,909	387,197,380	4,873,395,693
Discount stores	90,717,837	89,962,301	98,496,565	119,700,804	126,666,687	86,406,756	75,022,870	82,260,449	85,742,661	88,518,943	84,709,584	85,398,098	96,015,907	1,118,901,625
Catalogues	129,933,825	123,648,231	144,816,925	160,948,175	155,551,854	145,585,238	134,492,478	174,871,612	161,180,149	156,496,282	153,413,628	159,650,484	179,656,076	1,850,311,132
Miscellaneous mixed	100,711,076	112,516,978	120,250,942	135,799,913	163,599,865	93,489,643	88,631,515	103,015,297	104,163,540	108,262,040	112,268,566	110,696,544	106,724,253	1,359,419,098
Mixed business	684,158,141	711,440,813	767,489,539	929,885,861	1,063,535,077	706,904,069	595,420,048	719,261,100	715,705,023	729,238,336	752,631,031	740,923,035	769,593,616	9,202,027,548
Men's clothing	42,206,821	42,618,206	43,264,473	43,781,987	55,969,042	42,801,660	31,221,703	37,604,140	37,862,141	40,833,767	47,265,584	44,249,516	38,431,504	505,903,723
Women's clothing	126,516,213	145,125,199	150,301,633	155,636,178	182,627,083	120,564,248	110,629,220	143,226,453	141,500,930	147,472,156	162,901,994	150,980,955	127,844,880	1,738,810,929
Family clothing	384,478,025	417,711,966	454,897,046	494,323,460	615,513,650	354,648,170	323,538,576	404,817,325	428,739,176	439,909,785	455,110,063	458,841,982	420,793,689	5,269,844,888
Miscellaneous clothing	41,333,717	44,669,715	41,299,095	37,343,227	38,634,749	25,915,940	23,892,197	28,976,068	28,595,033	30,340,943	33,313,161	32,369,999	29,502,619	394,852,746
Shoe shops	88,292,622	90,404,191	96,315,477	94,647,789	113,054,991	77,521,018	56,136,705	70,404,425	81,009,596	83,018,735	80,473,986	84,763,032	89,036,397	1,026,786,342
Clothing	682,827,398	740,529,277	786,077,724	825,732,641	1,005,799,515	621,451,036	545,418,401	685,028,411	717,706,676	741,575,386	789,064,788	772,205,484	705,609,089	8,936,198,628
Furniture stores	265,899,809	282,815,434	312,230,161	308,011,466	281,842,932	324,562,565	261,067,025	283,713,093	273,140,364	276,059,234	265,054,435	278,401,267	280,580,626	3,427,478,602
Household appliance stores	116,698,471	118,613,404	131,710,682	136,155,284	139,037,551	134,974,982	119,163,085	130,783,703	117,745,999	119,516,899	115,836,939	118,784,658	112,757,997	1,495,081,183
Electronic stores	192,328,858	205,051,339	208,180,828	235,837,084	335,296,699	229,354,346	170,169,436	188,670,816	188,977,958	184,768,039	184,522,600	188,522,451	196,715,221	2,516,066,817
DIY stores	472,067,010	452,575,335	493,006,720	458,296,139	410,702,299	444,770,223	413,028,861	488,139,916	516,438,874	523,716,054	494,949,484	514,348,453	488,927,896	5,698,900,254
Floor covering stores	60,685,210	58,218,205	69,905,671	72,060,246	54,884,112	59,281,547	57,287,828	64,511,768	61,013,601	60,456,355	60,438,872	63,284,479	62,640,509	743,983,193
Garden centres	67,983,243	61,024,743	59,522,023	60,229,499	71,294,487	40,489,849	44,527,247	96,666,417	120,238,928	128,077,577	105,225,127	82,910,636	66,132,586	696,339,119
Miscellaneous household	127,211,697	137,389,669	147,735,026	149,629,090	183,530,479	138,559,364	117,691,211	134,494,274	131,284,386	133,244,986	141,994,881	144,176,712	135,668,012	1,695,398,280
Household	1,302,874,298	1,315,688,129	1,422,291,311	1,420,218,798	1,476,586,559	1,371,992,876	1,182,934,693	1,386,979,987	1,408,840,110	1,425,839,144	1,368,022,338	1,390,428,656	1,343,422,847	16,513,247,448
Books, newspapers & magazines	63,505,033	59,810,394	64,013,718	68,678,141	92,171,182	57,581,933	50,665,254	55,102,495	50,105,306	51,359,442	50,670,938	54,830,018	52,373,268	707,362,089
Record shops	5,957,592	5,984,066	6,685,616	9,233,499	23,471,988	6,126,779	5,312,455	5,551,324	5,855,248	5,433,009	5,768,927	5,450,654	5,220,980	90,904,545
Music shops	16,261,607	17,092,818	18,033,453	19,640,832	23,997,885	18,292,708	16,077,068	17,031,916	15,775,764	16,065,021	15,243,809	15,982,661	15,737,298	208,962,933
Hobbies, toys & games	23,943,411	28,039,590	30,568,731	53,673,579	81,186,804	28,048,564	23,631,729	28,403,432	27,427,899	27,991,967	27,470,974	28,385,539	27,912,215	412,741,023
Photographic	24,584,696	23,128,342	22,854,492	23,800,804	25,419,069	22,078,820	17,547,030	23,392,004	19,330,242	21,559,821	21,159,417	22,559,916	21,346,549	264,176,500
Handicraft	9,132,804	8,423,992	9,348,560	9,546,814	8,294,002	8,652,078	7,803,137	8,610,197	8,026,860	8,073,347	7,606,702	8,108,550	8,236,065	100,730,304
Sports shops	211,983,799	188,071,001	172,655,595	176,539,010	204,501,874	165,856,660	145,227,003	172,931,296	187,331,391	196,732,628	197,770,571	216,427,460	211,728,607	2,235,773,096
Jewellers	123,339,836	117,248,386	115,855,519	136,862,635	219,342,983	105,429,256	104,996,613	118,654,168	109,714,230	116,513,786	125,509,058	123,628,458	119,809,043	1,513,564,135
Computer software	55,450,356	57,180,822	57,519,585	59,220,658	65,590,821	55,800,572	44,207,262	48,942,304	46,225,642	42,814,275	40,185,299	42,046,752	36,569,916	596,303,909
Medical goods	14,962,582	14,294,402	16,668,446	17,341,823	19,924,668	14,780,274	14,798,471	17,078,589	15,905,036	16,717,649	17,225,875	18,554,286	17,362,519	200,652,038
Chemists	80,842,060	78,376,484	90,980,415	109,358,015	165,396,321	76,191,697	69,474,503	82,365,805	77,636,300	83,961,044	89,485,420	90,747,893	81,107,847	1,095,081,744
Optical goods	75,288,827	72,094,264	73,236,058	68,280,778	57,426,905	74,029,367	71,457,677	81,586,207	75,068,723	78,840,333	81,911,736	85,003,266	86,781,882	896,781,882
Cosmetic stores	25,063,710	25,150,873	28,474,809	35,632,076	53,178,212	22,491,160	21,294,332	26,471,740	24,040,377	26,465,213	29,060,603	28,273,976	26,432,353	346,965,724
Tobacconists	1,535,684	1,428,698	1,472,360	1,562,859	2,015,210	1,615,835	1,384,420	1,658,055	1,665,145	1,722,864	1,930,437	1,979,877	1,755,366	20,191,126
Florists	16,022,331	16,688,068	16,878,470	16,635,720	25,286,535	14,545,071	19,596,272	25,477,138	18,088,247	19,461,686	18,594,458	18,228,273	15,746,797	225,226,735
Artists' supplies	13,538,409	14,173,078	15,901,712	16,831,499	12,558,292	12,474,343	14,083,169	13,589,229	14,109,242	13,695,229	13,223,984	14,109,242	13,448,808	170,225,797
Antiques, art & stamps/coins	23,782,941	27,251,363	30,028,725	29,159,910	29,020,834	21,275,050	20,535,334	25,456,759	24,277,058	26,554,813	26,648,055	25,865,475	23,990,863	310,064,239
Pawn shops	986,309	962,519	904,955	903,890	1,269,842	934,616	840,595	820,997	837,141	796,151	823,737	1,049,566	1,055,288	11,199,297
Gift shops	55,698,070	50,711,474	56,473,607	72,433,071	87,266,726	40,217,169	39,671,984	47,511,796	45,483,773	49,306,719	56,205,586	57,944,067	65,799,363	654,799,363
Secondhand shops	2,045,305	2,205,427	2,525,613	2,283,768	2,415,751	2,147,096	2,086,532	2,657,533	2,550,881	2,491,816	2,817,678	2,648,352	1,930,587	28,761,034
Luggage & leather goods	15,563,992	15,763,536	16,767,854	17,588,930	24,122,778	13,972,162	11,775,032	14,703,807	13,950,157	14,583,384	17,414,664	16,097,223	15,804,654	192,344,181
Pet shops	35,596,483	33,552,269	35,129,121	33,672,127	35,672,579	33,596,240	30,302,499	34,684,329	34,657,384	34,684,329	34,657,384	35,951,236	34,873,742	411,327,458
Religious goods	442,730	451,459	336,771	251,365	238,034	227,417	199,224	282,970	363,713	437,295	443,189	512,863	455,642	4,199,

Table 3B Card expenditure statistics (not seasonally adjusted)

Value of credit card transactions

Detailed sector breakdown - services sectors (not seasonally adjusted)

£	August 2013	September 2013	October 2013	November 2013	December 2013	January 2014	February 2014	March 2014	April 2014	May 2014	June 2014	July 2014	August 2014	Total (latest 12 months)
Auto rental	76,778,639	55,448,702	51,466,513	42,836,496	42,360,189	43,363,738	41,273,457	50,249,830	55,307,250	61,536,441	67,177,503	78,700,091	66,323,928	656,044,139
Auto parts & accessories	119,171,133	116,788,003	121,861,877	118,758,944	106,251,114	117,824,449	112,364,912	129,183,514	122,384,269	123,464,389	121,229,564	126,167,405	113,402,486	1,429,680,926
Auto services	44,662,447	47,199,044	48,414,282	45,534,190	41,257,536	45,457,360	43,850,954	51,367,255	48,174,695	51,241,599	52,434,304	54,456,871	48,337,365	577,725,455
Auto repair shops	218,189,327	219,233,646	224,924,662	215,001,488	194,655,690	219,584,718	212,833,093	250,090,553	217,477,138	223,417,327	229,193,032	229,193,952	209,228,564	2,637,577,863
Service stations	0	0	0	0	0	0	0	0	0	0	0	0	0	0
Vehicle sales	206,410,088	217,688,216	204,435,326	185,397,370	162,997,349	201,904,064	202,279,699	254,718,984	214,314,520	219,990,002	219,209,537	219,384,211	202,643,411	2,504,962,689
Vehicle Sales & Services	665,211,634	656,357,611	651,102,660	607,528,488	547,521,878	628,134,329	612,802,115	735,610,136	657,657,872	679,649,758	681,987,940	707,902,530	639,935,754	7,805,991,071
Restaurants	588,760,785	563,149,577	576,639,385	566,035,108	636,264,292	491,736,841	509,840,528	599,438,672	578,649,229	617,957,219	628,047,969	652,420,330	659,954,017	7,080,133,167
Public houses	116,324,326	108,084,387	104,953,621	103,179,808	136,068,050	92,669,162	97,540,023	117,892,908	114,690,587	116,865,527	121,581,345	125,999,103	128,046,551	1,367,571,072
Catering services	51,822,679	51,080,624	56,972,593	57,894,643	60,128,107	51,331,696	49,232,929	57,704,523	54,533,947	60,575,182	60,633,178	63,644,095	52,293,560	676,025,077
Video stores	2,610,903	3,022,377	2,849,915	3,273,662	2,903,900	3,171,342	2,781,590	2,510,898	2,261,708	2,348,816	2,894,079	2,903,193	2,653,922	33,575,402
Cinema, theatre & dance	108,460,203	116,076,033	158,858,206	157,457,515	159,509,598	123,753,894	112,248,163	133,080,541	112,511,840	132,556,146	118,787,241	118,793,447	100,174,444	1,543,807,068
Concerts & entertainers	6,336,792	6,145,253	8,039,076	7,310,991	5,719,691	4,538,866	4,603,358	5,012,692	4,451,237	5,562,265	5,563,662	5,096,303	5,658,510	67,701,904
Tourist attractions	49,674,696	29,390,746	27,178,224	17,829,140	18,349,724	19,084,206	19,878,168	25,413,220	39,200,023	37,428,976	39,980,749	48,415,700	49,784,625	371,933,501
Amusement parks	8,228,465	3,537,175	3,501,600	1,835,396	1,319,257	1,290,503	1,670,967	2,154,417	4,955,502	4,080,440	4,927,013	6,345,674	7,562,475	43,180,419
Aquariums	2,054,232	1,123,131	985,945	760,769	783,618	780,599	965,153	1,164,787	1,994,814	1,573,214	1,478,468	2,820,832	3,780,031	18,211,361
Sports & games establishments	84,665,760	91,806,370	86,976,404	88,013,877	109,082,265	101,364,818	92,717,104	121,647,798	124,402,585	167,238,503	114,288,214	104,338,210	95,933,765	1,287,810,013
Professional sports clubs	10,680,687	10,503,648	10,436,277	11,740,404	13,971,290	13,533,792	8,525,872	11,824,269	15,158,980	26,698,175	16,594,602	15,295,616	10,520,859	164,803,784
Gambling	98,570,796	107,840,099	95,324,837	103,894,222	111,809,174	112,549,339	113,525,945	125,263,175	114,000,045	111,231,696	120,251,570	100,055,242	109,732,884	1,325,478,229
Personal services	17,433,468	18,993,291	19,475,913	22,303,456	18,219,302	16,543,014	18,271,009	19,442,303	17,376,767	18,505,115	18,183,881	18,185,776	18,555,765	224,270,419
Miscellaneous entertainment	179,375,410	200,259,833	208,234,101	187,891,875	129,982,776	205,500,931	187,382,401	206,281,327	187,462,983	208,679,940	178,598,619	183,429,236	182,779,473	2,266,483,495
Entertainment	1,324,999,202	1,310,121,489	1,359,943,475	1,326,593,323	1,408,195,198	1,239,577,991	1,217,455,215	1,428,831,530	1,371,650,247	1,511,301,214	1,431,810,590	1,448,073,757	1,427,430,881	16,480,984,910
Hotels	818,860,792	849,137,388	850,506,929	760,157,105	680,489,125	658,835,614	666,381,244	790,791,493	775,878,894	882,628,282	947,235,714	965,874,687	881,649,192	9,709,565,667
Airlines	477,303,213	530,037,680	517,635,831	435,384,094	341,819,234	638,933,165	496,784,172	549,346,769	512,663,805	550,450,429	449,852,789	431,493,373	294,930,195	5,749,331,536
Airport terminals	3,817,449	3,806,174	3,496,326	3,020,289	2,822,851	2,663,397	2,709,929	3,314,277	3,404,936	3,792,644	4,503,785	4,416,526	3,781,705	41,732,839
Railways	210,931,344	250,727,312	259,009,420	244,761,368	255,455,673	266,222,709	213,302,647	244,364,696	233,311,955	242,585,018	252,964,857	255,535,137	217,598,775	2,935,839,567
Buses	30,736,039	32,574,954	30,032,612	27,294,113	23,790,684	25,639,862	25,569,359	29,412,695	30,356,804	32,560,449	31,797,331	33,113,221	29,054,248	351,196,332
Sea travel	56,522,918	40,110,216	40,675,774	36,473,261	31,097,343	44,534,300	48,819,292	59,572,808	59,194,249	68,129,309	63,343,575	69,571,685	69,540,876	631,062,688
Travel agents	559,443,151	493,044,290	502,624,688	410,113,864	384,013,997	665,320,401	562,415,526	601,826,936	580,071,541	645,559,045	625,674,246	630,878,748	542,984,853	6,644,528,135
Timeshares	3,470,401	2,091,593	3,405,543	3,087,805	3,002,997	4,431,798	3,373,127	3,195,640	3,111,884	3,101,851	2,710,929	3,042,657	380,726	34,936,550
Camping grounds	35,831,057	19,993,046	17,349,577	22,134,385	21,403,697	21,239,565	21,100,708	29,578,558	30,173,441	36,001,202	38,590,103	43,018,919	34,891,594	335,474,795
Miscellaneous travel	60,447,230	54,679,127	56,297,640	51,708,150	46,676,600	57,605,079	54,308,605	61,472,638	61,125,731	67,262,739	71,890,405	70,917,006	64,013,157	717,956,877
Travel	1,438,502,802	1,427,064,392	1,430,527,411	1,233,977,329	1,110,083,076	1,726,590,276	1,428,383,365	1,582,085,017	1,513,414,346	1,649,442,686	1,541,328,020	1,541,987,272	1,257,176,129	17,442,059,319
Telegraph services / Wire transfer money order	1,590,361	782,516	1,841,109	1,657,611	1,720,898	1,864,964	1,866,032	1,931,301	1,755,582	2,793,668	2,400,530	2,732,171	1,153,248	22,499,630
Insurance services	311,283,349	314,343,426	309,066,350	264,979,364	248,459,725	280,792,392	264,617,677	311,505,647	290,771,640	283,038,027	292,151,793	312,218,061	286,579,320	3,458,523,422
Fls - cash disbursements (auto & manual)	11,535,460	9,609,002	9,832,705	8,224,051	7,414,987	9,424,196	8,338,386	9,360,562	7,730,038	8,601,183	8,358,129	8,518,831	8,046,633	103,458,703
Fls - merchandise & services	41,488,112	42,931,713	45,099,596	40,535,849	38,877,817	44,820,062	41,904,664	47,008,446	44,656,040	43,957,464	42,816,470	42,932,378	36,915,806	512,456,305
Non-Fls - foreign currency, travellers' cheques	51,818,987	46,189,664	29,724,529	19,485,368	19,706,962	22,070,067	24,147,781	28,652,998	39,378,477	51,679,310	57,555,679	61,416,056	58,744,704	458,751,595
Security brokers and dealers	3,713,863	4,168,141	4,935,248	4,471,505	4,256,617	4,992,289	3,488,446	4,008,244	3,465,683	3,452,771	2,303,997	2,461,471	2,071,822	44,076,234
Tax preparation services	65,658	81,151	73,053	88,168	72,637	115,217	85,720	88,676	106,691	121,457	131,353	148,679	148,949	1,261,751
Tax payments	248,285	14,197,319	252,734	213,504	216,430	186,354	167,214	196,536	251,282	218,342	217,332	245,097	218,545	16,580,689
Fines, bail and bond payments	10,349,969	10,045,380	11,558,014	11,144,477	10,735,192	11,898,936	10,906,951	11,529,756	10,518,114	11,877,754	11,910,920	12,592,538	11,198,866	135,853,898
Miscellaneous financial	16,721,850	14,234,841	14,872,093	13,939,517	11,567,958	14,658,959	13,292,122	15,790,165	15,810,230	16,081,732	16,854,352	17,377,539	15,506,912	179,996,420
Financial	448,815,894	456,583,153	427,255,431	364,739,414	343,029,223	390,823,436	368,814,993	430,072,331	414,443,777	421,831,708	434,700,555	460,579,821	420,584,805	4,933,458,647

Table 3B Card expenditure statistics (not seasonally adjusted)

Value of credit card transactions

Detailed sector breakdown - services sectors (continued, not seasonally adjusted)

£	August 2013	September 2013	October 2013	November 2013	December 2013	January 2014	February 2014	March 2014	April 2014	May 2014	June 2014	July 2014	August 2014	Total (latest 12 months)
Telecoms	86,233,671	89,871,129	97,593,362	91,605,961	92,488,707	92,435,243	79,909,314	85,249,144	80,159,521	81,675,336	77,845,629	82,689,087	74,994,671	1,026,517,104
Utilities	56,392,681	71,185,095	65,327,296	55,082,315	55,124,731	66,422,427	64,564,568	79,561,318	68,691,001	69,473,457	61,847,292	62,153,745	52,920,648	772,353,893
Contractors (residential & commercial)	79,291,180	84,729,261	91,393,171	89,360,957	75,210,216	81,295,735	78,149,649	89,489,336	82,341,488	86,302,519	85,946,850	91,749,412	81,374,952	1,017,343,546
Gardening services	5,262,106	5,904,809	4,306,455	5,950,008	4,230,527	3,610,208	6,467,052	5,122,954	6,928,509	6,928,509	6,221,464	5,016,501	70,812,626	92,667,582
Veterinary services	59,554,710	56,402,410	59,711,544	55,512,605	53,316,744	58,508,144	53,099,520	57,447,118	57,584,682	59,774,210	60,647,263	66,244,865	61,754,639	700,003,744
Photocopying & printing	35,640,936	36,851,687	41,641,113	39,811,281	36,458,049	37,280,743	33,206,000	35,940,524	32,217,794	34,363,127	33,337,441	34,146,077	32,176,204	427,430,040
Photographic studios	7,474,123	7,603,455	7,603,401	9,629,806	8,593,401	6,261,586	6,047,939	7,372,729	7,419,065	6,808,082	6,047,126	6,992,910	7,128,995	92,667,582
Beauty & barber shops	85,292,648	83,242,597	86,391,523	88,685,911	106,567,431	77,742,629	76,367,195	86,986,574	83,918,490	89,690,669	88,569,515	92,706,884	86,799,539	1,047,668,957
Employment agencies	26,933,153	25,761,253	29,767,087	27,872,176	24,922,636	19,759,846	22,453,643	23,432,930	24,231,968	22,928,748	30,440,195	28,667,999	24,588,434	304,826,919
Counselling services	1,236,494	1,044,845	1,072,618	1,145,066	1,038,653	1,290,479	1,800,816	1,159,756	1,284,517	1,609,265	1,269,641	1,243,223	15,294,135	15,294,135
Legal services	21,470,962	21,773,263	23,331,020	21,678,304	19,518,609	22,115,102	21,932,750	24,970,941	21,842,243	22,330,345	22,509,288	23,681,733	20,980,184	266,663,782
Laundry & cleaning	6,669,304	6,846,083	7,183,044	6,903,605	6,310,790	6,292,255	5,542,432	6,605,755	6,457,960	6,883,228	7,429,596	7,473,393	6,704,345	80,632,486
Funeral services	11,812,162	11,736,961	13,872,840	14,149,015	14,102,176	15,159,458	14,280,785	15,323,363	13,900,753	13,285,077	12,906,279	14,298,273	12,252,622	165,267,602
Medical services	156,517,872	161,718,614	184,229,180	175,464,791	153,067,271	174,090,678	164,585,099	178,647,227	166,042,844	173,184,717	176,430,746	182,096,979	157,968,047	2,047,526,193
Moving & courier services	39,098,386	39,844,087	45,875,203	42,301,459	40,823,203	41,338,663	38,423,107	42,110,663	40,937,778	44,701,138	43,324,975	47,391,562	42,588,269	509,660,107
Repair shops (not auto)	9,844,847	10,145,250	10,096,639	10,157,391	10,240,642	10,244,301	9,057,588	10,000,809	9,288,119	9,745,863	10,231,242	10,682,283	9,864,598	119,754,725
Accounting services	6,550,649	6,773,782	7,781,778	7,721,110	7,597,801	9,721,220	8,038,148	8,397,078	6,781,894	6,426,770	6,473,904	7,035,924	6,488,641	89,238,050
Advertising, consultancy & PR	7,834,617	8,203,546	8,593,682	8,028,212	6,512,091	8,178,067	7,155,563	7,838,293	7,385,859	7,675,258	7,184,307	7,898,813	6,913,128	91,566,819
Computer programming	100,476,099	89,075,528	96,470,856	98,253,750	117,895,489	89,030,660	77,173,474	86,643,863	83,227,411	83,312,851	86,059,234	87,831,769	80,598,665	1,075,573,550
Farming services	10,613,297	10,467,614	11,106,085	10,791,595	11,078,418	10,557,430	9,819,920	10,819,749	10,738,971	11,249,147	11,274,029	11,868,368	10,849,893	130,621,219
Miscellaneous professional services	163,781,037	175,021,105	163,073,409	145,174,348	135,820,634	167,379,520	145,534,552	164,188,054	160,366,719	156,090,032	158,640,726	162,161,215	152,757,433	1,886,207,747
Engineering services	15,188,188	14,812,211	16,285,307	14,613,272	13,625,452	14,707,616	14,345,073	16,048,906	15,031,718	15,487,982	16,134,542	17,091,781	14,523,724	182,707,584
Marina services	11,311,648	8,222,346	7,186,073	5,496,553	5,427,560	6,990,813	5,927,051	10,518,488	11,279,346	10,984,377	11,579,277	12,222,098	10,513,381	106,347,363
Wrecking & salvage yards	855,994	872,093	885,622	718,845	540,929	794,461	696,363	791,639	778,303	735,794	788,548	860,241	715,157	9,177,995
Pest control	544,015	619,276	593,733	505,576	460,647	524,890	544,576	517,166	544,726	596,106	607,555	740,819	577,849	6,832,919
Educational establishments	148,496,229	312,295,739	194,172,993	108,210,062	99,757,683	199,416,619	113,421,873	108,233,207	120,772,514	124,524,036	110,065,475	119,191,324	134,769,003	1,744,830,528
Child care services	2,178,294	2,265,255	2,472,815	2,241,838	2,138,260	2,651,321	2,329,576	2,464,740	2,410,790	2,553,112	2,639,706	2,810,358	2,432,574	29,410,345
Social, political & religious organisations	73,051,946	83,680,820	87,278,895	94,417,871	84,785,581	99,606,978	78,921,455	102,189,551	81,220,082	79,702,562	78,147,058	84,037,234	76,279,579	1,030,267,666
Government services	252,260,711	207,743,546	230,522,757	212,256,280	218,974,189	336,231,048	293,173,193	279,973,801	272,784,341	280,383,401	271,139,732	296,742,331	231,143,233	3,131,067,852
Miscellaneous services	81,376,749	87,775,118	87,308,740	85,045,871	98,638,690	84,484,050	77,638,485	96,269,451	85,474,804	87,691,329	98,238,156	94,141,002	75,669,365	1,058,375,061
Commercial equipment	125,950,579	128,015,165	139,801,934	132,417,825	117,595,887	130,031,013	120,854,976	136,328,017	132,624,956	131,587,188	127,178,174	137,349,665	121,249,969	1,555,034,769
Other services	1,689,195,287	1,850,503,943	1,823,920,175	1,661,203,659	1,623,365,032	1,874,197,980	1,629,607,300	1,782,655,862	1,694,438,933	1,731,959,268	1,713,544,038	1,802,449,249	1,603,837,465	20,791,682,904
Total services	6,385,585,611	6,549,767,976	6,543,256,081	5,954,199,318	5,712,683,532	6,518,159,626	5,923,244,232	6,750,046,369	6,427,484,069	6,876,812,916	6,750,606,857	6,926,867,316	6,230,614,226	77,163,742,518
TOTAL	13,390,014,496	13,541,544,948	13,788,057,915	13,620,574,454	14,577,110,119	13,129,139,250	11,900,920,532	13,749,151,958	13,387,174,435	14,000,109,944	13,954,065,534	14,179,660,641	13,150,516,984	162,978,026,714

Table 3C Card expenditure statistics (not seasonally adjusted)

Number of debit card transactions

Detailed sector breakdown - retail sectors (not seasonally adjusted)

Historical data located in hidden columns

	August 2013	September 2013	October 2013	November 2013	December 2013	January 2014	February 2014	March 2014	April 2014	May 2014	June 2014	July 2014	August 2014	Total (latest 12 months)
Supermarkets	226,677,454	233,698,392	242,375,793	238,149,141	257,995,740	232,173,554	226,427,702	267,596,709	255,056,536	264,505,104	268,383,233	268,962,347	250,310,359	3,005,634,610
Bakers & dairies	1,835,861	1,845,455	2,055,274	2,055,028	1,951,478	1,696,876	1,944,370	2,352,591	2,134,485	2,422,783	2,398,777	2,592,844	2,691,821	26,141,782
Sweet stores	797,639	780,757	877,587	1,033,928	1,480,131	746,350	1,004,656	1,140,131	1,216,860	971,133	1,001,919	949,519	1,001,872	12,204,843
Miscellaneous foodstores	15,409,185	14,677,461	15,746,805	15,128,721	16,127,154	14,891,786	14,612,264	16,629,598	15,729,454	16,186,409	16,414,959	16,569,188	15,648,424	188,362,223
Off-licences	3,319,416	3,175,673	3,304,845	3,269,060	3,409,605	2,954,738	3,014,742	3,492,097	3,323,404	3,562,900	3,601,223	3,630,341	3,480,537	40,219,165
Food & drink	248,039,555	254,177,738	264,360,304	259,635,878	280,964,108	252,463,304	247,003,734	291,211,126	277,460,739	287,648,329	291,800,111	292,704,239	273,133,013	3,272,562,623
Department stores	11,912,684	12,071,197	12,378,435	15,083,611	21,423,392	12,572,844	10,499,748	12,472,854	11,835,769	12,533,856	13,244,693	14,048,914	12,674,983	160,840,296
Discount stores	10,734,123	10,776,313	11,627,714	13,058,481	13,780,714	10,264,114	9,970,728	11,240,994	11,444,597	11,882,106	11,956,718	12,187,117	12,463,238	140,652,834
Catalogues	3,640,115	3,573,380	3,979,275	4,460,939	4,827,027	3,977,000	3,440,230	3,756,058	3,570,335	2,922,894	2,528,940	2,579,065	2,484,659	42,099,802
Miscellaneous mixed	14,952,186	16,257,538	16,824,100	17,197,199	21,429,168	15,486,079	13,607,197	9,463,815	7,940,077	8,177,616	8,724,602	8,586,258	7,937,515	151,631,164
Mixed business	41,239,108	42,678,428	44,809,524	49,800,230	61,460,301	42,300,037	37,517,903	36,933,721	34,790,778	35,516,472	36,454,953	37,401,354	35,560,395	495,224,096
Men's clothing	862,360	712,572	706,141	751,769	1,128,891	685,648	555,503	593,476	627,990	659,203	750,344	832,687	777,012	8,781,236
Women's clothing	6,196,826	5,949,734	6,221,277	5,992,710	9,355,166	5,418,761	4,778,859	5,976,859	5,881,308	6,636,145	7,007,705	7,533,384	6,244,261	76,996,169
Family clothing	24,030,810	24,962,411	26,553,090	28,346,754	40,664,398	23,993,183	21,105,731	26,473,105	26,800,581	28,639,412	30,662,494	32,032,606	27,879,626	338,113,391
Miscellaneous clothing	2,621,630	2,831,226	2,035,469	1,173,075	1,179,336	640,721	598,478	743,825	687,001	784,341	879,906	888,962	814,514	13,256,854
Shoe shops	3,552,044	3,139,476	2,805,290	2,670,244	3,703,686	2,808,534	2,057,640	2,464,467	2,784,572	2,938,203	3,387,680	3,533,795	3,486,905	35,780,492
Clothing	37,263,670	37,595,419	38,321,267	38,934,552	56,031,477	33,546,847	29,066,211	36,251,732	36,781,452	39,657,304	42,688,129	44,821,434	39,202,318	472,928,142
Furniture stores	3,914,362	4,035,823	4,324,980	4,636,353	5,464,895	3,706,439	4,320,557	3,590,650	3,414,324	3,507,350	3,493,461	3,497,584	3,609,143	46,471,559
Household appliance stores	5,668,515	5,749,166	5,980,844	6,145,496	6,304,872	5,658,796	5,309,158	6,107,020	5,686,452	5,922,952	5,801,717	5,938,664	6,089,576	70,694,713
Electronic stores	2,063,372	2,162,076	2,245,645	2,389,025	3,557,748	2,499,101	2,013,223	2,165,295	2,118,689	2,117,416	2,078,621	2,157,982	2,182,453	27,687,274
DIY stores	16,739,830	16,238,564	16,889,277	16,382,210	16,699,045	14,713,069	14,956,710	18,205,780	19,031,904	19,368,761	18,741,360	18,833,632	18,511,793	208,572,105
Floor covering stores	310,665	302,353	354,170	352,408	279,184	294,224	292,819	328,827	311,146	303,823	302,829	317,254	332,409	3,771,446
Garden centres	3,171,113	2,905,336	2,993,294	3,232,834	4,008,415	2,108,368	2,268,022	4,321,382	4,915,393	5,339,620	4,533,624	3,634,204	3,177,317	43,437,809
Miscellaneous household	1,645,264	1,618,127	1,761,308	1,639,453	1,854,850	1,759,102	1,559,038	1,653,290	1,646,190	1,553,868	1,548,305	1,679,934	1,882,326	20,155,791
Household	33,513,121	33,011,445	34,549,518	34,777,779	38,169,009	30,739,099	29,589,527	36,372,244	37,124,098	38,113,790	36,499,917	36,059,254	35,785,017	420,790,697
Books, newspapers & magazines	6,358,540	7,003,345	7,042,233	7,030,022	10,476,422	6,152,039	5,990,598	6,778,545	6,234,641	6,524,531	6,828,627	6,940,649	6,674,419	83,676,071
Record shops	747,971	836,006	862,048	1,087,866	2,979,586	858,752	756,043	839,141	765,926	719,919	774,698	697,368	709,068	11,886,421
Music shops	220,375	260,926	277,304	279,195	354,230	270,378	239,952	255,925	221,112	230,696	215,498	203,696	215,498	3,074,607
Hobbies, toys & games	1,369,533	1,765,100	1,650,255	2,139,710	3,357,141	1,369,891	1,337,525	1,670,996	1,569,490	1,659,894	1,629,917	1,676,085	1,755,161	21,581,165
Photographic	438,252	438,166	360,202	371,279	488,097	321,548	279,020	325,318	297,832	317,480	338,694	357,298	345,216	4,240,150
Handicraft	211,988	209,729	244,218	252,091	224,086	209,566	224,861	200,872	199,853	191,229	198,715	200,987	206,998	2,561,269
Sports shops	8,978,329	8,288,725	7,329,930	7,251,070	8,261,623	7,114,816	6,342,602	7,676,488	7,895,370	8,595,209	9,178,965	9,729,339	9,632,417	97,296,554
Jewellers	1,498,893	1,367,194	1,432,126	1,774,717	2,880,025	1,467,860	1,440,918	1,661,754	1,376,139	1,458,805	1,534,444	1,565,765	1,473,187	19,432,934
Computer software	475,753	512,576	450,448	470,750	558,112	502,643	417,296	431,661	399,736	355,063	342,303	354,800	318,072	5,113,460
Medical goods	41,190	38,889	43,138	41,592	36,028	40,246	38,022	42,338	41,461	43,080	43,628	48,510	44,449	501,381
Chemists	17,264,860	17,691,062	18,402,084	18,120,938	25,957,871	17,191,636	16,358,746	19,078,818	17,882,721	18,778,024	19,922,836	20,055,492	17,789,551	227,229,779
Optical goods	966,622	967,614	973,457	903,498	801,472	964,899	944,686	1,080,946	980,351	1,010,262	1,040,900	1,064,202	962,322	11,694,609
Cosmetic stores	1,395,333	1,399,259	1,488,271	1,758,752	3,132,550	1,207,907	1,243,284	1,513,570	1,347,168	1,441,423	1,607,398	1,555,384	1,501,089	19,196,055
Tobacconists	97,156	99,623	115,669	114,264	138,999	144,189	138,411	165,878	161,069	176,653	190,073	200,541	198,153	1,843,522
Florists	747,618	746,494	761,705	733,179	1,143,379	662,934	1,051,111	1,427,517	804,169	832,886	837,509	837,673	738,344	10,576,900
Artists' supplies	727,587	742,253	868,965	919,947	1,048,825	711,771	747,060	832,644	749,249	746,441	725,322	743,586	762,713	9,598,776
Antiques, art & stamps/coins	307,636	277,557	297,873	305,900	359,761	244,836	259,537	292,681	286,506	299,984	289,287	303,745	343,042	3,560,709
Pawn shops	25,742	24,450	26,448	27,608	35,678	25,104	23,763	25,920	24,300	25,711	24,410	28,201	27,816	319,409
Gift shops	4,742,491	4,606,286	4,963,961	6,039,987	10,827,303	4,303,272	5,117,175	6,024,862	4,585,734	4,795,623	5,838,364	5,411,544	5,450,837	67,964,948
Secondhand shops	75,823	77,585	80,893	79,575	97,223	69,698	66,420	73,086	69,976	73,287	71,653	77,247	76,027	912,670
Luggage & leather goods	182,396	160,032	158,858	179,578	261,256	146,580	122,395	152,099	137,296	145,537	159,663	170,228	179,133	1,972,655
Pet shops	3,033,245	2,926,068	3,083,803	2,959,663	3,273,090	2,952,137	2,791,901	3,161,873	3,064,097	3,137,741	3,187,987	3,237,703	3,322,678	37,098,741
Religious goods	8,175	7,039	7,672	7,350	7,886	5,714	6,081	6,243	7,129	6,987	6,436	7,608	8,654	84,799
Direct sales	5,204,130	5,440,687	5,941,739	5,446,309	5,678,851	5,449,043	5,005,157	5,514,064	5,318,394	5,223,862	5,110,493	5,060,292	4,089,091	63,277,982
Miscellaneous & speciality shops	2,746,747	2,836,517	3,141,458	3,535,437	4,259,155	3,026,587	2,894,414	3,409,500	3,489,018	3,917,904	3,916,660	4,114,304	4,083,100	42,624,054
Other retail	57,866,385	58,723,182	60,004,758	61,830,277	86,638,649	55,413,986	53,811,970	62,666,728	57,921,251	60,772,051	63,962,362	64,667,371	60,907,035	747,319,620
Automotive Fuels	67,323,963	66,635,244	67,466,576	66,452,283	67,146,198	63,636,252	61,465,615	71,045,516	66,688,555	69,365,348	69,118,768	70,768,586	67,291,593	807,080,534
Total retail sales	485,245,802	492,821,456	509,511,947	511,430,999	590,409,742	478,099,525	458,484,960	534,481,067	510,766,873	531,073,294	540,524,240	546,422,238	511,879,371	6,215,905,712

Table 3C Card expenditure statistics (not seasonally adjusted)

Number of debit card transactions

Detailed sector breakdown - services sectors (not seasonally adjusted)

	August 2013	September 2013	October 2013	November 2013	December 2013	January 2014	February 2014	March 2014	April 2014	May 2014	June 2014	July 2014	August 2014	Total (latest 12 months)
Auto rental	557,777	498,134	517,988	471,383	461,894	454,600	451,410	514,159	524,895	499,222	454,641	514,625	489,096	5,852,047
Auto parts & accessories	1,549,472	1,482,669	1,540,011	1,513,042	1,371,648	1,499,221	1,490,642	1,771,765	1,661,179	1,656,262	1,642,401	1,715,202	1,594,973	18,939,015
Auto services	3,961,649	4,063,540	4,421,938	4,325,723	4,586,904	4,193,395	4,138,412	4,633,178	4,478,062	4,768,630	4,768,582	5,008,165	4,771,088	54,157,617
Auto repair shops	1,692,522	1,672,303	1,761,197	1,655,639	1,466,292	1,704,640	1,670,663	2,009,072	1,791,806	1,817,611	1,799,499	1,885,760	1,725,679	20,960,161
Service stations	0	0	0	0	0	0	0	0	0	0	0	0	0	0
Vehicle sales	1,175,654	1,143,899	1,086,278	983,254	872,981	1,042,666	1,040,754	1,351,666	1,235,178	1,274,094	1,278,265	1,321,833	1,226,520	13,857,389
Vehicle Sales & Services	8,937,074	8,860,545	9,327,412	8,949,041	8,759,719	8,894,522	8,791,881	10,279,840	9,691,120	10,015,819	9,943,388	10,445,585	9,807,356	113,766,228
Restaurants	60,575,958	59,708,345	63,760,719	63,027,311	65,601,268	59,350,203	62,087,330	72,931,097	69,485,689	75,446,688	74,179,709	74,687,576	76,405,672	816,671,607
Public houses	11,093,333	10,695,756	10,794,019	10,667,601	12,689,124	10,751,670	11,791,199	14,081,221	11,820,064	11,558,612	11,608,195	11,528,950	11,628,761	139,615,172
Catering services	1,478,991	1,561,808	1,863,468	1,895,032	1,728,899	1,734,223	1,829,422	2,093,311	1,886,252	2,080,951	2,035,276	2,117,541	1,902,407	22,728,580
Video stores	390,601	380,396	447,308	311,703	198,588	182,634	188,577	155,203	122,925	74,080	47,236	47,485	47,485	2,780,328
Cinema, theatre & dance	5,637,914	4,135,979	4,768,837	5,606,455	6,022,338	5,558,432	5,114,323	4,635,390	4,740,692	5,186,848	4,587,293	4,896,059	6,147,872	61,400,518
Concerts & entertainers	163,355	141,321	177,875	170,571	169,888	159,777	180,527	174,707	173,989	180,817	138,392	154,280	216,288	2,038,432
Tourist attractions	1,802,302	945,489	870,049	584,727	557,832	459,281	636,561	765,262	1,304,257	1,096,840	1,070,595	1,309,431	1,887,806	11,488,130
Amusement parks	507,622	269,535	252,891	140,141	88,580	81,873	130,790	158,919	349,531	300,311	327,866	379,480	543,764	3,023,681
Aquariums	168,193	92,852	74,916	52,130	44,242	54,512	81,936	105,289	162,267	130,012	117,842	169,193	258,187	1,343,378
Sports & games establishments	3,268,650	2,969,255	3,094,336	2,778,843	3,241,403	3,646,461	3,435,505	3,858,399	3,797,167	3,875,815	3,449,247	3,678,730	3,801,194	41,626,355
Professional sports clubs	278,035	223,763	218,100	217,694	269,481	219,775	202,934	251,178	259,698	268,524	213,423	256,362	266,816	2,867,748
Gambling	19,057,100	20,068,703	21,335,951	19,766,979	22,660,450	23,133,686	21,534,909	26,200,510	25,935,106	22,076,829	25,276,498	21,466,970	20,774,412	270,231,003
Personal services	461,906	445,625	368,826	389,121	394,394	394,394	461,679	394,688	463,596	451,427	451,427	451,427	436,422	5,178,229
Miscellaneous entertainment	1,112,758	743,412	802,071	643,017	598,712	766,700	840,306	852,830	999,646	961,727	858,680	997,577	1,482,336	10,547,624
Entertainment	105,996,716	102,617,010	108,839,253	106,366,635	114,373,041	106,509,575	108,443,064	126,758,369	121,516,195	123,776,117	124,400,702	122,140,812	125,800,022	1,391,540,795
Hotels	5,128,864	4,465,880	4,579,835	4,242,980	4,322,729	4,291,820	4,396,419	5,149,527	5,132,395	5,309,532	5,243,412	5,553,549	5,787,830	58,475,608
Airlines	1,611,641	1,390,724	1,560,545	1,217,459	1,121,761	1,825,452	1,494,520	1,737,978	1,747,465	1,923,147	1,854,264	1,852,519	524,605	18,250,439
Airport terminals	60,254	58,234	46,307	34,352	34,982	36,677	38,279	50,907	55,035	60,095	62,651	67,922	62,081	607,522
Railways	15,766,535	17,001,197	18,348,074	17,454,317	17,466,653	16,284,432	15,749,958	18,117,208	16,706,701	17,649,946	18,154,242	18,624,822	16,895,736	208,453,286
Buses	1,985,312	2,229,313	2,388,162	2,473,044	2,256,666	2,607,204	2,606,014	2,983,242	2,843,411	3,133,213	2,842,563	3,028,462	1,558,865	30,950,159
Sea travel	243,457	167,130	151,048	129,792	126,243	126,938	126,142	154,512	188,549	200,178	210,870	244,335	256,672	2,082,409
Travel agents	1,658,703	1,509,253	1,424,372	1,144,591	1,107,435	2,168,672	1,820,965	2,051,308	1,896,700	2,024,641	1,914,543	1,993,828	1,776,812	20,833,120
Timeshares	5,205	5,077	4,809	3,962	3,917	6,867	5,024	4,701	4,639	4,590	4,135	4,761	51	52,533
Camping grounds	1,120,503	584,973	453,379	234,727	209,861	292,283	345,266	529,631	821,325	873,246	835,971	1,063,914	1,238,243	7,482,819
Miscellaneous travel	1,193,771	1,062,374	1,131,610	1,050,654	1,044,351	972,890	1,005,696	1,160,982	1,156,331	1,216,732	1,218,363	1,325,132	2,612,582	14,957,697
Travel	23,645,381	24,008,275	25,508,306	23,742,898	23,371,869	24,321,415	23,191,864	26,790,469	25,420,156	27,085,788	27,097,602	28,205,695	24,925,647	303,669,984
Telegraph services / Wire transfer money order	88,110	75,991	95,600	102,388	114,567	110,422	112,626	131,687	131,853	148,109	159,532	165,076	134,451	1,482,302
Insurance services	3,565,295	3,534,555	3,559,212	3,016,007	2,804,116	3,253,960	3,104,990	3,611,175	3,426,395	3,510,235	3,493,132	3,840,574	3,539,042	40,693,393
FIs - cash disbursements (auto & manual)	7,526	7,346	7,563	6,299	9,471	9,731	12,512	10,850	11,492	15,064	16,704	17,619	16,757	141,408
FIs - merchandise & services	9,360,638	8,988,025	9,823,300	9,330,101	9,915,332	9,775,939	8,819,893	10,460,191	9,754,814	9,471,879	9,042,513	9,431,778	8,906,787	113,720,552
Non-FIs - foreign currency, travellers' cheques	951,998	929,240	671,022	550,810	563,103	608,549	657,622	754,526	810,532	978,173	1,048,101	1,132,500	1,046,359	9,750,087
Security brokers and dealers	117,018	162,477	904,873	147,183	115,370	154,917	128,688	196,132	210,088	179,058	176,764	153,100	129,594	2,658,244
Tax preparation services	842	766	871	679	482	803	728	768	691	540	554	573	447	7,812
Tax payments	26,172	104,077	26,061	23,254	22,664	24,170	20,813	23,359	27,397	24,889	24,658	26,504	23,614	371,460
Fines, bail and bond payments	548,572	502,144	589,209	572,121	556,486	579,224	554,418	642,922	591,095	621,010	569,820	626,926	607,243	7,012,614
Miscellaneous financial	175,463	160,863	165,878	153,488	133,058	133,508	138,989	174,936	188,916	190,261	200,712	212,245	177,354	2,040,214
Financial	14,841,640	14,465,486	15,843,499	13,902,330	14,234,649	14,651,223	13,551,279	16,006,546	15,153,273	15,139,218	14,732,490	15,606,445	14,591,648	177,878,086

Table 3C Card expenditure statistics (not seasonally adjusted)

Number of debit card transactions

Detailed sector breakdown - services sectors (continued, not seasonally adjusted)

	August 2013	September 2013	October 2013	November 2013	December 2013	January 2014	February 2014	March 2014	April 2014	May 2014	June 2014	July 2014	August 2014	Total (latest 12 months)
Telecoms	10,635,775	10,707,474	10,762,997	10,361,858	10,823,183	10,796,273	9,640,691	10,831,117	10,284,070	10,573,527	10,238,423	10,957,136	10,886,754	126,863,503
Utilities	1,975,231	2,087,333	2,231,554	2,046,557	2,026,921	2,160,247	2,008,142	2,277,975	2,183,429	2,258,731	2,109,226	2,232,094	1,869,813	25,492,022
Contractors (residential & commercial)	514,989	535,368	595,381	571,622	487,652	518,702	515,099	587,744	548,864	555,804	561,355	600,512	540,978	6,619,081
Gardening services	110,064	101,134	103,135	106,558	140,139	80,481	84,601	140,779	156,489	162,706	146,901	124,095	101,734	1,448,752
Veterinary services	1,807,849	1,678,998	1,804,102	1,642,146	1,573,620	1,667,526	1,555,093	1,732,102	1,707,565	1,770,281	1,785,181	1,976,485	1,903,366	20,796,465
Photocopying & printing	323,597	360,843	422,663	450,675	490,695	379,017	344,683	393,923	373,540	417,405	391,462	383,927	353,634	4,762,467
Photographic studios	345,757	332,692	416,809	434,175	425,439	290,150	298,775	352,493	332,652	410,686	456,169	485,678	417,613	4,653,331
Beauty & barber shops	5,070,196	4,803,960	4,938,620	4,883,155	6,264,809	4,577,956	4,584,394	5,322,042	5,051,488	5,439,531	5,398,071	5,523,221	5,214,381	62,001,628
Employment agencies	10,127	10,220	8,758	7,706	6,087	8,175	7,729	8,634	7,976	8,363	7,909	8,659	8,064	98,280
Counselling services	102,628	104,234	110,290	101,630	102,363	104,200	97,969	115,716	116,826	117,128	116,592	120,599	112,915	1,320,462
Legal services	157,791	161,550	173,706	159,215	138,924	166,110	162,750	182,830	169,932	172,156	165,995	177,410	155,283	1,985,861
Laundry & cleaning	447,929	477,514	505,303	476,758	450,422	445,445	411,576	482,745	460,733	497,600	525,117	522,121	471,979	5,727,313
Funeral services	25,741	25,656	28,878	27,402	27,063	30,559	29,043	32,655	30,312	30,516	30,292	31,269	28,694	352,339
Medical services	2,659,137	2,754,685	3,075,228	2,905,292	2,577,547	3,043,019	2,858,295	3,089,795	2,927,777	2,999,071	3,001,833	3,161,363	2,796,872	35,190,777
Moving & courier services	379,257	370,968	419,385	403,254	431,961	400,897	355,119	400,601	397,950	424,460	433,085	464,673	409,623	4,911,976
Repair shops (not auto)	112,966	109,336	119,242	116,177	123,568	115,713	109,494	116,263	110,428	112,468	114,791	121,597	117,893	1,386,970
Accounting services	289,958	302,302	330,579	297,327	286,223	352,835	302,307	337,500	272,158	230,951	238,859	251,234	231,817	3,434,092
Advertising, consultancy & PR	165,544	160,914	168,777	166,130	122,846	140,294	134,155	150,673	143,909	145,651	145,272	147,442	136,947	1,763,010
Computer programming	1,465,275	1,555,013	1,174,600	810,749	722,924	693,977	619,188	671,769	651,765	647,397	646,980	659,471	644,421	9,498,254
Farming services	265,824	267,204	277,436	283,639	322,474	286,159	274,343	310,399	304,856	308,917	308,539	298,953	290,284	3,533,203
Miscellaneous professional services	3,224,516	3,385,626	3,737,546	3,649,785	3,660,044	3,715,496	3,420,188	3,822,010	3,639,055	3,583,534	3,538,200	3,620,482	3,328,265	43,100,231
Engineering services	83,614	81,628	92,637	84,276	72,750	78,665	79,793	91,699	89,674	89,697	90,729	95,610	82,530	1,029,688
Marina services	150,618	96,065	75,527	62,697	64,701	57,173	57,058	89,092	117,010	121,693	133,951	153,484	151,521	1,179,972
Wrecking & salvage yards	10,969	10,079	10,503	9,930	7,728	9,686	9,963	11,157	11,139	11,206	11,262	11,480	10,480	124,613
Pest control	5,291	4,149	4,771	3,878	3,414	3,508	3,199	3,636	3,961	4,755	5,033	5,509	4,729	50,542
Educational establishments	1,011,992	2,373,647	3,085,454	2,915,945	2,183,997	2,853,111	2,632,963	3,123,187	2,154,803	2,844,576	2,334,561	1,706,803	1,183,053	29,392,100
Child care services	135,325	126,619	159,702	138,143	126,814	178,070	177,852	159,288	156,309	162,786	136,151	139,144	176,977	1,837,855
Social, political & religious organisations	2,540,438	2,775,127	2,842,365	2,920,141	2,504,065	2,245,172	2,239,170	3,310,531	2,980,588	3,210,581	3,117,622	3,164,185	2,971,538	34,281,085
Government services	7,088,713	6,901,496	7,460,728	6,662,824	6,573,169	7,664,360	6,993,114	7,538,347	7,785,089	8,141,244	8,008,216	8,340,443	7,725,147	89,794,177
Miscellaneous services	5,420,983	5,576,645	5,854,799	5,632,726	7,667,269	5,621,450	5,298,194	6,199,073	6,009,490	6,330,485	6,413,374	6,610,441	5,785,416	72,999,362
Commercial equipment	1,516,759	1,788,740	1,794,048	1,694,069	1,782,522	1,713,344	1,550,429	1,704,777	1,559,175	1,628,524	1,549,788	1,564,392	1,516,202	19,846,010
Other services	48,054,853	50,027,219	52,785,523	50,026,439	52,191,333	50,397,770	46,855,369	53,590,552	50,739,012	53,412,430	52,160,939	53,659,912	49,628,923	615,475,421
Total services	206,604,528	204,444,415	216,883,828	207,230,323	217,253,340	209,066,025	205,229,876	238,575,303	227,652,151	234,738,904	233,578,533	235,611,998	230,541,426	2,660,806,122
TOTAL	691,850,330	697,265,871	726,395,775	718,661,322	807,663,082	687,165,550	663,714,836	773,056,370	738,419,024	765,812,198	774,102,773	782,034,236	742,420,797	8,876,711,834

Table 3D Card expenditure statistics (not seasonally adjusted)

Value of debit card transactions

Detailed sector breakdown - services sectors (not seasonally adjusted)

£	August 2013	September 2013	October 2013	November 2013	December 2013	January 2014	February 2014	March 2014	April 2014	May 2014	June 2014	July 2014	August 2014	Total (latest 12 months)
Auto rental	58,732,778	52,662,922	50,927,372	46,776,776	45,334,381	44,977,954	45,767,540	58,357,050	57,072,493	59,290,556	58,367,813	65,054,854	60,058,563	644,648,274
Auto parts & accessories	197,923,524	209,836,834	204,962,147	195,617,070	172,790,118	197,983,221	190,605,308	252,119,739	220,060,852	219,854,441	217,791,363	225,794,164	205,511,772	2,512,927,029
Auto services	58,211,105	56,586,045	60,977,642	55,514,366	55,800,315	56,050,489	54,702,736	61,737,298	62,370,096	65,190,117	66,163,377	71,066,717	65,421,413	731,580,611
Auto repair shops	566,852,150	662,519,543	600,655,864	558,701,406	513,303,736	581,089,787	558,437,791	799,200,552	633,544,197	616,903,937	616,903,555	633,264,901	579,516,821	7,369,654,090
Service stations	0	0	0	0	0	0	0	0	0	0	0	0	0	0
Vehicle sales	1,250,521,319	1,483,832,521	1,299,643,852	1,159,577,091	1,006,019,804	1,262,095,718	1,230,550,537	1,832,708,587	1,504,945,624	1,497,994,113	1,503,703,022	1,499,737,700	1,359,556,652	16,640,365,221
Vehicle Sales & Services	2,132,240,876	2,465,437,865	2,217,166,877	2,016,186,709	1,793,248,354	2,142,197,169	2,080,063,912	3,004,123,226	2,477,993,262	2,474,845,164	2,462,929,130	2,494,918,336	2,270,065,221	27,899,175,225
Restaurants	1,103,525,911	1,029,332,043	1,066,658,132	1,044,510,516	1,139,822,112	989,675,401	1,043,916,678	1,229,331,658	1,173,705,811	1,244,835,509	1,222,943,152	1,235,673,689	1,332,762,747	13,753,167,448
Public houses	263,557,281	244,021,220	242,816,983	237,800,652	299,341,233	235,655,054	254,105,813	308,003,220	281,569,552	277,535,679	277,935,480	279,633,321	290,643,196	3,229,061,403
Catering services	75,771,651	63,326,867	71,214,354	71,119,326	76,062,076	61,663,361	62,509,913	73,016,828	74,002,327	82,084,846	80,808,178	89,321,883	74,623,412	879,753,371
Video stores	4,266,662	7,876,584	4,513,187	5,553,105	2,787,193	1,437,884	1,349,628	1,461,754	1,258,528	1,232,957	1,075,868	1,000,074	918,326	30,465,088
Cinema, theatre & dance	150,546,344	133,598,436	174,030,777	191,113,333	202,631,506	158,362,250	153,863,369	168,644,524	171,363,778	177,211,674	153,424,223	157,801,606	157,710,964	1,999,756,440
Concerts & entertainers	4,957,150	4,888,593	6,587,167	5,964,652	5,776,273	4,777,083	5,101,575	5,551,998	5,330,792	5,805,467	4,418,768	5,093,092	6,608,562	65,904,022
Tourist attractions	62,197,013	31,585,911	31,508,311	21,197,806	21,223,197	18,885,959	21,223,197	18,885,959	46,271,282	27,591,661	39,756,640	22,791,352	63,959,528	411,788,080
Amusement parks	17,387,076	8,155,020	7,453,318	4,041,344	2,602,058	2,456,316	3,619,000	4,750,367	11,668,397	9,521,723	10,278,133	12,633,423	18,116,037	95,295,136
Aquariums	5,175,397	2,772,655	2,245,062	1,685,428	1,553,870	1,783,939	2,487,908	3,287,210	5,355,855	4,183,443	3,684,926	5,845,454	8,877,218	43,762,699
Sports & games establishments	107,411,219	103,361,830	101,442,039	93,859,332	103,488,258	114,759,731	104,476,133	138,912,634	137,930,700	147,852,692	119,353,804	123,002,664	118,999,408	1,407,439,225
Professional sports clubs	13,235,770	12,065,754	12,376,769	12,023,388	13,873,945	13,881,335	10,405,911	15,833,168	18,183,081	24,619,757	16,393,885	16,524,984	13,014,050	179,196,027
Gambling	377,906,731	355,840,011	319,053,514	309,202,146	345,604,273	304,161,958	373,944,446	358,560,480	317,724,367	320,743,244	362,983,830	284,782,282	379,599,690	4,032,200,241
Personal services	18,057,681	18,740,919	18,740,919	16,443,730	17,633,618	18,321,064	17,577,294	20,337,770	18,478,943	19,534,069	18,808,808	19,000,675	17,969,851	221,161,725
Miscellaneous entertainment	41,642,426	31,262,564	32,788,894	31,688,548	31,883,658	25,674,096	27,628,254	33,826,544	38,359,955	37,176,865	34,196,086	39,466,520	53,123,257	417,095,241
Entertainment	2,245,638,312	2,046,422,477	2,091,429,421	2,046,203,306	2,264,283,270	1,951,495,431	2,083,777,274	2,389,089,816	2,301,203,098	2,392,094,565	2,345,341,702	2,317,779,195	2,536,926,590	26,766,046,145
Hotels	471,397,528	442,888,896	417,818,542	349,475,160	342,724,112	403,326,712	365,361,464	429,793,519	459,977,062	476,680,001	482,628,021	514,000,872	534,586,321	5,219,260,682
Airlines	316,313,679	278,197,083	305,065,163	237,337,868	209,820,131	427,114,311	335,636,160	389,034,435	367,551,172	410,177,865	384,694,945	385,295,451	140,765,967	3,870,690,551
Airport terminals	4,931,579	4,145,766	3,427,379	2,861,466	2,840,459	2,705,739	2,643,013	3,729,765	3,762,500	4,066,517	4,562,024	4,817,052	4,485,975	44,047,655
Railways	354,257,589	392,373,852	424,349,662	392,545,486	393,937,057	402,071,599	360,800,630	413,760,414	386,785,453	395,472,087	405,314,021	424,256,257	375,282,523	4,766,949,041
Buses	44,440,303	49,763,501	45,001,861	40,189,011	35,044,807	44,967,181	40,978,139	46,494,748	46,333,496	45,757,143	40,619,275	42,797,322	40,476,664	518,423,148
Sea travel	40,678,970	28,859,676	39,665,230	32,679,432	26,972,561	34,996,152	37,854,352	44,511,218	47,613,955	51,382,590	50,423,299	49,621,149	44,549,938	489,129,552
Travel agents	899,883,083	783,274,613	764,343,723	652,810,683	629,728,104	1,113,960,407	1,000,159,414	1,182,951,416	1,169,356,354	1,319,241,982	1,207,147,883	1,180,286,777	961,322,226	11,964,583,582
Timeshares	716,726	600,394	675,519	553,604	541,541	954,218	718,365	665,084	653,169	635,740	559,459	659,263	27,922	7,244,278
Camping grounds	94,001,431	64,171,662	60,758,825	55,552,933	49,174,318	53,107,459	61,020,349	88,697,244	91,964,404	104,051,885	103,459,640	112,744,653	101,102,395	945,805,767
Miscellaneous travel	38,249,772	32,032,367	31,864,928	29,279,785	27,382,070	28,489,285	29,019,418	36,700,293	39,618,179	40,564,671	49,862,014	49,067,347	47,435,641	441,315,998
Travel	1,793,473,132	1,633,418,914	1,675,152,290	1,443,810,268	1,375,441,048	2,108,366,351	1,868,829,840	2,206,544,617	2,153,638,682	2,371,350,480	2,246,642,560	2,249,545,271	1,715,449,251	23,048,189,572
Telegraph services / Wire transfer money order	37,936,615	33,259,391	31,238,405	36,005,546	38,091,769	37,670,345	36,654,173	39,636,033	42,051,631	73,201,751	77,211,551	79,932,893	67,893,193	592,846,681
Insurance services	552,290,926	564,695,768	572,476,403	486,542,106	447,341,771	523,628,742	501,929,012	612,843,160	582,610,854	559,351,692	556,696,592	603,328,051	556,024,083	6,567,468,234
FIs - cash disbursements (auto & manual)	2,840,322	2,676,623	3,358,426	2,795,288	4,133,362	4,209,586	6,607,069	3,746,684	4,195,455	5,706,335	6,277,915	7,151,494	6,757,393	57,615,630
FIs - merchandise & services	2,965,904,082	2,945,859,953	3,282,384,479	3,002,032,530	3,273,512,985	3,251,790,773	2,894,779,027	3,414,978,629	3,438,506,077	3,004,409,197	2,919,300,151	3,143,246,873	2,870,727,520	37,441,528,194
Non-FIs - foreign currency, travellers' cheques	380,969,739	329,079,241	223,696,701	167,583,628	179,226,960	211,863,560	224,605,877	256,167,706	304,993,339	374,973,019	425,809,168	507,001,131	426,004,137	3,631,004,467
Security brokers and dealers	422,056,225	515,583,849	1,340,988,871	445,854,878	362,166,225	562,070,455	443,281,791	750,114,102	933,658,702	433,281,610	597,874,392	525,170,884	412,057,912	7,322,013,643
Tax preparation services	326,859	283,173	278,994	279,241	179,134	276,936	202,229	172,095	175,998	147,784	175,998	228,705	140,313	2,592,963
Tax payments	1,847,954	108,565,021	2,228,698	1,998,555	1,954,451	1,888,414	1,397,133	2,094,581	2,344,775	1,902,278	1,780,705	1,702,681	1,461,966	129,319,258
Fines, bail and bond payments	36,134,691	35,081,057	40,729,494	38,884,290	35,596,821	39,034,465	38,664,949	44,415,562	39,712,282	41,486,943	38,557,969	42,522,317	40,454,993	475,141,142
Miscellaneous financial	20,864,430	22,939,807	21,314,503	19,477,304	16,267,067	18,101,736	17,361,289	22,068,014	22,808,958	23,916,091	25,423,676	27,633,273	24,682,459	261,994,177
Financial	4,421,171,843	4,558,023,883	5,518,604,974	4,201,453,366	4,358,470,545	4,650,535,012	4,165,482,549	5,146,236,566	5,371,110,414	4,518,404,906	4,649,079,903	4,937,918,302	4,406,203,969	56,481,524,389

Table 3D Card expenditure statistics (not seasonally adjusted)

Value of debit card transactions

Detailed sector breakdown - services sectors (continued, not seasonally adjusted)

£	August 2013	September 2013	October 2013	November 2013	December 2013	January 2014	February 2014	March 2014	April 2014	May 2014	June 2014	July 2014	August 2014	Total (latest 12 months)
Telecoms	318,863,552	331,500,689	344,349,276	324,610,484	335,300,244	345,726,054	297,315,259	339,678,620	316,438,873	325,512,230	312,964,866	336,018,002	325,398,903	3,934,813,500
Utilities	211,864,154	361,247,555	238,970,304	211,318,563	208,503,419	240,602,317	240,985,029	300,350,547	282,949,215	267,263,009	236,566,129	236,405,813	194,060,920	3,019,222,820
Contractors (residential & commercial)	132,616,117	142,786,128	162,074,000	157,437,074	136,046,509	136,888,779	138,204,139	159,616,860	153,717,380	158,782,081	161,505,134	173,443,220	160,577,402	1,841,078,706
Gardening services	6,983,347	6,629,684	6,708,629	6,511,654	7,023,438	5,310,085	5,547,964	9,184,405	10,621,455	10,576,390	9,841,969	9,086,154	7,278,585	94,320,412
Veterinary services	105,868,551	98,863,501	106,376,752	96,671,387	91,432,644	101,290,708	94,039,813	105,062,027	104,146,945	108,292,544	109,234,996	120,576,286	113,893,091	1,249,880,694
Photocopying & printing	22,198,131	24,510,016	27,650,675	27,052,511	24,772,707	24,303,411	22,483,252	25,367,769	23,977,407	26,205,895	25,189,165	25,660,506	23,027,078	300,200,392
Photographic studios	11,473,080	11,919,235	13,685,262	14,902,237	14,639,440	14,902,237	14,902,237	11,875,625	10,078,351	12,531,914	13,268,085	15,324,341	12,561,872	151,588,600
Beauty & barber shops	199,288,960	191,830,130	197,448,331	196,898,423	243,837,821	177,500,706	183,206,172	212,570,868	200,758,000	215,869,530	210,980,999	218,968,540	205,671,521	2,455,541,041
Employment agencies	1,341,191	1,373,990	1,389,773	1,343,704	1,123,738	1,465,954	1,343,084	1,594,566	1,458,139	1,557,600	1,496,861	1,688,849	1,420,604	17,255,962
Counselling services	6,367,391	6,591,045	7,139,987	6,291,357	6,133,762	6,343,743	6,233,781	7,221,051	6,671,191	6,671,600	6,935,400	6,191,021	79,438,514	
Legal services	85,623,673	86,933,676	94,087,433	86,455,698	74,329,018	82,465,721	77,494,849	88,345,777	83,104,494	85,746,342	85,861,238	90,883,792	79,567,774	1,015,275,812
Laundry & cleaning	12,129,176	12,884,521	13,628,609	12,850,200	12,026,171	11,792,698	10,587,970	12,545,235	12,192,957	13,210,315	13,910,467	13,986,693	12,812,504	152,428,340
Funeral services	29,821,711	30,091,089	35,345,234	34,682,847	34,291,569	39,094,876	37,326,159	41,891,295	38,061,072	37,362,229	37,355,990	39,513,696	36,476,388	441,492,444
Medical services	220,809,182	229,917,003	257,935,546	242,398,551	212,364,223	246,380,254	237,644,367	261,025,331	244,811,033	253,551,504	256,071,284	270,847,472	234,115,074	2,947,061,642
Moving & courier services	35,344,432	33,891,130	37,040,464	35,347,485	33,806,947	32,657,886	29,392,206	33,662,685	34,012,298	35,743,244	37,314,083	41,657,454	37,857,640	422,383,522
Repair shops (not auto)	11,830,641	11,362,507	12,040,582	12,009,753	12,000,711	11,444,106	10,884,160	12,107,879	11,853,934	12,348,788	12,957,367	13,527,442	12,440,790	144,978,019
Accounting services	17,891,311	17,509,135	19,368,576	18,272,354	17,459,720	23,145,515	19,071,677	20,135,680	17,323,671	16,949,187	15,391,604	16,243,996	14,738,729	215,609,844
Advertising, consultancy & PR	11,278,364	11,493,302	12,185,100	11,459,702	9,052,505	11,295,508	10,668,870	11,593,422	11,621,279	11,716,235	11,190,740	11,968,211	10,429,373	134,674,247
Computer programming	36,347,816	39,734,614	40,518,505	36,092,311	36,781,620	38,812,837	32,175,902	35,131,064	34,696,518	34,082,872	32,992,312	34,379,299	32,261,969	427,659,823
Farming services	20,994,968	20,848,856	22,126,143	21,766,748	22,736,921	21,308,918	19,795,505	22,246,110	22,951,068	23,380,149	24,012,069	24,539,130	22,931,223	268,642,840
Miscellaneous professional services	558,320,804	627,648,940	670,730,387	531,148,791	501,558,663	634,220,895	540,259,786	650,602,417	687,443,199	584,170,481	579,227,743	627,289,774	599,474,909	7,233,775,985
Engineering services	19,047,591	19,458,273	21,021,165	18,703,132	16,522,590	17,774,706	18,084,923	20,957,790	20,866,394	21,388,100	21,018,412	22,213,310	19,215,744	237,224,539
Marina services	14,578,480	10,649,987	9,358,571	7,370,882	7,136,961	8,424,326	8,111,521	14,324,542	15,168,212	14,900,508	15,882,004	16,747,256	14,930,200	143,004,970
Wrecking & salvage yards	1,527,891	1,433,529	1,629,771	1,433,209	1,105,356	1,373,989	1,414,370	1,624,409	1,607,849	1,630,704	1,739,523	1,796,037	1,498,483	18,287,229
Pest control	636,976	532,018	634,499	565,813	474,442	554,710	527,708	579,819	604,346	699,750	792,785	865,292	736,680	7,567,862
Educational establishments	218,043,731	715,591,666	600,546,301	241,667,125	199,280,773	466,713,026	222,855,448	178,157,464	236,958,177	227,701,886	152,518,017	157,396,828	204,726,960	3,604,113,671
Child care services	11,679,262	12,190,215	14,034,151	12,619,068	11,412,467	15,221,560	13,520,657	14,562,967	14,367,733	14,429,586	14,171,071	14,911,810	13,371,698	164,812,983
Social, political & religious organisations	97,347,731	102,718,018	116,991,908	109,678,977	89,416,198	93,820,152	83,003,182	118,781,593	103,726,573	103,089,936	100,341,945	129,745,897	102,121,263	1,253,435,642
Government services	1,666,958,146	1,211,617,829	1,601,572,163	1,449,613,799	1,576,988,115	3,048,834,528	1,949,079,267	1,698,889,857	1,754,928,022	2,086,318,982	2,031,109,989	2,553,406,214	1,625,128,766	22,587,487,531
Miscellaneous services	461,144,432	481,712,384	502,165,055	449,210,548	490,746,027	586,085,339	447,877,498	514,148,450	526,986,640	526,741,780	637,568,640	672,048,131	534,304,144	6,369,594,636
Commercial equipment	135,500,822	145,752,014	150,083,450	141,846,360	124,646,009	134,341,182	125,835,517	154,120,909	143,689,876	148,032,770	146,077,552	157,923,405	145,024,161	1,717,373,205
Other services	4,683,721,614	5,001,221,779	5,338,836,602	4,518,230,747	4,552,950,728	6,574,834,293	4,895,048,386	5,077,939,033	5,129,159,281	5,386,457,732	5,315,303,127	6,055,998,250	4,804,245,469	62,650,225,427
Total services	15,747,643,305	16,147,413,814	17,259,008,706	14,575,359,556	14,687,118,057	17,830,754,968	15,458,563,425	18,253,726,777	17,893,081,799	17,619,832,848	17,501,924,443	18,570,160,226	16,267,476,821	202,064,421,440
TOTAL	30,484,191,796	31,355,481,730	32,887,317,597	30,579,428,978	33,646,705,216	32,129,606,700	28,981,013,865	34,129,492,761	33,254,517,959	33,399,014,422	33,423,356,636	34,527,304,793	31,495,400,010	389,808,640,667