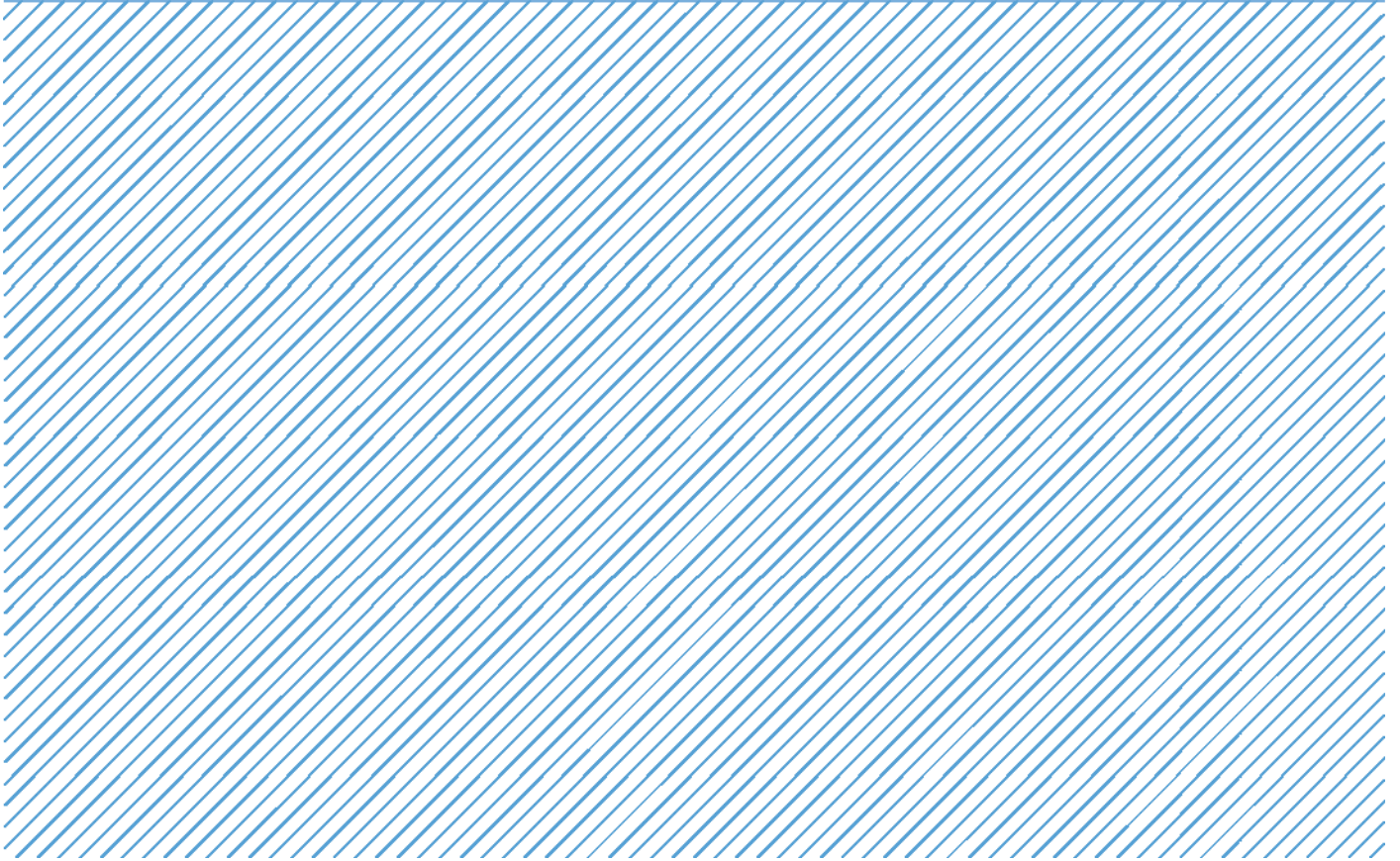


Card Expenditure Statistics

March 2016



Card Expenditure Statistics – March 2016

	Total Spending £ billions		Annual growth rates for spending		Number of purchases Millions	
	Mar 2016	Mar 2015	Mar 2016	Mar 2015	Mar 2016	Mar 2015
All payment cards	51.9	51.3	6.7%	7.7%	1,181	1,082
<i>Of which online *</i>	12.4	11.1	13%	–	152	126
Debit cards	37.1	36.3	7.4%	8.2%	912	827
Credit cards	14.9	15.0	4.9%	6.3%	269	255

Unless otherwise stated all data referred to are seasonally adjusted and depict the underlying trend. The X12 ARIMA monthly seasonal adjustments include trading days and leap years. Unadjusted data are located in tables 3A to 3D. There is a step change in the data between 2010 and 2011 following a change in the reporting population. Annual growth rates are based on twelve-month rolling periods.

* As there are insufficient online data series collected to apply X12 ARIMA seasonal adjustment, the underlying trend is determined using linear regression. This allows an estimation of the likely scale of seasonal impacts to be made until there are sufficient data to use a recognised method of seasonal adjustment.

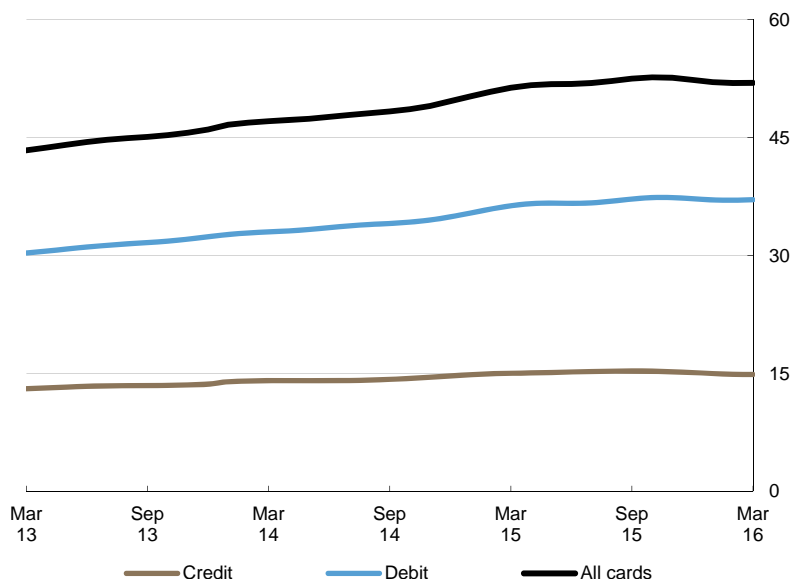
Introduction

The number of card payments increased slightly in March reaching a monthly total of just below 1.2 billion, up by 6 million on February. The main contributors to the growth in the number of purchases have been the ongoing migration of cash payments to cards, enhanced by increased use and acceptance of **contactless** cards. The number of contactless payments rose by 21 million to 180 million in March, accounting for 15% of total purchases, up from 6% a year ago.

Payment card spending also recorded a modest increase to reach £51.9 billion, which was £28 million above the level recorded in February. Spending online amounted to £12.4 billion, while £1.5 billion were spent using contactless. During Q1 2016 cardholders made 33 million more purchases than in Q4 2015, while the value spent was £1.6 billion below the level recorded in the previous quarter. This decline comes after a slowdown in the rate of economic growth¹ in the first quarter of 2016 coupled with weak consumer confidence² measure remaining at zero in March.

Chart 1

Monthly expenditure
(£ billions)



¹ ONS, Gross Domestic Product: <https://www.ons.gov.uk/economy/grossdomesticproductgdp/timeseries/ihvy>

² GfK, Consumer confidence: <http://www.gfk.com/insights/press-release/consumer-confidence-stalls-at-zero-1/>

Annual growth rates

Card spending grew at an **annual rate** of 6.7% in March, down from 7.4% in February. The annual growth rate has declined continuously since peaking at 8.5% in October 2015. Slower growth in card spending could be linked to an uptick in the annual **consumer price inflation rate**³ to a fifteen-month high followed by weaker consumer confidence.

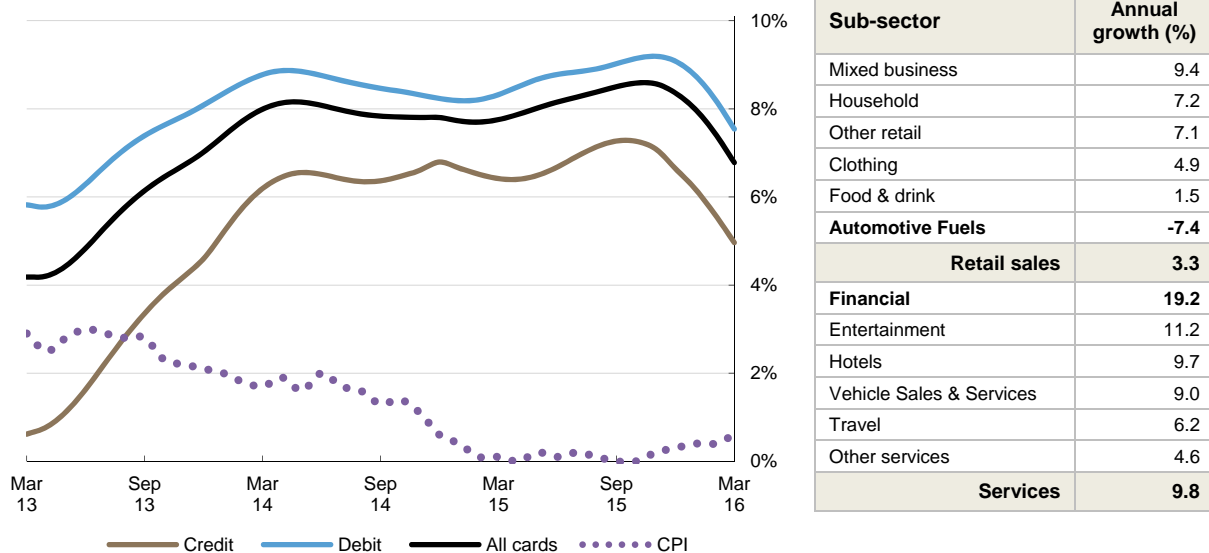
The annual growth in the **service** sector continued to exceed that in **retail** sales. The service sector expanded by 9.8% – three times the growth of spending within retail of 3.3%. Annual growth within the service sector has been particularly strong in **financial services** (+19%) and **entertainment** (+11%), while in retail sales, **automotive fuels** remained the only sub-sector recording a decline, falling by 7.4% over a year.

The annual growth rate of the **number of purchases** continued to outstrip that of amount spent, highlighting a growing consumer preference to use cards more often for lower value payments. The total number of purchases grew by 11.2% compared to 10.2% a year ago, while purchases online increased by 23% with contactless payments by 218% over the last twelve months⁴.

Chart 2

Spending on payment cards

Year-on-year growth rates



³ ONS, Consumer Price Inflation: <https://www.ons.gov.uk/economy/inflationandpriceindices/bulletins/consumerpriceinflation/mar2016>

⁴ Contactless Statistics: http://www.theukcardsassociation.org.uk/contactless_contactless_statistics/

Average transaction values

There has been a consistent trend of declining **average transaction values** (ATV) since 2011, mainly driven by the continuous migration of low value cash payments to cards. This has been accelerated by the increasing use of **contactless** cards, with the number of contactless payments accounting for 15% of total card purchases in March – up from 6% a year ago. Further downward pressure on ATVs is stemming from changing consumer preferences to pursue better value purchases at discount retailers coupled with intense competition among the major British supermarkets⁵.

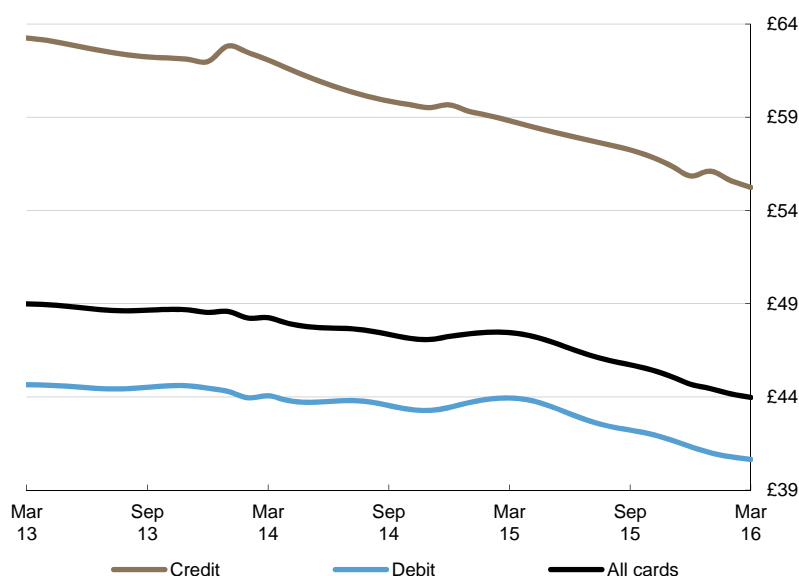
The ATV on all payment cards decreased between February and March, falling by a further 19p to £43.97, down from £47.45 a year ago. The ATV for **debit cards** decreased by 14p to £40.65, but the ATV for **credit cards** fell by 37p to £55.23.

Within the sectors, the **retail sales** ATV declined by 9p to £31.12, while the ATV for **services** fell under £70.00 for the first time in seven years, after decreasing by 49p to £69.09. The largest decrease was registered in the **vehicle sales and services** sub-sector, which recorded an ATV fall of 85p in March, while **financial services** registered the largest increase, growing by £2.08 during the month.

The ATV for **online spending** on all cards increased by £2.44 to £87.73. The ATV on **contactless** cards also increased and reached £8.40, up by 11p on February.

Chart 3

Average transaction values



Sub-sector	ATV
Household	£70.07
Clothing	£40.56
Other retail	£38.89
Mixed business	£30.44
Automotive Fuels	£27.50
Food & drink	£23.40
Retail sales	£31.12
Financial	£374.23
Vehicle Sales & Services	£189.59
Hotels	£126.13
Other services	£95.02
Travel	£74.91
Entertainment	£20.09
Services	£69.09

⁵ BBC News, Sainsbury's hit by falling food prices: <http://www.bbc.co.uk/news/business-36200773>

Spending by sector – retail sales and services

The number of transactions within the **retail sector** increased by 2.9 million to 782 million, with the corresponding spend rising by £19 million to £24 billion. The majority of the increase in spending was in the **food & drink** sub-sector growing by £28 million, boosted by **supermarket** sales⁶ due to Easter falling early this year. The **household** sub-sector was also a strong contributor to growth after increasing by £14 million on February. The recent uptick in spending at household stores was mainly driven by large increases in expenditure at **DIY stores** and **garden centres** in part stemming from the strengthening housing market and the Easter break. This was in part offset by a decline of £19 million in spending in the **automotive fuels**.

Meanwhile, the number of transactions in the **services sector** grew by 3.0 million on February, reaching a milestone of **400 million** payments made within a single month, corresponding to a rise in spending of £8.9 million to £28 billion. A major contributor of growth was the **other services** sub-sector, which recorded an increase of £25 million to £7.4 billion, boosted by a notable increase in **government services**. In contrast, the **entertainment** category registered a decline in spending after falling by £15 million to £4.4 billion, mainly driven by a large decrease in spending on **gambling** (-21%).

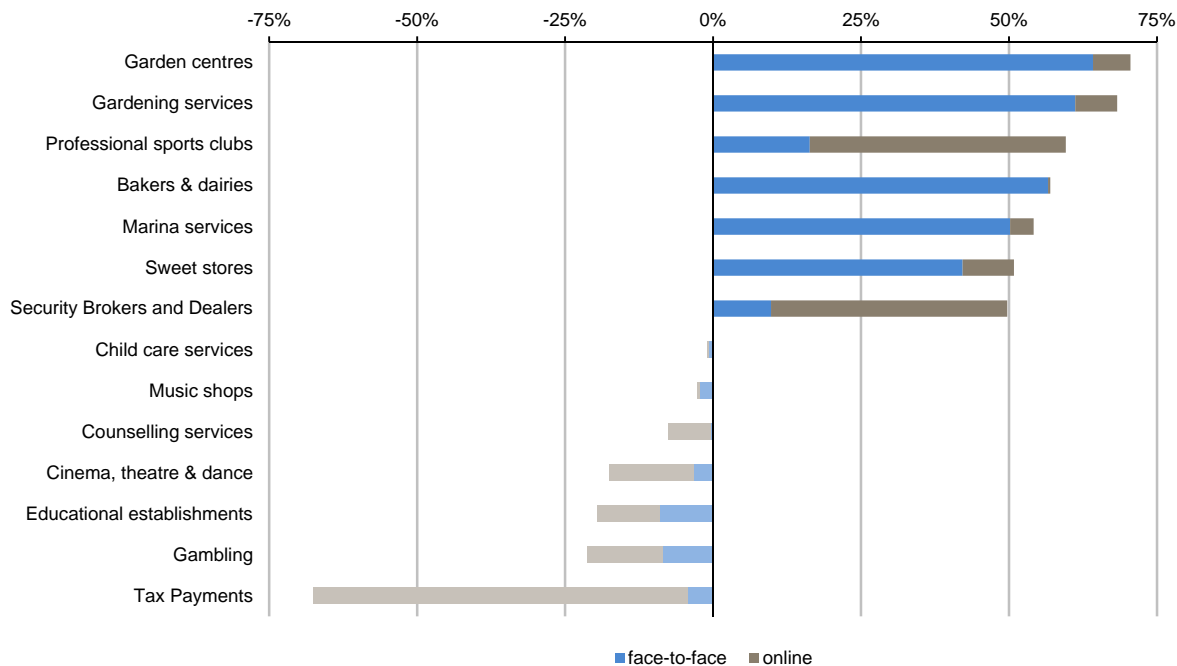
Spending by merchant categories (not seasonally adjusted)

In March large increases in card spending were evident at a wide range of businesses. The arrival of spring led to considerable growth in spending at **garden centres** and on **gardening services**. The increase evident at **security brokers and dealers** could be linked to people ensuring they have used their ISA allocation for the financial year 2015/16. There was also a notable increase in spending at **sweet stores** most likely linked to people stocking up for Easter.

Meanwhile, only 12 out of 121 merchant categories registered lower spending in March compared to February with **tax payments** accounting for the largest fall, followed by decreases on **gambling** and **educational establishments**.

Chart 4

Largest changes in card spending between February and March



⁶ Kantar Worldpanel, Early Easter boosts British supermarket sales: <http://www.kantarworldpanel.com/global/News/Early-Easter-boosts-British-supermarket-sales>

Spending online (not seasonally adjusted)

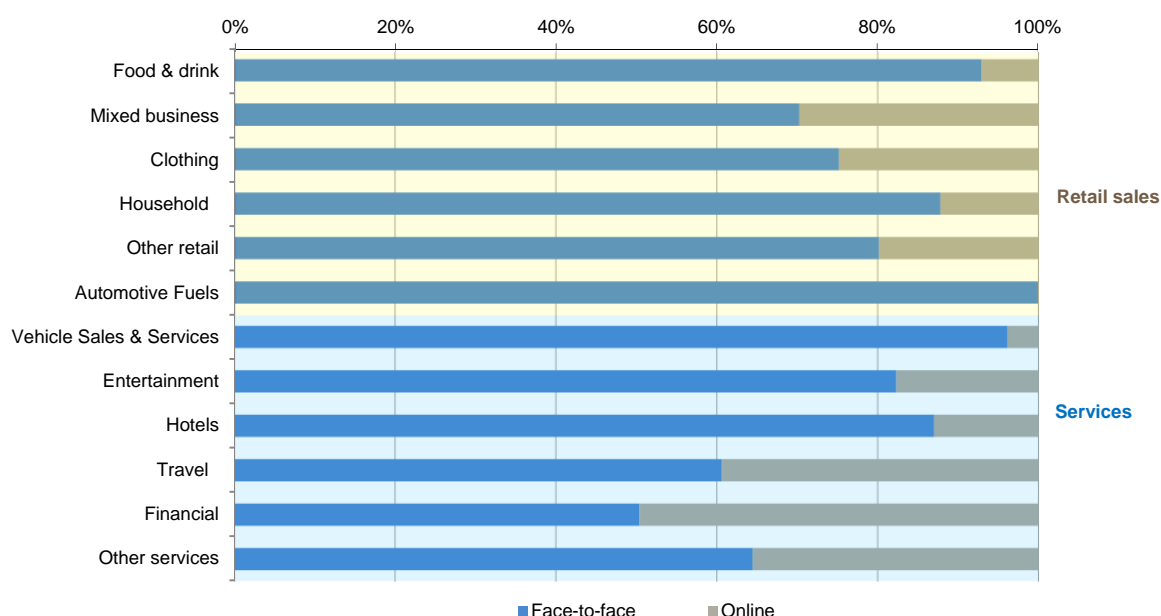
In March **the volume of internet shopping** continued to grow at more than double the annual rate of total card purchases – at 23%, compared to 11%. Amount spent online accounted for 24% of total card spending, while the number of e-commerce purchases reached 13% of total card payments. Interestingly, during Q1 2016 cardholders made 23 million fewer online purchases, but spent £2.7 billion more than in Q4 2015 – opposite to the trends evident in the face-to-face environment.

Within the services sector 19% of card payments and 31% of spending were made via the internet, while 8% of retail purchases and 13% of values were online. The highest proportion of e-commerce spending remained within **financial services**, where 50% of spending was completed online, followed by **travel** (39%) and **other services** (36%).

Within the merchant categories, **catalogues** registered the highest online spending (92%) followed by **timeshares** (85%) and **digital entertainment** (81%). The lowest share was recorded in the **vehicle sales** category, where just 0.6% of spending was made online, while virtually all spending on **automotive fuels** occurred in the face-to-face environment.

Chart 5

Face-to-face and online spending by merchant sectors in March



Payment card spending within national retail sales

Retail sales form a significant part of spending in the UK and data from merchant acquirers shows the increasing use of payment cards in this sector over many years. This expansion was in the main driven by increased card acceptance and card holdings. **Payment card share** of total **retail sales** (including automotive fuels)⁷ amounted to 77.4% in March and compares to 76.6% a year ago. Debit cards accounted for 53.5% of retail sales, up from 52.4% in March 2015, while credit cards share decreased to 23.9%, down from 24.2% a year ago. The share of spending within **food & drink** accounted for by payment cards continued to increase and reached 73.8%, up from 71.6% a year ago. In comparison to food & drink, nearly all expenditure on **automotive fuels** was accounted for by payment cards at 86.3%.

Contact: Silvija Krupena; silvija.krupena@ukpayments.org.uk | camis@ukpayments.org.uk | 020 3217 8460 or 020 3217 8720

⁷ CES 3-month moving average spend of £24.3 billion expressed as a percentage of a similar 3-month moving average for ONS Retail Sales – All Retailing Including Automotive Fuel (J5A3) that amounted to £31.4 billion.

Table 1 Card expenditure statistics (seasonally adjusted)

Summary

Number of purchase transactions (millions)										Value of purchase transactions (£ millions)								
All sectors			Retail sales			Services				All sectors			Retail sales			Services		
	Credit	Debit	Total	Credit	Debit	Total	Credit	Debit	Total	Credit	Debit	Total	Credit	Debit	Total	Credit	Debit	Total
Annual																		
2011	2,256	7,238	9,494	1,552	5,308	6,860	704	1,930	2,634	151,159	324,471	475,630	78,858	165,756	244,614	72,301	158,714	231,016
2012	2,373	7,837	10,209	1,621	5,642	7,263	752	2,195	2,946	152,827	345,889	498,716	81,040	175,356	256,395	71,787	170,534	242,321
2013	2,549	8,383	10,932	1,733	5,951	7,685	815	2,432	3,247	159,701	373,515	533,216	84,557	183,483	268,040	75,144	190,031	265,176
2014	2,802	9,239	12,040	1,877	6,432	8,308	925	2,807	3,732	170,392	403,906	574,297	87,542	193,509	281,051	82,849	210,397	293,246
2015	3,142	10,277	13,419	2,096	6,909	9,005	1,046	3,368	4,414	181,544	440,192	621,735	91,427	199,536	290,962	90,117	240,656	330,773
Monthly																		
2015 Mar	255	827	1,082	170	560	730	85	267	352	15,008	36,324	51,331	7,574	16,355	23,929	7,434	19,969	27,402
Apr	257	835	1,092	172	564	735	86	271	357	15,061	36,589	51,649	7,601	16,418	24,019	7,459	20,171	27,630
May	259	842	1,102	173	568	741	86	275	361	15,111	36,654	51,765	7,623	16,506	24,129	7,489	20,148	27,636
Jun	262	850	1,112	175	572	747	87	278	365	15,168	36,631	51,799	7,643	16,611	24,254	7,524	20,020	27,544
Jul	264	859	1,123	176	578	754	87	282	369	15,229	36,690	51,919	7,665	16,717	24,382	7,564	19,973	27,537
Aug	266	870	1,136	177	584	761	88	286	375	15,283	36,902	52,185	7,683	16,812	24,496	7,599	20,089	27,689
Sep	267	880	1,148	178	589	767	89	291	381	15,312	37,173	52,485	7,690	16,880	24,570	7,622	20,293	27,915
Oct	269	889	1,158	179	593	772	90	296	386	15,294	37,361	52,655	7,678	16,906	24,584	7,616	20,454	28,071
Nov	270	896	1,166	180	596	776	90	300	390	15,218	37,362	52,580	7,643	16,893	24,535	7,575	20,470	28,045
Dec	270	900	1,171	180	598	778	90	302	392	15,100	37,215	52,314	7,592	16,847	24,439	7,508	20,368	27,875
2016 Jan	267	904	1,171	176	600	776	91	304	395	14,977	37,065	52,042	7,541	16,802	24,343	7,436	20,263	27,699
Feb	268	908	1,176	177	602	779	91	306	397	14,892	37,025	51,917	7,508	16,794	24,302	7,385	20,231	27,615
Mar	269	912	1,181	178	604	782	91	309	400	14,863	37,082	51,945	7,499	16,822	24,321	7,364	20,260	27,624
Year-on-year growth rates (percentages)																		
Annual																		
2011	12.1	11.2	11.4	12.1	12.4	12.3	12.1	8.2	9.2	17.8	11.9	13.7	13.3	11.5	12.1	23.0	12.3	15.5
2012	5.1	8.3	7.5	4.4	6.3	5.9	6.8	13.7	11.9	1.1	6.6	4.9	2.8	5.8	4.8	-0.7	7.4	4.9
2013	7.4	7.0	7.1	6.9	5.5	5.8	8.5	10.8	10.2	4.5	8.0	6.9	4.3	4.6	4.5	4.7	11.4	9.4
2014	9.9	10.2	10.1	8.3	8.1	8.1	13.5	15.4	14.9	6.7	8.1	7.7	3.5	5.5	4.9	10.3	10.7	10.6
2015	12.1	11.2	11.4	11.7	7.4	8.4	13.1	20.0	18.3	6.5	9.0	8.3	4.4	3.1	3.5	8.8	14.4	12.8
Monthly																		
2015 Mar	10.7	10.1	10.2	9.3	7.6	8.0	13.7	16.1	15.5	6.3	8.2	7.7	3.6	4.3	4.1	9.4	11.9	11.2
Apr	10.9	10.1	10.3	9.7	7.5	8.0	13.6	16.4	15.7	6.3	8.4	7.8	3.6	3.9	3.8	9.2	12.7	11.7
May	11.2	10.1	10.4	10.1	7.3	7.9	13.6	16.9	16.1	6.4	8.6	7.9	3.8	3.6	3.7	9.3	13.3	12.2
Jun	11.6	10.2	10.5	10.5	7.2	7.9	13.7	17.5	16.5	6.6	8.7	8.1	4.0	3.4	3.6	9.4	13.7	12.5
Jul	11.9	10.4	10.7	11.0	7.2	8.0	13.8	18.1	17.0	6.8	8.7	8.2	4.2	3.2	3.5	9.6	14.0	12.7
Aug	12.2	10.6	11.0	11.4	7.2	8.1	13.8	18.6	17.4	7.0	8.8	8.3	4.5	3.1	3.6	9.8	14.1	12.9
Sep	12.4	10.8	11.2	11.7	7.3	8.3	13.8	19.1	17.8	7.2	8.9	8.4	4.6	3.1	3.6	9.9	14.4	13.1
Oct	12.4	11.0	11.3	11.8	7.3	8.3	13.7	19.5	18.1	7.2	9.0	8.5	4.7	3.1	3.6	9.8	14.6	13.2
Nov	12.4	11.1	11.4	11.8	7.3	8.3	13.5	19.8	18.2	7.0	9.1	8.5	4.6	3.1	3.6	9.5	14.6	13.2
Dec	12.1	11.2	11.4	11.7	7.4	8.4	13.1	20.0	18.3	6.5	9.0	8.3	4.4	3.1	3.5	8.8	14.4	12.8
2016 Jan	11.6	11.4	11.4	11.2	7.6	8.4	12.5	20.0	18.2	6.1	8.7	7.9	4.1	3.1	3.5	8.2	13.7	12.1
Feb	11.1	11.5	11.4	10.6	7.8	8.4	11.9	19.9	17.9	5.5	8.1	7.4	3.7	3.2	3.4	7.4	12.6	11.1
Mar	10.5	11.5	11.2	10.0	7.8	8.3	11.4	19.6	17.6	4.9	7.4	6.7	3.3	3.3	3.3	6.5	11.1	9.8

There was a step change in 2011 due to a change in reporting population

Data are seasonally adjusted and depict the underlying trend. The X12 ARIMA monthly seasonal adjustments include trading days and leap years.

Table 2A Card expenditure statistics (seasonally adjusted)

Retail sales

Number of purchase transactions (millions)

Total retail sales

	Number of purchase transactions (millions)																		Total retail sales		
	Food & drink			Mixed business			Clothing			Household			Other retailers			Automotive Fuels ¹			Number of purchases		
	Credit	Debit	Total	Credit	Debit	Total	Credit	Debit	Total	Credit	Debit	Total	Credit	Debit	Total	Credit	Debit	Total	Credit	Debit	Total
Annual																					
2011	602	2,572	3,174	136	425	562	139	428	567	157	370	526	295	781	1,076	223	732	956	1,552	5,308	6,860
2012	662	2,825	3,487	148	479	627	145	453	598	157	375	532	281	757	1,038	227	754	982	1,621	5,642	7,263
2013	722	3,058	3,780	182	523	704	152	459	611	165	401	566	276	720	997	236	791	1,027	1,733	5,951	7,685
2014	769	3,451	4,220	250	477	727	163	478	641	172	433	605	285	783	1,068	237	810	1,047	1,877	6,432	8,308
2015	835	3,719	4,554	346	524	871	176	510	686	179	472	650	329	866	1,195	232	818	1,050	2,096	6,909	9,005
Monthly																					
2015 Mar	68	301	369	27	42	69	15	42	57	15	38	53	26	70	96	19	67	86	170	560	730
Apr	69	303	372	28	42	70	15	42	57	15	38	53	26	70	97	19	67	87	172	564	735
May	69	305	374	29	43	71	15	42	57	15	39	54	27	71	98	19	68	87	173	568	741
Jun	70	307	377	29	43	73	15	42	57	15	39	54	27	72	99	19	68	88	175	572	747
Jul	70	310	380	30	44	74	15	43	57	15	39	54	28	73	101	19	68	88	176	578	754
Aug	70	313	384	30	45	75	15	43	58	15	40	55	28	74	102	19	69	88	177	584	761
Sep	71	317	387	30	46	76	15	43	58	15	40	55	29	75	103	19	69	88	178	589	767
Oct	71	320	391	30	46	76	15	43	58	15	41	56	29	75	104	19	69	88	179	593	772
Nov	71	322	393	31	46	77	15	43	58	15	41	56	29	74	104	19	69	89	180	596	776
Dec	71	325	396	31	46	77	14	43	57	15	41	56	29	74	103	19	70	89	180	598	778
2016 Jan	71	327	399	32	46	78	14	42	57	15	41	56	25	73	98	19	70	89	176	600	776
Feb	72	329	401	32	46	78	14	42	56	15	41	56	25	73	98	19	70	89	177	602	779
Mar	72	330	402	33	46	79	14	42	56	15	41	56	25	73	98	19	70	90	178	604	782

Year-on-year growth rates (percentages)

	Year-on-year growth rates (percentages)																				
	Credit	Debit	Total	Credit	Debit	Total	Credit	Debit	Total	Credit	Debit	Total	Credit	Debit	Total	Credit	Debit	Total	Credit	Debit	Total
Annual																					
2011	13.0	12.6	12.6	-1.5	4.6	3.1	8.2	0.8	2.5	5.8	5.7	5.7	7.3	6.5	6.7	38.0	39.4	39.1	12.1	12.4	12.3
2012	10.0	9.8	9.9	8.4	12.6	11.6	4.5	5.8	5.5	0.1	1.4	1.0	-4.8	-3.0	-3.5	2.0	3.0	2.8	4.4	6.3	5.9
2013	8.9	8.3	8.4	22.9	9.2	12.4	4.8	1.4	2.2	5.2	6.8	6.3	-1.6	-4.8	-3.9	3.7	4.9	4.6	6.9	5.5	5.8
2014	6.5	12.9	11.7	37.7	-8.7	3.3	7.2	4.1	4.9	4.2	8.0	6.9	3.1	8.6	7.1	0.5	2.4	2.0	8.3	8.1	8.1
2015	8.6	7.8	7.9	38.3	9.9	19.7	7.7	6.8	7.0	3.8	9.0	7.5	15.3	10.7	11.9	-2.3	1.0	0.2	11.7	7.4	8.4
Monthly																					
2015 Mar	7.0	12.3	11.3	39.5	-11.4	2.3	8.0	5.5	6.1	3.5	7.6	6.4	7.0	9.8	9.0	-0.8	0.9	0.5	9.3	7.6	8.0
Apr	7.2	11.8	10.9	40.1	-10.1	3.8	7.9	5.7	6.2	3.5	7.6	6.4	8.1	9.8	9.4	-1.2	0.6	0.2	9.7	7.5	8.0
May	7.4	11.2	10.5	40.9	-8.4	5.6	7.9	5.7	6.3	3.6	7.8	6.6	9.3	9.8	9.7	-1.5	0.3	-0.1	10.1	7.3	7.9
Jun	7.7	10.5	10.0	41.7	-6.3	7.7	7.9	5.8	6.3	3.8	8.1	6.8	10.5	9.8	10.0	-1.8	0.2	-0.2	10.5	7.2	7.9
Jul	8.0	9.9	9.6	42.3	-3.8	10.0	8.0	6.0	6.5	3.9	8.4	7.1	11.7	10.0	10.5	-2.0	0.2	-0.3	11.0	7.2	8.0
Aug	8.3	9.4	9.2	42.4	-1.0	12.3	8.3	6.3	6.8	4.0	8.7	7.3	12.9	10.3	11.0	-2.2	0.2	-0.3	11.4	7.2	8.1
Sep	8.6	8.9	8.8	41.9	1.9	14.5	8.5	6.7	7.1	4.0	8.8	7.4	13.8	10.6	11.4	-2.4	0.3	-0.3	11.7	7.3	8.3
Oct	8.7	8.4	8.4	40.9	4.7	16.5	8.6	6.9	7.4	3.9	8.9	7.5	14.6	10.8	11.8	-2.4	0.4	-0.3	11.8	7.3	8.3
Nov	8.7	8.0	8.1	39.7	7.4	18.2	8.4	7.0	7.4	3.9	9.0	7.5	15.1	10.9	12.0	-2.4	0.6	-0.1	11.8	7.3	8.3
Dec	8.6	7.8	7.9	38.3	9.9	19.7	7.7	6.8	7.0	3.8	9.0	7.5	15.3	10.7	11.9	-2.3	1.0	0.2	11.7	7.4	8.4
2016 Jan	8.4	7.8	7.9	36.9	12.3	21.0	6.7	6.3	6.4	3.7	9.0	7.5	13.9	10.3	11.2	-2.1	1.5	0.6	11.2	7.6	8.4
Feb	8.1	7.9	7.9	35.3	14.5	22.1	5.4	5.7	5.6	3.5	9.0	7.5	12.4	9.8	10.5	-2.0	2.0	1.1	10.6	7.8	8.4
Mar	7.8	8.1	8.0	33.4	14.8	21.6	4.2	5.0	4.8	3.2	9.0	7.4	10.9	9.3	9.8	-1.9	2.5	1.5	10.0	7.8	8.3

There was a step change in 2011 due to a change in reporting population

Data are seasonally adjusted and depict the underlying trend. The X12 ARIMA monthly seasonal adjustments include trading days and leap years.

¹ Automotive Fuels data is effective from January 2010.

Table 2B Card expenditure statistics (seasonally adjusted)

Retail sales

Value of purchase transactions (£ millions)

	Value of purchase transactions (£ millions)																		Total retail sales		
	Food & drink			Mixed business			Clothing			Household			Other retailers			Automotive Fuels ¹			Value of purchases		
	Credit	Debit	Total	Credit	Debit	Total	Credit	Debit	Total	Credit	Debit	Total	Credit	Debit	Total	Credit	Debit	Total	Credit	Debit	Total
Annual																					
2011	21,062	69,656	90,718	7,087	14,761	21,848	7,857	14,457	22,314	15,173	20,529	35,702	17,510	24,379	41,889	10,169	21,975	32,144	78,858	165,756	244,614
2012	22,568	74,181	96,749	7,731	16,410	24,141	8,206	15,629	23,834	15,377	21,632	37,008	16,759	24,437	41,196	10,399	23,068	33,467	81,040	175,356	256,395
2013	24,086	77,983	102,069	8,713	17,917	26,629	8,669	16,040	24,709	15,892	23,248	39,140	16,517	24,385	40,903	10,680	23,911	34,591	84,557	183,483	268,040
2014	24,540	84,437	108,977	9,577	16,728	26,306	9,165	17,039	26,204	16,870	26,000	42,870	17,156	25,716	42,871	10,235	23,588	33,823	87,542	193,509	281,051
2015	25,246	84,887	110,134	10,616	17,986	28,602	9,897	18,134	28,031	17,559	28,587	46,146	19,166	27,907	47,072	8,943	22,034	30,977	91,427	199,536	290,962
Monthly																					
2015 Mar	2,085	6,966	9,051	866	1,453	2,319	830	1,499	2,329	1,454	2,312	3,766	1,574	2,283	3,857	766	1,842	2,608	7,574	16,355	23,929
Apr	2,090	6,968	9,058	874	1,468	2,342	833	1,507	2,340	1,459	2,335	3,794	1,580	2,292	3,872	765	1,849	2,614	7,601	16,418	24,019
May	2,096	6,988	9,084	880	1,485	2,365	834	1,512	2,346	1,463	2,358	3,822	1,586	2,306	3,892	763	1,856	2,619	7,623	16,506	24,129
Jun	2,103	7,024	9,127	886	1,506	2,392	834	1,518	2,352	1,467	2,382	3,849	1,595	2,325	3,920	758	1,857	2,615	7,643	16,611	24,254
Jul	2,111	7,067	9,178	892	1,526	2,419	835	1,524	2,359	1,470	2,405	3,875	1,608	2,345	3,953	749	1,849	2,598	7,665	16,717	24,382
Aug	2,119	7,111	9,230	898	1,542	2,441	834	1,530	2,364	1,474	2,425	3,899	1,620	2,370	3,990	737	1,835	2,572	7,683	16,812	24,496
Sep	2,123	7,150	9,273	903	1,548	2,452	831	1,532	2,362	1,477	2,440	3,917	1,629	2,388	4,017	726	1,822	2,548	7,690	16,880	24,570
Oct	2,124	7,183	9,307	906	1,544	2,450	824	1,529	2,352	1,477	2,450	3,927	1,630	2,387	4,017	717	1,814	2,531	7,678	16,906	24,584
Nov	2,123	7,210	9,332	905	1,533	2,438	812	1,520	2,333	1,471	2,458	3,928	1,621	2,362	3,983	710	1,810	2,521	7,643	16,893	24,535
Dec	2,121	7,227	9,348	903	1,518	2,421	799	1,509	2,309	1,461	2,464	3,925	1,605	2,322	3,927	703	1,808	2,511	7,592	16,847	24,439
2016 Jan	2,121	7,240	9,361	900	1,506	2,406	788	1,500	2,288	1,451	2,472	3,923	1,587	2,281	3,868	695	1,803	2,498	7,541	16,802	24,343
Feb	2,125	7,258	9,383	899	1,501	2,401	781	1,498	2,279	1,445	2,485	3,930	1,572	2,256	3,828	685	1,796	2,481	7,508	16,794	24,302
Mar	2,133	7,278	9,411	902	1,505	2,407	780	1,501	2,282	1,442	2,502	3,944	1,566	2,248	3,814	675	1,788	2,463	7,499	16,822	24,321

Year-on-year growth rates (percentages)

Annual																					
2011	12.3	9.3	9.9	-1.2	5.8	3.4	15.4	5.9	9.1	3.3	8.8	6.4	12.8	3.4	7.1	53.4	48.0	49.7	13.3	11.5	12.1
2012	7.2	6.5	6.6	9.1	11.2	10.5	4.4	8.1	6.8	1.3	5.4	3.7	-4.3	0.2	-1.7	2.3	5.0	4.1	2.8	5.8	4.8
2013	6.7	5.1	5.5	12.7	9.2	10.3	5.6	2.6	3.7	3.4	7.5	5.8	-1.4	-0.2	-0.7	2.7	3.7	3.4	4.3	4.6	4.5
2014	1.9	8.3	6.8	9.9	-6.6	-1.2	5.7	6.2	6.1	6.2	11.8	9.5	3.9	5.5	4.8	-4.2	-1.4	-2.2	3.5	5.5	4.9
2015	2.9	0.5	1.1	10.8	7.5	8.7	8.0	6.4	7.0	4.1	9.9	7.6	11.7	8.5	9.8	-12.6	-6.6	-8.4	4.4	3.1	3.5
Monthly																					
2015 Mar	1.7	6.6	5.5	9.1	-7.8	-2.2	5.6	6.2	6.0	5.1	10.3	8.2	7.5	6.3	6.8	-7.2	-3.4	-4.6	3.6	4.3	4.1
Apr	1.7	5.8	4.8	9.0	-7.2	-1.8	5.7	6.1	5.9	4.8	10.0	7.9	8.7	6.4	7.3	-8.0	-4.1	-5.3	3.6	3.9	3.8
May	1.7	4.9	4.2	9.1	-6.1	-0.9	5.9	5.9	5.9	4.6	9.9	7.8	9.9	6.5	7.9	-8.8	-4.6	-5.9	3.8	3.6	3.7
Jun	1.9	4.0	3.5	9.4	-4.4	0.3	6.3	5.9	6.0	4.5	9.9	7.8	11.0	6.7	8.4	-9.6	-5.1	-6.5	4.0	3.4	3.6
Jul	2.1	3.2	2.9	9.9	-2.4	1.8	6.9	5.9	6.3	4.4	10.0	7.8	11.9	7.0	9.0	-10.3	-5.5	-7.0	4.2	3.2	3.5
Aug	2.3	2.4	2.4	10.3	-0.1	3.5	7.6	6.1	6.7	4.4	10.1	7.8	12.6	7.5	9.5	-11.1	-6.0	-7.5	4.5	3.1	3.6
Sep	2.5	1.7	1.9	10.7	2.2	5.2	8.2	6.3	7.0	4.4	10.1	7.8	12.9	8.2	10.1	-11.7	-6.4	-8.0	4.6	3.1	3.6
Oct	2.7	1.2	1.5	10.9	4.3	6.7	8.6	6.5	7.2	4.4	10.0	7.8	12.9	8.7	10.3	-12.3	-6.7	-8.4	4.7	3.1	3.6
Nov	2.8	0.7	1.2	11.0	6.1	7.9	8.5	6.6	7.2	4.3	10.0	7.7	12.5	8.8	10.3	-12.6	-6.8	-8.5	4.6	3.1	3.6
Dec	2.9	0.5	1.1	10.8	7.5	8.7	8.0	6.4	7.0	4.1	9.9	7.6	11.7	8.5	9.8	-12.6	-6.6	-8.4	4.4	3.1	3.5
2016 Jan	2.9	0.5	1.1	10.6	8.5	9.3	7.1	6.1	6.4	3.8	9.9	7.5	10.7	7.9	9.0	-12.5	-6.2	-8.1	4.1	3.1	3.5
Feb	2.9	0.8	1.2	10.1	9.1	9.5	5.9	5.6	5.7	3.5	9.9	7.4	9.5	7.1	8.1	-12.3	-5.7	-7.7	3.7	3.2	3.4
Mar	2.9	1.1	1.5	9.7	9.3	9.4	4.6	5.0	4.9	3.1	9.9	7.2	8.3	6.3	7.1	-12.2	-5.3	-7.4	3.3	3.3	3.3

There was a step change in 2011 due to a change in reporting population

Data are seasonally adjusted and depict the underlying trend. The X12 ARIMA monthly seasonal adjustments include trading days and leap years.

¹ Automotive Fuels data is effective from January 2010.

Table 2C Card expenditure statistics (seasonally adjusted)

Services

		Number of purchase transactions (millions)																		Total services		
		Vehicle Sales & Services ¹			Entertainment			Hotels			Travel			Financial			Other Services			Number of purchases		
		Credit	Debit	Total	Credit	Debit	Total	Credit	Debit	Total	Credit	Debit	Total	Credit	Debit	Total	Credit	Debit	Total	Credit	Debit	Total
Annual																						
	2011	51	89	139	268	882	1,150	51	43	94	116	237	354	33	145	178	185	534	719	704	1,930	2,634
	2012	50	94	144	309	1,062	1,371	53	48	100	124	266	389	30	160	190	186	565	751	752	2,195	2,946
	2013	53	104	157	354	1,222	1,576	54	53	107	130	286	416	28	174	202	196	593	788	815	2,432	3,247
	2014	59	121	179	423	1,500	1,923	60	63	122	150	328	478	26	166	192	208	630	838	925	2,807	3,732
	2015	69	142	210	477	1,843	2,320	66	75	141	178	428	606	28	183	211	228	697	925	1,046	3,368	4,414
Monthly																						
	2015 Mar	6	11	17	39	145	183	5	6	11	14	33	48	2	15	17	19	57	75	85	267	352
	Apr	6	11	17	39	147	186	5	6	12	14	34	48	2	15	17	19	57	76	86	271	357
	May	6	12	17	39	150	189	5	6	12	15	35	49	2	15	18	19	58	77	86	275	361
	Jun	6	12	17	39	151	191	6	6	12	15	35	50	2	15	18	19	58	77	87	278	365
	Jul	6	12	18	40	153	193	6	6	12	15	36	51	2	15	18	19	58	78	87	282	369
	Aug	6	12	18	40	157	196	6	6	12	15	37	52	2	16	18	19	59	78	88	286	375
	Sep	6	12	18	40	160	200	6	6	12	16	38	53	2	16	18	19	59	79	89	291	381
	Oct	6	12	18	41	163	204	6	7	12	16	38	54	2	16	18	19	60	79	90	296	386
	Nov	6	12	18	42	167	208	6	7	12	16	39	54	2	16	18	19	60	79	90	300	390
	Dec	6	12	18	42	169	211	6	7	12	15	39	54	2	16	18	19	60	79	90	302	392
	2016 Jan	6	12	18	43	171	214	5	7	12	15	39	54	3	16	18	19	60	79	91	304	395
	Feb	6	13	18	44	173	217	5	7	12	15	39	53	3	16	18	19	59	78	91	306	397
	Mar	6	13	18	44	176	220	5	7	12	15	39	53	3	16	18	19	59	78	91	309	400
Year-on-year growth rates (percentages)																						
Annual																						
	2011	-33.4	-56.6	-50.3	20.6	21.5	21.2	36.6	23.6	30.3	19.4	17.2	17.9	3.6	11.9	10.2	13.4	9.7	10.7	12.1	8.2	9.2
	2012	-0.3	5.7	3.5	15.4	20.4	19.2	3.2	11.7	7.1	6.5	11.8	10.1	-10.3	10.8	6.9	0.5	5.8	4.4	6.8	13.7	11.9
	2013	5.1	10.9	8.9	14.5	15.1	14.9	3.6	10.8	7.0	5.0	7.7	6.8	-3.7	8.3	6.5	5.1	4.9	4.9	8.5	10.8	10.2
	2014	10.6	16.2	14.3	19.6	22.7	22.0	9.4	18.3	13.8	15.5	14.7	14.9	-9.5	-4.5	-5.2	6.2	6.3	6.2	13.5	15.4	14.9
	2015	16.9	17.4	17.2	12.7	22.9	20.7	10.9	20.0	15.6	18.8	30.4	26.8	9.3	10.3	10.2	9.7	10.7	10.4	13.1	20.0	18.3
Monthly																						
	2015 Mar	11.4	15.2	13.9	18.9	22.0	21.3	10.0	18.2	14.1	16.6	18.5	17.9	-5.6	-1.7	-2.2	6.4	7.2	7.0	13.7	16.1	15.5
	Apr	11.7	15.1	13.9	18.3	22.0	21.1	10.3	18.1	14.2	16.7	19.8	18.8	-3.8	-0.8	-1.2	6.7	7.8	7.5	13.6	16.4	15.7
	May	12.1	15.2	14.1	17.7	22.1	21.1	10.6	18.3	14.5	16.8	21.2	19.8	-1.8	0.2	-0.1	7.1	8.4	8.1	13.6	16.9	16.1
	Jun	12.7	15.5	14.5	17.0	22.3	21.1	11.0	18.5	14.8	17.2	22.7	21.0	0.1	1.3	1.1	7.7	9.1	8.7	13.7	17.5	16.5
	Jul	13.4	15.9	15.1	16.4	22.5	21.1	11.4	19.0	15.2	17.7	24.4	22.3	2.1	2.6	2.5	8.3	9.6	9.3	13.8	18.1	17.0
	Aug	14.1	16.5	15.7	15.7	22.6	21.1	11.7	19.5	15.6	18.3	26.1	23.6	4.1	4.0	4.0	8.9	10.1	9.8	13.8	18.6	17.4
	Sep	14.8	16.9	16.2	14.9	22.7	21.0	11.9	19.9	16.0	18.9	27.8	25.0	6.0	5.6	5.6	9.4	10.5	10.2	13.8	19.1	17.8
	Oct	15.5	17.2	16.7	14.1	22.7	20.8	11.8	20.2	16.1	19.3	29.2	26.0	7.6	7.2	7.2	9.7	10.7	10.5	13.7	19.5	18.1
	Nov	16.2	17.4	17.0	13.4	22.8	20.7	11.6	20.2	16.0	19.2	30.1	26.7	8.8	8.8	8.8	9.8	10.8	10.5	13.5	19.8	18.2
	Dec	16.9	17.4	17.2	12.7	22.9	20.7	10.9	20.0	15.6	18.8	30.4	26.8	9.3	10.3	10.2	9.7	10.7	10.4	13.1	20.0	18.3
	2016 Jan	15.0	17.2	16.5	12.3	23.1	20.7	10.0	19.4	14.9	17.9	30.1	26.3	10.7	10.4	10.4	9.4	10.5	10.2	12.5	20.0	18.2
	Feb	13.1	16.9	15.6	12.1	23.2	20.8	8.8	18.7	13.9	16.8	29.3	25.4	11.4	10.3	10.4	8.8	10.1	9.8	11.9	19.9	17.9
	Mar	11.3	16.5	14.8	12.1	23.2	20.8	7.6	17.8	12.9	15.5	28.2	24.2	11.8	10.0	10.2	8.0	9.6	9.2	11.4	19.6	17.6

There was a step change in 2011 due to a change in reporting population

Data are seasonally adjusted and depict the underlying trend. The X12 ARIMA monthly seasonal adjustments include trading days and leap years.

¹ With effect of January 2010 Automotive Fuels was published as a separate sub-sector in retail sales. See tables 2A and 2B

Table 2D Card expenditure statistics (seasonally adjusted)

Services

		Value of purchase transactions (£ millions)																		Total services		
		Vehicle Sales & Services ¹			Entertainment			Hotels			Travel			Financial			Other Services			Value of purchases		
		Credit	Debit	Total	Credit	Debit	Total	Credit	Debit	Total	Credit	Debit	Total	Credit	Debit	Total	Credit	Debit	Total	Credit	Debit	Total
Annual																						
	2011	7,773	22,463	30,236	14,092	20,696	34,788	8,599	3,855	12,454	16,323	18,487	34,810	7,155	46,402	53,557	18,359	46,811	65,170	72,301	158,714	231,016
	2012	7,568	23,547	31,114	14,687	22,834	37,520	8,868	4,310	13,178	16,535	20,597	37,132	5,485	50,174	55,659	18,644	49,073	67,717	71,787	170,534	242,321
	2013	7,724	25,726	33,450	15,662	24,561	40,224	9,236	4,771	14,007	17,350	22,124	39,474	5,129	55,345	60,474	20,044	57,503	77,547	75,144	190,031	265,176
	2014	8,171	28,820	36,990	17,433	28,523	45,956	10,421	5,585	16,007	20,289	25,208	45,497	5,152	58,218	63,370	21,383	64,044	85,427	82,849	210,397	293,246
	2015	9,013	31,785	40,798	18,831	33,593	52,424	11,653	6,442	18,095	21,279	27,591	48,870	6,247	68,704	74,951	23,094	72,540	95,634	90,117	240,656	330,773
Monthly																						
	2015 Mar	750	2,598	3,348	1,546	2,736	4,282	959	517	1,476	1,752	2,263	4,015	504	5,469	5,973	1,923	6,386	8,309	7,434	19,969	27,402
	Apr	758	2,625	3,383	1,553	2,775	4,328	961	522	1,483	1,755	2,277	4,032	506	5,587	6,093	1,927	6,385	8,312	7,459	20,171	27,630
	May	762	2,640	3,402	1,562	2,790	4,352	965	528	1,493	1,761	2,281	4,042	508	5,669	6,178	1,930	6,240	8,170	7,489	20,148	27,636
	Jun	764	2,646	3,411	1,572	2,790	4,361	973	534	1,508	1,771	2,284	4,055	512	5,719	6,231	1,933	6,047	7,980	7,524	20,020	27,544
	Jul	765	2,659	3,423	1,578	2,799	4,377	983	542	1,525	1,783	2,299	4,082	516	5,761	6,278	1,938	5,914	7,852	7,564	19,973	27,537
	Aug	764	2,679	3,443	1,582	2,827	4,409	991	548	1,539	1,795	2,328	4,123	523	5,819	6,342	1,945	5,887	7,832	7,599	20,089	27,689
	Sep	760	2,698	3,458	1,585	2,867	4,452	993	554	1,547	1,805	2,354	4,159	531	5,902	6,433	1,947	5,919	7,866	7,622	20,293	27,915
	Oct	753	2,707	3,460	1,588	2,899	4,487	988	557	1,546	1,807	2,360	4,167	540	6,000	6,540	1,940	5,930	7,870	7,616	20,454	28,071
	Nov	744	2,713	3,457	1,590	2,913	4,502	977	560	1,536	1,798	2,347	4,145	548	6,095	6,643	1,919	5,843	7,761	7,575	20,470	28,045
	Dec	732	2,719	3,451	1,591	2,896	4,488	961	560	1,522	1,778	2,322	4,100	555	6,173	6,728	1,889	5,698	7,588	7,508	20,368	27,875
	2016 Jan	720	2,726	3,446	1,593	2,865	4,458	947	561	1,509	1,754	2,297	4,051	561	6,227	6,787	1,861	5,588	7,449	7,436	20,263	27,699
	Feb	710	2,736	3,445	1,598	2,835	4,433	939	564	1,503	1,732	2,283	4,015	565	6,254	6,819	1,841	5,559	7,401	7,385	20,231	27,615
	Mar	702	2,743	3,445	1,605	2,814	4,418	938	568	1,505	1,717	2,279	3,995	569	6,266	6,834	1,834	5,591	7,426	7,364	20,260	27,624
		Year-on-year growth rates (percentages)																				
Annual																						
	2011	-11.1	-9.6	-10.0	41.4	21.4	28.7	56.3	24.7	45.0	27.9	16.3	21.4	20.7	17.4	17.8	15.7	14.5	14.8	23.0	12.3	15.5
	2012	-2.6	4.8	2.9	4.2	10.3	7.9	3.1	11.8	5.8	1.3	11.4	6.7	-23.3	8.1	3.9	1.6	4.8	3.9	-0.7	7.4	4.9
	2013	2.1	9.3	7.5	6.6	7.6	7.2	4.1	10.7	6.3	4.9	7.4	6.3	-6.5	10.3	8.7	7.5	17.2	14.5	4.7	11.4	9.4
	2014	5.8	12.0	10.6	11.3	16.1	14.3	12.8	17.1	14.3	16.9	13.9	15.3	0.5	5.2	4.8	6.7	11.4	10.2	10.3	10.7	10.6
	2015	10.3	10.3	10.3	8.0	17.8	14.1	11.8	15.3	13.0	4.9	9.5	7.4	21.3	18.0	18.3	8.0	13.3	11.9	8.8	14.4	12.8
Monthly																						
	2015 Mar	5.9	10.3	9.3	11.5	17.9	15.4	13.4	17.6	14.8	11.1	12.0	11.6	6.3	7.1	7.0	6.4	14.2	12.2	9.4	11.9	11.2
	Apr	6.2	10.2	9.3	11.5	18.3	15.7	13.5	17.6	14.9	9.7	11.7	10.8	8.1	8.0	8.0	6.6	15.7	13.3	9.2	12.7	11.7
	May	6.8	10.3	9.5	11.5	18.8	16.0	13.7	17.4	15.0	8.6	11.6	10.3	9.8	9.0	9.1	6.9	16.7	14.2	9.3	13.3	12.2
	Jun	7.5	10.3	9.7	11.5	19.2	16.2	13.9	17.3	15.0	7.8	11.6	9.9	11.5	10.0	10.1	7.4	16.9	14.5	9.4	13.7	12.5
	Jul	8.3	10.3	9.9	11.4	19.5	16.4	14.0	17.2	15.1	7.3	11.5	9.6	13.3	11.1	11.2	7.9	16.6	14.4	9.6	14.0	12.7
	Aug	9.1	10.3	10.0	11.1	19.5	16.2	14.1	17.1	15.2	7.0	11.3	9.4	15.3	12.3	12.5	8.3	16.1	14.1	9.8	14.1	12.9
	Sep	9.8	10.3	10.2	10.5	19.3	15.9	14.0	16.9	15.0	6.7	11.0	9.1	17.4	13.7	14.0	8.6	15.7	13.9	9.9	14.4	13.1
	Oct	10.3	10.3	10.3	9.7	18.9	15.4	13.7	16.5	14.6	6.3	10.6	8.7	19.6	15.3	15.6	8.7	15.4	13.7	9.8	14.6	13.2
	Nov	10.5	10.3	10.3	8.8	18.4	14.8	12.9	16.0	14.0	5.7	10.0	8.1	22.0	16.8	17.2	8.5	14.7	13.1	9.5	14.6	13.2
	Dec	10.3	10.3	10.3	8.0	17.8	14.1	11.8	15.3	13.0	4.9	9.5	7.4	21.3	18.0	18.3	8.0	13.3	11.9	8.8	14.4	12.8
	2016 Jan	9.6	10.2	10.1	7.3	16.9	13.3	10.5	14.7	11.9	5.0	8.9	7.2	20.5	18.9	19.0	7.2	10.9	10.0	8.2	13.7	12.1
	Feb	8.5	10.0	9.7	6.7	15.7	12.3	9.0	14.1	10.8	4.8	8.3	6.7	19.9	19.2	19.3	6.1	7.9	7.4	7.4	12.6	11.1
	Mar	7.1	9.6	9.0	6.2	14.1	11.2	7.6	13.6	9.7	4.5	7.5	6.2	19.3	19.1	19.2	4.9	4.5	4.6	6.5	11.1	9.8

There was a step change in 2011 due to a change in reporting population

Data are seasonally adjusted and depict the underlying trend. The X12 ARIMA monthly seasonal adjustments include trading days and leap years.

¹ With effect of January 2010 Automotive Fuels was published as a separate sub-sector in retail sales. See tables 2A and 2B

Table 3A Card expenditure statistics (not seasonally adjusted)

Number of credit card transactions

Total detailed sector breakdown - retail sectors (not seasonally adjusted)

	March 2015	April 2015	May 2015	June 2015	July 2015	August 2015	September 2015	October 2015	November 2015	December 2015	January 2016	February 2016	March 2016	Total (latest 12 months)
Auto rental	1,193,921	1,196,151	1,275,474	1,359,244	1,434,851	1,326,238	1,303,950	1,151,878	998,297	981,026	612,241	888,934	1,009,700	13,537,984
Auto parts & accessories	840,390	779,734	751,096	792,874	804,641	719,173	756,119	739,903	708,859	667,834	708,116	739,096	794,884	8,962,329
Auto services	2,441,298	2,218,221	2,273,165	2,453,147	2,493,185	2,127,417	2,528,299	2,508,449	2,532,991	2,337,248	2,241,602	2,445,046	2,494,461	28,653,231
Auto repair shops	1,006,990	881,945	847,160	908,613	935,150	824,235	916,808	877,852	817,546	736,434	813,324	846,739	948,677	10,354,483
Vehicle sales	681,826	597,120	575,966	628,582	620,056	553,103	614,166	554,988	502,592	498,225	498,225	551,131	632,484	6,774,046
Vehicle Sales & Services	6,164,425	5,673,171	5,722,861	6,142,460	6,267,883	5,550,166	6,119,342	5,833,070	5,560,285	5,168,175	4,873,508	5,470,946	5,880,206	68,282,073
Restaurants	21,372,709	20,686,303	22,119,658	22,463,756	23,919,749	22,933,932	23,413,962	24,740,067	23,582,115	23,192,728	21,109,383	23,239,737	24,494,104	275,895,494
Public houses	3,198,159	3,215,619	3,369,184	3,533,498	3,720,743	3,557,930	3,682,197	3,629,802	3,430,734	3,494,214	2,812,691	3,401,457	3,634,587	41,482,656
Catering services	754,868	684,934	713,181	787,325	804,892	696,597	839,762	870,742	863,665	783,894	765,986	885,242	931,649	9,627,869
Video stores ¹	275,979	270,335	200,510	35,927	34,860	29,729	30,210	31,055	34,371	29,958	0	0	0	696,955
Cinema, theatre & dance	2,041,377	1,938,168	1,925,388	2,085,082	2,051,696	1,982,932	1,917,111	2,629,822	2,879,261	2,797,739	2,090,875	2,258,702	1,967,771	26,524,547
Concerts & entertainers	152,074	149,345	166,935	156,513	163,827	157,728	157,250	185,450	237,828	229,444	156,396	155,841	168,215	2,084,772
Tourist attractions	459,616	708,431	726,952	776,021	996,011	1,104,976	825,239	772,794	427,404	401,890	295,784	454,953	574,551	8,016,006
Amusement parks	50,917	102,760	96,299	82,396	112,107	154,933	81,849	83,729	46,958	43,257	28,937	49,130	69,006	951,361
Aquariums	32,243	57,254	48,833	45,299	63,489	91,367	53,524	52,560	23,180	22,817	17,953	35,111	45,285	556,672
Sports & games establishments	3,952,897	3,460,588	3,737,930	2,731,521	1,275,631	1,212,531	1,162,078	1,161,583	1,026,097	1,106,606	1,073,301	1,127,584	1,159,697	20,235,147
Professional sports clubs	114,926	100,813	94,128	73,111	92,563	95,775	116,527	138,959	91,141	84,870	85,939	84,928	93,169	1,151,923
Gambling	6,897,959	6,432,579	6,069,026	6,069,113	5,686,552	5,634,252	6,975,395	6,650,206	7,370,812	7,079,093	6,460,050	7,247,968	7,191,463	78,866,509
Personal services	314,164	301,029	319,298	331,951	354,987	303,313	324,285	310,550	328,756	358,296	272,512	271,059	290,261	3,766,297
Miscellaneous entertainment	812,753	841,015	875,849	860,432	922,486	957,592	911,170	897,296	776,322	678,343	853,593	883,472	913,567	10,371,137
Digital entertainment ²	0	0	0	0	0	0	0	0	0	0	4,447,839	4,332,304	4,221,633	13,001,776
Entertainment	40,430,641	38,949,173	40,463,171	40,031,945	40,199,593	38,913,587	40,490,559	42,105,615	41,118,644	40,303,149	40,471,239	44,427,488	45,754,958	493,229,121
Hotels	5,565,834	5,269,172	5,733,646	6,004,296	6,248,486	5,741,106	6,140,996	6,095,088	5,447,219	4,792,533	4,583,069	5,001,609	5,316,489	66,373,709
Airlines	2,916,620	2,790,617	2,744,863	2,743,875	2,635,743	2,539,206	2,878,630	2,662,795	2,268,844	1,995,821	2,998,060	2,673,006	2,784,555	31,716,015
Airport terminals	39,309	40,221	42,867	60,967	79,724	69,473	77,169	64,862	51,851	49,287	54,092	58,564	57,522	706,599
Railways	6,243,563	5,716,846	5,907,351	6,470,149	6,335,560	5,327,447	6,625,896	6,689,202	6,178,623	5,544,257	5,195,155	5,723,104	5,856,540	71,570,130
Buses	897,373	877,078	942,005	1,039,151	1,072,411	921,100	1,054,895	1,060,034	922,247	849,176	594,858	750,772	812,292	10,896,019
Sea travel	244,440	245,222	284,646	313,454	342,783	336,070	280,470	249,453	204,666	190,544	179,203	192,790	211,749	3,031,050
Travel agents	2,325,325	2,148,541	2,158,345	2,300,118	2,493,286	2,466,853	2,872,155	2,683,957	2,456,001	2,206,423	2,378,472	2,426,228	2,293,569	28,883,948
Timeshares	18,926	16,463	15,428	15,078	15,406	15,226	15,495	16,149	12,865	14,152	20,915	17,438	17,185	191,792
Camping grounds	179,593	256,111	283,155	290,446	355,853	364,500	224,430	175,281	81,427	57,923	111,708	138,776	204,000	2,543,610
Miscellaneous travel	2,185,122	2,145,222	2,364,363	2,555,817	2,753,382	2,603,191	2,791,112	2,993,837	2,765,484	2,707,160	2,526,566	2,585,728	2,806,512	31,598,374
Travel	15,050,271	14,236,321	14,743,023	15,789,055	16,084,148	14,643,066	16,820,252	16,595,570	14,942,008	13,614,743	14,059,029	14,566,398	15,043,924	181,137,537
Telegraph Services / Wire Transfer Mo	39,309	39,193	39,782	39,286	41,360	35,415	37,701	42,700	45,072	48,889	39,209	51,514	59,569	519,690
Insurance services	1,891,021	1,698,351	1,699,776	1,801,937	1,907,016	1,746,104	1,889,383	1,711,041	1,483,784	1,408,014	1,381,389	1,421,780	1,650,706	19,799,281
FIs - cash disbursements (auto & man	34,869	31,832	35,416	33,680	33,073	30,799	32,415	31,864	24,816	21,512	550,792	558,107	594,911	1,979,217
FIs - merchandise & services	226,114	204,758	206,765	216,127	205,252	206,980	230,273	229,139	230,890	228,583	151,158	220,086	290,571	2,620,582
Non-FIs - foreign currency, travellers' c	142,908	124,938	146,570	164,073	186,364	149,241	154,275	149,392	100,542	90,226	126,175	168,997	149,661	1,710,454
Security Brokers and Dealers	86,030	73,594	58,176	51,482	54,753	58,258	50,817	48,012	46,840	50,802	27,803	40,869	34,690	596,096
Tax Preparation Services	222	171	164	180	165	130	167	171	149	151	206	147	187	1,988
Tax Payments	31,554	25,386	22,745	22,671	27,230	24,222	27,025	29,166	28,584	29,526	80,333	102,686	44,855	464,429
Fines, bail and bond payments	61,440	57,529	59,061	57,592	55,921	51,939	52,964	54,322	50,427	48,237	50,342	50,679	52,393	641,406
Miscellaneous financial	109,690	101,552	93,819	77,950	77,969	94,571	98,596	94,734	88,180	74,767	73,498	82,751	93,933	1,052,320
Financial Services	2,623,157	2,357,304	2,362,274	2,464,978	2,589,103	2,397,659	2,573,616	2,390,541	2,099,284	2,000,707	2,480,905	2,697,616	2,971,476	29,385,463

Table 3A Card expenditure statistics (not seasonally adjusted)

Number of credit card transactions

Total detailed sector breakdown - retail sectors (not seasonally adjusted)

	March 2015	April 2015	May 2015	June 2015	July 2015	August 2015	September 2015	October 2015	November 2015	December 2015	January 2016	February 2016	March 2016	Total (latest 12 months)
Telecoms	2,011,489	1,880,500	1,922,334	1,928,822	1,973,383	1,924,936	2,092,987	2,080,681	1,940,834	2,003,810	1,814,246	1,725,062	1,823,034	23,110,629
Utilities	487,402	436,326	427,733	440,457	448,707	403,466	458,576	458,628	417,519	426,425	449,788	454,562	509,220	5,331,407
Contractors (residential & commercial)	305,029	269,581	256,792	282,117	287,241	252,139	298,479	300,990	289,692	243,938	262,985	284,503	294,018	3,322,475
Gardening services	49,745	61,814	61,712	57,097	44,371	38,766	37,797	35,660	31,270	36,082	21,592	29,452	44,802	500,415
Veterinary services	646,035	622,905	618,115	663,167	709,127	658,795	686,634	685,496	648,744	657,963	629,688	627,315	658,903	7,866,852
Photocopying & printing	356,810	306,707	313,631	329,218	324,485	300,813	347,779	366,925	443,125	473,101	279,666	283,803	286,953	4,056,206
Photographic studios	144,869	145,090	174,713	212,094	227,091	158,889	177,443	247,861	257,802	209,338	99,974	109,688	121,389	2,141,372
Beauty & barber shops	1,666,855	1,606,010	1,655,159	1,747,446	1,843,388	1,596,885	1,699,440	1,702,637	1,734,313	2,178,929	1,404,971	1,533,364	1,615,073	20,317,615
Employment agencies	30,983	23,911	25,445	24,751	29,264	24,469	24,417	27,041	22,876	24,025	22,943	23,780	28,725	301,647
Counselling services	6,617	6,086	6,166	6,396	6,401	6,112	6,568	6,421	6,199	5,537	6,681	6,990	17,974	87,531
Legal services	49,043	55,916	54,384	58,462	58,658	52,843	57,570	57,545	54,968	47,949	52,761	57,552	60,078	668,686
Laundry & cleaning	201,096	196,740	205,190	231,906	231,540	194,883	223,378	225,063	210,466	192,013	189,601	185,628	187,794	2,474,202
Funeral services	14,892	13,428	12,481	13,209	13,013	11,509	12,676	12,533	12,353	11,996	12,350	13,581	24,032	163,161
Medical services	1,427,029	1,315,926	1,273,377	1,423,803	1,424,064	1,227,114	1,429,760	1,419,589	1,399,205	1,271,969	1,345,131	1,389,102	1,428,929	16,347,969
Moving & courier services	472,955	438,750	446,512	489,862	481,773	401,022	493,607	515,683	503,551	484,739	429,665	455,459	458,643	5,599,266
Repair shops (not auto)	248,012	230,754	233,869	227,133	251,891	256,669	251,599	255,334	246,572	245,563	71,445	135,404	137,783	2,544,016
Accounting services	33,980	26,293	25,139	27,343	28,710	30,067	36,118	33,872	33,466	32,888	38,677	35,902	36,095	384,570
Advertising, consultancy & PR	76,871	69,968	67,593	213,928	213,188	194,280	238,152	229,117	232,565	216,913	193,745	229,065	239,622	2,338,136
Computer programming	1,770,182	1,522,341	1,683,941	1,767,243	1,796,768	1,679,534	1,826,515	1,984,028	2,476,731	2,802,291	1,853,205	1,799,310	1,941,239	23,133,146
Farming services	120,886	112,230	111,653	113,763	110,614	103,310	112,362	110,239	112,342	120,183	103,204	104,111	113,681	1,327,692
Miscellaneous professional services	1,256,221	1,145,396	1,172,760	1,222,125	1,223,140	1,132,654	1,229,566	1,249,715	1,269,091	1,225,748	1,179,121	1,259,174	1,381,871	14,690,361
Engineering services	55,916	51,747	49,923	55,074	55,177	47,347	51,070	52,002	49,528	43,139	45,370	49,741	51,236	601,354
Marina services	52,246	72,247	76,153	87,219	99,722	96,960	72,889	54,329	36,986	33,737	33,340	36,059	52,383	752,024
Wrecking & salvage yards	4,567	4,397	4,073	4,333	4,265	3,576	3,878	3,924	3,586	2,766	3,321	3,752	3,937	45,808
Pest control	3,196	3,238	3,210	4,040	4,354	3,285	3,137	3,166	2,941	2,405	2,602	2,606	2,969	37,953
Educational establishments	942,386	772,482	788,699	850,900	724,232	564,038	1,127,616	1,027,536	1,024,979	777,412	967,850	891,670	954,394	10,471,808
Child care services	24,365	21,413	23,088	22,023	24,734	23,962	23,504	25,052	24,368	23,289	26,447	29,913	25,440	293,233
Social, political & religious organisation	1,532,543	1,572,461	1,596,456	1,535,985	1,489,763	1,390,248	1,595,973	1,448,509	1,429,775	1,478,062	1,189,795	1,285,433	1,450,156	17,462,616
Government services	2,965,516	2,804,226	2,812,774	2,999,614	3,000,265	2,717,590	2,985,182	2,914,716	2,676,440	2,507,188	2,508,077	2,759,864	2,894,112	33,580,048
Miscellaneous services	1,577,042	1,461,026	1,404,915	1,597,799	1,524,738	1,343,005	1,580,527	1,542,490	1,633,858	2,311,859	1,409,480	1,498,474	1,647,464	18,955,635
Commercial equipment	988,720	875,358	854,010	883,758	880,569	782,068	951,208	910,033	922,433	878,331	827,524	814,262	823,047	10,402,601
Other Services	19,523,498	18,125,267	18,362,000	19,621,087	19,534,636	17,621,234	20,136,407	19,986,815	20,148,578	20,969,588	17,475,245	18,114,581	19,314,996	229,310,434
Total services	89,357,826	84,610,408	87,386,975	89,953,821	90,943,849	84,866,818	92,281,172	93,006,699	89,316,018	86,848,895	83,942,995	90,278,638	94,282,049	1,067,718,337
TOTAL	257,406,489	249,347,597	254,932,499	269,204,483	272,998,787	251,255,618	273,967,136	272,737,295	284,983,325	298,498,888	240,846,938	252,609,118	268,447,127	3,189,828,811

¹ With effect of January 2016 *Record shops* and *Video stores* were discontinued as separate categories and merged with *Digital entertainment* category.

² *Digital entertainment* category is effective from January 2016.

Table 3B Card expenditure statistics (not seasonally adjusted)

Value of credit card transactions

Total detailed sector breakdown - retail sectors (not seasonally adjusted)

£	March 2015	April 2015	May 2015	June 2015	July 2015	August 2015	September 2015	October 2015	November 2015	December 2015	January 2016	February 2016	March 2016	Total (latest 12 months)
Auto rental	148,511,563	145,743,577	169,204,770	201,946,636	221,376,504	170,823,458	146,658,827	126,226,020	112,771,021	123,869,335	69,353,373	109,304,797	128,524,160	1,725,802,480
Auto parts & accessories	136,953,966	122,643,324	118,718,992	124,189,942	125,257,720	110,952,722	119,908,876	117,510,509	111,999,228	103,721,051	109,411,275	115,149,026	125,595,757	1,405,058,420
Auto services	60,331,663	53,723,262	55,702,996	60,187,464	59,383,755	51,011,590	59,999,907	55,891,964	52,833,851	47,169,505	51,787,840	54,990,894	60,181,460	662,864,488
Auto repair shops	258,176,350	217,569,585	211,092,719	224,862,211	232,156,747	203,100,885	226,873,364	219,961,121	203,281,305	181,991,601	202,213,461	212,221,087	235,750,015	2,571,074,101
Vehicle sales	292,612,770	222,903,256	216,508,690	233,464,662	227,277,465	202,387,353	238,069,624	215,752,162	194,751,912	166,591,985	199,895,342	225,858,429	252,999,668	2,596,460,548
<i>Vehicle Sales & Services</i>	<i>896,586,312</i>	<i>702,583,004</i>	<i>771,228,167</i>	<i>844,650,915</i>	<i>865,452,191</i>	<i>738,276,008</i>	<i>791,510,598</i>	<i>735,341,776</i>	<i>675,637,317</i>	<i>623,343,477</i>	<i>632,661,291</i>	<i>717,524,233</i>	<i>803,051,060</i>	<i>8,961,260,037</i>
Restaurants	669,678,017	645,068,495	694,545,735	702,783,340	740,960,377	702,496,286	705,632,441	740,633,963	707,102,971	811,885,797	592,175,035	657,339,747	695,421,996	8,396,046,183
Public houses	125,477,614	123,782,213	130,939,891	136,806,327	143,743,255	137,071,403	140,868,749	137,872,218	132,789,613	157,787,204	103,605,805	121,751,154	131,846,315	1,598,864,147
Catering services	63,996,710	59,994,850	63,719,219	67,340,385	65,966,773	57,399,412	61,883,448	63,975,928	61,901,913	66,799,961	51,522,683	54,884,964	61,199,747	736,589,283
Video stores ¹	3,351,434	3,599,002	2,743,166	872,670	718,943	562,149	860,835	769,176	766,243	813,938	0	0	0	11,706,122
Cinema, theatre & dance	149,836,491	123,946,012	133,045,654	136,751,241	139,973,137	113,210,194	138,671,085	164,297,410	181,609,150	179,160,828	114,795,357	154,909,098	126,773,526	1,707,142,692
Concerts & entertainers	10,807,981	9,500,877	10,935,525	10,021,260	10,133,023	9,193,579	10,469,928	13,934,067	15,265,783	14,375,402	9,777,432	10,878,167	11,592,061	136,077,104
Tourist attractions	31,671,940	41,658,753	42,816,707	46,532,568	55,904,211	55,885,322	43,803,704	39,056,236	25,226,975	24,567,325	22,048,667	30,224,300	37,131,393	464,856,161
Amusement parks	3,030,587	5,250,113	4,972,863	5,030,614	6,211,527	7,165,418	3,787,649	4,000,736	2,434,703	2,220,783	1,707,781	2,407,774	3,468,348	48,658,309
Aquariums	1,674,159	2,887,754	2,554,822	2,391,541	3,384,423	4,598,116	2,588,087	2,521,135	1,242,527	1,436,290	958,375	1,677,941	2,311,632	28,552,193
Sports & games establishments	138,508,223	136,368,112	194,885,842	116,716,395	90,592,545	74,132,073	77,170,877	75,539,798	73,865,851	74,784,808	72,885,614	77,183,985	97,318,008	1,161,443,908
Professional sports clubs	10,656,449	11,487,953	12,896,246	9,164,171	8,473,331	6,802,013	8,818,704	9,665,428	6,425,054	5,932,888	7,235,748	6,141,442	10,423,111	103,466,089
Gambling	143,440,446	134,356,659	126,943,139	124,621,145	122,547,822	127,142,100	154,276,526	140,204,755	145,047,120	141,729,680	131,632,543	146,035,915	139,990,463	1,634,527,867
Personal services	21,130,957	19,916,391	20,444,008	21,181,866	21,635,816	19,132,888	20,679,005	21,795,991	23,731,989	24,178,400	19,118,718	18,329,356	20,065,880	250,210,308
Miscellaneous entertainment	218,182,345	209,875,415	210,530,581	205,939,584	195,509,752	183,089,729	221,708,848	217,988,952	185,934,282	144,016,490	222,649,548	210,504,737	213,214,092	2,420,962,010
Digital entertainment ²	0	0	0	0	0	0	0	0	0	0	72,921,946	65,629,996	66,962,259	205,514,201
<i>Entertainment</i>	<i>1,591,443,353</i>	<i>1,527,692,599</i>	<i>1,651,973,398</i>	<i>1,586,153,107</i>	<i>1,605,754,935</i>	<i>1,497,880,682</i>	<i>1,591,219,866</i>	<i>1,632,255,793</i>	<i>1,563,344,174</i>	<i>1,649,689,794</i>	<i>1,423,035,252</i>	<i>1,557,898,126</i>	<i>1,617,718,831</i>	<i>18,904,616,577</i>
<i>Hotels</i>	<i>942,484,709</i>	<i>907,599,176</i>	<i>1,019,654,449</i>	<i>1,115,988,854</i>	<i>1,153,851,692</i>	<i>1,019,172,305</i>	<i>1,138,449,463</i>	<i>1,131,102,394</i>	<i>952,168,622</i>	<i>804,719,663</i>	<i>757,221,246</i>	<i>823,621,694</i>	<i>897,822,070</i>	<i>11,721,371,626</i>
Airlines	766,151,551	702,053,181	701,660,254	696,341,750	676,219,611	613,493,514	699,526,964	658,246,861	527,038,179	456,708,599	781,107,256	699,791,020	726,219,552	7,938,406,741
Airport terminals	3,568,962	3,557,448	3,949,288	4,674,046	4,856,163	4,124,175	4,854,186	4,113,221	3,299,053	2,949,638	3,007,315	3,326,106	3,578,574	46,289,213
Railways	257,917,388	242,807,779	241,626,010	270,415,271	256,489,790	213,494,979	292,545,465	288,942,717	262,654,076	261,752,701	264,601,936	245,197,397	244,862,509	3,085,390,630
Buses	36,631,711	36,669,273	38,810,768	42,336,848	45,038,412	39,522,335	44,445,654	40,952,291	33,796,186	31,797,546	24,723,285	28,736,549	32,884,194	439,713,341
Sea travel	74,094,419	70,345,119	75,258,094	82,905,152	89,287,165	89,489,850	78,322,021	70,622,349	58,540,056	55,016,002	65,424,098	65,076,538	66,743,099	867,028,243
Travel agents	677,213,914	636,429,875	694,109,931	715,309,531	718,164,106	625,920,300	651,971,105	596,020,752	494,286,537	478,934,223	651,181,135	662,726,555	676,297,109	7,601,351,159
Timeshares	2,500,377	2,294,401	2,155,021	2,188,135	2,154,152	2,115,184	2,171,178	2,211,899	1,813,768	1,992,726	2,973,452	2,490,254	2,569,030	27,129,200
Camping grounds	31,773,059	31,585,217	38,296,710	41,626,530	44,997,143	36,415,545	23,509,369	21,137,768	26,116,656	18,339,074	23,442,138	26,653,335	34,820,649	366,940,134
Miscellaneous travel	78,078,847	73,365,774	80,393,163	92,406,988	90,993,307	76,199,521	78,015,752	77,668,623	69,582,244	64,924,525	71,749,393	72,051,856	78,340,935	925,692,081
<i>Travel</i>	<i>1,927,930,228</i>	<i>1,799,108,067</i>	<i>1,876,259,239</i>	<i>1,948,204,251</i>	<i>1,928,199,849</i>	<i>1,700,775,403</i>	<i>1,875,361,694</i>	<i>1,759,916,481</i>	<i>1,477,126,755</i>	<i>1,372,415,034</i>	<i>1,888,210,008</i>	<i>1,806,048,310</i>	<i>1,866,315,651</i>	<i>21,297,940,742</i>
Telegraph Services / Wire Transfer Mo	5,992,464	5,923,618	6,114,317	6,536,577	6,471,447	5,943,600	6,487,084	6,904,014	7,026,277	7,717,450	5,167,279	7,536,040	8,457,252	80,284,955
Insurance services	361,798,426	323,000,940	316,226,441	334,766,895	347,819,888	320,817,052	356,103,142	331,064,319	295,117,545	270,369,552	268,398,351	269,696,839	321,407,351	3,754,788,315
FIs - cash disbursements (auto & man	10,577,847	9,429,638	9,631,741	9,367,783	10,354,358	9,506,666	9,502,947	9,129,878	6,967,781	6,950,911	82,175,858	82,617,658	89,153,100	334,788,319
FIs - merchandise & services	58,152,978	41,279,960	42,579,342	43,929,202	43,023,976	40,296,918	43,985,298	45,491,460	41,460,944	38,396,075	32,845,817	40,550,783	45,483,693	499,323,468
Non-FIs - foreign currency, travellers' c	63,620,229	56,628,227	67,222,706	73,535,011	92,927,401	75,258,385	68,451,584	66,056,132	42,616,426	35,928,355	40,062,783	48,964,679	60,059,677	727,711,366
Security Brokers and Dealers	27,870,296	20,381,525	15,110,591	13,740,275	15,752,848	18,165,611	14,471,679	13,789,971	13,416,254	14,525,477	10,215,419	13,191,755	11,571,786	174,333,191
Tax Preparation Services	292,548	220,373	409,535	223,333	264,545	111,817	334,984	163,865	161,794	138,962	126,324	140,720	157,391	2,453,643
Tax Payments	35,885,269	29,681,688	28,870,892	29,080,962	40,077,012	41,669,142	46,412,507	61,777,586	61,806,574	49,237,767	111,997,686	171,090,952	75,281,064	746,983,832
Fines, bail and bond payments	10,075,503	8,758,899	9,696,864	10,079,148	9,534,468	8,645,049	9,034,960	9,289,458	8,264,594	8,118,397	8,396,759	8,463,461	8,668,557	106,950,614
Miscellaneous financial	19,832,261	18,249,952	17,710,342	16,383,592	16,514,716	17,043,493	19,054,021	18,315,461	18,009,436	15,590,254	15,651,345	16,932,819	18,317,185	207,772,616
<i>Financial Services</i>	<i>594,097,821</i>	<i>513,554,820</i>	<i>513,572,771</i>	<i>537,642,778</i>	<i>582,740,659</i>	<i>537,457,733</i>	<i>573,838,206</i>	<i>561,982,144</i>	<i>494,847,625</i>	<i>446,973,200</i>	<i>575,037,621</i>	<i>659,185,706</i>	<i>638,557,056</i>	<i>6,635,390,319</i>

Table 3B Card expenditure statistics (not seasonally adjusted)

Value of credit card transactions

Total detailed sector breakdown - retail sectors (not seasonally adjusted)

£	March 2015	April 2015	May 2015	June 2015	July 2015	August 2015	September 2015	October 2015	November 2015	December 2015	January 2016	February 2016	March 2016	Total (latest 12 months)
Telecoms	87,840,085	80,615,666	82,088,386	80,972,314	85,012,575	82,703,450	92,947,387	95,617,975	91,103,509	96,117,898	86,450,293	78,761,155	86,316,164	1,038,706,772
Utilities	85,907,565	75,339,731	70,392,244	70,069,707	67,902,548	58,719,985	67,445,974	67,653,200	60,890,739	63,298,836	71,653,941	74,954,561	90,678,039	838,999,505
Contractors (residential & commercial)	102,112,164	88,432,338	89,063,293	97,327,231	94,783,903	82,603,621	101,407,698	98,532,783	96,462,412	78,520,102	84,428,023	91,276,111	95,941,362	1,098,778,877
Gardening services	7,346,597	7,288,044	6,572,988	8,048,588	5,771,320	4,558,448	5,803,969	4,269,502	3,579,431	4,567,261	3,121,649	3,484,076	6,957,489	64,022,765
Veterinary services	63,640,842	61,323,389	60,628,149	65,289,881	68,961,663	63,601,203	66,725,128	66,835,368	63,344,716	62,889,413	63,411,048	63,215,144	66,243,335	772,468,437
Photocopying & printing	49,794,168	44,074,718	42,185,198	44,933,136	42,244,687	39,539,847	48,566,660	49,173,439	52,399,545	51,340,918	39,489,393	41,042,527	44,313,978	539,304,046
Photographic studios	7,754,624	7,503,910	8,367,461	9,380,420	10,948,180	7,967,319	8,793,083	10,688,905	11,450,162	9,631,418	5,845,427	6,734,721	7,202,947	104,513,953
Beauty & barber shops	93,279,346	89,872,540	92,493,995	96,310,049	100,737,543	88,405,995	95,226,709	97,009,055	99,504,663	120,033,015	78,526,620	86,533,256	92,091,222	1,136,744,662
Employment agencies	33,059,121	24,078,232	27,482,769	29,995,881	33,913,788	29,593,814	29,907,174	33,347,226	29,216,472	33,253,711	25,019,041	29,550,435	33,274,523	358,633,066
Counselling services	1,602,832	1,636,561	1,483,461	1,533,704	1,569,197	1,503,756	1,635,442	1,550,569	1,589,397	1,592,916	1,803,066	2,014,735	1,714,867	19,627,671
Legal services	26,143,020	22,567,722	22,217,555	24,811,064	24,533,203	21,224,778	23,710,453	24,050,736	23,469,552	20,159,445	21,823,984	24,863,304	26,141,106	279,572,902
Laundry & cleaning	6,828,995	6,740,501	6,895,807	7,817,655	7,940,675	6,785,612	7,698,303	7,715,978	7,284,862	6,544,398	6,657,949	6,341,762	6,498,670	84,922,172
Funeral services	18,775,262	15,805,909	14,081,297	14,640,338	14,072,307	12,856,110	14,218,937	15,188,382	14,924,560	14,224,890	14,842,614	16,793,395	18,178,602	179,827,341
Medical services	197,252,618	178,832,074	176,910,998	195,038,959	195,676,704	166,156,954	192,129,662	195,210,910	193,102,516	169,665,799	177,865,670	188,719,460	198,921,680	2,228,231,386
Moving & courier services	46,957,486	43,290,103	43,355,686	48,681,948	52,140,616	39,985,486	47,012,957	47,833,270	44,801,500	42,970,299	40,484,981	41,879,871	43,115,692	535,552,409
Repair shops (not auto)	21,895,955	17,692,017	19,096,738	18,577,784	22,696,987	20,597,007	20,255,260	20,708,574	22,805,642	22,341,008	10,560,758	14,056,499	16,485,624	223,873,898
Accounting services	9,487,893	7,184,082	6,521,564	6,886,821	7,442,988	7,095,400	7,892,602	7,775,594	8,062,228	8,379,208	10,269,054	9,597,055	9,976,904	97,083,500
Advertising, consultancy & PR	9,428,613	8,283,046	7,771,648	19,682,774	19,611,818	17,539,859	21,650,491	21,515,796	21,420,247	20,679,574	19,102,098	22,130,754	22,544,716	221,932,821
Computer programming	118,672,351	108,221,422	114,481,556	122,083,687	118,411,210	110,315,539	117,111,871	128,945,691	156,145,618	167,368,787	120,259,140	118,281,698	130,254,039	1,511,880,258
Farming services	12,275,257	11,005,129	10,846,069	12,064,602	12,080,762	10,948,496	11,989,201	11,853,475	11,190,085	11,349,632	10,307,178	10,442,004	11,334,104	135,410,737
Miscellaneous professional services	203,128,533	179,563,189	174,233,195	188,019,778	180,749,574	174,674,194	206,893,863	183,398,931	171,074,659	177,031,195	174,990,495	173,379,951	185,050,826	2,169,059,850
Engineering services	17,339,285	15,424,298	14,558,375	16,964,189	16,927,353	14,247,722	15,368,369	15,366,499	14,611,424	13,236,199	13,916,982	14,688,284	15,590,747	180,900,441
Marina services	11,186,321	10,805,830	10,406,418	11,776,069	11,782,882	10,066,496	8,538,055	6,791,605	5,279,694	4,767,272	6,320,061	6,514,353	10,132,718	103,181,453
Wrecking & salvage yards	1,005,827	890,164	806,687	931,617	931,617	729,360	830,684	865,837	788,798	660,217	714,948	781,257	878,734	9,783,564
Pest control	668,748	641,273	660,846	781,028	825,106	698,923	698,514	694,076	572,861	603,865	617,256	617,907	747,741	8,159,396
Educational establishments	147,228,439	178,384,234	143,923,642	145,560,177	148,633,293	185,549,246	412,611,719	248,488,439	134,065,727	128,561,910	217,271,159	143,814,763	133,560,132	2,220,424,441
Child care services	3,018,286	2,629,973	2,652,615	3,086,942	3,121,760	2,544,788	3,067,731	2,945,985	2,818,486	2,575,311	2,955,177	3,188,310	3,080,609	34,667,687
Social, political & religious organisation	107,773,218	93,746,360	90,785,591	91,642,357	94,457,506	81,110,835	98,171,005	99,937,531	91,576,239	108,629,418	104,039,409	94,677,405	96,219,768	1,144,993,424
Government services	291,162,522	282,484,904	261,961,093	276,131,076	296,889,828	272,117,869	271,887,691	229,862,472	204,808,585	201,023,916	208,296,740	220,544,548	248,056,148	2,974,064,870
Miscellaneous services	100,539,107	86,575,646	88,749,771	92,845,523	88,921,924	84,652,201	94,182,215	91,685,826	89,437,685	104,008,929	86,221,461	85,922,093	94,687,349	1,087,890,623
Commercial equipment	150,582,767	128,331,261	127,580,216	135,192,369	137,543,065	120,815,761	139,209,325	137,941,430	131,511,755	115,831,995	117,918,597	121,017,020	129,771,179	1,542,663,973
Other Services	2,033,687,847	1,879,264,266	1,819,255,311	1,937,051,312	1,967,236,562	1,819,910,074	2,233,588,132	2,023,455,059	1,857,293,769	1,861,856,755	1,825,184,212	1,795,818,414	1,925,961,014	22,945,876,900
Total services	7,986,230,270	7,389,801,932	7,651,943,335	7,969,691,217	8,103,235,908	7,313,472,205	8,203,967,979	7,844,053,647	7,020,418,262	6,758,999,923	7,101,349,630	7,360,096,483	7,749,425,682	90,466,456,203
TOTAL	15,515,429,703	14,650,360,686	15,018,977,361	15,717,281,585	15,818,165,377	14,364,831,113	15,912,435,561	15,571,898,738	15,673,369,483	16,229,159,224	13,690,614,815	14,031,298,951	15,085,307,273	181,763,700,167

¹ With effect of January 2016 *Record shops* and *Video stores* were discontinued as separate categories and merged with *Digital entertainment* category.² *Digital entertainment* category is effective from January 2016.

Table 3C Card expenditure statistics (not seasonally adjusted)

Number of debit card transactions

Total detailed sector breakdown - retail sectors (not seasonally adjusted)

	March 2015	April 2015	May 2015	June 2015	July 2015	August 2015	September 2015	October 2015	November 2015	December 2015	January 2016	February 2016	March 2016	Total (latest 12 months)
Auto rental	723,739	733,045	766,330	809,028	861,277	814,403	782,453	726,539	635,714	647,798	468,814	603,110	687,568	8,536,079
Auto parts & accessories	1,807,082	1,733,359	1,677,413	1,757,107	1,794,227	1,622,556	1,729,711	1,723,516	1,615,989	1,484,125	1,645,122	1,779,279	1,893,409	20,455,813
Auto services	6,079,092	5,786,788	5,960,997	6,243,592	6,461,731	5,926,722	6,666,646	6,713,529	6,984,468	7,203,982	6,231,557	6,936,214	7,102,049	78,218,275
Auto repair shops	2,091,334	1,906,380	1,845,954	1,957,282	2,021,309	1,792,264	2,002,377	1,959,904	1,809,370	1,581,269	1,818,961	1,934,030	2,159,913	22,789,013
Vehicle sales	1,465,178	1,341,974	1,304,324	1,393,684	1,395,448	1,273,628	1,403,841	1,287,479	1,144,930	990,155	1,164,644	1,305,099	1,501,997	15,507,203
Vehicle Sales & Services	12,166,425	11,501,546	11,555,018	12,160,693	12,533,992	11,429,573	12,585,028	12,410,967	12,190,471	11,907,329	11,329,098	12,557,732	13,344,936	145,506,383
Restaurants	93,500,204	89,307,716	96,536,129	92,098,252	95,443,427	96,356,379	97,407,724	106,813,856	105,897,101	105,365,363	96,828,049	107,412,592	113,027,628	1,202,494,216
Public houses	14,036,214	14,008,762	14,443,267	14,539,151	14,494,903	14,605,330	15,385,374	15,398,155	15,440,257	15,254,691	12,899,685	16,333,371	17,060,690	179,863,636
Catering services	3,166,277	2,785,753	2,941,984	3,084,055	3,198,407	2,825,539	3,464,917	3,777,595	4,124,198	3,633,042	3,722,191	4,427,848	4,622,778	42,608,307
Video stores ¹	59,131	56,947	50,290	37,103	32,324	27,893	28,485	30,817	33,263	32,758	0	0	0	329,880
Cinema, theatre & dance	5,222,015	6,282,496	5,573,609	6,329,700	6,022,647	5,732,984	5,358,151	7,223,830	7,563,831	7,667,573	6,246,709	7,307,866	6,269,860	77,579,256
Concerts & entertainers	420,837	411,175	469,710	406,311	444,536	471,229	433,830	496,054	594,801	572,759	486,384	480,837	499,173	5,766,799
Tourist attractions	911,748	1,470,138	1,324,234	1,246,987	1,586,400	2,164,335	1,475,346	1,413,199	861,960	819,755	605,581	1,074,571	1,240,935	15,283,441
Amusement parks	194,669	404,226	389,695	335,347	402,204	585,657	348,473	344,076	201,962	153,268	121,901	218,235	292,267	3,797,311
Aquariums	135,747	225,420	188,315	172,673	219,189	333,136	210,462	202,754	90,760	77,093	78,311	161,756	206,975	2,166,844
Sports & games establishments	4,567,241	4,398,042	4,923,177	4,369,973	3,820,778	3,916,486	3,606,927	3,669,012	3,300,383	3,239,392	3,641,555	3,985,831	4,000,793	46,872,349
Professional sports clubs	253,113	244,215	260,980	201,352	253,114	272,854	292,663	323,305	251,470	239,792	241,220	260,854	269,683	3,111,502
Gambling	33,237,256	31,280,685	26,972,947	24,717,510	21,087,634	23,371,720	26,652,891	26,102,952	29,438,725	29,169,958	28,604,951	29,759,085	31,501,266	328,660,324
Personal services	538,480	515,890	531,825	586,675	578,353	470,185	507,286	438,612	440,431	472,964	421,314	463,245	502,836	5,929,616
Miscellaneous entertainment	1,057,060	1,182,248	1,181,586	1,067,274	1,303,472	1,648,416	1,208,396	1,268,462	1,060,780	975,588	1,207,372	1,490,507	1,397,995	14,992,096
Digital entertainment ²	0	0	0	0	0	0	0	0	0	0	2,510,644	2,711,027	2,561,304	7,782,875
Entertainment	157,299,992	152,573,713	155,787,748	149,192,363	148,887,388	152,782,143	156,380,925	167,502,679	169,299,922	167,673,996	157,615,867	176,087,625	183,454,183	1,937,238,552
Hotels	6,179,040	6,153,720	6,510,714	6,407,385	6,830,350	7,215,413	6,680,119	6,730,681	6,247,947	6,076,892	5,636,874	6,262,636	6,563,735	77,316,466
Airlines	2,597,389	2,735,689	2,539,694	2,576,766	2,617,254	2,527,732	2,627,469	2,418,202	2,087,670	1,902,251	2,785,520	2,536,286	2,621,928	29,976,461
Airport terminals	53,131	57,303	61,166	95,774	143,419	136,221	145,613	108,922	85,081	91,649	90,937	106,062	114,149	1,236,296
Railways	18,726,186	16,821,310	16,978,171	18,284,136	17,814,699	15,721,937	19,018,031	19,328,179	18,496,741	17,781,320	15,596,808	17,752,283	17,698,866	211,292,481
Buses	2,616,455	2,476,466	2,601,165	2,634,657	2,623,817	2,517,134	2,760,560	2,984,519	2,737,187	2,775,457	1,919,780	2,399,038	2,558,937	30,988,717
Sea travel	215,397	251,162	262,288	289,016	334,092	371,819	273,980	237,962	191,233	203,672	140,203	172,683	209,099	2,937,209
Travel agents	2,403,521	2,162,095	2,220,577	2,239,108	2,246,077	2,020,766	1,956,929	1,760,123	1,410,182	1,237,214	2,271,294	2,221,795	2,258,607	24,004,767
Timeshares	5,164	4,479	4,420	4,132	4,333	4,124	4,041	4,770	3,929	4,606	7,190	5,964	5,727	57,715
Camping grounds	626,283	940,746	997,412	946,989	1,200,855	1,439,346	796,241	693,983	319,126	206,761	359,723	469,914	805,651	9,176,747
Miscellaneous travel	7,932,037	8,062,357	9,208,544	9,762,490	10,742,465	10,669,782	11,456,326	12,932,262	12,547,484	12,875,333	12,411,283	12,657,182	13,787,157	137,112,665
Travel	35,175,563	33,511,607	34,873,437	36,833,068	37,727,011	35,408,861	39,039,190	40,468,922	37,878,633	37,078,263	35,582,738	38,321,207	40,060,121	446,783,058
Telegraph Services / Wire Transfer Mo	288,381	277,848	297,114	306,139	314,377	307,340	318,340	327,696	333,292	357,686	167,183	295,737	312,475	3,615,227
Insurance services	4,117,322	3,825,147	3,820,985	4,034,057	4,237,979	3,916,536	4,224,869	3,967,139	3,474,709	3,126,838	3,118,675	3,271,803	3,728,151	44,746,888
FIs - cash disbursements (auto & man	59,815	62,053	74,868	80,326	93,774	82,414	71,309	66,070	51,707	54,616	110,170	133,686	148,241	1,029,234
FIs - merchandise & services	9,170,794	8,250,848	8,559,706	8,619,092	8,913,967	8,670,555	8,988,249	9,300,289	8,896,575	9,322,814	9,013,642	9,014,159	9,652,149	107,202,043
Non-FIs - foreign currency, travellers' c	1,004,685	925,719	1,082,533	1,252,894	1,452,583	1,279,891	1,114,077	1,020,188	730,992	769,514	841,567	1,046,276	1,292,035	12,808,269
Security Brokers and Dealers	340,988	343,533	299,020	262,572	268,671	273,171	248,724	246,373	256,397	238,608	244,317	272,024	296,089	3,249,499
Tax Preparation Services	596	517	514	541	570	482	524	550	533	490	707	568	654	6,650
Tax Payments	256,706	207,366	187,960	205,893	283,915	205,615	253,951	302,011	301,720	332,246	878,345	810,249	373,570	4,342,841
Fines, bail and bond payments	625,302	596,625	636,182	597,015	633,600	614,343	603,518	662,041	597,398	612,506	617,720	570,435	605,841	7,347,224
Miscellaneous financial	178,217	195,197	189,394	154,367	156,218	192,936	200,274	194,475	175,173	145,192	140,895	163,930	189,678	2,097,729
Financial Services	16,042,806	14,684,853	15,148,276	15,512,896	16,355,654	15,543,283	16,023,835	16,086,832	14,818,496	14,960,508	15,133,221	15,578,867	16,598,883	186,445,604

Table 3C Card expenditure statistics (not seasonally adjusted)

Number of debit card transactions

Total detailed sector breakdown - retail sectors (not seasonally adjusted)

	March 2015	April 2015	May 2015	June 2015	July 2015	August 2015	September 2015	October 2015	November 2015	December 2015	January 2016	February 2016	March 2016	Total (latest 12 months)
Telecoms	12,102,464	11,385,024	11,830,487	11,459,811	11,812,331	11,750,977	12,137,640	12,483,808	11,665,232	12,203,973	11,465,696	10,667,467	11,244,164	140,106,610
Utilities	3,012,092	2,762,973	2,745,037	2,760,743	2,830,632	2,497,955	2,682,454	2,742,397	2,567,806	2,947,587	3,133,038	3,144,591	3,438,082	34,253,295
Contractors (residential & commercial)	625,346	601,936	572,201	638,709	651,765	580,639	692,068	701,458	682,778	583,114	591,124	653,759	677,130	7,626,681
Gardening services	101,250	127,534	130,078	121,480	96,257	83,590	84,254	79,834	75,855	89,379	52,545	69,179	100,268	1,110,253
Veterinary services	1,838,669	1,785,870	1,789,097	1,891,374	2,030,535	1,927,330	2,008,607	2,021,930	1,897,331	1,888,887	1,844,113	1,882,657	2,000,697	22,968,428
Photocopying & printing	566,022	524,733	543,503	565,908	561,525	547,385	629,685	638,512	687,482	682,068	399,009	411,409	412,146	6,603,365
Photographic studios	526,284	517,470	608,533	704,388	729,417	557,532	599,326	825,535	858,862	805,162	405,433	469,118	516,353	7,597,129
Beauty & barber shops	5,720,662	5,477,128	5,731,831	5,908,854	6,175,325	5,488,314	5,794,306	5,866,583	5,706,301	7,171,137	4,880,311	5,592,767	5,847,091	69,639,948
Employment agencies	10,559	10,285	11,060	10,478	10,410	8,466	10,301	10,223	9,237	7,780	10,918	13,070	13,526	125,754
Counselling services	121,883	108,707	111,090	113,980	114,890	109,103	120,690	125,240	110,652	107,505	108,824	118,669	128,957	1,378,307
Legal services	199,467	178,332	175,970	196,185	200,270	176,219	198,165	198,869	188,726	160,523	177,995	202,734	202,547	2,256,535
Laundry & cleaning	508,569	490,085	517,900	567,827	559,914	493,511	572,053	593,123	560,066	505,143	494,659	508,897	507,096	6,370,274
Funeral services	41,198	36,311	34,372	36,574	36,574	32,411	35,882	37,279	36,178	36,513	38,923	43,655	46,877	451,550
Medical services	3,546,287	3,250,999	3,150,261	3,497,928	3,520,755	3,111,044	3,632,736	3,651,809	3,558,840	3,219,930	3,509,009	3,766,990	3,866,652	41,736,953
Moving & courier services	493,954	472,805	471,383	513,768	508,370	464,167	526,061	531,583	527,359	566,705	474,519	496,983	507,979	6,061,682
Repair shops (not auto)	400,119	373,632	381,535	365,218	403,356	403,826	413,797	427,274	414,592	441,409	150,101	249,039	246,227	4,270,006
Accounting services	77,791	66,970	67,570	76,373	75,899	74,127	87,618	85,439	85,132	80,827	92,943	91,722	92,055	976,675
Advertising, consultancy & PR	147,453	136,798	133,607	162,602	159,770	158,226	186,350	171,555	166,942	138,447	144,325	171,465	183,276	1,913,363
Computer programming	802,402	665,562	728,848	750,652	744,066	702,333	797,751	824,275	765,874	733,935	577,680	697,801	742,435	8,731,212
Farming services	327,633	320,209	321,352	329,406	322,761	309,926	334,580	333,793	337,124	354,875	320,546	330,759	352,942	3,968,273
Miscellaneous professional services	3,617,406	3,358,730	3,446,844	3,240,741	3,239,258	2,914,833	3,385,188	3,430,054	3,561,596	3,451,324	3,227,469	3,625,046	3,885,750	40,766,833
Engineering services	93,741	89,418	85,467	94,517	95,676	82,002	90,268	94,864	88,242	75,641	77,531	89,388	94,351	1,057,365
Marina services	94,637	130,593	132,814	146,567	164,857	174,933	130,630	105,508	75,621	70,265	66,396	77,271	106,890	1,382,345
Wrecking & salvage yards	11,473	11,160	10,626	11,293	11,228	9,984	10,956	10,935	9,797	7,700	8,972	10,563	10,953	124,167
Pest control	5,011	5,182	5,101	6,318	6,967	5,636	5,611	5,521	5,071	4,264	4,604	4,704	5,275	64,254
Educational establishments	4,125,101	3,062,343	3,599,887	3,127,839	2,128,231	1,449,257	4,058,381	4,683,074	5,037,677	3,363,259	4,421,285	4,616,184	4,630,733	44,178,150
Child care services	197,995	168,684	187,270	170,362	190,949	188,971	183,236	200,582	194,067	173,682	213,763	254,967	211,163	2,337,696
Social, political & religious organisation	3,563,849	3,610,835	3,770,425	4,022,097	3,995,489	3,621,123	4,343,290	4,126,296	3,803,978	3,649,622	3,142,382	3,675,458	4,059,675	45,820,670
Government services	9,031,161	8,978,517	8,825,996	9,017,502	8,991,685	8,451,636	9,374,322	9,185,071	8,483,710	8,108,319	8,414,263	8,893,073	9,354,924	106,079,018
Miscellaneous services	6,708,920	6,304,329	5,876,409	6,778,818	6,392,223	5,577,202	6,489,571	6,430,143	6,337,802	8,754,337	5,725,164	6,213,597	6,849,119	77,728,714
Commercial equipment	1,689,205	1,570,601	1,591,286	1,580,552	1,545,944	1,455,793	1,892,986	1,765,412	1,727,773	1,820,548	1,614,089	1,627,802	1,645,359	19,838,145
Other Services	60,308,603	56,583,755	57,587,840	58,868,865	58,307,329	53,408,451	61,508,763	62,387,979	60,227,703	62,203,860	55,787,629	58,670,784	61,980,692	707,523,650
Total services	287,172,429	275,009,194	281,463,033	278,975,270	280,641,724	275,787,724	292,217,860	305,588,060	300,663,172	299,900,848	281,085,427	307,478,851	322,002,550	3,500,813,713
TOTAL	864,275,755	825,140,676	843,141,899	868,068,349	872,900,116	822,089,081	882,961,939	899,705,810	920,929,271	986,528,771	817,207,328	879,826,997	929,677,132	10,548,177,369

¹ With effect of January 2016 *Record shops* and *Video stores* were discontinued as separate categories and merged with *Digital entertainment* category.² *Digital entertainment* category is effective from January 2016.

Table 3D Card expenditure statistics (not seasonally adjusted)

Value of debit card transactions

Total detailed sector breakdown - retail sectors (not seasonally adjusted)

£	March 2015	April 2015	May 2015	June 2015	July 2015	August 2015	September 2015	October 2015	November 2015	December 2015	January 2016	February 2016	March 2016	Total (latest 12 months)
Telecoms	369,775,651	339,079,060	355,579,852	337,849,422	352,968,220	352,076,795	366,712,073	388,714,105	361,238,519	380,344,138	367,704,928	330,025,163	360,369,090	4,292,661,365
Utilities	329,044,668	293,119,381	272,993,260	264,789,042	256,132,632	222,325,292	248,850,628	251,005,608	227,891,741	248,577,964	282,156,555	300,108,518	350,614,599	3,218,565,220
Contractors (residential & commercial)	186,259,010	177,617,982	173,690,832	193,759,445	196,562,448	177,253,122	216,455,656	193,759,627	211,685,736	179,405,124	177,156,014	190,975,618	203,921,167	2,316,482,771
Gardening services	8,533,939	10,350,714	10,139,673	10,106,773	8,441,852	6,954,786	7,201,912	6,652,579	5,932,047	5,765,980	4,297,928	5,594,385	8,318,542	89,757,171
Veterinary services	115,255,844	112,789,765	112,619,178	120,286,310	128,829,815	120,285,954	126,751,192	127,417,778	119,442,841	117,524,697	118,537,102	121,272,597	128,337,536	1,454,094,765
Photocopying & printing	32,187,940	30,344,140	29,927,845	31,748,306	30,731,267	27,582,593	33,444,172	33,488,824	35,054,501	30,887,395	24,182,336	26,724,253	27,621,594	361,737,226
Photographic studios	14,511,667	13,822,284	15,699,462	17,626,121	19,796,596	14,509,929	16,216,480	21,958,706	23,620,167	20,388,057	11,022,287	13,067,883	14,055,810	201,783,782
Beauty & barber shops	229,581,715	219,892,169	229,859,569	234,244,210	245,102,859	218,999,175	233,985,573	238,700,701	235,641,406	289,533,499	193,718,256	224,305,293	235,964,791	2,799,947,501
Employment agencies	1,754,491	1,644,607	1,571,930	1,671,680	1,699,110	1,418,238	1,463,026	1,428,999	1,356,740	1,068,338	1,416,140	1,589,927	1,646,468	17,975,203
Counselling services	6,699,237	6,143,816	6,450,585	6,800,723	6,881,874	6,319,740	6,696,256	6,701,778	6,707,285	6,633,809	7,576,484	8,739,154	8,233,181	83,884,685
Legal services	93,482,241	82,693,466	82,074,390	95,341,993	95,010,888	85,309,945	93,382,860	95,514,417	90,133,685	78,571,329	81,150,647	89,680,481	103,263,083	1,072,127,184
Laundry & cleaning	13,265,791	13,212,138	13,700,883	15,166,822	15,241,061	13,532,938	15,477,467	15,691,321	14,865,961	13,271,552	13,249,049	13,125,464	13,112,021	169,646,677
Funeral services	58,261,530	49,427,209	45,447,373	48,679,676	48,449,736	43,471,055	48,210,447	52,822,267	51,201,449	47,099,970	53,986,932	60,620,898	67,823,281	617,240,293
Medical services	305,622,470	279,710,453	275,029,602	303,244,936	305,972,885	263,776,969	309,248,578	314,211,978	304,972,250	267,456,695	288,944,577	314,760,636	327,306,078	3,554,635,637
Moving & courier services	37,941,458	36,560,835	37,287,565	42,713,374	45,119,382	40,495,030	43,875,786	42,511,237	41,233,869	39,248,986	35,197,069	35,716,322	40,271,101	480,230,556
Repair shops (not auto)	27,580,853	24,429,983	25,070,328	24,274,445	27,732,809	25,985,955	27,748,253	27,848,424	27,523,622	31,283,971	14,343,549	19,399,159	22,454,392	298,094,890
Accounting services	16,276,184	13,844,431	13,551,148	15,229,121	15,363,240	14,094,359	16,102,772	15,700,231	15,396,706	15,078,200	19,286,276	17,727,374	17,542,505	188,916,363
Advertising, consultancy & PR	12,014,949	11,459,352	11,155,921	12,557,125	12,351,328	11,288,011	13,327,752	12,724,086	11,807,665	10,023,046	11,103,718	12,435,923	13,151,854	143,385,781
Computer programming	38,674,661	35,029,030	35,732,501	37,107,796	36,706,691	34,445,173	39,129,832	40,065,589	37,739,394	36,389,929	32,189,931	34,181,703	36,731,090	435,448,659
Farming services	24,153,642	25,031,472	24,540,976	26,814,445	26,881,019	25,746,365	27,417,211	29,391,127	26,694,249	25,811,342	25,463,376	24,446,236	26,257,338	314,495,156
Miscellaneous professional services	742,282,335	763,311,767	641,229,567	615,227,139	624,812,045	587,506,676	680,752,785	607,740,148	558,779,944	520,435,321	614,652,032	583,192,497	673,753,522	7,471,393,443
Engineering services	21,312,670	20,037,824	19,457,001	22,493,945	22,105,425	19,163,854	20,848,007	21,242,131	19,841,584	17,005,391	16,959,337	20,223,513	20,692,177	240,070,189
Marina services	15,384,776	16,106,954	15,370,403	16,948,324	16,583,052	14,821,153	13,263,533	11,193,479	8,232,568	7,455,813	9,364,882	10,368,338	15,892,461	155,600,960
Wrecking & salvage yards	1,882,800	1,918,903	1,841,473	1,984,864	2,069,273	1,715,937	1,857,689	1,976,810	1,800,915	1,363,139	1,576,250	1,904,899	1,959,607	21,969,759
Pest control	894,304	892,994	853,531	1,032,640	1,120,113	949,954	1,023,504	1,043,060	902,037	794,114	876,167	876,199	901,703	11,266,016
Educational establishments	229,102,894	356,643,370	237,364,841	189,927,450	186,089,149	277,438,371	1,071,243,062	808,239,824	305,453,165	216,549,442	554,687,709	295,419,309	219,238,723	4,718,294,415
Child care services	16,681,569	15,486,670	14,905,148	16,228,450	16,438,477	13,922,617	16,656,220	16,453,305	15,574,682	13,936,731	16,186,318	16,697,281	16,603,045	189,088,944
Social, political & religious organisation	129,581,044	124,717,180	124,427,810	194,091,213	215,389,002	186,064,952	216,275,035	229,073,141	188,239,375	192,596,677	186,361,676	194,931,761	207,683,406	2,259,851,228
Government services	2,817,964,701	2,791,280,069	2,783,085,667	2,306,854,028	2,364,077,268	2,042,367,066	2,011,331,661	2,002,403,353	1,776,733,120	1,678,449,214	2,010,427,188	1,939,242,724	2,193,258,806	25,899,510,164
Miscellaneous services	626,128,994	575,728,396	505,786,917	649,573,793	640,653,103	396,834,909	445,001,049	443,808,591	405,591,289	446,413,962	432,761,575	424,152,476	477,393,712	5,843,699,772
Commercial equipment	162,316,243	158,040,914	158,787,884	168,921,352	169,190,677	153,329,942	180,866,106	176,104,870	163,481,277	142,175,093	147,381,010	153,473,234	174,631,065	1,946,383,424
Other Services	6,684,410,271	6,600,367,328	6,275,233,115	6,023,294,963	6,134,503,296	5,399,986,855	6,550,816,577	6,259,828,094	5,294,769,789	5,081,538,918	5,753,917,298	5,484,979,218	6,009,003,748	70,868,239,199
Total services	22,185,329,416	21,408,037,347	20,445,427,805	20,231,101,801	20,890,875,421	19,239,927,183	20,926,689,919	20,311,280,492	18,303,680,061	17,891,034,871	20,524,807,463	20,788,726,583	21,882,550,292	242,844,139,238
TOTAL	38,667,556,956	37,306,861,635	36,627,048,779	37,059,068,884	37,630,213,569	34,846,817,747	37,846,851,451	37,248,294,714	36,625,356,517	38,753,779,215	35,260,535,484	36,287,934,625	38,474,229,370	443,966,991,990

¹ With effect of January 2016 *Record shops* and *Video stores* were discontinued as separate categories and merged with *Digital entertainment* category.

² *Digital entertainment* category is effective from January 2016.

Table 4A Online card expenditure statistics (not seasonally adjusted)

Number of credit card transactions

E-commerce detailed sector breakdown - retail sectors (not seasonally adjusted)

	March 2015	April 2015	May 2015	June 2015	July 2015	August 2015	September 2015	October 2015	November 2015	December 2015	January 2016	February 2016	March 2016	Total (latest 12 months)
Supermarkets	2,573,682	2,278,517	2,413,562	2,587,104	2,589,036	2,548,853	2,658,774	2,499,795	3,075,205	3,117,547	2,355,509	2,430,057	2,660,591	31,214,550
Bakers & dairies	12,076	9,134	10,635	11,460	11,172	10,686	10,566	10,515	11,849	15,828	9,044	10,368	11,137	132,394
Sweet stores	36,888	17,245	13,291	29,587	27,351	27,729	13,859	17,842	40,530	67,852	11,336	17,928	43,175	327,725
Miscellaneous foodstores	383,601	349,469	357,600	364,323	358,244	331,810	382,958	394,181	434,252	448,580	383,646	393,642	415,688	4,614,393
Off-licences	44,036	42,112	49,944	73,792	59,447	50,178	54,023	63,313	97,418	157,963	19,508	34,821	44,157	746,676
Food & Drink	3,050,293	2,696,477	2,845,032	3,066,266	3,045,250	2,969,256	3,120,180	2,985,646	3,659,254	3,807,770	2,779,043	2,886,816	3,174,748	37,035,738
Department stores	837,014	911,496	903,819	944,666	942,898	807,476	834,302	915,643	1,731,279	1,997,956	1,073,257	805,002	835,291	12,703,085
Discount stores	126,351	127,500	133,959	161,033	190,597	181,168	195,970	229,638	432,197	507,372	244,116	212,312	259,486	2,875,348
Catalogues	13,838,371	15,258,058	15,213,104	14,419,506	14,424,175	14,423,733	19,849,651	18,404,041	21,978,963	15,432,999	17,586,222	20,006,626	21,615,705	208,612,783
Miscellaneous mixed	247,453	182,700	198,830	239,268	228,493	200,505	209,903	205,401	265,690	276,905	154,658	146,549	146,128	2,455,030
Mixed Business	15,049,189	16,479,754	16,449,712	15,764,473	15,786,163	15,612,882	21,089,826	19,754,723	24,408,129	18,215,232	19,058,253	21,170,489	22,856,610	226,646,246
Men's clothing	52,271	52,314	58,128	84,377	99,608	73,967	71,975	85,215	108,049	151,689	125,975	76,861	82,326	1,070,484
Women's clothing	612,013	617,715	674,930	682,737	705,600	548,373	701,785	733,323	1,011,901	1,152,460	722,551	708,618	775,962	9,035,955
Family clothing	2,604,355	2,662,035	2,546,921	2,799,341	2,857,326	2,521,839	2,498,993	2,606,094	3,345,872	3,659,510	2,209,871	2,033,959	2,347,093	32,088,854
Miscellaneous clothing	138,197	137,313	141,563	165,311	147,776	139,276	161,561	155,263	183,247	135,400	90,922	81,331	88,279	1,627,242
Shoe shops	148,286	176,037	158,139	181,291	183,368	154,400	165,971	177,169	269,812	308,225	222,868	159,229	153,785	2,310,294
Clothing	3,555,122	3,645,414	3,579,681	3,913,057	3,993,678	3,437,855	3,600,285	3,757,064	4,918,881	5,407,284	3,372,187	3,059,998	3,447,445	46,132,829
Furniture stores	182,697	168,091	172,149	169,548	176,108	165,675	165,197	171,863	196,195	162,021	183,561	152,209	152,909	2,029,190
Household appliance stores	303,744	257,738	262,292	275,388	286,035	278,382	280,172	301,930	346,407	312,755	249,878	267,730	294,999	3,413,706
Electronic stores	222,706	210,111	201,300	217,543	229,920	225,669	238,906	251,152	413,697	426,446	271,799	245,637	260,118	3,192,298
DIY stores	380,506	368,943	371,377	373,191	387,767	385,437	402,870	423,576	465,769	388,848	404,342	397,909	461,662	4,831,691
Floor covering stores	22,009	18,793	18,794	20,211	20,293	19,514	19,860	21,756	24,580	15,811	17,375	17,941	18,997	233,925
Garden centres	168,226	185,446	143,614	126,913	119,068	128,082	121,449	112,687	109,008	98,953	86,055	118,635	181,166	1,531,076
Miscellaneous household	144,428	129,703	130,084	145,108	153,316	133,967	151,922	165,155	246,154	234,999	189,065	163,359	165,096	2,007,928
Household	1,424,316	1,338,825	1,299,610	1,327,902	1,372,507	1,336,726	1,380,376	1,448,119	1,801,810	1,639,833	1,402,075	1,357,084	1,534,947	17,239,814
Books, newspapers & magazines	254,135	216,829	214,960	246,735	240,117	238,124	266,309	293,307	381,225	340,021	231,807	230,361	224,388	3,124,253
Record shops ¹	36,230	31,530	31,777	1,086,371	2,450,962	2,244,336	3,072,800	3,922,873	49,701	58,132	0	0	0	12,948,482
Music shops	54,613	47,228	46,932	51,583	50,363	48,845	56,239	57,103	65,435	80,806	54,312	54,725	52,486	666,057
Hobbies, toys & games	87,001	77,502	78,874	87,241	87,316	84,011	106,844	115,121	227,654	206,845	79,325	75,501	81,710	1,307,944
Photographic	40,056	35,202	38,175	39,209	40,280	38,098	38,864	41,185	50,987	55,170	27,290	30,881	32,411	467,752
Handicraft	16,324	13,652	12,684	14,255	14,275	14,583	14,471	14,507	18,655	16,455	17,289	17,053	16,061	183,940
Sports shops	752,284	739,452	732,110	793,386	807,666	802,245	811,870	818,572	1,091,614	1,258,965	528,404	576,630	588,390	9,549,304
Jewellers	62,138	50,418	48,659	58,067	59,832	49,701	46,435	48,115	88,324	133,637	56,111	51,113	55,219	745,631
Computer software	131,127	114,536	109,169	126,603	126,086	112,770	113,405	111,486	120,676	130,088	127,560	130,581	137,566	1,460,166
Medical goods	4,334	3,845	3,697	4,140	4,200	4,098	4,056	4,479	7,461	6,656	6,910	6,757	7,185	65,484
Chemists	142,313	131,869	136,169	144,476	146,394	144,443	144,275	152,440	237,782	314,501	144,744	138,640	133,599	1,969,332
Optical goods	52,625	49,957	47,085	55,015	55,898	54,885	54,028	49,431	51,887	47,706	48,990	50,630	53,662	619,174
Cosmetic stores	191,618	174,509	180,191	187,158	185,946	189,882	207,683	224,448	344,443	399,543	141,563	186,569	232,031	2,653,966
Tobacconists	11,677	11,437	11,480	12,367	12,277	12,606	14,029	13,869	14,859	17,247	20,061	20,617	20,834	181,683
Florists	113,842	43,828	77,374	85,114	86,751	85,086	83,291	78,679	83,796	162,154	67,662	126,260	148,088	1,128,083
Artists' supplies	50,983	39,282	41,600	46,481	44,533	42,328	43,685	49,964	69,172	51,416	47,755	52,513	49,260	577,989
Antiques, art & stamps/coins	14,728	12,513	12,748	12,783	13,252	12,830	14,195	13,950	17,227	22,101	14,561	14,990	16,185	177,335
Pawn shops	25	16	18	25	25	57	61	49	67	81	59	54	49	561
Gift shops	420,783	282,082	305,672	414,880	353,610	335,486	360,589	399,390	565,752	770,211	320,610	411,012	415,024	4,934,318
Secondhand shops	9,762	922	1,079	1,979	1,591	832	1,357	1,027	929	717	842	1,190	1,228	13,693
Luggage & leather goods	4,253	3,533	3,795	4,642	4,906	4,406	4,121	4,261	7,156	9,001	6,386	5,374	5,008	62,589
Pet shops	124,672	119,899	122,133	123,498	127,049	97,946	107,256	110,011	122,146	109,676	103,418	95,579	103,032	1,341,643
Religious goods	1,339	1,499	1,681	1,806	2,309	1,998	1,304	1,408	1,119	1,251	921	1,087	1,442	17,825
Direct sales	1,636,601	1,441,540	1,425,147	1,412,136	1,389,853	1,249,456	1,377,555	1,481,735	1,538,980	1,372,881	1,056,251	1,184,725	1,126,329	16,056,588
Miscellaneous & speciality shops	2,602,161	2,390,420	2,538,139	2,549,601	2,544,109	2,490,022	2,537,568	2,692,847	3,133,323	3,099,633	2,678,453	2,468,381	2,581,503	31,703,999
Other Retail	6,815,624	6,033,500	6,221,946	7,559,551	8,849,600	8,359,144	9,481,930	10,702,257	8,290,370	8,664,894	5,781,284	5,931,223	6,082,690	91,957,791
Automotive Fuels	2,913	955	906	972	849	779	696	811	832	1,334	1,602	4,453	4,947	19,136
Total retail sales	29,897,447	30,194,925	30,396,289	31,632,221	33,048,047	31,716,642	38,673,293	38,648,620	43,079,276	37,736,347	32,394,444	34,410,063	37,101,387	419,031,554

Table 4A Online card expenditure statistics (not seasonally adjusted)

Number of credit card transactions

E-commerce detailed sector breakdown - retail sectors (not seasonally adjusted)

	March 2015	April 2015	May 2015	June 2015	July 2015	August 2015	September 2015	October 2015	November 2015	December 2015	January 2016	February 2016	March 2016	Total (latest 12 months)
Auto rental	558,182	558,806	592,513	609,165	645,050	605,536	573,677	505,365	435,117	448,345	69,672	305,347	342,991	5,691,384
Auto parts & accessories	93,022	88,060	87,206	92,860	95,694	89,369	83,827	84,525	84,903	81,547	82,307	88,366	100,168	1,058,832
Auto services	249,736	224,688	226,050	232,160	238,261	230,543	257,640	247,279	230,219	188,430	262,460	332,646	361,428	3,031,804
Auto repair shops	36,338	33,185	33,522	32,431	34,169	33,594	37,358	33,928	33,368	32,194	36,945	36,568	45,912	423,174
Service stations	0	0	0	0	0	0	0	0	0	0	0	0	0	0
Vehicle sales	21,890	19,424	18,683	19,288	19,628	17,696	16,797	15,353	15,334	14,300	14,238	15,974	19,953	206,668
Vehicle Sales & Services	959,168	923,963	957,974	985,904	1,032,802	976,738	969,299	886,450	798,941	764,816	465,622	778,901	870,452	10,411,862
Restaurants	760,846	673,712	741,054	679,950	685,362	709,435	707,967	743,167	811,577	781,781	724,970	782,880	806,237	8,848,092
Public houses	7,784	7,119	7,580	7,793	7,798	7,680	8,177	9,163	9,914	12,252	9,030	9,127	9,151	104,784
Catering services	55,597	46,037	47,834	53,896	51,838	47,337	56,696	54,583	54,953	47,151	44,081	45,108	47,487	597,001
Video stores ¹	267,769	263,475	193,574	29,253	30,907	26,778	26,586	26,730	29,061	24,565	0	0	0	650,929
Cinema, theatre & dance	1,103,058	939,622	986,202	1,087,978	1,044,710	977,948	1,014,831	1,327,644	1,557,920	1,570,117	1,057,078	1,205,141	1,029,183	13,798,374
Concerts & entertainers	108,702	107,917	120,584	110,373	110,383	104,698	107,183	129,808	183,912	175,317	113,522	108,349	118,510	1,490,556
Tourist attractions	155,114	180,170	178,732	169,872	192,561	203,533	182,465	184,504	122,128	117,559	98,448	135,163	148,674	1,913,809
Amusement parks	5,364	10,351	8,834	7,328	7,750	11,970	5,965	8,309	6,001	6,361	2,499	4,683	5,642	85,693
Aquariums	2,921	5,670	6,012	3,573	4,575	6,457	4,074	4,122	2,554	3,492	1,872	3,296	4,216	49,913
Sports & games establishments	3,197,843	2,707,145	2,850,290	1,992,000	369,202	348,872	345,599	349,746	339,742	378,362	375,911	382,257	377,275	10,816,401
Professional sports clubs	29,488	34,224	26,070	25,036	32,703	26,390	22,310	27,020	22,658	23,372	26,035	22,285	25,892	313,995
Gambling	5,413,363	4,977,999	4,736,942	5,360,888	5,365,559	5,306,511	5,168,619	4,778,459	5,302,462	5,075,207	4,610,495	5,052,174	4,931,489	60,666,804
Personal services	76,939	69,587	69,946	76,880	75,819	74,596	89,400	76,704	86,925	82,136	68,197	64,474	68,148	902,812
Miscellaneous entertainment	98,055	101,284	103,275	107,101	123,568	124,383	96,521	104,329	90,667	88,725	109,011	112,876	120,718	1,282,458
Digital entertainment ²	0	0	0	0	0	0	0	0	0	0	4,267,254	4,150,664	4,051,981	12,469,899
Entertainment	11,282,843	10,124,312	10,076,929	9,711,921	8,102,735	7,976,588	7,836,393	7,824,288	8,620,474	8,386,397	11,508,403	12,078,477	11,744,603	113,991,520
Hotels	554,578	477,716	499,820	509,551	504,807	485,420	511,204	497,161	455,259	384,698	505,307	471,921	477,069	5,779,933
Airlines	1,382,051	1,321,232	1,316,613	1,327,115	1,285,708	1,276,385	1,500,969	1,347,540	1,131,608	994,751	1,523,097	1,326,799	1,390,335	15,742,152
Airport terminals	14,269	14,471	15,448	13,925	14,252	13,752	13,724	13,342	10,334	8,751	12,914	13,137	13,628	157,678
Railways	728,899	648,530	653,009	730,549	705,147	630,268	792,503	768,155	689,341	524,932	678,645	684,372	712,679	8,218,130
Buses	431,195	434,467	463,981	459,922	489,708	472,774	523,372	521,378	442,685	439,709	231,013	345,768	386,345	5,211,122
Sea travel	73,856	70,318	76,980	82,933	87,792	77,150	61,530	59,773	49,423	43,449	49,332	53,513	59,106	771,299
Travel agents	1,069,956	993,962	983,102	898,770	880,045	848,994	1,583,781	1,416,673	1,296,335	1,291,623	1,235,249	1,284,284	1,203,822	13,916,640
Timeshares	18,299	15,506	14,509	14,255	14,648	14,418	14,753	15,269	11,835	12,786	18,179	15,196	14,925	176,279
Camping grounds	55,589	55,991	58,416	49,991	56,817	46,133	27,496	22,079	16,620	13,291	44,074	50,734	52,322	493,964
Miscellaneous travel	413,607	369,143	407,032	410,314	444,203	418,634	409,372	399,154	359,617	338,230	160,949	170,514	179,102	4,066,264
Travel	4,187,721	3,923,620	3,989,090	3,987,774	3,978,320	3,798,508	4,927,500	4,563,363	4,007,798	3,667,522	3,953,452	3,944,317	4,012,264	48,753,528
Telegraph Services / Wire Transfer M	38,478	37,915	38,954	37,645	39,854	33,789	36,332	41,152	43,713	47,508	37,771	50,049	58,084	502,766
Insurance services	415,821	359,961	378,683	417,195	439,331	423,832	459,553	390,925	369,973	343,838	305,107	356,228	392,913	4,637,539
FIs - cash disbursements (auto & man	712	599	701	766	929	802	598	548	405	491	442	506	0	6,787
FIs - merchandise & services	173,522	156,478	157,707	162,569	155,279	140,460	137,336	138,786	153,253	154,223	101,432	157,813	224,678	1,840,014
Non-FIs - foreign currency, travellers' c	25,501	20,782	25,572	25,478	31,442	25,608	22,697	19,280	15,092	13,765	45,133	63,623	20,597	329,069
Security Brokers and Dealers	83,257	71,000	55,618	47,835	51,610	55,677	47,824	45,194	44,452	48,586	25,759	38,391	32,400	564,346
Tax Preparation Services	10	9	12	11	10	10	7	7	14	8	15	13	24	140
Tax Payments	15,516	13,334	12,036	15,526	15,508	15,508	17,313	19,276	19,097	20,047	67,033	86,454	30,185	331,317
Fines, bail and bond payments	26,787	25,110	26,582	24,132	20,251	19,748	18,804	19,317	18,177	17,639	18,103	17,965	19,202	245,030
Miscellaneous financial	5,921	5,953	6,542	6,572	6,109	6,388	6,513	6,324	8,349	7,962	7,750	8,357	9,200	86,019
Financial Services	785,525	691,141	702,407	737,729	760,323	721,822	746,977	680,809	672,525	654,067	608,545	779,399	787,283	8,543,027

Table 4A Online card expenditure statistics (not seasonally adjusted)

Number of credit card transactions

E-commerce detailed sector breakdown - retail sectors (not seasonally adjusted)

	March 2015	April 2015	May 2015	June 2015	July 2015	August 2015	September 2015	October 2015	November 2015	December 2015	January 2016	February 2016	March 2016	Total (latest 12 months)
Telecoms	450,747	414,403	423,022	450,267	471,956	467,290	496,504	481,180	453,282	440,945	403,730	407,361	408,245	5,318,185
Utilities	270,854	227,717	229,367	236,741	244,371	228,193	249,974	246,515	211,075	204,217	211,050	204,723	239,737	2,733,680
Contractors (residential & commercial)	29,535	27,317	26,103	28,223	28,768	27,650	29,796	29,827	30,566	23,557	27,929	27,414	28,162	335,312
Gardening services	6,380	7,746	6,777	5,808	5,101	4,482	3,321	2,762	2,323	1,962	1,629	2,963	5,743	50,617
Veterinary services	18,658	17,462	17,355	19,703	19,762	19,819	20,992	21,201	21,028	20,229	21,337	22,501	24,204	245,593
Photocopying & printing	207,010	179,278	185,789	188,276	183,554	191,793	204,979	220,659	281,076	315,915	174,028	169,279	169,406	2,464,032
Photographic studios	30,596	34,895	45,898	32,279	35,620	27,304	45,133	69,313	75,543	35,026	12,602	16,361	20,683	450,657
Beauty & barber shops	89,115	77,987	77,452	81,187	87,002	78,828	77,386	80,606	128,068	126,098	58,102	61,026	61,936	995,678
Employment agencies	1,497	1,370	1,270	1,377	1,271	1,222	1,299	1,236	1,154	907	1,387	1,459	4,008	17,960
Counselling services	716	560	689	792	818	999	911	798	819	690	1,105	1,361	928	10,470
Legal services	6,699	4,862	4,604	6,608	6,685	6,371	5,120	5,119	4,799	3,907	5,163	6,014	8,033	67,285
Laundry & cleaning	2,158	1,859	2,315	2,202	2,272	1,914	3,567	3,713	2,987	2,158	2,753	2,920	2,884	31,544
Funeral services	1,087	1,202	1,354	902	905	916	1,005	649	645	496	515	660	10,599	19,848
Medical services	68,270	62,747	60,811	64,082	66,374	65,707	74,930	68,727	67,180	64,269	72,174	71,852	76,310	815,163
Moving & courier services	134,588	129,615	129,069	134,603	136,363	128,892	131,838	138,112	144,887	151,695	126,547	124,795	120,590	1,597,006
Repair shops (not auto)	10,577	9,570	8,462	10,435	10,437	10,216	11,166	10,338	13,012	14,157	10,672	10,740	14,262	133,467
Accounting services	7,902	5,877	5,160	5,566	5,798	7,498	9,723	7,192	6,097	6,396	7,417	6,250	5,896	78,870
Advertising, consultancy & PR	41,783	38,338	36,340	178,394	179,031	171,974	201,902	192,516	197,862	184,806	174,558	206,664	216,109	1,978,494
Computer programming	1,333,901	1,193,279	1,267,969	1,332,685	1,355,164	1,263,333	1,390,789	1,487,252	1,979,656	2,307,578	1,495,162	1,361,996	1,466,331	17,901,194
Farming services	6,117	5,388	6,497	7,210	6,697	5,703	6,275	5,636	6,109	6,637	5,705	5,446	5,488	72,791
Miscellaneous professional services	474,424	419,454	424,563	451,838	434,898	409,667	447,570	442,423	436,213	381,623	358,789	378,136	430,033	5,015,207
Engineering services	6,796	6,003	5,803	6,500	6,481	6,247	5,814	6,974	7,576	9,171	6,258	6,807	7,092	80,726
Marina services	8,163	9,406	9,393	9,550	10,227	9,610	6,841	7,043	6,095	5,669	4,245	5,815	7,941	91,835
Wrecking & salvage yards	1,498	1,298	1,036	1,474	1,479	1,486	334	183	171	108	114	151	168	8,002
Pest control	1,212	1,319	1,291	1,259	1,240	1,224	849	928	999	741	853	790	951	12,444
Educational establishments	555,259	453,109	458,856	525,856	397,427	288,385	701,590	604,789	620,383	477,962	603,746	496,417	554,417	6,182,937
Child care services	1,862	1,533	1,705	1,824	2,030	2,018	2,030	2,176	2,106	1,779	2,032	2,400	2,385	24,018
Social, political & religious organisation	752,099	768,205	737,385	674,443	689,260	716,924	743,330	604,810	597,534	678,465	598,774	616,308	694,635	8,120,073
Government services	1,384,596	1,340,230	1,329,917	1,334,373	1,330,240	1,313,297	1,349,535	1,252,506	1,151,022	1,067,575	1,074,587	1,243,525	1,331,603	15,118,410
Miscellaneous services	363,744	383,652	343,502	347,224	344,308	321,988	390,186	357,870	342,306	337,324	315,397	337,561	387,859	4,209,177
Commercial equipment	236,672	215,891	206,467	227,742	234,136	218,439	203,444	200,236	210,501	169,869	163,603	167,276	170,926	2,388,530
<i>Other Services</i>	<i>6,504,515</i>	<i>6,041,572</i>	<i>6,056,221</i>	<i>6,369,423</i>	<i>6,299,675</i>	<i>5,999,389</i>	<i>6,818,133</i>	<i>6,553,289</i>	<i>7,003,074</i>	<i>7,041,931</i>	<i>5,941,963</i>	<i>5,966,971</i>	<i>6,477,564</i>	<i>76,569,205</i>
Total services	24,274,350	22,182,324	22,282,441	22,302,302	20,678,662	19,958,465	21,809,506	21,005,360	21,558,071	20,899,431	22,983,292	24,019,986	24,369,235	264,049,075
TOTAL	54,171,797	52,377,249	52,678,730	53,934,523	53,726,709	51,675,107	60,482,799	59,653,980	64,637,347	58,635,778	55,377,736	58,430,049	61,470,622	683,080,629

¹ With effect of January 2016 *Record shops* and *Video stores* were discontinued as separate categories and merged with *Digital entertainment* category.

² *Digital entertainment* category is effective from January 2016.

E-commerce detailed sector breakdown - retail sectors (not seasonally adjusted)

£	March 2015	April 2015	May 2015	June 2015	July 2015	August 2015	September 2015	October 2015	November 2015	December 2015	January 2016	February 2016	March 2016	Total (latest 12 months)
Auto rental	77,311,262	74,708,592	85,305,341	95,904,268	100,684,577	76,657,430	63,701,812	55,667,550	51,449,711	59,619,409	8,559,412	41,612,162	48,304,299	762,174,563
Auto parts & accessories	13,736,207	12,367,763	12,304,840	13,244,569	13,631,238	12,595,404	11,720,231	12,513,988	12,441,007	11,545,023	11,718,591	12,473,759	14,419,599	150,976,012
Auto services	12,296,156	11,037,371	11,578,761	12,365,359	12,266,579	11,725,992	12,270,146	11,114,671	9,706,385	8,632,438	10,909,384	11,633,125	12,271,989	135,512,200
Auto repair shops	4,707,411	4,367,441	4,377,474	4,198,362	4,409,001	4,592,947	5,042,475	4,621,581	4,734,758	4,555,503	5,083,758	5,051,310	6,172,265	57,206,875
Service stations	0	0	0	0	0	0	0	0	0	0	0	0	0	0
Vehicle sales	3,127,878	2,586,811	2,445,956	2,634,334	2,690,061	2,368,362	2,170,879	1,982,389	2,295,170	2,104,890	2,193,200	2,515,814	3,110,760	29,098,626
Vehicle Sales & Services	111,178,914	105,067,978	116,012,372	128,346,892	133,681,456	107,940,135	94,905,543	85,900,179	80,627,031	86,457,263	38,464,345	73,286,170	84,278,912	1,134,968,276
Restaurants	22,809,608	20,104,601	21,888,910	20,712,025	21,096,419	21,514,671	22,556,024	22,942,807	24,912,226	24,189,693	22,624,659	23,678,603	25,287,885	271,508,523
Public houses	684,800	669,415	720,823	702,545	703,266	669,133	735,565	777,442	847,191	970,789	800,125	764,940	846,989	9,208,223
Catering services	6,973,128	7,309,628	7,402,441	7,487,015	8,106,639	7,518,628	7,410,515	7,821,438	7,120,702	6,935,031	4,790,834	4,796,703	5,555,803	82,255,377
Video stores ¹	2,917,214	3,273,227	2,279,276	379,876	383,380	369,651	354,063	360,048	448,538	415,600	0	0	0	8,263,659
Cinema, theatre & dance	98,727,586	72,913,589	83,115,177	89,975,912	92,832,597	72,364,387	89,868,544	99,479,969	122,571,071	122,917,412	70,838,631	107,653,103	83,032,929	1,107,563,321
Concerts & entertainers	5,717,879	5,459,738	6,113,215	5,759,622	6,007,572	5,976,709	5,851,445	8,108,543	10,005,678	9,199,899	5,554,153	5,841,953	6,517,097	80,395,624
Tourist attractions	16,600,052	18,590,176	19,224,057	18,785,738	20,830,638	20,790,579	18,492,634	17,274,526	11,204,383	11,050,137	11,338,043	15,557,074	16,917,057	200,055,042
Amusement parks	406,510	752,758	666,135	552,557	533,324	843,926	391,147	535,806	392,501	368,763	165,855	263,276	397,527	5,863,575
Aquariums	202,219	397,479	435,998	237,340	318,178	470,047	255,198	228,452	178,551	340,184	153,035	168,450	259,017	3,441,929
Sports & games establishments	70,456,867	64,666,797	98,200,041	51,271,379	23,980,864	20,072,708	19,450,557	19,658,132	25,350,021	22,824,796	21,909,014	25,718,029	31,679,154	424,781,492
Professional sports clubs	3,256,382	4,948,661	3,491,904	2,939,137	3,167,759	2,435,673	2,499,271	2,662,445	1,844,213	1,810,694	2,460,719	1,844,141	5,241,298	35,345,915
Gambling	128,485,229	120,537,510	113,454,847	112,145,406	110,456,021	113,839,399	135,829,367	120,424,636	123,347,939	119,325,615	112,049,657	125,179,960	120,655,419	1,427,245,776
Personal services	3,472,683	3,507,669	3,402,902	3,910,192	3,538,317	3,198,882	3,471,172	3,693,282	5,258,523	4,914,876	3,518,989	3,094,381	3,570,920	45,080,105
Miscellaneous entertainment	10,999,423	10,818,927	11,954,725	11,912,750	12,441,102	11,865,229	10,606,726	11,152,024	9,501,473	7,954,807	12,260,411	11,882,495	12,462,077	134,812,746
Digital entertainment ²	0	0	0	0	0	0	0	0	0	0	68,179,691	60,580,977	62,101,048	190,861,716
Entertainment	371,709,580	333,950,175	372,350,451	326,771,494	304,396,076	281,929,622	317,772,228	315,119,550	342,983,010	333,218,296	336,643,816	387,024,065	374,524,220	4,026,683,023
Hotels	89,236,038	80,491,580	87,730,609	91,860,692	87,149,827	80,827,295	87,292,434	81,460,244	69,846,201	55,860,595	85,767,588	82,187,049	85,536,304	976,010,418
Airlines	407,613,219	374,034,970	374,308,333	380,955,757	374,954,179	346,113,480	387,277,713	357,186,743	284,322,481	248,696,972	443,672,247	377,565,772	388,068,953	4,337,157,610
Airport terminals	704,147	711,326	807,752	715,906	826,247	721,239	687,758	624,588	499,550	513,482	617,718	645,473	694,133	8,065,172
Railways	62,416,161	57,141,750	56,982,351	63,585,259	61,368,585	52,868,594	68,246,150	65,897,377	59,374,452	51,930,097	63,802,090	60,387,766	62,533,108	724,117,579
Buses	13,241,326	13,674,606	14,436,778	14,581,568	16,034,650	15,415,576	17,227,782	15,065,348	11,961,241	12,691,278	6,902,620	9,642,287	11,580,188	159,213,922
Sea travel	16,409,919	15,619,067	16,170,355	18,259,124	18,115,677	16,673,282	13,824,538	13,009,085	11,601,060	11,283,050	15,172,376	17,563,242	18,182,778	185,473,634
Travel agents	260,813,294	245,169,000	264,926,866	216,811,496	215,309,808	193,153,484	261,547,246	232,123,860	202,321,131	198,358,210	267,612,645	292,699,572	303,601,063	2,893,634,381
Timeshares	2,305,472	2,002,621	1,793,673	1,853,924	1,793,319	1,768,842	1,842,345	1,924,281	1,481,186	1,650,883	2,464,990	2,092,141	2,091,926	22,760,131
Camping grounds	10,066,441	10,023,017	13,748,941	12,363,529	13,286,055	9,390,229	4,358,089	3,937,162	6,291,082	4,275,302	8,070,789	8,518,864	10,443,883	104,706,942
Miscellaneous travel	22,225,857	21,709,084	23,486,602	22,152,577	22,542,942	19,472,926	19,474,039	16,954,507	15,899,123	14,425,072	15,178,235	16,614,498	17,498,540	225,408,145
Travel	795,795,836	740,085,441	766,661,651	731,279,140	724,231,462	655,577,652	774,485,660	706,722,951	593,751,306	543,824,346	823,493,710	785,729,625	814,694,572	8,660,537,516
Telegraph Services / Wire Transfer M	5,752,654	5,674,741	5,890,995	6,010,061	6,133,429	5,508,530	5,977,519	6,456,726	6,600,024	7,313,574	4,781,312	7,064,968	7,993,111	75,404,990
Insurance services	69,113,065	59,504,770	60,371,947	67,096,424	70,858,622	69,002,372	74,850,850	66,154,778	65,406,046	58,387,662	56,390,691	59,637,381	70,668,416	778,329,959
FIs - cash disbursements (auto & man	420,321	341,963	413,280	480,073	648,218	491,797	346,873	325,763	253,258	286,573	239,789	298,867	0	4,126,454
FIs - merchandise & services	34,130,518	19,924,900	20,075,479	21,936,245	21,634,353	21,254,628	18,700,212	19,235,530	17,781,663	17,308,890	12,765,802	18,024,269	21,529,787	230,171,758
Non-FIs - foreign currency, travellers' c	12,378,791	9,842,455	13,074,634	13,805,991	18,351,641	14,258,130	11,119,693	9,098,450	7,251,745	6,377,895	8,361,973	10,940,359	10,716,487	133,199,453
Security Brokers and Dealers	26,769,055	19,436,592	14,166,291	12,728,620	14,715,627	16,868,322	13,127,818	12,773,077	12,634,812	13,346,483	9,232,447	12,211,070	10,593,199	161,834,358
Tax Preparation Services	2,056	736	5,353	2,083	2,066	2,075	1,920	1,479	5,805	8,212	5,177	3,171	4,611	42,688
Tax Payments	17,974,902	17,794,228	17,744,059	17,975,293	17,974,793	17,974,793	33,386,281	49,726,333	50,845,477	38,948,240	96,481,182	147,809,244	51,576,601	558,236,524
Fines, bail and bond payments	3,342,503	3,019,113	3,170,348	2,958,927	2,550,673	2,508,242	2,522,742	2,660,823	2,471,388	2,591,256	2,467,523	2,461,157	2,596,783	31,978,975
Miscellaneous financial	1,075,590	1,086,905	1,155,759	1,170,906	1,195,200	1,028,860	1,140,902	1,067,354	1,369,137	1,300,186	1,342,849	1,307,518	1,351,250	14,516,826
Financial Services	170,959,455	136,626,403	136,068,145	144,164,623	154,064,622	148,897,749	161,174,810	167,500,313	164,619,355	145,868,971	192,068,745	259,758,004	177,030,245	1,987,841,985

E-commerce detailed sector breakdown - retail sectors (not seasonally adjusted)

£	March 2015	April 2015	May 2015	June 2015	July 2015	August 2015	September 2015	October 2015	November 2015	December 2015	January 2016	February 2016	March 2016	Total (latest 12 months)
Telecoms	18,071,127	16,381,471	17,075,006	16,737,474	17,525,550	17,983,339	19,703,082	20,051,868	20,446,042	19,255,853	17,603,477	18,390,976	18,343,642	219,497,780
Utilities	35,438,663	28,348,303	26,884,368	29,880,678	29,883,049	28,033,318	28,013,069	27,343,470	22,545,337	22,929,865	25,254,371	24,795,765	32,838,428	326,750,021
Contractors (residential & commercial)	4,990,216	4,577,104	4,516,979	4,778,746	5,019,173	4,856,860	6,799,924	5,483,437	5,629,508	4,039,405	5,154,413	4,916,478	5,232,327	61,004,354
Gardening services	684,318	932,164	824,588	733,987	680,126	621,205	452,719	342,225	261,765	170,614	164,135	296,736	673,122	6,153,386
Veterinary services	1,102,901	1,004,170	1,013,196	1,118,255	1,132,651	1,156,257	1,253,970	1,232,361	1,271,922	1,230,123	1,314,580	1,356,295	1,462,494	14,546,274
Photocopying & printing	19,950,025	18,103,612	17,013,507	17,938,290	16,207,218	16,549,722	20,345,563	21,416,458	22,982,625	21,682,144	16,360,320	17,615,539	18,086,086	224,301,084
Photographic studios	1,245,858	1,335,254	1,852,626	1,508,603	1,928,190	1,580,956	1,907,486	2,838,823	3,131,479	1,858,718	959,837	1,142,076	1,310,508	21,354,556
Beauty & barber shops	5,128,659	4,711,077	4,545,912	4,791,810	4,917,437	4,874,079	4,829,218	5,079,992	8,269,314	7,590,520	3,432,097	3,881,924	3,918,710	60,842,090
Employment agencies	311,316	279,150	303,339	270,384	261,212	259,976	230,402	250,083	220,756	191,607	283,423	315,472	449,783	3,315,587
Counselling services	340,705	317,396	261,389	296,377	322,292	404,427	320,339	336,775	331,538	191,690	388,453	551,643	342,109	4,064,428
Legal services	2,514,890	1,535,006	1,468,458	2,465,885	2,468,092	2,399,028	1,588,062	1,659,618	1,545,363	1,258,664	1,518,279	2,010,953	2,658,988	22,576,396
Laundry & cleaning	59,524	51,736	56,920	59,442	63,345	54,927	105,927	94,637	79,739	54,719	81,729	73,602	84,019	860,742
Funeral services	701,904	324,235	293,241	300,824	280,811	318,659	263,970	268,849	388,071	193,920	205,181	280,655	428,065	3,546,481
Medical services	6,886,098	6,173,502	5,769,260	6,430,254	6,592,652	6,632,487	7,420,120	6,891,212	6,748,612	6,673,755	6,914,442	7,160,188	7,910,339	81,316,823
Moving & courier services	4,488,958	4,401,331	4,446,556	4,749,091	4,922,900	4,602,276	5,097,705	5,170,541	5,304,075	5,086,460	4,237,920	4,083,976	4,556,670	56,659,501
Repair shops (not auto)	1,232,525	1,165,589	1,043,250	1,192,413	1,266,528	1,146,038	1,614,828	1,486,503	1,932,521	2,045,103	1,287,550	1,371,850	3,129,176	18,681,349
Accounting services	1,234,074	939,667	752,925	862,274	902,831	1,114,605	1,431,836	949,190	902,116	1,113,151	1,135,808	1,012,804	982,633	12,099,840
Advertising, consultancy & PR	2,160,509	2,011,127	1,904,291	12,713,417	12,763,072	12,848,512	15,059,782	14,965,195	15,220,389	15,200,478	14,564,601	16,887,994	17,546,613	151,685,471
Computer programming	83,334,687	76,314,951	80,743,076	86,939,668	81,720,600	73,538,817	78,836,626	87,516,820	113,214,389	124,864,045	85,579,131	79,505,255	88,751,244	1,057,524,622
Farming services	845,518	760,543	802,931	826,180	787,439	781,406	853,277	1,028,216	802,832	835,470	838,683	787,141	819,004	9,923,122
Miscellaneous professional services	68,380,796	66,117,127	63,049,423	66,232,198	60,794,725	65,069,097	69,177,645	54,849,142	47,571,712	48,496,625	51,975,996	49,151,529	56,146,409	698,631,628
Engineering services	1,497,614	1,343,948	1,219,059	1,321,317	1,338,507	1,347,817	1,148,063	1,311,274	1,280,024	1,448,053	1,034,274	1,265,259	1,393,067	15,450,662
Marina services	1,538,209	1,634,688	1,635,204	1,607,353	1,699,206	1,481,854	889,922	766,519	764,432	668,677	831,804	1,020,531	1,319,705	14,319,895
Wrecking & salvage yards	78,851	79,470	56,790	75,400	77,844	77,856	28,074	16,871	25,839	15,930	17,036	21,315	27,416	519,841
Pest control	55,105	62,159	63,592	64,498	58,741	56,256	41,174	50,475	49,573	38,685	42,701	41,519	48,994	618,367
Educational establishments	81,081,301	96,442,580	82,526,441	82,515,516	79,435,474	110,084,857	260,991,022	140,657,429	74,586,542	74,591,879	122,794,748	79,904,012	73,100,728	1,277,631,228
Child care services	382,287	300,784	326,767	389,037	407,623	386,756	402,569	357,409	378,392	314,865	333,305	442,290	412,835	4,452,632
Social, political & religious organisation	59,305,805	49,271,462	46,015,312	47,412,687	50,051,095	51,439,491	49,873,660	51,680,723	44,839,979	62,728,920	61,269,385	51,836,476	48,227,826	614,647,016
Government services	201,819,937	198,895,897	182,386,568	173,044,470	185,488,802	175,809,394	185,430,707	144,698,940	128,756,158	130,503,395	133,079,788	148,322,623	168,491,127	1,954,907,869
Miscellaneous services	17,088,055	17,066,383	15,899,550	16,478,228	16,519,976	17,162,773	21,168,731	19,277,463	15,704,567	14,766,067	19,786,824	16,913,609	17,592,161	208,336,332
Commercial equipment	23,901,453	21,224,549	20,436,155	22,748,180	23,234,821	22,318,771	20,788,161	21,172,101	21,300,133	16,211,319	17,882,052	18,158,736	19,448,634	244,923,612
<i>Other Services</i>	<i>645,851,888</i>	<i>622,106,435</i>	<i>585,186,679</i>	<i>606,482,936</i>	<i>608,751,982</i>	<i>624,991,816</i>	<i>806,067,633</i>	<i>639,244,619</i>	<i>566,485,744</i>	<i>586,250,719</i>	<i>596,326,343</i>	<i>553,515,221</i>	<i>595,732,862</i>	<i>7,391,142,989</i>
Total services	2,184,731,711	2,018,328,012	2,064,009,907	2,028,905,777	2,012,275,425	1,900,164,269	2,241,698,308	1,995,947,856	1,818,312,647	1,751,480,190	2,072,764,547	2,141,500,154	2,131,797,115	24,177,184,207
TOTAL	3,631,634,405	3,380,244,393	3,421,199,898	3,484,718,672	3,464,597,125	3,256,781,899	3,740,862,514	3,521,766,729	3,746,224,583	3,569,416,146	3,424,060,216	3,473,878,267	3,637,605,630	42,121,356,072

¹ With effect of January 2016 *Record shops* and *Video stores* were discontinued as separate categories and merged with *Digital entertainment* category.

² *Digital entertainment* category is effective from January 2016.

E-commerce detailed sector breakdown - retail sectors (not seasonally adjusted)

	March 2015	April 2015	May 2015	June 2015	July 2015	August 2015	September 2015	October 2015	November 2015	December 2015	January 2016	February 2016	March 2016	Total (latest 12 months)
Auto rental	220,883	227,465	245,822	253,469	276,500	267,917	238,951	216,207	177,782	182,697	30,476	128,201	151,235	2,396,722
Auto parts & accessories	103,504	99,423	99,093	104,617	110,022	102,913	99,790	101,818	98,231	93,968	100,867	108,378	120,459	1,239,579
Auto services	427,879	409,984	397,554	383,362	458,369	446,280	500,449	491,231	452,600	418,318	523,370	698,354	772,131	5,952,002
Auto repair shops	92,369	84,092	83,883	84,399	87,128	85,431	99,349	95,153	92,136	88,417	102,445	100,859	119,321	1,122,613
Service stations	0	0	0	0	0	0	0	0	0	0	0	0	0	0
Vehicle sales	39,368	36,498	36,360	38,270	39,368	36,523	39,582	38,804	34,964	32,138	34,485	37,413	43,673	448,078
Vehicle Sales & Services	884,003	857,462	862,712	864,117	971,387	939,064	978,121	943,213	855,713	815,538	791,643	1,073,205	1,206,819	11,158,994
Restaurants	5,681,997	5,066,922	5,793,372	5,003,795	6,047,162	5,324,341	5,225,885	5,787,016	6,391,060	6,225,193	6,082,028	6,522,575	6,673,553	70,142,902
Public houses	37,871	38,357	41,101	38,678	38,192	35,921	52,129	64,926	60,376	77,197	45,825	52,082	55,356	600,140
Catering services	198,089	151,277	160,970	185,010	175,581	158,035	195,953	192,389	201,847	172,520	171,525	183,579	198,444	2,147,130
Video stores ¹	29,806	30,022	23,989	11,909	11,428	10,275	9,039	9,884	11,893	10,051	0	0	0	128,490
Cinema, theatre & dance	1,976,274	2,049,053	1,872,578	2,046,906	1,942,440	1,876,689	1,928,404	2,798,190	2,972,023	3,287,037	2,230,671	2,605,260	2,240,127	27,849,378
Concerts & entertainers	253,869	251,831	282,567	248,094	249,048	244,235	248,508	285,666	389,252	371,444	301,189	277,995	303,728	3,453,557
Tourist attractions	185,926	225,752	209,926	200,078	228,586	281,034	229,151	254,288	164,536	162,981	125,848	182,227	179,460	2,443,867
Amusement parks	13,625	27,182	22,604	18,610	22,626	37,440	18,426	22,356	15,212	17,195	7,755	17,005	21,329	247,740
Aquariums	8,079	14,581	14,916	11,318	14,201	20,718	12,946	14,856	8,513	8,549	5,936	13,075	17,168	156,777
Sports & games establishments	1,666,589	1,461,392	1,602,966	1,504,982	590,376	568,192	529,911	569,233	508,713	578,857	603,540	646,813	641,640	9,806,615
Professional sports clubs	51,293	59,748	48,571	43,746	61,261	49,651	43,710	53,196	43,461	41,063	49,374	43,142	46,285	583,208
Gambling	16,641,092	16,136,223	14,942,312	15,685,656	16,577,439	15,917,298	14,011,808	13,352,539	15,422,351	14,817,964	14,943,429	13,750,463	13,685,481	179,242,963
Personal services	99,665	88,497	87,242	94,867	94,608	93,928	163,033	108,379	128,942	139,962	136,993	128,428	148,909	1,413,788
Miscellaneous entertainment	122,177	139,583	139,525	141,905	167,073	189,227	147,947	159,150	136,008	144,794	192,659	219,214	220,033	1,997,118
Digital entertainment ²	0	0	0	0	0	0	0	0	0	0	1,800,979	1,938,294	1,852,477	5,591,750
Entertainment	26,966,352	25,740,420	25,242,639	25,235,554	26,220,021	24,806,984	22,816,850	23,672,068	26,454,187	26,054,807	26,697,751	26,580,152	26,283,990	305,805,423
Hotels	748,991	680,187	695,065	690,247	652,713	678,237	723,992	730,688	674,309	595,250	809,437	756,497	758,203	8,444,825
Airlines	1,956,927	1,853,671	1,895,038	1,926,876	1,945,934	1,908,710	2,047,244	1,883,688	1,624,123	1,052,379	1,509,292	1,454,444	1,748,369	20,849,768
Airport terminals	20,373	21,434	22,764	20,449	20,680	20,719	18,654	17,519	12,837	12,504	16,771	19,726	21,842	225,899
Railways	1,234,342	1,061,471	1,065,322	1,195,811	1,182,647	1,049,321	1,375,655	1,326,360	1,192,231	1,030,190	1,084,583	1,153,236	1,183,869	13,900,696
Buses	1,386,592	1,296,932	1,369,440	1,411,001	1,438,808	1,397,677	1,444,298	1,544,049	1,382,227	1,450,140	716,168	1,133,253	1,246,537	15,830,530
Sea travel	56,262	56,951	61,238	65,029	73,502	69,870	52,856	50,020	39,543	38,167	40,952	44,050	53,340	645,518
Travel agents	1,086,044	1,014,834	1,044,089	853,429	829,094	798,703	904,193	769,140	646,563	569,323	1,137,897	1,086,095	1,095,713	10,749,073
Timeshares	5,123	4,404	4,349	4,034	4,278	4,048	3,990	4,714	3,797	4,544	7,127	5,888	5,663	56,836
Camping grounds	165,127	159,028	161,032	138,913	154,067	138,786	95,180	82,927	63,562	55,553	144,651	169,372	176,019	1,539,090
Miscellaneous travel	831,943	784,585	892,528	878,463	1,006,146	1,001,419	896,580	904,456	826,418	821,659	275,781	298,587	315,107	8,901,729
Travel	6,742,733	6,253,310	6,515,800	6,494,005	6,655,156	6,389,253	6,838,650	6,582,873	5,791,301	5,034,459	4,933,222	5,364,651	5,846,459	72,699,139
Telegraph Services / Wire Transfer Mo	236,903	228,964	242,507	243,232	254,876	253,795	265,545	272,389	278,328	303,870	120,792	244,304	258,979	2,967,581
Insurance services	1,008,028	936,013	980,517	1,058,648	1,109,310	1,073,250	1,197,782	1,072,693	1,016,771	898,986	792,857	904,538	1,010,207	12,051,572
FIs - cash disbursements (auto & man	0	0	0	0	0	0	0	0	0	0	0	0	1	1
FIs - merchandise & services	4,562,901	4,175,401	4,363,196	4,228,549	4,457,697	4,609,566	4,638,342	4,848,045	4,698,336	5,016,250	4,826,841	4,845,346	5,234,843	55,942,412
Non-FIs - foreign currency, travellers' c	312,154	292,407	341,372	361,512	427,248	425,801	321,889	265,674	229,625	215,363	220,941	255,905	298,050	3,655,787
Security Brokers and Dealers	225,681	232,987	163,166	155,954	161,920	170,553	142,427	141,610	135,938	139,678	143,770	164,312	188,871	1,941,186
Tax Preparation Services	39	50	47	42	58	58	66	63	72	85	91	111	133	876
Tax Payments	125,449	104,966	96,023	125,482	125,441	125,373	159,822	208,023	211,883	252,060	757,642	676,790	256,006	3,099,511
Fines, bail and bond payments	108,380	104,930	110,421	100,336	95,659	93,833	93,503	101,261	94,173	91,973	97,210	95,535	104,766	1,183,600
Miscellaneous financial	10,722	11,935	11,783	11,833	12,056	12,431	12,431	12,343	13,040	12,736	11,451	13,701	15,780	149,963
Financial Services	6,590,257	6,086,592	6,309,184	6,285,538	6,644,042	6,764,285	6,831,807	6,922,101	6,678,166	6,931,001	6,971,595	7,200,542	7,367,636	80,992,489

E-commerce detailed sector breakdown - retail sectors (not seasonally adjusted)

	March 2015	April 2015	May 2015	June 2015	July 2015	August 2015	September 2015	October 2015	November 2015	December 2015	January 2016	February 2016	March 2016	Total (latest 12 months)
Telecoms	1,861,001	1,712,221	1,719,509	1,758,172	1,857,634	1,884,457	1,995,115	2,145,574	2,049,545	2,163,723	2,169,370	2,077,889	2,125,799	23,659,008
Utilities	1,721,420	1,552,211	1,549,198	1,536,667	1,582,884	1,384,948	1,416,025	1,377,222	1,150,162	1,278,565	1,311,164	1,253,227	1,390,390	16,782,663
Contractors (residential & commercial)	38,728	39,333	36,048	37,786	38,919	36,820	42,566	41,398	40,778	33,096	39,007	38,349	38,996	463,096
Gardening services	6,795	6,638	7,745	6,397	5,392	4,605	4,041	3,401	2,955	2,466	2,154	3,723	6,298	57,815
Veterinary services	33,161	31,034	30,900	35,119	35,665	35,439	39,116	38,844	37,073	35,665	37,634	40,920	44,615	442,024
Photocopying & printing	293,089	263,732	276,811	281,288	288,644	305,386	326,189	339,843	385,567	413,924	237,497	216,988	208,496	3,544,365
Photographic studios	57,729	78,585	92,269	69,053	71,465	54,248	89,585	141,907	171,587	79,136	25,407	38,326	44,741	956,309
Beauty & barber shops	165,804	142,866	152,911	160,727	166,938	159,475	166,583	177,636	244,606	263,890	135,912	145,748	147,138	2,064,430
Employment agencies	2,828	2,981	2,646	2,708	2,268	2,216	2,668	2,560	2,293	1,643	2,720	2,848	2,957	30,508
Counselling services	6,008	5,232	7,373	7,349	7,130	7,489	7,600	8,424	7,912	7,339	10,040	11,882	10,304	98,074
Legal services	18,967	15,191	14,797	18,881	19,166	18,389	17,102	16,893	16,916	15,586	17,120	18,693	18,841	207,575
Laundry & cleaning	11,123	9,406	13,277	8,837	5,722	5,090	16,337	28,517	24,245	14,156	21,564	25,354	21,653	194,158
Funeral services	1,613	1,674	1,852	1,311	1,303	1,291	1,637	1,241	1,229	1,014	1,005	1,308	1,843	16,708
Medical services	127,887	115,277	113,882	113,174	120,477	131,180	164,871	139,900	127,824	123,843	146,114	145,818	154,425	1,596,785
Moving & courier services	257,704	250,381	251,742	264,420	265,695	256,548	262,316	269,839	276,527	302,283	253,514	265,679	253,803	3,172,747
Repair shops (not auto)	12,571	11,406	10,293	12,525	12,719	12,210	13,713	12,660	15,368	18,327	13,331	13,501	17,243	163,296
Accounting services	10,258	7,841	8,049	8,259	8,713	10,839	14,859	13,301	11,977	11,005	11,060	11,010	10,115	127,028
Advertising, consultancy & PR	87,521	81,235	79,720	104,107	105,284	109,968	131,788	117,493	114,404	92,711	101,329	125,126	134,248	1,297,413
Computer programming	383,598	343,812	336,321	351,616	341,550	321,812	367,754	373,325	355,511	338,211	283,852	333,348	346,037	4,093,149
Farming services	16,716	16,797	19,713	20,942	19,401	17,071	18,057	18,836	18,290	17,377	17,971	18,064	17,819	220,338
Miscellaneous professional services	1,199,619	1,108,084	1,127,326	981,576	942,888	833,917	1,046,787	997,741	1,087,614	989,331	953,511	988,970	1,057,415	12,115,160
Engineering services	10,905	9,379	8,906	10,146	9,935	9,567	9,456	11,788	12,308	14,325	10,175	11,598	11,820	129,403
Marina services	8,391	10,261	9,893	10,285	10,901	10,894	7,970	8,183	5,769	5,843	4,520	6,837	8,892	100,248
Wrecking & salvage yards	565	557	486	540	576	541	421	393	392	362	337	409	458	5,472
Pest control	1,299	1,497	1,383	1,325	1,316	1,313	1,022	1,026	1,116	904	1,010	999	1,189	14,100
Educational establishments	1,980,441	1,580,131	1,748,856	1,917,939	1,266,472	653,623	2,441,246	2,321,516	2,525,473	1,737,973	2,392,609	1,978,004	2,122,473	22,686,315
Child care services	7,760	6,985	7,608	8,316	9,002	8,899	8,541	9,868	9,275	8,249	9,518	11,111	11,293	108,665
Social, political & religious organisation	1,230,988	1,304,960	1,358,746	1,370,813	1,562,957	1,422,042	1,707,619	1,359,307	1,119,806	1,125,394	1,047,491	1,196,654	1,364,013	15,939,802
Government services	4,258,183	4,186,855	4,143,688	3,979,494	4,008,750	4,061,562	4,314,487	4,111,919	3,701,896	3,545,537	3,833,781	4,090,472	4,348,868	48,327,309
Miscellaneous services	1,067,570	1,140,949	966,759	1,079,983	1,067,609	950,732	1,034,083	969,011	923,342	999,435	863,988	941,916	1,119,699	12,057,506
Commercial equipment	233,240	221,498	218,931	232,407	231,761	211,223	222,275	221,740	225,547	185,480	180,206	185,965	189,853	2,526,886
<i>Other Services</i>	<i>15,113,482</i>	<i>14,261,009</i>	<i>14,317,638</i>	<i>14,392,162</i>	<i>14,069,136</i>	<i>12,923,794</i>	<i>15,891,829</i>	<i>15,281,306</i>	<i>14,667,307</i>	<i>13,826,793</i>	<i>14,134,911</i>	<i>14,200,736</i>	<i>15,231,734</i>	<i>173,198,355</i>
Total services	57,045,818	53,878,980	53,943,038	53,961,623	55,212,455	52,501,617	54,081,249	54,132,249	55,120,983	53,257,848	54,338,559	55,175,783	56,694,841	652,299,225
TOTAL	82,736,682	77,471,612	77,865,269	79,864,185	84,826,088	78,291,801	82,685,138	84,254,157	90,119,985	91,170,567	81,757,786	83,060,832	85,543,270	996,910,690

¹ With effect of January 2016 *Record shops* and *Video stores* were discontinued as separate categories and merged with *Digital entertainment* category.

² *Digital entertainment* category is effective from January 2016.

Table 4D Online card expenditure statistics (not seasonally adjusted)

Value of debit card transactions

E-commerce detailed sector breakdown - retail sectors (not seasonally adjusted)

£	March 2015	April 2015	May 2015	June 2015	July 2015	August 2015	September 2015	October 2015	November 2015	December 2015	January 2016	February 2016	March 2016	Total (latest 12 months)
Auto rental	23,712,353	23,811,355	28,004,898	32,001,906	36,038,513	27,567,621	21,280,538	18,941,211	16,249,206	19,685,522	2,118,391	12,716,116	16,014,158	254,429,435
Auto parts & accessories	11,476,322	10,955,456	10,882,189	11,393,851	12,016,560	10,932,660	10,743,580	11,498,028	11,241,306	10,532,261	10,967,125	12,126,382	13,490,557	136,779,955
Auto services	17,582,127	16,918,394	17,723,501	18,398,023	19,741,742	18,357,090	18,904,905	16,957,748	13,947,537	14,278,300	15,085,066	16,855,562	18,320,460	205,488,328
Auto repair shops	14,622,866	13,532,612	12,933,408	12,777,374	12,788,073	12,728,148	14,519,535	13,430,424	13,806,100	13,053,483	14,985,269	15,540,640	17,550,047	167,645,113
Service stations	0	0	0	0	0	0	0	0	0	0	0	0	0	0
Vehicle sales	7,986,761	7,458,599	7,143,712	7,799,032	7,462,816	7,060,727	8,329,603	8,657,069	7,831,273	6,443,001	8,549,079	9,235,149	11,026,082	96,996,142
Vehicle Sales & Services	75,380,429	72,676,416	76,687,708	82,370,186	88,047,704	76,646,246	73,778,161	69,484,480	63,075,422	63,992,567	51,704,930	66,473,849	76,401,304	861,338,973
Restaurants	113,845,306	102,657,074	115,555,322	100,664,255	120,565,306	107,500,576	106,876,995	116,618,155	127,993,246	127,469,640	120,810,975	129,224,455	133,240,823	1,409,176,822
Public houses	4,081,030	4,398,016	4,084,620	4,159,962	4,154,003	4,067,981	4,689,105	7,834,222	7,877,208	10,600,643	7,913,162	7,766,331	9,271,935	76,817,188
Catering services	12,879,523	13,152,389	13,473,675	14,259,456	15,950,900	15,230,742	14,884,860	15,907,623	14,188,358	13,915,808	11,935,775	13,071,959	15,525,115	171,496,660
Video stores ¹	336,618	355,863	296,127	287,305	266,395	221,066	228,481	195,381	232,432	238,785	0	0	0	2,321,835
Cinema, theatre & dance	110,529,538	89,381,168	95,750,689	101,509,316	100,780,654	87,204,370	96,444,996	120,108,408	145,265,425	156,668,985	91,152,440	134,042,958	104,706,663	1,323,016,072
Concerts & entertainers	9,846,502	9,609,438	11,100,733	9,543,956	10,019,016	10,027,287	9,624,844	11,724,483	15,276,839	14,050,548	10,851,180	10,812,591	11,687,229	134,328,144
Tourist attractions	12,587,961	15,205,008	14,684,637	13,819,895	16,159,741	18,716,494	15,066,298	16,332,680	17,134,878	14,347,086	9,052,574	12,124,235	12,809,880	166,049,466
Amusement parks	828,118	1,666,498	1,420,319	1,117,292	1,393,257	2,434,982	1,048,097	1,274,158	861,051	915,109	449,014	802,695	1,241,960	14,624,432
Aquariums	485,566	899,701	886,672	628,596	805,891	1,278,990	664,087	684,177	436,780	519,400	298,836	549,476	869,821	8,522,427
Sports & games establishments	45,633,509	42,202,222	61,129,422	41,330,018	29,861,078	27,158,250	25,839,142	27,282,461	27,915,769	29,611,817	27,531,481	33,367,527	37,821,687	411,050,874
Professional sports clubs	3,999,035	5,557,849	3,990,120	3,272,824	4,419,946	3,332,687	4,589,446	4,298,529	2,865,472	2,403,235	3,903,892	2,654,904	6,387,438	47,676,342
Gambling	257,964,326	233,806,261	195,636,571	189,841,017	194,888,160	232,377,409	201,301,819	184,780,601	179,426,308	178,553,036	160,009,494	89,841,546	45,872,643	2,086,334,865
Personal services	3,271,057	2,872,732	2,802,723	3,175,124	3,083,909	3,042,300	3,623,105	3,165,844	3,919,541	4,385,522	3,924,329	3,614,915	3,827,936	41,437,980
Miscellaneous entertainment	4,487,102	5,464,217	5,592,879	5,773,092	7,063,876	8,001,044	5,755,152	6,115,648	4,695,425	5,236,676	6,302,392	7,093,110	7,966,340	75,059,851
Digital entertainment ²	0	0	0	0	0	0	0	0	0	0	23,706,689	23,054,634	22,440,707	69,202,030
Entertainment	580,775,191	527,228,436	526,404,509	489,382,108	509,412,132	520,594,178	490,636,427	516,322,370	541,684,732	555,916,290	477,842,233	468,021,336	413,670,177	6,037,114,928
Hotels	91,356,435	88,098,709	95,896,470	95,185,659	89,043,152	88,516,896	97,387,257	90,014,113	73,051,757	63,017,769	109,532,624	96,131,554	101,437,454	1,087,313,414
Airlines	412,018,687	373,194,745	401,863,012	414,556,111	413,447,882	367,260,466	392,288,327	354,346,259	284,223,929	185,004,597	319,297,324	299,956,150	342,299,886	4,147,738,688
Airport terminals	906,048	1,037,185	1,116,133	965,782	1,001,536	980,810	956,705	828,845	601,128	683,232	795,722	921,433	1,007,417	10,895,928
Railways	57,864,326	50,514,384	50,320,429	57,043,835	56,865,391	50,210,520	63,056,225	62,479,384	55,807,885	50,123,270	56,933,856	56,285,224	57,469,247	667,109,650
Buses	32,017,046	31,338,475	32,158,870	32,923,070	35,571,956	35,357,198	38,156,016	35,339,972	29,625,163	32,533,805	14,583,511	22,252,774	25,082,113	364,922,923
Sea travel	7,409,175	7,390,991	7,590,654	8,494,116	9,837,607	8,716,880	6,532,208	6,235,555	5,112,903	4,663,325	6,240,989	6,656,137	7,346,683	84,818,048
Travel agents	432,337,405	417,331,564	483,227,515	429,219,287	406,550,481	334,382,047	280,706,694	257,524,733	224,334,307	215,357,567	400,403,637	404,995,862	452,664,461	4,306,698,155
Timeshares	632,606	561,906	524,777	513,171	527,451	503,912	499,969	576,638	597,108	594,262	944,262	780,702	760,686	7,271,012
Camping grounds	22,772,472	22,025,761	27,823,165	24,985,518	25,887,377	20,335,346	11,135,615	10,504,091	12,005,156	8,986,857	18,258,726	21,247,817	25,432,083	228,627,512
Miscellaneous travel	22,034,899	21,930,920	23,876,349	23,017,069	25,540,487	23,395,121	22,234,906	20,246,872	19,624,832	17,740,999	13,792,896	16,945,565	18,419,140	246,765,156
Travel	967,992,664	925,325,931	1,028,500,904	991,717,959	975,230,168	841,142,300	815,566,665	748,082,349	631,815,733	515,690,760	831,250,923	830,041,664	930,481,716	10,064,847,072
Telegraph Services / Wire Transfer M	74,795,423	72,983,568	77,838,723	76,244,244	82,935,728	78,307,421	75,046,068	81,443,338	87,115,900	82,181,352	40,106,500	67,452,578	73,767,089	895,422,509
Insurance services	140,118,230	127,404,473	130,148,732	141,841,328	150,719,566	149,122,031	168,203,038	153,432,003	159,326,081	137,884,862	116,953,586	127,649,234	149,465,555	1,712,150,489
FIs - cash disbursements (auto & man	0	0	0	0	0	0	0	0	0	0	0	0	650	650
FIs - merchandise & services	1,776,869,657	1,750,596,450	1,619,788,572	1,599,334,740	1,680,490,096	1,697,115,440	1,673,344,084	1,713,544,278	1,707,507,601	1,855,228,558	1,757,629,510	1,695,731,045	1,927,815,186	20,678,125,560
Non-FIs - foreign currency, travellers' c	164,437,613	142,556,520	173,469,890	196,062,615	245,782,970	194,249,678	153,054,792	132,076,948	118,748,059	106,663,092	104,098,094	119,761,543	151,352,240	1,837,876,442
Security Brokers and Dealers	745,562,962	908,414,140	404,810,734	419,283,656	435,070,817	467,908,073	335,235,616	292,995,446	301,461,006	291,144,029	382,406,428	414,062,436	663,469,824	5,316,262,205
Tax Preparation Services	6,991	9,445	9,307	6,737	8,011	8,270	15,721	8,763	12,361	12,895	17,369	18,069	17,493	144,441
Tax Payments	155,618,382	147,208,316	144,627,688	155,617,857	155,617,318	155,616,458	290,805,883	385,557,586	410,607,282	558,503,335	1,681,310,256	1,599,440,679	417,731,546	6,102,644,204
Fines, bail and bond payments	9,117,273	8,656,127	9,110,791	8,308,237	8,053,496	7,740,247	8,009,943	8,722,190	7,977,464	7,816,419	8,093,622	7,976,778	8,515,322	98,980,636
Miscellaneous financial	1,087,288	1,118,137	1,214,534	1,117,620	1,158,521	1,218,640	1,291,086	1,291,086	1,319,281	1,155,885	1,213,072	1,338,897	1,488,087	14,872,857
Financial Services	3,067,613,819	3,158,947,176	2,561,018,971	2,597,617,034	2,759,836,523	2,751,286,258	2,704,954,242	2,769,071,639	2,794,075,035	3,040,590,427	4,091,826,437	4,033,431,259	3,393,622,992	36,656,479,993

E-commerce detailed sector breakdown - retail sectors (not seasonally adjusted)

£	March 2015	April 2015	May 2015	June 2015	July 2015	August 2015	September 2015	October 2015	November 2015	December 2015	January 2016	February 2016	March 2016	Total (latest 12 months)
Telecoms	64,548,013	54,837,750	52,106,290	53,008,242	55,504,466	56,036,453	60,263,974	67,579,641	66,011,540	69,344,645	70,265,301	67,643,019	72,468,555	745,069,876
Utilities	125,480,692	105,891,492	99,833,668	108,111,555	108,759,261	103,160,246	95,967,172	95,451,418	82,203,170	85,226,604	92,231,586	94,123,333	117,757,454	1,188,716,959
Contractors (residential & commercial)	4,909,918	5,645,982	4,744,024	4,963,372	5,146,582	4,994,343	9,695,994	6,287,256	5,795,085	4,626,407	8,133,058	5,439,010	5,603,764	71,074,877
Gardening services	550,288	826,440	735,943	656,208	577,795	507,847	411,011	323,649	264,065	176,945	188,871	296,352	562,042	5,527,168
Veterinary services	1,709,325	1,613,861	1,544,378	1,743,799	1,807,447	1,779,076	2,014,769	1,950,258	1,893,401	1,871,423	1,941,908	2,130,096	2,344,338	22,634,754
Photocopying & printing	10,964,484	10,265,392	10,270,404	10,873,970	10,513,774	10,513,459	11,972,824	12,198,393	14,202,754	13,301,978	10,169,746	9,691,217	9,686,338	133,660,249
Photographic studios	1,883,063	2,076,098	2,556,480	2,413,541	2,950,437	2,406,841	3,162,333	4,828,462	5,658,082	3,184,057	1,435,268	1,946,755	2,127,129	34,745,483
Beauty & barber shops	7,952,190	7,349,858	7,554,315	7,930,809	8,019,091	8,010,455	8,758,161	9,384,965	13,142,747	12,798,299	6,732,345	7,463,650	7,625,595	104,770,290
Employment agencies	399,192	430,218	347,666	388,968	286,263	256,175	182,045	190,402	163,870	252,792	294,483	365,435	3,353,538	
Counselling services	358,123	284,544	404,143	423,210	435,201	478,970	415,859	502,902	454,797	464,825	887,026	1,362,768	805,710	6,919,955
Legal services	5,460,913	3,866,136	3,611,872	5,359,541	5,472,915	5,135,893	4,038,751	4,146,383	4,010,612	4,239,709	4,009,138	4,606,725	6,444,312	54,941,987
Laundry & cleaning	156,401	140,572	167,424	133,813	114,822	105,147	291,047	391,933	300,150	187,752	294,750	305,200	256,679	2,689,289
Funeral services	1,366,827	656,534	586,917	639,281	644,073	634,076	708,034	901,195	985,072	609,083	842,636	998,379	1,263,117	9,468,397
Medical services	10,007,796	8,644,503	8,397,107	8,411,074	9,220,869	10,768,047	13,590,495	11,021,295	9,498,193	9,191,306	11,113,721	11,268,787	12,305,337	123,430,734
Moving & courier services	7,537,442	7,534,447	7,507,517	8,236,972	8,282,953	8,015,363	8,793,225	8,536,306	8,912,823	9,090,247	7,565,976	7,081,397	7,898,363	97,455,589
Repair shops (not auto)	1,095,610	1,012,609	950,890	1,097,240	1,128,521	1,074,994	1,466,017	1,368,758	1,743,097	2,089,247	1,295,431	1,339,383	3,059,850	17,626,037
Accounting services	1,262,619	1,026,912	1,044,674	1,062,680	1,121,440	1,331,524	1,837,712	1,624,297	1,467,859	1,344,973	1,409,024	1,454,579	1,398,314	16,123,988
Advertising, consultancy & PR	2,912,964	2,790,287	2,708,038	3,444,295	3,540,207	3,695,408	4,588,666	4,214,503	3,977,358	3,153,474	3,852,552	4,669,948	5,007,927	45,642,663
Computer programming	13,526,084	13,082,481	13,135,006	13,543,348	13,073,839	12,335,660	13,440,431	14,100,926	13,621,220	13,655,426	11,698,951	12,170,211	12,993,733	156,851,232
Farming services	1,376,093	1,853,483	1,882,442	1,574,364	1,579,172	1,474,066	2,262,887	3,947,852	1,722,142	1,592,123	2,312,011	1,726,813	1,588,005	23,515,360
Miscellaneous professional services	256,375,955	276,638,581	203,476,960	193,861,442	198,182,936	203,286,047	197,355,737	162,430,750	144,911,864	147,210,767	179,630,861	154,344,635	214,289,650	2,275,620,230
Engineering services	2,810,045	2,464,355	2,409,383	2,703,899	2,483,751	2,456,928	2,139,867	2,486,371	2,519,863	2,569,745	2,085,355	2,569,868	2,552,552	29,441,937
Marina services	1,259,399	1,410,305	1,421,511	1,397,697	1,353,789	1,207,716	735,386	645,543	499,136	493,408	587,488	833,368	1,204,047	11,789,394
Wrecking & salvage yards	58,284	61,870	59,944	54,530	59,188	53,152	43,578	41,813	47,166	37,780	35,401	54,556	54,404	603,382
Pest control	54,996	63,488	58,290	58,918	59,646	56,109	48,699	42,847	45,641	35,369	37,660	42,524	49,028	598,219
Educational establishments	118,646,150	185,413,106	125,690,912	104,716,716	95,519,367	146,418,326	590,605,097	417,237,763	163,227,763	120,561,826	318,529,728	155,660,578	115,834,421	2,539,415,603
Child care services	1,363,904	1,213,019	1,223,841	1,385,300	1,450,981	1,419,650	1,421,679	1,397,211	1,345,161	1,287,549	1,318,551	1,625,671	1,618,989	16,707,602
Social, political & religious organisation	60,130,490	57,948,917	56,776,902	84,920,461	102,250,728	90,395,052	100,090,954	104,746,543	79,061,696	86,576,791	84,090,468	87,908,555	91,199,043	1,025,966,110
Government services	1,892,940,531	1,871,084,732	1,778,959,302	1,550,365,374	1,662,970,784	1,394,447,971	1,279,863,434	1,235,733,871	1,103,184,897	1,066,569,625	1,309,570,419	1,294,020,006	1,464,385,943	17,011,156,358
Miscellaneous services	43,907,706	45,308,378	39,987,632	42,638,167	42,160,691	39,326,176	44,079,858	42,903,401	39,735,733	42,954,230	42,141,464	40,349,765	45,584,669	507,170,164
Commercial equipment	17,478,715	17,107,840	16,872,039	18,183,099	18,341,296	16,486,458	17,801,731	17,843,013	17,804,496	14,258,786	14,557,645	15,681,089	16,525,450	201,462,942
Other Services	2,658,484,212	2,688,544,190	2,447,025,914	2,234,301,885	2,363,012,285	2,128,267,628	2,478,060,603	2,234,451,563	1,788,437,985	1,718,868,269	2,189,217,131	1,989,102,720	2,224,860,193	26,484,150,366
Total services	7,461,602,750	7,460,820,858	6,735,534,476	6,490,774,831	6,784,581,964	6,406,453,506	6,660,383,355	6,427,426,514	5,892,140,664	5,958,076,082	7,751,376,278	7,483,202,382	7,140,473,836	81,191,244,746
TOTAL	8,916,420,373	8,826,626,421	8,107,468,147	7,957,605,329	8,326,882,321	7,826,131,276	8,187,531,201	7,986,642,943	7,812,584,143	7,956,713,952	9,178,594,521	8,936,635,634	8,689,778,873	99,793,194,761

¹ With effect of January 2016 *Record shops* and *Video stores* were discontinued as separate categories and merged with *Digital entertainment* category.

² *Digital entertainment* category is effective from January 2016.