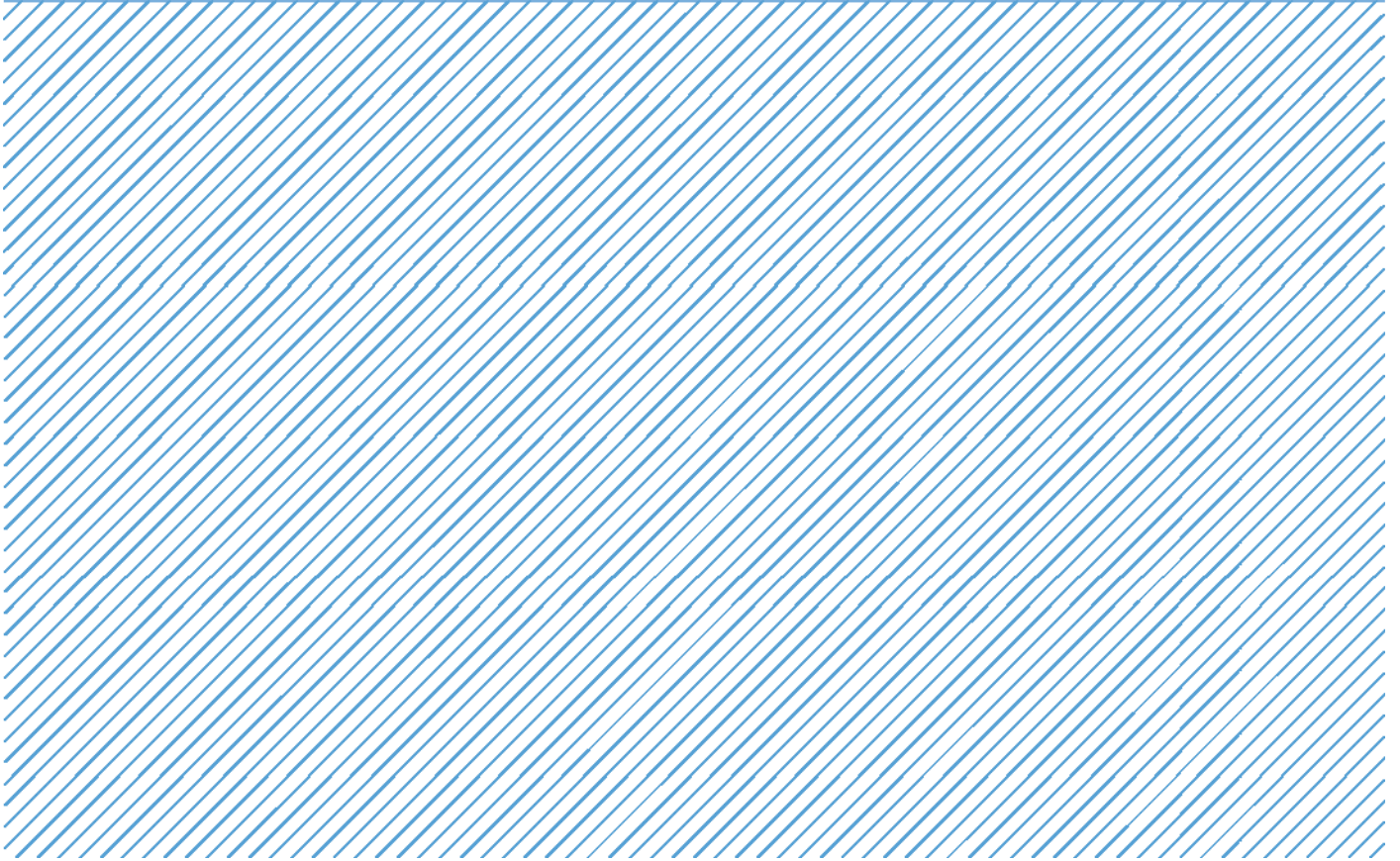


Card Expenditure Statistics

April 2016



Card Expenditure Statistics – April 2016

	Total Spending £ billions		Annual growth rates for spending		Number of purchases Millions	
	Apr 2016	Apr 2015	Apr 2016	Apr 2015	Apr 2016	Apr 2015
All payment cards	53.0	51.5	6.2%	7.7%	1,194	1,092
<i>Of which online *</i>	12.6	11.1	14%	–	153	128
Debit cards	37.8	36.5	6.8%	8.3%	920	835
Credit cards	15.1	15.0	4.6%	6.3%	274	257

Unless otherwise stated all data referred to are seasonally adjusted and depict the underlying trend. The X12 ARIMA monthly seasonal adjustments include trading days and leap years. Unadjusted data are located in tables 3A to 3D. There is a step change in the data between 2010 and 2011 following a change in the reporting population. Annual growth rates are based on twelve-month rolling periods.

* As there are insufficient online data series collected to apply X12 ARIMA seasonal adjustment, the underlying trend is determined using linear regression. This allows an estimation of the likely scale of seasonal impacts to be made until there are sufficient data to use a recognised method of seasonal adjustment.

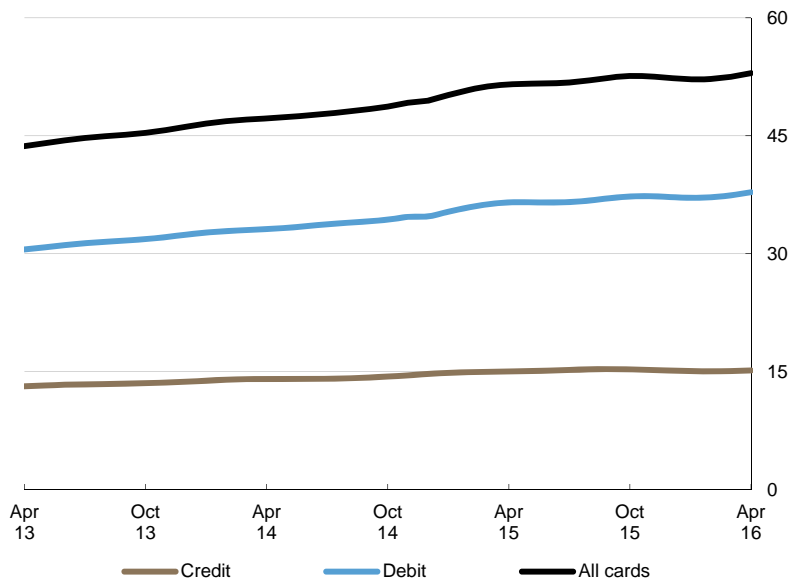
Introduction

Despite some evidence of subdued retail sales in March and April¹ and a slowdown in the rate of economic growth in the first quarter of 2016², **payment card spending** recorded the strongest monthly growth in thirteen months. Total value spent on cards increased by 0.9% to £53.0 billion, £0.5 billion above the level recorded in March. Spending online amounted to £12.6 billion, representing 24% of total card expenditure, up from 22% a year ago.

The **number of purchases** also increased, up by 0.9% on March, reaching a monthly total of just under 1.2 billion. The main contributors to the growth in the number of transactions have been the ongoing migration of cash payments to cards, reinforced by increased use of **contactless** cards³. The number of contactless payments rose to 188 million in April, accounting for 16% of total card purchases, up from 6% twelve months ago.

Chart 1

Monthly expenditure
(£ billions)



¹ BRC-KPMG Retail Sales Monitor April 2016: <https://home.kpmg.com/uk/en/home/media/press-releases/2016/05/retail-sales-flat-again-in-april.html>

² ONS, Gross Domestic Product: <https://www.ons.gov.uk/economy/grossdomesticproductgdp/bulletins/secondestimateofgdp/quarter1jantomar2016>

³ BBC, Contactless cards get a new fan base: The over-60s: <http://www.bbc.co.uk/news/business-36332607>

Annual growth rates

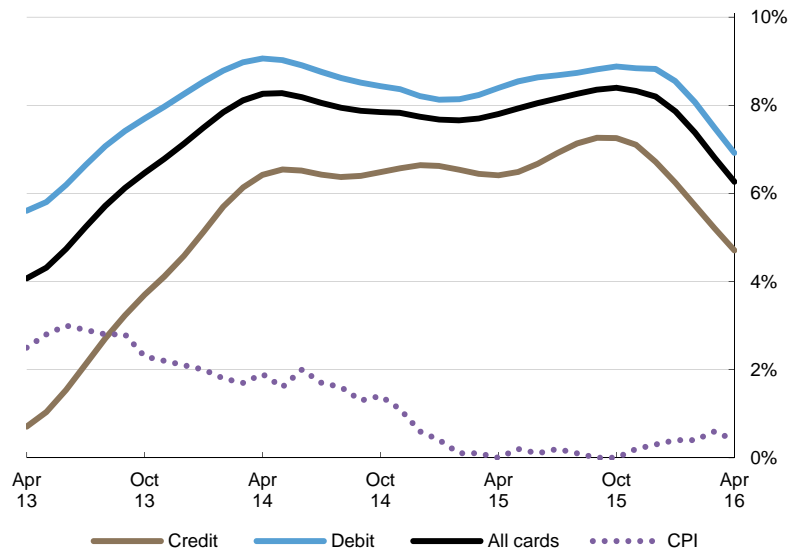
Growth in card spending continued to decelerate, growing by 6.2% – the lowest **annual rate** since September 2013. This subdued growth could, in part stem from uncertainty in the general economic climate followed by a decline in consumer confidence that fell below zero for the first time in fifteen months⁴. Other factors include continuously low annual inflation, recording a decrease for the first time since September 2015⁵, alongside further reductions in clothing and food prices⁶.

The annual growth in the **service** sector (+8.9%) continued to exceed that in **retail** sales (+3.2%), reflecting changing consumer behaviour, shifting from spending on goods to leisure such as **entertainment** (+10%) and **hotels** (+9%). **Automotive fuels** remained the only sub-sector recording a decline, falling by 6.4% over a year.

The annual growth rate of the **number of purchases** (+11%) continued to outstrip that of amount spent, driven by a robust rise in purchases made online (+22%) and contactless (+212%) over the last twelve months.

Chart 2

Spending on payment cards
Year-on-year growth rates



Sub-sector	Annual growth (%)
Mixed business	9.2
Household	7.1
Other retail	6.5
Clothing	4.1
Food & drink	1.5
Automotive Fuels	-6.4
Retail sales	3.2
Financial	19.0
Entertainment	10.1
Hotels	8.7
Vehicle Sales & Services	8.5
Travel	6.3
Other services	2.5
Services	8.9

⁴ GfK, Consumer Confidence: <http://www.gfk.com/en-gb/insights/press-release/economic-uncertainty-clouds-consumer-confidence/>

⁵ ONS, Consumer Price Inflation: <https://www.ons.gov.uk/economy/inflationandpriceindices/bulletins/consumerpriceinflation/apr2016>

⁶ The Guardian, The surprising fall in the cost of the UK's food: <http://www.theguardian.com/money/2016/may/07/surprising-fall-cost-food-uk-eggs-bread-meat>

Average transaction values

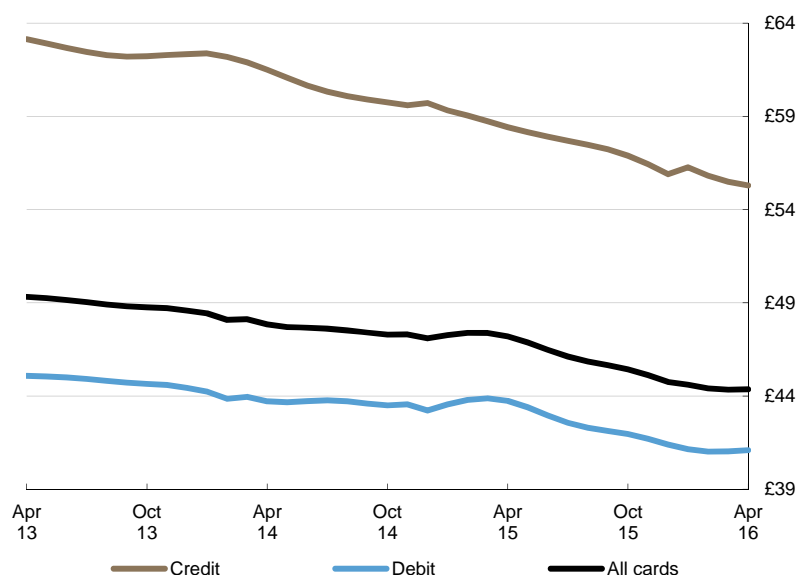
The **average transaction value** (ATV) on all payment cards remained broadly unchanged between March and April, rising by 1p to £44.36, well below the level of £47.20 a year ago. The ATV for **debit cards** picked up by 7p to £41.10, while the ATV for **credit cards** fell by 20p to £55.29. The ATV on all cards via the **online** channel amounted to £86.40, down from £87.27 in March, and compares to £95.26 a year ago. In contrast, the ATV on **contactless** cards increased to £8.42, up by £1.50 on April 2015.

Within the sectors, the **retail sales** ATV declined by 1p to £31.27, while the ATV for **services** fell to £69.31, after decreasing by 19p. The largest decrease was registered in **financial services**, which recorded an ATV fall of 90p, while the **other services** sub-sector registered the largest increase, growing by £1.40 during the month.

Despite the slight uptick in overall ATV, there has been a persistent decline in ATVs evident since 2011, stemming from changing consumer spending habits⁷ (such as buying less but more often and increasingly using contactless cards), coupled with intense price competition among British supermarkets⁸ that has been reinforced by low inflation.

Chart 3

Average transaction values



Sub-sector	ATV
Household	£70.88
Clothing	£40.76
Other retail	£39.43
Mixed business	£29.89
Automotive Fuels	£27.99
Food & drink	£23.37
Retail sales	£31.27
Financial	£369.56
Vehicle Sales & Services	£189.82
Hotels	£125.84
Other services	£96.93
Travel	£75.24
Entertainment	£19.88
Services	£69.31

⁷ Retail Week, The changing dynamics: <http://guides.retail-week.com/155.guide>

⁸ Kantar Worldpanel: <http://uk.kantar.com/home/consumer/shoppers/2016/may-kantar-worldpanel-uk-grocery-share/>

Spending by sector – retail sales and services

The number of purchases within the **retail sector** rose by 4.3 million to 783 million, with the corresponding spend amounting to £24.5 billion, up by £126 million on March. The largest increase in spending was registered in the **other retail** sub-sector, where spending grew by £38 million to £3.9 billion, mainly driven by expenditure at **sports shops** and **optical goods** merchants. The **household** sub-sector was also a strong contributor to growth after increasing by £23 million on March to £4.0 billion, boosted by a notable rise in spending at **DIY stores** and **garden centres**.

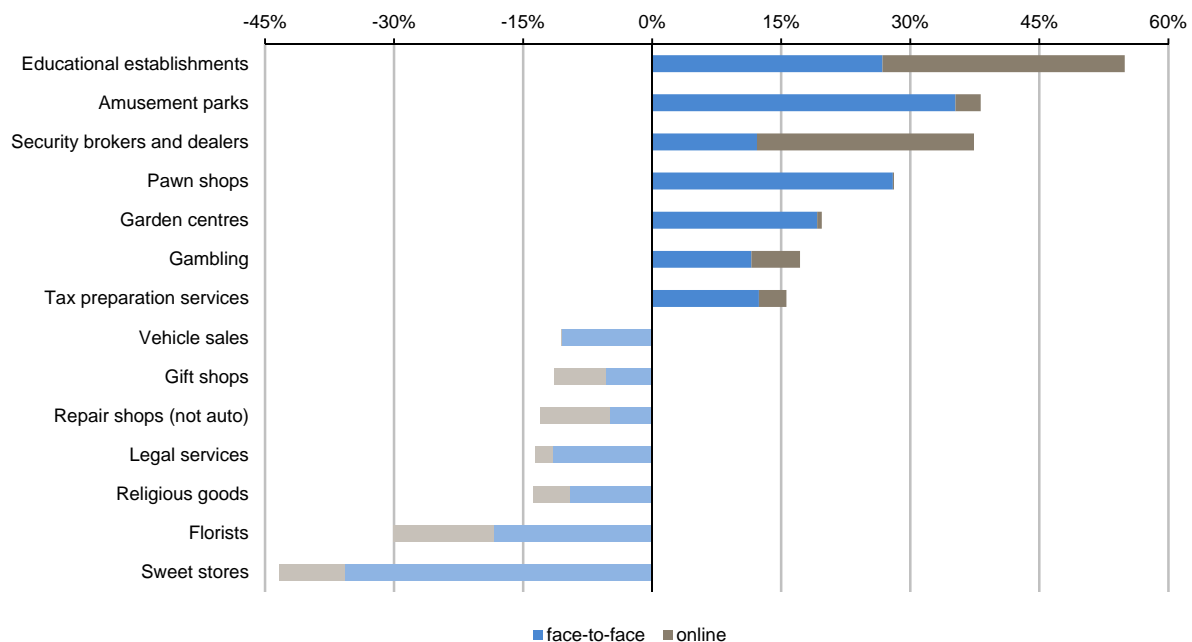
The number of card payments in the **services sector** grew by 6.1 million on March, reaching 411 million, corresponding to a rise in spending of £347 million to £28.5 billion. A major contributor of growth was the **other services** sub-sector, which recorded a rise of £192 million to £7.8 billion, with over 60% of this increase coming from the **educational establishments** category. The **travel** sub-sector was also a strong contributor to growth after increasing by £30 million to £4.1 billion, mainly due to higher spending at **travel agents**.

Spending by merchant categories (not seasonally adjusted)

In April large increases in card spending were registered at a wide range of businesses. The largest increase in spending was evident on **educational establishments**; likely due to the impending deadline for third term tuition fees. There was also a notable increase in spending at **amusement parks**, marking the half term holiday. **Garden centres** registered a substantial rise in spending for the second consecutive month as consumers continued to make seasonal improvements to the outdoor space. Meanwhile, spending at **sweet stores** and florists recorded the largest decreases between March and April.

Chart 4

Largest changes in card spending between April and March



Spending online (not seasonally adjusted)

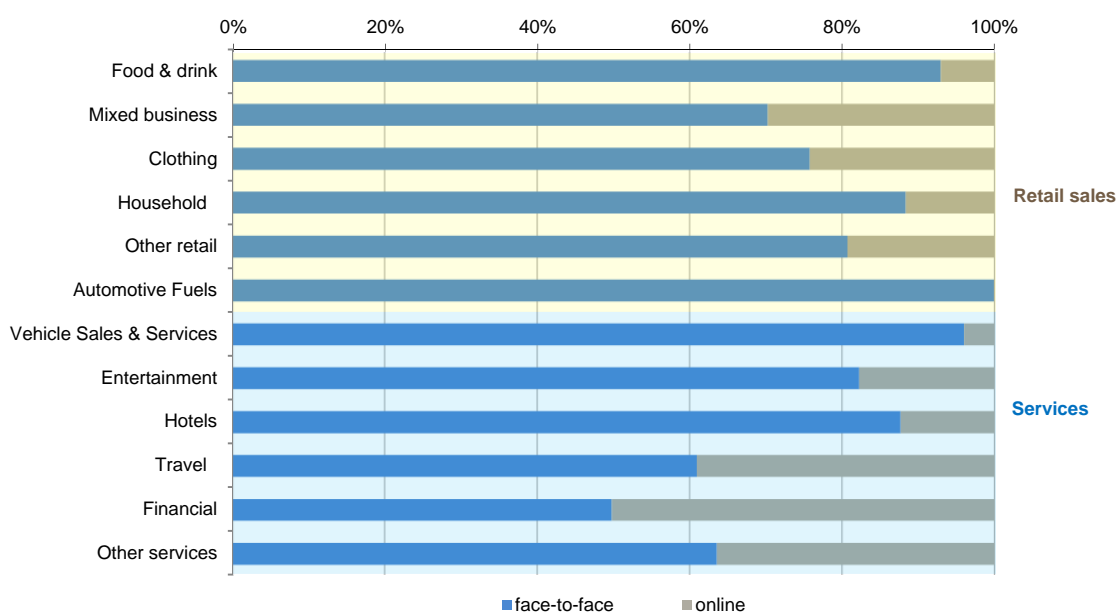
In April the volume of **internet shopping** continued to grow at double the rate (22%) of total card purchases (11%). Amount spent online accounted for 24% of total card spending, while the number of e-commerce purchases reached 13% of total card payments.

Within the services sector 19% of card payments and 32% of spending were made via the internet, while 9% of retail purchases and 13% of values were online. The highest proportion of e-commerce spending remained within **financial services**, where 50% of spending was completed online, followed by **travel** (38%) and **other services** (36%).

Within the merchant categories, **catalogues** registered the highest online spending (92%) followed by **timeshares** (81%) and **digital entertainment** (78%). The lowest share was recorded in the **vehicle sales** category, where just 0.7% of spending was made online, while virtually all spending on **automotive fuels** occurred in the face-to-face environment.

Chart 5

Face-to-face and online spending by merchant sectors in April



Payment card spending within national retail sales

Payment card share of total **retail sales** (including automotive fuels)⁹ amounted to **77.5%** in April and compares to 76.6% a year ago. Debit cards accounted for 53.5% of retail sales, up from 52.3% in April 2015, while credit cards share stood at 24.0%, down from 24.3% a year ago. This trend was also reflected in other sub-sectors such as **food & drink** and **automotive fuels**. The share of spending within food & drink accounted for by cards rose to 72.8%, while the majority of expenditure on automotive fuels was accounted for by payment cards at 89.9%.

Contact: Silvija Krupena; silvija.krupena@ukpayments.org.uk | camis@ukpayments.org.uk | 020 3217 8460 or 020 3217 8720

⁹ CES 3-month moving average spend of £24.4 billion expressed as a percentage of a similar 3-month moving average for ONS Retail Sales – All Retailing Including Automotive Fuel (J5A3) that amounted to £31.6 billion.

Table 1 Card expenditure statistics (seasonally adjusted)

Summary

	Number of purchase transactions (millions)									Value of purchase transactions (£ millions)								
	All sectors			Retail sales			Services			All sectors			Retail sales			Services		
	Credit	Debit	Total	Credit	Debit	Total	Credit	Debit	Total	Credit	Debit	Total	Credit	Debit	Total	Credit	Debit	Total
Annual																		
2011	2,252	7,230	9,482	1,548	5,300	6,848	704	1,930	2,634	151,186	324,458	475,645	78,838	165,617	244,455	72,348	158,842	231,190
2012	2,372	7,860	10,232	1,621	5,665	7,286	752	2,194	2,946	152,862	345,492	498,354	81,066	175,200	256,266	71,796	170,293	242,089
2013	2,547	8,335	10,882	1,732	5,903	7,635	816	2,431	3,247	159,718	373,674	533,392	84,531	183,470	268,001	75,187	190,204	265,391
2014	2,802	9,244	12,046	1,877	6,434	8,311	925	2,810	3,735	170,165	403,978	574,143	87,524	193,539	281,063	82,641	210,439	293,080
2015	3,142	10,273	13,415	2,095	6,902	8,998	1,047	3,371	4,417	181,427	439,215	620,642	91,394	198,926	290,320	90,033	240,289	330,322
Monthly																		
2015 Apr	257	835	1,092	172	564	736	85	271	356	15,022	36,518	51,539	7,596	16,382	23,978	7,425	20,136	27,561
May	259	842	1,101	173	568	741	86	274	360	15,071	36,546	51,617	7,617	16,481	24,098	7,454	20,064	27,519
Jun	261	850	1,111	175	572	747	87	277	364	15,134	36,506	51,640	7,637	16,589	24,226	7,497	19,917	27,414
Jul	264	859	1,122	176	577	754	87	281	369	15,207	36,556	51,763	7,659	16,681	24,340	7,548	19,875	27,423
Aug	266	869	1,135	177	583	760	88	287	375	15,275	36,766	52,041	7,679	16,760	24,439	7,596	20,006	27,602
Sep	268	879	1,147	178	587	766	89	292	381	15,313	37,050	52,363	7,687	16,824	24,511	7,626	20,227	27,853
Oct	269	888	1,157	179	591	770	90	297	387	15,301	37,272	52,573	7,676	16,861	24,537	7,625	20,411	28,036
Nov	270	895	1,164	180	594	774	90	301	391	15,234	37,305	52,539	7,643	16,849	24,492	7,591	20,455	28,047
Dec	271	899	1,169	180	596	776	91	303	394	15,140	37,196	52,336	7,598	16,809	24,408	7,541	20,387	27,928
2016 Jan	268	902	1,169	177	597	773	91	305	396	15,059	37,102	52,161	7,557	16,769	24,326	7,502	20,333	27,835
Feb	269	906	1,175	178	598	776	92	308	400	15,031	37,174	52,205	7,537	16,770	24,307	7,494	20,404	27,898
Mar	271	912	1,184	179	600	779	93	312	405	15,064	37,424	52,488	7,543	16,824	24,367	7,521	20,600	28,121
Apr	274	920	1,194	180	603	783	94	317	411	15,150	37,811	52,961	7,572	16,921	24,493	7,577	20,890	28,468
Year-on-year growth rates (percentages)																		
Annual																		
2011	11.7	11.0	11.2	11.6	12.1	12.0	12.1	8.2	9.2	17.8	11.9	13.7	13.3	11.4	12.0	23.1	12.4	15.6
2012	5.3	8.7	7.9	4.7	6.9	6.4	6.8	13.7	11.8	1.1	6.5	4.8	2.8	5.8	4.8	-0.8	7.2	4.7
2013	7.4	6.0	6.4	6.9	4.2	4.8	8.5	10.8	10.2	4.5	8.2	7.0	4.3	4.7	4.6	4.7	11.7	9.6
2014	10.0	10.9	10.7	8.4	9.0	8.9	13.5	15.6	15.0	6.5	8.1	7.6	3.5	5.5	4.9	9.9	10.6	10.4
2015	12.1	11.1	11.4	11.6	7.3	8.3	13.1	20.0	18.3	6.6	8.7	8.1	4.4	2.8	3.3	8.9	14.2	12.7
Monthly																		
2015 Apr	10.9	10.4	10.5	9.7	7.8	8.2	13.5	16.5	15.7	6.3	8.3	7.7	3.6	3.9	3.8	9.3	12.5	11.6
May	11.2	10.3	10.5	10.0	7.5	8.1	13.5	16.9	16.1	6.4	8.4	7.8	3.7	3.5	3.6	9.3	13.1	12.0
Jun	11.5	10.3	10.6	10.5	7.3	8.0	13.5	17.5	16.5	6.6	8.5	7.9	3.9	3.3	3.5	9.4	13.5	12.3
Jul	11.8	10.4	10.7	11.0	7.1	8.0	13.6	18.1	16.9	6.8	8.6	8.1	4.2	3.1	3.5	9.6	13.7	12.6
Aug	12.1	10.5	10.9	11.4	7.1	8.0	13.7	18.6	17.4	7.0	8.6	8.2	4.4	3.0	3.5	9.8	13.9	12.7
Sep	12.3	10.7	11.1	11.6	7.1	8.1	13.7	19.1	17.8	7.2	8.7	8.3	4.6	2.9	3.5	9.9	14.1	12.9
Oct	12.4	10.9	11.2	11.8	7.1	8.2	13.6	19.5	18.1	7.2	8.8	8.3	4.7	2.8	3.4	9.8	14.4	13.1
Nov	12.3	11.0	11.3	11.8	7.2	8.2	13.4	19.8	18.2	7.0	8.7	8.2	4.6	2.6	3.2	9.5	14.4	13.1
Dec	12.1	11.1	11.4	11.6	7.3	8.3	13.1	20.0	18.3	6.6	8.7	8.1	4.4	2.8	3.3	8.9	14.2	12.7
2016 Jan	11.6	11.2	11.3	11.2	7.4	8.2	12.6	20.0	18.2	6.1	8.4	7.8	4.1	2.9	3.3	8.3	13.5	12.0
Feb	11.1	11.3	11.3	10.6	7.5	8.2	12.1	19.9	18.0	5.6	8.0	7.3	3.8	3.0	3.3	7.6	12.4	11.1
Mar	10.6	11.3	11.2	10.1	7.6	8.1	11.7	19.8	17.8	5.1	7.4	6.7	3.4	3.2	3.2	6.9	11.1	10.0
Apr	10.1	11.3	11.0	9.4	7.6	8.0	11.5	19.5	17.6	4.6	6.8	6.2	2.9	3.3	3.2	6.3	9.9	8.9

There was a step change in 2011 due to a change in reporting population

Data are seasonally adjusted and depict the underlying trend. The X12 ARIMA monthly seasonal adjustments include trading days and leap years.

Table 2A Card expenditure statistics (seasonally adjusted)

Retail sales

Number of purchase transactions (millions)

Total retail sales

	Number of purchase transactions (millions)																		Total retail sales		
	Food & drink			Mixed business			Clothing			Household			Other retailers			Automotive Fuels ¹			Number of purchases		
	Credit	Debit	Total	Credit	Debit	Total	Credit	Debit	Total	Credit	Debit	Total	Credit	Debit	Total	Credit	Debit	Total	Credit	Debit	Total
Annual																					
2011	602	2,565	3,167	136	425	562	139	427	566	157	370	526	295	780	1,075	219	732	951	1,548	5,300	6,848
2012	662	2,849	3,511	148	478	626	145	452	598	157	375	532	281	757	1,038	227	754	981	1,621	5,665	7,286
2013	722	3,009	3,730	182	523	705	152	459	611	165	400	565	276	720	997	235	792	1,026	1,732	5,903	7,635
2014	769	3,454	4,223	250	477	727	163	478	641	172	433	605	285	783	1,068	238	810	1,048	1,877	6,434	8,311
2015	835	3,712	4,547	346	524	870	176	510	686	179	472	650	328	866	1,195	232	819	1,051	2,095	6,902	8,998
Monthly																					
2015 Apr	69	303	372	28	42	70	15	42	57	15	38	53	26	71	97	19	68	87	172	564	736
May	69	305	374	29	43	71	15	42	57	15	39	54	27	71	98	19	68	87	173	568	741
Jun	70	307	377	29	43	73	15	42	57	15	39	54	27	72	99	19	68	88	175	572	747
Jul	70	310	380	30	44	74	15	43	57	15	40	54	28	73	100	19	68	88	176	577	754
Aug	70	312	383	30	45	75	15	43	58	15	40	55	28	74	102	19	69	88	177	583	760
Sep	71	315	386	30	45	76	15	43	58	15	40	55	29	75	103	19	69	88	178	587	766
Oct	71	318	389	30	46	76	15	43	58	15	40	56	29	75	104	19	69	88	179	591	770
Nov	71	321	392	31	46	77	15	43	58	15	41	56	29	74	104	19	69	89	180	594	774
Dec	71	322	394	31	46	77	14	43	57	15	41	56	29	74	103	19	70	89	180	596	776
2016 Jan	71	324	395	32	46	78	14	42	56	15	41	56	25	73	98	19	70	89	177	597	773
Feb	71	325	397	33	46	79	14	42	56	15	41	56	25	73	98	19	71	90	178	598	776
Mar	72	326	398	34	47	81	14	42	56	15	41	56	25	73	99	19	71	90	179	600	779
Apr	72	327	399	35	47	82	14	42	56	15	41	56	26	74	99	19	71	91	180	603	783

Year-on-year growth rates (percentages)

	Number of purchase transactions (millions)																		Total retail sales		
	Credit	Debit	Total	Credit	Debit	Total	Credit	Debit	Total	Credit	Debit	Total	Credit	Debit	Total	Credit	Debit	Total	Credit	Debit	Total
Annual																					
2011	13.1	12.1	12.3	-1.5	4.6	3.1	8.1	0.8	2.5	5.8	5.6	5.7	7.3	6.5	6.7	32.7	39.3	37.7	11.6	12.1	12.0
2012	10.0	11.0	10.9	8.4	12.5	11.5	4.5	5.9	5.5	0.1	1.4	1.0	-4.8	-3.0	-3.5	3.8	3.1	3.2	4.7	6.9	6.4
2013	8.9	5.6	6.2	23.0	9.3	12.5	4.8	1.5	2.3	5.2	6.8	6.4	-1.6	-4.8	-3.9	3.3	5.0	4.6	6.9	4.2	4.8
2014	6.6	14.8	13.2	37.6	-8.8	3.2	6.9	4.1	4.8	4.2	8.1	6.9	3.1	8.7	7.1	1.3	2.3	2.1	8.4	9.0	8.9
2015	8.5	7.5	7.7	38.2	9.9	19.7	8.0	6.7	7.0	3.8	9.0	7.5	15.2	10.7	11.9	-2.5	1.1	0.3	11.6	7.3	8.3
Monthly																					
2015 Apr	7.2	12.5	11.5	40.1	-10.0	3.9	7.7	5.5	6.1	3.5	7.6	6.4	8.1	9.8	9.4	-1.2	0.7	0.3	9.7	7.8	8.2
May	7.5	11.5	10.8	40.9	-8.3	5.7	7.6	5.6	6.1	3.6	7.8	6.6	9.3	9.8	9.7	-1.6	0.5	0.0	10.0	7.5	8.1
Jun	7.7	10.6	10.1	41.7	-6.2	7.7	7.7	5.6	6.2	3.8	8.1	6.8	10.5	9.9	10.0	-1.9	0.5	-0.1	10.5	7.3	8.0
Jul	8.1	9.8	9.5	42.2	-3.7	10.0	7.9	5.8	6.4	3.9	8.4	7.1	11.7	10.0	10.5	-2.2	0.4	-0.2	11.0	7.1	8.0
Aug	8.3	9.1	8.9	42.3	-1.0	12.3	8.2	6.2	6.7	4.0	8.7	7.3	12.8	10.3	11.0	-2.4	0.4	-0.2	11.4	7.1	8.0
Sep	8.6	8.5	8.5	41.9	1.9	14.5	8.6	6.5	7.0	4.0	8.8	7.4	13.8	10.6	11.4	-2.6	0.4	-0.2	11.6	7.1	8.1
Oct	8.7	8.0	8.1	40.9	4.7	16.5	8.8	6.8	7.3	3.9	8.9	7.5	14.5	10.8	11.8	-2.6	0.5	-0.2	11.8	7.1	8.2
Nov	8.7	7.7	7.9	39.6	7.4	18.2	8.6	6.9	7.3	3.9	9.0	7.5	15.0	10.9	12.0	-2.6	0.8	0.0	11.8	7.2	8.2
Dec	8.5	7.5	7.7	38.2	9.9	19.7	8.0	6.7	7.0	3.8	9.0	7.5	15.2	10.7	11.9	-2.5	1.1	0.3	11.6	7.3	8.3
2016 Jan	8.3	7.4	7.6	36.9	12.2	21.0	6.9	6.2	6.4	3.7	9.0	7.5	13.8	10.3	11.2	-2.4	1.6	0.7	11.2	7.4	8.2
Feb	8.0	7.4	7.5	35.6	14.5	22.2	5.7	5.6	5.6	3.5	9.0	7.4	12.4	9.8	10.5	-2.2	2.1	1.2	10.6	7.5	8.2
Mar	7.7	7.5	7.5	34.1	14.8	21.9	4.4	4.9	4.8	3.2	9.0	7.3	11.0	9.4	9.8	-2.0	2.6	1.6	10.1	7.6	8.1
Apr	7.3	7.6	7.6	32.5	15.0	21.5	3.2	4.4	4.1	2.8	8.9	7.2	9.6	9.0	9.1	-1.8	3.1	2.0	9.4	7.6	8.0

There was a step change in 2011 due to a change in reporting population

Data are seasonally adjusted and depict the underlying trend. The X12 ARIMA monthly seasonal adjustments include trading days and leap years.

¹ Automotive Fuels data is effective from January 2010.

Table 2B Card expenditure statistics (seasonally adjusted)

Retail sales

Value of purchase transactions (£ millions)

Total retail sales

	Value of purchase transactions (£ millions)																		Total retail sales		
	Food & drink			Mixed business			Clothing			Household			Other retailers			Automotive Fuels ¹			Value of purchases		
	Credit	Debit	Total	Credit	Debit	Total	Credit	Debit	Total	Credit	Debit	Total	Credit	Debit	Total	Credit	Debit	Total	Credit	Debit	Total
Annual																					
2011	21,063	69,476	90,539	7,082	14,762	21,845	7,856	14,479	22,335	15,173	20,541	35,715	17,507	24,383	41,890	10,156	21,975	32,131	78,838	165,617	244,455
2012	22,568	74,014	96,583	7,731	16,410	24,141	8,209	15,629	23,837	15,377	21,637	37,013	16,759	24,433	41,192	10,423	23,077	33,499	81,066	175,200	256,266
2013	24,073	77,988	102,060	8,715	17,915	26,630	8,671	16,053	24,724	15,893	23,250	39,143	16,511	24,369	40,879	10,669	23,895	34,564	84,531	183,470	268,001
2014	24,524	84,441	108,964	9,563	16,725	26,288	9,165	17,066	26,231	16,870	25,998	42,868	17,170	25,724	42,895	10,233	23,585	33,818	87,524	193,539	281,063
2015	25,253	84,387	109,640	10,613	17,938	28,551	9,898	18,117	28,014	17,558	28,585	46,143	19,151	27,894	47,045	8,921	22,006	30,927	91,394	198,926	290,320
Monthly																					
2015 Apr	2,092	6,950	9,042	873	1,467	2,340	833	1,503	2,336	1,459	2,334	3,793	1,579	2,286	3,865	760	1,843	2,603	7,596	16,382	23,978
May	2,099	6,984	9,082	879	1,483	2,362	834	1,509	2,343	1,463	2,358	3,820	1,583	2,299	3,882	758	1,850	2,608	7,617	16,481	24,098
Jun	2,106	7,018	9,124	885	1,503	2,388	834	1,516	2,351	1,466	2,381	3,848	1,591	2,319	3,910	754	1,852	2,606	7,637	16,589	24,226
Jul	2,114	7,043	9,157	891	1,523	2,414	835	1,524	2,360	1,470	2,404	3,874	1,603	2,342	3,946	746	1,845	2,590	7,659	16,681	24,340
Aug	2,121	7,068	9,189	898	1,537	2,434	835	1,531	2,365	1,474	2,425	3,899	1,617	2,367	3,984	735	1,832	2,568	7,679	16,760	24,439
Sep	2,124	7,104	9,228	903	1,541	2,444	831	1,533	2,364	1,477	2,440	3,917	1,627	2,385	4,012	725	1,821	2,546	7,687	16,824	24,511
Oct	2,124	7,147	9,272	906	1,536	2,441	824	1,529	2,354	1,476	2,450	3,926	1,629	2,385	4,014	716	1,813	2,530	7,676	16,861	24,537
Nov	2,123	7,174	9,297	905	1,524	2,429	813	1,520	2,333	1,471	2,457	3,928	1,621	2,363	3,983	711	1,811	2,522	7,643	16,849	24,492
Dec	2,120	7,190	9,310	903	1,511	2,414	800	1,508	2,308	1,461	2,464	3,925	1,607	2,324	3,931	707	1,813	2,520	7,598	16,809	24,408
2016 Jan	2,115	7,190	9,305	903	1,504	2,406	788	1,497	2,285	1,452	2,474	3,926	1,594	2,288	3,882	705	1,816	2,521	7,557	16,769	24,326
Feb	2,112	7,184	9,297	905	1,506	2,411	781	1,493	2,274	1,446	2,490	3,936	1,589	2,276	3,864	704	1,821	2,525	7,537	16,770	24,307
Mar	2,111	7,189	9,301	911	1,518	2,429	780	1,494	2,274	1,445	2,510	3,954	1,593	2,287	3,880	704	1,825	2,530	7,543	16,824	24,367
Apr	2,112	7,213	9,325	920	1,535	2,455	784	1,500	2,283	1,447	2,531	3,977	1,606	2,312	3,918	705	1,830	2,535	7,572	16,921	24,493

Year-on-year growth rates (percentages)

Annual																					
2011	12.3	9.0	9.8	-1.2	5.9	3.4	15.4	6.1	9.2	3.3	8.9	6.4	12.8	3.4	7.1	53.3	48.0	49.6	13.3	11.4	12.0
2012	7.1	6.5	6.7	9.2	11.2	10.5	4.5	7.9	6.7	1.3	5.3	3.6	-4.3	0.2	-1.7	2.6	5.0	4.3	2.8	5.8	4.8
2013	6.7	5.4	5.7	12.7	9.2	10.3	5.6	2.7	3.7	3.4	7.5	5.8	-1.5	-0.3	-0.8	2.4	3.5	3.2	4.3	4.7	4.6
2014	1.9	8.3	6.8	9.7	-6.6	-1.3	5.7	6.3	6.1	6.1	11.8	9.5	4.0	5.6	4.9	-4.1	-1.3	-2.2	3.5	5.5	4.9
2015	3.0	-0.1	0.6	11.0	7.3	8.6	8.0	6.2	6.8	4.1	10.0	7.6	11.5	8.4	9.7	-12.8	-6.7	-8.5	4.4	2.8	3.3
Monthly																					
2015 Apr	1.6	5.7	4.8	9.1	-7.2	-1.8	5.6	5.8	5.8	4.8	10.0	7.9	8.8	6.4	7.3	-8.3	-4.2	-5.5	3.6	3.9	3.8
May	1.7	4.8	4.1	9.3	-6.1	-0.9	5.8	5.6	5.7	4.6	9.9	7.8	9.9	6.4	7.8	-9.1	-4.7	-6.1	3.7	3.5	3.6
Jun	1.8	4.0	3.5	9.6	-4.5	0.4	6.2	5.5	5.8	4.5	9.9	7.8	11.0	6.6	8.3	-9.8	-5.2	-6.6	3.9	3.3	3.5
Jul	2.0	3.2	2.9	10.1	-2.5	1.9	6.9	5.6	6.0	4.4	10.0	7.8	11.9	6.9	8.9	-10.5	-5.7	-7.2	4.2	3.1	3.5
Aug	2.3	2.3	2.3	10.5	-0.2	3.5	7.6	5.8	6.4	4.4	10.1	7.8	12.5	7.4	9.4	-11.3	-6.1	-7.7	4.4	3.0	3.5
Sep	2.5	1.5	1.7	10.9	2.0	5.1	8.2	6.0	6.8	4.4	10.1	7.8	12.8	8.1	9.9	-12.0	-6.5	-8.2	4.6	2.9	3.5
Oct	2.8	0.6	1.1	11.1	4.1	6.6	8.5	6.2	7.0	4.4	10.0	7.8	12.7	8.6	10.2	-12.5	-6.8	-8.6	4.7	2.8	3.4
Nov	2.9	-0.3	0.4	11.1	5.9	7.8	8.5	6.3	7.1	4.3	10.0	7.7	12.3	8.8	10.2	-12.8	-6.9	-8.7	4.6	2.6	3.2
Dec	3.0	-0.1	0.6	11.0	7.3	8.6	8.0	6.2	6.8	4.1	10.0	7.6	11.5	8.4	9.7	-12.8	-6.7	-8.5	4.4	2.8	3.3
2016 Jan	3.0	0.2	0.8	10.7	8.2	9.1	7.1	5.8	6.3	3.8	10.0	7.5	10.6	7.8	8.9	-12.6	-6.2	-8.1	4.1	2.9	3.3
Feb	2.9	0.4	1.0	10.3	8.8	9.4	6.0	5.4	5.6	3.5	10.0	7.4	9.5	7.0	8.0	-12.1	-5.6	-7.6	3.8	3.0	3.3
Mar	2.9	0.8	1.3	9.8	9.1	9.4	4.7	4.9	4.8	3.1	9.9	7.3	8.4	6.4	7.2	-11.7	-5.0	-7.0	3.4	3.2	3.2
Apr	2.7	1.2	1.5	9.3	9.1	9.2	3.4	4.4	4.1	2.7	9.9	7.1	7.4	5.9	6.5	-11.2	-4.4	-6.4	2.9	3.3	3.2

There was a step change in 2011 due to a change in reporting population

Data are seasonally adjusted and depict the underlying trend. The X12 ARIMA monthly seasonal adjustments include trading days and leap years.

¹ Automotive Fuels data is effective from January 2010.

Table 2C Card expenditure statistics (seasonally adjusted)

Services

Number of purchase transactions (millions)

Total services

	Number of purchase transactions (millions)																		Total services		
	Vehicle Sales & Services ¹			Entertainment			Hotels			Travel			Financial			Other Services			Number of purchases		
	Credit	Debit	Total	Credit	Debit	Total	Credit	Debit	Total	Credit	Debit	Total	Credit	Debit	Total	Credit	Debit	Total	Credit	Debit	Total
Annual																					
2011	51	89	139	268	882	1,150	51	43	94	116	237	354	33	145	178	186	534	720	704	1,930	2,634
2012	50	94	144	309	1,062	1,371	53	48	100	124	266	389	30	160	190	186	565	751	752	2,194	2,946
2013	53	104	157	354	1,223	1,576	54	53	107	130	286	416	29	174	202	196	592	789	816	2,431	3,247
2014	59	121	179	423	1,502	1,925	60	62	122	150	328	478	26	166	192	208	630	838	925	2,810	3,735
2015	69	142	210	477	1,844	2,321	66	75	141	178	428	606	28	183	211	228	699	928	1,047	3,371	4,417
Monthly																					
2015 Apr	6	11	17	39	147	186	5	6	12	14	34	48	2	15	17	19	57	76	85	271	356
May	6	12	17	39	149	188	5	6	12	15	35	49	2	15	17	19	57	76	86	274	360
Jun	6	12	17	39	151	190	6	6	12	15	35	50	2	15	18	19	58	77	87	277	364
Jul	6	12	18	40	153	193	6	6	12	15	36	51	2	15	18	19	58	78	87	281	369
Aug	6	12	18	40	157	197	6	6	12	15	37	52	2	16	18	19	59	78	88	287	375
Sep	6	12	18	40	160	201	6	6	12	16	38	53	2	16	18	19	60	79	89	292	381
Oct	6	12	18	41	164	205	6	7	12	16	38	54	2	16	18	19	60	80	90	297	387
Nov	6	12	18	42	167	209	6	7	12	16	39	54	2	16	18	19	60	79	90	301	391
Dec	6	12	18	42	169	212	6	7	12	15	39	54	3	16	18	19	60	79	91	303	394
2016 Jan	6	13	18	43	171	215	5	7	12	15	39	54	3	16	18	19	60	79	91	305	396
Feb	6	13	18	44	174	218	5	7	12	15	39	54	3	16	19	19	60	79	92	308	400
Mar	6	13	18	45	177	222	5	7	12	15	39	54	3	16	19	19	61	80	93	312	405
Apr	6	13	19	46	180	226	5	7	12	15	40	55	3	16	19	19	61	81	94	317	411
Year-on-year growth rates (percentages)																					
Annual																					
2011	-33.3	-56.6	-50.3	20.5	21.4	21.2	36.1	24.3	30.4	19.4	17.2	17.9	3.4	11.9	10.2	13.5	9.8	10.8	12.1	8.2	9.2
2012	-0.4	5.6	3.4	15.4	20.4	19.2	3.3	11.2	6.9	6.5	11.8	10.1	-9.9	10.8	6.9	0.4	5.7	4.3	6.8	13.7	11.8
2013	5.2	11.0	9.0	14.5	15.1	15.0	2.9	11.1	6.8	5.0	7.6	6.8	-3.5	8.3	6.4	5.2	4.9	5.0	8.5	10.8	10.2
2014	10.5	16.2	14.3	19.7	22.8	22.1	10.1	17.8	13.9	15.5	14.8	15.0	-10.9	-4.3	-5.3	6.1	6.4	6.3	13.5	15.6	15.0
2015	16.9	17.3	17.2	12.7	22.8	20.6	11.1	20.1	15.7	18.8	30.3	26.7	10.9	10.3	10.3	9.7	11.0	10.7	13.1	20.0	18.3
Monthly																					
2015 Apr	12.0	15.1	14.0	18.0	21.9	21.0	10.5	18.1	14.3	16.7	19.9	18.9	-4.3	-0.6	-1.2	6.6	8.0	7.6	13.5	16.5	15.7
May	12.4	15.2	14.3	17.3	21.9	20.9	10.8	18.3	14.6	16.9	21.3	19.9	-2.6	0.4	-0.1	7.0	8.7	8.3	13.5	16.9	16.1
Jun	13.0	15.5	14.7	16.7	22.1	20.9	11.2	18.6	14.9	17.2	22.7	21.0	-0.8	1.5	1.2	7.6	9.3	8.9	13.5	17.5	16.5
Jul	13.7	16.0	15.2	16.0	22.3	20.9	11.5	19.0	15.3	17.7	24.4	22.3	1.1	2.8	2.5	8.2	9.8	9.4	13.6	18.1	16.9
Aug	14.4	16.5	15.8	15.3	22.5	20.9	11.9	19.4	15.7	18.4	26.1	23.7	3.0	4.2	4.0	8.8	10.3	10.0	13.7	18.6	17.4
Sep	15.1	16.9	16.3	14.6	22.6	20.8	12.1	19.9	16.0	19.0	27.7	25.0	4.9	5.7	5.6	9.3	10.8	10.4	13.7	19.1	17.8
Oct	15.8	17.2	16.7	13.9	22.6	20.7	12.1	20.2	16.2	19.3	29.1	26.0	6.8	7.3	7.2	9.7	11.1	10.7	13.6	19.5	18.1
Nov	16.4	17.4	17.0	13.2	22.7	20.6	11.7	20.3	16.1	19.2	30.0	26.6	8.8	8.8	8.8	9.8	11.1	10.8	13.4	19.8	18.2
Dec	16.9	17.3	17.2	12.7	22.8	20.6	11.1	20.1	15.7	18.8	30.3	26.7	10.9	10.3	10.3	9.7	11.0	10.7	13.1	20.0	18.3
2016 Jan	14.9	17.2	16.4	12.4	22.9	20.6	10.1	19.7	15.0	17.9	30.1	26.3	11.5	10.4	10.5	9.4	10.6	10.3	12.6	20.0	18.2
Feb	13.0	17.0	15.6	12.3	23.1	20.7	9.0	19.0	14.1	16.8	29.5	25.5	12.1	10.4	10.6	8.9	10.3	9.9	12.1	19.9	18.0
Mar	11.1	16.7	14.9	12.5	23.2	20.9	7.9	18.0	13.1	15.7	28.5	24.5	12.9	10.4	10.7	8.4	9.9	9.5	11.7	19.8	17.8
Apr	9.5	16.5	14.2	13.0	23.2	21.0	6.9	17.0	12.1	14.4	27.5	23.5	13.8	10.4	10.8	7.8	9.5	9.0	11.5	19.5	17.6

There was a step change in 2011 due to a change in reporting population

Data are seasonally adjusted and depict the underlying trend. The X12 ARIMA monthly seasonal adjustments include trading days and leap years.

¹ With effect of January 2010 Automotive Fuels was published as a separate sub-sector in retail sales. See tables 2A and 2B

Table 2D Card expenditure statistics (seasonally adjusted)

Services

Value of purchase transactions (£ millions)

		Value of purchase transactions (£ millions)																		Total services			
		Vehicle Sales & Services ¹			Entertainment			Hotels			Travel			Financial			Other Services			Value of purchases			
		Credit	Debit	Total	Credit	Debit	Total	Credit	Debit	Total	Credit	Debit	Total	Credit	Debit	Total	Credit	Debit	Total	Credit	Debit	Total	
Annual																							
	2011	7,775	22,462	30,237	14,092	20,688	34,780	8,639	3,855	12,494	16,322	18,484	34,806	7,153	46,547	53,700	18,366	46,806	65,172	72,348	158,842	231,190	
	2012	7,567	23,539	31,106	14,683	22,820	37,503	8,869	4,311	13,181	16,552	20,617	37,169	5,484	49,942	55,426	18,640	49,064	67,704	71,796	170,293	242,089	
	2013	7,723	25,722	33,444	15,664	24,553	40,217	9,241	4,771	14,012	17,385	22,116	39,501	5,128	55,569	60,698	20,045	57,473	77,518	75,187	190,204	265,391	
	2014	8,171	28,789	36,960	17,434	28,509	45,943	10,417	5,584	16,001	20,086	25,278	45,365	5,153	58,262	63,415	21,379	64,017	85,396	82,641	210,439	293,080	
	2015	9,004	31,778	40,782	18,760	33,587	52,346	11,630	6,441	18,071	21,300	27,585	48,884	6,248	68,411	74,658	23,092	72,488	95,580	90,033	240,289	330,322	
Monthly																							
	2015 Apr	757	2,626	3,384	1,543	2,781	4,324	959	522	1,482	1,739	2,266	4,005	505	5,551	6,056	1,921	6,389	8,310	7,425	20,136	27,561	
	May	760	2,635	3,396	1,552	2,792	4,344	964	528	1,492	1,748	2,272	4,020	507	5,620	6,127	1,923	6,217	8,140	7,454	20,064	27,519	
	Jun	761	2,640	3,401	1,562	2,786	4,348	972	535	1,506	1,765	2,280	4,045	510	5,667	6,178	1,927	6,009	7,935	7,497	19,917	27,414	
	Jul	762	2,652	3,414	1,570	2,791	4,361	980	542	1,522	1,785	2,300	4,085	516	5,715	6,231	1,934	5,875	7,809	7,548	19,875	27,423	
	Aug	761	2,674	3,435	1,575	2,818	4,393	988	548	1,536	1,806	2,329	4,135	523	5,782	6,305	1,943	5,855	7,798	7,596	20,006	27,602	
	Sep	758	2,693	3,451	1,579	2,860	4,439	991	553	1,544	1,820	2,353	4,173	532	5,874	6,406	1,947	5,893	7,840	7,626	20,227	27,853	
	Oct	752	2,703	3,456	1,581	2,896	4,478	986	557	1,543	1,823	2,360	4,183	541	5,979	6,520	1,941	5,916	7,856	7,625	20,411	28,036	
	Nov	743	2,712	3,455	1,586	2,912	4,498	976	559	1,535	1,813	2,348	4,161	550	6,081	6,631	1,923	5,843	7,767	7,591	20,455	28,047	
	Dec	732	2,721	3,453	1,594	2,899	4,492	962	560	1,522	1,794	2,327	4,121	558	6,170	6,728	1,902	5,711	7,613	7,541	20,387	27,928	
	2016 Jan	722	2,732	3,455	1,604	2,871	4,475	950	560	1,510	1,773	2,314	4,087	566	6,246	6,812	1,886	5,611	7,497	7,502	20,333	27,835	
	Feb	716	2,753	3,469	1,618	2,846	4,464	944	561	1,505	1,758	2,318	4,076	574	6,311	6,885	1,884	5,615	7,499	7,494	20,404	27,898	
	Mar	715	2,778	3,493	1,633	2,832	4,465	943	564	1,507	1,755	2,334	4,088	581	6,367	6,948	1,895	5,725	7,619	7,521	20,600	28,121	
	Apr	719	2,804	3,523	1,646	2,843	4,490	947	568	1,515	1,762	2,356	4,118	587	6,424	7,011	1,916	5,895	7,811	7,577	20,890	28,468	

Year-on-year growth rates (percentages)

Annual																							
	2011	-11.1	-9.6	-10.0	41.5	21.4	28.8	57.0	24.8	45.4	27.6	16.2	21.3	20.7	17.8	18.2	15.8	14.5	14.8	23.1	12.4	15.6	
	2012	-2.7	4.8	2.9	4.2	10.3	7.8	2.7	11.8	5.5	1.4	11.5	6.8	-23.3	7.3	3.2	1.5	4.8	3.9	-0.8	7.2	4.7	
	2013	2.1	9.3	7.5	6.7	7.6	7.2	4.2	10.7	6.3	5.0	7.3	6.3	-6.5	11.3	9.5	7.5	17.1	14.5	4.7	11.7	9.6	
	2014	5.8	11.9	10.5	11.3	16.1	14.2	12.7	17.0	14.2	15.5	14.3	14.8	0.5	4.8	4.5	6.7	11.4	10.2	9.9	10.6	10.4	
	2015	10.2	10.4	10.3	7.6	17.8	13.9	11.6	15.3	12.9	6.0	9.1	7.8	21.2	17.4	17.7	8.0	13.2	11.9	8.9	14.2	12.7	
Monthly																							
	2015 Apr	6.2	10.3	9.4	11.4	18.4	15.7	13.4	17.5	14.8	10.3	11.6	11.0	8.0	7.5	7.5	6.4	15.7	13.3	9.3	12.5	11.6	
	May	6.7	10.4	9.5	11.3	18.9	16.0	13.5	17.4	14.9	9.1	11.4	10.4	9.8	8.3	8.5	6.8	16.7	14.1	9.3	13.1	12.0	
	Jun	7.4	10.4	9.7	11.3	19.3	16.2	13.7	17.3	14.9	8.3	11.3	10.0	11.5	9.2	9.4	7.2	16.9	14.5	9.4	13.5	12.3	
	Jul	8.2	10.4	9.9	11.2	19.5	16.3	13.8	17.2	15.0	7.8	11.2	9.7	13.3	10.2	10.5	7.8	16.6	14.3	9.6	13.7	12.6	
	Aug	9.1	10.4	10.1	10.8	19.5	16.2	13.9	17.1	15.0	7.6	11.0	9.5	15.2	11.5	11.8	8.2	16.1	14.1	9.8	13.9	12.7	
	Sep	9.8	10.4	10.2	10.2	19.3	15.8	13.8	16.9	14.8	7.3	10.7	9.2	17.3	13.0	13.3	8.5	15.7	13.9	9.9	14.1	12.9	
	Oct	10.3	10.4	10.3	9.3	19.0	15.3	13.4	16.5	14.5	6.9	10.3	8.8	19.6	14.6	15.0	8.7	15.3	13.7	9.8	14.4	13.1	
	Nov	10.4	10.4	10.4	8.4	18.5	14.7	12.7	15.9	13.8	6.5	9.7	8.3	22.0	16.1	16.6	8.5	14.7	13.1	9.5	14.4	13.1	
	Dec	10.2	10.4	10.3	7.6	17.8	13.9	11.6	15.3	12.9	6.0	9.1	7.8	21.2	17.4	17.7	8.0	13.2	11.9	8.9	14.2	12.7	
	2016 Jan	9.5	10.3	10.1	7.0	16.9	13.1	10.4	14.7	11.9	5.7	8.6	7.3	20.6	18.3	18.5	7.3	10.9	10.0	8.3	13.5	12.0	
	Feb	8.4	10.0	9.7	6.5	15.7	12.2	9.0	14.1	10.8	5.4	8.1	6.9	20.1	18.8	18.9	6.4	7.8	7.4	7.6	12.4	11.1	
	Mar	7.1	9.7	9.1	6.2	14.2	11.2	7.7	13.5	9.7	5.2	7.7	6.6	19.8	19.0	19.0	5.5	4.6	4.8	6.9	11.1	10.0	
	Apr	5.7	9.3	8.5	6.0	12.6	10.1	6.4	12.9	8.7	5.1	7.3	6.3	19.5	18.9	19.0	4.7	1.8	2.5	6.3	9.9	8.9	

There was a step change in 2011 due to a change in reporting population

Data are seasonally adjusted and depict the underlying trend. The X12 ARIMA monthly seasonal adjustments include trading days and leap years.

¹ With effect of January 2010 Automotive Fuels was published as a separate sub-sector in retail sales. See tables 2A and 2B

Table 3A Card expenditure statistics (not seasonally adjusted)

Number of credit card transactions

Total detailed sector breakdown - services sectors (not seasonally adjusted)

	April 2015	May 2015	June 2015	July 2015	August 2015	September 2015	October 2015	November 2015	December 2015	January 2016	February 2016	March 2016	April 2016	Total (latest 12 months)
Auto rental	1,196,151	1,275,474	1,359,244	1,434,851	1,326,238	1,303,950	1,151,878	998,297	981,026	612,241	888,934	1,009,700	998,687	13,340,520
Auto parts & accessories	779,734	751,096	792,874	804,641	719,173	756,119	739,903	708,859	667,834	708,116	739,096	794,884	761,369	8,943,967
Auto services	2,218,221	2,273,165	2,453,147	2,493,185	2,127,417	2,528,299	2,508,449	2,532,991	2,337,248	2,241,602	2,445,046	2,494,461	2,394,287	28,829,297
Auto repair shops	881,945	847,160	908,613	935,150	824,235	916,808	877,852	817,546	736,434	813,324	846,739	948,677	897,863	10,370,401
Vehicle sales	597,120	575,966	628,582	620,056	553,103	614,166	554,988	502,592	445,633	498,225	551,131	632,484	594,968	6,771,894
Vehicle Sales & Services	5,673,171	5,722,861	6,142,460	6,287,883	5,550,166	6,119,342	5,833,070	5,560,285	5,168,175	4,873,508	5,470,946	5,880,206	5,647,174	68,256,076
Restaurants	20,686,303	22,119,658	22,463,756	23,919,749	22,933,932	23,413,962	24,740,067	23,582,115	23,192,728	21,109,383	23,239,737	24,494,104	24,811,975	280,021,166
Public houses	3,215,619	3,369,184	3,533,498	3,720,743	3,557,930	3,682,197	3,629,802	3,430,734	3,494,214	2,812,691	3,401,457	3,634,587	3,714,029	41,981,066
Catering services	684,934	713,181	787,325	804,892	696,597	839,762	870,742	863,665	783,894	765,986	885,242	931,649	941,126	9,884,061
Video stores ¹	270,335	200,510	35,927	34,860	29,729	30,210	31,055	34,371	29,958	0	0	0	0	426,620
Cinema, theatre & dance	1,938,168	1,925,388	2,085,822	2,051,696	1,982,932	1,917,111	2,629,822	2,879,261	2,797,739	2,090,875	2,258,702	1,967,771	1,904,835	26,491,214
Concerts & entertainers	149,345	166,935	156,513	163,827	157,728	157,250	185,450	237,828	229,444	156,396	155,841	168,215	172,918	2,108,345
Tourist attractions	708,431	726,952	776,021	996,011	1,104,976	825,239	723,794	427,404	401,890	295,784	454,953	574,551	653,479	7,961,054
Amusement parks	102,760	96,299	82,396	112,107	154,933	81,849	83,729	46,958	43,257	28,937	49,130	69,006	96,351	944,952
Aquariums	57,254	48,833	45,299	63,489	91,367	53,524	52,560	23,180	22,817	19,953	35,111	45,285	54,973	554,391
Sports & games establishments	3,460,588	3,737,930	2,731,521	1,275,631	1,212,531	1,162,078	1,161,583	1,026,097	1,106,606	1,073,301	1,127,584	1,159,697	1,168,834	17,943,393
Professional sports clubs	100,813	94,128	73,111	92,563	95,775	116,527	138,959	91,141	84,870	85,939	84,928	93,169	89,796	1,140,906
Gambling	6,432,579	6,069,026	6,069,113	5,686,552	5,634,252	6,975,395	6,650,206	7,370,812	7,079,093	6,460,050	7,247,968	7,191,463	7,017,478	79,451,408
Personal services	301,029	319,298	331,951	354,987	303,313	324,285	310,550	328,756	358,296	271,059	328,512	279,261	283,433	3,748,701
Miscellaneous entertainment	841,015	875,849	860,432	922,486	957,592	911,170	897,296	776,322	678,343	853,593	883,472	913,567	939,311	10,469,433
Digital entertainment ²	0	0	0	0	0	0	0	0	0	4,447,839	4,332,304	4,221,633	3,491,531	16,493,307
Entertainment	38,949,173	40,463,171	40,031,945	40,199,593	38,913,587	40,490,559	42,105,615	41,118,644	40,303,149	40,471,239	44,427,488	45,754,958	45,340,069	499,620,017
Hotels	5,269,172	5,733,646	6,004,296	6,248,486	5,741,106	6,140,996	6,095,088	5,447,219	4,792,533	4,583,069	5,001,609	5,316,489	5,300,881	66,405,418
Airlines	2,790,617	2,744,863	2,743,875	2,635,743	2,539,206	2,878,630	2,662,795	2,268,844	1,995,821	2,998,060	2,673,006	2,784,555	2,706,849	31,632,247
Airport terminals	40,221	42,867	60,967	79,724	69,473	77,169	64,862	51,851	49,287	54,092	58,564	57,522	63,000	729,378
Railways	5,716,846	5,907,351	6,470,149	6,335,560	5,327,447	6,625,896	6,689,202	6,178,623	5,544,257	5,195,155	5,723,104	5,856,540	5,704,213	71,557,497
Buses	877,078	942,005	1,039,151	1,072,411	921,100	1,054,895	1,060,034	922,247	849,176	594,858	750,772	812,292	813,372	10,832,313
Sea travel	245,222	284,646	313,454	342,783	336,070	280,470	249,453	204,666	190,544	179,203	192,790	211,749	225,244	3,011,072
Travel agents	2,148,541	2,158,345	2,300,118	2,493,286	2,466,853	2,872,155	2,683,957	2,456,001	2,206,423	2,378,472	2,426,228	2,293,569	1,989,431	28,724,838
Timeshares	16,463	15,428	15,078	15,406	15,226	15,495	16,149	12,865	14,152	20,915	17,430	17,185	14,957	190,286
Camping grounds	256,111	283,155	290,446	355,853	364,500	224,430	175,281	81,427	57,923	111,708	138,776	204,000	251,626	2,539,125
Miscellaneous travel	2,145,222	2,364,363	2,555,817	2,753,382	2,603,191	2,791,112	2,993,837	2,765,484	2,707,160	2,526,566	2,585,728	2,806,512	2,837,816	32,290,968
Travel	14,236,321	14,743,023	15,789,055	16,084,148	14,643,066	16,820,252	16,595,570	14,942,008	13,614,743	14,059,029	14,566,398	15,043,924	14,606,508	181,507,724
Telegraph Services / Wire Transfer Mon	39,193	39,782	39,286	41,360	35,415	37,701	42,700	45,072	48,889	39,209	51,514	59,569	55,789	536,286
Insurance services	1,698,351	1,699,776	1,801,937	1,907,016	1,746,104	1,889,383	1,711,041	1,483,784	1,408,014	1,381,389	1,421,780	1,650,706	1,508,720	19,609,650
Fls - cash disbursements (auto & manu	31,832	35,416	33,680	33,073	30,799	32,415	31,864	24,816	21,512	550,792	558,107	594,911	606,533	2,553,918
Fls - merchandise & services	204,758	206,765	216,127	205,252	206,980	230,273	229,139	230,890	228,583	151,158	220,086	290,571	305,535	2,721,359
Non-Fls - foreign currency, travellers' ch	124,938	146,570	164,073	186,364	149,241	154,275	149,392	100,542	90,226	126,175	168,997	149,661	151,590	1,737,106
Security Brokers and Dealers	73,594	58,176	51,482	54,753	58,258	50,817	48,012	46,840	50,802	27,803	40,869	34,690	34,590	557,092
Tax Preparation Services	171	164	180	165	130	167	171	149	151	206	147	187	218	2,035
Tax Payments	25,386	22,745	22,671	27,230	24,222	27,025	29,166	28,584	29,526	80,333	102,686	44,855	36,984	476,027
Fines, bail and bond payments	57,529	59,061	57,592	55,921	51,939	52,964	54,322	50,427	48,237	50,342	50,679	52,393	51,826	635,703
Miscellaneous financial	101,552	93,819	77,950	77,969	94,571	98,596	94,734	88,180	74,767	73,498	82,751	93,933	95,244	1,046,012
Financial Services	2,357,304	2,362,274	2,464,978	2,589,103	2,397,659	2,573,616	2,390,541	2,099,284	2,000,707	2,480,905	2,697,616	2,971,476	2,847,029	29,875,188

Table 3A Card expenditure statistics (not seasonally adjusted)

Number of credit card transactions

Total detailed sector breakdown - services sectors (not seasonally adjusted)

	April 2015	May 2015	June 2015	July 2015	August 2015	September 2015	October 2015	November 2015	December 2015	January 2016	February 2016	March 2016	April 2016	Total (latest 12 months)
Telecoms	1,880,500	1,922,334	1,928,822	1,973,383	1,924,936	2,092,987	2,080,681	1,940,834	2,003,810	1,814,246	1,725,062	1,823,034	1,730,418	22,960,547
Utilities	436,326	427,733	440,457	448,707	403,466	458,576	458,628	417,519	426,425	449,788	454,562	509,220	467,498	5,362,579
Contractors (residential & commercial)	269,581	256,792	282,117	287,241	252,139	298,479	300,990	289,692	243,938	262,985	284,503	294,018	292,084	3,344,978
Gardening services	61,814	61,712	57,097	44,371	38,766	37,797	35,660	31,270	36,082	21,592	29,452	44,802	53,112	491,713
Veterinary services	622,905	618,115	663,167	709,127	658,795	686,634	685,496	648,744	657,963	629,688	627,315	658,903	659,559	7,903,506
Photocopying & printing	306,707	313,631	329,218	324,485	300,813	347,779	366,925	443,125	473,101	279,666	283,803	286,953	263,441	4,012,940
Photographic studios	145,090	174,713	212,094	227,091	158,889	177,443	247,861	257,802	209,338	99,974	109,688	121,389	122,602	2,118,884
Beauty & barber shops	1,606,010	1,655,159	1,747,446	1,843,388	1,596,885	1,699,440	1,702,637	1,734,313	2,178,929	1,404,971	1,533,364	1,615,073	1,645,477	20,357,082
Employment agencies	23,911	25,445	24,751	29,264	24,469	24,417	27,041	22,876	24,025	22,943	23,780	28,725	25,811	303,547
Counselling services	6,086	6,166	6,396	6,401	6,112	6,568	6,421	6,199	5,537	6,681	6,990	17,974	6,732	88,177
Legal services	55,916	54,384	58,462	58,658	52,843	57,570	57,545	54,968	47,949	52,761	57,552	60,078	56,519	669,289
Laundry & cleaning	196,740	205,190	231,906	231,540	194,883	223,378	225,063	210,466	192,013	189,601	185,628	187,794	211,445	2,488,907
Funeral services	13,428	12,481	13,209	13,013	11,509	12,676	12,533	12,353	11,996	12,350	13,581	24,032	14,024	163,757
Medical services	1,315,926	1,273,377	1,423,803	1,424,064	1,227,114	1,429,760	1,419,589	1,399,205	1,271,969	1,345,131	1,389,102	1,428,929	1,433,849	16,465,892
Moving & courier services	438,750	446,512	489,862	481,773	401,022	493,607	515,683	503,551	484,739	429,665	455,459	458,643	439,277	5,599,793
Repair shops (not auto)	230,754	233,869	227,133	251,891	256,669	251,599	255,334	246,572	245,563	71,445	135,404	137,783	128,769	2,442,031
Accounting services	26,293	25,139	27,343	28,710	30,067	36,118	33,872	33,466	32,888	38,677	35,902	36,095	30,998	389,275
Advertising, consultancy & PR	69,968	67,593	213,928	213,188	194,280	238,152	229,117	232,565	216,913	193,745	229,065	239,622	232,523	2,500,691
Computer programming	1,522,341	1,683,941	1,767,243	1,796,768	1,679,534	1,826,515	1,984,028	2,476,731	2,802,291	1,853,205	1,799,310	1,941,239	1,846,740	23,457,545
Farming services	112,230	111,653	113,763	110,614	103,310	112,362	110,239	112,342	120,183	103,204	104,111	113,681	109,822	1,325,284
Miscellaneous professional services	1,145,396	1,172,760	1,222,125	1,223,140	1,132,654	1,229,566	1,249,715	1,269,091	1,225,748	1,179,121	1,259,174	1,381,871	1,360,898	14,905,863
Engineering services	51,747	49,923	55,074	55,177	47,347	51,070	52,002	49,528	43,139	45,370	49,741	51,236	53,732	603,339
Marina services	72,247	76,153	87,219	99,722	96,960	72,889	54,329	36,986	33,737	33,340	36,059	52,383	62,518	742,295
Wrecking & salvage yards	4,397	4,073	4,333	4,265	3,576	3,878	3,924	3,586	2,766	3,321	3,752	3,937	3,938	45,349
Pest control	3,238	3,210	4,040	4,354	3,285	3,137	3,166	2,941	2,405	2,602	2,606	2,969	3,035	37,750
Educational establishments	772,482	788,699	850,900	724,232	564,038	1,127,616	1,027,536	1,024,979	777,412	967,850	891,670	954,394	858,932	10,558,258
Child care services	21,413	23,088	22,023	24,734	23,962	23,504	25,052	24,368	23,289	26,447	29,913	25,440	26,657	298,477
Social, political & religious organisations	1,572,461	1,596,456	1,535,985	1,489,763	1,390,248	1,595,973	1,448,509	1,429,775	1,478,062	1,189,795	1,285,433	1,450,156	1,491,310	17,381,465
Government services	2,804,226	2,812,774	2,999,614	3,000,265	2,717,590	2,985,182	2,914,716	2,676,440	2,507,188	2,508,077	2,759,864	2,894,112	2,956,255	33,732,077
Miscellaneous services	1,461,026	1,404,915	1,597,799	1,524,738	1,343,005	1,580,527	1,542,490	1,633,858	2,311,859	1,409,480	1,498,474	1,647,464	1,531,747	19,026,356
Commercial equipment	875,358	854,010	883,758	880,569	782,068	951,208	910,033	922,433	878,331	827,524	814,262	823,047	809,724	10,336,967
<i>Other Services</i>	<i>18,125,267</i>	<i>18,362,000</i>	<i>19,521,087</i>	<i>19,534,636</i>	<i>17,621,234</i>	<i>20,136,407</i>	<i>19,986,815</i>	<i>20,148,578</i>	<i>20,969,588</i>	<i>17,475,245</i>	<i>18,114,581</i>	<i>19,314,996</i>	<i>18,929,446</i>	<i>230,114,613</i>
Total services	84,610,408	87,386,975	89,953,821	90,943,849	84,866,818	92,281,172	93,006,699	89,316,018	86,848,895	83,942,995	90,278,638	94,282,049	92,671,107	1,075,779,036
TOTAL	249,347,597	254,932,499	269,204,483	272,998,787	251,255,618	273,967,136	272,737,295	284,983,325	298,498,888	240,846,938	252,609,118	268,447,127	263,852,903	3,204,334,117

¹ With effect of January 2016 Record shops and Video stores were discontinued as separate categories and merged with Digital entertainment category.

² Digital entertainment category is effective from January 2016.

Table 3B Card expenditure statistics (not seasonally adjusted)

Value of credit card transactions

Total detailed sector breakdown - services sectors (not seasonally adjusted)

£	April 2015	May 2015	June 2015	July 2015	August 2015	September 2015	October 2015	November 2015	December 2015	January 2016	February 2016	March 2016	April 2016	Total (latest 12 months)
Telecoms	80,615,666	82,088,386	80,972,314	85,012,575	82,703,450	92,947,387	95,617,975	91,103,509	96,117,898	86,450,293	78,761,155	86,316,164	78,886,895	1,036,978,001
Utilities	75,339,731	70,392,244	70,069,707	67,902,548	58,719,985	67,445,974	67,653,200	60,890,739	63,298,836	71,653,941	74,954,561	60,678,039	82,263,187	845,922,961
Contractors (residential & commercial)	88,432,338	89,063,293	97,327,231	94,783,903	82,603,621	101,407,698	98,532,783	96,462,412	78,520,102	84,428,023	91,276,111	95,941,362	93,508,782	1,103,855,321
Gardening services	7,288,044	6,572,988	8,048,588	5,771,320	4,558,448	5,803,969	4,269,502	3,579,431	4,567,261	3,121,649	3,484,076	6,957,489	6,069,475	62,804,196
Veterinary services	61,323,389	60,628,149	65,289,881	68,961,663	63,601,203	66,725,128	66,835,368	63,344,716	62,889,413	63,411,048	63,215,144	66,243,335	66,147,755	777,292,803
Photocopying & printing	44,074,718	42,185,198	44,933,136	42,244,687	39,539,847	48,566,660	49,173,439	52,399,545	51,340,918	39,489,393	41,042,527	44,313,978	40,270,448	535,499,776
Photographic studios	7,503,910	8,367,461	9,380,420	10,948,180	7,967,317	8,793,083	10,688,905	11,450,162	9,631,418	5,845,427	6,734,721	7,202,947	7,084,575	104,094,618
Beauty & barber shops	89,872,540	92,493,995	96,310,049	100,737,543	88,405,995	95,226,709	97,009,055	99,504,663	120,033,015	78,526,620	86,533,256	92,091,222	93,367,005	1,140,239,127
Employment agencies	24,078,232	27,482,769	29,995,881	33,913,788	29,593,814	29,907,174	33,347,226	29,216,472	33,253,711	25,019,041	29,550,435	33,274,523	30,210,154	364,764,988
Counselling services	1,636,561	1,483,461	1,533,704	1,569,197	1,503,756	1,635,442	1,550,569	1,589,397	1,592,916	1,803,066	2,014,735	1,714,867	1,760,394	19,751,504
Legal services	22,567,722	22,217,555	24,811,064	24,533,203	21,224,778	23,710,453	24,050,736	23,469,552	20,159,445	21,823,984	24,863,304	26,141,106	24,086,698	281,091,878
Laundry & cleaning	6,740,501	6,895,807	7,817,655	7,940,675	6,785,612	7,698,303	7,715,978	7,284,862	6,544,398	6,657,949	6,341,762	6,498,670	7,152,960	85,334,631
Funeral services	15,805,909	14,081,297	14,640,338	14,072,307	12,856,110	14,218,937	15,188,382	14,924,560	14,224,890	14,842,614	16,793,395	18,178,602	17,344,167	181,365,599
Medical services	178,832,074	176,910,998	195,038,959	195,676,704	166,156,954	192,129,662	195,210,910	193,102,516	169,665,799	177,865,670	188,719,460	198,921,680	195,779,487	2,245,178,799
Moving & courier services	43,290,103	43,355,686	48,681,948	52,140,616	39,985,486	47,012,957	47,833,270	44,801,500	42,970,299	40,484,981	41,879,871	43,115,692	41,741,011	534,003,317
Repair shops (not auto)	17,692,017	19,096,738	18,577,784	22,696,987	20,597,007	20,255,260	20,708,574	20,805,642	22,341,008	10,560,758	14,056,499	16,485,624	14,007,330	220,189,211
Advertising services	7,184,082	6,521,564	6,886,821	7,442,988	7,095,400	7,892,602	7,775,594	8,062,228	8,379,208	10,269,054	9,597,055	9,976,904	8,184,687	98,084,105
Advertising, consultancy & PR	8,283,046	7,771,648	19,682,774	19,611,818	17,539,859	21,650,491	21,515,796	21,420,247	20,679,574	19,102,098	22,130,754	22,544,716	22,441,536	236,091,311
Computer programming	108,221,422	114,481,556	122,083,687	118,411,210	110,315,539	117,111,871	128,945,691	156,145,618	167,368,787	120,259,140	118,281,698	130,254,039	127,356,272	1,531,015,108
Farming services	11,005,129	10,846,069	12,064,602	12,080,762	10,948,496	11,989,201	11,853,475	11,190,085	11,349,632	10,307,178	10,442,004	11,334,104	10,512,072	134,917,680
Miscellaneous professional services	179,563,189	174,233,195	188,019,778	180,749,574	174,674,194	206,893,863	183,398,931	171,074,659	177,031,195	174,990,495	173,379,951	185,050,826	185,203,343	2,174,700,004
Engineering services	15,424,298	14,558,375	16,964,189	16,927,353	14,247,722	15,368,369	15,366,499	14,611,424	13,236,199	13,916,982	14,688,284	15,590,747	14,916,726	180,392,869
Marina services	10,805,830	10,406,418	11,776,069	11,782,882	10,066,496	8,538,055	6,791,605	5,279,694	4,767,272	6,320,061	6,514,353	10,132,718	10,245,724	102,621,347
Wrecking & salvage yards	890,164	806,687	905,261	931,617	729,360	830,684	865,837	788,798	660,217	714,948	781,257	878,734	848,186	9,741,586
Pest control	641,273	660,846	781,028	825,106	698,923	698,514	694,076	572,861	603,865	617,256	617,907	747,741	710,143	8,228,266
Educational establishments	178,384,234	143,923,642	145,560,177	148,633,293	185,549,246	412,611,719	248,488,439	134,065,727	128,561,910	217,271,159	143,814,763	133,560,132	167,024,379	2,209,064,586
Child care services	2,629,973	2,652,615	3,086,942	3,121,760	2,544,788	3,067,731	2,945,985	2,818,486	2,575,311	2,955,177	3,188,310	3,080,609	2,990,707	35,028,421
Social, political & religious organisations	93,746,360	90,785,591	91,642,357	94,457,506	81,110,835	98,171,005	99,937,531	91,576,239	108,629,418	104,039,409	94,677,405	96,219,768	91,557,036	1,142,804,100
Government services	282,484,904	261,961,093	276,131,076	296,889,828	272,117,869	271,887,691	229,862,472	204,808,585	201,023,916	208,296,740	220,544,548	248,056,148	255,152,514	2,946,732,480
Miscellaneous services	86,575,646	88,749,771	92,845,523	88,921,924	84,652,201	94,182,215	91,685,826	89,437,685	104,008,929	86,221,461	85,922,093	94,687,349	94,041,903	1,095,356,880
Commercial equipment	128,331,261	127,580,216	135,192,369	137,543,065	120,815,761	139,209,325	137,941,430	131,511,755	115,831,995	117,918,597	121,017,020	129,771,179	123,648,236	1,537,980,948
Other Services	1,879,264,266	1,819,255,311	1,937,051,312	1,967,236,582	1,819,910,074	2,233,588,132	2,023,455,059	1,857,293,769	1,861,858,755	1,825,184,212	1,795,818,414	1,925,961,014	1,914,513,787	22,981,126,421
Total services	7,389,801,932	7,651,943,335	7,969,691,217	8,103,235,908	7,313,472,205	8,203,967,979	7,844,053,647	7,020,418,262	6,758,999,923	7,101,349,630	7,360,096,483	7,749,425,682	7,590,718,491	90,667,372,762
TOTAL	14,650,360,686	15,018,977,361	15,717,281,585	15,818,165,377	14,364,831,113	15,912,435,561	15,571,898,738	15,673,369,483	16,229,159,224	13,690,614,815	14,031,298,951	15,085,307,273	14,709,159,863	1.81822E+11

¹ With effect of January 2016 Record shops and Video stores were discontinued as separate categories and merged with Digital entertainment category.² Digital entertainment category is effective from January 2016.

Table 3C Card expenditure statistics (not seasonally adjusted)

Number of debit card transactions

Total detailed sector breakdown - services sectors (not seasonally adjusted)

	April 2015	May 2015	June 2015	July 2015	August 2015	September 2015	October 2015	November 2015	December 2015	January 2016	February 2016	March 2016	April 2016	Total (latest 12 months)
Telecoms	11,385,024	11,830,487	11,459,811	11,812,331	11,750,977	12,137,640	12,483,808	11,665,232	12,203,973	11,465,696	10,667,467	11,244,164	10,802,456	139,524,042
Utilities	2,762,973	2,745,037	2,760,743	2,830,632	2,497,955	2,682,454	2,742,397	2,567,806	2,947,587	3,133,038	3,144,591	3,438,082	3,337,952	34,828,274
Contractors (residential & commercial)	601,936	572,201	638,709	651,765	580,639	692,068	701,458	682,778	583,114	591,124	653,759	677,130	680,591	7,705,336
Gardening services	127,534	130,078	121,480	96,257	83,590	84,254	79,834	75,855	89,379	52,545	69,179	100,268	116,378	1,099,097
Veterinary services	1,785,870	1,789,097	1,891,374	2,030,535	1,927,330	2,008,607	2,021,930	1,897,331	1,888,887	1,844,113	1,882,657	2,000,697	2,026,655	23,209,213
Photocopying & printing	524,733	543,503	565,908	561,525	547,385	629,685	638,512	687,482	682,068	399,009	411,409	412,146	394,674	6,473,306
Photographic studios	517,470	608,533	704,388	729,417	557,532	599,326	825,535	858,862	805,162	405,433	469,118	516,353	503,397	7,583,056
Beauty & barber shops	5,477,128	5,731,831	5,908,854	6,175,325	5,488,314	5,794,306	5,866,583	5,706,301	7,171,137	4,880,311	5,592,767	5,847,091	5,980,337	70,143,157
Employment agencies	10,285	11,060	10,478	10,410	8,466	10,301	10,223	9,237	7,780	10,918	13,070	13,526	10,860	126,329
Counselling services	108,707	111,090	113,980	114,890	109,103	120,690	125,240	110,652	107,505	108,824	118,669	128,957	127,675	1,397,275
Legal services	178,332	175,970	196,185	200,270	198,165	198,165	188,726	188,869	160,523	177,995	202,734	202,547	195,314	2,273,517
Laundry & cleaning	490,085	517,900	567,827	559,914	493,511	572,053	593,123	560,066	505,143	494,659	508,897	507,096	561,765	6,441,954
Funeral services	36,311	34,372	36,575	36,574	32,411	35,882	37,279	36,178	36,513	38,923	43,655	46,877	45,455	460,694
Medical services	3,250,999	3,150,261	3,497,928	3,520,755	3,111,044	3,632,736	3,651,809	3,558,840	3,219,930	3,509,009	3,766,990	3,866,652	3,853,124	42,339,078
Moving & courier services	472,805	471,383	513,768	508,370	464,167	526,061	531,583	527,359	566,705	474,519	496,983	507,979	494,258	6,083,135
Repair shops (not auto)	373,632	381,535	365,218	403,356	403,826	413,797	427,274	414,592	441,409	150,101	249,039	246,227	236,744	4,133,118
Accounting services	66,970	67,570	76,373	75,899	74,127	87,618	85,439	85,132	80,827	92,943	91,722	92,055	86,006	995,711
Advertising, consultancy & PR	136,798	133,607	162,602	159,770	158,226	186,350	171,555	166,942	138,447	144,325	171,465	183,276	174,645	1,951,210
Computer programming	665,562	728,848	750,652	744,066	702,333	797,751	824,275	765,874	733,935	577,680	697,801	742,435	689,597	8,755,247
Farming services	320,209	321,352	329,406	322,761	309,926	334,580	333,793	337,124	354,875	320,546	330,759	352,942	339,752	3,987,816
Miscellaneous professional services	3,358,730	3,446,844	3,240,741	3,239,258	2,914,833	3,385,188	3,430,054	3,561,596	3,451,324	3,227,469	3,625,046	3,885,750	3,842,112	41,250,215
Engineering services	89,418	85,467	94,517	95,676	82,002	90,268	94,864	88,242	75,641	77,531	89,388	94,351	97,096	1,065,043
Marina services	130,593	132,814	146,567	164,857	174,933	130,630	105,508	75,621	70,265	66,396	77,271	106,890	125,310	1,377,062
Wrecking & salvage yards	11,160	10,626	11,293	11,228	9,984	10,956	10,935	9,797	7,700	8,972	10,563	10,953	11,208	124,215
Pest control	5,182	5,101	6,318	6,967	5,636	5,611	5,521	5,071	4,264	4,604	4,704	5,275	5,292	64,364
Educational establishments	3,062,343	3,599,887	3,127,839	2,128,231	1,449,257	4,058,381	4,683,074	5,037,677	3,363,259	4,421,285	4,616,184	4,630,733	4,236,287	45,352,094
Child care services	168,684	187,270	170,362	190,949	188,971	183,236	200,582	194,067	173,682	213,763	254,967	211,163	224,467	2,393,479
Social, political & religious organisations	3,610,835	3,770,425	4,022,097	3,995,489	3,621,123	4,343,290	4,126,296	3,803,978	3,649,622	3,142,382	3,675,458	4,059,675	4,183,091	46,392,926
Government services	8,978,517	8,825,996	9,017,502	8,991,685	8,451,636	9,374,322	9,185,071	8,483,710	8,108,319	8,414,263	8,893,073	9,354,924	9,930,947	107,031,448
Miscellaneous services	6,304,329	5,876,409	6,778,818	6,392,223	5,577,202	6,489,571	6,430,143	6,337,802	8,754,337	5,725,164	6,213,597	6,849,119	6,769,460	78,193,845
Commercial equipment	1,570,601	1,591,286	1,580,552	1,545,944	1,455,793	1,892,986	1,765,412	1,727,773	1,820,548	1,614,089	1,627,802	1,645,359	1,633,178	19,900,722
<i>Other Services</i>	<i>56,583,755</i>	<i>57,587,840</i>	<i>58,868,865</i>	<i>58,307,329</i>	<i>53,408,451</i>	<i>61,508,763</i>	<i>62,387,979</i>	<i>60,227,703</i>	<i>62,203,860</i>	<i>55,787,629</i>	<i>58,670,784</i>	<i>61,980,692</i>	<i>61,716,083</i>	<i>712,655,978</i>
Total services	275,009,194	281,463,033	278,975,270	280,641,724	275,787,724	292,217,860	305,588,060	300,663,172	299,900,848	281,085,427	307,478,851	322,002,550	320,102,677	3,545,907,196
TOTAL	825,140,676	843,141,899	868,068,349	872,900,116	822,089,081	882,961,939	899,705,810	920,929,271	986,528,771	817,207,328	879,826,997	929,677,132	902,459,747	10,625,496,440

¹ With effect of January 2016 Record shops and Video stores were discontinued as separate categories and merged with Digital entertainment category.

² Digital entertainment category is effective from January 2016.

Total detailed sector breakdown - services sectors (not seasonally adjusted)

£	April 2015	May 2015	June 2015	July 2015	August 2015	September 2015	October 2015	November 2015	December 2015	January 2016	February 2016	March 2016	April 2016	Total (latest 12 months)
Telecoms	339,079,060	355,579,852	337,849,422	352,968,220	352,076,795	366,712,073	388,714,105	361,238,519	380,344,138	367,704,928	330,025,163	360,369,090	345,184,578	4,298,766,883
Utilities	293,119,381	272,993,260	264,789,042	256,132,632	222,325,292	248,850,628	251,005,608	227,891,741	248,577,964	282,156,555	300,108,518	350,614,599	338,014,817	3,263,460,656
Contractors (residential & commercial)	177,617,982	173,690,832	193,759,445	196,562,448	177,253,122	216,455,656	217,999,627	211,685,736	179,405,124	177,156,014	190,975,618	203,921,167	210,558,522	2,349,423,311
Gardening services	10,350,714	10,139,673	10,106,773	8,441,852	6,954,786	7,201,912	6,652,579	5,932,047	5,765,980	4,297,928	5,594,385	8,318,542	9,761,523	89,167,980
Veterinary services	112,789,765	112,619,178	120,286,310	128,829,815	120,285,954	126,751,192	127,417,778	119,442,841	117,524,697	118,537,102	121,272,597	128,337,536	130,297,088	1,471,602,088
Photocopying & printing	30,344,140	29,927,845	31,748,306	30,731,267	27,582,593	31,444,172	33,488,824	30,887,395	35,054,501	30,887,395	24,182,336	27,621,594	27,477,721	358,870,807
Photographic studios	13,822,284	15,699,462	17,626,121	19,796,596	14,509,929	16,216,480	21,958,706	23,620,167	20,388,057	11,022,287	13,067,883	14,055,810	13,864,735	201,826,233
Beauty & barber shops	219,892,169	229,859,569	234,244,210	245,102,859	218,999,175	233,985,573	238,700,701	235,641,406	289,533,499	193,718,256	224,305,293	235,964,791	240,890,391	2,820,945,723
Employment agencies	1,644,607	1,571,930	1,671,680	1,699,110	1,463,026	1,428,999	1,356,740	1,068,338	1,416,140	1,589,927	1,646,468	1,478,094	1,780,890	17,808,690
Counselling services	6,143,816	6,450,585	6,800,723	6,881,874	6,319,740	6,696,256	6,701,778	6,707,285	6,633,809	7,576,484	8,739,154	8,233,181	8,140,397	85,881,266
Legal services	82,693,466	82,074,390	95,341,993	95,010,888	85,309,945	93,382,860	95,514,417	90,133,685	78,571,329	81,150,647	89,680,481	103,263,083	87,638,618	1,077,072,336
Laundry & cleaning	13,212,138	13,700,883	15,166,822	15,241,061	13,532,938	15,477,467	15,691,321	14,865,961	13,271,552	13,249,049	13,125,464	13,112,021	14,936,153	171,370,692
Funeral services	49,427,209	45,447,373	48,679,676	48,449,736	43,471,055	48,210,447	52,822,267	51,201,449	47,099,970	53,986,932	60,620,898	67,823,281	65,111,501	632,924,585
Medical services	279,710,453	275,029,602	303,244,936	305,972,885	263,776,969	309,248,578	314,211,978	304,972,250	267,456,695	288,944,577	314,760,636	327,306,078	328,182,478	3,603,107,662
Moving & courier services	36,560,835	37,287,565	42,713,374	45,119,382	40,495,030	43,875,786	42,511,237	41,233,869	39,248,986	35,197,069	35,716,322	40,271,101	39,148,257	482,817,978
Repair shops (not auto)	24,429,983	25,070,328	24,274,445	27,732,809	25,985,955	27,748,253	27,848,424	27,523,622	31,283,971	14,343,549	19,399,159	22,454,392	19,853,045	293,517,952
Accounting services	13,844,431	13,551,148	15,229,121	15,363,240	14,094,359	16,102,772	15,700,231	15,396,706	15,078,200	19,286,276	17,727,374	17,542,505	16,619,093	191,691,025
Advertising, consultancy & PR	11,459,352	11,155,921	12,557,125	12,351,328	11,288,011	13,327,752	12,724,086	11,807,665	10,023,046	11,103,718	12,435,923	13,151,854	12,637,366	144,563,795
Computer programming	35,029,030	35,732,501	37,107,796	36,706,691	34,445,173	39,129,832	40,065,589	37,739,394	36,389,929	32,189,931	34,181,703	36,731,090	35,508,929	435,928,558
Farming services	25,031,472	24,540,976	26,814,445	26,881,019	25,746,365	27,417,211	29,391,127	26,694,249	25,811,342	25,463,376	24,446,236	26,257,338	25,966,730	315,430,414
Miscellaneous professional services	763,311,767	641,229,567	615,227,139	624,812,045	587,506,676	680,752,785	607,740,148	558,779,944	520,435,321	614,652,032	583,192,497	673,753,522	789,127,174	7,497,208,850
Engineering services	20,037,824	19,457,001	22,493,945	22,105,425	19,163,854	20,848,007	21,242,131	19,841,584	17,005,391	16,959,337	20,223,513	20,692,177	21,747,593	241,779,958
Marina services	16,106,954	15,370,403	16,948,324	16,583,052	14,821,153	13,263,533	11,193,479	8,232,568	7,455,813	9,364,882	10,368,338	15,892,461	16,201,153	155,695,159
Wrecking & salvage yards	1,918,903	1,841,473	1,984,864	2,069,273	1,715,937	1,857,689	1,976,810	1,800,915	1,363,139	1,576,250	1,904,899	1,959,607	1,947,474	21,998,330
Pest control	892,994	853,531	1,032,640	1,120,113	949,954	1,023,504	1,043,060	902,037	794,114	876,167	876,199	901,703	982,126	11,355,148
Educational establishments	356,643,370	237,364,841	189,927,450	186,089,149	277,438,371	1,071,243,062	808,239,824	305,453,165	216,549,442	554,687,709	295,419,309	219,238,723	379,551,310	4,741,202,355
Child care services	15,486,670	14,905,148	16,228,450	16,438,477	13,922,617	16,656,220	16,453,305	15,574,682	13,936,731	16,186,318	16,697,281	16,603,045	17,155,856	190,758,130
Social, political & religious organisations	124,717,180	124,427,810	194,091,213	215,389,002	186,064,952	216,275,035	229,073,141	188,239,375	192,596,677	186,361,676	194,931,761	207,683,406	205,161,183	2,340,295,231
Government services	2,791,280,069	2,783,085,667	2,306,854,028	2,364,077,268	2,042,367,066	2,011,331,661	2,002,403,353	1,776,733,120	1,678,449,214	2,010,427,188	1,939,242,724	2,193,258,806	2,288,910,294	25,397,140,389
Miscellaneous services	575,728,396	505,786,917	649,573,793	640,653,103	396,834,909	445,001,049	443,808,591	405,591,289	446,413,962	432,761,575	424,152,476	477,393,712	473,895,455	5,741,866,831
Commercial equipment	158,040,914	158,787,884	168,921,352	169,190,677	153,329,942	180,866,106	176,104,870	163,481,277	142,175,093	147,381,010	153,473,234	174,631,065	167,321,682	1,955,664,192
Other Services	6,600,367,328	6,275,233,115	6,023,294,963	6,134,503,296	5,399,986,855	6,550,816,577	6,259,828,094	5,294,769,789	5,081,538,918	5,753,917,298	5,484,979,218	6,009,003,748	6,333,271,336	70,601,143,207
Total services	21,408,037,347	20,445,427,805	20,231,101,801	20,890,875,421	19,239,927,183	20,926,689,919	20,311,280,492	18,303,680,061	17,891,034,871	20,524,807,463	20,788,726,583	21,882,550,292	22,311,774,874	243,747,876,765
TOTAL	37,306,861,635	36,627,048,779	37,059,068,884	37,630,213,569	34,846,817,747	37,846,851,451	37,248,294,714	36,625,356,517	38,753,779,215	35,260,535,484	36,287,934,625	38,474,229,370	38,371,796,218	445,031,926,573

¹ With effect of January 2016 Record shops and Video stores were discontinued as separate categories and merged with Digital entertainment category.

² Digital entertainment category is effective from January 2016.

Table 4A Online card expenditure statistics (not seasonally adjusted)

Number of credit card transactions

E-commerce detailed sector breakdown - services sectors (not seasonally adjusted)

	April 2015	May 2015	June 2015	July 2015	August 2015	September 2015	October 2015	November 2015	December 2015	January 2016	February 2016	March 2016	April 2016	Total (latest 12 months)
Auto rental	558,606	592,513	609,165	645,050	605,536	573,677	505,365	435,117	448,345	69,672	305,347	342,991	324,661	5,457,439
Auto parts & accessories	88,060	87,206	92,860	95,694	89,369	83,827	84,525	84,903	81,547	82,307	88,366	100,168	96,704	1,067,476
Auto services	224,688	226,050	232,160	238,261	230,543	257,640	247,279	230,219	188,430	262,460	332,646	361,428	361,531	3,168,647
Auto repair shops	33,185	33,522	32,431	34,169	33,594	37,358	33,928	33,368	32,194	36,945	36,568	45,912	40,242	430,231
Service stations	0	0	0	0	0	0	0	0	0	0	0	0	0	0
Vehicle sales	19,424	18,683	19,288	19,628	17,696	16,797	15,353	15,334	14,300	14,238	15,974	19,953	20,867	208,111
Vehicle Sales & Services	923,963	957,974	985,904	1,032,802	976,738	969,299	886,450	798,941	764,816	465,622	778,901	870,452	844,005	10,331,904
Restaurants	673,712	741,054	679,950	685,362	709,435	707,967	743,167	811,577	781,781	724,970	782,880	806,237	753,980	8,928,360
Public houses	7,119	7,580	7,793	7,798	7,680	8,177	9,163	9,914	12,252	9,030	9,127	9,151	8,137	105,802
Catering services	46,037	47,834	53,896	51,838	47,337	56,696	54,583	54,953	47,151	44,081	45,108	47,487	45,756	596,720
Video stores ¹	263,475	193,574	29,253	30,907	26,778	26,586	26,730	29,061	24,565	0	0	0	0	387,454
Cinema, theatre & dance	939,622	986,202	1,087,978	1,044,710	977,948	1,014,831	1,327,644	1,557,920	1,570,117	1,057,078	1,205,141	1,029,183	983,192	13,841,944
Concerts & entertainers	107,917	120,584	110,373	110,383	104,698	107,183	129,808	183,912	175,317	113,522	108,349	118,510	119,566	1,502,205
Tourist attractions	180,170	178,732	169,872	192,561	203,533	182,465	184,504	122,128	117,559	98,448	135,163	148,674	141,185	1,874,824
Amusement parks	10,351	8,834	7,328	7,750	11,970	5,965	8,309	6,001	6,361	2,499	4,683	5,642	7,454	82,796
Aquariums	5,670	6,012	3,573	4,575	6,457	4,074	4,122	2,554	3,492	1,872	3,296	4,216	4,879	49,122
Sports & games establishments	2,707,145	2,850,290	1,992,000	369,202	348,872	345,599	349,746	339,742	378,362	375,911	382,257	377,275	351,777	8,461,033
Professional sports clubs	34,224	26,070	25,036	32,703	26,390	22,310	27,020	22,658	23,372	26,035	22,285	25,892	29,516	309,287
Gambling	4,977,999	4,736,942	5,360,888	5,365,559	5,306,511	5,168,619	4,778,459	5,302,462	5,075,207	4,610,495	5,052,174	4,931,489	4,691,421	60,380,226
Personal services	69,587	69,946	76,880	75,819	74,596	89,400	76,704	86,925	82,136	68,197	64,474	68,148	61,579	894,804
Miscellaneous entertainment	101,284	103,275	107,101	123,568	124,383	96,521	104,329	90,667	88,725	109,011	112,876	120,718	128,276	1,309,450
Digital entertainment ²	0	0	0	0	0	0	0	0	0	4,267,254	4,150,664	4,051,981	3,329,147	15,799,046
Entertainment	10,124,312	10,076,929	9,711,921	8,102,735	7,976,588	7,836,393	7,824,288	8,620,474	8,386,397	11,508,403	12,078,477	11,744,603	10,655,865	114,523,073
Hotels	477,716	499,820	509,551	504,807	485,420	511,204	497,161	455,259	384,698	505,307	471,921	477,069	435,579	5,737,796
Airlines	1,321,232	1,316,613	1,327,115	1,285,708	1,276,385	1,500,969	1,347,540	1,131,608	994,751	1,523,097	1,326,799	1,390,335	1,336,853	15,757,773
Airport terminals	14,471	15,448	13,925	14,252	13,752	13,724	13,342	10,334	8,751	12,914	13,137	13,628	14,616	157,823
Railways	648,530	653,009	730,549	705,147	630,268	792,503	768,155	689,341	524,932	678,645	684,372	712,679	669,257	8,238,857
Buses	434,467	463,981	459,922	489,708	472,774	523,372	521,378	442,685	439,709	231,013	345,768	386,345	379,167	5,155,822
Sea travel	70,318	76,980	82,933	87,792	77,150	61,530	59,773	49,423	43,449	49,332	53,513	59,106	63,025	764,006
Travel agents	993,962	983,102	898,770	880,045	848,994	1,583,781	1,416,673	1,296,335	1,291,623	1,235,249	1,284,284	1,203,822	934,678	13,857,356
Timeshares	15,506	14,509	14,255	14,648	14,418	14,753	15,269	11,835	12,786	18,179	15,196	14,925	12,957	173,730
Camping grounds	55,991	58,416	49,991	56,817	46,133	27,496	22,079	16,620	13,291	44,074	50,734	52,322	51,742	489,715
Miscellaneous travel	369,143	407,032	410,314	444,203	418,634	409,372	399,154	359,617	338,230	160,949	170,514	179,102	182,910	3,880,031
Travel	3,923,620	3,989,090	3,987,774	3,978,320	3,798,508	4,927,500	4,563,963	4,007,798	3,667,522	3,953,452	3,944,317	4,012,264	3,645,205	48,475,113
Telegraph Services / Wire Transfer Money	37,915	38,954	37,645	39,854	33,789	36,332	41,152	43,713	47,508	37,771	50,049	58,084	54,091	518,942
Insurance services	359,961	378,683	417,195	439,331	423,832	459,553	390,925	369,973	343,838	305,107	356,228	392,913	362,173	4,639,751
FIs - cash disbursements (auto & manual)	599	701	766	929	802	598	548	405	491	442	506	0	2	6,190
FIs - merchandise & services	156,478	157,707	162,569	155,279	140,460	137,336	138,786	153,253	154,223	101,432	157,813	224,678	238,444	1,921,980
Non-FIs - foreign currency, travellers' cheques	20,782	25,572	25,478	31,442	25,608	22,697	19,280	15,092	13,765	45,133	63,623	20,597	19,949	328,236
Security Brokers and Dealers	71,000	55,618	47,835	51,610	55,677	47,824	45,194	44,452	48,586	25,759	38,391	32,400	32,356	525,702
Tax Preparation Services	9	12	11	10	10	7	7	14	8	15	13	24	37	168
Tax Payments	13,334	12,036	15,526	15,508	15,508	17,313	19,276	19,097	20,047	67,033	86,454	30,185	24,343	342,326
Fines, bail and bond payments	25,110	26,582	24,132	20,251	19,748	18,804	19,317	18,177	17,639	18,103	17,965	19,202	18,598	238,518
Miscellaneous financial	5,953	6,542	6,572	6,109	6,388	6,513	6,324	8,349	7,962	7,750	8,357	9,200	8,797	88,863
Financial Services	691,141	702,407	737,729	760,323	721,822	746,977	680,809	672,525	654,067	608,545	779,399	787,283	758,790	8,610,676

Table 4A Online card expenditure statistics (not seasonally adjusted)

Number of credit card transactions

E-commerce detailed sector breakdown - services sectors (not seasonally adjusted)

	April 2015	May 2015	June 2015	July 2015	August 2015	September 2015	October 2015	November 2015	December 2015	January 2016	February 2016	March 2016	April 2016	Total (latest 12 months)
Telecoms	414,403	423,022	450,267	471,956	467,290	496,504	481,180	453,282	440,945	403,730	407,361	408,245	396,118	5,299,900
Utilities	227,717	229,367	236,741	244,371	228,193	249,974	246,515	211,075	204,217	211,050	204,723	239,737	206,101	2,712,064
Contractors (residential & commercial)	27,317	26,103	28,223	28,768	27,650	29,796	29,827	30,566	23,557	27,929	27,414	28,162	29,852	337,847
Gardening services	7,746	6,777	5,808	5,101	4,482	3,321	2,762	2,323	1,962	1,629	2,963	5,743	6,729	49,600
Veterinary services	17,462	17,355	19,703	19,762	19,819	20,992	21,201	21,028	20,229	21,337	22,501	24,204	25,623	253,754
Photocopying & printing	179,278	185,789	188,276	183,554	191,793	204,979	220,659	281,076	315,915	174,028	169,279	169,406	153,332	2,438,086
Photographic studios	34,895	45,898	32,279	35,620	27,304	45,133	69,313	75,543	35,026	12,602	16,361	20,683	20,909	436,671
Beauty & barber shops	77,987	77,462	81,187	87,002	78,828	77,386	80,606	128,068	126,098	58,102	61,026	61,936	60,721	978,412
Employment agencies	1,370	1,270	1,377	1,271	1,222	1,299	1,236	1,154	907	1,387	1,459	4,008	2,755	19,345
Counselling services	560	689	792	818	999	911	798	819	690	1,105	1,361	928	934	10,844
Legal services	4,862	4,604	6,608	6,685	6,371	5,120	5,119	4,799	3,907	5,163	6,014	8,033	7,637	70,060
Laundry & cleaning	1,859	2,315	2,202	2,272	1,914	3,567	3,713	2,987	2,158	2,753	2,920	2,884	2,608	32,293
Funeral services	1,202	1,354	902	905	916	1,005	649	645	496	515	660	10,599	1,134	19,780
Medical services	62,747	60,811	64,082	66,374	65,707	74,930	68,727	67,180	64,269	72,174	71,852	76,310	73,959	826,375
Moving & courier services	129,615	129,069	134,603	136,363	128,892	131,838	138,112	144,887	151,695	126,547	124,795	120,590	116,353	1,583,744
Repair shops (not auto)	9,570	8,462	10,435	10,437	10,216	11,166	10,338	13,012	14,157	10,672	10,740	14,262	11,023	134,920
Accounting services	5,877	5,160	5,566	5,798	7,498	9,723	7,192	6,097	6,396	7,417	6,250	5,896	3,702	76,695
Advertising, consultancy & PR	38,338	36,340	178,394	179,031	171,974	201,902	192,516	197,862	184,806	174,558	206,664	216,109	209,574	2,149,730
Computer programming	1,193,279	1,267,969	1,332,685	1,355,164	1,263,333	1,390,789	1,487,252	1,979,656	2,307,578	1,495,162	1,361,996	1,466,331	1,391,368	18,099,283
Farming services	5,388	6,497	7,210	6,697	5,703	6,275	5,636	6,109	6,637	5,705	5,446	5,488	5,029	72,432
Miscellaneous professional services	419,454	424,563	451,838	434,898	409,667	447,570	442,423	436,213	381,623	358,789	378,136	430,033	404,724	5,000,477
Engineering services	6,003	5,803	6,500	6,481	6,247	5,814	6,974	7,576	9,171	6,258	6,807	7,092	9,150	83,873
Marina services	9,406	9,393	9,550	10,227	9,610	6,841	7,043	6,095	5,669	4,245	5,815	7,941	8,155	90,584
Wrecking & salvage yards	1,298	1,036	1,474	1,479	1,486	334	183	171	108	114	151	168	151	6,855
Pest control	1,319	1,291	1,259	1,240	1,224	849	928	999	741	853	790	951	987	12,112
Educational establishments	453,109	458,856	525,856	397,427	288,385	701,590	604,789	620,383	477,962	603,746	496,417	554,417	475,134	6,204,962
Child care services	1,533	1,705	1,824	2,030	2,018	2,030	2,176	2,106	1,779	2,032	2,400	2,385	2,094	24,579
Social, political & religious organisations	768,205	737,385	674,443	689,260	716,924	743,330	604,810	597,534	678,465	598,774	616,308	694,635	720,809	8,072,677
Government services	1,340,230	1,329,917	1,334,373	1,330,240	1,313,297	1,349,535	1,252,506	1,151,022	1,067,575	1,074,587	1,243,525	1,331,603	1,309,816	15,087,996
Miscellaneous services	383,652	343,502	347,224	344,308	321,988	390,186	357,870	342,306	337,324	315,397	337,561	387,859	340,377	4,165,902
Commercial equipment	215,891	206,467	227,742	234,136	218,439	203,444	200,236	210,501	169,869	163,603	167,276	170,926	169,583	2,342,222
Other Services	6,041,572	6,056,221	6,369,423	6,299,675	5,999,389	6,818,133	6,553,289	7,003,074	7,041,931	5,941,963	5,966,971	6,477,564	6,166,441	76,694,074
Total services	22,182,324	22,282,441	22,302,302	20,678,662	19,958,465	21,809,506	21,005,360	21,558,071	20,899,431	22,983,292	24,019,986	24,369,235	22,505,885	264,372,636
TOTAL	52,377,249	52,678,730	53,934,523	53,726,709	51,675,107	60,482,799	59,653,980	64,637,347	58,635,778	55,377,736	58,430,049	61,470,622	60,634,692	691,338,072

1With effect from January 2016 Record shops and Video stores were discontinued as separate categories and merged with the Digital entertainment category

2The Digital entertainment category is effective from January 2016

E-commerce detailed sector breakdown - retail sectors (not seasonally adjusted)

Table with 15 columns (months from April 2015 to April 2016 plus Total) and rows listing various retail sectors like Supermarkets, Bakers & dairies, Department stores, etc., with values in £.

E-commerce detailed sector breakdown - services sectors (not seasonally adjusted)

£	April 2015	May 2015	June 2015	July 2015	August 2015	September 2015	October 2015	November 2015	December 2015	January 2016	February 2016	March 2016	April 2016	Total (latest 12 months)
Telecoms	16,381,471	17,075,006	16,737,474	17,525,550	17,983,339	19,703,082	20,051,868	20,446,042	19,255,853	17,603,477	18,390,976	18,343,642	17,369,570	220,485,879
Utilities	28,348,303	26,884,368	29,880,678	29,883,049	28,033,318	28,013,069	27,343,470	22,545,337	22,929,865	25,254,371	24,795,765	32,838,428	27,335,810	325,737,528
Contractors (residential & commercial)	4,577,104	4,516,979	4,778,746	5,019,173	4,856,860	6,799,924	5,483,437	5,629,508	4,039,405	5,154,413	4,916,478	5,232,327	5,084,503	61,511,753
Gardening services	932,164	824,588	733,987	680,126	621,205	452,719	342,225	261,765	170,614	164,135	296,736	673,122	744,130	5,965,352
Veterinary services	1,004,170	1,013,196	1,118,255	1,132,651	1,156,257	1,253,970	1,232,361	1,271,922	1,230,123	1,314,580	1,356,295	1,462,494	1,410,244	14,952,348
Photocopying & printing	18,103,612	17,013,507	17,938,290	16,207,218	16,549,722	20,345,563	21,416,458	22,982,625	21,682,144	16,360,320	17,615,539	18,086,086	16,935,751	223,133,223
Photographic studios	1,335,254	1,852,626	1,508,603	1,928,190	1,580,956	1,907,486	2,838,823	3,131,479	1,858,718	959,837	1,142,076	1,310,508	1,253,275	21,272,577
Beauty & barber shops	4,711,077	4,545,912	4,791,810	4,917,437	4,874,079	4,829,218	5,079,992	8,269,314	7,590,520	3,432,097	3,881,924	3,918,710	3,793,880	59,924,893
Employment agencies	279,150	303,339	270,384	261,212	259,976	230,402	250,083	220,756	191,607	283,423	315,472	220,756	362,316	3,398,753
Counselling services	317,396	261,389	296,377	322,292	404,427	320,339	336,775	331,538	191,690	388,453	551,643	342,109	336,313	4,083,345
Legal services	1,535,006	1,468,458	2,465,885	2,468,092	2,399,028	1,588,062	1,659,618	1,545,363	1,258,664	1,518,279	2,010,953	2,658,988	1,750,872	22,792,262
Laundry & cleaning	51,736	56,920	59,442	63,345	54,927	105,927	94,637	79,739	54,719	81,729	73,602	84,019	73,438	882,444
Funeral services	324,235	293,241	300,824	280,811	318,659	263,970	268,849	388,071	193,920	205,181	280,655	428,065	354,529	3,576,775
Medical services	6,173,502	5,769,260	6,430,254	6,592,652	6,632,487	7,420,120	6,891,212	6,748,612	6,673,755	6,914,442	7,160,188	7,910,339	7,533,352	82,676,673
Moving & courier services	4,401,331	4,446,556	4,749,091	4,922,900	4,602,276	5,097,705	5,170,541	5,304,075	5,086,460	4,237,920	4,083,976	4,556,670	4,379,175	56,637,345
Repair shops (not auto)	1,165,589	1,043,250	1,192,413	1,266,528	1,146,038	1,614,828	1,486,503	1,932,521	2,045,103	1,287,550	1,371,850	3,129,176	1,447,312	18,963,072
Accounting services	939,667	752,925	862,274	902,831	1,114,605	1,431,836	949,190	902,116	1,113,151	1,135,808	1,012,804	982,633	724,688	11,884,861
Advertising, consultancy & PR	2,011,127	1,904,291	12,713,417	12,763,072	12,848,512	15,059,782	14,965,195	15,220,389	15,200,478	14,564,601	16,887,994	17,546,613	17,374,151	167,048,495
Computer programming	76,314,951	80,743,076	86,939,668	81,720,600	73,538,817	78,836,626	87,516,820	113,214,389	124,864,045	85,579,131	79,505,255	88,751,244	87,149,079	1,068,358,750
Farming services	760,543	802,931	826,180	787,439	781,406	853,277	1,028,216	802,832	835,470	838,683	787,141	819,004	781,905	9,944,484
Miscellaneous professional services	66,117,127	63,049,423	66,232,198	60,794,725	65,069,097	69,177,645	54,849,142	47,571,712	48,496,625	51,975,996	49,151,529	56,146,409	56,937,261	689,451,762
Engineering services	1,343,948	1,219,059	1,321,317	1,338,507	1,347,817	1,148,063	1,311,274	1,280,024	1,448,053	1,034,274	1,265,259	1,393,067	1,273,234	15,379,948
Marina services	1,634,688	1,635,204	1,607,353	1,699,206	1,481,854	889,922	766,519	764,432	668,677	831,804	1,020,531	1,319,705	1,455,762	14,140,969
Wrecking & salvage yards	79,470	56,790	75,400	77,844	77,856	28,074	16,871	25,839	15,930	17,036	21,315	27,416	20,988	461,359
Pest control	62,159	63,592	64,498	58,741	56,256	41,174	50,475	49,573	38,685	42,701	41,519	48,994	56,338	612,546
Educational establishments	96,442,580	82,526,441	82,515,516	79,435,474	110,084,857	260,991,022	140,657,429	74,586,542	74,591,879	122,794,748	79,904,012	73,100,728	87,175,609	1,268,364,257
Child care services	300,784	326,767	389,037	407,623	386,756	402,569	357,409	378,392	314,865	333,305	442,290	412,835	380,441	4,532,289
Social, political & religious organisations	49,271,462	46,015,312	47,412,687	50,051,095	51,439,491	49,873,660	51,680,723	44,839,979	62,728,920	61,269,385	51,836,476	48,227,826	47,517,365	612,892,919
Government services	198,895,897	182,386,568	173,044,470	185,488,802	175,809,394	185,430,707	144,698,940	128,756,158	130,503,395	133,079,788	148,322,623	168,491,127	170,598,806	1,926,610,778
Miscellaneous services	17,066,383	15,899,550	16,478,228	16,519,976	17,162,773	12,168,731	19,277,463	15,704,567	14,766,067	19,786,824	16,913,609	17,592,161	18,247,225	209,517,174
Commercial equipment	21,224,549	20,436,155	22,748,180	23,234,821	22,318,771	20,788,161	21,172,101	21,300,133	16,211,319	17,882,052	18,158,736	19,448,634	18,754,201	242,453,264
Other Services	622,106,435	585,186,679	606,482,936	608,751,982	624,991,816	806,067,633	639,244,619	566,485,744	586,250,719	596,326,343	553,515,221	595,732,862	598,611,523	7,367,648,077
Total services	2,018,328,012	2,064,009,907	2,028,905,777	2,012,275,425	1,900,164,269	2,241,698,308	1,995,947,856	1,818,312,647	1,751,480,190	2,072,764,547	2,141,500,154	2,131,797,115	2,038,531,036	24,197,387,231
TOTAL	3,380,244,393	3,421,199,898	3,484,718,672	3,464,597,125	3,256,781,899	3,740,862,514	3,521,766,729	3,746,224,583	3,569,416,146	3,424,060,216	3,473,878,267	3,637,605,630	3,479,178,877	42,220,290,556

1With effect from January 2016 Record shops and Video stores were discontinued as separate categories and merged with the Digital entertainment category

2The Digital entertainment category is effective from January 2016

E-commerce detailed sector breakdown - services sectors (not seasonally adjusted)

	April 2015	May 2015	June 2015	July 2015	August 2015	September 2015	October 2015	November 2015	December 2015	January 2016	February 2016	March 2016	April 2016	Total (latest 12 months)
Auto rental	227,465	245,822	253,469	276,500	267,917	238,951	216,207	177,782	182,697	30,476	128,201	151,235	148,726	2,317,983
Auto parts & accessories	99,423	99,093	104,617	110,022	102,913	99,790	101,818	98,231	93,968	100,867	108,378	120,459	118,292	1,258,448
Auto services	409,984	397,554	383,362	458,369	446,280	500,449	491,231	452,600	418,318	523,370	698,354	772,131	769,878	6,311,896
Auto repair shops	84,092	83,883	84,399	87,128	85,431	99,349	95,153	92,136	88,417	102,445	100,859	119,321	108,551	1,147,072
Service stations	0	0	0	0	0	0	0	0	0	0	0	0	0	0
Vehicle sales	36,498	36,360	38,270	39,368	36,523	39,582	38,804	34,964	32,138	34,485	37,413	43,673	46,010	457,590
<i>Vehicle Sales & Services</i>	<i>857,462</i>	<i>862,712</i>	<i>864,117</i>	<i>971,387</i>	<i>939,064</i>	<i>978,121</i>	<i>943,213</i>	<i>855,713</i>	<i>815,538</i>	<i>791,643</i>	<i>1,073,205</i>	<i>1,206,819</i>	<i>1,191,457</i>	<i>11,492,989</i>
Restaurants	5,066,922	5,793,372	5,003,795	6,047,162	5,324,341	5,225,885	5,787,016	6,391,060	6,225,193	6,082,028	6,522,575	6,673,553	6,243,802	71,319,782
Public houses	38,357	41,101	38,678	38,192	35,921	52,129	64,926	60,376	77,197	45,825	52,082	55,356	48,772	610,555
Catering services	151,277	160,970	185,010	175,581	158,035	195,953	192,389	201,847	172,520	171,525	183,579	198,444	186,133	2,181,986
Video stores ¹	30,022	23,989	11,909	11,428	10,275	9,039	9,884	11,893	10,051	0	0	0	0	98,468
Cinema, theatre & dance	2,049,053	1,872,578	2,046,906	1,942,440	1,876,689	1,928,404	2,798,190	2,972,023	3,287,037	2,230,671	2,605,260	2,240,127	2,204,319	28,004,644
Concerts & entertainers	251,831	282,567	248,094	249,048	244,235	248,508	285,666	389,252	371,444	301,189	277,995	303,728	312,494	3,514,220
Tourist attractions	225,752	209,926	200,078	228,586	281,034	229,151	254,288	164,536	162,981	125,848	182,227	179,460	180,845	2,398,960
Amusement parks	27,182	22,604	18,610	22,626	37,440	18,426	22,356	15,212	17,195	7,755	17,005	21,329	25,275	245,833
Aquariums	14,581	14,916	11,318	14,201	12,946	12,946	14,856	8,513	8,549	5,936	12,075	17,168	18,511	160,707
Sports & games establishments	1,461,392	1,602,966	1,504,982	590,376	568,192	529,911	569,233	508,713	578,857	603,540	646,813	641,640	638,514	8,983,737
Professional sports clubs	59,748	48,571	43,746	61,261	49,651	43,710	53,196	43,461	41,063	49,374	43,142	46,285	56,272	579,732
Gambling	16,136,223	14,942,312	15,685,656	16,577,439	15,917,298	14,011,808	13,352,539	15,422,351	14,817,964	14,943,429	13,750,463	13,685,481	13,464,440	176,571,180
Personal services	88,497	87,242	94,867	94,608	93,928	163,033	108,379	128,942	139,962	136,993	128,428	148,909	116,928	1,442,219
Miscellaneous entertainment	139,583	139,525	141,905	167,073	189,227	147,947	159,150	136,008	144,794	192,659	219,214	220,033	230,554	2,088,089
Digital entertainment ²	0	0	0	0	0	0	0	0	0	1,800,979	1,938,294	1,852,477	1,611,369	7,203,119
<i>Entertainment</i>	<i>25,740,420</i>	<i>25,242,639</i>	<i>25,235,554</i>	<i>26,220,021</i>	<i>24,806,984</i>	<i>22,816,650</i>	<i>23,672,068</i>	<i>26,454,187</i>	<i>26,054,807</i>	<i>26,697,751</i>	<i>26,580,152</i>	<i>26,283,990</i>	<i>25,338,228</i>	<i>305,403,231</i>
Hotels	680,187	695,065	690,247	652,713	678,237	723,992	730,688	674,309	595,250	809,437	756,497	758,203	698,174	8,462,812
Airlines	1,853,671	1,895,038	1,926,876	1,945,934	1,908,710	2,047,244	1,883,688	1,624,123	1,052,379	1,509,292	1,454,444	1,748,369	1,832,534	20,828,631
Airport terminals	21,434	22,764	20,449	20,680	20,719	18,654	17,519	12,837	12,504	16,771	19,726	21,842	23,897	228,362
Railways	1,061,471	1,065,322	1,195,811	1,182,647	1,049,321	1,375,655	1,326,360	1,192,231	1,030,190	1,084,583	1,153,236	1,183,869	1,045,444	13,884,669
Buses	1,296,932	1,369,440	1,411,001	1,438,808	1,397,677	1,444,298	1,544,049	1,382,227	1,450,140	1,716,168	1,133,253	1,246,537	1,209,632	15,743,230
Sea travel	56,951	61,238	65,029	73,502	69,870	52,856	50,020	39,543	38,167	40,952	44,050	53,340	54,926	643,493
Travel agents	1,014,834	1,044,089	853,429	829,094	798,703	904,193	769,140	646,563	569,323	1,137,897	1,086,095	1,095,713	1,027,465	10,761,704
Timeshares	4,404	4,349	4,034	4,048	3,990	4,714	3,797	4,544	4,544	7,127	5,888	5,663	4,988	57,420
Camping grounds	159,028	161,032	138,913	154,067	138,786	95,180	82,927	63,562	55,553	144,651	169,372	176,019	169,253	1,549,315
Miscellaneous travel	784,585	892,528	878,463	1,006,146	1,001,419	896,580	904,456	826,418	821,659	275,781	298,587	315,107	323,037	8,440,181
<i>Travel</i>	<i>6,253,310</i>	<i>6,515,800</i>	<i>6,494,005</i>	<i>6,655,156</i>	<i>6,389,253</i>	<i>6,838,650</i>	<i>6,582,873</i>	<i>5,791,301</i>	<i>5,034,459</i>	<i>4,933,222</i>	<i>5,364,651</i>	<i>5,846,459</i>	<i>5,691,176</i>	<i>72,137,005</i>
Telegraph Services / Wire Transfer Money	228,964	242,507	243,232	254,876	253,795	265,545	272,389	278,328	303,870	120,792	244,304	258,979	192,959	2,931,576
Insurance services	936,013	980,517	1,058,648	1,109,310	1,073,250	1,197,782	1,072,693	1,016,771	898,986	792,857	904,538	1,010,207	960,570	12,076,129
FIs - cash disbursements (auto & manual)	0	0	0	0	0	0	0	0	0	0	0	1	1	2
FIs - merchandise & services	4,175,401	4,363,196	4,228,549	4,457,697	4,609,566	4,638,342	4,848,045	4,698,336	5,016,250	4,826,841	4,845,346	5,234,843	4,961,297	56,728,308
Non-FIs - foreign currency, travellers' cheques	292,407	341,372	361,512	427,248	425,801	321,889	265,674	229,625	215,363	220,941	255,905	298,050	299,701	3,663,081
Security Brokers and Dealers	232,987	163,166	155,954	161,920	170,553	142,427	141,610	135,938	139,678	143,770	164,312	188,871	216,738	1,924,937
Tax Preparation Services	50	47	42	58	58	66	63	72	85	91	111	133	293	1,119
Tax Payments	104,966	96,023	125,482	125,441	125,373	159,822	208,023	211,883	252,060	757,642	676,790	256,006	251,138	3,245,683
Fines, bail and bond payments	104,930	110,421	100,336	95,659	93,833	93,503	101,261	94,173	97,210	95,535	104,766	104,766	102,213	1,180,883
Miscellaneous financial	10,874	11,935	11,783	11,833	12,056	12,431	12,343	13,040	12,736	11,451	13,701	15,780	14,747	153,836
<i>Financial Services</i>	<i>6,086,592</i>	<i>6,309,184</i>	<i>6,285,538</i>	<i>6,644,042</i>	<i>6,764,285</i>	<i>6,831,807</i>	<i>6,922,101</i>	<i>6,678,166</i>	<i>6,931,001</i>	<i>6,971,595</i>	<i>7,200,542</i>	<i>7,367,636</i>	<i>6,999,657</i>	<i>81,905,554</i>

Table 4C Online card expenditure statistics (not seasonally adjusted)

Number of debit card transactions

E-commerce detailed sector breakdown - services sectors (not seasonally adjusted)

	April 2015	May 2015	June 2015	July 2015	August 2015	September 2015	October 2015	November 2015	December 2015	January 2016	February 2016	March 2016	April 2016	Total (latest 12 months)
Telecoms	1,712,221	1,719,509	1,758,172	1,857,634	1,884,457	1,995,115	2,145,574	2,049,545	2,163,723	2,169,370	2,077,889	2,125,799	2,120,262	24,067,049
Utilities	1,552,211	1,549,198	1,536,667	1,582,884	1,384,948	1,416,025	1,377,222	1,150,162	1,278,565	1,311,164	1,253,227	1,390,390	1,306,135	16,536,587
Contractors (residential & commercial)	39,333	36,048	37,786	38,919	36,820	42,566	41,398	40,778	33,096	39,007	38,349	38,996	40,993	464,756
Gardening services	8,638	7,745	6,397	5,392	4,605	4,041	3,401	2,955	2,466	2,154	3,723	6,298	7,821	56,998
Veterinary services	31,034	30,900	35,119	35,665	35,439	39,116	38,844	37,073	35,665	37,634	40,920	44,615	44,744	455,734
Photocopying & printing	263,732	276,811	281,288	288,644	305,386	326,189	339,843	385,567	413,924	237,497	216,988	208,496	187,991	3,468,624
Photographic studios	78,585	92,269	69,053	71,465	54,248	89,585	141,907	171,587	79,136	25,407	38,326	44,741	43,972	921,696
Beauty & barber shops	142,866	152,911	160,727	166,938	159,475	166,583	177,636	244,606	263,890	135,912	145,748	147,138	150,981	2,072,545
Employment agencies	2,981	2,646	2,708	2,268	2,216	2,668	2,560	2,293	1,643	2,720	2,848	2,957	2,703	30,230
Counselling services	5,232	7,373	7,349	7,130	7,489	7,600	8,424	7,912	7,339	10,040	11,882	10,304	11,556	104,398
Legal services	15,191	14,797	18,881	19,166	18,389	17,102	16,893	16,916	15,586	17,120	18,693	18,841	15,098	207,482
Laundry & cleaning	9,406	13,277	8,837	5,722	5,090	16,337	28,517	24,245	14,156	21,564	25,354	21,653	19,646	204,398
Funeral services	1,674	1,852	1,311	1,303	1,291	1,637	1,241	1,229	1,014	1,005	1,308	1,843	2,071	17,105
Medical services	115,277	113,882	113,174	120,477	131,180	164,871	139,900	127,824	123,843	146,114	145,818	154,425	144,128	1,625,636
Moving & courier services	250,381	251,742	264,420	265,695	256,548	262,316	269,839	276,527	302,283	253,514	265,679	253,803	247,194	3,169,560
Repair shops (not auto)	11,406	10,293	12,525	12,719	12,210	13,713	12,660	15,368	18,327	13,331	13,501	17,243	14,089	165,979
Accounting services	7,841	8,049	8,259	8,713	10,839	14,859	13,301	11,977	11,005	11,060	11,010	10,115	7,524	126,711
Advertising, consultancy & PR	81,235	79,720	104,107	105,284	109,968	131,788	117,493	114,404	92,711	101,329	125,126	134,248	127,222	1,343,400
Computer programming	343,812	336,321	351,616	341,550	321,812	367,754	373,325	355,511	338,211	283,852	333,348	346,037	321,025	4,070,362
Farming services	16,797	19,713	20,942	19,401	17,071	18,057	18,836	18,290	17,377	17,971	18,064	17,819	17,268	220,809
Miscellaneous professional services	1,108,084	1,127,326	981,576	942,888	833,917	1,046,787	997,741	1,087,614	989,331	953,511	988,970	1,057,415	1,006,098	12,013,174
Engineering services	9,379	8,906	10,146	9,935	9,567	9,456	11,788	12,308	14,325	10,175	11,598	11,820	10,314	130,338
Marina services	10,261	9,893	10,285	10,901	10,894	7,970	8,183	5,769	5,843	4,520	6,837	8,892	9,520	99,507
Wrecking & salvage yards	557	486	540	576	541	421	393	362	337	409	458	494	5,409	
Pest control	1,497	1,383	1,325	1,316	1,313	1,022	1,026	1,116	904	1,010	999	1,189	1,190	13,793
Educational establishments	1,580,131	1,748,856	1,917,939	1,266,472	653,623	2,441,246	2,321,516	2,525,473	1,737,973	2,392,609	1,978,004	2,122,473	2,034,168	23,140,352
Child care services	6,985	7,608	8,316	9,002	8,899	8,541	9,868	9,275	8,249	9,518	11,111	11,293	10,047	111,727
Social, political & religious organisations	1,304,960	1,358,746	1,370,813	1,562,957	1,422,042	1,707,619	1,359,307	1,119,806	1,125,394	1,047,491	1,196,654	1,364,013	1,488,852	16,123,694
Government services	4,186,855	4,143,688	3,979,494	4,008,750	4,061,562	4,314,487	4,111,919	3,701,896	3,545,537	3,833,781	4,090,472	4,348,868	4,477,679	48,618,133
Miscellaneous services	1,140,949	966,759	1,079,983	1,067,609	950,732	1,034,083	969,011	923,342	999,435	863,988	941,916	1,119,699	1,217,597	12,134,154
Commercial equipment	221,498	218,931	232,407	231,761	211,223	222,275	221,740	225,547	185,480	180,206	185,965	189,853	192,418	2,497,806
Other Services	14,261,009	14,317,638	14,392,162	14,069,136	12,923,794	15,891,829	15,281,306	14,667,307	13,826,793	14,134,911	14,200,736	15,231,734	15,280,800	174,218,146
Total services	53,878,980	53,943,038	53,961,623	55,212,455	52,501,617	54,081,249	54,132,249	55,120,983	53,257,848	54,338,559	55,175,783	56,694,841	55,199,492	653,619,737
TOTAL	77,471,612	77,865,269	79,864,185	84,826,088	78,291,801	82,685,138	84,254,157	90,119,985	91,170,567	81,757,786	83,060,832	85,543,270	82,409,709	1,001,848,787

1With effect from January 2016 Record shops and Video stores were discontinued as separate categories and merged with the Digital entertainment category

2The Digital entertainment category is effective from January 2016

E-commerce detailed sector breakdown - retail sectors (not seasonally adjusted)

£	April 2015	May 2015	June 2015	July 2015	August 2015	September 2015	October 2015	November 2015	December 2015	January 2016	February 2016	March 2016	April 2016	Total (latest 12 months)
Supermarkets	337,882,034	344,125,684	371,680,424	378,443,541	364,114,778	372,268,519	355,782,790	400,332,975	393,464,422	352,392,079	383,052,780	385,782,508	362,613,837	4,464,054,337
Bakers & dairies	659,696	657,957	751,189	733,987	696,179	734,812	756,542	788,150	942,993	610,765	717,660	797,239	729,271	8,916,744
Sweet stores	889,258	672,167	1,413,735	1,329,720	1,440,139	962,738	1,105,161	2,026,130	3,012,575	627,185	993,734	2,069,708	672,952	16,325,944
Miscellaneous foodstores	37,186,671	38,388,563	38,758,389	37,490,529	34,252,077	38,250,685	38,996,139	42,755,625	44,870,330	38,582,891	40,595,971	42,861,828	41,961,004	477,764,031
Off-licences	4,239,349	5,039,124	6,273,497	4,908,017	4,390,943	4,392,274	4,998,071	7,338,100	12,292,613	2,045,355	3,046,184	3,752,469	3,445,635	61,922,282
Food & Drink	380,857,008	388,883,495	418,877,234	422,905,794	404,894,116	416,609,028	401,638,703	453,240,980	454,582,933	394,258,275	428,406,329	435,263,752	409,422,699	5,028,983,338
Department stores	67,282,049	67,288,590	69,482,398	70,989,697	63,778,460	69,481,408	76,519,217	147,590,337	167,036,432	83,905,304	66,997,208	72,726,509	75,637,306	1,031,432,866
Discount stores	31,591,087	33,435,046	36,445,767	39,400,449	36,445,767	39,400,449	37,987,440	48,657,496	82,992,518	48,317,008	43,127,123	50,864,006	50,223,249	584,388,232
Catalogues	103,384,165	99,988,898	114,255,907	115,402,229	115,241,321	120,544,078	116,556,956	135,834,263	125,205,954	123,178,961	127,116,101	127,610,644	121,090,644	1,442,025,956
Miscellaneous mixed	15,507,139	16,397,156	18,240,610	17,205,881	14,896,163	17,646,152	17,806,301	20,779,205	21,520,128	11,711,970	12,925,562	14,209,991	12,910,703	196,249,822
Mixed Business	217,764,440	217,109,690	238,424,682	242,998,256	231,903,384	249,615,635	259,539,970	375,197,938	396,755,032	267,113,243	250,165,994	265,411,150	259,861,902	3,254,096,876
Men's clothing	4,371,409	4,808,825	6,964,571	6,838,034	5,583,864	5,815,532	7,331,865	9,085,867	13,351,718	7,959,008	5,686,435	6,153,318	5,518,153	85,097,190
Women's clothing	53,854,036	54,971,065	56,524,983	55,750,799	44,237,902	54,225,093	55,821,727	66,781,525	79,794,915	47,394,883	49,957,438	55,973,175	56,497,104	677,930,609
Family clothing	201,121,888	193,231,755	212,186,021	228,802,775	198,211,529	214,649,858	219,853,918	266,333,188	296,685,220	184,547,000	187,249,349	212,611,825	212,441,155	2,626,803,601
Miscellaneous clothing	4,279,269	5,949,747	9,914,252	5,693,102	4,256,199	4,556,510	5,947,327	5,970,481	5,530,567	3,596,440	3,453,925	4,307,038	6,325,619	87,525,619
Shoe shops	13,753,918	12,172,134	14,613,892	13,525,647	11,926,819	14,002,802	15,198,104	21,830,750	27,376,717	15,797,694	11,161,242	11,872,127	13,041,975	182,519,903
Clothing	277,380,520	271,133,526	300,203,719	310,610,357	264,216,313	293,249,795	304,152,941	370,001,811	422,739,137	259,295,033	257,204,495	290,064,370	291,805,425	3,634,676,922
Furniture stores	31,939,107	33,283,795	32,523,766	33,475,477	32,902,584	35,888,106	37,086,056	38,386,994	27,389,866	37,436,566	30,369,160	34,137,243	32,178,683	405,058,296
Household appliance stores	66,683,972	64,704,943	59,267,790	59,365,956	54,667,881	55,518,702	59,153,391	65,634,329	63,004,622	66,526,716	68,458,570	76,175,782	72,347,433	764,826,115
Electronic stores	32,192,624	29,323,663	33,180,484	33,810,366	33,807,464	41,117,959	40,403,150	74,042,466	73,424,281	46,234,274	39,103,582	44,032,211	38,492,989	526,972,889
DIY stores	54,823,576	55,152,693	58,196,240	59,292,901	56,730,356	59,981,028	61,686,268	65,747,557	52,106,915	56,259,801	58,445,097	69,556,320	71,473,754	724,628,931
Floor covering stores	3,768,701	4,336,324	4,599,056	4,808,772	4,424,552	4,929,597	5,374,183	5,819,340	3,788,415	4,043,719	4,465,963	4,930,481	4,905,397	56,425,799
Garden centres	10,516,145	8,796,896	8,614,393	7,830,379	7,190,964	6,552,684	6,371,012	5,998,161	5,500,237	4,314,896	5,986,466	9,860,094	10,527,278	67,543,760
Miscellaneous household	11,330,421	10,355,548	10,922,154	13,713,022	11,243,079	13,806,247	15,423,427	14,706,345	12,298,442	15,296,612	12,340,487	12,468,569	13,526,627	156,100,559
Household	211,254,546	205,953,862	207,303,883	212,296,873	200,966,880	217,794,323	225,497,487	270,335,192	237,512,779	230,112,584	219,169,325	251,160,700	243,452,161	2,721,556,049
Books, newspapers & magazines	9,655,643	8,167,090	9,126,303	8,862,001	8,882,311	11,281,410	14,199,397	14,438,081	12,400,921	10,906,466	9,360,412	9,612,671	10,418,874	127,655,517
Record shops ¹	503,319	572,726	1,162,562	13,762,548	13,762,146	18,758,775	21,607,631	1,252,334	1,692,865	0	0	0	0	72,571,587
Music shops	3,560,357	3,504,292	3,767,382	3,817,894	3,751,549	4,179,821	4,466,818	5,070,377	7,548,084	4,518,427	4,297,587	4,337,646	4,309,630	53,569,507
Hobbies, toys & games	6,031,404	6,102,847	7,271,764	7,232,356	6,954,460	9,489,036	10,622,546	28,233,928	18,845,134	6,027,883	5,845,121	6,821,138	5,984,576	119,430,789
Photographic	4,179,367	4,221,597	4,441,252	4,669,853	4,324,554	4,531,937	4,623,432	5,444,942	5,628,870	2,425,326	3,297,416	4,012,357	4,043,897	51,665,433
Handicraft	899,927	898,381	942,706	941,353	953,036	989,125	981,980	1,191,948	1,110,147	1,095,249	1,110,759	1,083,245	1,087,715	12,385,644
Sports shops	68,631,091	69,346,013	71,443,273	102,923,467	74,477,987	77,437,945	83,244,563	113,267,917	129,394,064	47,696,753	54,121,360	57,938,336	59,411,510	940,703,188
Jewellers	9,797,538	10,057,414	11,742,194	13,551,521	11,384,020	11,120,109	10,224,789	16,390,242	23,336,748	11,099,653	11,734,416	10,325,059	10,034,325	151,000,490
Computer software	11,887,131	11,331,203	13,637,310	14,013,875	14,317,691	13,651,930	13,914,947	15,204,409	15,464,904	14,112,347	12,376,942	13,029,937	12,603,772	163,659,267
Medical goods	1,782,671	1,863,616	2,040,980	2,025,882	2,024,587	1,881,580	2,564,736	2,759,979	2,416,397	2,078,328	2,501,264	2,407,074	2,594,922	27,159,345
Chemists	8,645,232	9,191,844	9,851,483	9,938,274	9,767,622	9,501,003	11,033,426	18,583,506	25,339,080	10,353,121	10,841,269	10,840,818	10,133,585	145,375,031
Optical goods	3,721,228	3,508,727	3,936,048	4,022,625	3,870,589	3,920,096	3,692,792	3,686,372	3,557,663	3,546,750	3,755,851	3,983,167	3,956,796	45,437,476
Cosmetic stores	23,322,109	24,773,374	25,219,659	25,639,652	24,953,911	24,975,881	29,353,298	38,372,803	47,845,120	10,141,778	21,788,397	24,446,783	21,887,142	319,397,798
Tobacconists	1,353,741	1,403,900	1,518,046	1,577,581	1,622,426	1,873,345	1,908,976	1,980,616	2,114,541	1,954,002	1,967,389	1,976,583	1,918,475	21,815,880
Florists	2,976,840	5,257,267	5,729,938	5,880,239	5,893,272	6,375,737	6,221,560	6,271,224	9,802,671	5,244,931	10,886,669	13,214,958	6,131,744	86,910,210
Artists' supplies	2,364,402	2,472,176	2,730,595	2,770,110	2,559,805	2,820,306	3,047,175	3,896,918	3,015,229	2,745,956	3,040,443	2,967,457	2,721,210	34,787,380
Antiques, art & stamps/coins	1,859,229	1,967,252	1,991,937	2,340,389	1,870,628	3,670,658	2,171,481	2,288,601	2,439,542	2,137,864	2,294,803	2,539,136	2,104,615	27,816,906
Pawn shops	128,521	159,911	150,928	152,001	155,914	263,257	115,352	117,109	188,154	170,917	168,405	169,562	187,612	1,999,122
Gift shops	20,959,076	21,751,488	26,959,028	24,374,902	22,790,289	27,284,854	29,233,776	40,458,373	52,302,951	25,157,194	32,416,063	31,891,461	23,634,587	358,254,966
Secondhand shops	53,248	47,941	48,551	44,319	38,355	63,386	52,330	47,549	68,848	22,769	35,509	52,333	54,701	576,591
Luggage & leather goods	296,204	309,770	352,844	385,001	381,117	357,088	362,701	519,171	644,490	421,976	383,434	371,136	399,633	4,888,361
Pet shops	6,636,489	6,617,419	6,799,668	7,187,973	5,923,354	6,453,131	6,763,190	7,131,315	6,701,233	6,724,427	6,361,477	6,959,776	6,803,073	80,426,036
Religious goods	35,145	36,578	34,275	45,738	47,043	39,710	38,621	30,776	36,884	30,678	32,059	42,039	33,792	448,193
Direct sales	37,360,682	39,861,743	35,141,872	39,335,310	35,203,837	45,308,108	41,604,762	44,266,201	39,696,424	42,025,482	39,074,936	40,296,367	41,572,247	483,387,289
Miscellaneous & speciality shops	51,185,393	54,745,227	55,208,947	57,240,569	61,138,046	62,875,655	65,548,260	79,946,394	74,612,072	64,983,264	59,271,520	56,460,649	53,470,337	745,500,940
Other Retail	277,825,987	288,169,796	301,249,545	352,735,433	317,048,549	349,103,883	367,598,539	450						

E-commerce detailed sector breakdown - services sectors (not seasonally adjusted)

£	April 2015	May 2015	June 2015	July 2015	August 2015	September 2015	October 2015	November 2015	December 2015	January 2016	February 2016	March 2016	April 2016	Total (latest 12 months)
Auto rental	23,811,355	28,004,898	32,001,906	36,038,513	27,567,621	21,280,538	18,941,211	16,249,206	19,685,522	2,118,391	12,716,116	16,014,158	14,720,815	245,338,895
Auto parts & accessories	10,955,456	10,882,189	11,393,851	12,016,560	10,932,660	10,743,580	11,498,028	11,241,306	10,532,261	10,967,125	12,126,382	13,490,557	13,176,058	139,000,557
Auto services	16,918,394	17,723,501	18,398,023	19,741,742	18,357,090	18,904,905	16,957,748	13,947,537	14,278,300	15,085,066	16,855,562	18,320,460	18,125,118	206,695,052
Auto repair shops	13,532,612	12,933,408	12,777,374	12,788,073	12,728,148	14,519,535	13,430,424	13,806,100	13,053,483	14,985,269	15,540,640	17,550,047	15,775,652	169,888,153
Service stations	0	0	0	0	0	0	0	0	0	0	0	0	0	0
Vehicle sales	7,458,599	7,143,712	7,799,032	7,462,816	7,060,727	8,329,603	8,657,069	7,831,273	6,443,001	8,549,079	9,235,149	11,026,082	11,755,227	101,292,770
Vehicle Sales & Services	72,676,416	76,687,708	82,370,186	86,047,704	76,640,246	73,778,161	69,484,480	63,075,422	63,992,567	51,704,930	66,473,849	76,401,304	73,552,870	862,215,427
Restaurants	102,657,074	115,555,322	100,664,255	120,565,306	107,500,576	106,876,995	116,618,155	127,993,246	127,469,640	120,810,975	129,224,455	133,240,823	124,957,516	1,431,477,264
Public houses	4,398,016	4,084,620	4,159,962	4,154,003	4,067,981	4,689,105	7,834,222	7,877,208	10,600,643	7,913,162	7,766,331	9,271,935	8,494,093	80,913,265
Catering services	13,152,389	13,473,675	14,259,456	15,900,900	15,230,742	14,884,860	15,907,623	14,188,358	13,915,808	11,935,775	13,071,959	15,525,115	15,768,072	174,112,343
Video stores ¹	355,863	296,127	287,305	266,395	221,066	228,481	195,381	232,432	238,785	0	0	0	0	1,965,972
Cinema, theatre & dance	89,381,168	95,750,689	101,509,316	100,780,654	87,204,370	96,444,996	120,108,408	145,265,425	156,668,985	91,152,440	134,042,958	104,706,663	126,495,117	1,360,130,021
Concerts & entertainers	9,609,438	11,100,733	9,543,956	10,019,016	10,027,287	9,624,844	11,724,483	15,276,839	14,050,548	10,851,180	10,812,591	11,687,229	11,663,425	136,382,131
Tourist attractions	15,205,008	14,684,637	13,819,895	16,159,741	18,716,494	15,066,298	16,332,680	10,730,878	11,347,086	9,052,574	12,124,235	12,809,880	12,688,588	163,532,986
Amusement parks	1,666,498	1,420,319	1,117,292	1,393,257	2,434,982	1,048,097	1,274,158	802,695	1,274,158	861,051	915,109	1,241,960	1,473,099	14,431,933
Aquariums	899,701	886,672	628,596	805,891	1,278,990	664,087	684,177	436,780	519,400	298,836	549,476	869,821	893,543	8,516,269
Sports & games establishments	42,202,222	61,129,422	41,330,018	29,861,078	27,158,250	25,839,142	27,282,461	27,915,769	29,611,817	27,531,481	33,367,527	37,821,687	40,391,515	409,240,167
Professional sports clubs	5,557,849	3,990,120	3,272,824	4,419,946	3,332,687	4,589,446	4,298,529	2,865,472	2,403,235	3,903,892	2,654,904	6,387,438	5,661,513	47,780,006
Gambling	233,806,261	195,636,571	189,841,017	194,888,160	232,377,409	201,301,819	184,780,601	179,426,308	178,553,036	160,009,494	89,841,546	45,872,643	62,498,596	1,915,027,200
Personal services	2,872,732	2,802,723	3,175,124	3,083,909	3,042,300	3,623,105	3,165,844	3,919,541	4,385,522	3,924,329	3,614,915	3,827,936	3,297,939	41,863,187
Miscellaneous entertainment	5,464,217	5,592,879	5,773,092	7,063,876	8,001,044	5,755,152	6,115,648	4,695,425	5,236,676	6,302,392	7,093,110	7,966,340	8,531,571	78,127,205
Digital entertainment ²	0	0	0	0	0	0	0	0	0	23,706,689	23,054,634	22,440,707	18,446,868	87,648,898
Entertainment	527,228,436	526,404,509	489,382,108	509,412,132	520,594,178	490,636,427	516,322,370	541,684,732	555,916,290	477,842,233	468,021,336	413,670,177	441,261,455	5,951,147,947
Hotels	88,098,709	95,896,470	95,185,659	89,043,152	88,516,896	97,387,257	90,014,113	73,051,757	63,017,769	109,532,624	96,131,554	101,437,454	100,651,141	1,099,865,846
Airlines	373,194,745	401,863,012	414,556,111	413,447,882	367,260,466	392,288,327	354,346,259	284,223,929	185,004,597	319,297,324	299,956,150	342,299,886	349,132,046	4,123,675,989
Airport terminals	1,037,185	1,116,133	965,782	1,001,536	980,810	956,705	828,845	601,128	683,232	795,722	921,433	1,007,417	1,077,659	10,936,402
Railways	50,514,384	50,320,429	57,043,835	56,865,391	50,210,520	63,056,225	62,479,384	55,807,885	50,123,270	56,933,856	56,285,224	57,469,247	52,142,110	668,737,376
Buses	31,338,475	32,158,870	32,923,070	35,571,956	35,357,198	38,156,016	35,339,972	29,625,163	32,533,805	14,583,511	22,252,774	25,082,113	24,080,942	357,665,390
Sea travel	7,390,991	7,590,654	8,494,116	9,837,607	8,716,880	6,532,208	6,235,555	5,112,903	4,663,325	6,240,989	6,656,137	7,346,683	7,737,798	85,164,855
Travel agents	417,331,564	483,227,515	429,219,287	406,550,481	334,382,047	280,706,694	257,524,733	224,334,307	215,357,567	400,403,637	404,995,862	452,664,461	469,330,183	4,358,696,774
Timeshares	561,906	524,777	513,171	527,451	503,912	499,969	576,638	480,430	597,108	944,262	780,702	760,686	680,338	7,389,444
Camping grounds	22,025,761	27,823,165	24,985,518	25,887,377	20,335,346	11,135,615	10,504,091	12,005,156	8,986,857	18,258,726	21,247,817	25,432,083	24,229,322	230,831,073
Miscellaneous travel	21,930,920	23,876,349	23,017,069	25,540,487	23,395,121	22,234,906	20,246,872	19,624,832	17,740,999	13,792,896	16,945,565	18,419,140	20,818,491	245,652,727
Travel	925,325,931	1,028,500,904	991,717,959	975,230,168	841,142,300	815,566,665	748,082,349	631,815,733	515,690,760	831,250,923	830,041,664	930,481,716	949,228,889	10,088,750,030
Telegraph Services / Wire Transfer Money	72,983,568	77,838,723	76,244,244	82,935,728	78,307,421	75,046,068	81,443,338	87,115,900	82,181,352	40,106,500	67,452,578	73,767,089	60,912,431	883,351,372
Insurance services	127,404,473	130,148,732	141,841,328	150,719,566	149,122,031	168,203,038	153,432,003	159,326,081	137,884,862	116,953,586	127,649,234	149,465,555	139,939,544	1,724,685,560
FIs - cash disbursements (auto & manual)	0	0	0	0	0	0	0	0	0	0	0	650	133	783
FIs - merchandise & services	1,750,596,450	1,619,788,572	1,599,334,740	1,680,490,096	1,697,115,440	1,673,344,084	1,713,544,278	1,707,507,601	1,855,228,558	1,757,629,510	1,695,731,045	1,927,815,186	1,945,424,839	20,872,953,949
Non-FIs - foreign currency, travellers' cheques	142,556,520	173,469,890	196,062,615	245,782,970	194,249,678	153,054,792	132,076,949	118,748,059	106,663,092	104,098,094	119,761,543	151,352,240	148,952,652	1,844,272,574
Security Brokers and Dealers	908,414,140	404,810,734	419,283,656	435,070,817	467,908,073	335,235,616	292,995,446	301,461,006	291,144,029	382,406,428	414,062,436	663,469,824	897,879,946	5,305,728,011
Tax Preparation Services	9,445	9,307	6,737	8,011	8,270	15,721	8,763	12,361	12,895	17,369	18,069	17,493	34,752	169,748
Tax Payments	147,208,316	144,627,688	155,617,857	155,617,318	155,616,458	290,805,883	385,557,586	410,607,282	558,503,335	1,681,310,256	1,599,440,679	417,731,546	403,100,743	6,358,536,631
Fines, bail and bond payments	8,656,127	9,110,791	8,308,237	8,053,496	7,740,247	8,009,943	8,722,190	7,977,464	7,816,419	8,093,622	7,976,778	8,515,322	8,577,169	98,901,678
Miscellaneous financial	1,118,137	1,214,534	1,117,620	1,158,521	1,218,640	1,239,097	1,291,086	1,319,281	1,155,885	1,213,072	1,338,897	1,488,087	1,445,535	15,200,255
Financial Services	3,158,947,176	2,561,018,971	2,597,817,034	2,759,836,523	2,751,280,258	2,704,954,242	2,769,071,639	2,794,075,035	3,040,590,427	4,091,828,437	4,033,431,259	3,393,622,992	3,606,267,744	37,103,800,561

E-commerce detailed sector breakdown - services sectors (not seasonally adjusted)

£	April 2015	May 2015	June 2015	July 2015	August 2015	September 2015	October 2015	November 2015	December 2015	January 2016	February 2016	March 2016	April 2016	Total (latest 12 months)
Telecoms	54,837,750	52,106,290	53,008,242	55,504,466	56,036,453	60,263,974	67,579,641	66,011,540	69,344,645	70,265,301	67,643,019	72,468,555	72,416,976	762,649,102
Utilities	105,891,492	99,833,668	108,111,555	108,759,261	103,160,246	95,967,172	95,451,418	82,203,170	85,226,604	92,231,586	94,123,333	117,757,454	105,675,369	1,188,500,836
Contractors (residential & commercial)	5,645,982	4,744,024	4,963,372	5,146,582	4,994,343	9,695,994	6,287,256	5,795,085	4,626,407	8,133,058	5,439,010	5,603,764	6,731,463	72,160,358
Gardening services	826,440	735,943	656,208	577,795	507,847	411,011	323,649	264,065	176,945	188,871	296,352	562,042	728,832	5,429,560
Veterinary services	1,613,861	1,544,378	1,743,799	1,807,447	1,779,076	2,014,769	1,950,258	1,893,401	1,871,423	1,941,908	2,130,096	2,344,338	2,328,218	23,349,111
Photocopying & printing	10,265,392	10,270,404	10,873,970	10,513,774	10,513,459	11,972,824	12,198,393	14,202,754	13,301,978	10,169,746	9,691,217	9,686,338	9,266,991	132,661,848
Photographic studios	2,076,098	2,556,480	2,413,541	2,950,437	2,406,841	3,162,333	4,828,462	5,658,082	3,184,057	1,435,268	1,946,755	2,127,129	2,062,496	34,731,881
Beauty & barber shops	7,349,858	7,554,315	7,930,809	8,019,091	8,010,455	8,758,161	9,384,965	13,142,747	12,798,299	6,732,345	7,463,650	7,625,595	7,634,586	105,055,018
Employment agencies	430,218	347,666	388,968	286,263	256,175	195,221	182,045	190,402	163,870	252,792	294,483	365,435	292,378	3,215,698
Counselling services	284,544	404,143	423,210	435,201	478,970	415,859	502,902	454,797	464,825	887,026	1,362,768	805,710	905,387	7,540,798
Legal services	3,866,136	3,611,872	5,359,541	5,472,915	5,135,893	4,038,751	4,146,383	4,010,612	4,239,709	4,009,138	6,444,312	6,444,312	4,651,855	55,727,706
Laundry & cleaning	140,572	167,424	133,813	114,822	105,147	291,047	391,933	300,150	187,752	294,750	305,200	256,679	249,674	2,798,391
Funeral services	656,534	586,917	639,281	644,073	634,076	708,034	901,195	985,072	609,083	842,636	998,379	1,263,117	961,316	9,773,179
Medical services	8,644,503	8,397,107	8,411,074	9,220,869	10,768,047	13,590,495	11,021,295	9,498,193	9,191,306	11,113,721	11,268,787	12,305,337	11,417,479	126,203,710
Moving & courier services	7,534,447	7,507,517	8,236,972	8,282,953	8,236,972	8,793,225	8,536,306	8,912,823	9,090,247	7,565,976	7,081,397	7,898,363	7,805,640	97,726,782
Repair shops (not auto)	1,012,609	950,890	1,097,240	1,128,521	1,074,994	1,466,017	1,368,758	1,743,097	2,089,247	1,295,431	1,339,383	3,059,850	1,584,030	18,197,458
Accounting services	1,026,912	1,044,674	1,062,680	1,121,440	1,331,524	1,837,712	1,624,297	1,467,859	1,344,973	1,409,024	1,454,579	1,398,314	1,071,551	16,168,627
Advertising, consultancy & PR	2,790,287	2,708,038	3,444,295	3,540,207	3,695,408	4,588,666	4,214,503	3,977,358	3,153,474	3,852,552	4,669,948	5,007,927	4,906,848	47,759,224
Computer programming	13,082,481	13,135,006	13,543,348	13,073,839	12,335,660	13,440,431	14,100,926	13,621,220	13,655,426	11,698,951	12,170,211	12,993,733	12,988,965	156,757,716
Farming services	1,853,483	1,882,442	1,574,364	1,579,172	1,474,066	2,262,887	3,947,852	1,722,142	1,592,123	2,312,011	1,726,813	1,588,005	2,014,429	23,676,306
Miscellaneous professional services	276,638,581	203,476,960	193,861,442	198,182,936	203,286,047	197,355,737	162,430,750	144,911,864	147,210,767	179,630,861	154,344,635	214,289,650	274,976,703	2,273,958,352
Engineering services	2,464,355	2,409,383	2,703,899	2,483,751	2,456,928	2,139,867	2,486,371	2,519,863	2,569,745	2,085,355	2,569,868	2,552,552	2,408,067	29,385,649
Marina services	1,410,305	1,421,511	1,397,697	1,353,789	1,397,697	1,207,716	735,386	645,543	499,136	493,408	587,488	833,368	1,204,047	11,683,127
Wrecking & salvage yards	61,870	59,944	54,530	59,188	53,152	43,578	41,813	47,166	37,780	35,401	54,556	54,404	61,583	603,095
Pest control	63,488	58,290	58,918	59,646	56,109	48,699	42,847	45,641	35,369	37,660	42,524	49,028	55,380	590,111
Educational establishments	185,413,106	125,690,912	104,716,716	95,519,367	146,418,326	590,605,097	417,237,763	163,227,763	120,561,826	318,529,728	155,660,578	115,834,421	201,128,482	2,555,130,979
Child care services	1,213,019	1,223,841	1,385,300	1,450,981	1,419,650	1,421,679	1,397,211	1,345,161	1,287,549	1,318,551	1,625,671	1,618,989	1,513,847	17,008,430
Social, political & religious organisations	57,948,917	56,776,902	84,920,461	102,250,728	90,395,052	100,090,954	104,746,543	79,061,696	86,576,791	84,090,468	87,908,555	91,199,043	92,956,450	1,060,973,643
Government services	1,871,084,732	1,778,959,302	1,550,365,374	1,662,970,784	1,394,447,971	1,279,863,434	1,235,733,871	1,103,184,897	1,066,569,625	1,309,570,419	1,294,020,006	1,464,385,943	1,508,890,069	16,648,961,695
Miscellaneous services	45,308,378	39,987,632	42,638,167	42,160,691	39,326,176	44,079,858	42,903,401	39,735,733	42,954,230	42,141,464	40,349,765	45,584,669	49,831,882	511,693,668
Commercial equipment	17,107,840	16,872,039	18,183,099	18,341,296	16,486,458	17,801,731	17,843,013	17,804,496	14,258,786	14,557,645	15,681,089	16,525,450	16,549,511	200,904,613
Other Services	2,688,544,190	2,447,025,914	2,234,301,885	2,363,012,285	2,128,267,628	2,478,060,603	2,234,451,563	1,788,437,985	1,718,868,269	2,189,217,131	1,989,102,720	2,224,860,193	2,405,370,495	26,200,976,671
Total services	7,460,820,858	6,735,534,476	6,490,774,831	6,784,581,964	6,406,453,506	6,660,383,355	6,427,426,514	5,892,140,664	5,958,076,082	7,751,376,278	7,483,202,382	7,140,473,836	7,576,332,594	81,306,756,482
TOTAL	8,826,626,421	8,107,468,147	7,957,605,329	8,326,882,321	7,826,131,276	8,187,531,201	7,986,642,943	7,812,584,143	7,956,713,952	9,178,594,521	8,936,635,634	8,689,778,873	9,067,953,799	100,034,522,139

1With effect from January 2016 Record shops and Video stores were discontinued as separate categories and merged with the Digital entertainment category

2The Digital entertainment category is effective from January 2016