

Card Expenditure Statistics [CES] – September 2011

Seasonally-adjusted

At a glance key figures for September

	Total spending £ billions		Annual growth rates for spending		Number of purchases millions	
	2011	2010	2011	2010	2011	2010
All plastic cards	38.3	34.9	8.8%	7.9%	794	718
Debit cards	27.7	24.3	12.4%	10.3%	624	552
Credit cards	10.6	10.6	0.9%	2.9%	169	166

Compared to July and August, **spending on plastic cards** fell back slightly in September to £38.3 billion with debit cards at £27.7 billion and credit cards at £10.6 billion. With no calendar or bank holiday effects on the monthly figures, the data confirm the slightly accelerating growth in plastic card usage that has been apparent since the turn of the year. The number of transactions was 9.8% higher than in September 2010 with spending growing at a slower rate of 8.8% – the small difference between the two growth rates suggesting a slight increase in the number of lower value purchases.

Since the inclusion of automotive fuels within **retail spending** from 2010, 71% of total card purchases have been in the retail sectors, amounting to 52% of spending. Largely due to price increases, card spending on **automotive fuels** grew at an annual rate of 16.9% in September and amounted to £2.1 billion or 11% of all retail card spending during the month. At £7.7 billion, card spending on **food & drink** represented 39% of September's retail total and continued to exhibit a strong annual rate of growth of 8.3%. Household items, which accounted for 15% of retail card spending, likewise continued to show strong growth of 7.7%.

Credit card use fell by 48 bp in September, down to 21.3% of card volumes – a new lowest level – although it held its share of 27.8% of the value of all plastic card purchases. Chart 1 shows its annual rate of growth since August 2010 sliding downwards whilst **debit card use** increases. Both spending and transaction volumes on debit cards grew at an annual rate of 12.4% in September.

The **plastic card share of total retail sales** (including automotive fuels)¹ was 71.3% in September (see Chart 2). In food & drink plastic cards accounted for 68.1% of all spending, and for automotive fuels the share was 65.1%.

¹CES 3-month moving average spending for September of £20.0 billion expressed as a percentage of a similar 3-month moving average for National Statistics 'All retailing including automotive fuel' (AGG 21) based on the value of Retail Sales at current prices (SA) that gives a figure of £28.4 billion.

Chart 1

Spending on plastic cards
Annual growth rates

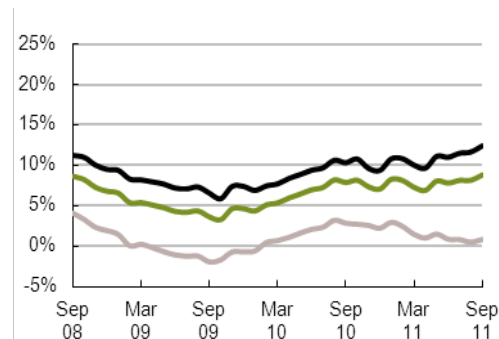
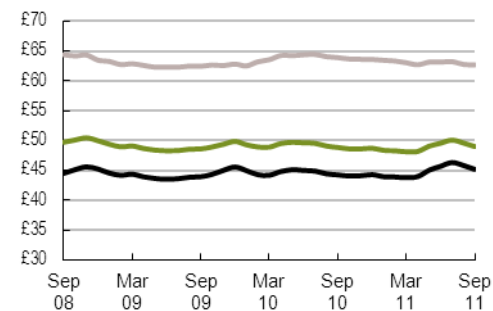


Chart 3

Average transaction values
Three-month moving average



— Debit cards
— Credit cards
— All plastic cards

Chart 2

Percent of retail sales made on plastic cards
(including automotive fuel)
Three-month moving average

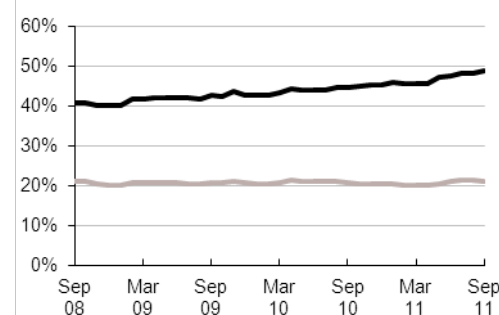


Chart 4

Average monthly expenditure
£ billions

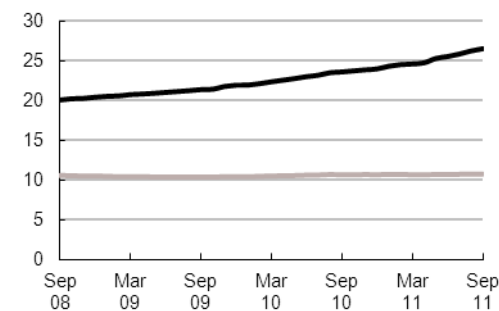


Table 1 Card expenditure statistics (seasonally adjusted)

Summary

Number of purchase transactions (millions)

Value of purchase transactions (£ millions)

		Number of purchase transactions (millions)									Value of purchase transactions (£ millions)								
		All sectors			Retail sales			Services			All sectors			Retail sales			Services		
		Credit	Debit	Total	Credit	Debit	Total	Credit	Debit	Total	Credit	Debit	Total	Credit	Debit	Total	Credit	Debit	Total
Annual																			
	2006	1,948	4,493	6,441	1,215	3,017	4,232	733	1,476	2,209	119,945	195,405	315,350	59,884	97,963	157,847	60,062	97,442	157,504
	2007	1,958	4,969	6,927	1,197	3,304	4,501	761	1,665	2,426	123,791	223,878	347,670	61,067	108,659	169,725	62,725	115,219	177,944
	2008	1,972	5,466	7,438	1,186	3,581	4,768	786	1,885	2,671	126,197	245,172	371,370	60,690	116,063	176,753	65,507	129,109	194,616
	2009	2,002	5,939	7,941	1,224	3,893	5,117	778	2,046	2,824	125,338	263,332	388,671	61,825	125,371	187,196	63,514	137,961	201,475
	2010	2,007	6,484	8,491	1,381	4,712	6,093	626	1,772	2,398	128,138	288,046	416,184	69,641	148,494	218,135	58,497	139,553	198,049
Monthly																			
	2010																		
	Sep	166	552	718	114	402	516	51	151	202	10,604	24,324	34,928	5,765	12,629	18,394	4,839	11,695	16,534
	Oct	163	542	705	112	393	506	50	149	199	10,342	23,885	34,227	5,659	12,425	18,083	4,683	11,461	16,144
	Nov	172	577	749	118	417	535	54	160	214	10,873	25,503	36,376	5,936	13,146	19,082	4,937	12,357	17,294
	Dec	163	555	718	112	400	513	51	154	206	10,441	24,739	35,180	5,691	12,724	18,414	4,750	12,015	16,766
	2011																		
	Jan	169	586	755	116	422	538	53	164	217	10,686	25,192	35,878	5,789	13,251	19,040	4,897	11,941	16,838
	Feb	169	580	749	116	416	531	53	164	218	10,637	25,541	36,179	5,757	13,066	18,822	4,881	12,475	17,356
	Mar	167	575	742	114	410	524	53	165	218	10,543	25,469	36,012	5,697	12,753	18,450	4,847	12,716	17,562
	Apr	170	592	761	118	425	543	52	166	218	10,543	25,742	36,286	5,851	13,423	19,275	4,692	12,319	17,011
	May	177	639	816	122	457	579	56	181	237	11,405	30,193	41,598	6,105	14,412	20,517	5,300	15,781	21,081
	Jun	173	595	769	121	417	538	53	178	231	10,919	27,547	38,465	6,100	13,226	19,326	4,819	14,320	19,139
	Jul	176	611	787	123	431	555	52	180	232	10,976	27,745	38,721	6,202	13,823	20,025	4,774	13,922	18,696
	Aug	179	640	818	123	457	580	56	182	238	11,229	29,284	40,513	6,160	14,511	20,671	5,069	14,773	19,842
	Sep	169	624	794	117	445	561	53	180	232	10,636	27,665	38,302	5,884	14,146	20,030	4,752	13,520	18,272

12 month growth rates (percentages)

Annual																			
	2006	-2.7	9.9	5.7	-2.9	9.3	5.5	-2.4	10.9	6.1	-1.4	15.3	8.3	-0.5	10.3	5.9	-2.2	20.8	10.8
	2007	0.5	10.6	7.5	-1.5	9.5	6.4	3.8	12.8	9.8	3.2	14.6	10.2	2.0	10.9	7.5	4.4	18.2	13.0
	2008	0.7	10.0	7.4	-0.9	8.4	5.9	3.3	13.2	10.1	1.9	9.5	6.8	-0.6	6.8	4.1	4.4	12.1	9.4
	2009	1.5	8.6	6.8	3.2	8.7	7.3	-1.0	8.6	5.7	-0.7	7.4	4.7	1.9	8.0	5.9	-3.0	6.9	3.5
	2010	0.2	9.2	6.9	12.8	21.0	19.1	-19.5	-13.4	-15.1	2.2	9.4	7.1	12.6	18.4	16.5	-7.9	1.2	-1.7
Monthly																			
	2010																		
	Sep	1.4	9.1	7.1	11.4	17.9	16.3	-14.2	-7.8	-9.6	2.9	10.3	7.9	11.7	16.1	14.6	-5.5	5.1	1.7
	Oct	1.1	9.3	7.2	11.9	19.1	17.4	-15.9	-9.4	-11.2	2.7	10.8	8.2	12.1	17.0	15.4	-6.3	5.1	1.4
	Nov	0.5	8.9	6.8	12.0	19.5	17.7	-17.5	-11.5	-13.2	2.6	9.6	7.4	12.1	17.1	15.4	-6.7	2.8	-0.2
	Dec	0.2	9.2	6.9	12.8	21.0	19.1	-19.5	-13.4	-15.1	2.2	9.4	7.1	12.6	18.4	16.5	-7.9	1.2	-1.7
	2011																		
	Jan	0.7	10.3	7.9	11.9	21.1	18.9	-17.5	-10.8	-12.6	3.0	10.8	8.3	12.6	18.7	16.7	-6.6	3.5	0.3
	Feb	0.6	10.4	8.0	10.7	20.0	17.8	-16.2	-8.8	-10.8	2.5	10.8	8.1	11.3	17.8	15.7	-6.4	4.3	0.9
	Mar	0.0	10.0	7.5	8.8	18.2	16.0	-15.1	-6.9	-9.1	1.5	10.0	7.3	9.3	16.3	14.0	-6.5	4.1	0.8
	Apr	0.0	10.3	7.7	7.9	17.3	15.1	-13.8	-4.7	-7.1	1.0	9.7	6.9	8.2	15.5	13.1	-6.4	4.0	0.8
	May	0.8	11.6	8.9	7.7	17.5	15.2	-11.5	-1.2	-4.0	1.5	11.1	8.1	7.5	15.9	13.2	-4.8	6.5	3.0
	Jun	0.7	11.4	8.7	6.6	15.8	13.6	-10.2	1.5	-1.7	0.9	11.0	7.8	6.0	14.6	11.8	-4.7	7.5	3.8
	Jul	1.2	11.9	9.2	6.2	15.0	12.9	-8.6	4.6	1.1	0.8	11.5	8.2	5.6	14.3	11.5	-4.4	8.8	4.8
	Aug	1.0	11.5	9.0	5.0	13.5	11.5	-6.9	6.8	3.2	0.5	11.7	8.2	4.4	13.1	10.3	-3.8	10.2	6.0
	Sep	1.7	12.4	9.8	4.8	13.3	11.3	-4.5	10.1	6.3	0.9	12.4	8.8	4.2	13.2	10.3	-2.9	11.6	7.3

Table 2A Card expenditure statistics (seasonally adjusted)

Retail sales

Number of purchase transactions (millions)

																			Total retail sales			
																			Number of purchases			
Food & drink			Mixed business			Clothing			Household			Other retailers			Automotive Fuels *							
	Credit	Debit	Total	Credit	Debit	Total	Credit	Debit	Total	Credit	Debit	Total	Credit	Debit	Total	Credit	Debit	Total	Credit	Debit	Total	
Annual																						
2006	394	1,454	1,848	215	415	630	126	317	444	145	263	408	334	567	901	0	0	0	1,215	3,017	4,232	
2007	426	1,639	2,066	203	436	639	124	350	474	147	282	429	297	596	893	165	419	584	1,197	3,304	4,501	
2008	500	1,873	2,373	134	408	542	121	371	492	143	292	435	288	637	925	168	459	626	1,186	3,581	4,768	
2009	512	2,086	2,597	131	401	532	125	404	529	146	321	466	311	681	992	158	475	633	1,224	3,893	5,117	
2010	534	2,283	2,816	138	403	541	128	424	552	147	348	495	273	733	1,006	161	520	681	1,381	4,712	6,093	
Monthly																						
2010	Sep	45	197	242	11	33	44	11	37	47	12	30	42	22	63	85	13	43	56	114	402	516
	Oct	44	191	236	11	33	44	10	35	45	12	30	42	21	61	82	13	44	57	112	393	506
	Nov	46	202	248	12	35	47	11	37	48	12	32	44	23	65	88	14	47	60	118	417	535
	Dec	44	198	242	12	34	45	10	35	45	12	29	41	21	62	83	13	43	56	112	400	513
2011	Jan	45	205	251	13	36	49	11	36	47	12	32	44	21	66	87	14	47	60	116	422	538
	Feb	45	202	246	12	35	47	11	36	47	12	32	44	22	65	87	13	47	60	116	416	531
	Mar	44	199	243	11	33	45	11	35	45	12	31	44	22	64	86	14	47	60	114	410	524
	Apr	47	207	254	12	36	48	12	39	51	12	32	45	22	65	87	13	46	59	118	425	543
	May	48	224	272	12	39	52	12	39	51	12	32	45	24	71	95	14	50	64	122	457	579
	Jun	52	201	253	11	36	47	11	37	48	12	32	44	21	64	85	14	47	61	121	417	538
	Jul	54	211	265	11	37	48	11	39	50	12	33	45	21	64	85	14	47	62	123	431	555
	Aug	51	227	278	11	38	49	12	40	52	13	34	46	22	68	91	14	51	65	123	457	580
	Sep	48	223	271	11	36	47	11	39	50	12	33	45	21	66	87	13	48	61	117	445	561
12 month growth rates (percentages)																						
Annual																						
2006	-0.2	11.5	8.8	-0.8	8.5	5.2	-4.6	9.5	5.1	-4.7	5.7	1.8	-5.9	6.3	1.4	-	-	-	-2.9	9.3	5.5	
2007	8.2	12.8	11.8	-5.6	5.1	1.4	-1.8	10.3	6.9	1.1	7.3	5.1	-11.1	5.0	-0.9	-	-	-	-1.5	9.5	6.4	
2008	17.3	14.3	14.9	-34.0	-6.5	-15.2	-2.3	6.0	3.8	-2.6	3.6	1.5	-3.0	6.8	3.6	1.5	9.6	7.3	-0.9	8.4	5.9	
2009	2.4	11.3	9.4	-2.2	-1.7	-1.8	3.2	9.0	7.6	1.9	9.7	7.1	7.8	7.0	7.2	-5.7	3.5	1.0	3.2	8.7	7.3	
2010	4.3	9.4	8.4	5.1	0.6	1.7	2.5	5.0	4.4	0.6	8.7	6.1	-12.0	7.6	1.5	2.0	9.5	7.6	12.8	21.0	19.1	
Monthly																						
2010	Sep	4.3	9.7	8.6	4.0	-0.3	0.8	3.9	6.6	6.0	2.3	9.3	7.1	-6.3	6.6	2.6	2.0	9.8	7.8	11.4	17.9	16.3
	Oct	4.3	9.7	8.6	4.8	0.4	1.5	3.4	6.2	5.5	1.9	9.4	7.0	-8.3	7.1	2.2	2.6	10.5	8.5	11.9	19.1	17.4
	Nov	4.0	9.0	8.0	4.4	-0.3	0.9	2.7	5.2	4.6	1.1	8.9	6.4	-10.4	7.0	1.6	2.4	9.7	7.9	12.0	19.5	17.7
	Dec	4.3	9.4	8.4	5.1	0.6	1.7	2.5	5.0	4.4	0.6	8.7	6.1	-12.0	7.6	1.5	2.0	9.5	7.6	12.8	21.0	19.1
2011	Jan	5.0	10.4	9.3	6.6	1.7	2.9	3.3	5.7	5.1	1.7	10.3	7.6	-14.0	9.3	2.0	3.1	10.8	8.9	11.9	21.1	18.9
	Feb	4.9	10.6	9.5	6.6	1.7	2.9	2.7	5.0	4.4	1.3	10.6	7.7	-13.3	9.5	2.4	2.2	10.5	8.4	10.7	20.0	17.8
	Mar	4.1	10.2	9.0	5.4	1.2	2.2	1.8	4.0	3.5	0.8	11.0	7.8	-13.2	9.0	2.1	1.0	9.9	7.7	8.8	18.2	16.0
	Apr	4.2	10.3	9.1	5.1	1.8	2.6	2.4	4.4	3.9	0.6	11.4	8.0	-12.4	9.3	2.7	0.1	9.3	7.0	7.9	17.3	15.1
	May	4.7	11.6	10.3	5.9	3.5	4.1	3.7	5.7	5.2	0.5	11.8	8.3	-10.8	10.6	4.1	0.2	10.2	7.7	7.7	17.5	15.2
	Jun	5.4	10.9	9.8	4.7	3.8	4.0	2.9	5.2	4.7	-0.9	11.6	7.7	-10.6	10.0	3.8	0.1	9.7	7.4	6.6	15.8	13.6
	Jul	7.0	11.1	10.3	4.1	4.8	4.6	3.2	5.8	5.2	-1.8	12.0	7.8	-9.9	10.0	4.1	0.5	10.0	7.7	6.2	15.0	12.9
	Aug	6.8	10.8	10.0	2.7	4.8	4.3	2.9	5.4	4.8	-1.8	11.6	7.5	-9.5	8.9	3.6	0.5	9.9	7.6	5.0	13.5	11.5
	Sep	7.6	11.8	11.0	2.5	6.0	5.1	3.6	6.2	5.6	-1.3	12.0	8.0	-8.1	9.1	4.2	0.8	10.5	8.2	4.8	13.3	11.3

* The category of Automotive Fuels is effective from January 2010. Data shown for 2009 are for growth trend purposes only; these data are excluded from totals for 2009 as these are already included in their former Services sector of Motoring (now known as Vehicle Sales & Service)

Table 2B Card expenditure statistics (seasonally adjusted)

Retail sales

Value of purchase transactions (£ millions)

Total retail sales

		Food & drink			Mixed business			Clothing			Household			Other retailers			Automotive Fuels *			Value of purchases			
		Credit	Debit	Total	Credit	Debit	Total	Credit	Debit	Total	Credit	Debit	Total	Credit	Debit	Total	Credit	Debit	Total	Credit	Debit	Total	
Annual																							
	2006	14,002	43,462	57,465	8,904	13,102	22,006	5,783	9,381	15,164	14,020	13,722	27,742	17,175	18,296	35,471	0	0	0	59,884	97,963	157,847	
	2007	15,308	48,576	63,884	8,843	14,053	22,896	5,861	10,456	16,317	14,700	15,346	30,046	16,354	20,228	36,582	5,868	10,958	16,825	61,067	108,659	169,725	
	2008	17,565	54,550	72,115	7,056	13,457	20,513	5,954	11,218	17,172	14,382	15,574	29,956	15,733	21,264	36,997	6,677	12,964	19,641	60,690	116,063	176,753	
	2009	18,099	60,229	78,328	7,094	13,863	20,957	6,376	12,649	19,024	14,494	16,602	31,097	15,762	22,028	37,790	5,860	12,668	18,528	61,825	125,371	187,196	
	2010	18,838	63,839	82,676	7,159	13,926	21,085	6,782	13,643	20,425	14,637	18,752	33,390	15,612	23,543	39,154	6,613	14,791	21,404	69,641	148,494	218,135	
Monthly																							
	2010																						
	Sep	1,576	5,459	7,035	584	1,161	1,744	567	1,186	1,753	1,203	1,629	2,832	1,291	1,985	3,276	544	1,210	1,754	5,765	12,629	18,394	
	Oct	1,554	5,327	6,880	579	1,129	1,707	563	1,127	1,690	1,184	1,621	2,806	1,238	1,963	3,202	541	1,258	1,798	5,659	12,425	18,083	
	Nov	1,618	5,606	7,224	608	1,209	1,817	593	1,199	1,792	1,239	1,694	2,933	1,304	2,080	3,384	574	1,358	1,932	5,936	13,146	19,082	
	Dec	1,551	5,502	7,054	587	1,153	1,740	561	1,137	1,699	1,203	1,635	2,837	1,240	2,010	3,249	549	1,286	1,835	5,691	12,724	18,414	
	2011																						
	Jan	1,585	5,637	7,222	601	1,223	1,824	582	1,196	1,777	1,166	1,696	2,862	1,255	2,064	3,319	601	1,436	2,037	5,789	13,251	19,040	
	Feb	1,558	5,488	7,046	586	1,185	1,771	578	1,173	1,751	1,173	1,723	2,896	1,260	2,059	3,319	602	1,437	2,038	5,757	13,066	18,822	
	Mar	1,515	5,286	6,801	568	1,097	1,665	573	1,136	1,709	1,183	1,720	2,904	1,252	2,075	3,326	605	1,439	2,045	5,697	12,753	18,450	
	Apr	1,650	5,673	7,323	596	1,259	1,855	600	1,263	1,863	1,189	1,770	2,959	1,220	2,048	3,268	595	1,411	2,006	5,851	13,423	19,275	
	May	1,625	6,159	7,785	658	1,375	2,033	617	1,311	1,928	1,213	1,817	3,030	1,359	2,198	3,557	632	1,552	2,185	6,105	14,412	20,517	
	Jun	1,908	5,352	7,260	598	1,260	1,858	593	1,249	1,842	1,142	1,821	2,963	1,243	2,093	3,336	616	1,451	2,067	6,100	13,226	19,326	
	Jul	2,014	5,770	7,784	601	1,302	1,903	606	1,309	1,915	1,136	1,861	2,997	1,225	2,116	3,341	620	1,466	2,085	6,202	13,823	20,025	
	Aug	1,782	6,152	7,934	615	1,337	1,952	622	1,342	1,964	1,234	1,913	3,147	1,291	2,192	3,483	616	1,575	2,191	6,160	14,511	20,671	
	Sep	1,665	6,058	7,723	602	1,281	1,883	604	1,322	1,925	1,182	1,885	3,068	1,225	2,096	3,321	606	1,503	2,109	5,884	14,146	20,030	
12 month growth rates (percentages)																							
Annual																							
	2006	-0.1	10.3	7.5	2.1	10.1	6.7	-1.5	8.6	4.5	0.9	13.5	6.8	-2.9	8.9	2.8	-	-	-	-0.5	10.3	5.9	
	2007	9.3	11.8	11.2	-0.7	7.3	4.0	1.3	11.5	7.6	4.9	11.8	8.3	-4.8	10.6	3.1	-	-	-	2.0	10.9	7.5	
	2008	14.7	12.3	12.9	-20.2	-4.2	-10.4	1.6	7.3	5.2	-2.2	1.5	-0.3	-3.8	5.1	1.1	13.8	18.3	16.7	-0.6	6.8	4.1	
	2009	3.0	10.4	8.6	0.5	3.0	2.2	7.1	12.7	10.8	0.8	6.6	3.8	0.2	3.6	2.1	-12.2	-2.3	-5.7	1.9	8.0	5.9	
	2010	4.1	6.0	5.6	0.9	0.5	0.6	6.4	7.9	7.4	1.0	13.0	7.4	-0.9	6.9	3.6	12.8	16.8	15.5	12.6	18.4	16.5	
Monthly																							
	2010																						
	Sep	4.6	6.5	6.0	3.0	1.3	1.9	8.2	9.8	9.3	3.1	13.6	8.7	1.1	6.5	4.3	11.1	15.6	14.1	11.7	16.1	14.6	
	Oct	4.5	6.4	6.0	2.6	1.4	1.8	7.5	9.3	8.7	2.6	13.8	8.5	0.5	6.8	4.2	12.9	17.3	15.9	12.1	17.0	15.4	
	Nov	4.0	5.4	5.1	1.2	0.1	0.5	6.7	8.1	7.6	1.6	13.1	7.7	-0.4	6.5	3.6	13.5	17.1	16.0	12.1	17.1	15.4	
	Dec	4.1	6.0	5.6	0.9	0.5	0.6	6.4	7.9	7.4	1.0	13.0	7.4	-0.9	6.9	3.6	12.8	16.8	15.5	12.6	18.4	16.5	
	2011																						
	Jan	4.3	6.7	6.1	1.6	1.4	1.5	7.0	8.5	8.0	2.4	14.9	9.1	-0.3	8.5	4.8	14.1	18.6	17.2	12.6	18.7	16.7	
	Feb	4.1	6.9	6.2	0.7	1.2	1.0	6.3	7.9	7.3	1.8	15.1	9.0	-0.5	8.6	4.8	13.3	18.5	16.9	11.3	17.8	15.7	
	Mar	3.1	6.4	5.6	-0.7	0.5	0.1	5.3	7.0	6.4	0.7	15.0	8.4	-1.4	8.1	4.2	12.0	18.0	16.1	9.3	16.3	14.0	
	Apr	3.3	6.6	5.9	-0.4	1.3	0.7	5.5	7.3	6.7	0.1	15.2	8.2	-1.9	8.1	3.9	10.6	17.3	15.2	8.2	15.5	13.1	
	May	3.6	8.0	7.0	0.7	3.1	2.3	6.3	8.6	7.8	-0.4	15.8	8.4	-1.9	9.0	4.5	10.3	18.3	15.8	7.5	15.9	13.2	
	Jun	4.6	7.3	6.7	-0.1	3.5	2.3	5.7	8.4	7.5	-2.1	15.7	7.6	-3.6	8.5	3.5	9.8	18.0	15.4	6.0	14.6	11.8	
	Jul	6.7	7.6	7.4	0.0	4.9	3.2	5.8	9.4	8.2	-3.0	16.5	7.6	-4.0	8.8	3.5	9.8	18.6	15.8	5.6	14.3	11.5	
	Aug	6.4	7.4	7.2	-0.4	5.1	3.2	5.4	9.0	7.8	-3.5	15.8	7.1	-4.6	8.0	2.9	9.7	18.8	16.0	4.4	13.1	10.3	
	Sep	7.3	8.6	8.3	0.2	6.4	4.3	5.8	9.9	8.6	-3.0	16.4	7.7	-4.2	8.3	3.2	10.0	20.0	16.9	4.2	13.2	10.3	

* The category of Automotive Fuels is effective from January 2010. Data shown for 2009 are for growth trend purposes only; these data are excluded from totals for 2009 as these are already included in their former Services sector of Motoring (now known as Vehicle Sales & Service)

Table 2C Card expenditure statistics (seasonally adjusted)

Services

Number of purchase transactions (millions)

Total services

		Number of purchase transactions (millions)																		Total services		
		Vehicle Sales & Services			Entertainment			Hotels			Travel			Financial			Other services			Number of purchases		
		Credit	Debit	Total	Credit	Debit	Total	Credit	Debit	Total	Credit	Debit	Total	Credit	Debit	Total	Credit	Debit	Total	Credit	Debit	Total
Annual																						
	2006	242	529	771	176	349	525	36	24	61	96	127	224	28	91	119	155	356	510	733	1,476	2,209
	2007	245	573	818	190	411	600	38	26	64	101	148	249	28	106	134	160	401	561	761	1,665	2,426
	2008	249	628	877	198	500	698	36	28	64	103	168	271	32	111	143	167	451	618	786	1,885	2,671
	2009	236	656	891	206	593	800	37	31	68	101	183	284	32	112	144	167	470	637	778	2,046	2,824
	2010	76	204	279	220	720	940	37	34	71	97	202	299	32	129	161	163	483	646	626	1,772	2,398
Monthly																						
	2010																					
	Sep	6	16	22	18	62	81	3	3	6	8	18	26	3	11	14	13	40	54	51	151	202
	Oct	6	16	21	18	62	81	3	3	6	8	17	25	3	11	14	13	40	53	50	149	199
	Nov	6	18	24	20	67	86	3	3	6	8	19	27	3	11	14	14	42	56	54	160	214
	Dec	6	18	25	18	63	82	3	3	6	8	18	26	3	11	14	13	40	53	51	154	206
	2011																					
	Jan	7	22	29	19	68	87	3	3	6	8	18	25	3	11	14	13	42	55	53	164	217
	Feb	7	23	31	19	67	86	3	3	6	8	18	25	3	11	14	13	42	55	53	164	218
	Mar	8	24	32	19	66	84	3	3	5	8	18	26	3	12	14	13	43	56	53	165	218
	Apr	8	24	32	19	67	86	3	3	6	7	18	25	3	12	14	13	42	55	52	166	218
	May	8	25	33	20	76	95	3	3	7	7	19	27	3	12	15	14	46	61	56	181	237
	Jun	7	23	30	19	71	91	3	3	7	7	22	29	3	12	15	14	47	60	53	178	231
	Jul	7	23	29	20	74	94	3	4	7	7	21	27	3	12	15	14	46	59	52	180	232
	Aug	7	23	30	21	76	97	3	4	7	8	20	28	3	13	16	14	46	59	56	182	238
	Sep	6	21	27	20	78	98	3	4	7	7	20	27	3	13	15	13	44	58	53	180	232
12 month growth rates (percentages)																						
Annual																						
	2006	-10.3	1.1	-2.7	5.3	15.2	11.7	-1.3	9.2	2.6	1.4	15.1	8.7	-9.0	13.6	7.4	1.7	21.7	14.9	-2.4	10.9	6.1
	2007	1.3	8.3	6.1	8.1	17.6	14.4	3.2	6.5	4.5	4.2	16.7	11.3	0.8	16.2	12.6	3.4	12.9	10.0	3.8	12.8	9.8
	2008	1.4	9.6	7.2	4.3	21.7	16.2	-2.8	5.9	0.8	2.5	13.4	9.0	15.7	4.8	7.1	4.6	12.3	10.1	3.3	13.2	10.1
	2009	-5.4	4.5	1.7	4.3	18.7	14.6	0.5	13.9	6.3	-2.5	8.9	4.6	-1.9	1.1	0.4	-0.1	4.4	3.2	-1.0	8.6	5.7
	2010	-67.7	-69.0	-68.6	6.7	21.4	17.6	1.6	9.2	5.1	-3.1	10.3	5.5	1.0	15.0	11.9	-2.4	2.7	1.4	-19.5	-13.4	-15.1
Monthly																						
	2010																					
	Sep	-51.4	-50.7	-50.9	7.1	21.5	17.7	2.6	9.7	5.8	-2.0	10.3	5.9	1.2	16.0	12.6	-1.2	2.3	1.4	-14.2	-7.8	-9.6
	Oct	-56.5	-56.4	-56.5	7.0	22.0	18.0	2.0	9.3	5.4	-2.4	10.1	5.6	1.1	15.8	12.5	-1.8	2.6	1.5	-15.9	-9.4	-11.2
	Nov	-62.0	-62.9	-62.7	6.8	21.3	17.5	2.0	8.9	5.1	-2.2	10.4	5.9	1.5	15.4	12.3	-1.9	2.9	1.7	-17.5	-11.5	-13.2
	Dec	-67.7	-69.0	-68.6	6.7	21.4	17.6	1.6	9.2	5.1	-3.1	10.3	5.5	1.0	15.0	11.9	-2.4	2.7	1.4	-19.5	-13.4	-15.1
	2011																					
	Jan	-65.3	-66.0	-65.8	8.1	22.6	18.9	2.3	10.3	6.0	-2.9	11.2	6.3	0.8	15.3	12.1	-2.3	3.2	1.8	-17.5	-10.8	-12.6
	Feb	-62.8	-62.8	-62.8	8.1	22.2	18.6	1.8	10.0	5.6	-3.7	11.4	6.1	0.1	14.7	11.5	-2.6	3.1	1.6	-16.2	-8.8	-10.8
	Mar	-59.9	-59.1	-59.4	7.3	21.2	17.7	0.4	8.7	4.3	-4.4	11.7	6.1	-1.0	13.9	10.7	-3.2	3.0	1.4	-15.1	-6.9	-9.1
	Apr	-56.5	-54.8	-55.2	6.8	20.3	16.9	0.1	9.3	4.4	-5.4	12.4	6.2	-1.4	13.4	10.3	-3.6	3.2	1.4	-13.8	-4.7	-7.1
	May	-52.2	-49.4	-50.1	7.5	21.5	18.0	0.7	10.8	5.4	-5.5	14.4	7.5	-0.7	13.5	10.5	-2.7	4.7	2.8	-11.5	-1.2	-4.0
	Jun	-47.8	-43.5	-44.6	6.5	21.1	17.5	-0.1	12.1	5.6	-6.9	15.2	7.6	-0.9	13.3	10.3	-2.7	5.8	3.6	-10.2	1.5	-1.7
	Jul	-42.7	-36.4	-38.1	6.3	21.4	17.7	-0.7	14.5	6.4	-7.9	16.7	8.3	-0.7	13.2	10.3	-2.4	7.2	4.7	-8.6	4.6	1.1
	Aug	-36.4	-28.6	-30.7	6.0	20.6	17.1	-0.7	14.7	6.5	-8.5	16.6	8.1	0.3	13.1	10.5	-2.5	7.5	4.9	-6.9	6.8	3.2
	Sep	-28.4	-18.0	-20.8	7.0	21.7	18.2	-0.3	16.5	7.7	-9.1	16.6	8.0	1.1	13.2	10.7	-2.1	8.3	5.6	-4.5	10.1	6.3

Table 2D Card expenditure statistics (seasonally adjusted)

Services

Value of purchase transactions (£ millions)

Total services

		Vehicle Sales & Services			Entertainment			Hotels			Travel			Financial			Other services			Value of purchases		
		Credit	Debit	Total	Credit	Debit	Total	Credit	Debit	Total	Credit	Debit	Total	Credit	Debit	Total	Credit	Debit	Total	Credit	Debit	Total
Annual																						
	2006	13,793	27,054	40,846	8,871	9,675	18,547	5,207	2,041	7,249	13,218	11,024	24,242	5,586	20,924	26,510	13,387	26,723	40,110	60,062	97,442	157,504
	2007	14,685	30,692	45,376	9,295	11,231	20,526	5,483	2,263	7,746	13,437	12,602	26,039	5,698	26,127	31,825	14,127	32,304	46,431	62,725	115,219	177,944
	2008	15,525	32,970	48,495	9,654	13,061	22,715	5,507	2,445	7,953	14,011	13,728	27,739	5,923	29,919	35,843	14,887	36,986	51,873	65,507	129,109	194,616
	2009	14,631	35,425	50,057	9,648	14,597	24,246	5,290	2,722	8,012	13,061	14,081	27,142	5,723	32,996	38,719	15,160	38,140	53,300	63,514	137,961	201,475
	2010	8,752	24,680	33,433	9,840	16,937	26,777	5,531	3,039	8,571	12,812	15,774	28,586	5,881	38,457	44,339	15,680	40,665	56,345	58,497	139,553	198,049
Monthly																						
	2010																					
	Sep	680	2,059	2,739	822	1,443	2,265	458	259	716	1,071	1,355	2,427	496	3,234	3,730	1,312	3,346	4,658	4,839	11,695	16,534
	Oct	668	2,004	2,672	808	1,436	2,245	455	259	715	1,021	1,345	2,366	476	3,208	3,684	1,254	3,209	4,462	4,683	11,461	16,144
	Nov	713	2,149	2,862	885	1,538	2,424	472	272	744	1,051	1,391	2,442	513	3,748	4,261	1,301	3,260	4,561	4,937	12,357	17,294
	Dec	706	2,081	2,786	781	1,451	2,232	459	262	721	1,037	1,386	2,423	500	3,506	4,005	1,268	3,330	4,598	4,750	12,015	16,766
	2011																					
	Jan	761	2,199	2,961	833	1,570	2,403	473	280	753	1,041	1,365	2,406	501	3,155	3,656	1,288	3,371	4,659	4,897	11,941	16,838
	Feb	776	2,238	3,014	834	1,560	2,393	466	277	743	1,006	1,339	2,344	509	3,560	4,070	1,290	3,502	4,792	4,881	12,475	17,356
	Mar	794	2,323	3,117	810	1,490	2,300	419	239	658	1,003	1,355	2,358	517	3,701	4,219	1,303	3,608	4,912	4,847	12,716	17,562
	Apr	746	2,255	3,001	799	1,590	2,389	466	288	754	944	1,366	2,310	534	3,675	4,209	1,202	3,146	4,348	4,692	12,319	17,011
	May	788	2,457	3,245	944	1,847	2,791	512	302	815	1,014	1,440	2,454	642	3,731	4,374	1,399	6,003	7,403	5,300	15,781	21,081
	Jun	719	2,331	3,050	818	1,693	2,511	459	341	800	959	1,492	2,451	567	3,832	4,400	1,296	4,632	5,927	4,819	14,320	19,139
	Jul	702	2,319	3,021	863	1,790	2,653	468	361	829	925	1,482	2,407	563	3,851	4,414	1,254	4,118	5,371	4,774	13,922	18,696
	Aug	743	2,353	3,096	868	1,827	2,695	486	348	833	986	1,515	2,501	649	4,531	5,180	1,337	4,200	5,536	5,069	14,773	19,842
	Sep	694	2,223	2,917	816	1,786	2,603	473	351	825	914	1,512	2,426	577	3,899	4,476	1,277	3,748	5,026	4,752	13,520	18,272
12 month growth rates (percentages)																						
Annual																						
	2006	-1.7	11.9	6.9	6.7	18.3	12.4	3.8	17.4	7.3	1.1	13.7	6.5	-32.8	21.1	3.6	5.6	36.4	24.3	-2.2	20.8	10.8
	2007	6.5	13.4	11.1	4.8	16.1	10.7	5.3	10.9	6.9	1.7	14.3	7.4	2.0	24.9	20.0	5.5	20.9	15.8	4.4	18.2	13.0
	2008	5.7	7.4	6.9	3.9	16.3	10.7	0.4	8.0	2.7	4.3	8.9	6.5	3.9	14.5	12.6	5.4	14.5	11.7	4.4	12.1	9.4
	2009	-5.8	7.4	3.2	-0.1	11.8	6.7	-3.9	11.3	0.8	-6.8	2.6	-2.2	-3.4	10.3	8.0	1.8	3.1	2.8	-3.0	6.9	3.5
	2010	-40.2	-30.3	-33.2	2.0	16.0	10.4	4.6	11.7	7.0	-1.9	12.0	5.3	2.8	16.6	14.5	3.4	6.6	5.7	-7.9	1.2	-1.7
Monthly																						
	2010																					
	Sep	-28.7	-17.0	-20.6	2.6	14.9	10.0	3.4	11.1	5.9	-3.9	12.9	4.6	1.6	16.6	14.3	4.4	8.3	7.2	-5.5	5.1	1.7
	Oct	-32.1	-20.9	-24.2	2.5	16.0	10.6	3.7	11.0	6.2	-3.4	12.2	4.5	1.7	17.0	14.7	3.9	11.5	9.3	-6.3	5.1	1.4
	Nov	-35.7	-25.2	-28.3	2.2	15.7	10.3	4.5	11.3	6.8	-2.0	12.2	5.3	2.6	17.2	15.0	4.2	7.1	6.3	-6.7	2.8	-0.2
	Dec	-40.2	-30.3	-33.2	2.0	16.0	10.4	4.6	11.7	7.0	-1.9	12.0	5.3	2.8	16.6	14.5	3.4	6.6	5.7	-7.9	1.2	-1.7
	2011																					
	Jan	-37.6	-27.1	-30.1	3.3	17.2	11.7	5.4	12.9	8.0	-1.4	12.0	5.6	3.6	18.7	16.5	3.6	9.0	7.5	-6.6	3.5	0.3
	Feb	-35.7	-25.0	-28.1	3.4	17.2	11.8	5.0	12.8	7.7	-2.6	10.5	4.3	3.8	19.4	17.1	2.8	9.0	7.2	-6.4	4.3	0.9
	Mar	-34.1	-23.8	-26.8	2.8	16.7	11.3	3.4	11.4	6.2	-3.4	9.1	3.2	3.6	18.8	16.6	1.9	8.1	6.3	-6.5	4.1	0.8
	Apr	-32.0	-21.9	-24.8	2.6	16.5	11.1	3.1	11.5	6.0	-4.5	8.9	2.6	4.1	18.4	16.4	0.7	5.8	4.4	-6.4	4.0	0.8
	May	-29.0	-18.6	-21.5	4.2	18.2	12.8	3.8	13.1	7.0	-3.7	9.7	3.5	6.6	18.3	16.6	0.7	10.1	7.4	-4.8	6.5	3.0
	Jun	-26.5	-15.3	-18.4	3.4	18.0	12.4	2.9	15.2	7.2	-4.4	10.2	3.4	7.2	17.7	16.2	-0.2	10.4	7.4	-4.7	7.5	3.8
	Jul	-23.6	-11.6	-14.9	3.2	19.2	13.1	2.2	18.3	7.8	-5.8	10.5	3.0	8.4	17.5	16.3	-1.0	10.5	7.3	-4.4	8.8	4.8
	Aug	-19.9	-8.0	-11.3	2.4	18.8	12.6	2.0	19.0	7.9	-6.8	10.3	2.5	10.5	19.1	17.9	-1.4	11.2	7.7	-3.8	10.2	6.0
	Sep	-15.4	-4.0	-7.1	2.6	20.0	13.4	2.4	21.6	9.1	-7.8	10.4	2.1	12.1	19.7	18.7	-1.6	11.4	7.8	-2.9	11.6	7.3

Table 3A Card expenditure statistics (not seasonally adjusted)

Number of credit card transactions

Detailed sector breakdown - retail sectors

	September 2010	October 2010	November 2010	December 2010	January 2011	February 2011	March 2011	April 2011	May 2011	June 2011	July 2011	August 2011	September 2011	Total (latest 12 months)
Supermarkets	40,298,861	41,396,777	46,536,218	48,942,099	38,855,018	36,777,424	42,023,720	42,272,726	42,976,297	52,184,350	52,441,961	46,061,617	42,965,114	533,433,321
Bakers & dairies	67,598	73,655	78,607	83,094	62,802	66,484	75,779	80,239	91,578	99,570	109,396	111,669	112,083	1,044,956
Sweet stores	127,601	146,414	246,306	457,308	96,750	124,541	166,165	216,227	173,983	158,605	152,259	162,607	157,482	2,258,647
Miscellaneous foodstores	2,028,366	2,018,747	2,211,819	2,292,898	1,745,699	1,788,163	2,034,325	2,203,845	2,314,030	2,345,934	2,327,294	2,612,893	2,292,073	26,087,720
Off-licences	488,187	509,945	533,305	694,690	414,689	425,084	475,263	493,212	507,233	507,192	518,998	513,745	477,121	6,070,177
Food & drink	43,010,613	44,145,538	49,606,255	52,470,089	41,174,958	39,181,696	44,775,252	45,266,249	46,063,121	55,295,651	55,549,608	49,362,531	46,003,873	568,894,821
Department stores	5,376,457	5,821,237	8,196,594	8,196,594	5,864,433	4,589,998	5,368,637	5,382,143	6,169,300	6,186,458	6,259,012	5,990,125	5,462,928	76,141,660
Discount stores	1,488,325	1,611,162	2,164,477	2,672,843	1,390,630	1,258,151	1,328,788	1,461,861	1,521,968	1,431,170	1,504,579	1,549,341	1,475,835	19,370,805
Catalogues	1,248,332	1,241,539	1,944,905	2,076,253	1,289,875	1,078,444	1,132,308	1,009,011	1,047,619	1,024,646	986,954	558,246	1,144,302	14,534,102
Miscellaneous mixed	2,412,298	2,517,458	3,028,621	3,279,520	2,550,660	2,379,664	2,278,857	2,027,759	2,344,961	2,237,587	2,252,054	2,429,266	2,299,704	29,626,111
Mixed business	10,525,412	11,197,396	15,334,597	18,879,411	11,095,596	9,306,257	10,108,590	9,880,774	11,083,848	10,879,861	11,002,599	10,526,978	10,382,769	139,672,678
Men's clothing	391,971	401,743	489,979	671,966	439,246	343,074	356,056	369,445	413,568	440,800	470,961	449,846	380,487	5,227,171
Women's clothing	1,731,187	1,774,859	2,100,524	2,558,986	1,569,404	1,355,827	1,635,120	1,950,487	2,117,099	2,188,988	2,283,438	2,069,747	1,882,311	23,486,790
Family clothing	6,008,895	6,312,430	7,566,347	9,759,355	5,503,258	4,725,783	5,685,349	6,400,347	6,794,947	6,628,839	7,600,750	6,948,800	6,307,692	80,233,897
Miscellaneous clothing	613,364	603,612	696,754	776,249	383,843	394,038	468,782	642,563	737,873	655,767	672,000	676,800	646,462	7,354,752
Shoe shops	1,241,208	1,236,369	1,315,689	1,566,273	887,263	887,328	983,679	1,317,486	1,355,358	1,443,746	1,615,351	1,631,387	1,297,631	15,877,360
Clothing	9,986,625	10,329,013	12,169,293	15,332,829	9,122,814	7,706,050	9,128,986	10,880,328	11,418,845	11,374,382	12,626,267	11,776,580	10,514,583	132,179,970
Furniture stores	1,217,065	1,323,063	1,578,282	1,572,453	1,450,133	1,143,232	1,224,009	1,104,175	1,235,219	1,201,417	1,235,951	1,325,486	1,236,622	15,630,042
Household appliance stores	1,269,587	1,316,864	1,493,154	1,676,355	1,278,333	1,175,264	1,339,673	1,271,378	1,329,351	1,250,046	1,283,849	1,306,041	1,311,052	16,032,360
Electronic stores	1,254,227	1,315,399	1,628,053	2,207,312	1,500,989	1,137,444	1,185,215	1,071,527	1,219,875	1,151,319	1,169,182	1,301,582	1,266,396	16,154,293
DIY stores	5,869,134	6,062,440	6,229,195	5,572,667	5,211,926	5,221,339	6,442,357	7,403,538	7,068,495	5,967,028	5,834,814	6,174,908	5,610,173	72,798,880
Floor covering stores	169,634	181,192	216,460	142,969	160,903	153,072	167,999	144,145	164,073	149,417	152,933	171,915	158,793	1,963,871
Garden centres	1,168,907	1,195,001	1,298,050	1,477,218	822,154	969,381	1,724,055	2,478,501	2,477,578	1,755,308	1,443,991	1,373,590	1,229,400	18,244,227
Miscellaneous household	380,663	382,613	436,612	350,144	336,353	304,310	335,048	333,901	365,459	358,708	403,241	494,369	459,655	4,560,413
Household	11,329,217	11,776,572	12,879,806	12,999,118	10,761,791	10,104,042	12,418,356	13,807,165	13,860,050	11,833,243	11,523,961	12,147,891	11,272,091	145,384,086
Books, newspapers & magazines	1,862,519	1,890,608	2,403,859	3,216,479	1,614,899	1,511,488	1,626,459	1,603,650	1,797,859	1,807,718	1,765,263	1,852,746	1,810,608	22,901,636
Record shops	595,120	637,869	1,131,325	1,911,377	604,130	538,279	514,642	576,011	542,778	464,571	450,373	464,561	434,676	8,415,186
Music shops	1,500,239	1,499,018	1,742,002	1,806,861	1,861,944	1,530,632	1,656,231	1,527,422	1,902,334	1,661,009	1,575,285	1,714,119	1,628,104	20,104,961
Hobbies, toys & games	639,027	774,526	1,394,427	1,926,809	603,310	506,922	572,825	514,762	488,207	466,271	475,263	513,043	494,348	8,730,713
Photographic	259,571	234,912	301,087	381,508	216,652	181,665	210,565	198,193	230,202	244,526	238,922	260,415	243,998	2,942,645
Handicraft	76,133	80,793	95,119	75,449	74,761	72,202	78,408	64,544	73,384	70,157	69,234	79,310	78,713	912,074
Sports shops	2,568,083	2,525,615	2,917,622	3,674,001	2,377,061	2,067,231	2,376,120	2,656,943	2,861,639	2,784,207	3,024,007	3,220,816	2,607,796	33,093,058
Jewellers	557,951	552,155	783,725	1,307,376	517,308	523,066	552,158	521,629	574,760	612,408	610,067	555,786	7,677,770	33,093,058
Computer software	668,597	628,163	737,499	764,550	615,847	530,883	580,259	525,633	604,234	571,592	537,442	584,942	567,312	7,248,356
Medical goods	18,385	18,478	21,083	17,660	17,652	18,676	20,888	17,813	19,395	20,339	19,503	19,603	19,603	230,693
Chemists	3,476,651	3,484,276	4,324,377	5,438,607	3,283,913	3,063,585	3,634,312	3,127,580	3,613,626	3,520,700	3,379,758	3,699,999	3,430,528	44,001,261
Optical goods	436,032	417,707	443,642	324,384	414,210	422,484	470,952	430,882	475,475	520,670	514,317	483,111	442,643	5,360,477
Cosmetic stores	363,133	376,714	578,312	868,481	336,823	307,999	336,805	297,443	339,450	349,264	350,916	373,511	336,540	4,851,258
Tobaccoists	9,921	9,514	10,167	7,253	8,181	7,253	10,664	11,306	14,438	14,768	16,719	14,768	14,467	142,874
Florists	342,441	317,380	335,141	534,462	299,798	412,176	465,537	450,511	351,209	335,152	318,318	310,380	320,546	4,450,610
Artists' supplies	249,259	264,359	345,576	301,863	212,147	217,291	254,349	213,443	246,621	234,053	238,126	269,972	246,415	3,044,215
Antiques, art & stamps/coins	141,870	163,802	178,055	166,502	111,404	130,265	122,147	111,404	145,851	127,083	171,244	145,851	142,313	1,761,552
Pawn shops	2,320	2,496	2,792	4,148	2,533	2,393	2,619	2,403	2,500	2,495	2,674	2,573	2,507	32,133
Gift shops	1,187,235	1,270,864	1,815,789	2,503,042	1,030,542	1,115,928	1,169,021	1,155,341	1,217,314	1,324,832	1,322,776	1,472,012	1,251,198	16,648,659
Secondhand shops	6,322	6,346	6,794	6,832	6,989	5,318	6,085	5,837	7,073	6,930	7,342	6,930	6,805	77,621
Luggage & leather goods	106,864	103,667	132,070	164,512	109,171	81,723	93,475	97,786	106,063	113,125	125,935	117,302	98,139	1,342,968
Pet shops	596,469	609,381	660,982	694,365	574,348	542,259	611,187	593,167	652,567	628,061	642,796	661,370	611,140	7,481,623
Religious goods	1,172	748	793	748	685	670	785	581	659	737	777	1,265	690	9,104
Direct sales	3,998,755	3,899,028	4,068,491	3,859,387	3,760,460	3,532,859	4,141,697	3,486,880	3,810,217	3,342,507	3,206,624	3,293,708	3,298,527	43,700,385
Miscellaneous & speciality shops	1,433,329	1,426,624	1,783,865	1,881,238	1,353,741	1,259,005	1,410,614	1,137,971	1,264,451	1,237,466	1,227,677	1,830,651	1,251,218	17,064,521
Other retail	21,097,398	21,195,013	26,214,632	31,842,502	20,020,359	18,564,319	21,016,410	19,283,445	21,368,111	20,518,661	20,277,510	22,030,781	19,894,620	262,226,353
Automotive Fuels	13,216,500	13,365,516	13,884,615	12,341,225	12,296,597	11,970,484	13,798,071	13,287,427	14,308,236	15,300,862	15,426,892	13,809,296	13,358,813	163,148,034
Total retail sales	109,165,765	112,003,048	130,089,198	143,865,174	104,472,117	96,832,848	111,245,665	112,205,388	118,102,211	125,202,650	126,406,837	119,654,057	111,426,749	1,411,505,942

Table 3A Card expenditure statistics (not seasonally adjusted)

Number of credit card transactions

Detailed sector breakdown - services sectors

	September 2010	October 2010	November 2010	December 2010	January 2011	February 2011	March 2011	April 2011	May 2011	June 2011	July 2011	August 2011	September 2011	Total (latest 12 months)
Auto rental	383,995	353,031	340,619	314,066	330,052	326,771	384,768	382,425	415,769	401,336	422,811	418,986	372,925	4,463,559
Auto parts & accessories	836,693	801,548	863,024	795,453	803,703	785,025	936,688	813,074	867,323	829,150	822,209	840,866	786,109	9,944,172
Auto services	1,616,954	1,595,552	1,659,978	1,417,947	1,503,073	1,505,271	1,712,330	1,504,947	1,743,270	1,709,008	1,689,878	1,613,332	1,725,569	19,380,155
Auto repair shops	964,837	908,904	933,561	844,878	926,916	903,484	1,082,917	914,882	968,572	928,822	906,324	918,578	931,054	11,168,892
Service stations	1,862,886	1,897,616	2,129,020	2,277,138	2,523,735	2,366,964	2,686,727	2,609,065	2,777,054	2,577,044	2,647,891	2,705,680	2,519,981	29,717,915
Vehicle sales	663,438	593,559	594,673	505,319	577,054	583,073	730,317	637,916	693,414	671,344	649,014	665,604	645,044	7,546,335
Vehicle Sales & Services	6,328,803	6,150,210	6,520,875	6,154,801	6,664,533	6,470,588	7,533,747	6,862,309	7,465,402	7,116,708	7,138,127	7,163,046	6,980,682	82,221,028
Restaurants	9,199,370	9,623,203	9,547,760	8,693,286	8,547,186	8,831,664	9,700,737	9,699,353	10,484,849	9,995,860	10,599,449	11,056,078	9,946,262	116,725,687
Public houses	1,583,820	1,525,848	1,575,120	1,412,531	1,345,030	1,401,729	1,573,369	1,689,478	1,869,639	1,758,466	1,831,612	2,084,305	1,775,755	19,842,882
Catering services	194,852	191,555	208,720	173,572	167,907	169,594	211,459	170,517	205,829	206,975	194,694	183,942	214,933	2,299,697
Video stores	67,115	72,465	81,675	87,319	80,373	74,887	78,148	73,434	82,326	75,118	74,017	75,914	71,142	926,818
Cinema, theatre & dance	1,443,437	1,628,534	2,033,623	1,610,593	1,748,099	1,694,328	1,514,258	1,224,841	1,774,890	1,584,882	1,932,552	1,875,505	1,580,130	20,202,235
Concerts & entertainers	13,538	16,228	18,169	20,662	17,521	17,984	21,548	21,916	24,636	32,131	32,620	32,053	23,620	279,088
Tourist attractions	379,338	339,614	226,264	158,408	133,679	190,791	222,614	426,802	434,149	502,874	595,112	737,399	409,362	4,377,068
Amusement parks	24,261	25,703	16,683	11,832	11,165	17,075	14,969	36,184	23,525	28,511	34,800	60,349	24,465	305,261
Aquariums	9,708	9,437	8,572	6,545	8,428	9,941	9,926	13,869	13,210	12,866	13,913	16,279	10,126	133,112
Sports & games establishments	1,973,420	1,851,122	2,072,792	2,431,709	2,146,741	1,955,658	2,527,086	1,821,852	1,369,466	2,160,878	2,136,443	2,415,182	2,087,242	24,976,171
Professional sports clubs	108,076	100,359	120,550	110,266	94,655	100,383	102,751	99,284	91,478	129,017	132,814	119,368	98,279	1,299,204
Gambling	2,823,196	2,864,625	3,212,420	2,946,663	2,967,046	2,735,671	2,999,026	2,733,603	3,031,716	2,643,237	2,825,721	3,529,995	3,500,630	35,990,353
Personal services	104,157	101,349	110,460	110,054	98,770	98,727	112,088	99,363	167,918	156,976	177,611	214,621	193,931	1,635,868
Miscellaneous entertainment	275,905	272,376	215,210	175,997	177,852	196,641	228,073	310,481	292,930	367,445	406,948	445,013	283,624	3,372,590
Entertainment	18,200,193	18,622,418	19,442,018	17,949,437	17,544,452	17,495,073	19,316,052	18,420,977	19,866,561	19,655,236	20,988,306	22,846,003	20,219,501	232,366,034
Hotels	3,286,723	3,171,250	3,028,301	2,560,111	2,650,909	2,743,560	2,863,493	3,029,677	3,512,605	3,320,388	3,502,263	3,521,904	3,321,930	37,226,391
Airlines	914,704	790,312	782,393	594,877	980,205	696,387	702,424	535,494	633,500	554,640	517,827	553,018	558,149	7,899,226
Airport terminals	26,866	22,300	18,653	14,679	17,018	17,274	23,476	25,051	28,145	31,621	32,724	35,920	30,045	296,906
Railways	4,551,267	4,651,363	4,900,013	3,933,440	4,039,323	4,041,671	4,772,440	4,064,089	4,222,439	4,690,730	4,534,155	4,385,207	4,666,896	52,901,766
Buses	372,575	350,577	362,050	305,116	304,289	307,338	367,240	353,870	425,800	416,909	418,179	427,361	438,108	4,476,837
Sea travel	97,036	80,269	66,277	61,794	64,319	65,468	78,872	87,359	96,194	99,767	108,141	121,773	89,790	1,020,023
Travel agents	1,257,825	1,127,663	1,070,729	824,064	1,397,513	1,236,316	1,407,574	1,123,739	1,285,188	954,853	967,201	957,682	853,236	13,205,758
Timeshares	373	359	302	158	248	292	636	210	157	194	140	115	138	2,949
Camping grounds	198,189	145,256	81,194	52,751	139,436	139,126	167,310	240,509	262,561	262,109	302,041	328,428	178,127	2,298,848
Miscellaneous travel	874,174	856,581	843,231	689,044	597,971	589,127	687,718	592,862	737,100	501,622	514,063	510,836	452,399	7,572,554
Travel	8,293,009	8,024,680	8,124,842	6,475,923	7,540,322	7,092,999	8,207,690	7,023,183	7,691,084	7,512,445	7,394,471	7,320,340	7,266,888	89,674,867
Telegraph services / Wire transfer money order	4,080	3,924	4,108	4,532	3,578	3,110	3,806	3,472	11,343	3,533	3,547	4,101	3,620	52,674
Insurance services	1,981,867	1,708,740	1,687,249	1,464,082	1,589,802	1,585,228	1,908,435	1,657,852	1,808,564	1,989,391	1,954,699	2,055,504	1,953,172	21,362,718
Fis - cash disbursements (auto & manual)	36,984	31,088	28,545	23,452	23,419	23,625	25,912	176,758	274,617	230,598	250,132	251,798	203,499	1,543,443
Fis - merchandise & services	518,422	549,634	518,338	511,091	524,329	486,621	583,924	508,045	518,920	512,096	512,135	547,938	556,430	6,329,501
Non-Fis - foreign currency, travellers' cheques	57,801	29,323	16,657	12,749	11,355	13,832	16,155	17,464	21,773	24,177	30,745	23,492	24,947	246,947
Security brokers and dealers	14,932	15,702	17,793	14,617	17,131	17,013	23,041	16,525	20,766	21,029	22,006	38,726	34,139	258,488
Tax preparation services	88	85	101	82	161	334	412	251	804	375	339	192	202	3,338
Tax payments	4,844	4,324	4,727	3,807	3,724	3,257	4,346	4,265	4,650	5,951	6,097	5,802	4,796	55,746
Fines, bail and bond payments	68,054	69,450	68,642	57,369	61,562	61,702	70,543	60,988	67,614	58,121	59,287	54,450	55,174	744,902
Miscellaneous financial	145,183	139,348	145,892	135,689	148,496	147,721	177,862	174,904	178,772	162,362	162,677	166,425	157,048	1,897,198
Financial	2,832,255	2,551,618	2,492,052	2,227,470	2,383,557	2,342,443	2,814,436	2,620,524	2,907,823	3,007,633	3,000,144	3,155,681	2,991,572	32,494,953

Table 3A Card expenditure statistics (not seasonally adjusted)

Number of credit card transactions

Detailed sector breakdown - services sectors (continued)

	September 2010	October 2010	November 2010	December 2010	January 2011	February 2011	March 2011	April 2011	May 2011	June 2011	July 2011	August 2011	September 2011	Total (latest 12 months)
Telecoms	1,835,186	1,813,602	1,873,436	2,067,412	1,762,498	1,646,198	1,866,413	1,849,021	2,022,780	1,919,501	1,895,828	1,980,122	1,888,896	22,585,707
Utilities	331,461	328,848	321,958	285,689	320,411	305,278	379,761	333,865	352,103	325,232	313,176	316,149	292,024	3,874,494
Contractors (residential & commercial)	313,036	317,358	344,903	275,484	295,522	290,778	326,715	256,070	284,107	275,985	265,623	281,029	280,022	3,493,596
Gardening services	45,580	43,362	49,505	54,025	30,454	33,600	52,967	70,892	76,880	57,676	48,173	48,458	42,864	608,856
Veterinary services	594,526	572,444	580,463	515,550	526,084	464,314	528,817	482,194	535,845	542,185	550,901	492,731	515,051	6,306,579
Photocopying & printing	330,677	347,144	398,100	364,107	324,692	296,966	344,940	274,744	323,447	318,167	295,893	306,793	320,746	3,915,739
Photographic studios	113,577	140,459	173,072	128,221	83,543	82,650	378,582	342,509	384,901	111,128	138,900	100,044	101,158	2,165,167
Beauty & barber shops	1,289,184	1,263,990	1,353,528	1,655,581	1,163,597	1,136,144	1,044,541	1,003,714	1,072,823	1,412,910	1,389,074	1,377,585	1,353,700	15,227,187
Employment agencies	20,395	19,009	19,678	15,768	20,316	19,752	20,612	12,162	11,481	13,956	14,141	13,189	14,690	194,754
Counselling services	3,925	4,169	3,899	3,775	4,194	3,991	4,342	4,473	5,462	4,919	4,609	5,151	4,935	53,919
Legal services	29,755	28,496	30,495	23,526	30,045	29,822	35,527	30,647	34,375	36,366	33,570	32,675	32,569	378,113
Laundry & cleaning	178,870	176,905	180,324	135,019	150,303	140,724	161,656	153,629	186,555	182,034	175,970	165,522	172,807	1,981,448
Funeral services	9,723	10,482	11,091	10,151	11,105	10,394	11,023	8,953	9,153	10,528	9,939	9,979	10,333	123,131
Medical services	1,095,039	1,037,791	1,135,765	891,789	1,028,739	1,021,477	1,182,622	950,276	1,107,385	1,209,000	1,131,811	1,070,343	1,127,204	12,894,202
Moving & courier services	180,083	173,011	186,690	173,650	166,269	164,111	197,160	167,708	198,091	191,360	183,449	183,590	186,059	2,171,148
Repair shops (not auto)	55,923	53,344	61,272	55,861	51,951	48,516	55,841	49,153	56,965	56,731	71,937	59,466	56,795	677,832
Accounting services	33,956	32,870	34,143	32,035	35,853	29,277	31,595	22,587	27,187	41,456	40,256	29,242	33,231	389,732
Advertising, consultancy & PR	125,417	116,285	122,583	85,940	110,528	108,550	163,820	143,882	168,112	160,285	151,015	160,140	151,626	1,642,766
Computer programming	479,801	464,548	491,416	461,088	476,240	452,999	505,303	433,550	449,259	407,708	405,568	403,210	411,299	5,362,188
Farming services	63,363	61,741	65,886	64,562	57,309	54,823	64,202	64,330	68,384	65,616	63,353	61,080	58,654	749,940
Miscellaneous professional services	1,217,665	1,158,463	1,231,047	1,070,666	1,067,404	1,319,915	1,229,117	986,350	1,122,614	1,217,190	1,177,839	1,036,700	1,075,198	13,692,503
Engineering services	59,941	56,182	58,786	46,301	53,832	58,014	69,443	56,717	64,242	61,158	57,910	56,097	54,337	693,019
Marina services	57,353	41,171	39,711	34,996	32,660	31,455	46,622	66,508	70,128	71,391	77,581	89,205	53,871	655,299
Wrecking & salvage yards	4,099	3,908	4,107	2,953	3,781	3,748	4,352	4,009	4,224	4,377	4,256	4,391	4,448	48,554
Pest control	3,458	2,869	2,570	1,707	2,103	1,941	2,522	2,350	2,906	3,342	4,282	4,356	4,100	35,048
Educational establishments	569,112	487,486	457,594	364,255	502,685	409,651	503,839	372,398	458,749	443,905	436,255	408,166	611,718	5,456,701
Child care services	15,043	16,672	17,045	14,442	18,027	17,928	16,327	12,139	14,626	18,101	18,962	16,594	14,944	195,807
Social, political & religious organisations	1,166,120	1,107,525	1,250,386	1,073,604	895,294	887,115	1,419,875	1,196,161	1,270,500	1,265,961	1,291,897	1,199,633	1,079,876	13,937,827
Government services	1,590,825	1,519,902	1,544,500	1,333,184	1,448,125	1,484,559	1,701,460	1,471,372	1,673,000	1,742,322	1,706,245	1,587,797	1,582,212	18,794,678
Miscellaneous services	997,426	990,206	1,170,788	1,400,257	916,687	928,804	1,185,259	1,019,474	1,071,879	1,107,088	1,095,614	1,102,666	1,141,670	13,130,392
Commercial equipment	998,474	922,901	991,737	865,123	921,091	838,058	934,116	754,634	864,947	746,183	712,394	744,084	842,948	10,138,216
Other services	13,808,993	13,313,143	14,206,478	13,506,721	12,511,342	12,321,552	14,469,371	12,596,471	13,993,110	14,023,761	13,766,421	13,346,167	13,519,985	161,574,542
Total services	52,749,976	51,833,319	53,814,566	48,874,463	49,295,115	48,466,215	55,204,789	50,553,141	55,436,585	54,636,171	55,789,732	57,353,161	54,300,558	635,557,815
TOTAL	161,915,741	163,836,367	183,903,764	192,739,637	153,767,232	145,299,063	166,450,454	162,758,529	173,538,796	179,838,821	182,196,569	177,007,218	165,727,307	2,047,063,757

Table 3B Card expenditure statistics (not seasonally adjusted)

Value of credit card transactions

Detailed sector breakdown - retail sectors

£	September 2010	October 2010	November 2010	December 2010	January 2011	February 2011	March 2011	April 2011	May 2011	June 2011	July 2011	August 2011	September 2011	Total (latest 12 months)
Supermarkets	1,376,659,864	1,425,718,436	1,680,382,327	2,027,283,255	1,303,106,322	1,238,128,879	1,404,814,230	1,484,814,718	1,453,979,690	1,896,199,322	1,899,883,651	1,557,369,078	1,455,070,320	18,826,750,228
Bakers & dairies	1,785,044	1,894,392	2,153,794	2,513,456	1,635,316	1,687,961	1,990,455	1,974,535	2,139,379	2,199,776	2,270,732	2,166,285	2,165,801	24,791,882
Sweet stores	2,956,573	3,450,334	6,834,397	12,212,198	2,180,874	2,713,295	3,888,111	5,110,576	3,696,618	3,538,228	3,801,045	3,786,998	3,777,239	54,989,903
Miscellaneous foodstores	56,941,271	56,212,942	65,922,083	82,492,747	51,018,233	50,863,380	58,116,853	61,270,296	64,297,985	65,096,933	65,634,351	67,003,041	61,666,954	749,595,738
Off-licences	25,506,337	26,486,512	35,003,444	53,997,654	22,181,740	21,864,971	25,815,088	26,430,345	28,811,316	30,803,865	32,208,135	27,443,101	24,990,611	356,036,782
Food & drink	1,463,849,089	1,513,762,616	1,790,295,975	2,178,499,310	1,380,122,485	1,315,258,486	1,494,624,737	1,579,600,470	1,552,924,988	1,997,838,124	2,003,797,914	1,657,768,503	1,547,670,925	20,012,164,533
Department stores	331,218,906	356,918,439	493,078,237	621,054,555	325,533,907	270,777,136	317,217,807	313,401,425	358,292,780	368,755,614	339,721,948	358,921,948	344,981,372	4,483,254,473
Discount stores	80,777,137	90,779,127	127,157,047	147,017,049	74,162,042	65,218,665	70,577,772	81,526,201	86,284,479	74,879,876	76,708,937	80,511,056	75,069,822	1,049,892,073
Catalogues	45,542,136	44,811,276	64,282,128	61,221,374	41,992,738	38,330,530	41,257,965	38,445,235	40,124,832	37,201,659	35,616,366	31,101,574	39,920,192	514,305,869
Miscellaneous mixed	91,317,209	91,426,918	108,253,636	112,074,741	74,124,619	70,682,269	81,022,237	83,955,428	102,185,796	100,520,014	103,643,759	108,225,455	106,880,159	1,142,995,031
Mixed business	548,855,388	583,935,760	792,771,048	941,367,719	515,813,306	445,008,600	510,075,781	517,328,289	586,887,887	581,387,163	589,490,315	589,560,033	566,851,545	7,190,447,446
Men's clothing	38,441,638	40,807,640	47,279,023	57,340,756	40,402,189	32,215,232	36,155,205	36,045,238	41,415,191	43,235,150	43,793,166	39,528,578	37,667,410	495,884,778
Women's clothing	122,237,099	124,640,771	138,432,471	149,366,446	104,097,623	97,946,690	121,193,057	125,081,056	132,923,383	139,686,466	134,487,756	123,488,750	132,311,037	1,523,655,506
Family clothing	303,285,776	317,368,700	372,334,510	448,002,433	243,815,217	232,465,932	282,506,357	302,300,198	315,485,445	315,224,779	346,605,137	326,812,665	326,844,715	3,839,766,088
Miscellaneous clothing	30,963,269	31,033,156	34,353,289	34,567,505	20,993,947	21,394,235	25,560,431	27,486,306	30,725,935	32,134,607	29,847,512	30,893,883	32,044,652	350,935,448
Shoe shops	72,556,744	78,991,059	83,048,173	90,832,708	62,040,915	49,422,472	57,866,796	70,589,733	72,849,429	74,339,437	76,594,591	81,261,121	77,330,721	875,167,155
Clothing	567,484,526	592,841,326	675,561,682	789,895,632	471,349,891	433,444,651	523,281,846	561,502,531	593,399,383	604,620,439	631,328,062	601,984,997	606,198,535	7,065,408,975
Furniture stores	250,164,797	276,622,572	305,782,080	267,859,665	286,287,108	231,247,211	254,130,984	221,447,478	248,873,458	228,285,592	237,663,984	253,897,644	242,162,877	3,054,260,653
Household appliance stores	115,828,816	123,157,082	141,957,776	144,299,215	118,080,790	106,874,722	122,699,318	105,971,977	111,050,445	107,822,161	107,769,824	110,791,114	113,245,419	1,413,719,843
Electronic stores	206,266,810	224,608,446	279,621,084	390,987,704	238,215,234	172,440,956	188,592,881	173,347,884	196,296,558	182,675,164	187,642,693	216,648,094	205,696,107	2,656,772,805
DIY stores	411,424,766	421,672,605	426,822,029	350,208,308	420,814,229	360,994,689	440,459,492	485,978,559	471,778,695	414,315,600	408,994,996	429,321,971	400,359,214	4,991,123,372
Floor covering stores	56,648,666	60,855,701	73,663,121	51,969,178	53,565,441	49,103,740	56,829,891	49,527,827	55,570,479	51,711,408	52,616,873	58,003,854	55,284,657	668,702,170
Garden centres	56,476,185	53,449,332	59,109,750	64,081,963	36,700,611	45,397,706	87,593,476	130,547,158	123,190,834	86,001,450	72,464,227	67,330,340	57,742,233	884,009,080
Miscellaneous household	52,964,964	53,408,314	59,097,273	44,608,327	43,223,368	39,612,574	44,954,868	41,473,642	45,503,813	46,536,596	50,675,457	61,296,571	57,482,558	587,873,961
Household	1,149,775,004	1,214,174,652	1,340,045,313	1,314,014,360	1,162,297,566	1,005,671,598	1,195,260,910	1,208,294,525	1,252,264,282	1,117,347,971	1,117,828,054	1,197,289,588	1,131,973,065	14,256,461,884
Books, newspapers & magazines	57,659,250	57,387,853	68,346,131	86,894,070	48,881,753	47,954,299	53,050,928	47,406,085	52,524,678	53,494,615	51,539,137	52,135,238	56,762,947	676,377,734
Record shops	14,559,610	16,638,866	31,505,393	55,774,068	14,680,484	13,152,843	15,132,234	13,187,736	14,440,121	13,514,259	12,098,578	12,372,470	11,535,095	224,032,147
Music shops	24,641,402	24,145,277	28,916,382	33,577,705	26,633,570	22,734,082	24,723,786	21,585,595	24,583,966	23,578,712	24,273,951	25,260,420	25,118,838	305,132,284
Hobbies, toys & games	37,096,737	43,926,378	84,819,543	101,769,223	31,710,715	26,870,464	33,332,602	28,769,035	28,523,195	27,053,333	26,207,828	26,883,022	27,824,344	487,689,682
Photographic	28,917,044	28,114,457	33,688,863	44,273,397	24,873,257	22,518,900	28,447,103	26,242,504	30,351,883	30,170,435	30,022,256	30,170,435	26,686,506	353,558,239
Handicraft	7,291,421	7,569,135	8,552,251	7,003,082	7,229,388	6,682,678	7,545,187	6,207,014	7,044,946	7,047,205	6,941,440	7,544,210	7,325,834	86,692,370
Sports shops	165,153,685	160,762,878	186,248,430	218,626,385	146,096,182	132,329,772	160,484,738	172,017,941	188,722,874	180,662,799	193,362,681	203,380,603	164,174,462	2,106,869,745
Jewellers	91,078,914	92,330,249	118,164,908	208,488,753	81,813,617	85,011,880	91,915,377	86,249,236	97,079,828	100,427,890	107,725,638	101,376,764	95,421,137	1,266,005,277
Computer software	132,100,460	116,439,651	141,866,859	156,919,185	105,008,889	89,796,984	107,141,291	100,462,546	118,113,319	107,262,176	103,837,456	111,288,398	109,429,217	1,367,565,971
Medical goods	5,301,723	4,962,247	5,623,168	4,369,764	4,133,128	5,019,541	5,581,507	4,709,159	4,843,178	5,598,595	5,335,878	5,276,641	5,427,902	60,880,708
Chemists	72,388,703	81,046,871	110,956,932	145,094,331	67,903,568	65,099,741	76,855,045	67,287,734	77,680,178	75,223,327	74,227,622	78,016,869	70,419,025	989,811,243
Optical goods	61,991,603	59,911,472	63,041,713	43,589,045	60,131,710	62,690,543	69,578,471	61,705,454	68,401,177	75,553,371	74,874,231	69,680,835	63,079,971	772,237,993
Cosmetic stores	17,554,247	18,689,427	27,652,969	38,214,165	16,000,481	14,851,956	17,231,545	20,286,333	23,678,200	17,535,449	17,366,203	18,039,630	17,114,059	246,660,417
Tobacconists	694,749	646,549	706,295	804,003	506,457	543,727	693,727	726,893	859,106	893,974	923,286	1,027,018	967,444	9,324,496
Florists	16,731,565	15,343,301	16,301,416	23,753,576	14,177,273	18,745,702	21,277,405	20,594,544	18,007,482	16,962,933	15,756,733	15,474,380	16,062,135	212,456,880
Artists' supplies	13,305,787	13,699,269	16,740,646	14,102,960	10,598,264	10,733,038	13,021,481	10,520,113	12,616,720	12,103,257	11,971,518	12,875,061	12,826,839	151,809,166
Antiques, art & stamps/coins	25,439,018	28,556,030	30,934,442	28,518,180	22,116,906	20,886,622	26,287,870	20,360,256	25,027,446	25,179,146	24,495,712	23,251,607	24,024,401	299,638,618
Pawn shops	431,890	612,965	520,052	611,247	520,069	393,845	426,220	447,492	545,453	497,232	541,433	569,585	572,570	6,258,163
Gift shops	42,966,124	46,796,946	65,177,265	78,062,850	35,077,111	35,960,038	40,773,473	39,642,493	43,606,848	44,175,643	45,839,701	49,448,790	44,306,010	568,867,168
Secondhand shops	728,526	995,991	827,241	775,759	853,456	787,821	673,819	757,821	892,473	911,029	780,768	864,020	9,660,462	9,660,462
Luggage & leather goods	8,162,958	7,931,673	11,141,933	15,820,158	9,072,040	7,973,552	9,215,631	9,375,339	10,197,732	11,739,720	13,138,973	10,147,423	10,180,341	125,934,515
Pet shops	25,515,252	25,267,102	27,309,125	27,878,360	24,352,379	23,028,908	26,605,758	25,728,582	28,031,921	27,095,203	27,515,577	29,207,754	27,314,312	319,334,981
Religious goods	102,899	51,010	50,835	46,714	57,121	40,421	52,928	36,666	50,469	57,805	57,535	58,991	50,788	611,283
Direct sales	233,996,972	223,960,682	243,005,856	225,913,238	229,669,964	229,173,319	269,912,762	214,446,246	238,949					

Table 3B Card expenditure statistics (not seasonally adjusted)

Value of credit card transactions

Detailed sector breakdown - services sectors

£	September 2010	October 2010	November 2010	December 2010	January 2011	February 2011	March 2011	April 2011	May 2011	June 2011	July 2011	August 2011	September 2011	Total (latest 12 months)
Auto rental	41,154,428	37,287,563	35,414,343	35,619,777	36,638,354	36,186,615	44,107,511	44,970,609	50,581,824	53,306,049	58,584,926	52,537,082	43,566,845	528,801,498
Auto parts & accessories	128,100,228	121,819,029	130,885,044	119,103,225	122,362,147	121,069,375	147,082,109	123,208,919	134,237,449	126,938,089	124,041,114	124,687,410	122,531,381	1,517,965,291
Auto services	43,990,799	41,712,263	42,454,840	35,525,464	41,256,078	40,633,702	47,153,042	41,081,444	48,321,613	46,614,540	45,757,029	45,608,097	45,691,356	521,809,508
Auto repair shops	238,430,616	226,828,327	229,616,427	204,780,916	232,058,330	227,978,483	276,311,111	228,474,828	242,557,927	229,405,445	226,824,619	226,824,619	237,046,485	2,795,710,912
Service stations	57,770,265	57,090,874	62,799,781	65,208,500	79,359,752	73,319,249	84,639,329	80,025,431	87,139,514	78,582,143	79,585,358	79,433,850	77,137,797	904,321,578
Vehicle sales	223,064,950	205,751,578	202,818,091	168,970,454	198,707,916	201,311,949	250,462,611	206,715,740	225,723,257	219,855,885	215,208,043	216,731,506	223,947,872	2,536,204,902
Vehicle Sales & Services	732,511,286	690,489,634	703,988,566	629,208,336	710,382,577	700,499,373	849,755,713	724,476,971	788,561,584	759,124,720	752,581,915	745,822,564	749,921,736	8,804,813,689
Restaurants	359,004,661	373,100,370	374,152,084	397,390,558	327,515,487	334,690,904	362,086,510	370,901,306	397,805,711	377,884,782	400,858,711	408,009,725	365,631,268	4,490,027,416
Public houses	69,371,538	67,353,900	70,487,712	75,710,648	58,025,548	59,439,831	65,770,392	70,591,802	79,460,370	74,957,121	78,557,613	86,939,975	75,162,099	862,457,011
Catering services	14,349,802	13,779,479	15,999,475	13,554,913	12,702,894	12,545,155	16,090,081	12,403,068	15,665,970	15,093,950	13,518,516	11,629,088	14,912,278	167,894,868
Video stores	1,600,645	1,890,332	1,892,807	1,822,926	1,333,804	1,181,392	1,334,404	1,155,942	1,341,745	1,320,362	1,177,720	1,330,968	1,278,381	17,060,783
Cinema, theatre & dance	109,296,084	130,410,518	172,408,893	123,224,266	107,650,470	108,675,108	128,239,685	90,581,428	192,516,646	119,185,539	135,205,337	101,505,896	106,752,174	1,516,355,960
Concerts & entertainers	1,076,795	1,206,253	1,385,613	1,156,711	1,135,578	1,022,985	1,265,259	1,141,879	1,796,095	2,170,682	2,117,735	1,622,779	1,344,753	17,366,322
Tourist attractions	16,958,222	15,779,797	10,948,423	8,509,228	7,191,475	9,576,991	12,428,781	21,242,843	21,856,763	25,797,227	29,736,382	32,974,513	18,809,813	214,852,236
Amusement parks	1,145,599	1,242,860	1,055,836	753,437	690,050	886,866	938,320	1,695,910	1,252,757	1,470,711	1,799,242	2,503,937	1,150,960	15,440,886
Aquariums	542,433	558,875	522,390	396,876	471,130	549,004	680,631	830,468	824,740	825,932	850,429	845,899	596,571	7,952,945
Sports & games establishments	75,271,299	70,669,398	77,814,469	81,917,888	75,600,729	73,165,381	98,080,258	85,430,072	127,056,944	110,675,462	85,708,828	75,463,652	69,371,363	1,030,954,444
Professional sports clubs	8,157,106	7,844,696	8,953,944	7,943,421	6,928,705	7,973,548	8,198,845	8,791,993	9,373,134	22,657,898	15,138,225	8,865,863	7,953,134	120,623,406
Gambling	115,046,890	110,857,821	120,108,281	107,955,929	112,120,673	106,604,244	114,310,608	104,464,307	111,855,022	98,353,840	98,903,506	114,887,040	101,737,914	1,302,159,185
Personal services	7,718,147	7,325,905	7,614,426	7,768,069	7,404,504	8,459,895	7,218,042	9,823,502	9,281,815	9,714,586	10,478,298	10,136,072	10,281,389	102,871,389
Miscellaneous entertainment	16,144,076	15,911,519	15,237,084	10,575,518	9,631,532	10,566,147	14,079,338	17,840,858	17,925,643	22,271,468	24,209,654	22,168,671	15,688,716	196,106,148
Entertainment	795,683,297	817,931,723	878,581,437	838,680,388	728,644,350	734,282,060	831,963,007	794,289,918	988,555,043	881,946,789	897,649,732	879,075,056	790,525,496	10,062,122,999
Hotels	496,023,813	479,346,220	457,644,024	383,046,928	385,702,368	391,787,051	412,144,380	447,256,133	536,882,764	517,764,243	557,721,129	532,746,864	512,441,594	5,614,483,698
Airlines	284,905,492	253,658,465	259,872,794	170,426,718	342,410,369	260,773,461	273,581,351	210,239,241	249,735,961	217,318,164	202,239,819	210,105,542	220,893,074	2,871,254,959
Airport terminals	3,529,618	3,132,850	3,021,839	2,568,245	2,399,167	2,081,027	2,995,783	3,083,074	3,775,463	3,501,814	3,739,342	3,594,329	3,215,982	37,108,915
Railways	198,198,177	192,439,163	204,798,980	186,767,034	175,500,555	170,822,137	196,987,005	162,867,898	184,081,039	209,662,471	193,669,440	185,500,672	212,448,298	2,275,544,692
Buses	20,079,017	18,106,724	17,419,512	15,728,540	15,289,271	15,606,810	18,950,092	18,935,616	22,140,149	21,375,281	22,145,979	21,974,209	22,312,190	229,984,373
Sea travel	13,515,566	12,768,722	10,925,868	10,479,139	13,343,787	11,969,239	14,400,257	14,020,508	15,634,826	15,771,312	16,495,022	15,666,381	13,791,883	165,266,944
Travel agents	477,284,037	415,999,861	368,033,669	300,361,524	562,555,511	468,015,967	540,261,846	462,516,237	554,775,815	530,617,618	532,515,761	480,165,958	387,207,406	5,603,027,173
Timeshares	36,436	38,235	34,994	19,509	46,303	49,888	49,353	26,511	22,590	28,026	22,368	16,912	17,672	372,361
Camping grounds	25,045,809	23,691,990	24,039,939	18,264,037	29,276,933	26,765,605	32,566,265	36,319,867	41,537,141	42,519,444	44,719,024	37,267,830	17,761,301	374,729,376
Miscellaneous travel	27,545,248	24,253,628	23,891,739	18,723,143	21,995,116	23,076,566	30,066,006	28,799,040	35,532,147	33,922,655	30,634,825	28,016,756	20,999,141	319,910,762
Travel	1,050,139,400	944,089,638	912,039,334	723,337,889	1,162,817,012	979,160,700	1,109,857,958	936,807,992	1,107,235,131	1,074,716,785	1,046,181,580	982,308,589	898,646,947	11,877,199,555
Telegraph services / Wire transfer money order	1,141,487	1,063,019	1,123,571	1,125,080	901,161	774,172	1,419,467	851,711	22,104,065	874,015	858,805	892,236	849,036	32,836,338
Insurance services	382,809,894	336,874,329	341,266,845	284,263,949	323,256,033	317,655,792	401,328,164	333,493,285	364,140,673	386,788,174	375,477,490	392,886,587	395,614,837	4,253,046,158
Fis - cash disbursements (auto & manual)	25,057,137	21,690,143	19,685,902	18,231,684	17,908,016	16,633,928	17,813,618	67,900,310	120,314,463	89,725,443	106,409,073	110,991,594	81,050,151	688,354,325
Fis - merchandise & services	63,691,003	70,406,414	67,884,186	62,179,703	68,383,204	69,249,628	85,522,442	75,251,226	77,566,033	84,259,501	83,260,306	90,750,998	89,247,316	923,960,957
Non-Fis - foreign currency, travellers' cheques	22,883,217	11,266,480	6,090,372	4,779,551	4,655,275	5,728,945	7,851,233	9,988,269	11,312,378	9,988,269	16,376,431	16,272,443	10,939,019	112,044,370
Security brokers and dealers	3,617,550	4,439,462	4,829,937	3,716,474	5,044,981	4,786,023	6,455,961	5,428,252	5,953,338	6,092,451	6,530,797	14,370,561	10,831,684	78,479,921
Tax preparation services	29,347	40,634	55,775	33,408	51,741	83,944	102,163	60,009	253,263	67,896	115,179	67,372	72,526	1,003,910
Tax payments	410,352	396,782	432,227	369,070	319,879	223,864	384,004	363,262	444,724	450,492	385,804	351,259	4,517,392	4,517,392
Fines, bail and bond payments	8,314,231	8,333,022	8,629,610	6,888,809	7,758,222	7,753,809	8,867,438	7,302,963	8,821,653	6,277,190	6,161,780	5,625,020	6,024,439	88,443,955
Miscellaneous financial	28,562,195	27,436,273	29,691,000	28,152,603	34,743,309	32,063,739	37,529,207	34,627,558	37,039,561	33,253,119	33,095,858	33,052,181	32,322,950	393,007,358
Financial	536,516,413	481,946,558	479,689,425	409,740,331	463,021,821	454,953,844	566,206,448	533,129,799	646,626,042	619,100,659	628,681,744	665,294,796	627,303,217	6,575,694,684

Table 3B Card expenditure statistics (not seasonally adjusted)

Value of credit card transactions

Detailed sector breakdown - services sectors (continued)

£	September 2010	October 2010	November 2010	December 2010	January 2011	February 2011	March 2011	April 2011	May 2011	June 2011	July 2011	August 2011	September 2011	Total (latest 12 months)
Telecoms	69,741,129	67,608,980	71,967,310	83,966,619	64,753,687	59,738,794	66,917,058	62,109,042	69,732,737	64,468,324	62,080,774	65,260,751	62,316,319	800,920,395
Utilities	43,494,054	42,185,001	42,295,739	37,436,396	43,178,668	44,442,927	60,933,589	51,845,816	52,334,187	46,669,090	42,132,621	41,971,163	41,672,408	547,097,605
Contractors (residential & commercial)	79,217,525	80,974,354	87,743,748	71,898,368	74,160,221	74,304,067	84,970,689	66,097,497	75,112,996	75,453,577	72,398,443	74,786,880	74,978,545	912,879,385
Gardening services	3,580,158	3,092,805	3,334,953	3,158,436	2,111,848	2,616,828	4,473,820	6,015,211	6,186,011	5,131,206	4,098,427	4,007,677	3,657,163	47,884,385
Veterinary services	49,401,890	47,478,141	48,784,297	42,838,691	46,324,151	39,943,324	46,093,472	41,357,629	46,013,125	47,054,246	47,032,015	40,964,125	43,707,733	537,590,949
Photocopying & printing	31,982,923	32,121,037	34,385,452	29,162,406	30,153,071	30,174,085	35,225,467	26,867,931	31,185,585	29,341,555	26,841,395	27,908,921	31,430,273	364,797,178
Photographic studios	8,835,095	9,546,730	11,570,766	9,282,050	6,765,023	6,850,365	23,291,215	20,806,738	22,906,258	8,332,673	10,203,052	8,387,586	7,994,508	145,936,964
Beauty & barber shops	69,332,253	67,779,099	73,497,743	86,491,484	61,001,438	60,874,129	55,793,765	52,145,574	56,785,502	73,459,570	72,433,554	71,023,840	71,965,882	803,251,580
Employment agencies	5,298,875	5,014,799	4,900,539	4,618,865	4,837,609	4,793,680	5,373,615	4,377,025	3,928,324	4,686,021	5,044,208	4,854,296	6,042,134	58,471,115
Counselling services	459,836	681,823	592,541	493,621	496,014	439,646	543,796	709,650	934,240	614,814	618,605	642,733	643,030	7,410,513
Legal services	15,889,850	15,681,204	16,204,544	13,710,921	16,738,097	17,104,602	20,512,425	17,057,702	18,330,454	20,391,606	17,777,110	17,387,183	17,686,364	208,582,212
Laundry & cleaning	5,784,009	5,612,471	5,751,935	4,494,073	4,867,140	4,566,232	5,522,789	5,270,399	6,493,703	5,800,048	5,638,451	5,383,198	5,795,361	65,195,800
Funeral services	9,735,871	10,714,308	9,801,055	10,221,192	11,397,973	11,312,784	11,940,040	9,222,750	9,113,326	10,570,430	10,308,521	10,135,196	10,861,508	125,599,083
Medical services	142,554,150	138,432,820	150,415,590	116,981,073	130,439,664	135,991,219	159,994,934	127,053,702	143,876,408	160,201,283	151,540,111	138,830,939	146,956,393	1,700,714,136
Moving & courier services	20,307,722	20,090,706	19,711,689	17,689,027	18,570,233	18,591,607	21,324,502	18,185,788	20,996,818	19,930,057	20,091,555	20,788,262	20,211,242	236,181,486
Repair shops (not auto)	10,119,844	9,550,994	10,942,727	9,713,984	8,273,342	8,111,608	9,349,694	8,352,828	9,457,707	10,520,757	12,650,903	9,451,188	9,625,060	116,000,792
Accounting services	6,351,846	5,741,833	6,134,488	5,936,577	6,857,019	6,191,039	6,748,076	4,743,388	5,193,894	6,616,913	6,142,317	5,213,754	5,865,352	71,384,650
Advertising, consultancy & PR	13,820,434	12,540,056	12,963,498	9,957,572	12,233,072	11,567,057	16,116,569	13,568,629	16,158,899	15,548,090	14,158,818	14,477,490	14,689,656	163,971,206
Computer programming	42,052,558	39,754,434	39,032,204	35,330,678	33,997,966	31,578,864	38,012,013	29,002,362	30,862,088	26,860,221	25,407,265	25,828,753	27,720,198	383,387,046
Farming services	8,295,817	7,891,578	8,106,451	7,576,633	7,249,553	7,029,548	8,134,226	7,556,368	8,121,665	8,268,958	8,174,994	8,261,212	7,559,961	93,931,147
Miscellaneous professional services	169,863,250	144,937,227	147,527,051	122,832,253	142,761,253	140,607,564	160,191,057	132,332,980	148,615,136	155,503,307	149,262,858	146,030,520	176,199,979	1,766,801,185
Engineering services	19,086,461	17,650,208	17,448,053	14,531,789	15,886,061	17,359,280	20,987,137	16,884,615	19,393,943	18,764,189	17,362,284	16,167,101	16,839,895	209,274,555
Marina services	8,461,976	7,042,725	6,637,367	7,984,222	6,841,732	6,406,538	10,765,763	10,577,973	11,306,894	11,287,829	11,521,519	10,976,275	7,992,766	109,341,603
Wrecking & salvage yards	874,981	806,573	845,954	584,322	731,481	751,259	865,860	781,828	795,382	876,953	810,849	803,415	914,228	9,568,104
Pest control	769,876	664,718	732,674	552,659	562,245	527,733	691,136	584,989	1,230,387	729,570	788,290	886,110	927,191	8,877,702
Educational establishments	253,210,120	166,293,319	92,122,670	81,234,642	152,190,033	97,639,559	97,284,187	87,195,825	107,717,387	92,696,680	94,142,444	126,906,492	263,914,789	1,459,338,027
Child care services	2,141,796	2,083,813	2,267,144	2,003,565	2,320,623	2,188,090	2,352,158	1,455,043	1,704,728	2,573,780	2,730,564	1,711,734	1,780,908	25,172,150
Social, political & religious organisations	65,209,207	65,441,264	66,132,145	66,459,585	66,057,594	58,607,416	89,490,074	68,202,325	61,703,647	61,229,522	68,346,271	59,953,200	62,220,121	793,843,164
Government services	160,642,516	150,000,167	146,262,968	135,726,783	147,063,736	152,776,759	177,681,629	156,485,540	187,632,847	172,848,654	164,310,168	159,619,438	153,215,683	1,903,624,372
Miscellaneous services	49,528,820	48,193,036	53,765,453	53,824,385	46,064,543	45,072,132	60,230,172	51,391,057	53,288,717	53,527,477	51,867,075	50,269,221	52,469,473	619,962,741
Commercial equipment	110,226,707	102,895,980	108,105,797	90,374,581	100,059,526	98,399,407	115,776,599	92,641,856	104,339,670	89,753,096	84,816,773	87,022,340	93,681,771	1,167,867,396
Other services	1,476,271,549	1,328,502,203	1,299,984,545	1,177,067,452	1,264,944,616	1,196,558,142	1,417,587,526	1,190,880,060	1,331,444,465	1,299,710,496	1,260,732,234	1,255,910,993	1,441,535,894	15,464,858,626
Total services	5,087,145,758	4,742,305,976	4,731,927,331	4,161,081,324	4,715,512,744	4,457,241,170	5,187,515,032	4,626,840,873	5,399,305,029	5,152,363,692	5,143,548,334	5,061,156,862	5,020,374,884	58,399,173,251
TOTAL	10,583,386,710	10,417,089,372	11,404,381,876	11,642,884,074	9,919,028,672	9,272,815,469	10,793,735,064	10,218,142,387	11,287,308,560	11,322,378,644	11,364,422,845	10,936,719,973	10,638,252,844	129,217,159,780

Table 3C Card expenditure statistics (not seasonally adjusted)

Number of debit card transactions

Detailed sector breakdown - retail sectors

	September 2010	October 2010	November 2010	December 2010	January 2011	February 2011	March 2011	April 2011	May 2011	June 2011	July 2011	August 2011	September 2011	Total (latest 12 months)
Supermarkets	174,259,048	180,167,353	196,836,415	196,519,459	179,518,942	174,785,146	197,490,439	189,924,812	208,915,244	195,873,879	194,796,783	206,231,744	197,141,937	2,318,202,153
Bakers & dairies	296,630	322,608	337,756	351,374	307,536	320,676	371,284	414,642	486,135	641,554	747,550	1,145,443	1,187,293	6,633,851
Sweet stores	436,306	485,456	513,980	1,428,796	379,365	531,046	649,335	837,234	736,853	676,833	593,516	616,803	580,397	6,229,614
Miscellaneous foodstores	9,289,351	9,426,311	10,203,165	9,705,176	8,203,828	8,350,310	9,460,268	9,977,792	10,762,886	10,723,043	10,422,442	11,618,802	10,533,638	119,387,661
Off-licences	2,583,174	2,854,593	2,859,565	3,031,441	2,623,463	2,672,134	2,938,287	3,066,155	3,118,072	3,005,982	3,114,124	3,087,774	2,921,998	35,293,588
Food & drink	186,864,509	193,256,321	210,950,881	211,036,246	191,033,134	186,659,312	210,909,613	204,220,635	224,019,190	210,921,291	209,674,415	222,700,566	212,365,263	2,487,746,867
Department stores	12,830,513	13,909,328	17,469,838	25,046,026	13,647,685	11,361,548	13,173,900	13,136,006	14,492,468	14,217,475	14,554,905	14,405,641	12,924,613	178,339,433
Discount stores	6,705,960	7,180,732	8,704,160	11,092,634	6,449,408	6,097,105	6,466,208	6,974,085	7,120,532	7,374,201	7,652,655	7,694,108	7,361,259	90,167,087
Catalogues	2,965,482	2,960,224	4,202,006	4,602,513	3,279,617	2,798,560	2,968,996	2,598,680	2,962,420	2,780,159	2,705,868	2,054,045	2,939,974	36,853,062
Miscellaneous mixed	8,459,281	8,534,830	9,905,919	11,216,051	8,021,129	8,040,952	9,272,692	9,797,292	11,520,838	10,891,827	10,947,779	11,768,085	10,654,729	120,572,123
Mixed business	30,961,236	32,565,114	40,281,923	51,957,224	31,397,839	28,298,165	31,881,796	32,506,063	36,096,258	35,263,662	35,861,207	35,921,879	33,880,575	425,931,705
Men's clothing	902,039	920,777	1,079,517	1,688,880	979,541	822,032	859,128	901,815	958,829	1,052,247	1,132,158	1,127,381	918,641	12,440,946
Women's clothing	5,657,943	5,884,884	6,569,103	8,625,449	5,252,541	4,676,578	5,452,504	6,494,933	6,800,005	7,636,529	8,108,323	7,087,317	6,310,110	78,898,276
Family clothing	21,036,591	22,483,324	25,055,830	33,475,898	20,085,726	17,948,465	21,253,675	22,871,648	24,522,807	23,620,124	26,015,757	24,576,845	22,261,041	284,171,140
Miscellaneous clothing	2,534,504	2,486,220	2,679,151	3,079,507	1,637,305	1,671,489	2,017,085	2,791,527	3,147,737	3,263,803	3,004,346	2,844,203	2,738,983	31,361,356
Shoe shops	3,141,855	2,988,409	3,147,768	2,954,958	2,259,461	2,153,265	3,298,020	3,295,805	3,295,805	3,716,348	4,037,659	4,096,437	3,357,656	39,584,828
Clothing	33,271,932	34,763,614	38,531,369	50,788,776	30,910,071	27,378,025	32,095,657	36,357,943	38,725,183	39,289,051	42,296,243	39,732,183	35,586,431	446,456,546
Furniture stores	2,688,662	2,963,214	3,333,839	3,659,043	3,179,633	2,677,009	2,915,127	2,694,961	2,970,010	2,922,590	3,023,819	3,240,171	3,021,694	36,601,110
Household appliance stores	4,780,862	4,938,533	5,281,694	4,768,154	4,768,154	4,587,726	5,247,272	5,038,053	5,270,555	5,066,531	5,328,987	5,259,182	5,317,824	62,347,918
Electronic stores	2,214,965	2,374,473	2,795,310	4,021,995	2,732,696	2,137,160	2,218,158	1,992,362	2,287,359	2,195,370	2,230,767	2,457,946	2,401,353	29,844,949
DIY stores	14,592,059	15,152,094	15,883,826	14,867,860	13,384,389	13,699,610	16,840,352	19,065,125	18,530,504	17,262,593	17,037,784	17,748,921	16,266,554	195,739,612
Floor covering stores	291,556	310,173	355,438	241,750	277,491	272,813	301,394	258,813	298,283	283,771	288,556	323,916	296,897	3,509,295
Garden centres	2,378,862	2,522,576	2,851,157	2,086,148	1,824,890	1,662,148	3,559,025	5,214,801	5,074,393	3,901,354	3,293,434	3,043,826	2,615,233	39,318,688
Miscellaneous household	1,267,337	1,205,870	1,287,393	1,051,423	1,063,217	980,201	1,083,485	1,006,571	1,085,961	1,228,505	1,404,717	1,467,969	1,341,554	14,212,866
Household	28,214,303	29,466,933	31,788,657	33,417,329	27,236,470	26,440,667	32,164,813	35,270,686	35,517,065	32,860,714	32,608,064	33,541,931	31,261,109	381,574,438
Books, newspapers & magazines	6,260,985	6,405,000	7,238,296	9,979,856	5,804,158	5,650,172	6,038,992	5,741,010	6,382,207	6,312,222	6,082,759	6,629,298	6,546,464	78,810,434
Record shops	1,856,798	2,016,997	3,242,132	6,181,407	2,075,108	1,808,015	1,889,186	1,610,861	1,786,647	1,512,501	1,739,438	1,655,682	1,606,662	27,124,636
Music shops	5,077,987	5,300,280	6,223,527	6,393,616	6,643,606	5,695,748	6,330,953	5,883,209	7,432,427	6,318,563	5,868,471	6,542,193	6,333,106	74,965,699
Hobbies, toys & games	2,002,549	2,437,453	3,771,623	5,675,818	2,039,255	1,754,269	1,928,410	1,640,481	1,648,346	1,535,672	1,476,170	1,657,273	1,667,708	27,232,478
Photographic	506,198	444,047	683,360	518,974	409,287	412,878	396,096	458,271	396,096	535,733	524,239	558,271	513,109	5,762,203
Handicraft	173,899	187,098	206,789	174,459	168,965	166,747	182,046	154,942	170,163	171,378	169,073	184,849	185,408	2,121,917
Sports shops	6,900,970	6,876,163	7,396,015	9,595,935	6,537,425	5,775,703	6,720,490	7,447,461	7,749,499	7,742,516	8,291,729	8,796,258	7,479,953	90,409,147
Jewellers	1,196,399	1,200,478	1,582,738	2,978,501	1,178,754	1,324,680	1,383,683	1,330,279	1,411,675	1,406,925	1,359,849	1,340,233	1,222,832	17,720,627
Computer software	714,996	711,939	794,256	964,117	749,181	617,438	664,382	597,666	700,388	655,186	623,298	666,572	652,107	8,396,530
Medical goods	26,454	26,700	28,994	24,311	25,372	27,095	30,965	27,071	29,742	31,846	31,131	31,035	31,216	345,478
Chemists	16,160,208	16,089,431	19,044,680	23,687,797	15,880,389	15,405,979	18,060,785	15,496,921	18,061,045	17,289,749	16,342,746	17,995,500	16,664,056	210,019,078
Optical goods	872,727	846,125	884,199	651,892	855,493	879,009	986,290	876,396	966,822	1,055,770	1,032,495	981,955	917,860	10,934,306
Cosmetic stores	1,193,223	1,241,028	1,659,744	2,757,516	1,046,787	1,053,501	1,166,712	1,162,838	1,187,671	1,269,954	1,211,087	1,307,356	1,163,639	16,227,833
Tobaccoists	21,312	21,999	26,853	32,739	20,982	23,918	30,722	30,740	38,386	35,054	37,421	37,826	36,071	373,826
Florists	701,137	667,416	682,091	1,000,292	635,732	971,716	1,023,142	1,112,273	751,219	767,434	749,638	717,610	718,800	9,797,363
Artists' supplies	574,356	635,065	785,239	747,036	541,778	567,419	653,721	561,992	643,063	631,058	624,235	666,224	605,995	7,662,825
Antiques, art & stamps/coins	229,861	256,281	275,219	290,316	210,195	209,449	231,765	218,095	240,798	256,558	291,687	244,801	2,966,546	
Pawn shops	13,959	15,262	16,176	23,617	15,834	16,017	17,257	16,233	16,737	17,741	18,957	18,834	19,357	212,022
Gift shops	3,751,318	4,054,756	5,418,208	8,976,024	3,752,117	4,446,882	4,398,744	4,230,985	4,055,510	4,778,904	4,228,278	4,639,168	4,132,428	57,112,004
Secondhand shops	41,885	42,838	45,530	35,680	37,317	42,797	42,797	40,766	51,915	50,733	54,586	50,740	52,896	550,740
Luggage & leather goods	186,744	181,385	214,461	292,383	195,866	154,842	173,558	176,124	185,729	202,151	216,712	217,461	173,118	2,383,790
Pet shops	2,162,043	2,273,182	2,296,912	2,416,364	2,163,647	2,070,472	2,288,328	2,193,600	2,408,297	2,300,991	2,436,438	2,484,219	2,309,901	27,642,351
Religious goods	1,969	1,511	1,670	1,734	1,551	1,551	1,734	1,560	1,560	1,863	3,457	1,979	1,677	21,825
Direct sales	4,824,888	4,832,496	5,252,774	5,283,437	5,297,948	4,945,568	5,859,763	5,284,452	5,593,962	5,564,558	5,333,249	4,878,971	5,002,102	63,129,280
Miscellaneous & speciality shops	2,782,078	2,867,421	3,507,821	3,925,770	2,717,733	2,567,371	2,840,312	2,673,320	2,909,013	3,029,784	2,997,137	4,098,745	2,945,379	37,079,805
Other retail	58,234,943	59,632,351	71,116,332	92,783,763	59,002,615	56,529,046	63,357,615	58,905,371	64,881,086	63,684,719	61,460,685	66,422,346	61,226,645	779,002,744
Automotive Fuels	43,566,075	44,852,813	47,294,133	42,064,866	43,597,332	42,566,687	49,032,871	46,159,881	51,150,399	48,726,233	48,867,505	50,762,388	48,819,084	563,894,192
Total retail sales	381,114,998	394,557,146	439,963,295	482,048,204	383,177,631	367,871,902	419,442,365	413,420,579	450,389,181	430,74				

Table 3C Card expenditure statistics (not seasonally adjusted)

Number of debit card transactions

Detailed sector breakdown - services sectors

	September 2010	October 2010	November 2010	December 2010	January 2011	February 2011	March 2011	April 2011	May 2011	June 2011	July 2011	August 2011	September 2011	Total (latest 12 months)
Auto rental	476,875	459,064	459,017	429,751	441,378	442,088	522,267	520,508	543,761	617,456	646,476	624,449	574,250	6,280,465
Auto parts & accessories	1,660,610	1,649,275	1,752,246	1,617,155	1,714,527	1,683,096	1,994,149	1,771,869	1,861,814	1,879,257	1,879,820	1,916,214	1,790,869	21,510,291
Auto services	2,711,173	2,782,838	2,917,879	2,891,715	2,666,719	2,655,532	2,997,851	2,779,412	3,152,951	3,241,360	3,286,408	3,279,395	3,270,395	35,922,455
Auto repair shops	1,646,585	1,594,379	1,617,603	1,457,690	1,666,132	1,666,147	1,987,604	1,704,365	1,800,697	1,857,489	1,827,993	1,817,409	1,833,982	20,811,490
Service stations	9,438,032	9,785,297	10,756,888	11,418,407	13,183,611	12,743,294	14,431,363	13,924,696	15,014,963	14,387,419	14,611,679	14,973,820	14,143,951	159,375,028
Vehicle sales	1,186,989	1,096,622	1,087,487	919,220	1,093,360	1,111,545	1,389,509	1,337,928	1,358,112	1,340,241	1,349,325	1,291,091	1,291,091	14,633,537
Vehicle Sales & Services	17,120,264	17,367,475	18,591,120	18,733,578	20,765,727	20,281,702	23,322,743	21,959,947	23,712,114	23,341,093	23,592,617	23,960,612	22,904,538	258,533,266
Restaurants	31,910,938	35,254,448	35,960,594	34,348,613	33,969,770	34,889,801	38,578,583	38,137,850	41,637,372	39,885,102	40,930,822	42,778,792	39,956,589	456,328,336
Public houses	5,470,940	5,710,049	6,078,969	5,734,686	5,622,815	5,736,442	6,431,097	7,001,140	7,638,442	6,724,874	6,873,569	7,832,098	6,717,389	78,101,570
Catering services	549,544	559,239	587,654	508,086	497,531	523,075	614,255	510,273	579,154	621,646	604,935	578,807	616,415	6,801,070
Video stores	221,126	195,233	196,187	215,269	206,375	188,074	282,583	364,105	394,611	374,822	381,240	426,158	413,623	2,848,282
Cinema, theatre & dance	3,165,787	3,794,246	4,685,570	3,511,779	4,184,730	4,413,738	3,507,785	3,165,554	4,700,499	4,231,110	5,203,705	5,738,208	3,934,150	51,071,074
Concerts & entertainers	34,791	44,798	46,254	54,506	46,388	52,914	55,088	57,837	60,367	69,220	70,093	83,208	60,694	701,367
Tourist attractions	899,469	837,958	606,625	358,235	338,700	459,898	488,431	858,155	776,745	840,720	954,701	1,328,468	686,298	8,534,934
Amusement parks	78,938	80,818	54,705	40,012	44,481	67,292	61,353	123,250	88,370	98,424	114,307	199,287	87,136	1,059,435
Aquariums	29,509	30,362	26,519	19,626	27,872	32,703	31,126	39,067	39,825	39,488	42,367	49,721	31,606	410,282
Sports & games establishments	2,318,000	2,279,503	2,280,519	2,219,113	2,526,007	2,473,824	2,771,289	2,392,550	2,300,162	2,770,255	2,768,584	3,001,231	2,519,064	30,302,101
Professional sports clubs	159,416	148,533	177,890	178,989	149,757	158,323	163,333	169,403	164,466	198,865	213,499	208,632	169,668	2,101,358
Gambling	12,400,990	13,325,477	14,829,646	13,923,967	14,609,428	13,881,509	16,836,188	14,865,497	17,316,440	15,883,902	16,547,722	16,864,046	16,492,665	185,376,487
Personal services	260,048	253,915	255,609	252,925	249,483	252,873	286,257	265,672	465,789	430,599	437,814	458,099	419,185	4,033,220
Miscellaneous entertainment	606,653	623,606	478,289	356,223	435,959	496,038	549,506	773,265	708,847	955,702	1,016,029	1,117,542	730,581	8,241,587
Entertainment	58,106,149	63,136,185	66,265,030	61,727,029	62,909,296	63,626,504	70,656,874	68,723,618	76,871,089	73,124,731	75,959,387	80,364,297	72,545,063	835,911,103
Hotels	3,040,523	3,008,690	2,796,212	2,575,767	2,607,666	2,720,543	2,709,675	3,307,862	3,471,234	3,811,050	4,183,244	4,218,954	3,761,933	39,172,830
Airlines	737,771	632,556	583,350	454,976	693,246	404,758	391,322	314,675	372,865	443,440	456,381	474,008	471,108	5,692,685
Airport terminals	36,012	28,317	22,650	19,643	23,030	23,129	32,302	36,744	39,708	46,503	48,036	54,440	42,875	417,377
Railways	13,098,462	14,114,046	14,750,047	12,974,496	12,519,936	12,598,320	14,933,660	13,259,309	15,087,274	16,798,725	16,160,949	14,944,322	15,213,122	173,354,206
Buses	891,192	884,491	949,896	797,034	853,166	819,420	931,102	871,775	958,945	958,298	978,680	1,012,653	1,060,387	11,075,847
Sea travel	121,521	107,818	93,673	93,926	100,752	114,272	132,643	133,174	150,084	165,529	192,520	150,860	139,206	1,520,860
Travel agents	1,414,155	1,282,841	1,118,282	947,862	1,817,106	1,548,463	1,793,432	1,585,962	1,724,047	2,058,012	2,052,660	1,880,017	1,791,370	19,600,054
Timeshares	399	343	284	216	339	284	1,205	194	120	135	113	75	78	3,386
Camping grounds	460,653	349,810	164,677	103,806	245,536	299,629	407,174	633,122	627,834	622,187	727,843	885,653	469,370	5,536,641
Miscellaneous travel	1,046,485	1,047,061	1,029,859	925,830	714,658	713,182	827,005	795,522	979,233	1,092,827	1,135,544	1,113,689	1,042,093	11,416,503
Travel	17,806,650	18,447,283	18,712,718	16,317,789	16,964,280	16,507,937	19,431,474	17,629,946	19,923,200	22,170,211	21,725,735	20,557,377	20,229,609	228,617,559
Telegraph services / Wire transfer money order	37,643	37,228	40,116	42,636	34,339	33,636	38,861	38,030	37,949	43,817	44,698	46,414	46,852	484,576
Insurance services	3,058,031	2,787,557	2,689,674	2,344,442	2,686,712	2,673,674	3,284,119	2,922,307	3,256,472	3,588,429	3,577,885	3,610,117	3,536,907	36,958,295
Fis - cash disbursements (auto & manual)	159,429	120,428	104,628	111,801	90,152	103,958	122,110	4,791	5,915	2,751	2,985	2,474	2,205	674,198
Fis - merchandise & services	6,915,007	7,066,506	6,968,354	7,151,825	7,208,799	6,507,913	7,808,351	6,949,703	7,404,481	7,572,835	7,772,803	7,878,625	7,614,253	87,904,448
Non-Fis - foreign currency, travellers' cheques	246,131	186,272	141,618	150,843	131,213	156,313	180,433	198,398	231,389	259,761	304,169	334,442	280,882	2,555,733
Security brokers and dealers	60,420	70,208	78,144	60,033	77,672	78,575	114,149	106,757	70,445	69,185	65,879	146,822	79,081	1,016,950
Tax preparation services	135	117	154	126	331	309	371	524	443	692	690	635	580	4,972
Tax payments	103,624	105,647	116,346	118,024	157,279	128,903	148,746	140,641	153,941	151,558	152,498	152,630	143,226	1,669,439
Fines, bail and bond payments	279,833	294,637	287,441	253,590	262,877	265,407	314,935	363,159	436,691	495,563	514,258	461,244	459,192	4,408,994
Miscellaneous financial	411,666	414,627	440,520	431,027	488,675	482,171	565,875	561,341	593,163	594,438	598,629	609,538	576,921	6,356,925
Financial	11,271,919	11,083,227	10,866,995	10,664,347	11,138,049	10,430,859	12,577,950	11,285,651	12,190,889	12,779,029	13,034,494	13,242,941	12,740,099	142,034,530

Table 3C Card expenditure statistics (not seasonally adjusted)

Number of debit card transactions

Detailed sector breakdown - services sectors (continued)

	September 2010	October 2010	November 2010	December 2010	January 2011	February 2011	March 2011	April 2011	May 2011	June 2011	July 2011	August 2011	September 2011	Total (latest 12 months)
Telecoms	9,576,766	9,535,164	9,776,545	10,868,232	9,560,726	8,927,584	9,939,854	10,678,214	11,429,589	11,658,789	11,691,495	11,857,983	11,252,896	127,177,071
Utilities	1,685,680	1,701,375	1,748,683	1,602,139	1,689,565	1,583,060	1,978,020	1,752,460	1,889,688	2,079,856	2,013,340	1,997,445	1,881,613	21,917,244
Contractors (residential & commercial)	561,277	580,235	608,029	509,564	529,985	534,719	593,362	439,777	481,076	500,531	487,903	508,590	512,617	6,286,388
Gardening services	87,935	88,013	101,713	117,156	67,219	72,614	106,122	138,937	146,944	124,340	105,877	100,540	85,991	1,255,466
Veterinary services	1,555,853	1,523,236	1,507,384	1,328,402	1,406,772	1,282,093	1,465,148	1,322,600	1,460,309	1,498,400	1,538,222	1,372,514	1,412,229	17,117,309
Photocopying & printing	389,823	390,117	469,276	425,235	385,347	362,725	433,705	350,424	426,550	438,635	400,009	423,445	442,989	4,948,457
Photographic studios	309,218	366,426	424,654	357,594	246,494	256,787	1,206,026	1,139,734	1,290,945	337,443	378,363	316,868	306,559	6,627,893
Beauty & barber shops	4,020,322	4,011,630	4,164,566	5,017,617	3,764,081	3,753,940	3,392,034	3,290,463	3,460,146	4,708,830	4,609,471	4,484,486	4,333,249	48,990,513
Employment agencies	22,965	22,656	21,761	15,426	24,391	22,853	22,569	9,091	10,062	12,613	11,941	11,576	10,817	195,756
Counselling services	46,389	46,639	50,063	50,264	49,901	46,173	49,075	62,644	76,224	82,887	80,015	81,535	74,795	750,215
Legal services	106,748	105,160	113,297	90,438	110,134	109,676	135,192	109,173	123,443	140,546	135,918	134,653	133,951	1,441,581
Laundry & cleaning	475,183	478,923	486,368	373,818	402,558	386,201	449,285	408,488	481,317	490,846	468,190	450,841	466,163	5,342,998
Funeral services	15,769	16,615	17,682	16,497	18,342	18,586	19,396	16,361	16,916	19,585	18,616	18,728	18,990	216,314
Medical services	2,370,732	2,270,484	2,452,101	1,902,832	2,272,760	2,326,310	2,686,774	2,155,261	2,467,858	2,699,901	2,516,750	2,451,640	2,576,066	28,778,737
Moving & courier services	219,844	219,844	240,692	229,555	223,013	217,485	253,182	227,048	263,541	300,986	288,166	277,284	284,991	3,025,787
Repair shops (not auto)	141,810	129,835	135,505	115,919	109,697	99,316	112,421	84,045	96,457	103,440	126,373	103,493	100,639	1,317,140
Accounting services	207,879	204,259	224,563	206,426	221,318	196,520	228,307	198,361	242,652	394,175	378,400	255,371	251,683	3,002,035
Advertising, consultancy & PR	262,696	252,397	260,621	187,745	237,843	228,987	260,126	221,467	262,848	258,099	246,375	253,475	242,286	2,912,266
Computer programming	883,372	867,919	921,370	862,652	1,059,506	1,031,464	1,206,402	873,294	950,986	980,518	958,590	926,390	996,305	11,635,396
Farming services	139,064	141,368	149,533	143,531	132,383	126,807	145,645	145,577	160,959	163,066	158,184	147,549	142,858	1,757,460
Miscellaneous professional services	3,188,383	3,182,174	3,373,283	3,024,640	2,749,320	2,599,486	2,962,900	2,540,385	2,917,827	3,193,011	3,107,559	2,937,422	2,957,325	35,545,332
Engineering services	54,996	53,227	53,511	42,857	49,189	55,312	68,565	60,231	63,268	78,100	75,526	71,586	70,681	742,053
Marina services	70,654	54,659	52,251	49,022	43,714	44,480	63,412	93,341	92,265	93,043	100,517	119,382	73,799	879,885
Wrecking & salvage yards	8,137	7,904	8,130	6,031	7,191	7,309	8,538	8,206	8,767	9,086	8,880	8,920	8,876	97,839
Pest control	4,048	3,197	2,798	1,951	2,352	2,229	2,769	2,824	4,008	4,507	5,530	5,177	4,959	42,301
Educational establishments	1,273,744	1,517,899	1,400,713	948,787	1,375,923	1,239,689	1,506,342	966,237	1,470,506	1,215,992	987,664	847,397	1,599,287	15,076,436
Child care services	79,381	92,281	91,344	77,621	101,652	104,691	97,599	76,983	97,102	106,208	106,037	109,168	95,545	1,156,231
Social, political & religious organisations	2,052,779	1,945,267	2,192,574	1,681,622	1,468,612	1,573,617	2,757,117	2,074,022	2,274,308	2,302,058	2,322,389	2,247,288	2,191,127	25,030,001
Government services	5,075,774	4,889,346	4,873,540	4,207,330	4,847,329	4,802,984	5,442,790	5,082,368	5,900,379	6,526,916	6,379,627	5,948,629	5,799,598	64,700,836
Miscellaneous services	4,956,029	4,792,701	5,586,335	6,420,097	4,615,979	4,646,680	5,718,296	5,023,401	5,615,860	5,552,837	5,235,490	5,576,116	5,550,973	64,334,765
Commercial equipment	1,616,513	1,499,574	1,542,240	1,459,787	1,484,217	1,357,574	1,491,209	1,223,532	1,451,075	1,482,731	1,409,627	1,468,089	1,770,290	17,639,945
Other services	41,469,277	40,990,524	43,051,125	42,340,787	39,257,513	38,017,951	44,802,182	40,774,949	45,633,875	47,557,975	46,351,044	45,513,580	45,650,147	519,941,652
Total services	148,814,782	154,035,384	160,283,200	152,359,297	153,642,531	151,585,496	173,500,898	163,681,973	181,802,401	182,784,089	184,846,521	187,857,761	177,831,389	2,024,210,940
TOTAL	529,929,780	548,592,530	600,246,495	634,407,501	536,820,162	519,457,398	592,943,263	577,102,552	632,191,582	613,529,759	615,616,640	636,939,054	600,970,496	7,108,817,432

Table 3D Card expenditure statistics (not seasonally adjusted)

Value of debit card transactions

Detailed sector breakdown - retail sectors

£	September 2010	October 2010	November 2010	December 2010	January 2011	February 2011	March 2011	April 2011	May 2011	June 2011	July 2011	August 2011	September 2011	Total (latest 12 months)
Supermarkets	4,811,720,619	5,014,277,229	5,639,057,847	6,379,061,638	4,979,913,209	4,743,040,655	5,271,645,702	5,291,473,518	5,752,808,679	5,300,576,442	5,328,972,723	5,647,972,061	5,322,648,546	64,671,448,249
Bakers & dairies	4,719,310	4,890,020	5,221,835	5,746,339	4,465,006	4,582,734	5,424,516	5,799,108	6,174,111	7,445,343	8,129,401	20,228,657	11,469,455	89,576,525
Sweet stores	6,066,160	6,973,485	11,661,555	23,828,246	5,578,067	7,210,415	9,277,413	12,663,126	9,903,597	9,166,434	8,578,268	9,962,008	9,479,743	124,282,357
Miscellaneous foodstores	169,637,215	170,023,097	188,414,613	211,014,800	151,185,707	150,614,177	170,530,162	182,674,770	193,404,314	195,376,297	193,207,169	222,037,101	200,581,446	2,229,063,653
Off-licences	54,194,796	60,513,662	64,724,886	85,385,754	55,508,979	56,130,426	63,100,975	67,115,235	68,317,315	71,661,143	74,065,364	71,139,949	66,592,835	804,256,523
Food & drink	5,046,338,100	5,256,677,493	5,909,080,736	6,705,036,777	5,196,650,968	4,961,578,407	5,519,978,768	5,559,725,577	6,030,608,016	5,584,225,659	5,612,982,925	5,971,339,776	5,610,772,025	67,918,627,307
Department stores	444,049,063	490,693,526	620,278,345	915,099,312	450,125,948	379,452,233	450,186,140	452,070,001	503,889,153	502,014,876	487,653,518	544,355,851	6,202,350,090	
Discount stores	272,550,292	298,937,181	385,113,811	473,932,531	246,958,345	229,809,597	235,313,879	284,787,058	293,878,191	302,739,138	306,390,330	315,012,564	299,558,345	3,672,430,970
Catalogues	119,454,664	119,353,792	151,941,102	150,659,189	127,151,392	114,988,869	122,599,525	107,981,128	126,758,517	118,872,743	115,540,514	116,648,451	123,374,696	1,495,869,918
Miscellaneous mixed	236,821,497	239,490,122	281,808,989	327,067,549	209,495,819	212,722,017	246,280,400	270,042,596	321,102,617	327,146,276	311,012,499	335,363,556	311,483,001	3,373,015,441
Mixed business	1,072,875,516	1,146,474,621	1,439,142,247	1,866,758,581	1,033,731,504	936,972,716	1,054,379,944	1,114,880,783	1,245,628,478	1,230,773,033	1,229,474,530	1,264,678,089	1,188,771,893	14,743,666,419
Men's clothing	50,731,497	54,448,114	62,656,528	91,791,171	52,806,360	44,109,240	49,227,469	51,080,028	57,064,341	61,382,761	62,782,489	61,161,629	53,472,242	701,982,372
Women's clothing	199,201,634	209,915,550	231,622,629	286,642,305	174,303,349	162,653,898	193,553,282	216,142,459	233,109,785	255,814,882	252,961,047	235,571,921	229,241,094	2,681,532,201
Family clothing	678,449,678	730,073,576	822,418,177	1,106,940,069	585,371,683	555,423,572	669,715,370	726,702,752	779,323,358	782,926,095	789,674,292	779,634,239	9,050,509,474	
Miscellaneous clothing	69,015,790	68,963,860	73,547,940	78,455,230	43,230,604	44,374,507	55,039,618	66,696,608	70,342,754	81,537,797	73,556,240	76,341,255	78,324,754	815,741,437
Shoe shops	118,999,638	124,650,334	128,800,329	157,328,730	104,476,581	82,828,257	95,796,483	119,219,049	120,884,773	127,680,435	131,555,451	148,510,505	132,711,308	1,474,442,235
Clothing	1,116,398,237	1,188,051,434	1,319,045,603	1,721,157,505	960,188,577	889,389,744	1,063,332,222	1,179,840,896	1,265,725,011	1,274,722,166	1,310,529,519	1,304,841,405	1,247,383,637	14,724,207,719
Furniture stores	277,541,474	305,687,834	331,971,048	307,688,255	312,380,900	264,896,713	295,786,204	266,794,269	300,640,391	290,329,619	298,756,131	316,835,778	306,528,603	3,598,295,745
Household appliance stores	172,710,798	183,173,845	205,510,508	234,476,503	189,213,713	178,276,396	206,397,135	188,113,434	195,044,054	193,086,210	198,433,894	198,736,399	201,336,161	2,371,800,252
Electronic stores	234,073,363	260,032,895	314,470,417	474,732,589	288,753,290	213,077,760	230,903,089	212,971,077	249,694,906	239,329,070	246,255,012	282,122,387	271,832,045	3,284,174,537
DIY stores	655,754,532	680,300,577	689,161,759	604,538,946	613,437,162	597,231,718	741,967,828	836,063,679	825,144,998	812,025,971	810,482,324	831,105,193	785,075,049	8,826,535,204
Floor covering stores	64,086,390	68,671,131	80,665,976	57,444,151	60,493,820	57,722,880	67,462,685	59,991,613	68,361,976	67,664,871	68,108,935	75,771,781	71,722,408	804,082,227
Garden centres	77,249,643	77,959,137	88,847,202	108,039,557	54,897,175	64,977,653	120,818,392	186,611,070	176,919,176	132,306,451	111,342,714	102,103,288	87,737,374	1,312,559,189
Miscellaneous household	84,604,716	82,201,150	88,245,496	69,591,782	67,390,277	61,524,131	69,835,342	85,960,341	72,268,635	81,927,415	90,074,935	100,168,074	93,997,486	943,185,064
Household	1,566,020,916	1,658,028,569	1,798,872,406	1,856,511,783	1,586,566,337	1,437,707,251	1,733,170,675	1,816,505,483	1,888,074,136	1,816,669,607	1,823,453,945	1,906,842,900	1,818,229,126	21,140,632,218
Books, newspapers & magazines	121,689,288	123,013,009	128,427,623	187,935,107	101,169,554	94,908,629	102,068,195	96,888,496	107,305,157	107,295,840	105,273,702	114,733,229	132,640,469	1,401,659,010
Record shops	37,080,246	42,056,803	73,875,546	153,557,904	41,206,914	37,995,456	35,560,241	37,344,501	34,808,384	30,967,620	32,904,660	33,837,178	33,467,876	587,582,083
Music shops	41,754,977	42,790,621	49,742,223	56,033,381	50,937,222	43,672,219	47,269,555	42,604,264	50,785,544	48,718,172	49,136,671	53,541,404	52,186,961	587,418,237
Hobbies, toys & games	76,556,698	96,157,385	171,076,811	237,287,805	71,548,623	58,788,773	71,648,493	60,767,574	60,114,947	56,881,138	51,343,240	56,090,367	61,066,909	1,052,742,065
Photographic	27,662,653	26,294,850	31,209,280	44,464,362	24,379,885	21,628,979	27,120,788	26,759,154	32,783,745	33,889,306	33,708,430	32,541,092	29,670,848	359,450,719
Handicraft	8,909,990	9,293,177	10,507,876	8,780,429	8,849,574	8,470,977	9,589,539	8,574,859	9,634,757	9,809,671	9,868,899	10,263,672	10,360,529	114,003,959
Sports shops	272,972,098	272,777,133	300,301,952	389,236,472	246,523,487	224,830,353	269,342,644	301,572,332	319,872,581	322,185,499	341,468,550	362,684,492	304,909,728	3,655,705,223
Jewellers	103,269,382	104,303,526	133,739,758	268,175,526	99,178,459	112,233,519	118,897,712	116,797,022	132,818,937	131,971,760	130,540,338	131,971,760	119,879,395	1,597,496,241
Computer software	109,837,912	104,535,629	122,058,405	165,476,664	118,406,786	96,432,137	108,905,792	93,767,053	113,779,067	103,236,543	98,321,745	105,723,954	108,359,179	1,339,002,954
Medical goods	5,579,511	5,498,412	5,676,982	4,291,898	4,491,441	5,451,128	6,320,556	5,249,880	5,877,879	6,536,541	6,124,349	6,517,600	6,354,644	68,391,310
Chemists	239,262,304	251,019,226	324,620,651	464,926,668	231,863,064	229,756,491	268,264,778	237,630,143	278,168,443	262,199,136	251,945,015	273,786,610	246,227,237	3,320,407,462
Optical goods	81,840,092	79,562,782	82,661,986	56,672,407	81,783,980	85,834,306	96,300,709	84,390,474	93,470,539	101,417,305	99,880,572	94,333,163	87,413,183	1,043,521,406
Cosmetic stores	45,270,114	49,590,829	66,744,134	105,682,785	37,304,823	37,871,511	44,611,127	43,704,001	40,407,589	38,673,594	37,287,565	45,332,545	36,965,737	583,816,240
Tobacconists	755,631	716,999	833,572	1,112,592	683,265	732,060	888,811	979,197	1,143,288	1,206,529	1,359,811	1,233,650	1,211,037	12,117,037
Florists	27,801,831	25,456,586	26,140,417	36,772,773	24,327,705	36,935,689	38,444,246	41,192,856	31,416,750	31,835,512	31,020,389	30,081,793	30,080,766	383,705,482
Artists' supplies	18,428,158	19,606,045	24,005,824	22,567,748	16,424,866	16,853,584	19,971,955	16,779,218	19,390,935	19,236,472	19,282,386	20,900,795	19,522,808	234,542,636
Antiques, art & stamps/coins	27,471,000	29,832,026	31,541,867	32,003,787	23,724,874	24,001,966	28,721,477	22,095,200	25,704,849	27,626,871	27,665,315	28,450,886	32,859,084	364,666,659
Pawn shops	1,600,019	2,055,332	1,939,822	2,405,203	1,940,679	1,711,088	1,938,581	2,127,234	2,050,442	2,082,008	2,519,052	2,395,078	2,326,313	25,490,832
Gift shops	75,975,470	85,124,361	116,134,310	171,282,567	73,236,174	77,463,948	83,777,999	83,062,614	83,271,439	93,681,052	91,148,906	97,826,505	89,078,752	1,145,088,627
Secondhand shops	2,775,222	2,794,134	2,677,152	3,049,110	2,129,502	2,688,372	2,946,397	2,659,543	3,003,884	3,674,271	3,417,661	3,674,271	3,630,939	36,466,659
Luggage & leather goods	8,195,927	8,256,854	10,815,715	17,156,440	9,601,153	7,937,335	9,419,334	9,648,114	10,006,582	12,181,371	12,580,846	11,150,534	10,471,803	129,226,081
Pet shops	59,098,830	60,782,485	62,192,865	66,070,340	58,817,528	56,198,678	63,081,826	61,367,136	67,529,752	65,437,469	68,360,874	71,472,622	65,831,096	767,142,671
Religious goods	93,727	60,637	49,573	73,977	51,381	51,092	51,381	51,092	51,491	101,761	96,248</			

Table 3D Card expenditure statistics (not seasonally adjusted)

Value of debit card transactions

Detailed sector breakdown - services sectors

£	September 2010	October 2010	November 2010	December 2010	January 2011	February 2011	March 2011	April 2011	May 2011	June 2011	July 2011	August 2011	September 2011	Total (latest 12 months)
Auto rental	43,689,086	42,407,079	40,022,807	36,886,576	38,217,671	38,470,053	47,176,556	47,354,256	50,662,699	60,853,247	64,569,783	60,925,891	53,673,258	581,219,876
Auto parts & accessories	202,372,300	187,689,767	192,999,373	168,956,540	180,290,468	178,590,410	233,276,144	194,570,174	209,460,405	214,322,326	209,935,419	209,400,595	217,388,850	2,396,880,471
Auto services	61,959,290	58,606,885	60,097,395	53,615,174	57,534,295	56,639,427	68,094,070	61,501,345	71,157,737	73,461,845	73,304,263	75,666,693	72,943,950	782,623,079
Auto repair shops	686,230,670	597,320,638	577,299,931	516,064,787	569,534,703	551,956,994	787,922,670	625,596,026	657,582,397	668,033,754	655,063,686	606,289,792	722,261,893	7,534,927,271
Service stations	125,134,775	126,919,793	136,793,714	145,285,607	177,591,930	167,157,293	195,387,525	188,147,867	229,380,085	209,424,667	205,363,155	208,218,051	198,083,796	2,187,753,483
Vehicle sales	1,231,113,857	1,067,285,861	1,062,863,143	869,103,767	972,248,406	970,156,769	1,384,487,423	1,123,782,603	1,225,309,510	1,217,547,401	1,174,667,878	1,193,715,511	1,291,369,184	13,492,537,456
Vehicle Sales & Services	2,350,499,978	2,080,230,023	2,070,076,363	1,789,912,451	1,995,417,473	1,962,970,946	2,716,344,388	2,240,952,271	2,443,552,833	2,443,643,240	2,362,904,184	2,294,216,533	2,555,720,931	26,975,941,636
Restaurants	627,772,950	687,434,264	686,356,700	693,066,419	668,621,484	679,654,361	728,063,582	763,103,885	806,839,800	784,688,535	819,448,381	864,892,977	766,308,180	8,948,478,568
Public houses	144,042,765	142,807,069	152,239,470	152,605,939	140,693,546	141,398,857	157,776,179	172,844,086	188,795,368	168,774,311	171,043,252	199,787,981	165,271,185	1,954,037,243
Catering services	12,909,370	12,580,679	13,195,666	12,215,986	11,153,092	11,391,769	13,872,051	12,543,857	14,427,681	16,455,884	15,977,003	15,679,427	15,617,807	165,110,902
Video stores	2,561,621	2,581,459	2,738,661	2,908,472	2,514,509	2,320,170	3,248,521	3,878,538	4,290,924	4,161,766	2,579,675	1,941,120	2,055,373	35,219,188
Cinema, theatre & dance	106,244,859	136,545,581	167,044,039	130,336,360	118,430,424	125,117,756	134,440,452	120,534,514	243,382,797	144,946,658	180,150,416	146,218,629	122,439,877	1,769,587,503
Concerts & entertainers	1,274,467	1,513,303	1,569,614	1,531,555	1,431,757	1,565,047	1,810,172	1,787,039	2,160,020	2,526,190	2,490,774	2,639,009	2,022,140	23,046,628
Tourist attractions	27,336,264	26,115,616	18,683,868	12,253,384	11,811,999	14,784,828	17,240,422	30,349,599	26,022,498	29,423,535	33,839,396	44,242,839	23,856,992	288,624,968
Amusement parks	2,686,901	2,537,130	1,809,428	1,384,338	1,427,743	1,991,271	1,992,572	4,054,384	3,005,606	3,239,859	3,842,409	6,129,554	2,750,692	34,164,986
Aquariums	983,981	1,015,644	968,475	761,996	965,920	1,073,138	1,174,733	1,433,598	1,496,836	1,413,542	1,501,556	1,606,596	1,112,533	14,524,567
Sports & games establishments	87,162,831	83,128,782	81,347,263	80,311,534	90,601,795	85,158,845	108,100,279	98,429,293	114,789,947	116,647,749	110,282,252	100,683,744	92,542,340	1,162,023,823
Professional sports clubs	8,090,393	7,384,440	8,667,040	8,659,101	7,397,346	8,104,074	8,769,572	10,552,545	9,486,510	17,201,831	13,063,991	10,277,066	9,144,308	118,707,824
Gambling	302,018,567	323,496,846	347,931,620	325,235,410	332,738,932	342,506,042	411,773,615	350,151,654	398,300,450	394,616,939	401,026,307	483,658,739	432,144,650	4,543,581,204
Personal services	11,514,535	11,242,067	11,463,127	11,183,606	11,217,623	12,864,674	11,704,296	12,864,674	11,704,296	16,904,631	17,587,706	16,992,432	16,692,432	166,745,634
Miscellaneous entertainment	27,406,582	27,607,053	24,858,348	15,999,208	16,720,674	18,846,736	24,582,235	34,690,184	33,205,577	41,250,882	45,167,471	45,362,784	31,902,221	360,193,373
Entertainment	1,362,006,086	1,465,989,933	1,518,629,591	1,448,732,829	1,415,692,827	1,445,130,517	1,625,709,059	1,616,057,472	1,864,153,302	1,742,064,466	1,817,317,514	1,940,708,171	1,683,860,730	19,584,046,411
Hotels	279,562,615	264,650,673	236,788,937	209,470,309	231,767,307	233,667,589	235,828,274	285,158,420	315,107,014	389,522,559	426,911,658	419,862,192	380,774,849	3,629,509,781
Airlines	136,837,490	119,718,690	115,267,796	76,890,702	142,128,378	88,298,105	92,453,251	73,784,582	89,885,132	127,789,180	134,835,157	134,955,565	136,603,833	1,332,610,371
Airport terminals	3,207,092	2,746,215	2,340,720	2,132,039	2,253,721	1,945,968	2,863,023	3,382,838	3,460,094	4,398,235	4,775,597	4,775,597	3,939,330	38,847,613
Railways	307,272,720	320,501,053	336,300,589	290,388,279	294,975,057	296,143,400	351,162,017	300,401,721	355,260,637	393,534,763	376,530,809	360,736,108	366,485,626	4,042,420,059
Buses	28,596,276	25,161,829	23,968,475	20,568,981	24,197,554	22,542,556	26,323,934	26,419,242	28,501,441	30,823,236	31,594,031	33,209,272	37,144,092	330,454,643
Sea travel	8,973,319	7,856,859	6,643,674	6,190,097	8,022,991	7,985,924	9,244,752	9,780,939	10,163,526	12,102,314	12,957,706	13,190,156	10,230,061	114,368,999
Travel agents	678,411,861	649,470,873	568,963,056	497,444,636	877,492,672	774,517,061	945,832,790	891,744,645	1,067,450,019	1,100,422,076	1,064,089,886	877,660,839	755,336,886	10,070,425,439
Timeshares	28,406	24,541	21,296	24,119	69,621	33,831	55,184	22,244	14,250	23,333	15,653	9,934	9,527	323,533
Camping grounds	50,762,177	48,337,125	39,137,927	27,952,542	42,215,202	47,324,209	63,099,798	74,405,304	79,840,324	79,668,363	85,087,349	81,096,882	48,882,733	717,047,758
Miscellaneous travel	29,344,086	26,358,255	26,148,213	21,943,329	22,976,247	23,950,000	31,316,405	32,142,825	37,716,404	46,007,961	43,321,747	39,781,977	32,112,179	383,775,542
Travel	1,243,433,427	1,200,175,440	1,118,791,746	943,534,724	1,414,331,443	1,262,741,054	1,522,351,154	1,412,084,340	1,672,291,827	1,794,769,461	1,753,042,171	1,545,416,330	1,390,744,267	17,030,273,957
Telegraph services / Wire transfer money order	12,433,031	11,739,785	14,312,847	12,542,555	11,898,913	11,602,102	12,206,278	11,813,587	10,723,677	12,384,430	13,458,902	15,636,078	18,237,484	156,556,638
Insurance services	617,785,550	602,025,369	577,290,843	544,721,727	608,078,108	589,855,896	740,805,961	660,951,111	729,302,797	787,384,107	800,871,422	787,461,232	790,288,204	8,219,036,777
Fis - cash disbursements (auto & manual)	52,384,441	39,780,316	32,079,593	35,453,434	29,282,753	33,461,728	34,527,598	1,986,838	2,186,980	1,252,892	1,518,380	1,297,021	1,069,095	213,896,628
Fis - merchandise & services	2,031,758,077	2,107,928,811	2,331,333,127	2,189,189,792	2,205,878,449	2,054,485,927	2,507,630,924	2,397,764,097	2,379,677,236	2,433,817,967	2,508,840,082	2,729,721,390	2,425,278,724	28,271,546,526
Non-Fis - foreign currency, travellers' cheques	95,378,530	69,677,564	49,799,078	51,002,569	46,657,418	53,885,767	61,761,641	72,514,008	87,789,323	99,324,742	129,704,744	138,567,402	103,374,551	964,058,807
Security brokers and dealers	203,271,842	242,984,867	267,660,636	206,543,276	283,484,820	275,180,880	469,074,514	517,089,523	246,070,738	223,576,166	204,144,851	519,219,541	240,521,538	3,695,551,350
Tax preparation services	25,213	22,963	51,888	37,624	83,445	82,231	81,705	87,904	70,492	113,506	120,851	131,689	139,288	1,023,586
Tax payments	91,779,528	93,325,421	100,775,955	106,227,994	154,551,705	121,533,541	142,181,231	136,644,362	166,604,126	152,418,605	149,251,473	151,109,177	143,502,986	1,618,126,576
Fines, bail and bond payments	23,148,429	24,743,381	24,223,803	21,115,970	22,388,314	22,473,405	27,233,205	25,806,737	29,759,671	36,590,321	36,757,865	31,696,491	33,992,030	336,781,193
Miscellaneous financial	54,580,619	54,446,391	57,345,883	56,542,263	67,833,515	64,432,619	76,564,380	74,354,888	88,765,997	85,914,203	84,576,533	84,679,361	81,376,648	876,832,681
Financial	3,182,545,260	3,246,674,868	3,454,873,653	3,223,377,204	3,430,137,440	3,226,994,096	4,072,067,437	3,899,013,055	3,740,951,037	3,832,776,939	3,929,245,103	4,459,519,382	3,837,780,548	44,353,410,762

Table 3D Card expenditure statistics (not seasonally adjusted)

Value of debit card transactions

Detailed sector breakdown - services sectors (continued)

£	September 2010	October 2010	November 2010	December 2010	January 2011	February 2011	March 2011	April 2011	May 2011	June 2011	July 2011	August 2011	September 2011	Total (latest 12 months)
Telecoms	242,332,175	246,040,059	253,376,557	292,076,196	247,686,977	226,580,081	253,126,273	248,605,518	272,687,964	273,771,809	275,158,332	280,843,572	271,452,102	3,141,405,440
Utilities	150,743,192	151,038,552	152,251,015	142,612,310	161,729,034	164,670,083	227,531,432	193,989,352	198,850,532	205,787,740	188,957,353	184,634,151	182,012,945	2,154,064,499
Contractors (residential & commercial)	96,886,632	99,569,814	107,534,056	93,115,098	93,949,559	98,802,213	113,513,736	84,779,244	98,603,238	102,950,695	101,947,680	105,500,299	109,430,183	1,209,695,815
Gardening services	4,271,086	4,031,900	4,449,934	4,772,851	3,011,968	3,487,736	5,532,520	7,326,024	7,908,576	6,417,685	5,643,486	5,375,379	4,822,882	62,780,941
Veterinary services	81,610,275	79,385,652	79,182,468	68,412,273	75,884,769	67,824,359	78,403,266	70,108,783	78,005,827	80,738,199	81,808,256	71,149,597	75,087,519	905,990,968
Photocopying & printing	22,693,258	22,189,897	24,910,763	21,013,160	20,847,959	20,442,796	24,570,868	19,845,789	23,459,985	28,908,583	26,310,061	26,915,635	30,194,428	289,609,924
Photographic studios	12,348,740	13,682,960	16,548,650	13,846,647	9,637,772	9,940,042	45,895,001	45,060,877	49,506,668	13,017,020	15,316,258	12,597,433	11,834,857	256,884,185
Beauty & barber shops	156,126,101	155,205,312	163,130,931	195,158,531	141,029,890	144,519,931	130,709,399	125,179,388	133,388,158	178,167,466	176,858,115	172,039,272	170,070,227	1,885,456,620
Employment agencies	967,644	943,624	910,475	864,600	969,412	929,036	1,051,749	754,954	895,859	1,814,470	1,460,945	1,460,945	1,835,346	13,965,846
Counselling services	3,813,964	4,479,119	4,746,562	4,039,259	3,847,825	3,609,851	3,780,689	5,809,386	6,877,531	6,259,576	5,873,807	6,100,002	5,575,459	60,999,066
Legal services	54,529,735	54,537,117	58,169,221	47,691,862	53,616,724	53,379,889	67,884,077	57,114,419	60,634,005	75,604,824	69,282,878	73,798,048	73,574,546	745,287,610
Laundry & cleaning	11,167,102	11,082,833	11,138,839	8,615,675	9,374,763	8,789,454	10,737,187	10,003,292	11,825,694	11,725,875	11,355,305	11,041,451	11,570,928	127,261,296
Funeral services	15,231,833	16,526,587	15,857,206	16,026,966	18,408,727	19,373,156	20,742,773	16,717,226	16,843,076	19,872,367	18,943,101	18,950,575	19,304,597	217,566,357
Medical services	182,035,308	177,358,472	191,373,367	147,360,218	170,365,259	180,479,429	212,963,944	171,287,900	195,527,716	216,556,779	204,238,995	192,709,740	204,329,730	2,264,551,549
Moving & courier services	24,139,393	22,638,269	23,149,592	21,009,437	20,813,579	19,377,170	22,877,600	21,148,910	24,343,704	29,246,524	30,251,998	30,683,866	30,414,289	295,954,938
Repair shops (not auto)	11,818,392	11,131,996	11,991,276	10,648,851	9,246,354	8,498,141	9,848,127	8,003,809	9,026,497	10,259,259	12,145,979	9,912,711	9,905,041	120,618,041
Accounting services	11,640,505	11,246,584	12,362,276	10,786,357	12,530,839	11,337,668	13,600,492	13,208,003	15,769,841	20,620,646	20,045,435	18,602,915	18,773,847	178,884,903
Advertising, consultancy & PR	16,657,169	15,334,037	16,232,292	12,094,726	14,596,689	15,779,695	16,122,131	13,735,590	16,122,833	15,339,076	15,108,746	16,122,833	14,961,015	179,559,450
Computer programming	125,904,577	119,277,253	120,799,693	106,899,797	105,469,356	92,769,545	110,775,508	31,209,543	32,720,119	40,175,219	37,803,269	37,446,772	42,108,923	877,549,997
Farming services	13,203,578	12,708,130	13,155,989	12,508,488	11,814,563	11,308,870	13,271,543	12,661,581	14,202,725	14,910,409	15,117,748	14,885,061	14,171,789	160,716,896
Miscellaneous professional services	466,850,766	428,295,777	420,748,622	374,063,358	446,872,788	390,619,729	466,878,560	435,871,344	460,497,078	487,141,605	491,821,992	484,012,295	554,658,598	5,441,481,746
Engineering services	14,576,859	14,384,432	14,068,013	11,265,255	12,834,794	14,447,040	18,078,621	15,689,443	16,881,946	20,681,648	20,064,152	19,258,780	19,807,938	197,462,062
Marina services	8,765,485	7,647,127	6,645,463	7,260,654	6,259,303	6,606,736	10,485,285	11,826,462	12,887,402	12,501,808	12,056,509	12,909,295	8,916,181	116,002,225
Wrecking & salvage yards	1,012,723	962,734	1,036,052	710,524	940,738	973,201	1,097,627	1,116,239	1,237,494	1,274,498	1,152,090	1,214,649	1,199,788	12,915,634
Pest control	658,478	566,859	524,146	454,675	446,626	451,957	545,918	500,002	811,494	730,794	818,685	757,321	829,174	7,437,651
Educational establishments	463,663,828	414,486,607	168,554,028	117,140,544	315,679,475	172,782,114	139,510,483	139,114,279	201,673,611	129,820,522	122,225,057	177,373,018	564,800,087	2,663,159,825
Child care services	8,495,393	8,653,110	9,297,230	8,258,480	10,027,710	9,212,115	10,655,406	8,187,303	10,144,551	11,378,306	11,154,416	9,843,179	10,079,419	116,891,225
Social, political & religious organisations	80,375,723	78,289,476	76,526,760	64,098,060	61,075,733	59,141,117	105,628,582	77,450,214	75,577,800	85,780,899	96,415,695	97,346,324	87,559,406	964,890,066
Government services	957,924,534	907,607,778	900,777,790	739,082,721	959,317,444	868,601,812	964,892,402	881,459,861	3,190,945,379	1,998,649,044	1,469,334,614	1,355,946,628	1,055,301,428	15,291,916,901
Miscellaneous services	372,572,169	351,249,146	382,430,314	359,776,315	420,015,993	356,615,348	435,326,334	381,391,464	435,502,988	411,482,283	423,442,332	451,358,265	433,386,511	4,841,977,293
Commercial equipment	98,776,113	93,992,402	94,609,920	79,236,313	86,593,133	83,743,799	99,875,154	83,844,684	95,215,482	114,698,359	113,490,503	115,692,606	129,112,034	1,190,104,389
Other services	3,711,792,730	3,534,543,615	3,356,489,500	2,990,900,201	3,504,895,755	3,123,321,134	3,635,570,251	3,193,000,883	5,768,575,073	4,627,193,646	4,075,908,553	4,015,468,530	4,167,081,217	45,992,948,358
Total services	12,129,840,096	11,792,264,552	11,755,649,790	10,605,927,718	11,992,242,245	11,254,825,336	13,807,870,563	12,646,266,441	15,804,631,086	14,829,970,311	14,385,329,183	14,675,191,138	14,015,962,542	157,566,130,905
TOTAL	24,031,086,100	24,238,835,644	25,887,753,186	27,055,152,552	23,928,258,837	22,535,721,255	26,724,040,652	25,611,816,797	29,862,940,502	28,290,552,730	27,909,570,503	28,797,596,508	27,388,013,300	318,230,252,466