

## Card Expenditure Statistics [CES] – October 2011

Seasonally-adjusted

### At a glance key figures for October

	Total spending £ billions		Annual growth rates for spending		Number of purchases millions	
	2011	2010	2011	2010	2011	2010
<b>All plastic cards</b>	<b>38.5</b>	34.4	<b>8.6%</b>	8.2%	<b>815</b>	706
<b>Debit cards</b>	<b>27.6</b>	24.0	<b>11.9%</b>	10.8%	<b>641</b>	543
<b>Credit cards</b>	<b>10.9</b>	10.4	<b>1.4%</b>	2.7%	<b>175</b>	163

With five week-ends falling in October, it is not surprising to see heavy use of plastic cards with a new record of **815 million purchases during the month**, an increase of 4.5% on the average monthly figure of the preceding six months. Total purchases amounted to **£38.5 billion**, close to the monthly average of the previous six months. The combined effect of a greater number of transactions coupled with only a very slight increase in total spending has forced down the **average transaction value** on debit cards by 60p to £44.12 and on credit cards by 49p to £63.59 (see Chart 3).

There were 277 million plastic card purchases in the **food & drink sector** in October – the highest monthly figure so far recorded, amounting to £7.9 billion. 82% of these purchases were made on **debit cards** with a total value of £6.2 billion. The debit card share of plastic card spending on food & drink has increased by one percentage point during the year to date to reach 79%, indicating a commensurate decline in **credit card** use in this sector.

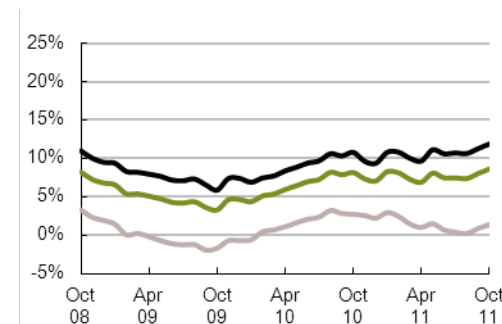
Across all sectors, although spending on credit cards was growing at an annual rate of 1.4% in October, the **credit card** share of all plastic card use has been falling over the 12 months to October 2011, with a fall of two percentage points in transactions, down to 23%, and a fall of 1.9 percentage points in total spend, down to 28%. Over the same 12 month period transaction volumes on **debit cards** were growing at an annual rate of 12.2% and debit card spending by 11.9%.

The **plastic card share of total retail sales** (including automotive fuels)<sup>1</sup> was 70.8% in October (see Chart 2). In food & drink plastic cards accounted for 65.7% of all spending, and for automotive fuels the share was 65.3%.

<sup>1</sup>CES 3-month moving average spending for October of £20.3 billion expressed as a percentage of a similar 3-month moving average for National Statistics 'All retailing including automotive fuel' (AGG 21) based on the value of Retail Sales at current prices (SA) that gives a figure of £28.7 billion.

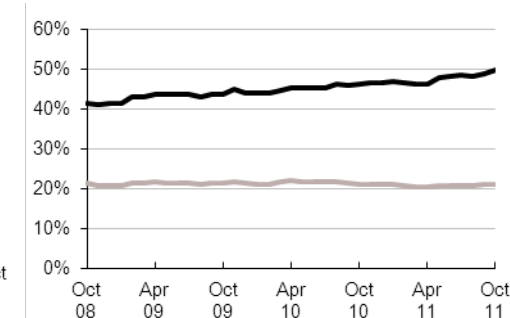
**Chart 1**

Spending on plastic cards  
Annual growth rates



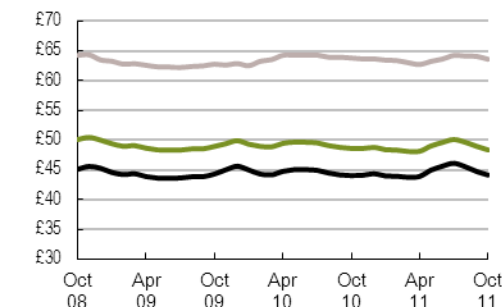
**Chart 2**

Percent of retail sales made on plastic cards  
(including automotive fuel)  
Three-month moving average



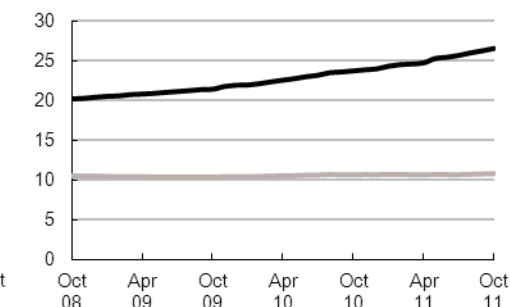
**Chart 3**

Average transaction values  
Three-month moving average



**Chart 4**

Average monthly expenditure  
£ billions



— Debit cards  
— Credit cards  
— All plastic cards

# Table 1 Card expenditure statistics (seasonally adjusted)

## Summary

Number of purchase transactions (millions)

Value of purchase transactions (£ millions)

		Number of purchase transactions (millions)									Value of purchase transactions (£ millions)								
		All sectors			Retail sales			Services			All sectors			Retail sales			Services		
		Credit	Debit	Total	Credit	Debit	Total	Credit	Debit	Total	Credit	Debit	Total	Credit	Debit	Total	Credit	Debit	Total
Annual																			
	2006	1,948	4,493	6,441	1,215	3,017	4,232	733	1,476	2,209	119,946	195,408	315,354	59,884	97,962	157,846	60,062	97,446	157,508
	2007	1,958	4,969	6,927	1,197	3,304	4,501	761	1,665	2,426	123,790	223,891	347,681	61,067	108,661	169,727	62,724	115,230	177,954
	2008	1,972	5,467	7,438	1,186	3,582	4,768	786	1,885	2,671	126,196	245,191	371,387	60,689	116,062	176,751	65,507	129,129	194,636
	2009	2,002	5,939	7,941	1,224	3,893	5,117	778	2,046	2,824	125,337	263,357	388,695	61,824	125,373	187,197	63,513	137,985	201,498
	2010	2,007	6,484	8,491	1,381	4,712	6,093	626	1,772	2,398	128,139	288,060	416,199	69,637	148,500	218,137	58,502	139,560	198,062
Monthly																			
	2010																		
	Oct	163	543	706	113	394	507	50	149	200	10,388	23,966	34,354	5,678	12,465	18,143	4,710	11,501	16,211
	Nov	172	577	749	118	417	535	54	160	214	10,877	25,508	36,385	5,942	13,153	19,095	4,936	12,355	17,291
	Dec	163	555	718	112	400	512	51	154	205	10,443	24,781	35,225	5,690	12,735	18,425	4,754	12,046	16,800
	2011																		
	Jan	169	586	755	116	422	538	53	164	217	10,684	25,202	35,885	5,783	13,258	19,041	4,900	11,944	16,844
	Feb	169	579	748	116	415	531	53	164	218	10,649	25,524	36,173	5,757	13,063	18,820	4,892	12,461	17,353
	Mar	167	574	742	114	409	524	53	165	218	10,539	25,371	35,910	5,707	12,707	18,414	4,832	12,665	17,497
	Apr	169	590	760	117	424	542	52	166	218	10,543	25,640	36,183	5,842	13,392	19,234	4,701	12,249	16,949
	May	177	638	814	121	457	578	56	180	236	11,391	30,143	41,534	6,084	14,406	20,490	5,307	15,737	21,044
	Jun	167	577	744	114	411	525	53	166	219	10,704	26,623	37,327	5,790	13,001	18,791	4,913	13,622	18,535
	Jul	167	595	761	115	426	541	52	168	221	10,683	26,689	37,372	5,822	13,591	19,412	4,861	13,099	17,960
	Aug	178	629	806	121	453	574	56	176	232	11,398	28,616	40,014	6,128	14,288	20,416	5,270	14,328	19,598
	Sep	171	622	793	117	445	562	54	177	231	10,959	27,216	38,175	5,980	14,011	19,991	4,980	13,205	18,185
	Oct	175	641	815	120	459	578	55	182	237	10,919	27,609	38,528	6,038	14,478	20,516	4,880	13,132	18,012

12 month growth rates (percentages)

Annual																			
	2006	-2.7	9.9	5.7	-2.9	9.3	5.5	-2.4	10.9	6.1	-1.4	15.3	8.3	-0.5	10.3	5.9	-2.2	20.8	10.9
	2007	0.5	10.6	7.6	-1.4	9.5	6.4	3.8	12.8	9.8	3.2	14.6	10.3	2.0	10.9	7.5	4.4	18.3	13.0
	2008	0.7	10.0	7.4	-0.9	8.4	5.9	3.3	13.2	10.1	1.9	9.5	6.8	-0.6	6.8	4.1	4.4	12.1	9.4
	2009	1.5	8.6	6.8	3.2	8.7	7.3	-1.0	8.6	5.7	-0.7	7.4	4.7	1.9	8.0	5.9	-3.0	6.9	3.5
	2010	0.2	9.2	6.9	12.8	21.0	19.1	-19.5	-13.4	-15.1	2.2	9.4	7.1	12.6	18.4	16.5	-7.9	1.1	-1.7
Monthly																			
	2010																		
	Oct	1.1	9.3	7.2	11.9	19.1	17.4	-15.9	-9.3	-11.2	2.7	10.8	8.2	12.1	17.0	15.4	-6.3	5.1	1.4
	Nov	0.6	8.9	6.8	12.0	19.5	17.7	-17.5	-11.5	-13.1	2.6	9.6	7.4	12.1	17.1	15.4	-6.6	2.8	-0.2
	Dec	0.2	9.2	6.9	12.8	21.0	19.1	-19.5	-13.4	-15.1	2.2	9.4	7.1	12.6	18.4	16.5	-7.9	1.1	-1.7
	2011																		
	Jan	0.7	10.3	7.9	11.9	21.1	18.9	-17.5	-10.8	-12.6	3.0	10.8	8.3	12.6	18.7	16.7	-6.6	3.5	0.3
	Feb	0.6	10.4	8.0	10.7	20.0	17.8	-16.2	-8.8	-10.8	2.5	10.8	8.1	11.3	17.8	15.7	-6.4	4.3	0.9
	Mar	0.0	10.0	7.5	8.8	18.2	16.0	-15.1	-6.8	-9.1	1.5	10.0	7.3	9.3	16.3	14.0	-6.5	4.1	0.8
	Apr	0.0	10.3	7.7	7.9	17.3	15.1	-13.8	-4.7	-7.1	1.0	9.7	6.9	8.2	15.6	13.1	-6.4	4.0	0.8
	May	0.9	11.6	8.9	7.7	17.5	15.2	-11.5	-1.3	-4.0	1.5	11.1	8.1	7.5	15.9	13.2	-4.8	6.5	3.0
	Jun	0.3	11.1	8.4	5.9	15.6	13.4	-10.2	0.8	-2.2	0.7	10.6	7.5	5.5	14.4	11.5	-4.5	6.9	3.4
	Jul	0.3	11.3	8.6	4.9	14.7	12.4	-8.6	3.2	0.0	0.4	10.7	7.5	4.5	13.9	10.9	-4.0	7.6	4.1
	Aug	0.1	10.8	8.2	3.7	13.2	11.0	-6.8	5.1	1.9	0.2	10.7	7.4	3.3	12.6	9.6	-3.2	8.7	5.1
	Sep	1.0	11.5	9.0	3.5	12.9	10.7	-4.1	8.2	4.9	0.9	11.3	8.0	3.3	12.6	9.6	-1.8	9.9	6.4
	Oct	1.8	12.2	9.7	3.3	12.6	10.5	-1.4	11.3	7.9	1.4	11.9	8.6	3.1	12.5	9.5	-0.6	11.3	7.8

# Table 2A Card expenditure statistics (seasonally adjusted)

## Retail sales

Number of purchase transactions (millions)

Total retail sales

		Food & drink			Mixed business			Clothing			Household			Other retailers			Automotive Fuels *			Number of purchases		
		Credit	Debit	Total	Credit	Debit	Total	Credit	Debit	Total	Credit	Debit	Total	Credit	Debit	Total	Credit	Debit	Total	Credit	Debit	Total
<b>Annual</b>																						
	2006	394	1,454	1,848	215	415	630	126	317	444	145	263	408	334	567	901	0	0	0	1,215	3,017	4,232
	2007	426	1,639	2,066	203	436	639	124	350	474	147	282	429	297	596	893	165	419	584	1,197	3,304	4,501
	2008	500	1,874	2,373	134	408	542	121	371	492	143	292	436	288	637	925	168	459	626	1,186	3,582	4,768
	2009	512	2,086	2,597	131	401	532	125	404	529	146	321	466	311	681	992	158	475	633	1,224	3,893	5,117
	2010	534	2,283	2,816	138	403	541	128	424	552	147	349	495	273	733	1,007	161	520	681	1,381	4,712	6,093
<b>Monthly</b>																						
	2010 Oct	44	192	236	11	33	44	10	35	45	12	30	42	22	61	83	13	44	57	113	394	507
	Nov	46	202	248	12	35	47	11	37	48	12	32	44	23	65	88	14	47	60	118	417	535
	Dec	44	198	242	12	34	45	10	35	45	12	29	41	21	61	83	13	43	56	112	400	512
	2011 Jan	46	205	251	13	36	48	11	36	47	12	32	44	21	66	87	14	47	60	116	422	538
	Feb	45	201	246	12	35	47	11	36	47	12	32	44	22	64	86	13	47	60	116	415	531
	Mar	44	199	243	11	33	45	11	35	46	12	31	44	22	64	86	14	47	60	114	409	524
	Apr	47	206	253	12	36	48	12	39	50	12	32	44	22	65	87	13	46	59	117	424	542
	May	47	225	272	12	40	52	11	39	51	12	32	45	24	71	95	14	50	64	121	457	578
	Jun	44	201	245	11	35	46	11	35	46	11	31	42	22	62	85	14	47	61	114	411	525
	Jul	46	211	257	11	36	47	11	37	48	12	32	44	20	62	83	14	47	62	115	426	541
	Aug	50	226	275	11	37	49	11	39	51	13	33	46	22	67	90	14	51	65	121	453	574
	Sep	47	223	271	11	36	48	11	39	50	12	33	45	21	66	87	14	48	62	117	445	562
	Oct	49	229	277	12	39	51	12	40	52	12	34	47	21	68	89	14	49	63	120	459	578
<b>12 month growth rates (percentages)</b>																						
<b>Annual</b>																						
	2006	-0.3	11.5	8.8	-0.8	8.6	5.2	-4.6	9.5	5.1	-4.7	5.7	1.8	-5.9	6.3	1.4	-	-	-	-2.9	9.3	5.5
	2007	8.2	12.8	11.8	-5.6	5.1	1.4	-1.8	10.3	6.9	1.1	7.3	5.1	-11.1	5.0	-0.9	-	-	-	-1.4	9.5	6.4
	2008	17.3	14.3	14.9	-34.0	-6.5	-15.2	-2.3	6.0	3.8	-2.6	3.6	1.5	-3.0	6.8	3.6	1.4	9.6	7.3	-0.9	8.4	5.9
	2009	2.4	11.3	9.4	-2.2	-1.7	-1.8	3.2	9.0	7.6	1.9	9.7	7.1	7.8	7.0	7.2	-5.7	3.5	1.0	3.2	8.7	7.3
	2010	4.3	9.5	8.4	5.1	0.6	1.7	2.5	5.0	4.4	0.5	8.7	6.1	-11.9	7.6	1.5	2.0	9.5	7.6	12.8	21.0	19.1
<b>Monthly</b>																						
	2010 Oct	4.3	9.7	8.6	4.8	0.4	1.5	3.4	6.2	5.5	1.9	9.4	7.1	-8.3	7.1	2.3	2.6	10.6	8.6	11.9	19.1	17.4
	Nov	4.0	9.0	8.0	4.4	-0.3	0.9	2.7	5.2	4.6	1.1	8.9	6.4	-10.3	7.0	1.6	2.4	9.7	7.9	12.0	19.5	17.7
	Dec	4.3	9.5	8.4	5.1	0.6	1.7	2.5	5.0	4.4	0.5	8.7	6.1	-11.9	7.6	1.5	2.0	9.5	7.6	12.8	21.0	19.1
	2011 Jan	5.0	10.4	9.3	6.6	1.7	2.9	3.3	5.7	5.1	1.7	10.3	7.6	-14.0	9.3	2.0	3.1	10.8	8.9	11.9	21.1	18.9
	Feb	4.9	10.6	9.5	6.6	1.7	2.9	2.7	5.0	4.4	1.3	10.6	7.7	-13.3	9.5	2.4	2.2	10.5	8.4	10.7	20.0	17.8
	Mar	4.1	10.2	9.0	5.4	1.2	2.2	1.8	4.0	3.5	0.8	11.0	7.8	-13.2	9.0	2.1	1.0	9.9	7.7	8.8	18.2	16.0
	Apr	4.2	10.3	9.1	5.1	1.8	2.6	2.4	4.4	3.9	0.6	11.4	8.0	-12.4	9.3	2.7	0.0	9.3	7.0	7.9	17.3	15.1
	May	4.8	11.6	10.3	5.9	3.5	4.1	3.7	5.6	5.2	0.5	11.8	8.3	-10.8	10.6	4.2	0.1	10.2	7.7	7.7	17.5	15.2
	Jun	3.7	10.9	9.5	4.5	3.6	3.8	3.1	4.7	4.3	-1.1	11.1	7.4	-10.2	9.7	3.8	0.1	9.7	7.3	5.9	15.6	13.4
	Jul	3.6	11.1	9.6	3.8	4.4	4.3	3.2	4.8	4.5	-1.9	11.2	7.2	-9.5	9.5	3.9	0.5	10.0	7.7	4.9	14.7	12.4
	Aug	3.3	10.8	9.3	2.4	4.3	3.8	2.7	4.2	3.9	-1.7	10.5	6.8	-9.2	8.3	3.2	0.5	9.9	7.6	3.7	13.2	11.0
	Sep	4.1	11.8	10.3	2.1	5.4	4.6	3.5	5.0	4.7	-1.0	10.9	7.3	-7.7	8.5	3.9	1.1	10.4	8.2	3.5	12.9	10.7
	Oct	4.7	12.6	11.1	2.4	7.0	5.8	4.3	6.0	5.6	-0.6	11.2	7.6	-6.4	8.6	4.4	1.3	10.6	8.4	3.3	12.6	10.5

\* The category of Automotive Fuels is effective from January 2010. Data shown for 2009 are for growth trend purposes only; these data are excluded from totals for 2009 as these are already included in their former Services sector of Motoring (now known as Vehicle Sales & Service)

# Table 2B Card expenditure statistics (seasonally adjusted)

## Retail sales

Value of purchase transactions (£ millions)

Total retail sales

	Value of purchase transactions (£ millions)																		Total retail sales			
	Food & drink			Mixed business			Clothing			Household			Other retailers			Automotive Fuels *			Value of purchases			
	Credit	Debit	Total	Credit	Debit	Total	Credit	Debit	Total	Credit	Debit	Total	Credit	Debit	Total	Credit	Debit	Total	Credit	Debit	Total	
Annual																						
2006	14,002	43,463	57,465	8,904	13,103	22,006	5,783	9,379	15,162	14,020	13,722	27,741	17,175	18,296	35,471	0	0	0	59,884	97,962	157,846	
2007	15,309	48,577	63,886	8,843	14,054	22,897	5,861	10,455	16,316	14,700	15,346	30,046	16,354	20,229	36,583	5,868	10,957	16,825	61,067	108,661	169,727	
2008	17,564	54,553	72,117	7,056	13,457	20,513	5,954	11,213	17,167	14,382	15,574	29,956	15,733	21,265	36,998	6,676	12,965	19,641	60,689	116,062	176,751	
2009	18,098	60,234	78,332	7,094	13,863	20,957	6,376	12,644	19,020	14,494	16,602	31,097	15,761	22,029	37,790	5,860	12,668	18,528	61,824	125,373	187,197	
2010	18,834	63,846	82,680	7,159	13,926	21,085	6,782	13,641	20,423	14,638	18,753	33,392	15,610	23,543	39,154	6,613	14,791	21,404	69,637	148,500	218,137	
Monthly																						
2010	Oct	1,556	5,352	6,908	577	1,134	1,711	565	1,134	1,698	1,191	1,624	2,815	1,248	1,967	3,215	542	1,254	1,796	5,678	12,465	18,143
	Nov	1,623	5,609	7,232	608	1,209	1,817	593	1,202	1,795	1,238	1,697	2,935	1,304	2,080	3,385	575	1,356	1,931	5,942	13,153	19,095
	Dec	1,551	5,508	7,058	587	1,153	1,740	561	1,141	1,702	1,202	1,638	2,840	1,240	2,010	3,250	548	1,286	1,834	5,690	12,735	18,425
2011	Jan	1,583	5,639	7,222	601	1,222	1,823	581	1,198	1,780	1,165	1,697	2,863	1,251	2,064	3,315	603	1,437	2,039	5,783	13,258	19,041
	Feb	1,553	5,491	7,044	586	1,183	1,769	578	1,175	1,753	1,172	1,723	2,895	1,264	2,055	3,320	603	1,436	2,039	5,757	13,063	18,820
	Mar	1,519	5,254	6,773	567	1,094	1,662	574	1,147	1,721	1,181	1,718	2,899	1,258	2,055	3,314	607	1,439	2,045	5,707	12,707	18,414
	Apr	1,632	5,673	7,305	596	1,252	1,848	600	1,260	1,860	1,189	1,762	2,951	1,229	2,034	3,263	597	1,411	2,008	5,842	13,392	19,234
	May	1,605	6,159	7,764	658	1,374	2,032	616	1,294	1,910	1,214	1,805	3,019	1,358	2,224	3,583	634	1,550	2,184	6,084	14,406	20,490
	Jun	1,542	5,391	6,933	593	1,223	1,815	611	1,200	1,812	1,141	1,724	2,865	1,287	2,011	3,298	618	1,451	2,069	5,790	13,001	18,791
	Jul	1,606	5,805	7,410	602	1,269	1,872	603	1,256	1,859	1,159	1,766	2,925	1,231	2,030	3,261	621	1,464	2,085	5,822	13,591	19,412
	Aug	1,715	6,117	7,832	617	1,316	1,933	619	1,309	1,928	1,257	1,837	3,094	1,302	2,137	3,439	618	1,572	2,190	6,128	14,288	20,416
	Sep	1,671	6,085	7,755	610	1,281	1,891	608	1,274	1,882	1,218	1,821	3,039	1,246	2,067	3,313	627	1,482	2,109	5,980	14,011	19,991
	Oct	1,694	6,229	7,923	634	1,353	1,987	622	1,335	1,957	1,211	1,876	3,086	1,253	2,153	3,405	624	1,533	2,157	6,038	14,478	20,516
12 month growth rates (percentages)																						
Annual																						
2006	-0.1	10.3	7.5	2.1	10.1	6.7	-1.5	8.6	4.5	0.9	13.5	6.8	-2.9	8.9	2.8	-	-	-	-0.5	10.3	5.9	
2007	9.3	11.8	11.2	-0.7	7.3	4.0	1.3	11.5	7.6	4.9	11.8	8.3	-4.8	10.6	3.1	-	-	-	2.0	10.9	7.5	
2008	14.7	12.3	12.9	-20.2	-4.2	-10.4	1.6	7.3	5.2	-2.2	1.5	-0.3	-3.8	5.1	1.1	13.8	18.3	16.7	-0.6	6.8	4.1	
2009	3.0	10.4	8.6	0.5	3.0	2.2	7.1	12.8	10.8	0.8	6.6	3.8	0.2	3.6	2.1	-12.2	-2.3	-5.7	1.9	8.0	5.9	
2010	4.1	6.0	5.5	0.9	0.5	0.6	6.4	7.9	7.4	1.0	13.0	7.4	-1.0	6.9	3.6	12.8	16.8	15.5	12.6	18.4	16.5	
Monthly																						
2010	Oct	4.5	6.4	6.0	2.6	1.4	1.8	7.5	9.3	8.7	2.6	13.8	8.6	0.5	6.8	4.2	12.9	17.4	16.0	12.1	17.0	15.4
	Nov	3.9	5.5	5.1	1.2	0.1	0.5	6.7	8.1	7.7	1.6	13.1	7.7	-0.4	6.5	3.6	13.6	17.1	16.0	12.1	17.1	15.4
	Dec	4.1	6.0	5.5	0.9	0.5	0.6	6.4	7.9	7.4	1.0	13.0	7.4	-1.0	6.9	3.6	12.8	16.8	15.5	12.6	18.4	16.5
2011	Jan	4.3	6.7	6.1	1.6	1.4	1.5	7.0	8.5	8.0	2.4	14.9	9.1	-0.3	8.5	4.8	14.1	18.6	17.2	12.6	18.7	16.7
	Feb	4.1	6.9	6.2	0.7	1.2	1.0	6.3	7.9	7.4	1.8	15.1	9.0	-0.6	8.6	4.8	13.2	18.5	16.9	11.3	17.8	15.7
	Mar	3.1	6.4	5.6	-0.7	0.5	0.1	5.3	7.0	6.4	0.7	15.0	8.4	-1.4	8.1	4.2	11.9	18.0	16.1	9.3	16.3	14.0
	Apr	3.3	6.7	5.9	-0.3	1.3	0.8	5.5	7.3	6.7	0.1	15.2	8.3	-2.0	8.1	3.9	10.5	17.3	15.2	8.2	15.6	13.1
	May	3.6	8.0	7.0	0.7	3.1	2.3	6.3	8.6	7.8	-0.4	15.8	8.4	-1.9	9.1	4.5	10.2	18.3	15.8	7.5	15.9	13.2
	Jun	2.3	7.4	6.2	-0.2	3.2	2.1	6.1	8.0	7.3	-2.2	15.1	7.2	-3.0	8.2	3.5	9.7	18.0	15.4	5.5	14.4	11.5
	Jul	2.1	7.8	6.5	0.0	4.3	2.8	6.1	8.5	7.7	-2.9	15.2	7.0	-3.4	8.0	3.3	9.6	18.6	15.8	4.5	13.9	10.9
	Aug	1.8	7.5	6.2	-0.5	4.4	2.7	5.6	7.8	7.1	-3.3	14.1	6.3	-4.0	7.0	2.5	9.5	18.9	15.9	3.3	12.6	9.6
	Sep	2.6	8.7	7.3	0.2	5.7	3.8	6.1	8.7	7.8	-2.5	14.5	6.9	-3.5	7.1	2.8	10.5	19.8	16.9	3.3	12.6	9.6
	Oct	3.2	9.5	8.1	1.3	7.3	5.3	6.7	9.7	8.7	-2.1	14.6	7.2	-3.0	7.4	3.2	11.0	20.1	17.3	3.1	12.5	9.5

\* The category of Automotive Fuels is effective from January 2010. Data shown for 2009 are for growth trend purposes only; these data are excluded from totals for 2009 as these are already included in their former Services sector of Motoring (now known as Vehicle Sales & Service)

# Table 2C Card expenditure statistics (seasonally adjusted)

## Services

Number of purchase transactions (millions)

Total services

	Number of purchase transactions (millions)																		Total services			
	Vehicle Sales & Services			Entertainment			Hotels			Travel			Financial			Other services			Number of purchases			
	Credit	Debit	Total	Credit	Debit	Total	Credit	Debit	Total	Credit	Debit	Total	Credit	Debit	Total	Credit	Debit	Total	Credit	Debit	Total	
Annual																						
2006	242	529	771	176	349	525	36	24	61	96	127	224	28	91	119	155	356	510	733	1,476	2,209	
2007	245	573	818	190	411	600	38	26	64	101	148	249	28	106	134	160	401	561	761	1,665	2,426	
2008	249	628	877	198	500	698	36	28	64	103	168	271	32	111	143	167	451	618	786	1,885	2,671	
2009	236	656	891	206	593	800	37	31	68	101	183	284	32	112	144	167	470	637	778	2,046	2,824	
2010	76	204	280	220	720	940	37	34	71	97	202	299	32	129	161	163	483	646	626	1,772	2,398	
Monthly																						
2010	Oct	6	16	21	18	63	81	3	3	6	8	17	25	3	11	14	13	40	53	50	149	200
	Nov	6	18	24	20	66	86	3	3	6	8	19	27	3	11	14	14	42	56	54	160	214
	Dec	6	18	25	18	63	82	3	3	6	8	18	26	3	11	14	13	40	53	51	154	205
2011	Jan	7	22	29	19	68	87	3	3	6	8	18	25	3	11	14	13	42	55	53	164	217
	Feb	7	23	30	19	67	86	3	3	6	8	18	25	3	11	14	13	42	55	53	164	218
	Mar	8	24	32	19	66	84	3	3	5	8	18	26	3	12	14	13	43	56	53	165	218
	Apr	8	24	32	19	67	86	3	3	6	7	18	26	3	12	14	13	42	55	52	166	218
	May	8	24	32	20	75	95	3	3	7	8	19	27	3	12	15	14	46	61	56	180	236
	Jun	7	18	25	19	69	88	3	3	7	7	19	26	3	12	15	14	44	58	53	166	219
	Jul	6	19	25	20	72	92	3	3	7	7	19	26	3	12	15	13	43	56	52	168	221
	Aug	6	19	26	21	76	97	3	3	7	8	19	28	3	13	16	14	45	59	56	176	232
	Sep	6	20	27	21	77	98	3	3	7	8	19	27	3	12	15	13	44	57	54	177	231
	Oct	6	22	28	22	80	101	3	4	7	8	20	27	3	13	15	13	45	58	55	182	237
12 month growth rates (percentages)																						
Annual																						
2006	-10.3	1.2	-2.7	5.3	15.2	11.7	-1.3	9.2	2.6	1.4	15.1	8.7	-9.0	13.6	7.4	1.7	21.7	14.9	-2.4	10.9	6.1	
2007	1.3	8.3	6.1	8.1	17.6	14.4	3.2	6.5	4.5	4.2	16.7	11.3	0.8	16.2	12.6	3.4	12.9	10.0	3.8	12.8	9.8	
2008	1.4	9.6	7.2	4.3	21.7	16.2	-2.8	5.9	0.8	2.5	13.4	9.0	15.7	4.8	7.1	4.6	12.3	10.1	3.3	13.2	10.1	
2009	-5.4	4.5	1.7	4.3	18.7	14.6	0.5	14.0	6.3	-2.5	8.9	4.6	-1.9	1.1	0.4	-0.1	4.4	3.2	-1.0	8.6	5.7	
2010	-67.7	-69.0	-68.6	6.7	21.4	17.6	1.6	9.2	5.1	-3.1	10.3	5.5	1.0	15.0	11.9	-2.3	2.7	1.4	-19.5	-13.4	-15.1	
Monthly																						
2010	Oct	-56.5	-56.4	-56.4	7.0	22.0	18.1	2.1	9.3	5.4	-2.4	10.1	5.6	1.1	15.8	12.5	-1.8	2.6	1.5	-15.9	-9.3	-11.2
	Nov	-62.0	-62.9	-62.6	6.8	21.3	17.5	2.0	8.8	5.1	-2.2	10.4	5.9	1.5	15.4	12.4	-1.9	2.9	1.7	-17.5	-11.5	-13.1
	Dec	-67.7	-69.0	-68.6	6.7	21.4	17.6	1.6	9.2	5.1	-3.1	10.3	5.5	1.0	15.0	11.9	-2.3	2.7	1.4	-19.5	-13.4	-15.1
2011	Jan	-65.3	-66.0	-65.8	8.1	22.6	18.9	2.3	10.2	6.0	-2.8	11.2	6.3	0.8	15.3	12.1	-2.3	3.2	1.8	-17.5	-10.8	-12.6
	Feb	-62.8	-62.8	-62.8	8.1	22.2	18.6	1.9	10.0	5.6	-3.7	11.4	6.1	0.1	14.7	11.5	-2.6	3.1	1.6	-16.2	-8.8	-10.8
	Mar	-59.9	-59.1	-59.3	7.3	21.2	17.7	0.4	8.7	4.3	-4.4	11.7	6.1	-0.9	13.9	10.7	-3.2	3.0	1.4	-15.1	-6.8	-9.1
	Apr	-56.5	-54.8	-55.2	6.8	20.3	16.9	0.1	9.3	4.4	-5.4	12.4	6.2	-1.4	13.5	10.3	-3.6	3.2	1.4	-13.8	-4.7	-7.1
	May	-52.2	-49.4	-50.2	7.5	21.5	18.0	0.7	10.8	5.4	-5.5	14.4	7.5	-0.7	13.5	10.5	-2.7	4.7	2.8	-11.5	-1.3	-4.0
	Jun	-47.8	-44.6	-45.4	6.3	20.7	17.1	0.6	11.2	5.5	-6.9	13.9	6.8	-1.0	12.7	9.9	-2.7	5.3	3.2	-10.2	0.8	-2.2
	Jul	-43.1	-38.7	-39.9	6.0	20.7	17.1	0.7	12.5	6.2	-7.1	14.3	7.0	-0.9	12.2	9.4	-2.6	5.9	3.7	-8.6	3.2	0.0
	Aug	-37.4	-32.2	-33.6	5.7	19.8	16.4	1.2	12.1	6.3	-7.1	13.9	6.8	0.1	12.0	9.6	-2.5	6.2	3.9	-6.8	5.1	1.9
	Sep	-29.3	-22.3	-24.2	6.9	20.8	17.5	2.4	13.0	7.4	-6.8	13.6	6.7	1.0	12.1	9.8	-1.8	6.9	4.6	-4.1	8.2	4.9
	Oct	-19.8	-10.3	-12.8	8.0	21.2	18.1	3.6	13.9	8.5	-6.3	13.9	7.2	1.6	12.6	10.4	-1.2	7.8	5.5	-1.4	11.3	7.9

# Table 2D Card expenditure statistics (seasonally adjusted)

## Services

Value of purchase transactions (£ millions)

## Total services

	Vehicle Sales & Services			Entertainment			Hotels			Travel			Financial			Other services			Value of purchases			
	Credit	Debit	Total	Credit	Debit	Total	Credit	Debit	Total	Credit	Debit	Total	Credit	Debit	Total	Credit	Debit	Total	Credit	Debit	Total	
Annual																						
2006	13,793	27,055	40,848	8,873	9,675	18,548	5,207	2,041	7,248	13,217	11,025	24,242	5,585	20,925	26,510	13,387	26,725	40,112	60,062	97,446	157,508	
2007	14,684	30,697	45,381	9,297	11,230	20,527	5,483	2,263	7,746	13,435	12,603	26,038	5,698	26,129	31,827	14,126	32,307	46,434	62,724	115,230	177,954	
2008	15,524	32,973	48,498	9,656	13,060	22,716	5,507	2,446	7,953	14,008	13,729	27,737	5,923	29,926	35,849	14,887	36,996	51,883	65,507	129,129	194,636	
2009	14,631	35,432	50,063	9,649	14,597	24,246	5,290	2,723	8,013	13,060	14,081	27,141	5,723	33,003	38,726	15,160	38,148	53,309	63,513	137,985	201,498	
2010	8,753	24,681	33,434	9,840	16,936	26,777	5,532	3,040	8,572	12,812	15,773	28,585	5,882	38,465	44,347	15,682	40,665	56,347	58,502	139,560	198,062	
Monthly																						
2010																						
Oct	667	1,994	2,661	812	1,444	2,256	457	260	717	1,030	1,342	2,372	479	3,236	3,715	1,265	3,224	4,489	4,710	11,501	16,211	
Nov	714	2,151	2,865	887	1,539	2,426	471	272	743	1,050	1,391	2,441	514	3,738	4,251	1,301	3,264	4,565	4,936	12,355	17,291	
Dec	706	2,082	2,788	785	1,451	2,236	458	262	721	1,036	1,386	2,422	500	3,524	4,024	1,268	3,341	4,610	4,754	12,046	16,800	
2011																						
Jan	762	2,198	2,960	834	1,573	2,407	473	281	755	1,042	1,366	2,408	501	3,149	3,650	1,288	3,377	4,665	4,900	11,944	16,844	
Feb	778	2,232	3,010	836	1,558	2,395	467	277	744	1,007	1,340	2,347	510	3,560	4,069	1,293	3,495	4,788	4,892	12,461	17,353	
Mar	796	2,303	3,099	784	1,496	2,280	421	239	660	1,006	1,352	2,359	518	3,695	4,213	1,307	3,580	4,887	4,832	12,665	17,497	
Apr	746	2,233	2,979	802	1,584	2,387	471	286	757	942	1,362	2,304	535	3,662	4,197	1,203	3,122	4,325	4,701	12,249	16,949	
May	791	2,483	3,274	949	1,847	2,796	513	295	807	1,019	1,422	2,442	643	3,712	4,355	1,392	5,978	7,370	5,307	15,737	21,044	
Jun	734	2,161	2,895	802	1,617	2,419	506	296	802	981	1,398	2,378	560	3,680	4,240	1,331	4,470	5,801	4,913	13,622	18,535	
Jul	674	2,147	2,821	868	1,719	2,587	515	305	820	983	1,392	2,375	559	3,710	4,269	1,262	3,826	5,088	4,861	13,099	17,960	
Aug	729	2,216	2,945	884	1,771	2,655	526	307	833	1,070	1,436	2,505	647	4,461	5,107	1,415	4,137	5,552	5,270	14,328	19,598	
Sep	714	2,181	2,895	843	1,741	2,584	530	299	829	988	1,417	2,406	568	3,863	4,432	1,336	3,704	5,039	4,980	13,205	18,185	
Oct	710	2,220	2,930	866	1,802	2,668	529	313	843	960	1,438	2,398	530	3,784	4,314	1,285	3,575	4,860	4,880	13,132	18,012	

## 12 month growth rates (percentages)

	Vehicle Sales & Services			Entertainment			Hotels			Travel			Financial			Other services			Value of purchases			
	Credit	Debit	Total	Credit	Debit	Total	Credit	Debit	Total	Credit	Debit	Total	Credit	Debit	Total	Credit	Debit	Total	Credit	Debit	Total	
Annual																						
2006	-1.7	11.9	6.9	6.7	18.3	12.4	3.8	17.4	7.3	1.1	13.7	6.4	-32.8	21.1	3.6	5.6	36.4	24.3	-2.2	20.8	10.9	
2007	6.5	13.5	11.1	4.8	16.1	10.7	5.3	10.9	6.9	1.7	14.3	7.4	2.0	24.9	20.1	5.5	20.9	15.8	4.4	18.3	13.0	
2008	5.7	7.4	6.9	3.9	16.3	10.7	0.4	8.1	2.7	4.3	8.9	6.5	3.9	14.5	12.6	5.4	14.5	11.7	4.4	12.1	9.4	
2009	-5.8	7.5	3.2	-0.1	11.8	6.7	-3.9	11.3	0.8	-6.8	2.6	-2.1	-3.4	10.3	8.0	1.8	3.1	2.7	-3.0	6.9	3.5	
2010	-40.2	-30.3	-33.2	2.0	16.0	10.4	4.6	11.6	7.0	-1.9	12.0	5.3	2.8	16.5	14.5	3.4	6.6	5.7	-7.9	1.1	-1.7	
Monthly																						
2010																						
Oct	-32.1	-20.9	-24.2	2.5	16.0	10.6	3.8	11.0	6.2	-3.3	12.1	4.5	1.7	17.0	14.7	3.9	11.5	9.3	-6.3	5.1	1.4	
Nov	-35.7	-25.2	-28.3	2.2	15.7	10.3	4.6	11.3	6.8	-2.0	12.2	5.3	2.6	17.2	15.0	4.2	7.1	6.3	-6.6	2.8	-0.2	
Dec	-40.2	-30.3	-33.2	2.0	16.0	10.4	4.6	11.6	7.0	-1.9	12.0	5.3	2.8	16.5	14.5	3.4	6.6	5.7	-7.9	1.1	-1.7	
2011																						
Jan	-37.6	-27.1	-30.1	3.3	17.2	11.7	5.4	12.9	8.0	-1.4	12.0	5.6	3.7	18.7	16.5	3.6	9.0	7.4	-6.6	3.5	0.3	
Feb	-35.7	-25.0	-28.1	3.4	17.2	11.8	5.0	12.8	7.7	-2.6	10.5	4.3	3.8	19.3	17.1	2.8	9.0	7.2	-6.4	4.3	0.9	
Mar	-34.1	-23.8	-26.8	2.9	16.7	11.3	3.4	11.4	6.2	-3.4	9.1	3.2	3.6	18.8	16.6	1.9	8.1	6.3	-6.5	4.1	0.8	
Apr	-32.0	-22.0	-24.8	2.6	16.5	11.1	3.1	11.5	6.0	-4.5	8.9	2.6	4.1	18.4	16.4	0.7	5.9	4.4	-6.4	4.0	0.8	
May	-29.0	-18.6	-21.5	4.3	18.2	12.9	3.7	13.1	6.9	-3.7	9.7	3.5	6.6	18.3	16.6	0.7	10.1	7.4	-4.8	6.5	3.0	
Jun	-26.3	-15.9	-18.8	3.2	17.4	12.0	3.9	13.5	7.2	-4.3	9.5	3.1	7.1	17.2	15.8	0.0	9.8	7.1	-4.5	6.9	3.4	
Jul	-23.6	-12.8	-15.8	3.0	18.1	12.4	4.1	14.6	7.7	-5.1	9.0	2.5	8.2	16.6	15.5	-0.7	9.4	6.6	-4.0	7.6	4.1	
Aug	-20.1	-9.9	-12.7	2.4	17.5	11.8	4.6	14.2	7.9	-5.5	8.4	2.0	10.3	18.0	16.9	-0.6	9.9	7.0	-3.2	8.7	5.1	
Sep	-15.4	-6.0	-8.5	2.8	18.6	12.7	6.0	14.8	9.1	-5.8	7.9	1.7	11.9	18.7	17.7	-0.4	9.9	7.1	-1.8	9.9	6.4	
Oct	-10.4	-1.6	-4.0	3.4	19.1	13.3	7.1	15.3	10.0	-6.0	7.8	1.6	12.9	19.2	18.4	-0.1	10.5	7.6	-0.6	11.3	7.8	

Table 3A Card expenditure statistics (not seasonally adjusted)

Number of credit card transactions

Detailed sector breakdown - retail sectors

	October 2010	November 2010	December 2010	January 2011	February 2011	March 2011	April 2011	May 2011	June 2011	July 2011	August 2011	September 2011	October 2011	Total (latest 12 months)
Supermarkets	41,396,777	46,536,218	48,942,099	38,855,018	36,777,424	42,023,720	42,272,726	42,976,297	42,807,308	43,342,100	45,602,512	42,810,848	45,550,297	518,496,567
Bakers & dairies	73,655	78,607	83,094	62,802	66,484	75,779	80,239	91,578	101,640	110,858	112,796	113,666	123,589	1,101,132
Sweet stores	146,414	246,306	457,308	96,750	124,541	166,165	216,227	173,983	158,390	152,247	162,671	157,620	172,638	2,284,846
Miscellaneous foodstores	2,018,747	2,211,819	2,292,898	1,745,699	1,788,163	2,034,325	2,203,845	2,314,030	2,358,015	2,312,729	2,497,142	2,286,838	2,391,541	26,437,044
Off-licences	509,945	533,305	694,690	414,689	425,084	475,263	493,212	507,233	491,326	512,591	505,625	479,014	500,732	6,032,764
<b>Food &amp; drink</b>	<b>44,145,538</b>	<b>49,606,255</b>	<b>52,470,089</b>	<b>41,174,958</b>	<b>39,181,696</b>	<b>44,775,252</b>	<b>45,266,249</b>	<b>46,063,121</b>	<b>45,916,679</b>	<b>46,430,525</b>	<b>48,880,746</b>	<b>45,847,986</b>	<b>48,738,797</b>	<b>554,352,353</b>
Department stores	5,821,237	8,196,594	10,850,795	5,864,433	4,589,998	5,368,637	5,382,143	6,169,300	6,084,883	6,184,177	5,915,425	5,461,136	6,122,623	76,190,144
Discount stores	1,611,162	2,164,477	2,672,843	1,390,630	1,258,151	1,328,788	1,461,861	1,521,968	1,354,410	1,467,080	1,508,082	1,464,624	1,608,251	19,201,165
Catalogues	1,241,539	1,944,905	2,076,253	1,289,875	1,078,444	1,132,308	1,009,011	1,047,619	1,014,945	987,168	556,552	1,151,671	1,900,688	15,189,439
Miscellaneous mixed	2,517,458	3,028,621	3,279,520	2,550,660	2,379,664	2,278,857	2,027,759	2,344,961	2,213,742	2,241,121	2,416,923	2,290,948	2,483,597	29,536,373
<b>Mixed business</b>	<b>11,191,396</b>	<b>15,334,597</b>	<b>18,879,411</b>	<b>11,095,596</b>	<b>9,306,257</b>	<b>10,108,590</b>	<b>9,880,774</b>	<b>11,083,846</b>	<b>10,667,980</b>	<b>10,879,546</b>	<b>10,396,982</b>	<b>10,368,379</b>	<b>12,115,159</b>	<b>140,117,121</b>
Men's clothing	401,743	489,979	671,966	439,246	343,074	356,056	369,445	413,568	424,717	454,778	433,702	382,263	388,365	5,167,159
Women's clothing	1,774,859	2,100,524	2,558,986	1,569,404	1,355,827	1,635,120	1,950,487	2,117,099	2,140,498	2,237,039	2,023,878	1,884,976	2,012,709	23,586,547
Family clothing	6,312,430	7,566,347	9,759,355	5,503,258	4,725,783	5,685,349	6,400,347	6,794,947	6,563,312	7,471,011	6,820,965	6,277,540	6,888,177	80,456,391
Miscellaneous clothing	603,612	696,574	776,249	383,843	394,038	468,782	642,563	737,873	1,055,303	652,612	673,319	647,524	721,965	7,850,825
Shoe shops	1,236,369	1,315,689	1,566,273	1,227,063	887,328	983,679	1,317,486	1,355,358	1,426,535	1,587,333	1,603,134	1,298,626	1,311,988	15,880,492
<b>Clothing</b>	<b>10,329,013</b>	<b>12,169,293</b>	<b>15,332,829</b>	<b>9,122,814</b>	<b>7,706,050</b>	<b>9,128,986</b>	<b>10,680,328</b>	<b>11,418,845</b>	<b>11,610,365</b>	<b>12,402,773</b>	<b>11,554,998</b>	<b>10,490,929</b>	<b>11,323,204</b>	<b>132,941,414</b>
Furniture stores	1,323,063	1,578,282	1,572,453	1,450,133	1,143,232	1,224,009	1,104,175	1,235,219	1,186,734	1,226,871	1,316,310	1,242,513	1,356,849	15,636,780
Household appliance stores	1,316,864	1,493,154	1,676,355	1,279,333	1,175,264	1,339,673	1,271,378	1,329,351	1,192,101	1,261,678	1,284,005	1,299,794	1,309,396	15,911,482
Electronic stores	1,315,399	1,628,053	2,207,312	1,500,989	1,137,444	1,185,215	1,071,527	1,219,875	1,138,707	1,176,393	1,307,785	1,288,419	1,315,484	16,177,203
DIY stores	6,062,440	6,229,195	5,572,667	5,211,926	5,221,339	6,442,357	7,403,538	7,068,495	5,809,971	6,032,960	6,361,301	5,898,813	6,186,843	73,439,405
Floor covering stores	181,192	216,460	142,969	160,903	153,072	167,999	144,145	164,073	147,861	152,807	172,067	161,294	171,348	1,954,998
Garden centres	1,195,001	1,298,050	1,477,218	822,154	969,381	1,724,055	2,477,578	1,737,250	1,432,323	1,362,180	1,228,793	1,352,414	1,835,897	18,359,897
Miscellaneous household	382,613	436,612	350,144	336,353	304,310	335,048	333,901	365,459	360,235	406,283	497,365	462,364	471,088	4,660,162
<b>Household</b>	<b>11,776,572</b>	<b>12,879,806</b>	<b>12,999,118</b>	<b>10,761,791</b>	<b>10,104,042</b>	<b>12,418,356</b>	<b>13,807,165</b>	<b>13,860,050</b>	<b>11,572,859</b>	<b>11,689,315</b>	<b>12,301,013</b>	<b>11,582,990</b>	<b>12,163,422</b>	<b>146,139,927</b>
Books, newspapers & magazines	1,890,608	2,403,859	3,216,479	1,614,899	1,511,488	1,626,459	1,603,650	1,797,859	1,786,916	1,748,461	1,835,314	1,813,143	1,957,656	22,916,183
Record shops	637,869	1,131,325	1,917,377	609,165	538,279	604,130	514,642	576,011	535,550	445,221	456,441	495,900	456,489	8,256,489
Music shops	1,499,018	1,742,002	1,806,861	1,861,944	1,530,632	1,656,231	1,527,422	1,902,334	1,659,359	1,575,406	1,714,212	1,629,741	1,745,463	20,351,607
Hobbies, toys & games	774,526	1,394,427	1,926,809	603,310	506,922	572,825	514,762	488,207	459,262	469,197	506,613	495,089	616,172	8,553,595
Photographic	234,912	301,087	381,508	216,652	181,665	210,565	198,193	230,202	248,611	263,388	242,373	263,388	232,830	2,955,946
Handicraft	80,793	95,119	75,449	74,761	72,202	78,408	64,544	73,384	90,609	68,351	78,319	78,651	84,678	934,475
Sports shops	2,525,615	2,917,622	3,674,001	2,377,061	2,067,231	2,376,120	2,656,943	2,861,639	2,744,513	2,988,068	3,178,784	2,590,488	2,476,010	32,908,480
Jewellers	552,155	783,725	1,307,376	517,308	523,066	552,158	521,629	567,332	585,183	606,902	604,305	554,090	564,438	7,687,512
Computer software	628,163	737,499	764,550	615,847	530,883	580,259	525,633	604,234	568,806	539,329	585,213	577,335	613,442	7,243,030
Medical goods	18,478	21,083	17,660	17,652	18,676	20,888	17,813	19,395	20,578	19,640	19,746	19,833	19,344	232,308
Chemists	3,484,276	4,324,377	5,438,607	3,283,913	3,063,585	3,634,312	3,127,580	3,613,626	3,982,352	3,350,787	3,671,672	3,425,708	3,565,918	44,482,437
Optical goods	417,707	443,642	324,384	414,210	422,484	470,952	430,882	475,475	458,035	452,913	480,561	443,216	434,974	5,251,728
Cosmetic stores	376,714	578,312	868,481	335,823	307,999	336,805	297,443	339,450	346,389	350,011	372,486	336,541	366,141	4,835,881
Tobacconists	9,514	10,167	11,903	7,253	10,664	10,664	11,306	14,438	18,363	16,673	14,213	14,213	14,655	162,454
Florists	317,380	335,141	534,462	299,798	412,176	465,537	450,511	351,209	342,785	318,313	310,203	324,293	303,591	4,448,019
Artists' supplies	264,359	345,576	301,863	212,147	217,291	254,349	213,443	246,621	576,841	237,940	269,722	247,867	270,380	3,394,040
Antiques, art & stamps/coins	163,802	178,055	166,502	122,147	111,404	130,265	127,083	145,851	155,409	170,694	143,053	150,779	1,757,857	17,145,051
Pawn shops	2,496	2,792	4,148	2,533	2,393	2,619	2,403	2,500	5,022	2,632	2,533	2,477	2,492	34,544
Gift shops	1,270,864	1,815,789	2,503,042	1,030,542	1,115,928	1,169,021	1,155,341	1,217,314	1,307,917	1,320,862	1,467,366	1,255,062	1,349,152	16,707,336
Secondhand shops	6,346	6,832	6,794	4,989	5,318	6,085	5,837	7,073	7,214	7,982	6,864	6,984	6,984	93,312
Luggage & leather goods	103,667	132,070	164,512	109,171	81,723	93,475	97,786	106,063	117,507	126,880	117,508	99,055	98,685	1,344,235
Pet shops	609,381	660,982	694,365	574,348	542,259	611,187	593,167	652,567	637,705	638,652	657,359	609,963	645,469	7,518,023
Religious goods	718	793	581	685	670	785	581	659	735	1,263	691	1,277	9,658	9,658
Direct sales	3,899,028	4,068,491	3,859,387	3,760,460	3,532,859	4,141,697	3,486,880	3,810,217	3,522,478	3,199,396	3,290,423	3,348,054	3,459,085	43,479,427
Miscellaneous & speciality shops	1,426,624	1,783,865	1,881,238	1,353,741	1,259,005	1,410,614	1,137,971	1,264,451	1,479,359	1,225,492	1,828,102	1,258,936	1,262,277	17,145,051
<b>Other retail</b>	<b>21,195,013</b>	<b>26,214,632</b>	<b>31,842,502</b>	<b>20,020,359</b>	<b>18,564,319</b>	<b>21,016,410</b>	<b>19,283,445</b>	<b>21,368,111</b>	<b>21,672,266</b>	<b>20,105,894</b>	<b>21,909,119</b>	<b>19,958,778</b>	<b>20,737,792</b>	<b>262,693,627</b>
<b>Automotive Fuels</b>	<b>13,365,516</b>	<b>13,884,615</b>	<b>12,341,225</b>	<b>12,296,597</b>	<b>11,970,484</b>	<b>13,798,071</b>	<b>13,287,427</b>	<b>14,308,236</b>	<b>13,103,732</b>	<b>13,909,766</b>	<b>14,231,671</b>	<b>13,817,901</b>	<b>13,825,922</b>	<b>160,775,647</b>
<b>Total retail sales</b>	<b>112,003,048</b>	<b>130,089,198</b>	<b>143,865,174</b>	<b>104,472,117</b>	<b>96,832,848</b>	<b>111,245,665</b>	<b>112,205,388</b>	<b>118,102,211</b>	<b>114,543,881</b>	<b>115,417,819</b>	<b>119,274,529</b>	<b>112,066,963</b>	<b>118,904,296</b>	<b>1,397,020,089</b>

Table 3A Card expenditure statistics (not seasonally adjusted)

Number of credit card transactions

Detailed sector breakdown - services sectors

	October 2010	November 2010	December 2010	January 2011	February 2011	March 2011	April 2011	May 2011	June 2011	July 2011	August 2011	September 2011	October 2011	Total (latest 12 months)
Auto rental	353,031	340,619	314,066	330,052	326,771	384,768	382,425	415,769	494,774	440,044	424,168	403,835	367,981	4,625,272
Auto parts & accessories	801,548	863,024	795,453	803,703	785,025	936,688	813,074	867,323	818,021	812,356	830,818	810,110	801,412	9,937,007
Auto services	1,595,552	1,659,978	1,417,947	1,503,073	1,505,271	1,712,330	1,504,947	1,743,270	1,664,751	1,686,855	1,608,097	1,782,213	1,741,305	19,530,037
Auto repair shops	908,904	933,561	844,878	926,916	903,484	1,082,917	914,882	968,572	900,164	893,572	905,141	963,712	922,239	11,160,038
Service stations	1,897,616	2,129,020	2,277,138	2,523,735	2,366,964	2,686,727	2,609,065	2,777,054	1,896,503	1,930,015	2,000,663	2,575,607	2,702,744	28,475,235
Vehicle sales	593,559	594,673	505,319	577,054	583,073	730,317	637,916	693,414	1,356,445	641,512	657,853	658,637	599,019	8,235,232
<b>Vehicle Sales &amp; Services</b>	<b>6,150,210</b>	<b>6,520,875</b>	<b>6,154,801</b>	<b>6,664,533</b>	<b>6,470,588</b>	<b>7,533,747</b>	<b>6,862,309</b>	<b>7,465,402</b>	<b>7,130,658</b>	<b>6,404,354</b>	<b>6,426,740</b>	<b>7,194,114</b>	<b>7,134,700</b>	<b>81,962,821</b>
Restaurants	9,623,203	9,547,760	8,693,286	8,547,186	8,831,664	9,700,737	9,699,353	10,484,849	9,789,427	10,852,563	11,237,516	10,313,515	10,865,074	118,562,930
Public houses	1,525,848	1,575,120	1,412,531	1,345,030	1,401,729	1,573,369	1,689,478	1,869,639	1,770,217	1,827,418	2,079,585	1,777,943	1,850,851	20,172,910
Catering services	191,555	208,720	173,572	167,907	169,594	211,459	170,517	205,829	205,721	204,043	191,059	226,029	217,790	2,352,240
Video stores	72,465	81,675	87,319	80,373	74,887	78,148	73,434	82,326	72,665	70,574	73,320	71,373	73,136	919,230
Cinema, theatre & dance	1,628,534	2,033,623	1,610,593	1,748,099	1,694,328	1,514,258	1,224,841	1,774,890	1,511,897	1,862,575	1,858,224	1,586,386	1,797,510	20,217,224
Concerts & entertainers	16,228	18,169	20,662	17,521	17,984	21,548	21,916	24,636	26,131	27,646	31,981	23,922	28,866	280,982
Tourist attractions	339,614	226,264	158,408	133,679	190,791	222,614	426,802	434,149	433,107	525,809	736,164	409,756	415,614	4,313,157
Amusement parks	25,703	16,683	11,832	11,165	17,075	14,969	36,184	23,525	26,593	32,866	60,032	24,490	30,964	306,378
Aquariums	9,437	8,572	6,545	8,428	9,941	9,926	13,869	13,210	11,523	12,561	16,100	10,140	10,361	131,176
Sports & games establishments	1,851,122	2,072,792	2,431,709	2,146,741	1,955,658	2,527,086	1,821,852	1,369,466	2,125,337	2,096,552	2,416,497	2,099,829	2,240,577	25,304,096
Professional sports clubs	100,359	120,550	110,266	94,655	100,383	102,751	99,284	91,478	108,567	112,304	118,246	98,368	103,377	1,260,229
Gambling	2,864,625	3,212,420	2,946,663	2,967,046	2,735,671	2,999,026	2,733,603	3,031,716	2,608,272	2,789,306	3,490,623	3,471,936	3,737,047	36,723,329
Personal services	101,349	104,460	110,054	98,770	98,621	112,088	99,363	167,918	156,517	176,002	212,974	193,840	193,696	1,724,409
Miscellaneous entertainment	272,376	215,210	175,997	177,852	196,641	228,073	310,481	292,930	295,768	338,575	441,892	283,972	295,466	3,252,857
<b>Entertainment</b>	<b>18,622,418</b>	<b>19,442,018</b>	<b>17,949,437</b>	<b>17,544,452</b>	<b>17,495,073</b>	<b>19,316,052</b>	<b>18,420,977</b>	<b>19,866,561</b>	<b>19,141,742</b>	<b>20,928,794</b>	<b>22,964,213</b>	<b>20,591,499</b>	<b>21,860,329</b>	<b>235,521,147</b>
<b>Hotels</b>	<b>3,171,250</b>	<b>3,028,301</b>	<b>2,560,111</b>	<b>2,650,909</b>	<b>2,743,560</b>	<b>2,863,493</b>	<b>3,029,677</b>	<b>3,512,605</b>	<b>3,612,850</b>	<b>3,779,089</b>	<b>3,744,513</b>	<b>3,625,489</b>	<b>3,516,157</b>	<b>38,666,754</b>
Airlines	790,312	782,393	594,877	980,205	696,387	702,424	535,494	633,500	661,860	590,996	628,784	625,558	548,555	7,981,033
Airport terminals	22,300	18,653	14,679	17,018	17,274	23,476	25,051	28,145	32,058	33,491	36,510	30,828	24,177	301,360
Railways	4,651,363	4,900,013	3,933,440	4,039,323	4,041,671	4,772,440	4,064,089	4,222,439	4,653,258	4,709,814	4,529,433	4,862,762	4,892,874	53,621,556
Buses	350,577	362,050	305,116	304,289	307,338	367,240	353,870	425,800	423,948	436,217	449,333	470,892	461,579	4,667,672
Sea travel	80,269	66,277	61,794	64,319	65,468	78,872	87,359	96,194	97,696	111,970	125,602	94,283	80,258	1,030,092
Travel agents	1,127,663	1,070,729	824,064	1,397,513	1,236,316	1,407,574	1,123,739	1,285,188	945,324	1,264,225	1,225,235	1,201,764	1,066,019	14,047,690
Timeshares	359	302	158	248	292	636	210	157	194	140	115	138	116	2,706
Camping grounds	145,256	81,194	52,751	139,436	139,126	167,310	240,509	262,561	256,828	296,763	323,681	176,355	132,299	2,268,813
Miscellaneous travel	856,581	843,231	689,044	597,971	589,127	687,718	592,862	737,100	559,914	700,499	666,136	643,078	606,159	7,912,839
<b>Travel</b>	<b>8,024,680</b>	<b>8,124,842</b>	<b>6,475,923</b>	<b>7,540,922</b>	<b>7,092,999</b>	<b>8,207,690</b>	<b>7,023,183</b>	<b>7,691,084</b>	<b>7,631,080</b>	<b>8,144,115</b>	<b>7,984,829</b>	<b>8,105,658</b>	<b>7,812,036</b>	<b>91,833,761</b>
Telegraph services / Wire transfer money order	3,924	4,108	4,532	3,578	3,110	3,806	3,472	11,343	4,561	3,578	4,140	3,628	3,606	53,462
Insurance services	1,708,740	1,687,249	1,464,082	1,589,802	1,585,228	1,908,435	1,657,852	1,808,564	1,980,046	1,959,768	2,059,526	1,957,808	1,765,772	21,424,132
FIs - cash disbursements (auto & manual)	31,088	28,545	23,452	23,419	23,625	25,912	176,758	274,617	230,598	250,132	251,798	203,499	87,374	1,599,729
FIs - merchandise & services	549,634	518,338	511,091	524,329	486,621	583,924	508,045	518,920	482,350	495,635	529,590	536,826	523,344	6,219,013
Non-FIs - foreign currency, travellers' cheques	29,323	16,657	12,749	11,355	13,832	16,155	17,464	21,773	23,766	28,904	30,449	23,388	17,131	233,623
Security brokers and dealers	15,702	17,793	14,617	17,131	17,013	23,041	16,525	20,766	25,899	21,932	38,620	34,051	28,082	275,470
Tax preparation services	85	101	82	161	334	412	251	804	375	339	192	202	172	3,425
Tax payments	4,324	4,727	3,807	3,724	3,257	4,346	4,265	4,650	5,256	5,258	5,798	4,796	4,420	54,304
Fines, bail and bond payments	69,450	68,642	57,369	61,562	61,702	70,543	60,988	67,614	53,490	72,808	70,479	72,799	70,654	788,650
Miscellaneous financial	139,348	145,892	135,689	148,496	147,721	177,862	174,904	178,772	152,303	150,458	154,065	169,627	168,814	1,904,603
<b>Financial</b>	<b>2,551,618</b>	<b>2,492,052</b>	<b>2,227,470</b>	<b>2,383,557</b>	<b>2,342,443</b>	<b>2,814,436</b>	<b>2,620,524</b>	<b>2,907,823</b>	<b>2,958,644</b>	<b>2,988,812</b>	<b>3,144,657</b>	<b>3,006,624</b>	<b>2,669,369</b>	<b>32,556,411</b>



Table 3A Card expenditure statistics (not seasonally adjusted)

Number of credit card transactions

## Detailed sector breakdown - services sectors (continued)

	October 2010	November 2010	December 2010	January 2011	February 2011	March 2011	April 2011	May 2011	June 2011	July 2011	August 2011	September 2011	October 2011	Total (latest 12 months)
Telecoms	1,813,602	1,873,436	2,067,412	1,762,498	1,646,198	1,866,413	1,849,021	2,022,780	1,850,386	1,879,207	1,959,468	1,885,486	1,930,901	22,593,206
Utilities	328,848	321,958	285,689	320,411	305,278	379,761	333,865	352,103	365,705	338,770	339,759	316,904	312,647	3,972,850
Contractors (residential & commercial)	317,358	344,903	275,484	295,522	290,778	326,715	256,070	284,107	394,736	270,050	285,383	287,545	290,450	3,601,743
Gardening services	43,362	49,505	54,025	30,454	33,600	52,967	70,892	76,880	57,461	47,947	48,236	42,881	45,074	609,922
Veterinary services	572,444	580,463	515,550	526,084	464,314	528,817	482,194	535,845	500,938	510,564	532,214	514,966	506,898	6,198,847
Photocopying & printing	347,144	398,100	364,107	324,692	296,966	344,940	274,744	323,447	323,375	308,420	318,190	336,730	342,788	3,956,499
Photographic studios	140,459	173,072	128,221	83,543	82,650	378,582	342,509	384,901	110,581	137,507	98,600	101,363	128,354	2,149,883
Beauty & barber shops	1,263,990	1,353,528	1,655,581	1,163,597	1,136,144	1,044,541	1,003,714	1,072,823	1,396,731	1,378,616	1,367,387	1,352,299	1,316,162	15,241,123
Employment agencies	19,009	19,678	15,768	20,316	19,752	20,612	12,162	11,481	14,195	14,958	14,166	15,674	15,327	194,089
Counselling services	4,169	3,899	3,775	4,194	3,991	4,342	4,473	5,462	4,909	4,599	5,141	4,936	4,900	54,621
Legal services	28,496	30,495	23,526	30,045	29,822	35,527	30,647	34,375	34,256	31,854	32,884	32,926	32,082	378,439
Laundry & cleaning	176,905	180,324	135,019	150,303	140,724	161,656	153,629	186,555	179,725	175,020	164,432	173,584	173,316	1,974,287
Funeral services	10,482	11,091	10,151	11,105	10,394	11,023	8,953	9,153	10,365	9,864	9,907	10,308	10,210	122,524
Medical services	1,037,791	1,135,765	891,789	1,028,739	1,021,477	1,182,622	950,276	1,107,385	1,122,419	1,045,092	1,064,312	1,128,025	1,072,132	12,750,033
Moving & courier services	173,011	186,690	173,650	166,269	164,111	197,160	167,708	198,091	194,357	196,184	191,772	196,047	193,466	2,225,505
Repair shops (not auto)	53,344	61,272	55,861	51,951	48,516	55,841	49,153	56,965	56,984	53,910	59,327	57,370	57,039	664,189
Accounting services	32,870	34,143	32,035	35,853	29,277	31,595	22,587	27,187	37,433	25,063	29,723	33,810	32,346	371,052
Advertising, consultancy & PR	116,285	122,583	85,940	110,528	108,550	163,820	143,882	168,112	157,794	148,388	157,560	151,829	147,565	1,666,551
Computer programming	464,548	491,416	461,088	476,240	452,999	505,303	433,550	449,259	431,180	415,415	412,274	437,297	496,335	5,462,356
Farming services	61,741	65,886	64,562	57,309	54,823	64,202	64,330	68,384	62,052	58,823	61,941	59,825	59,227	741,364
Miscellaneous professional services	1,158,463	1,231,047	1,070,666	1,067,404	1,319,915	1,229,117	986,350	1,122,614	1,096,869	1,069,229	1,041,214	1,090,245	995,964	13,320,634
Engineering services	56,182	58,786	46,301	53,832	58,014	69,443	56,717	64,242	57,147	60,491	62,098	60,931	58,130	706,132
Marina services	41,171	39,711	34,996	32,660	31,455	46,622	66,508	70,128	72,791	77,189	88,783	54,121	42,933	657,897
Wrecking & salvage yards	3,908	4,107	2,953	3,781	3,748	4,352	4,009	4,224	4,364	4,243	4,377	4,449	4,245	48,852
Pest control	2,869	2,570	1,707	2,103	1,941	2,522	2,350	2,906	3,337	4,277	4,351	4,101	3,596	35,761
Educational establishments	487,486	457,594	364,255	502,685	409,651	503,839	372,398	458,749	410,283	420,508	420,465	629,741	547,936	5,498,104
Child care services	16,672	17,045	14,442	18,027	17,928	16,327	12,139	14,626	14,009	14,868	16,564	14,947	15,706	186,628
Social, political & religious organisations	1,107,525	1,250,386	1,073,604	895,294	887,115	1,419,875	1,196,161	1,270,500	1,219,836	1,231,568	1,209,865	1,105,983	928,514	13,688,701
Government services	1,519,902	1,544,500	1,333,184	1,448,125	1,484,559	1,701,460	1,471,372	1,673,000	1,549,906	1,604,640	1,662,660	1,662,763	1,565,757	18,701,926
Miscellaneous services	990,206	1,170,788	1,400,257	916,687	928,804	1,185,259	1,019,474	1,071,879	1,133,268	1,094,085	1,103,153	1,146,316	1,193,536	13,363,506
Commercial equipment	922,901	991,737	865,123	921,091	838,058	934,116	754,634	864,947	1,177,517	824,826	847,317	962,685	903,953	10,886,004
Other services	13,313,143	14,206,478	13,506,721	12,511,342	12,321,552	14,469,371	12,596,471	13,993,110	14,044,909	13,456,175	13,613,523	13,876,087	13,427,489	162,023,228
<b>Total services</b>	<b>51,833,319</b>	<b>53,814,566</b>	<b>48,874,463</b>	<b>49,295,115</b>	<b>48,466,215</b>	<b>55,204,789</b>	<b>50,553,141</b>	<b>55,436,585</b>	<b>54,519,883</b>	<b>55,701,339</b>	<b>57,878,475</b>	<b>56,399,471</b>	<b>56,420,080</b>	<b>642,564,122</b>
<b>TOTAL</b>	<b>163,836,367</b>	<b>183,903,764</b>	<b>192,739,637</b>	<b>153,767,232</b>	<b>145,299,063</b>	<b>166,450,454</b>	<b>162,758,529</b>	<b>173,538,796</b>	<b>169,063,764</b>	<b>171,119,158</b>	<b>177,153,004</b>	<b>168,466,434</b>	<b>175,324,376</b>	<b>2,039,584,211</b>

Table 3B Card expenditure statistics (not seasonally adjusted)

Value of credit card transactions

## Detailed sector breakdown - retail sectors

£	October 2010	November 2010	December 2010	January 2011	February 2011	March 2011	April 2011	May 2011	June 2011	July 2011	August 2011	September 2011	October 2011	Total (latest 12 months)
Supermarkets	1,425,718,436	1,680,382,327	2,027,283,255	1,303,106,322	1,238,128,879	1,404,814,230	1,484,814,718	1,453,979,690	1,460,567,077	1,472,954,316	1,542,522,458	1,452,392,350	1,548,648,472	18,069,594,094
Bakers & dairies	1,894,392	2,153,794	2,513,456	1,635,316	1,687,961	1,990,455	1,974,535	2,139,379	2,771,001	2,363,431	2,257,343	2,252,133	2,480,447	26,219,251
Sweet stores	3,450,334	6,834,387	12,212,198	2,180,874	2,713,295	3,888,111	5,110,576	3,696,618	3,637,511	3,842,141	3,845,461	3,827,310	4,192,134	55,980,623
Miscellaneous foodstores	56,212,942	65,922,023	82,492,747	51,018,233	50,863,380	58,116,853	61,270,296	64,297,985	67,119,982	66,057,923	67,331,667	62,427,041	64,720,568	761,638,698
Off-licences	26,486,512	35,003,444	53,997,654	22,181,740	21,864,971	25,815,088	26,430,345	28,811,316	30,374,361	33,238,367	28,016,983	26,142,439	26,489,992	358,366,700
Food & drink	1,513,762,616	1,790,295,975	2,178,499,310	1,380,122,465	1,315,258,486	1,494,624,737	1,579,600,470	1,552,924,988	1,564,469,932	1,578,456,185	1,643,973,912	1,547,041,273	1,646,531,613	19,271,799,366
Department stores	356,918,439	493,078,237	621,054,555	270,777,136	317,217,807	313,401,425	313,401,425	358,292,780	364,414,018	372,520,261	338,363,556	347,664,777	379,569,468	4,501,887,927
Discount stores	90,779,127	127,157,047	147,017,049	74,162,042	65,218,665	70,577,772	81,526,201	86,284,479	72,490,145	77,641,240	81,139,599	77,088,596	88,287,937	1,048,590,772
Catalogues	44,811,276	64,282,128	61,221,374	41,992,738	38,330,530	41,257,965	38,445,235	40,124,832	36,864,449	37,301,023	32,604,629	42,254,123	58,815,556	533,494,582
Miscellaneous mixed	91,426,918	108,253,636	112,074,741	74,124,619	70,682,269	81,022,237	83,955,428	102,185,796	100,746,229	103,444,853	107,946,720	106,978,454	115,119,160	1,166,534,142
Mixed business	563,935,760	792,771,048	941,367,719	515,813,306	445,008,600	510,076,781	517,328,289	566,887,897	574,514,841	590,907,377	560,054,504	573,985,950	641,792,121	7,250,507,423
Men's clothing	40,807,640	47,279,023	57,340,756	40,402,189	32,215,232	36,155,205	36,045,238	41,415,191	42,404,945	42,970,804	38,752,253	38,295,838	39,966,315	493,242,989
Women's clothing	124,640,771	138,432,471	149,366,446	104,097,623	97,946,690	121,193,057	125,081,056	132,923,383	136,667,689	132,722,857	121,704,651	133,845,737	140,294,824	1,534,276,484
Family clothing	317,368,700	372,334,510	458,002,433	243,815,217	232,465,932	282,506,357	302,300,198	315,485,445	316,353,683	344,386,946	329,002,274	323,818,077	351,527,604	3,871,998,676
Miscellaneous clothing	31,033,156	34,467,505	34,353,289	20,993,947	21,394,325	25,560,431	27,486,306	30,725,935	30,232,009	29,900,410	30,964,916	32,445,159	34,846,293	383,370,525
Shoe shops	78,091,959	83,048,173	90,832,708	62,040,915	49,422,472	57,866,796	70,589,733	72,849,429	74,882,801	75,900,640	80,086,320	80,966,130	84,385,313	879,445,758
Clothing	592,841,326	675,561,682	789,895,632	471,349,891	433,444,651	523,281,846	561,502,531	593,399,383	630,541,127	625,571,657	595,326,217	611,439,466	651,020,349	7,162,334,432
Furniture stores	276,622,572	305,782,080	267,859,665	286,287,108	231,247,211	254,130,984	221,447,478	248,873,458	225,090,002	236,780,103	253,094,184	244,724,489	273,632,871	3,048,949,633
Household appliance stores	123,157,082	141,957,776	144,299,215	118,080,790	106,874,722	122,699,318	105,971,977	111,050,445	105,450,724	109,751,490	112,738,002	116,909,890	123,244,877	1,419,029,226
Electronic stores	224,608,446	279,621,084	390,987,704	238,215,234	172,440,956	188,592,881	173,347,884	196,296,558	180,482,840	190,656,812	219,710,208	211,929,869	217,224,146	2,659,506,176
DIY stores	421,672,605	420,814,229	350,208,308	386,225,014	360,994,689	440,459,492	485,978,559	471,778,695	411,766,373	428,499,963	448,137,258	426,118,965	435,124,182	5,066,105,727
Floor covering stores	60,855,701	73,663,121	51,969,178	53,565,441	49,103,740	56,829,891	49,527,827	55,570,479	51,086,071	52,877,101	58,451,262	56,525,245	59,803,780	668,973,135
Garden centres	53,849,332	59,109,750	64,081,963	36,700,611	45,397,706	67,593,476	130,547,158	123,190,834	85,728,649	72,868,074	67,668,029	58,731,442	60,439,114	892,056,806
Miscellaneous household	53,408,914	59,097,273	44,608,327	43,223,368	39,612,574	44,954,868	41,473,642	45,503,813	46,517,003	51,725,643	62,300,582	68,673,570	60,058,170	597,748,833
Household	1,214,174,652	1,340,045,313	1,314,014,360	1,162,297,566	1,005,671,598	1,195,260,910	1,208,294,525	1,252,264,282	1,106,121,662	1,143,159,185	1,222,099,525	1,173,613,470	1,229,527,140	14,352,369,536
Books, newspapers & magazines	57,387,853	68,346,311	86,894,070	48,881,753	47,954,299	53,050,928	47,406,085	52,524,678	53,857,953	52,173,669	52,652,444	58,467,046	58,152,930	680,361,986
Record shops	16,638,866	31,505,393	14,680,484	13,152,843	15,132,234	15,132,234	13,187,736	14,440,121	13,675,910	11,934,252	11,675,079	11,675,079	13,808,455	22,881,701
Music shops	24,145,277	28,916,382	33,577,705	26,633,570	22,734,082	24,723,786	21,585,595	24,583,966	23,391,022	24,763,313	25,783,367	25,959,001	26,533,971	309,185,760
Hobbies, toys & games	43,926,378	84,819,543	101,769,223	31,710,715	26,870,464	33,332,602	28,769,035	28,523,195	27,021,297	26,181,794	26,842,595	28,256,767	33,331,705	477,428,935
Photographic	28,114,457	33,688,863	44,273,397	24,873,257	22,518,900	28,447,103	26,242,504	28,168,678	31,522,128	30,769,034	27,865,093	26,325,388	26,325,388	355,733,233
Handicraft	7,569,135	8,552,251	7,003,082	7,229,388	6,682,678	7,545,187	6,207,014	7,044,946	9,770,808	6,936,816	7,547,775	7,437,531	8,151,747	90,109,223
Sports shops	160,762,878	186,248,430	218,626,385	146,096,182	132,329,772	160,484,738	172,017,941	188,722,874	180,369,952	193,395,264	203,068,686	165,560,009	160,486,990	2,107,407,223
Jewellers	92,330,249	118,164,908	208,488,753	81,813,617	85,011,880	97,079,828	86,249,236	97,079,828	103,533,302	108,252,153	101,522,252	96,429,496	96,142,023	1,274,602,825
Computer software	116,439,651	141,866,859	156,919,185	105,008,889	89,796,984	107,141,291	100,462,546	118,113,319	107,741,135	105,652,703	112,677,222	112,546,450	130,160,743	1,388,087,326
Medical goods	4,962,247	5,623,168	4,369,764	4,133,128	5,019,541	5,581,507	4,709,159	4,843,178	5,641,752	5,325,355	5,291,818	5,485,951	5,222,227	61,246,548
Chemists	81,046,871	110,956,932	145,094,331	67,903,568	65,099,741	76,855,045	67,287,734	77,680,178	96,545,578	73,621,131	77,418,142	70,555,604	82,172,135	1,011,190,119
Optical goods	59,911,472	63,041,713	43,589,045	60,131,710	62,690,543	69,578,471	61,705,454	68,401,177	65,915,109	65,493,796	69,432,300	63,370,912	62,581,299	755,931,529
Cosmetic stores	18,689,427	27,652,969	38,214,165	16,000,481	14,851,956	17,231,545	20,286,333	23,678,200	17,410,713	17,571,268	18,195,225	17,361,072	18,909,426	247,363,353
Tobacconists	646,549	706,295	536,457	541,744	536,457	541,744	536,457	541,744	536,457	541,744	536,457	541,744	536,457	6,623,429
Florists	15,343,301	16,301,416	23,753,576	14,177,273	18,745,702	21,277,405	20,594,544	18,007,482	19,185,528	15,957,636	15,668,959	16,510,539	14,996,298	215,176,358
Artists' supplies	13,699,269	16,740,466	14,102,960	10,598,264	10,733,038	13,021,481	10,520,113	12,616,720	49,054,725	12,115,555	13,038,294	13,191,808	13,360,464	189,094,068
Antiques, art & stamps/coins	28,556,030	30,934,442	28,518,180	22,116,960	20,886,622	26,287,870	20,360,256	25,027,446	26,659,844	24,682,158	23,406,731	24,483,601	27,262,648	302,626,704
Pawn shops	612,965	520,052	611,247	520,069	393,845	426,220	447,492	545,453	952,218	537,461	565,130	569,559	575,149	6,663,895
Gift shops	46,796,946	65,177,265	78,062,850	35,077,111	35,960,038	40,773,473	39,642,493	43,606,848	43,731,682	46,942,942	50,306,355	45,716,844	49,476,895	574,474,796
Secondhand shops	995,991	827,241	775,759	584,656	775,759	853,456	757,821	894,926	6,226,916	777,098	879,210	777,098	823,528	14,817,053
Luggage & leather goods	7,931,673	11,141,933	15,820,158	9,072,040	7,973,552	9,215,631	9,375,339	10,197,732	12,967,087	13,589,437	10,340,199	10,507,214	10,512,196	130,712,518
Pet shops	25,267,102	27,309,125	27,878,360	24,352,379	23,028,908	26,605,758	25,728,582	28,031,921	28,149,128	27,675,313	29,347,500	27,610,441	28,326,481	324,043,499
Religious goods	51,010	50,835	46,714	40,421	52,928	52,928	36,666	50,469	57,726	57,453	58,912	50,803	50,629	666,297
Direct sales	223,960,682	243,005,856	225,913,238	229,669,964	229,173,319	269,912,762	214,446,246	238,949,610	212,079,747	203,054,614	212,291,937	215,773,481	212,685,444	2,706,956,218
Miscellaneous & speciality shops	144,891,605	172,557,668	181,249,926	152,443,844	139,904,668	158,247,296	124,030,013	13						

Table 3B Card expenditure statistics (not seasonally adjusted)

Value of credit card transactions

## Detailed sector breakdown - services sectors

£	October 2010	November 2010	December 2010	January 2011	February 2011	March 2011	April 2011	May 2011	June 2011	July 2011	August 2011	September 2011	October 2011	Total (latest 12 months)
Auto rental	37,287,563	35,414,343	35,619,777	36,638,354	36,186,615	44,107,511	44,970,609	50,581,824	67,103,645	60,030,425	53,254,986	47,544,201	41,575,931	553,028,221
Auto parts & accessories	121,819,029	130,885,044	119,103,225	122,362,147	121,069,375	147,082,109	123,208,919	134,237,449	127,914,280	125,587,846	126,101,975	128,644,968	125,783,524	1,531,980,861
Auto services	41,712,263	42,454,880	35,525,464	41,256,078	40,633,702	47,153,042	41,081,444	48,321,613	46,296,586	45,783,067	45,660,953	47,631,132	44,327,342	526,125,303
Auto repair shops	226,828,327	229,616,427	204,780,916	232,058,330	227,978,483	276,311,111	228,474,828	242,557,927	222,840,284	226,595,902	223,949,025	245,210,643	232,965,884	2,793,339,760
Service stations	57,090,874	62,799,781	65,208,500	79,359,752	73,319,249	84,639,329	80,025,431	87,139,514	58,438,008	58,597,931	59,318,946	81,245,828	81,110,213	871,202,482
Vehicle sales	205,751,578	202,818,091	168,970,454	198,707,916	201,311,949	250,462,611	206,715,740	225,723,257	255,393,741	212,327,393	214,234,048	226,754,113	210,255,684	2,573,674,997
<b>Vehicle Sales &amp; Services</b>	<b>690,489,634</b>	<b>703,988,566</b>	<b>629,208,336</b>	<b>710,382,577</b>	<b>700,499,373</b>	<b>849,755,713</b>	<b>724,476,971</b>	<b>788,561,584</b>	<b>777,986,544</b>	<b>728,922,564</b>	<b>722,519,933</b>	<b>777,030,885</b>	<b>736,018,578</b>	<b>8,849,351,624</b>
Restaurants	373,100,370	374,152,084	397,390,558	327,515,487	334,690,904	362,086,510	370,901,306	397,805,711	371,837,799	414,889,542	417,707,339	384,788,022	404,877,447	4,558,642,709
Public houses	67,353,900	70,487,712	75,710,648	58,025,548	59,439,831	65,770,392	70,591,802	79,460,370	77,115,074	78,694,556	86,955,235	75,578,048	77,845,382	875,674,598
Catering services	13,779,479	15,999,475	13,554,913	12,702,894	12,545,155	16,090,081	12,403,068	15,665,971	15,057,771	14,551,936	12,347,413	15,978,505	14,883,046	171,780,228
Video stores	1,890,332	1,892,807	1,822,926	1,333,804	1,181,392	1,334,404	1,155,942	1,341,745	1,300,108	1,278,898	1,157,277	1,371,360	1,908,856	17,079,519
Cinema, theatre & dance	130,410,518	172,408,893	123,224,266	107,650,470	108,675,108	128,239,685	90,581,428	192,516,646	114,305,044	132,820,518	102,601,967	109,523,762	134,770,007	1,517,317,794
Concerts & entertainers	1,206,253	1,385,613	1,156,711	1,135,578	1,022,985	1,265,259	1,141,879	1,796,905	1,405,083	1,491,289	1,735,975	1,447,535	1,764,992	16,748,994
Tourist attractions	15,779,797	10,948,423	8,509,228	9,576,991	7,191,475	12,428,781	21,242,843	21,856,763	22,188,558	26,219,763	33,081,518	18,960,468	19,834,671	212,039,482
Amusement parks	1,242,860	1,055,836	753,437	690,050	886,866	938,320	1,695,910	1,252,757	1,384,544	1,712,580	2,492,151	1,153,367	1,417,396	15,433,214
Aquariums	558,875	522,390	396,876	471,130	549,004	680,631	830,468	824,740	734,856	759,082	839,420	597,894	574,694	7,781,185
Sports & games establishments	70,669,398	77,814,469	81,917,888	75,600,729	73,165,381	98,080,258	85,430,072	127,056,944	112,773,829	84,590,836	77,518,756	72,323,401	72,941,315	1,039,213,878
Professional sports clubs	7,844,696	8,953,944	7,943,421	6,928,705	7,973,548	8,198,845	8,791,993	9,373,134	21,021,092	13,499,139	8,811,454	7,964,246	7,869,477	117,328,998
Gambling	110,857,821	120,108,281	107,955,929	112,120,673	106,604,244	114,310,608	104,464,307	111,855,022	97,005,180	97,732,231	113,357,281	101,470,015	105,298,280	1,292,282,051
Personal services	7,325,905	7,614,426	7,768,069	7,404,504	7,646,275	8,459,895	7,218,042	9,823,502	9,589,794	9,729,051	10,474,225	10,236,987	10,127,586	106,092,356
Miscellaneous entertainment	15,911,519	15,237,084	10,575,518	9,631,532	10,566,147	14,079,338	17,840,858	17,925,643	17,508,353	19,947,572	22,349,045	15,928,598	16,941,816	188,531,504
<b>Entertainment</b>	<b>817,931,723</b>	<b>878,581,437</b>	<b>838,680,388</b>	<b>728,644,350</b>	<b>734,282,060</b>	<b>831,965,007</b>	<b>794,289,918</b>	<b>988,555,043</b>	<b>863,227,085</b>	<b>897,916,993</b>	<b>891,429,056</b>	<b>817,322,208</b>	<b>871,054,965</b>	<b>10,135,946,510</b>
<b>Hotels</b>	<b>479,346,220</b>	<b>457,644,024</b>	<b>383,046,928</b>	<b>385,702,368</b>	<b>391,787,051</b>	<b>412,144,380</b>	<b>447,256,133</b>	<b>536,882,764</b>	<b>576,151,749</b>	<b>618,029,684</b>	<b>575,913,744</b>	<b>575,632,392</b>	<b>552,657,132</b>	<b>5,912,848,349</b>
Airlines	253,658,465	259,872,794	170,426,718	342,410,369	260,773,461	273,581,351	210,239,241	249,735,961	240,055,281	239,798,972	250,677,944	258,692,472	226,657,228	2,982,921,792
Airport terminals	3,132,850	3,021,839	2,568,245	2,399,167	2,081,027	2,995,783	3,083,074	3,775,463	3,664,840	4,147,029	3,964,418	3,714,817	3,294,957	38,710,659
Railways	192,439,163	204,798,980	186,767,034	175,500,555	170,822,137	196,987,005	162,867,898	184,081,039	209,043,957	197,436,747	188,709,043	216,720,602	212,797,174	2,306,532,171
Buses	18,106,724	17,419,512	15,728,540	15,289,271	15,606,810	18,950,092	18,935,616	22,140,149	22,041,795	23,803,286	23,335,709	24,492,227	21,926,110	239,669,117
Sea travel	12,768,722	10,925,868	10,479,139	13,343,787	11,969,239	14,400,257	14,020,508	15,634,826	15,582,736	17,614,669	16,697,676	14,873,775	12,226,993	167,769,473
Travel agents	415,999,861	368,033,669	300,361,524	562,555,511	468,015,967	540,261,846	462,516,237	554,775,815	524,217,922	560,831,261	506,331,524	425,196,837	361,174,619	5,634,272,732
Timeshares	38,235	34,994	19,509	46,303	49,888	49,353	26,511	22,590	27,998	22,339	16,884	17,678	19,394	353,441
Camping grounds	23,691,990	24,039,939	18,264,037	29,276,933	26,765,605	32,566,265	36,319,867	41,537,141	41,923,905	44,567,039	37,158,291	17,634,530	16,243,808	366,297,360
Miscellaneous travel	24,253,628	23,891,739	18,723,143	21,995,116	23,076,566	30,066,006	28,799,040	35,532,147	39,203,048	34,401,791	31,356,745	24,665,238	22,281,936	333,992,515
<b>Travel</b>	<b>944,089,638</b>	<b>912,039,334</b>	<b>723,337,889</b>	<b>1,162,817,012</b>	<b>979,160,700</b>	<b>1,109,857,958</b>	<b>936,807,992</b>	<b>1,107,235,131</b>	<b>1,095,761,482</b>	<b>1,122,623,133</b>	<b>1,058,248,234</b>	<b>986,008,176</b>	<b>876,622,219</b>	<b>12,070,519,260</b>
Telegraph services / Wire transfer money order	1,063,019	1,123,571	1,125,080	901,161	774,172	1,419,467	851,711	22,104,065	1,137,858	858,272	894,229	847,713	833,531	32,870,830
Insurance services	336,874,329	341,266,845	284,263,949	323,256,033	317,655,792	401,328,164	333,493,285	364,140,673	385,581,982	377,816,652	395,002,800	397,976,257	360,350,948	4,282,133,380
FIs - cash disbursements (auto & manual)	21,690,143	19,685,902	18,231,684	17,908,016	16,633,928	17,813,618	67,900,310	120,314,463	89,725,443	106,409,073	110,991,594	81,050,151	37,681,205	704,345,387
FIs - merchandise & services	70,406,414	67,884,186	62,179,703	68,383,204	69,249,628	85,522,442	75,251,226	77,566,033	79,000,644	78,407,191	85,791,587	83,540,179	73,472,793	906,248,816
Non-FIs - foreign currency, travellers' cheques	11,266,480	6,090,372	4,779,551	4,655,275	5,728,945	6,783,984	7,851,223	9,988,269	11,038,150	16,105,809	16,046,736	10,678,397	7,607,389	107,354,100
Security brokers and dealers	4,439,462	4,829,937	3,716,474	5,044,981	4,786,023	6,455,961	5,428,252	5,953,338	6,625,185	5,992,434	13,390,993	10,357,278	7,731,455	80,312,311
Tax preparation services	40,634	55,775	33,408	51,741	83,944	102,163	60,009	253,263	67,896	115,179	67,372	72,526	77,536	1,040,812
Tax payments	396,782	432,227	369,070	319,879	223,864	384,004	363,262	444,724	360,358	376,403	351,259	344,501	4,428,326	
Fines, bail and bond payments	8,333,022	8,629,610	6,888,809	7,758,222	7,753,809	8,867,438	7,302,963	8,821,653	5,833,305	8,780,315	8,289,878	9,065,774	8,573,819	96,565,595
Miscellaneous financial	27,436,273	29,691,000	28,152,603	34,743,309	32,063,739	37,529,207	34,627,558	37,039,561	29,770,410	29,713,145	29,256,747	35,245,470	34,810,336	392,643,085
<b>Financial</b>	<b>481,946,558</b>	<b>479,689,425</b>	<b>409,740,331</b>	<b>463,021,821</b>	<b>454,953,844</b>	<b>566,206,448</b>	<b>533,129,799</b>	<b>646,626,042</b>	<b>609,239,648</b>	<b>624,558,428</b>	<b>660,108,339</b>	<b>629,185,004</b>	<b>531,483,513</b>	<b>6,607,942,642</b>

Table 3B Card expenditure statistics (not seasonally adjusted)

Value of credit card transactions

## Detailed sector breakdown - services sectors (continued)

£	October 2010	November 2010	December 2010	January 2011	February 2011	March 2011	April 2011	May 2011	June 2011	July 2011	August 2011	September 2011	October 2011	Total (latest 12 months)
Telecoms	67,608,980	71,967,310	83,966,619	64,753,687	59,738,794	66,917,058	62,109,042	69,732,737	62,784,899	64,290,471	67,408,442	65,178,486	76,643,835	815,491,380
Utilities	42,185,001	42,295,739	37,436,396	43,178,668	44,442,927	60,933,589	51,845,816	52,334,187	56,598,558	46,971,388	45,956,214	46,184,227	44,991,859	573,169,568
Contractors (residential & commercial)	80,974,354	87,743,748	71,898,368	74,160,221	74,304,067	84,970,689	66,097,497	75,112,996	99,065,026	74,046,599	76,334,684	77,272,620	77,412,095	938,418,610
Gardening services	3,092,805	3,334,953	3,158,436	2,111,848	2,616,828	4,473,820	6,015,211	6,186,011	5,119,650	4,086,387	3,996,137	3,659,520	48,397,370	3,638,569
Veterinary services	47,478,141	48,784,927	42,838,691	46,324,151	39,943,324	46,093,472	41,357,629	46,013,125	43,414,683	43,415,910	44,849,010	43,809,777	42,692,772	529,536,841
Photocopying & printing	32,121,037	34,385,452	29,162,406	30,153,071	30,174,085	35,225,467	26,867,931	31,185,585	31,937,109	30,363,445	31,041,082	35,784,544	34,128,786	380,408,963
Photographic studios	9,546,730	11,570,766	9,282,050	6,765,023	6,850,365	23,291,215	20,806,738	22,906,258	8,421,225	10,222,369	8,394,181	8,151,055	8,870,159	145,531,404
Beauty & barber shops	67,779,099	73,497,743	86,491,484	61,001,438	60,874,129	55,793,765	52,145,574	56,785,502	72,920,180	72,926,575	71,492,482	72,800,293	69,962,272	806,691,437
Employment agencies	5,014,799	4,900,539	4,618,865	4,837,609	4,793,680	5,373,615	4,377,025	3,928,324	4,728,179	5,585,921	5,389,665	6,857,031	6,099,241	61,489,694
Counselling services	681,823	592,541	493,621	496,014	439,646	543,796	709,650	934,240	613,175	616,898	641,096	643,364	714,168	7,438,209
Legal services	15,681,204	16,204,544	13,710,921	16,738,097	17,104,602	20,512,425	17,057,702	18,330,454	19,177,273	16,877,565	17,511,669	17,555,050	17,346,517	208,126,819
Laundry & cleaning	5,612,471	5,751,935	4,494,073	4,867,140	4,566,232	5,522,789	5,270,399	6,493,703	5,755,363	5,715,275	5,434,476	5,901,860	5,698,413	65,471,658
Funeral services	10,714,308	9,801,055	10,221,192	11,397,973	11,312,784	11,940,040	9,222,750	9,113,326	10,424,246	10,226,268	10,059,350	10,791,435	10,525,185	125,035,604
Medical services	138,432,820	150,415,590	116,981,073	130,439,664	135,991,219	159,994,934	127,053,702	143,876,408	151,022,172	142,817,807	139,541,172	148,461,620	143,391,272	1,689,986,633
Moving & courier services	20,090,706	19,711,689	17,689,027	18,570,233	18,591,607	21,324,502	18,185,788	20,996,818	20,139,691	22,365,217	22,624,257	22,197,619	21,228,158	243,624,606
Repair shops (not auto)	9,550,994	10,942,727	9,713,984	8,273,342	8,111,608	9,349,694	8,352,828	9,457,707	10,598,308	9,859,158	9,530,028	9,786,828	10,375,477	114,351,689
Accounting services	5,741,833	6,134,488	5,936,577	6,857,019	6,191,039	6,748,076	4,743,388	5,193,894	8,604,280	4,865,129	5,437,720	6,083,789	5,677,780	72,473,179
Advertising, consultancy & PR	12,540,056	12,963,498	9,957,572	12,233,072	11,567,057	16,116,569	13,568,629	16,150,699	15,401,852	14,006,458	14,331,464	14,719,479	14,214,245	165,230,594
Computer programming	39,754,434	39,032,204	35,330,678	33,997,966	31,578,864	38,012,013	29,002,362	30,862,088	33,740,483	28,841,520	29,177,687	33,091,584	32,911,839	395,579,288
Farming services	7,891,578	8,106,451	7,576,633	7,249,553	7,029,548	8,134,226	7,556,368	8,121,665	8,577,355	7,787,663	8,501,526	7,813,932	7,740,042	94,194,962
Miscellaneous professional services	144,937,227	147,527,051	122,832,253	142,761,253	140,607,564	160,191,057	132,332,980	148,615,136	149,777,914	146,993,896	149,546,131	181,339,836	145,001,657	1,767,526,728
Engineering services	17,650,208	17,448,053	14,531,789	15,886,061	17,359,280	20,987,137	16,884,615	19,393,943	17,645,086	18,566,802	18,317,621	19,129,718	17,490,461	213,640,566
Marina services	7,042,725	6,637,367	7,984,222	6,841,732	6,406,538	10,765,763	10,577,973	11,306,894	11,572,699	11,541,025	11,007,165	8,086,144	6,976,475	109,703,997
Wrecking & salvage yards	806,573	845,954	584,322	731,481	751,259	865,860	781,828	795,382	809,722	802,334	914,449	829,606	829,606	9,588,068
Pest control	664,718	732,674	552,659	562,245	527,733	691,136	584,989	1,230,387	729,001	787,698	885,542	927,307	821,498	9,032,869
Educational establishments	166,293,319	92,122,670	81,234,642	152,190,033	97,639,559	97,284,187	87,195,825	107,717,387	85,664,303	91,512,279	130,981,104	272,974,131	162,593,566	1,459,109,686
Child care services	2,083,813	2,267,144	2,003,565	2,320,623	2,188,090	2,352,158	1,455,043	1,704,728	1,661,264	1,817,952	1,709,453	1,781,374	1,692,865	22,954,259
Social, political & religious organisations	65,441,264	66,132,145	66,459,585	66,057,594	58,607,416	89,490,074	68,202,325	61,703,647	82,622,160	66,775,013	63,422,116	67,375,918	61,883,420	818,731,413
Government services	150,000,167	146,262,968	135,726,783	147,063,736	152,776,759	177,681,629	156,485,540	187,632,847	146,826,755	160,250,318	171,639,525	169,106,591	154,815,769	1,906,269,220
Miscellaneous services	48,193,036	53,765,453	53,824,385	46,064,543	45,072,132	60,230,172	51,391,057	53,288,717	56,886,400	53,400,222	51,731,898	54,116,188	52,551,361	632,322,528
Commercial equipment	102,895,980	108,105,797	90,374,581	100,059,526	98,399,407	115,776,599	92,641,856	104,339,670	115,017,277	102,312,986	103,099,814	112,630,656	105,400,486	1,248,158,655
Other services	1,328,502,203	1,299,984,545	1,177,067,452	1,264,944,616	1,196,558,142	1,417,587,526	1,190,880,060	1,331,444,465	1,338,322,437	1,270,655,936	1,320,795,045	1,525,126,425	1,344,319,848	15,677,686,497
<b>Total services</b>	<b>4,742,305,976</b>	<b>4,731,927,331</b>	<b>4,161,081,324</b>	<b>4,715,512,744</b>	<b>4,457,241,170</b>	<b>5,187,515,032</b>	<b>4,626,840,873</b>	<b>5,399,305,029</b>	<b>5,260,688,945</b>	<b>5,262,706,738</b>	<b>5,229,014,351</b>	<b>5,310,305,090</b>	<b>4,912,156,255</b>	<b>59,254,294,882</b>
<b>TOTAL</b>	<b>10,417,089,372</b>	<b>11,404,381,876</b>	<b>11,642,884,074</b>	<b>9,919,028,672</b>	<b>9,272,815,469</b>	<b>10,793,735,064</b>	<b>10,218,142,387</b>	<b>11,287,308,560</b>	<b>11,011,497,460</b>	<b>11,037,042,195</b>	<b>11,147,575,190</b>	<b>11,037,394,230</b>	<b>10,933,596,797</b>	<b>129,705,401,974</b>

Table 3C Card expenditure statistics (not seasonally adjusted)

Number of debit card transactions

## Detailed sector breakdown - retail sectors

	October 2010	November 2010	December 2010	January 2011	February 2011	March 2011	April 2011	May 2011	June 2011	July 2011	August 2011	September 2011	October 2011	Total (latest 12 months)
Supermarkets	180,167,353	196,836,415	196,519,459	179,518,942	174,785,146	197,490,439	189,924,812	208,915,244	195,678,183	195,013,759	205,073,639	197,557,302	212,741,290	2,350,054,630
Bakers & dairies	322,608	337,756	351,374	307,536	320,676	371,284	414,642	486,135	1,031,418	1,052,472	1,143,708	1,186,055	1,054,000	8,057,056
Sweet stores	485,456	713,980	1,428,796	379,365	531,046	649,335	837,234	736,853	632,145	563,545	615,019	580,410	667,546	8,335,274
Miscellaneous foodstores	9,426,311	10,203,165	9,705,176	8,203,828	8,350,310	9,460,268	9,977,792	10,762,886	10,678,703	10,251,649	11,596,545	10,540,433	11,306,626	121,037,381
Off-licences	2,854,593	2,859,565	3,031,441	2,623,463	2,672,134	2,938,287	3,066,155	3,118,072	2,948,707	3,067,080	3,054,204	2,920,155	3,246,025	35,545,288
<b>Food &amp; drink</b>	<b>193,256,321</b>	<b>210,950,881</b>	<b>211,036,246</b>	<b>191,033,134</b>	<b>186,659,312</b>	<b>210,909,613</b>	<b>204,220,635</b>	<b>224,019,190</b>	<b>210,969,156</b>	<b>209,948,505</b>	<b>221,483,115</b>	<b>212,784,355</b>	<b>229,015,487</b>	<b>2,523,029,629</b>
Department stores	13,909,328	17,469,838	25,046,026	13,647,685	11,361,548	13,173,900	13,136,006	14,492,468	14,048,848	14,428,443	14,161,947	12,927,688	14,378,738	178,273,135
Discount stores	7,180,732	8,704,160	11,092,634	6,449,408	6,097,105	6,466,208	6,974,085	7,120,532	6,936,148	7,288,436	7,542,776	7,371,763	8,278,247	90,321,502
Catalogues	2,960,224	4,200,006	4,602,513	3,279,617	2,798,560	2,968,996	2,598,680	2,962,420	2,716,330	2,646,240	2,004,490	2,932,595	4,175,528	37,887,975
Miscellaneous mixed	8,534,830	9,905,919	11,216,051	8,021,129	8,040,952	9,272,692	9,797,292	11,520,838	10,665,346	10,738,527	11,729,390	10,663,172	11,869,883	123,441,191
<b>Mixed business</b>	<b>32,585,114</b>	<b>40,281,923</b>	<b>51,957,224</b>	<b>31,397,839</b>	<b>28,296,165</b>	<b>31,881,796</b>	<b>32,506,063</b>	<b>36,096,258</b>	<b>34,366,672</b>	<b>35,101,646</b>	<b>35,438,603</b>	<b>33,895,218</b>	<b>38,702,396</b>	<b>429,923,803</b>
Men's clothing	920,777	1,079,517	1,688,880	979,541	822,032	859,128	901,815	958,829	963,837	1,036,155	1,066,395	917,063	975,634	12,248,826
Women's clothing	5,884,884	6,569,103	8,625,449	5,252,541	4,676,578	5,452,504	6,494,933	6,800,005	6,940,035	7,363,730	6,890,182	6,309,105	7,041,467	78,415,632
Family clothing	22,483,324	25,055,830	33,475,898	20,085,726	17,948,465	21,253,675	22,871,648	24,522,807	22,845,339	25,223,298	24,091,547	22,288,783	25,299,565	284,962,581
Miscellaneous clothing	2,486,220	2,679,151	3,079,507	1,637,305	1,671,489	2,017,085	2,791,527	3,147,737	2,975,708	2,653,528	2,822,498	2,739,302	3,228,720	31,443,557
Shoe shops	2,988,409	3,147,768	3,919,042	2,954,958	2,259,481	2,513,265	3,298,020	3,295,805	3,443,596	3,775,652	4,012,672	3,357,806	3,291,120	39,269,165
<b>Clothing</b>	<b>34,763,614</b>	<b>38,531,369</b>	<b>50,788,776</b>	<b>30,910,071</b>	<b>27,378,025</b>	<b>32,095,657</b>	<b>36,357,943</b>	<b>38,725,183</b>	<b>37,168,515</b>	<b>40,052,363</b>	<b>38,883,294</b>	<b>35,612,059</b>	<b>39,836,506</b>	<b>446,339,761</b>
Furniture stores	2,963,214	3,333,839	3,659,043	3,179,633	2,677,009	2,915,127	2,694,961	2,970,010	2,836,497	2,947,793	3,175,991	3,015,840	3,337,186	36,742,929
Household appliance stores	4,938,533	5,281,694	6,243,407	4,768,154	4,587,726	5,247,272	5,038,053	5,270,555	4,990,382	5,309,722	5,254,290	5,329,154	5,665,252	62,985,661
Electronic stores	2,374,473	2,795,310	4,021,995	2,732,696	2,137,160	2,218,158	1,992,362	2,287,359	2,100,124	2,141,587	2,388,862	2,379,342	2,511,005	29,705,960
DIY stores	15,152,094	15,883,826	14,867,860	13,384,389	13,699,610	16,840,352	19,065,125	18,530,504	16,419,265	16,251,689	17,117,828	15,976,500	17,313,020	195,349,968
Floor covering stores	310,173	355,438	241,750	277,491	272,813	301,394	258,813	298,283	270,309	275,311	314,024	294,433	319,573	3,479,632
Garden centres	2,522,576	2,851,157	3,331,851	1,824,890	2,086,148	3,559,025	5,214,801	5,074,393	3,692,075	3,138,847	3,068,553	2,616,132	3,017,282	39,415,154
Miscellaneous household	1,205,870	1,287,393	1,051,423	1,069,217	980,201	1,083,485	1,006,571	1,085,961	1,087,800	1,244,606	1,461,947	1,338,570	1,398,782	14,095,956
<b>Household</b>	<b>29,466,933</b>	<b>31,788,657</b>	<b>33,417,329</b>	<b>27,236,470</b>	<b>26,440,667</b>	<b>32,164,813</b>	<b>35,270,686</b>	<b>35,517,065</b>	<b>31,396,452</b>	<b>31,309,555</b>	<b>32,721,495</b>	<b>30,949,971</b>	<b>33,562,100</b>	<b>381,775,260</b>
Books, newspapers & magazines	6,405,000	7,238,296	9,979,856	5,804,158	5,650,172	6,038,992	5,741,010	6,382,207	6,108,885	5,894,637	6,518,661	6,543,473	6,997,069	78,897,416
Record shops	2,016,997	3,242,132	6,181,407	2,075,108	1,889,186	1,808,015	1,610,861	1,786,647	1,600,166	1,456,457	1,600,248	1,905,688	2,684,519	19,905,688
Music shops	5,300,280	6,223,527	6,393,616	6,643,606	5,695,748	6,330,953	5,883,209	7,432,427	6,302,036	5,854,541	6,535,880	6,331,501	6,910,653	76,537,697
Hobbies, toys & games	2,437,453	3,771,623	5,675,818	2,039,255	1,754,269	1,928,410	1,640,481	1,648,346	1,478,085	1,421,390	1,615,072	1,666,713	2,178,664	26,818,126
Photographic	444,047	518,974	683,360	409,287	358,168	412,878	396,096	458,274	487,074	512,457	508,360	469,537	567,992	5,678,992
Handicraft	187,098	206,789	174,459	168,965	166,747	182,046	154,942	170,163	161,164	158,169	179,760	185,458	203,641	2,112,303
Sports shops	6,876,163	7,396,015	9,595,935	6,537,425	5,775,703	6,720,490	7,447,461	7,749,499	7,559,126	8,133,198	8,711,978	7,496,991	7,457,696	90,581,517
Jewellers	1,200,478	1,582,738	2,978,501	1,178,754	1,324,680	1,383,683	1,330,279	1,411,675	1,368,284	1,414,675	1,324,510	1,224,554	1,287,870	17,715,944
Computer software	711,939	794,256	964,117	749,181	617,438	664,382	597,666	700,388	625,224	587,049	641,552	642,373	728,337	8,311,963
Medical goods	26,700	28,994	24,311	25,372	27,095	30,965	27,071	29,742	31,437	30,600	30,671	30,987	30,549	347,794
Chemists	16,089,431	19,044,680	23,687,797	15,880,389	15,405,979	18,060,785	15,496,921	18,061,045	17,149,269	16,073,575	17,792,103	16,666,764	17,615,018	210,934,325
Optical goods	846,125	884,199	651,892	855,493	879,009	986,290	876,396	966,822	926,102	906,439	968,993	917,352	933,794	10,752,781
Cosmetic stores	1,241,028	1,659,744	2,757,516	1,046,787	1,053,501	1,166,712	1,162,838	1,187,671	1,203,560	1,154,897	1,298,628	1,163,804	1,312,623	16,168,281
Tobacconists	21,999	26,853	32,739	20,982	23,918	30,722	38,386	36,770	34,048	36,811	36,377	36,331	39,1203	391,203
Florists	667,416	682,091	1,000,292	635,732	971,716	1,023,142	1,112,273	751,219	739,497	723,763	702,383	715,105	701,014	9,758,227
Artists' supplies	635,065	785,239	747,036	541,778	567,419	653,721	561,992	643,063	591,480	577,906	660,013	604,712	706,481	7,640,840
Antiques, art & stamps/coins	256,281	275,729	290,316	210,195	209,449	231,765	218,095	240,798	234,120	248,095	244,092	269,704	2,959,962	2,959,962
Pawn shops	15,262	16,176	23,617	15,834	16,017	17,257	16,233	16,737	17,881	18,879	18,794	19,386	20,599	217,410
Gift shops	4,054,756	5,418,208	8,976,024	3,752,117	4,446,882	4,398,744	4,230,985	4,055,510	4,642,064	4,108,983	4,590,585	4,128,593	4,711,014	57,459,709
Secondhand shops	42,838	46,325	45,530	37,317	40,766	47,797	51,915	48,779	49,991	52,834	56,067	55,617	56,168	561,618
Luggage & leather goods	181,385	214,461	292,383	195,866	154,842	173,558	176,124	185,729	193,808	208,571	213,546	172,206	165,461	2,346,555
Pet shops	2,273,182	2,296,912	2,416,364	2,163,647	2,070,472	2,288,328	2,193,600	2,408,297	2,259,957	2,400,254	2,471,433	2,311,088	2,521,056	27,801,408
Religious goods	1,511	1,776	1,493	1,551	1,734	1,554	1,560	1,554	1,755	1,905	1,755	1,905	2,404	22,529
Direct sales	4,832,496	5,252,774	5,283,437	5,297,948	4,945,568	5,859,763	5,284,452	5,593,962	5,304,603	5,044,732	4,710,162	4,954,827	5,250,808	62,783,036
Miscellaneous & speciality shops	2,867,421	3,507,821	3,925,770	2,717,733	2,567,371	2,840,312	2,673,320	2,909,013	2,853,625	2,803,984	4,069,669	2,938,427	3,156,165	36,963,210
<b>Other retail</b>	<b>59,632,351</b>	<b>71,116,332</b>	<b>92,783,763</b>	<b>59,002,785</b>	<b>56,529,046</b>	<b>63,357,615</b>	<b>58,905,371</b>	<b>64,881,086</b>	<b>62,006,097</b>	<b>59,679,142</b>	<b>65,550,813</b>	<b>61,162,857</b>	<b>65,633,088</b>	<b>780,607,995</b>
<b>Automotive Fuels</b>	<b>44,852,813</b>	<b>47,294,133</b>	<b>42,064,866</b>	<b>43,597,332</b>	<b>42,566,687</b>	<b>49,032,871</b>	<b>46,159,881</b>	<b>51,150,399</b>	<b>48,018,477</b>	<b>48,364,276</b>	<b>50,340,013</b>	<b>48,360,724</b>	<b>50,548,133</b>	<b>567,497,792</b>
<b>Total retail sales</b>	<b>394,557,146</b>	<b>439,963,295</b>	<b>482,048,204</b>	<b>383,177,631</b>	<b>367,871,902</b>	<b>419,442,365</b>	<b>413,420,579</b>	<b>450,389,181</b>	<b>423,925,</b>					

Table 3C Card expenditure statistics (not seasonally adjusted)

Number of debit card transactions

## Detailed sector breakdown - services sectors

	October 2010	November 2010	December 2010	January 2011	February 2011	March 2011	April 2011	May 2011	June 2011	July 2011	August 2011	September 2011	October 2011	Total (latest 12 months)
Auto rental	459,064	459,017	429,751	441,378	442,088	522,267	520,508	543,761	551,735	572,310	569,771	544,457	518,789	6,115,832
Auto parts & accessories	1,649,275	1,752,246	1,617,155	1,714,527	1,683,096	1,994,149	1,771,869	1,861,814	1,709,263	1,709,158	1,772,286	1,767,025	1,835,043	21,187,631
Auto services	2,782,838	2,917,879	2,891,715	2,666,719	2,655,532	2,997,851	2,779,412	3,152,951	3,110,282	3,163,006	3,187,696	3,216,433	3,327,435	36,066,911
Auto repair shops	1,594,379	1,617,603	1,457,690	1,666,132	1,646,147	1,987,604	1,704,365	1,800,697	1,685,376	1,660,789	1,675,521	1,802,392	1,795,972	20,500,288
Service stations	9,785,297	10,756,888	11,418,047	13,183,611	12,743,294	14,431,363	13,924,696	15,014,963	10,392,966	10,451,087	10,971,965	14,065,661	15,163,866	152,518,407
Vehicle sales	1,096,622	1,087,487	919,220	1,093,360	1,111,545	1,389,509	1,259,097	1,337,928	1,499,527	1,232,996	1,271,134	1,225,057	1,470,650	14,704,650
<b>Vehicle Sales &amp; Services</b>	<b>17,367,475</b>	<b>18,591,120</b>	<b>18,733,578</b>	<b>20,765,727</b>	<b>20,281,702</b>	<b>23,322,743</b>	<b>21,959,947</b>	<b>23,712,114</b>	<b>18,949,149</b>	<b>18,789,346</b>	<b>19,448,373</b>	<b>22,673,758</b>	<b>23,866,162</b>	<b>251,093,719</b>
Restaurants	35,254,448	35,960,594	34,348,813	33,969,770	34,889,801	38,578,583	38,137,850	41,637,372	38,498,144	39,741,250	42,170,675	39,590,376	44,887,897	462,410,925
Public houses	5,710,049	6,078,969	5,734,686	5,622,815	5,736,442	6,431,097	7,001,140	7,638,442	6,566,619	6,724,566	7,788,813	6,715,395	7,701,603	79,740,587
Catering services	559,239	587,654	508,086	497,531	523,075	614,255	510,273	579,154	575,979	564,117	568,764	605,460	631,202	6,765,550
Video stores	195,233	196,187	215,269	206,375	188,074	282,583	364,105	394,611	359,070	463,523	412,197	423,326	431,864	2,737,184
Cinema, theatre & dance	3,794,246	4,685,570	3,511,779	4,184,730	4,413,738	3,507,785	3,165,554	4,700,499	4,093,547	5,046,283	5,693,270	3,928,284	4,441,250	51,372,289
Concerts & entertainers	44,798	46,254	54,506	46,388	52,914	55,088	57,837	60,367	63,218	64,714	82,316	60,397	74,081	718,080
Tourist attractions	837,958	606,625	358,235	338,700	459,898	488,431	858,155	776,745	717,246	831,001	1,323,376	686,120	777,653	8,222,185
Amusement parks	80,818	54,705	40,012	44,481	67,292	61,353	123,250	88,370	90,922	106,839	197,491	87,106	108,231	1,070,052
Aquariums	30,362	26,519	19,626	27,872	32,703	31,126	39,067	39,825	33,203	36,257	48,923	31,595	33,741	400,457
Sports & games establishments	2,279,503	2,280,519	2,219,113	2,526,007	2,473,824	2,771,289	2,392,550	2,300,162	2,613,896	2,618,994	2,954,425	2,506,606	2,772,222	30,429,607
Professional sports clubs	148,533	177,890	178,989	149,757	158,323	163,333	169,403	164,466	158,531	173,313	207,077	169,659	174,930	2,045,671
Gambling	13,325,477	14,829,646	13,923,967	14,609,428	13,881,509	16,836,188	14,865,497	17,316,440	15,548,391	16,245,313	16,771,743	16,519,997	17,284,142	188,632,261
Personal services	253,915	255,609	257,925	249,483	252,873	286,257	265,672	465,789	423,840	433,378	452,748	419,268	424,715	4,187,557
Miscellaneous entertainment	623,606	478,289	356,223	435,959	496,038	549,506	773,265	708,847	759,336	829,351	1,108,902	730,430	817,809	8,043,955
<b>Entertainment</b>	<b>63,138,185</b>	<b>66,265,030</b>	<b>61,727,029</b>	<b>62,909,296</b>	<b>63,626,504</b>	<b>70,656,874</b>	<b>68,723,618</b>	<b>76,871,089</b>	<b>70,501,942</b>	<b>73,578,899</b>	<b>79,480,720</b>	<b>72,174,019</b>	<b>80,261,340</b>	<b>846,776,360</b>
<b>Hotels</b>	<b>3,008,690</b>	<b>2,796,212</b>	<b>2,575,767</b>	<b>2,607,666</b>	<b>2,720,543</b>	<b>2,709,675</b>	<b>3,307,862</b>	<b>3,471,234</b>	<b>3,479,953</b>	<b>3,781,579</b>	<b>3,984,551</b>	<b>3,460,144</b>	<b>3,614,289</b>	<b>38,509,475</b>
Airlines	632,556	583,350	454,976	693,246	404,758	391,322	314,675	372,865	437,102	381,795	397,162	403,715	388,468	5,223,434
Airport terminals	28,317	22,650	19,643	23,030	23,129	32,302	36,744	39,708	44,029	45,451	53,785	42,099	33,452	416,022
Railways	14,114,046	14,750,047	12,974,496	12,519,936	12,598,320	14,933,660	13,259,309	15,087,274	14,957,338	14,590,972	14,793,857	15,023,376	16,628,814	172,117,399
Buses	884,491	949,896	797,034	853,166	819,420	931,102	871,775	958,945	939,908	952,979	990,433	1,027,646	1,114,769	11,207,073
Sea travel	107,818	93,673	93,926	97,263	100,752	114,272	132,643	133,174	142,966	161,716	188,561	134,716	122,976	1,516,638
Travel agents	1,282,841	1,118,282	947,862	1,817,106	1,548,463	1,793,432	1,585,962	1,724,047	1,664,913	1,724,370	1,611,261	1,443,001	1,330,739	18,309,438
Timeshares	343	284	216	339	284	1,205	194	120	135	113	75	78	84	3,127
Camping grounds	349,810	164,677	103,806	245,536	299,629	407,174	633,122	627,834	613,951	727,480	890,135	471,156	390,267	5,574,767
Miscellaneous travel	1,047,061	1,029,859	925,830	714,658	713,182	827,005	795,522	979,233	900,224	931,856	957,784	851,474	843,253	10,469,880
<b>Travel</b>	<b>18,447,283</b>	<b>18,712,718</b>	<b>16,317,789</b>	<b>16,964,280</b>	<b>16,507,937</b>	<b>19,431,474</b>	<b>17,629,946</b>	<b>19,923,200</b>	<b>19,700,566</b>	<b>19,516,732</b>	<b>19,883,053</b>	<b>19,397,261</b>	<b>20,852,822</b>	<b>224,837,778</b>
Telegraph services / Wire transfer money order	37,228	40,116	42,636	34,339	33,636	38,861	38,030	37,949	40,985	41,665	46,375	46,859	49,651	491,102
Insurance services	2,787,557	2,689,674	2,344,442	2,686,712	2,673,674	3,284,119	2,922,307	3,256,472	3,461,874	3,474,007	3,606,094	3,532,745	3,297,574	37,229,694
FIs - cash disbursements (auto & manual)	120,428	104,628	111,801	90,152	103,958	122,110	4,791	5,915	2,417	2,650	2,474	2,206	67,256	620,358
FIs - merchandise & services	7,066,506	6,968,354	7,151,825	7,208,799	6,507,913	7,808,351	6,949,703	7,404,481	7,249,456	7,525,464	7,896,973	7,634,998	8,021,177	88,327,494
Non-FIs - foreign currency, travellers' cheques	186,272	141,618	150,843	131,213	156,313	180,433	198,398	231,389	259,484	304,490	334,738	280,986	221,064	2,590,969
Security brokers and dealers	70,208	78,144	60,033	77,672	78,575	114,149	106,757	70,445	69,356	65,917	146,928	79,169	63,751	1,010,896
Tax preparation services	117	154	126	331	309	371	524	443	631	645	635	580	469	5,218
Tax payments	105,647	116,346	118,024	157,279	128,903	148,746	140,641	153,941	113,499	112,529	118,083	142,554	152,017	1,602,112
Fines, bail and bond payments	294,637	287,441	253,590	262,877	265,407	314,935	363,159	436,691	446,382	468,060	445,215	441,580	466,346	4,451,683
Miscellaneous financial	414,627	440,520	431,027	488,675	482,171	565,875	561,341	593,163	460,098	460,087	479,586	563,802	592,753	6,119,098
<b>Financial</b>	<b>11,083,227</b>	<b>10,866,995</b>	<b>10,664,347</b>	<b>11,138,049</b>	<b>10,430,859</b>	<b>12,577,950</b>	<b>11,285,651</b>	<b>12,190,889</b>	<b>12,103,732</b>	<b>12,455,514</b>	<b>13,077,101</b>	<b>12,725,479</b>	<b>12,932,058</b>	<b>142,448,624</b>

Table 3C Card expenditure statistics (not seasonally adjusted)

Number of debit card transactions

## Detailed sector breakdown - services sectors (continued)

	October 2010	November 2010	December 2010	January 2011	February 2011	March 2011	April 2011	May 2011	June 2011	July 2011	August 2011	September 2011	October 2011	Total (latest 12 months)
Telecoms	9,535,164	9,776,545	10,868,232	9,560,726	8,927,584	9,939,854	10,678,214	11,429,589	11,143,781	11,230,739	11,765,512	11,257,037	11,659,157	128,236,970
Utilities	1,701,375	1,748,683	1,602,139	1,689,565	1,583,060	1,978,020	1,752,460	1,889,688	1,944,022	1,879,512	1,965,177	1,857,047	1,906,166	21,795,539
Contractors (residential & commercial)	580,235	608,029	509,564	529,985	534,719	593,362	439,777	481,076	498,138	463,519	491,991	505,141	526,557	6,181,858
Gardening services	88,013	101,713	117,156	67,219	72,614	106,122	138,937	146,944	112,993	97,264	99,782	86,003	94,079	1,240,826
Veterinary services	1,523,236	1,507,384	1,328,402	1,406,772	1,282,093	1,465,148	1,322,600	1,460,309	1,354,625	1,398,444	1,459,729	1,412,188	1,435,019	16,832,713
Photocopying & printing	390,117	469,276	425,235	385,347	362,725	433,705	350,424	426,550	412,437	376,722	405,180	427,069	439,858	4,914,528
Photographic studios	366,426	424,654	357,594	246,494	256,787	1,206,026	1,139,734	1,290,945	320,984	361,919	305,452	306,296	360,191	6,577,076
Beauty & barber shops	4,011,630	4,164,566	5,017,617	3,764,081	3,753,940	3,392,034	3,290,463	3,460,146	4,498,533	4,423,499	4,425,610	4,334,708	4,352,525	48,877,722
Employment agencies	22,656	21,761	15,426	24,391	22,853	22,569	9,091	10,062	10,826	10,382	10,532	9,837	9,771	177,501
Counselling services	46,639	50,063	50,264	49,901	46,173	49,075	62,644	76,224	72,621	70,909	81,434	74,834	75,674	759,816
Legal services	105,160	113,297	90,438	110,134	109,676	135,192	109,173	123,443	129,849	126,123	133,524	133,598	129,524	1,443,971
Laundry & cleaning	478,923	486,368	373,818	402,558	386,201	449,285	408,488	481,317	472,214	450,727	439,333	465,327	474,077	5,289,713
Funeral services	16,615	17,682	16,497	18,342	18,586	19,396	16,361	16,916	19,225	18,367	18,644	19,018	19,592	218,626
Medical services	2,270,484	2,452,101	1,902,832	2,272,760	2,326,310	2,686,774	2,155,261	2,467,858	2,497,141	2,323,325	2,420,941	2,575,276	2,476,951	28,557,530
Moving & courier services	219,844	240,692	229,555	223,013	217,485	253,182	227,048	263,541	273,206	262,589	267,562	275,067	270,466	3,003,406
Repair shops (not auto)	129,835	135,505	115,919	109,697	99,316	112,421	84,045	96,457	96,782	90,916	101,276	100,091	101,906	1,244,331
Accounting services	204,259	224,563	206,426	221,318	196,520	228,307	198,361	242,652	239,938	229,031	254,643	251,241	249,011	2,742,011
Advertising, consultancy & PR	252,397	260,621	187,745	237,843	228,987	260,126	221,467	262,848	247,211	235,851	246,730	242,169	241,199	2,872,797
Computer programming	867,919	921,370	862,652	1,059,506	1,031,464	1,206,402	873,294	950,986	868,144	851,094	892,376	971,393	1,085,546	11,574,227
Farming services	141,368	149,533	143,531	132,383	126,807	145,645	145,577	160,959	143,771	138,801	145,284	141,690	144,979	1,718,960
Miscellaneous professional services	3,182,174	3,373,283	3,024,640	2,749,320	2,599,486	2,962,900	2,540,385	2,917,827	2,879,266	2,813,406	2,886,223	2,942,428	3,035,682	34,724,846
Engineering services	53,227	53,511	42,857	49,189	55,312	68,565	60,231	63,268	65,814	63,881	64,455	64,100	62,986	714,169
Marina services	54,659	52,251	49,022	43,714	44,480	63,412	93,341	92,265	92,002	97,835	118,027	73,564	64,443	884,356
Wrecking & salvage yards	7,904	8,130	6,031	7,191	7,309	8,538	8,206	8,767	8,749	8,600	8,864	8,876	8,837	98,098
Pest control	3,197	2,798	1,951	2,352	2,229	2,769	2,824	4,008	4,124	5,088	5,167	4,961	4,261	42,532
Educational establishments	1,517,899	1,400,713	948,787	1,375,923	1,239,689	1,506,342	966,237	1,470,506	1,109,014	887,489	819,226	1,581,419	1,890,388	15,195,733
Child care services	92,281	91,344	77,621	101,652	104,691	97,599	76,983	97,102	92,259	92,632	108,998	95,550	107,648	1,144,079
Social, political & religious organisations	1,945,267	2,192,574	1,681,622	1,468,612	1,573,617	2,757,117	2,074,022	2,274,308	2,127,233	2,167,169	2,220,719	2,165,180	2,083,817	24,785,990
Government services	4,889,346	4,873,540	4,207,330	4,847,329	4,802,984	5,442,790	5,082,368	5,900,379	5,652,209	5,554,785	5,854,297	5,719,520	5,613,720	63,551,251
Miscellaneous services	4,792,701	5,586,335	6,420,097	4,615,979	4,646,680	5,718,296	5,023,401	5,615,860	5,529,977	5,166,130	5,538,769	5,546,082	5,734,200	65,141,806
Commercial equipment	1,499,574	1,542,240	1,459,787	1,484,217	1,357,574	1,491,209	1,223,532	1,451,075	1,862,564	1,289,236	1,364,856	1,650,619	1,580,615	17,757,524
Other services	40,990,524	43,051,125	42,340,787	39,257,513	38,017,951	44,802,182	40,774,949	45,633,875	44,779,652	43,185,984	44,920,313	45,297,329	46,238,845	518,300,505
<b>Total services</b>	<b>154,035,384</b>	<b>160,283,200</b>	<b>152,359,297</b>	<b>153,642,531</b>	<b>151,585,496</b>	<b>173,500,898</b>	<b>163,681,973</b>	<b>181,802,401</b>	<b>169,514,994</b>	<b>171,308,054</b>	<b>180,794,111</b>	<b>175,727,990</b>	<b>187,765,516</b>	<b>2,021,966,461</b>
<b>TOTAL</b>	<b>548,592,530</b>	<b>600,246,495</b>	<b>634,407,501</b>	<b>536,820,162</b>	<b>519,457,398</b>	<b>592,943,263</b>	<b>577,102,552</b>	<b>632,191,582</b>	<b>593,440,363</b>	<b>595,763,541</b>	<b>625,211,444</b>	<b>598,493,174</b>	<b>645,063,226</b>	<b>7,151,140,701</b>

Table 3D Card expenditure statistics (not seasonally adjusted)

Value of debit card transactions

## Detailed sector breakdown - retail sectors

£	October 2010	November 2010	December 2010	January 2011	February 2011	March 2011	April 2011	May 2011	June 2011	July 2011	August 2011	September 2011	October 2011	Total (latest 12 months)
Supermarkets	5,014,277,229	5,639,057,847	6,379,061,638	4,979,913,209	4,743,040,655	5,271,645,702	5,291,473,518	5,752,808,679	5,321,480,393	5,365,699,856	5,620,169,822	5,336,379,832	5,783,167,464	65,483,898,615
Bakers & dairies	4,890,020	5,221,835	5,746,339	4,465,006	4,582,734	5,424,516	5,799,108	6,174,111	19,864,654	18,396,445	20,127,072	20,031,476	12,908,330	128,741,626
Sweet stores	6,973,485	11,661,555	23,828,246	5,578,067	7,210,415	9,277,413	12,663,126	9,903,597	9,968,048	9,180,646	9,881,362	9,485,111	10,912,385	129,549,971
Miscellaneous foodstores	170,023,097	188,414,613	211,014,800	151,185,707	150,614,177	170,530,162	182,674,770	193,404,314	200,963,233	193,036,963	221,053,679	200,672,701	210,805,457	2,274,370,576
Off-licences	60,513,662	64,724,886	85,385,754	55,508,979	56,130,426	63,100,975	67,115,235	68,317,315	69,195,487	72,085,817	69,900,855	65,558,200	70,260,918	807,284,847
Food & drink	5,256,677,493	5,909,080,736	6,705,036,777	5,196,650,968	4,961,578,407	5,519,978,768	5,559,725,757	6,030,608,016	5,621,471,815	5,658,399,727	5,941,132,790	5,632,127,320	6,088,054,554	68,823,845,635
Department stores	490,693,526	620,278,345	915,099,312	450,125,948	379,452,233	450,186,140	452,070,001	503,889,153	495,233,685	491,431,287	477,358,871	460,266,098	520,047,930	6,215,439,003
Discount stores	298,937,181	385,113,811	473,932,531	246,958,345	229,809,597	235,313,879	284,787,058	293,878,191	282,379,583	288,647,947	308,880,351	297,492,523	341,697,126	3,668,890,942
Catalogues	119,353,792	151,941,102	150,659,189	127,151,392	114,988,869	122,599,525	107,981,128	126,758,517	113,683,391	110,860,114	112,739,600	121,022,335	151,536,471	1,511,921,633
Miscellaneous mixed	239,490,122	281,808,989	327,067,549	209,495,819	212,722,017	246,280,400	270,042,596	321,102,617	300,199,182	304,214,940	333,245,714	311,405,974	348,891,888	3,466,477,685
Mixed business	1,148,474,621	1,439,142,247	1,866,758,581	1,033,731,504	936,972,716	1,054,379,944	1,114,880,783	1,245,628,478	1,191,495,841	1,195,154,288	1,232,224,536	1,190,186,930	1,362,173,415	14,862,729,263
Men's clothing	54,448,114	62,656,528	91,791,171	52,806,360	44,109,240	49,227,469	51,080,028	57,064,341	56,965,660	54,432,057	58,206,300	53,027,859	57,705,252	693,071,995
Women's clothing	209,915,550	231,622,629	286,642,305	174,303,349	162,653,898	193,553,282	216,142,459	233,109,785	237,874,834	234,803,755	227,905,226	227,959,077	252,538,712	2,679,109,311
Family clothing	730,073,576	822,418,177	1,106,940,069	585,371,683	555,423,572	669,715,370	726,702,752	779,323,358	720,307,219	761,145,005	751,342,946	751,342,946	850,332,400	9,092,782,708
Miscellaneous clothing	68,963,860	73,547,940	78,455,230	43,230,604	44,374,777	55,039,618	66,696,608	75,342,754	75,708,260	67,688,236	77,974,618	78,928,617	89,185,674	826,173,675
Shoe shops	124,650,334	128,800,329	157,328,730	104,476,581	82,828,257	95,796,483	119,219,049	120,884,773	120,405,385	124,514,538	145,107,628	132,284,417	140,953,140	1,472,599,310
Clothing	1,188,051,434	1,319,045,603	1,721,157,505	960,188,577	889,389,744	1,063,332,222	1,179,840,896	1,265,725,011	1,214,482,094	1,246,583,591	1,270,687,661	1,242,588,917	1,390,715,178	14,763,736,999
Furniture stores	305,687,834	331,971,048	307,688,255	312,380,900	264,896,713	295,786,204	266,794,269	300,640,391	276,361,764	286,361,849	306,737,519	304,264,544	339,188,151	3,593,071,607
Household appliance stores	183,175,845	205,510,508	234,476,503	189,213,713	178,276,396	206,397,135	188,113,434	195,044,054	184,430,335	191,465,360	193,039,217	197,716,227	213,178,229	2,376,861,111
Electronic stores	260,032,895	314,470,417	474,732,589	288,753,290	213,077,760	230,903,089	212,971,077	249,694,906	224,154,822	232,229,787	269,849,576	265,653,997	280,744,532	3,257,235,842
DIY stores	680,300,577	689,161,759	604,538,946	613,437,162	597,231,718	741,967,828	825,144,998	754,873,067	756,245,612	787,861,213	759,131,958	804,465,373	870,123,313	8,770,123,313
Floor covering stores	68,671,131	80,665,976	57,444,151	60,493,280	57,722,880	67,462,685	59,991,613	68,361,976	63,961,361	64,488,152	72,749,018	70,516,138	76,540,264	800,398,034
Garden centres	77,959,137	88,847,202	108,599,157	54,897,175	64,977,653	120,818,392	186,611,070	176,919,176	125,786,911	105,919,597	99,366,528	86,735,614	95,059,588	1,313,978,463
Miscellaneous household	82,201,150	88,245,496	69,591,782	67,390,277	61,524,131	69,835,342	65,960,341	72,268,635	74,420,912	82,045,807	98,763,326	92,878,837	98,581,588	941,506,474
Household	1,658,028,569	1,798,872,406	1,856,511,783	1,586,566,337	1,437,707,251	1,733,170,675	1,816,505,483	1,888,074,136	1,703,989,172	1,718,756,164	1,828,366,397	1,776,897,315	1,907,757,725	21,053,174,844
Books, newspapers & magazines	123,013,009	128,427,623	187,935,107	101,169,554	94,908,629	102,068,195	96,888,496	107,305,157	101,944,747	100,251,317	110,783,371	130,891,709	129,929,235	1,392,503,140
Record shops	42,056,803	73,875,546	153,557,904	41,205,914	37,995,466	32,904,662	37,344,501	37,715,874	31,930,210	33,278,254	31,930,170	33,278,254	41,303,232	580,637,305
Music shops	42,790,621	49,742,223	56,033,381	50,937,222	43,672,219	47,269,555	42,604,264	50,785,544	47,150,368	47,759,410	52,456,244	51,354,654	56,594,476	596,359,560
Hobbies, toys & games	96,157,385	171,076,811	237,287,805	71,548,623	58,788,773	71,648,493	60,767,574	60,114,947	54,090,202	48,743,106	53,951,491	60,605,374	80,531,801	1,029,155,000
Photographic	26,294,850	31,209,280	44,464,362	24,379,885	21,628,979	26,759,154	27,783,745	30,884,118	30,826,090	31,170,134	28,534,570	28,077,445	352,839,250	
Handicraft	9,293,177	10,507,876	8,780,429	8,849,574	8,470,977	9,589,539	8,574,859	9,634,757	9,162,740	9,148,470	9,784,141	10,241,661	11,109,371	113,854,394
Sports shops	272,777,133	300,301,952	389,236,472	246,523,487	224,830,353	269,342,644	301,572,332	319,872,581	310,188,755	330,986,524	355,672,842	303,503,592	306,946,495	3,658,978,029
Jewellers	104,303,526	133,739,758	268,175,526	99,178,459	112,233,519	118,897,712	116,797,022	128,960,289	127,596,254	127,192,905	118,940,497	121,783,987	1,601,507,924	
Computer software	104,535,629	122,058,405	165,476,664	118,406,786	96,432,137	108,905,792	93,767,053	113,779,067	97,542,426	91,888,826	100,783,204	105,319,716	131,469,923	1,345,829,999
Medical goods	5,498,412	5,676,982	4,291,898	4,491,441	5,451,128	6,320,556	5,877,879	6,456,868	6,443,420	6,046,845	6,298,916	6,361,184	68,966,997	
Chemists	251,019,226	324,620,651	464,926,668	231,863,064	229,756,491	268,264,778	237,630,143	278,168,443	259,284,725	246,259,385	268,904,701	245,931,955	275,824,496	3,331,435,500
Optical goods	79,562,782	82,661,986	56,672,407	81,783,980	85,834,306	96,300,709	84,390,474	93,470,539	88,574,018	87,152,471	92,452,364	87,132,919	88,537,467	1,024,963,640
Cosmetic stores	49,590,829	66,744,134	105,682,785	37,304,823	37,871,511	44,611,127	43,704,001	40,047,589	37,408,835	36,154,531	44,764,002	36,733,166	41,656,689	572,683,193
Tobaccoists	716,999	1,112,592	833,267	683,265	732,060	888,811	979,197	1,143,288	1,179,620	1,335,207	1,219,704	1,248,110	1,250,456	
Florists	25,456,586	26,140,417	36,772,773	24,327,705	36,935,689	38,444,246	41,192,856	31,416,750	30,631,201	29,852,736	29,190,123	29,635,853	27,881,810	382,422,159
Artists' supplies	19,606,045	24,005,824	22,567,748	16,424,866	16,853,584	19,971,955	16,779,218	19,390,935	24,395,269	18,118,808	20,372,588	19,164,006	21,534,043	238,578,844
Antiques, art & stamps/coins	29,832,026	31,541,867	32,003,787	23,724,874	24,001,096	28,721,477	25,704,849	22,095,200	26,904,949	26,279,849	28,013,582	30,003,378	328,845,680	
Pawn shops	2,055,332	1,939,822	2,405,203	1,940,679	1,711,088	1,938,581	2,127,234	2,050,442	2,072,237	2,542,732	2,390,699	2,329,220	2,885,151	26,333,088
Gift shops	85,124,361	116,134,310	171,282,567	73,236,174	77,463,948	83,777,999	83,062,614	83,271,439	89,372,601	87,214,424	95,330,228	87,673,422	101,340,521	1,149,160,247
Secondhand shops	2,794,134	2,677,152	2,129,502	2,688,371	2,995,694	2,659,543	2,946,397	3,741,345	3,588,481	3,614,805	3,353,630	3,934,526	3,378,557	
Luggage & leather goods	8,256,854	10,815,715	17,156,440	9,601,153	7,937,335	9,419,334	9,648,114	10,006,582	11,463,822	11,766,423	10,758,243	10,148,242	10,529,553	129,250,956
Pet shops	60,782,485	62,192,865	66,070,340	58,817,528	56,198,678	63,081,826	61,367,136	67,529,752	63,989,107	66,991,165	70,631,727	65,543,944	70,411,650	772,825,718
Religious goods	60,637	59,213	73,977	59,213	47,612	51,092	51,491	96,390	78,640	95,960	95,478	107,331	818,135	
Direct sales	278,212,220	298,912,183	302,118,501	311,545,942	292,756,430	359,796,794	290,760,570	324,985,960	294,087,521	289,790,743	263,812,641	267,040,892	273,671,844	3,569,280,021
Miscellaneous & special														



Table 3D Card expenditure statistics (not seasonally adjusted)

Value of debit card transactions

## Detailed sector breakdown - services sectors

£	October 2010	November 2010	December 2010	January 2011	February 2011	March 2011	April 2011	May 2011	June 2011	July 2011	August 2011	September 2011	October 2011	Total (latest 12 months)
Auto rental	42,407,079	40,022,807	36,886,576	38,217,671	38,470,053	47,176,556	47,354,256	50,662,699	57,275,085	57,198,338	55,313,145	50,091,369	48,403,126	567,071,681
Auto parts & accessories	187,689,767	192,999,373	168,956,540	180,290,468	178,590,410	233,276,144	194,570,174	209,460,405	197,405,353	193,640,313	195,598,305	211,509,048	203,638,290	2,359,934,823
Auto services	58,606,885	60,097,395	53,615,174	57,534,295	56,639,427	68,094,070	61,501,345	71,157,737	70,452,393	70,566,796	73,252,598	71,182,023	67,564,961	781,658,214
Auto repair shops	597,320,638	577,299,931	516,064,787	569,534,703	551,956,994	787,922,670	625,596,026	657,582,397	614,844,367	606,947,786	563,416,854	713,691,187	636,740,133	7,421,597,835
Service stations	126,919,793	136,793,714	145,285,607	177,591,930	167,157,293	195,387,525	188,147,867	229,380,085	140,417,384	138,329,031	144,560,012	194,286,551	200,802,327	2,058,139,326
Vehicle sales	1,067,285,861	1,062,863,143	869,103,767	972,248,406	970,156,789	1,384,487,423	1,123,782,603	1,225,309,510	1,167,670,243	1,121,664,479	1,100,921,284	1,287,819,445	1,159,813,123	13,445,840,195
<b>Vehicle Sales &amp; Services</b>	<b>2,080,230,023</b>	<b>2,070,076,363</b>	<b>1,789,912,451</b>	<b>1,995,417,473</b>	<b>1,962,970,946</b>	<b>2,716,344,388</b>	<b>2,240,952,271</b>	<b>2,443,552,833</b>	<b>2,248,064,825</b>	<b>2,188,346,743</b>	<b>2,133,062,198</b>	<b>2,528,579,623</b>	<b>2,316,961,960</b>	<b>26,634,242,074</b>
Restaurants	687,434,264	686,356,700	693,066,419	668,621,484	679,654,361	728,063,582	763,103,885	806,839,800	742,666,603	781,797,513	841,130,780	747,166,727	847,166,097	8,985,633,951
Public houses	142,807,069	152,239,470	152,605,939	140,693,546	141,398,857	157,776,179	172,844,086	188,795,368	165,166,877	167,541,315	198,255,655	165,010,293	184,393,330	1,986,720,915
Catering services	12,580,679	13,195,666	12,215,966	11,153,092	11,391,769	13,872,051	12,543,857	14,427,681	14,940,091	14,491,471	14,839,124	14,555,695	14,404,516	162,030,999
Video stores	2,581,459	2,738,661	2,908,472	2,514,509	2,320,170	3,248,521	3,878,538	4,290,924	3,831,084	2,220,375	1,668,909	1,958,406	2,333,330	33,911,899
Cinema, theatre & dance	136,545,581	167,044,039	130,336,360	118,430,424	125,117,756	134,440,452	120,534,514	243,382,797	135,846,707	172,074,345	142,718,019	119,727,348	153,811,363	1,763,464,124
Concerts & entertainers	1,513,303	1,569,614	1,531,555	1,431,757	1,565,047	1,810,172	1,787,039	2,160,028	2,080,279	2,015,319	2,478,642	1,919,787	2,337,613	22,686,852
Tourist attractions	26,115,616	18,683,868	12,253,384	11,811,999	14,784,828	17,240,422	30,349,599	26,022,490	25,485,442	29,826,069	43,907,607	23,713,544	27,451,545	281,530,797
Amusement parks	2,537,130	1,809,428	1,384,338	1,427,743	1,991,271	1,992,572	4,054,384	3,005,606	3,020,362	3,625,738	6,060,218	2,746,733	3,368,398	34,486,791
Aquariums	1,015,644	968,475	761,996	965,920	1,073,138	1,174,733	1,433,598	1,496,836	1,210,855	1,302,785	1,583,142	1,111,253	1,144,827	14,227,558
Sports & games establishments	83,128,782	81,347,263	80,311,534	90,601,795	85,158,845	108,100,279	98,429,293	114,789,947	104,323,785	100,162,341	96,405,414	89,624,460	91,498,188	1,140,753,144
Professional sports clubs	7,384,440	8,667,040	8,659,101	7,397,346	8,104,074	8,769,572	10,552,545	9,486,510	15,434,772	11,312,059	10,200,776	9,141,002	8,535,598	116,260,395
Gambling	323,496,846	347,931,620	325,235,410	332,738,932	342,506,042	411,773,615	350,151,654	398,300,450	388,249,150	395,801,267	481,584,933	432,391,096	431,587,320	4,638,251,489
Personal services	11,242,067	11,219,399	11,463,127	11,183,606	11,217,623	12,864,674	11,704,296	17,949,288	16,324,840	16,626,172	17,287,084	16,636,570	16,707,685	171,184,364
Miscellaneous entertainment	27,607,053	24,858,348	15,999,208	16,720,674	18,846,736	24,582,235	34,690,184	33,205,577	33,489,238	37,600,011	44,758,945	31,667,596	35,870,520	352,289,272
<b>Entertainment</b>	<b>1,465,989,933</b>	<b>1,518,629,591</b>	<b>1,448,732,829</b>	<b>1,415,692,827</b>	<b>1,445,130,517</b>	<b>1,625,709,059</b>	<b>1,616,057,472</b>	<b>1,864,153,302</b>	<b>1,652,070,085</b>	<b>1,736,396,780</b>	<b>1,902,879,248</b>	<b>1,657,370,510</b>	<b>1,820,610,330</b>	<b>19,703,432,550</b>
<b>Hotels</b>	<b>264,650,673</b>	<b>236,788,937</b>	<b>209,470,309</b>	<b>231,767,307</b>	<b>233,667,589</b>	<b>235,828,274</b>	<b>285,158,420</b>	<b>315,107,014</b>	<b>333,920,339</b>	<b>359,173,455</b>	<b>375,431,505</b>	<b>317,919,196</b>	<b>317,648,120</b>	<b>3,451,880,465</b>
Airlines	119,718,690	115,267,796	76,890,702	142,128,378	88,298,105	92,453,251	73,784,582	89,885,132	91,901,290	96,665,029	93,878,141	98,818,271	96,404,265	1,156,010,942
Airport terminals	2,746,215	2,340,720	2,132,039	2,253,721	1,945,968	2,863,023	3,382,838	3,460,094	3,831,024	4,134,943	4,393,632	3,440,931	2,943,807	37,122,740
Railways	320,501,053	336,300,589	290,388,279	294,975,057	296,143,400	351,162,017	300,401,721	355,260,637	362,049,327	348,503,787	357,081,557	362,348,211	396,679,966	4,051,294,548
Buses	25,161,829	23,968,475	20,568,981	24,197,554	22,542,556	26,323,934	26,419,242	28,501,441	29,075,014	29,725,758	31,814,738	34,956,802	31,743,284	329,837,779
Sea travel	7,856,859	6,643,674	6,190,097	8,022,991	7,985,924	9,244,752	9,780,939	10,163,526	10,699,281	11,798,860	12,110,703	9,155,540	8,092,988	109,889,275
Travel agents	649,470,873	568,963,056	497,444,636	877,492,672	774,517,061	945,832,790	891,744,645	1,067,450,019	1,041,921,530	1,022,367,717	850,010,433	717,934,784	674,341,714	9,930,021,057
Timeshares	24,541	21,296	24,119	69,621	33,831	55,184	22,244	14,250	23,262	15,584	9,868	9,523	10,992	309,774
Camping grounds	48,337,125	39,137,927	27,952,542	42,215,202	47,324,209	63,099,798	74,405,304	79,840,324	78,422,322	84,699,997	81,131,302	49,009,688	48,712,077	715,950,692
Miscellaneous travel	26,358,255	26,148,213	21,943,329	22,976,247	23,950,000	31,316,405	32,142,825	37,716,404	42,849,098	38,648,604	36,383,478	28,458,048	26,709,420	369,242,071
<b>Travel</b>	<b>1,200,175,440</b>	<b>1,118,791,746</b>	<b>943,534,724</b>	<b>1,414,331,443</b>	<b>1,262,741,054</b>	<b>1,522,351,154</b>	<b>1,412,084,340</b>	<b>1,672,291,827</b>	<b>1,660,772,148</b>	<b>1,636,560,279</b>	<b>1,466,813,852</b>	<b>1,304,131,798</b>	<b>1,285,274,513</b>	<b>16,699,678,878</b>
Telegraph services / Wire transfer money order	11,739,785	14,312,847	12,542,555	11,898,913	11,602,102	12,206,278	11,813,587	10,723,677	11,531,394	12,584,654	15,634,085	18,246,571	16,642,995	159,739,658
Insurance services	602,025,369	577,290,843	544,721,727	608,078,108	589,855,896	740,805,961	660,951,111	729,302,797	763,553,699	779,948,066	785,344,969	788,047,082	775,272,749	8,343,173,008
FIs - cash disbursements (auto & manual)	39,780,316	32,079,593	35,453,434	29,282,753	33,461,728	34,527,598	1,986,838	2,186,980	1,155,446	1,401,419	1,297,021	1,069,578	23,239,222	197,141,610
FIs - merchandise & services	2,107,928,811	2,331,333,127	2,189,189,792	2,205,878,449	2,054,485,927	2,507,630,924	2,397,764,097	2,379,677,236	2,362,363,559	2,449,514,619	2,734,680,801	2,431,325,356	2,468,306,673	28,512,150,560
Non-FIs - foreign currency, travellers' cheques	69,677,564	49,799,078	51,002,569	46,657,418	53,885,767	61,761,641	72,514,008	87,789,323	99,239,091	129,975,366	138,793,109	103,635,173	76,555,351	971,607,894
Security brokers and dealers	242,984,867	267,660,636	206,543,276	283,484,820	275,180,880	469,074,514	517,089,523	246,070,738	223,527,190	204,628,858	520,199,109	240,995,733	170,610,245	3,625,065,522
Tax preparation services	22,963	51,888	37,624	83,445	82,231	81,705	87,904	70,492	107,560	116,505	131,689	139,302	96,468	1,086,813
Tax payments	93,325,421	100,775,955	106,227,994	154,551,705	121,533,541	142,181,231	136,644,362	166,804,126	102,905,285	101,155,183	105,607,637	140,788,286	145,434,185	1,524,409,490
Fines, bail and bond payments	24,743,381	24,223,803	21,115,970	22,388,314	22,473,405	27,233,205	25,806,737	29,759,671	30,598,953	31,191,837	29,031,633	30,951,980	30,980,950	325,756,458
Miscellaneous financial	54,446,391	57,345,883	56,542,263	67,833,515	64,432,619	76,564,380	74,354,888	88,765,987	61,519,700	60,924,285	62,985,227	78,390,902	79,660,150	829,329,809
<b>Financial</b>	<b>3,246,674,868</b>	<b>3,454,873,653</b>	<b>3,223,377,204</b>	<b>3,430,137,440</b>	<b>3,226,994,096</b>	<b>4,072,067,437</b>	<b>3,899,013,055</b>	<b>3,740,951,037</b>	<b>3,656,501,877</b>	<b>3,771,440,792</b>	<b>4,393,715,280</b>	<b>3,833,589,963</b>	<b>3,786,798,988</b>	<b>44,489,460,822</b>

Table 3D Card expenditure statistics (not seasonally adjusted)

Value of debit card transactions

## Detailed sector breakdown - services sectors (continued)

£	October 2010	November 2010	December 2010	January 2011	February 2011	March 2011	April 2011	May 2011	June 2011	July 2011	August 2011	September 2011	October 2011	Total (latest 12 months)
Telecoms	246,040,059	253,376,557	292,076,196	247,686,977	226,580,081	253,126,273	248,605,518	272,687,964	262,660,143	265,811,870	276,662,538	268,642,702	295,627,635	3,163,544,454
Utilities	151,038,552	152,251,015	142,612,310	161,729,034	164,670,083	227,531,432	193,989,352	198,850,532	195,525,269	177,756,053	179,915,970	177,548,394	181,135,127	2,153,514,571
Contractors (residential & commercial)	99,569,814	107,534,056	93,115,098	93,949,559	98,802,213	113,513,736	84,779,244	98,603,238	110,478,364	97,935,891	102,978,392	107,182,395	110,539,042	1,219,411,228
Gardening services	4,031,900	4,449,934	4,772,851	3,011,968	3,487,736	5,532,520	7,326,024	7,908,576	6,131,343	5,409,024	5,356,136	4,822,721	4,908,075	63,116,908
Veterinary services	79,385,652	79,182,468	68,412,273	75,884,769	67,824,359	78,403,266	70,108,783	78,005,827	73,491,551	74,806,623	77,572,438	74,986,758	75,364,404	894,043,519
Photocopying & printing	22,189,897	24,910,763	21,013,160	20,847,959	20,442,796	24,570,868	19,845,789	23,459,985	24,301,248	22,348,460	23,559,456	25,849,354	25,097,830	276,247,668
Photographic studios	13,682,960	16,548,650	13,846,647	9,637,772	9,940,042	45,895,001	45,060,877	49,506,668	12,576,406	14,907,535	12,330,517	11,687,134	13,303,325	255,240,574
Beauty & barber shops	155,205,312	163,130,931	195,158,531	141,029,890	144,519,931	130,709,399	125,179,388	133,388,158	172,024,947	171,454,255	170,020,860	169,204,805	167,731,872	1,883,562,967
Employment agencies	943,624	910,475	864,600	969,412	929,036	1,051,749	754,954	895,859	875,492	966,341	913,613	1,022,143	943,803	11,097,477
Counselling services	4,479,119	4,746,562	4,039,259	3,847,825	3,609,851	3,780,689	5,809,386	6,877,531	5,789,337	5,462,980	6,089,885	5,577,236	5,849,852	61,480,393
Legal services	54,537,117	58,169,221	47,691,862	53,616,724	53,379,889	67,884,077	57,114,419	60,634,005	71,374,719	65,296,005	73,245,069	73,694,472	72,813,515	754,913,977
Laundry & cleaning	11,082,833	11,138,839	8,615,675	9,374,763	8,789,454	10,737,187	10,003,292	11,825,694	11,348,065	11,005,339	10,835,446	11,462,952	11,439,049	126,575,755
Funeral services	16,526,587	15,857,206	16,026,966	18,408,727	19,373,156	20,742,773	16,717,226	16,843,076	19,690,023	18,860,156	18,968,344	19,370,012	19,986,163	220,843,828
Medical services	177,358,472	191,373,367	147,360,218	170,365,259	180,479,429	212,963,944	171,287,900	195,527,716	201,588,544	189,992,831	190,373,231	202,871,307	196,721,212	2,250,904,958
Moving & courier services	22,638,269	23,149,592	21,009,437	20,813,579	19,377,170	22,877,600	21,148,910	24,343,704	26,362,009	27,381,629	28,682,894	28,433,457	27,116,107	290,696,088
Repair shops (not auto)	11,131,996	11,991,276	10,648,851	9,246,354	8,498,141	9,848,127	8,003,809	9,026,497	9,733,633	8,997,249	9,724,554	9,750,037	9,762,490	115,231,018
Accounting services	11,246,584	12,362,276	10,786,357	12,530,839	11,337,668	13,600,492	13,208,003	15,769,841	15,531,588	15,052,832	18,350,854	18,564,207	17,422,242	174,517,199
Advertising, consultancy & PR	15,334,037	16,232,292	12,094,726	14,596,689	14,006,716	15,779,695	13,735,590	16,122,133	15,657,790	14,786,599	14,873,020	14,948,760	14,027,550	176,861,560
Computer programming	119,277,253	120,799,693	106,899,797	105,469,356	92,769,545	110,775,508	31,209,543	32,720,119	33,619,571	31,724,708	32,800,285	36,842,215	38,336,781	773,967,121
Farming services	12,708,130	13,155,989	12,508,488	11,814,563	11,308,870	13,271,543	12,661,581	14,202,725	13,585,431	13,752,913	14,553,963	13,919,852	13,762,196	158,498,114
Miscellaneous professional services	428,295,777	420,748,622	374,063,358	446,872,788	390,619,729	466,878,560	435,871,344	460,497,078	462,133,043	468,350,735	478,250,317	549,518,272	494,075,616	5,447,879,462
Engineering services	14,384,432	14,068,013	11,265,255	12,834,794	14,447,040	18,078,621	15,689,443	16,881,946	17,494,122	17,010,527	16,930,790	17,521,737	17,020,880	189,243,168
Marina services	7,647,127	6,645,463	7,260,654	6,259,303	6,606,736	10,485,285	11,826,462	12,887,402	12,297,220	11,804,239	12,762,428	8,828,384	8,226,868	115,890,444
Wrecking & salvage yards	962,734	1,036,052	710,524	940,738	973,201	1,097,627	1,116,239	1,237,494	1,245,859	1,128,167	1,211,692	1,199,764	1,220,037	13,117,394
Pest control	566,859	524,146	454,675	446,626	451,957	545,918	500,002	811,494	682,028	765,410	756,542	829,478	789,316	7,557,592
Educational establishments	414,486,607	168,554,028	117,140,544	315,679,475	172,782,114	139,510,483	139,114,279	201,673,611	114,005,921	107,398,953	170,473,355	555,812,268	444,417,483	2,646,562,514
Child care services	8,653,110	9,297,230	8,258,480	10,027,710	9,212,115	10,655,406	8,187,303	10,144,551	9,788,177	9,590,898	9,834,889	10,079,717	10,260,073	115,336,549
Social, political & religious organisations	78,289,476	76,526,760	64,098,060	61,075,733	59,141,117	105,628,582	77,450,214	75,577,800	73,509,901	85,715,301	93,465,429	82,461,032	88,909,623	943,559,552
Government services	907,607,778	900,777,790	739,082,721	959,317,444	868,601,812	964,892,402	881,459,861	3,190,945,379	1,912,638,940	1,393,313,587	1,341,536,499	1,039,367,359	994,606,878	15,186,540,672
Miscellaneous services	351,249,146	382,430,314	359,776,315	420,015,993	356,615,348	435,326,334	381,391,464	435,502,988	409,672,119	419,500,038	448,432,081	431,603,425	443,403,405	4,923,669,824
Commercial equipment	93,992,402	94,609,920	79,236,313	86,593,133	83,743,799	99,875,154	83,844,684	95,215,482	113,701,996	95,712,103	99,615,132	110,199,515	104,893,346	1,147,240,577
Other services	3,534,543,615	3,356,489,500	2,990,900,201	3,504,895,755	3,123,321,134	3,635,570,251	3,193,000,883	5,768,575,073	4,409,514,799	3,843,999,251	3,941,076,619	4,083,801,864	3,909,711,795	45,760,857,125
<b>Total services</b>	<b>11,792,264,552</b>	<b>11,755,649,790</b>	<b>10,605,927,718</b>	<b>11,992,242,245</b>	<b>11,254,825,336</b>	<b>13,807,870,563</b>	<b>12,646,266,441</b>	<b>15,804,631,086</b>	<b>13,960,844,073</b>	<b>13,535,917,300</b>	<b>14,212,978,702</b>	<b>13,725,392,954</b>	<b>13,437,005,706</b>	<b>156,739,551,914</b>
<b>TOTAL</b>	<b>24,238,835,644</b>	<b>25,887,753,186</b>	<b>27,055,152,552</b>	<b>23,928,258,837</b>	<b>22,535,721,255</b>	<b>26,724,040,652</b>	<b>25,611,816,797</b>	<b>29,862,940,502</b>	<b>27,120,371,649</b>	<b>26,776,301,386</b>	<b>28,082,962,726</b>	<b>27,018,781,836</b>	<b>27,837,047,272</b>	<b>318,441,148,650</b>