

Card Expenditure Statistics [CES] – March 2011

Seasonally-adjusted

At a glance key figures for March

Some of the data in this report has been estimated using average industry growths between February 2010 and March 2010

	Total Spending £ billions		Annual growth rates for spending		Number of purchases millions	
	2011	2010	2011	2010	2011	2010
All plastic cards	35.9	35.6	7.3%	5.4%	740	717
Debit cards	25.4	24.4	10.1%	7.7%	573	543
Credit cards	10.5	11.1	1.5%	0.7%	167	174

Spending on plastic cards in March amounted to £35.9 billion a fall of 0.4% on February - debit card spending fell by 0.2% while credit card spending decreased by 0.9%. This fall in spending is unusual in a month with five trading weekends, an indication of lower spending patterns by consumers. Annual growth in spending slowed down slightly (Chart 1) to 7.3% (from 8.2%) for all plastic cards, 10.1% (from 10.9%) for debit cards and 1.5% (from 2.5%) for credit cards.

The **average transaction values (ATV)** for all plastic cards fell from £48.23 to £48.12 – the lowest level since December 2005. However particular sectors in services saw strong rises in ATVs. The ATV in travel agents and airlines rose by £18.07 and £17.65 to £464.26 and £334.66 respectively. In financial services the ATV rose by £13.08 to £301.34 (a record high) and in vehicle sales by £79.98 to £771.27.

Retail spending fell by 1.7% compared to February; with spending on food and drink down 3.2%, mixed business down 4.7% and clothing down 2.4%, whilst automotive fuels was up 0.7% despite a 1p cut in fuel duty announced in the Budget. In contrast to retail, spending on **services** increased by 0.9%. Spending in financial services grew by 3.7% driven by purchases of investment products (including ISAs) and insurance services; other services was up 1.7% in part due to higher spending on utilities and government services. While spending on vehicle sales & services was up 3.7%, entertainment and hotels were down 4.2% and 11.1% respectively.

The **plastic card share of total retail sales** (including automotive fuels) ¹ was 66.3% in March (Chart 2). In food & drink this share was 60.7%.

¹CES 3-month moving average spending for March of £18.43 billion expressed as a percentage of a similar 3-month moving average for National Statistics 'All retailing including automotive fuel' (AGG 21) based on the value of Retail Sales at current prices (SA) that gives a figure of £28.26 billion.

Chart 1

Spending on plastic cards
Annual growth rates

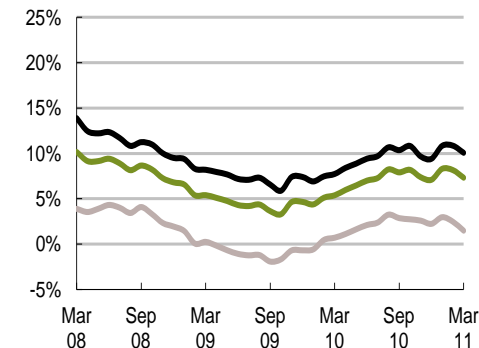
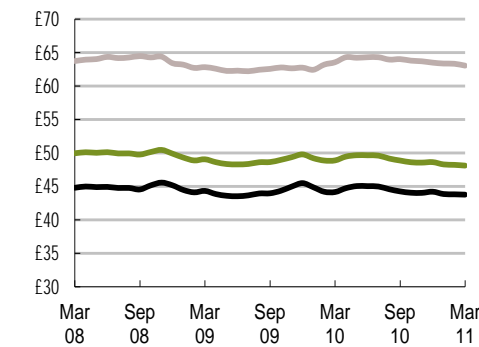


Chart 3

Average transaction values
Three-month moving average



— Debit cards
— Credit cards
— All plastic cards

Chart 2

Percent of retail sales made on plastic cards
(including automotive fuel)
Three-month moving average

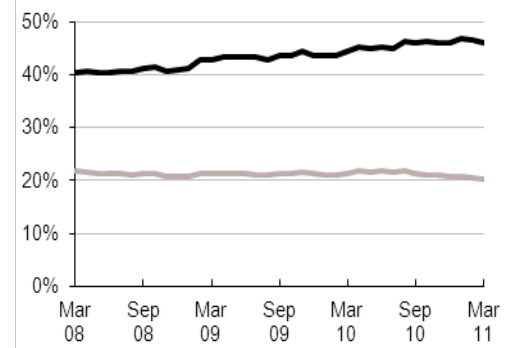


Chart 4

Average monthly expenditure
£ billions

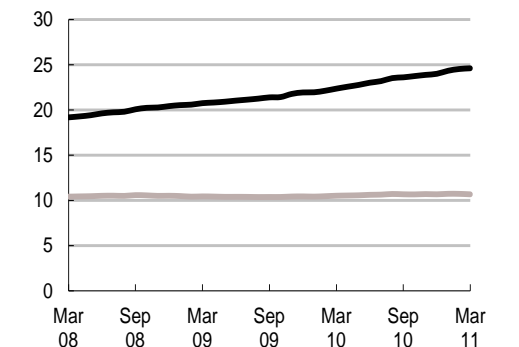


Table 1 Card expenditure statistics (seasonally adjusted)

Summary

		Number of purchase transactions (millions)									Value of purchase transactions (£ millions)									
		All sectors			Retail sales			Services			All sectors			Retail sales			Services			
		Credit	Debit	Total	Credit	Debit	Total	Credit	Debit	Total	Credit	Debit	Total	Credit	Debit	Total	Credit	Debit	Total	
Annual																				
	2006	1,948	4,493	6,441	1,215	3,017	4,232	733	1,476	2,209	119,943	195,401	315,344	59,884	97,963	157,848	60,059	97,438	157,497	
	2007	1,958	4,969	6,927	1,197	3,304	4,501	761	1,665	2,426	123,785	223,886	347,671	61,067	108,663	169,730	62,718	115,223	177,941	
	2008	1,972	5,467	7,438	1,186	3,581	4,767	786	1,885	2,671	126,191	245,168	371,359	60,692	116,064	176,755	65,499	129,104	194,604	
	2009	2,002	5,939	7,941	1,224	3,893	5,117	778	2,047	2,824	125,334	263,328	388,661	61,826	125,371	187,198	63,507	137,956	201,464	
	2010	2,007	6,485	8,492	1,381	4,713	6,093	626	1,772	2,398	128,141	288,094	416,235	69,640	148,521	218,161	58,500	139,574	198,074	
Monthly																				
	2010	Mar	174	543	717	119	396	515	54	148	202	11,129	24,434	35,563	6,009	12,451	18,460	5,121	11,983	17,104
		Apr	168	533	701	115	388	503	53	145	198	10,790	23,852	34,642	5,842	12,232	18,074	4,948	11,620	16,568
		May	163	519	683	112	378	490	51	142	193	10,517	23,587	34,104	5,726	11,919	17,645	4,791	11,667	16,459
		Jun	174	553	727	120	403	522	54	150	205	11,185	24,852	36,037	6,144	12,626	18,769	5,041	12,226	17,268
		Jul	167	534	701	115	388	503	52	146	198	10,735	23,823	34,558	5,795	12,142	17,938	4,940	11,681	16,620
		Aug	171	567	738	118	414	532	53	153	206	10,862	25,036	35,898	5,921	13,100	19,021	4,941	11,937	16,877
		Sep	164	550	714	113	400	513	51	150	201	10,576	24,194	34,770	5,763	12,521	18,284	4,813	11,673	16,486
		Oct	163	542	705	113	393	506	50	149	199	10,332	23,879	34,211	5,660	12,433	18,093	4,672	11,446	16,118
		Nov	172	577	750	118	417	535	54	160	214	10,864	25,476	36,340	5,937	13,151	19,088	4,927	12,325	17,252
		Dec	163	555	718	112	400	512	51	154	205	10,425	24,675	35,101	5,686	12,701	18,387	4,740	11,974	16,714
	2011	Jan	169	586	755	116	421	537	53	164	218	10,666	25,177	35,844	5,773	13,229	19,002	4,893	11,949	16,842
		Feb	169	579	748	115	415	530	54	164	218	10,633	25,461	36,094	5,738	13,015	18,754	4,895	12,446	17,341
		Mar	167	573	740	114	408	522	53	165	218	10,532	25,401	35,933	5,681	12,749	18,431	4,851	12,652	17,503
12 month growth rates (percentages)																				
Annual																				
	2006	-2.7	9.9	5.7	-2.9	9.3	5.5	-2.4	10.9	6.1	-1.4	15.3	8.3	-0.5	10.3	5.9	-2.2	20.8	10.8	
	2007	0.5	10.6	7.5	-1.5	9.5	6.4	3.8	12.8	9.8	3.2	14.6	10.3	2.0	10.9	7.5	4.4	18.3	13.0	
	2008	0.7	10.0	7.4	-0.9	8.4	5.9	3.3	13.2	10.1	1.9	9.5	6.8	-0.6	6.8	4.1	4.4	12.0	9.4	
	2009	1.5	8.6	6.8	3.2	8.7	7.3	-1.0	8.6	5.7	-0.7	7.4	4.7	1.9	8.0	5.9	-3.0	6.9	3.5	
	2010	0.2	9.2	6.9	12.8	21.1	19.1	-19.5	-13.4	-15.1	2.2	9.4	7.1	12.6	18.5	16.5	-7.9	1.2	-1.7	
Monthly																				
	2010	Mar	2.3	8.8	7.1	6.9	11.7	10.5	-4.9	3.1	0.8	0.7	7.7	5.4	5.5	10.7	8.9	-3.7	5.1	2.2
		Apr	2.1	8.7	7.0	7.5	12.6	11.3	-6.2	1.3	-0.8	1.1	8.4	6.0	6.4	11.5	9.7	-3.8	5.6	2.5
		May	2.1	8.7	7.0	8.5	13.7	12.4	-7.8	-0.8	-2.8	1.6	8.9	6.5	7.8	12.4	10.9	-4.1	5.7	2.5
		Jun	2.0	8.7	6.9	9.3	14.6	13.3	-9.3	-2.7	-4.6	2.1	9.4	7.0	9.1	13.3	11.9	-4.5	5.9	2.5
		Jul	1.7	8.5	6.8	9.9	15.4	14.0	-11.0	-4.6	-6.4	2.4	9.7	7.3	10.0	14.0	12.6	-4.8	5.8	2.4
		Aug	2.3	9.6	7.8	11.6	17.6	16.1	-12.1	-5.6	-7.4	3.3	10.7	8.2	11.8	16.0	14.6	-4.8	5.8	2.4
		Sep	1.4	9.1	7.1	11.4	17.9	16.3	-14.2	-7.8	-9.6	2.9	10.4	7.9	11.7	16.1	14.6	-5.5	5.1	1.7
		Oct	1.1	9.3	7.2	11.9	19.1	17.4	-15.9	-9.3	-11.2	2.7	10.8	8.2	12.1	17.1	15.4	-6.3	5.1	1.4
		Nov	0.6	8.9	6.8	12.0	19.5	17.7	-17.5	-11.5	-13.1	2.6	9.7	7.4	12.1	17.1	15.5	-6.6	2.8	-0.2
		Dec	0.2	9.2	6.9	12.8	21.1	19.1	-19.5	-13.4	-15.1	2.2	9.4	7.1	12.6	18.5	16.5	-7.9	1.2	-1.7
	2011	Jan	0.7	10.3	7.9	11.9	21.1	18.9	-17.5	-10.8	-12.6	3.0	10.8	8.3	12.6	18.7	16.7	-6.6	3.5	0.4
		Feb	0.6	10.4	8.0	10.7	20.0	17.8	-16.2	-8.8	-10.8	2.5	10.9	8.2	11.3	17.8	15.7	-6.4	4.3	1.0
		Mar	0.0	10.1	7.6	8.8	18.2	16.0	-15.1	-6.8	-9.1	1.5	10.1	7.3	9.3	16.3	14.0	-6.4	4.2	0.9

Table 2A Card expenditure statistics (seasonally adjusted)

Retail sales

Number of purchase transactions (millions)

Total retail sales

	Number of purchase transactions (millions)																		Total retail sales			
	Food & drink			Mixed business			Clothing			Household			Other retailers			Automotive Fuels *			Number of purchases			
	Credit	Debit	Total	Credit	Debit	Total	Credit	Debit	Total	Credit	Debit	Total	Credit	Debit	Total	Credit	Debit	Total	Credit	Debit	Total	
Annual																						
2006	394	1,454	1,848	215	415	630	126	317	444	145	263	408	334	567	901	0	0	0	1,215	3,017	4,232	
2007	426	1,640	2,066	203	436	639	124	350	474	147	282	429	297	596	893	165	419	584	1,197	3,304	4,501	
2008	500	1,874	2,374	134	408	542	121	371	492	143	292	435	288	636	924	168	459	626	1,186	3,581	4,767	
2009	512	2,086	2,598	131	401	532	125	404	529	146	321	466	310	681	991	158	475	633	1,224	3,893	5,117	
2010	534	2,283	2,817	138	403	541	128	424	552	147	349	495	273	733	1,007	161	520	681	1,381	4,713	6,093	
Monthly																						
2010	Mar	45	188	234	12	35	47	11	36	47	13	29	41	24	63	87	14	45	59	119	396	515
	Apr	44	187	231	11	34	45	11	36	47	13	29	41	23	60	82	14	43	57	115	388	503
	May	43	182	226	11	33	44	10	33	43	12	28	40	22	59	81	14	43	56	112	378	490
	Jun	47	195	242	12	34	46	11	37	48	13	30	42	24	63	87	14	44	58	120	403	522
	Jul	45	188	233	11	33	44	11	35	46	12	29	41	22	60	82	14	43	56	115	388	503
	Aug	47	201	248	11	34	45	11	37	48	12	31	43	23	65	89	14	46	59	118	414	532
	Sep	44	198	242	11	33	44	11	37	48	12	30	42	22	61	83	13	43	55	113	400	513
	Oct	44	191	236	11	33	44	10	35	45	12	30	42	21	61	82	13	44	57	113	393	506
	Nov	46	202	248	12	35	47	11	37	48	12	32	44	23	65	88	14	47	60	118	417	535
	Dec	44	198	242	12	34	45	10	35	45	12	29	41	21	62	83	13	43	56	112	400	512
2011	Jan	45	205	250	13	36	49	11	36	47	12	32	44	22	66	87	14	47	61	116	421	537
	Feb	45	201	245	12	35	47	11	35	46	12	32	44	22	65	87	13	47	60	115	415	530
	Mar	44	198	242	11	33	45	10	34	45	12	31	44	22	64	86	14	47	61	114	408	522
12 month growth rates (percentages)																						
Annual																						
2006	-0.2	11.5	8.8	-0.8	8.5	5.2	-4.6	9.6	5.1	-4.7	5.7	1.8	-5.9	6.3	1.4	-	-	-	-2.9	9.3	5.5	
2007	8.2	12.8	11.8	-5.6	5.1	1.4	-1.8	10.3	6.9	1.1	7.3	5.1	-11.1	5.0	-0.9	-	-	-	-1.5	9.5	6.4	
2008	17.3	14.3	14.9	-34.0	-6.5	-15.2	-2.3	6.0	3.8	-2.6	3.6	1.5	-3.0	6.8	3.5	1.4	9.6	7.3	-0.9	8.4	5.9	
2009	2.4	11.3	9.4	-2.2	-1.7	-1.8	3.2	9.0	7.6	1.9	9.7	7.1	7.8	7.0	7.2	-5.6	3.5	1.0	3.2	8.7	7.3	
2010	4.3	9.5	8.4	5.1	0.6	1.7	2.5	5.0	4.4	0.5	8.7	6.1	-11.9	7.7	1.6	2.0	9.5	7.6	12.8	21.1	19.1	
Monthly																						
2010	Mar	3.7	10.8	9.4	-0.1	-1.5	-1.2	3.8	8.2	7.1	3.0	9.5	7.4	5.1	6.3	5.9	-2.6	6.3	4.0	6.9	11.7	10.5
	Apr	3.6	10.5	9.1	0.1	-1.6	-1.2	3.3	7.7	6.7	2.5	8.7	6.7	3.3	6.2	5.3	-1.1	7.5	5.2	7.5	12.6	11.3
	May	3.8	10.4	9.0	0.7	-1.4	-0.9	4.0	7.9	7.0	3.1	9.3	7.3	1.6	6.1	4.7	-0.2	8.2	6.0	8.5	13.7	12.4
	Jun	4.0	10.1	8.8	1.3	-1.6	-0.9	3.9	7.3	6.5	3.6	9.5	7.6	-0.4	6.0	4.0	0.6	8.6	6.5	9.3	14.6	13.3
	Jul	3.9	9.7	8.6	1.8	-1.6	-0.8	3.5	6.7	6.0	3.7	9.6	7.7	-2.7	5.6	3.0	1.4	9.1	7.1	9.9	15.4	14.0
	Aug	5.0	10.6	9.5	3.6	-0.2	0.8	4.6	7.8	7.0	3.5	9.9	7.9	-3.4	7.1	3.8	1.9	10.0	7.9	11.6	17.6	16.1
	Sep	4.3	9.7	8.6	4.0	-0.3	0.8	3.8	6.6	6.0	2.3	9.3	7.1	-6.2	6.7	2.7	1.9	9.8	7.8	11.4	17.9	16.3
	Oct	4.3	9.7	8.6	4.8	0.4	1.5	3.4	6.2	5.5	1.9	9.4	7.1	-8.3	7.1	2.3	2.6	10.6	8.6	11.9	19.1	17.4
	Nov	4.0	9.0	8.0	4.3	-0.3	0.9	2.6	5.2	4.6	1.1	8.9	6.4	-10.3	7.1	1.6	2.4	9.8	7.9	12.0	19.5	17.7
	Dec	4.3	9.5	8.4	5.1	0.6	1.7	2.5	5.0	4.4	0.5	8.7	6.1	-11.9	7.7	1.6	2.0	9.5	7.6	12.8	21.1	19.1
2011	Jan	5.0	10.4	9.3	6.6	1.7	2.9	3.3	5.7	5.1	1.7	10.2	7.6	-14.0	9.3	2.0	3.1	10.8	8.9	11.9	21.1	18.9
	Feb	4.9	10.6	9.5	6.6	1.7	2.9	2.7	5.0	4.5	1.3	10.6	7.7	-13.3	9.6	2.4	2.2	10.4	8.4	10.7	20.0	17.8
	Mar	4.1	10.2	9.0	5.3	1.2	2.2	1.8	4.1	3.5	0.8	11.0	7.8	-13.2	9.0	2.2	1.1	9.8	7.6	8.8	18.2	16.0

* The category of Automotive Fuels is effective from January 2010. Data shown for 2009 are for growth trend purposes only; these data (in italics) are excluded from totals before 2009 as these are already included in their former Services sector of Motoring (now known as Vehicle Sales & Service) and it is complete in the January 2010 edition of the tables, where it was first introduced.

Table 2B Card expenditure statistics (seasonally adjusted)

Retail sales

Value of purchase transactions (£ millions)

Total retail sales

	Value of purchase transactions (£ millions)																		Total retail sales		
	Food & drink			Mixed business			Clothing			Household			Other retailers			Automotive Fuels *			Value of purchases		
	Credit	Debit	Total	Credit	Debit	Total	Credit	Debit	Total	Credit	Debit	Total	Credit	Debit	Total	Credit	Debit	Total	Credit	Debit	Total
Annual																					
2006	14,003	43,463	57,466	8,903	13,102	22,005	5,783	9,380	15,163	14,020	13,722	27,742	17,175	18,296	35,471	0	0	0	59,884	97,963	157,848
2007	15,311	48,578	63,889	8,840	14,054	22,893	5,862	10,456	16,317	14,701	15,347	30,048	16,354	20,229	36,583	5,867	10,961	16,828	61,067	108,663	169,730
2008	17,568	54,554	72,122	7,054	13,456	20,510	5,955	11,214	17,169	14,383	15,575	29,957	15,733	21,264	36,997	6,677	12,964	19,641	60,692	116,064	176,755
2009	18,102	60,234	78,336	7,091	13,863	20,954	6,377	12,643	19,020	14,496	16,603	31,098	15,761	22,028	37,789	5,860	12,668	18,528	61,826	125,371	187,198
2010	18,838	63,855	82,693	7,155	13,926	21,081	6,782	13,641	20,423	14,638	18,756	33,394	15,614	23,547	39,161	6,614	14,795	21,409	69,640	148,521	218,161
Monthly																					
2010																					
Mar	1,583	5,275	6,858	628	1,203	1,832	578	1,149	1,727	1,276	1,528	2,803	1,356	2,023	3,379	587	1,274	1,861	6,009	12,451	18,460
Apr	1,578	5,267	6,845	584	1,153	1,737	561	1,137	1,698	1,242	1,542	2,784	1,309	1,911	3,220	567	1,222	1,789	5,842	12,232	18,074
May	1,521	5,110	6,631	576	1,128	1,704	538	1,077	1,615	1,226	1,495	2,721	1,306	1,898	3,204	558	1,212	1,770	5,726	11,919	17,645
Jun	1,637	5,428	7,065	634	1,186	1,819	586	1,175	1,761	1,294	1,590	2,884	1,434	2,027	3,461	560	1,219	1,779	6,144	12,626	18,769
Jul	1,568	5,231	6,798	588	1,137	1,724	567	1,117	1,685	1,229	1,536	2,765	1,297	1,937	3,234	546	1,185	1,731	5,795	12,142	17,938
Aug	1,627	5,609	7,237	590	1,185	1,775	577	1,207	1,784	1,254	1,709	2,963	1,322	2,085	3,407	551	1,305	1,856	5,921	13,100	19,021
Sep	1,590	5,438	7,027	582	1,154	1,736	572	1,150	1,722	1,211	1,615	2,825	1,278	1,970	3,248	530	1,195	1,725	5,763	12,521	18,284
Oct	1,556	5,334	6,890	580	1,131	1,711	563	1,132	1,695	1,184	1,621	2,805	1,238	1,961	3,199	538	1,255	1,793	5,660	12,433	18,093
Nov	1,620	5,612	7,232	611	1,209	1,821	593	1,200	1,792	1,239	1,695	2,934	1,302	2,078	3,380	572	1,358	1,930	5,937	13,151	19,088
Dec	1,547	5,482	7,029	591	1,152	1,743	560	1,137	1,697	1,201	1,636	2,837	1,239	2,009	3,248	548	1,285	1,833	5,686	12,701	18,387
2011																					
Jan	1,575	5,623	7,198	600	1,217	1,818	577	1,189	1,766	1,163	1,694	2,857	1,253	2,063	3,316	605	1,442	2,048	5,773	13,229	19,002
Feb	1,542	5,459	7,001	585	1,174	1,759	574	1,163	1,737	1,168	1,719	2,887	1,262	2,058	3,320	607	1,443	2,050	5,738	13,015	18,754
Mar	1,506	5,273	6,780	564	1,113	1,677	564	1,131	1,696	1,179	1,711	2,890	1,255	2,070	3,324	614	1,451	2,064	5,681	12,749	18,431
12 month growth rates (percentages)																					
Annual																					
2006	-0.1	10.3	7.5	2.1	10.1	6.7	-1.5	8.6	4.5	0.9	13.5	6.8	-2.9	8.9	2.8	-	-	-	-0.5	10.3	5.9
2007	9.3	11.8	11.2	-0.7	7.3	4.0	1.3	11.5	7.6	4.9	11.8	8.3	-4.8	10.6	3.1	-	-	-	2.0	10.9	7.5
2008	14.7	12.3	12.9	-20.2	-4.2	-10.4	1.6	7.3	5.2	-2.2	1.5	-0.3	-3.8	5.1	1.1	13.8	18.3	16.7	-0.6	6.8	4.1
2009	3.0	10.4	8.6	0.5	3.0	2.2	7.1	12.7	10.8	0.8	6.6	3.8	0.2	3.6	2.1	-12.2	-2.3	-5.7	1.9	8.0	5.9
2010	4.1	6.0	5.6	0.9	0.5	0.6	6.4	7.9	7.4	1.0	13.0	7.4	-0.9	6.9	3.6	12.9	16.8	15.5	12.6	18.5	16.5
Monthly																					
2010																					
Mar	4.2	9.1	8.0	1.8	1.9	1.9	7.8	11.9	10.5	2.1	9.7	6.1	0.2	3.9	2.3	-5.1	3.2	0.4	5.5	10.7	8.9
Apr	4.0	8.5	7.4	1.6	1.4	1.5	7.5	11.4	10.0	2.3	10.2	6.4	0.4	4.4	2.7	-2.0	5.8	3.2	6.4	11.5	9.7
May	4.0	8.0	7.0	1.9	1.3	1.5	8.0	11.4	10.3	3.2	11.4	7.5	1.0	4.8	3.2	0.9	7.9	5.6	7.8	12.4	10.9
Jun	4.3	7.5	6.8	2.3	1.0	1.5	8.0	10.7	9.8	3.9	12.4	8.4	1.5	5.2	3.6	3.8	10.1	8.0	9.1	13.3	11.9
Jul	4.3	7.0	6.3	2.3	0.7	1.2	7.6	9.9	9.1	4.0	12.8	8.7	1.5	5.4	3.8	7.0	12.3	10.6	10.0	14.0	12.6
Aug	5.3	7.7	7.1	3.5	1.8	2.4	8.8	11.0	10.2	4.4	14.1	9.5	2.3	6.9	5.0	9.4	14.9	13.1	11.8	16.0	14.6
Sep	4.5	6.5	6.0	3.0	1.3	1.9	8.2	9.9	9.3	3.1	13.6	8.7	1.1	6.6	4.3	11.4	15.7	14.3	11.7	16.1	14.6
Oct	4.5	6.4	6.0	2.6	1.4	1.8	7.5	9.3	8.7	2.6	13.8	8.6	0.5	6.8	4.2	13.0	17.4	16.0	12.1	17.1	15.4
Nov	3.9	5.5	5.1	1.1	0.1	0.5	6.7	8.1	7.7	1.6	13.1	7.7	-0.4	6.5	3.6	13.6	17.2	16.0	12.1	17.1	15.5
Dec	4.1	6.0	5.6	0.9	0.5	0.6	6.4	7.9	7.4	1.0	13.0	7.4	-0.9	6.9	3.6	12.9	16.8	15.5	12.6	18.5	16.5
2011																					
Jan	4.3	6.7	6.1	1.6	1.4	1.5	7.0	8.5	8.0	2.4	14.9	9.1	-0.3	8.5	4.8	14.1	18.6	17.2	12.6	18.7	16.7
Feb	4.1	6.9	6.3	0.7	1.2	1.0	6.3	7.9	7.4	1.8	15.1	9.0	-0.5	8.6	4.8	13.2	18.5	16.8	11.3	17.8	15.7
Mar	3.1	6.4	5.6	-0.7	0.5	0.1	5.3	7.0	6.4	0.7	15.0	8.4	-1.4	8.1	4.2	11.7	17.9	16.0	9.3	16.3	14.0

* The category of Automotive Fuels is effective from January 2010. Data shown for 2009 are for growth trend purposes only; these data (in italics) are excluded from totals before 2009 as these are already included in their former Services sector of Motoring (now known as Vehicle Sales & Service) and it is complete in the January 2010 edition of the tables, where it was first introduced.

Table 2C Card expenditure statistics (seasonally adjusted)

Services

Number of purchase transactions (millions)

Total services

		Number of purchase transactions (millions)																		Total services		
		Vehicle Sales & Services			Entertainment			Hotels			Travel			Financial			Other services			Number of purchases		
		Credit	Debit	Total	Credit	Debit	Total	Credit	Debit	Total	Credit	Debit	Total	Credit	Debit	Total	Credit	Debit	Total	Credit	Debit	Total
Annual																						
	2006	242	529	771	176	349	525	36	24	61	96	127	224	28	91	119	155	356	510	733	1,476	2,209
	2007	245	573	818	190	411	600	38	26	64	101	148	249	28	106	134	160	401	561	761	1,665	2,426
	2008	249	628	877	198	500	697	36	28	64	103	168	271	32	111	143	167	451	618	786	1,885	2,671
	2009	236	656	892	206	593	799	37	31	68	101	183	284	32	112	144	167	470	638	778	2,047	2,824
	2010	76	204	280	220	720	940	37	34	71	97	202	299	32	129	161	163	483	646	626	1,772	2,398
Monthly																						
	2010																					
	Mar	7	18	26	19	59	77	3	3	6	8	16	24	3	10	13	14	41	55	54	148	202
	Apr	7	18	24	18	58	77	3	3	6	8	16	24	3	10	13	14	40	54	53	145	198
	May	6	17	23	18	57	75	3	3	6	8	15	23	3	10	13	13	39	53	51	142	193
	Jun	7	17	24	19	61	80	3	3	6	8	18	26	3	11	14	14	41	55	54	150	205
	Jul	6	17	23	19	59	78	3	3	6	8	17	25	3	11	14	14	39	53	52	146	198
	Aug	6	17	23	19	64	83	3	3	6	8	18	26	3	11	14	14	40	54	53	153	206
	Sep	6	16	22	18	62	80	3	3	6	8	18	26	3	11	14	13	40	54	51	150	201
	Oct	6	16	21	18	63	81	3	3	6	8	17	25	3	11	14	13	40	53	50	149	199
	Nov	6	18	24	20	67	86	3	3	6	8	19	27	3	11	14	14	42	56	54	160	214
	Dec	6	18	25	18	63	81	3	3	6	8	18	26	3	11	14	13	40	53	51	154	205
	2011																					
	Jan	7	22	29	19	68	88	3	3	6	8	18	25	3	11	14	13	42	55	53	164	218
	Feb	8	23	31	19	67	87	3	3	6	8	18	25	3	11	14	13	42	55	54	164	218
	Mar	8	24	32	19	66	84	3	3	5	8	18	26	3	11	14	13	42	56	53	165	218
12 month growth rates (percentages)																						
Annual																						
	2006	-10.3	1.1	-2.7	5.3	15.2	11.7	-1.3	9.2	2.6	1.4	15.1	8.8	-9.0	13.6	7.4	1.7	21.7	14.9	-2.4	10.9	6.1
	2007	1.3	8.3	6.1	8.1	17.6	14.4	3.2	6.5	4.5	4.2	16.7	11.3	0.8	16.2	12.6	3.4	12.9	10.0	3.8	12.8	9.8
	2008	1.5	9.7	7.2	4.3	21.7	16.2	-2.8	5.9	0.8	2.5	13.4	9.0	15.7	4.8	7.0	4.6	12.3	10.1	3.3	13.2	10.1
	2009	-5.4	4.5	1.7	4.3	18.7	14.6	0.5	13.9	6.3	-2.5	8.9	4.6	-1.9	1.1	0.4	-0.1	4.4	3.2	-1.0	8.6	5.7
	2010	-67.7	-69.0	-68.6	6.7	21.4	17.6	1.6	9.2	5.1	-3.1	10.3	5.5	1.0	15.0	11.9	-2.4	2.7	1.4	-19.5	-13.4	-15.1
Monthly																						
	2010																					
	Mar	-19.9	-13.5	-15.3	5.4	19.9	15.9	2.1	13.3	7.0	-2.4	9.5	5.0	0.3	8.0	6.3	0.9	2.9	2.4	-4.9	3.1	0.8
	Apr	-25.0	-19.8	-21.2	5.5	20.4	16.3	2.5	12.4	6.9	-2.0	9.6	5.3	1.0	11.0	8.7	1.1	2.5	2.1	-6.2	1.3	-0.8
	May	-30.2	-26.1	-27.2	5.5	20.2	16.2	3.0	11.7	6.9	-2.0	9.2	5.0	1.4	13.4	10.7	1.0	1.9	1.7	-7.8	-0.8	-2.8
	Jun	-35.5	-32.6	-33.4	6.3	20.7	16.8	3.3	11.2	6.8	-1.9	9.7	5.4	1.6	14.7	11.6	0.4	1.6	1.3	-9.3	-2.7	-4.6
	Jul	-40.8	-38.8	-39.3	6.7	20.7	17.0	3.2	10.5	6.5	-2.1	9.6	5.3	1.4	15.2	12.0	-0.4	1.5	1.0	-11.0	-4.6	-6.4
	Aug	-45.8	-44.4	-44.7	7.9	22.2	18.4	3.3	10.8	6.7	-1.9	10.3	5.9	1.8	16.1	12.8	-0.2	2.3	1.6	-12.1	-5.6	-7.4
	Sep	-51.4	-50.7	-50.9	7.1	21.5	17.7	2.6	9.7	5.8	-2.0	10.4	5.9	1.2	16.0	12.7	-1.2	2.3	1.4	-14.2	-7.8	-9.6
	Oct	-56.5	-56.4	-56.4	7.0	22.0	18.1	2.0	9.3	5.3	-2.4	10.1	5.6	1.1	15.8	12.5	-1.8	2.6	1.5	-15.9	-9.3	-11.2
	Nov	-62.0	-62.9	-62.6	6.8	21.3	17.6	2.0	8.8	5.1	-2.2	10.4	5.9	1.5	15.4	12.3	-1.9	2.9	1.6	-17.5	-11.5	-13.1
	Dec	-67.7	-69.0	-68.6	6.7	21.4	17.6	1.6	9.2	5.1	-3.1	10.3	5.5	1.0	15.0	11.9	-2.4	2.7	1.4	-19.5	-13.4	-15.1
	2011																					
	Jan	-65.3	-66.0	-65.8	8.1	22.6	18.9	2.3	10.2	6.0	-2.9	11.2	6.3	0.8	15.3	12.1	-2.3	3.2	1.8	-17.5	-10.8	-12.6
	Feb	-62.7	-62.8	-62.8	8.1	22.2	18.6	1.9	10.0	5.6	-3.7	11.4	6.1	0.1	14.7	11.5	-2.6	3.1	1.6	-16.2	-8.8	-10.8
	Mar	-59.8	-59.1	-59.3	7.3	21.2	17.7	0.4	8.7	4.3	-4.4	11.7	6.1	-0.9	13.9	10.7	-3.2	3.0	1.4	-15.1	-6.8	-9.1

Table 2D Card expenditure statistics (seasonally adjusted)

Services

Value of purchase transactions (£ millions)

Total services

	Vehicle Sales & Services			Entertainment			Hotels			Travel			Financial			Other services			Value of purchases			
	Credit	Debit	Total	Credit	Debit	Total	Credit	Debit	Total	Credit	Debit	Total	Credit	Debit	Total	Credit	Debit	Total	Credit	Debit	Total	
Annual																						
2006	13,790	27,052	40,842	8,873	9,675	18,548	5,207	2,041	7,249	13,217	11,027	24,244	5,586	20,923	26,509	13,386	26,719	40,105	60,059	97,438	157,497	
2007	14,680	30,693	45,373	9,296	11,231	20,526	5,483	2,263	7,746	13,434	12,609	26,043	5,699	26,123	31,822	14,126	32,304	46,431	62,718	115,223	177,941	
2008	15,522	32,973	48,494	9,654	13,059	22,714	5,507	2,445	7,953	14,005	13,734	27,739	5,924	29,913	35,837	14,887	36,980	51,866	65,499	129,104	194,604	
2009	14,630	35,433	50,063	9,647	14,593	24,240	5,290	2,723	8,012	13,057	14,091	27,147	5,724	32,988	38,712	15,160	38,129	53,289	63,507	137,956	201,464	
2010	8,756	24,685	33,442	9,840	16,935	26,775	5,531	3,039	8,570	12,808	15,782	28,590	5,882	38,448	44,330	15,682	40,684	56,366	58,500	139,574	198,074	
Monthly																						
2010																						
Mar	848	2,329	3,177	852	1,380	2,232	470	250	720	1,116	1,323	2,439	493	3,184	3,677	1,342	3,518	4,860	5,121	11,983	17,104	
Apr	767	2,118	2,885	814	1,377	2,190	460	251	711	1,094	1,254	2,348	484	3,153	3,638	1,329	3,466	4,796	4,948	11,620	16,568	
May	739	2,047	2,786	795	1,379	2,174	456	238	694	1,004	1,224	2,228	484	3,183	3,668	1,314	3,595	4,909	4,791	11,667	16,459	
Jun	753	2,073	2,826	843	1,448	2,290	474	255	730	1,092	1,306	2,398	512	3,349	3,862	1,367	3,795	5,162	5,041	12,226	17,268	
Jul	723	1,999	2,722	837	1,403	2,241	475	248	723	1,089	1,301	2,390	491	3,197	3,688	1,325	3,532	4,857	4,940	11,681	16,620	
Aug	703	2,051	2,754	861	1,527	2,388	471	272	742	1,085	1,345	2,431	495	3,316	3,811	1,326	3,425	4,751	4,941	11,937	16,877	
Sep	674	2,060	2,734	814	1,424	2,238	452	260	712	1,063	1,364	2,427	501	3,218	3,719	1,310	3,347	4,657	4,813	11,673	16,486	
Oct	664	2,003	2,667	811	1,436	2,248	455	260	715	1,016	1,354	2,370	476	3,200	3,676	1,250	3,192	4,442	4,672	11,446	16,118	
Nov	711	2,151	2,862	887	1,537	2,424	472	272	744	1,047	1,399	2,446	513	3,729	4,242	1,297	3,238	4,535	4,927	12,325	17,252	
Dec	706	2,084	2,790	777	1,440	2,217	459	262	721	1,035	1,392	2,427	499	3,499	3,998	1,263	3,298	4,561	4,740	11,974	16,714	
2011																						
Jan	765	2,203	2,968	837	1,568	2,405	473	279	752	1,041	1,370	2,411	499	3,160	3,659	1,279	3,368	4,647	4,893	11,949	16,842	
Feb	785	2,243	3,027	837	1,553	2,390	466	275	741	1,008	1,335	2,344	506	3,562	4,068	1,292	3,479	4,771	4,895	12,446	17,341	
Mar	812	2,328	3,139	792	1,496	2,288	420	239	659	1,009	1,335	2,344	511	3,707	4,218	1,307	3,547	4,854	4,851	12,652	17,503	

12 month growth rates (percentages)

	Vehicle Sales & Services			Entertainment			Hotels			Travel			Financial			Other services			Value of purchases		
	Credit	Debit	Total	Credit	Debit	Total	Credit	Debit	Total	Credit	Debit	Total	Credit	Debit	Total	Credit	Debit	Total	Credit	Debit	Total
Annual																					
2006	-1.7	11.9	6.9	6.7	18.3	12.4	3.8	17.4	7.3	1.1	13.7	6.5	-32.8	21.1	3.6	5.6	36.3	24.3	-2.2	20.8	10.8
2007	6.5	13.5	11.1	4.8	16.1	10.7	5.3	10.9	6.9	1.6	14.3	7.4	2.0	24.9	20.0	5.5	20.9	15.8	4.4	18.3	13.0
2008	5.7	7.4	6.9	3.9	16.3	10.7	0.4	8.0	2.7	4.3	8.9	6.5	4.0	14.5	12.6	5.4	14.5	11.7	4.4	12.0	9.4
2009	-5.7	7.5	3.2	-0.1	11.7	6.7	-3.9	11.3	0.7	-6.8	2.6	-2.1	-3.4	10.3	8.0	1.8	3.1	2.7	-3.0	6.9	3.5
2010	-40.1	-30.3	-33.2	2.0	16.0	10.5	4.6	11.6	7.0	-1.9	12.0	5.3	2.8	16.6	14.5	3.4	6.7	5.8	-7.9	1.2	-1.7
Monthly																					
2010																					
Mar	-12.0	1.3	-2.9	-0.4	12.2	6.9	-1.1	11.9	3.0	-6.4	8.0	0.7	-1.4	12.0	9.8	3.2	-1.1	0.1	-3.7	5.1	2.2
Apr	-14.2	-0.7	-5.0	-0.4	12.5	7.1	-0.1	11.7	3.7	-6.1	9.4	1.6	-0.4	13.6	11.3	4.1	0.6	1.6	-3.8	5.6	2.5
May	-16.8	-3.3	-7.5	-0.3	12.4	7.2	0.9	11.3	4.3	-6.1	10.4	2.0	0.2	14.1	11.9	4.6	2.2	2.9	-4.1	5.7	2.5
Jun	-19.6	-6.5	-10.6	0.7	13.3	8.1	1.7	11.4	4.8	-6.3	11.1	2.3	0.5	15.1	12.8	4.6	4.3	4.4	-4.5	5.9	2.5
Jul	-22.3	-10.0	-13.8	1.6	13.5	8.7	2.6	11.3	5.4	-5.9	12.0	3.0	0.7	16.4	13.9	4.5	5.6	5.3	-4.8	5.8	2.4
Aug	-25.1	-12.8	-16.6	3.0	15.3	10.3	3.4	12.0	6.2	-5.0	13.0	3.9	1.6	16.8	14.4	4.8	6.6	6.1	-4.8	5.8	2.4
Sep	-28.7	-17.0	-20.6	2.6	15.0	10.0	3.4	11.1	5.9	-3.9	12.9	4.6	1.6	16.6	14.3	4.4	8.3	7.2	-5.5	5.1	1.7
Oct	-32.1	-20.9	-24.2	2.5	16.0	10.6	3.8	11.0	6.2	-3.4	12.2	4.5	1.7	17.0	14.7	3.9	11.5	9.3	-6.3	5.1	1.4
Nov	-35.7	-25.2	-28.3	2.2	15.7	10.3	4.6	11.2	6.8	-2.0	12.2	5.3	2.6	17.2	15.0	4.2	7.2	6.3	-6.6	2.8	-0.2
Dec	-40.1	-30.3	-33.2	2.0	16.0	10.5	4.6	11.6	7.0	-1.9	12.0	5.3	2.8	16.6	14.5	3.4	6.7	5.8	-7.9	1.2	-1.7
2011																					
Jan	-37.5	-27.1	-30.1	3.3	17.3	11.7	5.4	12.9	8.0	-1.4	11.9	5.6	3.6	18.7	16.5	3.6	9.1	7.5	-6.6	3.5	0.4
Feb	-35.7	-25.0	-28.1	3.5	17.3	11.8	5.0	12.8	7.7	-2.6	10.5	4.3	3.8	19.3	17.1	2.8	9.1	7.3	-6.4	4.3	1.0
Mar	-34.0	-23.8	-26.7	2.9	16.7	11.3	3.4	11.4	6.2	-3.4	9.1	3.2	3.6	18.8	16.6	1.9	8.3	6.4	-6.4	4.2	0.9

Table 3A Card expenditure statistics (not seasonally adjusted)

Number of credit card transactions

Detailed sector breakdown - retail sectors

	March 2010	April 2010	May 2010	June 2010	July 2010	August 2010	September 2010	October 2010	November 2010	December 2010	January 2011	February 2011	March 2011	Total (latest 12 months)
Supermarkets	42,944,628	40,292,606	39,637,489	45,062,932	42,473,245	41,941,737	40,298,861	41,396,777	46,536,218	48,942,099	38,855,018	36,777,424	42,023,720	504,238,126
Bakers & dairies	66,582	59,663	62,288	73,618	71,844	67,549	67,598	73,655	78,607	83,094	62,802	66,484	75,779	842,981
Sweet stores	218,037	150,297	100,518	144,465	122,759	135,158	127,601	146,414	246,306	457,308	96,750	124,541	166,165	2,018,282
Miscellaneous foodstores	2,053,859	1,948,151	1,938,992	2,235,429	2,150,070	2,168,236	2,028,366	2,018,747	2,211,819	2,292,898	1,745,699	1,788,163	2,034,325	24,560,895
Off-licences	501,811	482,611	520,911	578,705	565,606	533,033	488,187	509,945	533,305	694,690	414,689	425,084	475,263	6,222,029
Food & drink	45,784,917	42,933,328	42,260,198	48,095,149	45,383,524	44,845,713	43,010,613	44,149,538	49,606,255	52,470,089	41,174,858	39,181,696	44,775,252	537,882,313
Department stores	5,616,820	5,204,554	5,290,966	6,347,446	6,334,517	5,728,626	5,376,457	5,821,237	8,196,594	10,850,795	5,864,433	4,589,998	5,368,637	74,974,260
Discount stores	1,527,311	1,483,658	1,558,659	1,614,283	1,611,086	1,550,917	1,488,325	1,611,162	2,164,477	2,672,843	1,390,630	1,258,151	1,328,788	19,732,979
Catalogues	1,405,767	1,223,866	1,102,345	1,210,265	1,150,999	1,089,624	1,248,332	1,241,539	1,944,905	2,076,253	1,289,875	1,078,444	1,132,308	15,788,755
Miscellaneous mixed	2,073,938	1,881,595	1,961,708	2,283,192	2,234,115	2,321,344	2,412,298	2,517,458	3,028,621	3,279,520	2,550,660	2,379,664	2,278,857	29,129,032
Mixed business	10,623,836	9,793,673	9,913,678	11,455,186	11,330,717	10,690,511	10,525,412	11,191,396	15,334,597	18,879,411	11,085,598	9,306,257	10,108,590	139,625,026
Men's clothing	380,684	380,736	394,794	465,013	498,509	462,878	391,971	401,743	489,979	671,966	439,246	343,074	356,056	5,295,965
Women's clothing	1,732,645	1,787,396	1,777,930	2,225,256	2,193,083	1,890,259	1,731,187	1,774,859	2,100,524	2,558,986	1,569,404	1,355,827	1,635,120	22,599,831
Family clothing	5,904,732	5,799,940	5,852,668	6,894,639	7,381,602	6,469,987	6,008,895	6,312,430	7,566,347	9,759,355	5,503,258	4,725,783	5,685,349	77,960,253
Miscellaneous clothing	531,535	532,929	514,400	641,126	587,254	545,108	603,612	603,612	696,754	776,249	383,843	394,038	468,782	6,757,459
Shoe shops	1,073,928	1,257,446	1,211,583	1,465,007	1,515,713	1,532,635	1,241,208	1,236,369	1,315,889	1,566,273	1,227,063	987,328	983,679	15,439,993
Clothing	9,623,524	9,758,447	9,751,375	11,691,041	12,176,161	10,900,867	9,986,625	10,329,013	12,169,293	15,332,829	9,122,814	7,706,050	9,128,986	128,053,501
Furniture stores	1,313,154	1,169,092	1,122,296	1,238,190	1,249,825	1,325,262	1,217,065	1,323,063	1,578,282	1,572,453	1,450,133	1,143,232	1,224,009	15,612,902
Household appliance stores	1,323,022	1,260,741	1,267,528	1,262,874	1,302,883	1,260,634	1,269,587	1,316,864	1,493,154	1,676,355	1,279,333	1,175,264	1,339,673	15,904,890
Electronic stores	1,308,873	1,184,828	1,180,547	1,283,822	1,290,155	1,319,011	1,254,227	1,315,399	1,628,053	2,207,312	1,500,989	1,137,444	1,185,215	16,487,002
DIY stores	6,734,439	7,509,008	7,413,700	6,872,665	6,751,949	6,315,116	6,671,134	6,062,440	6,229,195	5,572,667	5,211,926	5,221,339	6,442,357	75,471,496
Floor covering stores	191,102	166,451	150,226	163,391	163,567	177,908	169,634	181,192	216,460	142,969	160,903	153,072	167,999	2,013,772
Garden centres	1,593,979	2,201,689	2,271,732	2,119,820	1,398,272	1,214,273	1,168,907	1,195,001	1,298,050	1,477,218	822,154	969,381	1,724,055	17,860,552
Miscellaneous household	286,228	252,418	219,038	250,399	277,882	340,593	380,663	382,613	436,612	350,144	336,353	304,310	335,048	3,866,073
Household	12,750,797	13,744,227	13,625,067	13,191,161	12,434,533	11,952,797	11,329,217	11,776,572	12,879,806	12,999,118	10,761,791	10,104,042	12,418,356	147,216,687
Books, newspapers & magazines	1,915,923	1,605,935	1,495,059	1,748,623	1,772,337	1,832,094	1,862,519	1,890,680	2,403,859	3,216,479	1,614,899	1,511,488	1,626,459	22,580,359
Record shops	753,586	615,143	558,249	667,489	620,027	620,202	595,120	637,869	609,165	538,279	604,130	590,375	604,130	9,090,375
Music shops	1,552,781	1,323,521	1,270,946	1,576,669	1,457,860	1,539,267	1,500,239	1,499,018	1,742,002	1,806,861	1,861,944	1,530,632	1,656,231	18,765,190
Hobbies, toys & games	692,850	598,729	571,694	631,289	643,798	647,541	639,027	774,526	1,394,427	1,926,809	603,310	506,922	572,825	9,510,897
Photographic	254,624	219,811	220,790	267,697	269,145	263,355	259,571	234,912	301,087	381,508	181,665	216,652	210,565	3,026,758
Handicraft	80,000	65,691	62,720	68,808	71,730	76,475	76,133	80,793	95,119	75,449	74,761	72,202	78,408	898,289
Sports shops	2,348,556	2,481,329	2,510,755	2,911,493	2,949,309	3,004,689	2,568,083	2,525,615	2,917,622	3,674,001	2,377,061	2,067,231	2,376,120	32,363,308
Jewellers	581,993	500,059	523,399	589,929	601,185	628,525	557,951	552,155	783,725	1,307,376	517,308	532,066	552,158	7,636,836
Computer software	846,475	730,595	675,501	858,740	641,399	683,684	668,597	628,163	737,499	764,550	615,847	530,883	580,259	8,115,717
Medical goods	20,273	17,427	18,027	19,555	20,072	17,657	18,385	18,478	21,083	17,660	17,652	18,676	20,888	225,560
Chemists	3,669,797	3,284,371	3,360,528	3,925,473	3,669,132	3,669,353	3,476,651	3,484,276	4,324,377	5,438,607	3,283,913	3,063,585	3,634,312	44,614,578
Optical goods	495,787	443,084	437,858	484,485	481,115	468,330	436,032	417,707	443,642	324,384	414,210	422,484	470,952	5,244,283
Cosmetic stores	364,998	326,443	327,599	388,511	379,739	380,378	363,133	376,714	578,312	868,481	335,823	307,999	336,805	4,969,937
Tobacconists	9,166	8,310	10,083	9,921	10,563	10,704	9,921	9,514	10,167	11,903	7,253	8,181	10,664	116,194
Florists	637,095	353,785	354,915	379,984	356,195	316,667	342,441	317,380	335,141	534,462	299,798	412,176	465,537	4,468,481
Artists' supplies	280,195	221,847	216,226	245,487	241,872	262,203	249,259	264,359	345,576	301,863	212,147	217,291	254,349	3,032,479
Antiques, art & stamps/coins	141,286	127,583	143,009	143,009	148,518	164,106	141,870	163,802	178,055	166,502	111,404	122,147	130,265	1,726,289
Pawn shops	2,472	2,341	2,235	2,235	2,619	2,267	2,320	2,496	2,792	4,148	2,533	2,393	2,619	30,998
Gift shops	1,293,907	1,081,830	1,093,650	1,379,737	1,358,540	1,401,038	1,187,235	1,270,864	1,815,789	2,503,402	1,030,542	1,115,928	1,169,021	16,407,216
Secondhand shops	6,319	5,551	5,239	6,322	6,271	6,316	6,322	6,346	6,832	6,094	5,318	6,085	6,085	72,028
Luggage & leather goods	96,244	96,009	92,973	109,447	126,644	123,578	106,864	103,667	132,070	164,512	109,171	81,723	93,475	1,340,133
Pet shops	599,976	580,646	581,051	606,255	612,062	624,362	596,469	609,381	660,982	694,365	574,348	542,259	611,187	7,293,367
Religious goods	726	536	701	689	1,172	689	1,172	718	793	764	685	670	785	9,431
Direct sales	4,452,727	3,909,365	3,853,938	4,088,532	4,068,898	3,893,502	3,998,755	3,899,028	4,068,491	3,859,387	3,760,460	3,532,859	4,141,697	47,074,912
Miscellaneous & speciality shops	1,497,392	1,363,509	1,339,568	1,504,474	1,478,358	1,500,110	1,433,329	1,426,624	1,783,865	1,881,238	1,353,741	1,259,005	1,410,614	17,734,435
Other retail	22,595,148	19,963,450	19,711,580	22,015,417	22,015,417	22,092,631	21,097,398	21,195,613	26,214,632	31,842,502	20,020,359	18,564,319	21,016,410	266,348,050
Automotive Fuels	14,668,345	13,894,383	13,722,781	14,888,057	14,470,154	13,549,577	13,216,500	13,365,516	13,884,615	12,341,225	12,296,597	11,970,484	13,798,071	161,397,960
Total retail sales	116,046,567	110,087,508	108,984,679	121,934,933	117,810,506	114,032,096	109,165,765	112,003,048	130,089,198	143,865,174	104,472,117	96,832,848	111,245,665	1,380,523,537

Table 3A Card expenditure statistics (not seasonally adjusted)

Number of credit card transactions

Detailed sector breakdown - services sectors

	March 2010	April 2010	May 2010	June 2010	July 2010	August 2010	September 2010	October 2010	November 2010	December 2010	January 2011	February 2011	March 2011	Total (latest 12 months)
Auto rental	399,708	383,949	388,286	424,476	433,512	388,137	383,995	353,031	340,619	314,066	330,052	326,771	384,768	4,451,662
Auto parts & accessories	1,005,185	905,820	849,470	935,434	925,437	850,853	836,693	801,548	863,024	795,453	803,703	785,025	936,688	10,289,148
Auto services	1,702,800	1,428,931	1,513,902	1,636,976	1,635,850	1,493,475	1,616,954	1,595,552	1,659,978	1,417,947	1,503,073	1,505,271	1,712,330	18,720,239
Auto repair shops	1,152,392	994,360	943,186	1,017,794	1,013,106	914,077	964,837	908,904	933,561	844,878	926,916	903,484	1,082,917	11,448,020
Service stations	2,019,903	1,893,619	1,874,927	2,067,983	2,028,628	1,946,139	1,862,886	1,897,616	2,129,020	2,277,138	2,523,735	2,366,964	2,686,727	25,555,382
Vehicle sales	753,038	666,444	644,575	721,580	702,884	655,951	663,438	593,559	594,673	505,319	577,054	583,073	730,317	7,638,867
Vehicle Sales & Services	7,033,026	6,273,123	6,214,346	6,804,243	6,739,417	6,248,632	6,328,803	6,150,210	6,520,875	6,154,801	6,664,533	6,470,588	7,533,747	78,103,318
Restaurants	9,422,317	9,020,087	9,202,690	9,818,502	10,339,213	10,317,160	9,199,370	9,623,203	9,547,760	8,693,286	8,547,186	8,831,664	9,700,737	112,840,858
Public houses	1,518,878	1,514,024	1,464,033	1,759,167	1,711,126	1,852,072	1,583,820	1,525,848	1,575,120	1,412,531	1,345,030	1,401,729	1,573,369	18,717,869
Catering services	212,828	176,650	190,013	194,168	187,683	161,358	194,852	191,555	208,720	173,572	167,907	169,594	211,459	2,227,531
Video stores	44,505	42,382	46,650	52,718	64,206	68,653	67,115	72,465	81,675	87,319	80,373	74,887	78,148	816,591
Cinema, theatre & dance	1,680,611	1,453,766	1,343,563	1,325,267	1,679,079	1,820,852	1,443,437	1,628,534	2,033,623	1,610,593	1,748,099	1,694,328	1,514,258	19,295,399
Concerts & entertainers	24,042	18,184	15,169	16,612	17,430	19,111	13,538	16,228	18,169	20,662	17,521	17,984	21,548	212,156
Tourist attractions	238,822	396,002	306,074	435,309	515,996	709,175	379,338	339,614	226,264	158,408	133,679	190,791	222,614	4,013,264
Amusement parks	18,492	36,327	21,885	30,555	35,204	62,005	24,261	25,703	16,683	11,832	11,165	17,075	14,969	307,664
Aquariums	10,082	12,590	10,656	14,580	15,255	22,128	9,708	9,437	8,572	6,545	8,428	9,941	9,926	137,766
Sports & games establishments	2,407,707	2,075,659	2,036,793	2,057,426	2,160,790	2,149,173	1,973,420	1,851,122	2,072,792	2,431,709	2,146,741	1,955,658	2,527,086	25,438,369
Professional sports clubs	111,660	101,602	74,003	79,642	96,528	122,971	108,076	100,359	120,550	110,266	94,655	100,383	102,751	1,211,786
Gambling	3,239,777	3,044,414	2,652,736	3,266,461	2,601,207	2,766,440	2,823,196	2,864,625	3,212,420	2,946,663	2,967,046	2,735,671	2,999,026	34,879,905
Personal services	112,661	109,185	105,060	112,651	113,114	107,154	104,157	101,349	104,460	110,054	98,770	98,727	112,088	1,276,769
Miscellaneous entertainment	240,751	299,740	256,962	314,202	355,061	447,287	275,905	272,376	215,210	175,997	177,852	196,641	228,073	3,215,306
Entertainment	19,283,133	18,300,612	17,726,287	19,477,260	19,991,892	20,625,539	18,200,193	18,622,418	19,442,018	17,949,437	17,544,452	17,495,073	19,316,052	224,591,233
Hotels	3,232,342	3,047,473	3,207,203	3,501,054	3,621,749	3,397,125	3,286,723	3,171,250	3,028,301	2,560,111	2,650,909	2,743,560	2,863,493	37,078,951
Airlines	1,051,413	950,204	922,359	985,927	922,355	864,750	914,704	790,312	782,393	594,877	980,205	696,387	702,424	10,106,897
Airport terminals	30,198	26,118	28,977	30,420	27,782	28,239	26,866	22,300	18,653	14,679	17,018	17,274	23,476	281,802
Railways	4,742,203	4,194,735	4,279,306	4,776,968	4,579,344	4,089,821	4,551,267	4,651,363	4,900,013	3,933,440	4,039,323	4,041,671	4,772,440	52,809,691
Buses	331,737	315,211	324,804	384,774	378,834	354,784	372,575	350,577	362,050	305,116	304,289	307,338	367,240	4,127,592
Sea travel	91,345	112,756	110,324	117,519	124,403	126,344	97,036	80,269	66,277	61,794	64,319	65,468	78,872	1,105,381
Travel agents	1,516,532	1,333,707	1,302,296	1,394,646	1,404,471	1,275,676	1,257,825	1,127,663	1,070,729	824,064	1,397,513	1,236,316	1,407,574	15,032,480
Timeshares	301	351	363	424	442	551	373	359	302	158	248	292	636	4,499
Camping grounds	176,889	228,431	241,211	285,069	313,960	337,977	198,189	145,256	81,194	52,751	139,436	139,126	167,310	2,329,910
Miscellaneous travel	984,662	935,641	939,394	1,012,413	1,063,161	860,910	874,174	856,581	843,231	689,044	597,971	589,127	687,718	9,949,365
Travel	8,925,280	8,097,154	8,149,034	8,988,160	8,814,752	7,939,052	8,293,009	8,024,680	8,124,842	6,475,923	7,540,322	7,092,999	8,207,690	95,747,617
Telegraph services / Wire transfer money order	5,193	4,678	4,340	4,803	4,472	4,392	4,080	3,924	4,108	4,532	3,578	3,110	3,806	49,823
Insurance services	2,052,964	1,807,105	1,747,512	2,009,016	2,026,953	1,904,576	1,981,867	1,708,740	1,687,249	1,464,082	1,589,802	1,585,228	1,908,435	21,420,565
Fis - cash disbursements (auto & manual)	35,111	29,620	31,201	38,380	36,131	32,625	36,984	31,088	28,545	23,452	23,419	23,625	25,912	360,982
Fis - merchandise & services	624,486	555,734	563,706	586,902	605,388	514,795	518,422	549,634	518,338	511,091	524,329	486,621	583,924	6,518,884
Non-Fis - foreign currency, travellers' cheques	42,526	42,779	59,220	70,109	70,709	66,793	57,801	29,323	16,657	12,749	11,355	13,832	16,155	467,482
Security brokers and dealers	14,258	14,056	23,278	19,536	19,605	15,493	14,932	15,702	17,793	14,617	17,131	17,013	23,041	212,197
Tax preparation services	681	689	275	309	249	140	88	85	101	82	161	334	412	2,925
Tax payments	3,564	4,148	3,586	4,698	5,267	4,844	5,955	4,324	4,727	3,807	3,724	3,257	4,346	52,683
Fines, bail and bond payments	68,591	62,119	64,685	70,224	74,934	58,887	68,054	69,450	68,642	57,369	61,562	61,702	70,543	788,171
Miscellaneous financial	164,392	158,365	154,163	168,363	164,683	147,826	145,183	139,348	145,892	135,689	148,496	147,721	177,862	1,833,591
Financial	3,011,766	2,679,293	2,651,966	2,972,340	3,008,391	2,751,482	2,832,255	2,551,618	2,492,052	2,227,470	2,383,557	2,342,443	2,814,436	31,707,303

Table 3A Card expenditure statistics (not seasonally adjusted)

Number of credit card transactions

Detailed sector breakdown - services sectors (continued)

	March 2010	April 2010	May 2010	June 2010	July 2010	August 2010	September 2010	October 2010	November 2010	December 2010	January 2011	February 2011	March 2011	Total (latest 12 months)
Telecoms	2,119,810	1,958,138	1,903,124	2,000,401	2,033,750	1,863,706	1,835,186	1,813,602	1,873,436	2,067,412	1,762,498	1,646,198	1,866,413	22,623,864
Utilities	401,378	356,602	346,586	364,815	364,539	314,641	331,461	328,848	321,958	285,689	320,411	305,278	379,761	4,020,589
Contractors (residential & commercial)	345,925	305,623	293,848	311,703	309,244	289,053	313,036	317,358	344,903	275,484	295,522	290,778	326,715	3,673,267
Gardening services	60,688	68,934	66,867	71,924	53,727	46,829	45,580	43,362	49,505	54,025	30,454	33,600	52,967	617,774
Veterinary services	566,179	534,251	523,023	580,629	607,363	596,582	594,526	572,444	580,463	515,550	526,084	464,314	528,817	6,624,046
Photocopying & printing	385,754	319,264	307,044	327,048	318,197	306,550	330,677	347,144	398,100	364,107	324,692	296,966	344,940	3,984,729
Photographic studios	106,782	92,343	96,706	125,992	154,878	108,423	113,577	140,459	173,072	128,221	83,543	82,650	378,582	1,678,446
Beauty & barber shops	1,371,626	1,254,971	1,261,689	1,415,368	1,408,156	1,293,431	1,289,184	1,263,990	1,353,528	1,655,581	1,163,597	1,136,144	1,044,541	15,540,180
Employment agencies	23,005	20,737	20,952	22,427	21,337	19,569	20,395	19,009	19,678	15,768	20,316	19,752	20,612	240,552
Counselling services	4,472	3,879	3,929	3,975	4,024	3,764	3,925	4,169	3,899	3,775	4,194	3,991	4,342	47,866
Legal services	35,727	30,337	28,990	30,826	30,489	27,963	29,755	28,496	30,495	23,526	30,045	29,822	35,527	356,271
Laundry & cleaning	170,406	164,151	163,242	190,993	182,255	168,742	178,870	176,905	180,324	135,019	150,303	140,724	161,656	1,993,184
Funeral services	11,284	10,061	9,313	9,930	9,683	8,729	9,723	10,482	11,091	10,151	11,105	10,394	11,023	121,685
Medical services	1,151,496	1,004,409	992,689	1,091,590	1,066,338	979,410	1,095,039	1,037,791	1,135,765	891,789	1,028,739	1,021,477	1,182,622	12,527,658
Moving & courier services	196,959	165,536	167,551	189,747	186,232	163,748	180,083	173,011	186,690	173,650	166,269	164,111	197,160	2,113,788
Repair shops (not auto)	90,208	81,327	74,568	77,706	64,543	58,199	55,923	53,344	61,272	55,861	51,951	48,516	55,841	739,051
Accounting services	33,938	32,558	26,412	28,817	27,276	28,773	33,956	32,870	34,143	32,035	35,853	29,277	31,595	373,565
Advertising, consultancy & PR	155,808	141,514	122,243	136,324	124,768	123,337	125,417	116,285	122,583	85,940	110,528	108,550	163,820	1,481,309
Computer programming	678,320	604,025	463,375	494,356	470,856	454,192	479,801	464,548	491,416	461,088	476,240	452,999	505,303	5,818,199
Farming services	69,909	67,325	64,204	71,878	66,020	66,333	63,363	61,741	65,886	64,562	57,309	54,823	64,202	767,646
Miscellaneous professional services	1,214,215	1,063,372	1,036,125	1,186,790	1,146,602	1,197,461	1,217,665	1,158,463	1,231,047	1,070,666	1,067,404	1,319,915	1,229,117	13,924,627
Engineering services	73,253	64,922	59,903	66,074	64,616	56,311	59,941	56,182	58,786	46,301	53,832	58,014	69,443	714,325
Marina services	50,797	65,441	64,409	81,249	84,643	88,092	57,353	41,171	39,711	34,996	32,660	31,455	46,622	667,802
Wrecking & salvage yards	4,753	3,982	3,525	4,169	4,268	4,079	3,525	3,908	4,107	2,953	3,781	3,748	4,352	46,971
Pest control	2,804	2,614	2,590	3,054	3,719	3,407	3,458	2,869	2,570	1,707	2,103	1,941	2,522	32,554
Educational establishments	465,707	373,994	379,100	388,324	402,127	379,072	569,112	487,486	457,594	364,255	502,685	409,651	503,839	5,217,239
Child care services	16,368	14,228	12,879	13,942	15,023	16,166	15,043	16,672	17,045	14,442	18,027	17,928	16,327	187,722
Social, political & religious organisations	1,310,369	1,201,431	1,077,020	1,202,816	1,072,671	1,244,576	1,166,120	1,107,525	1,250,386	1,073,604	895,294	887,115	1,419,875	13,598,433
Government services	1,779,342	1,578,516	1,550,342	1,681,155	1,664,296	1,543,275	1,590,825	1,519,902	1,544,500	1,333,184	1,448,125	1,484,559	1,701,460	18,640,139
Miscellaneous services	1,142,609	991,157	930,102	1,001,596	959,951	964,815	997,426	990,206	1,170,788	1,400,257	916,687	928,804	1,185,259	12,437,048
Commercial equipment	1,097,464	930,670	930,238	971,186	970,488	870,947	998,474	922,901	991,737	865,123	921,091	838,058	934,116	11,145,029
Other services	15,137,355	13,506,312	12,982,588	14,146,804	13,892,079	13,290,175	13,808,993	13,313,143	14,206,478	13,506,721	12,511,342	12,321,552	14,469,371	161,955,558
Total services	56,622,902	51,903,967	50,931,424	55,889,861	55,968,280	54,252,005	52,749,976	51,833,319	53,814,566	48,874,463	49,295,115	48,466,215	55,204,789	629,183,980
TOTAL	172,669,469	161,991,475	159,916,103	177,824,794	173,778,786	168,284,101	161,915,741	163,836,367	183,903,764	192,739,637	153,767,232	145,299,063	166,450,454	2,009,707,517

Table 3B Card expenditure statistics (not seasonally adjusted)

Value of credit card transactions

Detailed sector breakdown - retail sectors

£	March 2010	April 2010	May 2010	June 2010	July 2010	August 2010	September 2010	October 2010	November 2010	December 2010	January 2011	February 2011	March 2011	Total (latest 12 months)
Supermarkets	1,473,098,626	1,411,860,585	1,387,514,586	1,570,026,140	1,447,453,196	1,431,577,260	1,376,659,864	1,425,718,436	1,680,382,327	2,027,283,255	1,303,106,322	1,238,128,879	1,404,814,230	17,704,525,080
Bakers & dairies	1,862,346	1,681,903	1,720,359	2,119,714	1,971,646	1,684,123	1,785,044	1,894,392	2,153,794	2,513,456	1,635,316	1,687,961	1,990,455	22,838,163
Sweet stores	5,189,645	3,298,238	2,311,226	3,156,835	2,766,815	2,840,236	2,956,573	3,450,334	6,834,387	12,212,198	2,180,874	2,713,295	3,888,111	48,609,122
Miscellaneous foodstores	60,527,844	55,537,669	55,664,767	63,841,133	62,577,470	59,204,154	56,941,271	56,212,942	65,922,023	82,492,747	51,018,233	50,863,380	58,116,853	718,392,642
Off-licences	27,165,206	25,972,891	29,370,977	35,782,955	37,001,714	30,018,753	25,506,337	26,486,512	35,003,444	53,997,654	22,181,740	21,864,971	25,815,088	369,003,036
Food & drink	1,567,843,667	1,498,351,286	1,476,581,915	1,674,926,777	1,551,770,841	1,525,324,526	1,463,849,089	1,513,762,616	1,790,295,975	2,178,499,310	1,380,122,485	1,315,258,486	1,494,624,737	18,863,368,043
Department stores	331,835,013	301,192,439	307,451,364	372,972,668	362,018,658	330,914,050	331,218,906	356,918,439	493,078,237	621,054,555	325,533,907	270,777,136	317,217,807	4,390,348,166
Discount stores	89,557,975	86,744,904	89,705,730	93,634,267	88,681,940	86,070,489	80,777,137	90,779,127	127,157,047	147,017,049	74,162,042	65,218,665	70,577,772	1,100,526,169
Catalogues	53,308,523	46,208,779	42,892,380	45,652,047	43,304,872	40,521,768	45,542,136	44,811,276	64,282,128	61,221,374	41,992,738	38,330,530	41,257,965	556,017,993
Miscellaneous mixed	91,353,338	75,639,296	79,434,624	89,181,813	87,715,799	87,891,208	91,317,209	91,426,918	108,253,636	112,074,741	74,124,619	70,682,269	1,048,764,369	
Mixed business	566,054,849	509,785,418	519,484,098	601,440,795	581,721,269	545,397,515	548,855,388	583,935,700	792,771,048	941,367,719	515,813,306	445,008,600	510,075,781	7,095,656,697
Men's clothing	38,255,900	37,156,874	39,160,824	43,333,744	45,058,887	41,078,926	38,441,638	40,807,640	47,279,023	57,340,756	40,402,189	32,215,232	36,155,205	498,430,938
Women's clothing	125,680,689	120,846,867	117,083,818	136,851,477	123,977,123	111,808,399	122,237,099	124,640,771	138,432,471	149,366,446	104,097,623	97,946,690	121,193,057	1,468,481,841
Family clothing	282,014,644	269,640,241	272,520,977	311,180,736	323,546,437	297,604,550	303,285,776	317,368,700	372,334,510	458,002,433	243,815,217	232,465,932	282,506,357	3,684,271,866
Miscellaneous clothing	28,236,752	27,092,011	26,457,764	30,785,986	28,464,662	26,208,600	30,763,269	31,033,156	34,467,505	34,353,289	20,993,947	21,394,325	25,560,431	337,774,945
Shoe shops	59,531,288	64,914,026	64,914,762	72,121,623	69,840,746	75,413,563	72,556,744	78,991,059	83,408,173	90,832,789	62,040,915	49,422,472	57,866,796	844,108,371
Clothing	533,719,273	521,795,539	520,137,409	594,273,566	590,887,855	552,114,038	567,484,526	592,841,326	675,561,682	789,895,632	471,349,891	433,444,651	523,281,846	6,833,067,961
Furniture stores	278,490,411	241,474,385	235,888,318	249,812,433	255,641,028	261,958,462	250,164,797	276,622,572	305,782,080	267,859,665	286,287,108	231,247,211	254,130,984	3,116,869,043
Household appliance stores	124,249,034	108,076,808	106,012,282	113,540,470	113,533,509	113,791,551	115,828,816	123,157,082	141,957,776	144,299,215	118,080,790	106,874,722	122,699,318	1,427,852,339
Electronic stores	215,167,567	198,702,054	212,814,297	226,813,441	215,772,406	224,746,072	206,266,810	224,608,446	279,621,084	390,987,704	238,215,234	172,440,956	188,592,881	2,779,581,385
DIY stores	479,044,466	495,974,638	497,305,909	469,960,209	465,842,081	411,424,766	433,652,649	421,672,605	420,814,229	350,208,308	386,225,014	360,994,689	440,459,492	5,154,534,589
Floor covering stores	61,989,911	54,993,544	51,757,113	56,141,741	55,616,391	57,311,229	56,648,666	60,855,701	73,663,121	51,969,178	53,565,441	49,103,740	56,829,891	678,455,756
Garden centres	80,534,882	116,686,462	117,441,702	109,628,448	72,800,661	60,724,344	56,476,185	53,849,332	59,129,150	64,081,963	36,700,611	45,397,706	87,593,476	880,490,640
Miscellaneous household	47,676,521	42,790,104	38,201,698	43,191,282	45,601,812	51,344,532	52,964,964	53,408,914	59,097,273	44,608,327	43,223,368	39,612,574	44,954,868	558,999,716
Household	1,287,512,792	1,258,697,995	1,259,421,319	1,269,088,024	1,224,807,888	1,203,528,839	1,149,775,004	1,214,174,652	1,340,045,313	1,314,014,360	1,162,297,566	1,005,671,598	1,195,260,910	14,596,783,468
Books, newspapers & magazines	55,223,022	47,383,219	45,089,354	50,657,054	51,883,375	50,246,771	57,659,250	57,387,853	68,346,131	86,894,070	48,881,753	47,954,299	53,050,928	665,434,057
Record shops	19,769,739	16,349,827	16,073,904	15,326,612	14,733,003	14,559,610	16,638,866	15,503,393	16,630,866	15,774,068	14,680,484	13,552,843	15,132,234	22,858,531
Music shops	27,743,769	23,473,829	21,814,625	24,867,621	23,825,007	23,577,166	24,641,402	24,145,277	28,916,382	33,577,705	26,633,570	22,734,082	24,723,786	302,930,452
Hobbies, toys & games	39,217,820	33,563,484	32,340,146	35,531,781	35,886,346	34,520,663	37,096,373	43,926,378	84,819,543	101,769,233	31,710,715	26,870,464	33,332,602	531,368,082
Photographic	34,649,693	28,742,462	28,581,215	32,398,605	32,483,438	30,035,567	28,917,044	28,114,457	24,873,297	24,873,297	22,518,900	22,518,900	28,447,103	363,074,308
Handicraft	7,652,210	6,284,587	6,300,414	7,122,826	7,142,844	7,326,630	7,291,421	7,569,135	8,552,251	7,003,082	7,229,388	6,682,678	7,545,187	86,050,443
Sports shops	160,695,240	168,084,991	167,920,680	188,666,971	189,319,186	187,959,035	165,153,685	160,762,878	186,248,430	218,626,385	146,096,182	132,329,772	160,484,738	2,071,652,933
Jewellers	96,455,138	82,929,996	100,058,258	108,024,041	98,608,058	91,078,914	92,330,249	98,608,058	118,164,908	208,488,753	81,813,617	85,011,880	91,915,377	1,248,099,689
Computer software	147,197,147	132,911,598	147,486,037	190,782,440	122,885,540	139,493,565	132,100,460	116,439,651	141,866,859	156,919,185	105,008,889	89,796,984	107,141,291	1,582,832,499
Medical goods	5,446,089	4,625,901	4,602,863	4,980,586	5,013,307	4,866,241	5,301,723	4,962,247	5,623,168	4,369,764	4,133,128	5,019,541	5,581,507	59,079,976
Chemists	76,311,889	70,393,348	70,370,520	84,525,612	80,898,240	77,332,800	80,898,240	81,046,871	110,956,932	145,094,331	67,903,568	65,099,741	76,855,045	1,002,865,741
Optical goods	73,247,524	64,223,176	63,381,017	69,200,876	68,693,281	67,532,564	61,991,603	59,911,472	63,041,713	43,589,045	60,131,710	62,690,543	69,578,471	753,965,471
Cosmetic stores	18,082,662	16,109,335	16,383,492	18,639,670	18,467,600	17,612,003	17,554,247	18,689,427	27,652,969	38,214,165	16,000,481	14,851,956	17,231,545	237,406,890
Tobacconists	631,624	568,777	637,112	717,588	733,851	694,749	735,851	646,549	706,295	546,457	804,003	564,577	693,727	7,998,425
Florists	26,655,306	17,020,829	17,398,452	18,774,811	17,280,255	15,344,449	16,731,565	15,343,301	16,301,416	23,753,576	14,177,273	18,745,702	21,277,405	212,189,034
Artists' supplies	14,011,725	11,357,368	11,773,605	12,999,696	12,654,594	12,728,828	13,305,787	13,699,269	16,740,646	14,102,960	10,598,264	10,733,038	13,021,481	153,715,536
Antiques, art & stamps/coins	26,318,580	22,525,254	26,141,214	26,102,826	25,510,059	23,522,512	25,439,018	28,556,030	30,934,442	28,518,180	22,116,906	20,886,622	26,287,870	306,540,933
Pawn shops	482,018	534,543	415,365	421,962	546,782	397,990	431,890	612,965	520,052	611,247	520,089	393,845	426,220	5,832,930
Gift shops	43,132,206	39,043,314	39,729,437	46,127,853	46,987,447	47,313,631	42,966,124	46,796,946	65,177,265	78,062,850	35,077,111	35,960,038	40,773,473	564,015,489
Secondhand shops	909,901	787,766	644,382	826,614	814,753	686,592	728,526	995,991	827,241	775,759	743,429	785,456	9,269,165	
Luggage & leather goods	7,153,023	6,983,437	7,148,493	8,344,816	9,160,293	8,360,918	8,162,958	7,931,673	11,141,933	15,820,158	9,072,040	7,973,552	9,215,631	109,315,902
Pet shops	26,096,333	25,175,685	24,717,643	26,326,729	26,242,193	26,542,124	25,515,252	25,267,102	27,309,125	27,878,360	24,352,379	23,028,908	26,605,758	308,961,258
Religious goods	43,539	31,011	46,559	51,173	51,173	102,899	65,132	51,102	46,714	50,835	57,121	52,928	640,264	
Direct sales	281,991,463	246,665,550	231,485,243	247,167,251	231,825,571	216,129,806	233,996,972	223,960,682	243,005,856	225,913,238	229,669,964	229,173,31		

Table 3B Card expenditure statistics (not seasonally adjusted)

Value of credit card transactions

Detailed sector breakdown - services sectors

£	March 2010	April 2010	May 2010	June 2010	July 2010	August 2010	September 2010	October 2010	November 2010	December 2010	January 2011	February 2011	March 2011	Total (latest 12 months)
Auto rental	47,337,953	44,540,051	47,245,101	54,038,826	55,650,408	44,761,720	41,154,428	37,287,563	35,414,343	35,619,777	36,638,354	36,186,615	44,107,511	512,644,697
Auto parts & accessories	155,770,480	137,575,607	129,718,694	142,586,192	137,973,518	124,843,832	128,100,228	121,819,029	130,885,044	119,103,225	122,362,147	121,069,375	147,082,109	1,563,119,000
Auto services	45,136,388	38,109,217	40,007,225	44,820,786	44,974,875	41,915,430	43,990,799	41,712,263	42,454,880	35,525,464	41,256,078	40,633,702	47,153,042	502,553,757
Auto repair shops	304,695,055	255,271,875	242,956,183	255,370,082	256,773,621	221,539,544	238,430,616	226,828,327	229,616,427	204,780,916	232,058,330	227,978,483	276,311,111	2,867,915,515
Service stations	63,208,415	58,172,400	58,204,493	63,711,115	62,086,721	57,818,368	57,770,265	57,090,874	62,799,781	65,208,500	79,359,572	73,319,249	84,639,329	780,180,847
Vehicle sales	270,861,227	224,096,040	214,962,492	236,262,048	227,903,119	210,352,889	223,064,950	205,751,578	202,818,091	168,970,454	198,707,916	201,311,949	250,462,611	2,564,664,137
Vehicle Sales & Services	887,009,518	757,765,186	733,094,188	796,789,049	785,362,262	701,231,783	732,511,286	690,489,634	703,988,566	629,208,336	710,382,577	700,499,373	849,755,713	8,791,077,953
Restaurants	378,395,903	358,864,522	366,609,316	387,026,173	407,856,976	401,603,165	359,004,661	373,100,370	374,152,084	397,390,558	327,515,487	334,690,904	362,086,510	4,449,900,726
Public houses	67,461,482	65,057,703	63,475,028	75,331,706	74,933,146	80,723,026	69,371,538	67,353,900	70,487,712	75,710,648	58,025,548	59,439,831	65,770,392	825,680,178
Catering services	15,531,960	12,998,255	14,303,709	15,034,276	13,584,190	10,643,990	14,349,802	13,779,479	15,999,475	13,554,913	12,702,894	12,545,155	16,090,081	165,586,219
Video stores	1,237,030	1,066,959	1,781,425	1,376,191	1,478,637	1,348,215	1,600,645	1,890,332	1,892,807	1,822,926	1,333,804	1,181,392	1,334,404	18,107,737
Cinema, theatre & dance	142,608,909	96,886,606	96,356,172	98,800,919	106,279,954	102,725,224	109,296,084	130,410,518	172,408,893	123,224,266	107,650,470	108,675,108	128,239,685	1,380,953,899
Concerts & entertainers	2,286,704	1,575,791	1,161,890	1,255,714	1,190,066	1,135,180	1,076,795	1,206,253	1,385,613	1,156,711	1,135,578	1,022,985	1,265,259	14,567,835
Tourist attractions	12,504,332	18,640,407	14,838,318	21,455,320	25,151,745	31,240,821	16,958,222	15,779,797	10,948,423	8,509,228	7,191,475	9,576,991	12,428,781	192,719,528
Amusement parks	1,142,505	1,639,039	1,145,192	1,421,721	1,744,464	2,485,021	1,145,599	1,242,860	1,055,836	753,437	690,050	886,866	938,320	15,148,405
Aquariums	638,975	722,283	617,796	746,083	732,848	828,059	542,433	558,875	522,390	396,876	471,130	549,004	680,631	7,368,348
Sports & games establishments	102,342,281	100,634,849	128,012,375	110,800,504	85,669,292	74,323,565	75,271,299	70,669,398	77,814,469	81,917,888	75,600,729	73,165,381	98,080,258	1,051,960,007
Professional sports clubs	8,829,034	8,642,267	9,558,840	23,008,544	10,092,735	9,028,046	8,157,106	7,844,696	8,953,944	7,943,421	6,928,705	7,973,548	8,198,845	116,330,697
Gambling	135,764,701	122,217,352	108,190,613	145,260,904	104,578,614	112,255,546	115,046,890	110,857,821	120,108,281	107,955,929	112,120,673	106,604,244	114,310,608	1,379,507,475
Personal services	8,608,555	7,789,265	7,440,508	8,002,025	7,445,001	7,325,001	7,718,147	7,325,905	7,614,426	7,768,069	7,646,275	7,404,504	8,459,895	92,309,097
Miscellaneous entertainment	15,905,363	17,178,828	16,178,690	18,838,486	20,777,471	22,498,600	16,144,076	15,911,519	15,237,084	10,575,518	9,631,532	10,566,147	14,079,338	187,617,289
Entertainment	893,257,734	813,914,126	829,669,812	908,358,566	861,965,215	858,083,459	795,683,297	817,931,723	878,581,437	838,680,388	728,644,350	734,282,060	831,963,007	9,897,757,440
Hotels	461,204,209	441,647,416	476,710,189	533,216,574	564,504,285	511,138,276	496,023,813	479,346,220	457,644,024	383,046,928	385,702,368	391,787,051	412,144,380	5,532,911,524
Airlines	300,750,468	260,975,917	218,892,436	269,145,295	280,077,195	254,449,484	284,905,492	253,658,465	259,872,724	170,426,718	342,410,369	260,773,461	273,581,351	3,129,168,977
Airport terminals	3,725,662	3,363,989	3,553,755	4,047,505	3,800,147	3,405,508	3,529,618	3,132,850	3,021,839	2,568,245	2,399,167	2,081,027	2,995,783	37,899,433
Railways	193,554,084	189,083,121	177,925,858	197,249,118	182,656,214	162,964,164	198,198,177	192,439,163	204,798,980	186,767,034	175,500,555	170,822,137	196,987,005	2,235,391,526
Buses	17,528,931	17,987,948	17,353,250	20,480,690	21,336,156	19,104,431	20,079,017	18,106,724	17,419,512	15,728,540	15,289,271	15,606,810	18,950,092	217,442,441
Sea travel	17,311,964	16,651,920	16,841,835	18,204,453	18,322,794	17,277,851	13,515,566	12,768,722	10,925,868	10,479,139	13,343,787	11,969,239	14,400,257	174,701,431
Travel agents	626,332,065	536,692,225	579,757,368	615,705,895	646,475,380	545,897,382	477,284,037	415,999,861	368,033,669	300,361,524	562,555,511	468,015,967	540,261,846	6,057,040,665
Timeshares	37,656	36,459	33,030	47,578	43,864	47,097	36,436	38,235	34,994	19,509	46,303	49,888	49,353	482,746
Camping grounds	34,103,471	34,443,318	38,831,151	45,840,583	51,121,545	41,908,291	25,045,809	23,691,990	24,039,939	18,264,037	29,276,933	26,765,605	32,566,265	391,795,466
Miscellaneous travel	31,284,626	32,424,565	30,029,436	44,115,112	40,162,326	32,711,607	27,545,248	24,253,628	23,891,739	18,723,143	21,995,116	23,076,566	30,066,006	348,994,492
Travel	1,224,626,927	1,091,659,462	1,083,218,119	1,214,836,229	1,243,995,621	1,077,765,815	1,050,139,400	944,089,638	912,039,334	723,337,889	1,162,817,012	979,160,700	1,109,857,958	12,592,917,177
Telegraph services / Wire transfer money order	1,314,103	1,220,931	1,122,908	1,326,025	1,141,004	1,190,983	1,141,487	1,063,019	1,123,571	1,125,080	901,161	774,172	1,419,467	13,549,808
Insurance services	378,634,558	334,410,494	321,952,480	365,285,702	363,533,421	353,181,473	382,809,894	336,874,329	341,266,845	284,263,949	323,256,033	317,655,792	401,328,164	4,125,818,576
Fis - cash disbursements (auto & manual)	25,720,110	23,036,730	21,959,356	26,415,815	26,955,288	24,844,082	25,057,137	21,690,143	19,685,902	18,231,684	17,908,016	16,633,928	17,813,618	260,231,699
Fis - merchandise & services	78,386,317	70,226,654	72,850,095	78,630,410	79,871,818	58,454,175	63,691,003	70,406,414	67,884,186	62,179,703	68,383,204	69,249,628	85,522,442	847,349,732
Non-Fis - foreign currency, travellers' cheques	15,938,958	15,959,800	23,361,155	28,814,436	31,284,041	29,235,189	22,883,217	11,266,480	6,090,372	4,779,551	4,655,275	5,728,945	6,783,984	190,842,445
Security brokers and dealers	4,895,227	5,187,392	8,779,332	6,056,052	4,667,531	3,333,582	3,617,550	4,439,462	4,829,937	3,716,474	5,044,981	4,786,023	6,455,961	60,914,277
Tax preparation services	74,981	82,284	64,861	63,700	69,121	33,452	29,347	40,634	55,775	33,408	51,741	83,944	102,163	710,430
Tax payments	348,336	400,300	366,242	471,397	438,387	420,221	410,352	396,782	432,227	369,070	319,879	223,864	384,004	4,632,725
Fines, bail and bond payments	8,714,754	7,341,492	7,929,459	8,597,027	8,994,842	7,099,491	8,314,231	8,333,022	8,629,610	6,888,809	7,758,222	7,753,809	8,867,438	96,507,452
Miscellaneous financial	31,844,437	29,091,658	29,409,961	32,243,071	31,485,319	28,670,416	28,562,195	27,436,273	29,691,000	28,152,603	34,743,309	32,063,739	37,529,207	369,078,751
Financial	545,871,781	486,957,735	487,795,849	547,903,635	548,440,772	506,463,064	536,516,413	481,946,558	479,689,425	409,740,331	463,021,821	454,953,844	566,206,448	5,969,635,895

Table 3B Card expenditure statistics (not seasonally adjusted)

Value of credit card transactions

Detailed sector breakdown - services sectors (continued)

£	March 2010	April 2010	May 2010	June 2010	July 2010	August 2010	September 2010	October 2010	November 2010	December 2010	January 2011	February 2011	March 2011	Total (latest 12 months)
Telecoms	78,716,541	72,456,294	70,441,006	76,130,855	80,436,704	69,967,944	69,741,129	67,608,980	71,967,310	83,966,619	64,753,687	59,738,794	66,917,058	854,126,380
Utilities	62,912,953	54,441,739	50,680,619	52,270,649	49,582,320	40,695,976	43,494,054	42,185,001	42,295,739	37,436,396	43,178,668	44,442,927	60,933,589	561,637,677
Contractors (residential & commercial)	86,541,798	75,991,036	75,217,611	80,734,599	77,052,456	71,849,618	79,217,525	80,974,354	87,743,748	71,898,368	74,160,221	74,304,067	84,970,689	934,114,292
Gardening services	4,664,576	5,545,663	5,404,954	5,783,706	4,484,867	3,585,164	3,580,158	3,092,805	3,334,953	3,158,436	2,111,848	2,616,828	4,473,820	47,173,202
Veterinary services	47,799,835	45,308,001	44,371,195	49,348,758	50,915,114	48,978,167	49,401,890	47,478,141	48,784,297	42,838,691	46,324,151	39,943,324	46,093,472	559,785,201
Photocopying & printing	36,009,518	29,228,915	29,197,532	31,459,761	29,277,124	26,970,636	31,982,923	32,121,037	34,385,452	29,162,406	30,153,071	30,174,085	35,225,467	369,338,409
Photographic studios	8,751,954	7,848,210	7,756,014	9,353,657	11,201,277	8,797,121	8,835,095	9,546,730	11,570,766	9,282,050	6,765,023	6,850,365	23,291,215	121,097,523
Beauty & barber shops	73,585,788	67,000,423	67,508,332	74,544,040	74,606,968	67,261,151	69,332,253	67,779,099	73,497,743	86,491,484	61,001,438	60,874,129	55,793,765	825,690,825
Employment agencies	5,170,034	4,698,220	4,048,503	4,558,439	3,984,408	4,379,931	5,298,875	5,014,799	4,900,539	4,618,865	4,837,609	4,793,680	5,373,615	56,507,483
Counselling services	433,769	359,063	319,352	315,944	388,442	381,565	459,836	681,823	592,541	493,621	439,646	439,646	543,796	5,471,643
Legal services	17,993,304	15,339,298	14,893,245	15,668,737	16,183,434	14,374,430	15,889,850	15,681,204	16,204,544	13,710,921	16,738,097	17,104,602	20,512,425	192,300,787
Laundry & cleaning	5,370,059	5,142,220	5,128,934	6,051,666	5,780,739	5,428,235	5,784,009	5,612,471	5,751,935	4,494,073	4,867,140	4,566,232	5,522,789	64,130,443
Funeral services	11,304,453	10,012,904	9,038,991	9,722,803	9,676,771	8,577,102	9,735,871	10,714,308	9,801,055	10,221,192	11,397,973	11,312,784	11,940,040	122,150,894
Medical services	155,127,854	132,630,511	134,793,607	146,489,981	145,738,529	126,860,958	142,554,150	138,432,820	150,415,590	116,981,073	130,439,664	135,991,219	159,994,934	1,661,323,036
Moving & courier services	21,289,895	19,240,509	19,237,972	21,970,295	22,974,379	19,044,155	20,307,722	20,090,706	19,711,689	17,689,027	18,570,233	18,591,607	21,324,502	238,752,796
Repair shops (not auto)	12,098,343	10,296,852	10,099,612	11,210,497	10,841,569	9,776,574	10,119,844	9,550,994	10,942,727	9,713,984	8,273,342	8,111,608	9,349,694	118,287,297
Accounting services	7,085,157	5,834,595	5,159,293	5,715,499	5,280,136	5,173,831	6,351,846	5,741,833	6,134,488	5,936,577	6,857,019	6,191,039	6,748,076	71,124,232
Advertising, consultancy & PR	15,644,367	14,081,370	12,613,088	14,240,423	13,635,276	12,632,137	13,820,434	12,540,056	12,963,498	9,957,572	12,233,072	11,567,057	16,116,569	156,400,552
Computer programming	52,508,917	45,675,084	46,562,674	46,251,841	42,799,486	35,756,281	42,052,558	39,754,434	39,032,204	35,330,678	33,997,966	31,578,864	38,012,013	476,804,083
Farming services	8,444,159	7,933,698	7,937,880	8,968,212	9,049,283	8,868,019	8,295,817	7,891,578	8,106,451	7,576,633	7,249,553	7,029,548	8,134,226	97,040,898
Miscellaneous professional services	154,768,455	142,084,424	137,998,949	153,580,109	148,568,294	141,810,660	169,863,250	144,937,227	147,527,051	122,832,253	142,761,253	140,607,564	160,191,057	1,752,762,091
Engineering services	22,650,403	20,377,835	18,848,716	21,747,221	20,958,711	17,664,780	19,086,461	17,650,208	17,448,053	14,531,789	15,886,061	17,359,280	20,987,137	222,546,252
Marina services	11,351,771	11,563,473	11,198,237	12,874,211	12,815,633	11,136,156	8,461,976	7,042,725	6,637,367	7,984,222	6,841,732	6,406,538	10,765,763	113,728,033
Wrecking & salvage yards	885,605	801,824	742,018	879,243	880,604	789,844	874,981	806,573	845,954	584,322	731,481	751,259	865,860	9,553,963
Pest control	780,026	644,212	645,032	672,303	821,922	752,527	769,876	664,718	732,674	552,659	562,245	527,733	691,136	8,037,037
Educational establishments	93,131,173	96,073,536	86,996,067	84,978,691	90,265,001	111,206,090	253,210,120	166,293,319	92,122,670	81,234,642	152,190,033	97,639,559	97,284,187	1,409,493,915
Child care services	2,140,573	1,862,677	1,719,842	1,922,753	2,017,377	1,783,996	2,141,796	2,083,813	2,267,144	2,003,565	2,320,623	2,188,090	2,352,158	24,663,834
Social, political & religious organisations	78,270,163	71,172,809	56,875,316	61,023,907	57,190,970	65,431,595	65,209,207	65,441,264	66,132,145	66,459,585	66,057,594	58,607,416	89,490,074	789,091,882
Government services	188,743,421	172,499,714	168,146,735	174,951,692	173,058,174	155,654,799	160,642,516	150,000,167	146,262,968	135,726,783	147,063,736	152,776,759	177,681,629	1,914,465,672
Miscellaneous services	60,789,469	53,333,212	49,675,404	54,643,189	53,220,894	45,852,806	49,528,820	48,193,036	53,765,453	53,824,385	46,064,543	45,072,132	60,230,172	613,404,046
Commercial equipment	127,410,075	109,223,038	107,186,101	113,023,690	114,965,285	97,490,202	110,226,707	102,895,980	108,105,797	90,374,581	100,059,526	98,399,407	115,776,599	1,267,726,913
Other services	1,452,374,408	1,308,701,359	1,260,441,931	1,351,087,371	1,338,652,147	1,238,932,450	1,476,271,549	1,328,502,203	1,299,984,545	1,177,067,452	1,264,944,616	1,196,558,142	1,417,587,526	15,658,731,291
Total services	5,464,346,577	4,900,645,284	4,870,930,088	5,352,191,424	5,342,920,302	4,893,614,847	5,087,145,758	4,742,305,976	4,731,927,331	4,161,081,324	4,715,512,744	4,457,241,170	5,187,515,032	58,443,031,280
TOTAL	11,371,695,416	10,475,894,048	10,427,787,638	11,464,831,080	11,167,884,404	10,522,379,924	10,583,386,710	10,417,089,372	11,404,381,876	11,642,884,074	9,919,028,672	9,272,815,469	10,793,735,064	128,092,098,331

Table 3C Card expenditure statistics (not seasonally adjusted)

Number of debit card transactions

Detailed sector breakdown - retail sectors

	March 2010	April 2010	May 2010	June 2010	July 2010	August 2010	September 2010	October 2010	November 2010	December 2010	January 2011	February 2011	March 2011	Total (latest 12 months)
Supermarkets	187,201,456	171,978,605	170,450,028	190,104,528	177,168,790	179,358,015	174,259,048	180,167,353	196,836,415	196,519,459	179,518,942	174,785,146	197,490,439	2,188,636,768
Bakers & dairies	277,148	248,808	250,333	297,897	290,687	302,249	296,630	322,608	337,756	351,374	307,536	320,676	371,284	3,697,838
Sweet stores	694,195	577,474	349,418	509,055	413,542	465,151	436,306	485,456	713,980	1,428,796	379,365	531,046	649,335	6,938,924
Miscellaneous foodstores	9,449,765	8,893,487	8,883,971	10,238,796	9,530,120	10,008,359	9,289,351	9,426,311	10,203,165	9,705,176	8,203,828	8,350,310	9,460,268	112,193,142
Off-licences	2,676,588	2,519,241	2,675,148	2,756,167	2,713,866	2,782,260	2,583,174	2,854,593	2,859,565	3,031,441	2,623,463	2,672,134	2,938,287	33,009,339
Food & drink	200,199,422	184,217,615	182,608,898	203,906,443	190,117,005	192,916,034	186,864,509	193,256,321	210,950,881	211,036,246	191,033,134	186,659,312	210,909,613	2,344,476,011
Department stores	15,244,386	13,574,681	13,438,596	15,247,225	14,663,526	13,988,761	12,830,513	13,909,328	17,469,838	25,046,026	13,647,685	11,361,548	13,173,900	178,351,627
Discount stores	6,143,496	5,752,789	6,169,786	6,400,594	6,558,448	7,011,948	6,705,960	7,180,732	8,704,160	11,092,634	6,449,408	6,097,105	6,466,208	84,589,772
Catalogues	3,337,747	2,869,437	2,647,779	2,926,258	2,776,507	2,757,526	2,965,482	2,960,224	4,202,006	4,602,513	3,279,617	2,798,560	2,968,996	37,754,905
Miscellaneous mixed	8,515,658	7,928,174	7,860,175	9,152,975	8,360,504	8,562,943	8,459,281	8,534,830	9,905,919	11,216,051	8,021,129	8,040,952	9,272,692	105,315,625
Mixed business	33,241,287	30,126,081	30,116,336	33,727,052	32,358,985	32,321,178	30,961,236	32,585,114	40,281,923	51,957,224	31,397,839	28,298,165	31,881,796	406,011,929
Men's clothing	855,088	854,408	893,823	1,035,970	1,085,540	1,101,000	902,039	920,777	1,079,517	1,688,880	979,541	822,032	859,128	12,222,655
Women's clothing	5,942,897	5,860,689	5,683,468	7,169,503	6,958,365	6,408,101	5,657,943	5,884,884	6,569,103	8,625,449	5,252,541	4,676,578	5,452,504	74,199,128
Family clothing	21,765,607	20,872,970	20,823,246	24,170,901	24,208,977	22,790,295	21,035,591	22,483,324	25,055,830	33,475,898	20,085,726	17,948,465	21,253,675	274,204,898
Miscellaneous clothing	2,254,999	2,232,655	2,155,070	2,700,814	2,208,182	2,081,282	2,534,504	2,486,220	2,679,151	3,079,507	1,637,305	1,671,489	2,017,085	27,483,264
Shoe shops	2,726,057	3,073,313	2,984,716	3,563,781	3,251,426	3,147,364	3,141,855	2,988,409	3,147,768	3,919,042	2,954,958	2,259,461	2,513,265	37,864,358
Clothing	33,544,648	32,894,035	32,540,323	38,640,969	38,002,490	36,157,042	33,271,932	34,763,614	38,531,369	50,788,776	30,910,071	27,378,025	32,095,657	425,974,303
Furniture stores	2,839,429	2,527,257	2,494,030	2,711,439	2,675,896	2,940,500	2,688,662	2,963,214	3,333,839	3,659,043	3,179,633	2,677,009	2,915,127	34,765,649
Household appliance stores	4,506,306	4,366,778	4,580,444	4,329,885	4,507,163	4,807,234	4,780,862	4,938,533	5,281,694	6,243,407	4,768,154	4,587,726	5,247,272	58,439,152
Electronic stores	2,233,466	2,027,250	1,957,496	2,104,181	2,125,151	2,341,601	2,214,965	2,374,473	2,795,310	4,021,995	2,732,696	2,137,160	2,218,158	29,050,436
DIY stores	14,769,555	16,595,997	16,381,094	15,602,195	14,879,196	15,979,047	14,592,059	15,152,094	15,883,826	14,867,860	13,384,389	13,699,610	16,840,352	183,857,719
Floor covering stores	308,348	269,546	242,801	266,501	266,980	310,889	291,556	310,173	355,438	241,750	277,491	272,813	301,394	3,407,332
Garden centres	3,365,895	4,451,495	4,580,773	4,350,527	2,905,876	2,633,907	2,378,862	2,522,576	2,851,157	3,331,851	1,824,890	2,086,148	3,559,025	37,477,087
Miscellaneous household	1,132,132	985,354	875,520	1,016,004	1,153,363	1,351,154	1,267,337	1,205,870	1,287,393	1,051,423	1,069,217	980,201	1,083,485	13,326,321
Household	29,155,131	31,223,677	31,112,158	30,380,732	28,513,625	30,364,332	28,214,303	29,466,933	31,788,657	33,417,329	27,236,470	26,440,667	32,164,813	360,323,696
Books, newspapers & magazines	6,154,093	5,134,288	5,140,756	5,964,702	5,760,812	6,232,912	6,280,985	6,405,000	7,238,296	9,979,856	5,804,158	5,650,172	6,038,992	75,010,929
Record shops	2,479,501	1,918,688	1,744,709	2,146,603	1,958,948	1,969,928	1,856,798	2,016,997	3,242,132	6,181,407	2,075,108	1,808,015	1,889,186	28,808,519
Music shops	4,744,381	4,199,247	4,172,106	5,064,774	4,737,693	5,174,946	5,077,987	5,300,280	6,223,527	6,393,616	6,643,606	5,695,748	6,330,953	65,014,483
Hobbies, toys & games	2,206,684	1,885,958	1,790,414	1,987,462	1,938,751	2,068,811	2,002,549	2,437,453	3,771,623	5,675,818	2,039,255	1,754,269	1,928,410	29,280,773
Photographic	465,222	408,654	405,538	498,485	405,538	507,169	485,467	506,198	444,047	683,360	409,287	358,168	412,878	5,638,225
Handicraft	201,318	165,382	155,623	165,119	164,337	176,884	173,899	187,098	206,789	174,459	168,965	166,747	182,046	2,087,348
Sports shops	6,247,915	6,483,031	6,730,800	7,673,767	7,430,986	8,060,543	6,900,970	6,876,163	7,396,015	9,595,935	6,537,425	5,775,703	6,720,490	86,181,828
Jewellers	1,281,959	1,055,360	1,097,607	1,224,377	1,297,501	1,303,879	1,196,399	1,200,478	1,582,738	2,078,501	1,178,754	1,324,680	1,383,683	16,823,957
Computer software	829,813	705,054	634,321	759,470	671,975	737,296	714,996	711,939	794,256	964,117	749,181	617,438	664,382	8,724,425
Medical goods	27,714	25,069	25,947	28,164	28,944	26,060	26,454	26,700	28,994	24,311	25,372	27,095	30,965	324,075
Chemists	17,848,371	15,629,221	15,748,370	18,308,286	16,592,557	17,030,945	16,160,208	16,089,431	19,044,680	23,687,797	15,880,389	15,405,979	18,060,785	207,638,648
Optical goods	994,890	872,383	845,811	941,215	911,341	912,664	872,727	846,125	884,199	651,892	855,493	879,009	986,290	10,459,149
Cosmetic stores	1,202,485	1,059,095	1,067,129	1,267,770	1,189,228	1,229,809	1,193,223	1,241,028	1,659,744	2,757,516	1,046,787	1,053,501	1,166,712	15,931,542
Tobacconists	20,595	18,593	20,269	21,745	21,209	22,159	21,312	21,999	26,853	32,739	29,982	23,918	30,722	282,500
Florists	1,368,798	717,578	706,929	777,456	746,440	675,153	701,137	667,416	682,091	1,000,292	635,732	971,716	1,023,142	9,305,082
Artists' supplies	642,141	502,605	482,772	550,062	532,720	608,428	574,356	635,065	785,239	747,036	541,778	567,419	653,721	7,181,201
Antiques, art & stamps/coins	237,930	212,242	206,457	229,129	230,016	229,861	229,861	275,729	290,316	290,316	210,195	209,449	231,765	2,860,394
Pawn shops	13,416	12,843	12,840	12,832	14,690	13,606	13,959	15,262	16,176	23,617	15,834	16,017	17,257	184,933
Gift shops	4,819,363	3,475,323	3,399,234	4,596,310	3,982,931	4,227,740	3,751,318	4,054,756	5,418,208	8,976,024	3,752,117	4,446,882	4,398,744	54,479,587
Secondhand shops	38,506	35,017	33,725	37,868	38,652	41,790	41,885	46,325	53,680	47,317	45,030	42,797	47,924	479,424
Luggage & leather goods	177,819	167,957	163,311	189,226	208,514	220,467	186,744	181,385	214,461	292,383	195,866	154,842	173,558	2,348,714
Pet shops	2,131,506	2,034,147	2,071,712	2,075,189	2,162,498	2,279,093	2,162,043	2,273,182	2,296,912	2,416,364	2,163,647	2,070,472	2,288,328	26,293,587
Religious goods	1,504	1,378	1,539	1,704	1,969	3,117	1,969	1,511	1,776	1,493	1,551	1,493	1,734	20,682
Direct sales	4,872,179	4,556,538	4,635,027	4,853,256	4,810,200	4,740,879	4,824,888	4,832,496	5,252,774	5,283,437	5,297,948	4,945,568	5,859,763	59,892,774
Miscellaneous & speciality shops	2,833,348	2,640,757	2,611,332	2,962,707	2,839,116	3,042,215	2,782,078	2,867,421	3,507,821	3,925,770	2,717,733	2,567,371	2,840,312	35,304,596
Other retail	61,841,059	53,916,278	53,904,278	62,337,315	58,760,230	61,582,447	58,234,943	59,632,351	71,116,332	92,783,763	59,002,785	56,529,046	63,357,615	751,157,375
Automotive Fuels	46,400,147	43,361,050	42,741,360	46,190,447	43,963,697	45,084,300	43,568,075	44,852,813	47,294,133	42,064,866	43,597,332	42,566,687	49,032,871	534,317,639
Total retail sales	404,381,694	375,737,736	373,023,353	415,182,958	391,716,032	398,425,333	381,114,998	394,557,146	439,963,295	482,048,204	383,177,631	367,871,902	419,442,3	

Table 3C Card expenditure statistics (not seasonally adjusted)

Number of debit card transactions

Detailed sector breakdown - services sectors

	March 2010	April 2010	May 2010	June 2010	July 2010	August 2010	September 2010	October 2010	November 2010	December 2010	January 2011	February 2011	March 2011	Total (latest 12 months)
Auto rental	432,782	414,798	418,202	454,442	464,969	490,170	476,875	459,064	459,017	429,751	441,378	442,088	522,267	5,473,021
Auto parts & accessories	1,875,067	1,698,111	1,604,872	1,748,265	1,723,883	1,701,872	1,660,610	1,649,275	1,752,246	1,617,155	1,714,527	1,683,096	1,994,149	20,548,061
Auto services	2,627,085	2,356,577	2,455,894	2,643,284	2,707,516	2,719,381	2,711,173	2,782,838	2,917,879	2,891,715	2,866,719	2,655,532	2,997,851	32,506,359
Auto repair shops	1,844,779	1,604,819	1,513,695	1,633,053	1,621,770	1,594,379	1,646,585	1,594,379	1,617,603	1,457,690	1,666,132	1,646,147	1,987,604	19,566,464
Service stations	9,770,620	9,096,197	9,088,956	10,051,375	9,642,760	9,887,536	9,438,032	9,785,297	10,756,888	11,418,047	13,183,611	12,743,294	14,431,363	129,523,536
Vehicle sales	1,320,464	1,175,793	1,121,948	1,245,741	1,210,096	1,199,599	1,186,989	1,096,622	1,087,487	919,220	1,093,360	1,111,545	1,389,509	13,837,909
Vehicle Sales & Services	17,870,797	16,346,295	16,203,567	17,776,160	17,370,994	17,575,545	17,120,264	17,367,475	18,591,120	18,733,578	20,765,727	20,281,702	23,322,743	221,455,170
Restaurants	32,716,425	31,080,006	31,790,618	32,824,691	32,813,593	35,075,281	31,910,938	35,254,448	35,960,594	34,348,613	33,969,770	34,889,801	38,578,583	408,496,936
Public houses	5,763,267	5,678,541	5,451,390	6,420,742	5,731,273	6,346,509	5,470,940	5,710,049	6,078,969	5,734,686	5,622,815	5,736,442	6,431,097	70,413,453
Catering services	547,918	468,143	483,682	526,277	532,349	502,313	549,544	559,239	587,654	508,086	497,531	523,075	614,255	6,352,148
Video stores	426,200	261,851	268,766	244,663	246,931	240,215	221,126	195,233	196,187	215,269	206,375	188,074	282,583	2,767,273
Cinema, theatre & dance	3,623,243	3,577,994	3,324,957	3,063,413	4,717,273	4,952,443	3,165,787	3,794,246	4,685,570	3,511,779	4,184,730	4,413,738	3,507,785	46,899,715
Concerts & entertainers	37,400	40,247	37,594	36,131	40,081	49,744	34,791	44,798	46,254	54,506	46,388	52,914	55,088	538,536
Tourist attractions	1,630,141	1,753,841	1,317,446	1,431,460	1,197,867	1,559,724	899,469	837,958	606,625	358,235	338,700	459,898	488,431	11,249,654
Amusement parks	66,455	121,446	79,651	101,992	104,143	189,109	78,938	80,818	54,705	40,012	44,481	67,292	61,353	1,023,940
Aquariums	33,359	37,494	31,743	37,179	38,489	46,754	29,509	30,362	26,519	19,626	27,872	32,703	31,126	389,376
Sports & games establishments	2,464,029	2,304,625	2,258,325	2,223,365	2,445,667	2,624,674	2,318,000	2,279,503	2,280,519	2,219,113	2,526,007	2,473,824	2,771,289	28,724,911
Professional sports clubs	151,059	142,814	120,476	116,425	138,429	193,705	159,416	148,533	177,890	178,989	149,757	158,323	163,333	1,848,090
Gambling	14,505,219	13,792,083	12,178,191	13,852,249	12,073,616	13,092,923	12,400,990	13,325,477	14,829,646	13,923,967	14,609,428	13,881,509	16,836,188	164,796,267
Personal services	297,735	272,284	268,256	284,374	282,459	276,431	260,048	253,915	255,609	249,483	252,873	286,257	286,257	3,199,914
Miscellaneous entertainment	530,024	716,177	556,341	681,709	696,396	1,022,558	606,653	623,606	478,289	356,223	435,959	496,038	549,506	7,219,455
Entertainment	62,792,474	60,247,546	58,167,436	61,844,670	61,058,566	66,172,383	58,106,149	63,138,185	66,265,030	61,727,029	62,909,296	63,626,504	70,656,874	753,919,668
Hotels	2,868,856	2,849,615	2,815,548	3,076,036	3,085,849	3,549,511	3,040,523	3,008,690	2,796,212	2,575,767	2,607,666	2,720,543	2,709,675	34,835,635
Airlines	852,327	737,287	758,510	810,770	767,711	770,737	737,771	632,556	583,350	454,976	693,246	404,758	391,322	7,742,994
Airport terminals	35,481	33,396	35,319	39,062	35,351	39,930	36,012	28,317	22,650	19,643	23,030	23,129	32,302	368,141
Railways	12,153,652	10,833,651	11,123,041	12,793,800	12,200,985	12,358,655	13,098,462	14,114,046	14,750,047	12,974,496	12,519,936	12,598,320	14,933,660	154,299,099
Buses	806,931	764,324	750,396	880,296	834,288	856,931	891,192	884,491	949,896	797,034	853,166	819,420	931,102	10,212,536
Sea travel	101,280	120,649	122,853	128,567	146,384	170,081	121,521	107,818	93,673	93,926	100,752	100,752	114,272	1,417,759
Travel agents	1,879,534	1,599,094	1,595,432	1,608,004	1,672,438	1,597,181	1,414,155	1,282,841	1,118,282	947,862	1,817,106	1,548,463	1,793,432	17,994,290
Timeshares	281	422	465	550	568	782	399	343	284	216	339	284	1,205	5,857
Camping grounds	379,370	515,667	536,745	620,545	667,101	853,358	460,653	349,810	164,677	103,806	245,536	299,629	407,174	5,224,701
Miscellaneous travel	880,934	860,503	860,975	999,369	1,048,779	1,109,263	1,046,485	1,047,061	1,029,859	925,830	714,658	713,182	827,005	11,182,969
Travel	17,089,790	15,464,993	15,783,736	17,880,963	17,373,605	17,756,918	17,806,650	18,447,283	18,712,718	16,317,789	16,964,280	16,507,937	19,431,474	208,448,346
Telegraph services / Wire transfer money order	40,057	35,292	36,871	40,676	37,869	38,603	37,643	37,228	40,116	42,636	34,339	33,636	38,861	453,770
Insurance services	3,041,694	2,781,499	2,728,744	3,043,127	3,136,964	2,974,075	3,058,031	2,787,557	2,689,674	2,344,442	2,673,674	2,673,674	3,284,119	34,188,618
FIs - cash disbursements (auto & manual)	91,985	86,784	110,962	170,939	176,295	169,788	159,429	120,428	104,628	111,801	90,152	103,958	122,110	1,527,274
FIs - merchandise & services	7,184,296	6,306,235	6,616,950	6,778,541	7,003,876	6,818,280	6,915,007	7,066,506	6,968,354	7,151,825	7,208,799	6,507,913	7,808,351	83,150,637
Non-FIs - foreign currency, travellers' cheques	194,735	184,756	211,736	267,965	290,105	283,150	246,131	186,272	141,618	150,843	131,213	156,313	180,433	2,430,535
Security brokers and dealers	100,342	96,030	92,079	87,154	73,806	63,762	60,420	70,208	78,144	60,033	77,672	78,575	114,149	952,032
Tax preparation services	119	227	223	291	272	176	135	117	154	126	331	309	371	2,732
Tax payments	104,180	97,708	96,627	109,015	121,923	108,978	103,624	105,647	116,346	118,024	157,279	128,903	148,746	1,412,820
Fines, bail and bond payments	259,133	236,589	248,350	252,847	274,870	253,571	279,833	294,637	287,441	253,590	262,877	265,407	314,935	3,224,947
Miscellaneous financial	405,151	393,710	390,149	431,771	415,492	428,178	411,666	414,627	440,520	431,027	488,675	482,171	565,875	5,293,861
Financial	11,421,692	10,218,830	10,532,691	11,182,326	11,531,472	11,138,561	11,271,919	11,083,227	10,866,995	10,664,347	11,138,049	10,430,859	12,577,950	132,637,226

Table 3C Card expenditure statistics (not seasonally adjusted)

Number of debit card transactions

Detailed sector breakdown - services sectors (continued)

	March 2010	April 2010	May 2010	June 2010	July 2010	August 2010	September 2010	October 2010	November 2010	December 2010	January 2011	February 2011	March 2011	Total (latest 12 months)
Telecoms	10,154,573	9,332,802	9,533,854	9,496,805	9,774,549	9,663,293	9,576,766	9,535,164	9,776,545	10,868,232	9,560,726	8,927,584	9,939,854	115,986,174
Utilities	1,726,379	1,518,526	1,488,010	1,652,004	1,612,282	1,641,810	1,685,680	1,701,375	1,748,683	1,602,139	1,689,565	1,583,060	1,978,020	19,901,154
Contractors (residential & commercial)	579,559	526,955	512,131	525,735	530,932	529,377	561,277	580,235	608,029	509,564	529,985	534,719	593,362	6,542,301
Gardening services	107,549	120,204	117,609	131,165	99,203	93,295	87,935	88,013	101,713	117,156	67,219	72,614	106,122	1,202,248
Veterinary services	1,490,389	1,387,243	1,365,751	1,489,474	1,573,152	1,571,259	1,555,853	1,523,236	1,507,384	1,328,402	1,406,772	1,282,093	1,465,148	17,455,767
Photocopying & printing	417,782	341,673	336,925	350,395	337,314	352,202	389,823	390,117	469,276	425,235	385,347	362,725	433,705	4,574,737
Photographic studios	296,611	261,391	270,946	333,920	368,302	305,919	309,218	366,426	424,654	357,594	246,494	256,787	1,206,026	4,707,677
Beauty & barber shops	4,325,044	3,940,401	3,915,885	4,347,186	4,296,630	4,124,710	4,020,322	4,011,630	4,164,566	5,017,617	3,764,081	3,753,940	3,392,034	48,749,002
Employment agencies	21,541	20,607	21,177	19,987	20,348	22,642	22,965	22,656	15,426	24,391	22,853	22,569	22,569	257,382
Counselling services	47,277	39,947	38,640	44,628	44,089	45,458	46,389	46,639	50,063	50,264	49,901	46,173	49,075	551,266
Legal services	110,158	95,435	91,301	101,560	102,988	100,495	106,748	105,160	113,297	90,438	110,134	109,676	135,192	1,262,424
Laundry & cleaning	459,747	427,774	427,913	486,106	464,395	454,440	475,183	478,923	486,368	373,818	402,558	386,201	449,285	5,312,964
Funeral services	17,325	15,106	14,606	15,908	15,327	14,343	15,769	16,615	17,682	16,497	18,342	18,586	19,396	198,177
Medical services	2,489,563	2,160,674	2,103,988	2,301,393	2,230,187	2,150,692	2,370,732	2,270,484	2,452,101	1,902,832	2,272,760	2,326,310	2,686,774	27,228,927
Moving & courier services	220,726	190,609	193,527	219,676	211,623	213,855	229,358	219,844	240,692	229,555	223,013	217,485	253,182	2,642,419
Repair shops (not auto)	325,584	259,577	206,854	199,940	176,045	165,872	141,810	129,835	135,505	115,919	109,697	99,316	112,421	1,852,791
Accounting services	186,025	172,576	163,884	188,303	181,467	192,949	207,879	204,259	224,563	206,426	221,318	196,520	228,307	2,388,451
Advertising, consultancy & PR	283,340	263,227	244,822	274,536	258,851	261,292	262,696	252,397	267,621	187,745	237,843	228,987	260,126	2,993,143
Computer programming	802,012	720,316	708,700	856,501	799,483	855,297	883,372	867,919	921,370	862,652	1,059,506	1,031,464	1,206,402	10,772,982
Farming services	144,238	134,859	133,349	151,386	139,880	143,331	139,064	141,368	149,533	143,531	132,383	126,807	145,645	1,681,136
Miscellaneous professional services	3,939,317	3,387,833	3,179,791	3,378,770	3,147,626	3,082,549	3,188,383	3,182,174	3,373,283	3,024,640	2,749,320	2,599,486	2,962,900	37,256,755
Engineering services	55,469	51,064	48,838	52,027	52,993	52,577	54,996	53,227	53,511	42,857	49,189	55,312	68,565	635,156
Marina services	61,314	81,077	77,238	100,233	98,698	109,572	70,654	54,659	52,251	49,022	43,714	44,480	63,412	845,010
Wrecking & salvage yards	11,400	9,688	8,731	8,964	9,164	8,317	8,137	7,904	6,031	7,191	7,309	8,538	98,104	98,104
Pest control	2,715	2,595	2,602	3,128	3,713	3,700	4,048	3,197	2,798	1,951	2,229	2,769	35,082	35,082
Educational establishments	1,173,867	907,908	1,084,900	862,116	712,426	679,757	1,273,744	1,517,899	1,400,713	948,787	1,375,923	1,239,689	1,506,342	13,510,204
Child care services	82,313	71,868	67,147	72,042	78,072	91,458	79,381	92,281	91,344	77,621	101,652	104,691	97,599	1,025,156
Social, political & religious organisations	2,175,149	1,905,155	1,898,312	2,041,483	1,813,108	2,138,469	2,052,779	1,945,267	2,192,574	1,681,622	1,468,612	1,573,617	2,757,117	23,468,115
Government services	4,916,257	4,700,125	4,667,389	4,994,411	4,872,406	5,003,479	5,075,774	4,889,346	4,873,540	4,207,330	4,847,329	4,802,984	5,442,790	58,376,903
Miscellaneous services	5,360,759	4,771,126	4,515,022	5,034,978	4,695,924	4,762,760	4,956,029	4,792,701	5,586,335	6,420,097	4,615,979	4,646,680	5,718,296	60,515,927
Commercial equipment	1,471,673	1,217,995	1,252,118	1,252,296	1,203,917	1,352,501	1,616,513	1,499,574	1,542,240	1,459,787	1,484,217	1,357,574	1,491,209	16,729,941
Other services	43,455,655	39,036,336	38,691,960	40,987,056	39,925,094	40,187,670	41,469,277	40,990,524	43,051,125	42,340,787	39,257,513	38,017,951	44,802,182	488,757,475
Total services	155,499,264	144,163,615	142,194,938	152,747,211	150,345,580	156,380,588	148,814,782	154,035,384	160,283,200	152,359,297	153,642,531	151,585,496	173,500,898	1,840,053,520
TOTAL	559,880,958	519,901,351	515,218,291	567,930,169	542,061,612	554,805,921	529,929,780	548,592,530	600,246,495	634,407,501	536,820,162	519,457,398	592,943,263	6,662,314,473

Table 3D Card expenditure statistics (not seasonally adjusted)

Value of debit card transactions

Detailed sector breakdown - retail sectors

£	March 2010	April 2010	May 2010	June 2010	July 2010	August 2010	September 2010	October 2010	November 2010	December 2010	January 2011	February 2011	March 2011	Total (latest 12 months)
Supermarkets	5,271,889,691	4,904,529,343	4,832,491,191	5,353,972,733	4,936,803,640	5,051,831,693	4,811,720,619	5,014,277,229	5,639,057,847	6,379,061,638	4,979,913,209	4,743,040,655	5,271,645,702	61,918,345,499
Bakers & dairies	4,568,527	4,103,336	4,053,011	4,865,475	4,696,023	4,834,310	4,719,310	4,890,020	5,221,835	5,746,339	4,465,006	4,582,734	5,424,516	57,601,914
Sweet stores	10,181,493	8,261,248	4,758,480	6,733,688	5,847,759	6,321,178	6,066,160	6,973,485	11,661,555	23,828,246	5,578,067	7,210,415	9,277,413	102,517,694
Miscellaneous foodstores	174,220,597	164,886,442	162,098,490	188,363,444	175,192,385	182,680,815	169,637,215	170,023,097	188,414,613	211,014,800	151,185,707	180,614,177	170,530,162	2,084,641,347
Off-licences	49,262,877	48,978,797	52,258,389	55,350,293	55,223,844	55,221,819	54,194,796	60,513,662	64,724,886	85,385,754	55,508,979	56,130,426	63,100,975	706,592,620
Food & drink	5,510,123,185	5,130,759,166	5,055,659,561	5,609,285,633	5,177,763,651	5,300,889,815	5,046,338,100	5,256,677,493	5,909,080,736	6,705,036,777	5,196,650,968	4,961,578,407	5,519,978,768	64,869,699,075
Department stores	502,025,840	449,097,055	452,057,842	516,137,361	477,415,306	465,061,401	444,049,063	490,693,526	620,278,345	915,029,312	450,125,948	379,452,233	450,186,140	6,109,653,532
Discount stores	258,579,820	241,175,343	253,824,601	273,897,569	263,020,042	284,276,147	272,550,292	298,937,181	385,113,811	473,932,531	246,958,345	229,809,597	235,313,879	3,458,809,338
Catalogues	138,049,309	118,305,719	111,459,972	121,223,423	114,194,801	117,147,005	119,454,664	119,353,792	151,941,102	150,659,189	127,151,392	114,988,869	122,599,525	1,488,479,453
Miscellaneous mixed	236,851,869	214,402,490	212,532,278	244,461,981	222,821,319	234,154,474	236,821,497	239,490,122	281,808,989	327,067,549	209,495,819	212,722,017	246,280,400	2,882,058,935
Mixed business	1,135,506,838	1,022,980,607	1,029,874,693	1,155,720,334	1,077,451,468	1,100,639,027	1,072,875,516	1,148,474,621	1,439,142,247	1,866,758,581	1,033,731,504	936,972,716	1,054,379,944	13,939,001,258
Men's clothing	48,572,390	48,967,805	51,628,712	56,218,358	57,644,324	58,762,779	50,731,497	54,448,114	62,656,528	91,791,171	52,806,360	44,109,240	49,227,469	678,992,357
Women's clothing	205,992,624	201,371,240	194,613,616	235,952,683	214,166,402	204,668,429	199,201,634	209,915,550	231,622,629	286,642,305	174,303,349	162,653,898	193,553,282	2,508,665,017
Family clothing	661,302,590	634,493,726	631,979,214	714,787,583	688,599,896	689,262,336	678,449,678	730,073,576	822,418,177	1,106,940,069	585,371,683	555,423,572	669,715,370	8,507,514,880
Miscellaneous clothing	59,168,566	57,356,789	55,851,527	67,286,144	54,308,825	54,475,284	69,015,790	68,963,860	78,455,230	78,455,230	43,230,640	44,374,777	55,039,618	721,906,388
Shoe shops	98,727,106	109,785,155	104,489,239	117,748,161	110,906,936	132,761,414	118,999,638	124,650,334	128,800,329	157,328,230	104,476,581	82,828,257	95,796,483	1,388,569,227
Clothing	1,073,763,276	1,051,974,715	1,038,562,308	1,191,992,929	1,125,624,353	1,139,930,242	1,116,398,237	1,188,051,434	1,319,045,603	1,721,157,505	960,188,577	889,389,744	1,063,332,222	13,805,647,869
Furniture stores	277,200,286	247,127,450	241,695,867	260,377,035	269,866,881	290,897,844	277,541,474	305,687,834	331,971,048	307,688,255	312,380,900	264,896,713	295,786,204	3,405,917,505
Household appliance stores	157,145,752	145,948,538	148,728,147	149,459,179	152,640,552	173,257,587	172,710,798	183,175,845	205,510,508	234,476,503	189,213,713	178,276,396	206,397,135	2,139,794,901
Electronic stores	224,919,248	209,907,033	209,532,928	230,979,664	223,304,815	255,399,612	234,073,363	260,032,895	314,470,417	474,732,589	288,753,290	213,077,760	230,903,089	3,145,167,455
DIY stores	632,653,936	694,812,199	695,689,978	661,124,960	643,301,503	700,422,837	655,754,532	680,300,577	689,161,759	604,538,946	613,437,162	597,231,718	741,967,828	7,977,743,094
Floor covering stores	62,197,992	56,828,162	52,477,812	58,117,595	58,056,482	65,580,453	64,086,390	68,671,131	80,665,976	57,444,151	60,493,820	57,722,880	67,462,685	747,607,537
Garden centres	108,266,477	155,518,413	158,492,954	148,744,023	96,734,878	85,173,826	77,249,643	77,959,137	88,847,926	108,039,557	64,977,653	120,818,392	1,237,452,853	1,237,452,853
Miscellaneous household	77,274,875	68,215,362	61,827,898	71,219,226	76,264,971	88,985,113	84,604,716	82,201,150	88,245,496	69,591,782	67,390,277	61,524,131	69,835,342	889,905,464
Household	1,539,658,566	1,578,357,157	1,568,444,679	1,580,021,682	1,520,170,082	1,659,717,272	1,566,020,916	1,658,028,569	1,798,872,406	1,856,511,783	1,586,566,337	1,437,707,251	1,733,170,675	19,543,588,809
Books, newspapers & magazines	103,584,964	89,011,471	85,859,748	97,938,674	96,831,774	105,138,860	121,689,288	123,013,009	128,427,623	187,935,107	101,169,554	94,908,629	102,068,195	1,333,991,932
Record shops	49,273,267	39,118,545	35,365,338	42,446,342	42,446,342	37,080,246	42,056,803	41,205,914	37,875,546	153,557,904	35,560,241	37,995,456	615,549,360	615,549,360
Music shops	41,341,058	36,432,296	35,202,202	40,688,359	39,324,772	41,536,079	41,754,977	42,790,621	49,742,223	56,033,381	50,937,222	43,672,219	47,269,555	525,383,906
Hobbies, toys & games	79,002,713	66,694,181	63,996,326	70,688,909	69,605,468	71,355,195	76,556,698	96,157,385	171,076,811	237,287,805	71,548,623	58,788,773	71,648,493	1,125,404,667
Photographic	28,513,801	24,917,995	24,521,528	28,463,734	28,303,327	28,303,327	27,662,653	26,294,850	31,209,280	44,464,362	24,379,885	21,628,979	27,120,788	337,345,322
Handicraft	9,784,730	8,234,730	7,863,940	8,345,960	8,577,003	9,064,837	8,909,990	9,293,177	10,507,876	8,780,429	8,849,574	8,470,977	9,589,539	106,488,032
Sports shops	249,755,425	264,134,316	272,133,686	306,400,330	295,095,042	319,864,289	272,972,098	272,777,133	300,301,952	389,236,472	246,523,487	224,830,353	269,344,644	3,433,611,802
Jewellers	107,538,270	93,149,744	98,640,740	109,525,037	113,841,641	114,786,451	103,269,382	104,303,526	133,739,758	268,175,526	112,233,519	133,739,758	118,897,712	1,469,741,495
Computer software	104,249,589	91,269,901	89,817,028	118,660,593	91,193,838	113,661,426	109,837,912	104,535,629	122,058,405	165,476,664	118,406,786	96,432,137	108,905,792	1,330,256,111
Medical goods	5,356,649	4,861,813	4,763,618	5,225,178	5,318,663	5,291,423	5,579,511	5,498,412	5,676,982	4,491,441	5,451,128	4,491,441	6,320,556	62,770,623
Chemists	263,642,239	236,181,540	236,331,484	280,543,228	255,451,907	258,218,669	238,262,304	251,019,226	324,620,651	464,926,668	231,863,064	229,756,491	268,264,778	3,276,440,010
Optical goods	98,307,598	84,936,018	82,044,270	89,551,324	86,918,873	86,815,116	81,840,092	79,562,782	82,661,986	56,672,407	81,783,980	85,834,306	96,300,709	994,921,863
Cosmetic stores	43,661,472	39,151,327	40,245,790	46,097,768	44,627,111	44,532,593	45,270,114	49,590,829	66,744,134	105,682,785	37,304,823	37,871,511	44,611,127	601,729,912
Tobacconists	684,779	649,940	675,751	796,730	783,564	716,999	755,631	716,999	833,572	883,265	732,060	888,811	9,453,968	9,453,968
Florists	46,932,531	26,744,472	27,095,681	29,610,622	28,327,128	26,587,335	27,801,831	25,456,586	26,140,417	36,772,773	24,327,705	36,935,689	38,444,246	354,244,485
Artists' supplies	19,513,442	15,546,312	15,255,539	17,215,178	16,729,631	18,626,082	18,428,158	19,606,405	24,005,824	22,567,472	16,424,866	16,853,584	19,971,955	221,230,922
Antiques, art & stamps/coins	28,283,864	23,974,469	24,576,834	25,177,667	25,573,024	25,720,090	27,471,000	29,832,026	31,541,867	32,003,787	24,001,096	28,721,477	322,318,215	322,318,215
Pawn shops	1,323,179	1,668,858	1,450,249	1,390,430	1,824,415	1,521,579	1,600,019	2,055,332	1,939,822	2,405,203	1,940,679	1,711,088	1,938,581	21,446,255
Gift shops	84,999,195	69,833,520	67,676,921	84,142,907	79,144,822	85,829,131	75,975,470	85,124,361	116,134,310	171,282,567	73,236,174	77,463,948	83,777,999	1,069,622,130
Secondhand shops	2,687,463	2,279,684	2,569,025	2,569,025	2,794,134	2,775,222	2,794,134	2,775,222	2,677,152	3,089,110	2,129,502	2,688,372	2,995,694	31,002,270
Luggage & leather goods	7,751,074	7,299,345	7,401,481	8,372,437	9,014,658	9,126,984	8,195,927	8,256,854	10,815,715	17,156,440	9,601,153	7,937,335	9,419,334	112,597,663
Pet shops	57,540,866	55,424,259	55,687,685	56,683,469	58,226,718	62,681,490	59,098,830	60,782,485	62,192,865	66,070,340	58,817,528	56,198,678	63,081,826	714,946,173
Religious goods	40,954	57,944	54,854	48,271	68,355	80,839	93,727	59,213	73,					

Table 3D Card expenditure statistics (not seasonally adjusted)

Value of debit card transactions

Detailed sector breakdown - services sectors

£	March 2010	April 2010	May 2010	June 2010	July 2010	August 2010	September 2010	October 2010	November 2010	December 2010	January 2011	February 2011	March 2011	Total (latest 12 months)
Auto rental	42,174,474	39,631,285	40,443,834	43,918,464	46,416,552	46,220,907	43,689,086	42,407,079	40,022,807	36,886,576	38,217,671	38,470,053	47,176,556	503,500,870
Auto parts & accessories	236,124,414	198,127,193	183,393,904	197,456,238	191,316,449	185,735,459	202,372,300	187,689,767	192,999,373	168,956,540	180,290,468	178,590,410	233,276,144	2,300,204,245
Auto services	62,133,243	54,344,665	54,975,222	61,350,194	61,064,180	62,004,270	61,959,290	58,606,885	60,097,395	53,615,174	57,534,295	56,639,427	68,094,070	710,285,067
Auto repair shops	839,647,020	638,422,114	590,709,921	590,887,563	581,924,730	533,618,037	686,230,670	597,320,638	577,299,931	516,064,787	569,534,703	551,956,994	787,922,670	7,221,892,758
Service stations	130,813,706	122,540,437	121,801,605	131,263,960	125,596,713	126,686,604	125,134,775	126,919,793	136,793,714	145,285,607	177,591,930	167,157,293	195,387,525	1,702,159,956
Vehicle sales	1,401,974,027	1,110,606,254	1,031,511,928	1,140,467,669	1,064,737,117	1,018,699,669	1,231,113,857	1,067,285,861	1,062,863,143	869,103,767	972,248,406	970,156,769	1,384,487,423	12,923,281,863
Vehicle Sales & Services	2,712,866,884	2,163,671,948	2,022,836,414	2,165,344,088	2,071,055,741	1,972,964,946	2,350,499,978	2,080,230,023	2,070,076,363	1,789,912,451	1,995,417,473	1,962,970,946	2,716,344,388	25,361,324,759
Restaurants	658,499,153	628,860,515	630,358,801	644,779,294	653,950,232	735,228,570	627,772,950	687,434,264	686,356,700	693,066,419	668,621,484	679,654,361	728,063,582	8,064,147,172
Public houses	154,660,830	150,702,021	142,428,077	168,191,104	153,159,586	173,426,246	144,042,765	142,807,069	152,239,470	152,605,939	140,693,546	141,398,857	157,776,179	1,819,470,859
Catering services	12,469,015	11,150,787	11,716,761	12,743,251	12,663,397	12,774,570	12,909,370	12,580,679	13,195,666	12,215,986	11,153,092	11,391,769	13,872,051	148,367,379
Video stores	4,539,525	2,898,694	3,253,596	2,807,342	2,753,340	2,568,617	2,561,621	2,581,459	2,738,661	2,908,472	2,514,509	2,320,170	3,248,521	33,155,002
Cinema, theatre & dance	141,250,654	111,465,821	102,083,912	96,741,720	126,656,268	129,671,865	106,244,859	136,545,581	167,044,039	130,336,360	118,430,424	125,117,756	134,440,452	1,484,779,057
Concerts & entertainers	1,744,925	1,663,076	1,370,725	1,510,380	1,495,164	1,711,440	1,274,467	1,513,303	1,569,614	1,531,555	1,431,757	1,565,047	1,810,172	18,446,700
Tourist attractions	43,511,107	49,446,561	36,473,709	41,562,483	36,893,797	48,466,280	27,336,264	26,115,616	18,683,868	12,253,384	11,811,999	14,784,828	17,240,422	341,069,211
Amusement parks	2,574,379	4,080,374	2,892,413	3,484,851	3,612,531	5,785,678	2,686,901	2,537,130	1,809,428	1,384,338	1,427,743	1,991,271	1,992,572	33,685,230
Aquariums	1,128,214	1,273,403	1,071,818	1,237,723	1,261,741	1,463,505	983,981	1,015,644	968,475	761,996	965,920	1,073,138	1,174,733	13,252,077
Sports & games establishments	100,102,167	96,307,409	96,900,122	92,183,050	90,377,720	89,369,390	87,162,831	83,128,782	81,347,263	80,311,534	90,601,795	85,158,845	108,100,279	1,080,949,020
Professional sports clubs	8,604,923	8,436,232	8,677,345	15,240,065	8,634,617	9,497,120	8,090,393	7,384,440	8,667,040	8,659,101	7,397,346	8,104,074	8,769,572	107,557,345
Gambling	327,028,026	308,210,282	317,850,998	361,024,926	283,637,202	322,087,926	302,018,567	323,496,846	347,931,620	325,235,410	332,738,932	342,506,042	411,773,615	3,978,512,366
Personal services	13,074,741	11,405,258	11,425,193	12,093,614	11,930,251	11,534,556	11,242,067	11,219,399	11,463,127	11,183,606	11,217,623	12,864,674	13,093,903	139,093,903
Miscellaneous entertainment	24,233,050	30,488,088	25,656,269	29,241,080	30,711,718	40,402,793	27,406,582	27,607,053	24,858,348	15,999,208	16,720,674	18,846,736	24,582,235	312,520,784
Entertainment	1,493,420,709	1,416,388,521	1,392,159,739	1,462,840,883	1,417,737,564	1,583,988,556	1,362,006,086	1,465,989,933	1,518,629,591	1,448,732,829	1,415,692,827	1,445,130,517	1,625,709,059	17,575,006,105
Hotels	245,684,992	251,055,678	252,261,483	286,253,640	292,762,116	328,923,069	279,562,615	264,650,673	236,788,937	209,470,309	231,767,307	233,667,589	235,628,274	3,102,991,690
Airlines	163,907,166	127,307,290	115,396,694	141,115,377	153,873,730	145,286,862	136,837,490	119,718,690	115,267,796	76,890,702	142,128,378	88,298,105	92,453,251	1,454,574,365
Airport terminals	2,739,638	3,003,920	2,991,656	3,441,815	3,316,961	3,463,704	3,207,092	2,746,215	2,340,720	2,132,039	2,253,721	1,945,968	2,863,023	33,706,834
Railways	285,991,022	261,558,695	259,598,154	299,125,286	283,040,541	280,953,627	307,272,720	320,501,053	336,300,589	290,388,279	294,975,057	296,143,400	351,162,017	3,581,019,418
Buses	22,839,581	22,827,356	21,109,418	24,795,002	24,982,304	26,364,252	28,596,276	25,161,829	23,968,475	20,568,981	24,197,554	22,542,556	26,323,934	291,437,937
Sea travel	9,645,464	10,027,048	11,290,635	10,579,270	11,937,841	12,081,242	8,973,319	7,856,859	6,643,674	6,190,097	8,022,991	7,985,924	9,244,752	110,833,652
Travel agents	936,295,463	805,175,734	924,468,585	953,864,266	948,063,973	791,290,860	678,411,861	649,470,873	568,963,056	497,444,636	877,492,672	774,517,061	945,832,790	9,414,996,367
Timeshares	22,472	34,564	31,004	45,704	46,128	45,226	28,406	24,541	21,296	24,119	69,621	33,831	55,184	459,624
Camping grounds	58,200,884	61,646,919	66,500,372	74,895,572	81,817,242	79,255,948	50,762,177	48,337,125	39,137,927	27,952,542	42,215,202	47,324,209	63,099,798	682,945,033
Miscellaneous travel	24,550,374	24,930,084	25,470,549	39,035,458	36,885,068	34,491,600	29,344,086	26,358,255	26,148,213	21,943,329	22,976,247	23,950,000	31,316,405	342,849,294
Travel	1,504,192,064	1,316,511,610	1,426,857,067	1,546,897,750	1,543,963,788	1,373,233,321	1,243,433,427	1,200,175,440	1,118,791,746	943,534,724	1,414,331,443	1,262,741,054	1,522,351,154	15,912,822,524
Telegraph services / Wire transfer money order	12,254,463	13,921,044	13,353,649	16,297,361	13,326,680	13,172,228	12,433,031	11,739,785	14,312,847	12,542,555	11,898,913	11,602,102	12,206,278	156,806,473
Insurance services	605,333,197	549,955,640	547,473,037	586,177,545	602,450,988	601,834,990	617,785,550	602,025,369	577,290,843	544,721,727	608,078,108	589,855,896	740,805,961	7,168,455,654
Fis - cash disbursements (auto & manual)	29,999,526	30,007,401	36,722,106	60,530,355	66,948,567	66,466,130	52,384,441	39,780,316	32,079,593	35,453,434	29,282,753	33,461,728	34,527,598	517,644,422
Fis - merchandise & services	2,191,285,675	2,077,820,017	2,003,615,272	2,063,156,530	2,089,736,663	2,061,709,737	2,031,758,077	2,107,928,811	2,331,333,127	2,189,189,792	2,205,878,449	2,054,485,927	2,507,630,924	25,724,243,326
Non-Fis - foreign currency, travellers' cheques	69,629,042	65,945,011	78,993,232	103,115,233	122,914,905	122,573,774	95,378,530	69,677,564	49,799,078	51,002,569	46,657,418	53,885,767	61,761,641	921,704,722
Security brokers and dealers	407,054,240	443,386,220	358,657,738	293,179,345	222,536,469	208,460,477	203,271,842	242,984,867	267,660,636	206,543,276	283,484,820	275,180,880	469,074,514	3,474,421,084
Tax preparation services	34,566	38,073	42,636	48,651	50,547	36,876	25,213	22,963	51,888	37,624	83,445	82,231	81,705	601,852
Tax payments	95,736,143	89,970,456	89,434,406	96,560,104	110,178,419	92,888,799	91,779,528	93,325,421	100,775,955	106,227,994	154,551,705	121,533,541	142,181,231	1,289,407,559
Fines, bail and bond payments	20,828,146	18,950,335	20,047,891	20,304,872	22,413,099	21,140,112	23,148,429	24,743,381	24,223,803	21,115,970	22,388,314	22,473,405	27,233,205	268,182,726
Miscellaneous financial	53,439,522	50,750,785	50,222,691	54,898,679	53,601,474	54,424,666	54,580,619	54,446,391	57,345,883	56,542,263	67,833,515	64,432,619	76,564,380	695,643,965
Financial	3,485,594,520	3,340,744,982	3,198,562,568	3,294,268,675	3,304,157,811	3,242,707,789	3,182,545,260	3,246,674,868	3,454,873,653	3,223,377,204	3,430,137,440	3,226,994,096	4,072,067,437	40,217,111,783

Table 3D Card expenditure statistics (not seasonally adjusted)

Value of debit card transactions

Detailed sector breakdown - services sectors (continued)

£	March 2010	April 2010	May 2010	June 2010	July 2010	August 2010	September 2010	October 2010	November 2010	December 2010	January 2011	February 2011	March 2011	Total (latest 12 months)
Telecoms	233,013,752	212,605,268	218,443,008	220,114,246	237,018,005	238,634,239	242,332,175	246,040,059	253,376,557	292,076,196	247,686,977	226,580,081	253,126,273	2,888,033,084
Utilities	202,218,643	170,355,198	159,359,735	167,202,860	152,577,637	144,624,237	150,743,192	151,038,552	152,251,015	142,612,310	161,729,034	164,670,083	227,531,432	1,944,695,285
Contractors (residential & commercial)	99,723,283	90,311,011	88,734,133	93,629,288	90,234,465	89,571,432	96,886,632	99,569,814	107,534,056	93,115,098	93,949,559	98,802,213	113,513,736	1,155,851,437
Gardening services	5,102,311	6,183,947	5,815,980	6,371,604	4,986,764	4,550,203	4,271,086	4,031,900	4,449,934	4,772,851	3,011,968	3,487,736	5,532,520	57,466,493
Veterinary services	79,315,050	73,708,762	71,960,971	79,619,584	83,302,568	82,027,746	81,610,275	79,385,652	79,182,468	68,412,273	75,884,769	67,824,359	78,403,266	921,322,693
Photocopying & printing	20,989,681	16,982,411	17,170,244	18,961,539	17,883,043	19,391,362	22,693,258	22,189,897	24,910,763	21,013,160	20,847,959	20,442,796	24,570,868	247,057,300
Photographic studios	12,257,708	10,803,140	10,962,248	12,815,337	15,010,010	12,360,409	12,348,740	13,682,960	16,548,650	13,846,647	9,637,772	9,940,042	45,895,001	183,850,956
Beauty & barber shops	165,177,153	150,275,142	148,803,531	162,506,721	162,351,809	157,293,725	156,126,101	155,205,312	163,130,931	195,158,531	141,029,890	144,519,931	130,709,399	1,867,111,023
Employment agencies	782,119	725,474	663,486	698,772	741,555	886,441	967,644	943,624	910,475	864,600	969,412	929,036	1,051,749	10,352,268
Counselling services	3,615,117	3,016,666	2,899,648	3,259,703	3,192,072	3,585,739	3,813,964	4,479,119	4,746,562	4,039,259	3,847,825	3,609,851	3,780,689	44,271,097
Legal services	53,833,730	47,434,743	52,045,819	54,005,184	53,022,226	50,970,780	54,529,735	54,537,117	58,169,221	47,691,862	53,616,724	53,379,889	67,884,077	647,287,377
Laundry & cleaning	10,203,132	9,725,401	9,687,917	11,087,286	10,632,507	10,541,108	11,167,102	11,082,833	11,138,839	8,615,675	9,374,763	8,789,454	10,737,187	122,580,072
Funeral services	16,622,813	14,775,575	13,496,164	14,613,290	14,858,905	13,767,418	15,231,833	16,526,587	15,857,206	16,026,966	18,408,727	19,373,156	20,742,773	193,678,600
Medical services	194,474,426	167,314,409	166,810,075	182,098,868	178,732,096	163,606,968	182,035,308	177,358,472	191,373,367	147,360,218	170,365,259	180,479,429	212,963,944	2,120,498,413
Moving & courier services	19,473,559	17,986,451	18,111,586	21,776,467	22,684,642	23,221,695	24,139,393	22,638,269	23,149,592	21,009,437	20,813,577	19,377,170	22,877,600	257,785,881
Repair shops (not auto)	21,745,987	17,620,218	14,965,193	15,148,009	14,089,432	13,290,863	11,818,392	11,131,996	11,991,276	10,648,851	9,246,354	8,498,141	9,848,127	148,296,852
Accounting services	10,871,015	9,650,521	9,135,531	10,369,791	10,328,684	10,650,919	11,640,505	11,246,584	12,362,276	10,786,357	12,530,839	11,337,668	13,600,492	133,640,167
Advertising, consultancy & PR	19,352,630	17,617,016	16,390,968	18,430,275	17,643,249	16,447,926	16,657,169	15,334,037	16,232,292	12,094,726	14,596,689	14,006,716	15,779,695	191,230,758
Computer programming	126,373,401	111,375,756	103,336,494	147,552,578	180,087,649	143,844,549	125,904,577	119,277,253	120,799,693	106,899,797	105,469,356	92,769,545	110,775,508	1,468,092,755
Farming services	11,676,902	11,053,486	11,076,351	13,263,562	13,328,174	13,639,663	13,203,578	12,708,130	13,155,989	12,508,488	11,814,563	11,308,870	13,271,543	150,332,397
Miscellaneous professional services	409,059,090	400,413,630	363,435,557	391,851,925	412,093,299	400,544,874	466,850,766	428,295,777	420,748,622	374,063,358	446,872,788	390,619,729	466,878,560	4,962,668,885
Engineering services	13,657,350	12,479,087	12,324,211	12,716,025	13,081,226	13,131,913	14,576,859	14,384,432	14,068,013	11,265,255	12,834,794	14,447,040	18,078,621	163,387,476
Marina services	9,978,515	11,189,559	10,422,360	12,494,338	11,941,892	11,508,254	8,765,485	7,647,127	6,645,463	7,260,654	6,259,303	6,606,736	10,485,285	111,226,456
Wrecking & salvage yards	1,300,170	1,152,273	1,085,217	1,085,350	1,105,155	1,044,382	1,012,723	962,734	1,036,052	710,524	940,738	973,201	1,097,627	12,205,976
Pest control	508,712	478,553	463,848	531,285	594,237	598,053	658,478	566,859	524,146	454,675	446,626	451,957	545,918	6,314,635
Educational establishments	120,511,043	153,592,003	136,739,810	95,824,612	94,909,766	142,140,985	463,663,828	414,486,607	168,554,028	117,140,544	315,679,475	172,782,114	139,510,483	2,415,024,255
Child care services	8,073,323	7,313,167	6,927,806	7,968,615	8,050,260	7,723,566	8,495,393	8,653,110	9,297,230	8,258,480	10,027,710	9,212,115	10,655,406	102,582,858
Social, political & religious organisations	76,247,816	67,567,849	62,479,789	68,765,051	66,762,608	87,618,518	80,375,723	78,289,476	76,526,760	64,098,060	61,075,733	59,141,117	105,628,582	878,329,266
Government services	1,158,581,247	1,285,900,036	1,304,156,796	1,325,112,542	1,151,093,727	931,895,519	957,924,534	907,607,778	900,777,790	739,082,721	959,317,444	868,601,812	964,892,402	12,296,363,101
Miscellaneous services	400,685,386	367,440,513	340,450,271	387,351,460	385,288,508	355,645,605	372,572,169	351,249,146	382,430,314	359,776,315	420,015,993	356,615,348	435,326,334	4,514,161,976
Commercial equipment	84,890,113	74,240,208	74,499,469	77,820,016	77,594,470	86,495,083	98,776,113	93,992,402	94,609,920	79,236,313	86,593,133	83,743,799	99,875,154	1,027,476,080
Other services	3,590,315,177	3,541,287,473	3,452,854,216	3,635,046,183	3,505,220,640	3,251,254,174	3,711,792,730	3,534,543,615	3,356,489,500	2,990,900,201	3,504,895,755	3,123,921,134	3,635,570,251	41,243,175,872
Total services	13,032,074,346	12,029,660,212	11,745,531,487	12,410,651,219	12,134,897,660	11,753,071,855	12,129,840,096	11,792,264,552	11,755,649,790	10,605,927,718	11,992,242,245	11,254,825,336	13,807,870,563	143,412,432,733
TOTAL	25,597,418,575	23,826,846,489	23,419,014,798	25,212,593,286	24,147,007,334	24,175,328,946	24,031,086,100	24,238,835,644	25,887,753,186	27,055,152,552	23,928,258,837	22,535,721,255	26,724,040,652	295,181,639,079