

Card Expenditure Statistics [CES] – July 2011

Seasonally-adjusted

At a glance key figures for July

	Total spending £ billions		Annual growth rates for spending		Number of purchases millions	
	2011	2010	2011	2010	2011	2010
All plastic cards	38.5	34.6	8.2%	7.3%	783	702
Debit cards	27.6	23.8	11.5%	9.7%	608	534
Credit cards	10.9	10.7	0.8%	2.4%	175	167

Spending on plastic cards in July was almost identical to that seen in June, amounting to £38.5 billion. Spending was 3.1% up on the average for the first six months of the year, and volumes were 2.4% higher. But this similarity with June conceals a fall in spending on services and an increase in the retail sectors, notably in food & drink with near record spending of £7.7 billion. Spending on services fell back by £0.6 billion as debit card payments to government slowed, believed to reflect lower inflows to National Savings.

Although **credit card spending** is exhibiting very weak growth compared to debit cards, and sunk in July to a low annual growth rate of 0.8% (see Chart 1), the volume of credit card payments for food & drink exceeded 50 million for the second successive month with July's value exceeding £2 billion for the first time. This brought the annual growth rate for credit card use in the food & drink sector to 7.0%. This is in marked contrast to other sectors, except for entertainment, where credit card use is exhibiting either very low or negative rates of growth. **Debit card spending** is currently growing at an annual rate of 11.5% with transaction volumes up by 11.9% – a six year high.

There is still no sign of retail price inflation feeding through to plastic card **average transaction values [ATV]**. For food & drink, which accounts for 34% of debit card use (about 200 million transactions per month), the latest three month average debit card ATV of £27.22 was £0.75 lower than a year earlier. The disparity between RPI inflation and the [lack of] growth in the debit card ATV for retail purchases is believed to reflect a continuing migration of lower value payments from cash to debit cards.

The **plastic card share of total retail sales** (including automotive fuels)¹ exceeded 70% for the first time in July with an 84 bp rise to a figure of 70.3% (see Chart 2). In food & drink this share rose by 140 bp to 65.5%.

¹CES 3-month moving average spending for July of £19.9 billion expressed as a percentage of a similar 3-month moving average for National Statistics 'All retailing including automotive fuel' (AGG 21) based on the value of Retail Sales at current prices (SA) that gives a figure of £28.3 billion.

Chart 1

Spending on plastic cards
Annual growth rates

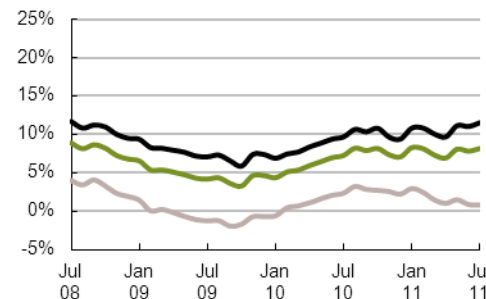


Chart 2

Percent of retail sales made on plastic cards
(including automotive fuel)
Three-month moving average

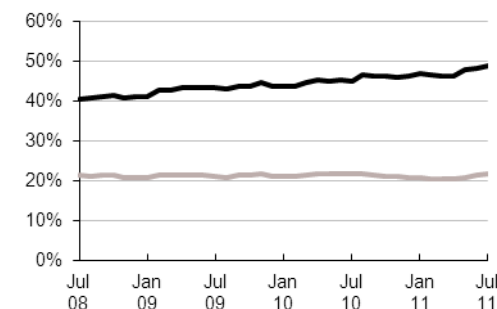


Chart 3

Average transaction values
Three-month moving average

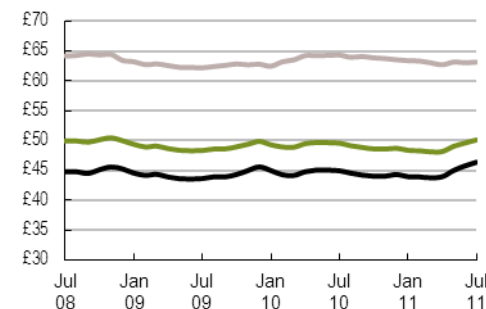
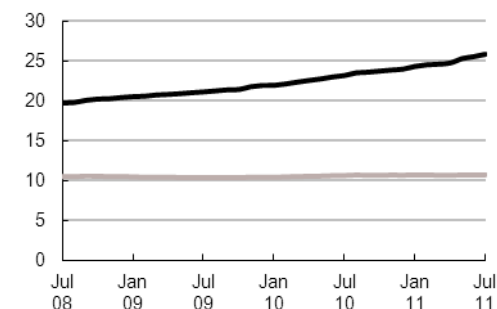


Chart 4

Average monthly expenditure
£ billions



— Debit cards
— Credit cards
— All plastic cards

Table 1 Card expenditure statistics (seasonally adjusted)

Summary

Number of purchase transactions (millions)

Value of purchase transactions (£ millions)

		Number of purchase transactions (millions)									Value of purchase transactions (£ millions)									
		All sectors			Retail sales			Services			All sectors			Retail sales			Services			
		Credit	Debit	Total	Credit	Debit	Total	Credit	Debit	Total	Credit	Debit	Total	Credit	Debit	Total	Credit	Debit	Total	
Annual																				
	2006	1,948	4,493	6,441	1,215	3,017	4,232	733	1,476	2,209	119,946	195,406	315,351	59,885	97,962	157,847	60,061	97,444	157,505	
	2007	1,958	4,969	6,927	1,197	3,304	4,501	761	1,665	2,426	123,791	223,886	347,677	61,068	108,662	169,730	62,723	115,224	177,947	
	2008	1,972	5,466	7,438	1,186	3,582	4,767	786	1,885	2,671	126,196	245,173	371,369	60,691	116,056	176,747	65,505	129,117	194,622	
	2009	2,002	5,939	7,941	1,224	3,893	5,117	778	2,046	2,824	125,338	263,327	388,665	61,825	125,363	187,188	63,512	137,965	201,477	
	2010	2,007	6,485	8,492	1,381	4,713	6,094	626	1,772	2,398	128,144	288,085	416,230	69,643	148,527	218,170	58,501	139,559	198,060	
Monthly																				
	2010	Jul	167	534	702	115	388	503	52	146	199	10,738	23,841	34,580	5,796	12,157	17,953	4,943	11,685	16,627
		Aug	171	568	739	118	415	533	53	153	206	10,882	25,065	35,947	5,935	13,159	19,094	4,946	11,906	16,853
		Sep	164	550	714	112	401	513	51	150	201	10,568	24,122	34,690	5,753	12,459	18,212	4,815	11,663	16,478
		Oct	163	543	705	113	393	506	50	149	199	10,347	23,909	34,255	5,666	12,443	18,109	4,681	11,466	16,147
		Nov	172	577	750	119	417	535	54	160	214	10,879	25,507	36,385	5,943	13,149	19,092	4,936	12,357	17,293
		Dec	163	554	717	112	400	512	51	154	205	10,440	24,729	35,169	5,689	12,710	18,399	4,751	12,019	16,770
	2011	Jan	169	586	755	116	422	538	53	164	217	10,678	25,187	35,866	5,780	13,244	19,024	4,899	11,943	16,842
		Feb	169	579	748	116	415	531	53	164	218	10,637	25,504	36,141	5,750	13,053	18,804	4,887	12,450	17,338
		Mar	167	574	741	114	409	523	53	165	218	10,556	25,376	35,932	5,706	12,698	18,405	4,850	12,678	17,528
		Apr	170	590	760	118	424	542	52	166	218	10,544	25,692	36,236	5,852	13,388	19,240	4,692	12,304	16,996
		May	177	639	817	122	458	580	56	181	237	11,405	30,176	41,581	6,105	14,392	20,497	5,300	15,784	21,084
		Jun	174	594	768	121	416	537	53	178	231	10,891	27,649	38,539	6,081	13,252	19,332	4,810	14,397	19,207
		Jul	175	608	783	123	428	551	52	180	232	10,944	27,588	38,532	6,187	13,715	19,902	4,758	13,873	18,630
12 month growth rates (percentages)																				
Annual																				
	2006	-2.7	9.9	5.7	-2.9	9.3	5.5	-2.4	10.9	6.1	-1.4	15.3	8.3	-0.5	10.3	5.9	-2.2	20.8	10.8	
	2007	0.5	10.6	7.5	-1.5	9.5	6.4	3.8	12.8	9.8	3.2	14.6	10.3	2.0	10.9	7.5	4.4	18.2	13.0	
	2008	0.7	10.0	7.4	-0.9	8.4	5.9	3.3	13.2	10.1	1.9	9.5	6.8	-0.6	6.8	4.1	4.4	12.1	9.4	
	2009	1.5	8.6	6.8	3.2	8.7	7.3	-1.0	8.6	5.7	-0.7	7.4	4.7	1.9	8.0	5.9	-3.0	6.9	3.5	
	2010	0.3	9.2	6.9	12.8	21.1	19.1	-19.5	-13.4	-15.1	2.2	9.4	7.1	12.6	18.5	16.6	-7.9	1.2	-1.7	
Monthly																				
	2010	Jul	1.7	8.5	6.8	9.9	15.4	14.0	-11.0	-4.6	-6.4	2.4	9.7	7.3	10.0	14.0	12.6	-4.8	5.8	2.3
		Aug	2.3	9.6	7.7	11.6	17.6	16.1	-12.1	-5.6	-7.4	3.2	10.7	8.2	11.8	16.0	14.6	-4.8	5.8	2.4
		Sep	1.4	9.1	7.1	11.4	17.9	16.3	-14.2	-7.8	-9.6	2.9	10.4	7.9	11.7	16.1	14.6	-5.5	5.1	1.7
		Oct	1.1	9.3	7.2	11.9	19.1	17.4	-15.9	-9.4	-11.2	2.7	10.8	8.2	12.1	17.1	15.4	-6.3	5.1	1.4
		Nov	0.6	8.9	6.8	12.1	19.5	17.7	-17.5	-11.5	-13.1	2.6	9.7	7.4	12.1	17.1	15.5	-6.6	2.8	-0.2
		Dec	0.3	9.2	6.9	12.8	21.1	19.1	-19.5	-13.4	-15.1	2.2	9.4	7.1	12.6	18.5	16.6	-7.9	1.2	-1.7
	2011	Jan	0.7	10.3	7.9	11.9	21.1	18.9	-17.5	-10.8	-12.6	3.0	10.8	8.3	12.6	18.7	16.7	-6.6	3.5	0.3
		Feb	0.6	10.4	8.0	10.7	20.0	17.8	-16.2	-8.8	-10.8	2.5	10.8	8.2	11.3	17.8	15.7	-6.4	4.3	0.9
		Mar	0.0	10.1	7.6	8.8	18.3	16.0	-15.1	-6.8	-9.1	1.5	10.1	7.3	9.3	16.3	14.0	-6.5	4.2	0.8
		Apr	0.1	10.3	7.7	7.9	17.3	15.1	-13.8	-4.7	-7.1	1.0	9.7	6.9	8.2	15.6	13.2	-6.3	4.1	0.8
		May	0.9	11.6	9.0	7.7	17.5	15.2	-11.5	-1.2	-4.0	1.5	11.2	8.1	7.5	16.0	13.2	-4.8	6.5	3.0
		Jun	0.7	11.4	8.8	6.6	15.8	13.6	-10.2	1.5	-1.7	0.9	11.0	7.8	6.0	14.7	11.8	-4.6	7.5	3.8
		Jul	1.2	11.9	9.3	6.2	15.0	13.0	-8.5	4.6	1.1	0.8	11.5	8.2	5.6	14.4	11.5	-4.4	8.8	4.8

Table 2A Card expenditure statistics (seasonally adjusted)

Retail sales

Number of purchase transactions (millions)

Total retail sales

	Number of purchase transactions (millions)																		Total retail sales			
	Food & drink			Mixed business			Clothing			Household			Other retailers			Automotive Fuels *			Number of purchases			
	Credit	Debit	Total	Credit	Debit	Total	Credit	Debit	Total	Credit	Debit	Total	Credit	Debit	Total	Credit	Debit	Total	Credit	Debit	Total	
Annual																						
2006	394	1,454	1,848	215	415	630	126	317	444	145	263	408	334	567	901	0	0	0	1,215	3,017	4,232	
2007	426	1,640	2,066	203	436	639	124	350	474	147	282	429	297	596	893	165	419	584	1,197	3,304	4,501	
2008	500	1,874	2,374	134	408	542	121	371	492	143	292	435	288	636	924	168	459	626	1,186	3,582	4,767	
2009	512	2,086	2,598	131	401	532	125	404	529	146	321	466	310	681	991	158	475	633	1,224	3,893	5,117	
2010	534	2,284	2,817	138	403	541	128	425	553	147	349	495	273	733	1,007	161	520	681	1,381	4,713	6,094	
Monthly																						
2010 Jul	44	188	232	11	33	45	11	35	46	12	29	41	22	60	83	13	43	56	115	388	503	
Aug	47	201	248	11	34	46	11	37	48	12	31	43	23	66	89	14	46	59	118	415	533	
Sep	44	198	242	11	33	44	11	37	48	12	30	42	22	61	83	13	42	55	112	401	513	
Oct	44	191	236	11	33	44	10	35	45	12	30	42	21	61	82	13	44	57	113	393	506	
Nov	46	202	248	12	35	47	11	37	48	12	32	44	23	65	88	14	47	60	119	417	535	
Dec	44	198	242	12	34	45	10	35	45	12	29	41	21	62	83	13	43	56	112	400	512	
2011 Jan	45	205	250	13	36	49	11	36	47	12	32	44	21	66	87	14	47	60	116	422	538	
Feb	45	201	246	12	35	47	11	36	46	12	32	44	22	65	87	13	47	60	116	415	531	
Mar	44	198	242	11	33	45	11	35	45	12	31	44	22	64	87	14	47	60	114	409	523	
Apr	47	206	253	12	36	48	12	39	50	12	32	45	22	65	87	13	46	59	118	424	542	
May	48	225	273	12	39	52	11	39	51	12	32	45	24	72	95	14	51	65	122	458	580	
Jun	52	201	253	11	36	47	11	37	48	12	32	44	21	64	85	14	47	61	121	416	537	
Jul	54	208	262	11	37	48	11	39	50	12	33	45	21	63	84	14	47	62	123	428	551	
12 month growth rates (percentages)																						
Annual																						
2006	-0.2	11.5	8.8	-0.8	8.5	5.2	-4.6	9.5	5.1	-4.7	5.7	1.8	-5.8	6.3	1.4	-	-	-	-2.9	9.3	5.5	
2007	8.2	12.8	11.8	-5.6	5.1	1.4	-1.8	10.3	6.9	1.1	7.3	5.1	-11.1	5.0	-1.0	-	-	-	-1.5	9.5	6.4	
2008	17.3	14.3	14.9	-34.0	-6.5	-15.2	-2.3	6.0	3.8	-2.6	3.6	1.5	-3.1	6.8	3.5	1.4	9.6	7.3	-0.9	8.4	5.9	
2009	2.4	11.3	9.4	-2.2	-1.7	-1.8	3.2	9.0	7.6	1.9	9.7	7.1	7.8	7.0	7.2	-5.7	3.5	1.0	3.2	8.7	7.3	
2010	4.3	9.5	8.4	5.1	0.6	1.7	2.5	5.0	4.4	0.6	8.7	6.1	-11.9	7.7	1.6	2.0	9.5	7.6	12.8	21.1	19.1	
Monthly																						
2010 Jul	3.9	9.7	8.6	1.8	-1.6	-0.8	3.5	6.7	6.0	3.7	9.6	7.7	-2.7	5.6	3.0	1.3	9.1	7.1	9.9	15.4	14.0	
Aug	5.0	10.6	9.5	3.7	-0.2	0.8	4.6	7.8	7.0	3.5	9.9	7.9	-3.4	7.1	3.8	1.8	10.0	7.9	11.6	17.6	16.1	
Sep	4.3	9.7	8.6	4.0	-0.3	0.8	3.9	6.6	6.0	2.3	9.3	7.1	-6.2	6.7	2.7	1.8	9.8	7.8	11.4	17.9	16.3	
Oct	4.3	9.7	8.6	4.8	0.4	1.5	3.4	6.2	5.6	1.9	9.4	7.1	-8.2	7.1	2.3	2.4	10.6	8.5	11.9	19.1	17.4	
Nov	4.0	9.0	8.0	4.4	-0.3	0.9	2.7	5.2	4.6	1.1	8.9	6.4	-10.3	7.1	1.6	2.4	9.7	7.9	12.1	19.5	17.7	
Dec	4.3	9.5	8.4	5.1	0.6	1.7	2.5	5.0	4.4	0.6	8.7	6.1	-11.9	7.7	1.6	2.0	9.5	7.6	12.8	21.1	19.1	
2011 Jan	5.0	10.4	9.3	6.6	1.7	2.9	3.3	5.7	5.1	1.7	10.3	7.6	-14.0	9.3	2.0	3.1	10.8	8.9	11.9	21.1	18.9	
Feb	4.9	10.6	9.5	6.6	1.7	2.9	2.7	5.0	4.5	1.3	10.6	7.7	-13.3	9.6	2.5	2.2	10.5	8.4	10.7	20.0	17.8	
Mar	4.1	10.2	9.0	5.4	1.2	2.2	1.8	4.0	3.5	0.8	11.0	7.8	-13.2	9.0	2.2	1.0	9.9	7.7	8.8	18.3	16.0	
Apr	4.2	10.3	9.1	5.1	1.8	2.6	2.4	4.4	4.0	0.6	11.4	8.0	-12.4	9.4	2.7	0.0	9.3	7.0	7.9	17.3	15.1	
May	4.7	11.6	10.3	5.9	3.5	4.1	3.7	5.7	5.2	0.5	11.8	8.3	-10.7	10.6	4.2	0.1	10.2	7.7	7.7	17.5	15.2	
Jun	5.4	10.9	9.9	4.7	3.8	4.0	3.0	5.2	4.7	-0.9	11.6	7.7	-10.6	10.0	3.9	0.0	9.7	7.4	6.6	15.8	13.6	
Jul	7.0	11.1	10.3	4.1	4.8	4.6	3.2	5.9	5.2	-1.8	12.0	7.8	-9.8	10.1	4.2	0.4	10.0	7.7	6.2	15.0	13.0	

* The category of Automotive Fuels is effective from January 2010. Data shown for 2009 are for growth trend purposes only; these data are excluded from totals for 2009 as these are already included in their former Services sector of Motoring (now known as Vehicle Sales & Service)

Table 2B Card expenditure statistics (seasonally adjusted)

Retail sales

Value of purchase transactions (£ millions)

Total retail sales

	Value of purchase transactions (£ millions)																		Total retail sales		
	Food & drink			Mixed business			Clothing			Household			Other retailers			Automotive Fuels *			Value of purchases		
	Credit	Debit	Total	Credit	Debit	Total	Credit	Debit	Total	Credit	Debit	Total	Credit	Debit	Total	Credit	Debit	Total	Credit	Debit	Total
Annual																					
2006	14,003	43,460	57,463	8,904	13,103	22,006	5,783	9,380	15,163	14,020	13,722	27,742	17,175	18,297	35,472	0	0	0	59,885	97,962	157,847
2007	15,309	48,577	63,886	8,843	14,054	22,896	5,861	10,456	16,317	14,701	15,347	30,047	16,354	20,229	36,584	5,868	10,960	16,828	61,068	108,662	169,730
2008	17,565	54,546	72,111	7,056	13,457	20,513	5,954	11,214	17,169	14,382	15,575	29,957	15,733	21,264	36,997	6,676	12,964	19,640	60,691	116,056	176,747
2009	18,100	60,225	78,324	7,094	13,863	20,956	6,376	12,644	19,020	14,496	16,604	31,100	15,760	22,028	37,787	5,860	12,668	18,528	61,825	125,363	187,188
2010	18,838	63,855	82,694	7,158	13,927	21,085	6,783	13,644	20,427	14,638	18,758	33,396	15,612	23,548	39,160	6,613	14,794	21,408	69,643	148,527	218,170
Monthly																					
2010 Jul	1,556	5,232	6,788	592	1,137	1,729	566	1,119	1,686	1,236	1,539	2,775	1,299	1,943	3,242	546	1,186	1,732	5,796	12,157	17,953
Aug	1,635	5,662	7,297	596	1,187	1,782	578	1,216	1,794	1,254	1,706	2,960	1,322	2,083	3,404	551	1,305	1,856	5,935	13,159	19,094
Sep	1,585	5,362	6,947	582	1,154	1,736	567	1,148	1,715	1,209	1,628	2,836	1,276	1,972	3,248	533	1,196	1,729	5,753	12,459	18,212
Oct	1,558	5,340	6,898	579	1,131	1,711	563	1,132	1,696	1,184	1,620	2,804	1,240	1,963	3,203	541	1,256	1,798	5,666	12,443	18,109
Nov	1,624	5,614	7,239	609	1,208	1,817	593	1,200	1,793	1,238	1,692	2,930	1,304	2,077	3,382	575	1,357	1,932	5,943	13,149	19,092
Dec	1,549	5,495	7,044	587	1,152	1,739	561	1,139	1,700	1,201	1,632	2,833	1,240	2,007	3,247	550	1,285	1,835	5,689	12,710	18,399
2011 Jan	1,578	5,636	7,215	601	1,222	1,823	582	1,195	1,777	1,165	1,693	2,858	1,251	2,061	3,312	603	1,437	2,040	5,780	13,244	19,024
Feb	1,550	5,483	7,033	586	1,184	1,770	577	1,172	1,750	1,171	1,720	2,892	1,261	2,056	3,317	604	1,438	2,042	5,750	13,053	18,804
Mar	1,522	5,240	6,762	569	1,096	1,664	572	1,137	1,709	1,184	1,717	2,901	1,253	2,068	3,321	607	1,441	2,047	5,706	12,698	18,405
Apr	1,652	5,652	7,304	596	1,257	1,854	599	1,261	1,861	1,187	1,765	2,952	1,221	2,041	3,262	596	1,411	2,007	5,852	13,388	19,240
May	1,625	6,145	7,769	658	1,375	2,033	613	1,300	1,913	1,216	1,811	3,028	1,359	2,204	3,564	633	1,556	2,189	6,105	14,392	20,497
Jun	1,899	5,407	7,306	598	1,259	1,857	592	1,249	1,841	1,134	1,814	2,949	1,240	2,084	3,324	618	1,438	2,056	6,081	13,252	19,332
Jul	2,011	5,691	7,702	601	1,300	1,901	605	1,308	1,914	1,129	1,853	2,981	1,220	2,106	3,326	621	1,457	2,078	6,187	13,715	19,902
12 month growth rates (percentages)																					
Annual																					
2006	-0.1	10.3	7.5	2.1	10.1	6.7	-1.5	8.6	4.5	0.9	13.5	6.8	-2.9	8.9	2.8	-	-	-	-0.5	10.3	5.9
2007	9.3	11.8	11.2	-0.7	7.3	4.0	1.3	11.5	7.6	4.9	11.8	8.3	-4.8	10.6	3.1	-	-	-	2.0	10.9	7.5
2008	14.7	12.3	12.9	-20.2	-4.2	-10.4	1.6	7.3	5.2	-2.2	1.5	-0.3	-3.8	5.1	1.1	13.8	18.3	16.7	-0.6	6.8	4.1
2009	3.0	10.4	8.6	0.5	3.0	2.2	7.1	12.7	10.8	0.8	6.6	3.8	0.2	3.6	2.1	-12.2	-2.3	-5.7	1.9	8.0	5.9
2010	4.1	6.0	5.6	0.9	0.5	0.6	6.4	7.9	7.4	1.0	13.0	7.4	-0.9	6.9	3.6	12.9	16.8	15.5	12.6	18.5	16.6
Monthly																					
2010 Jul	4.2	7.0	6.3	2.3	0.7	1.2	7.6	9.9	9.1	4.0	12.8	8.7	1.5	5.4	3.8	6.6	12.3	10.4	10.0	14.0	12.6
Aug	5.3	7.7	7.1	3.5	1.8	2.4	8.8	11.0	10.3	4.4	14.1	9.5	2.3	6.9	5.0	9.0	14.8	12.9	11.8	16.0	14.6
Sep	4.5	6.5	6.1	3.0	1.3	1.9	8.2	9.9	9.3	3.1	13.6	8.7	1.1	6.6	4.3	11.1	15.6	14.2	11.7	16.1	14.6
Oct	4.5	6.4	6.0	2.6	1.4	1.8	7.5	9.4	8.8	2.6	13.8	8.6	0.5	6.8	4.2	12.9	17.4	15.9	12.1	17.1	15.4
Nov	3.9	5.5	5.1	1.2	0.2	0.5	6.7	8.2	7.7	1.6	13.1	7.7	-0.4	6.5	3.6	13.5	17.2	16.0	12.1	17.1	15.5
Dec	4.1	6.0	5.6	0.9	0.5	0.6	6.4	7.9	7.4	1.0	13.0	7.4	-0.9	6.9	3.6	12.9	16.8	15.5	12.6	18.5	16.6
2011 Jan	4.3	6.7	6.1	1.6	1.4	1.5	7.0	8.6	8.1	2.4	14.9	9.1	-0.3	8.5	4.8	14.1	18.6	17.2	12.6	18.7	16.7
Feb	4.1	6.9	6.3	0.7	1.2	1.0	6.3	7.9	7.4	1.8	15.1	9.0	-0.5	8.6	4.8	13.2	18.5	16.9	11.3	17.8	15.7
Mar	3.1	6.4	5.7	-0.7	0.5	0.1	5.3	7.0	6.4	0.7	15.0	8.4	-1.4	8.1	4.2	11.9	18.0	16.1	9.3	16.3	14.0
Apr	3.3	6.7	5.9	-0.4	1.3	0.8	5.6	7.3	6.7	0.1	15.2	8.3	-1.9	8.1	4.0	10.5	17.3	15.2	8.2	15.6	13.2
May	3.5	8.0	7.0	0.7	3.1	2.3	6.3	8.6	7.9	-0.4	15.8	8.4	-1.9	9.1	4.6	10.2	18.3	15.7	7.5	16.0	13.2
Jun	4.6	7.4	6.7	-0.1	3.5	2.3	5.7	8.5	7.5	-2.1	15.8	7.6	-3.6	8.6	3.6	9.7	18.1	15.4	6.0	14.7	11.8
Jul	6.7	7.7	7.5	0.0	4.9	3.2	5.8	9.5	8.2	-3.0	16.5	7.7	-4.0	8.8	3.6	9.6	18.7	15.8	5.6	14.4	11.5

* The category of Automotive Fuels is effective from January 2010. Data shown for 2009 are for growth trend purposes only; these data are excluded from totals for 2009 as these are already included in their former Services sector of Motoring (now known as Vehicle Sales & Service)

Table 2C Card expenditure statistics (seasonally adjusted)

Services

Number of purchase transactions (millions)

Total services

	Number of purchase transactions (millions)																		Total services		
	Vehicle Sales & Services			Entertainment			Hotels			Travel			Financial			Other services			Number of purchases		
	Credit	Debit	Total	Credit	Debit	Total	Credit	Debit	Total	Credit	Debit	Total	Credit	Debit	Total	Credit	Debit	Total	Credit	Debit	Total
Annual																					
2006	242	529	771	176	349	525	36	24	61	96	127	224	28	91	119	155	356	510	733	1,476	2,209
2007	245	573	818	190	411	600	38	26	64	101	148	249	28	106	134	160	401	561	761	1,665	2,426
2008	249	628	877	198	500	697	36	28	64	103	168	271	32	111	143	167	451	618	786	1,885	2,671
2009	236	656	891	206	593	799	37	31	68	101	183	284	32	112	144	167	470	637	778	2,046	2,824
2010	76	204	280	220	720	940	37	34	71	97	202	299	32	129	161	163	483	646	626	1,772	2,398
Monthly																					
2010																					
Jul	6	17	23	18	59	78	3	3	6	8	17	25	3	11	14	14	40	53	52	146	199
Aug	6	17	23	19	64	83	3	3	6	8	18	26	3	11	14	14	40	54	53	153	206
Sep	6	16	22	18	62	80	3	3	6	8	18	26	3	11	14	13	40	54	51	150	201
Oct	6	16	21	18	62	81	3	3	6	8	17	25	3	11	14	13	40	53	50	149	199
Nov	6	18	24	20	67	86	3	3	6	8	19	27	3	11	14	14	42	56	54	160	214
Dec	6	18	25	18	63	81	3	3	6	8	18	26	3	11	14	13	40	53	51	154	205
2011																					
Jan	7	22	29	19	68	88	3	3	6	8	18	25	3	11	14	13	42	55	53	164	217
Feb	7	23	31	19	67	86	3	3	6	8	18	25	3	11	14	13	42	55	53	164	218
Mar	8	24	32	19	66	84	3	3	5	8	18	26	3	11	14	13	43	56	53	165	218
Apr	8	24	32	19	67	86	3	3	6	7	18	26	3	12	14	13	42	55	52	166	218
May	8	25	33	20	75	95	3	3	7	7	19	27	3	12	15	14	46	61	56	181	237
Jun	7	23	30	19	71	90	3	4	7	7	22	29	3	12	15	14	47	61	53	178	231
Jul	7	23	29	20	74	94	3	4	7	7	21	27	3	12	15	14	46	60	52	180	232

12 month growth rates (percentages)

Annual																					
2006	-10.3	1.1	-2.7	5.3	15.2	11.7	-1.3	9.2	2.6	1.4	15.1	8.7	-9.0	13.6	7.4	1.7	21.7	14.9	-2.4	10.9	6.1
2007	1.3	8.3	6.1	8.1	17.6	14.4	3.2	6.5	4.5	4.2	16.7	11.3	0.8	16.2	12.6	3.4	12.9	10.0	3.8	12.8	9.8
2008	1.4	9.6	7.2	4.3	21.7	16.2	-2.8	5.9	0.8	2.5	13.4	9.0	15.7	4.8	7.1	4.6	12.3	10.1	3.3	13.2	10.1
2009	-5.4	4.5	1.7	4.3	18.7	14.6	0.5	13.9	6.3	-2.5	8.9	4.6	-1.9	1.1	0.4	-0.1	4.4	3.2	-1.0	8.6	5.7
2010	-67.7	-69.0	-68.6	6.7	21.4	17.6	1.6	9.2	5.1	-3.1	10.3	5.5	1.0	15.0	11.9	-2.3	2.7	1.4	-19.5	-13.4	-15.1
Monthly																					
2010																					
Jul	-40.8	-38.8	-39.3	6.7	20.7	17.0	3.2	10.5	6.5	-2.1	9.6	5.3	1.4	15.2	12.0	-0.4	1.5	1.0	-11.0	-4.6	-6.4
Aug	-45.8	-44.4	-44.8	7.9	22.2	18.4	3.3	10.8	6.7	-1.9	10.3	5.9	1.7	16.1	12.8	-0.2	2.3	1.6	-12.1	-5.6	-7.4
Sep	-51.4	-50.8	-51.0	7.1	21.5	17.7	2.6	9.7	5.8	-2.0	10.3	5.9	1.2	16.0	12.6	-1.2	2.3	1.4	-14.2	-7.8	-9.6
Oct	-56.5	-56.5	-56.5	7.0	22.0	18.1	2.0	9.3	5.4	-2.4	10.1	5.6	1.1	15.8	12.5	-1.8	2.6	1.5	-15.9	-9.4	-11.2
Nov	-62.0	-62.9	-62.7	6.8	21.3	17.6	2.0	8.9	5.1	-2.2	10.4	5.9	1.5	15.4	12.3	-1.9	2.9	1.7	-17.5	-11.5	-13.1
Dec	-67.7	-69.0	-68.6	6.7	21.4	17.6	1.6	9.2	5.1	-3.1	10.3	5.5	1.0	15.0	11.9	-2.3	2.7	1.4	-19.5	-13.4	-15.1
2011																					
Jan	-65.3	-66.0	-65.8	8.1	22.6	18.9	2.3	10.3	6.0	-2.9	11.2	6.3	0.8	15.3	12.1	-2.3	3.2	1.8	-17.5	-10.8	-12.6
Feb	-62.8	-62.8	-62.8	8.1	22.2	18.6	1.8	10.0	5.6	-3.7	11.4	6.1	0.1	14.7	11.5	-2.6	3.1	1.6	-16.2	-8.8	-10.8
Mar	-59.9	-59.1	-59.3	7.3	21.2	17.7	0.4	8.7	4.3	-4.4	11.7	6.1	-1.0	13.9	10.7	-3.2	3.0	1.4	-15.1	-6.8	-9.1
Apr	-56.5	-54.8	-55.2	6.8	20.3	16.9	0.1	9.3	4.4	-5.4	12.4	6.2	-1.4	13.4	10.3	-3.6	3.2	1.5	-13.8	-4.7	-7.1
May	-52.2	-49.3	-50.1	7.5	21.5	18.1	0.7	10.8	5.4	-5.5	14.4	7.5	-0.7	13.5	10.5	-2.7	4.7	2.8	-11.5	-1.2	-4.0
Jun	-47.8	-43.4	-44.6	6.5	21.1	17.5	-0.1	12.1	5.6	-6.9	15.2	7.6	-0.8	13.3	10.3	-2.7	5.8	3.6	-10.2	1.5	-1.7
Jul	-42.6	-36.4	-38.1	6.4	21.5	17.8	-0.7	14.6	6.4	-7.9	16.7	8.3	-0.7	13.2	10.3	-2.4	7.2	4.7	-8.5	4.6	1.1

Table 2D Card expenditure statistics (seasonally adjusted)

Services

Value of purchase transactions (£ millions)

Total services

	Vehicle Sales & Services			Entertainment			Hotels			Travel			Financial			Other services			Value of purchases			
	Credit	Debit	Total	Credit	Debit	Total	Credit	Debit	Total	Credit	Debit	Total	Credit	Debit	Total	Credit	Debit	Total	Credit	Debit	Total	
Annual																						
2006	13,791	27,054	40,845	8,872	9,675	18,547	5,207	2,041	7,249	13,218	11,025	24,242	5,586	20,924	26,511	13,387	26,725	40,112	60,061	97,444	157,505	
2007	14,682	30,693	45,375	9,295	11,231	20,526	5,483	2,263	7,746	13,436	12,603	26,040	5,699	26,127	31,826	14,126	32,308	46,434	62,723	115,224	177,947	
2008	15,523	32,971	48,494	9,653	13,059	22,713	5,507	2,445	7,953	14,010	13,729	27,738	5,924	29,918	35,842	14,887	36,994	51,882	65,505	129,117	194,622	
2009	14,630	35,427	50,057	9,647	14,594	24,241	5,290	2,723	8,013	13,060	14,082	27,143	5,724	32,995	38,719	15,160	38,144	53,304	63,512	137,965	201,477	
2010	8,754	24,682	33,436	9,840	16,936	26,776	5,532	3,040	8,572	12,812	15,775	28,588	5,882	38,457	44,339	15,681	40,669	56,350	58,501	139,559	198,060	
Monthly																						
2010																						
Jul	729	2,016	2,744	828	1,391	2,220	473	247	720	1,096	1,305	2,400	491	3,215	3,706	1,326	3,511	4,837	4,943	11,685	16,627	
Aug	703	2,048	2,751	863	1,523	2,386	471	271	742	1,089	1,345	2,433	496	3,315	3,811	1,324	3,405	4,730	4,946	11,906	16,853	
Sep	676	2,057	2,732	810	1,422	2,232	450	259	709	1,067	1,360	2,428	499	3,219	3,719	1,313	3,346	4,659	4,815	11,663	16,478	
Oct	666	2,000	2,666	809	1,437	2,247	456	260	716	1,021	1,347	2,368	477	3,204	3,680	1,253	3,217	4,470	4,681	11,466	16,147	
Nov	712	2,145	2,857	887	1,535	2,422	473	272	745	1,050	1,392	2,443	514	3,744	4,258	1,301	3,268	4,569	4,936	12,357	17,293	
Dec	705	2,077	2,783	782	1,451	2,233	459	262	722	1,037	1,385	2,422	499	3,512	4,012	1,268	3,331	4,599	4,751	12,019	16,770	
2011																						
Jan	763	2,197	2,960	833	1,579	2,412	474	281	755	1,042	1,366	2,408	499	3,156	3,655	1,288	3,364	4,652	4,899	11,943	16,842	
Feb	779	2,236	3,015	834	1,559	2,393	466	276	743	1,007	1,335	2,341	508	3,563	4,071	1,292	3,482	4,774	4,887	12,450	17,338	
Mar	798	2,315	3,113	807	1,486	2,293	420	238	658	1,004	1,355	2,359	516	3,706	4,221	1,305	3,578	4,883	4,850	12,678	17,528	
Apr	748	2,251	3,000	798	1,588	2,386	467	287	754	943	1,362	2,305	533	3,678	4,211	1,202	3,138	4,340	4,692	12,304	16,996	
May	789	2,455	3,243	944	1,845	2,789	513	302	814	1,014	1,440	2,454	642	3,732	4,374	1,399	6,011	7,410	5,300	15,784	21,084	
Jun	717	2,333	3,050	817	1,688	2,506	459	342	801	957	1,491	2,449	566	3,828	4,395	1,292	4,715	6,007	4,810	14,397	19,207	
Jul	698	2,325	3,023	862	1,783	2,645	466	360	827	922	1,483	2,405	562	3,842	4,404	1,247	4,080	5,327	4,758	13,873	18,630	

12 month growth rates (percentages)

	Vehicle Sales & Services			Entertainment			Hotels			Travel			Financial			Other services			Value of purchases			
	Credit	Debit	Total	Credit	Debit	Total	Credit	Debit	Total	Credit	Debit	Total	Credit	Debit	Total	Credit	Debit	Total	Credit	Debit	Total	
Annual																						
2006	-1.7	11.9	6.9	6.7	18.3	12.4	3.8	17.4	7.3	1.1	13.7	6.4	-32.8	21.1	3.6	5.6	36.4	24.3	-2.2	20.8	10.8	
2007	6.5	13.5	11.1	4.8	16.1	10.7	5.3	10.9	6.9	1.7	14.3	7.4	2.0	24.9	20.0	5.5	20.9	15.8	4.4	18.2	13.0	
2008	5.7	7.4	6.9	3.9	16.3	10.7	0.4	8.1	2.7	4.3	8.9	6.5	3.9	14.5	12.6	5.4	14.5	11.7	4.4	12.1	9.4	
2009	-5.8	7.4	3.2	-0.1	11.8	6.7	-3.9	11.3	0.8	-6.8	2.6	-2.1	-3.4	10.3	8.0	1.8	3.1	2.7	-3.0	6.9	3.5	
2010	-40.2	-30.3	-33.2	2.0	16.0	10.5	4.6	11.6	7.0	-1.9	12.0	5.3	2.8	16.6	14.5	3.4	6.6	5.7	-7.9	1.2	-1.7	
Monthly																						
2010																						
Jul	-22.3	-10.1	-13.8	1.6	13.5	8.7	2.6	11.3	5.4	-5.9	12.0	3.0	0.7	16.4	14.0	4.5	5.6	5.3	-4.8	5.8	2.3	
Aug	-25.1	-12.9	-16.6	3.0	15.3	10.3	3.4	12.0	6.2	-5.0	13.0	3.9	1.6	16.8	14.4	4.8	6.6	6.1	-4.8	5.8	2.4	
Sep	-28.7	-17.1	-20.6	2.6	14.9	10.0	3.4	11.1	5.9	-3.9	12.9	4.6	1.6	16.6	14.3	4.4	8.3	7.2	-5.5	5.1	1.7	
Oct	-32.1	-20.9	-24.2	2.5	16.0	10.6	3.8	11.0	6.2	-3.3	12.2	4.6	1.7	17.0	14.7	3.9	11.5	9.3	-6.3	5.1	1.4	
Nov	-35.7	-25.2	-28.3	2.3	15.7	10.3	4.6	11.3	6.8	-2.0	12.2	5.3	2.6	17.2	15.0	4.2	7.1	6.3	-6.6	2.8	-0.2	
Dec	-40.2	-30.3	-33.2	2.0	16.0	10.5	4.6	11.6	7.0	-1.9	12.0	5.3	2.8	16.6	14.5	3.4	6.6	5.7	-7.9	1.2	-1.7	
2011																						
Jan	-37.6	-27.1	-30.1	3.3	17.3	11.7	5.4	12.9	8.0	-1.4	12.0	5.6	3.6	18.7	16.5	3.6	9.0	7.5	-6.6	3.5	0.3	
Feb	-35.7	-25.0	-28.1	3.5	17.3	11.8	5.0	12.8	7.7	-2.6	10.5	4.3	3.8	19.4	17.1	2.8	9.0	7.2	-6.4	4.3	0.9	
Mar	-34.1	-23.8	-26.8	2.9	16.7	11.3	3.4	11.4	6.2	-3.4	9.1	3.2	3.6	18.8	16.6	1.9	8.2	6.4	-6.5	4.2	0.8	
Apr	-32.0	-21.9	-24.8	2.6	16.5	11.1	3.1	11.5	6.0	-4.4	8.9	2.6	4.1	18.4	16.4	0.7	5.9	4.4	-6.3	4.1	0.8	
May	-29.0	-18.6	-21.5	4.2	18.2	12.9	3.8	13.1	7.0	-3.7	9.7	3.5	6.6	18.3	16.6	0.7	10.1	7.5	-4.8	6.5	3.0	
Jun	-26.4	-15.3	-18.4	3.4	18.0	12.4	2.9	15.2	7.2	-4.4	10.2	3.5	7.2	17.7	16.2	-0.2	10.4	7.4	-4.6	7.5	3.8	
Jul	-23.5	-11.6	-14.9	3.2	19.2	13.1	2.2	18.3	7.8	-5.7	10.5	3.0	8.4	17.6	16.3	-1.0	10.5	7.3	-4.4	8.8	4.8	

Table 3A Card expenditure statistics (not seasonally adjusted)

Number of credit card transactions

Detailed sector breakdown - retail sectors

	July 2010	August 2010	September 2010	October 2010	November 2010	December 2010	January 2011	February 2011	March 2011	April 2011	May 2011	June 2011	July 2011	Total (latest 12 months)
Supermarkets	42,473,245	41,941,737	40,298,861	41,396,777	46,536,218	48,942,099	38,855,018	36,777,424	42,023,720	42,272,726	42,976,297	52,184,350	52,441,961	526,647,189
Bakers & dairies	71,844	67,549	67,598	73,655	78,607	83,094	62,802	66,484	75,779	80,239	91,578	99,570	109,396	956,351
Sweet stores	122,759	135,158	127,601	146,414	246,306	457,308	96,750	124,541	166,165	216,227	173,983	158,605	152,259	2,201,317
Miscellaneous foodstores	2,150,070	2,168,236	2,028,366	2,018,747	2,211,819	2,292,898	1,745,699	1,788,163	2,034,325	2,314,030	2,345,934	2,327,294	2,327,294	25,479,356
Off-licences	565,606	533,033	488,187	509,945	533,305	694,690	414,689	425,084	475,263	493,212	507,233	507,192	518,698	6,100,531
Food & drink	45,383,524	44,845,713	43,010,613	44,145,538	49,606,255	52,470,089	41,174,958	39,181,696	44,775,252	45,266,249	46,063,121	55,295,651	55,549,608	561,384,743
Department stores	6,334,517	5,728,626	5,376,457	5,821,237	8,196,594	10,850,795	5,864,433	4,589,998	5,368,637	5,382,143	6,169,300	6,186,458	6,259,012	75,793,690
Discount stores	1,611,086	1,550,917	1,488,325	1,611,162	2,164,477	2,672,843	1,390,630	1,258,151	1,328,788	1,461,861	1,521,968	1,431,170	1,504,579	19,384,871
Catalogues	1,150,999	1,089,624	1,248,332	1,241,539	1,944,905	2,076,253	1,289,875	1,078,444	1,132,308	1,009,011	1,047,619	1,024,646	986,954	15,169,510
Miscellaneous mixed	2,234,115	2,321,344	2,412,298	2,517,458	3,028,621	3,279,520	2,550,660	2,379,664	2,278,857	2,207,759	2,344,961	2,237,587	2,252,050	29,630,783
Mixed business	11,330,717	10,690,511	10,525,412	11,191,396	15,334,597	18,879,411	11,095,598	9,306,257	10,108,590	9,880,774	11,083,848	10,879,861	11,002,599	139,978,854
Men's clothing	498,509	462,878	391,971	401,743	489,979	671,966	439,246	343,074	356,056	369,445	413,568	440,800	470,961	5,251,687
Women's clothing	2,193,083	1,890,259	1,731,187	1,774,859	2,100,524	2,558,986	1,569,404	1,355,827	1,635,120	1,950,847	2,117,099	2,188,988	2,283,438	23,156,178
Family clothing	7,381,602	6,469,987	6,008,895	6,312,430	7,566,347	9,759,355	5,503,258	4,725,783	5,685,349	6,400,347	6,794,947	6,628,839	7,600,750	79,456,287
Miscellaneous clothing	587,254	545,108	613,364	603,612	696,754	776,249	383,843	394,038	468,782	642,563	737,873	672,009	655,767	7,189,962
Shoe shops	1,515,713	1,532,635	1,241,208	1,236,369	1,315,689	1,566,273	1,227,063	887,328	983,679	1,317,486	1,355,358	1,443,746	1,615,351	15,722,185
Clothing	12,176,161	10,900,867	9,986,625	10,329,013	12,169,293	15,332,829	9,122,814	7,706,050	9,128,968	10,680,328	11,418,845	11,374,382	12,626,267	130,776,299
Furniture stores	1,249,825	1,325,262	1,217,065	1,323,063	1,578,282	1,572,453	1,450,133	1,143,232	1,224,009	1,104,175	1,235,219	1,201,417	1,235,951	15,610,261
Household appliance stores	1,302,883	1,260,634	1,269,587	1,316,864	1,493,154	1,676,355	1,279,333	1,175,264	1,339,673	1,271,378	1,329,351	1,250,046	1,283,849	15,945,488
Electronic stores	1,290,155	1,319,011	1,254,227	1,315,399	1,628,053	2,207,312	1,500,989	1,137,444	1,185,215	1,071,527	1,219,875	1,151,319	1,169,182	16,159,553
DIY stores	6,751,949	6,315,116	5,869,134	6,062,440	6,229,195	5,572,667	5,221,339	6,442,357	5,211,926	7,403,528	7,068,495	5,967,028	5,834,814	73,198,049
Floor covering stores	163,567	177,908	169,634	181,192	216,460	142,969	160,903	153,072	144,145	167,999	144,145	164,073	149,417	1,980,705
Garden centres	1,398,272	1,214,273	1,195,001	1,168,907	1,298,050	1,477,218	822,154	969,381	1,724,055	2,477,578	1,755,308	1,443,991	1,443,241	18,024,447
Miscellaneous household	277,882	340,593	380,663	382,613	436,612	350,144	336,353	304,310	335,048	333,901	365,459	358,708	403,291	4,327,645
Household	12,434,533	11,952,797	11,329,217	11,776,572	12,879,806	12,999,118	10,761,791	10,104,042	12,418,356	13,807,165	13,860,050	11,833,243	11,523,961	145,246,118
Books, newspapers & magazines	1,772,337	1,832,094	1,862,519	1,890,608	2,403,859	3,216,479	1,614,899	1,511,488	1,626,459	1,603,650	1,797,859	1,807,718	1,765,263	22,932,895
Record shops	620,027	602,202	595,120	637,869	1,131,325	1,911,377	609,165	538,279	604,130	514,642	576,011	542,778	450,373	8,713,271
Music shops	1,457,860	1,539,267	1,500,239	1,499,018	1,742,002	1,806,861	1,530,632	1,656,231	1,527,422	1,602,334	1,661,009	1,575,285	1,527,422	19,802,244
Hobbies, toys & games	643,798	647,541	639,027	774,526	1,394,427	1,926,809	603,310	506,922	572,825	514,762	488,207	466,271	475,263	9,009,890
Photographic	269,145	263,355	259,571	234,912	301,087	381,508	216,652	181,665	210,565	198,193	230,202	244,526	238,922	2,961,158
Handicraft	71,730	76,475	80,793	80,793	95,119	75,449	74,761	72,202	78,408	64,544	73,384	70,157	69,234	906,659
Sports shops	2,949,309	3,004,689	2,568,083	2,525,615	2,917,622	3,674,001	2,377,061	2,067,231	2,376,120	2,656,943	2,861,639	2,784,207	3,024,007	32,837,218
Jewellers	628,525	601,185	557,951	552,155	783,725	1,307,376	517,308	523,066	552,158	521,629	567,332	574,760	612,408	7,671,053
Computer software	641,399	683,684	668,597	628,163	737,499	764,550	615,847	530,883	580,259	525,633	604,234	571,592	537,442	7,448,383
Medical goods	20,072	17,657	18,385	18,478	21,083	17,660	17,652	18,676	20,888	17,813	19,395	20,339	19,503	227,529
Chemists	3,669,132	3,669,353	3,476,651	3,484,276	4,324,377	5,438,607	3,283,913	3,063,585	3,634,312	3,127,580	3,613,626	3,520,700	3,379,758	44,016,039
Optical goods	481,115	468,330	436,032	417,707	443,642	324,384	414,210	422,484	470,952	430,882	475,475	514,317	514,317	5,339,085
Cosmetic stores	379,739	380,378	363,133	376,714	578,312	868,481	335,823	307,999	336,805	297,443	339,450	349,264	350,916	4,884,718
Tobacconists	10,563	10,704	9,921	9,514	10,167	11,903	7,253	8,181	10,664	11,306	14,438	13,494	14,768	132,313
Florists	356,195	316,667	342,441	317,380	335,141	534,462	299,798	412,176	465,537	450,511	351,209	335,152	318,318	4,478,792
Artists' supplies	241,872	262,203	249,259	264,359	345,576	301,863	212,147	217,291	254,349	213,443	246,621	234,053	238,126	3,079,290
Antiques, art & stamps/coins	148,518	164,106	141,870	163,802	178,055	166,502	112,147	111,404	130,265	127,083	145,851	145,808	157,078	1,753,971
Pawn shops	2,619	2,267	2,320	2,496	2,792	4,148	2,533	2,393	2,619	2,403	2,500	2,674	2,674	31,640
Gift shops	1,358,540	1,401,038	1,187,235	1,270,864	1,815,789	2,503,042	1,030,542	1,115,928	1,169,021	1,165,341	1,217,314	1,324,832	1,322,776	16,513,722
Secondhand shops	6,271	6,516	6,322	6,346	6,832	6,794	4,989	5,318	6,085	5,837	7,073	6,930	7,270	76,312
Luggage & leather goods	126,644	123,578	106,864	103,667	132,070	164,512	109,171	81,723	93,475	97,786	106,063	113,125	125,935	1,357,969
Pet shops	612,062	624,362	596,469	609,381	660,982	694,365	574,348	542,259	611,187	593,167	652,567	628,061	642,796	7,429,944
Religious goods	689	1,368	1,172	718	793	744	685	670	785	581	659	737	777	9,689
Direct sales	4,068,898	3,893,502	3,998,755	3,899,028	4,068,491	3,859,387	3,760,460	3,532,859	4,141,697	3,486,880	3,810,217	3,342,507	3,206,624	45,000,407
Miscellaneous & speciality shops	1,478,358	1,500,110	1,433,329	1,426,624	1,783,865	1,881,238	1,353,741	1,259,005	1,410,614	1,137,971	1,264,451	1,237,466	1,227,677	16,916,091
Other retail	22,015,417	22,092,631	21,097,398	21,195,013	26,214,632	31,842,502	20,020,359	18,564,319	21,016,410	19,283,445	21,368,111	20,518,651	20,277,510	263,490,981
Automotive Fuels	14,470,154	13,549,577	13,216,500	13,365,516	13,884,615	12,341,225	12,296,597	11,970,484	13,798,071	13,287,427	14,308,236	15,300,862	15,426,892	162,746,002
Total retail sales	117,810,506	114,032,096	109,165,765	112,003,048	130,089,198	143,865,174	104,472,117	96,832,848	111,245,665	112,205,388	118,102,211	125,202,650	126,406,837	1,403,622,997

Table 3A Card expenditure statistics (not seasonally adjusted)

Number of credit card transactions

Detailed sector breakdown - services sectors

	July 2010	August 2010	September 2010	October 2010	November 2010	December 2010	January 2011	February 2011	March 2011	April 2011	May 2011	June 2011	July 2011	Total (latest 12 months)
Auto rental	433,512	388,137	383,995	353,031	340,619	314,066	330,052	326,771	384,768	382,425	415,769	401,336	422,811	4,443,780
Auto parts & accessories	925,437	850,853	836,693	801,548	863,024	795,453	803,703	785,025	936,688	813,074	867,323	829,150	822,209	10,004,743
Auto services	1,635,850	1,493,475	1,616,954	1,595,552	1,659,978	1,417,947	1,503,073	1,505,271	1,712,330	1,504,947	1,743,270	1,709,008	1,689,878	19,151,683
Auto repair shops	1,013,106	914,077	964,837	908,904	933,561	844,878	903,484	926,916	1,082,917	914,882	968,572	928,822	906,324	11,198,174
Service stations	2,028,628	1,946,139	1,862,886	1,897,616	2,129,020	2,277,138	2,523,735	2,366,964	2,686,727	2,609,065	2,777,054	2,577,044	2,647,891	28,301,279
Vehicle sales	702,884	655,951	663,438	593,559	594,673	505,319	577,054	583,073	730,317	637,916	693,414	671,348	649,014	7,555,076
Vehicle Sales & Services	6,739,417	6,248,632	6,328,803	6,150,210	6,520,875	6,154,801	6,664,533	6,470,588	7,533,747	6,862,309	7,465,402	7,116,708	7,138,127	80,654,735
Restaurants	10,339,213	10,317,160	9,199,370	9,623,203	9,547,760	8,693,286	8,547,186	8,831,664	9,700,737	9,699,353	10,484,849	9,995,860	10,599,449	115,239,877
Public houses	1,711,126	1,852,072	1,583,820	1,525,848	1,575,120	1,412,531	1,345,030	1,401,729	1,573,369	1,689,478	1,869,639	1,758,466	1,831,612	19,418,714
Catering services	187,683	161,358	194,852	191,555	208,720	173,572	167,907	169,594	211,459	170,517	205,829	206,975	194,694	2,257,032
Video stores	64,206	68,653	67,115	72,465	81,675	87,319	80,373	74,887	78,148	73,434	82,326	75,118	74,017	915,530
Cinema, theatre & dance	1,679,079	1,820,852	1,443,437	1,628,534	2,033,623	1,610,593	1,748,099	1,694,328	1,514,258	1,224,841	1,774,890	1,584,882	1,932,552	20,010,889
Concerts & entertainers	17,430	19,111	13,538	16,228	18,169	20,862	17,521	17,984	21,548	21,916	24,636	32,131	32,620	256,064
Tourist attractions	515,996	709,175	379,338	339,614	226,264	158,408	133,679	190,791	222,614	426,802	434,149	502,874	595,112	4,318,820
Amusement parks	35,204	62,005	24,261	25,703	16,683	11,832	11,165	17,075	14,969	36,184	23,525	28,511	34,800	306,713
Aquariums	15,255	22,128	9,708	9,437	8,572	6,545	8,428	9,941	9,926	13,869	13,210	12,866	13,913	138,543
Sports & games establishments	2,160,790	2,149,173	1,973,420	1,851,122	2,072,792	2,431,709	2,146,741	1,955,658	2,527,086	1,821,852	1,369,466	2,160,878	2,136,443	24,596,340
Professional sports clubs	96,528	122,971	108,076	100,359	120,550	110,266	94,655	100,383	102,751	99,284	91,478	129,017	132,814	1,312,604
Gambling	2,601,207	2,766,440	2,823,196	2,864,625	3,212,420	2,946,663	2,967,046	2,735,671	2,999,026	2,733,603	3,031,716	2,643,237	2,825,721	34,549,364
Personal services	113,114	107,154	104,157	101,349	104,460	110,054	98,770	98,727	112,088	99,263	167,918	156,976	177,611	1,438,627
Miscellaneous entertainment	355,061	447,287	275,905	272,376	215,210	175,997	177,852	196,641	228,073	310,481	292,930	367,445	406,948	3,367,145
Entertainment	19,891,892	20,625,539	18,200,193	18,622,418	19,442,018	17,949,437	17,544,452	17,495,073	19,316,052	18,420,977	19,866,561	19,655,236	20,988,306	228,126,262
Hotels	3,621,749	3,397,125	3,286,723	3,171,250	3,028,301	2,560,111	2,650,909	2,743,560	2,863,493	3,029,677	3,512,605	3,320,388	3,502,263	37,066,405
Airlines	922,355	864,750	914,704	790,312	782,393	594,877	980,205	696,387	702,424	535,494	633,500	554,640	517,827	8,567,513
Airport terminals	27,782	28,239	26,866	22,300	18,653	14,679	17,018	17,274	23,476	25,051	28,145	31,621	32,724	286,046
Railways	4,579,344	4,089,821	4,551,267	4,651,363	4,900,013	3,933,440	4,039,323	4,041,671	4,772,440	4,064,089	4,222,439	4,690,730	4,534,155	52,490,751
Buses	378,834	354,784	372,575	350,577	362,050	305,116	304,289	307,338	367,240	353,870	425,800	416,909	418,179	4,338,727
Sea travel	124,403	126,344	97,036	80,269	66,277	61,794	64,319	65,468	78,872	87,359	96,194	99,767	108,141	1,031,840
Travel agents	1,404,471	1,275,676	1,257,825	1,127,663	1,070,729	824,064	1,397,513	1,236,316	1,407,574	1,123,739	1,285,188	954,853	967,201	13,928,341
Timeshares	442	551	373	359	302	158	248	292	636	210	157	194	140	3,620
Camping grounds	313,960	337,977	198,189	145,256	81,194	52,751	139,436	139,126	167,310	240,509	262,561	262,109	302,041	2,328,459
Miscellaneous travel	1,063,161	860,910	874,174	856,581	843,231	689,044	597,971	589,127	687,718	592,862	737,100	501,622	514,063	8,344,403
Travel	8,614,752	7,939,052	8,293,009	8,024,680	8,124,842	6,475,923	7,540,322	7,092,999	8,207,690	7,023,163	7,691,084	7,512,445	7,394,471	91,319,700
Telegraph services / Wire transfer money order	4,472	4,392	4,080	3,924	4,108	4,532	3,578	3,110	3,806	3,472	11,343	3,533	3,547	53,425
Insurance services	2,026,953	1,904,576	1,981,867	1,708,740	1,687,249	1,464,082	1,589,802	1,585,228	1,908,435	1,657,852	1,808,564	1,989,391	1,954,699	21,240,485
FIs - cash disbursements (auto & manual)	36,131	32,625	36,984	31,088	28,545	23,452	23,419	23,625	25,912	176,758	274,617	230,598	250,132	1,157,755
FIs - merchandise & services	605,388	514,795	518,422	549,634	518,338	511,091	524,329	486,621	583,924	508,045	518,920	512,096	512,135	6,258,350
Non-FIs - foreign currency, travellers' cheques	70,709	66,793	57,801	29,323	16,657	12,749	11,355	13,832	16,155	17,464	21,773	24,177	29,225	317,304
Security brokers and dealers	19,605	15,493	14,932	15,702	17,793	14,617	17,131	17,013	23,041	16,525	20,766	21,029	22,006	216,048
Tax preparation services	249	140	88	85	101	82	161	334	412	251	804	375	339	3,172
Tax payments	5,267	5,955	4,844	4,324	4,727	3,807	3,724	3,257	4,346	4,265	4,650	5,951	6,097	55,947
Fines, bail and bond payments	74,934	58,887	68,054	69,450	68,642	57,369	61,562	61,702	70,543	60,988	67,614	58,121	59,287	762,219
Miscellaneous financial	164,683	147,826	145,183	139,348	145,892	135,689	148,496	147,721	177,862	174,904	178,772	162,362	162,677	1,866,732
Financial	3,008,391	2,751,482	2,832,255	2,551,618	2,492,082	2,227,470	2,383,557	2,342,443	2,814,436	2,620,524	2,907,823	3,007,633	3,000,144	31,931,437

Table 3A Card expenditure statistics (not seasonally adjusted)

Number of credit card transactions

Detailed sector breakdown - services sectors (continued)

	July 2010	August 2010	September 2010	October 2010	November 2010	December 2010	January 2011	February 2011	March 2011	April 2011	May 2011	June 2011	July 2011	Total (latest 12 months)
Telecoms	2,033,750	1,863,706	1,835,186	1,813,602	1,873,436	2,067,412	1,762,498	1,646,198	1,866,413	1,849,021	2,022,780	1,919,501	1,895,828	22,415,581
Utilities	364,539	314,641	331,461	328,848	321,958	285,689	320,411	305,278	379,761	333,865	352,103	325,232	313,176	3,912,423
Contractors (residential & commercial)	309,244	289,053	313,036	317,358	344,903	275,484	295,522	290,778	326,715	256,070	284,107	275,985	265,623	3,534,634
Gardening services	53,727	46,829	45,580	43,362	49,505	54,025	30,454	33,600	52,967	70,892	76,880	57,676	48,173	609,943
Veterinary services	607,363	596,582	594,526	572,444	580,463	515,550	526,084	464,314	528,817	482,194	535,845	542,185	550,901	6,489,905
Photocopying & printing	318,197	306,550	330,677	347,144	398,100	364,107	324,692	296,966	344,940	274,744	323,447	318,167	295,893	3,925,427
Photographic studios	154,878	108,423	113,577	140,459	173,072	173,072	83,543	82,650	378,582	342,509	384,901	111,128	138,900	2,185,965
Beauty & barber shops	1,408,156	1,293,431	1,289,184	1,263,990	1,353,528	1,655,581	1,163,597	1,136,144	1,044,541	1,003,714	1,072,823	1,412,910	1,389,074	15,078,517
Employment agencies	21,337	19,569	20,395	19,009	19,678	15,768	20,316	19,752	20,612	12,162	11,481	13,956	14,141	206,839
Counselling services	4,024	3,764	3,925	4,194	3,899	3,775	4,194	3,991	4,473	5,462	4,919	4,609	4,609	46,609
Legal services	30,489	27,963	29,755	28,496	30,495	23,526	30,045	29,822	35,527	30,647	34,375	36,366	33,570	370,587
Laundry & cleaning	182,255	168,742	178,870	176,905	180,324	135,019	150,303	140,724	161,656	153,629	186,555	182,034	175,970	1,990,731
Funeral services	9,683	8,729	9,723	10,482	11,091	10,151	11,105	10,394	11,023	8,953	9,153	10,528	9,939	121,271
Medical services	1,066,338	979,410	1,095,039	1,037,791	1,135,765	891,789	1,028,739	1,021,477	1,182,622	950,276	1,107,385	1,209,000	1,131,811	12,771,104
Moving & courier services	186,232	163,748	180,083	173,011	186,690	173,650	166,269	164,111	197,160	167,708	198,091	191,360	183,449	2,145,330
Repair shops (not auto)	64,543	58,199	55,923	53,344	61,272	55,861	51,951	48,516	55,841	49,153	56,965	56,731	71,937	675,693
Accounting services	27,276	28,773	33,956	32,870	34,143	32,035	35,853	29,277	31,595	22,587	27,187	41,456	40,256	389,988
Advertising, consultancy & PR	124,768	123,337	125,417	116,285	122,583	85,940	110,528	108,550	163,820	143,882	168,112	160,285	151,015	1,579,754
Computer programming	470,856	454,192	479,801	464,548	491,416	461,088	476,240	452,999	505,303	433,550	449,259	407,708	405,568	5,481,672
Farming services	66,020	66,333	63,363	61,741	65,886	64,562	57,309	54,823	64,202	64,330	68,384	65,616	63,353	759,902
Miscellaneous professional services	1,146,602	1,197,461	1,217,665	1,158,463	1,231,047	1,070,666	1,067,404	1,319,915	1,229,117	986,350	1,122,614	1,217,190	1,177,839	13,995,731
Engineering services	64,616	56,311	59,941	56,182	58,786	46,301	53,832	58,014	69,443	56,717	64,242	61,158	57,910	698,837
Marina services	84,643	88,092	57,353	41,171	39,711	34,996	32,660	31,455	46,622	66,508	70,128	71,391	77,581	657,668
Wrecking & salvage yards	4,268	4,079	4,099	3,908	4,107	2,953	3,781	3,748	4,352	4,009	4,224	4,377	4,256	47,893
Pest control	3,719	3,407	3,458	2,869	2,570	1,707	2,103	1,941	2,522	2,350	2,906	3,342	4,282	33,457
Educational establishments	402,127	379,072	569,112	487,486	457,594	364,255	502,685	409,651	503,839	372,398	458,749	443,905	436,255	5,385,001
Child care services	15,023	16,166	15,043	16,672	17,045	14,442	18,027	17,928	16,327	12,139	14,626	18,101	18,962	195,478
Social, political & religious organisations	1,072,671	1,244,576	1,166,120	1,107,525	1,250,386	1,073,604	895,294	887,115	1,419,875	1,196,161	1,270,500	1,265,961	1,291,897	14,069,014
Government services	1,664,296	1,543,275	1,590,825	1,519,902	1,544,500	1,333,184	1,448,125	1,484,559	1,701,460	1,471,372	1,673,000	1,742,322	1,706,245	18,758,769
Miscellaneous services	959,951	964,815	997,426	990,206	1,170,788	1,400,257	916,687	928,804	1,185,259	1,019,474	1,071,879	1,107,088	1,095,614	12,848,297
Commercial equipment	970,488	870,947	998,474	922,901	991,737	865,123	921,091	838,058	934,116	754,634	864,947	746,183	712,394	10,420,605
Other services	13,892,079	13,290,175	13,808,993	13,313,143	14,206,478	13,506,721	12,511,342	12,321,552	14,469,371	12,596,471	13,993,110	14,023,761	13,766,421	161,807,538
Total services	55,968,280	54,252,005	52,749,976	51,833,319	53,814,566	48,874,463	49,295,115	48,466,215	55,204,789	50,553,141	55,436,585	54,636,171	55,789,732	630,906,077
TOTAL	173,778,786	168,284,101	161,915,741	163,836,367	183,903,764	192,739,637	153,767,232	145,299,063	166,450,454	162,758,529	173,538,796	179,838,821	182,196,569	2,034,529,074

Table 3B Card expenditure statistics (not seasonally adjusted)

Value of credit card transactions

Detailed sector breakdown - retail sectors

£	July 2010	August 2010	September 2010	October 2010	November 2010	December 2010	January 2011	February 2011	March 2011	April 2011	May 2011	June 2011	July 2011	Total (latest 12 months)
Supermarkets	1,447,453,196	1,431,577,260	1,376,659,864	1,425,718,436	1,680,382,327	2,027,283,255	1,303,106,322	1,238,128,879	1,404,814,230	1,484,814,718	1,453,979,690	1,896,199,322	1,899,883,651	18,622,547,954
Bakers & dairies	1,971,646	1,684,123	1,785,044	1,894,392	2,153,794	2,513,456	1,635,316	1,687,961	1,990,455	1,974,535	2,139,379	2,199,776	2,270,732	23,928,963
Sweet stores	2,766,815	2,840,236	2,956,573	3,450,334	6,834,387	12,212,198	2,180,874	2,713,295	3,888,111	5,110,576	3,696,618	5,328,228	3,801,045	53,222,475
Miscellaneous foodstores	62,577,470	59,204,154	56,941,271	56,212,942	65,922,023	82,492,747	51,018,233	50,863,380	58,116,853	61,270,296	64,297,985	65,096,933	65,634,351	737,071,168
Off-licences	37,001,714	30,018,753	25,506,337	26,486,512	35,003,444	53,997,654	22,181,740	21,864,971	25,815,088	26,430,345	28,811,316	30,803,865	32,208,135	359,128,160
Food & drink	1,551,770,841	1,525,324,526	1,463,849,089	1,513,762,616	1,790,295,975	2,178,499,310	1,380,122,485	1,315,258,486	1,494,624,737	1,579,600,470	1,552,924,988	1,997,838,124	2,003,797,914	19,795,898,720
Department stores	362,018,658	330,914,050	331,218,906	356,918,439	493,078,237	621,054,555	325,533,907	270,777,136	317,217,807	313,401,425	358,292,780	368,755,614	373,521,253	4,460,684,109
Discount stores	88,681,940	86,070,489	80,777,137	90,779,127	127,157,047	147,017,049	74,162,042	65,218,665	70,577,772	81,526,201	86,284,479	74,879,876	76,708,937	1,061,158,821
Catalogues	43,304,872	40,521,768	45,542,136	44,811,276	64,282,128	61,221,374	41,992,738	38,330,530	41,257,965	38,445,235	40,124,832	37,201,659	35,616,366	529,348,007
Miscellaneous mixed	87,715,799	87,891,208	91,317,209	91,426,918	108,253,636	112,074,741	74,124,619	70,682,269	81,022,237	83,955,428	102,185,796	100,520,014	103,643,769	1,107,097,834
Mixed business	581,721,269	545,397,515	548,855,388	583,935,760	792,771,048	941,367,719	515,813,306	445,008,600	510,075,781	517,328,289	586,887,887	581,357,163	589,490,315	7,158,288,771
Men's clothing	45,058,887	41,078,926	38,441,638	40,807,640	47,279,023	57,340,756	40,402,189	32,215,232	36,155,205	36,045,238	41,415,191	43,235,150	43,793,166	498,209,354
Women's clothing	123,977,123	111,808,399	122,237,099	124,640,771	138,432,471	149,366,446	104,097,623	97,946,690	121,193,057	125,001,056	132,923,383	139,686,466	134,487,756	1,501,901,217
Family clothing	323,546,437	297,604,550	303,285,776	317,368,700	372,334,510	458,002,433	243,815,217	232,465,932	282,506,357	302,300,198	315,485,445	315,224,779	346,605,137	3,786,999,034
Miscellaneous clothing	28,464,662	26,208,600	30,963,269	31,033,156	34,467,505	34,353,289	20,993,947	21,394,325	25,560,431	27,486,306	30,725,935	32,134,607	29,847,412	345,168,782
Shoe shops	69,840,746	75,413,563	72,556,744	78,991,059	83,048,173	90,832,708	62,040,915	49,422,472	57,866,796	70,589,733	72,849,429	74,339,437	76,594,591	864,545,620
Clothing	590,887,855	552,114,038	567,484,526	592,841,326	675,561,682	789,895,632	471,349,891	433,444,651	523,281,846	561,502,531	593,399,383	604,620,439	631,328,062	6,996,824,007
Furniture stores	255,641,028	261,958,462	250,164,797	276,622,572	305,782,080	267,859,665	286,287,108	231,247,211	254,130,984	221,447,478	248,873,458	228,285,592	237,663,984	2,070,323,391
Household appliance stores	113,533,509	113,791,551	115,828,816	123,157,082	141,957,776	144,299,215	118,080,790	106,874,722	122,699,318	105,971,977	111,050,445	107,822,161	107,769,824	1,419,303,677
Electronic stores	215,772,406	224,746,072	206,266,810	224,608,446	279,621,084	390,987,704	238,215,234	172,440,956	188,592,881	173,347,884	196,296,558	182,675,164	187,642,693	2,665,441,486
DIY stores	465,842,081	433,652,649	411,424,766	421,672,605	420,814,229	350,208,308	386,225,014	360,994,689	440,459,492	471,778,695	414,315,600	408,994,996	5,006,519,602	
Floor covering stores	55,616,391	57,311,229	56,648,666	60,855,701	73,663,121	51,969,178	53,565,441	49,103,740	56,829,891	49,527,827	55,570,479	51,711,408	52,616,873	669,373,554
Garden centres	72,800,661	60,724,344	56,476,185	53,849,332	59,109,750	64,081,963	36,700,611	45,397,706	87,593,476	130,547,158	123,190,834	86,001,540	72,464,227	876,137,036
Miscellaneous household	45,601,812	51,344,532	52,964,964	53,408,914	59,097,273	44,608,327	43,223,368	39,612,574	44,954,868	41,473,642	45,503,813	46,536,596	50,675,457	573,404,328
Household	1,224,807,888	1,203,528,839	1,149,775,004	1,214,174,652	1,340,045,313	1,314,014,360	1,162,297,566	1,005,671,598	1,195,260,910	1,208,294,525	1,252,264,282	1,117,347,971	1,117,828,054	14,280,503,074
Books, newspapers & magazines	51,883,375	50,246,771	57,859,250	57,387,853	68,346,131	86,894,070	48,881,753	47,954,299	53,050,928	47,406,085	52,524,678	53,494,615	51,539,137	675,385,570
Record shops	15,326,612	14,733,003	14,559,610	16,638,866	31,505,393	55,774,068	14,680,484	13,152,843	15,132,234	13,187,736	14,440,121	13,514,259	12,098,578	229,417,195
Music shops	23,825,007	23,577,166	24,641,402	24,145,277	28,916,382	33,577,065	26,633,570	22,734,082	24,723,786	21,585,595	22,583,966	24,728,712	24,273,951	302,971,594
Hobbies, toys & games	35,886,346	34,520,663	37,096,737	43,926,378	84,819,543	101,769,223	31,710,715	26,870,464	33,332,602	28,769,035	28,523,195	27,053,333	26,207,828	504,599,716
Photographic	32,483,438	30,035,567	28,917,044	28,114,457	33,688,863	44,273,397	24,873,257	22,518,900	28,447,103	26,242,504	28,168,678	30,311,883	30,170,435	355,802,088
Handicraft	7,142,844	7,326,630	7,291,421	7,569,135	8,552,251	7,003,082	7,229,388	6,682,678	7,545,187	6,207,014	7,044,946	7,047,205	6,941,440	86,440,377
Sports shops	189,319,186	187,959,035	165,153,685	160,762,878	186,248,430	218,626,385	146,096,182	132,329,772	160,484,738	172,017,941	188,722,874	180,662,799	193,362,681	2,092,427,400
Jewellers	108,024,041	98,608,058	91,078,914	92,330,249	118,164,908	208,488,753	81,813,617	85,011,880	91,915,377	86,249,236	97,079,828	100,427,890	107,725,638	1,258,894,348
Computer software	122,885,540	139,493,565	132,100,460	116,439,651	141,866,859	156,919,185	105,008,889	89,796,984	107,141,291	100,462,546	118,113,319	107,262,176	103,837,456	1,418,442,381
Medical goods	5,013,307	4,866,241	5,301,723	4,962,247	5,623,168	4,369,764	4,133,128	5,019,541	5,581,507	4,709,159	4,843,178	5,598,595	5,335,878	60,344,129
Chemists	80,898,240	77,332,830	72,388,703	81,046,871	110,956,932	145,094,331	67,903,568	65,099,741	76,855,045	67,287,734	77,680,178	75,223,327	74,227,622	991,096,882
Optical goods	68,693,281	61,991,603	67,532,564	63,041,713	59,911,472	43,589,045	60,131,710	62,690,543	69,578,471	61,705,454	68,401,177	75,553,371	74,874,231	769,001,354
Cosmetic stores	18,467,600	17,612,003	17,554,247	18,689,427	27,652,969	38,214,165	16,000,481	14,851,956	17,231,545	20,286,333	23,678,200	17,535,449	17,366,203	246,672,978
Tobaccoists	733,851	717,573	694,749	646,549	706,295	804,003	536,457	541,744	693,727	726,893	859,106	891,974	923,286	8,742,356
Florists	17,280,255	15,384,449	16,731,565	15,343,301	16,301,416	23,753,576	14,177,273	18,745,702	21,277,405	20,594,544	18,007,482	16,962,933	15,756,733	213,036,379
Artists' supplies	12,654,594	12,728,828	13,305,787	13,699,269	16,740,646	14,102,960	10,598,264	10,733,038	13,021,481	10,520,113	12,616,720	12,103,257	11,971,518	152,141,881
Antiques, art & stamps/coins	25,510,509	23,522,512	25,439,018	28,556,030	30,934,442	28,518,180	22,116,906	20,886,622	26,287,870	20,360,256	25,027,446	25,179,146	24,495,712	301,324,140
Pawn shops	546,782	397,990	431,890	612,965	520,052	611,247	520,069	393,845	426,220	447,492	545,453	497,232	541,433	5,945,888
Gift shops	46,987,447	47,313,631	42,966,124	46,796,946	65,177,265	78,062,850	35,077,111	35,960,038	40,773,473	39,642,493	44,175,643	45,839,701	45,839,701	565,392,123
Secondhand shops	814,753	686,592	728,526	995,991	827,241	775,759	584,656	743,429	853,456	673,819	757,821	911,029	892,473	9,430,792
Luggage & leather goods	9,160,293	8,360,918	8,162,958	7,931,673	11,141,933	15,820,158	9,072,040	7,973,552	9,215,631	9,375,339	10,197,732	11,739,720	13,138,973	122,130,627
Pet shops	26,242,193	26,542,124	25,515,252	25,267,102	27,309,125	27,878,360	23,028,908	24,352,379	25,728,908	27,095,203	27,513,921	27,095,203	27,513,921	314,870,291
Religious goods	51,173	65,132	102,899	51,010	46,714	50,835	57,121	40,421	52,928	36,666	50,469	57,805	57,535	669,535
Direct sales	231,825,571	216,129,806	233,996,972	223,960,682	243,005,856	225,913,238	229,669,964	229,173,319	269,912,762	214,446,246	238,949,610	208,921,009	202,987,419	2,737,066,883
Miscellaneous & speciality shops	148,513,522	144,665,323	144,831,208	144,891,605	172,557,668	181,249,926	152,443,844	139,904,668	158,247,296</					

Table 3B Card expenditure statistics (not seasonally adjusted)

Value of credit card transactions

Detailed sector breakdown - services sectors

£	July 2010	August 2010	September 2010	October 2010	November 2010	December 2010	January 2011	February 2011	March 2011	April 2011	May 2011	June 2011	July 2011	Total (latest 12 months)
Auto rental	55,650,408	44,761,720	41,154,428	37,287,563	35,414,343	35,619,777	36,638,354	36,186,615	44,107,511	44,970,609	50,581,824	53,306,049	58,584,926	518,613,719
Auto parts & accessories	137,973,518	124,843,832	128,100,228	121,819,029	130,885,044	119,103,225	122,362,147	121,069,375	147,082,109	123,208,919	134,237,449	126,938,089	124,041,114	1,523,690,560
Auto services	44,974,875	41,915,430	43,990,799	41,712,263	42,454,880	35,525,464	41,256,078	40,633,702	47,153,042	41,081,444	48,321,613	46,614,540	45,757,029	516,416,284
Auto repair shops	256,773,621	221,539,544	238,430,616	226,828,327	229,616,427	204,780,916	232,058,330	227,978,483	276,311,111	228,474,828	242,557,927	233,828,014	229,405,445	2,791,809,968
Service stations	62,086,721	57,818,368	57,770,265	57,090,874	62,799,781	65,208,500	79,359,752	73,319,249	84,639,329	80,025,431	87,139,514	78,582,143	79,585,358	863,338,564
Vehicle sales	227,903,119	210,352,899	223,064,950	205,751,578	202,818,091	168,970,454	198,707,916	201,311,949	250,462,611	206,715,740	225,723,257	219,855,885	215,208,043	2,528,943,363
Vehicle Sales & Services	785,362,262	701,231,783	732,511,286	690,489,634	703,988,566	629,208,336	710,382,577	700,499,373	849,755,713	724,476,971	788,561,584	759,124,720	752,581,915	8,742,812,458
Restaurants	407,856,976	401,603,165	359,004,661	373,100,370	374,152,084	397,390,558	327,515,487	334,690,904	362,086,510	370,901,306	397,805,711	377,884,782	400,858,711	4,476,994,249
Public houses	74,933,146	80,723,026	69,371,538	67,353,900	70,487,712	75,710,648	58,025,548	59,439,831	65,770,392	70,591,802	79,460,370	74,957,121	78,557,613	850,449,501
Catering services	13,584,190	10,643,990	14,349,802	13,779,479	15,999,475	13,554,913	12,702,894	12,545,155	16,090,081	12,403,068	15,665,971	15,093,950	13,518,516	166,347,294
Video stores	1,478,637	1,348,215	1,600,645	1,890,332	1,892,807	1,822,926	1,333,804	1,181,392	1,334,404	1,155,942	1,341,745	1,320,362	1,330,968	17,553,542
Cinema, theatre & dance	106,279,954	102,725,224	109,296,084	130,410,518	172,408,893	123,224,266	107,650,470	108,675,108	128,239,685	90,581,428	192,516,646	119,185,539	135,205,337	1,520,119,198
Concerts & entertainers	1,190,066	1,135,180	1,076,795	1,206,253	1,385,613	1,156,711	1,135,578	1,022,985	1,265,259	1,141,879	1,796,095	2,170,682	2,117,735	16,610,765
Tourist attractions	25,151,745	31,240,821	16,958,222	15,779,797	10,948,423	8,509,228	7,191,475	9,576,991	12,428,781	21,242,843	25,797,227	29,736,382	211,266,953	
Amusement parks	1,744,464	2,485,021	1,145,599	1,242,860	1,055,836	753,437	690,050	886,866	938,320	1,695,910	1,252,757	1,470,711	1,799,242	15,416,609
Aquariums	732,848	828,059	542,433	558,875	522,390	396,876	471,130	549,004	680,631	830,468	824,740	825,932	850,429	7,880,967
Sports & games establishments	85,669,292	74,323,565	75,271,299	70,669,398	77,814,469	81,917,888	75,600,729	73,165,381	98,080,258	85,430,072	127,056,944	110,675,462	85,708,828	1,035,714,293
Professional sports clubs	10,092,735	9,028,046	8,157,106	7,844,696	8,953,944	7,943,421	6,928,705	7,973,548	8,198,845	8,791,993	9,373,134	22,657,898	15,138,225	120,989,561
Gambling	104,578,614	112,255,546	115,046,890	110,857,821	120,108,281	107,955,929	112,120,673	106,604,244	114,310,608	104,464,307	111,855,022	98,353,840	98,903,506	1,312,836,667
Personal services	7,895,077	7,718,147	7,325,905	7,614,426	7,768,929	7,646,275	7,404,504	8,458,895	7,218,042	9,281,815	9,281,815	9,281,815	9,281,815	97,220,167
Miscellaneous entertainment	20,777,471	22,498,600	16,144,076	15,911,519	15,237,084	10,575,518	9,631,532	10,566,147	14,079,338	17,840,858	17,925,643	22,271,468	24,209,654	196,891,437
Entertainment	861,965,215	858,083,459	795,683,297	817,931,723	878,581,437	838,680,388	728,644,350	734,282,060	831,963,007	794,289,918	988,555,043	881,946,789	897,649,732	10,046,291,203
Hotels	564,504,285	511,138,276	496,023,813	479,346,220	457,644,024	383,046,928	385,702,368	391,787,051	412,144,380	447,256,133	536,882,764	517,764,243	557,721,129	5,576,457,329
Airlines	280,077,195	254,449,484	284,905,492	253,658,465	259,872,794	170,426,718	342,410,369	260,773,461	273,581,351	210,239,241	249,735,961	217,318,164	202,239,819	2,979,611,319
Airport terminals	3,800,147	3,405,508	3,529,618	3,132,850	3,021,839	2,568,245	2,399,167	2,081,027	2,995,783	3,083,074	3,775,463	3,501,814	3,739,342	37,233,730
Railways	182,656,214	162,964,164	198,198,177	192,439,163	204,798,980	186,767,034	175,500,555	170,822,137	196,987,005	162,867,898	184,081,039	209,662,471	193,669,440	2,238,758,063
Buses	21,336,156	19,104,431	20,079,017	18,106,724	17,419,512	15,728,540	15,289,271	15,606,810	18,950,092	18,935,616	22,140,149	21,375,281	22,145,979	224,881,422
Sea travel	18,322,794	17,277,851	13,515,566	12,768,722	10,925,868	10,479,139	13,343,787	11,969,239	14,400,257	14,020,508	15,634,826	15,771,312	16,495,022	166,602,097
Travel agents	646,475,380	545,897,382	477,284,037	415,999,861	368,033,669	300,361,524	562,555,511	468,015,967	540,261,846	462,516,237	554,775,815	530,617,618	532,515,761	5,758,835,228
Timeshares	43,864	47,097	36,436	38,235	34,994	19,509	46,303	49,888	49,353	26,511	22,590	28,026	22,368	421,310
Camping grounds	51,121,545	41,908,291	25,045,809	23,691,990	24,039,939	18,264,037	29,276,933	26,765,605	32,566,265	36,319,867	41,537,141	42,519,444	44,719,024	386,654,345
Miscellaneous travel	40,162,326	32,711,607	27,545,248	24,253,628	23,891,739	18,723,143	21,995,116	23,076,566	30,066,006	28,799,040	35,532,147	33,922,655	30,634,825	331,151,720
Travel	1,243,995,621	1,077,765,815	1,050,139,400	944,089,638	912,039,334	723,337,889	1,162,817,012	979,160,700	1,109,857,958	936,807,992	1,107,235,131	1,074,716,785	1,046,181,580	12,124,149,234
Telegraph services / Wire transfer money order	1,141,004	1,190,983	1,141,487	1,063,019	1,123,571	1,125,080	901,161	774,172	1,419,467	851,711	22,104,065	874,015	858,805	33,427,536
Insurance services	363,533,421	353,181,473	382,809,894	336,874,329	341,266,845	284,263,949	323,256,033	317,655,792	401,328,164	333,493,285	364,140,673	386,788,174	375,477,490	4,200,536,101
FIs - cash disbursements (auto & manual)	26,955,288	24,844,082	25,057,137	21,690,143	19,685,902	18,231,684	17,908,016	16,633,928	17,813,618	67,900,310	120,314,463	89,725,443	106,409,073	546,213,799
FIs - merchandise & services	79,871,818	58,454,175	63,691,003	70,406,414	67,884,186	62,179,703	68,383,204	69,249,628	85,522,442	75,251,226	77,566,033	84,259,501	83,260,306	866,107,821
Non-FIs - foreign currency, travellers' cheques	31,284,041	29,235,189	22,883,217	11,266,480	6,090,372	4,779,551	4,655,275	5,728,945	6,783,984	7,851,223	9,988,269	11,312,378	16,376,431	136,951,314
Security brokers and dealers	4,667,531	3,333,582	3,617,550	4,439,462	4,829,937	3,716,474	5,044,981	4,786,023	6,455,961	5,428,252	5,953,338	6,092,451	6,530,797	60,228,808
Tax preparation services	69,121	33,452	29,347	40,634	55,775	51,741	83,944	83,944	102,163	60,009	67,896	67,896	115,179	926,811
Tax payments	438,387	420,221	410,352	396,782	432,227	369,070	319,879	223,864	384,004	363,262	444,724	450,492	396,025	4,610,902
Fines, bail and bond payments	8,994,842	7,099,491	8,314,231	8,333,022	8,629,610	6,888,009	7,758,222	7,753,809	8,867,438	7,302,963	8,821,653	6,277,190	6,161,780	92,208,218
Miscellaneous financial	31,485,319	28,670,416	28,562,195	27,436,273	29,691,000	28,152,603	34,743,309	32,063,739	37,529,207	34,627,558	37,039,561	33,253,119	33,095,858	384,864,839
Financial	548,440,772	506,463,064	536,516,413	481,946,558	479,689,425	409,740,331	463,021,821	454,953,844	566,206,448	533,129,799	646,626,042	619,100,659	628,681,744	6,326,076,148

Table 3B Card expenditure statistics (not seasonally adjusted)

Value of credit card transactions

Detailed sector breakdown - services sectors (continued)

£	July 2010	August 2010	September 2010	October 2010	November 2010	December 2010	January 2011	February 2011	March 2011	April 2011	May 2011	June 2011	July 2011	Total (latest 12 months)
Telecoms	80,436,704	69,967,944	69,741,129	67,608,980	71,967,310	83,966,619	64,753,687	59,738,794	66,917,058	62,109,042	69,732,737	64,468,324	62,080,774	813,052,399
Utilities	49,582,320	40,695,976	43,494,054	42,185,001	42,295,739	37,436,396	43,178,668	44,442,927	60,933,589	51,845,816	52,334,187	46,669,090	42,132,621	547,644,064
Contractors (residential & commercial)	77,052,456	71,849,618	79,217,525	80,974,354	87,743,748	71,898,368	74,160,221	74,304,067	84,970,689	66,097,497	75,112,996	75,453,577	72,398,443	914,181,103
Gardening services	4,484,867	3,585,164	3,580,158	3,092,805	3,334,953	3,158,436	2,111,848	2,616,828	4,473,820	6,015,211	6,186,011	5,131,206	4,098,427	47,384,867
Veterinary services	50,915,114	48,978,167	49,401,890	47,478,141	48,784,297	42,838,691	46,324,151	39,943,324	46,093,472	41,357,629	46,013,125	47,054,246	47,032,015	551,299,149
Photocopying & printing	29,277,124	26,970,636	31,982,923	32,121,037	34,385,452	29,162,406	30,153,071	30,174,085	35,225,467	26,867,931	31,185,585	29,341,555	26,841,395	364,411,543
Photographic studios	11,201,277	8,797,121	8,835,095	9,546,730	11,570,766	9,282,050	6,765,023	6,850,365	23,291,215	20,806,738	22,906,258	8,332,673	147,187,086	1,203,052
Beauty & barber shops	74,606,968	67,261,151	69,332,253	67,779,099	73,497,743	86,491,484	61,001,438	60,874,129	55,793,765	52,145,574	56,785,502	73,459,570	72,433,554	796,855,262
Employment agencies	3,984,408	4,379,931	5,298,875	5,014,799	4,900,539	4,618,865	4,837,609	4,793,680	5,373,615	4,377,025	3,928,324	4,686,021	5,044,208	57,253,491
Counselling services	388,442	381,565	459,836	681,823	592,541	493,621	496,014	439,646	543,796	709,650	934,240	614,814	618,605	6,966,151
Legal services	16,183,434	14,374,430	15,889,850	15,681,204	16,204,544	13,710,921	16,738,097	17,104,602	20,512,425	17,057,702	18,330,454	20,391,606	17,777,110	203,772,945
Laundry & cleaning	5,780,739	5,428,235	5,784,009	5,612,471	5,751,935	4,494,073	4,867,140	4,566,232	5,522,789	5,270,399	6,493,703	5,800,048	5,638,451	65,229,485
Funeral services	9,676,771	8,577,102	9,735,871	10,714,308	9,801,055	10,221,192	11,397,973	11,312,784	11,940,040	9,222,750	9,113,326	10,570,430	10,308,521	122,915,352
Medical services	145,738,529	126,860,958	142,554,150	138,432,820	150,415,590	116,981,073	130,439,664	135,991,219	159,994,934	127,053,702	143,876,408	160,201,283	151,540,111	1,684,341,912
Moving & courier services	22,974,379	19,044,155	20,307,722	20,090,706	19,711,689	17,689,027	18,570,233	18,591,607	21,324,502	18,185,788	20,996,818	19,930,057	20,091,555	234,533,859
Repair shops (not auto)	10,841,569	9,776,574	10,119,844	9,550,994	10,942,727	9,713,984	8,273,342	8,111,608	9,349,694	8,352,828	9,457,707	10,520,757	12,650,903	116,820,962
Accounting services	5,280,136	5,173,831	6,351,846	5,741,833	6,134,488	5,936,577	6,857,019	6,191,039	6,748,076	4,743,388	5,193,894	6,616,913	6,142,317	71,831,221
Advertising, consultancy & PR	13,635,276	12,632,137	13,820,434	12,540,056	12,963,498	9,957,572	12,233,072	11,567,057	16,116,569	13,568,629	16,150,699	15,548,090	14,158,818	161,256,631
Computer programming	42,799,486	35,756,281	42,052,558	39,754,434	39,032,204	35,330,678	33,997,966	31,578,864	38,012,013	29,002,362	30,862,088	26,860,221	25,407,265	407,646,934
Farming services	9,049,283	8,868,019	8,295,817	7,891,578	8,106,451	7,576,633	7,249,553	7,029,548	8,134,226	7,556,368	8,121,665	8,268,958	8,174,994	95,273,810
Miscellaneous professional services	148,568,294	141,810,660	169,863,250	144,937,227	147,527,051	122,832,253	142,761,253	140,607,564	160,191,057	132,332,980	148,615,136	155,503,307	149,262,858	1,756,244,596
Engineering services	20,958,711	17,664,780	19,086,461	17,650,208	17,448,053	14,531,789	15,886,061	17,359,280	16,884,615	19,393,943	18,764,189	17,362,284	213,018,800	1,756,244,596
Marina services	12,815,633	11,136,156	8,461,976	7,042,725	6,637,367	7,984,222	6,841,732	6,406,538	10,765,763	10,577,973	11,306,894	11,287,829	11,521,519	109,970,694
Wrecking & salvage yards	880,604	789,844	874,981	806,573	845,954	584,322	731,481	751,259	865,860	781,828	795,382	876,953	810,849	9,515,286
Pest control	821,922	752,527	769,876	664,718	732,674	552,659	527,733	527,733	691,136	584,989	1,230,387	729,570	788,290	8,586,804
Educational establishments	90,265,001	111,206,090	253,210,120	166,293,319	92,122,670	81,234,642	152,190,033	97,639,559	97,284,187	87,195,825	107,717,387	92,696,680	94,142,444	1,432,932,956
Child care services	2,017,377	1,783,996	2,141,796	2,083,813	2,267,144	2,003,565	2,320,623	2,188,090	2,352,158	1,455,043	1,704,728	2,573,780	2,730,564	25,605,300
Social, political & religious organisations	57,190,970	65,431,595	65,209,207	65,441,264	66,132,145	66,459,585	66,057,594	58,607,416	89,490,074	68,202,325	61,703,647	61,229,522	68,346,271	802,310,645
Government services	173,058,174	155,654,799	160,642,516	150,000,167	146,262,988	135,726,783	147,063,736	152,776,759	177,681,629	156,485,540	187,632,847	172,848,654	164,310,168	1,907,086,566
Miscellaneous services	53,220,894	45,852,806	49,528,820	48,193,036	53,765,453	53,824,385	46,064,543	45,072,132	60,230,172	51,391,057	53,288,717	53,527,477	51,867,075	612,605,673
Commercial equipment	114,965,285	97,490,202	110,226,707	102,895,980	108,105,797	90,374,581	100,059,526	98,399,407	115,776,599	92,641,856	104,339,670	89,753,096	84,816,773	1,194,880,194
Other services	1,338,652,147	1,238,932,450	1,476,271,549	1,328,502,203	1,299,984,545	1,177,067,452	1,264,944,616	1,196,558,142	1,417,587,526	1,190,880,060	1,331,444,465	1,299,710,496	1,260,732,234	15,482,615,738
Total services	5,342,920,302	4,893,614,847	5,087,145,758	4,742,305,976	4,731,927,331	4,161,081,324	4,715,512,744	4,457,241,170	5,187,515,032	4,626,840,873	5,399,305,029	5,152,363,692	5,143,548,334	58,298,402,110
TOTAL	11,167,884,404	10,522,379,924	10,583,386,710	10,417,089,372	11,404,381,876	11,642,884,074	9,919,028,672	9,272,815,469	10,793,735,064	10,218,142,387	11,287,308,560	11,322,378,644	11,364,422,845	128,747,953,597

Table 3C Card expenditure statistics (not seasonally adjusted)

Number of debit card transactions

Detailed sector breakdown - retail sectors

	July 2010	August 2010	September 2010	October 2010	November 2010	December 2010	January 2011	February 2011	March 2011	April 2011	May 2011	June 2011	July 2011	Total (latest 12 months)
Supermarkets	177,168,790	179,358,015	174,259,048	180,167,353	196,836,415	196,519,459	179,518,942	174,785,146	197,490,439	189,924,812	208,915,244	195,873,879	194,796,783	2,268,445,535
Bakers & dairies	290,687	302,249	296,630	322,608	337,756	351,374	307,536	320,676	371,284	414,642	486,135	641,554	747,550	4,899,994
Sweet stores	413,542	465,151	436,306	485,456	713,980	1,428,796	379,365	531,046	649,335	837,234	736,853	676,833	593,516	7,933,871
Miscellaneous foodstores	9,530,120	10,008,359	9,426,311	9,426,311	10,203,165	9,705,176	8,203,828	8,350,310	9,460,268	9,977,792	10,762,886	10,723,043	10,422,422	116,532,931
Off-licences	2,713,866	2,782,260	2,583,174	2,854,593	2,859,565	3,031,441	2,623,463	2,672,134	2,938,287	3,066,155	3,118,072	3,005,982	3,114,124	34,649,250
Food & drink	190,117,005	192,916,034	186,864,509	193,256,321	210,950,881	211,036,246	191,033,134	186,659,312	210,909,613	204,220,635	224,019,190	210,921,291	209,674,415	2,432,461,581
Department stores	14,663,526	13,988,761	12,830,513	13,909,328	17,469,838	25,046,026	13,647,685	11,361,548	13,173,900	13,136,006	14,492,468	14,217,475	14,554,905	177,828,453
Discount stores	6,558,448	7,011,948	6,705,960	7,180,732	8,704,160	11,092,634	6,449,408	6,097,105	6,466,208	6,974,085	7,120,532	7,374,201	7,652,655	88,829,628
Catalogues	2,776,507	2,757,526	2,965,482	2,960,224	4,202,006	4,602,513	3,279,617	2,798,560	2,968,996	2,598,680	2,962,420	2,780,159	2,705,868	37,582,051
Miscellaneous mixed	8,360,504	8,562,943	8,459,281	8,534,830	9,905,919	11,216,051	8,021,129	8,040,952	9,272,692	9,797,282	11,520,838	10,891,827	10,947,779	115,171,533
Mixed business	32,358,965	32,321,178	30,961,236	32,585,114	40,281,923	51,957,224	31,397,839	28,298,165	31,881,796	32,506,063	36,096,258	35,263,662	35,861,207	419,411,665
Men's clothing	1,085,540	1,101,000	902,039	920,777	1,079,517	1,688,880	979,541	822,032	859,128	901,815	958,829	1,052,247	1,132,158	12,397,963
Women's clothing	6,958,365	6,408,101	5,657,943	5,884,884	6,569,103	8,625,449	5,252,541	4,676,578	5,452,504	6,494,933	6,800,005	7,636,529	8,108,323	77,566,893
Family clothing	24,208,977	22,790,295	21,035,591	22,483,324	25,055,830	33,475,898	20,085,726	17,948,465	21,253,675	22,871,648	24,522,807	23,620,124	26,015,757	281,159,140
Miscellaneous clothing	2,208,182	2,081,282	2,534,504	2,486,220	2,679,151	3,079,507	1,637,305	1,671,489	2,017,085	2,791,527	3,147,737	3,263,803	3,004,346	30,393,956
Shoe shops	3,541,426	3,776,364	3,141,855	2,988,409	3,147,768	3,919,042	2,954,958	2,259,461	2,513,265	3,298,020	3,295,805	3,716,348	4,037,659	39,048,954
Clothing	38,002,490	36,157,042	33,271,932	34,763,614	38,531,369	50,788,776	30,910,071	27,378,025	32,095,657	36,357,943	38,725,183	39,289,051	42,298,243	440,566,907
Furniture stores	2,675,896	2,940,500	2,688,662	2,963,214	3,333,839	3,659,043	3,179,633	2,677,009	2,915,127	2,694,961	2,970,010	2,922,590	3,023,819	35,968,407
Household appliance stores	4,507,163	4,807,234	4,780,862	4,938,533	5,281,694	6,243,407	4,768,154	4,587,726	5,247,272	5,038,053	5,270,555	5,066,531	5,328,987	61,359,008
Electronic stores	2,125,151	2,341,601	2,214,965	2,374,473	2,795,310	4,021,995	2,732,696	2,137,160	2,218,158	1,992,362	2,287,359	2,195,370	2,230,767	29,542,216
DIY stores	14,879,196	15,979,047	14,592,059	15,152,094	15,883,826	14,867,860	13,384,389	13,699,610	16,840,352	19,065,125	18,530,504	17,262,593	17,037,784	192,295,243
Floor covering stores	266,980	310,889	291,556	310,173	355,438	241,750	277,491	272,813	301,394	258,813	298,283	283,771	288,556	3,490,927
Garden centres	2,905,876	2,633,907	2,522,576	2,378,862	2,851,157	3,331,851	1,824,890	2,086,148	3,559,025	5,214,801	5,074,393	3,901,354	3,293,434	38,672,398
Miscellaneous household	1,153,363	1,351,154	1,267,337	1,205,870	1,287,393	1,051,423	1,069,217	980,201	1,083,485	1,006,571	1,085,961	1,228,505	1,404,714	14,021,834
Household	28,513,625	30,364,332	28,214,303	29,466,933	31,788,657	33,417,329	27,236,470	26,440,667	32,164,813	35,270,686	35,517,065	32,860,714	32,608,064	375,350,033
Books, newspapers & magazines	5,760,812	6,232,912	6,260,985	6,405,000	7,238,296	9,979,856	5,804,158	5,650,172	6,038,992	5,741,010	6,382,207	6,312,222	6,082,759	78,128,569
Record shops	1,958,948	1,969,928	1,856,798	2,016,997	3,242,132	6,181,407	2,075,108	1,808,015	1,889,186	1,610,861	1,786,647	1,739,438	1,512,501	27,689,018
Music shops	4,737,693	5,174,964	5,077,987	5,300,280	6,223,527	6,393,616	6,643,606	7,432,427	5,883,209	6,330,953	5,883,209	6,318,563	5,868,471	72,343,333
Hobbies, toys & games	1,938,751	2,068,811	2,002,549	2,437,453	3,771,623	5,675,818	2,039,255	1,754,269	1,928,410	1,640,481	1,648,346	1,535,672	1,476,170	27,978,857
Photographic	485,467	507,169	506,198	444,047	518,974	683,360	409,287	358,168	412,878	396,096	458,271	535,733	508,041	5,738,222
Handicraft	164,337	176,884	173,899	187,098	206,789	174,459	168,965	166,747	182,046	170,163	154,942	171,378	169,073	2,102,443
Sports shops	7,430,986	8,060,543	6,900,970	6,876,163	7,396,015	9,595,935	6,537,425	5,775,703	6,720,490	7,447,461	7,749,499	7,742,516	8,291,729	89,094,449
Jewellers	1,297,501	1,303,879	1,196,399	1,200,478	1,582,738	2,978,501	1,178,754	1,324,680	1,383,683	1,330,279	1,411,675	1,406,925	1,359,849	17,657,840
Computer software	671,975	737,296	714,996	794,256	964,117	964,117	749,181	617,438	664,382	700,388	597,666	655,186	623,298	8,530,143
Medical goods	28,944	26,060	26,454	26,700	28,994	24,311	25,372	27,095	30,965	27,071	29,742	31,846	31,131	335,741
Chemists	16,592,557	17,030,945	16,160,208	16,089,431	19,044,680	23,687,797	15,880,389	15,405,979	18,060,785	15,496,921	18,061,045	17,289,749	16,342,746	208,550,675
Optical goods	911,341	912,664	846,125	884,199	651,892	855,493	879,009	986,290	876,396	966,822	1,055,770	1,069,822	1,032,495	10,819,882
Cosmetic stores	1,189,228	1,229,809	1,193,223	1,241,028	1,659,744	2,757,516	1,046,787	1,053,501	1,166,712	1,162,838	1,187,671	1,269,954	1,211,087	16,179,870
Tobacconists	21,209	22,159	21,312	21,999	26,853	32,739	20,982	23,918	30,722	30,740	38,386	35,054	37,421	342,285
Florists	746,440	675,153	701,137	667,416	682,091	1,000,292	635,732	971,716	1,023,142	1,112,273	751,219	767,434	749,638	9,737,243
Artists' supplies	532,720	608,428	574,356	635,065	785,239	747,036	541,778	567,419	653,721	561,992	643,063	631,058	624,235	7,573,390
Antiques, art & stamps/coins	233,016	275,954	229,861	256,281	275,729	290,316	210,195	209,449	231,765	218,095	240,798	240,872	256,558	2,935,873
Pawn shops	14,690	13,606	13,959	15,262	16,176	23,617	15,834	16,017	17,257	16,233	16,737	17,741	18,957	201,396
Gift shops	3,982,931	4,227,740	3,751,318	4,054,756	5,418,208	8,976,024	3,752,117	4,446,882	4,398,744	4,055,510	4,778,904	4,228,278	4,228,278	56,319,466
Secondhand shops	38,652	41,790	41,885	42,838	46,325	45,530	35,680	37,317	42,797	40,766	51,915	49,357	50,733	526,933
Luggage & leather goods	208,514	220,467	186,744	181,385	214,461	292,383	195,866	154,842	173,558	176,124	185,729	202,151	216,712	2,400,422
Pet shops	2,162,498	2,279,093	2,162,043	2,273,182	2,296,912	2,416,364	2,163,647	2,070,472	2,288,328	2,408,297	2,193,600	2,300,991	2,436,438	27,289,367
Religious goods	1,704	3,117	1,969	1,511	1,776	1,670	1,493	1,551	1,734	1,560	1,554	1,863	1,979	21,777
Direct sales	4,810,200	4,740,879	4,824,888	4,832,496	5,252,774	5,283,437	5,297,948	4,945,568	5,859,763	5,284,452	5,593,962	5,564,558	5,333,249	62,813,974
Miscellaneous & speciality shops	2,539,116	3,042,215	2,782,078	2,867,421	3,507,821	3,925,770	2,717,733	2,567,371	2,840,312	2,673,320	2,909,013	3,029,784	2,997,137	35,859,975
Other retail	58,760,230	61,582,447	58,234,943	59,632,351	71,116,332	92,783,763	59,002,785	56,529,046	63,357,615	58,905,371	64,881,086	63,684,719	61,460,685	771,171,143
Automotive Fuels	43,963,697	45,084,300	43,568,075	44,852,813	47,294,133	42,064,866	43,597,332	42,566,687	49,032,871	46,159,881	51,150,399	48,726,233	48,867,505	552,965,095
Total retail sales	391,716,032	398,425,333	381,114,998	394,557,146	439,963,295	482,048,204	383,177,631	367,871,902	419,442,365	413,420,579	450,389,181	430,745,670	430,770,119	4,991,926,423

Table 3C Card expenditure statistics (not seasonally adjusted)

Number of debit card transactions

Detailed sector breakdown - services sectors

	July 2010	August 2010	September 2010	October 2010	November 2010	December 2010	January 2011	February 2011	March 2011	April 2011	May 2011	June 2011	July 2011	Total (latest 12 months)
Auto rental	464,969	490,170	476,875	459,064	459,017	429,751	441,378	442,088	522,267	520,508	543,761	617,456	646,476	6,048,811
Auto parts & accessories	1,723,883	1,701,872	1,660,610	1,649,275	1,752,246	1,617,155	1,714,527	1,683,096	1,994,149	1,771,869	1,861,814	1,879,257	1,879,820	21,165,690
Auto services	2,707,516	2,719,381	2,711,173	2,782,838	2,917,879	2,891,715	2,666,719	2,655,532	2,997,851	2,779,412	3,152,951	3,241,360	3,286,408	34,803,219
Auto repair shops	1,621,770	1,576,987	1,646,585	1,594,379	1,617,603	1,457,690	1,646,147	1,666,132	1,987,604	1,704,365	1,800,697	1,857,489	1,827,993	20,383,671
Service stations	9,642,760	9,887,536	9,438,032	9,785,297	10,756,888	11,418,047	13,183,611	12,743,294	14,431,363	13,924,696	15,014,963	14,387,419	14,611,679	149,582,825
Vehicle sales	1,210,096	1,199,599	1,186,989	1,096,622	1,087,487	919,220	1,093,360	1,111,545	1,389,509	1,259,097	1,337,928	1,358,112	1,340,241	14,379,709
Vehicle Sales & Services	17,370,994	17,575,545	17,120,264	17,367,475	18,591,120	18,733,578	20,765,727	20,281,702	23,322,743	21,959,947	23,712,114	23,341,093	23,592,617	246,363,925
Restaurants	32,813,593	35,075,281	31,910,938	35,254,448	35,960,594	34,348,613	33,969,770	34,889,801	38,578,583	38,137,850	41,637,372	39,885,102	40,930,822	440,579,174
Public houses	5,731,273	6,346,509	5,470,940	5,710,049	6,078,969	5,734,686	5,622,815	5,736,442	6,431,097	7,001,140	7,638,442	6,724,874	6,873,569	75,369,532
Catering services	532,349	502,313	549,544	559,239	587,654	508,086	497,531	523,075	614,255	510,273	579,154	621,646	604,935	6,657,705
Video stores	246,931	240,215	221,126	195,233	196,187	215,269	206,375	188,074	282,583	364,105	374,824	181,240	181,240	3,059,842
Cinema, theatre & dance	4,717,273	4,952,443	3,165,787	3,794,246	4,685,570	3,511,779	4,184,730	4,413,738	3,507,785	3,165,554	4,700,499	4,231,110	5,203,705	49,516,946
Concerts & entertainers	40,081	49,744	34,791	44,798	46,254	54,506	46,388	52,914	55,088	57,837	60,367	69,220	70,093	642,000
Tourist attractions	1,197,867	1,559,724	899,469	837,958	606,625	358,235	338,700	459,898	488,431	858,155	776,745	840,720	954,701	8,979,361
Amusement parks	104,143	189,109	78,938	80,818	54,705	40,012	44,481	67,292	61,353	123,250	88,370	98,424	114,307	1,041,059
Aquariums	38,489	46,754	29,509	30,362	26,519	19,626	27,872	32,703	31,126	39,067	39,825	39,488	42,367	405,218
Sports & games establishments	2,445,667	2,624,674	2,318,000	2,279,503	2,280,519	2,219,113	2,526,007	2,473,824	2,771,289	2,392,550	2,300,162	2,770,255	2,768,584	29,724,480
Professional sports clubs	138,429	193,705	159,416	148,533	177,890	178,989	149,757	158,323	163,333	169,403	164,466	198,865	213,499	2,076,179
Gambling	12,073,616	13,092,923	12,400,990	13,325,477	14,829,646	13,923,967	14,609,428	13,881,509	16,836,188	14,865,497	17,316,440	15,883,902	16,547,722	177,513,689
Personal services	282,459	276,431	260,048	253,915	255,609	257,925	249,483	252,873	285,672	286,727	465,789	430,599	437,814	3,692,415
Miscellaneous entertainment	696,396	1,022,558	606,653	623,606	478,289	356,223	435,959	496,036	549,506	773,265	708,847	955,702	1,016,029	8,022,675
Entertainment	61,058,566	66,172,383	58,106,149	63,138,185	66,265,030	61,727,029	62,909,296	63,626,504	70,656,874	68,723,618	76,871,089	73,124,731	75,959,387	807,280,275
Hotels	3,085,849	3,549,511	3,040,523	3,008,690	2,796,212	2,575,767	2,607,666	2,720,543	2,709,675	3,307,862	3,471,234	3,811,050	4,183,244	37,781,977
Airlines	767,711	770,737	737,771	632,556	583,350	454,976	693,246	404,758	391,322	314,675	372,865	443,440	456,381	6,256,077
Airport terminals	35,351	39,930	36,012	28,317	22,650	19,643	23,030	23,129	32,302	36,744	39,708	46,503	48,036	396,004
Railways	12,200,985	12,358,655	13,098,462	14,114,046	14,750,047	12,974,496	12,519,936	12,598,320	14,933,660	13,259,309	15,087,274	16,798,725	16,160,949	168,653,879
Buses	834,288	856,931	891,192	884,491	949,896	797,034	853,166	819,420	931,102	871,775	958,945	958,298	978,680	10,750,930
Sea travel	146,384	170,081	121,521	107,818	93,673	93,926	97,263	100,752	114,272	132,643	133,174	150,084	165,529	1,480,736
Travel agents	1,672,438	1,597,181	1,414,155	1,282,841	1,118,282	947,862	1,817,106	1,548,463	1,793,432	1,585,962	1,724,047	2,058,012	2,052,660	18,940,003
Timeshares	568	782	399	343	284	216	339	284	1,205	194	120	135	113	4,414
Camping grounds	667,101	853,358	460,653	349,810	164,677	103,806	245,536	299,629	407,174	633,122	627,834	622,187	727,843	5,495,629
Miscellaneous travel	1,048,779	1,109,263	1,046,485	1,047,061	1,029,859	925,830	714,658	713,182	827,005	795,522	979,233	1,092,827	1,135,544	11,416,469
Travel	17,373,605	17,756,918	17,806,650	18,447,283	18,712,718	16,317,789	16,964,280	16,507,937	19,431,474	17,629,946	19,923,200	22,170,211	21,725,735	223,394,141
Telegraph services / Wire transfer money order	37,869	38,603	37,643	37,228	40,116	42,636	34,339	33,636	38,861	38,030	37,949	43,817	44,698	467,556
Insurance services	3,136,964	2,974,075	3,058,031	2,787,557	2,689,674	2,344,442	2,686,712	2,673,674	3,284,119	2,922,307	3,256,472	3,588,429	3,577,885	35,843,377
Fls - cash disbursements (auto & manual)	176,295	169,788	159,429	120,428	104,628	111,801	90,152	103,958	122,110	4,791	5,915	2,751	2,985	998,738
Fls - merchandise & services	7,003,876	6,818,280	6,915,007	7,066,506	6,968,354	7,151,825	7,208,799	6,507,913	7,808,351	6,949,703	7,404,481	7,572,835	7,772,803	86,144,857
Non-Fls - foreign currency, travellers' cheques	290,105	283,150	246,131	186,272	141,618	150,843	131,213	156,313	180,433	198,398	231,389	259,761	304,169	2,469,690
Security brokers and dealers	73,806	63,762	60,420	70,208	78,144	60,033	77,672	78,575	114,149	106,757	70,445	69,185	65,879	915,229
Tax preparation services	272	176	135	117	154	126	331	309	371	524	443	692	690	4,068
Tax payments	121,923	108,978	103,624	105,647	116,346	118,024	157,279	128,903	148,746	140,641	153,941	151,558	152,498	1,586,185
Fines, bail and bond payments	274,870	253,571	279,833	294,637	287,441	253,590	262,877	265,407	314,935	363,159	436,691	495,563	514,258	4,021,962
Miscellaneous financial	415,492	428,178	411,666	414,627	440,520	431,027	488,675	482,171	565,875	561,341	593,163	594,438	598,629	6,010,310
Financial	11,531,472	11,138,561	11,271,919	11,083,227	10,866,995	10,664,347	11,138,049	10,430,859	12,577,950	11,285,651	12,190,889	12,779,029	13,034,494	138,461,970

Table 3C Card expenditure statistics (not seasonally adjusted)

Number of debit card transactions

Detailed sector breakdown - services sectors (continued)

	July 2010	August 2010	September 2010	October 2010	November 2010	December 2010	January 2011	February 2011	March 2011	April 2011	May 2011	June 2011	July 2011	Total (latest 12 months)
Telecoms	9,774,549	9,663,293	9,576,766	9,535,164	9,776,545	10,868,232	9,560,726	8,927,584	9,939,854	10,678,214	11,429,589	11,658,789	11,691,495	123,306,251
Utilities	1,612,282	1,641,810	1,685,680	1,701,375	1,748,683	1,602,139	1,689,565	1,583,060	1,978,020	1,752,460	1,889,688	2,079,856	2,013,340	21,365,676
Contractors (residential & commercial)	530,932	529,377	561,277	580,235	608,029	509,564	529,985	534,719	593,362	439,777	481,076	500,531	487,903	6,355,835
Gardening services	99,203	93,295	87,935	88,013	101,713	117,156	67,219	72,614	106,122	138,937	146,944	124,340	105,877	1,250,165
Veterinary services	1,573,152	1,571,259	1,555,853	1,523,236	1,507,384	1,328,402	1,406,772	1,282,093	1,465,148	1,322,600	1,460,309	1,498,400	1,538,222	17,459,678
Photocopying & printing	337,314	352,202	389,823	390,117	469,276	425,235	385,347	362,725	433,705	350,424	426,550	438,635	400,009	4,824,048
Photographic studios	368,302	305,919	309,218	366,426	424,654	357,594	246,494	256,787	1,206,026	357,443	1,290,945	337,443	378,363	6,619,603
Beauty & barber shops	4,296,630	4,124,710	4,020,322	4,011,630	4,164,566	5,017,617	3,764,081	3,753,940	3,392,034	3,290,463	3,460,146	4,708,830	4,609,471	48,317,810
Employment agencies	20,348	22,642	22,965	22,656	21,761	15,426	24,391	22,853	22,569	9,091	10,062	12,613	11,941	218,970
Counselling services	44,089	45,458	46,389	46,639	45,458	50,063	49,901	46,173	49,075	62,644	76,224	82,887	80,015	685,732
Legal services	102,988	100,495	106,748	105,160	113,297	90,438	110,134	109,676	135,192	109,173	123,443	140,546	135,918	1,380,220
Laundry & cleaning	464,395	454,440	475,183	478,923	486,368	373,818	402,558	386,201	449,285	408,488	481,317	490,846	468,190	5,355,617
Funeral services	15,327	14,343	15,769	16,615	17,682	16,497	18,342	18,586	19,396	16,361	16,916	19,585	18,616	208,709
Medical services	2,230,187	2,150,692	2,370,732	2,270,484	2,452,101	1,902,832	2,272,760	2,326,310	2,686,774	2,155,261	2,467,858	2,699,901	2,516,750	28,272,455
Moving & courier services	211,623	213,855	229,358	219,844	240,692	229,555	223,013	217,485	253,182	227,048	263,541	300,986	288,166	2,906,725
Repair shops (not auto)	176,045	165,872	141,810	129,835	135,505	115,919	109,697	99,316	112,421	84,045	96,457	103,440	126,373	1,420,690
Accounting services	181,467	192,949	207,879	204,259	224,563	206,426	221,318	196,520	228,307	198,361	242,652	394,175	378,400	2,895,809
Advertising, consultancy & PR	258,851	261,292	262,696	252,397	260,621	187,745	237,843	228,987	260,126	221,467	262,848	258,099	246,375	2,940,496
Computer programming	799,483	855,297	883,372	867,919	921,370	862,652	1,059,506	1,031,464	1,206,402	873,294	950,986	980,518	958,590	11,451,370
Farming services	139,880	143,331	139,064	141,368	149,533	143,531	132,383	126,807	145,645	145,577	160,959	163,066	158,184	1,749,448
Miscellaneous professional services	3,147,626	3,082,549	3,188,383	3,182,174	3,373,283	3,024,640	2,749,320	2,599,486	2,962,900	2,540,385	2,917,827	3,193,011	3,107,559	35,921,517
Engineering services	52,993	52,577	54,996	53,227	53,511	42,857	49,189	55,312	68,565	60,231	63,268	78,100	75,526	707,359
Marina services	98,698	109,572	70,654	54,659	52,251	49,022	43,714	44,480	63,412	93,341	92,265	93,043	100,517	866,930
Wrecking & salvage yards	9,164	8,317	8,137	7,904	8,130	6,031	7,191	7,309	8,538	8,206	8,767	9,086	8,880	96,496
Pest control	3,713	3,700	4,048	3,197	2,798	1,951	2,352	2,229	2,824	4,008	4,507	5,530	39,913	39,913
Educational establishments	712,426	679,757	1,273,744	1,517,899	1,400,713	948,787	1,375,923	1,239,689	1,506,342	966,237	1,470,506	1,215,992	987,664	14,583,253
Child care services	78,072	91,458	79,381	92,281	91,344	77,621	104,691	97,599	97,599	76,983	97,102	106,208	106,037	1,122,357
Social, political & religious organisations	1,813,108	2,138,469	2,052,779	1,945,267	2,192,574	1,681,622	1,468,612	1,573,617	2,757,117	2,074,022	2,274,308	2,302,058	2,322,389	24,782,834
Government services	4,872,406	5,003,479	5,075,774	4,889,346	4,873,540	4,207,330	4,847,329	4,802,984	5,442,790	5,082,368	5,900,379	6,526,916	6,379,627	63,031,862
Miscellaneous services	4,695,924	4,762,760	4,956,029	4,792,701	5,586,335	6,420,097	4,615,979	4,646,680	5,718,296	5,023,401	5,615,860	5,552,837	5,235,490	62,926,465
Commercial equipment	1,203,917	1,352,501	1,616,513	1,499,574	1,542,240	1,459,787	1,484,217	1,357,574	1,491,209	1,223,532	1,451,075	1,482,731	1,409,627	17,370,580
Other services	39,925,094	40,187,670	41,469,277	40,990,524	43,051,125	42,340,787	39,257,513	38,017,951	44,802,182	40,774,949	45,633,875	47,557,975	46,351,044	510,434,872
Total services	150,345,580	156,380,588	148,814,782	154,035,384	160,283,200	152,359,297	153,642,531	151,585,496	173,500,898	163,681,973	181,802,401	182,784,089	184,846,521	1,963,717,160
TOTAL	542,061,612	554,805,921	529,929,780	548,592,530	600,246,495	634,407,501	536,820,162	519,457,398	592,943,263	577,102,552	632,191,582	613,529,759	615,616,640	6,955,643,583

Table 3D Card expenditure statistics (not seasonally adjusted)

Value of debit card transactions

Detailed sector breakdown - retail sectors

£	July 2010	August 2010	September 2010	October 2010	November 2010	December 2010	January 2011	February 2011	March 2011	April 2011	May 2011	June 2011	July 2011	Total (latest 12 months)
Supermarkets	4,936,803,640	5,051,831,693	4,811,720,619	5,014,277,229	5,639,057,847	6,379,061,638	4,979,913,209	4,743,040,655	5,271,645,702	5,291,473,518	5,752,808,679	5,300,576,442	5,328,972,723	63,564,379,954
Bakers & dairies	4,696,023	4,834,310	4,719,310	4,890,020	5,221,835	5,746,339	4,465,006	4,582,734	5,424,516	5,799,108	6,174,111	7,445,343	8,129,401	67,432,033
Sweet stores	5,847,759	6,321,178	6,066,160	6,973,485	11,661,555	23,828,246	5,578,067	7,210,415	9,277,413	12,663,126	9,903,597	9,166,434	8,578,268	117,227,944
Miscellaneous foodstores	175,192,385	182,680,815	169,637,215	170,023,097	218,414,613	211,014,800	151,185,707	150,614,177	170,530,162	182,674,770	193,404,314	195,376,297	193,207,169	2,158,763,136
Off-licences	55,223,844	55,221,819	54,194,796	60,513,662	64,724,886	85,385,754	55,508,979	56,130,426	63,100,975	67,115,235	68,317,315	71,661,143	74,065,364	775,940,354
Food & drink	5,177,763,651	5,300,889,815	5,046,336,100	5,256,677,493	5,909,080,736	6,705,036,777	5,196,650,968	4,961,578,407	5,519,978,768	5,559,725,757	6,030,608,016	5,584,225,659	5,612,952,925	66,683,743,421
Department stores	477,415,306	465,061,401	444,049,063	490,693,526	620,278,345	915,099,312	450,125,948	379,452,233	450,186,140	452,070,001	503,889,153	502,014,876	496,531,187	6,169,451,185
Discount stores	263,020,042	284,276,147	272,550,292	298,937,181	385,113,811	473,932,531	246,958,345	229,809,597	235,313,879	284,787,058	293,878,191	302,739,138	306,390,330	3,614,686,500
Catalogues	114,194,801	117,147,005	119,454,664	119,353,792	151,941,102	150,659,189	127,151,392	114,988,869	122,599,525	107,981,128	126,758,517	118,872,743	115,540,514	1,492,448,440
Miscellaneous mixed	222,821,319	234,154,474	236,821,497	239,490,122	281,808,989	327,067,549	209,495,819	212,722,017	246,280,400	270,042,596	321,102,617	307,146,276	311,012,499	3,197,144,855
Mixed business	1,077,451,468	1,100,639,027	1,072,875,516	1,148,474,621	1,439,142,247	1,866,758,581	1,033,731,504	936,972,716	1,054,379,944	1,114,880,783	1,245,628,478	1,230,773,033	1,229,474,530	14,473,730,980
Men's clothing	57,644,324	58,762,779	50,731,497	54,448,114	62,656,528	91,791,171	52,806,360	44,109,240	49,227,469	51,080,028	57,064,341	61,382,761	62,782,489	696,842,777
Women's clothing	214,166,402	204,668,429	199,201,634	209,915,550	231,622,629	286,642,305	174,303,349	162,653,898	193,553,282	216,142,459	233,109,785	255,814,882	252,961,047	2,620,589,249
Family clothing	688,599,896	689,262,336	678,449,678	730,073,576	822,418,177	1,106,940,069	585,371,683	555,423,572	669,715,370	726,102,752	779,323,358	748,306,291	789,674,292	8,881,661,154
Miscellaneous clothing	54,308,825	54,475,284	69,015,790	68,963,860	73,547,940	78,455,230	43,230,604	44,374,777	55,039,618	66,696,608	75,342,754	81,537,797	73,556,240	784,236,502
Shoe shops	110,904,906	132,761,414	118,999,638	124,650,334	128,800,329	157,328,730	104,476,581	82,828,257	95,796,483	119,219,049	120,884,773	127,680,435	131,555,451	1,444,981,474
Clothing	1,125,624,353	1,139,930,242	1,116,398,237	1,188,051,434	1,319,045,603	1,721,157,505	960,188,577	889,389,744	1,063,332,222	1,179,840,896	1,265,725,011	1,274,722,166	1,310,529,519	14,428,311,156
Furniture stores	269,866,881	290,897,844	277,541,474	305,687,834	331,971,048	307,688,255	312,380,900	264,896,713	331,971,048	264,896,713	300,640,391	290,329,619	298,756,131	3,543,370,682
Household appliance stores	152,640,552	173,257,587	172,710,798	183,175,845	205,510,508	234,476,503	189,213,713	178,276,396	206,397,135	188,113,434	195,044,054	193,086,210	198,433,894	2,317,696,077
Electronic stores	223,304,815	255,399,612	234,073,363	260,032,895	314,470,417	474,732,589	288,753,290	213,077,760	230,903,089	212,971,077	249,694,906	238,029,070	246,255,012	3,219,693,080
DIY stores	643,301,503	700,422,837	655,754,532	680,300,577	689,161,759	604,538,946	613,437,162	597,231,718	741,967,828	825,144,998	812,105,971	810,482,324	886,562,331	7,856,532,331
Floor covering stores	58,056,482	65,580,453	64,086,390	68,671,131	80,665,976	57,444,151	60,493,820	57,722,880	67,462,685	59,991,613	68,361,976	67,664,871	68,108,935	786,254,881
Garden centres	96,734,878	85,173,826	77,249,643	77,959,137	88,847,202	108,039,557	54,897,175	64,977,653	120,818,392	186,611,070	176,919,176	132,306,451	111,342,714	1,285,141,996
Miscellaneous household	76,264,971	88,983,113	84,604,716	82,201,150	88,245,496	69,591,782	67,390,277	61,524,131	69,835,342	65,980,341	72,628,635	81,927,415	90,074,935	922,609,332
Household	1,520,170,082	1,659,717,272	1,566,020,916	1,658,028,569	1,798,872,406	1,856,511,783	1,586,566,337	1,437,707,251	1,733,170,675	1,816,505,483	1,888,074,136	1,816,669,607	1,823,453,945	20,641,298,380
Books, newspapers & magazines	96,831,774	105,138,860	121,689,288	123,013,009	128,427,623	187,935,107	101,169,554	94,908,629	102,068,195	96,888,496	107,305,157	107,295,840	105,273,702	1,381,113,460
Record shops	38,570,175	38,716,798	37,080,246	42,056,803	73,875,546	153,557,904	41,205,914	35,560,241	37,995,456	32,904,660	37,344,501	34,808,384	30,967,620	596,074,073
Music shops	39,324,772	41,754,977	42,790,621	49,742,223	49,742,223	56,033,381	50,937,222	43,672,219	47,269,555	42,604,260	50,785,544	48,718,172	49,136,671	564,980,928
Hobbies, toys & games	69,605,468	71,355,195	76,556,698	96,157,385	171,076,811	237,287,805	71,548,623	58,788,773	71,648,493	60,767,574	60,114,947	56,851,138	51,343,240	1,083,496,682
Photographic	28,303,327	28,377,941	27,662,653	26,294,850	31,209,280	44,464,362	24,379,885	21,628,979	27,120,788	26,759,154	27,783,745	33,889,306	33,708,430	353,279,373
Handicraft	8,577,003	8,909,999	9,293,177	10,507,876	8,780,429	9,509,634	8,849,574	8,470,977	9,589,599	8,574,859	9,809,671	9,868,899	11,354,585	98,689,899
Sports shops	295,095,042	319,864,289	272,972,098	272,777,133	300,301,952	389,236,472	246,523,487	224,830,353	269,342,644	301,572,332	319,872,581	322,185,499	341,468,550	3,580,947,390
Jewellers	113,841,641	114,786,451	103,269,382	104,303,526	133,739,758	268,175,526	99,178,459	112,233,519	118,897,712	116,797,022	128,960,289	132,818,937	131,971,760	1,565,132,341
Computer software	91,193,838	113,661,426	109,837,912	104,535,629	122,058,405	165,476,664	118,406,786	96,432,137	108,905,792	93,767,053	113,779,067	103,236,543	98,321,745	1,348,419,159
Medical goods	5,318,663	5,291,423	5,579,511	5,498,412	5,676,982	4,291,898	4,491,441	5,451,128	6,320,556	5,249,880	5,877,879	6,536,541	6,124,349	66,390,000
Chemists	255,451,907	258,218,669	239,262,304	251,019,226	324,620,651	464,926,668	231,863,064	229,756,491	268,264,778	237,630,143	278,168,443	262,199,136	251,945,015	3,297,874,588
Optical goods	86,918,873	86,815,116	81,840,992	79,562,782	82,661,986	56,672,407	81,783,990	85,834,306	84,390,474	93,470,539	101,417,305	96,300,709	93,680,572	1,030,430,269
Cosmetic stores	44,627,111	44,532,593	45,270,114	49,590,829	66,744,134	105,682,785	37,304,823	37,871,511	44,611,127	43,704,001	40,047,589	38,673,594	37,287,565	591,320,665
Tobacconists	783,554	825,063	755,631	716,999	833,572	1,112,592	683,265	732,060	888,811	979,197	1,143,288	1,206,529	1,233,650	11,110,657
Florists	28,327,128	26,587,335	27,801,831	25,456,586	26,140,417	36,772,773	24,327,705	36,935,689	38,444,246	41,192,856	31,416,750	31,835,512	31,020,389	377,932,089
Artists' supplies	16,729,631	18,626,082	18,428,158	19,606,045	24,005,824	22,567,748	16,424,866	16,853,584	19,971,955	16,779,218	19,390,935	19,236,472	19,282,386	231,173,273
Antiques, art & stamps/coins	25,573,028	25,720,090	27,471,000	29,832,026	31,541,867	32,003,787	23,724,874	24,001,096	28,721,477	22,095,200	25,704,849	27,726,876	27,520,831	326,063,973
Pawn shops	1,824,415	1,521,579	1,600,019	2,055,332	1,939,822	2,405,203	1,940,679	1,711,088	1,938,581	2,127,234	2,050,442	2,082,008	2,519,052	23,891,039
Gift shops	79,144,822	85,829,131	75,975,470	85,124,361	116,134,310	171,282,567	73,236,174	77,463,948	83,777,999	83,062,614	83,271,439	93,681,052	91,148,906	1,119,987,971
Secondhand shops	2,569,025	2,556,620	2,775,222	2,794,134	2,677,152	3,049,110	2,129,502	2,688,372	2,995,694	2,659,543	2,946,397	3,803,884	3,674,271	34,749,901
Luggage & leather goods	9,014,658	9,126,984	8,195,927	8,256,854	10,815,715	17,156,440	9,601,153	7,937,335	9,419,334	9,648,114	10,006,582	12,181,371	12,580,846	124,926,655
Pet shops	58,226,718	62,681,490	59,098,830	60,782,485	62,192,865	66,070,340	58,817,528	56,198,678	63,081,826	61,367,136	67,529,752	65,437,469	68,360,874	751,619,273
Religious goods	68,355	80,839	93,727	60,637	59,213	49,570	73,977	47,612	51,381	51,092	51,491	101,761	80,389	801,689
Direct sales	284,573,998	272,349,044	279,644,776	278,212,220	298,912,183	302,118,501	311,545,942	292,756,430	359,796,794	290,760,57				

Table 3D Card expenditure statistics (not seasonally adjusted)

Value of debit card transactions

Detailed sector breakdown - services sectors

£	July 2010	August 2010	September 2010	October 2010	November 2010	December 2010	January 2011	February 2011	March 2011	April 2011	May 2011	June 2011	July 2011	Total (latest 12 months)
Auto rental	46,416,552	46,220,907	43,689,086	42,407,079	40,022,807	36,886,576	38,217,671	38,470,053	47,176,556	47,354,256	50,662,699	60,853,247	64,569,783	556,530,720
Auto parts & accessories	191,316,449	185,735,459	202,372,300	187,689,767	192,999,373	168,956,540	180,290,468	178,590,410	233,276,144	194,570,174	209,460,405	214,322,326	209,935,419	2,358,198,785
Auto services	61,064,180	62,004,270	61,959,290	58,606,885	60,097,395	53,615,174	57,534,295	56,639,427	68,094,070	61,501,345	71,157,737	73,461,845	73,304,263	757,975,996
Auto repair shops	581,924,730	533,618,037	686,230,670	597,320,638	577,299,931	516,064,787	569,534,703	551,956,994	787,922,670	625,596,026	657,582,397	668,033,754	655,063,686	7,426,224,293
Service stations	125,596,713	126,686,604	125,134,775	126,919,793	136,793,714	145,285,607	177,591,930	167,157,293	195,387,525	188,147,867	229,380,085	209,424,667	205,363,155	2,033,273,015
Vehicle sales	1,064,737,117	1,018,699,669	1,231,113,857	1,067,285,861	1,062,863,143	869,103,767	972,248,406	970,156,769	1,384,487,423	1,123,782,603	1,225,309,510	1,217,547,401	1,174,667,878	13,317,266,287
Vehicle Sales & Services	2,071,055,741	1,972,964,946	2,350,499,978	2,080,230,023	2,070,076,363	1,789,912,451	1,995,917,473	1,962,970,946	2,716,344,388	2,240,952,271	2,443,552,833	2,443,643,240	2,382,904,184	26,449,469,096
Restaurants	653,950,232	735,228,570	627,772,950	687,434,264	686,356,700	693,066,419	668,621,484	679,654,361	728,063,582	763,103,885	806,839,800	784,688,535	819,448,381	8,680,278,931
Public houses	153,159,586	173,426,246	144,042,765	142,807,069	152,239,470	152,605,939	140,693,546	141,398,857	157,776,179	172,844,086	188,795,368	168,774,311	171,043,252	1,906,447,088
Catering services	12,663,397	12,774,570	12,909,370	12,580,679	13,195,666	12,215,986	11,153,092	11,391,769	13,872,051	12,543,857	14,427,681	16,455,884	15,977,003	159,497,608
Video stores	2,753,340	2,568,617	2,561,621	2,581,459	2,738,661	2,908,472	2,514,509	2,320,170	3,248,521	3,878,538	4,290,924	4,161,766	2,579,675	36,352,933
Cinema, theatre & dance	126,656,268	129,671,865	106,244,859	136,545,581	167,044,039	130,336,360	118,430,424	125,117,756	134,440,452	120,534,514	243,382,797	144,946,658	180,150,416	1,736,845,721
Concerts & entertainers	1,495,164	1,711,440	1,274,467	1,513,303	1,569,614	1,531,555	1,431,757	1,565,047	1,810,172	1,787,039	2,160,028	2,526,190	2,490,774	21,371,386
Tourist attractions	36,893,797	48,466,280	27,336,264	26,115,616	18,683,888	12,253,384	11,811,999	14,784,828	17,240,422	30,349,599	26,022,490	29,423,535	33,839,396	296,327,681
Amusement parks	3,612,531	5,785,678	2,686,901	2,537,130	1,809,428	1,384,338	1,427,743	1,991,271	1,992,572	4,054,384	3,005,606	3,239,859	3,842,409	33,757,319
Aquariums	1,261,741	1,463,505	983,981	1,015,644	968,475	761,996	965,920	1,073,138	1,174,733	1,433,598	1,496,836	1,413,542	1,501,556	14,252,924
Sports & games establishments	90,377,720	89,369,390	87,162,831	83,128,782	81,347,263	80,311,534	90,601,795	85,158,845	108,100,279	98,429,293	114,789,947	116,647,749	110,282,552	1,145,329,960
Professional sports clubs	8,634,617	9,497,120	8,090,393	7,384,440	8,667,040	8,659,101	7,397,346	8,104,074	8,769,572	10,552,545	9,486,510	17,201,831	13,063,991	116,873,963
Gambling	283,637,202	322,087,926	302,018,567	323,496,846	347,931,620	325,235,410	332,738,932	342,506,042	411,773,615	350,151,654	398,300,450	394,616,939	401,026,307	4,251,884,308
Personal services	11,930,251	11,534,556	11,514,535	11,242,067	11,219,399	11,463,127	11,183,606	11,217,623	12,864,674	11,704,296	17,949,288	16,716,785	16,900,631	155,514,933
Miscellaneous entertainment	30,711,718	40,402,793	27,406,582	27,607,053	24,858,348	15,999,208	16,720,674	18,846,736	24,582,235	34,690,184	33,205,577	41,250,882	45,167,471	350,737,743
Entertainment	1,417,737,564	1,583,988,556	1,362,006,086	1,465,989,933	1,518,629,591	1,448,732,829	1,415,692,827	1,445,130,517	1,625,709,059	1,616,057,472	1,864,153,302	1,742,064,466	1,817,317,514	18,905,472,152
Hotels	292,762,116	328,923,069	279,562,615	264,650,673	236,788,937	209,470,309	231,767,307	233,667,589	235,828,274	285,158,420	315,107,014	389,522,559	426,911,658	3,437,358,424
Airlines	153,873,730	145,286,862	136,837,490	119,718,690	115,267,796	76,890,702	142,128,378	88,298,105	92,453,251	73,784,582	89,885,132	127,789,180	134,835,157	1,343,175,325
Airport terminals	3,316,961	3,463,704	3,207,092	2,746,215	2,340,720	2,132,039	2,253,721	1,945,968	2,863,023	3,382,838	3,460,094	4,398,235	4,609,833	36,803,482
Railways	283,040,541	280,953,627	307,272,720	320,501,053	336,300,589	290,388,279	294,975,057	296,143,400	351,162,017	300,401,721	355,260,637	393,534,763	376,530,809	3,903,424,672
Buses	24,982,304	26,364,252	28,596,276	25,161,829	23,968,475	20,568,981	24,197,554	22,542,556	26,323,934	26,419,242	28,501,441	30,823,236	31,594,031	315,061,807
Sea travel	11,937,841	12,081,242	8,973,319	7,856,859	6,643,674	6,190,097	8,022,991	7,985,924	9,244,752	9,780,939	10,163,526	12,102,314	12,957,706	112,003,343
Travel agents	948,063,973	791,290,860	678,411,861	649,470,873	568,963,056	497,444,636	877,492,672	774,517,061	945,832,790	891,744,645	1,067,450,019	1,100,422,076	1,064,089,886	9,907,130,435
Timeshares	46,128	45,226	28,406	24,541	21,296	24,119	69,621	33,831	55,184	22,244	14,250	23,333	15,653	377,704
Camping grounds	81,817,242	79,255,948	50,762,177	48,337,125	39,137,927	27,952,542	42,215,202	47,324,209	63,099,798	74,405,304	79,840,324	79,668,363	85,087,349	717,086,268
Miscellaneous travel	36,885,068	34,491,600	29,344,086	26,358,255	26,148,213	21,943,329	22,976,247	23,950,000	31,316,405	32,142,825	37,716,404	46,007,961	43,321,747	375,717,072
Travel	1,543,963,788	1,373,233,321	1,243,433,427	1,200,175,440	1,118,791,746	943,534,724	1,414,331,443	1,262,741,054	1,522,351,154	1,412,084,340	1,672,291,827	1,794,769,461	1,753,042,171	16,710,780,108
Telegraph services / Wire transfer money order	13,326,680	13,172,228	12,433,031	11,739,785	14,312,847	12,542,555	11,898,913	11,602,102	12,206,278	11,813,587	10,723,677	12,384,430	13,458,902	148,288,335
Insurance services	602,450,988	601,834,990	617,785,550	602,025,369	577,290,843	544,721,727	608,078,108	589,855,896	740,805,961	660,951,111	729,302,797	787,384,107	800,871,422	7,860,907,881
FIs - cash disbursements (auto & manual)	66,948,567	66,466,130	52,384,441	39,780,316	32,079,593	35,453,434	29,282,753	33,461,728	34,527,598	1,986,838	2,186,980	1,252,892	1,518,380	330,381,083
FIs - merchandise & services	2,089,736,663	2,061,709,737	2,031,758,077	2,107,928,811	2,331,333,127	2,189,189,792	2,205,878,449	2,054,485,927	2,507,630,924	2,397,764,097	2,379,677,236	2,433,817,967	2,508,840,082	27,210,014,226
Non-FIs - foreign currency, travellers' cheques	122,914,905	122,573,774	95,378,530	69,677,564	49,799,078	51,002,569	46,657,418	53,885,767	61,761,641	72,514,008	87,789,323	99,324,742	129,704,744	940,069,158
Security brokers and dealers	222,536,469	208,460,477	203,271,842	242,984,867	267,860,636	206,543,276	283,484,820	275,180,880	469,074,514	517,089,523	246,070,738	223,576,166	204,144,851	3,347,542,598
Tax preparation services	50,547	36,876	22,963	83,445	51,888	37,624	83,445	82,231	81,705	87,904	70,492	113,506	120,851	814,690
Tax payments	110,178,419	92,888,799	91,779,528	93,325,421	100,775,955	106,227,994	154,551,705	121,533,541	142,181,231	136,644,362	166,604,126	152,418,605	149,251,473	1,508,182,740
Fines, bail and bond payments	22,413,099	21,140,112	23,148,429	24,743,381	24,223,803	21,115,970	22,388,314	22,473,405	25,806,737	25,806,737	29,759,671	36,590,321	36,757,863	315,381,213
Miscellaneous financial	53,601,474	54,424,666	54,580,619	54,446,391	57,345,883	56,542,263	67,833,515	64,432,619	76,564,380	74,354,888	88,765,997	86,914,203	84,576,533	819,781,957
Financial	3,304,157,811	3,242,707,789	3,182,545,260	3,246,674,868	3,454,873,653	3,223,377,204	3,430,137,440	3,226,994,096	4,072,067,437	3,899,013,055	3,740,951,037	3,832,776,939	3,929,245,103	42,481,363,881

Table 3D Card expenditure statistics (not seasonally adjusted)

Value of debit card transactions

Detailed sector breakdown - services sectors (continued)

£	July 2010	August 2010	September 2010	October 2010	November 2010	December 2010	January 2011	February 2011	March 2011	April 2011	May 2011	June 2011	July 2011	Total (latest 12 months)
Telecoms	237,018,005	238,634,239	242,332,175	246,040,059	253,376,557	292,076,196	247,686,977	226,580,081	253,126,273	248,605,518	272,687,964	273,771,809	275,158,332	3,070,076,180
Utilities	152,577,637	144,624,237	150,743,192	151,038,552	152,251,015	142,612,310	161,729,034	164,670,083	227,531,432	193,989,352	198,850,532	205,787,740	188,957,353	2,082,784,832
Contractors (residential & commercial)	90,234,465	89,571,432	96,886,632	99,569,814	107,534,056	93,115,098	93,949,559	98,802,213	113,513,736	84,779,244	98,603,238	102,950,695	101,947,680	1,181,223,397
Gardening services	4,986,764	4,550,203	4,271,086	4,031,900	4,449,934	4,772,851	3,011,968	3,487,736	5,532,520	7,326,024	7,908,576	6,417,685	5,643,486	61,403,969
Veterinary services	83,302,568	82,027,746	81,610,275	79,385,652	79,182,468	68,412,273	75,884,769	67,824,359	78,403,266	70,108,783	78,005,827	80,738,199	81,808,256	923,391,873
Photocopying & printing	17,883,043	19,391,362	22,693,258	22,189,897	24,910,763	21,013,160	20,847,959	20,442,796	24,570,868	19,845,789	23,459,985	28,908,583	26,310,061	274,584,441
Photographic studios	15,010,010	12,360,409	12,348,740	13,682,960	16,548,650	13,846,647	9,637,772	9,940,042	45,895,001	45,060,877	49,506,668	13,017,020	15,316,258	257,161,044
Beauty & barber shops	162,351,809	157,293,725	156,126,101	155,205,312	163,130,931	195,158,531	141,029,890	144,519,931	130,709,399	125,179,388	133,388,158	178,167,466	176,858,115	1,856,766,947
Employment agencies	741,555	886,441	967,644	943,624	910,475	864,600	969,412	929,036	1,051,749	754,954	895,859	1,814,470	1,535,376	12,523,640
Counselling services	3,192,072	3,585,739	3,813,964	4,479,119	4,746,562	4,039,259	3,847,825	3,609,851	6,877,531	5,809,386	6,877,531	6,259,576	5,873,807	56,723,308
Legal services	53,022,226	50,970,780	54,529,735	54,537,117	58,169,221	47,691,862	53,616,724	53,379,889	67,884,077	57,114,419	60,634,005	75,604,824	69,282,878	703,415,531
Laundry & cleaning	10,632,507	10,541,108	11,167,102	11,082,833	11,138,839	8,615,675	9,374,763	8,789,454	10,737,187	10,003,292	11,825,694	11,725,875	11,355,305	126,357,127
Funeral services	14,858,905	13,767,418	15,231,833	16,526,587	15,857,206	16,026,966	18,408,727	19,373,156	20,742,773	16,717,226	16,843,076	19,872,367	18,943,101	208,310,436
Medical services	178,732,096	163,606,968	182,035,308	177,358,472	191,373,367	147,360,218	170,365,259	180,479,429	212,963,944	171,287,900	195,527,716	216,556,779	204,238,995	2,213,154,355
Moving & courier services	22,684,642	23,221,695	24,139,393	22,638,269	23,149,592	21,009,437	20,813,579	19,377,170	22,877,600	21,148,910	24,343,704	29,246,524	30,251,998	282,217,871
Repair shops (not auto)	14,089,432	13,290,863	11,818,392	11,131,996	11,991,276	10,648,851	9,246,354	8,498,141	9,848,127	8,003,809	9,026,497	10,259,259	12,145,979	125,909,544
Accounting services	10,328,684	10,650,919	11,640,505	11,246,584	12,362,276	10,786,357	12,530,839	11,337,668	13,600,492	13,208,003	15,769,841	20,620,646	20,045,435	163,799,565
Advertising, consultancy & PR	17,643,249	16,447,926	16,657,169	15,334,037	16,232,292	12,094,726	14,596,689	14,006,716	15,779,695	13,735,590	16,122,133	16,248,735	15,339,076	182,594,784
Computer programming	180,087,649	143,844,549	125,904,577	119,277,253	120,799,693	106,899,797	105,469,356	92,769,545	110,775,508	31,209,543	32,720,119	40,175,219	37,803,269	1,067,648,428
Farming services	13,328,174	13,639,663	13,203,578	12,708,130	13,155,989	12,508,488	11,814,563	11,308,870	13,271,543	12,661,581	14,202,725	14,910,409	15,117,748	158,503,287
Miscellaneous professional services	412,093,299	400,544,874	466,850,766	428,295,777	420,748,622	374,063,358	446,872,788	390,619,729	466,878,560	435,871,344	460,497,078	487,141,605	491,821,992	5,270,206,493
Engineering services	13,081,226	13,131,913	14,576,859	14,384,432	14,068,013	11,265,255	12,834,794	14,447,040	18,078,621	15,689,443	16,881,946	20,681,648	20,064,152	186,104,116
Marina services	11,941,892	11,508,254	8,765,485	7,647,127	6,645,463	7,260,654	6,259,303	6,606,736	10,485,285	11,826,462	12,887,402	12,501,808	12,056,509	114,450,488
Wrecking & salvage yards	1,105,155	1,044,382	1,012,723	962,734	1,036,052	710,524	940,738	973,201	1,097,627	1,116,239	1,237,494	1,274,498	1,152,090	12,558,302
Pest control	594,237	598,053	658,478	566,859	524,146	454,675	446,626	451,957	545,918	500,002	811,494	730,794	818,685	7,107,687
Educational establishments	94,909,766	142,140,985	463,663,828	414,486,607	168,554,028	117,140,544	315,679,475	172,782,114	139,510,483	139,114,279	201,673,611	129,820,522	122,225,057	2,526,791,533
Child care services	8,050,260	7,723,566	8,495,393	8,653,110	9,297,230	8,258,480	10,027,710	9,212,115	10,655,406	8,187,303	10,144,551	11,378,306	11,154,416	113,187,586
Social, political & religious organisations	66,762,608	87,618,518	80,375,723	78,289,476	76,526,760	64,098,060	61,075,733	59,141,117	105,628,582	77,450,214	75,577,800	85,780,899	96,415,695	947,978,577
Government services	1,151,093,727	931,895,519	957,924,534	907,607,778	900,777,790	739,082,721	959,317,444	868,601,812	964,892,402	881,459,861	3,190,945,379	1,998,649,044	1,469,334,614	14,770,488,898
Miscellaneous services	385,288,508	355,645,605	372,572,169	351,249,146	382,430,314	359,776,315	420,015,993	356,615,348	435,326,334	381,391,464	435,502,988	411,482,283	423,442,332	4,685,450,291
Commercial equipment	77,594,470	86,495,083	98,776,113	93,992,402	94,609,920	79,236,313	86,593,133	83,743,799	99,875,154	83,844,684	95,215,482	114,698,359	113,490,503	1,130,570,945
Other services	3,505,220,640	3,251,254,174	3,711,792,730	3,534,543,615	3,356,489,500	2,990,900,201	3,504,895,755	3,123,321,134	3,635,570,251	3,193,000,883	5,768,575,073	4,627,193,646	4,075,908,553	44,773,445,515
Total services	12,134,897,660	11,753,071,855	12,129,840,096	11,792,264,552	11,755,649,790	10,605,927,718	11,992,242,245	11,254,825,336	13,807,870,563	12,646,266,441	15,804,631,086	14,829,970,311	14,385,329,183	152,757,889,176
TOTAL	24,147,007,334	24,175,328,946	24,031,086,100	24,238,835,644	25,887,753,186	27,055,152,552	23,928,258,837	22,535,721,255	26,724,040,652	25,611,816,797	29,862,940,502	28,290,552,730	27,909,570,503	310,251,057,704