

## Card Expenditure Statistics [CES] – January 2011

Seasonally-adjusted

### At a glance key figures for January

	Total Spending £ billions		Annual growth rates for spending		Number of purchases millions	
	2011	2010	2011	2010	2011	2010
<b>All plastic cards</b>	<b>35.9</b>	31.2	<b>8.3%</b>	4.4%	<b>755</b>	653
<b>Debit cards</b>	<b>25.2</b>	21.2	<b>10.8%</b>	6.9%	<b>586</b>	492
<b>Credit cards</b>	<b>10.7</b>	10.0	<b>3.0%</b>	-0.6%	<b>169</b>	161

**Spending on plastic cards** in January amounted to £35.9 billion a rise of 2.3% in contrast to an unusually low spend in December 2010. Annually there was a pickup in plastic card spending with particularly strong growth on debit cards (see Chart 1).

The **average transaction values (ATV)** for all plastic cards was £48.29 (see Chart 3), a fall of £0.34 and £0.27 compared to December and November respectively. Despite inflationary pressures in food, the ATV for plastic card spending in supermarkets fell to a record low of £28.77, suggesting consumers are continuing to find price discounts in the sector, and an increased use of debit cards for lower value transactions.

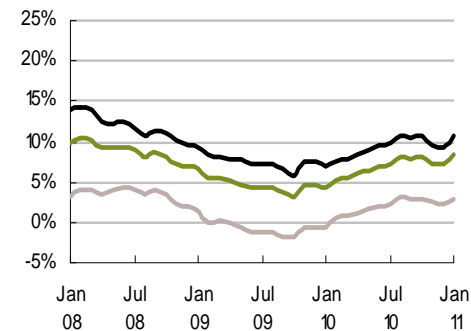
**Retail spending** grew by 3.3% compared to December. Corresponding purchase volumes rose by 4.9% mainly in the mixed business (7.4%) and household (6.4%) sectors; possibly attributable to seasonal sales and pre VAT rise purchases in early January. Spending on **services** increased by 1.2%, although the number of transactions increased by a stronger 6.3%. Spending on entertainment recovered to grow by 9%, while the number of transactions at garages increased by 22% possibly reflecting trade postponed from December; the ATV at garages fell by £14.59 down to £100.53.

The **plastic card share of total retail sales** (including automotive fuels)<sup>1</sup> was 67.7% in January (see Chart 2), three percentage points higher than a year ago. In food & drink this share increased by 75bp to a record 62.4% a reflection of increased debit card spending in the sector.

<sup>1</sup>CES 3-month moving average spending for January of £18.85 billion expressed as a percentage of a similar 3-month moving average for National Statistics 'All retailing including automotive fuel' (AGG 21) based on the value of Retail Sales at current prices (SA) that gives a figure of £27.86 billion.

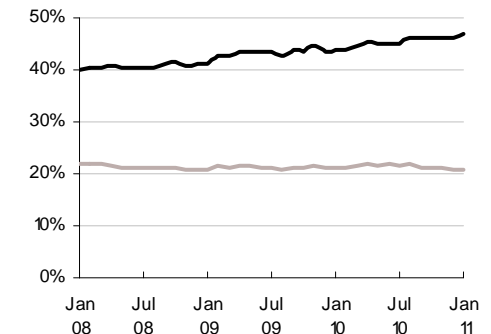
### Chart 1

Spending on plastic cards  
Annual growth rates



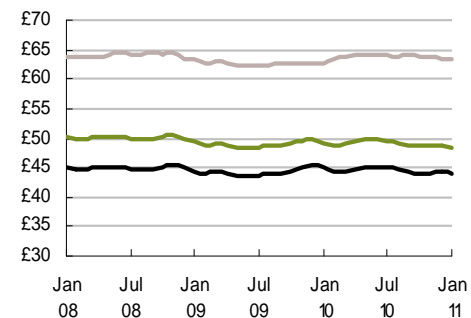
### Chart 2

Percent of retail sales made on plastic cards  
(including automotive fuel)  
Three-month moving average



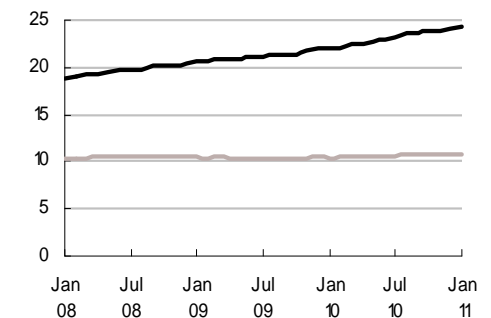
### Chart 3

Average transaction values  
Three-month moving average



### Chart 4

Average monthly expenditure  
£ billions



— Debit cards  
— Credit cards  
— All plastic cards

# Table 1 Card expenditure statistics (seasonally adjusted)

## Summary

		Number of purchase transactions (millions)									Value of purchase transactions (£ millions)								
		All sectors			Retail sales			Services			All sectors			Retail sales			Services		
		Credit	Debit	Total	Credit	Debit	Total	Credit	Debit	Total	Credit	Debit	Total	Credit	Debit	Total	Credit	Debit	Total
<b>Annual</b>																			
2006		1,948	4,493	6,441	1,215	3,017	4,232	733	1,476	2,209	119,942	195,397	315,339	59,883	97,965	157,848	60,059	97,432	157,490
2007		1,958	4,969	6,927	1,197	3,304	4,501	761	1,665	2,426	123,782	223,878	347,660	61,065	108,669	169,734	62,717	115,209	177,926
2008		1,972	5,466	7,438	1,186	3,582	4,768	786	1,885	2,671	126,187	245,149	371,336	60,688	116,069	176,757	65,499	129,080	194,579
2009		2,002	5,939	7,941	1,224	3,893	5,117	778	2,046	2,824	125,330	263,301	388,631	61,824	125,378	187,202	63,506	137,923	201,429
2010		2,007	6,485	8,492	1,381	4,713	6,094	626	1,772	2,398	128,149	288,090	416,239	69,644	148,528	218,172	58,505	139,561	198,067
<b>Monthly</b>																			
2010	Jan	161	492	653	112	359	471	49	133	182	10,011	21,180	31,191	5,410	11,330	16,739	4,601	9,851	14,452
	Feb	166	519	684	113	377	490	52	142	194	10,684	23,055	33,739	5,734	11,910	17,644	4,950	11,145	16,094
	Mar	174	544	718	119	396	515	54	149	203	11,161	24,524	35,686	6,043	12,432	18,475	5,119	12,092	17,211
	Apr	168	532	700	115	387	503	53	145	198	10,789	23,840	34,629	5,838	12,218	18,056	4,951	11,622	16,573
	May	163	519	682	112	378	490	51	142	193	10,520	23,588	34,108	5,726	11,914	17,640	4,794	11,674	16,468
	Jun	174	553	727	120	403	523	54	150	205	11,187	24,859	36,046	6,143	12,629	18,772	5,044	12,230	17,274
	Jul	167	534	702	115	388	503	52	146	198	10,739	23,832	34,571	5,797	12,153	17,950	4,942	11,679	16,621
	Aug	172	567	739	118	414	532	53	153	206	10,863	25,031	35,894	5,922	13,087	19,008	4,942	11,944	16,885
	Sep	164	551	715	113	401	514	51	150	201	10,575	24,208	34,783	5,749	12,541	18,289	4,826	11,667	16,494
	Oct	163	542	705	113	393	506	50	149	199	10,334	23,868	34,202	5,659	12,430	18,088	4,676	11,438	16,114
	Nov	172	577	749	118	417	535	54	160	214	10,864	25,476	36,340	5,936	13,150	19,086	4,928	12,326	17,254
	Dec	163	554	717	112	400	512	51	154	205	10,421	24,629	35,050	5,687	12,736	18,423	4,733	11,893	16,626
2011	Jan	169	586	755	116	422	537	53	165	218	10,670	25,192	35,862	5,783	13,252	19,034	4,888	11,940	16,827
<b>12 month growth rates (percentages)</b>																			
<b>Annual</b>																			
2006		-2.7	9.8	5.7	-2.9	9.3	5.5	-2.4	10.9	6.1	-1.4	15.3	8.3	-0.5	10.3	5.9	-2.2	20.8	10.8
2007		0.5	10.6	7.5	-1.5	9.5	6.4	3.8	12.8	9.8	3.2	14.6	10.2	2.0	10.9	7.5	4.4	18.2	13.0
2008		0.7	10.0	7.4	-0.9	8.4	5.9	3.3	13.2	10.1	1.9	9.5	6.8	-0.6	6.8	4.1	4.4	12.0	9.4
2009		1.5	8.7	6.8	3.2	8.7	7.3	-1.0	8.6	5.7	-0.7	7.4	4.7	1.9	8.0	5.9	-3.0	6.9	3.5
2010		0.3	9.2	6.9	12.8	21.1	19.1	-19.5	-13.4	-15.1	2.2	9.4	7.1	12.6	18.5	16.5	-7.9	1.2	-1.7
<b>Monthly</b>																			
2010	Jan	1.6	8.5	6.7	4.3	9.4	8.1	-2.4	6.7	4.1	-0.6	6.9	4.4	2.5	8.6	6.5	-3.4	5.4	2.5
	Feb	2.4	9.0	7.3	6.0	10.9	9.7	-3.1	5.4	2.9	0.5	7.5	5.1	4.2	9.9	7.9	-3.1	5.3	2.5
	Mar	2.3	8.8	7.1	6.9	11.7	10.5	-4.9	3.1	0.8	0.7	7.7	5.4	5.5	10.7	8.9	-3.7	5.1	2.2
	Apr	2.1	8.7	7.0	7.5	12.6	11.3	-6.3	1.3	-0.8	1.1	8.4	6.0	6.4	11.5	9.7	-3.8	5.6	2.5
	May	2.1	8.7	7.0	8.5	13.7	12.4	-7.8	-0.8	-2.8	1.6	8.9	6.5	7.8	12.4	10.9	-4.1	5.7	2.5
	Jun	2.0	8.7	6.9	9.3	14.6	13.3	-9.3	-2.7	-4.6	2.1	9.4	7.0	9.2	13.3	11.9	-4.5	5.9	2.5
	Jul	1.7	8.5	6.8	9.9	15.4	14.0	-11.0	-4.6	-6.4	2.4	9.7	7.3	10.0	14.0	12.7	-4.8	5.8	2.4
	Aug	2.3	9.6	7.7	11.6	17.6	16.1	-12.1	-5.7	-7.5	3.2	10.7	8.2	11.8	16.0	14.6	-4.8	5.8	2.4
	Sep	1.4	9.1	7.1	11.4	17.9	16.3	-14.2	-7.9	-9.6	2.9	10.4	7.9	11.7	16.1	14.6	-5.6	5.1	1.7
	Oct	1.0	9.3	7.2	11.9	19.1	17.4	-16.0	-9.4	-11.2	2.7	10.8	8.2	12.1	17.1	15.4	-6.3	5.1	1.4
	Nov	0.5	8.9	6.8	12.1	19.5	17.7	-17.6	-11.5	-13.2	2.6	9.7	7.4	12.1	17.1	15.5	-6.6	2.8	-0.2
	Dec	0.3	9.2	6.9	12.8	21.1	19.1	-19.5	-13.4	-15.1	2.2	9.4	7.1	12.6	18.5	16.5	-7.9	1.2	-1.7
2011	Jan	0.7	10.3	7.9	11.9	21.1	18.9	-17.5	-10.7	-12.6	3.0	10.8	8.3	12.6	18.7	16.7	-6.6	3.5	0.4

# Table 2A Card expenditure statistics (seasonally adjusted)

## Retail sales

Number of purchase transactions (millions)

Total retail sales

		Food & drink			Mixed business			Clothing			Household			Other retailers			Automotive Fuels *			Number of purchases			
		Credit	Debit	Total	Credit	Debit	Total	Credit	Debit	Total	Credit	Debit	Total	Credit	Debit	Total	Credit	Debit	Total	Credit	Debit	Total	
<b>Annual</b>																							
	2006	394	1,454	1,848	215	415	630	126	317	444	145	263	408	334	567	901	0	0	0	1,215	3,017	4,232	
	2007	426	1,640	2,066	203	436	639	124	350	474	147	282	429	297	596	893	<i>165</i>	<i>419</i>	<i>584</i>	1,197	3,304	4,501	
	2008	500	1,874	2,374	134	408	542	121	371	492	143	292	436	288	636	924	<i>168</i>	<i>459</i>	<i>626</i>	1,186	3,582	4,768	
	2009	512	2,086	2,598	131	401	532	125	404	529	146	321	466	310	681	991	<i>158</i>	<i>475</i>	<i>633</i>	1,224	3,893	5,117	
	2010	534	2,284	2,817	138	403	541	128	424	552	147	349	495	273	733	1,007	161	520	681	1,381	4,713	6,094	
<b>Monthly</b>																							
	2010	Jan	41	174	215	11	33	44	10	33	43	11	26	37	26	55	81	12	39	51	112	359	471
		Feb	43	179	222	12	34	46	11	35	46	12	28	40	22	59	81	14	42	56	113	377	490
		Mar	45	188	233	12	35	47	11	36	47	11	29	41	24	64	88	14	45	59	119	396	515
		Apr	44	186	231	11	34	45	11	36	47	13	29	41	23	59	82	14	43	57	115	387	503
		May	43	182	225	11	33	44	10	33	43	12	28	40	22	59	81	14	43	56	112	378	490
		Jun	47	195	242	12	34	46	11	37	48	13	30	42	24	63	87	14	44	58	120	403	523
		Jul	45	188	233	11	33	44	11	35	46	12	29	41	22	60	83	14	43	56	115	388	503
		Aug	47	201	248	11	34	45	11	37	48	12	31	43	23	65	89	14	46	59	118	414	532
		Sep	44	198	242	11	33	44	11	37	48	12	30	42	22	61	83	13	42	55	113	401	514
		Oct	44	191	236	11	32	44	10	35	45	12	30	42	21	61	82	13	44	57	113	393	506
		Nov	46	202	248	12	35	47	11	37	48	12	32	44	23	65	88	14	46	60	118	417	535
		Dec	44	198	242	12	34	45	10	35	45	12	29	41	21	61	83	13	43	56	112	400	512
	2011	Jan	45	205	250	13	36	49	11	36	47	12	32	44	21	66	87	13	47	60	116	422	537
<b>12 month growth rates (percentages)</b>																							
<b>Annual</b>																							
	2006	-0.2	11.5	8.8	-0.8	8.5	5.2	-4.6	9.5	5.1	-4.7	5.7	1.8	-5.8	6.3	1.4	-	-	-	-2.9	9.3	5.5	
	2007	8.2	12.8	11.8	-5.6	5.1	1.4	-1.8	10.3	6.9	1.1	7.3	5.1	-11.1	5.0	-1.0	-	-	-	-1.5	9.5	6.4	
	2008	17.3	14.3	14.9	-34.0	-6.5	-15.2	-2.3	6.0	3.8	-2.6	3.6	1.5	-3.1	6.8	3.5	1.4	9.6	7.3	-0.9	8.4	5.9	
	2009	2.4	11.3	9.4	-2.2	-1.7	-1.8	3.2	9.0	7.6	1.9	9.7	7.1	7.8	7.0	7.2	-5.6	3.5	1.0	3.2	8.7	7.3	
	2010	4.3	9.5	8.4	5.1	0.6	1.7	2.5	5.0	4.4	0.6	8.7	6.1	-11.9	7.7	1.6	2.0	9.5	7.6	12.8	21.1	19.1	
<b>Monthly</b>																							
	2010	Jan	2.5	11.0	9.2	-2.2	-2.1	-2.1	2.8	8.4	7.0	1.7	9.4	6.9	8.0	6.4	6.9	-5.3	4.0	1.5	4.3	9.4	8.1
		Feb	3.3	11.1	9.5	-0.8	-1.4	-1.3	3.8	8.9	7.6	3.0	10.1	7.8	7.2	6.9	7.0	-3.3	5.7	3.3	6.0	10.9	9.7
		Mar	3.7	10.8	9.4	-0.1	-1.5	-1.2	3.8	8.2	7.1	3.0	9.5	7.4	5.1	6.3	5.9	-2.5	6.3	4.0	6.9	11.7	10.5
		Apr	3.6	10.5	9.1	0.1	-1.6	-1.2	3.3	7.7	6.7	2.5	8.7	6.7	3.3	6.2	5.3	-1.0	7.5	5.3	7.5	12.6	11.3
		May	3.8	10.4	9.0	0.7	-1.4	-0.9	4.0	7.9	7.0	3.1	9.3	7.3	1.6	6.1	4.7	-0.1	8.3	6.1	8.5	13.7	12.4
		Jun	4.0	10.1	8.8	1.3	-1.6	-0.9	3.9	7.3	6.5	3.6	9.5	7.7	-0.4	6.0	4.0	0.7	8.6	6.6	9.3	14.6	13.3
		Jul	3.9	9.7	8.6	1.8	-1.6	-0.8	3.5	6.7	6.0	3.7	9.6	7.7	-2.7	5.6	3.0	1.5	9.2	7.2	9.9	15.4	14.0
		Aug	5.0	10.6	9.5	3.6	-0.2	0.8	4.6	7.8	7.0	3.5	9.9	7.9	-3.4	7.1	3.8	1.9	10.0	8.0	11.6	17.6	16.1
		Sep	4.3	9.7	8.6	4.0	-0.3	0.8	3.9	6.6	6.0	2.3	9.3	7.1	-6.2	6.7	2.7	2.0	9.9	7.9	11.4	17.9	16.3
		Oct	4.3	9.7	8.6	4.8	0.4	1.5	3.4	6.2	5.5	1.9	9.4	7.1	-8.3	7.1	2.3	2.6	10.6	8.6	11.9	19.1	17.4
		Nov	4.0	9.0	8.0	4.4	-0.3	0.9	2.7	5.2	4.6	1.1	8.9	6.4	-10.3	7.1	1.6	2.4	9.8	7.9	12.1	19.5	17.7
		Dec	4.3	9.5	8.4	5.1	0.6	1.7	2.5	5.0	4.4	0.6	8.7	6.1	-11.9	7.7	1.6	2.0	9.5	7.6	12.8	21.1	19.1
	2011	Jan	5.0	10.4	9.3	6.6	1.7	2.9	3.3	5.7	5.1	1.7	10.2	7.6	-13.9	9.3	2.0	3.1	10.8	8.9	11.9	21.1	18.9

\* The category of Automotive Fuels is effective from January 2010. Data shown for 2009 are for growth trend purposes only; these data (in italics) are excluded from totals for 2009 as these are already included in their former Services sector of Motoring (now known as Vehicle Sales & Service) and it is complete in the January 2010 edition of the tables, where it was first introduced.

## Table 2B Card expenditure statistics (seasonally adjusted)

### Retail sales

Value of purchase transactions (£ millions)

Total retail sales

		Food & drink			Mixed business			Clothing			Household			Other retailers			Automotive Fuels *			Value of purchases			
		Credit	Debit	Total	Credit	Debit	Total	Credit	Debit	Total	Credit	Debit	Total	Credit	Debit	Total	Credit	Debit	Total	Credit	Debit	Total	
<b>Annual</b>																							
	2006	14,003	43,467	57,470	8,902	13,102	22,005	5,783	9,380	15,163	14,019	13,722	27,742	17,175	18,295	35,470	0	0	0	59,883	97,965	157,848	
	2007	15,312	48,586	63,898	8,839	14,053	22,892	5,861	10,456	16,317	14,700	15,347	30,046	16,354	20,227	36,581	<i>5,868</i>	<i>10,961</i>	<i>16,829</i>	61,065	108,669	169,734	
	2008	17,568	54,562	72,130	7,053	13,456	20,509	5,955	11,214	17,169	14,381	15,574	29,955	15,732	21,262	36,994	<i>6,677</i>	<i>12,965</i>	<i>19,643</i>	60,688	116,069	176,757	
	2009	18,103	60,242	78,345	7,091	13,862	20,953	6,377	12,643	19,020	14,495	16,603	31,098	15,760	22,028	37,787	<i>5,860</i>	<i>12,668</i>	<i>18,528</i>	61,824	125,378	187,202	
	2010	18,839	63,860	82,699	7,155	13,925	21,079	6,782	13,641	20,423	14,639	18,758	33,397	15,616	23,550	39,165	<i>6,614</i>	<i>14,795</i>	<i>21,410</i>	69,644	148,528	218,172	
<b>Monthly</b>																							
	2010	Jan	1,496	5,009	6,506	581	1,126	1,707	529	1,050	1,579	1,069	1,312	2,381	1,231	1,745	2,976	503	1,088	1,591	5,410	11,330	16,739
		Feb	1,511	5,057	6,568	615	1,168	1,783	557	1,111	1,669	1,200	1,472	2,672	1,296	1,896	3,192	556	1,205	1,760	5,734	11,910	17,644
		Mar	1,577	5,234	6,811	628	1,196	1,823	582	1,148	1,730	1,300	1,535	2,835	1,371	2,050	3,421	585	1,269	1,854	6,043	12,432	18,475
		Apr	1,576	5,256	6,832	585	1,152	1,737	561	1,136	1,696	1,240	1,540	2,781	1,308	1,908	3,216	569	1,225	1,794	5,838	12,218	18,056
		May	1,521	5,103	6,625	576	1,128	1,704	539	1,077	1,616	1,225	1,495	2,720	1,306	1,897	3,203	559	1,214	1,773	5,726	11,914	17,640
		Jun	1,638	5,424	7,062	633	1,186	1,819	585	1,177	1,762	1,293	1,592	2,885	1,432	2,028	3,460	562	1,222	1,784	6,143	12,629	18,772
		Jul	1,570	5,235	6,806	587	1,137	1,724	567	1,120	1,687	1,229	1,538	2,767	1,298	1,939	3,237	545	1,184	1,729	5,797	12,153	17,950
		Aug	1,630	5,613	7,244	589	1,185	1,774	577	1,200	1,777	1,255	1,704	2,959	1,323	2,085	3,408	548	1,300	1,848	5,922	13,087	19,008
		Sep	1,589	5,461	7,051	581	1,154	1,735	569	1,151	1,720	1,208	1,618	2,826	1,272	1,963	3,235	529	1,194	1,723	5,749	12,541	18,289
		Oct	1,558	5,333	6,891	579	1,130	1,708	563	1,133	1,696	1,184	1,623	2,807	1,239	1,959	3,197	537	1,252	1,789	5,659	12,430	18,088
		Nov	1,623	5,614	7,237	611	1,209	1,820	593	1,200	1,793	1,237	1,695	2,932	1,302	2,076	3,378	571	1,355	1,926	5,936	13,150	19,086
		Dec	1,549	5,518	7,066	592	1,154	1,746	560	1,137	1,698	1,199	1,633	2,833	1,237	2,005	3,242	550	1,288	1,839	5,687	12,736	18,423
	2011	Jan	1,579	5,642	7,221	605	1,223	1,827	581	1,193	1,774	1,162	1,690	2,851	1,248	2,063	3,311	608	1,443	2,051	5,783	13,252	19,034
<b>12 month growth rates (percentages)</b>																							
<b>Annual</b>																							
	2006	-0.1	10.3	7.6	2.1	10.1	6.7	-1.5	8.6	4.5	0.9	13.5	6.8	-2.9	8.9	2.8	-	-	-	-0.5	10.3	5.9	
	2007	9.3	11.8	11.2	-0.7	7.3	4.0	1.4	11.5	7.6	4.9	11.8	8.3	-4.8	10.6	3.1	-	-	-	2.0	10.9	7.5	
	2008	14.7	12.3	12.9	-20.2	-4.3	-10.4	1.6	7.3	5.2	-2.2	1.5	-0.3	-3.8	5.1	1.1	13.8	18.3	16.7	-0.6	6.8	4.1	
	2009	3.0	10.4	8.6	0.5	3.0	2.2	7.1	12.7	10.8	0.8	6.6	3.8	0.2	3.6	2.1	-12.2	-2.3	-5.7	1.9	8.0	5.9	
	2010	4.1	6.0	5.6	0.9	0.5	0.6	6.4	7.9	7.4	1.0	13.0	7.4	-0.9	6.9	3.6	12.9	16.8	15.6	12.6	18.5	16.5	
<b>Monthly</b>																							
	2010	Jan	3.2	9.9	8.2	0.2	2.2	1.5	6.7	12.1	10.2	0.6	7.2	4.0	-0.2	3.3	1.8	-10.5	-0.9	-4.2	2.5	8.6	6.5
		Feb	3.7	9.5	8.1	1.4	2.5	2.1	7.8	12.5	10.9	1.5	8.8	5.3	0.3	3.9	2.4	-7.3	1.7	-1.3	4.2	9.9	7.9
		Mar	4.2	9.1	8.0	1.8	1.9	1.9	7.8	11.9	10.5	2.1	9.7	6.1	0.2	3.9	2.3	-5.1	3.2	0.5	5.5	10.7	8.9
		Apr	4.0	8.5	7.4	1.6	1.4	1.5	7.5	11.4	10.0	2.3	10.2	6.4	0.4	4.4	2.7	-1.9	5.8	3.2	6.4	11.5	9.7
		May	4.0	8.0	7.0	1.9	1.3	1.5	8.0	11.4	10.3	3.2	11.4	7.5	1.0	4.8	3.2	1.0	8.0	5.7	7.8	12.4	10.9
		Jun	4.3	7.5	6.8	2.3	1.0	1.5	8.0	10.7	9.8	3.9	12.4	8.4	1.5	5.2	3.6	4.0	10.2	8.2	9.2	13.3	11.9
		Jul	4.2	7.0	6.3	2.3	0.7	1.2	7.6	9.9	9.1	4.0	12.8	8.7	1.5	5.4	3.8	7.1	12.5	10.7	10.0	14.0	12.7
		Aug	5.3	7.7	7.1	3.5	1.8	2.4	8.8	11.0	10.2	4.4	14.1	9.5	2.3	6.9	5.0	9.5	14.9	13.1	11.8	16.0	14.6
		Sep	4.5	6.5	6.0	3.0	1.3	1.9	8.2	9.9	9.3	3.1	13.6	8.7	1.1	6.6	4.3	11.4	15.7	14.3	11.7	16.1	14.6
		Oct	4.5	6.4	6.0	2.6	1.4	1.8	7.5	9.3	8.7	2.6	13.8	8.6	0.5	6.8	4.2	13.0	17.4	16.0	12.1	17.1	15.4
		Nov	3.9	5.5	5.1	1.1	0.1	0.5	6.7	8.1	7.7	1.6	13.1	7.7	-0.4	6.5	3.6	13.5	17.1	16.0	12.1	17.1	15.5
		Dec	4.1	6.0	5.6	0.9	0.5	0.6	6.4	7.9	7.4	1.0	13.0	7.4	-0.9	6.9	3.6	12.9	16.8	15.6	12.6	18.5	16.5
	2011	Jan	4.3	6.7	6.1	1.6	1.4	1.4	7.0	8.5	8.0	2.4	14.9	9.1	-0.3	8.5	4.8	14.1	18.6	17.2	12.6	18.7	16.7

\* The category of Automotive Fuels is effective from January 2010. Data shown for 2009 are for growth trend purposes only; these data (in italics) are excluded from totals for 2009 as these are already included in their former Services sector of Motoring (now known as Vehicle Sales & Service) and it is complete in the January 2010 edition of the tables, where it was first introduced.

# Table 2C Card expenditure statistics (seasonally adjusted)

## Services

Number of purchase transactions (millions)

Total services

		Number of purchase transactions (millions)																		Total services			
		Vehicle Sales & Services			Entertainment			Hotels			Travel			Financial			Other services			Number of purchases			
		Credit	Debit	Total	Credit	Debit	Total	Credit	Debit	Total	Credit	Debit	Total	Credit	Debit	Total	Credit	Debit	Total	Credit	Debit	Total	
<b>Annual</b>																							
	2006	242	529	771	176	349	525	36	24	61	96	127	224	28	91	119	155	355	510	733	1,476	2,209	
	2007	245	572	818	190	411	600	38	26	64	101	148	249	28	106	134	160	401	561	761	1,665	2,426	
	2008	249	628	877	198	500	697	36	28	64	103	168	271	32	111	143	167	451	618	786	1,885	2,671	
	2009	236	656	892	206	593	799	37	31	68	101	183	284	32	112	144	167	470	637	778	2,046	2,824	
	2010	76	204	280	220	720	940	37	34	71	97	202	299	32	129	161	163	483	646	626	1,772	2,398	
<b>Monthly</b>																							
	2010	Jan	6	15	21	16	52	69	3	3	6	8	15	23	3	10	12	13	39	52	49	133	182
		Feb	7	17	24	18	56	74	3	3	6	8	16	24	3	10	13	14	40	54	52	142	194
		Mar	7	18	26	19	58	77	3	3	6	8	16	24	3	10	13	14	42	57	54	149	203
		Apr	7	18	24	18	58	77	3	3	6	8	16	24	3	10	13	14	40	53	53	145	198
		May	6	17	23	18	57	75	3	3	6	8	15	23	3	10	13	13	39	53	51	142	193
		Jun	7	17	24	19	61	80	3	3	6	8	18	26	3	11	14	14	41	55	54	150	205
		Jul	6	17	23	19	60	78	3	3	6	8	17	25	3	11	14	14	39	53	52	146	198
		Aug	6	17	23	19	63	83	3	3	6	8	18	26	3	11	14	14	40	54	53	153	206
		Sep	6	16	22	18	62	80	3	3	6	8	18	26	3	11	14	13	40	54	51	150	201
		Oct	6	16	21	18	62	81	3	3	6	8	17	25	3	11	14	13	40	53	50	149	199
		Nov	6	18	24	20	67	86	3	3	6	8	19	27	3	11	14	14	42	56	54	160	214
		Dec	6	18	24	18	63	81	3	3	6	8	18	26	3	11	14	13	40	53	51	154	205
	2011	Jan	7	22	29	19	69	88	3	3	6	8	18	25	3	11	14	13	42	55	53	165	218
<b>12 month growth rates (percentages)</b>																							
<b>Annual</b>																							
	2006	-10.3	1.1	-2.7	5.3	15.2	11.7	-1.3	9.2	2.6	1.4	15.1	8.8	-9.0	13.6	7.4	1.7	21.7	14.9	-2.4	10.9	6.1	
	2007	1.3	8.3	6.1	8.1	17.6	14.4	3.1	6.6	4.5	4.2	16.7	11.3	0.8	16.2	12.6	3.4	12.9	10.0	3.8	12.8	9.8	
	2008	1.5	9.7	7.2	4.3	21.7	16.2	-2.8	5.9	0.8	2.5	13.3	9.0	15.7	4.8	7.0	4.6	12.3	10.1	3.3	13.2	10.1	
	2009	-5.4	4.5	1.7	4.3	18.7	14.6	0.5	13.9	6.3	-2.5	8.9	4.6	-1.9	1.1	0.5	-0.1	4.4	3.2	-1.0	8.6	5.7	
	2010	-67.7	-69.0	-68.6	6.7	21.4	17.6	1.6	9.2	5.1	-3.1	10.3	5.5	1.0	15.0	11.9	-2.3	2.7	1.4	-19.5	-13.4	-15.1	
<b>Monthly</b>																							
	2010	Jan	-10.1	-1.2	-3.7	4.4	18.7	14.7	0.8	13.6	6.4	-2.5	9.1	4.7	-1.1	3.0	2.1	0.2	3.9	2.9	-2.4	6.7	4.1
		Feb	-14.3	-6.7	-8.8	5.2	19.6	15.6	1.8	13.8	7.0	-1.8	9.7	5.4	-0.1	5.8	4.5	1.2	3.8	3.1	-3.1	5.4	2.9
		Mar	-19.9	-13.5	-15.3	5.4	19.9	15.9	2.1	13.3	7.0	-2.4	9.5	5.0	0.3	8.0	6.3	0.9	2.9	2.4	-4.9	3.1	0.8
		Apr	-25.0	-19.8	-21.2	5.5	20.4	16.3	2.5	12.4	6.9	-2.0	9.6	5.3	1.0	11.0	8.7	1.1	2.5	2.1	-6.3	1.3	-0.8
		May	-30.3	-26.2	-27.3	5.5	20.2	16.2	3.0	11.8	6.9	-2.0	9.2	5.0	1.4	13.4	10.7	1.0	1.9	1.7	-7.8	-0.8	-2.8
		Jun	-35.6	-32.7	-33.5	6.3	20.7	16.8	3.2	11.2	6.8	-1.9	9.7	5.4	1.6	14.7	11.6	0.4	1.6	1.3	-9.3	-2.7	-4.6
		Jul	-40.8	-38.9	-39.4	6.7	20.7	17.0	3.2	10.6	6.5	-2.1	9.6	5.3	1.4	15.2	12.0	-0.4	1.5	1.0	-11.0	-4.6	-6.4
		Aug	-45.8	-44.5	-44.9	7.9	22.2	18.4	3.3	10.8	6.7	-1.9	10.3	5.9	1.8	16.1	12.8	-0.2	2.3	1.6	-12.1	-5.7	-7.5
		Sep	-51.5	-50.9	-51.1	7.1	21.5	17.7	2.6	9.7	5.8	-2.0	10.4	5.9	1.2	16.0	12.7	-1.2	2.3	1.4	-14.2	-7.9	-9.6
		Oct	-56.6	-56.6	-56.6	7.0	22.0	18.1	2.0	9.3	5.3	-2.4	10.1	5.6	1.1	15.8	12.5	-1.8	2.6	1.5	-16.0	-9.4	-11.2
		Nov	-62.1	-63.0	-62.8	6.8	21.3	17.6	2.0	8.8	5.1	-2.2	10.4	5.9	1.5	15.4	12.3	-1.9	2.9	1.7	-17.6	-11.5	-13.2
		Dec	-67.7	-69.0	-68.6	6.7	21.4	17.6	1.6	9.2	5.1	-3.1	10.3	5.5	1.0	15.0	11.9	-2.3	2.7	1.4	-19.5	-13.4	-15.1
	2011	Jan	-65.3	-66.0	-65.8	8.1	22.6	18.9	2.3	10.2	6.0	-2.9	11.2	6.3	0.8	15.3	12.1	-2.2	3.2	1.8	-17.5	-10.7	-12.6

# Table 2D Card expenditure statistics (seasonally adjusted)

## Services

Value of purchase transactions (£ millions)

Total services

		Value of purchase transactions (£ millions)																		Total services		
		Vehicle Sales & Services			Entertainment			Hotels			Travel			Financial			Other services			Value of purchases		
		Credit	Debit	Total	Credit	Debit	Total	Credit	Debit	Total	Credit	Debit	Total	Credit	Debit	Total	Credit	Debit	Total	Credit	Debit	Total
<b>Annual</b>																						
2006		13,789	27,051	40,840	8,873	9,675	18,548	5,207	2,041	7,249	13,217	11,024	24,241	5,586	20,921	26,507	13,387	26,719	40,106	60,059	97,432	157,490
2007		14,677	30,691	45,368	9,297	11,230	20,527	5,483	2,263	7,746	13,434	12,605	26,040	5,699	26,113	31,813	14,126	32,305	46,432	62,717	115,209	177,926
2008		15,519	32,968	48,487	9,656	13,058	22,714	5,507	2,445	7,953	14,006	13,731	27,737	5,925	29,897	35,822	14,886	36,980	51,866	65,499	129,080	194,579
2009		14,626	35,426	50,053	9,648	14,592	24,240	5,290	2,722	8,012	13,057	14,087	27,144	5,725	32,963	38,687	15,159	38,133	53,292	63,506	137,923	201,429
2010		8,757	24,685	33,443	9,842	16,935	26,777	5,531	3,039	8,570	12,809	15,780	28,589	5,883	38,435	44,317	15,683	40,688	56,370	58,505	139,561	198,067
<b>Monthly</b>																						
2010	Jan	685	1,717	2,402	745	1,254	1,999	431	227	658	1,049	1,225	2,274	454	2,496	2,950	1,238	2,932	4,170	4,601	9,851	14,452
	Feb	782	2,028	2,810	809	1,340	2,149	457	246	703	1,114	1,293	2,407	477	2,913	3,390	1,311	3,325	4,636	4,950	11,145	16,094
	Mar	855	2,358	3,213	836	1,375	2,211	468	250	718	1,117	1,339	2,456	493	3,223	3,716	1,349	3,548	4,897	5,119	12,092	17,211
	Apr	770	2,116	2,885	814	1,378	2,191	460	251	712	1,094	1,252	2,346	485	3,156	3,641	1,328	3,469	4,798	4,951	11,622	16,573
	May	741	2,045	2,786	795	1,380	2,176	456	237	693	1,004	1,223	2,227	484	3,187	3,671	1,313	3,602	4,916	4,794	11,674	16,468
	Jun	753	2,071	2,825	844	1,449	2,293	475	255	730	1,092	1,304	2,396	513	3,352	3,865	1,367	3,799	5,166	5,044	12,230	17,274
	Jul	722	1,998	2,720	840	1,405	2,244	475	248	723	1,089	1,300	2,389	491	3,200	3,691	1,325	3,528	4,854	4,942	11,679	16,621
	Aug	703	2,060	2,763	862	1,522	2,384	471	272	743	1,084	1,345	2,429	496	3,328	3,824	1,327	3,416	4,743	4,942	11,944	16,885
	Sep	675	2,064	2,738	819	1,423	2,242	454	260	714	1,063	1,362	2,426	502	3,221	3,724	1,313	3,336	4,650	4,826	11,667	16,494
	Oct	664	2,006	2,670	812	1,435	2,247	455	259	714	1,017	1,348	2,365	477	3,201	3,677	1,251	3,189	4,440	4,676	11,438	16,114
	Nov	709	2,149	2,859	888	1,536	2,423	472	272	743	1,048	1,397	2,446	513	3,727	4,241	1,297	3,245	4,543	4,928	12,326	17,254
	Dec	699	2,073	2,773	777	1,439	2,217	459	262	721	1,037	1,392	2,429	499	3,429	3,928	1,262	3,297	4,559	4,733	11,893	16,626
2011	Jan	762	2,181	2,943	838	1,575	2,413	473	280	753	1,045	1,383	2,428	498	3,178	3,677	1,271	3,342	4,613	4,888	11,940	16,827

### 12 month growth rates (percentages)

<b>Annual</b>																						
2006		-1.7	11.9	6.9	6.7	18.3	12.4	3.8	17.4	7.3	1.1	13.7	6.4	-32.8	21.1	3.6	5.6	36.3	24.3	-2.2	20.8	10.8
2007		6.4	13.5	11.1	4.8	16.1	10.7	5.3	10.9	6.9	1.6	14.3	7.4	2.0	24.8	20.0	5.5	20.9	15.8	4.4	18.2	13.0
2008		5.7	7.4	6.9	3.9	16.3	10.7	0.4	8.0	2.7	4.3	8.9	6.5	4.0	14.5	12.6	5.4	14.5	11.7	4.4	12.0	9.4
2009		-5.8	7.5	3.2	-0.1	11.7	6.7	-3.9	11.3	0.7	-6.8	2.6	-2.1	-3.4	10.3	8.0	1.8	3.1	2.7	-3.0	6.9	3.5
2010		-40.1	-30.3	-33.2	2.0	16.1	10.5	4.6	11.6	7.0	-1.9	12.0	5.3	2.8	16.6	14.6	3.5	6.7	5.8	-7.9	1.2	-1.7
<b>Monthly</b>																						
2010	Jan	-8.1	4.8	0.7	-0.1	11.6	6.7	-3.3	11.4	1.2	-6.8	4.6	-1.2	-2.8	10.2	8.0	2.1	-0.1	0.5	-3.4	5.4	2.5
	Feb	-9.6	3.2	-0.9	0.3	12.2	7.2	-2.0	11.9	2.4	-5.8	7.0	0.5	-1.8	10.9	8.9	3.2	-0.7	0.4	-3.1	5.3	2.5
	Mar	-12.1	1.3	-2.9	-0.4	12.2	6.9	-1.1	11.9	3.0	-6.5	8.0	0.7	-1.4	12.0	9.8	3.2	-1.1	0.1	-3.7	5.1	2.2
	Apr	-14.3	-0.7	-5.0	-0.4	12.5	7.1	-0.1	11.7	3.7	-6.1	9.4	1.6	-0.4	13.6	11.3	4.1	0.6	1.6	-3.8	5.6	2.5
	May	-16.9	-3.3	-7.5	-0.3	12.4	7.2	0.9	11.3	4.3	-6.1	10.4	2.0	0.2	14.1	11.9	4.6	2.2	2.9	-4.1	5.7	2.5
	Jun	-19.6	-6.5	-10.6	0.7	13.3	8.1	1.7	11.4	4.8	-6.3	11.1	2.3	0.5	15.1	12.8	4.6	4.3	4.4	-4.5	5.9	2.5
	Jul	-22.3	-10.0	-13.8	1.6	13.5	8.7	2.6	11.3	5.4	-5.9	12.0	3.0	0.7	16.4	13.9	4.5	5.6	5.3	-4.8	5.8	2.4
	Aug	-25.1	-12.9	-16.6	3.0	15.3	10.3	3.4	12.0	6.2	-5.0	13.0	4.0	1.6	16.7	14.4	4.8	6.6	6.1	-4.8	5.8	2.4
	Sep	-28.7	-17.1	-20.6	2.6	15.0	10.0	3.4	11.1	5.9	-3.9	12.9	4.6	1.6	16.6	14.3	4.4	8.4	7.3	-5.6	5.1	1.7
	Oct	-32.1	-20.9	-24.2	2.5	16.0	10.6	3.7	11.0	6.2	-3.3	12.2	4.6	1.7	17.0	14.7	3.9	11.5	9.3	-6.3	5.1	1.4
	Nov	-35.7	-25.2	-28.3	2.2	15.7	10.3	4.5	11.3	6.8	-2.0	12.2	5.3	2.6	17.2	15.0	4.2	7.2	6.3	-6.6	2.8	-0.2
	Dec	-40.1	-30.3	-33.2	2.0	16.1	10.5	4.6	11.6	7.0	-1.9	12.0	5.3	2.8	16.6	14.6	3.5	6.7	5.8	-7.9	1.2	-1.7
2011	Jan	-37.5	-27.1	-30.1	3.3	17.3	11.7	5.4	12.9	8.0	-1.4	11.9	5.6	3.6	18.8	16.6	3.6	9.1	7.5	-6.6	3.5	0.4

Table 3A Card expenditure statistics (not seasonally adjusted)

Number of credit card transactions

## Detailed sector breakdown - retail sectors

	January 2010	February 2010	March 2010	April 2010	May 2010	June 2010	July 2010	August 2010	September 2010	October 2010	November 2010	December 2010	January 2011	Total (latest 12 months)
Supermarkets	35,702,073	35,604,120	42,944,628	40,292,606	39,637,489	45,062,932	42,473,245	41,941,737	40,298,861	41,396,777	46,536,218	48,942,099	38,855,018	503,985,730
Bakers & dairies	48,166	54,814	66,582	59,663	62,288	73,618	71,844	67,549	67,598	73,655	78,607	83,094	62,802	822,114
Sweet stores	105,342	140,702	218,037	150,297	100,518	144,465	122,759	135,158	127,601	146,414	246,306	457,308	96,750	2,086,315
Miscellaneous foodstores	1,586,574	1,698,523	2,053,859	1,948,151	1,938,992	2,235,429	2,150,070	2,168,236	2,028,366	2,018,747	2,211,819	2,292,898	1,745,699	24,490,789
Off-licences	394,624	420,276	501,811	482,611	520,911	578,705	565,606	533,033	488,187	509,945	533,305	694,690	414,689	6,243,769
<b>Food &amp; drink</b>	<b>37,836,779</b>	<b>37,918,435</b>	<b>45,784,917</b>	<b>42,933,328</b>	<b>42,260,198</b>	<b>48,095,149</b>	<b>45,383,524</b>	<b>44,845,713</b>	<b>43,010,613</b>	<b>44,145,538</b>	<b>49,606,255</b>	<b>52,470,089</b>	<b>41,174,958</b>	<b>537,628,717</b>
Department stores	5,093,470	4,393,917	5,616,820	5,204,554	5,290,966	6,347,446	6,334,517	5,728,626	5,376,457	5,821,237	8,196,594	10,850,795	5,864,433	75,026,362
Discount stores	1,444,962	1,344,797	1,527,311	1,483,658	1,558,659	1,614,283	1,611,086	1,550,917	1,488,325	1,611,162	2,164,477	2,672,843	1,390,630	20,018,148
Catalogues	1,409,402	1,213,036	1,405,767	1,223,866	1,102,345	1,210,265	1,150,999	1,089,624	1,248,332	1,241,539	1,944,905	2,076,253	1,289,875	16,196,806
Miscellaneous mixed	1,674,509	1,713,945	2,073,938	1,881,595	1,961,708	2,283,192	2,234,115	2,321,344	2,412,298	2,517,458	3,028,621	3,279,520	2,550,660	28,258,394
<b>Mixed business</b>	<b>9,622,343</b>	<b>8,665,695</b>	<b>10,623,836</b>	<b>9,793,673</b>	<b>9,913,678</b>	<b>11,455,186</b>	<b>11,330,717</b>	<b>10,690,511</b>	<b>10,525,412</b>	<b>11,191,396</b>	<b>15,334,597</b>	<b>18,879,411</b>	<b>11,095,598</b>	<b>139,499,710</b>
Men's clothing	412,546	348,095	380,684	380,736	394,794	465,013	498,509	462,878	391,971	401,743	489,979	671,966	439,246	5,325,614
Women's clothing	1,422,191	1,397,274	1,732,645	1,787,396	1,777,930	2,225,256	2,193,083	1,890,259	1,731,187	1,774,859	2,100,524	2,558,986	1,569,404	22,738,803
Family clothing	5,189,950	4,661,253	5,904,732	5,799,940	5,799,940	6,894,639	7,381,602	6,469,987	6,008,895	6,312,430	9,759,355	5,503,258	5,503,258	78,115,106
Miscellaneous clothing	379,376	420,861	531,535	532,929	514,400	641,126	587,254	545,108	613,364	603,612	696,754	776,249	383,843	6,847,035
Shoe shops	1,156,102	893,160	1,073,928	1,257,446	1,211,583	1,465,007	1,515,713	1,532,635	1,241,208	1,236,369	1,315,689	1,566,273	1,227,063	15,536,074
<b>Clothing</b>	<b>8,560,165</b>	<b>7,720,643</b>	<b>9,623,524</b>	<b>9,758,447</b>	<b>9,751,375</b>	<b>11,691,041</b>	<b>12,176,161</b>	<b>10,900,867</b>	<b>9,986,625</b>	<b>10,329,313</b>	<b>12,169,293</b>	<b>15,332,829</b>	<b>9,122,814</b>	<b>128,562,632</b>
Furniture stores	1,280,194	1,170,559	1,313,154	1,169,092	1,122,296	1,238,190	1,249,825	1,325,262	1,217,065	1,323,063	1,578,282	1,572,453	1,450,133	15,729,374
Household appliance stores	1,175,448	1,138,413	1,323,022	1,260,741	1,267,528	1,262,874	1,302,883	1,260,634	1,269,587	1,316,864	1,493,154	1,676,355	1,279,333	15,851,388
Electronic stores	1,393,838	1,176,589	1,308,873	1,184,828	1,180,547	1,283,822	1,290,155	1,319,011	1,254,227	1,315,399	1,628,053	2,207,312	1,500,989	16,649,805
DIY stores	5,084,839	5,353,146	6,734,439	7,509,008	7,413,700	6,872,665	6,751,949	6,315,116	5,869,134	6,062,440	6,229,195	5,572,667	5,211,926	75,895,385
Floor covering stores	146,247	162,287	191,102	166,451	150,226	163,391	163,567	177,908	169,634	181,192	142,969	160,903	2,046,090	2,046,090
Garden centres	650,335	805,002	1,593,979	2,201,689	2,271,732	2,119,820	1,398,272	1,214,273	1,168,907	1,195,001	1,298,050	1,477,218	822,154	17,566,097
Miscellaneous household	234,494	256,279	286,228	252,418	219,038	250,399	277,882	340,593	380,663	382,613	436,612	350,144	336,353	3,769,222
<b>Household</b>	<b>9,965,395</b>	<b>10,062,275</b>	<b>12,750,797</b>	<b>13,744,227</b>	<b>13,625,067</b>	<b>13,191,161</b>	<b>12,434,533</b>	<b>11,952,797</b>	<b>11,329,217</b>	<b>11,776,572</b>	<b>12,879,806</b>	<b>12,999,118</b>	<b>10,761,791</b>	<b>147,507,361</b>
Books, newspapers & magazines	1,607,140	1,626,589	1,915,923	1,605,935	1,495,059	1,748,623	1,772,337	1,832,094	1,862,519	1,890,608	2,403,859	1,614,899	1,614,899	22,984,924
Record shops	710,283	677,573	753,586	615,143	558,249	667,489	620,027	602,202	595,120	637,869	1,131,325	1,911,377	609,165	9,379,125
Music shops	7,144,202	1,322,804	1,552,781	1,323,521	1,270,946	1,576,669	1,457,860	1,539,267	1,500,239	1,499,018	1,742,002	1,806,861	1,861,944	18,453,912
Hobbies, toys & games	592,481	556,757	692,850	598,729	571,694	631,289	643,798	647,541	639,027	774,526	1,394,427	1,926,809	603,310	9,680,757
Photographic	240,777	204,923	254,624	219,811	220,790	263,259	269,145	263,355	259,571	234,912	301,087	381,508	216,652	3,094,075
Handicraft	64,474	69,924	80,000	65,691	62,720	68,808	71,730	76,475	76,133	80,793	95,119	75,449	74,761	897,603
Sports shops	2,129,188	1,957,404	2,348,556	2,481,329	2,510,755	2,911,493	2,949,309	3,004,689	2,568,083	2,525,615	2,917,622	3,674,001	2,377,061	32,225,917
Jewellers	466,535	521,793	581,993	500,059	523,399	589,929	628,525	601,185	557,951	552,155	1,307,376	552,155	517,308	7,665,398
Computer software	882,559	794,268	846,475	730,595	675,501	858,740	641,399	683,684	668,597	628,163	737,499	764,550	615,847	8,645,318
Medical goods	13,772	16,887	20,273	17,427	18,027	19,555	20,072	17,657	18,385	18,478	21,083	17,660	17,652	223,156
Chemists	3,011,958	2,980,400	3,669,797	3,284,371	3,360,528	3,925,473	3,669,132	3,669,353	3,476,651	3,484,276	4,324,377	5,438,607	3,283,913	44,566,878
Optical goods	369,729	425,401	495,787	443,084	437,858	484,485	481,115	468,330	436,032	417,707	443,642	324,384	414,210	5,272,035
Cosmetic stores	298,233	300,475	364,998	326,443	327,599	388,511	379,739	380,378	363,133	376,714	578,312	868,481	335,823	4,990,606
Tobacconists	6,322	6,934	9,166	8,310	8,931	10,083	10,563	10,704	9,921	9,514	10,167	11,903	7,253	113,449
Florists	295,243	419,981	637,095	353,785	354,915	379,984	356,195	316,667	342,441	317,380	335,141	534,462	299,798	4,647,844
Artists' supplies	190,021	230,700	280,195	221,847	216,226	245,487	241,872	262,203	249,259	264,359	345,576	301,863	212,147	3,071,734
Antiques, art & stamps/coins	108,280	114,040	141,286	127,583	129,028	143,009	148,518	164,106	141,870	163,802	178,055	166,502	122,147	1,739,946
Pawn shops	2,159	2,179	2,472	2,341	2,235	2,235	2,619	2,267	2,320	2,496	4,148	2,533	2,533	30,637
Gift shops	932,775	1,092,232	1,293,907	1,081,830	1,093,650	1,379,737	1,358,540	1,401,038	1,187,235	1,270,864	1,815,789	2,503,042	1,030,542	16,508,406
Secondhand shops	4,964	5,254	6,319	5,551	5,239	5,765	6,271	6,516	6,322	6,346	6,832	6,794	4,989	72,198
Luggage & leather goods	88,599	81,854	96,244	96,009	92,973	109,447	126,644	123,578	106,864	103,667	132,070	164,512	109,171	1,343,033
Pet shops	555,536	526,927	599,976	580,646	581,051	606,255	612,062	624,362	596,469	609,381	660,982	694,365	574,348	7,266,824
Religious goods	509	498	726	536	701	570	689	1,368	1,172	718	793	744	685	9,200
Direct sales	3,722,515	3,580,534	4,452,727	3,909,365	3,853,938	4,088,532	4,068,998	3,893,502	3,998,755	3,899,028	4,068,491	3,859,387	3,760,460	47,433,617
Miscellaneous & speciality shops	1,264,758	1,254,318	1,497,392	1,363,509	1,339,568	1,504,474	1,478,358	1,500,110	1,433,329	1,426,624	1,783,865	1,881,238	1,353,741	17,816,528
<b>Other retail</b>	<b>24,703,012</b>	<b>18,770,649</b>	<b>22,595,148</b>	<b>19,963,450</b>	<b>19,711,580</b>	<b>22,614,339</b>	<b>22,015,417</b>	<b>22,092,631</b>	<b>21,097,398</b>	<b>21,195,013</b>	<b>26,214,632</b>	<b>31,842,502</b>	<b>20,020,359</b>	<b>268,133,118</b>
<b>Automotive Fuels</b>	<b>11,341,722</b>	<b>12,154,880</b>	<b>14,668,345</b>	<b>13,894,383</b>	<b>13,722,781</b>	<b>14,888,057</b>	<b>14,470,154</b>	<b>13,549,577</b>	<b>13,216,500</b>	<b>13,365,516</b>	<b>13,884,615</b>	<b>12,341,225</b>	<b>12,296,597</b>	<b>162,452,630</b>
<b>Total retail sales</b>	<b>102,029,416</b>	<b>95,292,577</b>	<b>116,046,567</b>	<b>110,087,508</b>	<b>108,984,679</b>	<b>121,934,933</b>	<b>117,810,506</b>	<b>114,032,096</b>	<b>109,165,765</b>	<b>112,003,048</b>	<b>130,089,198</b>	<b>143,865,174</b>	<b>104,472,117</b>	<b>1,383,784,168</b>

Table 3A Card expenditure statistics (not seasonally adjusted)

Number of credit card transactions

## Detailed sector breakdown - services sectors

	January 2010	February 2010	March 2010	April 2010	May 2010	June 2010	July 2010	August 2010	September 2010	October 2010	November 2010	December 2010	January 2011	Total (latest 12 months)
Auto rental	310,598	329,669	399,708	383,949	388,286	424,476	433,512	388,137	383,995	353,031	340,619	314,066	330,052	4,469,500
Auto parts & accessories	789,972	817,791	1,005,185	905,820	849,470	935,434	925,437	850,853	836,693	801,548	863,024	795,453	803,703	10,390,411
Auto services	1,298,362	1,457,482	1,702,800	1,428,931	1,513,902	1,636,976	1,635,850	1,493,475	1,616,954	1,595,552	1,659,978	1,417,947	1,503,073	18,662,920
Auto repair shops	898,001	943,668	1,152,392	994,360	943,186	1,017,794	1,013,106	914,077	964,837	908,904	933,561	844,878	926,916	11,557,679
Service stations	1,782,912	1,683,063	2,019,903	1,893,619	1,874,927	2,067,983	2,028,628	1,946,139	1,862,886	1,897,616	2,129,020	2,277,138	2,523,735	24,204,657
Vehicle sales	514,163	578,379	753,038	666,444	644,575	721,580	702,884	655,951	663,438	593,559	594,673	505,319	577,054	7,656,894
<b>Vehicle Sales &amp; Services</b>	<b>5,594,008</b>	<b>5,810,052</b>	<b>7,033,026</b>	<b>6,273,123</b>	<b>6,214,346</b>	<b>6,804,243</b>	<b>6,739,417</b>	<b>6,248,632</b>	<b>6,328,803</b>	<b>6,150,210</b>	<b>6,520,875</b>	<b>6,154,801</b>	<b>6,664,533</b>	<b>76,942,061</b>
Restaurants	7,178,826	8,113,445	9,422,317	9,020,087	9,202,690	9,818,502	10,339,213	10,317,160	9,199,370	9,623,203	9,547,760	8,693,286	8,547,186	111,844,219
Public houses	1,040,480	1,231,299	1,518,878	1,514,024	1,464,033	1,759,167	1,711,126	1,852,072	1,583,820	1,525,848	1,575,120	1,412,531	1,345,030	18,492,948
Catering services	161,697	212,828	176,650	190,013	176,650	194,168	187,683	161,358	208,720	191,555	208,720	173,572	167,907	2,237,435
Video stores	39,615	35,556	44,505	42,382	46,650	52,718	64,206	68,653	67,115	72,465	81,675	87,319	80,373	743,617
Cinema, theatre & dance	1,352,141	1,414,989	1,680,611	1,453,766	1,343,563	1,325,267	1,679,079	1,820,852	1,443,437	1,628,534	2,033,623	1,610,593	1,748,099	19,182,413
Concerts & entertainers	21,709	23,810	24,042	18,184	15,169	16,612	17,430	19,111	13,538	16,228	18,169	20,662	17,521	220,476
Tourist attractions	109,199	184,415	238,822	396,002	306,074	435,309	515,996	709,175	379,338	339,614	226,264	158,408	133,679	4,023,096
Amusement parks	8,051	14,596	18,492	36,327	21,885	30,555	35,204	62,005	24,261	25,703	16,683	11,832	11,165	308,708
Aquariums	6,757	9,015	10,082	12,590	10,656	14,580	15,255	22,128	9,708	9,437	8,572	6,545	8,428	136,996
Sports & games establishments	1,923,230	1,967,686	2,407,707	2,075,659	2,036,793	2,057,426	2,149,173	1,973,420	1,851,122	2,072,792	2,431,709	2,146,741	2,146,741	25,331,018
Professional sports clubs	97,902	71,286	111,660	101,602	74,003	79,642	96,528	122,971	108,076	100,359	120,550	110,266	94,655	1,191,598
Gambling	2,647,537	2,649,701	3,239,777	3,044,414	2,652,736	3,266,461	2,601,207	2,766,440	2,823,196	2,864,625	3,212,420	2,946,663	2,967,046	35,034,686
Personal services	87,538	94,576	112,661	109,185	105,060	112,651	113,114	107,154	104,157	101,349	110,460	110,054	98,770	1,273,191
Miscellaneous entertainment	157,733	200,394	240,751	299,740	256,962	314,202	355,061	447,287	275,905	272,376	215,210	175,997	177,852	3,231,737
<b>Entertainment</b>	<b>14,832,415</b>	<b>16,188,897</b>	<b>19,283,133</b>	<b>18,300,612</b>	<b>17,726,287</b>	<b>19,477,260</b>	<b>19,891,892</b>	<b>20,625,539</b>	<b>18,200,193</b>	<b>18,622,418</b>	<b>19,442,018</b>	<b>17,949,437</b>	<b>17,544,452</b>	<b>223,252,138</b>
<b>Hotels</b>	<b>2,468,853</b>	<b>2,745,886</b>	<b>3,232,342</b>	<b>3,047,473</b>	<b>3,207,203</b>	<b>3,501,054</b>	<b>3,621,749</b>	<b>3,397,125</b>	<b>3,286,723</b>	<b>3,171,250</b>	<b>3,028,301</b>	<b>2,560,111</b>	<b>2,650,909</b>	<b>37,450,126</b>
Airlines	1,054,838	965,450	1,051,413	950,204	922,359	985,927	922,355	864,750	914,704	790,312	782,393	594,877	980,205	10,724,949
Airport terminals	43,440	22,790	30,198	26,118	28,977	30,420	27,782	28,239	26,866	22,300	18,653	14,679	17,018	294,040
Railways	4,055,368	4,191,433	4,742,203	4,194,735	4,279,306	4,776,968	4,579,344	4,089,821	4,551,267	4,651,363	4,900,013	3,933,440	4,039,323	52,929,216
Buses	246,785	262,212	331,737	315,211	324,804	384,774	378,834	354,784	372,575	350,577	362,050	305,116	304,289	4,046,963
Sea travel	61,176	71,992	91,345	112,756	110,324	117,519	124,403	126,344	97,036	80,269	66,277	61,794	64,319	1,124,378
Travel agents	1,421,605	1,327,425	1,516,532	1,333,707	1,302,296	1,394,646	1,404,471	1,275,676	1,257,825	1,127,663	1,070,729	824,064	1,397,513	15,232,547
Timeshares	239	275	301	351	363	424	442	551	373	359	302	158	248	4,147
Camping grounds	122,584	139,195	176,889	228,431	241,211	285,069	313,960	337,977	198,189	145,256	81,194	52,751	139,436	2,339,558
Miscellaneous travel	722,749	879,063	984,662	935,641	939,394	1,012,413	1,063,161	860,910	874,174	856,581	843,231	689,044	597,971	10,536,245
<b>Travel</b>	<b>7,728,784</b>	<b>7,859,835</b>	<b>8,925,280</b>	<b>8,097,154</b>	<b>8,149,034</b>	<b>8,968,160</b>	<b>8,814,752</b>	<b>7,939,052</b>	<b>8,293,009</b>	<b>8,024,680</b>	<b>8,124,842</b>	<b>6,475,923</b>	<b>7,540,322</b>	<b>97,232,043</b>
Telegraph services / Wire transfer money orde	4,589	4,315	5,193	4,678	4,340	4,803	4,472	4,392	4,080	3,924	4,108	4,532	3,578	52,415
Insurance services	1,606,709	1,656,432	2,052,964	1,807,105	1,747,512	2,009,016	2,026,953	1,904,576	1,981,867	1,708,740	1,687,249	1,464,082	1,589,802	21,636,298
FIs - cash disbursements (auto & manual)	26,827	29,253	35,111	29,620	31,201	38,380	36,131	32,625	36,984	31,088	28,545	23,452	23,419	375,809
FIs - merchandise & services	542,575	509,461	624,486	555,734	563,706	586,902	605,388	514,795	518,422	549,634	518,338	511,091	524,329	6,582,286
Non-FIs - foreign currency, travellers' cheques	27,406	33,645	42,526	42,779	59,220	70,109	70,709	66,793	57,801	29,323	16,657	12,749	11,355	513,666
Security brokers and dealers	12,963	13,923	14,258	15,603	15,536	19,536	15,493	14,932	15,493	15,702	17,793	14,617	17,131	200,324
Tax preparation services	546	615	681	689	275	309	249	140	88	85	101	82	161	3,475
Tax payments	2,849	2,765	3,564	4,148	3,586	4,698	5,267	5,955	4,844	4,324	4,727	3,807	3,724	51,409
Fines, bail and bond payments	56,354	59,266	68,591	62,119	64,685	70,224	74,934	58,887	68,054	68,454	57,369	68,642	61,562	783,783
Miscellaneous financial	128,108	133,709	164,392	158,365	154,163	168,363	164,683	147,826	145,183	139,348	145,892	135,689	148,496	1,806,109
<b>Financial</b>	<b>2,408,906</b>	<b>2,443,384</b>	<b>3,011,766</b>	<b>2,679,293</b>	<b>2,651,966</b>	<b>2,972,340</b>	<b>3,008,391</b>	<b>2,751,482</b>	<b>2,832,255</b>	<b>2,551,618</b>	<b>2,492,052</b>	<b>2,227,470</b>	<b>2,383,557</b>	<b>32,005,574</b>



Table 3A Card expenditure statistics (not seasonally adjusted)

Number of credit card transactions

## Detailed sector breakdown - services sectors (continued)

	January 2010	February 2010	March 2010	April 2010	May 2010	June 2010	July 2010	August 2010	September 2010	October 2010	November 2010	December 2010	January 2011	Total (latest 12 months)
Telecoms	1,999,794	1,853,917	2,119,810	1,958,138	1,903,124	2,000,401	2,033,750	1,863,706	1,835,186	1,813,602	1,873,436	2,067,412	1,762,498	23,084,980
Utilities	325,471	325,484	401,378	356,602	346,586	364,815	364,539	314,641	331,461	328,848	321,958	285,689	320,411	4,062,412
Contractors (residential & commercial)	274,903	292,841	345,925	305,623	293,848	311,703	309,244	289,053	313,036	317,358	344,903	275,484	295,522	3,694,540
Gardening services	24,893	32,273	60,688	68,934	66,867	71,924	53,727	46,829	45,580	43,362	49,505	54,025	30,454	624,168
Veterinary services	488,658	495,783	566,179	534,251	523,023	580,629	607,363	596,582	594,526	572,444	580,463	515,550	526,084	6,692,877
Photocopying & printing	341,995	323,196	385,754	319,264	307,044	327,048	318,197	306,550	330,677	347,144	398,100	364,107	324,692	4,051,773
Photographic studios	81,250	84,908	106,782	92,343	96,706	125,992	154,878	108,423	113,577	140,459	173,072	128,221	83,543	1,408,904
Beauty & barber shops	1,064,949	1,157,310	1,371,626	1,254,971	1,261,689	1,415,368	1,408,156	1,293,431	1,289,184	1,263,990	1,353,528	1,655,581	1,163,597	15,888,431
Employment agencies	21,063	20,312	23,005	20,737	20,952	22,427	21,337	19,569	20,395	19,009	19,678	15,768	20,316	243,505
Counselling services	4,228	4,106	4,472	3,879	3,929	3,975	4,024	3,764	3,925	4,169	3,899	3,775	4,194	48,111
Legal services	28,748	29,985	35,727	30,337	28,990	30,826	30,489	27,963	29,755	28,496	30,495	23,526	30,045	356,634
Laundry & cleaning	131,927	141,288	170,406	164,151	163,242	190,993	182,255	168,742	178,870	176,905	180,324	135,019	150,303	2,002,498
Funeral services	10,555	10,038	11,284	10,061	9,313	9,930	9,683	8,729	9,723	10,482	11,091	10,151	11,105	121,590
Medical services	893,974	984,191	1,151,496	1,004,409	992,689	1,091,590	1,066,338	979,410	1,095,039	1,037,791	1,135,765	891,789	1,028,739	12,459,246
Moving & courier services	154,464	166,819	196,959	165,536	167,551	189,747	186,232	163,748	180,083	173,011	186,690	173,650	166,269	2,116,295
Repair shops (not auto)	89,755	77,833	90,208	81,327	74,568	77,706	64,543	58,199	55,923	53,344	61,272	55,861	51,951	802,735
Accounting services	31,985	29,672	33,938	32,558	26,412	28,817	27,276	28,773	33,956	32,870	34,143	32,035	35,853	376,303
Advertising, consultancy & PR	123,612	132,519	155,808	141,514	122,243	136,324	124,768	123,337	125,417	116,285	122,583	85,940	110,528	1,497,266
Computer programming	613,174	578,840	678,320	604,025	463,375	494,356	470,856	454,192	479,801	464,548	491,416	461,088	476,240	6,117,057
Farming services	57,839	56,977	69,909	67,325	64,204	71,878	66,020	66,333	63,363	61,741	65,886	64,562	57,309	775,507
Miscellaneous professional services	978,172	1,021,068	1,214,215	1,063,372	1,036,125	1,186,790	1,146,602	1,197,461	1,217,665	1,158,463	1,231,047	1,070,666	1,067,404	13,610,878
Engineering services	52,572	62,143	73,253	64,922	59,903	66,074	59,941	56,311	59,941	56,182	58,786	46,301	53,832	722,264
Marina services	28,930	31,642	50,797	65,441	64,409	81,249	84,643	88,092	57,353	41,171	39,711	34,996	32,660	672,164
Wrecking & salvage yards	3,549	3,869	4,753	3,982	3,525	4,169	4,268	4,079	4,099	3,908	4,107	2,953	3,781	47,493
Pest control	2,259	2,334	2,804	2,614	2,590	3,054	3,719	3,407	3,458	2,869	2,570	1,707	2,103	33,229
Educational establishments	448,903	380,011	465,707	373,994	379,100	388,324	402,127	379,072	569,112	487,486	457,594	364,255	502,685	5,149,467
Child care services	14,200	16,001	16,368	14,228	12,879	13,942	15,023	16,166	15,043	16,672	17,045	14,442	18,027	185,836
Social, political & religious organisations	1,136,646	891,601	1,310,369	1,201,431	1,077,020	1,202,816	1,072,671	1,244,576	1,166,120	1,107,525	1,250,386	1,073,604	895,294	13,493,413
Government services	1,392,087	1,533,202	1,779,342	1,578,516	1,550,342	1,681,155	1,664,296	1,543,275	1,590,825	1,519,902	1,544,500	1,333,184	1,448,125	18,766,664
Miscellaneous services	952,022	926,637	1,142,609	991,157	930,102	1,001,596	959,951	964,815	997,426	990,206	1,170,788	1,400,257	916,687	12,392,231
Commercial equipment	980,739	962,253	1,097,464	930,670	930,238	971,186	970,488	870,947	998,474	922,901	991,737	865,123	921,091	11,432,572
Other services	12,753,316	12,629,053	15,137,355	13,506,312	12,982,588	14,146,804	13,892,079	13,290,175	13,808,993	13,313,143	14,206,478	13,506,721	12,511,342	162,931,043
<b>Total services</b>	<b>45,786,282</b>	<b>47,677,107</b>	<b>56,622,902</b>	<b>51,903,967</b>	<b>50,931,424</b>	<b>55,889,861</b>	<b>55,968,280</b>	<b>54,252,005</b>	<b>52,749,976</b>	<b>51,833,319</b>	<b>53,814,566</b>	<b>48,874,463</b>	<b>49,295,115</b>	<b>629,812,985</b>
<b>TOTAL</b>	<b>147,815,698</b>	<b>142,969,684</b>	<b>172,669,469</b>	<b>161,991,475</b>	<b>159,916,103</b>	<b>177,824,794</b>	<b>173,778,786</b>	<b>168,284,101</b>	<b>161,915,741</b>	<b>163,836,367</b>	<b>183,903,764</b>	<b>192,739,637</b>	<b>153,767,232</b>	<b>2,013,597,153</b>

Table 3B Card expenditure statistics (not seasonally adjusted)

Value of credit card transactions

## Detailed sector breakdown - retail sectors

£	January 2010	February 2010	March 2010	April 2010	May 2010	June 2010	July 2010	August 2010	September 2010	October 2010	November 2010	December 2010	January 2011	Total (latest 12 months)
Supermarkets	1,239,458,563	1,223,777,567	1,473,098,626	1,411,860,585	1,387,514,586	1,570,026,140	1,447,453,196	1,431,577,260	1,376,659,864	1,425,718,436	1,680,382,327	2,027,283,255	1,303,106,322	17,758,458,164
Bakers & dairies	1,441,994	1,536,908	1,862,346	1,681,903	1,720,359	2,119,714	1,971,646	1,684,123	1,785,044	1,894,392	2,153,794	2,513,456	1,635,316	22,559,001
Sweet stores	2,224,723	2,947,475	5,189,645	3,298,238	2,311,226	3,156,835	2,766,815	2,840,236	2,956,573	3,450,334	6,834,387	12,212,198	2,180,874	50,144,836
Miscellaneous foodstores	49,343,210	49,765,422	60,527,844	55,537,669	55,664,767	63,841,133	62,577,470	59,204,154	56,941,271	56,212,942	65,922,023	82,492,747	51,018,233	719,705,675
Off-licences	20,380,064	21,883,989	27,165,206	25,972,891	29,370,977	35,782,955	37,001,714	30,018,753	25,506,337	26,486,512	35,003,444	53,997,654	22,181,740	370,372,172
<b>Food &amp; drink</b>	<b>1,312,848,554</b>	<b>1,299,911,361</b>	<b>1,567,843,667</b>	<b>1,498,351,286</b>	<b>1,476,581,915</b>	<b>1,674,926,777</b>	<b>1,551,770,841</b>	<b>1,525,324,526</b>	<b>1,463,849,089</b>	<b>1,513,762,616</b>	<b>1,790,295,975</b>	<b>2,178,499,310</b>	<b>1,380,122,465</b>	<b>18,921,239,848</b>
Department stores	289,028,005	264,444,878	331,835,013	301,192,439	307,451,364	372,972,668	362,018,658	330,914,050	331,218,906	356,918,439	493,078,237	621,054,555	325,533,907	4,398,633,114
Discount stores	79,608,224	74,879,716	89,557,975	86,744,904	89,705,730	93,634,267	88,681,940	86,070,489	80,777,137	90,779,127	127,157,047	147,017,049	74,162,042	1,129,167,423
Catalogues	45,792,586	43,837,304	53,308,523	46,208,779	42,892,380	45,652,047	43,304,872	40,521,768	45,542,136	44,811,276	64,282,128	61,221,374	41,992,738	6,532,575,325
Miscellaneous mixed	82,926,111	83,618,963	91,353,338	75,639,296	79,434,624	89,181,813	87,715,799	87,891,208	81,317,209	91,426,918	108,253,636	112,074,741	74,124,619	1,072,032,164
<b>Mixed business</b>	<b>497,354,936</b>	<b>466,780,861</b>	<b>566,054,849</b>	<b>509,785,418</b>	<b>519,484,098</b>	<b>601,440,795</b>	<b>581,721,269</b>	<b>545,397,515</b>	<b>548,855,388</b>	<b>583,935,760</b>	<b>792,771,048</b>	<b>941,367,719</b>	<b>515,813,306</b>	<b>7,173,408,026</b>
Men's clothing	38,085,026	32,523,749	38,255,900	37,156,874	39,160,824	43,333,744	45,058,887	41,078,926	38,441,638	40,807,640	47,279,023	57,340,756	40,402,189	500,840,150
Women's clothing	91,613,897	97,770,408	125,680,689	120,846,867	117,083,818	136,851,477	123,977,123	111,808,399	124,640,771	138,432,471	149,366,446	104,097,623	104,097,623	1,472,793,191
Family clothing	223,638,631	221,354,872	282,014,644	269,640,241	272,520,977	311,180,736	323,546,437	297,604,550	303,285,776	372,334,510	458,002,433	317,368,700	243,815,217	3,672,669,093
Miscellaneous clothing	20,335,008	23,179,056	28,236,752	27,092,011	26,457,764	30,785,986	28,464,662	26,208,600	30,963,269	31,033,156	34,467,505	34,353,289	20,993,947	342,235,997
Shoe shops	57,271,064	47,777,296	59,531,288	67,059,546	64,914,026	72,121,623	69,840,746	75,413,563	72,556,744	78,991,059	83,048,173	90,832,708	62,040,915	844,127,687
<b>Clothing</b>	<b>430,943,626</b>	<b>422,605,381</b>	<b>533,719,273</b>	<b>521,795,539</b>	<b>520,137,409</b>	<b>594,273,566</b>	<b>590,887,855</b>	<b>552,114,038</b>	<b>567,484,526</b>	<b>592,841,329</b>	<b>675,561,682</b>	<b>789,895,632</b>	<b>471,349,891</b>	<b>6,832,666,118</b>
Furniture stores	251,784,453	243,145,106	278,490,411	241,474,385	235,888,318	249,812,433	255,641,028	261,958,462	250,164,797	276,622,572	305,782,080	267,859,665	286,287,108	3,153,126,365
Household appliance stores	108,607,130	105,736,474	124,249,034	108,076,808	106,012,282	113,540,470	113,533,509	113,791,551	115,828,816	123,157,082	141,957,776	144,299,215	118,080,790	1,428,263,807
Electronic stores	221,810,089	184,377,717	215,167,567	198,702,054	212,814,297	226,813,441	215,772,406	224,746,072	206,266,810	224,608,446	279,621,084	390,987,704	238,215,234	2,818,092,832
DIY stores	377,494,578	380,774,363	479,404,466	495,974,638	497,305,909	469,960,209	465,842,081	433,652,649	411,424,766	421,672,605	420,814,229	350,208,308	386,225,014	5,213,259,237
Floor covering stores	47,801,039	50,650,024	61,989,911	54,993,544	51,757,113	56,141,741	55,616,391	57,311,229	56,648,666	60,855,701	73,663,121	51,969,178	53,565,441	685,162,060
Garden centres	29,676,141	38,897,816	80,534,882	116,686,462	117,441,702	109,628,448	72,800,661	60,724,344	56,476,185	53,849,332	59,109,750	64,081,963	36,700,611	866,932,156
Miscellaneous household	37,957,555	41,130,237	47,676,521	42,790,104	38,201,698	43,191,282	45,601,812	51,344,532	52,964,964	53,408,914	59,097,273	44,608,327	43,223,368	563,239,032
<b>Household</b>	<b>1,075,130,985</b>	<b>1,044,711,737</b>	<b>1,287,512,792</b>	<b>1,258,697,995</b>	<b>1,259,421,319</b>	<b>1,269,088,024</b>	<b>1,224,807,888</b>	<b>1,203,528,839</b>	<b>1,149,775,004</b>	<b>1,214,174,652</b>	<b>1,340,045,313</b>	<b>1,314,014,360</b>	<b>1,162,297,566</b>	<b>14,728,075,486</b>
Books, newspapers & magazines	47,805,445	48,063,254	55,223,022	47,383,219	45,089,354	50,657,054	51,883,375	50,246,771	57,659,250	58,346,131	57,387,853	68,894,070	48,881,753	667,715,109
Record shops	17,077,691	17,460,928	19,769,739	16,349,827	13,931,687	16,073,904	15,326,612	14,733,003	14,559,610	16,638,866	31,505,393	55,774,068	14,680,484	246,804,121
Music shops	52,412,665	24,297,321	27,743,769	23,473,829	21,814,625	24,867,621	23,825,007	23,577,166	24,641,402	24,145,277	28,916,382	33,577,705	26,633,570	307,513,674
Hobbies, toys & games	31,615,227	29,994,334	39,217,820	33,563,484	32,340,146	35,531,781	35,886,346	34,520,663	37,096,737	43,926,378	84,819,543	101,769,223	31,710,715	540,377,770
Photographic	27,429,890	25,011,376	34,649,693	28,742,462	28,581,215	32,398,605	32,483,438	30,035,567	28,917,044	28,114,457	33,688,863	44,273,397	24,873,257	371,769,374
Handicraft	6,169,789	6,637,291	7,652,210	6,284,587	6,300,414	7,122,826	7,142,844	7,326,630	7,291,421	7,569,135	8,552,251	7,003,082	7,229,388	86,112,079
Sports shops	130,739,425	125,403,864	160,695,240	168,084,991	167,920,680	188,666,971	189,319,186	187,959,035	165,153,685	160,762,878	186,248,430	218,626,385	146,096,182	2,064,937,527
Jewellers	74,427,970	96,455,138	82,929,996	89,675,638	100,058,258	108,024,041	98,608,058	91,078,914	92,330,249	118,164,908	208,488,753	81,813,617	1,252,668,632	
Computer software	136,628,434	129,073,676	147,197,147	132,911,598	147,486,037	190,782,440	122,885,540	139,493,565	132,100,460	116,439,651	141,866,859	156,919,185	105,008,889	1,662,165,047
Medical goods	3,369,276	4,552,115	5,446,089	4,625,901	4,602,863	4,980,586	5,013,307	4,866,241	5,301,723	4,962,247	5,623,168	4,369,764	4,133,128	58,477,132
Chemists	63,090,013	62,940,928	76,311,889	70,393,348	70,370,520	84,525,612	80,898,240	77,332,830	72,388,703	81,046,871	110,956,932	145,094,331	67,903,568	1,000,163,772
Optical goods	52,409,688	62,787,782	73,247,522	64,223,176	63,381,017	69,200,876	68,693,281	67,532,564	61,991,603	59,911,472	63,041,713	43,589,045	60,131,710	757,731,763
Cosmetic stores	14,415,567	14,686,024	18,082,662	16,109,335	16,383,492	18,639,670	18,467,600	17,612,003	17,554,247	18,689,427	27,652,969	38,214,165	16,000,481	238,092,075
Tobacconists	459,156	464,388	631,624	568,777	637,112	717,588	733,851	717,573	694,749	646,549	706,295	804,003	536,457	7,858,966
Florists	13,286,018	18,508,751	26,655,306	17,020,829	17,398,452	18,774,811	17,280,255	15,384,449	16,731,565	15,343,301	23,753,576	14,177,273	217,329,984	
Artists' supplies	9,598,789	11,340,781	14,011,725	11,357,368	11,773,605	12,999,696	12,654,594	12,728,828	13,305,787	13,699,269	16,740,646	14,102,960	10,598,264	155,313,523
Antiques, art & stamps/coins	18,759,122	20,008,332	26,318,580	22,525,254	26,141,214	26,102,862	25,510,059	23,522,512	25,439,018	28,556,030	30,934,442	28,518,180	22,116,906	305,693,353
Pawn shops	533,946	478,795	482,018	534,543	415,365	421,962	546,782	397,990	431,890	612,965	520,052	611,247	520,069	5,973,678
Gift shops	31,749,103	35,244,427	43,132,206	39,043,314	39,729,437	46,127,853	46,987,447	47,313,631	42,966,127	46,796,946	56,177,265	78,062,850	35,077,111	565,658,611
Secondhand shops	679,161	692,059	909,901	787,766	644,382	826,614	814,753	686,592	728,526	995,991	827,241	775,759	584,656	9,274,240
Luggage & leather goods	6,157,626	5,873,582	7,153,023	6,983,437	7,148,493	8,344,816	9,160,293	8,360,918	8,162,958	7,931,673	11,141,933	15,820,158	9,072,040	105,153,324
Pet shops	23,093,400	22,157,427	26,096,333	25,175,685	24,717,643	26,326,729	26,242,193	26,542,124	25,515,252	25,267,102	25,267,102	27,878,360	24,352,379	307,580,352
Religious goods	57,724	33,171	43,539	31,011	44,461	46,559	51,173	65,132	102,899	51,010	46,714	50,835	57,121	623,625
Direct sales	224,196,662	226,166,801	281,991,463	246,665,550	231,485,243	247,167,251	231,825,571	216,129,806	233,996,972	223,960,662	243,005,856			

Table 3B Card expenditure statistics (not seasonally adjusted)

Value of credit card transactions

## Detailed sector breakdown - services sectors

£	January 2010	February 2010	March 2010	April 2010	May 2010	June 2010	July 2010	August 2010	September 2010	October 2010	November 2010	December 2010	January 2011	Total (latest 12 months)
Auto rental	34,626,891	36,614,667	47,337,953	44,540,051	47,245,101	54,038,826	55,650,408	44,761,720	41,154,428	37,287,563	35,414,343	35,619,777	36,638,354	516,303,191
Auto parts & accessories	117,288,885	124,882,180	155,770,480	137,575,607	129,718,694	142,586,192	137,973,518	124,843,832	128,100,228	121,819,029	130,885,044	119,103,225	122,362,147	1,575,620,176
Auto services	33,926,121	37,458,569	45,136,388	38,109,213	40,007,225	44,820,786	44,974,875	41,915,430	43,990,799	41,712,263	42,454,880	35,525,464	41,256,078	497,361,970
Auto repair shops	224,290,587	242,888,388	304,695,055	255,271,875	242,956,183	255,370,082	256,773,621	221,539,544	238,430,616	226,828,327	229,616,427	204,780,916	232,058,330	2,911,209,364
Service stations	52,968,965	52,493,482	63,208,415	58,172,400	58,204,493	63,711,115	62,086,721	57,818,368	57,770,265	62,799,781	65,208,500	79,359,752	737,924,166	
Vehicle sales	178,100,924	206,318,632	270,861,227	224,086,040	214,862,492	236,262,048	227,903,119	210,352,889	223,064,950	205,751,578	202,818,091	168,970,454	198,707,916	2,590,069,436
<b>Vehicle Sales &amp; Services</b>	<b>641,202,373</b>	<b>700,655,918</b>	<b>887,009,518</b>	<b>757,765,186</b>	<b>733,094,188</b>	<b>796,789,049</b>	<b>785,362,262</b>	<b>701,231,783</b>	<b>732,511,286</b>	<b>690,489,634</b>	<b>703,988,566</b>	<b>629,208,336</b>	<b>710,382,577</b>	<b>8,828,488,303</b>
Restaurants	286,979,772	324,651,439	378,395,903	358,864,522	366,609,316	387,026,173	407,856,976	401,603,165	359,004,661	373,100,370	374,152,084	397,390,558	327,515,487	4,456,170,654
Public houses	45,751,334	54,290,762	67,461,482	65,057,703	63,475,028	75,331,706	74,933,146	80,723,026	69,371,538	67,353,900	70,487,712	75,710,648	58,025,548	822,222,199
Catering services	10,990,009	11,819,862	15,531,960	12,998,255	14,303,709	15,034,276	13,584,190	10,643,990	14,349,802	13,559,479	15,999,475	13,554,913	12,702,894	164,302,805
Video stores	1,021,577	1,128,973	1,237,030	1,066,959	1,781,425	1,376,191	1,478,637	1,348,215	1,600,645	1,890,332	1,892,807	1,822,926	1,333,804	17,957,944
Cinema, theatre & dance	91,569,646	97,274,891	142,608,909	96,886,606	96,356,172	98,800,919	106,279,954	102,725,224	109,296,084	130,410,518	172,408,893	123,224,266	107,650,470	1,383,922,906
Concerts & entertainers	1,874,189	2,105,003	2,286,704	1,575,791	1,161,890	1,255,714	1,190,066	1,135,180	1,076,795	1,206,253	1,385,613	1,156,711	1,135,578	16,671,298
Tourist attractions	5,931,571	9,200,285	12,504,332	18,640,407	14,838,318	21,455,320	25,151,745	31,240,821	16,958,222	15,779,797	10,948,423	8,509,228	7,191,475	192,418,373
Amusement parks	519,277	770,362	1,142,505	1,639,039	1,145,192	1,421,721	1,744,464	2,485,021	1,145,599	1,242,860	1,055,836	753,437	690,050	15,236,086
Aquariums	411,760	521,219	638,975	722,283	617,736	746,083	732,848	828,059	542,433	558,875	522,390	396,876	471,130	7,298,907
Sports & games establishments	69,149,605	73,627,706	102,342,281	100,634,849	128,012,375	110,800,504	85,669,292	74,323,565	75,271,299	70,669,398	77,814,469	81,917,888	75,600,729	1,056,684,355
Professional sports clubs	5,470,975	5,439,948	8,829,034	8,642,267	9,558,840	23,008,544	10,092,735	9,028,046	8,157,106	7,844,696	8,953,944	7,943,421	6,928,705	114,427,286
Gambling	114,577,783	105,804,186	135,764,701	122,217,352	108,190,613	145,260,904	104,578,614	112,255,546	115,046,890	110,857,821	120,108,281	107,955,929	112,120,673	1,400,161,510
Personal services	6,677,509	7,104,540	8,608,555	7,789,265	7,440,508	8,002,025	7,895,077	7,245,001	7,718,147	7,325,905	7,614,426	7,768,069	7,646,275	92,157,793
Miscellaneous entertainment	9,143,814	12,069,558	15,905,363	17,178,828	16,178,690	18,838,486	20,777,471	22,498,600	16,144,076	15,911,519	15,237,084	10,575,518	9,631,532	190,946,725
<b>Entertainment</b>	<b>650,068,821</b>	<b>705,808,734</b>	<b>893,257,734</b>	<b>813,914,126</b>	<b>829,669,812</b>	<b>908,358,566</b>	<b>861,965,215</b>	<b>858,083,459</b>	<b>795,683,297</b>	<b>817,931,723</b>	<b>878,581,437</b>	<b>838,680,388</b>	<b>728,644,350</b>	<b>9,930,578,841</b>
<b>Hotels</b>	<b>351,454,198</b>	<b>385,113,237</b>	<b>461,204,209</b>	<b>441,647,416</b>	<b>476,710,189</b>	<b>533,216,574</b>	<b>564,504,285</b>	<b>511,138,276</b>	<b>496,023,813</b>	<b>479,346,220</b>	<b>467,644,024</b>	<b>383,046,928</b>	<b>385,702,368</b>	<b>5,575,297,539</b>
Airlines	317,888,047	304,235,816	300,750,468	260,975,917	218,892,436	269,145,295	280,077,195	254,449,484	284,905,492	253,658,465	259,872,794	170,426,718	342,410,369	3,199,800,449
Airport terminals	3,082,512	2,716,684	3,725,662	3,363,989	3,553,755	4,047,505	3,800,147	3,405,508	3,529,618	3,132,850	3,021,839	2,568,245	2,399,167	39,264,969
Railways	192,586,759	171,724,280	193,554,084	189,083,121	177,925,858	197,249,118	182,656,214	162,964,164	198,198,177	192,439,163	204,798,980	186,767,034	175,500,555	2,232,860,748
Buses	13,274,324	13,515,136	17,528,931	17,987,948	17,353,250	20,480,690	21,336,156	19,104,431	20,079,017	18,106,724	17,419,512	15,728,540	15,289,271	213,929,606
Sea travel	12,181,957	13,925,559	17,311,964	16,651,920	16,841,835	18,204,453	18,322,794	17,277,851	13,515,566	12,768,722	10,925,868	10,479,139	13,343,787	179,569,458
Travel agents	585,066,826	529,113,372	626,332,065	536,692,225	579,757,368	615,705,895	646,475,380	545,897,382	477,284,037	415,999,861	368,033,669	300,361,524	562,555,511	6,204,208,289
Timeshares	48,713	44,019	37,656	36,459	33,030	47,578	43,864	47,097	36,436	38,235	34,994	19,509	46,303	465,180
Camping grounds	29,119,019	29,047,554	34,103,471	34,443,318	38,831,151	45,840,583	51,121,545	41,908,291	25,045,809	23,691,990	24,039,939	18,264,037	29,276,933	395,614,621
Miscellaneous travel	21,529,284	25,669,105	31,284,626	32,424,565	30,029,436	44,115,112	40,162,326	32,711,607	27,545,248	24,253,628	23,891,739	18,723,143	21,995,116	352,805,651
<b>Travel</b>	<b>1,174,777,441</b>	<b>1,089,991,525</b>	<b>1,224,628,927</b>	<b>1,091,659,462</b>	<b>1,083,218,119</b>	<b>1,214,836,229</b>	<b>1,243,995,621</b>	<b>1,077,765,815</b>	<b>1,050,139,400</b>	<b>944,089,638</b>	<b>912,039,334</b>	<b>723,337,889</b>	<b>1,162,817,012</b>	<b>12,818,518,971</b>
Telegraph services / Wire transfer money orde	1,201,173	1,087,659	1,314,103	1,220,931	1,122,908	1,326,025	1,141,004	1,190,983	1,141,487	1,063,019	1,123,571	1,125,080	901,161	13,757,931
Insurance services	287,641,506	292,389,454	378,634,558	334,410,494	321,952,480	365,285,702	363,533,421	353,181,473	382,809,894	336,874,329	341,266,845	284,263,949	323,256,033	4,077,858,632
FIs - cash disbursements (auto & manual)	21,621,461	21,587,863	25,720,110	23,036,730	21,959,356	26,415,815	26,955,288	24,844,082	25,057,137	21,690,143	19,685,902	18,231,684	17,908,016	273,092,126
FIs - merchandise & services	66,871,148	66,203,691	78,386,317	70,226,654	72,850,095	78,630,410	79,871,818	58,454,175	63,691,003	70,406,414	67,884,186	62,179,703	68,383,204	837,167,670
Non-FIs - foreign currency, travellers' cheques	10,147,756	12,078,737	15,938,958	15,959,800	23,361,155	28,814,436	31,284,041	29,235,189	22,883,217	11,266,480	6,090,372	4,779,551	4,655,275	206,347,211
Security brokers and dealers	4,997,805	4,677,120	4,895,227	5,187,392	8,779,332	6,056,052	4,667,531	3,333,582	3,617,550	4,439,462	4,829,937	3,716,474	5,044,981	59,444,640
Tax preparation services	63,670	53,115	74,981	82,284	64,861	63,700	69,121	33,452	29,347	40,634	55,775	33,408	51,741	652,419
Tax payments	309,773	216,072	348,336	400,300	366,242	471,397	438,387	420,221	410,352	396,782	432,227	369,070	319,879	4,589,265
Fines, bail and bond payments	7,010,801	7,246,893	8,714,574	7,341,492	7,929,459	8,597,027	8,994,842	7,099,491	8,314,231	8,333,022	8,629,610	6,888,809	7,758,222	95,847,852
Miscellaneous financial	25,388,333	26,810,800	31,844,437	29,091,658	29,409,961	32,243,071	31,485,319	28,670,416	28,562,195	27,436,273	29,691,000	28,152,603	34,743,309	358,141,042
<b>Financial</b>	<b>425,253,426</b>	<b>432,351,404</b>	<b>545,871,781</b>	<b>486,957,735</b>	<b>487,795,849</b>	<b>547,903,635</b>	<b>548,440,772</b>	<b>506,463,064</b>	<b>536,516,413</b>	<b>481,946,558</b>	<b>479,689,425</b>	<b>409,740,331</b>	<b>463,021,821</b>	<b>5,926,698,788</b>

Table 3B Card expenditure statistics (not seasonally adjusted)

Value of credit card transactions

## Detailed sector breakdown - services sectors (continued)

£	January 2010	February 2010	March 2010	April 2010	May 2010	June 2010	July 2010	August 2010	September 2010	October 2010	November 2010	December 2010	January 2011	Total (latest 12 months)
Telecoms	75,044,248	69,134,903	78,716,541	72,456,294	70,441,006	76,130,855	80,436,704	69,967,944	69,741,129	67,608,980	71,967,310	83,966,619	64,753,687	875,321,972
Utilities	43,911,859	48,461,142	62,912,953	54,441,739	50,680,619	52,270,649	49,582,320	40,695,976	43,494,054	42,185,001	42,295,739	37,436,396	43,178,668	567,635,256
Contractors (residential & commercial)	63,862,549	71,795,701	86,541,798	75,991,036	75,217,611	80,734,599	77,052,456	71,849,618	79,217,525	80,974,354	87,743,748	71,898,368	74,160,221	933,177,035
Gardening services	1,839,498	2,385,935	4,664,576	5,545,663	5,404,954	5,783,706	4,484,867	3,585,164	3,580,158	3,092,805	3,334,953	3,158,436	2,111,848	47,133,065
Veterinary services	41,020,340	41,521,622	47,799,835	45,308,001	44,371,195	49,348,758	50,915,114	48,978,167	49,401,890	47,478,141	48,784,297	42,838,691	46,324,141	563,069,862
Photocopying & printing	30,721,442	31,115,016	36,009,518	29,228,915	29,197,532	31,459,761	29,277,124	26,970,636	31,982,923	32,121,037	34,385,452	29,162,406	30,153,071	371,063,391
Photographic studios	6,302,164	7,074,471	8,751,954	7,848,210	7,756,014	9,353,657	11,201,277	8,797,121	8,835,095	9,546,730	11,570,766	9,282,050	6,765,023	106,782,368
Beauty & barber shops	56,174,012	61,245,737	73,585,788	67,000,423	67,508,332	74,544,400	74,606,968	67,261,151	69,332,253	67,779,930	73,497,743	86,491,484	61,001,438	843,854,456
Employment agencies	5,140,158	4,373,291	4,698,220	4,698,220	4,048,503	4,568,439	3,984,408	4,379,931	5,298,875	5,014,799	4,900,539	4,618,865	4,837,609	55,883,513
Counselling services	319,843	326,650	433,769	359,063	319,352	315,944	388,442	381,565	459,836	681,823	592,541	493,621	496,014	5,248,620
Legal services	14,232,382	15,045,007	17,993,304	15,339,298	14,893,245	15,668,737	16,183,434	14,374,430	15,889,850	15,681,204	16,204,544	13,710,921	16,738,097	187,722,071
Laundry & cleaning	4,292,952	4,439,457	5,370,059	5,142,220	5,128,934	6,051,666	5,780,739	5,428,235	5,784,009	5,612,471	5,751,935	4,494,073	4,867,140	63,850,938
Funeral services	10,605,341	10,149,234	11,304,453	10,012,904	9,038,091	9,722,803	9,676,771	8,577,102	9,735,871	10,714,308	9,801,055	10,221,192	11,397,973	120,351,757
Medical services	117,143,761	131,256,383	155,127,854	132,630,511	134,793,607	146,489,981	145,738,529	126,860,958	142,554,150	138,432,820	150,415,590	116,981,073	130,439,664	1,651,721,120
Moving & courier services	18,294,765	18,269,355	21,289,895	19,240,509	19,237,972	21,970,295	22,974,379	19,044,155	20,307,722	20,090,706	19,711,689	17,689,027	18,570,233	238,395,937
Repair shops (not auto)	10,261,454	10,016,714	12,098,343	10,296,852	10,099,612	11,210,497	10,841,569	9,776,574	10,119,844	9,550,994	10,942,727	9,713,984	8,273,342	122,941,052
Accounting services	6,738,467	6,229,676	7,085,157	5,834,595	5,159,293	5,715,499	5,280,136	5,173,831	6,351,846	5,741,833	6,134,488	5,936,577	6,857,019	71,499,950
Advertising, consultancy & PR	12,747,847	13,089,022	15,644,367	14,081,370	12,613,088	14,240,423	13,635,276	12,632,137	13,820,434	12,540,056	12,963,498	9,957,572	12,233,072	157,450,315
Computer programming	41,107,975	41,665,079	52,508,917	45,675,084	46,562,674	46,251,841	42,799,486	35,756,281	42,052,558	39,754,434	39,032,204	35,330,678	33,997,966	501,387,202
Farming services	6,814,542	6,838,025	8,444,159	7,933,698	7,937,880	8,968,212	9,049,283	8,868,019	8,295,817	7,891,578	8,106,451	7,576,633	7,249,553	97,159,308
Miscellaneous professional services	126,165,221	129,008,139	154,768,455	142,084,424	137,998,949	153,580,109	148,568,294	141,810,660	169,863,250	144,937,227	147,527,051	122,832,253	142,761,253	1,735,740,064
Engineering services	15,800,737	18,688,999	22,650,403	20,377,835	18,848,716	21,747,221	20,958,711	17,664,780	19,086,461	17,650,208	17,448,053	14,531,789	15,886,061	225,539,237
Marina services	5,905,191	6,648,486	11,351,771	11,563,473	11,198,237	12,874,211	12,815,633	11,136,156	8,461,976	7,042,725	6,637,367	7,984,222	6,841,732	114,555,989
Wrecking & salvage yards	708,148	717,370	885,605	801,824	742,018	879,243	880,604	789,844	874,981	806,573	845,954	584,322	731,481	9,539,819
Pest control	524,412	615,566	780,026	645,032	672,303	821,922	752,527	769,876	664,718	732,674	552,659	562,245	562,245	8,213,760
Educational establishments	139,767,071	96,225,231	93,131,173	96,073,536	86,996,067	84,978,691	90,265,001	111,206,090	253,210,120	166,293,319	92,122,670	81,234,642	152,190,033	1,403,926,573
Child care services	1,867,619	1,882,083	2,140,573	1,862,677	1,719,842	1,922,753	2,017,377	1,783,996	2,141,796	2,083,813	2,267,144	2,003,565	2,320,623	24,146,242
Social, political & religious organisations	85,024,855	58,255,942	78,270,163	71,172,809	56,875,316	61,023,907	57,190,970	65,431,595	65,209,207	65,441,264	66,132,145	66,459,585	66,057,594	777,520,497
Government services	145,750,548	158,211,437	188,743,421	172,499,714	168,146,735	174,951,692	173,058,174	155,654,799	160,642,516	150,000,167	146,262,968	135,726,783	147,063,736	1,930,962,142
Miscellaneous services	46,437,227	47,310,750	60,789,469	53,333,212	49,675,404	54,643,189	53,220,894	45,852,806	49,528,820	48,193,036	53,765,453	53,824,385	46,064,543	616,201,961
Commercial equipment	101,855,548	105,736,068	127,410,075	109,223,038	107,186,101	113,023,690	114,965,285	97,490,202	110,226,707	102,895,980	108,105,797	90,374,581	100,059,526	1,286,697,050
Other services	1,236,382,176	1,217,732,491	1,452,374,408	1,308,701,359	1,260,441,931	1,351,087,371	1,338,652,147	1,238,932,450	1,476,271,549	1,328,502,203	1,299,984,545	1,177,067,452	1,264,944,616	15,714,692,522
<b>Total services</b>	<b>4,479,138,435</b>	<b>4,531,653,309</b>	<b>5,464,346,577</b>	<b>4,900,645,284</b>	<b>4,870,930,088</b>	<b>5,352,191,424</b>	<b>5,342,920,302</b>	<b>4,893,614,847</b>	<b>5,087,145,758</b>	<b>4,742,305,976</b>	<b>4,731,927,331</b>	<b>4,161,081,324</b>	<b>4,715,512,744</b>	<b>58,794,274,964</b>
<b>TOTAL</b>	<b>9,365,696,660</b>	<b>9,368,215,057</b>	<b>11,371,695,416</b>	<b>10,475,894,048</b>	<b>10,427,787,638</b>	<b>11,464,831,080</b>	<b>11,167,884,404</b>	<b>10,522,379,924</b>	<b>10,583,386,710</b>	<b>10,417,089,372</b>	<b>11,404,381,876</b>	<b>11,642,884,074</b>	<b>9,919,028,672</b>	<b>128,765,458,271</b>

Table 3C Card expenditure statistics (not seasonally adjusted)

Number of debit card transactions

## Detailed sector breakdown - retail sectors

	January 2010	February 2010	March 2010	April 2010	May 2010	June 2010	July 2010	August 2010	September 2010	October 2010	November 2010	December 2010	January 2011	Total (latest 12 months)
Supermarkets	152,661,119	156,627,279	187,201,456	171,978,605	170,450,028	190,104,528	177,168,790	179,358,015	174,259,048	180,167,353	196,836,415	196,519,459	179,518,942	2,160,189,918
Bakers & dairies	203,491	230,223	277,148	248,808	250,333	297,897	290,687	302,249	296,630	322,608	337,756	351,374	307,536	3,513,249
Sweet stores	393,346	488,219	694,195	577,474	349,418	509,055	413,542	465,151	436,306	485,456	713,980	1,428,796	379,365	6,940,957
Miscellaneous foodstores	7,274,515	7,840,244	9,449,765	8,893,487	8,883,971	10,238,796	9,530,120	10,008,359	9,289,351	9,426,311	10,203,165	9,705,176	8,203,828	111,672,573
Off-licences	2,164,572	2,223,758	2,576,858	2,519,241	2,675,148	2,756,167	2,713,866	2,782,260	2,583,174	2,854,593	2,859,565	3,031,441	2,623,463	32,199,534
<b>Food &amp; drink</b>	<b>162,697,043</b>	<b>167,409,723</b>	<b>200,199,422</b>	<b>184,217,615</b>	<b>182,608,898</b>	<b>203,906,443</b>	<b>190,117,005</b>	<b>192,916,034</b>	<b>186,864,509</b>	<b>193,256,321</b>	<b>210,950,881</b>	<b>211,036,246</b>	<b>191,033,134</b>	<b>2,314,516,231</b>
Department stores	13,464,839	12,374,886	15,244,386	13,574,681	13,438,596	15,247,225	14,663,526	13,988,761	12,830,513	13,909,328	17,469,838	25,046,026	13,647,685	181,435,451
Discount stores	5,469,510	5,462,903	6,143,496	5,752,789	6,169,786	6,400,594	6,558,448	7,011,948	6,705,960	7,180,732	8,704,160	11,092,634	6,449,408	83,632,858
Catalogues	3,147,539	2,799,847	3,337,747	2,869,437	2,647,779	2,926,258	2,776,507	2,757,526	2,965,482	2,960,224	4,202,006	4,602,513	3,279,617	38,124,943
Miscellaneous mixed	6,474,620	6,848,132	8,515,658	7,928,174	7,860,175	9,152,975	8,360,504	8,562,943	8,459,281	8,534,830	9,905,919	11,216,051	8,021,129	103,365,771
<b>Mixed business</b>	<b>28,556,508</b>	<b>27,485,768</b>	<b>33,241,287</b>	<b>30,125,081</b>	<b>30,116,336</b>	<b>33,727,052</b>	<b>32,358,985</b>	<b>32,321,178</b>	<b>30,961,236</b>	<b>32,585,114</b>	<b>40,281,923</b>	<b>51,957,224</b>	<b>31,397,839</b>	<b>406,559,023</b>
Men's clothing	862,810	797,383	855,088	854,408	893,823	1,035,970	1,085,540	1,101,000	902,039	920,777	1,079,517	1,688,880	979,541	12,193,966
Women's clothing	4,750,139	4,889,870	5,942,897	5,860,689	5,683,468	7,169,503	6,958,365	6,408,101	5,657,943	5,884,884	6,569,103	8,625,449	5,252,541	74,902,813
Family clothing	18,191,773	17,403,834	21,765,607	20,872,970	20,823,246	24,170,901	24,208,977	22,790,295	21,035,591	22,483,324	25,055,830	33,475,898	20,085,726	274,172,199
Miscellaneous clothing	1,518,104	1,744,575	2,254,999	2,232,655	2,155,070	2,700,814	2,208,182	2,081,282	2,534,504	2,486,220	2,679,151	3,079,507	1,637,305	27,794,264
Shoe shops	2,904,580	2,312,258	2,726,057	3,073,313	2,984,716	3,563,781	3,541,426	3,776,364	3,141,855	2,988,409	3,147,768	3,919,042	2,954,958	38,129,947
<b>Clothing</b>	<b>28,227,406</b>	<b>27,147,920</b>	<b>33,544,648</b>	<b>32,894,035</b>	<b>32,540,323</b>	<b>38,640,969</b>	<b>38,002,490</b>	<b>36,157,042</b>	<b>33,271,932</b>	<b>34,763,614</b>	<b>38,531,369</b>	<b>50,788,776</b>	<b>30,910,071</b>	<b>427,193,189</b>
Furniture stores	2,584,819	2,482,448	2,839,429	2,527,257	2,494,030	2,711,439	2,675,896	2,940,500	2,688,662	3,263,214	3,333,839	3,659,043	3,178,633	34,495,390
Household appliance stores	3,925,239	3,902,241	4,506,306	4,366,778	4,580,444	4,329,885	4,507,163	4,807,234	4,780,862	4,938,533	5,281,694	6,243,407	4,768,154	57,012,701
Electronic stores	2,358,909	2,008,273	2,233,466	2,027,250	1,957,496	2,104,181	2,125,151	2,341,601	2,214,965	2,374,473	2,795,310	4,021,995	2,732,666	28,936,857
DIY stores	10,880,711	11,719,538	14,769,555	16,595,997	16,381,094	15,602,195	14,879,196	15,979,047	14,592,059	15,152,094	15,883,826	14,867,860	13,384,389	179,806,850
Floor covering stores	225,132	258,639	308,348	269,546	242,801	266,501	310,889	310,889	291,556	310,173	266,980	241,750	277,491	3,400,112
Garden centres	1,458,347	1,774,243	3,365,895	4,451,495	4,580,773	4,350,527	2,905,876	2,633,907	2,378,862	2,522,576	2,851,157	3,331,851	1,824,890	36,972,052
Miscellaneous household	855,066	992,216	1,132,132	985,354	875,520	1,016,004	1,153,363	1,351,154	1,267,337	1,205,870	1,287,393	1,051,423	1,069,217	13,386,983
<b>Household</b>	<b>22,286,223</b>	<b>23,137,598</b>	<b>29,155,131</b>	<b>31,223,677</b>	<b>31,112,158</b>	<b>30,380,732</b>	<b>28,513,625</b>	<b>30,364,332</b>	<b>28,214,303</b>	<b>29,466,933</b>	<b>31,788,657</b>	<b>33,417,329</b>	<b>27,236,470</b>	<b>354,010,945</b>
Books, newspapers & magazines	5,008,454	5,285,457	6,154,093	5,134,288	5,140,756	5,964,702	5,760,812	6,232,912	6,260,985	6,405,000	7,238,296	9,979,856	5,804,158	75,361,315
Record shops	2,215,808	2,165,349	2,479,501	1,918,688	1,744,709	2,146,603	1,958,948	1,969,928	1,856,798	2,016,997	3,242,132	6,181,407	2,075,108	29,756,168
Music shops	4,109,022	3,917,429	4,744,381	4,199,247	4,172,106	5,064,774	4,737,693	5,174,946	5,077,987	5,300,280	6,223,527	6,393,616	6,643,606	61,649,592
Hobbies, toys & games	1,823,306	1,804,883	2,206,684	1,885,958	1,790,414	1,987,462	1,938,751	2,068,811	2,002,549	2,437,453	3,771,623	5,675,818	2,039,255	29,609,661
Photographic	429,328	385,639	465,222	408,654	405,538	498,485	485,467	507,169	506,198	444,407	518,974	683,360	409,287	5,718,040
Handicraft	170,759	179,156	201,318	165,382	155,623	165,119	164,337	176,884	173,899	187,098	206,789	174,459	168,985	2,119,029
Sports shops	5,669,955	5,300,056	6,247,915	6,483,031	6,730,800	7,673,767	7,430,986	8,060,543	6,900,970	6,876,163	7,396,015	9,595,935	6,537,425	85,233,606
Jewellers	992,599	1,153,724	1,055,360	1,097,607	1,224,377	1,297,501	1,303,879	1,582,738	1,196,399	1,200,478	1,582,738	2,978,501	1,178,754	16,550,887
Computer software	837,276	773,136	829,813	705,054	634,321	759,470	671,975	737,296	714,996	711,939	794,256	964,117	749,181	9,045,554
Medical goods	17,095	23,203	27,714	25,069	25,947	28,164	26,060	26,060	26,454	26,700	28,994	24,311	25,372	316,932
Chemists	13,777,391	14,334,229	17,848,371	15,629,221	15,748,370	18,308,286	16,592,557	17,030,945	16,160,208	16,089,431	19,044,680	23,687,797	15,880,389	206,354,484
Optical goods	722,656	846,330	994,890	872,383	845,811	941,215	911,341	912,664	872,727	846,125	911,199	651,892	855,493	10,435,070
Cosmetic stores	893,968	990,005	1,202,485	1,059,095	1,067,129	1,267,770	1,189,228	1,229,809	1,193,223	1,241,028	1,659,744	2,757,516	1,046,787	15,903,819
Tobacconists	14,833	16,829	20,595	18,593	20,269	21,745	21,209	22,159	21,312	21,999	28,853	32,739	20,982	265,284
Florists	576,774	902,843	1,368,798	717,578	706,929	777,456	746,440	675,153	701,137	682,091	1,000,292	635,732	9,581,865	
Artists' supplies	407,308	520,477	642,141	502,605	482,772	550,062	532,720	608,428	574,356	635,065	785,239	747,036	541,778	7,122,679
Antiques, art & stamps/coins	166,751	200,410	237,930	212,242	206,457	229,129	233,016	275,954	229,861	256,281	275,729	290,316	210,195	2,857,520
Pawn shops	11,585	12,123	13,416	12,843	12,840	12,832	14,690	13,606	13,959	16,176	16,176	23,617	15,834	177,198
Gift shops	3,128,533	4,243,614	4,819,363	3,475,323	3,399,234	4,596,310	3,982,931	4,227,740	3,751,318	4,054,756	5,418,208	8,976,024	3,752,117	54,696,938
Secondhand shops	29,212	32,413	38,506	35,017	33,725	37,868	38,652	41,790	41,885	42,838	46,325	45,530	35,680	470,229
Luggage & leather goods	150,625	150,924	177,819	167,957	163,311	189,226	208,514	220,467	186,744	181,385	214,461	292,383	195,866	2,349,057
Pet shops	1,951,482	1,895,997	2,131,506	2,034,147	2,071,712	2,075,189	2,162,498	2,279,093	2,162,043	2,273,182	2,296,912	2,416,364	2,163,647	25,962,290
Religious goods	1,037	1,087	1,504	1,240	1,539	1,378	1,704	3,117	1,969	1,511	1,776	1,670	1,493	19,988
Direct sales	3,946,547	3,874,173	4,872,179	4,556,538	4,635,027	4,853,256	4,810,200	4,740,879	4,824,888	4,832,496	5,252,774	5,283,437	5,297,948	57,833,795
Miscellaneous & speciality shops	2,261,287	2,356,384	2,833,346	2,640,757	2,611,332	2,962,870	2,839,116	3,042,215	2,782,078	2,867,821	3,925,770	3,925,770	2,717,733	35,086,643
<b>Other retail</b>	<b>49,313,591</b>	<b>51,365,870</b>	<b>61,841,059</b>	<b>53,916,270</b>	<b>53,904,278</b>	<b>62,337,315</b>	<b>58,760,230</b>	<b>61,582,447</b>	<b>58,234,943</b>	<b>59,632,321</b>	<b>71,116,332</b>	<b>92,783,763</b>	<b>59,002,785</b>	<b>744,477,643</b>
Automotive Fuels	36,177,218	38,594,749	46,400,147	43,361,058	42,741,360	46,190,447	43,963,697	45,084,300	43,568,075	44,852,813	47,294,133	42,064,866	43,597,332	527,712,977
<b>Total retail sales</b>	<b>327,259,989</b>	<b>335,141,628</b>	<b>404,381,694</b>	<b>375,737,736</b>	<b>373,023,353</b>	<b>415,182,958</b>	<b>391,716,032</b>	<b>398,425,333</b>	<b>381,114,998</b>	<b>394,557,146</b>	<b>439,963,295</b>	<b>482,048,204</b>	<b>383,177,631</b>	<b>4,774,470,0</b>

Table 3C Card expenditure statistics (not seasonally adjusted)

Number of debit card transactions

## Detailed sector breakdown - services sectors

	January 2010	February 2010	March 2010	April 2010	May 2010	June 2010	July 2010	August 2010	September 2010	October 2010	November 2010	December 2010	January 2011	Total (latest 12 months)
Auto rental	333,992	363,345	432,782	414,798	418,202	454,442	464,969	490,170	476,875	459,064	459,017	429,751	441,378	5,304,793
Auto parts & accessories	1,458,007	1,535,606	1,875,067	1,698,111	1,604,872	1,748,265	1,723,883	1,701,872	1,660,610	1,649,275	1,752,246	1,617,155	1,714,527	20,281,489
Auto services	2,017,573	2,242,183	2,627,085	2,356,577	2,455,894	2,643,284	2,707,516	2,719,381	2,711,173	2,782,838	2,917,879	2,891,715	2,666,719	31,722,244
Auto repair shops	1,393,924	1,487,885	1,844,779	1,604,819	1,513,695	1,633,053	1,621,770	1,576,987	1,646,585	1,594,379	1,617,603	1,457,690	1,666,132	19,265,377
Service stations	7,909,408	8,143,586	9,770,620	9,096,197	9,088,956	10,051,375	9,770,620	9,887,536	9,438,032	9,785,297	10,756,888	11,418,047	13,183,611	120,262,905
Vehicle sales	868,046	1,000,393	1,320,464	1,175,793	1,121,948	1,245,741	1,210,096	1,199,599	1,186,989	1,096,622	1,087,487	919,220	1,093,360	13,657,712
<b>Vehicle Sales &amp; Services</b>	<b>13,980,950</b>	<b>14,772,998</b>	<b>17,870,797</b>	<b>16,346,295</b>	<b>16,203,567</b>	<b>17,776,160</b>	<b>17,370,994</b>	<b>17,575,545</b>	<b>17,120,264</b>	<b>17,367,475</b>	<b>18,591,120</b>	<b>18,733,578</b>	<b>20,765,727</b>	<b>210,494,520</b>
Restaurants	25,209,178	28,120,552	32,716,425	31,080,006	31,790,618	32,824,691	32,813,593	35,075,281	31,910,938	35,254,448	35,960,594	34,348,613	33,969,770	395,865,529
Public houses	4,071,618	4,674,461	5,763,267	5,678,541	5,451,390	6,420,742	5,731,273	6,346,509	5,470,940	6,078,969	5,734,686	5,622,815	5,622,815	68,683,642
Catering services	410,554	473,221	547,918	468,143	483,682	526,277	532,349	532,349	549,544	559,239	587,654	508,086	497,531	6,235,957
Video stores	384,232	344,892	426,200	261,851	268,766	244,663	246,931	240,215	221,126	195,233	196,187	215,269	206,375	3,067,708
Cinema, theatre & dance	2,920,807	3,085,448	3,623,243	3,577,994	3,324,957	3,063,413	4,717,273	4,952,443	3,165,787	3,794,246	4,685,570	3,511,779	4,184,730	45,686,883
Concerts & entertainers	31,442	38,253	37,400	40,247	37,594	36,131	40,081	49,744	34,791	44,798	46,254	54,506	46,388	506,187
Tourist attractions	881,810	1,258,406	1,630,141	1,753,841	1,317,446	1,431,460	1,197,867	1,559,724	899,469	837,958	606,625	358,235	338,700	13,189,872
Amusement parks	30,685	55,263	66,455	121,446	79,651	101,992	104,143	189,109	78,938	80,818	54,705	40,012	44,481	1,017,013
Aquariums	21,285	29,655	33,359	37,494	31,743	37,179	38,489	46,754	29,509	30,362	26,519	19,626	27,872	388,561
Sports & games establishments	1,931,082	2,100,753	2,464,029	2,304,625	2,258,325	2,223,365	2,258,325	2,624,674	2,318,000	2,279,503	2,280,519	2,219,113	2,526,007	28,044,580
Professional sports clubs	117,334	115,988	151,059	142,814	120,476	116,425	138,429	193,705	159,416	148,533	177,890	178,989	149,757	1,793,481
Gambling	11,339,448	12,080,597	14,505,219	13,792,083	12,178,191	13,852,249	12,073,616	13,092,923	12,400,990	13,325,477	14,829,646	13,923,967	14,609,428	160,664,386
Personal services	223,258	247,773	297,735	272,284	268,256	284,374	282,459	276,431	260,048	253,915	255,609	257,925	249,483	3,206,292
Miscellaneous entertainment	330,637	463,782	530,024	716,177	556,341	681,709	696,396	1,022,558	606,653	623,606	478,289	356,223	435,959	7,167,717
<b>Entertainment</b>	<b>47,903,370</b>	<b>53,089,044</b>	<b>62,792,474</b>	<b>60,247,546</b>	<b>58,167,436</b>	<b>61,844,670</b>	<b>61,058,566</b>	<b>66,172,383</b>	<b>58,106,149</b>	<b>63,138,185</b>	<b>66,265,030</b>	<b>61,727,029</b>	<b>62,909,296</b>	<b>735,517,808</b>
<b>Hotels</b>	<b>2,169,601</b>	<b>2,478,903</b>	<b>2,868,856</b>	<b>2,849,615</b>	<b>2,815,548</b>	<b>3,076,036</b>	<b>3,085,849</b>	<b>3,549,511</b>	<b>3,040,523</b>	<b>3,008,690</b>	<b>2,796,212</b>	<b>2,575,767</b>	<b>2,607,666</b>	<b>34,753,176</b>
Airlines	779,263	743,642	852,327	737,287	758,510	810,770	767,711	770,737	737,771	632,556	583,350	454,976	693,246	8,542,883
Airport terminals	40,393	25,802	35,481	33,396	35,319	39,062	35,351	39,930	36,012	28,317	22,650	19,643	23,030	373,993
Railways	10,522,965	10,745,503	12,153,652	10,833,651	11,123,041	12,793,800	12,200,985	12,358,655	13,098,462	14,114,046	14,750,047	12,974,496	12,519,936	149,666,274
Buses	604,022	632,805	806,931	764,324	750,396	880,296	834,288	856,931	891,192	884,491	949,896	797,034	853,166	9,901,750
Sea travel	74,398	85,682	101,280	120,649	122,853	128,567	146,384	170,081	121,521	107,818	93,673	93,926	97,263	1,389,697
Travel agents	1,666,017	1,579,206	1,879,534	1,599,094	1,595,432	1,608,004	1,672,438	1,597,181	1,414,155	1,282,841	1,118,282	947,862	1,817,106	18,111,135
Timeshares	223	270	281	422	465	550	568	782	399	343	284	216	339	4,919
Camping grounds	191,456	262,337	379,370	515,667	536,745	620,545	667,101	853,358	460,653	349,810	164,677	103,806	245,536	5,159,605
Miscellaneous travel	634,528	782,386	880,934	860,503	860,975	999,369	1,048,779	1,109,263	1,046,485	1,047,061	1,029,859	925,830	714,658	11,306,102
<b>Travel</b>	<b>14,513,265</b>	<b>14,857,633</b>	<b>17,089,790</b>	<b>15,464,993</b>	<b>15,783,736</b>	<b>17,860,963</b>	<b>17,373,605</b>	<b>17,756,918</b>	<b>17,806,650</b>	<b>18,447,283</b>	<b>18,712,718</b>	<b>16,317,789</b>	<b>16,964,280</b>	<b>204,456,358</b>
Telegraph services / Wire transfer money orde	30,134	32,807	40,057	35,292	36,871	40,676	37,869	38,603	37,643	37,228	40,116	42,636	34,339	454,137
Insurance services	2,394,060	2,454,275	3,041,694	2,781,499	2,728,744	3,043,127	3,136,964	2,974,075	3,058,031	2,787,557	2,689,674	2,344,442	2,686,712	33,726,794
FIs - cash disbursements (auto & manual)	49,215	67,792	91,985	86,784	110,962	170,939	176,295	169,788	159,429	104,628	111,801	90,152	1,460,983	1,460,983
FIs - merchandise & services	6,458,341	6,057,108	7,184,296	6,306,235	6,616,950	6,778,541	7,003,876	6,818,280	6,915,007	7,066,506	6,968,354	7,151,825	7,208,799	82,075,777
Non-FIs - foreign currency, travellers' cheques	129,990	155,456	194,735	184,756	211,736	267,965	290,105	283,150	246,131	186,272	141,618	150,843	131,213	2,443,980
Security brokers and dealers	64,121	60,598	100,342	96,030	92,079	87,154	73,806	63,762	60,420	70,208	78,144	60,033	77,672	920,248
Tax preparation services	91	98	119	227	223	291	272	176	135	117	154	126	331	2,269
Tax payments	83,359	85,440	104,180	97,708	96,627	109,015	121,923	108,978	103,624	105,647	116,346	118,024	157,279	1,324,791
Fines, bail and bond payments	209,828	217,383	259,133	236,589	248,350	252,847	274,870	253,571	279,833	294,637	287,441	253,590	262,877	3,121,121
Miscellaneous financial	310,275	329,703	405,151	393,710	390,149	431,771	415,492	428,178	411,666	414,627	440,520	431,027	488,675	4,980,669
<b>Financial</b>	<b>9,729,414</b>	<b>9,460,660</b>	<b>11,421,692</b>	<b>10,218,830</b>	<b>10,532,691</b>	<b>11,182,326</b>	<b>11,531,472</b>	<b>11,138,561</b>	<b>11,271,919</b>	<b>11,083,227</b>	<b>10,866,995</b>	<b>10,664,347</b>	<b>11,138,049</b>	<b>130,510,769</b>

Table 3C Card expenditure statistics (not seasonally adjusted)

Number of debit card transactions

## Detailed sector breakdown - services sectors (continued)

	January 2010	February 2010	March 2010	April 2010	May 2010	June 2010	July 2010	August 2010	September 2010	October 2010	November 2010	December 2010	January 2011	Total (latest 12 months)
Telecoms	9,826,550	8,998,540	10,154,573	9,332,802	9,533,854	9,496,805	9,774,549	9,663,293	9,576,766	9,535,164	9,776,545	10,868,232	9,560,726	116,271,849
Utilities	1,385,627	1,380,174	1,726,379	1,518,526	1,488,010	1,652,004	1,612,282	1,641,810	1,685,680	1,701,375	1,748,683	1,602,139	1,689,565	19,446,627
Contractors (residential & commercial)	458,518	485,754	579,559	526,955	512,131	525,735	530,932	529,377	561,277	580,235	608,029	509,564	529,985	6,479,533
Gardening services	46,845	61,263	107,549	120,204	117,609	131,165	99,203	93,295	87,935	88,013	101,713	117,156	67,219	1,192,324
Veterinary services	1,247,061	1,293,895	1,490,389	1,387,243	1,365,751	1,489,474	1,573,152	1,571,259	1,555,853	1,523,236	1,507,384	1,328,402	1,406,772	17,492,810
Photocopying & printing	321,461	327,428	417,782	341,673	336,925	350,395	337,314	352,202	389,823	390,117	469,276	425,235	385,347	4,523,517
Photographic studios	209,765	237,768	296,611	261,391	270,946	333,920	368,302	305,919	309,218	366,426	424,654	357,594	246,494	3,779,243
Beauty & barber shops	3,239,938	3,647,719	4,325,044	3,940,401	3,915,885	4,347,186	4,296,630	4,124,710	4,020,322	4,011,630	4,164,566	5,017,617	3,764,081	49,575,791
Employment agencies	19,072	19,475	21,541	20,607	21,177	19,987	20,348	22,642	22,965	22,656	21,761	15,426	24,391	252,976
Counselling services	39,531	40,880	47,277	39,947	38,640	44,628	44,089	45,458	46,389	46,639	50,063	50,264	49,901	544,175
Legal services	82,026	89,563	110,158	95,435	91,301	101,560	102,988	100,495	106,748	105,160	113,297	90,438	110,134	1,217,277
Laundry & cleaning	350,738	383,573	459,747	427,774	427,913	486,106	464,395	454,440	475,183	478,923	486,368	373,818	402,558	5,320,798
Funeral services	14,865	15,175	17,325	15,106	14,606	15,908	15,327	14,343	15,769	16,615	17,682	16,497	18,342	192,695
Medical services	1,870,342	2,115,216	2,489,563	2,160,674	2,103,988	2,301,393	2,230,187	2,150,692	2,370,732	2,270,484	2,452,101	1,902,832	2,272,760	26,820,622
Moving & courier services	176,804	190,051	220,726	190,609	193,527	219,676	211,623	213,855	229,358	219,844	240,692	229,555	223,013	2,582,529
Repair shops (not auto)	324,246	310,785	325,584	259,577	206,854	199,940	176,045	165,872	141,810	129,835	135,505	115,919	109,697	2,277,423
Accounting services	152,658	150,012	186,025	172,576	163,884	188,303	181,467	192,949	207,879	204,259	224,563	206,426	221,318	2,299,661
Advertising, consultancy & PR	214,668	234,974	283,340	263,227	244,822	274,536	258,851	261,292	262,696	252,397	260,621	187,745	237,843	3,022,344
Computer programming	697,060	658,990	802,012	720,316	708,700	856,501	799,483	855,297	883,372	867,919	921,370	862,652	1,059,506	9,996,118
Farming services	119,210	118,528	144,238	134,859	133,349	151,386	139,880	143,331	139,064	141,368	149,533	143,531	132,383	1,671,450
Miscellaneous professional services	3,483,487	3,456,285	3,939,317	3,387,833	3,179,791	3,378,770	3,147,626	3,082,549	3,188,383	3,182,174	3,373,283	3,024,640	2,749,320	39,089,971
Engineering services	39,476	44,719	55,469	51,064	48,838	52,027	52,993	54,996	52,577	53,511	52,227	42,857	49,189	611,467
Marina services	34,567	38,955	61,314	81,077	77,238	100,233	98,698	109,572	70,654	54,659	52,251	49,022	43,714	837,387
Wrecking & salvage yards	11,642	9,941	11,400	9,688	8,731	8,964	9,164	8,317	8,137	7,904	8,130	6,031	7,191	103,598
Pest control	2,041	2,185	2,715	2,595	2,602	3,128	3,713	3,700	4,048	3,197	3,197	1,951	2,352	34,984
Educational establishments	1,051,007	1,000,659	1,173,867	907,908	1,084,900	862,116	712,426	679,757	1,273,744	1,517,899	1,400,713	948,787	1,375,923	12,938,699
Child care services	66,579	81,246	82,313	71,868	67,147	72,042	78,072	91,458	79,381	92,281	91,344	77,621	101,652	986,425
Social, political & religious organisations	1,584,962	1,409,262	2,175,149	1,905,155	1,898,312	2,041,483	1,813,108	2,138,469	2,052,779	1,945,267	2,192,574	1,681,622	1,468,612	22,721,792
Government services	4,126,177	4,323,101	4,916,257	4,700,125	4,667,389	4,994,411	4,872,406	5,003,479	5,075,774	4,889,346	4,873,540	4,207,330	4,847,329	57,370,487
Miscellaneous services	4,138,962	4,266,508	5,360,759	4,771,126	4,515,022	5,034,978	4,695,924	4,762,760	4,956,029	4,792,701	5,586,335	6,420,097	4,615,979	59,778,218
Commercial equipment	1,304,348	1,303,870	1,471,673	1,217,995	1,252,118	1,252,296	1,203,917	1,352,501	1,616,513	1,499,574	1,542,240	1,459,787	1,484,217	16,656,701
Other services	36,640,233	36,696,494	43,455,655	39,036,336	38,691,960	40,987,056	39,925,094	40,187,670	41,469,277	40,990,524	43,051,125	42,340,787	39,257,513	486,089,491
<b>Total services</b>	<b>124,936,833</b>	<b>131,355,732</b>	<b>155,499,264</b>	<b>144,163,615</b>	<b>142,194,938</b>	<b>152,747,211</b>	<b>150,345,580</b>	<b>156,380,588</b>	<b>148,814,782</b>	<b>154,035,384</b>	<b>160,283,200</b>	<b>152,359,297</b>	<b>153,642,531</b>	<b>1,801,822,122</b>
<b>TOTAL</b>	<b>452,196,822</b>	<b>466,497,360</b>	<b>559,880,958</b>	<b>519,901,351</b>	<b>515,218,291</b>	<b>567,930,169</b>	<b>542,061,612</b>	<b>554,805,921</b>	<b>529,929,780</b>	<b>548,592,530</b>	<b>600,246,495</b>	<b>634,407,501</b>	<b>536,820,162</b>	<b>6,576,292,130</b>

Table 3D Card expenditure statistics (not seasonally adjusted)

Value of debit card transactions

## Detailed sector breakdown - retail sectors

£	January 2010	February 2010	March 2010	April 2010	May 2010	June 2010	July 2010	August 2010	September 2010	October 2010	November 2010	December 2010	January 2011	Total (latest 12 months)
Supermarkets	4,439,135,436	4,424,485,318	5,271,889,691	4,904,529,343	4,832,491,191	5,353,972,733	4,936,803,640	5,051,831,693	4,811,720,619	5,014,277,229	5,639,057,847	6,379,061,638	4,979,913,209	61,600,034,151
Bakers & dairies	3,410,996	3,797,095	4,568,527	4,103,336	4,053,011	4,865,475	4,696,023	4,834,310	4,719,310	4,890,020	5,221,835	5,746,339	4,465,006	55,960,287
Sweet stores	5,405,754	6,530,586	10,181,493	8,261,248	4,758,480	6,733,888	5,847,759	6,321,178	6,066,160	6,973,485	11,661,555	23,828,246	5,578,067	102,741,945
Miscellaneous foodstores	138,758,081	144,800,025	174,220,597	164,886,442	162,098,490	188,363,444	175,192,385	182,680,815	169,637,215	170,023,997	188,414,613	211,014,800	151,185,707	2,082,517,630
Off-licences	40,933,040	41,844,378	49,262,877	48,978,797	52,258,389	55,350,299	55,223,844	55,221,819	54,194,796	60,513,662	64,724,886	85,385,754	55,508,979	678,468,474
<b>Food &amp; drink</b>	<b>4,627,643,307</b>	<b>4,621,457,402</b>	<b>5,510,123,185</b>	<b>5,130,759,166</b>	<b>5,055,659,561</b>	<b>5,609,285,633</b>	<b>5,177,763,651</b>	<b>5,300,889,815</b>	<b>5,046,338,100</b>	<b>5,256,677,493</b>	<b>5,909,080,736</b>	<b>6,705,036,777</b>	<b>5,196,650,968</b>	<b>64,519,722,487</b>
Department stores	431,981,043	400,847,678	502,025,840	449,097,055	452,057,842	516,137,361	477,415,306	465,061,401	444,049,063	490,693,526	620,278,345	915,099,312	450,125,948	6,182,888,677
Discount stores	215,057,253	219,429,210	258,579,820	241,175,343	253,824,601	273,897,569	263,020,042	284,276,147	272,550,292	298,937,181	385,113,811	473,932,531	246,958,345	3,471,694,892
Catalogues	120,565,285	113,391,819	138,049,309	118,305,719	111,459,972	121,223,423	114,194,801	117,147,005	119,454,664	119,353,792	151,941,102	150,659,189	127,151,392	1,502,332,187
Miscellaneous mixed	188,955,955	197,847,639	236,851,869	214,402,490	212,532,278	244,461,981	222,821,319	234,154,474	236,821,497	239,490,122	281,808,989	327,067,549	209,495,819	2,857,756,026
<b>Mixed business</b>	<b>956,559,536</b>	<b>931,516,346</b>	<b>1,135,506,838</b>	<b>1,022,980,607</b>	<b>1,029,874,693</b>	<b>1,155,720,334</b>	<b>1,077,451,468</b>	<b>1,100,639,027</b>	<b>1,072,875,516</b>	<b>1,148,474,621</b>	<b>1,439,142,247</b>	<b>1,866,758,581</b>	<b>1,033,731,504</b>	<b>14,014,671,782</b>
Men's clothing	46,116,924	41,732,933	48,572,390	48,967,805	51,628,712	56,218,358	57,644,324	58,762,779	50,731,497	54,448,114	62,656,528	91,791,171	52,806,360	675,960,971
Women's clothing	153,273,537	165,603,254	205,992,624	201,371,240	194,613,616	235,952,683	214,166,402	204,668,429	209,915,550	231,622,629	286,642,305	199,201,634	174,303,349	2,524,053,715
Family clothing	514,765,643	519,234,464	661,302,590	634,493,726	631,979,214	714,787,583	688,599,896	689,262,336	678,449,678	730,073,576	822,418,177	1,106,940,069	585,371,683	8,462,912,992
Miscellaneous clothing	39,381,803	45,243,081	59,168,566	57,356,789	55,851,527	67,286,144	54,308,825	54,475,284	69,015,790	68,963,860	73,547,940	78,455,230	43,230,604	726,903,640
Shoe shops	98,064,994	81,124,318	98,727,106	109,765,155	104,489,239	117,748,161	110,904,906	132,761,414	118,999,638	124,650,334	128,800,329	157,328,730	104,476,581	1,389,795,911
<b>Clothing</b>	<b>851,602,901</b>	<b>852,938,050</b>	<b>1,073,763,276</b>	<b>1,051,974,715</b>	<b>1,038,562,308</b>	<b>1,191,992,929</b>	<b>1,125,624,353</b>	<b>1,139,930,242</b>	<b>1,116,398,237</b>	<b>1,188,051,434</b>	<b>1,319,045,603</b>	<b>1,721,157,505</b>	<b>960,188,577</b>	<b>13,779,627,229</b>
Furniture stores	242,791,729	240,043,429	277,200,286	247,127,450	241,695,867	260,377,035	269,866,881	290,897,844	277,541,474	305,687,834	331,971,048	307,688,255	312,800,900	3,362,478,303
Household appliance stores	131,717,090	133,621,144	157,145,752	145,948,538	148,728,147	149,459,179	152,640,552	173,257,587	172,710,798	183,175,845	205,510,508	234,476,503	189,213,713	2,045,888,266
Electronic stores	241,545,845	196,748,496	224,919,248	209,907,033	209,532,928	230,979,664	223,304,815	255,399,612	234,073,363	260,032,895	314,470,417	474,732,589	288,753,290	3,122,854,350
DIY stores	475,717,984	496,820,608	632,653,936	694,812,199	695,689,073	661,124,960	643,301,503	700,422,837	655,754,532	680,300,577	689,161,759	604,538,946	613,437,162	7,768,018,092
Floor covering stores	45,573,552	50,537,289	62,197,992	56,828,162	52,477,812	58,117,595	58,056,482	65,580,453	64,086,390	68,671,131	57,444,151	60,493,820	73,157,253	604,938,820
Garden centres	42,173,249	53,006,823	108,266,477	155,518,413	158,492,954	148,744,023	96,734,878	85,173,826	77,249,643	77,959,137	88,847,202	108,039,557	54,897,175	1,212,930,108
Miscellaneous household	58,725,484	65,780,083	77,274,875	68,215,362	61,827,898	71,219,226	76,264,971	88,985,113	84,604,716	82,201,150	88,245,496	69,591,782	67,390,277	901,600,949
<b>Household</b>	<b>1,238,244,933</b>	<b>1,236,557,872</b>	<b>1,539,658,566</b>	<b>1,578,357,157</b>	<b>1,568,444,679</b>	<b>1,580,021,682</b>	<b>1,520,170,082</b>	<b>1,659,717,272</b>	<b>1,566,020,916</b>	<b>1,658,028,569</b>	<b>1,798,872,406</b>	<b>1,856,511,783</b>	<b>1,586,566,337</b>	<b>19,148,927,321</b>
Books, newspapers & magazines	89,289,875	90,046,604	103,584,964	89,011,471	85,859,748	97,938,674	96,831,774	121,689,288	123,013,009	128,427,623	187,935,107	101,169,554	101,169,554	1,330,646,676
Record shops	42,785,340	42,434,021	49,273,267	39,118,545	35,365,338	42,446,342	38,570,175	38,716,798	37,080,246	42,056,803	73,875,546	153,557,904	41,205,914	633,700,899
Music shops	38,980,112	35,754,621	41,341,058	36,432,296	35,202,202	40,688,359	39,324,772	41,536,079	41,754,977	42,790,621	49,742,223	56,033,381	50,937,222	511,537,811
Hobbies, toys & games	64,053,502	61,669,955	79,002,713	66,694,181	63,996,326	70,688,909	69,605,468	71,355,195	76,556,698	96,157,385	117,076,811	237,287,805	71,548,623	1,135,640,069
Photographic	23,590,102	21,259,597	28,513,801	24,917,995	24,521,528	28,303,327	28,377,941	27,662,653	26,294,850	31,209,280	44,464,362	24,379,885	338,368,953	2,379,885,969
Handicraft	8,312,528	8,612,656	9,784,730	8,234,730	7,863,940	8,345,960	8,577,003	9,064,837	8,909,990	9,293,177	10,507,876	8,780,429	8,849,574	106,824,902
Sports shops	208,379,284	202,111,242	249,755,425	264,134,316	272,133,686	306,400,330	295,095,042	319,864,289	272,972,098	272,777,133	300,301,952	389,236,472	246,523,487	3,391,305,472
Jewellers	80,240,684	97,215,839	107,538,270	93,149,744	98,640,740	109,525,037	113,841,641	114,786,451	103,269,382	114,786,451	133,739,758	268,175,526	99,178,459	1,443,364,373
Computer software	99,502,459	92,236,802	104,249,589	91,269,901	89,817,028	118,660,593	91,193,838	113,661,426	109,837,912	104,535,629	122,058,405	165,476,664	118,406,786	1,321,404,573
Medical goods	2,910,448	4,442,847	5,356,649	4,861,813	4,763,618	5,225,178	5,318,663	5,291,423	5,579,511	5,498,412	5,676,982	4,291,898	4,491,441	60,798,435
Chemists	204,029,782	214,354,744	263,642,239	236,181,540	236,331,484	280,543,228	255,451,907	258,218,669	239,262,304	251,019,226	324,620,651	464,926,668	231,863,064	3,256,415,724
Optical goods	68,346,684	82,990,198	98,307,598	84,936,018	82,044,270	89,551,324	86,918,873	86,815,116	81,840,092	79,562,782	82,661,986	56,672,407	81,783,980	914,084,644
Cosmetic stores	32,243,160	35,504,102	43,661,472	39,151,327	40,245,790	46,097,768	44,627,111	44,532,593	45,270,114	49,590,829	66,744,134	105,682,785	37,304,823	598,412,848
Tobacconists	536,005	538,553	684,779	649,940	675,751	796,730	783,554	825,063	755,631	716,999	833,572	833,572	683,265	9,056,429
Florists	20,492,512	32,312,814	46,932,514	26,744,472	27,095,681	29,610,622	28,327,128	26,587,335	27,801,831	25,456,586	26,140,417	36,772,773	24,327,705	358,109,895
Artists' supplies	12,729,646	15,731,654	19,513,442	15,546,312	15,255,539	17,215,178	16,729,631	18,626,082	18,428,158	19,606,045	24,005,824	22,567,748	16,424,866	219,650,479
Antiques, art & stamps/coins	17,730,640	22,170,122	28,283,864	23,974,469	24,576,834	25,177,667	25,573,028	25,720,090	27,471,000	29,832,026	31,541,867	32,003,787	23,724,874	320,049,628
Pawn shops	1,302,885	1,215,698	1,323,179	1,668,858	1,450,249	1,390,430	1,824,415	1,521,579	1,600,019	2,055,332	1,939,822	2,405,203	1,940,679	20,335,463
Gift shops	59,804,421	71,539,857	84,999,195	69,833,520	67,676,921	84,142,907	79,144,822	85,829,131	75,975,470	85,124,361	116,134,310	171,282,567	73,236,174	1,064,919,235
Secondhand shops	1,757,321	2,285,598	2,687,463	2,279,684	1,902,552	2,585,203	2,569,025	2,556,620	2,775,222	2,794,134	2,677,152	3,049,110	2,129,502	30,291,265
Luggage & leather goods	6,457,029	6,243,612	7,751,074	7,299,345	7,401,481	8,372,437	9,014,658	9,126,984	8,195,927	8,256,854	10,815,715	17,156,440	9,601,153	109,235,680
Pet shops	52,065,694	50,223,816	57,540,866	55,424,259	55,687,685	58,226,718	62,681,490	59,098,830	59,098,830	60,782,485	66,070,340	58,817,528	58,817,528	603,330,351
Religious goods	58,793	46,551	40,954	57,944	54,854	48,271	68,355	80,839	93,727	60,637	59,213	49		



Table 3D Card expenditure statistics (not seasonally adjusted)

Value of debit card transactions

## Detailed sector breakdown - services sectors

£	January 2010	February 2010	March 2010	April 2010	May 2010	June 2010	July 2010	August 2010	September 2010	October 2010	November 2010	December 2010	January 2011	Total (latest 12 months)
Auto rental	28,581,307	32,287,676	42,174,474	39,631,285	40,443,834	43,918,464	46,416,552	46,220,907	43,689,086	42,407,079	40,022,807	36,886,576	38,217,671	492,316,411
Auto parts & accessories	157,247,123	173,419,443	236,124,414	198,127,193	183,393,904	197,456,238	191,316,449	185,735,459	202,372,300	187,689,767	192,999,373	168,956,540	180,290,468	2,297,881,548
Auto services	44,420,374	48,457,579	62,133,243	54,344,665	54,975,222	61,350,194	61,064,180	62,004,270	61,959,290	58,606,885	60,097,395	53,615,174	57,534,295	696,142,392
Auto repair shops	486,617,915	529,544,676	839,647,020	638,422,114	590,709,921	590,887,563	581,924,730	533,618,037	686,230,670	597,320,638	577,299,931	516,064,787	569,534,703	7,251,204,790
Service stations	103,985,597	105,437,146	130,813,706	122,540,437	121,801,605	131,263,960	125,596,713	126,686,604	125,134,775	126,919,793	136,793,714	145,285,607	177,591,930	1,575,865,990
Vehicle sales	757,005,090	899,285,577	1,401,974,027	1,110,606,254	1,031,511,928	1,140,467,669	1,064,737,117	1,018,699,669	1,231,113,857	1,067,285,861	1,062,863,143	869,103,767	972,248,406	12,869,897,275
<b>Vehicle Sales &amp; Services</b>	<b>1,577,857,406</b>	<b>1,788,432,097</b>	<b>2,712,866,884</b>	<b>2,163,671,948</b>	<b>2,022,836,414</b>	<b>2,165,344,088</b>	<b>2,071,055,741</b>	<b>1,972,964,946</b>	<b>2,350,499,978</b>	<b>2,080,230,023</b>	<b>2,070,076,363</b>	<b>1,789,912,451</b>	<b>1,995,417,473</b>	<b>25,183,308,406</b>
Restaurants	512,381,971	572,371,876	658,499,153	628,860,515	630,358,801	644,779,294	653,950,232	735,228,570	627,772,950	687,434,264	686,356,700	693,066,419	668,621,484	7,887,300,258
Public houses	109,784,116	124,629,954	154,660,830	150,702,021	142,428,077	168,191,104	153,159,586	173,426,246	144,042,765	142,807,069	152,239,470	152,605,939	140,693,546	1,799,586,607
Catering services	8,987,274	10,149,996	12,469,015	11,150,787	11,176,761	12,743,251	12,663,397	12,774,570	12,909,370	13,195,666	12,580,679	11,153,986	11,153,092	145,722,570
Video stores	4,102,680	3,765,358	4,539,525	2,898,694	3,253,596	2,807,342	2,753,340	2,568,617	2,561,621	2,581,459	2,738,661	2,908,472	2,514,509	35,891,194
Cinema, theatre & dance	91,800,052	107,085,831	141,250,654	111,465,821	102,083,912	96,741,720	126,656,268	129,671,865	106,244,859	136,545,581	167,044,039	130,336,360	118,430,424	1,473,557,334
Concerts & entertainers	1,282,638	1,539,716	1,744,925	1,663,076	1,370,725	1,510,380	1,495,164	1,711,440	1,274,467	1,513,303	1,569,614	1,531,555	1,431,757	18,356,122
Tourist attractions	27,202,918	34,360,810	43,511,107	49,446,561	36,473,709	41,562,483	36,893,797	48,466,280	27,336,264	26,115,616	18,683,868	12,253,384	11,811,999	386,915,878
Amusement parks	1,208,749	1,935,748	2,574,379	4,080,374	2,892,413	3,484,851	3,612,531	5,785,678	2,686,901	2,537,130	1,809,428	1,384,338	1,427,743	34,211,514
Aquariums	702,447	953,367	1,128,214	1,273,403	1,071,818	1,237,723	1,261,741	1,463,505	983,981	1,015,644	968,475	761,996	965,920	13,085,787
Sports & games establishments	71,978,119	75,315,239	100,102,167	96,307,409	96,900,122	92,183,050	90,377,720	89,369,390	87,162,831	83,128,782	81,347,263	80,311,534	90,601,795	1,063,107,302
Professional sports clubs	5,174,984	5,498,529	8,604,923	8,436,232	8,677,345	15,240,065	8,634,617	9,497,120	8,090,393	7,384,440	8,667,040	8,659,101	7,397,346	104,787,151
Gambling	275,777,527	275,607,129	327,028,026	308,210,282	317,850,998	361,024,926	283,637,202	322,087,926	302,018,567	323,496,864	347,931,620	325,235,410	332,736,932	3,826,867,864
Personal services	9,486,202	10,755,056	13,074,741	11,405,258	11,425,193	12,093,614	11,930,251	11,534,556	11,514,535	11,242,067	11,219,399	11,463,127	11,183,606	138,841,403
Miscellaneous entertainment	13,508,910	18,221,594	24,233,050	30,488,088	25,656,269	29,241,080	30,711,718	40,402,793	27,406,582	27,607,053	24,858,348	15,999,208	16,720,674	311,546,457
<b>Entertainment</b>	<b>1,133,378,587</b>	<b>1,242,190,203</b>	<b>1,493,420,709</b>	<b>1,416,388,521</b>	<b>1,392,159,739</b>	<b>1,482,840,883</b>	<b>1,417,737,564</b>	<b>1,583,988,556</b>	<b>1,362,006,086</b>	<b>1,465,989,933</b>	<b>1,518,629,591</b>	<b>1,448,732,829</b>	<b>1,415,692,827</b>	<b>17,239,777,441</b>
<b>Hotels</b>	<b>188,312,095</b>	<b>207,705,860</b>	<b>245,684,992</b>	<b>251,055,678</b>	<b>252,261,483</b>	<b>286,253,640</b>	<b>292,762,116</b>	<b>328,923,069</b>	<b>279,562,615</b>	<b>264,650,673</b>	<b>236,788,937</b>	<b>209,470,309</b>	<b>231,767,307</b>	<b>3,086,886,679</b>
Airlines	154,042,431	152,009,322	163,907,166	127,307,290	115,396,694	141,115,377	153,873,730	145,286,862	136,837,490	119,718,690	115,267,796	76,890,702	142,128,378	1,589,739,497
Airport terminals	2,410,424	1,938,656	2,739,638	3,003,920	2,991,656	3,441,815	3,316,961	3,463,704	3,207,092	2,746,215	2,340,720	2,132,039	2,253,721	33,576,137
Railways	254,433,206	250,964,736	285,991,022	261,558,695	259,598,154	299,125,286	283,040,541	280,953,627	307,272,720	320,501,053	336,300,589	290,388,279	294,975,057	3,470,669,759
Buses	18,629,804	18,359,780	22,839,581	22,827,356	21,109,418	24,795,002	24,982,304	26,364,252	28,596,276	25,161,829	23,968,475	20,568,981	24,197,554	283,770,808
Sea travel	6,813,994	7,941,103	9,645,464	10,027,048	11,290,635	10,579,270	11,937,841	12,081,242	8,973,319	7,856,859	6,643,674	6,190,097	8,022,991	111,189,543
Travel agents	772,289,358	742,469,448	936,295,463	805,175,734	924,468,585	953,864,266	948,063,973	791,290,860	678,411,861	649,470,873	568,963,056	497,444,636	877,492,672	9,373,411,427
Timeshares	63,475	30,887	22,472	34,564	31,004	45,704	46,128	45,226	28,406	24,541	21,296	24,119	69,621	423,968
Camping grounds	34,947,747	41,108,464	58,200,884	61,646,919	66,500,372	74,895,572	81,817,242	79,255,948	50,762,177	48,337,125	39,137,927	27,952,542	42,215,202	671,830,374
Miscellaneous travel	16,454,087	20,088,682	24,550,374	24,930,084	25,470,549	39,035,458	36,885,068	34,491,600	29,344,086	26,358,255	26,148,213	21,943,329	22,976,247	332,221,945
<b>Travel</b>	<b>1,260,084,526</b>	<b>1,234,911,078</b>	<b>1,504,192,064</b>	<b>1,316,511,610</b>	<b>1,426,857,067</b>	<b>1,546,897,750</b>	<b>1,543,963,788</b>	<b>1,373,233,321</b>	<b>1,243,433,427</b>	<b>1,200,175,440</b>	<b>1,118,791,746</b>	<b>943,534,724</b>	<b>1,414,331,443</b>	<b>15,866,833,458</b>
Telegraph services / Wire transfer money orde	11,901,238	10,635,543	12,254,463	13,921,044	13,353,649	16,297,361	13,326,680	13,172,228	12,433,031	11,739,785	14,312,847	12,542,555	11,898,913	155,888,099
Insurance services	470,006,046	474,580,063	605,333,197	549,955,640	547,473,037	586,177,545	602,450,988	601,834,990	617,785,550	602,025,369	577,290,843	544,721,727	608,078,108	6,917,707,057
FIs - cash disbursements (auto & manual)	16,136,555	21,831,271	29,999,526	30,007,401	36,722,106	60,530,355	66,948,567	66,466,130	52,384,441	39,780,316	32,079,593	35,453,434	29,282,753	501,485,893
FIs - merchandise & services	1,818,183,286	1,777,271,396	2,191,285,675	2,077,820,017	2,003,615,272	2,063,156,530	2,089,736,663	2,061,709,737	2,031,758,077	2,107,928,811	2,331,333,127	2,189,189,792	2,205,878,449	25,130,683,546
Non-FIs - foreign currency, travellers' cheques	47,331,188	52,779,795	69,629,042	65,945,011	78,993,232	103,115,233	122,914,905	122,573,774	95,378,530	69,677,564	49,799,078	51,002,569	46,657,418	928,466,151
Security brokers and dealers	212,700,405	198,010,114	407,054,240	443,386,220	358,657,738	293,179,345	222,536,469	208,460,477	203,271,842	242,984,867	267,660,636	206,543,276	283,484,820	3,335,230,044
Tax preparation services	29,973	16,688	34,566	38,073	42,636	48,651	50,547	36,876	25,213	22,963	51,888	37,624	83,445	489,170
Tax payments	76,486,557	77,024,556	95,736,143	89,970,456	89,434,406	96,560,104	110,178,419	92,888,799	91,779,528	93,325,421	100,775,955	106,227,994	154,551,705	1,198,453,486
Fines, bail and bond payments	17,451,588	17,796,169	20,828,146	18,950,335	20,047,801	20,304,872	22,413,099	21,140,112	23,148,429	24,743,381	24,223,803	21,115,970	22,388,314	257,100,431
Miscellaneous financial	41,139,292	42,772,842	53,439,522	50,750,785	50,222,691	54,898,679	53,601,474	54,424,666	54,580,619	54,446,391	57,345,883	56,542,263	67,833,515	650,859,330
<b>Financial</b>	<b>2,711,366,128</b>	<b>2,672,718,437</b>	<b>3,485,594,520</b>	<b>3,340,744,982</b>	<b>3,198,562,568</b>	<b>3,294,268,675</b>	<b>3,304,157,811</b>	<b>3,242,707,789</b>	<b>3,182,545,260</b>	<b>3,246,674,868</b>	<b>3,454,873,653</b>	<b>3,223,377,204</b>	<b>3,430,137,440</b>	<b>39,076,363,207</b>

Table 3D Card expenditure statistics (not seasonally adjusted)

Value of debit card transactions

## Detailed sector breakdown - services sectors (continued)

£	January 2010	February 2010	March 2010	April 2010	May 2010	June 2010	July 2010	August 2010	September 2010	October 2010	November 2010	December 2010	January 2011	Total (latest 12 months)
Telecoms	227,001,098	205,244,584	233,013,752	212,605,268	218,443,008	220,114,246	237,018,005	238,634,239	242,332,175	246,040,059	253,376,557	292,076,196	247,686,977	2,846,585,066
Utilities	142,824,112	155,486,621	202,218,643	170,355,198	159,359,735	167,202,860	152,577,637	144,624,237	150,743,192	151,038,652	152,251,015	142,612,310	161,729,034	1,910,199,034
Contractors (residential & commercial)	71,133,804	79,853,637	99,723,283	90,311,011	88,734,133	93,629,288	90,234,465	89,571,432	96,886,632	99,569,814	107,534,056	93,115,098	93,949,559	1,123,112,409
Gardening services	2,040,783	2,776,364	5,102,311	6,183,947	5,815,980	6,371,604	4,986,764	4,550,203	4,271,086	4,031,900	4,449,934	4,772,851	3,011,968	56,324,912
Veterinary services	65,632,175	68,566,425	79,315,050	73,708,762	71,960,971	79,619,584	83,302,568	82,027,746	81,610,275	79,385,652	79,182,468	68,412,273	75,884,769	922,976,543
Photocopying & printing	15,829,078	16,953,882	20,989,681	16,982,411	17,170,244	18,961,539	17,883,043	19,391,362	22,693,258	22,189,897	24,910,763	21,013,160	20,847,959	239,987,199
Photographic studios	8,408,750	9,795,326	12,257,708	10,803,140	10,962,248	12,815,337	15,010,010	12,360,409	12,348,740	13,682,960	16,548,650	13,846,647	9,637,772	150,068,947
Beauty & barber shops	119,791,141	138,584,936	165,177,153	150,275,142	148,803,531	162,506,721	162,351,809	157,293,725	156,126,101	155,205,312	163,130,931	195,158,531	141,029,890	1,895,643,782
Employment agencies	720,443	718,875	782,119	725,474	663,486	698,772	741,555	886,441	967,644	943,624	910,475	864,600	969,412	9,872,477
Counselling services	3,276,098	3,353,039	3,615,117	3,016,666	2,899,648	3,259,703	3,192,072	3,585,739	3,813,964	4,479,119	4,746,562	4,039,259	3,847,825	43,848,713
Legal services	37,837,297	44,773,460	53,833,730	47,434,743	52,045,819	54,005,184	53,022,226	50,970,780	54,529,735	54,537,117	58,169,221	47,691,862	53,616,724	624,630,601
Laundry & cleaning	7,966,230	8,413,908	10,203,132	9,725,401	9,687,917	11,087,286	10,632,507	10,541,108	11,167,102	11,082,833	11,138,839	8,615,675	9,374,763	121,670,471
Funeral services	14,191,636	14,750,393	16,622,813	14,775,575	13,496,164	14,613,290	14,858,905	13,767,418	15,231,833	16,526,587	15,857,206	16,026,966	18,408,727	184,935,877
Medical services	140,760,724	161,388,520	194,474,426	167,314,409	166,810,075	182,098,868	178,732,096	163,606,968	182,035,308	177,358,472	191,373,367	147,360,218	170,365,259	2,082,917,986
Moving & courier services	15,992,539	16,760,455	19,473,559	17,986,451	18,111,586	21,776,467	22,684,642	23,221,695	24,139,393	22,638,269	23,149,592	21,009,437	20,813,579	251,765,125
Repair shops (not auto)	20,952,559	20,348,503	21,745,987	17,620,218	14,965,193	15,148,009	14,089,432	13,290,863	11,818,392	11,131,996	11,991,276	10,648,851	9,246,354	172,045,074
Accounting services	9,382,433	9,001,394	10,871,015	9,650,521	9,135,531	10,369,791	10,328,684	10,650,919	11,640,505	11,246,584	12,362,276	10,786,357	12,530,839	128,574,416
Advertising, consultancy & PR	15,604,005	15,928,857	19,352,630	17,617,016	16,390,968	18,430,275	17,643,249	16,447,926	16,657,169	15,334,037	16,232,292	12,094,726	14,596,689	196,725,834
Computer programming	94,772,372	97,397,990	126,373,401	111,375,756	103,336,494	147,552,578	180,087,649	143,844,549	125,904,577	119,277,253	120,799,693	106,899,797	105,469,356	1,488,319,093
Farming services	9,313,534	9,515,596	11,676,902	11,053,486	11,076,351	13,263,562	13,328,174	13,639,663	13,203,578	12,708,130	13,155,989	12,508,488	11,814,563	146,944,482
Miscellaneous professional services	340,700,456	331,865,929	409,059,090	400,413,630	363,435,557	391,851,925	412,093,299	400,544,874	466,850,766	428,295,777	420,748,622	374,063,358	446,872,788	4,846,095,615
Engineering services	9,680,556	11,110,131	13,657,350	12,479,087	12,324,211	12,716,025	13,081,226	13,131,913	14,576,859	14,384,432	14,068,013	11,265,255	12,834,794	155,629,296
Marina services	4,695,352	5,677,329	9,978,515	11,189,559	10,422,360	12,494,338	11,941,892	11,508,254	8,765,485	7,647,127	6,645,463	7,260,654	6,259,303	109,790,279
Wrecking & salvage yards	1,055,600	1,101,023	1,300,170	1,152,273	1,085,217	1,085,350	1,105,155	1,044,382	1,012,723	962,734	1,036,052	710,524	940,738	12,536,341
Pest control	370,976	404,898	508,712	478,553	463,848	531,285	594,237	598,053	658,478	524,146	454,675	566,859	446,626	6,230,370
Educational establishments	250,647,717	152,208,114	120,511,043	153,592,003	136,739,810	95,824,612	94,909,766	142,140,985	463,663,828	414,486,607	168,554,028	117,140,544	315,679,475	2,375,450,815
Child care services	6,399,600	6,752,926	8,073,323	7,313,167	6,927,806	7,968,615	8,050,260	7,723,566	8,495,393	8,653,110	9,297,230	8,258,480	10,027,710	97,541,586
Social, political & religious organisations	72,155,950	52,782,432	76,247,816	67,567,849	62,479,789	68,765,051	66,762,608	87,618,518	80,375,723	78,289,476	76,526,760	64,098,060	61,075,733	842,589,815
Government services	952,017,100	967,895,812	1,158,581,247	1,285,900,036	1,304,156,796	1,325,112,542	1,151,093,727	931,895,519	957,924,534	907,607,778	900,777,790	739,082,721	959,317,444	12,589,345,946
Miscellaneous services	333,932,127	313,781,535	400,685,386	367,440,513	340,450,271	387,351,460	385,288,508	355,645,605	372,572,169	351,249,146	382,430,314	359,776,315	420,015,993	4,436,687,215
Commercial equipment	68,824,452	70,168,080	84,890,113	74,240,208	74,499,469	77,820,016	77,594,470	86,495,083	98,776,113	93,992,402	94,609,920	79,236,313	86,593,133	998,915,320
Other services	3,063,910,697	2,993,360,974	3,590,315,177	3,541,287,473	3,452,854,216	3,635,046,183	3,505,220,640	3,251,254,174	3,711,792,730	3,534,543,615	3,356,489,500	2,990,900,201	3,504,895,755	41,067,960,638
<b>Total services</b>	<b>9,934,909,439</b>	<b>10,139,318,649</b>	<b>13,032,074,346</b>	<b>12,029,660,212</b>	<b>11,745,531,487</b>	<b>12,410,651,219</b>	<b>12,134,897,660</b>	<b>11,753,071,855</b>	<b>12,129,840,096</b>	<b>11,792,264,552</b>	<b>11,755,649,790</b>	<b>10,605,927,718</b>	<b>11,992,242,245</b>	<b>141,521,129,829</b>
<b>TOTAL</b>	<b>20,167,214,885</b>	<b>20,487,686,496</b>	<b>25,597,418,575</b>	<b>23,826,846,489</b>	<b>23,419,014,798</b>	<b>25,212,593,286</b>	<b>24,147,007,334</b>	<b>24,175,328,946</b>	<b>24,031,086,100</b>	<b>24,238,835,644</b>	<b>25,887,753,186</b>	<b>27,055,152,552</b>	<b>23,928,258,837</b>	<b>292,006,982,243</b>