

## Card Expenditure Statistics [CES] – February 2011

Seasonally-adjusted

### At a glance key figures for February

	Total Spending £ billions		Annual growth rates for spending		Number of purchases millions	
	2011	2010	2011	2010	2011	2010
<b>All plastic cards</b>	<b>36.1</b>	33.8	<b>8.2%</b>	5.1%	<b>748</b>	686
<b>Debit cards</b>	<b>25.5</b>	23.1	<b>10.9%</b>	7.5%	<b>579</b>	520
<b>Credit cards</b>	<b>10.6</b>	10.7	<b>2.5%</b>	0.5%	<b>169</b>	166

**Spending on plastic cards** in February amounted to £36.1 billion, a rise of 0.6% on January – debit card spending increased by 1.0% while credit card spending decreased by 0.4%. Factoring in consumer price inflation total plastic card spending fell by 0.2%, with debit spending up 0.2% and credit card spending down 1.1%.

The **average transaction values (ATV)** for all plastic cards fell from £48.29 to £48.21 (see Chart 3). Within the sub-sectors changes in ATV's were varied – supermarkets fell by £0.50 to £28.27, restaurants fell by £0.23 to £23.20, hotels fell by £2.96 to £114.47 (an annual low); while there were ATV rises in family clothing of £2.34 to £34.75 and in airlines of £27.46 to a record £317.01. This mixed picture may suggest shoppers are looking for bargain savings from particular sectors to off-set unavoidable prices increases in other sectors.

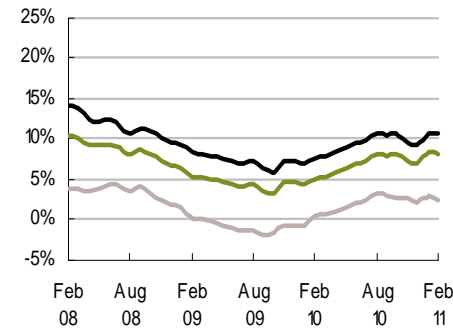
**Retail spending** by volume and value both fell by 1.3% compared to January. Spending on food and drink was down 2.6%, mixed business down 3.0% and clothing down 1.8%, with other retailers flat – reflecting consumer caution in response to current and/or anticipated economic headwinds. Spending on **services** increased by 2.7% with purchase volumes flat. Spending on entertainment, hotels and travel fell by 0.6%, 1.3% and 2.8% respectively. Spending in financial services grew strongly by 10.1% (11.4% on debit cards) perhaps due to 'last minute' personal tax payments; spending in other services was up 2.7%.

The **plastic card share of total retail sales** (including automotive fuels)<sup>1</sup> was 67.0% in February (see Chart 2). In food & drink this share was 61.8%.

<sup>1</sup>CES 3-month moving average spending for February of £18.74 billion expressed as a percentage of a similar 3-month moving average for National Statistics 'All retailing including automotive fuel' (AGG 21) based on the value of Retail Sales at current prices (SA) that gives a figure of £27.99 billion.

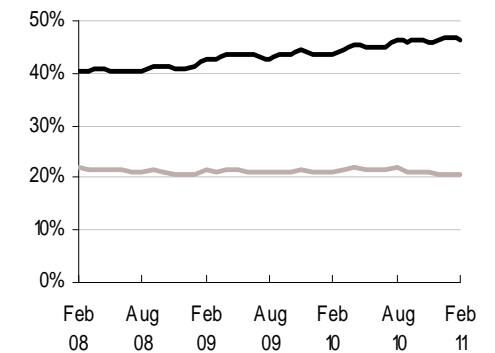
### Chart 1

Spending on plastic cards  
Annual growth rates



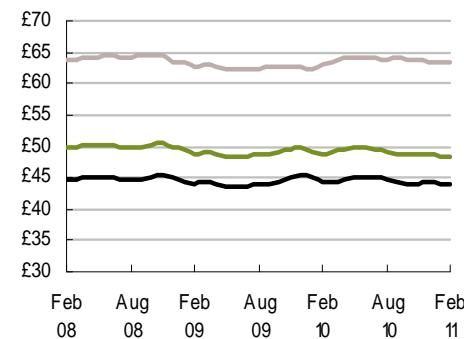
### Chart 2

Percent of retail sales made on plastic cards  
(including automotive fuel)  
Three-month moving average



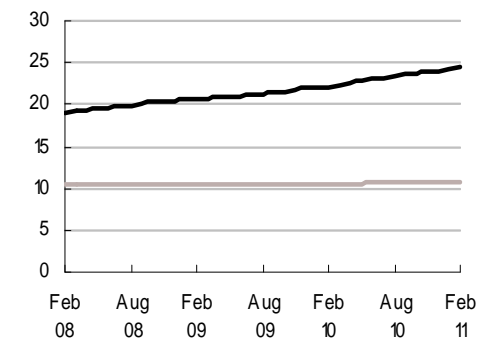
### Chart 3

Average transaction values  
Three-month moving average



### Chart 4

Average monthly expenditure  
£ billions



— Debit cards  
— Credit cards  
— All plastic cards

# Table 1 Card expenditure statistics (seasonally adjusted)

## Summary

		Number of purchase transactions (millions)									Value of purchase transactions (£ millions)									
		All sectors			Retail sales			Services			All sectors			Retail sales			Services			
		Credit	Debit	Total	Credit	Debit	Total	Credit	Debit	Total	Credit	Debit	Total	Credit	Debit	Total	Credit	Debit	Total	
<b>Annual</b>																				
	2006	1,948	4,493	6,441	1,215	3,017	4,232	733	1,476	2,209	119,941	195,398	315,339	59,882	97,964	157,846	60,059	97,434	157,493	
	2007	1,958	4,969	6,927	1,197	3,304	4,501	761	1,665	2,426	123,782	223,878	347,660	61,063	108,664	169,727	62,719	115,213	177,933	
	2008	1,972	5,467	7,438	1,186	3,581	4,767	786	1,885	2,671	126,188	245,150	371,338	60,687	116,065	176,752	65,501	129,085	194,586	
	2009	2,002	5,939	7,941	1,224	3,893	5,116	778	2,047	2,824	125,326	263,296	388,623	61,820	125,370	187,189	63,506	137,927	201,433	
	2010	2,007	6,485	8,491	1,381	4,713	6,093	626	1,772	2,398	128,141	288,076	416,218	69,641	148,522	218,163	58,500	139,555	198,055	
<b>Monthly</b>																				
	2010	Feb	166	520	686	113	378	492	52	142	194	10,714	23,112	33,826	5,760	11,961	17,721	4,954	11,151	16,105
		Mar	174	544	718	120	396	515	54	149	203	11,162	24,525	35,686	6,045	12,439	18,484	5,116	12,086	17,202
		Apr	168	532	700	116	387	503	53	145	198	10,789	23,836	34,624	5,840	12,223	18,063	4,949	11,612	16,561
		May	163	519	682	112	378	490	51	141	193	10,517	23,579	34,096	5,726	11,912	17,637	4,791	11,667	16,458
		Jun	174	553	727	120	402	522	54	150	204	11,177	24,838	36,015	6,135	12,615	18,749	5,042	12,223	17,266
		Jul	167	534	701	115	388	503	52	146	198	10,733	23,809	34,542	5,793	12,135	17,928	4,940	11,674	16,614
		Aug	171	567	738	118	414	532	53	153	206	10,857	25,037	35,894	5,918	13,099	19,017	4,939	11,938	16,878
		Sep	163	550	714	112	401	513	51	150	201	10,566	24,187	34,753	5,744	12,524	18,268	4,822	11,663	16,485
		Oct	163	542	705	112	393	505	50	149	199	10,325	23,848	34,173	5,652	12,418	18,071	4,673	11,429	16,102
		Nov	172	577	749	118	417	535	54	160	214	10,863	25,455	36,319	5,934	13,143	19,077	4,929	12,312	17,241
		Dec	163	554	717	112	400	512	51	154	205	10,424	24,660	35,085	5,686	12,723	18,409	4,738	11,937	16,676
	2011	Jan	169	586	755	116	422	538	53	164	218	10,672	25,200	35,872	5,780	13,249	19,030	4,892	11,951	16,843
		Feb	169	579	748	116	415	531	54	164	217	10,633	25,449	36,082	5,743	13,044	18,787	4,890	12,405	17,295
<b>12 month growth rates (percentages)</b>																				
<b>Annual</b>																				
	2006	-2.7	9.9	5.7	-2.9	9.3	5.5	-2.4	10.9	6.1	-1.4	15.3	8.3	-0.5	10.3	5.9	-2.2	20.8	10.8	
	2007	0.5	10.6	7.6	-1.5	9.5	6.4	3.8	12.8	9.8	3.2	14.6	10.2	2.0	10.9	7.5	4.4	18.2	13.0	
	2008	0.7	10.0	7.4	-0.9	8.4	5.9	3.3	13.2	10.1	1.9	9.5	6.8	-0.6	6.8	4.1	4.4	12.0	9.4	
	2009	1.5	8.6	6.8	3.2	8.7	7.3	-1.0	8.6	5.7	-0.7	7.4	4.7	1.9	8.0	5.9	-3.0	6.8	3.5	
	2010	0.3	9.2	6.9	12.8	21.1	19.1	-19.5	-13.4	-15.1	2.2	9.4	7.1	12.7	18.5	16.5	-7.9	1.2	-1.7	
<b>Monthly</b>																				
	2010	Feb	2.4	9.0	7.3	6.0	10.9	9.7	-3.1	5.4	3.0	0.5	7.5	5.1	4.2	9.9	8.0	-3.0	5.3	2.5
		Mar	2.3	8.8	7.1	7.0	11.7	10.5	-4.9	3.2	0.9	0.7	7.7	5.4	5.5	10.7	8.9	-3.7	5.1	2.2
		Apr	2.1	8.7	7.0	7.5	12.6	11.3	-6.2	1.4	-0.8	1.1	8.4	6.0	6.4	11.5	9.7	-3.8	5.6	2.5
		May	2.1	8.7	7.0	8.5	13.7	12.4	-7.8	-0.7	-2.8	1.6	8.9	6.5	7.8	12.4	10.9	-4.1	5.7	2.5
		Jun	2.0	8.7	7.0	9.3	14.6	13.3	-9.3	-2.6	-4.5	2.1	9.4	7.0	9.2	13.3	11.9	-4.5	5.9	2.5
		Jul	1.7	8.5	6.8	9.9	15.4	14.0	-10.9	-4.6	-6.4	2.4	9.7	7.3	10.0	14.0	12.7	-4.8	5.8	2.4
		Aug	2.3	9.6	7.8	11.6	17.6	16.1	-12.1	-5.6	-7.4	3.3	10.7	8.2	11.8	16.0	14.6	-4.8	5.8	2.4
		Sep	1.4	9.1	7.1	11.4	17.9	16.3	-14.2	-7.8	-9.6	2.9	10.4	7.9	11.7	16.1	14.6	-5.5	5.1	1.7
		Oct	1.1	9.3	7.2	11.9	19.1	17.4	-15.9	-9.3	-11.2	2.7	10.8	8.2	12.1	17.1	15.4	-6.3	5.1	1.4
		Nov	0.6	8.9	6.8	12.1	19.5	17.8	-17.5	-11.5	-13.2	2.6	9.7	7.4	12.1	17.1	15.5	-6.6	2.8	-0.2
		Dec	0.3	9.2	6.9	12.8	21.1	19.1	-19.5	-13.4	-15.1	2.2	9.4	7.1	12.7	18.5	16.5	-7.9	1.2	-1.7
	2011	Jan	0.7	10.3	7.9	11.9	21.1	18.9	-17.5	-10.8	-12.6	3.0	10.8	8.3	12.6	18.7	16.7	-6.6	3.5	0.4
		Feb	0.6	10.4	8.0	10.7	20.0	17.8	-16.2	-8.8	-10.8	2.5	10.9	8.2	11.3	17.8	15.7	-6.4	4.3	1.0

# Table 2A Card expenditure statistics (seasonally adjusted)

## Retail sales

Number of purchase transactions (millions)

Total retail sales

		Number of purchase transactions (millions)																		Total retail sales		
		Food & drink			Mixed business			Clothing			Household			Other retailers			Automotive Fuels *			Number of purchases		
		Credit	Debit	Total	Credit	Debit	Total	Credit	Debit	Total	Credit	Debit	Total	Credit	Debit	Total	Credit	Debit	Total	Credit	Debit	Total
<b>Annual</b>																						
2006		394	1,454	1,848	215	415	630	126	317	444	145	263	408	334	567	901	0	0	0	1,215	3,017	4,232
2007		426	1,640	2,066	203	436	639	124	350	474	147	282	429	297	596	893	<i>165</i>	<i>419</i>	<i>584</i>	1,197	3,304	4,501
2008		500	1,874	2,374	134	408	542	121	371	492	143	292	435	288	636	924	<i>168</i>	<i>459</i>	<i>626</i>	1,186	3,581	4,767
2009		512	2,086	2,598	131	401	532	125	404	529	146	321	466	310	681	991	<i>158</i>	<i>475</i>	<i>633</i>	1,224	3,893	5,116
2010		534	2,283	2,817	138	403	541	128	424	552	147	349	495	273	733	1,007	161	520	681	1,381	4,713	6,093
<b>Monthly</b>																						
2010	Feb	43	180	223	12	34	46	11	35	46	12	28	40	22	59	81	14	42	56	113	378	492
	Mar	45	188	233	12	35	47	11	36	47	13	29	41	24	64	88	14	45	59	120	396	515
	Apr	44	187	231	11	34	45	11	36	47	13	29	41	23	60	82	14	43	57	116	387	503
	May	43	182	225	11	33	44	10	33	43	12	28	40	22	59	81	14	43	56	112	378	490
	Jun	47	195	241	12	34	46	11	37	48	13	30	42	24	63	87	14	44	58	120	402	522
	Jul	45	188	233	11	33	44	11	35	46	12	29	41	22	60	82	14	43	56	115	388	503
	Aug	47	201	248	11	34	45	11	37	48	12	31	43	23	66	89	14	46	59	118	414	532
	Sep	44	198	242	11	33	44	11	37	48	12	30	42	22	61	82	13	43	55	112	401	513
	Oct	44	191	236	11	32	44	10	35	45	12	30	42	21	61	82	13	44	57	112	393	505
	Nov	46	202	248	12	35	47	11	37	48	12	32	44	23	65	88	14	47	60	118	417	535
	Dec	44	198	242	12	34	45	10	35	45	12	29	41	21	62	83	13	43	56	112	400	512
2011	Jan	45	205	250	13	36	49	11	36	47	12	32	44	21	66	87	14	47	61	116	422	538
	Feb	45	201	246	13	35	48	11	35	46	12	32	44	22	65	87	13	47	60	116	415	531
<b>12 month growth rates (percentages)</b>																						
<b>Annual</b>																						
2006		-0.2	11.5	8.8	-0.8	8.5	5.2	-4.6	9.6	5.1	-4.7	5.7	1.8	-5.8	6.3	1.4	-	-	-	-2.9	9.3	5.5
2007		8.2	12.8	11.8	-5.6	5.1	1.4	-1.8	10.3	6.9	1.1	7.3	5.1	-11.1	5.0	-1.0	-	-	-	-1.5	9.5	6.4
2008		17.3	14.3	14.9	-34.0	-6.5	-15.2	-2.3	6.0	3.8	-2.6	3.6	1.5	-3.1	6.8	3.5	1.4	9.6	7.3	-0.9	8.4	5.9
2009		2.4	11.3	9.4	-2.2	-1.7	-1.8	3.2	9.0	7.6	1.9	9.7	7.1	7.8	7.0	7.2	-5.7	3.5	1.0	3.2	8.7	7.3
2010		4.3	9.5	8.4	5.1	0.6	1.7	2.5	5.0	4.4	0.6	8.7	6.1	-11.9	7.7	1.6	2.0	9.5	7.6	12.8	21.1	19.1
<b>Monthly</b>																						
2010	Feb	3.3	11.1	9.5	-0.8	-1.4	-1.3	3.8	8.9	7.7	3.0	10.1	7.8	7.2	6.9	7.0	-3.3	5.7	3.3	6.0	10.9	9.7
	Mar	3.7	10.8	9.4	-0.1	-1.5	-1.2	3.8	8.2	7.2	3.0	9.5	7.4	5.1	6.3	5.9	-2.5	6.3	4.0	7.0	11.7	10.5
	Apr	3.6	10.5	9.1	0.1	-1.6	-1.2	3.4	7.7	6.7	2.5	8.8	6.8	3.3	6.2	5.3	-1.0	7.5	5.3	7.5	12.6	11.3
	May	3.8	10.4	9.0	0.7	-1.4	-0.9	4.0	7.9	7.0	3.1	9.3	7.3	1.6	6.1	4.7	-0.1	8.2	6.1	8.5	13.7	12.4
	Jun	4.0	10.1	8.8	1.3	-1.6	-0.9	3.9	7.3	6.5	3.6	9.5	7.7	-0.4	6.0	4.0	0.8	8.6	6.6	9.3	14.6	13.3
	Jul	3.9	9.7	8.6	1.8	-1.6	-0.8	3.5	6.7	6.0	3.7	9.6	7.7	-2.7	5.6	3.0	1.5	9.1	7.1	9.9	15.4	14.0
	Aug	5.0	10.6	9.5	3.6	-0.2	0.8	4.6	7.8	7.0	3.5	9.9	7.9	-3.4	7.1	3.8	1.9	10.0	7.9	11.6	17.6	16.1
	Sep	4.3	9.7	8.6	4.0	-0.3	0.8	3.9	6.6	6.0	2.3	9.3	7.1	-6.2	6.7	2.7	1.9	9.8	7.8	11.4	17.9	16.3
	Oct	4.3	9.7	8.6	4.8	0.4	1.5	3.4	6.2	5.5	1.9	9.4	7.1	-8.2	7.1	2.3	2.5	10.6	8.6	11.9	19.1	17.4
	Nov	4.0	9.0	8.0	4.4	-0.3	0.9	2.7	5.2	4.6	1.1	8.9	6.4	-10.3	7.1	1.6	2.4	9.8	7.9	12.1	19.5	17.8
	Dec	4.3	9.5	8.4	5.1	0.6	1.7	2.5	5.0	4.4	0.6	8.7	6.1	-11.9	7.7	1.6	2.0	9.5	7.6	12.8	21.1	19.1
2011	Jan	5.0	10.4	9.3	6.6	1.7	2.9	3.3	5.7	5.1	1.7	10.3	7.6	-14.0	9.3	2.0	3.1	10.8	8.9	11.9	21.1	18.9
	Feb	4.9	10.6	9.5	6.6	1.7	2.9	2.7	5.0	4.5	1.3	10.6	7.7	-13.3	9.6	2.5	2.2	10.4	8.4	10.7	20.0	17.8

\* The category of Automotive Fuels is effective from January 2010. Data shown for 2009 are for growth trend purposes only; these data (in italics) are excluded from totals for 2009 as these are already included in their former Services sector of Motoring (now known as Vehicle Sales & Service) and it is complete in the January 2010 edition of the tables, where it was first introduced.

## Table 2B Card expenditure statistics (seasonally adjusted)

### Retail sales

Value of purchase transactions (£ millions)

																				Total retail sales		
																		Value of purchases				
Food & drink			Mixed business			Clothing			Household			Other retailers			Automotive Fuels *							
	Credit	Debit	Total	Credit	Debit	Total	Credit	Debit	Total	Credit	Debit	Total	Credit	Debit	Total	Credit	Debit	Total	Credit	Debit	Total	
<b>Annual</b>																						
2006	14,003	43,465	57,468	8,902	13,102	22,004	5,783	9,380	15,163	14,019	13,722	27,741	17,175	18,294	35,469	0	0	0	59,882	97,964	157,846	
2007	15,311	48,582	63,893	8,839	14,053	22,892	5,861	10,455	16,317	14,699	15,347	30,046	16,353	20,226	36,580	<i>5,868</i>	<i>10,962</i>	<i>16,829</i>	61,063	108,664	169,727	
2008	17,567	54,559	72,126	7,053	13,456	20,509	5,955	11,214	17,169	14,381	15,574	29,955	15,732	21,261	36,993	<i>6,677</i>	<i>12,965</i>	<i>19,642</i>	60,687	116,065	176,752	
2009	18,101	60,238	78,339	7,091	13,862	20,952	6,376	12,643	19,019	14,493	16,602	31,095	15,758	22,025	37,784	<i>5,860</i>	<i>12,668</i>	<i>18,528</i>	61,820	125,370	187,189	
2010	18,838	63,858	82,696	7,155	13,925	21,080	6,782	13,641	20,423	14,638	18,755	33,393	15,614	23,547	39,161	6,614	14,796	21,410	69,641	148,522	218,163	
<b>Monthly</b>																						
2010	Feb	1,523	5,094	6,617	617	1,174	1,791	560	1,116	1,676	1,207	1,473	2,680	1,297	1,901	3,198	555	1,203	1,758	5,760	11,961	17,721
	Mar	1,578	5,239	6,817	628	1,196	1,824	583	1,149	1,732	1,300	1,535	2,835	1,372	2,052	3,424	585	1,268	1,853	6,045	12,439	18,484
	Apr	1,577	5,260	6,837	585	1,152	1,738	561	1,136	1,697	1,240	1,541	2,781	1,308	1,909	3,218	568	1,225	1,793	5,840	12,223	18,063
	May	1,521	5,103	6,624	577	1,128	1,704	539	1,076	1,615	1,225	1,494	2,719	1,305	1,897	3,202	559	1,214	1,773	5,726	11,912	17,637
	Jun	1,636	5,419	7,055	627	1,186	1,813	585	1,174	1,760	1,292	1,590	2,883	1,432	2,025	3,456	562	1,221	1,783	6,135	12,615	18,749
	Jul	1,568	5,227	6,795	588	1,136	1,724	567	1,117	1,684	1,228	1,536	2,764	1,296	1,935	3,231	546	1,184	1,729	5,793	12,135	17,928
	Aug	1,627	5,613	7,240	591	1,184	1,775	577	1,205	1,782	1,253	1,705	2,958	1,321	2,090	3,411	549	1,302	1,851	5,918	13,099	19,017
	Sep	1,587	5,456	7,042	581	1,153	1,734	567	1,151	1,717	1,207	1,615	2,822	1,273	1,957	3,229	529	1,193	1,722	5,744	12,524	18,268
	Oct	1,556	5,330	6,886	579	1,130	1,709	563	1,131	1,694	1,183	1,621	2,804	1,236	1,955	3,191	536	1,252	1,788	5,652	12,418	18,071
	Nov	1,623	5,609	7,232	611	1,208	1,819	592	1,199	1,791	1,236	1,695	2,931	1,302	2,075	3,377	571	1,356	1,927	5,934	13,143	19,077
	Dec	1,547	5,504	7,051	591	1,153	1,744	560	1,137	1,697	1,199	1,635	2,834	1,238	2,007	3,244	550	1,288	1,838	5,686	12,723	18,409
2011	Jan	1,577	5,634	7,212	603	1,221	1,824	581	1,191	1,772	1,160	1,693	2,853	1,251	2,064	3,315	608	1,445	2,053	5,780	13,249	19,030
	Feb	1,546	5,479	7,025	588	1,181	1,770	575	1,165	1,740	1,164	1,717	2,881	1,261	2,054	3,316	608	1,447	2,055	5,743	13,044	18,787

### 12 month growth rates (percentages)

<b>Annual</b>																						
2006	-0.1	10.3	7.6	2.1	10.1	6.7	-1.5	8.6	4.5	0.9	13.5	6.8	-2.9	8.9	2.8	-	-	-	-0.5	10.3	5.9	
2007	9.3	11.8	11.2	-0.7	7.3	4.0	1.4	11.5	7.6	4.9	11.8	8.3	-4.8	10.6	3.1	-	-	-	2.0	10.9	7.5	
2008	14.7	12.3	12.9	-20.2	-4.2	-10.4	1.6	7.3	5.2	-2.2	1.5	-0.3	-3.8	5.1	1.1	13.8	18.3	16.7	-0.6	6.8	4.1	
2009	3.0	10.4	8.6	0.5	3.0	2.2	7.1	12.7	10.8	0.8	6.6	3.8	0.2	3.6	2.1	-12.2	-2.3	-5.7	1.9	8.0	5.9	
2010	4.1	6.0	5.6	0.9	0.5	0.6	6.4	7.9	7.4	1.0	13.0	7.4	-0.9	6.9	3.6	12.9	16.8	15.6	12.7	18.5	16.5	
<b>Monthly</b>																						
2010	Feb	3.8	9.5	8.2	1.4	2.5	2.1	7.8	12.5	10.9	1.6	8.8	5.4	0.3	3.9	2.4	-7.3	1.7	-1.3	4.2	9.9	8.0
	Mar	4.3	9.1	8.0	1.8	1.9	1.9	7.8	11.9	10.5	2.1	9.7	6.1	0.2	3.9	2.3	-5.1	3.2	0.5	5.5	10.7	8.9
	Apr	4.0	8.5	7.4	1.6	1.4	1.5	7.5	11.4	10.0	2.3	10.2	6.4	0.4	4.4	2.7	-2.0	5.8	3.2	6.4	11.5	9.7
	May	4.0	8.0	7.0	1.9	1.3	1.5	8.0	11.4	10.3	3.2	11.4	7.5	1.0	4.8	3.2	1.0	8.0	5.7	7.8	12.4	10.9
	Jun	4.3	7.5	6.8	2.3	1.0	1.5	8.0	10.7	9.8	3.9	12.4	8.4	1.5	5.2	3.6	3.9	10.2	8.1	9.2	13.3	11.9
	Jul	4.3	7.0	6.3	2.3	0.7	1.2	7.6	9.9	9.1	4.0	12.8	8.7	1.5	5.4	3.8	7.1	12.4	10.7	10.0	14.0	12.7
	Aug	5.3	7.7	7.1	3.5	1.8	2.4	8.8	11.0	10.2	4.4	14.1	9.5	2.3	6.9	5.0	9.5	14.9	13.2	11.8	16.0	14.6
	Sep	4.5	6.5	6.0	3.0	1.3	1.9	8.2	9.9	9.3	3.1	13.6	8.7	1.1	6.6	4.3	11.4	15.7	14.3	11.7	16.1	14.6
	Oct	4.5	6.4	6.0	2.6	1.4	1.8	7.5	9.3	8.7	2.6	13.8	8.6	0.5	6.8	4.2	13.0	17.4	16.0	12.1	17.1	15.4
	Nov	3.9	5.5	5.1	1.1	0.1	0.5	6.7	8.1	7.7	1.6	13.1	7.7	-0.4	6.5	3.6	13.5	17.1	16.0	12.1	17.1	15.5
	Dec	4.1	6.0	5.6	0.9	0.5	0.6	6.4	7.9	7.4	1.0	13.0	7.4	-0.9	6.9	3.6	12.9	16.8	15.6	12.7	18.5	16.5
2011	Jan	4.3	6.7	6.1	1.6	1.4	1.5	7.0	8.5	8.0	2.4	14.9	9.1	-0.3	8.5	4.8	14.1	18.6	17.2	12.6	18.7	16.7
	Feb	4.1	6.9	6.3	0.7	1.2	1.0	6.3	7.9	7.4	1.9	15.1	9.0	-0.5	8.6	4.8	13.1	18.5	16.8	11.3	17.8	15.7

\* The category of Automotive Fuels is effective from January 2010. Data shown for 2009 are for growth trend purposes only; these data (in italics) are excluded from totals for 2009 as these are already included in their former Services sector of Motoring (now known as Vehicle Sales & Service) and it is complete in the January 2010 edition of the tables, where it was first introduced.

# Table 2C Card expenditure statistics (seasonally adjusted)

## Services

Number of purchase transactions (millions)

Total services

		Number of purchase transactions (millions)																		Total services			
		Vehicle Sales & Services			Entertainment			Hotels			Travel			Financial			Other services			Number of purchases			
		Credit	Debit	Total	Credit	Debit	Total	Credit	Debit	Total	Credit	Debit	Total	Credit	Debit	Total	Credit	Debit	Total	Credit	Debit	Total	
<b>Annual</b>																							
	2006	242	529	771	176	349	525	36	24	61	96	127	224	28	91	119	155	355	510	733	1,476	2,209	
	2007	245	573	818	190	411	600	38	26	64	101	148	249	28	106	134	160	401	561	761	1,665	2,426	
	2008	249	628	877	198	500	697	36	28	64	103	168	271	32	111	143	167	451	618	786	1,885	2,671	
	2009	236	656	892	206	593	799	37	31	68	101	183	284	32	112	144	167	470	637	778	2,047	2,824	
	2010	76	204	280	220	720	940	37	34	71	97	202	299	32	129	161	163	483	646	626	1,772	2,398	
<b>Monthly</b>																							
	2010	Feb	7	17	23	18	56	74	3	3	6	8	16	24	3	10	13	14	40	54	52	142	194
		Mar	7	18	26	19	59	77	3	3	6	8	16	24	3	10	13	14	42	57	54	149	203
		Apr	7	18	24	18	58	77	3	3	6	8	16	24	3	10	13	14	40	53	53	145	198
		May	6	17	23	18	57	75	3	3	6	8	15	23	3	10	13	13	39	53	51	141	193
		Jun	7	17	24	19	61	80	3	3	6	8	18	26	3	11	14	14	41	55	54	150	204
		Jul	6	17	23	19	59	78	3	3	6	8	17	25	3	11	14	14	39	53	52	146	198
		Aug	6	17	23	19	64	83	3	3	6	8	18	26	3	11	14	14	40	54	53	153	206
		Sep	6	16	22	18	62	80	3	3	6	8	18	26	3	11	14	13	40	54	51	150	201
		Oct	6	16	21	18	62	81	3	3	6	8	17	25	3	11	14	13	40	53	50	149	199
		Nov	6	18	24	20	67	86	3	3	6	8	19	27	3	11	14	14	42	56	54	160	214
		Dec	6	18	25	18	63	81	3	3	6	8	18	26	3	11	14	13	40	53	51	154	205
	2011	Jan	7	22	29	20	69	88	3	3	6	8	18	25	3	11	14	13	42	55	53	164	218
		Feb	7	23	30	19	67	87	3	3	6	8	18	25	3	11	14	13	42	55	54	164	217

12 month growth rates (percentages)

<b>Annual</b>																							
	2006	-10.3	1.1	-2.7	5.3	15.2	11.7	-1.3	9.2	2.6	1.4	15.1	8.8	-9.0	13.6	7.4	1.7	21.7	14.9	-2.4	10.9	6.1	
	2007	1.3	8.3	6.1	8.0	17.6	14.4	3.1	6.6	4.5	4.2	16.7	11.3	0.8	16.2	12.6	3.4	12.9	10.0	3.8	12.8	9.8	
	2008	1.5	9.7	7.2	4.3	21.7	16.2	-2.8	5.9	0.8	2.5	13.4	9.0	15.7	4.8	7.0	4.6	12.3	10.1	3.3	13.2	10.1	
	2009	-5.4	4.5	1.7	4.3	18.7	14.6	0.4	13.9	6.3	-2.5	8.9	4.6	-1.9	1.1	0.4	-0.1	4.4	3.2	-1.0	8.6	5.7	
	2010	-67.7	-69.0	-68.6	6.7	21.4	17.6	1.6	9.2	5.1	-3.1	10.3	5.5	1.0	15.0	11.9	-2.3	2.7	1.4	-19.5	-13.4	-15.1	
<b>Monthly</b>																							
	2010	Feb	-14.3	-6.6	-8.7	5.2	19.6	15.6	1.8	13.8	7.0	-1.8	9.7	5.4	-0.1	5.8	4.5	1.2	3.8	3.1	-3.1	5.4	3.0
		Mar	-19.8	-13.4	-15.2	5.4	19.9	15.9	2.1	13.3	7.0	-2.4	9.5	5.0	0.3	8.0	6.3	0.9	2.9	2.4	-4.9	3.2	0.9
		Apr	-24.9	-19.7	-21.1	5.5	20.4	16.3	2.5	12.4	6.9	-2.0	9.6	5.3	1.0	11.0	8.7	1.1	2.5	2.1	-6.2	1.4	-0.8
		May	-30.2	-26.0	-27.2	5.5	20.2	16.2	3.0	11.8	6.9	-2.0	9.2	5.0	1.4	13.4	10.7	1.0	1.9	1.7	-7.8	-0.7	-2.8
		Jun	-35.5	-32.6	-33.4	6.4	20.7	16.8	3.2	11.2	6.8	-1.9	9.7	5.4	1.6	14.7	11.6	0.4	1.6	1.3	-9.3	-2.6	-4.5
		Jul	-40.7	-38.7	-39.3	6.7	20.7	17.0	3.2	10.6	6.5	-2.1	9.6	5.3	1.4	15.2	12.0	-0.4	1.5	1.0	-10.9	-4.6	-6.4
		Aug	-45.7	-44.3	-44.7	7.9	22.2	18.4	3.3	10.8	6.7	-1.9	10.3	5.9	1.8	16.1	12.8	-0.2	2.3	1.6	-12.1	-5.6	-7.4
		Sep	-51.4	-50.7	-50.9	7.1	21.5	17.7	2.6	9.7	5.8	-2.0	10.4	5.9	1.2	16.0	12.7	-1.2	2.3	1.4	-14.2	-7.8	-9.6
		Oct	-56.5	-56.4	-56.4	7.0	22.0	18.1	2.0	9.3	5.4	-2.4	10.1	5.6	1.1	15.8	12.5	-1.8	2.6	1.5	-15.9	-9.3	-11.2
		Nov	-62.0	-62.9	-62.6	6.8	21.3	17.6	2.0	8.8	5.1	-2.2	10.4	5.9	1.5	15.4	12.3	-1.9	2.9	1.7	-17.5	-11.5	-13.2
		Dec	-67.7	-69.0	-68.6	6.7	21.4	17.6	1.6	9.2	5.1	-3.1	10.3	5.5	1.0	15.0	11.9	-2.3	2.7	1.4	-19.5	-13.4	-15.1
	2011	Jan	-65.3	-66.0	-65.8	8.1	22.6	18.9	2.3	10.2	6.0	-2.8	11.2	6.3	0.8	15.3	12.1	-2.3	3.2	1.8	-17.5	-10.8	-12.6
		Feb	-62.8	-62.8	-62.8	8.1	22.2	18.6	1.8	10.0	5.6	-3.7	11.4	6.1	0.1	14.7	11.5	-2.6	3.1	1.6	-16.2	-8.8	-10.8

# Table 2D Card expenditure statistics (seasonally adjusted)

## Services

Value of purchase transactions (£ millions)

Total services

		Vehicle Sales & Services			Entertainment			Hotels			Travel			Financial			Other services			Value of purchases		
		Credit	Debit	Total	Credit	Debit	Total	Credit	Debit	Total	Credit	Debit	Total	Credit	Debit	Total	Credit	Debit	Total	Credit	Debit	Total
<b>Annual</b>																						
	2006	13,789	27,052	40,841	8,873	9,675	18,548	5,207	2,041	7,249	13,217	11,025	24,242	5,586	20,921	26,507	13,387	26,719	40,106	60,059	97,434	157,493
	2007	14,680	30,693	45,373	9,297	11,229	20,526	5,483	2,263	7,746	13,434	12,606	26,040	5,699	26,117	31,816	14,126	32,305	46,431	62,719	115,213	177,933
	2008	15,522	32,970	48,492	9,656	13,057	22,713	5,507	2,445	7,953	14,005	13,731	27,737	5,925	29,904	35,828	14,886	36,978	51,864	65,501	129,085	194,586
	2009	14,630	35,427	50,057	9,647	14,591	24,238	5,290	2,722	8,012	13,056	14,087	27,143	5,724	32,970	38,695	15,159	38,129	53,288	63,506	137,927	201,433
	2010	8,757	24,683	33,440	9,841	16,934	26,775	5,531	3,039	8,570	12,808	15,779	28,587	5,882	38,433	44,315	15,681	40,687	56,368	58,500	139,555	198,055
<b>Monthly</b>																						
	2010 Feb	778	2,020	2,798	810	1,342	2,153	459	246	704	1,121	1,303	2,425	478	2,916	3,394	1,307	3,324	4,631	4,954	11,151	16,105
	Mar	853	2,356	3,209	837	1,374	2,211	469	250	718	1,116	1,339	2,455	493	3,223	3,716	1,349	3,544	4,893	5,116	12,086	17,202
	Apr	768	2,115	2,883	814	1,377	2,191	460	251	712	1,094	1,251	2,345	484	3,155	3,640	1,328	3,463	4,791	4,949	11,612	16,561
	May	740	2,044	2,784	795	1,379	2,175	455	237	692	1,004	1,224	2,227	484	3,185	3,669	1,313	3,598	4,911	4,791	11,667	16,458
	Jun	753	2,071	2,824	844	1,447	2,290	475	255	730	1,092	1,304	2,396	512	3,349	3,862	1,367	3,797	5,164	5,042	12,223	17,266
	Jul	722	1,998	2,721	838	1,402	2,240	475	248	722	1,089	1,300	2,389	491	3,196	3,687	1,325	3,531	4,856	4,940	11,674	16,614
	Aug	702	2,058	2,761	861	1,528	2,389	470	273	743	1,085	1,345	2,430	496	3,313	3,809	1,326	3,420	4,746	4,939	11,938	16,878
	Sep	674	2,062	2,735	818	1,424	2,242	453	260	714	1,063	1,363	2,426	502	3,215	3,717	1,312	3,339	4,652	4,822	11,663	16,485
	Oct	664	2,005	2,669	811	1,434	2,245	454	259	713	1,016	1,350	2,366	476	3,198	3,674	1,251	3,183	4,434	4,673	11,429	16,102
	Nov	712	2,151	2,863	888	1,536	2,424	471	272	743	1,047	1,397	2,444	513	3,717	4,230	1,297	3,241	4,538	4,929	12,312	17,241
	Dec	705	2,079	2,784	777	1,434	2,211	459	262	721	1,035	1,389	2,424	499	3,471	3,970	1,263	3,302	4,565	4,738	11,937	16,676
	2011 Jan	762	2,191	2,953	842	1,578	2,419	473	280	753	1,041	1,369	2,410	498	3,174	3,672	1,276	3,359	4,635	4,892	11,951	16,843
	Feb	780	2,221	3,001	843	1,561	2,405	467	276	743	1,009	1,333	2,342	505	3,537	4,042	1,285	3,477	4,762	4,890	12,405	17,295

## 12 month growth rates (percentages)

<b>Annual</b>																						
	2006	-1.7	11.9	6.9	6.7	18.3	12.4	3.8	17.4	7.3	1.1	13.7	6.5	-32.8	21.1	3.6	5.6	36.3	24.3	-2.2	20.8	10.8
	2007	6.5	13.5	11.1	4.8	16.1	10.7	5.3	10.9	6.9	1.6	14.3	7.4	2.0	24.8	20.0	5.5	20.9	15.8	4.4	18.2	13.0
	2008	5.7	7.4	6.9	3.9	16.3	10.7	0.4	8.0	2.7	4.3	8.9	6.5	4.0	14.5	12.6	5.4	14.5	11.7	4.4	12.0	9.4
	2009	-5.7	7.5	3.2	-0.1	11.7	6.7	-3.9	11.3	0.7	-6.8	2.6	-2.1	-3.4	10.3	8.0	1.8	3.1	2.7	-3.0	6.8	3.5
	2010	-40.1	-30.3	-33.2	2.0	16.1	10.5	4.6	11.6	7.0	-1.9	12.0	5.3	2.8	16.6	14.5	3.4	6.7	5.8	-7.9	1.2	-1.7
<b>Monthly</b>																						
	2010 Feb	-9.6	3.2	-0.9	0.3	12.2	7.2	-2.0	11.9	2.4	-5.8	7.0	0.5	-1.8	11.0	8.9	3.2	-0.7	0.4	-3.0	5.3	2.5
	Mar	-12.0	1.3	-2.9	-0.4	12.2	6.9	-1.1	11.9	3.0	-6.4	8.0	0.7	-1.4	12.0	9.8	3.2	-1.1	0.1	-3.7	5.1	2.2
	Apr	-14.2	-0.7	-5.0	-0.4	12.5	7.1	-0.1	11.7	3.7	-6.1	9.4	1.6	-0.4	13.6	11.3	4.1	0.6	1.6	-3.8	5.6	2.5
	May	-16.8	-3.3	-7.5	-0.3	12.4	7.2	0.9	11.3	4.3	-6.1	10.4	2.0	0.2	14.1	11.9	4.6	2.2	2.9	-4.1	5.7	2.5
	Jun	-19.6	-6.5	-10.6	0.7	13.3	8.1	1.7	11.4	4.8	-6.3	11.1	2.3	0.5	15.1	12.8	4.6	4.3	4.4	-4.5	5.9	2.5
	Jul	-22.3	-10.0	-13.8	1.6	13.5	8.7	2.6	11.3	5.4	-5.9	12.0	3.0	0.7	16.4	13.9	4.5	5.6	5.3	-4.8	5.8	2.4
	Aug	-25.1	-12.8	-16.6	3.0	15.3	10.3	3.4	12.0	6.2	-5.0	13.0	4.0	1.6	16.7	14.4	4.8	6.6	6.1	-4.8	5.8	2.4
	Sep	-28.7	-17.0	-20.6	2.6	15.0	10.0	3.4	11.1	5.9	-3.9	12.9	4.6	1.6	16.6	14.3	4.4	8.4	7.3	-5.5	5.1	1.7
	Oct	-32.1	-20.9	-24.2	2.5	16.0	10.6	3.7	11.0	6.2	-3.3	12.2	4.5	1.7	17.0	14.7	3.9	11.5	9.3	-6.3	5.1	1.4
	Nov	-35.7	-25.2	-28.3	2.2	15.7	10.3	4.6	11.3	6.8	-2.0	12.2	5.3	2.6	17.2	15.0	4.2	7.2	6.4	-6.6	2.8	-0.2
	Dec	-40.1	-30.3	-33.2	2.0	16.1	10.5	4.6	11.6	7.0	-1.9	12.0	5.3	2.8	16.6	14.5	3.4	6.7	5.8	-7.9	1.2	-1.7
	2011 Jan	-37.5	-27.1	-30.1	3.3	17.3	11.7	5.4	12.9	8.0	-1.4	12.0	5.6	3.6	18.8	16.5	3.6	9.1	7.5	-6.6	3.5	0.4
	Feb	-35.7	-25.0	-28.1	3.5	17.2	11.8	5.0	12.8	7.7	-2.6	10.5	4.3	3.8	19.4	17.1	2.9	9.1	7.3	-6.4	4.3	1.0



Table 3A Card expenditure statistics (not seasonally adjusted)

Number of credit card transactions

Detailed sector breakdown - services sectors

	February 2010	March 2010	April 2010	May 2010	June 2010	July 2010	August 2010	September 2010	October 2010	November 2010	December 2010	January 2011	February 2011	Total (latest 12 months)
Auto rental	329,669	399,708	383,949	388,286	424,476	433,512	388,137	383,995	353,031	340,619	314,066	330,052	326,771	4,466,602
Auto parts & accessories	817,791	1,005,185	905,820	849,470	935,434	925,437	850,853	836,693	801,548	863,024	795,453	803,703	785,025	10,357,645
Auto services	1,457,482	1,702,800	1,428,931	1,513,902	1,636,976	1,635,850	1,493,475	1,616,954	1,595,552	1,659,978	1,417,947	1,503,073	1,505,271	18,710,709
Auto repair shops	943,668	1,152,392	994,360	943,186	1,017,794	1,013,106	914,077	964,837	908,904	933,561	844,878	926,916	903,484	11,517,495
Service stations	1,683,063	2,019,903	1,893,619	1,874,927	2,067,983	2,028,628	1,946,139	1,862,886	1,897,616	2,129,020	2,277,138	2,523,735	2,366,964	24,888,558
Vehicle sales	578,379	753,038	666,444	644,575	721,580	702,884	655,951	663,438	593,559	594,673	505,319	577,054	583,073	7,661,588
<b>Vehicle Sales &amp; Services</b>	<b>5,810,052</b>	<b>7,033,026</b>	<b>6,273,123</b>	<b>6,214,346</b>	<b>6,804,243</b>	<b>6,739,417</b>	<b>6,248,632</b>	<b>6,328,803</b>	<b>6,150,210</b>	<b>6,520,875</b>	<b>6,154,801</b>	<b>6,664,533</b>	<b>6,470,588</b>	<b>77,602,597</b>
Restaurants	8,113,445	9,422,317	9,020,087	9,202,690	9,818,502	10,339,213	10,317,160	9,199,370	9,623,203	9,547,760	8,693,286	8,547,186	8,831,664	112,562,438
Public houses	1,231,299	1,518,878	1,514,024	1,464,033	1,759,167	1,711,126	1,852,072	1,583,820	1,525,848	1,575,120	1,412,531	1,345,030	1,401,729	18,663,378
Catering services	178,129	212,828	176,650	190,013	194,168	187,683	194,852	191,555	208,720	173,572	167,907	169,594	169,594	2,228,900
Video stores	35,556	44,505	42,382	46,650	52,718	64,206	68,653	67,115	72,465	81,675	87,319	80,373	74,887	782,948
Cinema, theatre & dance	1,414,989	1,680,611	1,453,766	1,343,563	1,325,267	1,679,079	1,820,852	1,443,437	1,628,534	2,033,623	1,610,593	1,748,099	1,694,328	19,461,752
Concerts & entertainers	23,810	24,042	18,184	15,169	16,612	17,430	13,538	18,169	16,228	20,662	18,169	17,521	17,984	214,650
Tourist attractions	184,415	238,822	306,074	306,074	435,309	515,996	709,175	379,338	339,614	226,264	158,408	133,679	190,791	4,029,472
Amusement parks	14,596	18,492	36,327	21,885	30,555	35,204	62,005	24,261	25,703	16,683	11,832	11,165	17,075	311,187
Aquariums	9,015	10,082	12,590	10,656	14,580	15,255	22,128	9,708	9,437	8,572	6,545	8,428	9,941	137,922
Sports & games establishments	1,967,686	2,407,707	2,075,659	2,036,793	2,057,426	2,160,790	1,973,420	2,149,173	1,851,122	2,072,792	2,431,709	2,146,741	1,955,658	25,318,990
Professional sports clubs	71,286	111,660	101,602	74,003	79,642	96,528	122,971	108,076	100,359	120,550	110,266	94,655	100,383	1,220,695
Gambling	2,649,701	3,239,777	3,044,414	2,652,736	3,266,461	2,601,207	2,766,440	2,823,196	2,864,625	3,212,420	2,946,663	2,967,046	2,736,671	35,120,656
Personal services	94,576	112,661	109,185	105,060	112,651	113,114	107,154	104,157	101,349	104,460	110,054	98,770	98,727	1,277,342
Miscellaneous entertainment	200,394	240,751	299,740	256,962	314,202	355,061	447,287	275,905	272,376	215,210	175,937	177,852	196,641	3,227,984
<b>Entertainment</b>	<b>16,188,897</b>	<b>19,283,133</b>	<b>18,300,612</b>	<b>17,726,287</b>	<b>19,477,260</b>	<b>19,891,892</b>	<b>20,625,539</b>	<b>18,200,193</b>	<b>18,622,418</b>	<b>19,442,018</b>	<b>17,949,437</b>	<b>17,544,452</b>	<b>17,495,073</b>	<b>224,558,314</b>
<b>Hotels</b>	<b>2,745,886</b>	<b>3,232,342</b>	<b>3,047,473</b>	<b>3,207,203</b>	<b>3,501,054</b>	<b>3,621,749</b>	<b>3,397,125</b>	<b>3,286,723</b>	<b>3,171,250</b>	<b>3,028,301</b>	<b>2,560,111</b>	<b>2,650,909</b>	<b>2,743,560</b>	<b>37,447,800</b>
Airlines	965,450	1,051,413	950,204	922,359	985,927	922,355	864,750	914,704	790,312	782,393	594,877	980,205	696,387	10,455,886
Airport terminals	22,790	30,198	26,118	28,977	30,420	27,782	28,239	26,866	22,300	18,653	14,679	17,018	17,274	288,524
Railways	4,191,433	4,742,203	4,194,735	4,279,306	4,776,968	4,579,344	4,089,821	4,551,267	4,651,363	4,900,013	3,933,440	4,039,323	4,041,671	52,779,454
Buses	262,212	331,737	315,211	324,804	384,774	378,834	354,784	372,575	350,577	362,050	305,116	304,289	307,338	4,092,089
Sea travel	71,992	91,345	112,756	110,324	117,519	124,403	126,344	97,036	80,269	66,277	61,794	64,319	65,468	1,117,854
Travel agents	1,327,425	1,516,532	1,333,707	1,302,296	1,394,646	1,404,471	1,275,676	1,257,825	1,127,663	1,070,729	824,064	1,397,513	1,236,316	15,141,438
Timeshares	275	301	351	363	424	442	551	373	359	329	158	248	292	4,164
Camping grounds	139,195	176,889	228,431	241,211	285,069	313,960	337,977	198,189	145,256	81,194	52,751	139,436	139,126	2,339,489
Miscellaneous travel	879,063	984,662	935,641	939,394	1,012,413	1,063,161	860,910	874,174	856,581	843,231	689,044	597,971	589,127	10,246,309
<b>Travel</b>	<b>7,859,835</b>	<b>8,925,280</b>	<b>8,097,154</b>	<b>8,149,034</b>	<b>8,988,160</b>	<b>8,814,752</b>	<b>7,939,052</b>	<b>8,293,009</b>	<b>8,024,680</b>	<b>8,124,842</b>	<b>6,475,923</b>	<b>7,540,322</b>	<b>7,092,999</b>	<b>96,465,207</b>
Telegraph services / Wire transfer money order	4,315	5,193	4,678	4,340	4,803	4,472	4,392	4,080	3,924	4,108	4,532	3,578	3,110	51,210
Insurance services	1,656,432	2,052,964	1,807,105	1,747,512	2,009,016	2,026,953	1,904,576	1,981,867	1,708,740	1,687,249	1,464,082	1,589,802	1,585,228	21,565,094
FIs - cash disbursements (auto & manual)	29,253	35,111	29,620	31,201	38,380	36,131	32,625	36,984	31,088	28,545	23,452	23,419	23,625	370,181
FIs - merchandise & services	509,461	624,486	555,734	563,706	586,902	605,388	514,795	518,422	549,634	518,338	511,091	524,329	486,621	6,559,446
Non-FIs - foreign currency, travellers' cheques	33,645	42,526	42,779	59,220	70,109	70,709	66,793	57,801	29,323	16,657	12,749	11,355	13,832	493,853
Security brokers and dealers	13,923	14,258	14,056	23,278	19,605	19,605	15,493	14,932	15,702	17,993	14,617	17,131	17,013	203,414
Tax preparation services	615	681	689	275	309	249	140	88	85	101	82	161	334	3,194
Tax payments	2,765	3,564	4,148	3,586	4,698	5,267	5,955	4,844	4,324	4,727	3,807	3,724	3,257	51,901
Fines, bail and bond payments	59,266	68,591	62,119	64,685	70,224	74,934	58,887	68,054	69,450	68,642	57,369	61,562	61,702	786,219
Miscellaneous financial	133,709	164,392	158,365	154,163	168,363	164,683	147,826	145,183	139,348	145,892	135,689	148,496	147,721	1,820,121
<b>Financial</b>	<b>2,443,384</b>	<b>3,011,766</b>	<b>2,679,293</b>	<b>2,651,966</b>	<b>2,972,340</b>	<b>3,008,391</b>	<b>2,751,482</b>	<b>2,832,255</b>	<b>2,551,618</b>	<b>2,492,052</b>	<b>2,227,470</b>	<b>2,383,557</b>	<b>2,342,443</b>	<b>31,904,633</b>



Table 3A Card expenditure statistics (not seasonally adjusted)

Number of credit card transactions

## Detailed sector breakdown - services sectors (continued)

	February 2010	March 2010	April 2010	May 2010	June 2010	July 2010	August 2010	September 2010	October 2010	November 2010	December 2010	January 2011	February 2011	Total (latest 12 months)
Telecoms	1,853,917	2,119,810	1,958,138	1,903,124	2,000,401	2,033,750	1,863,706	1,835,186	1,813,602	1,873,436	2,067,412	1,762,498	1,646,198	22,877,261
Utilities	325,484	401,378	356,602	346,586	364,815	364,539	314,641	331,461	328,848	321,958	285,689	320,411	305,278	4,042,206
Contractors (residential & commercial)	292,841	345,925	305,623	293,848	311,703	309,244	289,053	313,036	317,358	344,903	275,484	295,522	290,778	3,692,477
Gardening services	32,273	60,688	68,934	66,867	71,924	53,727	46,829	45,580	43,362	49,505	54,025	30,454	33,600	625,495
Veterinary services	495,783	566,179	534,251	523,023	580,629	607,363	596,582	594,526	572,444	580,463	515,550	526,084	464,314	6,661,408
Photocopying & printing	323,196	385,754	319,264	307,044	327,048	318,197	306,550	330,677	347,144	398,100	364,107	324,692	296,966	4,025,543
Photographic studios	84,908	106,782	92,343	96,706	125,992	154,878	108,423	113,577	140,459	173,072	128,221	83,543	82,650	1,406,646
Beauty & barber shops	1,157,310	1,371,626	1,254,971	1,261,689	1,415,368	1,408,156	1,293,431	1,289,184	1,263,990	1,353,528	1,655,581	1,163,597	1,136,144	15,867,265
Employment agencies	20,312	23,005	20,737	20,952	22,427	21,337	19,569	20,395	19,009	19,678	15,768	20,316	19,752	242,945
Counselling services	4,106	4,472	3,879	3,929	3,975	4,024	3,764	3,925	4,169	3,899	3,775	4,194	3,991	47,996
Legal services	29,985	35,727	30,337	28,990	30,826	30,489	27,963	29,755	28,496	30,495	23,526	30,045	29,822	356,471
Laundry & cleaning	141,288	170,406	164,151	163,242	190,993	182,255	168,742	178,870	176,905	180,324	135,019	150,303	140,724	2,001,934
Funeral services	10,038	11,284	10,061	9,313	9,930	9,683	8,729	9,723	10,482	11,091	10,151	11,105	10,394	121,946
Medical services	984,191	1,151,496	1,004,409	992,689	1,091,590	1,066,338	979,410	1,095,039	1,037,791	1,135,765	891,789	1,028,739	1,021,477	12,496,532
Moving & courier services	166,819	196,959	165,536	167,551	189,747	186,232	163,748	180,083	173,011	186,690	173,650	166,269	164,111	2,113,587
Repair shops (not auto)	77,833	90,208	81,327	74,568	77,706	64,543	58,199	55,923	53,344	61,272	55,861	51,951	48,516	773,418
Accounting services	29,672	33,938	32,558	26,412	28,817	27,276	28,773	33,956	32,870	34,143	32,035	35,853	29,277	375,908
Advertising, consultancy & PR	132,519	155,808	141,514	122,243	136,324	124,768	123,337	125,417	116,285	122,583	85,940	110,528	108,550	1,473,297
Computer programming	578,840	678,320	604,025	463,375	494,356	470,856	454,192	479,801	464,548	491,416	461,088	476,240	452,999	5,991,216
Farming services	56,977	69,909	67,325	64,204	71,878	66,020	66,333	63,363	61,741	65,886	64,562	57,309	54,823	773,353
Miscellaneous professional services	1,021,068	1,214,215	1,063,372	1,036,125	1,186,790	1,146,602	1,197,461	1,217,665	1,158,463	1,231,047	1,070,666	1,067,404	1,319,915	13,909,725
Engineering services	62,143	73,253	64,922	59,903	66,074	64,616	56,311	59,941	56,182	58,786	46,301	53,832	58,014	718,135
Marina services	31,642	50,797	65,441	64,409	81,249	84,643	88,092	57,353	41,171	39,711	34,996	32,660	31,455	671,977
Wrecking & salvage yards	3,869	4,753	3,982	3,525	4,169	4,268	4,079	4,099	3,908	4,107	2,953	3,781	3,748	47,372
Pest control	2,334	2,804	2,614	2,590	3,054	3,719	3,407	3,458	3,407	2,570	1,707	2,103	1,941	32,836
Educational establishments	380,011	465,707	373,994	379,100	388,324	402,127	379,072	569,112	487,486	457,594	364,255	502,685	409,651	5,179,107
Child care services	16,001	16,368	14,228	12,879	13,942	15,023	16,166	15,043	16,672	17,045	14,442	18,027	17,928	187,763
Social, political & religious organisations	891,601	1,310,369	1,201,431	1,077,020	1,202,816	1,072,671	1,244,576	1,166,120	1,107,525	1,250,386	1,073,604	895,294	887,115	13,488,927
Government services	1,533,202	1,779,342	1,578,516	1,550,342	1,681,155	1,664,296	1,543,275	1,590,825	1,519,902	1,544,500	1,333,184	1,448,125	1,484,559	18,718,021
Miscellaneous services	926,637	1,142,609	991,157	930,102	1,001,596	959,951	964,815	997,426	990,206	1,170,788	1,400,257	916,687	928,804	12,394,398
Commercial equipment	962,253	1,097,464	930,670	930,238	971,186	970,488	870,947	998,474	922,901	991,737	865,123	921,091	838,058	11,308,377
Other services	12,629,053	15,137,355	13,506,312	12,982,588	14,146,804	13,892,079	13,290,175	13,808,993	13,313,143	14,206,478	13,506,721	12,511,342	12,321,552	162,623,542
<b>Total services</b>	<b>47,677,107</b>	<b>56,622,902</b>	<b>51,903,967</b>	<b>50,931,424</b>	<b>55,889,861</b>	<b>55,968,280</b>	<b>54,252,005</b>	<b>52,749,976</b>	<b>51,833,319</b>	<b>53,814,566</b>	<b>48,874,463</b>	<b>49,295,115</b>	<b>48,466,215</b>	<b>630,602,093</b>
<b>TOTAL</b>	<b>142,969,684</b>	<b>172,669,469</b>	<b>161,991,475</b>	<b>159,916,103</b>	<b>177,824,794</b>	<b>173,778,786</b>	<b>168,284,101</b>	<b>161,915,741</b>	<b>163,836,367</b>	<b>183,903,764</b>	<b>192,739,637</b>	<b>153,767,232</b>	<b>145,299,063</b>	<b>2,015,926,532</b>





Table 3B Card expenditure statistics (not seasonally adjusted)

Value of credit card transactions

## Detailed sector breakdown - services sectors (continued)

£	February 2010	March 2010	April 2010	May 2010	June 2010	July 2010	August 2010	September 2010	October 2010	November 2010	December 2010	January 2011	February 2011	Total (latest 12 months)
Telecoms	69,134,903	78,716,541	72,456,294	70,441,006	76,130,855	80,436,704	69,967,944	69,741,129	67,608,980	71,967,310	83,966,619	64,753,687	59,738,794	865,925,863
Utilities	48,461,142	62,912,953	54,441,739	50,680,619	52,270,649	49,582,320	40,695,976	43,494,054	42,185,001	42,295,739	37,436,396	43,178,668	44,442,927	563,617,041
Contractors (residential & commercial)	71,795,701	86,541,798	75,991,036	75,217,611	80,734,599	77,052,456	71,849,618	79,217,525	80,974,354	87,743,748	71,898,368	74,160,221	74,304,067	935,685,401
Gardening services	2,385,935	4,664,576	5,545,663	5,404,954	5,783,706	4,484,867	3,585,164	3,580,158	3,092,805	3,334,953	3,158,436	2,111,848	2,616,828	47,363,958
Veterinary services	41,521,622	47,799,835	45,308,001	44,371,195	49,348,758	50,915,114	48,978,167	49,401,890	47,478,141	48,784,297	42,838,691	46,324,151	39,943,324	561,491,564
Photocopying & printing	31,115,016	36,009,518	29,228,915	29,197,532	31,459,761	29,277,124	26,970,636	31,982,923	32,121,037	34,385,452	29,162,406	30,153,071	30,174,085	370,122,460
Photographic studios	7,074,471	8,751,954	7,848,210	7,756,014	9,353,657	11,201,277	8,797,121	8,835,095	9,546,730	11,570,766	9,282,050	6,765,023	6,850,365	106,558,262
Beauty & barber shops	61,245,737	73,585,788	67,000,423	67,508,332	74,544,040	74,606,968	67,261,151	69,332,253	67,779,099	73,497,743	86,491,484	61,001,438	60,874,129	843,482,848
Employment agencies	4,373,291	5,170,034	4,698,220	4,048,503	4,558,439	3,984,408	4,379,931	5,298,875	5,014,799	4,900,539	4,618,865	4,837,609	4,793,680	56,303,902
Counselling services	326,650	433,769	359,063	319,352	315,944	388,442	381,565	459,836	681,823	592,541	493,621	496,014	439,646	5,361,616
Legal services	15,045,007	17,993,304	15,339,298	14,893,245	15,668,737	16,183,434	14,374,430	15,889,850	15,681,204	16,204,544	13,710,921	16,738,097	17,104,602	189,781,666
Laundry & cleaning	4,439,457	5,370,059	5,142,220	5,128,934	6,051,666	5,780,739	5,428,235	5,784,009	5,612,471	5,751,935	4,867,140	4,867,140	4,566,232	63,977,713
Funeral services	10,149,234	11,304,453	10,012,904	9,038,091	9,722,803	9,676,771	8,577,102	9,735,871	10,714,308	9,801,055	10,221,192	11,397,973	11,312,784	121,515,307
Medical services	131,256,383	155,127,854	132,630,511	134,793,607	146,489,981	145,738,529	126,860,958	142,554,150	138,432,820	150,415,590	116,981,073	130,439,664	135,991,219	1,656,455,956
Moving & courier services	18,269,355	21,289,895	19,240,509	19,237,972	21,970,295	22,974,379	19,044,155	20,307,722	20,090,706	19,711,689	17,689,027	18,570,233	18,591,607	238,718,189
Repair shops (not auto)	10,016,714	12,098,343	10,296,852	10,099,612	11,210,497	10,841,569	9,776,574	10,119,844	9,550,994	10,942,727	9,713,984	8,273,342	8,111,608	121,035,946
Accounting services	6,229,676	7,085,157	5,834,595	5,159,293	5,715,499	5,280,136	5,173,831	6,351,846	5,741,833	6,134,488	5,936,577	6,857,019	6,191,039	71,461,313
Advertising, consultancy & PR	13,089,022	15,644,367	14,081,370	12,613,088	14,240,423	13,635,276	12,632,137	13,820,434	12,540,056	12,963,498	9,957,572	12,233,072	11,567,057	155,928,350
Computer programming	41,665,079	52,508,917	45,675,084	46,562,674	46,251,841	52,799,486	35,756,281	42,052,558	39,754,434	39,032,204	35,330,678	33,997,966	31,578,864	491,300,987
Farming services	6,838,025	8,444,159	7,933,698	7,937,880	8,968,212	9,049,283	8,868,019	8,295,817	7,891,578	8,106,451	7,576,633	7,249,553	7,029,548	97,350,831
Miscellaneous professional services	129,008,139	154,768,455	142,084,424	137,998,949	153,580,109	148,568,294	141,810,660	169,863,250	144,937,227	147,527,051	122,832,253	142,761,253	140,607,564	1,747,339,489
Engineering services	18,688,999	22,650,403	20,377,835	21,747,221	18,848,716	21,747,221	17,664,780	19,086,461	17,650,208	17,448,053	15,886,061	17,359,280	224,209,518	
Marina services	6,648,486	11,351,771	11,563,473	11,198,237	12,874,211	12,815,633	11,136,156	8,461,976	7,042,725	6,637,367	7,984,222	6,841,732	6,406,538	114,314,041
Wrecking & salvage yards	717,370	885,605	801,824	742,018	879,243	880,604	789,844	874,981	806,573	845,954	584,322	731,481	751,259	9,573,708
Pest control	615,566	780,026	644,212	645,032	672,303	821,922	752,527	769,876	664,718	732,674	552,659	562,245	527,733	8,125,927
Educational establishments	96,225,231	93,131,173	96,073,536	86,996,067	84,978,691	90,265,001	111,206,090	253,210,120	166,293,319	92,122,670	81,234,642	152,190,033	97,639,559	1,405,340,901
Child care services	1,882,083	2,140,573	1,862,677	1,719,842	1,922,753	2,017,377	1,783,996	2,141,796	2,083,813	2,267,144	2,003,565	2,320,623	2,188,090	24,452,249
Social, political & religious organisations	58,255,942	78,270,163	71,172,809	56,875,316	61,023,907	57,190,970	65,431,595	65,209,207	65,441,264	66,132,145	66,459,585	66,057,594	58,607,416	777,871,971
Government services	158,211,437	188,743,421	172,499,714	168,146,735	174,951,692	173,058,174	155,654,799	160,642,516	150,000,167	146,262,968	135,726,783	147,063,736	152,776,759	1,925,527,464
Miscellaneous services	47,310,750	60,789,469	53,333,212	49,675,404	54,643,189	53,220,894	45,852,806	49,528,820	48,193,036	53,765,453	53,824,385	46,064,543	45,072,132	613,963,343
Commercial equipment	105,736,068	127,410,075	109,223,038	107,186,101	113,023,690	114,965,285	97,490,202	110,226,707	102,895,980	108,105,797	90,374,581	100,059,526	98,399,407	1,279,360,389
Other services	1,217,732,491	1,452,374,408	1,308,701,359	1,260,441,931	1,351,087,371	1,338,652,147	1,238,932,450	1,476,271,549	1,328,502,203	1,299,984,545	1,177,067,452	1,264,944,616	1,196,558,142	15,693,518,173
<b>Total services</b>	<b>4,531,653,309</b>	<b>5,464,346,577</b>	<b>4,900,645,284</b>	<b>4,870,930,088</b>	<b>5,352,191,424</b>	<b>5,342,920,302</b>	<b>4,893,614,847</b>	<b>5,087,145,758</b>	<b>4,742,305,976</b>	<b>4,731,927,331</b>	<b>4,161,081,324</b>	<b>4,715,512,744</b>	<b>4,457,241,170</b>	<b>58,719,862,825</b>
<b>TOTAL</b>	<b>9,368,215,057</b>	<b>11,371,695,416</b>	<b>10,475,894,048</b>	<b>10,427,787,638</b>	<b>11,464,831,080</b>	<b>11,167,884,404</b>	<b>10,522,379,924</b>	<b>10,583,386,710</b>	<b>10,417,089,372</b>	<b>11,404,381,876</b>	<b>11,642,884,074</b>	<b>9,919,028,672</b>	<b>9,272,815,469</b>	<b>128,670,058,683</b>



Table 3C Card expenditure statistics (not seasonally adjusted)

Number of debit card transactions

## Detailed sector breakdown - services sectors

	February 2010	March 2010	April 2010	May 2010	June 2010	July 2010	August 2010	September 2010	October 2010	November 2010	December 2010	January 2011	February 2011	Total (latest 12 months)
Auto rental	363,345	432,782	414,798	418,202	454,442	464,969	490,170	476,875	459,064	459,017	429,751	441,378	442,088	5,383,536
Auto parts & accessories	1,535,606	1,875,067	1,698,111	1,604,872	1,748,265	1,723,883	1,701,872	1,660,610	1,649,275	1,752,246	1,617,155	1,714,527	1,683,096	20,428,979
Auto services	2,242,183	2,627,085	2,356,577	2,455,894	2,643,284	2,707,516	2,719,381	2,711,173	2,782,838	2,917,879	2,891,715	2,666,719	2,655,532	32,135,593
Auto repair shops	1,487,885	1,844,779	1,604,819	1,513,695	1,633,053	1,621,770	1,576,987	1,646,585	1,594,379	1,617,603	1,457,690	1,666,132	1,646,147	19,423,639
Service stations	8,143,586	9,770,620	9,096,197	9,088,956	10,051,375	9,642,760	9,887,536	9,438,032	9,785,297	10,756,888	11,418,047	13,183,611	12,743,294	124,862,613
Vehicle sales	1,000,393	1,320,464	1,175,793	1,121,948	1,245,741	1,210,096	1,199,599	1,186,989	1,096,622	1,087,487	919,220	1,093,360	1,111,545	13,768,864
<b>Vehicle Sales &amp; Services</b>	<b>14,772,998</b>	<b>17,870,797</b>	<b>16,346,295</b>	<b>16,203,567</b>	<b>17,776,160</b>	<b>17,370,994</b>	<b>17,575,545</b>	<b>17,120,264</b>	<b>17,367,475</b>	<b>18,591,120</b>	<b>18,733,578</b>	<b>20,765,727</b>	<b>20,281,702</b>	<b>216,003,224</b>
Restaurants	28,120,552	32,716,425	31,080,006	31,790,618	32,824,691	32,813,593	35,075,281	31,910,938	35,254,448	35,960,594	34,348,613	33,969,770	34,889,801	402,634,778
Public houses	4,674,461	5,763,267	5,678,541	5,451,390	6,420,742	5,731,273	6,346,509	5,470,940	5,710,049	6,078,969	5,734,686	5,622,815	5,736,442	69,745,623
Catering services	473,221	547,918	468,143	483,682	526,277	532,349	502,313	549,544	559,239	569,654	508,086	497,531	523,075	6,285,811
Video stores	344,892	426,200	261,851	268,766	244,663	246,931	240,215	221,126	195,233	196,187	215,269	206,375	188,074	2,910,890
Cinema, theatre & dance	3,085,448	3,623,243	3,577,994	3,324,957	3,063,413	4,717,273	4,952,443	3,165,787	3,794,246	4,685,570	3,511,779	4,184,730	4,413,738	47,015,173
Concerts & entertainers	38,253	37,400	40,247	37,594	36,131	40,081	49,744	34,791	44,798	46,254	54,506	46,388	52,914	520,848
Tourist attractions	1,258,406	1,630,141	1,753,841	1,317,446	1,431,460	1,197,867	1,559,724	899,469	837,958	606,625	358,235	338,700	459,898	12,391,364
Amusement parks	55,263	66,455	121,446	79,651	101,992	104,143	189,109	78,938	80,818	54,705	40,012	44,481	67,292	1,029,042
Aquariums	29,655	33,359	37,494	31,743	37,179	38,489	46,754	29,509	30,362	26,519	19,626	27,872	32,703	391,609
Sports & games establishments	2,100,753	2,464,029	2,304,625	2,258,325	2,223,365	2,445,667	2,624,674	2,318,000	2,279,503	2,280,519	2,219,113	2,526,007	2,473,824	28,417,651
Professional sports clubs	115,988	151,059	142,814	120,476	116,425	138,429	193,705	159,416	148,533	177,890	178,989	149,757	158,323	1,835,816
Gambling	12,080,597	14,505,219	13,792,083	12,178,191	13,852,249	12,073,616	13,092,923	12,400,990	13,325,477	14,829,646	13,923,967	14,609,428	13,881,509	162,465,298
Personal services	247,773	297,735	272,284	268,256	284,374	282,459	276,431	260,048	253,915	255,609	257,925	249,483	252,873	3,211,392
Miscellaneous entertainment	463,782	530,024	716,177	556,341	681,709	696,396	1,022,558	606,653	623,606	478,289	356,223	435,959	496,038	7,199,973
<b>Entertainment</b>	<b>53,089,044</b>	<b>62,792,474</b>	<b>60,247,546</b>	<b>58,167,436</b>	<b>61,844,670</b>	<b>61,058,566</b>	<b>66,172,383</b>	<b>58,106,149</b>	<b>63,138,185</b>	<b>66,265,030</b>	<b>61,727,029</b>	<b>62,909,296</b>	<b>63,626,504</b>	<b>746,055,268</b>
<b>Hotels</b>	<b>2,478,903</b>	<b>2,868,856</b>	<b>2,849,615</b>	<b>2,815,548</b>	<b>3,076,036</b>	<b>3,085,849</b>	<b>3,549,511</b>	<b>3,040,523</b>	<b>3,008,690</b>	<b>2,796,212</b>	<b>2,575,767</b>	<b>2,607,666</b>	<b>2,720,543</b>	<b>34,994,816</b>
Airlines	743,642	852,327	737,287	758,510	810,770	767,711	770,737	737,771	632,556	583,350	454,976	693,246	404,758	8,203,999
Airport terminals	25,802	35,481	33,396	35,319	39,062	35,351	39,930	36,012	28,317	22,650	19,643	23,030	23,129	371,320
Railways	10,745,503	12,153,652	10,833,651	11,123,041	12,793,800	12,200,985	12,358,655	13,098,462	14,114,046	14,750,047	12,974,496	12,519,936	12,598,320	151,519,091
Buses	632,805	806,931	764,324	750,396	880,296	834,288	856,931	891,192	884,491	949,896	797,034	853,166	819,420	10,088,365
Sea travel	85,682	101,280	120,649	122,853	128,567	146,384	170,081	121,521	107,818	93,673	93,926	97,263	100,752	1,404,767
Travel agents	1,579,206	1,879,534	1,599,094	1,595,432	1,608,004	1,672,438	1,597,181	1,414,155	1,282,841	1,118,282	947,862	1,817,106	1,548,463	18,080,392
Timeshares	270	281	422	465	550	568	782	399	343	284	216	339	284	4,933
Camping grounds	262,337	379,370	515,667	536,745	620,545	667,101	853,358	460,653	349,810	164,677	103,806	245,536	299,629	5,196,897
Miscellaneous travel	782,386	880,934	860,503	860,975	999,369	1,048,779	1,109,263	1,046,485	1,047,061	1,029,859	925,830	714,658	713,182	11,236,898
<b>Travel</b>	<b>14,857,633</b>	<b>17,089,790</b>	<b>15,464,993</b>	<b>15,783,736</b>	<b>17,880,963</b>	<b>17,373,605</b>	<b>17,756,918</b>	<b>17,806,650</b>	<b>18,447,283</b>	<b>18,712,718</b>	<b>16,317,789</b>	<b>16,964,280</b>	<b>16,507,937</b>	<b>206,106,662</b>
Telegraph services / Wire transfer money orde	32,807	40,057	35,292	36,871	40,676	37,869	38,603	37,643	37,228	40,116	42,636	34,339	33,636	454,966
Insurance services	2,454,275	3,041,694	2,781,499	2,728,744	3,043,127	3,136,964	2,974,075	3,058,031	2,787,557	2,689,674	2,344,442	2,686,712	2,673,674	33,946,193
FIs - cash disbursements (auto & manual)	67,792	91,985	86,784	110,962	170,939	176,295	169,788	159,429	120,428	104,628	111,801	90,152	103,958	1,497,149
FIs - merchandise & services	6,057,108	7,184,296	6,306,235	6,616,950	6,778,541	7,003,876	6,818,280	6,915,007	7,066,506	6,968,354	7,151,825	7,208,799	6,507,913	82,526,582
Non-FIs - foreign currency, travellers' cheques	155,456	194,735	184,756	211,736	267,965	290,105	283,150	246,131	186,272	141,618	150,843	131,213	156,313	2,444,837
Security brokers and dealers	60,598	100,342	96,030	92,079	87,154	73,806	63,762	60,420	70,208	78,144	60,033	77,672	78,575	938,225
Tax preparation services	98	119	227	223	291	272	176	135	117	154	126	331	309	2,480
Tax payments	85,440	104,180	97,708	96,627	109,015	121,923	108,978	103,624	105,647	116,346	118,024	157,279	128,903	1,368,254
Fines, bail and bond payments	217,383	259,133	236,589	248,350	252,847	253,571	279,833	294,637	287,441	253,590	262,877	265,407	265,407	3,169,145
Miscellaneous financial	329,703	405,151	393,710	390,149	431,771	415,492	428,178	411,866	414,627	440,520	431,027	488,675	482,171	5,133,137
<b>Financial</b>	<b>9,460,660</b>	<b>11,421,692</b>	<b>10,218,830</b>	<b>10,532,691</b>	<b>11,182,326</b>	<b>11,531,472</b>	<b>11,138,561</b>	<b>11,271,919</b>	<b>11,083,227</b>	<b>10,866,995</b>	<b>10,664,347</b>	<b>11,138,049</b>	<b>10,430,859</b>	<b>131,480,968</b>

Table 3C Card expenditure statistics (not seasonally adjusted)

Number of debit card transactions

## Detailed sector breakdown - services sectors (continued)

	February 2010	March 2010	April 2010	May 2010	June 2010	July 2010	August 2010	September 2010	October 2010	November 2010	December 2010	January 2011	February 2011	Total (latest 12 months)
Telecoms	8,998,540	10,154,573	9,332,802	9,533,854	9,496,805	9,774,549	9,663,293	9,576,766	9,535,164	9,776,545	10,868,232	9,560,726	8,927,584	116,200,893
Utilities	1,380,174	1,726,379	1,518,526	1,488,010	1,652,004	1,612,282	1,641,810	1,685,680	1,701,375	1,748,683	1,602,139	1,689,565	1,583,060	19,649,513
Contractors (residential & commercial)	485,754	579,559	526,955	512,131	525,735	530,932	529,377	561,277	580,235	608,029	509,564	529,985	534,719	6,528,498
Gardening services	61,263	107,549	120,204	117,609	131,165	99,203	93,295	87,935	88,013	101,713	117,156	67,219	72,614	1,203,675
Veterinary services	1,293,895	1,490,389	1,387,243	1,365,751	1,489,474	1,573,152	1,571,259	1,555,853	1,523,236	1,507,384	1,328,402	1,406,772	1,282,093	17,481,008
Photocopying & printing	327,428	417,782	341,673	336,925	350,395	337,314	352,202	389,823	390,117	469,276	425,235	385,347	362,725	4,558,814
Photographic studios	237,768	296,611	261,391	270,946	333,920	368,302	305,919	309,218	366,426	424,654	357,594	246,494	256,787	3,798,262
Beauty & barber shops	3,647,719	4,325,044	3,940,401	3,915,885	4,347,186	4,296,630	4,124,710	4,020,322	4,011,630	4,164,566	5,017,617	3,764,081	3,753,940	49,682,012
Employment agencies	19,475	21,541	20,607	21,177	19,987	20,348	22,642	22,965	22,656	21,761	15,426	24,391	22,853	256,354
Counselling services	40,880	47,277	39,947	38,640	44,628	44,089	45,458	46,389	46,639	50,063	50,264	49,901	46,173	549,468
Legal services	89,563	110,158	95,435	91,301	101,560	102,988	100,495	106,748	105,160	113,297	90,438	110,134	109,676	1,237,390
Laundry & cleaning	383,573	459,747	427,774	427,913	486,106	464,395	454,440	475,183	478,923	486,368	373,818	402,558	386,201	5,323,426
Funeral services	15,175	17,325	15,106	14,606	15,908	15,327	14,343	15,769	16,615	17,682	16,497	18,342	18,586	196,106
Medical services	2,115,216	2,489,563	2,160,674	2,103,988	2,301,393	2,230,187	2,150,692	2,370,732	2,270,484	2,452,101	1,902,832	2,272,760	2,326,310	27,031,716
Moving & courier services	190,051	220,726	190,609	193,527	219,676	211,623	213,855	229,358	219,844	240,692	229,555	223,013	217,485	2,609,963
Repair shops (not auto)	310,785	325,584	259,577	206,854	199,940	176,045	165,872	141,810	129,835	115,919	109,697	99,316	2,065,954	
Accounting services	150,012	186,025	172,576	163,884	188,303	181,467	192,949	207,879	204,259	224,563	206,426	221,318	196,520	2,346,169
Advertising, consultancy & PR	234,974	283,340	263,227	244,822	274,536	258,851	261,292	262,696	252,397	260,621	187,745	237,843	228,987	3,016,357
Computer programming	658,990	802,012	720,316	708,700	856,501	799,483	855,297	883,372	867,919	921,370	862,652	1,059,506	1,031,464	10,368,592
Farming services	118,528	144,238	134,859	133,349	151,386	139,880	143,331	139,064	141,368	149,533	143,531	132,383	126,807	1,679,729
Miscellaneous professional services	3,456,285	3,939,317	3,387,833	3,179,791	3,378,770	3,147,626	3,082,549	3,188,383	3,182,174	3,373,283	3,024,640	2,749,320	2,599,486	38,233,172
Engineering services	44,719	55,469	51,064	48,838	52,027	52,993	52,577	54,996	53,227	53,511	42,857	49,189	55,312	622,060
Marina services	38,955	61,314	81,077	77,238	100,233	98,698	109,572	70,654	54,659	52,251	49,022	43,714	44,480	842,912
Wrecking & salvage yards	9,941	11,400	9,688	8,731	8,964	9,164	8,317	8,137	7,904	8,130	6,031	7,191	7,309	100,966
Pest control	2,185	2,715	2,595	2,602	3,128	3,713	3,700	4,048	3,197	2,798	1,951	2,352	3,028	35,028
Educational establishments	1,000,659	1,173,867	907,908	1,084,900	862,116	712,426	679,757	1,273,744	1,517,899	1,400,713	948,787	1,375,923	1,239,689	13,177,729
Child care services	81,246	82,313	71,868	67,147	72,042	78,072	91,458	79,381	92,281	91,344	77,621	101,652	104,691	1,009,870
Social, political & religious organisations	1,409,262	2,175,149	1,905,155	1,898,312	2,041,483	1,813,108	2,138,469	2,052,779	1,945,267	2,192,574	1,681,622	1,468,612	1,573,617	22,886,147
Government services	4,323,101	4,916,257	4,700,125	4,667,389	4,994,411	4,872,406	5,003,479	5,075,774	4,889,346	4,873,540	4,207,330	4,847,329	4,802,984	57,850,370
Miscellaneous services	4,266,508	5,360,759	4,771,126	4,515,022	5,034,978	4,695,924	4,762,760	4,956,029	4,792,701	5,586,335	6,420,097	4,615,979	4,646,680	60,158,390
Commercial equipment	1,303,870	1,471,673	1,217,995	1,252,118	1,252,296	1,203,917	1,352,501	1,616,513	1,499,574	1,542,240	1,459,787	1,484,217	1,357,574	16,710,405
Other services	36,696,494	43,455,655	39,036,336	38,691,960	40,987,056	39,925,094	40,187,670	41,469,277	40,990,524	43,051,125	42,340,787	39,257,513	38,017,951	487,410,948
<b>Total services</b>	<b>131,355,732</b>	<b>155,499,264</b>	<b>144,163,615</b>	<b>142,194,938</b>	<b>152,747,211</b>	<b>150,345,580</b>	<b>156,380,588</b>	<b>148,814,782</b>	<b>154,035,384</b>	<b>160,283,200</b>	<b>152,359,297</b>	<b>153,642,531</b>	<b>151,585,496</b>	<b>1,822,051,886</b>
<b>TOTAL</b>	<b>466,497,360</b>	<b>559,880,958</b>	<b>519,901,351</b>	<b>515,218,291</b>	<b>567,930,169</b>	<b>542,061,612</b>	<b>554,805,921</b>	<b>529,929,780</b>	<b>548,592,530</b>	<b>600,246,495</b>	<b>634,407,501</b>	<b>536,820,162</b>	<b>519,457,398</b>	<b>6,629,252,168</b>





Table 3D Card expenditure statistics (not seasonally adjusted)

Value of debit card transactions

## Detailed sector breakdown - services sectors

£	February 2010	March 2010	April 2010	May 2010	June 2010	July 2010	August 2010	September 2010	October 2010	November 2010	December 2010	January 2011	February 2011	Total (latest 12 months)
Auto rental	32,287,676	42,174,474	39,631,285	40,443,834	43,918,464	46,416,552	46,220,907	43,689,086	42,407,079	40,022,807	36,886,576	38,217,671	38,470,053	498,498,788
Auto parts & accessories	173,419,443	236,124,414	198,127,193	183,393,904	197,456,238	191,316,449	185,735,459	202,372,300	187,689,767	192,999,373	168,956,540	180,290,468	178,590,410	2,303,052,515
Auto services	48,457,579	62,133,243	54,344,665	54,975,222	61,350,194	61,064,180	62,004,270	61,959,290	58,606,885	60,097,395	53,615,174	57,534,295	56,639,427	704,324,240
Auto repair shops	529,544,676	839,647,020	638,422,114	590,709,921	590,887,563	581,924,730	533,618,037	686,230,670	597,320,638	577,299,931	516,064,787	569,534,703	551,956,994	7,273,617,108
Service stations	105,437,146	130,813,706	122,540,437	121,801,605	131,263,960	125,596,713	126,686,604	125,134,775	126,919,793	136,793,714	145,285,607	177,591,930	167,157,293	1,637,586,137
Vehicle sales	899,285,577	1,401,974,027	1,110,606,254	1,031,511,928	1,140,467,669	1,064,737,117	1,018,699,669	1,231,113,857	1,067,285,861	1,062,863,143	869,103,767	972,248,406	970,156,769	12,940,768,467
<b>Vehicle Sales &amp; Services</b>	<b>1,788,432,097</b>	<b>2,712,866,884</b>	<b>2,163,671,948</b>	<b>2,022,836,414</b>	<b>2,165,344,088</b>	<b>2,071,055,741</b>	<b>1,972,964,946</b>	<b>2,350,499,978</b>	<b>2,080,230,023</b>	<b>2,070,076,363</b>	<b>1,789,912,451</b>	<b>1,995,417,473</b>	<b>1,962,970,946</b>	<b>25,357,847,255</b>
Restaurants	572,371,876	658,499,153	628,860,515	630,358,801	644,779,294	653,950,232	735,228,570	627,772,950	687,434,264	686,356,700	693,066,419	668,621,484	679,654,361	7,994,582,743
Public houses	124,629,954	154,660,830	150,702,021	142,428,077	168,191,104	153,159,586	173,426,246	144,402,765	142,807,069	152,239,470	152,605,939	140,693,546	141,398,857	1,816,355,510
Catering services	10,149,996	12,469,015	11,150,787	11,150,787	11,150,787	12,743,251	12,743,251	12,909,370	12,580,679	13,195,666	12,215,986	11,153,092	11,391,769	146,964,343
Video stores	3,765,358	4,539,525	2,898,694	3,253,596	2,807,342	2,753,340	2,568,617	2,561,621	2,581,459	2,738,661	2,908,472	2,514,509	2,320,170	34,446,006
Cinema, theatre & dance	107,085,831	141,250,654	111,465,821	102,083,912	96,741,720	126,656,268	129,671,865	106,244,859	136,545,581	167,044,039	130,336,360	118,430,424	125,117,756	1,491,589,259
Concerts & entertainers	1,539,716	1,744,925	1,663,076	1,370,725	1,510,380	1,495,164	1,711,440	1,274,467	1,513,303	1,569,614	1,531,555	1,431,757	1,565,047	18,381,453
Tourist attractions	34,360,810	43,511,107	49,446,561	36,473,709	41,562,483	36,893,797	48,466,280	27,336,264	26,115,616	18,683,868	12,253,384	11,811,999	14,784,828	367,339,896
Amusement parks	1,935,748	2,574,379	4,080,374	2,892,413	3,484,851	3,612,531	5,785,678	2,686,901	2,537,130	1,809,428	1,384,338	1,427,743	1,991,271	34,267,037
Aquariums	953,367	1,128,214	1,273,403	1,071,818	1,237,723	1,261,741	1,463,505	983,981	1,015,644	968,475	761,996	965,920	1,073,138	13,205,558
Sports & games establishments	75,315,239	100,102,167	96,307,409	96,900,122	92,183,050	90,377,720	89,369,390	87,162,831	83,128,782	81,347,263	80,311,534	90,601,795	85,158,845	1,072,950,908
Professional sports clubs	5,498,529	8,604,923	8,436,232	8,677,345	15,240,065	8,634,617	9,497,120	8,090,393	7,384,440	8,667,040	8,659,101	7,397,346	8,104,074	107,392,696
Gambling	275,607,129	327,028,026	308,210,282	317,850,998	361,024,926	283,637,202	322,087,926	302,018,567	323,496,846	347,931,620	325,235,410	332,738,932	342,506,024	3,893,766,777
Personal services	10,755,056	13,074,741	11,405,258	12,093,614	11,930,251	11,534,556	11,930,251	11,534,556	11,242,067	11,219,399	11,463,127	11,183,606	11,217,623	139,303,970
Miscellaneous entertainment	18,221,534	24,233,050	30,488,088	25,656,269	29,241,080	30,711,718	40,402,793	27,406,582	27,607,053	24,858,348	15,999,208	16,720,674	18,846,736	312,171,599
<b>Entertainment</b>	<b>1,242,190,203</b>	<b>1,493,420,709</b>	<b>1,416,388,521</b>	<b>1,392,159,739</b>	<b>1,482,840,883</b>	<b>1,417,737,564</b>	<b>1,583,988,556</b>	<b>1,362,006,086</b>	<b>1,465,989,933</b>	<b>1,518,629,591</b>	<b>1,448,732,829</b>	<b>1,415,692,827</b>	<b>1,445,130,517</b>	<b>17,442,717,755</b>
<b>Hotels</b>	<b>207,705,860</b>	<b>245,684,992</b>	<b>251,055,678</b>	<b>252,261,483</b>	<b>286,253,640</b>	<b>292,762,116</b>	<b>328,923,069</b>	<b>279,562,615</b>	<b>264,650,673</b>	<b>236,788,937</b>	<b>209,470,309</b>	<b>231,767,307</b>	<b>233,667,589</b>	<b>3,112,848,408</b>
Airlines	152,009,322	163,907,166	127,307,290	115,396,694	141,115,377	153,873,730	145,286,862	136,837,490	119,718,690	115,267,796	76,890,702	142,128,378	88,298,105	1,526,028,280
Airport terminals	1,938,656	2,739,638	3,003,920	2,991,656	3,441,815	3,316,961	3,463,704	3,207,092	2,746,215	2,340,720	2,132,039	2,253,721	1,945,968	33,583,449
Railways	250,964,736	285,991,022	261,558,695	259,598,154	299,125,286	283,040,541	280,953,627	307,272,720	320,501,053	336,300,589	290,388,279	294,975,057	296,143,400	3,515,848,423
Buses	18,359,780	22,839,581	22,827,356	21,109,418	24,795,002	24,982,304	26,364,252	28,596,276	25,161,829	23,968,475	20,568,981	24,197,554	22,542,556	287,953,584
Sea travel	7,941,103	9,645,464	10,027,048	11,290,635	10,579,270	11,937,841	12,081,242	8,973,319	7,856,859	6,643,674	6,190,097	8,022,991	7,985,924	111,234,364
Travel agents	742,469,448	936,295,463	805,175,734	924,468,585	953,864,266	948,063,973	791,290,860	678,411,861	649,470,873	568,963,056	497,444,636	877,492,672	774,517,061	9,405,459,040
Timeshares	30,887	22,472	34,564	31,004	45,704	46,128	45,226	28,406	24,541	21,296	24,119	69,621	33,831	426,912
Camping grounds	41,108,464	58,200,884	61,646,919	66,500,372	74,895,572	81,817,242	79,255,948	50,762,177	48,337,125	39,137,927	27,952,542	42,215,202	47,324,209	678,046,119
Miscellaneous travel	20,088,682	24,550,374	24,930,084	25,470,549	39,035,458	36,885,068	34,491,600	29,344,086	26,358,255	26,148,213	21,943,329	22,976,247	23,950,000	336,083,263
<b>Travel</b>	<b>1,234,911,078</b>	<b>1,504,192,064</b>	<b>1,316,511,610</b>	<b>1,426,857,067</b>	<b>1,546,897,750</b>	<b>1,543,963,788</b>	<b>1,373,233,321</b>	<b>1,243,433,427</b>	<b>1,200,175,440</b>	<b>1,118,791,746</b>	<b>943,534,724</b>	<b>1,414,331,443</b>	<b>1,262,741,054</b>	<b>15,894,663,434</b>
Telegraph services / Wire transfer money orde	10,635,543	12,254,463	13,921,044	13,353,649	16,297,361	13,326,680	13,172,228	12,433,031	11,739,785	14,312,847	12,542,555	11,898,913	11,602,102	156,854,658
Insurance services	474,580,063	605,333,197	549,955,640	547,473,037	586,177,545	602,450,988	601,834,990	617,785,550	602,025,369	577,290,843	544,721,727	608,078,108	589,855,896	7,032,982,890
FIs - cash disbursements (auto & manual)	21,831,271	29,999,526	30,007,401	36,722,106	60,530,355	66,948,567	66,466,130	52,384,441	39,780,316	32,079,593	35,453,434	29,282,753	33,461,728	513,116,350
FIs - merchandise & services	1,777,271,396	2,191,285,675	2,077,820,017	2,003,615,272	2,063,156,530	2,089,736,663	2,061,709,737	2,031,758,077	2,107,928,811	2,331,333,127	2,189,189,792	2,205,878,449	2,054,485,927	25,407,898,077
Non-FIs - foreign currency, travellers' cheques	52,779,795	69,629,042	65,945,011	78,993,232	103,115,233	122,914,905	122,573,774	95,378,530	69,677,564	49,799,078	51,002,569	46,657,418	53,885,767	929,572,123
Security brokers and dealers	198,010,114	407,054,240	443,386,220	358,657,738	293,179,345	222,536,469	208,460,477	203,271,842	242,984,867	267,660,636	283,484,820	275,180,880	3,412,400,810	
Tax preparation services	16,688	34,566	38,073	42,636	48,651	50,547	36,876	25,213	22,963	51,888	37,624	83,445	82,231	554,713
Tax payments	77,024,556	95,736,143	89,970,456	89,434,406	96,560,104	110,178,419	92,888,799	91,779,528	93,325,421	100,775,955	106,227,994	154,551,705	121,533,541	1,242,962,471
Fines, bail and bond payments	17,796,169	20,828,146	18,950,335	20,047,801	20,304,872	22,413,099	21,140,112	23,148,429	24,743,381	24,223,803	21,115,970	22,388,314	22,473,405	261,777,667
Miscellaneous financial	42,772,842	53,439,522	50,750,785	50,222,691	54,898,679	53,601,474	54,424,666	54,580,619	54,446,391	57,345,883	56,542,263	67,833,515	64,432,619	672,519,107
<b>Financial</b>	<b>2,672,718,437</b>	<b>3,485,594,520</b>	<b>3,340,744,982</b>	<b>3,198,562,568</b>	<b>3,294,268,675</b>	<b>3,304,157,811</b>	<b>3,242,707,789</b>	<b>3,182,545,260</b>	<b>3,246,674,868</b>	<b>3,454,873,653</b>	<b>3,223,377,204</b>	<b>3,430,137,440</b>	<b>3,226,994,096</b>	<b>39,630,638,866</b>

Table 3D Card expenditure statistics (not seasonally adjusted)

Value of debit card transactions

## Detailed sector breakdown - services sectors (continued)

£	February 2010	March 2010	April 2010	May 2010	June 2010	July 2010	August 2010	September 2010	October 2010	November 2010	December 2010	January 2011	February 2011	Total (latest 12 months)
Telecoms	205,244,584	233,013,752	212,605,268	218,443,008	220,114,246	237,018,005	238,634,239	242,332,175	246,040,059	253,376,557	292,076,196	247,686,977	226,580,081	2,867,920,563
Utilities	155,486,621	202,218,643	170,355,198	159,359,735	167,202,860	152,577,637	144,624,237	150,743,192	151,038,552	152,251,015	142,612,310	161,729,034	164,670,083	1,919,382,496
Contractors (residential & commercial)	79,853,637	99,723,283	90,311,011	88,734,133	93,629,288	90,234,465	89,571,432	96,886,632	99,569,814	107,534,056	93,115,098	93,949,559	98,802,213	1,142,060,984
Gardening services	2,776,364	5,102,311	6,183,947	5,815,980	6,371,604	4,986,764	4,550,203	4,271,086	4,031,900	4,449,934	4,772,851	3,011,968	3,487,736	57,036,284
Veterinary services	68,566,425	79,315,050	73,708,762	71,960,971	79,619,584	83,302,568	82,027,746	81,610,275	79,385,652	79,182,468	68,412,273	75,884,769	67,824,359	922,234,477
Photocopying & printing	16,953,882	20,989,681	16,982,411	17,170,244	18,961,539	17,883,043	19,391,362	22,693,258	22,189,897	24,910,763	21,013,160	20,847,959	20,442,796	243,476,113
Photographic studios	9,795,326	12,257,708	10,803,140	10,962,248	12,815,337	15,010,010	12,360,409	12,348,740	13,682,960	16,548,650	13,846,647	9,637,772	9,940,042	150,213,663
Beauty & barber shops	138,584,936	165,177,153	150,275,142	148,803,531	162,506,721	162,351,809	157,293,725	156,126,101	155,205,312	163,130,931	195,158,531	141,029,890	144,519,931	1,901,578,777
Employment agencies	718,875	782,119	725,474	663,486	698,772	741,555	886,441	967,644	943,624	910,475	864,600	969,412	929,036	10,082,638
Counselling services	3,353,039	3,615,117	3,016,666	2,899,648	3,259,703	3,192,072	3,585,739	3,813,964	4,479,119	4,746,562	4,039,259	3,847,825	3,609,851	44,105,525
Legal services	44,773,460	53,833,730	47,434,743	52,045,819	54,005,184	53,022,226	50,970,780	54,529,735	54,537,117	58,169,221	47,691,862	53,616,724	53,379,889	633,237,030
Laundry & cleaning	8,413,908	10,203,132	9,725,401	9,687,917	11,087,286	10,632,507	10,541,108	11,167,102	11,082,833	11,138,839	8,615,675	9,374,763	8,789,454	122,046,017
Funeral services	14,750,393	16,622,813	14,775,575	13,496,164	14,613,290	14,858,905	13,767,418	15,231,833	16,526,587	15,857,206	16,026,966	18,408,727	19,373,156	189,558,640
Medical services	161,388,520	194,474,426	167,314,409	166,810,075	182,098,868	178,732,096	163,606,968	182,035,308	177,358,472	191,373,367	147,360,218	170,365,259	180,479,429	2,102,008,895
Moving & courier services	16,760,455	19,473,559	17,986,451	18,111,586	21,776,467	22,684,642	23,221,695	24,139,393	22,638,269	23,149,592	21,009,437	20,813,579	19,377,170	254,381,840
Repair shops (not auto)	20,348,503	21,745,987	17,620,218	14,965,193	15,148,009	14,089,432	13,290,863	11,818,392	11,131,996	11,991,276	10,648,851	9,246,354	8,498,141	160,194,712
Accounting services	9,001,394	10,871,015	9,650,521	9,135,531	10,369,791	10,328,684	10,650,919	11,640,505	11,246,584	12,362,276	10,786,357	12,530,839	11,337,668	130,910,690
Advertising, consultancy & PR	15,928,857	19,352,630	17,617,016	16,390,968	18,430,275	17,643,249	16,447,926	16,657,169	15,334,037	16,232,292	12,094,726	14,596,689	14,006,716	194,803,693
Computer programming	97,397,990	126,373,401	111,375,756	103,336,494	147,552,578	180,087,649	143,844,549	125,904,577	119,277,253	120,799,693	106,899,797	105,469,356	92,769,545	1,483,690,648
Farming services	9,515,596	11,676,902	11,053,486	11,076,351	13,263,562	13,328,174	13,639,663	13,203,578	12,708,130	13,155,989	12,508,488	11,814,563	11,308,870	148,737,756
Miscellaneous professional services	331,865,929	409,059,090	400,413,630	363,435,557	391,851,925	412,093,299	400,544,874	466,850,766	428,295,777	420,748,622	374,063,358	446,872,788	390,619,729	4,904,849,415
Engineering services	11,110,131	13,657,350	12,479,087	12,324,211	12,716,025	13,081,226	13,131,913	14,576,859	14,384,432	14,068,013	11,265,255	12,834,794	14,447,040	158,966,205
Marina services	5,677,329	9,978,515	11,189,559	10,422,360	12,494,338	11,941,892	11,508,254	8,765,485	7,647,127	6,645,463	7,260,654	6,259,303	6,606,736	110,719,686
Wrecking & salvage yards	1,101,023	1,300,170	1,152,273	1,085,217	1,085,350	1,105,155	1,044,382	1,012,723	962,734	1,036,052	710,524	940,738	973,201	12,408,519
Pest control	404,898	508,712	478,553	463,848	531,285	594,237	598,053	658,478	524,146	454,675	446,626	451,957	6,277,429	
Educational establishments	152,208,114	120,511,043	153,592,003	136,739,810	95,824,612	94,909,766	142,140,985	463,663,828	414,486,607	168,554,028	117,140,544	315,679,475	172,782,114	2,396,024,815
Child care services	6,752,926	8,073,323	7,313,167	6,927,806	7,968,615	8,050,260	7,723,566	8,495,393	8,653,110	9,297,230	8,258,480	10,027,710	9,212,115	100,000,775
Social, political & religious organisations	52,782,432	76,247,816	67,567,849	62,479,789	68,765,051	66,762,608	87,618,518	80,375,723	78,289,476	76,526,760	64,098,060	61,075,733	59,141,117	848,948,500
Government services	967,895,812	1,158,581,247	1,285,900,036	1,304,156,796	1,325,112,542	1,151,093,727	931,895,519	957,924,534	907,607,778	900,777,790	739,082,721	959,317,444	868,601,812	12,490,051,946
Miscellaneous services	313,781,535	400,685,386	367,440,513	340,450,271	387,351,460	385,288,508	355,645,605	372,572,169	351,249,146	382,430,314	359,776,315	420,015,993	356,615,348	4,479,521,028
Commercial equipment	70,168,080	84,890,113	74,240,208	74,499,469	77,820,016	77,594,470	86,495,083	98,776,113	93,992,402	94,609,920	79,236,313	86,593,133	83,743,799	1,012,491,039
Other services	2,993,360,974	3,590,315,177	3,541,287,473	3,452,854,216	3,635,046,183	3,505,220,640	3,251,254,174	3,711,792,730	3,534,543,615	3,356,489,500	2,990,900,201	3,504,895,755	3,123,321,134	41,197,920,798
<b>Total services</b>	<b>10,139,318,649</b>	<b>13,032,074,346</b>	<b>12,029,660,212</b>	<b>11,745,531,487</b>	<b>12,410,651,219</b>	<b>12,134,897,660</b>	<b>11,753,071,855</b>	<b>12,129,840,096</b>	<b>11,792,264,552</b>	<b>11,755,649,790</b>	<b>10,605,927,718</b>	<b>11,992,242,245</b>	<b>11,254,825,336</b>	<b>142,636,636,516</b>
<b>TOTAL</b>	<b>20,487,686,496</b>	<b>25,597,418,575</b>	<b>23,826,846,489</b>	<b>23,419,014,798</b>	<b>25,212,593,286</b>	<b>24,147,007,334</b>	<b>24,175,328,946</b>	<b>24,031,086,100</b>	<b>24,238,835,644</b>	<b>25,887,753,186</b>	<b>27,055,152,552</b>	<b>23,928,258,837</b>	<b>22,535,721,255</b>	<b>294,055,017,002</b>