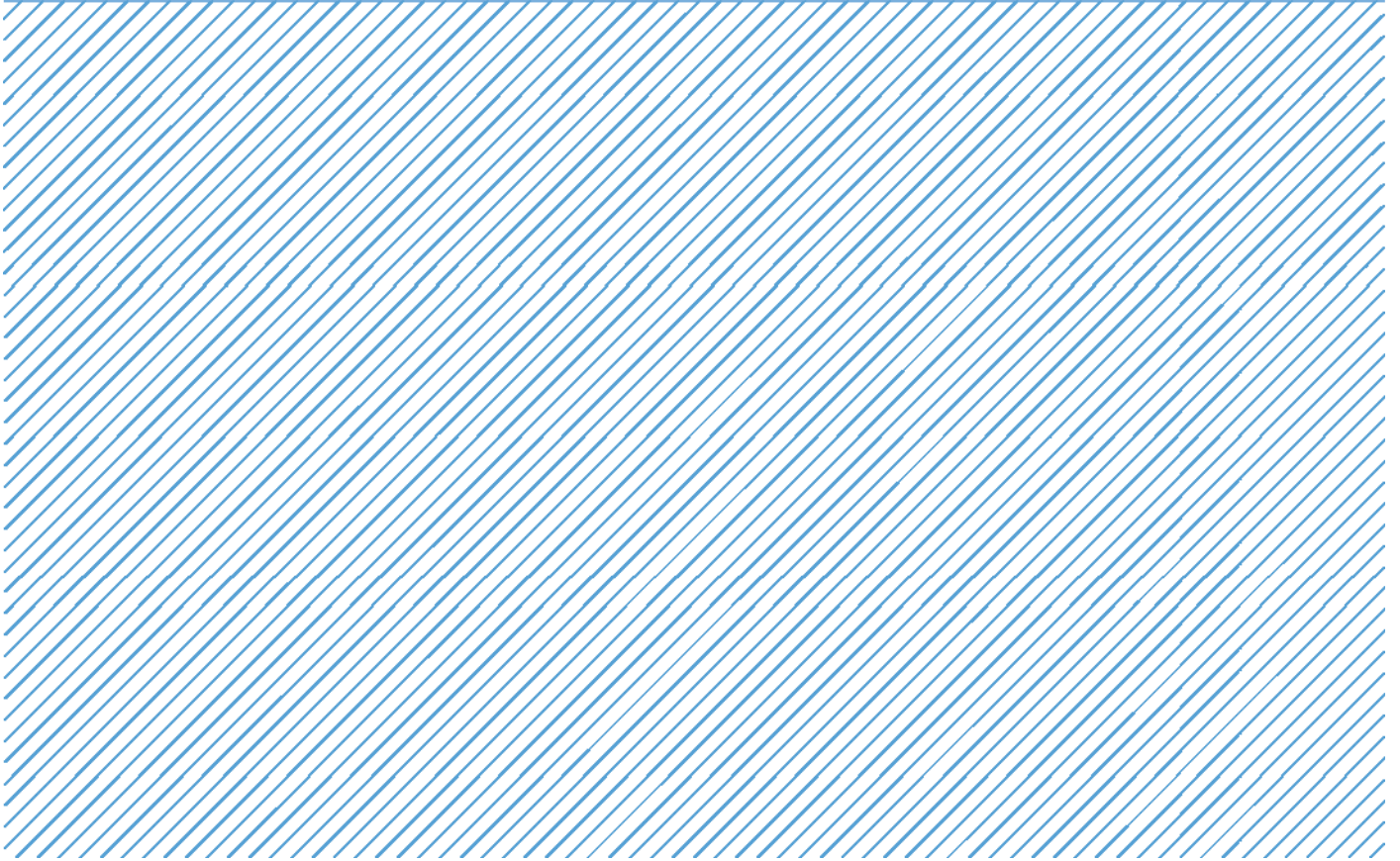


Card Expenditure Statistics

April 2015



Card Expenditure Statistics (Seasonally Adjusted) – April 2015

	Total Spending <i>£ billions</i>		Annual growth rates for spending		Number of purchases <i>Millions</i>	
	Apr 2015	Apr 2014	Apr 2015	Apr 2014	Apr 2015	Apr 2014
All payment cards	50.7	47.2	7.1%	8.0%	1,076	986
Debit cards	36.1	33.2	8.0%	8.7%	824	757
Credit cards	14.6	14.1	5.0%	6.3%	252	229

Unless otherwise stated all data referred to are seasonally adjusted and depict the underlying trend. The X12 ARIMA monthly seasonal adjustments include trading days and leap years. Unadjusted data are located in tables 3A to 3D. There is a step change in the data between 2010 and 2011 following a change in the reporting population. Average transaction values are based on three-month rolling averages, while growth rates are based on twelve-month rolling periods.

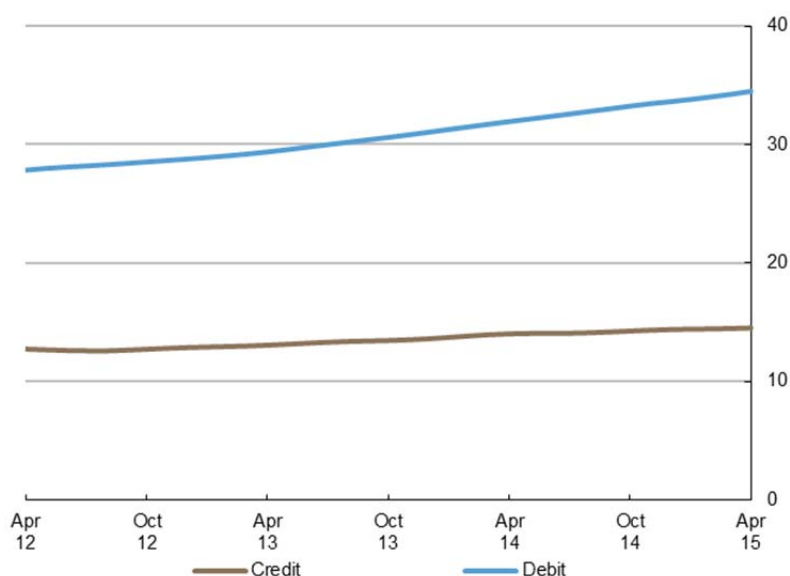
Introduction

Payment card spending increased by 0.9% to 50.7 billion, which was £0.5 billion above the level recorded in March. This growth comes after a slowdown in the rate of economic growth¹ in the first quarter of 2015 coupled with the highest employment rate since 1971² and strong consumer confidence³.

The **number of purchases** also increased, up by 1.0% on March, reaching a record monthly total of 1.08 billion. The main contributors to the growth in the number of transactions have been the ongoing migration of low value cash payments to cards, reinforced by **contactless** and **online** spending. The number of online purchases accounted for 11.4% of total purchases, up from 10.1% a year ago.

Chart 1

Average monthly expenditure
Three-month moving average (£ billions)



¹ ONS, Gross Domestic Product: <http://www.ons.gov.uk/ons/rel/gva/gross-domestic-product--preliminary-estimate/q1-2015/index.html>

² ONS, Labour Market Statistics: <http://www.ons.gov.uk/ons/rel/lms/labour-market-statistics/may-2015/statistical-bulletin.html>

³ Source: GfK's UK Consumer Confidence Index

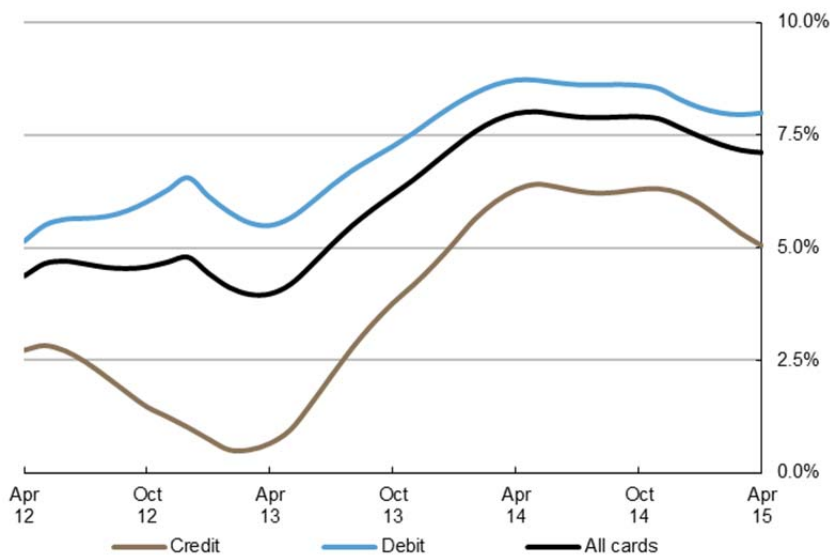
Annual growth rates

Card spending grew at an **annual rate** of 7.1%, slightly down on March. The annual growth rate has slowed down continuously since peaking at 8.0% in May 2014. This could be attributed to the decelerating rate of annual inflation. The latest figures showed the annual UK **consumer price index** entered **deflation** for the first time on record after declining to -0.1% in the year to April⁴, down from 0% in February and March. This compares to 1.8% a year ago. The downward effect on the price index was mainly driven by lower food and transport costs⁵.

Debit card spending grew by 8.0% while that on credit cards increased by 5.0%. This difference in part reflects the near universal coverage of debit cards among the cardholding population. Furthermore, much of the resurgence in economic growth over the last two years has been driven by spending on services rather than retail sales. The annual growth in the **service** sector continued to exceed that in **retail** sales with registered growth of 11.0% and 3.6% respectively.

Meanwhile, the **growth rate of the number of purchases** continued to outpace growth in amounts spent, after increasing by 9.6% in the year to April and compares to 9.1% a year ago.

Chart 2
Spending on payment cards
Year-on-year growth rates



⁴ ONS, Consumer Price Inflation, April 2015: <http://www.ons.gov.uk/ons/rel/cpi/consumer-price-indices/april-2015/index.html>

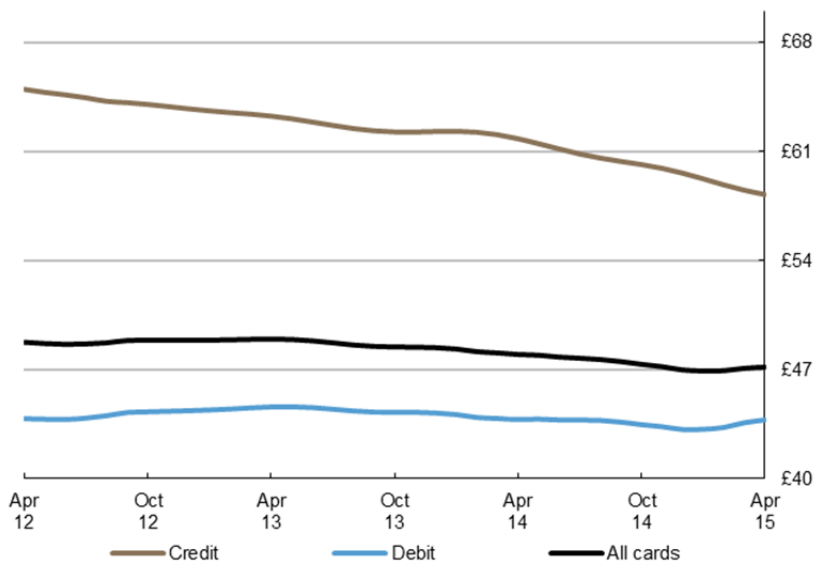
⁵ WSJ, UK Flirts With Deflation as Prices Fall in April: <http://www.wsj.com/articles/u-k-consumer-prices-fall-in-april-1432025362>

Average transaction values

The **average transaction value** (ATV) on all payment cards picked up by 7p on March reaching £47.16, and compares to £47.97 a year ago. Within the sectors, the ATV in **retail sales** declined by 3p to £32.62, while the ATV for **services** rose by 4p to £77.71. Despite this recent uptick, there has been a consistent trend over the last three years of continuously declining ATVs, mainly driven by the migration of low value cash payments towards cards alongside the growth in **contactless** payments.

Meanwhile, the ATV on card payments via the **internet** amounted to £95.22, which compares to £41.84 for **face-to-face** purchases. In the digital space the lowest average purchase value of £12.37 was registered at video stores, whilst in the face-to-face environment the lowest ATV of £7.14 was recorded at bakers and dairies. Security brokers and dealers accounted for the highest ATV in both the online (£4,136.43) and face-to-face (£3,385.37) channel. Interestingly, security brokers and dealers were also the main contributors to the increase in the overall ATV for the second consecutive month with the average payment value rising by £626.39, reflecting the strong performance in financial markets.

Chart 3
Average transaction values
Three-month moving average



Spending by sector – retail sales and services

The number of transactions within the **retail sector** increased by 5.2 million to 727 million, with the corresponding spend rising by £138 million to £23.7 billion. The majority of the increase in spending was in the **food & drink** and **household** sub-sectors, reaching £9.0 billion and £3.8 billion respectively. The recent uptick in spending at household stores was mainly driven by large increases in expenditure at DIY stores and garden centres in part stemming from the strengthening housing market. Spending in the **automotive fuels** category picked up for the first time in 13 months after growing by £9.3 million to £2.60 billion, up from £2.59 billion on March, but still below a monthly average of £2.9 billion during 2013 and the first half of 2014.

Meanwhile, the number of transactions in the **services sector** grew by 5.2 million to 349 million, corresponding to a rise in spending of £331 million to £27.1 billion. A major contributor of growth was the **financial services** sub-sector, which recorded an increase of £115 million to £5.9 billion, boosted by a notable increase at security brokers and dealers. The **entertainment** category was also a strong contributor to growth after increasing by £54 million to £4.2 billion.

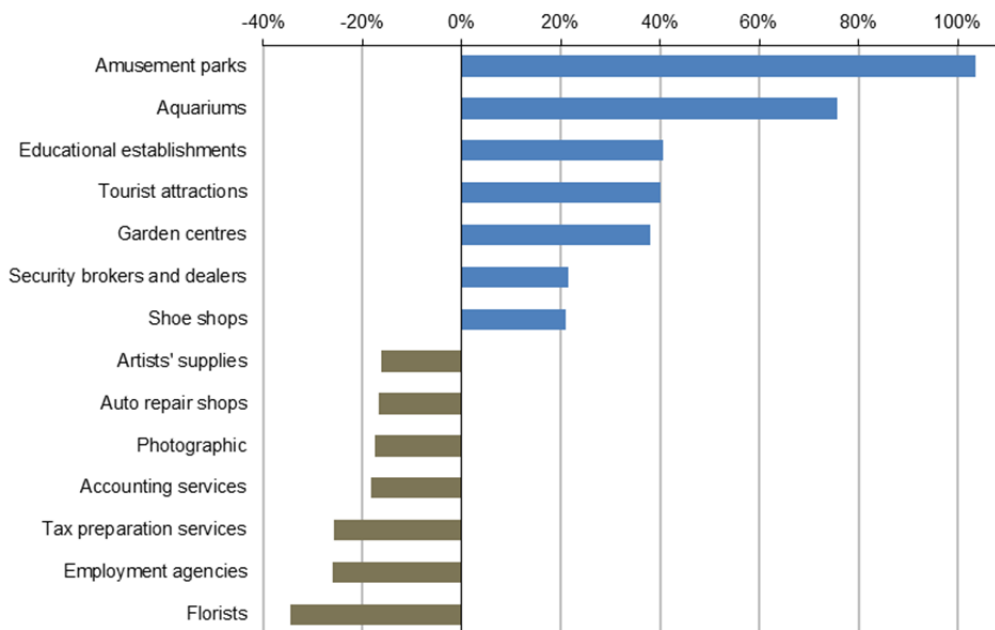
Spending by merchant categories (not seasonally adjusted)

Along with growth in spending at groceries, household stores and security brokers there were significant increases in card spending at a number of other merchants during April. The largest increase in spending was evident at merchants offering leisure activities, such as amusement parks, aquariums and tourist attractions. Growth in spending on leisure coincided with the Easter holidays.

Garden centres registered a substantial rise in spending for the second consecutive month as consumers continued to make seasonal improvements to their outdoor space. There was also a notable increase in spending on educational establishments likely due to impending deadline for the third term tuition fees. Meanwhile, spending at florists, employment agencies and tax preparation services recorded the largest decreases between March and April.

Chart 4⁶

Largest changes in total card spending between March and April



⁶ Chart 4 shows relative growth rates. Some listed merchant categories are too small in size to make a material impact on the overall total

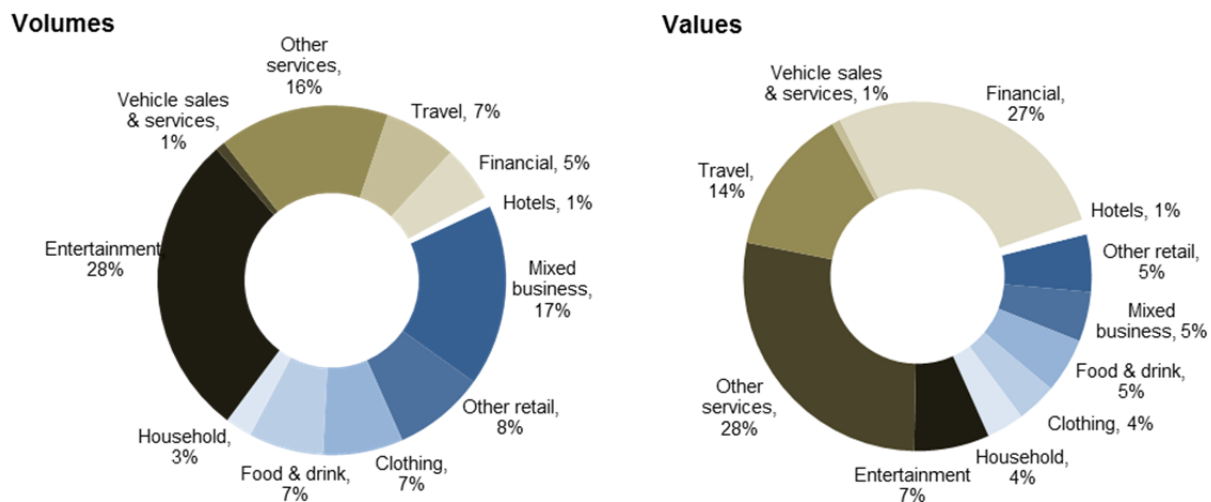
Payment card spending online (not seasonally adjusted)

The number of online card payments amounted to 121 million in April, while online spending reached £11.5 billion. The proportion of online purchases was virtually unchanged at 11.4%, while corresponding online spending accounted for 22.7% of total card expenditure, up from 22.4% in March, but down from the 30% recorded in January. Monthly fluctuations stem from seasonal factors in sectors with higher proportions of online spending such as other services, financial services and travel.

Consumer habits are noticeably different when spending via the online channel or in the face-to-face environment. E-commerce continued to prevail within the services sector where 32% of card spending was made via the internet, while just 11% of retail spending was online. Comparing online to the face-to-face channel reveals a similar pattern, with higher e-commerce proportions within services compared to retail sales. 78% of total £11.5 billion internet spending occurred in the services sector when compared to 48% in the face-to-face environment.

In volume terms entertainment accounted for 28% of the total number of online transactions, with other services accounting for 16%, both unchanged on March. In value terms the share of other services and financial services both increased slightly by one percentage point to 28% and 27% respectively. The highest online prevalence within the sectors was evident in financial services, with 39% of payments and 49% of spending in this sub-sector completed via the internet. The lowest share was recorded in food & drink, where just 2.3% of purchases and 6.7% of spending were made online, while virtually all spending on automotive fuels occurred in the face-to-face environment.

Chart 5
Online purchases and spending by sub-sectors



Payment card spending within national retail sales

There was a slight uptick in the percentage share of retail sales accounted for by payment cards⁷ in April. This figure increased to 75.5%, up 0.2 percentage points on March, with debit and credit card splits of 51.7% and 23.8% respectively. This trend was reflected in other sub-sectors such as **food & drink** and **automotive fuels**. The share of spending in the food & drink sector accounted for by payment cards rose from 70.8% in March to 71.2% in April. In comparison to food & drink, nearly all expenditure on automotive fuels was accounted for by payment cards at 90.5%, up from 89.7% in March.

Contact: Silvija Krupena; silvija.krupena@ukpayments.org.uk | camis@ukpayments.org.uk | 020 3217 8460 or 020 3217 8720

⁷ CES 3-month moving average spend of £23.6 billion expressed as a percentage of a similar 3-month moving average for ONS Retail Sales – All Retailing Including Automotive Fuel (J5A3) that amounted to £31.2 billion.

Table 1 Card expenditure statistics (seasonally adjusted)

Summary^{1 and 2}

		Number of purchase transactions (millions)									Value of purchase transactions (£ millions)								
		All sectors			Retail sales			Services			All sectors			Retail sales			Services		
		Credit	Debit	Total	Credit	Debit	Total	Credit	Debit	Total	Credit	Debit	Total	Credit	Debit	Total	Credit	Debit	Total
Annual																			
	2010	2,010	6,504	8,514	1,383	4,721	6,103	628	1,783	2,410	128,189	289,623	417,812	69,585	148,562	218,147	58,604	141,061	199,664
	2011	2,259	7,229	9,488	1,555	5,301	6,856	704	1,928	2,632	151,350	324,122	475,472	78,881	165,587	244,469	72,468	158,534	231,003
	2012	2,373	7,835	10,208	1,622	5,642	7,264	752	2,193	2,945	152,876	345,366	498,242	81,034	175,371	256,405	71,842	169,995	241,837
	2013	2,550	8,391	10,941	1,735	5,962	7,697	815	2,429	3,244	159,933	372,548	532,481	84,638	183,616	268,254	75,295	188,932	264,227
	2014	2,795	9,253	12,048	1,873	6,450	8,322	923	2,803	3,726	169,864	403,461	573,325	87,465	193,594	281,058	82,399	209,867	292,266
Monthly																			
	2014																		
	Apr	229	757	986	153	530	684	75	227	303	14,073	33,163	47,236	7,261	16,113	23,374	6,812	17,050	23,862
	May	230	762	992	154	534	688	76	228	304	14,071	33,329	47,400	7,262	16,139	23,402	6,808	17,190	23,998
	Jun	231	766	997	155	537	692	76	229	305	14,077	33,528	47,605	7,269	16,159	23,427	6,809	17,369	24,178
	Jul	233	771	1,004	156	539	695	77	232	309	14,113	33,743	47,856	7,283	16,186	23,469	6,830	17,556	24,387
	Aug	235	777	1,013	158	542	699	77	236	313	14,186	33,950	48,136	7,306	16,232	23,538	6,879	17,718	24,597
	Sep	237	785	1,022	159	545	704	78	240	318	14,274	34,123	48,396	7,332	16,278	23,610	6,941	17,845	24,786
	Oct	239	792	1,032	160	548	708	79	244	324	14,351	34,303	48,654	7,353	16,323	23,676	6,998	17,980	24,977
	Nov	242	798	1,039	161	550	711	80	248	328	14,403	34,531	48,934	7,366	16,374	23,739	7,037	18,158	25,195
	Dec	244	801	1,045	163	551	714	81	251	331	14,433	34,384	48,817	7,374	15,931	23,305	7,059	18,453	25,512
	2015																		
	Jan	246	804	1,050	164	551	715	81	253	335	14,450	34,839	49,289	7,381	15,989	23,371	7,069	18,850	25,918
	Feb	248	809	1,056	166	552	718	82	257	339	14,477	35,308	49,786	7,399	16,044	23,442	7,079	19,265	26,344
	Mar	250	816	1,065	167	555	722	82	261	344	14,527	35,748	50,275	7,429	16,117	23,546	7,098	19,631	26,729
	Apr	252	824	1,076	169	558	727	83	266	349	14,596	36,147	50,743	7,467	16,217	23,684	7,129	19,930	27,059
Year-on-year growth rates (percentages)																			
Annual																			
	2010	0.3	9.4	7.1	12.8	21.2	19.2	-19.3	-12.9	-14.7	2.4	10.5	7.9	13.0	18.4	16.6	-7.8	3.1	-0.3
	2011	12.4	11.2	11.4	12.5	12.3	12.3	12.1	8.2	9.2	18.1	11.9	13.8	13.4	11.5	12.1	23.7	12.4	15.7
	2012	5.1	8.4	7.6	4.3	6.4	5.9	6.8	13.7	11.9	1.0	6.6	4.8	2.7	5.9	4.9	-0.9	7.2	4.7
	2013	7.5	7.1	7.2	7.0	5.7	6.0	8.5	10.8	10.2	4.6	7.9	6.9	4.4	4.7	4.6	4.8	11.1	9.3
	2014	9.6	10.3	10.1	7.9	8.2	8.1	13.2	15.4	14.8	6.2	8.3	7.7	3.3	5.4	4.8	9.4	11.1	10.6
Monthly																			
	2014																		
	Apr	9.0	9.1	9.1	7.9	7.6	7.7	11.2	12.9	12.5	6.3	8.7	8.0	4.7	5.8	5.4	8.1	11.7	10.6
	May	9.1	9.4	9.3	7.9	7.9	7.9	11.7	13.4	12.9	6.4	8.7	8.0	4.5	5.9	5.5	8.5	11.5	10.7
	Jun	9.1	9.7	9.5	7.7	8.1	8.0	12.0	13.7	13.3	6.3	8.7	8.0	4.3	6.0	5.4	8.7	11.4	10.6
	Jul	9.0	9.8	9.6	7.5	8.1	7.9	12.3	14.0	13.5	6.3	8.6	7.9	4.0	6.0	5.3	8.9	11.2	10.6
	Aug	9.0	9.9	9.7	7.3	8.1	7.9	12.6	14.3	13.8	6.2	8.6	7.9	3.7	6.0	5.3	9.1	11.2	10.6
	Sep	9.0	10.0	9.8	7.3	8.2	8.0	12.8	14.6	14.2	6.2	8.6	7.9	3.5	6.0	5.2	9.3	11.2	10.7
	Oct	9.2	10.2	10.0	7.4	8.3	8.1	13.1	15.0	14.5	6.3	8.6	7.9	3.5	5.9	5.2	9.5	11.2	10.7
	Nov	9.4	10.3	10.1	7.6	8.3	8.1	13.2	15.3	14.8	6.3	8.5	7.9	3.4	5.9	5.1	9.6	11.1	10.7
	Dec	9.6	10.3	10.1	7.9	8.2	8.1	13.2	15.4	14.8	6.2	8.3	7.7	3.3	5.4	4.8	9.4	11.1	10.6
	2015																		
	Jan	9.7	10.1	10.0	8.1	7.9	8.0	13.0	15.4	14.8	6.0	8.1	7.5	3.2	5.0	4.4	9.1	11.1	10.6
	Feb	9.7	9.8	9.8	8.3	7.5	7.7	12.6	15.4	14.7	5.7	8.0	7.3	3.1	4.5	4.0	8.5	11.4	10.6
	Mar	9.7	9.7	9.7	8.5	7.3	7.6	12.2	15.3	14.5	5.3	8.0	7.2	2.9	3.9	3.6	7.9	11.8	10.7
	Apr	9.7	9.5	9.6	8.7	7.0	7.4	11.9	15.4	14.5	5.0	8.0	7.1	2.9	3.4	3.2	7.5	12.4	11.0

¹ There was a step change in 2011 due to a change in reporting population

² Data are seasonally adjusted and depict the underlying trend. The X12 ARIMA monthly seasonal adjustments include trading days and leap years.

Table 2A Card expenditure statistics (seasonally adjusted)

Retail sales^{1 and 2}

Number of purchase transactions (millions)

Total retail sales

	Number of purchase transactions (millions)																		Total retail sales			
	Food & drink			Mixed business			Clothing			Household			Other retailers			Automotive Fuels ³			Number of purchases			
	Credit	Debit	Total	Credit	Debit	Total	Credit	Debit	Total	Credit	Debit	Total	Credit	Debit	Total	Credit	Debit	Total	Credit	Debit	Total	
Annual																						
2010	533	2,283	2,816	139	406	545	129	424	553	148	350	498	273	733	1,006	162	524	686	1,383	4,721	6,103	
2011	602	2,564	3,166	136	425	561	139	428	567	157	370	527	297	782	1,079	224	732	956	1,555	5,301	6,856	
2012	662	2,824	3,486	148	479	627	145	453	598	157	375	532	281	757	1,038	228	754	982	1,622	5,642	7,264	
2013	722	3,060	3,782	182	523	705	153	460	613	165	402	567	277	723	1,000	236	793	1,029	1,735	5,962	7,697	
2014	769	3,468	4,237	248	477	726	162	479	641	172	433	605	284	782	1,066	237	810	1,047	1,873	6,450	8,322	
Monthly																						
2014	Apr	63	284	348	19	38	58	14	40	53	14	35	50	23	65	88	20	68	88	153	530	684
	May	63	287	351	20	38	58	14	40	54	14	35	50	23	65	88	20	68	88	154	534	688
	Jun	64	290	353	20	38	58	14	40	54	14	36	50	23	66	89	20	68	87	155	537	692
	Jul	64	291	355	21	38	59	14	40	54	14	36	50	24	66	89	20	68	87	156	539	695
	Aug	64	294	358	21	38	60	14	40	54	14	36	51	24	66	90	20	68	87	158	542	699
	Sep	65	296	361	22	39	61	14	40	54	14	37	51	24	66	90	20	67	87	159	545	704
	Oct	65	298	364	23	39	61	14	40	54	15	37	52	25	66	91	20	67	87	160	548	708
	Nov	66	299	365	23	39	62	14	40	54	15	37	52	25	67	92	19	67	87	161	550	711
	Dec	67	299	366	24	39	63	14	41	54	15	37	52	25	67	92	19	67	86	163	551	714
2015	Jan	67	298	365	24	40	64	14	41	55	15	38	52	25	68	93	19	67	86	164	551	715
	Feb	68	298	365	25	40	65	14	41	55	15	38	52	25	68	93	19	67	86	166	552	718
	Mar	68	299	367	26	40	66	14	42	56	15	38	53	25	68	93	19	67	86	167	555	722
	Apr	68	301	370	27	41	67	14	42	56	15	38	53	25	69	94	19	68	87	169	558	727
Year-on-year growth rates (percentages)																						
Annual																						
2010	3.6	9.4	8.3	5.8	0.7	1.9	2.7	4.8	4.3	1.6	9.6	7.1	-11.9	7.5	1.5	2.3	10.4	8.4	12.8	21.2	19.2	
2011	13.1	12.3	12.4	-1.5	4.5	3.0	8.1	0.8	2.5	5.9	5.8	5.8	8.7	6.7	7.3	38.3	39.7	39.4	12.5	12.3	12.3	
2012	10.0	10.1	10.1	8.4	12.7	11.7	4.6	5.9	5.6	0.2	1.5	1.1	-5.3	-3.2	-3.8	1.8	3.0	2.7	4.3	6.4	5.9	
2013	9.0	8.4	8.5	23.2	9.2	12.5	5.0	1.7	2.5	5.2	7.1	6.5	-1.4	-4.5	-3.7	3.6	5.2	4.8	7.0	5.7	6.0	
2014	6.5	13.3	12.0	36.1	-8.7	2.9	6.3	3.9	4.5	4.0	7.8	6.7	2.6	8.2	6.7	0.5	2.2	1.8	7.9	8.2	8.1	
Monthly																						
2014	Apr	8.0	9.9	9.6	31.8	8.4	14.0	6.3	2.7	3.6	6.4	9.8	8.8	-0.4	1.4	0.9	3.7	5.9	5.4	7.9	7.6	7.7
	May	7.6	10.4	9.9	33.0	6.8	13.1	6.5	2.9	3.8	6.0	9.6	8.6	-0.3	3.2	2.2	3.4	5.3	4.9	7.9	7.9	7.9
	Jun	7.2	10.9	10.2	33.5	4.9	11.9	6.5	3.0	3.9	5.5	9.3	8.2	-0.3	5.0	3.5	3.0	4.8	4.3	7.7	8.1	8.0
	Jul	6.9	11.3	10.4	33.7	2.8	10.4	6.4	3.1	3.9	5.0	8.9	7.8	-0.4	5.5	3.9	2.5	4.2	3.8	7.5	8.1	7.9
	Aug	6.6	11.8	10.8	33.9	0.5	8.8	6.3	3.1	3.9	4.6	8.6	7.4	-0.3	6.1	4.3	2.1	3.7	3.3	7.3	8.1	7.9
	Sep	6.4	12.3	11.2	34.2	-1.9	7.2	6.2	3.2	3.9	4.4	8.4	7.3	0.0	6.6	4.8	1.7	3.3	2.9	7.3	8.2	8.0
	Oct	6.3	12.8	11.6	34.8	-4.2	5.7	6.2	3.4	4.1	4.4	8.3	7.1	0.7	7.2	5.4	1.3	2.9	2.5	7.4	8.3	8.1
	Nov	6.4	13.2	11.9	35.5	-6.5	4.2	6.2	3.6	4.3	4.2	8.1	7.0	1.6	7.7	6.0	0.9	2.6	2.2	7.6	8.3	8.1
	Dec	6.5	13.3	12.0	36.1	-8.7	2.9	6.3	3.9	4.5	4.0	7.8	6.7	2.6	8.2	6.7	0.5	2.2	1.8	7.9	8.2	8.1
2015	Jan	6.6	13.2	12.0	36.5	-10.9	1.5	6.3	4.2	4.8	3.8	7.5	6.4	3.7	8.6	7.2	0.0	1.7	1.3	8.1	7.9	8.0
	Feb	6.7	12.9	11.7	36.6	-12.9	0.2	6.1	4.5	4.9	3.5	7.2	6.2	4.8	8.7	7.6	-0.4	1.2	0.8	8.3	7.5	7.7
	Mar	6.8	12.3	11.3	36.6	-12.1	1.1	5.7	4.7	4.9	3.3	7.1	6.0	5.7	8.7	7.9	-0.9	0.8	0.4	8.5	7.3	7.6
	Apr	7.0	11.7	10.8	36.6	-11.0	2.2	5.3	4.8	4.9	3.3	7.2	6.1	6.7	8.5	8.0	-1.3	0.5	0.1	8.7	7.0	7.4

¹ There was a step change in 2011 due to a change in reporting population

² Data are seasonally adjusted and depict the underlying trend. The X12 ARIMA monthly seasonal adjustments include trading days and leap years.

³ Automotive Fuels data is effective from January 2010. Data shown pre 2010 are for growth trend purposes only; these data are excluded from totals as these are already included in their former Services sector of Motoring (now known as Vehicle Sales & Service)

Table 2B Card expenditure statistics (seasonally adjusted)

Retail sales^{1 and 2}

Value of purchase transactions (£ millions)

Total retail sales

	Value of purchase transactions (£ millions)																		Total retail sales			
	Food & drink			Mixed business			Clothing			Household			Other retailers			Automotive Fuels ³			Value of purchases			
	Credit	Debit	Total	Credit	Debit	Total	Credit	Debit	Total	Credit	Debit	Total	Credit	Debit	Total	Credit	Debit	Total	Credit	Debit	Total	
Annual																						
2010	18,765	63,682	82,446	7,169	13,945	21,114	6,808	13,649	20,456	14,684	18,863	33,547	15,522	23,577	39,099	6,638	14,846	21,484	69,585	148,562	218,147	
2011	21,066	69,444	90,509	7,090	14,762	21,852	7,851	14,479	22,330	15,177	20,546	35,723	17,513	24,379	41,892	10,185	21,978	32,162	78,881	165,587	244,469	
2012	22,570	74,170	96,740	7,731	16,412	24,143	8,209	15,633	23,841	15,377	21,647	37,024	16,743	24,454	41,197	10,404	23,055	33,459	81,034	175,371	256,405	
2013	24,098	77,998	102,095	8,721	17,928	26,649	8,672	16,072	24,744	15,941	23,247	39,187	16,534	24,448	40,982	10,672	23,924	34,596	84,638	183,616	268,254	
2014	24,498	84,562	109,060	9,579	16,693	26,272	9,135	17,010	26,145	16,863	26,020	42,883	17,157	25,721	42,878	10,232	23,589	33,821	87,465	193,594	281,058	
Monthly																						
2014	Apr	2,042	7,011	9,053	793	1,405	2,197	766	1,421	2,188	1,399	2,138	3,537	1,385	2,141	3,526	877	1,997	2,874	7,261	16,113	23,374
	May	2,042	7,055	9,097	791	1,377	2,169	766	1,427	2,194	1,399	2,144	3,542	1,393	2,146	3,539	871	1,990	2,861	7,262	16,139	23,402
	Jun	2,041	7,086	9,128	791	1,360	2,151	765	1,429	2,194	1,400	2,154	3,554	1,406	2,145	3,552	865	1,984	2,850	7,269	16,159	23,427
	Jul	2,039	7,119	9,158	794	1,350	2,144	762	1,427	2,188	1,404	2,169	3,573	1,424	2,144	3,568	859	1,979	2,838	7,283	16,186	23,469
	Aug	2,038	7,161	9,199	800	1,347	2,147	760	1,423	2,182	1,410	2,187	3,597	1,447	2,143	3,590	851	1,971	2,822	7,306	16,232	23,538
	Sep	2,040	7,199	9,239	807	1,350	2,157	759	1,419	2,179	1,416	2,205	3,621	1,471	2,148	3,619	839	1,957	2,796	7,332	16,278	23,610
	Oct	2,045	7,235	9,280	813	1,355	2,168	760	1,418	2,178	1,419	2,219	3,638	1,492	2,162	3,655	823	1,934	2,757	7,353	16,323	23,676
	Nov	2,052	7,280	9,332	817	1,362	2,180	761	1,421	2,182	1,422	2,229	3,651	1,508	2,178	3,686	805	1,903	2,708	7,366	16,374	23,739
	Dec	2,059	6,830	8,889	821	1,372	2,193	764	1,428	2,192	1,425	2,241	3,666	1,517	2,189	3,707	788	1,871	2,659	7,374	15,931	23,305
2015	Jan	2,064	6,874	8,938	824	1,384	2,209	767	1,440	2,207	1,429	2,255	3,685	1,523	2,192	3,715	774	1,844	2,618	7,381	15,989	23,371
	Feb	2,069	6,895	8,964	831	1,400	2,230	771	1,454	2,225	1,437	2,276	3,713	1,526	2,190	3,716	766	1,829	2,595	7,399	16,044	23,442
	Mar	2,074	6,914	8,987	840	1,416	2,256	775	1,468	2,243	1,447	2,299	3,746	1,530	2,194	3,724	763	1,827	2,590	7,429	16,117	23,546
	Apr	2,080	6,944	9,025	851	1,431	2,282	780	1,479	2,258	1,457	2,324	3,781	1,534	2,205	3,739	764	1,835	2,599	7,467	16,217	23,684
Year-on-year growth rates (percentages)																						
Annual																						
2010	3.6	5.7	5.2	1.5	0.3	0.7	7.1	7.6	7.4	1.9	13.8	8.2	-0.9	7.1	3.8	13.3	17.2	16.0	13.0	18.4	16.6	
2011	12.3	9.0	9.8	-1.1	5.9	3.5	15.3	6.1	9.2	3.4	8.9	6.5	12.8	3.4	7.1	53.4	48.0	49.7	13.4	11.5	12.1	
2012	7.1	6.8	6.9	9.0	11.2	10.5	4.6	8.0	6.8	1.3	5.4	3.6	-4.4	0.3	-1.7	2.2	4.9	4.0	2.7	5.9	4.9	
2013	6.8	5.2	5.5	12.8	9.2	10.4	5.6	2.8	3.8	3.7	7.4	5.8	-1.2	0.0	-0.5	2.6	3.8	3.4	4.4	4.7	4.6	
2014	1.7	8.4	6.8	9.8	-6.9	-1.4	5.3	5.8	5.7	5.8	11.9	9.4	3.8	5.2	4.6	-4.1	-1.4	-2.2	3.3	5.4	4.8	
Monthly																						
2014	Apr	5.1	5.9	5.7	13.8	7.5	9.6	7.7	4.9	5.9	6.0	11.6	9.3	-0.9	2.7	1.2	1.7	2.5	2.3	4.7	5.8	5.4
	May	4.6	6.2	5.8	13.5	6.3	8.6	7.7	5.3	6.2	6.2	12.1	9.7	-0.9	3.3	1.6	1.1	2.1	1.8	4.5	5.9	5.5
	Jun	4.0	6.5	5.9	13.0	4.7	7.4	7.5	5.6	6.3	6.3	12.3	9.8	-0.7	3.9	2.0	0.3	1.6	1.2	4.3	6.0	5.4
	Jul	3.4	6.9	6.1	12.4	2.8	5.9	7.1	5.7	6.2	6.3	12.4	9.9	-0.5	4.3	2.3	-0.4	1.1	0.6	4.0	6.0	5.3
	Aug	2.9	7.4	6.4	11.7	0.8	4.4	6.6	5.8	6.1	6.2	12.5	9.9	0.0	4.5	2.7	-1.1	0.6	0.1	3.7	6.0	5.3
	Sep	2.4	8.0	6.7	11.2	-1.4	2.7	6.2	5.8	6.0	6.2	12.6	10.0	0.8	4.7	3.1	-1.8	0.1	-0.5	3.5	6.0	5.2
	Oct	2.1	8.4	6.9	10.7	-3.4	1.2	5.9	5.9	5.9	6.2	12.6	9.9	1.7	4.8	3.6	-2.5	-0.3	-1.0	3.5	5.9	5.2
	Nov	1.8	8.8	7.1	10.3	-5.3	-0.2	5.7	5.9	5.8	6.0	12.4	9.8	2.7	5.0	4.1	-3.2	-0.8	-1.6	3.4	5.9	5.1
	Dec	1.7	8.4	6.8	9.8	-6.9	-1.4	5.3	5.8	5.7	5.8	11.9	9.4	3.8	5.2	4.6	-4.1	-1.4	-2.2	3.3	5.4	4.8
2015	Jan	1.6	8.0	6.5	9.2	-8.0	-2.4	4.9	5.7	5.4	5.4	11.3	8.9	4.8	5.3	5.1	-5.1	-2.1	-3.0	3.2	5.0	4.4
	Feb	1.5	7.4	6.0	8.6	-8.7	-3.0	4.3	5.5	5.1	5.1	10.7	8.4	5.9	5.2	5.5	-6.2	-2.8	-3.9	3.1	4.5	4.0
	Mar	1.4	6.6	5.4	8.0	-8.8	-3.2	3.7	5.2	4.6	4.7	10.1	7.9	6.9	5.0	5.7	-7.3	-3.6	-4.7	2.9	3.9	3.6
	Apr	1.3	5.8	4.8	7.6	-8.4	-3.1	3.1	4.8	4.2	4.5	9.7	7.6	7.9	4.7	6.0	-8.2	-4.3	-5.5	2.9	3.4	3.2

¹ There was a step change in 2011 due to a change in reporting population

² Data are seasonally adjusted and depict the underlying trend. The X12 ARIMA monthly seasonal adjustments include trading days and leap years.

³ Automotive Fuels data is effective from January 2010. Data shown pre 2010 are for growth trend purposes only; these data are excluded from totals as these are already included in their former Services sector of Motoring (now known as Vehicle Sales & Service)

Table 2D Card expenditure statistics (seasonally adjusted)

Services^{1 and 2}

Value of purchase transactions (£ millions)

	Value of purchase transactions (£ millions)																		Total services				
	Vehicle Sales & Services ³			Entertainment			Hotels			Travel			Financial			Other services			Value of purchases				
	Credit	Debit	Total	Credit	Debit	Total	Credit	Debit	Total	Credit	Debit	Total	Credit	Debit	Total	Credit	Debit	Total	Credit	Debit	Total		
Annual																							
2010	8,762	24,839	33,602	9,954	17,043	26,997	5,508	3,091	8,599	12,781	15,901	28,682	5,927	39,322	45,249	15,671	40,864	56,535	58,604	141,061	199,664		
2011	7,773	22,465	30,238	14,072	20,685	34,757	8,641	3,854	12,495	16,332	18,478	34,809	7,162	46,280	53,443	18,488	46,773	65,261	72,468	158,534	231,003		
2012	7,566	23,547	31,113	14,683	22,795	37,478	8,890	4,316	13,206	16,555	20,538	37,092	5,492	49,801	55,293	18,658	48,998	67,656	71,842	169,995	241,837		
2013	7,694	25,721	33,415	15,664	24,560	40,224	9,264	4,785	14,048	17,466	22,090	39,556	5,132	54,573	59,705	20,076	57,203	77,279	75,295	188,932	264,227		
2014	8,111	28,866	36,977	17,370	28,485	45,855	10,365	5,587	15,952	20,125	25,193	45,318	5,084	57,673	62,757	21,344	64,063	85,407	82,399	209,867	292,266		
Monthly																							
2014	Apr	682	2,372	3,054	1,413	2,298	3,712	847	451	1,298	1,693	2,064	3,757	422	4,777	5,199	1,755	5,088	6,843	6,812	17,050	23,862	
	May	680	2,370	3,051	1,419	2,306	3,726	852	457	1,309	1,683	2,050	3,733	422	4,841	5,262	1,751	5,166	6,917	6,808	17,190	23,998	
	Jun	678	2,378	3,056	1,428	2,319	3,747	858	462	1,320	1,669	2,049	3,717	421	4,876	5,297	1,754	5,286	7,040	6,809	17,369	24,178	
	Jul	675	2,395	3,070	1,443	2,351	3,795	866	467	1,333	1,661	2,063	3,724	422	4,875	5,297	1,764	5,405	7,169	6,830	17,556	24,387	
	Aug	674	2,418	3,091	1,464	2,403	3,867	874	473	1,347	1,666	2,092	3,758	422	4,846	5,268	1,779	5,486	7,266	6,879	17,718	24,597	
	Sep	672	2,435	3,107	1,487	2,461	3,948	883	481	1,364	1,680	2,129	3,809	423	4,818	5,241	1,796	5,520	7,317	6,941	17,845	24,786	
	Oct	671	2,450	3,121	1,505	2,513	4,018	891	488	1,380	1,694	2,165	3,859	425	4,818	5,243	1,811	5,545	7,357	6,998	17,980	24,977	
	Nov	670	2,469	3,139	1,516	2,544	4,060	897	494	1,392	1,703	2,186	3,889	428	4,861	5,289	1,824	5,603	7,427	7,037	18,158	25,195	
	Dec	670	2,491	3,161	1,518	2,562	4,080	901	499	1,400	1,703	2,191	3,895	432	4,952	5,384	1,835	5,758	7,593	7,059	18,453	25,512	
	2015	Jan	673	2,517	3,189	1,516	2,587	4,102	903	501	1,404	1,699	2,192	3,891	436	5,073	5,509	1,843	5,980	7,823	7,069	18,850	25,918
		Feb	676	2,543	3,218	1,514	2,624	4,139	904	504	1,409	1,695	2,197	3,892	440	5,200	5,640	1,849	6,196	8,046	7,079	19,265	26,344
		Mar	679	2,567	3,246	1,517	2,672	4,189	907	508	1,415	1,695	2,211	3,907	444	5,317	5,761	1,855	6,356	8,211	7,098	19,631	26,729
Apr		683	2,586	3,269	1,525	2,718	4,242	912	513	1,425	1,701	2,235	3,936	447	5,428	5,876	1,862	6,449	8,311	7,129	19,930	27,059	

Year-on-year growth rates (percentages)²

Annual																							
2010	-40.2	-30.1	-33.1	3.5	16.7	11.4	3.9	13.4	7.1	-2.3	12.7	5.5	3.5	20.0	17.5	3.4	10.4	8.4	-7.8	3.1	-0.3		
2011	-11.3	-9.6	-10.0	41.4	21.4	28.7	56.9	24.7	45.3	27.8	16.2	21.4	20.8	17.7	18.1	18.0	14.5	15.4	23.7	12.4	15.7		
2012	-2.7	4.8	2.9	4.3	10.2	7.8	2.9	12.0	5.7	1.4	11.1	6.6	-23.3	7.6	3.5	0.9	4.8	3.7	-0.9	7.2	4.7		
2013	1.7	9.2	7.4	6.7	7.7	7.3	4.2	10.9	6.4	5.5	7.6	6.6	-6.6	9.6	8.0	7.6	16.7	14.2	4.8	11.1	9.3		
2014	5.4	12.2	10.7	10.9	16.0	14.0	11.9	16.8	13.6	15.2	14.0	14.6	-0.9	5.7	5.1	6.3	12.0	10.5	9.4	11.1	10.6		
Monthly																							
2014	Apr	4.9	12.7	10.8	8.3	9.5	9.1	10.0	12.3	10.8	10.8	10.7	10.8	-4.2	8.2	7.1	9.2	16.1	14.2	8.1	11.7	10.6	
	May	5.3	12.9	11.1	8.6	10.2	9.6	11.2	12.8	11.7	11.9	10.7	11.2	-4.0	8.1	6.9	9.1	15.2	13.6	8.5	11.5	10.7	
	Jun	5.7	13.0	11.3	8.8	10.8	10.0	11.1	13.4	11.9	12.7	10.7	11.6	-3.7	8.0	6.9	8.7	14.3	12.8	8.7	11.4	10.6	
	Jul	6.0	13.1	11.4	8.9	11.4	10.4	11.2	13.9	12.1	13.3	11.1	12.1	-3.3	7.8	6.8	8.3	13.6	12.2	8.9	11.2	10.6	
	Aug	6.2	13.3	11.6	9.2	12.1	11.0	11.4	14.4	12.4	14.0	12.0	12.9	-2.9	7.3	6.4	7.9	13.1	11.7	9.1	11.2	10.6	
	Sep	6.4	13.4	11.8	9.6	13.0	11.7	11.7	15.0	12.8	14.7	13.1	13.8	-2.5	6.7	5.9	7.5	12.8	11.4	9.3	11.2	10.7	
	Oct	6.3	13.4	11.7	10.1	14.1	12.5	11.9	15.6	13.2	15.3	14.0	14.6	-2.0	6.1	5.4	7.1	12.5	11.1	9.5	11.2	10.7	
	Nov	6.0	12.9	11.3	10.6	15.1	13.3	12.0	16.3	13.4	15.6	14.4	14.9	-1.5	5.7	5.1	6.7	12.2	10.7	9.6	11.1	10.7	
	Dec	5.4	12.2	10.7	10.9	16.0	14.0	11.9	16.8	13.6	15.2	14.0	14.6	-0.9	5.7	5.1	6.3	12.0	10.5	9.4	11.1	10.6	
	2015	Jan	4.7	11.4	9.8	11.0	16.6	14.4	11.7	17.1	13.5	14.2	13.1	13.6	-0.2	6.0	5.5	5.9	12.3	10.7	9.1	11.1	10.6
		Feb	3.9	10.5	9.0	10.8	16.9	14.5	11.4	17.2	13.3	12.7	12.1	12.3	0.4	6.6	6.1	5.6	13.2	11.2	8.5	11.4	10.6
		Mar	3.2	9.9	8.4	10.6	17.0	14.5	11.0	17.1	13.1	10.9	11.3	11.1	1.1	7.3	6.8	5.3	14.5	12.1	7.9	11.8	10.7
Apr		2.6	9.6	8.0	10.4	17.2	14.6	10.8	16.8	12.8	9.3	10.8	10.1	1.8	7.9	7.4	5.2	16.0	13.2	7.5	12.4	11.0	

¹ There was a step change in 2011 due to a change in reporting population

² Data are seasonally adjusted and depict the underlying trend. The X12 ARIMA monthly seasonal adjustments include trading days and leap years.

³ With effect of January 2010 Automotive Fuels was published as a separate sub-sector in retail sales. See tables 2A and 2B

Table 3A Card expenditure statistics (not seasonally adjusted)

Number of credit card transactions

Detailed sector breakdown - retail sectors (not seasonally adjusted)

Historical data located in hidden columns

	April 2014	May 2014	June 2014	July 2014	August 2014	September 2014	October 2014	November 2014	December 2014	January 2015	February 2015	March 2015	April 2015	Total (latest 12 months)
Supermarkets	56,930,462	58,629,190	60,525,536	60,952,700	57,026,642	60,556,456	61,788,278	60,586,531	73,763,834	57,588,817	55,586,545	65,051,989	61,399,227	733,455,745
Bakers & dairies	272,727	299,385	308,612	327,757	331,909	346,295	382,365	372,500	392,198	332,212	348,942	441,972	395,763	4,279,910
Sweet stores	351,406	244,749	257,164	257,183	270,057	253,397	298,880	358,532	675,080	193,040	257,673	354,246	294,081	3,714,082
Miscellaneous foodstores	3,264,642	3,344,117	3,434,749	3,536,443	3,288,342	3,434,341	3,490,576	3,296,311	3,881,861	3,056,627	3,119,217	3,614,809	3,481,816	40,979,209
Off-licences	561,770	594,609	621,669	634,413	603,366	575,932	583,432	607,160	906,763	461,250	490,639	571,339	568,017	7,218,589
Food & drink	67,387,007	63,112,050	65,147,730	65,708,496	61,520,316	65,166,421	66,543,531	65,221,034	79,619,736	61,631,946	59,803,016	70,034,355	66,138,904	789,647,535
Department stores	5,139,404	5,505,234	5,865,845	6,197,849	5,464,470	5,163,445	5,690,941	7,419,741	11,204,390	5,868,824	4,524,247	5,201,786	5,361,104	73,467,876
Discount stores	2,010,222	2,089,652	2,088,096	2,183,190	2,187,503	2,082,198	2,296,179	2,733,114	3,718,388	1,986,574	1,846,732	2,162,690	2,109,659	27,483,975
Catalogues	8,072,540	8,029,188	8,187,987	8,823,587	9,987,830	11,496,859	12,489,582	14,761,571	13,355,044	12,286,284	10,784,822	13,824,185	15,223,597	139,250,536
Miscellaneous mixed	2,573,138	2,616,868	2,743,461	2,706,176	2,549,000	2,726,897	2,917,515	3,240,114	2,213,584	2,154,815	2,626,629	2,154,815	2,579,001	33,517,433
Mixed business	17,795,304	18,240,942	18,885,389	19,910,802	20,188,803	21,469,399	23,394,217	28,154,540	32,721,195	22,355,266	19,310,616	23,815,290	25,273,361	273,719,820
Men's clothing	315,488	334,842	396,886	431,817	365,831	321,661	343,018	379,483	614,427	394,496	278,936	298,301	324,654	4,484,352
Women's clothing	1,987,751	2,165,331	2,416,563	2,578,885	2,047,982	1,972,816	2,002,248	2,167,033	3,240,215	1,872,157	1,616,549	2,018,980	2,181,417	26,280,176
Family clothing	8,637,891	9,097,595	9,597,338	10,402,319	8,813,515	8,589,400	9,264,896	9,923,716	14,569,731	7,954,815	6,703,790	8,500,384	8,932,820	112,350,319
Miscellaneous clothing	421,383	455,958	504,536	535,580	476,286	463,924	496,275	526,195	653,844	389,356	337,077	417,921	416,798	5,673,750
Shoe shops	1,271,606	1,334,953	1,534,586	1,623,840	1,529,344	1,294,980	1,317,140	1,203,087	1,752,546	1,246,909	889,887	1,046,121	1,344,807	16,118,200
Clothing	12,634,119	13,388,679	14,449,909	15,572,441	13,232,958	12,642,781	13,423,577	14,199,514	20,830,763	11,857,733	9,826,239	12,281,707	13,200,496	164,906,797
Furniture stores	1,335,835	1,370,226	1,371,949	1,399,189	1,447,073	1,456,891	1,616,661	1,711,801	1,990,907	1,696,414	1,363,933	1,546,588	1,425,896	18,397,528
Household appliance stores	1,326,020	1,352,971	1,342,328	1,371,996	1,367,229	1,372,891	1,450,153	1,514,083	1,818,084	1,359,174	1,224,773	1,402,606	1,349,032	16,925,320
Electronic stores	1,182,292	1,160,791	1,144,057	1,202,022	1,214,858	1,301,009	1,346,030	1,407,022	2,095,151	1,440,932	1,166,456	1,264,406	1,147,704	15,890,438
DIY stores	7,102,919	7,189,074	6,717,473	6,804,578	6,781,796	6,483,709	6,641,160	6,436,397	6,202,095	5,615,055	5,547,177	6,903,753	7,453,839	78,776,109
Floor covering stores	170,541	164,187	163,064	171,459	174,930	180,484	204,653	203,676	155,818	169,035	165,102	192,748	170,271	2,115,427
Garden centres	2,365,525	2,545,759	2,086,843	1,639,181	1,420,237	1,507,278	1,528,964	1,515,932	2,043,295	1,994,990	1,094,990	1,966,307	2,564,546	20,879,809
Miscellaneous household	1,510,614	1,561,352	1,630,865	1,733,650	1,672,760	1,706,721	1,754,504	1,870,521	2,374,306	1,707,694	1,497,446	1,688,437	1,587,500	20,785,756
Household	14,993,746	15,344,360	14,456,579	14,322,075	14,078,883	14,008,983	14,542,125	14,659,432	16,679,656	12,964,781	12,059,877	14,954,845	15,698,788	173,770,384
Books, newspapers & magazines	1,722,216	1,776,164	1,857,098	1,975,240	1,865,154	2,079,663	2,151,685	2,248,541	3,525,931	1,756,639	1,702,008	1,997,026	1,777,709	24,712,858
Record shops	203,415	187,943	193,521	191,236	186,064	187,725	203,134	269,828	680,466	189,394	176,347	200,922	173,710	2,840,290
Music shops	116,202	118,628	111,317	120,279	113,421	139,945	143,202	153,204	208,077	130,464	121,895	127,988	116,925	1,601,925
Hobbies, toys & games	457,412	460,088	454,747	501,496	504,352	573,714	646,466	941,253	1,434,517	446,226	431,452	466,722	451,614	7,312,647
Photographic	137,962	152,423	163,319	177,143	171,789	175,059	171,805	193,988	173,055	139,977	132,129	151,564	121,432	1,923,693
Handicraft	84,616	84,465	89,960	85,719	89,960	90,994	98,208	99,792	89,102	83,916	94,990	79,031	81,181	1,058,489
Sports shops	2,762,196	2,967,242	3,104,119	3,426,833	3,423,746	2,987,628	2,715,180	2,709,525	3,945,583	2,624,270	2,309,683	2,660,105	2,903,061	35,776,975
Jewellers	628,163	663,349	702,784	712,102	650,185	629,826	625,307	820,947	1,580,354	618,367	582,567	642,113	557,666	8,785,567
Computer software	274,480	268,155	256,616	264,648	253,899	275,559	279,292	264,712	322,798	267,470	235,478	255,630	223,761	3,168,018
Medical goods	444,657	477,924	494,449	536,283	495,905	491,225	527,091	515,664	650,218	505,645	471,859	551,007	523,135	6,240,405
Chemists	3,658,686	3,889,743	4,145,656	4,263,906	3,753,739	4,006,899	4,139,070	4,044,462	6,360,944	3,696,771	3,438,703	4,140,068	3,858,174	49,738,135
Optical goods	491,808	519,089	545,320	568,719	517,516	515,272	508,838	463,472	432,049	479,814	475,814	553,869	516,646	6,098,314
Cosmetic stores	413,529	443,499	481,786	484,636	460,983	488,932	542,335	686,290	1,249,664	420,899	425,287	495,578	451,684	6,631,573
Tobacconists	32,613	35,369	38,093	40,308	38,874	40,498	40,795	38,026	49,458	39,940	46,911	39,490	45,916	493,678
Florists	341,769	357,576	346,967	339,476	294,073	333,315	320,220	303,973	546,632	269,430	393,763	542,015	328,944	4,376,384
Artists' supplies	266,504	271,201	265,297	282,990	284,359	288,525	323,103	357,654	399,107	244,892	260,771	305,702	250,606	3,534,207
Antiques, art & stamps/coins	147,898	162,329	158,984	173,106	180,355	172,662	168,381	165,337	196,396	127,553	120,961	138,986	133,202	1,898,252
Pawn shops	3,278	3,262	3,278	4,180	4,144	4,088	4,108	4,372	6,756	3,825	3,602	3,992	3,709	49,316
Gift shops	1,295,948	1,367,840	1,544,126	1,618,945	1,676,126	1,592,265	1,684,657	2,136,792	3,396,435	1,256,452	1,335,435	1,597,661	1,372,145	20,579,192
Secondhand shops	21,857	21,197	22,667	24,347	21,879	21,231	23,222	21,605	25,100	20,969	18,630	32,885	25,388	279,120
Luggage & leather goods	95,751	103,054	117,371	122,547	120,379	104,480	113,708	130,256	178,310	95,226	75,503	92,310	90,375	1,343,519
Pet shops	803,288	831,670	821,580	848,467	855,815	821,432	867,512	844,893	978,092	816,191	767,676	894,590	854,306	10,202,224
Religious goods	10,309	12,493	13,019	15,580	13,783	11,652	11,041	8,010	8,078	6,959	6,463	9,063	9,581	125,722
Direct sales	3,689,464	3,628,044	3,521,590	3,589,174	3,315,087	3,390,131	3,615,554	3,315,143	3,704,124	3,395,772	3,242,718	3,727,137	3,326,615	41,771,089
Miscellaneous & speciality shops	2,983,948	3,273,598	3,304,429	3,511,728	3,410,197	3,526,461	4,915,523	5,303,865	5,885,087	4,856,782	4,474,328	5,127,122	4,777,093	52,366,214
Other retail	21,087,969	22,076,145	22,749,264	23,879,088	22,701,784	22,949,181	24,839,437	26,041,614	36,026,846	22,489,005	21,330,478	24,855,956	22,969,008	292,907,806
Automotive Fuels	19,623,179	20,303,884	20,632,879	21,138,126	19,883,979	20,535,495	20,240,182	18,691,214	19,471,196	17,675,368	17,062,678	19,861,788	19,249,331	234,746,120
Total retail sales	147,515,324	152,466,060	156,321,750	160,531,028	151,606,723	156,772,260	162,983,069	166,967,348	205,349,392	148,974,099	139,392,904	165,803,941	162,529,888	1,929,698,462

Table 3A Card expenditure statistics (not seasonally adjusted)

Number of credit card transactions

Detailed sector breakdown - services sectors (not seasonally adjusted)

	April 2014	May 2014	June 2014	July 2014	August 2014	September 2014	October 2014	November 2014	December 2014	January 2015	February 2015	March 2015	April 2015	Total (latest 12 months)
Auto rental	615,311	650,680	667,464	740,074	681,619	657,457	543,475	457,587	449,455	495,316	512,332	627,398	621,915	7,104,772
Auto parts & accessories	800,394	799,716	790,371	827,270	744,173	754,786	751,478	696,196	719,396	719,555	701,469	833,639	773,763	9,111,812
Auto services	1,915,563	2,068,569	2,081,660	2,171,202	1,912,440	2,168,016	2,325,359	2,168,635	2,142,038	2,073,058	2,110,666	2,440,360	2,217,293	25,879,296
Auto repair shops	885,258	903,749	904,199	941,391	848,138	904,641	893,101	806,242	769,757	825,219	833,959	1,006,526	881,441	10,518,363
Service stations	0	0	0	0	0	0	0	0	0	0	0	0	0	0
Vehicle sales	594,366	610,525	614,799	627,747	570,329	611,847	560,000	489,946	459,214	509,139	529,976	681,144	596,412	6,861,078
Vehicle Sales & Services	4,810,892	5,033,239	5,058,493	5,307,684	4,756,699	5,096,747	5,073,413	4,618,606	4,539,860	4,631,027	4,679,662	5,589,067	5,090,824	59,475,321
Restaurants	17,088,152	18,472,146	18,753,520	19,775,009	19,600,318	19,438,995	20,318,156	19,149,963	19,702,360	17,443,915	18,297,687	21,341,536	20,659,370	232,952,975
Public houses	2,917,200	2,887,419	2,991,777	3,138,804	3,084,888	3,084,180	2,906,707	2,669,772	2,989,403	2,359,976	2,581,141	3,198,159	3,215,619	35,107,845
Catering services	545,646	591,645	611,391	637,298	555,148	661,358	699,112	662,202	630,702	613,116	646,425	748,014	679,220	7,735,631
Video stores	193,754	183,092	198,503	187,561	180,019	187,561	200,110	194,779	222,622	248,533	396,185	275,895	270,289	2,733,165
Cinema, theatre & dance	1,719,511	1,734,077	1,625,616	1,800,033	1,923,221	1,690,062	2,193,403	2,408,504	2,556,896	2,001,813	2,014,385	1,984,029	1,882,207	23,814,246
Concerts & entertainers	133,890	135,874	124,909	131,869	151,746	56,295	156,016	186,409	204,442	138,654	128,301	136,188	136,039	1,686,742
Tourist attractions	684,396	640,000	678,591	866,322	1,039,696	685,602	371,649	621,739	383,982	278,658	364,396	458,960	702,828	7,092,423
Amusement parks	97,591	75,670	78,647	106,039	155,126	81,861	84,816	41,437	34,322	26,664	43,899	50,917	102,760	882,158
Aquariums	41,589	31,907	29,617	52,920	79,248	50,536	39,548	21,923	21,027	16,900	28,634	32,243	57,254	461,757
Sports & games establishments	3,265,765	3,528,874	3,167,194	3,156,670	3,185,707	3,752,885	3,851,656	3,395,489	4,367,895	4,268,156	3,376,739	3,926,780	3,439,610	43,417,655
Professional sports clubs	140,200	156,524	111,253	144,277	136,338	156,345	124,435	125,941	121,235	94,640	87,997	114,926	100,813	1,474,724
Gambling	5,849,636	5,420,051	5,747,752	5,333,736	5,019,556	5,916,812	6,060,666	5,739,677	6,803,324	6,144,983	5,960,250	6,789,023	6,336,623	71,732,453
Personal services	274,749	286,593	284,982	292,758	278,971	278,822	281,498	301,534	382,897	270,372	295,579	295,810	285,409	3,495,225
Miscellaneous entertainment	681,106	705,075	655,892	720,108	933,393	783,092	923,012	683,184	583,282	738,153	732,128	812,753	841,015	9,111,087
Entertainment	33,633,185	34,848,947	35,059,644	36,343,404	36,323,375	36,836,955	38,455,543	35,933,261	39,004,389	34,644,533	34,913,746	40,165,233	38,709,056	441,238,086
Hotels	4,721,602	5,205,389	5,281,499	5,537,804	5,212,363	5,445,681	5,360,924	4,841,041	4,424,903	4,411,057	4,625,058	5,371,107	5,122,317	60,839,143
Airlines	2,643,890	2,799,134	2,553,575	2,478,111	2,364,403	2,638,124	2,570,159	2,159,641	1,888,402	2,865,096	2,561,380	2,888,021	2,763,663	30,529,709
Airport terminals	39,805	43,781	45,033	47,719	41,728	45,058	38,562	28,808	27,230	31,088	31,580	39,256	40,161	460,004
Railways	5,637,691	6,055,544	6,307,600	6,492,461	5,606,392	6,422,013	6,582,071	6,104,469	5,771,604	5,365,874	5,446,324	6,240,141	5,713,354	72,107,847
Buses	616,799	655,151	610,088	615,265	545,699	633,416	640,292	588,222	568,612	526,983	543,959	630,301	616,446	7,174,434
Sea travel	198,509	234,012	230,063	253,141	259,551	230,982	205,729	159,628	150,167	176,592	167,537	209,514	206,166	2,483,082
Travel agents	1,790,377	1,891,578	1,857,014	1,836,892	1,723,866	1,907,065	1,872,174	1,633,859	1,555,971	2,117,373	1,935,959	2,140,222	1,961,575	22,433,548
Timeshares	18,146	17,823	15,901	17,534	17,738	17,736	18,488	16,426	16,631	26,135	19,605	18,926	16,463	219,406
Camping grounds	242,435	272,077	269,573	335,414	346,267	215,594	148,977	75,561	57,142	111,929	126,155	177,569	253,605	2,389,863
Miscellaneous travel	1,044,271	1,146,744	1,153,983	1,246,342	1,081,697	1,198,276	1,475,084	1,531,166	1,511,118	1,616,711	1,674,930	1,948,468	1,943,613	17,528,132
Travel	12,231,923	13,115,844	13,042,830	13,322,879	11,987,341	13,308,264	13,551,536	12,297,780	11,546,877	12,837,781	12,507,429	14,292,418	13,515,046	155,326,025
Telegraph services / Wire transfer money order	16,614	18,617	17,212	17,323	16,028	16,333	19,921	21,841	23,011	24,858	26,993	30,691	30,947	263,775
Insurance services	1,665,616	1,655,588	1,667,417	1,839,432	1,672,600	1,729,359	1,586,678	1,373,640	1,352,680	1,466,740	1,432,192	1,744,215	1,563,292	19,083,813
FIs - cash disbursements (auto & manual)	14,963	16,682	17,106	16,167	13,325	18,063	17,237	14,055	15,312	15,607	18,167	15,980	195,711	
FIs - merchandise & services	135,118	143,156	140,114	143,434	126,415	355,759	132,630	113,345	118,764	123,995	123,511	152,278	138,545	1,811,946
Non-FIs - foreign currency, travellers' cheques	97,123	128,580	137,240	135,592	123,556	132,594	100,055	72,863	76,097	82,272	108,817	135,733	118,753	1,352,152
Security brokers and dealers	16,674	15,263	12,653	15,409	15,433	16,988	18,704	20,789	25,221	18,972	25,760	24,596	233,765	
Tax preparation services	175	160	168	166	132	208	158	160	111	211	179	222	171	2,046
Tax payments	15,753	13,600	12,583	14,853	13,002	14,481	13,453	11,738	11,790	17,552	19,339	31,554	25,386	199,331
Fines, bail and bond payments	68,947	69,821	70,248	74,900	69,187	69,153	74,059	67,861	56,080	57,229	54,596	61,440	57,229	782,103
Miscellaneous financial	93,917	92,056	95,168	101,285	89,446	92,937	97,860	85,404	79,308	80,085	80,963	109,684	101,552	1,105,748
Financial	2,124,900	2,153,503	2,169,909	2,358,561	2,139,124	2,445,875	2,066,801	1,782,793	1,752,685	1,893,475	1,881,169	2,309,744	2,076,751	25,030,390

Table 3A Card expenditure statistics (not seasonally adjusted)

Number of credit card transactions

Detailed sector breakdown - services sectors (continued, not seasonally adjusted)

	April 2014	May 2014	June 2014	July 2014	August 2014	September 2014	October 2014	November 2014	December 2014	January 2015	February 2015	March 2015	April 2015	Total (latest 12 months)
Telecoms	1,844,217	1,872,218	1,819,447	1,940,118	1,907,603	2,094,657	2,027,933	1,909,784	2,072,859	1,929,964	1,723,570	1,970,636	1,842,460	23,111,249
Utilities	360,360	394,325	362,001	387,091	357,415	400,371	415,656	372,316	387,786	397,889	382,735	470,622	421,238	4,749,445
Contractors (residential & commercial)	260,230	265,479	264,791	284,268	255,928	285,174	312,244	280,539	252,097	261,223	263,097	304,845	269,369	3,299,054
Gardening services	77,954	80,070	70,821	58,815	48,073	49,976	50,137	45,904	60,258	36,526	49,745	61,814	644,420	644,420
Veterinary services	615,866	636,894	644,356	709,910	673,642	672,737	697,845	630,390	647,111	614,179	567,382	645,731	622,621	7,762,798
Photocopying & printing	241,918	256,744	247,643	253,431	222,763	261,490	282,420	313,482	364,848	268,770	239,779	282,306	240,832	3,234,508
Photographic studios	101,770	123,180	136,757	156,025	118,408	126,124	159,776	171,301	267,854	112,371	100,886	127,897	132,342	1,732,921
Beauty & barber shops	1,552,150	1,656,204	1,668,774	1,739,716	1,595,221	1,635,737	1,656,708	1,605,024	2,191,032	1,435,747	1,431,072	1,660,936	1,601,539	19,877,710
Employment agencies	22,654	22,156	24,919	25,673	22,778	23,563	26,367	23,779	20,711	23,713	23,323	30,977	23,905	291,864
Counselling services	6,200	5,963	5,848	6,149	5,389	5,837	6,685	6,314	5,780	6,440	6,052	6,589	6,063	73,109
Legal services	56,038	56,505	56,074	57,933	53,181	56,907	59,607	53,116	48,675	53,308	55,457	49,035	55,902	655,700
Laundry & cleaning	188,431	204,625	220,424	221,857	191,858	213,786	220,407	201,731	193,987	186,139	174,962	201,096	196,740	2,427,612
Funeral services	12,342	12,407	12,401	12,847	11,227	12,466	12,361	11,691	12,157	13,661	12,859	14,818	13,366	152,261
Medical services	1,228,050	1,264,968	1,284,136	1,343,498	1,159,639	1,325,044	1,382,020	1,277,573	1,197,862	1,297,095	1,252,320	1,421,862	1,309,918	15,515,935
Moving & courier services	407,060	438,164	422,331	444,893	370,590	436,418	475,027	452,289	447,052	420,698	420,810	468,784	434,203	5,231,259
Repair shops (not auto)	57,875	59,945	60,366	64,894	60,584	63,855	67,310	71,419	81,348	67,177	65,872	77,460	68,940	809,170
Accounting services	28,922	27,971	28,943	30,600	30,899	37,019	38,225	36,612	36,556	39,334	32,285	33,978	26,291	398,713
Advertising, consultancy & PR	71,265	72,501	71,871	74,295	69,192	71,614	70,554	62,688	56,340	59,858	62,516	72,021	65,394	808,844
Computer programming	1,287,682	1,310,973	1,358,800	1,417,439	1,376,648	1,511,223	1,610,805	1,971,380	2,396,813	1,656,225	1,460,850	1,598,304	1,459,369	19,128,829
Farming services	112,133	113,871	110,248	108,086	103,884	107,100	108,025	105,173	125,069	102,807	95,677	120,370	111,780	1,312,090
Miscellaneous professional services	879,791	893,472	890,855	932,001	867,660	946,236	1,183,746	1,117,761	1,128,921	1,091,932	1,088,549	1,221,690	1,108,803	12,471,626
Engineering services	52,173	52,286	53,547	56,521	48,707	51,981	55,842	48,022	44,733	47,211	48,450	55,248	51,073	613,621
Marina services	69,594	75,000	83,757	99,232	91,231	73,938	49,673	38,140	34,678	33,376	33,326	50,888	70,547	733,786
Wrecking & salvage yards	3,730	3,594	3,588	3,926	3,490	4,003	3,899	3,423	2,955	3,533	3,778	4,567	4,397	45,153
Pest control	2,818	3,447	3,414	3,924	3,124	3,416	4,019	3,120	2,843	2,969	2,752	3,196	3,238	39,462
Educational establishments	600,652	675,737	673,242	612,153	486,772	931,449	861,563	814,901	671,390	871,750	721,802	879,052	711,260	8,911,071
Child care services	20,471	21,517	18,401	18,800	22,690	19,937	22,777	19,371	19,787	22,647	24,072	24,365	21,413	255,777
Social, political & religious organisations	1,367,471	1,448,309	1,437,801	1,421,342	1,394,944	1,551,815	1,467,619	1,380,576	1,387,283	1,130,492	1,100,380	1,490,503	1,523,667	16,734,731
Government services	2,557,237	2,651,192	2,650,075	2,692,184	2,448,026	2,588,667	2,609,311	2,317,183	2,216,602	2,443,716	2,445,460	2,756,334	2,609,504	30,428,254
Miscellaneous services	1,181,411	1,398,673	1,428,403	1,483,329	1,281,106	1,399,771	1,415,175	1,386,545	2,097,444	1,326,549	1,281,298	1,574,626	1,459,132	17,532,051
Commercial equipment	862,234	889,160	872,073	912,209	845,705	987,710	993,836	943,241	931,419	912,747	839,158	959,222	839,933	10,926,413
Other services	16,130,699	16,987,550	16,986,107	17,573,159	16,128,377	17,950,021	18,347,572	17,674,788	19,404,250	16,865,801	15,997,055	18,627,703	17,367,053	209,909,436
Total services	73,653,201	77,344,472	77,598,482	80,443,491	76,547,279	81,083,543	82,855,789	77,148,269	80,672,964	75,283,674	74,604,119	86,355,272	81,881,047	951,818,401
TOTAL	221,168,525	229,810,532	233,920,232	240,974,519	228,154,002	237,855,803	245,838,858	244,115,617	286,022,356	224,257,773	213,997,023	252,159,213	244,410,935	2,881,516,863

Table 3B Card expenditure statistics (not seasonally adjusted)

Value of credit card transactions

Detailed sector breakdown - retail sectors (not seasonally adjusted)

Historical data located in hidden columns

£	April 2014	May 2014	June 2014	July 2014	August 2014	September 2014	October 2014	November 2014	December 2014	January 2015	February 2015	March 2015	April 2015	Total (latest 12 months)
Supermarkets	1,823,830,120	1,852,979,563	1,890,622,873	1,863,140,099	1,766,729,549	1,852,507,855	1,891,740,567	1,928,770,781	2,630,480,321	1,678,634,665	1,617,529,529	1,914,840,781	1,828,092,396	22,716,068,979
Bakers & dairies	4,088,753	4,370,575	4,562,654	4,617,597	4,468,611	4,817,872	5,082,480	5,067,001	6,036,341	4,241,317	4,464,634	5,543,623	4,958,324	58,231,029
Sweet stores	8,973,193	5,944,123	6,266,297	6,510,251	6,420,174	6,075,636	6,806,456	9,216,196	17,550,217	3,960,032	5,242,765	8,163,892	6,349,334	88,505,373
Miscellaneous foodstores	99,670,775	102,162,206	105,436,814	105,424,686	96,379,519	101,801,931	105,841,721	104,665,839	141,788,125	94,022,833	93,614,453	108,681,740	102,791,450	1,262,611,317
Off-licences	41,629,932	42,244,580	42,421,883	42,838,798	39,577,615	37,486,314	39,406,906	49,018,615	81,006,626	32,148,188	33,309,309	39,441,699	39,509,637	518,410,170
Food & drink	1,978,192,773	2,007,701,047	2,049,310,521	2,022,531,431	1,913,575,468	2,002,689,608	2,048,878,130	2,096,738,432	2,876,861,630	1,813,007,035	1,754,160,690	2,076,671,735	1,981,701,141	24,643,826,868
Department stores	365,046,580	376,528,861	401,925,110	384,053,341	384,446,547	383,199,699	414,732,897	526,629,699	373,113,287	306,997,415	365,551,689	716,907,891	379,259,192	5,013,345,428
Discount stores	91,216,281	94,272,437	90,600,286	93,498,253	96,166,295	91,598,413	101,495,806	130,944,852	172,897,218	88,637,387	79,184,088	103,957,704	87,485,376	1,230,738,115
Catalogues	158,120,141	153,494,683	150,087,029	155,873,321	173,932,899	197,698,269	204,584,481	221,446,449	186,417,062	178,179,123	159,005,963	203,742,290	204,726,444	2,189,228,013
Miscellaneous mixed	103,961,277	108,217,540	112,230,410	110,677,935	106,659,671	116,999,333	125,589,762	139,026,768	177,570,623	85,465,419	85,617,544	104,783,109	103,007,994	1,375,846,108
Mixed business	718,344,279	732,513,321	754,842,835	744,102,850	761,205,412	789,495,714	846,402,946	1,018,087,768	1,253,792,794	725,395,216	630,805,010	778,034,792	774,479,006	9,809,157,664
Men's clothing	38,019,650	40,995,605	47,429,144	44,418,380	38,717,958	38,849,527	43,312,436	45,857,878	64,127,147	43,511,193	32,016,148	38,758,325	39,630,788	517,624,529
Women's clothing	143,846,026	149,867,751	165,018,242	152,918,579	130,438,322	145,826,606	152,552,364	154,529,024	196,326,643	126,401,712	117,254,936	152,098,245	153,506,762	1,796,738,186
Family clothing	430,084,708	441,898,483	457,641,201	461,676,656	457,641,201	440,508,462	423,016,667	481,959,987	356,245,547	505,514,152	425,026,364	430,028,175	5,439,823,131	
Miscellaneous clothing	28,263,095	30,091,853	33,479,422	32,557,826	29,642,910	30,680,747	33,893,128	34,474,229	40,912,132	25,411,107	23,552,950	30,557,497	29,498,368	374,752,169
Shoe shops	81,539,472	83,673,040	91,226,181	85,475,811	89,916,631	86,025,128	96,001,094	89,601,502	118,920,934	74,497,003	66,670,946	71,140,130	85,549,046	1,028,697,446
Clothing	721,752,951	746,526,732	794,794,190	777,047,252	711,732,324	741,889,470	807,719,009	829,976,785	1,106,448,523	626,066,992	559,640,484	717,580,561	738,213,139	9,157,635,461
Furniture stores	273,686,156	276,732,875	265,789,007	279,209,784	281,776,424	292,548,037	333,573,154	314,306,428	290,208,827	341,015,635	280,372,386	317,809,325	286,502,637	3,559,844,519
Household appliance stores	117,640,150	119,433,088	115,732,161	118,726,715	112,781,214	117,975,198	133,045,193	137,719,661	143,838,310	126,206,518	114,929,849	128,412,379	113,757,361	1,482,557,647
Electronic stores	189,474,530	185,266,272	185,008,552	189,141,349	198,186,908	220,920,108	231,647,999	241,624,213	362,461,743	232,351,109	180,611,098	201,161,939	188,844,468	2,617,225,758
DIY stores	516,911,927	524,464,300	495,806,769	515,469,469	490,378,817	485,507,439	513,938,965	478,249,120	410,724,234	435,099,627	426,427,027	541,793,901	536,679,830	5,854,539,498
Floor covering stores	61,415,389	60,897,913	60,876,671	63,828,489	62,847,588	66,700,835	76,648,575	76,156,871	56,573,443	60,832,781	58,591,643	68,990,265	61,781,920	774,726,994
Garden centres	120,958,611	128,902,619	106,075,067	83,624,146	66,905,584	68,998,218	65,482,114	64,345,061	82,278,410	40,384,661	46,860,662	96,923,628	134,641,403	1,877,221,773
Miscellaneous household	131,445,633	133,520,372	142,340,623	144,590,634	137,985,253	147,730,703	158,297,632	162,324,551	192,671,516	145,579,611	125,872,725	147,573,899	138,632,946	9,771,120,465
Household	1,411,532,396	1,429,217,439	1,371,628,850	1,394,590,586	1,350,861,788	1,400,380,538	1,512,633,632	1,474,725,905	1,538,756,483	1,381,480,142	1,235,465,390	1,502,665,336	1,460,840,565	17,053,246,654
Books, newspapers & magazines	50,267,408	51,728,440	50,937,284	54,966,537	51,980,299	58,998,772	65,424,504	68,516,658	98,999,105	59,462,857	54,657,565	61,798,632	54,317,544	731,788,197
Record shops	5,800,659	5,385,350	5,719,169	5,385,684	5,164,918	5,352,028	5,760,207	8,026,361	18,884,654	4,921,162	4,754,836	5,534,437	5,184,650	80,073,456
Music shops	15,834,168	16,094,735	16,029,740	15,293,181	16,029,740	15,902,468	18,074,695	20,573,225	16,404,995	17,983,268	16,711,472	18,015,527	16,377,048	216,363,330
Hobbies, toys & games	27,442,025	28,018,936	27,563,708	28,492,747	28,139,279	38,409,631	39,391,413	60,391,283	88,255,251	25,512,438	24,436,073	27,538,232	25,895,288	442,044,279
Photographic	19,386,643	21,629,908	21,351,888	22,685,960	21,463,647	20,785,250	21,140,487	22,251,553	26,461,004	19,052,646	18,125,249	24,088,980	19,385,452	258,422,024
Handicraft	8,034,821	8,099,280	7,638,108	8,154,035	8,280,537	8,453,927	9,106,617	9,158,318	8,030,223	7,906,345	7,964,332	8,982,355	7,703,634	99,477,711
Sports shops	187,450,432	197,142,199	198,208,869	216,921,703	216,041,028	190,017,862	177,774,087	179,795,808	242,218,238	163,000,095	148,124,270	179,873,856	192,568,885	2,301,686,900
Jewellers	110,324,441	117,230,455	126,235,522	124,532,078	120,510,008	118,442,829	118,363,801	141,608,949	275,864,145	105,039,386	110,385,149	121,672,513	111,181,132	1,591,065,967
Computer software	45,977,761	42,915,402	40,322,541	42,207,464	40,120,655	45,001,326	45,541,677	44,448,481	53,597,714	42,001,331	38,261,060	43,383,602	38,671,408	516,472,761
Medical goods	15,979,452	16,811,579	17,311,453	18,597,011	17,365,146	17,830,279	19,734,790	19,480,880	23,330,326	16,320,375	16,242,527	19,667,411	17,892,251	220,584,028
Chemists	77,218,556	83,567,360	89,060,997	90,256,038	80,746,213	84,834,270	98,930,462	102,943,425	173,459,325	76,289,660	71,371,228	88,696,710	79,955,744	1,120,111,432
Optical goods	75,128,155	78,969,154	82,066,488	85,223,777	77,912,830	78,079,837	77,393,158	70,543,943	61,760,769	73,491,378	74,939,809	87,488,511	80,782,735	928,652,389
Cosmetic stores	24,662,894	27,021,762	29,097,199	28,324,760	26,655,697	30,649,059	33,040,304	40,263,850	64,081,371	24,215,191	24,258,644	29,848,759	27,075,426	384,532,022
Tobacconists	1,850,376	1,908,622	2,132,715	2,152,443	1,917,707	2,010,361	2,001,500	1,831,310	2,486,189	1,876,991	1,867,348	2,319,234	2,228,752	24,733,172
Florists	18,127,137	19,518,504	18,663,948	18,327,133	15,783,662	17,916,325	16,948,017	16,179,196	26,046,914	14,331,289	19,609,033	26,823,219	18,257,575	228,404,815
Artists' supplies	12,950,002	13,705,505	13,230,172	14,115,643	13,549,703	14,277,680	16,014,751	16,998,148	17,303,989	14,438,283	12,413,679	14,938,223	12,230,973	170,226,749
Antiques, art & stamps/coins	24,362,276	26,731,393	26,720,165	26,003,900	23,987,688	27,649,734	29,208,918	28,347,263	29,960,767	21,827,685	20,693,463	27,511,844	24,504,978	313,147,798
Pawn shops	837,274	796,151	823,506	1,049,566	1,055,259	1,140,407	1,111,964	1,066,209	1,396,827	1,009,655	902,834	1,028,383	976,574	12,357,335
Gift shops	46,596,398	50,302,524	52,447,629	57,336,769	59,719,274	58,345,837	63,837,591	80,772,225	108,816,624	44,155,592	42,238,093	52,495,682	48,302,504	720,770,344
Secondhand shops	2,550,981	2,493,747	2,817,861	2,652,510	1,926,742	2,244,984	2,736,159	2,539,073	2,730,704	2,585,549	2,212,641	3,828,943	2,547,624	31,316,537
Luggage & leather goods	13,956,290	14,606,276	17,238,794	16,111,921	15,815,248	15,407,997	16,256,329	17,564,159	26,091,493	13,513,328	11,702,344	14,623,772	14,627,511	193,559,082
Pet shops	35,020,504	35,640,415	35,616,401	36,847,341	36,926,148	35,805,167	37,530,232	36,027,100	40,106,068	34,568,137	32,616,206	36,862,122	36,862,122	436,648,403
Religious goods	365,039	438,803	446,658	517,438	457,440	417,249	420,257	264,805	284,263	238,908	211,921	319,640	350,689	4,368,071
Direct sales	219,121,500	213,784,434	207,868,051	215,134,572	197,751,294	222,105,044	220,662,450	195,910,025	207,548,153	204,324,758	191,639,536	220,662,994	208,036,95	

Table 3B Card expenditure statistics (not seasonally adjusted)

Value of credit card transactions

Detailed sector breakdown - services sectors (not seasonally adjusted)

£	April 2014	May 2014	June 2014	July 2014	August 2014	September 2014	October 2014	November 2014	December 2014	January 2015	February 2015	March 2015	April 2015	Total (latest 12 months)
Auto rental	73,548,112	82,369,463	94,113,999	111,012,128	90,745,396	78,363,853	58,552,412	48,692,508	54,932,445	53,938,226	54,282,017	69,628,596	68,194,804	864,825,847
Auto parts & accessories	125,120,967	126,416,416	124,017,222	129,194,006	113,897,510	119,363,198	120,022,023	109,726,143	111,025,849	113,207,752	110,531,460	135,598,016	121,414,450	1,434,414,170
Auto services	48,228,522	51,353,681	52,564,626	54,579,279	48,809,353	54,337,861	53,613,594	48,147,706	45,894,314	49,869,612	50,257,566	60,077,183	53,474,490	622,979,265
Auto repair shops	218,814,050	225,011,258	223,964,595	231,713,269	209,389,099	225,962,531	224,056,040	201,589,254	208,482,759	207,919,317	208,482,759	258,072,628	217,481,848	2,622,027,912
Service stations	0	0	0	0	0	0	0	0	0	0	0	0	0	0
Vehicle sales	215,349,198	220,996,349	220,283,134	220,760,758	202,783,521	232,060,652	212,516,300	184,412,977	171,391,186	199,049,409	210,546,259	292,480,814	222,772,331	2,590,053,690
Vehicle Sales & Services	681,060,849	706,147,167	714,943,576	747,259,440	665,624,879	710,088,095	668,760,369	592,568,588	571,629,108	623,984,316	634,100,061	815,857,237	683,338,048	8,134,300,884
Restaurants	580,917,429	621,777,239	633,174,889	659,210,292	659,684,635	646,844,400	663,818,230	637,331,308	759,799,380	545,233,839	570,225,917	668,736,730	644,233,879	7,710,070,738
Public houses	115,411,227	117,879,724	122,798,677	127,537,625	127,704,874	127,479,808	119,903,789	112,072,072	146,534,509	94,077,176	101,058,649	125,477,614	123,782,213	1,446,306,730
Catering services	54,533,751	60,598,473	60,675,748	63,684,776	55,635,879	62,663,706	63,281,037	61,459,408	66,497,467	54,074,715	54,569,706	63,873,016	59,888,282	726,902,213
Video stores	2,261,150	2,348,500	2,893,659	2,901,796	2,663,357	2,891,445	2,768,157	2,523,620	2,999,706	3,879,544	3,343,255	3,593,039	35,625,998	35,625,998
Cinema, theatre & dance	112,657,783	132,665,675	119,131,514	119,388,936	102,579,651	113,181,974	205,931,162	197,634,394	171,926,046	111,408,926	113,987,005	139,329,568	114,577,998	1,641,742,849
Concerts & entertainers	7,763,325	8,829,733	8,641,609	8,370,622	9,043,936	5,207,668	11,023,193	12,892,572	12,477,003	8,935,985	8,567,270	10,307,836	9,063,746	113,361,173
Tourist attractions	40,082,771	38,007,078	40,631,517	48,980,035	51,252,205	35,106,643	34,045,806	21,732,058	23,256,908	20,410,540	24,245,439	31,103,106	40,376,927	409,148,262
Amusement parks	4,961,353	4,084,082	4,930,070	6,349,972	7,703,384	4,005,529	4,399,807	2,230,457	1,857,239	1,676,325	2,255,784	3,030,587	5,250,113	47,773,349
Aquariums	2,002,690	1,581,409	1,485,135	2,814,502	3,943,144	2,409,727	1,919,755	1,179,459	1,250,382	925,954	1,433,372	1,674,159	2,887,754	23,504,752
Sports & games establishments	125,035,573	167,602,097	114,849,075	104,744,007	96,960,646	117,658,987	109,176,954	109,091,983	121,668,881	118,490,535	102,072,698	136,642,411	135,099,655	1,434,057,929
Professional sports clubs	15,130,702	26,683,825	16,607,340	15,291,950	10,691,386	11,450,186	11,124,829	11,103,361	8,579,596	8,582,022	8,135,903	10,656,449	11,487,953	150,394,800
Gambling	117,565,543	115,106,721	124,598,989	103,941,677	113,338,909	132,004,079	124,596,142	119,267,515	135,445,847	127,598,773	202,052,234	137,063,112	128,713,288	1,483,727,286
Personal services	18,296,684	19,327,548	19,008,682	19,446,422	18,363,654	19,064,605	20,914,954	22,294,337	25,917,447	19,558,370	17,910,331	20,768,373	19,615,505	242,190,228
Miscellaneous entertainment	187,482,954	208,694,754	178,643,414	183,553,044	182,933,722	209,962,865	225,567,033	191,940,755	141,733,847	223,545,357	198,833,405	218,182,345	209,875,415	2,373,465,956
Entertainment	1,384,102,935	1,525,186,858	1,448,070,318	1,466,215,656	1,442,499,382	1,489,931,622	1,598,470,848	1,502,753,299	1,619,944,258	1,337,338,437	1,329,227,257	1,570,188,561	1,508,445,767	17,838,272,263
Hotels	803,486,127	914,465,945	966,043,516	1,003,226,810	916,445,630	986,513,547	963,222,549	846,621,742	756,807,809	737,230,794	752,782,342	889,122,782	861,624,492	10,614,107,958
Airlines	742,919,231	778,726,857	671,540,382	651,187,587	597,040,030	665,502,522	649,880,195	543,328,546	474,680,419	773,422,497	668,117,366	759,758,337	696,684,510	7,929,869,249
Airport terminals	3,416,536	3,804,065	4,508,972	4,431,939	3,788,854	4,240,768	3,294,833	2,719,452	2,852,456	2,746,387	2,640,467	3,521,125	3,481,883	42,030,801
Railways	233,271,637	242,531,016	252,912,204	255,468,602	217,549,378	276,100,090	272,763,727	254,399,706	278,925,739	263,179,567	230,053,022	257,726,214	242,615,341	3,044,224,606
Buses	30,271,761	32,472,211	31,713,585	33,019,772	30,199,212	33,171,314	30,389,255	27,203,037	25,540,035	24,451,133	23,911,767	28,988,238	29,215,197	350,274,756
Sea travel	59,878,362	69,077,971	64,442,498	70,374,017	76,742,237	75,808,020	66,165,641	50,651,581	49,128,488	67,095,708	58,189,740	70,148,351	66,313,414	784,137,666
Travel agents	581,711,202	647,465,196	627,677,776	631,748,563	550,052,306	539,173,392	510,317,523	412,919,856	398,378,747	639,088,554	566,364,287	642,166,274	604,399,199	6,769,751,673
Timeshares	2,958,426	2,943,246	2,592,768	2,885,021	2,831,060	2,830,522	3,032,210	2,713,733	2,718,706	3,523,185	2,584,235	2,500,377	2,294,401	33,449,464
Camping grounds	30,148,707	35,962,649	38,520,283	42,821,832	34,682,590	21,546,869	18,718,294	21,811,340	16,341,278	22,222,828	23,055,748	31,371,898	30,947,706	338,003,315
Miscellaneous travel	61,425,838	67,589,497	72,506,909	71,499,540	60,566,622	62,530,702	66,106,587	58,878,017	54,600,581	63,898,347	62,805,893	74,499,409	70,642,886	786,124,990
Travel	1,746,001,700	1,880,572,708	1,766,415,377	1,763,436,873	1,573,452,289	1,680,904,199	1,620,668,265	1,374,625,268	1,303,166,449	1,859,628,206	1,637,722,525	1,870,680,223	1,746,594,137	20,077,866,519
Telegraph services / Wire transfer money order	2,759,232	2,795,530	2,405,476	2,741,470	2,532,889	2,569,807	2,842,173	2,978,561	3,287,459	3,365,047	3,496,754	3,982,978	3,872,588	36,870,732
Insurance services	290,878,137	282,987,075	292,115,474	312,260,894	287,833,938	310,804,423	290,551,150	252,460,942	240,949,757	272,825,674	259,675,170	324,846,464	287,961,275	3,415,272,236
FIs - cash disbursements (auto & manual)	7,730,038	8,601,183	8,358,129	8,518,831	8,047,738	9,091,408	8,330,810	7,367,465	7,224,181	7,247,564	6,773,306	8,608,247	7,495,234	95,664,096
FIs - merchandise & services	37,629,065	40,263,145	40,336,412	40,745,012	35,943,068	38,961,472	36,652,587	29,242,791	29,281,741	31,284,029	32,605,460	50,628,050	34,293,254	440,237,021
Non-FIs - foreign currency, travellers' cheques	39,617,132	52,449,305	58,449,237	62,213,572	59,635,435	55,732,886	38,432,915	27,874,108	29,001,107	35,203,834	43,626,991	58,810,708	50,041,407	571,471,505
Security brokers and dealers	6,336,903	6,395,005	4,658,761	5,509,875	5,241,842	5,737,474	8,192,798	6,250,957	7,114,040	8,519,552	5,868,259	14,493,425	8,882,213	86,864,201
Tax preparation services	111,941	121,457	131,353	148,679	149,129	130,259	207,030	161,889	394,432	157,630	292,548	220,373	2,178,957	2,178,957
Tax payments	15,278,119	14,410,202	11,955,451	13,806,551	13,506,635	14,929,731	11,874,173	12,248,303	10,969,102	20,861,959	24,853,350	35,885,269	29,681,889	214,982,414
Fines, bail and bond payments	10,555,086	11,901,981	11,928,767	12,555,496	11,235,928	11,036,945	11,636,926	10,607,681	8,613,982	9,575,720	9,036,614	10,075,503	8,758,899	126,964,442
Miscellaneous financial	15,885,595	16,168,725	16,914,921	17,449,825	15,528,954	16,433,695	18,229,330	16,850,481	15,170,926	16,102,549	15,997,984	18,249,952	18,249,952	202,929,335
Financial	426,781,248	436,093,608	447,253,981	475,950,205	439,655,566	465,428,100	426,949,892	366,043,178	351,676,473	405,143,558	402,328,320	527,455,185	449,456,883	5,193,434,939

Table 3B Card expenditure statistics (not seasonally adjusted)

Value of credit card transactions

Detailed sector breakdown - services sectors (continued, not seasonally adjusted)

£	April 2014	May 2014	June 2014	July 2014	August 2014	September 2014	October 2014	November 2014	December 2014	January 2015	February 2015	March 2015	April 2015	Total (latest 12 months)
Telecoms	79,865,009	81,403,348	77,569,528	82,448,037	83,422,828	96,641,240	94,772,998	93,006,909	98,948,665	91,611,814	78,255,896	86,429,069	79,347,631	1,043,857,963
Utilities	68,629,657	69,523,674	61,936,138	62,289,768	54,211,364	61,963,440	64,056,758	56,856,139	55,353,768	65,155,904	65,017,366	83,987,124	73,493,356	773,844,799
Contractors (residential & commercial)	82,573,296	86,487,430	86,117,366	92,147,402	81,528,719	94,883,075	98,694,498	92,082,103	80,121,717	84,509,420	86,282,461	102,083,505	88,392,236	1,073,329,932
Gardening services	7,517,285	9,664,030	6,982,163	6,275,897	5,017,001	6,573,559	4,728,733	4,437,731	5,846,686	3,014,602	3,767,431	7,346,597	7,288,044	70,942,474
Veterinary services	57,673,503	59,900,503	60,771,206	66,375,910	61,770,331	63,422,557	64,732,297	58,803,201	59,680,217	59,911,478	55,346,567	63,561,259	61,269,392	735,544,918
Photocopying & printing	34,050,175	36,078,172	35,136,309	35,654,143	33,813,133	37,791,849	41,280,237	40,425,799	37,982,605	38,140,886	36,234,842	38,633,424	33,723,427	444,894,826
Photographic studios	6,866,016	7,491,782	7,800,370	9,067,167	7,691,483	7,139,242	8,628,097	9,798,565	10,636,572	5,979,146	7,239,215	7,128,343	94,427,757	
Beauty & barber shops	84,244,621	90,206,210	89,203,223	93,485,479	86,817,366	89,593,455	91,488,717	90,824,734	116,659,521	79,056,700	78,904,295	92,499,233	89,240,431	1,087,979,364
Employment agencies	24,241,512	22,938,905	30,456,453	28,668,084	24,595,673	24,896,795	29,760,796	27,415,997	26,708,354	23,137,091	26,565,118	33,057,723	24,072,192	322,273,181
Counselling services	1,142,244	1,582,077	1,263,472	1,270,125	1,243,211	1,348,774	1,638,767	1,147,901	1,804,258	1,568,525	1,631,747	1,599,598	1,631,747	17,643,417
Legal services	21,696,628	22,201,956	22,570,059	23,783,781	20,993,270	23,055,090	25,849,305	21,556,756	20,352,654	21,621,482	22,605,803	26,135,867	22,550,631	273,276,654
Laundry & cleaning	6,479,024	6,915,449	7,469,799	7,525,373	6,707,533	7,466,319	7,503,475	6,999,898	6,589,508	6,418,196	5,905,279	6,828,995	6,740,501	83,070,325
Funeral services	13,912,422	13,309,894	12,932,821	14,325,266	12,264,028	13,984,825	14,944,016	14,620,960	14,741,102	16,905,013	16,188,497	18,694,124	15,762,885	178,673,431
Medical services	166,448,179	173,828,222	177,204,678	183,148,976	158,135,538	177,104,795	190,514,834	176,710,591	160,247,893	172,838,768	173,843,078	196,157,544	177,588,822	2,117,323,739
Moving & courier services	40,995,667	44,753,025	43,390,225	47,495,182	42,711,314	44,162,345	46,051,396	43,645,087	42,254,825	41,187,269	41,122,236	46,193,815	42,461,062	525,427,781
Repair shops (not auto)	9,336,817	9,790,225	10,282,763	10,737,323	9,889,358	10,388,034	11,643,854	11,388,780	12,435,217	10,093,607	10,245,809	12,106,121	10,439,541	129,440,632
Accounting services	6,799,732	6,474,576	6,479,405	7,049,208	6,494,220	7,565,507	7,724,817	7,523,946	8,599,594	10,096,395	8,945,675	9,487,691	7,183,947	93,624,981
Advertising, consultancy & PR	7,798,574	8,111,265	7,707,853	8,286,333	7,186,784	7,816,479	8,367,861	7,092,562	6,795,343	7,730,480	7,573,611	8,906,992	7,780,238	93,355,801
Computer programming	83,577,570	83,679,438	86,506,565	88,195,049	81,470,301	91,193,639	108,359,998	128,369,053	146,022,163	111,229,634	97,338,559	112,082,133	104,901,089	1,239,347,621
Farming services	10,750,685	11,263,990	11,288,639	11,890,564	10,873,732	11,315,288	11,782,430	10,457,731	11,254,931	10,432,069	9,699,281	12,205,228	10,960,132	133,424,015
Miscellaneous professional services	156,645,040	157,574,269	159,293,403	163,657,160	156,012,835	184,092,288	177,132,251	160,748,512	154,357,611	173,046,539	162,447,485	194,587,909	167,738,108	2,010,688,370
Engineering services	15,035,320	15,492,457	16,135,800	17,093,798	16,135,800	15,311,967	17,273,640	14,214,895	13,242,871	14,522,675	14,814,207	16,861,550	14,959,434	184,451,632
Marina services	11,363,904	11,021,165	11,574,879	12,227,972	10,556,994	8,821,591	7,002,059	5,458,747	5,636,031	6,664,806	6,175,257	11,133,626	10,749,094	107,022,221
Wrecking & salvage yards	781,021	743,745	795,734	865,882	721,356	863,294	849,871	760,361	659,424	733,703	815,137	1,005,827	890,164	9,704,498
Pest control	518,014	598,064	609,471	743,813	577,849	691,170	768,440	641,360	668,535	650,935	624,527	668,748	641,273	7,884,185
Educational establishments	124,398,717	127,630,893	114,977,779	123,739,956	144,881,445	315,278,800	196,945,112	111,474,301	109,713,169	211,296,796	123,127,607	124,977,535	149,783,534	1,853,826,927
Child care services	2,422,096	2,564,515	2,657,791	2,835,945	2,439,354	2,711,790	2,737,050	2,434,069	2,386,321	2,695,517	2,598,952	3,018,286	2,629,973	31,709,563
Social, political & religious organisations	80,889,229	79,951,690	78,115,825	84,129,399	76,303,662	90,849,072	93,731,593	81,573,597	94,118,627	92,682,804	80,679,891	103,708,378	89,371,245	1,045,215,783
Government services	263,354,208	266,172,757	259,322,352	283,092,549	269,894,839	276,352,498	256,544,338	227,249,618	244,263,188	350,285,408	292,006,631	287,549,251	279,103,062	3,291,836,491
Miscellaneous services	86,535,492	87,268,932	97,670,345	93,625,945	80,170,283	92,228,377	94,346,652	82,274,910	101,961,666	80,743,357	76,663,930	99,733,735	85,854,180	1,072,542,312
Commercial equipment	132,936,953	131,964,752	127,572,885	137,804,305	121,963,187	134,744,019	141,904,325	130,932,437	115,811,389	123,967,902	122,044,476	148,559,408	125,864,205	1,563,133,290
Other services	1,689,478,610	1,726,587,410	1,711,795,299	1,799,935,791	1,674,335,088	2,000,803,414	1,921,759,215	1,720,927,250	1,765,854,425	1,917,777,550	1,713,364,012	1,957,039,510	1,799,539,919	21,709,718,883
Total services	6,730,911,469	7,189,053,696	7,074,522,067	7,256,024,775	6,712,012,824	7,333,668,977	7,199,831,138	6,403,539,325	6,369,078,522	6,881,102,861	6,469,524,517	7,630,343,498	7,048,999,246	83,567,701,446
TOTAL	13,704,970,529	14,332,213,536	14,297,939,581	14,530,418,455	13,654,417,626	14,554,291,600	14,820,506,046	14,210,825,654	16,006,358,421	13,491,803,442	12,614,090,483	15,018,935,892	14,175,593,794	171,707,394,539

Table 3C Card expenditure statistics (not seasonally adjusted)

Number of debit card transactions

Detailed sector breakdown - retail sectors (not seasonally adjusted)

Historical data located in hidden columns

	April 2014	May 2014	June 2014	July 2014	August 2014	September 2014	October 2014	November 2014	December 2014	January 2015	February 2015	March 2015	April 2015	Total (latest 12 months)
Supermarkets	259,596,708	269,161,332	273,496,936	273,796,584	255,394,111	272,893,545	279,762,517	267,523,289	292,824,915	254,198,514	250,603,025	292,631,442	273,954,061	3,256,240,271
Bakers & dairies	2,136,296	2,426,053	2,403,279	2,600,648	2,690,670	2,800,044	3,247,832	3,322,286	3,368,221	2,941,667	3,013,084	3,617,222	3,418,100	35,849,106
Sweet stores	1,214,703	970,669	1,001,563	950,059	1,011,398	1,003,917	1,143,518	1,260,132	2,164,422	859,699	1,148,723	1,421,883	1,274,670	14,210,653
Miscellaneous foodstores	15,633,260	16,128,968	16,387,687	16,591,936	15,550,854	16,398,981	16,684,431	15,662,884	17,357,667	14,915,784	15,358,991	17,829,802	17,196,385	196,064,370
Off-licences	3,290,259	3,530,437	3,579,031	3,618,981	3,460,419	3,420,106	3,484,176	3,441,042	3,871,355	3,051,911	3,094,775	3,538,729	3,482,825	41,573,787
Food & drink	281,671,226	292,217,453	296,868,496	297,558,208	278,107,452	296,516,593	304,322,474	291,209,633	319,586,580	275,967,575	273,218,598	319,039,078	299,326,041	3,543,938,187
Department stores	11,828,910	12,528,112	13,231,106	13,963,452	12,594,426	12,399,135	13,138,406	15,631,934	25,893,752	13,101,192	11,248,213	13,237,827	12,873,556	169,841,111
Discount stores	11,545,306	11,987,176	12,058,499	12,390,457	12,460,128	12,274,310	13,741,707	15,301,524	20,157,519	11,872,444	11,619,472	13,506,001	12,991,185	160,360,422
Catalogues	3,497,790	2,853,696	2,464,569	2,515,604	2,401,435	2,665,625	2,767,181	2,809,874	3,319,722	2,851,786	2,506,862	2,896,947	2,710,404	32,763,705
Miscellaneous mixed	7,854,741	8,089,967	8,636,963	8,514,428	7,872,264	8,469,331	8,939,562	9,448,904	14,256,485	7,115,022	8,850,959	8,469,223	8,469,223	105,642,158
Mixed business	34,726,747	35,458,951	36,391,137	37,383,941	35,328,253	35,808,401	38,586,856	43,192,236	63,627,478	34,804,472	32,489,569	38,491,734	37,044,368	468,607,396
Men's clothing	621,229	652,354	742,556	827,327	777,455	647,310	662,187	716,662	1,332,242	696,913	577,998	591,086	669,243	8,893,333
Women's clothing	5,860,403	6,617,555	6,993,234	7,526,514	6,278,953	6,333,969	6,053,736	5,991,468	10,097,167	5,506,091	5,087,194	6,284,045	6,472,963	79,242,889
Women's clothing	26,592,507	28,434,307	30,464,565	31,849,288	27,783,290	27,940,984	29,409,993	29,481,022	46,284,077	24,797,559	22,268,667	27,742,670	28,605,405	355,061,827
Miscellaneous clothing	652,579	752,922	883,615	893,750	819,822	794,591	918,932	803,420	1,175,558	603,296	595,437	780,258	692,631	9,714,232
Shoe shops	2,765,338	2,922,538	3,369,393	3,519,976	3,478,018	3,111,301	2,819,006	2,542,765	3,878,014	2,640,648	2,047,864	2,412,242	3,038,055	35,779,820
Clothing	36,492,056	39,379,676	42,453,363	44,616,855	39,137,538	38,828,155	39,863,854	39,535,337	62,767,058	34,244,507	30,577,160	37,810,301	39,478,297	488,692,101
Furniture stores	3,378,686	3,472,270	3,459,739	3,471,440	3,583,506	3,621,676	3,471,155	3,967,890	5,048,472	3,903,783	3,396,810	3,867,413	3,567,606	45,467,760
Household appliance stores	5,666,845	5,903,094	5,781,493	5,919,937	6,073,481	6,062,765	6,428,661	6,660,096	7,770,250	5,979,010	5,654,004	6,456,996	6,122,009	74,811,796
Electronic stores	2,101,982	2,102,715	2,066,546	2,151,381	2,221,485	2,385,798	2,455,702	2,504,838	4,015,631	2,633,044	2,183,398	2,325,617	2,211,293	29,257,448
DIY stores	18,911,642	19,256,745	18,628,043	18,736,289	18,415,445	18,355,694	18,343,457	18,256,075	18,343,457	16,100,856	16,100,856	19,309,364	20,963,207	221,105,384
Floor covering stores	308,981	302,216	301,300	316,367	329,233	346,583	383,008	375,980	301,685	306,884	314,111	361,385	330,897	3,969,649
Garden centres	4,906,206	5,333,356	4,529,984	4,529,984	3,635,157	3,173,766	3,277,521	3,583,759	3,377,521	2,262,888	2,539,178	4,339,289	5,474,395	46,437,346
Miscellaneous household	1,647,611	1,558,090	1,554,953	1,689,164	1,895,981	2,022,218	2,013,869	1,876,129	2,215,466	1,880,523	1,760,032	1,941,783	1,771,255	22,179,463
Household	36,921,953	37,928,486	36,322,058	35,919,735	35,692,897	36,076,426	37,418,015	37,364,032	42,601,322	32,914,977	31,948,389	38,601,847	40,440,662	443,228,846
Books, newspapers & magazines	6,204,725	6,497,341	6,798,841	6,916,640	6,641,671	7,508,688	7,528,489	7,280,113	11,280,612	6,356,715	6,513,488	7,604,793	6,765,944	87,693,335
Record shops	756,910	711,530	765,673	689,414	701,366	747,844	796,417	966,162	2,687,290	718,729	695,442	831,979	687,078	10,998,924
Music shops	231,919	236,612	221,311	230,937	274,737	267,287	283,881	417,475	241,071	260,376	249,951	223,401	3,125,199	
Hobbies, toys & games	1,554,135	1,646,338	1,618,423	1,668,506	1,745,255	2,086,151	2,260,925	3,049,742	4,933,306	1,631,007	1,632,307	1,834,549	1,702,651	25,809,160
Photographic	297,179	316,941	338,433	356,822	345,673	366,087	339,112	376,067	367,601	291,614	294,478	329,913	256,797	3,979,538
Handicraft	200,598	198,717	200,235	207,796	217,528	207,964	217,528	238,265	241,074	211,107	234,898	211,107	198,626	2,552,648
Sports shops	7,859,893	8,562,399	9,148,920	9,707,109	9,649,494	8,849,942	8,027,783	7,735,756	11,281,857	7,619,018	7,095,665	8,241,644	8,927,291	104,846,878
Jewellers	1,368,679	1,451,928	1,527,590	1,562,405	1,467,472	1,450,252	1,443,249	1,813,149	3,842,573	1,393,571	1,435,147	1,637,212	1,314,682	20,339,230
Computer software	362,957	353,082	340,796	353,743	348,707	389,464	393,311	376,240	477,794	385,806	334,747	354,355	328,183	4,436,228
Medical goods	42,584	44,335	44,907	48,725	44,507	46,749	48,375	45,016	41,959	42,223	42,185	47,553	45,277	541,811
Chemists	17,559,579	18,437,845	19,587,787	19,758,581	17,488,552	19,450,830	19,578,135	18,371,253	28,461,493	17,712,011	17,505,228	21,068,420	19,332,102	236,742,237
Optical goods	968,040	998,136	1,029,925	1,055,734	953,822	1,033,616	1,014,705	913,091	860,063	952,197	985,688	1,151,739	1,053,896	12,002,612
Cosmetic stores	1,380,248	1,472,862	1,599,918	1,550,576	1,501,452	1,640,674	1,767,641	2,001,459	4,045,071	1,401,760	1,527,031	1,833,026	1,627,151	21,968,621
Tobacconists	176,345	192,565	206,462	215,994	212,046	228,817	246,385	236,185	288,166	280,813	277,465	328,157	319,011	3,032,066
Florists	801,305	830,777	836,238	839,158	735,210	811,672	786,866	729,732	1,218,653	655,313	1,061,424	1,420,962	817,257	10,743,262
Artists' supplies	747,768	745,150	724,536	743,185	763,969	803,391	922,982	962,713	1,154,945	703,946	938,238	741,849	987,851	9,987,851
Antiques, art & stamps/coins	286,228	300,027	289,398	304,928	341,750	330,178	323,892	327,041	415,939	260,380	273,826	304,210	286,676	3,758,245
Pawn shops	24,445	25,649	24,347	28,138	27,751	27,988	28,111	28,100	40,701	27,881	27,156	29,013	28,177	343,012
Gift shops	4,579,175	4,788,006	5,819,554	5,417,698	5,460,893	5,640,771	6,026,975	7,042,007	13,299,628	4,938,619	6,099,934	7,237,180	5,301,180	77,072,445
Secondhand shops	70,218	73,558	71,929	77,639	76,229	78,822	80,614	75,281	95,126	69,261	70,066	80,378	77,456	926,359
Luggage & leather goods	137,362	145,617	159,918	170,609	179,732	154,063	158,218	183,014	276,494	134,082	114,031	137,410	126,280	1,939,468
Pet shops	3,065,207	3,197,372	3,149,616	3,253,128	3,358,495	3,253,931	3,275,100	3,698,419	3,228,703	3,391,871	3,063,687	3,459,524	3,332,264	39,662,110
Religious goods	7,089	6,943	6,419	7,656	8,624	6,836	8,651	7,960	8,239	6,049	6,872	7,614	7,310	89,173
Direct sales	6,291,592	6,243,881	6,102,503	6,077,428	5,317,033	4,553,118	5,785,541	5,421,863	5,964,422	5,647,008	5,392,182	6,224,567	5,664,938	68,394,484
Miscellaneous & speciality shops	3,371,261	3,796,870	3,810,493	4,011,946	3,974,965	4,066,803	4,363,372	4,542,648	5,437,776	4,241,242	4,523,655	4,293,472	4,293,472	51,130,415
Other retail	58,345,441	61,274,481	64,415,642	65,246,934	61,770,624	64,011,502	65,837,431	66,281,838	100,811,679	59,154,944	59,750,347	70,100,940	63,458,949	802,115,311
Automotive Fuels	66,577,221	69,312,087	68,898,586	70,761,627	66,861,871	69,266,911	69,582,977	66,052,325	67,044,683	61,562,523	59,997,064	70,278,065	67,601,472	807,220,191
Total retail sales	514,934,644	535,571,140	545,349,282	551,487,300	516,898,635	540,507,988	555,611,607	543,635,401	656,438,800	498,648,998	487,981,127	574,321,965	547,349,789	6,553,802,032

Table 3C Card expenditure statistics (not seasonally adjusted)

Number of debit card transactions

Detailed sector breakdown - services sectors (not seasonally adjusted)

	April 2014	May 2014	June 2014	July 2014	August 2014	September 2014	October 2014	November 2014	December 2014	January 2015	February 2015	March 2015	April 2015	Total (latest 12 months)
Auto rental	571,075	549,962	511,189	574,744	550,032	527,332	465,783	417,682	419,694	415,138	435,517	508,375	504,159	5,879,607
Auto parts & accessories	1,667,056	1,664,747	1,651,354	1,730,875	1,588,748	1,648,160	1,647,237	1,514,437	1,531,135	1,579,170	1,587,489	1,799,368	1,726,608	19,669,328
Auto services	4,487,784	4,782,190	4,782,825	5,024,773	4,789,594	5,128,547	5,616,648	5,320,118	5,964,368	5,149,588	5,275,222	6,077,942	5,785,540	63,697,355
Auto repair shops	1,797,303	1,826,776	1,812,948	1,905,695	1,720,330	1,848,396	1,856,634	1,663,458	1,542,237	1,746,028	1,753,918	2,091,164	1,906,238	21,673,822
Service stations	0	0	0	0	0	0	0	0	0	0	0	0	0	0
Vehicle sales	1,255,002	1,273,343	1,278,210	1,324,569	1,219,825	1,311,194	1,205,260	1,049,459	962,902	1,105,714	1,155,848	1,465,026	1,341,802	14,693,152
Vehicle Sales & Services	9,778,220	10,097,018	10,036,526	10,560,656	9,868,529	10,463,629	10,791,562	9,965,154	10,420,336	9,995,638	10,207,994	11,941,875	11,264,347	125,613,264
Restaurants	69,295,822	75,353,755	74,151,715	74,812,624	76,083,571	77,606,102	83,012,359	80,466,764	85,666,613	75,513,198	79,664,306	93,301,821	89,126,203	964,759,031
Public houses	11,856,817	11,638,217	11,714,961	11,670,551	11,574,428	12,055,485	11,585,025	11,036,808	12,468,354	10,212,995	11,320,877	14,036,214	14,008,762	143,322,677
Catering services	1,886,666	2,082,031	2,037,476	2,120,335	1,926,216	2,314,161	2,685,659	2,604,738	2,410,320	2,482,732	2,700,295	3,140,375	2,765,605	29,269,943
Video stores	154,908	122,626	73,760	46,928	47,551	47,199	47,509	47,156	47,509	51,351	66,512	59,067	56,885	721,062
Cinema, theatre & dance	4,716,537	5,160,770	4,562,126	4,873,241	6,209,387	4,311,896	5,733,618	5,717,666	6,642,095	5,765,654	6,036,490	5,141,929	6,197,420	66,352,292
Concerts & entertainers	335,333	350,049	289,210	310,695	386,039	159,919	402,515	426,241	449,456	401,611	386,719	390,877	383,943	4,337,274
Tourist attractions	1,306,169	1,095,886	1,070,116	1,310,357	1,898,813	1,140,476	1,140,476	709,782	793,013	529,358	793,013	911,558	1,469,334	12,794,832
Amusement parks	350,416	300,739	328,108	380,112	549,455	343,091	327,845	168,492	111,778	96,927	169,731	194,669	404,226	3,375,173
Aquariums	161,927	130,093	117,848	169,069	263,153	188,208	131,313	77,930	66,836	67,071	119,314	135,747	225,420	1,692,002
Sports & games establishments	3,815,771	3,861,019	3,440,500	3,675,345	3,870,425	3,914,317	4,187,202	3,636,597	3,967,071	4,389,649	4,019,863	4,511,540	4,352,707	47,826,235
Professional sports clubs	258,538	267,310	212,593	255,782	272,466	276,756	252,951	249,731	257,602	220,085	209,543	253,113	244,215	2,972,147
Gambling	25,766,034	21,977,161	25,177,786	21,403,614	20,966,584	23,757,889	25,015,915	22,386,666	26,904,005	24,367,306	24,986,052	31,782,416	30,031,781	298,757,175
Personal services	456,477	493,431	475,407	467,809	434,254	440,977	419,980	387,487	407,952	427,952	519,682	519,682	498,436	5,415,520
Miscellaneous entertainment	999,790	964,995	863,771	1,008,098	1,487,587	1,042,320	1,109,222	804,167	736,564	896,675	1,035,854	1,057,060	1,182,248	12,188,561
Entertainment	121,361,205	123,798,082	124,515,377	122,504,560	125,969,929	127,598,796	136,054,818	128,720,225	140,901,319	125,402,564	131,935,001	155,436,068	150,947,185	1,593,783,924
Hotels	5,181,268	5,370,721	5,323,968	5,656,517	5,918,404	5,636,711	5,372,816	5,003,321	5,100,211	4,996,340	5,334,147	6,102,734	6,109,018	65,924,908
Airlines	2,213,928	2,413,628	2,359,612	2,338,339	2,212,456	2,300,499	2,191,324	1,808,807	1,733,290	2,597,137	2,229,139	2,575,035	2,714,159	27,473,425
Airport terminals	54,912	59,982	62,610	67,866	62,026	61,780	49,536	34,089	36,909	37,697	40,595	53,123	57,287	623,500
Railways	16,706,410	17,649,599	18,153,909	18,624,503	16,897,538	19,071,062	19,683,575	18,030,141	18,720,621	16,158,919	16,426,762	18,725,686	16,820,810	214,963,125
Buses	1,645,153	1,690,265	1,445,150	1,409,130	1,420,738	1,575,275	1,652,047	1,597,815	1,620,129	1,550,812	1,544,190	1,762,211	1,663,914	18,931,676
Sea travel	190,258	202,021	212,603	245,475	265,161	202,165	178,354	138,973	137,089	135,741	140,035	170,824	193,194	2,221,635
Travel agents	1,894,712	2,022,688	1,913,555	1,991,170	1,823,068	1,712,893	1,523,683	1,256,721	1,166,905	2,207,727	1,981,591	2,293,524	2,032,676	21,926,201
Timeshares	4,608	4,568	4,116	4,727	4,618	4,618	4,815	4,101	4,173	6,764	5,160	5,164	4,479	57,303
Camping grounds	817,190	869,732	832,691	1,060,812	1,234,581	713,371	549,421	276,998	184,658	338,870	405,562	625,477	939,408	8,031,581
Miscellaneous travel	2,353,924	2,659,811	2,653,896	2,977,895	2,452,435	2,778,684	4,202,302	4,819,112	5,378,322	5,847,702	6,151,282	7,381,431	7,543,370	54,846,242
Travel	25,681,095	27,572,294	27,638,142	28,719,917	26,372,621	28,420,347	30,035,057	27,966,757	28,982,096	28,881,369	28,924,316	33,592,475	31,969,297	349,074,688
Telegraph services / Wire transfer money order	146,471	149,461	161,069	166,937	150,752	138,538	117,353	115,836	137,847	123,634	137,039	170,178	165,131	1,733,775
Insurance services	3,412,124	3,489,126	3,472,583	3,819,792	3,555,294	3,702,712	3,498,704	3,014,661	2,791,703	3,151,406	3,125,203	3,792,354	3,505,864	40,919,402
Fls - cash disbursements (auto & manual)	11,492	15,064	16,704	17,619	16,757	15,732	9,845	6,691	10,653	9,317	14,122	20,489	19,431	172,424
Fls - merchandise & services	8,248,421	8,298,816	7,920,829	8,372,814	7,928,399	9,157,384	8,393,281	7,900,393	8,534,787	8,283,497	7,596,859	9,027,795	8,112,134	99,526,988
Non-Fls - foreign currency, travellers' cheques	813,949	979,657	1,069,739	1,159,503	1,099,653	1,062,344	820,268	648,508	711,740	700,129	813,266	973,361	892,426	10,930,594
Security brokers and dealers	246,254	190,061	189,653	166,978	132,593	189,286	246,706	212,362	215,529	235,318	218,662	299,692	307,203	2,603,953
Tax preparation services	686	535	547	572	444	461	499	429	428	686	496	596	517	6,210
Tax payments	117,253	103,547	100,755	118,401	93,669	116,092	116,892	106,133	106,197	531,551	428,290	256,706	207,366	2,285,599
Fines, bail and bond payments	590,644	620,225	568,918	625,940	607,070	584,590	641,353	612,274	566,958	594,854	553,770	625,302	596,625	7,197,879
Miscellaneous financial	188,844	190,284	201,342	213,408	186,729	191,331	182,181	157,462	144,289	135,140	143,363	178,191	195,166	2,118,886
Financial	13,776,138	14,036,776	13,702,049	14,661,964	13,771,360	15,158,470	14,027,082	12,774,749	13,220,131	13,765,532	13,031,070	15,344,664	14,001,863	167,495,710

Table 3C Card expenditure statistics (not seasonally adjusted)

Number of debit card transactions

Detailed sector breakdown - services sectors (continued, not seasonally adjusted)

	April 2014	May 2014	June 2014	July 2014	August 2014	September 2014	October 2014	November 2014	December 2014	January 2015	February 2015	March 2015	April 2015	Total (latest 12 months)
Telecoms	10,278,590	10,568,277	10,234,126	10,954,341	11,160,569	11,681,094	11,780,321	11,357,039	12,148,809	11,629,789	10,521,102	12,061,068	11,344,105	135,440,640
Utilities	2,158,437	2,242,881	2,094,752	2,218,965	2,083,432	2,276,869	2,418,817	2,256,634	2,480,211	2,678,632	2,503,474	2,929,327	2,683,438	28,867,432
Contractors (residential & commercial)	545,106	552,315	557,606	597,324	537,421	612,459	670,798	607,875	562,070	547,242	562,943	625,142	601,716	7,034,911
Gardening services	157,347	164,171	147,617	124,445	101,252	106,560	108,344	103,975	140,570	73,969	82,354	101,250	127,534	1,382,041
Veterinary services	1,701,750	1,765,182	1,780,466	1,972,413	1,895,053	1,889,163	1,976,059	1,772,689	1,770,760	1,728,084	1,629,990	1,838,503	1,785,682	21,804,044
Photocopying & printing	373,089	416,979	391,360	384,199	356,661	423,670	460,159	535,658	604,398	382,083	378,879	431,481	393,955	5,159,482
Photographic studios	332,374	410,768	456,473	486,044	417,460	431,366	499,858	525,261	802,062	391,799	474,816	473,824	473,824	5,752,714
Beauty & barber shops	5,054,308	5,453,333	5,415,809	5,558,664	5,192,212	5,359,335	5,350,502	5,043,651	6,888,108	4,676,643	4,882,139	5,715,413	5,472,792	65,008,601
Employment agencies	7,917	8,272	7,839	8,624	8,167	9,309	9,837	8,722	7,576	9,349	9,603	10,559	10,285	108,142
Counselling services	116,868	117,156	116,602	120,620	112,894	112,894	119,031	112,483	116,972	115,529	109,490	121,866	108,699	1,391,724
Legal services	162,324	163,938	165,113	176,757	154,063	169,200	179,930	157,112	140,671	159,771	166,971	199,461	178,324	2,011,311
Laundry & cleaning	460,837	499,157	527,325	525,677	470,625	533,467	551,180	509,558	490,742	462,576	447,616	508,569	490,085	6,016,577
Funeral services	30,223	30,400	30,181	31,247	28,577	31,534	33,124	31,118	30,841	35,972	36,609	41,096	36,211	396,910
Medical services	2,914,798	2,991,261	2,998,904	3,168,462	2,782,265	3,201,493	3,350,986	3,064,660	2,843,216	3,142,691	3,126,229	3,541,876	3,245,954	37,457,997
Moving & courier services	396,973	423,765	432,456	464,321	419,260	464,824	489,882	471,148	526,211	456,300	432,367	490,131	468,877	5,539,542
Repair shops (not auto)	110,059	112,291	114,738	121,850	117,390	123,952	129,025	137,812	174,218	130,904	133,830	157,423	143,302	1,596,735
Accounting services	271,875	230,544	238,453	251,010	231,333	251,492	268,775	231,651	148,594	85,389	70,902	77,791	66,970	2,152,904
Advertising, consultancy & PR	142,178	144,042	144,159	146,581	135,994	145,241	139,561	121,593	110,063	118,681	126,766	146,433	135,850	1,614,964
Computer programming	654,005	646,474	646,270	659,134	648,013	710,741	704,088	617,304	647,842	581,606	577,952	650,516	611,957	7,701,897
Farming services	304,440	308,659	308,219	298,794	291,132	304,078	307,918	299,254	353,148	298,450	284,838	327,520	320,119	3,702,129
Miscellaneous professional services	2,860,800	2,974,072	2,886,103	3,022,385	2,820,286	3,024,682	3,302,529	3,116,047	3,116,230	3,072,918	3,029,574	3,449,516	3,195,333	37,009,675
Engineering services	85,859	85,827	87,726	91,992	78,890	89,283	95,013	84,044	73,788	75,792	80,033	93,421	89,097	1,024,906
Marina services	117,031	121,866	134,123	153,718	151,192	121,387	88,976	70,120	67,115	61,850	66,513	93,265	129,079	1,259,204
Wrecking & salvage yards	9,004	8,714	8,969	9,492	8,602	9,589	9,785	8,336	7,434	8,971	9,545	11,473	11,160	112,070
Pest control	3,967	4,785	5,062	5,572	4,721	5,099	6,177	5,122	4,473	4,678	4,335	5,011	5,182	60,217
Educational establishments	2,164,707	2,856,070	2,340,428	1,715,559	1,208,582	3,049,501	3,816,832	3,621,829	2,609,438	3,498,325	3,310,473	3,922,400	2,874,351	34,823,788
Child care services	155,196	161,807	135,841	139,486	175,820	152,359	181,283	152,913	147,403	182,927	199,403	197,995	168,684	1,995,921
Social, political & religious organisations	2,941,328	3,186,590	3,095,769	3,145,597	2,955,636	3,363,071	3,328,228	2,942,952	2,857,263	2,450,511	2,612,807	3,517,201	3,549,280	37,004,905
Government services	7,838,609	7,983,161	7,860,442	8,181,059	7,779,389	8,095,263	8,462,613	7,343,485	7,193,867	8,325,906	7,818,717	8,815,378	8,775,760	96,635,040
Miscellaneous services	6,287,381	6,321,630	6,407,045	6,607,017	5,816,837	6,422,663	6,240,787	5,851,109	8,560,998	5,740,889	5,561,665	6,704,839	6,300,525	76,536,004
Commercial equipment	1,554,977	1,624,712	1,546,616	1,562,688	1,516,204	1,869,529	1,799,133	1,642,893	1,776,722	1,622,563	1,505,282	1,664,690	1,538,269	19,669,301
Other services	50,192,357	52,579,099	51,316,592	52,904,037	49,659,932	55,048,655	56,879,551	52,804,047	57,401,813	52,750,789	50,665,384	58,925,430	55,336,399	646,271,728
Total services	226,170,283	233,453,990	232,532,654	235,007,651	231,560,775	242,326,608	253,160,886	237,234,253	256,025,906	235,792,232	240,097,912	281,343,246	269,628,109	2,948,164,222
TOTAL	741,104,927	769,025,130	777,881,936	786,494,951	748,459,410	782,834,596	808,772,493	780,869,654	912,464,706	734,441,230	728,079,039	855,665,211	816,977,898	9,501,966,254

Table 3D Card expenditure statistics (not seasonally adjusted)

Value of debit card transactions

Detailed sector breakdown - retail sectors (not seasonally adjusted)

Historical data located in hidden columns

£	April 2014	May 2014	June 2014	July 2014	August 2014	September 2014	October 2014	November 2014	December 2014	January 2015	February 2015	March 2015	April 2015	Total (latest 12 months)
Supermarkets	6,527,340,437	6,652,810,297	6,748,597,784	6,616,484,371	6,304,309,023	6,630,783,495	6,692,161,190	6,580,476,684	8,039,775,018	5,990,089,745	5,814,712,649	6,839,213,902	6,391,174,148	79,300,588,306
Bakers & dairies	16,569,483	18,069,213	17,947,250	19,473,384	19,893,601	20,096,804	22,196,770	22,135,962	24,360,695	19,459,633	20,037,553	23,996,915	23,085,621	250,753,401
Sweet stores	18,624,344	13,133,239	13,980,446	13,769,757	14,194,693	14,208,186	15,889,329	19,038,530	35,662,834	11,301,323	14,774,015	20,038,115	17,721,712	203,712,179
Miscellaneous foodstores	295,740,516	301,074,468	303,879,690	306,501,427	304,222,495	291,734,971	30,472,191	295,039,398	374,946,070	282,673,215	284,513,667	326,940,090	317,175,118	3,696,172,800
Off-licences	79,968,648	83,060,746	84,188,869	86,659,170	83,061,343	80,600,097	82,382,139	84,936,269	122,179,270	70,538,706	72,358,454	83,007,928	84,069,874	1,017,042,865
Food & drink	6,938,243,428	7,068,147,963	7,168,594,039	7,042,888,109	6,713,193,631	7,049,911,077	7,120,101,619	7,001,626,843	8,596,923,887	6,374,062,622	6,206,396,338	7,293,196,950	6,833,226,473	84,468,269,551
Department stores	451,626,372	480,297,475	510,910,010	507,627,697	469,331,801	480,721,355	513,042,310	643,377,504	477,980,154	1,060,237,689	412,641,930	499,298,009	485,490,447	6,540,956,381
Discount stores	373,211,086	387,677,059	386,283,193	387,274,661	394,399,831	401,300,564	443,055,148	541,363,563	709,579,959	375,150,216	360,722,893	412,120,960	398,538,877	5,197,466,924
Catalogues	150,961,809	133,970,324	126,033,518	127,431,829	121,752,832	138,291,950	139,486,035	134,517,646	153,010,234	142,003,227	125,344,338	146,829,077	134,245,427	1,622,916,437
Miscellaneous mixed	231,306,125	242,037,789	255,600,185	250,113,715	237,247,756	262,798,740	282,677,924	308,195,612	454,734,523	197,323,326	205,296,026	258,621,848	251,688,129	3,206,335,580
Mixed business	1,207,105,392	1,243,962,647	1,278,826,906	1,272,447,902	1,222,732,220	1,283,112,616	1,378,261,417	1,627,454,325	2,377,562,405	1,192,456,923	1,104,005,187	1,316,869,894	1,269,962,880	16,567,675,322
Men's clothing	41,058,431	43,541,157	48,523,430	48,915,921	46,146,864	42,473,258	44,918,112	47,526,211	79,747,548	41,370,051	35,036,085	41,071,944	43,799,938	563,070,519
Women's clothing	226,753,720	250,576,095	269,021,588	268,099,398	225,613,476	243,336,002	247,990,473	245,230,260	373,295,490	204,462,181	196,538,907	244,619,953	251,670,358	3,020,453,740
Family clothing	888,884,663	937,902,853	974,784,978	973,117,127	892,706,958	937,042,842	1,007,830,372	1,033,400,170	1,568,372,019	749,464,232	720,581,201	912,324,083	955,338,338	11,642,865,173
Miscellaneous clothing	27,591,089	31,237,327	37,352,187	35,811,964	33,257,447	31,969,488	35,797,383	33,913,508	43,693,859	25,345,273	24,034,891	30,883,448	30,552,534	393,849,309
Shoe shops	122,632,843	126,349,831	136,896,197	132,702,001	150,545,117	140,535,067	141,945,771	132,089,058	196,767,051	114,349,674	91,594,480	111,479,643	135,474,347	1,610,728,237
Clothing	1,306,920,746	1,389,607,263	1,466,578,380	1,458,646,411	1,348,269,862	1,395,356,657	1,478,482,111	1,492,159,207	2,261,875,526	1,134,991,411	1,067,785,564	1,340,379,071	1,396,835,515	17,230,966,978
Furniture stores	350,578,563	357,323,975	349,569,585	367,500,727	369,486,498	393,652,362	440,568,399	417,952,825	397,566,575	412,947,887	363,970,696	412,549,965	385,323,560	4,668,413,054
Household appliance stores	229,719,733	230,386,586	221,407,689	224,364,036	219,771,247	224,840,589	245,607,089	255,440,198	284,497,125	240,578,161	229,105,704	258,931,450	238,154,310	2,873,084,184
Electronic stores	224,140,656	218,768,428	220,602,993	224,836,749	236,421,237	268,255,114	268,689,725	278,625,353	464,014,124	278,258,074	221,975,970	244,917,576	236,447,861	3,161,813,204
DIY stores	982,252,635	1,010,656,618	979,528,752	1,031,544,947	980,140,455	996,702,073	1,067,359,815	994,261,864	899,268,819	857,787,651	858,155,388	1,002,487,032	1,109,727,912	11,787,621,326
Floor covering stores	84,031,597	84,849,034	85,738,505	91,482,088	90,726,180	97,593,433	109,257,685	109,374,675	85,502,856	84,047,108	83,867,691	98,017,667	93,686,909	1,114,143,831
Garden centres	174,054,826	189,205,963	159,716,545	126,777,265	102,889,415	106,940,105	110,782,221	105,087,722	110,782,221	153,861,418	65,835,806	76,989,886	197,188,350	1,539,028,689
Miscellaneous household	115,956,814	110,085,573	111,069,960	120,396,502	129,260,931	141,892,060	144,206,545	130,404,872	136,651,236	126,811,804	118,304,805	135,714,103	126,781,340	1,531,579,731
Household	2,160,734,824	2,201,276,177	2,127,634,029	2,186,902,314	2,128,695,963	2,229,875,736	2,380,776,980	2,296,842,508	2,421,362,153	2,066,266,491	1,952,370,140	2,296,371,286	2,387,310,242	26,675,684,019
Books, newspapers & magazines	93,985,230	98,733,512	98,712,930	102,893,738	102,255,614	116,749,348	119,489,891	115,711,992	192,971,153	97,413,348	93,639,063	107,688,857	98,021,844	1,344,281,290
Record shops	15,418,423	14,395,033	15,634,678	13,806,146	14,071,558	15,520,758	16,513,839	21,259,567	61,784,896	13,924,110	13,643,764	16,576,087	14,322,811	231,453,247
Music shops	18,774,487	17,203,986	18,260,047	18,260,047	21,098,741	21,098,741	21,590,343	21,798,329	20,876,720	18,834,109	20,580,564	19,119,575	246,459,889	1,919,575
Hobbies, toys & games	56,941,160	59,841,716	58,932,787	58,776,791	59,917,442	92,986,146	94,927,307	141,747,871	228,492,325	60,280,109	57,614,373	66,206,892	60,095,576	1,039,819,335
Photographic	18,352,949	19,849,823	20,162,768	22,528,377	19,986,682	20,251,667	19,922,366	21,093,080	24,553,378	17,474,622	17,032,322	20,968,185	17,760,515	241,583,785
Handicraft	11,069,395	11,343,400	10,923,684	11,746,712	11,388,770	11,994,617	13,092,120	12,578,846	11,171,090	10,700,228	11,679,580	11,679,580	11,613,745	141,393,541
Sports shops	335,918,066	361,068,793	371,087,151	394,543,189	400,133,320	360,717,898	337,327,538	335,970,945	487,012,343	301,275,912	285,376,313	342,772,910	374,990,002	4,352,276,314
Jewellers	133,123,229	143,482,480	150,212,803	154,319,981	148,093,227	146,327,346	143,807,164	177,130,493	377,219,925	129,694,868	142,961,126	158,065,781	137,884,967	2,009,200,161
Computer software	49,999,006	47,739,930	44,752,573	47,802,978	46,151,699	53,669,724	53,987,138	51,950,877	66,548,726	49,895,212	46,034,682	46,034,682	42,370,952	593,350,519
Medical goods	10,190,213	10,135,740	10,452,386	11,294,904	10,528,439	10,847,140	11,733,798	11,050,583	9,858,886	8,986,372	10,329,584	12,264,925	11,446,994	128,929,751
Chemists	258,426,906	275,957,374	293,135,480	293,274,059	260,341,897	286,903,593	304,205,465	303,998,413	560,830,400	252,878,013	252,774,754	314,208,755	281,598,388	3,680,106,231
Optical goods	97,959,200	101,668,505	104,968,696	107,993,565	103,600,803	102,043,233	92,298,670	81,131,619	96,010,483	100,635,599	119,016,097	108,733,185	112,195,909,509	1,215,909,509
Cosmetic stores	43,713,584	47,054,419	50,664,452	49,261,372	47,669,769	53,055,632	56,998,070	67,716,728	139,510,694	42,269,697	46,438,479	55,905,179	49,789,784	706,334,275
Tobacconists	5,303,406	5,797,374	6,338,126	6,369,095	6,126,875	6,556,525	6,836,343	6,506,859	8,531,233	7,822,917	7,669,417	8,855,909	8,741,407	86,152,080
Florists	35,057,516	36,254,304	35,628,665	36,268,562	32,239,486	35,433,986	33,810,136	31,327,717	48,310,633	28,891,308	44,822,824	56,712,916	36,455,668	456,156,205
Artists' supplies	20,761,820	21,352,395	20,642,620	21,499,559	21,602,349	23,118,488	26,014,326	27,284,523	31,755,707	20,008,421	21,247,200	25,105,181	20,916,679	280,547,448
Antiques, art & stamps/coins	29,703,177	32,883,211	32,963,957	31,373,676	28,906,533	36,527,801	36,192,119	35,480,923	40,886,051	27,232,685	28,246,433	33,870,836	31,942,380	396,506,605
Pawn shops	4,546,185	4,914,570	4,842,238	5,678,865	5,303,250	5,419,437	5,363,839	4,724,551	6,129,393	5,707,459	5,268,272	5,584,353	6,102,743	65,038,970
Gift shops	94,550,846	97,553,888	106,983,957	109,294,736	112,105,841	114,158,010	128,540,591	157,641,501	257,138,344	96,593,517	104,890,959	124,512,349	101,709,204	1,511,122,897
Secondhand shops	4,984,155	4,692,695	5,332,302	5,552,938	4,820,151	5,969,098	5,678,765	4,980,532	6,206,701	4,330,167	5,237,356	5,099,767	5,406,529	63,307,001
Luggage & leather goods	11,536,563	12,038,584	13,787,530	13,072,160	13,121,861	12,265,334	12,950,299	14,300,238	24,556,527	11,223,453	9,700,092	12,280,267	11,409,740	160,706,085
Pet shops	89,220,987	92,317,782	90,775,804	94,116,162	97,315,866	94,955,471	98,577,323	94,488,368	97,345,496	92,506,908	99,444,058	97,171,543	97,171,543	1,146,880,769
Religious goods	209,843	214,988	184,693	212,533	239,464	216,161	303,125	212,904	226,295	166,995	201,946	211,479	226,170	2,616,7

Table 3D Card expenditure statistics (not seasonally adjusted)

Value of debit card transactions

Detailed sector breakdown - services sectors (not seasonally adjusted)

£	April 2014	May 2014	June 2014	July 2014	August 2014	September 2014	October 2014	November 2014	December 2014	January 2015	February 2015	March 2015	April 2015	Total (latest 12 months)
Auto rental	61,817,906	64,821,596	66,288,166	74,971,849	67,081,827	65,532,164	55,395,168	48,661,204	49,699,485	47,539,657	50,489,134	62,745,751	60,698,898	713,924,899
Auto parts & accessories	220,573,562	220,707,704	218,893,612	227,663,319	204,229,304	232,766,900	219,335,005	196,004,291	187,060,828	203,322,630	205,360,514	256,466,585	233,066,161	2,604,876,853
Auto services	61,996,128	64,890,099	66,196,741	71,115,114	65,569,794	69,737,493	69,101,977	61,948,712	66,873,961	61,617,208	62,485,603	73,587,903	70,238,155	803,362,760
Auto repair shops	634,820,644	634,467,904	618,728,806	636,566,658	578,144,895	703,472,885	619,233,246	558,461,002	490,882,922	586,011,588	581,706,599	803,659,828	666,348,634	7,476,684,967
Service stations	0	0	0	0	0	0	0	0	0	0	0	0	0	0
Vehicle sales	1,505,403,401	1,493,609,596	1,499,441,292	1,498,172,686	1,353,316,581	1,735,273,345	1,481,706,420	1,267,284,165	1,146,720,831	1,366,172,541	1,415,029,550	2,022,594,837	1,720,373,636	18,019,695,500
Vehicle Sales & Services	2,484,611,641	2,477,496,899	2,469,548,617	2,508,489,626	2,268,342,401	2,806,782,787	2,444,771,816	2,152,359,394	1,941,238,027	2,264,663,624	2,315,071,400	3,219,054,904	2,750,725,484	29,618,544,979
Restaurants	1,173,134,312	1,246,947,563	1,226,899,881	1,243,231,661	1,328,162,128	1,271,326,590	1,312,684,984	1,278,909,658	1,455,887,749	1,192,365,978	1,261,791,326	1,475,490,653	1,418,626,703	15,712,324,874
Public houses	282,162,591	279,112,862	280,170,331	282,650,615	289,021,678	292,426,611	275,200,958	262,425,896	319,016,226	241,513,447	261,342,951	324,495,542	321,172,997	3,428,550,114
Catering services	73,967,939	82,066,700	80,809,742	89,314,170	84,296,931	87,706,236	85,281,220	81,757,322	88,912,799	69,913,404	73,922,241	84,508,934	85,425,900	993,915,599
Video stores	1,253,495	1,224,019	1,063,510	986,706	917,855	955,842	986,737	1,010,395	1,076,663	860,416	960,877	986,761	1,007,709	12,037,490
Cinema, theatre & dance	170,417,853	176,395,866	152,686,128	157,174,625	159,720,024	137,511,059	208,138,857	215,379,025	222,698,361	155,736,770	169,598,856	180,383,316	198,027,065	2,133,449,952
Concerts & entertainers	11,497,794	12,260,026	10,011,317	10,949,394	12,885,230	4,925,100	13,545,647	15,108,897	14,529,879	12,450,448	11,978,408	12,922,553	12,325,584	143,892,483
Tourist attractions	46,415,747	39,729,123	39,076,168	48,081,461	65,029,507	38,753,336	42,316,752	26,200,395	28,140,293	21,482,753	28,708,368	34,323,855	51,215,656	463,057,667
Amusement parks	11,683,571	9,523,261	10,274,678	12,641,134	18,545,932	10,433,685	9,660,972	4,806,216	3,174,442	2,906,274	4,626,200	5,715,839	12,551,440	104,860,073
Aquariums	5,347,958	4,183,897	3,682,861	5,841,407	9,277,377	6,349,185	4,315,696	2,677,069	2,442,354	2,201,013	3,785,262	4,468,267	7,898,043	57,122,791
Sports & games establishments	138,271,825	147,793,822	119,435,454	123,173,506	119,981,405	126,144,803	123,576,992	113,803,071	124,378,192	132,508,537	123,517,325	162,304,680	157,453,608	1,574,071,395
Professional sports clubs	18,129,625	24,545,785	16,335,099	16,491,496	13,329,765	13,518,411	14,439,405	13,095,286	11,809,711	12,644,536	12,011,429	14,157,280	15,881,779	178,259,982
Gambling	325,233,139	328,060,891	372,383,624	292,376,392	349,767,329	377,455,605	410,046,397	323,495,037	410,154,188	375,986,466	399,963,617	492,599,747	450,694,935	4,582,984,228
Personal services	18,628,564	19,627,318	19,016,346	19,365,162	17,885,782	19,000,638	18,800,100	17,181,752	19,956,277	18,061,471	18,155,145	21,777,918	19,891,031	228,821,940
Miscellaneous entertainment	38,340,237	37,211,029	34,284,335	39,748,160	53,371,695	40,234,595	42,776,080	36,839,675	26,407,911	27,680,604	32,180,332	39,280,858	43,518,759	453,534,036
Entertainment	2,314,484,650	2,408,682,162	2,366,129,474	2,342,025,889	2,522,192,998	2,426,741,696	2,561,873,797	2,392,689,697	2,728,585,045	2,266,312,117	2,402,542,337	2,853,416,203	2,795,691,209	30,066,882,624
Hotels	468,262,723	485,964,788	493,959,484	527,720,910	547,835,404	550,592,362	487,170,287	413,724,093	405,241,691	453,892,961	433,372,171	496,297,673	521,886,257	5,817,658,081
Airlines	467,482,316	509,960,880	485,813,004	484,266,636	425,852,626	446,400,416	423,189,577	343,106,746	312,112,640	560,959,507	459,050,438	537,076,995	506,606,502	5,494,395,967
Airport terminals	3,756,968	4,049,415	4,566,287	4,820,462	4,484,532	4,606,026	3,748,527	2,683,374	2,993,304	2,959,017	2,699,505	3,612,128	3,940,177	45,162,754
Railways	386,740,471	395,421,610	405,266,735	424,212,199	375,317,886	446,237,071	452,328,670	412,254,798	424,300,254	407,095,265	386,371,480	438,646,449	396,930,365	4,964,382,782
Buses	44,641,068	43,739,831	38,699,098	40,579,431	40,829,728	49,488,023	41,533,820	36,152,132	35,409,072	38,513,745	35,241,339	41,426,415	42,031,588	483,644,222
Sea travel	48,030,158	51,932,331	50,980,437	50,032,733	46,097,708	42,841,620	49,932,763	34,792,493	34,110,530	43,015,318	47,176,427	54,996,977	56,895,132	562,804,469
Travel agents	1,170,340,646	1,320,485,662	1,208,442,587	1,179,844,894	972,418,756	876,473,485	808,061,135	699,337,829	654,087,795	1,139,354,145	1,080,501,804	1,312,584,469	1,258,915,334	12,510,507,895
Timeshares	629,232	627,710	555,153	652,731	613,935	613,935	646,660	559,757	551,643	851,515	661,010	650,897	597,828	7,582,774
Camping grounds	91,291,944	103,501,848	102,810,190	112,361,605	100,630,639	75,773,969	72,023,310	63,337,640	43,934,115	62,395,820	71,321,872	103,967,811	102,665,143	1,014,723,962
Miscellaneous travel	41,164,354	42,474,136	51,952,383	51,547,899	43,482,710	41,895,407	45,740,284	46,191,582	47,123,298	50,832,496	54,693,237	67,374,882	69,898,178	613,206,492
Travel	2,254,077,157	2,472,193,423	2,349,085,874	2,348,318,590	2,009,728,520	1,984,329,952	1,897,204,746	1,638,416,351	1,554,622,651	2,305,976,828	2,137,717,112	2,560,337,023	2,438,480,247	25,696,411,317
Telegraph services / Wire transfer money order	75,811,649	73,553,216	77,684,375	80,526,113	69,922,113	70,560,044	53,467,673	51,214,066	56,956,256	59,819,955	59,082,888	66,431,796	66,411,805	785,630,300
Insurance services	579,820,071	556,036,083	553,501,085	600,298,680	557,075,817	606,859,314	586,156,060	506,688,463	462,438,680	536,840,808	522,816,916	681,442,564	608,084,938	6,778,239,408
FIs - cash disbursements (auto & manual)	4,195,455	5,706,335	6,277,914	7,151,494	6,757,393	5,790,265	3,616,945	2,165,476	3,620,256	3,327,973	4,838,373	7,310,723	6,856,902	63,420,049
FIs - merchandise & services	3,150,051,102	2,934,651,837	2,871,828,202	3,125,803,796	2,891,164,681	3,036,697,549	3,122,859,054	2,884,267,085	3,122,861,873	3,002,801,577	2,777,750,274	3,414,682,590	3,296,485,878	36,481,854,396
Non-FIs - foreign currency, travellers' cheques	307,372,976	380,787,979	434,646,978	518,471,519	459,319,256	416,723,277	288,294,755	209,408,494	251,074,653	267,363,714	301,359,193	395,054,101	347,869,553	4,270,373,472
Security brokers and dealers	1,109,022,736	466,282,393	633,397,530	570,309,229	412,570,218	487,160,597	605,374,227	430,175,139	468,760,161	553,342,674	508,253,053	1,044,751,548	1,278,855,967	7,459,232,736
Tax preparation services	226,170	173,487	147,262	138,128	228,695	168,987	231,912	124,203	207,896	259,361	246,991	262,991	208,222	2,234,491
Tax payments	121,767,876	110,074,519	97,506,474	154,007,816	121,810,910	118,060,386	109,516,972	103,361,163	109,300,215	1,046,464,817	839,435,134	309,443,927	260,635,782	3,379,618,115
Fines, bail and bond payments	39,863,935	41,603,421	38,710,888	42,651,152	40,640,355	39,151,354	42,238,383	39,174,780	33,993,370	38,245,796	37,102,140	40,415,407	38,084,814	472,011,860
Miscellaneous financial	22,784,364	23,883,341	25,402,971	27,653,531	24,575,730	25,820,703	25,674,879	22,687,580	19,603,229	20,148,334	20,673,459	25,170,004	25,835,798	287,129,569
Financial	5,410,916,334	4,592,752,611	4,739,103,679	5,127,102,025	4,583,974,601	4,806,992,476	4,837,430,860	4,249,266,449	4,528,736,040	5,528,615,009	5,071,519,326	5,984,949,651	5,929,301,659	59,979,744,386

Table 3D Card expenditure statistics (not seasonally adjusted)

Value of debit card transactions

Detailed sector breakdown - services sectors (continued, not seasonally adjusted)

£	April 2014	May 2014	June 2014	July 2014	August 2014	September 2014	October 2014	November 2014	December 2014	January 2015	February 2015	March 2015	April 2015	Total (latest 12 months)
Telecoms	315,846,256	324,927,386	312,423,457	335,582,739	345,064,573	373,816,958	375,046,891	360,082,214	375,493,377	369,835,016	321,330,526	368,502,147	337,905,570	4,200,010,854
Utilities	280,043,003	265,713,318	235,149,021	235,299,285	207,690,828	227,626,940	239,551,873	212,369,276	216,974,563	252,082,768	253,924,700	322,446,019	286,792,309	2,955,630,900
Contractors (residential & commercial)	152,697,053	157,782,176	160,566,710	172,730,229	159,564,891	183,450,785	196,972,622	180,614,814	162,293,188	156,807,460	162,488,240	186,236,607	177,589,447	2,057,097,169
Gardening services	10,618,072	10,584,035	9,855,931	9,100,089	7,244,133	7,759,871	7,483,651	6,312,204	7,381,002	4,936,768	5,818,499	8,533,939	10,350,714	95,360,776
Veterinary services	103,780,332	108,002,537	108,964,596	120,363,732	113,389,470	115,188,613	119,919,434	107,305,108	106,313,469	107,500,912	101,437,825	115,221,907	112,759,200	1,336,366,803
Photocopying & printing	23,958,142	26,170,064	25,190,275	25,717,204	23,164,519	27,478,515	28,460,589	29,016,914	27,521,464	24,389,908	24,006,267	26,953,310	25,288,578	313,357,607
Photographic studios	11,174,005	12,511,334	13,277,635	15,326,826	12,512,733	13,080,529	15,121,850	16,520,271	19,434,252	10,490,226	11,136,480	13,162,216	12,682,986	165,257,338
Beauty & barber shops	200,734,986	216,134,523	211,665,525	220,290,633	204,898,796	214,395,064	215,319,107	206,531,968	272,839,930	184,987,705	195,934,285	228,972,420	219,379,258	2,591,349,214
Employment agencies	1,454,675	1,555,075	1,496,319	1,685,922	1,426,460	1,647,459	1,685,814	1,529,737	1,279,288	1,683,469	1,544,912	1,754,491	1,644,607	18,933,553
Counselling services	6,907,845	6,675,646	6,743,800	6,942,532	6,188,630	7,213,122	6,587,466	6,179,615	6,427,843	6,857,500	6,179,615	6,698,259	6,143,639	79,213,697
Legal services	81,167,031	83,357,438	85,245,602	90,785,309	78,826,069	84,783,030	91,531,378	82,276,630	73,697,655	76,116,977	76,969,273	93,480,024	82,690,279	999,759,664
Laundry & cleaning	12,189,945	13,241,650	13,960,391	14,074,127	12,775,536	14,430,678	14,634,388	13,611,668	12,945,313	12,360,399	11,624,806	13,265,791	13,212,138	160,136,885
Funeral services	37,964,826	37,247,857	37,213,116	39,507,734	36,306,876	40,112,133	44,740,704	42,755,693	40,518,419	50,503,373	51,271,254	58,112,956	49,324,062	527,614,177
Medical services	243,948,568	253,011,239	255,886,686	271,444,138	233,124,916	266,779,969	285,383,184	262,914,250	235,651,682	261,986,746	265,701,712	305,022,227	279,133,804	3,176,040,553
Moving & courier services	33,998,140	35,775,271	37,353,219	41,775,039	37,918,551	40,528,812	40,843,689	37,315,479	37,181,930	33,949,823	32,695,007	37,434,215	36,016,361	448,787,396
Repair shops (not auto)	11,832,287	12,335,673	12,951,467	13,563,637	12,379,503	13,295,981	13,857,900	14,003,752	16,438,515	12,282,343	12,882,393	15,714,800	14,489,090	164,195,054
Accounting services	17,242,124	16,839,756	15,258,865	16,158,579	14,594,121	16,666,250	17,652,067	16,564,730	15,129,283	18,179,082	15,197,504	16,276,184	13,844,431	192,360,852
Advertising, consultancy & PR	11,586,359	11,644,050	11,170,770	11,950,925	10,419,933	11,491,712	11,447,384	10,144,793	9,206,509	10,330,770	10,458,447	11,932,594	11,399,887	131,597,774
Computer programming	35,176,772	34,098,285	33,028,698	34,428,695	32,505,447	35,699,007	36,234,290	33,476,652	32,950,400	32,580,949	30,731,074	34,800,556	33,626,990	404,161,043
Farming services	22,892,214	23,328,942	23,980,569	24,516,812	22,900,501	23,823,928	27,960,379	22,981,478	25,228,523	22,848,846	21,445,357	24,112,807	25,004,522	288,132,664
Miscellaneous professional services	655,002,762	578,096,772	564,713,662	616,267,691	593,164,509	678,230,705	652,090,767	560,057,349	540,308,189	655,020,085	598,321,263	715,700,369	737,066,394	7,489,037,755
Engineering services	19,254,806	19,880,740	19,814,991	20,837,826	17,735,302	21,549,773	21,945,529	19,564,696	16,454,443	17,017,697	18,161,916	21,144,281	19,867,960	233,975,154
Marina services	15,101,423	14,826,188	15,817,872	16,701,794	14,875,025	12,342,579	10,526,136	7,745,180	8,062,195	8,837,949	9,140,116	15,345,747	16,060,841	150,281,622
Wrecking & salvage yards	1,528,480	1,548,401	1,648,932	1,709,767	1,423,477	1,638,009	1,703,623	1,447,320	1,209,782	1,493,479	1,493,117	1,882,800	1,918,903	19,117,610
Pest control	604,200	699,392	791,200	861,200	733,996	790,902	1,047,651	922,689	819,255	798,099	751,949	894,304	892,994	10,003,631
Educational establishments	242,949,586	231,062,807	154,889,110	161,912,462	227,552,457	754,410,684	634,640,046	240,017,096	186,674,300	514,792,793	246,446,504	202,501,563	310,559,917	3,865,459,739
Child care services	14,352,047	14,423,958	14,216,210	15,029,118	13,313,056	14,908,003	15,938,033	13,713,178	13,460,189	15,672,777	14,618,602	16,681,569	15,486,670	177,461,363
Social, political & religious organisations	102,208,870	102,996,926	99,811,089	129,164,122	101,636,396	119,971,684	131,629,901	101,182,423	100,165,842	98,517,887	92,412,022	127,118,375	121,576,553	1,326,183,220
Government services	1,653,868,036	1,965,921,155	1,929,446,836	2,392,161,584	1,926,816,242	1,905,509,711	1,891,940,201	1,676,017,231	1,734,264,844	6,690,488,709	3,165,510,621	2,814,530,356	2,787,955,705	30,880,563,195
Miscellaneous services	561,262,303	526,731,275	636,638,329	671,422,442	536,498,306	602,017,728	582,953,341	509,646,504	571,832,069	586,335,430	505,382,572	624,326,391	574,182,935	6,927,967,322
Commercial equipment	143,074,289	147,474,081	145,510,845	157,655,704	144,923,812	165,907,052	163,343,631	151,173,250	133,798,934	139,802,956	137,893,398	160,962,488	156,434,604	1,804,880,755
Other services	5,024,419,437	5,254,597,950	5,194,681,728	5,884,967,896	5,151,569,064	5,996,546,186	5,898,193,519	4,944,242,390	5,002,084,449	10,379,498,641	6,402,910,256	6,589,721,712	6,491,281,348	73,190,295,339
Total services	17,956,771,942	17,691,687,833	17,612,508,856	18,738,624,936	17,083,642,988	18,571,985,459	18,126,645,025	15,790,698,374	16,160,507,903	23,198,959,380	18,763,132,602	21,703,777,166	20,927,366,204	224,369,536,726
TOTAL	33,469,749,301	33,635,546,182	33,699,010,209	34,866,219,584	32,468,908,265	34,661,365,548	34,672,191,066	32,323,363,756	37,072,881,595	37,539,493,745	32,591,651,890	38,064,402,190	36,704,329,390	418,299,363,429