

Card Expenditure Statistics

April 2014

Card Expenditure Statistics – April 2014

	Total spending <i>£ billions</i>		Annual growth rates for spending		Number of purchases <i>Millions</i>	
	Apr 2014	Apr 2013	Apr 2014	Apr 2013	Apr 2014	Apr 2013
All payment cards	46.7	43.7	7.5%	4.0%	977	893
Debit cards	33.0	30.6	8.4%	5.5%	751	684
Credit cards	13.8	13.2	5.4%	0.6%	226	209

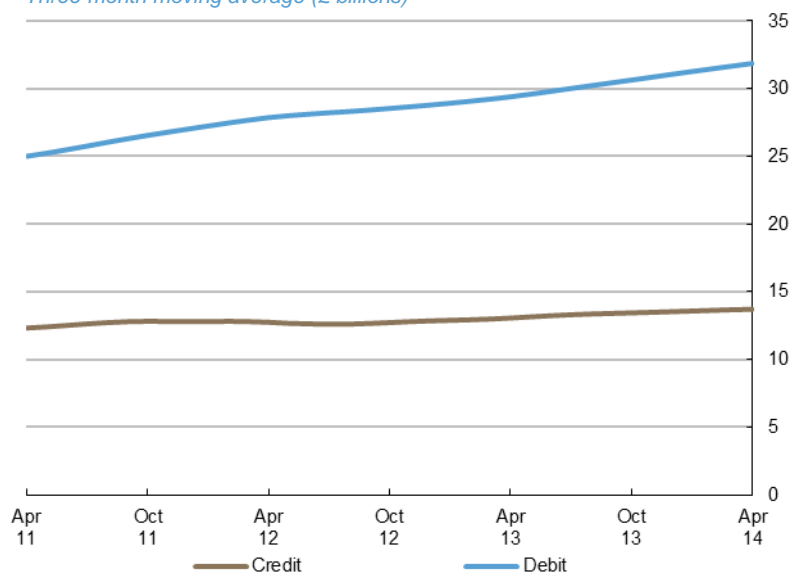
With effect of January 2014 the methodology used for seasonal adjustment - using X12 ARIMA - has been reviewed and changed. Trading days and leap years have been incorporated into the monthly seasonal adjustment process. Unless otherwise stated all data referred to are seasonally adjusted. Unadjusted data are located in tables 3A to 3D. There is a step change in the data between 2010 and 2011 following a change in the reporting population. Average transaction values are based on three-month rolling averages, while growth rates are based on twelve-month rolling periods.

Introduction

Payment card spending in April amounted to £46.7 billion, up £0.2 billion on March. The number of purchases reached a record 977 million, which compares to 969 million in March. Factors driving growth during the month include the on-going strength in consumer spending alongside the **Easter** bank holiday weekend. The increase in payment card expenditure comes after growth of 0.8% in GDP¹ in the first quarter of 2014 and a continuing rise in **consumer confidence**. Debit card spending has continued to strengthen, since breaking the threshold of £30 billion per month in February 2013. Spending using credit cards also picked up over this period, though more modestly in comparison.

Chart 1

Average monthly expenditure
Three-month moving average (£ billions)



¹ <http://www.ons.gov.uk/ons/rel/naa2/second-estimate-of-gdp/q1-2014/index.html>

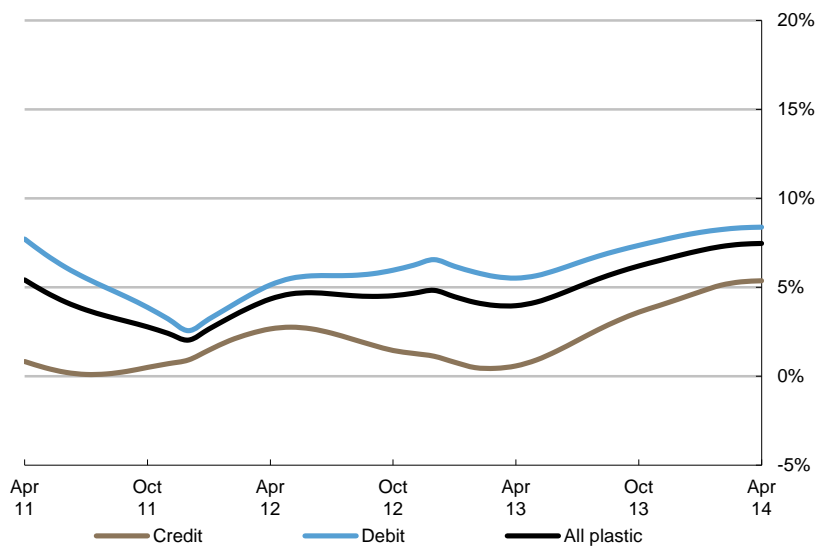
Annual growth rates

Growth in payment card spending continued to gather pace, growing at an annual rate of 7.5% in April, which is the **strongest rate of annual growth** in more than three years. This continuing strength highlights the role payment cards are playing in the growth of consumer spending in the economy.

Debit card spending grew by 8.4% while that on credit cards increased by 5.4%. This difference reflects the near universal coverage of debit cards among the card-holding population. Furthermore, much of the resurgence in economic growth since 2013 has been driven by the service sector.

Over the past year, the annual growth rate of the number of purchases has consistently outstripped that of values, highlighting a consumer preference of utilising payment cards to make a higher number of lower value payments. During the month, the number of purchases grew by 8.7%, which compares to growth rate of 7.5% for the value of purchases.

Chart 2
Spending on payment cards
Year-on-year growth rates

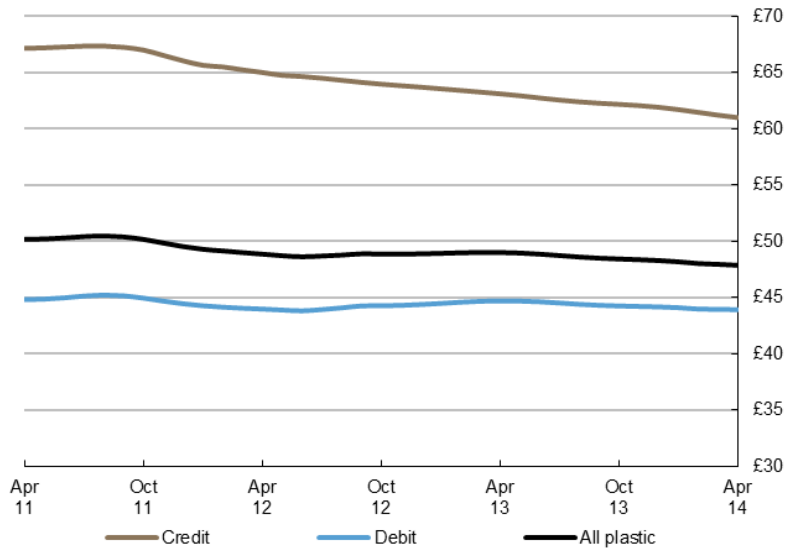


Average transaction values

The **average transaction value** (ATV) on all payment cards declined between March and April, falling by 8p to £47.88 and corresponded with an ATV of £49.01 a year ago. The ATV for debit cards decreased by 4p to £43.92, while the ATV for credit cards decreased by 21p to £61.00.

ATVs for payment cards have been on a gradual decline since peaking in the middle of 2011. This is likely a reflection of the continuing migration of low value cash payments to payment cards alongside the increasing use of **contactless cards**. This decline has also possibly been driven by increased **online spending**, enhanced by accelerated adoption and use of technology such as smartphones and tablets - which are driving up the number of lower value transactions. Within the sectors, the ATV in **retail sales** remained relatively unchanged since February at £34.24, while the ATV for **services** dropped 46p during April to £78.60.

Chart 3
Average transaction values
Three-month moving average



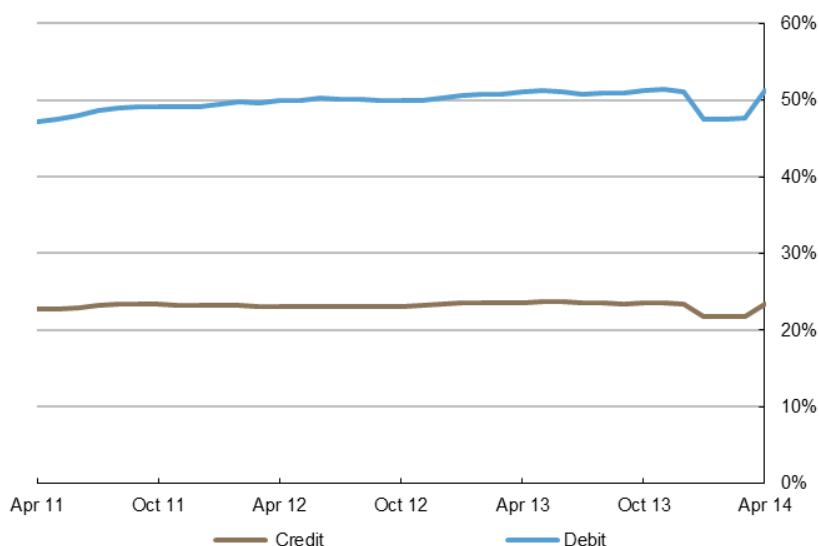
Spending by sector – retail sales and services

The number of transactions within the **retail sector** increased by 5.2 million to 676 million, with the corresponding spend rising by £0.1 billion to £23.1 billion. A majority of this increase was in the **food & drink** and **household goods** sub-sectors, where spending amounted to £8.9 billion and £3.6 billion respectively. Expenditure growth in the household sub-sector coincides with the strong performance in the housing market. There was however, a modest decrease in spending in **mixed business**.

Meanwhile, the number of transactions in the **services sector** increased by 2.8 million to 301 million, which corresponded to an increased spend to £23.6 billion. **Entertainment** was a strong contributor to card expenditure growth in this sector after increasing by £25 million to £3.7 billion, in part driven by a sizable growth in spending at **tourist attractions**. However, the largest increase in expenditure came from the **financial** sub-sector, which rose by £52 million to £5.2 billion, driven by spending at security brokers and dealers. It is likely these were ISA purchases for the financial year 2014/15.

Chart 4

Proportion of retail sales made on payment cards (including automotive fuel)
Three-month moving average



Payment card spending within national retail sales

Retail sales form a significant part of spending in the UK and data from merchant acquirers shows the increasing use of payment cards in this sector over many years. The **payment card share of total retail sales** (including automotive fuels)² amounted to 74.7% during the month with a split of 51.2% by debit and 23.4% by credit. The share of spending within **food & drink** accounted for by payment cards amounted to 69.1%. The share of spending accounted for by payment spending within **automotive fuels** is now at the highest it has ever been after increasing to 91%. These figures point to the increasing use of payment cards within the retail space, driven by new technology and consumer habits.

Contact: David Obuwa; david.obuwa@ukpayments.org.uk | camis@ukpayments.org.uk | 020 3217 8421 or 020 3217 8720

² CES 3-month moving average spend of £23.0 billion expressed as a percentage of a similar 3-month moving average for ONS Retail Sales – All Retailing Including Automotive Fuel (J5A3) that amounted to £30.8 billion.

Table 1 Card expenditure statistics (seasonally adjusted)

Summary^{1 and 2}

			Number of purchase transactions (millions)									Value of purchase transactions (£ millions)								
			All sectors			Retail sales			Services			All sectors			Retail sales			Services		
			Credit	Debit	Total	Credit	Debit	Total	Credit	Debit	Total	Credit	Debit	Total	Credit	Debit	Total	Credit	Debit	Total
Annual																				
	2009		2,004	5,945	7,949	1,227	3,897	5,123	777	2,048	2,825	125,129	262,243	387,372	61,585	125,420	187,004	63,544	136,823	200,368
	2010		2,009	6,501	8,511	1,382	4,719	6,101	628	1,782	2,410	128,314	289,750	418,064	69,503	148,590	218,093	58,811	141,160	199,971
	2011		2,259	7,231	9,490	1,555	5,302	6,857	704	1,929	2,632	151,145	324,274	475,419	78,861	165,555	244,416	72,284	158,719	231,002
	2012		2,372	7,829	10,202	1,621	5,637	7,258	751	2,193	2,944	152,845	345,527	498,372	81,041	175,237	256,278	71,803	170,291	242,094
	2013		2,551	8,387	10,938	1,737	5,963	7,700	814	2,424	3,238	159,504	372,740	532,244	84,473	183,470	267,943	75,031	189,270	264,301
Monthly																				
	2013	Apr	209	684	893	143	489	632	66	196	262	13,155	30,594	43,749	6,990	15,115	22,105	6,166	15,478	21,644
		May	211	690	901	144	493	637	67	198	265	13,243	30,815	44,058	7,030	15,197	22,228	6,213	15,618	21,831
		Jun	213	697	910	145	497	642	67	200	267	13,317	31,019	44,336	7,066	15,293	22,359	6,251	15,726	21,978
		Jul	214	702	917	146	500	647	68	202	270	13,368	31,183	44,551	7,088	15,373	22,461	6,280	15,810	22,090
		Aug	215	707	923	147	503	650	69	204	273	13,406	31,337	44,744	7,099	15,435	22,533	6,308	15,903	22,210
		Sep	216	712	928	147	505	652	69	207	276	13,442	31,502	44,944	7,103	15,478	22,580	6,339	16,024	22,364
		Oct	217	717	934	147	507	654	70	210	280	13,481	31,691	45,172	7,104	15,521	22,625	6,376	16,170	22,547
		Nov	218	723	941	148	509	657	71	213	284	13,531	31,922	45,453	7,113	15,570	22,682	6,418	16,352	22,770
		Dec	220	729	949	149	513	661	72	216	288	13,585	32,177	45,762	7,130	15,615	22,745	6,455	16,561	23,017
	2014	Jan	222	737	958	150	517	666	72	220	292	13,634	32,415	46,049	7,156	15,666	22,822	6,478	16,749	23,227
		Feb	223	744	967	151	521	672	73	223	296	13,676	32,606	46,283	7,189	15,727	22,916	6,487	16,879	23,367
		Mar	225	744	969	152	519	670	73	225	299	13,717	32,779	46,496	7,225	15,807	23,033	6,491	16,972	23,464
		Apr	226	751	977	153	523	676	74	228	301	13,752	32,956	46,708	7,256	15,893	23,149	6,496	17,063	23,559
Year-on-year growth rates (percentages)																				
Annual																				
	2009		1.8	8.9	7.0	3.5	9.0	7.6	-0.7	8.7	6.0	-0.4	7.3	4.7	1.6	8.0	5.8	-2.2	6.6	3.7
	2010		0.3	9.4	7.1	12.6	21.1	19.1	-19.3	-13.0	-14.7	2.5	10.5	7.9	12.9	18.5	16.6	-7.4	3.2	-0.2
	2011		12.4	11.2	11.5	12.5	12.3	12.4	12.2	8.2	9.2	17.8	11.9	13.7	13.5	11.4	12.1	22.9	12.4	15.5
	2012		5.0	8.3	7.5	4.3	6.3	5.8	6.7	13.7	11.8	1.1	6.6	4.8	2.8	5.8	4.9	-0.7	7.3	4.8
	2013		7.5	7.1	7.2	7.1	5.8	6.1	8.3	10.6	10.0	4.4	7.9	6.8	4.2	4.7	4.6	4.5	11.1	9.2
Monthly																				
	2013	Apr	4.5	6.0	5.7	3.9	4.1	4.1	5.8	11.2	9.8	0.6	5.5	4.0	2.0	4.0	3.4	-1.0	7.1	4.6
		May	4.7	5.8	5.5	4.3	3.9	4.0	5.8	10.8	9.5	0.9	5.7	4.2	2.2	3.8	3.3	-0.5	7.6	5.1
		Jun	5.2	5.7	5.5	4.8	3.8	4.0	6.0	10.5	9.3	1.4	6.0	4.6	2.6	3.8	3.4	0.1	8.3	5.8
		Jul	5.6	5.8	5.8	5.3	4.1	4.4	6.4	10.4	9.3	2.0	6.4	5.0	3.0	3.8	3.6	0.9	9.0	6.6
		Aug	6.1	6.0	6.0	5.8	4.4	4.7	6.8	10.3	9.4	2.6	6.7	5.5	3.4	3.9	3.8	1.7	9.7	7.3
		Sep	6.5	6.2	6.3	6.1	4.7	5.0	7.2	10.2	9.4	3.1	7.1	5.9	3.7	4.1	4.0	2.5	10.2	7.9
		Oct	6.8	6.5	6.5	6.5	5.0	5.3	7.5	10.2	9.5	3.6	7.4	6.2	3.9	4.2	4.1	3.2	10.6	8.4
		Nov	7.1	6.8	6.8	6.8	5.4	5.7	7.9	10.3	9.7	4.0	7.6	6.5	4.1	4.5	4.3	3.8	10.9	8.8
		Dec	7.5	7.1	7.2	7.1	5.8	6.1	8.3	10.6	10.0	4.4	7.9	6.8	4.2	4.7	4.6	4.5	11.1	9.2
	2014	Jan	7.9	7.6	7.6	7.4	6.2	6.5	8.9	11.0	10.4	4.7	8.1	7.1	4.4	4.9	4.7	5.2	11.3	9.5
		Feb	8.3	8.0	8.1	7.7	6.6	6.9	9.4	11.5	11.0	5.1	8.2	7.3	4.5	5.1	4.9	5.8	11.5	9.8
		Mar	8.5	8.4	8.4	7.9	6.9	7.2	9.9	12.1	11.6	5.3	8.3	7.4	4.6	5.2	5.0	6.1	11.5	9.9
		Apr	8.6	8.8	8.7	7.9	7.2	7.4	10.3	12.8	12.1	5.4	8.4	7.5	4.6	5.4	5.1	6.3	11.4	9.9

¹ There was a step change in 2011 due to a change in reporting population

² With effect of January 2014 the seasonal adjustment methodology using X12 ARIMA was reviewed and changed. Trading days and leap years have been incorporated into the monthly seasonal adjustment process.

Table 2A Card expenditure statistics (seasonally adjusted)

Retail sales^{1 and 2}

Number of purchase transactions (millions)

Total retail sales

	Number of purchase transactions (millions)																		Total retail sales			
	Food & drink			Mixed business			Clothing			Household			Other retailers			Automotive Fuels ³			Number of purchases			
	Credit	Debit	Total	Credit	Debit	Total	Credit	Debit	Total	Credit	Debit	Total	Credit	Debit	Total	Credit	Debit	Total	Credit	Debit	Total	
Annual																						
2009	514	2,087	2,602	131	404	535	125	405	530	146	319	465	310	682	992	158	475	633	1,227	3,897	5,123	
2010	532	2,282	2,815	139	406	545	128	424	553	148	350	498	273	733	1,006	161	524	685	1,382	4,719	6,101	
2011	602	2,565	3,168	137	424	561	139	428	567	157	370	526	297	783	1,079	223	733	956	1,555	5,302	6,857	
2012	662	2,818	3,481	149	479	628	145	453	598	157	375	532	281	758	1,039	227	754	981	1,621	5,637	7,258	
2013	723	3,061	3,784	184	522	707	152	460	612	165	403	567	277	724	1,001	236	793	1,029	1,737	5,963	7,700	
Monthly																						
2013	Apr	60	250	310	14	42	56	13	38	51	14	33	46	23	60	83	20	66	85	143	489	632
	May	60	252	312	15	43	57	13	38	51	14	33	47	23	60	83	20	66	86	144	493	637
	Jun	61	254	315	15	43	59	13	39	51	14	34	48	23	60	84	20	66	86	145	497	642
	Jul	61	256	317	16	44	60	13	39	51	14	34	48	23	61	84	20	67	87	146	500	647
	Aug	61	258	319	16	45	61	13	39	52	14	34	48	23	61	84	20	67	87	147	503	650
	Sep	61	259	320	16	45	61	13	39	51	14	34	48	23	61	84	20	67	87	147	505	652
	Oct	61	261	322	17	45	62	13	38	51	14	34	48	23	61	84	20	67	86	147	507	654
	Nov	61	263	325	17	46	63	13	38	51	14	35	49	23	61	83	20	67	86	148	509	657
	Dec	62	266	328	18	46	64	13	38	51	14	35	49	22	61	83	20	67	86	149	513	661
2014	Jan	62	269	331	18	46	64	13	39	52	14	35	49	22	61	83	20	67	87	150	517	666
	Feb	63	272	335	19	46	65	13	39	52	14	35	50	22	61	83	20	67	87	151	521	672
	Mar	63	276	339	19	39	58	13	39	52	14	36	50	22	61	84	20	68	87	152	519	670
	Apr	63	279	343	19	39	59	13	39	53	14	36	50	22	61	84	20	68	88	153	523	676

Year-on-year growth rates (percentages)

	Year-on-year growth rates (percentages)																					
	Credit	Debit	Total	Credit	Debit	Total	Credit	Debit	Total	Credit	Debit	Total	Credit	Debit	Total	Credit	Debit	Total	Credit	Debit	Total	
Annual																						
2009	2.9	11.4	9.6	-1.9	-0.9	-1.2	3.1	9.7	8.1	2.1	9.3	6.9	8.0	7.5	7.6	-5.4	3.8	1.3	3.5	9.0	7.6	
2010	3.5	9.3	8.2	5.5	0.6	1.8	2.6	4.7	4.2	1.6	9.7	7.2	-12.0	7.5	1.4	2.0	10.3	8.2	12.6	21.1	19.1	
2011	13.1	12.4	12.5	-1.1	4.4	3.0	8.2	0.8	2.5	5.8	5.7	5.7	8.6	6.8	7.3	38.4	39.9	39.5	12.5	12.3	12.4	
2012	10.0	9.9	9.9	8.5	13.0	11.9	4.6	5.8	5.5	-0.1	1.5	1.0	-5.2	-3.2	-3.8	1.7	2.9	2.6	4.3	6.3	5.8	
2013	9.1	8.6	8.7	23.8	9.1	12.6	4.8	1.6	2.4	5.1	7.4	6.7	-1.4	-4.4	-3.6	3.9	5.1	4.8	7.1	5.8	6.1	
Monthly																						
2013	Apr	9.3	8.2	8.4	10.5	8.9	9.3	2.6	2.5	2.5	-0.3	0.4	0.2	-5.9	-7.8	-7.3	1.1	2.2	2.0	3.9	4.1	4.1
	May	9.5	8.0	8.3	11.4	8.2	8.9	2.9	2.2	2.4	0.4	1.0	0.8	-5.6	-8.9	-8.0	1.4	2.5	2.3	4.3	3.9	4.0
	Jun	9.7	8.0	8.4	12.4	7.6	8.8	3.5	2.2	2.5	1.2	1.8	1.6	-5.1	-10.0	-8.6	2.0	3.0	2.7	4.8	3.8	4.0
	Jul	9.8	8.1	8.4	13.6	7.4	8.9	4.1	2.2	2.7	2.0	2.6	2.4	-4.3	-9.1	-7.8	2.5	3.5	3.3	5.3	4.1	4.4
	Aug	9.8	8.1	8.4	15.1	7.3	9.2	4.5	2.1	2.7	2.7	3.5	3.3	-3.5	-8.3	-7.0	3.0	4.0	3.8	5.8	4.4	4.7
	Sep	9.6	8.1	8.4	16.9	7.5	9.8	4.8	2.0	2.7	3.3	4.4	4.1	-2.7	-7.4	-6.1	3.3	4.4	4.2	6.1	4.7	5.0
	Oct	9.4	8.2	8.4	19.0	7.9	10.5	4.8	1.8	2.5	3.8	5.3	4.9	-2.1	-6.4	-5.3	3.6	4.8	4.5	6.5	5.0	5.3
	Nov	9.2	8.4	8.5	21.4	8.4	11.5	4.8	1.7	2.4	4.4	6.3	5.8	-1.7	-5.4	-4.4	3.7	5.0	4.7	6.8	5.4	5.7
	Dec	9.1	8.6	8.7	23.8	9.1	12.6	4.8	1.6	2.4	5.1	7.4	6.7	-1.4	-4.4	-3.6	3.9	5.1	4.8	7.1	5.8	6.1
2014	Jan	9.0	8.8	8.8	26.1	9.8	13.7	5.0	1.7	2.5	5.8	8.5	7.7	-1.3	-3.3	-2.8	4.1	5.3	5.0	7.4	6.2	6.5
	Feb	8.8	9.0	9.0	28.3	10.5	14.8	5.4	1.9	2.8	6.4	9.3	8.5	-1.1	-2.2	-1.9	4.2	5.4	5.1	7.7	6.6	6.9
	Mar	8.5	9.3	9.1	30.2	9.7	14.6	5.7	2.1	3.0	6.8	9.9	9.0	-1.1	-1.1	-1.1	4.1	5.5	5.2	7.9	6.9	7.2
	Apr	8.2	9.6	9.3	31.6	8.7	14.3	5.9	2.3	3.2	6.8	10.1	9.1	-1.1	0.1	-0.3	3.9	5.4	5.0	7.9	7.2	7.4

¹ There was a step change in 2011 due to a change in reporting population

² With effect of January 2014 the seasonal adjustment methodology using X12 ARIMA was reviewed and changed. Trading days and leap years have been incorporated into the monthly seasonal adjustment process.

³ Automotive Fuels data is effective from January 2010. Data shown pre 2010 are for growth trend purposes only; these data are excluded from totals as these are already included in their former Services sector of Motoring (now known as Vehicle Sales & Service)

Table 2B Card expenditure statistics (seasonally adjusted)

Retail sales^{1 and 2}

Value of purchase transactions (£ millions)

	Value of purchase transactions (£ millions)																		Total retail sales			
	Food & drink			Mixed business			Clothing			Household			Other retailers			Automotive Fuels ³			Value of purchases			
	Credit	Debit	Total	Credit	Debit	Total	Credit	Debit	Total	Credit	Debit	Total	Credit	Debit	Total	Credit	Debit	Total	Credit	Debit	Total	
Annual																						
2009	18,106	60,229	78,335	7,064	13,895	20,959	6,358	12,683	19,041	14,410	16,578	30,988	15,647	22,035	37,682	5,860	12,668	18,528	61,585	125,420	187,004	
2010	18,695	63,715	82,410	7,158	13,936	21,094	6,805	13,645	20,451	14,682	18,862	33,544	15,528	23,573	39,101	6,635	14,859	21,494	69,503	148,590	218,093	
2011	20,997	69,469	90,467	7,120	14,740	21,860	7,843	14,486	22,329	15,172	20,518	35,691	17,526	24,364	41,890	10,202	21,978	32,180	78,861	165,555	244,416	
2012	22,571	74,036	96,607	7,719	16,406	24,125	8,210	15,633	23,842	15,378	21,617	36,995	16,738	24,446	41,184	10,426	23,099	33,524	81,041	175,237	256,278	
2013	24,116	77,849	101,965	8,701	17,948	26,649	8,661	16,091	24,752	15,872	23,257	39,129	16,454	24,424	40,878	10,669	23,901	34,570	84,473	183,470	267,943	
Monthly																						
2013	Apr	2,000	6,443	8,443	706	1,458	2,164	709	1,320	2,030	1,298	1,883	3,181	1,387	2,026	3,412	889	1,985	2,875	6,990	15,115	22,105
	May	2,009	6,452	8,461	715	1,478	2,193	717	1,331	2,049	1,311	1,916	3,227	1,384	2,028	3,411	894	1,993	2,887	7,030	15,197	22,228
	Jun	2,017	6,478	8,495	723	1,498	2,221	726	1,343	2,069	1,325	1,943	3,267	1,378	2,031	3,409	897	2,000	2,897	7,066	15,293	22,359
	Jul	2,023	6,502	8,525	731	1,516	2,247	732	1,352	2,084	1,335	1,961	3,296	1,370	2,038	3,407	898	2,005	2,902	7,088	15,373	22,461
	Aug	2,026	6,517	8,543	737	1,532	2,270	735	1,357	2,092	1,342	1,975	3,317	1,363	2,047	3,409	896	2,006	2,902	7,099	15,435	22,533
	Sep	2,028	6,524	8,552	743	1,545	2,289	735	1,359	2,095	1,346	1,990	3,335	1,358	2,055	3,413	892	2,004	2,897	7,103	15,478	22,580
	Oct	2,028	6,541	8,569	750	1,553	2,302	734	1,360	2,094	1,349	2,009	3,358	1,356	2,059	3,415	888	1,999	2,887	7,104	15,521	22,625
	Nov	2,027	6,567	8,594	758	1,552	2,310	733	1,364	2,097	1,354	2,036	3,390	1,357	2,058	3,415	883	1,993	2,875	7,113	15,570	22,682
	Dec	2,026	6,590	8,617	768	1,543	2,311	735	1,371	2,107	1,363	2,066	3,429	1,359	2,056	3,414	879	1,989	2,867	7,130	15,615	22,745
2014	Jan	2,027	6,623	8,650	779	1,523	2,302	739	1,382	2,121	1,373	2,097	3,470	1,362	2,055	3,417	876	1,987	2,863	7,156	15,666	22,822
	Feb	2,030	6,675	8,705	789	1,495	2,284	745	1,393	2,139	1,385	2,123	3,508	1,365	2,054	3,419	873	1,988	2,861	7,189	15,727	22,916
	Mar	2,037	6,752	8,790	799	1,462	2,261	752	1,403	2,155	1,397	2,144	3,542	1,368	2,056	3,424	872	1,988	2,860	7,225	15,807	23,033
	Apr	2,045	6,838	8,883	807	1,432	2,239	759	1,410	2,169	1,407	2,160	3,567	1,368	2,063	3,430	871	1,990	2,861	7,256	15,893	23,149

Year-on-year growth rates (percentages)

Annual																						
2009	3.1	10.1	8.4	0.3	2.7	1.9	7.9	13.0	11.2	0.0	6.5	3.4	-0.5	4.1	2.1	-12.1	-2.1	-5.5	1.6	8.0	5.8	
2010	3.3	5.8	5.2	1.3	0.3	0.6	7.0	7.6	7.4	1.9	13.8	8.2	-0.8	7.0	3.8	13.2	17.3	16.0	12.9	18.5	16.6	
2011	12.3	9.0	9.8	-0.5	5.8	3.6	15.3	6.2	9.2	3.3	8.8	6.4	12.9	3.4	7.1	53.8	47.9	49.7	13.5	11.4	12.1	
2012	7.5	6.6	6.8	8.4	11.3	10.4	4.7	7.9	6.8	1.4	5.4	3.7	-4.5	0.3	-1.7	2.2	5.1	4.2	2.8	5.8	4.9	
2013	6.8	5.2	5.5	12.7	9.4	10.5	5.5	2.9	3.8	3.2	7.6	5.8	-1.7	-0.1	-0.7	2.3	3.5	3.1	4.2	4.7	4.6	
Monthly																						
2013	Apr	7.0	5.3	5.7	8.9	8.7	8.7	2.0	3.7	3.1	-0.5	3.0	1.5	-4.2	-1.4	-2.6	0.9	3.8	2.9	2.0	4.0	3.4
	May	7.2	5.1	5.6	9.3	8.2	8.6	2.4	3.2	2.9	-0.4	3.0	1.6	-4.0	-1.7	-2.7	1.1	3.7	2.9	2.2	3.8	3.3
	Jun	7.3	5.0	5.5	9.8	8.0	8.6	3.0	3.0	3.0	-0.2	3.3	1.9	-3.6	-1.8	-2.6	1.6	3.8	3.1	2.6	3.8	3.4
	Jul	7.4	5.0	5.5	10.4	8.0	8.8	3.8	3.0	3.2	0.3	3.7	2.3	-3.2	-1.7	-2.4	2.0	3.9	3.3	3.0	3.8	3.6
	Aug	7.5	5.0	5.6	10.9	8.2	9.1	4.4	2.9	3.4	0.9	4.2	2.8	-2.8	-1.6	-2.1	2.3	4.0	3.5	3.4	3.9	3.8
	Sep	7.5	5.0	5.6	11.4	8.5	9.4	4.8	2.8	3.5	1.4	4.8	3.4	-2.4	-1.4	-1.8	2.5	4.0	3.5	3.7	4.1	4.0
	Oct	7.4	5.0	5.6	11.9	8.9	9.8	5.1	2.7	3.6	2.0	5.5	4.0	-2.2	-1.0	-1.5	2.5	3.9	3.5	3.9	4.2	4.1
	Nov	7.2	5.1	5.6	12.3	9.2	10.2	5.3	2.8	3.6	2.6	6.4	4.8	-1.9	-0.6	-1.1	2.4	3.7	3.3	4.1	4.5	4.3
	Dec	6.8	5.2	5.5	12.7	9.4	10.5	5.5	2.9	3.8	3.2	7.6	5.8	-1.7	-0.1	-0.7	2.3	3.5	3.1	4.2	4.7	4.6
2014	Jan	6.5	5.1	5.4	13.1	9.5	10.6	5.9	3.3	4.2	3.9	8.9	6.8	-1.5	0.4	-0.4	2.3	3.3	3.0	4.4	4.9	4.7
	Feb	6.0	4.9	5.2	13.5	9.3	10.7	6.3	3.8	4.7	4.7	10.2	7.9	-1.4	0.8	-0.1	2.2	3.1	2.8	4.5	5.1	4.9
	Mar	5.5	4.9	5.0	13.8	8.9	10.5	6.6	4.3	5.1	5.5	11.4	8.9	-1.3	1.2	0.2	2.0	2.9	2.6	4.6	5.2	5.0
	Apr	5.0	4.9	5.0	14.0	8.1	10.0	6.8	4.7	5.5	6.1	12.2	9.7	-1.3	1.6	0.4	1.6	2.6	2.3	4.6	5.4	5.1

¹ There was a step change in 2011 due to a change in reporting population

² With effect of January 2014 the seasonal adjustment methodology using X12 ARIMA was reviewed and changed. Trading days and leap years have been incorporated into the monthly seasonal adjustment process.

³ Automotive Fuels data is effective from January 2010. Data shown pre 2010 are for growth trend purposes only; these data are excluded from totals as these are already included in their former Services sector of Motoring (now known as Vehicle Sales & Service)

Table 2C Card expenditure statistics (seasonally adjusted)

Services^{1 and 2}

Number of purchase transactions (millions)

																			Total services			
																			Number of purchases			
Vehicle Sales & Services ³			Entertainment			Hotels			Travel			Financial			Other services							
	Credit	Debit	Total	Credit	Debit	Total	Credit	Debit	Total	Credit	Debit	Total	Credit	Debit	Total	Credit	Debit	Total	Credit	Debit	Total	
Annual																						
2009	236	658	894	206	593	798	37	31	68	101	183	283	32	112	144	167	470	637	777	2,048	2,825	
2010	76	204	280	222	726	947	37	35	72	97	202	299	32	129	161	164	486	650	628	1,782	2,410	
2011	51	89	139	268	882	1,149	51	43	94	116	236	352	33	145	178	186	535	720	704	1,929	2,632	
2012	50	94	144	309	1,062	1,371	53	48	100	123	265	389	30	160	190	187	564	750	751	2,193	2,944	
2013	53	104	157	352	1,219	1,571	54	53	108	130	284	413	29	173	202	196	592	788	814	2,424	3,238	
Monthly																						
2013	Apr	4	8	13	28	97	125	4	4	9	11	23	34	2	14	17	16	49	65	66	196	262
	May	4	9	13	29	98	127	5	4	9	11	23	34	2	14	17	16	49	65	67	198	265
	Jun	4	9	13	29	99	128	5	4	9	11	24	34	2	14	17	16	49	66	67	200	267
	Jul	4	9	13	29	101	130	5	4	9	11	24	35	2	15	17	16	49	66	68	202	270
	Aug	4	9	13	30	103	133	5	5	9	11	24	35	2	15	17	17	50	66	69	204	273
	Sep	5	9	13	30	105	135	5	5	9	11	24	35	2	15	17	17	50	66	69	207	276
	Oct	5	9	14	31	107	138	5	5	9	11	24	35	2	15	17	17	50	67	70	210	280
	Nov	5	9	14	31	109	141	5	5	9	11	24	36	2	15	17	17	51	67	71	213	284
	Dec	5	9	14	32	112	144	5	5	9	11	25	36	2	15	17	17	51	68	72	216	288
2014	Jan	5	10	14	32	114	147	5	5	9	11	25	36	2	15	17	17	51	68	72	220	292
	Feb	5	10	14	33	117	150	5	5	10	11	25	37	2	15	17	17	51	68	73	223	296
	Mar	5	10	14	33	119	152	5	5	10	11	26	37	2	15	17	17	51	68	73	225	299
	Apr	5	10	14	34	121	155	5	5	10	11	26	37	2	15	18	17	51	68	74	228	301

Year-on-year growth rates (percentages)

Annual																						
2009	-4.8	5.0	2.2	4.3	18.7	14.6	1.0	13.7	6.5	-2.2	8.6	4.5	-0.6	1.2	0.8	0.0	4.5	3.2	-0.7	8.7	6.0	
2010	-67.8	-69.0	-68.7	7.7	22.5	18.7	1.7	10.1	5.6	-3.2	10.3	5.5	0.6	15.3	12.1	-2.0	3.4	2.0	-19.3	-13.0	-14.7	
2011	-33.3	-56.6	-50.3	20.8	21.4	21.3	36.5	24.4	30.7	19.3	16.9	17.7	3.1	11.9	10.1	13.5	10.0	10.9	12.2	8.2	9.2	
2012	-0.6	5.6	3.3	15.3	20.5	19.3	3.4	11.3	7.0	6.2	12.5	10.4	-9.9	10.7	6.9	0.5	5.4	4.2	6.7	13.7	11.8	
2013	5.5	11.2	9.2	14.0	14.8	14.6	3.5	11.4	7.2	5.2	6.9	6.4	-3.7	8.1	6.2	5.1	4.9	5.0	8.3	10.6	10.0	
Monthly																						
2013	Apr	0.7	5.7	3.9	14.6	17.9	17.2	-2.1	7.6	2.4	4.2	8.9	7.4	-10.5	8.5	5.1	-0.1	2.6	1.9	5.8	11.2	9.8
	May	1.1	6.0	4.3	14.3	17.1	16.5	-2.5	7.8	2.2	3.9	8.5	7.0	-9.8	8.3	5.2	0.3	2.5	2.0	5.8	10.8	9.5
	Jun	1.5	6.5	4.7	14.2	16.5	16.0	-2.3	8.2	2.5	3.8	8.2	6.8	-8.9	8.3	5.4	0.9	2.6	2.2	6.0	10.5	9.3
	Jul	2.0	7.0	5.2	14.2	16.0	15.6	-1.8	8.8	3.1	3.9	7.9	6.6	-7.8	8.4	5.6	1.6	2.9	2.6	6.4	10.4	9.3
	Aug	2.5	7.6	5.8	14.2	15.6	15.3	-1.0	9.4	3.9	4.1	7.6	6.5	-6.7	8.4	5.9	2.3	3.1	2.9	6.8	10.3	9.4
	Sep	3.1	8.3	6.4	14.2	15.3	15.0	0.0	9.9	4.6	4.3	7.2	6.3	-5.7	8.4	6.1	3.1	3.4	3.3	7.2	10.2	9.4
	Oct	3.8	9.1	7.2	14.1	15.0	14.8	1.1	10.3	5.4	4.6	6.8	6.1	-4.8	8.3	6.2	3.7	3.8	3.8	7.5	10.2	9.5
	Nov	4.6	10.1	8.1	14.0	14.8	14.6	2.2	10.7	6.3	4.8	6.7	6.1	-4.2	8.3	6.3	4.4	4.3	4.3	7.9	10.3	9.7
	Dec	5.5	11.2	9.2	14.0	14.8	14.6	3.5	11.4	7.2	5.2	6.9	6.4	-3.7	8.1	6.2	5.1	4.9	5.0	8.3	10.6	10.0
2014	Jan	6.4	12.4	10.3	14.3	15.1	14.9	4.7	12.1	8.3	5.7	7.3	6.8	-3.4	7.9	6.1	5.7	5.5	5.5	8.9	11.0	10.4
	Feb	7.3	13.5	11.4	14.7	15.7	15.5	5.9	12.9	9.3	6.2	7.8	7.3	-3.2	7.7	6.0	6.2	5.9	6.0	9.4	11.5	11.0
	Mar	8.0	14.5	12.2	15.3	16.6	16.3	6.8	13.7	10.1	6.5	8.3	7.8	-3.0	7.6	6.0	6.5	6.1	6.2	9.9	12.1	11.6
	Apr	8.4	15.1	12.8	15.8	17.6	17.2	7.3	14.4	10.8	6.7	8.8	8.1	-2.8	7.6	6.1	6.5	6.2	6.3	10.3	12.8	12.1

¹ There was a step change in 2011 due to a change in reporting population

² With effect of January 2014 the seasonal adjustment methodology using X12 ARIMA was reviewed and changed. Trading days and leap years have been incorporated into the monthly seasonal adjustment process.

³ With effect of January 2010 Automotive Fuels was published as a separate sub-sector in retail sales. See tables 2A and 2B

Table 2D Card expenditure statistics (seasonally adjusted)

Services^{1 and 2}

Value of purchase transactions (£ millions)

	Value of purchase transactions (£ millions)																		Total services				
	Vehicle Sales & Services ³			Entertainment			Hotels			Travel			Financial			Other services			Value of purchases				
	Credit	Debit	Total	Credit	Debit	Total	Credit	Debit	Total	Credit	Debit	Total	Credit	Debit	Total	Credit	Debit	Total	Credit	Debit	Total		
Annual																							
2009	14,657	35,517	50,174	9,614	14,610	24,224	5,302	2,722	8,023	13,092	14,119	27,210	5,724	32,823	38,547	15,156	37,033	52,189	63,544	136,823	200,368		
2010	8,753	24,834	33,587	9,956	17,041	26,997	5,510	3,082	8,591	12,817	15,861	28,677	5,910	39,415	45,325	15,865	40,928	56,793	58,811	141,160	199,971		
2011	7,781	22,465	30,246	14,083	20,695	34,777	8,649	3,845	12,494	16,282	18,455	34,737	7,149	46,490	53,639	18,340	46,768	65,108	72,284	158,719	231,002		
2012	7,549	23,561	31,111	14,688	22,772	37,460	8,872	4,315	13,188	16,555	20,679	37,234	5,475	50,047	55,522	18,664	48,915	67,579	71,803	170,291	242,094		
2013	7,658	25,643	33,301	15,657	24,544	40,201	9,251	4,781	14,032	17,434	22,120	39,554	5,116	55,042	60,158	19,915	57,139	77,055	75,031	189,270	264,301		
Monthly																							
2013	Apr	638	2,093	2,731	1,277	1,993	3,270	758	389	1,147	1,432	1,834	3,266	432	4,536	4,968	1,628	4,634	6,262	6,166	15,478	21,644	
	May	640	2,122	2,761	1,286	2,010	3,296	769	390	1,159	1,447	1,847	3,294	427	4,529	4,956	1,645	4,720	6,364	6,213	15,618	21,831	
	Jun	639	2,137	2,776	1,297	2,027	3,324	776	392	1,169	1,457	1,845	3,302	423	4,531	4,954	1,659	4,794	6,453	6,251	15,726	21,978	
	Jul	638	2,143	2,781	1,308	2,041	3,350	780	396	1,177	1,462	1,831	3,293	420	4,560	4,980	1,671	4,839	6,510	6,280	15,810	22,090	
	Aug	637	2,151	2,789	1,319	2,057	3,376	784	401	1,185	1,467	1,819	3,286	420	4,616	5,036	1,681	4,858	6,539	6,308	15,903	22,210	
	Sep	639	2,172	2,811	1,329	2,079	3,408	788	406	1,194	1,473	1,829	3,302	419	4,669	5,088	1,692	4,869	6,561	6,339	16,024	22,364	
	Oct	642	2,210	2,852	1,337	2,103	3,440	794	411	1,205	1,480	1,861	3,342	419	4,695	5,114	1,704	4,889	6,594	6,376	16,170	22,547	
	Nov	648	2,256	2,904	1,345	2,126	3,472	799	417	1,216	1,490	1,899	3,389	417	4,698	5,115	1,719	4,957	6,676	6,418	16,352	22,770	
	Dec	654	2,303	2,957	1,354	2,158	3,512	802	423	1,225	1,499	1,933	3,432	415	4,689	5,104	1,731	5,055	6,786	6,455	16,561	23,017	
	2014	Jan	658	2,344	3,002	1,361	2,201	3,562	802	428	1,231	1,506	1,958	3,464	413	4,689	5,101	1,738	5,128	6,867	6,478	16,749	23,227
		Feb	659	2,370	3,029	1,369	2,241	3,610	801	434	1,235	1,508	1,970	3,478	411	4,710	5,121	1,739	5,153	6,892	6,487	16,879	23,367
		Mar	659	2,380	3,039	1,378	2,269	3,646	799	440	1,239	1,508	1,975	3,483	409	4,748	5,158	1,738	5,160	6,898	6,491	16,972	23,464
Apr		658	2,380	3,038	1,386	2,286	3,671	798	446	1,244	1,507	1,980	3,487	408	4,802	5,210	1,738	5,171	6,909	6,496	17,063	23,559	

Year-on-year growth rates (percentages)²

	Year-on-year growth rates (percentages) ²																						
	Credit	Debit	Total	Credit	Debit	Total	Credit	Debit	Total	Credit	Debit	Total	Credit	Debit	Total	Credit	Debit	Total	Credit	Debit	Total		
Annual																							
2009	-5.1	7.7	3.6	-0.3	12.7	7.2	-3.3	11.8	1.3	-5.1	2.9	-1.1	-2.9	11.2	8.8	3.0	1.0	1.6	-2.2	6.6	3.7		
2010	-40.3	-30.1	-33.1	3.6	16.6	11.4	3.9	13.2	7.1	-2.1	12.3	5.4	3.3	20.1	17.6	4.7	10.5	8.8	-7.4	3.2	-0.2		
2011	-11.1	-9.5	-9.9	41.4	21.4	28.8	57.0	24.8	45.4	27.0	16.4	21.1	21.0	18.0	18.3	15.6	14.3	14.6	22.9	12.4	15.5		
2012	-3.0	4.9	2.9	4.3	10.0	7.7	2.6	12.2	5.6	1.7	12.1	7.2	-23.4	7.7	3.5	1.8	4.6	3.8	-0.7	7.3	4.8		
2013	1.4	8.8	7.0	6.6	7.8	7.3	4.3	10.8	6.4	5.3	7.0	6.2	-6.6	10.0	8.3	6.7	16.8	14.0	4.5	11.1	9.2		
Monthly																							
2013	Apr	-2.4	4.8	3.0	4.6	8.6	7.0	-3.5	9.4	0.5	2.3	9.8	6.3	-21.0	8.0	4.5	0.7	5.4	4.1	-1.0	7.1	4.6	
	May	-2.2	5.1	3.3	4.9	8.4	7.0	-3.8	9.3	0.3	2.7	9.7	6.5	-19.1	8.1	4.9	1.2	6.9	5.3	-0.5	7.6	5.1	
	Jun	-1.8	5.5	3.7	5.2	8.3	7.1	-3.4	9.4	0.6	3.3	9.7	6.8	-17.1	8.3	5.4	1.8	8.9	6.9	0.1	8.3	5.8	
	Jul	-1.4	5.9	4.1	5.7	8.2	7.2	-2.6	9.7	1.3	3.8	9.5	6.9	-15.0	8.6	6.0	2.6	11.0	8.6	0.9	9.0	6.6	
	Aug	-1.0	6.3	4.5	6.0	8.2	7.3	-1.5	10.0	2.2	4.3	8.9	6.8	-12.8	9.1	6.7	3.4	12.9	10.2	1.7	9.7	7.3	
	Sep	-0.4	6.6	4.9	6.3	8.1	7.4	-0.2	10.3	3.1	4.6	8.1	6.6	-10.6	9.6	7.5	4.3	14.3	11.5	2.5	10.2	7.9	
	Oct	0.1	7.1	5.4	6.4	8.1	7.4	1.2	10.5	4.2	4.8	7.5	6.3	-8.4	10.0	8.2	5.1	15.3	12.4	3.2	10.6	8.4	
	Nov	0.7	7.8	6.1	6.5	7.9	7.4	2.7	10.7	5.3	5.0	7.1	6.2	-7.5	10.2	8.4	5.9	16.1	13.3	3.8	10.9	8.8	
	Dec	1.4	8.8	7.0	6.6	7.8	7.3	4.3	10.8	6.4	5.3	7.0	6.2	-6.6	10.0	8.3	6.7	16.8	14.0	4.5	11.1	9.2	
	2014	Jan	2.1	10.0	8.1	6.8	7.9	7.4	5.9	11.0	7.5	5.7	7.0	6.4	-5.6	9.5	8.1	7.4	17.3	14.6	5.2	11.3	9.5
		Feb	2.7	11.1	9.1	7.0	8.3	7.8	7.3	11.2	8.6	6.1	7.2	6.7	-4.4	9.0	7.7	8.0	17.5	14.9	5.8	11.5	9.8
		Mar	3.1	12.0	9.8	7.3	8.8	8.2	8.3	11.5	9.4	6.4	7.3	6.9	-5.1	8.4	7.2	8.3	17.4	14.9	6.1	11.5	9.9
Apr		3.3	12.5	10.3	7.6	9.4	8.7	8.8	11.9	9.9	6.4	7.2	6.9	-5.5	8.1	6.8	8.4	17.0	14.7	6.3	11.4	9.9	

¹ There was a step change in 2011 due to a change in reporting population

² With effect of January 2014 the seasonal adjustment methodology using X12 ARIMA was reviewed and changed. Trading days and leap years have been incorporated into the monthly seasonal adjustment process.

³ With effect of January 2010 Automotive Fuels was published as a separate sub-sector in retail sales. See tables 2A and 2B

Table 3A Card expenditure statistics (not seasonally adjusted)

Number of credit card transactions

Detailed sector breakdown - retail sectors (not seasonally adjusted)

	April 2013	May 2013	June 2013	July 2013	August 2013	September 2013	October 2013	November 2013	December 2013	January 2014	February 2014	March 2014	April 2014	Total (latest 12 months)
Supermarkets	46,196,999	55,717,638	53,425,041	61,193,349	54,952,089	56,015,029	57,093,638	58,248,997	66,668,040	54,229,964	50,643,647	58,491,519	56,997,774	683,676,725
Bakers & dairies	207,748	233,930	231,392	246,973	249,517	247,899	262,881	259,950	254,447	218,873	245,836	291,266	271,991	3,014,955
Sweet stores	238,093	216,699	225,219	220,508	236,318	225,801	255,747	341,719	569,862	190,697	243,029	284,882	354,176	3,364,657
Miscellaneous foodstores	3,161,225	3,484,093	3,279,754	3,747,064	3,450,327	3,315,990	3,435,306	3,296,909	3,663,040	3,131,473	3,003,164	3,378,151	3,266,143	40,451,414
Off-licences	530,895	573,053	569,037	616,461	575,117	535,325	552,474	597,368	718,191	455,948	480,686	562,790	562,636	6,799,086
Food & drink	50,334,960	60,225,413	57,730,443	66,024,355	59,463,368	60,340,044	61,600,046	62,744,943	71,873,580	58,226,955	54,616,362	63,008,608	61,452,720	737,306,837
Department stores	5,186,999	5,429,410	5,717,876	6,114,210	5,200,024	5,212,417	5,506,018	7,434,515	9,383,748	5,838,384	4,332,925	5,070,519	5,122,655	70,362,701
Discount stores	1,691,713	1,825,151	1,817,397	2,036,416	1,973,546	1,930,113	2,053,785	2,489,901	2,589,176	1,843,846	1,676,917	1,857,092	1,973,143	24,066,483
Catalogues	1,638,275	4,074,732	4,052,141	4,722,524	5,288,562	5,146,665	6,090,055	6,184,750	6,341,471	6,429,400	6,089,072	8,310,092	8,329,589	71,059,053
Miscellaneous mixed	2,423,358	2,499,049	2,367,186	2,722,222	2,481,275	2,677,894	2,848,730	3,211,356	4,042,340	2,448,209	2,273,260	2,596,669	2,576,093	32,744,283
Mixed business	10,940,345	13,828,342	13,954,600	15,595,372	14,943,407	14,967,089	16,498,588	19,320,522	22,356,735	16,559,839	14,372,174	17,834,372	18,001,480	198,232,520
Men's clothing	365,090	394,579	435,308	504,500	416,701	365,988	361,515	395,231	561,219	393,264	272,197	296,584	314,562	4,711,648
Women's clothing	1,923,339	2,027,657	2,079,578	2,624,964	1,981,627	1,866,138	1,952,574	2,138,557	2,983,625	1,809,206	1,480,272	1,863,469	1,970,071	24,777,738
Family clothing	7,289,974	7,904,208	7,603,340	9,876,852	7,674,283	7,752,486	8,404,963	9,649,272	12,976,417	7,756,496	6,421,098	8,641,527	8,641,770	102,668,712
Miscellaneous clothing	849,455	875,406	879,865	1,024,971	830,561	844,144	691,247	558,229	636,271	330,020	425,946	430,059	430,059	7,913,718
Shoe shops	1,255,001	1,309,702	1,417,257	1,728,270	1,559,747	1,339,372	1,318,286	1,287,345	1,694,672	1,322,524	887,049	1,051,584	1,270,984	16,186,792
Clothing	11,682,859	12,511,552	12,415,348	15,759,557	12,462,919	12,168,128	12,728,585	14,029,034	18,852,204	11,668,089	9,390,636	11,645,110	12,627,446	156,258,608
Furniture stores	1,456,056	1,462,612	1,351,688	1,473,923	1,483,518	1,513,224	1,659,829	1,826,980	2,008,621	1,624,038	1,269,105	1,369,819	1,335,464	18,378,821
Household appliance stores	1,298,907	1,343,724	1,296,256	1,345,303	1,337,825	1,357,924	1,403,675	1,492,623	1,551,652	1,386,927	1,222,785	1,368,061	1,329,475	16,436,230
Electronic stores	1,081,431	1,161,035	1,061,349	1,216,281	1,197,101	1,241,455	1,304,342	1,426,280	1,966,365	1,458,398	1,127,094	1,191,491	1,180,405	15,531,596
DIY stores	6,329,404	7,211,201	6,436,349	6,651,822	6,508,436	6,071,612	6,359,875	6,131,107	6,075,875	5,620,367	5,511,291	6,585,443	7,099,501	76,263,269
Floor covering stores	166,133	167,407	148,672	162,384	171,438	164,537	195,295	198,489	151,754	168,811	163,264	178,306	169,464	2,040,181
Garden centres	2,110,753	2,680,631	2,162,963	1,734,463	1,450,187	1,352,842	1,371,300	1,405,701	1,730,963	939,795	993,315	1,975,139	2,357,676	20,154,975
Miscellaneous household	1,414,575	1,511,468	1,521,360	1,623,997	1,535,091	1,502,730	1,639,866	1,759,966	2,295,699	1,665,995	1,373,807	1,564,948	1,508,556	19,503,483
Household	13,857,259	15,538,078	13,979,027	14,208,173	13,683,596	13,204,324	13,934,182	14,241,506	15,780,929	12,864,331	11,660,661	14,233,207	14,980,541	168,308,555
Books, newspapers & magazines	1,787,414	1,791,687	1,672,155	1,975,988	1,878,601	2,034,974	2,105,693	2,287,550	3,381,975	1,774,536	1,631,312	1,842,103	1,740,862	24,117,436
Record shops	354,443	210,232	196,487	217,779	214,261	213,511	230,882	310,799	777,146	230,882	192,665	205,829	205,237	3,205,804
Music shops	1,993,999	129,737	118,653	121,554	115,752	140,261	148,635	153,219	185,763	140,271	122,280	127,443	115,845	1,619,413
Hobbies, toys & games	391,780	397,357	376,863	441,578	440,080	483,956	531,793	778,529	1,126,941	424,272	388,424	455,912	458,604	6,304,309
Photographic	178,754	200,241	216,323	200,774	216,323	221,441	180,046	201,763	241,250	166,782	128,609	147,739	137,864	2,253,613
Handicraft	94,663	91,822	81,878	88,599	94,555	93,634	106,029	111,351	95,931	94,511	82,514	92,067	84,386	1,117,277
Sports shops	2,563,607	2,884,322	2,770,746	3,457,349	3,297,542	2,912,804	2,584,620	2,673,835	3,146,963	2,587,737	2,200,325	2,554,403	2,763,182	33,833,828
Jewellers	590,093	620,825	644,140	741,868	714,998	641,971	669,855	1,296,970	864,653	695,688	627,438	695,688	8,834,160	8,834,160
Computer software	645,400	657,918	631,317	730,559	579,251	606,833	585,902	602,017	692,255	520,918	318,027	334,344	299,238	6,558,579
Medical goods	394,403	435,917	435,993	477,475	424,215	408,074	442,660	446,351	541,936	417,495	393,413	454,292	443,964	5,321,785
Chemists	3,307,584	3,851,489	3,629,995	4,475,477	3,729,073	3,718,257	3,916,413	4,132,957	5,942,895	3,669,833	3,305,234	3,842,147	3,688,638	47,902,408
Optical goods	486,695	512,841	475,910	553,489	506,414	487,323	486,509	459,998	411,756	494,672	466,591	528,826	491,505	5,875,834
Cosmetic stores	416,846	469,810	411,218	457,447	440,671	421,654	465,673	613,571	1,018,541	385,108	359,696	431,911	402,278	5,877,758
Tobacconists	16,754	20,595	20,367	24,905	24,400	23,263	24,583	24,178	30,484	26,664	24,703	28,516	28,870	301,528
Florists	332,278	369,997	346,093	352,609	311,652	323,963	325,744	325,642	542,226	288,616	402,286	546,908	340,827	4,476,563
Artists' supplies	285,767	269,119	240,588	275,071	284,751	282,108	324,776	365,568	387,731	266,583	265,919	290,558	266,722	3,519,494
Antiques, art & stamps/coins	173,175	165,536	144,992	168,613	168,698	153,528	165,003	166,203	127,321	124,347	139,340	124,347	148,991	1,855,283
Pawn shops	3,101	3,209	3,073	3,229	3,447	3,370	3,685	3,879	5,910	3,544	3,387	3,596	3,274	43,603
Gift shops	1,195,123	1,293,981	1,357,809	1,514,973	1,553,700	1,379,816	1,474,940	1,910,235	2,849,485	1,147,851	1,178,081	1,395,036	1,278,338	18,334,245
Secondhand shops	17,888	20,439	21,574	20,800	20,800	20,206	21,387	21,694	23,526	18,739	16,936	21,533	21,837	248,880
Luggage & leather goods	101,854	115,027	124,438	136,306	119,727	108,579	116,818	131,736	173,770	104,039	81,104	98,470	95,737	1,405,751
Pet shops	728,630	808,862	750,655	818,766	807,213	770,475	812,871	795,270	870,582	776,910	709,772	798,306	800,551	9,520,182
Religious goods	9,786	12,294	13,716	13,716	13,593	12,011	10,384	7,778	6,935	5,923	8,342	10,274	121,360	121,360
Direct sales	3,573,569	3,828,368	3,452,683	3,799,478	3,500,674	3,648,637	4,044,664	3,584,185	3,793,509	3,547,575	3,289,938	3,536,885	3,521,918	43,548,514
Miscellaneous & speciality shops	2,941,379	3,980,922	2,960,859	3,339,289	4,006,902	3,291,326	2,888,099	3,306,818	3,660,350	2,933,532	2,653,425	3,054,845	3,007,121	39,083,488
Other retail	22,584,985	23,142,547	21,080,398	24,424,014	23,472,411	22,391,315	22,667,664	24,279,959	31,388,143	20,851,108	18,972,368	21,629,483	20,981,685	275,281,095
Automotive Fuels	18,362,097	20,379,628	19,765,733	21,682,964	20,432,217	19,977,476	20,068,968	19,453,192	19,700,953	18,578,717	17,647,840	20,285,710	19,541,927	237,515,325
Total retail sales	127,762,505	145,625,560	138,925,549	157,694,435	144,457,918	143,048,376	147,498,033	154,069,156	179,952,544	138,749,039	126,660,041	148,636,490	147,585,799	1,772,902,940

Table 3A Card expenditure statistics (not seasonally adjusted)

Number of credit card transactions

Detailed sector breakdown - services sectors (not seasonally adjusted)

	April 2013	May 2013	June 2013	July 2013	August 2013	September 2013	October 2013	November 2013	December 2013	January 2014	February 2014	March 2014	April 2014	Total (latest 12 months)
Auto rental	458,184	522,338	489,944	568,433	543,062	485,611	473,719	405,564	378,236	396,858	383,576	444,885	461,221	5,553,447
Auto parts & accessories	808,033	818,781	757,895	840,498	769,158	727,202	749,248	737,727	675,823	731,647	702,179	813,522	785,705	9,109,385
Auto services	1,588,090	1,840,875	1,805,694	1,940,151	1,744,976	1,873,939	2,037,002	1,966,855	1,848,561	1,878,503	1,826,107	2,018,661	1,904,900	22,686,224
Auto repair shops	856,560	916,930	869,571	964,830	887,079	872,674	897,179	858,596	773,682	873,209	836,421	988,773	879,423	10,618,367
Service stations	0	0	0	0	0	0	0	0	0	0	0	0	0	0
Vehicle sales	600,366	623,701	582,632	642,726	594,801	582,371	552,130	503,874	447,933	526,409	519,371	650,525	591,055	6,817,528
Vehicle Sales & Services	4,311,233	4,722,625	4,505,736	4,956,638	4,539,076	4,541,797	4,709,278	4,472,616	4,124,235	4,406,626	4,267,654	4,916,366	4,622,304	54,784,951
Restaurants	14,268,412	15,755,368	15,229,409	16,863,448	16,623,470	15,801,604	16,388,914	15,858,167	15,937,174	14,497,422	15,000,918	17,383,616	17,078,399	192,417,909
Public houses	2,449,348	2,822,324	2,647,743	3,110,038	2,979,687	2,745,144	2,684,763	2,631,824	2,993,454	2,507,341	2,682,597	3,178,876	2,905,567	33,889,358
Catering services	418,851	490,990	476,850	520,905	471,538	504,396	550,595	551,530	522,021	502,140	509,397	577,975	546,378	6,224,715
Video stores	177,795	211,623	207,425	236,033	238,633	260,410	253,977	259,755	257,361	291,986	236,679	216,475	193,799	2,864,156
Cinema, theatre & dance	1,797,455	1,962,841	1,643,893	1,749,483	1,906,702	1,647,853	2,093,374	2,277,896	2,317,580	2,081,910	1,865,420	1,758,778	1,720,158	23,025,888
Concerts & entertainers	54,841	55,232	52,200	50,850	60,150	55,633	70,775	69,054	65,612	53,303	56,341	56,671	58,889	704,710
Tourist attractions	552,456	619,599	564,750	829,470	587,624	1,016,178	510,639	319,256	315,830	519,559	313,539	394,829	680,919	6,412,192
Amusement parks	77,591	75,869	67,812	101,739	159,874	69,718	67,845	35,059	25,533	20,430	33,766	38,110	97,405	793,160
Aquariums	28,967	26,124	24,764	34,775	46,964	24,187	21,257	14,471	13,400	14,041	20,535	23,566	41,437	305,521
Sports & games establishments	2,656,062	2,470,431	2,109,328	2,409,896	2,358,234	2,417,377	2,452,705	2,402,197	3,601,297	3,409,375	2,996,871	3,516,752	3,238,542	33,383,005
Professional sports clubs	125,093	159,320	101,822	144,167	143,750	121,256	119,270	123,279	150,241	118,217	102,277	129,269	140,729	1,553,597
Gambling	4,035,780	4,714,783	4,062,450	4,452,755	4,406,338	4,934,217	5,108,341	4,956,463	5,810,300	5,726,962	5,358,815	6,132,327	5,812,518	61,476,269
Personal services	239,267	322,970	290,843	325,713	301,968	284,495	288,351	265,324	303,603	241,369	220,650	244,799	239,993	3,330,078
Miscellaneous entertainment	640,859	660,254	604,977	728,678	729,031	639,812	651,210	555,754	458,249	588,093	572,751	644,883	680,714	7,514,406
Entertainment	27,522,777	30,347,728	28,084,266	31,557,950	31,442,517	30,093,726	31,262,016	30,320,029	32,771,655	30,312,148	29,970,556	34,296,926	33,435,447	373,894,964
Hotels	4,629,392	4,900,990	4,768,431	5,218,476	4,863,882	4,682,612	4,840,124	4,467,429	4,088,300	4,083,032	4,145,655	4,779,228	4,621,856	55,460,015
Airlines	1,604,131	1,649,270	1,513,849	1,547,170	1,494,484	1,723,032	1,593,212	1,338,321	1,076,908	1,793,149	1,472,817	1,632,121	1,577,849	18,412,182
Airport terminals	27,018	31,822	36,935	49,342	42,104	39,687	37,187	28,978	26,467	30,805	30,311	37,202	39,803	430,643
Railways	5,540,668	5,851,360	5,594,415	6,086,672	5,318,403	5,860,525	6,167,437	5,935,621	5,470,311	5,395,775	5,136,056	6,016,771	5,637,972	68,471,318
Buses	618,037	705,755	704,617	772,351	687,817	779,826	780,117	747,833	641,808	699,472	705,467	797,647	785,207	8,807,917
Sea travel	129,327	179,664	170,911	198,375	205,810	152,438	139,008	117,598	108,514	129,609	141,283	180,642	195,449	1,919,301
Travel agents	1,611,842	1,954,532	1,825,848	1,913,479	1,677,311	1,714,068	1,858,481	1,624,009	1,493,578	2,139,052	1,838,082	1,962,089	1,789,813	21,790,342
Timeshares	27,273	17,792	16,645	18,896	20,169	15,865	19,255	17,274	17,424	27,484	20,608	18,897	18,170	228,479
Camping grounds	207,035	256,300	248,568	336,029	351,884	192,332	138,217	74,780	65,531	108,435	113,108	160,290	243,032	2,288,506
Miscellaneous travel	847,934	918,469	886,770	955,758	895,220	866,976	918,403	852,825	814,053	794,911	793,733	902,792	873,155	10,473,065
Travel	10,613,265	11,564,964	10,998,558	11,878,072	10,693,202	11,344,749	11,651,317	10,737,239	9,714,594	11,118,692	10,251,465	11,708,451	11,160,450	132,821,753
Telegraph services / Wire transfer money order	3,329	9,627	12,125	8,853	10,710	3,562	14,162	12,789	14,129	15,188	15,915	16,698	15,785	149,543
Insurance services	1,647,218	1,736,851	1,623,387	1,990,189	1,825,786	1,817,639	1,777,630	1,495,708	1,433,304	1,629,910	1,526,165	1,760,216	1,664,767	20,281,552
FIs - cash disbursements (auto & manual)	21,240	22,838	20,811	21,056	17,902	19,838	20,716	17,252	13,429	15,639	16,258	17,396	14,963	218,098
FIs - merchandise & services	422,686	458,502	448,319	383,972	367,453	370,040	382,694	367,261	367,935	390,220	353,889	417,721	377,995	4,686,001
Non-FIs - foreign currency, travellers' cheques	84,043	95,817	117,080	110,369	109,358	73,686	53,056	53,056	63,712	74,872	63,712	74,872	96,032	999,584
Security brokers and dealers	31,121	13,042	12,388	10,116	9,218	9,663	10,294	10,311	9,894	10,758	8,450	8,458	7,825	120,417
Tax preparation services	236	208	174	165	158	160	153	150	121	203	201	216	171	2,080
Tax payments	18,384	4,768	4,102	5,687	5,410	15,128	4,248	3,859	3,900	3,494	3,719	3,648	4,484	62,447
Fines, bail and bond payments	60,288	70,418	63,179	71,377	68,253	66,050	75,357	71,201	69,803	71,855	68,784	74,170	69,133	839,580
Miscellaneous financial	87,636	107,240	87,148	97,891	97,862	83,017	84,951	77,303	66,068	71,097	69,499	86,999	93,520	1,022,595
Financial	2,376,161	2,519,311	2,366,452	2,706,386	2,513,121	2,494,455	2,443,891	2,108,890	2,032,480	2,265,250	2,126,592	2,460,394	2,344,675	28,381,897

Table 3A Card expenditure statistics (not seasonally adjusted)

Number of credit card transactions

Detailed sector breakdown - services sectors (continued, not seasonally adjusted)

	April 2013	May 2013	June 2013	July 2013	August 2013	September 2013	October 2013	November 2013	December 2013	January 2014	February 2014	March 2014	April 2014	Total (latest 12 months)
Telecoms	2,008,061	1,952,321	1,863,297	2,030,451	1,957,400	1,991,756	2,037,282	1,932,087	1,992,186	1,957,337	1,737,496	1,922,201	1,845,789	23,219,603
Utilities	384,438	397,801	355,259	385,297	355,440	372,424	404,266	361,679	358,992	395,102	375,005	423,441	360,426	4,545,132
Contractors (residential & commercial)	267,615	272,941	249,244	280,760	263,823	272,471	301,694	287,437	238,202	264,917	254,564	279,307	259,777	3,225,137
Gardening services	68,914	82,824	67,952	61,476	51,862	46,834	47,954	47,483	61,863	34,612	37,552	66,987	77,143	684,542
Veterinary services	584,575	607,799	579,700	662,903	663,843	617,063	654,717	605,735	590,999	618,075	561,027	612,151	614,798	7,388,810
Photocopying & printing	286,438	261,551	241,239	253,464	249,200	273,726	310,710	320,936	344,367	298,378	237,636	267,338	238,934	3,297,479
Photographic studios	104,091	116,518	122,589	144,646	109,804	108,821	145,031	150,555	137,012	88,093	86,768	102,648	101,318	1,413,803
Beauty & barber shops	1,503,101	1,615,705	1,556,995	1,716,842	1,607,502	1,523,249	1,573,468	1,609,096	2,041,008	1,458,788	1,389,438	1,577,388	1,543,901	19,213,380
Employment agencies	30,436	27,665	25,191	29,770	28,316	26,477	29,037	26,698	23,239	22,428	21,330	22,317	22,626	305,094
Counselling services	6,498	6,157	6,078	6,617	6,270	6,485	6,576	5,798	4,636	5,896	5,458	6,201	6,229	72,401
Legal services	57,342	76,349	37,594	78,636	40,894	73,516	60,488	41,321	66,712	58,778	39,898	78,454	56,243	708,883
Laundry & cleaning	183,297	201,407	200,717	222,004	188,185	196,271	206,888	193,682	181,537	183,012	163,424	190,058	187,756	2,314,941
Funeral services	12,921	12,957	11,543	12,360	11,059	10,783	12,250	11,806	11,689	12,826	11,994	13,069	12,330	144,666
Medical services	1,141,235	1,249,898	1,172,932	1,274,330	1,154,617	1,194,498	1,328,013	1,263,840	1,127,482	1,309,962	1,191,535	1,279,940	1,224,028	14,771,075
Moving & courier services	386,953	431,937	418,551	435,212	381,354	391,457	448,352	435,760	418,601	386,531	384,439	418,748	406,900	4,957,842
Repair shops (not auto)	58,123	63,663	57,418	66,113	61,440	60,133	66,033	65,551	63,803	66,667	58,736	60,509	57,755	747,821
Accounting services	28,230	28,707	26,774	29,496	32,711	35,968	38,928	37,146	36,013	45,387	35,026	36,575	28,873	411,604
Advertising, consultancy & PR	98,742	90,001	79,670	86,779	82,752	79,424	82,082	83,131	61,132	70,899	64,049	73,146	69,793	922,858
Computer programming	1,260,313	1,350,347	1,257,317	1,352,741	1,249,594	1,397,593	1,504,643	1,590,037	2,009,671	1,362,008	1,174,166	1,356,973	1,287,080	16,892,170
Farming services	105,026	108,725	100,834	107,924	99,169	98,637	102,921	105,644	120,129	103,931	97,123	111,280	112,038	1,268,355
Miscellaneous professional services	949,812	945,189	865,059	930,223	900,722	946,325	967,131	926,776	875,755	935,356	880,584	958,144	907,397	11,038,661
Engineering services	56,881	52,044	51,699	58,159	51,674	50,428	55,696	50,653	44,337	50,440	48,815	54,097	52,167	620,209
Marina services	65,685	76,424	74,297	107,982	101,596	62,551	46,742	36,912	36,047	34,776	31,179	50,505	69,437	728,448
Wrecking & salvage yards	3,886	4,284	4,059	4,443	3,982	3,894	3,894	3,365	2,530	3,544	3,178	3,606	3,710	44,228
Pest control	2,857	3,168	2,899	3,939	3,599	2,996	3,426	2,786	2,526	2,526	2,287	2,657	2,811	35,457
Educational establishments	517,258	567,916	537,608	542,482	455,560	785,644	752,379	704,570	571,025	776,327	629,403	757,142	596,396	7,676,452
Child care services	19,930	18,394	15,590	17,279	18,590	17,732	21,442	18,613	18,333	23,664	22,588	19,639	20,424	232,288
Social, political & religious organisations	1,025,691	1,356,107	1,234,677	1,345,963	1,277,436	1,363,567	1,347,088	1,526,509	1,327,738	1,183,485	1,101,393	1,497,052	1,374,001	15,935,016
Government services	2,186,840	2,362,713	2,258,583	2,449,924	2,244,558	2,298,025	2,412,727	2,221,893	2,103,513	2,408,356	2,342,378	2,567,896	2,526,309	28,196,875
Miscellaneous services	2,240,045	1,379,833	1,299,076	1,467,129	1,327,713	1,337,170	1,416,482	1,425,366	1,968,180	1,412,100	1,343,621	1,507,244	1,208,529	17,092,443
Commercial equipment	878,844	926,106	854,846	910,074	892,327	979,572	1,015,092	995,875	948,365	987,945	868,457	927,720	860,208	11,166,587
Other services	16,524,078	16,647,451	15,629,287	17,075,418	15,872,992	16,625,229	17,403,432	17,088,740	17,787,459	16,562,146	15,200,547	17,244,433	16,135,126	199,272,260
Total services	65,976,906	70,703,069	66,352,730	73,392,940	69,924,790	69,782,568	72,310,058	69,194,943	70,518,723	68,747,894	65,962,469	75,405,798	72,319,858	844,615,840
TOTAL	193,739,411	216,328,629	205,278,279	231,087,375	214,382,708	212,830,944	219,808,091	223,264,099	250,471,267	207,496,933	192,622,510	224,042,288	219,905,657	2,617,518,780

Table 3B Card expenditure statistics (not seasonally adjusted)

Value of credit card transactions

Detailed sector breakdown - retail sectors (not seasonally adjusted)

£	April 2013	May 2013	June 2013	July 2013	August 2013	September 2013	October 2013	November 2013	December 2013	January 2014	February 2014	March 2014	April 2014	Total (latest 12 months)
Supermarkets	1,521,647,858	1,828,454,442	1,738,759,991	1,975,026,227	1,780,535,367	1,835,642,675	1,826,140,750	1,976,965,597	2,452,034,549	1,669,391,820	1,580,303,446	1,829,134,864	1,825,485,104	22,317,874,832
Bakers & dairies	3,500,534	3,830,121	3,687,989	3,936,029	3,756,017	3,844,846	4,080,205	4,137,032	4,655,329	3,436,605	3,565,614	4,296,637	4,054,742	47,281,166
Sweet stores	6,138,800	5,533,411	5,645,055	5,933,110	6,057,438	5,752,280	6,948,075	9,982,186	18,355,834	4,840,433	5,655,323	6,960,349	9,036,579	90,700,073
Miscellaneous foodstores	92,968,404	102,574,296	97,502,265	106,766,414	96,957,522	96,137,345	101,797,668	103,777,264	129,511,241	95,640,387	91,045,937	102,527,425	99,619,064	1,223,856,826
Off-licences	37,803,793	44,608,902	43,211,861	42,126,992	39,418,830	35,823,668	40,227,043	49,800,057	62,836,919	31,686,134	33,031,374	40,934,432	41,646,140	505,352,252
Food & drink	1,662,059,389	1,985,001,172	1,888,807,159	2,133,788,772	1,926,725,174	1,977,200,714	1,979,193,741	2,144,662,136	2,667,393,872	1,804,995,379	1,713,601,694	1,983,853,707	1,979,841,629	24,185,065,149
Department stores	363,107,039	368,555,169	396,573,048	385,713,017	362,795,403	385,313,303	403,925,107	513,436,969	617,716,671	381,422,432	297,273,185	359,113,742	364,618,673	4,836,456,719
Discount stores	81,807,001	87,761,247	83,185,041	93,143,354	90,717,837	89,962,301	98,496,565	119,700,804	126,666,687	86,406,756	75,022,870	82,260,449	85,742,661	1,119,066,572
Catalogues	51,960,204	114,659,084	109,051,137	122,983,156	129,933,825	123,648,231	144,816,925	160,948,175	155,551,854	145,585,238	134,492,478	174,871,612	161,180,149	1,677,721,864
Miscellaneous mixed	101,408,357	101,466,001	96,375,468	107,701,418	101,711,076	112,516,978	120,250,942	135,799,913	163,599,865	93,489,643	88,631,515	103,015,297	104,163,540	1,327,721,656
Mixed business	598,282,601	672,441,501	685,184,694	709,540,945	684,158,141	711,440,813	767,489,539	929,885,861	1,063,535,077	706,904,069	595,420,048	719,261,100	715,705,023	8,960,966,811
Men's clothing	40,893,213	46,327,588	49,982,626	48,919,483	42,206,821	42,618,206	43,264,473	43,781,987	55,969,042	42,801,660	31,221,703	37,604,140	37,862,141	522,559,870
Women's clothing	140,332,664	143,483,780	145,849,930	157,084,027	126,516,213	145,125,199	150,301,633	155,636,178	182,627,083	120,564,248	110,629,220	143,226,453	141,500,930	1,722,544,894
Family clothing	370,794,182	405,248,830	387,382,054	453,853,771	384,478,025	417,711,966	454,897,046	494,323,460	615,513,650	354,648,170	323,538,576	404,817,325	428,739,176	5,125,152,049
Miscellaneous clothing	40,381,260	45,022,939	44,343,510	46,445,488	41,333,717	44,669,715	41,299,905	37,343,227	26,915,940	23,892,197	28,976,068	28,595,033	446,471,678	
Shoe shops	78,019,389	81,357,951	82,692,282	88,211,355	88,292,622	90,404,191	96,315,477	94,647,789	113,054,991	77,521,018	56,136,705	70,404,425	81,009,596	1,020,048,402
Clothing	673,120,708	721,441,088	710,250,402	794,514,124	682,827,398	740,529,277	786,077,724	825,732,641	1,005,799,515	621,451,036	545,418,401	685,028,411	717,706,876	8,836,776,893
Furniture stores	272,881,092	272,648,405	243,750,116	267,215,329	265,899,809	282,815,434	312,230,161	308,011,466	281,842,932	324,562,565	261,067,025	283,713,093	273,140,364	3,376,896,699
Household appliance stores	120,993,389	121,958,498	114,823,418	121,898,926	116,698,471	118,613,404	131,710,682	136,155,284	139,037,551	134,974,982	119,163,085	130,783,703	117,745,999	1,503,564,003
Electronic stores	174,158,957	179,123,727	164,272,340	189,834,857	192,328,858	205,051,339	208,180,828	235,837,084	335,296,699	229,354,346	170,169,436	188,670,816	188,977,958	2,487,098,288
DIY stores	457,392,913	520,485,014	464,217,447	491,506,978	472,067,010	452,575,335	493,006,720	458,296,139	410,702,299	444,770,223	413,028,861	488,139,916	516,438,874	5,625,234,816
Floor covering stores	56,190,006	59,401,802	54,831,706	60,126,693	60,685,210	58,218,205	69,905,671	72,060,246	54,884,112	59,281,547	57,287,828	64,511,768	61,013,601	732,208,389
Garden centres	103,790,061	133,927,496	104,248,864	88,961,303	67,983,243	61,024,743	59,522,023	60,229,499	40,489,849	44,527,247	96,666,417	120,238,928	949,114,099	
Miscellaneous household	126,108,539	127,546,772	129,799,629	140,593,528	127,211,637	137,389,669	147,735,226	149,629,080	183,530,479	138,559,364	117,891,211	134,494,274	131,284,386	1,665,465,315
Household	1,311,514,957	1,415,091,714	1,275,943,520	1,360,137,614	1,302,874,298	1,315,688,129	1,422,291,311	1,420,218,798	1,476,588,559	1,371,992,876	1,182,934,693	1,386,979,987	1,408,840,110	16,339,581,609
Books, newspapers & magazines	52,744,737	62,330,988	49,716,410	56,324,071	63,505,033	59,810,394	64,013,718	68,678,141	92,171,182	57,581,933	50,665,254	55,102,495	50,105,306	730,004,925
Record shops	10,097,282	5,795,887	6,117,753	5,367,075	5,957,592	5,984,066	6,685,616	9,233,499	6,126,985	5,551,324	5,312,455	5,551,324	5,855,248	91,459,282
Music shops	28,070,051	15,795,668	14,524,896	16,314,444	16,261,607	17,092,818	18,033,453	19,640,832	23,997,885	18,292,708	16,077,068	17,031,916	15,775,764	208,839,059
Hobbies, toys & games	22,741,770	23,421,616	22,541,406	25,658,041	23,943,411	28,039,590	30,568,731	35,673,579	81,186,804	28,048,564	23,631,729	28,403,432	27,427,899	396,544,802
Photographic	22,686,051	25,766,294	23,137,803	25,796,688	24,584,696	23,128,342	22,854,492	23,800,804	25,419,069	17,547,030	23,392,004	23,392,004	19,330,242	276,836,284
Handicraft	8,014,569	9,145,184	7,507,726	8,083,973	9,132,804	8,423,992	9,348,560	9,546,814	8,294,002	8,652,078	7,803,137	8,610,197	8,026,860	102,575,327
Sports shops	177,294,028	195,477,579	183,351,381	219,500,561	211,983,799	188,071,001	172,655,595	176,539,010	204,501,874	165,856,660	145,227,003	172,931,296	187,331,391	2,223,426,650
Jewellers	109,265,148	113,534,613	118,113,120	129,609,708	123,339,836	117,248,386	115,855,519	136,862,635	219,342,983	104,996,613	104,996,613	118,654,168	109,714,230	1,512,701,067
Computer software	113,362,411	57,984,021	54,634,496	59,495,506	55,450,356	57,180,822	57,519,585	59,220,658	65,590,821	55,800,572	44,207,262	48,942,304	46,225,642	662,252,045
Medical goods	13,501,955	15,954,507	15,374,004	16,873,314	14,962,582	14,294,402	16,668,446	17,341,823	19,924,668	14,780,274	14,798,471	17,078,589	15,905,036	193,956,116
Chemists	70,781,139	83,136,887	78,199,091	96,280,059	80,842,060	78,376,484	90,980,415	109,358,015	165,396,321	76,191,697	69,474,503	82,365,805	77,636,300	1,088,237,637
Optical goods	73,785,320	76,696,549	70,524,385	80,809,046	75,288,827	72,094,264	73,236,058	68,280,778	57,426,905	74,029,362	71,457,677	81,586,207	75,068,723	876,498,781
Cosmetic stores	23,309,165	36,892,642	25,407,223	27,054,569	25,063,710	25,150,873	28,474,809	35,632,076	53,178,212	22,491,160	21,294,342	26,471,740	24,040,377	351,151,723
Tobacconists	1,185,223	1,444,374	1,332,919	1,674,914	1,535,684	1,428,689	1,472,360	1,562,859	1,505,210	1,265,855	1,384,420	1,658,055	1,665,145	18,790,474
Florists	17,257,453	19,716,432	17,717,734	18,125,275	16,022,331	16,688,068	16,878,470	16,635,720	25,286,535	14,545,071	19,596,272	25,477,138	18,088,247	224,777,293
Artists' supplies	13,495,588	13,699,275	12,570,799	13,776,852	13,538,409	14,173,078	15,901,712	16,831,999	16,784,332	12,558,292	12,474,343	14,083,169	12,942,109	169,333,869
Antiques, art & stamps/coins	26,132,504	26,986,000	26,493,631	25,854,937	26,493,631	27,251,363	30,028,725	29,159,910	29,020,834	21,275,050	20,535,334	25,456,759	24,277,058	310,122,542
Pawn shops	700,402	763,529	698,606	794,358	986,309	962,519	904,955	903,890	1,269,842	934,616	840,595	820,997	837,141	10,717,357
Gift shops	43,303,542	47,922,775	47,848,456	54,411,222	55,698,070	50,711,474	56,473,607	72,433,071	87,265,726	40,217,169	39,671,984	47,511,796	45,483,773	645,649,123
Secondhand shops	2,168,434	2,603,870	2,439,989	2,045,305	2,205,427	2,283,768	2,525,613	2,086,532	2,415,751	2,147,096	2,086,532	2,657,533	2,550,881	28,394,968
Luggage & leather goods	15,164,488	16,650,938	20,137,383	19,574,066	15,563,992	15,763,536	16,767,854	17,588,930	24,122,778	13,972,162	11,775,032	14,703,807	13,950,157	200,570,635
Pet shops	32,273,147	35,667,323	32,949,336	36,130,464	35,596,483	33,552,269	35,129,121	33,672,127	35,672,579	33,596,240	30,302,499	34,684,329	34,657,384	411,610,154
Religious goods	330,791	406,285	410,814	446,525	442,730	336,771	251,365	238,074	227,417	199,227	227,417	282,970	363,713	4,057,307
Direct sales	231,366,651	238,054,206	214,441,718											

Table 3B Card expenditure statistics (not seasonally adjusted)

Value of credit card transactions

Detailed sector breakdown - services sectors (not seasonally adjusted)

£	April 2013	May 2013	June 2013	July 2013	August 2013	September 2013	October 2013	November 2013	December 2013	January 2014	February 2014	March 2014	April 2014	Total (latest 12 months)
Auto rental	54,817,631	71,995,250	64,712,818	79,279,170	76,778,639	55,448,702	51,466,513	42,836,496	42,360,189	43,363,738	41,273,457	50,249,830	55,307,250	675,072,052
Auto parts & accessories	125,609,513	129,573,692	120,393,503	131,308,164	119,171,133	116,788,003	121,861,877	118,758,944	106,251,114	117,824,449	112,364,912	129,183,514	122,384,269	1,445,863,574
Auto services	43,583,607	48,991,651	47,174,244	50,012,157	44,662,447	47,199,044	48,414,282	45,534,190	41,257,536	45,457,360	43,850,954	51,367,255	48,174,695	562,095,815
Auto repair shops	211,574,829	227,548,216	216,638,656	233,720,829	218,189,327	219,233,646	224,924,662	215,001,488	194,655,690	219,584,718	212,833,093	250,090,553	217,477,138	2,649,898,016
Service stations	0	0	0	0	0	0	0	0	0	0	0	0	0	0
Vehicle sales	212,880,390	215,925,551	203,181,603	220,123,258	206,410,088	217,688,216	204,435,326	185,397,370	162,997,349	201,904,064	202,279,699	254,718,984	214,314,520	2,489,376,028
Vehicle Sales & Services	648,465,970	694,034,360	652,100,824	714,443,578	665,211,634	656,357,611	651,102,660	607,528,488	547,521,878	628,134,329	612,602,115	735,610,136	657,667,872	7,822,305,485
Restaurants	530,040,458	568,947,092	559,448,303	599,240,747	588,760,785	563,149,577	576,639,385	566,035,108	636,264,292	491,736,841	509,840,528	599,438,672	578,649,229	6,838,150,559
Public houses	102,217,292	110,886,994	104,979,349	120,161,745	116,324,326	108,084,387	104,953,621	103,179,808	136,068,050	92,669,162	97,540,023	117,892,908	114,690,587	1,327,430,960
Catering services	43,778,484	56,277,811	54,042,683	57,395,198	51,822,679	51,080,624	56,972,593	57,894,643	60,128,107	51,331,696	49,232,929	57,704,523	54,533,947	658,417,433
Video stores	2,520,170	2,534,087	2,423,323	2,688,000	2,610,903	3,022,377	2,849,915	3,273,662	2,903,900	3,171,342	2,781,590	2,510,898	2,261,708	33,031,705
Cinema, theatre & dance	129,989,934	135,625,522	114,821,169	114,542,932	108,460,203	116,076,033	158,858,206	157,457,515	159,509,598	123,753,894	112,248,163	133,080,541	112,511,840	1,546,945,616
Concerts & entertainers	3,929,688	8,406,313	4,439,020	4,245,081	6,336,792	6,145,253	8,039,076	7,310,991	5,719,691	4,538,866	4,603,358	5,012,692	4,451,237	69,248,370
Tourist attractions	29,442,205	36,179,014	33,185,504	46,303,056	49,674,696	29,390,746	27,178,224	17,829,140	18,349,724	19,084,260	19,878,168	25,413,220	39,200,023	361,665,721
Amusement parks	3,776,729	4,376,044	4,096,921	5,852,279	8,228,465	3,537,175	3,501,600	1,835,396	1,319,257	1,290,503	1,670,967	2,154,417	4,955,502	42,818,526
Aquariums	1,394,861	1,329,719	1,256,684	1,725,128	2,054,232	1,123,131	985,945	760,769	783,618	780,599	965,153	1,164,787	1,994,814	14,924,579
Sports & games establishments	106,512,798	134,895,861	121,081,156	95,593,125	84,665,760	91,806,370	86,976,404	88,013,877	109,082,265	101,364,918	92,717,104	121,647,798	124,402,585	1,252,247,223
Professional sports clubs	12,767,584	27,585,715	13,433,154	14,597,146	10,680,687	10,503,648	10,436,277	11,740,404	13,971,290	13,533,792	8,525,872	11,824,269	15,158,990	161,991,234
Gambling	103,343,295	105,105,025	90,142,811	98,281,746	98,570,796	107,840,099	95,324,837	103,894,222	111,809,174	112,549,339	113,525,945	125,263,175	114,000,045	1,276,307,214
Personal services	15,467,515	18,623,068	17,245,146	18,735,207	17,433,468	18,102,236	18,993,291	19,475,913	22,303,456	18,543,014	19,442,303	22,545,919	17,376,767	222,545,771
Miscellaneous entertainment	191,014,766	207,348,188	187,776,973	177,522,852	179,375,410	200,259,833	208,234,101	187,891,875	129,982,776	205,500,931	187,382,401	206,281,327	187,462,983	2,265,019,650
Entertainment	1,276,195,779	1,418,120,453	1,308,372,196	1,356,884,242	1,324,999,202	1,310,121,489	1,359,943,475	1,326,593,323	1,408,195,198	1,239,577,991	1,217,455,215	1,428,831,530	1,371,650,247	16,070,744,561
Hotels	781,960,016	838,481,527	859,310,067	923,458,740	818,860,792	849,137,388	850,506,929	760,157,105	680,489,125	658,835,614	666,381,244	790,791,493	775,878,894	9,472,288,918
Airlines	483,865,303	567,723,576	507,633,027	528,989,161	477,303,213	530,037,680	517,635,831	435,384,094	341,819,234	638,933,165	496,784,172	549,346,769	512,663,805	6,104,253,727
Airport terminals	3,314,426	3,724,832	3,964,086	4,952,878	3,817,449	3,496,326	3,020,289	2,822,851	2,663,397	2,709,929	3,314,277	3,404,936	3,404,936	41,697,424
Railways	233,506,306	240,220,127	230,413,938	245,229,841	210,931,344	250,727,312	259,009,420	244,761,368	255,455,673	266,222,709	213,302,647	244,364,696	233,311,955	2,893,951,030
Buses	26,605,579	30,726,803	31,086,944	34,442,519	30,736,039	32,574,954	30,032,612	27,294,113	23,790,684	25,639,862	25,569,359	29,412,695	30,356,804	351,663,388
Sea travel	38,018,115	56,672,734	47,053,531	51,169,625	56,522,918	40,110,216	40,675,774	36,473,261	44,534,300	48,819,292	59,572,808	59,194,249	57,189,051	571,896,051
Travel agents	567,097,490	691,699,748	634,992,600	653,050,917	559,443,151	493,044,290	502,624,688	410,113,864	384,013,997	665,320,401	562,415,526	601,826,936	580,071,541	6,738,617,659
Timeshares	5,868,907	3,449,554	3,114,270	3,420,579	3,470,401	2,091,593	3,405,543	3,087,805	3,002,997	4,431,798	3,373,127	3,195,640	3,111,884	39,155,191
Camping grounds	26,958,090	34,578,873	36,616,205	42,129,566	35,831,057	19,993,046	17,349,577	22,134,385	21,403,697	21,239,565	21,100,708	29,578,558	30,173,441	332,128,678
Miscellaneous travel	60,068,339	69,721,696	67,656,590	68,413,559	60,447,230	54,679,127	56,297,640	51,708,150	46,676,600	57,605,079	54,308,605	61,472,638	61,125,731	710,112,645
Travel	1,445,302,555	1,698,517,943	1,562,531,191	1,631,798,645	1,438,502,802	1,427,064,392	1,430,527,411	1,233,977,329	1,110,083,076	1,726,590,276	1,428,383,365	1,582,085,017	1,513,414,346	17,783,475,793
Telegraph services / Wire transfer money order	845,626	1,594,962	1,610,543	1,332,401	1,590,361	782,516	1,841,109	1,657,611	1,720,898	1,864,964	1,866,032	1,931,301	1,755,582	19,548,280
Insurance services	297,003,444	298,516,370	279,304,271	337,540,202	311,283,349	314,343,426	309,066,350	264,979,364	248,459,725	280,792,392	264,617,677	311,505,647	290,771,640	3,511,180,413
Fis - cash disbursements (auto & manual)	11,718,325	13,820,450	10,402,370	11,138,855	11,535,460	9,609,002	9,832,705	8,224,051	7,414,987	9,424,196	8,338,386	9,360,562	7,730,038	116,831,062
Fis - merchandise & services	58,006,854	61,344,889	59,602,531	45,460,371	41,488,112	42,931,713	45,099,596	40,535,849	38,877,817	44,820,062	41,904,664	47,008,446	44,656,040	553,730,090
Non-Fis - foreign currency, travellers' cheques	31,796,267	38,880,346	40,290,238	54,524,275	51,818,987	46,189,664	29,724,529	19,485,368	19,706,962	22,070,067	24,147,781	28,652,998	39,378,477	414,869,692
Security brokers and dealers	9,390,349	5,267,318	4,875,531	4,189,448	3,713,863	4,168,141	4,935,248	4,471,505	4,256,617	4,992,289	3,488,446	4,008,244	3,465,683	51,832,333
Tax preparation services	83,771	87,646	78,684	109,340	65,658	81,151	73,053	88,168	72,637	115,217	85,720	88,676	106,691	1,052,641
Tax payments	14,221,983	254,680	226,232	289,170	248,285	14,197,319	252,734	213,504	186,354	196,536	167,214	196,536	251,282	16,699,740
Fines, bail and bond payments	8,923,348	10,607,750	9,643,313	10,467,846	10,349,969	10,045,380	11,558,014	11,144,477	10,735,192	11,898,936	10,906,951	11,529,756	10,518,114	129,405,698
Miscellaneous financial	13,635,886	19,143,786	14,540,724	15,843,273	16,721,850	14,234,841	14,872,093	13,939,517	11,567,958	14,658,959	13,292,122	15,790,165	15,810,230	180,415,518
Financial	445,625,853	449,518,197	420,574,437	480,895,181	448,815,894	456,583,153	427,255,431	364,739,414	343,029,223	390,823,436	368,814,993	430,072,331	414,443,777	4,995,565,467

Table 3B Card expenditure statistics (not seasonally adjusted)

Value of credit card transactions

Detailed sector breakdown - services sectors (continued, not seasonally adjusted)

£	April 2013	May 2013	June 2013	July 2013	August 2013	September 2013	October 2013	November 2013	December 2013	January 2014	February 2014	March 2014	April 2014	Total (latest 12 months)
Telecoms	81,752,897	86,217,569	80,832,382	88,500,373	86,233,671	89,871,129	97,593,362	91,605,961	92,488,707	92,435,243	79,909,314	85,249,144	80,159,521	1,051,096,376
Utilities	80,469,639	70,766,653	61,756,902	64,187,210	56,392,681	71,185,095	65,327,296	55,082,315	55,124,731	66,422,427	64,564,568	79,561,318	68,691,001	779,062,197
Contractors (residential & commercial)	73,969,739	82,275,212	75,711,516	83,751,304	79,291,180	84,729,261	91,393,171	89,360,957	75,210,216	81,295,735	78,149,649	89,489,336	82,341,488	992,999,025
Gardening services	6,416,217	8,959,384	6,671,929	6,123,235	5,262,106	5,904,809	4,306,455	5,950,008	4,230,527	3,610,208	5,122,954	6,467,052	7,461,580	70,070,247
Veterinary services	53,576,703	55,899,068	53,732,816	60,290,487	59,554,710	56,402,410	59,711,544	55,512,605	53,316,744	58,508,144	53,099,520	57,447,118	57,584,682	681,059,848
Photocopying & printing	34,509,303	36,185,090	34,053,063	34,713,686	35,640,936	36,851,687	41,641,113	39,811,281	37,280,743	37,280,743	33,206,000	35,940,524	32,217,794	433,999,966
Photographic studios	7,513,826	7,686,858	7,677,701	9,185,796	7,474,123	7,603,455	8,593,401	9,629,806	9,095,336	6,261,586	6,047,939	7,372,729	6,808,082	93,436,812
Beauty & barber shops	81,403,647	87,311,193	83,834,623	90,568,016	85,292,648	83,242,597	86,391,523	88,685,911	106,567,431	77,742,629	76,367,195	86,986,574	83,918,490	1,036,908,830
Employment agencies	24,565,085	24,782,463	24,631,823	28,902,730	26,933,153	25,761,253	29,767,087	27,872,176	24,922,636	19,759,846	22,453,643	23,432,930	24,231,968	303,451,767
Counselling services	1,142,244	1,154,998	864,173	950,697	1,236,494	1,044,845	1,072,618	1,145,066	1,038,653	1,335,256	1,290,479	1,800,816	1,159,756	14,093,851
Legal services	19,742,046	22,402,051	20,143,558	22,855,586	21,470,962	21,773,263	23,331,020	21,678,304	19,518,609	22,115,102	21,932,750	24,970,941	21,842,243	264,034,389
Laundry & cleaning	6,254,639	6,965,989	6,850,546	7,636,844	6,669,304	6,846,083	7,183,044	6,903,605	6,310,790	6,292,255	5,542,432	6,605,755	6,457,960	80,264,607
Funeral services	14,250,819	13,872,223	12,089,510	13,133,184	11,812,162	11,736,961	13,872,840	14,149,015	14,102,176	15,159,458	14,280,785	15,323,363	13,900,753	163,432,430
Medical services	156,414,951	173,254,864	162,313,183	175,069,265	156,517,872	161,718,614	184,229,180	175,464,791	153,067,271	174,090,678	164,585,099	178,647,227	166,042,844	2,025,000,888
Moving & courier services	38,605,999	41,158,875	40,876,389	45,508,150	39,098,386	39,844,087	45,875,203	42,301,459	40,823,203	41,338,663	38,423,107	42,110,663	40,937,778	498,295,963
Repair shops (not auto)	9,473,821	10,330,371	9,667,660	11,203,334	9,844,847	10,145,250	10,096,639	10,157,391	10,240,642	10,244,301	9,057,588	10,000,809	9,288,119	120,276,951
Accounting services	6,404,776	6,419,240	6,132,826	6,478,360	6,550,649	6,773,782	7,781,778	7,721,110	7,597,801	9,721,220	8,038,148	8,397,078	6,781,894	88,393,886
Advertising, consultancy & PR	9,908,015	9,951,409	8,327,609	9,146,672	8,327,609	7,834,617	8,593,682	8,028,212	6,512,091	8,178,067	7,155,563	7,838,293	7,385,859	97,155,620
Computer programming	80,399,058	120,760,312	84,867,513	87,158,397	100,476,099	89,075,528	96,470,856	98,253,750	117,895,489	89,030,660	77,173,474	86,643,863	83,227,411	1,131,033,352
Farming services	9,921,924	10,616,737	10,039,638	11,388,989	10,613,297	10,467,614	11,106,085	10,791,595	11,078,418	10,557,430	9,819,920	10,819,749	10,738,971	128,038,443
Miscellaneous professional services	154,716,945	166,440,535	153,800,917	163,085,183	163,781,037	175,021,105	163,073,409	145,174,348	135,820,634	167,379,520	145,534,552	164,188,054	160,366,719	1,903,666,013
Engineering services	17,678,626	16,335,663	15,264,447	16,556,080	15,188,188	14,812,211	16,285,307	14,613,272	13,625,452	14,707,616	14,345,073	16,048,906	15,031,718	182,813,933
Marina services	11,010,430	11,246,087	10,564,036	13,326,157	11,311,648	8,222,346	7,186,073	5,496,553	5,427,560	6,990,813	5,927,051	10,518,488	11,279,346	107,496,158
Wrecking & salvage yards	748,555	869,044	903,178	903,496	855,994	837,178	885,622	718,845	540,929	794,461	696,363	791,639	778,303	9,543,967
Pest control	572,521	619,393	472,808	596,394	544,015	619,276	593,733	505,576	460,647	524,890	544,576	544,726	517,166	6,543,200
Educational establishments	122,122,117	111,980,902	99,606,861	113,419,428	148,496,229	312,295,739	194,172,993	108,210,062	99,757,683	199,416,619	113,421,873	108,233,207	120,772,514	1,729,784,110
Child care services	2,106,675	2,262,509	2,188,780	2,490,953	2,178,294	2,265,255	2,472,815	2,241,838	2,138,260	2,651,321	2,329,576	2,464,740	2,410,790	28,095,131
Social, political & religious organisations	68,569,821	75,303,699	69,015,732	78,655,030	73,051,946	83,680,820	87,278,895	94,417,871	84,785,581	99,606,978	78,921,455	102,189,551	81,220,082	1,008,127,640
Government services	197,610,364	242,222,499	225,479,917	263,214,014	252,260,711	207,743,546	230,522,757	212,256,280	218,974,189	336,231,048	293,173,193	279,973,801	272,784,341	3,034,836,296
Miscellaneous services	121,437,741	83,678,601	77,539,522	88,144,010	81,376,749	87,775,118	87,308,740	85,045,871	98,638,690	84,484,050	77,638,485	96,269,451	85,474,804	1,033,374,091
Commercial equipment	119,548,348	130,456,044	124,084,698	132,251,768	125,950,579	128,015,165	139,801,934	132,417,825	117,595,887	130,031,013	120,854,976	136,328,017	132,624,956	1,550,412,862
Other services	1,612,817,491	1,718,385,535	1,569,930,315	1,729,394,828	1,689,195,287	1,850,503,943	1,823,920,175	1,661,203,659	1,623,365,032	1,874,197,980	1,629,607,300	1,782,655,862	1,694,438,933	20,646,798,849
Total services	6,210,367,664	6,817,058,015	6,372,819,030	6,836,875,214	6,385,585,611	6,549,767,976	6,543,256,081	5,954,199,318	5,712,683,532	6,518,159,626	5,923,244,232	6,750,046,369	6,427,484,069	76,791,179,073
TOTAL	12,645,224,259	14,023,560,945	13,096,352,462	14,240,977,070	13,390,014,496	13,541,544,948	13,788,057,915	13,620,574,454	14,577,110,119	13,129,139,250	11,900,920,532	13,749,151,958	13,387,174,435	162,444,578,584

Table 3C Card expenditure statistics (not seasonally adjusted)

Number of debit card transactions

Detailed sector breakdown - retail sectors (not seasonally adjusted)

	April 2013	May 2013	June 2013	July 2013	August 2013	September 2013	October 2013	November 2013	December 2013	January 2014	February 2014	March 2014	April 2014	Total (latest 12 months)
Supermarkets	215,291,191	235,208,507	226,163,674	253,022,073	226,677,454	233,698,392	242,375,793	238,149,141	257,995,740	232,173,554	226,427,702	267,596,709	255,056,536	2,894,545,275
Bakers & dairies	1,503,547	1,718,276	1,715,708	1,769,702	1,835,861	1,845,455	2,055,274	2,055,028	1,951,478	1,696,876	1,944,370	2,352,591	2,134,485	23,075,104
Sweet stores	856,044	782,664	809,898	754,505	797,639	780,757	877,587	1,033,928	1,480,131	746,350	1,004,656	1,140,131	1,126,860	11,425,106
Miscellaneous foodstores	14,066,024	15,771,170	14,726,720	16,814,342	15,409,185	14,677,461	15,746,805	15,128,721	16,127,154	14,891,786	14,612,264	16,629,598	15,729,454	186,264,660
Off-licences	3,197,886	3,367,148	3,299,456	3,572,997	3,319,416	3,175,673	3,304,845	3,269,060	3,409,605	2,954,738	3,014,742	3,492,097	3,323,044	39,503,181
Food & drink	234,914,692	256,847,765	246,715,456	275,933,619	248,039,555	254,177,738	264,360,304	259,635,678	280,964,108	252,463,304	247,003,734	291,211,126	277,460,739	3,154,813,326
Department stores	11,712,339	12,201,073	12,541,581	13,977,419	11,912,684	12,071,197	12,378,435	15,083,611	21,423,392	12,572,844	10,499,748	12,472,854	11,835,769	158,970,607
Discount stores	9,530,289	9,909,664	10,021,388	11,048,135	10,734,123	10,776,313	11,627,714	13,058,481	13,780,714	10,264,114	9,970,728	11,240,994	11,444,597	133,876,965
Catalogues	4,041,500	3,849,207	3,423,892	3,920,659	3,640,115	3,573,380	3,979,275	4,460,939	4,827,027	3,977,000	3,440,230	3,756,058	3,570,335	46,418,117
Miscellaneous mixed	12,694,116	14,828,505	13,926,583	17,158,671	14,952,186	16,257,538	16,824,100	17,197,199	21,429,168	15,486,079	13,607,197	9,463,815	7,940,077	179,071,118
Mixed business	37,978,244	40,768,449	39,913,444	46,104,884	41,239,108	42,678,428	44,809,524	49,800,230	61,460,301	42,300,037	37,517,903	36,933,721	34,790,778	518,336,807
Men's clothing	719,655	740,123	816,599	979,972	862,360	712,572	706,141	751,769	1,128,891	685,648	555,503	593,476	627,990	9,161,044
Women's clothing	6,094,677	6,248,959	6,126,007	8,061,187	6,196,826	5,949,734	6,221,277	5,992,710	9,355,166	5,418,761	4,778,859	5,976,859	5,881,308	76,207,653
Family clothing	24,264,158	24,529,466	24,116,010	30,438,157	24,030,810	24,962,411	26,553,090	28,346,754	40,664,398	23,993,183	21,105,731	26,473,105	26,800,581	322,013,696
Miscellaneous clothing	2,938,621	2,934,582	2,925,034	3,328,477	2,621,630	2,831,226	2,035,469	1,173,075	640,721	1,179,336	598,478	743,825	687,001	21,698,854
Shoe shops	2,898,909	2,866,176	3,132,600	3,863,672	3,552,044	3,139,476	2,805,290	2,670,244	3,703,886	2,800,524	2,057,640	2,464,467	2,784,572	35,848,401
Clothing	36,916,020	37,319,306	37,116,250	46,671,465	37,263,670	37,595,419	38,321,267	38,934,552	56,031,477	33,546,847	29,096,211	36,251,732	36,781,452	464,929,648
Furniture stores	3,853,103	3,833,031	3,620,875	3,891,664	3,914,362	4,035,823	4,324,980	4,636,353	5,464,895	3,706,439	3,190,557	3,590,650	3,414,324	47,623,953
Household appliance stores	5,298,990	5,552,585	5,546,648	5,560,478	5,668,515	5,749,166	5,980,844	6,145,496	6,304,872	5,658,796	5,309,158	6,107,020	5,686,452	69,270,030
Electronic stores	1,864,281	1,963,283	1,817,643	2,073,992	2,063,372	2,162,076	2,245,645	2,389,025	3,557,748	2,499,101	2,013,223	2,165,295	2,118,689	27,069,902
DIY stores	16,363,989	18,258,427	16,728,229	17,547,903	16,738,564	16,238,564	16,889,277	16,382,210	16,699,045	14,713,069	14,956,710	18,205,780	19,031,904	202,390,948
Floor covering stores	297,167	295,693	264,400	291,667	310,665	302,353	354,170	352,408	279,184	294,224	292,819	328,827	311,146	3,677,196
Garden centres	4,430,916	5,457,954	4,559,622	3,745,258	3,171,113	2,905,336	2,993,294	3,232,834	4,008,415	2,108,328	2,268,022	4,321,382	4,915,393	43,686,991
Miscellaneous household	1,472,704	1,395,319	1,274,395	1,487,715	1,645,264	1,618,127	1,761,308	1,639,453	1,854,850	1,759,102	1,559,038	1,653,290	1,646,190	19,294,051
Household	33,581,150	36,756,292	33,811,452	34,598,677	33,513,121	33,011,445	34,549,518	34,777,779	38,169,009	30,739,099	29,589,527	36,372,244	37,124,098	413,012,261
Books, newspapers & magazines	6,092,596	6,166,316	5,955,969	6,674,626	6,358,540	7,003,345	7,042,233	7,030,022	10,476,422	6,152,039	5,990,598	6,778,545	6,234,641	81,863,296
Record shops	1,322,848	768,337	758,955	757,442	747,971	747,971	826,048	1,087,866	2,979,586	858,752	756,043	839,141	765,926	12,018,073
Music shops	8,289,617	247,259	231,138	232,237	220,375	260,926	277,304	279,195	354,230	270,378	239,952	255,925	232,607	3,101,526
Hobbies, toys & games	1,229,170	1,329,416	1,250,229	1,323,812	1,369,533	1,765,100	1,650,255	2,139,710	3,357,141	1,369,891	1,337,525	1,670,996	1,569,490	20,133,098
Photographic	352,697	389,289	418,203	431,176	438,252	360,202	371,279	371,279	488,097	321,548	279,020	325,318	297,832	4,558,382
Handicraft	205,038	202,407	182,675	196,629	211,988	209,729	244,218	252,091	224,086	209,506	199,853	224,861	200,872	2,558,915
Sports shops	7,122,926	7,808,165	7,838,031	9,503,744	8,978,329	8,288,725	7,329,930	7,251,070	8,261,623	7,114,816	6,342,602	7,676,488	7,895,370	94,288,893
Jewellers	1,270,074	1,294,478	1,336,254	1,534,278	1,498,893	1,367,194	1,432,126	1,774,717	2,880,025	1,467,860	1,440,918	1,661,754	1,376,139	19,064,636
Computer software	724,782	503,946	471,818	515,029	475,753	512,576	450,448	470,750	558,112	502,643	417,296	431,661	399,736	5,709,768
Medical goods	34,959	40,201	38,027	42,876	41,190	38,889	43,138	41,592	36,028	40,246	38,022	42,338	41,461	484,008
Chemists	16,122,290	18,078,387	17,030,152	20,540,880	17,264,860	17,691,062	18,402,084	18,120,938	25,957,871	17,191,636	16,358,746	19,078,818	17,882,721	223,598,155
Optical goods	955,041	996,431	921,990	1,071,517	966,622	967,614	973,457	903,498	801,472	964,899	944,686	1,080,946	980,351	11,573,483
Cosmetic stores	1,490,391	1,352,569	1,321,705	1,450,807	1,395,333	1,399,259	1,488,271	1,758,752	3,132,550	1,207,907	1,243,284	1,513,570	1,347,168	18,611,175
Tobacconists	59,536	77,387	81,997	96,189	97,156	99,623	115,669	114,264	138,999	144,189	158,878	161,069	161,069	1,430,831
Florists	756,293	826,573	804,751	840,520	747,618	746,494	761,705	733,179	1,143,379	662,934	1,051,111	1,427,517	804,169	10,549,950
Artists' supplies	766,803	709,317	616,748	687,337	727,587	742,253	868,965	919,947	1,048,825	711,771	747,060	832,644	749,249	9,361,703
Antiques, art & stamps/coins	301,701	280,475	249,133	274,495	307,636	277,557	297,873	305,900	244,836	259,537	292,681	286,506	3,436,390	
Pawn shops	24,007	25,425	24,627	24,739	25,742	24,450	26,448	27,608	35,678	25,104	23,763	25,920	24,300	313,804
Gift shops	4,248,138	4,276,667	4,811,931	4,728,241	4,742,491	4,606,286	4,963,961	6,039,987	10,827,303	4,303,272	5,117,175	6,024,862	4,585,734	65,027,910
Secondhand shops	65,125	66,928	65,925	76,386	75,823	77,585	80,893	77,585	97,223	73,086	69,420	73,086	69,976	899,518
Luggage & leather goods	146,555	161,875	164,849	184,463	182,396	160,032	158,858	179,578	261,256	146,580	122,395	152,099	137,296	2,011,677
Pet shops	2,745,039	2,943,788	2,743,439	3,026,668	3,033,245	2,926,068	3,083,803	2,959,663	3,273,090	2,952,137	2,791,901	3,161,873	3,064,097	35,959,772
Religious goods	6,708	6,561	6,232	6,785	6,175	7,039	7,672	7,350	8,786	5,714	6,081	6,243	7,129	82,867
Direct sales	5,446,580	5,670,051	5,105,268	5,530,165	5,204,130	5,440,687	5,941,739	5,446,309	5,678,851	5,449,043	5,005,157	5,514,064	5,318,394	65,303,858
Miscellaneous & speciality shops	2,510,455	2,619,425	2,493,992	2,826,632	2,746,747	2,836,517	3,141,458	3,535,437	4,259,155	3,026,587	2,894,414	3,409,500	3,489,018	37,278,882
Other retail	62,289,369	56,841,673	54,924,038	62,577,673	57,866,385	58,723,182	60,004,758	61,830,277	86,638,649	55,413,986	53,811,970	62,666,728	57,921,251	729,220,570
Automotive Fuels	64,666,665	67,595,606	65,645,622	71,475,396	67,323,963	66,635,244	67,466,576	66,452,283	67,146,198	63,636,252	61,465,615	71,045,516	66,688,555	802,576,826
Total retail sales	470,346,140	496,149,091	478,126,262	537,361,714	485,245,802	492,821,456	509,511,947	511,430,999	590,409,742					

Table 3C Card expenditure statistics (not seasonally adjusted)

Number of debit card transactions

Detailed sector breakdown - services sectors (not seasonally adjusted)

	April 2013	May 2013	June 2013	July 2013	August 2013	September 2013	October 2013	November 2013	December 2013	January 2014	February 2014	March 2014	April 2014	Total (latest 12 months)
Auto rental	483,514	523,682	501,996	577,243	557,777	498,134	517,988	471,383	461,894	454,600	451,410	514,159	524,895	6,055,161
Auto parts & accessories	1,584,907	1,617,193	1,517,743	1,690,518	1,549,472	1,482,669	1,540,011	1,513,042	1,371,648	1,499,221	1,490,642	1,771,765	1,661,179	18,705,103
Auto services	3,332,098	3,921,113	3,840,284	4,213,611	3,961,649	4,063,540	4,421,938	4,325,723	4,586,904	4,193,395	4,138,412	4,633,178	4,478,062	50,777,809
Auto repair shops	1,634,699	1,750,471	1,665,669	1,849,378	1,692,522	1,672,303	1,761,197	1,655,639	1,466,292	1,704,640	1,670,663	2,009,072	1,791,806	20,689,652
Service stations	0	0	0	0	0	0	0	0	0	0	0	0	0	0
Vehicle sales	1,168,966	1,210,826	1,136,144	1,268,469	1,175,654	1,143,899	1,086,278	983,254	872,981	1,042,666	1,040,754	1,351,666	1,235,178	13,547,769
Vehicle Sales & Services	8,204,184	9,023,285	8,661,836	9,599,219	8,937,074	8,860,545	9,327,412	8,949,041	8,759,719	8,894,522	8,791,881	10,279,840	9,691,120	109,775,494
Restaurants	54,463,103	60,204,782	56,312,683	61,305,013	60,575,958	59,708,345	63,760,719	63,027,311	65,601,268	59,350,203	62,087,330	72,931,097	69,485,689	754,350,398
Public houses	9,628,657	11,216,689	10,201,227	11,886,431	11,093,333	10,695,756	10,794,019	10,667,601	12,689,124	10,751,670	11,791,199	14,081,221	11,820,064	137,688,334
Catering services	1,335,013	1,530,115	1,433,908	1,548,396	1,478,991	1,561,808	1,863,468	1,895,032	1,728,899	1,734,223	1,829,422	2,093,311	1,886,252	20,583,825
Video stores	616,404	344,650	334,896	318,552	390,601	624,193	380,396	447,308	311,703	198,588	182,634	188,577	155,203	3,877,301
Cinema, theatre & dance	4,782,763	5,567,210	4,541,112	5,027,141	5,637,914	4,135,979	4,768,837	5,606,455	6,022,338	5,558,432	5,114,323	4,635,390	4,740,692	61,355,823
Concerts & entertainers	162,550	151,462	131,447	119,481	163,355	141,321	177,875	170,571	169,888	159,777	180,527	174,707	173,989	1,914,400
Tourist attractions	1,088,922	1,004,205	1,232,206	865,106	1,802,302	945,489	870,049	584,727	557,832	459,281	636,561	765,262	1,304,257	11,027,277
Amusement parks	281,204	267,531	271,707	352,172	507,622	269,535	252,891	140,141	88,580	81,873	130,790	158,919	349,531	2,871,292
Aquariums	99,901	92,469	94,178	126,161	168,193	92,852	74,916	52,130	44,242	54,512	81,936	105,289	162,267	1,149,145
Sports & games establishments	3,137,079	3,106,897	2,796,145	2,754,774	3,268,650	2,969,255	3,094,336	2,778,843	3,241,403	3,646,461	3,435,505	3,858,399	3,797,167	38,747,835
Professional sports clubs	234,360	257,523	185,094	258,392	278,035	223,763	218,100	217,694	269,481	219,775	202,934	251,178	259,698	2,841,667
Gambling	22,628,628	19,627,778	18,369,678	18,086,390	19,057,100	20,068,703	21,335,951	19,766,979	22,660,450	23,133,686	21,534,909	26,200,510	25,935,106	255,777,240
Personal services	307,456	502,402	460,738	497,745	461,906	436,599	445,625	368,826	389,121	394,688	461,679	446,634	5,260,357	5,260,357
Miscellaneous entertainment	880,587	816,475	702,707	1,286,023	1,112,756	743,412	802,071	643,017	598,712	766,700	840,306	852,830	999,646	10,164,655
Entertainment	99,046,627	104,690,188	96,700,626	104,798,877	105,996,716	102,617,010	108,839,253	106,366,635	114,373,041	106,509,575	108,443,064	126,758,369	121,516,195	1,307,609,549
Hotels	4,329,132	4,616,808	4,439,723	5,091,596	5,128,864	4,465,880	4,579,835	4,242,980	4,322,729	4,291,520	4,396,419	5,149,527	5,132,395	55,858,276
Airlines	1,398,459	1,659,233	1,556,133	1,665,068	1,611,641	1,390,724	1,560,545	1,217,459	1,121,761	1,825,452	1,494,520	1,737,978	1,747,465	18,587,979
Airport terminals	41,098	43,217	47,363	66,721	60,254	58,234	46,307	34,352	34,982	36,677	38,279	50,907	55,035	572,328
Railways	17,230,363	17,345,000	16,263,274	17,974,745	15,766,535	17,001,197	18,348,074	17,454,317	17,466,653	16,284,432	15,749,958	18,117,208	16,706,701	204,478,094
Buses	1,708,868	1,912,331	1,896,390	2,079,562	1,985,312	2,229,313	2,388,162	2,473,044	2,256,666	2,607,204	2,606,014	2,983,242	2,843,411	28,260,651
Sea travel	145,364	172,534	179,982	225,367	179,982	167,130	151,048	129,792	126,243	126,938	126,142	154,512	188,549	1,991,694
Travel agents	1,822,196	1,874,227	1,758,247	1,837,386	1,658,703	1,509,253	1,424,372	1,144,591	1,107,435	2,168,672	1,820,965	2,051,308	1,896,700	20,251,859
Timeshares	28,111	4,542	4,098	4,801	5,205	5,077	4,809	3,962	3,917	6,867	5,024	4,701	4,639	57,642
Camping grounds	634,257	754,953	709,802	990,839	1,120,503	584,973	453,379	234,727	209,861	292,283	345,266	529,631	821,325	7,047,542
Miscellaneous travel	1,001,646	1,043,066	1,025,094	1,145,793	1,193,771	1,062,374	1,131,610	1,050,654	1,044,351	972,890	1,005,696	1,160,982	1,156,331	12,992,612
Travel	24,010,362	24,809,103	23,440,383	25,990,282	23,645,381	24,008,275	25,508,306	23,742,898	23,371,869	24,321,415	23,191,864	26,790,469	25,420,156	294,240,401
Telegraph services / Wire transfer money order	69,256	77,413	80,830	85,891	88,110	75,991	95,600	102,388	114,567	110,422	112,626	131,687	131,853	1,207,378
Insurance services	3,077,061	3,246,698	3,170,640	3,770,244	3,565,295	3,534,555	3,559,212	3,016,007	2,804,116	3,253,960	3,104,990	3,611,175	3,426,395	40,063,287
Fis - cash disbursements (auto & manual)	3,341	5,774	6,601	7,589	7,526	7,346	7,563	6,299	9,471	9,731	12,512	10,850	11,492	102,754
Fis - merchandise & services	8,859,562	9,569,972	9,289,472	9,799,356	9,360,638	8,988,025	9,823,300	9,330,101	9,915,332	9,775,939	8,819,893	10,460,191	9,754,814	114,887,033
Non-Fis - foreign currency, travellers' cheques	791,771	860,909	892,020	957,718	951,998	929,240	671,022	550,810	563,103	608,549	657,622	754,526	810,532	9,208,049
Security brokers and dealers	173,001	139,250	115,877	100,387	117,018	162,477	904,873	147,183	115,370	154,917	128,688	196,132	210,088	2,492,260
Tax preparation services	1,021	1,089	912	1,055	842	766	781	679	482	803	728	768	691	9,596
Tax payments	126,514	26,780	23,796	29,619	26,172	104,077	26,061	23,254	22,664	24,170	20,813	23,359	27,397	378,162
Fines, bail and bond payments	460,759	510,023	483,068	527,452	548,572	502,140	589,209	572,121	556,486	579,224	554,418	642,922	591,095	6,656,730
Miscellaneous financial	162,271	181,617	169,263	192,271	175,469	160,869	165,878	153,488	133,058	133,508	138,989	174,936	188,916	1,968,262
Financial	13,724,557	14,619,525	14,232,479	15,471,582	14,841,640	14,465,486	15,843,499	13,902,330	14,234,649	14,651,223	13,551,279	16,006,546	15,153,273	176,973,511

Table 3C Card expenditure statistics (not seasonally adjusted)

Number of debit card transactions

Detailed sector breakdown - services sectors (continued, not seasonally adjusted)

	April 2013	May 2013	June 2013	July 2013	August 2013	September 2013	October 2013	November 2013	December 2013	January 2014	February 2014	March 2014	April 2014	Total (latest 12 months)
Telecoms	10,948,098	10,616,347	10,247,508	10,834,969	10,635,775	10,707,474	10,762,997	10,361,858	10,823,183	10,796,273	9,640,691	10,831,117	10,284,070	126,542,262
Utilities	1,979,506	2,118,022	1,920,198	2,123,788	1,975,231	2,087,333	2,231,554	2,046,557	2,026,921	2,160,247	2,008,142	2,277,975	2,183,429	25,159,397
Contractors (residential & commercial)	509,182	513,382	477,439	543,130	514,989	535,368	595,381	571,622	487,652	518,707	515,099	587,744	548,864	6,409,372
Gardening services	137,341	161,868	136,684	127,034	110,064	101,134	103,135	106,558	140,139	80,481	84,601	140,779	156,489	1,448,966
Veterinary services	1,583,014	1,638,905	1,563,070	1,807,626	1,807,849	1,678,998	1,804,102	1,642,146	1,573,620	1,667,526	1,555,093	1,732,102	1,707,565	20,178,602
Photocopying & printing	408,305	360,755	320,244	311,351	323,597	360,843	422,663	450,675	490,695	379,017	344,683	393,923	373,540	4,531,986
Photographic studios	318,825	355,410	369,459	406,925	345,757	332,692	416,809	434,175	425,439	290,150	298,775	352,493	332,652	4,360,736
Beauty & barber shops	4,878,805	5,177,444	4,941,979	5,354,871	5,070,196	4,803,960	4,938,620	4,883,155	6,264,809	4,577,956	4,584,394	5,322,042	5,051,488	60,970,914
Employment agencies	9,637	10,684	9,922	10,957	10,127	10,220	8,758	7,706	6,087	8,175	7,729	8,634	7,976	106,975
Counselling services	111,469	105,799	95,594	115,610	102,628	104,234	110,290	101,630	102,363	104,200	97,969	115,716	116,826	1,272,859
Legal services	146,430	164,711	153,657	173,971	157,791	161,550	173,706	159,215	138,924	166,110	162,750	182,830	169,932	1,965,147
Laundry & cleaning	447,108	477,896	472,117	513,810	447,929	477,514	505,303	476,758	450,422	445,445	411,576	482,745	460,733	5,622,248
Funeral services	27,015	28,833	26,315	28,361	25,741	25,656	28,878	27,402	27,063	30,559	29,043	32,655	30,312	340,818
Medical services	2,612,643	2,852,077	2,642,520	2,892,370	2,659,137	2,754,685	3,075,228	2,905,292	2,577,547	3,043,019	2,858,295	3,089,795	2,927,777	34,277,742
Moving & courier services	342,126	397,752	376,203	412,113	379,257	370,968	419,385	403,254	431,961	400,897	355,119	400,601	397,950	4,745,460
Repair shops (not auto)	104,904	111,864	102,602	116,578	112,966	109,336	119,242	116,177	123,568	115,713	109,494	116,263	110,428	1,364,231
Accounting services	290,561	293,544	269,612	307,007	289,958	302,302	330,579	297,327	286,223	352,835	302,307	337,500	272,158	3,641,352
Advertising, consultancy & PR	224,454	187,949	159,632	174,723	165,544	160,914	168,777	166,130	122,846	140,294	134,155	150,673	143,909	1,875,546
Computer programming	1,464,715	1,598,498	1,426,252	1,609,444	1,465,275	1,555,013	1,174,600	810,749	722,924	693,977	619,188	671,769	651,765	12,999,454
Farming services	272,359	278,923	264,218	283,831	265,824	267,204	277,436	283,639	322,474	286,159	274,343	310,399	304,856	3,419,306
Miscellaneous professional services	2,959,849	3,283,496	3,071,834	3,400,394	3,224,516	3,385,626	3,737,546	3,649,785	3,660,044	3,715,496	3,420,188	3,822,010	3,639,055	42,009,990
Engineering services	72,293	80,876	82,541	91,761	83,614	81,628	92,637	84,276	72,750	78,665	79,793	91,699	89,674	1,009,914
Marina services	97,537	112,610	108,090	155,282	150,618	96,065	75,527	62,697	64,701	57,173	57,058	89,092	117,010	1,145,923
Wrecking & salvage yards	8,996	11,078	10,770	11,792	10,969	10,079	10,503	9,930	7,728	9,686	9,963	11,157	11,139	124,794
Pest control	3,682	4,188	4,055	5,398	5,291	4,149	4,771	3,878	3,414	3,508	3,199	3,636	3,961	49,448
Educational establishments	1,711,095	2,247,889	1,671,538	1,380,528	1,011,992	2,373,647	3,085,454	2,915,945	2,183,997	2,853,111	2,632,963	3,123,187	2,154,803	27,635,054
Child care services	143,232	138,631	110,795	121,451	135,325	126,619	159,702	138,143	126,814	178,070	177,852	159,288	156,309	1,728,999
Social, political & religious organisations	2,101,181	2,772,085	2,495,102	2,696,220	2,540,438	2,775,127	2,842,365	2,920,141	2,504,065	2,245,172	2,239,170	3,310,531	2,980,588	32,321,004
Government services	6,465,951	7,171,745	6,734,617	7,459,792	7,088,713	6,901,496	7,460,728	6,662,824	6,573,169	7,664,360	6,993,114	7,538,347	7,785,089	86,033,994
Miscellaneous services	10,989,124	6,154,889	5,626,443	6,172,859	5,420,983	5,576,645	5,854,799	5,632,726	7,667,269	5,621,450	5,298,194	6,199,073	6,009,490	71,234,820
Commercial equipment	1,517,941	1,608,347	1,445,169	1,508,863	1,516,759	1,788,740	1,794,048	1,694,069	1,782,522	1,713,344	1,550,429	1,704,777	1,559,175	19,666,242
Other services	52,887,378	51,036,497	47,327,286	51,161,702	48,054,853	50,027,219	52,785,523	50,026,439	52,191,333	50,397,770	46,855,369	53,590,552	50,739,012	604,193,555
Total services	202,802,240	208,795,406	194,802,333	212,113,258	206,604,528	204,444,415	216,883,828	207,230,323	217,253,340	209,066,025	205,229,876	238,575,303	227,652,151	2,548,650,786
TOTAL	673,148,380	704,944,497	672,928,595	749,474,972	691,850,330	697,265,871	726,395,775	718,661,322	807,663,082	687,165,550	663,714,836	773,056,370	738,419,024	8,631,540,224

Table 3D Card expenditure statistics (not seasonally adjusted)

Value of debit card transactions

Detailed sector breakdown - retail sectors (not seasonally adjusted)

£	April 2013	May 2013	June 2013	July 2013	August 2013	September 2013	October 2013	November 2013	December 2013	January 2014	February 2014	March 2014	April 2014	Total (latest 12 months)
Supermarkets	5,760,900,253	6,019,681,627	5,778,078,903	6,438,913,903	5,765,036,669	5,991,941,701	6,027,317,297	6,125,921,193	7,170,740,212	5,716,994,880	5,552,504,549	6,601,404,946	6,346,041,895	73,534,577,775
Bakers & dairies	13,358,580	14,849,453	14,494,534	15,483,265	15,866,427	15,397,357	16,678,825	16,674,490	16,332,307	13,284,360	14,615,963	17,330,572	16,520,864	187,528,417
Sweet stores	13,184,131	11,318,382	11,688,422	11,382,404	11,871,845	11,741,743	13,431,329	17,235,540	28,163,453	10,468,419	13,406,756	15,837,220	18,673,712	175,219,228
Miscellaneous foodstores	270,900,450	296,501,362	276,506,809	309,793,975	287,074,791	275,097,906	291,336,200	286,676,095	342,533,638	283,130,937	273,209,081	310,075,213	297,811,515	3,529,747,522
Off-licences	74,784,010	80,598,477	78,293,764	83,896,565	79,956,871	73,901,099	77,639,112	80,115,901	95,446,992	66,839,094	68,235,475	80,184,301	80,658,237	945,765,888
Food & drink	6,133,127,424	6,422,949,301	6,159,062,432	6,859,470,112	6,159,806,603	6,368,079,806	6,426,402,763	6,526,623,222	7,653,216,602	6,090,717,690	5,921,971,824	7,024,832,252	6,759,706,223	78,372,838,830
Department stores	442,164,754	458,069,424	496,472,101	433,673,553	467,967,888	483,967,139	483,967,139	606,731,816	842,736,395	462,656,299	384,067,020	472,361,280	451,183,401	6,041,233,375
Discount stores	336,644,271	344,605,557	335,692,441	376,596,012	357,736,112	373,674,866	403,278,104	465,149,954	513,171,427	337,426,484	320,077,938	363,998,603	362,361,731	4,553,769,229
Catalogues	152,639,759	150,117,653	134,997,002	157,261,928	145,884,602	150,393,656	160,590,499	172,670,470	183,558,520	165,442,784	145,556,649	164,999,044	155,059,569	1,886,531,908
Miscellaneous mixed	353,420,266	421,888,457	399,351,834	488,761,770	430,339,362	485,793,523	503,237,563	535,625,566	696,060,594	438,431,170	390,645,902	273,864,151	233,751,055	5,297,750,947
Mixed business	1,264,869,050	1,374,681,091	1,351,388,336	1,519,091,811	1,367,633,629	1,477,829,933	1,551,072,855	1,780,177,806	2,235,626,918	1,403,956,737	1,240,347,509	1,275,223,078	1,202,355,756	17,779,285,459
Men's clothing	46,537,415	48,972,338	52,325,001	55,930,695	50,883,344	46,674,617	46,642,376	47,148,284	67,967,904	41,675,765	34,448,267	40,800,731	41,298,567	574,767,889
Women's clothing	225,922,476	228,470,259	225,699,089	272,535,171	215,394,178	232,823,318	242,217,820	242,124,308	337,924,015	194,779,311	180,892,085	228,056,473	226,869,530	2,827,785,557
Family clothing	798,170,847	813,541,972	789,601,253	936,384,520	777,849,002	863,036,320	929,070,646	990,655,762	1,369,721,891	731,275,974	683,133,444	875,110,624	895,044,147	10,654,425,595
Miscellaneous clothing	82,498,593	82,761,951	81,121,133	87,240,527	84,643,658	84,247,181	84,643,658	84,247,181	41,617,735	26,178,299	24,083,595	29,801,751	28,687,686	668,580,689
Shoe shops	121,008,330	119,270,981	122,995,548	137,514,918	146,499,606	141,359,215	139,295,693	136,117,680	183,904,155	118,763,063	89,738,748	110,588,333	123,050,426	1,569,098,266
Clothing	1,274,138,161	1,293,017,401	1,271,742,624	1,489,605,831	1,265,053,351	1,368,537,128	1,422,001,342	1,459,287,800	2,001,135,700	1,112,672,412	1,012,296,139	1,284,357,912	1,314,950,356	16,294,657,996
Furniture stores	345,959,640	344,139,010	313,670,891	347,449,632	345,903,748	380,675,108	407,611,546	405,875,696	388,560,446	383,924,196	329,227,423	365,701,399	354,157,965	4,366,897,060
Household appliance stores	219,367,193	223,793,877	215,778,138	218,471,041	211,423,240	213,551,862	228,976,516	240,375,807	248,190,208	248,189,862	228,939,141	263,036,380	230,801,046	2,772,527,118
Electronic stores	195,027,218	201,809,910	186,311,250	220,371,342	219,460,331	239,747,112	243,263,858	265,470,909	407,042,526	265,305,279	204,080,891	226,652,824	226,644,946	2,906,161,178
DIY stores	805,094,921	919,523,853	849,334,852	914,666,203	871,371,375	851,894,040	929,937,183	877,440,249	813,848,012	793,138,430	771,452,444	933,104,960	986,098,540	10,511,810,141
Floor covering stores	71,825,003	76,731,934	71,285,960	80,054,270	82,030,371	79,677,696	94,286,988	96,751,959	75,881,876	76,463,748	75,659,828	87,985,051	84,848,037	981,293,718
Garden centres	150,181,694	191,738,171	155,954,272	129,425,598	101,941,827	91,439,223	92,252,516	99,022,394	124,188,872	62,180,234	68,329,985	144,480,806	174,378,642	1,435,332,450
Miscellaneous household	106,016,112	99,045,093	90,038,467	108,233,135	114,701,144	117,743,375	126,685,781	116,009,594	118,131,459	118,467,919	104,120,124	114,898,727	115,993,696	1,344,068,514
Household	1,893,471,781	2,056,781,848	1,882,373,830	2,018,671,221	1,946,832,036	1,974,728,416	2,124,014,388	2,100,946,608	2,175,843,309	1,947,669,668	1,781,809,836	2,135,860,147	2,172,558,872	24,318,090,179
Books, newspapers & magazines	99,307,237	96,706,672	92,720,992	104,028,973	110,837,408	125,668,388	125,137,909	118,316,488	185,816,360	101,347,702	102,354,936	96,281,704	96,281,704	1,352,337,003
Record shops	27,552,500	14,751,344	14,653,404	15,081,174	14,930,869	17,315,399	18,170,602	14,298,360	17,637,129	17,136,554	16,502,748	15,607,722	256,057,736	
Music shops	62,466,012	18,301,814	16,806,007	18,263,397	17,639,023	19,131,403	20,551,196	21,406,127	27,122,904	21,309,507	18,579,194	19,831,546	18,855,149	237,797,267
Hobbies, toys & games	38,959,350	41,145,929	40,505,862	43,796,908	44,264,327	65,614,546	61,609,469	107,195,411	171,613,785	58,678,052	48,228,312	63,119,370	57,478,143	803,250,114
Photographic	19,634,194	21,634,517	20,948,073	23,257,694	22,021,110	21,307,599	20,911,285	21,452,397	22,908,962	16,036,012	20,385,938	18,380,523	28,154,889	
Handicraft	10,620,598	10,729,425	9,910,162	10,600,789	11,133,235	11,179,075	12,852,618	13,097,651	11,517,138	11,325,297	10,741,403	12,203,853	11,095,410	136,386,056
Sports shops	303,486,059	329,531,447	322,364,849	381,667,606	369,418,053	337,619,963	308,127,721	309,843,495	362,086,905	286,583,484	258,046,200	331,424,687	337,231,553	3,919,945,963
Jewellers	128,645,806	129,992,010	133,763,113	147,196,949	143,928,981	133,315,335	134,639,093	163,706,402	268,433,050	127,770,962	132,261,288	149,530,537	133,605,415	1,798,143,135
Computer software	105,979,775	49,566,690	45,365,597	50,745,241	50,984,680	55,670,600	54,822,454	56,491,399	68,239,580	56,896,098	47,704,565	52,463,903	50,637,927	639,588,734
Medical goods	6,978,046	9,237,338	8,694,115	9,726,757	8,687,930	8,528,980	9,812,929	9,191,790	8,882,626	9,285,870	10,316,499	10,129,922	110,703,663	
Chemists	242,104,675	269,291,813	253,995,375	307,288,061	258,278,168	258,984,808	283,047,961	307,586,308	521,866,026	245,470,635	238,142,447	284,482,105	263,181,059	3,491,614,766
Optical goods	95,429,962	98,149,926	89,825,893	104,170,748	95,065,213	93,894,851	95,330,123	88,193,374	73,841,318	95,413,130	94,095,463	109,762,019	99,102,727	1,136,844,785
Cosmetic stores	45,017,569	44,351,635	43,150,073	46,808,248	45,136,391	45,402,790	49,415,751	61,040,229	113,504,253	37,700,243	38,347,393	47,215,637	42,462,508	614,535,151
Tobacconists	2,279,759	2,822,464	2,861,382	3,460,836	3,302,435	3,292,511	3,821,800	3,659,560	4,525,228	4,589,313	4,149,070	4,762,419	4,607,511	
Florists	31,721,476	35,026,903	32,955,293	34,656,319	30,991,981	31,109,757	31,544,272	30,039,797	43,608,044	27,759,896	42,370,340	54,401,268	35,192,074	429,655,944
Artists' supplies	21,714,764	20,627,429	18,229,249	20,389,182	20,927,670	21,343,018	24,724,164	25,978,799	28,871,512	19,889,017	20,323,358	22,728,464	20,829,700	264,861,562
Antiques, art & stamps/coins	29,568,565	29,151,732	28,395,657	28,360,848	27,064,959	23,065,800	27,064,959	33,676,816	35,853,790	26,279,173	26,505,158	32,818,744	29,588,264	360,282,963
Pawn shops	3,803,829	4,147,052	3,942,237	4,319,282	4,308,929	4,131,469	4,413,392	4,355,559	5,114,283	4,208,354	3,917,163	4,282,933	4,546,896	51,687,549
Gift shops	86,891,810	87,417,655	90,984,350	98,709,290	101,030,978	97,807,746	110,631,169	138,317,971	208,704,745	88,506,192	93,086,345	110,972,332	93,855,847	1,320,024,620
Secondhand shops	4,321,821	3,795,964	4,432,905	4,383,774	4,422,652	5,219,834	4,604,689	5,892,263	3,906,144	4,708,558	4,984,276	5,494,276	5,796,848	
Luggage & leather goods	11,844,118	12,906,550	14,929,526	14,699,091	13,140,696	12,637,394	13,121,566	14,449,929	21,854,517	11,922,650	9,954,957	12,424,151	11,527,244	163,568,271
Pet shops	79,257,501	85,734,461	80,002,896	88,043,889	88,375,091	84,729,837	88,868,914	84,843,237	93,506,876	84,835,679	79,579,659	90,767,861	88,899,532	1,038,277,932
Religious goods	206,178	175,145	168,168	181,819	216,243	200,422	217,079	189,268						

Table 3D Card expenditure statistics (not seasonally adjusted)

Value of debit card transactions

Detailed sector breakdown - services sectors (not seasonally adjusted)

£	April 2013	May 2013	June 2013	July 2013	August 2013	September 2013	October 2013	November 2013	December 2013	January 2014	February 2014	March 2014	April 2014	Total (latest 12 months)
Auto rental	50,640,720	55,588,684	53,127,400	62,888,101	58,732,778	52,662,922	50,927,372	46,776,776	45,334,381	44,977,954	45,767,540	58,357,050	57,072,493	632,213,451
Auto parts & accessories	206,535,650	212,599,766	198,479,355	214,408,015	197,923,524	209,836,834	204,962,147	195,617,070	172,790,118	197,983,221	190,605,308	252,119,739	220,060,852	2,467,385,949
Auto services	51,266,014	58,114,988	55,063,295	64,375,910	58,211,105	56,586,045	60,977,642	55,514,366	55,800,315	56,050,489	54,702,736	61,737,298	62,370,096	699,504,285
Auto repair shops	583,896,646	602,793,307	579,512,205	593,441,495	566,852,150	662,519,543	600,655,864	558,701,406	513,303,736	581,089,787	558,437,791	799,200,552	633,544,197	7,250,052,033
Service stations	0	0	0	0	0	0	0	0	0	0	0	0	0	0
Vehicle sales	1,349,854,405	1,358,118,015	1,259,494,989	1,350,072,610	1,250,521,319	1,483,832,521	1,299,643,852	1,159,577,091	1,006,019,804	1,262,095,718	1,230,550,537	1,832,708,587	1,504,945,624	15,997,580,667
Vehicle Sales & Services	2,242,193,435	2,287,214,760	2,145,677,244	2,285,186,131	2,132,240,876	2,465,437,865	2,217,166,877	2,016,186,709	1,793,248,354	2,142,197,169	2,080,063,912	3,004,123,226	2,477,993,262	27,046,736,385
Restaurants	997,798,891	1,050,350,172	995,324,824	1,074,742,868	1,103,525,911	1,029,332,043	1,066,658,132	1,044,510,516	1,139,822,112	989,675,401	1,043,916,678	1,229,331,658	1,173,705,811	12,940,896,126
Public houses	231,501,448	254,072,227	232,242,230	270,472,783	263,557,281	244,021,220	242,816,983	237,800,652	299,341,233	235,655,054	254,105,813	308,003,220	281,569,552	3,123,658,248
Catering services	55,777,179	70,489,358	68,592,731	76,967,424	75,771,651	63,326,867	71,214,354	71,119,326	76,062,076	61,663,361	62,509,913	73,016,820	74,002,327	844,736,216
Video stores	7,477,442	3,862,037	3,750,291	3,481,822	4,266,662	7,876,584	4,513,187	5,553,105	2,787,193	1,437,884	1,349,628	1,461,754	1,258,528	41,598,675
Cinema, theatre & dance	156,984,323	169,612,578	141,546,290	154,272,636	150,546,344	133,598,436	174,030,777	191,113,333	202,631,506	158,362,250	153,863,369	168,644,524	171,363,778	1,969,585,821
Concerts & entertainers	4,721,325	4,764,051	4,209,974	4,295,575	4,957,150	4,888,593	6,587,167	5,964,652	5,776,273	4,777,083	5,101,575	5,551,998	5,330,792	62,204,883
Tourist attractions	38,304,751	36,302,458	31,480,670	44,444,605	62,197,013	31,508,311	31,585,911	21,197,806	21,223,197	18,885,959	22,791,352	27,571,661	46,271,282	395,460,225
Amusement parks	8,845,138	8,746,138	8,733,549	11,768,481	17,387,076	8,155,020	7,453,318	4,041,344	2,602,058	2,456,316	3,619,000	4,750,367	11,668,397	91,381,064
Aquariums	3,166,053	2,919,669	2,925,428	3,852,627	5,175,397	2,772,655	2,245,062	1,685,428	1,553,870	1,783,939	2,487,908	3,287,210	5,355,585	36,044,778
Sports & games establishments	116,401,364	121,821,897	116,233,325	108,881,101	107,411,219	103,361,830	101,442,039	93,859,332	103,488,258	114,759,731	104,476,133	138,912,634	137,930,700	1,352,578,199
Professional sports clubs	15,368,349	25,330,895	13,384,502	15,866,772	13,236,770	12,065,754	12,376,769	12,023,388	13,873,945	13,881,335	10,405,911	15,833,168	18,183,081	176,461,290
Gambling	402,187,241	330,295,337	319,436,832	308,445,475	377,906,731	355,840,011	319,053,514	309,202,146	345,604,273	304,161,958	373,944,446	358,560,480	317,724,367	4,020,175,570
Personal services	14,142,168	19,454,109	17,936,440	19,908,438	18,057,681	18,314,989	18,740,914	16,443,730	17,633,618	18,321,064	17,577,294	20,337,770	18,478,943	221,204,990
Miscellaneous entertainment	33,379,579	32,273,576	30,990,326	40,279,948	41,642,426	31,282,564	32,788,894	31,688,548	31,883,658	25,674,096	27,628,254	33,826,544	38,359,955	398,318,789
Entertainment	2,086,055,251	2,130,294,502	1,986,787,412	2,137,680,555	2,245,638,312	2,046,422,477	2,091,429,421	2,046,203,306	2,264,283,270	1,951,495,431	2,083,777,274	2,389,089,816	2,301,203,098	25,674,304,874
Hotels	406,840,702	422,233,918	415,877,501	470,555,672	471,397,528	442,888,896	417,818,542	349,475,160	342,724,112	403,326,712	365,361,464	429,793,519	459,977,062	4,991,430,086
Airlines	278,051,473	369,980,928	346,761,536	373,684,810	316,313,679	278,197,083	305,065,163	237,337,868	209,820,131	427,114,311	335,636,160	389,034,435	367,551,172	3,956,497,276
Airport terminals	3,421,916	3,612,178	3,990,231	5,090,755	4,931,579	4,145,766	3,427,379	2,861,466	2,840,459	2,705,739	2,643,013	3,729,765	3,762,500	43,740,830
Railways	418,714,869	413,229,949	386,654,638	421,207,822	354,257,589	392,373,852	424,349,662	392,545,466	393,937,057	402,071,599	360,800,630	413,760,414	386,785,453	4,741,974,151
Buses	38,832,633	40,797,871	39,935,632	45,897,925	44,440,303	49,763,501	45,001,861	40,189,011	35,044,807	44,967,181	40,978,139	46,494,748	46,333,496	519,844,475
Sea travel	27,573,256	41,109,774	39,173,904	40,999,075	40,678,970	28,859,676	39,665,230	32,679,432	26,972,561	34,996,152	37,854,352	44,511,218	47,613,955	455,114,299
Travel agents	1,139,044,938	1,272,436,493	1,148,500,449	1,107,668,558	899,883,083	783,274,613	764,343,723	652,810,683	629,728,104	1,113,960,407	1,000,159,414	1,182,951,416	1,169,356,354	11,725,073,297
Timeshares	7,764,118	693,070	584,611	668,016	716,726	600,394	675,519	553,604	541,541	954,218	718,365	665,084	653,169	8,024,317
Camping grounds	73,673,291	87,672,545	86,716,590	101,650,522	94,001,431	64,171,662	60,758,825	55,552,933	49,174,318	53,107,459	61,020,349	88,697,244	91,964,404	894,488,282
Miscellaneous travel	36,927,992	39,718,082	43,947,730	46,577,573	38,249,772	32,032,367	31,864,928	29,279,785	27,382,070	28,489,285	29,019,418	36,700,293	39,618,179	422,879,482
Travel	2,024,004,486	2,269,250,890	2,096,265,321	2,143,445,056	1,793,473,132	1,633,418,914	1,675,152,290	1,443,810,288	1,375,441,048	2,108,366,351	1,868,829,840	2,206,544,617	2,153,638,682	22,767,636,409
Telegraph services / Wire transfer money order	29,493,257	30,028,342	43,742,674	31,747,274	37,936,615	33,259,391	31,238,405	36,005,546	38,091,769	37,670,345	36,654,173	39,636,033	42,051,631	438,062,198
Insurance services	536,821,854	532,886,806	507,098,549	595,309,345	552,290,926	564,695,768	572,476,403	486,542,106	447,341,771	523,628,742	612,843,160	501,929,012	582,610,854	6,479,653,442
Fis - cash disbursements (auto & manual)	1,085,297	1,971,967	2,334,180	2,810,343	2,840,322	2,676,623	3,358,426	2,795,288	4,133,362	4,209,586	6,607,069	3,746,684	4,195,455	41,679,305
Fis - merchandise & services	3,143,989,398	3,079,517,850	2,949,512,017	3,164,951,906	2,965,904,082	2,945,859,953	3,282,384,479	3,002,032,530	3,273,512,985	3,251,790,773	2,894,779,027	3,414,978,629	3,438,506,077	37,663,730,308
Non-Fis - foreign currency, travellers' cheques	256,821,401	286,674,302	320,472,689	396,018,343	380,969,739	329,079,241	223,696,701	167,583,628	179,226,960	224,605,877	256,167,706	266,167,706	304,993,339	3,281,352,085
Security brokers and dealers	775,790,424	430,976,455	405,281,925	335,293,676	422,056,225	515,583,849	1,340,898,871	445,954,878	362,166,225	562,070,435	443,281,791	750,114,102	933,658,702	6,947,237,134
Tax preparation services	366,540	363,759	344,171	475,048	326,859	283,173	278,994	279,241	179,134	276,956	202,229	172,095	228,341	3,410,000
Tax payments	126,209,240	2,208,347	1,927,549	2,265,651	1,847,954	1,085,565,021	2,228,698	1,998,555	1,954,451	1,888,414	1,397,133	2,094,581	2,344,775	130,721,129
Fines, bail and bond payments	32,629,040	34,449,795	32,546,942	35,092,282	36,134,691	35,081,057	40,729,494	38,884,290	35,596,821	39,034,465	38,664,949	44,415,562	39,712,282	450,342,630
Miscellaneous financial	21,207,211	24,631,751	22,529,772	24,432,655	20,864,430	22,939,807	21,314,503	19,477,304	16,267,067	18,101,736	17,361,289	22,068,014	22,808,958	252,797,285
Financial	4,924,413,662	4,423,709,374	4,285,790,468	4,588,396,523	4,421,171,843	4,558,023,883	5,518,604,974	4,201,453,366	4,358,470,545	4,650,535,012	4,165,482,549	5,146,236,566	5,371,110,414	55,688,985,517

Table 3D Card expenditure statistics (not seasonally adjusted)

Value of debit card transactions

Detailed sector breakdown - services sectors (continued, not seasonally adjusted)

£	April 2013	May 2013	June 2013	July 2013	August 2013	September 2013	October 2013	November 2013	December 2013	January 2014	February 2014	March 2014	April 2014	Total (latest 12 months)
Telecoms	326,217,706	318,327,073	308,159,640	325,953,973	318,863,552	331,500,689	344,349,276	324,610,484	335,300,244	345,726,054	297,315,259	339,678,620	316,438,873	3,906,223,737
Utilities	370,977,264	274,720,536	236,208,371	243,340,943	211,864,154	361,247,555	238,970,304	211,318,563	208,503,419	240,602,317	240,985,029	300,350,547	282,949,215	3,051,060,953
Contractors (residential & commercial)	118,761,096	132,099,818	125,669,967	142,186,767	132,616,117	142,786,128	162,074,000	157,437,074	136,046,509	136,888,779	138,204,139	159,616,860	153,717,380	1,719,343,538
Gardening services	7,590,751	9,728,334	8,328,160	8,658,660	6,983,347	6,629,684	6,708,629	6,511,654	7,023,438	5,310,085	5,547,964	9,184,405	10,621,455	91,235,815
Veterinary services	93,006,230	97,030,301	92,813,100	106,770,141	105,868,551	98,863,501	106,376,752	96,671,387	91,432,644	101,290,708	94,039,813	105,062,027	104,146,945	1,200,365,870
Photocopying & printing	23,350,249	23,914,344	22,109,689	23,027,173	22,198,131	24,510,016	27,650,675	27,052,511	24,772,707	24,303,411	22,483,252	25,367,769	23,977,407	291,367,085
Photographic studios	11,574,301	12,068,635	11,836,607	14,208,429	11,473,080	11,919,235	13,685,262	14,902,237	14,639,440	9,639,804	10,078,351	11,857,625	11,180,434	147,489,139
Beauty & barber shops	192,553,773	203,899,445	193,193,265	208,892,500	199,288,960	191,830,130	197,448,331	196,898,423	243,837,821	177,500,706	183,206,172	212,570,868	200,758,000	2,409,324,621
Employment agencies	1,103,445	1,271,095	1,228,667	1,327,751	1,341,191	1,373,090	1,389,773	1,343,704	1,123,738	1,465,954	1,343,084	1,594,566	1,458,139	16,260,752
Counselling services	7,221,886	7,192,962	6,215,863	7,163,843	6,367,391	6,591,045	7,139,987	6,291,357	6,133,762	6,343,743	6,233,781	7,221,051	6,936,088	79,830,873
Legal services	75,795,588	85,226,270	82,589,028	95,350,242	85,623,673	86,933,676	94,087,433	86,455,698	74,329,018	82,465,721	77,494,849	88,345,777	83,104,494	1,022,005,879
Laundry & cleaning	11,521,309	12,463,251	12,425,070	13,790,216	12,129,176	12,884,521	13,628,609	12,850,200	12,026,171	11,792,698	10,587,970	12,545,235	12,192,957	149,316,074
Funeral services	31,111,487	33,834,667	30,212,241	32,347,227	29,821,711	30,091,089	35,345,234	34,682,847	34,291,569	39,094,876	37,326,159	41,891,295	38,061,072	416,999,987
Medical services	214,041,595	239,995,279	225,244,076	246,993,334	220,809,182	229,917,003	257,935,546	242,398,551	212,364,223	246,380,254	237,644,367	261,025,331	244,811,033	2,865,518,179
Moving & courier services	27,835,728	32,264,064	32,569,035	37,512,495	35,344,432	33,891,130	37,040,464	35,347,485	33,806,947	32,657,886	29,392,206	33,662,685	34,012,298	407,501,127
Repair shops (not auto)	10,419,441	11,278,260	10,622,080	12,454,485	11,830,641	11,362,507	12,040,582	12,009,753	12,000,711	11,444,106	10,884,160	12,107,879	11,853,934	139,889,098
Accounting services	15,754,078	16,762,569	17,487,635	17,969,120	17,891,311	17,509,135	19,368,576	18,272,354	17,459,720	23,145,515	19,071,677	20,135,680	17,323,671	222,396,963
Advertising, consultancy & PR	13,668,885	13,396,969	11,774,919	12,854,579	11,278,364	11,493,302	12,185,100	11,459,702	9,052,505	11,295,508	10,668,870	11,593,422	11,621,279	138,674,519
Computer programming	36,342,817	37,825,560	35,392,700	38,861,514	36,347,816	39,734,614	40,518,505	36,092,311	36,781,620	38,812,837	32,175,902	35,131,064	34,696,518	442,370,961
Farming services	18,747,706	20,414,332	20,106,071	22,414,252	20,994,968	20,848,856	22,126,143	21,766,748	22,736,921	21,308,918	19,795,505	22,246,110	22,951,068	257,709,892
Miscellaneous professional services	566,805,614	552,538,001	519,747,318	576,787,453	558,320,804	627,648,940	670,730,387	531,148,791	501,558,663	634,220,895	540,259,786	650,602,417	687,443,199	7,051,006,654
Engineering services	17,857,498	19,730,418	19,166,471	20,963,280	19,047,591	19,458,273	21,021,165	18,703,132	16,522,590	17,774,706	18,084,923	20,957,790	20,866,394	232,296,733
Marina services	13,447,090	14,023,914	12,886,792	16,509,592	14,578,480	10,649,987	9,358,571	7,370,882	7,136,961	8,424,326	8,111,521	14,324,542	15,168,212	138,543,780
Wrecking & salvage yards	1,291,235	1,511,162	1,329,797	1,691,550	1,527,891	1,433,529	1,629,771	1,433,209	1,105,356	1,414,370	1,624,409	1,607,849	1,607,849	17,682,882
Pest control	545,155	617,462	523,680	657,043	636,976	532,018	634,499	565,813	474,442	554,710	527,708	579,819	604,346	6,908,516
Educational establishments	244,399,893	187,222,346	130,102,526	147,008,113	218,043,731	715,591,666	600,546,301	241,667,125	199,280,773	466,713,026	222,855,448	178,157,464	236,958,177	3,544,146,696
Child care services	12,477,961	12,762,230	11,674,096	13,682,777	11,679,262	12,190,215	14,034,151	12,619,068	11,412,467	15,221,560	13,520,657	14,562,967	14,367,733	157,727,183
Social, political & religious organisations	81,812,814	92,169,633	84,382,216	102,342,257	97,347,731	102,718,018	116,991,908	109,678,977	89,416,198	93,820,152	83,003,182	118,781,593	103,726,573	1,194,378,438
Government services	1,320,191,328	1,642,522,130	1,667,537,359	2,093,620,979	1,666,958,146	1,211,617,829	1,601,572,163	1,449,613,799	1,576,988,115	3,048,834,528	1,949,079,267	1,698,889,857	1,754,928,022	21,362,162,194
Miscellaneous services	911,467,416	518,245,412	471,812,249	579,615,993	461,144,432	481,712,384	502,165,055	449,210,548	490,746,027	586,085,339	447,877,498	514,148,450	526,986,640	6,029,750,027
Commercial equipment	125,065,424	134,817,184	129,245,014	138,653,857	135,500,822	145,752,014	150,083,450	141,846,360	124,646,009	134,341,182	125,835,517	154,120,909	143,689,876	1,658,532,194
Other services	4,902,956,763	4,759,873,656	4,532,593,702	5,303,610,538	4,683,721,614	5,001,221,779	5,338,836,602	4,518,230,747	4,552,950,728	6,574,834,293	4,895,048,386	5,077,939,033	5,129,159,281	60,368,020,359
Total services	16,586,464,299	16,292,577,100	15,462,991,648	16,928,874,475	15,747,643,305	16,147,413,814	17,259,008,706	14,575,359,556	14,687,118,057	17,830,754,968	15,458,563,425	18,253,726,777	17,893,081,799	196,537,113,630
TOTAL	31,150,800,840	31,387,607,141	29,908,493,565	32,999,619,864	30,484,191,796	31,355,481,730	32,887,317,597	30,579,428,978	33,646,705,216	32,129,606,700	28,981,013,865	34,129,492,761	33,254,517,959	381,743,477,172