

## Card Expenditure Statistics [CES] – May 2009

Seasonally-adjusted

### At a glance key figures for May

	Total spending £ billions		Annual growth rates for spending		Number of purchases millions	
	2009	2008	2009	2008	2009	2008
<b>All plastic cards</b>	<b>30.8</b>	30.3	<b>4.8%</b>	9.1%	<b>633</b>	608
<b>Debit cards</b>	<b>20.7</b>	19.8	<b>7.7%</b>	12.2%	<b>472</b>	446
<b>Credit cards</b>	<b>10.0</b>	10.4	<b>-0.6%</b>	3.9%	<b>160</b>	163

**Plastic card spending** in May was 2.6% lower than in April with both **debit and credit card** spending falling by £0.4 billion. Annual growth rates continued to decline, with credit card spending moving further into negative growth. The average plastic card purchase value in May was £48.64, the lowest since April 2006. Credit card purchases averaged £62.75, and those on debit cards £43.84.

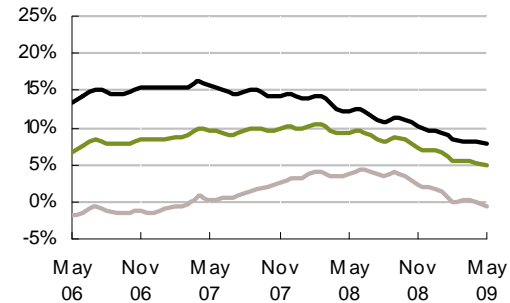
The plastic card share of total retail sales<sup>1</sup> in May was 64.7%, and has increased from 62.2% over the past 12 months.

The plastic card spending figures for May reflect the slowdown in underlying retail sales growth apparent in National Statistics and reveal that the slowdown is equally apparent in the services sector. The annual growth rate for plastic card spending in the retail sectors fell to 3.7% in May and to 5.9% in the services sectors. Six months ago (November 2008) these rates of growth were 4.2% and 9.4%. Lower spending occurred in all the sub-sectors with the exception of motoring where a very small rise of 0.2% probably reflected increased petrol prices.

<sup>1</sup>CES 3-month moving average spending for May of £15.4 billion expressed as a percentage of a similar 3-month moving average for National Statistics 'All retailing' (EAQV) based on the value of Retail Sales at current prices (SA) that gives a figure of £23.8 billion.

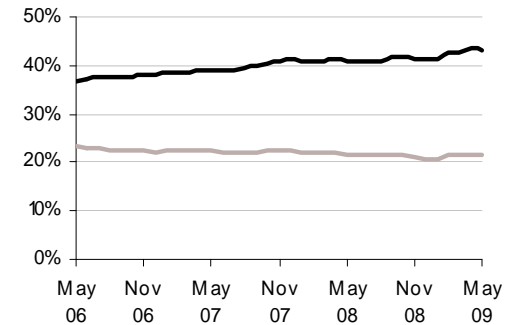
**Chart 1**

Spending on plastic cards  
Annual growth rates



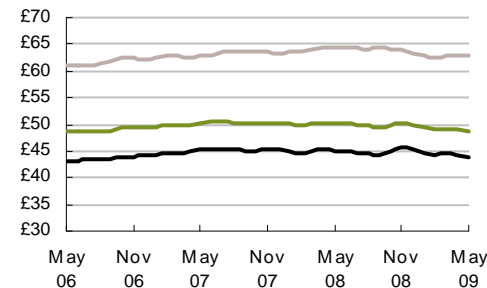
**Chart 2**

Percent of retail sales made on plastic cards  
Three-month moving average



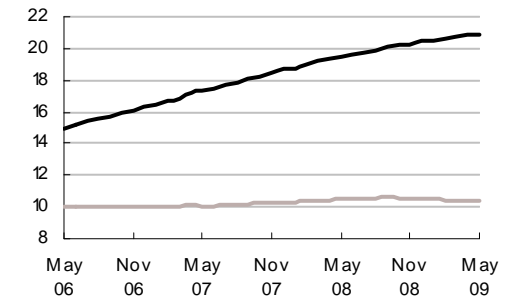
**Chart 3**

Average transaction values  
Three-month moving average



**Chart 4**

Average monthly expenditure  
£ billions



— Debit cards  
— Credit cards  
— All plastic cards