

Card Expenditure Statistics [CES] – June 2009

Seasonally-adjusted

At a glance key figures for June

	Total spending £ billions		Annual growth rates for spending		Number of purchases millions	
	2009	2008	2009	2008	2009	2008
All plastic cards	32.8	31.1	4.4%	9.4%	681	622
Debit cards	22.2	20.5	7.2%	12.4%	510	458
Credit cards	10.6	10.6	-1.0%	4.3%	171	164

Plastic card spending in June was the strongest since September 2008, which was a record month. June spending was 6.3% higher than in May with both **debit and credit card** spending growing by a similar percentage (also 6.3%). In spite of this increase in June, annual growth rates continued to decline, with credit card spending moving further into negative growth. The **number of plastic card purchases** in June (681 million) was the highest monthly figure so far recorded. Faster growth in the number of purchases compared with the value reflects the decline in average purchase values [ATV], normally associated with cost-cutting by retailers and consumers switching to cheaper brands. There were falls in the ATV at supermarkets and in the clothing sectors. June's ATV was £48.50, the lowest since April 2006. Credit card purchases averaged £62.63, and those on debit cards £43.72.

The plastic card share of total retail sales¹ in June was 65.0%, and has increased from 62.6% over the past 12 months.

¹CES 3-month moving average spending for June of £15.5 billion expressed as a percentage of a similar 3-month moving average for National Statistics 'All retailing' (EAQV) based on the value of Retail Sales at current prices (SA) that gives a figure of £23.9 billion.

Chart 1

Spending on plastic cards
Annual growth rates

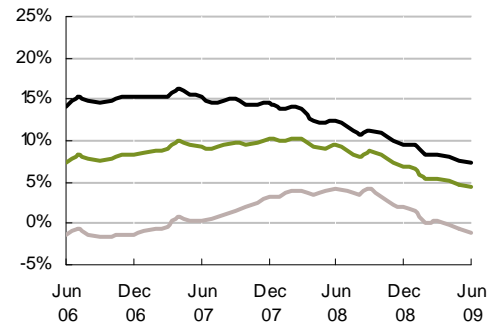


Chart 2

Percent of retail sales made on plastic cards
Three-month moving average

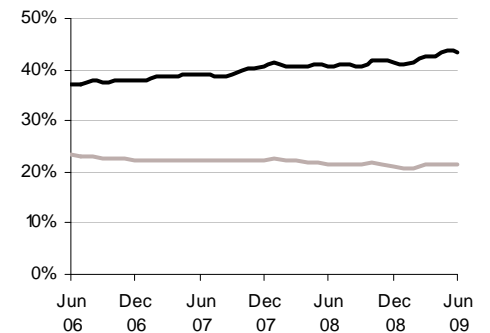


Chart 3

Average transaction values
Three-month moving average

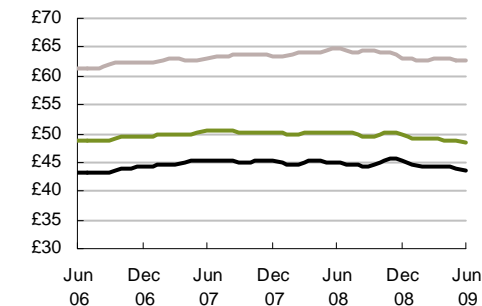
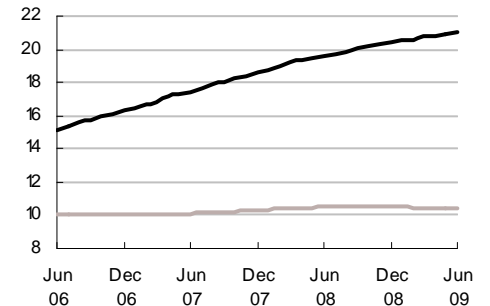


Chart 4

Average monthly expenditure
£ billions



— Debit cards
— Credit cards
— All plastic cards